



Running for cover

A sudden cloudburst Friday brought out the athlete in Peter Hill [center], a sophomore philosophy major. The brief storm failed to leave any measurable rain in official rain gauges, however. [State Press staff photo by Mary Connell]

tuesday

February 6, 1979

**state
press**

Tempe, Arizona

© Copyright, State Press, 1979

Arizona State University

Vol. 61 No. 70

Inside Today

An ASU professor says a proposed faculty code drafted by the Arizona Board of Regents has created fear among University professors.

Page 3

Friction between Maricopa County legislators is the main reason for the budget disparity between ASU and UA, according to a state Senator.

Page 6

The Sun Devil baseball team almost didn't get to play its season opener this past weekend, thanks to some unseasonal rain and a deranged groundskeeper.

Page 17

Along with tuition hike

Bill to tighten residency status

By Lori Grzesiek

The number of students qualifying for resident fee status will be sliced under the same bill that boosts out-of-state tuition \$650 a year, a state representative said Monday.

Rep. Jim Hartdegen, R-Casa Grande, said the bill that requires an out-of-state student to meet five out of seven criteria for in-state status is expected to pass the House of Representatives.

The seven criteria are having an Arizona driver's license; having a car registered in Arizona; being employed at least 30 hours a week; being a registered voter in Arizona; owning or renting housing on an annual basis and paying all tuition and school expenses.

"Meeting five of the seven criteria might be difficult," Hartdegen said. "But it will effectively weed out the students who are trying to get in-state status that don't deserve it."

He refused to estimate the number of students who would be unable to qualify for residency under the new system that would have qualified under the present system.

Blair Benjamin, adviser to the Arizona Board

of Regents, said the present system of determining fee status is much more lenient since it considers each student on an individual basis.

Dick Coyne, fee status officer, said ASU determines residency by "weighing the evidence" presented by each student. Students seeking in-state status are required to submit copies of voter registration, car registration, leases, property deeds, and grants or scholarships.

Benjamin said the proposed requirements could result in a hardship for students.

"There will be people who are clearly residents of the state who won't be able to meet five of the seven criteria," he said. "Some might not have a car, a 30-hour-per-week job or file for state income tax and still be residents in Arizona for five years."

Rep. Lee Jones, R-Phoenix, said out-of-state students could meet five of the criteria "if they are serious" about attending school.

"Students can qualify if they want to," he said. "But they will have to get down and work

hard for their education so they can meet the requirements."

Hartdegen said stricter requirements and a tuition hike will save taxpayer's money.

"Out-of-state tuition doesn't scratch the surface of the cost of education at the universities," he said. "Taxpayers have to pick up 27 percent of the cost of out-of-state tuition. Students should be paying the fair share for their education."

He added the goal of the bill is to require non-resident students to pay 90 percent of the cost of their schooling.

Some members of the Board of Regents said the current system of determining fee status is effective, but they are powerless to keep it.

"We can't do anything about it at all," Regent Dwight Patterson said. "The Legislature is the body with the purse strings. If they want to change the law, they change the law."

Regent Earl Carroll said the new guidelines would probably guarantee uniformity of fee-status determinations at Arizona's universities.

In the news briefly

from the Associated Press

TENG ENDS VISIT

SEATTLE — China's Vice Premier Teng Hsiao-ping ended his get-acquainted visit with America on Monday, expressing hope that U.S. and China will "live in friendship from generation to generation." Nursing a cold and slight fever and too weary for one last meeting, the Chinese leader said he is returning home "laden with the warm sentiments of the American people." He called "most unforgettable" the friendship shown him in his eight-day visit.

FARMERS JAM TRAFFIC

WASHINGTON — Thousands of farmers turned their plowshares into tools of civil disruption on Monday, jamming the capital's roadways with tractors and triggering sporadic violence despite a total mobilization of police. "We've raised enough corn, but not enough hell!" came the battle cry, as several separate cavalcades of farm vehicles poured into the city in a traffic-snarling demand for higher government price supports for their crops.

ALTERNATE PRISON SITE CONSIDERED

PHOENIX — Legislative leaders, troubled by a court suit over a proposed new prison site in Litchfield Park, met Monday to speed action on alternatives. The prime choice has now become an 800-acre tract at the southwest tip of South Mountain Park, a site from which the lawmakers were chased by Gila River Indians and Laveen residents in another frantic search five years ago. Also under consideration is a site near Buckeye.

BIANCA JAGGER WANTS DIVORCE

LOS ANGELES — Bianca Jagger, wife of Rolling Stones lead singer Mick Jagger, filed for divorce Monday, asking \$14,000 a month in support and half the couple's estimated \$25 million in community property. "Although Bianca has been hoping for a reconciliation these past couple of months, the lawsuit was necessary because Mick has made it clear that it (reconciliation) is not possible — because he has been living with another lady," said attorney Marvin Mitchelson, who filed the petition on behalf of Mrs. Jagger, who was in London.

KHOMEINI NAMES GOVERNMENT HEAD

TEHRAN, Iran — Ayatollah Ruhollah Khomeini took a fateful step in his fight for power Monday, naming a veteran anti-shah politician to head a "revolutionary" regime rivaling Iran's shaky government and warning the military they risk God's wrath if they try to stop him. The Moslem holy man called on the people of Iran to obey the new "transitional government" of 70-year-old Mehdi Bazargan, which is to pave the way for an Islamic republic. He urged them to show their support through peaceful marches nationwide.

CLEVELAND PAYS DEBT

CLEVELAND — The city of Cleveland was able to pay off a \$2.2 million debt Monday to the State Public Employee Retirement System and thereby prevent a second state agency from seizing its tax receipts. The city, struggling to recover from default, failed to make a \$2.1 million payment to the PERS in December.

MARTIN ALBUM BANNED

TROY, Mich. — "A Wild and Crazy Guy," the latest recording by popular comedian Steve Martin, is being banned for sale by K-mart Corp. because it contains offensive language, a K-mart spokeswoman said Monday. "We took it out of our stores because a number of our customers complained about the language," according to Ann Wolff, spokeswoman for the nation's No. 2 retailer.

POPULATION HITS 220 MILLION

WASHINGTON — The nation's population hit the 220 million mark at 10:45 a.m. EST Monday, but nobody will ever know the identity of the 220 millionth American, says the Census Bureau. The total was reached 11 years, two months and 16 days after the population reached 200 million on Nov. 20, 1967. The population is recorded on a Census Clock at the Commerce Department.

More aid to farmers promised by Carter

WASHINGTON — President Carter promised Monday to do more to help farmers, but his chief inflation fighter, Alfred Kahn, said farmer demonstrations are a waste of fuel and may foreshadow higher food prices for consumers. Kahn, who is chairman of the Council on Wage and Price Stability, also disagreed with a statement by Carter that farmers suffer more than other groups from inflation.

While the tractors of militant farmers roamed Pennsylvania Avenue a few yards away, Kahn told reporters at the White House: "I would say that the tractors do not bode well for food prices, or even for energy consumption in the United States."

Carter told some state agriculture officials that the distribution of farm income was still "spotty" and that he intended to act to help all farmers share in prosperity.

Carter also said "I don't know of any other group that's suffered more from inflation in the past than have the farmers."

Reporters then asked Kahn if he thinks farmers suffer most from inflation.

"No," said Kahn, apparently unaware of Carter's earlier statement. "I don't think that's true."

Told of the president's earlier remarks, Kahn said with a smile, "That's all right. He's entitled to his opinion. I'm entitled to mine."

White House press secretary Jody Powell told reporters the administration will "continue the process" of giving farmers a greater share of the national income.

He would not comment on specifically how this would be done, but acknowledged that it would involve higher food prices.



"I never had credit before..."
"Now, I've got Instant Credit!"

"I tried to get credit at lots of places. It was a real hassle... 'too young'... 'it takes two to six weeks'... 'not employed long enough'... and 'application denied.' Then I learned about American Savings' brand new VISA/MASTER CHARGE program. All I needed was a \$1,000 savings account at American for either. My credit card is secured by my savings account and I can charge up to half my savings balance. I tried it! It worked! And, American's VISA and MASTER CHARGE cards only charge twelve percent per year interest! Best of all, with my \$1,000 I got a lot of other services, too — free traveler's checks, free money orders, safe deposit box and more!"

Most important, though, I know American is giving me the highest interest allowed by law... higher than any bank... and my savings are insured!"



Finance charges equal a periodic rate of one percent of Average Daily Balance (sum of the daily balances divided by number of days in the month). A substantial interest penalty is required for early withdrawal from certificate savings accounts. Credit limit \$2,500 per customer.

Open Your VISA or master charge Account Today

Stop in at any American office. Open a 5 1/4% American Savings account for \$1,000 or more, fill out the simple application and within a couple of days you'll receive your new credit card.

AMERICAN SAVINGS



The 1st savings and loan association in Arizona to offer the VISA and master charge cards.

CALL TOLL FREE FOR DETAILS
1-800-362-7012

WARNING!

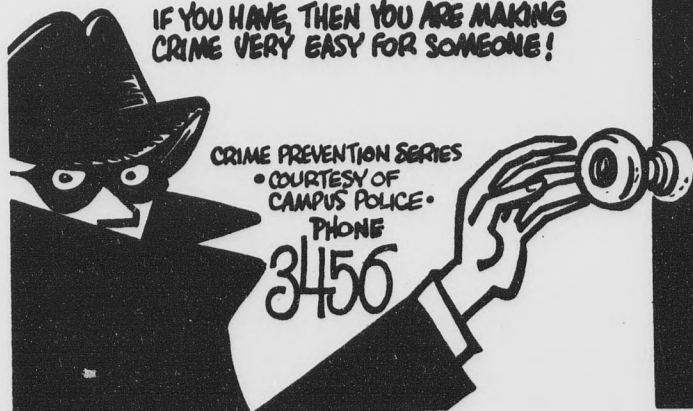
CRIME CAN BE YOUR FAULT!

? HAVE YOU EVER LEFT A DOOR OR WINDOW UNLOCKED WHILE AWAY FROM YOUR ROOM OR YOUR APARTMENT...

? OR HAVE YOU EVER LEFT YOUR CAR OR BIKE UNLOCKED...

? OR YOUR PURSE UNATTENDED IN THE LIBRARY, CAFETERIA OR THE BOOKSTORE...

IF YOU HAVE, THEN YOU ARE MAKING CRIME VERY EASY FOR SOMEONE!



CRIME PREVENTION SERIES
• COURTESY OF
CAMPUS POLICE •
PHONE
3456

'Document of confrontation'

Fear devastates ASU faculty, says professor

By Jim Muhlstein

An ASU professor Monday labeled the Arizona Board of Regents' proposed faculty code as a "document of confrontation" that has created fear among University faculty.

The fact there is fear among faculty on this campus is devastating," Dr. Thomas Hoult, professor of sociology said at a meeting of the campus chapter of the American Association of University Professors in the Memorial Union.

"The board is not showing itself as a professional group, and this document certainly was not designed for creative leadership," he said.

The 24-page code was presented to faculty members for review on Jan. 15. The deadline for their response has been pushed back to May 15.

See editorial, page 4

Faculty response to the policy proposal have focused on the lack of a specified number of years a faculty member may be employed without tenure. Opponents to the code also point to the provision that the University may assign a tenured faculty member to off-campus positions in disregard of his contractual agreement with the University.

Dr. Melvin Firestone, associate professor of anthropology and president of the campus AAUP, said there is little chance of ASU's censorship by the AAUP being lifted if the proposed code is approved by the regents.

Censorship was imposed following the firing of Morris Starsky, former associate professor of philosophy, in 1970 for alleged political activities.

"The same fundamental conditions that led to Starsky's dismissal still exist and that's what the AAUP will be looking at," Firestone said.

He said Governor Bruce Babbitt was "quite supportive" at a Jan. 11 meeting

with members of the chapter's censorship committee.

"The governor said he was unaware of the proposed policy and after reading it agreed if some of the provisions were taken literally, one could abrogate the meaning of such things as tenure," Firestone said.

The AAUP set specific guidelines and standards for tenure in its 1940 Statement of Policy Standards and revisions, which the University presently follows "in principle," Firestone said.

He added the governor "agreed more time is necessary for response to the regent's proposal."

The campus AAUP censorship committee was set up last year to study the problem of censorship relating to the Starsky case.

"The committee's new priority is this proposal because it definitely will affect whether or not the censorship is removed," Firestone said.

Andrew Federhar, student member of the board of regents, said he will seek to have the board extend the deadline further to "past summer."

He said the AAUP should make their final presentation to the board on a state-wide basis.

"I personally am opposed to the provisions concerning tenure, but the board needs a general employment policy so we can avoid long, noisy lawsuits like the Starsky case," Federhar said.

Hoult said the AAUP chapter currently is working on an alternative proposal to present to the regents.

"It would be too easy for them to try and placate us with just a few changes among those gripes we list, then turn to us and say 'See how easy we bend,'" Hoult said.

ENGINEERING MAJORS:

Do you know who the leader in automatic test equipment is?

TERADYNE DOES.

For information contact your placement office.

TERADYNE, INC.

Equal Opportunity Employer M/F

TERADYNE

ROSITA'S

FINE MEXICAN FOOD
1090 W. 5th ST., TEMPE

4 BLOCKS WEST OF MILL

966-0852

Open Monday thru Saturday
11 a.m. to 10 p.m.
Closed Sunday

Pitchers of COORS 60 oz. \$1.75

Mugs of COORS 35¢

Take-Out Service

LUNCHEON SPECIALS

DAILY 11 A.M. - 1 P.M.

- | | |
|-------------------------------------|------|
| 1. Cheese Crisp | 1.50 |
| 2. Sour Cream Enchilada, Rice | 1.75 |
| 3. Taco, Rice, Beans | 1.75 |
| 4. Enchilada, Rice, Beans | 1.75 |
| 5. Tostada, Rice, Beans | 1.75 |
| 6. Three Tacos | 2.00 |
| 7. Enchilada, Taco, Tostada | 2.00 |

\$1.00 OFF ANY CHIMICHANGA

w/ coupon

OFFER GOOD 2 P.M. - 10 P.M. MON. - SAT.

Offer expires 2/28/79

there's lots of living and loving ahead



Why cut it short?

American Cancer Society

Frank G. Baranowski presents

ODYSSEY II

Exploration of Science & Phenomena

Saturday • February 10 • 9 a.m. to 4 p.m.

★ Special Premiere Showing "THE LOST CITY OF ATLANTIS"

A ninety minute movie, filmed for television as a forthcoming NBC Television Special, a debut by Dr. MAXINE ASHER, anthropologist, explorer, author and technical director for the film. Dr. Asher is currently adjunct professor of education, University of San Francisco. With a B.A. in Psychology, M.A. in Anthropology, Ph.D. in Education, she possesses four life-time teaching credentials. 9 a.m.

★ VIRGINIA MORROW

subject for the book, "A Search for Bridie Murphy," that stunned the world with incredulous facts about a former life in Ireland in the nineteenth century. Ridiculed by 2500 newspaper and magazine articles, criticized for being unorthodox, condemned for being untraditional, her courage and integrity have won the respect of researchers the world over. 1 p.m.

★ CLARISSA BERNHARDT

the only known person who has predicted an earthquake to the minute, day and location, i.e., the Indonesia quake of June 26, 1977, a quake in the Atlantic, a Hawaiian quake, etc. Clarissa prevented a sabotage attempt on a 747 airline May 19, 1975, by identifying the airline and location where the device would be planted. She has worked with the United States Geological Survey, the Federal Bureau of Investigation, F.A.A. and other government organizations. An interesting woman . . . to say the least. 2:45 p.m.

SATURDAY • FEBRUARY 10 • 9 a.m. to 4 p.m.

SCOTTSDALE HIGH SCHOOL AUDITORIUM • 7410 E. Indian School Rd.
Adults \$15.00 -- High School & University Students with I.D. Card \$10.00

Bend over and smile, prof

Even after nine years, Morris Starsky's ghost still haunts the Arizona Board of Regents.

After the regents fired the ASU philosophy professor, a self-proclaimed Socialist, for dismissing a class to attend an out-of-town political rally, they were accused of trampling on "academic freedom."

They didn't like that, but it taught them a lesson. Now the regents are out to stifle academic freedom again, but this time they're trying to cover all the bases to avoid the hassles the Starsky case brought.

After Starsky's dismissal in 1970, he filed suit against the board, claiming he had been fired unjustly. In 1972, Federal Judge Carl Muecke ruled in Starsky's favor, but the regents appealed. After seven long years of litigation, Starsky lost.

His kick in the shorts brought the wrath of the American Association of University Professors, which placed ASU under censure for its failure to stand up for professors' rights.

That condemnation remains in effect today.

After all the furor, the regents made up their minds that the next time they wanted to fire someone they didn't like, there would be no ugly lawsuits or screaming. No muss, no fuss.

Their solution: a 24-page draft policy that will give the board absolute power over hiring, firing and tenure of faculty members, and will deny due process of appeal in many cases.

The document, formally titled "Conditions of Faculty and Academic Professional Service," was approved at

the board's December meeting and was distributed for response last month.

It says, in effect, "You, the faculty, have no rights. We hold the cards."

Written in vague language designed to befuddle the layman, almost every page contains dictates that conflict with AAUP guidelines for conditions under which professors ought to work.

The code is peppered with ambiguous reasons for termination, such as "unprofessional conduct," "personal misconduct," "immorality," and "in-subordination," which are open-ended and arbitrary.

Blair Benjamin, legal advisor to the board, told a State Press reporter that because the regents are the employers and faculty members are the employees, the board should have the power to lay down whatever rules it so desires.

If faculty members don't like it, they can go somewhere else, right?

Wrong. Despite what the regents might think, the board has an obligation to students and citizens of this state to provide an atmosphere of quality education.

And quality means diversity. A university is supposed to be a place for intelligent exchange of ideas, a place where faculty members are free to introduce concepts and philosophies even the regents, in their infinite wisdom, might frown upon.

The board also has a responsibility to at least consult the body it seeks to control. No faculty input went into the drafting of the regents' conditions of employment.

The regents are out of line if they view themselves as dictators who can weed out professors they view as a threat to the "orderly functioning of the university."

Most faculty members who have read the code are either upset or afraid, as well they should be. It jeopardizes the academic freedom of tenured professors, and provides numerous excuses for the board to deny stability of employment.

An AAUP censure is a disgrace to any university, and the enactment of this policy will destroy any chances ASU has of salvaging its respectability. What outstanding scholar is going to sign up with an institution that is more like Stalag 13 than a university?

And if we're trying so damn hard to earn the prestige of other Pac-10 universities, getting back into good graces with the AAUP would help.

The ASU Faculty Senate, which strongly opposes the policy, will hold a public hearing at 3 p.m. Thursday in the College of Law's Great Hall. Members of the ASU chapter of the AAUP will be there to point out its dangers. Every person on this campus should attend.

If you're a faculty member, you should understand exactly what the board is trying to shove down your throat.

And if you're a student who thinks faculty matters are of no concern to you, think again. This university will not be worth the time it takes to find a parking place if professors are intimidated by the threat of losing their jobs at the regents' whim.

Letters to the Editor

You believed those clowns?

Editor:

I am writing in reference to your editorial (Jan. 25) highlighting the absurd conclusions of a group which alleges the Palo Verde Nuclear Plant "will cost more than twice as much to build as APS has estimated".

The authors present themselves as "Power Plant Analysts" when in fact, they have no background, training or expertise in nuclear or power plant economics. To any individual with the least bit of knowledge in these complex disciplines, the report is totally without merit.

Nuclear power and nuclear economics have been studied extensively by a number of state and federal regulatory commissions who have heard testimony from this country's foremost authorities. None of them have reached conclusions that even come close to the outlandish allegations of this report.

The preface of the report admits "...two years ago, the authors had no special background in power plant economics." They have demonstrated that they still don't by this rather amateurish effort.

O. Mark DeMichele
Vice President of
Corporate Relations
Arizona Public Service Co.

Opinion

state
press

Fees: that ol' white magic

Editor:

Friday's editorial in the State Press blames the proposed tuition increase on "fiscal conservatives in the Legislature who are trying to make themselves look good in the eyes of taxpayers." But it is not just a case of a handful of neanderthals attacking our rights.

Cutbacks in education, tuition hikes, and the elimination of affirmative action programs (Bakke) are taking place around the country as part of a national plan to turn our universities into whiter, more elite, institutions.

In 1973 the Committee for Economic Development, a group of top corporation executives,

and the Carnegie Commission on Higher Education, a "think-tank" composed mostly of current and former university presidents bankrolled by the Carnegie fortune, issued some recommendations. They thought that too many of us are getting educated. The CED proposal called for a doubling or tripling of tuition over a five-year period.

The U.S. government and the corporations that control it are worried. To increase their profits, which are threatened by the economic crisis they created, they must lower the standard of living of the working class and its allies. Carter demands that we keep our wage increases below 7 percent a year (less than inflation) while some companies make record profits.

This means more money for them; and lower wages, speed-up, fewer hospitals, and lower quality education for the rest of us.

It is not just a band of reactionaries in Arizona that support this policy. The Democratic "friend of the common man" Party controls the U.S. Congress and most state legislatures. The attacks on our democratic rights are organized and supported by the Democratic and Republican parties alike.

The Young Socialist Alliance believes that education is a

right, not a privilege. It should be free for whoever wants or needs it. We support taxing the rich, not the working people, to pay for a quality education.

We favor eliminating the more than \$120 billion military budget. Instead of aiding the Shah of Iran and now Bakhtiar in slaughtering thousands of people struggling for their rights, this money could be used to end environmental contamination and build new hospitals and homes, as well as to subsidize college education.

While we will not win free education immediately or without struggle, we can stop the unjust tuition hikes.

We cannot allow the Legislature to try and divide out-of-state students from in-state students, or students from workers as a whole.

This divide-and-rule strategy has been used successfully to divide blacks from whites and men from women. If they raise out-of-state tuition this year, in-state tuition certainly will be next.

The ASU student government should call for a demonstration to protest these attacks. We must appeal to our allies in the labor unions and in minority organizations for their support. Mass protests can lay the basis for stopping these reactionary moves.

Seth Galinsky
Young Socialist Alliance

Optics



Photo by Steve Berry

Letter Policy

The State Press welcomes letters to the editor on any topic. To ensure publication, however, letters must conform to a few guidelines.

Type them, double spaced, with margins set on 60 characters. Include your full name, class standing and major. Anonymous letters will be discarded. However, if it is imperative that your name be withheld, state why.

All letters are subject to editing for style, grammar and spelling, but don't be sloppy. Lengthy letters may be shortened to meet space limitations, so be brief.

More Letters

Hey, this ain't funny

Editor:

As a concerned student I would like to suggest, in keeping with the line of reasoning recently taken by one member of the Arizona House of Representatives, that the following appreciation measures be implemented at our university:

1) that pay toilets be installed in the restrooms at ASU — 10 cents for in-state students; 50 cents for out-of-state.

2) that a significant number of urinals and toilets be removed from laboratories, thereby

eliminating receptacles for the inordinate amount of cigarette butts discarded by wasteful students.

3) that in a few instances all fixtures be removed from bathrooms in strategic locations around campus.

This last measure would inhibit the flow of inebriated students in some facilities, and act as an energy-saving measure in that the lights in these areas could be turned out.

Robert Rowley
Graduate Student
Linguistics

Editor:

I feel that these representatives of ours have forgotten an important factor in their argument.

The majority of students I have met have been from out-of-state. After talking to them, I've found that many are considering leaving ASU.

I'd like to know what the representatives think is going to happen to the small businesses here in Tempe. Many of the small shops and restaurants

must rely on ASU students for their business. If enough students can't afford to return, what will happen to these businesses?

If enrollment drops sufficiently, would ASU have to consider the release of a number of professors? Does it make sense to hurt Tempe's economy for the sake of the few tax dollars they're hoping for?

Cathy Kaminski
Freshman
Dance

Editor:

Students who value an education do so because they wish to learn to be functional; not because some politician wants to increase tuition rates again (groan).

Suffering students still are trying to adjust to all the tuition increases (ouch) and the dropping of full-time status to anything more than six hours, for pay purposes.

Any loss of students through tuition hikes results in the loss of incalculably valuable human potential. Is this short range monetary grasp, i.e. tuition hike, worth the long range loss? I doubt it.

It is intellectually pompous and morally arrogant to cast the judgment that the individual's money is misspent if not spent in accordance to certain politician's personal and/or religious beliefs. This is in response to the free

and legal choices of drinking beer, smoking and car ownership.

When do the tuition hikes stabilize? Is it when a majority of students only can afford to wear rags and eat one or maybe two meals a day?

What if all such politicians would give up a sizable chunk of their salaries (say \$4,000, to some charity for this and all successive years) because they can afford to smoke, drink and have a car, whether expensive or not. Such a move will cause the politician to value his pay rate in the same sense as the student does a tuition increase. Such a pitiful excuse for wanting to soak the students again.

Could it be possible, I wonder, if these tuition increases have driven some students to drinking and smoking?

Henry Provencio
Senior
Engineering

Editor:

Last week, I read the State Press and was shocked by the front page article. I cannot believe what I read.

I do not drive a fancy car, nor do I drink or smoke excessively, but this is not the issue here. If you really believe that you can stereotype students, go ahead, but do not let such bigotry influence your actions in the legislature.

How many of you legislators drive big cars, smoke cigarettes and drink occasionally? On this basis I would suggest that all legislators should have a pay cut, thus limiting your budget. This is known as an "eye for an eye and a tooth for a tooth."

I feel that raising the tuition at ASU will end only in tragedy, for both students and legislators. You'll be depriving needy students of education, while at the same time losing your seats in the state legislature.

I'm a registered voter, and believe me, I (as many others) keep track of the news and what certain legislators do. As of now Pat Wright and Jim Cooper never will receive my vote and I shall do my best to spread the word of why they want to raise tuition fees.

If the raise in tuition was due to any sane reasoning, I could not argue with you, but it is not. In reference to Cooper's statement that students should value their education, what in the hell are students going to ASU for? Are there legislators who went to college and cherish their degrees or do they, in fact, feel they spent their college years smoking, drinking and running around in fast cars and therefore feel that all college students today do the same as they did?

Let's hope not, or our legislators have more problems than just plain bigotry.

Jeff Bohling
Secondary Education

Introducing
the \$5.00
haircut!

Crimpers is pleased to announce a new budget division of its haircutting salon. A precision cut, \$5.00; a shampoo, \$1.00; a blow dry, \$2.00.

Call 966-5192
today for an appointment.

CRIMPERS LTD

111 East University Drive, Tempe, Az

PAPILLON'S
SANDWICHES

CHILI SPECIAL

Chili Spaghetti and

Chili Dog

\$1.15

ALL FOR

Reg. \$2.20

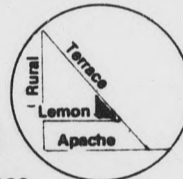
Expires Feb. 13, 1979

Come on in and
sign up to win

a **FREE HONDA EXPRESS**

894-2021

1050 S. Terrace



GUADALAJARA SUMMER SCHOOL

University of Arizona offers more than 40 courses, i.e., anthropology, bilingual education, history, Spanish, etc. at Guadalajara, Mexico, July 2 - August 10. Tuition: \$265. Board and room with Mexican family: \$300.

Write
Guadalajara
Summer School
Alumni 211
University of Arizona
Tucson 85721
(602) 626-4729

ASSOCIATED BIOSCIENCE OF TEMPE

UNIVERSITY PLASMA CENTER

"Plasma Donors are Life Savers"

\$6.00 - 1st donation \$9.00 - 2nd donation

(within same
work week)

CASH Paid for Plasma Donation

BONUS PROGRAMS AVAILABLE

Federally Licensed and Regulated

Hours: Mon. - Fri. 9 a.m. - 5 p.m.
Sat. 9 a.m. - 1 p.m.

CALL FOR APPOINTMENT

1015 S. RURAL ROAD, TEMPE **968-6139**

Bring this ad in for Bonus. (NEW DONORS ONLY)

Conflict causes disparity in budgets, official says

By Steve Allnatt

Friction between Maricopa County legislators is the chief cause of ASU's failure to achieve budget parity with UA, the chairman of the Senate Appropriations Committee said Monday.

ASU had 4,000 more students than UA, but the Tucson school's 1978-79 appropriation was approximately \$17 million more.

"Maricopa County legislators never have been a cohesive unit behind ASU like Pima County legislators are behind UA," Sen. John C. Pritzlaff Jr., R-Phoenix, said.

Pritzlaff said there needs to be a "greater awareness" among Maricopa County legislators because ASU is "suffering a lag" in funds.

"This problem goes back many years," he said. "We see it, but aren't able to handle it right now."

Pritzlaff said budget talks for the state universities will begin this week.

"We're not getting into a situation with one school against the other," he said. "We're trying to find a rational approach, find out if differences exist and how to make up the differences."

University President John W. Schwada will meet with the Appropriations subcommittee considering University budgets Monday.

The subcommittee meeting, which will be open to the public, is chaired by Sen. Jack J. Taylor, R-Mesa. Schwada's appearance is scheduled at 9 a.m. in Room Four at the Senate. The UA representative will appear at 1 p.m.

Schwada said his appearance before the subcommittee will focus on the "specifics and details" of his formal budget request made before the full Appropriations Committee last month.

He added the theme of his formal presentation is that ASU's growth and changing character demanded higher appropriations.

Money is appropriated to the University "as though we're not growing," he said. "Recognition of the growth and changing character has not been recognized."

"A greater proportion of work is being done at the professional and graduate levels," he said. "These are more expensive programs and are more demanding in terms of faculty, facilities and library materials."

Schwada said ASU enrollment has increased by 10,000 students in the past seven-and-a-half years. He expects another 1,000 in the fall of 1979. "Per-student cost has fallen far behind because of the fast growth," he said.

Fee hike, grant program linked, ASA official says

By Tricia Reeson

A proposed tuition hike could be carried through the Legislature as a trade-off for a student grant program supported by the Arizona Board of Regents, the executive director of Arizona Students Association said Monday.

Carla Blackwell said that opponents of a bill to raise out-of-state tuition will have to watch for "behind-closed-door dealings" that could connect the bill to the State Student Incentive Program.

In its unsuccessful introduction to the Legislature last year, support for the SSIG program was bought in exchange for last spring's tuition hike, Blackwell said.

The SSIG program, which would appropriate \$150,000 in state monies for student grants, has been reintroduced this session, and has passed through the Senate.

However, Blackwell said passage of the bill in the House may again be tied to tuition hikes in the form of House Bill 2265, which

would raise tuition \$650 dollars a year for out-of-state students.

"We have to watch out for some of the deals that could be made along the line," Blackwell said.

"I'm worried that the SSIG will be caught up in the whole mess. The regents fell for that (a trade-off) last year. We've got a replay of last year now," she said.

Engineering & Computer Science Majors

DON'T MISS TALKING TO THE HUGHES RECRUITER VISITING YOUR CAMPUS SOON.

Contact your placement office for interview dates.

HUGHES

Creating a new world with electronics

AN EQUAL OPPORTUNITY EMPLOYER M/F

Presenting this week . . .

"COYOTE"

February 6 - February 10



PLUS OUR REGULAR WEEKDAY SPECIALS



- Mon. 10c Beer, 7:30-10:30 p.m.
- Tues. Triple "T" Nite (Two-Fer) 7:30-10 p.m. Admission & Drinks
- Wed. Loose Ladies' Nite Free Admission and Drinks till 10:30
- Thurs. 25c Mixed Drinks and Beer 7:30-10:30 p.m.

SPECIAL
Shot Jack Daniels
Glass of Beer 75c
Every Mon. thru Feb.

NEXT WEEK

YESTERDAY'S WINE

Feb. 12 - Feb. 17

all at
Bluegrass Country

2003 N. Scottsdale Rd. (Between McDowell & Oak) **946-4859**

CALL for information on the BEST DEAL on Country Swing Dance Lessons!

coming...

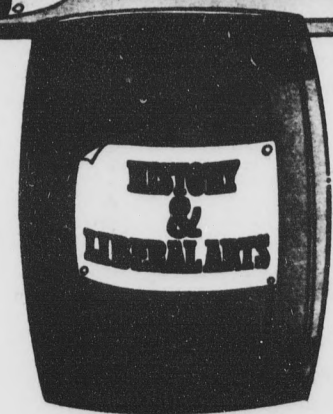
WELCOME TO THE JOB MARKET



What's your best bet in today's marketplace? What can you expect from your first job? Need it be a nine-to-five one? These and many other questions related to entering the job market will be discussed in this issue of "Insider"—the free supplement to your college newspaper from Ford.

Ford hopes these tips about what awaits you in the job market will help you start your career off on the right track. And if you're in the market for a new car or truck, we also hope you'll check out the great lineup of '79 Fords.

Look for "Insider"—Ford's continuing series of college newspaper supplements.



FORD

FORD DIVISION

Mac TEMPE CENTER
JEWELERS

FOR ALL YOUR JEWELRY NEEDS
Diamonds, Watches
14k Chains, Pendants
Sorority-Fraternity Jewelry
Watch & Jewelry Repairing
966-7587

Collage

Dates Announcements Places
Clubs Meetings

TODAY

Sigma Delta Pi, Spanish Honor Society, holds a meeting at 2 p.m. in LLA 46. Members and interested people are invited to attend. For additional information call 966-0024.

The Communication Association for Undergraduate Students meets at 7 p.m. in Stauffer Hall, room 412. The meeting's agenda includes the election of new officers and planning the calendar for Spring '79.

The American Indian Crusade meets at 6 p.m. for potluck and 7 p.m. for a concert at the Lutheran Campus Center, 1414 McAllister, Tempe for "All-Indian Student Night." For additional information call 986-7140.

Hillel holds its weekly luncheon from 11:30 a.m. to 1 p.m. at Baker Center, 213 E. University Dr., Tempe. The lunch costs 99 cents. For additional information call 967-7563.

WEDNESDAY

The Young Libertarians of

ASU will show the film "The Incredible Bread Machine," at 2:30 p.m. in MU room 213. For additional information call 968-1697.

The MUAB Entertainment Committee meets at 3 p.m. in the MU Yavapai Room to discuss the Red Eye Special. Anyone interested in planning the event is welcome. For additional information call 965-6649.

The Daybreak Inter-denominational Ministries meets at 7:30 p.m. in the MU Santa Cruz Room. For additional information call 966-7865.

Eckankar meets at 7:30 p.m. in MU room 221 to discuss the path to God. For additional information call 838-2272.

The Black Student Union meets at 7:30 p.m. in the MU. The schedule of events concerning Black Culture Week will be discussed. For additional information call 963-9563.

THURSDAY

The National Academy of Television Arts and Sciences meets at 7 p.m. in Stauffer

Hall room 207. The business meeting features Earl Baldwin, who will discuss an upcoming seminar. A social will follow the business meeting. For additional information call 937-2228.

The Campus Organization for the Awareness of Disabilities (CO-AD) meets at 7 p.m. in the MU for presidential elections. Proxy ballots should be turned in at ASASU. For additional information call 965-2116.

The Pre-Med Honorary Society meets at 7:30 p.m. in the MU Pinal Room to discuss "Paramedics: Training and Career." The campus community is invited. For additional information call 894-2523.

The Women's Affairs Board meets at 7 p.m. in the MU Graham Room to discuss the upcoming Holly Near concert. For additional information call 965-2516.

Blue Key meets at 9:30 p.m. in the MU Yuma Room to discuss the upcoming rush. For additional information call 965-5868.

Sugar satisfies craving

Soft drinks provide 'high' and headaches, prof says

By Susan Cook

Soft drinks cause forgetfulness, headaches and drowsiness, an ASU education professor said.

And with the amount of drinking machines on campus, ASU students are having a lot of headaches, said Dr. Larry Faas.

Students who don't eat breakfast and come to school find themselves using the soft drink machines, he said. "The sugar they can get out of soft drinks gives them the 'boost' they need to make it through a few more classes," he added.

When the body's blood sugar level is high, it has energy to burn and this energy is stretched over a few hours time, he said. When the blood sugar level drops, the body needs sugar so it can convert it into energy.

When the body's blood sugar level is low and reaches a certain point, people crave sugar.

"The sugar from soft drinks can satisfy the body's craving and it gives the person a 'high,'" Faas said. "By 10:30 a.m. a student's alertness is somewhat less than it could be."

Some students may find they

have a low blood sugar tendency, a condition called hypoglycemia, if they constantly crave sweets Dr. Faas said. Stress and anxiety can touch off

low blood sugar condition. The sugar's main action is to produce more rapid and clear flow of thought and to allay drowsiness and fatigue.

Take stock in America

DRIVE CARS FREE

Cars Available Many Points U.S.A. We are I.C.C. licensed and insured. Must be 21 years or more.

SCHEALL DRIVEAWAY 991-5533

Opening February 12th

HANK THOMPSON

Will Be Here

February 12th

thru

February 17th

MAKE YOUR

RESERVATIONS NOW!

894-9751



LEARN TO SKYDIVE!!

Call now **267-7815**
24 hrs.

- Professional instruction
- Certified equipment
- Well maintained aircraft
- Exhibition jumps

ARIZONA PARACHUTE RANCH
Largest Center in the Southwest

racket world

2626 N. Scottsdale Rd. 941-5172
1/2 block South of Thomas

YOUR RACKETBALL HEADQUARTERS

— FULL LINE OF RACKETS —

EKTELON Slazenger ALON

Head • LEACH

Wilson® \$34.95 While they last!
Advantage

Racketball Equipment

Shirts • Shoes • Shorts • Balls • Gloves • Bags

10% DISCOUNT WITH STUDENT ID CARD

It's going to be the Greatest Western Music Show in the Valley!

2 Dance Floors • Continuous Entertainment from 8 p.m. 'til 2:30 a.m.
• 3 Hours of Luchtime Entertainment

GOLDEN HORSESHOE

In Tempe
WESTERN STYLE SUPPER CLUB
WOOLCO SHOPPING CENTER
Curry Road and Scottsdale Rd.

• Draft Beers • Cocktails • Breakfast, Lunch and Dinner Menu
Family Owned and Operated

AUTHENTIC WESTERN DECOR
Acres of FREE . . . Front Door Parking

1354 N. SCOTTSDALE RD., TEMPE

Casual Dress Code



Insults to be heard

Group aims to create the season of 'Taxmus'

OMAHA, Neb. (AP) — The people who brought you insult cards are back with a suggestion to spend April 15 folded, spindled and mutilated in glorious celebration of the new season of "Taxmas."

That's the traditional date by which Americans must file their federal income tax returns.

This year April 15 is on Sunday and the Internal Revenue Service therefore gives taxpayers an extra day to follow the card folks' suggestions to tell the IRS such things as: "You've actually saved me money this year. I don't need pockets any more."

Another "Taxmas" card is aimed at a policymaker, such as a congressman or IRS bureaucrat:

"You have created a tax system of great distinction . . . an' de stinc gets greater all de time."

The cards are the creation of a former

writers' club, headed by playwright John O'Donnell.

Now known as Group Ten Press, the staff of creative writers and others is calling for a new season called "Taxmas," which would end with IRS Day on April 15.

"Let this day forever remind the politician and the bureaucrat that the people who pay the bill will no longer sulk alone and remain silent. Let the insults ring throughout the land," O'Donnell said Thursday in what he called a proclamation of Taxmas.

The group attracted attention about six months ago with its marketing of insult cards, aimed at giving people a chance to say by mail what they wouldn't say in person.

In one such card, an employee could tell his boss that his sense of justice could earn him an appointment to the Supreme Court . . . of Uganda.

Deadline near for graduation applications

Wednesday, Feb. 14, is the final day to apply for May graduation without a late charge. Graduates may pick up applications in the Moer Building, room 134.

The graduation fee is \$7 for

undergraduate students and \$10 for graduate students. After Feb. 14 the fee is \$12 for undergraduates and \$15 for graduates.

Late applications for May 1979 accepted until May 18. Diplomas

for late applications are usually not available until 12 weeks after the commencement date. Diplomas for applications meeting the deadline are usually available four to six weeks after commencement.

CONTESTING YOUR NON-RESIDENT TUITION STATUS?

Steven B. Yarbrough, Attorney at Law, is available to assist you with your appeal to the University Appeals Board on Tuition Status. Fee may be contingent, i.e., a percentage of difference between resident and non-resident tuition payable only if resident status is granted.

STEVEN B. YARBROUGH

1650 W. Alameda Dr.
Tempe, Arizona 967-9401

BIRD'S RECORD EXCHANGE

111 E. University

Corner of University & Myrtle
In Tower Center

WE BUY, SELL AND TRADE
FINE QUALITY USED RECORDS
AND CASSETTES

OPEN MONDAY - SATURDAY
10 - 9

ROCKJAZZFOLKBLUESCLASSICALSHOWS
966-4158



My doctor pronounced me cured of cancer.

My boss didn't.

My boss didn't understand that I was healthy again.

So I was let go.

A lot of people are like my boss. They think that everyone dies of cancer. I thought so, too. Until the American Cancer Society, through one of its service and rehabilitation programs, helped me return to a normal life.

The ACS also has local Units that help Americans who've never had cancer understand it better.

Today more and more, cancer is a curable disease. Ignorance about cancer is curable, too.

American Cancer Society

DO WHAT?
DUESSELDEFENEFENDORF!
DO SELL TO WHO?
DUESSELDEFENEFENDORF!
DUE SELF EVEN IF HE DON'T?
DUESSELDEFENEFENDORF!

Knackwurst • Kraut • Ale
502 South College
Tempe

Nominations for teaching awards due

Now is the time for nominations to be submitted for the Quality Teaching Awards presented by the ASU Dean of the College of Liberal Arts each spring.

Students, student organizations, faculty, faculty organizations and departments are encouraged to submit nominations of full-time assistant or associate professors in the Liberal Arts College in letter form by Feb. 26.

Letters must be accompanied by a list of professional and academic statistics and a list of courses taught, as well as a clear indication of student opinion and at least two kinds of supporting evidence.

Nominations and supporting materials may be sent to Linda Farwell, secretary of the Quality of Instruction Committee, Office of the Dean, College of Liberal Arts, SS109.



By Joseph M. Bering
Registered Jeweler

A LOVING, LASTING VALENTINE

Candy and flowers are two of the most popular Valentine's Day gifts. These thoughtful tokens of affection are much appreciated, I'm sure, but they don't last very long. We can offer a suggestion for a gift that says "I love you" day after day, year after year. I'm speaking, of course, of fine jewelry.

A man can find a wide selection of items to express the magic sentiment to his beloved lady. If marriage is on his mind, he might choose this time to present an engagement ring. If just a hint of marriage crosses his thoughts, he might want a promise ring with a very small diamond that means "there are bigger things to come." The heart shape is very popular today and can be purchased in a pendant, ring, earrings, bracelet, anklet, stick pin or charm. Of course, any piece of jewelry, whether it bears a Valentine motif or not, would be very appropriate and warmly accepted by any woman.

Fine jewelry is also an excellent choice for a man's Valentine gift. Ladies, let us help you select a piece for your husband, boyfriend, father... keeping his taste and wardrobe in mind.

Love is a marvelous emotion, and it goes through such interesting changes as life progresses. We especially enjoy helping young couples who come into the store looking for engagement and wedding rings. Sharing in their joy is one of the fringe benefits of being a fine jeweler.

Joseph M. Bering
JEWELRY
& DIAMOND CUTTING
130 E. UNIVERSITY — TEMPE
"In the Arches" 967-8917

Project federally funded

Nursing clinic offers health examinations

Families or friends of students as well as faculty or staff who wish health examinations or ambulatory health care may obtain this care through the ASU College of Nursing Community Health Services Clinic at 7700 E. Roosevelt,

Scottsdale.

The nursing clinic has been developed through a master's program federally funded project entitled "Participatory Education in Health Care Delivery." Services are provided by professional nursing

students in the master's program, by faculty, and by a staff of certified nurse practitioners and nurse specialists. Part-time project physicians provide consultation for students and staff.

A special rate has been

established of \$23.00 for a complete health examination (includes health history, physical examination including vision and hearing.

For an appointment, call 994-2323 and ask for the clinic.

Resource development unifying force in politics between state governments

Water resource development is the most unifying force in the politics of Arizona, Colorado, Idaho, Oklahoma and Montana an ASU political science professor said.

Dr. Ross Rice said that in these states, inquiries by political scientists into institutional arrangements for the

development of water resources have played key roles.

"Water management practices of the Salt River Project of Arizona serve as models for arid lands in several continents," Ross said.

Currently a UA team is conducting research on a project in the arid West African nation

of Niger to study the area threatened by the desertification process.

Ross said in the 1970's the study of public policy has become one of the first arenas in the "post-behavioral" era of political science with many scientists working in the natural resource area of the field.

He said he believes members of his profession will soon be involved in research of arid lands which will have a bearing on critical policy decisions.

"The problem of arid-land planning in developing nations is becoming more visible daily and water claims on Indian land is causing conflicts."

MONDAYS: ASU Disco Dance Class
featuring Steve Charette Instructing

TEMPTING TUESDAYS:
All Tequila Drinks
55¢ ALL NIGHT

WEDNESDAYS: ASU Ladies Night
25¢ Drinks till 9:00

Try Our New Sun Devil Sundays

APACHE at RURAL

SYMPOSIUM
**Temporary Desert
 Aquatic Environments**
 Saturday, February 10
 8:30 a.m.
 Pima Room - Memorial Union
 Sponsored by Beta Beta Beta
 Biological Honorary

**Be Nice
 To Your
 Bike Week
 Tune-Ups**

\$6⁹⁵
 plus parts



Includes:
 Adjusting brakes, gears, cranks, Headset,
 wheel cones, minor truing of wheels, and
 complete lubrication.

**Largest Selection of New Bikes in the Area
 Wide Variety of Used Bikes, too.**

TEMPE BICYCLE SHOP
 602 So. Mill Ave. HOURS:
 8-6
 8-8 Tues. & Thurs.
 11-4 Sunday

VISA master charge



**Grand Canyon
 National
 Park Lodges**

**Find a Job
 Find Yourself
 At the Grand Canyon**


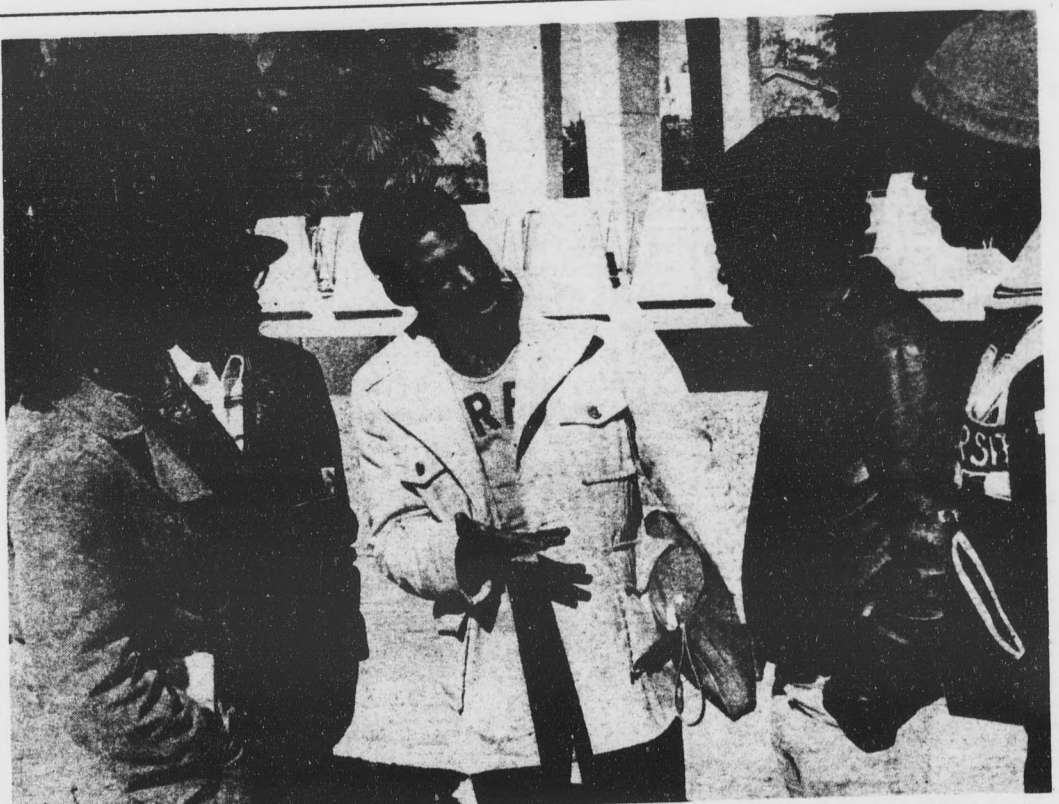
**Immediate Full-time and
 Seasonal Opportunities**

We have many entry-level jobs available in our hotels and restaurants which begin at Federal minimum wage. Dormitories for employees are located within the Park and room charges are automatically deducted from wages. Cooking is not allowed in the dormitories, but meals are available at Employee Cafeterias at a nominal charge. We promote from within but you must be willing to work at the job you accept for at least 90 days before being eligible for transfer to another department.

If you are a hard working individual, at least 19 years old, we invite you to apply. Married couples are welcome, but unfortunately, housing for children is not available.

INTERVIEWS
**Arizona State University
 Placement Office**
Thursday, February 8, 1979
9:00 a.m. to 5:00 p.m.
 Walk-Ins Only.
 No Phone Calls Accepted.

**GRAND CANYON
 National Park Lodges
 Grand Canyon, AZ. 86023**
 An Equal Opportunity Employer M/F/H

Derique Powell, organizer of the new Black Student Union, discusses upcoming projects with group members. [State Press staff photo by Steve Berry]

Black Student Union emerges after period of nonexistence

After more than a year of nonexistence, the Black Student Union has re-established itself at ASU.

The group disappeared from campus following funding problems during the 1977 school year. This semester the club has reorganized and plans to bring black-oriented events to the University, a group spokesman said.

"This is a new idea," Derique Powell, president of the organization said. We are starting fresh. "A Black Student Union is a necessary organization on any campus — grade school, high school or college."

Powell said the ASU administration does not offer cultural events for blacks. "It's essential because of the number of blacks on ASU's campus," he said. "We have about 800 black students on a campus of 36,000 students. We must have some unity between these students."

February will be "Black History Month." Movies, fashion shows and rap sessions are scheduled for the month.

"We've been getting good response from the students. They say they want to keep working on the organization so we can have a stable setup," Powell said.

The Black Student Union will start off "Black History Month" with a general

get-together at 7:30 p.m. Friday in the MU Alumni Lounge.

Gospel Singing will be highlighted from 3 p.m. to 7 p.m. Sunday in the MU Arizona Room. Gospel groups from the Phoenix metropolitan area will be featured.

Following the gospel sing there will be a reception for the cast of the "Wiz" production.

Movies will be shown from 1 p.m. to 7 p.m. in the MU Pima room. Documentary films such as "Black History: Lost, Stolen or Strayed"; "Bill Cosby on Prejudice"; "Body and Soul Part II"; "Heritage in Black"; and "Negro and the American Promise." will be shown.

A feature-length black movie is planned for entertainment.

The group is sponsoring a combination art, fashion and talent show at 7 p.m. March 1 in the MU Arizona Room. The evening will begin with a display of photographs and paintings by black students, followed by a fashion show and a talent show.

Students interested in assisting the Black Student Union can attend the next meeting at 7:30 p.m. Wednesday upstairs in the MU, Powell said.

THE TRANSCENDENTAL MEDITATION PROGRAM



A FREE INTRODUCTORY LECTURE

Wednesday, February 7 - 12 Noon or 7:30 p.m.

MU Building - Navajo Room - No. 219

For information on TM, call 962-6317



Traffic trauma!

Rich Prisco, a freshman business major, maneuvers his way down crowded Cady Mall. Increased enrollment has made getting to classes, even by way of bicycle, a real challenge during the 10 minute break. [State Press staff photo by Sam Jones]

Typewriter supplier for library still not found yet, official says

ASU administrators have yet to find a company that will supply typewriters to Hayden Library for student use, and it might be awhile before the service is available again, the acting assistant librarian said Monday.

Former supplier of the typewriters, Universal Office Equipment, repossessed the machines in December, Connie Corey said. Corey said a

disagreement had risen between the library and the company concerning refund responsibilities for malfunctioning machines.

"We're trying to find an acceptable solution to the problem but we haven't been able to find another company that will provide the service," Corey said.

Universal Office Equipment's manager Harold Smith said the company decided to remove

its typewriters from the library in December because of "hassles."

"We removed the machines when we started to get some hassle from Corey, and we just got fed up with the whole thing," Smith said.

"We originally set up the typewriters about 12 years ago when the library was opened, but now it's not worth the hassle."

DR. W.G. AMES, Optometrist

2916 N. 68th St. 941-5228
Scottsdale, Ariz. Open Monday thru Saturday

EYE EXAM FOR GLASSES \$20.00
Many Designer Frames
10% Discount on All Complete Glasses
Fill Your Doctor's Prescriptions

EYE EXAM FOR CONTACT LENSES \$25.00
SOFT CONTACT LENSES \$139.95
Soft Contact Lenses for Astigmatism

MBA's

The Electro-Optical and Data Systems Group of Hughes Aircraft Company, Culver City, California, extends an invitation to MBA graduates with either a technical or a Business Administration undergraduate degree to explore our opportunities in:

- ★ Finance
- ★ Group Administration and Resource Planning
- ★ Contracts
- ★ Operations
- ★ Developmental Program

To schedule an interview on Feb. 8, please contact your COLLEGE PLACEMENT OFFICE.

HUGHES

Creating a new world with electronics
An equal opportunity employer. M/F/H/C
U.S. Citizenship required.

GRADUATING ENGINEERS

Have you considered these factors while determining where you will work?

1. Will the job offer challenge and responsibility?
2. If you don't like that particular job, does your future employer encourage job changing?
3. What does your future employer do to encourage you to keep your education current?
4. What plan does your future employer have to introduce you to the work?
5. Big starting salaries are nice -- but can you afford the cost-of-living in the area, and what is the salary and growth potential?

At the Naval Weapons Center we have given these things a lot of consideration and believe we have the answers for you.

Arrange through your placement office to interview with our representative, Nancy Zimmermann on February 14. We think you will like what you hear.

If you cannot fit an interview into your schedule, write or call:

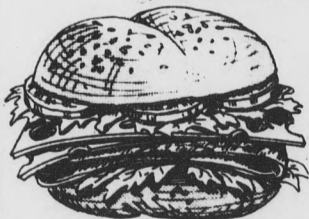
DANIEL G. BURNETT
Professional Employment Coordinator
Naval Weapons Center (Code 09201)
China Lake, CA 93555
(714) 939-2690

An Equal Opportunity Employer
These are Career Civil Service Positions.

KITCHIES 50 FLAVORS ICE CREAM

50¢ OFF
Deli Sandwiches

(With coupon only. Good for up to two Sandwiches)



Good thru
2-13-79

Double Dip Sundaes
... Just 69¢

With coupon only. Good for up to 4 Sundaes

Good thru
2-13-79



NEW LOCATION!

5th St. & Mill
Downtown
Tempe

966-7023

11 a.m. - 11 p.m. Daily



915 E. BROADWAY

Lucky Shopping
Center

966-8950

10 a.m. - 11 p.m.
Fri. - Sat. till 11:30

Takes all night

Art and artist's life debated

A panel of five renown artists met here Friday to discuss regional art, but instead ended up talking about artist's lives then ended with a frank assessment of painting at ASU.

Included in the panel discussion were John Baldessari, a conceptual artist from New York; Eleanor Moty, an internationally-known jeweler from Illinois; Peter Plagens, a painter and art critic from Los Angeles; Susan Klotz-Reilly, a sculptor living in Phoenix; and Beth Ames-Swartz, a painter and resident of Scottsdale.

Plagens initiated Friday night's feverish discussion, avoiding the topic of regional art with a frank remark about art in general.

"At it's very best art deals with issues," Plagens told a full-house in the MU Pima Room. "There's an intense desire to make art relevant. If I see another breaking chain or clinched fist I'll throw up."

Plagens' opening remarks sparked the crowd and set the tone for all-night debating from the audience.

Plagens ended the discussion with an equally frank statement on student painting at ASU. He broke the silence, "I had a hard time with the ceramics. As far as the painting goes, there must be something wrong with the way painting is taught here," he said.

The five artists, exchanged their views of regional art without much elaboration. Then, in a talk-show format discussed the significance of art today. The consensus from the panel was there isn't regional art per se.

Ames-Swartz, noted for working with fire, sunlight and the earth to create special effects in her paintings, doesn't believe in regional art.

"Everyone should do their own work and stay in their own place," said Ames-Swartz. The exposure is wherever you bring it, or it takes you.

"I didn't work my butt off for 25 years to be a regional artist. The things you do to become a regional artist are hateful."

Baldessari was the most outspoken of the five artists. The tall, angular, white-bearded photographer, responded sarcastically to most of the remarks from the audience.

On why an artist becomes an artist, Baldessari responded wryly: "...stops you from getting bored. It keeps me off the streets."

Baldessari feels that the economic element has been neglected. "I travel around the United States and a lot of good art is going on.

Klotz-Reilly doesn't think an artist has to go to New York. "I think it's a gift to do my work all day at home. I don't want to spend a lot of time meeting people I don't care to meet.

"I like Phoenix because not much is going on here. I can sit back and do my work, not worrying about a play or art festival."

The artists all agreed, art is an individual thing. They believe the undergraduate school is mainly a place to learn techniques and historical art.

"The teachers shouldn't tell them to do it their way. One must be able to express their ideas," Klotz-Reilly said.

Ames-Swartz was the only one to comment on the local art galleries in the Valley. "Big things are happening here." The Art Museum, Scottsdale Center for the Arts and Scottsdale Art Gallery are all good.

"There's a few things not done here, like performance and conceptual art. This work needs to be spawned and nurtured here."

Plagens, who kicked off the two-hour affair, also ended it, leaving the audience grumbling. Throughout the night the panel was asked to comment on the student art show. Most of the artists were apprehensive to give their opinions.

Moty squirmed in her seat and expressed uneasiness at the question. Then, Plagens ended the discussion with his straight forward assesment of painting at ASU.

—Dick Obert

UNION CINEMA

Films

HAWAII


Julie Andrews (PG)
Max von Sydow

February 6 - 7 - 8
Tuesday, Wednesday, Thursday
7 p.m. and 10:30 p.m.

Lower Level - Memorial Union
\$1.00 with ASU I.D. — \$1.50 without

Coming

DR. ZHIVAGO



GAMMAGE CENTER

MARCEL MARCEAU

Tonight • 8 p.m.
Wednesday, February 7 • 8 p.m.

Marcel Marceau, called the WORDLESS WONDER, the WORLD'S GREATEST PANTOMIMIST, the GENIUS OF GESTURE, has thrilled audiences throughout the world with his interpretations of the comic and tragic aspects of our daily existence. An evening with the French marvel will make life take on new meaning.

Tickets: \$7.50, \$6.50 and \$5.50

*Reserved Student Series seats for February 6th performance available at Gammage Box Office now.

FERRANTE & TEICHER

Monday, February 12 • 8 p.m.

For 25 years, audience reaction has been overwhelming wherever Ferrante & Teicher have performed. Be in the audience and you'll understand why they are the most sought after combination in show business.

Tickets: \$8, \$7 and \$6

YANKEE SAILS THE MEDITERRANEAN

Narrated by Captain Irving M. Johnson

Tuesday, February 13 • 8 p.m.

Set sail aboard the Ketch Yankee with National Geographic photographer Captain Irving Johnson and his wife for a filmed tour of the magical and mystical Mediterranean. You'll visit Gibraltar, Spain, the Balearic Islands, Sicily, Suez and dozens of other "ports of call." Be in the audience as Captain Johnson provides the personal commentary for his latest adventure film.

Tickets: \$3 in advance
\$3.50 at the door

FRED WARING

and His Young Pennsylvanians

Tuesday, February 20 • 8 p.m.

"More About Love" is the all new edition of the Fred Waring Show. Here's a musical variety extravaganza featuring more types of love songs than anyone except Fred Waring could imagine.

Tickets: \$7, \$6 and \$5

CANADA'S ROYAL WINNIPEG BALLET

Wednesday, February 21 • 8 p.m.

The internationally acclaimed Royal Winnipeg Ballet has become well-known to audiences for its versatile repertoire and the technical excellence of its young dancers. It represents innovation, creativity, youthful vigor and innocent excitement in the world of dance. Don't miss this single performance!

Tickets: \$7, \$6 and \$5 — University Discount
Until 6:00 p.m., Night of Performance

FESTIVAL OF RUSSIAN DANCE

A Kaleidoscope Of Dancers From
The Republics Of The Soviet Union

Thursday, February 22 • 8 p.m.

Swirling figures, leaping men, beautiful women, colorful costumes and exciting music combine to make an evening of entertainment not to be missed.

Tickets: \$7, \$6 and \$5

THE WIZ

Monday, February 26 • 8 p.m.

Tuesday, February 27 • 8 p.m.

Wednesday, February 28 • 8 p.m.

"The Wiz" is a carnival of fun which grins from soul and flaunts the gaudy hues of an exploding rainbow. Its talk is jumping, its walk is a big-city strut, its dances have a blowtorch frenzy and its songs range from a warm gospel glow to the rock beat of a riveter mining asphalt. Be sure to see this smash hit Broadway musical that won seven TONY awards.

Tickets: \$10, \$9 and \$8

*Reserved Student Series seats for February 27th performance available at Gammage Box Office now.

Full-time students may pick up a reserved seat ticket by presenting photo ID activity card plus \$1. Maximum of two tickets per person upon presentation of two activity cards.

For additional ticket information, please call the Gammage Box Office, 965-3434.



Michael P. Holland and Kelly Thomas in a scene from "The Magistrate," showing Feb. 8-11.

Plot of 19th century farce receives uninhibited response

One of the nicest discoveries in the current Lyceum production of "The Magistrate" is that an audience can still respond uninhibitedly to a 19th century farce and enjoy, enjoy, enjoy.

Part of the credit goes to playwright Arthur Wing Pinero for the rapid action and repartee that envelop the situation comedy. Besides, the image of high absurdity in bourgeois places is an eminently durable one.

Director James Yeater enhances these qualities with a delicate touch, elaborating the caricature for humor while maintaining a certain naive decorum essential in a farce.

The story concerns a lady who in the course of a second marriage seeks to disguise her age by passing off her son as younger than he is. A slight plot, but enough momentum to keep 15 characters in humorous orbit.

Yeater has successfully drawn distinct and interesting characterizations from nearly every actor. Especially notable are Mark D. Dowling as the French waiter Isidore; Michael P. Holland as the gallantly ridiculous Colonel Lukyn; and Kelly Jane Thomas, who as Agatha Posket, manages to keep in step with the silliness while retaining a Victorian grace.

The set reflects the consciously stylized mood of both play and production in props and back-drops of fine-line ink drawings. The scene changes were neatly done by the actors them-

selves, in-character.

Another completing touch was the between-acts playing of popular Music Hall songs of the period.

All in all, a thoroughly

mellow and mellowing show.

"The Magistrate" will be at 8:00 p.m. Feb. 8-11 in the Lyceum Theater.

—Jean Wilson

Engineering & Computer Science Majors

BEFORE YOU PICK UP YOUR DEGREE, PICK OUR INTERVIEW.

Contact your placement office for interview dates.

HUGHES

Creating a new world with electronics

AN EQUAL OPPORTUNITY EMPLOYER M/F

MASTER'S AND DOCTOR OF PHILOSOPHY DEGREES IN NUCLEAR ENGINEERING

Financial aid is available for Engineering and Science Majors for graduate study in Nuclear Engineering, Fusion Engineering, and Health Physics. Graduate Research and Teaching Assistantship stipends range from \$5000 to \$8300 per year plus out-of-state tuition waiver. President's Fellowships for outstanding applicants provides a stipend of \$5000 per year plus full tuition waiver. For information write: Director, School of Nuclear Engineering, Georgia Institute of Technology, Atlanta, Ga 30332.

Bellyfiller...

BRING THIS COUPON AND TAKE ADVANTAGE OF OUR

\$1 Dollar Breakfast (8-11)

\$1 Dollar Evening Special (4-9)

Offer good thru May 5, 1979

WE HAVE WHOLE WHEAT HOAGIE ROLLS

Bellyfillers

111 EAST UNIVERSITY

[Across from Arthur Treachers] 966-9479

NOMINATE

A Liberal Arts

TEACHER

for the 1978-79

QUALITY TEACHING AWARD

Nominees must be full-time Assistant/Associate Professors in the College of Liberal Arts. Complete the coupon below and forward, along with supporting evidence, to Linda Farwell, Secretary, Quality of Instruction Committee, c/o Office of the Dean, College of Liberal Arts, SS109, before Monday, February 26, 1979.

I nominate _____
ASSISTANT/ASSOCIATE (circle on) PROFESSOR,
Department of _____
for Quality Teaching Award.

BRING THIS AD!



TIRED of Looking for an Honest Place to Take Your Foreign or Domestic Vehicle?

WELL, WAKE UP!!

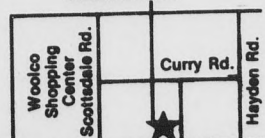
\$10⁰⁰ OFF ANY SERVICE \$25⁰⁰ OR MORE

ALL SERVICES ON IMPORTS

WORLD AUTO SPECIALISTS
1127 E. Curry Rd., Tempe
ARE HERE
"For Service That's Out of This World"
968-3041

Automatic Trans Air Conditioning on Domestic

Richmond Industrial Park



VISA MasterCard Accepted

ARTS & ENTERTAINMENT

Artists' post-Christmas releases make the grade

"The Inside Story" — Robben Ford, Elektra/Asylum.

This is the time of year for debut albums. New artists or those with experience striking out on their own have waited until the Christmas rush has passed to market new discs.

Robben Ford has released a new album *"The Inside Story."* Fortunately for him and those who like good music, it didn't get brushed to the side in the Christmas album rush.

He plays guitar and keyboards on this, his first album, and the jazz-blues tunes are among the most pleasing of new releases. Ford has put together eight of the most pleasing songs a "new" artist could muster.

Actually, he's not a new musician in any sense. Ford is a 27-year-old studio musician who taught himself to play guitar.

Previously, Ford toured with Joni Mitchell and George Harrison and has recorded with Kenny Loggins and Barbra Streisand on *A Star is Born* soundtrack.

The influence of working with these heavyweight stars has obviously influenced Ford's jazz training and the mixture of the two styles makes for a pleasing product on *"The Inside Story."*

"Magic Sam," the first track on side one, is a great opener, featuring synthesizer and Ford's guitar which mix and end up sounding better than the best Jeff Beck sound.

A tune dealing with the meeting of Ford and his wife called "North Carolina," combines the best of jazz and blues. The title track "The Inside Story" is another strong track that Ford says contains hints of what to expect in his musical future.

The album is produced by Steve Cropper, who produced the mega-hit "Briefcase full of Blues" and his influence pushes the album beyond the regular.

Ford gives the listener more than an adequate dose of his accomplished guitar and leaves you wanting more.

★★★

"No Escape" — Marc Tanner, Elektra Asylum.

Yet another entry to the rock mainstream, with his first album is Marc Tanner. He says he wants to make a "strong entrance into" rock music and it could be debated whether his first album accomplishes that intention.

Currently Tanner is getting quite a bit of FM band airplay from his single "Elena" which he describes as a "fun song to sing along with." He writes all his songs for the most part and after listening to them a few times they become redundant and boring.

"Never Again," a guitar-oriented song, concerns Marc's promise never to fall in love again. How touching. Then on side two "In the spotlight," is about "taking big risks and getting big satisfaction" in the music business. This sort of thing has been recorded and

rehashed on so many albums it's become passe'.

Tanner comes over as the hard-nosed, macho rock star but his material doesn't really carry that image.

—Tom Sammons

★★★

Handel — "Acis and Galatea." [Archiv 2708 038].

The dramatic cantata "Acis and Galatea," one of Handel's most popular works during his lifetime, is impressively performed in this new Archiv release.

John Eliot Gardiner directs the English Baroque Soloists, and the cast includes Norma Burrows (Galatea), Anthony Rolfe Johnson (Acis), Martyn Hill (Damon), and Willard White (Polyphemus).

The accompanying booklet has extensive notes on the instruments used and an informative historical essay by John Coombs.

DISCOVER RECORDS

Duets for Two Violins. Itzhak Perlman, Pinchas Zukerman, violins. [Angel S-37406].

There is hardly an abundance of violin duet recordings, so one by artists the caliber of Perlman and Zukerman is welcome.

The works played are Spohr's Duo in D, op. 67, no. 2; Leclair's Sonata in E minor, op. 3, no. 5; Wieniawski's "Etudes-Caprices," op. 18, nos. 1 and 2; and Handel's Passacaglia in G minor (arr. Halvorsen), for violin and viola.

Perlman and Zukerman play with enthusiastic zest and absolute technical command. The sound quality is top-notch. Highly recommended.

★★★

Vaughan Williams — Concerto for Oboe. Concerto for Bass Tuba. "The Lark Ascending." [DG 2530 906].

Three of Vaughan Williams' most attractive (and least frequently recorded) works are beautifully rendered in this collection.

Daniel Barenboim conducts the English Chamber Orchestra and the Chicago Symphony. Soloists are Arnold Jacobs (tuba), Pinchas Zukerman (violin), and Neil Black (oboe).

Most appealing is "The Lark Ascending," in which Barenboim weaves an ethereal orchestral fabric around Zukerman's exceptionally sensitive playing.

—Bryan Stoneburner

REMEMBER
Wednesday, February 14th, is
VALENTINE'S DAY

We carry all types of flowers, featuring a wide selection of fresh cut flowers.
We also wire flowers out of town.

Candle Passings Corsages
FLOWERING PLANT POLICY
(Free flowers with all plants)
"Flowers that will help with student affairs."

THE FLOWER CHILDREN
Flower & Plant Shops

Tempe Hours:
8 a.m. to 6 p.m. Mon.-Thurs.
Fri.-Sat. 8 a.m. to 7 p.m.
15 W. 6th St. **OPEN SUNDAY**
11-5
Just west of Mill Ave. **968-0781 • 966-2775**

MAZATLAN '79 Spring Break
1000 STUDENTS

~~6 DAYS - \$95⁰⁰~~ **250 RESERVATIONS SOLD OUT**
~~Leaves Sat., March 17th — Arrives Back Ariz. Sat., March 24th~~

7 DAYS - \$95⁰⁰ - 600 RESERVATIONS

A. Leaves Fri., March 16th — Returns to Arizona Sat. morning, March 24th. 184 reservations left.
B. Leaves Sat., March 17th — Returns to Arizona Sun. morning, March 25th. 207 reservations left.

8 DAYS - \$105⁰⁰ - 150 RESERVATIONS - 63 LEFT

C. Leaves Fri. afternoon, March 16th and returns to Arizona Sunday morning, March 25th.

TRIPS INCLUDE: train transportation to Mazatlan and back, lodging in beach front hotel (4 to a room), FREE cocktail party each night to start the evening, and a FREE "College Tours" Mazatlan "T" shirt.

OTHER OPTIONS

- Stay at the Holiday Inn, \$25.00 per person. It's the best beach hotel in Mazatlan.
- Sleeping cabin on the train. 2 to a small cabin, 4 to a large cabin. \$15.00 per person round trip.

\$20.00 deposit required to reserve your trip. Mail check or money order to "College Tours" — 4041 N. Central, Phoenix, 85012. Upon receipt of your deposit we will send you a complete itinerary. Also enclose what trip, options, and roommates you desire.

FOR ADDITIONAL INFORMATION call in Phoenix 263-8017, in Tucson call 884-5229, in Flagstaff call 523-2956.

JUNE GRADS

WE'RE AS CONCERNED ABOUT YOUR FUTURE AS YOU ARE!

QUALIFIED? We're looking for:

- Programmers - Engineering, Math, (concentration in programming), or Grads who have programming experience or a strong desire to enter programming.
- Engineers - B.S.E.E. or M.S.E.E.

INTERESTED? Establish your career with a leader in the development of communications and terminals systems.

- We'll provide the challenge of exploring the unexplored in meeting these needs today and in the future.
- Further your education at the same time. We provide tuition reimbursement, internal career development and more.

SIGN UP! Our representatives will be on Campus Friday, February 9th, 1979 to discuss your career interests. Contact the career placement office to schedule your interview.

If unable to interview, please send resume with copy of transcript to:

EMPLOYMENT DEPARTMENT
322 North 2200 West
Salt Lake City, Utah 84116

SPERRY UNIVAC
An Equal Opportunity Employer M/F/V/H

diversions



Marcel Marceau

Music

ASU jazz combos will present a free concert in the ASU Music Theater tonight at 8 p.m.

ASU's Symphonic and Concert Bands are scheduled to play at 8 p.m. Feb. 11, free to the public in Gammage Center. South American music will be featured in the program, launching the month-long Latin American Music Festival.

Duo pianists Ferrante and Teicher, who are celebrating their 25th anniversary as a team, will present a program at 8 p.m. Feb. 12 in ASU's Gammage Center. Their repertoire ranges from Bach to Bacharach to the Beatles. Tickets are \$8, \$7 and \$6 at Gammage and Diamond's Select-A-Seat.

Theater

Marcel Marceau will return to Gammage Center tonight and tomorrow for 8 p.m. performances. Tickets are \$7.50, \$6.50 and \$5.50 at Gammage and Diamond's Select-A-Seat.

The Magistrate will be staged at 8 p.m. Feb. 8-11 in ASU's Lyceum Theater. Tickets are \$3 to the public and \$1 for students at the Lyceum and Diamond's Select-A-Seat.

Backgammon

An organizational meeting to start the ASU Backgammon Players Association will be held at 6:30 p.m. Feb. 8 in the Yavapai Room of the MU. Beginning, intermediate and advanced players are encouraged to join. For information call Becky at 965-3642.

More Music

Willie Nelson and Jerry Jeff Walker will play the Activity Center at 8 p.m. Feb. 15. Tickets are \$7.50 in advance at Gammage and Diamond's Select-A-Seat.

Randy Hanson plays the music of Jimi Hendrix, at 9 p.m. Wednesday at Dooley's. Tickets are \$5.00.

Elvis Costello and The At-

tractions will play one show at Dooley's at 9 p.m. Feb. 20. Tickets are \$6.50.

Styx plays the Coliseum on Feb. 13.

Photography

Harold Jones will exhibit his work at Northlight Gallery through March 1. He is a member of the art faculty at the UA.




YOU CAN LEARN TO SKI IN TEMPE ON THE SKI MACHINE.

629 S. Rockford, Tempe, Az.
966-8209

OF ARIZONA
"If you can walk thru our doors, you can learn to ski."

THE SKI MACHINE is the newest, safest and most efficient method of ski instruction . . . because we bring the mountain to you! It is a mechanical training device that can concentrate a whole day of skiing into just one hour.

ASU STUDENTS
Save 15% on ALL ITEMS
Offer expires 2-28-79



HAIRCUTS
30% OFF

MTW only with coupon ad.
Expires Feb. 14, 1979

We use and recommend
REDKEN

hair & kamp **966-9061**
120 E. University

"IN THE ARCHES"
*Valid on Thurs. with Terry

WHEN WAS YOUR LAST GOOD HAIRCUT?



Next time you're in Mexico, stop by and visit the Cuervo fabrica in Tequila!

Since 1795 we've welcomed our guests with our best. A traditional taste of Cuervo Gold.

Visitors to Cuervo have always been greeted in a special way. They're met at the gates and invited inside to experience the unique taste of Cuervo Gold. This is the way we've said "welcome" for more than 180 years. And it is as traditional as Cuervo Gold itself. For this dedication to tradition is what makes Cuervo Gold truly special. Neat, on the rocks, with a splash of soda, in a perfect Sunrise or Margarita, Cuervo Gold will bring you back to a time when quality ruled the world.



Cuervo. The Gold standard since 1795.

CUERVO ESPECIAL® TEQUILA. 80 PROOF. IMPORTED AND BOTTLED BY © 1978 HEUBLEIN, INC., HARTFORD, CONN.

Swimmers sweep UA meet with record-setting style

By Jim Elsleger

ASU swept the Arizona Swimming and Diving Invitational over the weekend in Tucson, winning both the men's and women's titles.

It was the first time the men have won the yearly meet, and it was a second straight victory for the women despite having two top swimmers out.

The men took the title with a 659 total, winning eight events, while the women scored an 828 total and grabbed nine events.

The teams combined to capture 17 of 36 total events.

Competing with bad weather and slow times, the women still managed to set eight meet records.

"The weather was bad and some of the times weren't as fast as we were expecting," Coach Mona Plummer said. "We had hoped to get some national qualifying times, but the weather held us back. We had good overall performances though and I'm pleased with the way we swam."

Cheryl Gibson did the most damage for the Sun Devils as she took the 400-yard individual medley, the 200-yard butterfly and the 100-yard backstroke, setting three individual records. She also helped set a 400-yard medley relay record.

The 200-yard freestyle mark fell as Gail Amundrud swam a 1:53.08 along with helping to set new standards for the invitational in the 400 relay and the 200-yard freestyle relay.

Other winners included Pam Rogers with a 1:07.03 in the 100-yard breaststroke and Sue Sloan in the 100-yard butterfly with a 57.14, both meet records.

The men grabbed a share of the spotlight as they set two individual and two relay marks.

Sam Jones took the 100-yard breaststroke in a time of 59.28, and Dan Lasarge dominated the one-meter diving event with a point total of 468.15, again both meet records.

The men also teamed to set marks in the 200-yard freestyle relay and the 400-yard medley relay.

Jones was the only double winner for the men as he also took the 100-yard freestyle in a time of 46.67.

All-America Blake Johnson took the 400-yard individual medley, Paul Asmuth nailed down the 1,650 and Kerwin Gober rounded out the individual victories with a win in the 200-yard breaststroke.

The win raised the men's record to 9-2 on the season, while the women remained undefeated in both dual and individual competition at 7-0.

The women were swimming without the services of Diane Kutsunal and Bonnie Glasgow, both top swimmers on the team.

Kutsunal is out with an injured shoulder and Glasgow is in Europe competing with the U.S. team in international meets.

Coach Ron Johnson said both teams performed well and was especially impressed with the women's performance.

"You have to be impressed with the women winning like that," Johnson said. "With two of its top swimmers out I thought the team did an exceptional job."

UCLA finished second in the women's meet, with USC taking third and UA fourth.

A strong, upcoming Texas team had more than they could handle with the Sun Devils as it could only manage fifth, with New Mexico and Midlands College rounding out the placings.

The men outdistanced the No Name Swim Club of Tucson, while UA ended up third, New Mexico fourth and Midlands College last.

Both teams get a week off, with the next meet scheduled Feb. 17 against UA. It will start at 12:30 p.m. at the Sun Devil pool, and will use the combined scores of both men and women's teams to decide a winner.

Intramural teams open play

The intramural basketball program is in full swing, with entries still being accepted for the three-man faculty/staff league, with the student league beginning play already.

The intramural office will accept faculty/staff entries until Feb. 9 with play scheduled to begin Feb. 20.

League play will take place Tuesdays and Thursdays at noon. Schedules of games will be out no later than Feb. 14 and can be picked up at the intramural office on campus.

The student league started play last Wednesday with 156 men's teams, 19 women's teams and 11 co-recreational teams entered.

The faculty/staff league will play through the entire semester according to Jill Williams, assistant director of intramural sports. Playoffs start after the semester break.

"Basketball is our biggest sport as far as participation goes," Williams said.

Last year there were six teams in the three-man basketball league and 31 individuals in the faculty/staff racquetball league.

The student basketball league

will have several divisions this year, with the men having an A, B and C division, the C division being for men 5-foot-10 and under.

The faculty/staff league will have five players on the teams. Each participant will receive an intramural T-shirt.

There will be a \$3 entry fee.

The five-man student teams can have as many as 15 players, and often have from 10 to 15 according to Williams.

A racquetball singles league is

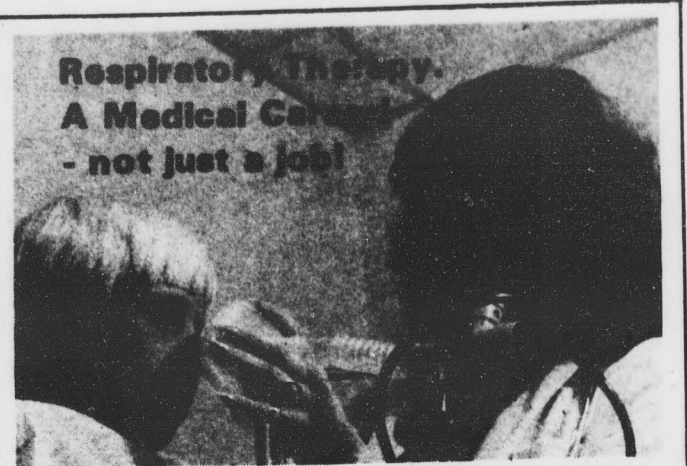
also being formed for the faculty and staff, with entries due by Feb. 9.

Play in this league is open for scheduling, according to the participant's schedules.

The intramural office is also sponsoring the second annual H-O-R-S-E competition, slated to begin Feb. 10.

Entries must be in by Feb. 7.

The competition will be broken down into two classes according to ability.



Respiratory Therapy.
A Medical Career
- not just a job!

A profession that allows you to feel good about yourself
* Accredited to American Medical Assn. * Approved for veterans
* Small Classes - Individualized Instruction
* Well Established School with Financial Aid

SCOTTSDALE EDUCATIONAL CENTER

7300 E. 4TH ST., SUITE 208 - SCOTTSDALE 994-0331
8841 N. 7TH ST., SUITE 3B - PHOENIX
Applications Now Being Accepted for Feb. and March Classes

PEACE SURPLUS MEANS LOW PRICES

- Parachute 16 ft. yellow.....\$6.95
- Nylon Duffle size large.....\$9.50
- Hiking Boots with vibram sole..\$29.95
- Rainbow Suspenders.....\$5.50
- GI Khaki Pants.....\$5.95
- Wooden Ammo Boxes.....\$3.50
- Camouflage Parachute.....\$9.95
- Down Vests special.....\$19.95

PEACE SURPLUS

520 S. Mill Ave., Tempe 894-9137

NEXT DOOR TO ASU

TRY OUR LUNCHEON SPECIAL

A 6-inch mini-pizza, all the salad you can eat, plus soft drink

ONLY \$2.45

WE KNOW YOU'RE SHORT ON TIME, SO CALL AHEAD AND YOUR ORDER WILL BE READY WHEN YOU GET HERE!

Godfather's Pizza



CLOSE TO ASU

CORNER OF MILL & 10th ST.
6 EAST 10th STREET
SW CORNER OF TEMPE CENTER
PHONE: 894-1234

Career Services is...

registering early in your senior year.

Sun Devils sting Toros

By Walter Berry

That was not the ASU baseball team's season opener this past weekend at Packard Stadium.

It was a cross between a marathon and a mercy killing.

The 1979 Sun Devils somehow managed to cram 18 runs and 25 hits into some seven hours worth of assault and "bat"tery on the Toros of Cal State-Dominguez Hills Sunday — sweeping a doubleheader by 5-2 and 13-3 scores in the process. But by the time it was over, all the residue of a Helmet Day crowd could think about was missing the start of the movie "Rocky" on CBS.

It was that dry. Yet the weekend started wet.

A late afternoon downpour washed out Friday's scheduled season opener, thereby leading to a hasty penciling-in of a twin bill on Saturday followed by a single game on Sunday. Muddy waters messed up that plan and a deranged groundskeeper almost thwarted Sunday's doubleheader altogether with his garden hose.

"Someone came in about 9 or 10 o'clock, turned it on and let it flow along the first base side. They must've thought the field needed some watering down or something," said Sun Devil head coach Jim Brock. "Someone else noticed it after the gymnastics meet (Saturday night at the Activity Center) and turned it off. It was just your average prank."

Cal State probably wishes it was successful. ASU jumped on Toro starter John Leteria for all five of its runs in Game One as the Devils dusted off their No. 1 offensive arsenal from 1978 — the long ball. Senior Mike Anicich struck first with a towering two-run shot in the first inning. Sophomore Mike McCain duplicated that feat one inning later.

Jeff Ahern, meanwhile, was holding Cal State hitless through the first four frames until the Toros nicked the junior left-hander for a run on two hits in the fifth. He fanned nine before being relieved by sophomore righthander Ken Jones, who yielded the other Toro run during his four-inning stint.

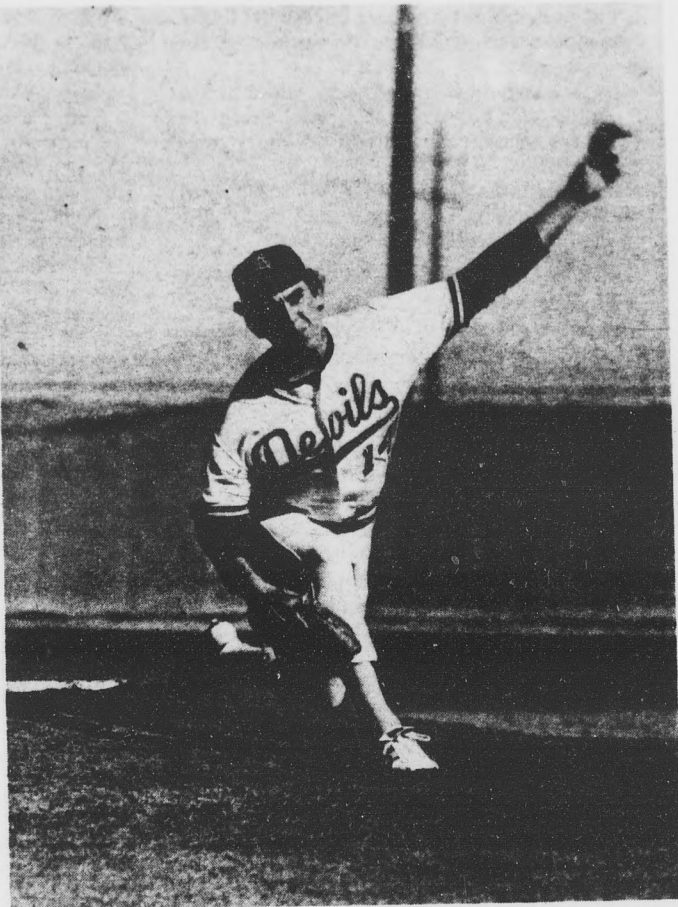
Game two saw ASU spot Cal State an early 2-0 lead then erupt for a five-run first. Anicich's RBI single and a Marty Barrett sacrifice fly tied it, before John Freitas and Greg Stahl fused back-to-back doubles to drive in two more.

After Barrett and Stan Holmes banged out run-producing base hits in the second, junior David Kush (you know who's son) lofted a solo homer over the leftfield fence an inning later to essentially seal the win away for senior south-paw starter Casey Lindsey.

"The hitting looked reasonably good. There were more bright spots that I had thought there would be," said Brock. "Of course, it's hard to judge how good the opposition was. It was a long afternoon."

Anyone there would just have to consult their derriere to verify that...

Leo La Sala slugged a grand slam with one out in the ninth inning to give ASU a dramatic 4-2 win over Chapman College yesterday at Packard Stadium. La Sala picked on a 2-1 pitch from Panther reliever Kevin McCarthy for the deciding hit — a low line drive to deep right-field. Freshman Bob Randolph got the win in relief of Sun Devil starter Ed VandeBerg.



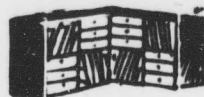
Sun Devil lefthander Jeff Ahern delivers a fastball during ASU's 5-2 win over Cal State-Dominguez Hills Sunday at Packard Stadium. [State Press staff photo by Sam Jones]

TEMPE OFFICE SUPPLY

has just about everything you need

Four piece Storage Cubes

\$5.95
Reg. \$14.95



Amberg File Folders

\$3.00 Box
(assorted counts)

Memo Books
(assorted sizes)
Reg. \$2.50 to \$5.00



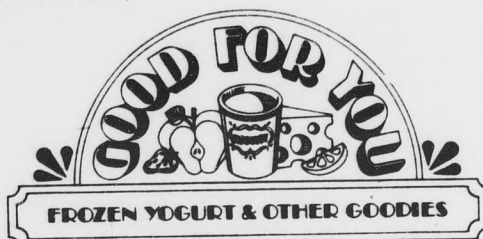
NOW \$1.50

While Supplies Last.

968-8621 • 616 Mill Ave., Tempe • 968-8622

The Good Egg Omelette

(3 farm fresh eggs) served with a FREE toasted bagel, English muffin or Good For You toast. Served any time. Only \$1.25. Coupon expires Abe's Birthday.



120 E. UNIVERSITY

Open
8 a.m. - 8 p.m.
Weekends
Sat. 12-6
Sun. 12-6

CALL
968-7133
HOTLINE FOR
HEALTH

The
Healthful
Alternative

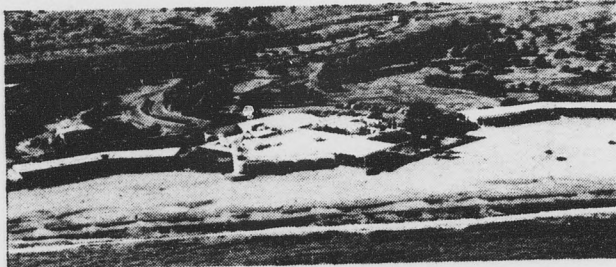
ASASU TRAVEL BUREAU Spring Calendar

Celebrate Washington's Birthday
February 17, 18 & 19, 1979
in Sunny Guaymas, Mexico



Package cost: \$77.00

The San Carlos Posada has an excellent restaurant (with a band nightly), a large pool, it's own beach area, a par 3 golf course, tennis courts, gift shop and guest privileges at the nearby Yacht Club and Marina.



Feeling Lucky?

Spend two nights and three days in Las Vegas, Nevada, March 20-22, 1979.

Included in this package is round-trip AIR transportation; two nights accommodations at the brand new Sam's Town Hotel and Gambling Hall; one free cocktail; breakfast one morning during stay; one complimentary Keno ticket; and special menu selection.



Package cost: \$109.26

For further information, contact ASASU TRAVEL BUREAU --
Memorial Union 208J, 965-3161
THE DEADLINE IS NOW!!!

**GET YOUR DEPOSITS IN NOW!!!
LIMITED SPACE AVAILABLE!!!**

ASU tennis team defeats Axers

By Murray Froehlich

The ASU tennis team defeated NAU Sunday at the Whiteman Center 7-2, and lost an exhibition match Saturday to the Phoenix All-Stars 12-10.

Against NAU, No. 1 seed Alan Waldman defeated Craig Marshall in straight sets and Mike Carruthers was taken to three sets before downing Jeff Hollihan.

Greg Brown was the only individual winner for NAU as he defeated No. 2 Eric Sherbeck 2-6, 6-0, 6-1 after Sherbeck developed a blister on his hand after the first set.

ASU's Tim Anderson had a relatively easy time in defeating Mike Long as did Archie Bouwer in taking Toby Bennett in straight sets.

Blair Roberts, the No. 6 seed, also won in straight sets. Waldman and Anderson teamed to take the No. 1 doubles match, while Bouwer and Kevin Mason nailed down the No. 2 spot.

Long and Bennett managed to overcome Roberts and Jeff Murphy to take the No. 3 doubles play for NAU.

The win raised the Sun Devils' record to 5-0 with the exhibition loss not counting toward the season record.

In Saturday's exhibition loss the decision came down to the final match between Waldman and Brian Cheney, playing coach for the Phoenix Racquets last year.

Cheney displayed an artful approach and net game to defeat Waldman in straight sets 6-3, 6-3.

Team effort vaults ASU to solid win

Lindsay Nylund's and Jeff Knepper's solid performances led the ASU men's gymnastics team to a 215.3 - 194.35 victory over Chico State Saturday night at the Activity Center.

Nylund took the all-around title, winning the parallel bars and pommel horse, finishing second in the floor exercises and third in the high-bar competition.

Knepper was second to Nylund as he captured the vault event with a 9.45 effort.

The win upped the Sun Devils record to 4-5 as they took their third straight victory.

ASU swept the top three spots in the parallel bars, vault, pommel horse and high bar.

Dave Martin won the high bar with a 9.4 for ASU, and Gary Rust took the floor exercises with a 9.45 and tied in the still rings with Rick Hall, both from ASU.

R. D. Webster, performing with a bad shoulder, managed a second-place finish on the parallel bars.

Also contributing to a balanced ASU squad were Mike Naddour with a third place in the parallel bars and Kent Weaver who scored third in the vault.

Nylund now leads the Pac-10 in the all-around category and Webster is leading the nation in the floor exercise competition.

257-0010

PARACHUTE JUMPING
INSTRUCTION
U.S. PARACHUTE
SERVICE

Professional Instruction
Since 1969

Sky-Dive Near Phoenix
20 Years Experience
Hours by appt. only

\$5 with ASU I.D.
Classroom East Phoenix
257-0010

Split games baffle Wulk

By Bob Petrie

The person most qualified to respond to the following question was pretty much stuck for an answer.

Q: How can a basketball team, which has to scramble to lose by 14, come back to slaughter another team by 36 the very next night?

A: "I'm not sure," said ASU coach Ned Wulk, whose Sun Devils managed to do both on the Pac-10 road over the weekend.

ASU was miserable in losing to Stanford 75-61 Friday night in Palo Alto, but came back to wallop Cal 91-55 Saturday night in Berkeley. The split leaves ASU with a 5-6 Pac-10 record, 14-9 overall.

"We didn't do anything different in the preparation for the games," Wulk said, "but for the Cal game we practiced a bit more the day of the game. We weren't laying around the hotel."

"Usually when we have back-to-back games we just loosen up, but we shot so poorly against Stanford we went to a zone practice. We also spent some time on the films of our game with Cal in Tempe," Wulk said.

Against Stanford, ASU, quite frankly, stunk. The Devils managed to miss 72 percent of their first-half "bricks" against the Cards (18 of 25), and connected on only 35.6 percent of their shots for the game.

The Cal game was completely different. ASU hit an unbelievable 81 percent of its shots in the first half, and then "cooled" to a

final 67.3 percent. Senior Roy Joshua, who hadn't been doing a whole lot up until Saturday night, hit 10 of 15 shots on his way to 23 points.

"All I can say is we had a hot hand, particularly by Joshua," Wulk said. "Of course, I'd say shot selection has a place in better shooting percentages."

Wulk also said ASU was able to do what it wanted to do against Cal from the outset.

"Against Stanford, we never really got off the deck," Wulk said. (ASU fell behind 8-0 and never recovered.) "But against Cal we started right out in the zone and that's our most effective defense."

It was effective enough for the Devils to run away with the game early. ASU led 40-22 at the half, and led by as many as 39 during the second half. The Devils' zone also pushed the Golden Bears out to their shooting limits, and they showed it, hitting only 23 of 77 shots during the game.

Wulk also changed his system of player substitution against Cal. Instead of "platooning" his players, the ASU coach started an original five, and substituted only when deemed necessary.

"I was never really that strong on the platoon idea, and I thought I could get a better look at our player situation this way," Wulk said.

The Sun Devils host a pair of Pac-10 games this week. ASU entertains Oregon Thursday night and Oregon State Saturday night.

ENGINEERING & COMPUTER SCIENCE MAJORS

GET YOUR CAREER OFF THE GROUND WITH BOEING.

If you're about to graduate with an engineering or computer science degree, we'd like to talk to you about your future.

Will it be in commercial jetliners? We're building two new planes — the 767 and 757. While the orders for 727s, 737s and 747s keep coming from all over the world.

Perhaps you'd like to get into the aerospace field, where we have more projects going than you can shake a calculator at.

Or maybe you'll help us provide computer services to over 2,000 clients, including government, private industry, commercial airplanes and aerospace.

Whatever path you take at Boeing, you'll enjoy living in Seattle — one of America's most beautiful cities.

BOEING WILL BE ON CAMPUS SOON.

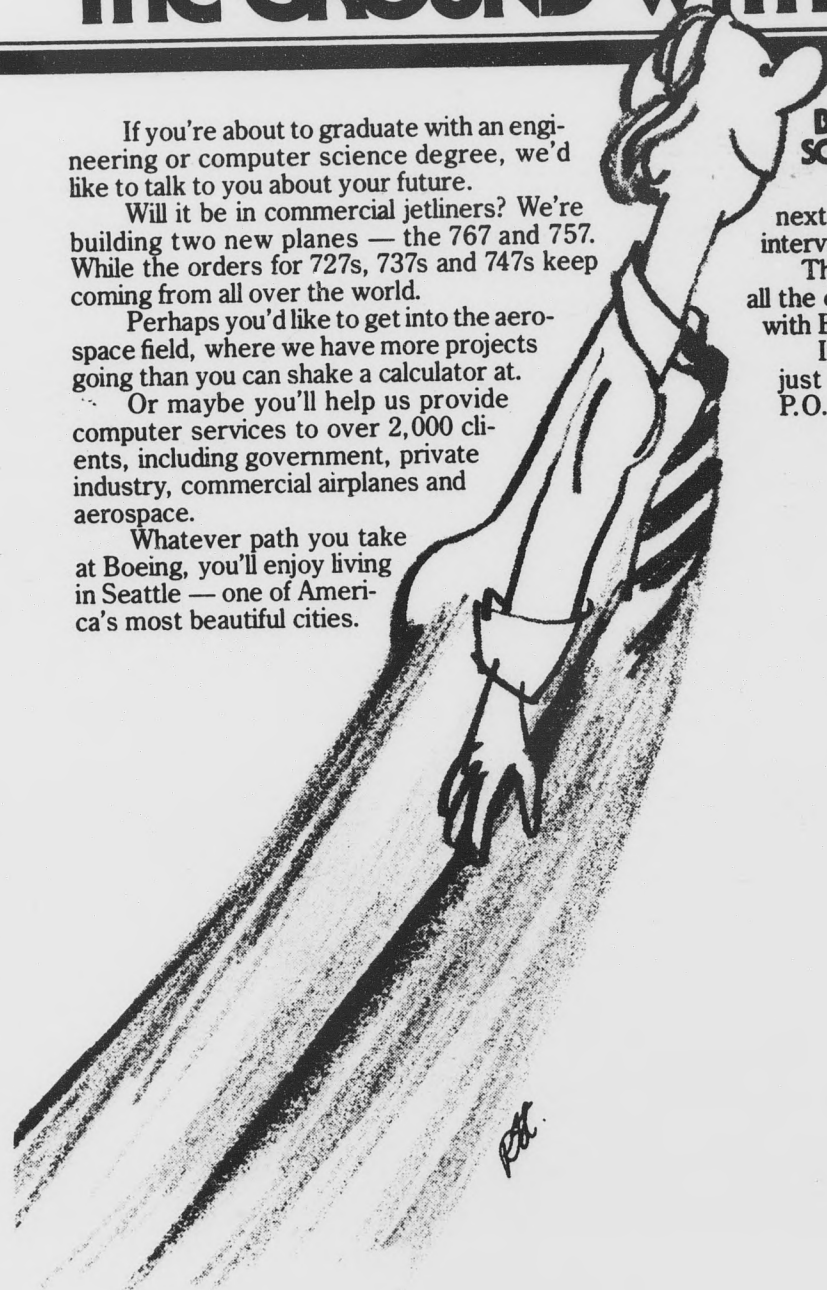
Boeing will be here within the next two weeks. So sign up for your interview today in the Placement Office.

Then we can tell you in person about all the opportunities you'll have to grow with Boeing.

If this time is inconvenient for you, just write us: The Boeing Company, P.O. Box 3707-VLO, Seattle, WA 98124.

An equal opportunity employer.

BOEING
GETTING PEOPLE TOGETHER



Gymnasts win matches

The women's gymnastics team made it a sweep last weekend, toppling New Mexico Friday night 128.25-115.5 and then taking Texas-El Paso on Saturday 131.75-121.4 at the Activity Center.

ASU's Laurie Frasco took the all-around title in both meets with a 31.35 against New Mexico and a 32.45 against UTEP.

Pam Godward gave an excellent performance for the Sun Devils on the balance beam scoring a 9.5 on Friday and a 9.8 Saturday.

The wins raised ASU's mark to 6-5 on the season.

After losing in a quadrangle meet two weeks ago, Coach Marie Bilski reorganized the team for the meets this weekend and added a few new members.

"We're really happy and also surprised at the success of Laurie Frasco," she said. "We feel much more confident in our upcoming regional championship."

WANT ADS

START HERE

Business Directory

-A-

Wheel Works Auto Co.
Buy, Sell and Trade Japanese Cars
1 Mile North of Campus
945 E. Curry 894-1137

For Rent/Lease

TOWNHOUSE FOR rent near ASU. All appliances, heated pool, 2 or 3 students, \$325 on lease. 991-1829. 2/9

Lost/Found

REWARD: Gold Cross Pencil, special gift, initials engraved, TJP. Call Tim, 947-7178. 2/7

Instruction

PIANO LESSONS — Good Teacher, 966-0573. 2/7

TUTORING IN geology and math pre-exam help also given, call 967-8465. 2/9

Travel

DRIVE CARS free to most points of the United States — over 21. Scheall Drive-away, 991-5533. 2/28

SPRING BREAK (March 17-25) on the beach in Maui, Hawaii. Tour includes: airfare, deluxe ocean view rooms, rental car and more! Cost per person, \$499. For information and reservations, call John, Collins - Clare Travel, 955-3000. Hurry, space limited. 2/9

Roommate Wanted

1 NICE GUY needed to share two bedroom apartment, close to ASU, \$130, all included. Randy, 968-2255. 2/8

FEMALE, \$75, plus 1/2 utilities. 20 minutes to campus. 892-4028 before 8 a.m., after 11 p.m. 2/8

SHARE NEW three bedroom condominium, one mile from campus, free laundry, furnished, utilities free. \$200 per month. Available immediately. 955-6982 after 4:30 p.m., "Casitas West." 2/9

PERSON NEEDED to help ASU disabled grad student. Free rent in nice apartment close to ASU. 967-6748. 2/13

WANTED: MATURE female roommate, ages 22-30 for 2 bedroom furnished apartment in Tempe. \$148/month, includes everything. Available immediately. Call Terry at 955-0950, nights, weekends, 894-1677. 2/8

FEMALE ROOMMATE to share furnished apartment with pool and laundry, 2 blocks from ASU. \$120/month + 1/2 utilities. 966-3116. 2/8

FEMALE ROOMMATE needed March 1st. Beautiful two bedroom apartment, University Village Apts. \$131.30 per month, no utilities. Call late night or weekends. Ask for Kent, 968-8186. 2/7

state press

CLASSIFIEDS

... have an audience of 160,000 people a week.

Motorcycles

1978 HONDA EXPRESS, excellent condition, 2800 miles, baskets, manuals. Great for around campus. \$250. 893-2755. 2/9

Typing

EXPERIENCED TYPIST. Theses, dissertations, engrg/tech. reports. 838-0802. 2/27

Typing: THESES, dissertations, term papers, etc. Professional secretary, accurate, spelling corrected, reasonable rates. 949-9207. 3/2

NEAR ASU. Research papers, theses, dissertations. English degree. Editing. 7 years experience. 967-4443. 2/16

Typing? CALL 277-0161 for any typing needs for your reports, term papers, etc. \$1.60 per page, copying and stationary supplies also available. Action Office Mates, 1611 E. Camelback Rd. 2/6

GRADUATE COLLEGE expertise. Top quality typing, IBM correcting Electric, quality bond paper. Dissertations, Theses, and Research Papers. Call Debby at Schmalzer Corporation, 833-5363; evenings and weekends, 967-2305. 3/8

Personal

ARE YOU LONELY?

Do you need a friend? Want to talk with me? Call any time.
Ben B. Taylor, Christian Science Campus Counselor
1808 E. Loma Vista Dr., Tempe.
Phone: 967-3716 2/16

MEN -- WOMEN!

JOBS ON SHIPS! American. Foreign. No experience required. Excellent pay. Worldwide travel. Summer job or career. Send \$3.00 for information: SEAFAX, Dept. A-3, Box 2049, Port Angeles, Washington 98362. 2/6

For Sale

YAMAHA'S C-2 Pre-Amp and B-2 Power Amp are the best electronic components Yamaha has made to date. New \$1500., you can buy mine for \$995. firm. Also: Technics SLIIOA turntable with J.H. Formula IV Tonearm, \$275. 948-7890. 2/9

TWO REFRIGERATORS, \$50 and \$75; '68 Chevy pickup, 1/2 ton long, 6-cyl., \$1200; drafting table lamp, \$30. Call 244-8549. 2/6

MOVIE BUFFS Discount Tickets, many times half price, Superman for \$1.75. Intramurals PEW 122. 2/16

HEARD THE AR9's? This is AR's best and ranks as one of the most accurate speaker systems made. Mine are five weeks old. List \$1500/pr. \$1095 buys this week. 948-7890. 2/9

SHOE SALE — Men's and Women's shoes up to 1/2 off. Backdoor Shoe Shop, 707 S. Forest, 966-1772. 3/1

MATEUS WINE, \$2.99; Heineken's Beer, \$3.99 six pack; Castillo Rum, \$3.99. Rundle's Liquors and Market, University and Mill Avenue. 967-9079. 2/23

SHIN-SETSU MARTIAL art supplies and equipment. Karate and Judo uniforms. Call Chris, 967-0417. 2/7

WRITERS! SELL what you write — locally. Get details on over 100 little-known Arizona free lance markets. Arizona Writer's Marketing Guide available at ASU Bookstore. 2/23

SEWING MACHINE, Free Arm, never used, 1979, best model, still in carton. Full original guarantee. Does everything. Cost \$469, must sacrifice, \$165. I also have the beautiful cabinet that came with it. Private Home. 946-2127. 5/4

BUDGET BATTERY

Reconditioned Batteries

\$13⁹⁰ exchange

New Factory Bliems from \$19⁹⁵

12 Month Warranty

We Buy Old Batteries

715 N. SCOTTSDALE RD. 966-8728

708 W. MISSOURI AVE. 246-9395 2/7

Instruction

★ HAVE FUN ★ learning a BACKUP CAREER & making GOOD money as a BARTENDER

We offer a personalized program with flexible training hours for students.

For a Course Description, Call:
275-MIXX
ARIZONA SCHOOL OF
PROFESSIONAL BARTENDERS
1/26

Help Wanted

OVERSEAS JOBS — Summer/year round. Europe, S. America, Australia, Asia, etc. All fields, \$500 - \$1,200 monthly. Expenses paid. Sightseeing. Free information - write: IJC, Box 4490-AD, Berkeley, CA 94704. 3/1

ADDRESSERS WANTED immediately! Work at home — no experience necessary — excellent pay. Write American Service, 8350 Park Lane, Suite 127, Dallas, TX. 75231. 2/23

PHONE SALES: Evenings, nice office; hourly rate, bonus, good hours, close to college, 968-4853. 2/7

CAMERA SHOP needs experienced person full-time — consider part-time. 966-5134 or 966-8363. Mr. Olson or Mr. McAvoy. 2/14

NEED FIVE students to fill sales positions in Tempe. You must have experience in personal sales. For interview, call Mike at 967-3783 or 835-1353. 2/9

PART-TIME JOBS: Excellent pay... work whenever you have time... no obligation. Write: Sumchoice, Box 530, State College, PA 16801... and start earning next week. 2/6

SPORTS SOUTHWEST needs computer operators for ASU baseball, track scoreboards message systems. Typing 60 per minute/knowledge baseball and track. Afternoons, evenings. Anyone. Call 966-9406 for interview. 2/7

WORK YOUR own hours cleaning occupiec homes in Scottsdale. Must have car and phone. Starting salary, \$3.25 per hour 257-0727. 3/1

ATTENDANT, NURSING assistant, LPN, RN, work private duty. 7-3, 3-11 shift weekdays full or part-time. Good working conditions, good pay. Quadruple grad student, 967-6748. 2/13

NEED SALES oriented people to sell self-defense weapons. Average commission of \$40 weekly. Sound good? 968-0427. 2/11

ASU STUDENTS! Are you looking for part-time employment? Earn \$25 per day cleaning a private home; or babysit evenings for extra cash. Call Referral Services, Inc. 956-5231. 2/22

ATTENTION: PART-TIME jobs available 5-9 p.m. Great for students. 941-0045. 2/7

MEN! WOMEN! JOBS

CRUISE SHIPS • FREIGHTERS
No experience. High pay! See Europe, Hawaii, Australia, So. America. Summer! Career. Send \$3.85 for info to SEAWORLD CW Box 61035, Sacramento, CA 95860. 2/7

HELP!!!

We are the largest in our field and need PHONE PEOPLE for the easiest sales you've ever had. We offer:
1. Weekly advance.
2. Monthly commissions.
3. Daily & weekly contests.
4. Weekly bonuses.
5. Excellent selling atmosphere.
Experience helpful, but not necessary. We train. The right person can make \$250 - \$300/week. We have been in Tempe since 1973. Call Mr. Sebastian at 966-8527. 2/13

TYPIST DAY STUDENTS NIGHT STUDENTS

We have long-term assignments through June in Tempe. 40 hours per week, 7:00 - 3:30 or 3:30-12:00. Weekly pay, no fee. Call Joyce Woods for appointment. 831-1131.

ADIA

Temporary Services
2101 E. Broadway
Tempe, AZ. 2/8

Real Estate

FOUR BLOCKS to ASU, owner selling custom-built four bedroom home, \$69,900, principals only. 968-4817. 2/9

\$3,000 BUYS your interest and right to occupy beautiful new 3 bedroom, 2 bath townhouse, 1 mile from ASU. Immediate occupancy. 966-9179. 2/9

YOU'RE MAKING YOUR LANDLORD RICH! Stop it by taking your hard-earned money and investing it in your own home. You'll build equity and save taxes and have a place all your own. Call George at the Benton Co. (968-7243) for details. 2/6

You're going to throw away over Twelve Thousand Dollars in the next four years. How? By paying \$250 a month for rent. Why not invest in a home and build equity and appreciation? Interested? Call George at the Benton Company, 968-7243. He'll tell you more. 2/6

Services

SEND YOUR lover a signing valentine by SAI. Inquire at table on Cady Mall, February 6, 7, 8, 9, between 10:00 and 2:00. 2/9

PROFESSIONAL RESUME Service in Tempe. Employment Counseling, Composition, Typing and Printing. 424 W. Broadway, #15. Ready for the Head Hunters? Call John, 894-1261. 3/30

GOOD STUDENTS: Save 25% on Auto Insurance. Non-smokers 15%. Ask Steve Lundell, ASU Representative, Farmers Insurance, 835-1480. 3/1

a Rent A Bartender Service

Professional Bartenders For Private Parties
Be the Host at your own party.
Call
995-4999

Automobiles

Wanted

MOVING? MOVER with 14 ft. truck, to Chicago March 1-7, less than U-Haul. Write Gary Page, c/o General Delivery, Tempe, Az. 85282. 2/8

SMALL FURNISHED utility trailer approximately 4x4x6. 275-6635, George, or 275-7681 and leave message. 2/7

Automobiles

1972 VW SQUAREBACK, 30 mpg, air conditioning, engine perfect, some dents. Jim, 968-2916 evenings. 2/8

74 CAMARO: power steering, power brakes, air conditioning, tape deck, new brakes, wheels, \$3800 or best offer. Call 965-5175 after 10 p.m.; 965-5503 before 10 p.m. 2/9

1978 FIREBIRD Esprit, white exterior, blue velour interior, many options. 266-2662. Serious inquiries only. 2/9

SMALL CAR COMPANY

'70 Porsche 914	\$3395
'73 Porsche 914	\$4895
'74 Porsche 914	\$5895
'52 Porsche cpe	\$5995
'71 240 Z	\$2295
'72 240 Z	\$2995
'74 260 Z	\$3795
'75 280 Z 2+2	\$5995
'69 XKE Roadster	\$6995
'74 Jensen Healey	\$5995
'62 Vette	\$Mint
'72 Vette T top	\$5995
'74 Spitfire	\$2795
'72 TR 6	\$2995
'71 Spitfire	\$1695
'73 Opel GT	\$2495
'71 Fiat 124 Spider	\$1995
'72 Fiat 850 Spider	\$1895
'75 Fiat 124 Spider	\$3695
'69 MGB-GT	\$2295
'73 MGB	\$2895
'77 MGB	\$4695
'77 MG Midget	\$3695
'76 MG Midget	\$3195
'75 MG Midget	\$2895
'74 MG Midget	\$2495
'72 MG Midget	\$2195
'76 BMW 2002	\$6495
'74 BMW 2002	\$4795
'68 BMW 2002	\$1995
'74 Saab 99LE	\$9995 \$2995
'74 Audi 100 LS	\$1995
'75 Audi Fox	\$2995

SMALL OVERHEAD SMALL PRICES

SMALL CAR CO.

5201 East Van Buren St.

Only One Sky Salesman On Duty



Call 966-1421 now, you Bozo!

GET SOME GREAT WHEELS AND RAP WITH SOME GOOD PEOPLE.

EASY TERMS LOW D/PAYMENT

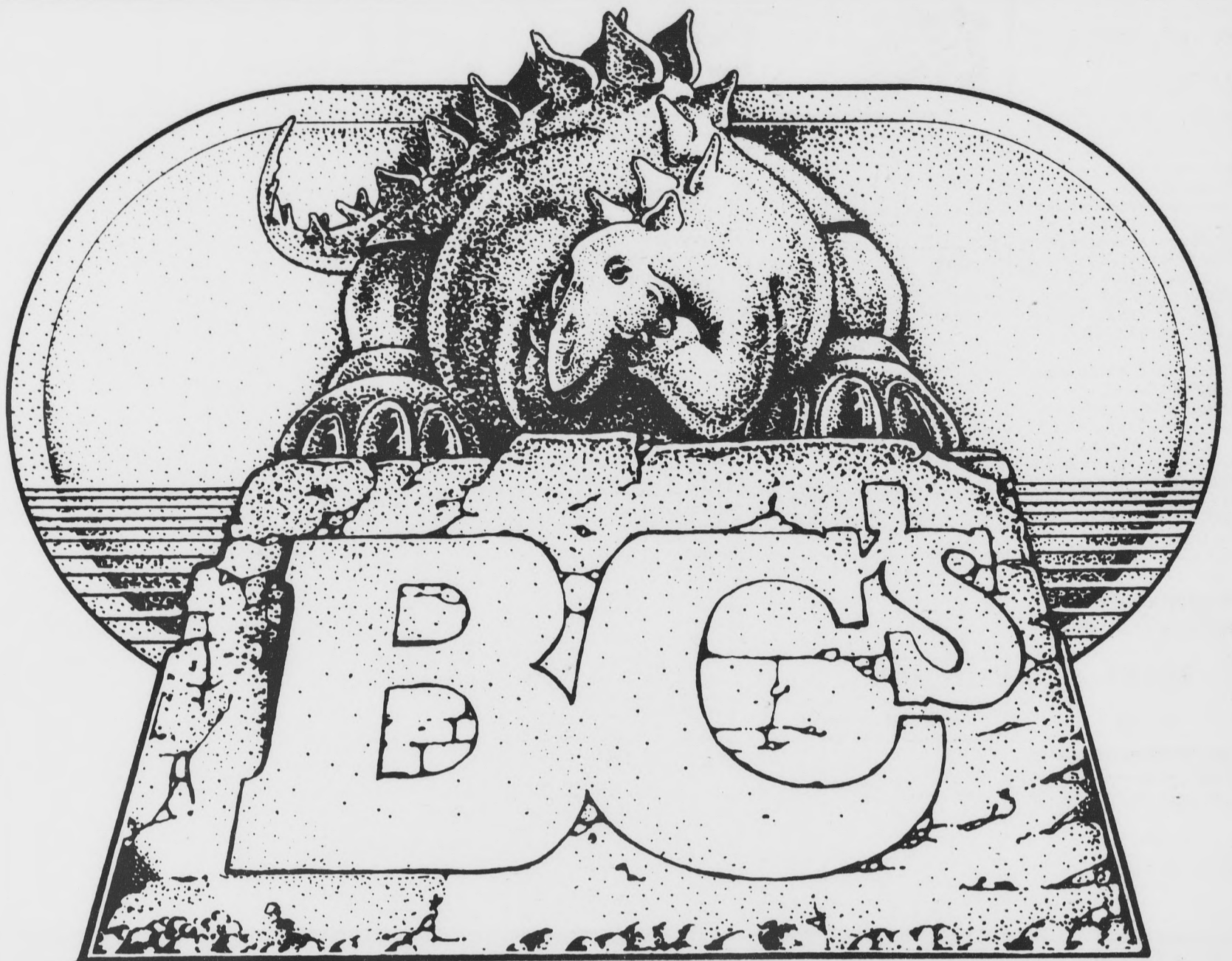
'73 Lemans Sport Coupe/Sunroof	\$2495
'74 Caprice Classic, 40,000 mi.	\$2795
'77 Datsun P/U	\$3995
'76 Ford P/U swb	\$5295
'75 Datsun 280-Z	\$5495
'75 Fiat Spider	\$4195
'75 Datsun P/U	\$2395
'75 Pontiac Catalina	\$3195
'75 Audi Fox	\$3495
'74 VW Bus	\$2825
'74 Dodge Dart	\$2495
'75 Cougar XR7 - loaded	\$4395
'74 VW Bug	\$2595
'73 Nova Hatchback	\$2195
71 Jeep V-8 Chevy	\$2695
'73 Luxury Lemans	\$2895
'72 Dodge Dart	\$1895
'70 Pontiac Tempest	\$1295
'74 Mustang Ghia	\$2495
'72 Dodge Dart, clean	\$1695

NEW USED

SALES LEASING RENTALS

CROWN AUTO BROKERS

1 MI. NORTH OF SUN DEVIL STADIUM ON SCOTTSDALE RD. 2/7



Arizona's Million Dollar Entertainment Cave
DISCO ★ LIVE ENTERTAINMENT ★ COCKTAILS

BC'S CAMPUS NIGHT

All You Can Drink For \$4.00
(Valid Student ID Required)

Wednesday, February 7th
7 p.m. to 1 a.m.

5700 EAST MAIN ST., MESA 985-3600