

Aieeeeeeeeeeeee

The population of spiders has increased this year in Arizona. ASU officials are trying to reduce the University black widow population. Students at McClintock Dorm found this spider near the housing complex. Turn to page 3 for a look at the dormitory's problem with black widows. [State Press staff photo by David Seibert]

Concert backers to pay royalties; may raise prices

By Lori Rabinowitz

ASU concert promoters will be forced to pay music license royalties next semester which could result in higher ticket prices and cancellation of programs, University officials said Thursday.

Under a newly adopted federal copyright law effective Jan. 1, ASU no longer will be exempt from the payment of royalties for music played on campus, said Miriam Boegel, event coordinator for Gammage Center for the Performing Arts.

ASU is now functioning under the copyright law of 1909 which provides that colleges and universities do not have to pay music royalties.

"Under the old law, we shifted the responsibility of the payment of royalties to the performer or artist which we had a contract with. Gammage acted as a local sponsor for the programs. In addition, we were sponsoring these programs as a non-profit organization," Boegel said.

Under the new regulation, Gammage Center will be responsible for paying musical royalties for licensed materials used in concerts.

The new regulation will place a tremendous financial burden on the Gammage Center and similar university facilities throughout the United States, Boegel said.

"We have not budgeted for music royalties. Therefore, we will have to raise the prices of tickets in attempting to meet the costs. Cutting back on our programs will be our last resort," Boegel said.

She said she does not know how much it will cost the Gammage Center for royalties because ASU is waiting for the American Council on Education to come up with an interpretation of the new regulation.

"Everything is up in the air right now. We are looking to the national organizations to clarify this legislation," Boegel said.

The only thing that is clear in this law is ASU must sign three annual contracts with music licensing organizations including The American Society of Composers, Authors and Publishers (ASCAP); Broadcast Music, Inc. (BMI); and The Society of European Stage Authors and Composers (SESAC), she said.

"There is little music that will be exempt from this new regulation. Every organization at ASU that deals with music in any way will be affected," Boegel said.

ASU has been advised by national higher education groups negotiating with the music licensing agencies not to sign any licensing contracts until more information is furnished.

The music licensing organizations probably will set the royalty fee depending on criteria such as the admission charge, size of the hall used, purpose of the events and number of events during a one-year period. The exact criteria has not yet been established, Boegel said.

ASU will have to wait until the license fees are established before it can set the prices of tickets and discuss the possibility of cutting back programs, she said.

"I hope we find out about the licensing fees soon. We will have to start paying them in January. We will keep in contact with the American Council on Education and we will talk with University

continued page 7

friday

October 7, 1977

Arizona State University

Vol. 60, No. 24

**state
press**

Tempe, Arizona

Police purchase tire locks to anchor parking violators

By Mary Connell

Fourth in a series

ASU police have purchased two tire-lock devices for immobilizing cars belonging to campus parking violators.

University Police Chief George Bays said the immobilizers will be in use within a month.

An immobilizer will be placed on a vehicle for any serious violation causing a "threat to safety," Bays said.

"It will be left up to the enforcement officer to determine the severity of an offense.

"We've ordered two until we find if they're successful," Bays said. "We'll start using them as soon as we receive them. It should be from two weeks to a month."

Bob Fails, a Business College administrator who chaired an ad hoc parking committee last year, said his committee was more concerned with finding parking for everyone than it was with finding enforcement methods.

"The parking committee felt strongly that enforcement is a last-ditch effort when convenience and logic fail.

"You must have enforcement, but you hate to use it," he added.

A campus tow truck to enforce parking violations will be in operation next semester, or possibly by the end of this semester, Bays said.

"We're trying to get our own truck, designate an impound lot and determine who should be authorized to accept fee payment," Bays said.

Tow trucks have the advantage of being public demonstrations of the administration's intent to enforce parking rules, Fails said.

"It also can perform numerous services as a light crane for physical plant and as a tow truck for the motor pool," he said.

Violators will have to pay \$25 to have the

tire lock removed or have their car released from impoundment, he said.

The impoundment lot probably will be located near the east border of campus, north of Ritter School, Bays said.

Advance warnings will be placed on the cars of habitual or flagrant violators before any car is towed, Bays said.

"When we find an illegally parked car, if the person has been notified, we will tow," he said. "If he has not been notified we will put on the wheel lock."

The advanced warning will be attached to the windshield of the vehicle with adhesive tape to keep the wind from blowing it away, Bays said.

"We will file a duplicate copy of each warning in a central system to prove the person had advance notice," he said.

Enforcement officers will radio in to check the parking record of a violator, Bays said.

"The computer system will be upgraded to program a monthly printout of all violators."

Bays added his offices eventually will have a connection to the main computer so officers in parking lots can radio in and directly receive feedback on individual violators.

Using an immobilizer to impound a car is cheaper than towing, Bays said.

"For a tow truck, you have to pay for fuel, operators and storage of the vehicle," he said.

"The immobilizer will allow for the car to be left where it is. Also, the officer can release it at the same location.

"If the immobilizer is effective in controlling parking problems, we may not have to utilize the tow truck as much," Bays said.

The price of an immobilizer is about \$200, Bays said. About \$4,000 would be spent to buy

continued page 7

In the news briefly

from the Associated Press

NEWSPAPER BILL INTRODUCED

WASHINGTON — A bill designed to preserve family ownership of newspapers by making it easier to pay inheritance taxes was introduced Thursday by Rep. Morris Udall, D-Ariz. "Almost two-thirds of the daily newspapers in the United States are owned by chains," Udall said in a statement. "One of the major reasons for the decline in the number of independent local newspapers is the devastating effect of estate taxes."

FORMER CANDIDATE INDICTED

PHOENIX — A long-time character actor and former City Council candidate has been ordered to stand trial on charges of molesting an eight-year-old girl. Danny Zapien, 51, is to be arraigned Oct. 19. Zapien ran for the City Council as an independent in 1973, and has worked as a Maricopa County Sheriff's deputy and probation officer.

ANOTHER EMBARGO PREDICTED

TUCSON — Former federal energy chief Frank Zarb said it is very likely that there will be a second Arab oil embargo, throwing one million Americans out of work and causing the economy to plunge. Zarb, speaking at an energy conference here Wednesday, predicted "an 80 percent likelihood that there will be another oil embargo." He said the political sensitivity of the oil producing countries in the Middle East is the reason that another embargo is likely. The last embargo occurred in late 1973 and early 1974.

FBI WIRETAPS REPORTED

NEW YORK — FBI agents investigating organized crime have placed illegal wiretaps and then used the information gathered from them in false affidavits presented to federal courts at times during the past five years, the *New York Times* reported in its editions Thursday. In a report from Washington, the newspaper quoted "key law enforcement sources" as saying the illegal activities included illegal entries or "black bag jobs," and were known to some lawyers in the Justice Department's organized crime section, but were not criticized or investigated.

TAX BOOST REQUESTED

WASHINGTON — Backers of a measure to bail out the Social Security System by raising taxes for the best paid workers and their employers are pressing for final action before Congress adjourns, even if this month's planned adjournment is delayed. The bill, passed by the House Ways and Means Committee Wednesday, will almost certainly be compromised with a version being developed in the Senate.

PANEL KILLS CARTER BILL

WASHINGTON — The Senate Finance Committee completed its rout Thursday of President Carter's proposed energy taxes, voting 13 to 4 to kill the biggest proposed energy-saver in the President's plan. That vote rejected a House-passed provision designed to save up to 1.25 million barrels of oil a day by levying a stiff tax on industries and utilities that use oil and natural gas.

TORTURE TRIAL CONTINUES

BISBEE — The jury in the trial of two Douglas area brothers accused of torturing three Mexican aliens continued deliberations Thursday. The jury is deciding whether to believe three Mexican aliens who say they were tortured and kidnapped, or two brothers from a respectable Douglas family who have been charged in the crime and claim innocence.

IRS ISSUES NEW RULING

WASHINGTON — An Internal Revenue Service spokesman said an IRS ruling that carriers for a particular newspaper are subject to federal tax withholding does not set a precedent and may only apply to the newspaper that received the ruling. The IRS spokesman said Wednesday the ruling for the unidentified newspaper was based on the way its carriers were paid.

SURPRISE NOBEL AWARDED

STOCKHOLM, Sweden — The Swedish Academy of Letters awarded the 1977 Nobel Prize for Literature Thursday to Spaniard Vicente Aleixandre, a sickly recluse cited for a half-century of haunting, surrealistic poetry that "illuminates man's condition in the cosmos." The academy's choice was a surprise — the 79-year-old Aleixandre's reputation has been largely limited to the Spanish-speaking world.

TEXAS POLICEMEN CONVICTED

HUNTSVILLE, Tex. — Two former Houston policemen

were convicted Thursday of criminal negligent homicide for the drowning death of a young Mexican-American prisoner. They had been indicted for murder. An all-white jury of seven women and five men deliberated 15 hours before returning the verdict against Terry Denson, 27, and Stephen Orlando, 21. It was one of the lightest the jury could have handed down.

CARTER ORDERS CLEMENCY

WASHINGTON — President Carter granted clemency Thursday to Andres Figueroa Cordero, a Puerto Rican nationalist convicted in 1954 for participating in an armed attack in the House of Representatives. Cordero has terminal cancer and a White House spokesman said Carter commuted his sentence to the time he has already served because of his physical condition.



AL FANN SUBARU

Largest Stock in Arizona
4-Wheel Drives, Wagons, 2-Doors, 4-Doors.
Large Inventory of Pre-owned Cars

1333 E. Camelback

Phoenix 279-9575

DRIVE AND COMPARE — THANK YOU!

STUDENT DISCOUNTS
STARTING AT 20%



WE HAVE ALL YOUR PHOTO NEEDS

967-4662 Tempe Center 966-8363

VISIT OUR 14-FOOT SOUP & SALAD BAR



FRED GANG'S

NEWLY REDECORATED

Featuring 35 Extraordinary Culinary Delights

Fresh Fruits & Vegetables

Homemade Soup & Bread

Taste Fred's huge block of cheese.

GO BACK TO THE SALAD BAR AS MANY TIMES AS YOU LIKE WITH A LUNCH OR DINNER ENTREE

Fred's Specialties

- *Seafood
- *Steaks
- *Prime Rib
- *Sandwiches

FRED GANG'S
1112 E. APACHE BLVD.

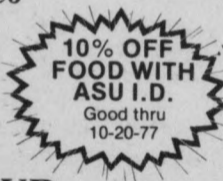
[Next to Willy's]

Open For Lunch and Lounge At 11:00 AM Daily.

SPECIAL FROZEN DRINKS \$1.50
(to cool you off!)

HAPPY HOUR
Tuesday-Friday, 4-6 PM
2'fer 1 Drinks

Monday Night Football
Monday 4-10 p.m.
2'fer 1 Drinks



THE CANON F-1

THE MOST COMPLETE, MOST PERFECTLY INTEGRATED CAMERA SYSTEM IN THE WORLD.



A true system camera for less than you'd think.

GET 30% OFF LIST WITH THIS AD THRU OCT. 14

(PAPER ONLY)

When it comes to top-notch performance and quality, nothing can match the Canon F-1 system. The superbly built F-1 body can tackle any photographic task with ease. It is designed with you, the photographer, in mind, to operate with complete smoothness day in and day out. Wherever you go or whatever you do in photography, the F-1 is an ideal companion.

- Over 40 lenses and 200 accessories
- Central area spot metering
- Shutter speeds to 1/2000 second
- Breech lock lens mount
- Ultra-sophisticated film transport system
- Rugged, smooth construction
- Superior handling
- No add-on after thoughts
- No adaptations or modifications from year to year



AZ - TECH GRAPHICS

OPEN 9-6 MONDAY thru FRIDAY

527 W. McDOWELL PHOENIX 258-7731

WE WELCOME VISA, MASTER CHARGE & AMERICAN EXPRESS

STATE PRESS is published by Arizona State University Tuesday through Friday during the academic year, except holidays and examination periods. Entered as second class matter at Tempe, AZ 85281.

PRINTED AT
SUN PUBLISHING CO.
Tempe, Ariz.

Black widow spiders live in McClintock dormitory

By Pat Walsh

The spider may have asked the fly into her parlor, but most residents of McClintock Hall would prefer the spider leave their living rooms.

Black widow spiders have been on the increase this year in the state, including the ASU dormitory.

"I'm afraid to sit on my couch," said Karen Leckbee, a McClintock resident. "I never know if I'm going to sit on one."

Leckbee said she has found six black widows in her dormitory in the last two weeks and has repeatedly told the administration.

"We've done everything. I've even taken live ones over to housing," Leckbee said. Leckbee said she used a big stick and a jar to catch the spiders.

The population of the spider in Arizona is up this year because the spiders had many insects to feed on, according to Dr. Dave Langston, an extension specialist in entomology for the state.

The dormitory rooms were sprayed Wednesday by an exterminator contracted by the ASU Housing Office, Russell Flaherty, director of housing, said.

"It's a problem we have every year about this time," Flaherty said. He said the number of complaints has not gone up.

Dormitory residents acknowledged there had been a spraying, but some were dissatisfied with the process.

"You should have seen them (exterminators)," said one resident who refused to give her name. "They ran in with their little cans and hoses, sprayed for five seconds and ran out."

"They could have done the whole dorm in 45 minutes at that rate," she added.

Another resident said the rooms weren't sprayed thoroughly.

"They didn't get by the walls by the beds, just the walls that were exposed," said Jan Johnston.

"They should go in the cracks where they (spiders) live," said McClintock resident Holly Halsey.

Leckbee said she doesn't think the spray used was powerful enough to kill the black widows. However, Bob Pride of Pride Pest Control contracted to do the exterminating, said the spray will kill the spiders.

"There's just no way you can pick up every book, every desk and chair to spray," he said. "Whether it's black widows or roaches or anything else, the spray is only as effective as where we can get the bug to go," Pride said. He said the bug has to walk on the spray.

There is another drawback since the spray is ineffective in killing eggs.

"The insecticide won't kill eggs. There is no insecticide on the market that will kill insect eggs," he said.

Pride said that black widows are shy creatures that avoid activity. He said they are more likely to be found in dark storerooms than in dorm rooms.

"Insects do not seek out people to bite and very, very rarely are there fatal cases of insect bites," he said.

Estelle Fidler, public health nurse at the ASU Health Service, said she doesn't recall any cases of black widow bites this fall, which she said usually are not dangerous to a healthy person.

When you buy a pair of Ms. Riddell Casuals, You Get a \$6.00 Bag FREE!



ONLY \$19.99

Great Campus Shoe. 6 Different Colors.

The Jock Shop

45 E. BROADWAY
Complete Riddell Dealer
Helmets • Helmet Plaques
Casual Shoes • Training Shoes

SEE THEM AT THE JOCK SHOP
Mill & Broadway

Division of Sunvalco Ath. Supply
School Dist. 967-5589

Brookside's Vin Rosé Plus Wine Glass Special

... 25% off sale this month on regular bottle price in case lots. Our special 8 1/2 ounce wine glasses are now on sale 59c



OCTOBER SPECIAL PRICES:

— Vin Rose —
\$1.85 per fifth
\$18.45 per case

Tasting Parties . . .
5 tastes for only 25¢

•TEMPE•
1131 West Broadway
967-9836

•PHOENIX•
10240 North 27th Ave.
943-0972

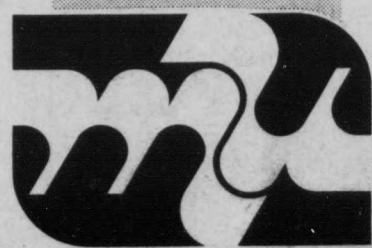
Brookside TASTING CELLARS

State Press Advertising 965-7572

FALL 1977

MEMORIAL UNION

SHORT COURSE



THE M.U. SHORT COURSE program is a series of informal, non-credit classes. Registration for the following classes must be done in advance at the M.U. Activities Center. Enrollment is open to all ASU I.D. holders and their immediate families. For more information, check the Short Course brochure in the M.U. or call 965-6649.

BALLROOM DANCE

INSTRUCTOR: **Stuart Noah**
CLASS DATES: Section II
Mondays, 7:30 - 9:00 p.m.
October 26 - November 30,
6 weeks

PLACE: Manzanita Cafeteria
FEE: \$14.00 per student

New dance club. Learn the popular fad dances, the "bump" and the "hustle," also the great ballroom favorites — jitterbug, cha-cha, and the tango.

BEGINNING BELLYDANCING

INSTRUCTOR: **Debi Hondorf Johnson**
CLASS DATES: Section II
Mondays, 3:30 - 5:00 p.m.
October 31 - December 12,
7 weeks

PLACE: M.U. E & W Cochise #212
FEE: \$12.50 per student

For entertainment or for exercise, bellydancing can be performed by anyone, ages 8 to 80!

CPR: BASIC LIFE SAVING TECHNIQUES

INSTRUCTORS: **Ken Huffman, Shiela Linderholm, and Jim Dearing**
CLASS DATES: Section II
Tuesdays, 6:30 - 9:00 p.m.
October 11 - November 1, 4 weeks
Section III
Tuesdays, 6:30 - 9:00 p.m.
November 8 - November 29,
4 weeks

PLACE: M.U. Navajo Room #219
FEE: \$10.00 per student
\$ 2.00 materials fee

Instruction in basic life-support for heart attack, O.D. and choking victims. (Certification by American Heart Association.)

DOG OBEDIENCE TRAINING

INSTRUCTOR: **Louise Slusher from the Desert Obedience School**
CLASS DATES: Section II
Mondays, 8:15 - 9:15 p.m.
October 10 - November 28,
8 weeks

PLACE: M.U. East Lawn
FEE: \$12.00 per student

The basics — heel, stay, recall. Required: A dog train-

ing collar of chain or nylon; a six-foot leash of web or leather. (NO CHAIN LEADS), and proof of dog's rabies vaccination.

SELF-HYPNOSIS FOR PERSONAL IMPROVEMENT-ACADEMIC SKILLS

INSTRUCTORS: **Robert T. Morin and Nelson Gammon**
CLASS DATES: Section III
Mondays, 3:00 - 4:30 p.m.
October 24 - November 28,
6 weeks
Section IV
Tuesdays, 6:30 - 8:00 p.m.
October 25 - November 29,
6 weeks

PLACE: M.U. Yuma #211
FEE: \$20.00 per student

Participate in self-hypnosis as you learn, in progressive stages, the basic techniques. Course designed for self-improvement only, covering memory, retention, recall and concentration.

SELF-HYPNOSIS FOR TENSION/STRESS CONTROL

INSTRUCTORS: **Robert T. Morin and Nelson Gammon**
CLASS DATES: Section II
Mondays, 6:00 - 7:30 p.m.
October 24 - November 28,
6 weeks

PLACE: M.U. Yuma #211
FEE: \$20.00 per student

Teaches methods which the student can utilize at any time and under any condition, to reduce anxiety, stress, and tension.

INTERMEDIATE SELF-HYPNOSIS

INSTRUCTORS: **Robert T. Morin and Nelson Gammon**
CLASS DATES: Section I
Tuesdays, 8:30 - 10:00 p.m.
October 25 - November 29,
6 weeks
Section II
Wednesdays, 3:00 - 4:30 p.m.
October 26 - November 30,
6 weeks

PLACE: Section I: M.U. Yuma #211
Section II: M.U. Santa Cruz #213

FEE: \$20.00 per student

Structured for students who have completed one of the above self-hypnosis classes. Instruction in new techniques in self-hypnosis and how they may be applied to improvement of one's own self image, feelings of worthiness, self-confidence and becoming more positive.

Opinion

state
press

America is a large, friendly dog in a very small room. Every time it wags its tail, it knocks over a chair.
—Arnold Toynbee

Herb Neal

This is not about ASU, or the world or the nation.

It's about a kind and thoughtful man who died this week. His name was Herb Neal, and for longer than most ASU students have been alive, Herb was a Phoenix cop.

Herb held about every job in the department in the 30 years he was on the force. He was a patrolman, he ran the juvenile section, he worked in communications and he ran the internal affairs of the force.

When he retired, sick with cancer, he was assistant chief of police. There never was such a thing as off-duty for Herb. When he came home to Hazel and his children, the living room crackled with the radio transmissions of officers in the field.

And Herb had this incredible shop built on to the side of his house. In it was every tool imaginable, a real toy store for a man with creative intelligence and able hands.

And its use was not restricted to him personally. He was that kind of man who would share what he had with anyone considerate enough to treat what he received with respect.

A newspaper editor who was an unemployed carpenter 2,500 miles from his family at Christmas time 1974 remembers the kindness of the man who invited him to share Christmas with the Neal clan.

Herb's long bout with illness is over, and it is now not a time for sadness. He was tough enough to outlast his doctors' predictions as to when it would end.

But he was sensitive enough to share the joy of living, and worked hard to make sure the city was safe for citizens to be able to enjoy it.



South from here - Morrissey/Visotsky

Panama Canal:

U.S. to give it back for business reasons

*... some American students
disregarded this order
and flew the U.S. flag alone.
The aftermath of this
arrogance was an explosion
that left 20 Panamanians
and four Americans dead,
plus some 200 people
injured.*

*"But what makes us so sure
they will be gone
by the year 2000?
We don't have any
guarantee."*

As the history of United States-Panama relations clearly shows, the new treaties concerning the Canal do not flow from U.S. benevolence. Since the original treaty in 1903 Panama has wanted a more equitable arrangement.

The new agreement is due to 74 years of Panamanian struggle, world opinion (especially Latin American) against colonialism and U.S. business interests realizing their lucrative Latin American transactions are in jeopardy without a change concerning the Panama Canal.

The resistance of the Panamanian people to the unjust treaty of 1903 is as old as the Canal itself. Since the late 1950's the resistance has intensified. Panamanian youth and students have staged many mass protests in Panama and the Canal Zone.

They have called for an end to the old treaty, an end to discriminatory employment laws and regulations, and finally the return of the canal to Panama with withdrawal of all U.S. military troops and bases.

During the many years of struggle, Panama's only gains have been minor treaty revisions in 1936 and 1955. The 1955 revision increased the annuity payment for the canal from \$250,000 to \$1.9 million. It also called for several minor changes, including some alterations in the boundaries of the Canal that favored Panama.

Also, from this revision came a long awaited memorandum containing promises to abolish wage differences, and promise of equal employment opportunities.

Not until mid-1958 did the U.S. Congress pass the necessary legislation providing for equal working conditions. The three years it took to get from revision to ratification added to the very intense resentments the majority of Panamanians felt towards the United States.

In 1963, a joint commission between the United States and Panama agreed on a resolution calling for the Panamanian flag to fly in the Canal Zone with the U.S. flag. This issue was extremely important to Panama.

In January, 1964, some American students disregarded this order and flew the U.S. flag alone. The aftermath of this arrogance was an explosion that left 20 Panamanians and four

North Americans dead, plus some 200 people injured. This incident signaled negotiations that have lasted for 13 years culminating in the new treaties.

The two new treaties were negotiated under very tight secrecy. The major provisions revealed so far are:

Panama will assume jurisdiction over the Canal Zone in 2000, with the United States maintaining military bases in the zone until that time. The United States currently has more than 11,000 soldiers at 14 bases in Panama, as well as the infamous School of the Americas, a major training center for repressive Latin American regimes.

The United States will have the right to defend the canal indefinitely and U.S. and Panamanian warships will always have the right to use the canal.

Financially, the United States will pay Panama about \$50 million a year for the canal use, with the amount subject to increases. Further funds will be loans through the Export-Import Bank, and similar lending institutions.

"But what makes us so sure that they will be gone by the year 2000? We don't have any guarantee," is the response of exiled Panamanian leader Miguel Antonio Bernal. Bernal, one of more than 200 exiled Panamanian activists, says further, "We want total and immediate control over the Canal."

Naturally, the response of the U.S. citizens working and living in the ten-mile-wide Canal Zone have been unfavorable. The "Zonians," as they are called, live as colonists, enjoying distorted advantages and privileges at the expense of the Panamanian people. To the "Zonians," and some people in the United States, the Canal is a symbol of American imperial power.

Major U.S. & multinational companies, such as Kodak, Bank of America, Ford, Gulf and many others are concerned with what's good for business and realize the old canal system has to take new appearances. Many observers say the new treaties strengthen the U.S. position, conceding very little, and thus insuring a continued favorable climate for business interests with Latin America and other developing countries.

Letters To The Editor

Vendor trucks noxious pests

Editor:

I was interested to see your article concerning the contract with Valley Vendors Corporation. Opinions may differ as to the legitimacy of fixing a price for drinks as high as 30 cents, and generating as a consequence a substantial amount of revenue for the University. However, the question I would like to comment on is slightly different.

I have recently noticed that the Valley Vendors Corporation truck is regularly to be seen on campus, presumably for the purpose of servicing the machines that dispense food and drink. The truck is usually to be seen parked on a pedestrian area, or driving across a pedestrian area. It is one more noxious and undesirable vehicle to be added to the impressive array of polluting machines which daily (and illegally) drive across zones which, by my understanding, were reserved for people on foot.

Many of the vehicles that intrude into the pedestrian zones are driven by persons who probably feel they have a right to do so; maintenance vehicles, ASU departmental trucks, electric trolleys (a danger to life and limb even if they do not pollute) are all to be found, wending their respective ways between the rows of trees and flowers.

I am sure that a quick investigation would show that most vehicles on the malls are there unnecessarily, in that they could easily attain their objectives by driving around some back way rather than cutting straight across the pedestrian areas. But in any case, it seems about time for action to be taken to cut down vehicle usage of pedestrian areas, and to press for a policy of rigorous exclusion of motorized vehicles from the malls. Perhaps, with the courtesy of your columns, some support for such action could be energized.

W. Donald McTaggart
Geography

Parking blues

Editor:

Recently I was transferred for a few weeks to Agriculture (from the main Engineering Center) to help out in the office because a secretary, Janet Pfaff, went to Desert Samaritan Hospital for an operation.

The enclosed ticket was issued to me even after I hunted for an E parking lot that was not full. I either had to "dive" into one near Agriculture Building (where a party had just left) or think about driving on home because of the disgusting situation of no place to park.

I don't mind paying \$2.00 because I'm not entirely broke, but what went through my mind occasionally since getting that ticket is this: What is really happening to this fine University when the staff, faculty and students are continually ticketed (burdened) when your office and the State of Arizona know darn well that there is a continuous parking problem not imposed by said staff, faculty and students, but a problem that exists and which expounds monies from innocent persons daily, monthly and yearly? I could understand it even better had I had no "E" sticker on my window, but I am on the staff, I came over here to relieve a situation which had a lack of office help, and I am rewarded with a ticket when I could not possibly find a place to park.

Always before I had wondered how students felt when they were ticketed when they could not find a place to park . . . now I know much better how they feel.

Everett C. Young

BIG SAVINGS
at
PEDAL WORLD
LOW PRICES ON

KHS Bicycles
Gitane Bicycles & Mopeds
Repairs On All Makes

PEDAL WORLD

85 W. Boston, Chandler
963-4374

FREE DELIVERY

WOMEN

WHAT ARE YOU GOING TO DO
WITH THAT DEGREE IN SCIENCE,
SOCIAL SCIENCE, ENGINEERING?

ATTEND A ONE-DAY NATIONAL SCIENCE
FOUNDATION CAREER WORKSHOP

- ☆ Meet noted women scientists, engineers and social scientists from around the country.
- ☆ Learn where the jobs of the future will be.
- ☆ Discover how to go after and get the job you want.

THE WORKSHOP FOR JUNIOR AND
SENIOR WOMEN IS:

★ **FREE**

★ **SATURDAY, OCTOBER 29, 1977**


AT THE MODERN LANGUAGES AUDITORIUM
U of A

You will be reimbursed for gas mileage expense. Application forms are available through ASU science department heads and Dr. Thelma Shinn, SS107.

APPLICATION DEADLINE: OCT. 17, 1977

For more information, call 884-4477.

**RENT WHAT IT TAKES
TO HAVE A BALL.
THE PARTY PLACE.**



**UNITED
RENT-ALL**

Price List of Party
Items Available


 accepted

3414 South Mill,
Tempe 967-1649

Our
39th
Year

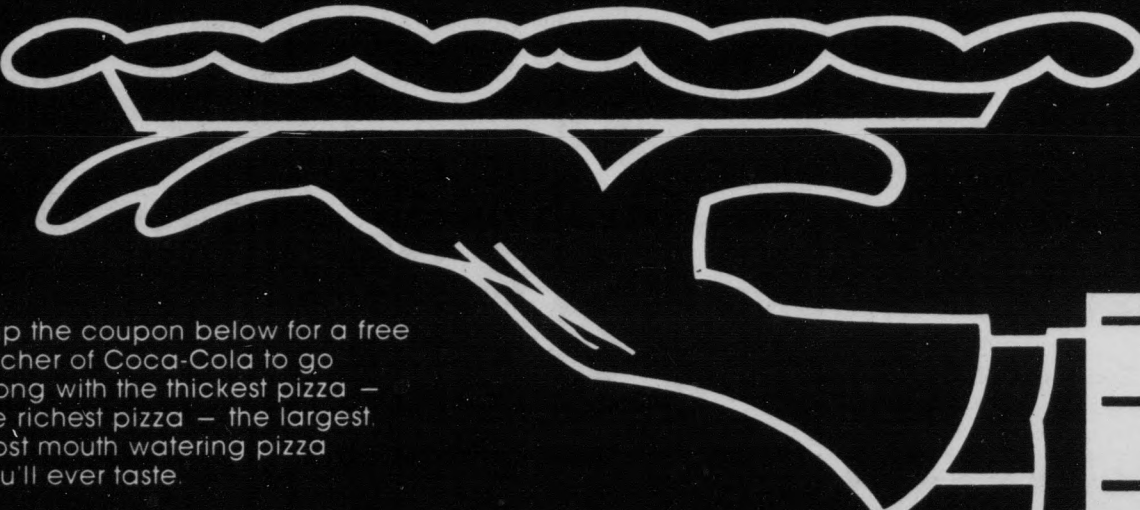
PREPARE FOR:

MCAT • DAT • LSAT • GRE
GMAT • OCAT • VAT • SAT
NMB I, II, III,
ECFMG • FLEX • VQE
NAT'L DENTAL BOARDS
NURSING BOARDS
Flexible Programs & Hours
There IS a difference!!!


**Stanley H.
KAPLAN**
EDUCATIONAL
CENTER

Test Preparation Specialists Since 1938
For Information Please Call:
967-2967
For Locations In Other Cities, Call:
TOLL FREE: 800-223-1782
Centers in Major US Cities
Toronto, Puerto Rico and Luzano, Switzerland

Godfather's Pizza



Clip the coupon below for a free pitcher of Coca-Cola to go along with the thickest pizza — the richest pizza — the largest, most mouth watering pizza you'll ever taste.

PITCHER OF COORS

10¢

With purchase of any Small,
Medium or Large Pizza.

Expires 10-15-77.

McCLINTOCK & GUADALUPE
Tempe Square Shopping Center

Stop In or Carry Out
Phone: 839-9988

Hours: Mon-Thurs 11 am - 11 pm
Fri-Sat 11 am - 1 am
Sun 4 pm - 10 pm

Coca-Cola and Coke are registered trade-marks which identify the same product of the Coca-Cola Company.



ASU faces a problem during each football game with the possibility of losing footballs that are kicked into the stands. It is estimated that 100 footballs are lost each year. [State Press staff photo by David Seibert]

'Ball boys' risk lives, limbs to retrieve kicked pigskins

By Chet Barfield

Eight dedicated young men risk their necks every weekend during the ASU football season.

They do not wear helmets, shoulder pads or numbered jerseys, but their mission can be almost as brutal as the players on the gridiron; facing drunken football fans to retrieve the runaway pigskin after field goals and extra point kicks.

These ball boys, who are local high school youngsters and ASU managers, save the athletic department an estimated \$2,000 per season, ASU athletic equipment manager John Crumbaker said Thursday.

Crumbaker estimated at least 100 footballs, which cost ASU \$20 each, fly into the crowds every season.

The problem, it seems, is getting them back.

"It's not as bad as it used to be," said Crumbaker. "But people will always be the same. There's always someone who's going to try to beat the system."

Crumbaker said the stadium expansion has made the ball boys' job easier.

"There used to be bleachers on the north end of the field. Someone would catch the ball and then drop it down to someone below," he said.

Crumbaker said about six spotters surround the area where the ball landed and converge on it before it disappears.

Crumbaker, who chased balls in 1972 and '73, said fans often become irate when asked to give back the ball. He said he was involved in three fights in the line of duty.

Now if anyone tries to get tough with the ball boys, they threaten to fetch a sheriff's deputy.

Fans are asked to return the ball, or face arrest. Crumbaker said the officers have not been summoned for four years.

Chief Hall, assistant equipment manager, said ASU lost two footballs last year, but so far this season none have gotten away.

Crumbaker said fans use various tricks

continued page 8

Take a **SEMESTER AT SEA** with the Institute for Shipboard Education and the University of Colorado.

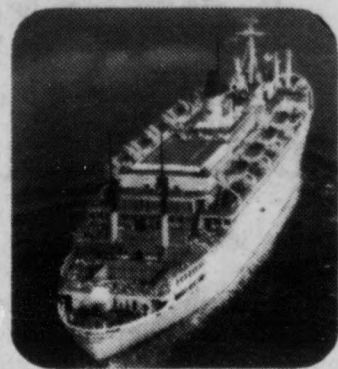
Let this unique international program add an important dimension to your undergraduate experience. Each semester the S.S. Universe*—the education ship—sails to fascinating areas of the world.

Fully accredited, courses transferable.

Next sailing: Around the world, Spring Semester, 1978.

For further information:

Institute For Shipboard Education
Taj Mahal Building — Suite 206
P.O. Box 2488, Laguna Hills, CA 92653
CALL TOLL FREE (800) 854-0195
*18,000 ton, Liberian registry



Phoenix Christmas CHAMPAGNE CHARTERS

December 21st and 22nd
NEW YORK —

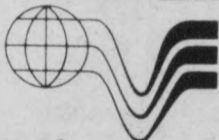
\$234.00

Return January 18th
CHICAGO —

\$179.00

W. Al Pasley's

VALLEY TRAVEL



CONTACT

707 South Forest
Tempe, Arizona

Phone

(602) 967-9403

PILLOW THIS . . .
BACK TO SCHOOL SPECIAL
Limited Supply 32 x 25 x 11

Overstuffed with Polyester Fiber Felt (very comfortable). Washable with zipper. Quality craftsmanship guaranteed.

Originally \$23.95 — NOW only \$19.95

Please specify **A** Batik Print (Browns and Blues)
B Courderoy (Brick Red) or **C** Courderoy (Brown).
Intercase additional \$4.50. All orders shipped UPS.
Please include \$2.50 to defray shipping and handling.

Dept. 110
Box 401 Cooper Sta. N.Y., N.Y. 10003

UNIQUITIES

Football Pinball Pool

THE UNDERGROUND

LADIES NITE
Tuesdays AND Wednesdays
10c Draft Beer to all Ladies
Must have Valid ASU I.D.

20c Draft Beer

SPECIAL! ANY LARGE PIZZA
Includes One Item
\$1.99 Each Additional Item — 50c

With this ad and ASU I.D. In store only.

manhattan villa pizza inc.
Original and Only New York Pizza

ALSO BEER and WINE

201 West Southern, #328
Southern & Mill — Danelle Plaza

Sun. - Thurs. 4-1
Fri. & Sat., 4-2

967-0843

(One Coupon Per Customer • Expires 10-25-77)

DISCO DANCE

SAT., OCT. 8
8-12pm
p.m.

Maricopa Rm. M.U.
Memorial Union

\$2.00
at the door

open to campus

dance to the music of D.J. **W. STEVEN KUPD.** **MARTIN AM/FM.**

sponsored by **Hillel** UNION OF JEWISH STUDENTS

More about

Police to 'lock' tires

Continued from page 1

a used tow truck, he added.

The immobilizers will help solve problems posed by cars without decals, Bays said.

"We currently have to trace the owner by license number," he said.

"Once we find out the owner, we have to cross reference it with a student list. With the immobilizer, we can find out who the owner is right away."

Bays added that enforcement officers don't bother to track the owner of a non-decal vehicle until the sixth violation.

Students whose cars have been impounded because of delinquent citations will pay the impoundment fee at the lot, Bays said.

The outstanding citations will have to be

paid to the business administration within 24 hours, or the vehicle will be subject to impoundment again, he said.

"We still have to work the details out," he said. "The business office currently handles parking fines."

The threat of impoundment should be a deterrent for potential parking violators, Bays said.

"I don't envision towing many cars," he said.

"We don't like to use threats. We just want to lay the cards on the table and say here it is, if you want to take the chance, you know the consequences," he said.

"We don't want to become a collection agency."

More about

Concert promoters

Continued from page 1

officials to see what factors will be used in determining how much ASU will pay," she added.

Associated Students officials said they do not know how this new regulation will affect the concerts ASASU sponsors.

"I have not heard anything or received any information on this regulation since July. We are presently consulting with our lawyers to see how the regulation will affect us," said Ellie Glazer, ASASU activities vice-president.

Under the new regulation, the marching band will have to limit their choice of popular music to be played during half-time to songs that do not require the payment of royalties, said Robert Fleming, assistant director of bands.

"If the companies which we are presently receiving our song material from start demanding royalties, then we will not play their songs. We will just go to other companies and use songs that do not require royalty payments," he said.

"These copyright holders should not force us to pay music royalties. We have them by the nose because we play their music in front of large audiences and stimulate people to buy their records. If we were making records of the band performing copywritten material and then selling these records, it would be a different situation," he added.

However, the new regulation will not affect the concert band, orchestra and chorus, Fleming said.

"The concert band, orchestra and choir purchase the sheet music for their concerts. The music royalties are included in the price of the sheet music," he said.

In addition, most of the music played at these concerts are commission works and has copywritten clearance from the publishers, he added.

"These works are usually unpublished and the composer is usually paid for the use of his music," Fleming said.

The Lyceum Theatre always has made royalties on the material used, said Nancy Tallman, production manager of Lyceum Theatre.

"Ethically it is the right of any artist to be paid for his work. We've always been subjected to royalties on plays and songs. We should not be exempt from it because we are realizing money back from using the author's works," she said.



No matter where you are, the most direct source for hometown news is the newspaper. NASA officials used headlines, particularly those from the sports pages to help keep astronauts in touch with reality.

NOW RE-OPENED!

INDIA HOUSE

International Restaurant

Featuring Complete India Dishes

also
STEAKS * SEAFOOD * COCKTAILS
DINNERS SERVED 5:30 to 10:00p.m.

Closed Sundays & Mondays
We Cater to Large and Small Parties

4225 E. Camelback Rd., Phoenix

Reservations Advised

959-4450 or 959-2830

JUMBO SHRIMP SPECIAL

Steamed Jumbo Shrimp, Baked Potato w/butter or Sour Cream, Cole Slaw & Sour Dough Bread.

\$5.95

FRIDAY & SATURDAY ONLY

—ENTERTAINMENT—

JIM LEIGHTON

THURS.-FRI.-SAT.

FROM 8:30 P.M.

COCKTAIL HOUR

10:30 TIL CLOSING



the Salt Cellar

A RESTAURANT & GARDEN UNDERGROUND

550 N. HAYDEN RD.

SCOTTSDALE

Call for Reservations 947-1963

NOW OPEN

Vitamins, Diet Aids & Health Food Supplements

Appliances
Frozen Foods
Organic Meats
Dairy Products
Vegetarian Foods

Grains, Snacks & Sweets.
Nuts & Seeds

Frozen Yogurt,
Juices & Snacks
Available at Our
Snack Bar

Arizona's Most Beautiful
& Complete Natural
Food Store

10% OFF REG. PRICE
With This Coupon

ALL NUTS IN STOCK
Try Aztec Nuts
Expires 10-18-77

We Accept Food Stamps
Discounts Available
to ASU Students

NATURE'S HARVEST

SCOTTSDALE & McKELLIPS RDS.
ALPHA-BETA/THRIFTY PLAZA

946-3157

NOW OPEN

FIREBIRD

The Best Music
for the
head, ears and feet
appearing Oct. 7-15

at **THE Library**
1001 E. 8TH ST. Just East of ASU

basketball
CHEERLEADING
ASU Tryouts
OCT. 10-13

Open to all ASU Men and Women enrolled for seven or more hours and maintaining a 2.2 GPA minimum.

LEADERSHIP OPPORTUNITIES
ALUMNI/COMMUNITY RELATIONS
SERVICE TO STUDENT BODY
SOCIAL ACTIVITIES
TRAVEL OPPORTUNITIES
PUBLIC RELATIONS
PROMOTING SPIRIT
CHEERLEADING

FUN!

Information, tryout schedule and applications at MU 208-A, MU Information Desk, Residence Hall Desks, and MCENT 138.

Get acquainted

SPECIAL

Complete Tune-Up

- *New Spark Plugs
- *New Points
- *New Condenser
- *Set Timing
- *Set Dwell
- *Adjust Carb
- *Check Belts and Hoses
- *Check Emissions
- *Check Starting and Charging Systems
- *Check Cooling System
- *Road Test Car

\$38.95

Most V-8 Cars
6-cyl. \$4.00 Less

Lubrication Service Special

- *Install 5 qts. of Oil
- *Install New Filter
- *Lubricate All Chassis and Suspension Parts
- *Check Battery Level
- *Check Transmission Fluid
- *Check P/S Fluid
- *Check Brake Fluid
- *Check Rear End Lube
- *Check Radiator Coolant

\$10.95

Add \$1.00 for multi-grade

SAGUARO

AUTOMOTIVE & PERFORMANCE

748 WEST SOUTHERN · MESA, ARIZONA · (602)969-4000

More about

Retrieving pigskin hazardous job

continued from page 6

to try to fool the ball retrievers, including passing the ball down the row, hiding it under a blanket or throwing it in a big purse, but few are successful.

He said he remembered an incident years ago when the ball flew into a group of Indians sitting in the end zone.

The spotters watched where it landed, but could not find the ball when they approached the group.

Crumbaker said the ball had been given to one of the women in the group.

"She must have weighed 250 or 300 pounds," he said. "She stuck the ball between her legs, and her fat covered it up."

Crumbaker said he spotted the ball when she moved her leg. He managed to get it back by knocking it out from between her kness.

Jerome Clardy, athletic staging

director, said most fans cooperate and some even throw the ball back after they catch it.

Clardy said the University has considered putting up a net to catch the balls, similar to the ones now used by the NFL, but problems of expense and logistics have interfered.

He said the heavy nets and complicated pulley system to raise them cost more than \$5,000.

Also, he said putting the poles that support the net on the south end of the field present a problem because there is not enough room. They would have to go in the stands and would block the view, he said.

Clardy said he does not believe the University will consider buying the nets in the near future.

"I don't think it's too high on our priority list," he said.

Official withdraw period for students ends today

A student will receive a failing grade for a class which he never attended if he does not drop the course by today.

William Haid, associate registrar, said a student is enrolled in a course until he officially withdraws, even if he has never entered the classroom.

Today is the last day that a student can withdraw from a

class with a guaranteed grade of W. Instructors may assign either a W or a failing grade to any student who withdraws after Oct. 7, depending on the student's status at the time of withdrawal.

To drop a class, a student should complete the form available at the Records Information window in Moer Administration Building, then take the form to the University Cashier and pay \$1 for each course change.

1977-78 basketball cheerleading line tryouts to begin

Tryouts for the 1977-78 ASU basketball cheerleading line begin at 7:30 p.m. Monday in Gym 139 of the PE East building.

The tryouts will be conducted over a four-day period, with three days of workshops on various cheering techniques, and judging on the final day consisting of an interview, a test on basketball basics, and a performance routine for the judges.

Membership is open to men and women. Candidates must be currently enrolled for seven or more semester hours and have a minimum 2.0 grade average.

Applications and further information can be obtained at all residence hall desks, the MU information desk and in MU 208-A.

Only the Newspaper



You, too, can train your dog to 'go fetch.' It's worth the trouble, for the interesting things you read make you a more conversant and interesting person. The informed reader is the newspaper reader.

BACK BY POPULAR DEMAND "A Safe Place is delightfully eccentrically, funny... Sight and Sound"

Tuesday Weld Orson Welles
A SAFE PLACE
also starring Jack Nicholson PG
co-starring Phillip Proctor SECOND MOVIE
LOS ARCOS MALL CINEMA 949-0301 Scottsdale Rd. & McDowell
THE PETER O'TOOLE RULING CLASS EXCLUSIVE

ACADEMY AWARD WINNER "BEST FOREIGN FILM" **BLACK AND WHITE COLOR** "This is superior film-making." ABC T.V. PG
CAMELVIEW 2 PLAZA CINEMA 949-0370 70th St. North of Camelback Rd.
PLUS An Award-Winning Animated Short Subject: "Mindscape"

HERE COMES THE COMEDY ROMANCE OF THE YEAR! **Between the Lines** "A 70's American Graffiti!"
CAMELVIEW 1 PLAZA CINEMA 949-0370 70th St. North of Camelback Rd.

GOLDEN TEMPLE

Wholesome Food for Wholesome People

In Tempe:
Delightful gourmet dishes
Entertainment Nightly
415 S. Mill Ave.
968-4258

In Phoenix:
Fast Foods
Frozen Yogurt
4821 N. Central
266-3584

509 Mill Ave., Tempe 967-6664

VALLEY ARTS

Roll over, Beethoven.

Bruno Bozzetto's **Allegro Non Troppo**
(a full-length animated movie) PG

NOW SHOWING
7:00, 8:40, 10:20 p.m.
SAT. & SUN. MATINEE

Friday - Saturday Night Midnight Movie
The Best of the First N.Y. Erotic Film Festival

The MU Film Committee Presents

Confounding!

Sherlock Holmes unraveling the clues, Sigmund Freud unraveling the motives... on the fiendish trail of the Baron with a weak backhand, the Pasha with a penchant for Redheads, the Overcoat with a small man inside. THIS STORY IS TRUE. Only the facts have been made up.

From the #1 Best-Selling Novel
THE SEVEN-PERCENT SOLUTION
A HERBERT ROSS FILM
ALAN ARKIN · VANESSA REDGRAVE · ROBERT DUVAL · and NICOL WILLIAMSON
in "THE SEVEN-PERCENT SOLUTION"
also starring LAURENCE OLIVIER as Professor Moriarty · JOEL GREY · SAMANTHA EGGAR · CHARLES GRAY · GEORGIA BROWN · REGINE · and JEREMY KEMP

Thursday thru Saturday
7 & 9:30 p.m.
MU Movie House
\$1.00 with ASU I.D., \$1.50 without

Coming
"Adam's Rib"
"Bringing Up Baby"

DOONESBURY
by Garry Trudeau



Collage

Announcements
Dates Clubs
Places Meetings

TODAY

The **Backgammon Club** meets at 3:30 p.m. at Villa Del Ray West Apartments, #22, to discuss upcoming events relating to tournaments.

Walter Flood of the Arizona Athletic Club will speak at the **Marketing Club** meeting at 3:30 p.m. in Business Administration, room 413. A tour of the athletic club will follow the speech.

SATURDAY

Hillel is sponsoring a disco dance featuring KUPD's W. Steve Martin from 8 p.m. to midnight in the MU Maricopa Room. Admission is \$2.

MONDAY

Ted Pickett of the state board of accountancy will speak at the monthly meeting of the **Accounting Association**, 2:45 p.m. in the MU Pinal Room.

967-5778 **RUNDLE'S** 967-5778

SPEED GOODIES

2202 E. Apache Blvd. Tempe
Mon.-Fri. 10-7; Sat. 10-5

<p>MAG WHEEL LOCKS</p> <p>Set of 4 \$6.95</p> <p>FREE INSTALLATION</p>	<p>MOTOR OIL</p> <p>Valvoline 30W Racing 49¢ qt.</p> <p>6 qt. limit</p>
---	--

This ad and its offers are good until 10/14/77

Kachina Bottle Stop

Drive-In Liquor & Groceries

Collector Bottles
Ruth and Jim Benthin

Call 966-0362

OPEN 8 A.M. - 1 A.M. DAILY
INCLUDING HOLIDAYS

1885 E. Apache Blvd. Tempe, Arizona 85281

CARPET REMNANTS

Up to 12' x 9'

49¢

PER SQ. FT.

All Types
All Sizes

Al Smith Carpet

Papago Plaza
946-3187

Craving for Corduroy?

The Blazer: A suit doesn't have to be stiff.

The Jeans: Flared jeans, well cut with

The Vest: to match.

Together 3-piece purchased separately ... buy and wear the vest, blazer and jeans separately ... or make a suit out of it.

125 East 7th Street • Tempe • 968-3585
One block north of ASU on Forest
10 to 6 • Thursday until 9

Catch the **\$5.55**

teriyaki

steak

with soup or salad buffet, potato or rice and hot fresh bread and butter.

Eight more scrumptious entrees to choose from at \$5.55 ... Five others at \$7.55 ... Steak 'n' Lobster \$9.95. You can still enjoy elegant dining, great food and rich, warm Plankhouse atmosphere at down to earth prices.

The Plankhouse

2350 E. Southern Ave.
Tempe
Reservations 838-8047

ARTS & ENTERTAINMENT

Matthews Center exhibit whimsical and complex

"Yeah, you know, some days I feel the same way," sighed a young man sympathetically as he passed by a half-bird, half-human wooden figure, seated in a wheelchair on display at the Matthews Center Wood-in Art exhibit.

Wood-in Art, cosponsored by the University Art Collections and the Arizona Commission of the Arts and Humanities, represents 61 pieces done primarily in wood by 52 Arizona artists.

Sculptor Gordon G. Woods, assistant director of the Natural History Museum of Los Angeles

County, judged the show earlier this month. \$500 in prize money from the American Art Heritage Foundation was awarded to the winners.

"This is going to sound corny," Woods said in a statement accompanying the show, "but there is a marvelous range of ideas represented in this show."

Wood-in Art was unusual because it showed the variety that working with wood as an artistic medium could take. It ranged from the whimsical, such as the wheelchair figure done by Don Canary of Mesa, to the

complex, as shown by the intricate wood relief series submitted by Randy McCabe of Phoenix.

Simple but beautifully crafted furniture, like Chris Fischer's "A Chair for Ms. Harlow," showed off the natural beauty of wood grain.

Other pieces in the show included musical instruments, freestanding sculpture, figure studies and jewelry.

Wood-in Art, located on the second floor of Matthews Center, will be on display through Oct. 23.

—Nora Burba



A piece in the Matthews Center Wood-in Art exhibit displays both a whimsical and complex design.

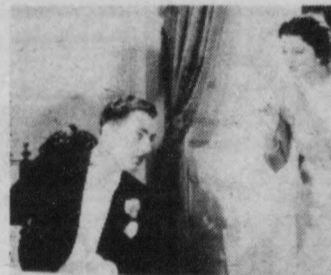
ASASU CULTURAL AFFAIRS BOARD NEED HALL FILM SERIES



SILENT MOVIE TONIGHT: 7-9-11PM \$1 WITH ASU I.D.



CRIES AND WHISPERS SATURDAY: 7-9-11 PM \$1 WITH ASU I.D.



ANOTHER THIN MAN



HIS GIRL FRIDAY

SUNDAY EVENING HIS GIRL — 7 PM THIN MAN — 8:30 PM FREE TO UNIVERSITY COMMUNITY

*See jazz great Charles Mingus LIVE in Gammage, Tuesday, Oct. 18.

Tom Rush's pa accumulate lik

By Jim Muhlstein

Lou Viola, road manager for Tom Rush, moved quickly off the stage after setting up for the performance.

"You should really listen tonight," he said excitedly. "Tom's got some new material. There's this one song 'Louisiana Eyes.' It's really nice."

The late afternoon sky was clear at Cordes Junction as Tom Rush took the stage, the air beginning to cool. Rush's voice was simple relief for a crowd dosed with good but steady jazz throughout most of the day.

As it happened, "Louisiana Eyes" was not one of the songs performed. The well-mixed set included mostly material from previous albums, such as "Merrimac County," "Ladies Love Outlaws," and the sad-eyed ballad "Child's Song." The one surprise in the set was "Panama Limited," a Rush classic, rarely performed, combining three Bukka White railroad tunes.

"That was a kind of a spur of the moment thing," he said later as he sat backstage in his trailer. "I've done it a couple of times lately, but I haven't closed a show with it."

I told him that Lou had mentioned a new song, "Louisiana Eyes." He leaned back and thought for a moment. I didn't do it tonight. I'm not sure why, but it's a real nice tune. I think of it mainly as a band tune. I work with a band most of the time. I tend to shy away from that song on my own because I miss the harmonies. It's a great song for the harmonies."

Though personal appearances have picked up the last couple of years, Rush's output of albums has slowed quite a bit.

His latest album, released about two years ago, was *Ladies Love Outlaws*, a strong and powerful album.

"I do enjoy traveling; I enjoy playing with people; I enjoy doing the interviews. The whole thing. But I can't do it 365 days a year.

"I did that for about five years. I nearly went nuts. I didn't know it at the time, but that's when I retired, got this place in New Hampshire, and said 'Enough.' I try not to do much more than that, and when I'm East I try to work just weekends. I go home for four days; go out for a couple of days. When I was

el CAMINO 994-0328
2040 N. SCOTTSDALE ROAD
"Rolling Thunder" Rated R
Today at 7:30 & 9:25
Sat. & Sun. 1:30, 3:30, 5:30, 7:30, 9:25

INDIAN DRIVE-IN 249-2987
N. 27th AVE. & INDIAN SCHOOL RD.
"Smokey and The Bandit" AND "The Sting" Rated PG
Gates Open At 6:30

CINE CAPRI 956-1901
2323 E. CAMELBACK RD.

DAILY 12:30 • 2:40 • 4:50 • 7:00 • 9:30
MIDNIGHT SHOWINGS TONIGHT & TOMORROW
NOW IN 70mm — DOLBY SOUND



SORRY — NO TWENTIETH CENTURY-FOX Presents A LUCASFILM LTD PRODUCTION STAR WARS PASSES Starring MARK HAMILL HARRISON FORD CARRIE FISHER

70MM

DOLBY SYSTEM

STAR WARS PG

If ever you see a suspicious character — so hanging around a bike rack or lurking by a dorm the University Police at 3456. No names necessary. And no victimless crimes, please.

Arcosanti an exposure to the unusual

By Roberta Bender

Arcosanti is an embodied vision. But to call it (as I have elsewhere) "Paolo Soleri's visionary city" does not properly credit it with its contribution to Arizona and its people.

This year with the combination of the accredited Conference on Health and Healing and a performing arts *tour de force*, the impact of the festival on the state should be registering on the Richter scale.

The paid attendance was 9,000 people for the two days, with 6,000 of them coming on Sunday. Swelling the crowd was an "extensive guest list," according to Ron Bell, one of the conference organizers. It included "subsidized and free tickets to children in the Indian, Chicano, and black areas of Phoenix."

But, Bell said, "this year the festival did not lose money." Almost all of the performing arts groups were paid only for their expenses, diminishing festival costs. Bell said that "a maximum of fifty cents per ticket and probably much less than that could be seen as profit," to be used for continued construction

of the city.

Jackson Brown, living out the values in his lyrics, gave a benefit performance for Arcosanti, Bell said. "When at the last minute he brought his band, The Section, he ended up paying their expenses as well."

And the young crowd, which tripled the amphitheater space available, was ecstatic with Brown and his music.

"The purpose of the festival is not to raise money but to create a community experience," Bell said.

The Arcosanti Festival is, indeed, an inspired way to acquaint people with the city and its implied life style.

Staying there the two days of the event creates a muscle memory. You feel the city, the ravine it's perched along, the stream bed below and the hills beyond in your body. You know something of what living there would be.

It is a place for exposure to the unusual in our lives. How many anglos have even listened to a medicine man? How many people over fifty would ever go to a rock concert? How many have heard doctors talk about preventative medicine? How many have played with night and day dreams as a substitute for doctor bills?

How many people have ever seen concert dance? How many

have gone to concessions and not been able to buy junk food (soda pop was the one exception)?

It is a comfortable environment for the socially and politically liberal element in Arizona, especially the over-thirty crowd. The Betty Friedan

speech was cheered by several hundred with almost a 50/50 male/female mix.

A Sunday picnic at the top of the rocky mesa filled me with an appreciation of the 2,000 people who have constructed the city since 1970. Arcosanti is now only

two percent of its projected size. People of all ages who come from all over the world to create it will have completed it in twelve to twenty years. Within our lifetime and his, Paolo Soleri will have changed the face of Arizona and the strata of our lives.

Welcome to LA: alienation in the city of one night stands

By Nora Burba

Los Angeles. The city where the only cultural advantage is being able to turn right on a red light, says Woody Allen. California. If America were tilted, everything that wasn't screwed on tight would slide into Southern California, says author Saul Bellow.

Through *Welcome to LA*, director Alan Rudolph, a Robert Altman protege, attempts to evoke this feeling of transience, illusion and alienation.

The film uses many actors who have appeared in other Robert Altman films. Keith Carradine is a former resident of Los Angeles who returns to write music for a new album after living in England. He is the central character through whom the rest

of the film's actors are connected.

Viveca Lindfors is a beautiful, but older agent who has brought Carradine back to Los Angeles to do the album. Lauren Hutton is a slightly mysterious and eccentric photographer. Sally Kellerman is a real estate agent who rents Carradine a house, complete with Sissy Spacek as the topless, hustling housekeeper.

Harvey Keitel plays the workaholic assistant to Carradine's millionaire father and Geraldine Chaplin is his wife, who spends her days riding around in taxis, longing for romance.

Despite business successes, the characters are all failures in some respect. They are emotionally crippled and allow

Carradine to enter their lives with unspoken promises of intimacy and fulfillment.

All through the film, a haunting song by Richard Baskin depicts Los Angeles as the "city of the one-night stands." *Welcome to LA* is filmed with a soft yellow glow, like the eternal California sunset, and mirrors are present in nearly every scene to heighten the effect of illusion.

During the hour and a half the film is on the screen, the pacing and timing seem off — things happen suddenly or not at all. Before long, the film is over, evoking a feeling rather than telling a story. The ideas presented in Rudolph's debut film are fascinating, but the thread that holds them together is weak.

Tom's paper scraps date like glaciers

Tom

after

nt," he

the new

song

ear at

ok the

Rush's

dosed

ughout

s" was

l. The

aterial

h as

Love

ballad

in the

Rush

binning

of the

he sat

ne it a

aven't

oned a

leaned

didn't

at it's a

y as a

most of

m that

ss the

or the

have

Rush's

a bit.

at two

aws, a

playing

he in-

an't do

ars. I

at the

ot this

l said

e than

work

days;

I was

traveling full-time I lived in New York City. I hated the place. I couldn't wait to leave. But now I like where I live, so it's the other way around, you know. I tend to drag my ass a little bit."

Rush's desire to work at a self-imposed rate is reflected in his need to create at his own pace as well.

"I save up little scraps of paper. I write down ideas, and songs accumulate. Sort of like glaciers. After long periods of time they finally inch towards completion.

"I usually finish a bunch of tunes in a fairly short period of time, and then I'll go a couple of years without finishing anything. I just finished one the other day so I think a slew of them is about to get down. Maybe that's the way I'll round out the next album."

For many musicians, the studio provides a creative playground of ideas for new material. It is expensive, and obviously not within the budget of most artists. For still others, it can be a spring of impatience — something that they'd rather get into and out of as quickly as possible.

This requires that such work as selection of compatible material, instrumentation, and so forth, be decided upon before entering the studio.

Some material has already been collected for the next album. Rush scoffs at the idea of sticking to an assigned recording schedule. "It's a combination of ingredients. I'm not ready to make a record. I'm getting ready, working on tapes at home. Most of my work is homework.

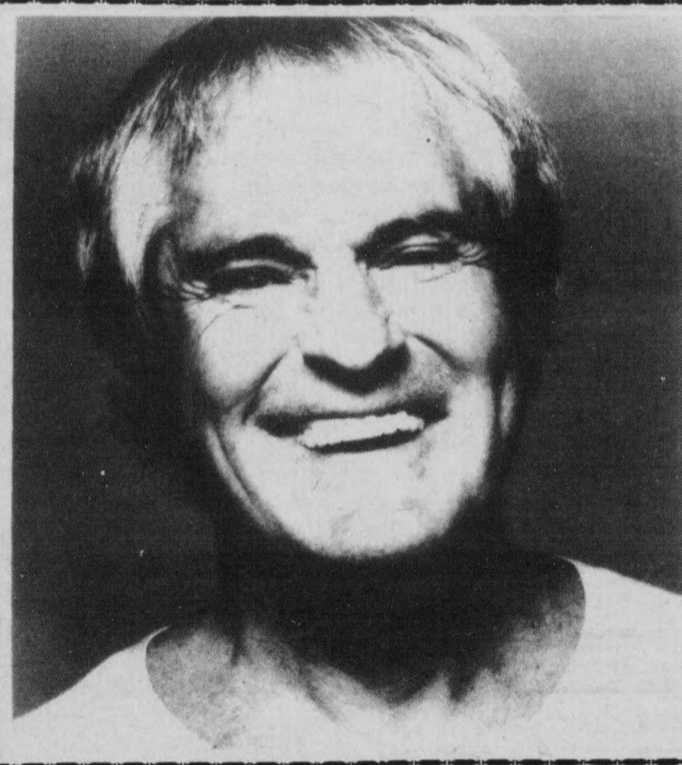
"I like to see what things sound like. What things sound like together. And then when I'm ready to do it I go into the studio. It's really expensive to do any experimenting at a hundred and fifty bucks an hour with a bunch of studio guys sitting around."

Is Tom Rush satisfied with where he's at now?

"I've got probably more land than is reasonable for any living time. I bought a couple of farms and put them together. The house is right in the middle. My nearest neighbor is a church about a half mile away. I'm probably overreacting, but that's the way I like it."

s character — some guy
turking by a dorm — call
o names necessary.
ease.

3456



TIMOTHY LEARY

PRESENTED BY
MU IDEAS & ISSUES COMMITTEE

Friday, October 7

Grady Gammage Auditorium

\$2 with I.D., \$2.50 without I.D.

Leary will be speaking on

Life Extension, Space

Migration, Intelligence Increase

in Concert

Doobie Brothers

with

Pablo Cruise

University Activities Center ASU

October 18th — 8pm

Tickets on Sale Today

at

World Records

Milano's Music Stores

Gammage Box Office

Diamond's Select-a-Seat Locations



An ASASU Presentation

A Double Tee Production

TV Log

FRIDAY

- Noon 12 Baseball
- 5:00 12 Baseball
- 7:00 3 Donnie & Marie
- 5 Gunsmoke
- 8 Washington Week
- 10 Wonder Woman
- 7:30 8 Wallstreet Week
- 8:00 3 Dangerous Love
- 5 Merv Griffin
- 8 Evening at Symphony
- 10 Escape to Bogen Co.
- 12 Clambake
- 9:00 8 Masterpiece Theater
- 10 Switch
- 9:30 5 News
- 10:00 3 10 12 News
- 5 Holly'd Connection
- 8 NW. Traveler

SATURDAY

- 12:00 3 Devil Dust
- 5 Action-Theater
- 8 All Star Soccer
- 10 Ninos Contentos
- 12:30 3 NCAA: Alab.-USC
- 1:00 8 Tennis Championship
- 10 Where The Jobs Are
- 1:30 10 Sports
- 12 Gunsight Ridge
- 2:00 5 Adventure Theater
- 2:30 21 Spanish Programs
- 3:00 10 Great Adventure
- 3:30 12 Kidsworld
- 4:00 3 Will Families Survive
- 5 Gunsmoke
- 8 Kup's Show
- 10 Medical Center
- 12 Nashville on the Road
- 4:30 3 Untamed World
- 12 Pop Goes the Country
- 5:00 3 Good Ole Nashville
- 5 Adam-12
- 8 Washington Week
- 10 Medical Opinion
- 12 Disaster
- 5:30 3 10 12 Network News
- 5 Porter Wagoner
- 8 Wallstreet Week
- 6:00 3 10 12 Local News
- 5 Hee Haw

- 8 Firing Line
- 2 Deaf World
- 6:30 3 City Talk
- 10 Copperstate
- 12 Match Game
- 7:00 3 Fish
- 5 Emergency
- 8 Robin Hood
- 10 Bob Newhart
- 12 Bionic Woman
- 7:30 3 Operation Petticoat
- 8 The Handicapped
- 10 We've got each other
- 8:00 3 Starsky & Hutch
- 5 The Naked Runner
- 8 Forsyte Saga
- 10 The Jeffersons
- 12 Rio Lobo
- 8:30 10 Tony Randall
- 9:00 3 The Love Boat
- 8 Onedin Line
- 10 Carol Burnett
- 12 Praise The Lord
- 10:00 3 5 10 12 News
- 8 One in a Million
- 10:30 3 Escape To Mindanao
- 5 G.I. Blues
- 10 Baby Jane
- 10:50 12 Sat. Night Live
- 11:45 8 Browing Version
- 12:15 12 Maverick
- 12:30 5 Viking Queen
- 12:40 10 Serenade

SUNDAY

- 12:00 3 Indian-Americans
- 5 Mod Squad
- 8 Latina Americana
- 12:30 3 Within This World
- 8 Gardening
- 10 NFL: Dallas-St. Louis
- 1:00 3 Beverly Hillbillies
- 5 Mother Wore Tights
- 8 One in a Million
- 1:30 3 City Talk
- 2:00 3 She wouldn't say yes
- 12 Heaven/Mr. Allison
- 3:00 5 Andy Griffith
- 8 Jacques Cousteau
- 3:30 3 Black Fashion
- 5 Big Valley
- 8 Amer. Short Story
- 4:00 3 Formby's
- 10 Great Adventure
- 12 Frank Kush Report
- 4:30 3 Local News

- 5 Wild Kingdom
- 5:00 3 Lawrence Welk
- 5 Wild, Wild West
- 8 Austin City Limits
- 10 Sixty Minutes
- 12 Network News
- 5:30 12 Local News
- 6:00 3 Hardy Boys
- 5 Sha Na Na
- 8 The French Chef
- 10 Local News
- 12 World of Disney
- 6:30 5 Marty Robbins
- 10 World of Animals
- 7:00 3 Six Mill.\$ Man
- 5 Anything Goes
- 8 Nova
- 10 Rhoda
- 7:30 5 That's Hollywood
- 10 On Our Own
- 8:00 3 Murder/Orient Exp.
- 5 The Little Foxes
- 8 Masterpiece Theater
- 10 All in the Family
- 12 Big Event
- 8:30 10 Alice
- 9:00 8 Evening at Symphony
- 10 Kojak
- 12 Praise The Lord
- 10:00 3 10 12 News
- 8 Monty Python
- 10:30 3 Thief
- 8 Lohmann & Barkley
- 10 Medical Center/1&2
- 12 Owl & the Pussycat
- 10:45 5 News
- 11:15 3 UofA Football Hilité
- 12:00 5 News
- 12:30 10 Where The Jobs Are

MONDAY

- 6:00 3 NFL: Rams-Bears
- 7:00 5 Gunsmoke
- 8 Madame Bovary
- 10 Dan'l Boone
- 12 Laugh-In
- 8:00 5 Merv Griffin
- 8 Age of Uncertainty
- 10 Betty White
- 12 Killer on Board
- 8:30 10 C'ntry Music Awards
- 10 Oral Roberts
- 9:00 3 S. Pedro Beach Bums
- 8 The Onedin Line
- 12 Praise the Lord
- 9:30 5 News

"WHAT'S NEW IN AN OLD BOOK?"

A study of the ideas and issues in the Bible and their implications in today's society.



This non-credit seminar meets Monday evenings at Hillel - Baker Center, 213 E. University Dr.

Next session Monday, October 10, 8:00 p.m.
Seminars led by Rabbi Moishe Metzger
For more information call Hillel 967-7563

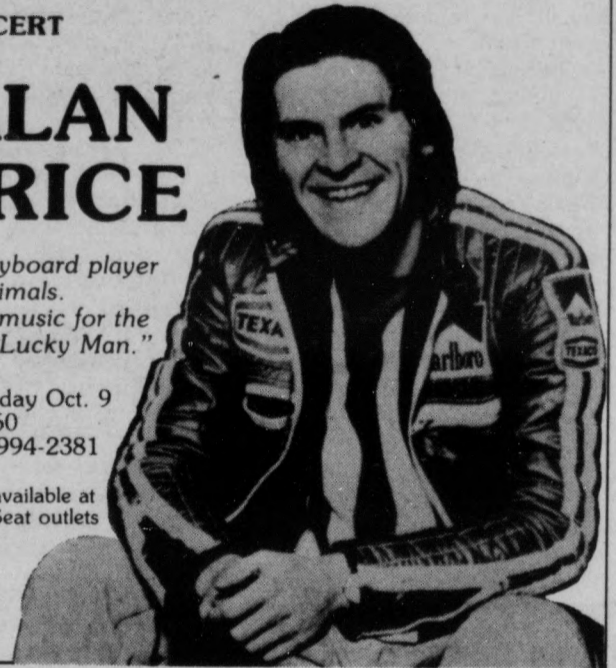
IN CONCERT

ALAN PRICE

Former keyboard player for the Animals.
Produced music for the movie "O Lucky Man."

8 p.m. Sunday Oct. 9
\$5.50, \$6.50
Box Office 994-2381

Tickets also available at all Select-A-Seat outlets



SCOTTSDALE CENTER FOR THE ARTS

SINCE 1971 WE HAVE BEEN LEARNING TO BE THE BEST AT WHAT WE DO.



Earthen joy
Natural Foods Restaurant
36 East 5th Street
Tempe, Arizona

A specially prepared entree is presented each evening [moussaka, shrimp tempura, country chicken crepe, to name a few]. A most ample selection of sandwiches and salads. Freshly made soups, organic ground beef hamburgers, and of course, the most wonderful desserts.

Hours: Monday through Saturday
11:00 - 10:00

5th Street off Mill, across from City Hall

MALE®

takes you from the classroom to the great outdoors in fatigue jeans of prewashed Cone Indigo denim. This sturdy denim is comfortable to wear and just improves with washing. Multi-pocketed jeans in sizes 28 to 38, M,L,XL. At fine stores everywhere.

Cone denim



Cone makes fabrics people live in.

CONE MILLS 1440 BROADWAY, NEW YORK, N.Y. 10018

Internship applicants are sought

ASU is having trouble attracting Arizona legislative internship applicants from departments other than political science and the center for public affairs, the program coordinator said Thursday.

"We are looking for students from all disciplines within the University," Dr. Mathew Betz said. "Our hardest problem is getting people to apply for it. The legislature has a need for people training in virtually every area the University trains for."

The 1978 internship program is open to juniors, seniors and graduate students. Betz said 30 slots are available to be divided among ASU, UA, NAU and Grand Canyon College.

"Last year we had 12 from ASU. I think that's a pretty substantial number," he said.

Betz, assistant to the ASU academic vice president, said applicants are screened after interviews with a committee from the University. Applicants are judged on the basis of grades, interest in political science, related experience and personality.

The committee then sends the names of all qualified students to the legislature.

"There's no quota as such on the number we send. It depends on the number of qualified applicants, the quality of the applicants and where the committee determines the break should be," Betz said.

A committee of legislators and staff members interviews all applicants from the four schools before selecting the interns.

Each intern receives \$1,500 for serving from January 1978 through the end of the legislative session and 12 hours under undergraduate credit or nine hours graduate credit.

"This is an established program. It is a structured, well-organized program both here and in the legislature," Betz said.

Applications are available in room 205 of the Administration Building and are due Oct. 28. More information can be obtained by calling 965-4995.

Author/critic Max Lerner to visit ASU

Education critic and syndicated columnist Max Lerner will speak on "Values in Education" at 2:30 p.m. Monday in the Education Lecture Hall.

Lerner, known as a political liberal and a critic of American education, has written several books, including "Ideas are Weapons," "Education and a Radical Humanism" and "The Age of Overkill."

His latest book dealing with educational theory, "Values in Education," was published in 1976, and he is currently writing a study of American civilization in the 60's and 70's to be called "Third Century America."

The lecture, sponsored by the ASU Bureau of Educational Research and Services, is free to the public.

"Freedom of the press is not an end in itself but a means to the end of a free society."

— Felix Frankfurter

sports chalet-mesa grand opening

To celebrate the Grand Opening of our new Mesa Store, we're offering greatly reduced prices on most merchandise at both Valley Stores.

SALE

Begins Saturday, October 1, 10:00 a.m. • Ends Sunday, October 9, 6:00 p.m.



water skiing

	Reg.	Sale
Taperflex Skis	120.00	86.95
Western Wood Skis	139.00	98.00
Maherajah Skis	152.00	105.00
O'Brien Skis	165.00	135.00
Cypress Gardens Doubles	50% off	
American Cup Vests	32.50	22.95



hiking

Assortment of boots 20-50% off
Vasque, Mt. 10, Ronni, Pivetta-Muir

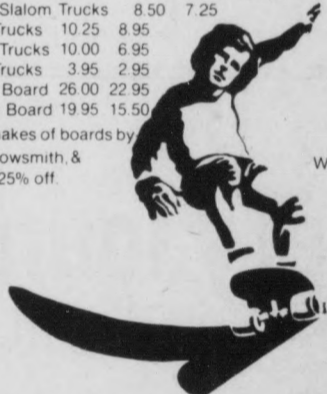
(Metro Center only)
All backpacking food 20% off

Alpenlite & Trailwise backpacks 30% off
PolarGuard Jackets 30% off
Hiking Shorts 25% off
Down Vests Reg. 39.95 Now 27.95

skate boarding

	Reg.	Sale	Set of 4
Kryptonite 70mm Wheels	9.00	7.50	26.95
Kryptonite 60mm Wheels	7.25	5.95	20.95
Rolls Royce Cobre Wheels	6.95	5.75	21.95
Banzai Cyclone Wheels	6.00	4.95	18.95
California Stalom Trucks	8.50	7.25	
ACS 650 Trucks	10.25	8.95	
California Trucks	10.00	6.95	
ACS 430 Trucks	3.95	2.95	
Comstock Board	26.00	22.95	
Logan Flat Board	19.95	15.50	

Selected makes of boards by Logan, Arrowsmith, & Banzai 10-25% off.



tennis

Special selection of men's & women's clothing—50% off
Off Shore casual wear Reg. 17.00, Now 9.95
Jog-Joy warm-ups Reg. 27.95, Now 19.95
Other warm-ups 20% off
Wilson Kramer Rackets Reg. 24.95, Now 19.95 (Metro Center only)
All Bancroft Rackets 20% off
All Donnay Rackets 20% off
Dunlop-Murphy Rackets Reg. 35.00, Now 28.00
Wilson Club Champion Rackets Reg. 20.95, Now 14.95
Kennedy Medalist pre-strung rackets, Now 9.95



shoes

Nike irregulars 30% off
Specs running & tennis shoes 20-50% off
Tread 2 shoes—50% off (Metro Center only)
Special close-outs up to 50% off Medalist, Tiger, Converse, Bob Wolf (Mesa Store only)
Saucony multi-crest football shoes Reg. 17.95 now 20% off
Jogging, tennis, all-purpose shoes—20-50% off

snow skiing

Ski Packages

(all packages include skis, bindings, and poles)

	Reg.	Sale
Lange Short Style Skis	224.90	179.95
Kastle K22 Skis	229.95	149.95
K2 Short Cut Skis	218.90	169.95

Special Junior Performance and Ski Packages available at discount prices. Ask us for details.

Equipment

Large assortment of boots 20-40% off
La Dolomite Boots—40% off (selected)
Look GT Bindings 59.95 49.95
K2 Poles 25.00 15.00
Barrecrafters Poles 9.95 6.95
Ski's up to 40% off—Lange, K2, Dynastar, Kastle
X Country Skis & Boots up to 30% off—Trak, Rossignol

Ski Clothing

1 piece suit (limited supply) 235.00 58.75
Selected ski clothing—Beconta, Continental, Elho, Obermeyer—50-80% off

Kids' Ski Special

For the junior skiers, any equipment purchased this year, may be traded in next year at 50% of the original value. Save your sales slip for proof of purchase.

At the Metro Center Store, we offer a complete children's section of clothes, skis, poles, boots, bindings. Plus special junior ski packages.

Re-Wax Special
Any ski purchases during the sale entitle you to free re-waxing of your skis during the season. As many times as you wish. Compliments of The Sports Chalet.

Mt. Metro

Mt. Metro, Sports Chalet's own year-round learn-to-ski ramp, is ready for another year. Unique to Arizona, Mt. Metro offers the skier-beginner or intermediate—all the challenges of the slopes—and lessons can be completed in one week. Become a better skier now for the season ahead! Only at Mt. Metro at The Sports Chalet.

- To celebrate the second year for Mt. Metro, we're offering a special "Learn to Ski" Package. For only \$29.95, you'll receive two 1 1/2 hour lessons, all necessary ski equipment while on the ramps, plus a group lesson at Sunrise.
- By October 15, Mt. Metro will sport additional equipment which will enable you to learn the stages from beginning thru advanced parallel. No need to even leave the Valley!
- Should you purchase any ski package or skis during the sale, you'll receive the Mt. Metro "Learn to Ski" Package for only \$19.95.

	Metrocenter Hours	Mesa Hours
Mon.-Thurs.	10 a.m.-9 p.m.	10 a.m.-9 p.m.
Fri.	10 a.m.-9 p.m.	9 a.m.-6 p.m.
Sat.	10 a.m.-6 p.m.	10 a.m.-6 p.m.
Sun.	Noon-6 p.m.	Noon-6 p.m.



MESA

37 North Hibbert Road (1 block north of Main) • 834-3485

METROCENTER

Metrocenter Parkway at the Peoria Ave. entrance • 944-2273

All sale items can be found at either store unless otherwise noted.

Lobos try (again) to defeat Devils

By Bob Nightengale

This Saturday, the University of New Mexico will be trying to accomplish something it hasn't done since 1942. Defeat ASU in a football game.

This will be the Devils' first conference game of the year and the first away game. Kickoff is at 6:30 p.m.

The game also marks the first time the Lobos have played at home this season. New Mexico is 1-3 with a win against Hawaii and losses to Texas Tech, Colorado and Brigham Young University. The Devils are 2-1 with its loss coming last week to Missouri, 15-0.

ASU head coach Frank Kush said Dennis Sproul will start at quarterback against the Lobos and "we'll stay with a quarterback until he drowns."

All the other starters for ASU will remain the same with the possible exception of the tight end spot. "Marshall Edwards will start unless he's not completely healthy yet. If not, Bruce Hardy will start," said Kush.

"We've got to establish our running game. Last week we had no authority or consistency around the goal line," said Kush. "When you get 370 yards total offense and don't score — well that's pathetic."

Last week Missouri ran the option successfully against ASU and Kush says New Mexico will try doing the same. "New Mexico will be running the 'veer' option a lot because their quarterback, Noel Mazzone, is a good runner." Mazzone is also a fair passer as he's passed for seven touchdowns in four games this season. He has also completed 23 of 45 passes for 376 so far.

Sproul, on the other hand, is the WAC's second leading quarterback with almost 11 completions a game. He's thrown 72 passes and has completed 32 of these for 426 yards and two touchdowns. However, he's also tied for the WAC lead in interceptions thrown, with six.

Another Devil high in the WAC offensive statistics is halfback Arthur Lane. Lane is averaging 92.3 yards a game rushing with 277 yards, which places him third in the WAC.

This is far below New Mexico's leading rusher Mike Williams, though. Williams is the WAC's leading rusher with a 109-yard rushing game average for 437 yards in four games.

Kush said one of the keys to winning the game is to stop Williams. "In order to win we'll

have to stop Mazzone's rushing and William's rushing. Our offense will also have to develop some consistency," said Kush.

One of the offense's inconsistencies is time possession in a game. ASU's opponents have held onto the ball for an average

continued page 19

S P O R T S

GRAND PRIX

Formula 1 racing
now YOU can drive a racing car!

with this coupon ASU

BUY ONE GET ONE FREE!

Present this coupon and receive one FREE lap of driving when you purchase one lap at the regular price of \$1.25. Valid driver's license required. Limit 1 coupon per person, per visit. Offer expires Dec. 30, 1977.

1616 North Hayden Road
Tempe, Arizona 85281
(602) 949-7265
(next door to Big Surf)

SP

WANT TO LOSE WEIGHT?

Introducing *Chic*



Whether you have a few pounds to lose or a lot of pounds to lose, OUR PROGRAM IS FOR YOU!

We have developed a remarkably **Effective, Inexpensive, Easy-To-Use** Diet Program.

CLINICALLY TESTED — LOSE UP TO 14 POUNDS IN TWO WEEKS!

DO YOU WANT TO BECOME A CHIC LADY?



DIETARY SUGGESTION PLAN, INC.

4747 N. 16th St., Suite B111
Phoenix 85016

264-6751

the gallery lounge

OPEN TO THE PUBLIC at the

arizona athletic club

HAPPY HOUR WEEKDAYS 3-7 P.M. DRINKS

75¢ EACH

J&B, Smirnoff
Jose Cuervo,
Beefeaters

LIVE ENTERTAINMENT • EVERY FRI. & SAT. NIGHT
GIANT SCREEN TV FOR MONDAY NIGHT FOOTBALL:
\$3.00 ALL THE DRAFT YOU CAN DRINK

the gallery lounge



arizona athletic club

1425 W. 14th ST.,
TEMPE, ARIZONA 85281

894-2281



Sign Up for the "ARIZONA ATHLETIC CLUB/USHER'S • GREEN STRIPE SCOTCH 1st ANNUAL MEMBER-GUEST TENNIS TOURNAMENT"

October 8 thru October 9

The George Washington University National Law Center
Washington, D.C.

A Member of
The Committee on Recruitment and Student Life
will be on campus
Thursday, October 13
ASB, Rm. 111A

FHA-VA from
\$200 DOWN

PITI \$175/mo. and up
Single Level

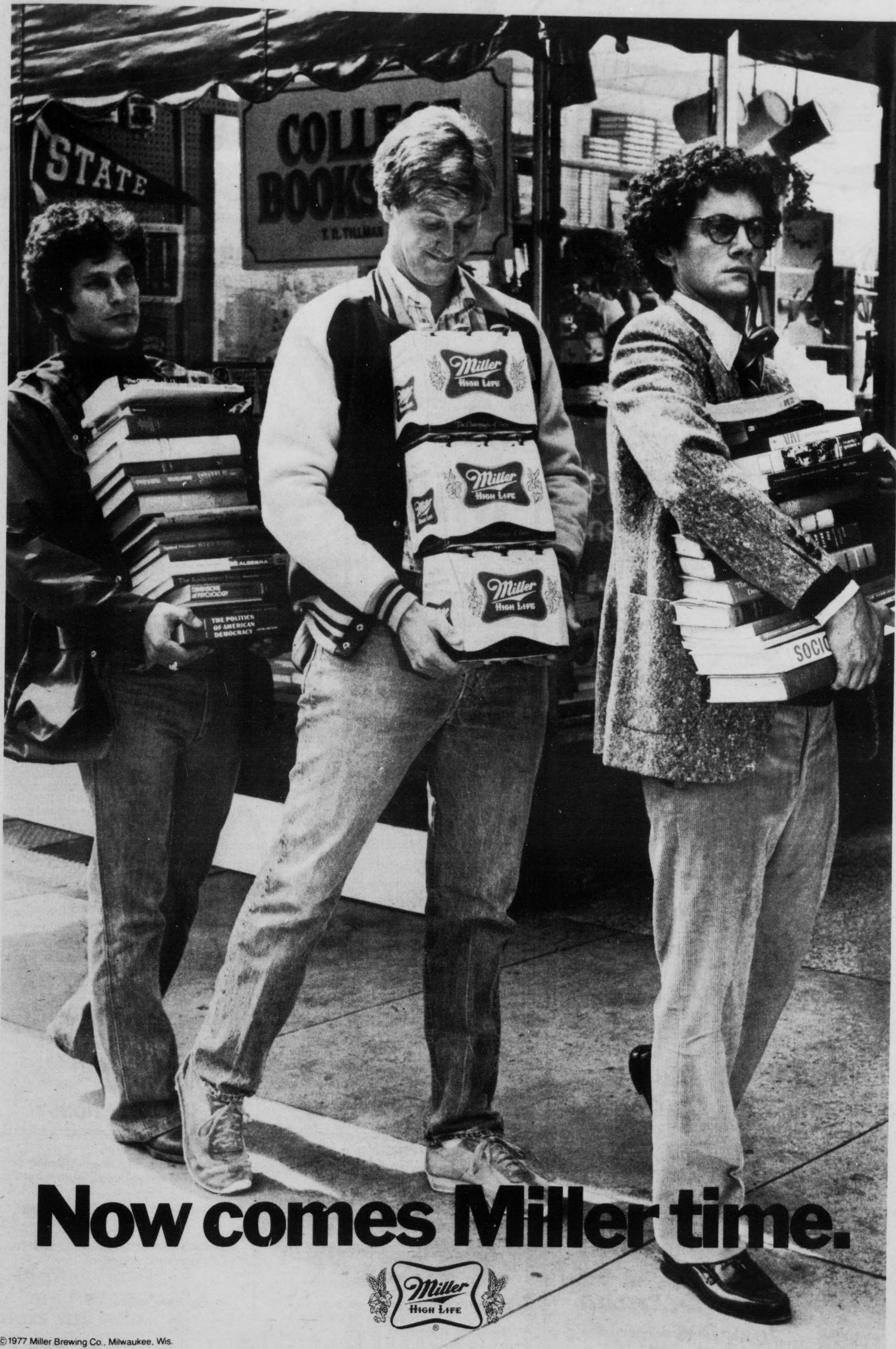
**1-2-3 BEDROOM
UNITS FROM \$18,500**

Salesman in office daily 11-6 p.m.
CLOSING OUT PHASE II
Brokers Welcome

DOVE REALTY

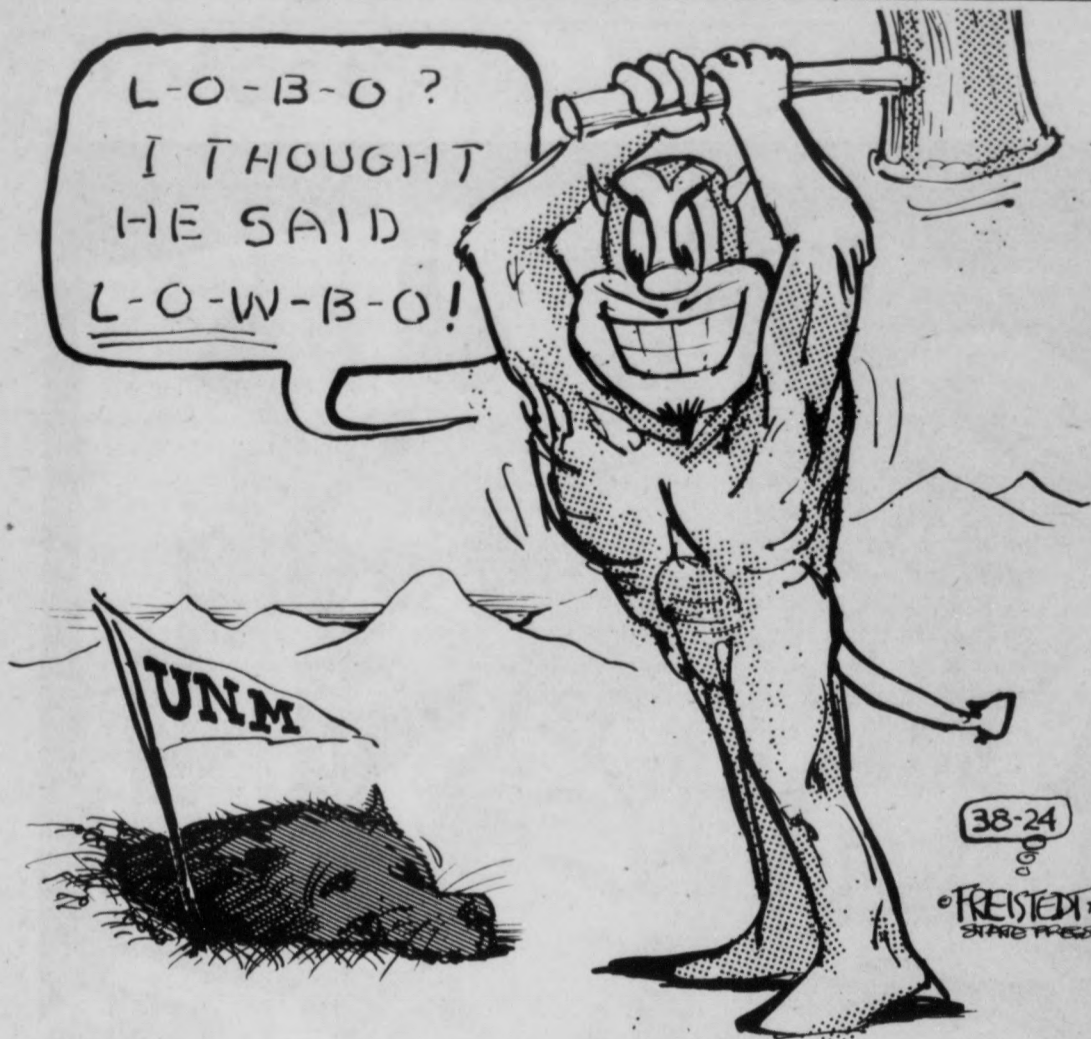
275-4015

Eves, 248-7896



Now comes Miller time.





The New Mexico Lobos will be trying to break their 35-year loss streak to the Sun Devils when the two teams meet Saturday night in Albuquerque. The Lobos are the third team ASU has played this year that is ranked in the "bottom twenty." Oregon State and Northwestern are the other teams to be so honored.

ECONOMY FURNITURE

"THE WORKING MAN'S FRIEND"
Good Furniture for Less

Sofa & Chair	139.95	Sofa & Loveseat (Herculan or Velvet)	249.95	Box Spring & Mattress (Twin or Full)	49.95
Odd Lamps	9.95	Captain's Bed	119.95	Picture	5.00
4-Drawer Chest	29.95	Corner Units	199.95	Bunk Beds, complete	129.95
5-Pc. Bedroom Set of Tables (2 end, 1 coffee)	159.95	Swivel Rockers	99.95	Bar Stools	19.95
		Recliners from	89.95		

3 RMS. FURN. 399⁹⁵ 20⁰⁰ Mo.

579 N. Arizona Ave. Chandler 963-1276 17 S. Country Club Mesa 833-8204 1340 N. Scottsdale Rd. Tempe 966-2376

Engineering Grads

Sperry Offers You Career Choice

Sperry Flight System is a leader in the design and development of Automatic Flight Control Systems for aircraft, Attitude Control Systems for space vehicles and Avionics. We are located in sunny Phoenix, one of the newest, fastest growing areas in the country. You'll like the professional atmosphere at Sperry - and you'll enjoy the relaxed western life style of Phoenix.

Career choice means:

- Product Development
- or
- Research
- or
- Product Design
- or
- Circuit Design
- or
- Control Systems
- or
- Analysis

It's up to You! Talk With Sperry!

Charles Melker will be on campus October 21
Sign up in the Placement Office.

2111 N. 19th Avenue Phoenix, Arizona 85027
An Equal Opportunity Employer M/F

WINE

Browse through hundreds of wines from around the world and rap with our wine merchants: Tom, Bob, Ken or Dennis.

VALLEY FAIR
DISCOUNT WINES & SPIRITS

S.E. Corner Southern & Mill **967-2488**

FREE

THE SCIENTIFIC REALITY BEHIND

Psi

7:30 P.M. Oct. 12, 1977
6830 5th Ave.
Scottsdale 945-7984

Ring enlarged to show detail.

What you should look for in a diamond

Puzzled by the wide variety in diamond pricing? Confused by "discount" promises in mail-order ads and catalogs? Then you need someone you can trust to give you factual information about what to look for in a diamond. As a member firm of the American Gem Society, we have Registered Jewelers on our staff. We will be happy to properly and ethically advise you on the subtle differences in diamond quality that affect the price you pay. Come in and see us.

Joseph M. Berning Jewelers
130 E. University Dr.
"In The Arches" 967-8917
MEMBER AMERICAN GEM SOCIETY

McDonald's Restaurant Corporation Is Now Hiring Part-time Shift Managers

APPLY IN PERSON TO MR. KIRK: McDONALD'S, 1031 E. APACHE, TEMPE

Only serious-minded, qualified persons should apply.

McDonald's Corporation hires only the best!

BENEFITS INCLUDE	QUALIFICATIONS
<ul style="list-style-type: none"> ✓ Good pay, regular increases based on performance. ✓ Outstanding Training Program. ✓ Flexible hours — 25-35 per week. ✓ Possible career opportunities. ✓ Excellent working conditions. ✓ The chance to team-up with the International Leader in the fast-food industry. 	<ul style="list-style-type: none"> ✓ Some formal business training or current related curriculum helpful. ✓ Some fast food experience helpful. ✓ Some management or leadership experience preferred. ✓ Resumes helpful.

An equal opportunity employer.

ASU gymnasts set sights for national championship

The ASU women's gymnastics team has begun its drive to be the 1978 AIAW National Champions, senior team captain Yvonne Sandmire said.

"We're going for No. 1," Sandmire said, "and we're going to do everything we can to get there."

The team is better than ever this year, she added.

They placed seventh in the AIAW Championships last spring.

Joining the team this year are two nationally-ranked freshmen. Tammy Manville is a former Elite National Champion and took seventh in the Olympic Trials. Pam Godward from Scottsdale is also an Elite gymnast.

Elite gymnasts are those who are the top-ranked gymnasts in the country.

Intermountain Conference all-round champion Kittia Kennedy will be the top returning gymnast from last year. Other returning Devils are juniors Janet Goewey, Pam Wenzel and Lori Anonsen, and sophomore Tricia Arnold.

Debbie Barnes, a transfer from Temple University in Philadelphia, will also be joining the Devils this year. Barnes placed seventh in the AIAW Championships in vaulting last year.

Other transfers include Cyndi Devero from the University of Iowa and

Barbara Wong from the University of Maryland.

Coach Mary Bilski, a 1972 Olympian, is beginning her third year with the gymnastics team.

The Devils are working out three hours a day, five days a week. Sandmire said some of the girls also work out at clubs around the Valley after they work out at ASU.

The men's and women's

teams will be traveling to Mexico City during Thanksgiving vacation to compete against the University of Mexico in an exhibition meet.

Last year the University of Mexico came to Tempe to compete against the Devils.

The UM meet will be the teams' first meet and will be held Nov. 22-27. The first home meet will be against UCLA in January.

MWF
10-5
T Th Sat
10-1



**HOME BREWING
SUPPLIES**

1805 N. 24th St., Phoenix 275-0259

SPECIAL

ONLY \$17⁹⁵



NIKE

Blue
Suede
Cortez

Good Only While Supply Lasts

**University
sporting
goods**

968-7725 Located in
TEMPE CENTER

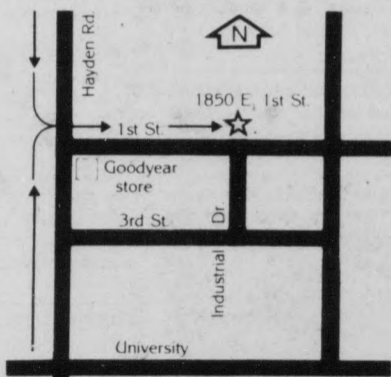
Mon.-Fri. 9-9, Sat. 9-6, Sun. 10-5

Datsun-Toyota-Opel Owners!

\$23.95*
complete tune up

Includes new
plugs
points
condensers
carburetor adjustment
timing & dwell
emission adjust to
meet Arizona's standards

*240, 260, 280 Z's, 6 cyl. \$29.95



Rich Duncan's is the alternative.
Factory trained specialists in
Datsuns, Toyotas, Opels.

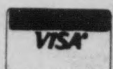
7-10 years experience in each.

**Complete service
available**

engine overhaul
clutch overhaul
transmission overhaul
rear end work
brakes
air conditioning
suspension, shocks
cooling system
carburetion
lights, tires
good prices

967-4851

Rich Duncan's Automotive Service



- Regulation Navy Sea Farer Denim Bell Bottoms
- Parachute Canopies
- Bike Bags
- Back Packs

CITRON'S SURPLUS

2nd St. & JEFFERSON
Downtown Phoenix

It all adds up!



Birth defects are forever. Unless you help.
TO PROTECT THE UNBORN AND THE NEWBORN

March of Dimes

THIS SPACE CONTRIBUTED BY THE PUBLISHER

Sports shorts

The ASU Rugby club opens its season Sunday when it meets UA. Game time is 1 p.m. on the field behind PE West. The Rugby club practices from 4 to 5:30 p.m. on Monday, Tuesday and Thursday behind PE West.

The Lacrosse Club holds its first practice at 4 p.m. Tuesday, Oct. 11 on the intramural field behind the men's gym. Practice is open to anyone interested in playing lacrosse.

The women's tennis team will be in Salt Lake City this weekend competing in the first round of Intermountain Conference matches. The tennis team finished eighth last year in the USTA National Collegiate Championships.

The women's volleyball team also is traveling to Utah this weekend. The Devils will meet BYU Friday and take on the Utes of Utah on Saturday.

BYU quarterbacks have completed 95 of 129 passes in three games this year and have not thrown an interception. Gifford Nielsen leads the Cougars with 76 completions in 108 attempts and 13 touchdowns and his backup, Marc Wilson, is almost as impressive. Wilson has completed 18 of 20 passes for two touchdowns.

WAC games for this weekend are: BYU vs. Oregon State, Texas Tech vs. Arizona, Colorado State vs. UTEP, and Wyoming vs. Utah.

Applications are still being accepted for eight vacancies on the 1978 Devils' Angels squad. The Angels (bat girls) work on the field during all home ASU baseball games, usher in the reserved seating area at Packard Stadium, sell programs and help with the baseball recruiting.

The applications can be picked up at the MU information desk or in coach Jim Brock's office in the Activity Center. The applications must be completed and returned to Brock's office by 4 p.m. Monday, Oct. 10. All girls applying will be interviewed during the week after the application deadline.

State Press staff predictions:
Berry 35-17 ASU (3-0); Dougherty 31-3 ASU (1-2); Nightengale 24-10 ASU (1-1); Lavelle 41-7 ASU (2-1); Winkel 35-10 ASU (2-1); Gibbons 40-30 ASU (2-1); Garland 35-10 ASU (2-1); Hendrix 33-14 ASU (2-1).

Don't
drive
loaded

STATE PRESS Advertising HAS LOST ITS MIND!

Never before has this community seen such an advertising bargain as

DIME-A-LINE WANT ADS

It is just what the name says: want ads at only a dime per line! Five words count as one line.

Dime-a-line ads will not be classified under headings; they all run under one head, Dime-A-Line.

And they will run in the Wednesday edition only. Deadline for copy to be received at the STATE PRESS office, A-111 Stauffer Hall, will be noon Monday. Cash with order only.

If you want to buy, sell, trade, find something, this is your chance to do it at the lowest rates ever.

OPEN TO EVERYONE ON CAMPUS. YOU PROFIT FROM OUR MADNESS!

State Press Classifieds

CLASSIFIED ADS
965-7572

★ Lost/Found

As A Service To The
ASU Campus
Community,
**WESTERN
SAVINGS**
Sponsors
This
**FRIDAY FREE
LOST & FOUND
COLUMN**

LOST:

REWARD FOR return of black wallet and makeup bag lost in ASU Library 9/28. No questions asked. Lisa, 966-2010 after 5 p.m. 10/7

PANASONIC AM/FM cassette radio on 24th Sept., at football game. Reward, 959-7391. 10/7

LOST: ASTON-MARTIN DBS-V8 owner's manual; 350 pages. Car's illustration on cover. Important! Greg, 967-1103. Reward. 10/7

CITADEL BIKE lock, stolen from campus tree. Reward. No questions asked. Jim, 966-1286. 10/7

LOST: Opel ring. Lost Oct. 3rd. Reward offered. No questions asked. Call 838-5932. 10/7

LOST: Book: Treasure of Early Music by Carl Parrish. Please return to Music Building 436, phone 965-4573. 10/7

LOST: Prescription sunglasses lost in vicinity of Business Administration and MU buildings. Brown plastic frames/brown lenses. Reward. Call 967-5520. 10/7

FOUND:

FOUND: Black male kitten about 6-8 months old. Vicinity of College and Apache. John, 965-5161. 10/7

THANK YOU to who found and returned my calculator to the Social Science office Tuesday. GKS. 10/7

Courtesy Of:

**WESTERN
SAVINGS**
Leading from strength since 1929. 10/7

★ For Rent/Lease

APARTMENT 1/2 block from campus. One and/or two people. \$85 per person. 968-1594. 10/14

★ Personal

YOU CAN'T get dollars off unless you use. Dollars-off. Dollars-off! Dollars-off! 10/9

O MEDITATION goes beyond meditation, most effective system to date. For more information call Bill at 276-0011. 10/12

★ Personal

ALTERNATE LIFESTYLE. Come and explore self-awareness, meditation, companionship, relaxation, etc. For more information call Libby at 834-0386. 10/19

GIRLS WITH broken legs need exercise too. Call Tony S. 849-2820. 10/7

★ Wanted

URGENT! Anyone who has photos of the 1976 Hayden's Ferry Arts & Crafts Fair in Tempe, please call Catt immediately at 956-7383. If not in, leave message. 10/14

★ Travel

CHAMPAGNE CHRISTMAS CHARTERS. New York \$234. Chicago \$179. via United Airlines. Contact Valley Travel Mart. 707 S. Forest or call 967-9403. 10/19

GO HOME for Christmas. Space available on roundtrip charter flight to Northeast. Leaving December 24. Contact Bill Wachter, 866-0080, 993-9989. 10/7

SKI EUROPE \$848

Fabulous Winter Holidays, 2 dates! Schuss glorious powder slopes Dec. 19 - Jan. 4. 1 wk. each Kitzbuehel, Austria (Alps) & Canazei, Italy (Dolomites) or Dec. 29 - Jan. 22, Davos, Switzerland & St. Anton, Austria (both Alps.) Incl. air, hotels, meals, parties, sightseeing, lectures, N.Y. Eve Grand Ball in Vienna. 2 units opt. credit.

CONTACT:
Dr. Jim Odenkirk, Chrmn. ASU P.E.
(602) 965-3875 (days)
(602) 965-9011 (eve)

OR: ASTRA
American Student Travel Assn.,
10929 Weyburn Ave.,
Los Angeles, CA 90024.
Tel. (213) 478-2511. 10/12

★ Instruction

PARACHUTE twelve miles from Phoenix! \$5.00 off with student ID or this ad. Phone 275-0010. 12/9

★ Roommate Wanted

TWO ROOMMATES wanted for beautiful 4 bedroom house. Near ASU, laundry, pool. \$150 plus 1/4 utilities. 274-3363. 10/11

ROOMMATE WANTED. Large house near Southern/Hardy. \$135/mo. plus 1/2 utilities, lots of privacy. 966-8042. 10/12

★ For Sale

DIAMOND ENGAGEMENT and Wedding Rings: Up to 50 percent discount to students, faculty and staff. Example, 1/4 ct. .95; 1/2 ct. \$275; 1 ct. \$795, by buying direct from leading diamond importer. For color catalog send \$1 to SMA Diamond Importers, Inc., Box 42, Fanwood, N.J. 07023. (Indicate name of school) or call (212) 682-3390 for location of showroom nearest you. 10/7

BIC 960 TURNTABLE, excellent condition. Excellent price. Must see! Call Mike, 965-4533 or 966-7781. 10/7

NEW QUEEN SIZE bed — extra firm, custom built mattress with three sets sheets and spread. A steal for \$160. Call 962-1737 after 6 p.m. 11/12

PANASONIC STEREO, two small speakers and turntable. Ideal for dorm room or small apartment, \$60. Call Betsy at 994-4215. 10/7

BACK DOOR Shoe Shop. 707 South Forest, Tempe. Having a Shoe Sale! \$10 and 1/2 off ladies' and men's sandals and shoes. 12/9

BOW AND ARROW "Wing Presentation II with stabilizer and case. Like new. Mornings 968-7354. 10/7

LITERATE T-SHIRT: "Eschew Obfuscation." (S-M-L) \$5 (postpaid). B. Hardy, P.O. Box 23703, Ft. Lauderdale, FL 33307. 10/13

NEW! Diamond class rings. Differently designed by a Master Craftsman from R. Johns, Ltd. — Now offered with diamonds at no extra cost. Ask at Student Book Center. 10/13

New
&
Used
Tires

968-4880

221 S. Perry Ln., Tempe

10/7

★ Help Wanted

DELIVERY HELP wanted. Need car and know Tempe area. Cashier help needed. 966-4292, 834-8515. 10/7

WANTED: Office product rep. Office and sales experience, knowledge of office products. Bookkeeping and typing helpful. Should be available A.M. and P.M. Transportation required. Hours to be arranged. Frank, 966-7189, 968-0203. 10/11

GALS & GUYS: Earn big money on your own free time in our direct factory sales program. Rep. Rogers Co. (tableware) to all types of outlets. Protected territories — car necessary. If you are interested in maximum earnings with minimum effort. Call for appointment (602) 945-1925 Mon. - Fri. Between 2-5 p.m. 10/14

ASSISTANT for major record company promoter. On-the-job training for career-minded person. No cash salary. You will be compensated with albums of your choice. Cash value equal to \$4 per hour. Must be 20 years old or older and have own car. 5 - 15 hours per week during regular office hours. Your schedule is up to you. Call 956-7090. Leave number and best time to reach you. 10/14

★ Typing

TYPING: IBM Selectric. Dissertations, theses, term papers. Six years experience. Jean, 277-3602. 10/18

GRADUATE EXPERTISE — Guaranteed! Dissertations, theses, research papers (Business, Humanities, Psychology, etc.). Nearby, Debby, 967-2305. 12/9

NEAR ASU. Research papers, theses, dissertations. English degree. Editing. Work guaranteed. 7 years experience. 967-4443. 10/14

PROFESSIONAL TYPING for the ASU community. Theses, Dissertations, Term Papers and Resumes, 65 cents per page. Close to campus at 1801 S. Jen Tilly Lane, Suite C-9. Phone 968-5159. 12/9

EXPERIENCED TYPIST. Guaranteed. Dissertations, theses, term papers, etc. Speedy, neat, near ASU. 967-4937. 11/3

TYPING: IBM Correcting Selectric. Experienced, fast, accurate. Reasonable rates. Darshan, 254-7554. 10/12

PROFESSIONAL TYPING — Manuscripts, etc. Proofed. Short reports out same day. Call 947-5547 after 5 p.m. 10/7

PROFESSIONAL TYPING. Quality paper. Business College graduate. By appointment. Experienced. 65 cents. Anita, 966-9088. 10/27

TYPING: Manuscripts, term papers, etc. — Professional secretary, accurate, edited, reasonable rates. 949-9207. 10/25

FAST, ACCURATE typing on IBM Correcting Selectric. Former legal secretary, 7 years' experience. Heidi, 839-5651. 10/28

★ Help Wanted

PHONE WORK week nights, 5:30-9:30 p.m. Ticket sales, \$2.30 hourly. Near University. 966-9271. 10/7

WORK OUTDOORS! Lawn service workers part-time and full-time. \$2.75/hr. to start — hours flexible. 834-5008. 10/7

PART-TIME EVENING work for Police Association's Annual Civic Plaza show. Work until mid-November. Good hourly wages. Must be neat appearing and have pleasant voice. 894-9135 or 249-2927. 10/28

OPPORTUNITY TO produce and sell natural, organic whole wheat products in exchange for room and board in a psychological-spiritual community. Call 967-6358. 10/7

STUDENTS TO represent a new service needed by everyone. Good commission. Medical Data Bank, 833-6599. Fund-raising programs also. 10/13

ENGINEERING and COMPUTER SCIENCE MAJORS

Kirk-Mayer is seeking applicants for part time positions as engineering aids. Flexible hours, competitive wages, and convenient location. Applicants must type at least 30wpm, have a good technical vocabulary, and be familiar with electronic, electro-mechanical, and mechanical components. Previous experience as an electronic technician especially helpful.

FOR INFORMATION CALL
KEN LEWIS
264-4806 10/7

★ Motorcycles

1973 YAMAHA RD-350. Runs good, 78 plates, 77 ASU parking decal. Great value. \$375. Call 942-7198 between 1:00 - 6:00 p.m. 10/13

★ Motorcycles

1970 HONDA 450cc, \$550. 966-1321. Good condition. Ask for Dave Richardson. 10/7

★ Automobiles

WANTED: SPORTS CARS. We also have many fine cars to choose from. Sports Car Co., 5431 East Van Buren, 267-0424. 12/9

1975 YELLOW FIAT 124 Spider. Low mileage, AM/FM Cassette wire wheels. Excellent condition. Call 941-0006. 10/7

'66 VW BUG, sun roof, good transportation/mileage. \$600. 839-4856 after 6:00 p.m. 10/7

1966 TR4A. Good condition. \$1,200. 968-8843. 10/13

1971 FIAT 850 Spider. Excellent paint and interior, new Pirelli radials and top, rebuilt engine, 35 mpg. \$1500. 276-5995 after 5 p.m. 10/11

★ Services

DOLLARS OFF: the book that gives you Dollars-off on eats, entertainment, and excitement! 10/19

PERMANENT HAIR removal: face, body. Eternal Electronic Tweezer also available; no needles, no discomfort. Electrolysis of Scottsdale, 7033 East Indian School Road. 945-4245. 10/27

ROCKY MOUNTAIN EDITING. Academic editing by scholars. Dissertations, theses, papers for publication. Typing arranged. No "papers on file." 966-2274, 966-0312. 12/9

TIRED OF being completely unrelieved. Try a sound massage at 21st Century Automotive Sound, 4821 North 7th St. We've got a Sanyo System to soothe those tensions. 10/7

ASTROLOGICAL ANALYSIS and counseling in education career relations and fulfilling personal goals. Appointments: Antoinette, 948-9240. 10/7

BIORHYTHMS — judgment, creativity, health, sexuality, mood. \$1, ten days; \$3 thirty days. Send birthdate, check to: Bioresearch, Box 1632, Scottsdale, AZ 85282. 10/14

WELL-ENDOWED FEMALE models wanted for figure photography. Fee \$10.00 per hour - up. 945-5235. 10/11

★ Announcements

GALS, come to our membership tea. Oct. 23, 2-4, Mesa. Business and Professional Women's Club. 965-3355, Naomi. 10/21

URGENT! Anyone having photos of the 1976 Mill Avenue Arts & Crafts Fair, please call Catt today at 956-7383. If I'm not in, leave message. 10/14

An Introductory Road Rally will be presented by PHOENIX RALLY ORGANIZATION Tonight at 7 P.M.

at the southeast corner of Thomas Mall, 44th and East Thomas, Phoenix. Bring a watch, clipboard, flashlight and your thinking cap. THIS SPORT IS NEVER DULL. 10/7

CHANGING HANDS BOOK STORE's RECENT ARRIVALS and titles of interest.

The Silmarillion: Tolkein's tales and legends of the Elder Days, the First Age of Middle Earth... \$10.95

Golden Guide to Hallucinogenic Plants: Includes illustrations of wild and cultivated species in brilliant color... \$1.95

UNABRIDGED Webster's New Twentieth Century Dictionary: Thumb-indexed second edition lists at \$59.95 but now only... \$25.00

Black Sun: Another Edward Abbey book. This one, a novel about a forest ranger (loner, iconoclast, lover of the rugged life) who falls in love with a beguiling, independent "American Princess" half his age... \$5.95

Poetry by Ashbery, Bukowski, Bly, Ferlinghetti, Ginsberg, Giovanni Jeffers, Levertov, Neruda, Olson, Piercy, Pound, di Pirra, Snyder, Kabir, Tagore and others.

CHANGING HANDS BOOKSTORE 9 East 5th • 966-0203

In downtown Tempe, just around the corner from the Valley Art Theatre. 10/7

Pick 'em

Entries must be turned in to the **State Press** by 3 p.m. Friday in Stauffer Hall. **Only one entry per person will be accepted.** The top three winners will be listed in Tuesday's paper.

ASU _____ vs. New Mexico _____. Predict the score.

Visitor

- Texas Tech
- BYU
- Oklahoma
- Villanova
- Air Force
- Citadel
- UCLA
- Oklahoma State
- Missouri
- Dartmouth
- Texas Christian
- Alcorn State
- Purdue
- Alabama
- Virginia Tech
- Wyoming

Home

- Arizona
- Oregon State
- Texas
- Army
- Navy
- Delaware
- Stanford
- Colorado
- Iowa State
- Yale
- Rice
- Texas Southern
- Ohio State
- USC
- William & Mary
- Utah

PRO FOOTBALL

- Oakland
- Dallas
- Detroit
- Miami
- Cleveland
- St. Louis
- Minnesota
- Baltimore

First prize will be dinner for two at **Jeremiah's Steak House**. Second prize is 21 draft beers for a nickel at **Instant Replay** and third prize is two hand-packed quarts of ice cream at **Kitchie's 50 Flavors**.

Name _____
Phone _____

Nominations for ASU sportsman and sportswoman of the 1977 year.

More about

Lobos

continued from page 14

of seven minutes longer a game than ASU. The Devils have had possession for only an average of four minutes during the fourth quarter while their opponents have kept the ball for an average of 10 minutes.

ASU is still the second-ranked offensive team in the WAC by averaging 372 yards per game.

The Devils are fourth in the WAC in rushing yardage and second in passing.

One of the main factors in ASU's passing game is wide receiver John Jefferson. Jefferson has caught 15 passes for 266 yards and two touchdowns this season. This places him second in the WAC for number of catches and is tied for sixth nationally.

The Devils' defense seems to be more consistent than the offense. ASU is third in the WAC in team defense as it's fourth in rushing defense and third in passing defense.

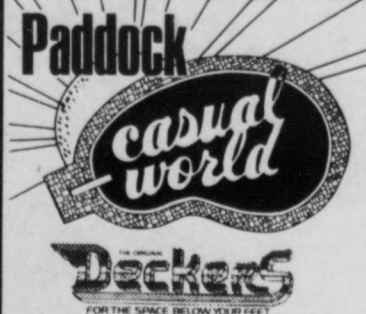
ASU's specialty teams are led by safety John Harris and wingback Ron Washington.

CARPET SPECIALS

9x12 Used Rugs **\$750**
All Sizes in Stock

CARPET HOUSE

1516 E. Van Buren
Phoenix



**HOT ITEMS!
COOL PRICES!!**

SAT. & SUN. ONLY.



Step into the fun shoes... made of soft neoprene foam with layers of splashy color! You can walk, climb or wade with complete confidence — the unique toe grip and textured soles enable you to be surefooted. And the nylon parachute straps won't break or loosen!

SINGLES
Reg. \$6.99

\$5.88

DOUBLES
Reg. \$8.88

\$7.49

TRIPLES
Reg. \$10.88

\$8.99

SCRIPTO LIGHTERS

SPECIAL OFFER!! 59¢



Get a dependable light with the "Mighty Match" Disposable Butane Lighter by Scripto! Features visible fuel supply and adjustable flame! Compact and lightweight! Take advantage of this special low price!! Sugg. Reg. \$1.39.

SINGLE HIBACHI

The all-time favorite for cookouts, camping or parties! This 10" x 10" Single Hibachi features hardwood handles and adjustable grill. Reg. \$6.00

Sale... **\$4.66**

36 POSITION CHAISE

You can relax 36 Different Ways with this multi-position chaise! A very attractive lounge, at a very attractive price! Reg. \$16.95

\$12.88 OR **2 FOR \$25.00**



STORE HOURS: MON-FRI 9 TO 6, SUN 10 TO 4

TEMPE EAST
Valley Plaza Shopping Ctr
Southern & McClintock
838-0679

SCOTTSDALE EAST
6525 East Thomas Rd
947-7261

PHOENIX WEST
West Plaza Shopping Ctr
35th Ave & Bethany
973-0198

PHOENIX NORTH
728 East Glendale Ave
944-8633

MESA EAST
1109 East Main St
834-0907

Sports award offered

The **State Press** is awarding a sportsman and sportswoman of the year award in December. Nominations for the award can be placed on the Pick 'Em entries. The athlete must be an ASU student and accomplished the athletic achievement in 1977.

ONLY GRADUATE STUDENTS M.B.A.'s LAW STUDENTS

Now buy a minimum of \$25,000 worth of life insurance starting at \$25 a year. That's the same life insurance you'll have to have 5-7 years from now at a much higher price. Call today.

**PENN MUTUAL OFFERS IT
258-1671**

Campus Rep: PRENTICE WILLIAMS

BRAKES (COMPLETE) \$49.95 For VW's ONLY

**TUNE-UP
PARTS & LABOR**
Plugs, Points, Condenser, Valve & Carb. Adj., Oil Change with Filter.

VW \$24.95

DATSUN ... \$33.50

TOYOTA ... \$37.50

Sundance

**AUTOMOTIVE
Import Specialists**

969-4747
746 W. Southern
Mesa

968-7719
2119 E. Apache
Tempe

SOMETHING FOR EVERYONE

Sale

Offer Expires 10-12-77

Thorn-Resistant TUBES

27x1 1/4 & 26 x 1 & 3/8 sizes only

\$1.95
Reg. \$3.25

TIRES

All Sizes & Styles

\$1.00 OFF

ALLUMINUM
ALLOY

WATER BOTTLE CAGE

Worth \$1.00 —
Our Reg. Price
\$4.95

**ON SALE AT
\$3.95**



27x1 1/4

WHEELS

Front or rear —
less tire tube and
gear cluster.



\$10.95
Reg. \$13.95

FOR THE SERIOUS
CYCLIST



UNIGLIDE CHAIN

The revolutionary chain that shifts better in every way. Doubles the service life of the drive train.

\$5.95
Reg. \$7.95



BOOK RACK

Pletscher aluminum alloy. Fits most bikes.

\$4.50
Reg. \$5.95



BACK PACK

Nylon backpack, padded shoulder straps, double stitched. An amazing value at our regular \$8.95.

ON SALE \$6.95

New Arrivals: Avocet Ladies' Saddle [touring & racing]

BICYCLE HARBOR

WHERE THE PEOPLE
MAKE THE DIFFERENCE

RALEIGH • PEUGEOT • AZUKI

Alpha Beta Shopping Center
Corner of Rural & Baseline

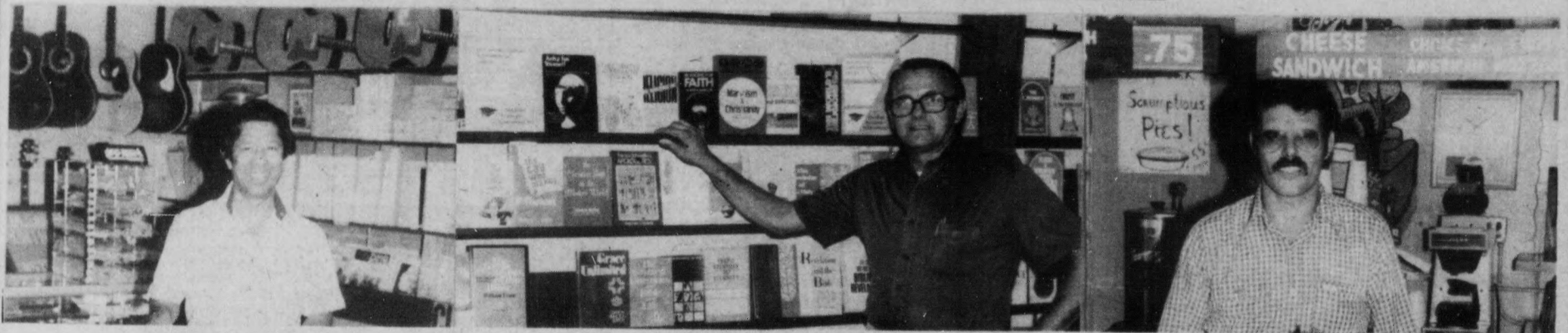
HOURS:
10 til 6 Mon.-Fri.
10 til 5 Sat.
Sun. 12-4

839-4580



UNIVERSITY ARTISTS

IN TEMPE AT THE CORNER OF UNIVERSITY & FOREST



Miguel Bernal
Miguel's Music Center

Elmer Hiebert
Quo Vadis Books

Sid Joseph
The Warehouse Restaurant

FASHION EXPLOSION

TOPS JUMPSUITS DENIMS
PANTS SKIRTS GAUCHOS

SEEING IS BELIEVING
968-1339

MIGUEL'S MUSIC CENTER

Finest in Classic & Folk Guitars
From all over the World

AUTHORIZED DEALER FOR
MARTIN - YAMAHA - OVATION
RAMIREZ GUITARS

OPEN 10 A.M. TO 6 P.M. 6 DAYS
968 2310

BANJO LESSONS
GUITAR LESSONS
IN FOLK & CLASSIC

SALES BY MIGUEL
RENTALS
REPAIRS

BAND
INSTRUMENTS
& ACCESSORIES

OPTIQUE BOUTIQUE

966-9440
Complete Selection
of Sunglasses

Joseph Berning

JEWELRY ♦ DIAMOND CUTTING

MEMBER AMERICAN GEM SOCIETY
967-8917

When buying a diamond it pays to know the four C's: Cutting, Color, Clarity, Carat Weight. Come in and take our diamond presentation course. Use your gemscope to really see what you are buying. Buy from the master diamond cutter, Joseph Berning.

Complete Floral Service
Wide Variety of Plants
Gifts & Accessories

DUANE'S FLOWERS

FTD Selected Member
We ship flowers worldwide!
Mastercharge - BankAmericard
966-4515

hair S kamp

we have a new owner . . .
we have new operators . . .
we have a new look . . .
isn't it time you had one too?

For today's men and women.
Call for an appointment — 966-9061

Live Entertainment
Every Night
No. Min. — No Cover

THE WAREHOUSE
"Good Food and Drink"

Light & Dark
Beer on Tap
—Wine—
—Carryouts—

Happy Hour 1/2 Gal. Pitchers,
Mon. thru Fri. \$1.50
3 to 6 p.m. Mugs 35c

OPEN DAILY 10:30 am to 12 midnight
Fri, Sat, & Sun. till 1:00 am
966-7788

MEN MEN GARMENTEUR, LTD. MEN MEN

CONTEMPORARY NATURAL
SHOULDER CLOTHING

10 A.M. - 6 P.M. MON. THRU SAT.
THURSDAY 'TIL 9 P.M. OR BY APPOINTMENT

Quo Vadis BOOKS

POSTERS
GIFTS, JEWELRY,
CHRISTIAN BOOKS

122B East University Drive — 968-3663

Pinball wizard

The New Pinball Wizard
VIDEOS
Finest Game Selection in Tempe
Pinball - Foomball

XEROX or MULTILITH

alpha graphics

Finest Quality; Low Prices

Take-Out Capital of ASU
Call 968-7133

GOOD FOR YOU

FROZEN YOGURT & OTHER GOODIES

SUN DEVIL HAIRCUTTERS

5 Barber-Stylists to serve you. Everything from beard trims to perms. We're the best on campus, so try us! Walk in or call for an appointment:

Open Monday thru Friday
10:00 A.M. til 5:30 P.M.
Saturday: 8:30 A.M. til 4:00 P.M.

Record Phono Ioniser

ELIMINATES STATIC.
REMOVE DUST, GRIME
AND PARTICLES FROM
RECORDS.
IMPROVES FIDELITY AND LIFE.

Regular \$5.00
\$250 with coupon

Jerry's audio exchange

•Components •Systems
•Accessories

TEMPE
130 E. University
968-3491

PHOENIX
334 E. Camelback
263-9410