

wednesday

# state press

Tempe, Arizona

Arizona State University  
Vol. 59, No. 3, August 25, 1976



\$15 charge for lost card

## Sports events require special ID

By Mike Tulumello

Athletic department officials have started a new ticket policy. Students must now obtain a separate I.D. to attend sports events.

Under the new plan, students must obtain an athletic I.D. at the stadium ticket office by Sept. 3 or pay a one dollar late fee. The policy applies to both season ticket holders and single-game ticket buyers. Students will not be charged for the card before Sept. 3.

"I'm a little upset about it," said Kevin Dahl, ASASU campus-affairs vice president. "I'm going to ask the student

members of the athletic board to look into it."

The new procedure was developed last month after plans for an activity card for both athletic and Gammage events fell through, said ASU ticket manager Terry Wojtulewicz. He said the policy is necessary because campus service cards often arrive after the football season is over and many students duplicate their fee cards to bring non-student friends to games.

"Last year, we asked people with fee cards to walk all the way over to West Hall to see if their service cards had come in,"

Wojtulewicz said. "We were forced to hassle students and we didn't want to."

The ticket manager said last year approximately 3,000 fee cards were duplicated and the football program could have lost as many as 1,000 tickets or \$7,000, per game. This is the reason we will charge \$15 for lost cards, he said.

"The only kids who are griping are the ones who wanted to bring friends to the game," Wojtulewicz said.

"Students will be inconvenienced from 7-10 minutes"

while picking up the athletic card, he said, "But then we won't have to hassle them anymore. Anyone who is a legitimate student will be able to get into the games."

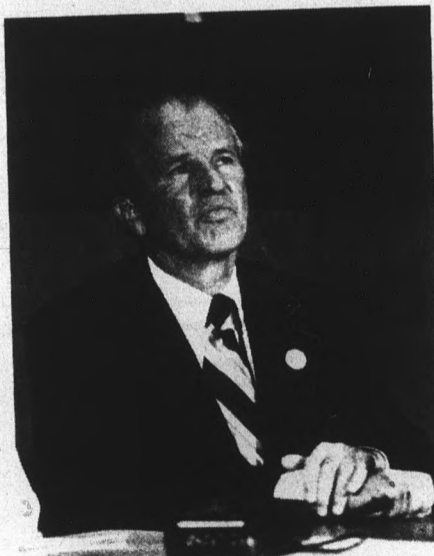
Wojtulewicz said he told student leaders the athletic department was exploring the "possibility" of starting the new policy, but ASASU press officer Pat O'Hara said, "As far as I know, no one knew about it."

"You can bet a large segment of students won't hear about it before the (Sept. 3) deadline," O'Hara said. "I haven't heard a

favorable comment about (the new policy) yet."

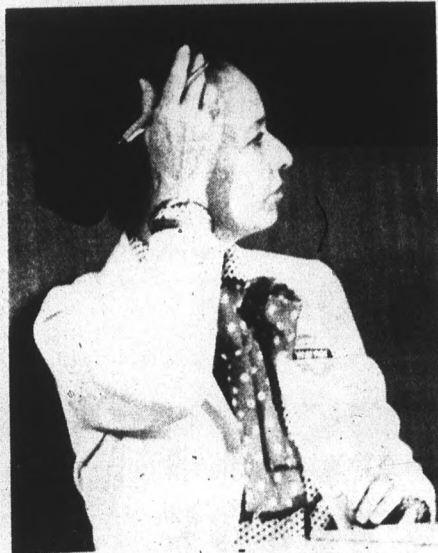
"We weren't officially warned or consulted about it," Dahl said. "It seems kind of strange that they're having problems with one ticket bureaucracy, so they try to correct it with another one. Especially since it costs students money."

Wojtulewicz urged students to pick up the I.D. as soon as possible — to avoid the rush before the season-opener against UCLA Sept. 9. Students may pick up tickets for the game Monday through Thursday next week.



Wade Church

Photos by Keary Cannon



Carolyn Warner

## Senatorial candidates criticize bureaucracy

By Britton Bloom

Local solutions to local problems, without help from the federal government, was the main theme of Tuesday's debate between candidates for Arizona's U.S. Senate seat.

Republican Sam Steiger and Democrats Carolyn Warner and Dennis DeConcini criticized the federal bureaucracy as ineffective for solving problems.

"The Feds are good only for collecting taxes, not spending them," Steiger told an audience of 400 at the Great Hall in the College of Law.

Only Democrat Wade Church expressed any hope that federal agencies could help local dilemmas.

The \$31 million "rip-off" by the defunct Lincoln Thrift savings and loan company is a federal problem, because fraud associated with the company crossed state boundaries, said Church.

The Securities and Exchange Commission (SEC), the Internal Revenue Service and a federal prosecutor should have conducted a massive investigation of the company. Instead, the SEC only filed a suit and then went back to Los Angeles, he said.

Federal intervention is necessary, Church said, since local politicians can be pressured by contributions from powerful firms.

Then too, frauds have to be protected by "the biggest defense structures" of a state, which include "that rag," *The Arizona Republic*, Church said.

A senator has to be able to stand up against pressures and fight fraudulent companies, he said.

Steiger defended the idea of local autonomy, pointing out that federal regulations set up uniform standards, while local needs differ from one state to another.

Housing standards that apply in Miami, Fla., would not be valid in Miami, Ariz., Steiger said.

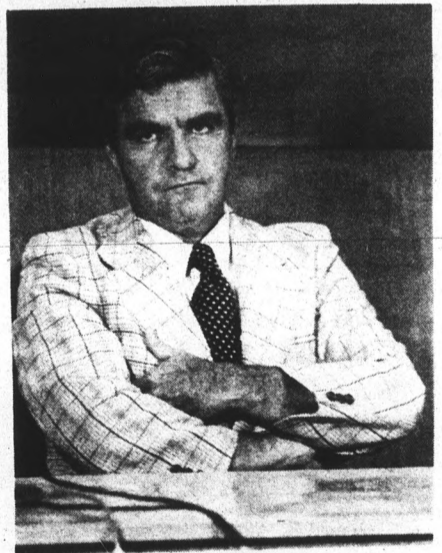
Federal agencies for land use planning and consumer affairs would only serve the bureaucrats and consumerists who would make their livings from such agencies, he said.

Warner also vowed to limit the growth of the federal bureaucracy. She said she would continue the fight to cut down the amount of paperwork and red tape which she began in her term as State Superintendent of Public Instruction.

DeConcini said he favored the Humphrey-Hawkins bill currently before the Senate to reduce unemployment to 3 or 4 per cent, as long as the role of the government is limited to providing incentives for private firms to hire employees.

DeConcini said he would support public works programs only in the event of a depression.

Warner drew a long cheer from the audience when she expressed strong support for the U.S. Supreme Court decision upholding the legality of abortion.



Sam Steiger



Dennis DeConcini

continued page 17

# Phoenix agency organizing university car pool program

By Nina Bondarook

A Phoenix-based car pool agency is trying to organize several car pools at ASU, the agency project manager said Tuesday.

Dick Toolan of Project Pool It said the organization wants to get three ASU groups into operation: a student pool, one for staff and one for faculty. But, he said, students and faculty are the agency's toughest customers to place.

"With students and faculty it's most difficult because everyone starts work and goes to classes at different times," Toolan said.

Project Pool It has been operating on federal and city grants for more than two years and has a computer data bank of

more than 10,000 names. Its services are free.

"If you apply for a car pool, we send you a compiled sheet of names, and the actual arrangements you make with the drivers are entirely up to the individual," he said.

"We don't have any personal ax to grind, we're only concerned with multiple occupancy of vehicles. If people will take a bus or van, we're all for it — anything other than single occupancy of vehicles," he added.

Project Pool It operates with almost \$65,000 per year. Last year local media donated more than \$75,000 in free publicity to the agency.

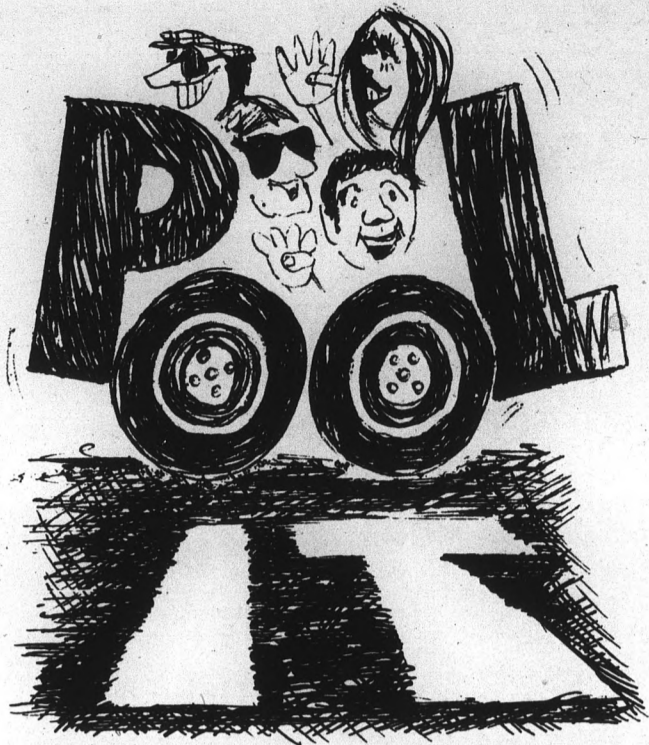
Toolan said there is no accurate way to measure whether

the money put into the project is worth the results, although he said the city of Phoenix did a study based on occupancy rate that showed positive results.

"Based on the number of people involved (in car pooling) and their travel, this does come to a substantial amount of savings per year," he said. The study indicated \$1,048,000 per year is saved in gasoline.

"Of course, this is only one facet. If you look at it, it means less congestion, less pollution, less wear and tear on the roads and less parking problems," Toolan said.

Anyone interested in joining a car pool can contact the agency at 257-9084.



## In the news... briefly

From the Associated Press

### GOLDWATER BACKS STEIGER

PHOENIX — Angry over alleged anti-Semitism in the primary campaign of Rep. John Conlan, R-Ariz., Sen. Barry Goldwater, R-Ariz., endorsed Rep. Sam Steiger, R-Ariz., Tuesday for the GOP nomination to the U.S. Senate.

### WEST POINT DECISION

WASHINGTON — A new congressional hearing has been scheduled to clear up unanswered questions in Army Secretary Martin R. Hoffmann's plan to end West Point's cheating scandal. Lawyers for accused cadets said Tuesday they'll fight for more concessions.

### STRIKE TARGET REVEALED

DETROIT — Ford Motor Co. is the United Auto Workers' 1976 strike target in efforts to obtain an improved labor contract from the auto industry, the union announced Tuesday.

### SOUTH AFRICAN TURMOIL

JOHANNESBURG, South Africa — At least seven persons have been killed in clashes between blacks trying to enforce a three-day work boycott and other blacks in Soweto, the World newspaper reported Tuesday.

### RUBBER STRIKE AGREEMENT

COLUMBUS, Ohio — Goodyear Tire & Rubber Co. and the United Rubber Workers union reached a tentative agreement on a three-year master contract Tuesday that could end the 126-day-old strike, the company reported.

### CARTER TO VISIT PHOENIX

PHOENIX — Democratic presidential nominee Jimmy Carter will visit Arizona Sept. 13 to help raise funds for Rep. Morris Udall, D-Ariz., one of his primary opponents. Carter will appear in Phoenix, and Tucson if time permits, Udall said Tuesday.

### FORD SUGGESTS FOUR DEBATES

VAIL, Colo. — President Ford Tuesday suggested that his debates with Democrat Jimmy Carter begin shortly after Labor Day to "give the American people the opportunity to know where we both stand on the issues." Ford suggested there be four debates, one each on national defense and domestic, foreign and economic policies.

### POLITICS STRIKES AGAIN

PHILADELPHIA — The Soviet Union and Czechoslovakia said Tuesday they will not allow their teams to play in the Federation Cup tennis championship here because of participation by teams from South Africa and Rhodesia.

### PARACHUTISTS LAND IN PRISON

FLORENCE — Seven parachutists were charged with trespassing after they jumped to the Arizona State Prison grounds in the face of an approaching dust storm. "Somebody said it looked like a baseball diamond down there, so we jumped," said John Sharber, 21, of Flagstaff.

## WESTERN NIGHT

Saturday, Aug. 28, 6:30 PM

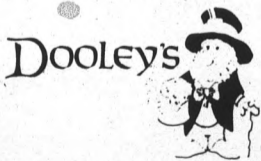
Bar-b-que supper, square dancing and contemporary dancing. Reservations in advance 967-7563. Fee \$1.00.

Daley Park, College Ave. and Encanto. (just south of Apache and A.S.U.)

Sponsored by Hillel Union of Jewish Students



WE CATER TO PEOPLE'S SECOND MOST INTIMATE PLEASURE.

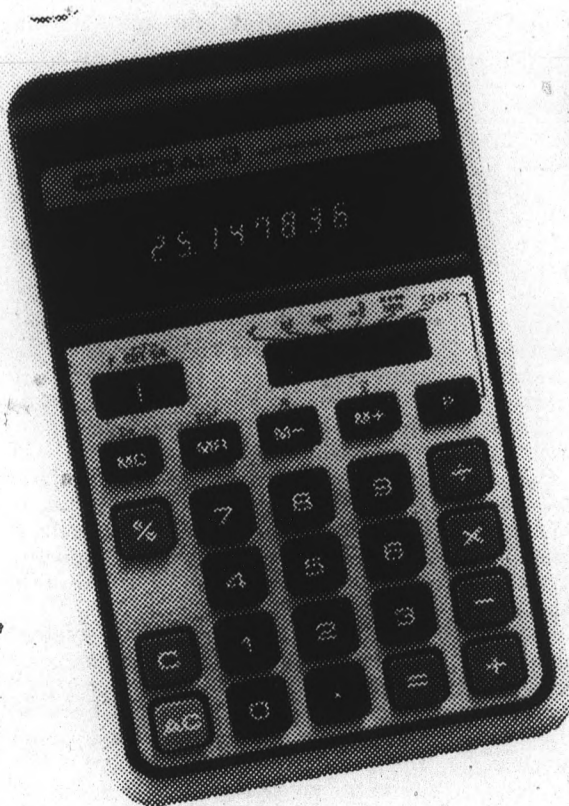


1216 East Apache, Tempe (3 blks. east of Rural)

**3456**

If ever you see a suspicious character — some guy hanging around a bike rack or lurking by a dorm — call the University Police at 3456. No names necessary.

And no victimless crimes, please.



## AL-8... THE WORLD'S FIRST FRACTION CALCULATOR

$$\frac{1}{2} + \frac{2}{3} = 1\frac{1}{6}$$

$$1\frac{2}{3} \times 4\frac{5}{6} \div 7\frac{8}{9} = 1\frac{3}{142}$$

- Standard Deviation.
- Sexagesimal calculation (hour, minute, second or degree, minute, second).
- Square root and remainder calculation in division.
- Percentage for mark-up & discount.
- Independent memory with four-key and grand total memory.
- 8 digits with large bright green display.
- AC or two penlight batteries (included).
- AC adaptor (Type 2-2000) is available as optional item.

**\$24.95**

**UNIVERSITY BOOKSTORE**

# Information official hopes to change ASASU image

By Leslie Green

Associated Students first public information officer, Pat O'Hara, said he hopes to improve Associated Students' image by informing students, and the community, of student government activities.

"The principal goal is to make the campus community specifically, and the whole community generally, aware of what ASASU is doing," he said.

"I hope to change the image from a haggling legislative body to one that works together to accomplish student-oriented goals," O'Hara said.

O'Hara, a 23-year-old speech communications major, also said he hopes student involvement in ASASU will increase once students are informed of their activities.

"Hopefully, the more people know about it (ASASU), the more willing they'll be to get involved in it," he said.

O'Hara said he took the job because it was a new position and allowed him to "create the job myself."

Bruce Mortensen, ASASU executive vice president, said the new position was created to have one ASASU employee coordinate all publicity requests from Associated Students organizations, to obtain research data for publication of the Student Bulletin.

The association's graphics and advertising department previously handled ASASU student organizations' publicity requests, he said.

O'Hara was a journalism major in 1971, and during

that school year was sports writer for the Mesa Tribune and sports editor for the Sun Valley Spur Shopper. He won the ASU Outstanding Freshman Journalist Award at that time.

He went to Belfast, Ireland on a church mission from 1972 to 1974 where for five months he was public information officer for the Church of Jesus Christ of Latter-day Saints.

He returned to ASU in September 1974 and changed his major from journalism to speech communications.

Mortensen said O'Hara is being paid from the Associated Students Contingency fund as a full-time employee. Student officers plan to request funds for his salary this year from either the First Council's fund or the student emergency fund.

# Housing service pairs roommates

By Dan Winkel

ASU students looking for roommates have a new referral service at their disposal this fall.

The ASASU Tenants Association new offers a matchmaking service — in addition to helping students locate housing in Phoenix and mediating students' complaints against landlords.

Mitch Braddon, administrative coordinator of the Tenants Association, said the new roommate service uses files containing personal information on each prospective roommate to help locate a compatible partner.

Braddon said the roommate files "get people together" and eliminate the practice of using just a name and number to find roommates.

Braddon called the service successful and said more than 35 people have found places to live through the Valley-wide service.

Besides the new roommate service, Braddon said the Tenants Association serves two main functions — to help students find housing in the Phoenix area, and to mediate complaints students may have against landlords.

Braddon said his largest task is "opening up communication between the landlord and tenant and the landlord and this office."

Many landlords and tenants are not aware of the laws concerning renting apartments and houses, and problems between the two are sometimes resolved slowly, he said.

## Disabled students may form rec club

The ASU Disabled Students Office is interested in forming a recreation program for disabled students, an office spokesman said Tuesday.

Neal Naigus, an adviser for disabled students, said the program will be tailored to individual needs. The program might include jogging, access to gym facilities and group social events, he said.

Funds are available to hire a recreation director, but Naigus said he needs to know how many students are interested before he makes a commitment.

Naigus also is considering organizing wheel chair basketball teams for men and women.

Interested students should contact Naigus at 965-6466.

## BIKERS!

Don't become a victim. (25) bikes stolen in August 1975. 341 bikes were stolen on campus last year, for a total value of \$34,000. How much is your bike worth?

Save your money and your wheels. Register your bike for only 50 cents at any Tempe fire station.

Lock your bike securely, using a case hardened lock and chain.

Place chain around the frame and through the rear wheel. Attach your bike to a permanent fixture.

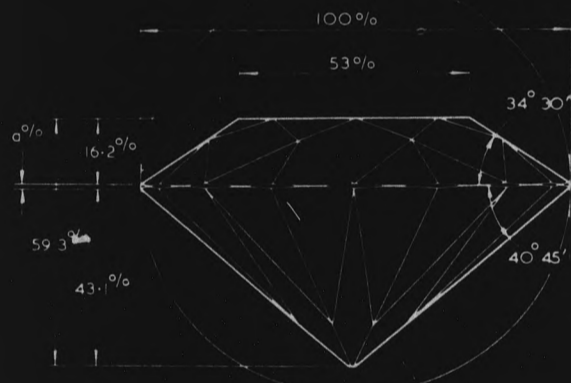
HELP US — HELP YOU, Call University Police 3456

## Petite Genève JEWELRY By George

618 S. College, across from First National Bank

TEMPE, ARIZONA

968-1233



## Expert Custom Crafted Jewelry

DESIGNER & MAKER OF THE 1975 FIESTA BOWL RINGS FOR OUR WAC CHAMPS

ALSO DESIGNER & MAKER OF THE GOLD, SILVER & TURQUOISE MINIATURE SCULPTURE PRESENTED TO THE FIRST LADY, BETTY FORD, DURING HER VISIT TO OUR VALLEY ON MARCH 9, 1976

*We have the largest & finest selection of Diamonds & Colored Gem Stones.*

With the purchase of our settings, stones will be available to you at our cost.

Guarantee on our work backed by over 20 years of Swiss training and experience.

OPEN DAILY 9 a.m. to 8 p.m.

**EARS PIERCED FREE**

## CARPET SPECIALS

9 X 12 used rugs — \$7.50

All Sizes in Stock

## CARPET HOUSE

1516 E. Van Buren, Phx.

## ASASU Cultural Affairs Board —

Open to any student with an interest in the visual, literary, and performing arts. First Meeting:

**Friday, Aug. 27 - 5 p.m.**

**at Neeb Hall**

For more information, stop by MU 208-R

## PIONEER CAMERA - TEMPE CENTER



### HOW TO GET TO KNOW US

Bring a roll of film in for KODAK processing. We'll give you a roll of the same type film FREE. (WITH THIS COUPON)

**GOOD FOR FREE ROLL OF FILM, WHEN WE PROCESS ANOTHER ROLL OF THE SAME TYPE.**

(LIMIT ONE ROLL PER CUSTOMER, PER COUPON, OFFER GOOD TO SEPT. 1, 1976)

COUPON

COUPON

# Opinion

state  
press

*Any man who doesn't have a skeleton  
in his closet may not have much  
upstairs either.*

*Irv Kupcinet*

## You can't blame Karl

You can't blame Karl Dannenfeldt, academic vice president, for telling Associated Students leaders that Ritter School is not available for a day care center.

Helping students by providing a day care center for their young children is a good idea. The existing small facility operated by the psychology department falls short of the need.

But ASU is in a tight spot, literally. It has less space per student than U of A or NAU. The legislature has not granted money recently to build classrooms or academic offices. Enrollment is growing.

Dannenfeldt, in charge of allocating available academic space, needs every bit he can get.

Not that Ritter School, formerly a Tempe elementary school, located on the extreme eastern edge of campus, is an

ideal location for classes or offices.

It's hard to imagine any faculty member happy about being stuck out there, unless he or she likes to get away from it all.

Regardless of how it is used, Dannenfeldt needs the space.

Objectively choosing between a practical student service like a day care center and increased academic space is tough.

Dannenfeldt's decision makes it harder for ASASU to establish a day care center. Ritter School would have been just right.

But ASASU officers seem determined to find another location and make the center work.

If they do, they will draw thanks from student parents.

Upset at Dannenfeldt's decision? Aim your fire at the state legislature, which hasn't appropriated money for new buildings in two years.

## Thanks, GI office, for taking my check

Editor:

On Aug. 1 I received my Veteran's Administration check for \$64.20 which was 20 per cent of my August entitlement. Upon calling the GI Bill Office I was told that all of the people receiving VA benefits were terminated as of Aug. 6 due to a new University policy designed to catch those people receiving checks but not enrolled.

I do not disagree with the basic policy, but, I was neither notified nor aware that any action was to take place and therefore was put in a very serious financial position for the month of August.

I have been enrolled at ASU since transferring from Maryland last September. My present entitlement was to run without interruption until I graduate next summer.

Being that the VA accounts for 75% of my family's income, this unheralded action has just about left me without any money for either (1) paying rent, (2) buying food or (3) buying books for my wife and I for the fall semester.

On Aug. 16 I again called the VA office on campus to find out why I have not received a check because I had gone through the proper channels for registering for fall.

My fees were paid well before the final payment date for pre-

registration and the VA office validated my enrollment that day.

I believe this policy has seriously hurt many veterans like myself who depend a great deal on the VA for subsistence. This policy should be examined more closely in the future from the standpoint of the veteran and not the University as it apparently has been.

I wish to thank the GI Bill Office for causing me extreme hardship this month and hope that its leadership is more responsible in the future. Yours truly,

Harold R. Huard

### How to write letters

Type letters. Type them short, no more than two pages double-spaced. Write simple, direct sentences. The most effective letters make only one or two points. Sign your letter. Bring it to the State Press in Stauffer A-137.

## A tale of three stickers

Before long my car will be held together by nothing but parking stickers.

In 1974, my first year at ASU, I bought an "R" commuter student sticker. The instructions said place it "conspicuously" on the right rear bumper.

I did. It remains, testimony to the staying power of bumper sticker glue.

I didn't buy a sticker in 1975-76. It's quicker to ride a bike if you live near campus than circle like a vulture for a parking space.

This summer I got an "E" staff sticker

while working on the summer *State Press*.

Where to put it? "The bottom of the rear windshield."

Now, as editor, I get another "E" sticker. — "Place in lower right hand corner of front windshield." That's probably the last sticker I'll buy, because I plan to get out of here in nine months.

In a way that's too bad. If I could just get a few more stickers on my car, I could add a book of green stamps and trade it in on a waffle iron.



## Poor crowds, cancellations

# Rock-show promoters face difficulties

By Greg Smith

Big Surf has given up rock concerts. The Phoenix Civic Plaza hasn't booked any rock shows. Neither has the Arizona Veterans Memorial Coliseum, ASU or Associated Students.

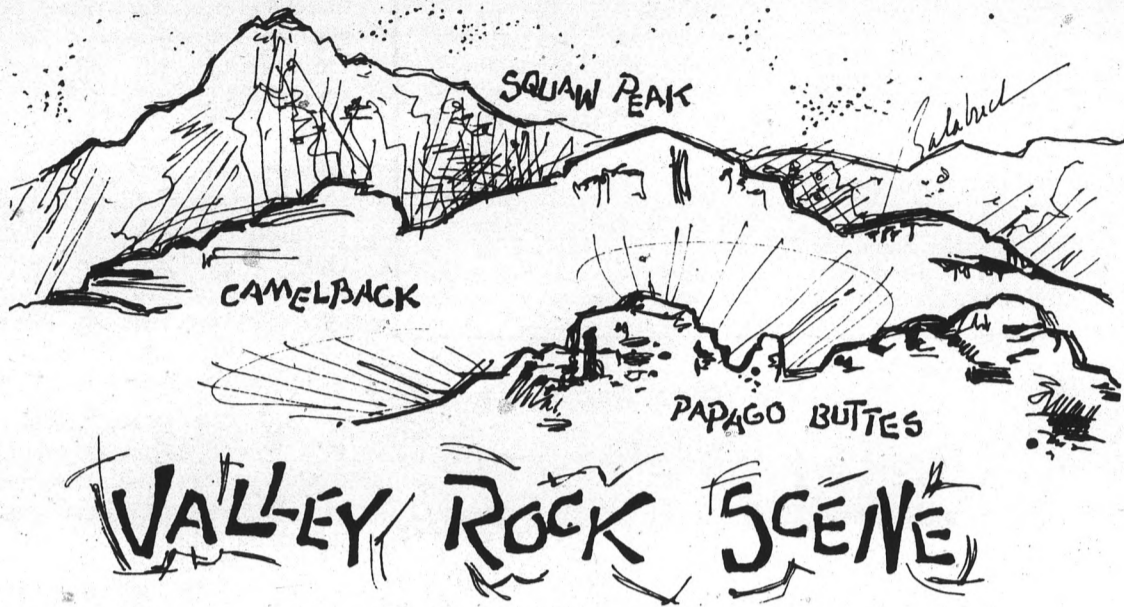
Rock offerings in the Valley are very slim compared to those of Los Angeles. But considering its size, is Phoenix really a poor market for the hard-driving music?

"Phoenix is really not the best rock town in the country. It's really a poor one," said William Palethorpe, assistant executive director of the coliseum in Phoenix.

"It's a tough market," Palethorpe said. He blamed disc jockeys who don't play hard rock, the popularity of country-western music, and a broad spectrum of likes and dislikes in a city that is still "in the developmental stage." Palethorpe said only "powerhouse" groups can draw big audiences.

Big Surf has given up rock performances because they "don't make us any money" and audiences destroy landscaping, said Glenn Vandiver, general manager of the swimming facility in Tempe.

The Leon Russell show in June 1974 was the last rock act there, Vandiver said. Only 3,209 fans showed up when about 8,000 were needed to break even, he said.



"The only people who make money on concerts are the performers," he said. "As far as I'm concerned, the performers have priced themselves out of the market."

Vandiver said 80 per cent of the gate receipts go to the musicians.

To make matters worse, audiences ruin the grounds by stomping on flower beds, hedges and cactus. "One concert can set it back three years," he said.

Civic Plaza director Edward Allen said Phoenix is a "very competitive market for the entertainment dollar."

Rock musicians charge such high prices that promoters have to take a big risk to put on a show so there are fewer shows than there could be, Allen said.

"If the economics were more attractive to a promoter, they would be more willing to take the risk. They have to have a chance to make it."

Others who book rock concerts in the Valley say Phoenix is not such a bad town for rock, but they agree it is difficult to stage successful shows consistently.

"The demand (for rock shows) is here," said Timothy Van Leer, events coordinator for Gammage

and the Activity Center. He said problems arise when shows are scheduled at various concert halls within a few days and the rock audience is split between the different acts.

The technical aspects of staging rock shows are another problem.

"It's very easy to put on a symphony orchestra. You put the chairs on the stage and turn on the lights and that's it," Van Leer said. "But when you have three 40-ton trucks pulling up, you know it's going to be a long day."

E.B. Smith, president of the firm which owns Tempe

Stadium, listed some of the requirements for shows: stagehands, parking attendants, rented music equipment, security guards, nurses and even toilet attendants.

"The technical requirements are a lot greater for a rock show," agreed Doug Clark, who stages shows at Celebrity Theater. Celebrity has had the most success with rock in the Valley in recent years, and Clark attributes it to consistent scheduling and loyal audiences.

"You can lose money very quickly — it's an extremely high-risk business," he said. "I've got to sell 85 per cent of the house on one show to break out even."

A lot of promoters lose their shirts, Clark said.

But the fault often lies with promoters, said Smith. "A lot of promoters put on a bad show and it bombs, and they say it's a bad market. It's not a bad market, it's a bad promoter or a bad show."

Clark says Phoenix has a pretty good selection of rock shows considering its size, with about 100 concerts per year. But he says Celebrity cannot support many big-name groups because the concert hall is too small.

That leaves most super-group shows to other halls.

The Coliseum is limited to one rock show per month, but less than half that many were staged last year. Palethorpe hopes for six rock shows during the fiscal

continued page 6

### Call 3456

If ever you see a suspicious character — some guy hanging around a bike rack or lurking by a dorm — call the University Police at 3456. No names necessary. And no victimless crimes, please.

THE LOOK IS...

# garland



WELCOME BACK STUDENTS!

(FREE DRESS HANGERS, WHILE THEY LAST.)

## CELIA'S FASHIONS

TEMPE CENTER

"TRY CELIA'S FIRST"

## Reading Course Increases Comprehension and Speed

Do you want to learn how to comprehend more of what you read? Would you like to read faster with improved comprehension? Would you like to study more effectively? If your answer is YES, the Arizona State University Reading Center has a highly systematized reading improvement course that is designed to fit your needs.

The six weeks non-credit course can be taken by anyone who pays the \$35.00 fee. Registration begins the week of Aug. 30th in the Reading Center, Room B112 of Payne Hall. Further information may be obtained by calling 965-7766. Pick a class that fits your schedule from the list below:

First Session — Sept. 6 - Oct. 15

Section 1	M night	7:00 - 9:30 p.m.
Section 2	T night	7:00 - 9:30 p.m.
Section 3	W night	7:00 - 9:30 p.m.
Section 4	T and Th	10:40 - 11:55 a.m.
Section 5	M-W-F	9:40 - 10:30 a.m.

### DESCRIPTION OF THE COLLEGE READING PROGRAM

The College Reading Program is a comprehensive fifteen (15) hour non-credit course designed to increase comprehension, speed and retention of reading materials. The course focuses on comprehension as the key to rapid and efficient reading. Reading is defined as an active decision-making process whereby the reader selectively looks for those clues which will enable him to reconstruct meaning from print. Therefore, no special eye or finger movements are stressed. Within the framework of large group, small group, and individual experiences, the student will actively participate rather than be lectured to by an instructor.

Students can benefit from the program as study becomes more productive through increased speed and comprehension. Also, those students who may have to take aptitude or qualifying examinations will find that increased speed and comprehension aids them in sections where reading ability is tested.

On the basis of past experience and research, improvement in reading is promised by the program. Classes in the past have attained average increases of fifty (50) to one hundred thirty (130) per cent. The question is not whether the student can improve but how much he can improve.

## Senate candidates to debate

Candidates for the Democratic senatorial nomination will debate in the MU Pima Room at 2 p.m. today, after a scheduling mix-up that put back-to-back candidate forums on campus this week.

Dennis DeConcini, Carolyn Warner and Wade Church will appear in today's debate, sponsored by the Special Events Board. All three spoke on campus yesterday, along with Republican candidate Sam Steiger, in a forum sponsored by the Student Bar Association.

Pat O'Hara, Associated Students information officer, charged Tuesday that the Student Bar Association broke University rules by not contacting the Scheduling Board before scheduling Tuesday's forum.

"It was upsetting to us, since anyone using University facilities is supposed to go through the Scheduling Board to avoid embarrassing conflicts," O'Hara said.

But Manuel Figueroa, University scheduling coordinator, said

Tuesday's forum was arranged through the dean's office of the College of Law, and the Student Bar Association was therefore under no obligation to contact the Scheduling Board.

"Most of the time we keep in contact (with the academic departments) to avoid such conflicts," Figueroa said, calling this week's situation a one-time mix-up.

The Special Events Board also will sponsor an appearance by Steiger on Thursday, Aug. 26, at 2 p.m. in the Pima Room.

## X-ray use upheld by medical panel

TUCSON (AP) — The risks of using X-Rays to detect breast cancer may have been exaggerated in recent warnings, two University of Arizona specialists say.

Dr. Arthur J. Present and Dr. William G. Connor, said a group of doctors who recommended last month that routine X-ray screening of women under 50 be stopped did not have solid figures to prove a significant risk exists.

"It is the best available tool we have for detecting breast cancer," said Connor of breast X-rays, or mammograms.

"They don't have modern figures to support their claims," said Present.

Even so, Present, director of the Breast Cancer Detection Center in Tucson, said the center will

follow new guidelines recommending against mammography for women between the ages of 35 and 50. An exception will be made if individuals show specific symptoms or are classified as high risks.

Some 10,000 women are involved in a five-year project in Tucson, and about half of them are in the 35-50 age group. Some withdrew from the project after the issue arose last month.

The warning came from Dr. Lester Breslow of UCLA and was based on a 10-year program in New York. However, many mammograms taken during that period and on which the recommendations were based may have used doses of radiation 10 to 15 times higher than those presently used, the U of A specialists said.

### More about

## Rock concert difficulties

continued from page 5  
year 1976-77. They will be booked later.

Tempe Stadium wants to schedule 10 rock acts in the next year. They have already booked Lynyrd Skynyrd, Aerosmith, Rick Derringer and Jeff Beck for a show Sept. 8.

Allen said he would like more than one rock group at the Civic Plaza each month. None are scheduled.

ASU will have two to four rock shows this fall, then three to five next semester, said Van Leer. He said he is working to bring big-name performers here.

Celebrity will present the Nitty Gritty Dirt Band Aug. 29, along with Pure Prairie League. Clark said Celebrity will schedule about 60 concerts this year.

Celebrity has canceled a Far Fall show for Sept. 4. This emphasizes what Clark says is the toughest problem in putting on rock shows: cancellations.

Cancellations can cost thousands of dollars in advertising and ticket printing costs, Clark said. A recent concert cancellation cost \$6,000, he said.

And "there's very little you can do if a guy doesn't feel like playing," he added.

Smith told how he had scheduled a Led Zepplin concert before a guitarist injured his hand in a car wreck.

"They canceled out the whole tour and I wanted to commit suicide," he said.

### Graduates rank high in firm's job placements

ASU is among the nation's 25 leading colleges and universities in a ranking of schools whose graduates have accepted employment with a major U.S. manufacturing firm, the firm reports.

Armstrong Cork Company, headquartered in Lancaster, Pa., says it has employed more graduates from ASU than from nearly 190 other campuses where it has conducted recruiting activities the past five years.

STATE PRESS is published by Arizona State University Tuesday through Friday during the academic year, except holidays and examination periods. Entered as second class matter at Tempe, AZ 85281.

State Press News

965-2292

State Press Advertising

965-7572

State Press  
Classified Ads  
Get Results



DISCOUNT  
SUPERMARKETS

Make E-Z Save your one-stop shopping center for foods, meats, fresh produce, health and beauty aids, school supplies, wines, beer and cigarettes.

CONVENIENT LOCATIONS

• 1338 E. APACHE BLVD.  
TEMPE

• McDOWELL ROAD AT  
SCOTTSDALE ROAD

Coke Stuff!

High Times, Matches

Bumper Stickers

Levi

A - Smile

Viceroy

Berney Karp - Glass Head

Pipes

Papers

10% DISCOUNT  
TO ALL A.S.U.  
STUDENTS  
WITH I.D. CARD

Cool Leaf

Job

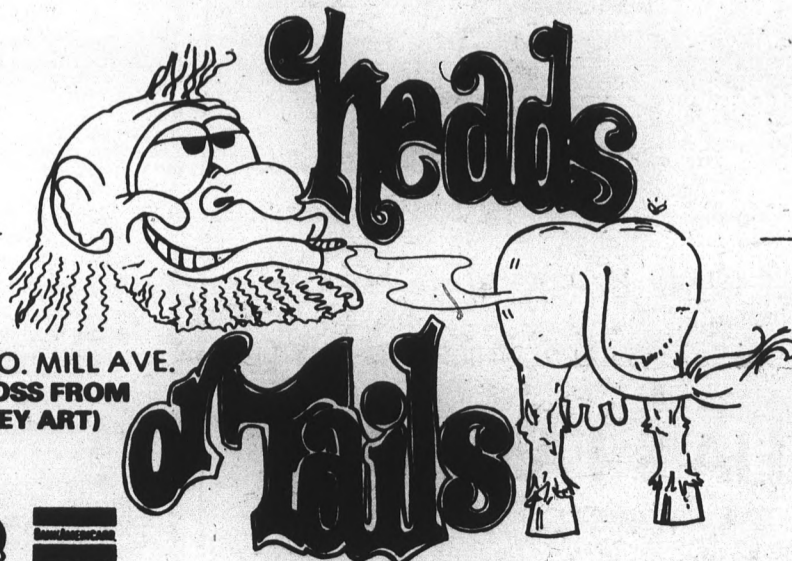
Lee

Zig Zag

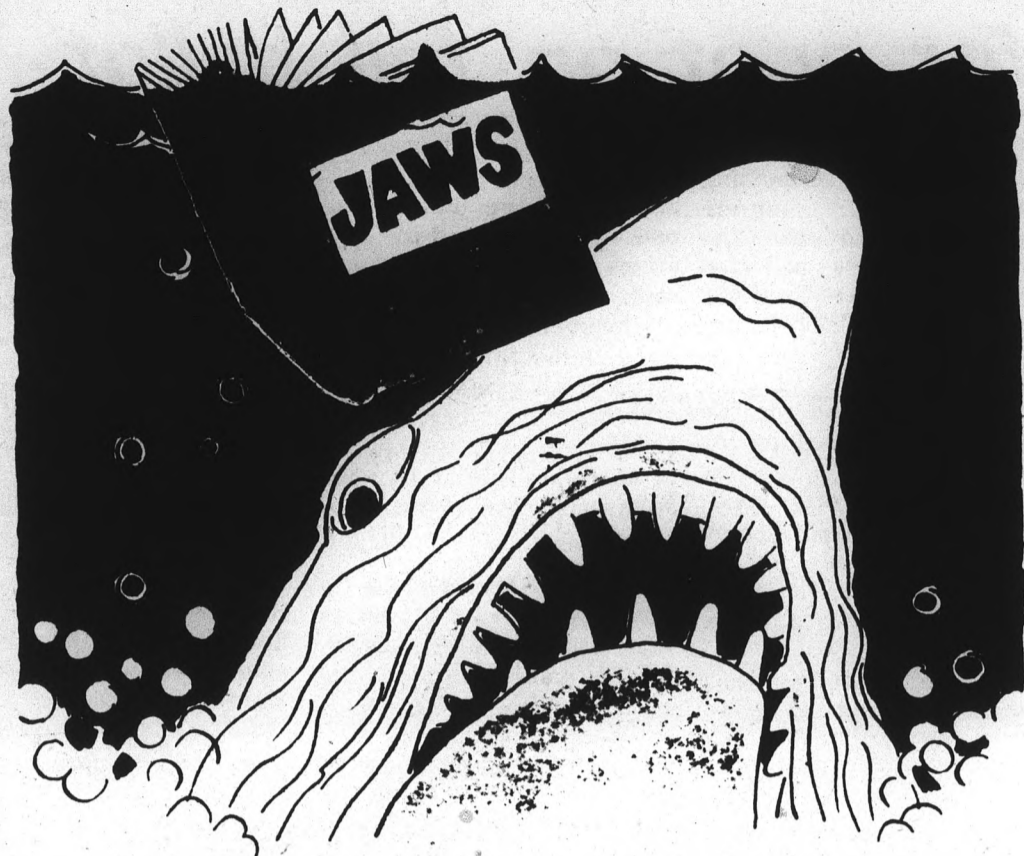
\$4<sup>00</sup> OFF  
ANY & ALL

a. Smile inc. JEANS

Head Gear



514 SO. MILL AVE.  
(ACROSS FROM  
VALLEY ART)



# It Sounds Incredible

**BUT EVELYN WOOD GRADUATES CAN READ**

**JAWS IN 41 MINUTES**

**At That Speed, The 309 Pages Come Across  
With More Impact Than The Movie.  
In Living Blood, You Might Say.**

You can do it, too. So far almost 1,000,000 people have done it. People who have different jobs, different IQ's, different interests, different educations have completed the course. Our graduates are people from all walks of life. These people have all taken a course developed by Evelyn Wood, a prominent educator. Practically all of them at least tripled their reading speed with equal or better comprehension. Most have increased it even more.

Think for a moment what that means. All of them—even the slowest—now read an average novel in less than two hours. They read an entire issue of Time or Newsweek in 35 minutes. They don't skip or skim. They read every word. They use no machines. Instead, they let the material they're reading determine how fast they read.

And mark this well: they actually understand more, remember more, and enjoy more than when they read slowly. That's right! They understand more. They remember more. They enjoy more. You can do the same thing—the place to learn more about it is at a free speed reading lesson.

This is the same course President Kennedy had his Joint Chiefs of Staff take. The same one Senators and Congressmen have taken.

Come to a free Speed Reading Lesson and find out. It is free to you and you will leave with a better understanding of why it works. Plan to attend a free Speed Reading Lesson and learn that it is possible to read 3-4-5 times faster, with better comprehension.

## **SCHEDULE OF FREE SPEED READING - LESSONS**

**You'll increase your reading speed  
50 to 100% on the spot!**

**SUNDAY THRU THURSDAY**

**4:00 P.M. OR 8:00 P.M.**

### **PHOENIX**

**DEL WEBB'S TOWNEHOUSE  
100 West Clarendon  
Near Indian School & Central**

### **TEMPE**

**HOLIDAY INN  
Corner of Apache Blvd. & Rural Road**

**EVELYN WOOD READING DYNAMICS**



## Returning students overload 'Ma Bell'

By Rosemary Schabert

The influx of ASU students into Tempe has doubled demand for telephone installations in the last two weeks, a Mountain Bell spokesman said Tuesday.

At the request of Associated Students, H.A. Clark, a phone company representative, was in the MU to take student orders for new telephones.

Clark said ASU students living in a four and one-half block area of W. Fifth Street in Tempe might have to wait until Oct 15 for telephone installation. New orders are being filled as quickly as present phones are disconnected, Clark added.

"They do have a facility shortage," Clark said. "But they've been able to release (fill) about 40 orders. Right now we don't have anybody waiting. But if they get any more in there, there will be a delay."

A phone company construction project scheduled for completion in mid-October will provide more service coverage for the area.

Clark said the addition of phone cable is an ongoing project in Tempe. New apartments mean new cable must be added, he said.

Applicants for service are placed on a waiting list and notified as phone connections are freed, according to Carol Gesell, a Mountain Bell business office supervisor working in the MU office. She said this year's addition of the tem-

continued page 18

# McCarthyites petition for spot on fall ballot

By Jayne Clark

Campaigners supporting former Sen. Eugene McCarthy's bid for the presidency have collected about 5,000 of the 6,000 signatures required to put their candidate on the Arizona ballot.

A spokeswoman for the Arizona Campaign for McCarthy said Tuesday chances are "pretty good" the group will have collected enough signatures by the Sept. 12 deadline. McCarthy is running as an independent.

"We've gotten good response around colleges," said Kathleen Zwirling. But he (McCarthy) doesn't have the money the Republicans and the Democrats have, so it's sort of a low key thing."

The Arizona Campaign for McCarthy will hold a meeting at 7:30 p.m. on Aug. 26 at the Lutheran Center, 1414 S. McAllister. The group also has scheduled a rally for Sept. 8 at the Lutheran Center with Peter Yarrow (formerly of Peter, Paul and Mary).

"Most of us are interested in cracking the shell of the Democratic and Republican parties," Zwirling said. "Liberal Democrats and Republicans are enough alike; we could pick up a lot of votes from both parties."

McCarthy, who lost the bid for the Democratic party nomination in '68 and '72, is

running to offer an alternative to the two main political parties and to raise issues, campaign workers said.

However, Charles Pine, state Democratic chairman, said McCarthy is a "spoiler," who has never forgiven the Democrats when they failed to nominate him as Lyndon Johnson's running mate in 1964.

"He's (McCarthy) a spoiler and he could cost us electoral votes," Pine said. "He'll make possible the election of Republicans."

Pine added he thinks McCarthy is campaigning for monetary reasons.

"The more exposure he gets now, the higher his lecture fees will be. I suspect there is monetary motive. McCarthy knows he doesn't stand a chance of winning," Pine said.

Zwirling denied the accusation.

"The Democrats and Republicans always yell 'foul,'" she said. "Somebody else in this country has a right to run."

New Optometrist Office

Near ASU Located in

Apache Plaza

1000 E. Apache Blvd. No. 117

Tempe, AZ.

Across from Sun Devil Lounge

**15% STUDENT DISCOUNT**  
on Frames, Lenses,  
and Contact Lenses.

967-8483 Dr. C. G. Tatham

994-1833 Dr. Barry S. Herndon

NOW OPEN AT  
NEW LOCATION

**Barry's  
Capezio**

DANCE — THEATRE RECREATION

2240 A. North Scottsdale Rd.  
(BETWEEN McDOWELL AND THOMAS)

Scottsdale

**DANCING SUPPLIES**

MR. & MRS. IRWIN KAUFAX

Grand Opening  
Special

Adult Leotards  
Ass't. Styles  
& Colors **\$3.00** each

Capezio's



**BUSHWACKERS**  
Two For One Beer

Mon.-Tues. 4-11 PM • Wed.-Fri. 4-7 PM

Now featuring **6** different tap beers!

LEGS CONTEST  
Ladies Night

Beer **10¢** A Mug

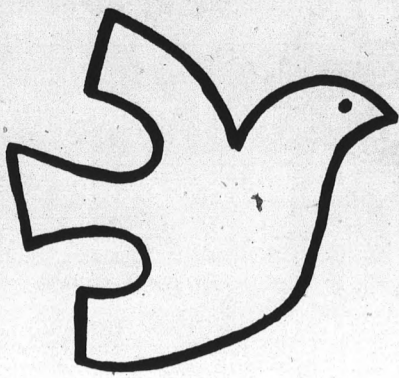
Wednesday, 9-11 pm

We also have 5 fine wines,  
ham and pastrami sandwiches  
served with buttery baby Lima beans.

**16mm MOVIES** and **FREE PEANUTS**

On the south side of Danelle Plaza  
(S.W. corner of Southern + Mill 967-5542)

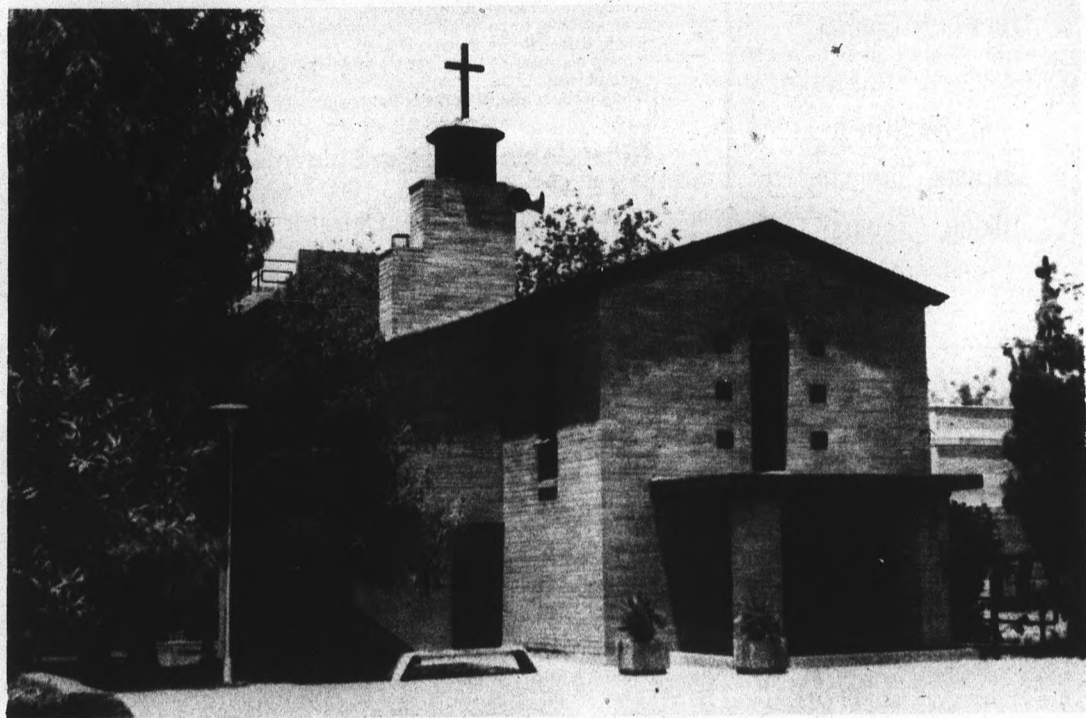




# Campus Ministeries

Serving Arizona State University

A paid supplement to the State Press — August 1976



Danforth Chapel

## Danforth Chapel

Just a stone's throw from the large fountain on Campus, the Danforth Meditation Chapel offers the A.S.U. Community a pleasant place to take a quiet, cool break from the business of rushing to and from classes. Once at the edge of the campus, the Chapel is now at the very center — opposite the Memorial Union Building and is the setting for many weddings, various memorial services for members of the university community as well as the site of worship services sponsored by Student Religious Groups.

The Chapel is open daily from 7:00 a.m. until 10:00 p.m. Coordination and scheduling of the Chapel use is handled by the secretary, Mrs. Alta Lockhart, in the Chapel Office (to the left of the main entrance). Mrs. Lockhart also functions as the liaison between the many campus ministers and students — making referrals and taking messages and directing persons to the different campus religious centers. The office is open on class days from 8:00 a.m. to 4:00 p.m.

## A Place Where Someone Cares

Are you searching for a special person with whom to share your joys, discoveries or sorrows? If you are, drop into Danforth Chapel and spend some time with a campus ministry staff member. A focal-point of the campus ministry is a sincere concern and interest in the lives of students.

Campus ministry staff members have backgrounds in theology to deal with religious questions. They are open to helping students in their individual searches for meaning or purpose in life. For those in search of assistance with personal problems, campus ministry members have qualified backgrounds in counseling.

All the religious organizations are concerned with helping students reach their maximum potential while at ASU. Many

programs are presented to challenge students intellectually while providing the means of spiritual fulfillment. Emotional well-being is also of primary concern.

Frequently ASU seems overpowering for the lone individual. One goal of campus ministry is to help students feel that they are important as individuals while on campus. The ministry is interested in assisting all students, with or without denominational background, in formulating their own personal life styles.

Campus ministry staff members representing all denominations are available for confidential conversation daily in the Danforth Chapel Office. Mrs. Alta Lockhart, secretary of the Chapel, is always eager to help students find their own

denominational campus staff or campus center.

All the campus centers sponsor a variety of events including films, camping trips, retreats and Bible studies.

### DANFORTH CHAPEL

Open

7 a.m.-10 p.m.

Daily

Telephone

965-3570

Mrs. Alta Lockhart,  
secretary



### Preference Cards Help Us Help You

Religious Groups on the Arizona State University Campus look forward to providing many services and activities meeting your spiritual/denominational needs. The PREFERENCE CARD (at right) will enable your Campus Religious Leader to inform you of services, events and activities that will be offered during this semester.

After filling out the coupon, clip it out and drop it off at any Campus mail location or in any A.S.U. Department, or in the box outside Danforth Chapel.

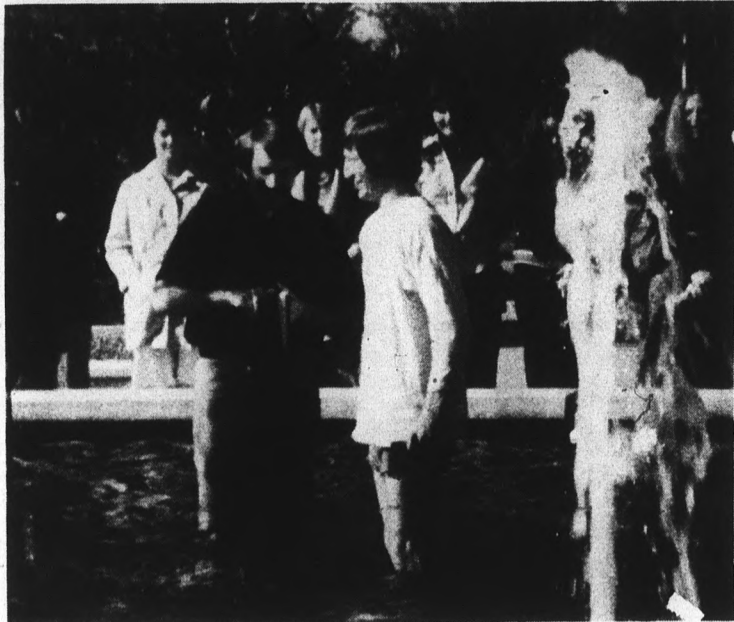
PLEASE Do Not Place In U.S. Mail —  
CAMPUS MAIL ONLY

### PREFERENCE CARD LIST

Last Name	First	Age
Local/College Address: Street City Zip		
A.S.U. (please circle) Fr. Sop. Jr. Sr. Grad. Other _____		
<input type="checkbox"/> American Indian Crusade	<input type="checkbox"/> Christian Science	<input type="checkbox"/> Lutheran [A.L.C./L.C.A.]
<input type="checkbox"/> Baha'i Faith	<input type="checkbox"/> Church of Christ	<input type="checkbox"/> Lutheran [Missouri]
<input type="checkbox"/> Baptist [American]	<input type="checkbox"/> Church of the Nazarene	<input type="checkbox"/> Lutheran [Wisconsin]
<input type="checkbox"/> Baptist [Conservative]	<input type="checkbox"/> Episcopal	<input type="checkbox"/> Methodist [Wesley]
<input type="checkbox"/> Baptist [Southern]	<input type="checkbox"/> Inter-Varsity Christian Fl.	<input type="checkbox"/> Quaker [Friends]
<input type="checkbox"/> Campus Crusade for Christ	<input type="checkbox"/> Hillel/Jewish	<input type="checkbox"/> Presbyterian
<input type="checkbox"/> Catholic [Newman]	<input type="checkbox"/> L.D.S.	<input type="checkbox"/> United Church of Christ [Cong.]
<input type="checkbox"/> Christian Church [Disc. of Christ]	<input type="checkbox"/> Christian Reformed Church	<input type="checkbox"/> Other _____

## GAMMA DELTA LUTHERAN CONGREGATION

(Missouri Synod)



—WASHING . . . NEW BIRTH

### WORSHIP

Sunday-11:00-  
Danforth Chapel

Communion: Bi-Weekly

### BIBLE STUDY:

Thursday-6:30 pm-  
Danforth Chapel

### FELLOWSHIPS:

Retreats, Camping,  
Hiking, "Tubing"  
and more!

IF YOU CHOOSE . . .

YOU MAY HAVE A - RICHER,  
MORE MEANINGFUL LIFE:

HOW?

JOIN US AT

*The Tempe LDS Institute*

- Where — Wholesome friends associate
- Where — Religious classes teach life's real meaning
- Where — You can socialize, sing, worship, recreate, relax, study, and grow spiritually with others with similar ideas.

THE BASIC PURPOSE of the Institute is to help students gain eternal life and find the joy that comes by living in harmony with the principles of the gospel of Jesus Christ.

*Join us for a memorable semester*

(across from the Law building)

## Baha'i Faith

The Baha'i Association is dedicated to the principles of unity: unity of mankind, unity of religions, and to the basic equality of all people, including both women and men. The Association is open to any A.S.U. students, and members of faculty or staff, regardless of religious or racial background, creed, sex, or national origin.

Fall plans include movies and informal discussions. The time and place of the film previews is still being arranged at press time.

Informal group "fireside" discussions will be held each Friday at 7:30 p.m. beginning September 3 in the Memorial Union Yavapai Room.

Those interested in joining the Baha'i Association are welcome to come to its first meeting, Friday, August 27 at 7:30 p.m. in the Memorial Union Yavapai Room; or write to:

Baha'i Faith  
P.O. Box 504  
Tempe, Arizona 85281  
or phone:  
839-2098

"The earth is one country  
and mankind its citizens."  
Baha'u'llah

## Jewish Hillel is...

- making a friend
- dropping in to Kibbitz
- making shabbos dinner
- prayer, singing and dancing
- a look into your past; the making of your future
- joining the campus Jewish community (there are 1500 of us!)
- attending at your desire — lectures, seminars, workshops, classes in Jewish study
- eating lunch in a comfortable lounge with friends
- keeping current on Israeli issues
- opportunities for study, work, travel in Israel
- participating in what interests you
- an opportunity to be in on the planning of programs
- making a Jewish life in today's world
- meeting and hearing guest artists and intellectuals from U.S., Israel and abroad
- joining a vocal unit of concern for Jewish interests on the A.S.U. campus
- camping trips, socials, travel
- joining a special interest group
- remembering and celebrating the holidays with

Hillel Union of Jewish Students  
213 E. University Dr. 967-7563  
Rabbi Barton Lee, Director



## Lutheran Center

Retreats are just one of many activities sponsored by the Lutheran Center at 1414 S. McAllister. Wednesday night Communion services take place every week at 9:30 p.m. in Danforth Chapel. John Peterson and Charlotte Hampton, staff members, can be contacted by stopping by the Center or by calling 967-3543.

## UNITED CAMPUS CHRISTIAN MINISTRY

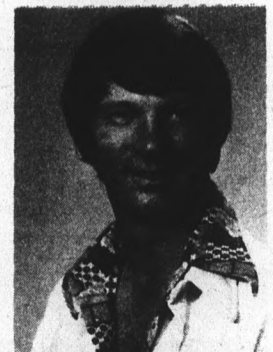
(United Presbyterian Church, U.S.A.;  
Disciples of Christ;  
United Church of Christ)

Worship and Communion 9:30 p.m.  
Wednesday evenings, Danforth Chapel

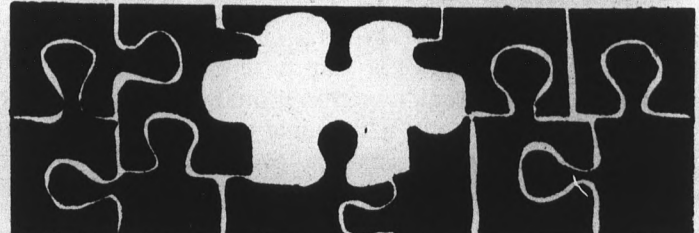
Plans for this year include: Bible Study, groups for sharing and individual growth, retreats, counseling, special musical and ecumenical programs.

I look forward to meeting you.  
Dick Pyke, Campus Minister

839-1608 Home  
965-3570 Danforth



## THAT MISSING PEACE



Tempe Nazarene 838-2887

Koinonia — Young Singles

3929 S. Rural Rd. 10:00 am 6:00 pm

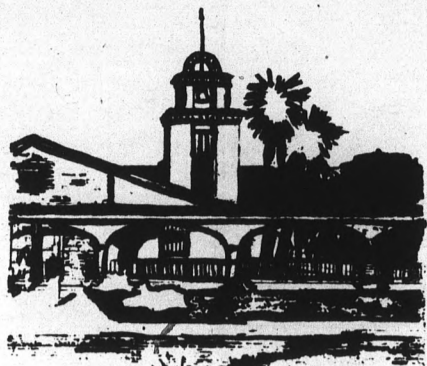
**CAMPUS MAIL ONLY**

**To: DANFORTH CHAPEL**

**Do not put in U.S. Mail**

Leave at any A.S.U. department  
or at Danforth Chapel, A.S.U.

# Adventist Student Koinonia



Welcome to the Church with a Campus Heart

Wants you for a friend

## ASK

wants to

- Listen
- Share
- Serve

Stop by for a get-acquainted gift and visit us at our table on the mall. Or phone 967-4022.

Pastor — Gordon Paxton

# Advancing for Christ

ADVANCE FOR CHRIST is just that, advancing with the message of Christ into a culture that has turned away from God. The activities and direction of Advance emphasize the Lordship of Jesus Christ and encourage the kind of fellowship that existed among the First

Century Christians.

Students from various religious and cultural backgrounds come together Sundays, Wednesday nights and Friday nights to study the Bible and apply what is learned to their lives on campus and in the dorms. What brings these students together is that each one has made Jesus Lord.

Jesus said, "They'll know you are my disciples by the love you have for one another." This love is evident at Friday night devotionals when 60 gather weekly to praise God in song and encourage one another in the Christian life. It is not just fun and games even though there are many smiling faces. They take their responsibility for one another seriously along with Christ's call to, "Follow Me."

Classes are taught in a challenging way by Ken Burford, director of Advance for Christ. They are available to anyone interested in a relevant study of God's Word.

## Advance for Christ

707 E. Broadway  
968-7847  
Ken Burford  
Campus Minister  
Kathy Williams,  
Women's Counselor

## Canterbury Club

The Episcopal Church is represented on ASU's campus through the **Canterbury Club**. This student organization meets Tuesdays at 9:00 p.m. for a folk mass in Danforth Chapel followed by a "rap session". After Spring Vacation members and their friends are invited to a weekend conference at the Episcopal Camp in Prescott, Arizona. For further information about Canterbury or the services provided by the clergy (counseling, baptism, confirmation, marriage), contact the acting chaplain, Fr. Robert E. Williams, at 964-5820 or at Danforth Chapel.

## Newman Center Celebrations

"Mass on the Grass"



A.S.U. Students celebrate the Lord Jesus in a joyful outdoor Mass at All Saints Newman Center on the corner of College Avenue and University Drive. The Newman Center is known throughout the Valley for its variety of Eucharistic Celebrations featuring contemporary folk music, blue grass/gospel songs, mariachi, and Gregorian Masses. The Newman Center is open each day and the Sunrise Coffee Shop — located in the Center — serves breakfasts and lunches each class day.

↑ **QUO VADIS BOOKS** ↑  
122-B E. UNIVERSITY DR.  
(in the Arches — Ph. 968-3663)  
**CHRISTIAN BOOKS**  
for The University Community  
RECORDS — GIFTS — CARDS

## New Beginnings

### At Wesley Foundation In Baker Center



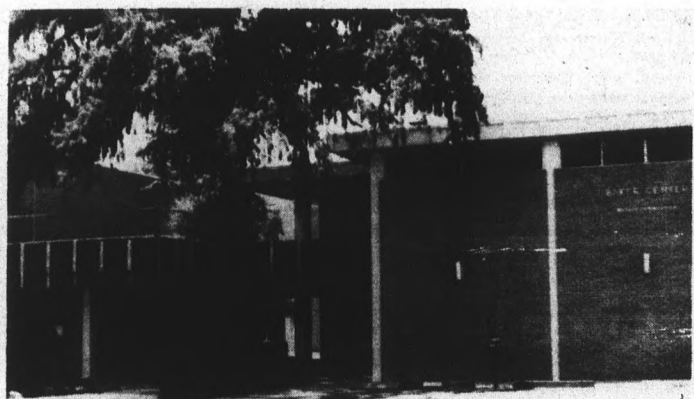
Wesley Foundation is located in Baker Center, 213 East University on the ASU campus next to the First United Methodist Church. While Methodist in background, the Wesley Foundation offers a

complete program for students of all faiths. Baker Center is a haven from the pressures of a large campus. Here, there is a quiet place to study and think, or a bustling place to make friends and enjoy the full social and religious program. Sunday Worship Services are at 9:30 and 11:00 with a Fellowship meeting Sunday evening at 6:00 p.m. The noon-time lunches are a great place to

make friends and meet faculty members. There is always a rap session going on at Wesley. This year there is a new Foundation Director, Darrell Weist, from the University of California, Riverside, via Sierra Leone, West Africa, where he has been for the past three years. You all come by and see how exciting things are at the **WESLEY FOUNDATION!!**

## IVCF

**InterVarsity Christian Fellowship** is a student-led group centered on an individual commitment to Jesus Christ and to each other. We encourage each student to grow towards maturity in Christ, to relate to the gospel message, and to determine God's role for him/her in the world. If you would like to join in on our activities, look for our posters on campus.



Baker Center 213 E. University Drive

## the MOCCASIN CLAN

A Fellowship of Christian Indians

1. Indians who believe God's Word is a lamp unto their feet and a light unto their path.  
Psalms 119:105

2. Indians who have been born into God's family.  
1 John 5:1

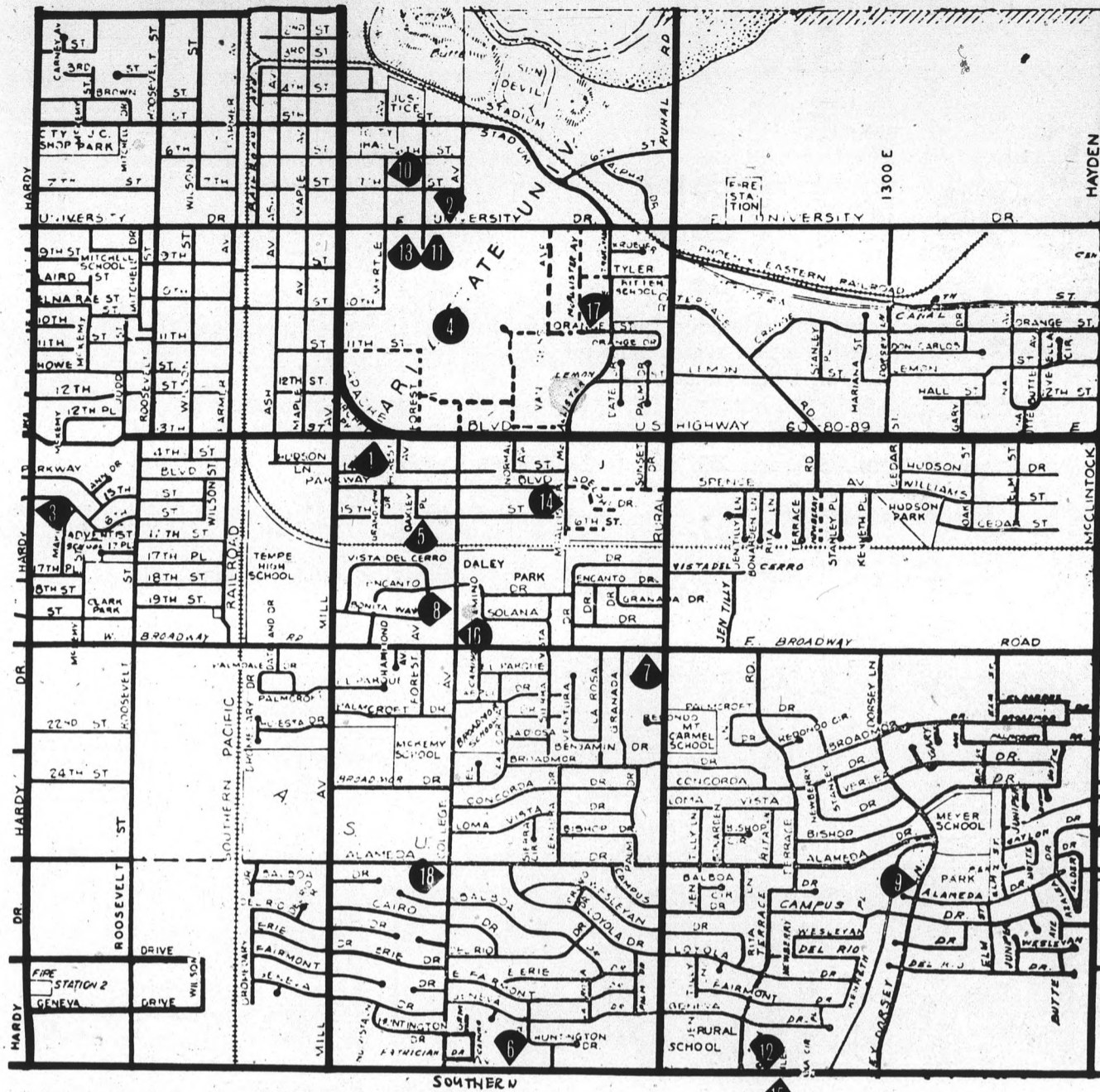
In days long past when arrows shot through the silent prairies, buffalo, moose, and antelope fell panting and dying under the sway of their quick sharp bite. The buffalo, the grassland, the arrow are all but gone, but there's one thing that is going to last forever -- God's Word.

It is sharper than a sword that cuts both ways, Hebrews 4:12-13 says, and no one can hide from IT!

I am the **WAY**, TRUTH, and LIFE, Jesus said. "No one can go to the Father except by Me." (John 14:6) Trails webbed and wound over knolls, through ravines to the water holes of the shaggy buffalo, but only **ONE WAY** leads to LIFE. **J E S U S** is The **W A Y**.

Sponsored by: American Indian Crusade  
"Serving Indian Students at ASU"

# A Limited Guide To Church And Religious Centers Around A.S.U.



NUMBERS INDICATE POSITION ON MAP  
★ NOT INDICATED ON MAP

★  
**Abiding Savior Lutheran Church**  
70 St. - 1/2 mi. south of McDowell  
Rev. Erich Hofer & Rev. James Hofer - 947-7495  
Sunday Services 8:30 am and 10:30 am; Sunday 9:30 am Adult Bible Study; Come hear Bob Turnbull 7:30 pm October 3-6.

1.  
**Adventist Student Koinonia**  
41 E. 13th St. — Tempe  
Gordon Paxton — 967-4022  
Better Living in the Bible 9:30 am, Sat.; Word and Worship 11:00 am, Sat.; Bible Fellowship Forum 7:30 pm, Sun.

2.  
**All Saints Newman Center**  
College & University — Tempe  
Dominican Chaplains — 967-7823  
Sunday Masses: Folk Masses at 10:00 am, 11:30 am & 6:00 pm, also 5:30 pm Saturday. School days: (M-Th) 11:40 am, Danforth Chapel; (M-F) 4:45 pm, Newman Center; (W) 9:00 pm Newman Center.

3.  
**American Baptist Church**  
1619 So. Hardy — Tempe  
Rev. Irven Johnson — 967-7303  
Sunday School: 9:45 am, Worship 11:00; 11:00 am, 6:00 pm Baptist Youth Fellowship; 7:30 pm Wednesday, Bible Study.

11.  
**American Baptist Student Ministry**  
213 E. University Dr. — Tempe  
Bruce McBride, campus coordinator — 968-4832  
Weekday lunches and Bible Studies. Weekend fun activities and informal fellowship

4.  
**American Indian Crusade**  
Danforth Chapel — A.S.U. Campus  
Doug Brown, Counselor, 963-3570  
Indian Centered Involvement:  
The Moccasin Clan — Indian Fellowship; The Moccasin Council — Indian Leadership.

★  
**Beautiful Savior Lutheran Church**  
1337 W. 11 St. (Priest & 11 St.)  
Rev. Martin E. Lundt — 967-2660  
Worship 8:00 am and 11:00 am  
Bible classes and Sunday School 9:30 am  
Mid-week Service 7:30 pm Wednesdays

5.  
**Campus Crusade for Christ**  
205 E. 15th St. in backyard  
Elmer Lappen — 968-1571/967-4351  
College Life Friday 8:00 pm (Corner of Mill and 13th St. — Tempe); Leadership Training 6:30 pm Tuesday (Office)

6.  
**Christ Chapel United Methodist**  
400 E. Southern — Tempe  
Marshall Lindsay — 967-6071  
A contemporary church service 10:30 am, Preschool during the week

4.  
**Christian Science College ORG.**  
Danforth Chapel — A.S.U. Campus  
Rick Froese, President — 968-6519  
Every Tuesday 7:30 p.m. Danforth Chapel for readings and testimonies — All are welcome to attend.

7.  
**Church of Christ**  
707 E. Broadway — Tempe  
Barry Walker & Ken Burford — 968-7847  
Worship: Sunday, 10:00 am and 6:00 pm; Bible Study: Sunday, 9:00 am and 7:30 pm, Wednesday, College Devotional: 8:00 pm Friday.

1.  
**Church of the Redeemer**  
Meets in 7th Day Adventist  
41 E. 13th Tempe  
Jack Turner/Elmer Hiebert — 945-9316/946-4467  
Sunday, 10:00 am, Bible Study-Worship.

8.  
**Community Christian Church**  
1/2 block N. of Broadway on College  
Ralph Wetherell, pastor — 967-5266  
Church School: 9:30 am (all ages); morning worship 10:30 am. Phone for details 967-5266. A "Disciple of Christ" Christian Church

★  
**Desert Haven Community Ch., RCA**  
1967 E. Palmcroft — Tempe  
Rev. Cornelius Mayskens — 966-0555  
Sunday School, 9:30 am; Worship, 10:45 am-7:00 pm  
Youth Program, 7:00 pm, Thursday; Bible Study, 7:00 pm Wednesday.

★  
**Episcopal Canterbury Club**  
322 N. Horne — Mesa  
Father Robert E. Williams — 964-5820  
Episcopalian Folk Mass Every Tuesday Night 9:00 pm, Danforth Chapel, ASU

★  
**Faith Evangelical Free Church**  
1251 E. Southern — Tempe  
Rev. L. D. Manlove — 838-6559  
Sunday School 9:30 am; worship 10:45 am; Evening Fellowship 6:00 pm, Sunday; Bible Study 7:00 pm Wednesday.

★  
**First Baptist Church of Tempe**  
4525 So. McClintock Dr. — Tempe  
Pastors: Milt Winterberg/Hubert Verrill — 839-0926  
Sunday School 9:45 am; Worship 11:00 am-6:00 pm; Family Night 7:00 pm Wednesday. Conservative Baptist Fellowship

9.  
**First Christian Church**  
2720 S. Dorsey Lane — Tempe  
Rev. Glen Vernon — 838-2424  
Sunday Worship 10:30 am and 7:00 pm; Sunday School 9:30 am; Bible Study 7:00 pm, Wednesday.

10.  
**First Congregational Church UCC**  
101 E. 6th Street — Tempe  
Russell Mueller, minister — 967-2275  
Church school and Adult Forum 9:30 am; Worship 11:00 am; College Fellowship 2nd & 4th Sun. 5:00 pm

11.  
**First United Methodist**  
215 E. University — Tempe  
Dorsey Allen and Darrell T. Weist, Ministers — 967-3374  
Sunday Worship 9:30 and 11:00 am; Sunday School 9:30 a.m.

4.  
**Gamma Delta Lutheran Congregation**  
Danforth Chapel, A.S.U. Campus  
Frank Anderson — 967-2660  
Worship 11:30 am Sunday; Bible Study 11:00 am Sunday; Bible Study 6:30 pm Thursday.

12.  
**Grace Community Church**  
Terrace and Southern — Tempe  
Guy Davidson, pastor — 968-3441  
Jim Wilson, college pastor — 838-3542  
Worship and Church School 8:15, 9:30, 11:00 am  
Wed. College Bible Study 7:15 pm; Church offers activities, camps, retreats

11.  
**Hillel/Jewish**  
Baker Center, 213 E. University Dr  
Rabbi Barton Lee — 967-7563  
Observance of Religious Holidays; Shabbat Services, call for time and place. Counseling on individual basis, call Rabbi Barton Lee for appointment. Programs covering a wide range of interests — religious, social and cultural.

13.  
**Inter-Varsity Christian Fellowship**  
123 E. University Dr., Suite 115  
Rev. Maynard Nieboer — 966-2598  
Meeting time: Fridays at 7:30 p.m. Location to be announced later in the State Press.

★  
**King of Glory Lutheran Church**  
2085 E. Southern — Tempe  
Roger Gordon and Joel Bjorkstrand — 838-0477  
Beginning Sept. 12: Worship Services 8:00, 9:00, 10:30 am; Christian Education 9:00, 10:30 am; Communion Services 8:00 am Every Sunday

14.  
**Lutheran Campus Center**  
1414 S. McAllister — Tempe  
Rev. John Peterson and Charlotte Hampton  
967-3543  
Lutheran Center open from 9:00 am-5:00 pm; Wednesday Communion at Danforth Chapel 9:30 pm

14.  
**Good Shepherd Lutheran Church**  
1430 S. McAllister — Tempe  
John Peterson & Charlotte Hampton — 967-3543  
Worship Celebration 10:00 am Sunday; Holy Communion 9:30 pm at Danforth Chapel, Wednesdays

4.  
**Quakers Tempe Monthly Meeting**  
Danforth Chapel, A.S.U. Campus  
Ralph Raymond, Clerk, 832-0811  
Meeting for Worship (Unprogrammed); Sundays 9:30 am Danforth Chapel, 10:30 am Discussion Group

15.  
**Southside Baptist Church**  
1001 E. Southern — Tempe  
Dr. Glenn Saul — 838-5700  
Terry York, minister of music and youth  
Sunday School: 9:30 am, Worship 11:00 am & 7:00 pm  
7:30 pm Mid-week Prayer (Wednesdays); 8:15 pm Adult Choir (Wednesdays)

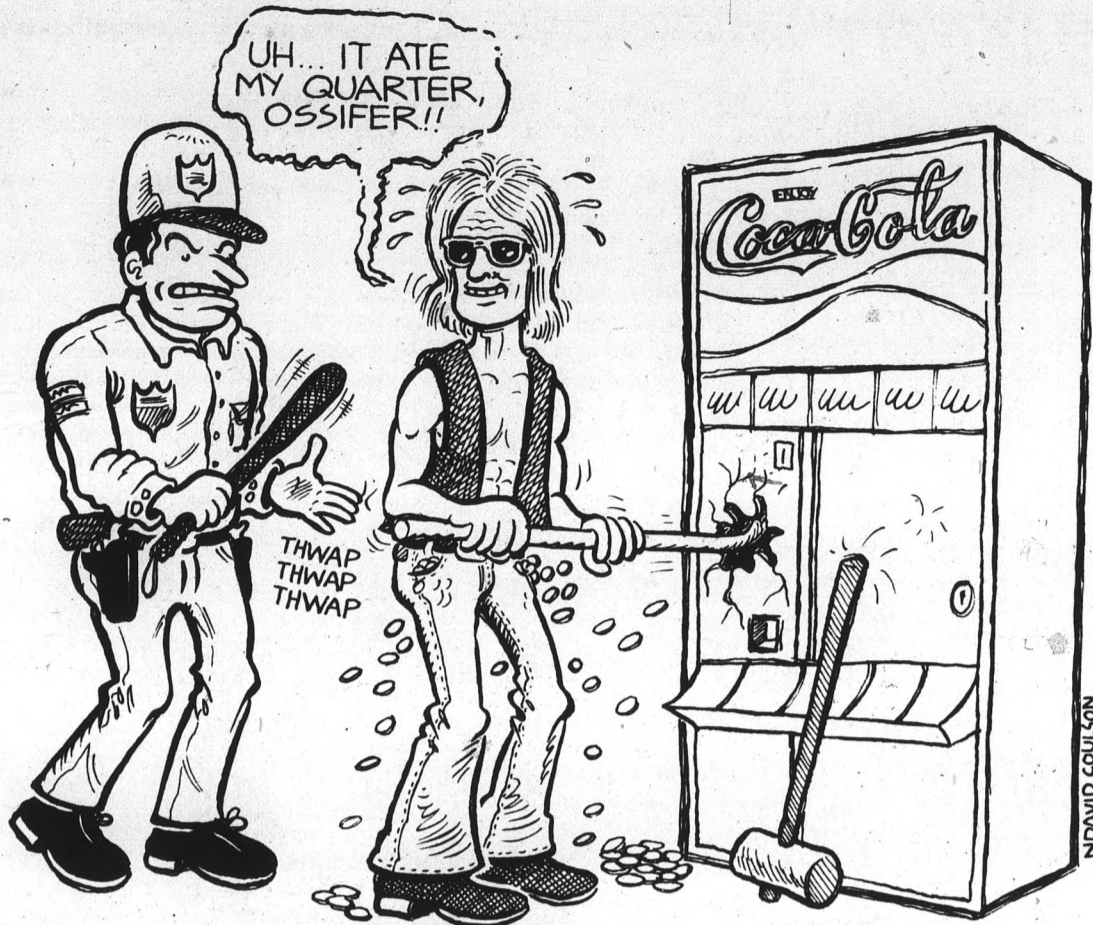
16.  
**St. Augustine's Episcopal Church**  
1735 S. College Ave. — Tempe  
Rector: Rev. Canon William Pottenger, Jr. / 967-3295  
Sunday 8:00 am, 10:00 am Holy Eucharist; Wednesday 7:00 pm; Bible Study and Eucharist

★  
**Tempe Church of the Nazarene**  
3929 S. Rural Rd. (Rural at Fwy.)  
Stanley McElrath, pastor — 838-2887  
Worship Services, 10:00 am and 6:00 pm; Young Singles Sunday at 11:15 am

17.  
**Tempe LDS Institute of Religion**  
947 S. McAllister — Tempe  
Clare Judy, Director  
Sunday Services: 9:00 am, 10:00 am, 5:00 pm  
Weekly Religion classes; Fall 1976 Registration: August 16-27.

18.  
**University Presbyterian Church**  
139 E. Alameda Dr. — Tempe  
William C. Howell, pastor, 966-6267  
Summer: Worship 9:15 am (Coffee — 10:15 am)  
Fall: (Sept. 12) Worship, 9:15 am, Church School 10:30 am; Winter: Worship 9:00 & 11:00 am, Church School 10:00 am.

11.  
**Wesley Foundation**  
213 E. University — Tempe  
Dr. Darrell Weist, campus minister — 967-8747  
Services in conjunction with First United Methodist: Sunday 9:30, 11:00 am; Fellowship Group 6:00 pm Sunday; noon Luncheon 11:30 am to 1:00 pm Thursday; Baker Center open 8:30 to 10:00 pm daily.



## Disabled drink machines 'repaired,' director thinks

Campus vending machines suffered several thousand dollars in damage in separate incidents this summer, Ed Hickcox, director of auxiliary services, said Tuesday.

Hickcox said he thought all campus machines are now operational. However, many machines remain unrepaired.

"Summertime is a peak time for van-

dalism, because not as many people are around to see it happening," Hickcox said.

Vending machine vandalism has increased significantly this year, he added.

"Only on very rare occasions are the vandals apprehended," he said. "Witnesses often don't report acts of vandalism and that just costs you and I more money as taxpayers."

## Student officers to outline plans for coming year

Associated Students is sponsoring a Labor Day weekend retreat at Camp Tontozona, near Payson, for students interested in working with ASASU.

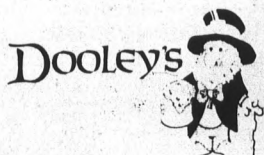
ASASU officers said they will plan goals for the year, and will be open to ideas and complaints.

A \$5 fee per student will cover bus transportation, lodging and meals. Students should bring their own sleeping bags.

The bus will leave at 2:30 p.m. Sept. 3 from ASU and will return at 3:30 p.m. Sept. 5.

Call 965-3161 or go to MU 208J for reservations and information.

IF IT DOESN'T  
FEEL FUN  
YOU'RE NOT  
AT



1216 East Apache, Tempe  
(3 blks. east of Rural)

## Book recounts Gammage events

The appearance of the African dancers from Mali at Gammage Auditorium during the 1967-68 season created quite a stir.

Should they dance bare-breasted in native costume, or wear what the company manager called "halter's?"

After considerable controversy, it was decided they should appear covered, much to the consternation of ethnic dance enthusiasts who felt the women looked ridiculous in white bras atop their native dress.

But attitudes change, and when the Dancers of Mali returned five years later there was no restriction on their dress and the performance was warmly received.

"The First Decade" by David B. Scoular, a history of events from the 1964 opening of Gammage through 1974, includes reminiscences about programs and famous personalities at ASU's center for the performing arts.

Scoular, now retired, was managing director of the hall during those historic years. He

quotes the great singers and orchestra directors who praised the auditorium's acoustical qualities. He also recounts many humorous anecdotes and discusses some of the problems encountered as well as the triumphs.

Among the most memorable events were the formal inaugural concert Sept. 18, 1964 by the Philadelphia Orchestra under Eugene Ormandy's direction, the funeral Jan. 29, 1972 of Arizona's Senator Carl Hayden, and the appearance March 30, 1972 of cellist Pablo Casals.

Of Hayden's funeral, Scoular said: "Many of the great of Washington attended, and the eulogy was given by former President Lyndon Johnson. Sen. Barry Goldwater spoke briefly and emotionally as he said 'goodby' to an old friend."

Copies of "The First Decade" are on sale for \$2.50 at the Gammage box office and the ASU Bookstore.

## COLLEGE GRADUATES

Why settle for a job when you can choose a career? You may qualify for a challenging profession as a

### LAWYER'S ASSISTANT

A limited number of applications are still being accepted  
For more information write:

### The Paralegal Institute

3201 N. 16th St. Phoenix Suite 11  
Dept. C. Phoenix, Ariz. 85016 or Call (602) 277-4877 or 264-2218.

**SkiHaus**  
ACTION SPORTS

## pack & racket sale



### TENNIS RACKETS

	Reg.	Sale
Spaulding Pancho Gonzales	\$27.95	\$19.95
Wilson Stan Smith	\$32.95	\$24.95
Spaulding World Open	\$32.00	\$24.95
Slazenger Signature	\$19.95	

### STRINGING

50% OFF Nylon Stringing for above Rackets!

### CLOTHING

Men's Tennis Clothing	20-40% OFF
Women's Clothing	20-50% OFF

### WATERSKIS

	Reg.	Sale
America's Cup Waterski Vest	\$32.95	\$19.95
Western Wood Funnel Tunnel	40% OFF	
O'Brien World Team Comp	30% OFF	
O'Brien Exhibition	20% OFF	
Maheja 2001	25% OFF	
DEMO WATERSKIS		up to 50% OFF

### BACK PACKS

The Original Ski Haus Action Sports Book Pack Two Bucks!!

	Reg.	Sale
Kelty Tour Pack	\$55.00	\$42.50
Kelty Tioga	\$81.00	\$69.95
JanSport Sack I	\$22.00	\$16.95
JANSPORT BACKSACK I	\$65.00	\$29.95
JanSport D-3	\$83.00	\$69.95
JanSport Great Sack	\$75.00	\$59.95
Alpine Products Nylon Bookpacks (Regular Great Price)	\$ 9.95	
Gerry Traveler Sack (Rigid Frame -2 Only)	\$75.00	\$29.95

### HIKING SHORTS

All remaining stock on sale up to 40% OFF

### PARKAS

MT Products 60/40 Mountain Parkas	\$35.00	\$24.95
Roffee Down Parkas	\$55.00	\$42.00
MPC Down Vests	\$30.95	\$24.75

### ACCESSORIES

Kelty Rain Gear	25% OFF
MT Products Down Booties	\$14.95 \$ 9.95
Sierra West Foam Pads	25% OFF
Class V - Class II Bag	25% OFF

2501 E. INDIAN SCHOOL—PHOENIX 705 S. FOREST—TEMPE

# ARTS & ENTERTAINMENT \*\*\*\*\*

The Cultural Affairs Board is offering a few interesting films in Neeb Hall this week. Director Paul Mazursky's **Alex in Wonderland** explores the surrealistic world with Donald Sutherland and Ellen Burstyn in tow. Federico Fellini appears in a cameo spot in this picture.

Richard Dreyfuss carries **Inserts** to a rather surprising finish. Playing a has-been boy-wonder of films, he turns to making shady films, adding his special touch through unorthodox methods of direction. The film schedule for CAB includes:

- AUGUST**  
 27. "Return of the Pink Panther". 7, 9:15, 11:30 p.m.  
 28 "Alex in Wonderland", 7 p.m. Open to the public without charge.  
 "Inserts", 9, 11 p.m.  
 29 "The Big Broadcast of 1938", 7 p.m.  
 "Tillie and Guss", 8:30 p.m. Both films are free to the University community.

marine." First showing starts at 5:30 daily.  
 "The Point" and "Tex Avery Cartoon Follies." Midnight showing.

without, except when specified in the schedule.

Advance tickets for specially designated films are available with your ID card at the MU Activities Center. A maximum of four tickets may be purchased on one ID card. There are no refunds or exchanges on movie tickets.

All tickets at the MU Movie House and Neeb Hall are \$1 with ASU I.D. card; \$1.50

## Discount tickets now available

Discount tickets for Valley movie houses are available to students, faculty and staff members of ASU through the Intramural Office in PE West.

Students must show current, validated ID to obtain the discount tickets. The intramural office offers half price or better off the regular prices at these theatres:

- |                                   |                                  |
|-----------------------------------|----------------------------------|
| Westwood Cinema Twin — 90 cents** | Camelback Plaza — \$1.25**       |
| Westdale — \$1                    | Shea Plaza Cinema III — \$1.25** |
| Hayden East — \$1                 | Los Arcos Cinema II — \$1.25**   |
| Valley West — \$1                 | Cine Capri — \$1.50              |
| Tower Plaza — \$1.25**            | El Camino — \$1.50               |
| Glenfair Cinema — \$1.25**        | Indian Drive In — \$1.50         |
- (\*\*Good Sunday through Thursday only)

Free discount coupons are also available to students, faculty and staff for the following recreational parks:

- |              |                            |
|--------------|----------------------------|
| Grand Prix   | Sea World                  |
| Phoenix Zoo* | San Diego Zoo              |
| Disneyland   | San Diego Wild Animal Park |
- (\*Has expiration date.)

Other discount tickets include the Oceanside Ice Arena (\$1.20) and Big Surf (\$1.75 in season).

Intramurals has recently added Phoenix Symphony concerts to its discount ticket list. These coupons entitle students to an additional 50 cents off the regular Symphony student fee of \$2 on any event. Faculty and staff grab \$1 off the regular ticket price. Tickets for the Phoenix Symphony range from \$4.50 to \$12.50 a ticket.

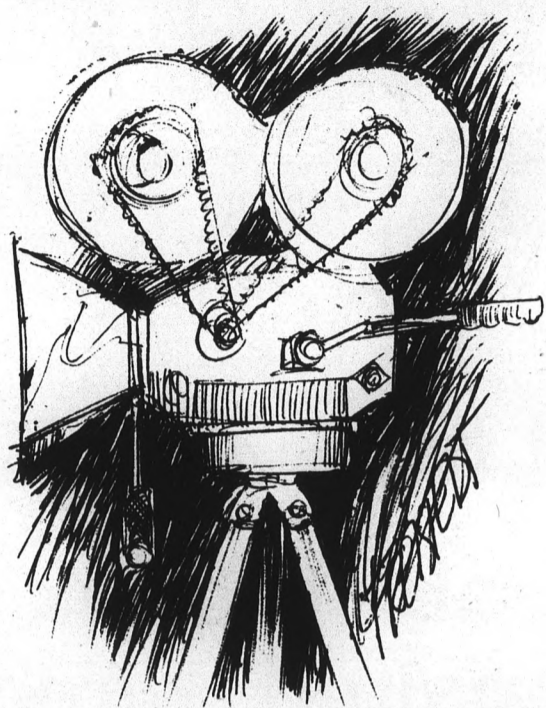
For additional information call the Intramural office, 965-5638.

The MU Movie House is offering the following films this week:

- AUGUST**  
 25 "The Maltese Falcon", 7, 9:30 p.m.  
 26-28 "The Black Bird", 7, 9:30 p.m.  
 31-Sept. 1  
 "The Key Plays of Pro Football" and 1975 ASU Football Highlights. 11:30 a.m. - 1:30 p.m. Free admission. Continuous showing.  
 31-Sept. 1  
 "Once Is Not Enough", 7, 9:30 p.m.

The movie listing this week for the nearby Valley Art Theatre, 509 S. Mill, includes:  
**AUGUST**

- 25-31 "Help!," "A Hard Day's Night," "Yellow Sub-



## 7 Beers for \$1

### INSTANT REPLAY



OPEN NOON to 1 AM

1858 E. Apache, Tempe

FOOSBALL TOURNAMENT

Every Wednesday

CASH PRIZES

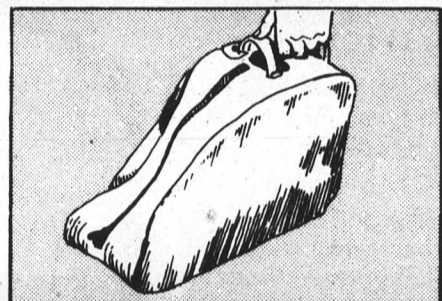
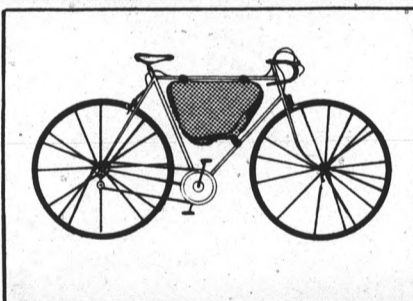
### MODERN JAZZ DANCE

with Marco Poshar  
 New York Teacher  
 95 E. Southern Ave.

In Valley Fair Shopping Center

Call 946-9677

## Get your books off your back!

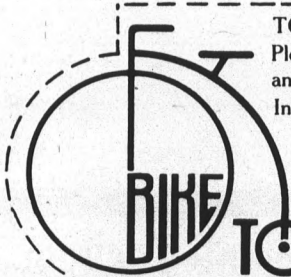


## The all new Bike Tote is a hand tote, too!

The Bike Tote is a durable vinyl carry-all that fastens securely to the frame of any 3, 5, or 10 speed lightweight boys bicycle, where it is safely out of the way. It's as light as a feather, but large and sturdy enough to zip in just about anything you'd need to carry, including text books. And the Bike Tote is waterproof so it cleans inside and out with only a damp cloth.

The Bike Tote is a hand tote, too! It comes off your bike as easily as it goes on... in seconds. When off, the Bike Tote is a handsome, easy-to-carry hand tote with dozens of uses. Use this attractive piece of luggage as a book bag, a swimming, tennis and skiing bag, and it's perfect as an overnight bag. So take the load off your back today, and put it in a Bike Tote that's a hand tote, too!

Special Introductory Offer: Only \$12.95 plus \$1.00 for postage and handling.



TO: Bike Tote • 610 W. Broadway, Suite 205 • Tempe, Arizona 85282  
 Please send me \_\_\_\_\_ Bike Tote(s) at \$13.95 each including postage and handling. Enclosed is my check or money order totaling \$ \_\_\_\_\_

Indicate quantity and color(s) you want. Allow 4 to 6 weeks for delivery.  
 \_\_\_\_\_ white \_\_\_\_\_ black \_\_\_\_\_ light blue \_\_\_\_\_ light yellow

Your Name \_\_\_\_\_  
 Address \_\_\_\_\_  
 City, State \_\_\_\_\_ Zip \_\_\_\_\_

AUG. 25-31 **BEATLES** \$1 BEFORE 5:30 MON.-TUES.  
**ROCK 'N' ROLL** Music

**Yellow Submarine** 8:40  
**Help!** 7:05  
**A Hard Day's Night** 5:30-10:10  
 509 Mill Ave., Tempe • 967-6664  
**VALLEY ART**

## GOLDEN TEMPLE

NATURAL FOODS RESTAURANT and HONEY ICE CREAM PARLOR

Complete Natural Food Menu

Sandwiches, Lunches, Dinners  
 Fruit and Vegetable Salads

East Indian Italian American Mexican Chinese  
 Dishes always available

### GOLDEN TEMPLE

Honey Ice Cream Parlor  
 Pure Fruit Flavors

Mon. 10 a.m.-6 p.m.  
 Tues.-Sat. 10 a.m.-12 midnight  
 Sun. 12-12

No Sugar  
 No Preservatives  
 No Artificial Color  
 No Artificial Flavor

GOLDEN TEMPLE  
 415 S. Mill, Tempe

Corner of 5th St. and Mill

Largest Selection of Birkenstock Sandals in Arizona

# Shows to move out of Lyceum

ASU Theatre productions in the Lyceum Theatre have broken out of that box office boiler room into the open.

William Akins, ASU director of theatre announced plans to abandon the Lyceum for the ASU Theatre's 1976-77 Main Stage series.

"The idea is to find larger and more attractive houses or facilities which would in turn attract larger audiences, offsetting the cost of moving the scenery or whatever," Akins said.

Akins said some of the faculty from the theatre department had gotten together and decided to make the move. He called it "an act of faculty."

Akins said plans call for using borrowed, adapted or rented facilities. "We hope, in addition, to dramatize the need for a more adequate theatre facility at ASU," he said.

The Lyceum has housed the University Theatre since 1962 but originally was built by the Works Progress Administration (WPA) in the 1930's.

Chronic problems of the Lyceum include no wings, no fly space, limited seating (170 seats), potentially hazardous wiring, poor lighting equipment, a tiny proscenium opening (24 feet by 10 feet), and a makeshift group of dressing rooms.

The basement has been flooded more than once in the past by leaking air-conditioning. Yet there is no running water to speak of or toilet facilities backstage.

"The primary reason for moving is to provide theatre students with adequate facilities for teaching technical theatre," Akins said.

Akins cited several advantages of other locations: use of better equipped facilities will challenge faculty directors and designers. It will also provide more sophisticated experiences for student performers and technicians.

The Main Stage Series opens at ASU in the Dixie Gammage Courtyard with Terrence McNally's "Bad Habits" on Sept. 23-26 and Sept 30 to Oct. 3. The show includes two satirical comedies by one of America's newest playwrights. William Dobkin will direct.

Next, the Scottsdale Center for the Arts will host Bertolt Brecht's classic, "The Good Woman of Setzuan," directed by James Yeater Nov. 4-6. This production concerns the plight of a generous woman favored by the gods who finds she can survive only by becoming hard and unfeeling.

Daniel Witt will direct "Anything Goes" at McClintock High School Theatre Feb. 2-5. It will feature comedy along with some of Cole Porter's best known songs. Since it is a cooperative show between University Theatre and the high school, net proceeds will be shared with the school's drama and music department.

Shakespeare's "The Tragedy of King Richard the Third," directed by William Dobkin, will be presented at the ASU Music Theatre March 31 to April 3.

Main Stage season tickets, offered at a considerable saving over individual purchases, are priced at \$11. Brochures and ticket information may be obtained by calling the ASU Theatre office, 965-7136.

Still, the Lyceum will not be left to rot. The building will be used for two student directed thesis productions, a faculty studio production and a full children's theatre production.



Photo by Marcia Joy Prouse

Members of the University Theatre will no longer have to contend with the leaky air conditioning or flooded basement of the Lyceum theatre building. The group will move out to open air shows and to other locations around the Tempe-Scottsdale area for its productions.

# EAT

deep dish pizza, juicy burgers, giant salads, homemade ringers, taters, and golden mushrooms — 15c hot dogs on Fridays 3:30-6.

# DRINK

frothy beer in frosted mugs, frozen fruit daiquiris, special prices during DOOLEY HOURS, Mon. - Thurs. 4-6.

# DANCE

to a live band EVERY night. No cover charge on FIDD [Friday is DOOLEY DAY] from 3:30-6. Watch a professional light show, cartoons, slides and flicks. Pitcher of COORS \$1.75, Well drinks 75c.

## Dooley's

1216 East Apache, Tempe  
(3 blks. east of Rural)



Open for Lunch every day at 11:30,  
Entertainment starts at 7:30

### \$1.00 OFF ON ANY PIZZA

Offer valid thru September 10, 1976

— MUST PRESENT COUPON —

We've added a new  
**SOUP & SALAD BAR**

to enhance our rich atmosphere and tasty menu. Entertainment nightly.



We accept your American Express, Bank Americard and Master Charge.

Fine Seafood

4455 SOUTH RURAL RD. • TEMPE

## Barclay Jacks



**Refreshing**

Photo by Brian Drake

Janet Loughrey, 18, enjoys a cool splash in the fountain near Gammage Auditorium.

## Special education show airs this fall

"The Exceptional Child," a television course which introduces the teaching of special education, will be offered this fall over KAET-TV Channel 8.

The program, designed and videotaped by Dr. John Nelson, associate professor of special education, features interviews with nationally known authorities in special education, dramatizations and taped visits to special education classes.

A different topic will be covered in each of the broadcasts scheduled to begin Sept. 16. Among them are behavioral disabilities, oral communication disabilities and visual disabilities.

One program, entitled the "Epilepsies," includes a dramatization of a youth experiencing an epileptic seizure, said Nelson, who said the telecast offers advice on how to handle individuals in such situations.

The course, which already has been taken by more than 1000 students, should be of interest to persons other than those who intend to enter the field of special education, said Nelson. He said many former participants were not regularly enrolled ASU students.

"The Exceptional Child" may be taken for three undergraduate credits and is a recommended prerequisite for most special education programs. It will be presented by ASU's Department of Special Education, KAET-TV and University Extension.

Besides watching the 13 broadcasts, slated for Thursdays at 7 a.m. and repeated Saturdays at 12:30 p.m., students will meet on campus three times for films, guest speakers and examinations.

**FEDO MTRS.**

• WE COME TO YOU •

COMPLETE TUNE-UP & REPAIR  
— 24 HR. SERVICE —

• AMERICAN  
• FOREIGN **964-1194**

## Residents of Ocotillo dorm find atmosphere 'relaxed'

By Tasha Kostantacos

A more relaxed atmosphere, dormitory security and apartment-like living are some advantages residents have found to living in Ocotillo Hall, formerly The College Inn.

ASU's Ocotillo Hall, which went into operation for the first time this fall, houses about 370 students in an adjacent coed living situation — similar to Best Hall.

Although he feels it is too early to evaluate the operation of Ocotillo Hall,

Dr. John Schuh, assistant director of housing, said the adjacent living is expected to work out well, especially with a large percentage of residents who have previously lived in dormitories and are familiar with escort and visitation policies.

The Ocotillo staff, according to Schuh are working on better communication methods with residents living in Ocotillo's five wings, two of which house women with the other

three housing men.

Ondre Williams, head resident of Ocotillo Hall, said the dormitory is well-designed for adjacent living and has not been changed physically except for the removal of cafeteria facilities. Ocotillo's residents run from freshmen to graduate students.

**IS YOUR ROOM DULL,  
DRAB AND COLORLESS?  
GIVE IT SOME PIZZAZZ  
WITH A marimekko  
WALL HANGING**

... OUTRAGEOUS DESIGNS  
... INCREDIBLE COLOR DESIGNS



7121 5th AVENUE  
SCOTTSDALE 994-1244

AN INCREDIBLE  
GIFT SHOP TO  
DISCOVER AND  
KEEP SECRET

*Payless Cashways*  
INC.

- • Decorative Cement Blocks
- • Particle Board Shelves
- • Hollow Core Doors (Slightly Damaged)

**Make Great Desks!!**

**Complete Line of Paint,  
Stains, & Accessories**

HOURS: 1171 S. RURAL RD.  
Mon.-Fri. 8-6  
Sat. 8-5  
Sun. 11-4  
TEMPE 967-3386

**10% OFF!**  
**BACK TO SCHOOL**  
**SALE!**

TO WELCOME NEW AND RETURNING ASU STUDENTS, HIGH ADVENTURE IS OFFERING A 10% DISCOUNT ON ALL ITEMS WITH PRESENTATION OF THIS AD.

OFFER VALID FROM AUG. 25 to SEPT. 3

- PACKS • TENTS • HIKING BOOTS • TOPO MAPS
- RENTALS • SEW-IT-YOURSELF KITS



**HIGH ADVENTURE**

1043 E. LEMON  
TEMPE  
968-2712

A **Holubar** SHOP

3925 E. INDIAN SCHOOL  
PHOENIX  
955-3391

## More about U.S. senatorial candidates

continued from page 1

In a free country, she said, the decision to have an abortion must be a free choice made by each individual.

Warner also said she supported President Ford's show of military strength in Korea following last week's killing of two American officers by North Koreans.

This is not the time to create a debate about troop reduction in South Korea. The United States must hold its position against North Korea, she said.

The United States should not go to war, she added, but it should not back down either.

DeConcini said he opposed any use of American troops to support the government of South Africa.

DeConcini said he could not conceive of a circumstance in which it would be in the best interests of the United States to act as the policemen of the world, nor use its troops to impose its will on other countries.

DeConcini also came out in support of capital punishment for certain crimes, like premeditated murder.

## Malfunctioning sprinkler cause of false alarms

Fire alarms that emptied Manzanita Hall three times Monday evening and Tuesday morning were caused by the same sprinkler system that extinguished a small blaze in the trash chute Sunday, Manzanita's director said Tuesday.

Ernie Califana said there was no fire and the sprinkler system did not spray water this time. The system will only spray if temperatures reach 120 degrees, he said.

The alarms were apparently caused by air that got into the sprinkler system after the sprinkler head was replaced following Sunday's fire, he said.

The air created pressure within the water system and set the alarms off, Califana said.

Plumbers fixed the sprinkler system Tuesday afternoon, he said, and added, "I hope there are no more problems with it — I'd like to get a good night's sleep."

DOONESBURY

by Garry Trudeau



Time Out

Photo by Brian Drake

Freshman Mary Halfmann and Bill Snyder take a break from class to enjoy each other's company.

There's only one thing worse than finding out you have cancer.

Not finding out.

American Cancer Society

THIS SPACE CONTRIBUTED BY THE PUBLISHER

EVERY

F.I.D.D.

(Friday is Dooley Day)

Dooley's

Live Band No Cover

15¢ Hot Dogs

3:30 pm - 6 pm

1216 East Apache, Tempe (3 blks. east of Rural)



UCLA vs. ASU, September 9th

DEFEAT OR VICTORY



ASU's Head Coach Frank Kush: 1976 Coach of the Year, ranks second nationally in winning percentage and spurred the "Devils" to an undefeated 12-0 1975 season.

Will this be the scene after ASU meets the UCLA Bruins?

Read Sun Devil FOOTBALL '76 for an in depth profile by Los Angeles Times sportswriter Mal Florence as he reviews the UCLA Bruins.

Sun Devil FOOTBALL '76 is not just a book about ASU football. It's a living documentary of the explosiveness hardships, gaiety, tension, spirit, tears and success that has lifted ASU football to its present national status.

Available at the ASU Bookstore, Student Book Center, Diamonds, J. C. Penneys and leading sporting goods and book stores throughout the valley.

Sun Devil FOOTBALL '76

Reaching for Number 1

now YOU can drive a racing car!



GRAND PRIX

GRAND PRIX FORMULA I RACING

1616 N. Hayden Rd., Tempe 949-7265

FOUR LAPS FOR ONLY \$2.00

WITH THIS AD AND STUDENT I.D.

Valid drivers license required. Limit 1 ad per person. Offer expires December 31, 1976.

STP 7-76

**More about**

**'Ma Bell' overload**

continued from page 8

porary on-campus office, in MU 208H, has helped alleviate the problem of student phone applications.

"It's easier for both of us this way," Gesell said. "They can't all get into the switchboard or the office at the same time. They get a busy signal, and it's very annoying. Here they can see other people waiting and we're all working."

The MU office can accept deposit payments only by check or money order. Students ordering phones with cash payments must apply at the Mountain Bell business office at 24 W. 5th St.

Gesell said the MU office has taken about 200 orders since opening Aug. 16.

Clark said he would help any student who is unable to obtain phone service. Students can drop by the MU office, which will be open until Wednesday, or call Clark at 834-2595.

**Classifieds  
Start  
Here**

**★ Personal**

FILL THOSE EMPTY SPACES with a plant. 10% off on all plants with student I.D. The New Leaf, Miller and Indian School Rd., Scottsdale, 48th St. and Southern, Phoenix and Baseline and McClintock, Tempe. 9-8

**★ Instruction**

GUITAR LESSONS, inexpensive, popular and rock, given by experienced musician. Call Scott, 967-7624. 9-1

**State Press**

**Classified**

**★ For Sale**

SELECTED STYLES 1/2 off ladies sandals. Back Door Shop, 707 South Forest, Tempe. 9-30

STEREO LP ALBUMS - Rock or Popular. Each factory sealed. Yours for only \$7.50 for 5 LPs or 12 LPs for \$15.00, our selection. Original list price \$6.98 per LP. Also, inquire about volume orders at extra special low prices. King Tapes, Dept. G, Box 4084, Mesa, Arizona 85201. 9-17

QUALITY MOBILE HOMES . . . Ideal for student living and pride of ownership. 12 x 55 Lynn Haven, 2 bdms, skirting, awnings, partially furnished, etc. Exceptionally nice, only \$5500. 12 x 65 Sahara, 3 bdms, 1 1/2 baths, skirting, awnings, storage shed, etc., only \$5750. Please phone Bob for your mobile home needs . . . 945-6812. 8-27

CHANGING HANDS BOOKSTORE has thousands of new and used books. 9 E. Fifth Street in downtown Tempe — next to Future Foods. 966-0203. 8-27

SKIS — 195 Head HRP's, 180 Olin Mark IV's, Nordica boots 8 1/2 Med. Best offer for one or all. Call Greg, 949-1188. 9-1

MOBILE HOME, 1972, 12 x 44, 2 bdms front and rear, one bath, set up in a conveniently located park. Space rent including gas, \$55 monthly. Only \$3600, firm price. Bob - 945-6812. 8-27

SELF DEFROSTING refrigerator and single waterbed complete, 966-2314. 9-1

SACRIFICE — Sale of entire apartment contents. Contemporary high quality. All reasonable offers accepted. 1133 W. 5th, Apt. 44, Tempe. 966-8994. 8-31

TEXTBOOKS WITH notes; QBA 161, MGT 463, CIS 302, HES 100, AC 101, AC 102, SOC 305, and others. 944-2481 evenings. 9-8

'68 DODGE POLARA, A/C, PS, PB, AM/FM stereo w/tape, has new tires, brakes, air shocks, alternator, voltage regulator, and more. Very clean. Great low-cost get-around town car. \$700/offer. George 273-1237 or 839-5275. 8-31

TEXTBOOKS WITH Notes: ADS 233, ACC 201, CIS 402, MGT 432, MKT 411, ACC 541, MGT 591, MGT 522, MGT 434, etc. 944-2481. 9-4

WELL BUILT Mobile, Phoenix. 10 x 48. Adult Park. Managers approval. No pets. Contact Box 1894, Prescott, 86301. \$3500. Furnished. 8-27

D-N-B TV REPAIR. Used blk. and whites and color sets for sale. Discounts for college students. 1248 E. Valerie Dr., Tempe, behind Big Surf at Miller and Valerie, 947-6212. 9-8

KIMBALL TRANSISTORIZED Organ, 12 Rhythm Stop, \$700. 948-1503. 8-27

FOR SALE: Trailer, good condition, 5 min. from ASU, Call 945-6434 (late at night). 8-27

**★ For Rent/Lease**

GF EAT FOR Grad student — two bedroom, unfurnished — carpets, drapes, built-ins. No Pets — Mesa — 3 miles from ASU. \$170/mo., 969-1506. 8-27

2 BEDROOM, unfurnished, pool and barbeque area, laundry, hook-up. \$260. 86th St. and Indian School, 948-6636. 8-31

ROOM, SCOTTSDALE, one or two girls, pool, refrigeration, \$50 each, 945-1170, 254-6421, ext. 271. 8-27

FOR RENT, Large house. 3 bedrooms, old fashioned brick, near State Capitol, Phoenix, ideal for 3 or 4 students. \$140 month, utilities extra. 247-8600. 9-1

**★ Help Wanted**

HAIRDRESSER with clientele. 946-7716. 8-27

EXPERIENCED HAIRCUTTER needed. 946-3789. 8-31

NO EXPERIENCE necessary, bartender and doormen, apply after 11 a.m. Monday, August 23 and after, no phone calls. College of Consumptive Arts, 1207 N. Scottsdale Rd. 8-31

SECRETARY — Part-time, for Hillel Union of Jewish Students. Monday, Wednesday, Friday, 9 a.m. - 1 p.m. Tuesday 9 a.m. - 2 p.m. Thursday 9 a.m. - 5 p.m. Excellent typing, shorthand an asset. For interview appointment, call 967-7563 between 10 a.m. and 4 p.m. 8-26

I NEED a certified Kindergarten teacher. Call me at 275-2361. 8-25

COORDINATOR INDIAN Education program. Requirements: California teaching credential or training and experience in providing instructional counseling or equivalent services to Indian population. May enable candidate to apply for California eminence teaching credential. Salary \$17,094 to \$22,220. Application closure date extended from Aug. 5 to Aug. 24 (agencies and placement offices please note extended application closure date). Apply Personnel Services, San Juan Unified School District, 3738 Walnut Avenue, Carmichael, CA 95608 or dial Mrs. Grant (916-484-2440). An Equal Opportunity Affirmative Action Employer.

HOUSEKEEPER WANTED — housecleaning, stay with two children (9 yrs. & 11 yrs.) from 3 - 5:30 or 6 p.m. M-F, cook supper. Must have car, two work references. \$25/week plus suppers. 838-1643 or Jerry, 267-4788. 8-27

LIQUOR SALES, 20 to 25 hours weekly. Must be pleasant, well groomed, and have at least 3 semesters remaining. Store in good area, N.E. Phoenix. Call 248-9615. 9-3

FREE LARGE private room with bath plus meals in lovely Scottsdale home in exchange for ironing and light house work. References required. 945-8135. 9-1

**★ Announcements**

"ASU NATIVE American Calendar" — Get your free copy today at AIC student information table. 8-27

Sun Devil FOOTBALL '76 is the most complete book on ASU football. KTAR-TV (NBC) Sports Director Ted Brown says, "It's the best publication he's ever seen . . ." The publication is available at the University Bookstore, Student Book Center, Hills Books and University Sporting Goods. 8-25

ARE YOU JEWISH? For FREE information on all Jewish activities on campus call Hillel, 967-7563. Free mailing list. No obligation. 8-26

WESTERN NIGHT. Square Dancing. Contemporary Dancing and bar-b-que supper sponsored by Hillel. Sat., August 28, 6:30 p.m. Daley Park. Call to make reservation, 967-7563. Fee \$1.00. 8-27

ARTISTS: "Join my co-op gallery" in Scottsdale. Save on commissions with T.L.R., Box 26805, Tempe, AZ. 85283. 8-26

MECHA would not debate us, nor would The Young Socialist Alliance, so Young Americans for Freedom cannot be all bad. For more info. write: YAF, 3001 W. Indian School Rd., Phx., Az. 85017. 266-0136

**★ Motorcycles**

1972 YAMAHA 650. Looks good, runs good. W/new battery. \$650. 967-0934 or inquire: PYB 150. 8-31

**★ Roommate Wanted**

ONE OR TWO female roommates to share two bedroom apartment near campus, 947-3904, call evenings. 8-31

ONE OR TWO female roommates to share two bedroom apartment near campus, 947-3904. Call evenings. 8-27

**★ Automobiles**

1974 VEGA HATCHBACK. New steel radials, radio, power brakes, steering, factory air, like new, \$200 under book value, owner 838-3407. 8-26

**Take Off Your Clothes!**

And get into something comfortable, like our recycled jeans and cut-offs. We have the best quality vintage clothes around . . . Hawaiian and western shirts, silks and satins, old velvets and antique Oriental goodies.

**R&M GENERAL STORE**

Rural at University  
[Next to Bo-Jo]  
FUNKY-TO-SWANKY OLD CLOTHES  
FOR GUYS & GALS  
9-9

**★ Wanted**

PROFESSIONAL ROCK Band needs exceptional vocalist (male), possibly plays keyboard or whatever. Call Phil or Ray, 968-3814. 8-31

**AIM FOR MORE !!!!!**

We pay top dollar for any clean vehicle. We will buy your auto outright or you can trade down for lower payments. Come to:  
5211 E. WASHINGTON  
IF YOU WANT A GOOD DEAL  
OR CALL 275-4444  
MAGOO'S AUTO SALES INC.

AUDITIONS, Sept. 4, 5. St. Barnabas, 6715 North Mockingbird La., Scottsdale. Benefit for the Arizona Leukemia Foundation at Scottsdale Center for the Arts. Dancers, tap and jazz, 11 a.m. Sept. 4. Singers and individual performers, 2 p.m. Sept. 4 and 5. Information 959-1550. 9-3

**★ Typing**

TYPING. BUSINESS College graduate. 65c per double-spaced page. By appointment. Anita 966-9088. 9-16

SPEEDY AND accurate. Elite or pica type. Good bond paper, carbon ribbon, grammar and spelling corrected if desired. Call Jane 968-9828. Near tennis courts. 12-3

DISSERTATIONS, THESES, Business, and Legal Papers, etc. Broad format experience near ASU. Patti 967-4937. 12-3

NEAR ASU. Research papers, theses, dissertations. English degree. Editing. Work guaranteed, 7 years experience. 967-8155. 9-1

**• VIRGINIA SLADE •**



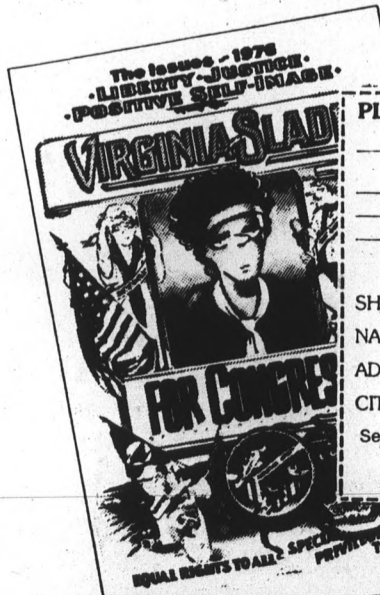
**FOR CONGRESS  
The STATE PRESS**

Your regional purveyor of Doonesbury, now offers to its readership, on an entirely exclusive basis, campaign collectibles of uncommon quality.

Virginia Slade may have lost a long-shot primary bid, but with her former Congressional opponent freshly disgraced, her prospects have taken on a bright, new look. As an independent candidate, Ginny is mounting a campaign that has already electrified her district and engaged the attention of political wizards across the country.

The pundits agree: Virginia Slade's fresh, new face has momentum. And now it can be found on tastefully designed campaign paraphernalia. If you believe in the Slade campaign, then get involved! Slip on a T-shirt, pin on a button, slap on a sticker, unfurl a 4-color poster! Get on the bandwagon that boogies, and so you don't forget, support Ginny Slade for Congress before midnight tonight!

Proceeds will partially benefit the National Women's Educational Fund of Washington, D.C.



**PLEASE RUSH THE FOLLOWING:**

Ginny Slade Campaign Kit @ \$4.95 each (Each kit includes: T-shirt, bumper sticker, campaign button packaged in confetti).  
18 1/2" x 29" 4 color campaign Poster @ \$3.50 each.  
\$ .75 Mailing and Handling charge Kansas Residents Add 3 1/2% Sales Tax.  
Total enclosed with order.  
T-shirt sizes: small medium large extra large  
(Make checks payable to DOONESBURY)

SHIP TO:  
NAME \_\_\_\_\_  
ADDRESS \_\_\_\_\_  
CITY \_\_\_\_\_ STATE \_\_\_\_\_ ZIP \_\_\_\_\_

Send your order to: Ginny Slade for Congress c/o The STATE PRESS  
6700 Squibb Road/Mission, Kansas 66202  
(Allow Three Weeks For Delivery)



4 COLOR BUMPER STICKER

4" CAMPAIGN BUTTON

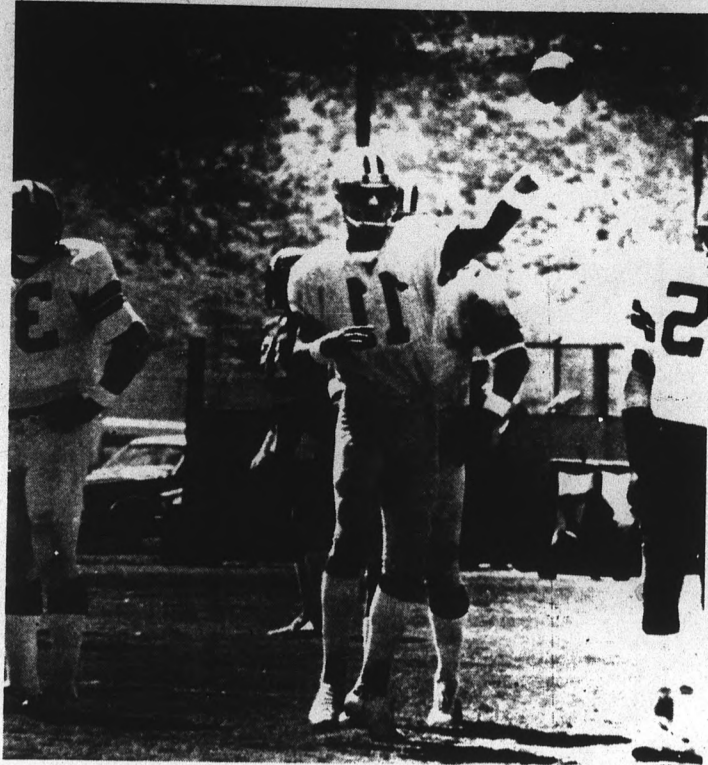


Photo by Marcia Joy Prouse

Danny White (11), shown here practicing at the Dallas Cowboys training camp in Thousand Palms, Calif., is the junior half of the only father-and-son combination to be inducted into ASU's Sports Hall of Fame. Danny played at A-State in 1971-73. His father "Whizzer" White played football from 1950 to 1953. Both were charter inductees in 1975.

# sports

## 21 ASU athletes gain top honors in Hall of Fame

By George H. McCaskey

This year ASU may have its best football team ever, with some of its best players ever — several of them will probably wind up in the school's Sports Hall of Fame.

Six former ASU football stars were among 21 athletes inducted last year as charter members of the school's Sports Hall of Fame.

Norris Steverson, Wilford "Whizzer" White, Charley Taylor, Curley Culp, Woody Green, and Danny White all met the general guidelines for induction of achieving "national acclaim for ASU through the vehicle of intercollegiate athletics."

Three baseball players, a softball player, two basketball players, four track men, a wrestler, two divers, a tennis player, an archer and a golfer round out the list of charter inductees.

Steverson was the first ASU athlete drafted by a professional team (by the Chicago Bears in 1934). In 1931, as an All-Southwest halfback, he led the Devils to the Border Conference championship. After working for over 30 years in the school's physical education department, he retired last spring.

"Whizzer" White led the country in rushing and all-purpose running in 1950. He was the first ASU athlete to receive All-American mention nationally and the first to win NCAA statistical championships. He played professionally for the Chicago Bears.

Taylor played halfback for the Devils in the early 1960s but switched to wide receiver when he joined the Washington Redskins in 1964. He was the NFL's Rookie of the Year that season. In 1975 he became pro football's all-time leading pass receiver with 635 catches.

Culp is the only inductee selected for his accomplishments in two different sports. While at ASU he was a first team All-American football selection. In addition, he was the NCAA heavyweight wrestling champ in 1967. While earning all-pro football honors with the Kansas City Chiefs he was probably best-known for his amazing strength. In 1975, while playing for the Houston Oilers, he was selected as the NFL's outstanding defensive lineman.

Danny White, Whizzer's son, quarterbacked the Devils to a 32-4 record and three Fiesta Bowl victories in his three-year career at ASU. He held seven NCAA records and was a first team All-American selection. He is now with the Dallas Cowboys.

Green was the first consensus All-American in ASU history and the first Sun Devil to rush for over 1,000 yards three straight years. He was a first-round draft selection of the Kansas City Chiefs in 1974.

Each of the 21 inductees has a plaque bearing his or her picture and the details of his or her accomplishments hanging in the Activity Center. The Hall of Fame, sponsored by the Valley National Bank, plans to add about 12 more inductees this fall.

WE WON'T PROMISE YOU MUCH  
JUST GREAT ENTERTAINMENT  
TERRIFIC FOOD, COZY  
ATMOSPHERE

Dooley's

THE REST WE LEAVE  
UP TO YOU

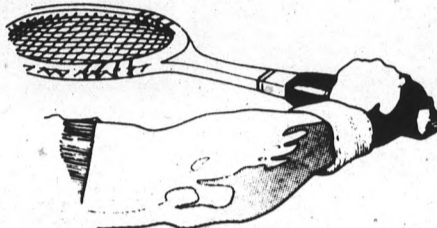


1216 East Apache, Tempe (3 blks. east of Rural)

# SMASHING SALE



FOR THE NET SET



## TENNIS RACQUETS

Wilson Jack Kramer Autograph	Reg. Price \$33.95
Wilson Chris Evert "Prestige" and "Baseline" Racquets	Sale Price <b>\$24<sup>95</sup></b>
	Reg. Price \$19.95
	Sale Price <b>\$15<sup>95</sup></b>

(Ideal racquets for the beginning player)

## LADIES T-SHIRTS

50% Cotton  
50% Polyester  
In Maize, Light Blue, Beige, Rose, Seafoam, Peach and White.

Reg. Price \$5.00

Sale Price **\$3<sup>49</sup>**

## TENNIS RACKET BACK PACKS

For the player who bicycles to the courts — available in several different colors.

ONLY **\$9<sup>95</sup>**

Tennis Dresses (selected group)

20%  
to  
40%  
OFF

MEN'S WILSON SHIRTS 30% OFF  
MEN'S White Stag Shorts 30% off

## LADIES PANTIES

Classy Lassy Tennis Panties

Cotton lined nylon panties in white, yellow and light blue.

Reg. Price \$4.50 - Sale Price **\$2<sup>99</sup>**

## Tennis Shoes

Adidas Nastase (men's) Reg. Price \$21.95 . . . Sale Price **\$16<sup>95</sup>**

Pony Ladies Canvas Shoes Reg. Price \$17.95 . . . Sale Price **\$12<sup>95</sup>**

We are happy to offer a free measurement for the proper grip size. Our store also features a "racquet testing area" where a player can actually try racquets out right here in the store.

This sale ends Saturday, September 4. Sale is subject to stock on hand. We reserve the right to limit quantities on advertised items.



FOR THE NET SET

Open Mon. & Thurs. 10 AM to 8 PM  
Tues.-Wed., & Fri. 10 AM to 6 PM  
Saturday 10 AM to 5:30 PM

1031 South Rural Road — Tempe — Phone 967-8861

## Cross-country Schedule

Date	Site	Opponent	Distance
Sept. 4	Tempe	Intersquad	4.0 miles
Sept. 18	Sedona	Northern Arizona	4.0 miles
Sept. 25	Las Vegas	Las Vegas Invitational	4.0 miles
Oct. 2	Tempe	UTEP-Arizona-NAU (men and women)	6.0 miles
Oct. 9	Tucson	Univ. of Arizona Inv.	6.0 miles
Oct. 16	San Diego	San Diego Invitational	6.0 miles
Oct. 23		(Open Date)	
Oct. 30	El Paso	U.T.E.P.	6.0 miles
Nov. 6	Tempe	Air Force Academy	6.0 miles
Nov. 13	Tempe	W.A.C. Championships	6.0 miles
Nov. 22	Denton, Texas	N.C.A.A. Championships	6.0 miles



Photo by Keary Cannon

### NURSING STUDENTS NEEDED



Beginning nursing students as well as graduates, any shift, any number of days, also weekends. Highest pay — no fee. Assignments in your own area.

**Earn while you learn**

**Nurses Central Registry**  
2536 East Indian School, Phoenix  
957-9031

# BACK TO SCHOOL

## COUPON VALUES

<p style="text-align: center;">COUPON</p> <p><b>BIG STICK PENS</b></p> <p style="text-align: center;"><b>3 FREE</b></p> <p style="text-align: center;"></p> <p style="font-size: small;">With \$2.00 Purchase REGULAR 39c EACH</p>	<p style="text-align: center;">COUPON</p> <p style="text-align: center;"><b>\$3.00 OFF</b></p> <p style="text-align: center;"><b>PRESCRIPTION PURCHASE</b></p> <p style="font-size: x-small;">Good for \$3.00 OFF on purchase of any two new or transferred prescriptions (or \$1.50 applied towards one Rx)</p>	<p style="text-align: center;">COUPON</p> <p style="text-align: center;"><b>"GET BAGGED"</b></p> <p style="text-align: center;">REG. \$1.45 lb.</p> <p style="text-align: center;"> <b>88¢</b></p>	<p style="text-align: center;">COUPON</p> <p style="text-align: center;"><b>BUTANE LIGHTER</b></p> <p style="text-align: center;">REG. 98c</p> <p style="text-align: center;"> <b>59¢</b></p>
<p><b>NOTEBOOK PAPER</b></p> <p style="font-size: x-small;">300 CT.</p> <p style="text-align: center;"><b>99¢</b></p> <p style="font-size: x-small;">MFG. LIST \$2.37</p> <p style="font-size: x-small;">LIMIT 2 WITH AD</p> <p style="text-align: center;"></p>	<p><b>DATA CENTER 300</b></p> <p style="font-size: x-small;">REG. \$4.19</p> <p style="text-align: center;"><b>\$2.13</b></p> <p style="text-align: center;"></p>	<p><b>JOT-A-NOTE</b></p> <p style="font-size: x-small;">REG. \$2.00</p> <p style="text-align: center;"><b>88¢</b></p> <p style="text-align: center;"></p>	<p><b>LUCITE WATCHES</b></p> <p style="font-size: x-small;">REG. \$19.95</p> <p style="text-align: center;"><b>\$8.95</b></p> <p style="text-align: center;"></p>
<p><b>SPIRAL NOTEBOOK</b></p> <p style="font-size: x-small;">70 CT.</p> <p style="text-align: center;"><b>4-SUBJECT</b></p> <p style="text-align: center;"><b>67¢</b></p> <p style="text-align: center;"></p>	<p><b>DESK ADDRESS BOOK</b></p> <p style="font-size: x-small;">REG. \$3.98</p> <p style="text-align: center;"><b>\$1.99</b></p> <p style="text-align: center;"></p>	<p><b>MEAD TYPING PAPER</b></p> <p style="font-size: x-small;">200 CT. REG. \$1.75</p> <p style="text-align: center;"><b>97¢</b></p> <p style="text-align: center;"></p>	<p style="text-align: center;"><b>WE'RE NEAR LOS ARCOS MALL</b></p>

Check Our Prescription Prices LIMIT RIGHTS RESERVED—SUBJECT TO AVAILABILITY

**MEMBER ARIZONA'S LARGEST DRUG CHAIN!**

**ADOBE UNITED DRUGS**

1029 N. SCOTTSDALE RD. (1/4 Mile South of McDowell) **945-9519**

AFTER LABOR DAY HOURS:  
DAILY UNTIL 9 PM  
SAT. UNTIL 5 PM  
SUNDAY NITE 6 PM-9 PM



### off and on

Midleguard Rocky Mataalii takes a quick breather during workout at Camp Tontozona last week. Mataalii quit the team Saturday, but then rejoined Monday. It was Mataalii who recovered the fourth quarter fumble against Nebraska in the Fiesta Bowl to sew up the game for the Devils.

### Drop us a line


This Thursday, and every Thursday this semester, the sports section of the *State Press* will print letters from our readers — just like on the opinion page.

Letters must be typewritten and double-spaced. The deadline for letters is 1 p.m. Wednesday. All letters should be brought to Stauffer Hall A137.

Letters should be as short as possible because the shorter the letter the better it makes its point. It also has better chances of getting printed. We reserve the right to edit portions of any letter.

Letters may deal with anything pertaining to sports.

**THE MUSIC MAN**

**Dooley's** 

1216 East Apache, Tempe  
(3 blks. east of Rural)