

summer  
**state  
press**

Tempe, Arizona

thursday

Arizona State University

Vol.1 No.3, June 17, 1976

*Despite year-old pullout*

## Students stuck with tab for public lectures series

By Pat Denley

University administrators apparently plan to use \$3900 in left-over Associated Students funds to pay all of last year's expenses of the University Public Lectures Board, although ASASU dropped support of the board over a year ago.

When informed of the idea, ASASU President Dave Braaten was told the money would cover half of the board's expenses, but it

spent a total of only \$3,912 last year, according to Dr. Frederick Giffen, its chairman.

"ASASU money is for ASASU programs. It's not a grab bag for the University," said Braaten.

Braaten talked about the \$3900 with George Hamm, vice president for student affairs, and Leon Shell, dean of students.

Hamm said to the *State Press* that he was told a few weeks ago by Jack Penick, vice president for business affairs, that \$3900 was needed from somewhere for the board.

Hamm said he assumed the \$3900 was half of the board expenses for last year, and that he understood the board had spent as though it had \$10,000, although action by

the student senate last year left the board only \$5,000 contributed by ASU.

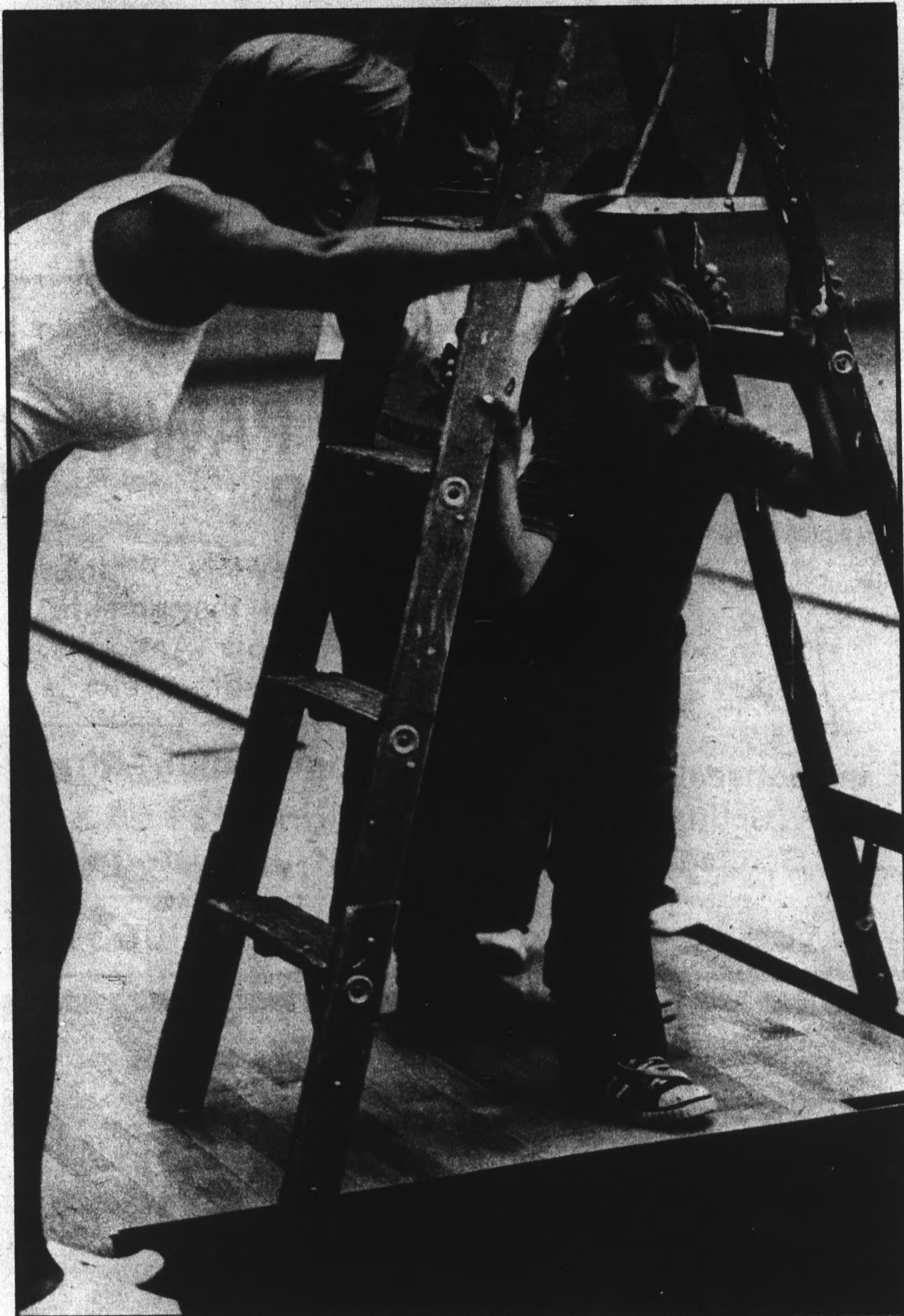
"I didn't have the money," Hamm said, "so it looks like it will have to come out of the fund balance" (unspent parts of the ASASU budget).

In spring '75 the senate voted to end an agreement with the University to give \$5,000 each year to the Public Lectures Board, matching \$5,000 from the University. ASASU expanded its own lecture program this year and spent \$16,000.

Student leaders complained students didn't have enough input into the board, although it has student members.

Hamm said the final decision on the \$3900 will be

continued page 2



Susan Hansen, gymnastics instructor for Kids Korner Kamp, explains the obstacle course route to Barty Leonard and Anthony Aranda. The kids participating in the Kamp are children of students, faculty and staff.

## Summer school for ASU kids

Summer School at ASU is for kids as well as grown-ups.

The intramural department offers an on-campus day camp for children of students, faculty and staff.

One two-week session is just ending, but another begins Monday. Sign-up deadline is today, June 17.

For a fee of \$15, the "Kids Korner Kamp" offers children arts and crafts, games, sports, movies and trips on and off campus. Kids meet weekdays

8:30 a.m. to noon. The price includes an orange t-shirt emblazoned with the Kamp's name.

The children, ages 6 to 12, also hear campus speakers and tour campus buildings.

Intramural workers are counselors for the Kamp. They are: Barb Grede, Cathy McClelland, Jan Bradshaw, Rich Ripley, Gene Frederick and Susan Hansen.

Kamp size is limited to 40. Sign-up is at the intramural office, Men's Gym lobby. Call 965-5638 for more information.

## Insurance victims form group to assist cause

By Britton Bloom

University employees left with unpaid medical bills by the collapse of the Arizona Health Foundation have formed a group to speak for about 3,000 former policy holders across the state.

Sheldon Gerard, chairman of State Health Insurance Victims (SHIV), said ASU employees met last week to form the group. Gerard is an ASU accountant.

"The point is to have one group representing the individuals who have outstanding liabilities (to AHF)," he said. "When the time comes to meet with representatives of the state, we can have one spokesman to represent our view."

The state personnel board's 3-2 decision in October to renew AHF's contract may be responsible for leaving some 70 ASU employees liable for \$50,000 to \$75,000 in medical bills, Gerard said.

The AHF, one of six companies providing health insurance for state employees, went into receivership March 18 when it could no longer meet its debts.

Gerard said the Health Advisory Committee recommended in October that the personnel board not renew AHF's contract as an insurance carrier.

The personnel board, however, renewed the contract

despite the warnings, Gerard said.

Merle Farmer, a member of the personnel board who voted to renew AHF's contract, said the state insurance commissioner showed the board that the company was alright. There was no implication that AHF was in financial trouble, she said.

After the company went into receivership, an Arizona Superior Court issued a temporary restraining order to temporarily stop doctors and hospitals from billing policy holders.

A hearing scheduled for July 23 will determine whether to renew the restraining order or make some party liable for the payments.

John Mangum, legal counsel to House Speaker Rep. Stan Akers, R-Phoenix, said Jack Trimble, director of the state department of insurance, and the state attorney general have taken the position that employees holding policies are not liable and do not have to pay. If the court rules that the policy holders are liable, the decision will probably be appealed, Mangum said.

Trimble, the receiver of AHF, said, "My stance, as director of (the department of) insurance, is to protect the guys who bought the insurance from any liability."

## Preregistration begins Tuesday

Early registration for the second five-week summer session will be Tuesday through Thursday June 22, 23 and 24.

Students can pick up packets and pay fees from 9 a.m. to 3:30 p.m. in the MU. Class cards will be available in department offices.

Regular walk-through registration for second session, day and night classes, will be 8 to 11 a.m. July 3 in the University Activity Center. Night students register from 6 to 8 p.m. July 6 in the MU.

Late registration and drop-add will be from 10 a.m. to 4:30 p.m. July 6 and 7 in the MU.

Currently, 13,327 students are registered and attending classes in the eight-week and the first five-week session. The total includes 251 students enrolled in 18 graduate and upper division ASU business, education and liberal arts courses being offered for the first time during the summer on the Glendale Community College campus.

More about

# Tab for lecture series

continued from page 1

made by the University Budget Committee soon.

"One of the problems we have is that students start a program and then dump it," as in the agreement over the lectures board.

Hamm said he talked to Linda LaGanke, last year's ASASU executive vice president, several times about University expectations of some student contribution to the lectures program.

LaGanke said, "That's news to me."

LaGanke and Rick Clark, last year's ASASU activities vice president, could recall

no discussion on the subject.

Clark said he knew some administrators were upset when ASASU decided to drop support of the University lectures program and focus on its own.

Board chairman Giffin, a history professor, was told, he said, in spring of '75 that students had pulled out of the program and that the board would have to get along on \$5,000 from the University. And it did so, he added.

But he said one problem worried him all year. No money was ever transferred

into the board's account and it operated — at least on paper — always at a deficit. But the checks he issued to speakers and for expenses were always honored, he said.

**THE WISE OLD MAN RETURNED FROM THE MOUNTAIN TOP TO INTRODUCE BOLTS TO THE PEOPLE...**

**FOR THE SPACE BELOW YOUR FEET**

**THE SECOND BASE**  
111 E. University — Tempe  
5625 S. Central — Phoenix  
8342 N. 7th St. — Phoenix

**IT'S OUT OF THIS WORLD!  
NOTHING LIKE IT EVER!**

**FORBIDDEN PLANET**

**PLUS FREAKS**

**IT'S THE MOST UNUSUAL HORROR FILM EVER MADE**

**Valley Art**  
509 S. Mill Ave. • 967-6664

**PG \$1.00 before 5:30 Mon.-Thurs.**

# Spectacle Shoppe



University Arches  
120 east university  
Tempe arizona 85281  
**966-9440**

Loan, Buy, Sell or Trade Anything of Value  
— NEW or USED —

## SAGUARO PAWN SHOP

Diamonds, Watches, Jewelry, Radios, TVs, Furniture, Musical Instruments, Appliances, Stereos, Tools, Antiques, Golf Clubs, Guns, Typewriters, etc.

**Special-Engagement Rings**  
**Wedding Rings \$34.95 & up**  
**Stereo Units from \$29.95**

in Scottsdale Plaza  
2200 N. Scottsdale Rd.  
Scottsdale

(1/2 block South of Oak) Phone 947-0639

\*\*\*\*\*

**M.U. SUMMER FILM FESTIVAL**

ALBERT FINNEY  
LAUREN BACALL  
MARTIN BALSAM  
INGRID BERGMAN  
JACQUELINE BISSET  
JEAN PIERRE CASSEL  
SEAN CONNERY  
JOHN GIELGUD  
WENDY HILLER  
ANTHONY PERKINS  
VANESSA REDGRAVE  
RACHEL ROBERTS  
RICHARD WIDMARK  
MICHAEL YORK

**AGATHA CHRISTIE'S MURDER ON THE ORIENT EXPRESS**

**THE WHO'S WHO IN THE WHODUNIT!**

**MEMORIAL UNION MOVIE HOUSE**  
**THURS. & FRI. 7:00 & 9:30 p.m.**

**TICKETS \$1.00 with Summer I.D.**  
**50¢ Children under 12**  
**\$1.50 Others**

Tickets Available at the Memorial Union Activities Center in Advance, or at the Door.

\*\*\*\*\*

**Special Offer Only At**

**1324 S. Rural Rd. - Tempe - 968-8757**  
**1329 E. Main - Mesa - 962-4233**

**BUY ONE PIZZA ANY SIZE ANY TYPE**

**GET THE NEXT SMALLER FREE**

**Tuesday Night Buffet 5-8**  
**Pizza, Spaghetti, Salad, Minestrone Soup \$2.29**

Buy one pizza, get the next smaller free. Bring this coupon and receive the next smaller pizza free (same number of ingredients) with the purchase of any size, any type pizza. One coupon per visit please. Valid thru JUNE 24, 1976

Good at two Locations:  
**1324 SOUTH RURAL RD., TEMPE 968-8757**  
**1329 E. MAIN, MESA 962-4233**

\*offer good to go

Veterans Affairs director:

# Confirm enrollment now

Veterans attending summer school who have yet to have their enrollment verified, must bring their green receipt cards to the Veteran Affairs Office (ASB 303) immediately or their benefits will be terminated.

Loren Corsberg, Director of Veterans Affairs, said many veterans are unaware that the enrollment verification is required. They could face delays in receiving checks or not receive money at all if they fail to notify the Veterans Affairs Office.

Corsberg said the University does not mail receipt cards to students who pay fees by mail. Veterans who paid summer school fees by mail can pick up their receipt cards at the cashier's office in the Administration building.

In order to receive advance pay for the fall semester, veterans must fill out a locator card by June 25. It usually takes about two months from the time the locator card is submitted until the first check arrives, so applications should be made as soon as possible.

Veterans who can't afford to pay the fee can sign a deferred fee promissory note. This allows veterans to postpone payment of fees until G.I. Bill benefits are received.

The Veteran Affairs Office is open from 8 a.m. to 5 p.m. daily during the summer. The office will be open until 8 p.m. on July 6 for night registration. For more information, contact Mary Lou Williams at the G.I. Bill office (ASB 303) or call 965-7723.

# Japanese industry may beat U.S. in solar energy sales

Japanese manufacturers may beat American firms to the punch in U.S. sales of solar-powered equipment to heat and cool homes, warned an ASU authority on solar energy recently.

Dr. Charles Backus, an engineering professor, said, "Solar energy research in Japan is moving strongly on all fronts and is making great strides in home heating and cooling units."

He added, "One firm predicts that in another two years it will offer solar equipment with the same guarantees and specifications as standard gear. If U.S. manufacturers have not progressed that far by then, we can look for importation of Japanese solar energy systems."

Nearly 2.5 million Japanese units for heating water are in use, Backus said, adding, "In Israel alone, there are 50 different makers for solar water heaters."

Backus spoke to 200 Arizona educators at an energy conference in the MU.

He said engineering applications using the sun as a source have been seriously pursued for 100 years.

Only the advent of the automobile and inexpensive gasoline and oil ended serious engineering investigation of solar devices.

"We tend to correlate solar energy with weather which is simply not correct," Backus said, "The solar energy available in most of the nation is at least 70 per cent as much as that available in Arizona."

He said some studies at ASU indicate that solar heating of

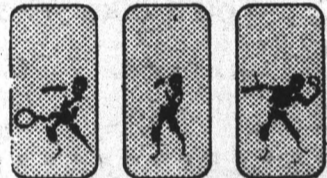
buildings will be much more significant in the northern part of the country because fuel savings will be greater per square foot per year.

"The cost of solar collecting devices is about the same per square foot in Minnesota as it is in Arizona," he added. "As a result, the impact of solar energy for heating buildings is going to

be very significant in the north, not in the south which has more raw solar energy."

Backus estimates that by the year 2000 solar energy will contribute 10 to 15 per cent of the nation's energy needs.

"Solar energy is not a cure all for all our energy," he cautioned. "We don't have energy alternatives... we need them all."



## MUEHLEISEN COURTS

---

AIR CONDITIONED Open To The Public

### STUDENT SPECIAL

**\$2.00** With Student I.D. per hour  
Until 4 p.m. and Weekends

---

### PRO SHOP SALE

ALL RACQUETBALL RACQUETS REDUCED

Only While Sale Lasts! All Models

<b>Ektelon</b>	<b>10% OFF</b>
<b>Vittert</b>	<b>20% OFF</b>
<b>Brum-Star</b>	<b>20% OFF</b>

Other Great Savings

- Ladies' morning exercise classes
- Economy cards now available
- Challenge courts now available (call for times).
- Reduced group rates for organizations, churches, businesses, etc.

1440 W. Broadway • Mesa • 964-1461

### CAMPUS CLEANERS & COIN-OP LAUNDROMAT

One Day Service on Dry Cleaning & finished Shirts

☆ Alterations
☆ Hand Ironing

☆ Suede & Leather Cleaning
☆ Fluff Dry • Wash • Dry • Fold

OPEN 7 DAYS A WEEK  
WE ALSO DO DRAPES AND RUGS

**Phone 967-9650 • Tempe**  
Corner of University & Rural Road



111 E. University  
Tower Center  
Behind Baskin-Robbins

The "IN SPOT" for  
Tops and Bottoms at Reasonable  
Prices

Overalls, Painter Pants

Levi & Wranglers

Custom Skirts

And our ever popular Re-cycled Denim Jeans at 4.99 and Cutoffs at 2.49

Great Bargains Everyday

966-7083
Mon.-Sat. 10-6

## Petite Genere JEWELRY

By George

618 S. College, across from First National Bank  
TEMPE, ARIZONA

### 968-1233



### Expert Custom Crafted Jewelry

DESIGNER & MAKER OF THE 1975 FIESTA BOWL RINGS FOR OUR WAC CHAMPS

ALSO DESIGNER & MAKER OF THE GOLD, SILVER & TURQUOISE MINIATURE SCULPTURE PRESENTED TO THE FIRST LADY, BETTY FORD, DURING HER VISIT TO OUR VALLEY ON MARCH 9, 1976

*We have the largest & finest selection of Diamonds & Colored Gem Stones.*


With the purchase of our settings, stones will be available to you at our cost.

Guarantee on our work backed by over 20 years of Swiss training and experience.


OPEN DAILY 9 a.m. to 8 p.m.

## EARS PIERCED FREE

## Only the best



IF YOU WALK IN IT, SLEEP IN IT, CARRY IT, OR WEAR IT, YOU CAN BE CERTAIN OF THE FINEST WORKMANSHIP, THE BEST FIT, AND THE MOST COMFORT WITH THESE TOP LINES FROM SKI HAUS ACTION SPORTS!



**KELTY**

*Vasque*

**JNSPORT**

### SkiHaus

**ACTION SPORTS**

2501 E. INDIAN SCHOOL • PHOENIX  
2823 E. SPEEDWAY • TUCSON  
705 S. FOREST • TEMPE

# Gameshow view of life satirized in "Adaptations"

If you've ever thought of life as one great big game show, you will enjoy Elaine May's "Adaptations," a one-act play being presented by the Southwest Ensemble Theatre in conjunction with the ASU Lyric Opera Theatre.

"Adaptations" is a spoof on traditional attitudes of society, successfully combining elements of humor and philosophy into an evening of clever ridicule of life and people.

The play is centered around the life of Phil Benson — played by Thomas Mastronardi — as he grows from childhood to adulthood.

The setting is that of a television game show. Phil is rewarded or reprimanded for coming up with the right or wrong answers in the game of life.

The game's host, played by Thomas Allard II, keeps the play flowing, and his imitation of a TV host is quite good.

The other two characters in the play, Peggy Thurston Scalise as the female player, and Keith Morris as the male player,

assume many different roles. Both switched costumes repeatedly to portray a variety of characters in Phil's life.

Morris is capable of mimicking many kinds of characters, and was the funniest in Sunday night's performance.

At times, "Adaptations" was

slow, especially when Morris was off-stage, but the finale is well worth waiting for.

Selections from "Thurber Carnival" were featured in the second portion of the show, starring the same cast. Morris was again the standout, and this portion seemed to move along

well with more attempts at "gut-level" humor than "Adaptations."

The last performance of "Adaptations" can be seen at 8 p.m. June 24. Tickets are available at the Music Theatre Box Office.

Arthur Moorhead

## DOONESBURY

by Garry Trudeau



### "How many people do you know who have been cured of cancer?"

Flip Wilson, National Crusade Chairman

Almost everybody knows someone who has died of cancer. But the fact is about two million living Americans have been cured. Not only cured but leading active, normal lives. Another fact is millions more could be.

By getting to the doctor in time. By availing themselves of the most effective treatments today. By advances made through cancer research. Research which is made possible with the help of the American Cancer Society.

To save more people, the American Cancer Society needs more money. So, please give. We want to wipe out cancer in your lifetime.

THE ORIGINAL **Deckers** FOR THE SPACE BELOW YOUR FEET

**NEW**

ALL SIZES & COLORS  
MEN'S  
WOMEN'S

**BACKDOOR SHOE SHOP**  
707 S. Forest 966-1772  
Tempe

Come Into **STANDARD OPTICAL**

You'll Like What You See!

Los Arcos Tri City    Tower Plaza South Plaza Christown    Valley West Mall Metro Center

**10% Student Discount at STANDARD OPTICAL 10%**

# THE HUB... we've got a lot to offer —

<p>● <b>HOT FOOD LINE</b></p> <p>ROAST BEEF, FRENCH DIP SANDWICH, SOUP &amp; VEGETABLES EVERY DAY, PLUS A WIDE VARIETY OF LUNCH AND DINNER ITEMS</p>	<p>HOT FOOD</p> <p>GRILL</p> <p>MEXICAN FOOD</p> <p>TO CASHIER</p> <p>TO CASHIER</p> <p>BEVERAGE ISLAND</p>	<p>● <b>THE GRILL</b></p> <p>FULL BREAKFAST MENU SERVED 7:00 AM UNTIL 10:30 AM</p> <p>LUNCH &amp; DINNER ITEMS</p> <p>TRY OUR ICE CREAM SUNDAES OR MILKSHAKES</p>	
<p>● <b>DESSERT BAR</b></p> <p>PIES, CAKES, PASTRIES YOGURT, BROWNIES COOKIES, DONUTS, AND MUCH, MUCH MORE</p>	<p>DESSERTS</p> <p>SALADS</p> <p>ENTRANCE</p> <p>COLD SANDWICHES</p>	<p>● <b>MEXICAN FOOD</b></p> <p>TACOS, BURROS, TOSTADAS, ENCHILADAS, CHEESE CRISPS, BEANS &amp; SPANISH RICE</p> <p>OUR MOST POPULAR AREA</p>	
<p>● <b>SALAD BAR</b></p> <p>CHEF SALADS, FRUIT PLATES, TOSSED SALADS, AND AT LEAST FIVE INDIVIDUAL SALADS EVERY DAY</p>	<p><b>THE HUB</b></p> <p>on the main level in the Memorial Union</p> <p>Hours: Mon.-Fri. 6:30 am — 3:30 pm</p> <p>"We've got a lot to offer!"</p>		<p>● <b>COLD SANDWICHES</b></p> <p>EVERYTHING FROM OUR HUB SUB TO PASTRAMI ON RYE</p> <p>10 KINDS IN ALL</p>

# ARTS & ENTERTAINMENT

## FILMS

"Murder on the Orient Express," starring Sean Connery, Lauren Bacall and Ingrid Bergman, will be shown at 7 and 9:30 p.m., tonight and Friday in the MU Movie House. Tickets are \$1 with a Summer I.D. and \$1.50 without.

## ☆☆☆

### PRODUCTIONS

ASU Theatre will present a double bill at 8 p.m., June 17 to 20 and June 24 to 27 in the Lyceum Theatre, featuring "The Wonderful Ice Cream Suit" by Ray Bradbury and "Lemonade" by James Predeux. Both shows are directed by William Akins. Tickets are available at the Lyceum Theatre box office.

"Adam and Eve" from the musical comedy "The Apple Tree," plus selections from such hits as "A Chorus Line," will be presented by the Off-Off-Off Broadway Group at 8 p.m. June 17 to 19; at 3

and 8 p.m. June 20; and at 8 p.m. June 22, 23 and 25 in the ASU Music Theatre. Directed by Kenneth Seipp and John Stone Porter, the presentation is part of ASU's Lyric Opera Theatre summer series. Tickets are available at the Music Theatre box office and Diamond's Select-A-Seat locations.

Roger Williams, dubbed Mr. Piano by some fans, will give a performance at 8 p.m., June 18 in Gammage Auditorium. Williams' easy listening music ranges from standards like "Autumn Leaves" and "Misty" to contemporary tunes. Tickets may be purchased at the Gammage box office and Diamond's Select-A-Seat locations.

An abstract theme of time will be the emphasis of a special hour-long show for children, "Will Today Be Yesterday Tomorrow," at 10 a.m. and 2 p.m., June 19 at 2 p.m., June

20 in the MU Arizona room. The show has been developed in improvisational style by "The Imagination Corporation," a group created to provide college students interested in child drama experience working with children.

"Adam and Eve," a one-act play based on Mark Twain's "The Diary of Adam and Eve," and the musical revue "Four Ugly Ducklings" will be presented at 8 p.m., June 17 and 19; at 3 and 8 p.m., June 20; and at 8 p.m., June 22, 23 and 25 in the ASU Music Theatre. "Adam and Eve," starring Christy Welty and Jeff Hammond, will be presented first and "Four Ugly Ducklings" will follow the intermission. The musical revue tells a story of four chorus girls in a psychological drama during theatre auditions, where the girls are alternately seen as ugly ducklings and lovely swans. Tickets are available at the Music Theatre box office and Diamond's Select-A-Seat locations.

## Jeff Beck unpredictable; explores musical idioms

There is one thing that nobody can disagree on concerning Jeff Beck; you can never predict what he's going to do next.

Friday night at the Celebrity Theatre, Beck, backed by the Jan Hammer Group, demonstrated his ability to explore a variety of musical idioms, and the audience was with him every inch of the way.

After the warmup act, a British band called Upp, Jan Hammer and his group did several selections of their own.

Hammer, best known to most as a member of the original Mahavishnu Orchestra, is a keyboard player with unlimited ideas. He has a jazz-oriented approach to playing, and a strong classical feeling is detected in his compositions.

Beck joined the group on the third number, and from that point on, Beck controlled the direction of the concert.

He played several numbers from "Blow By Blow," an instrumental album that gave hint to Beck's jazz abilities. Hammer and Beck exchanged ideas as if they had been playing together for years.

Beck is not a master of technique when it comes to playing the guitar, but he is capable of projecting many different moods. This is where the thrust of his success lies. It

will be a while, however, before hard core jazz audiences accept Beck as a serious voice in the direction of jazz/rock guitar.

Arthur Moorhead

STATE PRESS is published by Arizona State University Tuesday through Friday during the academic year, except holidays and examination periods. Entered as second class matter at Tempe, AZ 85281.

### HYPNOSIS HELPS!

#### IMPROVE

- Memory
- Concentration
- Personality
- Lose Weight Easily
- Explore Incarnate Lives

#### POSITIVE SUGGESTION INSTITUTE

LINDSAY BRADY  
HYPNOTIST

968-9035

## THE WAREHOUSE

(Formerly Panini's)

### "Good Food & Drink"

Live Entertainment  
Every Fri., Sat. & Sunday  
Till 1 AM  
—NO COVER—



130 E. University — Tempe  
966-7788 (in the Arches)

Light & Dark  
Beer on Tap  
—Wine—  
—Carryouts—

Happy Hour  
Mon. thru Fri.  
3 to 6 p.m.

1/2 Gal. Pitchers,  
\$1.50  
Mugs 35c

Open Daily 10:30 a.m.  
to 11 p.m.; Fri. & Sat.  
10:30 a.m. to 1 a.m.;  
Sun. Noon to Midnight

Visit Our New Store

## Colonial Ice Cream

- SUNDAES
- CONES
- HANDPACKED ICE CREAM
- SHAKES

Choose From Over 45 Delicious Flavors

915 E. Broadway, Tempe 966-8950  
In the Lucky Shopping Center

Open From 11 AM to 10 PM

SPECIAL! WITH THIS COUPON

Double Scoop Sundae

49¢ Your Choice of Topping  
Reg. 85¢

[Good Thru. Aug. 15, 1976]



Who Do You  
Buy Your  
Diamond  
From?



Brilliant



Marquise



Oval



Emerald

## NEW ARRIVALS!

clothing & jewelry

123 East University, Suite 116  
Tempe, Arizona

APOLLUX



FREE NO APPOINTMENT NECESSARY \$3000 MICROSCOPE ON DISPLAY FREE

## stylus, cartridge & turntable CLINIC

Audio Specialists will check your stylus cartridge and turntable FREE! And present you with a free gift of a stylus pressure gauge. Why ruin your fine record collection? Have your equipment checked out now — FREE! And pick up your free gift.

TEMPE  
McCLINTOCK  
AT SOUTHERN  
838-3611

Clinic held Monday to Friday

AUDIO SPECIALISTS Sound & Video Experts Since 1950

## Couples communicate in course

An ASU communication professor — expert in the way people can brighten their lives by learning to say what they mean to their closest companions — is teaching a class on how to improve communication between couples.

Dr. Jerry Buley, assistant professor on the communications faculty, will teach communications skills and exercises in behavior modification during his six-session non-credit extension course "Communicating as a Couple."

The course will help partners learn to talk to their spouses about their deepest feelings; to set down sensible rules for their relationship now and for what they want it to be in the future; and to cope successfully with communications problems.

Emphasis in the course, according to

Buley, is on strengthening and maintaining relationships, on changing problem relationships and on handling conflict.

Communications graduate Jean Smith will join Buley in lecturing on — then showing by simulation and practice — how a "skills approach" to better communication works.

The course is open only to couples, and practice in communicating will be on a one-to-one basis between man and woman — not in "group encounter" style, Buley said.

Fee for the instruction is \$60. Class starts July 6 and continues July 8, 13, 15, 20 and 22, from 7 to 9:30 p.m., in room 412 of the Stauffer building.

For pre-registration instructions or information, contact Buley at 965-7319, or the communications faculty office, 965-4797.

## Atomic waste disposal demands care

Disposal of nuclear waste calls for careful planning and new ideas, according to Dr. William Bishop, waste management chief for the U.S. Nuclear Regulatory Commission.

Bishop spoke last week at an energy conference in the MU before 200 Arizona educators.

"Oddly, the majority of trash presently in need of disposal from the commercial sector does not come from nuclear power facilities," he said. "The largest volume, though less dangerous, comes from other users of radiation materials such as industrial processors and medical users."

Bishop said scientists should consider various technologies for geological disposal, space disposal, transmutation, and seabed disposal.

"Alternatives include the four traditional elements . . . earth, fire, air, and water," he said. "Right now, most scientists lean toward earth disposal, but haven't ruled out some phases of sea disposal."

Waste must be kept in a way that isolates it from the environment until harmful radiation drops to an innocuous level.

"For long-lived nuclear waste, burial deep in the earth is best," he said. "However, the ocean may be best for short-lived

material that is difficult to solidify."

There is one type of radioactive waste which deserves special mention because it is virtually incapable of removal, to a

repository or burial ground, he added.

"That is the decommissioned, but still slightly contaminated nuclear facility itself.



### THE BUFFALO EXCHANGE

Recycled Clothing

Buying — Selling — Trading  
11 E. 5th St., Tempe  
968-2557 — Closed Sun. & Mon.

### ALRIGHT! CHECK THIS AD!

● Super High Performance  
**RIVER TUBES**  
in Basic Black **\$2<sup>95</sup>**

● **CANVAS RIVER SHOES**  
These Already **99¢**  
Have Character.

**PLUS! PLUS! PLUS!**  
Sunglasses, Waterproof Bags And  
876 Other Useful ?? Items.

**CHECKERBOARD ARMY & NAVY STORES**  
1126 W. MAIN — MESA 834-7047



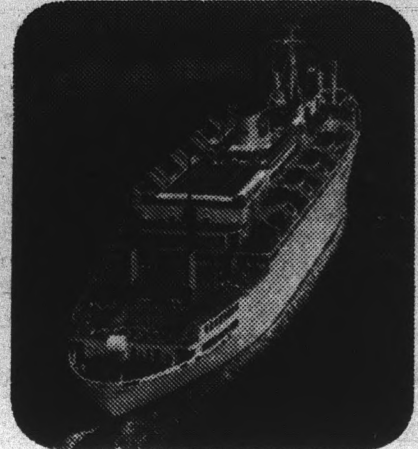
Next to the Firehouse Restaurant  
1617 Apache Boulevard  
Tempe, Arizona 85281  
Phone (602) 968-2616

**Furnished One Bedrooms - Studios**

62 UNITS  
21 ONE BEDROOMS — 41 STUDIOS

## SEMESTER AT SEA sailing again in February

The S.S. Universe Campus sets sail February 25, 1977, on a new series of Semester at Sea voyages for undergraduate students. The Spring 1977 voyage is around-the-world from Los Angeles.



For information write

**INSTITUTE FOR SHIPBOARD EDUCATION**

Suite 303B, 23521 Paseo de Valencia  
Box 2726, Laguna Hills, CA 92653

State Press

## Classified Ads

### ★ Automobiles

1970 CARMANN GHIA, original and perfect throughout. \$1900 or best offer. 966-5086. 6-17

1975 CAMARO, like new, only 11,000 miles. Yellow, stick shift, stereo and tape, call 959-5237. 6-17

### ★ Work Wanted

HOUSE SITTER. Reliable, experienced teenager will tend your lawn, pool etc. while you vacation. References. Please phone Ted 966-3328 between 6:30 a.m. and 8:00 a.m. or 5:30 p.m. and 7:30 p.m.

TOUGH HOUSEHOLD job? Strong, reliable, experienced teenager will pitch in. Wash windows, clean carport, shampoo carpets, whatever. References. Please phone Ted 966-3328 between 6:30 a.m. and 8:00 a.m. or 5:30 p.m. and 7:30 p.m.

### ★ Typing

NEAR ASU. Research papers, theses, dissertations. English degree. Editing. Work guaranteed. 7 years experience. 967-8155. 8-5

SPEEDY ACCURATE elite or pica. Dissertations, theses, term papers. Near campus. Call Jane 968-9828. 8-5

### ★ For Rent/Lease

WESTSIDE TRAILER park. Five minute walk to campus. \$95/mo. Gas, water paid. 968-0270. 6-24

WALK TO spacious carpeted refrig. apartments. Pool, laundry facilities, BBQ, parking. 966-2156, 967-1677, Art. 8-24

### ★ Wanted

GRADUATE NURSING student wants to rent small house for two years. Dog OK. Near campus for bike. Decent price. Good karma. Late July/Early August. References. Please call collect 402-342-2640 after 5 pm or write M.L. Haberman, 1110 So. 30th Ave. #6, Omaha, Nebr. 68105. 7-15

### ★ Instruction

TUTORING BY junior English major in 101, 102, 103, 312, and 321. Reasonable rates. Laura 947-0214. 7-1

ACTING FOR camera Intensive Workshop, \$50, 996-5749. 7-8

TUTORING MATH, Statistics, Chemistry, Physics and Fortran Programming. Call 838-3374. 7-29

MATH TUTORING, avoid crisis now. Experienced part-time college professor. Small groups OK. 838-4038. 8-5

### ★ For Sale

SELECTED STYLES 1/2 off ladies sandals. Back Door Shop. 707 South Forest, Tempe. STERLING INTERNATIONAL "Masterpiece" pattern four places plus extras. 60% below retail. 966-5086. 6-17

### BUTLER'S

Used Furniture • Antiques  
Buy • Sell • Trade  
Student Discount on Reg. Price  
225 W. Univ. 968-6800

### ★ Help Wanted

WORK PART-TIME answering phones, nite and weekend hours are available. Apply at Pennysaver, 1034 West 23rd Street (between Priest and Hardy, one block south of Broadway). 6-17

STUDENTS WITH suspected hearing loss to serve in auditory perception experiment. Approx. 10 hours/week at \$3/hour. Call 965-7287. 8-5

HOUSE PARENTS for boys residential treatment center. \$10,000 a year 963-8139. 7-8

MAKE EXTRA dollars on your own time. Sell attractive pet identification tags. Carol 839-4391. 7-15

EARN \$250 in spare time! Details: Send SASE to: Cairns, 1522 Alberta Street, Dayton, Ohio 45409. 7-15

TEACHERS WANTED: west and other states. Placements since 1946, bonded. Southwest Teachers Agency, Box 4337, Albuquerque, N.M. 87106. 6-17

### ★ Lost/Found

FOUND: BLACK lab/mix longhair female, 5 mos. ASU 945-5741. 6-17

### ★ Services

#### MRS. O'NEAL

Psychic, Palm and Tarot Card Reader, Tells Past, Present and Future. Helps in All Matters. One Free Question Over Phone.

966-0881

#### Singles — Students Divorced Seniors

We have apts, homes, townhouses to share. Live better for less. Many listings, National city to city relocation services available. Students 1/2 price with this ad.

#### ROMMATE FINDERS

since 1972  
263-0266

### ★ Personal

LOOKING FOR low cost jet fares with reliable service? Need information on international travel? Let Intercontinental Travel Service assist you. 107 Girard Blvd., SE, Suite L, Albuquerque, NM 87106. (505) 255-6830. 8-5

NEVER GO hungry! Lose weight realistically like the skiers do. Send one dollar to Ski Team, 10203 Santa Monica Blvd. 303A, Los Angeles, CA 90067. 7-29

WANT A cool roommate for the summer? Rent a two-cubic-foot refrigerator at United Rent-Alls, 3414 S. Mill, Tempe 967-1649. 6-17

### ★ Travel

INTERCONTINENTAL TRAVEL Service offers the lowest jet fares to Europe, Asia, Africa, South America. Eurail passes, etc. 107 Girard Blvd., SE, Suite L, Albuquerque, NM. (505) 255-6830. 8-5

### ★ Real Estate Sale

TOWNHOUSE, 2 story, 2 bedroom, large master bedroom, carpets, drapes, refrig, disposal, brick patio; 4 blocks north of Southern on Alma School Road. \$21,000 or \$3000 CTM. 834-5532. 6-24

# Experts in sports medicine to present 5 day workshop

Experts in sports medicine from Arizona, California and Washington will offer five afternoons of information on the topic June 21 through 25 during a special workshop and seminar at ASU.

Making presentations daily from 1:40 to 4:30 p.m. in the Great Hall of the College of Law, the speakers will treat the team physician, sports conditioning, athletic training preparation for schools and colleges, the female athlete and nutrition.

The first day, Dr. Henry A. Newman, a urologist; Dr. P. J. Nichols, orthopedic consultant to the Suns; Dr. Douglas Brinkerhoff, D.O., team physician at Shadow Mountain High School, Phoenix; and Dr. Richard W. Abbuhl, a lawyer specializing in the forensic and legal aspects of medicine, will discuss, respectively: "Sports in Warm Weather"; "Musculo-Skeletal Injuries"; "Special Situations"; and "Medicolegal Aspects."

On June 22, William J. Stone,

chairman of the Department of Health, Physical Education and Recreation, will explain "Aerobic and Anaerobic Conditioning." ASU's weight room director, William A. Kroll, will discuss "Strength Training."

Workshop co-director and physical education chairman Prof. James E. Odenkirk will outline "Student and Faculty Trainer Systems" from the ASU viewpoint. Michael Shimensky, Paradise Valley High School athletic trainer, Del Tanner, Los Angeles Lakers basketball team trainer, and other Valley coaches, trainers and students, will speak further on the subject during the June 23 session.

"The Female in Athletics" will be sole topic June 24 for Dr. Keith D. Peterson, director of the Sports Medicine Clinic in Seattle, Wash., team physician for Seattle Pacific College and medical consultant to National Basketball Assn. teams.

Peterson's wife Marilyn, a nutritionist at the Sports Medicine Clinic, will talk about

"The Athlete's Diet" during the final three-hour meeting June 25.

The seminar is open to all for one hour of ASU credit — at a fee of \$57 — or for no credit, for \$35.

For enrollment information and instructions, call Dr. Odenkirk in the physical education office, 965-3151, or University Extension, 965-6563.

## REAR ENGINES Ltd.

### VW-PORSCHE

Discount Parts—Service

VW tune-up 19<sup>95</sup>

Parts & Oil Included  
Rebuilt engines from \$170

504 N. CENTER, MESA

833-3670

# University Father's Day sporting goods Specials

## WILSON TENNIS RACKETS

Chris Evert Auto  
Jack Kramer Auto  
Billie Jean King Auto  
Now Only

Strung With Top-Quality Nylon String  
Reg. \$39.95 Each

**\$29<sup>95</sup>**



With Coupon Only  
Good Through 6-24-76

TEMPE CENTER -  
UNIV. & MILL AVE.

Mon. - Fri. 9-9, Sat. 9-6 966-1633

## ASU geographer traces Phoenix's growth history

An ASU geographer will trace the growth of Phoenix into a major city in a lecture tonight.

Dr. Charles Sargent, assistant professor of geography, will explain "The Evolution and Contemporary Problems of Greater Phoenix" at 7:30 p.m. in the Pinal Room of the MU.

This is the second program in a four lecture summer series and is open to the public free.

Future programs include "The Development of Cities in Latin America" on June 24, and "Evolution and Contemporary Problems of Greater Buenos Aires, Argentina" on July 1.



## GINO'S PIZZA

WE DELIVER

966-4666, 966-5542

MON. - THURS. 5-1

FRI. & SAT. 4-2

SUN. 3-12

822 South Mill

now YOU can drive  
a racing car!



GRAND PRIX

GRAND PRIX  
FORMULA I RACING

1616 N. Hayden Rd., Tempe  
949-7265

**FOUR LAPS  
FOR  
ONLY \$2.00**

WITH THIS AD AND STUDENT I.D.

Valid drivers license required. Limit 1 ad per person. Offer expires July 7, 1976

STP 6-76

## THE DIAMOND PEOPLE

With 11 Years Experience "In the Arches"

# Joseph M. Berning JEWELRY & DIAMOND CUTTING

MEMBER AMERICAN GEM SOCIETY



Buying, Selling, Appraising, Cutting, Repairing

130 E. University Dr.

967-8917

**SPECIAL!**  
**\$1.19** per DOZEN  
WITH THIS AD  
(Offer Good Thru June 23, 1976)

1035 S. Rural  
Tempe  
Open  
24 Hrs.  
A Day



**'Four ugly duckings'**

"All I need is music and a mirror and I'll dance for you," say cast members of the musical revue, "Four Ugly Ducklings," to be staged this month by Arizona State University's Lyric Opera Theatre. From left are Christy Welty, Terri Halderman, Marilyn Sommer and Michele Fiorito.

*Polynesian*  
**LIQUORS**

6743 E. McDowell Rd. (Corner 68th St.)

**PLANNING A PARTY?**  
Call us, we offer —

- Cold Keg Beer & Equipment
- Liquor • Ice • Case Discounts
- Fine Wines & Champagne
- Wine Well — Chills Wine in 3-6 Min.
- Convenient Drive-In Window

947-2352

**PAPA JAY'S**  
*Authentic New York*

Student Discount  
Mon. thru Thurs.

**PIZZA** PAPA JAY'S  
SICILIAN SANDWICHES

THICK CRUST — All our Pizzas hand made!  
TAKE OUT OR EAT IN  
TRY OUR DELICIOUS  
DINNERS & SUBMARINES

Open 4 P.M. - 1 A.M. Sun. - Thurs.  
4 P.M. - 2 A.M. Fri. - Sat.

SERVING MICHELOB  
COORS • BUDWEISER • SCHLITZ  
We Deliver Beer!

**804 S. ASH, TEMPE**

½ Blk. S. of University  
NEW! Game Room! NEW!



FREE DELIVERY  
AFTER 5 P.M.

**967-9689**

**Need help?**  
**Call us.**



Red Cross.  
The Good  
Neighbor.

**CARPET  
SPECIALS**

9 X 12 used rugs — \$7.50

All Sizes in Stock

**CARPET  
HOUSE**

1516 E. Van Buren, Phx.

**SUMMER  
FORMAL**

**CASUAL JUMPSUIT**

By Vicky Vaughn

As Seen in Seventeen



**Celia's Fashions**

TEMPE CENTER

"Try Celia's First"

**GAUZE SHIRTS**

The coolest cloth around. Perfect for hot summer wear or, if an accident happens tear it up and make bandages. Many colors.

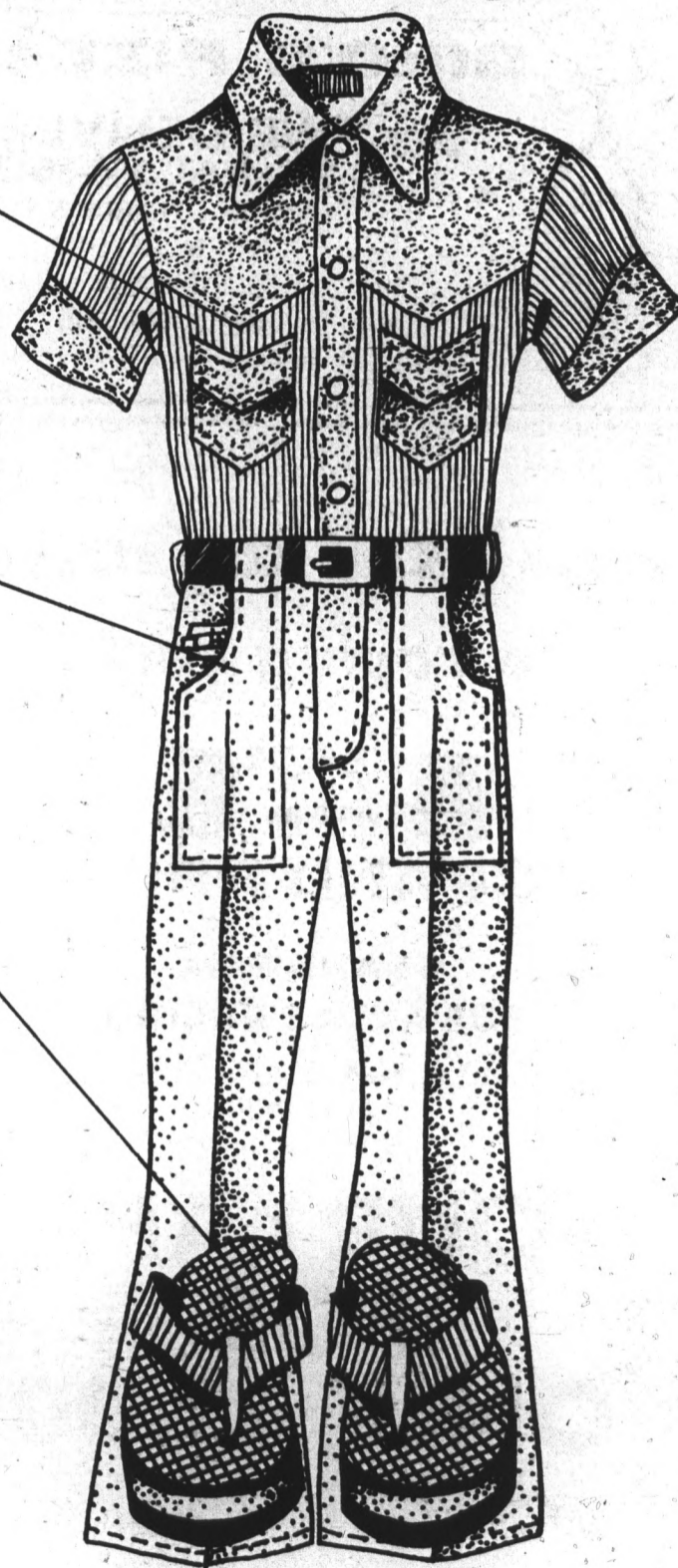
**LEVIS and  
FASHION JEANS**

Dax has the largest selection of styles and sizes in town. We take the term 'fashion jeans' seriously. . . we buy all the latest and best new styles as soon as they're off the sewing machines.

**SLAPS**

The strap of this slap is guaranteed one full year. Go through three pairs of brand X or one pair of ours. Two and three layers, all the colors of the rainbow, shown here in black and white.

It doesn't get  
much more formal  
than this  
around  
**Dax.**



1 Block North of University on Forest in Tempe, 968-3585,  
Mon. - Sat. 10 to 6 (Thursday till 9)