

friday

Arizona State University

Vol. 58, No. 47 November 21, 1975

state press

Tempe, Arizona

inside

Hose handling	4
Steinem speaks	5
Organic observations	10-11
Handicapper honored	12
Grappling growing	17

ASU crime ranks high among schools

By Paul Havill

ASU ranked 12th out of 54 universities in the FBI's 1974 Uniform Crime Report. The UofA ranked ninth.

A spokesman for the Phoenix FBI office was unaware of the report, but said it was probably compiled and published from reports sent in by each university. The ASU Police prepares a Monthly Uniform Crime Report for the bureau.

The predominant crimes at the universities were related to property thefts and burglaries, with few violent crimes reported. The UofA was one of only four schools to report a homicide.

Lt. Thomas Godbehere of the University Police said, "I have no ideas on why ASU was 12th. The rates are basically higher in urban areas than areas out in the country."

Godbehere said he could make no further comment until he sees a copy of the report. "Most statistics show mainly petty theft. It's not any easier to commit crimes against property on campus than anywhere else," he said.

The complete crime index for the top ten universities listed:

- 1) Michigan State University, at East Lansing, 2,327
- 2) University of Florida, at Gainesville, 2,170
- 3) University of California, at Los Angeles, 1,549
- 4) Indiana University, at Bloomington, 1,504
- 5) University of California, at Berkeley, 1,424
- 6) University of Maryland, at College Park, 1,312
- 7) University of Illinois, at Urbana, 1,306
- 8) University of Minnesota, at Minneapolis, 1,220
- 9) University of Arizona, at Tucson, 1,188
- 10) Southern Illinois University, at Carbondale, 1,178

The report did not consider enrollment, and the crime figures do not correlate with them. Michigan State, ranked No. 1, enrolled 39,949 students in 1974, while University of Minnesota, ranked 8th, enrolled 48,415 in the same year.

Crime statistics

	UofA	ASU
Homicide	1	0
Rape	1	1
Aggravated assault	5	19
Robbery	0	1
Burglary	83	53
Larceny-theft	1,055	956
Auto theft	43	28
TOTAL	1,188	1,058
1974 total enrollment	28,978	31,021

Student found dead in bin

An ASU coed was found dead in a newspaper bin Tuesday morning in Scottsdale, along with 10 pills and a partially empty bottle of wine.

Three boys walking to school discovered the body of 19-year-old Lisa Means shortly before 8 a.m. The body was in a newspaper recycling collection bin near the in-

tersection of 74th Street and McKinley.

The girl had been living with her mother, Irma, at 7258 E. Papago Drive, Scottsdale.

Authorities said an autopsy was performed to determine the cause of death, but results were not available Thursday evening.

Coed dorms: Inter-dorm Council researches feasibility of coed housing

By Mike Tulumello

ASU's newly formed Inter-Dorm Council is exploring the feasibility of starting coed housing on campus, according to the council's president.

Ed Conway said a committee within the council is conducting a survey to gather student ideas on what kind of coed housing proposal should be formulated. Conway said the survey results are incomplete, but initial reactions to the idea have been favorable.

Conway said the coed housing committee will submit a "plan of action" to the full council.

"It's too early to say what form the plan will take," Conway said, "but one plan will definitely be approved."

Kathy Sipe, secretary-treasurer of the council, said

administration and housing officials, along with parents, will be polled on the idea to gather a well-rounded input. Housing programs at UofA and NAU, which include some form of coed housing, also will be investigated, she said.

"We can't afford to overlook anyone and have it thrown back at us for lack of research," said Sipe. "We want to be able to tell people why coed housing would be beneficial."

Sipe said the council is not attempting to challenge the morals of the community.

"We'd like to see a more natural environment--not one where the males and females are distinctly apart," she said.

Conway declined to speculate when a coed

housing plan might be approved, but he did express hope that students currently attending the University could benefit from the

council's work.

"We're not trying to bulldoze a plan through," he said. "Right now we're laying the groundwork to determine

what the students really want, and what channels we should go through."

More than 4,000 students live in ASU's 10 dormitories.



David Seibert photo

Bomb threat in art building

Threat empties building

By Jim Boardman

University Police evacuated the art building for 75 minutes Thursday morning after learning of a bomb supposedly planted somewhere inside the building.

A male caller told Tempe Police at 9:51 a.m. he had planted a within the building that would explode at 10:45 a.m. Tempe police notified University police who immediately began evacuating the building.

Following the evacuation, University Police conducted a "very thorough, cursory search" prior to detonation time, University Police Captain Norman Peck said.

Detonation time came and went as police stood casually by the art building, hands in pockets, awaiting the threatened crisis.

Peck speculated the threat came for a student wishing to avoid taking a test during a 10:40 class. A test in Ancient Art History was scheduled for that time.

Peck said no positive correlation between tests and bomb threats could be established, but he added, "We can usually find a test scheduled," and that it was "a routine thing to get bomb threats during finals a few years ago."

He said University Police "overlooked" bomb threats during finals several years ago.

Other than "minor fire bombing during the anti-war demonstrations" during the years of 1968 and 1970, no bombs have exploded on ASU's campus, Peck said.

College adopts measure to allow some seniors right to skip finals

By Pat Denley

The College of Engineering and Applied Sciences is the first ASU College to adopt a formal policy allowing some students to skip finals.

Graduating seniors in the college may elect to pass up finals in their engineering classes and accept the grade earned up to that point.

J.E. Stadmiller, coordinator of advisement, said the option is popular with graduating students and was designed with the idea in mind that it could spread to other colleges.

Graduating engineering seniors must notify their teachers at least one week before finals that they are considering not taking the examination. Engineering professors must then tell the student what grade they have earned up to that time.

If a graduating student decides to accept the grade and not take the final, he places his initials next to his grade in the professor's gradebook.

The program is designed to give graduating students a break, Stadmiller said. The option could give them more time to study for other classes and allows them some relief from the pressures graduating students face, he said.

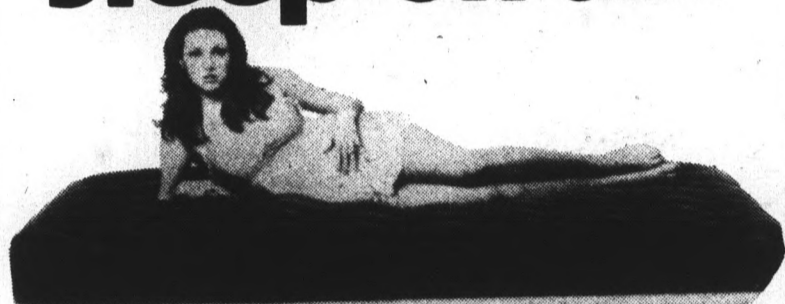
"If a professor is doing his job, he is evaluating the student throughout the semester. Ideally he should know what kind of grade the student will get," Stadmiller said.

Stadmiller said the procedure may cause some problem for engineering professors who give few tests and do not keep current evaluations of their students. But he said, "We haven't had any serious complaints or problems."

For the time being the option of skipping finals will be limited to graduating seniors, he said. But he did not rule out the possibility the program could be expanded in the future to include other students.

The policy began as an experiment conducted last spring and during summer sessions. College officials worked out the plan, and it was approved by Academic Vice President Karl Dannenfeldt after a vote of the engineering faculty.

Sleep on air.



INFLATE-A-BED

The Only Guest Bedroom You Store On A Shelf

Perfect for Vans

- For Sleeping
- Camping
- Boating
- Relaxing
- Sunbathing
- Loving
- A Super Water Raft

TWIN, DOUBLE, QUEEN, KING SIZES

Order an extra one now and take it home for Christmas.

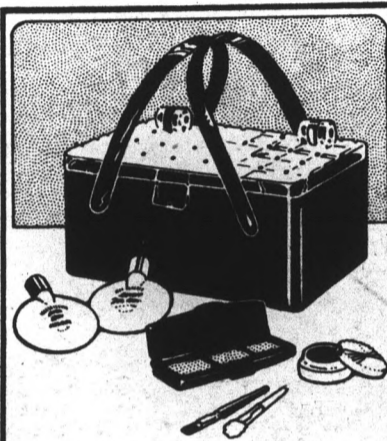
(Master Charge & BAC cards welcome)

949-1007 or See it Now at

Bedroom Interiors

Everything for your Bedroom

1450 N. Scottsdale Rd. in Martin Plaza
(2 Blocks S. of McKellips Rd.)



More Christmas for Your Money

OUR BIGGEST EVER FREE GIFT-WITH-PURCHASE

With this coupon and any \$20 purchase of Merle Norman cosmetics, you get our FREE gift of a smart mock tortoise shell and crystal look purse. Inside, a Holiday Collection of six Merle Norman beauty-makers including: Intense Body Moisturizer, Candescence Face Makeup, Taupe Creamy Eye Shadow, a Trio Compact with Satin Sienna Lipstick, Tawny Cheek Color Creme and Russett Moist Lip Gloss.

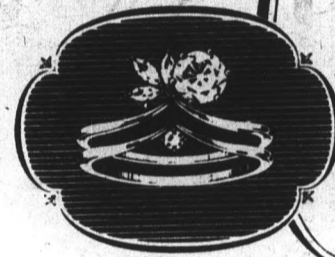
Only at your

MERLE NORMAN COSMETIC STUDIO

"Peaches Powder Puff"
707 S. Forest
Tempe • 966-1737

*Offer good through Dec. 25, 1975 or while supplies last at participating studios. Redeemable only at time of purchase.

when buying a diamond it pays to know the four C's and one B



Cutting
Color
Clarity
Carat weight
and Joseph Berning

JOSEPH BERNING, a Diamond cutter for 30 years and in the jewelry store in "the Arches" for the past 10 years.

Take our famous Diamond Presentation, learn about diamonds & diamond value studying all qualities of loose diamonds with the use of our Gem Lab equipment

BUY YOUR DIAMOND FROM THE DIAMOND CUTTER —

Joseph M. Berning
JEWELRY & DIAMOND CUTTING

130 E. UNIVERSITY DR. "IN THE ARCHES" 967-8917

"cutting makes the difference in the brilliancy of your diamond."



MEMBER AMERICAN GEM SOCIETY

Layaway for Xmas with 10 percent down



Precious metals.

Lee Optical presents wire frame glasses in an eye opening selection of up to the minute styles for men and women.

Gold, Silver, Bronze, Pewter — you name it and you'll find it at Lee, where single vision glasses are priced from as low as \$18.00.

If your tastes run to precious metals, see Lee Optical's latest collection.

Come see.

STUDENT DISCOUNT PROGRAM

WITH CONVENIENT VISION CENTERS THROUGHOUT ARIZONA

LEE Optical

IN TEMPE
TEMPE CENTER
967-7864
2032 S. INDUSTRIAL PARK AVE.
967-7333



Called 'nice gesture'

Administrators cool to Lyceum petition

By Wade Estes

Theatre students netted over 5,000 signatures on a petition demanding immediate action on a new theatre complex, but the University administration has remained unimpressed, Vicki Brenner, theatre graduate student said Wednesday.

"We had a meeting with the president (ASU President John Schwada) and presented him with our petitions. He generally felt that petitions are a nice gesture, but in the long run they don't mean a lot," Brenner said.

Karl Dannenfeldt, vice ASASU plans fund-raising gig for new theater

Plans to appropriate up to \$1,500 for a patrons organization to promote funding for the Lyceum Theater are in the making, according to ASASU President Craig Tribken.

"In essence the money will be used to hold receptions for invited prominent Tempe citizens in hopes of hitting them up for bucks," Tribken said.

The theater puts on about 20 plays a year.

president, was present at the meeting between Schwada and the students and said he agreed with Schwada's comment.

"Petitions are simply an expression of a wide spread interest," Dannenfeldt said.

Dannenfeldt went on to explain that funds for construction of a new theatre complex would have to come from the legislature and petitions don't have much effect there.

"We regret the lack of fine theatre facilities. We too wish we had them," Dannenfeldt said.

Dannenfeldt said classroom facilities are primary on the list of major expenditures and the theatre would have to wait until the legislature appropriated enough funds.

Dick Phillips, president of the student theatre organization Players Club Council (PCC), said a theatre is as much a classroom as

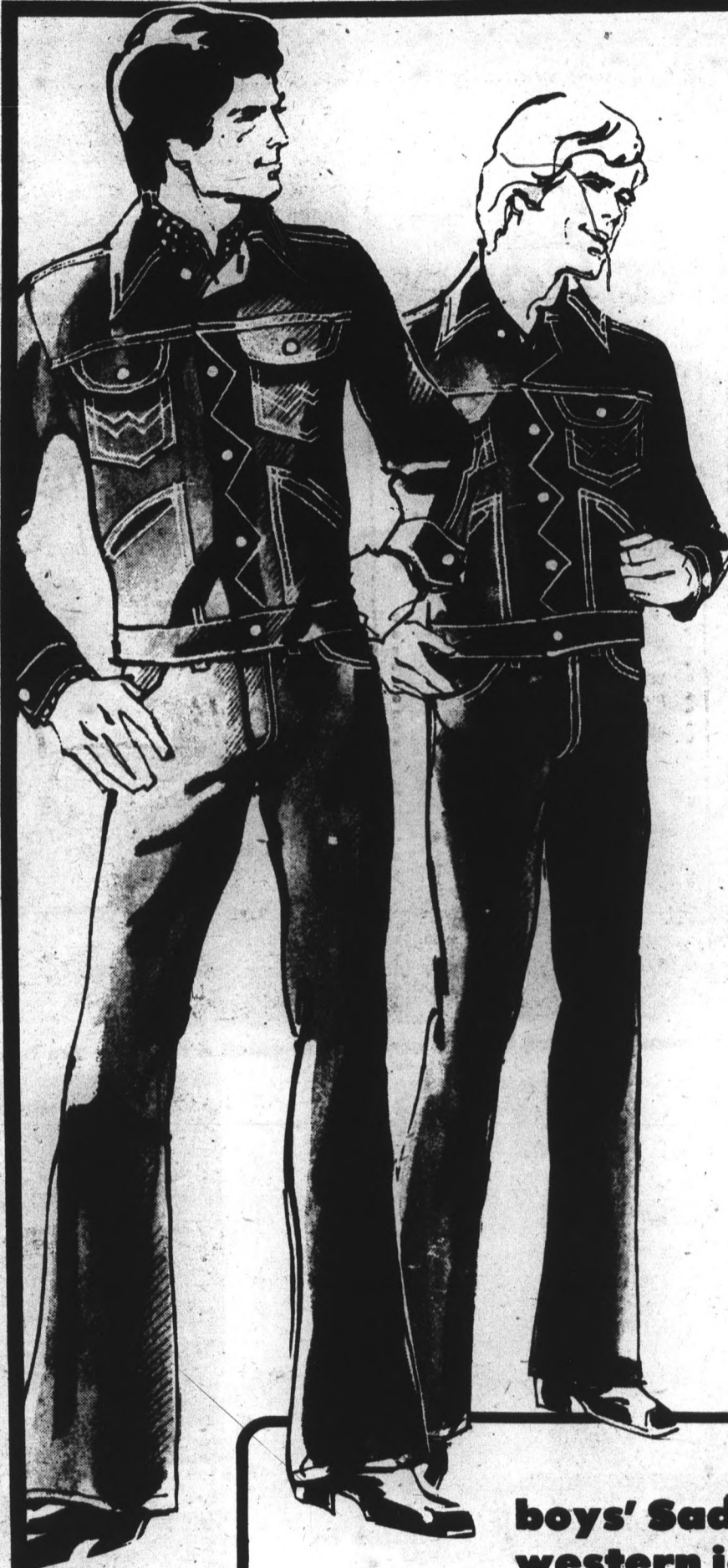
any other classroom facility, but said he has no hard feelings toward the administration.

Phillips said he received a very positive reaction from Schwada. The PCC had a 15 minute appointment which Schwada stretched to almost an hour. He also promised Phillips a letter by Thursday to recap their meeting and further explain the University's position.

The PCC has a second phase planned their new theatre movement, Brenner said.

"We decided phase two is to send letters to legislators. They are the ones who basically appropriate money for the school," Brenner said.

The PCC is also organizing a patrons fund to generate private donations for the theatre, Brenner said.



Woolco

JEAN-O-RAMA men's rugged Saddlehorn jeans

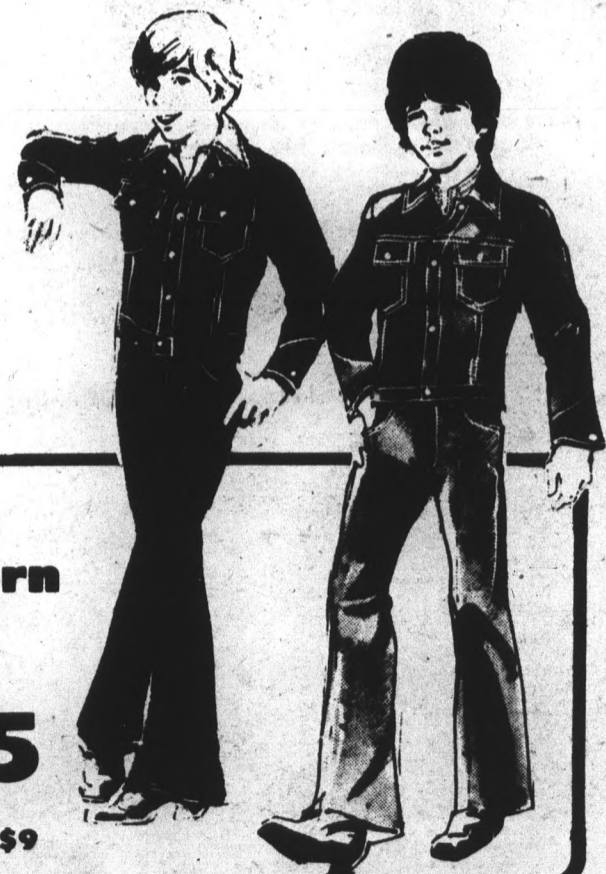
555

prices

2 prs. \$11

Sold everyday at 7.99! Heavy weight 13 3/4 ounce blue denim at sensational savings! Great-looking western styles with flared legs and five pockets! Navy denim in sizes 28-38.

Men's Chambray Shirts \$3.97



boys' Saddlehorn western jeans

Saddlehorn jeans in super tuff 13 3/4 ounce twill . . . bar-tacked at points of strain for longer wear! Navy denim color. Regulars, 8-18; slims, 8-16.

455

2 prs. \$9

TEMPE STORE ONLY

STORE HOURS:
Mon.-Sat. 9:30-9:30 Sunday 12-4

BUY WITH CONFIDENCE! SATISFACTION GUARANTEED!
REPLACEMENT OR MONEY BACK REFUND



You have something to share with the people of the rural South and Appalachia—yourself. Find out about the opportunities open to you as a Glenmary Priest, Brother or Sister.

For free information about opportunities with Glenmary Home Missioners, write:

GLENMARY, Room #1
Box 46404
Cincinnati, Ohio 45246

- Also please send free 17" x 22" God Made Me Poster, Shown Above.
- Send free poster only.

Name _____
Address _____
City _____ State _____
Zip _____ Age _____



A sitting position is often the best for handling a fire hose alone.



Firemen have to be physically fit to grip and control the surge of water blasting through the hose.

How to handle a hose



Water flow isn't always used to put out the fire—a fireman stoops to quench his thirst with it, too.



Several Phoenix area fire fighters scramble to catch a runaway fire hose.



Maneuvering for a better firefighting position requires the assistance of other firemen.



The work involved in putting out a major fire leaves a firefighter exhausted.

Photos by
Bill Frakes

Wide significance seen in local law suits



Gloria Steinem

By Laura Aldrich

Gloria Steinem, nationally known feminist and editor of Ms. Magazine, Wednesday said suits pending in federal court accusing Pima Community College (PCC) of discrimination may have national significance for all workers.

Since Spring 1974, 20 complaints have been filed with the Equal Employment Opportunity Commission (EEOC), alleging discrimination against PCC staff because of sex, race and national origin. The college fired six of the complainants.

Then six women from the college filed complaints for retaliation against PCC. Five of the women were among those fired. Retaliation—or unfair tactics against persons who complain against an employer—is a felony.

Two filed before they were fired, and three were fired previously. One is still employed by the college.

After the retaliation complaints were filed with the EEOC, the FBI was called in to investigate.

A spokesperson for the Equal Rights Association of PCC (ERA-PCC) claimed the FBI is not often called in to investigate but was in this case because of the number of complaints filed in a relatively short period of time.

Steinem was in Phoenix and Tucson to help raise money for the ERA-PCC.

After the investigation was completed this summer, the FBI's findings were turned over to the Justice Department.

In August, the college was informed it had been found guilty of all six retaliation charges.

The official letter informing the college of that decision was accompanied by a letter written by the EEOC urging the college to meet with the complainants. The complainants also indicated their willingness to meet with the administrators. The college did not

respond to the letter. In September, 1975, the college filed a suit with the Justice Department alleging the investigation had not been properly conducted.

The college charged it was not contacted during the investigation; so investigators could not have all the facts.

Four suits have also been filed in federal court by women against the college. A fifth suit is now being heard in Pima County Superior Court.

Similarities exist between the controversy at PCC and at least one suit pending against ASU.

Conrad Martinez, former volunteer coordinator for ASU Community Services, filed a suit after complaining a campaign of secrecy and spying had been conducted against him.

He accused the University of eavesdropping on his phone calls, close observation of his movements and refusal by other department

members to talk to him.

Rita Finchum, a former PCC staff member, after filing a discrimination complaint and demanding her immediate superior, Dean of Personnel Don Castro, stop surveillance of her activities on campus.

When asked about the surveillance of Finchum, Castro said, "There was no surveillance. I should know since I was her direct supervisor."

Finchum, however, insists she has proof her campus phone was tapped and her associates were questioned about her contacts.

Finchum also said Affirmative Action Officer Rosemary Guierez had not helped the staff members.

Martinez has accused ASU Vice President of Business Affairs Jack Penick, a former affirmative action officer, of inaction.

Blair Benjamin, attorney for the Arizona Board of Regents, was not sure if the outcome of the cases at PCC would effect ASU suits.

Regular
Bag of Chips

Only **10¢**

with purchase of
any sandwich . . . at

THE HUB

in the M.U.

Live at the

The College Inn

**NOW RENTING For
SPRING SEMESTER**

Services include:

- 20 meals weekly for Fall
- Weekly maid service
bed linens furnished
- Private parking lot
- Recreational facilities
including pool
- Laundry facilities
- Private phone connections
available

The College Inn

401 E. Apache
Tempe

Phone
967-7828

Petite Genere JEWELRY By George

618 S. College • Next to Varsity Book Exchange • 968-1233

FINE JEWELRY

DESIGNED & HAND CRAFTED ON PREMISES

PLATINUM • GOLD • SILVER
DIAMONDS • GEM STONES • TURQUOISE

QUALITY GIFT ITEMS

WATCHES — CROSS & SHEAFFER PENS

ORIGINAL ENGAGEMENT & WEDDING SETS
ENGRAVING — ETC.



OPEN DAILY 9 a.m. to 8 p.m.



EARS PIERCED FREE

Cost prohibits central hookup

Fire system excludes dorms

By Michelle Fulcher

Two off-campus dormitories are not connected to a campus-wide fire alarm system that automatically notifies the Central Plant when an alarm sounds on campus. ASU officials aren't sure the buildings will be linked to the system because costs would be so high.

According to George Zalenski, associate director of physical plant, the two buildings, Mariposa and Sahuaro Halls, do have their own internal fire alarm systems.

But, Zalenski said, wires from the two dormitories would have to be put across property the University doesn't own or across telephone lines, to connect them to the Central Plant system.

Use of the telephone lines would cost about \$10 per month for every

individual alarm station in the dormitories, Zalenski said.

He estimated there are between 50 and 60 stations in Sahuaro and about half as many in Mariposa Hall. "This is why we hesitate to use the telephone system," Zalenski said.

If the buildings were connected with the Central Plant, an alarm would sound there as soon as it was triggered in the dormitory, Zalenski said.

Plant employees would then check a control board indicating which building the alarm was coming from and notify University Police on a direct telephone line, he said.

Other dormitories on campus are served by the Central Plant station, but residents of Sahuaro or Mariposa Hall now have to call

the Central Plant when an alarm goes off inside those buildings, Zalenski said.

Because University Police and other employees, including electricians, can be called as soon as an alarm goes off, response could be quicker for the buildings served by the central alarm system than for those which only have building alarms, Zalenski said.

Mariposa and Sahuaro Halls are two of 15 or 16 campus buildings not linked to the central alarm system. Most of those buildings are the smaller, older ones on campus, he said.

The remaining buildings, with the possible exception of Mariposa and Sahuaro, will probably be linked to the central alarm system within the next two years, at a cost of \$3,000 to \$5,000 per building, Zalenski said.

THE WAREHOUSE
(Formerly Panini's)


"Good Food & Drink"

Live Entertainment
Every Fri.,
Sat. and Sun. Eves
(no cover, no min.)

Light & Dark
Beer on Tap
— Wine —
— Carryouts —


Happy Hour
Mon. thru Fri.
3 to 6 p.m.
Live Entertainment
½ Gal. Pitchers,
\$1.50
Mugs 35c

Open Daily
10:30 a.m. - 11
p.m.; Fri., Sat.
10:30 a.m. - 1
a.m.; Sun.
Noon - 12 mid.



130 E. University — Tempe
966-7788 (in the Arches)

TRADE IN
YOUR
WIRES!



WIRES are OUT — PLASTICS are IN
10% Student Discount

Standard Optical
Los Arcos ~ Tri City Mall

**Mandatory senior check
is designed to save grief**

By Gary Emerson

For seniors, it's the difference between graduating on time and experiencing a delay which could cost them an extra semester and hundreds of dollars.

Although it is stated in the catalog that senior checkout is a requirement, many faculty advisors say students are unaware of the procedure.

"Students who plan to complete degree requirements during the spring semester must apply for graduation before the end of the current semester," said Mary Anderson, control supervisor for the graduation office.

She said senior checkout should be applied for after completion of 80 to 90 hours or the students may have to go an extra semester because they lack hours they didn't know they needed.

Anderson said senior checkout was designed to let students know what requirements they need to graduate. A \$5 fee is charged to cover the cost of the diploma.

A reminder to prospective May graduates appeared in the University Bulletin Nov. 10. Anderson said it was up to the advisors and instructors to inform the students of the requirement. Although it is announced in classes that checkout is a requirement, advisors say many students are unaware of the procedure.

We're new and we'd like to get
to know you!

LIT'L TRAVELER
IMPORTS, JEWELRY, ETC.

25%-50% OFF ALL
MEXICAN IMPORTS
and
ALWAYS FREE ROLLING PAPERS

• COME IN AND MEET US
2702 N. Scottsdale Road
1 block South of Thomas

A Special Offer From

HERTZ
RENT A CAR

ASU Students . . .
If you're over 18 you can rent
a Ford or other fine car at a
SPECIAL LOW WEEK-END RATE of
\$9.99 A DAY
AND 13c PER MILE
Weekend rates start at \$14.99 — no mileage

7 Days for \$105.00

For Your Car, Call Your A.S.U. Representative

STEVE BLAGEN
968-4072 or 963-5786

Honoraries must admit either sex

By Gina Schweikart

The seven honorary societies at ASU will be forced to admit members of the opposite sex within the next three years.

The action is a result of Title IX of the Civil Rights Act, which states, "No person in the U.S. shall be denied the benefits of or be subject to discrimination under any education program or activity receiving federal financial assistance."

"ASU must comply with Title IX; otherwise, it feels it will lose its federal funding," said Paul Zavalney, Blue Key president.

Zavalney said his organization does not oppose female membership, but it would not have admitted women without the Title IX ruling.

"I don't think the issue would have come up," he said.

Female honorary hesitant

Honorary constitutions soon must be changed to allow for members of the opposite sex. However, the national affiliate of Alpha Lambda Delta, a female organization, is reluctant to make the necessary changes, said President Kay Jett.

Their reluctance was stated in a letter to Jett which read, "There is a need for an honorary society for freshmen women to...help women develop to their fullest potential."

No males applied

Alpha Lambda Delta held an organization meeting last week to initiate interested students, including males. Jett said of the 2,000 students eligible to join, there was a very low turnout, and no males showed up.

The organizations will have to restructure their goals and activities with the new membership requirement. Natani President Maria Hesse said their organization does a lot of service projects such as ushering at Gammage Auditorium. "I have not met any guy who would want to serve as an usher," she said.

Women more involved

Hesse said, "Women are more oriented toward doing things such as service activities." Men seem less interested and use the organization for their transcript, she added.

Most of the honoraries agreed they would not have changed their membership requirements without the ruling.

"People get into a tradition, and unless something is done to shake them up there will be no change," Susan Clouse, student activity advisor, said. Clouse is also advisor to four of the female honorary organizations.

A class by itself.



The rich jacket in opulent velvet and the urbanely western suit. Both splendid in new detailings. The Arthur Richards Collection. Jacketings from \$100 to \$135. Clothing from \$125 to \$185. At these discriminating stores or write us.

Arthur Richards

MEN
MEN

GARMENTEUR, LTD.

MEN
MEN

130 E. UNIVERSITY • TEMPE •
966-6840

MONDAY THRU SATURDAY 10-6
THURS TILL 9, OR BY APPOINTMENT

HAVE YOU DISCOVERED
Kwik-Kopy.
 10% Student Discount On Printing
 Photocopies 5¢
 2105 So. Rural Rd. 968-0726

NOTICE . . .
To Out-of-State Students

If you are planning to fly home for the Christmas holidays, we can help. Mundus Travel is offering a limited number of seats at a group excursion rate to Chicago and New York — with connections to any Midwest or East Coast city.

Remember — we offer free service and ticket delivery so you avoid the hassles at the airport. For more information call Doug Harder at 965-4736 before it's too late.

THANKSGIVING DINNER
No Mess, No Fuss, Leave the cooking to Us . . .

★ **SAGA M.U. Catering** ★

Complete Dinner for four
 for as little as \$18.11 plus tax

— YOU CAN ALSO ORDER ALA CARTE —

Whole Roasted Turkeys
 (Any Size)
 Dressing
 Giblet Gravy
 Green Beans or Peas-pearl onions
 Dinner Rolls
 Pumpkin Pie

Also available —

Sliced Turkey Breast
 Sliced Turkey Thigh
 Sliced Baked Ham

All items on Pick-up basis only
 for further info call 965-6508
 SAGA M.U. CATERING

Fullinwider will seek House seat

Pat Fullinwider, who ran unsuccessfully against Rep. John Rhodes R-Phoenix in 1974, accused Rhodes of adopting the same policies she advocated during her campaign.

Speaking this week to the Women's Affairs Board, Fullinwider said Rhodes, the House Minority Leader, has been "doing things I suggested to him at the election," such as supporting the decriminalization of marijuana, opening the highway trust fund to state use, and more frequent visits to his district to listen to voters' needs.

"My opponent is even talking about woman on the Supreme Court," she said. "Not that we're likely to see that, but it looks good on his record."

Fullinwider said she was going to run against Rhodes again in 1976. The campaign began the day after the '74 defeat, she said, to have more time to organize her grassroots strategy.

Getting money for a campaign is one of the biggest problems women candidates face, according to Fullinwider.

Money is controlled by men, she said, "Now we're trying to set up contacts with women professionals for their contributions. If that means we have to nickel-and-dime it—that's \$5 and \$10 contributions—that's what we'll have to do," she said.

Arizona led the nation in the number of women running in state elections in 1970 to 1974; now the Arizona state legislature has 13 women in the House and five in the Senate, out of 90 legislative seats, she said.

"The media labeled '74 as 'The Year of Women' she said. "As though we only had one year."



patrick rusing photo

Noggin knocked

An ASU police officer examines Susan Heerman Wednesday after her bicycle collided with a car driven by ASU freshman Diana Sherman. Heerman was treated at the ASU Student Health Center for a minor injury. The mishap occurred at the corner of Mill Avenue and 11th Street.

Couples dance 34 hours for Epilepsy Foundation

Bellies will gyrate and bodies will bump at a dance marathon sponsored by the Epilepsy Foundation and Alpha Epsilon Pi fraternity.

The extravaganza begins at 6 p.m. Friday in the women's gym and ends at 8 p.m. Sunday.

The extravaganza includes belly dancers, three live bands, \$600 worth of prizes and appearances by local radio celebrities and Miss Arizona.

The couple who raises the most money through pledges by sponsors will win the marathon. A sponsor puts up a certain amount of money for each hour the couple dances. The winning couple will receive a weekend in Las Vegas, two trophies and various other prizes including dinner at the Camelback Inn.

DEADLINE For Special Thanksgiving Orders at
BAKE 'N TAKE
 —12 Noon, Tues., November 25—

Pumpkin Pie.....	\$1.35
Mince Pie.....	1.65
Apple Pie.....	1.35
Holiday Sweetbread.....	.89
Dinner Rolls (doz).....	.49
French Bread.....	.45
Rye Bread.....	.45

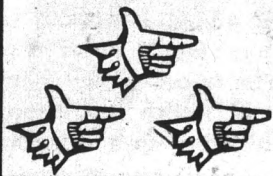
ASSORTED DINNER MINTS AVAILABLE
 (50c deposit on each order)

Did You Know?
 THE HUB
 is open
 Saturdays
 7:30 AM to 1 PM

CARPET SPECIALS
 9 x 12 used rugs - \$7.50
 All Sizes In Stock
CARPET HOUSE
 1516 E. Van Buren, Phx.

UNIVERSITY ARETHAS

IN TEMPE AT THE CORNER OF UNIVERSITY & FOREST



HELP US CELEBRATE

Wm C. Bullit* Day!

* 1st U.S. Ambassador to Russia, November 21, 1933

WORLD RECORDS AND TAPE CENTER
966-7254

We buy, sell, and trade used records and tapes.

Dozens of new releases - \$3.65

Also in Phoenix - 332 E. Camelback

277-2659

MIGUEL'S MUSIC CENTER

Finest in Classic & Folk Guitars From all over the World

GUITAR LESSONS IN FOLK & CLASSIC BY MIGUEL

AUTHORIZED DEALER FOR MARTIN - YAMAHA - OVATION RAMIREZ GUITARS

SALES RENTALS REPAIRS BAND INSTRUMENTS & ACCESSORIES

OPEN 10 A.M. TO 6 P.M. 6 DAYS

968 2310

Spectacle Shoppe

eye glasses unlimited

966-9440

FREE SPECTACLE SHOPPE T-SHIRT with your complete pair of glasses

Joseph Berning

JEWELRY ♦ DIAMOND CUTTING

MEMBER AMERICAN GEM SOCIETY

967-8917

THE CUTTING MAKES A BIG DIFFERENCE IN YOUR DIAMOND'S BRILLIANCE

Your campus jeweler for 10 years - Specializing in Engagement and Wedding Ring Sets.

Complete Floral Service
Wide Variety of Plants
Gifts & Accessories

DUANE'S FLOWERS

PLANTS FLOWERS

Mastercharge - BankAmericard

966-4515

Flowers Do It!!

Hair Kamp Salon

"GREAT HAIRCUTTING WITH A PERSONAL TOUCH"

Four haircutters to serve women and men

Complete line of products for the hair

Call for appointment - 966-9061

Live Entertainment
Friday through Sunday evenings
No Cover No Minimum
Dark and Light Beer on tap - Wines - Carry Outs

THE WAREHOUSE
"Good Food and Drink"

Hours: Monday - Thursday 10:30 a.m. - 11:00 p.m.
Friday - Saturday til 1:00 a.m.
Sunday - Noon til midnight

Happy Hour: Monday thru Friday 3:00-6:00 PM

Live Music/½ gallon pitchers, \$1.50 mugs, 35¢

GARMENTEUR, LTD.

"new dimensions in men's clothing"

Thomson Trousers Creighton Corbin, Ltd. Eagle

Bert Pulitzer • Bass • Nunn Bush • Arthur Richards

10 A.M. - 6 P.M. MON. THRU SAT.
THURSDAY 'TIL 9 P.M. OR BY APPOINTMENT

NON-PROFIT FOR THE UNIVERSITY COMMUNITY

QUO VADIS

122D East University Dr.
Tempe, Az. 85281
968-3663

BOOKS

CHRISTIAN

Pinball Wizard

The Original Pinball Wizard

Electric Games - Air Hockey

Finest Game Selection in Tempe

XEROX OR MULTILITH

alphaGraphics

Finest Quality; Low Prices

THE COMPANY

FREE PAPERS JUST ASK

SUN DEVIL BARBER SHOP

We specialize in long hair and cut it THE WAY YOU WANT IT.

5 Barber-Stylists to serve you.

Open Monday through Friday, 9:00 a.m. to 5:30 p.m.

Drop in or call for an appointment:

966-5462

savings up to 50%

Blank Tape/Record Accessories/Headphones/Red Tag Audio Gear

Jerry's audio exchange

334 E. Camelback, Phoenix
130 E. University Dr., Tempe
1037 N. Park Ave., Tucson
4815 E. Speedway Blvd., Tucson

"RELIGION IN ISRAELI LIFE AND POLITICS"

featuring *Benyamin Amiram*,
National Coordinator, American Zionist
Youth Foundation

Tuesday, November 25

7:00 p.m. Baker Center 213 E. University

"Come To A Cabaret"

ISRAELI STYLE

Sat., November 22 — 8:00 PM

SINGING DANCING ENTERTAINMENT REFRESHMENTS

Ross Hall, 213 E. University
(First United Methodist Church Complex)

Admission — \$1.00
Sponsored by HILLEL

PARAMOUNT
PICTURES
A MEMORIAL
ENTERPRISES FILM
if...
COLOR A PARAMOUNT PICTURE



"GO!—FOR THE FURY,
FORCE AND FUN OF
it"—LOOK
"ANGRY, TOUGH AND
FULL OF STING!"—LIFE

O Lucky Man!

Starring Malcolm (Clockwork Orange) McDowell

Nov. 19-25 1st show Wed., Thurs., Mon., Tues., \$1.00
IF/5:15, 10:05
MAN/7:10
Ask for our movie
Schedule at M.U.



HEALTH FOODS AND VITAMINS

Are they worth it?

By Dan McCarthy

The shelves of a health food store are chock full of nuts, honey and kelp, but trying to find an Eskimo Pie or Ding Dong among the organically grown produce is like searching for a definition of "health foods."

"They are foods in which the ground has been allowed to keep all the minerals . . . foods that are healthy in themselves. It depends on how they are grown," said Paul Costa, owner of Valley Fair Nutrition in Tempe.

Phil Abadie, who serves as Women, Infants and Children coordinator (WIC) at the state Nutrition Services department, disagrees.

"It's a misnomer. I can't think of anything I'd call a health food," he said. "Food is neither healthy or unhealthy in itself. There are no magical or special properties to food."

Factional dispute

Opinions vary but the dividing line is clearly drawn. Physicians and nutritionists seem to see no scientific basis for the move to health foods, while health food store owners attest to their products' benefits by citing both studies and health improvements they witness in their customers.

Regarding the rise in popularity of health food stores, Dr. Glenn Friedman, a Scottsdale pediatrician, said, "People are

beginning to realize that food and what we eat are related to health." He added, however, "Health food stores don't improve our health. You're not going to buy anything in a health food store that you can't buy in a supermarket."

Abadie also contends that there are no items in a health food store that cannot be purchased in some form in the average supermarket.

"Food in a supermarket is, overall, as wholesome and will do as much to promote health as food in a health food store," he said. "Their basis is that their food is more healthy, this is basically false."

Basic food groups

Whether shopping in a health food store or a grocery store, the question still remains . . . What is a healthy diet?

Marianna Cadigan, chief nutritionist for the Maricopa County Department of Health Services, advocates selecting food from the four basic food groups: dairy products, proteins (meat, fish, eggs), fruits and vegetables, and breads and cereals.

"It is simple, many people find it hard to see that it is so simple," she said.

According to Abadie, there should not be one specific food

PLAY WEE-TEE MINIATURE GOLF

2 for price of 1

(with this ad until 12-31-75)

Your Choice of Two 18-Hole Courses

University Drive at Rural—Tempe
HOURS — 1 p.m.-12 midnight Daily Phone 966-8027
Sat., Sun. and holidays 10 a.m.-11 p.m.



ASASU CULTURAL AFFAIRS BOARD NEEB HALL FILMS

FRIDAY 21: 7 AND 10 PM

ONE TINY SPARK BECOMES A NIGHT OF BLAZING SUSPENSE

The world's tallest building is on fire. You are there on the 135th floor... no way down... no way out.

STEVE McQUEEN PAUL NEWMAN WILLIAM HOLDEN FAYE DUNAWAY

IRWIN ALLEN'S **THE TOWERING INFERNO**

FRED SUSAN RICHARD JENNIFER O.J. ROBERT ROBERT
ASTAIRE BLAKELY CHAMBERLAIN JONES SIMPSON VAUGHN WAGNER

IRWIN ALLEN JOHN GULLERMIN STIRLING SILLIPHANT JOHN WILLIAMS
Based on the novel, *The Tower*, by RICHARD MARTIN STERN and *The Great Escape*, by THOMAS H. SCOTT and
FRANK M. ROBINSON

\$1 W/ID \$1.50 W/O

SATURDAY 22: 7 PM claude chabrol's lacombe, lucien

10 O'CLOCK SPECIAL

AROUND THE WORLD IN 80 DAYS

David Niven Cantinflas
Shirley MacLaine
Robert Newton



Director: Michael Anderson
Producer: Michael Todd
Music: Victor Young

OPEN TO THE CAMPUS COMMUNITY

SUNDAY 23: 7 PM

KATHARINE HEPBURN



"BAREFOOT IN THE PARK"

WESTWOOD CINEMAS 1306 W. Univ. Mesa

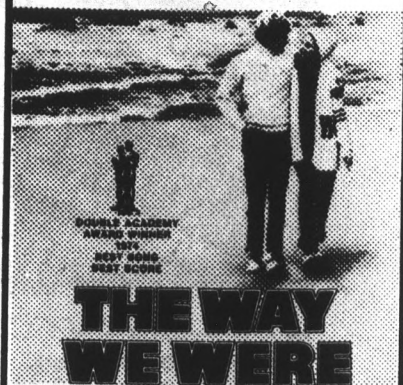
CINEMA ONE

SIDNEY POITIER BILL COSBY



— PLUS —
"Walking Tall II"

CINEMA TWO



— PLUS —
DUSTIN HOFFMAN
in
"Little Big Man"



around which a person's diet revolves. He said, "The diet should be as broad as economically possible."

Diet need: unprocessed food
"A balanced diet doesn't mean anything," said Martner. "People in this country eat so much sugar that it is a killer."

Martner said more raw, unprocessed foods are necessary in the daily diet. He advises staying away from foods that can "hurt you," such as refined flour.

Are health foods cheaper than goods purchased in supermarkets? "Health foods aren't economical," said Martner. "But it depends on how much you value your health."

Costa, however, said that "health food" fulfills a greater amount of our bodies' need for vitamins and minerals, and thus eat less.

Health foods may dupe users
"Our body doesn't crave (other foods)," he said.

Abadie said people on fixed incomes are often persuaded into buying health foods chiefly because of theories like Costa's. "The elderly are frequently duped. They're susceptible to the come on," said Abadie.

The megavitamin controversy (ingesting vitamins well over the Recommended Daily Allowance, RDA) has received a great deal of attention ever since Nobel Prize

Winner Dr. Linus Pauling began advocating taking massive doses of vitamin C as a preventive against colds.

Pauling's research conducted on mammals (chiefly rats) indicated to him that the average adult should take in up to 2,200 milligrams of vitamin C each day. As of now the RDA for the vitamin is 45 milligrams.

Recommended dosage
One 500-milligram tablet of vitamin C is, according to Martner, the equivalent of 10 to 14 oranges.

Costa said the government's RDA is so low that, "You couldn't live on the Recommended Daily Allowance alone."

Abadie agrees that the dietary allowances as presently set are not adequate, "but there is no support for large doses of vitamins."

"The large quantities of vitamins they (health food proponents) talk about are used not as a nutrient but as a drug," said Dr. Friedman, who is president of the Health Evaluation and Longevity Planning Foundation.

He said vitamins A and D, which are stored in the body, could be toxic in large doses.

"It's a malicious way to discourage people from taking vitamins," said Martner.

continued page 16

Give something special. Bulova Accutron®



His: Goldtone case. Regal Roman numeral dial. \$120.



Hers: Sweep second precision in brush textured stainless steel. \$138.

Mac JEWELERS

Tempe Center
921 S. Mill, Tempe
968-7587

Zionism and Racism:

- Who's the Real Racist?
- Teach-In Featuring Professor Gorden Weiner of the A.S.U. History Department, 8:45 p.m. Baker Center (following Shabbat Services 8:15) on Friday, Nov. 21.
- 213 E. University, Baker Center
- Israeli singing and dancing following teach-in

ASU Public Lectures Board presents:


Isaac Don Levine
author-foreign correspondent
Specializing in "Kremlinology"

"The Soviet Challenge to America"

Monday, November 24

8:00 P.M.

Neub Lecture Hall



curtain up inc

PRESENTS
THE
NATIONAL TOURING
CO.

PLAY BY:
JULIAN BARRY

Based on the life
and words of
Lenny Bruce

LENNY

FULL STAGE PLAY / ORCHESTRA
AS ORIGINALLY PRESENTED
ON BROADWAY
BY:
JULES FISHER
MARVIN WORTH
MICHAEL BUTLER

SET & COSTUMES BY: **JANUS PURINS**

DIRECTED BY: **TOM THOMAS**

ORIGINAL MUSIC BY: **LARRY DAVIS**

PRODUCTION CONSULTANT:
MARVIN WORTH

Symphony Hall • 8 P.M. • Thurs. Fri. Sat. / Nov. 27 28 29

Tickets \$8.50 / \$7.50 / \$6.50 available at
Civic Plaza Box Office & Diamonds Select-A-Seat

...A MANCUS PRODUCTION
in coordination with KDKB

PENNYSAVER
PRESENTS
PHOENIX SUNS
2 for 1 Night
Dec. 5
Phoenix Suns vs. Washington Bullets
BUY 1 TICKET - GET 1 FREE
FOR MOST SEATS IN THE HOUSE
for details
PICK UP THIS WEEK'S PENNYSAVER
AT
THE STUDENT BOOK CENTER

Friends remember courage

Handicapped lawyer honored after death

By Niles White

Daniel Borcher, a dwarf law graduate of A.S.U. who struggled against severe handicaps since birth, will win his last triumph over them when New Jersey's Supreme Court posthumously awards him the license to practice law.

Borcher, who died last month, apparently is the first recipient of such an award in New Jersey's history. The award comes at a time when Borcher's former classmates are establishing a memorial in his name.

"He finished his requirements

at the law college a year ago last summer," said Dr. Alan Matheson, associate dean of ASU's law college. "He took the Arizona Bar exam in February and passed that exam."

He had earlier completed an electrical engineering degree at the University of Arizona, Matheson said.

"He was very well liked. He wanted to be treated like everyone else."

"He was just Dan," said Virginia Stewart, the law college's placement secretary who knew Dan personally.

"After you got to know him, you just didn't think about his deformities," Stewart said. "The most delightful human being was in that body you'd ever want to see. I used to think who was trapped in that body."

Borcher applied his electrical engineering knowledge to his wheelchair.

"You should have seen his wheelchair," Stewart said. "It was the most sophisticated piece of equipment you'd ever seen. It was his life."

Borcher's mother was devoted to him. Her courage rivaled his, Stewart said.

"He'd be studying a lot with his mother," said Ted Wright, third-

year law student and law library attendant.

"He kept his wheelchair here. I would give his mother a call and she would come down." She used to carry him from his wheelchair to the car when he finished a night's study, Wright said, and many nights she remained with him, getting his books for him.


"He took his bar exams orally. That's real gutsy," Wright said. "His handwriting wasn't so good because his hands weren't perfectly formed."

Stewart recalled how she rearranged her office and installed a tape recorder for Borcher's use in the grueling three-day examination. Borcher decided that he would read each question, then orally record his answer onto tape, Stewart said.

"The first morning when we got the office all set up Borcher was terribly nervous," Stewart said. During the exam he couldn't get the recorder to play back his answer because his hands were too weak to operate the controls.

"I told him to calm down. We rearranged the controls, and he passed his exams with flying colors, Stewart said.

"It should make us ashamed ever to complain of anything," she said.



the Plan Ahead
arizona health plan
planning ahead for all your health care needs

IN-PATIENT—hospitalization 100% coverage
OUT-PATIENT—\$2.00 each office visit includes: eye examinations, immunizations, health testing.

well-baby check-ups pap smear, laboratory and blood tests, x-rays, electrocardiogram, referred specialists, all office visits.

EMERGENCY CARE:
24 hours a day, 7 days a week.
Physician always on duty.
Ambulance
Home Nursing Care
No Claim Forms

OPEN HOUSE EVERY SUNDAY IN NOVEMBER
2-5 p.m.

IT'S OPEN ENROLLMENT TIME NOW FOR FEDERAL AND STATE EMPLOYEES. Find out why close to 30,000 have joined the ARIZONA HEALTH PLAN.

arizona health plan
(underwritten by Connecticut General Life Insurance Company)
925 East McDowell Road Phoenix, Arizona 257-8800
1402 South Mill Avenue Tempe, Arizona



9:00 P.M. Masterpiece Theatre: Notorious Woman Misalliance
10:00 P.M. Profiles in Courage Anne Hutchinson
11:00 P.M. Scoreboard
11:30 P.M. Soundstage Yes We Can

SATURDAY

7:30 A.M. Lilies, Yoga and You
8:00 A.M. Antiques The Glass Gaffers
8:30 A.M. Under One Roof Moving and Storage
9:00 A.M. Consumer Survival Kit A Lick and a Promise: A Look at Mail Order Sales
9:30 A.M. La Cocina Mexicana: Mexico City Menu
10:00 A.M. The Romagnolis' Table Souvenirs of Puglia
10:30 A.M. Journey Through Eden
11:00 A.M. Prime Time
12:00 N Gardening For Fun
12:30 P.M. Open Math
1:00 P.M. Arizona Byline: Androcles and the Lion
2:00 P.M. Firing Line
3:00 P.M. Profiles in Courage
4:00 P.M. Kup's Show
5:00 P.M. Washington Week In Review
5:30 P.M. Wall Street Week He's Bullish on America
6:00 P.M. Evening at Symphony
7:30 P.M. Mystery Murals of Barb California
8:00 P.M. In Performance At Wolf Trap Galina and Valerie Panov
9:00 P.M. Soundstage Arlo's Gang
10:00 P.M. Cinema Classics The Hunchback Of Notre Dame

FRIDAY

7:00 A.M. History of Western Civilization
7:30 A.M. Sesame Street
8:30 A.M. Lilies, Yoga and You
9:00 A.M. Mister Rogers' Neighborhood
9:30 A.M. The Electric Company
10:00 A.M. Sesame Street
11:00 A.M. The Electric Company
11:30 A.M. Villa Alegre
12:00 N Classic Theatre Preview: The Humanities in Drama Hedda Gabler
12:30 P.M. Classic Theatre: The Humanities in Drama Hedda Gabler
2:30 P.M. Lilies, Yoga and You
3:00 P.M. Realidades
3:30 P.M. Villa Alegre
4:00 P.M. Mister Rogers' Neighborhood
4:30 P.M. Sesame Street
5:30 P.M. The Electric Company
6:00 P.M. Vintage Video: People Are Funny
6:30 P.M. Public Memo
7:00 P.M. Aviation Weather Winter Flying
7:38 P.M. La Cocina Mexicana Mexico City Menu
8:00 P.M. Washington Week In Review
8:30 P.M. Wall Street Week He's Bullish on America

Listen to breast cancer patients tell what it was like.



Ten women who have undergone mastectomies describe their experiences on this 60-minute special hosted by Lee Grant.

"Why Me?" Nov. 24 at 8:00, PBS Channel 8.

Followed immediately by a local call-in special.



Jerry's
audio exchange

Tucson — 1037 N. Park 622-7407
Phoenix — 334 E. Camelback Rd. 263-9410
Tempe — 120 E. University Dr. 968-3491

PROF. PUDGIES. The Good Times Disco

PRESENTS

"The BEST FRIDAY NIGHT In Town"

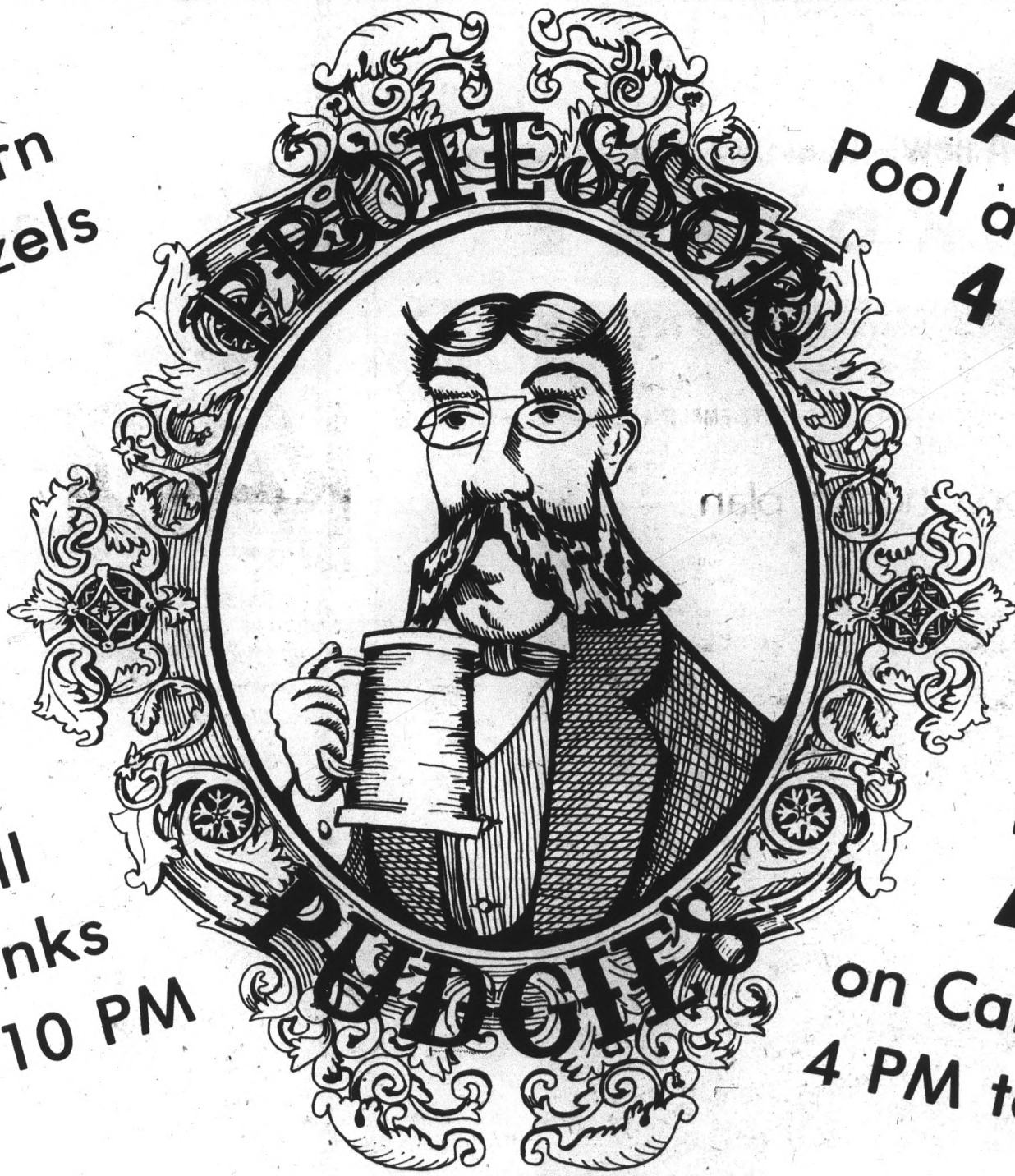
Starting at 4 O'clock!

SCHLITZ — Light and Dark

25¢ Glass — \$1.00 (60 ounce) Pitcher

FREE
Popcorn
& Pretzels

**DISCO
DANCING**
Pool and Games
4 to 1



50¢
on all
Well drinks
4 PM to 10 PM

75¢
on Call drinks
4 PM to 10 PM

MARGARITAS 75¢ — All the time

(and all poured by PEOPLE)

Dance & enjoy the music of your choice

PUDGIES

The Good Times Disco — 396 Mill Ave., Tempe

Students learn real estate ethics

By Bill Lagattuta

ASU real estate professors are telling students to keep their eyes open to the growing number of illegal land deals in the state.

They say in addition to teaching the basics of land sales and licensing, they are placing a greater emphasis on ethics.

"Students have become much more aware in the past year of what's going on in land sales," said Milton Anderson, associate professor of real estate. "They are well aware of the fact that they better be leery of anything that has to do with promoting land today."

Anderson says illegal deals, like those initiated by the now-defunct Great Southwest Land and Cattle

Prof tells students to keep eyes open to increase in number of land frauds

Company, are "the types of things real estate students worry about."

Anderson warns his students not to buy any land with the intention of making money on it. "We've never found that the student is wise enough in his own right to tell what is a good deal and what is a bad deal," he said.

Bruce Childers, who teaches real estate law, says recent court rulings have shown the student that once out in the business world, they should stay away from

foul-smelling deals.

"We are telling them that if they engage in a fraudulent selling scheme, they won't just get a 'slap on the hand' by the court," he said. "Today's public is very tired of fraud."

Childers said most ASU real estate students will never be involved in major land deals that could lead to criminal activities. He said persons involved in major land crime usually haven't had any real estate training.

an increase in educated brokers, "The era of big land frauds is very much over."

"I suspect that students are more evaluative because land frauds have made them more aware of the problems that are associated with real estate investments," he said.

Wilt called real estate the "last great investment opportunity in the country."

Professors say students themselves are buying more property than ever. They suggest when buying land, the student should seek help from a professional real estate agent or a professor.

A new album by

LEO KOTTKE



CHEWING PINE

on Capitol Records and Tapes.

available at:

• Evolution Records • Odyssey Records • World Records



Capitol®

WHAT IS ZIONISM?

ZIONISM IS the love of the Jewish people for the land of Judaism's Birth.

ZIONISM IS the dream of the Jewish people to be free and independent.

ZIONISM IS the struggle of Jews to rebuild their ancient homeland.

ZIONISM IS the insistence that Jews like other people have a right to a State of their own.

ZIONISM IS the commitment that there be a State to which Jews can emigrate out of religious or ideological conviction or for simple physical survival.

ZIONISM IS the hope of building a just, peaceful, progressive State in Israel.

ZIONISM IS the Jewish claim to be treated with justice and dignity.

ZIONISM realized a major goal when the U.N. in 1947 created the State of Israel.

ZIONISM is not only for Jews. It excludes no one; it seeks to hurt no one; it seeks rather to create a situation where Jews can live in security and concord with Arabs in Israel, with Christians and Moslems in Israel, with Arabs in the Arab World, with non-Jews in all countries where Jews live.

ZIONISM is not racism: The United Nations call for the elimination of Zionism is itself racist as it maligns and condemns the national liberation aspirations of the Jewish people alone.

The United Nations call for the elimination of Zionism is aimed at preparing the ideological ground for the eventual destruction of the State of Israel. This assault upon Zionism is an attack upon the Jewish people and their right to peoplehood and self-determination. Under the guise of eliminating racism, the United Nations is now at the point of officially endorsing anti-Semitism. We call upon everyone of goodwill to repudiate and reject this shameful resolution. Its adoption also constitutes a threat to world peace since it diminishes the hope for meaningful negotiations in the Middle East. The ultimate victim of such an outrageous and immoral resolution will not only be Israel, but the United Nations Organization itself and all those who truly love peace and freedom.

Students for Israel
HILLEL
213 E. University

ID policy change hassles ticket buyers

A student ID hassle has angered many ASU students trying to purchase tickets for the Nov. 22 ASU-UofA football game.

About 1,000 students are still using the pink fee card as an ID due to various camera and processing problems.

These students are required to obtain a special stamp on the back of the fee card which says "student stub" before they can purchase football tickets, according to Mike Andrews, coordinator for campus service cards.

However, students who didn't attend the ASU-Pacific game didn't realize the fee

cards had to be restamped until they waited in lines to buy tickets.

"We had quite a few irate people here Monday morning (when tickets went on sale)," Andrews said. "Some said they were there as long as an hour."

"Lots of people were coming in who hadn't seen any notice (of the validation stamp requirement)," he said.

He added this will force students to pick up their permanent cards. There are 1800 cards yet unclaimed.

According to Tom George of the Sun Devil ticket office, students were told by the ticket takers at the last game that fee

cards had to be restamped for the Arizona game. No notices were sent to either the State Press or Student Bulletin.

"It's a legitimate complaint," said George.

"The ID system is really a problem for us, and we're working on it," he said. "We had one guy this year that had three ID's," George said.

He said, "Pink fee cards mainly cause a problem of duplicate ID's. Students could end up with two."

Andrews said the biggest reason why they're worried about the cards is potential

scalping.

Last fall, the ID card office issued about 500 cards without photos, and "a lot of people had the habit of lending those out," he said.

Andrews said a committee has been formed to study the ID card system because of a total lack of satisfaction from students, athletics and the business office.

"If ASU is willing to spend the money, they could get a

faster system," he said.

However, he added, the present budget is less than \$20,000, and to produce cards on campus with the same basic format could cost as much as \$200,000.

Citron's Surplus

Jefferson at 2nd St.
in Phoenix for

- Navy denim seafarer bellbottoms
- Tankers
- Back Packs
- Camping Supplies
- White & 13 Button Belts
- Parachute canopies

STATE PRESS is published by Arizona State University Tuesday through Friday during the academic year, except holidays and examination periods. Entered as second class matter at Tempe, AZ. 85281.

DOONESBURY



Radio Shack

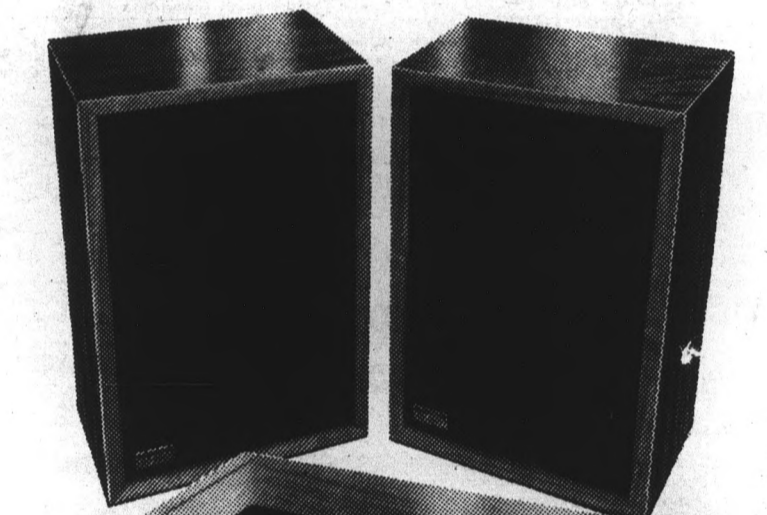
WHY REALISTIC...

BECAUSE WE REALIZE THE VALUE OF A DOLLAR, BOTH TO YOU AND TO US. OUR PHILOSOPHY IS TO BRING YOU THE BEST QUALITY PRODUCTS AT THE LOWEST POSSIBLE PRICE. OVER 2,000 STORES SELL AND SERVICE THE EXCLUSIVE REALISTIC LINE OF ELECTRONIC PRODUCTS, MANUFACTURED FOR AND BY RADIO SHACK UNDER THE MOST STRINGENT QUALITY CONTROL THAT ASSURES EXCELLENCE FROM THE INSIDE OUT.

RADIO SHACK RETAIL OUTLETS ELIMINATE MIDDLEMAN PROFITS AND WE PASS THE SAVINGS ON TO YOU. WE MUST BE DOING SOMETHING RIGHT. WE'RE THE WORLD-FAMOUS LEADER IN CONSUMER ELECTRONICS.

50% OFF! OUR FAMOUS MC-1000 SPEAKER SYSTEMS

Spread the sound with a pair of Realistic's bookshelf acoustic suspension speakers in handsome walnut veneer enclosures. Only 17 1/4 x 8 3/4 x 11 1/4" **Reg. 59.95 Each** **\$60 PAIR** 40-1980



SAVE \$100! REALISTIC[®] AM-FM STEREO RECEIVER WITH AUTOMATIC FM TUNING

Test listen our sensational STA-82. See and feel the luxury of its graceful styling. Experiment with the many dials and controls. Think of saving 33%. You'll want our STA-82—an exceptional receiver for those who know fine stereo! **Reg. 299.95** **199.95** 31-2056



SAVE \$5! DELUXE NOVA-14 STEREO HEADPHONES

Escape to your private world of stereo listening pleasure at an unbelievably low price! Set the volume/balance controls for the sound you like! **Reg. 14.95** **9.95** 33-1013



•1114 N. Scottsdale Way
Woolco Plaza
966-5271

•1813-106 Baseline Rd.
839-4570

•Tempe Shopping Center
917 Mill Ave.

CLASSIFIED ADS

• HELP WANTED

STATE PRESS STAFF POSITIONS. Applications now being accepted for next semester's editorial staff must be turned in at 111-A Stauffer Hall by next Friday, November 21. Any full-time ASU student eligible, regardless of college or major.

Easy soliciting. Work own time. High volume \$3.00 item. Commission paid daily. 839-4391. 11-21

Need small band or three piece combo for wedding Dec. 6. Contemporary music. 942-3038. 11-26

Cocktail waitresses needed. Side Door Lounge, 441 E. Main St. 833-1333. Apply after 8:00 p.m. See Mike. Full or part-time. 11-26

Female graduate student needed for live-in companion and driver for 18 yr. old high school senior confined to wheel chair. Scottsdale-P.V. location with private living quarters & pool. Salary & time negotiable. Call between 10 a.m. & 3 p.m. 947-4169. 12-2

Girls, if you like new and better ideas, and you like to meet people, you can make money working your own hours. 967-0248. 11-21

General Manager — Real Estate. Commercial, Industrial, Syndicates, Etc. Please send complete resume to: S. Cook, 2009 N. 40th St., Phoenix 85008. 11-26

Women wanted 25 and over to answer phone, must be experienced. For interview, call Kain 274-0605; 274-1662. 11-26

Sharp girls 25 and over for escort, experienced only. Must be clean and neat, good money, good hours. Call for interview, Kain 274-0605; 274-1662. 11-26

OVERSEAS JOBS — temporary or permanent. Europe, Australia, S. America, Africa, etc. All fields, \$500-\$1200 monthly. Expenses paid, sightseeing. Free info. — Write: International Job Center, Dept. AD, Box 4490, Berkeley, CA 94704. 1-22

• FOR SALE

2, 3, & 4 bedroom homes & townhouses, vacant, immediate occupancy — from \$19,900.00 Town & Country Realty 968-3414 or eves. 839-2557. 12-5

3 bedroom refig., fenced, double carport \$24,500, eves. 967-4512. 2 bedroom on large fenced corner lot — \$19,900 terms. Eves. 967-5928. 3 BR — family room, fireplace, pool — near campus — \$33,900. Eves. 967-5070. Town & Country Realty 968-3414. 11-26

Ladies — 1/2 off Fall Shoe Sale. Back Door Shop, 707 South Forest, Tempe. 12-5

Five Family Porch Sale, Saturday, Nov. 22, 9:00 to 5:00. Books, records, barbells, barbecue, antique typewriter, clothes, luggage, misc. 909 West 19 St., Tempe. 11-21

Indian Jewelry. Quantity discounts. Rings \$3, bracelets \$4. Great X-mas presents. Call 947-3698. 12-5

21" Raggedy Ann Dolls made to order. Makes beautiful Christmas gifts. Call Mrs. Stralla 276-2334. 11-21

Want to keep your stereo? Let us install a high security Deadbolt in your apartment door for \$12.50 complete. Pro Tech — 968-5564. 12-5

1963 Triumph convertible, \$449.00. RE-BUILT. Call 834-7409 after 4 p.m. 11-25

Hang-glider, 18 ft. standard. Seated or prone. Certified instruction in Flagstaff includ. \$400.00. Late eves. 1-997-1346. 11-21

SKATEBOARD HEADQUARTERS. COMPLETE BOARDS & PARTS. Centurion (rated best buy) & Peugeot bikes. Bikes, 'n Things where quality isn't expensive. 1020 S. McClintock. 968-4511. 1-23

Polaroid 420 Land Camera and focused flash attachment, less than 1 year old, excellent condition. \$50 or best offer. Debbie 965-2133. 11-25

Two twin beds — new electric lawn mower — French Provincial make-up table — undrilled bowling ball. 959-7677 after 5. 11-26

ATTN: GUYS & GALS! EMBROIDERED SHIRTS, BLOUSES, DRESSES FROM MEXICO. Also the new bulky knit sweater jacket. Phoenix Greyhound Swap Meet every Sat. & Sun., Space 371 on east side or call 964-5033 night or day. Bring ad for 10 percent discount. 12-5

Men's 5 speed Schwinn, \$40.00 or best offer. Call 968-8053 after 12:00. 12-3

Classic guitar and hardshell case, like new condition. \$199.00. After 6 p.m. 275-9657. 12-5

• INSTRUCTION

Learn to be a model. Classes begin Dec. 13. Call today 263-0732 or 955-8365. 11-21

• ROOMMATE WANTED

Two roommates needed to share nice large house. Heated pool, completely furnished including dishwasher, color television, pool table. \$100 month plus share utilities. 946-5189; 946-4683. 12-3

Roommate wanted, female, \$120.00 a month, includes utilities, own room, 2 bedroom apartment, pool, dishwasher. 968-1661. 11-26

Two people to move in Dec. 1. Four bedroom house 13 miles from ASU. \$65.00 mo. 986-2532 after 4 p.m. 12-2

• PERSONAL

FASHION EYEWEAR is featured at very exclusive shops, but priced right at Doctor's Optical Service. Dare to compare 945-8235. 11-21

Cess. Wishing you a very happy birthday for tomorrow. Your fellow galera, Silly. 11-21

• RENT

Need a darkroom? We can provide what you need! Rental darkroom by day or month. Mornings 1521 S. Indian Bend, 968-7741 12 to 12. 12-2

4-bdr. house, 2 blocks from ASU, \$300. Call 947-3698, 946-5189. Carpets, drapes and appliances. 12-2

• AUTOMOBILES

MG Midget, 1970, good condition, 27,000 miles. Call 968-2239, \$900. 11-21

1972 Mazda Rx 3 with air. Moving and must sell by Dec. 1st. Call Pat 966-8030 after five. 11-21

1972 Capri, \$1300, good condition, new brakes, good mileage. 949-7417, 8611 E. Highland, Scottsdale. 12-3

1965 yellow Pontiac Catalina Conv., fully equipped, perfect condition. Motor overhauled. 833-0666. 11-26

4 chrome rims, 10x15, fits Ford Jeep, Dodge. \$10 each. Also 1 Gates Comando. Good condition, \$10. 968-3941. 11-26

'71 VW, \$1500, must sell. 968-1878. 11-25

• MOTORCYCLE

'73 Kawasaki 250-F11, only 800 miles. \$575 or best offer. 4002 W. Palm Aire, Phoenix, AZ. 937-7858. 11-26

'75 Honda 550, excellent condition, 2900 miles, \$1300. Call 965-4854. 11-21

1970 Triumph 650, great condition, extras \$750. 966-7739 Bill. 11-25

Kawasaki KZ-400, 2200 miles. Bought new in 1975. Excellent condition, \$850. Will deal. 833-4067 after 5:30 p.m. 12-2

Best on-off road machine available! Suzuki TC 185, dual-range, 10 speed. Bought July, 1975. Call 966-9678. Offers! 11-25

• WANTED

Wanted: Volkswagens, any year. Running or not. 258-3593, 244-1184. 12-5

• LOST

I'm directing this to the person who stole my Alaskan Malamute puppy from 940 E. Spence. I'm willing to pay more than you can sell him for. Contact Brian, 833-5198. No questions asked. 12-3

• TYPING

PROFESSIONAL TYPING. IBM Pica. Expertise in format requirements; research reports, theses, dissertations; 60 page. 956-7983. By appointment. 11-26

Typing — IBM Selectric II, Dissertations, theses, term papers, Rosemary Vance, Tempe. 967-9143. 12-5

Starving graduate student will type. Great writing and typing experience. Selectric. Cheap. Close to campus. 947-8579 evenings. 11-21

Experienced typing. Reasonable, accurate. IBM elite. 838-1642. 12-5

Near ASU. Research papers, theses, dissertations. English degree. Editing. Work guaranteed. 7 yrs. experience. 967-8155. 12-9

Special Student Rates. Can't type or you just don't want to do it? Let us do it! E.S.P. Typing & Resume Service, on campus, 123 East University. Call Gene 968-9075. 12-5

Professional experience on I.B.M. Selectric II. Thesis, Dissertations, etc. 967-7423. 12-5

TERM PAPERS, RESUMES, THESES, DISSERTATIONS. Professional, guaranteed work. IBM. Maxine Mullen. 955-0763. 4-30-76

Typing — reasonable rates, IBM Correcting Selectric, various types. Call Lillie after 4:00 p.m. 964-5817. 12-5

Typing of manuscripts, envelopes, term papers, themes, and etc. done in my home. Fast accurate work at a very reasonable rate. Contact Nancy Bolding — 274-2814. 12-5

Typist, experienced with Campbell and Turabian formats. Near ASU, cheap too — 60c page. Debra, 967-2305. 12-5

Typing all phases. Very reasonable, neat, fast, accurate, near ASU. Mary 949-5538. 12-5

• ANNOUNCEMENTS

ATTENTION INDIAN STUDENTS — Fall picnic supper and volleyball game. No charge. Monday, Nov. 24th, 4 p.m. at Daley Park. Sponsored by American Indian Crusade. Information 839-4352. 11-21

Nostalgians: Now open, Dynabelle's Frock Shop, 2144 East Apache, Tempe. Tues. thru Sat. 10:00-6:00, specializing in nostalgia clothing, etc. 11-25

Forming New Bilalian (Black) Student Union (B.S.U.) Contact Brother Will, 965-4641 or messages 965-4722. 12-3

"Is Zionism Racism?" This question will be discussed Friday evening, Nov. 21 at approximately 8:45 following services at Hillel (Services at 8:15). Baker Center, 213 E. University. 11-21

Year old .cat. Spayed. Gray and white. Looking for good home. Call after 5:00. 949-1188. 12-3

Travel, education, work, Aliyah or Israel? Find out information on how to accomplish it. For an appointment with the director of the Israel Aliyah Center call 967-7563. Interviews on Tues. Nov. 25. 11-25

• SERVICES

Tutoring: Beginning Spanish-French. Get help now! 968-2913 (Evenings or week-ends). 11-25

Counseling available for Indian students at Dantorth Chapel, ASU. Sponsored by American Indian Crusade. Information 839-4352. 12-5

Typewriter tune up. Clean, oil, and adjust your typewriter and install a new ribbon for \$8.50. 968-5564. 12-5

Is your car sick and wasting gas? Save it with the best tune-up at the best price. Minor auto repairs, fast service, mobile service. 966-3185. 12-2

THINKING CHRISTMAS? Give a practical gift. Get that stereo equipment repaired (at non-ripoff prices). Steve 968-0022. 12-5

Motorcycle tune-ups. Will give tune-up for very reasonable price. All Japanese bikes two and four stroke. Call after 3:00 p.m. for appointment. 947-3410. 1-20

Big Wheel & Tire Barn, 1125 So. Country Club Dr. Mesa, Ariz. 833-5458. Speed Parts. 12-5

Get that holiday painting done now! Jim 967-6547; 969-6729. ASU alumnus. Very reasonable. 12-5

continued from page 11

While Pauling's vitamin C research has caused arguments both in health food and medical circles, no other vitamin has attracted as much public attention as the "modern day fountain of youth," vitamin E.

Proponents of the fat-soluble vitamin not only say that it slows down the aging process, but also espouse that it aids in healing.

Vitamin E for youth

Costa said as a result of increasing oxygen in the body, vitamin E has "retarded the aging process in animals."

"It's proven that it slows down the aging process," he said of research done outside the United States.

Abadie considers the growth in popularity of the vitamin as the current health food fad.

"It's in vogue," he said. "The research in vitamin E has been with animal models. There is no conclusive evidence in humans that shows additional benefits."

However, according to Abadie, there has been research which tends to support vitamin E's "slow down" effect on aging.

A pamphlet put out by Blue Cross entitled "Food and Fitness" indicates that, "Vitamin E deficiencies are unknown among adults in the United States . . . Medicine knows of no proof that excess vitamin E will protect either one's heart or sex life."

Facts should convince skeptics

Martner said, "At least, I feel that they have to accept it and say it is beneficial. My own opinion is that I think it helps prevent old age in that it helps the arteries, circulation and heart. It keeps the arteries from hardening."

A product deemed beneficial by all those interviewed is yeast. Though they differ on how much of the product should be consumed, all agree that it is a rich source of B vitamins.

As a dietary supplement health food proponents say yeast provides good complete protein.

Costa considers yeast the top food one can consume.

"Brewers yeast is number one. It's the most potent food," he said.

Yogurt: surefire panacea

To many the entire health food field can be summed up in a word, yogurt. The skim milk product "cleans out the system," according to its users.

"Yogurt has a bacteria favorable to the intestines," said Martner. "People in Europe attribute staying healthy to yogurt."

The store owner added that "plain" yogurt is superior to those with flavor additives.

While the use of vegetables is necessary for a balanced diet, the argument made by those using health foods is that all vegetables are important, whether they are grown by organic or synthetic means.

Costa said natural fertilizers are much more easily absorbed into the plant roots than synthetic types.

Abadie, however, disputes the theory that organic fertilizers give added nutrients to the plants.



According to Abadie, it takes years for this organic fertilizer to be used by a plant.

Costa said, "You can't reproduce in a lab what occurs in nature."

He cited royal jelly (produced by the queen bee) as an example.

According to Costa, the vitamins and minerals in this product, if looked at separately, have no extraordinary characteristics because they are in such small quantities.

"Collectively and with intrinsic factors (vitamins not yet discovered or substances simply not understood) it is an unbelievable product," he said. "However, put it in a tablet and it wouldn't be anything."

Costa said royal jelly tends to act as an antibiotic. According to him, undernourished infants were given this product, after nothing else worked, and their health was greatly improved.

Health fads could endanger

Dr. Friedman is concerned that many times those who frequent health food stores are masking their problems and are endangering their health by not seeing a physician.

"If there is an underlying illness, you're losing time that can be important," he said. "Health food stores are preying on fears. There is no scientific evidence to back them up."

Abadie agrees.

"The unfortunate part is that this person (who uses health foods) has not seen a physician and it may mean that he avoids early detection of a problem," he said.

Costa indicated, however, that 50 per cent of his customers have seen doctors without results.

"People usually know what they want. There's enough information in books and magazines . . . most people are informed," said Martner. "I know it (health food business) is not perfect because it is a business that has been exploited since it has become popular."

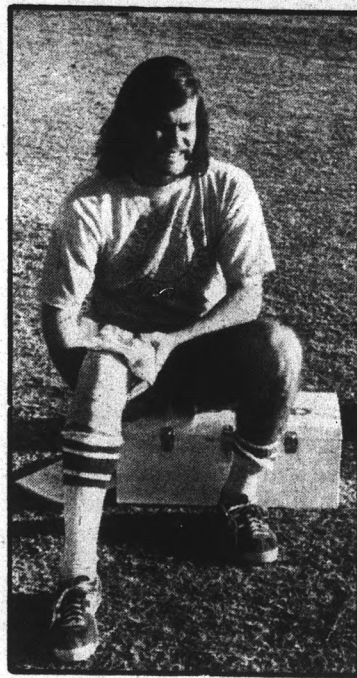
Cadigan said nutritionists should follow health food advocates in one area. "Health food stores are doing a good job of advertising," she said. The County's chief nutritionist pointed out that there is a great need to educate the public when it comes to nutrition.

RATES

14 words \$1.00
5c Each Additional Word
Per Insertion

Frequency Rates

5 or more consecutive editions 20 percent OFF
10 or more consecutive editions 30 percent OFF
20 or more consecutive editions 40 percent OFF
(No change of copy)



Wounded Warrior

Dave Covert, sophomore Zoology major, suffered a knee injury Wednesday in Lemon Terrace Club's intramural football game against 4-Northwest (P.V. West Team). Covert was later taken to the Student Health Center in a University Police van. Lemon Terrace won 6-0.

Wrestling team makes its move

By Mike Natter

For years ASU's wrestling team found itself buried at the bottom of the Western Athletic Conference. After Bobby Douglas was hired last year as head coach, the team improved each week en route to a 7-6-1 season and fifth place in the WAC tournament.

During the off-season the staff went to work and recruited some of the nation's best high school and junior college wrestlers, Douglas said. With a year of experience and the added talent, Douglas sees the Devil wrestlers not only as serious WAC contenders but as a team which is only a step away from national recognition.

Coach Douglas points out two reasons for the wrestlers' recent success.

"First," Douglas said, "wrestling interest is on the up-

swing all over the country. The residents of our community and the athletic administration recognized this and decided that the wrestling program should display the quality ASU exhibits in other sports." "Secondly," Douglas added, "is the outstanding character of our athletes. When we recruit, personality and goals are more important than past record. The attitude of our wrestlers is just tremendous. I've worked with national championship teams before, and I've never been more pleased with the enthusiasm and determination of a group of young men."

This past weekend the quality of Devil wrestling was displayed as ASU dominated the Arizona AAU tournament in a manner Coach Douglas called an "historic accomplishment." ASU, according

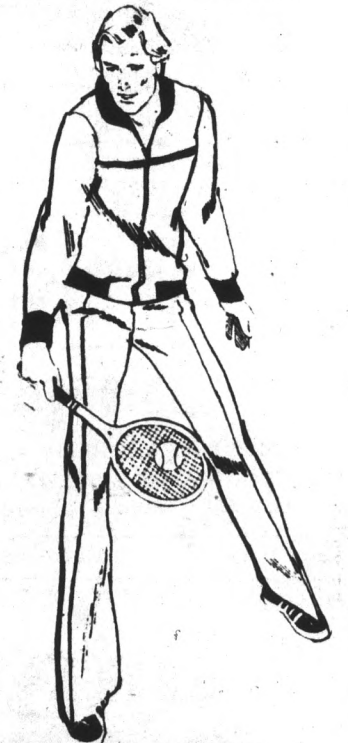
continued page 18

TEMPE RACQUET & SWIM CLUB

IRON GATE SHOP PRESENTS:

SPECTACULAR WARM UP SUITS FOR WINTER WEAR OR CHRISTMAS GIFTS \$29.95 TO \$50.00

COMPLETELY EQUIPPED TENNIS FACILITY 2140 EAST BROADWAY TEMPE



University sporting goods

SHOE SALE

20% to 40% OFF

	Reg Price	sale Price
Ladies' Bata Polylove	\$14.95	\$8.95
adidas Monte Carlo	26.95	18.95
adidas Olympia	29.95	21.95
adidas Red Gazelle	29.95	18.95
adidas Red Varsity	19.95	14.95
adidas Americana	24.95	16.95
Tiger Red Montreal	23.95	17.95
Tiger Wrestling Shoes	20.95	15.95
Men's Tretorn Tennis	22.50	15.95
Nike Obori	22.50	15.95
Puma Football No. 3003	19.95	14.95
Converse Skidgrips	11.95	8.00
Converse Net Stars	11.95	8.00
Converse Deck Shoe	8.95	6.00
Brooks	17.95	12.95
adidas RBI	12.95	8.00
Pro Keds	12.95	8.00
K-Swiss	24.95	19.95
adidas Riviera	25.95	14.95
Puma 121-K	20.95	14.95

Tempe Center — Univ. & Mill • 966-1633

MAKE MONEY

Sell Commercial Real Estate — Apartments, Industrial, etc.

Mr. Zika 994-3700

ASU Student Foundation

presents



on Saturday November 22nd at 7:30 pm

in the University Activities Center

the first-ever inter-collegiate

mixed team dual tennis match between

ASU and BYU

in World Tennis League

DONORS

Athletes Foot - Christown
Spa World - Scottsdale
Olympia Brewing
Oshman's Sporting Goods
Los Arcos Mall
Radio Shack
Tri-City Mall
Associated Students

Adidas tennis shoes and shirts
One year membership
10 cases beer
tennis balls
pocket radio
group tickets

ASU Athletic Dept.
Recordland
Tri-City Mall
Charlie Barry's
for the Net Set
"DYNASTY"
Jack Shop - Tempe
Covey Lincoln-Mercury

sports tickets
albums
\$10 certificate
band shirt

ticket prices: \$1 for students and \$2 for the general public

proceeds to the Student Foundation for scholarships, emergency short-term loans and campus needs.

ticket available in the ASU Ticket Office, 500 S. Baseline, 8:00 a.m. to 5:00 p.m.

Valuable Coupon

\$1.00 OFF ANY LARGE PIZZA
"New York Style Thick Crust"

WITH THIS COUPON
NOT VALID ON DELIVERY. ONE COUPON PER CUSTOMER.
DANELLE PLAZA
Corner of Southern & Mill, Tempe
201 W. Southern

MANHATTAN VILLA INC. 967-0843

Monday, Tuesday, Thursday 11 a.m. - 11 p.m.
Friday & Saturday 11 a.m. - 1 p.m.
Sunday 4 p.m. - Midnight

Offer Expires 11/30/75

Wrestler's set for WAC meet

continued from page 17

to Douglas, received nine gold, nine silver and six bronze medals, shattering the previous team point record.

On Dec. 4, the Sun Devil wrestlers open their season in the ASU men's gym. At 2 p.m. one squad will battle Utah and then at 7:30 p.m. another squad will grapple with top-ten power Oregon State.

Douglas says his team is young and deep and expects competition in many of the weight classes.

At 126 lbs. Rick Reed, "a transfer student with national championship potential," will hold the spot after he becomes eligible January 1. Right now two former high school rivals, Carlos Gonzales and Doug Meyers, are battling it out.

At 134 lbs. Kerry Bolin, a national J.C. champ, has the experience over McClintock's Mike Pike and Bob Gillette. Bolin is presently at 142 lbs., but will drop class (weight) during the season.

At 159 lbs., transfer Tom Kastrzewski has the edge but there is still a question concerning his eligibility. John Maile and Mike Warren stand ready to take his spot if necessary.

Mark Cole at 280 pounds is the top heavyweight. Cole, last year's WAC runner-up, came to practice in tremendous condition and looks solid, Douglas said.

Three hundred fifty-pound John Mitchell might be the biggest thing ever to hit the ASU mat. Mitchell will be red shirted (he'll practice but is not eligible for league matches) in order to gain experience. However, the fans will be seeing a lot of John. He's scheduled to wrestle 20 times in exhibition and AAU matches.

Regardless of who represents ASU in each category, Douglas expects great things from his team.

"The team has shown tremendous improvement," he said. "The results will tell the story but — we're going to bury some teams this year."

Huge crowd to witness tennis match

By Jacque McVay

The largest crowd ever to witness amateur tennis may gather in ASU's Activity Center Saturday night at 7:30 p.m. when ASU plays BYU.

The historic event will be the first intercollegiate mixed team tennis match using World Team Tennis (WTT) format.

WTT rules dictate that "each event (doubles or singles) is a set. The game winner receives a point. And, the school with the highest total of points wins the match," said Chris Penn, ASU's No. 1 female tennis player.

The match will consist of women's doubles and singles, men's singles and doubles and mixed doubles.

The Sun Devils have won both men's and women's championships in Western Athletic Conference competition. The women's team, coached by Dr. Anne Pittman, won the national championship three times over the past five years.

Expressing apprehension, ASU's No. 1 male tennis player Mark Joffey said, "I think it's going to be close. Considering that both schools have equal ability, there are other factors to affect the scores. For example, ASU's mixed doubles partners Glen Holroyd and Susan Boyle have never played together."

"Also, most of us have never played on a carpet court, which is faster. There won't be much time to practice on it," Penn said. The indoor synthetic court, provided by the Phoenix Racquets, will be installed in the Activity Center shortly

continued page 19

Get Acquainted Special



\$2.50 OFF

on any haircut with this coupon . . .

Offer Good till Dec. 24
In Tempe ONLY

We condition, cut and blow-dry your hair into a head-shaking, free and swinging style. Our stylists concentrate on a cut that suits your hair texture and your life style. Call now for your appointment. You'll love what we do!

\$5.00 Off — On any Perm

Chicago Hair Company

1041 E. Lemon 10261 N. Scottsdale Rd.
Tempe 967-2360 Scottsdale 948-1460
[Corner Lemon & Terrace]

LA PAZ

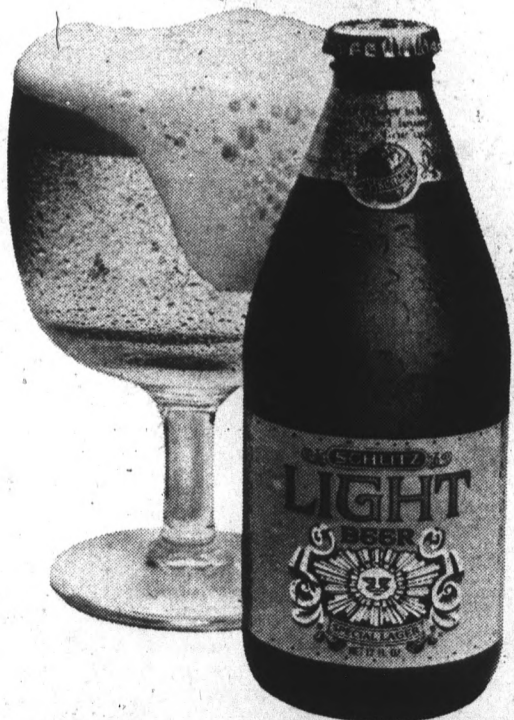
DON'T RENT UNTIL

You have seen the La Paz Apartments at 1011 East Lemon St., Tempe

- Furnished with ALL Utilities paid
- walk to ASU
- 1 Bedroom — \$158-\$178 month plus tax.
- 2 Bedroom — \$208-\$228 month plus tax
- Deposit fully refundable
- Pool plus laundry facilities

CALL 967-2544 for further info

Introducing Schlitz Light Beer.



©1975 JOS. SCHLITZ BREWING CO., MILWAUKEE, WIS., AND OTHER CITIES.

One third fewer calories than our regular beer, but all the taste you'd expect from Schlitz.
It took Schlitz to bring the taste to light.

PRESENTING:
SCOTTSDALE'S NEWEST SELF-SERVICE MINI-WAREHOUSE

- VACATION STORAGE OF VALUABLES
- LONG TERM STORAGE OF BUSINESS FILES
- 16 TO 200 SQ. FT.
- COMPLETE SECURITY
- YOU KEEP THE KEY
- FIRE PROOF
- 24 HOUR RESIDENT MANAGER

Lowest Rates In Town

30% DISCOUNT 'TIL DEC. 31, '75
WITH THIS AD

advance mini-warehouse
8615 E. McDOWELL ROAD
SCOTTSDALE, ARIZONA 85257
for information call anytime : 949-7075

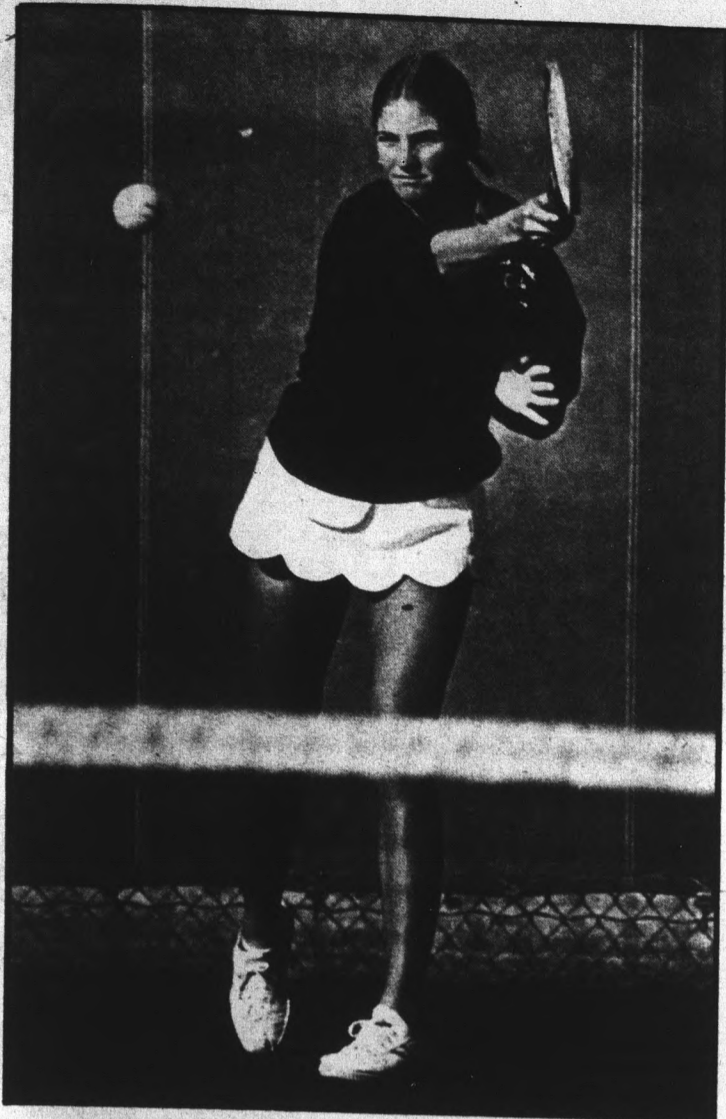
FREE EGG ROLL
(With This Coupon)
With Lunch & Dinner
HOW-HOW Chinese Restaurant

921 E. Univ. Dr. at Rural
Tempe • 966-2560

好

Chinese Smorgasbord
Every Day
LUNCH 11 AM-3 PM
DINNER 5 PM-9 PM
Fri. & Sat. till 10 PM

We are also serving
Beer & Wine
THIS COUPON EXPIRES
NOV. 30, 1975



david seibert photo

ASU women's tennis player Chris Penn will play singles for the Devils against BYU this Saturday.

Huge crowd expected to watch tennis match

continued from page 18
before match time.

Most of the players expressed uncertainty of their ability to concentrate because WTT rules allow spectators to boo, hiss, scream and cheer. Normally, noise is not permitted and a feeling of respect for the players is generated. "We don't anticipate booing, and if it happens it happens. We are abiding by the U.S. Tennis Association's code of conduct where it is unsporting to boo," said men's coach Marty Pincus.

Joffey is the second ASU student ever to be an All American in tennis. He has won the Fiesta Bowl Open twice and has been the WAC No. 1 singles champion for two years. The junior is currently ranked first in the Southwest Tennis Association.

The women are no slouches either in the awards area. Premier player Penn won the Southwest Open singles two years running and also conquered the Arizona Open and Phoenix Open.

The other teammates make up what coach Pincus calls "the strongest team in the school's history."

Lineups announced by ASU coaches Marty Pincus and Dr. Anne Pittman and Wayne Pearce and Ann Valentine of BYU are as follows:

Sue Boyle and Nancy Janco of ASU will oppose Susie

Brown and Karen Kensington from BYU in women's doubles.

Chris Penn, ASU, vs. Kensington in woman's singles.

Jeremy Cohen and Glen Holroyd, ASU, will face Mike Nissley and Bruce Kleege in men's doubles. Mark Joffey, ASU vs. Kleege, BYU, in men's singles.

Boyle and Holroyd vs. Brown and Nissley in mixed doubles.

Umpiring will be Mike and Flo Blanchard who together received the first ATP (Association of Tennis Professionals) and Tennis Officials of the Year Award for 1975.

Mike has umpired at the U.S. Open Tennis championships at Forest Hills for 40 years and has covered more

television tennis matches than any other umpire.

The match is sponsored by the ASU Student Foundation for scholarships, emergency short term loans and campus needs. Tickets, \$1 for students and \$2 for adults, are available at the ASU ticket office (965-2381) or any Select-a-Seat outlet.

Pre-match competition has centered in ticket sales. The campus organization selling the most tickets to the tennis match will receive choice group seating for the 1976 ASU basketball season.

Game time is 7:30 p.m. Sat. Nov. 22. in the ASU Activity Center.

FREE COUPON

Indian Jewelry

GUARANTEED AUTHENTIC

1/2-2/3 OFF EVERY PURCHASE WITH THIS COUPON OR ASU I.D.

[EXCEPT ADVERTISED SPECIALS]

WHOLESALE TO THE PUBLIC — YOU PAY NO SALES TAX

TURQUOISE TURTLE

1024 S. McClintock OPEN EVES M-F 2-8 PM SAT 10-6
(AT DON CARLOS) 968-1545

SHIPPING PAID WITHIN USA

Q and BREW

618 Mill Ave

Pool Players Special

60 oz. Pitcher of Beer

25¢

2 players 1 hour minimum
One Coupon per table

OFFER EXPIRES DEC. 15, '75

FREE QUART OF PEPSI

With Purchase of any 2 Hot Subs

with coupon at

Out-R-Inn

Pizza & Subs WE DELIVER CAMPUS AREA

1045 LEMON ST. 966-7009
OFFER EXPIRES NOV. 25, '75

AUDIO SPECIALISTS

is presenting a

Unique BOSE Computerized Speaker Demonstration

TODAY — 12 noon to 8 PM
TOMORROW — 12 noon to 6 PM

MR Mr. Jim Trego, the BOSE factory representative, will be on hand.

This demonstration will run every hour, on the hour — no appointment necessary.

At the Tempe store only

3300 South McClintock Drive

GOOD PRICES ARE JUST THE BEGINNING

CUSTOM hi-fi

DISCOUNT center

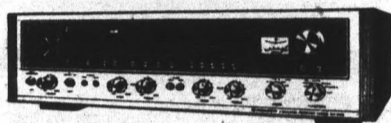
ODDS & ENDS USED & SCRATCHED MERCHANDISE CLEARANCE

SAT
10 AM-6 PM
SUN
NOON-5 PM

THIS
WEEKEND

RECEIVERS

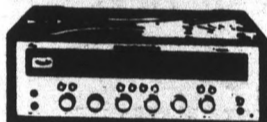
PIONEER
QX 747



Built-in CD4 Demodulator
SQ Decoder
RM Decoder

\$429

Marantz 2230



60 watts RMS into two channels,
20-20,000 Hz 8 ohm
0.5 percent T.H.D.
3 year Parts & Labor Warranty
A best buy at any price

NOW **\$280**

SANSUI
771



40 watts RMS into 2 channel
20-20000 Hz-80hm -
2 tape monitors

\$299

SUPER SPECIALS

BSR 2260



Magnetic cartridge
Cue pause device

\$39⁹⁵

BSR 710



(4 left)

Large
die cast
Platter
Complete

\$119⁰⁰

S
U
P
E
R



PIONEER

Pioneer SX535
Pioneer Quality
Power to spare
ECI SUPER 8W
Walnut cabinet
8 inch woofer

BSR 2200
Magnetic cartridge
Cue pause device

\$385⁰⁰

S
Y
S
T
E
M

SPEAKERS



sound as clear
as light

At
a
Discount

**AMT 3
Rock Monitor**



\$650⁰⁰
pr.

You Save
\$250.00

**AMT 1
TOWER**



\$778⁰⁰
pr.

You Save
\$200.00

ECI 1255



5 way
adjustable
cross over
12 inch woofer

\$99⁹⁵

Misc.

Gilbs FM 8-trk. Car Deck **\$60⁰⁰**

(1) Wollensak 8055 **\$169⁰⁰**

Sharp CB 500 UB
23 channel CB radio
with ANL and
delta tune **\$129⁹⁵**

Univ. 8-trk 80 **\$1.09**

Univ. 8-trk. 40 **\$.89**

Pioneer SEL 20A
Headphones **\$15⁰⁰**

Pioneer SEL401
Headphones **\$22⁵⁰**

Radarsentry
radar detector **\$29⁹⁵**

264-4717

Fry's Shopping Center

264-4717

Charge- East Indian School Road & North 16th Street -Layaway

Most Merchandise on Special — Choose Marantz, Teac, E.S.S. B.C. Venturi, Akai, A.R., Dual, P.E. B.S.R., Pioneer, Sansui and Many More.

Tucson is OPEN — 2549 E. Broadway 327-5959



BEFORE YOU BUY SHOP CUSTOM HI-FI

IF YOU CAN'T DEAL WITH US
YOU JUST CAN'T DEAL!!

WE DISCOUNT PRICE NOT QUALITY