



Modern art

Steve Arco, senior, studies the results of his work on a spoké shaver. His finished artwork will be a sculpture for advanced sculpture class. Photo by Les Barrett

friday

state
press

Tempe, Arizona

Arizona State University

Vol. 58, No. 21 October 3, 1975

ASU to visit Spain for tourney

By Paul Lorentz

Head Basketball Coach Ned Wulk said Thursday ASU will play in the International Christmas Tournament in Madrid despite the turmoil sparked by recent political killings there.

Wulk said it is up to the U.S. State Department or other agencies to advise against the team's participation in the event.

The Sun Devils are the only college team that will represent America in the Dec. 24-26 tournament.

Recent executions of five Basque militants by the Franco government brought protests from many European countries, some of which withdrew their diplomatic envoys from Spain. Demonstrations erupted in Spain and elsewhere on the continent in response to the killings.

In return, Spain recalled its ambassadors from four countries and the Vatican.

While many European officials have

Civil unrest developed in Europe after Spain's leader ordered the execution of five political prisoners despite international protests. ASU's basketball team may participate in a tournament in Spain this winter, although other nations' teams plan to boycott it.

lashed criticism at the fascist Spanish regime, the U.S. has remained neutral in its comments concerning the executions.

Wulk said it is up to the NCAA, the U.S. Amateur Basketball Association and the State Department to decide whether ASU will go to Madrid.

"The State Department has the final say on any overseas venture," Wulk said.

The three agencies have people who are "well-versed in athletic involvement overseas and are the best ones to make the decision," Wulk said.

President Ford expressed regret over the "cycle of violence" in Spain. Presidential Press Secretary Ron Nessen said there are no plans to pull the U.S. ambassador from Spain.

The U.S. is currently negotiating

with Spain for military bases inside the country.

Wulk said he has not given much thought to the possible political overtones the Sun Devils' trip could create. He said he believes the State Department would advise him not to go if the team's safety were involved.

"I don't think they would make a decision on a basketball team on a political basis, regardless of the team's welfare," Wulk said.

Paul Howard, assistant basketball coach, said the situation in Spain will probably cool off before December. "It's kind of a wait-and-see thing," he said.

"This game was scheduled before the real hot things hit," Howard said. "I want to see the country and the people, not Franco," he said.

Sun Devil team member James Holliman said the Basque executions and the general turmoil in Spain does not worry him.

Consumers' committee investigates SAGA food

By Bill Lagattuta

The Associated Students Consumer Services Board is conducting a full-scale investigation of several SAGA Food cafeterias.

Jeff Martin, head of the student-run board, said he will file five formal complaints against SAGA's Manzanita dormitory operation early next week.

Martin said his committee, designed to handle student complaints about local products and services, has been investigating SAGA campus outlets for several weeks. The board receives an average of one complaint per day, most of them about food.

"Complaints range from minor gripes to things that could be potentially serious, such as uncooked pork and chicken," said Martin. "Other people are reporting raw or undercooked eggs, wilted or rusted lettuce and spoiled cottage cheese."

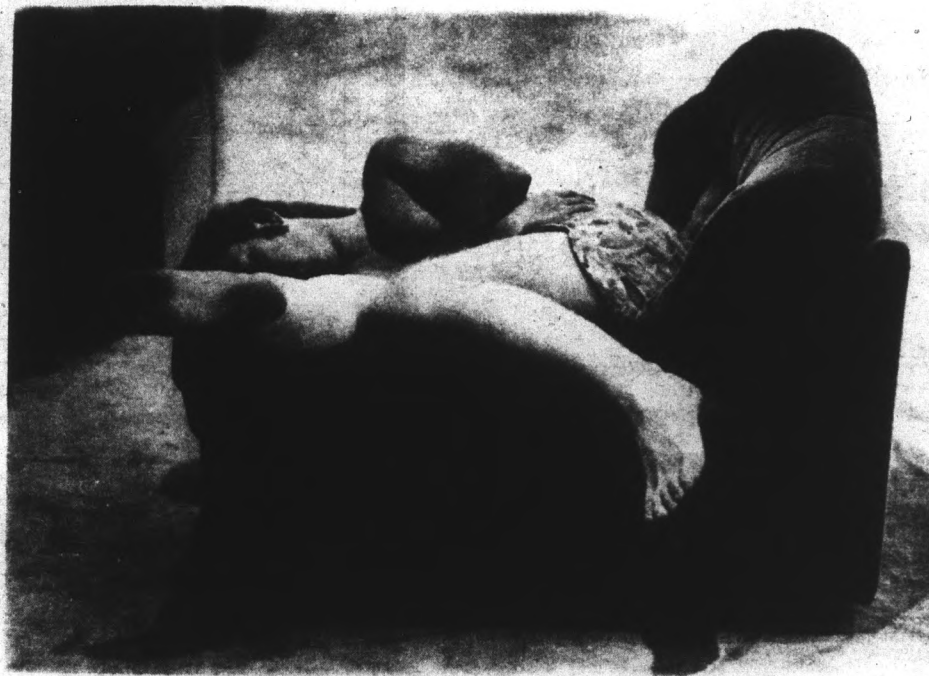
Several complaints have also been registered against SAGA personnel. Martin said his committee has received more than 50 individual complaints, but as of now, only five have been formalized.

"The person making the complaint must fill out and sign a formal statement," he said. "Many people just don't want to put their name on something that will be sent to SAGA."

Complaint forms are modeled after those of the Better Business Bureau, which aids the Consumer Services Board in its operations. Forms provide space for several different complaints.

Martin said while his board has been receiving complaints from residents of Palo Verde West, Palo Verde Main and Saguaro dorms, the majority involve the Manzanita cafeteria. He said copies of the complaint forms and a petition by

continued page 2



Quiet contortionist

Impervious to passing trains, trolley cars and even students, this individual chose to while away the hours Thursday afternoon snuggled up on one of the MU's comfortable couches.

Photo by Bill Frakes

Consumer board investigates SAGA food

continued from page 1
 residents will be given to cafeteria manager Paul Knight.
 Knight, when contacted, said he was unaware of any investigation or complaints. He said his staff meets with representatives of each dormitory

floor every two weeks to get student feedback.
 "So far, we have only had minor suggestions for improvements," he said. "A complaint is taken into consideration if it is legitimate, and most of the time, it is taken care of right away."
 Knight said five formal complaints would weigh heavily in his cafeteria operations. He said that if they were valid gripes, "changes would happen immediately."
 Knight indicated his staff would look into Consumer Services' complaints.

Martin said Consumer Services has been busier than ever this semester. He said in addition to investigating SAGA, his seven-member board advises students with consumer problems and publishes a best-buy price list called "Penny Power" in the Student Bulletin.
 Martin said the SAGA investigation should be completed within two weeks. "We expect some action by then," he said.
 "We aren't so concerned with minor gripes about the food, but some complaints, such as raw or undercooked pork can lead to serious disease," he said.

You've got to Like Us a Lot!

'Cause we got a lot goin' on around here . . .

While you're using the many & varied services of the Memorial Union we'll try any number of ways (at least 4) to provide good, wholesome food at hard-to-beat prices.

Looking For a Quick Snack?

Try **THE HUB** on the First Floor

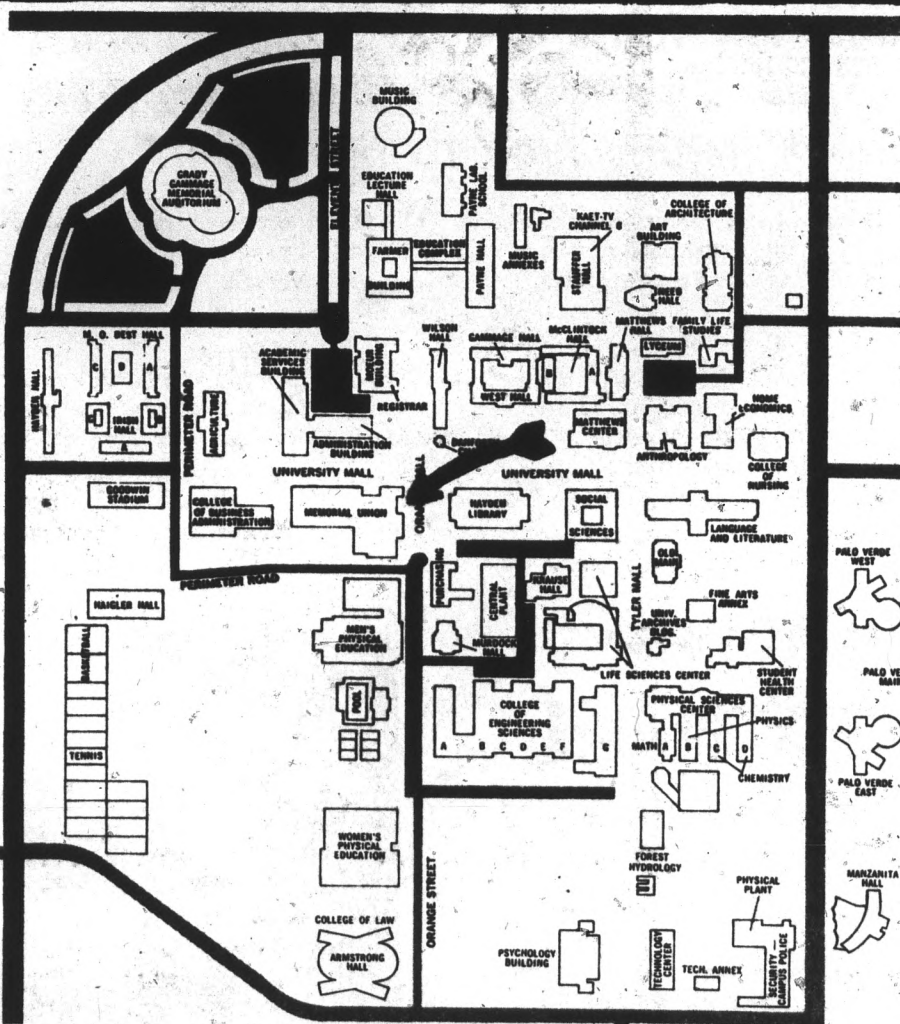
A LA CARTE and full GRILL MENU With Daily Specials

Also Mexican Food Line with Daily Special

OPEN DAILY EXCEPT SUNDAYS

M.U. Has . . .

- Movies
- Games Room
- Bookstore
- Photography Labs
- Noon-Time Pop-Ups
- Bake 'n Take
- Bowling Alley
- Music
- Art Displays



Something Different? try **SIDEWALK CAFE**

in the lower level A la Carte & Full Grill Menu plus Ice Cream Specialties

OPEN DAILY Till 9 PM Fri. - Sat. - Sun.

Popcorn, snacks & Specials on MOVIE NITE!

M.U. Has . . .

- TV Rooms
- Information Desk
- Notary Service
- University Cashier
- Music-Folk
- Barber Shop
- Comfortable Lounges
- University Bookstore

Ask About **THE CLUB**

A cafeteria that offers real good buys on Meal Tickets for almost any plan or length of time you want.

The M.U. is in the Heart of the Campus — open during the better part of every day.

- 6:30 - 11:00 Mon. thru Thurs.
- 6:30 - 1 AM Friday
- 7:30 - 1 AM Saturday
- 11:00 - 11:00 Sunday

UNIVERSITY BUFFET

Serving Monday thru Friday 11:30 to 1:30 in the Maricopa Room (2nd floor M.U.)

- Soup 'N Salad line - \$1.50
- Carved Meat line — \$2.00 includes salad, deserts, beverages

Mexican trade planned with ASU

By Ann Inakeep

An extensive program of cooperation involving faculty and students from ASU and a Mexican university is in its final planning stage, according to ASU administrators.

Agreements between ASU and the Universidad Autonoma de Guadalajara (UAG) have not been signed officially, but a plan including faculty training in business, team-teaching between ASU and UAG professors and a student exchange has been approved by both sides.

Dr. Glenn D. Overman, dean of the College of Business Administration, said the first of three phases involving the business college is the establishment of a Center for Executive Development at UAG. ASU business professors will help the UAG faculty organize a center similar to ASU's. Overman said they will hold seminars for local businessmen to teach concepts in marketing, management and economics.

"A second phase is a team-teaching project to enlarge the professional competency of UAG business faculty," Overman said. Faculty from ASU and UAG will work together to teach graduate level courses to other UAG professors.

Dr. George Downing, professor of marketing, is the first ASU professor to participate.

"Many of the faculty down there have only bachelor degrees, yet they are teaching

In a sister school program, the University of Guadalajara and ASU will exchange teachers, students, experience and expertise which will lead to a Center for Executive Development in Guadalajara, similar to ASU's.

graduate level courses," Downing said.

He said the program will prepare the Mexican professors for future study at ASU so they can earn MBA degrees.

"We'll be teaching concepts and strategies translated into the Mexican business culture, but maintaining the standards we have up here so the UAG professors will be able to complete their degrees at ASU," he said.

Downing is now in Guadalajara starting the first course, Marketing Management (MKT 501). He will give a course outline and syllabus to his UAG counterpart and teach the first 12 class hours with the aid of an interpreter.

The UAG professor will teach the next 24 class hours over an eight-week period. Downing returns to Guadalajara in the first week of December to teach the final 12 hours.

According to Downing, participating business professors are not being paid for their work in the program.

Overman said, "The Universidad Autonoma de Guadalajara is paying all their expenses."

ASU's business college also will be helping strengthen its health services program in administrative and management areas, Overman said. UAG, a private university, has a medical school and a hospital.

The fourth phase of the project is a student exchange plan. Selected students will be able to enroll, pay tuition and

receive credits from their home school while attending classes in the other country, said Dr. Lewis A. Tambs, director of ASU's Center for Latin American Studies.

"We send two students and they send two students," he said. "Basically it's a body exchange."

Participating students will take courses on a pass-fail basis, since competition with native speakers in all classes could cause grading problems. Transportation and living

expenses are the students' responsibility, Tambs said. The high expense normally involved in foreign study is avoided because students pay only the regular tuition at their home universities.

Two other exchange programs with Mexican universities are now in operation and working well, according to Tambs. Two ASU students are attending the Universidad de Sonora at Hermosillo and two are in Monterrey at the Universidad Autonoma de Nuevo Leon, while each of these schools has two students here.

Applications to participate in the programs for the spring semester are available now in the Center for Latin American Studies, SS 213. Deadline for applications is Oct. 30. Students from any field of study may apply, but must be able to speak, read and write Spanish.

ASU ENGLISH DEPARTMENT LECTURE:

"Problems of an Author in a New Society" featuring YEHUDITH HENDEL, Israeli Writer

WEDNESDAY, OCTOBER 8 3:00 p.m.

LANGUAGE AND LITERATURE BLDG. C-319

THE WAREHOUSE

(Formerly Panini's)

"Good Food & Drink"

Live Entertainment Every Thurs., Fri., Sat. and Sun. Eves (no cover, no min.)

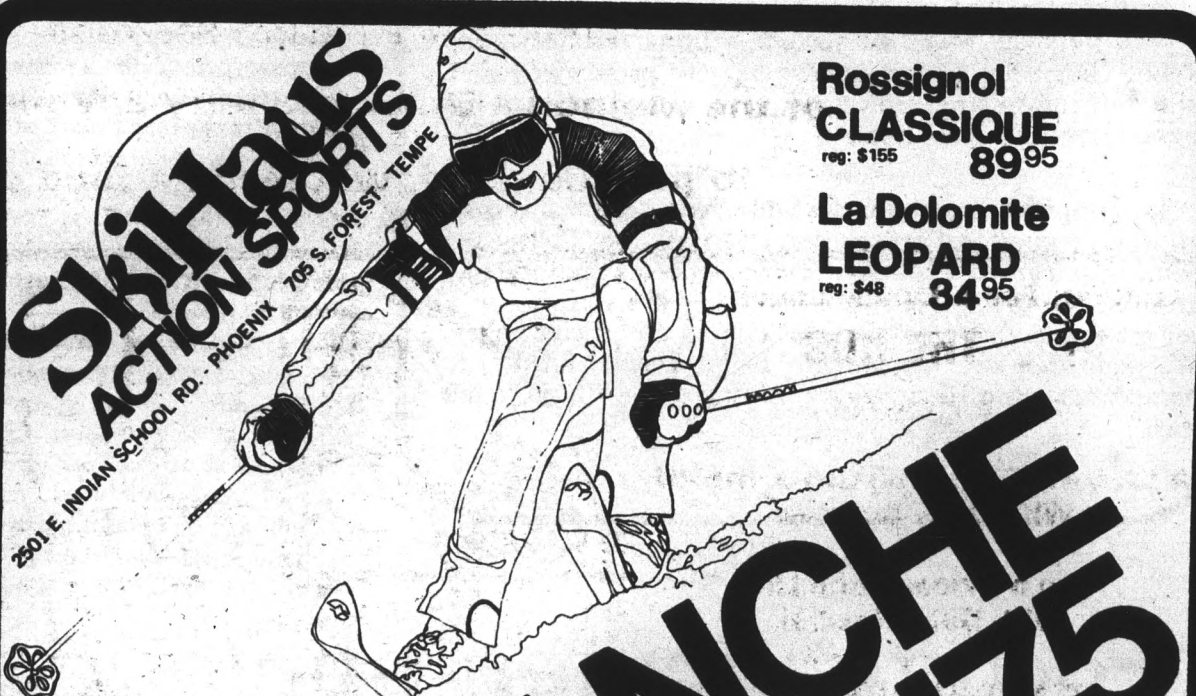


130 E. University - Tempe 966-7788 (in the Arches)

Light & Dark Beer on Tap - Wine - Carryouts -

Happy Hour Mon. thru Fri. 3 to 6 p.m. Live Entertainment 1/2 Gal. Pitchers \$1.50

Open Daily 10:30 a.m. - 11 p.m.; Fri., Sat. 10:30 a.m. - 1 a.m.; Sun. Noon - 12 mid.



Skis & Action Sports
2501 E. INDIAN SCHOOL RD. PHOENIX 705 S. FOREST - TEMPE

Rossignol CLASSIQUE reg: \$155 89.95

La Dolomite LEOPARD reg: \$48 34.95

AVALANCHE

SALE DATES OCT. 8-11 '75

K-2 Freestyle reg: \$140 99.95

Edelweiss STRETCH PANTS reg: \$38.50 29.95

MPC PARKAS reg: \$38 \$19

Warm-Up PANTS reg: \$25 14.95

Le Trappure COSMOS reg: \$130 49.95

up to 40% and more OFF

Sweaters, pants, ensembles, hats, poles, bindings, gloves, goggles, and more.

up to 50% and more OFF SKIS · BOOTS · PARKAS

PACKAGE 1
PACKAGE 2
PACKAGE 3

ERBACHER 102 SKIS Plus BARRECRATER POLES	Retail Value	Package Price
with AMERICANA bindings with Boots	\$132.45	\$ 79.95
with GERTCH bindings with Boots	\$217.45	\$129.95
with MARKER M-3 bindings with Boots	\$132.45	\$ 89.95
	\$217.45	\$139.95
	\$162.45	\$119.95
	\$222.50	\$169.95

ROSSIGNOL CLASSIQUE II SKI Plus BARRECRATER POLES	Retail Value	Package Price
with AMERICANA bindings with Boots	\$180	\$124.95
with GERTCH bindings with Boots	\$270	\$174.95
with MARKER M-3 bindings with Boots	\$180	\$134.95
	\$270	\$184.95
	\$210	\$149.95
	\$295	\$199.95

K-2 SHORT HEAT BARRECRATER POLES MARKER step-in bindings	Retail Value	Package Price
	\$235	\$169.80

PACKAGE Boots are Dolomite Logos, Retail Value \$85.00

Dean implements censorship policy

Ordinarily, the *State Press* runs letters on its editorial page, but a memorandum of high significance has reached our office. Dated Sept. 29, the memo was forwarded from the office of Juanita F. Murphy, Dean of the College of Nursing. Dean Murphy has requested that "any information to the public which is to be published regarding the College of Nursing" be cleared through her office. Murphy took pains to point out this directive included information about nursing faculty, students and programs.

Murphy may well expect the *State Press* to live up to this lop-sided bargain, especially since it would make coverage difficult and less complete than it might be. But something else is grossly wrong here.

It seems Dean Murphy would demand that nursing students and faculty accept this directive and clam up whenever a student reporter might approach them for an opinion on a nursing topic. The implication here is a heavy one.

Perhaps the best way Murphy could get favorable, approved publicity would be to hire a press secretary. The White House has had great success with press secretaries, and only information presidents have wanted released has passed through their lips.

The people who work for the *State Press* believe this is an extreme request reflecting the Dean of the College of Nursing's fear of publicity. Those students and faculty involved in nursing are forewarned they are studying in a college that enforces prior censorship as an official policy. We hope they are not content to let Dean Murphy, to paraphrase a local hamburger outfit's jingle, "have it her way."

Opinion

state
press

Correspondence

ASU should get out of tourney

Editor:

Unless conditions change abruptly, ten representatives of the ASU basketball team will be spending Christmas day as ambassadors of goodwill to a country whose government is currently engaged in a systematic execution of leaders of its political opposition. The reference is to Spain, whose long time dictator General Francisco Franco has engineered and permitted the execution of five Basque revolutionaries in the past week, and seems intent on convicting revolutionary leader Jose Mugica Arregui and other radicals in the immediate future. These convictions and executions are the product of an "emergency justice" procedure which eliminates even an appearance of due process.

The recent events have drawn attention to the illegitimacy of the Franco regime, which was established with assistance from the Nazis in the pre-World War II era, and is now abetted by American aid and American military presence.

The executions have produced a huge and negative international reaction, with several countries withdrawing ambassadors from Spain. Mexico has withdrawn from all diplomatic and trade relations, and has issued a call for the removal of Spain from the United Nations. The Vatican

reportedly is also near a diplomatic break.

American reaction has been less forthright, to say the least. Gerald Ford, through Ron Nessen, has spoken of "unfortunate cycles of violence," without specific reference to the executions.

Henry Kissinger is successfully negotiating an extension of military agreements between the U.S. and Spain. And the Sun Devils are planning to travel to Spain during the season of Peace as a gesture of friendship to the Franco dictatorship. We must urge Arizona State University to withdraw from the tournament immediately.

The tournament is "an attempt to gloss over the reality of spilled blood."

There will be arguments raised against such a withdrawal.

It will be suggested that, since the invitation was arranged long before the current executions, ASU carries no burden to act, even though the authoritarian and violent character of the regime has been known for decades. In any case, it is not too late to reverse the decision to participate.

It will also be argued that sports should be above politics. That is a noble aim, but one which is absurd in the context of the present circumstances. Any American presence in Spain will be evidence

of support for political violence.

It should be noted that tournament participation came about in part because of personal contacts between the late Eugene Pulliam and Franco, and can in no way be interpreted as apolitical. Sport as peaceful international communication might be advisable in even marginally peaceful times, but in a country torn by an authoritarian dictatorship, sport can only be viewed as bread and circuses; an attempt to gloss over the reality of spilled blood.

There is no comparison of this coming event with Olympiad competition. The Madrid International Christmas Tournament will involve only three countries: the United States, Brazil, and Spain. The foreign teams will be guests of the Spanish regime. ASU's involvement will not be welcomed by Spanish radicals, it will be rightly protested as support for Franco.

Again, we urge Arizona State University to withdraw from this outrageous ambassadorship. We hope that faculty, students, staff, and members of the community will encourage the University to do so. Each day of inaction is a proclamation of approval for political violence and death.

Bill Chaloupka Ben Mancini
Joe Gerson Lani Gerson

Faculty women applaud Schwada's speech

Editor:

The Executive Board of the Faculty Women's Association would like to correct both the emphasis and the facts printed in your report of President Schwada's address to the Faculty Women's Association on September 18.

President Schwada delivered a major address in which he outlined the economic problems which this university faces because of an increasing enrollment (over 5,000 new students in two years) and because of an inadequate budget for operating expenses

and buildings. In addition to supplying specific and useful information regarding the student body, President Schwada stated, and we feel in a striking manner, that the significance of a university education cannot be estimated economically in terms of the earning power of its graduates.

At a time when many students are concerned with training themselves for the job market and when many faculty members are discouraged by their own economic problems, President Schwada's speech

was a needed affirmation of the intellectual function of this university and of the social and intellectual significance of education. As President Schwada pointed out, both good and bad experiments take place in our society because of the activities in our classrooms, laboratories, and libraries.

It is ironic that an adversary relationship would be described in the *ASU State Press* when the Executive Board of Faculty Women's Association and probably most of our membership subscribe

wholeheartedly to precisely the educational philosophy President Schwada articulated.

Studies of salaries and attempts to amend inequities in appropriate cases have been going on for more than three years and will continue to go on. The Equal Opportunities Board, which President Schwada founded before Affirmative Action legislation required one, has had his full cooperation, and it was because of President Schwada's cooperation that the Faculty Women's Association

was able to publish data relating to salaries.

Yours sincerely,
Executive Board

Faculty Women's Association

Editors' note:

After receiving your letter, we made an appointment to see President Schwada to determine whether we had missed the beat on the story. After speaking with Schwada, we were satisfied that we reported the story fairly and accurately. We're sorry you feel we painted an adversary relationship between you and Schwada, as we had no intention of doing so and feel we did not.

This is a student operated newspaper which does not necessarily reflect the opinions of the University faculty or the administration. Editorial offices are located in Stauffer Hall, Room A111, Arizona State University, Tempe, AZ, 85284; phone number 965-7572.

Editor
Managing editor

Anita Mabante
Greg Smith

News editor
City editor
Assistant city editor
Sports editor
Assistant sports editor

Staff reporters

Columnist
Photo editor

Dave Jensen
Tom Cruise
Jeff Lettow
Marty Malone
Drew Jubera

Jim Boardman
Pat Denley
Paul Havill
Paul Lorentz
Diane Tod
Bill Frakes

Photographers

Copy editor

Copy desk

Staff artists

Manager of Student Publications
Advertising manager

Craig Newman
Leslie Barrett
Dave Seibert

Jason Shaw
Rusty Foley

Robert Friedman
Dick Elkins
Mark Hanly
Ed Papolow
Hal Hubele

Correspondence

Ferris State: A case against faculty unions

Editor:

After reading the letter from Professor Hoult concerning the necessity for the faculty of Arizona State University to go to collective bargaining, I felt that I should balance the scales with a report of an incident that occurred at one of our institutions of higher learning in this country that recently went to a union shop.

Professor Hoult cites an example of Ohio University as one school which has an organized faculty, though he fails to say what success that organization has helped the faculty. I suppose it would be successful or he would not cite the example.

"In recent decades the independence of the professor has been menaced . . ."

But let me cite an example much more specifically of just the opposite . . . Ferris State College in Michigan. Russell Kirk, educator, columnist and authority on things academic and who lives in Michigan, supplied the details in an editorial appearing in the *Arizona Republic* this past July 20.

He notes that at Ferris State, two professors were given notices of dismissal last spring. Both were experienced college teachers of high reputation: Mrs. Margaret Eller, assistant professor of engineering graphics and Dr. James Lehnert, associate professor of biology. Several of their colleagues also came close to being dismissed.

The reason for their firing? They declined to pay dues to a union.

Late in 1973, a teachers union gained exclusive bargaining rights at Ferris: the Ferris Faculty Association, affiliated with the Michigan Education Association and the National Education Association. The local of the MEA succeeded in imposing upon all members of the Ferris Faculty who did not join the union a "service fee" of \$160 a year, the equivalent of union dues. Then the local got the Ferris State College Board of Control to resolve that any faculty members who did not pay union dues or "service fees" would be dismissed from their employment.

Professors Eller and Lehnert received their notices of dismissal last May, the last holdouts of the Ferris faculty. Dr. Lehnert succumbed and paid up. Mrs. Eller took early retirement, missing by one year her full retirement pay. Intimidation by union, the administration and the bleak job market induced most dissenters to pay up.

"... the power vested in unions has become too great and is being mis-used."

The Ferris State case is ominous. It is the first time a state college or university has dismissed tenured professors because they protest against paying substantial sums of money to a union that they have not joined and to whose activities they strongly object.

As Dr. Lehnert and other members of the Ferris faculty have pointed out, most of the dues or fees go to support the big-scale

political lobbying, direct or indirect, of the Michigan Education Association and the National Education Association. Of the \$160 "service fee" only \$22 is retained by the Ferris Faculty Association for rendering to the faculty such services as bargaining with the Ferris administration.

"Nowadays the chief enemies of freedom to teach are the teachers' unions."

Despite ardent and well-financed organizing campaigns by the National Education Association and the American Federation of Teachers, as yet only eight or ten colleges and universities in all the country have succumbed to "agency shop" contracts. Of these few, only Ferris State has actually dismissed members of the faculty at the insistence of the union.

Time was when the principal threat to academic freedom came from pressure groups outside the academy. In recent decades the independence of the professor has been menaced by arbitrary college and university administrators, bent upon empire building. Nowadays the chief enemies of freedom to teach are the teachers'

unions.

As Dr. Lehnert wrote to Ferris State's Tenure Review Board, "The teaching jobs at Ferris are not the property of the union. The public colleges of Michigan belong to the public they serve. The union is not the voice of the teaching profession . . . They are interested in academic freedom only insofar as it helps them to their political goals. Academic freedom is essentially protection of the right to study, think and teach the truth. Tenure is designed to allow freedom of expression, and is most often challenged by political ideologues, as in this case, who coerce others into conformity, and in this case, even demand economic support."

I for one do not want to see this state school go to collective

bargaining and a union. In my personal estimation, unions are the direct cause of much that is wrong with America today, not that their basic premise is wrong, to protect the working man, but that the power vested in unions has become too great and is being misused.

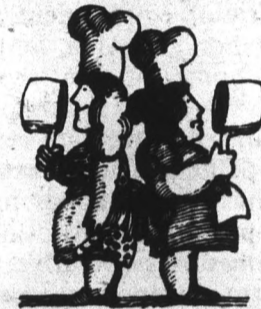
The record should be balanced. There are many reasons why we should not have collective bargaining. In my estimation, those reasons far outweigh the reasons to open the doors to unionism at Arizona State University.

Thank you.

Sincerely,
EIDean Bennett
Associate Professor,
Mass Communications

Hillel Shabbat Dinner

Friday
Oct. 10
6 PM
\$1.50



Reservations
by Oct. 9
988-5371
Baker Center
Services 7:30 p.m.

Classes in Creative Movement
for children - beginning October 6!

THE STUDIO

95 E. Southern Ave., Tempe
Valley Fair

Ages 7-9 Mondays at 4
Ages 10-12 Mondays at 5

Call Marlo Coleman at 949-5823
or leave a
message!



You are invited to a program in conjunction with
International Women's Year on the

"Equality of Women & Men"

Featured Speakers:

Drs. Dorothy & Samandar Ha'i

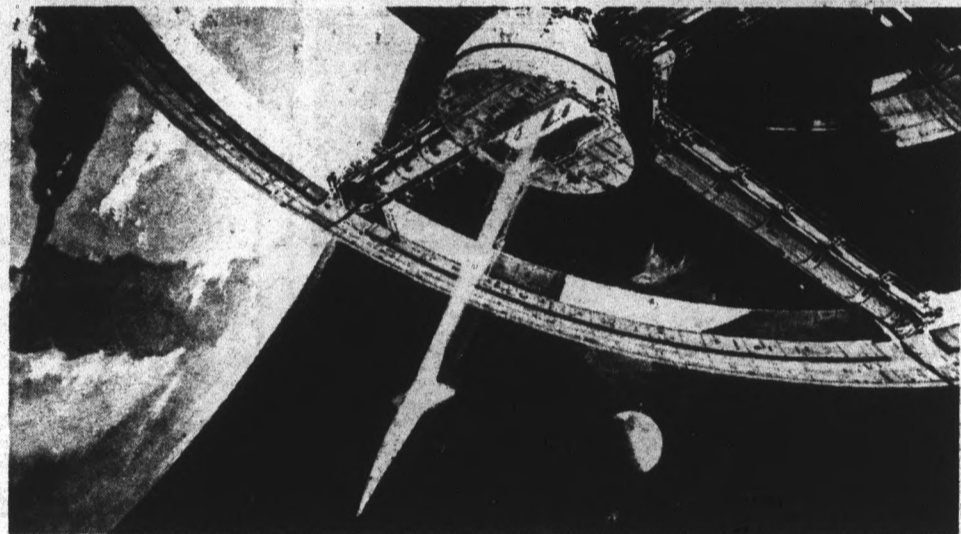
TONIGHT

7 pm to 9 pm in the Pinal Room,
ASU Memorial Union

Sponsored By:

The Baha'i Association at ASU
and the Baha'is of Tempe

NO ADMISSION NO COLLECTION



"Space Station One" (Smithsonian Institution Collection) A 24 x 28 inch lithograph in brilliant full color. \$15.

The space station from 2001. First offering of Robert McCall's contemporary classic.

In the future, Man will use his down-to-earth technology to reach deep into the awesome infinity of outer space. Robert McCall has already been there. He has a mind that spans time and space, an eye for technical detail - and the hand of a great painter.

His painting of Space Station One, created for the film, "2001: A Space Odyssey," has become a collector's item and a contemporary classic.

Commissioned by NASA to paint scenes of Man's first ventures into space, McCall is at the spot for important launches and splash-downs.

His oil paintings have gained international acclaim reproduced as U.S. Postage Stamps, one of which was the first stamp cancelled on the moon, and another, his most recent, commemorated the historic Apollo-Soyuz space rendezvous.

McCall's work hangs in important collections around the world and he has been honored in a one-man space art show at the Smithsonian Institution.

There is no question about it. McCall is the premier space artist of this generation.

Now, offered for the first time, are three gallery quality lithographs of McCall's work.

These are incredibly detailed, beautifully colored paintings of Man's greatest journeys. Each 24 x 28 inch lithograph is accompanied by a descriptive statement in the artist's own words.

The price of each lithograph is \$15. The complete edition of all three can be acquired for a total of \$35. Prices include protective packaging and shipping.

This limited collector's edition has been authorized by the artist, prepared and offered exclusively by The Mikael Redman Galleries of Scottsdale, Arizona.

As always, your complete satisfaction is guaranteed.

BankAmericard, Master Charge or American Express cardholders may expedite shipment of their purchase by calling toll-free. 946-9234



The Mikael Redman Galleries

7110 Fifth Avenue, Scottsdale, Arizona 85251

THE MIKAEL REDMAN GALLERIES
7110 Fifth Avenue, Scottsdale, Arizona 85251

Please send without delay these McCall lithographs:
 First Men on the Moon. Space Station One. AS
 Apollo VIII Coming Home. I understand they are
\$15 each or 3 for \$35. Check enclosed. Charge to
credit card number: _____

Exp. Date _____ BAC MC AmEx

Name _____

Street _____

City _____ State _____ Zip _____

Professor evaluation causes controversy

By Renea Gentry

A controversy has developed in the College of Liberal Arts about whether teachers should be evaluated by students, or if they should be evaluated at all.

Recently, Liberal Arts Dean Dr. Charles Woolf sent a memo to department chairpersons reminding them that all faculty being considered for promotion or continuing employment must provide "documented" evidence of their teaching ability.

A faculty committee, studying the quality of ASU's education, produced a standardized form for students to evaluate their teachers, to be used as documented evidence.

But this evaluation was mandatory only for junior faculty members—professors who have not reached the five-year tenure.

So the committee then recommended all faculty members, including full professors, should be evaluated in some way at least once a year.

Calling for the comparison of all teachers within a department, the committee's report stated that without the entire faculty being compared, the best teacher for promotion cannot be adequately found.

That's what started the controversy.

Dr. John Alcock, professor of zoology and a member of the committee, said, "I think the recommendations are good. Student evaluations will be increasingly important for promotion and stability of employment."

But committee member Dr. Alan Johnson, professor of English, disagrees. "Some of the resolutions are very debatable," Johnson said many senior professors feel they have proven their abilities and need not be evaluated.

Dr. Bruce Mason, political science professor and former committee member, has doubts about making the student evaluations mandatory.

"The evaluations measure popularity. Teaching is not a popularity contest. I am not opposed to a voluntary method of students evaluating faculty. But I have little faith in students knowing whether or not the teacher knows his subject," said Mason.

Road work to start soon

"Sin City" residents must use alternate routes to campus until late November during construction work aimed to realign Lemon and Orange Drive.

The project is designed to eliminate the hazardous Lemon-Rural Road intersection and "improve traffic circulation," according to Richard Garrett of ASU's planning and construction department.

Garrett said the project could not be completed in the summer, because it could not be coordinated with movement of underground

water lines, which must be put in before the new road is constructed.

Until the project is completed, commuters may use two alleyways just north of Lemon which cross parking lots west of Rural. Tyler also connects with McAllister Drive at the Technology Center. Each gives access to ASU bicycle paths.

The \$63,700 project should be completed in 60 days. "This is the goal we'd like to meet," Garrett said. Final completion will depend on coordination with Tempe on rerouting traffic on Rural during road work.

Arrest man in library

University Police arrested a 26-year-old ASU student Wednesday afternoon after they said he exposed himself to a female student on the fourth floor of Hayden Library.

The suspect, who was released on his own recognizance until formal charges are filed, was arrested by Officer Raul Morales after two library employes detained him, said University Police Det. Bill Grenzbach.

Grenzbach said the female student was reading on the fourth floor of the library when she observed the suspect.

"The female student notified a librarian of the man," Grenzbach said. "When Officer Morales arrived the suspect was being held by two library employes at the door on the second level, where he was placed under arrest."

— NOTICE —

If you are into good sound the auditioning of the all new E.S.S. AMT 1-A is a must.

The advance design must be explained by one of our staff — stop in soon.

Jerry's

audio exchange

Tucson — 1037 N. Park 622-7407
Phoenix — 334 E. Camelback Rd. 263-9410
Tempe — 120 E. University Dr. 968-3491

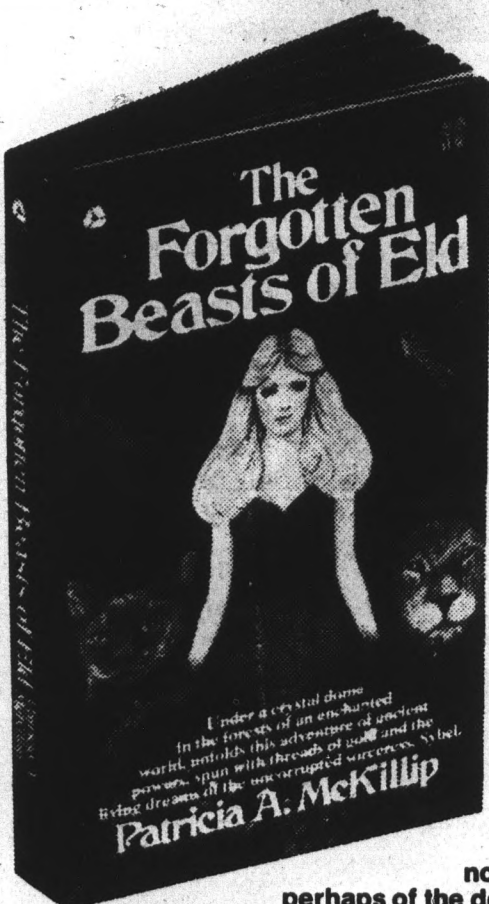
PLAY WEE-TEE MINIATURE GOLF

Your Choice of Two 18-Hole Courses



University Drive at Rural—Tempe
HOURS — 1 p.m.-12 midnight Daily Phone 966-8027
Sat., Sun. and holidays 10 a.m.-11 p.m.

\$1.50 AVON PAPERBACK



"Rich and regal... A very good book!"

—The New York Times

"The best fantasy novel of the year... and perhaps of the decade. It's a mythical kingdom fantasy with a marvelous heroine, satisfying strange beasts, and some chilling sorcery scenes." —Locus

IF YOU'RE NOT
SAILING BY
NOW —
maybe you're
in the
wrong port!



Drop anchor in P.V. East, West, Main, Manzanita, Sahuaro, Best, Hayden, Irish, or Mariposa.

Stop by the
Friendly ASU Housing Office

Who's Who recognizes outstanding students

Associated Students is now accepting nominations for Who's Who Among Students.

Who's Who provides an opportunity to reward students for academic and service achievements on 1,200 American college campuses, said Allan Frazier, coordinator for ASASU.

"We send letters to all the department chairmen. The majority of students are nominated by the chairmen and the faculty," he said. They are also named by campus organizations, faculty and staff.

"I am amazed at the number of students that are nominated that are not known, but are active and diversified. Many students prefer to be active because they like it, not for recognition."

Who's Who Among Students provides various benefits to the students and the University.

"Who's Who sends out letters of recommendation to employers, which help him in his decision making. It gives the student an opportunity to be honored all over the country and ASU to gain status as a University," Frazier said.

Selection is concerned with the overall person, not just one-sided contributions, whether academic or service, he said. "We receive about 200 to 300 nominations in a year. Each student has the personal option to decide if he wants to be selected. Frazier said 48 students were selected last year.

Students that are nominated must have completed a minimum of 84 semester hours, maintained at least a 2.2 cumulative grade index and be currently enrolled at ASU.

The nomination form must be filed before Oct. 24.

Law dean marks report with his wit

By Dan McCarthy

He-e-e-e-re's Dean Pedrick!

While it may not be ASU's answer to late night TV, Law Dean Willard Pedrick issued his final report before his retirement next semester, to the University's administration which, for the first few pages, rivaled the wit of Johnny Carson.

One item in the report indicated that male law students had yielded to the pressure and turned over one of their "relief facilities."

"Those males consulted, approved, and in short order and with considerable fanfare, the conversion, transmutation—if not transubstantiation—took place," said the dean. He was referring to a conversion of a men's restroom into one for women.

The memorandum from Pedrick announcing the restroom reassignment states:

"To alleviate physical suffering, preserve public health and provide for the common defense, now, therefore, I, Dean Pedrick the First, exercising all my authority under the Constitution as Commander of Something, the Statutes of Arizona, the Rules for the Board of Regents and the common law, do hereby proclaim that:

"Whereas, all men are created equal, but men are not precisely equal to women in all respects; and . . . whereas, hell hath no fury like women scorned [actually, they have been quite decent], now, therefore, I do hereby proclaim that . . ."

In short, the change was made.

WESTWOOD CINEMA

1308 W. University, Mesa
988-8088

The stage attraction of the decade becomes the greatest entertainment event in history!



Bill Sargent presents

JAMES WHITMORE
as Harry S. Truman in
GIVE 'EM HELL, HARRY!

CHRISTIAN FILMS

"Satan On The Loose"

The Story of Nicky Cruz of "The Cross and the Switchblade"

"World of Seance"

A Christian View of the Occult

Sunday — Oct. 5 at 7 p.m.

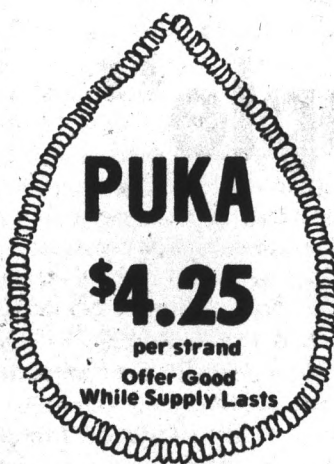
NO ADMISSION CHARGE

Tempe High School Auditorium
Broadway at Mill

Sponsored By
THE ARK CHRISTIAN CENTER, 2020 S. MILL

The Beaderie

Create Your Own Strands
all Strands under \$10.00



125 E. 7th St. Inside DAX
Tempe Oxford Square

MEDICAL INSURANCE

STUDENT ENROLLMENT CLOSES

OCT. 3, 1975

Coverage Thru August 21, 1976
Student Cost \$70.00

Dependent Coverage Available

Coverage is 24 Hours —
WORLD WIDE

Information Packets at
ASU Health Center
Or

Student Insurance Office
1000 E. Apache, No. 121, Tempe
Phone 968-8711 — 968-3770

Monday Night
WIDE SCREEN

FOOTBALL

Tuesday Night
25¢ Beers

COORS

\$1⁰⁰ Pitchers 1/2 gal.

Hot Hors D'oeuvres
4 to 7

Live Entertainment
9 to 1

and would
you believe
Every Nite
SNACKS
from 4 to 7

plus

DOUBLE sized

DRINKS

for prices of 1 - 4 to 7
(House Brands)

HOWARD JOHNSON'S

"Sundowner Lounge"

also enjoy our 89¢ BREAKFAST SPECIAL

Every morning in the Restaurant . . .
2 eggs — hash browns — toast

SIDE DOOR LOUNGE

441 EAST MAIN, MESA • 833-1333

Valley's First LIVE DISCO! In Quadraphonic Sound

LIVE ENTERTAINMENT 7 NITES A WEEK

Now Playing . . .

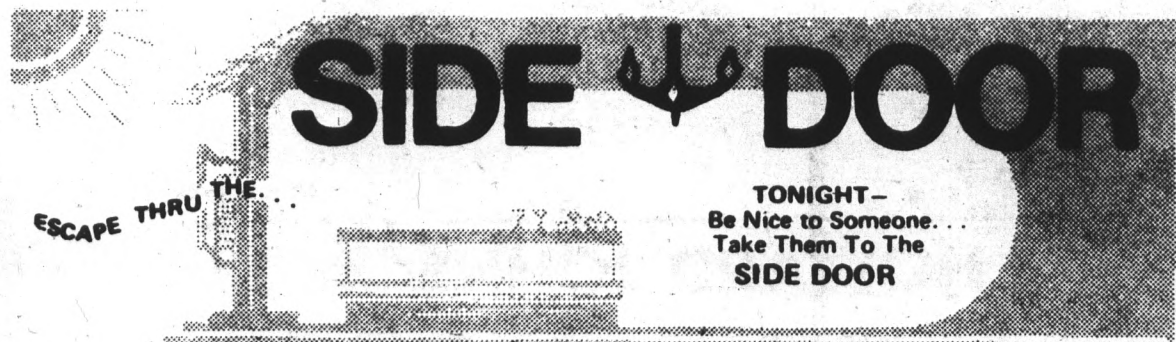
"Everyday People"

Coming Attractions include:

- ★ "STARK NAKED & THE CAR THIEVES"
 - ★ "WONDERLICK"
 - ★ "SOUP"
 - ★ "ROCKIN' HORSE"
 - ★ "LIL ELMO & THE COSMOS"
 - ★ "COTTONWOOD SOUTH"
 - ★ "STELLA & THE BACK PORCH REVIEW"
 - ★ and the "CHECKMATES"
- will be back for New Years . . .

Draught Beer 25¢ **Movies**
Light Shows **Liquor 75¢**
Pool **T.V. Room**
Slides **Disco** **Love Seats**
Sunken Dance Floor

New!
Dance Floor
BINGO
Lotsa' Winners!



After Hours Fri. & Sat. Till 2 AM
NO COVER OR MINIMUM SUNDAY THRU THURSDAY
Casual Dress Acceptible - i.e., no holey Levi's



FRIDAY
7:00 a.m. History of Western Civilization
7:30 a.m. Liliias, Yoga and You
8:00 a.m. Mister Rogers' Neighborhood
8:30 a.m. The Electric Co.
9:00 a.m. Sesame Street
10:00 a.m. The Electric Co.
10:30 a.m. Villa Alegre
11:00 a.m. Hodgepodge Lodge
11:30 a.m. Solar Energy "The Theory is Tested"
12:00 N Classic Theatre Preview: The Humanities in Drama "Edward II"
12:30 p.m. Classic Theatre: The Humanities in Drama "Edward II"
2:30 p.m. Liliias, Yoga and You
3:00 p.m. Mister Rogers' Neighborhood
3:30 p.m. Sesame Street
4:30 p.m. The Electric Co.
5:00 p.m. Villa Alegre
5:30 p.m. Hodgepodge Lodge
6:00 p.m. Vintage Video: People Are Funny
6:30 p.m. Evening Edition with Martin Agronsky
7:00 p.m. Washington Week in Review
7:30 p.m. Wall Street Week "Rinfret Economics"
8:00 p.m. Masterpiece Theatre: The Nine Tailors
9:00 p.m. Profiles in Courage "Mary McDowell"
10:00 p.m. Kup's Show
11:00 p.m. Scoreboard
11:15 p.m. Philadelphia Folk Festival

SATURDAY
7:30 a.m. Liliias, Yoga and You
8:00 a.m. Sesame Street
9:00 a.m. Sesame Street
10:00 a.m. Sesame Street
11:00 a.m. Sesame Street
12:00 N Gardening For Fun
12:30 p.m. Open Math
1:00 p.m. Feedforward "Urban Land Use"
1:30 p.m. Jean Shepherd's America "Make School or Die"
2:00 p.m. Profiles in Courage "Mary McDowell"
3:00 p.m. Kup's Show
4:00 p.m. Firing Line
5:00 p.m. Washington Week in Review
5:30 p.m. Wall Street Week "Rinfret Economics"
6:00 p.m. The Best of Evening at Pops "Old Timers Night"
7:00 p.m. Play It Again, Uncle Sam
8:00 p.m. Tenno
9:00 p.m. Soundstage "Barry Manilow"
10:00 p.m. Cinema Classics "Z"
SUNDAY
8:00 a.m. Sesame Street
9:00 a.m. Sesame Street
10:00 a.m. Sesame Street
11:00 a.m. Sesame Street
12:00 N Speaking Freely "Sheikh Mujib Raman"
1:00 p.m. Cinema Classics "Gimme Shelter"
2:45 p.m. Eat Art
3:00 p.m. Play It Again, Uncle Sam
4:00 p.m. Tenno
5:00 p.m. Ourstory "The Peach Gang"
6:00 p.m. World Press
6:38 p.m. Lowell Thomas Remembers
7:00 p.m. Evening at Symphony
8:00 p.m. Masterpiece Theatre: Shoulder to Shoulder "The Pankhursts"
continued page 12

ASASU CULTURAL AFFAIRS BOARD presents

THE 10 O'CLOCK SPECIAL

CARTOON CARNIVAL MARATHON



featuring

REUNION IN RHYTHM (OUR GANG/LITTLE RASCALS)
DIZZY RED RIDING HOOD (BETTY BOOP)
LITTLE ORPHAN WILLIE (FLIP THE FROG)
CINDERELLA MEETS A FELLA (MERRIE MELODIES)
FRANKENSTEIN'S CAT (MIGHTY MOUSE)
GOING GOING GOSH (ROADRUNNER)
SPEEDY GONZALES (SPEEDY GONZALES)
BROKEN LEGHORN (FOGHORN LEGHORN)
SAHARA HARE (BUGS BUNNY)

plus others



SATURDAY OCT 4 10:30pm

NEEB HALL
after the game



\$1.00 with ID
\$1.50 without

Scarcity of Elton tickets pushes scalper prices high

By Norma Coile

Ticket scalping for tonight's sold-out Elton John concert has become big business, and the status of its legality seems unclear.

Ticket scalping is the process of buying tickets and selling them to another individual at a profit.

Tickets for the Elton John concert, originally priced at \$6.50 and \$7.50, are being resold from \$8 to \$30 each, and possibly more.

Willing to pay

Andrea Field, a secretary in the political science department, advertised in Wednesday's *State Press* classified ads that she was "willing to pay" for Elton John tickets. She got more offers than she could count. Field said the highest price quoted to her on a single ticket was \$25. She bought some tickets at \$10 and others at \$20.

Jane Clark, another ASU staff member, advertised for tickets on the Mu Bulletin Board. "I've had at least six calls today," she said. "Most offers were at \$20 a piece, but I bought mine at \$10."

The legal status of ticket scalping is difficult to determine.

The Consumer Fraud Division of the State Attorney General's office said, "That's out of our jurisdiction, call the police."

University Police said, "I don't think there is a law about that on the Arizona books. Call the Attorney General's office to find out for sure."

Scalping is illegal

Phoenix police confirmed that ticket scalping is

illegal. A spokesman said it is a misdemeanor and "probably" carries a maximum penalty of three months in jail.

Can a person be arrested for standing outside of a concert and selling tickets at a profit? "Probably, although that is not strictly enforced because we just don't have the personnel."

University regulations requires people to move off campus to sell tickets.

"On city streets it is out of our jurisdiction," a University Police spokesman said. "Ticket scalping will be discouraged at the Elton John concert, but I don't believe we can make any arrests."

Tickets \$8 to \$20

KUPD radio station announced over the air a service to put prospective buyers and sellers in contact with each other. KUPD received only four offers from sellers, at prices from \$8 to \$20.

"We didn't talk to anyone quoting outrageous prices," a KUPD secretary said. "We're simply doing a favor for everybody. We don't want anybody to make a great deal of money off of this. They can go out and do that for themselves."

She said people have been calling in to buy tickets for days. "I stopped taking names after the first 35 people called. There is no way we can find tickets for all of them, even though some are willing to pay triple the original price."

Availability of additional tickets will depend on the size of the band's set up. If available, they will go on sale at 10 a.m. at the Gammage box office.



OCT. 10 & 11
at 8 P.M.
OCT. 12
2 P.M. & 7:30 P.M.

HAIR

CIVIC
PLAZA
SYMPHONY
HALL

A ROCK TALENT PRODUCTION INC.

THE AMERICAN TRIBAL LOVE-ROCK MUSICAL

DIRECT FROM NEW YORK CITY

BOOK & LYRICS: GEROME RAGNI
JAMES RADO
MUSIC: GALT MAC DERMONT

FULL ORCHESTRA & CHORUS
SPECIAL
LIGHTING EFFECTS

Ticket prices 8.50, 7.50, 6.50 - Tickets available at Diamonds Select-a-Seat and at the Civic Plaza Box Office. For information please call 262-727. Mail orders accepted at 225 E. Adams, Phx. 85004. Please enclose a stamped, self addressed envelope.

NEEB HALL FILMS ASASU Cultural Affairs Board

DAY FOR NIGHT



Friday Oct 3
7:00, 9:00 & 11:00
\$1.00 with ID
\$1.50 without ID

Saturday 4 7:00

Wedding in Blood



open to campus

Sunday 5

CIMARRON

starring 7:00

IRENE DUNN

Lack of space cramps dancers style

Dancers forced to practice in gym hall

By Wade Estes

Five figures slid across the main hallway in the Womens' Physical Education building.

"Seven, eight — step on right foot, one, two — what did I do there? Alternate? What am I doing? I have six counts here — I don't know what they're for. Oh, there it is."

Approximately 58 dance students are being forced to carry out dance labs in the main hallway of the Women's P.E. building.

A shortage of classrooms and higher enrollment are two of the reasons, said Margaret Gisolo, chairperson of health, physical education and recreation (HPER) department.

Dance instructor Marion Jones said the number of students enrolled in basic choreography classes has doubled in the last two years. The dance department consequently doubled the number of basic choreography classes.

"We have asked for the balcony in the men's gym to be made into two studios," Gisolo said. "We're pleased to know that the College of Liberal Arts is aware of the problem and is working towards trying to get funds to convert the upper floor of the men's gym into a workable studio.

Dr. Paul Hubbard, associate dean of liberal arts said they were aware of the problem and it is on the priority list, but he said there are other items that claim more immediate at-



ention.

"Faculty offices are our first priority, Hubbard said. "We want to build a wall that will shut the balcony off and lay a wood floor. We hope to do that job and get them two nice classrooms. It might cost \$50,000. The good hardwood

floors are pretty expensive."

He said the money would have to come from the special projects budget. A special budget committee distributes the money. "We haven't heard any information about allocation of money for this year. But, it's early yet, he said.

dance major, saw the problem in a similar light.

"When you make up a dance, you have to make it up for the room it's going to be performed in," she said. "When we practice out here in the hall, it looks different when we get in the room."

"These floors are bad on our feet. There's no give to the floor at all," said Pam Tooke, a junior dance major.

The leotard-clad dancers all concurred on one point — other than the inconvenience of the hallways.

Yesterday's PROPHECY
Today's
CURRENT EVENTS
KNCS Radio, 1010 kc
Weekdays 10 A.M.

Valley Art
509 S. Mill Ave • 967 6664

A Change of face at the Valley Art

OCTOBER 1 - 3
Woody Allen's
"TAKE THE MONEY AND RUN"
8:30
"WHAT'S UP TIGER LILY"
7:00 - 10:00

COMING, OCT. 4 - 7
"THE MAD ADVENTURES OF RABBI JACOB"
"BEDAZZLED"

JOIN THE Miller PICK-EM-UP

Any campus group or organization is eligible. No purchase necessary. Miller bottles earn one (1) point per pound; Miller aluminum cans earn thirty (30) points per pound.

Your group will receive a coupon for the points you earn when the MILLER PICK-EM UP truck makes its appointed rounds. All cans and bottles collected must be separated and placed in individual bags.

CALL Mike Holley TEL. 968-5242

ENTER TODAY

STARTS TOMORROW
THE MAD ADVENTURES OF "RABBI" JACOB ©

8:25

"IN THE BEST OF THE CHAPLIN-MARX BROS. SPIRIT."
—Judith Crist, New York Magazine

"A WACKY, HILARIOUS COMEDY... in the tradition of the Marx Bros."
—N.Y. Daily News

"Clearly earns its reputation as the funniest film around. It will appeal to anybody who likes to laugh."
—The Village Voice

Valley Art
509 S. Mill Ave • 967 6664

CO-FEATURE BEDAZZLED Ⓜ

6:30 - 10:00

Before 6:30 - \$1.00

TOM LAUGHLIN

THE MASTER GUNFIGHTER

He Fought Like an Army, and Lived Like a Legend.

starring **RON O'NEAL**

co-starring LINCOLN KILPATRICK • GEO ANNE SOSA • BARBARA CARRERA
Music by LALO SCHIFRIN Executive Producer DELORES TAYLOR Produced by PHILIP PARSLOW
Directed by **FRANK LAUGHLIN** **PG** PARENTAL GUIDANCE SUGGESTED
SOME MATERIAL MAY NOT BE SUITABLE FOR PRE-TEENAGERS

NOW PLAYING
Check your local newspaper for a theatre near you.

Where's A New Place To Go On Friday Afternoons? Why Not The Longest Happy Hour In Town?

4 PM to 10 PM

Any Well

- Bourbon
- Scotch
- Vodka
- Gin
- Rum
- Tequila

50¢

**All Poured
from the
Un-Gun**



75¢

Call Liqueurs

- Jack Daniels
- J&B Scotch
- Beefeaters
- Jose Cuevo
- Tequila
- Kahlua
- Cutty
- CC
- 7 Crown
- VO
- Collins & Sunrises

**All Poured
from the
Un-Gun**

- Popcorn for all -
- Game Room
- Music of your Choosing
- Dance to the:
- Beach Boys
- Beatles
- Average White Band
- BT Express
- you name it.

 * **The Good Times** *
 * **Disco** *

PROF. PUDGIES

396 So. Mill Ave., Tempe Next to the Casa Loma



Program

continued from page 8

- | | |
|---|---|
| 9:00 p.m. The Ascent of Man
"The Harvest of the Seasons" | 1:00 p.m. The Ascent of Man
"The Harvest of the Seasons" |
| 10:00 p.m. Kup's Show | 2:00 p.m. World Press |
| | 2:30 p.m. Liliias, Yoga and You |
| | 3:00 p.m. Mister Rogvrs' Neighborhood |
| MONDAY | 3:30 p.m. Sesame Street |
| 7:00 a.m. History of Western Civilization | 4:30 p.m. The Electric Co. |
| 7:30 a.m. Liliias, Yoga and You | 5:00 p.m. Villa Alegre |
| 8:00 a.m. Mister Rogers' Neighborhood | 5:30 p.m. Hodgepodge Lodge |
| 8:30 a.m. The Electric Co. | 6:00 p.m. Vintage Video:
The Honeymooners
"Brother Ralph" |
| 9:00 a.m. Sesame Street | 6:00 p.m. Evening Edition with
Martin Agronsky |
| 10:00 a.m. The Electric Co. | 7:00 p.m. In Performance at
Wolf Trap
"Robert Devereau" |
| 10:30 a.m. Villa Alegre | 9:30 p.m. Monty Python's
Flying Circus |
| 11:00 a.m. Hodgepodge Lodge | 10:00 p.m. The David Susskind
Show |
| 11:30 a.m. Ourstory
"Eliza" | |
| 12:00 N Black Perspective
on the News | |
| 12:30 p.m. Interface
"Gil Scott-Heron
and Midnight" | |

Register bikes next week, deter theft for 50 cents

Students may register their bikes with the Tempe Fire Department from 10 a.m. to noon Monday and Tuesday in front of the MU. An individual registration number will be stamped on the frame of each bike for 50 cents. The registration number cannot be removed. Bitter said the campus

affairs will also distribute information on the prevention of bike theft. The women's Affair Board is also sponsoring a bicycle workshop Oct. 7 and 8. Vicki Larsen, a member of the Bicycle Consumers' Club, on both will discuss bicycle maintenance, repair and safety at 7 p.m. in MU 215.

CLASSIFIED ADS

HELP WANTED

EARN UP TO \$5 AN HOUR: Farrell's, America's No. 1 Ice Cream Parlour Restaurants, is now accepting applications for waiters at all Valley locations. No experience necessary. Evening work. Apply between 3 and 5 p.m. Tues. through Thurs. 10-8

MODELSS If you would like to earn up to \$10.00 per hour and work around your classes, give us a call and become a model by Michealson. We are presently doing over 40 sleepwear fashion shows throughout the valley per week. Michealson Enterprises, 277-4861. No experience necessary! 10-30

Girls for part-time work in December. Duties. Modeling in dept. stores for a famous fragrance co. Must have own transportation. Call 964-9279 evenings after 6:00 o'clock. 10-3

Need Accounting major for part-time work in CPA office. Call 254-2107 for appt. 10-10

FOR SALE

Want to keep your stereo? Let us install a high security Deadbolt in your apartment door for \$12.50 complete. Pro Tech — 968-5564. 12-5

10 Speed bike, center-pull brakes, safety levers, one year old. \$60.00. 955-1473 after 9 p.m. 10-7

Christian reference library by fundamentalist former pre-seminary student. 955-1473 after 9 p.m. 10-7

Discount to students always. Furniture, antiques, good stuff. Delivery arranged to suit. Butler's Used Furniture, 225 W. University, next to Snide's Pizza. 10-31

Two Elton John Concert tickets for sale. Call Steve 967-4624. 10-3

VW '67. Ex. condition, white w-black interior, 30,000 on engine, radial tires. After 4:00, 968-6806, \$900. 10-3

Where it's at!! Sharpest 2BR plus office (or 3 BR) custom, on quiet cul-de-sac. Close to Tempe High & campus. Eves. 839-2557. Four-plex buy near ASU. Seller anxious, terms avail. eves. 839-2557. Two bedroom block home, carport, storage, fenced, bike to ASU, only \$20,500 w-low down. Eves. 962-8287. Town & Country Realty 968-3414. 10-3

Miracle Polishing Cloth: cleans, polishes — silver, chrome, brass, all metals; enamels, tiles, musical instruments, automobiles. Removes stains, corrosion, burnmarks, scuffmarks from almost everything! Introductory price — Only \$1.25!! Moneyback guarantee. Mayfad, Box 27716, Tempe, Arizona. 10-3

Men and women's sandals — we are having 1/2 off sale on women's sandals and Fall shoes. Backdoor Shop, 707 S. Forest, Tempe. 966-1772. 10-31

MEXICAN EMBROIDERED SHIRTS FOR GUYS AND GALS. Also blouses and dresses. Phoenix Greyhound Swap Meet. Saturday and Sunday, space 371 or call 964-5033. Bring ad for 10 percent discount. 10-10

Must sell — huge 1-BR townhouse, 3 mi. ASU, all appliances included, with extras. \$18,500 — no reasonable offer refused! 276-4112 M-F, 9-5. 10-17

Clubman, 26" boy's frame, 10 speed w-extras for sale — \$55.00. 616 N. Grand, Mesa, eves. 10-3

RENT

Female roommate desperately needed to share one bedroom apartment. \$90 per month. Near ASU. 966-0768. 10-7

NEED A PLACE TO LIVE??? Share beautiful homes, apartments — \$95.00 to \$150.00. Roommate Finders 957-2963. 9-30

Get a friend and come to Marianna Apartments, 1214 E. Orange. Furn. & Unfurn. Studios & 1 BDRM. \$120 to \$160. 966-8597. Walk to school. 11-13

Male Christian roommate to share furnished 1 bedroom apt. Near ASU, \$95 utilities included. 959-9128 after 5. Dell. 10-8

Efficiency apt. behind house, 1/2 mile from campus, \$125.00 including utilities. 509 W. Parkway, call 968-6986. 10-3

Unfurnished 3 bedrooms, 1 1/2 baths, 2 private patios. Starting from \$180.00. 968-1724. 10-16

AUTOMOBILES

1965 Chrysler Newport, good condition. \$300. Ted or Mitzi 967-8747. 10-3

MOTORCYCLE

1975 Suzuki TM250, 25 hours riding time — like new. Phone 968-4661. Racing sprocket included. 10-7

1972 Honda 500-4, Hiway & Pullback bars; good condition, 16,000 miles; spare parts, book, helmet; \$800. 273-6014 Steve. 10-7

WANTED

Wanted — Sports Cars — Any make, model or condition. 275-8607. 10-14

TYPING

Near ASU; Elite OR Pica, Italics, Symbols; Graduate paper expertise with editing and form; 966-1684. 10-23

Term papers, resumes, theses, dissertations. Professional, guaranteed work. IBM. Maxine Mullen, 955-0763. 4-30-76

Typist, experienced with Campbell and Turabian formats. Near ASU, cheap too — 60c page. Debra, 967-2305. 12-5

Special Student Rates. Can't type of you just don't want to do it? Let us do it! E.S.P. Typing & Resume Service, on campus, 123 East University. Call Gene 968-9075. 10-31

INSTRUCTION

Read faster, comprehend more, with RAPID READ aids. Transparent page overlays, scientifically shaded overlays promote word group associations. Experience immediate improvement — double, triple, rate with practice. For the RAPID READ improvement kit, send \$2.95 to Metromedia, Box 31235P, Tempe, Arizona 85281. 10-3

ANNOUNCEMENTS

Am organizing charter flight for Christmas to Chicago and New York. If interested contact Doug 965-4736. Do it now! 10-3

Now Open! "or Whatever Gifts" 1043 W. University, Tempe. Introducing Inca Galleria orion ponchos, capes and vests handloomed in Ecuador. Beautiful colors and designs. One size fits all. Priced from \$11.95 to \$29.95. 20 percent off to students and faculty showing I.D. card. Hrs. 10-5 Tues.-Friday, 10-4 Sat. 10-7

We have a large assortment of fall leather purses — Backdoor Shop 707 S. Forest — Tempe 966-1772. 10-31

JOBS ON SHIPS! American. Foreign. No experience required. Excellent pay. Worldwide travel. Summer job or career. Send \$3.00 for information. SEAFAX, Dept. A-3 Box 2049, Port Angeles, Washington 98362. 10-16

FREE SCHOLARSHIPS - FINANCIAL AID: Millions of dollars from companies and individuals go unclaimed yearly! Get your share. For list of over 100 little known sources, send \$3.00 to: Williams Company, 370 E. 11th, Suite 404, Denver, Colorado 80203. 10-21

Arizona Foreign Car club fall rallye Sunday, October 5. Cash prizes. Entry fee \$15.00 (includes buffet). Register at any BAP Store or call 242-4158. 10-3

SERVICES

Typewriter tune-up. Clean, oil, and adjust your typewriter and install a new ribbon for \$8.50. 968-5564 12-5

Prevent Noise Pollution! Stereos cleaned, adjusted, or repaired (tape decks, turntables, etc.) Reasonable. Steve 968-0022. 10-3

XEROX
COPIES
4¢ EACH
(8 1/2 x 11 white)
★ NO MINIMUM ★
MARICOPA COPIES
PHOENIX CENTRAL and ADAMS DIAL 254-4534
TEMPE 729 S. MILL AVE DIAL 966-4567

CARPET SPECIALS
9 x 12 used rugs - \$7.50
All Sizes In Stock
CARPET HOUSE
1516 E. Van Buren, Phx.

TUNE-UP SPECIAL for VW's
Plugs, Points, Condenser, Valve Adj. & Oil Change
ONLY **\$24.50** Parts & Labor
Carburetor Overhaul \$ 20.00
Brake adjustment \$ 6.00
Rebuilt engines from \$220.00
with Air Conditioning slightly higher
VALLEY Engine Service
• 2119 E. APACHE BLVD., TEMPE 968-7719
• 18 E. Clarendon, Phoenix 265-0726

CLASSIFIED AD ORDER FORM
One word per box. Abbreviations and groups of numbers are words.

RATES: \$1 minimum for first 14 words or less plus 5c per additional word each insertion. 20 percent discount for same ad running in 5 or more consecutive editions, 30 percent discount on 10 or more consecutive insertions, 40 percent discount on 20 or more consecutive insertions of same ad.

Return this form with check to: The STATE PRESS, Room 111-A Stauffer Hall, or the Memorial Union, Room 207, Arizona State University, Tempe, AZ 85281. The STATE PRESS reserves the right to refuse any copy.

Name: (Please check one)
Address:
Phone:
Check enclosed for \$.....
Run ad days.

For Sale
For Rent
Help Wanted
Lost
Found
Auto
Motorcycle
Transportation
Wanted

Typing
Personal
Instruction
Services
Roommate
Wanted

NOTE: Mailed classified ads will appear in second edition AFTER COPY AND CHECK ARE RECEIVED IN OUR OFFICE.

Devils to enjoy Idaho Vandals' fluff and fumble

By Drew Jubera

ASU tries to make it four wins in a row Saturday night when they square off with the rough and tumble — or is it fluff and fumble — Vandals from Idaho.

"... the Idaho Vandals?!" you ask.

Well... yes, Idaho will be here Saturday night, or so promises their coach, Ed Troxel.

And... well, no, they do not have any realistic chance of beating the Sun Devils.

Then why, in God's most compassionate name, is Division II Idaho even scheduled to take the field at Sun Devil Stadium?

The Vandals come to Tempe with a victory over NAU and losses to Arkansas State and rival Idaho State.

Their pass defense has been outstanding (!) against that competition, allowing the opposition an average of 80 yards per game.

Their defense against the rush, however, has shown little evidence that it exists, already having given up 902 yards in three games.

The Idaho offense, such as it is, revolves around senior quarterback Dave Comstock, named Big Sky Offensive Player of the Week after his performance against NAU, and fullback J.C. Chadband. The

sports

Because of the one thing none of us, including Idaho's football program, ain't got 'nuff of — money, money, money, money.

The vandals have played before a total of 34,000 fans in their first three games. There are at least that many Sun Devil fans who have become gluttonous for those 50 point spread shellackings that have been absent for the last year and a half. And Saturday night will be the closest to a sure thing as one can get.

Coach Troxel's only comment on the games scheduling was, "There's the administrative way of looking at it, then there's the coaching point of view. I think I'll keep silent and stay out of trouble with the administration."

Enough said, Ed.

And, I guess, enough poisoned darts thrown in the direction of the Idaho team.

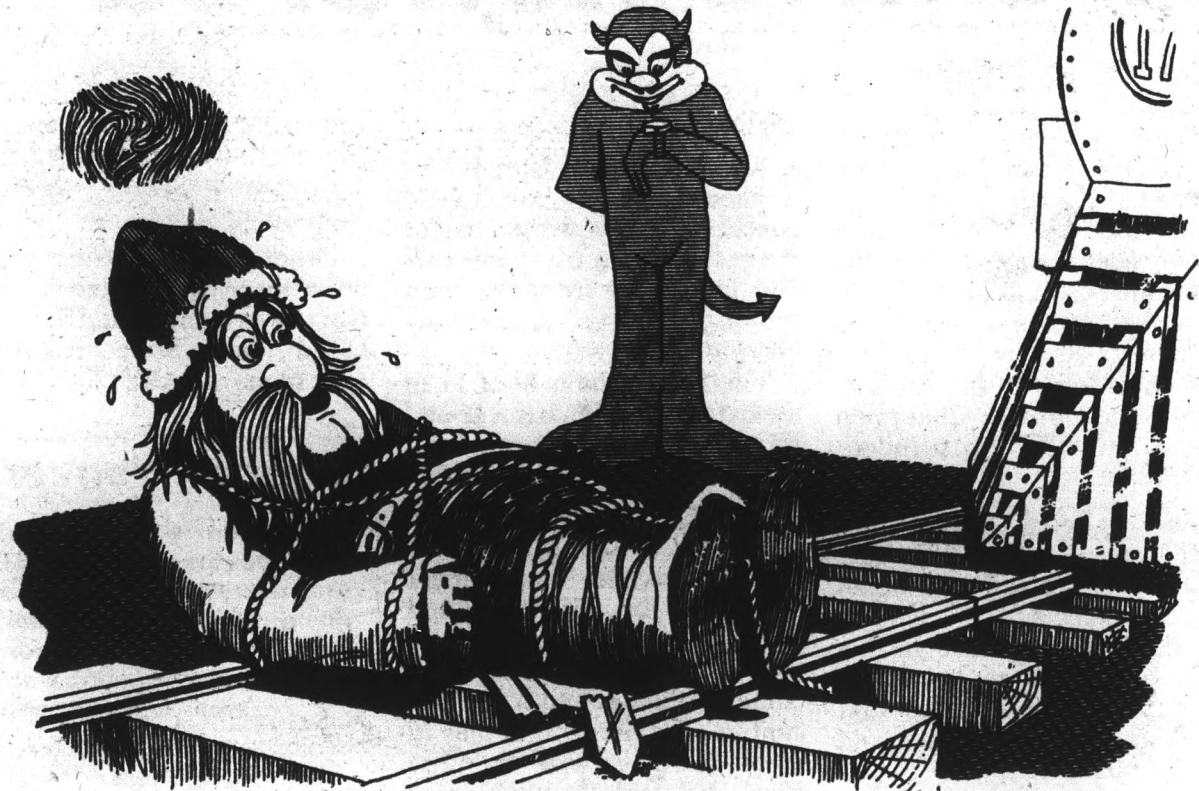
bruising fullback rushed for 752 yards in nine games last season, but has started slowly to date.

ASU will be trying, it need be, to retain their ranking of 13th in the country. Whether Fred Mortenson or Dennis Sproul (who leaked signs against BYU he may possess the quarterbacking skills expected of him) will open at QB is undecided, though Mortenson should hold the edge.

Chances are all three ASU quarterbacks will see action. Chances are the entire Sun Devil roster will see action, with the possible exception of tight end Kirk Carter, who is doubtful with an injury.

So Saturday night should provide a fantastic fireworks show for all you greedy Sun Devil fans.

But somehow it will be hard not to show a little pity for Idaho.



It's easy when you've got a System.

VIVITAR SYSTEM 35

THE PORTABLE SLR SYSTEM



220SL Kit,
A great combination
for serious picture-
takers.

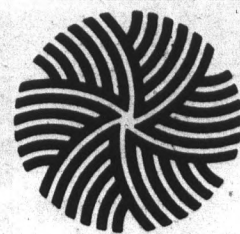
Includes:

- VIVITAR 220SL (Black) 35mm SLR with TTL meter, f1.8 lens.
- VIVITAR 135mm f/2.8 auto telephoto
- VIVITAR 2x teleconverter
- VIVITAR electronic flash
- VIVITAR Enduro Case

All for just

\$258⁹⁵

We make everything click.



Sunland Camera

3259 East McDowell 275 5082

Open Friday until 6 pm, Saturday until 5 pm.

- Brian Cheney
- John Roetman
- Jim Munsil

PROFESSIONALS

Will offer a series of 8-1 Hour Group Tennis Lessons for Beginners and Intermediate levels.



Begins October 7 & October 9th
CALL 968-9231 FOR DETAILS

Private Lessons Also Available
—WE HAVE MORE TO OFFER—

Archers honored

Sports in brief

TWO members of the ASU women's archery team, Jean Stephenson and Wendy Vance, have been named to the Women's Collegiate All-America Archery Team for 1975.

Stephenson was the Arizona 1974 State Outdoor Champion and is the 1975 State Indoor Champion.

ASU women volleyballers will travel to Flagstaff tomorrow for a pair of matches against NAU and the Uof A.

The Devils may have given a hint of what's to come by defeating the UofA last Monday in both varsity and junior varsity matches.

ASU WINGBACK Larry Mucker has been named the WAC offensive player of the week.

Mucker received the award on the strength of his six receptions for 133 yards and one touchdown in last week's 20-0 conquest of BYU.

FOR those people already looking ahead to the spring semester, there is an interesting new class being offered by the PE department.

It's a beginning ice-skating class, and is taught by Florence Weber, a former professional figure skater, and Stephen Friedlander, formerly a top ice hockey player in Minnesota.

AT LEAST one member of the ASU football team is well

on his way to setting some new records.

Kicker Danny Kush has tied a school record for career field goals (18) and is within five of the record for extra points (87) and four away from the total scoring points scored by kicking (140).

This season, he is 11 of 11 in the extra point department and three of five in field goals for a team leading 20 points.

THE FIESTA BOWL Team Selection Committee is ecstatic over a recent development involving the Big 10 and Pacific-8 conferences.

In the past, these two conferences allowed only the conference champion to play in a post-season game — the Rose Bowl. This rule has now been discarded, however, and other teams in the conference will now be allowed to participate in other bowl games if invited.

It could mean the Fiesta Bowl will come up with a high-ranking opponent for the WAC champion in this year's game.

ONLY two conference games are slated for this weekend — New Mexico versus BYU and Colorado State against Wyoming.

Other games involving WAC members are Arizona vs. Northwestern, Pacific vs. UTEP, Iowa State vs. Utah, and Idaho at ASU.

Seventh Heaven

This elderly gentleman must be the envy of ASU fans everywhere — he's got an on-the-field seat complete with all the popcorn he can eat.

Photo by David Seibert

The State Press "Muck-rakers" will meet the ASASU "Associated Stars" in a football game, 10 a.m. Oct. 5 at Tempe's Daly Park. Officiating as referees will be Allan Frazier, Coordinator for Associated Students, and Leon Shell, Dean of Students.



Desert Fox T-Shirts

408 S. MILL, TEMPE

10% OFF any shirt
purchase with coupon

Any design & shirt of your choice

Good thru Oct. 15th '75

A resoled tennis shoe is a good old tennis shoe.



Official factory resoling and repair service for all athletic shoes.

Adidas Puma
Tretorn Tiger
Nike Head
Converse And more.

BRING IN YOUR OLD TENNIS SHOES TO US FOR RESOLING.



FOR THE NET SET

1031 S. Rural • 967-8861

BUY
1 Hot Sub
GET
2nd at
1/2 price!

with coupon at

Out-R-Inn

Pizza & Subs

WE DELIVER CAMPUS AREA

1045 LEMON ST.

966-7009

OFFER EXPIRES OCTOBER 7, '75

10 BEERS 1.00
for

This Sat., October 4
&

Every Wednesday Nite

(Regularly 7 for \$1.00)

RUSTY BUCKET

5501 E. Washington

• POOL and GAMES •

A Special Offer From

HERTZ
RENT A CAR

ASU Students . . .

If you're over 18 you can rent a Ford or other fine car at a SPECIAL LOW WEEK-END RATE of

\$9.99 A DAY AND 13c PER MILE

3 Day Weekend rate: \$39 with unlimited Free Mileage

UNLIMITED FREE Mileage Rates

7 Days for \$119.00

For Your Car, Call Your A.S.U. Representative

STEVE BLAGEN

968-4072 or 963-5786

Intramural head gambles with creative innovation

By Dave Garell

Jill Williams has been a compulsive gambler since she became the women's intramural coordinator last year. She is always gambling with new ideas and activities for the women's program and these ideas have always come up winners.

This fall she is experimenting with a women's point system that will produce an overall champion at the year's end. And as expected, the point system is one of the most popular innovations introduced into the ASU women's program.

"I know it's working because of the way our tennis singles entries have increased from last year," Williams said. "We had 11 singles teams last season, and already this fall we have 39 teams. We considered all the variables, and the main reason has got to be the point system."

Williams devised the point system this summer as a means to increase participation and give the women an ultimate goal to strive for. She said that the sororities approached her at the end of last year and suggested giving points, so she adopted and modified the point system used at West

Virginia University.

Unlike the men's point distribution, women's points are based primarily on participation. By playing and not forfeiting an event, a team can pick up close to half its points just by being there, which Williams said will help to get more involvement in all the sports.

"This should really help our minor sports, because girls will still earn points for sports like rodeo, bowling and golf, instead of only being awarded for major sports like football, basketball and volleyball," Williams said.

Greeks dominate intramural activities

Volleyball playoffs begin next week for approximately 16 intramural co-rec teams, while women's volleyball playoffs conclude today.

Each co-rec team that had a .500 record or better will enter next week's playoffs. In one league, four of the six teams will go to post-season play. First place teams that will be seeded include The Team, Lambda Chi Alpha, Hapa Haoles, Odds and Ends, Sigma Phi Epsilon, and the Tortfeasors. The Lambda Chi Fraternity is the defending champions.

In women's play, Our Gang, Kappa Delta, and Kappa Kappa Gamma won first round games Tuesday. In the second round Wednesday, the top-seeded Hapa Haoles, who had a first round bye, defeated

Kappa Delta.

In Thursday's game, Our Gang met the Kappas, and the winner will play the Hapa Haoles of the championship at 3:30 today in the men's gym.

In co-rec golf last week, two teams from Lambda Chi Alpha finished first and second. Mike Griffith and Donna Peterson defeated Ruly Contreras and Ruth Kusters in the finals at Rolling Hills Golf Course.

During October, the men's program features the start of the biggest campus sport, flag football, as well as rodeo, paddleball singles, three-man basketball and tennis doubles.

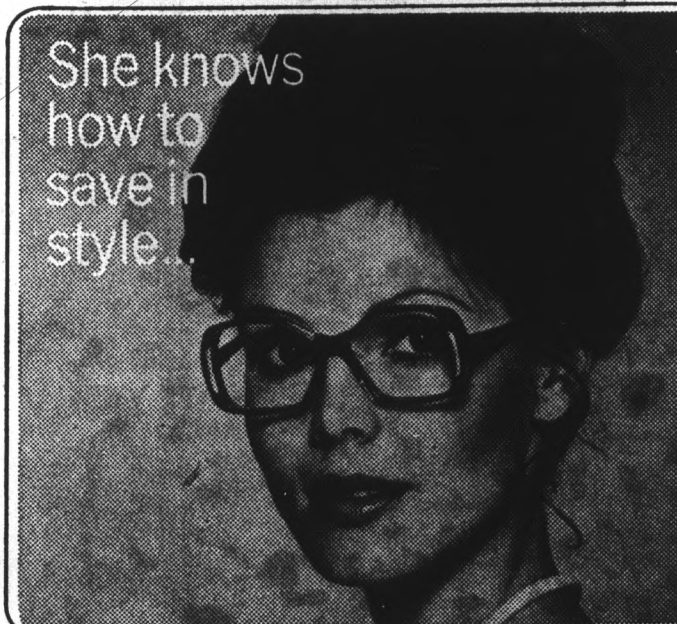
The women's program this month includes tennis, badminton, ping pong, and of course powder puff football, which received TV coverage last season.



Mr. Florence Nightingale

One of the busier and more valuable members of any football program is the team trainer. At ASU the man in that position is Ray Robison, shown here attending to tight end Kirk Carter.

Photo by Bill Frakes



She knows how to save in style...

with fashion eyewear from Lee!

You can pay extra for high quality fashion eyewear... or, you can look to Lee. Lee Optical has hundreds of frame styles and colors for your new glasses.

Modern frames, imported frames, and, of course, a huge selection of the popular wire frames.

Stop in at your nearby Lee Optical office for "In Style" eyewear. Come see.

Single vision glasses as low as **\$19.95**
STUDENT DISCOUNT

WITH CONVENIENT VISION CENTERS THROUGHOUT ARIZONA

LEE
Optical

IN TEMPE
TEMPE CENTER
967-7864
2032 S. INDUSTRIAL PARK AVE.
967-7333



1969 BEER PRICES ARE BACK

LARGE PITCHER COORS

75¢

LIMIT 1 to 4 DEPENDING ON PIZZA SIZE

WITH PURCHASE OF ANY SIZE PIZZA

THIS OFFER EXPIRES OCT. 31st

BRING THIS COUPON TO

1127 NORTH SCOTTSDALE ROAD
TEMPE — PHONE 968-6246
Across From Hayden Plaza East



Windbreaker & arm-up Sale
WHITE STAG®

SPEEDO®

Reg. 27.95 NOW 19.95

20% off

Windbreakers & Jackets

Offer good thru Oct. 10

UNIVERSITY SPORTING GOODS

OPEN EVENINGS TIL 9
966-1633

TEMPE CENTER

UNIVERSITY & MILL

GOOD PRICES ARE JUST THE BEGINNING

CUSTOM hi-fi

DISCOUNT center WE DISCOUNT PRICE NOT QUALITY

AFTER INVENTORY CLEARANCE

SATURDAY 10-6 pm Sunday 12-5 pm
"First Come First Serve"

Time to Save and Pick-up on the Audio equipment on Specials this week-end. — We're Clearing it out for new Merchandise Already Ordered—

SYSTEM PRICES ARE OUR SPECIALTY

Sansui
"Few Left"



Our special purchase is going fast — so hurry — We feature the Sansui 551 AM/FM Stereo Receiver, with Power To Spare. ERC 5019 "Mighty Mite" speakers and sound Quality plus a BSR2280 magnetic Cartridge turntable.

You pay only **\$249**

PIONEER
"Best Buy"



One of our heavy systems at a light price. Featuring the SX636 Stereo Receiver with Power To Spare. Plus E.C.I. 3-way 12" woofer speakers and a BSR2520 (New for 1976) for a Super Price

YOU PAY ONLY **\$410**

MARANTZ
We sound better
"FALL IN"




Its that time of the year and you can enjoy the sale of our History — MARANTZ 2230 a "Best Buy" and Priced Right. Pioneer PL12D the Newest from the Belt Drive People. Plus E.C.I. 1254W 4 way 12" woofer sound system - 5 yr. warranty.

\$550

Speakers
E.C.I. 1254W

- 4 speaker system
- 3 way 12" woofer
- 5 year warranty



\$65 each
(4) pr. E.C.R. 5019

•Full Range high efficiency Sound System — A Steal!!!

While They Last **\$1700** each

(4) E.C.I. 1556

•5 way 15 inch woofer, Removable grille - Big Sound at A little price.

While They Last **\$95** each


PIONEER
SX434 "Just Right"



AM/FM Stereo Receiver that has all the Performance you could ask for — Customs Price

\$189

MARANTZ
Model 2230



Perfect for that system you've been dreaming about — Custom Brings you Marantz at a Discount

\$295

Sansui
"Special Buy" on the 551



AM/FM Stereo with Power & Looks that makes any system a Tiger.

ONLY **\$169**

RADAR SENTRY



Detects Radar Speed Traps Drive Safe and Still Save Mondy.

\$29.95

TURNTABLES
P.E. 3060

- Die Cast Platter
- Damped Cue/Pause
- A Steal!!!



\$99.95

(7) BSR 2520

New for 1976. with gram weight control anti-skate, magnetic cartridge Base & Cover

\$69.95

BSR 2260

New for 1976 and comes complete with Base, Dust Cover, and Shure Magnetic

\$39.95

SPECIALS

Misc., Closeouts, etc.

(2) AKAI reel to reel #210 with auto. reverse, three heads, three mutes and more. **ONLY \$399**

(3) SUPERSCOPE C-101 Portable Cassette Recorder with built-in condenser microphone. **NOW \$38**

BEFORE YOU BUY SHOP CUSTOM HI-FI

East Indian School & North 16th St.
inside Fry's New Shopping Center

264-4717
Famous 10 month "no interest" layaway