

**Regents review**

# Schwada pleads for budget hike

By Jim Boardman

University President John Schwada presented a tentative 1976-77 operating budget request for \$70.1 million in an Arizona Board of Regents budget committee hearing Friday. This represents an 18.6 per cent or \$11 million increase over this year.

Schwada said ASU has the highest rate of enrollment growth (7 per cent) and the largest percentage of graduate students but receives less state support per student than either of Arizona's other two universities.

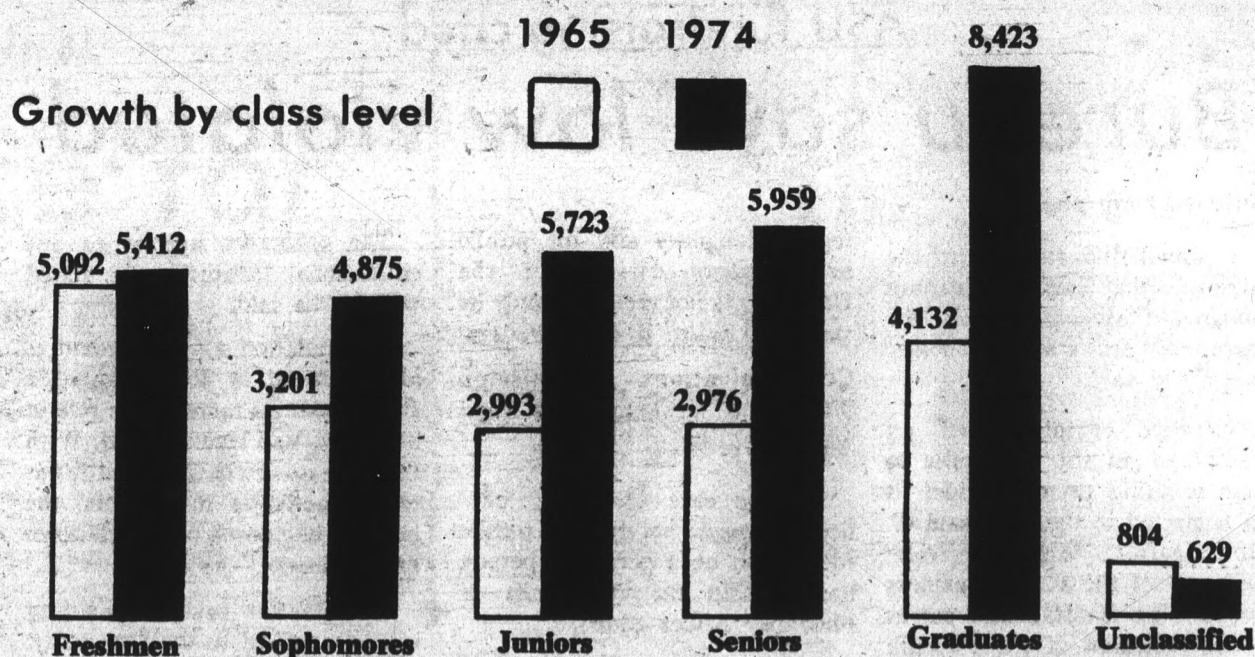
Schwada stressed that unless funding is substantially improved, ASU would have to "sharply increase" fees or limit enrollment.

He said 1,029 classes had to be closed this year due to

budgetary constraints, affecting more than 4,000 students. Among those students was Schwada's daughter, who is not attending ASU this semester because she did not get a single course for which she pre-registered.

After meeting for 25 minutes upstairs in the Administration building, the regents recommended ASU cut its request for a 15 per cent merit raise to 3 per cent, shaving \$884,000 off the total. Merit raises are awarded to University personnel in recognition of high performance, as opposed to across-the-board, cost-of-living raises appropriated by the state legislature.

Regent Ralph Bilby said he anticipates the legislature may approve a 7 per cent cost-of-living raise.



University President John Schwada said ASU's enrollment is increasing faster than enrollment at other Arizona universities. This chart shows how enrollment has risen here in ten years.

Schwada said 1,970 new students are expected to enroll next year, more than 50 per cent of them being transfer students.

If approved, the biggest funding percentage increase will go for organized research, up 50.6 per cent.

Falling under this category

are the different centers and laboratories conducting research here on a permanent basis.

Funding for instruction, on the other hand, would increase only 16 per cent.

Friday's hearing was only for review purposes. The regents

will meet next month in Tucson as a committee of the whole to consider the budgets.

Troy Crowder, assistant to President Schwada, said he expects final regent approval during the October meeting, after which the budgets will be readied for legislative consideration.

**tuesday**  
**state**  
**press**

Tempe, Arizona

Arizona State University

Vol. 58, No. 18 September 30, 1975

**Better Business Bureau says:**

## Program violates law

By Gina Schwelkart

The Phoenix Better Business Bureau (BBB) has filed a complaint against the University for neglecting to secure permits for fund-raising projects.

However, the complaint is requiring ASU to "take a permit for nothing," according to Carl Miller, ASU development director.

The BBB issued a release to the media in mid-September announcing ASU had violated a city ordinance requiring major organizations to obtain solicitation permits to conduct money-raising campaigns in Phoenix.

"The release says a campaign is under way and it is not under way," Miller said. "It was only announced

there would be one in mid-October."

The complaint was directed at "a campaign currently being conducted by the University television station, KAET," according to the release. Miller said KAET-TV conducts a fund-raising campaign each year, "pledge week." Area residents are asked to send in contributions in support of the station.

The ordinance states an organization must apply to the board for approval within 15 days of the campaign's effective date.

Miller said the complaint stemmed from an announcement of fall programming which mentioned the upcoming KAET campaign.

continued page 2

## ASU staff volunteer resigns; charges racial discrimination

By Pat Denley

A chicano staff member resigned Friday, charging his superiors with harassment and the University with failing to act on his discrimination complaint.

Conrad Martinez, who worked for five years as volunteer coordinator for the Community Services Program, said a campaign of secrecy and spying was aimed against him recently, including eavesdropping on phone calls, close observation of his movements and the refusal of other department members to talk to him.

Last semester Martinez filed complaints charging ethnic discrimination against Denis Kigin, dean of University extension and summer sessions. The complaints were filed with ASU's Board of Equal Opportunity (BEO) and the federal Equal Employment Opportunity Commission.

Kigin refused any comment yesterday on the charges, as did Don Campbell, coordinator of community services.

"It was just a matter of time" before he would have been fired. Martinez said. "I put up with too much."

Martinez said he originally filed the complaints against Kigin when Kigin ordered him to stop distributing a newsletter to universities, other agencies and local minority groups telling of employment opportunities at ASU.

continued page 2



**Crouched conversation**

Zack DiBrell comes down to the level of spectators on the other side of the fence along the Sun Devil field Saturday night. The starting middle guard talked to fans during the second half of ASU's successful contest against BYU. See more photos on page 4.

Photo by Bill Frakes

# ASU fundraising cited Bureau says law violated

# ASU staff volunteer resigns; charges discrimination

continued from page 1

"I cannot find anything in the ordinance that says you cannot announce that sometime in the future you are going to solicit money," he said.

The BBB complaint was an attempt to get the University to begin securing permits, which it has neglected in the past, said C. Van Haaftan, executive vice-president of the Better Business Bureau. Van Haaftan also serves as vice-chairman of the Phoenix Solicitation Board, which awards the fund raising permits.

"Through publicity we are trying to persuade the University to accept its responsibility under the ordinance," he said.

Miller said the University is in agreement with the purpose of the ordinance, which is to prevent unethical practices by fake charities. However, he cited two conflicts in the BBB's power to enforce the ordinance on ASU.

"First, we are domiciled outside the city of Phoenix. We feel it would be difficult for the city to force us to comply with the ordinance.

"Secondly, we are a state-

regulated agency and the public broadcasting division of the University is not regulated only by state but also by the Federal Communications Commission (FCC) and must meet its rigid standards.

"In the case of KAET particularly, we do not do mass public solicitation on a person-to-person basis within the city limits of Phoenix," Miller added.

Although the University and KAET are located outside the city limits, the airwaves are carried across the boundaries of Phoenix, Van Haaftan said. This brings ASU under the jurisdiction of the ordinance, he added.

Van Haaftan sees no conflict with the FCC regulations. "It rules on wave lengths, non-commercial and commercial activities and obscenities; and I don't think they would overrule a city ordinance requiring solicitation permits," he said.

Phoenix also has the right to enforce a city ordinance on the University although it is a state-regulated institution, Van Haaftan said.

The ordinance applies to any educational institution as stated therein, he said.

The violation announcement is also a result of the Solicitation Board taking a more active role in its duties, Van Haaftan said. With the increase of charities and fund-raising activities in Phoenix, the board is beginning to "crack down on applicants," he added.

Van Haaftan said no penalties will be assessed to the University.

"We only want ASU to follow the required procedure," he said.

Miller will meet with Van Haaftan and Francis Thalheimer, chairman of the Solicitation Board on Wednesday. The board will consider issuing one yearly permit to the University to avoid consistent applications for the many activities conducted each year, Van Haaftan said.

continued from page 1

After he filed the complaint, his 12-month contract was cut to nine months without explanation, Martinez said. He said he was never given a clear idea of his duties, and his programs were short-changed in budget allocations.

The federal government is still investigating his case, Martinez said, but he gave up hope on the University taking any action.

James Hill, executive director of the ASU Board of Equal Opportunity, said this year's board met Sept. 18 and decided to continue the investigation begun last spring into Martinez's complaint. Martinez said Hill told him this last week, but by then he had already decided to quit.

The BEO began its investigation April 18, Hill said, and continued until the end of the spring semester when the board disbanded for the summer.

"We heard as much as possible, but it was not enough time," Hill said. He said he heard news of Martinez's resignation as he was gathering data to be resubmitted to the BEO at its next meeting.

Hill said it was up to the board to decide whether to continue its investigation now that Martinez has resigned.

Jack Penick, University vice president for business affairs, was also accused of inaction by Martinez. He was formerly ASU's affirmative action officer. A full-time officer to take his place is now being sought.

"He has been involved from the beginning," Martinez said, but no action was taken. Penick was unavailable for comment yesterday.

Jerry's

audio  
exchange

Tucson — 1037 N. Park 622-7407  
Phoenix — 334 E. Camelback Rd. 263-9410  
Tempe — 120 E. University Dr. 968-3491

casual  
corner

SALE!

1/3 Off

casual corner

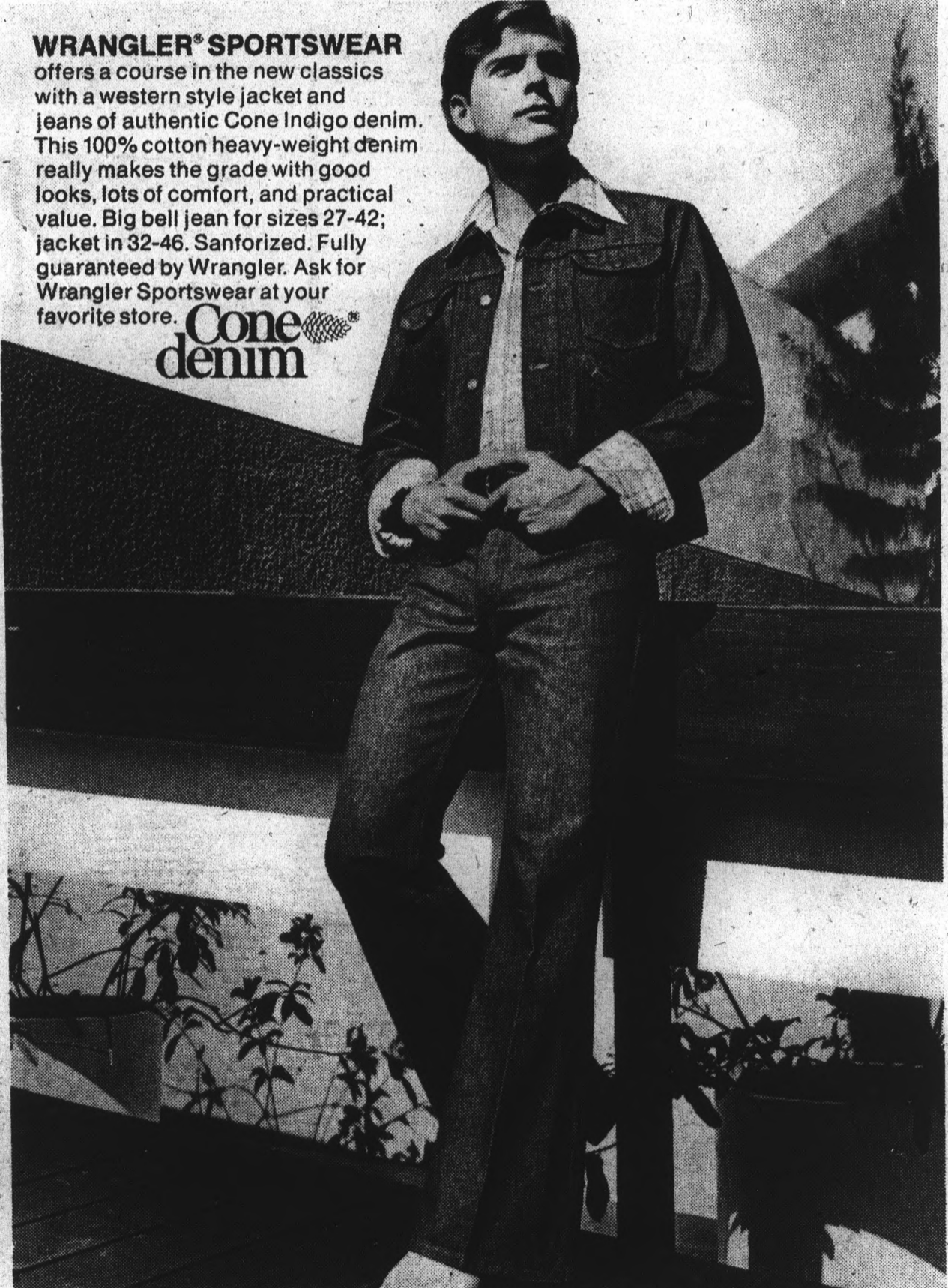
Fashion Square — Scottsdale  
947-8355

Open: Tues.-Wed.-Sat. till 6  
Mon.-Thur.-Fri. till 9  
Sunday 12 to 5

WRANGLER® SPORTSWEAR

offers a course in the new classics with a western style jacket and jeans of authentic Cone Indigo denim. This 100% cotton heavy-weight denim really makes the grade with good looks, lots of comfort, and practical value. Big bell jean for sizes 27-42; jacket in 32-46. Sanforized. Fully guaranteed by Wrangler. Ask for Wrangler Sportswear at your favorite store.

Cone  
denim



Cone makes fabrics people live in.  
CONE MILLS 1440 BROADWAY, NEW YORK, N.Y. 10018

Students must 'grow up' first

# Independence far off for ASASU

By Michelle Fulcher

Craig Tribken, president of Associated Students, would like to see ASASU become independent of University control. But two administrators, who must approve of ASASU programs before they take place, believe students will have to grow up a lot before that happens.

ASASU coordinator Allan Frazier likens the administration-ASASU relationship to that of a parent and child. "As you're growing up you're sure they're there to prevent you from having any fun," he said.

Frazier is paid by the University to serve as a liaison with ASASU officials and approve their budget requests.

Dean of Students Dr. Leon Shell said that students need "some guidance and advice" to run ASASU. He said this is partly due to the yearly turnover of ASASU officers. "It takes a little while to get the feel of the office and how things are done," he said.

University officials insist on

paying the ASASU coordinator's salary and controlling its budget because they see students as children who cannot make rational decisions, Tribken said.

"When you're only allowed to see so much of the picture—when they lie to you, when they're not frank with you, when they deceive you, it's hard to make good decisions," he added.

Administrators have occasionally deceived ASASU officials in the past, Tribken said. But this year "we've established a real good relationship of trust" with administrators, he said.

Shell acknowledged that ASASU officials have sometimes had trouble getting information they needed. The ASASU coordinator can help the students work within University channels to get necessary information, he said.

As a first step toward independence, Tribken wants ASASU to return to paying its coordinator. At one time ASASU

did pay the coordinator, but the Office of Student Affairs now provides his salary.

Having people who work for ASASU paid by someone else is bad management, Tribken said, and it could also create problems when ASASU and administration objectives clashed, Tribken said.

Since funds for ASASU and the Office of Student Affairs all come from the University budget, it doesn't matter who pays the coordinator, Shell said.

As long as the coordinator's salary and other ASASU funds come from the University budget, a staff member will be responsible to the administration for the way ASASU money is spent, he added.

### You'll Love Our . . .

- JEWELRY — wide selection
- BASKETS — from many lands
- BOXES — Polish Hand-carved, Pewter, Mexican Tin
- HAND WOVEN BELTS Mexican
- AFRICAN Artifacts
- Art Cards & Posters
- Museum reproductions in sculpture & jewelry
- Much, Much more at

### GALLERY STORE

Matthews Center  
2nd floor  
Open 12 to 4



**HEY GUY —  
HAVE I GOT A DEAL FOR YOU.**

**M.U. DUPLICATE  
BRIDGE CLUB**

Every Wednesday, 7:15 p.m.

Memorial Union Alumni  
Lounge

Open to Students, Faculty & Staff

## DISNEYLAND Mini-VACATION!

**OCTOBER 10**

**\$27.50 per person**

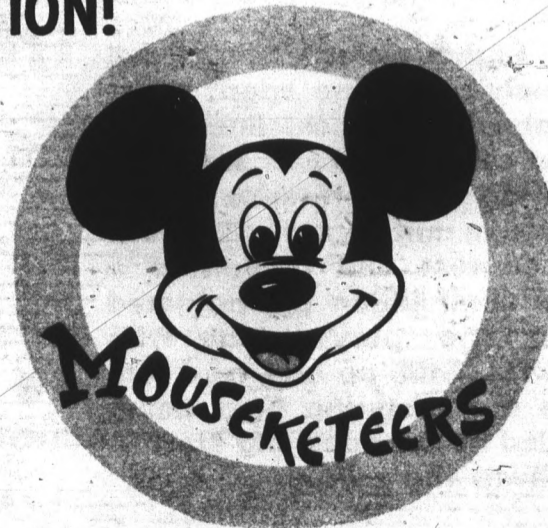
Disneyland tour price includes one Deluxe Ticket Book and admission to the park.

Depart ASU at 11:30 P.M., Oct. 10 (Fri.)  
Arrive in Anaheim 9:00 A.M., Oct. 11  
Leave Disneyland at 6:30 P.M., Oct. 11  
Arrive at ASU at 2:00 A.M., Oct. 12

You must sign up at the intramural office in the men's gym lobby by 4:00 P.M. Thursday, October 9. For further information call 965-5638

### OTHER INTRAMURAL TOURS TO LOOK FOR:

- Nogales — October 18
- Las Vegas — November 1



## The Memorial Union Presents **THE SHORT COURSE PROGRAM Fall '75**

A series of informal, non-credit classes

### Register Now

### Appliqué, Patchwork and Quilting

October 22-November 26  
Wednesday evenings Fee: \$11.00

### Astrology—Beginning

October 7-November 25  
Tuesday evenings Fee: \$26.00

### Drawing—Beginning

October 8-November 26  
Wednesday evenings Fee: \$16.00

### Macrame—Beginning

October 21-November 25  
Tuesday evenings Fee: \$11.00

### Photography—Beginning

#### Black and White

October 6-December 1  
Monday evenings Fee: \$25.00

### Strategies of Blackjack

October 6-November 24  
Monday evenings Fee: \$15.00

### Understanding High-Fidelity

October 8-November 19  
Wednesday evenings Fee: \$15.00

### Wine Appreciation

October 13-October 27  
Monday evenings Fee: \$8.00

Must Register in Advance in M.U. Activities Center with valid ASU I.D. For more information, call 965-6640 or 965-6649

Enrollment open to ASU I.D. holders and their immediate families.

# Backstage blahs —

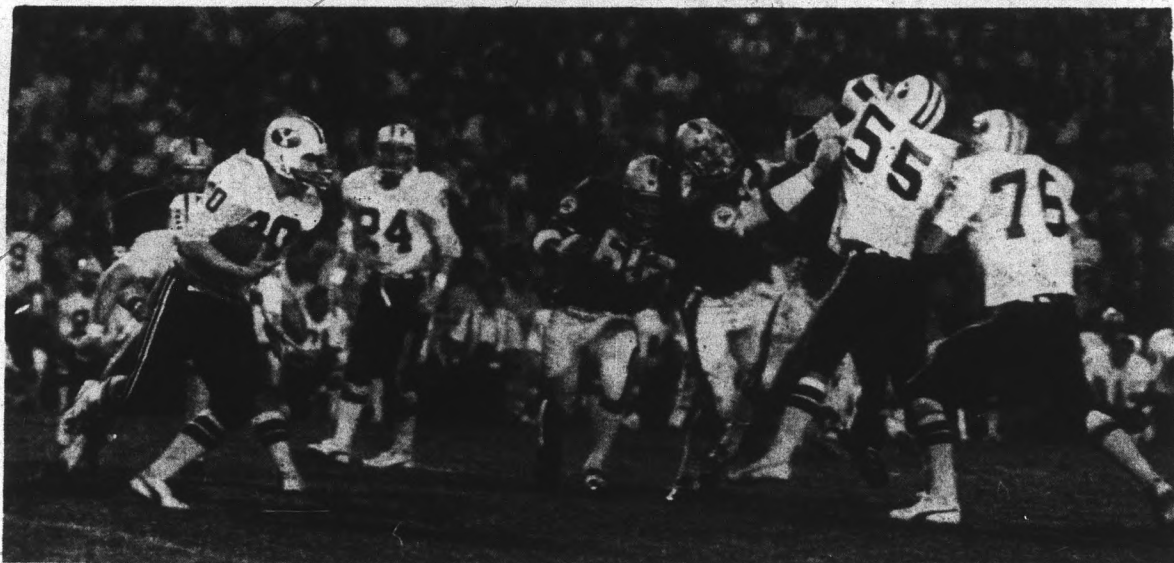


Frakes

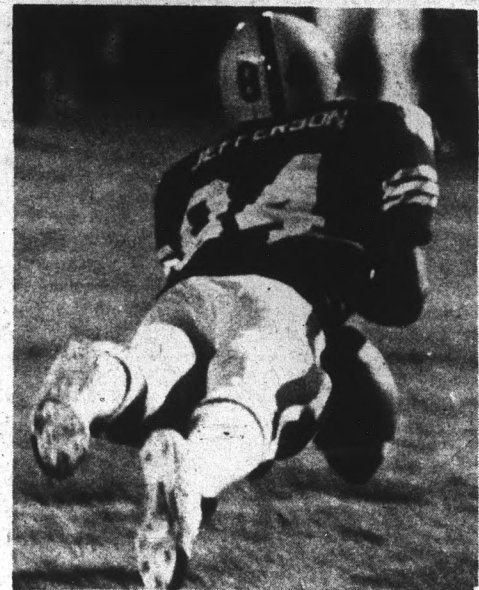


Frakes

# — at the Sun Devil circus



Seibert



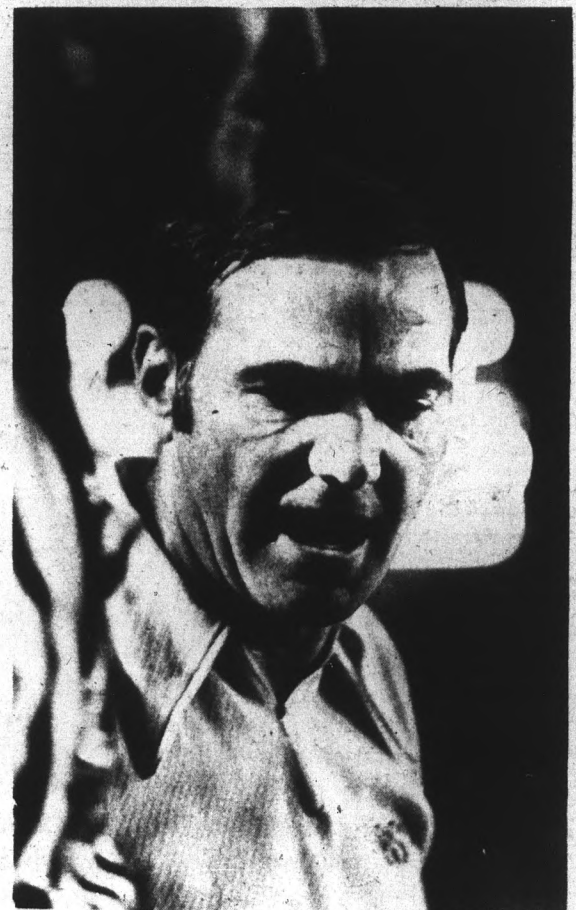
Seibert



Frakes

The highpowered Sun Devil offensive machine spent most of Saturday night sidelined with a bad case of the blahs. Only a superlative performance by the defensive unit kept the Devils in the contest and prevented a mass annihilation promulgated upon the players by the coaches. Still, no one was safe from the blistering heat being exuded by the coaching staff — not even the zebras.

Photos by Bill Frakes & David Seibert



Frakes

# Police write more parking tickets

By Bill Lagattuta

University Police have written more than 12,000 tickets for parking violations so far this year. They say that before year's end they will top last year's record of 100,000.

ASU Police Cpl. Jack Trimble, who coordinates campus ticketing, said this is normal. He blames rising enrollment as the reason for the high number of infractions.

"Last fall alone we wrote more than 41,000 tickets," Trimble said. "People should realize it's hard to outwit our patrolmen."

*University Police have intensified parking patrols and they expect to write a record number of tickets this year. Still students play the game of "outwit the cops."*

Trimble said his men write an average of 500 tickets each school day. He and three other officers patrol the parking lots until 3 p.m. Two students handle the night shift.

The most common violation, according to Trimble, is parking without registering the vehicle. Next is parking in the

wrong lot. Parking in loading or red zones takes third place. Most infractions take place near the center of campus.

Despite beefed-up patrols, Trimble said students are still playing the game of "trying to outwit the cop." He said his men have seen every trick there is.

"The most common gimmick is putting an old ticket on the car window so an officer will think he has already ticketed the car," he said. "This doesn't work, because our patrolmen simply get to know the cars."

Regulations call for the parking decal to be in plain view, but many students use a weather cover to hide the windows. Trimble said his men will look under the cover anyway.

Most policemen agree that backing a car into a space to hide a window with no decal, just doesn't work.

"When I saw a car backed into a space, it would only stimulate my curiosity to check it," said University Police Lt. Irving Jaffe, who used to work the ticket beat. "I didn't care if I had to walk around ten cars to see. The fact that it was backed in, forced me to

check."

Trimble says more than one half of the cars backed into a space are parked illegally. Cars without a decal will cost their owner \$5. Cars in the wrong lot get a \$2 ticket.

The more exotic the violation, the more expensive the penalty. Police say cars with a forged parking sticker will cost the owner \$25. Only two forged stickers were found last year. Trimble said both were painted on the car bumper.

"The students should have flunked their art class," he said. "Their work was just not perfect enough."

Officers say their busiest ticketing days are Monday, Wednesday and Friday. Violations issued daily range from 200 to a record 1,025, issued earlier this month.

## Free parking offered

Parking lot 59, north and east of Sun Devil Stadium is open for free parking, said Jack Penick, vice president for business affairs.

Beginning next semester, serialized decals will be issued free to any student who wishes to park in the lot. Penick emphasized that only lot 59 will be free. Stickers for other lots are available for the normal fee of \$5.

Penick hopes that by opening the lot, students, staff and faculty will be induced to park there. He said he expects no sudden influx of parkers right away, but said that by this time next year, the 4,187 space lot should be in greater use.

According to Penick, University Police will still issue tickets in lot 59 only for improper parking (outside the lines, etc.).

He said the Ad Hoc Parking Committee is primarily concerned with evaluating present parking problems, leaving futuristic schemes such as a shuttle service for consideration at a later date.

Penick added the committee may evaluate lots currently reserved for faculty or staff, with the possibility of opening them to students if the lots are partially empty each day.

STATE PRESS is published by Arizona State University Tuesday through Friday during the academic year, except holidays and examination periods. Entered as second class matter at Tempe, Arizona 85281.

**AV  
ALAN  
NCHE!**  
SkiHaus  
ACTION SPORTS

**SENIORS!**

Information about  
The Graduate School  
of  
Administration  
Willamette University  
Salem, Oregon 97301

Prof. J. Kent Butler  
is on campus  
Wednesday, Oct. 1  
9am-12 noon

See your Campus Placement  
Director

**The  
Beaderie**

Create Your Own Strands  
all Strands under \$10.00

**PUKA**  
**\$4.25**  
per strand  
Offer Good  
While Supply Lasts

125 E. 7th St. Inside DAX  
Tempe Oxford Square

*"Lack of money is the  
root of all evil."*  
George Bernard Shaw

**COMBAT SUCH EVIL WITH  
PENNYSAVER'S  
MONEY-SAVING OFFERS.**

PICK UP THIS WEEK'S PENNYSAVER  
AT  
**THE STUDENT BOOK CENTER**

**SDC**  
A STUDENT RUN COMPANY!

**STANTON**  
PHONO  
CARTRIDGE  
681EEE **\$37.75**  
Reg. 82.50

**KOSS**  
PRO/4AA  
HEAD  
PHONES  
Reg. 65.00  
**\$34.75**

BUY BOTH  
FOR **\$70** AND SAVE

STUDENT  
**REPS WANTED**  
EARN BIG COMMISSIONS  
SELLING STEREO EQUIPMENT,  
TV'S ETC. AT BIG DISCOUNTS  
ON YOUR CAMPUS. WRITE  
FOR MORE INFORMATION!

SEND CHECK OR MONEY ORDER  
PLUS \$1.00 HANDLING DIRECTLY TO:  
STUDENT DISCOUNT CORP.  
DEPT. 12  
P.O. BOX 113  
SOUTH ORANGE, N.J. 07079

**MEDICAL  
INSURANCE**

**STUDENT ENROLLMENT CLOSES  
OCT. 3, 1975**

Coverage Thru August 21, 1976  
Student Cost \$70.00

Dependent Coverage Available

Coverage is 24 Hours —  
WORLDWIDE

Information Packets at  
ASU Health Center  
Or  
Student Insurance Office  
1000 E. Apache, No. 121, Tempe  
Phone 968-8711 — 968-3770

**Get Acquainted Special**

**\$2.50  
OFF**  
on any haircut  
with  
this coupon . . .

Offer Good till Oct. 7  
In Tempe ONLY

We condition, cut and blow-dry your hair into a head-shaking, free and swinging style. Our stylists concentrate on a cut that suits your hair texture and your life style. Call now for your appointment. You'll love what we do!

Recommended by  
**MADEMOISELLE MAGAZINE**  
September '75  
*"Where to Get a Great Haircut in the U.S.A."*

**Chicago Hair Company**  
1041 E. Lemon Tempe 967-2360  
10261 N. Scottsdale Rd. Scottsdale 948-1460

# Alcoholism: a very difficult

## Center treats alcoholics

One of the nation's most menacing diseases, affecting more than 10 million persons, killing many of its victims, and driving the ones that live to insanity is a very frustrating problem . . .

Worse yet, most of the victims never know they have the disease. Actually, the afflicted become less aware as the sickness grows.

The disease is alcoholism.

### 10 million alcoholics

Robert Cox, director of a local counseling service for alcoholics, says there are at least 10 million known alcoholics. Of the more than 90 million persons in the

United States that drink, many do not realize their problem.

The counseling center, 1515 E. Osborn Road, is one of several facilities to help alcoholics in Arizona. It is affiliated with the National Council on Alcoholism.

Cox said, "Last year we held 882 counseling sessions in our offices. Besides these people, we referred more than 3,000 persons to other sources. I expect these figures to increase this year by 25 per cent."

According to Cox, students make up a large portion of these figures. Last year, the center saw 60 to 70 full-time college students

and many more that were of college age.

### High school drinking

"We also had 35 to 40 kids come to us that were still in high school, most under the age of 19," Cox said.

Cox said that it doesn't matter what you drink or how much you drink, but what you do in your social environment once you are drunk.

"An alcoholic usually creates social problems but many people who have the disease function normally in society. Ninety-five per cent of the country's alcoholics still function properly," Cox said.

Only three per cent of all alcoholics end up in the most desperate situations, completely beyond help. The counseling center along with other groups such as Alcoholics Anonymous try to stop the disease from progressing that far.

"We work with students on a one-to-one basis, trying to teach them the facts of alcoholism. If they know they have the problem and understand why, then their half way home," Cox said.

Counseling fees are based on one's ability to pay. If a person has no income, many times the cost is waived.

### No real symptoms

"There are no real symptoms. Many people that drink a lot are

not alcoholics because they are not addicted to the drug. It is usually a matter of whether the person causes a social problem, and that varies from case to case," he said.

In a recent story in the University of Arizona Wildcat, Dean D. Hughson, director of the Alcoholism Council of Southern Arizona, said if you can not refrain from drinking less than three mixed drinks every day for a month, you have a real problem.

"Many physical effects, including damage to the brain, stomach and liver, often are not detected for about ten years. The body keeps score even if society doesn't," Hughson said.

Cox said that only one person out of every 35 will have their problem arrested. The percentage increases as the person continues to drink.

### No cure

"There is no cure for alcoholism, it lasts forever. The only thing an alcoholic can do is stop drinking," Cox said.

"Alcoholics have a physical predisposition. Their metabolism simply will not burn up the alcohol fast enough due to an enzyme disfunction," he said.

"Some generic studies say that it runs in the family but this isn't always the case," Cox said.

*In moderation, drinking is not a problem. But in excess it becomes a disease. Doctors say it is almost incurable. Ray Artigue points out the spotlight on the problem.*



## To the students of A.S.U.

*It is with deep regret that Tempe Jewelers has decided to leave the campus area. We will open at our new location on or about Oct. 1 The address is 1900 E. University at the Riviera Plaza Center in Mesa.*

*Our association with the students these past few years has been very pleasant. Your credit has been of the highest standard. We wish you all continued success here at A.S.U.*

*Mac Jewelers will handle all your jewelry needs including the Sorority and Fraternity jewelry. They are located in Tempe Center. Any jewelry that has been ordered can be picked up at Mac Jewelers after Oct. 1st.*

TEMPE JEWELERS, INC.  
Frank A. Kosisky

*The following were winners in our Lucky Number Contest and each received a genuine Jade Pendant.*

**Merlinda Parra**

**Cathie Stewart**

**Lynn Dee Meyer**

**Julie French**

**Nancy Scheer**

**Marcia Sancken**

**Kathy Dalvey**

**Bob Sanchez**

**Jody Delmanowski**

**Mrs J. K. Moore**



"Your CHILD is the center of our existence"

*Introducing*

## A COMPLETE CHILD CARE FACILITY

101 E. Sixth St. Tempe, Arizona

close to A.S.U.  
non-profit  
non-sectarian

- FOR CHILDREN AGES 3-5
- ASU PARKING AVAILABLE - 7th and Myrtle
- SMALL GROUPS
- INDIVIDUALIZED INSTRUCTION
- QUALITY PERESCHOOL CURRICULUM
- SOCIAL AND PERSONAL DEVELOPMENT
- READING, MATHEMATICS AND SCIENCE
- FIELD TRIPS

◆ WE SOLICIT YOUR SUPPORT  
IN BEGINNING THIS ENDEAVOR  
For more information call — 967-2275

**XEROX**  
COPIES

**4¢**  
EACH

★ NO MINIMUM ★

(8 1/2 x 11 white)

MARICOPA COPIES

PHOENIX  
CENTRAL and ADAMS  
DIAL 254-4554

TEMPE  
720 S. MILL AVE.  
DIAL 966-6567

**state  
press**

**965-  
7572**

# Difficult problem to solve Rehabilitation saves lives

Drinking is no evil to society. It becomes a disease most incurable, as writer Tracy points out in this column on the problem.



Finding the solution to a problem may seem difficult. But for many, realizing there is a problem is the hardest step.

"I didn't know that I was drinking that much. In fact, the more I drank, the less aware I was about my problem," said an ASU coed that prefers to be nameless and will be called Tracy.

The attractive young brunette's eyes grew large as she told the story about her experience with alcohol at ASU. No one ever believes that something bad could ever happen to them and especially something like alcoholism, Tracy said.

### Great expectations

"I came to college with great expectations about starting a new life. I was tired of being a no-one in my small high school community and I really wanted to be accepted as a someone," she said.

Now 16 months after her first encounter with drinking, Tracy believes that if she had not sought rehabilitation, she would be dead or insane.

"I started drinking because everyone in college does. First on weekends and then gradually on a weeknight. After a while I was drinking a beer or whiskey almost everyday," Tracy said.

Tracy said that she gradually became very frustrated with school and her friends. She would wake up in the morning and need some sort of drink to calm her nerves.

"I realized that I might have a problem when I would carry a half pint in my purse and take a drink

in the girls' bathrooms during classes," Tracy said.

### More drinking

She said it was a perpetual thing whereby the more she realized her problem, the more she drank to forget it. "It's like a smoker who doesn't want to get cancer but who can't stop buying cigarettes."

Tracy finally sought help after she could no longer tolerate her declining condition.

"I was losing weight and became sick almost every other week. Besides, I couldn't afford my habit any longer. It was costing me at least \$25 a week," Tracy said.

### ASU counseling center

Tracy brought her problem to the counseling center at ASU where she received initial guidance before being referred to a Phoenix alcoholism center, and eventually to a local hospital

"If it hadn't been for the treatment I received from the many kind people I encountered, I would be dead by now. I was so afraid that no one would understand," Tracy said.

Although no one at ASU who deals with alcoholism could accurately say how many students are confronted with drinking problems, Tracy is not the lone victim of this disease.

### College drinking problems

Sources at all of the rehabilitation centers in Tempe and Phoenix say they deal with "the college-age individual" many times throughout the school year.

"It is obviously very difficult to estimate the number of students that are alcoholics because they themselves do not realize the problem," said Robert Cox, director of a Phoenix counseling center.

Tracy said, "I know a lot of my friends are on the same road that led to my problem. I try to tell them that they are drinking too much, but like me, they won't listen."

Tracy no longer drinks alcohol and says that she is much happier without it. "I now realize that the people I wanted to be accepted by are not worth having for friends," she said.

STATE PRESS is published by Arizona State University Tuesday through Friday during the academic year, except holidays and examination periods. Entered as second class matter at Tempe, Arizona 85281.

**TUESDAY LUNCH**  
 Begins Today At  
**HILLEL Baker Center**  
 213 E. University  
 11:30 - 1 p.m.  
 75c for a home cooked meal  
**ALL ARE WELCOME**

**Desert Fox T-Shirts**  
 408 S. MILL, TEMPE  
**10% OFF** any shirt  
 purchase with coupon  
 Any design & shirt of your choice  
 Good thru Oct. 15th '75

**pizza Galore**  
 EVERY **Tuesday 5-8 pm**  
 ALL THE DELICIOUS VILLAGE INN PIZZA AND SALAD YOU CAN EAT!  
**\$1.89**  
 1324 RURAL ROAD (Just South of Apache) 968-8757

**ON MARCH 11, 1958, THE UNITED STATES DROPPED AN ATOM BOMB ON MARS BLUFF, SOUTH CAROLINA.**

The citizens of Mars Bluff probably aren't planning anything special to commemorate the day their town almost became the Hiroshima of the Pee Dee River, but with the *Official National Lampoon Bicentennial Calendar*, you can help remember this and hundreds of other black days in American history. Painstakingly researched to insure historical accuracy, the *Official National Lampoon Bicentennial Calendar* contains over 600 massacres, explosions, defeats, assassinations, crashes, bombings (intentional and accidental), panics, executions, lynchings, betrayals, mishaps, riots, sinkings, mutinies, rigged elections, armed incursions, stonings, fish kills, mass murders, and miscarriages of justice.

While everyone else is running around making a big deal out of a boring battle the British somehow managed to lose, you can be celebrating the day 147 persons, most of them young women, perished in America's ghastliest industrial fire. Or the day Congressman Preston Brooks walked on to the Senate floor and beat Senator Charles Sumner unconscious with a gutta-percha cane. Or the day convicted "trunk murderer" Winnie Ruth Judd escaped from the Arizona State Insane Hospital for the sixth time.

And the *Official National Lampoon Bicentennial Calendar* makes a perfect gift that will continue to depress and annoy someone you love throughout the whole year. The *Official National Lampoon Bicentennial Calendar*, with twelve breathtakingly lurid illustrations, is on sale in bookstores everywhere for only \$3.95.

Conceived by Christopher Cerf

# New student I.D.'s ready in October

New student I.D. cards will be ready during the first two weeks of October, said Mike Andrews, campus service cards coordinator.

Andrews said the delay in getting new cards processed is not unusual.

"It normally takes four to five weeks to get an order," he said. "And we have more than 10,000 new I.D. requests this year."

The coordinator said ASU buys I.D. cards from Omni-Card Systems Inc., a New York firm. He said about 200 other colleges also

buy from the company.

Andrews said the cost of an individual I.D. card depends on how many are ordered.

Student cards are required for most campus business, he said.

Students must have their cards validated to use them, Andrews said. He said it can be done in room 167 of West Hall.

Providing I.D. cards is considered a campus service, but new cards are not paid out of tuition, Andrews said. He said his department receives funds from the general University budget.

He said students normally pay \$10 to replace a lost card.

"Right now we're replacing cards for \$2," Andrews said. "We're trying to get people who have lost them or have cards that are in bad shape to have them replaced."

A student who withdraws from college must turn in his I.D. card or pay a \$10 fee to have it invalidated, Andrews said.

Graduates are given an alumni card and allowed to keep their I.D. cards, but they also are invalidated, he said.

# "Orpheus": Play has weak spots

The Lyric Opera Theatre's production of Offenbach's "Orpheus in the Underworld" is a fairly strong performance stained by a few weak moments.

This spoof of the ancient myths of Roman gods and heroes features Jon Benac as Orpheus, a third-rate composer with a tone-deaf violinist tagging at his heels. Orpheus' relentless pursuit of his art drives his wife Eurydice, played by Laurel Moore, into a love affair with Pluto, god of the Underworld, played by Tomm Fox.

Pluto tricks Eurydice into a death trap set for him by Orpheus and carries her off to Hell, leaving to Orpheus the task of getting her back.

The opera is very funny, and the humor is best in a few strong supporting roles. Rebecca Wilcox as Cupid and David Fetz as Mercury, with winged feet carrying his splendid legs, add life and bounce (literally) to the show.

Unfortunately, their strength is offset by weaker moments, particularly in transitional sports, when the action almost dies. A scene with Orpheus and a collection of poker-faced little students sawing at their violins tries to be funny, but only interrupts the continuity of the

action.

Nearly all elements of the opera present a dichotomy of strength and weakness. The chorus of gods and goddesses is usually excellent, but not always together.

There are striking visual effects, such as the lighting in Hell and the sprawling limbs of gods and goddesses on bean-bag chairs, seen through a transparent curtain. However, after the initial clouds on Mount Olympus billow away, the puny trickle of dry ice from the sides loses effect.

But the strengths do slightly outweigh the weaknesses. Dean Tarkington as the mighty Jupiter disguised as a bumblebee displays a hilarious triumph of Lyric Opera costuming. The bright, lyric voice of Laurel Moore as Eurydice infuses its shining quality into the entire production.

A show worth seeing, "Orpheus in the Underworld" will be presented again at 8 p.m. Wednesday, Friday and Saturday and at 3 p.m. Sunday in the Music Theatre. —Elizabeth Lee

## Collage

### TODAY

The Engineering Department will sponsor an environmental and water resources engineering seminar at 7:30 p.m. in Engineering G-324.

Hillel sponsors Israeli folk dancing every Tuesday at 7:30 p.m. at the Baker Center, 213 E. University. Newcomers are welcome. Hillel also serves a Tuesday lunch for \$.75 from 11:30 to 1 p.m. at the Baker Center.

The hangliding group of the Outing Club will meet at 6:30 p.m. in the MU. Tonight's agenda will include talking about flying and seeing films and slides.

Circle K International will meet at 7 p.m. in MU room 216. The meeting is open to all.

### WEDNESDAY

The MU Chess Association meets every Wednesday from 7 to 11 p.m. in the basement of the MU.

Speaker Craig David, House minority leader, will speak on "What's Happening with Special Education and the Legislature" when the Student Council for Exceptional Children meets tonight at 7 p.m. in the Frontier Room of Tempe Howard Johnson's.

The College Democrats will have their regular meeting from 3-4:30 p.m. today in the MU Navajo Room.

Alpha Lambda Delta meets today at 3:30 p.m. in MU 217. They will be giving out certificates and will hear a speaker from Planned Parenthood.

The Integrity Club meets at 8 p.m. in the MU Yuma Room. Topic of discussion will be "Friendship: the Sheltering Tree."

Medieval culture will be discussed when the Medievalist Club meets at 7:30 p.m. in the MU Coconino Room.

**WHAT IS A BANDERSNATCH?**  
**COME TO 5TH AND FOREST — AND FIND OUT!**  
 The most beautiful social environment in Tempe.

Discotheque

# ISADORE'S

## Free Dance Lessons

TONITE & Every Tues. — 8-9:30

- Learn the — Hustle
- Bump
- Express
- Jitterbug
- Any Other!

968-7851  
 1123 W. Broadway

The MU Ideas and Issues Committee Presents



1st Original and Only Female Comedy Team in America

Tomorrow, OCT. 1st

Time: 2:30 p.m.

Where: Memorial Union Arizona Room

**FREE ADMISSION**

Open to the Public

**ERICKSON ART SUPPLIES**  
 HANDGRAPHS  
 • 967-4482 •  
 Serving ASU since 1958  
**YOUR MOST COMPLETE ARCHITECTURAL, DRAFTING and ARTIST SUPPLY STORE**  
**CONVENIENTLY LOCATED**  
 Our Back Door Faces The Architecture and Arts Buildings  
**TOWER CENTER • 111E. UNIVERSITY DRIVE**

The MU Fall Film Festival Presents ...  
**Their goal...assassination.**  
**November 22, 1963**  
**...accomplished!**

**BURT LANCASTER**  
**ROBERT RYAN** and **WILL BEER**  
 An EDWARD LEWIS Production  
**EXECUTIVE ACTION**  
 PROBABLY THE MOST CONTROVERSIAL FILM OF OUR TIME  
 Tonight at 7:00 & 9:30 p.m.  
 Tomorrow at 7:00 & 9:30 p.m.  
 In the MU Movie House  
 Tickets are ...  
**\$1.00** W/I.D. **\$1.50** W/Out

# University Police putting on a pretty face



Claressia Hall

By Gary Emerson

An alarm that went off in the cashier's office on campus was answered quickly by ASU's newest cop. There was one problem. When she arrived on the scene she couldn't convince anybody she was on the police force. This is just one of the problems faced by Claressia Hall, one of the two campus policewomen, who is completing her second week of campus patrol.

Hall, an ASU graduate, previously worked as a dispatcher for the University Police. She said it was during this time that she developed her interest in becoming a uniformed officer.

She applied for the University Police job after completing the Department of Public Service training course.

Hall said that Chief George Bays didn't seem shocked by her application. "Bays seems to have the attitude that if a woman can do the job, then let her do it," Hall said.

Her beat is the Manzanita and Palo Verde dormitories and adjoining parking lots. She also patrols the main mall during parts of the day.

Hall said she works alone and has had no confrontations so far, but she does carry a .38 caliber Smith and Wesson revolver for protection.

"Training and practice sessions for use of the weapons are held twice a year and are mandatory," she said.

"The main part of my job seems to be more public relations than law enforcement," she said.

Hall has the freedom to sit down and talk with anyone she pleases, and said she frequently helps people who get lost on campus.

As far as parking is concerned, Hall said she will give a ticket to anyone who is illegally parked.

"If we didn't, we would have total chaos," she said. "People know they are taking a chance when they park illegally."

Hall said there is plenty of parking on campus, but everybody wants to park close.

"It's just human nature to try to get as close as possible. People just don't want to take the extra time to get to school early or to walk the extra distance," she said.

## State team studies conversion of buildings to solar energy

Testing and analysis is under way at ASU to determine if all state-owned buildings could be fitted with solar heating and cooling devices intended to save money and energy for Arizona taxpayers.

Dr. Byard Wood, project coordinator and associate professor of mechanical engineering, heads a seven-man team funded with \$21,054.

The money comes from a subcontract with the Arizona Solar Energy Research Commission.

The team is doing a preliminary solar feasibility study on four buildings: a men's gym; a girls' dormitory and an engineering center, all located on the NAU campus in Flagstaff, and the New

Motor Vehicle Division building in Phoenix.

The buildings were chosen "to develop a systematic way of evaluating all other state buildings," said Wood.

All were chosen carefully to represent a wide range of state buildings in terms of structure, age and function, he said.

"We're working with each building to see how it measures up to today's thermal performance standards. We'll see how efficiently each one handles its heating and cooling load, and we'll determine what, if anything, we would have to do to bring it up to standard," he said.

Wood said there undoubtedly will be some state buildings that

cannot be updated in terms of the project.

The initial study is scheduled for completion Dec. 1 and will be submitted to the Arizona Solar Energy Research Commission for further action.

Others working on the project are:

Dr. Donovan Evans of ASU; Dr. Bill Davis of Northern Arizona University; Dr. John Peck, University of Arizona; George Timmerman, a mechanical engineering consultant in Phoenix; Charles Magadini, a structural engineer in Phoenix, and George Buffington, an architect in Tucson.

## Cycle parking

### Motorcycle lots expand

More parking space is planned for motorcycles on campus. Lot 15, behind the agriculture building, and lot 24, east of the engineering building, both will be doubled in size, probably this fall, according to John Ellingson, physical plant director.

The increase in the two overcrowded lots should provide space for more than 200 additional motorcycles. A motorcycle requires only about 25 square feet of space, whereas a car needs about 300 square feet including its share of driving lanes, he said.

It is not yet known whether motorcycle usage is on the rise at ASU. A report from the comptroller's office shows 345 parking decals were issued for motorcycles so far this year.

Total sales of motorcycle decals from August to January usually total between 500 and 600, according to reports from the business office.

Ellingson doesn't rely on figures from the comptroller in determining need for more parking space. "That doesn't mean a thing," he said, referring to the fact that not all registered vehicles are on campus at the same time.

"We'll take aerial photos on a Monday morning in October, the peak time on campus for students, faculty and staff," he said. "Then we'll be able to tell what the real needs are."

**STUDENT DISCOUNT**  
Mon. thru Thurs.

**PAPA JAY'S**  
Authentic New York  
**PIZZA** NOW! BEER ON TAP!

THICK CRUST - All our Pizzas hand made!  
TAKE OUT OR EAT IN  
TRY OUR DELICIOUS  
DINNERS & SUBMARINES

• Open 4 P.M.-1 A.M. Sun.-Thurs.  
4 P.M.-2 A.M. Fri.-Sat.  
SERVING MICHELOB  
COORS • BUDWEISER • SCHLITZ

**New! Game Room!**  
**804 S. ASH, TEMPE**  
½ Blk. S. of University

**FREE DELIVERY**  
AFTER 5 P.M.  
**967-9689**



**BEWARE**  
**THE AVALANCHE**

! **SKI HAUS**  
ACTION SPORTS

**GINO'S PIZZA**

**WE DELIVER**  
966-4666, 966-5542  
MON. - THURS. 5-1  
FRI. & SAT. 4-2  
SUN. 3-12  
822 South Mill



**MEDICAL SCHOOL ASPIRANTS**

Over 40,000 men and women will apply to American medical schools this year, but only about 14,000 will be accepted.

Qualified candidates have a valid alternative: medical education in Europe. For information and application forms (opportunities also available for veterinary and dentistry candidates), contact the information office:

**INSTITUTE OF INTERNATIONAL  
MEDICAL EDUCATION**

Provisionally chartered by the Regents of the University of the State of New York.

40 E. 54 St., New York 10022, (212) 832-2089

"The name's Lonnegan....  
you're going to remember that name."

Enjoy Scottsdale's Distinctive New Restaurant-Pub  
Specializing in fine food and entertainment.

featuring: DAVE LEAHY mon-sat  
with David Dodt & Mike Segall thur-sat

Ed Flores (Ev Forrest) on sunday  
Irish Happy Hour 4-7 fridays  
hors d'oeuvres—entertainment

"Why argue with a legend?"

**LONNEGAN'S**  
7436 E. McDowell 1 blk. E. of Los Arcos 947-3304



## Cyclist, student collide

A student who suffered a broken left leg in a motorcycle-pedestrian collision Saturday in the Sigma Nu fraternity house parking lot is in stable condition, a Tempe Community hospital spokesman said Monday.

David Denno, an accounting major, was hit by a motorcycle driven by Kip Meeboer, University police said. Meeboer was treated and released for a cut on his left foot, a hospital spokesman said. Both students are members of Sigma Nu.

Witnesses told police that Meeboer, who was riding the

motorcycle around the parking lot, drove towards Denno but at the last moment swerved to miss him. Denno attempted to move from the motorcycle's path but stepped in the same direction Meeboer steered. The bike hit Denno knocking him to the ground, witnesses said.

Officer Al Campoy said Meeboer did not wear a safety helmet and did not have his driver license with him when the accident occurred.

"We can't issue any citations because it happened on private property," Campoy said.

## Faculty receives grants to study mating strategy

By Beth DeBruno

The mating strategy of male wasps was researched last summer as part of the Faculty Grant-in-Aid Program. Dr. John Aleock, associate professor of zoology, was awarded \$1,200 last summer for research into the mating habits of the male wasp and the male bee. His work took him to areas near Mesa and Douglas, Ariz.

Aleock said the importance of his work is in discovering the remarkable process bees use in finding mates. "There is a lot of competition for mates," he said.

"One bee I've worked with actually digs up virgin females who are buried by the mother under one-half inch of soil."

Aleock said he writes scientific papers on his work and incorporates his studies into his class discussions.

Other grants awarded last year seem as strange and diverse as wasp breeding habits.

The Career and Influence of Herbert Hoover, Urban Planning and Design in Indonesia and The Upper Paleolithic Occupation at the Cave Site of LaRiera in Asturias, Spain were some of the topics.

"About \$200,000 will be allotted this year for faculty grants," said Dr. H. B. Hunnicutt, director of research grants and contracts.

Inflation has not created any acute problems for the program, Hunnicutt said. The program has had little trouble in obtaining an increase in funds each year.

"The whole purpose of the grants is to help the faculty pursue creative endeavors," he said.

Last year, 87 grants out of 230 applicants were awarded. A 13-member University Grants Committee decided what projects should be awarded funds after considering the project's importance and significance to others in the field and to students.

## Student drinking would be same in spite of campus liquor sales

By Carol Seanian

The bar-hopping habits of ASU students would probably remain the same if beer and wine were sold at the MU, according to most local bar owners.

"The novelty of a bar on campus would soon wear off," said Sid Joseph, owner of the Warehouse restaurant on University Drive. "The kids would want to get away again and out of the institution surroundings" he added.

ASU students account for 85 percent of the business at Freddie's, a bar just east of campus and little of this would be lost to MU competition, according to bar owner Richard Davis.

"I'm not particularly in favor of ASU getting a liquor license. Naturally, the fewer bars around, the better it is for me," he said.

Changes would not be necessary because competition would be so slight, Davis added.

"The atmosphere where drinks were sold in the MU would be the main factor in possible competition," said Don Harris, manager of the Chuckbox restaurant on University Drive.

A liquor license for ASU would affect business at the Chuckbox because 98 percent of its customers are students, Harris said. "If sales went down, we'd

try to meet the competition."

People would tend to stay at the MU longer if they sold beer and wine but nearby bars still would not lose too much business, according to several ASU students and local bar patrons.

More people would stay around the MU if it sold beer, Michael Anderson, assistant attorney general and ASU graduate, said. "I might go there with friends during the day but not on my own initiative."

Most students would go there just during the day between classes and it wouldn't have the atmosphere of a regular bar, Doug Kollmyer, graduate student in business, said.

"I'd probably stay around the MU if they sold beer," Daniel Borta, junior history major, said.

"I wouldn't spend more time in the MU but would buy beer while I'm here," business major David Ridings said.

Other bars would not lose business because the MU probably would not stay open late enough, Andrea Hilton, junior education major said. "I couldn't go to the MU for drinks during the day because I have to study."

# CLASSIFIED ADS

BUY — SELL — TRADE — LEASE

### HELP WANTED

**CONFIDENTIAL SECRETARY WANTED.** Fluent English and German, including shorthand and speed writing, typing, handling of all internal and external correspondence. Duties include personnel administration, basic knowledge of ticketing, if possible. Ability to work independently. Starting salary \$900.00p. month, including fringe benefits. German Airlines. 932-1600 or 247-9282. 10-1

Girls for part-time work in December. Duties, Modeling in dept. stores for a famous fragrance co. Must have own transportation. Call 964-9279 evenings after 6:00 o'clock. 10-3

### FOR SALE

Want to keep your stereo? Let us install a high security Deadbolt in your apartment door for \$12.50 complete. Keep your shady roommate out of your drawers, replace your bedroom doorknob with a keyed lock for \$8.60. Truck town in safety with a pocket size chemical paralysar. \$4.95. Pro-Tech — Hayden East Plaza. 968-5564. 9-30

Men and women's sandals — we are having 1/2 off sale on women's sandals and Fall shoes. Backdoor Shop, 707 S. Forest, Tempe. 966-1772. 9-30

Discount to students always. Furniture, antiques, good stuff. Delivery arranged to suit. Butler's Used Furniture, 225 W. University, next to Snides Pizza. 9-30

Mobile Home 8' x 47', 2 minute walk to ASU, furnished, air conditioned, all new inside, must see, \$2400 or offer. 834-4290 10-1

VW '67, Ex. condition, white w-black interior, 30,000 on engine, radial tires. After 4:00, 968-6806, \$900. 10-3

Where it's at!! Sharpest 2BR plus office (or 3 BR) custom, on quiet cul-de-sac. Close to Tempe High & campus. Eves. 839-2557. Four-plex buy near ASU. Seller anxious, terms avail. eves. 839-2557. Two bedroom block home, carport, storage, fenced, bike to ASU, only \$20,500 w-low down. Eves. 962-8287. Town & Country Realty 968-3414. 10-3

Miracle Polishing Cloth: cleans, polishes — silver, chrome, brass, all metals; enamels, tiles, musical instruments, automobiles. Removes stains, corrosion, burnmarks, scuffmarks from almost everything! Introductory price — Only \$1.25!! Moneyback guarantee. Mayfad, Box 27716, Tempe, Arizona. 10-3

1971 MGB — runs exc., 4 new radials, AM-FM stereo, exc. interior. \$1800 or best offer. 966-0858. 10-1

**MEXICAN EMBROIDERED SHIRTS FOR GUYS AND GALS.** Also blouses and dresses. Phoenix Greyhound Swap Meet. Saturday and Sunday, space 371 or call 964-5033. Bring ad for 10 percent discount. 10-10

### RENT

Male Christian roommate to share furnished 1 bedroom apt. Near ASU, \$95 utilities included. 959-9128 after 5. Dell. 10-8

Female roommate desperately needed to share one bedroom apartment. \$90 per month. Near ASU. 966-0768. 10-7

**NEED A PLACE TO LIVE???** Share beautiful homes, apartments — \$95.00 to \$150.00. Roommate Finders 957-2963. 9-30

Get a friend and come to Marianna Apartments. 1214 E. Orange. Furn. & Unfurn. Studios & 1 BDRM. \$120 to \$160. 966-8597. Walk to school. 11-13

Female roommate wanted. Own room with bed, laundry facilities in 3 bedroom house. \$100. 968-2128. 10-2

Need female roommate to share apt! Walking distance from campus. \$95.00 utilities included. Desperate for Oct. 1. Call Debbie 968-8882 or 966-9825. 10-1

Three bedroom house, refrigerated, 1 1/2 bath, den, near ASU. \$270 month. 968-2836 or 278-1212. 10-2

### AUTOMOBILES

Tires. Best possible deals on all types & sizes. Warehouse distribution makes possible. Roger 966-2933. 10-1

1965 Chrysler Newport, good condition. \$300. Ted or Mitzi 967-8747. 10-3

### WANTED

Wanted — Sports Cars — Any make, model or condition. 275-8607. 10-14

Need several tickets to Elton John. Can be singles. Andrea 965-6551. Willing to pay! 10-2

### TYPING

Term papers, resumes, theses, dissertations. Professional, guaranteed work. IBM. Maxine Mullen, 955-0763. 4-30-76

### INSTRUCTION

Analyze the HANDWRITING of that special friend. Instructional booklet \$2.00. Rohrbach Institute, Box 244, Baldwin, N.Y. 11510. 10-1

Read faster, comprehend more, with RAPID READ aids. Transparent page overlays, scientifically shaded overlays promote word group associations. Experience immediate improvement — double, triple, rate with practice. For the RAPID READ improvement kit, send \$2.95 to Metromedia, Box 31235P, Tempe, Arizona 85281. 10-3

### ANNOUNCEMENTS

Am organizing charter flight for Christmas to Chicago and New York. If interested contact Doug 965-4736. Do it now! 9-30

Now Open! "or Whatever Gifts" 1043 W. University, Tempe. Introducing Inca Galleria orlon ponchos, capes and vests handloomed in Ecuador. Beautiful colors and designs. One size fits all. Priced from \$11.95 to \$29.95. 20 percent off to students and faculty showing I.D. card. Hrs. 10-5 Tues.-Friday, 10-4 Sat. 10-7

**KODAK FILM AT LOW PRICES!** Color prints 12 exp. roll — \$1.13, 20 exp. roll \$1.41, Kodachrome slide 20 exp. \$1.62, 36 exp. \$2.31; Ektachrome slide 20 exp. \$1.78, 36 exp. \$2.48. B&W film and Kodak chemicals at comparable savings. Filmco, 1023 S. Rural Rd. (one door S. of Isaac Newton's) 966-5788. Check our low developing prices too! 9-30

### LOST

15 month white Labrador, male, with brown collar. Near 8th St., Tempe. Call 966-9493, 966-3730. 10-1

### SERVICES

Typewriter tune up. Clean, oil, and adjust your typewriter and install a new ribbon for \$8.50. 968-5564. 9-30

Prevent Noise Pollution! Stereos cleaned, adjusted, or repaired (tape decks, turntables, etc.) Reasonable. Steve 968-0022. 10-3

Ambitious? Photographic enthusiast? Proven system guarantees profit in campus photography. For more information call collect, person to person for Debbie Shoemaker 405-947-8747 or write Candid Color Systems, Box 25669, Oklahoma City, Okla. 73125. 9-30

**ATTENTION 35mm Camera Owners!** For superior quality color print film processing try Filmco; 1023 S. Rural Rd., Tempe, 966-5788. Low Prices and fast service. 9-30

# Super Fall Bicycle Specials

Men's 26", Coaster Brakes \$52.00  
Men's & Women's 27" 5 sp. \$65.00  
Men's 27" 10 speed \$67.50

Bicycle Car Carriers — \$5.00

Clean, Lube, & Adjust  
Brakes & Derailleurs — \$5.00

NEW & USED PARTS

**The BICYCLE SHOP**  
602 S. Mill, Tempe  
966-6896

## Offense lacks punch

# Devil defense does it again

By Marty Malone

It appears long-standing football traditions at ASU may be changing.

No, it's not that the Sun Devils are suddenly losing or that Frank Kush has ordered hamburger drills outlawed.

What has changed, however, is the way in which ASU is winning its games. No longer are victories lopsided offensive conquests; instead, they are

tremendous defensive endeavors that frustrate the opponents and literally carry the Devil offense.

Such was the case once more last Saturday night as ASU bumped off the BYU Cougars 20-0.

For the third time in as many games this season, the Sun Devil defense shouldered the big part of the burden while the offense shook, sputtered and blew one golden opportunity after another.

And once again it was the same stalwarts who led the defensive denial—sophomore linebacker Tim Petersen with 15 tackles, seven of them unassisted; middle guard Zack DiBrell with 13 tackles; and senior linebacker Larry Gordon with 11 tackles, an interception, a fumble recovery and a pass deflection.

With Dennis Sproul the unexpected starter at quarterback for a less-than-healthy

Fred Mortensen, the Devils looked ready to break the mold as they took the opening kick off and drove 75 yards to the BYU one-yard line.

But old habits proved too hard to break, and an aroused BYU defense suddenly hardened and held the Devils on downs.

It wasn't until midway through the second quarter that ASU finally got on the board when Sproul sneaked in

from the one after taking the Devils 66 yards in 10 plays.

The big plays of the drive were Sproul's passes of nine and 20 yards to wingback Larry Mucker.

For a time it seemed that the game would end with the baseball-like score of 7-0. It wasn't until the fourth quarter that ASU was able to strike paydirt again—this time on a 16-yard pass from Sproul to


continued page 12



### No way, baby!

Although middle guard Zack DiBrell is making the tackle, it seemed almost the entire ASU defense was in on this stop. It was the defense once again that carried the load as the Devils beat BYU, 20-0.

Photo by Ken Akers



let's go


# SKI SHOW

**Del Webb's TownHouse**  
100 West Clarendon  
Thurs., October 2, 5 p.m.-10 p.m.

Sponsored by Frontier Airlines and Ski Magazine

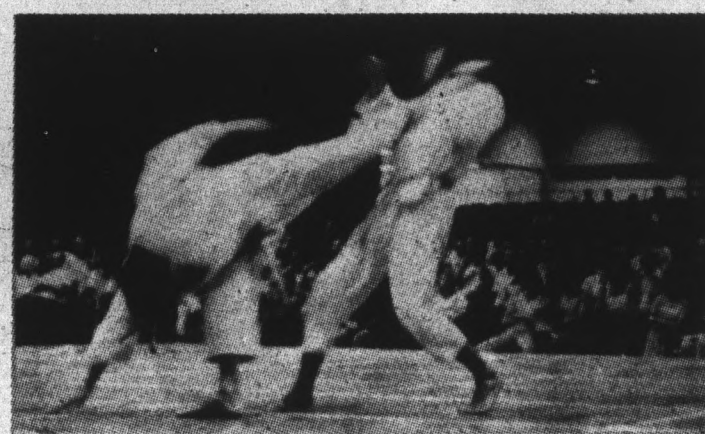
- Live demos by Olympic skier Billy Kidd
- New facilities to give you more time on the slopes
- New equipment and apparel in the latest colors
- New tour packages for famed ski areas in the Rockies—at prices you can handle.

Ski Prizes—Films  
Admission \$1.50  
No charge for children under 12.  
Bring a friend who hasn't skied!



Listen for details on KOOL-FM Golden Stereo 94.5

## KARATE CLUB



**Men And Women Welcome**  
**BEGINNERS & ADVANCED**

3:30 p.m.—4:30 p.m.  
Tuesday & Thursday at M. P. E. 113  
For info call: 966-0808

Also  
**KARATE DEMONSTRATION**  
Noon Tuesday Sept. 30  
Rendezvous Lounge  
Memorial Union

# Defense carries team to third win



## Heroes hurt, too

Split end John Jefferson managed four spectacular catches against BYU, but not even that made him immune from those nagging injuries that all football players suffer.

Photo by Bill Frakes

continued from page 11

Mucker. Danny Kush added two field goals to complete the scoring.

Mucker and split end John Jefferson proved to be the only real standouts in an otherwise lackluster offensive effort, with Mucker snagging six passes for 133 yards and Jefferson four for 66 yards.

It was Jefferson in particular who put on an incredible acrobatic show in thrilling the 50,944 fans with his seemingly impossible catches.

Once again ASU's rushing game was somewhat of a disappointment as the Devils managed only 149 yards on 49 carries. The leading rusher was Fred Williams with 51 yards on 16 attempts.

Possibly indicative of a new trend was Kush's decision to use freshmen fullbacks Ron Bonner and George Perry as his messengers to the huddle. Mark Lovett, season-long-starter at that position, received only limited playing time.

**Budweiser**

PRESENTS  
**HOW TO WIN AT fussball**

**1** For a very fast and deadly shooting method, set up the ball with the shooter in backswing position. Then, by positioning the ball along the foot of the shooter as shown, you can fire in any direction with only one wrist movement.

**2** Pass back occasionally and shoot quickly from the middle line. This surprises your opponent(s) and makes more of the goal visible.

**3** Practice bank shots from the middle and halfback positions using the shooting method described in #1. This is an unbelievably slick shot.

AND THEN...  
PRACTICE  
UP WHERE  
YOU SEE  
THIS SIGN.

ANHEUSER-BUSCH, INC. • ST. LOUIS

PHOENIX SKI CLUB P.O. BOX 16204 PHOENIX, ARIZONA 85011 992-2333

**PHOENIX SKI CLUB**

**THE 3rd ARIZONA SKI SWAP**

INCREDIBLE USED SKI EQUIPMENT SALE!! shop it or swap it - buy someone else's extra - or sell your own. loads of ski bargains!!

'spread the word'

**METROCENTER**  
2nd floor next to Broadway  
brown entry west side

**SATURDAY, OCT 4th**  
11 AM UNTIL 7 PM

BRING IN ITEMS FOR SALE  
6-9 PM FRI & 9-10 AM SAT  
MASTER CHARGE

SKIS  
BOOTS  
POLES  
PARKAS  
SKI PANTS  
SWEATERS  
- PLUS -  
WATER SKIS &  
TENNIS RACQUETS