

friday

Arizona State University

This is a student-operated newspaper which does not necessarily reflect the opinions of the University faculty or administration.

# state press

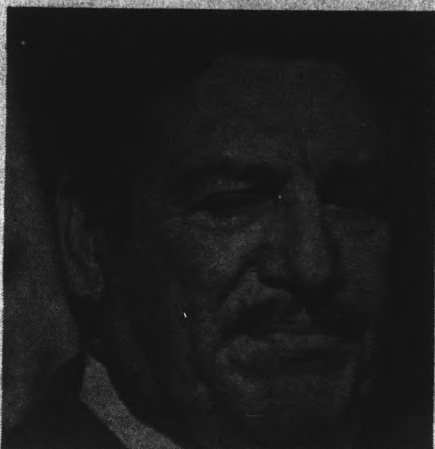
Tempe, Arizona

inside

Media vs. regents .....	2
Tram Service .....	3
Dorm going, going .....	5
Center sells out .....	11

Vol. 57, No. 81 March 7, 1975

## Castro says re-evaluate budgets



Gov. Raul Castro

By Bob Kauffman and Sara Wilson

The state's universities must re-evaluate their budgets and operations because the "days of frills and thrills are over," said Gov. Raul Castro at ASU Thursday.

"I've made a specific request to the universities to look over their catalogs," he said. The universities can no longer afford the luxury of classes like guitar playing and camp cookery. These courses are no longer in the public interest at the university level," Castro said.

"Taxpayers pay for this University, so it could be used by the Boy Scouts or Girl Scouts or anything that has to do with

community projects," he said. The universities are going to have to cope with budget adjustments the best they can, he said. "If sessions today have 10 students, let's make it 20 . . . or even 30."

The governor suggested better utilization of the University on a year-round basis. "We must make better use of our buildings. Instead of a building laying idle for three months of the year, let's use it year-round," he said.

Castro said he was not opposed to professional football coming to ASU. "I can't conceive of a \$50 million stadium being used for 5 home games," he said.

"If professional football can play on Sunday and not compete with

ASU football on Saturday, I see no objection to it.

"I'm sure Dr. (John) Schwada and Dr. (John) Schaeffer may not like it, but I happen to be on the board of regents and I'm the guy who sets policy and I intend to have my voice heard," the governor said.

Appointment of a student representative to the board of regents would not be opposed by the governor if he were an observer and had no voting right.

Castro said he thinks the quarter system might work effectively at ASU. "We had it in Flagstaff when I was a student and it worked. Stanford had it, and I think there's nothing wrong with it."

## Pink Floyd scheduled for April 12 concert

By Carol Pyne

Associated Students has booked Pink Floyd for an April 12 concert in the Activity Center, John Ridgway announced today.

"I've been trying to work this out with promoters all year and, because of our reputation, very few promoters will even speak to us anymore," Ridgway said. The promoter for the Pink Floyd concert is Arizona Family, a heroin addiction clinic.

"We've had a promoter come in here who's willing to battle, to stick with us. That's the important thing," Ridgway said.

The battle against administrative red tape seems to be almost over.

One of the first steps in setting up a concert is to set up the concert dates and clear use of the facility with the University Scheduling Board.

"They raked us over the coals for all of our expenses, how we were contracting, who we were dealing with, the money situation and all this stuff which they never ask anyone else. But we did get the concert through," Ridgway said.

Dean of Students Leon Shell, chairman of the scheduling board, said, "I think it's necessary that Scheduling Board members have information as to what they're going to be voting on."

Clyde Parker, Gammage technical director, said he had questions as to whether the built-up stage, blocking an exit, would present a safety hazard.

Ridgway said, "At that point the Pink Floyd people were ready to pull out."

Ridgway said he and the Pink Floyd people talked to safety and fire officials and the architect of the Activity Center and worked out the problems.

At this point, Ridgway said Warren Sumners, director of the Activity Center and Gammage, called University Police Chief John Duffy to inform him of problems with the concert.

"The promoter, when he heard that, he freaked out," Ridgway said, "because he's got \$40,000 in this show." Neither Sumners nor Duffy could be reached for comment.

Ridgway said the promoter talked to Duffy and cleared up any misunderstandings.

Vice president Gilbert Cady arranged a meeting Feb. 19 of



### A vanishing style of life

Though the style of living in Dixie Gammage dorm isn't quite the same as portrayed in this 1949 picture, many of its residents contend that the elimination of Gammage as a dorm will be the end of a lifestyle at ASU. See story, page 5.

Photo courtesy of University Archives

all people involved with the concert.

Insurance coverage for the concert, safety hazards and ASASU's power to contract were discussed at the meeting. These questions had already been resolved.

Steve Yarbrough, ASASU executive manager, has the power to contract for the University, as written in ASASU statutes. Shell said he doesn't know why the power was questioned in the meeting with Cady.

"The thing I'm worried about right now is it looks like Cady is going to be making a move at the vice-presidential level to take away our power to contract through Yarbrough," Ridgway said.

"That would put us in a pretty rough spot," he said. Cady could not be reached for comment.

Ridgway said tickets will be on sale early next week at all Bill's Records for the Pink Floyd concert.

### Bulletin

The Arizona Senate tentatively approved Thursday by a committee of the whole vote of 29 to 1 a bill which would place a voting student member on the board of regents.

The lone dissenting vote was cast by Sen. John Roeder, R-Scottsdale.

The bill is expected to go to the Arizona House next week, where it will be placed in committees.



John Ridgway

# Superior Court judge to decide media vs. regents within 10 days

By Don Stevenson

Motions in a lawsuit seeking to require the Arizona Board of Regents to allow tape recorders and cameras at its meetings was taken under advisement Thursday by Superior Court Judge Yale McFate.

A decision is expected within 10 days.

The Arizona Press Club, the ASU chapter of Sigma Delta Chi Society of Professional Journalists, two legislators and others have sued the regents, charging violations of the state open meeting law. Three of four points in the suit were settled earlier this week by mutual agreement.

William Jones, attorney for the regents, told the judge that at one time the regents allowed tape recorders. Jones said the regents later found them to be disruptive and have not permitted their use since.

Such decisions must be made

by the regents and not by the press, Jones said. "Regents don't tell the press what to do so why should the press tell us what to do."

Herbert Ely, attorney for the press organizations suing the regents, said the use of cameras and tape recorders in regents meetings is not prohibited, but added that unanimous consent of the board is required before such equipment can be permitted.

Cameras and recorders are tools of the trade and must be allowed for accurate, comprehensive news reporting, witnesses for the press said.

Regent James Dunseath of Tucson, testified that the regents use a tape recorder at their meetings and that their use does not interfere with the deliberations.

Dunseath said the regents probably use the recorder to

help the secretary.

Dunseath said the regents are "trying to make three great universities in this state and some members of the legislature and press are working against us."

The public, cameras and tape recorders would be deterrents to regents' remarks during meetings, Dunseath said.

In closing arguments, Ely said the board of regents "is not a private country club, it is indeed a public agency," and therefore should be open to cameras and recorders.

"Human beings are fallible and make mistakes. The irony is that those tools used to insure accuracy are forbidden," Ely said.

Jones said in closing arguments that several reporters had testified they had never reported regents meetings inaccurately.

## Summer school deadlines set

Early registration applications for the first five and eight-week sessions of summer school must be in the registrar's office by April 4.

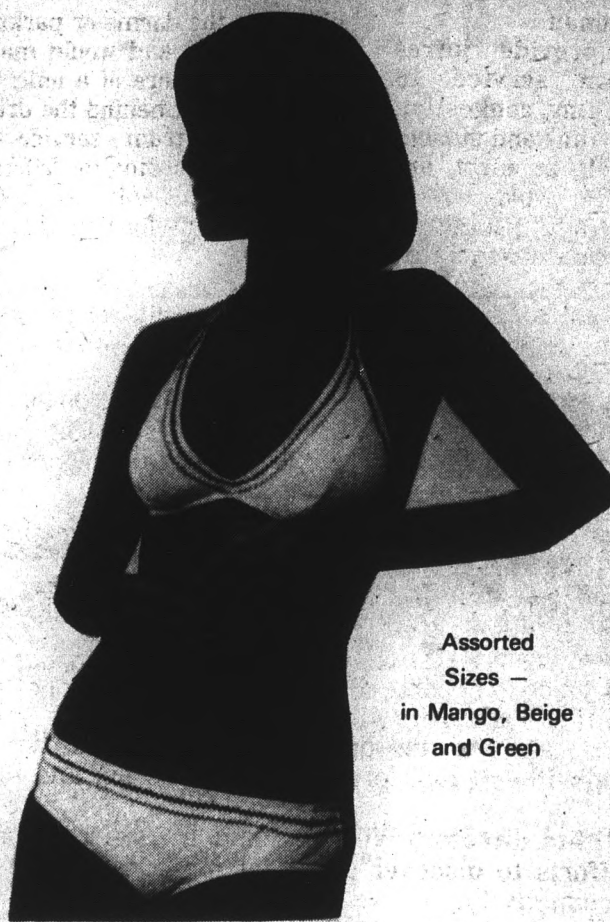
Students who fail to meet this deadline must complete walk through registration from 8 a.m. to noon May 31 in the

University Activity Center.

Fees for early registration must be paid through the mail no later than May 14 or in person May 1-2, 5-7 in the MU Cochise room.

Special registration for night students will be 6 p.m. to 8 p.m. June 2 in the MU.

## Catalina Swimwear



Assorted Sizes — in Mango, Beige and Green

at

## Celia's Fashions

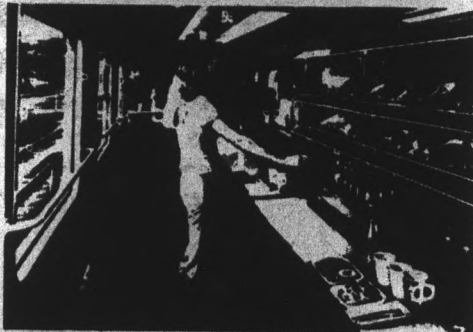
915 Mill Ave.

Tempe Center

967-2245

ARTHUR FROMMER, EUROPE ON \$5 AND \$10 A DAY, P. 601—

# "The life of Europe is mirrored in its trains."



"You haven't really savored the essence of the Continent until you've chugged along in a second-class compartment and shared the sausage-and-Chianti of an Italian family, or carried on a bouncing conversation in broken French, or simply leaned back and observed the European in his holiday-traveling mood.

"On most other occasions in Europe, the tourist is likely to be a frenzied animal, divorced from a truly human contact with the population. In a train, this remoteness falls away.

"A moment occurs when the sights and sounds of Europe become intimate and related to people—and that, to me, is a thrill which no monument or museum can ever provide."

If you're going to Europe, consider our trains. Our Student Railpass gives you two months of unlimited Second Class travel for \$180. In Britain, a variety of BritRail Youth Passes from \$35 to \$94 is available.

NOTE: These passes are not available in Europe. You must buy them here before you go. See your Travel Agent or mail the coupon below. Prices subject to change.

European Railroads, Department 192-2006  
Box 70, Bohemia, New York 11716

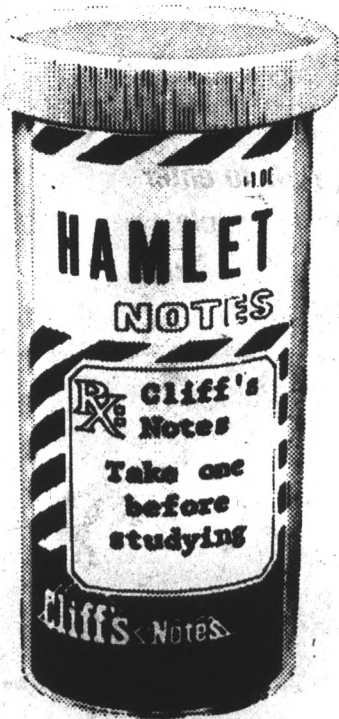
Gentlemen,  
Please send me your free brochure, "The Trains of Europe."

Name \_\_\_\_\_ Address \_\_\_\_\_  
City \_\_\_\_\_ State \_\_\_\_\_ Zip \_\_\_\_\_

My Travel Agent is \_\_\_\_\_

## THE TRAINS OF EUROPE

Ask anyone who's been there.



Cliff's Notes...always the right prescription when you need help in understanding literature. Prepared by educators. Easy to use. Titles available now cover over 200 frequently assigned plays and novels.



Look for the Cliff's Notes "First Aid" Station wherever books are sold.

Only \$1/\$1.25 each

### Available

At: WALDENBOOKS  
Camel View Plaza &  
Los Arcos Mall  
Scottsdale

# Panel studies tram service possibility

By Jim Boardman

Plans to provide intra-campus tram service to alleviate parking congestion during the daytime and student fear of assault at night are currently under study by a student University committee.

Craig Tribken, Associated Students Senate Special Projects Committee chairman, said, "A tram would get the congestion out of the mid-campus area, allowing students to park at the stadium and be on campus in ten minutes; help women students get from the

library to the dorms or parking lots at night; and would make the campus more of a unit."

The catalyst behind the drive to provide tram service to students, according to Tribken, is many co-eds will not use the library at night for fear of being assaulted.

Tribken backs this contention up with the results of a survey of three girls dorms — Manzanita, Palo Verde East and Palo Verde Main showing that 82 per cent of the respondents were afraid to walk on campus alone at night.

Although Lt. Theodore Nielson of the University Police reported there were only two-to-three assaults a month, Tribken said the police figures are inaccurate. He said, "You cannot begin to measure the fear and just because you can't measure doesn't mean it isn't a problem."

Tribken had no figures as to the cost of a tram but said the Phoenix Zoo uses one that costs around \$25,000.

Tribken said income could be generated by advertising and by transporting football fans to

the stadium from outlying parking lots for a small fee.

ASASU President Rick Weiss said the tram could not be funded by ASASU. It would have to be funded by the University.

Tribken said the tram should be free to students and that similar systems have been

highly successful at Penn State, Colorado State and the University of Florida.

Tribken's next step, he said, will be to recruit a committee "committed not to study the problem, but committed to finding a solution" of how a tram system can be set up on ASU's campus.

## Former gubernatorial candidate obtains post in Business College

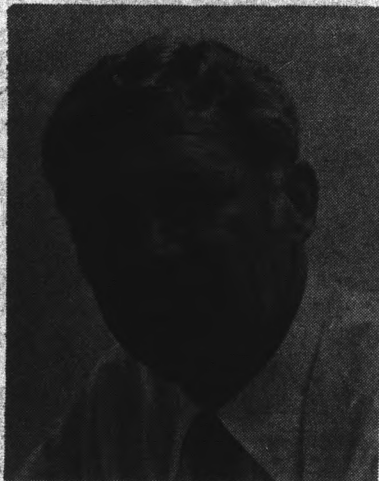
Former gubernatorial candidate Russ Williams has left the political scene to become director of the new Productivity Institute in the Business College.

Williams, who became director March 3, said he was hired through the regular process of application and interview.

As institute director, Williams said he will coordinate research efforts to discover practical methods to increase business productivity.

Williams, who faces a \$5,000 debt from 1974 campaign expenditures, said he does not foresee re-entering politics soon.

"I have no plans in that area. Time will have to tell," he said.



Russ Williams

rabbi

# JOSEPH SCHACHTER

(presently the Associate Director of the Hillel Foundation at the Hebrew University in Jerusalem)

**Tuesday, March 11 6:30 p.m.** Baker Center  
**DESERT SEMINAR** Rabbi Schachter will speak on: "RELIGIOUS LIFE IN ISRAEL AND EMERGING JEWISH CONSCIOUSNESS AMONG ISRAELI YOUTH" ISRAELI DANCING FOLLOWS

**Wednesday, March 12 8:30 a.m.**  
 Traditional morning service. Reading of weekly torah portion with Rabbinic commentary by Rabbi Schachter. Breakfast follows at 9:00.  
 Reservations 966-5371  
 Baker Center 213 E. University

3rd ANNUAL

# "DANCE FOR THOSE WHO CAN'T"

48 HR. DANCE MARATHON FOR MUSCULAR DYSTROPHY

Sponsored by PI KAPPA ALPHA FRATERNITY — ALPHA DELTA PI SORORITY

CO-SPONSORED BY

MARCH 28, 29, 30  
 WOMEN'S PHYSICAL EDUCATION  
 BUILDING — ASU CAMPUS

# KRIZ RADIO

We invite YOU to enter  
 as a dancing couple.  
 Continuous "LIVE" Music  
 All Weekend

1st, 2nd & 3rd PLACE PRIZES  
 AWARDED TO WINNING COUPLES

Door Prizes To Be Given Away ALL Weekend Long

# WON'T YOU HELP?

FOR MORE INFORMATION AND REGISTRATION,

CONTACT:

CHUCK RICH — 994-9734

LANI PETERS — 965-2493

Special 24-hour "MARATHON" number — 968-5016

Or Visit Our Booth On The Mall

ALL PROCEEDS GO TO THE — 2ND ANNUAL JERRY LEWIS  
 ARIZONA SUMMER CAMP FOR DYSTROPHIC CHILDREN



## Red tape takes toll

News of the Pink Floyd concert is refreshing, but it might be an example of too little, too late.

Red tape and petty bickering have prevented the University from coordinating any kind of a successful concert program in the Activity Center.

It's a shame in more ways than one.

The Center has been badly managed. That seems obvious. Warren Sumners and Gilbert Cady should get their own acts together before it's too late to book the big name acts we all want to see.

A successful concert schedule could have provided the revenue to fund student programs next year which will now likely die on vine.

It hasn't been Ned Wulk's fault. In fact, his basketball team has provided top notch entertainment in the Activity Center. It hasn't been John Ridgway's fault. He's tried time and time again to book concerts.

The Center has been badly managed. That seems obvious. Warren Sumners and Gilbert Cady should get their own acts together before it's too late to book the big name acts we all want to see.

## Apples and oranges

A subcommittee of the Student Affairs Board announced Tuesday that it would survey six collegiate newspapers in an effort to determine why the State Press will run a deficit of about \$14,000 this year.

One of the papers picked by the subcommittee is the NAU Lumberjack. We're having trouble figuring why.

The Lumberjack is published weekly. We're published daily. NAU has an enrollment of 9,000 students. We have more than 30,000 students. The NAU paper has a circulation of 5,000. Ours is double that.

John Ridgway, Associated Students activities vice president and chairman of the subcommittee, says the survey will define the cause of the State Press deficit and help find out what can be done about it.

This may be true.

But do three apples equal two oranges? Or do three oranges equal two apples?

We have trouble remembering.

Hopefully the Student Affairs Board doesn't.

Ben Wood

## The old flip flop

Governor Raul Castro is living in a motel. It seems appropriate when you consider the state's current economic crisis.

University President John Schwada, Castro points out, is living in relative luxury in a home supplied by ASU.

But if the governor thinks that Schwada's job is really so posh, perhaps some sort of occupational swap could be arranged.

We've got a feeling that if the two could switch places for even a week-end, Gov. Castro would soon realize that a soft bed does not necessarily translate into a good night's sleep.

Especially if you toss and turn all night as you worry about the ramifications of a reduced budget for the university. The quality of the education that ASU dispenses is going to suffer and suffer badly if the state makes the sort of budget cuts everybody is talking about.

Schwada realizes that.

For the sake of the state, we hope Castro does.



## Opinion

state  
press

Alan Faye

## Council hits the big top

If Phoenix City Council sessions can be described as three-ring circuses, the ringmaster for the extravaganzas would certainly be an overweight teddy-bear of a man, Mr. Gary Peter Klahr.

Decorum is a seldom-heard word at these sessions and most of the jokes cracked by all concerned would probably be rejected by "Hee Haw" as too low-brow for its audience.

One of the biggies on the agenda last Monday was the problem of plastic trash bags being sold by the city. It seems that Phoenix tried to use the honor system to have people pay for the bags.

And, surprise, surprise, the city lost \$50,000 on this deal as a number of not-so-honest citizens ripped the trash bags off.

So the question was: what to do. The solution was simple: raise the price of a box of trash bags to \$4 in the

hope that Phoenix could get some of its money back. Nobody could figure out how to keep people from stealing them, so now people can rip off boxes of plastic trash bags worth \$4 instead of \$3. The ravages of inflation, I think they call it.

Councilman Klahr had two methods of expressing himself on this matter vital to the survival of the American way of life. One was loud and the other soft. Rattling jokes off with the speed (and humor) of a Henry Youngman, he kept the entire council off-balance through his inflections of laughter (for the good jokes) and pain (for the bad ones).

The second method involved the use of a straight man. The poor unfortunate choice for this was one of his fellow councilmen, whose name I shall protect. The poor councilman found he could get nary a wink of sleep because Klahr kept him awake with private

rendition of some of his lesser jokes.

But I really can't complain. I had to cover the session as a reporter and with all the fooling around, the council managed to get precious little done. And the less it accomplished, the less I had to write. And, particularly in the case of the great trash bag controversy, I think we can all agree that the less written the better.

And thus the representatives of the people acrry forth in their never-ending struggle for good government, the flag, mom and apple pie. Now let's face it. Groucho couldn't do much better.

## In left field

Editor,

You're way out in left field!

Obviously, the only individuals playing a "childish game" here are the writers of the State Press.

Your obligation to the students is to report the news and now you say "there will be no more ASU baseball coverage" until statements of an alleged plan by J.B. (Jim Brock) are changed. Grow up yourself!

Besides, your coverage of ASU baseball previous to this simple-minded decision was shabby and inadequate to start with.

The State Press may feel rejected because J.B. won't talk to them anymore but it is clear from the excellent record (29-3) of our team that the ball players are not affected by your rejection.

Keep up the good work, Brock.

We're number one!!

Sincerely,  
George P. Sheppard  
Physical Anthropology

Editor's note:

Call me childish, will ya? George, we're no longer covering Physical Anthropology.

Seriously, though, we've tried to cover baseball and we'd like to cover it again. But if Coach Brock is going to put a roadblock in front of our reporters, I'll tell them to take a detour and devote a little more space to other sports. It's called going with the flow, George.

Brock's proposed communications system is unworkable for a daily newspaper. I suspect he knows it. And I'm hoping that we can make arrangements with him that will enable us to cover ASU baseball again. But we won't do it under his new rules.

## Letters

### He wants facts

Editor,

The article entitled "ASU hires more women than average university" which appeared on the front page of the State Press on March 4, raises several probing questions concerning the validity of Mr. Jack Penick's statement about ethnic minorities at ASU.

Mr. Penick, ASU's part-time Affirmative Action officer, said: "The same situation goes with those in the ethnic backgrounds. We are not in bad shape."

Are we to infer that the ethnic minorities have achieved as great a dimension as the women in teaching positions at ASU?

Nowhere in the article are there figures to substantiate such a statement. We don't know whether the reporter

inadvertently omitted such pertinent information to support Mr. Penick's claim or if Mr. Penick himself suffered a temporary lapse of memory and conveniently slithered his way out of it.

In either case, we feel that such figures should be made public to cast aside all doubts concerning ASU's commitment to affirmative action or equal employment opportunities. Such figures should be made public since the university is a tax supported institution. Heretofore, people have had problems obtaining information pertaining to the ethnic minority employment and student breakdown at ASU.

Specifically, we are interested in answers to the following questions concerning Chicanos at the university: how many are employed in administrative positions, including a breakdown of their rank? What is the breakdown of each department's commitment to implement the proposed affirmative action program of the university? Why does ASU have a part-time affirmative action officer? And most important does ASU have an effective affirmative action program, which has had a final approval by the federal government?

Sincerely,

Herman Alcantar Jr.  
President, MECHA

# 'Old lady' Gammage dorm victim of regents' ruling

By Francis O'Steen

The women of Gammage are being taken by force.

"They're going to be destroying a vanishing lifestyle," student Susan Cartsonis said of the Arizona Board of Regents recent approval to turn Dixie Gammage dormitory into office space and classrooms.

"It's a home, not a dorm," she added, her words drawing nods of approval from women gathered to contest the change. The 1941 building is one of the University's remaining dorms from the World War II era.

Many of the women will have to leave the dorm's carpeted hallways, private courtyard and sleeping porches for the "C" wing of Best Hall, which currently houses men.

"Hell no! We won't go," a sign shouts at Gammage residents and visitors. Even with the lack of air conditioning in the summer and the noisy heating system in the winter (the pipes sound like they are being pounded on with a sledgehammer, the residents of Gammage dorm are willing to pay an increase in their

monthly rates to maintain what they think is the only centrally located resident hall on campus for women. McClintock, next door, is for honor students.

Residents who resent not being consulted before the regents' final decision plan to protest, though they have little hope for success. Even with many of the old traditions gone or fading, Gammage residents feel their hall encourages personal interaction.

"Some of the other dorms are like zoos," Cartsonis commented.

"Like Manzi," Naomi Mathra continued, "You can walk in the lobby every five minutes all day and never see anyone you know."

Concerned with the nation's deepening recession, the 83 residents are seeking low-cost living facilities for next semester. Best "C" second lowest cost housing facility on campus (lowest is Gammage), will cost each occupant an additional \$112 annually.

The women at Gammage are angry and frustrated. They say the individual is no longer important to the University Administration.



Photo by Benny Bulmer

## Unchanging Times

Residents, attitudes, clothing and hair styles have changed over the years at Dixie Gammage, but the dormitory's traditional hominess has survived the ravages of times. These residents want to keep that atmosphere intact.

DISPLAY ADS  
965-7572

# 2 FOR 1 HAMBURGERS

IT'S  
THE GREAT  
HAMBURGER  
REBATE

It's been a tough year, America, and Farrell's believes that you deserve something a little special for your hard labors. Farrell's is bringing you the most tantalizing rebate offered anywhere on this planet! Simply detach this ad, hand it to your friendly Farrell's waiter, and receive not one, but two delicious Farrell's #1 Hamburgers for the price of one. Buy one — **get another one free.** It's that simple.

**HAMBURGER**

So stop drooling, march right down to Farrell's in Tempe and ask — no, **DEMAND**, your **HAMBURGER REBATE!** You've got it coming, America!

**FARRELL'S**

1301 EAST BROADWAY  
TEMPE

## FREE EAR PIERCING

with purchase of  
Training Studs

SPECIAL PRICE

NOW ONLY \$7.50

Jewel's International

130 East University, Tempe



## Wedding Bands



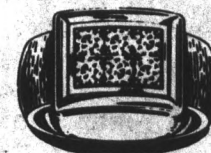
HOLYOKE



ARBOR LOVE



EXETER



CASTILIAN

Over 200 Styles To Choose From —  
STOREWIDE CLEARANCE SALE  
INCLUDES ALL ENGAGEMENT  
AND WEDDING RINGS



**JEWELS INTERNATIONAL**  
BY G. DARRELL OLSON

130 E. University Dr. — Tempe — 967-8917



Also Phoenix, Sun City, Chris-Town  
Scottsdale, Chandler

Certified Gemologist Accredited Gem Lab

# New chemical changes soil into a smooth road surface

By John Williams

Man has come a long way since rickety wagon trains cavorted over the rocky hills of the west in search of gold.

Road construction has progressed from cobblestone streets to concrete highways, and now, with research by an ASU civil engineering professor, highways built over clay surfaces can be solidified.

Dr. Charles O'Bannon has found a way to chemically solidify clay surfaces, overcoming soil problems under Arizona highways due to shifting clay. His electro-osmotic process has proved successful beneath several roads in northern Arizona and other southwestern states are showing interest in the treatment.

"By introducing water soluble chemicals we are changing the chemical composition of expansive clay there by changing it to a stable compound capable of performing its function as a roadbed.

"The nature of expansive clay is such that it carries a negative (electrical) charge on its surface. By introducing a positive ion (charged particle) into the soil the positive ion will be attracted to the surface of the clay and will bond to it, changing the original chemical compound to something more suitable and more stable for its intended use," O'Bannon said.

He said tests were performed on soil samples that were treated with potassium fluoride and electro-osmosis (used to drive the positive

ion into the clay) were compared to untreated samples. He said effectiveness of the treatment was determined this way.

He said the treatment should outlive the life of the highways, and will not reverse itself once it has changed the chemical compound. The treatment cost is \$40 per mile and the five-year experiment cost \$125,000.

The tests indicate the treatment is successful, O'Bannon said, but "final tests will not be completed until April and a final report will be prepared by June of this year."

O'Bannon said he got the idea of electro-osmosis while he was a graduate student from reading about similar work.

STATE PRESS is published by Arizona State University Tuesday through Friday during the academic year, except holidays and examination periods. Entered as second class matter at Tempe, AZ, 85281.

**PICK UP YOUR PENNYSAVER**  
at the  
**STUDENT BOOK CENTER**

One block North of Campus

©1974 The Gap  
**Take a Levi's Jeans trip.**

Make it to the Gap. For the world's greatest selection of Levi's®. Over 4 tons per store. Levi's for every size, shape, taste and sex. Good trip.



the gap  
**LOS ANGELES MALL**  
949-6533  
Mon-Fri. 10 am-5 pm  
Sat. 10am to 5pm

# Graduating Engineers: If your heart's in San Francisco.....



## Mare Island is hiring!

Live in the heart of Northern California—America's most famous work and play land. Ideal, smog-free climate, short drive to the Golden Gate, the wine country, lots more!

Work in a challenging environment at the West Coast's oldest and best-known naval institution, with unmatched potential for professional growth, reward and recognition.

**SEND YOUR RESUME TO:  
EMPLOYMENT OFFICE  
[Code 170.2]**

**Mare Island Naval Shipyard**

Vallejo, California 94592

An Equal Opportunity Employer  
U.S. Citizenship Required



# Collage

**TODAY**  
 MU Movie House—Conrack is showing at 7 and 9:30 p.m. through Saturday and at 2 and 7 p.m. on Sun.  
 The University Theatre presents the Children's Theatre production of "The Great Hunters" in the Lyceum Theatre at 8 p.m. tonight and Saturday and at 2 p.m. Sunday. Real Estate Association will meet at 2:45 p.m. at the Anchorage Hawaii Restaurant, 530 W. Broadway. There will be a panel discussion on the opportunities for women in real estate.  
 Law in the People's Republic of China will be the topic of the SBA meeting at 2 p.m. in the Law Bldg. rm. 112.

**SATURDAY**  
 Delta Sigma Pi pledge class will have a car wash from 9 a.m. to 4 p.m. at the Chevron station at McClintock and Broadway.  
 All Saints Newman Center parking lot will be the site of a charity car wash from 9 a.m. to 2 p.m.

**SUNDAY**  
 Personnel Management lecture by Don Edwards will be presented at 8 p.m. in the MU Mohave rm.

**MONDAY**  
 M.E.C.H.A. Meeting — 5 p.m., MU 210.

## Lawyer talks on Red Chinese law

The national president of the U.S.-China Friendship Association will speak at 2 p.m. Friday in the Law building, LB 112.

Frank Pestana, a Los Angeles attorney who has visited China several times, will discuss "Law in the People's Republic of China."

The lecture, which is open to the public, is sponsored by the Student Bar Association and the Center for Asian Studies.

Sole snooze

Photo by Susan Dodd

## PLAY WEE-TEE MINIATURE GOLF

Your Choice of Two 18-Hole Courses

University Drive at Rural—Tempe  
 HOURS — 1 p.m.-12 midnight Daily Phone 966-8027  
 Sat., Sun. and holidays 10 a.m.-11 p.m.



ASASU CULTURAL AFFAIRS BOARD PRESENTS  
 SATURDAY MARCH 8 SUNDAY MARCH 9



Memories of Underdevelopment  
 & CUBA: BATTLE OF TEN MILLION



Akira Kurosawa's first film in color  
 "Dodes'ka-den"

SHOWS AT 7:30pm IN NEEB HALL FREE

# JEREMIAH'S Comin'



Monday, March 10



35 E. NINTH ST.  
 TEMPE, ARIZ. 85281  
 967-9053

PREPARE FOR  
 SPRING BIKINI  
 CONTEST

DON'T RESIST THE URGE . . .  
 TREAT YOURSELF TO A TODAY MEAL AT YESTERDAY'S PRICES  
 at Tempe Center's Newest Eating Establishment  
 START YOUR DAY WITH A BUDGET BREAKFAST!

**Eggs 95¢**  
 Two eggs cooked to your liking as well as cottage fries, toast and jelly.

Served 8 am until 11 am

**Coney Breakfast Special 99¢**  
 Eggs in a delightful mixture of chopped ham, peppers, onions, cheese and our own original chili served on a toasted bun. Served with special cottage fries.

**Ham and Eggs \$1.65**  
 A big chunk of ham, two eggs cooked the way you like, and cottage fries, toast and jelly

TEXAS TOAST & COFFEE 49¢  
 TEA 25¢

FREE giant cup of coffee served with any breakfast selection

DANISH ROLL & COFFEE 49¢  
 ORANGE JUICE 35¢

FEAST ON OUR HAPPY DAY'S DINNER SPECIAL!

Served 5 pm until 10 pm

**Coney Burger \$1.05**  
 One burger on a toasted bun smothered with chili, cheese, mustard and onions, accompanied by Special Cottage fries.

**Coney Island 99¢**  
 One all beef custom weiner decorated with mustard, onions, and our special original chili sauce served on our steam bun. Served with special cottage fries.

**Coney Ham \$1.15**  
 Our own baked ham united with mustard, chili, chopped onions and cheese, served with Special Cottage fries.

FREE Soft Drink in a Frosted Mug Served with any Meal Selection

Any Coney dishes can be ordered to your liking - with or without the trimmings

Call in Orders, also 967-9053



Photo by Joyce Berger

### Hand art

Art student Jeanne Raymond inspects the beginnings of her self-designed sculpture during a class in the Art building. The remainder is still in the planning stages, but thus far Jeanne is satisfied with her handmade work of art.

### Play honors retirees

"Herr Peter Squentz," a comedy sponsored by the German department, will be presented at 1:45 p.m. March 7 in the Education Lecture Hall and 2 p.m. March 8 in the Music Theatre.

The Saturday performance is dedicated to Dr. and Mrs. Albert Buffington. Buffington retired last semester after ten years at ASU.

The play, written by Andreas Gryphius, is a slapstick comedy based on a village scene in Shakespeare's "A Midsummer Night's Dream."

The play is free to the public.

### Midnite Special

NOCTURNAL CINEMA

presents

### THE MAGIC CHRISTIAN

Starring:

- ☆ Peter Sellers
- ☆ Raquel Welch
- ☆ Ringo Starr

SATURDAY MARCH 8  
12 P.M.

CAMELVIEW THEATER  
70th ST. & CAMELBACK  
SCOTTSDALE N. OF SAKOWITZ

### Indian students on TV Sunday

ASU exchange students from India will discuss American-Indian relations on "Editorial U.S.A.," a Channel 3 public affairs program to be broadcast at 3:30 p.m. Sunday.

According to Arvind Kumar Bansal, a student in public administration and one of the four Indian students on the panel, "The theme of the program is Indian-American

relations and how to go about improving them."

Dr. Bruce Mason, professor of political science at ASU, adviser to foreign students and co-moderator of the program, said the students will discuss Indian culture, government, economy and social customs.

"The students will be trying to explain India to Americans so India and America will have better relations," he said.

WOODY ALLEN  
TAKES A  
NOSTALGIC LOOK  
AT THE  
FUTURE.

Woody Allen and Diane Keaton  
in  
"Sleeper"

PG  
United Artists

Tonight 7 - 9 - 11 P.M.

NEEB HALL

Tickets \$1.00 with ID  
A Salliant Features Presentation

MIDNIGHT SHOW

**Aquarius Cinema**  
CACTUS RD. at 35th AVE. 938-9923

MARCH 7-8  
FRIDAY AND SATURDAY ONLY

**"Celebration At Big Sur"**

MIDNIGHT SHOW

TRY IT - YOU'LL LIKE IT

THREE NIGHTS ONLY

**Band On The Run**

QUAD SOUND THE GREATEST MULTI-MEDIA EXPERIENCE IN HISTORY QUAD SOUND

FRIDAY, SATURDAY & SUNDAY - MARCH 14, 15 & 16  
CAMELVIEW CINEMA/SCOTTSDALE 945-6178

Tickets on sale now at the theatre \$2.50 in advance, \$3.00 at the door

FRIDAY at 7:00, 9:00 & 11:00 PM  
SATURDAY at 6:00, 8:00, 10:00 & 12:00 Midnight  
SUNDAY at 5:00, 7:00, 9:00 & 11:00 PM

SOBRIETY NO PASSES

"The X-rating has been honestly earned, but without descents to activities that disgust the queasy.... This picture can be legitimately classed as aphrodisiac in effect, not embarrassing for mixed company. "The exotica includes a Thailand boxing match, with kicks, and a feat of cigarette smoking that can only be described as open-ended or bizarre."  
- New York Post, Archer Winsien

"Voluptuous sophistication, with gorgeous sexual couplings."  
- Village Voice

"The entire French colony, including our heroine, her husband, and every other French man or woman on the scene, devotes full time to fornication."  
- New York Magazine, Judith Crist

"Glossy, erotic."  
- New York Daily News

### X was never like this.

**Emmanuelle is sensual, but she's elegant. Emmanuelle is fantasy, but she's fun. But most important, she leaves you with a singular lack of guilt. And that's the clue to its overwhelming popularity.**



**Emmanuelle**



"Emmanuelle is a thinking man's X; a very specialized how-to film; a stylish sex trip across the skies from Paris to Thailand, down Bangkok's canals, and through the senses of perhaps the most physically beautiful cast of top-caste women ever assembled in one film."  
- After Dark, Norma McLain-Stoop

"Sex done with taste and beauty. A lush erotic atmosphere."  
- Cosmopolitan, Liz Smith

"France's top box-office blockbuster... centers on a pretty wife of a young member of the French Embassy who spends nearly all of her time in a variety of couplings... a succession of lesbian bouts... a trip to an opium den where she is raped, then to a prize fight where she is the prize."  
- New York Times, A. H. Weiler

Alain Cuny • Sylvia Kristel • Marika Green • Emmanuelle X NO ONE UNDER 18 ADMITTED  
A film by Just Jaeckin with Daniel Sarrailh • Jeanne Cochen • Christine Boutevin • music Pierre Bachelet  
A Co-production of TRINACRA FILM • ORPHEE PRODUCTIONS • Distributed by COLUMBIA PICTURES

**PALMS** 264 6848  
2612 N. CENTRAL AVE.

MON.-THUR. 7:30 • 9:15  
FRI. 7:00 • 8:45 • 10:15

SAT. 1:45 • 3:15 • 5:00 • 7:00 • 8:45 • 10:15  
SUN. 1:45 • 3:15 • 5:00 • 7:00 • 8:45

# Senior gymnasts face last home meet

By Dave Garell  
Friday night's gymnastics meet in Sun Devil Gym may be a tearful departure for six ASU seniors in their last home meet, but they will probably be more than happy to kiss rickety old Sun Devil Gym goodbye.

The gymnasts have always favored competing in the more spacious Activity Center, but due to a high school basketball tournament the new arena is not available Friday night.

Resigned to competing in the gym, the senior crew will face in-state rival Arizona in what coach Don Robinson termed a "no-problem" match.

"UofA has had a lot of injuries and health problems this year, and I don't think that they will be ready to

compete with us," Robinson said.

The seniors making their last appearance at ASU include All-Americans Gary Alexander and Rick Curtis, WAC champions in the floor

## state press sports

exercise and still rings, respectively.

The remaining four seniors are Kent Brown, Steve Isham, Don Steiger, and Tom Watson.

Alexander is a three-time All-American, while Curtis is a four-year ASU letterman and was All-

American after finishing third in the NCAA last season.

Brown is the WAC's second best floor exercise performer behind Alexander; Isham is a four-year Devil star on the side horse; Steiger transferred from junior college after lettering in side horse, and Watson is one of the nation's top high bar specialists with a season-best 9.45.

The Devils take a 6-2 dual meet record into the Arizona contest, but the meet will be held more in preparation for the WAC title meet than in

competition with a rival school.

"We are using this one as a warm-up for the conference meet March 20-22, and we're getting our guys more prepared now in practice than before," Robinson said.

Robinson said that practice has changed so that the team is doing more routines now, to build up consistency.

"All of them are getting psyched — not only for the WAC at Brigham Young, but for the nationals at Indiana State April 3-5. Everyone is getting ready, but it means a

little more to our seniors. They want to go out in a blaze of glory."



### Our tonight show.

Racing, Wednesday through Sunday. Post Time, 8 p.m. East Washington at 40th Street. Reservations: 273-7181

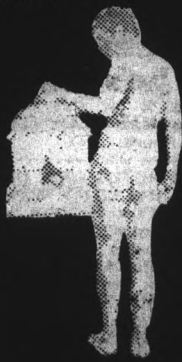
**Phoenix Greyhound Park.**  
home of the winners.

THE KING AND HIS LOYAL SHORT SUBJECTS

BAMBI MEETS GODZILLA  
— second for second the funniest short ever made!  
THANK YOU, MASK MAN  
— a Lenny Bruce routine in animated cartoon

ALAN BATES in

## KING OF HEARTS



In an isolated surreal pocket of World War I, the British send Alan Bates into a highly unlikely, tiny French town to discover a bomb. The townspeople have fled and the inmates of the local asylum have taken their place. The resulting interaction gives us some of the most enchanting sequences on film. When the reality of the returning armies breaks the bubble and the inmates have returned to the asylum, we can really share Bates' confusion about which people are really insane. In our opinion, KING OF HEARTS is a rare treat, funny and sad at the same time.

This wacky, beautiful film has awakened, become a giant, and turned the movie world upside down.

There is one reason for this phenomenon: people love the King.

NOW SHOWING  
7:30 and 9:30

**valley** A.T.G.  
509 MILL AVE.  
TEMPE / 967-5664

PHONE 4230 WEST BETHANY 1 @

Reader's Digest presents  
Mark Twain's  
**Huckleberry Finn**  
MATINEES  
SATURDAY & SUNDAY  
ALL SEATS \$ 0.75

**Cricket** Omar Sharif as  
4230 WEST BETHANY 2 @

WINNER OF 6 ACADEMY AWARDS!  
Julie Christie  
**DOCTOR ZHIVAGO**

MU Spring Film Festival

**JON VOIGHT IS CONRACK**  
One beautiful man. His story is true.

PG PANAVISION® COLOR BY DELUXE®

Thurs-Sat 7 & 9:30  
Sun 2 & 7:00

**MU MOVIE HOUSE**  
Tickets \$1.00 w/ASU ID  
\$1.50 w/out

Available in advance in the MU Activities Center w/ID

PENTHOUSE PRODUCTIONS LTD. IN COOPERATION WITH ALIVE ENTERPRISES PRESENTS

# GOOD TO SEE YOU AGAIN, ALICE COOPER

PG

THE FILM THAT "OUT-GROSSES" THEM ALL

LOS ARCOS CINEMA 949-8851 Scottsdale Rd. & McDowell

NO PASSES  
MIDNITE SHOW  
FRI. & SAT.

GLENFAIR TWIN ONE CINEMA 944-1822 59th Ave & Bethany Rd.

## LAST 5 DAYS

# Sports in Brief

## WAC baseball playoff, fan ethics discussed by conference officials

A DECISION TO initiate a divisional playoff for WAC baseball highlighted the tri-annual conference meeting of WAC officials, athletic directors and administrators last week at Scottsdale's Westward Ho.

The baseball addition was made to allow two representatives (instead of one) to compete in NCAA playoffs.

The system will match the number one team from the southern division against the top team from the north, and the second place teams from each league.

The winner of the second-place game will meet the loser of the first-place game — in other words, the loser of the winner's bracket.

Other decisions and discussions:

—Texas-El Paso's administration agreed to remedy any situation involving rowdy basketball fans. They said they would investigate the fans' behavior and make any necessary corrections.

—Football travel squads were cut from 50 to 47.

**INTRAMURAL HAPPENINGS** — Sweeping through the playoffs and defeating intra-

mural staff member Gene Fredricks, Lambda Chi Alpha's Gary Strabala captured the intramural ping pong championship early this week. Intramural head Bob Gildersleeve urged softball teams to get entry forms in as soon as possible, and said that racquetball and basketball finals are approaching next week.

The racquetball finals will be in the new Muehleisen Courts, at 1440 W. Broadway Road in Mesa, a new complex featuring 10 I.R.A. approved courts. The courts are open to the public seven days a week from 7 a.m. to 11 p.m.

Featuring one championship court, which is glass-walled for spectator viewing, the complex also features a pro shop, men's and women's locker facilities, and a sauna and lounge.

Rates for court use are \$1.50 per hour per person from 7 a.m.-1 p.m.; \$2.50 an hour from 1-5 p.m.; 9-11 p.m.; and \$3.00 from 5-9 p.m.

## MOTHER EARTH NEWS

Tells You How To Do It

ALL ISSUES AT THE WATERBED SHOP

402 MILL AVE.

In Downtown Tempe

## IN VERY GOOD TASTE SUPERB CHINESE CUISINE

OPEN 11:00 A.M. TO 10:00 P.M.  
SUNDAY THRU THURS.  
11:00 A.M. TO MIDNIGHT  
FRIDAY & SATURDAY  
COCKTAIL LOUNGE OPEN  
UNTIL 1 A.M.

833-3577

# JADE EMPRESS

BROADWAY & DOBSON ■ MESA ■ IN THE K-MART SHOPPING CENTER



## CARPET SPECIALS

9 x 12 used rugs-\$5.00

All Sizes In Stock

## CARPET HOUSE

1516 E. Van Buren, Phx.

# Jerry's

audio exchange

Phoenix 334 E. Camelback Rd. 262 9410  
Tempe 170 E. University Dr. 968 3491  
Tucson 1037 N. Park 622 7407

BUY  
SELL

# CLASSIFIED ADS

TRADE  
LEASE

1. Rates: The first day is 10 cents per word with \$1.50 minimum (15 words). All consecutive ads after the first day are discounted.
2. Notification of errors is required before second publication. The State Press will not be responsible for more than the first incorrect insertion.
3. No refunds will be made for cancellations of classified advertising.
4. All abbreviations or small groups of numbers count as one word. Hyphenated words count as two words.
5. No tear sheets will be provided with classified advertising.
6. The right is reserved to reject any copy.
7. Payment for all classified ads is cash in advance.
8. Ads will not be accepted over the telephone but can be placed either in the offices of the State Press, Stauffer Bldg., A111, ASU, Tempe, Az. 85281, or in the Memorial Union, Room 208 J. Ads also may be mailed to the State Press if prepayment is included with the form.
9. Deadline is 4 p.m. two days before the ad is to appear.

### ● FOR SALE

Trade, Sell: Pioneer receiver, dual turntable, electrovoice speakers, telescope, c.b. with antenna. Steve 964-5182. (3/11)

Spalding Stinger high performance short skis (180cm). Used only 15 days. Excellent condition. 968-9778. (3/7)

1972 Triumph Spitfire Mark IV. 28,000 miles. Excellent condition. \$2150.00 Call 266-5781. (3/7)

UNIQUE-The only Store in Tempe offering such good stuff. FURNITURE, COLLECTIBLES, Thousands of odds & ends. Student discount with I.D. Now sorting Estate of fantastic variety. Butler's Used Furniture. 225 W. University. Next to Snides Back Door. 966-8498. (3/8)

Electronics parts; parts, kits, equipment, etc. The Bear and The Lion wish to announce the opening of their newest store in Arizona. A.R.B. Ltd., Suite 126, 6730 E. McDowell Rd., Scottsdale, Arizona 85252. (3/12)

Indian Jewelry. Double Turquoise Jaw Claw Special! \$65. Reg. \$180. Call Mal 839-3979. Near Campus. (3/14)

SUMMER'S COMING! We have river tubes, rafts, backpacks, canteens, and hundreds of far out items at down to earth prices. Check with Checkerboard Army-Navy at 1126 W. Main in Mesa and save. Open 9-9 Sat & Sun 9-5. (3/14)

1961 Porsche. New Engine, Transmission, Clutch, etc. & mo./6,000 miles warranty on engine. Must Sell. 965-8843. (3/11)

Lecithini Vinegar! B6! Kelp! All four in one capsule, ask for VB6+, Campus Drugs. (3/7)

Portable Craig Tape recorder Model 212. Reel to reel with high and low speeds. Includes 3 tapes, microphone with remote control and AC adapter. All for \$25.00. It's in great condition. Call anytime after 5 p.m. Sun-Sat. (3/7)

### ● HELP WANTED

Cocktail waitresses, age 19 or older. Must be reliable, personable, neat and attractive. Part or full time. Good opportunity to make extra money and enjoy meeting people. Apply in person Mon.-Fri. 12-3. Friday's & Saturdays. 825 N. Scottsdale Rd. (3/2)

Couple to manage 12 unit Apt. House in exchange for 1 bdrm apt., furnished, utilities & phone. One person must be there most of time. Corner of 7th St. & Culver, 10 min. to ASU by freeway. Call 948-2566. (3/7)

R.A. desk positions for 75-76 year now open at housing. Apply at M.U. Room 110 now through March 7. Applications limited to the first 300 people who wish to apply. (3/7)

### ● LOST

Lost - Irish Setter - Feb. 20, Collar #44211. She has a black spot on tongue - 8 months old. Reward!!!! 967-1890. (3/5)

Lost - Light colored female siamese cat, 6 lbs, 8 months. Sin City area. Cat is sick, needs medicine 1050 South Stanley Place, Apt. 36. 968-5946, ask for Mark or Deb. Reward. (3/7)

### ● ANNOUNCEMENTS

Phoenix Rally Organization First Friday Nighter, beginner's car rally, Friday March 7, 7:00 p.m., Southeast corner Thomas Mall; \$1.50, information 956-1677. (3/7)

"A dollar saved is worth 30c" - unless you save it with us. Investment information 7 p.m. Mon. - Fri. Free refreshments. 123 E. University, Suite 116 (Next to Ericksons). (4/3)

"The Exam Secret" - Free catalog of this plus hundreds of other irresistible titles. Write R.S. Bronstein, 45 So. Franklin St. Allentown, PA 18102. (3/14)

Europe - Israel - Africa - Orient student flights year round. Contact: ISCA, 11687 San Vicente Blvd. #4, L.A. Calif. 90049 or Tel: (213) 826-5669, 826-0955. (5/2)

MAZATLAN March 14-21, round trip to Mazatlan from Tempe all super deluxe accommodations. Stay right on the beach (right next to Playa Del Rey) Drinks, kitchen facilities, deep sea fishing, air conditioned, stereo, and more. \$90.00 Gals \$95.00 Guys Total. Tom 969-1539 John 838-5803. (3/11)

U.S. Government jobs - free information from government agencies and departments. Receive 250 pamphlets and brochures from 46 different agencies and departments of the U.S. government describing rewarding career opportunities for college level entry positions and how to prepare and apply for them. Our research staff has compiled a comprehensive bibliography listing these pamphlets and brochures that will send them to you Free! Send \$3.00 for this bibliography to Resources Information Company, P.O. Box 20672, Phoenix, Az. (3/11)

KLASS NOTES ARE HERE! At last you can be free of the tedious and inefficient task of "taking notes." Imagine, an entire semester's set of typed lecture notes. The following list of notes is now available at the ASU Bookstore and the Student Book Center on College Ave., BO-100, CH-101, 113, 115, 231, ES-102, EC-201, GL-100, 101, MA-120, 121, MI-201, MI-101, PX-100, RE-251, ZO200, 201, 202, 270. (4/14)

Norman Salger, representative of the American Zionist Youth Foundation will be on campus at the Memorial Union, Yavapai Rm. 209, on Friday, March 7. He will show films on Israel, and discuss opportunities for work, study, travel, etc. in Israel. (3/7)

### ● RENT

Room for rent with bath near campus. \$90/mo. prefer Grads or Seniors 968-1240. (3/7)

Roommate wanted: own room in house near Southern & Mill. \$100 utilities paid. 968-2128. (3/10)

Still renting - 3 bedroom house, 1741 Sierra Vista Dr. & blacks to ASU. 2 showers, huge living room, nice kitchen, fire place, big back yard. Rent \$250/mo. call 966-3671. (3/7)

### ● RIDE WANTED

Couple needs ride to Texas over Spring Break. Really. 965-5783. (3/7)

Need a ride to Reno, Nevada or vicinity - Spring Break. There and back. Mike 965-2870. (3/11)

### ● TYPING

Typing done - .50c a page. Linda Bedell, 833-7605, 1752 E. 1st. St., Mesa, Az. (5/2)

Manuscript typing, and/or editing. Fast and accurate. Experienced in all fields. IBM Selectric II. Call Carolyn Kappas, 968-2167. (3/28)

Fast, accurate, professional typing. IBM machine. Complete proofreading. 2210 S. Priest, #102. 967-3393. (3/7)

Typing - IBM Selectric, Dissertations, Theses, Term papers, Rosemary Vance, Tempe, 967-9143. (5/2)

Manuscript typing, and/or editing. Fast and accurate. Experienced in all fields. IBM Selectric II. Call Carolyn Kappas, 968-2167. (3/28)

Professional Typing. IBM pica & various styles. 60c page. Format ed. & corrections. Early reservation necessary. 956-7983. (4/29)

Experienced typist can do theses, dissertations, term papers, medical background. .50c page. Janet, 834-0893. (3/2)

Mesa. Theses, term papers, reports. Big jobs or small. 50c and up. Sharon. 833-4641. (5/2)

Term papers, resumes, theses, dissertations. Professional, guaranteed work. IBM. Maxine Mullen, 955-0763. (5/2)

Typing - school papers, resumes, thesis, manuscripts, no minimum. 946-4665. (5/2)

### ● WANTED

Female to share 3 bdrm. house, 1 minute from ASU - Rent Free - Inquire 1005 Maple Avenue, Tempe. (3/7)

Female roommate wanted to share a 3 bdrm house with two other girls. \$50 rent and utilities; 838-2613. (3/7)

### ● AUTOMOBILES

1963 Fleetwood, 10x57 3 bedroom mobile home for sale by owner. 2 air and one cooler. Carpeted. Most furniture included. Excellent condition and very clean. Only short walking distance from ASU in University Mobile Home Park. \$3900. Call 964-9753. (3/7)

1972 Cutlass. 23,000 miles. Superior condition. Must see. AC. Leather interior, radio, sun screen. 954-0385. (3/7)

### ● MOTORCYCLES

Kawasaki 100. Excellent condition. Call Curt 967-9555. (3/13)

### ● INSTRUCTION

Parachute. Your first jump \$35.00 group rate with student ID. U.S. Parachute Service 275-0010. (4/18)

### ● SERVICES

Getting a raw deal on stereo service? Let me get things straight. Steve, 964-5182. (3/11)

# Devils look south after facing 'Cats

By Mike Tulumello

With the Activity Center sold out for the first time for ASU's clash with intrastate rival Arizona Saturday, you wouldn't think the Sun Devils would be whistling Dixie . . .

... But the Devils' eyes will be cast in the direction of the South this weekend as the Devils try to find out their opponent in the first round of the NCAA playoffs.

The NCAA announced Thursday that ASU, which will be one of eight schools hosting pre-regional tournaments throughout the country, will play the runner-up of the Southeastern Conference — either fifth-ranked Alabama (22-3) or sixth-rated Kentucky (21-4). Alabama leads Kentucky by one game in the SEC race, with one game to play.

ASU, for its part, is in a novel position for the Devils this year. They don't have to win against Arizona, having clinched the Western Athletic Conference title last weekend. The Wildcats, however are tied for second in the WAC at 9-4 (with Texas-El Paso) and need a victory against ASU to have chance at qualifying for the NCAA playoffs.

Though ASU will get a break from its two-month long string of "must" games, ASU coach Ned Wulk said the Sun Devils will not ease up against the Wildcats.

"I haven't seen any difference (in the team's attitude) in practice this week," said Wulk.

"We're not an emotional team, anyway. We seem to have a pretty matter-of-fact personality — we don't get particularly high for some games and low for others."

Wulk said he plans no strategy changes from his team's 83-81 win over UofA in Tucson last month.

"Arizona's strengths are well-established. They've been going to their big men (Bob Elliot and Al Fleming) all year, and they're not about to stop now. We'll just have to keep helping each other out underneath."

The highlight of the game figures to be the match-up between two of the flashiest players in the conference — Rudy White of ASU and Herm Harris of the Wildcats.

"Harris is starting to play really well for them, so that will make things tougher for us. He's much less reluctant

to shoot the ball than (Jerome) Gladney."

ASU played some of its finest basketball of the season last week in trouncing Wyoming and Colorado State. Much of the credit went to increased production from the Devils' front line — particularly Scott Lloyd who netted 41 points in the two wins.

"Each team we've played this year has concentrated a little more on our guards — so it's only natural that our inside-game is starting to go. And Scotty has been shooting a lot better than he did earlier in the season, which has added to our offense."

The Devils have four players averaging in double figures in Lionel Hollins (16.2), White (14.1), Lloyd (11.3) and Mike Moon (10.5).

Arizona's scoring is dominated by Elliott (22.8), Fleming (19.7) and Jim Rappis (12.8).

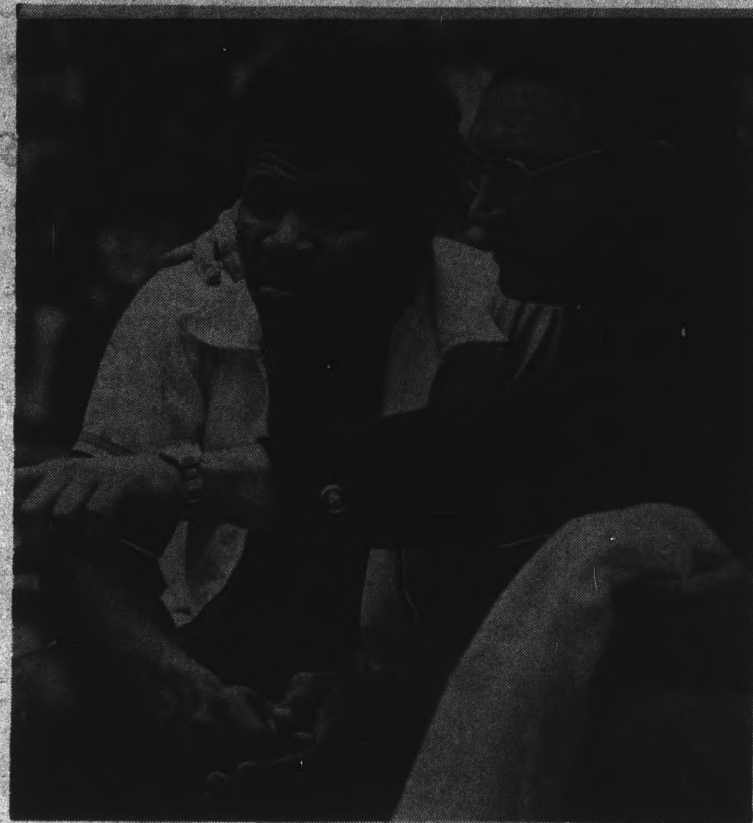


Photo by John McDonough

Head basketball coach Ned Wulk has called upon Rudy White for tough assignments all season long. The 6'2" junior will face another challenge this weekend when he matches up with Arizona's Herm Harris, the Wildcats' outside threat.

## MOVING — PACKING — STORAGE

Local & Statewide Service

**Springer Corporation**

"A Moving Force In The Southwest"

272-6317 and 269-9304

A Special Offer From

# HERTZ

## RENT A CAR

**ASU Students . . .**

If you're over 18 you can rent

a Ford or other fine car at a

**SPECIAL LOW WEEK-END RATE of**

**\$8.00** A DAY AND 14c PER MILE

4-Day-Weekend rate: \$29—\$69 free miles

**UNLIMITED FREE Mileage Rates**

7 Days for \$119.00

For Your Car, Call Your A.S.U. Representative

**STEVE BLAGEN**

968-4072 or 963-5786



**ARTIST & DRAFTING SUPPLIES**

Crafts - Picture Frames  
Decorating Material

Open Mon. & Thurs. Nights  
10 Percent Discount to Students  
111 E. University — 967-4482

## Citron's Surplus

Jefferson at 2nd St.  
in Phoenix for

- Navy denim seafarer bellbottoms
- tankers
- Back Packs
- Camping Supplies
- White & 13 Button Belts
- Parachute Canopies

# Your roommate smoked your tomato plant.

You owe yourself an Oly.

Olympia Brewing Company, Olympia, Washington "OLY"  
All Olympia empties are recyclable.

She knows how to save in style



with fashion eyewear from Lee!

You can pay extra for high quality fashion eyewear . . . or, you can look to Lee. Lee Optical has hundreds of frame styles and colors for your new glasses.

Modern frames, imported frames, and, of course, a huge selection of the popular wire frames.

Stop in at your nearby Lee Optical office for "In Style" eyewear. Come see.

Single vision glasses \$18 as low as

Student Discount Program

WITH CONVENIENT VISION CENTERS THROUGHOUT ARIZONA

**LEE**  
Optical

IN TEMPE  
TEMPE CENTER  
967-7864  
2032 S. INDUSTRIAL PARK AVE.  
967-7333



**GOOD PRICES ARE  
JUST THE BEGINNING**

**CUSTOM hi-fi**

# WAREHOUSE SALE

**DISCOUNT center**

Comparison Proves It! The place to buy is Custom Hi-Fi — We Discount Price Not Quality! Special Warehouse Sale prices Now available on merchandise by Marantz, Pioneer, Sansui, B.I.C., Venturi, E.S.S., Teac, Akai, E.C.I., Acoustic Research, B.S.R., etc. Finance terms are available and trade-ins welcome . . . . 10% down holds any sale priced item in lay-away.

**COMPARISON  
PROVES IT!**

**POWER RATINGS:** All ratings indicate the continuous power output per channel (R.M.S.), the resistive load in OHMs, the power band in Hertz (Hz) and the maximum total harmonic distortion (T.H.D.) at the rated output.

**REMEMBER . . . WAREHOUSE PRICED — NO PHONE QUOTES**

**Sansui**

**SANSUI 210** • AM/FM stereo receiver • 10 watts per channel R.M.S. • 1.0% T.H.D. • 8 OHMs • 40-20,000 Hz • List \$179.95

**BSR 260X** • Full size automatic record changer • cue/pause control • includes base and dust cover • magnetic cartridge • List \$86.80

**E.C.I. Super 8** • 2-way speaker system • 8" woofer • removable grille • 5 yr. warranty • List \$79.95 each

**TOTAL LIST \$436.75**

**\$219**



**CAR STEREOS**

**PIONEER KP333**  
• Reconditioned auto/reverse stereo cassette player  
• Full warranty  
• List \$99.95 on Unit

**Bowman CT 2200**  
• 8-track with FM stereo  
• New warranty  
• These won't last long  
• List \$119.95 on Unit

**\$68** With Speakers      **\$78** With Speakers



**PIONEER**

**PIONEER 434** • AM/FM stereo receiver • 15 watts per channel R.M.S. • 8 OHMs • 40-20,000 Hz • 0.8% T.H.D. • List \$239.95

**BSR 310** • Automatic record changer • damper cue/pause control • includes base and dust cover • List \$95.80

**E.C.I. Trend I** • Shelf speaker system with Big-Sound • 5 yr. warranty • removable grille • List \$89.95 each

**TOTAL LIST \$495.65**

**\$345**



**SPEAKER SYSTEMS**

**E.C.I. 1253W** • 3-way speaker system • 12" woofer • adjustable crossover controls • List \$159.95  
**NOW \$79 each**

**E.C.I. 83** • 8" full range speaker system • modern foam grille design • 5 yr. warranty • List \$49.95 each  
**NOW \$15.95 each**

**ANNOUNCING . . .  
E.S.S. HAS ARRIVED**

**AT CUSTOM HI-FI . . . See Them**

**RCA 373WL** • 2-way speaker system • 8" woofer • "First Come First Serve" • Special purchase • Won't last long • List \$79.95 ea.  
**ONLY \$17.95 each**

**PIONEER CS99A** • 5-way speaker system • 15" woofer • decorator grille • List \$239.95 each  
**NOW \$199.00 each**



**SUPERSCOPE  
WAREHOUSE PRICED**

**SUPERSCOPE R310** • AM/FM stereo receiver • made by the makers of Marantz • List \$179.95

**BSR 280X** • Automatic record changer • Shure M75 cartridge • includes base and dust cover • List \$86.80

**E.C.I. 83** • Full range 8" woofer speaker system • 5 yr. warranty • modern grille design • List \$49.95

**TOTAL LIST \$366.70**

**\$195**  
While They Last!



**TAPE DECKS**

• Decorder 7200 reel to reel • List \$499.95 Sale \$399.95

• Akai CS33D Cassette with Dolby • List \$179.95 • \$159.00

• Soundite 8-track player model SD800 • List \$59.95 • \$29.95

• Akai GX 600D reel to reel 10" • List \$599.95  
Special . . . . . \$499.95

• Wollensak 8855 8-track record/play • List \$249.95  
Won't Last . . . . . \$199.00

• Akai 4000DS reel to reel with pause • List \$299.95 . . . . . Few Left  
Special . . . . . \$259.00

• Teac 3300S reel to reel • 10" reels • SAVE • SAVE • SAVE

• Grundig CR47 8-track record/play • List \$169.95 . . . . . \$94.95

• Concord Dolby Noise reduction unit "Special" • List \$129.95 . . . . . \$59.95



**Sansui**


**SANSUI 661** • AM/FM stereo receiver • 25 watts per channel R.M.S. • 8 OHMs • 30-20,000 Hz • 0.5% T.H.D. • List \$349.00

**BSR 520X** • Automatic record changer • includes smoked dustcover and wood style base • List \$95.80

**E.C.I. 1253V** • 3-way speaker system • 12" woofer • removable front grille • List \$119.95 each

**TOTAL LIST \$684.70**

**\$455**



**MISCELLANEOUS  
(Trade-ins, Discontinued Stock, Closeouts)**

• Pioneer SX9000 Receiver . . . . . Just \$285.00

• Fisher XP56K Speakers . . . . . Now \$35.00 each

• Garrard SLX2 Turntable . . . . . Sale \$29.00 complete

• Sansui AU555A Amplifier . . . . . Now \$139.00

• Craig 3216 AM/FM Stereo 8-Track w/speaker . . . . . Just \$65.00

• Marantz Z230 New 3-yr. warranty . . . . . Sale \$289.00

• Lloyds Compact M751 Large Speakers included. . . . . Now \$95.00

• Pioneer SX525 AM/FM Stereo . . . . . Only \$185.00

• Marantz Z270 New in Factory Cartons . . . . . Just \$429.00

• Pioneer PL10 Manual Turntable . . . . . Now \$79.95

**PIONEER**

**PIONEER SX636** • AM FM stereo receiver • 25 watts per channel R.M.S. • 8 OHMs • 20-20,000 Hz • 0.5% T.H.D. • List \$349.95

**GARRARD 74M** • Automatic record changer • includes base and dust cover • Shure M91ED cartridge • List \$148.80

**E.C.I. 1253W** • Walnut style enclosures • 3-way speaker system • 12" woofer • adjustable crossover controls • List \$159.95 each


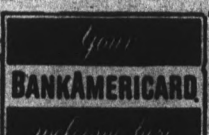
**TOTAL LIST \$788.65**

**\$525**



**SYSTEM PRICES ARE OUR SPECIALTY**

**OPEN DAILY TIL 7:00 — SAT. AND SUN. TIL 6:00**  
**LAY-AWAY TERMS AND FINANCING AVAILABLE**  
**TRADE-INS WELCOME**

**BEFORE YOU BUY  
SHOP CUSTOM HI-FI**

**4015 NORTH 16th ST.  
CORNER OF 16th STREET  
AND INDIAN SCHOOL  
264-4717**

**WE DISCOUNT PRICE NOT QUALITY**