

Funding for cheerers called illegal

Squad seeks Hawaii-game travel money

By John Lemons

A senator from the College of Law said Thursday that the Board of Financial Control (BFC) cannot allocate travel funds to ASU cheerleaders because it violates student Senate guidelines.

Associated Students Senator Michael Cantor obtained Wednesday a temporary restraining order from the Supreme Court of Associated Students (SCAS) in a move to prevent the BFC from allocating \$628 to send two additional cheerleaders to Hawaii.

Dave Adams, chief justice of SCAS, said the temporary restraining order was not a decision but an emergency action to freeze the status quo. If the temporary restraint had not been issued, the cheerleaders would have gone and returned by the time the court met.

Adams said the suit stems from a previous decision made by the SCAS in which they ruled that all funds allocated by the BFC were subject to the Student Senate guidelines.

Cantor said the suit argues that the cheerleaders are a secondary account and according to the Student Senate guidelines, the BFC cannot allocate travel funds to a secondary account.

Rick Weiss, BFC chairman, said, "There is no

question as to whether it is a primary account. A primary account is any of the officers accounts and the cheerleaders are under special events—a part of the activities vice president's office."

Cantor said that on the face of it, he may lose this argument but that under the court's power of interpretation, they will go beyond the face of it and interpret the guidelines.

Cantor also said his other argument is based on the general section in the guidelines as to how many students will benefit and how many will participate.

Cantor said he is not against the cheerleader program. The allocation is for an additional two cheerleaders, he said. "Plus they waited till after the Senate had adjourned. If they had submitted it to the Senate, it would have led to a heated debate.

"I have an inherent belief that statutes are written to be followed," said Cantor. "We don't feel it's fair for some to ignore the guidelines while others are expected to follow them."

Cantor said the temporary restraining order was drawn up right after the meeting so that everyone concerned would have time to prepare their arguments.

friday
state
press

Arizona State University

Vol. 57, No. 54 December 6, 1974

ASU scrutinized

Arizona schools hiring elsewhere

By David Jensen

A check by the State Press disclosed this week that some Arizona school districts are hiring up to 40 per cent of their teachers out of state.

State Superintendent of Public Instruction Weldon Shofstall and some of the state's hundreds of unemployed teachers are mad about it.

Educators are wondering if the hunt for out-of-state teachers indicates a weakness in the ASU College of Education.

ASU student Virginia Purzycki, a substitute teacher in the Paradise Valley school district, was amazed when she received the district's newspaper saying 40 per cent of its teachers this year had been hired out of state.

"It is because the Colleges of Education in Arizona produce inferior teachers?" she asked.

"If this is the case, then maybe we should look into the programs being taught here and reevaluate them before we flood the unemployment ranks further with potentially unemployable people," said Purzycki, who has her BA and MA degrees from ASU and is presently working on her doctorate at ASU.

40 per cent nonresidents

A check with area school district revealed some districts this year hired up to 40 per cent of its new personnel by recruiting out of state. A recent publication of the Paradise Valley School District said its

personnel department received 6,000 applications and inquiries for staff positions.

"With assistance from the administrative staff we visited 25 colleges and universities for recruitment of teachers. Out of state personnel hired accounted for 40 per cent of the new teachers," the publication said.

A Mesa school district newsletter also said 40 per cent of its newly hired teachers had out-of-state training. The newsletter said 150 new teachers for the present school year were chosen from nearly 3,000 applicants.

State Superintendent of Public Instruction Weldon Shofstall said in an interview he doubted any districts would hire 40 per cent out of state. When shown the statistics, Shofstall immediately called but was not able to reach Ray Shipley, superintendent of Paradise Valley schools. He then called John Freestone, state director of teacher certification.

After asking Freestone for any statistics he had, Shofstall read from the Paradise Valley Schools "School Observer."

Not true

He said to Freestone: "My first reaction when somebody said that, was that it just wasn't true. Does this mean they (the districts) don't think our people are any good?" After reading from the Mesa newsletter, Shofstall told Freestone "It's too bad when you and I know so many teachers who are qualified and can't get jobs."

Continued on page 6



Photo by Roger O'Connor

Bob Gill fights for survival in the 149-181 pound weight class championship round against Richard Flores. Flores won the arm-wrestling match.

Athletes face trial in assault case

By Jerry Porter

The trial of two Sun Devil football players, alleged to have assaulted an ASU senior Sept. 24, will begin Monday before the University Trial Board.

Defensive end Clifton Alapa and offensive tackle John Tyler are accused of assaulting Wayne Dailey in Dailey's Palo Verde West dormitory room. The players are also accused of entering a University facility for inconsistent use and intentional damage of University property.

The students rejected disciplinary measures recommended Oct. 14 by ASU Dean of Students Dr. Leon Shell. The dean's recommended sanction was not disclosed, but is believed to be suspension from the University.

ASASU Executive Manager Steve Yarbrough will be the University advocate.

Yarbrough said the two defendants had secured outside legal aid. He said Tyler's

lawyer is Ralph Hunsaker, a Phoenix attorney, while Alapa's lawyer is Rad Vucichevich.

The trial was originally scheduled for Nov. 12, but the board granted a 26-day delay.

"The delay has hurt my case substantially from the point of view that it is really an imposition on the students who are going to be witnesses, but we have a good case," Yarbrough said.

Punishment for the two athletes, if found guilty, will be decided by the trial board. Yarbrough said the defendants could appeal to an advisory board to the University president, and then personally to President John Schwada.

Yarbrough also conceded the possibility that the matter could be taken to Superior Court where an injunction could be granted to prevent the initiation of any punishment.

Bookstore manager predicts fewer delays while buying texts

By Chris Hudson

There will be fewer long delays for students who want to buy textbooks for spring Semester classes, said the assistant manager of the ASU bookstore.

Dale Scott, who is in charge of textbooks at the campus bookstore, said "The response from faculty members has been good. Most completed their text requisitions on time. We're in pretty good shape right now."

The deadline for faculty members to submit textbook requests was Oct. 1. Initial request forms are sent to the departments then followed up with phone contacts. "We just keep bugging them, and most are good about cooperating," Scott said.

"We send the requisition forms to the department chairmen who are responsible for getting them to faculty

members and collecting them."

Problems and delays that do occur are the result of the magnitude of the task. "We handle roughly 5,000 titles each semester, give or take a few," Scott said.

According to Scott there are many reasons for the problems. "You always run into the problem of publishers running out of certain texts, different editions, wrong titles; stupid little things."

"The best solution is for the faculty and the store to work together," he added.

"We do everything we can to get the books on time. Students just have to sit and wait, cross their fingers and hope we're doing the right thing," Scott said.

Student group to discuss Stop sign needed at Stadium Drive food stamps with politician

By John Pfau

Student involvement in the federal food stamp program will be discussed in a meeting tentatively scheduled for Dec. 20 between Burton Barr, Republican state representative, and an ASU group headed by Annette Vargo.

Vargo, leader of Circles, a concerned students group, failed to confirm a scheduled meeting Wednesday at the State Capitol with Barr, according to Barr's office, and met instead with Democratic senator-elect Madelene Van Arsdell.

Mike Callahan, ASASU senator, was part of the five-member ASU group who spoke to Van Arsdell. "We went off on a tangent about a lot of things," Callahan said, including "basic

discrimination against students."

Callahan said that students have to declare loans as a part of income when applying for food stamps. The non-student populace does not have to declare loans. Callahan called it "probably the most blatant example of discrimination."

According to Callahan, "Nothing came of the meeting yesterday (Wednesday) and we're all optimistic about meeting with Burton Barr. We don't want to attack him, we just want to find out what his story is."

Barr, in recent public statements, opposed the issuing of food stamps to some students, causing unfavorable comment from Circles and other concerned ASU groups.

By Andy Porter

New stop signs are needed on Stadium Drive to protect pedestrians, according to an ASU student adviser.

Diane Pulaski, the advisor to handicapped students, said Tuesday that she and John Ellingson, director of the Physical Plant, are attempting to have stop signs placed at a crosswalk located between Manzanita Hall and the University Activity Center on Stadium Drive.

Pulaski said that she and Ellingson met with Harvey Friedson, traffic engineer for the city of Tempe, several weeks ago and asked to have the signs installed. At that meeting Friedson refused to install the signs, she said.

Friedson said Tuesday that he denied the request for stop signs at the crosswalk because, "we have no problem there."

Pedestrian warning signs have been erected at the crosswalk to control traffic, he said.

Pulaski said that she and Ellingson are still trying to have stop signs installed at the crosswalk.

"When cars are coming out of the light at Transvall and University and are going down Stadium, the drivers step on the gas and are speeding up as they approach the crosswalk," Pulaski said.

A curve in Stadium Drive near Manzanita hides the crossing from the intersection and adds to the danger, Pulaski said.

She and Ellingson decided to ask for the stop signs when the University Activity Center opened and caused pedestrian traffic in the crosswalk to increase, Pulaski said.

DON'T LEAVE ASU BROKE!
SELL US YOUR BOOKS
GET SOME SPENDING MONEY FOR THE HOLIDAYS
WE EXCHANGE CASH FOR BOOKS PLUS 10% GIFT CERTIFICATE ON ALL BUY-BACKS OVER \$10**

Student Book Center

704 S. College Ave.
One Block North of ASU
968-6226

Canon FTb

Your passport to fine photography.



The Canon FTb is what a fine SLR camera should be. It is simply a no-nonsense tool through which you can meet any photographic challenge head on, and get the quality you demand. Like the F-1, the FTb draws from an array of more than 40 superb Canon lenses, and many fine Canon accessories from photographic through the microscope to astronomical photography. It's a serious tool for serious photographers, and a camera you can grow with as you grow in photography.

- Selective, central area spot metering
- All metering information visible in finder
- Shutter speeds from 1-1/1,000 sec., plus "B"
- Accepts Canon Auto Tuning (CAT) system for foolproof auto flash
- Breech lock lens mount
- QL—Quick loading mechanism

\$219⁹⁵ with case



710 S. Forest
Tempe, Ariz.
968-5806

State to probe rate hike

BY DAVID PEARSON

The State Department of Insurance is making an inquiry into a company that offers a personal property insurance program to ASU students who live on campus.

The inquiry is to find out whether a recent premium increase is justified.

National Student Services, Inc. (NSS), a company that has provided personal property insurance to ASU students for two years, raised its premium rates \$8 this year to \$20.

Robert Allen, a state insurance analyst, said, "There appear to be some irregularities in this program." He also said NSS is not licensed to do business in Arizona, but its underwriter, National Independence Insurance Co., is licensed.

The ASU Housing Office has distributed fliers from NSS in its housing envelopes sent to students wishing to live on campus, according to Russell Flaherty, director of housing.

"All we do is stuff the fliers in the envelopes," said Flaherty.

The 67 percent increase in premium cost was stated in a letter from Steven Ditto of NSS, Stillwater, Okla.

Ditto cited the general economic situation in the country saying, "All costs seem to be rising correspondent to inflationary trends."

He additionally cited increased paper cost, general administrative expenses,

printing charges and adjuster's charges as factors contributing to the increased cost of a policy.

Flaherty said he did not know if the increase was justifiable but agreed that printing and paper costs have risen considerably.

Flaherty said two years ago the housing office was contacted by NSS and agreed to distribute the fliers if a NSS representative was made available to students.

Bert Crockett of Bert Crockett Insurance and Investments was the representative. "It was advantageous because Crockett is involved in other insurance programs for students," said Flaherty.

Crockett said Flaherty called and asked him to be the representative. Crockett said he became the NSS representative June 22, 1973.

He said he received a three per cent commission on about 600 policies from students at the three state universities during the 1973-74 school year.

Crockett said he received a letter from NSS saying his services would no longer be needed after July 10, 1974. "So I have nothing to do with this year's program," said Crockett.

Flaherty said he was not told of Crockett's dismissal by NSS. He said the housing office will cease to distribute fliers if no local representative is provided.

Employee seeks job restoration

By SEAN NICOLAI

Gary Steer was the manager of operations and controls in the ASU comptrollers office until he was terminated from his job Nov. 18. If Steer had a non-university job he would be looking for work elsewhere, but the ASU Grievance Committee gives him hope that he'll get his job back.

"In my opinion it's a termination without cause and without due process," Steer said. "That's what the hearings are about."

The primary function of the Grievance Committee is to hear complaints relating to the University from members of the faculty, staff and student body, and to investigate the allegations made and recommend solutions to University President John Schwada.

The University president is not bound by the decision of the committee and may decide to act

contrary to their recommendation.

Five students, five faculty members and five ASU staff personnel man the committee.

"Their function is to determine the facts and I feel that if the facts are really brought out and properly recorded, I have reason to be confident," Steer said.

Dean Mouser, ASU comptroller disagreed with Steer.

"The man has been terminated by me," Mouser said. "I wouldn't have done it if I didn't think I was justified. I spent a considerable amount of time before terminating him, and have written a three or four page memo to personnel and the Grievance Committee stating my reasons."

"The fairness of his case before the committee is best served if I don't comment as to why," Mouser said.

Committee slots open

Several positions on ASU committees will be open to students beginning next semester, according to Associated Students President Rick Weiss.

In addition to the list of committees in Thursday's paper, the following committees may also have positions available to students: Grievance Committee, Auxiliary Services Advisory Board, Career Services Committee, Committee Services Program Committee, Extension-Summer Advisory Council, Interdisciplinary Committee on Human Ex-

perimentation, Intramurals — Club Sports and Recreation Committee, Public Lectures Board, Scholarship and Student Aid Committee, State Press Advisory Committee, Teacher Education Advisory Committee, University Appeals Board for Parking and Traffic, University Library Committee, University Performing Arts Board and University Television Advisory Committee.

"Applications should be submitted to the ASASU office, MU 208, before the end of the semester," Weiss said.



Stag Tobacconists, Ltd.

921 Mill Avenue — 966-5712

DECEMBER MENU

*MAIN COURSES



Cigar Seleccion Superba

If it's made, we sell it. Buy them by the box, pack or single cigar. Priced all the way from 10¢ to \$2.41 each. We even have a cigar shaped like a pipe.

Fresh, Perfect Humidification — Fresh, Perfect Humidification



TOBACCOS

There is no reason to smoke a tobacco that isn't fresh, easy to keep lit, smoke cool all day long, and give you the taste you want without inhaling. We can even custom-blend to your satisfaction.

Fresh, Pure, Hand-Blended — Fresh, Pure, Hand-Blended

PIPES



All the way from our *Famous Sale Pipes* at 2 for \$7.50 to kits to make your own. From corn cobs at \$1.00 to Meerchaums costing over \$200.00

Selection, Price Range, Variety — Selection, Price Range, Variety



CIGARETTES

Imported cigarettes from all over the world. Featuring Shermans, Sobranie, Dunhill, Rothman, Bidis, Colored Cigarettes, and many, many others.

Best Selection Anywhere — Best Selection Anywhere

*DESSERT

Expert Pipe Repairs
Roll-your-Own Supplies
Water Pipes
Christmas Gift Items

Do-It-Yourself

Pipe Rejuvenation Center
Customers R & R Lounge
Largest Selection of Lighters
In The Valley

Petite Genere JEWELRY

618 S. College • Next to Varsity Book Exchange • 968-1233

DECEMBER 1 thru 24

COMPLIMENTARY

Bottle of Champagne or Box of Chocolates
with every purchase over \$25.00

SILVER • GOLD • PLATINUM
TURQUOISE • GEM STONES • DIAMONDS

Engagement & Wedding Sets

Longines-Wittnauer Dealer

WATCHES — CROSS & SHEAFFER PENS

COLIBRI QUARTZ LIGHTERS — PEWTER MUGS

ENGRAVING — ETC.

OPEN DAILY 9 a.m. to 8 p.m.

EARS PIERCED FREE

No more papers till next year

This is our last issue of the semester.

Many of the stories we've been writing about remain unresolved. Unfortunately, some of them will reach their denouement during the next couple of weeks while we're all desperately trying to regroup for finals. We'll try to fill you in on the results when we resume publication next semester.

Besides covering these "old stories" next semester, we hope to provide the University community with an informative, readable paper. We'll be trying to cover many aspects of campus life, the positive as well as the controversial.

We can't promise perfection. But we can promise an honest effort to produce a newspaper that will report campus events objectively.

Our editorial comment will, by definition, be more subjective. We'll try to be fair and we'll welcome opinions that differ from our own. And we'll keep our editorial comments confined to the editorial page.

No time for Professor Loewenberg's fantasies

By Bill McClellan

The ad hoc committee that is investigating the State Press held an open meeting Wednesday for the avowed purpose of soliciting student input. Dr. William Arnold, chairman of the committee, scheduled the meeting in the Cochise Room of the Memorial Union.

He should have scheduled it in a phone booth. Nobody showed up.

Well, almost nobody. There were about a dozen students.

Harry was one of them. I don't know Harry's last name and it doesn't really matter.

When Dr. Arnold asked if anybody had any comments about the State Press, Harry stood up and said he thought the paper should have an unshackled editorial page.

Obviously, that's the kind of thing I like to hear.

Because I agree with Harry. And I'd like to assure him that we do have an unshackled editorial page. Some of our comments have been negative as far as the administration is concerned, but to their credit, they have not tried to exert any influence on the paper.

Still, the ad hoc committee scares me.

It probably shouldn't. After all, the State Press has a lot of room for improvement. Much good can come from the ad hoc committee.

But, sometimes, instead of a feeling of co-operation, I unconsciously slip into an antagonistic frame of mind.

Committee members keep using the word "control." To a journalism student, that particular word has a very negative connotation. Somebody mentions "control" and I get paranoid and start worrying that the word is a euphemism for a much nastier one — censorship.

I'm afraid some of my paranoia was evident at Wednesday's meeting.

For instance, I asked the committee why they have yet to call any former State Press editors. Two of them are still on campus. It seems like they could offer valuable insight into the operations and problems of the paper.

Dr. Arnold informed me that the committee will indeed call the former editors.

There were several other pointed questions. I'm not the only one that harbors suspicions about the committee, suspicions that might well be unfounded.

The members of the committee accounted very well for themselves. They appeared to be fair-minded individuals, trying to handle a difficult assignment objectively.

Unfortunately, there was an exception. While the rest of the committee seemed genuinely interested in soliciting student input, Dr. Robert Loewenberg seemed more determined to illustrate that his expertise is in history rather than logic.

When Harry said he'd like to see an unshackled editorial page, Dr. Loewenberg objected.

What if a Nazi gains control of the paper, Dr. Loewenberg mused. What if it becomes editorial policy to encourage the killing of blacks and Jews?

Dr. Loewenberg carried on with his far fetched examples for a while. In a way, it was amusing. If a faculty

Opinion

state press

Administrative influence is unhealthy

Editor:

I don't normally write letters to the editor, but I feel as though I must publicly disassociate myself from the recent action of the Board of Financial Control in granting funds to the ASU cheerleaders for an admitted "vacation" trip to Hawaii.

Students on this campus are almost unanimous in their opposition to this measure, yet their so-called representatives on the BFC

felt a higher duty to the hard-working members of the cheer line. The only reason that the wishes of the students were subverted in this manner was the intercession on the cheerleader's behalf by Steve Yarbrough, ASASU Executive Manager, and Allan Frazier, Assistant Executive Manager and cheerleader advisor.

I guess that brings me to the real point of my letter. How can anyone expect

ASASU to be effective in its role of serving the students when administrators from the Office of Student Affairs have such an unhealthy amount of influence over the decision-making processes?

Bob Kenison
ASASU First Vice President

Priorities

Editor:

The arrangement of priorities at this university amazes me. At the risk of further alienating myself from the athletic community here, I want to say that the allocation of university funds to send cheerleaders to Hawaii because of "the lure of the islands, and what it holds in everyone's minds" when there isn't enough money to provide graduate students with grants or fellowships for the summer is appalling.

I am a Teaching Assistant in the English Department here and as such was informed that there were grants and fellowships available for the summer. As a T.A., I am limited in the number of hours I can take during the semester, so it will be necessary for me to study during the summer or continue the pursuit of my Master's degree for another year. Now that the fellowships and grants have been cancelled due to lack of funds, it appears that I will have to spend the extra year.

Meanwhile, a girl who received a deficiency note at midterm is going to Hawaii to cheer on a losing team.
James H. McCutchan

member wants to be absurd, that's his business.

But it was unsettling nevertheless. For a couple of reasons.

First, those kinds of absurd examples can always be used to pave the way for future censorship. It's the kind of illogical reasoning — if I can even use that word — that most often precedes an attempt to muzzle the press.

Secondly, it's insulting not only to me, but to other more distinguished members of the University community.

The State Press editor is chosen by a committee composed of faculty members, students and administration personnel. Dr. William Ruch heads the committee.

It's ludicrous to suggest that Dr. Ruch and his fellow committee members would select a Nazi to head the paper. It's ludicrous to suggest that they would tolerate such an editorial policy. The committee has the authority to fire as well as hire.

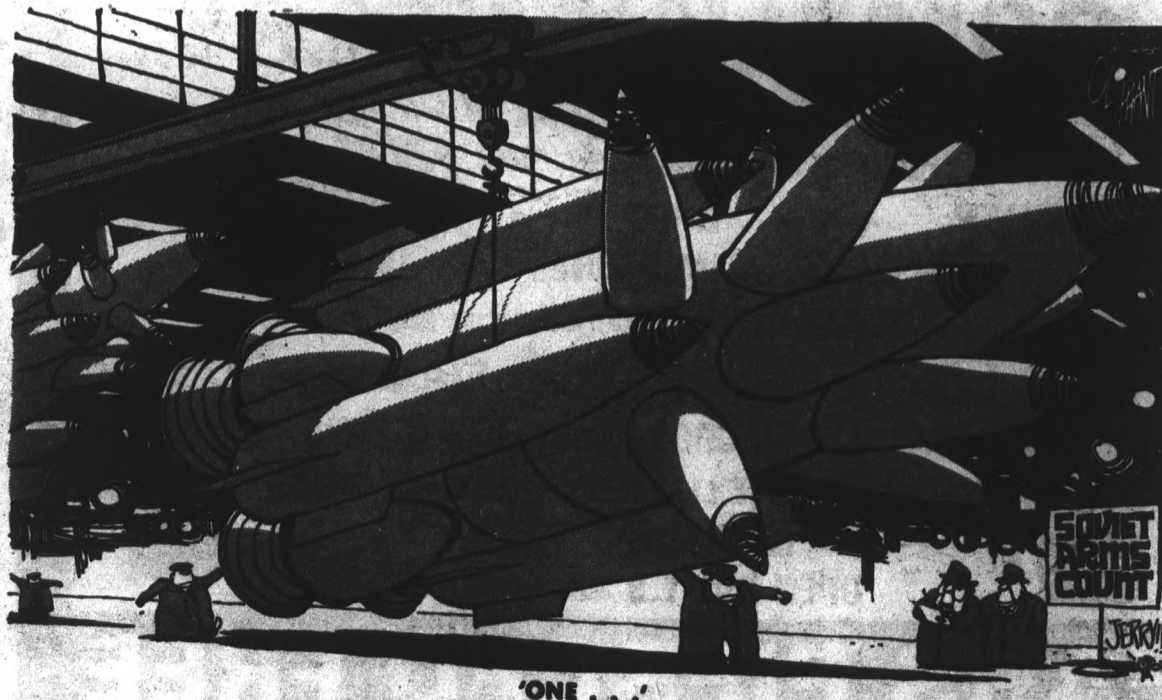
It says so right on page four of the State Press policy guidelines. You'd expect that Dr. Loewenberg, since he is supposed to be studying the paper, would be familiar with those guidelines. Apparently not.

Or perhaps Dr. Loewenberg is simply fascinated by the sound of his own voice and doesn't expect people to take him seriously. Maybe he enjoys playing the role of a buffoon. And, if he does, that's his privilege.

Frankly, I don't think Dr. Loewenberg likes the State Press. He's said so to other committee members. After today, he'll probably like it even less. I don't care.

I only wanted to assure Harry and anyone else who is concerned that the State Press does have an unshackled editorial page. The administration has never tried to influence the paper.

I only hope that Dr. Loewenberg will adopt a more serious approach to the committee's task. There's much to be done and little time for his fantasies.



'ONE . . .'

Two ASASU officers flaunt discriminatory power

Editor:

I cannot begin to express my overwhelming awe and disbelief in the power flaunted by ASASU First Vice President Bob Kenison and Administrative Vice President Mo Portley.

Both gentlemen have displayed infamous dictatorial methodologies carried out in this century by notorious European strongmen. Both gentlemen have only given token consideration to the voice of the students as represented through the ASASU Senate.

Our illustrious Mr. Kenison, according to a former ASASU official, can by using his prerogative as president of the student senate, tell that body what to do; that he is the Senate. MECHA, however, believes that in today's democratic society even a man as powerful as Mr. Kenison cannot dictate to each individual senator how he will express his own views on any issue.

On the same side of the coin, Mr. Portley has demonstrated an outlandish dictatorial type attitude. Mr. Portley, a duly elected representative of ASASU, of which MECHA members are a part, implies that he doesn't have to recognize MECHA's and-or other organizations basic inalienable rights. He states: "I can just cut cultural weeks out of my budget. I won't be violating anything because it's my program."

As the above has shown, both gentlemen have not only ignored their duties as duly elected representatives

of the student body, but as the following will show, they also have made a travesty of the significance of the Civil Rights Act of 1964 by inferring that they are above the law.

Specifically, Title VI of the Civil Rights Act states that there will be no discrimination in federally-assisted institutions, such as ASU. MECHA feels that when it was told not to speak Spanish during the cultural week, it amplifies a traditional sad reality of life of how people throughout the ages have been discriminated against simply for expressing and enjoying their own culture. This sad commentary on life is further amplified by Mr. Kenison's statement of "If you do it in Spanish, that's just like adding fuel to the fire, and it's really going to be rough sledding trying to get the funds next year."

Concerning the issue of MECHA's credibility, I would like to direct Mr. Portley to True North. He says, "They (MECHA) are a radical arm of the chicano

people." We are not a radical organization. MECHA has been instrumental in raising the chicano enrollment at the university since it became an organization at ASU in 1968. The members not only have helped in recruiting chicanos by giving out scholarships and filling out registration forms, but have also helped in retaining them in school by referring them to various services that specialize in retention of students.

If Mr. Portley considers that being involved in helping out fellow-students means being "radical", then I feel that every member of this university should be a radical and be damned proud of it.

MECHA not only has ties in the university but also in the community. Many times MECHA has been approached by subversive organizations that have wanted to destroy the principles of knowledge, truth and democratic process, on which this institution is built, but MECHA

has been instrumental in diverting such forces by subliminating their energies into useful activities.

When the time for the allocation of funds for cultural weeks is brought before the

ASASU Senate in the spring, MECHA and concerned individuals will be present to insure these principles and justice will not be forgotten. Herman Alcantar Jr. Pres. MECHA

Opinion

state press

STARTING DEC. 9 WE WILL BE OPEN
EVENINGS TILL 9 P.M.
WE CARRY HAND TOOLED LEATHER BELTS - BAGS - BILFOLDS
10% OFF STUDENT DISCOUNT

Ardee's

911 S. MILL 968-3532 IN TEMPE CENTER

Macrame Supplies, Jute Beads
Decoupage Boards & Needlework
PAINTINGS & UNUSUAL GIFTS

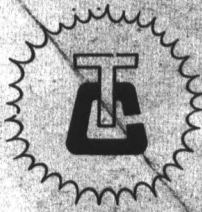
For All Your
Holiday Shopping -

SHOP EARLY AND SAVE AT
Tempe Center

Special Pre-Christmas Sale
December 12 - 13 - 14
plus a
SIDEWALK SALE
next Saturday - Dec. 14



University



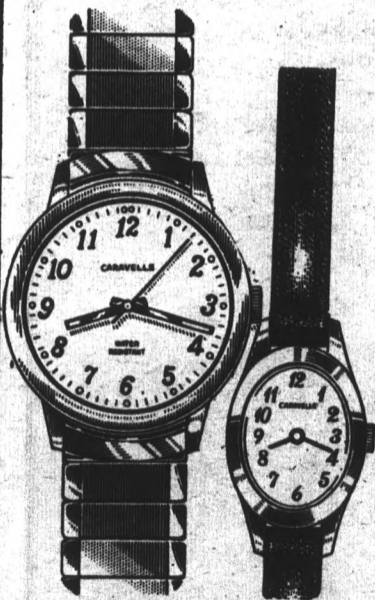
Mill

TEMPE CENTER

UNIVERSITY & MILL

"In The Heart Of Sun Devil Country"

Gift Priced
Under \$30



CARAVELLE
BY BULOVA

Mac
JEWELERS

Tempe Center
921 S. Mill Ave.
966-7587

Some local schools hiring out of state

Continued from page 2

Shofstall said he was glad the statistics had been brought to his attention. He interrupted the interview again to call the superintendent of Mesa schools. "He was proud of it," Shofstall said of the Mesa administrator. "He considers it important that we not have in-breeding, that we have a variety of people. He said his people represent 30 or 40 states. Well, I just don't agree with that."

Reactions from other educators were diverse on the subject of in-breeding, which they call the fear of hiring too many in-state personnel because attitudes and philosophies would reflect only local opinion.

ASU College of Education Dean Del Weber said, "If I were a school personnel director, I wouldn't hire every one of my teachers from Arizona State University. I think training programs are different, professors are different."

He said many school districts from California traditionally hire a portion of their personnel in Arizona. "One wouldn't conclude from that, that the California schools weren't turning out good teachers," Weber said.

Balanced views needed

School district superintendent Ray Shipley said schools need "a balance of philosophic viewpoints, of cultural viewpoints from around the nation."

"It seems to me that having people come in from out of state is a healthy situation," Shipley added.

Purzycki said Arizona is fortunate to already have in-breeding. "Most people here (at ASU) are from out of state and that is already in-breeding. I have brought my mid-western values with me. I haven't changed to the western style completely."

Shofstall agreed. "This idea that you can get a different type of teacher by going out of the state is, as far as I am concerned, a bunch of malarkey. I just don't see it. I don't think the training they're getting in other states is significantly different from the training they're getting in this state," he said.

In response to Purzycki's claim that students in Arizona colleges of education are already in-bred, Shipley said, "At that point, there's only one answer. We want the best people we can get for the job."

Shipley said his hiring out of state intended to curb recent adverse publicity about the quality of teachers. "We are determined that we're going to overcome the 'quality' comments," he said.

Shipley said his annual expense budget for recruiting is \$2,000. Purzycki said, "That's \$2,000 too much."

One student doesn't worry

ASU student Steve Poe, a senior in elementary education, said he is not worried about job prospects. "I know Arizona's population is growing, and each

year many teachers are retiring," he said.

Poe feels out-of-state recruiting by local districts is justified. "If they can get the cream of the crop from ASU and then go somewhere else and get the best, I can't see anything wrong with that" he said.

Carol Goewey, working on her master's degree in secondary education, said she would prefer school districts hire in-state.

"I feel I'm in a position where it's going to be very difficult to get a job. That's why I'm now taking courses in reading," she said.

Shofstall said he understands districts hiring specialists which can't be found in-state.

He said another reason for out-of-state recruitment may be to make up for minority deficiencies in staff personnel.

Ernie Bivens, personnel director last year of Tempe Elementary School District said he was forced to find teachers elsewhere. "We'd never gone out of state until we were virtually ordered to do so by the Civil Rights office in San Francisco."

"They made an investigation of our hiring practices and came up with the findings that we were under-staffed in Mexican-American teachers," he said. Although only three teachers were hired on a

Continued on page 7

SERVICES AT HILLEL

Friday night Shabbat services will be held December 6, 8:00 p.m. at Baker Center, 213 E. University


Following services will be a presentation by ASU Oral Interpretation students. You'll hear works from the great Shalom Aleichem, and other Jewish authors.

ORAL INTERPRETATION

©1974 The Gap

Take a Levi's Jeans trip.

Make it to the Gap. For the world's greatest selection of Levi's®. Over 4 tons per store. Levi's for every size, shape, taste and sex. Good trip.



the gap.

LOS ANGELES MALL
946-6533
Mon.-Sat. 10 am-5 pm
Sun. Noon to 5:00 pm

Live at the



**NOW RENTING For
SPRING SEMESTER**

Services include:

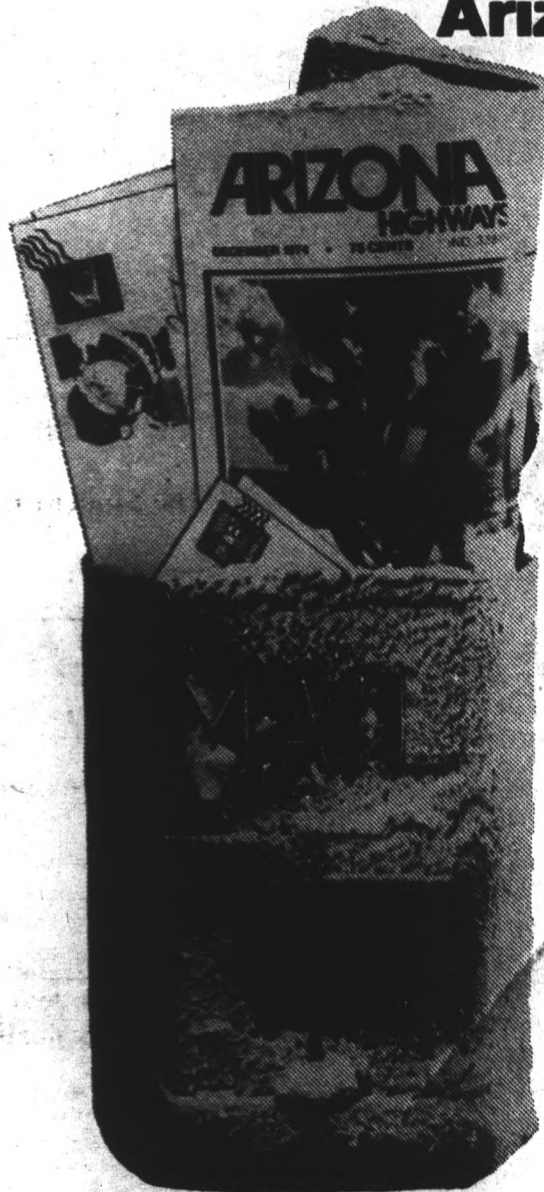
- 20 meals weekly
- weekly maid service
- bed linens furnished
- Private parking lot
- Recreational facilities including pool
- Laundry facilities
- Private phone connections avail.



401 E. Apache
Tempe

Phone
967-7628

A nice way to remember... Arizona Highways.



The holiday issue is on sale now — 75¢ at newsstands and checkout counters everywhere. It's 52 pages in glorious color. Free mailing envelope included.

Gift subscriptions: \$6.00 per year in U.S. and possessions. \$7.00 elsewhere.

Send check or money order to: Arizona Highways, 2039 West Lewis, Phoenix, AZ 85009. Or phone 258-6641. We'll mail an attractive card to announce your gift.

Some Arizona schools find many teachers elsewhere

Continued from page 6

recruitment trip to New Mexico and Texas, the Civil Rights office seemed to be satisfied with the effort, Bivens told. He added that only one of the three he hired speaks Spanish.

Stay with tradition

Phyllis Catlett, president of the Arizona Classroom Teachers, a department of the Arizona Education Association, said districts excessively hire out of state because it has been a practice of the past and "they're still clinging to it."

"I think the situation for those in the market already is to the point where a lot of them have taken other jobs rather than be in the field of education at all," she said.

Catlett agreed with the suggestion voiced by some students and Shofstall that the ASU College of Education be upgraded. She said this could be done by providing better orientation to students as to the employment outlook in the state and raising standards in the college's student teaching program.

ASU graduate student Dorris Newton said she has asked Catlett to call a special meeting of the Arizona Classroom Teachers to discuss the quality of teachers being employed who have had their training in Arizona institutions.

Catlett said February would probably be the earliest such a meeting could be arranged.

Honors leader to confer with eligible students

Dr. John Evans, chairman of the honors program in the College of Liberal Arts, will meet with all eligible students in Social Sciences Room 108 at noon on Dec. 12 to discuss the honors program.

Any student who has completed 15 hours of University courses and has a grade point average of 3.40 is eligible. Students with more than 60 hours must have a grade index of 3.5 in order to qualify, Evans said.

At basketball classics

Students must pay \$1 for tickets

Frank Rispoli, assistant athletic director, said the additional income for the tournament games is necessary for the classic, because ASU must pay for room, board and transportation for the visiting teams. In addition ASU must pay maintenance costs for the Activities Center.

According to Rispoli no fees are assessed to students for regular season games because ASU doesn't have to provide accommodations for the visiting team.

ASU students will have to pay \$1 to attend either the upcoming Sun Devil or Fiesta

Bowl basketball classics because of an agreement between the Associated Students and the ASU athletic department, an ASASU official said.

Rick Weiss, ASASU president, said a contract between the two organizations was signed last year providing free regular season games for students, but a \$1 charge for the two classics.

For the classics, ASU pays for 15 individuals per team, on a basis of \$10 a day for lodging, \$12 a day for food, and whatever transportation costs are involved, Rispoli said.

The OX BOW
(Under New Management)

TEMPES OLDEST TAVERN

T.G.I.F.
Pitcher of
Beer — \$1.00
(64 oz.)

Mexican Food

OPEN

11:00 am to 1:00 am Daily
Noon to 1:00 am Sunday

Completely Renovated

1810 E. Apache, Tempe (Near Corner of McClintock)

FRIDAY
Free Taco
Night
(1 per customer)



Sell the Old Man!

To you he's old - all used up.
It's the end of the semester
and you have no use for him anymore.

He could sit on some shelf and collect dust
but he's still worth something.

The Student Book Center will buy him back
and not only pay you cash but give you a valuable gift certificate as well.
When you sell your used books for \$20.00 you get \$20.00 cash and
a gift certificate for \$2.00. If you get \$30.00 for your used books
you'll get a gift certificate for \$3.00.

You can use this gift certificate now to save
on a gift for yourself or a friend.
Or you can hold on to it till next semester and save even more
by buying the books you'll need
from the supply of used books
the Student Book Center will have on hand.

Either way you'll make out better when you sell your used books
to the Student Book Center on College Avenue
one block north of campus.

Do yourself a favor -
SELL THE OLD MAN, HE'S WORTH IT!

704 S. College Avenue
One block North of ASU
966-6226

'Harrowhouse' and 'Klansmen' considered film flops

This is the time of the year when the studios release all of their big pictures on an unsuspecting public. The holidays, school vacations and The Academy Award qualification deadline are the obvious causes for the onslaught of what the studio heads and production chiefs consider their important products.

So many will open that reviewers and critics will find it almost impossible to catch them all. With some of the supposedly quality films lacking some critical coverage, the lesser known films and the real bombs will certainly not be exposed to the watchful eye they might ordinarily receive.

Thus, this column is dedicated to and written about two of these "lesser" films.

"Harrowhouse" might have been considered an important movie had it been released during a different season, when it would have less competition in the publicity contests.

It is a stylish and sophisticated heist flick. The viewers who would most appreciate "Harrowhouse's" style will probably stay away from anything labeled a heist and caper movie, while action fans will not find enough of the old rough and tumble to satisfy their tastes either. This genre seems to have run its course, so to bring out another jewel stealing caper film at this time does not seem to insure it of any great success.

Whatever the reason "Harrowhouse" ends up in the collection of unimportant films, but the movie is a droll and delightful film. However, its comedic device sometimes goes a bit far and the plot gets a bit farfetched.

Charles Grodin, who was the "The Heartbreak Kid," plays

the lead. His wry voice-over reactions to what's going on (his thoughts are verbalized on the soundtrack) are the highlights of the film. However, these asides are where the film goes a bit too far. The director and the screenwriter carry this on too long, when both the novelty and the wit have worn thin. Perhaps this is because there is not much else here. The action is pretty slow.

But there is Candice Bergen, the most beautiful actress in films, and if she is not the most spirited performer around, she is getting better, besides which she projects a likable warm intelligence. And you can always just look at her.

The rest of the cast is a distinguished group of British actors, John Gielgud, Trevor Howard and James Mason portraying another one of his broken down characters, which

seems to be all he ever plays anymore.

"Harrowhouse" is a good film, filled with humor, sophistication and style, things we seldom get anymore and should probably accept thankfully.

Last and certainly least is "The Klansman." It was certainly a well enough publicized venture. Daily reports were filed from location site, Oroville, California, telling about drinking bouts between Richard Burton and Lee Marvin, flirtations between Richard Burton and various local lovelies and the disintegration of a marriage between Richard Burton and Elizabeth Taylor amidst boozing, brawling and temporary

reconciliations. No wonder Burton's performance is so tired. The poor man was exhausted.

The script, based on the novel by William Bradford Huie, has a good story, but the dialogue here is so fake and the reasoning so shallow that the film, directed by Terence Young in grade-B style, can probably be named the worst film of 1974 with very little argument. But sometimes prizes like that make very unimportant films into very big movies.

"The Klansman" is the story of racial tensions in an Alabama town during the days when civil rights activists organized marches and conducted demonstrations.

Lee Marvin plays the sheriff trying to keep the town calm at any price. Burton plays an alcoholic Black sympathizer, and it is indeed sad to watch an actor of Burton's magnitude appear in an exploitation programmer, but it is sadder, indeed, when one realizes that he is not even up to this trash.

Acting honors go to Linda Evans (who you will not recognize from her Audra Barkley days on "The Big Valley") and O. J. Simpson as a very militant militant.

The rest of the cast includes Cameron Mitchell, Lola Falana and Luciana Paluzzi as Burton's mistress named Trixie, and her accent is anything but Southern. You figure it out.

—Steve Allnatt

Student Discount
MINI-STORAGE & WAREHOUSE
DON'T HAUL IT . . .
STORE IT
You Lock It.
You Keep The Key.
2422 W. Broadway
MESA
968-1021

Why Are More and More People Choosing THE LAMSON BUSINESS COLLEGE?



HERE IS ONE STUDENT'S REASON

"I chose Lamsons because I want to be qualified for a good paying job in the shortest possible time."

Robin Amoro
Legal Secretarial Student
Phoenix

If you would like a high-paying job in just a few short months, enroll at Lamsons.

NEXT CLASSES BEGIN JANUARY 6

(We accept your college credits)

- *Executive Secretarial — 24 months
- *Legal Secretarial — 24 months
- Medical Secretarial — 12 months
- Receptionist — 6 months
- IBM Key Punch — 6 months
- Accounting — 9-12 months
- *Business Administration — 24 months
- *Associate in Business Degree programs

Free Job Placement Assistance . . . Day and Evening Classes . . .
Approved for Veterans Training . . . An Eligible Institution Under the
Federally Insured Student Loan Program . . . BEOG . . . SEOG.

ENROLL NOW
CALL 258-7940

Or send coupon for Free Information
THE LAMSON BUSINESS COLLEGE
725 N. Central Avenue
Phoenix, AZ 85004

Name _____
Address _____
City _____
Phone _____



Give The
Of Gent
His
Christmas
Break

Let us help you choose from a wide selection — in stock — of new Brunswick Bowling Balls, bags and shoes. Just right for that special "under the tree" gift with savings on Christmas "package" combinations

ALSO IN STOCK, AN
ASSORTMENT OF POOL
CUES AND CASES

**Memorial Union Recreation
Center-Lower Level**

Collage

"College Life" — Fellowship, singing, message and food with members of the Campus Crusade for Christ at 8 p.m., 1290 Mill Avenue.
Homemade Fried Bread Sale, sponsored by the Native American Student Association, from 11:30 a.m. to 1 p.m. at Baker Center. Plain bread costs 55 cents, with beans 65 cents.
The McAllister Performing Arts Group meets at 8 p.m. until 1 a.m. at 1414 S. McAllister. Come enjoy music, dance, drama and poetry.
Interpretations of great Jewish literature will be presented by ASU students of Oral Interpretation, 8 p.m., Baker Center, 213 East University.
Band Day T-Shirts will be on sale for \$3 by Kappa Kappa Psi, the honorary band fraternity of Grady Gammage, room 311 from 3:45 p.m. to 4:15 p.m. through next Wednesday.
Dickens' Christmas Carol will be presented through Sunday, Dec. 8, at the Lyceum Theatre, 8 p.m. Acting as Scrooge, Tiny Tim and the Ghost of Christmas are specially fashioned marionettes. Tickets at the Lyceum Box Office.

SATURDAY

\$1 invested in **"Las Vegas Night"** will entitle you to \$1,000 worth of playing money, a free drink and participation in the Swinger Sweepstakes in the party room at Canlen House, 200 West Hermosa off of Mill Avenue. Transportation will be provided by Hillel from Baker Center, call 966-5371.

SUNDAY

A **Special Bluegrass Mass** will be held at the All Saints Newman Center at 6 p.m. 230 E. University.
 Listen to **"Kool and Kompany"** sound off at 10 p.m. The show is produced by ASU Students on Kool FM 94.5.
Handel's "Messiah" will be presented by the ASU Choir at Grady Gammage Auditorium, 3 & 8 p.m. Tickets are \$1, unreserved.

MONDAY

The **Black Discovery Group** will meet 6:30 to 8 p.m. at 205 E. 15th Street. The discussion will concern the relevance of the life and teachings of Jesus to the Black Community.

Broadcasting executive to speak

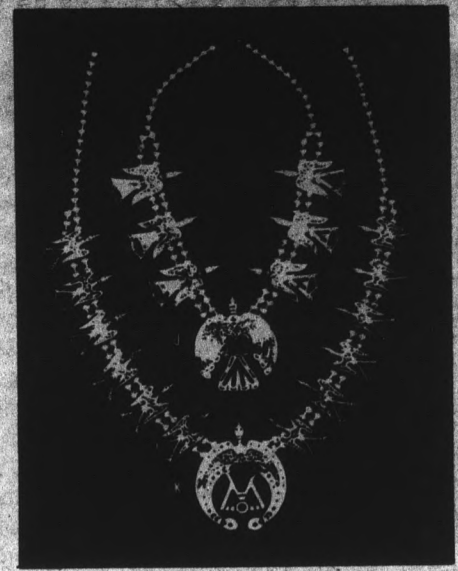
The president of the National Association of Broadcasters (NAB), Vincent Wasilewski, will speak to mass communications students and the public on the NAB code, current changes in the NAB and broadcast philosophy at 11:30 a.m. today in the

Stauffer Building.

Wasilewski is in Phoenix this week for the winter convention of the Arizona Broadcasters Association. The talk is sponsored by the ASU chapter of Alpha Epsilon Rho, an honorary broadcast fraternity.

INDIAN JEWELRY

½ Price during
Christmas Season



CHIEF DODGE

INDIAN JEWELRY

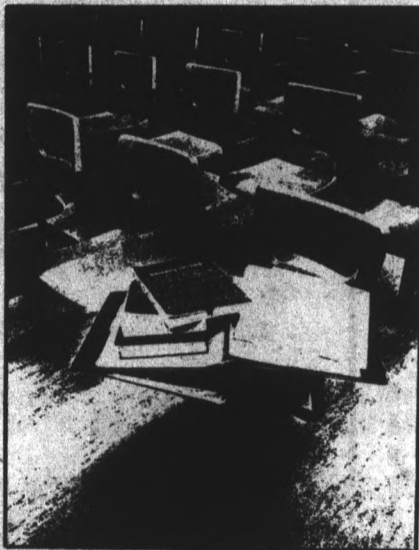
518 S. MILL
 TEMPE, ARIZONA

Hand Made Jewelry

THE ASASU STUDENT BOOK EXCHANGE

YOU'LL SAVE MONEY BECAUSE WE WON'T MAKE ANY

December 12-13,
Thursday through Friday and
December 16-20,
Monday through Friday
Book Collection at Manzanita,
Sahuaro, and the MU
Greenlee Room.



January 17, Friday, and
January 20 through 23,
Monday through Thursday.
Book Selling in the
Mohave Room. MU.
Book Collection outside
the Mohave Room.

Books will be bought and sold at 65% of the original price.
Compare this to others who buy at 50% and sell at 75%.

SPECIAL PROJECTS COMMITTEE

Record review

New albums appeal to wide variety of music lovers

Leo Kottke

Leo Kottke's appearances at Gammage Auditorium recently jolted a lot of amateur musicologists into thinking about the potential of popular instrumental guitar music. More specifically, it pointed out one man's genius in developing the mountain style of pickin' a 12-string into distinctly structured, serious pieces.

Kottke's appeal lies in his ability to make music of a specific geographic area mass marketable. A new release proves that point: "Dreams and All-That Stuff" (Capitol).

In "Dreams," Kottke's versatility is exemplified by such works as "Medley" (in his words, "a little bit of San Antonio Rose plastered onto America the Beautiful"), "Mona Ray" (named after a furniture saleswoman in Santa Barbara) and "Twilight Property."

Johnny Hammond

Jazz albums, unlike many rock albums, seem to have less trouble in establishing a continuity throughout their works. Their biggest pitfall is monotony, but not so in Johnny Hammond's "Gambler's Life" (Salvation). Hammond relies

heavily on the use of the electric piano and synthesizer. Combining that kind of electronic wizardry with King Errisson's congas and the attraction of Rhodesian soul (as on "Rhodesian Thoroughfare"), it comes out as a successful transition from organ to piano for Hammond.

"Star Borne" is a nice finger snapper but the best was "Virgo Lady," a cut which gave every contributing artist a chance to show off his skills.

Tom Rush

Women have been described throughout history as mysterious creatures with unpredictable moods and fancies. Whether this tradition is true depends on individual interpretation but Tom Rush dwells on it in his latest release, "Ladies Love Outlaws" (Columbia).

The survival instinct of the West is brought out in tunes like "Black Magic Gun," wherein a gunfighter's reputation is distorted beyond his ability to keep alive.

Two favorites of Rush's ap-

pear on the album: "Desperados Waiting for the Train" and the bittersweet "No Regrets." The latter features a new brass arrangement which adds some dramatic impact to the piece.

An easy album to listen to, guaranteed to offend no one.

Merle Haggard

"His 30th Album," on Capitol by Merle Haggard is just that. It's certainly not his best. But that does not mean there is not some worthwhile sound on this album from one of the few country western singers to make the cover of TIME.

Haggard's treatment of "Things Aren't Funny

Anymore" is the best thing on the album, a simple ballad of lost love, showing he's still one of the best lyricists in country music. "The Girl Who Made Me Laugh" with lots of violin and guitar is another album plus.

"Holding Things Together," on the other hand, is when it starts falling apart, especially when Haggard wails, "When it comes to raisin' children, it's a job meant for two . . ."

ELO

Electric Light Orchestra's latest album maintains its summit in classical rock. It is called the "Eldorado" Symphony and packs what any ELO fan could want. Every cut is

strong with the best being "Can't Get It Out of My Head," and "Boy Blue."

The hollow vocals which have characterized ELO remain and the frenzied cello and violin playing add the needed spark to Eldorado. Basically it is an album that you will want to play loud so its full potential can be realized.

King Crimson

Robert Fripp is stuck in a rut. There's no denying he is fantastic, like the other musicians in the band he leads. But King Crimson's last three albums are made of the same material, with each record slightly Continued on page 11

For about the same amount as a rental deposit, you can become one of the landed gentry. Older houses are available in Downtown Tempe, Mesa, and east Phoenix. It's cheaper than rent and you can do what you like. Call 968-7803

BOB'S REALTY

A.S.U. PHOTO SERVICE OFFERS YOU

- COPYING
- SLIDE DUPLICATION
- PHOTOLITHOGRAPHY
- PRODUCT ILLUSTRATION
- BLACK & WHITE PRINTING
- EKTACHROME PROCESSING
- PASSPORTS & PORTRAITURE

AT A.S.U. PHOTO SERVICE MATTHEWS HALL 965-3637

A university service facility for the university community

ONE BEDROOM \$165⁰⁰ PER MONTH

Live at LA-MANCHA APARTMENTS and have it all! Fantastic recreational facilities: swimming pool, sauna, volleyball court, universal gym and billiards room. Naturally, there's private parking and security patrol. Check around, you'll see, our rates are great; . . . and all accommodations are completely furnished with utilities paid. Studios available at \$135.00.

La Mancha APARTMENTS

909 So. Terrace Road, Tempe

50¢ OFF

any large Pizza

plus

4 FREE Pepsi's

Out-R-Inn Pizza & Subs

1045-A Lemon St. • 966-7009

WE DELIVER
Call 966-7009

Offer Good thru 12/20/74

Newly-released LPs make excellent stocking stuffers

Continued from page 10

reshaped to make it saleable.

On this new album, "Red," (ATCO) we see violinist David Cross has lost his status as a band member. He is now listed under the "With thanks to" column. It was personnel changes which changed the bands' sound several years ago, but it will take much more to do it now.

Fripp must expand his horizons. With his talent, he can do much better.

One cut on "Red," entitled "Providence," is so slow and loose it sounds like the band is tuning up. Other songs are fast and tight, but repetitive and boring.

It seems Fripp doesn't want to improve his style because he's afraid of rocking the boat. If that's his theory, he'd better not expect us to keep buying his albums.

Linda Ronstadt

Best release of the month: Linda Ronstadt's "Heart Like A Wheel" on Capitol is the culmination of a frustrating stop and go career of a good singer. Ronstadt's voice isn't her only strong point — her selection of musicians and material reflects her maturity. She competently covers songs that range from James Taylor's "You Can Close Your Eyes" to Clint Ballard, Jr.'s "You're No Good." In between she draws from her country and western

roots for a Hank Williams classic, "I Can't Help It (If I'm Still in Love With You)," making it very palatable to those unaccustomed to the C&W style. With help from friends Maria Muldaur, John David Souther and the Eagles, "Heart Like a Wheel" seems to be the turning point in Ronstadt's bid for singing stardom.

Joe Cocker

Joe Cocker's adventures as a rock star have been part of general gossip: his drinking problem and his inability to maintain during his performances. But when it comes down to singing, Cocker can rank with the professionals in terms of putting feeling into music.

"I Can Stand A Little Rain" (A&M) crops up as the mellow side of Cocker. "Put Out the Light," and "I Get Mad," still retain the driving rhythms of his delta days, but it's the softer tunes that make this album.

"You Are So Beautiful," co-written by Billy Preston and Bruce Fisher, is slow and simple in its approach and Cocker takes advantage of the opportunity to express himself honestly. He succeeds again in Jimmy Webb's "The Moon Is A Harsh Mistress," and the title song, written by Jim Price.

Willie Hutch

Pondering the fate of the world is a heavy subject and is difficult to transform in terms

of music. Willie Hutch's "The Mark of the Beast" (Motown) steps up to that door but isn't able to negotiate the lyrics.

The flip side is nice, tough, and gets back to some lighter material. "Woman You Touched Me," "Do The Thing That's Best For You," and "Don't You Let Nobody Tell You How to do Your Thing" all communicate eloquently.

Gentle Giant

Gentle Giant's new album on Capitol reflects a stunning change: the group is apparently going commercial.

It would be hard for them to outdo their last two albums, but this new one is watered-down and mellowed-out in comparison to the innovative rock-

jazz they had been playing.

It's called "The Power and The Glory," and it's Gentle Giant's rock opera. Each song is supposed to express a different mood, tied to the lyrics, like what Rick Wakeman does in "The Six Wives of Henry the Eighth."

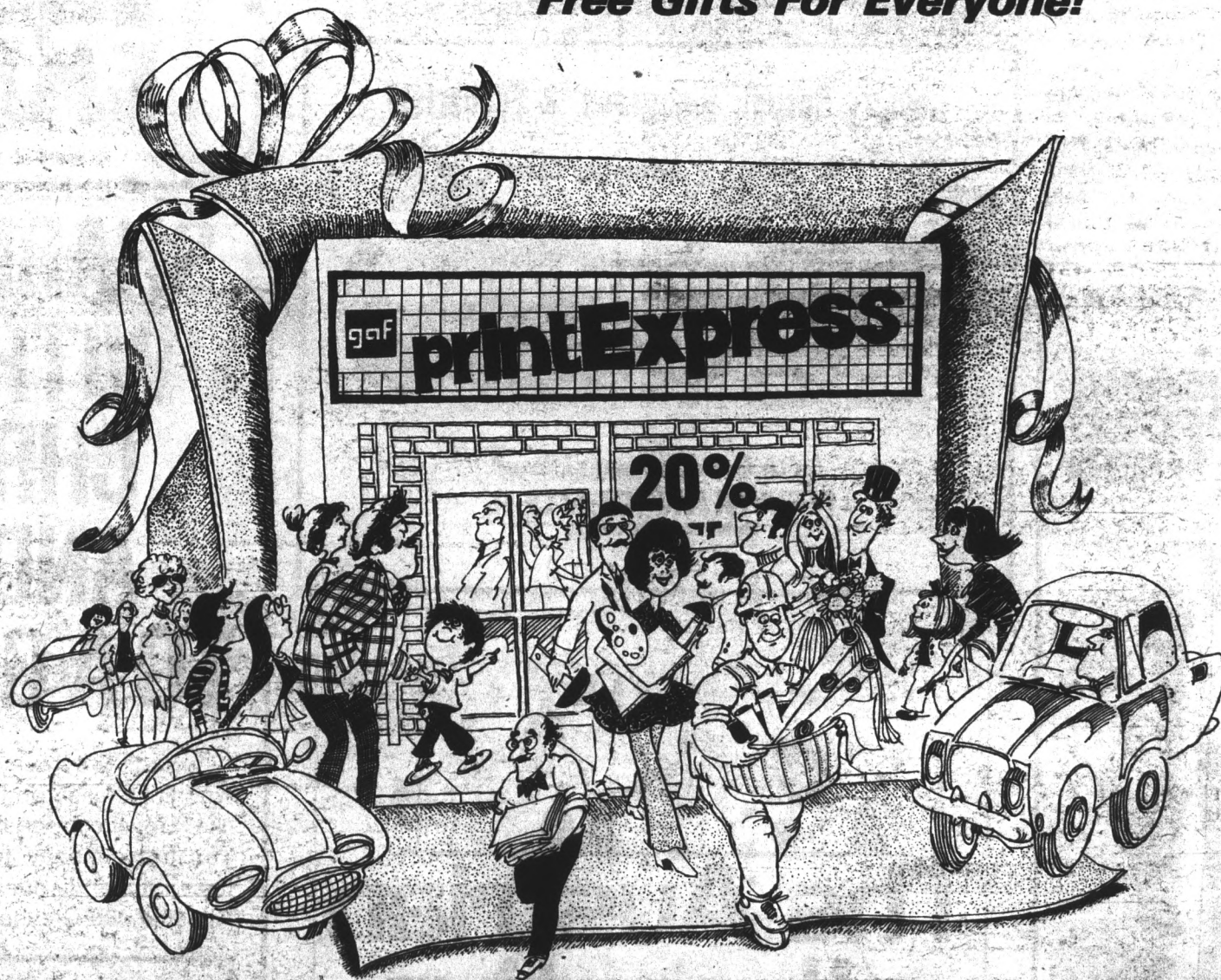
Lyrics are great, but this album emphasizes them at the expense of the music.

"Playing the Game" is a song that is alive like their old material. But too many songs are like "Aspirations," which is slow, conventional mush rock.

The group seems to be heading for the mediocre middle roads of commercial rock. Hopefully they're just off course, and will realize their folly.

OPEN NOW — Watch For GRAND OPENING SALE—20% Off during week of Dec. 9-14

Free Gifts For Everyone!



Grand Savings for our Grand Opening.

Come in to celebrate the Grand Opening of the GAF Print Express.™
We're giving **20% OFF** on all services and products + **Free Gifts.**

We didn't just come up with one good idea for the Grand Opening of the GAF Print Express.™

We came up with two of them.

20% off our regular prices for one week only, plus free gifts. (You heard right, free.)

It's our way of introducing you to a fantastic new place to get the best, and the fastest, of the following services:

Like Express Copies, while-you-wait, of just about anything on just about any paper.

Like Express Printing, while-you-wait, of announcements, resumes, invitations, anything.

Like Express White Printing, while-you-wait, for architects, engineers, even students.

Like Express Transparencies and Microfilm Service, while-you-wait, overhead presentation transparencies and projector rentals, even microfilm.

Like Drafting Supplies and Equipment, even Art Supplies.

The GAF Print Express™ is open Monday through Saturday.

It's always going to be terrific, but the 20% off Grand Opening week will make the first week even 20% better.

Come celebrate our Grand Opening at:

1027 S. Rural Rd., Tempe

Open: 9-5 Mon. thru Fri.

Sat. 9:30-12:30

968-7989



"We'll help you express yourself. Fast and inexpensively."

Feed the
EARS

Nourish the
HEAD

Spread the
BREAD

Give the
Christmas gift
that makes it
for everyone.

**RECORDS
and
TAPES**

Sexist bill in — college sports out?

By MARK BAUER

A proposed law to be signed by President Gerald Ford in January ending sex discrimination in intercollegiate sports is causing many dollar-pinched athletic directors around the country headaches.

The proposed law, Title nine of Public Law 92-318, is part of the 1972 Education Act.

The Department of Health, Education and Welfare (HEW) will be responsible for enforcing and interpreting the law.

Athletic directors and the NCAA have reacted against the law because they feel it could possibly cause the downfall of major college athletics.

The proposed law specifically states that all schools receiving federal funds "must treat their admitted students without discrimination on the basis of sex."

"Athletics may be provided through separate teams for males and females, or through a single team open to both sexes." It also states "they may not discriminate on the basis of sex

in provision of necessary equipment or supplies, or in any other way."

Title nine says a college does not necessarily have to spend the same amount of money for the women as it does men. Some athletic directors feel that they will be forced to spend the same amount of money on women's programs as men's in order to offer equal opportunity.

Athletic Director Stan Watts of BYU has expressed great concern with guidelines as they are now.

"I feel the HEW requirements will force a lot of schools to cut back on athletic budgets. It would really put us in a financial bind if we were required to give equal opportunities to women," he said.

Football and basketball, the major revenue producing sports, have not been excluded from Title Nine and, in order to keep these sports, the minor sports may have to be dropped.

Gwen Gregory, the HEW lawyer chiefly responsible for Title Nine, said minor sports like swimming, track and

baseball may possibly die.

ASU Athletic Director Fred Miller isn't as gloomy. The finalized guidelines are not ready and there are still too many questions to be answered, he said.

"There are so many alternatives to explore in the funding of a women's program," Miller said. "The first reaction is that they are going to take money from men's intercollegiate athletics and put it in women's intercollegiate athletics, that is an early assumption."

"My reaction is that you react upon definitive information, you don't act upon speculation. The guidelines have indicated that there will be equal rights for women. I don't think anybody argues with that," Miller said.

"What the relationship of athletics on university campuses will be is still not finalized. I think the gals will have an opportunity to compete, as well they should, he said.

"I don't want to react until I see the final guidelines. There is a reason for concern, but there is not reason for panic."

HERTZ

RENT A CAR

ASU Students . . .

If you're over 18 you can rent a Ford or other fine car at a

SPECIAL LOW WEEK-END RATE of

\$8.00 A DAY AND 14c PER MILE

4-Day-Weekend rate: \$29—\$30 free miles

UNLIMITED FREE Mileage Rates

7 Days for \$119.00

For Your Car, Call Your A.S.U. Representative

STEVE BLAGEN

968-4072 or 963-5786

Another Continental Discount Fare:

ECONOMY DISCOUNT FARE

SAVE \$5

TO LOS ANGELES

You come out ahead because we really move our tail.

We're the only airline with Economy Discount Fares throughout our route system — a great way to save, just for skipping a meal. Our Los Angeles Economy fare is only \$43. And we've got plenty more:

HOUSTON	\$ 78	SAVE \$10
MIAMI	\$140	SAVE \$15
EL PASO	\$ 30	SAVE \$ 3
SAN ANTONIO	\$ 67	SAVE \$ 7

Then for added savings, we have Standby Discount Fares on selected flights. Most of our standbys do make their flights, so the risk is low and the savings high:

HOUSTON	\$ 61	SAVE \$27
EL PASO	\$ 25	SAVE \$ 8

Remember too, a travel agent costs you nothing extra, so call one for the good word on all our Discount Fares. Or call us at 258-8911. At holiday time or any time, we can probably get you where you live, for less.

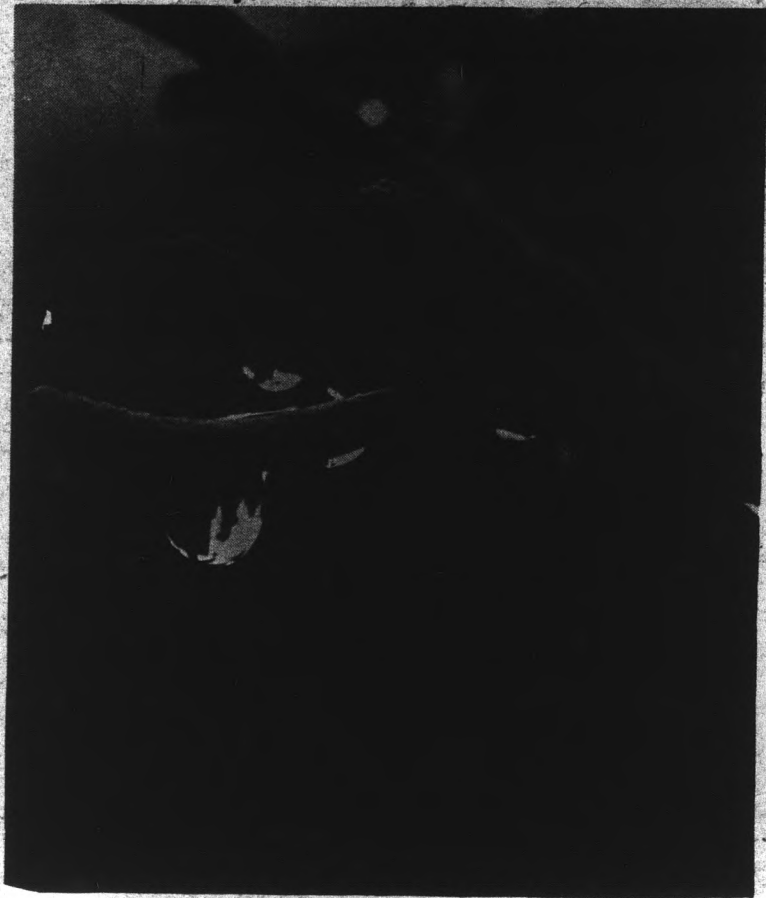
All fares are one way and include tax; airport security surcharge extra.

We really move our tail for you.

CONTINENTAL AIRLINES

The Proud Bird with the Golden Tail.





Rainwater

Tiny drops of water hang in indecision on a plant near the Architecture building.



Photos by Kevin Gustafson

ASU Final Exam Schedule

All Classes Regularly Scheduled on		Examination is Scheduled on:	
MWF or Daily * at:			
7:40 - 8:30	Wed.,	December 18	7:40 - 9:30
8:40 - 9:30	Tues.,	December 17	7:40 - 9:30
9:40 - 10:30	Mon.,	December 16	7:40 - 9:30
10:40 - 11:30	Tues.,	December 17	10:00 - 11:50
11:40 - 12:30	Mon.,	December 16	10:00 - 11:50
12:40 - 1:30	Thurs.,	December 19	10:00 - 11:50
1:40 - 2:30	Wed.,	December 18	3:40 - 5:30
2:40 - 3:30	Mon.,	December 16	1:00 - 2:50
3:40 - 4:30	Thurs.,	December 19	3:40 - 5:30
4:40 - 5:30	Fri.,	December 20	3:40 - 5:30
All Classes Regularly Scheduled on		Examination is Scheduled on:	
TTh or TThS at:			
7:40 - 8:30	Fri.,	December 20	7:40 - 9:30
7:40 - 8:55	Fri.,	December 20	7:40 - 9:30
8:40 - 9:30	Wed.,	December 18	10:00 - 11:50
9:15 - 10:30	Thurs.,	December 19	7:40 - 9:30
9:40 - 10:30	Thurs.,	December 19	7:40 - 9:30
10:40 - 11:30	Wed.,	December 18	1:00 - 2:50
10:40 - 11:55	Wed.,	December 18	1:00 - 2:50
11:40 - 12:30	Tues.,	December 17	3:40 - 5:30
12:15 - 1:30	Tues.,	December 17	1:00 - 2:50
12:40 - 1:30	Tues.,	December 17	1:00 - 2:50
1:40 - 2:30	Thurs.,	December 19	1:00 - 2:50
1:40 - 2:55	Thurs.,	December 19	1:00 - 2:50
2:40 - 3:30	Fri.,	December 20	1:00 - 2:50
3:15 - 4:30	Mon.,	December 16	3:40 - 5:30
3:40 - 4:30	Mon.,	December 16	3:40 - 5:30
4:40 - 5:30	Fri.,	December 20	10:00 - 11:50
4:40 - 5:55	Fri.,	December 20	10:00 - 11:50

* All classes not listed will follow this schedule.

Examinations for classes that are scheduled with "Time Arranged" and for classes that meet at, or after 5:30 P.M. in the evening, will be held at the time scheduled for the last regular meeting of the class during the examination period of December 16 through December 20 unless otherwise scheduled by the instructor during this final examination period. For three semester hour courses that meet twice a week, examinations should be scheduled to correspond to the full class hour period for which the course is scheduled.

Correction

Due to an error in proofreading, the State Press reported Thursday that afternoon Bugline runs leave ASU at 1:30, 2:45 and 5 a.m.

The story should have read "p.m."

LAS VEGAS NIGHT

Saturday, Dec. 7
8:00 p.m.

Canlon House Party Room
200 West Hermosa
(South of Southern Ave. New Section)

Admission \$1.00
includes \$1,000 worth of
playing money and
one free beverage.

Door prizes
Auction
Gambling





ERICKSON
HANDCRAFTS

ARTIST & DRAFTING
SUPPLIES

Crafts - Picture Frames
Decorating Material

Open Mon. & Thurs. Nights
10 Percent Discount to Students
111 E. University — 967-4482

50% DISCOUNT ON ALL JEWELRY WITH COUPON
Come See Our Holiday Gift Selection
INDIAN JEWELRY

Bever Silver & Jewelry

Western Savings Building, Suite 205
525 South Mill—Tempe
Open Monday-Friday 8:30 to 6:30, Saturday 10:00 to 5:00
Phone 968-3462

WITH THIS COUPON:

XMAS SPECIALS

WATERBEDS

Reg. \$50. . NOW **\$24⁹⁵**

ADULT SIZE BEAN BAG CHAIRS

Reg. \$45. . NOW **\$23⁵⁰**
(Black - red - brown - gold - green - white, etc.)

ALL TOPS 20% OFF

Michael's Apple Pie

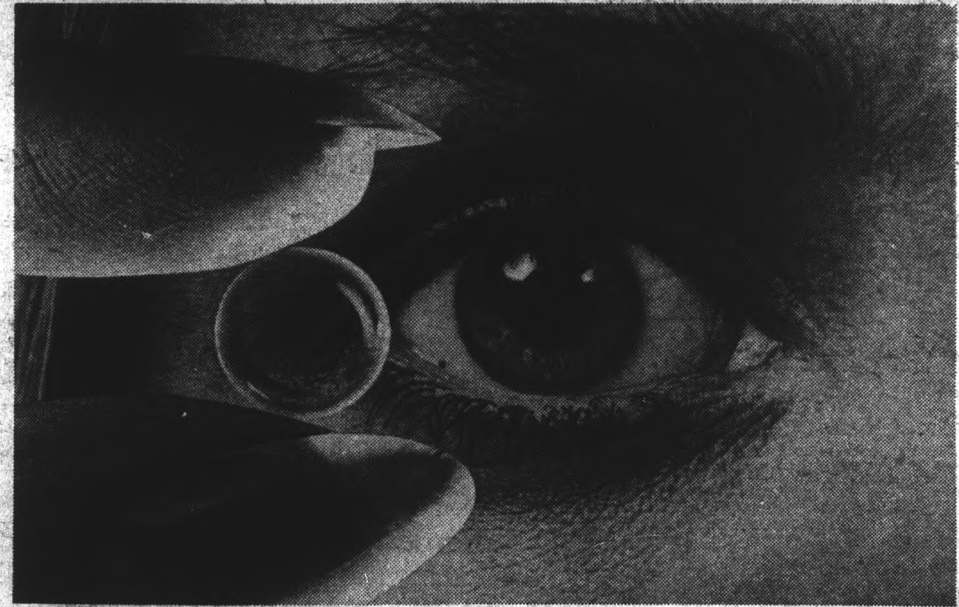
221 W. University Drive 4873 North Central
Tempe • 966-9006 Phoenix • 248-9022

Open Monday-Friday 11:30 to 7:30, Saturday 10:00 to 6:00

OFFER GOOD THRU 12/24/74

COUPON

CONTACTS ARE A GIRL'S BEST FRIEND.



Contact lenses can help you look better, feel better. Our contacts are flawlessly ground to exact specifications. They're fitted with care by professionals. Let us show you the new comfort and convenience of our contact lenses.

\$90

Single-vision contact lenses:

TEMPE • 805 Mill Avenue, Tempe Center / 967-7864

PHOENIX 16 W. Adams St.	PARK CENTRAL 3100 N. Central	CHRIS-TOWN 1741 W. Bethany Home Rd.	THOMAS MALL 4527 E. Thomas Rd.
SCOTTSDALE 719 N. Old Scottsdale Rd.	MARYVALE 5220 W. Indian School Rd.	MESA 120 West Main	TUCSON El Con Center, Amphl Plaza
			YUMA 2816 4th Ave.



MU displays works of feminist crusader

Selected works of feminist writer, journalist and former student of Tempe Normal School, now ASU, are on display in the north end of the MU until Dec. 14.

Agnes Smedley, who attended Tempe Normal School in 1911 and was editor of the Tempe Normal Student (the forerunner of the State Press), spent much of her life traveling around the world and working for various independence and civil rights movements. She wrote six books, five of them about China, where she spent 12 years.

Smedley is best known for her involvement in the India independence movement in 1921, the birth control and women's rights movements in the United States and the League for Civil Rights in China, where she worked with Madame Sun Yat-Sen.

She was one of the first correspondents with the Eighth Army during the

Chinese-Japanese war in 1936 where she interviewed Chou En-lai, Mao Tse-tung and Chu-Teh. At times, she marched with the Red Army behind Japanese lines.

Before the bombing of Pearl Harbor, Smedley constantly reminded the United States of the threat of Japanese attack. Her identification with China's cause before and during World War II drew criticism in the U.S., at one point, she was suspected of being part of a Red spy network.

After her marriage dissolved, she wrote:

"I have always detested the belief that sex is the chief bond between man and woman. Friendship is far more human. For women, marriage is at best an economic investment; at its worst, a relic of human slavery."

Sixty years later, 'radical' women are pronouncing similar ideas.

MU's 18th Christmas coffee to offer music, refreshments

The Memorial Union is presenting its traditional Christmas Coffee at 8:30 a.m. Dec. 11 in the Maricopa room, an MU spokesman said.

Roseanne Cartledge, MU activities adviser, said free refreshments will be served at this year's 18th annual coffee, and two live bands will provide entertainment.

Upstairs in the Maricopa room a local group will play ragtime and dixieland

Christmas music from 8:30 to 10:30 a.m., and downstairs in the Rendezvous Lounge, traditional Christmas carols will be presented by the "Brass Choir," she said.

Cartledge said the coffee will be open to all faculty, staff and students. "We usually get a great deal of faculty to come, but this year we particularly want to extend the invitation to the students," she said.

IDEAL CHRISTMAS GIFTS

FOR YOUR FAMILY AT HOME!

ASU JACKETS - T-SHIRTS
SWEATSHIRTS - MUGS
PENNANTS

SELL US YOUR USED BOOKS

USE YOUR CASH PLUS

A 10% GIFT CERTIFICATE

TO FINANCE YOUR CHRISTMAS GIFTS

Student
Book
Center

704 S. College Ave.
One Block North of ASU
966-6226

now is the time

20% to 50% off

Now is the time to purchase the clothes you've admired, but just could not afford. Dax, the clothing merchants, has reduced prices on their regular inventory 20% to 50% from December 2nd to the 14th.

Catering to every man's taste and combining the elements of comfort and fashion, the following selection of clothing will offer unprecedented savings.

Shirts	Jackets
Shoes	Jeans
Sweaters	Pants
Dress Clothes	and much
Blazers	more....

"THE CLOTHING MERCHANTS"

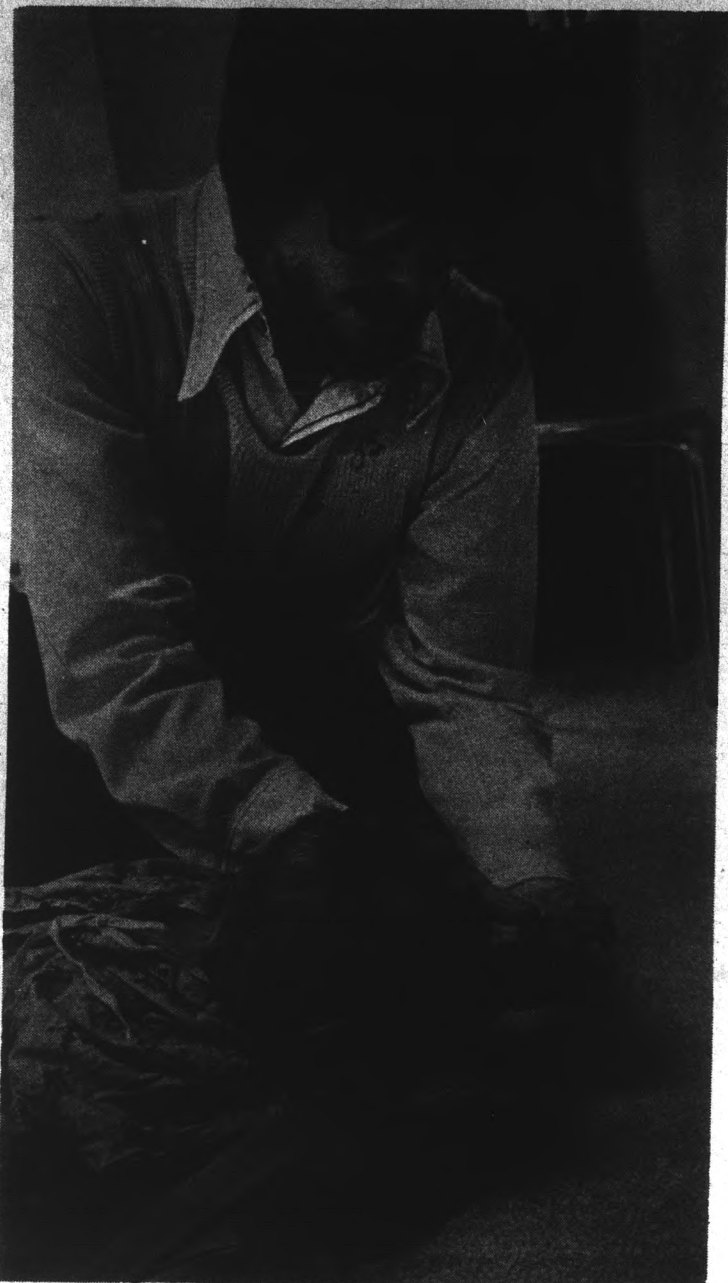
DAX

MON-SAT 10-6
THURSDAY till 9

125 E. SEVENTH
TEMPE-968-3585

ONE BLOCK N. OF ASU ON FOREST & 7th

COUPON



Because of the tendency for the limbs to contract and become brittle, each of the children must be exercised each day. Mike Kirby stretches the limbs of Gary Young in order to keep them limber.

Student aides help develop skills of mentally retarded children

By Jean Rukkila

A row of stuffed animals look over the Salt River from a third floor window of the Arizona Crippled Children's Hospital. Inside a seven-year-old girl with wispy blonde hair sputters in the lap of an ASU student.

"Bitsy has a problem with lip closure," Mike Kirby says. "We used to have a lot of trouble because she would put her tongue out. Then a consultant suggested putting the spoon in under her tongue and closing her lips around it."

Kirby slips a small spoon full of pureed green beans into Bitsy successfully. "Now we're trying to teach her how to drink from a cup," he says. A small stream of apple juice rolls off her chin.

Kirby is one of several ASU students who have worked the eight-hour shifts in the mental retardation (MR) ward of the hospital.

There are three levels of mental retardation: moderately, severely and profoundly. The 54 children in the MR ward are profoundly retarded with additional medical problems.

Most don't walk. In the room where Kirby is feeding, most lie on pads and a couple are in wheel chairs. "We are trying to advance them as far as they are able to go," says Kirby. This starts with potty training and teaching them how to eat and sit up.

It takes 6 to 8 weeks to complete the oral interviews and application to become a mental retardation training specialist — 1.

"It's hard to work with profoundly retarded children. They have different needs," Kirby says. After eight hours a day with them, Kirby says he feels strange observing healthy children for his child studies classes.

In a nearby room Sue Moreth sprays a sterilizing solution on posture pads. A junior dietetic major, Moreth has been there the longest of the ASU students, over a year. Before coming to the hospital she worked as a diet aide at Scottsdale Memorial Hospital.

Moreth started at \$427 a month. Now as a team leader for 24 children she is earning \$585 a month.

Continued on page 17

Gary laughs at the feel of an electric toothbrush.



Learning therapy is a major chore

Continued from page 16

When Moreth arrives at 3 p.m. she finds out what the kids need. They are fed at 4:45 p.m. "We've got a lot of hard eaters," she says. At six everything needs to be cleaned. Teeth are brushed, the children are positioned, given nourishments and put to bed around 8:30 p.m. Except for diaper checks the time until the next shift at 11 p.m. goes slowly.

Moreth is trying to develop some in-service training for these hours, to teach aides physical therapy. "There are a lot of people working here who haven't worked in hospitals or with MR's before," she said.

There is a lot of turnover among the aides. "There is no part time work here which discourages most students," Noreth says. She is taking six hours this semester, 12 in the spring.

Kirby wants two degrees from ASU. He'll finish with psychology this year. Then he begins applying to medical schools while he finishes another degree in chemistry. He's taking 12 hours this semester.

"It takes a special kind of person to work with MR kids. This is not just custodial care. It involves a lot of programming and physical therapy," he says.

Dave Lara appreciates the independence his full time job gives him. A sophomore political science major about to change to special education, Lara worked in a MR training center in Coolidge before coming to ASU.



Gary enjoys the splashing of his daily bath. "I enjoy it as much as he does," says Mike.

Sociology senior Mike Smily used to help handicapped students in his dormitory. "This is a lot more intense than that was," he says. After he graduates he intends to go into special education, because there seems to be a fairly good job market.

He described his first week at the hospital as traumatic. "I had a hard time keeping my meals down. But I was really determined to stick it through. I think I'm doing a job a lot of people would have a hard time doing," he said.

Smily thinks some aides feel too sorry for the kids which makes it hard for them to work. He remembers one who didn't stay long. "A week after he started he was in tears," he said.

The most visible problem with the children is that many can't move their arms or legs away from their bodies. It is a condition called contraction and it comes from leaving a child who can't move in one position for a long time.

"Their muscles atrophy so much their arms get locked into positions," Kirby says.

He places the child he is feeding on a cushion stomach down, arms above her head and legs stretched out behind. A rolled blanket is placed under her armpits to encourage her to hold her head up, a position intended to prevent contraction.

"There's really no one to blame. We wouldn't know except we've been specially trained. It's hard to expect parents to know," Kirby said.

Some of the aides become involved with the kids and take them out. Kirby plans to take a 19-year-old boy home for Christmas in his Tempe apartment. "He tends to sulk around here. Outside he opens up. His parents haven't seen him in a long time. I think he understands what Christmas is and misses it," he said.



Like most children Gary enjoys the attention given him by Mike. Mike is more than willing to administer that attention.



Good night Gary good night Mike.

Photos by Roger O'Connor

Privacy: new bill offers more protection

"Any organization maintaining an administrative automated personal data system shall . . . take reasonable precautions to protect data in the system from any anticipated threats or hazards to the security of the system . . ."

—from the Right to Privacy Act of 1973

By Chris Shuey

Item: Early in October, several attempts were made by unauthorized persons to gain access to personnel information files housed in the storage banks of the University Computer systems.

Item: On Nov. 21, the Senate passed the Right to Privacy Act, referred to as the Privacy Bill, by a vote of 74 to 9. The above excerpt from the bill is now law.

In recent years, enormous advances have been made in computer technology. This, coupled with public outrage over governmental corruption in the Watergate affair, led Sen. Barry Goldwater (R-Az.) to introduce the "Right to Privacy Act of 1973."

According to Goldwater's

legislative assistant, Terry Emerson, the Privacy Bill "will most likely pertain only to the federal government and cover private and state record keeping systems in the form of a thorough study."

Originally, the bill stated that all federal, state and local organizations using "automated personal data systems" should provide safeguards for personal privacy by adhering to the following "principles of information practice:"

"There must be no personal data record keeping systems that are secret.

There must be a way for an individual to find out what information about him is in a record and how it is used.

There must be a way for an individual to prevent information about him obtained for one purpose from being used or made available for other

purposes without his consent.

There must be a way for an individual to correct or amend a record of identifiable information about him.

Any organization creating, maintaining, using or disseminating records of identifiable personal data must assure the reliability of the data for their intended use and must take reasonable precautions to prevent misuse of the data.

But even in the wake of October's security problems involving the University computers, Dr. Nelson Garrison, director of Campus Computing Services, sees no immediate problem.

"At this point, in terms of identifiable form and information contained," he said, "there is no problem as far as the University is concerned."

"Everybody can be apprised

Continued on page 19

David Essex
Ringo Starr
Billy Fury Keith Moon Rosemary Leach

That'll Be The Day

CAMELVIEW TWIN ONE
70th St & Camelback north of Sakowitz 945-6178

Citron's Surplus
Jefferson at 2nd St. in Phoenix for

- Navy denim seafarer belbottoms
- tankers
- Seak Packs
- Camping Supplies
- White & 13 Button Belts
- Parachute Canopies

"Insanely funny, outrageous and irreverent."
—PLAYBOY MAGAZINE

"Hilarious. Left me hungry for more. When was the last time that happened in the movies?"
—Donis Mills, Washington Star News

THE GROOVE TUBE Color

CAMELVIEW TWIN ONE
70th St & Camelback north of Sakowitz 945-6178

When you're up early or up late.

The Breakfast Jack

Try our refresher course.
The Breakfast Jack. A deliciously different ham, egg and cheese sandwich.
Pure orange juice before.
A cup of coffee after.
Even the price is refreshing.

Jack in the Box HAMBURGERS

Scottsdale Rd. & Weber
S. Mill Ave. & E. University

SKNIGHTS FIVE

NOW APPEARING
SUZY SALLE
WITH THE SIX POUND SMILE
FOR YOUR DANCING & LISTENING PLEASURE

NIGHTLY
ATTITUDE ADJUSTMENT PERIOD

IN THE ENTERTAINMENT ROOM — 6-8 P.M.

Continuous Entertainment
8-12:30

1123 W. Broadway • Tempe
Phone 988-6150

Come Early for Dinner & Show

New bill bolsters the right to privacy

Continued from page 18

of what information is contained in information files. In general, as I have seen it (the bill) in newsprint and so forth, it creates no problem for us."

Garrison said, "The only type of data that we release is collective aggregated data and not individual information on a given student or a given staff member."

He said that by disseminating that kind of information there is no invasion of an individual's rights.

"I do not have any authority to release any information stored in the computers. We're only keepers of that — we provide a utility service."

"It is the in-user's responsibility to release the information," he said. "We try to provide him the service, which includes a reasonable level of security."

Dr. Joseph Rue, chairman of the Computer Users Committee and professor of Quantitative System Analysis, agreed with Garrison.

"I don't think it will have too much of an effect for the reason that the attempt of maintaining security already exists. It would have had a profound effect if we did (commit) flagrant violations."

"That's why I don't feel too worried about the bill itself," he said. "I'd be more interested in seeing what happens with the bill in terms of the federal bureaucracies."

Karen Olson, coordinator of publications and computing

services, said the University personnel office issues information sheets once a year to update their files.

They then make any needed additions or corrections to the files as specified by the persons involved, she said.

In describing the attempted break-ins to the computer, Garrison said, "We're not sure what they (the unauthorized persons) were trying to get at. We know they were getting into a payroll file, so we assume they were after salary information."

He said that additional efforts were made in trying to get access into student master files, particularly grade files.

"We can only speculate why anyone would want to get at a grade file, either to look at somebody's grades or to try to change someone's grades."

He said that while they did achieve entry into the files, "they did not get any significant hard copy output on campus. At the best, they got some hit and miss pieces of information."

Emerson was asked how the bill would interpret the unauthorized access to the ASU computers.

"The restrictions of this bill would control that only persons in the agency who had a need for the purposes of that agency to know the salary record of an individual would have access to that (record), but the agency could not reveal that to the general public."

But he also stated that penalties for disregarding the provisions of the law "would

apply against a person who wrongly gains access to it and uses it."

If salaries of state employees are public information, then why are such records maintained in the same storage banks that contain the more personal, non-public information?

"To maintain and break out all that information would require a great deal of extra programming and processing time to be going across all the multiple files," Garrison said.

"We are on a very fragmented or multi-file system. The payroll office developed their application, the Comptroller developed his and so now an individual may need to go several places to get a simple address changed," he said.

Rue formulated a procedure, that was not specified in the Privacy Bill, whereby an individual could change any information that any record keeping organization had on that individual.

"First of all," he said, "(You should) request a print-out of the information stored. It should be a complete print-out and should not be coded up —

something you can understand.

"Then, and this is my ideal way, it should be taken to a notary if there's an error. The corrections should be put on public record and all (corrections) noted, signed by the notary, duplicated for your own records and originals sent to the agency (involved)."

Emerson agreed with Rue's suggestion saying, "That is absolutely the purpose."

He said that it was not spelled out in the bill, but any corrections made by individuals for themselves will be made a part of the public record.

The Privacy Bill also calls for

physical safeguards in addition to the hypothetical ones previously mentioned.

Garrison listed the various security systems around the computers.

"We have physical security regarding fire. We have keys to the doors to get entry to where the computer itself is. Only those people who have a need to be into the computer itself are admitted, that is, the specific computer operators at the central site, the specific systems support people, the UNIVAC engineers and myself."

NOMINATED FOR 10 ACADEMY AWARDS
INCLUDING 10 BEST PICTURE

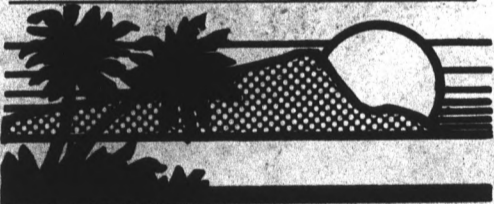
CABARET

PG

TONIGHT! **Neeb Hall**

Shows at 7 & 9:30
Tickets \$1 w/ID, \$1.50 without
A SALIENT FEATURES PRESENTATION

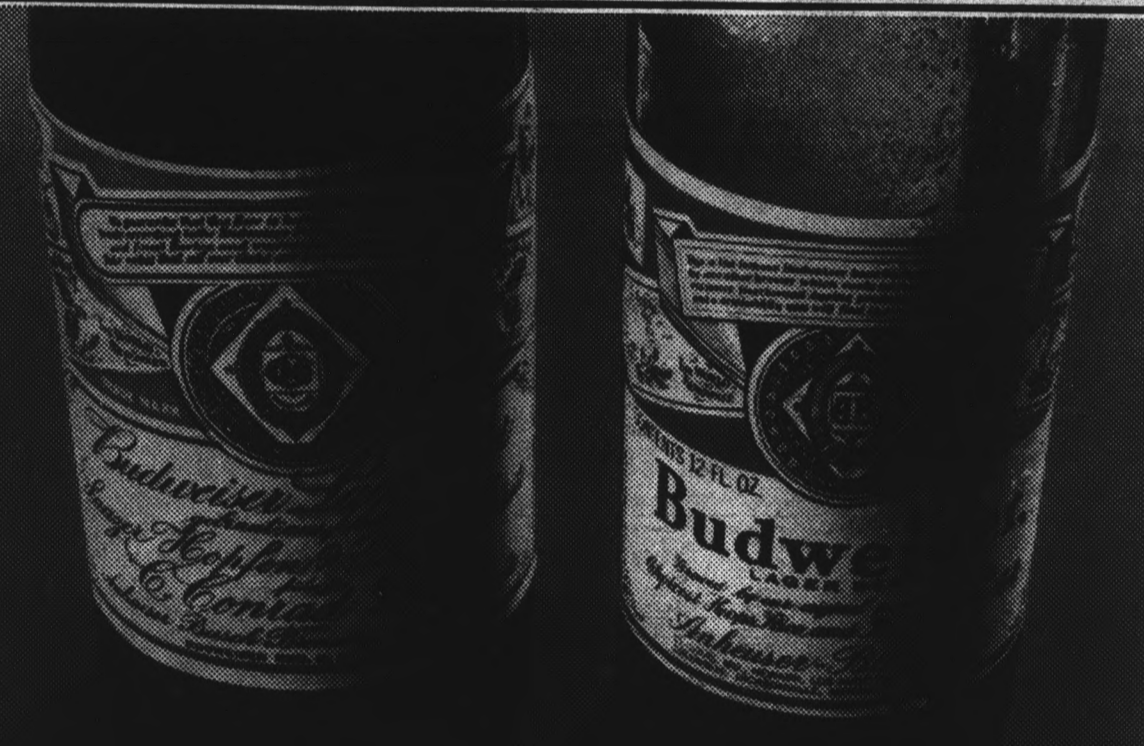
THE ANCHORAGE HAWAII SEAFOOD RESTAURANT



FOR LUNCH AND DINNER
Crab Legs · Shrimp · Abalone · Mahi Mahi · Sand Dabs · Lobster · Chicken Curry · Petrali Sole · Teriyaki Steak

"MAGIC" Entertaining
Nitely in the
HANAIEI ROOM
COCKTAILS · SEAFOOD BAR
DANCING NIGHTLY
Cocktail Hour Daily
3 to 7 — 60¢ Drinks

**530 WEST BROADWAY
TEMPE, ARIZONA**
(JUST A FEW BLOCKS FROM THE FREEWAY)
968-6135



Brewed in 1876 by our original process from the choicest hops, rice and best barley malt.

Still is

We're making sure that caring isn't just a memory. And every taste of Beechwood Aged Budweiser says so... And always will.

Somebody still cares about quality.

Hawaii to host struggling Devils

By Mike Tulumello

ASU's football team will find itself in an unusual position when the Sun Devils play Hawaii Saturday night — they'll be fighting to salvage a winning season.

The Devils (6-5) close out an up and down season (with emphasis on the latter) by meeting Hawaii (6-4) for the first time since 1959. Kickoff will be 11 p.m. (Phoenix time) with KTAR-Radio set to broadcast the game.

ASU's record is the worst

since the 1966 team went 5-5.

The teams have met one mutual opponent — Brigham Young. The Rainbows nipped BYU 15-13 in Honolulu, while ASU fell 21-18 to the Cougars in Provo, Utah. Hawaii's victory, however, came well before BYU caught fire and began destroying Western Athletic Conference foes to win the league title.

"It's a big game for us," said ASU head coach Frank Kush. "A win will give us a

winning record and some positive carryovers for next season. It's important that our young club maintains a winning attitude."

The Sun Devils need all the incentive they can get. They're coming off a disappointing 10-0 loss to arch-rival Arizona — a game that in the past marked the end of the Devils' schedule.

ASU, shut out for the second time this season, had plenty of opportunities to

slip past the Wildcats, but the sputtering Devil offense never could maintain a

times for 1,218 yards (a 5.3 average). Williams needs eight carries to break Art Malone's school record of 235 rushing attempts in a season.

The Rainbows have been a hot and cold team this season and face the Sun Devils with the heat on their side.

After winning its first four games, Hawaii then dropped the next four. But the Rainbows fought back to win their most recent contests, 21-7 over Fresno St. and 28-16 over Rutgers.

The Hawaiians are led by quarterback Alex Kaloi, who passed for 138 yards and ran 69 yards for a touchdown in last week's win over Rutgers.

state press sports

sustained drive.

"Our defense was superb," said Kush, "and certainly played well enough to win. But our offense was ineffective and that's been our main problem all year long."

One of the bright lights in the Sun Devil attack has been Freddie Williams. The sophomore halfback-fullback has rushed 228

PLAY WEE-TEE MINIATURE GOLF

Your Choice of Two 18-Hole Courses

University Drive at Rural—Tempe
HOURS — 1 p.m.-12 midnight Daily Phone 966-8027
Sat., Sun. and holidays 10 a.m.-11 p.m.



TEMPE HEALTH STUDIO

STUDENT SPECIAL

MEMBERSHIPS AS LOW AS \$10 A MONTH

966-4111
399 MILL AVE.

FLESH GORDON

AN OUTRAGEOUS PARODY OF YESTERYEARS' SUPER HEROES!

NOT TO BE CONFUSED WITH THE ORIGINAL "FLASH GORDON"

Starring: JASON WILLIAMS, SUZANNE FIELDS, JOSEPH HUGGINS, and WILLIAM HUNT in METRO COLOR Rated X

SHOW TIMES 7:00 • 8:45 • 10:15 NITELY

valley A.T.G. Also Playing At

242-4525 Unlimited Free Parking

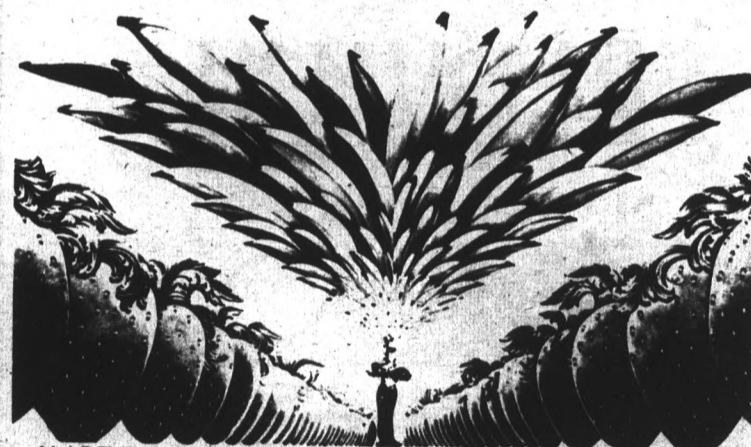
UA CHRIST-TOWN MALL CINEMAS 6

Two Daughters



Free
Sunday Dec. 8,
7:30pm
Neeb Hall

CULTURAL AFFAIRS BOARD



ALICE FAYE · CARMEN MIRANDA · BUSBY BERKELEY'S
THE GANG'S ALL HERE



ESTHER WILLIAMS · VICTOR MATURE · WALTER PIDGEON · in BUSBY BERKELEY'S
MILLION DOLLAR MERMAID

SATURDAY DECEMBER 7
NEEB HALL 7:30pm
FREE

cab.

HI

ASU to meet Montana in Sun Devil Classic

By Dave Garell
ASU basketball coach Ned Wulk will get to see his team in its first real competition tonight as the Sun Devils meet Big Sky Conference co-champion Montana in the feature game of the 1974 Sun Devil Classic.

Montana, who shared its league title with Idaho State last year, is the toughest team ASU will face in the tournament according to Wulk.

"Montana has three big men returning from last year and they have an excellent zone defense, but I'd still have to say that we are the favorites. Usually the host team is always picked to win its own tournament," Wulk said.

'Huskers face '49ers

Preceding the 9 p.m. ASU-Montana contest, Nebraska meets perennially tough Long Beach State at 7.

"Long Beach has always been strong, but they lost most of their veterans through graduation or pro signing and they have a new coach (Dwight Jones)," Wulk said. The 49ers were 24-2 last season and won the Pacific Coast Athletic Association title for the fifth straight year.

Nebraska comes into the Sun Devil Classic with a 1-0 record after finishing fourth

in the Big-8 last year. "I understand that Nebraska is going to be the quickest team in their conference this season," Wulk said. "As long as we don't play them in the first round, we can use their game against Long Beach as our scouting report."

Opener pleases Wulk

Wulk found his team's 103-67 victory over Whittier in the season opener beneficial to his team's progress.



"Whittier wasn't a tough opponent, but they were a good team to play for the first game. We were able to get a lot accomplished Tuesday night and we got to see how the things we've been working on in practice worked in game application," Wulk said.

"The strong point of our game was definitely our defense. Any time we can force the other team into 43 turnovers (ASU had 23 steals), you know we're doing something right."

The Sun Devil Classic has been rejuvenated after a four-year layoff. The reason

the tournament was dropped, said Wulk, was that the old Sun Devil Gym was not superior enough for the classic.

"We tried the Phoenix Coliseum for a couple of years, but we didn't get the attendance we needed. Now that we have our new arena, we are able to host the tournament again," Wulk said.

"I was not pleased with the crowd turnout (5,000) we had for our first game against Whittier. I wish I knew why fans don't want to come to our games — maybe it just isn't the social thing to do."

"I guess things aren't that bad," Wulk said. "At least we outdrew the Suns Tuesday night."



Photo by John McDonough
Mike Moon and Rudy White show Whittier's Eric Peterson why the Devils were able to force the Poefs into 43 turnovers in the season opener.

HELP!

We're going to "help" you obtain better buying power by offering a sale on the finest updated "natural shoulder clothing" at unseasonal savings. Our entire stock will be marked down to save you anywhere from 20% to 50% from December 2 to the 14th.

Whether a leather or suede jacket to an entire suit Garmenteur Ltd. will "help" you save during the upcoming season.



130E. UNIVERSITY • TEMPE

- | | | | |
|---------------|-------------------------|------------------|-----------------|
| Harris Slacks | Levi Panatella | Thomson Trousers | Eagle |
| Creighton | Gant | Arthur Richards | Stanley Blacker |
| Briar | Bert Pulitzer | Thane | Alan Paine |
| Lakeland | Fantastic International | Casa Desport | Robert Lewis |
| Bass | Nunn Bush | | Volare |

966-6840

OPEN: Mon.-Sat. 10-6, thurs. till 9



A new style in campus living

Resilio's casual corduroy country shirt is leisurely complemented with Broughton button down shirt, tartan plaid tie and fine gabardine Resilio trousers. All with traditional Resilio authority for tailoring and styling details.



Neckwear, Shirts & Trousers

VILLAGE PEDDLER

Zoo's Funkys capture '74 powderpuff crown

With an undefeated season in which they were not scored upon, Zoo's Funkys shutout Lambda Chi Alpha's Crescents Wednesday to capture the 1974 intramural powderpuff championship.

The independent Manzanita team, composed primarily of physical education majors, scored twice in the first half and once more the second half to blank the Crescents 20-0.

Despite managing to score 20 points in the contest, the championship game was the lowest number of points the Funkys have tallied all season. They have beaten teams by scores of 32-0, 56-0 and 33-0.

The Crescents breezed through their league and the playoffs into the finals. They defeated the Pi Phi's in overtime in the semi-final before Thanksgiving.

In getting to the finals, Zoo's Funkys beat the Tough Tomatoes, 24-0.

Zoo's Funkys relied on the skills of quarterback-punter Linda Pelletier, who also was a standout on the defensive line.

Speedy Kathy Elliott scored numerous touchdowns this year from her split end spot. Kathy Spokes and Nancy Janco were stalwart defensive backfield players through the year.

"We were very pleased with the powderpuff program this year," said women's intramural director Jill Williams. "We had TV coverage twice and there were a lot more fans out to watch all season than there have been in the past."

APARTMENT

½ block from ASU
Ideal for 1 or 2 students

\$140 Month
Utilities paid

967-5430

705 Krueger St. No. 7

Mrs. Ann



SPIRITUAL CARD READER

has a new location 1 block west of Mill Avenue. She tells the past, present and future. If you'd like to brighten your life — see her today. I can help in any matter.

For Appointment Call
967-9612

115 W. University, Tempe
Open 9 a.m. - 10 p.m. Daily

GRADUATES

Branta Corporation, a full services financial planning corp., is looking for a man to develop into a Divisional Manager in the next year.

For Personal Interview: please call Robert Leonard at 968-7766

SNOW SKI IN HAWAII?

Guide to over 250 ski areas in the 11 western continental states plus Hawaii & Alaska.

For your copy of "Skiing—Where it's at in the West" Send \$2 to:
LIFE RUSHES
P.O. Box 368 Dept. [A.]
Altadena, Calif. 91001

STUDENTS!!

DO YOU NEED EMPLOYMENT?

Need Cash for College or Christmas?

CAN YOU DEVOTE 25 HOURS FOR \$150⁰⁰ per week?

Interested?

Call 968-8045 or Write P.O. Box 3121 Tempe, Ariz. 85281

BUY
SELL

CLASSIFIED ADS

TRADE
LEASE

1. Rates: The first day is 10 cents per word with \$1.50 minimum (15 words). All consecutive ads after the first day are discounted.
2. Notification of errors is required before second publication. The State Press will not be responsible for more than the first incorrect insertion.
3. No refunds will be made for cancellations of classified advertising.
4. All abbreviations or small groups of numbers count as one word. Hyphenated words count as two words.
5. No tear sheets will be provided with classified advertising.
6. The right is reserved to reject any copy.
7. Payment for all classified ads is cash in advance.
8. Ads will not be accepted over the telephone but can be placed either in the offices of the State Press, Stauffer Bldg., A111, ASU, Tempe, Az. 85281, or in the Memorial Union, Room 208 J. Ads also may be mailed to the State Press if prepayment is included with the form.
9. Deadline is 4 p.m. two days before the ad is to appear.

RENT

Need roommate for Spring semester - \$80 per month for one, \$140 per month for two. Pool. 967-9268. (12/6)

Need male roommate for Spring semester. Apt., furnished, 2 bedroom, utilities free. Lemon Terrace Apts. \$75.35 per month for your share. 966-9456. (12/6)

Room with home privileges—\$45. a month including utilities. 275-7127. (12/6)

Get away for the weekend in peaceful Star Valley, Lazy D Motel, 3½ mi. E. of Payson on Hwy 260. TV - fireplaces - stable. Weekend rts. - 2 nite package - kitchenette with fireplace 4 pers. \$8 ea., 2 pers. \$12 ea. Kitchenette w/o fireplace - 2 pers. \$12 ea. Room - no kit. or fireplace - 4 pers. \$6 ea. 2 per. \$10 ea. Phone 474-2442 or write Box 547 Payson Arizona 85541. (12/6)

¼ block from ASU—furn 1 bedroom apt's. \$140 mo., All util. paid. No lease req. 705 Krueger St. #7 or call 967-5430. (12/6)

TYPING

Typing done. .50c a page. Linda Bedell 962-4032. 1752 E. 1st St. Mesa, Az. (12/6)

Professional typing. IBM pica. 60c page. Minor ed & corrections. By appointment. 956-7963. Phx. (12/6)

TYPING — Experienced, neat, accurate. Call Anne - 946-4105. (12/6)

Manuscript typing, and/or editing. Fast and accurate. Experienced in all fields. IBM Selectric II. Call Carolyn Kappas, 968-2167. (12/6)

Quality typing. Fast, accurate, professional. IBM (Carbon) Machine. Complete proofreading. Call Joy, 967-3393. (Weekdays). (12/6)

Typing — IBM Selectric-Pica type. Rosemary Vance. Tempe 967-9143. (12/6)

Typing - my home - accurate and dependable. Call 833-8698. (12/6)

Term papers, resumes, theses, dissertations. Professional, guaranteed work. IBM. Maxine Mullen, 955-0763. (5/2)

IBM, experienced, reports, theses, dissertations, guaranteed, 50c and up. Pam, 964-9851 after 5' (\$5.00 minimum). (12/6)

AUTOMOBILES

1966 Olds Cutlass \$325 or offer, with factory air. Call Pat at 965-5286. (12/6)

1967 Jaguar XKE Convertible. Very clean. \$2650. 966-5325 after 6 p.m. (12/6)

1971 XKE V/12 Coupe, refrigeration, automatic, immaculate condition, \$5100, or trade for larger car or truck. 967-6016, 931-9231. (12/6)

1966 Volkswagen Van. 1971 engine. AMPLEX tape. Runs well. \$1,075.00. See at Southwest German on Apache or Call 964-5246. (12/6)

1968 Oldsmobile 88, 2-dr. hardtop, 67,000 miles. Perfect mechanical condition. 15-19 M.P.G. 838-2340. (12/6)

WANTED

Female roommate needed for Spring Semester. Furnished Apt. two bedroom/ utilities paid. Orange West Apts. 966-6088. (12/6)

To Ohio: I'm driving to Springfield, Ohio; starting about the 19th or 20th and need one rider to share the driving time and gas costs. Call Chris at 968-6823. Thank. (12/6)

WANTED: Need female roommate for Spring Semester. Two bedroom townhouse. \$100 a month (utilities included). Walking distance to ASU - Pool - Call Ruth 968-2296. (12/6)

Female roommate, \$80 a mo. plus utilities furnished, quiet, near school, own bedroom, Jr., Sr., Grad., preferred. Karen 967-7441 aft. & Eve. (12/6)

ANNOUNCEMENTS

New business! Antiques - Collectables - Prints. Wide range historical value including Hogarth, Vanity Fair, Norman Rockwell. "Passy Finds", 2227 E. Main, Mesa. (12/6)

Farmers and gardeners using natural, poison-free methods of raising produce and crops are invited to bring them to Apache Wells Organic Farmers' Market. Sell direct to consumer every Saturday from 7 a.m. - 11 a.m. 56th and McKellips Rd., Mesa, phone 832-1550 for full info. (12/6)

Hillel Chanukah Dinner, Sunday, Dec. 8, 6:30 p.m., Baker Center. Join us for a delicious dinner and program, featuring the great faculty debate "Which is Better, the Hamantaschen . . . or the Latke?" \$1.75 per person, reservations, please, by Dec. 5, 1966-5371. Also, make a hand crafted Menorah out of any material and bring it to dinner for judging. A prize will be awarded for the best menorah. (12/6)

Farmers and gardeners using natural, poison-free methods of raising produce and crops are invited to bring them to Apache Wells Organic Farmers' Market. Sell direct to consumer every Sat. from 7 a.m. - 11 a.m. 56th and McKellips Rd., Mesa, phone 832-1550 for full info. (12/6)

First Friday Nighter beginners' car rally, Phoenix Rally Organization, Dec. 6, 7 p.m., Southeast corner Thomas Mall, info. 956-1677, \$1.50 entry. (12/6)

Permanent hair removal, face or body, Electrolysis of Scottsdale, Gail Walker—945-4245. (12/6)

Diplomacy. If you are interested in Board Version of Grandeur Mail Games, call Cheak Yee 242-4696 Days or 269-2764 nights or postcard: 2207 N. 59 Ave. 85035. The 1828 Game in Age of Metternich has played continuously since 1961; the 1649 game in Age of Cromwell & Louis XIV is in planning. (12/6)

HELP WANTED

Mature Student Needed for Child Care (2 children) and household work, part time, for ASU Professor. Private Room, Board, & Salary for qualified applicant. Leave Name & Phone at 965-4516. (12/6)

We need 6 ambitious young men and women. 25 hours per week. Part time - \$150.00, full time - \$250.00. Write M.G.B.I., P.O. Box 3121, Tempe 85281. (12/6)

Help! Ill husband of a student needs your dollars for defence warchest. Charged with felony assault on a Tempe cop, in his own home, not guilty. Needs \$1,000 for lawyer. If you want to help . . . call Bob 265-1662 or Barbara 968-9138. (12/6)

Make \$500 on each commission. Campus and local representatives are needed for nationwide employee search. For full info, write Sumner Adv. Co., P.O. Box 643, Peoria, Ill., 61601. (12/6)

Part-time typist/bookkeeper needed at Hillel Union of Jewish Students right here on campus! Type correspondence, answer phone, pay bills, reconcile bank statement. About 10 hours a week. Call for an appointment 966-5371. (12/6)

Cocktail waitresses, age 19 or older. Must be reliable, personable, neat and attractive. Part or full time. Good opportunity to make extra money and enjoy meeting people. Apply in person Mon.-Fri. 12-3. Friday's & Saturdays. 825 N. Scottsdale Rd. (5-3-75) (12/6)

TRAVEL

Europe-Israel-Africa. Student flights all year round. Contact: ISCA 1 6035 University Ave. #11 - San Diego, Calif. 92115. Tel: (714) 287-3010, (213) 836-5669. (12/6)

LOST

Five month old Golden Retriever, reddish color, no collar, seat on side. Call 966-9492, 966-4546. (12/6)

FOR SALE

3-Channel frequency controlled, stereo color organ, 2'x5'. Best offer. Mike 994-9929 - morning - evenings. (12/6)

Sting Ray bicycle, good condition, basket and chain with lock incl. \$20.00. 968-2254. (12/6)

GI Foot Lockers — \$10.95. We carry Vietnam boots, flight suits, fatigue pants and shirts, Navy whites and blues, Army down mummy bags, shoulder bags, back packs and hundreds of far-out bargain items. Checkboard Surplus 1126 W. Main, Mesa. (12/6)

Special grand opening discount to students. 20% off our fine collection of European and American furniture, glass, china, books, silver etc. Layaways at no extra cost! Rosemary Antiques — 405 E. Roosevelt, Phx. Tue. - Sunday, 11 - 5:30. (12/6)

Beagle pups, AKC; champion blood line, 966-7168. (12/6)

Fly! Ask to see free Hangglider movie. No obligation 955-6487. All size Hanggliders for sale. (12/6)

New tape clearance: Ampex 1½ MII on 7" reel 1.10 ea. Ampex 1 MII on 7" reel 1.40 ea. Audio Mag. C40 Cassette .65 ea., Audio Mag C90 Cassette .85 ea., Audio Mag L120 Cassette 1.00 ea. Speech recording quality - minimum 10 per order. Ask for Dave 264-2041. (12/6)

70 Honda CD 175, excellent shape, new chain & sprocket, 2 helmets. Call Jean 968-9286 or 966-7368. (12/6)

Teach Overseas! Have collected over 200 addresses of schools around the world — English the language of instruction — this invaluable list yours for \$3.50. Send check: Henry W. Miller, Box 568, AGS/IA, Glendale, Az. 85306. (12/6)

Back from the reservation with Indian Jewelry at wholesale prices. For quality plus selection call Mal at 839-3979. (12/6)

Arthro hide-a-bed sofa, good condition, \$100. Pr. 966-3147. (12/6)

Army fatigue pants \$2.49 — white Navy belts \$1.99 — Navy Pea coats \$18.95 — Marine Corp coats \$2.99 — Viet Nam boots \$12.95 and lots of other far out stuff at Checkboard Army — Navy — 1126 W. Main, Mesa. (12/6)

Three bedroom house, fireplace, walled in back yard, near ASU. \$102 per month. 966-5661. (12/6)

Jimmy Dynes framed Lithograph: signed & No. edition for Lincoln Center Play 1968. Sells for over \$200 - will take \$130 or best offer: call Pete 966-4530. (12/6)

Hanger-glider, 18" free-flight Rogallo quick rigging complete with bag and harness, almost new \$225.00. Bob Friday 275-5330. (12/6)

1968 Falcon, best offer — call 967-6251. (12/6)

Ladies fall shoe selection at the Backdoor Shop, 707 S. Forest, ranges from sandals to cold weather shoes. We carry the men & ladies Bass Weelin line. We also special order shoes - ladies shoe sale, ½ off. (12/6)

Furniture discount for students! Butler's Used Furniture & Antiques, 225 W. Univ., 964-8496. We trade! (12/6)

Young progressive financial and insurance firm looking for ambitious senior law student to survey fellow students. Great Supplemental Income. Call 968-7768. (12/6)

SERVICES

Horseback riding just north of football stadium. Special student discount, open everyday - Papago Stables. 966-9793. (12/6)

"Roommate Finders"—We're the people who have been finding congenial roommates for two years now throughout the Valley. Let us find you a roommate and cut that rising cost of living in half! Call now 957-2963. (12/6)

Five Sun Devils to get homecoming in Hawaii

By Christie Wilson

For five ASU football players, this weekend's season-ending trip to Hawaii won't be an island vacation. It will be a homecoming. Junior Clifton Alapa, sophomores Rocky Mataalii and Wayne Fonoimoana, and freshman Fialele Edra along with John Tyler, a part-Hawaiian with a not-so-exotic name, account for more than 1,100 pounds of Sun Devil gridiron muscle. The Hawaiian football

tradition at ASU began not too long ago with the "Hawaiian Punch," Junior Ah You, an appropriate nickname for the now pro defensive end who earned all-conference honors in 1971.

Ah You graduated from Kahuku High School, the same school where Alapa, Mataalii and Fonoimoana were all-stars together a few years afterwards. But at the time of Ah You's reign over

Hawaii prep football, "We were the kids who ran around the football field at halftime throwing passes to each other with tin cans," said Fonoimoana.

Alapa, an all-conference defensive end this season, feels it might be difficult for some of his teammates to "get up" for the game, since it's the season finale. But, he adds, it won't be much of a problem for him.

"I know a lot of the Hawaii players," said Alapa. "And when I see them, we never talk about the game. But I know they want to beat us bad, and I sure want to beat them."

Fonoimoana, asked if he had any special plans for the four-day homecoming, said, "Well, we got to win the game first — but I expect to visit some friends and family, and do a little bodysurfing if I can."

Morning Briefing

Owens, Breuning named to compete in post season all-star grid game

The ASU football season may be over for most players after the Hawaii game this weekend, but for two seniors, Morris Owens and Bob Breuning, one more game is left to play.

Owens and Breuning were named Thursday to play in the East-West Shrine Game in San Francisco, Dec. 28. The game is limited to seniors because players get paid for competing and would thereby end their amateur status.

Nearly 400 spectators saw Pat Neve, Mr. USA, exhibit his body in Sun Devil Gym Wednesday, according to Bob Gildersleeve, assistant intramural director.

"It was really a super show — not just Neve, but the powerlifting and the arm wrestling too," Gildersleeve said.

In the arm wrestling event, Emily Houck was the women's champion.

"We don't have the results of the powerlift yet, but I know that one guy lifted 600 pounds in the dead weight. We had some great competition and there were a lot of school records set," Gildersleeve said.

In men's arm wrestling, Doug Harnick captured the 148-pound class, Richard Flores won the 149-181 pound group and the 182-210 pound class was won by Bernie Colonna.

The ASU Lacrosse Club is holding an organizational meeting, Dec. 10 at 6 p.m. in the Navajo Room of the Memorial Union.

Anyone interested in lacrosse is invited, no experience necessary. Further questions should be directed to Tom Tompkins at 968-7678.

Opening their pre-season at the University of Nevada at Las Vegas this weekend, the ASU women's basketball team is preparing for their regular season opener against Brigham Young in January.

First year coach Susan Miller has been putting her squad through an intensive workout schedule all winter. At 6:30 a.m. daily, the team conditions with sprints, jogs and weight training. Along with the conditioning, the girls work out for two hours, three days a week, on team scrimmages.

Along with awards such as all-WAC three years in a row, and selection to the annual East-West Shrine Game in San Francisco, Sun Devil linebacker Bob Breuning was chosen by UPI as second-team All-America. Breuning was the only player in the WAC picked for the first or second team.

TEXAS INSTRUMENTS SR-50 SLIDE RULE CALCULATOR

NOW ONLY
\$138⁹⁵

Howlett-Packard
HP-45
\$309⁹⁵

SR-10
\$59⁹⁵

GUARANTEED
LOWEST PRICES
IN ARIZONA!
BEST SELECTION
OF NAME BRANDS



**ROMNEY
BROS.**

1028 N. Scottsdale Rd.
(East Side of Hayden Plaza East.)

Phone 967-0259

Hours: 10-6 pm
SAT. 10-2 pm

WE PAY
CASH FOR BOOKS
10% GIFT
CERTIFICATE
ON ALL BUY-BACKS
OVER \$10.00

Student
Book
Center

704 S. College Ave.
One block North of ASU
966-6226

THANKS!

TO THE BUSINESSES and people for the donations which enabled ASU's women's Water Polo team to travel to Cincinnati for the AAU National Championships — we took third!

- Ennio Tassoni, Custom Tailor
- The Baby Carriage, Ltd.
- Snyder's Bakery
- A to Z Office Supply
- The Tinder Box
- The Stone Age Shop
- The Crystal Palace
- The Village Craftsman
- McQ's Children's Western Wear
- Jewelry by Elias, Inc.
- Gilbert Ortega's Indian Arts and Crafts
- Spud Henry's Plumbing Service
- American Indian Crafts, Inc.
- Erickson Handcrafts
- Valley Travel
- Que Vadis Books
- Tempe Daily News
- Universal Travel
- Apache Hardware
- Waterbed World
- Fred Thompson's TV and Stereo, Inc.
- Colia's Fashion
- Hensley and Co.
- Sigma Chi Fraternity
- Pi Kappa Alpha Fraternity
- Mr. and Mrs. F. J. Whittlesey
- Ms. Catherine Larned
- Mr. and Mrs. Doll S. Cahoon
- Tempe Jeweler's Inc.
- Bobbie's Flower and Gift Shop
- The Americana Shop
- Baskin-Robbins 31 Flavors

Campus & Community Insurance, Inc.

- * LOW RATES
- * MONTHLY PAY
- * LOW DOWN PAYMENT
- * SR-22 FILINGS
- * IMMEDIATE COVERAGE
- TWO LOCATIONS TO SERVE YOU

Phoenix
248-0061
1333 W. Camelback Rd.
Suite 113

Mesa — Tempe
833-4563
1005 W. Southern Ave.
Mesa

Call Dave Smith

GOODYEAR

SUPER SUNDAY SALE

6 BIG HOURS OF SAVINGS

Sunday Only Noon 'til 6 p.m.

SAVE ON SETS OF 4

\$90.00 Reg. \$136.24

SIZE	REG. PRICE SET OF 4	SALE PRICE SET OF 4	F.E.T.
700x13	136.24	90.00	2.11

POLYGLAS WHITEWALL

SAVE ON MATCHING PAIRS

825x14 4 ply Whitewall **2 FOR \$39.95**

F78x15 4 ply 2 White **2 FOR \$35.95**

G78x14 4 ply Whitewall **2 FOR \$49.95**

H78x15 Polyglas Black **2 FOR \$67.95**

plus F.E.T. 2.32 to 2.97 per tire

<p>LOOK AT THIS DEAL!</p> <p>Power Cushion Whitewall</p> <p>\$19.95 Reg. \$27.95</p> <p>645x14 Tubeless Whitewall plus 1.76 F.E.T. and old tire</p>	<p>HERE'S A REAL BUY</p> <p>Belted Whitewall</p> <p>\$24.95 Reg. \$37.95</p> <p>678x15 Whitewall plus 2.92 F.E.T. and old tire</p>	<p>NOW'S YOUR CHANCE TO SAVE</p> <p>40,000 Mile Steel Radial</p> <p>\$44.95 Reg. \$69.95</p> <p>LH78x15 Steel Radial Whitewall plus 3.16 F.E.T. and old tire</p>	<p>THE DEAL OF THE DAY</p> <p>AMERICAN MAGS</p> <p>SET OF 4 \$75</p> <p>15x8 Ford Free Mounting</p>	<p>MANY OTHER TIRE SPECIALS TOO NUMEROUS TO LIST —</p> <p>Many, many specials on Mags & Chrome Wheels</p>
--	---	---	---	---

U.S. Indy 15x7 Dish

\$29.95 each

Free Mounting

U.S. Indy Ford Pick-Up 15x7 Dish '73 & '74

\$35.95 Each

Free Mounting

Appliance Wire Mags 14x6 & 14x7

\$32.95 Each

Free Mounting

MAKE AN APPOINTMENT FOR WEEKDAY AUTO SERVICE

Brakes, Alignment, Tune-Up

Check our Special Prices.

GOODYEAR

WESTERN STATES TIRE SALES

101 S. HAYDEN RD., TEMPE 968-9041

5 Blocks North of the Minder Binder • Serving the Tri-City Area

OUR PROFESSION IS HELPING MAKE CARS SAFER and we do it with the finest quality products and professional services available anywhere