

# Prof. Morris Starsky firing case enters court

By Tina May  
Special to the State Press  
SAN FRANCISCO — A former ASU self-proclaimed Socialist professor who was fired by the Arizona Board of Regents after he missed a class to attend a demonstration will know within three to six weeks if he must be reinstated as a professor at the University.

The Ninth U.S. Circuit Court of Appeals heard oral arguments here Thursday for Morris Starsky and the regents. Starsky was represented by Phoenix attorney Allen Kyman. Three lawyers represented the regents.

The court said it would rule within three to six weeks on whether Starsky will be reinstated.

The regents fired Starsky in 1970. Starsky appealed, saying the regents had violated his

rights. Phoenix Judge Carl Muecke ruled for Starsky, saying Starsky's First Amendment rights of free expression had been violated. The regents appealed

Muecke's decision. After nearly two years of waiting, the appeals court listened to the case. Regents' lawyers said in court that Starsky signed an agreement that gave him a

sabbatical if he would agree to being dismissed from the University. The regents' argument was that since Starsky had signed the agreement, he was bound by it

and could legally be dismissed from the University.

The lawyers directed their arguments to Ninth U.S. Circuit Court of Appeals Judges Ben C. Duniway, James R. Browning and Albert C. Wollenberg.

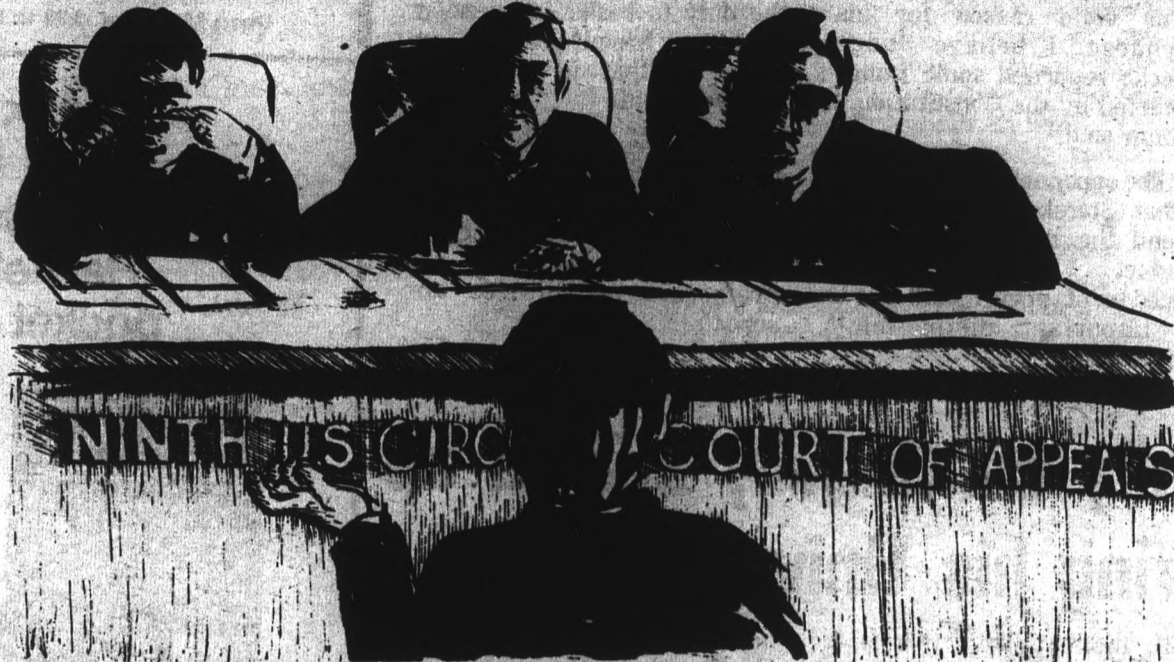
The regents' lawyers argued for little more than 15 minutes, less than their allotted time of half an hour.

Kyman then called the regents' use of the signed agreement a "red herring" that was designed to gloss over what Kyman called the violation of Starsky's rights.

"There is evidence in the record that professor Starsky was entitled to a sabbatical anyway. The fact of the sabbatical doesn't mean anything," Kyman said.

Duniway argued with Kyman, saying, "Professor Starsky knew that if the sabbatical was accepted his contract would not be renewed."

Continued on page 2



tuesday

Arizona State University

Vol. 57, No. 26 October 15, 1974

state  
press

## Starsky talks confidently of winning reinstatement

SAN FRANCISCO — Morris Starsky appeared confident as he left the Ninth U.S. Circuit Court of Appeals here Thursday. He said outside the courtroom that he believed he would win his case against the Arizona Board of Regents.

Starsky said the regents' argument about him signing the sabbatical agreement was thrown in by the regents at the last minute "because they know they are going to lose the case."

"They know they've lost. They know there is no way to get around the 1972 decision (to reinstate Starsky). This sabbatical argument is a red herring. They know they are beaten on the civil rights part of the case," Starsky said.

"It (the 1972 decision to reinstate Starsky) was a landmark decision. If we win this one, it will be recognized all over as a landmark decision.

Starsky said he has had a number of jobs since the regents fired him in 1970 after he missed a class so he could attend a demonstration.

He taught at San Diego State until 1971. Starsky said that university wanted to rehire him but the San Diego Union newspaper published a story detailing how he had been fired at ASU.

San Diego State did not rehire him and Starsky sued California State College System, winning \$20,000.

In the summer of 1971, Starsky was offered a job as chairperson at Cal State College at Domingus Hills in Los Angeles. Starsky said that nine days before he was supposed to start work, the college changed its mind and ordered him out.

Starsky sued Cal State and won. The court ordered him retroactively reinstated.

In between teaching jobs, Starsky has done market and legal research.

At one point, Starsky said he was working as a parking lot attendant.

Starsky said he now is concentrating on his political work. He presently is campaigning for Olga Rodriguez, a Socialist Workers Party candidate for governor of California.

## Harrison show canceled

By Ben Wood

The George Harrison concert scheduled for the ASU Activities Center Nov. 14 has been canceled, said Warren Summers, managing director of Gammage Auditorium and the Activities Center.

Summers said F.M. Productions, Bill Graham's company promoting the 27-city concert tour, would not agree to a standard conduct clause and security clause in the ASU contract.

The conduct clause bans the

use of drugs, alcohol, and obscenity on stage, and prohibits performers from the stage when under noticeable influence of drugs or alcohol.

Summers said that ASU has never used the conduct clause against a performer, but it was standard in ASU contracts. "If someone can't accept that clause, we don't want them on campus," he said.

Harrison will perform in Tucson's 10,000-seat Community Center now that the ASU date is off, Summers said.

## Ex-U.S. attorney general denies seeking Kennedy's Senate seat

By Greg Smith

Former U.S. Attorney General Elliot Richardson denied Monday at ASU he is planning to seek the seat of Senator Edward Kennedy, but later spelled out what he would do if he ran against the Massachusetts Democrat.

"If I were campaigning against Teddy Kennedy, I would challenge him on his health plan because it would certainly be an overblown bureaucratic

monstrosity," said the 54-year-old Harvard Law School graduate.

He fielded question from students on the mall three hours before he spoke in the MU Arizona room. "I literally have no plans beyond April, but it makes no sense to go shutting doors before I come to them," he said.

Richardson served as Secretary of Defense as well as Secretary of Health, Education

and Welfare. Former President Richard Nixon, in April, 1972 appointed him to succeed Richard Kiliendienst, as U.S. Attorney General.

During his six months as attorney general, Richardson oversaw plea bargaining that led to Spiro Agnew's fall from the vice-presidency.

In what came to be known as "The Saturday Night Massacre," Nixon asked him to

Continued on page 3

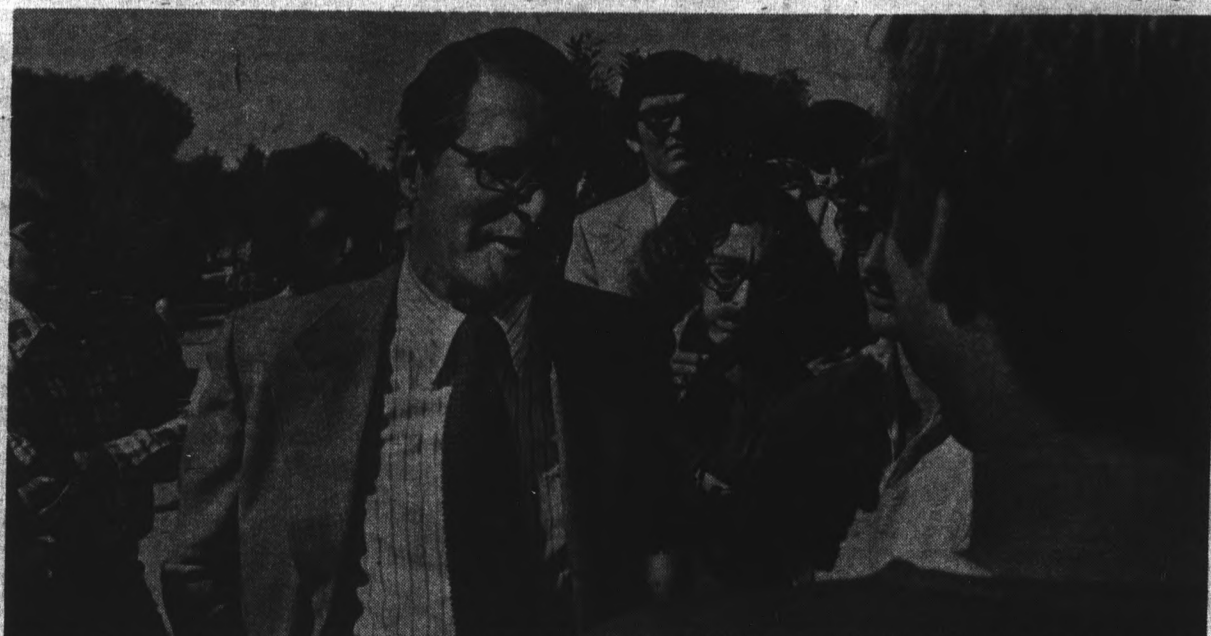


Photo by Greg Hagan

Former U.S. Attorney General Elliot Richardson got into a discussion with students on the main mall before he spoke in the Arizona Room.

# Morris Starsky case

Continued from page 1

Kyman countered, saying that Starsky had crossed out the section of the agreement saying that he would be dismissed from the University. It was only after Starsky had crossed this section out that he signed the document, Kyman said.

"Professor Starsky was entitled to the sabbatical. It shouldn't be an issue," Kyman said.

This is the only terminal sabbatical ever issued at ASU, Kyman said.

Kyman also spoke to the panel of judges about the decision in 1972 in which Judge

Muecke ruled in Starsky's favor.

"Judge Muecke found that the regents had no justification and facts to dismiss Starsky. There is no valid reason for his discharge. I believe Judge Muecke regarded some things protected by the Constitution," Kyman said.

"The opponents have referred to this (Starsky leaving class to attend the demonstration) as conduct. I refer to it as (freedom of) speech, and this is an important distinction," Kyman said.

Duniway said, "The decision

(by the lower court) itself demonstrates that it was based primarily on grounds that were not constitutional.

"The district judge does have the duty to make independent decisions based on the information that he receives," Duniway said.

"There are problems in trying to frame a rule which governs the regents. We have to protect the constitutional rights of faculty members and professors of colleges and schools.

"Here we have a question of degree," Duniway said.

## Professor Starsky continually stirred up controversy during his University days

By Carol Pyne

Stoop-shouldered, bespectacled, chubby, and losing his hair, Morris Starsky doesn't look like a fighter. In fact, he describes himself as "a working-class Jew from Rochester."

Observers who are fooled by Starsky's appearance soon discover their impressions are far from the truth. Starsky's activities during his professorship at ASU (1964-1970) prompted statewide press coverage, turmoil within Arizona social groups and institutions, and even a Minuteman threat on his life.

Starsky proclaimed he was either a Socialist or philosophical anarchist, Dr. Thomas Hoult, sociology professor, said in his book about Starsky, "The March to the Right." "It is true that Professor Starsky has a style that antagonizes many. His occasional use of four-letter words, his sign-carrying protests against the established order — all these things grate on the nerves of many good people," Hoult said.

Starsky's use of four-letter words got him in some legal hot water when he distributed copies of a paper written by Mark Rudd, Columbia University militant, to faculty members attending a fall faculty assembly. The paper closed with a statement by LeRoi Jones, "Up against the

wall, motherfucker, this is a stick-up."

Starsky defended himself with his constitutional right to freedom of speech and the belief that Rudd's paper should be a "warning to faculty that needed reforms must be taken before it is too late," Hoult said.

"Press reports about Starsky create an impression of hard-heartedness," Hoult said. Starsky and Hoult became acquaintances initially because both owned Irish Setters. When Hoult's dog was killed in an automobile accident, Starsky offered to give Hoult his dog, Antar. "Their attitude was that they would miss Antar deeply, but we in our grief were more in

need of him than they were," Hoult said.

Hoult said Starsky still thinks society needs fundamental changes if justice is to prevail.

"If our society is so weak that it cannot stand the challenges of a professor Starsky, then we have little left that deserves defense," Hoult said. "It is a fundamental principle that all social organizations which hope to survive must include people who challenge the organization and thus help to keep it constructively flexible."

"He is looking forward to returning to Arizona State," Hoult said. "He likes the school and likes the people... he is not bitter."

### JEWISH STUDIES AT HILLEL

Classes begin week of Oct. 14

1. Beginning Hebrew
2. Torah Concepts
3. Jewish Views of Jesus
4. Maimonides: A New Design for an Old Structure
5. Conversion Class: An Inquiry into Judaism for those with no background or those interested in becoming Jewish
6. Advanced Hebrew
7. Womens Groups.

Participants are required to register  
966-5371 • 213 E. University

Guest Lecturers—Rabbi Jack Steinhorn, Nov. 4

Prof. Michael Signer, Nov. 25

"All About Eve, a Sexist View of Judaism"

NOW SHOWING  
Oct. 11-17


## VALLEY THEATRE

509 MILL AVE • TEMPE • 967-6664

### THE MAX FLEISCHER CARTOON CARNIVAL

Featuring!  
The full-length animated color cartoon "GULLIVER'S TRAVELS" (1939).  
Two great "POPEYE" color shorts.  
Plus the original "SUPERMAN" color cartoon.

7:00      9:00



## Henry's Jewelry and Supply

- Custom casting, designing & repairing
- Instruction in lost wax & Silversmithing tailored to your needs.
- Tools, machinery and supplies.
- Large stock of gold, silver, brass, copper, turquoise, coral, heshi, etc.

2025 W. Baseline Rd. (1 Blk. W. of Freeway)  
Open Mon.-Sat. 9:30 to 5, Mon. Eve. 7-9 • 967-2847

Check the keys...  
you'll know why  
the professionals choose  
**Hewlett-Packard**  
pocket calculators!



The  
**HP-35**  
Scientific  
Pocket Calculator

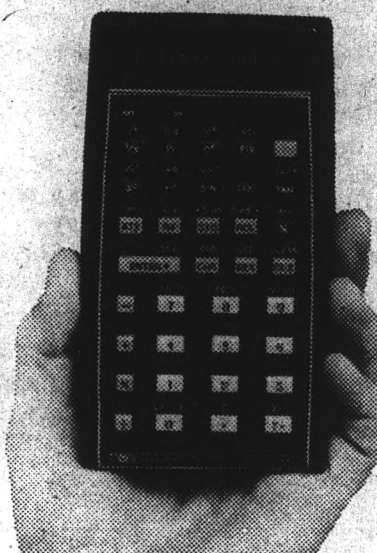
Don't confuse the HP-35 with those limited function pocket calculators that don't do much beyond add, subtract, multiply and divide. The HP-35 can help you boost your grades because...

- It solves a wide variety of scientific and engineering math problems! Performs log, trig and math functions. Calculates square roots, reciprocals and powers. Has automatic  $\pi$  constant.
- It replaces log and trig tables! They're pre-programmed in. No interpolation required.
- Its 4-register operational stack remembers intermediate solutions for recall at appropriate time! Unique stack design permits roll-down of any entry to the display for review or other operation. Eliminates paper-and-pencil calculations!
- Its accuracy—up to 10 digits—surpasses that of slide rules and most other calculators! Handles numbers as small as  $10^{-99}$ ... as large as  $10^{99}$ —200 decades! And it reduces mistakes!
- It offers computer-like power! At a fraction of the cost. And there's no waiting to use it.
- It saves time! Up to 50 times faster than a slide rule. Solves complex problems in seconds.
- It operates silently... anywhere! Perfect for classroom, library or dorm. Runs on rechargeable batteries or AC.

NOW AT A NEW  
LOW PRICE!

**Student  
Book  
Center**

704 S. College Avenue  
One block North of ASU  
966-6226



The  
**HP-45**  
Advanced Scientific  
Pocket Calculator

Want better grades in science, engineering or math? The HP-45 can help, because...

- It solves all types of scientific and engineering math problems! Does vector arithmetic. Calculates the mean and standard deviation, factorials, powers, square roots and reciprocals. Automatically converts U.S./metric constants, and polar/rectangular coordinates. Performs log, trig and math functions. And it does so much more!
- It displays answers in fixed or scientific notation! Has selective round-off capability (0 to 9 places).
- It replaces log and trig tables! They're pre-programmed in. No interpolation required.
- Its 14 registers remember intermediate solutions! 9 of them are addressable for selective storage and retrieval of data. Register arithmetic is fast and easy... it eliminates pencil-and-paper calculations!
- Its accuracy—up to 10 digits—surpasses that of slide rules and most other calculators! It reduces mistakes. Handles numbers as small as  $10^{-99}$ ... as large as  $10^{99}$ —200 decades!
- It offers computer-like power! At a fraction of the cost. And there's no waiting to use it.
- It saves time! Up to 50 times faster than a slide rule. Solves complex problems in seconds.
- It operates silently... anywhere! Perfect for classroom, library or dorm. Runs on rechargeable batteries or AC.

It's as easy to use as an ordinary pocket calculator—but it's like having your own computer!

Come in and try it!

## Artichoke advocate elected to community college seat

By Rob Kastrow

Roger Brooks: The story of how the top Artichoke came out smelling like a rose.

Four years ago, as student body president of Scottsdale Community College, Brooks led a campaign against Maricopa County Community College Board policy over what he thought was over-spending on athletics by the district.

The artichoke was voted by SCC students as the team mascot, and pink and white were chosen school colors as a symbolic protest against the board, the governing body of the county junior colleges.

### Was elected

Last week, Brooks was elected to that community college board.

"All I did was what I was told to do by the district," Brooks said. "They told me if I didn't like the way things were done, to run, and I could change it. And I've run, and I'm going to change it."

Brooks leaned back in his chair, sighed a sigh of satisfaction and grinned, "There's no revenge involved. I'm looking for justice. The board has been unjust, they've treated people unfairly, they've been insensitive."

Brooks says there are a lot of similarities between the community college board and the Arizona Board of Regents, the governing body of the state universities.

He said the board and regents are making decisions based on inaccurate and incomplete information because they're out of touch with student problems. They get second and third hand information with negative matter screened out — and wrong decision result, he said.

### Unusual opportunity

The 27-year-old accountant feels a crusade to reduce athletic spending at ASU would have little impact. Because he was the first student body president at SCC, Brooks believes he had an unusual opportunity to accomplish something.

But because of ASU's long

### Financial aid ready for nursing students

All nursing students who applied for financial aid for the academic year 1974-75 can pick up their money in the business administration building, according to the financial aid office.

Students with questions can contact Gloria Hemphill at campus extension 3355.

traditions and "people there who would rather spend money on football than anything else," he believes trying to reduce athletic expenditures would be like "me standing up trying to throw rocks at a tank."

Brooks won his board seat in a special election to fill a vacancy caused by a resignation on the five-man board. He'll serve until the end of 1979, and he says his election may turn the board toward his ideas of "fiscal accountability."

## Richardson denies Senate plans

Continued from page 1

fire original special Watergate prosecutor Archibald Cox. Richardson refused to do so, and lost his job.

Wearing a "Keep John Rhodes in Congress" name tag pinned to his shirt, Richardson told students on the mall "The Goldberg book is in the category of dirty tricks."

The Goldberg book was reportedly financed in part by Nelson Rockefeller's brother Laurence, and has delayed the Senate's decision on whether to confirm Rockefeller as vice-president.

Richardson said Nelson Rockefeller's involvement

shouldn't disqualify him from being vice-president.

Endorsing Congressman Rhodes, Richardson said, "He's entirely on the level. It's more important to have people who are honest with us rather than people who agree with us."

In his 1 p.m. speech to about 200 persons in the Arizona Room, he said now that the campaign funding reform bill is on President Ford's desk, Congress should draft legislation to prevent dirty tricks.

Former special Watergate prosecutor Leon Jaworski established the independence of the special prosecutor from the

Presidency, and established the prosecutor's right to get evidence despite Presidential claims of executive privilege, he said.

The public will get the full story on Nixon's involvement in Watergate, even though Nixon was pardoned, Richardson said. "I think the president will testify in due time." He said there is a strong prima facie case against Nixon for obstructing justice, and Nixon's misdeeds were due in part to "deep loyalty to his friends."

Nixon felt like an outsider, not fully accepted, Richardson said, and he came to think of the other side as the enemy.



"My insurance company? New England Life, of course. Why?"

Because new responsibilities are right around the corner.

A career.

Maybe even marriage.

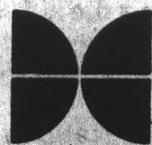
Your choice of the right life insurance program today will help you handle tomorrow.

The best possible plans are available at New England Life.

One is designed to insure you today and let you start paying premiums after graduation. Mean-

time, you pay just the interest.

Talk it over with your New England Life agent.



**BERT CROCKETT & ASSOCIATES** 1000 E. Apache Blvd., Tempe 968-8711 or 968-8529

**BOB FELTEN**  
SPECIAL AGENT

# Opinion

# state press

## ASU Activities Center has had poor beginning

It's big; we might even call it monstrous. It's pretty; an architectural landmark. It's also expensive, and has so far failed miserably to live up to expectation.

The eight million dollar University Activities Center has been completed for several months, and in that time we've seen a couple of partial successes plus some colossal failures under its roof.

First it was used for Summer Sessions walk-through registration. The concept was good. Students could pick up packets, collect class cards and pay fees all in one place, saving them from their semesterly treks across campus during walk-through.

The lines flowed rather well inside the building, but the building would hold so many people at once, so long lines of people sweltered in the 110-degree weather outdoors.

Next the athletic department, always on the lookout for an extra couple of grand, thought it would clean up with a closed-circuit television presentation of the ASU-Houston football game inside the air-conditioned center at the same time the game was going on in the stadium next door.

Unfortunately, the public didn't share the department's enthusiasm for the plan, and a lack of sufficient ticket sales caused a sizable loss of money on the project. A later try at the same thing made a small profit, but the meager turnout was still disappointing to those who had had quadruple-digit profit figures in mind.

Finally came what many of us had been waiting for — the premier concert in the new facility. But alas, the musical acts scheduled for the event were as uninspiring as those in the local bars, so they too failed to draw enough of a crowd to make a profit for the event.

Someone on the State Press staff remarked that the concert had provided one benefit; the technicians had been allowed a chance to work with the center's atrocious acoustics before the George Harrison concert scheduled a month later.

But now, because of contract disagreements, that show has been cancelled, and the chance for successful use of the University Activities Center still seems to be floating in the distant future.

## Indecent

Editor:

This time I have really had it with Bill McClellan. Twice this week he has written columns which are in even worse taste than usual and what is harder to believe make even less sense than usual.

On Tuesdays McClellan does not like Republicans, so suddenly all Republicans are members or at least hearty endorsers of the Ku Klux Klan.

On Fridays McClellan does not like veterans, so suddenly all veterans are Girl Scout corruptors or molesters.

It truly infuriates me that the State Press encourages as a columnist an egomaniac who has nothing good to say about anything or anyone except himself. McClellan should be stopped from publicly fantasizing the worst and most perverted about any person or group he does not happen to like.

Although I advocate a free press, certain minimal standards of decency are necessary. It is not in good taste to permit McClellan to continue his columns, it does not make any kind of sense, and it just not worth printing or reading.

Robin R. Hintze  
Business Administration



## Not image, but works

Editor:

Your recent editorial on Vietnam Veterans and the ASU Veterans Association disturbs me greatly. In it you made two statements which are untrue. This is due, I am sure, to either your own ignorance of the facts or misinformation you received from some other source.

Your first mis-statement: "The Old Vets Club has been disbanded." If this is true, why did the Vets Association use monies from the "Old Vets Club" to get it's start. Further, some of the members of the Vets Association were members of the former group.

Your second mis-statement (really only half untrue); "The Meetings (the Old Vets Club's) consisted of equal parts of beer drinking and swapping war stories." Under no circumstances was any member of the Vets Club allowed to tell war stories. In any

event to do so was considered, by the vast majority of members, in bad taste. We did, however, consume a goodly amount of alcoholic delights and we have never denied this. The purpose of the Vets Club was social in nature as stated in the constitution. It was never intended as a political force, as opposed to the present organization, which is self-piteous at best.

But lest anyone say we were unconcerned about others around us, let me make this perfectly clear. For two years running, while I was a member, the Vets Club gave its' time and money to a local orphanage. Even to the extent of taking the kids on two picnics. How's that for a bunch of beer-drinking, war story swapping, unconcerned Vets.

My point is that an organization's worth is based not on its image but on its works.  
Ellis T. Badon

Editor  
Managing Editor  
News Editor  
City Editor  
Assistant City Editor  
Staff Writers

Photo Editor  
Photographers

Sports Editor  
Assistant Sports Editor  
Columnist  
Perspective Editor  
Staff Artist

Ted Williamson  
Jim Braly  
Anita Mabante  
Jason Shaw  
Dale Messmer  
Dave Jensen  
Carol Pyne  
Greg Hagan  
John Masingill  
Roger O'Connor  
Jack Nock  
Chuck Pratt  
Roger Wittlin  
Mike Tulumello  
Bill McClellan  
Kevin Gustafson  
A. Jean Saiki

## Successful, yet great?

Editor:

Everyone has his heroes... such as Superman, Batman, Under Dog, Super Chicken, even Warren Sumners. Unfortunately, the ASU Student Foundation saw that the star to light

their way to a scholarship fund was Warren Sumners.

Mr. Sumners does a great job in getting entertainment for the general public... but when it comes to providing entertainment for the students our super hero loses some of his muscle. Some of his more recent episodes have been Burt Bacharach, the Beach Boys, Blood Sweat and Tears and now it seems that he is determined to add the George Harrison feather to his cap.

Everyone has blamed the Student Foundation for the lack of playing ability of Blood, Sweat & Tears, but those youngsters dreaming of the past greatness of "Spinning Wheel" were duped into believing that B.S & T would pack the house and bring in the funds. But unfortunately that was not the case.

But how long will it be before Warren Sumners flies from his Fortress Gamme to the University Activities Center for a concert that is successful, yet great?

Ahmed Eciruam Yeltrop  
Political Science

## Policy

The State Press appreciates letters to the editor from its readers. Selective samples of the letters received will be printed at the discretion of the editor. Letters should be typewritten and double-spaced.



## Police call alcohol major drug problem

By Alan Faye

Alcoholism is the biggest drug problem on the ASU campus with marijuana use ranking second, says University Police Chief John Duffy.

ASU police is the properties owned by the three Arizona universities, including the ASU campus and the nearby University of Arizona experimental farm, Duffy said.

"Alcohol is a drug, and an overdose of alcohol causes a hell of a lot of problems on this campus," Duffy said.

The ASU police are usually tipped off on marijuana use by a neighbor of the suspect, Duffy said.

Duffy said that a person cannot be arrested just for being drunk. "We have to do something with him. So we take him home or get somebody to take him home. You can't leave him lying in the street," Duffy said.

"We get a lot of phony information, or we'll get information of the type that we can't act on unless we get a search warrant and by the time we get it, the evidence is gone," he said.

Excluding alcohol, Duffy listed four other types of drug problems the ASU police deal with — hard drugs, pill-type drugs, illegal prescriptions and marijuana.

Duffy said more men than women have been caught smoking marijuana at ASU.

Duffy said, "We get more calls to check in on marijuana situations than anything else within our geographical jurisdiction." The jurisdiction of the

Duffy said he believes there has been a decrease since last year in the use of what he called "hard drugs," and an increase in pill-type drugs at ASU. He said he thought the number of students who smoked marijuana had remained the same on campus.

Don't bear that bare finger any longer! **Turquoise\* rings** in wide selection and at great prices, now available at

**THE GALLERY STORE**

Matthews Center — 2nd Floor — 12 to 4

\*All genuine Navajo Indian hand-made



**ARTIST & DRAFTING SUPPLIES**

Crafts - Picture Frames  
Decorating Material

Open Mon. & Thurs. Nights  
10 Percent Discount to Students  
111 E. University — 967-4482

Have  
You Ordered

Your  
School Ring  
Yet?

**\$5<sup>00</sup> DISCOUNT  
ON ALL BALFOUR  
RING ORDERS  
THIS WEEK ONLY**

**WHEN: Tuesday-Friday, October 15-18th**

**WHERE: A.S.U. Bookstore**

**\$10<sup>00</sup> DEPOSIT REQUIRED**

*Balfour - the ring people*

**Jerry's**

**audio  
exchange**

Phoenix — 334 E. Camelback Rd. 263-9410  
Tempe — 120 E. University Dr. 968-3491  
Tucson — 1037 N. Park 622-7407

**YOUR LOCAL DATSUN DEALER —  
OCTOBER - NOVEMBER  
SERVICE SPECIAL!**

**15% DISCOUNT  
ON PARTS AND LABOR**

\*FOR ANY DATSUN SERVICE TO ALL ASU  
STUDENTS, FACULTY, STAFF WITH ASU ID CARD

*Brit Smith*  
**MESA DATSUN**

1701 W. BROADWAY • MESA • 834-3366  
— ONLY MINUTES FROM THE CAMPUS —



Photos by Bill Frakes

Julius "Hutch" Hutchins undergoes a part of the test for sickle cell anemia. The disease is prevalent among the black community and is distinguished by the deformity of body blood cells.

# Sickle cell:

By Karl Middleburg

Tests to determine sickle cell anemia, a hereditary blood disease which causes normal red blood cells to assume the shape of a sickle, were performed Oct. 9 in Sahuaro Hall.

Jo Robertson, a graduate student at ASU who is studying the disease for his doctoral dissertation in health and physical education, conducted the tests.

Margaret Welch, program coordinator of the State Department of Health Services Sickle Cell Screening Program, and John Goulding, a physical education major, assisted Robertson with the tests.

Robertson said the turnout

was good, but not what he had hoped for. "A black is a fool not to take the test, but some kids are afraid to find out if they have the disease," he said.

"The purpose of the test is to get subjects to participate in the study, which concerns the maximal oxygen uptake of male sickle cell anemia trait subjects," Robertson said. "After the tests are completed, we will make a comparison between those with the trait and those who don't have the trait."

Robertson said the results of the test, along with other factors, will be fed into a computer.

"Then we'll try to determine if there is any difference between those with the trait and those persons that don't have

it," Robertson said.

Sickle cell is dangerous because the malformed cells can't float through the body easily, impairing their ability to carry oxygen to the vital parts of the body.

People whose ancestors came from Africa are more likely to have sickle cell disease, although Caucasians whose ancestors came from the Mediterranean area may also have some form of the disease.

There are two forms of sickle cell disease. Sickle cell trait, the mild form, is likely to be found in one of ten black Americans. Having sickle cell trait means a person is carrying a gene for sickle cell disease which can be passed along to his children. If

Continued on page 7

## Study in Europe this spring.

Plan now to spend the spring semester studying in Austria, France, Germany, Spain, or England. The Institute of European Studies programs will provide a good background for careers in international business and post-graduate professional education.

Study opportunities include a broad range of subjects in the humanities and the social sciences. Independent study, traineeships in business firms, student teaching and area studies programs are available.

Live with families or in student dorms. Full integration into the student community.

Learn or improve your language ability. English language program in Vienna. All programs include intensive orientation.

Financial aid is available.

See your study abroad advisor and write us today:

Office of Admissions  
The Institute of European Studies  
875 North Michigan Avenue  
Chicago, Illinois 60611

### The Institute of European Studies

**CAMPUS & COMMUNITY INSURANCE, INC.**  
1005 WEST SOUTHERN AVE. MESA, ARIZONA

★ Low rates ★ Monthly Pay ★ Low Down Payment  
★ SR-22 Filings ★ Immediate Coverage

Lowest rates in the State! Excellent rates & coverage Low, Low, Low cost call & compare

RESIDENTIAL - 25% Below rates, if you qualify, most do! COMMERCIAL - Let us compare cost & coverage! Lowest rates available on approved Mobile Home Parks

\*Apartment contents policies

**CALL DAVE SMITH 833-4563**

## On the Way . . . To Better Pay . . . Without Wasting Time

Now — get started faster in a money-making career

Spend all your time on selected business courses . . . what you need to get a job.

Learn to be a Secretary - Accountant - Key punch Operator - Programmer

IN LESS THAN ONE YEAR YOU CAN PREPARE FOR A NEW LIFE OF CHALLENGE, ACHIEVEMENT, SATISFACTION AND GOOD EARNINGS.

**FREE** Lifetime Placement Assistance

**FREE** Lifetime Brushup

Call 258-7947 — New classes begin October 29th

### THE LAMSON BUSINESS COLLEGE

725 N. Central Avenue, Phoenix, Arizona 85004

## Students get tests plus genetic counseling

Continued from page 6

the children marry someone who also has this trait, their children have a higher risk of being born with the serious form of the disease.

The severe form of the disease, sickle cell anemia, is likely to be found in one of every 400 black Americans.

The tests are performed by taking a blood sample, a simple prick of the finger. The samples are sent to the Arizona State Laboratory for Clinical Diagnosis, said Welch. Welch said if there are any abnormal cells, a hematologist from the State Health Department will give individuals genetic counseling.

"Much research is performed on the national level, but not in the state, to perfect treatment and to search for a cure to the illness," Welch said. There is no cure for sickle cell anemia. Welch said, "The value of such tests is really in educational genetic counseling."

The many symptoms of sickle cell anemia vary from person to person. Sickle cell patients get pale, tired and short of breath. Their eyes take on a yellow cast, and they have pain in their arms, legs, back and abdomen. Patients also have a low resistance to infections.

The chances are one in two that a man and women who both have the trait will pass it on to their children. The chances are one in four that the child will have the serious form of the disease, and one in four that the child will have no form of the disease at all.



A few drops of blood can help determine the presence of sickle cell anemia.

### THE INCREDIBLE SPECTRADYNE ORBITER Z4

A NEON LASER VIDEO PROJECTOR THAT OPERATES DIRECTLY FROM A STEREO OUTPUT TO PRODUCE MIND-SHATTERING VISIONS COVERING YOUR WALL.

Under \$200 at Jerry's Audio Exchange  
130 E. University Drive in Tempe

### CAMPUS CLEANERS & COIN-OP LAUNDROMAT

One Day Service on Dry Cleaning & finished Shirts

☆ Alterations ☆ Hand Ironing

☆ Suede & Leather Cleaning

☆ Fluff Dry • Wash • Dry • Fold

Dry Cleaning by the Pound  
OPEN 7 DAYS A WEEK

WE ALSO DO DRAPES AND RUGS

Phone 967-9650

• Tempe

Corner of University & Rural Road

### CARPET SPECIALS

9 x 12 used rugs-\$5.00

All Sizes In Stock

### CARPET HOUSE

1516 E. Van Buren, Phx.

### WORLD CAMPUS AFLOAT

### JOIN US!



You'll sail in February, with the ship your classroom and the world your campus . . . combining accredited studies with fascinating visits to the fabled ports of the Orient, Africa, and the Americas. Over 10,000 students from 450 colleges have already sailed with WCA — join them! Financial aid available. Write today for free catalog.

WCA, Chapman College  
Box F, Orange, CA 92666

## WHY?

Why could not **THANE READ**, World Party candidate for U.S. Representative, District 1, be on the Primary Ballot?

The answer is simple:

## DEMOCRATIC AND REPUBLICAN MONOPOLY

Several years ago Republicans and Democrats in the Arizona Legislature passed a law which makes it impossible for **candidates of any new party** to get on the primary ballot. Last session a bill to correct this rankly discriminatory law mysteriously got "lost."

### THE MARKETPLACE OF IDEAS IS NOT OPEN

Here we have the Republicans and Democrats working hand in glove to eliminate competition and prevent the voters from learning of new ideas and proposals. In this way the parties in power can continue peddling their outmoded, ineffective ideas, slogans and cliches without competition.

### IS THIS ARIZONA DEMOCRACY IN ACTION OR WATERGATE STYLE POLITICS?

VOTERS . . . YOU CAN HELP OPEN UP THIS ELECTION — THERE IS A WAY

VOTE  
WRITE IN

# THANE READ

VOTE  
WRITE IN

WORLD PARTY PLATFORM

- |                       |                          |                            |
|-----------------------|--------------------------|----------------------------|
| 1. WORLD GOVERNMENT   | 3. WORLD MUTUAL AID PLAN | 5. DISTRIBUTION CONFERENCE |
| 2. POPULATION CONTROL | 4. EQUAL RIGHTS — NOW    | 6. WORLD LANGUAGE          |

WORLD PARTY BOX 10 TEMPE, AZ 85281

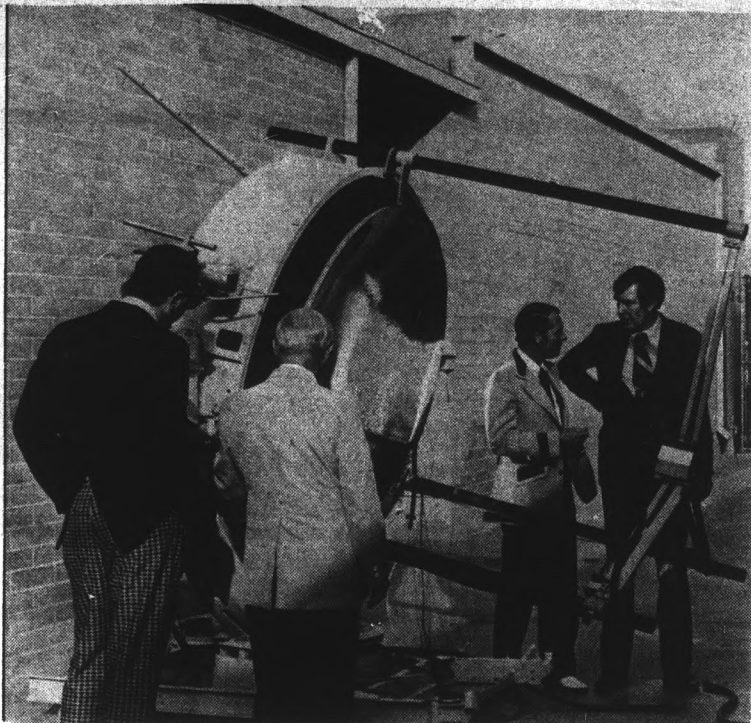


Photo by David Pearson

The development of solar energy has found a starting place on some land west of the campus on University Drive. Byron "Bud" Brown, Democratic candidate for Congress (second from right), donated the land to the University. Brown and Congressman Morris Udall inspect a solar reflector along with John Yellot, professor of architecture, and Byard Wood, professor of engineering.

### Problem with funds

## Land donated for solar energy center

By Dave Pearson

About 1.3 acres of land has been donated to ASU to establish a solar energy research center.

The land, located about six blocks west of campus on University Drive, was donated Oct. 12 at a news conference in the mechanical engineering lab in the College of Engineering by Byron "Bud" Brown, Democratic candidate for Congress.

Brown said, "If we are to get solar energy off the ground in this state, we've got to make certain that solar energy research is promoted."

Brown is opposed in the upcoming general election by Republican incumbent John Conlan, 4th Congressional District.

Congressman Morris Udall (D-Ariz.) said the U.S. should increase its appropriations to solar energy research.

Brown donated the 56,000-square-foot parcel in the name of Bud Brown Enterprises and North American Investment, of which he is president.

A solar energy demonstration took place prior to the news conference. A solar water heater was unveiled that will be mounted on a University-owned home to replace its gas water heater.

The solar water heater, purchased from Israel, costs \$500 but will pay back this cost in about five years, said Byard Wood, assistant professor of mechanical engineering.

Wood said there are three drawbacks in using a solar waterheater. The initial cost is prohibitive, it doesn't work at night and it works poorly on cloudy days.

In spite of these problems Wood said, solar energy "deserves more attention to determine its real potential."

John Yellot, professor of Architecture, said if the donation is approved by the regents, plans could be drawn up for a solar energy research building in one week and construction could start a month after funds have been appropriated.

ASU President Schwada said the regents must approve all acquisitions of the University.

Schwada said he was pleased at the donation but he added, "I have no idea where funds will come from to build a solar research center."

STATE PRESS is published by Arizona State University Tuesday through Friday during the academic year, except holidays and examination periods. Entered as second class matter at Tempe, AZ, 85281.

### Collage

TODAY

Hillel-sponsored lunch, 11:30-1 p.m. at Baker Center. Price 75 cents.  
 Arizona Association of Student Nurses is conducting a hypertension clinic for the community, 10:30-1:30 p.m. on the mall.  
 ASU English Department presents "The Writing on the Wall: A study of American Graffiti" featuring Professors Frank D'Angelo, Don Nilson, James Ney, and D. G. Kehl at 3 p.m. in the MU Pima Room.  
 MU Pop-Up features turtle races, 10:30-2 p.m. in the MU Rendezvous Lounge.  
 ASU Veterans Association meeting, 2:30 p.m. in the MU Yuma Room.  
 Baptist Student Union chapel service, 12:40-1:30 p.m. at Danforth Chapel.  
 Baptist-sponsored lunch, 11:30-1 p.m. at Baker Center. Price 75 cents.  
 MU Chess Association meeting 7-11 p.m. in the MU Navajo Room.  
 Question and answer seminar for freshmen and sophomore nursing students, 4:30 p.m. in the Nursing Building, Room 101.  
 Masters Business Association will have a general meeting at noon in the MU Pinal Room.  
 MU Bridge Club meeting at 7:15 p.m. in the MU South Pinal Room.  
 Disabled Student Organization meeting, 2:45 p.m. in the MU South Pinal Room.  
 NSID, the National Society of Interior Designers, will meet to discuss "Marketing Principles and Buyer Behavior" at 4 p.m. in the Architecture Building, Room 141.  
**THURSDAY**  
 Methodist Campus Ministry-sponsored lunch, 11:30-1 p.m. at Baker Center. Price 75 cents.  
 Christian Science Organization will have its weekly testimony meeting at 4 p.m. at Danforth Chapel.  
 Inter-Varsity Christian Fellowship meeting, 7:30 p.m. in the MU South Pinal Room.  
 Horns 'N' Halos Square Dance Club will meet 7:30-9:45 p.m. at the LDS Institute.  
 CIRCLES will meet at 1:15 p.m. in MU Room 211.  
 Sopros meet at 5 p.m. in the MU Graham Room.

### LSAT REVIEW COURSE

Maximize your LSAT score by taking review course taught by Phoenix attorneys.

Course for December LSAT will be held in Phoenix on November 23, 24 and 30.

#### FOR INFORMATION

Call—264-0236 or 949-5786  
 Write—Arizona LSAT, 4008 North 15th Avenue, Phoenix, Arizona 85015

BLACK & WHITE AND COLOR

### SLIDES

FOR YOUR PRESENTATIONS  
 MADE FROM YOUR ART WORK,  
 GRAPHS, BOOKS & MAGAZINES

OR  
**DUPLICATE SLIDES**  
 MADE FROM YOUR ORIGINALS

#### AT A.S.U. PHOTO SERVICE

MATTHEWS HALL 965-3637

A university service facility  
 for the university community



### GINO'S PIZZA

**WE DELIVER**  
 966-4666, 966-5542  
 MON. - THURS. 5-1  
 FRI. & SAT. 4-2  
 SUN. 3-12  
 822 South Mill



*"Know what you  
 are and act from  
 your full potential."*

—Maharishi Mahesh-  
 Yogi

### TRANSCENDENTAL MEDITATION

Introductory Lectures on Tues. and Wed.  
 October 15 and 16 at 8 p.m. in

Language & Literature A218

For more information please call

**264-2242**

# Stop Forgetting!



Cut your study time in half - double your retention **AND** improve your grades.

**DR. ROBERT MERIWETHER**, Mnemonics Institute of San Diego, will present a one day seminar on memory training and rapid study techniques.

**DATE:** October 19  
**PLACE:** Howard Johnson's  
**TIME:** 8 am till 4:30 pm  
**COST:** \$20, (including text & aids)

**OBJECTIVES:** To introduce students to the science of mnemonics (memory aids), to develop an excellent memory, to teach effective study habits, to teach students to remember what they read and hear.

**SATISFACTION  
 GUARANTEED**

*Do It Now!*  
 BEFORE YOU FORGET

# Devil golfers defeat weather, opponents in Tucker tourney

By Mark Bauer

The ASU men and women's golf teams should have taken wet suits to the Tucker Invitational golf tournament in Albuquerque last weekend. The weather was that bad.

Instead they took golf clubs, and the men and women each came away with impressive victories.

The weather shortened the women's scheduled 54-hole event to 36 holes. ASU women's coach Judy Whitehouse did not protest when officials halted the match.

"One morning we played in such unusual conditions that you couldn't even see the green from the tee because of the fog. It was eerie," Whitehouse said.

The women finished with a 542 team total, 10 strokes ahead of second-place Arizona. The men toured the 72 holes in 1176, edging out Brigham Young by two strokes.

The ASU women were led by Robin

Walton with a 36-hole total of 159. Julie Stanger shot a 163 and Chris Remme carded a 165.

"It ranks as one of the top tournaments in the country. The last day the weather was really bad. It was cold and raining and just no fun," Mann said.

The women will play at Stanford Oct. 24-25 and the men hope to schedule a tournament before they host their own tournament Dec. 4-6.

Mann said he had positive feelings following the tournament.

"It indicates to me that we are just as good as some of the top teams in the country. This win will indicate to those schools that we will be up there. We will probably be ranked high nationally," he said.

Charlie Gibson led the ASU men with an even par 288 total, tying for second in the tournament. Dub Huckabee finished with a 292 total, while John Adams shot a 297.

state press

## sports

### Tennis Devils court success

The ASU men's tennis team begins play Thursday in the 62nd Southwestern Open Tennis Championships.

ASU's Mark Joffey, the 1974 WAC singles champion, has been seeded first in the tournament. Other seeded ASU players are Ted Williams (13) and Jan Eric Palm (16).

Coach Marty Pincus said the Southwestern Open is one of the most important tennis tournaments during the fall season.

The tournament rotates between Phoenix, Tucson, El Paso and Albuquerque.

In tennis action last week, Glen Holroyd of ASU defeated Peter Hansen of Mesa Community College, 6-1, 6-1, to win his second Mike Harden Memorial Collegiate Singles Tournament title.

Student Discount

MINI-STORAGE & WAREHOUSE

DON'T HAUL IT . . .

STORE IT

You Lock It.

You Keep The Key.

2422 W. Broadway

MESA

968-1021

# The All-Volunteer Army

## Ending the Draft

Compulsory military service was a part of the pattern of life in the old world. Many Europeans immigrated to the United States because they rejected the notion that young men should be conscripted to serve in wars of conquest.

The draft was first employed in the United States in 1863 during the War between the States. Then it was dropped and not used again until 1917. In 1940, at the outset of the second world war, young men were again drafted to serve in the military.

I believe the draft is wrong.

As a co-sponsor of Senate Bill #392, I am proud of the action of the Congress of the United States to end the draft and place our national defense in the hands of an all-volunteer professional military force.



Senator **Barry Goldwater**  
REPUBLICAN

Goldwater for Senate Committee

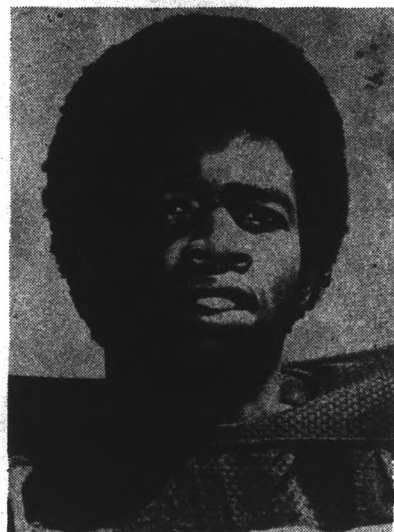
Marshall Humphrey • Mrs. Emery Johnson • Hoyt Pinaire

Arizona Needs Him... the Nation Needs Him!

STUDENTS FOR GOLDWATER HEADQUARTERS • 525 Mill Ave. Suite 204-C. Ph. 966-3668

# Morning Briefing

## Bo Warren reinstated by Kush after unanimous vote by players



**Bo Warren**

When Bo Warren said he would run from Tempe to Blythe, Calif. to get back on the ASU football team, he underestimated the influence his teammates might have on head coach Frank Kush.

Saturday the squad voted unanimously to reinstate Warren, who had been dismissed by Kush for being drunk on the return flight from the Missouri game Sept. 28.

"Bo came to see me last week and I checked into a few specifics, they decided to put it up for a team vote," Kush said. "I treat every player differently, and in this case, I simply changed my mind."

There are numerous questions that still remain unanswered in the Warren incident, but as far as Kush, Warren, and the athletic administration are concerned, the case is closed. Warren will be ready for the Utah game Saturday night.

ASU football fans who have always wondered why national recognition for the Sun Devils is so hard to come by can look to television as a partial answer, according to the Oct. 19 edition of TV Guide.

Sixteen percent of the 127 colleges and universities playing major football schedules have dominated the ABC-TV selected weekly grid telecasts for the past

eight years, the magazine reported.

Texas, followed by Notre Dame, USC, UCLA, Nebraska, Oklahoma and Alabama led the list of TV's most visible teams. TV Guide said about a dozen colleges take almost \$4 million of the annual \$13 to \$16 million in income, though 9 out of 10 college grid programs are losing money.

Though ASU is the second winningest major college team of the past 25 years, the Sun Devils have appeared on national TV only once. Two years ago the Devils outlasted Houston 33-28 in the Astrodome.

Practice begins today for that annual winter madness known as Western Athletic Conference basketball.

Team previews indicate another well-balanced race, one which could produce an identical finish to that of the past two seasons. In 1973 and '74, five or six teams still had a chance at the title before the final wild weekend, when one team walked away with outright honors.

Leading returnees include all-WAC guards Lionel Hollins of Arizona State and Luther (Ticky) Burden of Utah, plus second-team selections Al Fleming of Arizona and Tim Hall of Colorado State.

*Mrs. Ann*

**SPIRITUAL CARD READER**

has a new location 1 block west of Mill Avenue. She tells the past, present and future. If you'd like to brighten your life — see her today. I can help in any matter.

For Appointment Call **967-9612**

115 W. University, Tempe  
Open 9 a.m.-10 p.m. Daily

## ASU schedules first intramural rodeo

ASU students will get their chance to wrestle with some fun during an intramural co-recreational rodeo.

The rodeo, billed as "Fun Day", will be at the ASU farm November 2. The rodeo is the first in ASU intramural history.

Entries for the event are due October 28. The rodeo will be closed to Rodeo Association members, but all other ASU students will be eligible.

Competition will be scored on an individual points basis but awards will also be given for overall team performance.

The events range from a greased pig race to dummy roping.

Participants will get an opportunity to dress a calf with



a. Jean Salkin

bloomers, hog tie a goat and speed across the corral during a boot race.

Students having the urge to bust a bronc can match their skill against the clock in a

bucking-barrel event.

The Coolidge bull dogging contest gives entrants a chance to grab on to some real bull.

Events will be scored on the basis of time and elimination.

### BUY SELL CLASSIFIED ADS TRADE LEASE

1. Rates: The first day is 10 cents per word with \$1.50 minimum (15 words). All consecutive ads after the first day are discounted.
2. Notification of errors is required before second publication. The State Press will not be responsible for more than the first incorrect insertion.
3. No refunds will be made for cancellations of classified advertising.
4. All abbreviations or small groups of numbers count as one word. Hyphenated words count as two words.
5. No tear sheets will be provided with classified advertising.
6. The right is reserved to reject any copy.
7. Payment for all classified ads is cash in advance.
8. Ads will not be accepted over the telephone but can be placed either in the offices of the State Press, Stauffer Bldg., A111, ASU, Tempe, Az. 85281, or in the Memorial Union, Room 208 J. Ads also may be mailed to the State Press if prepayment is included with the form.
9. Deadline is 4 p.m. two days before the ad is to appear.

**FOR SALE**

Lecithini Vinegar! B6! Kelp! Now all four in one capsule, ask for VB6+, Carnus Drugs. (12/5)

The whole world in your hands for about 8c per day. Subscribe now to The Christian Science Monitor. Call 966-8736 or stop by the table on the mall. (10/18)

New Boys 10 speed with lock and chain—\$70 or best offer — must sell. 968-1945. (10/17)

Girls 10 speed - \$65. Mens - \$40. 3 speed \$25. Typewriter \$20. Ans. machine \$80. Call 948-5647. (10/20)

Ladies shoes & sandals — 1/2 off — Back Door Shop, 707 S. Forest, Tempe. 966-1772. (10/31)

Ideal home for college proff. 3 bd., 2 bath, 2 car garage. Proff decorated. Many extras. Near Lakes. High 30's, 7% MTG. Owner, anxious. Agent eves. 997-4995. (10/18)

Discount to students — used furniture, antiques, collectables. Prices to help your budget problems. Now moved to Ash & Univ., Suite 112, Univ. Square. Butlers. 966-8498. (10/16)

**HELP WANTED**

Full time career opportunity with a National Organization: Call 968-7760 for personal interview. (10/18)

Acoustic Guitarist/Singer for new restaurant. Clean looks and modern folk-rock repertoire required. 714-299-4600. Leave phone number for appoint. Singles, duos, trios only. No drums. Ask for John Kelly. (10/24)

Cocktail waitresses, age 19 or older. Must be reliable, personable, neat and attractive. Part or full time. Good opportunity to make extra money and enjoy meeting people. Apply in person Mon-Fri. 12-3. Friday's & Saturdays. 825 N. Scottsdale Rd. (5-2-75)

Help wanted: Tillerman Restaurant opening mid-November. All positions open — waiters, cocktail waitress, hostess, bar tenders, kitchen help, clean-up. Between 9 a.m. to 12 p.m. and 2 p.m. to 4 p.m. Mon. thru Fri. Ask for Bob Gonzales, 2152 E. Broadway, in front of Tempe Raquet & Swim Club. (10/23)

Part-time help wanted. Call 968-7760 for interview. (10/18)

**LOST**

Orange/white long-haired cat. Seven toes front feet. Vicinity - Apache/Rural. 968-0324 - after 4 p.m. (10/15)

**ANNOUNCEMENTS**

Israeli Folk Dancing, 8:00 p.m., Cochise Room, MU, newcomers & oldtimes welcome. (10/15)

Veterans Bill Recipients: Fate of future GI bill is in your hands! ASU Veterans Association gets mailgrams at half price (\$1.20). Can you afford to invest \$1.00 for an increase of 36-45 months plus other benefits? We must act now! Pledge \$1.00 by leaving your name, address and phone at MU information desk. Further information at ASU Veterans Meeting. (10/15)

Mr. Ronald Milakowski, Pres. of the Union of Israeli Students, at Hillel on Wed., Oct. 16, 8:00-9:00 p.m. He will speak about Jewish student organization in Israel and abroad. 213 E. University. (10/16)

Men! Women! Jobs on ships! No experience required. Excellent pay. Worldwide travel. Perfect summer job or career. Send \$3.00 for information. Seafax, Dept. A-6, P.O. Box 2049, Port Angeles, Washington 98362. (10/17)

Retreat with Hillel. Meet Jewish students from all over state of Az. Nov. 1-3, Peppersauce Canyon, Mt. Lemon. Call Hillel to register. 966-5371. (10/18)

**INSTRUCTION**

Individual tutoring in math, chemistry, physics, and biological sciences. \$15 per 2-hour session. 272-7706. (10/31)

Parachute twelve miles from Phoenix! \$5 off with student ID or this ad. Phone 275-0010. (11/21)

**WANTED**

Instructors wanted to teach following classes in MU short course program: bridge, chess, guitar. Contact Rick Eden, 965-6640, MU Activities Center. (10/17)

Roommate wanted. 2 bedrooms, 2 baths - \$116 inc. utilities. Canlen House 968-1303. 10 a.m. to 8 p.m. Steve. (10/18)

**TRAVEL**

Europe-Israel-Africa. Student flights all year round. Contact: ISCA 1 6035 University Ave. #11 - San Diego, Calif. 92115. Tel: (714) 287-3010, (213) 826-5669. (12/6)

**AUTOMOBILES**

'69 Fairlane 2 door hardtop. Bargain — \$150 under book. Extra clean. Vinyl roof, V8, automatic, air, power steering. \$795. 948-6027. (10-15)

'65 Ford Falcon-Wagon, 289-V8, body in good condition, runs good. \$400. Ask for Chris 965-4255. (10/17)

WANTED: 1971 or 1972 Porche 911. Cash ready. Dick Williams Days 277-5763, night 948-7949. (10/17)

'70 Dodge Challenger, in excellent cond. Green w/black landau, black interior, air-cond. Must sell. Call 834-8849. (10/16)

**TYPING**

Professional typing. IBM pica. 60c page. Minor ed & corrections. By appointment. 956-7963. Phx. (12/6)

Typing — IBM Selectric — pica type. Rosemary Vance. Tempe 967-9143. (11/15)

Term papers, resumes, theses, dissertations. Professional, guaranteed work. IBM. Maxine Mullen, 955-0763. (5/2)

Experienced typist can do theses, dissertations, term papers, medical background. 50c page. Janet, 834-8893. (10/31)

IBM, experienced, reports, theses, dissertations, guaranteed, 50c and up, Pam, 994-9851 after 5 (\$5.00 minimum). (12/6)

**50% DISCOUNT ON ALL JEWELRY WITH THIS COUPON INDIAN JEWELRY**

**Bever Silver & Jewelry**

Western Savings Building, Suite 205  
525 South Mill — Tempe  
Open Monday-Friday 8:30 to 6:00, Saturday 10:00 to 5:00  
Phone 968-3462



Photo by Greg Hagan

ASU freshman quarterback Bruce Hardy finds himself in a swarm of Glendale Community College defensive players. The Sun Imps lost its second consecutive game of the season against Glendale Friday night, by a 10-7 score.

## Hardy enjoys game despite loss

It may not be Sun Devil Stadium filled to capacity on a Saturday night, but for freshman quarterback Bruce Hardy, the Sun Imp's game against Glendale Community College Friday night, was a pleasurable experience despite a 10-7 loss.

"It felt good just to play," Hardy said. "All of us coming down from varsity enjoyed playing in a real game. It was my first game against another team in almost a year."

Hardy, who was named Sports Illustrated's prep player of 1973, has been the Sun Devil back-up quarterback for Ray Alexander and Freshman Dennis Sproul.

Against GCC Friday before an estimated 400 people, Hardy threw 10 of 21 completed passes for 153 yards. He teamed up with split end Dave Hainlan for a 69-yard pass play, setting up the lone ASU touchdown.

"I would expect that I'll play all the game that I can for the Sun Imps," Hardy said, "But whenever the varsity game conflicts with the freshman game, I'll probably go with the big team."

Freshman coach Bill Kaijikawa hopes that Hardy can stay down more often. "Bruce looked good, especially since this is the first chance he's had to play this year. Naturally we'd love to have him stay down with us more often, but that decision will have to be made by the other coaches."

Before the game, head coach Frank Kush said that he would be watching Jimmy Malone, younger brother of Art and Ben, closely in future weeks.

Against GCC, Malone carried the ball only twice for three yards. His total season statistics are now seven carries for 21 yards.

## WAC Standings

	WAC			Overall		
	W	L	T	W	L	T
Arizona	3	0	—	5	0	—
Arizona State	1	0	—	3	1	—
Brigham Young	1	1	1	1	3	1
Texas El-Paso	1	1	—	1	4	—
New Mexico	1	2	—	1	3	1
Colorado State	0	1	1	1	3	1
Utah	0	2	—	0	4	—
Wyoming	0	2	—	0	4	—

### Saturday's results

Arizona 41, Utah 8  
 Brigham Young 38, Wyoming 7  
 Utah State 24, Colorado State 23  
 San Jose 13, New Mexico 11  
 New Mexico State 14, Texas El-Paso 13

### This week's games

Utah at Arizona State  
 Texas El-Paso at Brigham Young  
 Nevada-Reno at Colorado State  
 New Mexico at Wyoming  
 Arizona at Texas Tech

# Vivitar

## Special Purchase!



### Vivitar automatic T-4 LENSES

The amazing T-4 system offers razor sharp lenses with complete interchangeability between two or more 35mm SLR cameras with differing lens mounts. Fast and easy to use. Choose from an extensive range of focal lengths.

21mmf3.8 . . . . . \$103.95	135f2.8 . . . . . \$ 59.95
24mm f2.8 . . . . . 89.95	200f3.5 . . . . . \$ 79.95
28mm f2.8 . . . . . \$ 69.95	90 to 230 Zoom. \$129.95
	75 to 260 Zoom. \$189.95

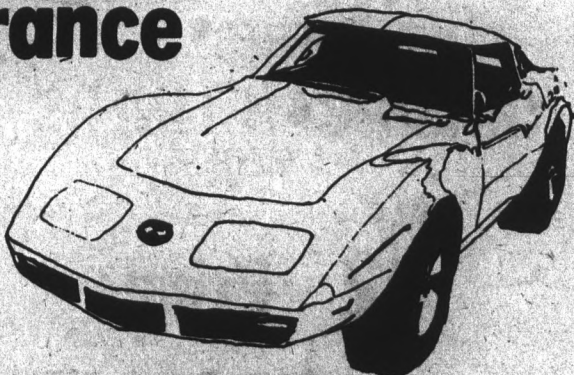
Prices includes T-4 Mount  
**LEWIS CAMERA EXCH.**  
 1236 North Scottsdale Road  
 Tempe, Arizona 85281  
 (Hayden Plaza East) • 908-2030

# SGS

Auto Insurance

## Low Cost Insurance

- Excellent for college students
- All driving records & cars accepted
- Easy monthly payments
- Call today for quote



Selective Group Services, Inc.

# 834-8935

28 North Alma School Rd. Suite E. Mesa, Arizona

**VIT. C**  
250 mg.  
100's  
reg. \$1.60  
Now ..... **99¢**

**SUPER PLENAMINS**  
Vitamins & Minerals  
216's  
Reg. \$8.69  
Now ..... **\$5<sup>88</sup>**

**TAMPAX**  
40's  
Reg. \$2.09  
Now ..... **\$1<sup>39</sup>**

**SCHOLL'S**  
Exercise Sandles  
Reg. \$14.95  
Now ..... **\$9<sup>88</sup>**

Clairol  
Herbal Essence  
**SHAMPOO**  
8 oz.  
Reg. \$1.69  
Now ..... **99¢**

**CLAIROL HERBAL**  
ESSENCE CREAM  
RINSE  
8 oz.  
Reg. \$1.39  
Now ..... **77¢**

**BINACA**  
BREATH SPRAY  
Reg. \$1.29  
Now ..... **77¢**

**BAYER**  
ASPIRIN 100's  
Reg. \$1.25  
Now ..... **87¢**

**VICTORS**  
COUGH DROPS  
Reg. 39¢  
Now ... **27¢**

**G.A.F. 126/12**  
COLOR FILM  
Reg. \$1.50  
Now **69¢**

**VB —**  
Kelp, Lecithin,  
Vinegar, B6  
100's Reg. \$4<sup>98</sup>  
42's Reg. \$1<sup>98</sup>

**SEAL 'N' AIR**  
FOR BIKES Reg. \$1<sup>89</sup>  
MOTORCYCLE SIZE Reg. \$3<sup>88</sup>

**CLOSEOUT PRICES ON SPECIAL SELECTION OF POPULAR COSMETIC ITEMS.**

with this special coupon  
**COLOR FILM**  
DEVELOPED AND PRINTED  
**\$1<sup>99</sup> \$2<sup>99</sup>**  
12 EXP. 20 EXP.  
THIS OFFER GOOD UNTIL 10/22/74 16

**TUFFIES**  
TRASH CAN LINERS  
ALL SIZES  
**1/2 Price**

**TOOTSIE-ROLL**  
POP DROPS  
Reg. 15¢  
Now ..... **5¢**

**LISTERINE**  
Reg. \$1.45  
Now ..... 14 OZ. **99¢**

**CAMPUS DRUG CO.**  
College & University  
Open Daily 8 to 8, Sat. & Sun. 9 to 7

Every Thursday at Campus Drugs - 1 to 4 pm  
**FREE Skin Care Advice**  
Come in and meet Bonnebelle Cosmetic's ASU Representatives