

Regents OK hike in tuition

The Arizona Board of Regents voted Monday to increase the registration fee for ASU students classified as residents from the present \$185 per semester to \$200 per semester.

The increase will become effective for the fall semester in 1975.

The regents also approved an increase in the non-resident student registration fee from the present \$185 to \$255. Non-resident tuition fees will rise from \$445 to \$530 per semester.

Total costs for non-residents, including registration fee and tuition fee, will rise from \$1260 to \$1570 per year.

Most students call the registration fee a "tuition" fee but under regents' terminology it is a "registration" fee. Out-of-state students pay both a

registration fee and tuition fee.

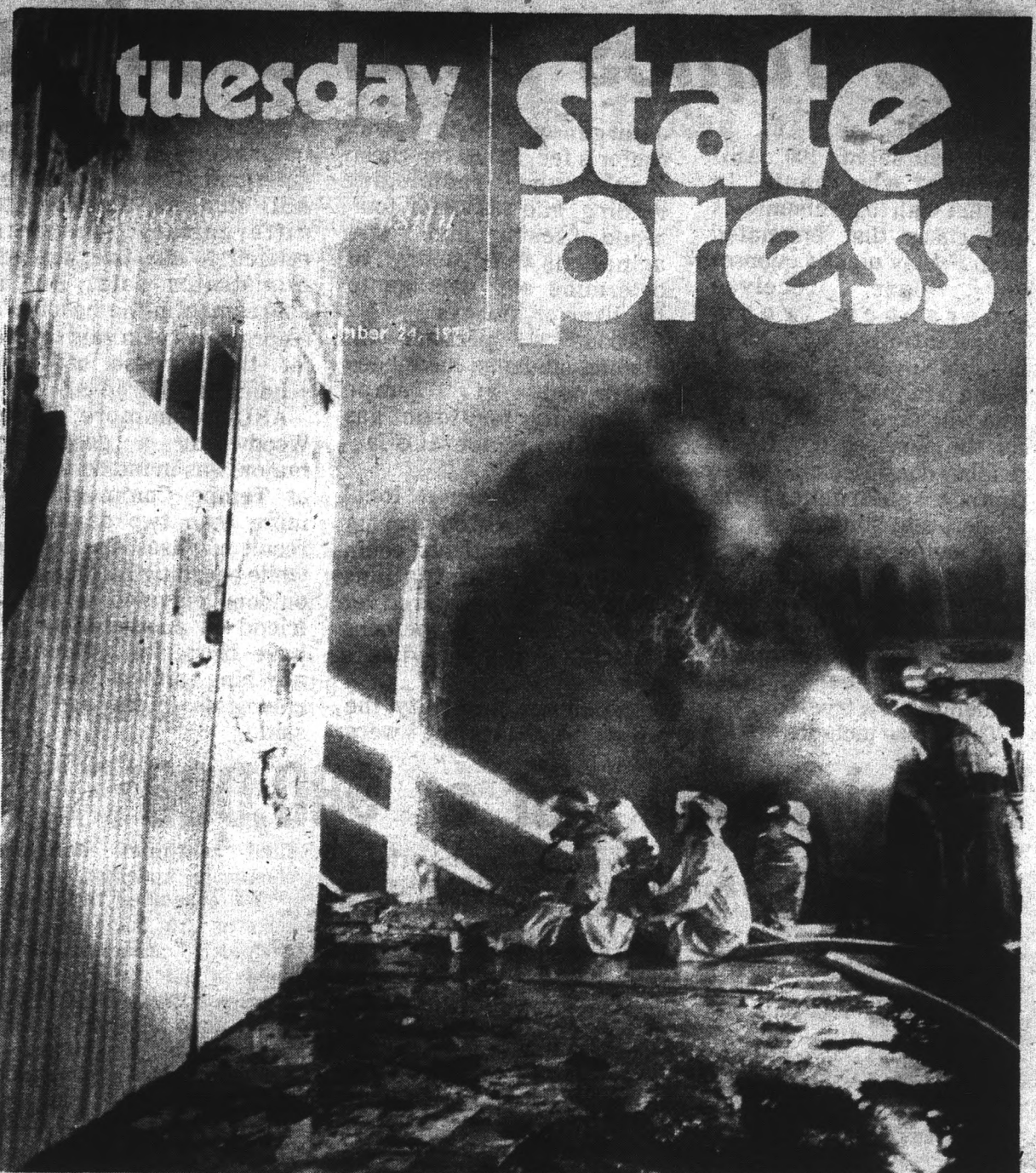
The regents, meeting at Northern Arizona University in Flagstaff, also approved similar increases for NAU and the University of Arizona.

The board also voted in favor of cutting off all negotiations that might lead to a professional football team using Sun Devil Stadium.

Three regents, Kenneth Bentson, Weldon Shofstall, and Gordon Paris, were in favor of continuing to study whether a pro team should be allowed to use the stadium, but the remainder of the regents voted against them.

Bentson said, "ASU and Frank Kush will become as big a name as Notre Dame in 10 years, but I believe pro

Continued on page 5



\$80,000 fire

Photo by Bob Reeder

Sixty-five firemen and five fire trucks were called to battle a blaze that started in a University storage shed Friday night. An estimated 200 onlookers were later tested at a hospital for possible toxicity since the blaze burned a poisonous insecticide. This caused fumes that could possibly be dangerous. Story, Page 2.



Watered-down fans

Rain is uncommon at ASU football games. Saturday night the uncommon came down in bucketfuls, causing hundreds of fans to seek

refuge beneath the press box and various plastic umbrellas. More photos on Page 4.

Photo by Chuck Pratt

Fire fumes send students for checkups

By Dave Jensen

An estimated 100 ASU students who came in contact with toxic chemicals and gases that emanated from Friday night's quonset hut blaze received emergency room examinations at local hospitals over the weekend.

And it may be the students who will have to foot the bill for the services if ASU officials today decide not to finance emergency aid rendered to students.

In some cases cost may be as high as \$100 a person, said Margie Johnson, head nurse in the emergency room of Tempe Community Hospital, where most students were treated.

The figure includes \$25 for

emergency room and doctor's fee, \$20.60 for chest X-ray and radiologist reading, and \$38.75 for four blood tests and one urinalysis, necessary to determine any damage to the liver or kidneys.

About 225 persons, including students, have been examined at Tempe Community for toxic gas inhalation since the accident.

Three other local hospitals reported seeing less than 50 patients each. However, examinations were not administered at those hospitals to persons who showed no visible symptoms.

At Tempe Community, the words "ASU incident" were

written in the blank for insurance company on emergency room forms of ASU students. This was to differentiate patients related to the fire, an administrator said. But a spokesman in the hospital's emergency room said it was for the purpose of later sending the bill to ASU.

ASU sophomore Janel Woodworth, a geography major, was in intensive care at Tempe Community for more than two days as a result of gases she inhaled while boarding La Mancha's outdoor elevator to see a friend on another floor. "I have bronchial asthma, so anything affects me with chemicals in the air," she said.

Woodworth reported she first felt the effect of the gases at 10 p.m. and was unable to breathe by midnight. A neighbor called the fire department which responded and administered oxygen to Woodworth before taking her to Tempe Community.

She speculated on what would happen if she had to pay the hospital bill herself. "I don't know what the bill is going to cost, but it would certainly set me back. I probably wouldn't be able to go back to school," she said.

Woodworth reports her parents' medical insurance can handle the expenses.

Warnings broadcast early Saturday morning by Valley radio stations advised students who witnessed the blaze to seek medical aid as quickly as possible. Respondents to the call were asked to go to various hospitals to prevent any one hospital from being deluged, said University Police Chief John Duffy.

Duffy called upon United Press International to issue the warning after he was advised by the fire department and a chemical manufacturers' control board in Los Angeles to do so.

Door-to-door contact was volunteered by Tom Bognanno of the interfraternity council to alert residents on Alpha Drive Saturday morning.

Students were advised to

see their private physicians or seek aid at a local hospital, Duffy said, since ASU's Student Health Service Center cannot handle such tests.

A hospital spokesman at Tempe Community said between 50 and 75 persons, including students, had positive results from blood and urine tests. But it is possible that not all results were caused directly by inhalation of the fire's toxic fumes, the spokesman said.

Some may not have been affected by the fumes at all, but had other, undiscovered problems instead, the spokesman said.

Symptoms of injury resulting from the absorption of a phosphate compound insecticide and other harmful chemicals are described as "anything in the line of chest pain, shortness of breath, cough, spitting up of blood, fever, neurological signs such as headaches and slurring of speech."

Fire damage put at \$80,000

By Dale Messmer

Fire that ravaged a University quonset hut Friday night caused an estimated \$80,000 damage to the structure and its contents, according to Keith Rhodes, ASU-supervisor of property control.

The storage shed, made almost entirely of metal was located near Krueger and McAllister. It contained insecticides, fertilizers and lawn and garden equipment, according to Sylvester Anderson, University fire marshal.

The toxic fumes from the burning chemicals forced firemen to wear gas masks while fighting the blaze. Anderson said eight or ten firemen

and policemen were taken to the hospital, while a crowd of an estimated 200 onlookers were tested for toxicity. (See related story)

Anderson said several dangerous chemicals were in the shed, but a poisonous insecticide, melathion, was the only chemical to burn.

One ASU student and a Tempe fireman were admitted to the intensive care unit at Tempe Community Hospital following the fire.

The area was evacuated approximately one hour after the blaze erupted, according to Tempe Fire Chief William Hanna. The delay was due to firefighters being unaware the

shed contained dangerous chemicals, Anderson said.

"We evacuated the area as soon as we knew about the chemicals," Anderson said. "I knew about them, but the firemen at the scene didn't. We didn't dare take any chances, but we could've gotten away without doing anything (about the chemicals)."

Remains from the burned chemicals were taken to the Maricopa County Landfill, Anderson said.

"We scooped them up and put them in three dump trucks and hauled them away," he said. "We didn't put them in the Salt River bottom landfill, because they could have percolated to the top and contaminated flood waters."



Jerry's

audio
exchange

Phoenix — 334 E. Camelback Rd. 263-9410
Tempe — 120 E. University Dr. 968-3491
Tucson — 1037 N. Park 622-7407

Snide's House of Pizza

FEATURING
Pizza, Spaghetti,
Submarines
Salads, Soft-Drinks &
Cold Beer on Tap

Open for Lunch — Mon. thru Fri. — 11 AM
SUPER SANDWICHES

Dine In —
966-6287
Delivery

225 W. UNIVERSITY DR. TEMPE, AZ 85281



They actually think. They get darker as the sun gets brighter. And vice-versa.

New from Lee Optical.
Incredibly smart sunglasses.

PHOTOSUN (TM) Sunglasses
Sunglasses

They adjust by themselves to give you just the right amount of protection and visibility in sun or shade. Bright day or cloudy.

One pair of sunglasses for all kinds of days. Come in and get a pair of sunglasses that out-smart the sun.

TEMPE 14 CONVENIENT VISION CENTERS THROUGHOUT ARIZONA
Open Monday through Saturday.
Tempe Center/2032 S. Industrial Park Ave.
967-7864 967-7333



False alarms in dormitory may kill people, chief says

Somebody is playing the role of the little boy who cried wolf at Palo Verde West and ASU Police Chief John Duffy is unhappy about it.

Of the 10 false fire alarms University Police have received so far this semester, five have originated from Palo Verde West, Duffy said.

"We received two this week and it's getting to be dangerous now. They're going to get a fire in there and these people are going to say the hell with it and they're going to get burned up because of this rash of

false alarms," Duffy said.

Duffy said that whoever turns in these false alarms will be responsible for the injuries or deaths when a fire does occur and the dormitory residents do not evacuate.

Duffy said the campus police always have received a greater number of false alarms at the beginning of each semester.

"We get some jerks who think it's still funny. I guess we have more jerks at Palo Verde West than we have anyplace else," he said.

Funds to be redistributed if not picked up in time

The Financial Aids Office said National Direct Student Loans (NDL) and Supplementary Educational Opportunity Grants (SEOG) which have not been picked up by the recipients from the Business Office by Wednesday will be cancelled.

Assistant Director of Financial Aids Richard Michaud said the action was necessary to redistribute any leftover funds to other students who are enrolled and have not been awarded any aid.

Michaud said any students who did not pick up their fall semester aid, but intend to use their spring semester award should contact the business office.

If they do not, both semesters' aid will be cancelled.

STATE PRESS is published by Arizona State University Tuesday through Friday during the academic year, except holidays and examination periods. Entered as second class matter at Tempe, AZ, 85281.

LSAT REVIEW COURSE

Maximize your LSAT score by taking review course taught by Phoenix attorneys.

Course for October LSAT will be held in Phoenix during the week of September 23, 1974, in the evenings.

FOR INFORMATION

Call—264-0236 or 949-5786

Write—Arizona LSAT, 4008 North 15th Avenue, Phoenix, Arizona 85015



VALLEY TRAVEL

Make your Holiday Reservations Now
Pay in December

Our Services are Free

707 S. Forest, Tempe

Right across from ASU

9 a.m. to 5 p.m. Call 967-9403

For information from 5-9:30 p.m., Call your Campus Representative at 968-7112

Zero after 35 days

Tuition refunds cost a bundle

A student planning to withdraw from ASU may be able to put up with bureaucratic red tape, but

Oct. 4 last day to drop classes without penalty

October 4 is the last day liberal arts students can drop a course without penalty, according to the Student Academic Affairs Office.

If a student wishes to see an adviser about dropping a course, or any other academic problem, he should go to room 111 in the Social Science Building, or call 965-6506.

the effect on his pocketbook may be harder to bear.

A sliding scale is used for tuition refunding by the University. The amount of money refunded and kept by ASU is as follows:

	Refunded
1-14 days	80 percent
15-21 days	60 percent
22-28 days	40 percent
29-35 days	20 percent
After 35 days	None

The days in the schedule are calendar days, beginning with the first day of classes.

For example, an out-of-state student wishing to withdraw from the University this week would lose \$504.00 out of his \$630.00 tuition fee. For the resident

student the loss would be \$148.00 out of \$185.00 paid for tuition.

W. Duane Eckert, registration coordinator, said the scale was submitted by a committee from the Business Office and was approved by the Arizona Board of Regents. He added that the scale has been used since at least 1966.

"No one has asked me to set up a scale, but I think this one is adequate," Eckert said.

Heavy administrative costs and funding requirements in the beginning of the semester necessitate the rapid decline in tuition refunds, Eckert said.

MALE selects Cone Cotton Corduroy

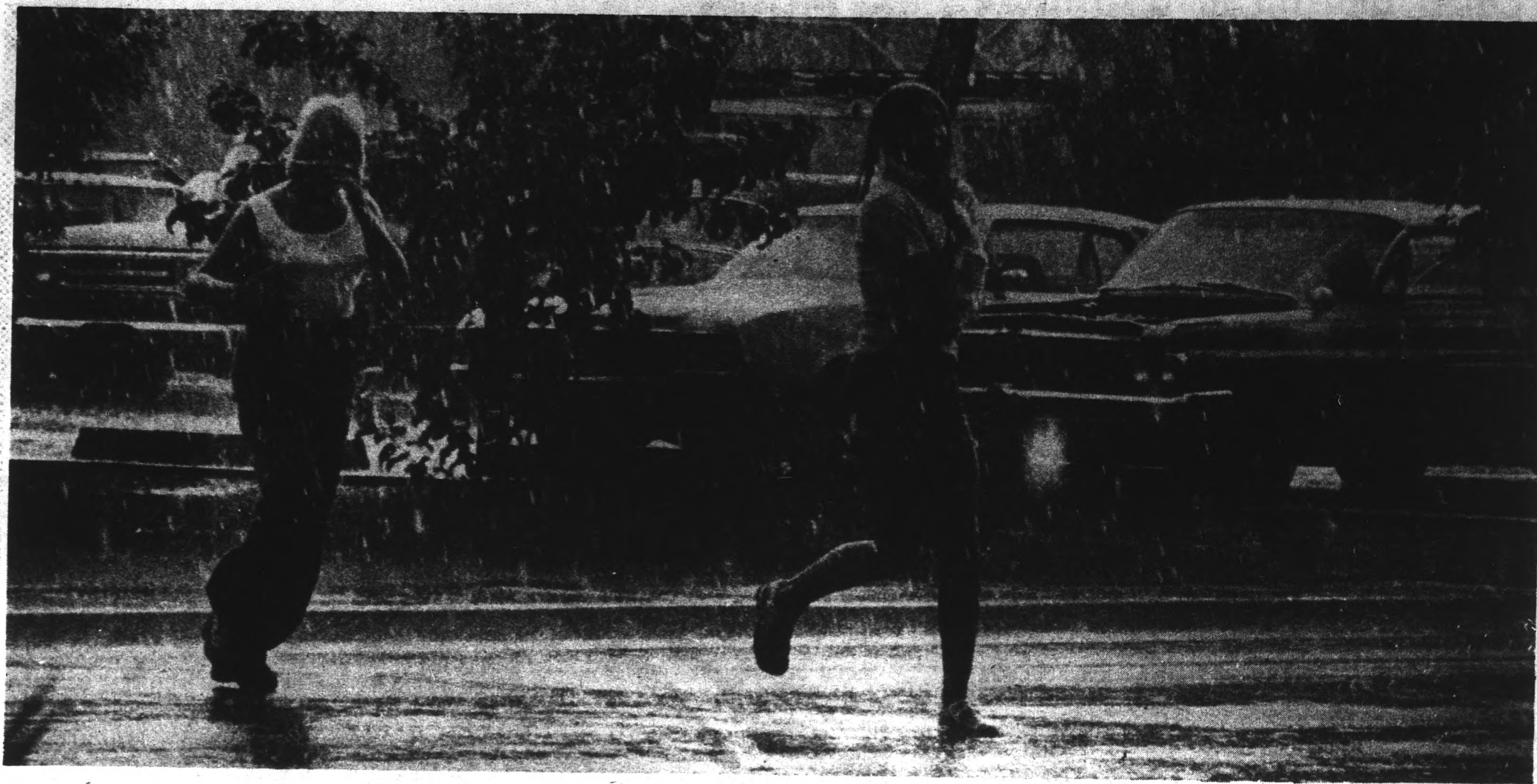
...it's easy on you and your budget! These low-rise jeans of Stacord™ corduroy, a Natural Blend™ of 84% cotton, 16% polyester, give you all the comfort and practicality you want. Sizes 26-38, S, M, L, XL. Available in umpteen colors. Ask for Male at your favorite campus store.

Cone
corduroy

MEMBER CORDUROY COUNCIL OF AMERICA

Cone makes fabrics people live in.

CONE MILLS 1440 BROADWAY, NEW YORK, N.Y. 10018



Football fans maintain in the rain



Photo by John Masingill



Photo by John Masingill



Photo by John Masingill



Photo by Greg Hagan

Regents vote increase in tuition, stop further pro football talks

Continued from page 1

football is coming to town. I would rather cooperate with them (professionals) than be in competition with them."

Shofstall said, "It is poor, clumsy business procedure to refuse to negotiate."

The Western Athletic Conference President's Council voted Sept. 7 that member universities could not let pro teams use their stadiums except on a one-time basis.

There was speculation that the regents would vote the way they did — against

the pros — because they would not want to contradict this ruling by the WAC. The WAC did not set any punishment for violation of this ruling, but it did not rule out expulsion from the conference.

In another action, the regents' legal adviser, Blair Benjamin, said the state universities' budgets are public information.

"The university ledger is

public information. Anyone could bring in a camera and take pictures of it if they wanted," Benjamin said.

The NAU Lumberjack, the school paper, had previously tried to look at

the university's budget but was not allowed by the president.

The paper's editors sought clarification from the state attorney general's office.

A lawyer for the state also said the budget is public information and could not be kept private.

Gilbert and Sullivan musical opens season

"Princess Ida" by Gilbert and Sullivan will open the Lyric Opera Theatre season with performances at 8 p.m. Sept. 27-28 and Oct. 2-6 in the ASU Music Theater.

Kenneth Seipp, musical director, describes the

Professional school entrance interviews start

Students applying for admission to medical, osteopathic, or dental school classes beginning in the fall of 1975 should report to the Pre-Medical Office (SS104) for an interview appointment on or before October 4.

Interviews will be completed by October 11 and evaluations will be mailed to the professional schools beginning October 25.

music as "the most sophisticated, most satirical and funniest of all the G&S operas."

Lead singers include Forrest "Butch" Bachtel as King Gama, April Stevens in the title role, and noted Valley actor David Thompson as King Hildebrand.

A student preview will be shown at 8 p.m. Wednesday in the Lyric Opera Theatre. The performance is open only to students, and preview tickets will be \$1 for unreserved seats. Tickets can be purchased at the Music Theater.

First Wash FREE
to introduce
MAYTAG
Dial-a-Fabric
WASHERS

They make it simpler to wash all of today's fabrics just like the care tags say

we've just put on a Bright New Face

OPEN 24 hrs. a Day!

Holiday Laundry
1015 West University, Tempe

ERICKSON
HANDCRAFTS

ARTIST & DRAFTING SUPPLIES
Crafts - Picture Frames
Decorating Material

Open Mon. & Thurs. Nights
10 Percent Discount to Students
111 E. University — 967-4482

35mm
EKTACHROME
COLOR FILM
PROCESSING

20 EXP. UNMOUNTED	\$1.00
20 EXP. MOUNTED	1.50
36 EXP. UNMOUNTED	1.25
36 EXP. MOUNTED	2.25

AT
A.S.U.
PHOTO SERVICE
MATTHEWS HALL 965-3637

A university service facility for the university community

CRIADAS:

- Upperclass women's service group
- Usher at Gammage Auditorium
- Usher at M.U. movies
- Serve at M.U. specials
 - Pumpkin Fest
 - Xmas Tea
 - Art Shows
 - Activities Week
 - Banquets
 - Much, much more
- Organize Film Festival

There will be a
New Membership Get-Together
Tomorrow — 3:00 P.M.

at the Alumni Lounge
in the Memorial Union

ASU's tuition called low

Resident tuition fees at ASU are among the lowest charged by members of the National Association of State Universities and Land-Grant Colleges (NASULGC), according to a Sept. 15 survey.

The median resident fee of the organization's schools is \$531 a year, the survey shows. This figure contrasts with the \$400 annual fee to be charged by ASU, a NASULGC member.

Also included in the survey were the following findings:

Tuition charged by NASULGC members ranges from \$70 a year at City University of New York to \$1,500 annually at Cornell University.

The NASULGC median fee for non-residents is \$1,378 per year.

Non-resident fees range from \$165 a year at the University of Puerto Rico to \$2,800 a year at the University of Michigan. ASU's non-resident fee will be \$1,060 a year.

Median charges for resident students has increased from \$311 to \$531 in nine years — an increase of 70 percent. The non-resident median has gone from \$734 to \$1,378, an increase of 88 percent in the same period.

Of the 117 schools in the survey, only 21 currently have resident fees less than the \$370 a year currently charged at ASU. Only 37 have non-resident fees below ASU's \$1,260 non-resident charge.

Among 17 NASULGC schools in ten western states — Colorado, Washington, Oregon, Nevada, Montana, New Mexico, Arizona, Wyoming, Utah and Idaho — ASU yearly resident fees are the lowest.

The highest yearly resident charge, \$638, is levied by the University of Colorado. ASU now ranks 15th in non-resident fees. Colorado heads the list with a fee of \$2,070 a year.

We are now 2 years old and "kicking" — because some of you don't even know we're alive at...

THE GALLERY STORE

Matthews Center—2nd Floor—12 to 4
jewelry—baskets—boxes—ethnics—cards

WITH THIS COUPON

WATERBEDS \$24⁹⁵
King — Queen — Double
Single — 5 yr. guarantee

Jean Jackets

All 20% OFF

Waterbed Heaters

20% OFF

INDIA COTTON SPREADS

72" x 108" Carpet Prints Just **\$5⁹⁹**

Michael's Apple Pie

221 W. University Drive
Tempe • 966-9006
4973 North Central
Phoenix • 248-9022
Open Monday-Friday 11:00 to 7:30, Saturday 10:00 to 6:00

COUPON



Oblivious . . . obviously

Photo by Kevin Gustafson

Oblivious to their surroundings were Lawrence Gordon and Bethadori Studman while embracing in front of Matthews Center. At the time the photo was taken, the couple had been engaged for four days.

Office hours are clarified

A check of faculty office hours shows five previously named professors are not in violation of University regulations.

Richard Britz, assistant professor architecture, is on leave from the University. James Elmore, professor of

architecture; Dr. Thomas Karnes, professor of history; and Melvin Firestone, associate professor of anthropology, are on sabbatical. Dr. Frederick Giffin, associate professor of history, has office hours posted on an inner office door.

BEWARE THE AVA-LANCHE



STUDENT Nurses Needed!

RN's - LPN's - NA's - N. Students

Any shifts, any days, and weekends. We pay weekly — no fee. Assignments in your own area.

Nurses Central Registry

2536 East Indian School, Phoenix

248-7200

What you should know about diamonds:



LOVERLY

Cutting

A perfectly cut diamond will reflect all the light upwards for maximum brilliance.

Every ArtCarved diamond is precision cut for brilliance, whether its shape is round, oval, pear or marquise.

Art Carved
From the makers of Lenox China & Crystal

Mac JEWELERS

Tempe Center
921B So. Mill Avenue
966-7587

CARPET SPECIALS

9 x 12 used rugs-\$5.00

All Sizes In Stock

CARPET HOUSE

1516 E. Van Buren, Phx.

Citron's Surplus

Jefferson at 2nd St. in Phoenix for

- Navy denim seafarer bellbottoms
- tankers
- Back Packs
- Camping Supplies
- White & 13 Button Belts
- Parachute Canopies

FINE **Italian Food**

FOR YOUR DINING PLEASURE
Complete Dinners . . . Pasta Specialties
15 Pizza Varieties . . . Submarine Sandwiches



LARGE PITCHER COORS

\$1.19

PIZZA OVEN RESTAURANT

1127 N. SCOTTSDALE ROAD
TEMPE • PHONE 966-6246
(Across From Hayden Plaza East)
Open Weekdays 11:30 a.m. to 12 p.m.
Fri. & Sat. 'til 1 a.m. • Sun. 5 to 11 p.m.

Extra Sensory Perception

— DEMONSTRATION

Today - 11:30 am to 12:30 pm

in the Montgomery Lounge — M.U.

Major Wayne Aho will use audience volunteers and talk of his 25 years of research into this phenomena as well as telepathy - healing - parapsychology also at 1:30 pm a seminar of I.S.P. (inner) in the Cochise Room — M.U.

Collage

TODAY

International Students Relations Board, American and International Student get-together, 2:40 p.m. in the MU Navajo Room.

Outing Club Meeting to present a movie and lecture show on hang gliding by a gliding school representative, at 7:30 p.m. in the MU Pima Room. Sopho's to meet and discuss membership requirements and organization goals for the sophomore men's honorary society at 3:00 p.m. in the MU Santa Cruz Room.

Snow Devil's Ski Club will be on the mall through Wednesday passing out a calendar of events.

Ideas and Issues Committee presents Major Wayne Aho speaking on "Extra Sensory Perception," at 11:30-12:30 p.m. in the MU Montgomery Lounge; 1:30-3 p.m. in the MU Cochise Room. The University community is invited. Film Committee meeting at 7 p.m. in the MU Movie House.

WEDNESDAY

Associated Women Students continues its self defense

Food stamp officials to talk on eligibility

Circles, a campus group interested in informing the student population on state and federal social services, will present a lecture by a Department of Economic Security official.

Food stamp representative Ed Poorman will discuss eligibility for the food stamp program at 2 p.m. Wednesday in the MU Cochise Room.

The group currently is circulating petitions to determine if there is a University need for a campus food stamp representative. For more information contact Dr. Donald Fausel at 965-3865.

series with a speaker from the Valley Assault Crisis Center at 7 p.m. in the MU Cochise Room.

Arizona Friends of the Earth presents Bud Brown, democratic Congressional candidate, who will discuss environmental issues at 7:30 p.m. in the MU Pinal Room 215. For more information contact Matt Tringer at 947-0885.

National Society of Interior Designer, (NSID) will have a panel discussion at 4 p.m. in Room 141 of the Architecture Building. The topic is "Client-Designer Relationships". University community is welcomed.

ASU Veterans Association meeting at 2:30 p.m. in the MU Yuma Room 211 to discuss Veteran business. For more information contact Mike Martena at 965-2533.

First meeting of Snow Devils Ski Club will feature the film "Steamboat's a Comin'" at 7 p.m. at the Varsity Inn, 801 E. Apache in Tempe.

Criadas, a service group, will have a membership drive starting at 3:30 p.m. in the MU Alumni Lounge. For more information contact Annet Mathis at 937-7847.

Young Democrats meeting 3 p.m. in the MU, Room 221.

The "Inventions of Leonardo da Vinci" slide lecture by Dr. Anthony Calarco, 3 p.m. in the MU Pima Room 218. Co-sponsored by the MU Ideas

and Issues Committee. Open to the public.

Union Board meeting, 5 p.m. in the MU Apache Room 221.

The Wednesday Thing presents "Women In Love" at 7 and 9:30 p.m. in the MU Movie House. Admission 50 cents with ASU ID, 75 cents without. Tickets available a half hour before showtime at the Movie House.

Lyric Opera Theatre presents the Opera "Princess Ida" in a special student preview at 8 p.m. in the ASU Music Theatre. Admission is \$1 for unreserved seats.

MU Pop-up features Bob Wlos, 11 a.m. in the MU Rendezvous Lounge.

THURSDAY

Christian Science Organization weekly testimony meeting at 4 p.m. in Danforth Chapel.

Inter-Varsity Christian Fellowship meeting at 7:30 p.m. in the MU South Pinal Room 215. ASU Mat Maids get-together for students interested in becoming an ASU Mat Maid for the wrestling team at 3:30 p.m. in the MU Navajo Room 219.

Hostess Committee Meeting 3:30 p.m. in the MU Yavapai Room 209.

MU Fall Film Festival presents "Jesus Christ Superstar" at 7 and 9:30 p.m. in the MU Movie House. Tickets are available in the MU Activities Center for \$1 with ASU ID. Door sales are \$1 with ASU ID, \$1.50 without.



MESA SUZUKI SPORTS CENTER INC.

2121 W. Main-MESA

834-1955

1974 TS-185L SIERRA

Base price	Sale price	Student price
'865	'777	'695 w/coupon

1974 TM-125L MOTO-CROSS

'795	'745	'675 w/coupon
------	------	---------------

1974 TM-250L MOTO-CROSS

'1,160	'995	'925 w/coupon
--------	------	---------------

PLUS FREIGHT & TAX

Your closest & largest SUZUKI Dealer.

KARATE - JUDO

Korean Tae Kwon Do

HAP-KI-DO SCHOOL



Master Instructor
CHAE WON PARK
6th Dan Black Belt
JUDO - KARATE

Unbelievable Power
YOU HAVE IT
But How Can You Find It?
STUDY WITH US

Weight Lifting & Concentration Room
Air Conditioning - No Contract Nec.
Open Monday thru Saturday 10 AM-10 PM

DAE-MYUNG JUDO - KARATE ACADEMY
994-4001

2212 N. SCOTTSDALE RD., SCOTTSDALE PLAZA

Karate tournament

See the Mid-west open Championships
Sat., Sept. 28 at Scottsdale Community College gym

FREE WASH

WITH THIS COUPON

OFFER EXPIRES 10-8-74 COUPON GOOD ONLY
DURING ATTENDANT HOURS 9-6 MON.-SAT. 11-4 ON SUN.

COIN OPERATED LAUNDRY
& DRY CLEANING

PROFESSIONAL WASHING & DRY CLEANING

DROP OFF SERVICE
OPEN 24 HOURS



1035 EAST LEMON, TEMPE

Corner of Lemon & Terrace 966 5311

"A perversely fascinating, highly original movie."

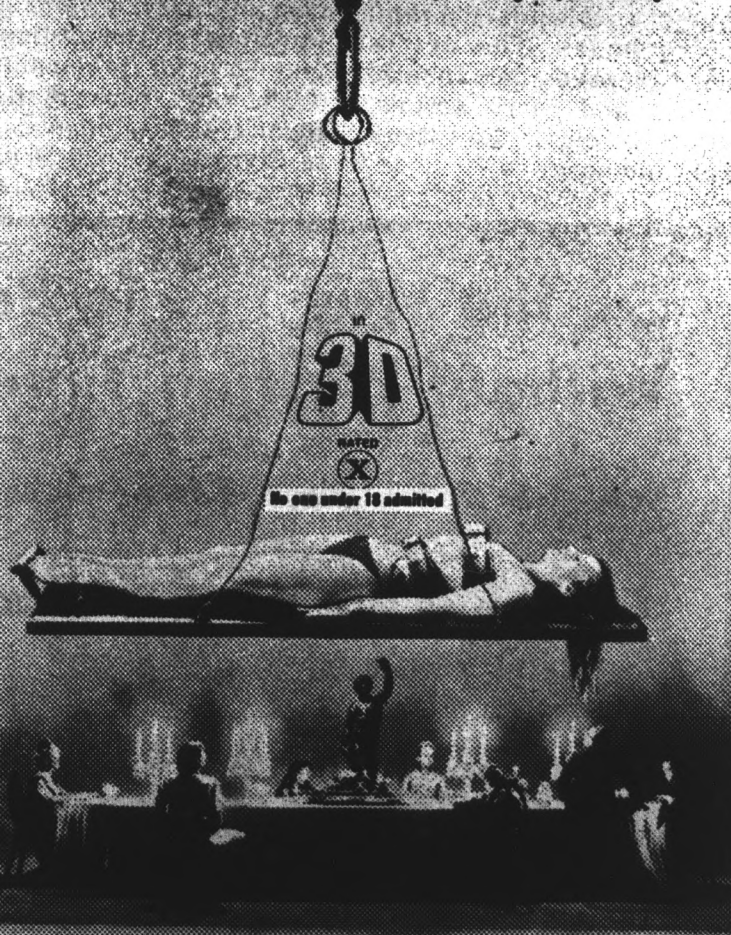
—Paul D. Zimmerman, Newsweek

"Instantly achieves top rank as the most outrageously gruesome epic ever unleashed."

—Bruce Williamson, Playboy

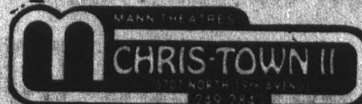
Andy Warhol's

Frankenstein



A Film by Paul Morrissey

ANDY WARHOL'S "FRANKENSTEIN" - A Film by PAUL MORRISSEY - Starring Joe Dallesandro, Monique Van Vooren, Udo Kier, Introducing Arno Juerging, Dalia Di Lazzaro, Srdjan Zelenovic, A CARLO PONTI - BRAUNSBURG - RASSAM PRODUCTION COLOR - A BRYANSTON PICTURES RELEASE



EXCLUSIVE SHOWING

DAILY AT 2-4-6-8-10 PM

HAIR

NOW OPEN IN

TEMPE

HAIR'S A BARGAIN

2 for 1

cutting 2 heads for price of 1
clip this ad, grab a friend & go to

HAIR

OPEN 8:30 AM - 9:00 PM

720 Mill Ave. Tempe
966-8525

Fire fumes send 200 for tests

ASU students were referred to hospitals rather than the Student Health Center after possible exposure to potentially dangerous fumes from a chemical fire on campus Friday.

"They had a test that we don't have any machinery to run. That's chemical identification,"

said Dr. Richard Jones, Center director.

Jones said there is not much need for this equipment on campus, but it may be used often in a large hospital.

About 200 students went to Tempe Community Hospital for blood tests over the weekend.

Superb speech, wit

'Don Juan' is one hell of a play

The George Bernard Shaw play "Don Juan in Hell" opened Thursday night for an all-too-short engagement at Gammage Auditorium.

The play is Act III of Shaw's four-act play "Man and Superman." It was originally cast on Broadway over 20 years ago with an all-star cast of Agnes Moorehead, Charles Boyer, Sir Cedric Hardwicke and Charles Loughton.

The version of the play now touring the country has Ricardo Montalban in the title role. Myrna Loy as Dona Ana, Kurt Kaszner as the commander and Edward Mulhare as the Devil.

Following the original production of the play, director John Houseman presents the piece on a bare stage, using only stools, music stands, and microphones. The actors are dressed in formal clothes and carry scripts, but it is clear they work from memory.

The play is a tour de force of words, ideas, conflicts and passions, presented in a sustained and dazzling dialogue. Man and Woman, heaven and hell, virtue and immortality, civilization and man's destructiveness are some of the points with which Shaw barrages the audience. Shaw takes the English language and molds it into the very "life force" he mentions in the play.

The vehicle for the play is the figure of Don Juan. Ricardo Montalban is excellent in this role. He is the perfect blend of libertine, politician, theologian, historian and moralist. If Montalban sometimes overdid the part, who can blame him?

The emotion and verve of the dialogue needed no help. Edward Mulhare and Kurt Kaszner are beautifully cast. Mulhare, despite some faults, gave an articulate and forceful performance.

The only performance I found rather static was that of Myrna Loy. She seemed

CBS newsmen to speak in MU today

CBS News executives will lead a panel discussion and field questions at 11:30 a.m. today in the Pima Room of the Memorial Union.

Richard Salant, president of CBS News, and William Small, senior vice president and director of news will head the panel.

During his career Salant

has been active in the fight for freedom of the press. He defended White House newsman Dan Rather, who came under fire for his conflict with former President Richard Nixon.

Salant also defended the CBS News presentation of the controversial documentary "The Selling of the Pentagon."

In a 1969 speech Salant said he felt the First Amendment to the Constitution gives "unconditional freedom" to

newsmen but also imposes "an immense and awesome responsibility . . . We must do our level best to be fair, accurate and impartial."

Appearing with Salant and Small will be Emerson Stone, vice president and director of CBS Radio News, and Peter Herford, who has served as a news bureau chief in Saigon and Paris.

The program is sponsored by the mass communications department and Alpha Epsilon Rho, honorary broadcasting fraternity.

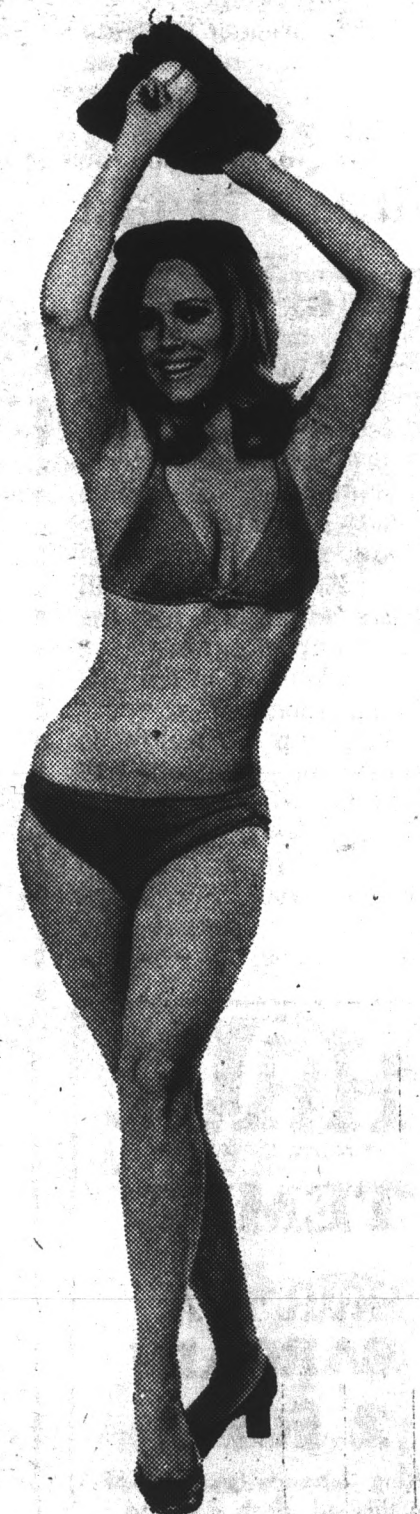
bored with the whole evening and at times brought the dynamic pitch of the dialogue down to that level.

The qualities that make George Bernard Shaw a playwright of classic stature were present in the play. He displays a superb knowledge of stage speech, trenchant wit, and above all a mastery of words. When all things are considered, "Don Juan in Hell" works. Thursday night's performance certainly did not diminish the glow of it in any way.

— David Gariff



You didn't get the pitch . . . *



On the Way . . . To Better Pay . . . Without Wasting Time

Now — get started faster in a money-making career

Spend all your time on selected business courses . . . what you need to get a job.

Learn to be a Secretary - Accountant - Keypunch Operator - Programmer

IN LESS THAN ONE YEAR YOU CAN PREPARE FOR A NEW LIFE OF CHALLENGE, ACHIEVEMENT, SATISFACTION AND GOOD EARNINGS.

FREE Lifetime Placement Assistance

FREE Lifetime Brushup

Call 258-7947 — New classes begin October 29th

THE LAMSON BUSINESS COLLEGE

725 N. Central Avenue, Phoenix, Arizona 85004

Sun Devils destroy Horned Frogs, 37-7

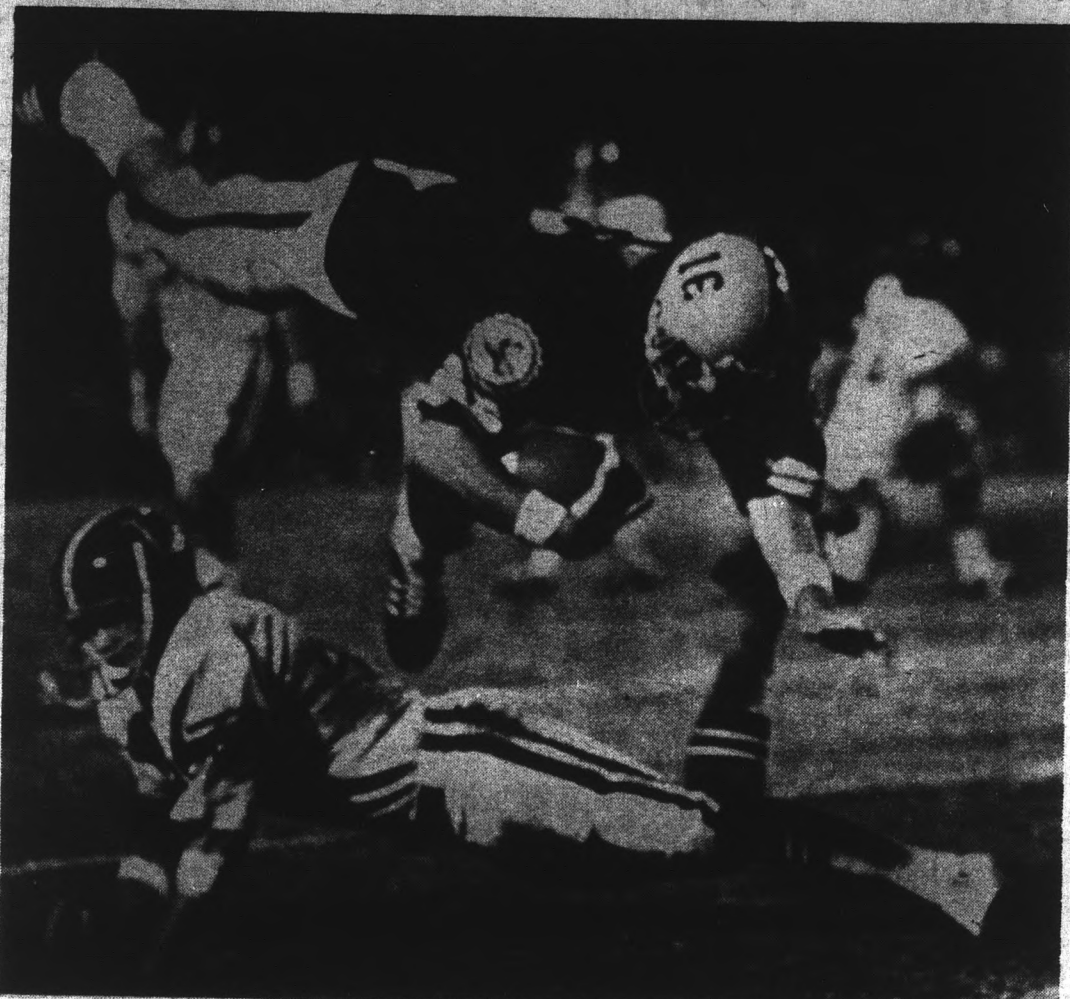


Photo by Greg Hagan

ASU freshman quarterback Dennis Sproul dives over TCU defensive back for precious first down yardage to sustain drive which led to Devil score late in the second quarter.

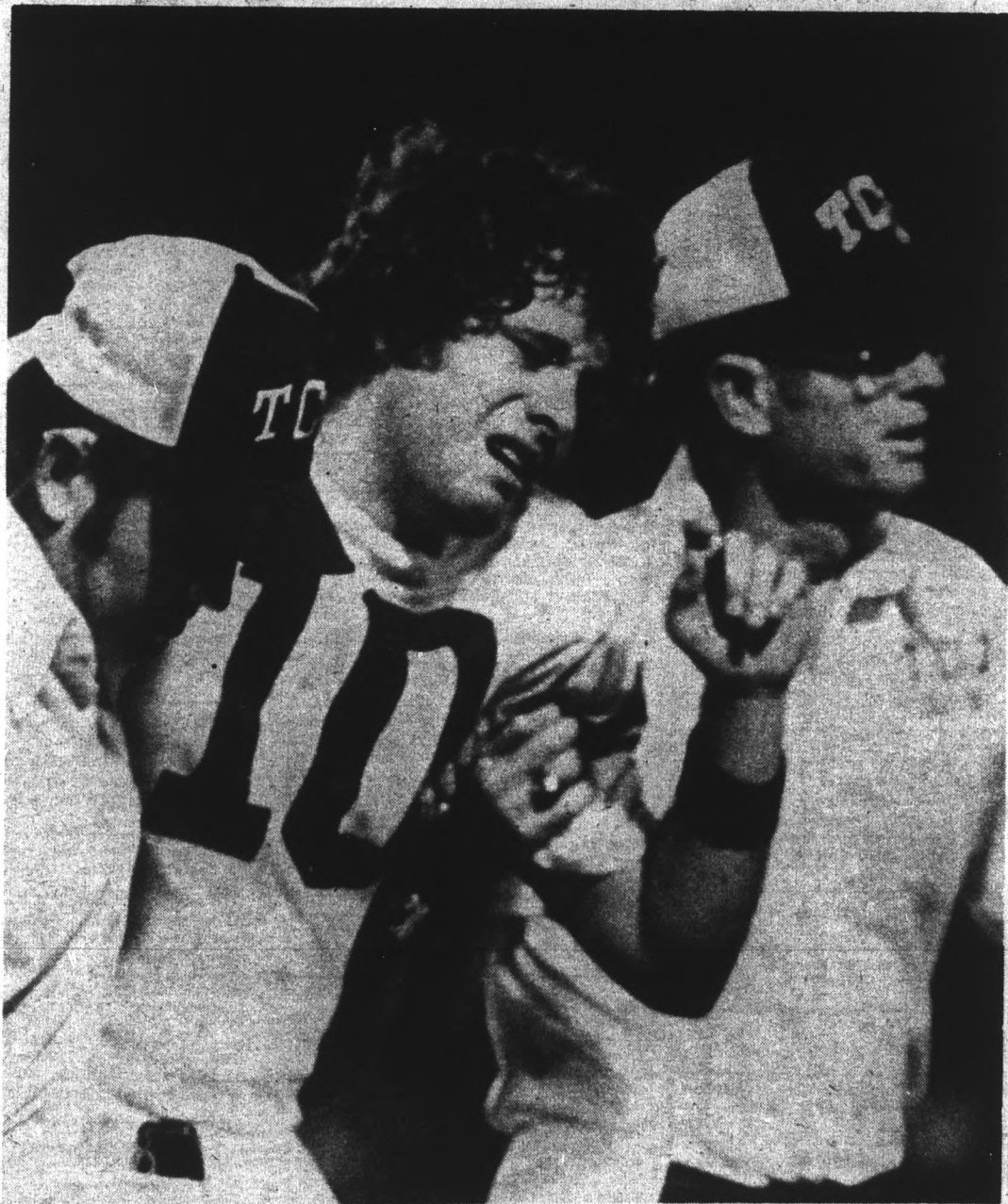


Photo by John Masingilli

Texas Christian quarterback Leo Cook is helped off the field by two trainers after suffering from a Clifton Alapa tackle.

Sproul impressive in QB debut; Frosh play key role in victory

By Mike Tulumello

Don't blame ASU quarterback Ray Alexander for looking over his shoulder in practice this week.

He'll be hearing footsteps.

Freshman signal-caller Dennis Sproul made an impressive debut, replacing Alexander late in the first half and directing the Sun Devils the rest of the way as ASU routed Texas Christian 37-7 Saturday night in rain-drenched Sun Devil Stadium.

"I'm happy with the way the game turned out. The important thing is that we won," said Sproul, who completed 10 of 14 passes for 115 yards.

Sproul hit his first two aeriels and marched the Devils on a 17 play-70 yard drive to put ASU up 17-7 at halftime. The two key plays, including the TD, came on fourth down situations with Sproul rolling out and running the ball himself.

"I can't really take the credit for those two plays," said Sproul. "They were both called from upstairs."

The Sun Devil coaching staff directed much of Sproul's play selection.

"They were keying on Freddie (halfback Williams) up the middle too much, so we took some plays to the outside and opened up their defense," Sproul said.

Sun Devil head coach Frank Kush said Sproul's ability to avoid the pass rush was a key factor in the game. "If a quarterback can make up for the linemen's mistakes it can pick everybody up," Kush said. Several times Dennis did an excellent job in not getting dropped for a big loss.

ASU showed a balanced offensive attack, gaining 227 yards on the ground and 184 through the air. Williams and Mark Lovett led the running game with 105 and 99 yards respectively.

Offensive guard John Houser said, "Our offense improved 100 percent over the Houston game. We were much more aggressive and we fired out from the line a lot better."

In the aerial attack, split end Greg Hudson snared 6 passes for 75 yards.

"If we would have passed more, we really could have killed them. But things were a little slippery out there. It might have been better if Sproul could have called more of his own plays," Hudson said.

Freshman Ainslie Washington, playing defensive back for the first time in college, nearly had a dream come true late in the game. He intercepted a pass at his own ten yard line and raced down the sidelines for an apparent touchdown.

But teammate Mike Martinez, frantically trying to block the last TCU defender out of the way, accidentally cut Washington down at the one yard-line.

"I thought I'd go all the way until I got to the ten. I never expected one of my own people to hit me."

Is Martinez on Washington's enemy list?

"He apologized and I said 'okay,'" Washington said. "But I'm going to be thinking about that play for quite a while."



Photo by Chuck Pratt

TCU's second string quarterback Jimmy Elzner found himself sitting on top of the world. The world is represented by 6-3 258-pound freshman defensive tackle Robert Allison, who has just sacked Elzner.

Back says game 'breaks,' not Devils, defeated TCU

By Dave Garell

Despite Saturday night's 37-7 ASU victory, TCU's All-America fullback candidate Mike Luttrell is not convinced of the Devil's superiority.

"We're a better team than ASU," Luttrell said. "We should have beaten them, but the breaks of the game turned it around."

The "breaks" Luttrell cited were Ainslie Washington's interception that prevented a TCU touchdown late in the game, Mike Haynes' interception that Luttrell felt should not have been ruled an interception, and the 25 yards the Horned Frogs were penalized.

"Every time we moved the ball the refs were calling penalties against us. I wonder how many penalties they called against ASU," he said.

What Luttrell failed to realize was that ASU incurred 70 more yards of penalties than the Horned Frogs.

"Even without the penalties, our offense couldn't convert anything inside the 20-yard line," Luttrell said. "If we could have done that, it would have been a different ball game."

TCU's offense gained only 39 net yards rushing. Even though he had all of those 39 yards himself, the two-time All-Southwest Conference back was not pleased with his 2.6 yard average.

"I wasn't satisfied with my performance. All of us made a lot of mistakes everywhere," Luttrell said. "If our offense would have been able to move as a unit, maybe I could have had a better game."

Luttrell has only 2.8 yards a carry in two games, as compared to a 4.2 average last season and 5.1 yards as a sophomore when he racked up 906 yards with 10 touchdowns.

He was TCU's Most Valuable Player the past two seasons.

Records do not impress the 6-1, 206-pounder though.

"Records and honors are for old men," Luttrell said. "At this point in the season anyway, individual goals are almost meaningless."

Luttrell is not off to a good start this year. Against University of Texas at Arlington (UTA), Luttrell gained 95 yards in 2 carries. After his performance Saturday night, a reporter asked Luttrell if the defenses seem to be keying on him.

"There is no way for me to tell," Luttrell said. "ASU did what UTA did to us — held us to one touchdown. But as far as I could see, they weren't doing anything differently to stop me specifically."

Head coach Jim Shofner, who was a San Francisco 49er assistant coach for seven years, feels that Luttrell has a good shot at All-American.

"There's not a reason for Mike not making it," Shofner said. "After watching him, I think he's as good as any fullback we ever had with the 49er's."

Don't let the price of a college education stop you.

The price of a college education is skyrocketing. The Air Force has done something about it. For the first time, the Air Force ROTC Scholarships include the 2-year program, for men and women.

If you qualify, the Air Force will pay for the remainder of your college education. Not only do AFROTC 2-year scholarships cover full tuition, reimbursement for textbooks, lab and incidental fees, and \$100 a month, tax-free.

To cash in on all this apply qualify, and enroll in the Air Force ROTC at Dept. of Aerospace Studies, ASU, Tempe, 965-3181.

It's a great way to finish your college education in the money, and build a future as an Air Force officer.

MAKE THE MOST OF IT

"The good 'ol days are back again . . ."
COORS! — 10¢ a Glass
 . . . **60¢ for Pitchers**
(While playing Pool)

GOLDEN EIGHT BALL BILLIARD LOUNGE

Pool only 60¢ hour per Person

from 10 am-6 pm
 Hayden Plaza East — Woolco
 1330 N. Scottsdale Rd., Tempe

The WAC Scene

Saturday's Results

ASU 37, TCU 7
 Arizona 35, Indiana 20
 New Mexico 21, Texas Tech 20
 Utah State 9, BYU 6
 Colorado State 14, Florida State 7
 Texas-El Paso 34, Utah 7
 Texas 34, Wyoming 7

Next week's games

ASU at Missouri
 New Mexico at Arizona
 Brigham Young at Iowa State
 Colorado State at Memphis State
 Texas-El Paso at San Diego State
 Utah at Oregon
 Wyoming at Air Force

Western Athletic Conference

	Conference				All Games					
	W	L	T	Pts.	Op.	W	L	T	Pts.	Op.
UNM	1	0	0	32	23	1	0	1	53	44
UTEP	1	0	0	34	7	1	1	0	48	24
UA	1	0	0	34	0	2	0	0	52	30
ASU	0	0	0	0	0	2	0	0	67	16
BYU	0	0	0	0	0	0	2	0	19	24
WYM	0	0	0	0	0	0	2	0	14	51
CSU	0	1	0	23	32	1	1	0	37	39
UU	0	1	0	7	34	0	1	0	7	34

state press

sports

BUY
SELL

CLASSIFIED ADS

TRADE
LEASE

1. Rates: The first day is 10 cents per word with \$1.50 minimum (15 words). All consecutive ads after the first day are discounted.
2. Notification of errors is required before second publication. The State Press will not be responsible for more than the first incorrect insertion.
3. No refunds will be made for cancellations of classified advertising.
4. All abbreviations or small groups of numbers count as one word. Hyphenated words count as two words.
5. No tear sheets will be provided with classified advertising.
6. The right is reserved to reject any copy.
7. Payment for all classified ads is cash in advance.
8. Ads will not be accepted over the telephone but can be placed either in the offices of the State Press, Stauffer Bldg., A111, ASU, Tempe, Az. 85281, or in the Memorial Union, Room 208 J. Ads also may be mailed to the State Press if prepayment is included with the form.
9. Deadline is 4 p.m. two days before the ad is to appear.

FOR SALE

Girls 10 speed - \$45, Mens - \$40, 3 speed, \$25. Typewriter - \$20. Ans. machine \$80. Call 946-5647. (10/20)

The Bike Route offers Gitane, Centurion, Faicon, and Romana bicycles as well as Campagnolo racing equipment. The Bike Route is owned by Steve Cline, bicyclist & mechanic. 955-5541, 2310 N. 32nd St., Oak and 32nd St. Phoenix. Hours 10-7 M-F, 10-5 Sat. (9/25)

New mens suede jacket from Spain - lined. Must sacrifice - \$80. Size 41. Call Ruth - 956-2343. (9/25)

1962 10x55 mobile home, 7 C, 3 miles from ASU. \$3200. 948-8517. 968-0182. (9/27)

Stenotype machine, 140 dollars, includes case, all instruction books, forty paper refills, miscellaneous supplies. 948-1407. (9/31)

Discount to students - used furniture, antiques, collectables. Prices to help your budget problems. Now moved to Ash & Univ., Suite 112, Univ. Square. Butlers. 966-8498. (10/16)

'71 VW Super Beetle, 29,000 miles. Good cond. AM-FM radio, air cond., new tires. \$1695 or best offer. Phone 274-3052. (9/25)

Parachuting gear, PC Mini-System, more. Worth \$850. Everything goes - \$300. Call for list. Tom 966-7111. (9/25)

12 string Acoustic Ovation with pickup and case - \$299. Queen waterbed mattress and heater \$49. Call at noon - 967-0798. (9/25)

Steel-string guitar. Alvarez. Like new. Call Alice at 244-1916. (9/25)

Silver watch-turquoise band - lost in M.U. or vicinity. 965-6324. (9/24)

RENT

Furnished roof for rent, use of kitchen, laundry, refrigerated, near school. 267-0691 or 838-9769. (9/26)

Office space for rent - lease not required - 6 blocks from ASU campus - utilities included - from \$100 per month. Contact Dennis Friedman 248-0020. (10/9)

WANTED

Information from anyone who has had his car towed from Tempe Shopping Center within the last year. Please call Bonnie: 957-0102. 10 - 11 p.m. M & T. 5 - 6 p.m. W, Th, F. (9/27)

HELP WANTED

Life Class models. Apply 10:30 - 11:30 daily at Mesa Community College. Phone 949-1281. Expires 9/24. (10/8)

Legend City - a fun place to work! Weekend hours only. Apply Mon. thru Fri. 8:30 AM to 4:00 PM at Legend City - 56th St. & Washington. (9/25)

Cocktail waitress - age 19 or older. Must be reliable, personable, neat and attractive. Part or full time. Good opportunity to make extra money and enjoy meeting people. Apply in person Mon-Fri. 12-3. Friday's & Saturdays. 825 N. Scottsdale, Rd. (5-2-73) (9/27)

Part time job, located near campus. Hourly rate, call 968-7766 between 9 am - 12 noon ask for Michael or Steve. (9/27)

Dependable people for advertising campaign. Job consists of walking. Good chance to make extra money. Necessary to work 3 hours daily, 7 days a week. Limited amount of transportation necessary. Apply in person Mon-Fri. from 12-3 Fridays and Saturdays, 825 N. Scottsdale Rd. (9/27)

ANNOUNCEMENTS

Return to Mother Earth. Young couple with 18 mo. baby have bus and 40 acres in N.M. interviewing young couples with guts and desire to break away from rat race with us. (602) 992-4829 after 6 p.m. (9/25)

Veterans party - Friday Sept. 27 - 5 p.m. to midnight. Bring friends, guests, food. All you can drink - \$1 a person. So. Min. Pk., Los Lomitas Ramada. Further info at ASU Vets Assoc. meeting Wed. Sept. 25, 2:30 p.m. - 5 p.m. MU Yuma Rm. 211. See you there!!! (9/26)

SERVICES

Permanent hair removal, face or body. Electrolysis of Scottsdale. Gail Walker - 945-4245. (12/6)

Need a roommate? Call Roommate Finders. Nice homes & apts. to share. 968-7703. (10/25)

Future CPA's learn how to prepare for the CPA Exam. Becker CPA review course. Call collect 602-277-7621. (9/25)

FOUND

FOUND: Found - female Shepherd, mostly black - black rimmed ears, vicinity of Rural Road & Apache Blvd. 946-0067. (9/26)

LOST

Small clear plastic change purse - 3 rings inside. Reward. Call 968-5435. (9/24)

Silver watch-turquoise band - lost in M.U. or vicinity. 965-6324. (9/24)

Ladie's class ring, red stone, Wingate High, 1967. If found call 968-1618. Sentimental value, \$10.00 reward. (9/24)

Lost: White Samoyah pup - 2 months old, from 415 S. Wilson, Tempe on 9/17. Needs medication - Ref. 839-2824 - Call 966-6498 or leave message at 965-3506. V (9/26)

INSTRUCTION

Need help in accounting? Get help from experienced tutor. 967-1389 or 965-4600. Ask for Alan. (9/26)

A class in Scottish Gaelic will be taught. Call 964-1818 most evenings or all day Tues-Thurs. (9/27)

LA Language Requirement Evasion Kit: \$10.00. New guaranteed technique for skipping LA requirement and improving education 12%. Free info: P. Jablonka, 1314 E. 1st Pl., Mesa, Az. (9/26)

TYPING

Professional typing. IBM pica. 60c page. Minor ed & corrections. By appointment. 956-7983. Phx. (12/6)

Term papers, resumes, theses, dissertations. Professional, guaranteed work. IBM. Maxine Mullen, 955-0763. (5/27)

Experienced, IBM. Professional quality. theses, term papers, etc. 50c page & up. Elen 252-8445. (0/27)

Experienced typist can do theses, dissertations, term papers, medical back-ground. 50c page. Janet, 834-0893. (10/11)

IBM, experienced, reports, theses, dissertations, guaranteed, 50c and up, Pam, 994-9851 after 5 (\$5.00 minimum). (12/6)

MOTORCYCLES

1965 Honda 305 Super-Hawk - custom paint, tank, seat clean - runs well. Le-Mancha Apt. C-710 (Clyde) (9/27)

TRAVEL

Europe-Israel-Africa. Student flights all year round. Contact: ISCA 1 6035 University Ave. #11 - San Diego, Calif. 92115. Tel: (714) 287-3010, (213) 826-5669. (12/6)

Morning Briefing

UTEP wins game, loses rank

Steve Harvey will have to start scouting for a new "Bottom Ten" pace-setter.

Texas-El Paso, rated by columnist Harvey as the nation's worst college football team, accomplished the improbable Saturday by defeating Utah 34-7 in a Western Athletic Conference grid encounter.

UTEP, trounced 82-6 by Utah last year, crushed the Redskins behind quarterback Bob McKinley's three touchdown passes and freshman tailback Mike Belew's 168 yards.

The Miners are now tied for the WAC lead with New Mexico. Both teams have 1-0 conference marks.

After last season's mediocre 39-24 record, ASU baseball coach Jim Brock is thinking a change of atmosphere might not hurt his squad.

Suzy Rennbaum is attempting to sell Brock on the idea of using batgirls for home contests. Rennebaum, formerly a batgirl for the University of Oklahoma, would like to coordinate a wide-ranging scale of activities for batgirls at ASU.

Girls would keep the bat racks in order for home and visiting teams, usher in the stands and assist in the press box.

If the plan is approved, six girls will be chosen for the job following interviews later this fall. Interested persons should contact Suzy Rennebaum at 965-5803.

Students and faculty-staff who would like to watch ASU play Missouri Saturday but don't have Columbia, Mo. in their travel plans, will be able to view the contest on closed circuit TV in the Activity Center.

Tickets are on sale at Sun Devil Stadium with prices scaled at \$2.50 for University members and \$5.00 for the general public.

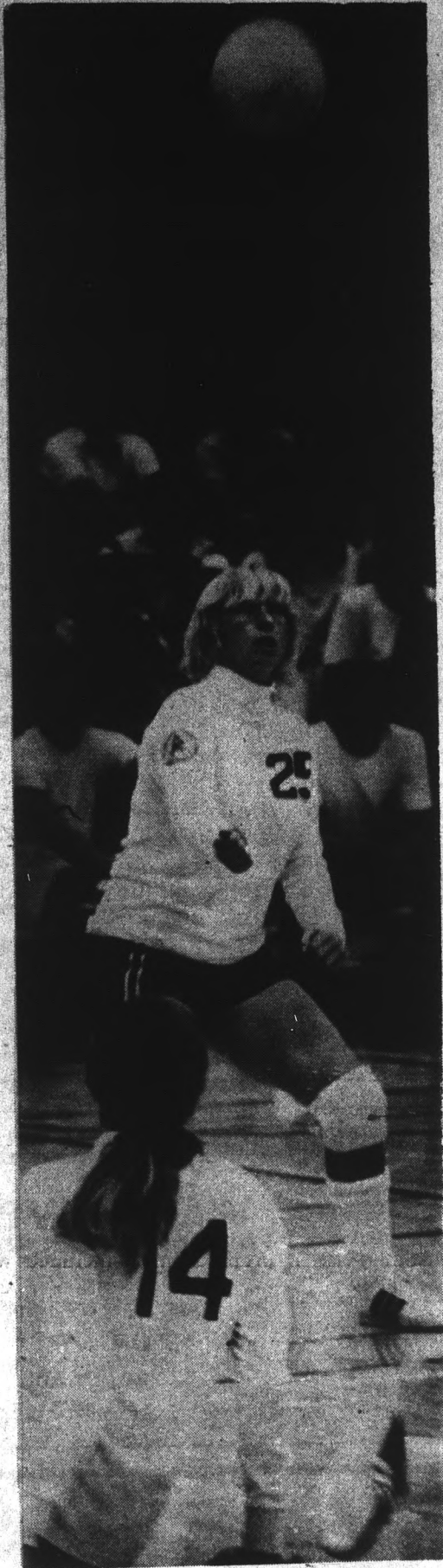


Photo by Debbie Dalton

Debbie Willis (14) slips and falls as she sets up teammate Lee Ann Easley (25) in the Sun Devils opening season game against Mesa Community. Mesa won last week's match by a 3-1 score. Next home game for the ASU women is Sept. 27 at 7 p.m.

Top ten teams didn't stick to form either. Four schools in the Associated Press' high-rent district were defeated by unranked opponents.

Fourth-ranked Nebraska fell to Wisconsin 21-20, seventh-rated Louisiana State dropped a 21-14 decision to Texas A&M, Penn State (8th) lost to Navy by 7-6 and Oklahoma State upset 10th ranked Arkansas 26-7.

Houston, ASU's opening game foe, was trounced 20-3 by Miami, Fla. The Cougars were ranked 19th.

But two future Sun Devil opponents in the Top 20, North Carolina State and Arizona, avoided Saturday's flurry of surprises. State (15th) trounced Clemson 31-10 while the Wildcats disposed of Indiana 35-20.

ASU, by virtue of its 37-7 victory over Texas Christian, could jump up from its 11th spot in the AP poll to as high as 7th this week due to Saturday's upsets.

Happy Hour

2 to 5

7 Days a Week

featuring
PITCHERS — 99¢
MUGS — 20¢

Out-R-Inn Pizza & Subs

1045-A Lemon Street • 966-7009

INTRAMURAL SHOES

\$8.95 & UP

UNIVERSITY SPORTING GOODS

Tempe Center - Univ. & Mill 966-1633
 9 to 9 Mon—Fri Sat 9—6



Beat the lunch crunch.

Leave the hassle and the crowds and the noise behind. Have a relaxing (and delicious) lunch at the Pizza Hut Restaurant.

Pizza, sandwiches, pasta, salads.

Warm, friendly atmosphere, too.

You'll love the Pizza Hut Restaurant for lunch!

955 E. University Dr.
 967-1604



Our people make our pizza better

©1974 Pizza Hut, Inc.

Unions move to organize ASU faculty

By Ken Reed

Several organizations are attempting to organize ASU faculty members into a collective voice, according to spokesmen for the groups.

The three major organizations are the American Association of University Professors (AAUP), the Association of College and University Faculty of Arizona (ACUFA) and the American Federation of Teachers (AFT).

AAUP is largest

The AAUP is the largest organization on campus, according to Dr. Bert Bender of the English department. Bender said the AAUP has about 130 members. He said he saw a need for organizations

Seek voice at administration level

which parallel the American labor movement, but the AAUP isn't radical enough.

"A lot of people who belong to these organizations don't like to have them referred to as unions," said Bender. "I think that's the best way to refer to them, myself, because I believe there's a real struggle between workers and management and I see that that's the same situation here."

Bender said grievance procedures and the recent teaching-load change might be the major issues raised by AAUP this year. ASU President John Schwada recently raised the normal

teaching load from nine to 12 hours.

Membership lapses

"I used to be a member of AAUP, because I do support some of the things it does," said Dr. Gerald Kleinfeld of the history department. "I don't support other thing it does and, over the years, I've let my membership lapse."

Kleinfeld said there are many problems inherent in any union or professional organization of this type. "It seems to me that it develops its own tyranny," he said. He said individual members of such an organization lack the element of control over it.

Kleinfeld said, "It is not necessary to have a union for professors to have some means of having their point of view expressed on issues that are meaningful to them, and it is not necessary to have a union in order for the administration to learn what the view of the faculty is on a particular issue."

Collective input

Dr. Louis Smith, also of the history department, is the chairman of Local 2050 of the AFT. He said, "There is a need for collective faculty input into the governing processes of the University in academic matters, in salary matters, in many ways, and I think the only answer is some sort of collective process."

Smith said there hasn't been enough faculty input in

relationship with recent decisions concerning the library, the computer, teaching loads or new research positions.

He said AFT is primarily concerned with the passage of a collective bargaining law in Arizona. "Unionization is an idea whose time is coming," Smith said.

Dr. Eugene Chafey of the secondary education department is the chairman of the ASU Association of Higher Education, the local ACUFA affiliate. He said ACUFA is interested in retirement programs and would like to see the legislature make collective bargaining legal here.

Chafey said his group engages in what he called "professional negotiations" with the administration. Anything beyond that "becomes an extra-legal kind of activity," he said.

Meet to discuss state retirement

Representatives of Arizona employers and employees will have an opportunity to discuss recent trends and proposals in state retirement programs with state officials at the Conference on State Retirement Saturday.

Included in state

retirement programs are employees of the state and its political subdivisions. The conference will also consider problems of retired public employees.

The conference, sponsored by the Community Services Center, will be at the Superstition Inn in Apache Junction. Registration fee is \$15.

DISPLAY ADS
965-7572

Student Discount

MINI-STORAGE & WAREHOUSE

DON'T HAUL IT . . .

STORE IT

You Lock It.

You Keep The Key.

2422 W. Broadway

MESA


968-1021



GINO'S PIZZA
WE DELIVER
966-4666, 966-5542
MON. - THURS. 5-1
FRI. & SAT. 4-2
SUN. 3-12
822 South Mill

YOM KIPPUR Services
Wednesday, September 25
7:00 PM, Arizona Room, MU
Kol Nidre Services
Thursday, September 26
10:00 AM, Arizona Room, MU
Thursday, September 26
BREAK THE FAST DINNER—Baker Center
\$1.75 in advance \$2.00 at the door
Reservations at Hillel, 966-5371

SERVICE FIRST
★ Low rates ★ Monthly Pay
★ Low Down Payment
★ SR-22 Filings
★ Immediate Coverage
RESIDENTIAL-25%
Below rates, if you qualify, most do!
*Apartment contents policies
Lowest rates in the State!
COMMERCIAL - Let us compare cost & coverage!
LIFE & HEALTH - Group & Individual, good coverages, low premiums
Lowest rates available on approved Mobile Home Parks
Low, Low, Low cost, call & compare
Excellent rates & coverage
CALL DAVE SMITH FOR A QUOTE.
CAMPUS & COMMUNITY INSURANCE, INC.
1005 WEST SOUTHERN AVE. - MESA, ARIZONA
833-4563



UNIVERSITY OF THE PACIFIC
McGEORGE SCHOOL OF LAW
Sacramento Campus
ON-CAMPUS INTERVIEWS OF PROSPECTIVE LAW STUDENTS
will be held on Monday, September 30, 1974 from 2:30 until 4:40 P.M. in the Career Services Center. For an appointment or further information, contact Mr. Ed Stubblefield, Career Service Advisor, Commercial Division, ASB 109, Arizona State University.
The program of the School of Law enables students to begin the study of law in the summer quarter (June 1975) or autumn quarter (September 1975), in the 3 year day or 4 year evening division. McGeorge offers the juris doctor degree and is accredited by the American Bar Association. Application deadline: April 30, 1975.
NOTE: (Application Deadline for 1975-76 academic year is April 30, 1975.)