

Gymnastic program feels left out

Activities Center plans don't include it

By Don Stevenson

While several of the athletic programs will be using the new \$8 million ASU Activities Center for the first time this season, the gymnastics team will have to continue to use the old Sun Devil gym, and members of the gymnastics program are unhappy with the situation.

Two persons within the athletic department, who asked not to be identified, have said Coach Don Robinson and staff were "very unhappy" concerning the use of the new center.

Indications are the gymnastics team, which placed first in the Western Athletic Conference and second in the nation last season, will have to use the 22-year-old men's gym which is deteriorating structurally, Robinson said.

The team is forced to practice in the 50-year-old gym annex because it is the only room available large enough to hold the equipment and the 30 athletes working out.

Frank Rispoli, assistant athletic director said, "The planners of the Activities Center just didn't plan for the gymnastics department. The

Center has all kinds of nice practice rooms, weight rooms, class and locker rooms, but they weren't planned for the high ceiling required for a gymnastics program" Rispoli said.

"Our facilities are about adequate," said Brian Scott, assistant gymnastics coach. "but you'd think that being second in the nation they'd give

us something better. We were completely left out of the new Activities Center. They've got all sorts of facilities and rooms over there but nothing for us. It's just hard to get funds if you're not a Frank Kush," Scott added.

Robinson did say he was "hopeful" he would be permitted to use the Activities Center for meets. "You should realize the Center is used for many events. We have to share the facilities with basketball and wrestling," he said.

"It's up to the people at the top to decide," said Robinson. "With the stronghold and powerful budgets of the other athletic programs — they're in control. I don't want to make unnecessary waves, though. We've had great teams and we're going to have greater teams in the future. I want to see it continue," he said.

Athletic Director Fred Miller countered by saying, "If coach Robinson is unhappy, that's his problem. We didn't build this center for him. I've got to worry about basketball and wrestling."

Continued on page 10

Class rosters expected today

Computer print-out class lists, which were supposed to be in the hands of University professors Thursday, were delayed and delivery to professors is expected today, according to the office of Registrar Enos Underwood.

Roy Mascorro, operational supervisor of campus computer service, confirmed the delay and said he was preparing a statement concerning reasons. The statement was to be delivered late Thursday afternoon to Dr. Nelson Garrison, computer center director.

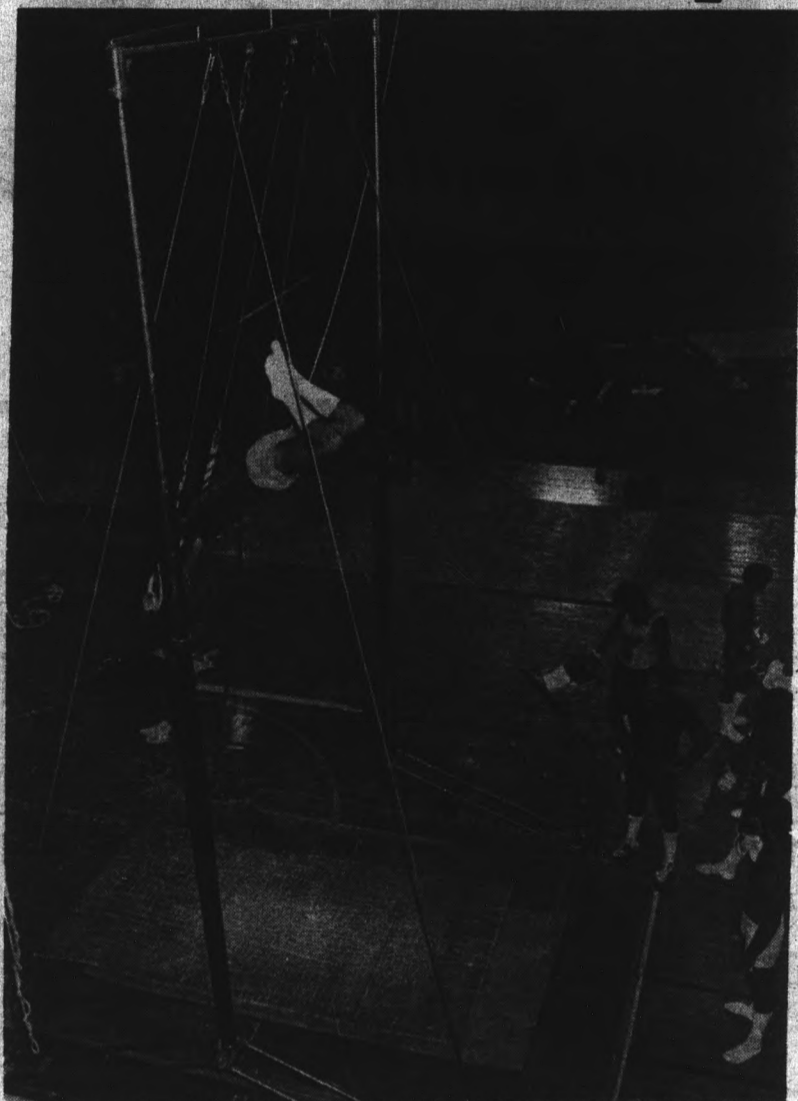


Photo by Don Stevenson

Senior Rick Curtis, third in the nation last year on the still rings, works out in the old gymnasium instead of the new University Activities Center.

Bugline faces red tape problems in attempt to extend bus service

By Barry Quist

Bug Line night runs and extended route service is being held up by problems with the state and a lack of University support, a bugline co-founder said.

The Bug Line's petition for a charter permit was refused by the State Corporation Commission, said John Balfour.

"This charter would permit us to rent out our buses and drivers to different groups and clubs. The revenue from this would help pay for fuel and repairs which are biggest expenditures," said Balfour.

Diana Massey of the Corporation Commission said the commission did not refuse the petition. "We needed more information on the company so we sent it back to be completed."

Another delay in Bug Line expansion services is what Balfour called a lack of support from the University administration. He said he was told by University President John Schwada that there was no parking problem at ASU.

Schwada said Wednesday, "I have no recollection of making that statement. There is a parking problem at ASU and I'm aware of it. I

support any system that will enable students to get to the campus without using automobiles."

John R. Ellingson, director of Planning and Construction said last week, parking was available. There are 14,000 available parking spaces with about 8,000 in daily use.

Balfour said the controversy over ASU parking problems depends on how you define a parking problem. "there may be 14,000 parking spaces at ASU, but if you have to park your car next to the baseball stadium and then have a 10- or 15-minute walk to class, that's a parking problem."

Balfour feels that the Bug Line is a logical method of alleviating some of the parking and transportation problems at ASU.

If possible, Balfour would like to extend Bug Line service to include a run to South Phoenix. Presently the only way to get to ASU from South Phoenix by bus is to ride into Phoenix and catch a bus from there to ASU.

"My goal for January is bus service to South Phoenix, but we'll need the support of the students, administration, and community," Balfour said.



Photo by Bob Burns

The Bug Line's only passenger Margaret Keikelmann, checks out Thursday at the end of the Tempe run.



Photo by Roger O'Connor

Bike registration

Students lined up Thursday for the ASASU Student Affairs Committee's bike registration in front of the Memorial Union. Tempe firemen,

Jim Smith and S.D. Ronninger engraved each students' social security number on their bike.

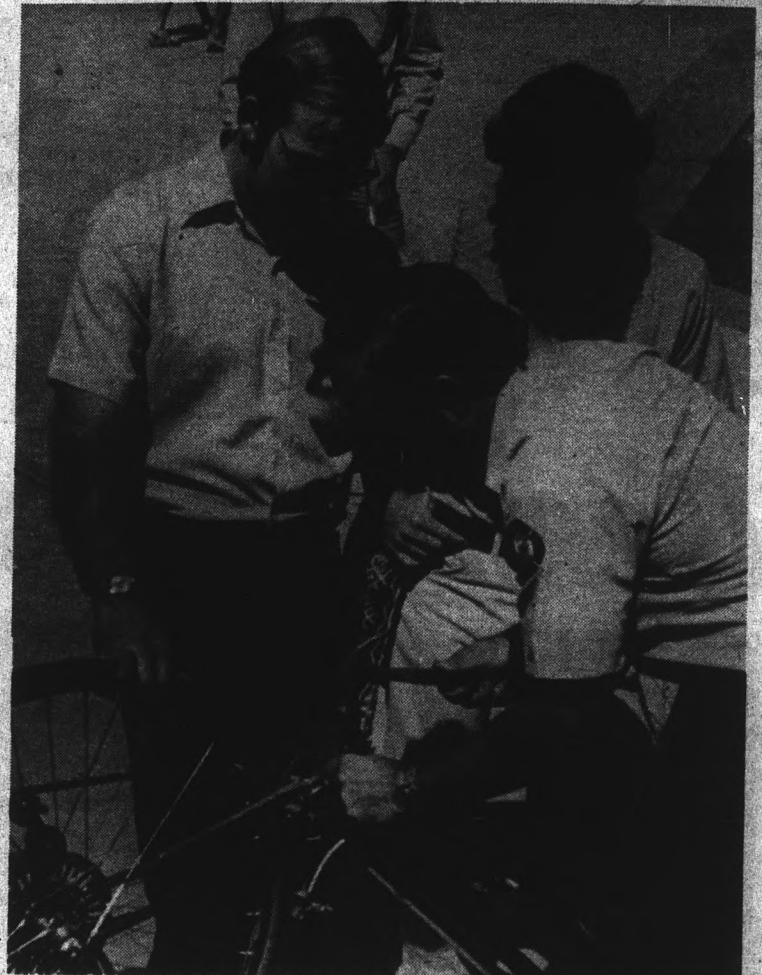


Photo by Bob Burns

WARNING!

The stuff* they peddle is so great it's easy to become addicted to:

THE GALLERY STORE

Matthews Center—2nd Floor—12 to 4

*jewelry—baskets—boxes—ethnics—cards



ARTIST & DRAFTING SUPPLIES

Crafts - Picture Frames
Decorating Material

Open Mon. & Thurs. Nights
10 Percent Discount to Students
111 E. University — 967-4482

INDIAN JEWELRY

Ardee's

10% OFF STUDENT DISCOUNT

911 S. MILL 968-3532 IN TEMPE CENTER

WE CARRY HAND TOOLED

LEATHER BAGS - BELTS - BILLFOLDS

Macrame Supplies, Jute Beads

Decoupage Boards & Needlework

PAINTINGS & UNUSUAL GIFTS

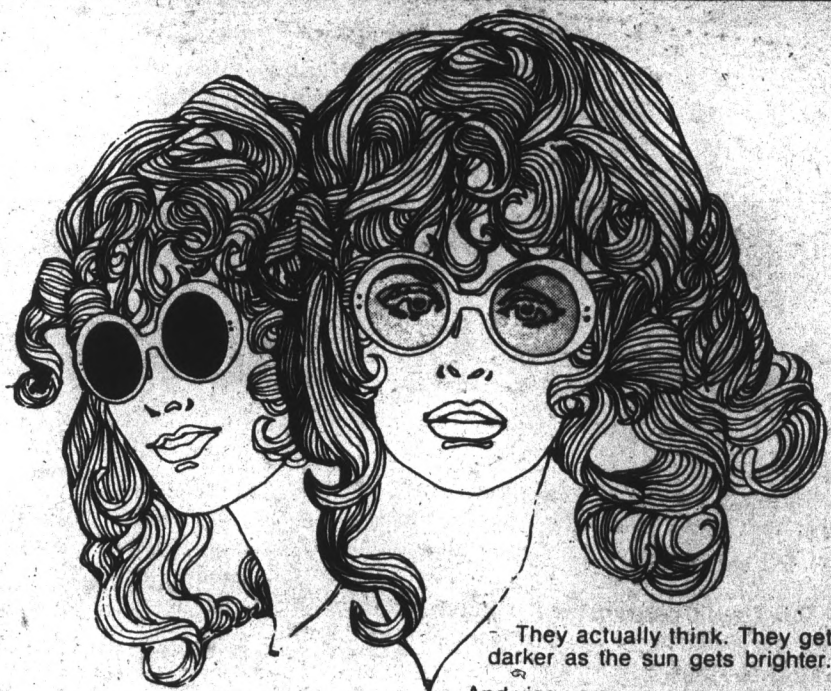
BECAUSE YOU'VE
ACHIEVED



The experiences that have "carved" your real achievements are the personal ones. Wear a class ring and remember.

Order on Ring Day and save 5%.

Date — Sept. 9th thru the 13th
Time — 10 A.M. to 5 P.M.
Place — Univ. Bookstore



They actually think. They get darker as the sun gets brighter. And vice-versa.

New from Lee Optical.
Incredibly smart sunglasses.

PHOTOSUN™ Sunglasses. They adjust by themselves to give you just the right amount of protection and visibility in sun or shade. Bright day or cloudy.

One pair of sunglasses for all kinds of days.

Come in and get a pair of sunglasses that out-smart the sun.

TEMPE 14 CONVENIENT VISION CENTERS THROUGHOUT ARIZONA
Open Monday through Saturday.
Tempe Center/2032 S. Industrial Park Ave.
967-7864 967-7333

LEE Optical



100 students register bicycles in ASASU, fire dept. drive

One hundred students took advantage of the bike registration drive sponsored by the Student Affairs Committee Thursday. The same number of students are expected to register their bicycles this afternoon, said Susan Bitter, committee chairman.

For 50 cents the Tempe Fire Department will engrave a permanent

identification number on the bike, which will then be registered along with a description of the bike at the Tempe Police Department. If the bike is stolen and recovered, the owner can be traced through the number, said Bitter.

The engraving will be done today from 12 p.m. to 3 p.m. in parking area number two, west of Manzanita dorm.

Intramural budget increase not enough

By Ben Wood

The intramural department has received a 100 per cent increase over last year's budget, but there still isn't enough money for everybody in the department.

Budget requests totaling more than \$29,000 were submitted to the intramural office by ASU's 11 club sports late Wednesday.

Keith Jacobson, the Coordinator of Intramurals, Club Sports and Recreation, said the intramural program has only \$9,000 to allot to club sports.

The organizational requests are:

- Sun Devil Canoe and Kayak Club, \$1,163.00
- Sun Devil Karate Club, \$800.00

- Flying Club, \$1,761.50
- Water Polo, \$5,621.30
- Outing Club, \$803.13
- Rodeo, \$3,800.00
- Weight Lifting, \$820.00
- Sun Devil Hockey Club, \$7,670.05
- Wheelchair Athletic Association, \$1,190.25
- Volleyball, \$2,643.24
- Sun Devil Rugby Club, \$2,744.37

Last year the clubs were funded \$1,500, according to Dr. George Greey, area head of recreation and coordinator of recreation from 1969 through last year.

Club sports funds will be used to pay for equipment, facility rental, uniforms, publicity,

travel and lodging, Jacobson said.

Club sports are an athletic activity on a competitive level superior to intramurals but inferior to intercollegiate sports. ASU students, faculty and staff are eligible to join the 11 clubs. The clubs do not officially represent the University and cannot award athletic scholarships, Jacobson said.

A series of intramural subcommittee meetings will determine the allotments for each club.

STATE PRESS is published by Arizona State University Tuesday through Friday during the academic year, except holidays and examination periods. Entered as second class matter at Tempe, AZ. 85281.

Monday and Tuesday



A STRANGE CONFRONTATION
ANDRE KOLE UNMASKS THE UNKNOWN—
REVEALS THE TRUTH BEHIND THE OCCULT
IN A FULL STAGE PRODUCTION DEALING
WITH THE FANTASY AND REALITY OF THE
SUPERNATURAL WORLD.

GAMMAGE AUDITORIUM

8:00 P.M.

ADMISSION \$1.50

Tickets available on the Mall and at
Gammage Box Office

Records & Leather

THIS STORE HAS RECORDS AND TAPES
AT LOW DISCOUNT PRICES

•regular•

- \$5.98 Lp's — \$3.74
- \$6.98 Lp's — \$4.34
- \$7.98 Lp's — \$5.34
- \$9.98 Lp's — \$6.34
- \$11.98 Lp's — \$7.34
- \$12.98 Lp's — \$8.34

•plus weekly specials at•

- \$5.98 Lp's — Now \$3.29
- \$6.98 Lp's — Now \$3.89

ALSO

- custom leather to suit the customer's needs (belts, sandals, visors, etc.)
- pottery and macrame
- bongos, pipes, papers, clips, incense, posters, candles, etc.

Conveniently located in Tempe at the corner of
Lemon and Terrace near A.S.U.

Bring this coupon!

THIS COUPON WORTH 50¢ TOWARDS PURCHASE
OF ANY ITEM FROM OUR REGULAR STOCK OVER \$1

(Not valid on sales items.)



50¢
Coupon

50¢
Coupon



50¢
Coupon

1039 E. Lemon, Tempe
966-8689

50¢
Coupon

Opinion

state press

It took almost a year to bring Birth Control

Planned Parenthood has decided to open a birth control clinic near ASU to administer chiefly to ASU students, ending a year-old effort by a number of ASU students to bring the much-needed service to Tempe.

It all started last September when the Student Affairs Committee of Associated Students decided that in order for the Student Health Service to do a complete job of meeting student needs, it should offer birth control devices and information to campus students.

The committee, then under the direction of Bob Kennison, immediately ran into the same brick wall that had stymied countless other would-be do-gooders before it — the Arizona Board of Regents.

The regents ruled that ASU would not and could not take on the birth control project. But the committee didn't stop there. It went to the State Attorney General for his opinion on whether the regents had the right to make such a decision. He

said they did.

Next the committee went to the American Civil Liberties Union seeking backing on a lawsuit against the regents aimed at bringing the services on campus, but the ACLU, though interested, wasn't interested enough to take on the case.

The committee still didn't give up. Its members next investigated the possibility of opening a branch of Planned Parenthood on campus, staffed by non-ASU people and paid for with non-ASU funds. Still University officials wouldn't give in. It seems they were determined to keep the service off campus.

Tuesday it was announced that after a great deal of study, Planned Parenthood has agreed to open a branch near the campus, allowing easy access to students, but avoiding the taboo University grounds. The decision was certainly influenced by the continuous efforts of Kennison, who is no longer a member of the Student Affairs Committee,

but still active in the campaign to meet student needs.

Kennison and all the others whose work contributed to the Planned Parenthood decision deserve and receive our gratitude for sticking to it against administrators, regents and state officials. It's easy to give up against that kind of odds, but fortunately not everyone always takes the easiest path open to him.

Editor
Managing Editor
News Editor
City Editor
Assistant City Editor
Photo Editor
Photographers

Sports Editor
Assistant Sports Editor
Columnist
Perspective Editor
Staff Artist



BY 1974 WE'LL HAVE A CHICKEN IN EVERY POT BECAUSE WE CAN'T AFFORD BEEF AND THERE'LL BE 2 CARS IN EVERY GARAGE BECAUSE WE'LL BOTH BE LAID OFF!

Letters

Co-ordination

Editor:

I have sat and listened quietly for quite a while, and now have a comment to make. (My information was gleaned from the State Press on September 11.)

A. People want a telephone at Neeb Hall to avoid any further accidents, but it is held up because it will cost over \$3,000.

B. Some offices are going to be remodeled soon with money left over from last year's budget. A total of \$3,700 is to be used.

Conclusion— Why isn't this money used for the telephone at Neeb Hall where it will benefit more people and ease many a mind?

Ruth E. Stevens
Spanish

Policy

The State Press appreciates letters to the editor from its readers. Selective samples of the letters received will be printed at the discretion of the editor. Letters should be typewritten and double-spaced.

Bill McClellan

Demise of the moderate feminists

Despite the disdain with which they treat me and the repeated rejections I have suffered at their hands, I still have a generally positive attitude toward the girls on this campus.

Which is more than the Student Senate has, at least according to Heather Bryan, president of Associated Women Students.

But before I get into the particulars of why she says that, let me explain that I never know quite what to think of AWS or, for that matter, Heather herself.

Every girl on campus is a de facto member of AWS. Very few co-eds seem to pay much attention to the organization. The younger girls, who are straight out of high school and whose daddies foot the bills, don't feel discriminated against. The older co-eds, whose inclinations might lean more in the feminist direction, are predictably leary of any student organization. It's not a strange phenomenon. The ASU Veteran's Club runs into the same problem every semester. Older students are not joiners.

And Heather, despite the militant feminist magazines that lay scattered in her office, does not seem to be much of a radical libber. She wears a bra. She opposes abortion. Like I said, I never know what to think. My stereotyped images keep colliding with reality.

But back to the big collision, the one between AWS and the Student Senate.

It was bad enough, from Heather's point of view, when the Senate refused to fund AWS's proposed movie series on women. It was to be a consciousness raising affair. The organization ran a similar series a couple years ago and the

girls remember it as a rousing success.

The Senate was less enthusiastic. No more money for flicks.

Oh well. They girls decided they could live without the movies. Then came the big news. More than the AWS budget would be cut. The organization itself was on the way out. The Student Senate voted to disband the organization. The margin was two to one against AWS.

The matter was put before the students in last year's elections in the form of a referendum. By a rather narrow vote, the students concurred with the Senate.

But then came a reprieve. President Schwada decided not to sign the bill disbanding AWS. The girls were back in business.

But only for a year. Under the new articles of association that realign student government, there is only passing mention made of AWS. The mention states that the president of AWS will no longer sit on the policy making executive committee.

In all probability, what is now AWS will become some sort of a women's board.

And poor Heather, president of a lame duck organization with her office situated smack in the middle of the male dominated student government complex on the second floor of the Union, is wondering if anything can be done.

The future of AWS looks bleak indeed. Perhaps the organization isn't worth saving, but it has been on campus since 1932 and its abolishment could well be considered the end of an era.

Farewell to the genteel feminists.

Opinion

state press

How about a contest?

It is a pity that Mr. Duffy had to take such a strong position concerning bicycling on the main walkways on campus. ASU has a large collection of intelligent minds, minds which could be put to use to devise a plan for more efficient bike paths. I propose that the student government offer a \$50 prize for the best design for bike paths, with an emphasis on safety and efficiency.

accepted from any member of the University community. The panel that would evaluate these should be made up of members from each of the departments involved. The three best plans should be submitted to the student body via the State Press and the final selection through a write-in vote. The majority of the responsibility of this venture should lie with our student government.

Designs would be

Bob Walter

More bike path letters

Help! I'm trapped at my desk under a pile of bike path letters, and can barely raise my hands to the keyboard of my typewriter under their weight.

The deluge of letters we've received, most of them protesting the new rule against riding on malls has gotten out of hand, and although we appreciate

the response, we're sorry to say there's no way we can print them all. We will continue to read all we receive, and print selected samples which seem to show the trend the letters are taking, so please keep them coming. But don't be hurt if you don't see yours in the paper.

Expand the bikepaths

Editor:

Come off it, administration. First you do not provide us with adequate parking for our cars, so we come to campus on our bicycles instead. Then we discover that you have banned our bicycles, too. What do you want?

Granted, there is a problem with bicycle traffic on the pedestrian thorough fares on campus. The solution, however, is not to ban bicycle traffic on the malls, but to provide for it with a rational plan for additional bikepaths; paths through the heart of the campus providing bicycle access to major buildings, not just around the outskirts of campus. Given such a reasonable system, cyclists would be much more willing to confine themselves to the bikepaths.

In this year of environmental crisis and energy shortage, we should do as much as possible to keep as many automobiles off the streets as we can. By making our bicycles useless on the major part of the campus, you are probably contributing to the problem and not to the solution.

David Kreutzberg
Political Science
Robin Hintze
Business Administration

First Wash FREE

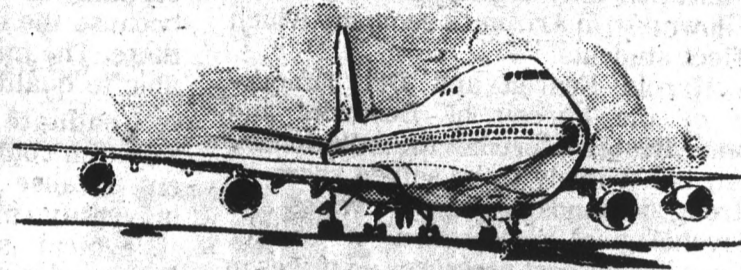
to introduce
MAYTAG
Dial-a-Fabric
WASHERS

they make it simpler to wash
all of today's fabrics
just like the
care tags say



OPEN
25 hrs. a Day!

Holiday Laundry
1016 West University, Tempe



VALLEY TRAVEL

Make your Holiday Reservations Now
Pay in December

Our Services are Free

707 S. Forest, Tempe

Right across from ASU

9 a.m. to 5 p.m. Call 967-9403

For information from 5-9:30 p.m., Call your Campus Representative at 968-7112

ROSH HASHANAH DINNER PALO VERDE EAST DORM

Monday, September 16 4:15-6:15
Traditional Yun Tiff dinner

chicken noodle soup
baked chicken
baked potato
apples and honey
salads
challah
dessert and wine

All dorm students may attend free
Non-dorm guests \$1.75 in advance

All students — dorm students, non-dorm residents and guests — are asked to make reservations with Hillel, 213 E. University 966-5371

ROSH HASHANAH SERVICES

Monday, September 16

8:00 p.m., Arizona Room, Memorial Union
Kiddush will follow the services

Tuesday, September 17

9:30 a.m. Arizona Room, Memorial Union
"Birthday of the World Party" at Baker Center will follow services

Wednesday, September 18

9:30 a.m. Arizona Room, Memorial Union

Even you can afford it.



The Jack Steak Sandwich

Going to school is an expensive proposition.

When you're eating out, look into the Jack Steak Sandwich. Fresh sliced tomatoes, crisp shredded lettuce and U.S.D.A. Choice beef, flaked and formed. All sandwiched into a toasted French roll.

It can fill you up. Without emptying your pocket.



Scottsdale Rd. & Weber
S. Mill Ave. & E. University

High cost of living pressures students

By Neal Balmes

For many ASU students, academic success often depends upon maintaining a standard of living in inflationary times.

Steve Logan, a wildlife biology major attending

ASU on a loan, is married with only his wife working. He admitted he is worried about the high cost of living. "You wonder when it's going to stop and what it's going to come to," he said. Yet Logan believes the

money pinch would not improve for a long time for him. Getting an education is a now-or-never thing. "You can't afford to goof off in classes. If I blow it, there won't be another chance at it."

When buying groceries, Logan said all he could do was close his eyes and forget about the prices. "We make sure we get our stomachs full. I can do without recreation or anything like that but not eating. You can't study when you're hungry."

"The only problem I have is keeping my energy together," said Robert Flood, an psychology major who is carrying a 13-hour school load and is working 40 hours a week.

Flood, a married student with two grade-school sons, said being a father and

Continued on page 7

Money is tighter for students too

By Mark Bauer

Two ASU economists say uncertainties about inflation may signify the start of a major downturn in Arizona's economy which will affect students.

Dr. Harold Fearon and Dr. Timothy Hogan of the bureau of Business and Economic Research predict the inflationary problem is not likely to be solved soon.

"Strong demands for higher wages and the psychological expectation of further inflation will spur cost pressures on prices in the immediate future. The pain of higher unemployment will almost certainly be felt," Fearon said.

Students feel the same pressures of inflation as non-students but will be less affected in some areas. Interest rates affect students less because they are not involved in borrowing for housing and medical care, Hogan said.

Students at ASU should be able to cope with inflation and school because tuition rates are low and some students are able to support themselves. Students at private schools will hurt because of high tuition rates, Hogan said.

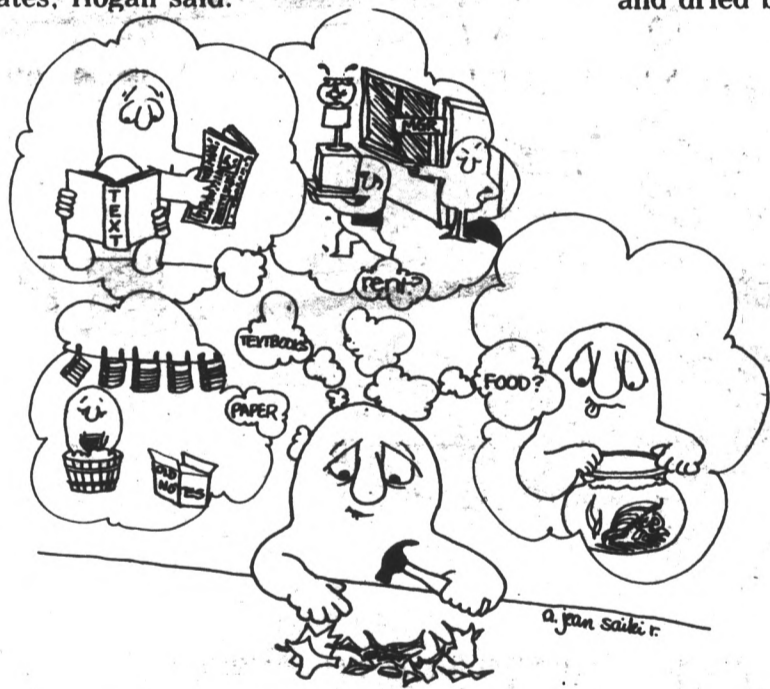
Middle class families will find it more difficult to support students. "There is certainly a pressure on the middle class because the opportunity for loans won't be there. The middle income families won't be able to qualify," Hogan said.

Graduate programs and university research could suffer a decline if funds are cut because of inflation. Hogan said The university may suffer if research ends.

Typical student product needs have increased in price from May 1973 to May 1974 at a rate of over 10 per cent, according to the Consumer Price Index.

The Index shows transportation up 11.4 percent and postal charges up 19.6 percent. Fuel and utilities are up 18.5 per cent and gasoline 43.5 per cent. Dungarees with cotton blend are up 17.5 percent and toilet paper has increased 25.5 per cent. Telephone charges are up 4.8 per cent and residential rent is up 4.5 per cent. Food costs have increased 15.8 per cent.

Beer is up 8.1 per cent and pretzels 17.4 per cent. French fries have risen 26.6 percent and dried beans 204.5 per cent.



WANTED

Models for
Haircutter's Workshop

CRIMPER'S LTD.
111 E. University
After 5 p.m.

MESA SUZUKI SPORTS CENTER INC.

2121 W. Main-MESA **834-1955**

| | | | |
|------------|--------------------------------|---------------|--|
| | 1974 TS-185L SIERRA | | |
| Base price | Sale price | Student price | |
| '865 | '777 | '695 w/coupon | |
| | 1974 TM-125L MOTO-CROSS | | |
| '795 | '745 | '675 w/coupon | |
| | 1974 TM-250L MOTO-CROSS | | |
| '1,160 | '995 | '925 w/coupon | |

PLUS FREIGHT & TAX
Your closest & largest SUZUKI Dealer

Trying something new

You're always trying something new. This year you began ballet lessons. And today, you finally mastered that new position. You feel wonderful.

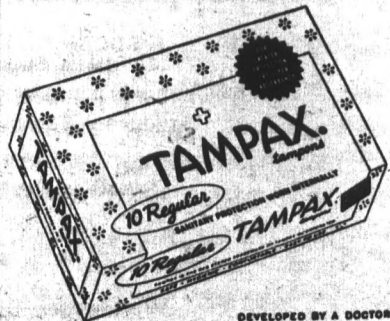
Trying Tampax tampons



for the first time can be a wonderful new experience, too. They're worn internally so you can always be your most active. No one will know you have your period, even in a leotard, a bikini, or a tennis skirt. They're easy to use, too. The silken-smooth container-applicator makes insertion safe, easy and comfortable. And the exclusive Junior absorbency-size is just right for a beginner.

Try Tampax tampons and every day of the month can be a good day to try something new.

The internal protection more women trust



DEVELOPED BY A DOCTOR
NOW USED BY MILLIONS OF WOMEN
MADE ONLY BY TAMPAX INCORPORATED, PALMER, MASS.

Student Discount

MINI-STORAGE & WAREHOUSE

DON'T HAUL IT . . . STORE IT

You Lock It.
You Keep The Key.

2422 W. Broadway
MESA
968-1021

WATERBED SALE

Frame, Liner, Mattress, Chemicals **\$59⁹⁵**

2x10 Frame Only **\$24⁹⁵**

15% Student Discount

☆ Heaters, Sheets, Spreads, etc. ☆
ESCHER & PITRE Prints, Decoupage

Sale Extended till Sept. 14

THE WATERBED SHOP
402 Mill Ave. in Tempe 968-2123

Open 10-6 Mon. thru Fri. — 9:30 to 5:30 Sat.

Money crunch worries students

Continued from page 6
 student was difficult.
 "They've (his family) got it together enough to put up with what I go through. Everything we want we just couldn't get. The kids are in school, too."

Gerald Baranowski, a history major, is a retired Air Force navigator attending ASU on the GI Bill. He doesn't work but owns his own home. Not only did he say that car and food costs were "zapping" him, but he added he is forced to play a shuffle scheme with credit cards. "I keep borrowing on my charge card. I borrow on this card to pay for that card."

The one thing Baranowski, Orr, Ridenour, and Logan have in common is sharing expenses.

Logan, his wife and his brother rent a home. Without his brother helping with the rent, Logan said, "We wouldn't make it."

Both Ridenour and Orr have roommates to help pay the rent.

Orr, who earns \$200 a month as an ASU economics research assistant, shares a two bedroom unfurnished apartment with two other co-eds. "We each took our own bedroom furniture... from gifts for Christmas we got a table and a lamp." She said the remaining furniture was salvaged from parents and friends.

Even though Ridenour's living expenses are paid by her parents, she still shares the rent with two other students and works 20 hours a week part-time to earn extra money.

Baranowski has his youngest high-school aged daughter, and a married daughter and her husband living with him. He said they help split the costs. "You can't balance it out. I don't know who's ahead, them or me."

Regarding entertainment needs, Flood put the security of his family first. "Since I don't have any money to spare, I can't be out drinking beer and shooting pool with the boys."

Logan also spends less on entertainment than he did as a single. "I hardly ever go to a show. I think the biggest reason is I don't have the bread anymore."

Ridenour said she was contented with going to movies or football games, and having her escort pay whenever possible.

Otherwise she said she stays home and drinks beer.

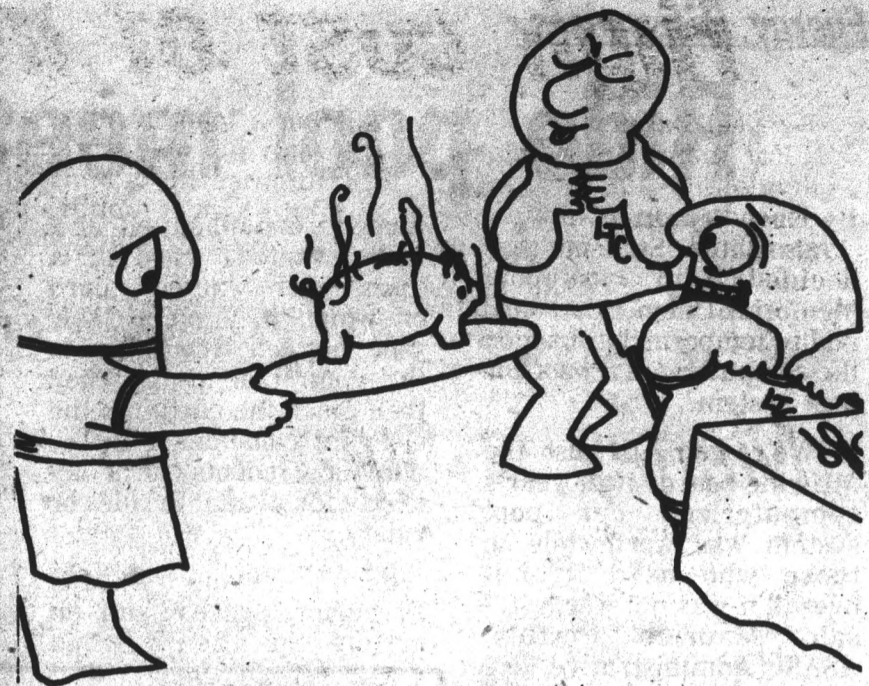
Entertainment is the one thing Orr said she would not sacrifice. "That's where the balance of my money goes — that and books."

Every payday Baranowski goes to the race track. He said he usually breaks even, but he has hopes of working out a system that will aid in helping ends meet. "I checked out seven books on the horse races. I read them all. One a day. I'm going to renew a couple of them, I liked them so well."

Students such as Ridenour who depend on their parents to meet their financial needs don't feel the money crunch as seriously as married students such as Logan and Flood. Single students such as Orr and Baranowski get by, but not without feeling a little sting.

"I would like to be able to save some money. If I was careful, I could," said Orr.

Or, as Baranowski said, "I'm making it, but just by my fingernails. I'm gaining on the damn thing, but not much."



BACK-TO-SCHOOL

FREE BOOK COVERS & PENCILS
 Ask at any Tempe Center Business ABSOLUTELY FREE!

ATTENTION! STUDENTS & FACULTY

WIN A COLOR TV
 16 in. Zenith

\$500 GIVEN AWAY IN PRIZES
 Simply Complete an entry Located in any Tempe Center Store

OR ONE OF 15 OTHER PRIZES

- ☆ \$200 GIFT CERTIFICATE—Americana
- ☆ \$200 GIFT CERTIFICATE—Bonnie Sue
- ☆ Handcarved wooden candleholders—Ardee's
- ☆ PHOTO ALBUM—Brown's
- ☆ \$200 GIFT CERTIFICATE—Celia's
- ☆ EMBROIDERY KIT—Sewing Basket
- ☆ \$100 SAVINGS ACCOUNT—FNB
- ☆ 1 gal. ICE CREAM & CAKE—31 Flavors
- ☆ \$100 GIFT CERTIFICATE—University Sporting Goods
- ☆ CACHET PERFUME—Revco
- ☆ 2 FREE BREAKFASTS—Jam's
- ☆ \$200 GIFT CERTIFICATE—Pioneer Camera Shop
- ☆ LADDER—Sherwin-Williams
- ☆ \$100 GIFT CERTIFICATE—Shoes Unlimited
- ☆ CAR HAND LIGHT—Flint Foreign Auto Parts

THE TEMPE CENTER MERCHANTS WANT TO WELCOME YOU TO SCHOOL HURRY! Contest Ends Sept. 15

ENTER THE GREAT "GETTING TO KNOW YOU" GIVEAWAY

TEMPE CENTER
IN THE HEART OF SUN DEVIL COUNTRY
UNIVERSITY & MILL

Energy crisis eases

Ride pool meets commuters' needs

By Gary Schnitzer

Associated Students has decided to support Memorial Union ride board and to temporarily abandon the computerized school car pool system.

"We're going to push the MU ride board. Last year's computerized car pool system was worthwhile to those who used it, but overall it was not worth it," said Maurice Portley, ASASU Administrative Vice President.

Demand Lessons

Last year 250 people utilized the computerized car pool system. The easing-up of the energy crisis has made it possible for the MU ride board to handle this year's demand.

"I would say a couple hundred students have used the board, although I don't think many students, mostly freshman, know it's here," said Joyce Pelsue, director of the information center.

'Ride Wanted'

The ride board is completely run by interested students.

Climate lab can study pollution

The new ASU Climatology Laboratory has the capability to study such problems as air pollution, droughts and destructive storms, according to its director.

Dr Robert Durrenberger, whom the governor recently appointed state climatologist, told representatives of more than 40 government agencies at a meeting on campus that the lab should be fully operational the end of September.

"A 24-hour weather teletype has already been installed, and map facsimile machines should be ready in two weeks," said Durrenberger. Besides being linked to the U.S. Weather Bureau, the lab will receive data from 250 Arizona Weather Watchers and from state ham radio operators.

Durrenberger discussed several research projects which are under way or planned. He said undergraduate students have begun to reconstruct and map destructive storms that have occurred in central Arizona, and the lab is working with the Mexican government on a Sonoran Desert drought study.

"We also hope to be involved in analyzing Maricopa County air pollution data," said Durrenberger.

Students can fill out either a "ride wanted" card or a "passenger wanted" card on which they place their zone number according to the commuter map. They then place the card into the slot that coincides with the number. Students check day to day for available rides or riders.

Rick Weiss, ASASU President, agrees with an article in the Arizona

Republic (Sept. 9) which said valley car pooling is on the decline.

Problem Remains

"We want to determine how many students are interested. A telephone survey would be the quickest and most accurate way of determining need. But there is no gasoline shortage, and apparently car pooling has died," Weiss said.

Weiss said if more students were in car pools, the parking problem on campus might be relieved. "The parking problem is still there, and for every person that's in a car pool there will be one less car that needs a spot," Weiss said.

Portley favors

preferential parking spaces for those who ride in car pools.

Portley said if ASASU does decide to adopt computerized system, it would take at least one week to put the system together. And an additional two weeks before the system could be put into effect.

LSAT REVIEW COURSE

Maximize your LSAT score by taking review course taught by Phoenix attorneys.

Course for October LSAT will be held in Phoenix during the week of September 23, 1974, in the evenings.

FOR INFORMATION

Call—264-0236 or 949-5786
Write—Arizona LSAT, 4008 North 15th Avenue,
Phoenix, Arizona 85015

50% DISCOUNT ON ALL JEWELRY
WITH THIS COUPON
INDIAN JEWELRY

Bever Silver & Jewelry

Western Savings Building, Suite 205
525 South Mill—Tempe

Open Monday-Friday 8:30 to 6:00, Saturday 10:00 to 5:00
Phone 968-3462

M.C. ESCHER JOHN PITRE

Prints at
THE WATERBED SHOP
402 Mill Av. in Tempe

Hille's "NIGHT ON THE ROOF"

Saturday, Sept. 14 — 7 P.M. — \$1.00
at BAKER CENTER . . .
on the Volleyball Deck

**BBQ DINNER — MUSIC
ENTERTAINMENT**
Live Singing with Rick Felix

for more info. — call 968-5371



I Do Not Care.

No matter what your financial condition, at this time you can certainly afford to wheel on down to the Bottom End and take advantage of the fantastic reductions on halters, summer tops, men's knit shirts and a special selection of jeans, for both sexes.



THE PHOENIX STORE IN PHOENIX
3629 EAST INDIAN SCHOOL ROAD.

IN THE CELLAR OF CAMPUS DRUGS
COLLEGE & UNIVERSITY IN TEMPE.

NEXT TO FRIDAYS & SATURDAYS
811 NORTH SCOTTSDALE ROAD.



We invited a few friends for dinner and they helped clean up the Genesee River.

With the aid of a few thousand pounds of microorganisms, we're helping to solve the water pollution problem in Rochester. Maybe the solution can help others.

What we did was to combine two processes in a way that gives us one of the most efficient water-purifying systems private industry has ever developed.

One process is called "activated sludge," developed by man to accelerate nature's microorganism adsorption. What this means is that for the majority of wastes man can produce, there is an organism waiting somewhere that will happily assimilate it. And thrive on it.

The breakthrough came when Kodak scientists found a way to combine the activated sludge process with a trickling filter process and optimized the combination.

We tested our system in a pilot plant for five years.

(At Kodak, we were working on environmental improvement long before it made headlines.) And the pilot project worked so well, we built a ten-million-dollar plant that can purify 36-million gallons of water a day.

Governor Rockefeller called this "the biggest voluntary project undertaken by private industry in support of New York State's pure-water program."

Why did we do it? Partly because we're in business to make a profit—and clean water is vital to our business. But in furthering our own needs, we have helped further society's. And our business depends on society.

We hope our efforts to cope with water pollution will inspire others to do the same. And, we'd be happy to share our water-purifying information with them. We all need clean water. So we all have to work together.



Kodak
More than a business.

Gymnasts feel left out

Continued from page 1

"The gymnasts will get to use the center only if they get a crowd. The problem is that Robinson can't even draw a good crowd," Miller said.

Miller estimated a crowd of 2,000 would be necessary to open up the center for any activity. The Center was used for the season's first closed-circuit telecast of ASU's football game which drew a crowd of only 1,141, according to athletic department estimates.

The gym's annex in which the team now practices has no air conditioning.

In sample readings taken by a

State Press reporter, the temperature in the practice room has been 120 to 130 degrees during team workouts.

But the air conditioning problem is not new to the gym annex, according to Miller and Rispoli.

Rispoli said "Air conditioning has been a perennial request for the last 16 years. It would be hard to air condition the annex the way it is now, but if an inexpensive drop ceiling were put in — then air conditioning would be possible. It's just that the Physical Plant has never followed through on the requests."

John Ellingson, director of the Physical Plant said, "We've received proposals from Fred Miller the last couple of years and I have put it in the budget proposals. But we only get so much funds."

Ellingson said it wasn't possible to allot all the funds in one direction. "Some philosophies are that the building isn't worth fixing up, others feel it should be," said Ellingson.

The gymnastic practice room isn't as hot as it recently was. There is now a fan to cool the room.

Collage

TODAY

Art Committee meeting 3 p.m. in the MU Activities Center. Yoga class for 1 hour credit (an extension course); registration extended to Monday. Register at 828 S. Valencia in Mesa or at the ASU Extension office. Classes are Monday and Thursday from 8-9:30 p.m.

An all-horror show featuring "Npateratu" ("The Undead") starring Max Schreck, the original and most terrifying Dracula, along with John Barrymore in "Dr. Jekyll and Mr. Hyde". The films start at 8 p.m. at the Unitarian Church, 4027 E. Lincoln Drive, Paradise Valley. Donations are \$1.50 for adults and 50 cents for children. Refreshments are served.

SATURDAY

MU Movie House will show "Butch Cassidy and the Sundance Kid" at 2 and 7 p.m. Advance tickets are available at the Activities Center. Ticket prices are \$1 with ASU ID, \$1.50 without. The movie will be shown through Sunday.

People's Pops concert 7 p.m. at the Phoenix Civic Plaza Symphony Hall. Free by ticket. For ticket information call 262-7272.

Grand Fiesta Parade celebrating Mexico's Independence Day begins marching at Central and Polk concluding in a free Mexican fiesta at Encanto Park.

SUNDAY

Students' International Meditation Society (SIMS) at 8 p.m. in the MU Yuma Room for an advanced lecture for meditators. For more information call Anthony Antimuro or Bob Sanderson at 264-2242.

MONDAY

Faculty Senate meeting in the Great Hall of the College of Law.

TUESDAY

Get together for gays and Bis 7:30-11 p.m. at 107 E. 7th Street. Donations asked but beer and music provided.

BUY
SELL

CLASSIFIED ADS

TRADE
LEASE

WITH THIS COUPON

WATERBEDS \$24⁹⁵
King — Queen — Double
Single — 5 yr. guarantee

**HALTER TOPS and
SHORT SLEEVE TOPS**

50% OFF

India Cotton Bedspreads \$6⁹⁹
Normally \$10.00
Now

Michael's Apple Pie

221 W. University Drive 4873 North Central
Tempe • 966-9006 Phoenix • 248-9022
Open Monday-Friday 11:00 to 7:30, Saturday 10:00 to 6:00

COUPON

**HERTZ
RENT A CAR**

ASU Students . . .
If you're over 18 you can rent
a Ford or other fine car at a

SPECIAL LOW WEEK-END RATE of

\$8.00 A DAY
AND 14c PER MILE

4-Day-Weekend rate: \$59—\$60 free miles

UNLIMITED FREE Mileage Rates
7 Days for \$119.00

For Your Car, Call Your A.S.U. Representative

STEVE BLAGEN
968-4072 or 963-5786

1. Rates: The first day is 10 cents per word with \$1.50 minimum (15 words). All consecutive ads after the first day are discounted.
2. Notification of errors is required before second publication. The State Press will not be responsible for more than the first incorrect insertion.
3. No refunds will be made for cancellations of classified advertising.
4. All abbreviations or small groups of numbers count as one word. Hyphenated words count as two words.
5. No tear sheets will be provided with classified advertising.
6. The right is reserved to reject any copy.
7. Payment for all classified ads is cash in advance.
8. Ads will not be accepted over the telephone but can be placed either in the offices of the State Press, Stauffer Bldg., A111, ASU, Tempe, Az. 85281, or in the Memorial Union, Room 208 J. Ads also may be mailed to the State Press if preparation is included with the form.
9. Deadline is 4 p.m. two days before the ad is to appear.

FOR SALE

1972 — 24x44 mobile home. 2 bedrooms, 1 1/2 baths, carpeting, central air, skirting, awnings, storage shed, 9'x22' porch, tuff lawn & sprinklers, Baseline & Priest — 639-3258. (9/17)

'74 telecaster custom w/humbucking, maple neck and hardshell case, natural finish wood grain. Only \$200.00. 966-1557. (9/18)

Trailer for sale — 1 bedroom unfinished. Very close to ASU, \$2500. Mark 968-3846 after 4 p.m. (9/13)

Nordica Astral Racer ski boots, size 13, great condition. Queen-size waterbed, unused. 967-0995. (9/17)

Schwinn Supreme \$225; Continental \$70; Varsities cheaper. Typewriter \$22. 948-5647. (9/13)

Army-Navy Surplus is your best buy. Fatigue pants or shirts \$2.00, Vietnam boots \$13.95. Gas mask bags, packs and hundreds of other items at discount prices. Checker-board Army - Navy bargains, 1126 W. Main - Mesa. (9/16)

Two bedroom mobile home for sale, furnished, refrigerated \$140/mo. \$1500 down. 994-3463 after 6 p.m. (9/13)

HP-Calculator \$175, save 25.9259259%, like new selling because I bought HP-45. Call 966-9235. (9/13)

The Bike Route offers Gitane, Centurion, Falcon, and Romana bicycles as well as Campagnolo racing equipment. The Bike Route is owned by Steve Cline - Bicyclist & mechanic. 955-5541, 2316 N. 32nd St. - Oak and 32nd St. Phoenix. Hours 10-7 M-F, 10-5 Sat. (9/25)

Mai is back with authentic Indian Jewelry at reservation prices. Close to campus. Call 639-3979. (9/20)

INSTRUCTION

A class in Scottish Gaelic will be taught (privately). For details — call 964-1818 most evenings. (9/17)

Guitar Lessons, all styles. Call Steve . . . 967-6401. Call evenings. Friendly lessons. (9/13)

AUTOMOBILES

1971 Dodge Demon w/automatic, air conditioning, Economy 6, low mileage. Evenings 252-4324.

1974 Vega GT — power steering, air, 4 speed, custom interior, steel radials, 6,200 miles. 1031 E. Lemon Apt. 1 — 967-3210. (9/18)

TRAVEL

Europe-Israel-Africa. Student flights all year round. Contact: ISCA 1 6035 University Ave. #11 - San Diego, Calif. 92115. Tel: (714) 287-3010, (213) 826-5669. (12/6)

WANTED

Female, non-smoking roomer. Own bedroom. Pool, bike to ASU, meals optional. 966-8288. (9/15)

Need three past issues of VIVA magazine—May, June & July, 1974. Must be in good condition and fully intact. \$2.00 plus each, depending on condition. Call 959-5944 . . . 1 p.m. to 5 p.m. weekdays, all day Sunday.

Want to be an M.U. Pop-Up (musicians, artists)? Call Judy McCann at 965-6640 or see her in M.U. Activities Center. (9/13)

Ride wanted T/Th. 9:30 p.m. from Ed. Bldg. to 23rd Ave. & Thomas. Will pay. Call 265-1285. (9/13)

SERVICES

Does your child like school — or can he use everything he studies? If your not satisfied with your child's education, call The Learning, Responsibility, Happiness School (K-8th grade). 277-3593. 7:00-5:30 p.m. 1009 E. Bethany Home. (9/13)

Permanent hair removal, face or body. Electrolysis of Scottsdale. Gail Walker—945-4245. (12/6)

MOTORCYCLES

1973 Yamaha, 360, low mileage, excellent condition. Call 967-9390 after 6 p.m. Mon.-Friday. (9/20)

HELP WANTED

Part-time jobs. Have 5 openings. Some Scholarships available. Call after 6 p.m. 834-0879. (9/18)

Wanted—Young woman to care for elderly lady in N.E. Nursing Home, part-time-weekends @ \$2.00 hour. Requirements: dependable, patient, understanding and experienced with care of elderly, preferably in Nursing Home setting. 275-5890. (9/20)

Liquor store sales clerk. 25-30 hrs. weekly. Hours flexible. \$2.50 hourly to start. Store in good area. 274-9913. (9/13)

Volunteers needed to help elect Jonathan Marshall United States Senator. Call 957-9348. (9/13)

Cocktail waitresses, age 19 or older. Must be reliable, personable, neat and attractive. Part or full time. Good opportunity to make extra money and enjoy meeting people. Apply in person Mon.-Fri. 12-3. Friday's & Saturdays. 825 N. Scottsdale Rd. (5-2-75).

Dependable people for advertising campaign. Job consists of walking. Good chance to make extra money. Necessary to work 3 hours daily, 7 days a week. Limited amount of transportation necessary. Apply in person Mon.-Fri. from 12-3 Fridays and Saturdays. 825 N. Scottsdale Rd. (9/27)

LOST

Female Irish Setter with large red collar - Family pet - Reward. Call 838-5118. (9/18)

ANNOUNCEMENTS

Anyone witnessing a hit and run accident in parking lot between Marzanita and Palo Verde East - Tuesday night, Wednesday morning (around 12:30 a.m.) please contact Monica at 965-2309. Reward offered. (9/17)

Get lost — play a game of chess, sip a cup of rare coffee or tea, boogie without booze and participate in the slow opening of Tempe's hard to find coffee house. Hole in the Wall "Express" 1972 E. 1st Street — Tempe. (9/20)

Do you have a car? Is it dirty? Well, get your car washed Sat. Sept. 14 from 10-2 at the Shell Station on University and Rural. Only one dollar. (9/13)

Phoenix Rally Organization presents a car rally school and rally Sunday Sept. 15, Mark Imports, 2020 E. Indian School. The free school begins at 1:00 p.m. The rally costs \$4.00 with registration at 2:00 p.m. Information 956-1677. (9/13)

Help beat John Rhodes! Volunteer to help Pat Fullinwider. Call 967-7072. (9/13)

Class Notes are here! At last you can be free of the tedious and inefficient task of "taking notes." Imagine, an entire semester's set of typed lecture notes, before the lectures begin. The following list of notes is now available at the ASU Bookstore and the Student Book Center on College Ave., 80-100, CH-101, 113, 115, 231, ES-102, EC-201, GL-100, 101, NA-120, 121, MI-201, MI-101, PX-100, RE-251, ZO-200, 201, 202, 270. (9-18)

TYPING

Term papers, resumes, theses, dissertations. Professional, guaranteed work. IBA. Maxine Mullen, 955-0763. (12/2)

IBA, experienced, reports, theses, dissertations, guaranteed, 50c and up, Pam, 994-9851 after 5 (\$5.00 minimum). (12/6)

RENT

Need female roommate to share 2 bedroom townhouse apartment. Vicki 966-6688. (9/20)

Female roommate wanted to share 2 bedroom, 2 bath, furnished apartment with pool, laundry. \$106.50/month plus electricity. Call 968-0141. (9/13)

Furnished bedroom, twin beds, walk-in closet, refrigerated, laundry facilities, kitchen privileges, near campus, prefer female student, \$100.00 per month. 267-0691 or 838-9769. (9/17)

8x40 trailer, furnished, close to campus. Call 838-8124 after 4 pp.m. (9/18)

3 bdrm., 2 baths, Townhouse living. \$200 monthly. Pool, front and rear patios, walking to shopping, schools. Lotus Flower apt. on McClintock Dr. S. of Broadway. Mgr. Apt. 21. Call 966-4738 or 265-7210. (9-13)

1 bedroom furnished apt. ideal for teacher or student. Pool, laundry facilities. Scottsdale, 994-8549 or 964-3552. (9/13)

Morning Briefing

ASU elects to keep options open, will not host NCAA hoop tourney

ASU WILL NOT host an NCAA pre-regional basketball tournament next spring, athletic director Fred Miller announced Wednesday.

ASU has withdrawn its bid to host the tourney due to an NCAA rule limiting the host team's opportunities for post-season competition.

If a host school fails to qualify for a regional berth (by winning its conference title), the team must turn in its uniforms for the season, preventing it from competing in other post-season tournaments, the NCAA rule stipulates.

"We want flexibility for our basketball team" Miller said. "We want to keep our options open. We couldn't do that by hosting the tournament."

The same rule trapped UofA last spring. The Wildcats, who tied for second place in the Western Athletic Conference, stayed home while three other WAC teams traveled to New York and St. Louis for post-season tourneys.

MAJOR LEAGUE baseball's pennant races have reached the boiling point, and Larry Gura's arm has warmed to the occasion.

Gura, who helped pitch ASU to the College World Series, title in 1969, held the Baltimore Orioles to five hits Wednesday night as the New York Yankees defeated the Orioles 5-1. Gura's victory preserved the Yankees' two game lead over Baltimore in the American League East.

ASU's SOCCER CLUB will open its 1974-75 season by hosting the UofA at 1 p.m. Sunday. The game will

Kawasaki G-5 100cc enduro



Student SPECIAL

\$549 through Sept. 15

INCLUDES FREE HELMET AND RIDING INSTRUCTIONS
STUDENT I.D. REQUIRED

KACTUS KAWASAKI

7809 East McDowell
Scottsdale — 947-1905

be played directly behind the fire station on University east of Rural Road.

Both clubs will be participating in the newly established Mid-Southwestern Soccer Conference. ASU and UofA compete in the Southern Division along with New Mexico, New Mexico State, Texas-El Paso and Nevada-Las Vegas. The northern division is comprised of Utah, Utah State, BYU and Idaho.

ANOTHER ASU-UofA match-up occurs this weekend when the schools water polo teams clash.

The two squads play at 5:15 p.m. Friday, followed by two matches Saturday morning at 10:15 and 11:15. All matches will be held at the ASU pool.

STUDENT PICK-UP for the Texas Christian football game next Saturday night will be Monday through Thursday from 8:30 a.m. to 5 p.m.; and Friday from 8:30 a.m. to 9:30 p.m.

Arizona-San Diego State game tops WAC grid intersectionals

The Western Athletic Conference's stature again will be on the line when pre-season league favorite Arizona hosts Pacific Coast Association powerhouse San Diego State Saturday night.

Last week ASU disposed of highly ranked Houston 30-9 in an intersectional contest, and the Wildcats have an excellent opportunity to raise the WAC banner higher against the talented Aztecs.

San Diego State boasted a 9-1-1 record last season. A host of experienced players returned including its top six running backs. Head coach Claude Gilbert will be counting on an unknown talent, Colorado transfer Craig Penrose, to handle the quarterback duties.

Arizona, which tied with ASU for the conference title last year, was tabbed as the league's favorite by the WAC coaches and the WAC Skywriters. Quarterback Bruce Hill, halfback Willie Hamilton and fullback Jim Upchurch, who rushed for 1,184 yards in 1973, comprise a Wildcat backfield which played as a unit last season. Hamilton had a 6.8 yard per carry average last year.

With nine offensive and eight defensive starters back, expectations of a conference championship are running rampant in Tucson.

At New Mexico, the Lobo's oppose second-year Sark Arslanian's Colorado State Rams. After years of frustration, Colorado State's football program has turned around under Arslanian, who guided the Rams to a 5-6 record last year.

New Mexico will be hoping junior college transfer Steve Myer can prove as effective with the Lobos as he was at Mount San Antonio College in California. Myer passed for 3,643 yards and 29 touchdowns at the junior college before making the switch to New Mexico.

Brigham Young's first game of the year will be in Honolulu Saturday night against Hawaii, who finished with a 9-2 record last year. The Cougars favorite passing com-

bination of Quarterback Gary Scheide to the 1973 receiving leader Jay Miller has been broken when Miller broke his shoulder blade in practice last week.

Wyoming, who has been given the darkhorse label among WAC teams, opposes Utah State in Laramie. Cowboy coach Fritz Shurmur has only superlatives to say about his offensive unit except for one key position — quarterback. Shurmur is expected to start 6-0, 178-pound junior Steve Trusso, who only threw six passes last year.

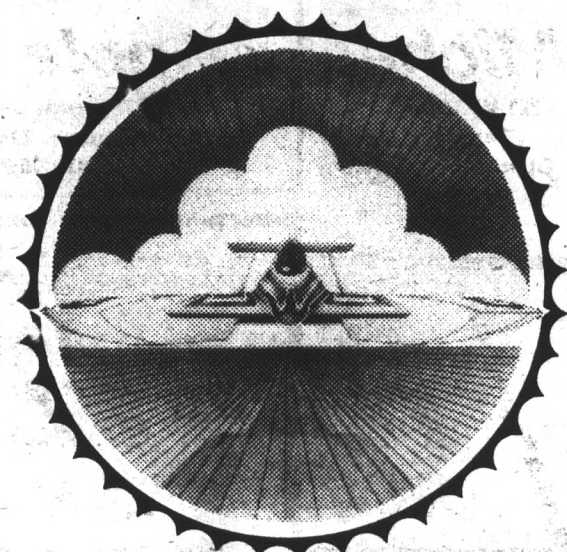
And in El Paso, the Miners, under new head coach Gil Bartosh, oppose Pacific University who whipped Sacramento State last week 21-0. UTEP's chief offensive weapon figures to be kicker Bronko Belichesky, who self-admittedly is the finest kicker in the nation. Belichesky kicked a 55-yard field goal last season against ASU for the longest kick in WAC history.

Sept. 14-15

DESERT

THUNDERBOAT REGATTA

FOR UNLIMITED HYDROPLANES



LAKE PLEASANT — PHOENIX, ARIZONA

General Admission:

\$2.00 (When purchased in advance)

\$3.00 (When purchased at the lake)

Children under 12 admitted free
(Must be accompanied by an adult.)

For tickets and information call
(602) 263-8671

Sponsored by the Phoenix Jaycees under the auspices of the Maricopa County Department of Parks and Recreation.
Ad courtesy Johnson-Bozzani Porsche-Audi

Jerry's

audio
exchange

Phoenix — 334 E. Camelback Rd. 263-9410
Tempe — 120 E. University Dr. 968-3491
Tucson — 1037 N. Park 622-7407

STUDENTS • FACULTY • STAFF

LOVE
5 to 10

That's right! ASU's tennis courts are available for your use Monday through Friday — 5 to 10 p.m. But they must be reserved ahead of time.

For complete information and reservations, call 965-5638 Monday thru Friday, 8-5

INTRAMURALS/CLUB
SPORTS/RECREATION

Has strong religious views

Sun Devil football star not typical athlete

By Dave Garell

Kory Schuknecht's night life will never be confused with that of Hollywood's celluloid heroes.

Schuknecht (pronounced Shoot-neck) is a 3.0 student, resides at home, lives by the Bible, and works with Young Life, a Christian youth organization.

Even on the football field, the Sun Devil weak safety is not hostile or out for blood.

"I just go out there to do my job," Schuknecht said. "I'm not a linebacker, so I don't have to go out and kill guys. My greatest pleasure is doing what I'm supposed to be doing and sometimes getting an interception."

Interception leader

And interceptions seem to be the 6-4, 198-pound senior's specialty. He led the Sun Devils in interceptions last season, picking off five passes for 120 yards. He intercepted his first pass of this season Saturday night against Houston.

Schuknecht is also ASU's punter, after spending last season as Danny White's backup.

Schuknecht has not always been a safety for the Devils. After playing safety and quarterback at Scottsdale's Saguaro High, he came to ASU as a quarterback for the freshman team and completed 21 of 53 passes for 331 yards and three touchdowns.

Coaches approval

He had to compete with White for the quarterback spot his sophomore year, so Sun Devil coach Frank Kush converted Schuknecht to safety.

The ASU coaches have seen a continued improvement in Schuknecht's play. Defensive backfield coach Fred Glick says Schuknecht has improved 100 per cent since his sophomore year.

"He's an excellent leader on the field now," Glick said. "He's worked hard on learning where he has to be on every play, plus his former quarterbacking experience helps him to recognize offensive formations."

Kush appreciates Schuknecht's field effort as well. "He gets the maximum physical potential out of himself, and has keen athletic sense," Kush said.

Off the field, Schuknecht is seen in a different light. Some of his friends say he seems shy, almost introverted. Mike Artozqui, who

worked with Schuknecht this summer at Applegate's Old English Pub in Phoenix, said, "He seems very tough when he's playing, but at work he's quiet and seems like the homebody type."

No conflicts

Does Schuknecht's personality come in conflict with some of his team-

mates? "Not at all," says coach Glick. "Kory's the type that



Photo by Chuck Pratt

Kory Schuknecht

might not believe in the way some people behave, but he can still enjoy their company."

Glick's statement stems from Schuknecht's admittedly strong religious convictions. "It doesn't create any problems among my teammates. They know what I stand for and what I believe in," Schuknecht said. "Some of the guys ask me questions about the Bible, and I tell them. But I don't press it, I don't believe in that."

Schuknecht said he was interested in attending the Air Force or Naval

but chose ASU because it was near his hometown and he had always been a Sun Devil fan.

Included in his future ambitions is a professional football career.

Ideal size

ASU coaches feel Schuknecht has the potential. "Kory has ideal size for a defensive back," Glick said. "It depends on how hard he wants to work. He'll get good experience this year, and his consistency is a big point in his favor."

sports

Football Fans!

See Football at its best
This **SUNDAY**
On Our New, Gigantic

Color TV Screen
(6 feet x 4½ feet)

at

BULL-N-BARREL

1334 N. Scottsdale Rd.

*Good, Cold Beer at
Discount rates for
ASU Students with ID*

Our doors now open Sundays
at 12 noon — game time 1 p.m.
Be There

This Sunday's Game:
DALLAS vs. ATLANTA

PLAY WEE-TEE MINIATURE GOLF



Your Choice of Two 18-Hole Courses

University Drive at Rural—Tempe Phone 966-8027
HOURS — 1 p.m.-12 midnight Daily
Sat., Sun. and holidays 10 a.m.-11 p.m.



A: 618

**Q: HOW MANY STEPS
OFF CAMPUS IS
TEMPE HEALTH STUDIO?**

**TAKE THOSE 618 STEPS TO TEMPE
HEALTH STUDIO NOW AND LEARN
ABOUT OUR CONVENIENT:
SEMESTER MEMBERSHIPS
MEN AND WOMEN**

TEMPE HEALTH STUDIO
399 MILL AVE./966-4111
NO CONTRACTS

CARPET SPECIALS

9 x 12 used rugs-\$5.00

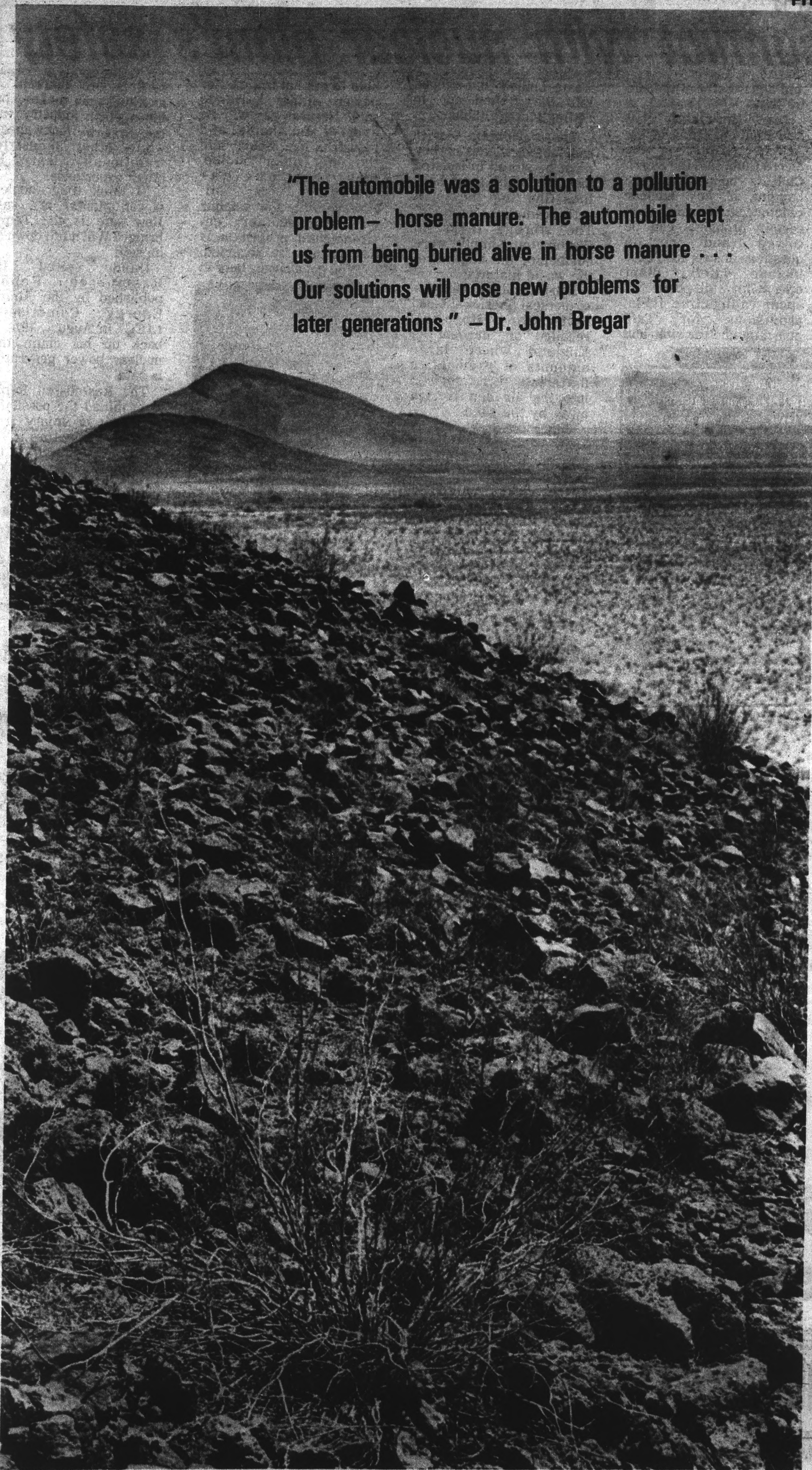
All Sizes In Stock

CARPET HOUSE

1514 E. Van Buren, Phx.

state
press

"The automobile was a solution to a pollution problem— horse manure. The automobile kept us from being buried alive in horse manure . . . Our solutions will pose new problems for later generations " —Dr. John Bregar



P
E
R
S
P
E
C
T
I
V
E

Has strong religious views

Sun Devil football star not typical athlete

By Dave Garell

Kory Schuknecht's night life will never be confused with that of Hollywood's celluloid heroes.

Schuknecht (pronounced Shoot-neck) is a 3.0 student, resides at home, lives by the Bible, and works with Young Life, a Christian youth organization.

Even on the football field, the Sun Devil weak safety is not hostile or out for blood.

"I just go out there to do my job," Schuknecht said. "I'm not a linebacker, so I don't have to go out and kill guys. My greatest pleasure is doing what I'm supposed to be doing and sometimes getting an interception."

Interception leader

And interceptions seem to be the 6-4, 198-pound senior's specialty. He led the Sun Devils in interceptions last season, picking off five passes for 120 yards. He intercepted his first pass of this season Saturday night against Houston.

Schuknecht is also ASU's punter, after spending last season as Danny White's backup.

Schuknecht has not always been a safety for the Devils. After playing safety and quarterback at Scottsdale's Saguaro High, he came to ASU as a quarterback for the freshman team and completed 21 of 53 passes for 331 yards and three touchdowns.

Coaches approval

He had to compete with White for the quarterbacking spot his sophomore year, so Sun Devil coach Frank Kush converted Schuknecht to safety.

The ASU coaches have seen a continued improvement in Schuknecht's play. Defensive backfield coach Fred Glick says Schuknecht has improved 100 per cent since his sophomore year.

"He's an excellent leader on the field now," Glick said. "He's worked hard on

learning where he has to be on every play, plus his former quarterbacking experience helps him to recognize offensive formations."

Kush appreciates Schuknecht's field effort as well. "He gets the maximum physical potential out of himself, and has keen athletic sense," Kush said.

Off the field, Schuknecht is seen in a different light. Some of his friends say he seems shy, almost introverted. Mike Artozqui, who

worked with Schuknecht this summer at Applegate's Old English Pub in Phoenix, said, "He seems very tough when he's playing, but at work he's quiet and seems like the homebody type."

No conflicts

Does Schuknecht's personality come in conflict with some of his team-

mates?

"Not at all," says coach Glick. "Kory's the type that



Photo by Chuck Pratt

Kory Schuknecht

**PLAY WEE-TEE
MINIATURE GOLF**



Your Choice of Two 18-Hole Courses

University Drive at Rural—Tempe
HOURS — 1 p.m.-12 midnight Daily Phone 966-8027
Sat., Sun. and holidays 10 a.m.-11 p.m.



A: 618

**Q: HOW MANY STEPS
OFF CAMPUS IS
TEMPE HEALTH STUDIO?**

**TAKE THOSE 618 STEPS TO TEMPE
HEALTH STUDIO NOW AND LEARN
ABOUT OUR CONVENIENT:**

**SEMESTER MEMBERSHIPS
MEN AND WOMEN**

TEMPE HEALTH STUDIO
399 MILL AVE./966-4111
NO CONTRACTS

**CARPET
SPECIALS**

9 x 12 used rugs-\$5.00

All Sizes In Stock

**CARPET
HOUSE**

1514 E. Van Buren, Phx.

might not believe in the way some people behave, but he can still enjoy their company."

Glick's statement stems from Schuknecht's admittedly strong religious convictions. "It doesn't create any problems among my teammates. They know what I stand for and what I believe in," Schuknecht said. "Some of the guys ask me questions about the Bible, and I tell them. But I don't press it, I don't believe in that."

Schuknecht said he was interested in attending the Air Force or Naval

but chose ASU because it was near his hometown and he had always been a Sun Devil fan.

Included in his future ambitions is a professional football career.

Ideal size

ASU coaches feel Schuknecht has the potential. "Kory has ideal size for a defensive back," Glick said. "It depends on how hard he wants to work. He'll get good experience this year, and his consistency is a big point in his favor."

sports

Football Fans!

See Football at its best
This **SUNDAY**
On Our New, Gigantic

Color TV Screen
(6 feet x 4 1/2 feet)

at

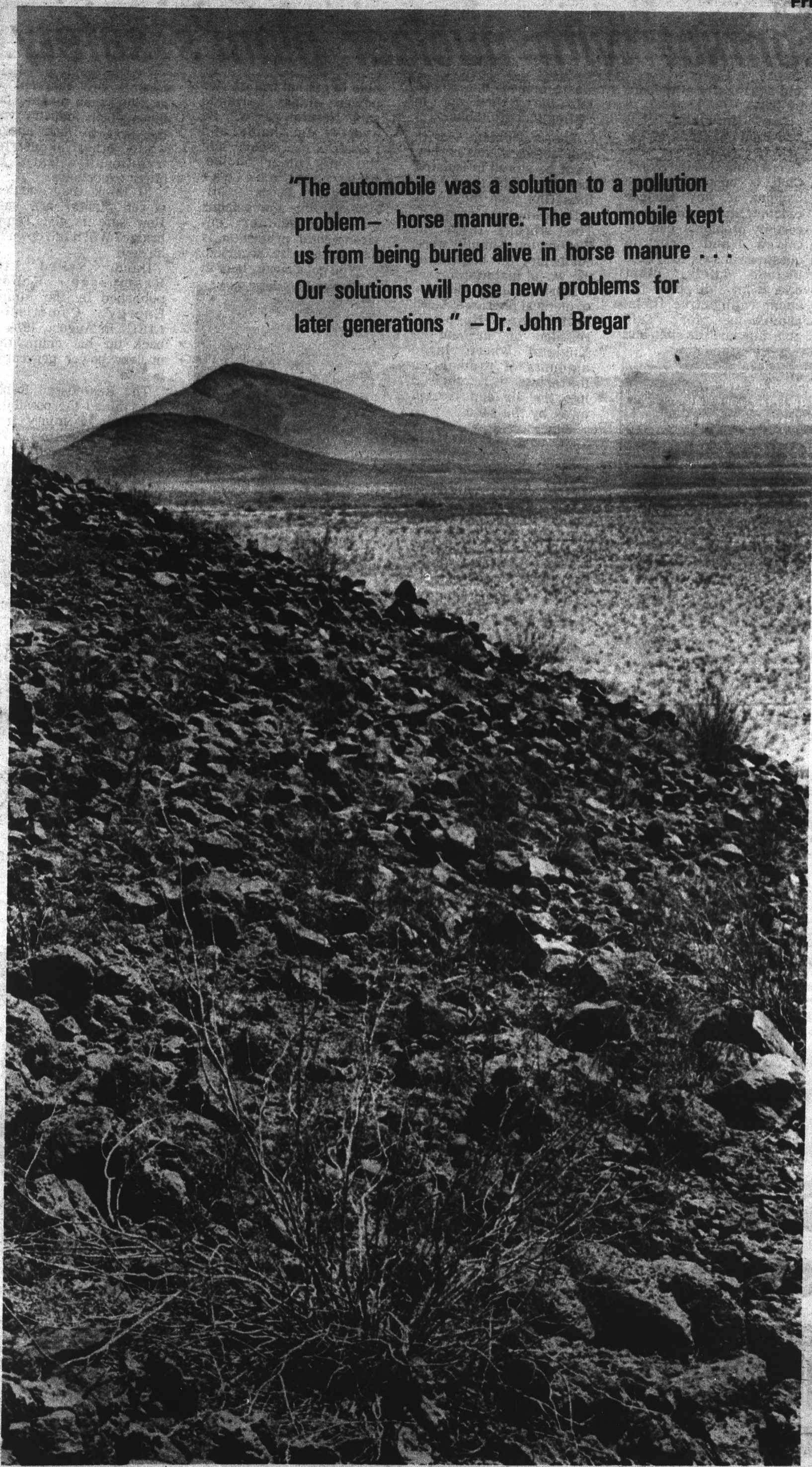
BULL-N-BARREL

1334 N. Scottsdale Rd.

**Good, Cold Beer at
Discount rates for
ASU Students with ID**

Our doors now open Sundays
at 12 noon — game time 1 p.m.
Be There

This Sunday's Game:
DALLAS vs. ATLANTA



"The automobile was a solution to a pollution problem— horse manure. The automobile kept us from being buried alive in horse manure . . . Our solutions will pose new problems for later generations " —Dr. John Bregar

state
press

P
E
R
S
P
E
C
T
I
V
E

Studies conflict with nuclear plant's safety

By Neal Balmes

Approximately two miles south of Wintersburg, Ariz., stands a cyclone fence housing a meteorological tower. The tower gathers environmental data on this desert area where cattle graze and farmers of the Buckeye Valley irrigate their fields.

The tower is a prelude to the Palo Verde Nuclear Generating Station that will contain three units. Each unit will consist of an atomic reactor, a turbine

and a generator at the site by 1984.

Jan Herwick, conservation chairman of the Arizona chapter of the Sierra Club, said the Sierra Club is opposed to the building of any nuclear reactors in Arizona until certain problems can be solved and certain questions answered. These include safety, plant operation, disposal of spent radioactive fuels, provisions for safe guarding nuclear sites and

waste spilled and seeped into the ground due to rotting storage tanks.

The problem with radioactive wastes is they must be stored in isolated locations until their half-lives (the time they omit active radiation) dissipate. The storage tanks in Washington simply wore out before the half-life of the waste material.

Martin Hilger, director of medical physics at Good Samaritan Hospital, recalled an incident in England where large amounts of radioactive materials were spewed into the air and carried away by the winds.

Hilger said he didn't know what the results of such accidents would have because radiation damage, genetic defects and cancer often take a long time to appear. Even though the industry has few accidents, the press plays up the few to sell newspapers, said Hilger.

Ted Dando, nuclear information representative for Arizona Public Service (APS), said electrical generation by nuclear power is a safe and necessary form of power generation.

"By 1976, we won't be

able to get natural gas for power plants," Dando said. Natural gas will be averted for home and industrial use. Dando said the only other choice, besides nuclear generation, is oil. However, the low sulphur oil required for environmental protection is hard to come by, he added.

"You got a choice here in

failures are inherent in anything man makes, but the nuclear industry was the first to look ahead, while other industries traditionally learn by bitter experience.

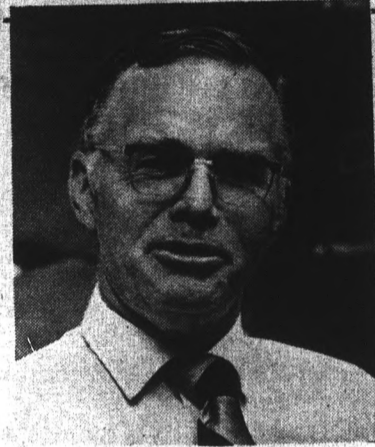
"I think they (nuclear power plants) are safe. How safe is the Tempe bridge? Will it fall down?," he said.

Dando cited the Rasmussen Report published by the Atomic Energy Commission (AEC) in August, 1974, to back up his claim that nuclear power generation is safe.

The Rasmussen Report determined the possibility of death or injury from nuclear reactors. The study claimed the possibility of death is one in 300 million and one in 150 million for an injury to occur.

"Radiation (from nuclear power plants) has never killed or injured any member of the general public," Dando said. Even though Dando discounts the chances of any accidents, he said the Palo Verde will leak some radiation into the surrounding area.

Many people, such as Dr. Byron Moore, ASU professor in special education, believe any radiation in addition to natural radiation can have unknown effects on a person's health. No one knows exactly what



Dr. John Bregar

Arizona: you got coal and you got uranium," Dando said.

Developing cleaner energy generation technologies such as solar energy would be better rather than cast the fate of future generations on unknown effects created in the long run by nuclear generation, Herwick said.

Based on present knowledge, there is little danger of long range problems caused by power plant radiation, Dando said.

Dr. John Bregar said

COMING SOON

Come early, stay late, enjoy

THE KING AND HIS LOYAL SHORT SUBJECTS
BAMBI MEETS GODZILLA THANK YOU MASK MAN (Lenny Bruce)

KING OF HEARTS

This wacky, crazy beautiful film has awakened, become a giant, and turned the movie world upside down. There is one reason for this phenomenon: people love the King.

UNIVERSITY-2

967-7857

UA CHRIS-TOWN 6 MALL CINEMAS

THE LAST PICTURE SHOW

THE PICTURE SHOW THAT INTRODUCED AMERICA TO THE FORGOTTEN 50'S.

It launched the meteoric career of its brilliant new director and its talented cast.

It won 2 Academy Awards, and nominations for 8.

If you missed it the first time, you owe it to yourself now.

If you saw it once, remember again.

A Film by PETER BOGDANOVICH
Starring
TIMOTHY BOTTOMS
CYBILL SHEPHERD
JEFF BRIDGES
ELLEN BURSTYN
BEN JOHNSON
CLORIS LEACHMAN



PLUS **EASY RIDER**
PETER FONDA DENNIS HOPPER
JACK NICHOLSON

CAMELVIEW TWIN ONE
70th St & Camelback north
& Sakowitz 945-6178

Papa Jay's

Authentic New York

PIZZA

Hand made with extra thick crust also

SUBMARINES & FULL DINNERS

804 S. Ash, Tempe

Call 967-9889

for FREE Delivery

7 MAGIC WORLDS

Lifelike Lifesize

ROYAL LONDON WAX MUSEUM

"2 for price of 1" at student discount rate during September only with ASU ID card



150 WAX FIGURES

45 DISPLAY SCENES

9:30 A.M. TO 9:30 P.M. DAILY



5555 EAST VAN BUREN PHOENIX, PHONE 273-1368

MAINMAN PRESENTS



BOWIE

IN ASSOCIATION WITH CRYSTAL LEIF

PRODUCTION SUPERVISOR - JULES FISHER

SEPT. 14 · PHOENIX · 8:00 P.M.

ARIZONA COLISEUM

RESERVED TICKETS AT COLISEUM BOX OFFICE
DIAMONDS · EVOLUTION TAPES & RECORDS

Tower aids nuclear plant study

Continued from page 14 amount of radiation will harm a person, natural or otherwise, he said.

In the April, 1959, issue of the "American Journal of Public Health" Dr. John T. Jentry, health director for the state of New York, published a study of natural radiation.

The study concluded there were more birth defects in areas of high radiation. The study had compared areas of high radiation and areas of lower radiation counts in New York.

"It proves natural radiation, in its own right, does have some damage," Moore said. Moore suggested that any radiation in addition to the natural, would have unknown effects. He said these effects cannot be predicted right now, since this problem is presently under study.

"Any radiation is harmful to man," Bregar said. He added that the policy of the nuclear industry is to limit man-made radiation added to the environment. Insecticides, cigarettes and alcoholic beverages are more harmful to man than radiation, Bregar said.

Hilger said nuclear power must be viewed from a practical viewpoint. Most of the radiation people are exposed to comes from medical and dental x-rays, Hilger said.

"If I get some big problem, I want someone to look inside to see what it is. I'll take my chances with radiation."

The potential for radiation danger is not shrugged off by Herwick. She is concerned about the storage of waste materials that take hundreds of thousands of years to break down before they

are safe for the environment.

Waste disposal operations work under the assumption that over the

life span of the waste materials, governments who administer safe guards will remain stable and the geological foun-

dations in which the wastes are stored will also remain stable, Herwick said.

The reactor being built in the Buckeye valley is a pressurized water, fission reactor that uses uranium-235 as the radioactive fuel. The waste materials represent only three per cent of the original mass, Dando said.

This waste material consists of 11 different by-products. Plutonium-239 is one of those by-products and has a half-life of 34,000 years, Dando said. The half-lives of the other materials run from 24,000 years to 3.9 seconds.

Some "radical organization" could steal some of these waste materials and make a bomb, Herwick said.

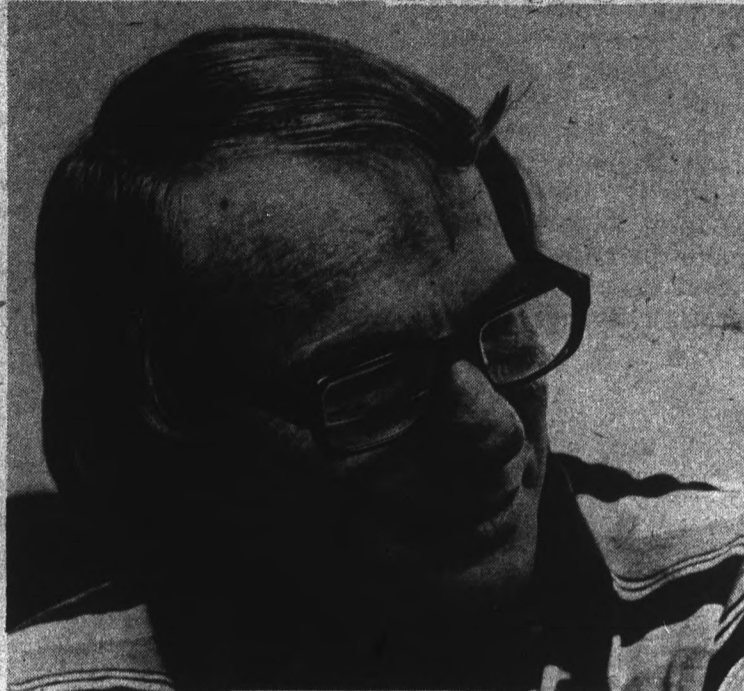
"A guy would have to have one hell of a

manufacturing plant to make a bomb out of that stuff, because the concentration of fuel for reactors is only two to three per cent, Dando said. Materials to make the bomb would have to be at least 97 per cent concentrate.

Many experts claim a rudimentary bomb could be made, Herwick said.

The possibility of a terrorist group making a bomb is doubted by Hilger even if they do acquire the radioactive materials. "It would be quite an undertaking. They sure as hell better know what they're dealing with before they try it."

"I can't say I have a lot of positive, absolute answers. I suspect somewhere in between is the truth," Moore said.



Dr. Byron Moore

Newsweek says:

"Andy Warhol's 'Frankenstein' is a perversely fascinating movie. The first original variation on 'Frankenstein' in years. The film succeeds intelligently on the strength of a highly original vision. Paul Morrissey is an underground talent running to daylight."

—Paul D. Zimmerman

Judith Crist says:

"Some very funny and clever switches on the man-made monster theme. The 3-D process is visually exciting."

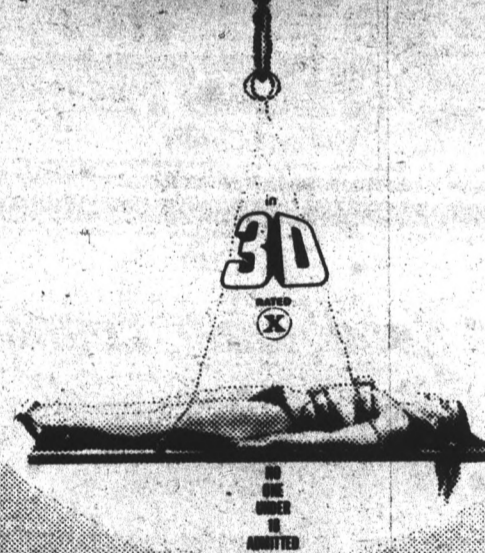
—New York Magazine

Women's Wear Daily says:

"Andy Warhol's 'Frankenstein' is the ultimate 3-D movie, the ultimate stomach turner."

—Howard Kissel

Andy Warhol's Frankenstein



Playboy says:

"...Instantly achieves top rank as the most outrageously gruesome epic ever unleashed upon a public always hungry for fashionable kicks... Incurable horror addicts can get a fix from Morrissey."

—Bruce Williamson

A Film by Paul Morrissey

ANDY WARHOL'S "FRANKENSTEIN" • A Film by PAUL MORRISSEY • Starring Joe Dallesandro • Monique Van Vooren • Udo Kier • Introducing Arno Juerging • Dalila Di Lazzaro • Srdjan Zelenovic
A CARLO PONTI - BRAUNSBURG - RASSAM PRODUCTION COLOR • A BRYANSTON PICTURES RELEASE

MANN THEATRE
CHRIS-TOWN II
5707 NORTH 17TH AVENUE
249 2843

NOW — EXCLUSIVE SHOWING
DAILY AT 2 - 4 - 6 - 8 - 10 P.M.

"CATCH-22"

IS THE MOST MOVING, THE MOST INTELLIGENT, THE MOST HUMANE — OH, TO HELL WITH IT! — IT'S THE BEST AMERICAN FILM I'VE SEEN THIS YEAR!"

—VINCENT CANBY, N.Y. TIMES

FORUM PICTURES CORPORATION IN ASSOCIATION WITH FILMWAYS, INC. PRESENTS

A MIKE NICHOLS FILM
ALAN ARKON

CATCH-22
BASED ON THE NOVEL BY JOSEPH HELLER

Next Wednesday — Sept. 18
Showtime — 6:30 & 9:00
In Neab Hall — Adm. \$1.00

Tour to examine education in Russia

By John Pfau

Dobro pozhalovat! My nadeemsja, chto vasha poezdka v sovetskij sojuz budet ochen' prijatnoj i dlja vas poleznoj.

It may be all Greek to you, but it is Russian and translated means "Welcome to the Soviet Union! We hope your stay will be pleasant and useful for you."

It is the sort of welcome Associate Professor of Special Education Alan Brown hopes for when he heads an ASU-sponsored educational tour of Moscow and Leningrad Dec. 28 to Jan. 5.

The tour for the ASU group is designed to study special education in Russia. Brown toured Russia last winter with a group from the University of Nebraska. "You get a feel of what's going on in the Soviet Union related to education and you also get a chance to meet people," Brown said.

Brown thought that the Soviets had a different and more effective distribution service to the Russian people including educational services, medical care and psychological counseling.

He could not explain why the tour was set for winter, but thought that "It must be cheaper in the winter, maybe because there are less tourists."

Bonnie Rabe, who assists Brown in the ASU Teacher Corps program, will also be

Kremlin visit, holiday festivities highlight ASU tour

making the trip. Rabe is teaching an extension course to help prospective tour members prepare themselves for the Russian experience.

She pointed out the course, International Special Education-Soviet Union, is not required but would be helpful. "The

course was set up because of the tour," she said.

Who can go on the tour? "I'm expecting all kinds of people," Rabe said. "students, teachers — just about anybody who is interested." She expects a group of 30 to 40 people to make the trip.

Just in case it sounds like all work and no play, there

are visits scheduled to the Kremlin, a ballet performance, a troika ride, New Year's tree party (The Soviets exchange gifts and have a decorated New Year's tree), a tour of the famous Moscow subway system and a farewell dinner in Leningrad.

The group from ASU will be attached to another from Kent State and will be departing Kennedy Airport Dec. 27, arriving in Moscow the afternoon of Dec. 28.

Russian professor Lee Croft said he was all for

the tour. "I'm thinking of organizing a tour for the summer, myself." Croft added that "it can't but help us in terms of Russian interest, although it doesn't take long in the Soviet Union to make an American patriot of you."

The tour will cost \$900 for the round trip ticket from New York to Moscow, including meals and hotel accommodations in Russia. There is room for 15 to 20 more people, and preliminary arrangements can be made in Farmer 305 or by calling Dr. Brown at 965-6788.



WESTWOOD CINEMA 1306 W. University MESA 969-6066

THE LAST PICTURE SHOW
A Film By PETER BOGDANOVICH

PLUS **EASY RIDER**
Matinees Daily

The Sundowner Lounge
is happy to announce the return of
Steve Dannenbaum

Entertainment Tuesdays
thru Saturdays
9 p.m. - 1 a.m.
(Check on our daily specials!)

HOWARD JOHNSON'S
The Flavor of America

The Party
SEPT. 14 SAT.
7:30 pm
NEEB HALL FREE

The Milky Way
SEPT. 15 SUN.
7:30 pm
NEEB HALL FREE

CULTURAL AFFAIRS BOARD

HOW MUCH GREAT PIZZA CAN YOU EAT?
Find out for just \$1.55
At the PIZZA HUT Smorgasbord

All the pizza you can eat,
Every MONDAY
5:30 PM to 8:30 PM

PIZZA HUT
955 East University Drive
967-1604

WE SERVE MORE PIZZA THAN ANYONE ELSE IN THE WORLD.

© 1972 Pizza Hut, Inc.

25¢
10-OZ ON TAP

PIZZA OVEN RESTAURANT
FINE ITALIAN FOOD

1127 N. Scottsdale Rd.
Tempe • Ph. 966-6246
(Across from Hayden Plaza East)

Dine In... Or Take Out