

Wages go up; jobs stay

University decides on full \$1.90 rate

By Don Goldstrom

ASU's administration has devised a plan to meet new federal minimum wage requirements without cutting back on the student work force.

Gilbert Cady, vice president for business affairs, said the University anticipated the wage law, which went into effect Wednesday. Cady said budget adjustments were made to prevent the elimination of some campus jobs.

Students working on campus

will receive \$1.90 per hour instead of \$1.60. The law states universities need pay only 85 per cent of the minimum wage figure, but Joe White, director of payroll services, said the Administration decided to pay the full rate.

In return, students will no longer receive (10 cents per hour) for tenure, White said.

Cady said the Administration supports the minimum wage increase. "People can't live on \$1.60 an hour. There's just no way," he said.

"All you have to do is go to the grocery store and you can see why," Cady said.

Minimum wage opponents

have argued rate increases price young people out of the job market because potential employers can't meet the higher salary requirements. This doesn't seem to apply at ASU.

White estimated about 2,000 students hold campus jobs during the academic year. Most of them are employed in routine clerical jobs such as library and departmental office positions.

However, persons with special qualifications may receive more than the minimum wage, White said.

The federal law provides for successive wage increases over a three-year period. The hourly rate will reach \$2.30 on Jan. 1, 1977. Unless the University elects to exercise the 85

per cent option at a future date, student wages should keep pace with the national rate, White said.



Gilbert Cady

Today is the last State Press issue this semester

friday

Arizona State University

Tempe, Arizona

Vol. 56, No. 112 May 3, 1974

state press

ASU senior rehabilitates following brain operation for cerebral hemorrhage

By Sharon Simpson

Finals, last minute term papers and job hunting are no longer major problems for ASU senior Diana Jones, 20.

On March 21 she had a cerebral hemorrhage and now faces long months of rehabilitation and the possibility of permanent brain damage.

Then came the problems of how to pay for her month-long hospital stay at Barrow Neurological Hospital in Phoenix and for the brain surgeon's fees.

Diana is one of eight children. They live in a small house in South Phoenix and their only means of support is their mother's monthly disability check from the government.

"The doctor told me not to worry about paying now. He said the important thing was for

Diana to get well," said Mrs. Jones, Diana's mother. "So I just looked at the bills, put them back in the envelope and put them back on the dresser."

An English Secondary Education major, Diana was supposed to graduate next fall, but now it all depends on what her doctor says, Dr. Susan Cummings, associated professor of education said.

Diana is up and around but she has a hard time reading since the operation and as an English major she has a lot of reading to do," Cummings said.

Cummings said hopefully she will get full credit for the course. "She was working through spring vacation and I think she deserves the credit. She has done way beyond what most people do, so she has piles of extra hours."

Diana was enrolled in a 14-



Diana Jones

hour education class taught by Cummings and Dr. Elizabeth Manera, assistant professor of secondary education.

The class is an on-site program where the students actually teach and observe in schools while doing regular classwork under the ASU teacher's supervision.

The night Diana had her hemorrhage, she and classmates were observing at a community school in Phoenix. It was during spring break.

"We were sitting there when I heard someone call my name," said Lynne Brown, an ASU junior. "I turned to see Diana put her hands to her head. All of a sudden there she was — unconscious on the floor."

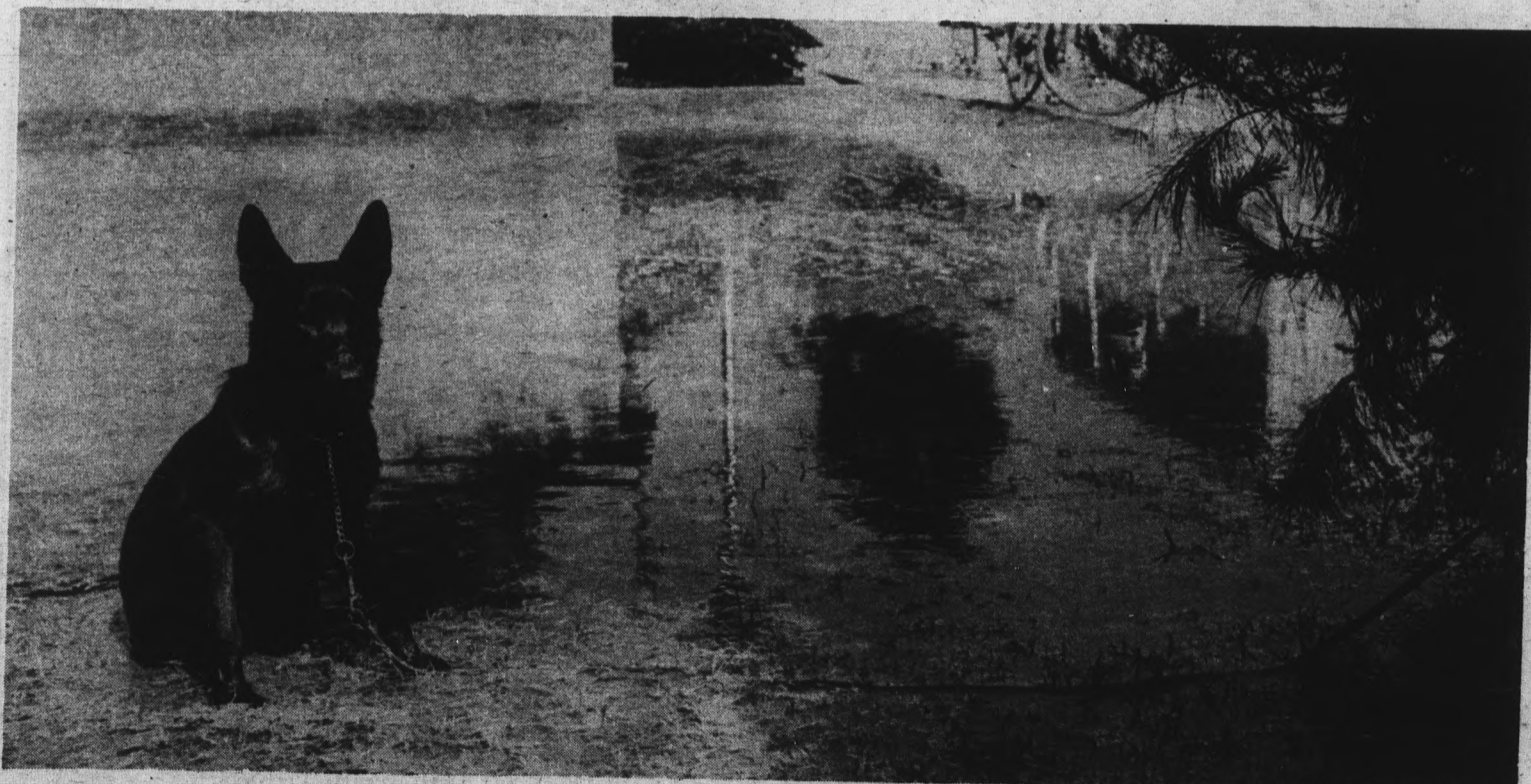
In three weeks, doctors will reexamine the brain to determine how responsive she is, Mrs. Jones said. Diana still slurs her speech, Cummings said.

Diana hopes to be able to make up the incompletes she had to take this summer. "I really don't know, though. It still is a question mark," Diana said.

She is home now and Mrs. Jones has problems keeping her quiet.

"I have problems making her stay put. The doctor told me to make her stay put, but some

Continued on page 12



Unexpected bath

Photo by T. L. Niatt

This dog was tied up by its owner Thursday outside the art building — before the irrigation was turned on.

There wasn't much he could do but wait it out, and get a somewhat unexpected and greatly unwanted bath.

Kerrigan logs achievements

Mark Kerrigan, outgoing Associated Students president, lists as one of the major accomplishments during his term the organization of a free legal counseling service for students.

The service will go into operation next year with a beginning budget of \$15,000, he said. It hinges on President Schwada approving the budget recommendations of the Student Affairs committee.

"There are four to six students a day going into the law college with legal problems. Students just don't have the money to spend on lawyers," Kerrigan said.

Kerrigan said if the free legal counseling service can't help the student with his problem, he will be referred to an attorney in Tempe who will charge a reduced rate.

"The program will start on a limited basis but it will expand, hopefully it will double in size," Kerrigan said.

ASASU has also been actively working on setting up a charter bus service from the South Phoenix, MetroCenter and Thomas Mall areas to the campus.

Kerrigan said ASASU has persuaded the University to enter into a contract with Sun Valley Bus Lines and if enough students sign up the service will begin next year.

He said the bus service would cost approximately \$35 to \$40 for round trip runs every day for one semester.

"The service will be offered in pre-registration packets with a box where students can just check it off if they want it and

they will be billed for it," Kerrigan said.

He said the charter service would not compete with the Bug Line, free buses that depend on advertising revenue for financing.

The price for a semester of the service is reportedly a savings of about \$90 over the cost of driving to campus everyday.

A third major area Kerrigan has worked extensively in this past year is the establishment of an information and research exchange center that would develop into a type of student union.

"The problem is that students don't have any input into such things as the Board of Regents

or the Legislature," Kerrigan said.

The exchange center would have offices at the three Arizona universities and would serve as a network to tap expertise at the universities for the benefit of students.

"It's not exactly going to serve as a lobbying organization for students but will make information available and put pressure on areas that would serve students' needs," Kerrigan said.

He said they have an office ready to go in the ASASU area in the MU and a director is ready to begin working part-time this summer.

Kerrigan said the exchange center should be in operation

next year and will be funded by the three universities. Each center will receive \$3,000 to start. Kerrigan hopes they will be able to move off campus in the future and obtain private funding.

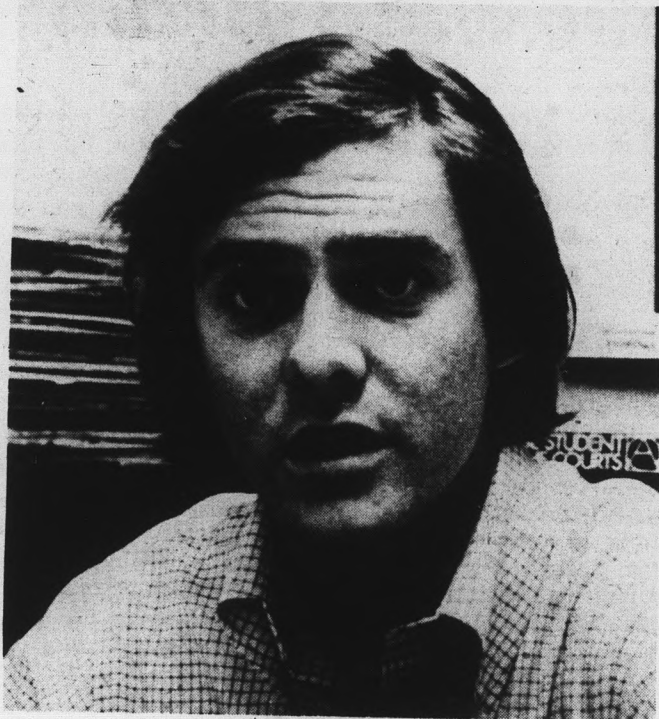
ASASU has also drafted a proposal, to go before the Faculty Senate and President Schwada that makes recommendations for lowering the cost of books. If approved, and Kerrigan thinks it will be,

sections of the proposal would require:

—professors to use the same text book for a minimum of two years

—If only part of a book is required for the course, the book would be on reserve at the library.

—The same set of books to be used by all professors teaching the same class even though they are different sections.



Mark Kerrigan



They actually think. They get darker as the sun gets brighter. And vice-versa.

New from Lee Optical.
Incredibly smart sunglasses.

PHOTOSUN™ Sunglasses.

They adjust by themselves to give you just the right amount of protection and visibility in sun or shade. Bright day or cloudy.

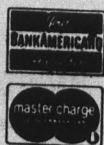
PHOTOSUN
Sunglasses

One pair of sunglasses for all kinds of days.

Come in and get a pair of sunglasses that out-smart the sun.

TEMPE 14 CONVENIENT VISION CENTERS THROUGHOUT ARIZONA
Open Monday through Saturday.
Tempe Center/2032 S. Industrial Park Ave.
967-7864 967-7333

LEE
Optical



TURQUOIS SELLABRATION

Starting May 6th, our Tempe store will offer a very large selection of Turquoise and Sterling Silver jewelry . . . at

MONEY SAVING PRICES.

An ideal time to select a gift for Mother's Day — or for Graduation — or to take home for gifts.

Save up to 30% on all our Turquoise Jewelry.

ASK ABOUT OUR LAYAWAY PLAN



CREDIT TERMS AVAILABLE

JEWELS INTERNATIONAL
BY G. DARRELL OLSON

967-8917

130 East University Drive
"IN THE ARCHES" — Tempe

Certified Gemologist



Accredited Gem Laboratory

In search of education

Jobless vets try ASU

By Debbe Nelson

Falling job opportunities are raising the veteran student population at ASU.

John Dibble, ASU veterans adviser, said the University veteran population has more than tripled in the past eight years. "With the wind-down of the Vietnam War and the drop in the military, they just dumped the guys out," he said.

Veterans who cannot find jobs will often turn to the university, Dibble said.

Lois Kinkaid, veterans coordinator for the G.I. Bill, said the Veteran enrollment in the 1966-67 academic year was 2,319. In the 1972-73 academic year, enrollment

had increased to 5,819. In the present academic year, veteran enrollment has jumped to 6,742, she said.

The Arizona Department of Economic Security said Arizona has the highest percentage of veterans in the nation continuing their education.

Dibble said this high rate could be due to Arizona's weather.

Veterans with pins in their legs suffer much discomfort if the pins get cold. He said this is never a problem in Phoenix.

"They don't have to wheel their chairs through snow here," he said.

ASU actively recruits veterans, Dibble said.

"We try to get the guys to use the bill," he said. About half of the veterans Dibble interviews enroll at ASU.

Universities increasing veteran enrollment receive increased funds from the federal government that are applied to Veterans Affairs office counselors and services, he said.

A bill extending veteran benefits from the present eight year eligibility to ten years has passed through Congress and is now waiting approval of President Nixon.

Two other bills are working their way through congress. One calls for an increase in veteran benefits and another extends education entitlement within the present eight year period from 36 months to 48 months.

Student and roommate struck crossing street

An ASU student and her roommate were struck by a car Wednesday night as they crossed University Drive at Forest St.

Deborah Droge, a senior in anthropology, was taken to Tempe Community Hospital with a broken right leg and three broken bones in her face. Diana Maria Lane, a first-grade teacher, received lacerations on her

mouth. Both live at 111 E. 7th St. in Tempe.

The women were returning home from shopping at Tempe Center when they were hit in the crosswalk at 9:30 p.m.

The driver of the car, Roger L. Wittlin, 700 E. Curry Rd., Tempe, was cited by Tempe police for failure to yield to pedestrians in a crosswalk. Wittlin is a student at ASU.

Today is the last State Press issue this semester

STATE PRESS is published by Arizona State University Tuesday through Friday during the academic year, except holidays and examination periods. Entered as second class matter at Tempe, AZ 85281.



"Men's Doubles"

LeROY NEIMAN

Works of LeROY NEIMAN

thru — May 18th

BJ'S GALLERY

1020 South Mill

Phone 968-2091

(ACROSS FROM GANNAGE AUDITORIUM)



MAY 10th & 11th

See A Live Color Printing Demonstration! Factory representatives will make color prints in our store from 10 a.m. to 4 p.m. each day. See the easiest color processing system ever. Bring along a negative — if they choose it for the demonstration — you take home the print!



**PIONEER
CAMERA
SHOP, INC.**

University & Mill
TEMPE CENTER
967-4662

Thank you Dr. Hamm

The State Press appreciates the concern of the Student Affairs Committee. That committee, headed by Dr. George Hamm, has recommended that President Schwada withhold funds from the State Press until an ad hoc committee has investigated ways to provide ASU with a campus newspaper that "is conspicuous for high-quality journalism."

It's wonderful to see that even though the Student Affairs Committee is upset with the State Press for its efforts to enter closed Student Affairs meetings, it could put aside this prejudice and make such a recommendation for the good of the paper.

To some people, this may look like an attempt by the committee to institute faculty censorship of the paper, but we're sure the committee would not attempt such a blatant disregard for students' right to information.

We're sure such an investigation would be healthy for the paper. It's always good to have outside opinions injected into an operation to provide new ideas, approaches and solutions to problems.

We hope the Student Affairs Committee will continue to help us in our efforts to continually improve the paper. Meanwhile, the State Press will continue to try to find out what kind of political games go on behind the closed doors of Student Affairs meetings.

Letters to the Editor

The Greek view

Editor:

After four years of hearing unfair accusations aimed toward the Greek System, I would like to give a different view from my position.

As Greek Sing chairman '73, I had to swallow a lot of pride when chairs in Gammage were found broken and liquor bottles were scattered throughout the auditorium. The Greek System paid for the damage in more than monetary ways. In talking with Warren Sumners, Gammage director, his comment was that it was a shame a few people could ruin the name of an entire system.

Coordinating an entire show and dealing with amateurs is a difficult task. At the end of last year, my "Sing" notebook, which was given to Steve Moeller (Greek Sing Chairman '74), was filled with do's and don'ts for future years. My main comment was the lack of good entertainment between acts and it was suggested to put some clever things in between which was done this year. Anyone who has had any experience with the stage knows there are many

unexpected occurrences during the course of an evening and it is extremely hard to prejudge just how everything will go.

Not only does a Greek Sing chairman work with the Greeks, but he or she chooses judges, handles publicity, tickets, musical acts, talent auditions, and works with Clyde Parker and the Gammage staff.

Working with hundreds of different personalities and trying to appease everyone is a hard position to be in and I personally feel sorry for those who cannot appreciate a job well done.

Tara Gillock
Greek Sing Chairman '73

Policy

The State Press appreciates letters to the editor from its readers. Selective samples of the letters received will be printed, at the discretion of the editor. Letters should be typewritten and double-spaced.

Opinion

state press

Don Goldstrom

Politics: big drag

With the obscene number of gubernatorial candidates skulking around the state these days, you'd think campus politicians would be out organizing a turkey shoot. Unfortunately, the news that Jack Williams will abdicate his throne seems to have taken the thrill out of politicking.

Arizona hasn't been on such a downer since its flagship led the fleet to the bottom of Pearl Harbor. As an ASU senior, I've learned to live with such apathy. But somehow I can't swallow the prospect of having a car dealer in our Governor's Mansion next year.

That's right folks. A shifty-eyed showroom smoothy is going to drive off with the election in '74. The only question is whether the motorous operendi will be a Mercury or a Pontiac.

Consider the following:

State Republicans need some strong medicine to fight Watergate. Candidates Milt Graham and John Driggs have out-lived their cabinet shelf-lives, so Pontiac dealer Evan Mecham will get the nod.

On the other side, Democrats know that a name like Raul Castro can't win in a state which requires free enterprise classes in high school. This means Lincoln-Mercury magnate Jack Ross is a virtual shoo-in to win nomination.

Although it's too late to change the party tickets, there's still time to organize honest election machinery.

Under the circumstances, I suggest a minor change in the electoral system. Rather than go through the ordeal of voting, why not stage a winner-take-all drag race down Washington Street to the State Capitol Building?

To insure the integrity of

this process, candidates would be required to race vehicles selected at random from their own used-car lots. The election couldn't be "fixed" because, as everyone knows, a used car can't be fixed.

Campaign financing? Forget it. A used car averaging six miles per gallon (48 cents for regular) would consume only 1-24th gallon during a quarter-mile drag. Total campaign expenditures would run 2 cents per party. Arizonans are always ready to donate their two-cent's worth on political issues.

On the campus level, I urge the formation of student activist groups to be known as DREG (Drag Races to Elect Government). The time has come for MU coffee slurpers to begin playing a positive role in society. Let's pitch in and make the '74 election a memorable one.



'MY NAME IS JOHN DEAN AND I DEMAND EQUAL TIME!!!'

state press

Editor
Managing Editor
City Editors

News Editor
Sports Editor
Photo Editor
Assistant Photographers

Perspective Editor
Staff Artist

Ted Williamson
Jim Braly
Dan McGowan
Jason Shaw
Anita Mabante
Roger Wittlin
Greg Hagan
John Masingill
Roger O'Connor
Kevin Gustafson
A. Jean Salki

Collage

TODAY

Applicants are now being accepted to fill recruiter positions with the Veterans Affairs Office in room 305 of the Academic Service Building, 965-7722.

Free personal and situational counseling school days at Danforth Chapel, 965-3570.

ASU Concert Band with Eugene Anderson conducting, 8 p.m. in the Grady Gammage Auditorium.

Lyric Opera Theatre production of "Tales of Hoffman," 8 p.m. in the Music Theatre. Admission.

Student Recital Series features Linda Wrzalinski on piano, 8 p.m. in the Recital Hall.

SATURDAY

ASU Outing Club will meet for their picnic at the Mogollon Rim at 9 a.m. in the Business building parking lot. For more information on the trip, call 965-4495.

Arizona High School music festival "Concert of Honor, 7:30 p.m. in Gammage Auditorium.

Lyric Opera Theatre's "Tales of Hoffman," see above Collage item.

Student Recital Series features pianist Jan Hoblit at 8 p.m. in the Recital Hall.

Banuel's "Diary of a Chambermaid" and

Remix's film of the same title, 7:30 and 9 p.m. in Nash Hall. Tickets available in advance in MU 208K or at the door of Nash Hall. Price, \$1 for the University community, \$1.50 for general public.

SUNDAY

GDAC education club, last meeting of the year, 2 p.m. at Tempe Beach Park, across from Hayden Flour Mill, by the bridge. All interested in education please attend.

Student Recital Series features pianist David Tan, 8 p.m. in the Recital Hall.

MONDAY

Alpha Epsilon Delta meeting 7:30 p.m. in MU 25 with guest speaker Dr. Revisin, vice dean of admission for the UofA medical school.

Black discovery group meeting 6:30 p.m. at 205 E. 15th St.

Special Lecture by Dr. Steven French on "Sudbury, Ontario—The Poor Man's Apollo," 3:40 p.m. in Agriculture 121. He will discuss his work showing evidence the great structure at Sudbury is the result of a gigantic collision with a meteorite.

ASU Chamber Music Orchestra with Eugene Lombardi conducting, 8 p.m. in the Music Theatre.

Dependent's fees going up

Dependents of ASU staff and faculty will pay 50 per cent more in registration fees next fall to keep pace with higher fees at Arizona's two other universities.

Jack Penick, assistant vice president for business affairs, said that was the reason for the increase, which will jump from \$43.50 to \$88.50.

Penick said the Arizona Board of Regents is responsible for the decision and regulates registration fees independently with each university.

Northern Arizona University dependents will pay \$70 next year, up \$3 from this year. University of Arizona dependents will pay \$100 as they did this year.

"We use the same calculations as NAU and UofA," Penick said. Like regular students, the money pays for health, activity and bonding fees.

Such dependents can attend any state university, regardless of where the parent teaches.

Mothers Day CONTEST

\$200 worth of Gift Certificates!

TO BE GIVEN AWAY!

ABSOLUTELY FREE



Win \$200 worth of merchandise (your choice) from Tempe Center Merchants

COMPLETE THE FOLLOWING (up to 50 words)—

My Mother is the greatest because _____

My name is _____ Class _____ Age _____

Address _____ Phone _____

City _____ Zip _____

Simply Mail this entry to:

Mothers Day Contest
c/o Abrams Realty & Management
444 West Camelback Road
Phoenix, Arizona 85013

or give it to any Tempe Center store manager (except T. G. & T.)

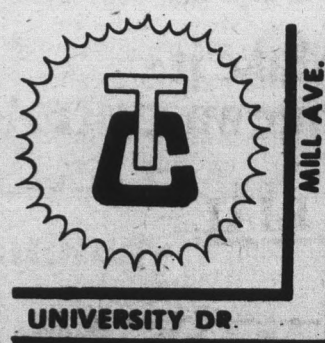
Entries must be mailed or given to a store manager by May 7th, 1974.

Four (4) total winners—

- Through 4th grade
- 5th grade - 8th grade
- High school
- College age

TEMPE CENTER

UNIVERSITY & MILL AVES.



Bet your "unusual" Mother would like an unusual gift from our unusual gift-shop.

THE GALLERY STORE
Matthews Center
Second Floor
Open 12 to 4

FREE Ear-piercing
with purchase of \$8.95 earrings

Mac JEWELERS
Tempe Center
725 N. Mill Ave.
965-7287

MEDICAL ASSISTANTS SOUTHWESTERN PREPARATORY SCHOOL

The Elite of Medical Assistant Schools

- Sponsored and Owned by Maricopa County Medical Society — a nonprofit organization.
- Our 11th year of operation.
- Physician (M.D.) teaching staff.
- Student counseling and study groups.
- Free placement.
- Student loan available.
- Licensed by State of Arizona.
- Member of Arizona Private School Association

2025 N. CENTRAL AVE.
252-5896

For seniors and grads

Program provides bucks

A new work-study program worth money, college credit and work experience is being established for ASU seniors and graduate students.

The new activity, called the YMCA-ASU Student Assistantship Program, is offered to majors in the fields of physical education, recreation, criminal justice, social work, sociology, counseling, education and home economics.

Dave Byers, director of YMCA youth and community programs, said the program will be implemented in the fall of 1974 but applications from seniors and graduate students are being taken now.

Byers said students will work 15 to 20 hours per week in jobs related to their fields of study. Work experience is combined with staff training, seminars and conferences, he said.

Three to six assistantship grants worth \$1,000 to \$1,500 will be awarded to seniors and graduate level students, said Byers. One to six hours of college credit also will be given, but the amount will be determined by the student's department, he said.

Byers said there are three steps in the program. The first step is for freshmen through juniors, he said. The second step is for juniors and seniors and the third step is for seniors and graduates, he said. "A

student can enter in at any point," he said.

Byers said he is taking applications for third step positions now. Third step students would become staff associates with major program responsibility, he said.

Assignment areas would be in community recreation programs, alternatives to the Juvenile Justice System, outdoor education programs, family life education programs, plus some other unusual programs, said Byers.

One of the new programs is the National Youth Project Utilizing Mini-Bikes (NYPUM), he said. It is a counseling program that utilizes mini-bikes to draw kids into the program.

The NYPUM Program is an outreach counseling program designed to reduce alienation to school, juvenile crime and delinquency, said Byers. The kids are referred from other organizations, he said.

The success rate for the Mini-Bike Program has been good, said Byers. The recidivism rate for the program has been about 3.7 per cent as compared to a 75 to 90 per cent in the juvenile court system, he said.

Byers said this will be the first implementation of the program in this state. He said the program has been in operation in Iowa for three years in conjunction with the University of Northern Iowa. "We felt it was very effective," he said. "Out of the initial four people who started the program, one took over my job when I left."

Byers said the program has been accepted favorably by related ASU departments. "Every department should have information on this by now," he said. If they don't then students can get more information and application forms from the Community Services Office in the Academic Services Building, room 111.



Owned and operated by Prudential Insurance Co.

It's a piece of the Rock

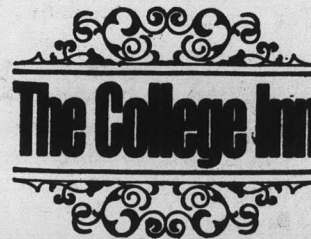
But living here is pretty soft;

No groceries to buy at inflated prices
No cooking and cleaning, or dishes to wash
Privacy and consideration without drudgery

Right on the price and right by the campus

Stop by or call for

Summer and Fall reservations



401 E. Apache
Tempe

Phone
967-7828

ENTER ↑

This is your key to unprecedented calculating capacity. Only Hewlett-Packard offers it.

It lets you "speak" to your calculator with total consistency, because it lets you load data into a 4-Register Stack. This means: (1) you always enter and process your data the same way, no matter what your problem; (2) you don't have to re-enter data; (3) you can see all intermediate data anytime.

Our HP-45 is one of two pre-programmed scientific pocket-sized computer calculators with this key. That's one reason it's the most powerful pre-programmed pocket-sized scientific computer calculator. Here are three of many others:

1. It's pre-programmed to handle 44 arithmetic, trigonometric and logarithmic functions and data manipulation operations beyond the basic four (+, -, x, /).

2. It lets you store nine constants in its nine Addressable Memory Registers, and it gives you a "Last X" Register for error correction or multiple operations on the same number.

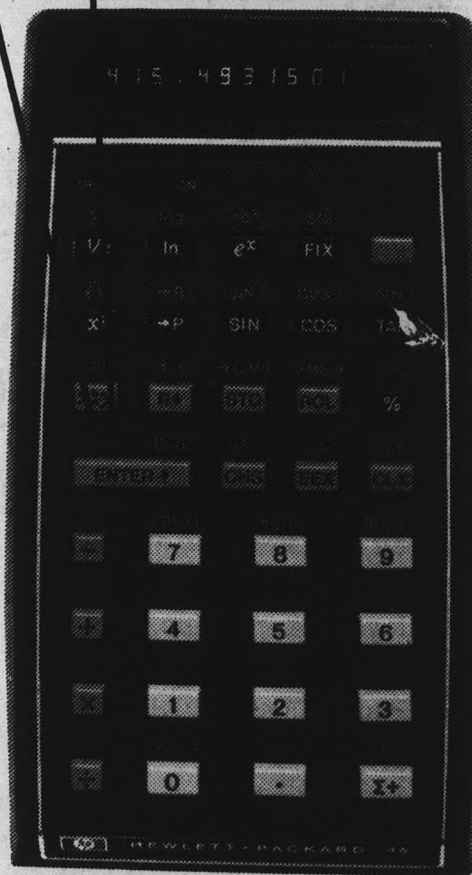
3. It displays up to 10 significant digits in either fixed-decimal or scientific notation and automatically positions the decimal point throughout its 200-decade range.

Our HP-35 is the other. It handles 22 functions, has one Addressable Memory Register and also displays up to 10 digits in either fixed-decimal or scientific notation. It's the second most powerful pre-programmed pocket-sized scientific computer calculator.

Both of these exceptional instruments are on display now. If you're looking for unprecedented calculating capacity for your money, by all means see and test them.

HEWLETT  PACKARD

Hewlett-Packard makes the most advanced pocket-sized computer calculators in the world.



614/09

Violence
divides.
God
unites.
The
community
of God.
Make it
your way.

RIAL
RELIGION IN AMERICAN LIFE

STUDENT BOOK CENTER

704 S. College Ave., Tempe, Az. 85281

Phone (602)—966-6226

Open: 8 to 8 Mon., 8-5 Tues. thru Fri., 9 to 5 Saturdays

DAX

First Annual

"Slipping into Summer SALE"

IS NOW UNDERWAY!

KNITS

ALL

- Long Sleeve \$ 3.00
- Short Sleeve \$ 3.50
- Tank Tops \$ 1.99

SHIRTS

- Dress Shirts \$ 3.00
- Sport Shirts \$ 3.00
- Baggy Tops \$ 3.00

JACKETS \$10.00

SWEATERS \$ 5.00

SHOES All half price

Verde — Nunn/Bush — Dexter

PANTS*

- Jeans \$ 3.00
- Casuals \$ 4.00
- Shorts \$ 3.00

****FREE Belt with each pant purchase— WHILE THEY LAST!***



One block North
of ASU
Corner Forest & 7th
968-3585

SALE HOURS
10—9 Thursday & Friday
10—6 Saturday
3 DAYS ONLY!

Student coalitions plan to picket Nixon's talk

By Robert Leon

Two student coalitions will participate in the anti-Nixon rally today at the Veterans Memorial Coliseum.

The two groups, People Against Corrupt Government (PACG) and MECHA, will conduct rallies independent of the Arizona Committee to Preserve the Presidency (ACPP). The ACPP also will have a rally today.

Both groups have complained about the Democratic Party's influence on the ACPP but say they will cooperate with it to assure a successful rally.

"We want to do this on our own," said Mitzi Carrillo of MECHA. "Our ideas are different from theirs (ACPP)."

The coalitions plan to meet at the south gate of the Coliseum parking lot at 4:30 p.m. and form picket lines but only MECHA plans to attend the activities inside the Coliseum as a group.

The MECHA coalition, made up of Chicano groups

from ASU, Mesa Community College and Maricopa Technical College, said their reasons for attending the rally are:

—To call for the impeachment of Nixon.

—To protest the Nixon Administration's failure to fulfill its promises to Mexican-Americans such as more federal jobs.

—To protest the cut backs in federal funds of academic grants and scholarships.

—To denounce the Nixon Administration's effort to set up a Bracero program which would allow Mexican nationals to work in the U.S. agricultural fields which could hamper labor negotiations with agricultural unions and growers.

The PACG, composed of ASU students, said their reason for holding the rally is "to show an opposition to Nixon, not our support to the Democrats."

The coalition was formed last Monday when 50 people agreed to hold a mass picket with marshalls to assure order and to keep everything peaceful.

Party conference draws Democrats to Phoenix

Democratic leaders from 13 western states and Guam will be in Phoenix this weekend as Arizona hosts the Western States Democratic Conference Friday and Saturday at the Scottsdale Country Club Resort, 7702 E. Shea Blvd.

Guest speakers will include Congressman Morris Udall, R-Ariz., former National Chairwoman, Jean Westwood and former governor Samuel P. Goddard.

Roundtable discussions are scheduled to make Democratic leaders, party workers, and other interested Democrats more knowledgeable about specific campaign issues.

About 50 ASU students, under the leadership of Dan Medina of the Arizona Political Action Project have prepared a poll of Democrats to determine their feelings on issues. Medina will lead a discussion of this poll and its results, as well as give ideas on how polls should be conducted.

State Democratic leaders

have announced plans for an official party reply to President Nixon's speech here Friday night. Charles Pine, state party chairman said it will be given by Udall.

Local Democrats can participate in this conference for a \$5 a day registration fee. For more information, call state Democratic Headquarters, 244-0389.

Award banquet hands down just desserts

Six seniors and one organization at ASU were named last night at the annual ASASU Awards Banquet as recipients of major honor awards.

Norman Batt of Wilder, Idaho, was selected as the ASU Man of the Year. Patricia Norris of Scottsdale was chosen ASU Woman of the Year.

Michael Arruda of Anchorage, Alaska, and Sandra Janzen of Mesa were named as ASU Male and Female Scholars of the Year.

Sun Devil archer Stephen Lieberman of Reading, Penn., was cited as the ASU Male Athlete of the Year. No award was presented to a female athlete this year.

The ASU Alumni Association, co-sponsors of the awards banquet, presented the Moeur Award for academic excellence to Thomas McKinley of Las Cruces, New Mexico.

Campus Paperback Book Exchange—Introductory Meeting

Thurs. May 9 Room 318, Stauffer Hall 10:40 to noon — Bring your books or come to look! Free, open to all.



**University of California
Santa Cruz
SUMMER
SESSION
1974**

Courses in ARTS and SCIENCES
6 week sessions and 3 week sessions
Special Programs in
DANCE • FOREIGN LANGUAGES • MARINE SCIENCES
write for free catalog
127 Communications Building
University of California Santa Cruz, California 95064



Mother's Day
MAY 12
Don't Forget . . .
Mothers like
plants too

(Next to Bo-Jo's)
831 S. Rural

The PLANT STUMP

Send Mom a care package. Send her the FTD Sweet Surprise for Mother's Day (May 12th).



Sweet Surprise, arranged, usually available for less than
\$15⁰⁰*




Sweet Surprise, planted, usually available for less than
\$12⁵⁰*

Send it today. It couldn't be easier. Just call or visit your nearby FTD Florist. Tell him you want the FTD Sweet Surprise.™ One's all flowers... the other, growing plants with flower accents. Both come in dainty hand-painted ceramic flower buckets. An Extra Touch™ gift she'll love. Your FTD Florist can send your Sweet Surprise almost anywhere in the U.S. or Canada.

*As an independent businessman, each FTD Member Florist sets his own prices.
© 1974 Florists' Transworld Delivery



"Your Extra Touch Florist"



CLIP THIS COUPON

YOUNG LOVERS

Clip this coupon and bring it to your nearby Weisfield's Jewelers to receive a 20% discount on the diamond wedding set of your choice!

20% Off on any Diamond Wedding Set

Name _____

weisfield's
JEWELERS

Now 2 Locations

LOS ARCOS MALL
And also
METROCENTER

Cash Value 1/20c.

Illustration and design by [unreadable]

Take in a concert this summer

The following is a list of summer concerts which local promoters have definitely booked. It is only a partial list, as promoters are uncertain of securing some acts for the summer.

May 4—7:30 and 10:30 p.m.: Gordon Lightfoot at Celebrity Theatre.

May 5—7:30 and 11

Honorary initiates 83 members

Eighty-three outstanding Arizona State University undergraduates in the College of Liberal Arts will be initiated Wednesday into the campus chapter of Phi Beta Kappa, national honorary scholastic society.

Following the initiation ceremony, the first since ASU was granted a Phi Beta Kappa charter last August, a banquet will be held at 7 p.m. in the MU Arizona Room.

Professor H. William Welch, assistant dean of the College of Engineering Sciences, will deliver the banquet address, "Is Progress Circumstantial?"

Phoenix-area members of Phi Beta Kappa who wish to attend the banquet are requested to send their reservations, at \$5 per person, to Dr. John A. Cochran, professor of economics.

New awards presented to teachers

Two faculty members and a graduate assistant have been selected as the first recipients of the annual teaching excellence awards of the ASU College of Business Administration.

Dr. John W. Lowe, associate professor of economics; Dr. Andrew A. Haried, associate professor of accounting; and Daniel C. Green, a candidate for the Doctor of Business Administration degree in the field of quantitative systems, were selected for the awards in a competition sponsored by the Business Administration Student Council.

Dr. Lowe was chosen outstanding teacher at the graduate level; Dr. Haried, undergraduate level; and Green, teaching assistant.

The teaching excellence awards are the first ever offered by the College of Business Administration.

Ballots were cast for those professors and graduate teaching assistants who best reflect the ability to impart knowledge, teach new tools to students and generate interest in subject matter.

p.m.: The Electric Light Orchestra at Celebrity Theatre.

May 7—8 p.m.: Cat Stevens at Tucson Community Center.

May 16—8:30 p.m.: Harry Chapin and David Bromberg at Celebrity Theatre.

May 22—8 p.m.: Sha Na Na at Phoenix Civic Plaza

May 24—5:30 p.m.: Steve

Miller at Tempe Stadium (with Boz Scaggs James Cotton Blues Band and the Marshall Tucker Band)

May 31—8:30 p.m.: Mahavishnu with John McLaughlin at Celebrity Theater

June 7—7 and 10 p.m.: George Jones—Tammy Wynette at Phoenix Civic Plaza

June 8—Maria Maudar: 7:30 p.m. at Celebrity Theater

June 8 and 9 — Kodak Telethon: at Phoenix Civic Plaza

June 21—8 p.m.: Herbie Hancock at Phoenix Civic Plaza

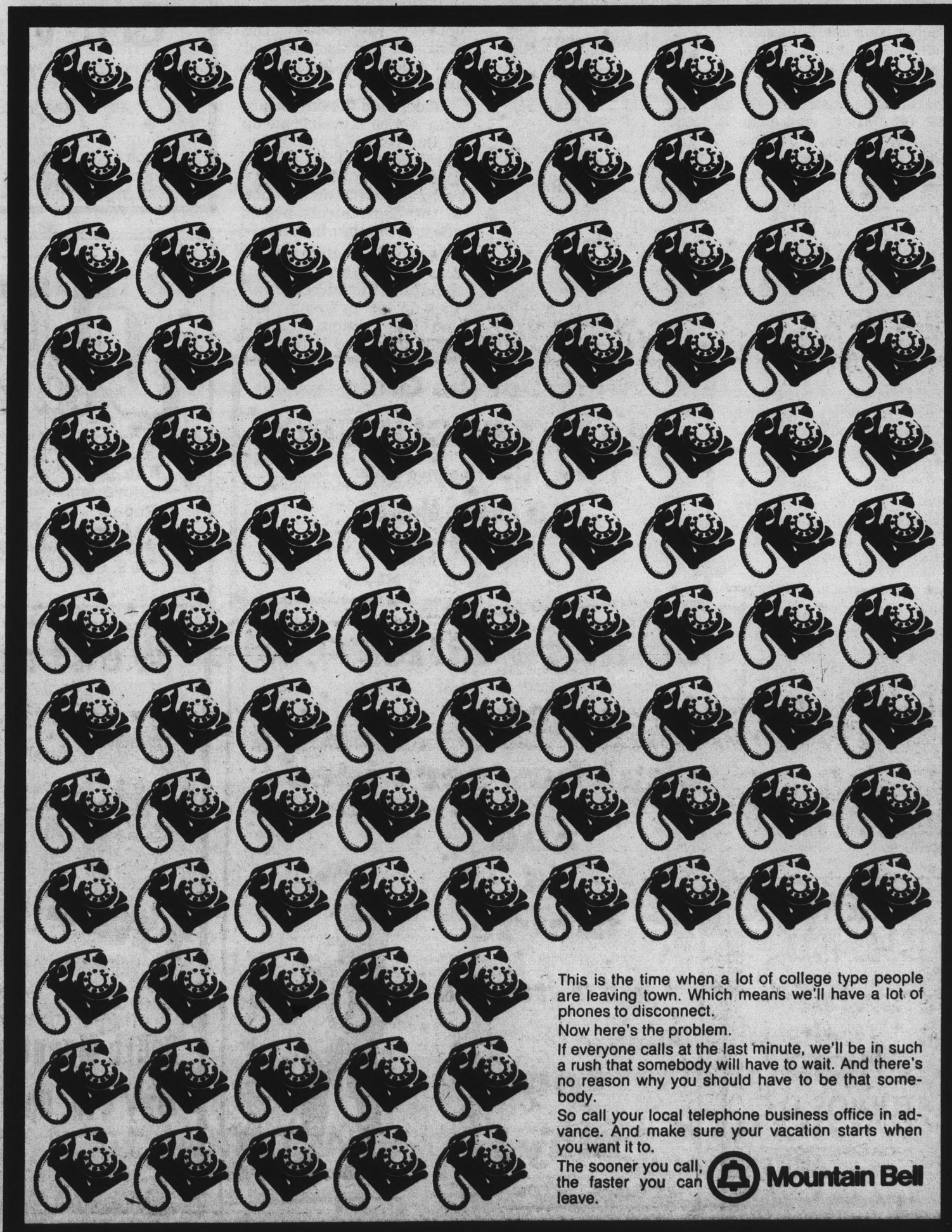
June 15—(time?): Bachman Turner at Celebrity Theater

June 27—(time?): Bruce Springsteen at Celebrity Theater

For more information call:

Civic Plaza Box Office, 262-7272; Celebrity Theater Info, 267-7502; Feyline Inc., 968-9065; KDKB, 833-4261; Tucson Community Center, 791-4266.

IT'S HARD FOR US TO SAY GOODBYE TO EVERYONE AT THE SAME TIME.



This is the time when a lot of college type people are leaving town. Which means we'll have a lot of phones to disconnect.

Now here's the problem.

If everyone calls at the last minute, we'll be in such a rush that somebody will have to wait. And there's no reason why you should have to be that somebody.

So call your local telephone business office in advance. And make sure your vacation starts when you want it to.

The sooner you call, the faster you can leave.



Mountain Bell

ASU mail room a postman's delight

By John Lemons

Inclement weather may be the traditional foe of the postman but at ASU even the dogs are docile. The situation sounds more like the place all postmen want to go when they die. That great big mailroom in the sky.

The ASU Mail Service is located on the first floor of the Matthews Center behind the offices for student grants and loans.

Sol Beder, supervisor for the ASU Mail Service, said things couldn't be better. He said he knew of no problems worth mentioning.

Beder is an energetic man who was delighted to explain the operation of his department. He enthusiastically ushered me into his office where he carefully outlined the duties and responsibilities of the ASU Mail Service.

Service oriented

"We are service oriented," said Beder. "We

handle all mail between the Tempe Post Office and the campus," he said. "We perform every service the U.S. Post Office does only we are more efficient and do a better job. That's because our primary function is to serve the university itself."

Beder said the Mail Service also handles all inter-campus distribution between departments. "We deliver payroll checks to the departments and act as a messenger service," he said. That includes all campus organizations. They have as much inter-campus mail as off-campus.

Lick those stamps

Beder said the Mail Service rates and affixes postage on all mail that goes off campus. Postage is affixed by a metering machine which rapidly stamps and counts the outgoing letters. The postage rates are then billed every month to the account representatives, he said.

Campus departments and organizations are assigned postage account numbers, said Beder. When their

assigned postage budget runs out so "does their mailing privileges. "We have about 300 active accounts," he said.

Beder said the Mail Service receives an average of 10,000 incoming letters and boxes a day. "We also meter about \$1,000 a day in postage charges in outgoing," he said.

The staff

The Mail Service staff is composed of eight full-time employees plus five work-study assistants, said Beder. They have one walking route and three delivery van routes. The Mail Service is assigned four truck vans for pick up and delivery.

Beder said the day begins with a 6:30 morning pick-up at the Tempe Post Office. The incoming mail is then sorted in the Mail Service room and initial distribution to the departments begins about 8:30 a.m., he said.

The mail is then carried or driven to the different departments on campus. Pick-up of outgoing mail and inter-campus mail is made then, and is returned

to the Mail Service room, he said.

Deadline

All outgoing mail is picked up before 4:30 p.m. This is so the outgoing mail can have the postage affixed and be sorted for the run to the Post Office by 5:00 p.m. The deadline is important since the Tempe Post Office has to make its own deadline for surface and air pickups, he said.

That is why the window closes at 4:15 p.m., said Beder. If anyone wants to

get their letter out that day, they must get it in before the 4:15 deadline.

Beder said the Mail Service is a complete postal service. It handles certified, registered and insured mail as well as the regular mail. Although special delivery is not hand delivered, anything perishable will be given special attention, he said. If things such as live animals or serum for the clinic are received the department will be called to come over and pick it up, he said.

Quo Vadis Books

"In the Arches"

Reading This Summer?

... TRY US

122-D University



968-3663

Noise topic of talk

The effects of noise on human performance will be the subject of a discussion by a Romanian professor.

Dr. Edith Gulian of the University of Bucharest will speak at 3 p.m. May 9 in Psychology 102.

Law Prof elected

Dr. John P. Morris, ASU law professor, has been elected to the Council of the American Association of University Professors (AAUP).

The AAUP is the nation's largest association of college and university teachers.

NEWS
965-7572

SE HABLA ESPAÑOL
SI PARLA ITALIANO

PHOTO
STUDIOS D.C.

DAGOBERTO
DE CASTRO

134 WEST ADAMS
PHOENIX, ARIZONA 85003
PHONE 252-1462

Pupil of the Great MARIO ESCUDERO

WILL TEACH Flamenco Guitar

at Miguel's Music

(111 East University)

\$5.00 for 1/2 hour

Call Bill Regan, 967-1944 or 968-2310

come to hillel
for
shabbos services
and
a
movie

"Wall in Jerusalem"

An Israeli Documentary

8pm

may 3

at Baker Center

Call Hillel at 966-5371 for more information



Western Night!



FREE



South Mountain Park—little ramada
May 4th 6pm

MEET AT 5:30PM AT BAKER CENTER FOR
RIDES TO THE PARK

Sponsored by Hillel--for more information and transportation--
call 966-5371

Women find law school worth it

By David Kohn

Getting into the legal profession isn't easy, and it's even tougher if you're a woman, said two members of Women-In-Law (WIL), ASU's women law student organization.

But the fight is worth it, said Ame Gannon, the organization's president. "Women are going to be discriminated against whether they go to law school or not.

"If we were to say there's no point in going to law school because they're not hiring women attorneys, we could also say there's no point in doing anything but staying home and raising babies, because that seems to be the only place where women have cornered the market."

Deal with it

"Being an attorney, the woman who knows she is going to face discrimination is particularly equipped to deal with it. Just by getting admitted to the bar you have the right to start causing trouble and making changes," Gannon said.

A woman's trouble starts in getting admitted to the College of Law. "There are very few women law students," said Sheri Capra, past president of WIL. There are 70 women students out of around 450. The percentage of women has been going up each year.

But some women may have more trouble than others. "I'm one of the few single women in my class," Capra said. She also does not know how many men or women have worked and then applied to law school. "Most of the women are definitely not out of college."

"We have been talking about going to the admissions committee. It's very difficult to elicit information. They don't want to tell you."

More women

Capra did say the admissions committee is rumored to be admitting a higher percentage of women than before.

Even if a woman is admitted, she may not go to law school, Capra said. One factor is that she has more trouble getting a loan than a male student.

Another reason many women don't go is the College of Law's scheduling. "The first year of law school is inflexible. It's like having an eight to five job. That denies an awful lot of women who have families the opportunity to even try," Capra said.

For those women who do

go to law school, there are other problems. "Some of us became aware of discrimination, not even necessarily conscious, in the jokes and offhand remarks of some professors," Gannon said.

Talk it over

"We've talked to some professors about it where we just weren't listened to because he thought we were just a bunch of hysterical females. Others sat down and discussed it with us."

Sometimes the women fight back. "One professor referred to 'the broad in the back row,' or something like that. So the women in the class got together," Gannon said. "The next time he tried it, we got vocal, and he didn't do it anymore."

Another incident occurred last year before one of the College of Law's formal occasions, Gannon said. "There was a note on the bulletin board saying that all women were to wear a skirt and blouse. Women

were told verbally that if they wore pants suits they would not be allowed to participate," Gannon said.

"Some of us agreed to wear pants suits, even if a notice saying we couldn't wear them were put up. The notice didn't go up, and as far as I know nobody particularly cared if we wore pants suits."

But some women give up almost immediately, Gannon said. She felt that many women quit because they don't get the support and encouragement they need. "The males have their cliques to do that. I think it's unfortunate we don't do it," she said.

Not many jobs

Should a woman complete law school, her job prospects are mixed. "There aren't that many conventional jobs for lawyers," Capra said.

She felt that many people are not being served by the present legal system. When ways to serve them are

devised, there will be many jobs for lawyers.

But even before that happens, women deserve a better break than they have been getting in the profession. "We have to get rid of the depression mentality that says men should have the jobs if there is a limited number of jobs available," she said.

Hopesprings eternal

Capra sees some hope.

Law firms seem to be hiring more women.

Getting started in a profession can be difficult for anyone, Capra said. And that's where married students might have an edge. "It seems to me that for these married people who have two incomes, one could be in a shaky financial position. Traditionally, it's been the woman, but it could be the man," she said.

Coming Soon



Hear

Billy Graham

Arizona Crusade

Beginning May 5 through 12

ASU STADIUM

TEMPE, ARIZONA

NIGHTLY-7:30...SUNDAYS-7 PM ONLY

Pre-Law Students LSAT REVIEW COURSE

Maximize your LSAT score by taking review course taught by lawyers in Phoenix.

Course for July 27 LSAT starts July 15, 1974.

For information

Call — in Phoenix (602) 264-8236 or 948-5786.

Write — LSAT Course, P.O. Box 11669 Phoenix, Arizona 85061

"Jesus, Catholics, & Billy Graham"



At the Newman
Center Masses
this weekend

Saturday: 5:30 & 7:30

Special Years' End "Mass on the Grass"

followed by a party and dance

Sunday: 10:30—Folk Mass

also 12 noon & 6 p.m. Folk Mass

ALL SAINTS CHAPEL

Newman Center

College Ave., & University Drive

Class helps to pay brain operation costs

Continued from page 1

days she stays up a little too much," she said.

"I think the hardest thing is going to be for her to stay in and not be with people all the time," Brown said. "She is a people-person."

The class visits often. Two weeks ago, the class descended on the house.

"We revamped the bedroom,

living room and kitchen," Brown said. We also redid her bedroom floor, tiled it and replaced window panes. Somebody else donated a bedspread and curtains so she had a nice room to come home to."

The class also sponsored a movie in Neeb Hall Thursday to help pay medical costs and plans to sponsor a garage sale at ASU the first week of summer school.

Program aids children with math problems

TEMPE — Schoolchildren in grades one through eight who have learning problems in mathematics will have a chance this summer to seek help beyond that provided by their schools.

ASU's department of elementary education is offering an individualized mathematics program for such students June 10 through July 3.

Dr. Jon Engelhardt, coordinator of the service, said

youngsters enrolled will undertake remedial work on a one-to-one basis with graduate assistants who previously have diagnosed their learning difficulties. Meetings will be 11 a.m. to 12:30 p.m. daily at ASU.

Registration for the program will be 9 a.m. to 12 noon, May 13-17, by telephone only, through the Elementary Education office, 965-6988. Fees for instruction and materials may be discussed during registration.

Not brawn

ASU recruiting brains

By Ellen Vlahovich

ASU's recruitment program has shifted into high gear. But the recruiters aren't looking for high school Bart Stars or Wilt Chamberlains.

They are searching for scholars — high school seniors with impressive academic records. This time ASU is recruiting brains, not brawn.

The ASU Alumni Association April 27 honored 143 out-standing high school juniors at their annual Medallion of Merit Day.

These students were chosen from Arizona high schools to receive the Merit Award and a full-year university fees scholarship.

They must have at least a "B" average and be currently involved in

community and school activities.

"The number of Merit recipients that attend ASU has doubled and even tripled in the past few years," said Bob Francis, assistant director of the ASU Alumni Association.

"Instead of just offering these scholars the Merit award, we attached a scholarship to it, Francis said. At first we just offered a one semester university fees scholarship with the award. Next year we will be awarding a full-year fee scholarship to the Merit winners."

There are also other reasons why Merit winners attending ASU, has increased, Francis said.

First, the scholarship program is receiving more

attention from the University, Francis said. The University as a whole is doing a better job of getting information on its programs and activities to these students, he said.

The ASU Alumni Association is not the only recruiter of these high school scholars. Approximately 375 incoming freshmen were awarded Board of Regents scholarships for 1973-74.

After these students have been awarded scholarships, ASU does not abandon the recruiting of Arizona high school scholars.

A form letter from the ASU Admissions Office is then sent to the scholarship winner. The letter tells him enticingly why he should come to ASU.




ERICKSON
HANDCRAFTS

ARTIST & DRAFTING SUPPLIES

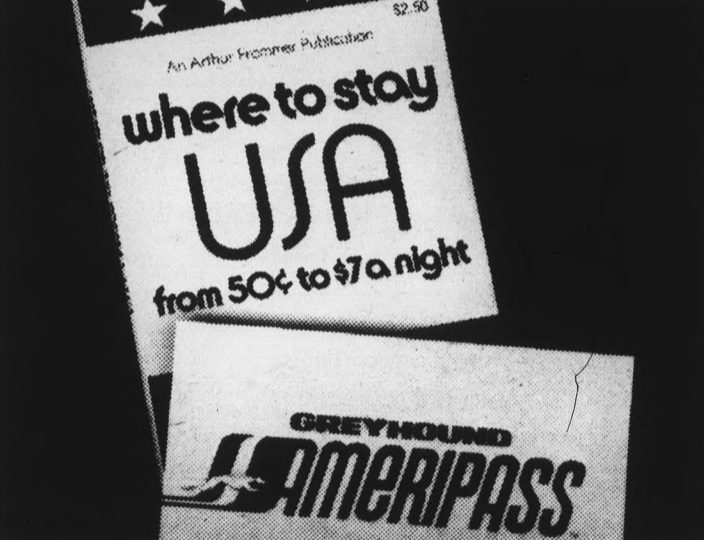
Crafts - Picture Frames
Decorating Material

Open Mon. & Thurs. Nights
10 Percent Discount to Students
111 E. University — 967-4482



Jerry's
audio exchange

the arches:
Tempe — 120 E. University Dr. 968-3491



An Arthur Frommer Publication
where to stay USA
from 50¢ to \$7 a night

GREYHOUND AMERIPASS

America on a shoestring

(Show this ad to your folks.)

Here are a couple of great ways to spend your summer. Without worrying about gas. A Greyhound Ameripass gives you unlimited travel throughout America (\$165 for 1 month and \$220 for 2 months). And this invaluable guide covers economical sleeping accommodations along the way. Plan your own trip. Anywhere. Anytime. Sleep cheap. Then hop aboard another bus.

Another nice thing: you can bring your bike along too. We'll carry it in our baggage compartment at no extra cost. You can do some extra exploring on your own wheels.

So if your folks voted thumbs down on your travel plans this summer, here's a sensible way to reopen the discussion.

Go Greyhound. And leave the driving to us.
Call: Greyhound Agent, Tel: 967-4030 13 E 5th St., Tempe

Frommer-Pasmanier Publishing Corp.
70 5th Avenue • New York, N. Y. 10011

I plan to buy a Greyhound Ameripass. Please send me a postage-paid copy of "where to stay USA" at the special reduced price of \$1.75. A check or money order is enclosed made payable to Frommer-Pasmanier Publishing Corp.

Name _____
Address _____
City _____ State _____ Zip _____

Reading Course Increases Speed and Comprehension

Do you want to learn how to read faster and comprehend more of what you read? Would you like to learn more efficient methods of studying? Methods that will decrease the amount of time you spend studying, and at the same time increase your understanding. If your answer is YES, the Arizona State University Reading Center has a highly individualized reading improvement course that is designed to fit your needs.

The six week non-credit course can be taken by anyone who pays the \$25.00 fee. Registration begins May 6th in the Reading Center, Room B112 of Payne Hall. Further information may be obtained by calling 965-3474, 3709 or 3519. Pick a class that fits your schedule from the list below:

SUMMER 1974		
FIRST SESSION.....		JUNE 3 - JULY 6
SECTION 1	M-W-F	11:00 - 12:30
SECTION 2	T and TH EVENINGS	7:00 - 9:00
SECOND SESSION.....		JULY 8 - AUGUST 9
SECTION 1	M-W-F	9:20 - 10:50
SECTION 2	T and TH EVENINGS	7:00 - 9:00

... **TOO MUCH HOMEWORK?**

Action depends on thieves' age, criminal record

By Jack Marks

Age, past criminal record and the bicycle's value are factors influencing what happens after a bicycle thief is apprehended.

Joyce Adams, a Tempe police officer, said after a person is caught, much depends on the person's age and if the value of the bicycle is under \$100.

If the thief is a juvenile (under 18), there will be a hearing and he will probably be released to his parents, she said. However, "If there is a history of three to five prior thefts, he may go to the Maricopa Detention Home."

Adams said when the thief is not a juvenile, much depends on the value of the bicycle. Stolen property under \$100 constitutes petty theft, over \$100 is grand theft, she said.

"Grand theft is a felony, so your talking about a more serious punishment," she said. "It makes a difference in time served and amount of the fine."

A misdemeanor (petty theft) is punishable by a fine and or a maximum jail sentence of not more than 6

months in the County Jail, she said. A felony (grand theft) is punishable by a fine and or a prison sentence in the state penitentiary.

Although the severity of the punitive measures may vary from case to case, the procedure of arresting and booking a bicycle thief does not.

Lt. Irving Jaffe, of the ASU security police, said, after a person is arrested mug shots and finger prints are taken, a report is written and then sent to the Assistant County Attorney. "If he decides there is a case, the attorney files a complaint with the Justice of the Peace," he said.

After the complaint is filed and a court date set what happens is entirely up to the judge, he said. "If the man pleads guilty and it's petty theft the man may be put on probation or given a jail sentence."

If the accused enters a plea of not guilty a trial date is set and he may be released on his own recognizance or bond may have to be posted, he said. On the day of the trial all witnesses are summoned to appear in court and testify.

Jaffe said it is hard to say what type of punitive measures will be taken by the judges because all the judges and cases are different. "Our function is to arrest those who violate the law, the next step in the legal machine is for the judge to do the judging," he said.

DISPLAY ADS
965-7572

PASSPORT PHOTOS
4 Minute Service
Adjacent to U.S. Passport Office
210 S. 1st Ave., Phx.
Phone 253-8049

Your mountain climbing class meets at night.

You owe yourself an Oly.

Olympia Brewing Company, Olympia, Washington "OLY"®
All Olympia empties are recyclable



Sequined T-Shirts



Custom sequined T-shirts now available for the first time. Men & women's sizes S-M-L in your choice of yellow, blue, green, red, or beige in these styles:

- Frog (green only) — \$10.00
- Happy Face (yellow) — \$10.00
- Bicycle or Mickey Mouse — \$15.00
- Butterfly — \$20.00

Send check or money order with summer address to:

T-Shirts
P.O. Box 3025
Scottsdale, Ariz. 85257

We'll sequin any garment—your design—Send sketch for estimate.

SATISFACTION GUARANTEED
*prices include tax, mail & handling

Special SUMMER RATES

For Students at
Evergreen Terrace Apartments

- Studios from \$155⁰⁰
- 2 B.R. Unfurn..... from \$190⁰⁰
- 2 B.R. Furn. from \$220⁰⁰

INCLUDES UTILITIES

Mature landscaping with lots of shade trees — well manicured lawns. Large units with disposals and dish-washers.

RESPONSIVE MANAGEMENT
Water Volleyball — Small Pets Welcome
See Harold or June at:

1701 E. Don Carlos
(2 blocks N. of Apache on McClintock)
or call 967-7357

Kennington, Ltd.

SOLD

impulse

LOVE 'N' STUFF

seafarer

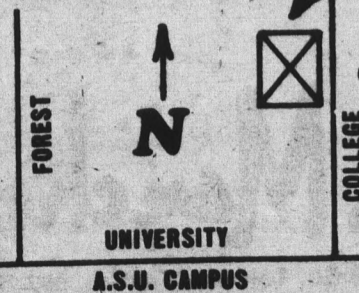
ACCENT

h.i.s.-for-her

m
a
d
m
a
n

Lee

Levi's



IN THE CELLAR OF
CAMPUS DRUGS
College & University - Tempe

Just a sample of what's available in the CELLAR



Court kills opposition; Graham has stadium

Billy Graham won in the final battle for Sun Devil Stadium. Graham deftly side stepped the last defensive back and will streak in for a touchdown this coming Sunday.

U.S. District Court Judge William P. Copple dismissed a petition seeking to prohibit Graham from

using the ASU Sun Devil Stadium. The petition submitted by Phoenician Martin S. Pratt, said the use of the stadium for a religious crusade would violate the U.S. Constitution's provision of separation of church and state.

Don Bailey, press secretary for the Billy Graham Evangelist Association, said Graham last spoke in Arizona in 1964. He said Graham spoke in the Sun Devil Stadium at that time and does not remember any opposition to the use of it.

Bailey said if the court had blocked use of the stadium he didn't know where they would have had the crusade. "We didn't have any alternative site for the crusade," he said.

Bailey said the crusade will begin 7 p.m., May 5 and continue through the week. Graham will attend all services, he said.

Course offers student trip down rapids

Survival lessons in the middle of the Green River rapids cost a mere \$250.

Ross Clements, ASU camping instructor, and Mark Brown, of the Scottsdale Community College faculty, will take a small group through the 68 Colorado River-like rapids of the Green River in Utah.

Survival instructions will be given during the first few days when the river is pretty calm, Brown said.

The trip will last two weeks, from June 5 to June 19. Survival instruction includes fishing and trapping techniques to provide necessary supplements to basic staple rations.

Clements and Brown have taken many groups down the Green River, the Colorado, the San Juan and others. They are survival and first aid instructors recognized by the American Red Cross and the Arizona Mountaineering Club.

Trip objectives are for each person to become self-sufficient in outdoor living.

Further information is available from Brown at 946-6545 or 273-7778 and Clements at 263-3716 or 956-8253.

Directory offers unusual services

By Dannice Munson

A willingness to share the experience of giving birth at home or the cost of the New York Times are listings that can be obtained in "The Peoples' Yellow Pages," a new type of directory service published by Arizonans for Peace.

The directory is intended to provide a network of services that people are willing to share with someone else for little or no cost, said Ben Mancini, coordinator of the project.

"For example, there is a tool cooperative listed in the book. If you have a plow and are in need of a lawn mower, the lawn mower and the plow could get together," said Jeanne Frieden, president of Arizonans' for Peace, ASU chapter.

Through sharing, two people can make use of a tool and additional purchases are not necessary, she said.

"Often, students are new to the Valley and not familiar with available services and do not know other people who share their interests," Mancini said.

"With the help of the directory a new student on campus would have the advantage of someone else's knowledge who has lived here for awhile."

The directory is being published as a community service and there isn't any charge to list a service or share your abilities in the directory, she said. However, there is a 25 cent charge for a copy of the directory.

Mancini said the directory is non-profit. Any returns will be used for additional publications. "We hope to have another one out in the next six months with additional listings."

Other services listed in

the directory include a schedule of the Bug Line and a radio program guide.

In addition, numbers are listed for women who have been assaulted to call for advice and help, he said.

Frieden said they are looking for students who are willing to share their knowledge, even if it's repairing a bicycle, for a small fee or in exchange for a dinner. "Students may just want to share a hobby," she said.

The directory has been successful in other cities and is currently available through the Changing Hands Bookstore and at the Arizonans' for Peace table on the mall, she said.

PLAY WEE-TEE MINIATURE GOLF



Your Choice of Two 18-Hole Courses

University Drive at Rural—Tempe
HOURS — 1 p.m.-12 midnight Daily Phone 966-8027
Sat., Sun. and holidays 10 a.m.-11 p.m.

HALLELUJAH! WE ARE CONVERTING!

... TO ALL NEW APARTMENT LIVING!
See our new room models during a preview showing May 11th and 12th and be converted too!

La Mancha

909 So. Terrace, Tempe. 967-2011

Moving When Classes Are Out?

Take Your Gear in
a Nationwide trailer
Anywhere in the
U.S. for only \$15

Anywhere

Choose any size Nationwide trailer in stock. Choose any destination where there is a Nationwide dealer. Your Nationwide trailer rental cost will be only \$15, with optional hitch and insurance slightly extra. A deposit now will reserve a trailer for up to 30 days. Offer is limited so get details and a free moving guide from:

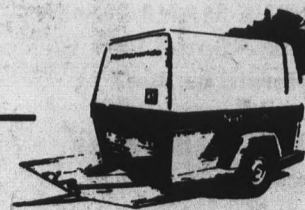


NATIONWIDE Trailer Rental

3339 W. Indian School Road
263-7924

Sun Valley Surplus
2708 W. Buckeye Road
278-8933

(Bring this ad to receive this special price.)



Nationwide

SE HABLA ESPAÑOL
SI PARLA ITALIANO

**PHOTO
STUDIOS D.C.**

DAGOBERTO
DE CASTRO

134 WEST ADAMS
PHOENIX, ARIZONA 85003
PHONE 252-1462

**CARPET
SPECIALS**

12 used rugs-\$5.00
All Sizes In Stock

**CARPET
HOUSE**

1516 E. Van Buren, Phx.

Benefit concert to help Terros get equipment

A Captain Beefheart and the Magic Band performance may replace Terros audio visual equipment destroyed in the recent fire on Tempe's Mill Avenue.

Captain Beefheart will headline a benefit concert on Sunday, May 12, in the Phoenix Municipal Stadium. Seventy per cent of the proceeds will go to Terros,

and 30 per cent will go to Amigos de las Americas.

Joining Beefheart will be Brewer & Shipley ("One Toke Over the Line"), Kathi McDonald ("Insane Asylum"), the Bob Meighan Band and Hans Olsen.

KDKB Radio, the Mayor's Youth Advisory Board and the Arizona Audio Dealers Association are sponsoring the noon to six benefit. Donations are \$2.



Captain Beefheart and his Magic Band perform Sunday in a benefit concert.

Petition seeks returnable containers law

An initiative petition that would require the bottling of beverages in returnable containers is expected to be circulated next week at ASU.

Joanne Booker, director of the initiative effort, said the petition is similar to an Oregon law that requires a deposit on all beverage containers.

"This cuts down on litter and saves natural resources," she said.

Booker said more than 14,000 signatures must be collected by July 5 to put the initiative on the ballot in Arizona's gubernatorial election Nov. 5.

"We need a lot of help, and we'd love volunteers," she said. "Right now we're trying to work through any groups we're familiar with."

The initiative is a project of Tempe's Christ Chapel Methodist Church, of which Booker is a member. Booker said the church began collecting signatures Thursday.

"We think we'll be able to meet the deadline," said Booker. "Everyone we talk to is for it. Our biggest problem is distribution," she said.

If the initiative is put on the ballot, a positive vote from Arizonans will make it law.

SUMMER BUMMER!

What with the seasonal change, (and the manager's vacation) Ski Haus Action Sports is pleased (?) to announce the summer shut down of its Tempe shop. The most spectacular closeout bargains of the century are being made available to you now through May 20

MOST EVERYTHING IN THE STORE REDUCED UP TO 50%! INCLUDING:

- PACKS & FRAMES/ DAY PACKS/ TENTS/ BOOTS/ & MORE!
- TENNIS: SHIRTS/SHORTS/ SHOES/ RACKETS/ETC.
- WATER SKIS (O'BRIEN & TAPERFLEX) SOME WATER SKIING ACCESSORIES!

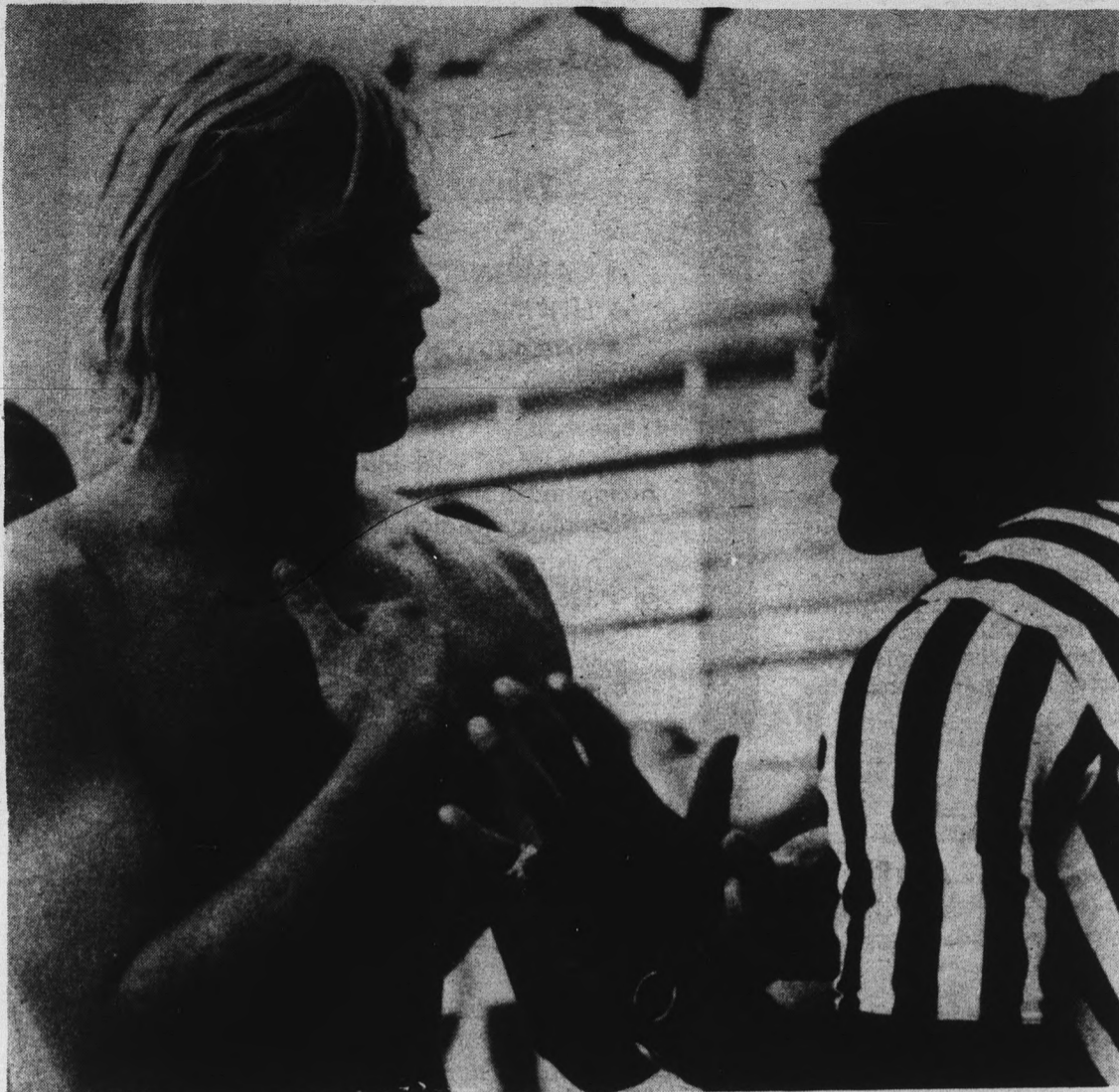
Since the manager's vacation won't last forever, the Tempe shop will reopen sometime next fall. In the meantime, don't forget that our other two stores (2501 E. INDIAN SCHOOL RD./ PHOENIX & 2823 E. SPEEDWAY/TUCSON) will remain open this summer to meet all of your action sports needs.

Ski Haus ACTION SPORTS
705 SOUTH FOREST
TEMPE

(THIS SALE TO BE HELD AT TEMPE STORE ONLY.)

DISPLAY ADS
965-7572

Yesterday's PROPHECY
Today's CURRENT EVENTS
KHCS Radio, 1010 kc
Weekdays 2 P.M.



Jed Jennings a member of the Zookers "A" league basketball team didn't agree with referee Jim Trigg on this call. Jennings' team, which was assessed five technical fouls, didn't agree with many of Trigg's calls in the championship game won by Salt and Pepper 61-49. The Snakes won the "B" division and the "C" league was won by the Trocats.

state
press
sports

Concert Associates Present

TOD RUNDGREN'S UTOPIA

SUNDAY MAY 12 7:30 pm
**PHOENIX CIVIC PLAZA
ASSEMBLY HALL**

Tickets: \$5.50 in advance / \$6. day of show
Tickets Available at Tiki Fashions, Diamond Community Box Offices
and Pacific Coast Box Offices. For information call 262-7272.
(mail order: 225 E. Adams, Phoenix 85004,
enclose self-addressed stamped envelope.)

Produced by CONCERT ASSOCIATES

Intramural results

Final Standings		3. Air Force ROTC	2283	10. Purple Gang	692
Fraternity Division		4. P.V. West	2148	11. Army ROTC	622
1. Phi Delta Theta	3899	5. Snakes	1615	12. Vets Club	529
2. Phi Gamma Delta	3876	6. La Mancha	1553	13. Cosa Nostra	448
3. Phi Sigma Kappa	3703	7. Tequila Sunrise Gang	1397	14. Mariposa Hall	403
4. Sigma Chi	3503	8. Cannibals	1299	15. Newman Center	247
5. Pi Kappa Alpha	3261				
6. Sigma Alpha Epsilon	3092				
7. Kappa Sigma	2901				
8. Delta Sigma Phi	2775				
9. Lambda Chi Alpha	2390				
10. Sigma Phi Epsilon	2349				
11. Theta Delta Chi	2107				
12. Sigma Nu	1497				
13. Theta Chi	1483				
14. Phi Kappa Psi	1406				
15. Alpha Epsilon Pi	1167				
Independent Division					
1. Tort Feasors	3400				
2. F.F.I.	2638				

**Student
Discount**

**MINI-
STORAGE**

& warehouse

DON'T HAUL IT . . .

STORE IT

You Lock It.

You Keep The Key.

2422 W. Broadway,
MESA
968-1021

**Desert
Sunset**

Cahill's
Prickly Pear Syrup — 1 pt.
Tequila — 2 pts.
Lime Juice — ½ pt.

Well blended over rocks, tall or in a snifter

Available at your local:

Holiday Inn, Howard Johnson's, or North Bank

PRESENTED BY

Cahill **DESERT PRODUCTS**

3123 E. Thomas, Phoenix
Phone 966-2030

OUT-R-INN

PIZZA & SUBS

1045-A E. Lemon St.

**FINALS
SPECIAL**
(NO LIMIT)

75¢ off lg. pizza

50¢ off med. pizza

**25¢ off sm. pizza
& sandwiches**

This coupon good for 3 times.

WE DELIVER

966-7009

Good thru May 17, 1974

Summer Bug Line schedule

Buses leave Chris Town

6:30 a.m.

7:30 a.m.

Leaving ASU

11:30 a.m.

12:30 p.m.

Leave Chris Town

6 p.m.

arrive ASU

7:30 a.m.

8:30 a.m.

arrive C. Town

12:30 p.m.

1:30 p.m.

leave ASU

10 p.m.

Mon.-Thurs.

Baseballers face uphill battle

By ROGER WITTLIN

For coach Jim Brock's ASU baseball team the battle to retain the WAC championship is all uphill.

The Devils, 36-20 overall, are still trailing the Arizona Wildcats by one game in the WAC standings. The Cats gained the edge by taking two of three games against the Devils in their first series this season. And chances are the Wildcats' 54-4 record won't suffer when they play Texas-El Paso this weekend.

The Devils start a three-game set with the University of New Mexico at 7:30 tonight in Albuquerque. The series concludes with a doubleheader tomorrow.

ASU didn't have much trouble in sweeping the Lobos 12-1, 11-1 and 11-0 earlier in the season at Rendezvous Park, but in Albuquerque New Mexico has been playing a better brand of ball. The Lobo's three conference wins have all come at home.

Brock will re-arrange his pitching rotation against New Mexico because of strong throwing by sophomore left-

hander John Poloni. Poloni (8-1, 2.76 earned run average), has been slated to start Friday's game against Kent Seaman (3-5, 4.26 earned run average), whom Brock considers the toughest Lobo hurler.

Freshman Jim Peterson, (9-1, 2.24 ERA) and junior Jim Umbarger (6-1, 3.32 ERA) will combine for Saturday's day-night doubleheader.

Brock said he was pleased by the Devil hitting in Wednesday's 4-2 victory against the Phoenix Giants. "We really haven't been hitting the ball hard in the last two weeks, but I was encouraged with the contact made against the Giants."

Brock wouldn't say ASU is experiencing a batting slump, but referred to the Devils light hitting of late as a "recession."

Freshman rightfielder Mike Colbern's .352 batting average is leading the Devil hitters, whose team average is .288.

First base strongboy Clay Westlake is second in batting average with a .315. Westlake's .505 slugging percentage is tops among starters.

Following the New Mexico

series the Sun Devils return to Packard Stadium Tuesday night for their final home game of the year against Grand Canyon College. The Devils will need a win against GCC to keep its record at Packard Stadium above .500. ASU lost its first four games at the new stadium, but has since won eight of the last 10 home games.

The WAC Southern Division championship will likely be decided in Tucson May 9, May 10 and May 11. If both the Wildcats and Devils are victorious this weekend against their foes ASU would have to win two of the three game series to force a playoff to break the tie.

SPRING . . .
Enjoy it!

- CAMPING
- HIKING
- BACKPACKING



Arizona's largest selection of **QUALITY** brands hiking boots, sleeping bags, jackets and packs. Complete selection Arizona topo maps.

HIGH ADVENTURE
"WILDERNESS OUTFITTERS"
3925 E. Indian School Road (Phoenix) 955-3391
Corner of Lemon and Terrace (Tempe) 968-2712

BUY

SELL

CLASSIFIED ADS

TRADE

LEASE

LOOK

SURPLUS AIRCRAFT COMPONENTS

1833 S. Central Ave. Phoenix, Ariz. 258-0317

Radio & electronic equipment, hydraulics, plexiglas seat belts, shoulder harnesses, optics, lights, backpacks & other canvass, heim joints, filters, water and fuel storage tanks, aluminum pontoons, trailers, cargo straps switches, circuit breakers, seats, bombsights, computer tape decks, AND MUCH MUCH MORE! stop by or give a call. 258-0317 — 9:00-5:00 Mon. thru Sat.

CENTRAL AVE. and the FREEWAY

FUNCITY RENTAL

Rental and Sales

SNARK PRODUCTS

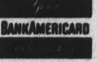

- *Fishing Boats*
- *Sail Boats*
- *Bait and Tackle*

MOTORCYCLES

STREET & TRAIL BIKES

•Hour
•Day
•Week

Call
985-6321

6660 Apache Trail — MESA

● HELP WANTED

Job for Summer — \$2.50 an hour. Afternoons. Outdoor work. 275-4805.

Need someone to drive my car to Galveston, Texas. Will pay gas plus \$25. Call 956-2176. (5/3)

Person with Jewish knowledge for Hillel outreach work and programming. 10 hrs/wk. Fall semester. Call 966-5371. (5/3)

Summer jobs—fulltime, some parttime. \$670-\$870 per month. Overtime extra. Management positions to continue next Fall. 834-0879. (5/3)

● RENT

Need a Roommate or a place to live? We have nice homes & apts. & loads of roommate referrals too! In Tempe 838-9127 Phx. Vail 838-9127 Roommate Finders, Inc. Irish setter pups, A.K.C. O.F.A. Champ. sired. 26 champs/4 gener. p.m. & wk. ends. 931-2595. (5/3)

Sublsg furnished duplex for summer 1 block from ASU \$100 + utilities/mo. 966-4474.

1 bdrm. apt. for summer. 1 block from ASU \$140/mo. 968-3849. (5/3)

3 bdrm. Large yard. Scotts/Tempe border. \$225 month. 966-5919. (5/3)

Sub-lease May 17-Aug. 20 . . . 2 br., furn., all extras \$195 Mo. 1120 W. Broadway. 966-0091. (5/3)

Furnished two-bedroom house 2 blks. from campus. \$175 + utilities. Sublease for summer. 966-0267. (5/3)

1 bedroom apt., air, 3 blocks from ASU. Call 967-6408. (5/3)

1/2 block to ASU—ideal for 1 or 2 people, furn, all util. paid, 705 Krueger St. #7. \$124 per month, \$40 dep. (5/3)

To rent May 20 to Aug. 20 — two bedroom house 32nd and Camelback contact Prof. Cuthbert — College of Architecture or Phone 957-1094. (5/3)

Co-op Studio Apt. Available late June. Reasonable. 949-5336. (5/3)

Bike to campus, \$25 wk. up. No dep., util. paid, linens, refrig. 268-6547/956-9050. (5/3)

● SERVICES

Repair, sell, buy, or trade your home, or car stereo radio or TV at Campus Stereo .737 Apache Blvd. 966-8422 Tempe. We install units. (5/3)

● MOTORCYCLES

1971 Yamaha 350, per. cond. Must sell by 5/17. Asking \$430. 962-0846. (5/3)

73 Honda 250 SL \$750 or best offer. After 6 p.m. 964-9255. (5/3)

● FOR SALE

4 bdrm. — sale or rent. Refrigerated, close to ASU. \$26,500 — \$3,300 C.T.M. \$300 Rent. 966-5919. (5/3)

Complete waterbed set up - custom - over \$100 invested + time! Must sell \$125. Firm. 275-4741 Ext. 337. 8-5. (5/3)

Indian Joka all-turquoise necklace \$80. 275-4741 Ext. 337. 8-5. (5/3)

3 br., 2 bath, 6 1/2% mort. \$150 month. \$7000 C.T.M. 968-3233. (5/3)

Furniture. 8' couch, chair, 2 tables, double bed. 967-2750. Jim, Tom. (5/3)

1960 V.W. 68 rebuilt engine, sunroof, mag wheels \$350 or best offer. Call Jean 965-2152. (5/3)

15 1/2 ft. Glastron boat—115 hp. Johnson. New interior. Trailer & Cover. 968-4083 or 242-2065. \$2000. (5/3)

Buy, sell, or trade your car, cycle, boat, etc. at Campus Auto Sales, 739 Apache Blvd, 966-8422, Tempe. (5/3)

Priced to sell now — 3 br. Townhouse. New AC drapes, carpet. Mgmt. fee a bargain. Clean vacant. Below Aprsl. at \$21,500. 966-8498 or 838-6175. Terms avail. (5/3)

Used furniture. Buy, Sell, Trade. Discount to ASU. Desks, chests, lamps, etc. Butlers, 1711 Apache. (5/3)

INDIAN JEWELRY FOR SUMMER AT WHOLESALE PRICES. CALL MAL 967-0111. (5/3)

1972 Mobile Home, awn, 3 ton air, furn. Club House extras, new. \$11,800. Must sell by 5/17. Ask \$6,100. 962-0846. (5/3)

1966 Melody Home. 12'x60'. Front and rear bedroom. 1 1/2 baths. awning, screened room, storage room, carport, and air-cond. Transperary Park. Call Joplin — 252-7666. (5/3)

● WANTED

Liberal Arts Major looking for female roommate. Comfortable Apt. near campus. Make appt. to see. Call Dave 966-0836. (5/3)

Need girl roommate to share cottage — 2 blks. ASU for Summer School. 968-5768. (5/3)

Summer home for Law Clerk & family. Write to A. Marquis, 1214 N.E. 70th, Seattle, WA. 98115. Needed for 6-20 — 9-20. (5/3)

2 bdrm furnished apt. or house. June 20-Aug. 10. Call 712-737-4182 or write Gerry Bouma, 220 Georgia Ave., Orange City, Iowa 51041. (5/3)

Wanted—20 students—to form summer exhib. drill team. No exp. nec. Will train. Must have school spirit. Pay is lousy—rewards: Great info. Put name—phone on list in PV East. Call Jim 967-8956. (5/3)

● RIDERS

Going to Yellowstone area. Leaving May 25. If you're interested in a ride, call 838-1547 after 3 p.m. (5/3)

● INSTRUCTION

Self hypnosis . . . free introductory class. Stop smoking, lose weight, calm nerves, speed learning, self confidence at Creative Guidelines . . . Mar. 8 6:30 p.m. 8011 N. 15th ave. 997-6632. (5/3)

Skydiving instruction. Learn with confidence at Columbine Para Center of Casa Grande. Call 838-7125 for info. Jump at Casa Grande Municipal arpt. 7 days a wk. (5/3)

PARACHUTING CLASS. \$1 OFF WITH AD. LOW RATES. SIGN UP NOW. 275-0010. (5/3)

● TYPING

Term papers, IBM Elec. 50c pg. Elen, 252-0078 aft 5 p.m., 967-5297. (5/3)

Typing - Pica. Near ASU 60c pg. Carole 966-9591. (5/3)

Typing. Experienced, neat accurate. Call Anne. 946-4105. (5/3)

Experienced IBM Electric. Tempe. Pat Baker 838-1642. (5/3)

TYPING—IBM SELECTRIC-PICA TYPE—ROSEMARY VANCE. TEMPE 967-9143. (5/3)

PROFESSIONAL TYPING. IBM PICA. EXPERIENCED. 50c - 60c/p. 956-7963. (5/3)

TERM PAPERS, RESUMES, THESES, DISSERTATIONS, PROFESSIONAL, GUARANTEED WORK, IBM, MAXINE MULLEN 955-0763. (5/3)

● AUTOMOBILES

72 Vega GT, 4 sp., air, AM-FM radio, extras. 945-0408 or 834-3147. (5/3)

64 Corvair Monza Cpe. 4 spd. radio. Runs good. \$395 or consider trade for VW Bus. 265-8770. (5/3)

70 Chevelle, ss396, air, power brakes, gold color. \$1600. 967-7226. (5/3)

71 VW Superbeetle. Radio and heater-air. 2100 miles. 947-0070. (5/3)

1971 Ford Pinto, 2000 cc motor, good condition, \$1300. 968-4614. (5/3)

● ANNOUNCEMENTS

Europe-Israel-Africa. Student flights all year round. Contact: ISCA 6035 University Ave., No. 11, San Diego, Calif. 92115. Tel. (714) 287-3010 - (213) 876-5449. (5-3)

● LOST

Lost dog — generous reward. Brown & White Springer Spaniel "Bear." Ph: 967-9800. (5/3)

GENEROUS REWARD for Chinese Pug dog "Mimi," lost April 2. Female, 13 lbs., 8 months. Needs med. Please call 948-4162. (5/3)

● WANTED TO RENT

2 bedroom furnished apt. or house. June 20 Aug. 10. Call 712-737-4182 or write Gerry Bouma, 220 Georgia Ave., Orange City, Iowa 51041. (5/3)

Exp. house-sitters . . . desire 2-3 br. house starting Aug. 1. Will pay low \$ and care for home and yard. Becka Boney 839-3168. (5/3)

Triple-jumper unhappy at ASU

By Mike Tulumello

When WAC triple-jump champion Trevor Hall transferred from Texas-El Paso to ASU after his freshman season, it was a blessing for the Sun Devil track program.

But for Hall, whose 52-3 triple jump is the best in the conference, the feeling is not mutual.

Hall, along with a dozen other track standouts, left UTEP when Gene Vandenburg lost his job as head coach at UTEP two years ago. Hall and world sprint champion Steve Williams then came to ASU. Williams switched to San Diego State due to a transcript foul-up, but Hall remained and sat out his sophomore year because of the NCAA transfer rule.

Bad choice

What made him choose ASU?

"Right now I'd say stupidity," said the Jamaica born Hall. "I thought they had a good track program here — at least they did when I came here."

Hall said he had planned to compete in the Penn Relays at Philadelphia April 28, but because of a budget shortage he was sent to the less prestigious Mount San Antonio Relays.

Baldy Castillo, ASU track coach, said when he received the entry forms for the Penn Relays Hall was not jumping well. "At the time I made the considerations of who would go to the Penn Relays Trevor was jumping around 50 feet or less," Castillo said. "After his 52-3 jump at UTEP I contacted the meet director Jim Tuppeny about letting Trevor enter the meet as a late entrant, but my request was denied."

"I'm not going to blame any individual. If the money was available, I suppose the whole team could go to the relays," Hall said.

Differences

"Many differences are coming out between the head coach (Castillo) and myself and the rest of the athletes. He's been here for 24 years and over that period the type of athletes have changed. When you get a different breed of athlete and a coach who retains the same philosophy, they won't see eye to eye," the junior said.

"At the beginning of the year, my goals were well defined," he said. "I wanted to win the WAC and at least finish very high in the national championships. Now I'm so disgusted with the present situation, it's not only hampering my athletic ability, but it's also hurting me scholastically."

High honors

A critical problem facing athletes is keeping up with scholastic requirements. But Hall, who was president of his high school's honor society, is maintaining better than a B grade average as a political science and history major.

"I had a good background. My parents stressed education and they sent me to a boarding school in Jamaica."

"I'd rather read than do a lot of other things. I realize that when my four years of eligibility are up, my diploma is all I have going for me."

"For many athletes, the problem goes back to high school. Most of the black athletes are from inner-city areas where the learning environment doesn't allow them to succeed in college."

"They come here (ASU) and the coaches tell them all they have to do is run the ball over the goal, or shoot the ball through the hoop and we'll take care of you. They're told they need to be an athlete, not a student."

Future

After graduation, Hall plans to attend graduate school and study political theory. He would also like to write a couple of books "to throw some light on the situation so future athletes

won't have the same problems."

"Someone has to tell incoming freshmen that you have to go to school. After all, you're supposed to be a student-athlete, not an athlete-student."

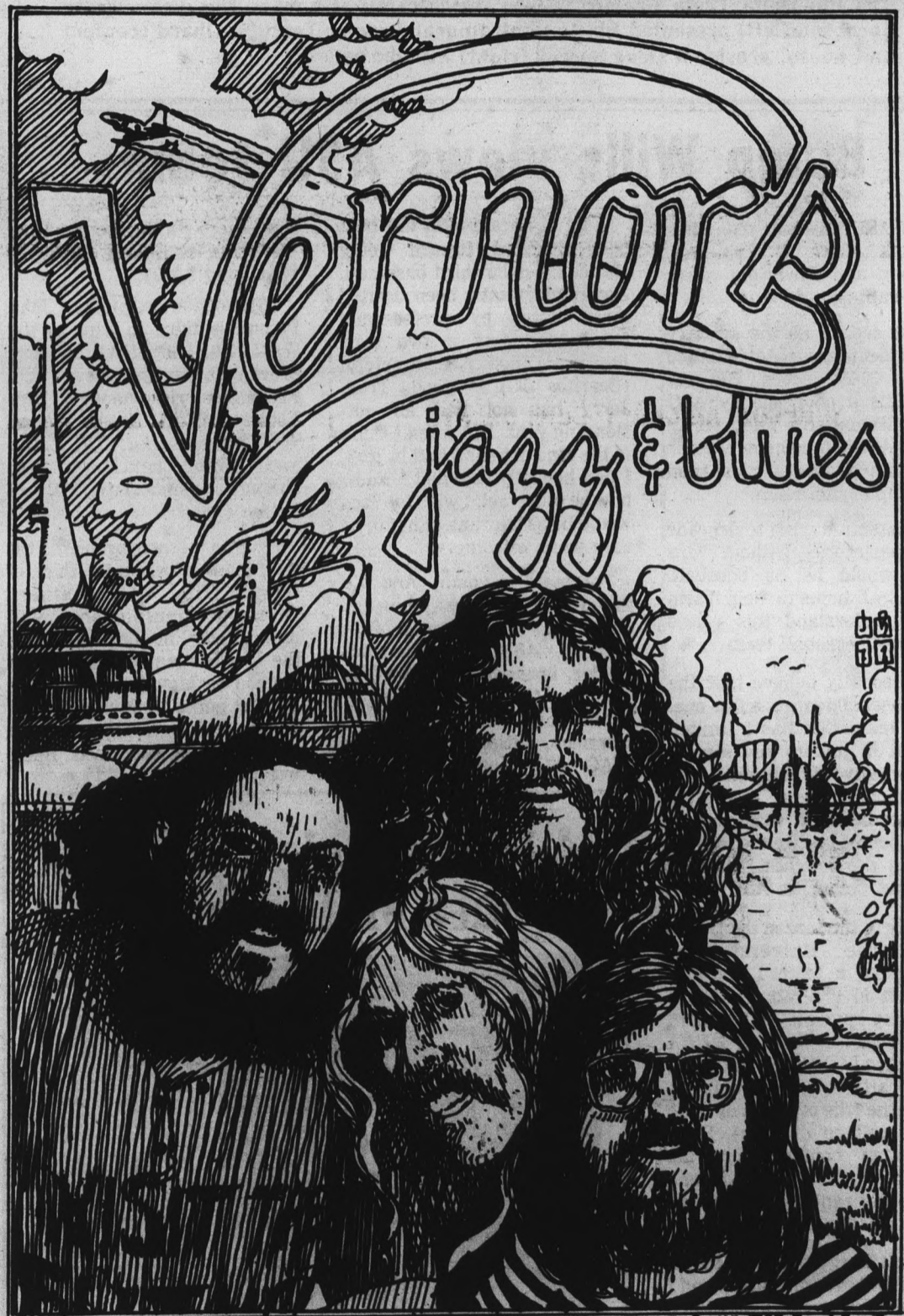
state press

sports

Citron's Surplus

Jefferson at 2nd St.
in Phoenix for

- Navy denim seafarer
 bellbottoms
- Tankers
- Back Packs
- Camping Supplies
- White & 13 Button Belts
- Parachute canpoles



HERTZ
RENT A CAR

ASU Students . . .

If you're over 18 you can rent
a Ford or other fine car at a

SPECIAL LOW WEEK-END RATE of

\$8.00 A DAY
AND 14c PER MILE

4-Day-Weekend rate: \$59-500 free miles

UNLIMITED FREE Mileage Rates

7 Days for \$119.00

or

Rent a Pinto for only \$99 a wee!

For Your Car, Call Your A.S.U. Representative

STEVE BLAGEN

967 967-9362 or 963-5786

AT THE **Library** 1001 E. 8TH ST.

... TONIGHT from 9 to 1



The Phi Delta Theta Fraternity won the intramural banner this year. Keith Jacobson (left) presented Phi Delt intramural director Terry Southard (center) and house president Steve Horrell (right) with the banner.

Bump Wills views ASU team

The ASU baseball team has had its share of criticism, ridicule, and downright nasty name-calling.

Most teams in the country would be more than satisfied with a 36-20 record. But the record is a poor one by ASU baseball standards. The problem is that ASU's fans have become accustomed to nothing less than a championship team.

My intention is not to degrade the spectators. Without fans there would be no baseball. Instead, I hope to help them better understand this year's Sun Devil baseball team.

I personally believe that the ASU baseball team is a fine one. For a team that has a limited amount of juniors and seniors and many freshmen and sophomores, their record is commendable. I wonder how many people realize the team is playing the roughest schedule ever put before an ASU team.

Early in the season the Devils faced the University of Oklahoma, a team I consider the best in the country. Since then they have played Southern California (defending NCAA national champions), University of California — Irvine (the top ranked team in the college division), Stanford (top contender in the Pacific-8), and Arizona (currently ranked number one in the country).

I can't deny that the team has looked bad in some games and I don't believe excuses should be made. But the Devils have played excellent baseball at times. Unfortunately for ASU fans, most of these times occurred when the team was on the road. For instance, the Devils played very well during their two-week California trip. On that trip, the team won the Riverside Tournament for this first time.

A lot of harassment has been directed toward Jerry Maddox, ASU's third baseman. Any player that's been drafted three times by professional teams and was a two time junior college All-American (Cerritos JC) is good. True, Jerry has not had an outstanding year. But when I think of the kind of year I had in 1973, I can honestly say that I know how he must feel. I wish the fans would be as tolerant with him as they were with me.

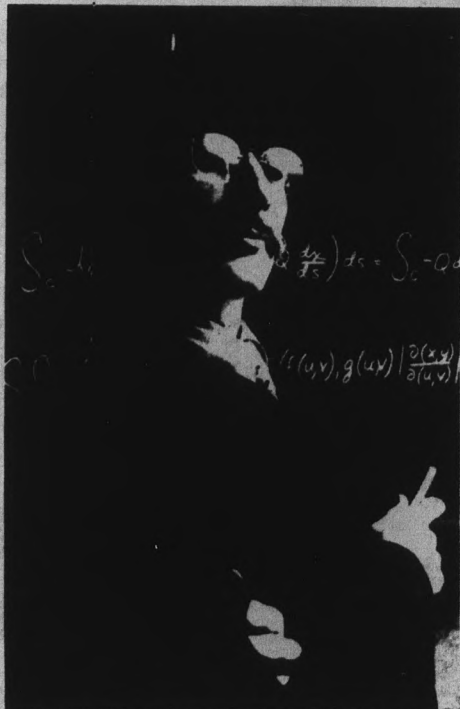
The team is young. And it's the young players who are carrying the team. Mike Colbern, ASU freshman outfielder, is leading the WAC in hitting (.545). He is followed by sophomore catcher R. J. Harrison, hitting second in the WAC (.437). And another Devil

sophomore, first baseman Clay Westlake, is hitting fourth in WAC play (.375).

ASU sophomore pitcher, John Poloni, is third in wins in the WAC (3-0, 1.40 ERA), and has proven to be the Devil ace. Freshman right-hander, Jim Peterson, is fifth in wins among WAC pitchers (2-1, 2.91 ERA) and junior southpaw Jim Umbarger ranks sixth (3-0, 3.66 ERA).

Despite all their problems the ASU team is still in the thick of things. The WAC Southern Division championship will undoubtedly be decided when the Devils face the Arizona in Tucson on May 9-11. When the Devils come home with the championship trophy a lot of people will be surprised. But I won't.

A little simple arithmetic about a Math major.



The cost of a higher education is getting higher. In fact, you could end up spending close to \$20,000 to put your child through college. So maybe you should consider U.S. Savings Bonds. They're one of the most dependable ways to build funds for an education. All you have to do is join the Payroll Savings Plan where you work. Then an amount you specify is set aside from your paycheck and used to buy Bonds. Say your child is 2 years old now. If you buy a \$75 Bond a month through Payroll Savings, by the time he's 18, you'll have \$16,534 tucked away. A solid sum to get him started. See? A little simple arithmetic can add up to a lot. Make the chances of your child's college education more secure. Join the Payroll Savings Plan now.

Take stock in America.
Join the Payroll Savings Plan.

Women eye series berth

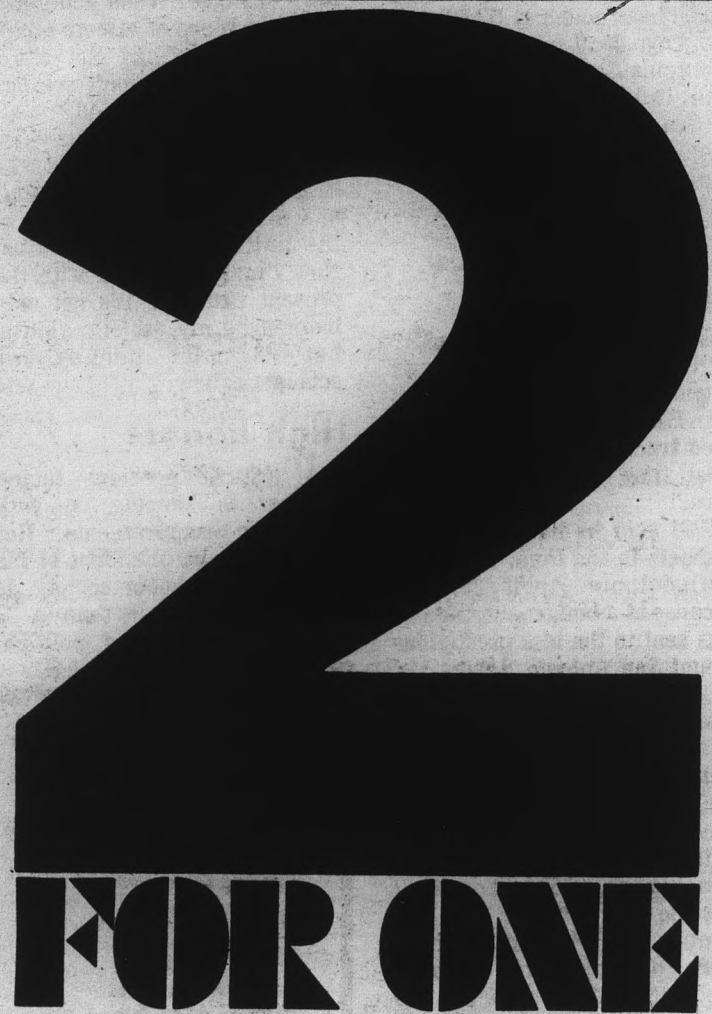
The ASU women's softball team competes in the Arizona Intercollegiate Softball tournament May 3-4 in Thatcher, Az., to try and earn a berth in the Women's College World Series in Omaha.

ASU has won the World Series for the past two years.

The ASU team has been idle since Tuesday when the women defeated Northern Arizona 16-13.

The Sun Devils are the defending national collegiate women's champion. They also won the title in 1972.

SPORTS
965-7572



There's a world of healthful, recreational activity awaiting you at Golden's Health Spa and Racquet Club this Summer, and with this ad, you can share those activities with a friend, with two full memberships for the price of one.

As part of this Summer's activities, make use of our swimming pool, lighted tennis court, 2 indoor air-conditioned racquetball courts, whirlpool, and separate men's and women's health and exercise equipment. There are always trained attendants on hand to assist, and both a regular and health food snack-bar are open for your convenience.

Come in with a friend, see for yourself, and convince yourself.



This offer is valid for a limited time only, and this ad must be presented at time of visit.

ASASU honors CAB chairman

The Associated Students and the Alumni Association of ASU honored Roslyn Clark, chairman of the Cultural Affairs Board for the past two years, with an award for significant achievement while serving on the board.

CHAPLIN

A Series of Feature Classics

- Modern Times
- The Great Dictator
- Monsieur Verdoux
- Limelight
- A King in New York

state
press
**P
E
R
S
P
E
C
T
I
V
E**



Some do a lot with no credit

By Kevin R. Gustafson

Some people get a lot of credit and limelight for doing little, and some people get a lot of credit for doing nothing. But then, some people do a lot and don't receive any credit.

Roslyn Clark, chairwoman of the Cultural Affairs Board (CAB) of Associated Students, is one person in the latter category.

Roslyn has been chairwoman of the board for the past two years and has seen the board's budget increase from \$15,000 in 1971-72 to \$28,000 this year.

The board's responsibility is to bring free cultural activities to ASU that are not provided by any other organization on campus, or in the Valley. Another purpose of the board is to coordinate, fund, and help organize other student cultural activities, when asked for help.

"The film series has been the keystone of the CAB since 1964," Roslyn said. The film series was shown in Neeb Hall this past year and will do the same next year. The Charlie Chaplin series was part of this program, along with many other foreign and American productions.

"The CAB is primarily interested in showing films not seen in the Valley during the past two or three years and never shown on television," she said.

"I inherited the film series and I couldn't see any programming philosophy in how it was put together. We tried to figure out a unique path," Roslyn added.

Part of putting on the CAB film series was finding out what types of films were being shown elsewhere on campus, and then coordinating the programs. Roslyn pointed out that the MU movie series is all contemporary American films.

"I am trying to give the board a base to work from. Therefore, you go forward each year and don't stay in the same place."

"This year the committee is trying to strike a balance between American and foreign films. We are trying to reach out for the culture you get in New York and Los Angeles, and bring it to Tempe. But, we still had to keep in mind that students wanted American films and could relate to them," Roslyn said.

To reach this end, the CAB has experimented with the programming of movies. A retrospective of a particular director's work, such as the Chaplin series, is one way to do this.

Other possibilities the CAB

has explored are comparisons of foreign and American productions of the same movie or theme, showing the original movie and a more recent remake, or just comparison of two directors.

"We try to provide a wide variety of programming. If you limit your programming, you will limit the number of students it appeals to." Last year, the board experimented with double billings, and this year it used features and selected shorts.

"The idea of the double isn't to just put two movies together, but to get them to relate in some way. Next year, we hope with funding, to show double bills, if we think it will work, and features with a short," she said.

"The hardest part is finding out what the students want to see. You have to consider; will the students be aware of it and come? It is really nice to do a premier, but does it all go for naught," she queried.

This year CAB solicited suggestions from students. "We ended up having over 500 film requests for the 68 available nights. We did a computer print out of all 500 and researched them. Then we were down to a little over 300 films," Roslyn said.

In the 1971-72 school year, Roslyn's first year on the CAB, the board sponsored the film

series, the Student Experimental Theatre (SET), a poetry series consisting of two poets, and photo, literary and film contests.

The 1971-72 school year was the first year the CAB sponsored SET, two productions shown for two nights each semester. SET is completely produced, directed and acted by students.

The program was very successful according to Roslyn, and was expanded to three productions for three nights per semester this year.

Roslyn said the SET productions might be expanded for next year, if the program can be coordinated with other plays being produced on the

Continued on page 23

CLOCKWORK ORANGE

plus

Mick Jagger And James Fox.

PERFORMANCE

where underground meets underworld

PERFORMANCE 7:00
CLOCKWORK 8:45

A.T.C.
valley
508 MILL AVE.
TEMPE / 967 6664

ASASU CULTURAL AFFAIRS BOARD
PRESENTS

Fri. May 3

Spider's Stratagem

1970
by Bertolucci
director of Last Tango in Paris
italian with english subtitles


Sat. May 4

by Bunuel (1964)
italian with english subtitles

Diary of a Chambermaid

Diary of a Chambermaid
french with english subtitles
by Renoir (1946)

Sun. May 5



DISNEY'S
DUMBO I.D.s checked at the door

ALL FILMS WILL BE SHOWN IN THE ARTS AND ARCHITECTURE
AUDITORIUM (NEEB HALL). SHOWTIME IS 7:30 P.M. FOR ALL
FILMS. NO ADMISSION CHARGE — OPEN TO ALL.

The Burt Bacharach Show IN PERSON!

"The Music Man of the 70's"
— One Night Only —
Saturday, May 18 — 8 P.M.

in the
New University Activity Center

Tickets \$7 - \$6 - \$5

\$1⁰⁰ discount for ASU Faculty, Staff & Students

Tickets available at the University
Activity Center ticket office, 965-7373

or

Gammage Auditorium ticket office, 965-3434

and

all Select-A-Seat outlets

SPONSORED BY THE ASU STUDENT FOUNDATION

CAB brings culture to Tempe

Continued from page 22
ASU campus.

Roslyn managed to finagle the Board of Financial Control in ASASU to allow the CAB to purchase capital equipment for its programs. "The SET was funded for tools. That was really nice; without tools, you can't build sets," she said. Another problem the SET has had is with lighting.

Roslyn said they formerly borrowed lighting equipment from various high schools in the Valley. "We have had tremendous problems with lights in the past two years. We were able to buy a basic set of lights and, hopefully, that will help out a lot next year."

The 1972-73 year ushered in an increased budget, from \$15,000 to \$30,000 for CAB. With this increase, the board was able to increase prize money and publicity for its contests (photo, literary and film).

The board also added funds for both art and music budgets which allow them to co-sponsor shows with other groups on campus. In November 1973, CAB sponsored a retrospective woodprint show by M. C. Escher.

Roslyn considers the Escher show to be the highlight of her three years in the CAB.

In 1973, CAB also added a music budget, because the board wanted to do something with music, but wasn't sure what.

"We hired Roberta Bragdon to accompany silent films," she said. Bragdon is 80 years old and used to play the piano when silent movies were the only ones available. Roslyn said the board did this to lend authenticity to the movies. "Our generation doesn't relate to silent films, yet silent films are important to the development of the movie industry." She believes the live music helps students to relate to the silent movies more.

"I am happier with the CAB this year than last year. We came closer to realizing our goals. We have been doing things the CAB should do," Roslyn said.

Another program the board has added to its cultural offerings is the Reader's Theatre. "They work directly from literature. They use poetry, parts of plays or whatever. In the theatre, you think of plays, but this is kind of oral in-

terpretation," Roslyn stated. There are no real sets or fancy costumes, and consists mainly of improvisations.

Reader's Theatre produced two shows a semester this year. This year CAB dropped the photo contest because several other organizations on campus were sponsoring photo contests. The board, however, did add a musical composition contest. "It worked out fairly well.

Between 12 and 14 compositions were entered. The greatest bulk of them was serious type classical music. I really expected more popular type compositions to be entered," she said.

Since this was the first year of the contest, several technical problems arose with it. They were able to resolve all of them, except one. Student par-

Continued on page 24



Roslyn Clark

THE SEATS & SOUNDS OF THE CASBAH

Live Entertainment
BELLY DANCERS MIDDLE EAST MUSIC

Seventh Veil
425 North 7th St.
Authentic Middle East & American Restaurant

LUNCHEON
DINNER
COCKTAILS

Reservations Suggested 277-7697

TAKE A BREAK! TONIGHT!
with Spanky and Our Gang, Betty Boop, The Mousketeers, The Marx Bros., Scrappy, Mr. Spock and other surprises

SPECIAL NIGHT SHOW!

VALLEY THEATER 5th & Mill

UNIVERSITY	UNIVERSITY
WEEKDAYS 6:30 - 9:10 Sat. & Sun. 1:20 - 3:55 - 6:35 - 9:15	WEEKDAYS 7:15 - 9:35 Sat. & Sun. 2:40 - 5:00 - 7:20 - 9:40
PAUL NEWMAN ROBERT REDFORD ROBERT SHAW A GEORGE ROY HILL FILM THE STING ...all it takes is a little Confidence. Written by DAVID S. WARD • Directed by GEORGE ROY HILL Produced by TONY BILL and MICHAEL & JULIA PHILLIPS TECHNICOLOR • A UNIVERSAL PICTURE	Where were you in '62? <i>American Graffiti</i> CRUISIN' A LUCAS FILM LTD./COPPOLA CO. Production A UNIVERSAL PICTURE • TECHNICOLOR

In the great tradition of American thrillers.

"The niftiest chase sequence since silent films!"
—Paul D. Zimmerman, Newsweek

20th CENTURY-FOX Presents
THE FRENCH CONNECTION
20th CENTURY-FOX PRESENTS "THE FRENCH CONNECTION" A PHILIP DANTONI PRODUCTION
STARRING GENE HACKMAN FERNANDO REY ROY SCHEIDER TONY LO BIANCO MARCEL BOZZUFFI
DIRECTED BY WILLIAM FRIEDKIN PRODUCED BY PHILIP DANTONI ASSOCIATE PRODUCER KENNETH UTT
EXECUTIVE PRODUCERS G. DAVID SCHINE SCREENPLAY BY ERNEST TRYDMAN MUSIC COMPOSED AND CONDUCTED BY DON ELLIS
COLOR BY DE LUXE

Today and Tomorrow
Education Lecture Hall
Showtimes: 7, 9, and 11 p.m.

FANTASTIC PLANET

WINNER GRAND PRIX CANNES FILM FESTIVAL 1973

Second Prize JANE FONDA BARBARELLA

"THE MOST UNUSUAL AND PROVOCATIVE WORK OF SCIENCE-FICTION."
—Pat Collins, WCBS-TV

CAMELVIEW TWIN ONE
7th St. & Camelback North
of Sawtooth 945-6178

Culture not available elsewhere

Continued from page 23
 participation in the form of entries is needed. The CAB closed some categories in the contest because there was only one entry.

"Unless we can build inside structure up, the CAB has grown as much as it can. If you can get really gung-ho people, the CAB can grow."

There was no such problem with the literary contest Roslyn claims. "This year we had over 300 short poems entered. Creative writing classes go more into poems than plays. It reflects in our contests and that is pretty interesting," she said. "We have had film contests in the past years where only two or three people would enter, but in the past two years it has really gotten together. We had 14 entries this year; we went out and encouraged students to enter," she said whispering the last part.

Basically, those are the programs the Roslyn Clark and the CAB have provided for the University community this year, and they would like to expand their programs somewhat. "For a long time, we have wanted to bring in directors for the film series,"

she said.

The movie directors would not just lecture on their movies, however. We would "bring in directors to help kids make films," Roslyn wishes out loud, "You can start a fine arts lecture series and really work with the students."

Roslyn has only a few complaints about the CAB. "Student participation on the board at times has really been low," she said.

In Roslyn's first year on the board there were only eight members — spending \$15,000.

In her second year, there were 16 members and this year there are 30. "There is increasing membership on the board. We are still small enough now that if one cog slips, the whole thing falls," she said. "I go back and pick up the crumbs because I can't stand to see a program fail."

"Funding is often a very frustrating thing. You can't always talk the numbers game when talking about fine arts things," she said. Roslyn claims that the argument about prorating the expenditure for a program over the number of students benefited by it is a good way to kill a program that only needs three or four years to really blossom.

She says arranging for and scheduling the movies is no problem, if it is done a year in

advance! "By the time school is out, the series will be put together for next Fall — with some flexibility. This allows for films that weren't available before," she said.

One other problem Roslyn said she has is keeping out of the political infighting in ASASU. "Learning how ASASU works, you really have to know that to keep you head above the water. That is the first thing the chairman has to learn."

"An agreement exists between the board and the activities vice president that the board knows what it is doing."

Being a humanities (art history) major, Roslyn feels she has been a slight disadvantage running the CAB. "Somebody walking in here with a business major could probably do a better job than me," she said. Basically she said, the CAB is an administrative unit, which someone has to organize and operate.

"It helps to have a background in fine arts, but you could pick that up somewhere else. What is important is having a chairman who is interested in the wider aspect of things," she added. "It is a thing where no day is the same. I wonder if out in the real world,

I'll be able to find the same thing."

"Up here there are about 20 or 30 people who really do things — and that is really eerie. What students don't realize is if they were willing to give a little time,

and care they could really make ASASU a part of the University community," Roslyn asserted.

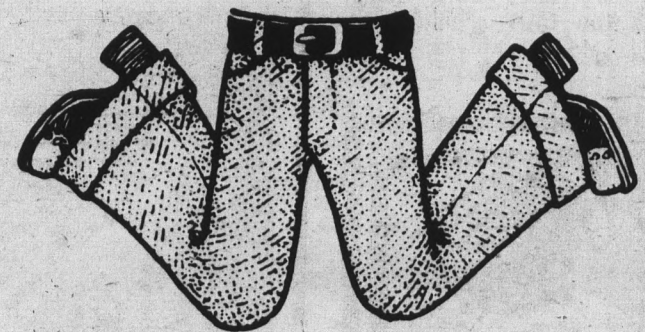
Roslyn Clark has cared more than a little, and she has done more than just a little.

Have a Levi's fit.

In Levi's Jeans.

At the Gap.

Flip over the world's greatest selection of Levi's®. Levi's—that's all we carry. From Levi's for gals. To Levi's Sta-Prest® pants. You'll go nuts.



the
gap®

Los Arcos Mall
946-6532

Open: Mon.-Sat. 10 a.m. to 9 p.m.
Sunday, Noon till 5 p.m.

Also at THOMAS MALL & METRO CENTER



There's no easy way for Charlie Nelson to become Dr. Nelson.

But there is a way to make it somewhat easier. Our way. The Armed Forces Health Professions Scholarship Program. It won't soften the demands of your professors, or those you make upon yourself—but it may free you from those financial problems which, understandably, can put a crimp in your concentration.

If you qualify, our scholarship program will cover the costs of your medical education. More, you'll receive a good monthly allowance all through your schooling.

But what happens after you graduate?

Then, as a health care officer in the military branch of your choice you enter a professional environment that is challenging, stimulating and satisfying.

An environment which keeps you in contact with practically all medical specialties. Which gives you the time to observe and learn before you decide on your specialty. Which may present the opportunity to train in that specialty. And to practice it.

You may also find some of the most advanced medical achievements happening right where you work. Like at the Brooke Army Medical Center in San Antonio, Texas, long noted for its Burn Treatment Center. Or the home of Flight Medicine, the famed Aerospace Medical Division, also in San

Antonio. Or the National Naval Medical Center in Bethesda, Maryland, recognized worldwide for its work in Medical Research.

And if you've read this far, you may be interested in the details. Just send in the coupon and we'll supply them.

Armed Forces Scholarships
 Box A
 Universal City, Texas 78148 Z-CN-44

I desire information for the following program: Army
 Navy Air Force Medical/Osteopathic Dental
 Veterinary Podiatry Other (please specify) _____

Name _____ (please print)
 Soc. Sec. # _____
 Address _____
 City _____
 State _____ Zip _____
 Enrolled at _____ (school)
 To graduate in _____ (month) _____ (year) _____ (degree)
 Date of birth _____ (month) _____ (day) _____ (year)

*Veterinary not available in Navy Program.

ARMED FORCES HEALTH CARE
 DEDICATED TO MEDICINE AND THE PEOPLE WHO PRACTICE IT