

Inside:

A brief look at highlights of state, city and campus politics. page 2

thursday

Arizona State University

Vol. 56 No. 79 February 28, 1974

**state
press**

Tempe, Arizona

Communication snafu's end hope for concert

By Kevin Gustafson

In the middle of January, the agent for the Electric Light Orchestra (ELO) contacted Associated Students and Warren Sumners, associated director of Gammage Auditorium, because the ELO wanted to play in the auditorium, Sumners said.

"I am working with Rick Rusing," said Boyd Dunn,

the activities vice president for ASASU.

Rusing is a co-founder of Fantasy Productions, which is in the business of promoting concerts. ASASU needed the financial backing of Fantasy to bring the ELO to ASU, Rusing said.

"We were trying to get the

ELO for April 18," Dunn said. "We were making arrangements; we wanted them in Gammage. I called Rick Bloom (Creative Management Agency's southwestern university agent) yesterday (Tuesday) and he said they already signed in the area."

"Electric Light Orchestra was available. The dates

were available; yet it wasn't set up," Rusing said. Rick Bloom called Boyd Dunn six weeks ago and said ELO was available to play in Gammage. About two weeks ago, Boyd Dunn told me that ELO was interested in Gammage."

"They were offering a real good price and wanted to play the hall," Rusing said.

Rusing said that he told Dunn to go ahead with the plans; check the dates, send a memo to Warren and get the exact price.

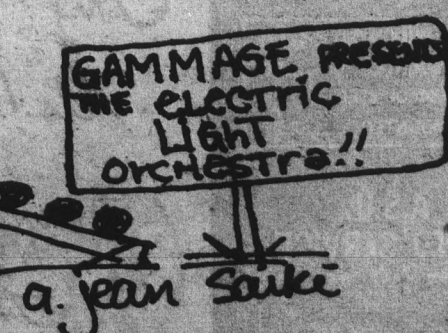
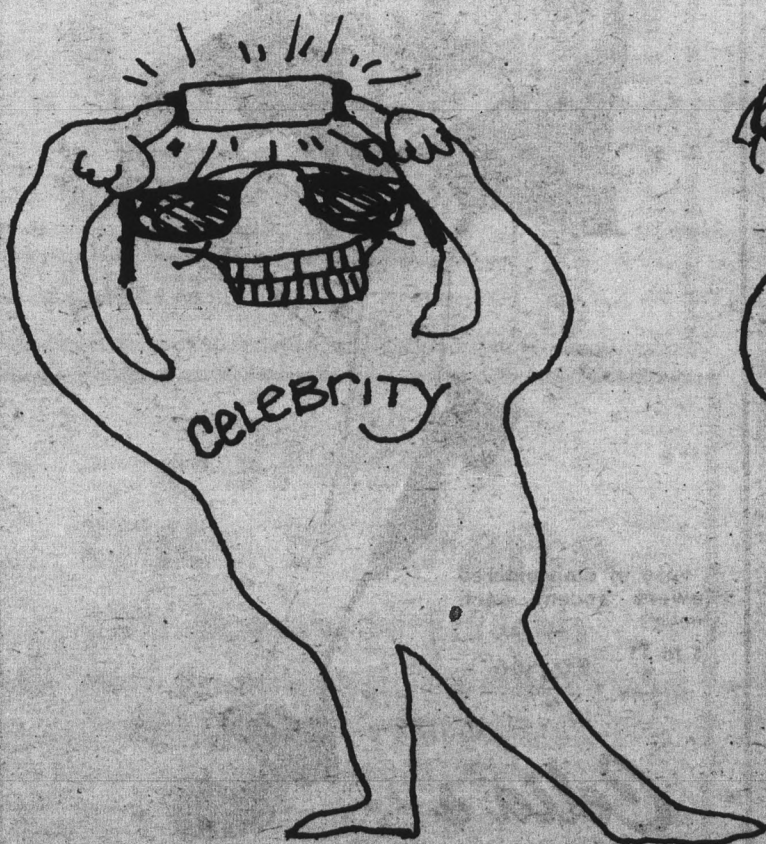
"There was a lack of communications between Rick Bloom and ASASU," Rusing said.

Dunn said part of the problem was finding a proper facility on campus, one with enough seating capacity so ticket prices to students would be reasonably low.

"My job as promoter on campus is to keep tickets as low as possible for students," Dunn said. "I would like to have kept May open with possibilities of the Activities Center."

Rusing said tickets for a concert in Gammage would be about \$3.50 and the tickets for a concert in the Activities Center would be \$2.00.

Doug Clark Productions is presenting ELO May 5 in the Celebrity Theatre in Phoenix, with ticket prices of \$3.75, \$4.75 and \$5.75.



World View

Emergency energy legislation

The House passed emergency energy legislation Wednesday that would allow an oil price rollback and give President Nixon the authority to order gasoline rationing. The bill faces an almost certain veto by the President.

British election close

Opinion polls of today's election in Britain between the ruling Conservatives and Laborites are too close to forecast a winner. A third party, the Liberals have a good chance of holding the balance of power.

Army deliberates freeing Calley

The Army said Wednesday it has not decided whether to appeal a federal judge's order freeing Lt. William Calley on bail while his murder conviction in the My Lai massacre case is being reviewed.

Ethiopian govt. resigns

The government of Ethiopia resigned Wednesday after units of the country's army and navy mutinied in support of demands for higher pay.

Minicars under consideration

Big Four auto makers are considering plans to build minicars, smaller and lighter than their present subcompacts, to compete with successful foreign imports.

Kissinger carries prisoner list

Secretary of State Henry Kissinger flew from Syria to Israel carrying a list of Israeli war prisoners held by Syria. The Israelis have insisted on receiving the list before any agreement to start peace talks is made.

Women and children short of iron

A preliminary government report said that about 95 per cent of the nation's preschool children and women of child-bearing age appear to lack sufficient iron in their diets.

Political happenings on the local scene

Former U. S. Ambassador Raul Castro plans to announce his candidacy for governor at 10 a.m. March 4. Castro indicated the emphasis of his campaign will be the need for strong governmental leadership to combat current problems.

Four years ago, Castro lost a close election to incumbent Gov. Jack Williams. Castro won the Democratic nomination after a two-to-one victory over Mesa auto dealer Jack Ross.

Jack Ross is the only announced candidate for governor at the present. His campaign headquarters are in the Westward Ho Hotel, Phoenix. Hours are 9 a.m. to 5 p.m., Monday through Friday.

In Tempe politics, mayoralty candidate Dick Neuheisel, announced the opening of his campaign headquarters.

Located at 1701 East Southern, it is open from 8 a.m. daily until the April 9 primary election.

Neuheisel is a former member of the ASU faculty.

Tempe councilman Bill LoPiano is also campaigning for mayor of Tempe. His headquarters are in his City Hall office, with hours of 9 a.m. to 5:30 p.m. Monday through Friday, 8:30 a.m. to noon Saturdays.

Along with the usual election of Associated Student officers, on the election ballot this year may be two additional propositions, the Articles of Association and Constitutional Amendment one.

The Articles of Association would restructure Associated Students. It would replace the Senate with a First

Council made up of representatives from the individual college councils.

The Articles are currently in committee. If the committee approves them, and the Senate votes in favor of the committee's recommendation, at least 15 days prior to the election, the Articles will be placed on the ballot for a student vote.

Constitutional Amendment one, if passed, would remove Associated Women Students from the executive level of Associated Students. The Senate is scheduled to consider the amendment in about two weeks. If it approves the amendment at least 15 days before the election, it will also go on the ballot.

Primary elections are scheduled for Apr. 2 and 3. The general election is set for Apr. 9 and 10.

LIGHT
BLUE
DENIM



A vase of embroidered flowers accent each sleeve

5 to 13 \$30.00

Celia's
TEMPE CENTER

STATE PRESS is published by Arizona State University Tuesday through Friday during the academic year, except holidays and examination periods. Entered as second class matter at Tempe, AZ, 85281.

CLASSIFIED
965-7572

NEWS
965-7572

35mm
EKTACHROME
COLOR FILM
PROCESSING

20 EXP. UNMOUNTED \$1.00
20 EXP. MOUNTED 1.50
36 EXP. UNMOUNTED 1.25
36 EXP. MOUNTED 2.25

AT
A.S.U.
PHOTO SERVICE
MATTHEWS HALL 965-3837

A university service facility
for the university community

L.A. STATION



A halter-jacket,
long skirt
in a beautiful
floral print
and edged with
dainty lace



Try
Us!

Bonnie Sue Fashions
913 Mill Ave.
Tempe Center 967-4094

Postal rates go up, up, up again Saturday

Penny postcards are a thing of the past. So are nickel postcards. So are seven cent stamps. And now eight cent stamps are an endangered species.

They won't do you any good come Saturday anyway. Postal rates are going up again.

First class letters sent after midnight Saturday will cost ten cents an ounce as the first postal increase in three years goes into effect.

Walter Kelly, acting director of administrative services, said all levels of mail will increase in rates.

First class will go up two cents from eight cents per ounce. Airmail will increase from 11 cents to 13 cents per ounce, Kelly said.

The Board of Governors of the U.S. Postal Service felt the rate increase

was needed because costs are going up, he said.

"Gas, fuel, transportation by air, paper, salaries and food have gone up. We can't operate while losing money. The post office was set up as a break even organization. We have to be self sufficient," he said.

Kelly said the increase will not be sufficient to meet rising costs and predicted another rate rise within a couple years.

The last postal increase was in May of 1971 when first class rates went up from six cents per ounce to eight cents per ounce. Previous to that postal rates were increased to five cents in 1963 and to six cents 1968.

Kelly said the postal increase does not imply better postal service.

"We're always working for better service, regardless of the rate," he said.

Israeli historian presents lecture

An Israeli historian and senior lecturer in history at Tel Aviv University will visit ASU Feb. 28 and March 1, under the sponsorship of the American Professors for Peace in the Middle East.

Dr. Arnon Gutfeld will be honored Feb. 28 during a noon luncheon at the Memorial Union where he will discuss "The United States and the Arab-Israeli Conflict."

Gutfeld's major fields of research are the history of the American West and the U.S. involvement in the

Middle East. His articles on the West have appeared in the "Pacific Historical Review," "Labor History," and the "Arizona and the West."

He has also completed a manuscript with Professor Bernard Riech of George Washington University entitled "The United States and the Arab-Israeli Conflict." He has been teaching "The U.S. Involvement in the Mideast" at the Israeli Staff and Command College.

NEW LOCATION

Petite Genève **JEWELRY** by George

Proud To Invite You To Our
NEW LOCATION NEXT TO VARSITY BOOK EXCHANGE
 618 S. COLLEGE AVE.—TEMPE, ARIZONA—968-1233

GRAND OPENING
 Friday & Saturday, March 1st & 2nd

Open House with Refreshments While Viewing a unique
 selection of our Custom Crafted Jewelry and fine gems.
 See the ONLY and Most Modern Jewelry Factory in Tempe.

Watch and Jewelry Service Center
 20 yrs. of Swiss Training & Experience
 Time payment plan available
 Open Daily 9 A.M. to 8 P.M.

EARS PIERCED FREE

Jerry's

audio exchange

the arches:

Tempe — 120 E. University Dr. 968-3491

Ardee's

Gifts & Crafts

10% Discount to Students

Indian Jewelry Macrame Supplies, Jute, Beads & Flowers
 Decoupage-Boards & Needlework.

PAINTINGS & UNUSUAL GIFTS
 featured along with candles

Hand Tooled Leather Belts, Handbags and Billfolds

IN TEMPE CENTER 968-3532

Today's Recipe

Cellar Surprise


COMBINÉ:
 Over 1000 pairs of all styles of jeans
 Almost as many shirts, sweaters, and tops
 1000 99c Bottom End T-Shirts
 The largest assortment of used denim in the Valley
 50 railroad ties
 1 phone booth
 1 cellar

Blend well. Add friendly, helpful sales people

Yield: One new Bottom End location in the cellar of
 Campus Drugs near ASU.

Hours: Mon.-Sat. 10-6
 Thurs. eve. till 8:30
 Sun. 1-5

3629 E. INDIAN SCHOOL RD. PHOENIX 955-2480
 811 N. SCOTTSDALE RD. TEMPE 967-9541
 ASU Campus-(Below Campus Drugs on College) 966-3346



the
Bottom
End

Opinion

state press

Jason Shaw

New York v. Phoenix: No contest

Okay it's agreed. It stinks, it's crowded, it's heartless and there are problems with crime and the school system. I'm talking about Fun City, the Big Apple, the Jungle or its proper name, New York City.

I've spent most of my life there and that's why I've stayed away from it for the last few years.

At the rate people leave, I can't figure out how there can still be eight million left. I'm sure if some agency got statistics on all the people who left New York in the last few years, it would be about 10 million.

I have never met anyone who gleefully said, "I'm moving to New York next month." Maybe it's because they are embarrassed to say it. Their friends would probably start laughing.

Outside of New York, the only things said about it, are bad. Everyone feels as if he has to bad mouth the city. People who have never gotten as far east as Illinois say "I know I would hate it," or "I wouldn't mind visiting for a few days, but I wouldn't want to live there."

Phoenicians are the worst critics of New York, probably because so many of them have fled from there to the land of the sun.

If in a casual conversation you say you're from New York they say something like, "Finally got off the sinking ship, heh?" or maybe just a curt "Oh."

I went back to the City Christmas break and saw the things I left behind three years ago with a fresh eye. I feel New York has things worth defending.

When someone leaves the "rat race" of New York for the instant utopias of The Lakes, Fountain Hills, Sin City, etc. ad nauseum, they leave behind: The Museum of Modern Art, the Metropolitan Museum, The Metropolitan Opera, Broadway theater and thirty different foreign films showing every week)

They leave Little Italy, Chinatown (and as a result real Italian pizza and real Chinese food) the greatest restaurants, a ride on the Staten Island Ferry (still only

five cents), all-night cafes (not plasticized hamburger joints), sidewalks that people walk on, lessons for everything (where else can you find a class in Irish Gaelic) and a city that is constantly alive with every variety of person. No matter how bizarre, normal, rich, poor or perverted you are, New York accepts you.

When a person moves from New York he is leaving things that are the best qualities of man: the art, the music, all the things that have made man a special animal.

Comparing Phoenix, and likewise many of the other cities in the U.S., to New York is like comparing soda pop to a good scotch. Soda pop just quenches your thirst with a sugary flavor, a scotch goes down smooth, quenches your thirst and gets you high . . . but, with an over indulgence, you get sclerosis of the liver.



'WE SAVE OUR WORST PUNISHMENT FOR YOUR TYPE, COMRADE—WE MAKE YOU RICH AND FAMOUS EXILES!'

ELP symbolizes strength, confusion

Emerson, Lake and Palmer's sellout performance Saturday in the Tucson Community Center left the crowd emotionally and physically drained.

Their music was intense and loud, as if the leaders of electronic music were out to prove their technological superiority over other bands.

ELP presented a problem to rock purists because their music did not always fit into any one category. They frequently fell into digressionary periods of folk and jazz.

Drummer Carl Palmer was completely surrounded with his drums, gongs, overhead bell and kettle drums. There was so much equipment that he was difficult to see.

The stage, filled with equipment, included a revolving pedestal for Palmer's drums, a rainbow of lights covering the stage and six keyboards reserved for Keith Emerson.

In the rear of the stage, a circular screen was used for presenting images symbolic of strength and confusion.

The real hub of the band is Emerson. The quadraphonic sound system is especially suited for his synthesized music.

Sometimes clarity was lost because the music was so loud. It was not the sound system that could not handle the noise level, but the listeners' own ears.

When the Music was loud, it became consuming. There was no need to think. Emerson's frenzy culminated when he rocked one synthesizer around the stage and then finally threw it to the floor.

Lake gave a fine acoustical version of "Lucky Man" and sang a song from his earlier group, King Crimson.

Emerson, Lake and Palmer are master showmen and they devastated the crowd with their strength and versatility.

NEA poll provides bad news for Nixon

A poll taken by a national teacher's organization shows that 47 per cent of the responding members feel President Nixon's ability to govern is "greatly impaired" by Watergate.

An additional 40 per cent who answered the questionnaire said that his ability to govern is "somewhat impaired."

A report on the poll was issued to the board of directors of the National Education Association (NEA) on Feb. 15 in Washington D.C. by Terry Herndon, executive secretary of the organization.

A second part of the poll showed that 47 per cent of the teachers believe the House of Representatives should proceed with impeachment proceedings.

Forty-five per cent said Nixon should resign.

Dr. Victor Baumann, an NEA spokesman at ASU, said, "This is a national statement by a national officer." He added that there has not been a poll conducted of NEA members at ASU.

Bob Frazier, the director of professional development for the NEA in Phoenix, said that there are approximately 1,300,000 members in the NEA.

Frazier said that between 1,750 and 1,900 persons are usually contacted in a poll of this nature and this number will give an accurate indication of sentiment. Frazier added that this was probably a selected sample type of poll and is very similar to those conducted by Harris and Gallup.

Parking lot closes March 4

Parking lot 76, which runs north and south from University Drive to the Forest Hydrology building and east-west from McAllister to Van Ness, will be closed indefinitely as of March 4.

The parking lot will be

closed because of construction beginning on a new physical science addition building adjacent to it.

NEWS
965-7572

STUDY IN GUADALAJARA, MEXICO

Fully accredited University of Arizona GUADALAJARA SUMMER SCHOOL offers July 1-August 10, 1974 courses in ESL, bilingual education, Spanish, anthropology, art, folk dance and folk music, geography, government and history. Tuition \$170; room and board in Mexican home \$215. For brochure write: International Programs, 413 New Psychology, University of Arizona, Tucson, Arizona 85721.



Mello Jams at the QUALITY INN

3541 E. Van Buren—273-7121

Sweet Music in the Lounge by M & M

No Cover—Cheap Prices—Freaks Welcome
Thursday is Ladies Night

COLLEEN

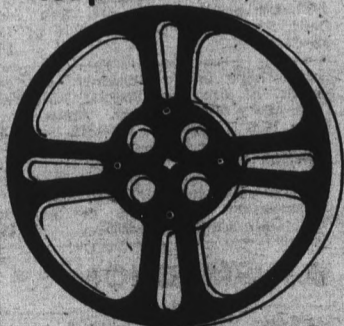
is cutting hair at

HAIRTAILOR EAST

for appointments call - 838-9076
LAKESHORE VILLAGE

CINEMEDIA V Film Competition

1st prize — \$1,000



Entry forms available now at your local Broadway store. Entry deadline — June 15, 1974

Winning films to be shown in The Broadway's Film Festival.
THE BROADWAY



IF YOU HAVE AN APPETITE TO CREATE GOOD MUSIC

Write down some of your good lines and enter them in the Musical Composition Contest. There are two appetizing categories: One is POPULAR, consisting of rock, jazz, etc.; the other is SERIOUS, such as concertos, operas, quartets.

YOU CAN EVEN MAKE MONEY AT IT: First Prize - \$50; Second Prize - \$25; for each category.

ENTRIES ARE EASY: Pick up forms in Memorial Union Room 252. Deadline for entries is March 8. Winners will be notified by mail and a concert is scheduled April 19.

THE 7TH ANNUAL CULTURAL AFFAIRS BOARD LITERARY CONTEST

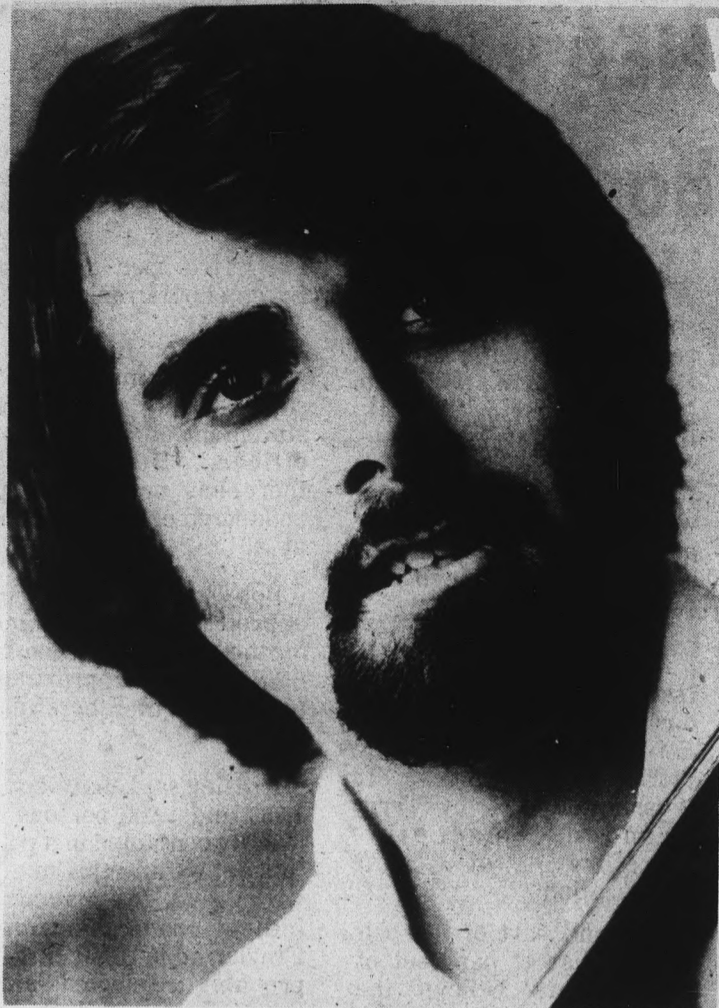
Three Kinds of Words



CASH PRIZES
For each of the above categories:
First Place - \$75.00
Second Place - \$50.00
Third Place - \$25.00

CONTEST DATES
January 21 - Pick up forms & rules.
March 4-15 - Submit entries, forms & fees.
March 15 - Contest deadline

Memorial Union Room 252



Jonathan Abramowitz

Cellist plays tonight in Music Theater

Award-winning cellist Jonathan Abramowitz, who made his New York debut at Carnegie Hall, will perform at ASU's Music Theater tonight at 8 p.m.

Abramowitz will be accompanied by pianist Bernard Rose as part of this season's Young Concert Artist Series.

After performing as principal cellist in the University of Maryland Symphony Orchestra when he was ten, Abramowitz went on to win first prize at the National Society of Arts and Letters Competition in

Washington, D.C.

In 1966, he played in Carnegie Hall, and was a medalist in the Geneva International Competition in 1967.

The New York Times called Abramowitz an "exciting musician... and uncommonly interesting artist."

Tonight he will be playing pieces from Brahms, Schumann, Tchaikowsky, Ravel, Hindemith and Ginastera.

General admission tickets are two dollars and will be on sale at the Gammage box office, 965-3434 and at the Music Theater tonight.

CARPET SPECIALS

9 x 12 used rugs-\$5.00

All Sizes In Stock

CARPET HOUSE

1516 E. Van Buren, Phx.

MRS. ANN

Palm Reader & Advisor

There's no problem so great she can't solve it — love, marriage or business. She can tell you all about yourself — present, past and future — you will gain.

967-9612

1123 Apache Blvd., Tempe
Open Daily 9 A.M. to 11 P.M.

AET LAS VEGAS NITE

Friday, March 1 — 8 pm

Band - Refreshments - Prizes

717 ALPHA DRIVE TEMPE

CULTURAL AFFAIRS PRESENTS

FRAMES

fifth annual film contest

cash prizes

1. \$75

2. \$50

3. \$25



final entry april 26

OPEN TO ALL ASU STUDENTS
for INFORMATION & ENTRY BLANKS
go to ACTIVITIES CENTER M.U.

BUY
SELL

CLASSIFIED ADS

TRADE
LEASE

Classified advertising must be paid for in advance either in person or by mail to the State Press, Stauffer Hall, A 111. No ads accepted over the phone. Our new office open daily 8-5. Ph. 965-7572. STUDENT RATES: \$1.30 minimum charge for three 20 letter space lines. 35 cents per line additional for each 20 letter space line over three. For each consecutive day after the first day, the rate is one-half the initial charge. If the ad is not run consecutively, the first day rate will apply. Corrections to ads will be made if noted before the second printing. NO REFUNDS WILL BE MADE FOR CLASSIFIED ADS PLACED IN THE STATE PRESS.

COMMERCIAL RATES: Add 20% to the student rate. All ads not placed by students for student activities will be charged at the commercial rate.

DEADLINE: 3 p.m. two days before publication. (An ad for Friday must be placed by 3 p.m. Wednesday.)

● FOR SALE

Townhouse, 3 bdr., 2 1/2 bth, selfcleaning oven, Shag carpet. 966-5772. (3/1)

PAIR Electra — Voice Speakers. Brand new \$100. 967-7098. (3/1)

U finish. Sale at cost. USED FURNITURE Priced to sell now Discount to ASU/I.D. Butlers — 1711 Apache. (2/28)

Fender Stratocaster Fender AMP and Case. Call Ray at 966-5910. (2/28)

● AUTOMOBILES

64 Volvo 5 W \$900, new paint, 30 mpg. 1041 Mariana #2 after 7 p.m. (3/1)

● ANNOUNCEMENTS

Concert — The Fabulous Bullets in the Maricopa Room, Sat. at 9 p.m. (3/1)

● TYPING

TYPING—IBM SELECTRIC-PICA TYPE-ROSEMARY VANCE. TEMPE 967-9143. (5/3)

PROFESSIONAL TYPING. IBM PICA. EXPERIENCED. 50c - 60c/p. 956-7983. (5/3)

IBM - PICA OR ELITE. EDITING, GRAD PAPER EXP. NEAR ASU. 966-1684. (3/15)

TERM PAPERS, RESUMES, THESESS DISSERTATIONS. PROFESSIONAL, GUARANTEED WORK. IBM. MAXINE MULLEN 955-0763. (5/3)

● RENT

2 roommates (male or female) to share 4 bdrm. house near Los Arcos Mall with straight grad. student. March 1 through May. \$65/mo. + 1/3 utilities. Call Reyn Dubois at 949-5720 after 5. See house at 7520 Pierce St. Scottsdale. (2/28)

● SERVICES

EUROPE - ISRAEL - AFRICA. Student flights all year round. CONTACT: ISCA, 6035 University Ave., #11, San Diego, Calif. 92115. Tel: (714) 287-3010 or (213) 826-5669. (5/3)

Girls—shape up for summer. Lose wt., inches, or firm up. Special ASU rates. Call now - offer limited. Venus Health Club, 1870 E. Apache, 966-6389. (3/1)

TYPING 838-8291. (2/28)

Remove unwanted hair permanently. Free consultation Electrolysis of Scottsdale. Mrs. Gail Walker 945-4245. (3/7)

● INSTRUCTION

Skydiving instruction - sales & service - learn freefall from the best in the world. COLUMBINE PARACHUTE CENTER, CASA GRANDE, AZ. 838-7125. (3/1)

PARACHUTING CLASS. \$1 OFF WITH AD. LOW RATES. SIGN UP NOW. 275-0010. (5/3)

SPORTS
965-7572

NEWS
965-7572

CLASSIFIED
965-7572

state
press

sports

Golfers tee off

The ASU golf team will host the Arizona Collegiate Tournament today and Friday at the Ahwatukee Golf Course south of Tempe.

ASU will compete against Northern Arizona, Arizona, Grand Canyon College and Scottsdale, Mesa, Phoenix, Glendale and Yavapai junior colleges.

ASU's last competition was two weeks ago in the Pan American Invitational, where they finished sixth among 19 teams with a 54-hole total of 905, 37 strokes behind first-place Florida.

The leader for the Sun Devils was Charles Gibson, 218, followed by Rocky Waitt, 225; Gary Jacobson, 230; Bob Burton, 232; and Jim Strong, 239.

Women's gym meet

The ASU women's gymnastic team which last weekend won the Arizona District Qualifying Meet in Tucson will host the University of Arizona and Glendale Community in the ASU Invitational 6:30 p.m. Friday, in the women's gym.

ASU beat Arizona 187.90 to 160.05 in the District Qualifying Meet.

The ASU Invitational and a March 9 meet at Long Beach State are preparation meets for the Western District Qualifying Meet March 15 and 16, Coach Monika Sublette said.

Sun Devils win 15-0

The ASU baseball team won its second game in a row against Nevada-Las Vegas 15-0.

Jim Peterson was the winning pitcher. He pitched seven

innings of one hit ball and Dale Hrovat pitched the last two innings also giving up one hit.

Gary Allinson, Jerry Maddox and Clay Westlake homered for the Devils.

Women's basketball

The national Chinese women's basketball team will be in the Valley playing the Arizona State champions, the Westerners, this weekend.

The teams will play 8 p.m. Saturday at Grand Canyon

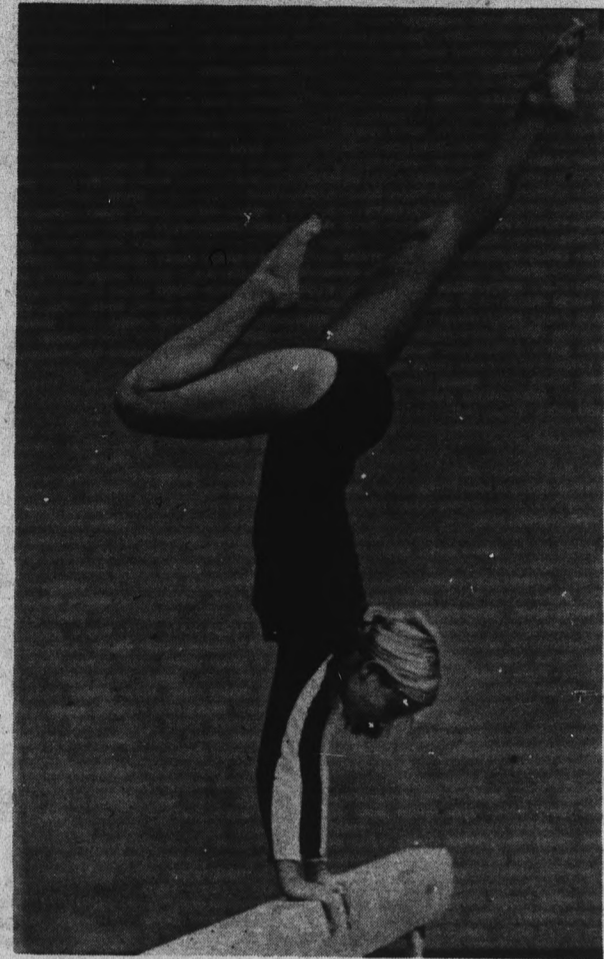
College and 2 p.m. Sunday at Gerard High School.

Admission will be \$2 for adults and \$1 for students and children. Advance tickets can be purchased at Kerr Sporting Goods stores.

Student ticket pick-up for Saturday's basketball game against Arizona will be today and Friday at the ticket office of Sun

Devil Stadium.

Tickets not picked up will go on sale to the public Saturday morning.



Heidi Welchlin of the ASU women's gymnastics team works out on the balance beam in preparation for this weekend's meet.

B.S. & M.S. Electronic Engineers

CAMPUS INTERVIEWS

MONDAY, MARCH 4

at the

College Placement Office

Unusual project responsibility within 8 weeks with third generation automatic test system that will fault isolate chip level. Considerable circuit analysis, test program development, diagnostic language programming, and hands-on system checkout.

It very effectively combines hardware and software plus systems engineering.

Those with good design background are invited to sign up for a technical interview

— Lockheed California Company interviewing on campus, Monday, March 4.

If unable to attend please send resume to Gene Mitz, Lockheed College Relations Coordinator, P.O. Box 551, Burbank, California, 91520.

AN EQUAL OPPORTUNITY EMPLOYER

FEBRUARY
GRAND OPENING

by
**NUNN
BUSH**



Brown, Navy,
Burgandy

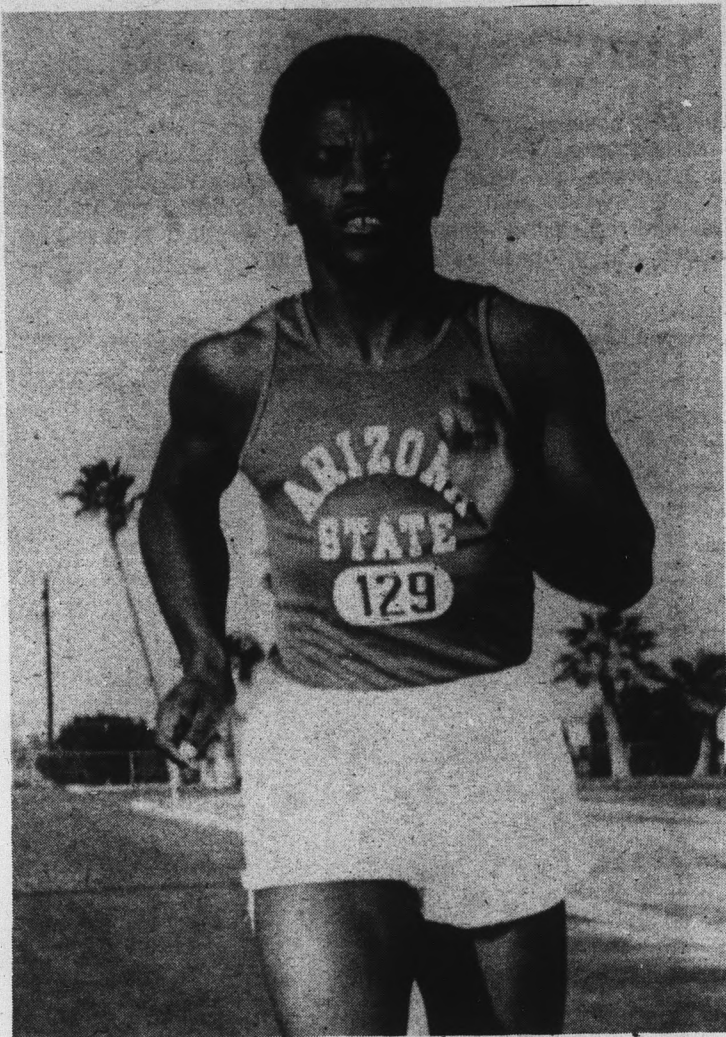
\$35⁰⁰

MEN
MEN
GARMENTEUR, LTD.
MEN
MEN

130 E. UNIVERSITY
TEMPE • 966-6840

mon-sat 10-6
thursday till 9
or by appointment

"new dimensions in men's clothing"



Charlie Wells

Tough UCLAns pose challenge

The 1974 ASU track team opens the season with a challenge. They meet defending National Champion UCLA at 7 p.m. Saturday at Joe Selleh track.

Coach Baldy Castillo's team, which finished third in the nation last yer, features Charley Wells, WAC champion in the 100-yard dash, Carl McCullough and Phil Chewning in the sprints, Mark Rafferty and Bob Franek in the 880 and Larry Lawson and Ed Zuck in the mile.

UCLA features Benny Brown in the 440. Brown finished second to ASU's Maurice Peoples in the NCAA and AAU tournaments. Peoples has used up his collegiate eligibility and cannot run for ASU in the meet.

Wrestling tourney

ASU will host the WAC wrestling championships today and Friday at Sun Devil Gym.

Preliminary matches will be at 1 p.m. today and the semi-finals will follow at 7:30 p.m. The consolation round will be 1 p.m. Friday and the finals that evening at 7:30.

ASU, with a season record of 10-3-1, will be a darkhorse in the meet behind favorite BYU which was 16-0 for the season.

"We definitely have a shot at the title," said ASU coach John Wadas, "however, we'll have to put five wrestlers in the finals in order to gain enough points to contend." Probable entries for the Devils will be Joe

Soell (118); Jim Weed (126); Tim Jeffries (134); Randy Jeffries or Larry Glenn (142); Frank Penn (150); Ralph Geisendaffer (158); Eric Stevens (167); Bruce Young (177); Curtis Cook (190); Mike Bever (HWT).

Tim Jeffries, Penn, Geisendaffer and Stevens appear to have the best title chances for ASU.

The top three wrestlers in each weight class qualify for the NCAA championships in Ames, Iowa, March 14-16.

Afternoon sessions at the WAC meet are free and evening sessions are \$2 for adults and \$1 for students.

**RIDIN' ROPIN'
WRANGLIN'
and all that SHOOT
WESTERN BULL**
pulled together by
MEL BROOKS
in his new
COMEDY CLASSIC

**BLAZING
SADDLES**

*brought to you by Warner Bros-the people
that gave you "The Jazz Singer"*



**STARTS
FRIDAY**

From Warner Bros. A Warner Communications Company

DAILY AT
1:00-2:45-4:30-6:20
8:10-10:00-P.M.



UNIVERSITY I WEEKDAYS 6:30 - 9:30 Sat. & Sun. 1:20 - 3:55 - 6:35 - 9:15	UNIVERSITY II WEEKDAYS 7:15 - 9:35 Sat. & Sun. 2:40 - 5:00 - 7:20 - 9:40
PAUL NEWMAN ROBERT REDFORD ROBERT SHAW A GEORGE ROY HILL FILM THE STING  ...all it takes is a little Confidence.	Where were you in '62? <i>American Graffiti</i>  A LUCAS FILM LTD./COPPOLA CO. Production A UNIVERSAL PICTURE • TECHNICOLOR®