

wednesday

Arizona State University

Vol. 56, No. 74 February 20, 1974

# state press

Tempe, Arizona

## 'Damage is done' says regent; stadium rental doesn't matter

By Debbe Nelson

Establishment of a professional football franchise in Phoenix would hurt ASU athletics whether they do or do not rent Sun Devil Stadium to a professional football team, Arizona Board of Regents

members Rudy Campbell and Margaret Christy said, Tuesday.

The regents at a meeting Saturday decided to consider renting the stadium to a professional football team.

The board said it would

not consider the proposal until Phoenix shows definite intentions of building a permanent stadium after the National Football League grants a Phoenix franchise to a responsible organization.

"When professional football comes to Phoenix

the damage will be done to ASU as it is. We might as well get what we can out of them," Campbell said.

Temporarily renting Sun Devil stadium to the professional team would draw revenues from the lease and create a cooperative relationship between the two teams, he said.

"We could maybe play the Fiesta Bowl in their stadium, along with other big games we hope to get against teams such as Notre Dame," he said.

Campbell said the term "temporary rental" would have to be clearly defined. He suggested a one year rental.

"I don't want to be married to them (the professional franchise). We need to keep a way out open," he said.

"If the Phoenix City Council decides they don't want to build a stadium, then we don't want them," he said.

Campbell said the regents' decision to consider rental of the stadium promises only talk to professional franchise representatives with "no strings attached." "We're going to see if our (Regent's) demands can be negotiated," he said.

Regent Christy said she would consider renting Sun Devil Stadium to a professional team because, "If they're here, the harm is done."

She said although she doesn't want professional football to come to Phoenix, once it is here, it would not hurt any more to let them use ASU's facilities temporarily.

Christy said statistics compiled by Robert

Brodhead, consultant to prospective franchise owner Karl Eller, indicated presence of a professional football team near a university shows college football "is bound to suffer."

Brodhead disagreed. He said his report showed little correlation between establishment of a professional team near a university and a drop in college football revenue.

"We found that attendance fluctuated with the won-loss record, not because of competition with a professional football. However, if the college has a losing team, the attendance will slip faster than if there was no professional team," he said.

Brodhead said ASU has one of the most successful teams in the country.

"If they continue the same they will not be hurt," he said.

A professional stadium and Sun Devil Stadium together could not hold all of Arizona's football fans, he said.

Athletic Director Fred Miller said in any situation he knows of where professional football has rented university facilities, erosion of the university's athletic program has resulted.

"You can do whatever you please with statistics," he said, referring to Brodhead report.

ASU President John Schwada said, "This commitment (to use Sun Devil Stadium) is being asked with the knowledge that experience elsewhere shows it will most likely have a serious negative effect on university athletic programs."



### Mismatched

Twenty-month-old Chris Ingalls was no match for ASU gymnast Jim Nelson in this battle for control of the gym floor Saturday. Ingalls strolled across the mat during the ASU-New Mexico gymnastics

meet, but the quick-thinking Nelson whisked him back to his mother's arms. Nelson went on to win the vaulting competition and ASU won the meet.

Photo by John Phillips

Inside:

Campus officials are asking the City of Tempe to help set up a local bus system. page 5

# World View

## Mitchell, Stans stand trial

Despite their renewed protest, former Atty. Gen. John Mitchell and former Secretary of Commerce Maurice Stans went on Trial Tuesday, accused of exerting corrupt influence in exchange for a secret \$200,000 contribution to President Nixon's re-election campaign.

## Nixon intends veto

Federal energy chief William E. Simon told Congress President Nixon intends to veto the emergency energy bill in its present form.

Simon also said an additional 2,000,000 barrels of gasoline will be sent to 20 states to relieve long lines at service stations.

## SALT talks resumed

U.S. and Soviet negotiators met Tuesday for their first session of the strategic arms limitation talks in three months, in an apparent effort at concrete achievements before President Nixon's June trip to Moscow.

## Greece arrests Communists

The Greek government announced the arrest of 35 top members of the outlawed Communist party and members of its youth branch and charged they planned to overthrow the Greek regime and impose a Communist dictatorship.

# Car pool program gets rolling today

More than 150 car pool forms have been turned in to the Associated Students office with an average of 25 new forms being submitted daily, said Rick Weiss. Weiss is head of the ASASU-sponsored project designed to develop a car pool system for the ASU community. "The response has been good though not fantastic," Weiss said. "We are hoping to develop more of an incentive than just saving gas, like the incentive of preferential parking for car poolers."

ASU has 8,000 commuter students. Information will be fed into the ASU computer this afternoon for a print-out which will coordinate the schedule of commuter students interested

in a car pool, Weiss said.

The names will be grouped by numbered areas of commuters and their schedules. "It may turn out that some single square mile areas with just one or two people will be consolidated together with others to accommodate seven or eight people," he said.

Students who find their name in print and are successful in joining a car pool should contact Weiss or Rick Clark at 965-3142 to have their names removed from the list.

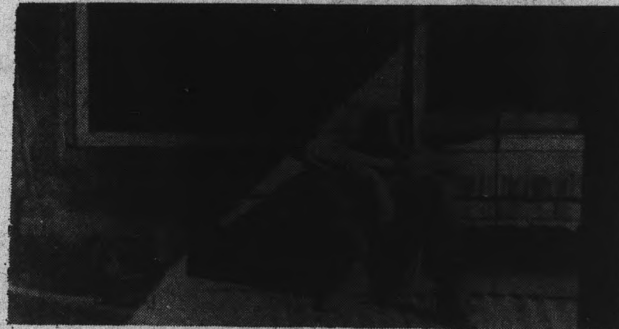
The program will continue indefinitely until responses

decline to the point where all interested students are in car pools, Weiss said.

One of the five boxes on campus to collect information forms for the car pool was stolen last week from the Social Science building. Students who turned in a form to that box and whose names do not appear in Friday's Listing should fill out another form, Weiss said.

Students may obtain car pool request forms at major bulletin boards on campus. "We're trying to get one in every building," Weiss said.

## "Does Anybody Care" Become A Volunteer Now!



Contact: Conrad Martinez

### COMMUNITY SERVICES PROGRAM

Academic Services Bldg., Room 111  
ARIZONA STATE UNIVERSITY  
965-6305

Yesterday's  
**PROPHECY**

Today's  
**CURRENT EVENTS**

KHCS Radio, 1010 kc  
Weekdays 2 P.M.



**ARTIST & DRAFTING  
SUPPLIES**

Crafts - Picture Frames  
Decorating Material

Open Mon. & Thurs. Nights  
10 Percent Discount to Students  
111 E. University — 967-4482

BLACK & WHITE AND COLOR

### SLIDES

FOR YOUR PRESENTATIONS  
MADE FROM YOUR ART WORK,  
GRAPHS, BOOKS, & MAGAZINES

OR

**DUPLICATE SLIDES**  
MADE FROM YOUR ORIGINALS

AT

**A.S.U. PHOTO SERVICE**

MATTHEWS HALL - 965-3637

A university service facility  
for the university community

OPEN AUDITIONS AT

**LEGEND CITY**  
CONTINENTAL RECREATION INC.

1200 W. Washington Tempe  
275-8551

SINGERS

ACTORS

MUSICAL GROUPS

MAGICIANS

JUGGLERS

INSTRUMENTALISTS

DANCERS

PUPPETEERS

VENTRILOQUISTS

COMEDIANS



**SATURDAY, FEB. 23, 10 am**

Single Performers & Singing Groups

**SUNDAY, FEB. 24, 10 am**

Instrumental Groups & Rock Bands

**EQUAL OPPORTUNITY EMPLOYER**



They actually think. They get darker as the sun gets brighter.

And vice-versa.

**New from Lee Optical.**  
**Incredibly smart sunglasses.**

PHOTOSUN™ Sunglasses.

They adjust by themselves to give you just the right amount of protection and visibility in sun or shade. Bright day or cloudy.

**PHOTOSUN**  
Sunglasses

One pair of sunglasses for all kinds of days.

Come in and get a pair of sunglasses that out-smart the sun.

**TEMPE**

14 CONVENIENT VISION CENTERS  
THROUGHOUT ARIZONA  
Open Monday through Saturday.

Tempe Center/2032 S. Industrial Park Ave.  
967-7864 967-7333

**LEE**  
Optical



**In bike theft attempt**

# Students arrested

By David Kohn

Two ASU students were arrested on campus Monday night for allegedly attempting to steal a bike.

Lt. Irving Jaffe, of the University Police, said, "One of our men spotted two men attempting to steal a bike. One attempted to escape and was caught by two other policemen."

Both men are students, Jaffe said, but he refused to release their names at this time, since neither person has been formally charged.

Both men have been processed and released, pending a decision by the County Attorney's office on filing charges, Jaffe said.

A charge has not been made, Jaffe said, because of a new criminal procedure instituted statewide in Arizona. Under this new procedure, an arrested individual might not be charged with a crime when he is arrested, said deputy county attorney Roger McKee.

"Where a person is locally

## Governor's works go to ASU library

ASU was lucky to get former Gov. Dan E. Garvey's collection of newspaper clippings and photographs, said Sue Abbey, assistant archivist at the Hayden Library.

Garvey, the eighth governor of Arizona, who died Feb. 5 at 87, lived in Tucson most of his life. He was a big supporter of the University of Arizona, which probably would have received the memorabilia had Abbey not requested it first.

The late Governor's papers now sit on shelves in the archives room on the fifth floor of the Hayden Library. The papers are awaiting cataloging and indexing by Abbey and the governor's son, Dan Garvey, a professor of communications at the University of Missouri, she said.

The clippings and pictures will not be displayed because they are too current and because Gov. Garvey served only one term, Abbey said.

"I am collecting Garvey's papers now because they will be of value to researchers in the future," Abbey said.

Abbey said the Garvey collection will be kept in the library under the supervision of Charles C. Cooley, director of special collections.

identifiable," Jaffe said, "we process them by taking their prints and photographs." Then the arrested individual may be released, while the police forward their information to the County Attorney's office. The decision whether to lodge a charge or not is up to the Assistant County Attorney in charge of the Tempe area.

"This is a new procedure, so it's hard to say what the usual time for a decision will be," Jaffe said. He estimated however, that the

final decision would take no more than a week.

Bike thefts are a serious problem on any campus, he said. At ASU at least ten bikes are stolen every week," he said. University Police statistics show six bicycles were stolen during the past three-day weekend alone.

STATE PRESS is published by Arizona State University Tuesday through Friday during the academic year, except holidays and examination periods. Entered as second class matter at Tempe, AZ, 85281.

KWFM presents



# FOGHAT

SUN. MAR. 3 7:30 PM  
TUCSON COMMUNITY CENTER  
EXHIBIT HALL

TICKETS: NON-RESERVED, FESTIVAL STYLE SEATING  
\$5. in advance / \$5.50 day of show  
Tickets Available at Main Box Office, Phone 791-4266, and at all  
Box Office locations, also El Con Shopping Center, Davis,  
Monahan Air Force Base, Fort Huachuca and Pueblo Ticket Agency  
Dial-A-Ticket 882-8626.

Produced by CONCERT ASSOCIATES

## JEWELS INTERNATIONAL

OUR ESTATE DEPARTMENT HAS ACQUIRED  
A PROMINENT JEWELERS INVENTORY  
AND WILL OFFER A

# \$200,000 INVENTORY LIQUIDATION SALE

**FOR 6 DAYS ONLY**

WEDNESDAY, FEB. 20

THURSDAY, FEB. 21

FRIDAY, FEB. 22

SATURDAY, FEB. 23

MONDAY, FEB. 25

TUESDAY, FEB. 26

DIAMOND JEWELRY

WATCHES

GOLD JEWELRY

**1/3 TO 1/2**

# SAVINGS!



JEWELS  
INTERNATIONAL

BY G. DARRELL OLSEN

TEMPE STORE ONLY

967-8917

In University Arches

130 E. University

# Opinion

# state press

## The end begins

This weekend may prove to be the beginning of the end for the Arizona Board of Regents. They demonstrated themselves unable to withstand outside political pressure, substituting their concern for the well-being of the University with concern for self-preservation.

The legislators threatened to take control of Sun Devil Stadium away from the regents because of their opposition to its temporary use by a pro football team. The regents declined to discover if the threats were only threats, and they agreed to consider any reasonable offer from a responsible group if a franchise is granted.

Prior to their great reversal, the regents seemed to show a legitimate interest in the welfare of the University and its athletic program, rather than interest in lining their pockets.

They expressed honest concern that the moral and financial support of the ASU athletic program would decline, adversely affected by the competition of a pro team.

The regents further expressed concern

that the stadium use, presented as only temporary, would grow into a permanent arrangement. The comments by Rep. W. A. "Tony" West, R-Phoenix, would certainly give some substantiation to the regents' concern. (He indicated a personal survey of 60 House members showed 50 members opposed to constructing a second stadium for the pros. At the same time, the survey showed most legislators would like to see pro football in Phoenix.)

The regents, in initially opposing pro use of the stadium, were not in an enviable position.

They were appointed by the governor and approved by the legislature to oversee the operation of the universities, yet when they acted to protect the University legislators decided it was time to step in to help determine policy.

Since the regents bowed so completely to the pressure exerted by the legislators, the beginning of the end may have arrived. Once such an effective, easily applied toll as power is discovered by politicians, it is not soon forgotten.

## Letters

### EDITOR:

Preliminary organization of the recent MU Student Photography Contest suggested that this year's competition would avoid the pitfalls besetting previous contests — one that would appeal to all facets of photography rather than being restricted to abstract, art photography.

However, selections from this year's contest affirm that the competition has changed only superficially. Clarity, color and composition take a thumping from the bizarre, obscure and out of focus.

I suggest the contest be made more equitable and appealing to entrants by inclusion of photographic categories including art, portrait, wildlife, landscape, etc. with awards given for winners in each category.

I also suggest that the judges be of diversified photographic specializations to insure competence in the judging of each of the categories.

I am convinced that only with this type of diversification in appeal can the annual MU photo contest merit the general theme of "student photography."

George J. Gamboa



TRIUMPH

# ASU to ask Tempe's help with buses

The City of Tempe will be asked to participate in setting up a local bus system which would ferry students and city residents to ASU.

Mike Arruda, ASASU administrative vice president, said a committee of University representatives probably will approach Tempe City Hall in the next two weeks. Members of that committee are not yet known, Arruda said.

The bus system proposal was made about a month ago to ASU's Ad Hoc Parking Committee by American Transit Corp., a St. Louis firm, said Arruda.

Dr. David Gourley, chairman of the committee, said American Transit proposed a bus line that would operate Monday through Friday. The proposal suggested bus routes south to Baseline Road along Mill Avenue, Rural Road and McClintock Drive.

Another suggested east-west route would run close to the apartment complexes, Gourley said.

American Transit estimates the proposed bus

system would cost \$150,000 to \$175,000 a year, depending on whether old or new buses are used, Gourley added.

Who will pay for the proposed bus line is unknown, Arruda said, who is also a member of the Ad Hoc Parking Committee.

"We're trying to get a grant to do a feasibility study on it," he said.

He said the study would determine where potential bus riders are, which ones would use it and when they would use it, he said.

He and ASASU President Mark Kerrigan last week asked an official of the Maricopa Association of Governments (MAG) how to obtain funds for a feasibility study.

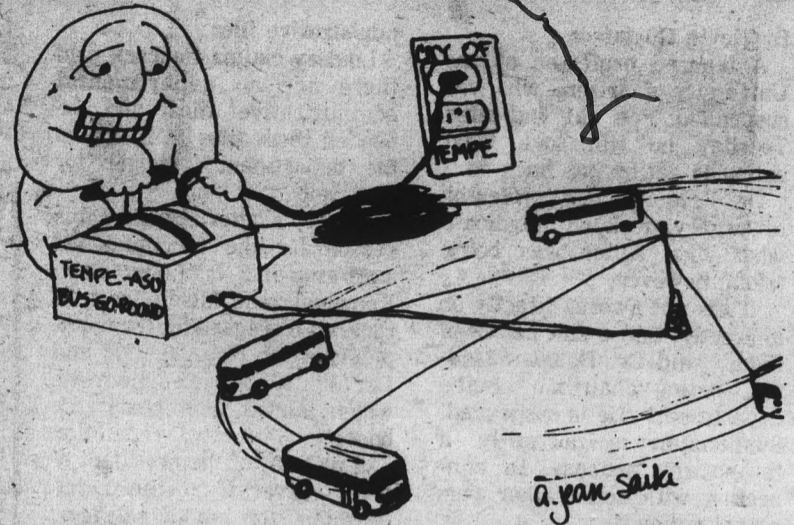
Roger Brady, manager of MAG's transportation and planning staff, said his organization is checking to see if federal funds can be made available for a study.

If funds for a study are found, they probably will come from the Urban Mass Transportation Administration, a division of the Department of Transportation, Brady said.

Jim Casey, assistant to the Tempe city manager, said the city might participate in setting up a feasibility study for the proposal.

"It might be done with city help," Casey said. "A basic feasibility study isn't so hard that local talent can't be used."

"Kerrigan is going to find University talent, then sit down with me to determine if money (for outside consultants) needs to be used," Casey added.



## Citron's Surplus

Jefferson at 2nd St. in Phoenix for

- Navy denim seafarer bellbottoms, white & chambray
- Tankers
- Buck Packs & Bike Bags
- Ponchos & CPO Shirts
- White & 13 Button Belts
- Parachute canopies

## Student Nurses Needed!

RN's - LPN's - NA's - Students

Any shifts, any days, we pay weekly — no fee. Assignments in your own area.

**Nurses Central Registry**

2536 E. Indian School, Phx. 248-7200

## TERADYNE MAKES SENSE

if you're an ELECTRICAL ENGINEER who

.... loves engineering for its own sake and is just as comfortable with a soldering iron as with a slide rule.

.... wants the freedom to follow your interests as they develop—whether they lead to circuit design, test engineering, field engineering, applications engineering or software development.

.... wants to translate your technical knowledge into practical, economical solutions to industrial problems.

.... wants to join a company that is big enough to offer an engineer the resources he needs but small enough so that he can make himself heard.

.... appreciates a fast-growing company that depends on capable people to keep it growing. If all this MAKES SENSE to you, see our representative on campus

TODAY — 8:30 to 4:30

**TERADYNE**

20130 Plummer Street, Chatsworth, Calif. 91311

an equal opportunity employer

# Jerry's

audio  
exchange

Phoenix — 334 E. Camelback Rd. 263-9410  
Tempe — 120 E. University Dr. 968-3491  
Tucson — 1037 N. Park 622-7407.

# \$1.00 off

Bring the entire family to your neighborhood Village Inn Pizza Parlor on Wednesday night. And enjoy our FAMILY NIGHT! You'll save \$1.00 on any family size pizza, eaten on the premises.

1324 S. Rural Rd. Tempe



"Where pizza is always in good taste."

# UofA prof may take legal action

By Kevin Gustafson

A tenured professor at the University of Arizona who was suspended Feb. 11 indicated Tuesday he will take legal action to get his job back.

Dr. Erle Peacock, professor of surgery, declined to indicate what legal action was being taken, however.

"I am not aware, directly or indirectly, that a suit has been filed," said Dr. Douglas Lindsey, acting chairman of the department. "He is suspended. Suspension is normally a temporary process, in connection with some other personnel action."

Jim Craft, a reporter for the UofA 'Wildcat,' said the charges stemmed from a June, 1973, report by the American Medical Association accreditation team which gave the U of A medical school a poor rating.

On Jan. 30 Lindsey was appointed acting chairman of the surgical department. In a Feb. 11 letter to Schaefer, Lindsey recommended Peacock be suspended from the staff at U of A. Schaefer suspended Peacock on Lindsey's recommendation until June 30 when Peacock's contract expires.

"In the same letter in which I requested his suspension, I requested initiation of action for his dismissal. The request is going to committee for advice on that point," stated Lindsey.

Craft said Lindsey gave three reasons for his recommendations. His letter stated Peacock intentionally disrupted, obstructed and interfered with normal activities of the department.

On Feb. 2, the surgical staff had a meeting at which the staff discussed problems they had during surgery in the previous week. Craft said Lindsey accused Peacock of recruiting resident doctors away from the departmental meeting and holding his own meeting.

Craft said that in the letter Lindsey accused Peacock of knowingly making a false statement to the chairman of the department (Lindsey) about the existence of ad-

ministrative files.

Lindsey claims Peacock said there are no departmental administrative files and he needed these files to make up the department's budget for next year.

Lindsey's letter also gave this reason for the recommended suspension: "(Peacock) Knowingly and falsely, or with reckless disregard for the truth, published on Nov. 20, 1973 and Dec. 10, 1973 written statements which tended to impeach the honesty, integrity, reputation and motives of the president of the university, the vice president for health sciences, his fellow clinical department heads, and other members of the university community."

"Those statements were written, published and distributed by himself," said

Lindsey.

Peacock's suspension comes under section III-E of the Arizona Code of Conduct: "Summary suspension of the accused from the university

campus may be imposed when the president is satisfied that continued presence of the accused on the campus constitutes an immediate threat to the physical or emotional safety

and well-being of the accused, or well-being of members of the University Community or guests or the property or the normal functioning of the university."

## Canadians to air opera

The Canadian Opera Co. will present Mozart's operatic comedy, "Cosi Fan Tutti," in Gammage Auditorium at 8 p.m. Wednesday.

The performance, which will be sung in English, is a part of this season's Fine Arts Series.

The Mozart masterpiece is a farce that makes light of human frailty.

The performance is under the general direction of Dr. Herman Geiger-Torel, South American stage director now with the Canadian Opera Co.

The Canadian Opera Co., which has received acclaim both in Canada and the U.S., has toured annually since 1958.

The production will be under the musical direction of John Fenwick, pianist and composer.

Tickets for the program are from \$2.50 to \$5.50, and are on sale at the Gammage box office, 965-3434.

**THE Library** 1001 E. 8<sup>TH</sup> ST.  
EAST OF ASU  
967-6784

PRESENTS...

# THE COASTERS

Plus: STANLEY PLANET AND HIS  
THROBBING UNIT  
AND HANS OLSON... THIS FRI. & SAT.  
FEB. 22 & 23 STARTING AT 8:00  
A NIGHT OF EXCELLENT MUSIC, ONLY \$2.00

## BUY SELL CLASSIFIED ADS TRADE LEASE

Classified advertising must be paid for in advance either in person or by mail to the State Press, Stauffer Hall, A 111. No ads accepted over the phone. Our new office open daily 8-5. Ph. 965-7572. STUDENT RATES: \$1.30 minimum charge for three 20 letter space lines. 35 cents per line additional for each 20 letter space line over three. For each consecutive day after the first day, the rate is one-half the initial charge. If the ad is not run consecutively, the first day rate will apply. Corrections to ads will be made if noted before the second printing. NO REFUNDS WILL BE MADE FOR CLASSIFIED ADS PLACED IN THE STATE PRESS. COMMERCIAL RATES: Add 20% to the student rate. All ads not placed by students for student activities will be charged at the commercial rate. DEADLINE: 3 p.m. two days before publication. (An ad for Friday must be placed by 3 p.m. Wednesday.)

- **FOR SALE**  
AUTHENTIC INDIAN JEWELRY—RESERVATION DIRECT. LOWEST PRICES AROUND. 2 BLOCKS FROM ASU LAW BUILDING. CALL 966-6119. (2/22)  
NIXON POSTER — Tricky hand crafted silk screen. Send \$2.50 to Point-Blank & Co. P.O. Box 901 Adelphi, Md. 20783. Allow 3 wks. for del. (2/22)  
New, never lived in, plush 2 bdr. - 2 b/den. Allied Patio Villa. Walk or bike to Tri City-ASU. Will lease or sell — low down payment—no qualifying. Call 964-3635 or 969-7272. (2/20)  
AUTHENTIC INDIAN JEWELRY — NO OVERHEAD — LOW PRICES. CALL MAL 967-0111. (2/22)  
Trailer for sale 8 x 35 with 10 x 20 addition. Across street from ASU. Air conditioned and furnished. 966-5919. (2/22)  
Lacquer-finished cranium w/32 teeth: \$75. Femur: \$40. Human Skeleton also available: \$239. Reply E. Dunn, Box 20663, PHX. 85036. (2/21)
- **WANTED**  
Male or female roommate needed. \$79 per month for own room. Contact Jim or Lonnie at the Fountains—1028 E. Orange, #1. (2/27)  
ROOMMATE share 2-bdr. hse w/3 others acr. st. fm Mus Bldg. \$75/mo. ut. inc. 968-2177. (2/22)  
Models wanted haircutting clinic—Crimpers, Lt. 966-5192. (2/26)
- **TYPING**  
PROFESSIONAL TYPING. IBM PICA. EXPERIENCED. 50c - 60c/p. 956-7983. (5/3)  
IBM - PICA OR ELITE. EDITING, GRAD PAPER EXP. NEAR ASU. 966-1684. (3/15)  
TERM PAPERS, RESUMES. THESE DISSENTATIONS. PROFESSIONAL. GUARANTEED WORK. IBM. MAXINE MULLEN 955-0763. (5/3)
- **HELP WANTED**  
Carpet company needs a couple of females to help in sales. Mon-Fr., 4-7 p.m. \$3 p/hr. + comm. Phone 248-0500. (2/20)  
Experienced photographer needed for State Press. Must be available at least 3 1/2 hrs. a day. Contact Tom Hiatt at the Stauffer Bldg. 965-7572. (2/28)  
Male-female, all ages, all types now being interviewed for future motion pictures & T.V. commercials for extras bit parts. 265-4801. Phoenix International Productions, 4700 North Central, Suite #308. (2/28)
- **RENT**  
2 bedroom, furnished and unfurnished, close to campus 1014 Farmer. Phone - 968-2800 after 2 p.m. M-F, all day Sat. and Sun. (2/22)  
Tempe — brand new 2 bedroom furnished mobile home. \$166.40 monthly — Tri City Trailer Ct., 2320 E. Apache Blvd., Tempe. Call 968-1970 or 265-7210. (2/21)
- **ANNOUNCEMENTS**  
ERBDEERENS!! UNITE!! We meet at Paninis Thurs. Feb. 21-afternoon. (2/20)
- **MOTORCYCLES**  
1971 Yamaha 175CT good cond. \$325. Mike at 275-1395 after 7 p.m. (2/22)
- **AUTOMOBILES**  
1973 Z28 Camaro Mags loaded—must sell. \$3500 or best offer. Mike, 275-1395 after 7 p.m. (2/22)  
1960 Volvo P544—25 MPG—\$500 or best offer. 966-6173 5 p.m. (2/22)
- **SERVICES**  
Girls—shape up for summer. Lose wt., inches, or firm up. Special ASU rates. Call now - offer limited. Venus Health Club, 1870 E. Apache, 966-6389. (3/1)  
TYPING 838-8291. (2/28)  
Remove unwanted hair permanently. Free consultation Electrolysis of Scottsdale. Mrs. Gail Walker 945-4245. (3/7)

**EVERGREEN TERRACE APARTMENTS**

1701 E. Don Carlos

967-7357

2 B.R., furn. & unfurn. from \$195

Including utilities. Mature trees — lots of green grass and responsive management by Harold & June Marshall

10 Minutes from ASU

**WINNER 1972 CANNES FILM FESTIVAL JURY PRIZE AWARD Only American Film to be so Honored**

**Billy Pilgrim**  
Lives from time to time to time...

A GEORGE ROY HILL PAUL MONASH PRODUCTION

**SLAUGHTERHOUSE - FIVE**  
A Universal Picture in TECHNICOLOR

**FRIDAY, FEB. 22**  
All Shows in Neeb Hall  
Show Times:  
3:30, 7:00, 9:00, 11:00  
ADMISSION \$1.00

# Baseball team seeks consistency

By Barry Hochfelder  
Coach Jim Brock calls patience the key word in describing his Sun Devil baseball team's three win, two loss start.

The goal is to reach a level of consistency from start to finish of each game and if the team, coaches and fans are patient it will happen, he said.

"This team is young, experience-wise, and sometimes doesn't think about situations as they develop and exist," Brock said.

The coaching staff also has not lost faith in third baseman Jerry Maddox. The former junior college All-America has made seven errors in five games, four in the season opener against Stanford.

There is a transition that has to be made when an athlete moves from junior college to the major college level, Brock said.

Maddox is playing a deeper third base than he did in junior college and he has had to adjust the way he plays. Right now he is at the

learning stage, Brock said. A question mark has arisen concerning pitcher Doug Slocum, who hurt his arm during Monday night's loss to UCLA.

Brock said a nerve in

Slocum's right elbow appears to have slipped out of position. Slocum was to see an orthopedic specialist yesterday afternoon. Brock said the question is how long Slocum will be out.

"It's not just an ordinary sore arm," he said.

The team's hitting has not been up to expectations either. Brock blamed it on a lack of aggressiveness at the plate. He said the hitters

are taking too many pitches and only taking half swings, causing hitting slumps.

The Monday night game against UCLA lasted almost five hours before ASU lost in the 12th inning. The game was played in progressively colder weather, though. Brock said, "People who didn't stay for the whole game would have found it got warmer as the sun came up."

The Devils met UCLA in the final game of the series Tuesday.



ASU second baseman Bump Wills dives back to first base ahead of the tag by Stanford's Mark Lucich. The Devils took

two of three weekend games against Stanford.

Photo by Mark Bauer



Professional Audio Services

We repair all audio equipment

7441 E. McDowell Road  
(around the corner from Bashas facing 75th St.)  
946-7164

Stereo **W** **S** **T** Inc.

**UNIVERSITY UNIVERSITY**

WEEKDAYS 4:30 - 9:30  
Sat. & Sun. 1:20 - 3:55 - 6:35 - 9:15

**PAUL NEWMAN**  
**ROBERT REDFORD**  
**ROBERT SHAW**

A GEORGE ROY HILL FILM  
**THE STING**

...all it takes is a little Confidence.

Directed by DAVID S. WARD - GEORGE ROY HILL  
Produced by TONY BILL and MICHAEL & JULIA PHILLIPS  
TECHNICOLOR A UNIVERSAL PICTURE

Where were you in '62?

*American Graffiti*

**AMERICAN GRAFFITI**

WEEKDAYS 7:15 - 9:35  
Sat. & Sun. 2:40 - 5:00 - 7:20 - 9:40

A LUCAS FILM LTD./COPPOLA CO. Production  
A UNIVERSAL PICTURE - TECHNICOLOR

**FEBRUARY GRAND OPENING**

Best buy—Levi's® Panatela™ slacks  
STORE NAME

Great look, fit and tailoring  
in a fine pair of dress  
slacks—at the remarkably  
low Levi's® Panatela™ price.

What's more, these  
slacks are Sta-Prest®.  
never a wrinkle.

**Panatela Slacks Signature collection**

**MEN MEN MEN**

**GARMENTEUR, LTD.**

**MEN MEN MEN**

130 E. UNIVERSITY  
TEMPE • 966-6840

mon-sat 10-6  
thursday till 9  
or by appointment

"new dimensions in men's clothing"

# Basketball title hopes suffer

By Roger Wittlin

The ASU basketball teams hopes for a second consecutive WAC championship were dimmed considerably after last weeks losses to New Mexico and Texas El Paso.

"We had a chance to be in the driver's seat if we would have pulled through with one win," head coach Ned Wulk said. But the Sun Devils didn't pull through and, following an 89-72 loss to New Mexico, ASU was thoroughly embarrassed by the Miners 82-48.

The night before defeating ASU the Miners lost to Arizona 85-48. This break through gave Arizona a 7-4 record, tying them for second behind Utah at 7-3. The 6-5 Devils fell into a fourth-place tie with UTEP.

A lack of depth at the guard position was evident in both losses. ASU has lost two ex-

perienced guards this season in Rudy White and James Brown. White, who was instrumental in last years league championship injured his hand before the season even began and will not play until next year. Wulk said White's hand has completely healed, but the decision for him not to play this year was made at midseason.

Brown started in the Sun Devil's first 14 games and averaged 9.1 points per game. He was ruled academically ineligible on Jan. 28.

Wulk's coaching philosophy has always been one of substituting liberally. This year he's been limited and has been forced to make a number of changes to compensate for the losses of White and Brown. Mike Moon, who saw very little varsity experience last season, was elevated to a starting role.

Moon has responded well and Wulk has been satisfied by his play.

"Mike came into an extremely tough situation and has proven himself to be a very competent player," Wulk said.

Wulk's next moves were directed at finding back-up players at the guard slot. He experimented with swingmen Gary Jackson, Jack Schrader and Nate Hollins in the backcourt and only Schrader has shown any kind of consistency.

Under these circumstances the Sun Devils could have easily hit bottom, but an upset over league leader Utah at Salt Lake City and an unblemished record at home has kept ASU close to the leaders.

A sizable portion of the Devils' success can be credited with junior college transfer Lionel Hollins. Hollins has scored 17.3

points per game and has drawn raves from opposing players and coaches.

Arizona senior guard Ron Allen said Hollins was the most complete backcourt man he's faced this season. Arizona head coach Fred Snowden was even stronger in his praise of Hollins.

"My opinion of Hollins is that he's one of the finest guards in the country," Snowden said. "Some of my assistants scouted Lionel in junior college and they all felt ASU landed about the best junior college player available last year."

ASU's chances for a tie of the

league championship will be determined by two factors. The Sun Devils will have to win their remaining three games with Utah, BYU and Arizona and hope for New Mexico to drop one of their remaining three games. In addition Utah will have to lose to Arizona, Colorado State or Wyoming.

The Sun Devils will host Utah on Thursday night and BYU Saturday night. Student tickets for the games can be picked up from 8:30 a.m. to 5 p.m. today and Thursday at the Sun Devil Ticket Office. Both games will be broadcast on KTAR Radio.

**CARPET SPECIALS**  
9 x 12 used rugs-\$5.00  
All Sizes In Stock  
**CARPET HOUSE**  
1516 E. Van Buren, Phx.

**Stage Sound STEREO CENTER**  
For the best deals in town call  
—967-9445—Campus Drugs Cellar  
—967-9444—2202 E. Apache, Tempe  
—836-9695—Casa Grande Mall

## This summer go Dutch.



**...via a special campus charter to Amsterdam**

Our charter flight to Europe last summer was such a great success that we are running two this coming summer. (Ask the people who flew with us.)

Fly roundtrip to Amsterdam from Phoenix on a luxurious DC-8 for only 1360.00 (May 29-June 13) or \$380 (May 19-June 29).

For more information call Tempe at 834-0134, 965-4822, 965-6466, 967-1673, or write "Charter," A.S.U. Student Foundation, A.S.U., Tempe, Arizona 85281.

Co-Sponsored By: ASU Student Foundation and ASU Alumni Assn.

## ASU SPECIAL

Sale Prices Good Thru Saturday

| Size    | Whitewall | Blackwall | Price | Plus F.E.T. |
|---------|-----------|-----------|-------|-------------|
| F78x14  | N-W       |           | 25.00 | INC.        |
| G78x14  | N-W       |           | 24.00 | INC.        |
| H78x14  | N-W       |           | 27.00 | INC.        |
| HR78x14 | W-S       |           | 40.00 | INC.        |
| H78x15  | N-W       |           | 27.00 | INC.        |
| LL8x15  |           | Bik.      | 23.00 | INC.        |
| L78x15  |           | Bik.      | 28.00 | INC.        |

• New Car Take-Offs... Traded For Goodyear Tires

| Size    | Description | Was   | Now   | Plus F.E.T. |
|---------|-------------|-------|-------|-------------|
| 775x15  | MTHN N-W    |       | 15.00 | INC.        |
| 678x15  | CPCAGNW     |       | 29.00 | INC.        |
| 855x15  | MTHNXNW     |       | 17.00 | INC.        |
| 800x15  | MTHNXNW     |       | 19.00 | INC.        |
| L78x15  | CPCPGBL     |       | 27.00 | INC.        |
| 10x16.5 | HM SS       | 61.85 | 44.34 | INC.        |

• Plus Old Tire

| Size    | Description | Was | Now   | Plus F.E.T. |
|---------|-------------|-----|-------|-------------|
| 600x13  | CPNo.4 N-W  |     | 14.94 | INC.        |
| A78x13  | CPS N-W     |     | 27.50 | INC.        |
| 700x13  | PBELTN-W    |     | 23.00 | INC.        |
| E78x14  | DC78 BK     |     | 22.00 | INC.        |
| ER70x14 | RADHAW-S    |     | 38.00 | INC.        |
| F78x14  | CPS N-W     |     | 35.00 | INC.        |
| HR70x14 | CWT5TLW5    |     | 47.00 | INC.        |
| 560x15  | PC 78xN-W   |     | 21.00 | INC.        |

• Plus Old Tire

| Size | Width    | Fits     | Was   | Now       |
|------|----------|----------|-------|-----------|
| 13   | 5 1/2 AP | VEGA     | 29.89 | 23.00 EA. |
| 13   | 8 US     | PINTO    | 38.00 | 30.00 EA. |
| 14   | 7 ROC    | FORD     | 31.88 | 22.00 EA. |
| 14   | 6 AP     | FORD     | 27.30 | 20.00 EA. |
| 15   | 7 AP     | CHEV P-U | 31.84 | 28.50     |
| 15   | 7 AP     | FORD P-U | 31.24 | 28.50     |
| 15   | 8 1/2 AP | CHEV     | 44.21 | 38.00     |

SPECIAL PRICES ON ALL SIZES & TYPES

## STAUFFER TIRE CO.

62 S. CENTER - MESA 2077 S. HARDY - TEMPE  
834-0212 967-8758