

Inside:

ASU Faculty Wives push for recycling of campus garbage. page 2

A U. S. Representative from California talks about blacks, niggers, and the difference between the two. page 3.



tuesday

Arizona State University

Vol. 56, No. 66 February 5, 1974

**state
press**

Tempe, Arizona

But makes no promises

Phoenix ponders Bug Line aid

By Robert Straus

The City of Phoenix might provide extra buses for the overburdened Bug Line, according to an administrative assistant to Phoenix Mayor Tim Barrow.

"The City of Phoenix is sympathetic (to the Bug Line)," said John Nimsy added, "Phoenix isn't promising anything."

Nimsy said a proposal for Phoenix to offer aid to the Bug Line would have to be submitted to the Phoenix Law Department to determine if such a proposal is legally feasible. He said he would submit the proposal Monday, but he wouldn't speculate when a decision would be made.

"Even if the law department says support is feasible, we've still got a mayor and six councilmen to deal with. It depends on whether the mayor says 'let's push it' or 'let's wait a while.' If we decide to help, we'll do it as quickly as possible."

Nimsy said Phoenix might be able to rent the Bug Line one or two buses for a nominal fee. The buses would come from American Transit Co., a privately-owned company subsidized annually by Phoenix to run its bus service.

But Nimsy said the fact that the Bug Line, which makes money from advertising, is run on a profit, rather than non-profit, basis could hurt its chance of receiving help from Phoenix. By giving the Bug Line more financial help, the city government might attract a flood of funding requests for other parties, he said.

Phoenix has already given the Bug Line \$5000 to help it get started. Since it began in mid-January, the free bus service has faced standing-room-only crowds. Bug Line founders John Balfour and Ed Sears say they cannot afford to buy back-up buses at this time.

At the Friday meeting Kerrigan said the \$5000 donation represents a commitment by Phoenix to the Bug Line. But Nimsy said Phoenix has made "no commitment whatsoever."

Gas gobblers

A crane in the Physical Plant parking lot was drained of 50 gallons of gas sometime Sunday night or early Monday morning.

University Police Chief John Duffy said the theft was discovered at 8:20 a.m. Monday.

Duffy said two ASU students reported gas stolen from their vehicles Friday, increasing the total gas thefts reported last week to five.

"This shows a trend," he said. "And our answer is to get some device to prevent this. I know gas cap locks are hard to get, but you can go down to your gas stations and get their advice."

"There's bound to be a rise in gas thefts, with the gas shortage," he said. "It's the same old story! Lock your valuables up — and gas has become a valuable."



Photo by Robert Lazzara

Promise kept

Starting Thursday, University Police Chief John Duffy promised bicyclists citations for traffic law violations. Corporal R.D. Burbridge keeps that

promise as he cites John Bear for failure to use bike paths. Duffy said 36 tickets were issued to cyclists on Thursday.

World View

Nixon Subpoenaed

President Nixon was officially subpoenaed yesterday to testify in the Ellsberg burglary case. The subpoena, requested by former presidential aide John D. Ehrlichman, ordered the President to appear in Los Angeles on Feb. 25 and on April 15.

Deputy White House Press Secretary Gerald L. Warren has said Nixon's attorneys "will recommend to the President that he respectfully decline to appear . . . on constitutional grounds" and said Nixon will heed the advice.

Superior Court Judge Gordon Ringer signed the subpoena. The action marks the first time in U.S. history that a state court judge has ordered personal testimony by a president.

Trucker shutdown continues

Violence, food shortages and more layoffs were reported Monday in the spreading shutdown of independent truckers.

National Guardsmen were on duty in Michigan, Ohio, and Pennsylvania to try to stop further violence in the five-day old protest.

The Nixon administration asked Congress to allow the Interstate Commerce Commission to speed approval of new regulations that would pass increased fuel costs on to the shipping companies for whom the drivers work. Teamsters Union President Frank E. Fitzsimmons condemned the current protest by truck drivers and urged state and local governments to "take whatever actions necessary" to keep truck transportation rolling.

Calley's appeal rejected

The U.S. Court of Military Appeals yesterday declined to reconsider its earlier rejection of Lt. William Calley Jr.'s appeal from his conviction in the MyLai massacre case.

The court, the highest American military tribunal, upheld Calley's conviction and 20-year prison sentence. President Nixon has said he will pass final review on Calley.

But useful

'A piece of Garbage'

By Jack Marks

"This is a piece of garbage." That was the title of a flier sent out by the ASU Faculty Wives Club to the various departments in the university, because the flier was written on recycled paper.

Jane Sauck, a member of the club, said the primary objective of the flier was to "let the university know that recycled paper was a possibility to be considered."

However, George Morrell, director of purchasing at ASU feels purchasing recycled paper is not economical.

"In the past we have not found that buying recycled paper saves money," Morrell said. According to him the University was looking into the possibility of writing on used paper rather than having the paper go back to the mills for recycling. Morrell said part of the problem is the lack of availability of recycled paper in the Valley.

The Grand Canyon Paper Company, also in Phoenix, does carry certain types of recycled paper, but J. Gilbert, an employee for the

company, doubts they could supply the university with recycled paper.

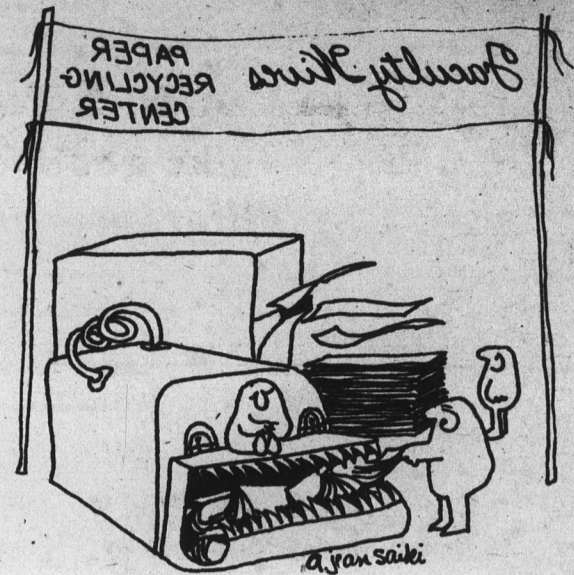
An ASU professor of Civil Engineering, John Klock, is currently conducting a study of the University's potential for recovering and recycling paper on campus. Klock said, "We were early and we were late. The university was willing to try and recycle paper sooner, but did not have the market to sell the waste to."

According to Klock within

six months, possibly sooner, the University may begin its own recycling program.

According to Morrell, last year the University used 80,000 reams of bond, mimeograph and Xerox paper and 90,000 computer cards. Klock said both types of paper are recyclable.

Morrell said that presently reuse and recycling is not a general University policy, but he suspects added pressure and shortages will force the issue.



STATE PRESS is published by Arizona State University Tuesday through Friday during the academic year, except holidays and examination periods. Entered as second class matter at Tempe, AZ, 85281.

A.S.U. PHOTO SERVICE OFFERS YOU

- COPYING
- SLIDE DUPLICATION
- PHOTOLITHOGRAPHY
- PRODUCT ILLUSTRATION
- BLACK & WHITE PRINTING
- EKTACHROME PROCESSING
- PASSPORTS & PORTRAITURE

AT A.S.U. PHOTO SERVICE MATTHEWS HALL 965-3637

A university service facility for the university community

ERICKSON HANDCRAFTS
ARTIST & DRAFTING SUPPLIES
Crafts - Picture Frames
Decorating Material
Open Mon. & Thurs. Nights
10 Percent Discount to Students
111 E. University — 967-4482

Yesterday's PROPHECY Today's CURRENT EVENTS
KHCS Radio, 1010 kc
Weekdays 2 P.M.

Jerry's audio exchange
Phoenix — 334 E. Camelback Rd. 263-9410
Tempe — 120 E. University Dr. 968-3491
Tucson — 1037 N. Park-622-7407

LET US WIRE YOU FOR SIGHT.



Our contemporary "wires" come in all shapes and sizes. And there's a rainbow of precision, colored lenses to go with them.

Whatever your taste in fashion, you'll find we have hundreds of the very latest frame designs from around the world.

With the expert help of our staff, you'll find fashion eyewear just right for you. Come in — for a new outlook.

Convenient credit terms, or use your Master Charge or BankAmericard.

Single vision glasses as low as **\$16**

All Lee Optical Lenses Meet FDA Impact Resistant Specifications.

TEMPE 14 CONVENIENT VISION CENTERS THROUGHOUT ARIZONA
Open Monday through Saturday.
Tempe Center/2032 S. Industrial Park Ave.
967-7864 967-7333

LEE Optical
BANKAMERICARD
master charge

ALL DAY **TODAY** 11 AM TO 9 PM
\$1.09 SALAD NOT INCL.
for our regular **RIBEYE STEAK DINNER** includes Baked Potato and Texas Toast
Does not apply to carry outs
BONANZA SIRLOIN PIT.
3339 S. RURAL RD. TEMPE
4333 W. INDIAN SCH. PHOENIX

Scheduling Board restricts attendance at MU dances

A ruling by the University Scheduling Board has limited all on-campus dances to ASU students only.

Edward Hickcox, MU auxiliary services director, said he did not know about the new policy.

"Last year there were serious problems with dances held in the MU after football games. There were several hearings, in which student organizations were invited to meet with me and several other persons, to work out procedures to eliminate the problems — vandalism of facilities and drinking. I don't know what came out of the hearings," Hickcox stated.

He said students at the hearings accused non-campus individuals of causing the damage.

"We have had no problems arising from certain events open to the public, except for dances," Hickcox.

"The MU is designed primarily for the students and it seemed right and proper to exclude members from the community," he said.

Hickcox said exceptions might be made for dances given by minority groups during their cultural week.

"Under these circumstances whoever is involved in arranging things for the heritage week should approach the committee (the auxiliary services advisory board) and ask for clearance for a dance," he said.

Hickcox said speaking and other events could be open to the public.

Manuel Figueroa, assistant director of students affairs, agreed with Hickcox on allowing exceptions to the new rule.

Figueroa said rules and regulations concerning the Memorial Union are governed by the MU administrators, the Auxiliary Services Advisory Board, and the University Scheduling Committee.

"This rule was made at the Nov. 21, 1973 meeting of the scheduling board, Figueroa said. The board not only authorizes certain events, dances, exhibits, off-campus speakers, and other events, but it is a law making body also."

The new policy applies to all organizations. It limits dances held by on-campus organizations to ASU students, and dances sponsored by off-campus organizations to members of their own groups.

"It wasn't a move directed against students but the protection of university property," Figueroa said.

There is no concrete evidence the damage done to the facility was done by persons attending the dances, he said.

"However, we do not have this problem, at any other activity, said Figueroa. The history of vandalism, damage, and the misuse of property is only after these open dances."

"This move was necessary," he said. "As long as this rule curtails damage, dances will remain open for students only."

Black greek organizations, which Hickcox said were at the hearings, did not know of the new ruling until this January.

Carrie Edwards, president of Delta Sigma Theta Sorority, said. "I really do think the administration is being prejudiced. At the last meeting we had after the last dance, we were not aware of the ruling. There is a definite lack of communication between Figueroa and the administration of the MU."

"There are a lot of discrepancies between us and the MU," said Khambrel Marshall, president of Kappa Alpha Psi Fraternity. "They told us of the damage but we never say anything. They always had a list. There were no problems that we saw."

Representative says

'Niggers aren't all black'

By Craig Coulombe

"You no longer have to be black to be a nigger," Rep. Ronald V. Dellums, D-Calif., said Saturday.

ROTC expands scholarship opportunities

The Air Force ROTC scholarship program has been expanded to include careers in architecture, the engineering sciences, mathematics and computer science (EDP).

Air Force Reserve Officers Corps scholarship's had been previously limited to college students who wanted to become pilots or navigators. The expansion is not due to a lack of demand for the pilot and navigator scholarships, but to increased needs in the other fields, said Maj. Nicholas P. Costa, assistant professor of aerospace studies.

Sophomores who qualify will receive full scholarships paying tuition, books, laboratory fees and a \$100 per month allowance.

These scholarships are open to both men and women.

Interested students should contact a member of the aerospace studies department, third floor, Old Main building.

Dellums told an audience that filled the Memorial Union Arizona Room if a person's life and opportunities are circumscribed, oppressed and excluded by the establishment power structure, that person is a nigger.

Dellums said niggers are black, brown, red, yellow, women, youth, senior citizens, poor of all races, non-english-speaking, ecologists, pacifists, leftists, non-Protestants, working-class and now the middle-class.

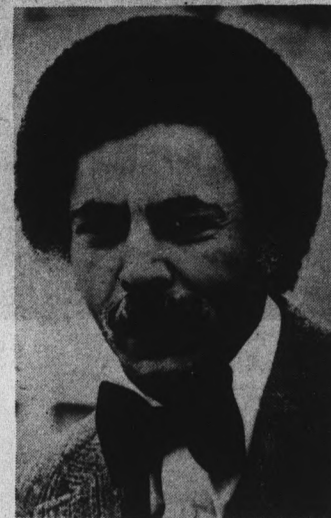
"Racism and sexism niggerizes, pollution niggerizes, elitism niggerizes," Dellums said.

He said for racism to end people must be accepted and respected for being human regardless of other differences such as race, beliefs and social position.

Dellums said he advocates public financing of political elections, a national health insurance program and bi-lingual education.

Honesty on the part of American leaders, rather than politics geared to big corporations and secrecy, is the answer to the countries' problems, he said.

Dellums said he advocates the impeachment of President Nixon to prove to Americans and to the world that no one is above



Ronald Dellums

the law. Nixon is a racist and is neglecting the needs of the people, he said.

Dellums attacked government subsidies to floundering corporations, the size of American forces in Europe and for the administration's use of scapegoats while undermining the foundation of the American political system.

When the government starts giving the people straight answers, then the government will once again become democratic and valuable to all the people instead of the few who now prosper from it, Dellums said.

*Save gas
and money
and time!
It's not too late
to check into a
residence hall
for spring*

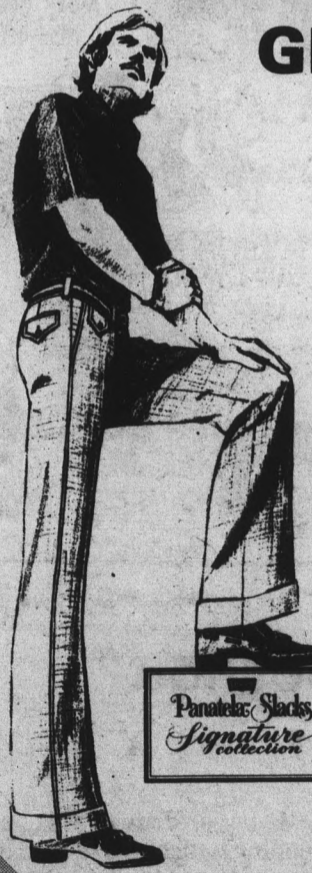
Space available in

P.V. East and West,
Mariposa, Gammage,
Best,
Hayden or Irish.

Also Manzanita
Sahuaro, P.V. Main,
and McClintock.



FEBRUARY GRAND OPENING



New—from
Levi's® Panatela™

A good-looking multi-stripe stretch belt accents these new slacks for the Panatela™ Signature Collection, fashioned from a cool linen-like fabric.

\$18⁰⁰

MEN
MEN
GARMENTEUR, LTD.
MEN
MEN

130E UNIVERSITY
TEMPE · 966-6840

mon-sat 10-6
thursday till 9
or by appointment

"new dimensions in men's clothing"

Opinion state press

Letters to the Editor

Sidewalk Cafe protest

Editor:

Who is in charge of the Sidewalk Cafe? You'll note that I said "in charge" — it appears obvious that no one manages it!

I have the occasion to use the Sidewalk Cafe a couple of nights each week. Everytime I get caught in the 15-30 minute waiting line, I first become amused, then disgusted and finally enraged at the complete lack of organization behind the counter as students and faculty cue up and wait to be served.

A few examples — why can't the frycook fry more than 3 hamburgers at a time? why can't he concentrate on his duties and let

the waitresses take care of the salads and putting the burgers together after they are fried? why oh why, must the cook wait until the 5:30 rush to clean the grill?

How about considering some physical rearrangements to include moving the coffee urns out of the lines so coffee drinkers won't have to buck the lines.

I cannot fail to mention the appalling condition of the dining area. Students should not have to put up with the messy, sticky and unbussed tables — conditions which would cause us to walk out of any eating establishment in the community.

Don't try to rationalize this deplorable condition and tell me that the Sidewalk Cafe belongs to the students and they have

a responsibility to keep it clean!! Since the prices are comparable or higher for similar service in the immediate community, this service should be provided.

I say its time to rectify this poor situation. With the superabundance of management skills on the University staff, there is no reason why this problem cannot be resolved.

Until it is resolved, I for one, intend to keep on walking when I get to the Sidewalk Cafe.

J.G. Dietrich
Grad Student
Business Administration



More abortion

Editor:

I read your publication regularly and have come to respect the caliber of newspaper that you produce. Your coverage is usually thorough, imaginative and gutsy. Imagine my surprise when I discovered that your paper recently ran an editorial that was written from a secondary source. I am referring to your editorial on abortion that appeared in State Press of January 29.

Correct me if I am wrong, but it appears to me that the writer of that editorial wrote the piece almost directly from an Arizona Republic article (January 28).

I have drawn this conclusion after reading both of these articles. What is more distressing is the fact that if the "Pro-Life" rally merited a 400 word editorial, why then was there no news story covering that rally? I trust that you will attempt to rectify the situation in the interest of a better State Press.

Faithfully,
John Junker

Mass Communications

P.S. I am not a member of Right To Life.

Abortion

Editor:

Why does any woman in the United States today have to die from abortion, legal or illegal?

In your editorial of January 29th, you state that "abortion should not be regarded as a method of birth control" but according to Joe Davis, executive director of Planned Parenthood in Arizona, 76 per cent of the women aborted by his group failed to use any form of contraception.

If one of the prime purposes of the pro-abortion movement is concern for the

lives of America's mothers, perhaps right-thinking people in this group should put pressure on organizations such as Planned Parenthood to make contraceptive devices more readily available.

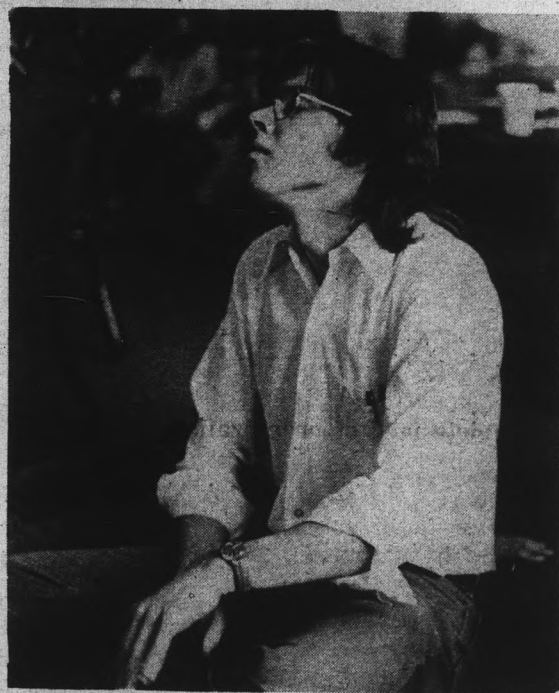
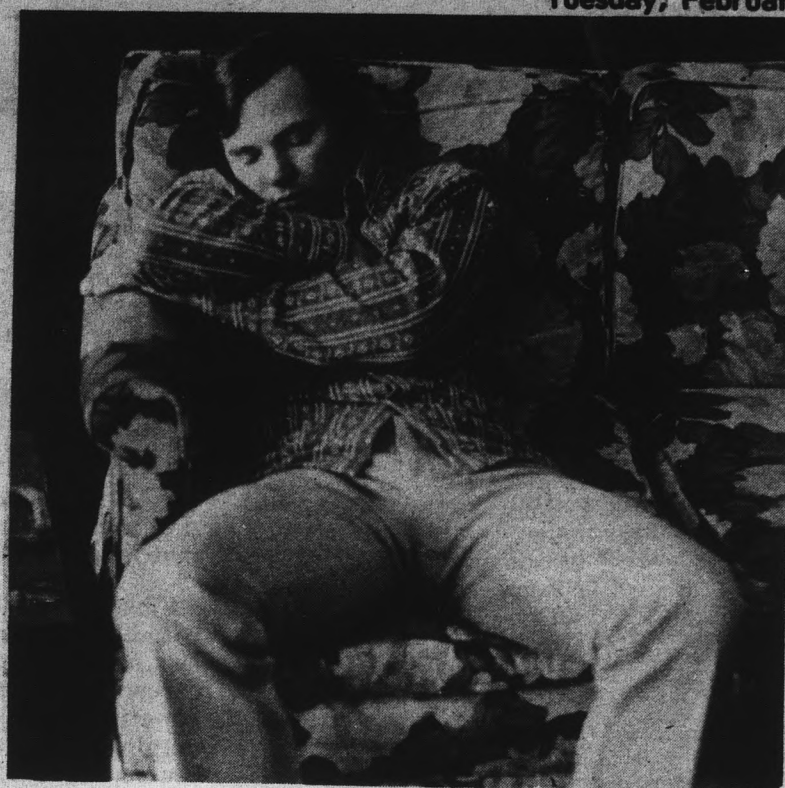
Contraception is safer and cheaper than abortion.

My sympathy goes out to those involved in Right to Life who feel that innocent humans are being terminated while Planned Parenthood and friends take the easy way out.

Sincerely,
Mary Ellen (Saunders)
Juergens
Student '66 - '67, Math

state press

| | |
|---------------------|------------------|
| Editor | Patty Nolan |
| Managing Editor | Ted Williamson |
| News Editor | Anita Mabante |
| Sports Editor | Barry Hochfelder |
| Asst. Sports Editor | Roger Wittlin |
| City Editor | Greg Hagan |
| Asst. City Editor | Jason Shaw |
| Perspective Editor | John LeHockey |
| Photo Editor | Tom Hiatt |
| Asst. Photo Editor | Dave Chase |



"Chicago
Hambone and
The Rhythm
Romper's"
played to an
underwhelmed
crowd Friday in
the Memorial
Union

Photos by Tom Lawson



Pardon our pride

I may be prejudiced, but I think the Scottsdale Daily Progress has the best staff of any newspaper in this part of the country. Backing this claim is the fact that the Progress has just won six out of eight first place awards for daily newspapers under 30,000 circulation in Arizona's Better Newspapers Contest. It is the first time in contest history that any daily has accomplished this. The awards included:

- 1 — Newswriting,
- 2 — General and department news coverage,
- 3 — Editorial page,
- 3 — Design and typography,
- 5 — Special sections (for the Weekend section)
- 6 — General excellence.

If you have not been reading the Progress, why not call 947-7544 and take a trial subscription. I think you will agree that the Progress is lively, accurate and easy to read.

Sincerely,

Jonathan Marshall

Jonathan Marshall, publisher

Fifth in a series

HEY!

Are you starting to feel the pinch of high food prices . . . and especially tired of trying to decide which restaurant to go to for your next meal??

. . . then TRY THE CLUB

Convenient Hours:

| | |
|--------------------------|------------|
| Breakfast | 7:00-8:30 |
| Continental Brksft. | 8:30-9:00 |
| Lunch | 11:30-1:00 |
| Dinner | 4:45-6:15 |

Convenient Location:

At center of Campus in the Memorial Union

Great Prices:

Any 5 Meals-week—\$1.50 per day
Any 10 Meals-week—\$2.60 per day
All 15 Meals-week—\$2.83 per day

These plans available on a Monthly or Semester basis

Our prices have not & will not change

through May 17, 1974

Inquire at Housing Office for more information

Interest may increase for retirement fund

The interest paid on state retirement funds may eventually increase, according to Wayne Gibson, director of the State Retirement System.

"If present trends continue, such as higher mortgage rates, we may raise our interest," he said Thursday.

The Retirement System's present rate of interest is four and three quarter per cent.

"We're not here to apologize for our level of interest," he said. "It is comparable to that of a short term bank savings account. You shouldn't take the bank ads on tv too literally."

Gibson said that when someone buys a certificate of deposit and cashes it in earlier than the stipulated date, the bank levies substantial interest penalties.

"We return the full amount of the deposit, plus a reasonable rate of return," Gibson said. "There are some retirement systems that do not return the full amount of the employee contributions, and there are others that do not give any interest."

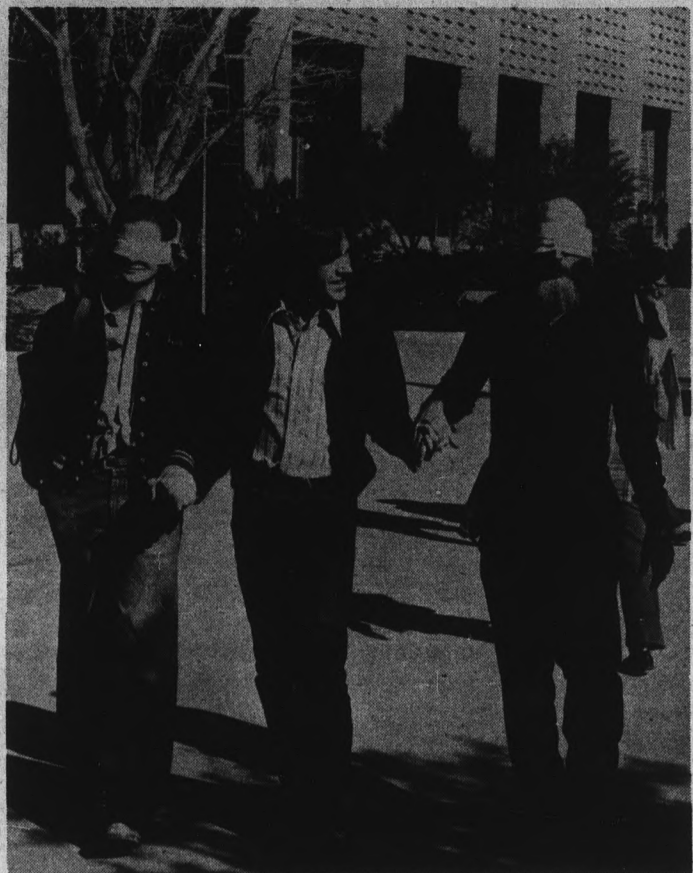
Gibson said that interest is part of the overall cost of running the system. "It is an arbitrary rate for people who terminate. When a person leaves, he receives

his contributions plus interest. We retain the employer contributions."

"The more people who quit, the lower the cost," he said. "The reason for this, Gibson said, is that there are fewer people receiving the benefit of the employer's matching contributions."

Gibson sees nothing wrong with this. "The system is run for the benefit of the career employee and the beneficiaries of an employee whose death occurs," he said.

Gibson said that if the Arizona system did raise its interest rates, it would be done only if it were to the advantage of the retirement fund. "We would expect to benefit," he said, "since our investments in the future would be at a higher rate."



Keeping in touch

Bruce Rod teaches special awareness, reliance on senses other than sight, and greater trust in other individuals in his sculpture class at ASU. Gregg Kitchin leads Minda Liming and Vern Kelly through their awareness exercise on campus.

Photo by Robert Lazzara

Airline offers ticket to LA in ASU club sweepstakes

A round-trip airline ticket to Los Angeles will be given away to an ASU student at the end of this week.

The ticket contest is part of a travel literature distribution program to be conducted by Trans World Airlines (TWA).

Students may register for the ticket, which is good at any time, at a booth on the mall today. The free travel literature and registration is being conducted by the Sons and Daughters of TWA club.

TWA is sponsoring the ticket give-away and literature to encourage air travel over spring break and the summer vacation according to Jonnie Banks,

TWA campus representative.

The travel literature deals with reduced youth fair plans, group tours and package tours on all TWA routes, Banks said.

Banks and another representative, Bill Woodward, will be available at the booth from 9 a.m. to 3 p.m. daily to answer questions pertaining to travel.

MRS. ANN Palm Reader & Advisor

There's no problem so great she can't solve it — love, marriage or business. She can tell you all about yourself — present, past and future — you will gain.

967-9612
1123 Apache Blvd., Tempe
Open Daily 9 A.M. to 11 P.M.

SKI SUNRISE

Stay in
PINETOP — LAKESIDE
Choice of
Lodging and Excellent Restaurants

For
— Reservation info.
— Rates
— Telephone Nos.
— Area Description

Call 336-4914 or pick up your
PINETOP-LAKESIDE brochure at ASU student
Memorial
Information Desk
or
Local Ski Shops

BUY
SELL

CLASSIFIED ADS

TRADE
LEASE

Classified advertising must be paid for in advance either in person or by mail to the State Press, Stauffer Hall, A 111. No ads accepted over the phone. Our new office open daily 8-5. Ph. 965-7572. STUDENT RATES: \$1.30 minimum charge for three 20 letter space lines. 35 cents per line additional for each 20 letter space line over three. For each consecutive day after the first day, the rate is one-half the initial charge. If the ad is not run consecutively, the first day rate will apply. Corrections to ads will be made if noted before the second printing. NO REFUNDS WILL BE MADE FOR CLASSIFIED ADS PLACED IN THE STATE PRESS. COMMERCIAL RATES: Add 20% to the student rate. All ads not placed by students for student activities will be charged at the commercial rate. DEADLINE: 3 p.m. two days before publication. (An ad for Friday must be placed by 3 p.m. Wednesday.)

● FOR SALE

Hart skis — good condition — must sell — \$75. 967-2553. (2/7)

73 Pinto Runabout. Factory air plus custom options. Must sell. Low mileage. \$2,850 or best offer. 966-9732. (2/8)
Banjo — excellent condition. Orlando 5 string. Call after 12. 833-2995. (2/6)

● INSTRUCTION

PARACHUTING CLASS. \$1 OFF WITH AD. LOW RATES. SIGN UP NOW. 275-0010. (5/3)

Learn tennis faster using your own awareness as your teacher. The relaxed and fun atmosphere will help you learn. 947-4736. (2/6)

Need info. or a tutor? Dial assistance 965-7133. 24 hr. service. (2/12)

● HELP WANTED

MEN — WOMEN! JOBS ON SHIPS! No experience required. Excellent pay. Worldwide travel. Perfect summer job or career. Send \$3.00 for information. SEAFAX, Dept. 4-B, P.O. Box 2049, Port Angeles, Wash. 98362. (2&5)

Pierce National Life needs college representative to show Pierce College Plan on campus. Full time pay for part time work. Men and women leaders on campus. Call for appointment. Jane Hill 967-9479, 64 E. Broadway, Tempe, Az. 85282. (2/8)

General housecleaning two days a month. Call 838-6722 after 5 p.m. (2/7)

Male - female, all ages, all types now being interviewed for future motion pictures & T.V. commercials for extras bit parts. 265-801. Phoenix International Productions, 4700 North Central, Suite #308. (2/12)

● TYPING

PROFESSIONAL TYPING. IBM PICA. EXPERIENCED. 50c - 60c/p. 956-7983. (5/3)

IBM - PICA OR ELITE. EDITING. GROD PAPER EXP. NEAR ASU. 966-1684. (3/15)

TERM PAPERS, RESUMES. THESE DISSERTATIONS. PROFESSIONAL. GUARANTEED WORK. IBM. MAXINE MULLEN 955-0763. (5/3)

Excellent typing. My home. IBM pica. 25 years experience. 968-5405. (2/14)

● ANNOUNCEMENTS

Klass notes are here! At last you can be free of the tedious & inefficient task of "taking notes." Imagine, an entire semester's set of typed lecture notes, before the lectures begin. The following list of notes are now available at the ASU Bookstore and the Student Book Center on College Ave., BO-100 CH-101, 113, 115, 231 ES-102 EC-201 GL-100 GL 101 MA-120, 201 MI-201 MI-101 PX-100 RE-251 ZO-200, 201, 202, 270. (2/8)

EUROPE - ISRAEL - AFRICA. Student flights all year round. CONTACT: ISCA, 6035 University Ave., #11, San Diego, Calif. 92115. Tel: (714) 287-3010 or (313) 826-5669. (5/3)

The Gypsy Tearoom. New and exciting 1444 Danella Plaza, Tempe. 10:30-5:30. Tues. thru Sat. It's different. (2/15)

● SERVICES

Girls—shape up for summer. Lose wt., inches, or firm up. Special ASU rates. Call now - offer limited. Venus Health Club, 1870 E. Apache, 966-6389. (3/1)

Remove unwanted hair permanently. Free consultation - Electrolysis of Scottsdale. Mrs. Gail Walker 945-4245. (3/7)

● LOST

Lg. yellow labrador male. Ans. to "Jake" REWARD for dog or information. 267-8159 or 273-0056 or 263-1200 Ext. 359. (2/1)

"Nuto," full-grown cat. Black & white. Lost Sin-City area. 968-8004. (2/7)

Missing 1/16/74 male Maltese mix white. 18 mo. Named Tucker. Call 967-9069. REWARD. (2/6)

● WANTED

Male, grey & white striped tiger kitten at La Mancha Apt. About 4 mos. old. Need to find good home soon. Call Debbie, 966-9707. (2/5)

Roommate wanted - female grad. student or upper class. Townhouse — 3 miles from ASU. Own bdrm. & bath. \$115/mo. plus utilities. TJ at 838-8078. (2/2)

Wanted—mature female to share 3 bdrm. house with ASU student. 1 min. ASU. 1005 Maple Ave. (2/6)

● MOTORCYCLES

1973 1/2 Honda CB350G 3 mos. old—immaculate. Steve 838-8693 or 962-2216. 3:30 p.m. - 12. (2/5)

● RENT

Tempe — brand new 2 bedroom furnished mobile home. \$166.40 monthly — Tri City Trailer Ct., 2320 E. Apache Blvd., Tempe. Call 968-1970 or 265-7210. (2/21)

Need a roommate? Call 967-7058. 9 a.m. to 9 p.m. Homes/Apts. to share. (2/15)

● AUTOMOBILES

1972 Datsun 510 - air auto - ex. condition - ex. mpg. 965-3319 or 949-8503. (2/8)

CLASSIFIED
965-7572

SUMMER JOBS

Guys & Gals needed for summer employment at National Parks, Private Camps, Dude Ranches and Resorts throughout the nation. Over 50,000 students aided each year. For FREE information on student assistance program send self-addressed STAMPED envelope to Opportunity Research, Dept. SJO, 55 Flathead Drive, Kalispell, MT 59901. ... YOU MUST APPLY EARLY ... THIS STUDENT ASSISTANCE PROGRAM HAS BEEN REVIEWED BY THE FEDERAL TRADE COMMISSION

Student Nurses Needed!

RN's - LPN's - NA's - Students

Any shifts, any days, we pay weekly — no fee. Assignments in your own area.

Nurses Central Registry

2536 E. Indian School, Phx. 248-7200

SKI — SUNRISE PARK

Sponsored & escorted by Diamond's Travel Service

Package Tour — March 1 thru 3rd, 1974

Includes: roundtrip travel by Deluxe Motorcoach — 2 dinners — 2 breakfasts — 2 day lift tickets — 2 nights at beautiful Sunrise Park Hotel also other extras.

\$59⁵⁰ Per person double occupancy

Call Margrit—248-3360—4501 E. Thomas, Phoenix

Wildcats out-rebound Devils

By Roger Wittlin

"When you don't make use of your strength it's difficult to win a ballgame," head coach Ned Wulk said of ASU's 98-90 loss to Arizona.

The strength Wulk referred to was Sun Devil rebounding. Arizona out-rebounded ASU 54-29, and in the important match-up between centers Ron Kennedy and Bob Elliot. U of A's Elliot outrebounded Kennedy 25-5.

"They just out-quickened us on the front line," Wulk said. "There's no reason why we should have lost so many rebounds."

Wulk said the Devils were concerned with stopping Coniel Norman, who entered the game with a league leading 28.3 points per game

average. "With (Ken) Gray guarding Norman head-to-head on defense it took one of our best rebounders away from the boards, Wulk said.

"We didn't want to get into the situation where every time they needed a basket Norman would be wide open," Wulk said. "Maybe in our preparation for the game we concentrated on this area too much and forgot about the basics."

On the positive side for ASU was the hot shooting of 6-10 Scott Lloyd, who made eight of 10 field goal attempts and finished with 19 points, his season high. Lloyd's long range shooting brought the Devils to a 54-54 tie, early in the second-half.

However, Arizona quickly opened a lead, which it never lost.

Wulk said Arizona is an exceptionally good shooting team. "They're going to make 10 phenomenal shots a game. The only way to beat them is take the easy shots away," Wulk said.

Another battle ASU lost was with referees Irv Brown and John Overby, who called 26 fouls on the Sun Devils compared to Arizona's 16. Elliot's 38 points were helped by his 14 free throws in 20 attempts. Arizona was 28 of 38 from the foul line while the Devils managed 14 of 19.

The loss left ASU in a five-way tie for second-place. ASU, Arizona, Colorado State, New Mexico and Utah are all deadlocked with 4-3 conference records.

UTEP leads the WAC with a 5-2 record.

Wulk said a 9-5 final record should gain a tie for the championship. Of the seven games remaining on the ASU schedule five will be in Sun Devil Gymnasium. The two away games are against New Mexico and Texas-El Paso, where wins are traditionally hard to come by for a visiting team.

This weekend, Wyoming and Colorado State are the opponents in Sun Devil Gym. Wyoming is 0-7 in the WAC while Colorado State is among those with 4-3 record.

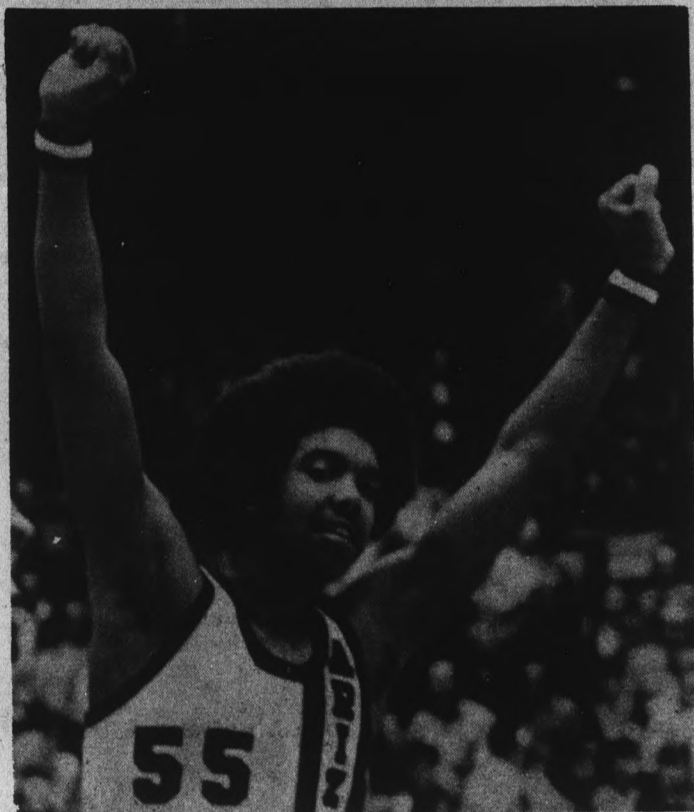
ASU defeated Wyoming 91-69 in Laramie.

Saturday night the Sun Devils will try to avenge an earlier 74-72 loss to Colorado State.

Student tickets for both games can be purchased on Wednesday and Thursday from 8:30 a.m. to 5 p.m. at the Sun Devil Ticket Office.

state press

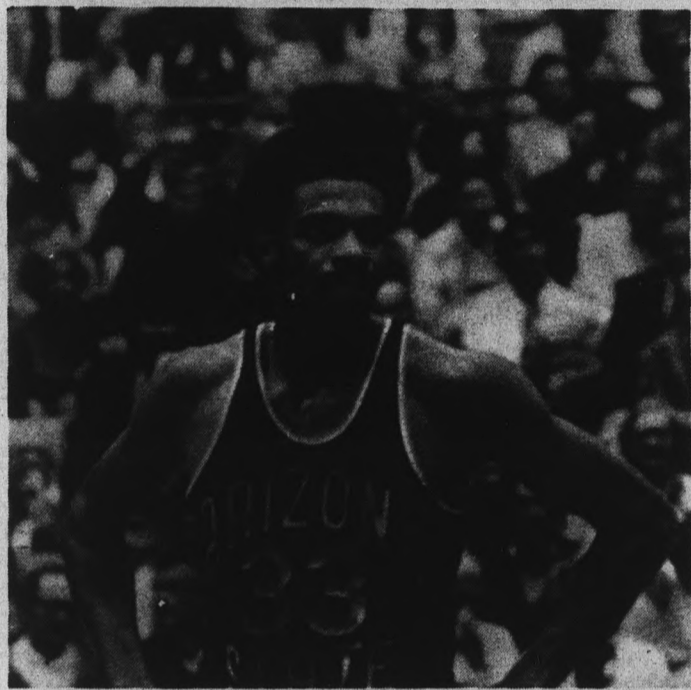
sports



... and the thrill of victory

The UofA's Bob (Big Bird) Elliot reacts joyfully at the sound of the buzzer sealing the Wildcat win. Elliot dominated the game with 38 points and 25 rebounds.

Photo by Jim Finn



The agony of defeat . . .

ASU guard Lionel Hollins glares in disgust near the end of ASU's loss to Arizona Saturday night. Hollins led the Sun Devils in scoring with 21 points.

Photo by Tom Lawson

SPORTS
965-7572

Hamburger,
Fries & Coke
96¢

Rita's Coffee Shop

from 5 A.M. - 5 P.M.
With This Ad

1021 W. University, Tempe

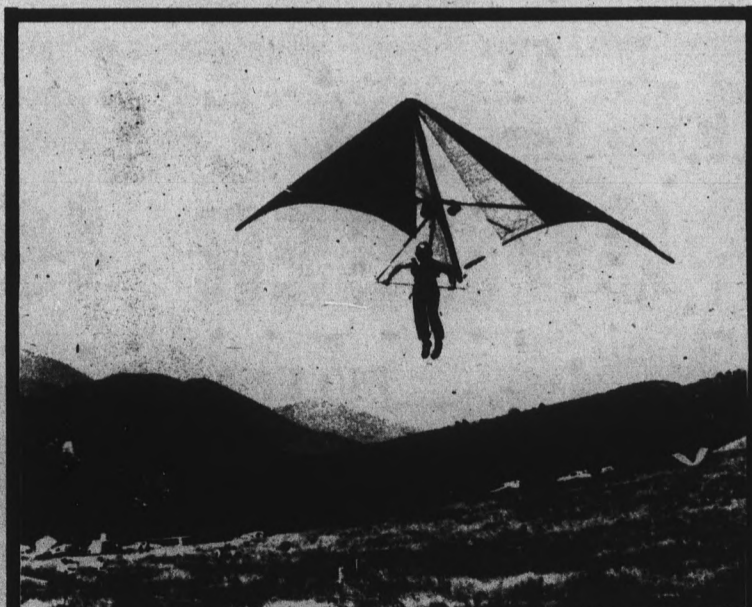
CARPET
SPECIALS

9 x 12 used rugs-\$5.00

All Sizes In Stock

CARPET
HOUSE

1516 E. Van Buren, Phx.



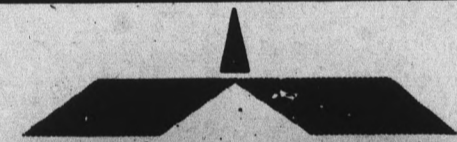
Now You Can Fly—Really Fly!!

It's easier than it looks and the thrills are like nothing you've ever felt before.

GENESIS II
FLIGHT SCHOOL & SALES

\$10.00 PER LESSON

CALL 257-1261



HOWARD
JOHNSON'S

The Flavor of America

10% Discount

Cards now available to all
Faculty, Staff & Students
of ASU

Good anytime — Good for everything but
alcoholic beverages. Good for a member and
entire party.

at

HOWARD JOHNSON'S

Restaurant

225 E. Apache Blvd., Tempe

Collage

TODAY

Free breakfast 7 to 9 a.m. daily except Sunday at the Golden Temple Restaurant, 415 S. Mill Ave., Tempe.

Veterans Affairs Office is accepting applications for recruiter positions in Academic Service, room 305, 965-7723.

Career Services Placement Office offers Air Force opportunities from 8 to 12 p.m. Luncheon sponsored by Hillel 11:30 to 1 p.m. at Baker Center every Tuesday. Price 75 cents.

ASU Outing Club meeting at 7:30 p.m. in the MU Pinal Room 215 including trip planning and slide show.

Phrateres meeting at 7 p.m. in the MU Coconino Room 217, mandatory attendance for active members.

Pop-up concert featuring the Bob Meighan band from 10:30 to 12:30 p.m. in the MU Rendezvous lounge.

Free, personal and situation counseling school days at Danforth chapel, 965-3570.

WEDNESDAY

Pop-up concert featuring D. Whitney Quinn from 10 to 12 p.m. in the MU Rendezvous lounge.

MU Movie House presents "The African Queen," at 2, 7 and 9:30 p.m. Tickets are 25 cents and are available in the MU Movie House 45 minutes before showtime.

Memorial Union Photography 5 entry deadline at 5 p.m. in the MU Activities Center (lower level).

Lunch sponsored by the American Baptist Foundation of Arizona every Wednesday 11:30 to 1:30 p.m. at Baker Center.

Sri Chinmoy Meditation Group meets every Wednesday at Danforth Chapel at 7:30 p.m.

Meditation thought for the week: "When the power of Love replaces the love of power, man will have a new name: God."

THURSDAY

Home-cooked luncheons sponsored by the Wesley Foundation Methodist ministry each Thursday from 11:30 a.m. to 1 p.m. at 213 East University Drive.

College Democrats meeting at 7 p.m. in the MU Apache room.

Newsletter supplements State Press

The Student Bulletin is newsletter sponsored by the Associated Students of ASU to provide information concerning services, student organizations and activities.

In the first edition, distributed Jan. 29, the bulletin covered campus parking, the reconstruction of ASASU, the energy crisis and a calendar of events.

Rick Weiss, editor of the bulletin, said the newsletter is a supplement to the State Press.

AWARE meeting at noon in Farmer Education room 213. Scientology ASU meeting at 7:30 p.m. in the MU Yavapai room.

College Democrats vs. College Republicans in a volleyball game at 4 p.m. at the volleyball courts next to the women's gym, onlookers invited.

Christian Science College Organization meeting 4 p.m. at Danforth Chapel.

Anthropology Club meeting at 7 p.m. in the MU Pinal Room 215 featuring guest speaker Prof. L. Nash on "Recent Studies at Gombe Stream."

Norn 'N' Halos square dancing from 7 to 9:30 p.m. at the Ross Hall First Methodist Church.

Inter-varsity Christian Fellowship volleyball came at 6:30 p.m. at the campus circle mail box.

Indians plan cultural week

Plans for the Indian cultural week will be discussed at 7 p.m., Wednesday in the Memorial Union's Yavapai Room.

Indian folksinger, Floyd Westernman, is scheduled to perform during the cultural week.

For further information contact Barehand Harlan at 966-0862.



STUDENT SPECIAL

75^c + tax

at



Show Your Student I.D. Card

Buy a WHOPPER

(or WHALER or YUMBO)

and receive

FREE FRIES

at **BURGER KING**®

ASU

740 E. Apache Blvd.



Limit: One per Customer

A Minute's walk from the Campus

Other Locations:

7444 E. McDowell, Scotts.

2237 E. Ind. Sch. Rd., Phx.

2302 W. Camelback, Phx.

Offer Extended to Feb. 15, 1974— Subject to increase in retail prices