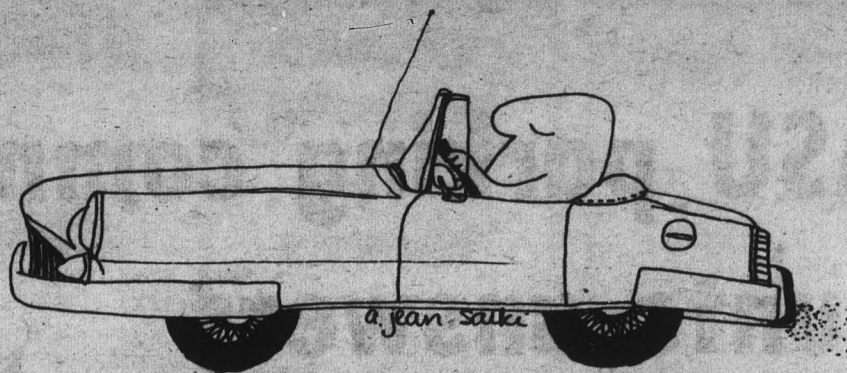


**Inside:**

**The ASU Parking Committee sponsors a contest to find parking solutions. page 2**



**tuesday**

Vol. 57, no. 1 January 22, 1974

**state  
press**

Tempe, Arizona

# Bug Line creeps through traffic unmolested

The Bug Line started last Thursday, with all signs pointing to success. Originators and managers John Balfour and Ed Sears have indicated that most of the advertising, which pays for the buses, is already sold, and the rest is expected to be sold within the next two weeks.

Students are making good use of the two buses. "We had full capacity on each of the three early runs. That's about 70 people, (each)" Balfour said. The early afternoon runs have been filled to near standing room only.

Buses leave Christown each morning at 7:30, 8:30, 9:30, and 11:30. Afternoon departures are 1:30 and 5:30. Students should park in the southwest area of the parking lot near the movie theatre.

Each bus will take 19th Avenue to West High School, turning left on Thomas to Phoenix College. From there the buses will go to North High, and then to Tower Plaza. The buses will continue on Thomas to Scottsdale Road, making the next stop at Papago Plaza on McDowell.

The bus will continue on Scottsdale Road to University, stopping near Women's P.E.

Each trip takes one hour from Christown to the University. Balfour indicated a schedule for each stop should be available within the next two weeks. It should take about 30 minutes to reach Los Arcos, he said, but he warned this was just a rough estimate.

Buses leave campus from the Women's P.E. area each morning at 8:40 and 10:40. Afternoon departures are at 12:40, 1:40, and 2:40. A final bus will leave at 9:45 p.m.

Photo on Page 3



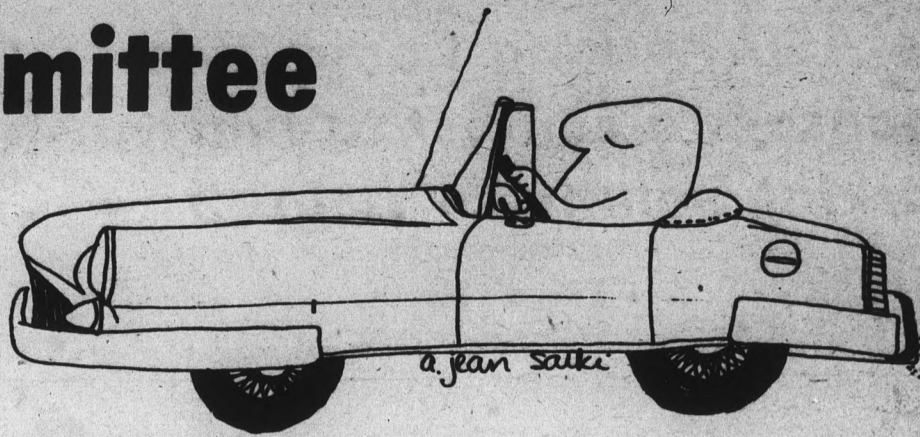
Photo by Tom Hlatt

**While strolling through Language and Literature one day . . .**

Students line up to drop and add English classes in the lobby of the Language and Literature building yesterday. Drop-add forms and course request cards

are available in all colleges and departments. The course cards and drop-add forms must be turned in at the MU Arizona room by 4 p.m. Wednesday.

# ASU parking committee hunts answers through contest



The ASU Parking Committee is sponsoring a contest to find long- and short-term solutions to parking problems on campus. An "E" parking sticker, allowing parking anywhere on campus, will be awarded to the winner in each category.

Michelle Wolosz, committee member, said the best proposals for long- and short-term solutions will be submitted to the appropriate University administrators for action.

Any student, staff or faculty member may enter the contest. Wolosz said there are no restrictions on the types of proposals acceptable.

Proposals may be turned in at the State Press office in the Stauffer Communications building, Associated Students office in the Memorial Union, or the Engineering Center.

The contest closes Feb. 8. Further information about the contest may be obtained at the State Press and Associated Students offices.

The eleven-member parking committee is

composed of students from various campus organizations, and headed by Mike Arruda, ASASU administrative vice president.

Since its first meeting in October, the committee has studied such possibilities as high-rise parking, a shuttle bus service through "Sin City" and an expanded bike path system.

The committee also worked to establish the University Police escort service for girls who live in Gammage and McClintock Halls and have to park behind the Palo Verde complex.

The committee's efforts led to the experimental marking of the newly-paved parking lot south of Apache. The lines on the lot are closer together than in normal lots to encourage drivers of smaller cars to park there.

The committee is currently studying the possibility of a two-week trial period in which all parking restrictions are lifted, so parking will be on a first-come first-served

basis. During this period, the University Police would give no citations for parking in lots marked for cars with other decals.

University administrators have not yet approved this plan.

**NEWS**  
965-7572

**ERICKSON**  
HANDCRAFTS  
ARTIST & DRAFTING  
SUPPLIES  
Crafts - Picture Frames  
Decorating Material  
Open Mon. & Thurs. Nights  
10 Percent Discount to Students  
111 E. University — 967-4482

**After-Christmas**  
**SALE**  
10% to 50% OFF all items  
Big savings available as we re-stock for 1974!  
— Rings — watches — pendants — charms  
— pens — watch bands — bracelets —  
lighters — tie tacks — cuff links — key rings  
— earrings — wallets — lockets — crosses  
— pewter mugs — silver trays — etc. —  
(Sale prices effective thru Jan. 31).  
**Tempe Jewelers Inc.**  
(Formerly Budd's Jewelers)  
708 S. Forest Ave., Tempe  
"In Oxford Square"

Don't miss the man from Minolta.  
He'll be here for a  
**Minolta**  
**Demonstration**  
Friday & Saturday  
Jan. 25 & 26, 10 am-5 pm  
**PIONEER CAMERA SHOP**  
TEMPE CENTER  
967-4662  
**MINOLTA ST-T 102**  
with f/1.4 lens

They actually think. They get darker as the sun gets brighter.  
And vice-versa.  
New from Lee Optical.  
Incredibly smart sunglasses.  
PHOTOSUN™ Sunglasses.  
They adjust by themselves to give you just the right amount of protection and visibility in sun or shade. Bright day or cloudy.  
PHOTOSUN™ Sunglasses  
One pair of sunglasses for all kinds of days.  
Come in and get a pair of sunglasses that out-smart the sun.

**LEE Optical**  
TEMPE  
Open Monday through Saturday.  
Tempe Center 967-7864 2032 S. Industrial Park Ave. 967-7333

Other vision centers in: PHOENIX, PARK CENTRAL, CHRIS-TOWN, THOMAS HALL, SCOTTSDALE, MESA, HAYDEN PLAZA NORTH, MARYVALE, TUCSON, YUMA



**Traffic bugging you?**

The free Bugline bus service leaves Christown each morning at 7:30, 8:30, 9:30 and 11:30. Buses leave campus from the lot across from the Womens P.E. building each morning at 8:40 and 10:40. Afternoon departures are at 12:40, 1:40 and 2:40. An evening bus leaves at 9:45.

Photo by T.L. Hiatt

**'Macbeth' auditions tonight**

Auditions for the University Players production of "Macbeth" will be held tonight from 7 to 10 p.m. and tomorrow from 4 to 7 p.m. at Payne Training Center.

There are 34 positions in the cast, primarily men's roles, and all students who would like to try Shakespeare are urged to try out.

Specific times for a reading can be obtained by signing the appointment sheet in the lobby of the Lyceum.

**CLASSIFIED**  
965-7572

**NEWS**  
965-7572

STATE PRESS is published by Arizona State University Tuesday through Friday during the academic year, except holidays and examination periods. Entered as second class matter at Tempe, AZ. 85281.

**CARPET SPECIALS**

9 x 12 used rugs-\$5.00

All Sizes In Stock

**CARPET HOUSE**

1516 E. Van Buren, Phx.

**Citron's Surplus**

Jefferson at 2nd St. in Phoenix for

- Navy denim seafarer bellbottoms, white & chambray
- Tankers
- Back Packs & Bike Bags
- Peacoats & CPO Shirts
- White & 13 Button Belts
- Parachute canopies

**The cartridge-load automatic that knows when not to flash. Minolta Autopak 600-X.**

You'll never have to worry whether or not to use flash. The Autopak 600-X decides for you. And you don't have to worry about missing flashes either because the 600-X uses batteryless X-cubes. Drop in a 126-size film cartridge, leave an X-cube on top and fire away. Sensitive electric eye automatically sets exposure for perfect color or black-and-white prints. Color slides, too.



**Special Price - This Week Only**

See the MINOLTA

demonstration all day

Friday and Saturday at

**PIONEER CAMERA SHOP**

967-4662

TEMPE CENTER — UNIVERSITY & MILL

**STEREO**



**SYSTEM 323\***

- SANSUI** AM/FM Receiver **\$149<sup>95</sup>**
  - GARRARD** Turntable with Cartridge **84<sup>95</sup>**
  - E.P.I.** Micro-Tower Speakers **120<sup>90</sup>**
- NORMALLY **\$354<sup>90</sup>**



\* DOLLARS THAT IS!!

**BASF RECORDING TAPE**

- 7" Reel **\$149**
- 1200'
- 90 Minute **\$199**
- 8-Track
- C-66 Cassette **96¢**

**ROBBINS RECORD IONIZER**

REG. \$5<sup>00</sup> / NOW **\$2<sup>50</sup>**

\* "Keep Em Clean"

**HEAD PHONES ALL MODELS**

**20% OFF**

\* EXCEPT STAY

**25' EXTENSION HEADPHONE CORD**

REG. \$4<sup>99</sup> / NOW **\$2<sup>99</sup>**

**SPEAKER SALE**

- A.R.-4X** OILED WALNUT REG. \$75<sup>00</sup> / NOW **\$58<sup>00</sup>**
- E.P.I. 100** OILED WALNUT REG. \$94<sup>50</sup> / NOW **\$79<sup>00</sup>**

**8-TRACK CARTRIDGE DECK**

"Add It To Your System"

REG. \$44<sup>95</sup> / NOW **\$37<sup>50</sup>**

**Jerry's**

**audio exchange**

Phoenix — 334 E. Camelback Rd. 263-9410  
Tempe — 120 E. University Dr. 968-3491  
Tucson — 1037 N. Park 622-7407

# Opinion

# state press

## Thanks

Commuter students finally have something of their own to be thankful for — the Bug Line.

After months of hearing "in few more weeks", the student-initiated project started last Thursday.

Two students, John Balfour and Ed Sears, originated the ASU plan and manage the line. They have devoted a year to getting free transportation for students.

The Bug Line is expected to ease traffic congestion and pollution, to make the hideous parking situation on campus perhaps a little less hideous, to help students face the problems of "steep gas prices" and cut down on crimes associated with hitchhiking.

The really exciting part of the Bug Line operation, though, even more exciting than the number of students riding the bus, is that students successfully initiated and developed a project of this size and potential.

To Balfour and Sears go sincere congratulations, best wishes and thanks.

To other campus organizations, the ASASU Senate, for example, HINT, HINT.

## Ride the Bug Line



Mark Kerrigan

## Looking ahead at ASASU

This is part one of a series by ASASU President Mark Kerrigan.

We have in the past and we will continue in the future to feel new and different demands upon us. Such demands require us to keep abreast of the times in which we live. A few years ago due to growing apprehensions about the military conflict in Asia, the University, through prompting by its students, provided draft counseling and advisement, a service recognized as being vital to the academic future of many of us. But today we witness new demands.

Many colleges and universities throughout the country are keeping abreast of these demands by being responsive to needs such as job placement programs, psychiatric counseling, advisement programs for residential living, extended health care facilities, etc. All of these services and programs aid the student so

that he or she may gain a better educational experience.

One program this university has failed to adopt is in the area of legal services. Associated Students has for more than a year been pursuing a program on this campus to provide our students with quality legal help. All the more evidence favoring this position lies in the legal emancipation of eighteen year olds. This puts thousands more of us into a position of being sued, entering into legal contracts, and being treated in all cases as a legal adult. So, in what position does this leave many of us? We may, due to our student status and financial situation, find ourselves legally responsible, yet inadequately protected. If in fact, the University reasonably assumes that counseling provides relief for students so that they may perform their academic functions more

efficiently, then the implementation of a students' attorney is even more vital.

For how can a student compete academically when he's facing legal threats through housing, leasing, or other legal complications? If past precedents are the case then free legal counsel is the answer.

Hope for implementation of this program continues to grow due to increasing University responsiveness.

There is another area that needs serious recognition. I am sure we have all noticed the mounting costs of text books. Students have in the past attempted to remedy this plight by initiating co-operative book exchanges. The idea is commendable but unfortunately has not found a great degree of longevity.

It appears the first step to eliminating high book costs lies in the development of a text book policy. A

university committee has been formed to study the possibilities of developing such a policy. Elements I feel vital and hope to be included in such a policy would consist of greater utilization of the library reserve section and a two year minimum text use standard. When both suggestions are observed, the costs per student throughout the University would be decreased.

Such a policy should not be an intrusion upon the rights of the faculty to stipulate their needs, rather it should exist to protect the student and university from being engulfed by text book prices and negligent practices.

Once this policy is in effect more used books would be in existence, thus making the establishment of a book co-op exchange more realistic.

# state press

Editor  
Managing Editor  
News Editor  
Sports Editor  
Asst. Sports Editor  
City Editor  
Perspective Editor  
Photo Editor  
Asst. Photo Editor

Patty Nolan  
Ted Williamson  
Anita Mabante  
Barry Hochfelder  
Roger Wittlin  
Greg Hagan  
John LeHockey  
Tom Hiatt  
Dave Chase

# Collage

Today

Free, personal and situation counseling school days at Danforth Chapel, 965-3570.  
Free breakfast daily except Sunday at the Golden Temple Restaurant 415 S. Mill Ave., 7 to 9 a.m.  
United States Air Force Recruiting Service offers Air Force opportunities 8 a.m. to 12 p.m. in the Career Service Placement office.  
Veterans Affairs Office is accepting applications to fill recruiting positions, Academic Service, 305, daily, 965-7723.  
MU Film Committee meeting, 7 p.m. in the MU Movie House.  
ASASU Cultural Affairs Board meeting at 4:30 p.m. in the MU Navajo Room.  
Hillel folkdancing 7:30 to 10:30 p.m. in the MU Cochise Room.

Wednesday

Free faculty recital featuring violinist Gabriel Gruber and pianist Ralph Lockwood at 8 p.m. in the ASU Music Theater.  
MU Movie House presents "The Picture of Dorian Gray" at 7 p.m., admission 25 cents.  
SRI Chinmoy Meditation group meeting at 7:30 p.m. in Danforth Chapel.

Thursday

AWARE meeting at noon in Farmer Education 213.  
Scientology ASU discussions and drills at 7:30 p.m. in the MU Yavapai Room.  
Violinist Jean-Jacques Kantorow will perform virtuoso works in an 8 p.m. concert at Gammage Auditorium. General admission tickets are \$2 and are available at the Gammage Box office or at the Music Theater on the evening of the concert.  
Beta Tau Chapter of Beta Alpha Psi lunch from 12 to 1:40 p.m. in the MU Gold Room.  
Center for Executive Development seminar luncheon from 12 to 1 p.m. in the MU Alumni Lounge.  
JHO Yoga club meeting 4 to 5 p.m. in the MU Yavapai Room.  
Anthropology Club meeting 7 p.m. in the MU Santa Cruz Room.  
Horns 'N Hales square dance from 7 to 9:30 p.m. in the MU Maricopa Room.  
ASU Lacrosse Club meeting at 7:30 p.m. in the MU Navajo Room.  
Young Socialist Alliance meeting at 7 p.m. in the MU Yavapai Room.

## Women given special aid on return

Mature women students will find a cluster of compatible peers at the bi-weekly AWARE meetings.

The ASU chapter of the Association for Women's Active Return to Education meets at noon, every other Thursday beginning January 24, in Farmer Education 213. It offers a varied program for women making the transition of resuming their education after an interim of not attending school.

Dr. Catherine Nichols, professor of counselor education, will speak Thursday on the topic, "Where Do We Go From Here?"

Dr. Nichols teaches a personality development seminar specially designed to help mature women re-adjust to the university setting.

## SAVE ON MEMBERSHIPS

Students Can Save **\$150** on student memberships prior to Feb. 1, 1974

Faculty Can Save **\$80** on corporate (family) memberships prior to Feb. 1, 1974

**Tempe Racquet & Swim Club**  
2140 E. BROADWAY • 968-9231

## MovieHouse re-arranges ticket policy

The MU Film Committee has changed its ticket policy because of an increase in films in the Spring Film Festival.

Advance ticket sales will take place only for week-end films, beginning on the Monday of the week of the film, but it will not take place for Sunday films. Tickets can be purchased with a current I.D. card in the MU Activities Center, located on the lower level.

All other ticket sales will take place at the Movie House ticket counter on the day of the film, beginning 45 minutes before show time.

Ticket prices range from 25 cents to \$1.

## Ed group recruits members

The Student National Education Association (SNEA) is recruiting education majors or persons interested in education. Applications and materials are available in the Office of Professional Field Experience, Farmer Education building, Room 118.

## Seniors, Grad. Students

Applications Now Accepted For Spring Graduates non-flying positions open! Engineering — Math — Computer Sciences — Also pilot & navigator.  
Stop by office at 123 E. University Tempe or call 261-4097 or 968-1149

# Radio Shack®

## SAVE ON 4-CHANNEL STEREO NOW



APPRECIATE THE SAVINGS WHILE YOU ENJOY THE SOUND OF THIS REALISTIC 4-CHANNEL SYSTEM

Reg. 927.75 **799<sup>95</sup>**

Another Realistic first... the QTA-790 AM FM 4-channel stereo receiver with wireless remote control. PLUS sleek styling and every control and feature imaginable! Optimus-2 acoustic-suspension bookshelf speakers deliver superior bass and treble response. LAB-12B automatic stereo changer features custom base and counterweighted arm for precise tracking... and there's only one place you can find this system... RADIO SHACK!

UNCOMMON 4-CHANNEL MUSIC CENTER FROM COMMON SENSE REALISTIC

Reg. Sep. Items Price **229<sup>90</sup>**  
289.90

Versatile system includes 4-channel stereo receiver, 4 speaker systems, and 2/4 channel 8-track player. Features include tuning meter, inputs for phono, inputs and outputs for taping. 8-track player features automatic 2 and 4-channel sensing so there's no need to switch. 12-1444, 14-1901



and you can CHARGE IT

SHOP OUR COMPLETE LINE OF MOUNTS AND ACCESSORIES FOR CAR TAPE PLAYERS



AUTO PLAYER WITH 4-CHANNEL SYNTHESIZER

Realistic 8-track player adds 4-channel to your auto entertainment. 12-2024 Reg. 69.95 **48<sup>88</sup>**

CAR STEREO SPEAKER SYSTEMS

STANDARD 8<sup>95</sup> / DELUXE 14<sup>95</sup> PR. PR.

Deluxe and standard surface or flush mount speaker systems 12-1841 thru 12-1844

4-CHANNEL TAPE CARTRIDGES

Leading artists performing various hits. **3<sup>95</sup>** EA. 51-5078 thru 5082

1114 NORTH SCOTTSDALE RD., TEMPE  
Phone 966-5271

Open Weekdays 10 A.M. — 9 P.M. — Saturday 9 A.M. — 6 P.M. — Sun. Noon to 5 P.M.

A TANDY CORPORATION COMPANY



# Devils face tough times

By Roger Wittlin

The ASU basketball team enters a critical period in defense of its WAC championship, with road games against Utah and Brigham Young this week.

The Devil's were kept busy over the semester break with eight games, four of which were conference games.

They defeated Wyoming, Texas-El Paso, New Mexico, Creighton, Utah State and Tulane, losing only to Oklahoma State and Colorado State.

The Devils now have an 11-4 overall record and are 3-1 in conference play.

In the Devils 77-64 win over Creighton Saturday night ASU played without senior guard James Brown, who has been ruled academically ineligible. Whether Brown will be lost all season will be known later this week.

Brown's loss placed junior Mike Moon in a starting role and Moon responded with ten points. Head coach Ned Wulk was pleased with Moon's performance and said Moon has been handling pressure situations all season.

Wulk said ASU is in good position to take command of the WAC with wins against Utah and Brigham Young. "The team that is going to win the conference is the one which can win on the road. When a team wins away from home I consider that a plus one; a loss at home is a minus one."

"BYU, Colorado State and us have all broken through on the road," Wulk said.

"The way the WAC conference is sizing up a plus three should be good enough for at least a tie for the championship."

The Arizona Wildcats,

who had been a nearly unanimous choice for the championship have not lived up to pre-season expectations. Arizona has a 2-2 WAC record and one of the

losses was to Texas-El Paso (ASU defeated UTEP 73-53) at McKale Center in Tucson.

Wulk said the Wildcats have tremendous individual potential but have not stabilized or solidified as a team.

Leading the Sun Devils in scoring, with an 18.0 average, is Lionel Hollins. Hollins came to ASU from Dixie Junior College in St. George, Utah. Wulk doesn't hide his elation over the play of Hollins. "There hasn't ever been a junior college transfer at ASU who has adjusted to our system better than Lionel. He's scoring a little more than I thought he would and he's a completely unselfish player."

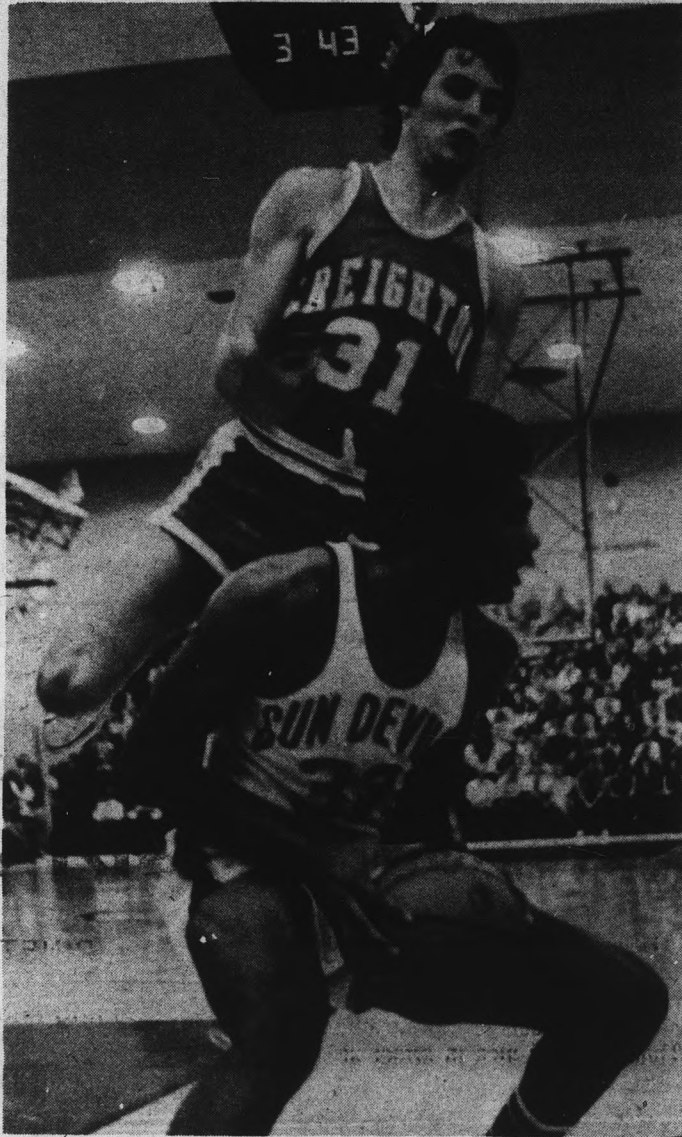
"He's the best guard in the conference," Wulk said. "I haven't seen every team

play this year, but from what I know of the players last season, Lionel can match up with anyone."

Wulk cited forwards Mark Wasley and Ken Gray as contributing factors in the Devils success this season.

"Mark has shown tremendous improvement in the last eight games. (Wasley scored 32 points against Tulane in the Roadrunner Classic for an ASU seasonal high. Gray does more than an adequate job through his steady play."

Both games in Utah will be televised. Thursday's game against Brigham Young on KTAR-TV, channel 12 will begin at 6:30 p.m. Saturday's Utah contest will be televised by KOOL-tv, channel 10 at 2 p.m.



## Goodby Richie

A fake by ASU guard Lionel Hollins sends Creighton's Richie Smith up in the air and then down on Hollins' back. The ASU star made both free throws and totaled 27 points against the Blue Jays.

Photo by Mike Russell

## sports | state press

### AIR FORCE RECRUITMENT

The U.S. Air Force is recruiting MINORITY students for positions in administration, electronics, navigation, mechanics, computer science, math, engineering and others. The positions are open to men and women graduate and undergraduates. Captain Willy C. Lawrence Captain Rodriguez and Sgt. Dunkerly; will be in the Mall area from 8:30 a.m. to 10:30 a.m. then at 12:00 to 2:00 p.m. in the Academic Services Bldg. room 111A on January 29, 1974.

THE CULTURAL AFFAIRS BOARD PRESENTS  
**CHARLIE CHAPLIN'S**  
CLASSIC COMEDY



## MODERN TIMES

with Paulette Goddard  
written, directed and scored by  
Charles Chaplin

JAN. 25 & 26 7 & 9 PM NEED HALL A.S.U.  
TICKETS RM. 222 MU OR AT DOOR  
UNIV. I.D. \$1. GENERAL \$1.50

BUY  
SELL

## CLASSIFIED ADS

TRADE  
LEASE

STUDENT RATES: \$1.30 minimum charge for three 20 letter space lines. 35 cents per line additional for each 20 letter space line over three. For each consecutive day after the first day, the rate is one-half the initial charge. If the ad is not run consecutively, the first day rate will apply. Corrections to ads will be made if noted before the second printing. NO REFUNDS WILL BE MADE FOR CLASSIFIED ADS PLACED IN THE STATE PRESS.

COMMERCIAL RATES: Add 20% to the student rate. All ads not placed by students for student activities will be charged at the commercial rate.

DEADLINE: 3 p.m. two days before publication. (An ad for Friday must be placed by 3 p.m. Wednesday.)

### FOR SALE

Why pay rent! 8x4 two bedroom mobile home, 10 min. from campus. It's like owning your own home. \$1,995. Payments lower than rent. Call Nate 964-4030 or 2207 W. Main #24 Mesa. (Next to Pioneer Drive Inn.) (1/24)

BACK FROM THE RESERVATION WITH INDIAN JEWELRY AT WHOLESALE PRICES. CALL MAL 967-0111. (2/1)

2 bdrm. mobile home fully furn. incl. carpet, drapes & air cond. 10 min. walk to ASU & shopping. Call 966-3194. (1/25)

Vans 71 & 72 Ford 72 Chev. auto V8 air clean. \$900-\$1500. 265-6884. (1/24)

Floor Mount Cassette \$50. 12" A1. boaf \$50. Tandberg recorder \$25. Soils EA325 Text \$7. Food Tech. Text \$7. Call 968-4848. (1/23)

U-finish best quality new 4 drwr chest \$28. Used furniture cheap. 1711 Apache, 966-8498. (2/1)

Nice chests / dressers / variety of used desks. 1711 Apache 966-8498. (2/1)

Kimball Piano—4 years old—like new. Make an offer. Orig. cost \$1500. 946-2170 or 944-3430. (1/25)

House Trailer, 35x8, with refrigeration. Within walking distance of campus. Call 968-2016 after 5 p.m. (1/25)

### ANNOUNCEMENTS

Klass notes are here!! At last you can be free the tedious & inefficient task of "taking notes." Imagine, an entire semester's set of typed lecture notes, before the lectures begin. The following list of notes are now available at the ASU Bookstore and the Student Book Center on College Ave., BO-100 CH-101, 113, 115, 231 ES-102 EC-201 GL-100 GL 101 MA-120, 121 MI-201 MI-101 PX-100 RE-251 20-200, 201, 202, 270. (2/8)

Earn up to \$1500 a school year hanging posters on campus in spare time. Send name, address, phone and school to: Coordinator of Campus Representatives, P.O. Box 606, Ann Arbor, MI 48107. Call (313) 662-5575. (1/22)

ALASKA is booming this year! Approved handbook, "JOBS IN ALASKA," covers all occupations, including pipeline. 1974 edition. \$3.00, from JOBS IN ALASKA, Box 1565, Anchorage 99510, a licensed employment agency.

The Gypsy Tearoom. New and exciting 1444 Danielle Plaza, Tempe. 10:30-3:30. Tues. thru Sat. It's different. (2/15)

### FOUND

Pottery and glasses found Dec. 7 or Dec. 8 in women's restroom on the 1st floor of the State Press, Sta. Bldg. (1/25)

### INSTRUCTION

PARACHUTING CLASS. \$1 OFF WITH AD. LOW RATES. SIGN UP NOW. 275-0010. (5/3)

### TYPING

Typing—IBM selectric, pica type, Rosemary Vance—empe. 967-9143. (1/31)

PKUP & delivier ASU. Electric elite type. Call Lyn at 963-8428. (1/22)

Typing, IBM 50c & up. Thesis/diss/reports. Pam 994-9851 after 5. (1/22)

### SERVICES

Small appliances fixed at very low rates. Call Palco Appliance Repair. 965-2904, Sahuero Hall C-209. (1/25)

TUNE UPS/REPAIRS. ANY FOREIGN/AMERICAN CAR. SAVE UP 30%; MY HOME 946-3253. (1/22)

Wanted: driver to drive car to Staten Island N.Y. Call 279-5293. (1/24)

### RENT

Need a roommate? Call 967-7058. 9 a.m. to 9 p.m. Homes/Apts. to share. (2/15)

New 2 bedroom, pool, dishwasher, disposal, refrig. Tri-City, \$190. 834-0457. (1/22)

Two bedroom Townhouse, new pool, \$180 per month. 992-4611. (1/25)

# Did cable-tv blow it?

By BARRY HOCHFELDER

The broadcast of the Nov. 24 ASU-UofA football game by a Flagstaff based cable television company may have jeopardized future local broadcasting of ASU and UofA sports events.

The Warner Cable Co. broadcast the game to its subscribers in Flagstaff despite an NCAA regulation limiting the broadcast to the Phoenix and Tucson areas because ASU had completed its regional television allotment.

Before permission for local broadcasting could be granted, the NCAA needed assurances the game would not be broadcast elsewhere in the state, said Dr. Fred Miller, ASU athletic director.

ASU, KTAR-tv, Phoenix, and KGUN-tv, Tucson sent telegrams to all cable television companies in Arizona notifying them of the situation and requesting them not to show the game, Miller stated.

Cable television operates by taking a broadcast signal from a normal tv transmission and feeding it to subscribers via cables.

Cables systems are allowed to show any program being broadcast by the stations they take their signals from, with

one exception according to Federal Communication Commission (FCC) rules.

They cannot show anything being broadcast by the regular broadcasting station in the area they serve.

Because of the FCC ruling Warner Cable decided to broadcast the game to its subscribers, said Clint Wager, general manager of Warner Cable.

When it was learned the company planned to broadcast the game, Miller, Arizona Att. Gen. Gary Nelson, and Jack Clifford, general manager of KTAR called Wager and requested again that the company not broadcast the game, Clifford said.

It was explained that if Warner Cable went ahead with plans to show the game the NCAA would rescind permission to broadcast it in Phoenix and Tucson.

"Wager told us, 'You can tell the NCAA the general manager of the Flagstaff Warner Cable System assured you that system would not carry the game if no other cable company would carry it and if my owners do not reverse this decision,'" Clifford said.

All interested parties took

Wager at his word and assumed the cable company would not broadcast the game, he said.

Wager said he checked with Warner's corporate attorneys who told him "there were no existing rules, regulations or laws that permitted me to delete a signal normally carried."

He said his first obligation is to his customers and some had threatened to sue if the game weren't carried by the cable system.

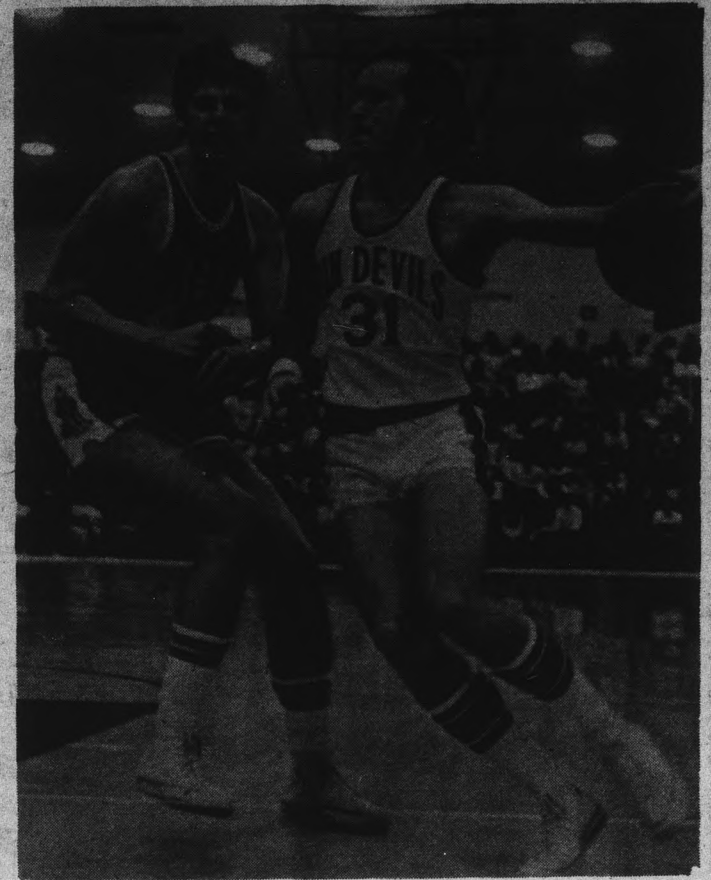
Clifford admitted the Warner Cable did nothing legally wrong so no action can be taken against them.

It is possible the NCAA will prohibit all local broadcasting of ASU-UofA sports events to avoid the recurrence of the problem, Clifford said.

Both Miller and Clifford will be meeting with the NCAA Television Committee in the near future to try and find a way to settle the issue.

Miller said he doesn't expect the NCAA to take any punitive action against the two schools since they can prove every effort was made to keep the cable companies from broadcasting the game.

"We acted in good faith across the board," he said.



## That 'ol Devil Moon

ASU's Mike Moon drives around Creighton center Doug Brookins to score two of his ten points Saturday night.

Photo by Mike Russell

# Miller denies LBS allegation

By Barry Hochfelder

ASU athletic Director Dr. Fred Miller said he was never aware of any recruiting violations at Long Beach State University during his tenure there as athletic director. Statements by Long Beach State officials have linked him to the charges.

"Long Beach officials said the people involved in the alleged violations were no longer there, so the penalties invoked by the NCAA are less severe," Miller said. "This incenses me because they're inferring there were violations during my tenure."

"At no time was there any hint of wrong-doing. At no time

was there an inquiry while I was athletic director and at no time was I contacted by NCAA investigators," he said.

Miller pointed out that the NCAA charges and penalties never mentioned the period of time when the alleged violations occurred.

Long Beach State was put on indefinite probation for a minimum of three years. They are prohibited from all post-season football and basketball competition because of alleged violations discovered during a two-year NCAA investigation.

"An athletic director can't operate in a void. If there is a charge you investigate it but there was never a charge made

while I was there," Miller said.

He said it has always been his policy to look for violations but does not like to dwell on negative aspects of a program. That policy is also in effect at ASU.

The NCAA can strangle a program by reducing grants-in-aid and recruiting privileges so it would be foolish for a coach to violate the rules, Miller said.

There is a built-in system of checks and balances to watch for just those things, he said.

"The penalties are just too severe for coaches to take the risk. Our coaches here at ASU operate within the guidelines of the WAC and NCAA codes," he said.

## TRANSCENDENTAL MEDITATION

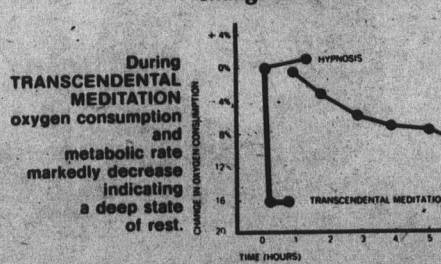
as taught by

Maharishi Mahesh Yogi

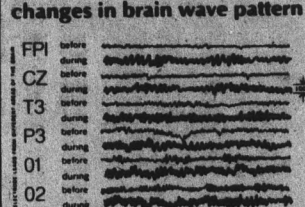


## SCIENTIFIC RESEARCH

LEVELS OF REST change in metabolic rate



RESTFUL ALERTNESS changes in brain wave pattern



These patterns are different from those seen in other states of consciousness—waking, dreaming and sleeping—and indicate a state of restful inner alertness.

During TRANSCENDENTAL MEDITATION there is a spreading of 8-9 cycles per second waves to the more frontal areas of the brain, with the occasional occurrence of prominent and synchronized 5-7 cycles per second waves.

Free Introductory Lectures:  
Today - 12 noon & Tonight - 8 pm  
M.U. Bldg. Room 283

## SKI SUNRISE

Stay in  
PINETOP—LAKESIDE

Choice of  
Lodging and Excellent Restaurants

- For
- Reservation info.
- Rates
- Telephone Nos.
- Area Description

Call 336-4914 or pick up your  
PINETOP-LAKESIDE brochure at ASU student  
Memorial  
Information Desk  
or  
Local Ski Shops

## BO-JO

Welcomes Back All Our  
Old Friends & Extends A  
Hearty Welcome To All  
The New  
STUDENTS & FACULTY

BO-JO SUBMARINE SANDWICHES  
THE LONGEST . . .  
THE BEST BUY . . .  
IN TOWN

PIZZA  
COMPARE OUR  
SIZES - PRICES  
QUALITY - TASTE

We Serve the Tallest Soft Drinks  
... At the Lowest Prices

EAT IN AND CARRY OUT

'Everybody Meets and Eats at BO-JO's'

Just South of University Drive on Rural Road

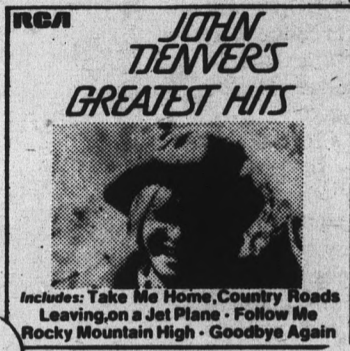
Phone 967-7023

829 S. Rural Rd., Tempe

Open 11:00 A.M. to 1 A.M.

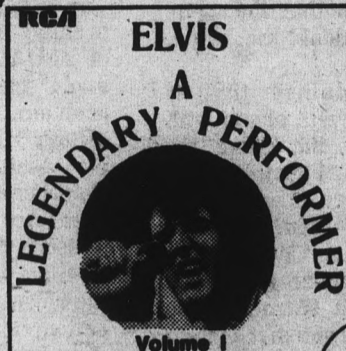
# New Music From Tempe's New Record Store At Old Fashioned Prices

**RCA**



**\$3.99**

CPL1-0374



**\$4.49**

CPL1-0341

**RCA**



BFL1-0348

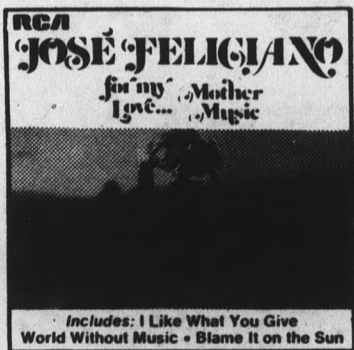


APL1-0291

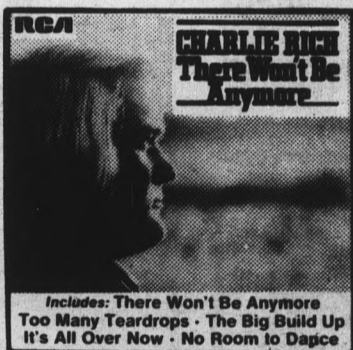


BFL1-0347

**\$2.99** 5.98 LIST



APL1-0266



APL1-0433



ARL1-0422



ARL4-0370

**\$11.98**

**discount records** LONG-PLAYING RECORDS AT A SAVING!

1023 S. Rural Road, Tempe

Phone 968-2414