

thursday

Arizona State University
Tempe, Arizona

Vol. 56, No. 53 December 6, 1973

state
press

Women's dorms benefit

Parking plan offered

By KEN PHILLIPS

Proposals calling for more parking spaces for women dorm residents and the elimination of most designated parking areas at ASU have been offered by the Associated Students Parking Committee.

The 15-member committee has resolved unanimously to allot 55 parking spaces behind the Stauffer Communication Arts (SCA) building for use by residents of McClintock and Gammage halls. The proposals were submitted to Gilbert Cady, Vice President for Business Affairs.

Mike Arruda, committee chairman, said the additional parking spaces would permit women from McClintock and Gammage to park closer to their dorms.

Due to a shortage of parking near the dorms, 54 of the 119 women drivers in the two halls are required to park across University Drive near Palo Verde Main. Some of the women

have complained of possible dangers walking alone at night. In response to this problem, an escort service is provided by University Police.

"We have proposed that the newly designated area for McClintock-Gammage residents should be controlled by an automatic gate," Arruda said. This gate would open only for special cards carried by residents of the dorms.

Arruda, who is ASASU administrative vice president, said he hoped the proposal would be backed by the University Parking Committee, (UPC) a nine-member group composed of students, faculty and staff. This committee was established by ASU President John Schwada to study the parking situation at the University.

Dr. David Gourley, UPC chairman, said his group will offer a proposal similar to the

one submitted by Arruda's committee.

Gourley said some faculty and staff now parking behind SCA would be required to park in other areas if the proposal is accepted.

"But this will work only if Cosner (Auditorium, which burned recently) becomes a parking area," Gourley said.

Both Gourley and Arruda said they hoped the McClintock-Gammage parking would be available soon after the spring semester begins.

"It's just a proposal, but it looks solid," Arruda said.

But Cady said he has doubts about the proposal's solidarity.

"We're doing the best we can, but I don't think there are enough spaces," Cady said.

He said the university determined that 45 of the women living in the two halls should be allowed to park

Continued on page 13



In a bit of a precarious position, hanging high above the sidewalk is just part of the job for Jim Casey, University grounds and construction employee. From his perch he is attempting to paint the Moer Administration building.

Free bus service goes into operation next year

Bug Line, a free bus service for students, may run a special route during the Christmas shopping season. John Balfour, co-ordinator of the bus service, said yesterday.

Balfour said details and a schedule of the bus route will be announced later this week.

The buses for the service will be picked up in Los Angeles this weekend, but the buses won't be running on a regular basis until next semester. Balfour said the reason for the delay is that carpeting and stereo systems need to be installed on the buses.

"There is no possible way we won't be running next semester," Balfour said.

The Bug Line has been delayed this semester while waiting for approval of a

\$15,000 bank loan. The service was also delayed because of a delay of the Phoenix city government and the Small Business Administration to guarantee the bank loan, Balfour said.

When the service does get running, it will serve ASU, Phoenix College and high school students living along the route. The bus route will run from Christown shopping center to the ASU campus, and will stop at shopping centers along the way.

Balfour said arrangements have been made for students to park their cars in shopping centers along the route.

Balfour said he expects the operating costs for the first year of Bug Line to reach \$58,000. The service will be supported entirely by advertising.



Precision and intense concentration members of the advanced modern reflect in the forms of Connie Daine (front), Arlene Ellis (back left) and Joyce Smith. The ASU juniors are

Advertisers:

State Press ends fall publication

Friday, Dec. 7-only one more issue

Other campus news

Parking at BYU

Brigham Young University has a parking problem. It seems as though students are parking in residential areas instead of student lots.

Residents of Provo have shown concern over blocked driveways, congested streets and hazards to their children caused by the influx of student parking.

A citizens committee to study the parking problem has recommended that two hour limits be put on any car parked in the residential areas. Daily Universe, 11-27-73

Protests at New Mexico

The election results from New Mexico State University's Associated Students elections are being protested by one of the candidates.

Patricia Huckleby, candidate for Arts and Sciences Senator, filed two protests. One said she was discriminated against because she was black, a woman and a new candidate. The other charged the winning candidates with seeing preliminary voter returns before the election was finished.

Huckleby alleged this gave those candidates who saw the tally sheet an advantage in gaining votes before the final polls closed.

After Huckleby's protest the senate Election and Membership Committee voted to request the election be repeated in the College of Arts and Sciences. Roundup 11-30-73.

No liquor at Texas Tech.

Students at Texas Tech University in Lubbock are opposing a Residence Hall Association (RHA) request to allow liquor in Tech dormitories. The RHA request came following a dorm-wide referendum on liquor.

More than half of Tech's dorm population of 6,800 voted in the four part referendum. The results showed 87 per cent favored the idea of allowing liquor in the dorms.

The request will be presented to the Board of Regents at their first meeting in February. The University Daily 11-27-73.

Conservation in Indiana

A student group at the University of Indiana has proposed several conservation projects. The Eco-Action Committee of Indiana's Memorial Union is planning a campus car-pool board and an on-campus recycling center to handle paper, glass and aluminum.

The long range goal of the committee is to eliminate 75 per cent of the traffic on campus. Indiana Daily Student 11-28-73.

Prof fights for job

A professor at the University of Washington (UW) is fighting the university in a federal court to get his job back. John Chambless, a philosophy lecturer at UW said his status was not renewed in 1973-74.

He claims the university has denied him a property right to renewed and continued employment without due process of law.

His suit is to reinstate him to his job as a philosophy lecturer and to compel the university to give him a hearing if it wants to terminate his job. Daily 11-27-73.

Parking plan benefits women dorm residents

behind the SCA building because they work at night.

Cady said it is not possible for all McClintock-Gammage drivers to park near their dorms.

"It's not fair to make that request," he said.

Cady also said the Cosner parking lot is not a certainty. "I won't commit myself on that," he said.

In addition to their solution for McClintock-Gammage drivers, the ASASU Parking Committee has proposed eliminating all designated parking areas at ASU except those used by dorm residents and disabled students.

Arruda said faculty, staff and students all would compete for parking spaces on a first come, first served basis.

To test the feasibility of this plan, the committee has suggested a one week trial period next semester.

"This would let everyone know there is a problem and create some kind of awareness," Arruda said.

The committee chairman said ASU has sufficient parking

spaces, but many are inconvenient because they are in outlying areas. The solution, he said, is to provide a bus system to transport people from parking areas to the center of campus.

Arruda said the bus system also could carry students who live near the university. A proposal for such a system will be submitted in March, he said.

Cady said the bus system is an alternative for the future. But he said the committee's proposal for undesignated parking at ASU would not work.

"You have to provide parking on the basis of need, not seniority," Cady said. He said faculty and staff members need convenient parking areas because they often are required to leave campus during the day. When they return, they must be able to park, Cady said.

Cady said students who walk from outlying parking areas should not feel inconvenienced.

"If what we have to offer isn't worth a 10-minute walk, then we don't have much to offer," Cady said.

NEWS
965-7572

CLASSIFIED
965-7572

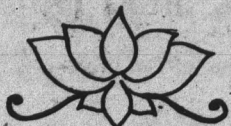
SPORTS
965-7572

WDA GURU
Imports
beyond words

CLOTHING FROM INDIA
& OTHER COUNTRIES
HANDCRAFTED ITEMS
—JEWELRY INCENSE
—TIBETAN PRINTS

726 Mill Ave.

Open 9-9 Monday thru Saturday
966-0385



YOU'LL BE CRAZY TOO . . .

about our:—

- Indian turquoise rings
- Polish hand carved boxes
- Seri Indian ironwood carvings
- Papago Indian baskets
- African trade bead necklaces
- Guatemala tree ornaments
- Recycled-paper Xmas cards
- Museum reproduction sculpture

THE GALLERY STORE

Matthews Center, 2nd floor
From 12 Noon to 4 P.M.



INCLUDES:

- * transportation
- * lodging
- * lift ticket
- * band

WITH:

- * contests
- * prizes
- * queen

**more info
on the mall**

SPONSORED BY A.S.U. BLUE KEY

312

AMERICAN EXPRESS

3003 North Central Ave.
Phoenix, Arizona 85012

Vacations to Europe, Hawaii, Mexico, South America,
Africa, Caribbean, South Pacific, Orient, and Israel

EURAILPASSES - SKI PACKAGES

Airline Tickets-Cruise and Steamship tickets

PHONE 244-6673 FOR FREE TRAVEL BROCHURES,
INFORMATION AND RESERVATIONS

Validated parking with First Federal Garage

**"I can show you how to
have the Life Insurance
you need—on your
present budget!"**

"My company, Penn Mutual, has developed a brand new plan specifically for college seniors and graduate students.

"It not only provides the same life insurance protection you'd expect to buy when you're through school . . . it does it *right now*, even if you're on a tight budget and working part time.

"Let me give you the facts. It'll take just 10 minutes, and believe me, it's worth 10 minutes. Phone me or use the coupon."

James J. Sejba & Assoc.
301 W. Osborn, Phoenix
264-1701

To: Roger C. Dyer

Yes, please call me with the facts about Penn Mutual's special life insurance plan.

Name _____

Address _____

City _____ State _____ Zip _____

Phone _____ Best time to call _____

College year _____

**THE PENN MUTUAL
LIFE INSURANCE COMPANY**
Independence Square, Philadelphia, Pa. • Founded 1847

Law student sues college for mental injury in 'Revue'

A third year law student sues the ASU College of Law and is represented by three ASU graduates in a show entitled "The Graduates" for the 1973 Law Revue.

The student is suing the college for mental injury inflicted upon him when he was a student. The defense will be presented by Willard Pedrick, dean of the College of Law.

Pedrick will be assisted by third year student Jim Ryan and the cast will be made up of ASU law students. The cast will be racially and sexually balanced and ethnically integrated.

The presentation will be at 7:30 p.m., Dec. 13, in the Great Hall of the College of Law. The show is free and open to the public.



Nutcracker Suite Dec. 13-15

Ballet West's presentation of Tchaikovsky's "Nutcracker" will be at Grady Gammage at 8 p.m. Dec. 13 to 15. Tickets, ranging from \$2 to \$5.50, can be reserved in advance at the Gammage box office.

This week

THURSDAY — "Hans Christian Andersen" will be presented by the University Players through Sunday in the Lyceum Theater. The play will be at 7:30 p.m. with 2 p.m. matinees on Saturday and Sunday.

The MU Fall Film Festival presents "Cabaret" at 7 and 9:30 p.m. in the MU Movie House. The film runs through Saturday. Admission is \$1.

Music Moods in the MU presents the Christmas Vespers program by Sigma Alpha Iota. It will be at noon in the Rendezvous Lounge.

FRIDAY — "The Marriage of Figaro" will be presented by the Lyric Opera Theater at 8 p.m. tonight and Saturday in the ASU Music Theater.

SUNDAY — The ASU Brass Choir and the University Choir will present a concert at 3:30 p.m. in the ASU Music Theater.

Gina Bagnoli on violin and Kevin Hedges on trombone will give a recital in the Recital Hall at 1 p.m.

TUESDAY — Opera Workshop scenes will be presented at 2:40 and 8 p.m. in the ASU Music Theater. The all-Mozart program will include scenes from "Cosi fan tutte," "Don Giovanni," "Magic Flute" and "Abduction from the Seraglio."

WEDNESDAY — The ASU Faculty Chamber Music Series program will be at 8 p.m. in the ASU Music Theater. Featured will be works by Castelnuovo-Tedesco, Ernest Block and Bela Bartok. Tickets will be on sale at the door and all proceeds will be used for music scholarships.

THURSDAY — Tschikowsky's "Nutcracker" will be staged at 8 p.m. tonight through Saturday in Gammage Auditorium. There will be a 2:30 matinee on Saturday. Tickets may be reserved at the Gammage box office.

Bobby O'Donnell, who has played with the Ice Follies, will perform with ASU's Jazz Ensemble, conducted by Robert Miller at 7 and 9 p.m. in the ASU Music Theater.

STATE PRESS is published by Arizona State University Tuesday through Friday during the academic year, except holidays and examination periods. Entered as second class matter at Tempe, AZ, 85281.

CHRISTMAS ART SALE

Memorial Union
Art Gallery and
Alumni Lounge

Opens Monday, December 3, 1973, 6:00 p.m. to 10:00 p.m., continues Tuesday through Friday, December 4-7, 10:00 a.m. to 10:00 p.m.
Ceramics, Crafts, Drawings, Jewelry, Paintings, Photos, Prints, Sculpture.

ATTENTION

• Clubs

• Organizations

• Interest Groups

Liberal Arts College Council
has

Money

For your

— Activities

— Speakers or

— Whatever

Come to our Budget Meeting

Today — 4:30 p.m.

M.U. Rm. 265

to get full details call

Bruce — 966-6467

Richard — 967-4624

GRAND OPENING

SELF-STORAGE
FOR THE HOME AND BUSINESS

IN TEMPE
NEXT TO BROOKSIDE WINERY

Lock-it
Lockers

MINI-WAREHOUSES

1135 WEST BROADWAY

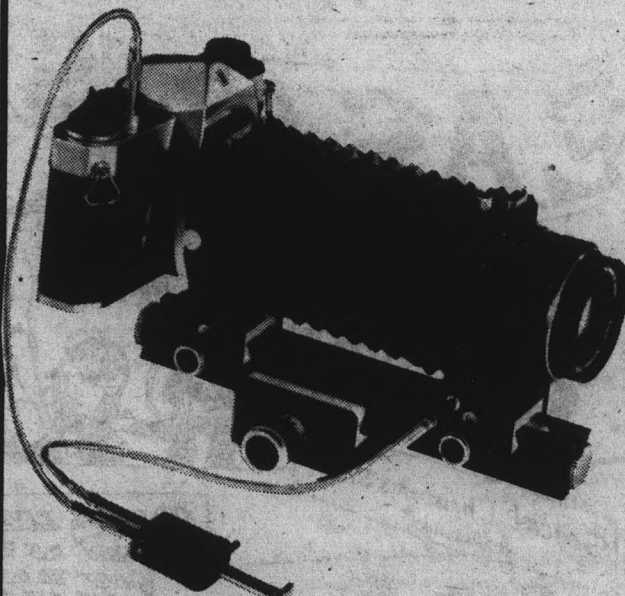
TEMPE, ARIZONA 85281

966-2622

YOU LOCK IT

POCKET THE KEY

Enter the Macro World with your PENTAX



AUTO BELLOWS UNIT

and the complete system including the Honeywell PENTAX Auto Bellows unit, 50mm f-4 SMC Takumar Macro Lens, Honeywell Strobanar ring light & power pack.

\$382⁰⁰

Other Pentax
Closeup Equipment
From \$22.40

— See the Professionals . . . at

PIONEER CAMERA SHOP

Tempe Center — 967-4662
at
University and Mill

Opinion

state press

Power play on courts

By TED WILLIAMSON

Last Sunday two ASU students playing tennis on a University court were ordered to leave the court by Marty Pincus, ASU tennis coach, so he and a friend could play on the court.

Other courts were available for Pincus to use, but the sun and wind weren't as good for playing on those courts, so he chose to evict the students.

No big deal, right? Just another case of a person with a little (probably a little much) power stepping on the toes of those without any. We all see examples of this sort of thing all the time, so it's no big deal, right?

Wrong.

The fact that this type of abuse goes on all the time is precisely what makes it important. We

gripe about these "little" things, but how many of us do anything about it?

The two students in question wrote a letter to the editor of the State Press (Dec. 5), and are in the process of tracking down just who has jurisdiction in conflicts such as theirs. They're going to a lot of trouble over such a small incident, we may say.

Perhaps they are, but what they're accomplishing goes far beyond their personal satisfaction. If each of us followed their example, and did his best to rectify the bugs in "the system," perhaps life would be a little easier for the two or three people who followed him. Theoretically, the effect would snowball, and before long virtually all old bugs would be ironed

out, and new ones would be dealt with as they came up.

These two students deserve a pat on the back, not only for having the incentive to dig into their problem, but also the way they're going about it. They're polite, courteous, and tasteful in their questioning techniques. They show no malice; only interest in seeing the situation clarified.

In other words, in attempting to iron out their own little bug, they're trying to avoid creating them for others.

Go ahead and shrug it off. Be insulted that your time has been wasted in reading this. But the next time a clerk tells you it can't be done because it's against policy, or you're ordered to do something because it's always been done that way, remember.

Santa Claus freaks out

By ANITA MABANTE

It's strange that in the midst of the current nostalgia wave an institutional legend should go 20th century mod.

I'm talking about Santa Claus. He's gone freaky.

This season St. Nick looks like a fugitive from a David Bowie stage show.

I walked into what is advertised as the biggest, best and most modern of the shopping centers and almost contracted a stray coronary.

There, in a dusty pink velvet suit, complete with rumples, was the person who I used to write letters to, in which I enumerated all of my personal preferences.

The elves were also there, except they were mini-skirted girls dressed in the same pink outfits. Some helpers. When I was little, it was hard enough to accept the fact that elves were neuter in gender. Now, that I think of myself as a fairly liberated woman, I find it chilling to think that these females are willingly subservient to St. Nick.

I suppose that it shouldn't have surprised me.

After all, Santa arrived the day after Thanksgiving in the most modern transportation — a spiffy helicopter. Which raises an interesting question about the reindeer. With the fuel crisis, Santa would be wise to resort to that method of distributing his goodies. Unless, of course, Rudolph and the rest of them decide to go union.

Yes, it looks like we have trouble right here in MetroCity.

When are the Yuletide exploiters going to realize that

they are ruining what might be the last of the childhood luxuries?

What would happen to Santa if, soon, families become so tight with their money that they couldn't afford to take their kiddies to those shining megastores to sit on a plastic Santa's knee?

While it may be true that human beings always seem to be wiser about the past than about the future. I can't help

thinking that Santa Claus, the original Ho-Ho-Ho Man, is being buried under the mire of modern technology.

Twentieth century man is slowly killing the old fool, for the sake of attracting shopper-parents to confusing merchandise complexes.

My hope is that this situation will generate a nostalgia craze for Santa to save him from an electronic death.

If it succeeds, the children may have someone, a little tarnished maybe, but a hero to write to at Christmas time.

If it fails, well, I suppose that big business being what it is today might have Santa get into politics to help protect their interests and be their spokesman. Who wouldn't trust an old man in a rumpled suit?

After that he might be appointed to be a special Presidential adviser.

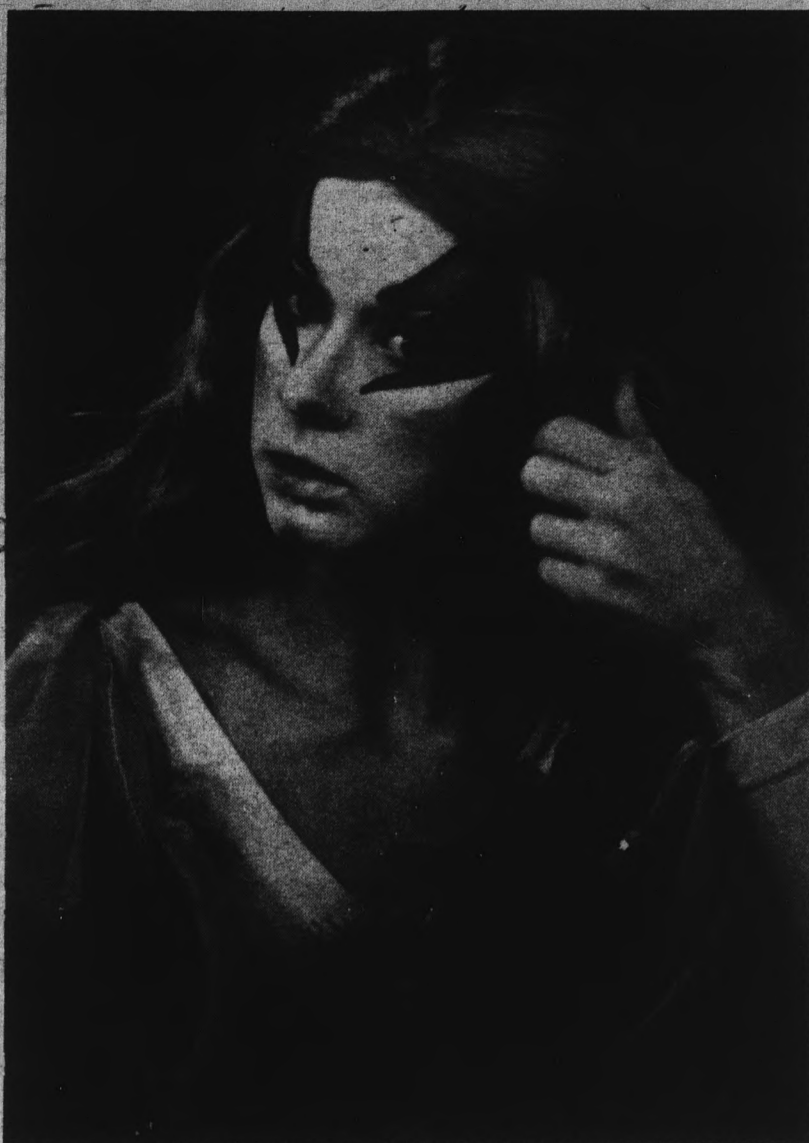
He may even get fired for suppressing the elves as a minority or for evading the IRS. The media might call it the North Pole Scandal.

Better yet, he could be impeached for perpetuating a fairy tale.

And then, Virginia, when you ask if there really is a Santa Claus, the only reply that you'll get is:

"No comment."





On with the show . . .

The atmosphere is pleasant and hectic. Everyone is hurrying about gathering their own costumes and helping each other. The girls spend that extra few minutes putting the finishing touches of make-up on their faces. Many are nervous but conceal it well. Everyone is anxious for the show to get underway. The tension is too great. Thank goodness it's the last performance.

Photos by Daryl Kass

Devils sharpen ax for 'Loggers'

If past performances are any indication, the ASU basketball team shouldn't have any trouble with Northern Arizona tonight at 7:30 in Sun Devil Gym.

In 13 meetings since Ned Wulk became head coach at ASU, NAU's Lumberjacks have won only two games.

The loggers have a 1-2 record this season with their only win coming in the Bronco Classic against host Cal. Poly of Pomona. NAU lost to Loyola-Los Angeles 78-63 and the University of California at Riverside 97-64.

Through the first two games, junior guard Lionel Hollins has paced the Devils with an 18.5 scoring average. The former junior college All-America from Dixie (Utah) Junior College scored 27 points against California — Santa Barbara and 10 points against Wichita State.

Hollin's backcourt mate James Brown, is second in scoring, with a 13.0 average. Brown's defensive play in the Devils 86-63 win over Wichita State drew praise from Wulk.

"James has sparked us during the past two years, but mainly he has sparked us defensively. Now he is getting the chance to play regularly and he's doing an outstanding job," he said. "He compliments Hollins very well in the backcourt and seems to have gained confidence in his offensive ability."

Wulk said the difference between the Devil's opening loss against The University of California at Santa Barbara, and the Wichita State win was the play of center Ron Kennedy. Kennedy was held to two points by Santa Barbara, but scored 15 points and cleared eight rebounds

against Wichita State.

Following this evening's game, the Sun Devils travel to Manhattan, Kansas for a Saturday night meeting with Kansas State.

Kansas State compiled a 23-5 record last season. The Wildcats were the Big Eight Conference champions and went on to upset highly rated Southwest Louisiana 92-72 in the NCAA Midwest Regionals before falling to NCAA runner-up Memphis State.

"We really don't know a

lot about Kansas State other than they lost a few starters from a very fine team last season," Wulk said. "Any time you play the defending Big Eight champion at their home court you can cer-

tainly expect a very tough game."

Both games can be heard on KBUZ radio (1310 AM) with airtime for each broadcast beginning 20 minutes prior to tipoff.



ENGINES PARTS for VW REPAIRS

Completely rebuilt engines in stock from \$210
Tune ups \$17.50 — Parts and Labor

Valley Engine Service

2202 E. Apache — Tempe — 968-2318
18 E. Clarendon — Phoenix — 265-0726



The Cultural Affairs Board Presents:

Chaplin Clearance Sale

Monsieur Verdoux Modern Times
A King in New York Limelight The Great Dictator

Buy four — get one free!
5 films for \$4.00: Students 5 films for \$6.00: General Public

Tickets Available in MU
222 until Jan. 25, 1974

CARPET SPECIALS
9 x 12 used rugs-\$5.00
All Sizes In Stock

CARPET HOUSE
1516 E. Van Buren, Phx.

1973 Alpine Skiing Vacation In Europe

Davos, Switzerland & Chamonix, France
19 DAY TRIP — Dec. 29 — Jan. 16

Featuring many interesting sidelights — 38 hours of instruction optional.

\$598⁰⁰
Total Cost (from Los Angeles)

Contact:
Dr. James E. Odenkirk
Office 128, Men's Gymnasium—
or call 965-3151

BUY SELL CLASSIFIED ADS TRADE LEASE

Classified advertising must be paid for in advance either in person or by mail to the State Press, Stauffer Hall, A111. No ads accepted over the phone. Our new office now open daily 8 to 5. Phone 965-7572 for further information.

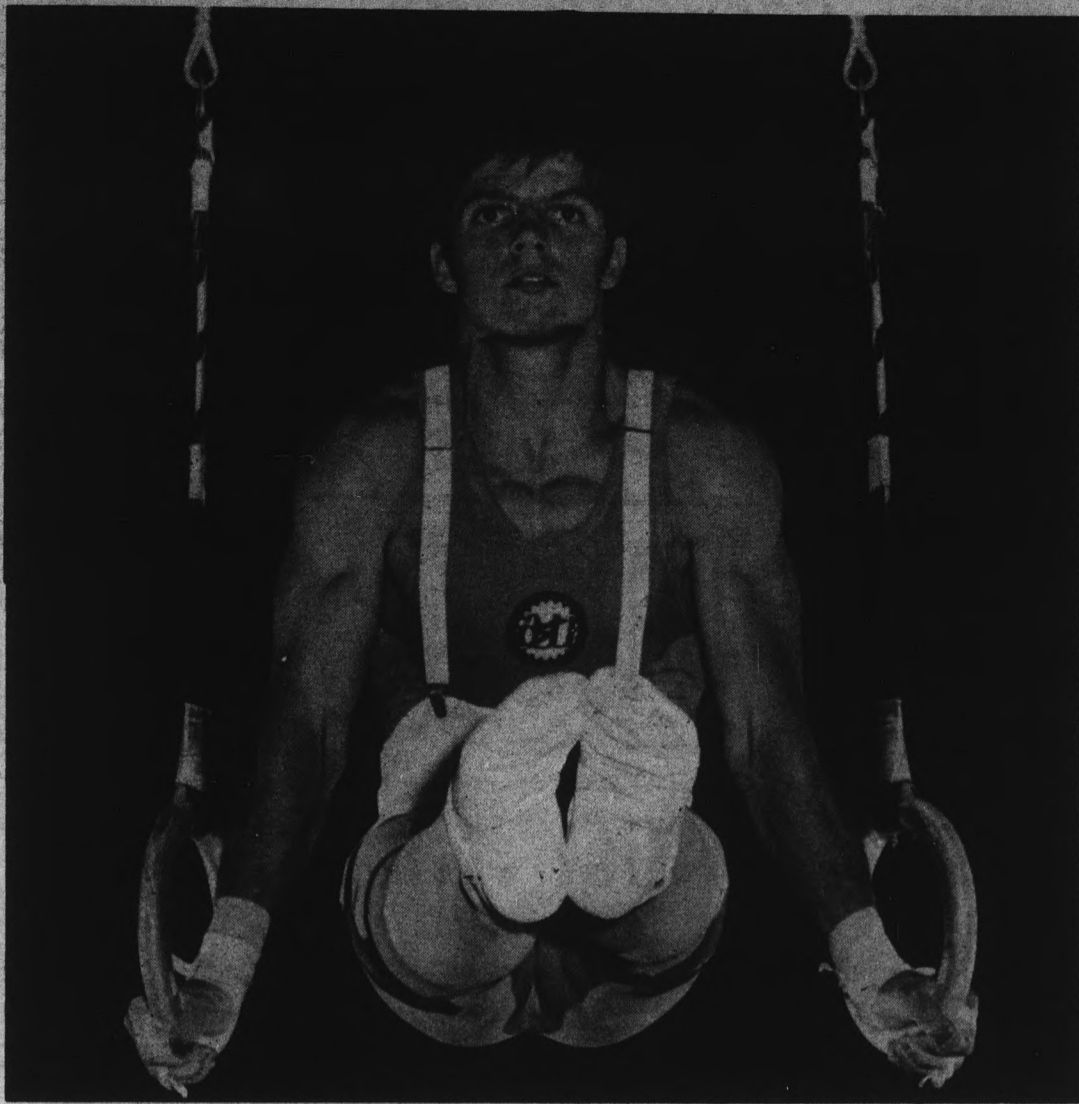
Student Rates: \$1.30 minimum charge. 35c per line for each line over three. Add 50% for each consecutive day beyond the first day. If the ad is not consecutive, the initial charge of \$1.30 (or the total cost of the first insertion) will be made again. Corrections to ads will be made if noted before the second printing. NO REFUNDS WILL BE MADE FOR CLASSIFIED ADS PLACED IN THE STATE PRESS.

Commercial Rates: Add 20% to the student rate. All ads not placed by students for student activities will be charged for at the commercial rate.

DEADLINE: 3:00 p.m. two days before publication. (An ad for Friday must be placed by 5:00 p.m. Wednesday.)

NO REFUNDS WILL BE MADE ON CLASSIFIEDS

- FOR SALE**
 - Men's 26" 3 speed bike. Phone 965-4196 evenings. \$25. (12/7)
 - Microscopes, doctors office and laboratory equipment. 254-3431. (12/6)
 - Mobile home—1 bdrm. and den furnished, air conditioned, short walk to campus and shopping. Call 966-3194 after 5 p.m. (12/7)
 - 10% off with coupon men, ladies shoes Backdoor Shop—707 S. Forest—1/2 off shoe sale. (12/7)
 - Santa Doming, Zuni, Navajo, and Singer jewelry. Beth 968-3322. (12/7)
 - For sale—ten speed bicycle—26" w/light. Good shape, \$60. 968-5454. (12/7)
 - 1971 VW Squareback. Automatic air, radio—nice car; offer. 966-2015. (12/7)
 - INDIAN JEWELRY FOR CHRISTMAS — ONE SUPER GIFT. CALL MAL 967-0111. (12/7)
- HELP WANTED**
 - Secretary-receptionist, parttime, good typing skills. Phx. Freeway-Indian School Rd. 263-0330. (12/7)
 - EDUCATION MAJORS—Jrs, Srs & Grad. students. 20 hrs. per wk in loc. tutoring ctra. Salary based on educ. & exp. Min. \$2 pr hr. Start now or after Holidays. Call Mr. Lorens or Ms Green at 264-3331. (12/7)
 - Part-time menswear salesman. Experience preferred. Tarmigan Sage. For appl. call 947-4359. (12/7)
 - Train in a part time position. Evenings and weekends. Potential of base of \$20,000 with incentive to \$30,000. Part time at \$2 per hour. Call Al Daly at 948-2210. (12/7)
 - Person needed to do stock work a couple of hours a day. Apply at DAX clothing merchants 125 E. 7th St. (12/6)
 - Several permanent part time positions are open for early mornings and evenings hours. Extensive paid training. Apply Washington Inventory Service 3015 E. Thomas Rd.—Phoenix. 956-0530. (12/7)
 - Students to help distribute class evaluation in LA. 967-4624. (12/6)
 - USHER TICKET TAKER needed for events at Phoenix Civic Plaza, Fayline Field, Fastrack, etc.; see your Campus Placement office. (12/5)
 - Females 18-22 for psychological research project. Call Terry at 966-5915. (12/5)
 - Full time—Part time. No selling. Phone from our office. Close to the University. Earn high salary and bonuses. 244-0686. (12/7)
 - Overseas Jobs—Australia, Europe, S. America, Africa. Students all professions and occupations \$700 to \$3,000 monthly. Expenses paid, overtime, sightseeing. Free information. Write: TRANS WORLD RESEARCH, Dept. D 6, P.O. Box 603, Corte Madera, CA. 94925. (1/29)
 - Part-time positions now, full time during xmas break. 834-0879. (12/7)
 - Co-eds 19 and over. We train cocktail waitresses. Full or part time positions. Must be neat and attractive. Apply in person. 825 N. Scottsdale Rd. 11 a.m.—2 p.m. (12/7)
- SERVICES**
 - STEREO SYSTEMS WHOLESALER. Shure M91ED List \$54.95, your cost \$21.99. Call or write: Sound City Warehouse for free catalog 1544 Los Osos Rd., San Luis Obispo, Cal. 805/544-1285. (12/7)
 - First Friday niter car rally, Fri., Dec. 7. Starts S.E. corner of Thomas Mall, 7 p.m. \$1.50 per car. (12/7)
 - Giveaway Lab puppy, 4 month female. Super friendly. Roommate allergic to her. Need a good home. 968-4336. (12/7)
 - Las Vegas night! Sat. Dec. 8, 8 p.m. at Canlen House Party Room. Admission \$1. Sponsored by Hillel. (12/7)
 - Liberal Arts Council budget meeting, Dec. 6, MU 271, 4:30 p.m. (12/6)
 - Very special imports and handcrafted items. WHA GURU SHOP, 726 S. Mill (9-7 Mon.-Sat.) (12/7)
 - My people sings! A musical production by Baruch Cohen. Thurs., Dec. 6, Pima Room 8 p.m. Sponsored by Hillel. (12/6)
 - GOLDEN TEMPLE CONSCIOUS COOKERY. Joyous for soup or full dinner. 415 Mill. 967-5297. (12/7)
- ANNOUNCEMENTS**
- RENT**
 - Room in furnished townhouse for spring sem. \$75 mo. Reserve now. 966-8764. (12/7)
 - Room for rent. Kitchen, laundry privileges. East Phoenix. \$20 wk. Call Mrs. Davis. 261-3601 or 273-1851. (12/7)
 - Tempe—Brand new 2 bedroom furnished mobile home \$166.40 monthly. Tri City Trailer Ct. 2320 E. Apache Blvd. Tempe. Call 966-1970 or 265-7210. (12/7)
 - One bedroom, furnished, utilities paid—La Crescenta Park—\$171.80. Month rent paid till Jan. 1st. Can move in Dec. 21st or before. 966-2645. (12/7)
- INSTRUCTION**
 - COMET'S COSMIC SIGNIFICANCE, world transformation, and how you can help others and yourself using cosmic light all explained; \$1. RADIANCE, Box 471, Olympia, WA 98507. (12/7)
 - "The Lord isn't slow to do what he promised (come again), as some people think. He is patient with you and doesn't want any to perish but wants them all to turn from sin to him." Peter 3:9. Visit First Baptist College Class—4525 S. McClintock Drive—Sundays 9:45 a.m. (12/6)
- MOTORCYCLES**
 - 1970 BSA 650 Chopper recently rebuilt—excellent running. \$900. 965-4180. (12/7)
- WANTED**
 - Male roommate over 24. Furn 3 bdrm townhouse near campus. Plus utilities. 968-1564. (12/7)
 - Wanted: 67 VW Bug in excellent condition. 271-6691. 838-9739. (12/7)
 - Dog to share yard with 10 mo. old puppy during day. 10 min. from ASU. 965-6193 day, or 966-3319 evenings. (12/7)
 - Vespa Scooter wanted—180c.c. Must be in good shape. Call 242-1710 between 4 & 6 p.m. daily. (12/6)
- FOR LEASE**
 - New 2 bdrm. townhouse. Heated pool. \$217 per month. Call 972-6511. 48th St. and Maricopa Freeway. (12/6)
- AUTOMOBILES**
 - Econoline Van with camper set up. Great shape throughout. Mike at 966-3929. (12/7)
 - For Sale—1965 Olds Cutlass \$400. Phone 838-5033. (12/7)



ASU's All-America gymnast Gary Alexander performs an L-seat on the still rings. Alexander will perform for

ASU in the all-around and floor exercise events at the Rocky Mountain Open in Aurora, Colo., Dec. 7 and 8.

Gymnastics begins

The ASU gymnastics squad opens the season Friday in a two-day meet at Aurora, Col. The team will be one of 12 entered in the Rocky Mountain Open.

ASU coach Don Robinson said he will take 12 team members to participate in the meet, including All-America Gary Alexander.

"This meet should be a very good indicator of what to expect this season and what we still need to work on," Robinson said.

Several team members are just recovering from minor injuries, he said.

Alexander and pommel horse specialist Don Steiger has just recovered from hand injuries. All-around performer John Pellikan has a bruised foot and Mark Dedrick (high bar) has a sprained ankle.

Because of the injuries Robinson isn't too optimistic about the meet.

"We should have some individual champs at the open, but team-wise I just don't know," he said.

ASU cracks top 10

A.P. Poll		U.P.I. Poll	
1. Alabama	11-0-0	1. Alabama	11-0-0
2. Oklahoma	10-0-1	2. Oklahoma	9-0-1
3. Notre Dame	10-0-0	3. Ohio State	9-0-1
4. Ohio State	9-0-1	4. Notre Dame	10-0-0
5. Michigan	10-0-1	5. Penn State	11-0-0
6. Penn State	11-0-0	6. Michigan	10-0-1
7. So. California	9-1-1	7. So. California	9-1-1
8. Texas	8-2-0	8. Texas	8-2-0
9. UCLA	9-2-0	9. UCLA	9-2-0
10. Arizona State	10-1-0	10. Arizona State	10-1-0
11. Texas Tech	10-1-0	11. Nebraska	8-2-1
12. Nebraska	8-2-1	12. Texas Tech	10-1-0
13. Louisiana State	9-2-0	13. Houston	10-1-0
14. Houston	10-1-0	14. Louisiana State	9-2-0
15. Miami, Ohio	10-0-0	15. Kansas	7-3-1
16. No. Carolina St.	8-3-0	16. Tulane	9-2-0
17. Tulane	9-2-0	17. Miami, Ohio	10-0-0
18. Maryland	8-3-0	18. Maryland	8-3-0
19. Kansas	7-3-1	19. San Diego State	9-1-1
20. Tennessee	8-3-0	20. Florida	7-4-0

ALL HANGING PLANTS

20% OFF

at
The PLANT STUMP

Dec. 1 — Dec. 8

967-0962 831 S. Rural (Next to Bo Jo's)

Hold Over

Special Showing of

"SACCO & VANZETTI"

at the
Valley Art Theatre

Friday, Dec. 7-11:30 p.m.

Min. donation \$1.50 for Benefit of Farah and Farmworker's strikers.

The best-dressed clothes in town

live on Easy Street.

332 E. Camelback
265 6370

Easy Street
men's fashions

easy clothes to get into

KTKI PRESENTS

EAGLES

SPECIAL GUEST STAR

Jesse Colin Young

WED. DEC. 19 8 PM

TUCSON COMMUNITY CENTER Music Hall

All seats reserved \$6, \$5, \$4.

TICKETS AVAILABLE AT MAIN BOX OFFICE, PHONE 791-4266 AND AT ALL BOX OFFICE LOCATIONS. ALSO, E. CON SHOPPING CENTER, DAVIS MONTHAN AIR FORCE BASE AND AT FORT HUACHUCA.

Produced by CONCERT ASSOCIATES

Thursday Night...

Any Collins DRINK 50¢ From 8-10

AT **The Library**

1001 E 8TH ST. EAST OF ASU

With **Hans Olson**

Who was featured at
THE ALLMANN BROS. + WAY, THREE DOG-NIGHT CONCERTS AT FEYLINE FIELDS

ASU vets team with bar in toys for beer swap

The ASU Veterans Club and Minder-Binders, 715 S. Hayden, will reward, with a pitcher of beer, every person who brings in a toy between Dec. 17 and 20.

University veterans and the tavern are sponsoring a Christmas program for needy children and will give a free pitcher to anyone bringing a toy to bar.

The toys may be new or used, but must be worth at least \$1.50, according to veteran Bill Hackley.

He said these toys will be collected and distributed to needy children in the Valley.

Hackley got the idea for the Christmas toy program from a

"Ban the Bra" promotion by Minder-Binders when a free pitcher of beer was given to anyone who brought in a bra.

Hackley concluded that there was a better use for that promotion and originated the toy program.

The program's objective is to reach children not helped by larger civic organizations, Hackley said.

'Figaro' servants and master vie in Lyric Opera show

By CAROL PYNE

The Lyric Opera Theater will stage its final performances of "The Marriage of Figaro" at 8 p.m. Friday and Saturday in the Music Theater.

"The Marriage of Figaro" is a comic opera by Wolfgang Mozart with the libretto by Lorenzo Da Ponte. The opera was written during the beginning of the French Revolution and frightened the aristocracy because of its revolutionary content.

The story contrasts a group of servants and their aristocratic master, making him appear foolish and completely defeating him at the end.

"The Marriage of Figaro" is under the direction of John Stone Porter and the musical director is Kenneth Seipp. Marsha Hunter stars as Susanna and Paul Yoder is Figaro. The Count is played by Barry Stein. Tickets are available at the Music Theatre box office, 965-3398.

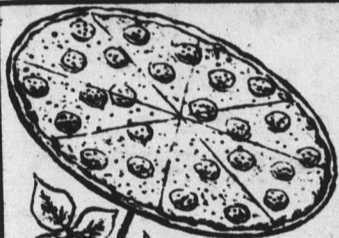
College of Law debates deletion of honor system

All students interested in retaining the third year pass-fail honors program in the College of Law are asked to attend a 12:40 meeting today in the Great Hall. Faculty and administration officials will be present to discuss doing away with the honor system.

Citron's Surplus

Jefferson at 2nd St. in Phoenix for

- Navy denim seafarer bellbottoms, white & chambray
- Tankers
- Back Packs & Bike Bags
- Pouches & CPD Shirts
- White & 13 Button Belts
- Parachute canopies



A Pizza Oven Pizza by any other name would still taste great!

PIZZA OVEN RESTAURANT

Open Mon.-Sat. 11:30 a.m. to 1 a.m. Sundays 5 p.m. to 11 p.m.

- 15 Famous Varieties of PIZZA
- Delicious Italian Dishes
- PITCHER BEER . . . \$1. (large pitcher)

1127 N. SCOTTSDALE RD.

TEMPE . . . PHONE 966-6246
Across from Hayden Plaza East

STOCKING STUFFERS

for the MAN on your list . . .

Alan Paine

Henley Pure Lambswool
The pullover with the great classic look. From England, in a wide range of new colours. About \$22.



Fully fashioned turtlenecks from England. In a handsome range of exclusive Alan Paine colors.

\$22 to \$30



Radley Shetland

Ascot Pure Lambswool



\$42⁵⁰



125 E. SEVENTH ST.

TEMPE • 968-3585

More Ideas from **Creighton** SHIRTMAKERS



And if you're really undecided . . .

THE Merchandise Certificate

Upon presentation and surrender of this CERTIFICATE you may select gift items on our shelves to the value of _____ DOLLARS

Presented by _____

by _____

DAX
CLOTHING MERCHANDISE
125 East Seventh Street, Tempe