

tuesday
Arizona State University

Vol. 56, No. 10 September 18, 1973

state
press

WEATHER

Forecast for the greater Phoenix area: Clear today and tomorrow. Slightly cooler nights, but continued warm afternoons. Overnight lows in the upper 60's and a high today near 101.

Tempe, Arizona

U.S. fund cut kills housing issue

By BARRY HOCHFELDER

The issue of married student housing at ASU is temporarily dead because a federal government plan to subsidize interest rates has been withdrawn, Gilbert Cady, vice president for business affairs, said yesterday.

The government had been

subsidizing the approximately 10 per cent interest rates on new construction for University housing but recently cancelled the program, Cady said.

"We just can't afford to pay 10 per cent interest," he said.

Seven architectural

studies had been drawn up using a 55-acre parcel of land at Mill avenue and Alameda drive, said ASASU Senator John Holcomb.

The land is now being appraised and a decision will be reached on whether to sell, trade or keep the land, Cady said.

The parcel of land must be disposed of before ASU can receive any land acquisition funds from the state legislature, Cady said.

ASU officials have been working with the Tempe City Council to determine the best way to handle the land transaction, said William Pederson, administrative assistant to the Tempe City Manager.

If ASU sells the land "I assume it will be put up for public auction," Pederson said.

The Tempe Planning and Zoning commission recommended at its August 27 meeting that the land be rezoned for residential areas.

Pederson said if the land is rezoned the city will have more control over what is built on it.

Tempe cannot rezone the land without ASU permission because it (the land) is university owned. The city plan is to rezone part of the land for single family residences, part for townhouses, and part for small, single story offices, he said.

ASU is now in the process of acquiring a large parcel of land east of campus along Rural road near University drive, Cady said.

The land could be used for married student housing if funds were available, he said.



Photos by Dave Chase

Sorta takes ya back to high school

Members of the Devil's Disciples, ASU pep squad formed paint bucket lines up the face of Tempe Butte Saturday, brightening the 'A' on the south side of the butte. Disciples at left brushes whitener on giant 'A.'

Inside:

Sun Devils win seventh straight season opener, stopping Oregon 26-20. Story, photos, pages 9-11.

World View

Hunt asks court to dismiss charges

E. Howard Hunt asked the federal court yesterday to dismiss the conspiracy, burglary and wiretap case against him. Hunt was the first of the Watergate defendants to plead guilty.

Segretti pleads guilty

Donald H. Segretti, an underground political operative for the Committee to Re-Elect the President, agreed yesterday to plead guilty to violating federal election laws. Segretti is accused of receiving money from President Nixon's former attorney to conduct a political sabotage campaign in Florida.

House might see jury findings

A federal grand jury may send its findings on Vice President Spiro T. Agnew to the House of Representatives. The grand jury is investigating allegations of political graft in Maryland. The action could lead to impeachment proceedings against Agnew.

Allende planned assassinations

Two Chilean newspapers have said the late President Salvador Allende had prepared a plan to assassinate all top military officers and opposition political leaders. Allende committed suicide last Tuesday as a military junta took over the government.

IBM ordered to pay damages

International Business Machines Corp. (IBM), computer manufacturers, has been found guilty of monopolistic practices. The company was ordered to pay \$352.5 million in damages to a competitor. An IBM spokesman said the company would appeal.

Law College hosts Raul Castro speech

Raul Castro, who has announced plans to campaign for Arizona governor in 1974 will speak at 10 a.m. today in the Great Hall in the College of Law.

Castro, a Tucson lawyer, former judge and 1970 candidate for governor, will discuss a current law problem.

The speech is sponsored by the Student Law Association and El Grupo, a chicano organization. The speech is open to the public.



experience new freedom

CRIMPERS LTD. is offering new freedom to the student. Now through October 15th, come in for a free hair analysis and receive a conditioning treatment. Shampoo and styling blow-out free. Experience it.

CRIMPERS LTD. 111 EAST UNIVERSITY DRIVE TEMPE

2 BLOCKS FROM CAMPUS

Frontier Employment Service

525 Mill, Suite 101 — Western Savings Bldg.
Tempe, Arizona
967-2069

OPEN Monday-Friday 9-5
ASK FOR: SHARON or JAN

By Schwada

ASASU Senate praised

University President John Schwada addressed Thursday's meeting of the Associated Student Senate, telling the senators that, together with the executive officers, they have provided "a very efficient, responsible kind of leadership for this university."

Schwada said those students who are active in university politics and student affairs have positions of "exceptional responsibility" because they probably only number 200 and 500, and represent such a small percentage of the total student population.

Schwada praised the senators for their work on what he called "fine student programs" such as the ASASU Foundation. The foundation "expresses your concern for your fellow student who may on occasion need help," Schwada said.

ASU is far ahead of most other universities in student representation on committees, Schwada said, with student representation increasing by as much as 50 per cent in the two years he has been here.



President John Schwada addresses the ASASU Senate
Photo by Pete Jordan

Open Thursday Eves. Till 8

Budd's Jewelers

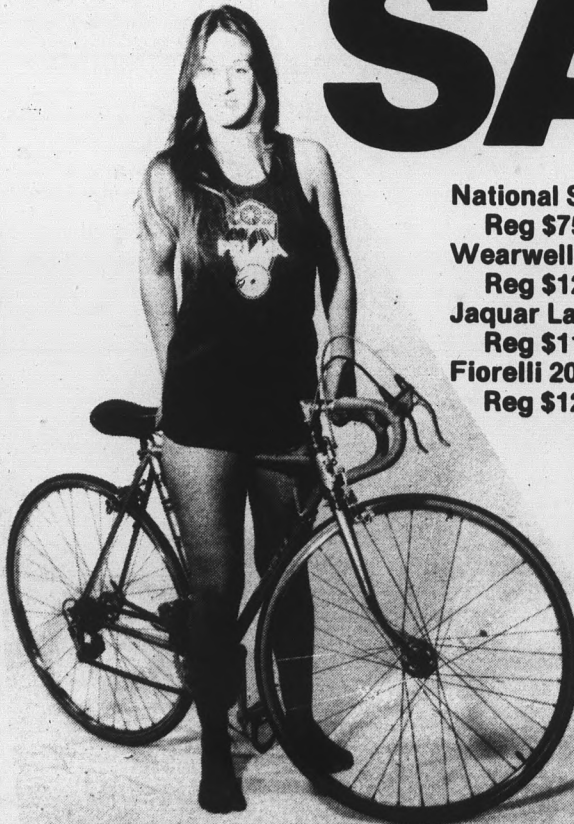
708 South Forest
Oxford Square
Tempe
Arizona
964-6031

Charms
Bracelets
Guards

Rings
Badges
Lavaliers

Watch repair & Engraving done in our store.

GRAND OPENING BICYCLE SALE



- National Sport Mens and Womens 3-speed
Reg \$75 NOW \$59
- Wearwell English 10-speed
Reg \$120 NOW \$88
- Jaquar Ladies 5-speed
Reg \$110 NOW \$89
- Fiorelli 200 Italian 10-speed
Reg \$125 NOW \$99
- Magneet Sprint Dutch 10-speed
Reg \$135 NOW \$114
- Lambert of England 10-speed
NOW \$149
- Japanese Star 10-speed
Reg \$180 NOW \$155

FREE Bicycle Ecology T-Shirt
with purchase of any bicycle

FREE Bicycle Car Carrier
with purchase of any
two bicycles

100 Days FREE Parts and Labor Warranty - 5 Years on Frame.

Bikeways Cycle Centers

SCOTTSDALE
7160 East Second Street
(Corner of Second and Scottsdale Road)
947-1781

TEMPE
608 Mill Avenue South
967-8845

For 25 hours

Dorms lose hot water, cold air

By DEBBE NELSON

Confusion and discomfort was common among many dormitory residents at the north end of campus when a 12-hour air-conditioning and hot water shut-off extended to 25 hours over the weekend.

"Pipe construction for the new Physical Education building necessitated closing off steam and chilled water lines leading to the Manzanita and the Palo Verde complex," said George Zelenski, associate director of the power plant.

The contractor, J.H. Welch and Son, estimated that the work could be finished between 8 p.m. Saturday and 8 a.m. Sunday, he said. However, they didn't finish until 10 Sunday night.

"As with any construction, there are always unforeseen delays," Zelenski said. "In this case, fittings had to be refabricated in accordance with the new design."

Zelenski estimated the

thirteen extra hours the construction crew worked on the pipes cost the contractors \$10,000.

"The men worked 25 hours without going home," he said. "If they hadn't put in the extra time, we'd still be without air-conditioning and hot water."

"My own men had to turn on the steam and chilled water," he said. "They were called to duty three times before the construction was actually done."

Zelenski said the most

serious problem were the cost to the contractor, the inconvenience to the student, and the inconvenience to the food service.

"We use steam to cook much of our food," Buck Kessler, food service director, said. "We also need it to clean dishes, as it is a state law that high temperature water and steam be used."

He said meals were served on paper plates at Palo Verde East Sunday.

Cooking was done on top of the stoves and in the ovens.

Although there was confusion, Kessler said operations went smoothly and at a normal pace.

"You're so doggone used to doing things one way, that any change of thinking will cause problems," he said. "Luckily these things happen very seldom."

Although notices were posted in the residence halls announcing the 12 hour cut-off of air-conditioning and hot water, the dormitories

were not notified of the delay. Many questions and complaints from residents resulted.

"We received a lot of complaints from residents," Ed Endriquez, assistant head resident of Palo Verde West said. "we just had to assure them that eventually the air-conditioning would go back on."

"But it was hotter than hell," he said. "Sunday afternoon thermostats measured 90 degrees inside."

Regents talk of seating for disabled

The first meeting of the Arizona Board of Regents for the 1973-74 academic year will include a discussion on more seating for handicapped spectators in Sun Devil Stadium.

Troy Crowder, director of University Relations, said the board will also discuss grants, contracts and some construction change orders. Changes in faculty and staff will also be approved, he said.

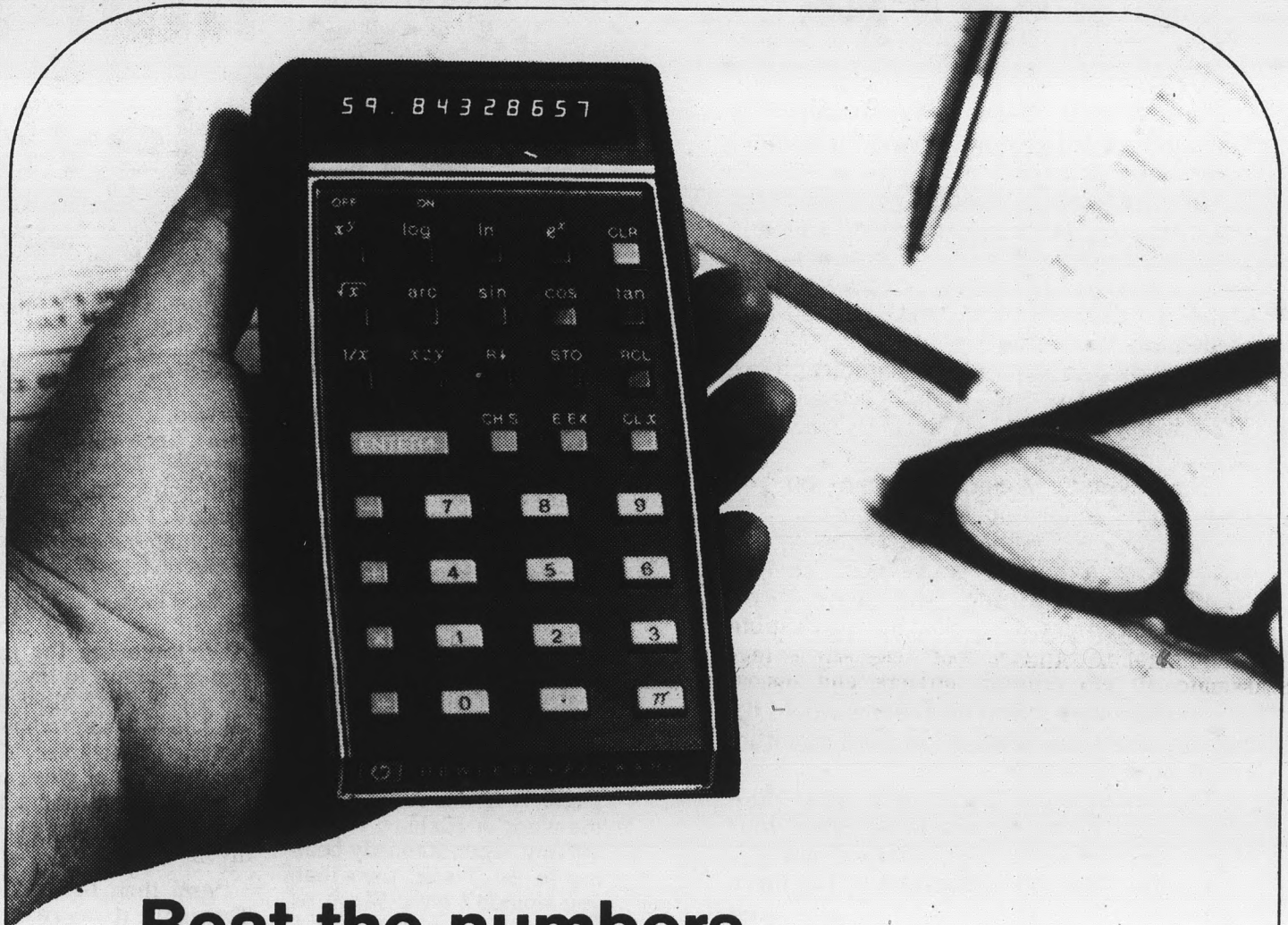
The universities will present their preliminary reports on fall enrollment estimates as a matter of regular business.

The meeting will be held at 10 a.m., Saturday, at Northern Arizona University.

POLY FOAM

1x24x60	\$1.25
2x24x76	\$2.75
3x24x76	\$4.13
4x24x76	\$5.50
5x24x76	\$6.88
2x30x76	\$3.52
3x30x76	\$5.23
4x30x76	\$7.04
5x30x76	\$8.75
2x39x76	\$4.56
3x39x76	\$6.88
4x39x76	\$9.08
5x39x76	\$11.44
2x54x76	\$6.27
3x54x76	\$9.40
4x54x76	\$12.54
5x54x76	\$15.68

TEMPE SALES
412 WEST BROADWAY
TEMPE, ARIZONA



Beat the numbers...

The world's first calculators that challenge computers and fit into your pocket.

Are you spending too much time solving problems the old-fashioned way—with slide rule, ordinary calculator or paper and pencil?

Solve problems in seconds, with one of the same calculators used by professionals in your field—the HP-35 Scientific Pocket Calculator, the HP-45 Advanced Scientific Pocket Calculator, or the HP-80 Business Pocket Calculator.

Hewlett-Packard calculators give you more power, more accuracy, more storage registers and more features than ordinary calculators. For example, the HP-35 gives you up to 10 digit accuracy, a floating decimal point, and a range of 200 decades (10^{-99} to 10^{99}). The HP-45 also gives you automatic conversions, offers you a choice of fixed or scientific notation, and per-

forms register and vector arithmetic. And the HP-80 is pre-programmed with 3 dozen financial functions.

Right now, an HP calculator can help you get better grades, because it...

- SAVES TIME in solving problems—just press the keys!
- GUARANTEES ACCURACY for fewer mistakes
- OFFERS COMPUTER-LIKE POWER (no waiting for school machine)
- REPLACES TABLES AND PAPER-AND-PENCIL CALCULATIONS
- OPERATES SILENTLY for use in classroom, library or dorm
- GOES ANYWHERE (fits in pocket or purse; weighs but 9 ounces)

COME IN TODAY FOR A FREE DEMONSTRATION of the complete line of Hewlett-Packard pocket calculators

Student Book Center

704 College Ave., Tempe

University Bookstore

M.U. Building

HEWLETT  PACKARD

Sales, service and support in 172 centers in 65 countries

Opinion

state press

Help

The ASASU Tenant's Association is starting its third year of serving the student community this fall.

The association, funded by Associated Students, is there to provide students renting apartments with information and help regarding leases, security and cleaning deposits and the latest laws protecting the renter.

According to Wayne Johnson, director of the association, the main problem the association deals with is security and rent deposit returns.

The Tenant's Association can tell you your rights regarding these deposits.

Johnson reports that the association will soon have available a revised renters handbook explaining the new laws regarding renters. They also have available apartment inventory checklists to protect renters.

Johnson says that if all renters would fill out this checklist, a lot of "deposit rip-offs" could be prevented.

The association can't give you legal advice, but it can let you know what your rights in relation to your landlord are.

Use the Tenant's Association. It is there to help you.

Letters

Porn - It's a shame

Dear Sir:

In rebuttal to Clifford Marko's (Porn-It's Your Right), I think it's a shame when the Supreme Court makes one good decision out of ten and then gets the axe for it. And for what? For allowing local standards of morality to prevail over a nationally determined system of values. How can there be any doubt that the Supreme Court has acted properly in taking the right to determine community moral standards out of the hands of the New York porno kings and placing it into the laps of the local courts?

Since pornography (1) opposes traditional marriage as being archaic and without value, (2) advocates self-gratifying pleasure devoid of responsibility, and (3) rejects the concept of interpersonal, committal love, it is my opinion that all pornography—from Playboy to Screwworm—should be banned from further publication.

My view is supported in Drakeford and Hamm's Por-

nography: The Sexual Mirage p. 137.

The message of pornography is anti-family. The emphasis on sex without relationship, its attack on the concept of a wholesome, wellrounded love, the downgrading of commitment to a mate that creates a setting in which children can be raised. . .

It is the absence of love and the exultation of selfishness that forms the essence of the pornographic industry. It is an equally loveless and selfish society that permits the continuance of this spiritual corruption.

What idiocy it is to justify the distribution of this trash because the majority of the people want it or are willing to tolerate it. Did majority support justify our intervention into the Vietnam war? Did majority will justify the enslavement of millions of black men and women a century ago? Since when has majority sentiment equalled automatic rightness? Opinions mean nothing unless

Ladies and gentlemen, the President of the United States.

"Thank you, my fellow Americans. I have a few words to say tonight about the Watergate affair that I believe will clear the whole thing up; I lied.

"That's right, make no mistakes about it, I lied. And so did Bob Haldeman, John Erlichman, and John Mitchell. I knew all along that those phones were being tapped. In fact, I ordered it! I ordered all of it! Including the burglaries, the destruction of government records, the breaking and entering of the shrink, the political sabotage, and all of the dirty tricks. All of it was the work of Richard Nixon.

"Boy, when Kennedy beat me in '60, I said then that you wouldn't have Nixon to kick around any more, and I meant it! But I never said anything about Nixon coming back and kicking you around!

"All of my life, I have been made fun of, laughed at and been the butt of somebody else's prank.

"Even as a boy growing up in Whittier, California, I was made a fool of. Why, I can remember dipping little Linda's pig tail in the ink well, and then she got up screaming rape. But, that's neither here nor there.

evidence is brought forth to support your belief and compassion is the prime motivator behind your belief.

Those who uphold the sale of pornography never seem to tire of scare tactics. "Once censorship is imposed in this area, it'll lead to burning libraries, editing newspapers and state controlled television." My concern is not over the right to read porno; it is over the right to make it.

I'm tired of hearing smut justified as being protected by the 1st Amendment. My mind keeps returning to those days in 1969 and '70 when the Army and FBI were illegally conducting surveillance on millions of persons in the antiwar movement. They said they were

Clifford Marko

Was that really on television?

"Anyway, back to Watergate.

"Think of it my way for once, will you?

"After I botched up the Vietnam war, the fiasco I ordered in Cambodia, and then screwing up the economy so badly that I don't think I'll ever get it straight, I felt that I had to do something to insure my re-election.

"So, I looked at the people around me, and I thought 'God, these are the people who are going to try to get me re-elected? How did I wind up with such a bunch of flunkies?' You know, it's not easy to run a government when you appoint all the people to whom you owe favors.

"And then there's Spiro. The only two reasons I asked him to run were, as my old, personal saying goes, 'If you want to shine, stand next to something dull.' And, that he was a political hack, like myself, who made a good compromise, because nobody knew who the hell he was. Sort of reminds me of me.

"Looking at these people, I just couldn't let them ruin my whole political career. God knows, I've ruined it enough times myself. So I did it all myself.

"Constitutionally" defending national security. Let's not kid ourselves. The Constitution does not support, nor should it be used to protect immoral excesses of any kind.

Anyone who would use such tactics to defend something inherently evil, be it pornography, oppression of deceit is so low they have to reach up to scratch an ant's belly.

To conclude: "He that justifieth the wicked and he that condemneth the just . . . they are both an abomination to the Lord." Proverbs 17:15

Michael Shelton
Sophomore
Political Science Major
Liberal Arts Senator

"Sort of like the way Tom Landry sends in all of the plays in from the bench, I sent in all the plans. Even got one of those voice changers from the CIA. I felt like a cross between Howard Hughes, and James Bond at times.

"But God, how I felt all powerful. Imagine, me, little Dicky Nixon ordering all of those things? I was getting so good at it, that I even put a wiretap on me!

"And nobody could touch me. In fact, you still can't. Because if you impeach me, you will get Spiro, and he's in up over his head with his own mess in Maryland. If you impeach both of us, then you get stuck with Carl Albert, and I've got a whole file full of incriminating stuff on him!

"So, in conclusion, I would like for all of you to quit talking about Watergate, so that we can get on with the business of running the world. Excuse me, but I meant to say, with the business of running the government.

Thank you, and good night, my fellow Americans, and may God smile down upon each and every one of you: every one of you on the good, good Earth."

Policy

The State Press welcomes comments from the University community on any material published in the newspaper, or any topic determined to be of interest to the majority of its readers.

Letters — typewritten, double-spaced and no longer than 300 words — to be submitted to the Editor, State Press, must be edited for libel, space requirements and compliance with the newspaper's regulations.

The Editor, with whom responsibility for publication rests, may at his discretion refuse publication of any item.

Collage

TODAY

- American Welding Society and Society of Manufacturing Engineers 1:40 p.m. TC 104.
- Cultural Affairs Board and Student Experimental Theatre auditions for Kurt Vonnegut's 'Happy Birthday Wanda June', 7 p.m., Payne Training School, corner of 10th and Myrtle.
- Arizona State Lacrosse Club, organizational meeting, 7 p.m., MU 283.
- Student Affiliates of the American Chemical Society, SAACS Science Film Festival, 3:35 p.m., C-234.
Wednesday, Sept. 19
- Christian Science College Organization, 7:30 p.m., Danforth Chapel
- Student Affiliates of the American Chemical Society, 3 p.m., Physical Science Center C-232.
- Women's Center, The Woman's Picture (1930-1960), 7 and 9 p.m., Neeb Hall.

Vacant seats

ASASU seeks 3 senators

Pat Norris, Associated Students first vice president said yesterday she is taking applications for three vacancies in the ASASU Senate.

Norris said she will accept applications until early next week for positions representing the Liberal Arts, Education and Architecture colleges. One senator will be selected from each.

The only qualification for an applicant, as stated in the ASASU statutes, is a cumulative scholastic average of at least 2.2.

Most of the vacancies were a result of last spring's ASASU elections when not enough people were elected to fill all the Senate seats.

Norris said filling these three vacancies will give the Senate its required 40 members. Applicants will be interviewed by Norris,

the Rules and Membership Committee and the full Senate, with confirmation coming from the full body.

She will talk to as many applicants as possible, either in person or by telephone.

"You have to apply to even be considered," she said.

This policy of asking for applications is not meant to exclude anyone, Norris said. She said it is done this way to prevent someone from filling a seat without going through proper channels.

At the beginning of the school year eight other vacancies were filled from recommendations by a Senate interim committee on Senate appointments.

Confirmed to ASASU Senate positions and

colleges represented were: John Holcomb, Engineering; Connie Isenbarger, Education; Martha Jett, Education; Norm Keyt, Law; Debbie Kipp, Education; Debbie Marquardt, Education; Anne Rohan, Education; Michelle Wolosz, Education. Keyt is a former ASASU President.

Persons wishing to apply for the three current vacancies should inquire at MU 246 or call 965-3161.

Hand Carved Boxes

From Poland

Old fashioned superb craftsmanship. From \$3.50 to \$35.00 including mini-chess sets at \$15.00

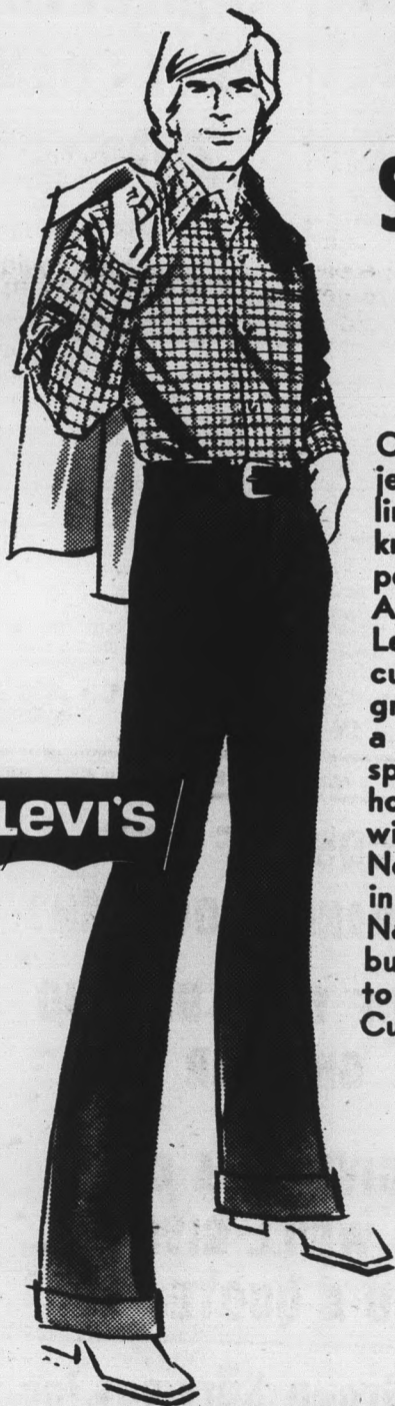
Matthews Center, 2nd floor
From 12 noon to 4 p.m.

The Gallery Store

LEVI'S® NUVO TUFF CUFF

STA-PREST

FLARE SLACKS



Of all the fashion jeans in the levis line, none is better known nor more popular than Nuvo's. And why not? Levi's Nuvo Tuff cuff have that great lean fit plus a tough, grizzly spun fabric that holds its shape without ironing. Now on our shelves in rich new colors. Navy, brown and burgundy. Sizes 28 to 36. Levi's Tuff Cuff flares.

13.00

Levi's

LeSueur's

MENS AND BOYS WEAR
IN DOWNTOWN MESA
18 W. MAIN

Come try it . . .

THE HUB

. . . in the Memorial Union

DEVIL BURGER
With French Fries &
large beverage

\$1 10
+ tax
Save 10c

OFFER GOOD THRU 9-21-73

Give coupon to cashier — HUB ONLY

CONTACTS ARE A GIRL'S BEST FRIEND.



Contact lenses can help you look better, feel better. Our contacts are flawlessly ground to exact specifications. They're fitted with care by professionals. Let us show you the new comfort and convenience of our contact lenses.

\$80

Single-vision contact lenses:

TEMPE 13 CONVENIENT VISION CENTERS
THROUGHOUT ARIZONA
Open Monday through Saturday.
Tempe Center/2032 S. Industrial Park Ave.
967-7864 967-7333

LEE
Optical



Remodeled Varian Data 620

Computer aids engineering

By GREG HAGAN

ASU's advanced electrical engineering students are provided an unusual opportunity to learn how a computer works, according to Dr. Marvin Woodfill, associate professor of electrical engineering.

"Students can actually get in and work on the electronics of the computer," he said.

Woodfill's computer, a transformed Varian Data 620, was purchased by ASU in 1966 for \$40,000. Since then, \$10,000 has been spent to purchase additional equipment and parts, he said.

Woodfill said students have changed what the machine does inside and made it twice as flexible and

workable as the original.

He said the changes made by students are important because the machine is now more efficient.

Woodfill says the improvements on the computer have been made by graduate students working on masters programs. More than 50 projects involving modifications to the computer have been completed, he said.

"The students really learn from these projects," he said. When a new way of doing a particular process is discovered, then more modifications are made on the computer, he said.

Woodfill does all the maintenance on the computer because there have been so many modifications that no one else would know how.

The computer runs on paper tape instead of cards, he said. "Cards are expensive and so is the equipment to handle them."

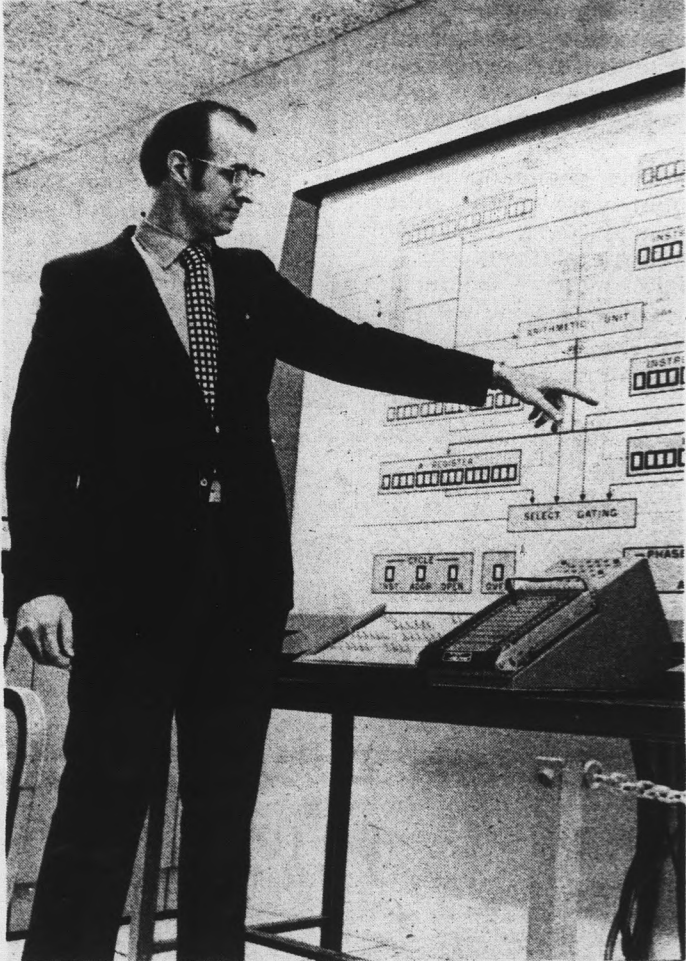
Most of the equipment is given to ASU by local industries when they purchase newer models, he says.

"Because there are so many different models we are finding it difficult to use everything that has been donated."

Enrollment in the electrical engineering courses using the computer has increased and Woodfill expects more students in the future than he can ac-



Electrical engineering students profit from the time Dr. Marvin Woodfill spends reworking and adding parts to the \$40,000 donated computer they use in their classes.



Dr. Marvin Woodfill, associate professor of electrical engineering, examines the screen on the Varian Data 620 computer he uses as a classroom teaching aid.

Photos by
Greg Stanek

CARPET SPECIALS

9 x 12 used rugs-\$5.00

All Sizes In Stock

CARPET HOUSE

1516 E. Van Buren, Phx.

experience new freedom

CRIMPERS, LTD.
311 EAST UNIVERSITY DRIVE
TEMPE

VALUABLE COUPON

BURGER & SHAKE 59¢

Exclusively at your
DAIRY QUEEN - BRAZIER
3420 S. Mill Ave, TEMPE

Reg. U.S. Patent Off. AM. D.Q. Corp 1972AM D.Q. CORP

"The good 'ol days are back again . . ."

BUD! — 5¢ a Glass!

. . . 50¢ for Pitchers
(while playing pool)

at the
GOLDEN EIGHT BALL BILLIARD LOUNGE

Hayden Plaza East—Woolco
1330 N. Scottsdale Rd., Tempe

- Snack Bar ● Top Equipment ●
- Excellent Lighting ● Music ●

comodate. The courses using the computer are EE 420, 421, 521 and 524.

Woodfill says he wants to "provide the students with the best and most convenient set of tools." The computer provides a learning experience and "means more than just sitting in a classroom," he said.

SHREDED POLY FOAM

40¢ pd.

TEMPE SALES
412 WEST BROADWAY
TEMPE, ARIZONA

Jerry's AUDIO EXCHANGE

STEREO COMPONENTS SYSTEMS AND ACCESSORIES

A.R. - AKAI - AMPEX - B.A.S.F. - BEYER - BRAUN - B & O
BOSE - CROWN INT. - DECCA - DUAL - DYNACO - E.V.
EMPIRE - E.P.L. - E.S.S. - GARRARD - HARMON - KARDON - K.L.H.
INNER AUDIO - J.B.L. - KLIPSCH - KOSS - PHASE LINEAR - PHILLIPS
PICKERING - RABCO - REVOX - S.A.E. - SANSUI - SENNHEISER - SHURE - SONY
STANTON - SUPEREX - SCOTCH - TANDBERG - T.D.K. - TEAC - THORENS

968-3491 120 E. UNIVERSITY DR.
IN THE ARCHES

IS THE COST OF YOUR AUTO INSURANCE TOO HIGH? BECAUSE OF YOUR DRIVING RECORD OR YOUR AGE? IF SO, GIVE US A CALL AND WE'LL GIVE YOU A QUOTE.

Selective Group Services, Inc.

Mesa - Scottsdale - Tempe	Phoenix - Glendale
28 N. Alma School Rd. Suite C. Mesa, Arizona David W. Smith	1333 W. Camelback Suite 113B. Phoenix, Arizona Elmer Adair
834-8935	264-9721

Students are taught by teaching

Junior and senior elementary education majors now have the opportunity to participate in on-site classroom training through a program known as Project Outreach.

"This is a two year program designed so college students can teach children early in their schooling. They can decide early if they like teaching other people's kids," says Dr. Martin Kamins, assistant

professor of elementary education and coordinator of the program.

He adds that often education majors wait until their last semester to student teach and then find they don't like teaching.

The Outreach Project covers four semesters spent in the Washington Elementary School District in Phoenix. The first two semesters each offers 12 hours credit, and the students teach from 8:15 a.m. to 10:15 a.m. daily. At 10:20 a.m., the ASU students meet at the Washington district office for extension classes in education taught

by Kamins. These classes take place Monday through Thursday, with Fridays being reserved for guest speakers or visitation.

The students are dismissed at noon. Several of the 32 students participating then commute to ASU to take one of the two courses not offered on-site, visual or educational psychology.

Third semester involves student teaching from 8 a.m. to 4 p.m. for 15 hours credit.

The fourth semester is an optional internship which can be taken for either credit or pay from the

district.

This is the second year for the program in the Washington District. A similar program was started three years ago in the Chandler schools under the supervision of Dr. Merri Schall, assistant professor of elementary education.

Kamins reports that he is pleased with the results of the program.

Students also seem pleased with the program.

"I absolutely love it," said Cheryl Greinke, senior. "We spent one whole year getting our feet wet and can now move in faster. Normally student teachers just start

to get into it and their time is over."

Jo Ann Cochran, new to the program, says, "The kids last year didn't miss any days. I wish every student could go through this program. We would have better teachers."

Students wishing to enroll in this program next fall should contact Kamins or Shawl as soon as possible. Their office is 413A in the Farmer Education building.

Eligible students are not required to have had any education classes at ASU. The first 35 to 40 students enrolling will have an interview with the district.

MU auditions pop-up acts

Auditions for musicians interested in performing in a Memorial Union Pop-Up program will be held at 9:30 a.m. on Sept. 29 in the M.U. Maricopa Room.

The Pop-Up programs offer various forms of entertainment in the M.U. Musical concerts, art demonstrations and karate exhibitions are some of the Pop-Ups which have been presented.

Anyone interested in performing in a Pop-Up should call Rick Eden or Roseanne Cartledge at 965-6640.



state
press
C
I
A
S
S
I
F
I
E
D
S
S
E
L
L

CANLEN HOUSE

APARTMENTS · TEMPE

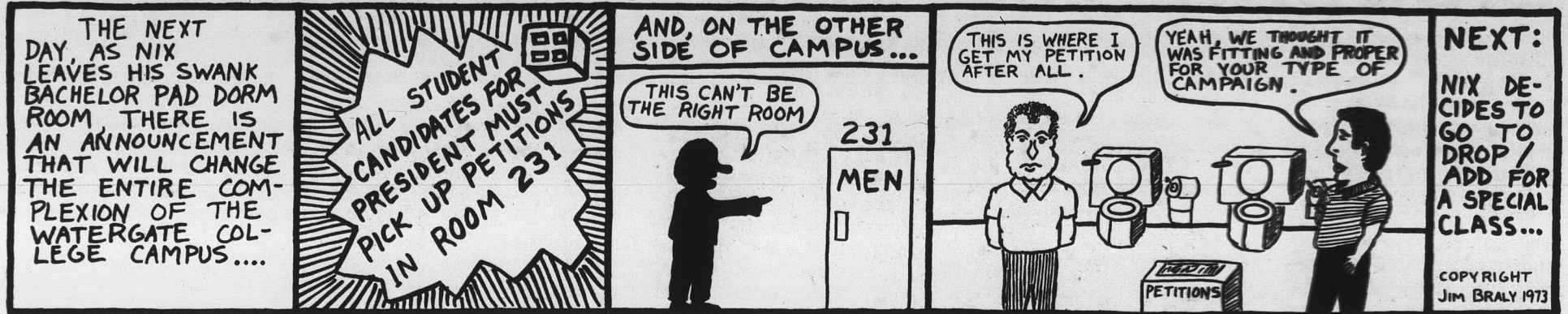
HERMOSA AND MILL AVENUE,
ONE BLOCK NORTH OF THE FREEWAY . . .

Immediate Occupancy — FREE Utilities

PHONE 968-8656

FROM \$145

Watergate college



Dropouts, no-shows cut dorm crowding

Crowding in the residence halls has been relieved, according to Cathy Lahti, assistant director of housing at Manzanita, and Rich Shindell, assistant director of Palo Verde West.

Many men who had signed up for dorms stayed in fraternity houses, and ten were temporarily assigned as third persons in two-person units at Palo Verde West in the first weeks of school this fall.

At the height of the rush seven lounges in Sahuaro Hall were converted into sleeping area to handle 21 surplus residents, said George Vinson, unit manager at Sahuaro.

Last year when occupancy was down Sahuaro assigned 100 private rooms, which has essentially cut out 100 students from receiving rooms, Vinson said.

This year Sahuaro was forced to turn down 200 requests for rooms, he said.

"There was a lot of confusion and a few complaints," Shindell said. "However there are no more rooms housing three men."

Seventy-eight women were temporarily assigned as third persons in bedrooms at Manzanita, Lahti said.

"Many people come to school and after a week or two find they just can't cut it," she said. "This drop-out rate, along with unclaimed reservations, has allowed us to accommodate this surplus of students."

Vinson said the drop-out rate this year is the lowest it has been in his four years as Sahuaro unit manager.

Both Lahti and Shindell said residence halls are filled to capacity. A waiting list for each dorm has been established in case of late cancellations.

ASU visitation calendar proposed

Dr. Roger M. Swanson, dean of admissions, has proposed an Outreach Calendar to coordinate the visit by ASU representatives to Arizona high schools and community colleges.

The calendar would contain such information about proposed visits as the division or area of ASU represented, purpose of the visit, date of the visit and the name and location of the school to be visited.

Swanson said there has been a duplication of effort the last several years and hopes the calendar will eliminate this duplication.

"We found that people were going out and learning that people from other groups had been there the day before," Swanson said. Combined efforts might allow better economical handling and avoid backlash from some high schools, he said.

Groups involved in an outreach information program include Special Services, Financial Aids, Army and Air Force ROTC, Dean of Students office, High School and Community College Relations, Social Welfare (department of sociology), Devil's Advocates, and Veterans Special Services.

Bob Francis, administrative assistant to the dean of admissions, will be in charge of the calendar.

Forms for outreach groups are available in the Admissions Office. Swanson requests notification to his office two weeks or more in advance of the visit.

Outreach groups that have not been contacted are requested to notify Swanson as soon as possible.

ERICKSON
HANDCRAFTS

ARTIST & DRAFTING
SUPPLIES

Crafts - Picture Frames
Decorating Material

Open Mon. & Thurs. Nights
10 Percent Discount to Students
111 E. University — 967-4482

**NATURAL
BURLAP**

45^c yd.

TEMPE SALES
412 WEST BROADWAY
TEMPE, ARIZONA

The book that has
changed
thousands
of
lives.

IMITATION OF CHRIST
at your bookstore — \$1.50
available in Protestant and Catholic editions

OUR SUNDAY VISITOR, Inc. Noll Plaza Huntington IN 46750

METRO PANTS
help you make a beeline
to the country with
"Hipshake" shaped pants—
that have an extension
waistband, scalloped
pockets and cuffed bot-
toms. In Cone Jonah's
Wale Corduroy. Navy,
red, grey, green, brown,
camel. 27-38, S,M,L and
XL lengths. About \$15.
Visit your campus shop
today.

**Cone
corduroy**
MEMBER EQUIPMENT COUNCIL OF AMERICA

Cone makes fabrics people live in.

CONE MILLS 1440 BROADWAY NEW YORK, N.Y. 10018

*** Devils win opener 26-20 ***

By JEFF STREET

What does a quarterback do when he has two of the finest college running backs in the country and the opposing team effectively shuts off his ground attack?

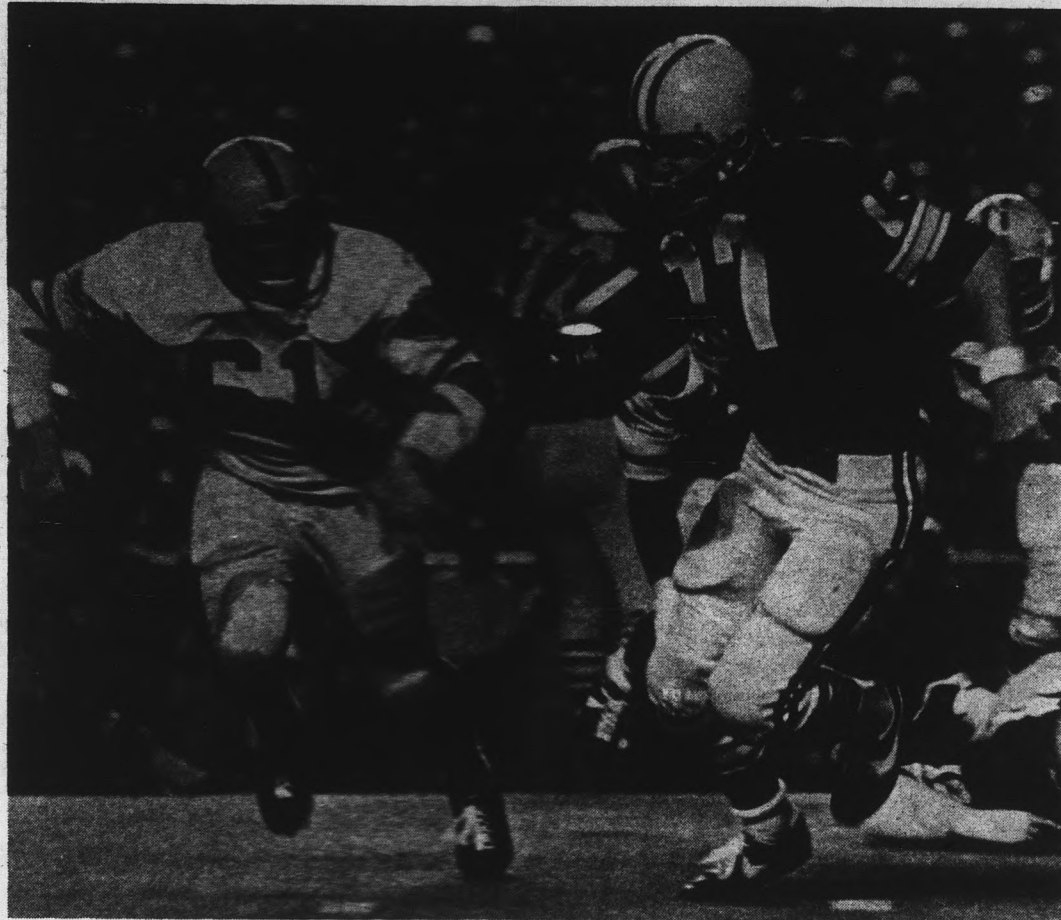
Ask Sun Devil quarterback Danny White, he knows what to do.

White's devastating passing and near perfect play calling when the Devils' needed it most sparked the 13th ranked A-Staters to a hard fought 26-20 victory over the upset hungry Oregon Ducks, Saturday night in Eugene.

The senior signal-caller threw only 15 passes, but completed 10 of them for a phenomenal 282 yards and two touchdowns.

A near sellout crowd of 40,100 watched a fired up Oregon defense stymie the Sun Devil running attack, holding All-American halfback Woody Green to 77 yards in 22 carries. Green fumbled three times, all in the first half.

Fullback Ben Malone also felt the Oregon pinch, as he gained only 64 yards in 14 tries for a 4.4 yards-per-



Sun Devil defensive middle guard Sal Olivo moves in hot pursuit of Oregon starting quarterback Norval Turner. ASU survived a late Duck charge, winning 26-20 Saturday night in Eugene.

carry average (far below his lifetime 7.0 average).

Even with an ineffective ground game, the Devils managed 26 points and a not too bad 430-yard total offense compared to 296 yards of total offense for the Ducks.

The Sun Devil defense showed signs of improvement over last year's team that allowed 21.8 points a game, but several lapses nearly cost them the ball game.

"I was disappointed in our defense in some respects," ASU head coach Frank Kush said after the game. "I thought we had rectified some of the problems from

BEAN BAG CHAIR

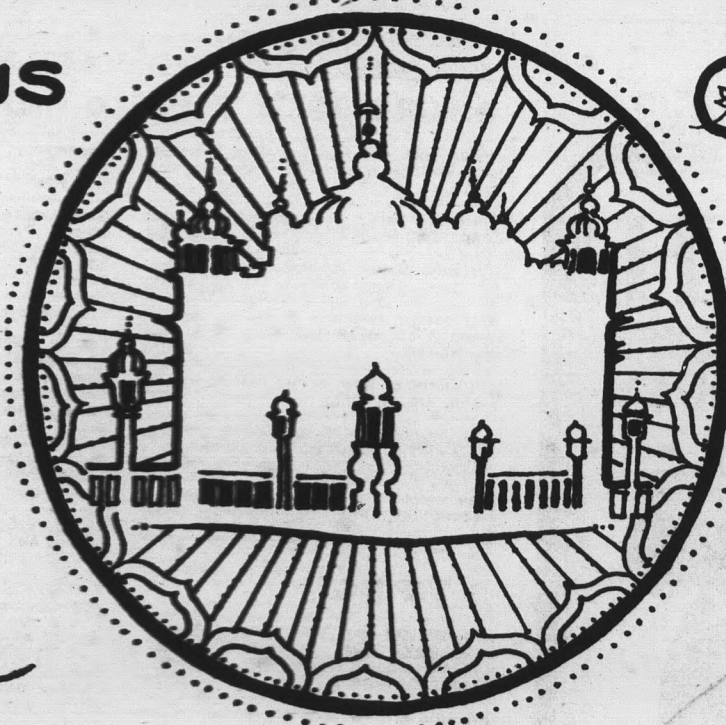
Filling — \$3.33 4 cu. ft.

Patterns — 50c Each

TEMPE SALES
412 WEST BROADWAY
TEMPE, ARIZONA

The Golden Temple Conscious Cookery

Tempe's only
vegetarian
restaurant



NOW OPEN

Monday — Saturday
11:00 am — 9:00 pm



*Salads, sandwiches, and entrees
lovingly prepared and gracefully served.*

415 S. MILL AVE.
TEMPE, ph. 967-5297

• Devils win

last year, but apparently not all of them."

Linebacker Bob Breunig and ends Larry Shorty and Sam Johnson came up with several big plays for the Devils. Breunig was in on 15 tackles, with 12 of them being unassisted. Shorty and Johnson had 11 and 10 tackles, respectively.

The first score of the game came on a 26-yard sweep around the left end by Malone, just into the second quarter. Two plays earlier, Shorty blocked an Oregon punt on the 28 yard line, setting up the scoring run. Bob Currier booted the extra point, making the score 7-0.

One minute and 29 seconds later Oregon freshman Rick Kane scored on a 13-yard run to the right side, capping a 66-yard drive that took only three plays.

With 4:48 remaining in the half, Oregon utilized a third Woody Green fumble and scored on an eight-yard pass from quarterback Norval Turner to split end Bob Palm, giving the Ducks the lead by seven.

All was not lost for A-State fans, as the Devils showed the people in Eugene what an Arizona team can do in the way of scoring points in little or no time.

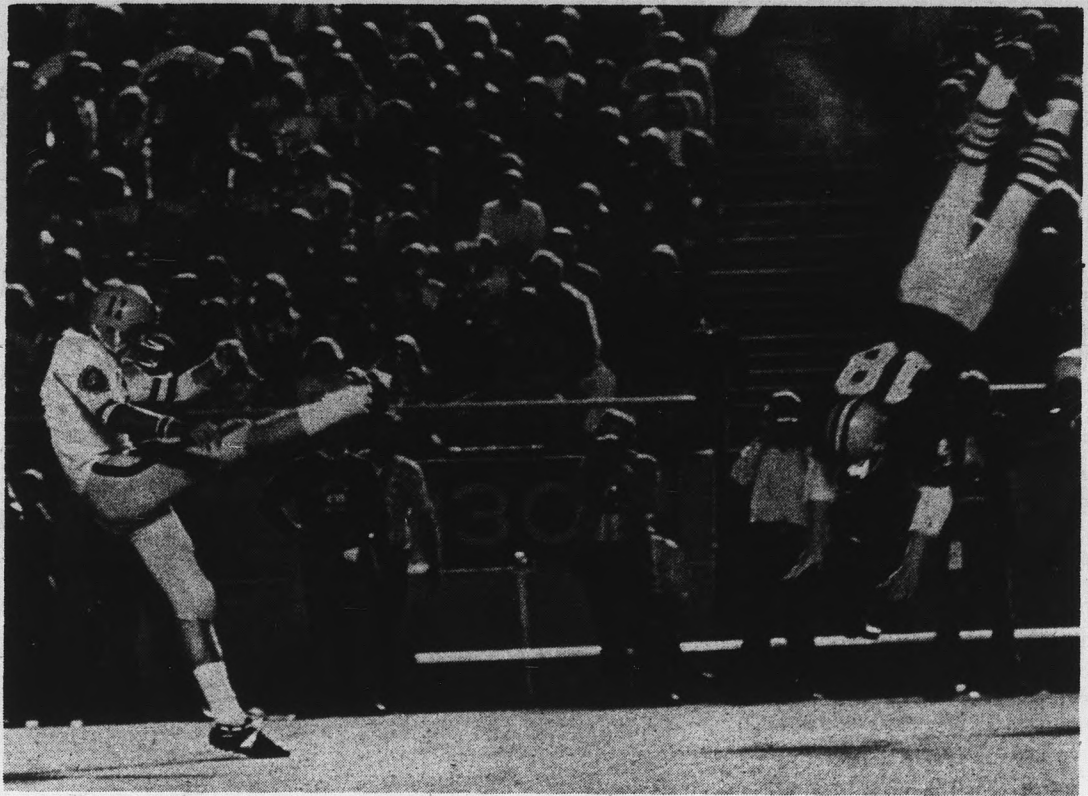
With the clock showing just 50 seconds, ASU got the ball on its own 19 yard line and proceeded to march 81 yards in only two plays. White hit Green for a 77-yard scamper that ended on the four yard line. Wingback Morris Owens then took the ball on a wingback reverse around the left side for the touchdown. The drive, from start to score, took 24 seconds.

Kush stayed with his starting lineup throughout the game and it paid off, as the Devils mounted a 70-yard drive that took just five players to score late in the third quarter.

White again demonstrated his superior passing ability by leading the team to the Oregon 39 and hitting split end Greg Hudson with a perfect scoring pass. Hudson was all alone on the left side, with no Oregon defenders within 10 yards.

White hit Morris Owens from 30 yards out to give the Devils their last score with 10:27 left in the ball game.

Kush said Oregon's late drive was, to a certain extent, due to a lapse in the defensive line. "For some reason or another, that is historical at Arizona State," Kush said after the game."



Oregon defender Tim Slapnicka does everything short of flying, in trying to block first-quarter punt by Sun Devil kicker-

quarterback Danny White. White averaged 35.3 yards each punt, getting off several key kicks.

Photo by Jeff Street

Citron's Surplus

Jefferson at 2nd St. in Phoenix for

- Navy denim seafarer bellbottoms
- Tankers
- Back Packs
- Camping Supplies
- White & 13 Button Belts
- Parachute canopies

ENGINES

PARTS for



REPAIRS

Completely rebuilt engines in stock from \$210
Tune ups \$17.50 — Parts and Labor

Valley Engine Service

2202 E. Apache — Tempe — 968-2318
18 E. Clarendon — Phoenix — 265-0726

state press

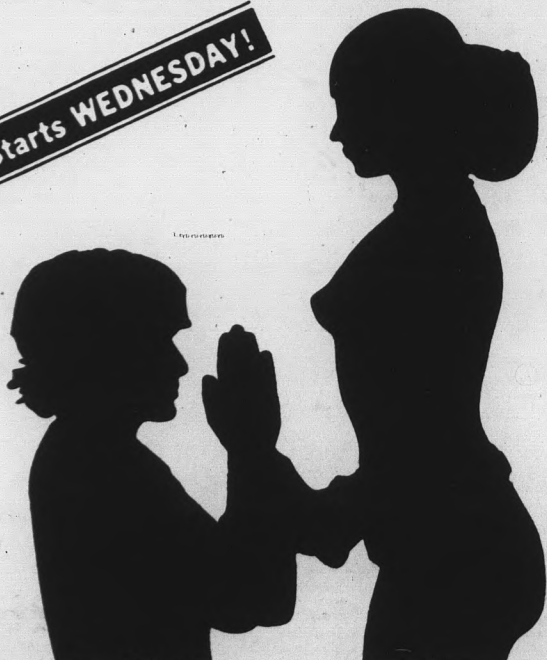
sports

HAYDEN EAST
Cinema
967-7859
1348 N. SCOTTSDALE ROAD • Tempe

SIDDHARTHA

A NOVEL BY HERMANN HESSE /
A FILM BY CONRAD ROOKS

Starts WEDNESDAY!



COLUMBIA PICTURES PRESENTS A FILM BY CONRAD ROOKS
HERMANN HESSE'S SIDDHARTHA • STARRING SHASHI KAPOOR
SIMI GAREWAL • PRODUCED, DIRECTED AND WRITTEN FOR THE SCREEN
BY CONRAD ROOKS • PHOTOGRAPHED BY SVEN NYKVIST

IN COLOR

BUY SELL CLASSIFIED ADS TRADE LEASE

Classified advertising must be paid for in advance either in person or by mail to the State Press, Stauffer Hall, A111. No ads accepted over the phone. Our new office now open daily 8 to 5. Phone 965-7572 for further information.
Student Rates: \$1.25 minimum charge. 35c per line for each line over three. Add 50% for each consecutive day beyond the first day. If the ad is not consecutive, the initial charge of \$1.25 (or the total cost of the first insertion) will be made again. Corrections to ads will be made if noted before the second printing. NO REFUNDS WILL BE MADE FOR CLASSIFIED ADS PLACED IN THE STATE PRESS.

Commercial Rates: Add 20% to the student rate. All ads not placed by students for student activities will be charged for at the commercial rate.

DEADLINE: 5:00 p.m. two days before publication. (An ad for Friday must be placed by 5:00 p.m. Wednesday.)

NO REFUNDS WILL BE MADE ON CLASSIFIEDS

• FOR SALE

Health nuts can now buy SPA membership 947-0546 Must sell Cheap—leaving area. (9/20)

Trailer for sale 8x24 Lakewood 1395. Good Shape. Call 968-2631. (9/21)

Authentic Indian jewelry. Private collector. Low prices. 967-0111. (10/5)

Best sandal selection in town!.. Special group 1/2 off. Back door shop 707 S. Forest 966-1772. (9/18)

Furnishing a Dorm or Apt.? Beds, trunks, tables, etc. 967-5152. (9/18)

3 Br. townhouse with pool—move in today. No qualifying required. Call 252-4909. (9/21)

Lose weight with New Shape Tablets and Hydrex Water Pills - Campus Drugs (9/20)

• TYPING

TERM PAPERS, RESUMES, THESES DISSERTATIONS, PROFESSIONAL, GUARANTEED WORK. IBM, MAXINE MULLEN 955-0763. (6/3/74)

Typing—Term papers, theses et cetera. Resumes composed. Telephone Lora, 947-8101, 946-9157. (9/28)

Typing IBM executive. 955-3206 or 267-9812. (9-12-30)

Typing - term papers, theses, et cetera. Resumes composed. Telephone Lora, 947-8101, 946-9157. (9-18)

Typing—IBM electric. Pice type, Rosemary Vance—Tempe 967-9143. (all sem.)

Typing IBM executive 955-3206 267-9812 E. Phx 75c DBL space PG. (9/12-30)

• SERVICES

Sales service installations on all car and home radios and stereos Campus stereo 737 Apache Blvd. Tempe. (10/12)

Ride Scotts HS and back to ASU Th PM Will pay Jon 965-7231. (9/20)

MX/Desert frame work lowering & chambers. Noon to 8 p.m. 968-4253. (9/26)

• HELP WANTED

Housekeeper & easy sitter for two small boys. Room & board + \$25.00 1 wk 244-4194 after 3:30 p.m. (9/19)

Girls looking for a fun job dealing with people. Pleasant personality, requested good pay short hours. Apply in person 1212 E. Apache Tempe Lunt Ave Marble CL. (9/21)

Apt. Manager: couple-small apt. complex —16 units. McDowell & 52nd St. Call 264-0420 or 258-5458. (9/26)

Boys clubs need Athletic Dir., Recreation Leader; Shop & Crafts Dir., Aquatic Dir. 15 to 30 Hrs./week \$2 to \$2.50/Hr. Phone 264-4651 for information. (9/18)

Secretary/desk clerk—evenings 3pm-11pm —Phone Mr. Nickolis 273-1601—Romney Motor Hotel. (9/18)

Secretary/Cocktail waitress — parttime—Phone Mr. Nickolis for appt. 273-1601 Romney Motor Hotel. (9/18)

Part-time night auditor. Will train person with accounting background 11pm-7am. Phone Mr. Nickolis Romney-Motor Hotel 273-1601 for appt. (9/18)

Unusual computer dating firm seeking campus distributor. Easy money. RAR-502 Frances - Madison. Wis. 53703 (9-21)

Staff artist for State Press. 965-7572 or STA 137.

• AUTOMOBILES

Buy, sell, trade your car at Campus Auto —Tempe 739 Apache Blvd. (9/12)

Need cash 1969 Chevy Camaro Conv. 327 Auto. P.S. AMFM John 965-4380. (9/20)

1972—914 Porche Gemini—Blue-Am-Fm stereo w/air Call Jim Miller 966-0059. (9/28)

1968 Chev. Impala PS, PB FAC 307 Eng 2DR at \$700. 944-0284. (9/18)

1971 Baracuda 2 door Blue vinyl roof 30,600 MI, radio, heater, power steering. Must sell. Leaving area 967-6774. (9/21)

• INSTRUCTION

Tutoring in Chinese Mandarin Call 967-8916. (9/18)

• WANTED

For research purposes, wish to interview any man who has ever impregnated a woman to whom he was not then married, no matter how situation was resolved. Information held in strictest confidence. Phone: Dr. E. H. Phuhl, Dept. of Sociology, ASU, at 965-6311 or leave call-back number at 965-3768. (9/28)

Need female roommate. Bel Air Apt. 1031 E. Lemon St. \$64 Mo. Call Sherry 968-5868. (9/20)

Phoenix registered voters to circulate petitions for Gary Peter Klahr, 20c per name. Call Greg Michael 254-5166. (9/18)

2 females to share 3 bdrm townhouse. Call late eve. 838-8301. (9-14)

• ANNOUNCEMENTS

Be an MU pop-up. Singe dance deatree? Play an instrument? For more information call 965-6640. (9/21)

Come and help the single graduates celebrate the arrival of Autumn and the resurgence of learning Sept. 21 Dance starts 8pm—music by the Open Road Members 50c-guests \$1.50 Cash-Bar-Desert Hills Banquet Rooms. (9/21)

Hillel's after the game party! Sat. Sept. 22, 10:00 after at Baker Center. (9/21)

Sophomore mens honor org. is having a membership drive Tues. Sept 18, 7pm MU265 All interested soph. men are invited to attend. (9/18)

• RENT

2 bedrooms in a 4 bedroom townhouse. Completely furnished. Brand new washer & dryer. \$80 a month. Close to Campus. 966-8764. (9/21)

Roommate wanted for large Apt. Arawan Palms. Call 956-7692. (9/25)

Female roommate wanted to share 2 bedroom furnished Apt. with one other. \$100-Mo. util. & Tax inc. Walk to ASU. Call Beth 966-5451. (9/18)

How Sun Devil opponents fared

1. Oregon lost to ASU, 26-20.
2. Washington State lost to Kansas, 28-9.
3. Colorado State defeated Brigham Young, 21-13.
4. New Mexico defeated New Mexico State, 48-6.
5. San Jose State defeated Fresno State, 24-6.
6. Brigham Young lost to Colorado State, 21-13.
7. Oregon State lost to Auburn, 18-9.
8. Utah lost to Texas Tech., 29-22.
9. Wyoming lost to Arizona, 21-7.
10. Texas-El Paso lost to University of Pacific, 34-9.
11. Arizona defeated Wyoming, 21-7.

ASU-Washington St. ticket pickup now

Student football lottery ticket pick-up is in progress for the home opener against Washington State Saturday.

Tickets are available at the Athletic Ticket Office at the south end of Sun Devil Stadium.

Students purchasing tickets must present their validated ID card or their fee receipt card. Cost of the tickets is one dollar for reserved seating and 50 cents for general admission.

Office hours are Monday through Thursday 8:30 a.m.-5 p.m. and 8-9 a.m. on

Friday. Spouse tickets are available for a \$15 seasonal charge, and may be arranged at the ticket office.

This year guest tickets are available from 5-9 p.m. on Friday. If a student brings a guest to the game he must pay the full price for the guest.

Group seating plans are available in sizes of 18 to 48 persons. One student can only present six ID's for tickets.



ASU defensive end Sam Johnson (86) moves in on Oregon reserve quarterback Herb Singleton. Singleton was able to complete the pass for a Duck first down, averting a safety.

Photo by Jeff Street

ASU-Oregon stats

Arizona State 0 14 6 6-26
 Oregon 0 14 0 6-20
 ASU — Malone 26 run (Currier kick)
 Ore — Kane 13 run (Woodward kick)
 Ore — Palm 8 pass from Tucker (Woodward kick)
 ASU — Owens 4 run (Currier kick)
 ASU — Hudson 39 pass from White (kicked blocked)
 ASU Owens 70 pass from White (pass failed)
 Ore — Palm 29 pass from Turner (kick failed)

Attendance —	40,100	
ASU	Oregon	
First downs	13	22
Rushes-yards	40-148	50-116
Passing yards	282	180
Return yards	53	0
Passes	10-15	19-37
Punts	8-34	11-40
Fumbles-lost	5-5	1-1
Penalties-yards	5-45	3-25

INDIVIDUAL STATISTICS

Rushing		
ASU	Att'd	Net Yards
Green	22	77
Malone	14	64
Hudson	1	7
Owens	1	4
White	2	1
Oregon		

Rushing		
ASU	Att'd	Net Yards
Reynolds	27	128
Kane	4	18
E. Brown	7	15
M. Anderson	1	8
Singleton	1	-12
Turner	10	-41

Passing		
ASU	Att-Comp-I	Yards
White	15 10 0	28
Oregon	15 10 0	96
Singleton	18 10 0	96
Turner	19 9 0	84

PASS RECEIVING

ASU	No.	Yards
Owens	4	112
Hudson	3	62
Green	2	86
Granell	1	22
Oregon	No.	Yards
Palm	5	91
Anderson	4	31
E. Brown	3	28
Francis	3	11
Kerr	1	12
Lindsey	1	9
Kane		0
Reynolds	1	-2

Tennis match sparks raffle

The ASU women's tennis team is sponsoring a raffle on the outcome of the Bobby Riggs — Billie Jean King tennis match.

Tickets are available on the mall today through Thursday, the day of the match. Proceeds from the sale of the 50-cent tickets will help defray the traveling costs of the ASU women's tennis team.

The person coming closest to predicting the score and winner of the match will win a Spalding tennis racquet.

state press

sports

SPORTS
965-7572

M.U. Barber Shop

Open Mon. thru Fri.
ON CAMPUS
Lower level of M.U.
965-3583

BOWLERS THUMB
presents
SUN DEVIL REPORT

7:30 am
mon.-sat

5:30 pm
sundays

on

KOOL FM GOLDEN STEREO
94.5

SON'S & DAUGHTER'S CLUB

NOW FORMING

NEW & OLD MEMBERS WELCOME
1st Meeting: Thur. Sept. 20, 8:00 p.m.

M.U. Room No. 265 Yavapai
For info call: Stu Dixon - 966-2166
Skip Guss - 966-8443

FREE Karate Demonstration

KATA

FREE STYLE*

BASIC TECHNIQUES

TONIGHT!

Time — 7 P.M.

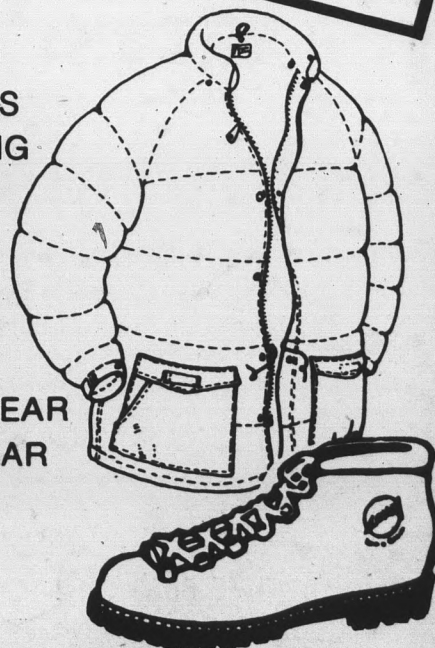
Place — Men's P.E., A.S.U.

Sponsored by Sun Devil Karate Club
Instructed by SHOJIRO KOYAMA

SUMMER CLEARANCE SAVINGS!

20%—40% OFF

BOOTS
CLOTHES
SLEEPING BAGS
PACKS
TENTS
STOVES
KNIVES
RIVER GEAR
RAIN GEAR



SALE STARTS SEPT. 22

**PHOENIX STORE ONLY
DOORS OPEN 9:00 A.M.**

HIGH ADVENTURE "WILDERNESS OUTFITTERS"

3925 E. Indian School Road (Phoenix) 955-3391
Corner of Lemon and Terrace (Tempe) 968-2712

Get into the Record Sales BOX

129

to

998

Schwann Cat. 2⁹⁸ to 44⁹⁵



Distributors Overstock Sale!

Classical • Folk • Jazz • Rock

More Than 500 Famous Artists Over 40 Major Labels

HUNDREDS OF CLASSICAL BOX SETS

BEETHOVEN

The Nine Complete Symphonies
William Steinberg and the Pittsburgh Symphony Orchestra
8 Record Set Value to \$44.50 \$9.98

THE CLASSICAL GUITAR

Segovia, Almeida, Williams, Montoya and many others
5 Record Set Value to \$25.00 \$6.98

THE BEST OF MOZART

His Most Famous Orchestral Works
4 Record Set Value to \$20.00 \$5.98

BRUCKNER

Symphony No. 7 in E Major
William Steinberg and the Pittsburgh Symphony Orchestra
2 Record Set Value to \$10.00 \$2.98

WORLD'S GREATIST CELLISTS

"Limited Edition"
Pablo Casals, Pierre Fournier, Janos Starker
3 Record Set Value to \$15.00 \$5.98

THE BEST OF JOHANN STRAUSS

His Most Famous Waltzes and Overtures
3 Record Set Value to \$15.00 \$4.98

STRAVINSKY AND HIS MUSIC

"Limited Edition"
Petrouchka, Firebird Suite and Others Featuring Ernest Ansermet
4 Record Set Value to \$20.00 \$6.98

TCHAIKOVSKY - HIS FINEST MUSIC

"Limited Edition"
Michael Ponti, Pianist
3 Record Set Value to \$15.00 \$5.98

MY FAVORITE CHOPIN

His Most Famous Works
5 Record Set Value to \$25.00 \$6.98

Student
Book
Center

ONE BLOCK NORTH OF ASU AT
704 S. COLLEGE AVE. 966-6226