



Summer News

Arizona State University

Vol. 1, No. 8 August 2, 1973

No new buildings requested

New budget goes for instruction

In the past several years construction at ASU has boomed so rapidly one almost fears to stand in an open area too long, lest the new multi-story Quasimoto building erupt from under his feet. But the University's 1974-75 capital outlay request of \$14,077,916, recently approved by the Arizona Board of Regents and soon to be submitted to the State Legislature, is the first in several years with no provisions for new buildings.

With the exception of street and utility improvements and land acquisition, all projects in the ASU request are directly related to existing classroom, laboratory and library structures.

No proposals were put forth for additions to administrative office buildings, dining and dormitory accommodations or recreational and athletic buildings.

Listed in order of their priority, the projects in the 1974-75 request are:

A two-floor, 27,830-square-foot addition to the Arts building; \$1,472,801; a three-floor, 60,000-square-foot addition to the Music Building; \$3,486,750; a two-floor, 85,000-square-foot addition to Hayden Library; \$4,006,250.

Then are campus improvements, including streets, lighting, walks and tunneling at \$1,180,920; a three-floor, 68,000-square-foot addition to the Technology building; \$2,594,149; completion of a 9,800-square-foot basement in the Architecture building; \$337,046; and land acquisition: \$1 million.

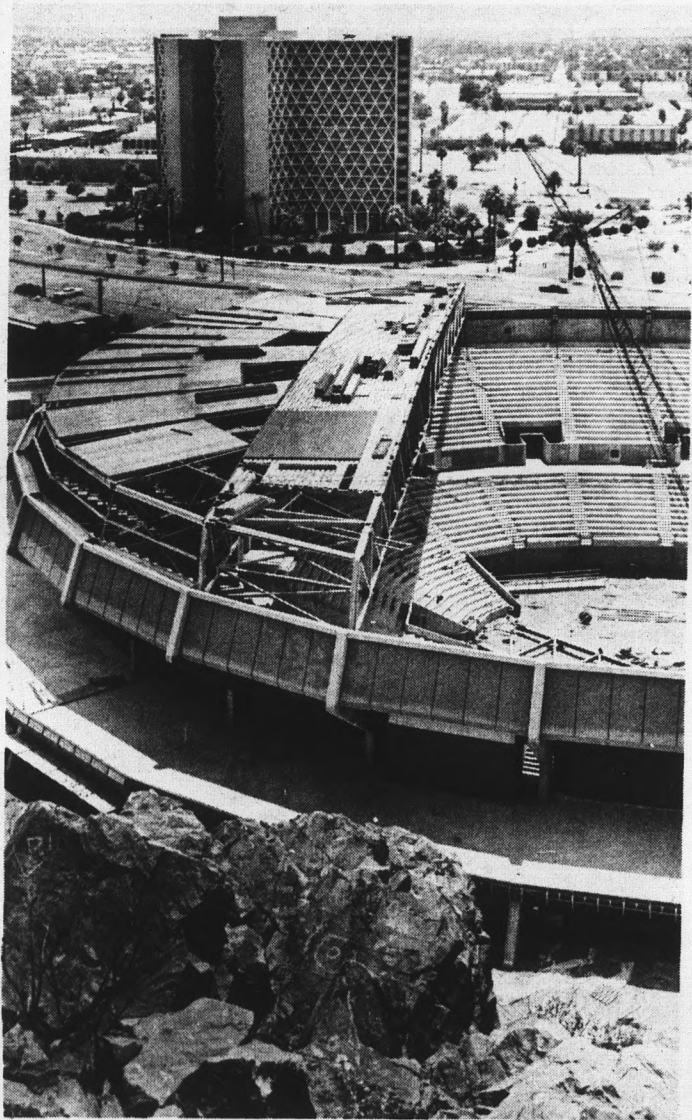
With the exception of land acquisition, campus improvements and the

completion of the Architecture building basement, all the projects initially were requested by the regents in their July 1972 request to the legislature.

Since that time, estimated costs of the additions to the Art, Music, Library and Technology buildings have increased by about \$1,068,050.

Within the one-year interval the construction cost of the Arts building has increased \$126,070, or \$4.53 per square foot; Music building addition, \$297,000, or \$4.95 per square foot;

Library addition, \$416,500, or \$4.90 per square foot; and Technology building addition, \$228,480 at \$3.36 per square foot.



Law professor and son found in plane wreckage

The bodies of an Arizona State University law professor and his son have been recovered from the wreckage of their light plane in the Sierra Ancha Mountains near Young, about 100 miles northeast of Phoenix.

Leland Badler, professor of law at ASU, disappeared in his plane, the Mooney Mark 21, Feb. 20 on a flight from Springerville to Phoenix. On board with him was his son, David, 13.

An extensive air and ground search failed to turn up the grey and white plane when it was reported missing, mainly due to heavy snows and bad weather in the mountains.

Gila County deputies on horseback yesterday reached the crash-site near the top of 7,100-foot McFadden Peak. Wreckage was scattered over a wide area, they said.

Bring on

Wilt

The Stilt



No new buildings were included in the University's 1974-75 capital outlay request, but the new athletic facility, utilizing funds allocated in past years, is well on the way to completion. Ahead of schedule now, the architect plans the

finished product for early next Spring. The \$7.7 million facility boasts movable seating, dressing rooms and classrooms for all athletic disciplines. Multi-purpose in design, its seating capacity will be more than 14,000.

Latin studies center gets it on

The Arizona State University Center for Latin American Studies (CLAS), established in 1965, now has expanded to encompass 53 faculty members in 15 academic disciplines and extensive exchange with other nations.

Dr. Lewis Tambs, director of the center, said the Latin-American content courses of study at ASU have increased to 87, almost all of which are upper-division or graduate classes, offered by 16 departments in six of the school's nine colleges.

The center is a coordinating and supporting agency for the various colleges and departments which offer graduate and undergraduate degrees with a Latin American emphasis.

In addition, CLAS provides students in these areas with an understanding of public affairs and cultural and national trends in Latin America.

Largely due to the center's efforts Hayden Library has acquired a comprehensive collection of publications dealing primarily with Mexican-America, Middle America

(Mexico-Guatemala) and South America (Argentina, the Andes and the Amazon).

In the past five years the library has received more than 26,000 volumes covering such Latin American areas as Argentine literature, Bolivia, the Mexican revolution and Latin American bibliography.

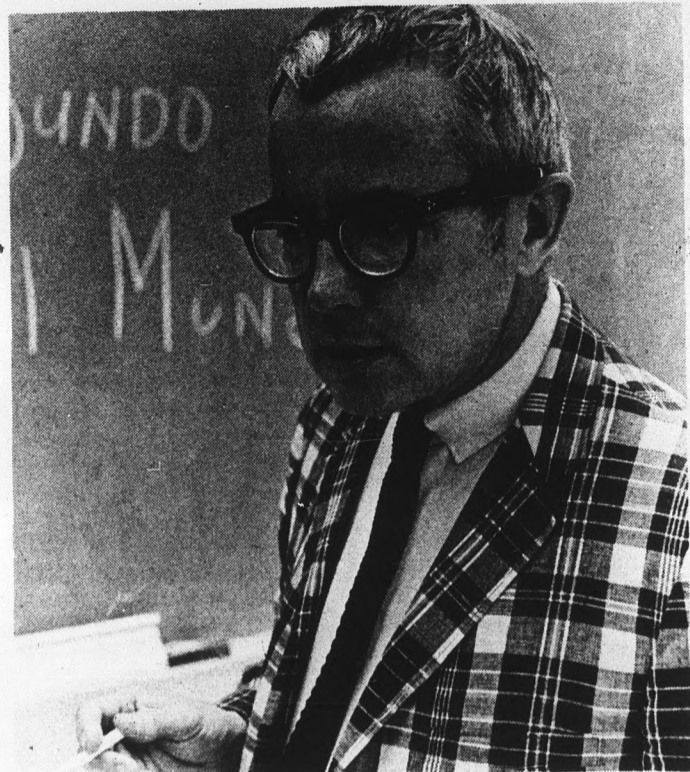
Total resources now include 60,000 books, 336 periodicals and four newspapers in English, and 40,000 books, 224 periodicals and 10 newspapers in Spanish and Portuguese.

In addition to preparing research reports on current public affairs of Latin America, CLAS publishes the quarterly "Latin American Digest," with readers throughout the Americas and other foreign countries.

Its staff also translates and publishes the "Annual Alberdi-Sarmiento Award Lectures" presented by La Prensa (considered one of the world's finest newspapers) of Buenos Aires.

The "Directory of Latin Americanists" compiled by the center is designed to assist ASU students in planning their programs of study, enabling them to select courses taught by specialists in their fields of interest.

CLAS serves as university liaison with various organizations throughout the state



Dr. Lewis Tambs

and nation involved with Latin America, and maintains close relations with Academic Associates of CLAS (Latin American specialists on the faculties of other Arizona universities and communities).

Mutual exchanges also are made with Friends of the Center, a group of Arizona business and community leaders with Latin American experience and interests.

Recently CLAS established a cultural exchange program with the University of Sonora in Hermosillo, Mexico.

Other professorial affiliations include the Latin American Studies Association, the Rocky Mountain Council on Latin American Studies, the Pacific Coast Council on Latin American Studies and the Southwestern Council on Latin American Studies.

ASU women's tennis coach goes to Moscow for games

ASU women's tennis coach Anne Pittman will be at the fore of a racketeer trio in the USSR next month.

She has been accorded the honor of taking three U.S. women tennis players to the World University Games in Moscow, Aug. 15-25.

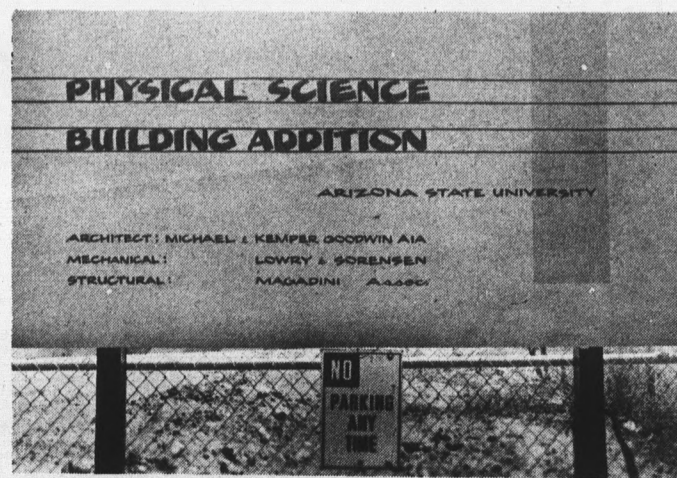
Representing the United States are Janice Metcalf, University of Redlands in California; Jane Stratton, University of Utah; and Linda Lewis, UCLA.

They were chosen on the basis of their recent performances at the U.S. Lawn Tennis Association College Tennis Tournament at Auburn University, Alabama.

They will participate in singles, doubles and mixed doubles competition against student athletes from throughout the world.

"This is the first time a full complement of women plus a woman coach has gone to the games," Miss Pittman said.

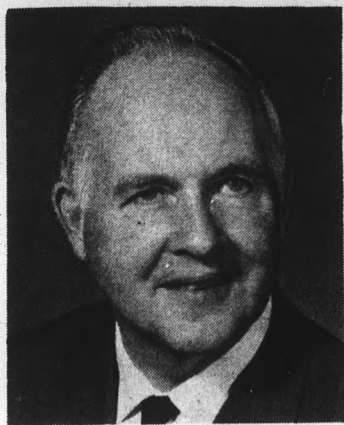
Her appearance among the swingers is no accident on this prestigious first occasion, either, for she coached national championship teams in both 1971 and 1972.



A J-Jon sadly smiling in neglect and a rather perplexing sign are the only features to relieve the eye when one happens by one of the biggest NO PARKING areas on campus. The Hole, as it has come to be known, now is the domicile of

tumbleweeds—has been for more than a year and likely will remain so for some time yet. Rumors that the Hole was created by a mischievous subterranean tribe may be discounted.

Gammage hosts workshop



David Scoular
Managing Director,
Gammage Auditorium

You may have wondered how, when the night lights at Gammage Auditorium suddenly spark alive, that simultaneously there appears on stage a resin-embued violinist, tearful-tomed Romeo or wild-eyed people with hair in their guitar strings.

Or you merely have attributed it all to the whimsey of the Tarot.

In either case, it ain't no accident nor miracle. And it might be interesting to know that considerably more effort goes into setting up a season's entertainment than

into the average term paper.

This very area — devices, techniques and tools of the concert manager's trade — is to be in the spotlight Aug. 5-10 when the University hosts the eighth annual summer workshop of the Association of College and University Concert Managers (ACUCM).

David Scoular, managing director of Gammage Auditorium, has coordinated the whole affair, and heading the discussion will be the director of ASU's Counseling Service, Dr. L.T.

Cummings.

The basic fundamentals of management will be covered in morning sessions, and more advanced discussions will include such topics as Law and the Performing Arts, Relations with Arts Councils and Related Organizations, and Planning a Concert.

The workshop is designed for all those involved in administration, production or promotion of arts programs at educational institutions or non-profit arts organizations.

Distinguished speakers from around the United

States will attend, representing such institutions as Stanford University, CIT, UofC at Berkeley, Purdue University and the University of Iowa.

A highlight of the workshop will be a concert by the Flagstaff Festival Orchestra, conducted by Izler Solomon and featuring guest pianist menahem Pressler.

Information on registration may be obtained by writing the 1973 ACUCM Workshop, Gammage Auditorium, ASU, Tempe, AZ 85281.

Football cheering group seeks members for Fall

An ASU student cheering group is marshaling its energies and recruiting members in preparation for Sis Boom Bah time this Fall.

The Devils' Disciples (no connection with the guys who terrorize downtown Mill) has begun a drag-'em-in membership drive and strategy planning sessions in hopes the Sun Devils this year can be urged to even greater performances.

Guaranteed seating has been established in the stadium for all home games, in the east bleachers, but a large group turnout is necessary if those seats are to be good ones.

Allan Frazier, assistant executive manager of ASU's Associated Students, said, "It is the group's hope that by coordinating with the Spirit Squad the cheers will be more rousing and appreciated than if the Disciples did not help out.

"You'll see me out there, fat 'n sassy in my new Devil's Disciples T-shirt." An ex-officio organizer and early participant, Frazier said the group hopes to garner at least



200 members for the first kickoff.

The T-shirt mentioned is provided each member at the cost of \$3. However, that fee also is to cover organizational expenses and the cost of a team information handout to be given group members at each game.

Frazier said most group meetings will be held on Saturdays with last minute reviews of the cheers the Spirit Squad will be using. At that time any changes or suggestions can be made.

"The idea behind the Disciples is its concern that the team deserves more recognition from the students attending the games," Frazier said.

"The activity is purely extracurricular, and is designed with the hope it will in no way interfere with the student's courses, but will provide added enjoyment of the fall football games."

The Devils' Disciples' first get-together tentatively is scheduled for Aug. 25. Up-to-date information may be obtained from Frazier, MU 238, 965-3449.

Entertainment winds up with top-notch concert

The Arizona State University Summer Series draws to a smashing close next Tuesday when the Flagstaff Festival Symphony Orchestra, replete with big-name performers, exhibits its artistry at Gammage Auditorium.

Izler Solomon, acclaimed internationally as one of the world's foremost conductors, leads the boys in the band beginning at 8 p.m.

His first selection is Rossini's Overture, "Italian in Algiers," followed by Rachmaninoff's "Symphony No. 10."

Solomon has been music director and conductor of the Indianapolis Symphony since 1956, and has headed the Flagstaff Summer Festival since it began in 1966. Previously he directed the Aspen Musical Festival.

During his career Solomon has guest-conducted most of the country's major orchestras, including those in Boston, Philadelphia, Chicago and

Los Angeles. He also has conducted in Europe, Canada and Mexico.

After beginning his career as a concert violinist he turned to conducting, and since has been awarded honorary degrees from five colleges and universities, along with numerous other honors.

Guest soloist with the orchestra Tuesday is pianist Menahem Pressler, winner of the International Debussy Competition and professor of piano at Indiana University.

He will play Rachmaninoff's "Concerto No. 2 for Piano and Orchestra."

Pressler has played with most major orchestras, including the New York Philharmonic, Philadelphia Orchestra, Chicago, Pittsburgh, Washington, Buffalo and Minneapolis symphonies under such conductors as Ormandy, Szell, Stokowski, Steinberg and Dorati.

He has toured the United States, Canada, Europe, Latin America, Africa and

Asia in concert, and has several records to his credit.

Admission to the program is free to students with summer school receipts and University personnel with campus service cards.

General admission tickets at \$2.50 are on sale at the Gammage Box Office, 965-3434.



Izler Solomon



Enforcement incognito

At first glance it might appear that the University Police have resorted to unmarked cars. Or possibly that some razor-toting hoodlum deftly removed the identifying decals. In actuality,

though, the bare-skinned buggies merely got new paint jobs so they could be in greater harmony with the uniforms of the officers. And it takes 30 days for the paint to dry before

new decals can be applied. So, if in your rearview mirror you see a frantically waving individual tailgating your car—pull over, buddy.

For qualified students

ASU offers fast-credit exams

How many times have you heard students say, "Harumph! My first two years in college were spent on idiot courses in drudgery!"?

Perhaps not often, in those exact words, at any rate, but the sentiment that frosh and soph years are exercises in boredom is a widespread one.

Educators' pronouncement that "background" courses are necessary for a well-rounded education oftentimes is little comfort to the student somnambulating through a required course such as Clamdigging 101.

The time has come, however, when the person who knows it all — or even a little bit of it all — can bypass part of the Coma Years' curriculum and still get credit for it.

He or she can do so if qualified, through an innovative program now going into full swing at ASU.

CLEP (College Level Examination Program) was begun by the nationally oriented College Entrance Examination Board in 1965, but only recently in Arizona has it begun to come into its own.

The program is relatively simple in concept, entailing as it does the award of college credit hours to a person who can pass a written examination on college subjects.

The tests, both in general and specific areas, were designed by college instructors for the CEEB. The exam forms and information material then were distributed to test centers throughout the country, including the one at ASU.

Dr. Joyce Foster, assistant to the academic vice president, also



Dr. Joyce Foster

is chairman of the recently created Ad Hoc CLEP Committee whose job is to adapt the national program to the University's format for maximum utilization.

CLEP is designed primarily for two types of people, according to Dr. Foster, first being the gifted high school student who already has knowledge comparable to that taught in college level classes.

Second is the type of person who has gone straight from high school to work or the armed forces, but in the process has gained life experience comparable to part of that gained at a college or university.

The program also can be utilized, however, by students already in college who have not completed more than 60 hours of study.

This is not to say that every freshman and sophomore on campus should seek immediate salvation, for there are certain limitations.

"I am not advocating that just any student take the exams," Dr. Foster said. "Especially if he's not sure of himself. But for the student with experience and knowledge this is a marvelous program, both financially and educationally."

She suggested that the student who feels he might be qualified seek further information from the University Testing Center, Payne B-302, 965-3104.

CLEP, in brief, has examinations in two categories: "general" and "subject."

The five tests under the "general" heading are English Composition, Mathematics, Natural Sciences, Social Sciences and Humanities. Somewhat similar to the ACT.

A person can take one test only, or he can take several. One test costs \$15; two or more tests are a flat \$25. The cost, when one considers the \$18 per credit hour now charged at ASU, is minimal.

If a person passes the test(s) the credit he receives goes toward no specific course, but simply is counted as part of the 126 hours now required for a bachelor's degree.



This figure is:
(A) an Etruscan warrior
(B) an Aztec deity
(C) an Egyptian tomb figure
(D) a Hindu Siva
(E) a Sumerian portrait bust

(Sample question on humanities from CLEP "general examinations" test. Answer is B.)

The "subject" examinations (now offered for more than 30 ASU courses) cost a straight \$15 per, regardless of number taken. They fall under the categories of Business, Social Sciences, Sciences, Humanities, Mathematics and Education.

The examinations are conducted at the University 12 times a year, but the "subject" exams may not be repeated (should a student fail) within one year, while the "general" exams may be repeated only once within a year.

Further, tests may not be taken which duplicate credit previously earned at ASU, or which cover material more elementary than that which the student already has covered.

Almost anyone can take the tests, student or not, but to receive credit for them he must be enrolled at the University.

One question that has arisen, however, is how much credit should be awarded for passing a CLEP examination. Test materials which differ from those taught in courses here obviously should be accorded different treatment.


Thus the creation of the committee which Dr. Foster chairs. Its members represent the colleges of Liberal Arts, Business, Engineering and Education.

One of their major concerns at the moment is obtaining copies of examinations from the CEEB and submitting them to appropriate faculty members here for evaluation of their compatibility with the ASU curriculum.

Their recommendations, before instituted, must be approved by the Faculty Senate.

Because of the questions of equivalency and credit CLEP has enjoyed only limited utilization in the past. Twenty-three ASU students took the exams in the last academic year, and a total of 387 credit hours were awarded.

Most of the credits were for lower division courses, since most of the tests are in lower division areas, and the credit received ranged from 3 to 32 hours per person.



Registration Guide

CLEP, WHAT IS IT?
CLEP stands for the College-Level Examination Program, sponsored by the College Entrance Examination Board. It is a national program of credit-by-examination that offers you the opportunity to obtain recognition for college-level achievement. No matter when, where, or how you have learned — by means of formal or informal study — you can take CLEP tests. If the results are acceptable to your college, you can receive credit.

Many colleges today encourage students to take CLEP tests for credit in courses whose subject matter they already have mastered. People of all ages interested in pursuing a college education have obtained the most in time and money by successfully completing CLEP tests for credit. Successful results in a particular field, such as foreign languages, social studies, mathematics, computer science, TV or radio courses, music, or foreign languages, may have already prepared you for the college credit through CLEP tests.

Colleges and universities awarding credit are listed in a separate list of participating institutions. Each institution determines which CLEP tests it will accept for credit and the amount of credit to be awarded. If you want to take tests for college credit, first call, write, or visit the college you wish to attend to inquire about its policy on CLEP credit as well as its other admission requirements.

The services of the program are also available to people who do not take CLEP tests by an employer, by a professional licensing agency, a qualifying agency, or by other groups that recognize college equivalency on the basis of satisfactory CLEP scores. You may, of course, take the tests solely for your own information. If you do, your scores will be reported only to you.

Further, call on the CLEP Board for complete printed materials on awarding college credit, but you will receive with your scores information to help you interpret your own scores on the tests you take.

GENERAL EXAMINATIONS
The five tests under the "general" heading are English Composition, Mathematics, Natural Sciences, Social Sciences and Humanities. Somewhat similar to the ACT.

Subject Examinations
The subject examinations are available in more than 30 areas. They are conducted at the University 12 times a year. The subject examinations are conducted at the University 12 times a year. The subject examinations are conducted at the University 12 times a year.

Registration
Registration for CLEP tests is available at the University Testing Center, Payne B-302, 965-3104. Registration is available at the University Testing Center, Payne B-302, 965-3104.

Cost
One test costs \$15; two or more tests are a flat \$25. The cost, when one considers the \$18 per credit hour now charged at ASU, is minimal.

Credit
If a person passes the test(s) the credit he receives goes toward no specific course, but simply is counted as part of the 126 hours now required for a bachelor's degree.