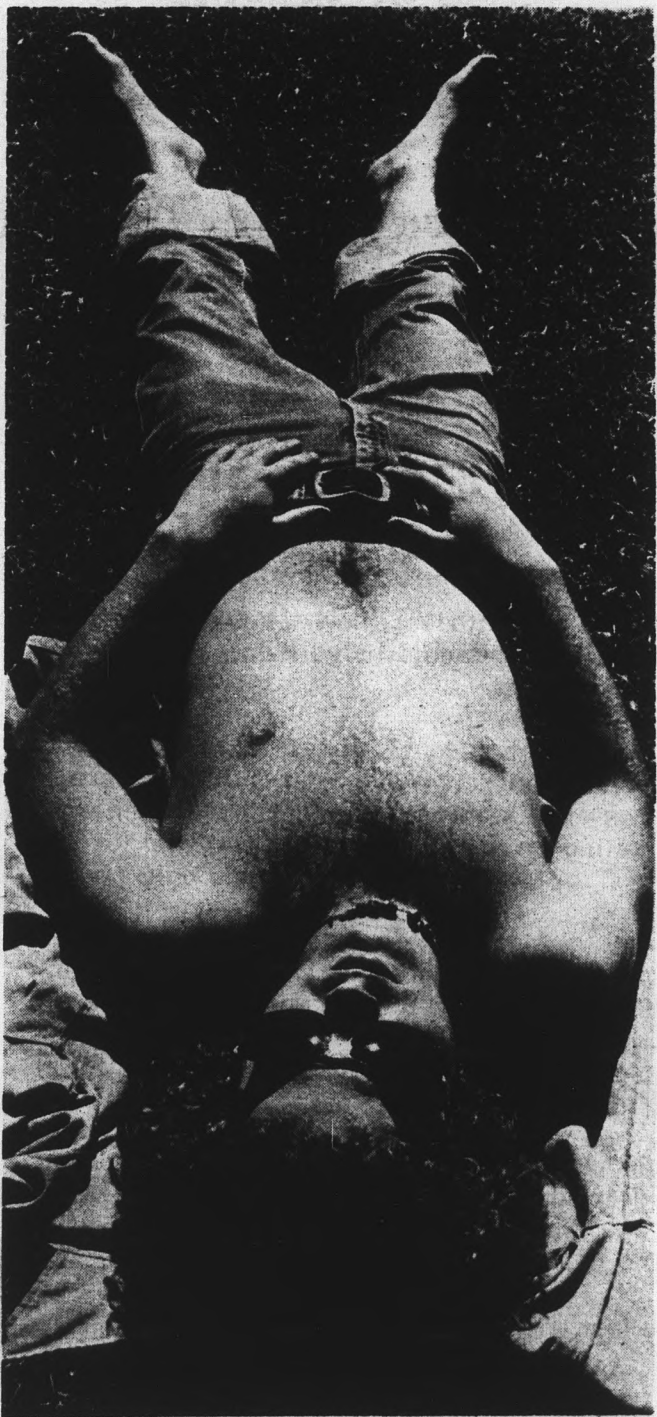


Legislature increases budget 13 per cent

By TOM LAWSON



Sun visitor

The Arizona Senate and House Appropriations Committees agreed yesterday to appropriate \$35,321,300 for ASU's operating budget for the 1973-74 fiscal year.

ASU's enrollment has increased 2.1 per cent. Compared to this, the allocation is 13 per cent more than last year's allocation, said an aide to Sen. Boyd Tenney, senate appropriations committee chairman.

The House and Senate committees disagreed on the amount last week. The House authorized \$35.7 million and the

Senate \$34.33 million. The final figure is closer to the House allocation. The committees met again yesterday afternoon to determine the capital outlay figure for the universities. Capital outlay money is used for new buildings and building additions and improvements. The House committee allocated \$7 million in funds and the Senate allocated \$6.34 million.

The Senate committee recommended last week placing a six per cent growth limit on Arizona's universities. This would put a budget ceiling on the

universities similar to limitations on elementary, high school and junior college districts.

The senate's capital outlay recommendations would cover all land acquisition costs, but only 50 per cent of construction costs, said Dr. Alonzo Metcalf, vice-president for administration.

The budgets must now be approved by floor vote in both the House and the Senate. Then they will be submitted to Governor Jack Williams.

Sun can be nasty

Sun worshipers may find their idol of heavenly fire providing more problems than prayed for.

"Anyone who sits in the Arizona sun is crazy," said a Phoenix dermatologist with the Maricopa County Medical Society.

(Medical ethics prohibit the publication of the physician's name because it would be free publicity.)

The doctor said prolonged exposure may cause skin cancer and he recommends gradual exposure for those who tan.

Individuals with freckled or fair skin should not try to tan. People who burn easily are making a bad thing worse by constant exposure, he said.

"The more one burns the more he increases the chance of skin cancer."

Too much sun causes the skin to age rapidly, which makes it susceptible to cancer, he said.

"Arizona has the highest incidence of skin cancer in the United States," said Dr. Richard Jones, director of the ASU Health Center.

"This involves mostly older people."

Although cases of third degree sunburn have been recorded, most fall into first and second degree categories, Jones said.

Redness of the skin indicates first degree burns, where the appearance of blisters marks second degree. Jones said third degree, the most dangerous of burns, involves loss of the skin's outer layers.

The worst burns are received from sunlight reflected off

water. More people will burn when tanning around water than when sunning away from it, Jones said.

"There is no rule of thumb in the treatment of sunburn. It is treated as any other burn with the same type of preparation, no matter what the source," he said.

A Phoenix ophthalmologist said the effect of the sun on the eyes is almost negligible, except in cases of directly viewing eclipses.

"There are lots of theoretical and occasional problems with the eyes and these scare people into wearing sunglasses. There is no real reason, aside from comfort, to wear sunglasses because for health they are not a significant solution," the eye specialist said.

Despite 3-1 student vote

Senate stall kills restructuring

The ASASU Senate is a major obstacle to the Executive Council's constitutional restructuring proposal, said Wayne Lindquist, ASASU first vice president and speaker of the senate.

The executive Council, comprised of the five ASASU executive officers, decided Tuesday it could do nothing about restructuring ASASU because the proposal, which would abolish the senate, has been tabled indefinitely by the senate constitutional committee, Lindquist said.

The proposal, first submitted to the senate in February, would substitute for the senate a First Council of representatives from

the individual college councils. The redesigned ASASU would also have an Executive Council and a Board of Financial Control.

The proposal was submitted to a vote of the student body during the recent elections to determine student reaction. More than 1,400 students voted for the proposal, and 430 against it.

ASASU President Mark Wilson said the purpose of the restructuring would be to change the attitude of students toward ASASU.

"We are not a government," he said, "but an organization to provide a service to the students of this university."

If ASASU were restructured, it

would be more accountable to the students, Wilson said. The students' vote reflected their approval of this idea, he added.

"The present system had its place in its time," Wilson said, "but students and their opinions have changed along with their lifestyles."

ASASU President-elect Mark

Kerrigan does not approve the proposal.

"I am in favor of the restructure for its efforts of controlling the handling of money and giving greater involvement to the college council, but not the part about killing the present senate," he said.

Wilson names 3 to committee

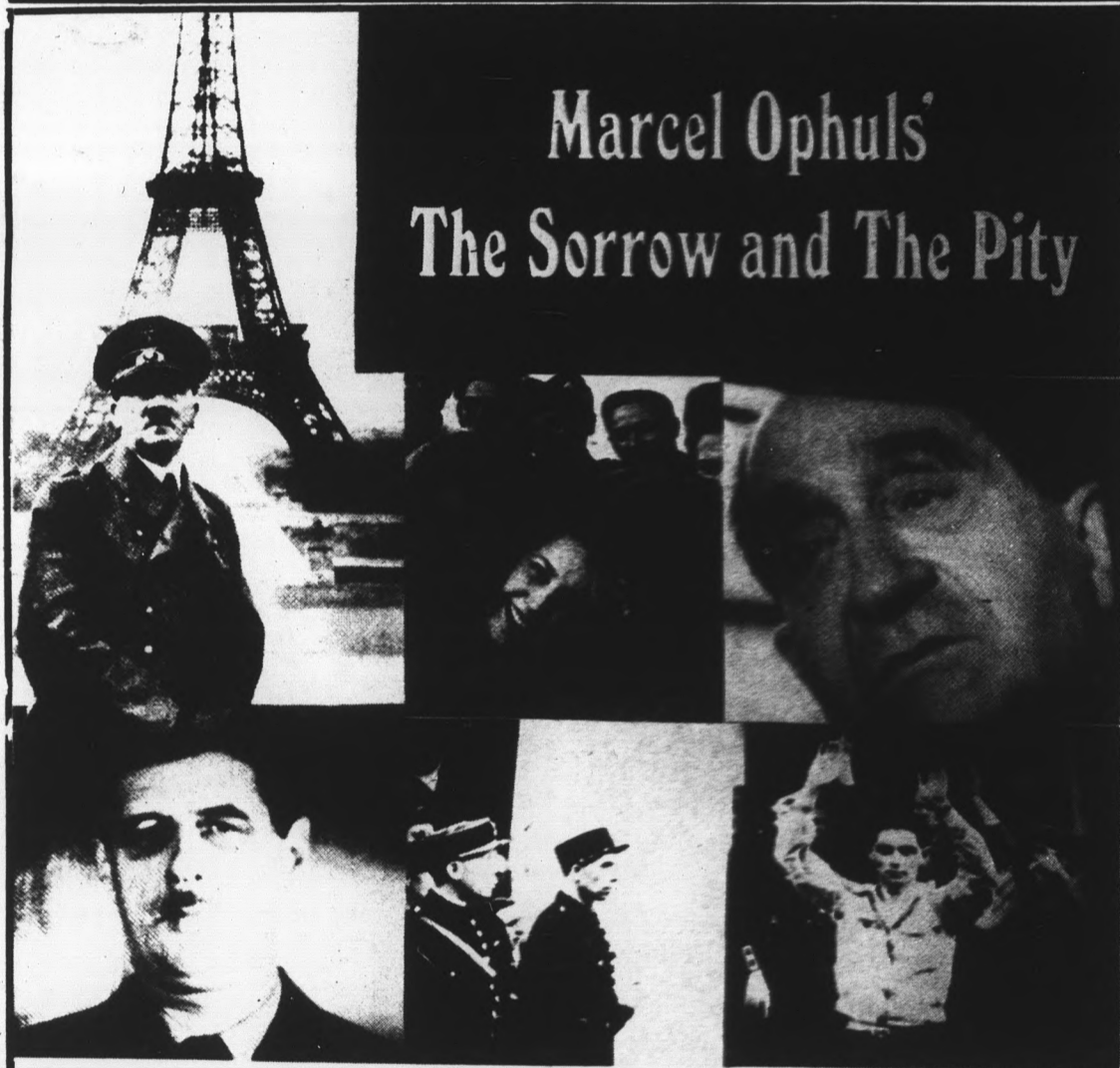
ASASU President Mark Wilson has appointed three senators to the committee which will review the Associated Women Students constitutional amendment.

They are senators Moe Mosely, Susan Clouse and Art Garcia. These are not the three recommended to Wilson by the senate.

Wilson's choices must be approved by the senate at its meeting April 26.

The reviewing committee, made up of three senators and three faculty members, must approve the amendment abolishing AWS before it is sent to the senate. If approved, it would be sent to the student body for a vote.

Advertisers: 9 more issues of the State Press



The Arizona Premier

Presented by

ASASU Cultural Affairs Board

ACADEMY AWARD NOMINATION

Best Documentary

With English Voice Translations

Neub Hall — 6:30pm

Friday April 20

**SO YOU THINK
YOU'RE COMING
BACK NEXT YEAR, HUH?**

Why go through the hassle of carting your stuff home or having to store it? Why go through the ya-ha of finding an apartment in 115 degree late August temperature!

HERE'S A DIFFERENT DEAL.

Sign a 12-month lease now at any of the 4 W. R. Schulz apartments listed below and pay for 10½ months.

If you sign a lease say in June before you leave, you can move your stuff in, store it over the summer and not have to hassle getting an apartment in August; and for the first 3 months, June-August, you only pay ½ rent.

All we ask is that you vacate your apartment for two months, not because we don't want you, only because it wouldn't be fair to some old folks who have signed year's leases at full rate.

Think about it — if there are 2 or 3 of you, it's a great deal for storage and one month living there for one half rent. Key thing, however, is no hassle!

THE CEDARS

2100 N. Scottsdale Rd.
945-8423

EVERGREEN TERRACE

1701 E. Don Carlos
967-7357

MONTERREY VILLAGE

5th Street & Hardy
966-9842

WOODLAND PARK

1314 W. University
966-7970

W. R. Schulz and Associates

Transportation forum

Experts offer alternatives

By BARRY HOCHFELDER
Staff Writer

A suspended cable car system and a bus-like railway were two alternatives to mass transportation problems presented yesterday at the first meeting of a two-day transportation forum at Murdock Hall.

The sky tram mass transit system is designed to alleviate traffic problems created by automobiles, said Curt Erickson of Bud Brown Enterprises, Inc., creators of the tram.

The sky tram is suspended from a cable and driven by a series of hydraulic motors turning the wheels on the cable, Erickson said.

The passenger car, similar in size to a bus, can hold 125 people. It travels about 35 miles per hour.

The cables are connected to towers which serve as boarding and departure stations. The towers can be up to one mile apart depending upon need, Erickson said.

Cost of the system would be about \$1 million per mile.

Erickson said his company has tried to present their program to the Phoenix City Council, council members showed no interest.

"We have invited them down to see the working model of the sky tram but have not received the courtesy of a reply. People are going to have to change a lot of their attitudes.

Specialist talks on sound waves used in therapy

A specialist in medical ultrasonics will speak at 3:30 p.m. tomorrow in EC A-320.

Ultrasonics are high frequency sound waves which can be used for medical treatment such as in physical therapy.

Marty Wilson, president of Advanced Diagnostic Research Corp., will talk on "Medical Applications of Ultrasound." Wilson has developed a line of medical ultrasonic equipment.

The speech is open to the public.

CLASSIFIED
965-3249

state press

STATE PRESS is published by Arizona State University Tuesday through Friday during the academic year, except holidays and examination periods. Entered as second class matter at Tempe, AZ, 85281.

We've got to have an alternative," he said.

A similar alternative was offered by George Main, a Westinghouse Corporation representative.

Westinghouse has created a bus-like system which runs on a single rail above ground, below ground or at ground level, Main said.

Westinghouse established a test program for the

system in Pittsburgh in 1966. The computer-operated system was tested for 13,000 hours without a malfunction, he said.

The car can travel between 35 and 60 miles per hour.

The Westinghouse system would cost about \$10 million per mile to install, including land, construction and material costs, Main said.

Karate club hosts tourney

The ASU Sun Devil Karate Club will host the 1973 Collegiate Karate Union Western Region elimination tournament April 28 in the Women's Physical Education building.

Teams from ASU, Phoenix College, Glendale College, the UofA, and the University of California at Riverside will begin semi-final eliminations at 7:30 p.m.

The areas of competition are individual kata, team kata, individual kumite (sparring) and team kumite. Instructors of the Japan Karate Association will give demonstrations during the evening.

The winners of the tournament will go to the national tournament in South Dakota. Rules and requirements are available at the Arizona Karate Association, 274-1136.

The tournament is open to the public. Admission is 50 cents.

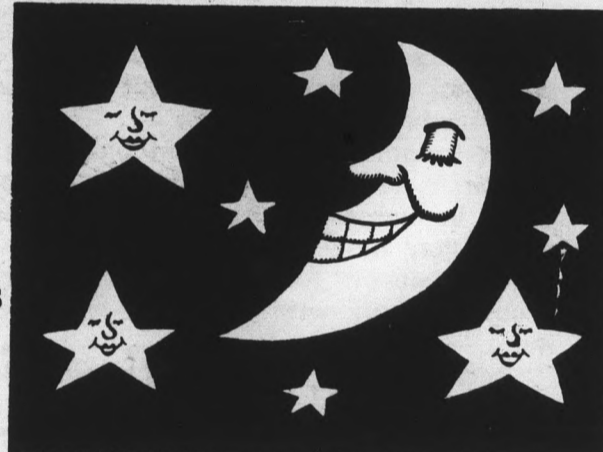
With TWA it pays to be young.

Armed with just a pack on your back and a TWA Youth Passport* in your hand, you can see a lot more of the U.S. for a lot less with TWA.

Here are some ways we help.

Overnite Pass.*

TWA's terrific new money saver. It gets you guaranteed student dormitory accommodations (at the least) without advance reservations in 40 cities in the U.S.A., Canada and Mexico for only \$5.25 a night!



Bonus Coupon Books.

Take your TWA Youth Passport and boarding pass to any TWA Ticket

Office in New York, Boston, Philadelphia or Washington.

You'll get a book of bonus coupons good for 50% off things and absolutely free things like a dinner at the Spaghetti Emporium in Boston, free admission to a flea market in Philadelphia and lots, lots more. Like we said, with TWA it pays to be young. For all the details write: TWA — IT

PAYS TO BE YOUNG, Box 25, Grand Central Station, New York, N.Y. 10017.



Call Your TWA Campus Rep. — Barry Liss, 264-4771 days, 966-3646 Eves.

Youth Passport and Overnite Pass are service marks owned exclusively by TWA.

Opinion **state press**

Check-out

Graduating from the University is not merely a simple matter of attending classes, making passing grades and enduring for four years.

There is also the matter of senior check-out to contend with. For many seniors check-out becomes a baptism by fire.

Besides a large amount of running to be done between buildings, the candidate for graduation must fill out a form more detailed than the one he probably completed to pay his federal income taxes.

Most students can handle that, however. The real problem arises after the form is completed.

Every year a number of seniors suddenly discover they cannot meet graduation requirements.

The causes vary. Sometimes the students themselves are to blame for not keeping track of their academic careers. Or an incompetent advisor may have gummed up the works in one of a thousand ways.

But since check-out can only begin during the senior year, it's often too late to remedy the situation.

The time to begin senior check-out is the junior year. Then if a student comes up short of hours he has the option of going to summer school and still graduating on schedule. At least he wouldn't suffer an eleventh hour trauma.

One might argue that the junior year is too early to begin the process—juniors might be closed out of classes or drop one which they have already placed on their check-out forms. But seniors have the same problems, only with less time to correct them.

Because more people would be needed in the graduate office to handle the initial influx of juniors beginning check-out, plus the usual number of seniors, expenses would be high for one semester.

But the eventual savings in terms of student anguish would be worth the trouble.

Barry Hochfelder

While time slouches on

Tired and bleary-eyed I enter the classroom and slump into my chair.

I open my spiral notebook and am blinded by the glare reflecting off its clean, white pages.

The teacher enters and a pall comes over the room. He hides behind his podium and does not emerge until the bell rings several hours later. The clock shows that only 50 minutes have passed, but in this class there are 85 seconds to the minute.

I glance down at my once clean notebook page. It is now a jumble of solitary tic-tac-toe games (all of which I lost), jumbled baseball line-ups and various writings which expose the weird state to which my mind has been reduced.

A psychologist would love to get his hands on this.

One of my favorite quotes appears on the page: "This world's so full of crap that a fella's bound to step in it sooner or later no matter how careful he is."

Those stirring words were first spoken by

Paul Newman in "Hud."

This is followed by fragmented lyrics of several inconsequential songs sung by several inconsequential singers.

"Wolverton Mountain" by Claude King, "Teen Angel" by Mark Dinning, and the immortal classic "Purple People Eater" by Sheb Wooley.

The unique thing about all this is that the teacher probably thought I was busily engaged taking copious notes of the drivel he spewed forth in a steady monotone.

My notes ended with the last lines of Dylan's "Positively 4th St." The words seemed quite appropriate.

"I wish that for just one time you could stand inside my shoes,

And just for that one moment I could be you,

Yes, I wish that for just one time you could stand inside my shoes,

Then you'd know what a drag it is to see you."

Letters

Union director answers critic

Editor:

In response to John Blessing's letter of April 17 concerning the Pop-Up performance on April 11, I should like to state the following:

All individuals or groups performing in the Memorial Union are auditioned before the Pop-Up Committee and its advisor. In addition Kuwambi had performed on May 17, 1972 without incident and consequently the Committee had no reason to believe that objectionable material would be presented during the performance on April 11.

The Committee does not ever book a performance "for art's sake." A wide variety of Pop-Ups have been presented by the Memorial Union and the Pop-Up Committee for a number of years, this incident is the first of its kind.

The Committee advisor is always present at the beginning of a performance and was present at the beginning of Kuwambi's performance. The advisor, as usual, checked the set-up and noted that two musicians were performing. The advisor then left and later the Memorial Union Information Desk called the advisor to report that a third person had joined the group and was reading an offensive passage of poetry.

The advisor returned to the concert and remained until the end. There were no other occurrences of "publicly unacceptable words."

Had Mr. Blessing registered his complaint with the Activities Center as others did, he would have been assured that they were aware of the incident and that they, too, were concerned and were taking action to avoid any problem of this kind in the future. Incidents of this nature are regrettable especially when they occur in an open public lounge, however, live performances are always vulnerable to unexpected events. The Memorial Union appreciates expressions of student concern and would like Mr. Blessing to know this.

Cecelia Scoular
Director of the
Memorial Union

We're terribly sorry, girls

Editor:

The faculty wives are certainly to be commended for their work on the election (April 12, page 4) but it seems to me by the time one is married and one's husband has had time to become faculty at a university, one is a woman and not a "girl." Males feel insulted if referred to as "boy," and rightly so. But a female, even when she's 60, may still be called "girl." A more proper heading for your editorial would have been "Thanks, Women."

Cathy Schaefer
Junior



AWS Woman's Week

Event accents awareness

AWS Women's Week will focus on modern woman's emerging awareness as AWS presents a varied calendar of events including a prominent California politician and a Phoenix television personality.

"Woman: What is it to you?" is the theme for the coming week's activities.

Assemblywoman Yvonne Braithwaite, D-Calif., vice chairwoman of the 1972 Democratic Convention, will speak Monday evening; Jim Masilek will use multi-media to present

"Expanding Human Awareness" on Tuesday; women gymnasts will give an exhibition on Wednesday; and Evelyn Thompson of KOOL-tv will speak at the awards session on Thursday.

"We are focusing on letting women know about women," said Jeanne Rice, AWS president. "But we are also reaching out to a total kind of human awareness. We hope to make men more aware of women in a lot of different aspects, too."

The week's emphasis will

be evident on the Mall. Featured will be a women's bazaar, an information table, a Women-in-Law display, a Women in Communications table, and the sale of flowers.

Noon-time entertainment win the MU Rendezvous Lounge will feature female performers; a guitarist, flutist and pianist.

Rice said the Human Awareness Sessions each afternoon in the MU would be important.

"We are trying to make people consciously aware of

societal expectations for women, the myths and fantasies concerning women's roles, the fear women have of success, and women's struggle for equality," she said.

Other afternoon activities include an Equal Rights Amendment panel and a

film, "Modern Woman—The Uneasy LIFE."

Detailed schedules of activities, times, dates and locations are posted throughout the campus or may be obtained in the AWS Resource Center.

Library joins national group

Hayden Library has been accepted into the Association of Research Libraries, the nation's leading library organization.

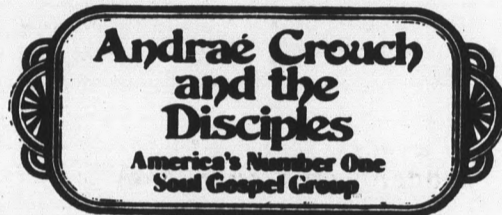
Acceptance was announced yesterday by Dr. Karl Dannenfeldt, academic vice president, who termed the acceptance "a major step in the development of the University."

The Association of Research Libraries was formed in 1932 to develop the resources of the research collections in American libraries. In 1972, the association had a

membership of 89 libraries.

Potential members are evaluated on the amount spent for books, periodicals and binding. They are also evaluated on microreproduction, preservation of research material and bibliographic control.

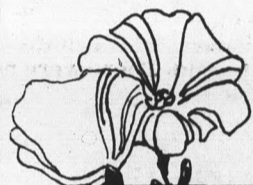
"The invitation to join this foremost of professional library associations comes in recognition of ASU's position among the leading educational institutions in the nation," Dannenfeldt said.



TONIGHT — 7:30 P.M.

GAMMAGE AUDITORIUM

Donation \$1.50 — Open Seating — No Refunds



JEWELRY GIFTS FOR SPRING OCCASIONS

A. Sterling Cross of Peace an Exclusive Gordon Design \$10.95
 B. Yellow Medallion and Chain \$24.00
 C. Mother's Day Charm Bracelet, 12K gold-filled \$18.95

D. Girl's Head, 12K yellow gold-filled \$ 2.00
 E. Boy's Head, sterling silver \$ 2.00
 F. Mother's charm, 12K yellow gold-filled \$ 4.00

OPEN A CHARGE ACCOUNT

We Accept: BankAmericard • Master Charge

Daniel's JEWELERS
 Love is what we're all about.

IN MESA SHOP AT DANIEL'S
 TRI-CITY MALL and
 130 W. MAIN STREET
 STORES IN PHOENIX, YUMA and TUCSON

4-3-06-12

IF YOU ARE PLANNING ON

EUROPE THIS SUMMER

A **PASSPORT** IS REQUIRED.

THE PASSPORT OFFICE HAS INDICATED THAT THIS IS THE

LAST WEEK To Apply

For a passport if you are going to Europe on our charter

(made possible through the courtesy of UofA travel office)

LEAVING **MAY 22** RETURNING **AUG 17**
 from ASU from Amsterdam

THE LOW, LOW COST OF **\$299⁰⁰**

- includes:
- Round trip air fare on transinternational air line
 - All meals in flight
 - Reserved seats, choice selection
 - Charter bus from ASU to Tucson airport and return
 - All fees, charges and taxes
 - Your on your own in Europe — come and go as your please
 - Liberal 44 LB baggage allowance

FOR A CHOICE SEAT RESERVATION SEND CHECK FOR \$50 MAKE PAYABLE TO UNIVERSITY OF ARIZONA, and send to: Dr. L. Tenney, 2727 E. University No. 103

TEMPE, Arizona 85281

If more information is desired call Dr. Tenney

at **834-0134**

open to all Students, Faculty, staff and families associated with ASU.

Prof examines trash

By DAVID HUDSON

Three ASU geographers studied visitor areas in Tonto National Forest last summer and discovered critical buildups of trash.

Dr. Robert Mings, assistant professor of geography, directed the project which studied waste management patterns in Arizona park lands. Graduate students Wayne Balmer and Martin Wurbs assisted him.

"We examined and evaluated the trash collection system and recommended measures to improve it," Mings said.

"Waste management problems do exist in Arizona park lands. The situation is most critical in areas having the greatest number of visitors. It could turn into a hard-core ecological problem," he said.

The investigators gathered data from 93 visitor sites in seven Tonto ranger districts. They studied trash amounts, types, collection

procedures, transportation and disposal methods.

"Classifying items not collected is particularly significant to us," he said. "In nearly every case, they were small items such as beverage can pull tabs, bottle caps, plastic bag ties, cigarette filters, scraps of paper, and aluminum foil."

The clean-up crews emptied the trash receptacles and gathered large scattered bits of debris, but they failed to collect smaller items discarded outside the established receptacles, he said.

"Few authorities are fully aware of the actual trash build-up that has occurred. Litter accumulation is so severe in some areas that special restoration crews may be required to reduce the backlog to a level that regular collecting crews can manage," Mings said.

He said picnic and water sites have the highest visitor and litter average. "Ironically, these areas are

also the most poorly served by the collection systems."

Smaller, remote picnic areas are the cleanest because of their lower attendance, not because of superior waste management practices, he said.

The geographers' study resulted in eight specific recommendations for improving trash collecting methods. These focus on administrative reorganization, public education, improved receptacles and equipment, larger crews and a study of the type of waste not being collected.

Mings said collection crews should be instructed to regularly gather small debris. Large trash receptacles should be placed at every accessible location, he said.

"The public and the Forest Service must work together to preserve the beauty of Arizona's parklands," he said.

Concert committee seeks Pop-up talent

Although Pop-up Concerts, as their name implies, are intended to be spontaneous in nature, much planning and organizing by the Special Events and Pop-up Committee is required to produce the events.

Auditioning performers is one of the committee's primary jobs. "At the beginning of the semester, we set up an audition date, usually two weeks into the semester, Rick Eden, committee adviser, said.

Eden said while he serves as adviser to the committee, the students who serve as members decide which performers will be hired.

"We rely a lot on talented ASU students and on people who have played for us before," Eden said. "But, we're always looking for new talent, and anybody who's going to be around here next fall can come in and talk with me about an audition."

Eden said the fees paid to performers vary according to how well they are known, and how many people are in the group. The committee usually offers a single performer \$35 for two 45-minute shows.

"This money comes out of the Activities Center's budget, which is in turn funded by student fees," he said.

People wishing to audition for a Pop-up performance can contact Eden at the Activities Center in MU 124-C.

Major in Chinese wins new award

An ASU senior majoring in Chinese language will be the first recipient of the Guilford A. Dudley Memorial Award.

Carl Hampe will receive the \$50 prize at the history department's spring banquet next Thursday.

Hampe, who was with the U.S. Army in Vietnam, developed an interest in Chinese studies during a visit to Hong Kong.

The award will be presented annually to an outstanding Asian studies student.

CARPET SPECIALS
9 x 12 used rugs-\$5.00
All Sizes In Stock
CARPET HOUSE
1516 E. Van Buren, Phx.

NEWS 3656

UNIV. NO. 2 Broadway East of Rural Tempe 967-337

"That 'Hamilton Bitch'? Well, perhaps I am. But I'm the woman he wants!"



Admiral Nelson and his Lady Hamilton... and the love that defied the world!

A HAL WALLIS Production
Glenda Jackson • Peter Finch
"The Nelson Affair"
Starring **Anthony Quayle • Margaret Leighton • Dominic Guard • Nigel Stock**
Michael Jayston as "Captain Hardy"

Screenplay by Terence Rattigan "A Request to the Nation" Directed by James Cellan Jones
Produced by Hal B. Wallis • A Universal Release • Technicolor • PG

SHOE TIMES WEDNESDAY
Nelson Affair — 6:30-8:46

GIRLS & GUYS
EXCITING POSITION FOR YOUNG MEN OR WOMEN IN ONE OF ARIZONA'S LEADING LAND DEVELOPMENT ORGANIZATIONS — THE BACA GRANDE — LISTED ON THE AMERICAN AND PACIFIC STOCK EXCHANGES. WORK IN ATTRACTIVE DOWNTOWN SCOTTSDALE OFFICE.
\$2.50 PER HOUR
ASK FOR MISS ANN HOGAN
Call 947-7604 Mon. thru Fri.

CLASSIFIED ADS

Classified advertising must be paid for in advance either in person or by mail to the State Press, ASB 202, two days in advance of publication. No ads will be accepted over the telephone. Office hours are 8 a.m. to 4 p.m. Monday through Thursday and 8 a.m. to noon Friday. Phone 965-3457. Rate: \$1 for three lines and 30c for each additional line. 50 per cent discount for consecutive additional days. There will be no refunds for advertisements placed with the State Press.

● MOTORCYCLES
Hondas SL 175 and TR90. Low mileage, excellent condition, reasonable price. 967-2763. (4-20)
Bultaco 350. Desert Power. Many extras. \$550 or best offer single bike trailer extra. 966-4252. (4-20)
Honda 450cb custom seat. Only \$650. Inc. two helmets face shields and extra tools 937-3218. (4-20)
68 Honda 65 cheap must sell call 966-0905 evenings.

● FOR SALE
Ovation classical guitar 3 mos. old \$340 new sell for \$250 or \$300 with case 1224 E. Lemon #156. (4-20)
Ampex 1455A open reel tape deck w/sos & echo, see it at my apt. 1224 William, by Woolco Pl.
Good used books. Out-of-print search service. Dollar Sign Books. Alma School Rd. at University, Mesa 962-6257.
Stereo cassette tape recorder priced to sell quickly contact Rich Plynter after 5:30 p.m. 254-1705. (4-20)
Spools all sizes now available finished or unfinished. Largest stock in area at the lowest prices call now—838-3762 or 834-1084 open Sunday also 9-5. (5-4)
Sale: couch, girls bike, reel-to-reel tape deck, am-fm receiver, tent, small desk, large mirror, appliances, kitchen wares adding machines, and lots more. April 20-23 1717 Jen Tilly, apt. 228 Tempe 966-5767. (4-20)

● SERVICES
Auto-tuneups reasonable prices work guaranteed! Call 965-2512 Scott or Jack. (4-24)
Professional typing IBM pica call 275-9165 Mrs. Dee. (4-20)
2 senior girls willing to 'house-sit' this summer. Contact 968-2388 between 6:30-10:30 p.m. (4-20)
Experienced editing, form and style. IBM, Gothic or standard type. Near ASU 966-1684. (run)

● WANTED
Need fem roommate for 2 bdrm unfurn at Windbell \$86 a piece after 3 967-0222/966-0505 Karen. (4-20)
Roommate—your half \$64/mo Bel Air Apts. — Move in now — pay rent starting Apr. 1 Rosie 968-5868.
Immediately female roommate will have own room \$67 pool utilities paid 1224 E. Lemon. Call 968-1409 after 3 p.m.

● ANNOUNCEMENTS
April 28 is the single graduates first anniversary come and help us celebrate with dancing and refreshments live music by the Open Road Desert Hills Banquet room 8-1 donation \$1.50. (4-27)
Shabat dinner and program "What Crucified Jesus" April 20 dinner 6:30, program 8:00 call 968-5371, Hillel, for reservations. (4-20)
PRIMAL SCREAM; group sessions. By appointment only. Donation \$4. Tues.-Sat. 7:30 p.m. 244-1896. (4-20)

● AUTOMOBILES
73 CJ5 Jeep 3000 miles V8 roll bar power steering 2 mos. old \$3500 1224 E. Lemon #124. (4-20)
65 Sprite. One owner car. \$300 965-2158 after 5. (4-20)
1969 Pontiac Firebird excell. condition \$1600 or best offer call 968-1845 evenings/weekends. (4-20)
1970 VW bus am-fm sunroof removable bed, stove, etc. \$1950/offer 959-8903. (4-20)
69 GTO exc cond 4 spd loaded low mileage best offer 945-8060. (4-20)
57 T-Bird very sharp new inter. 4 speed 70 eng all new or rebuilt must go by May 968-1990. (4-20)
1959 Rambler station wagon. Cheap, dependable. Make offer 803 W 1st St. #D Tempe, evenings.

● TYPING
Typing: former exec sec. Exp. student papers, statistics, eng. Karen 968-0488.
Typing, 967-3675 Tempe. (run)
Typing—experienced, neat accurate, call Anne 946-4105. (run)
Professional typing. Term papers, Research, Reports, etc. Reasonable rates. 955-6047. (run)
PROFESSIONAL TYPING. IBM Selectric. Minor editing & corrections. Reasonable. NE Phoenix. 956-7983. (5-4)
TYPING—IBM SELECTRIC PICA TYPE, ROSEMARY VANCE TEMPE 967-9143. (5-4)
TERM PAPERS, RESUMES, THESE DISSERTATIONS, PROFESSIONAL, GUARANTEED WORK, IBM. MAXINE MULLEN 955-0763. (run)

● LOST
Lost black billfold lost in library Monday April 9 Reward 965-2565. (4-20)

● INSTRUCTION
Want to learn piano (any style?) Want to compose? Experienced music grad teaches Classic, Jazz, Contemporary improv. All levels, call John 964-6293 after 5.
Sport parachuting instruction. Licensed. 15 yr. experience US Parachute Service Mesa 965-3980. (run)
Ballet—beginners thru professional. Recommended for children, teens, adults and ASU dance majors. Qualified instructor: Mary Adams, LRAD, AISTD. Arizona Academy of Dancing. Tempe: Valley Fair, 95 E. Southern. Phx: 3802 E. Ind. Sch. (Run)
TUTORING—French & Spanish translation service. Call 968-2913 before 7:30 a.m. or nights.

● RENT
1 bedroom home 6 blocks from ASU with large lot & many fruit trees. Available May 3 966-8071. (4-20)
Townhouse new 2 br pool patio unfurnished \$185 4 mo lease 48 St. at Broadway #264 935-3207. (4-19)
One bedroom furnished all utilities included Pool, gas, BBQ laundry + storage facilities close to ASU, shopping centers, Coco's + University 1-2 lease terms Landmark Apartments. 929 E. Vista del Cerro, Tempe 966-8091. (5-4)
Need an apartment? Try La Paz 1011 E. Lemon. Pool, laundry summer rates (run)
Mobile home 3 bed room completely furnished inc tv & stereo 5 min from ASU move in today \$150 total 968-5231 don.
Roommate needed pronto 2 bdrm 2 bath lots of trees furn \$91 + elec mo. before 8 am after 10 pm greg 966-2797.
3 bed rm 2 baths all elec kitchen pool enclosed patios carpets carpeting Lotus Flower Apts south of Broadway on McClintock Tempe see Mngtr Apt. 16 or call 966-0147 \$215 per month. (4-20)

● HELP WANTED
You can operate your own business exciting way to spend summer or start a career phone 992-2674 for appl. (4-20)
Part time, full time summer jobs, opportunity for good earnings plus education scholarships. Call Bob Ross, 964-5633. (run)
Photographer needed for next semester. Beautiful new facilities call 965-3656, 965-3657. (run)
Professional typing all kinds near ASU 968-1544. (4-19)
Waitresses full or part time nite work only apply now for summer job at Fridays & Saturdays 825 N. Scottsdale Rd. Weekdays between 70 am and 2 pm. (run)

ASU author debut

'Oops!' knocks 'em dead



Planning murder is no easy task for Harold (Robert Rowell) and Desdemona (Angela Laking), in "Oops!" which will play at ASU Tuesday through Thursday.

"Oops!," a one-act comedy rated by the cast as "the best mystery since 'Love Story,'" will premier at 7:30 p.m. next Tuesday. There also will be a 9 p.m. performance. Admission is free.

The play was written by an ASU student, Gary White, a senior from Canada majoring in English.

"It's a spoof on the traditional murder play with all the elements reversed," White said. "There's no big social message. It's just meant for entertainment."

Producers of "Oops!" are the University Cultural Affairs Board and the Student Experimental Theatre (SET).

The comedy is a series of errors in which a man and a woman plot to kill the woman's husband. An unexpected mistake occurs, which leads to what the play's director, Dean Eisen, terms "the funniest mass murder in history."

The original music of "Oops!" was composed and performed by ASU student Michael Morrison.

Performances will be through Thursday in "An Alternate Space" at Payne Lab, 10th St. and Myrtle. Tickets are available at the Lyceum box office, 965-3437, on a first come, first serve basis.

fine arts

**state
press**

Play reflects 17th century

By DEAN EISEN

To cheat on one's mate without getting caught, is the theme of the University Players' production "Country Wife" at the Lyceum Theatre this weekend.

Written by William Wycherly in 17th century England, it is typical of comedies of the Restoration era when authors reacted against the Puritanism preceding that time. Double-entendre is the rule of the game, evolving around many a love entanglement.

The performance, directed by Dr. James Yeater, gives an excellent interpretation of the language, movement, and mood of the period.

Although the production is energetic and witty, a static moment is the street scene in the first act. The street people seem to have been arbitrarily placed. Instead of coming through as true characters, the street people look more like set decorations.

The scene is saved by Susan Hansen, a country wife, who unleashes a bombardment of facial expressions and body movements to establish the most hilarious moment of the production.

The only fault with her performance is the use of a high pitch and noisy breath that detracts from her otherwise exciting performance.

Other admirable performances are those of Michael Hood, David Sankuer, Tom Bamford and Greg Hubach.

Ed Steidele, while doing a more than adequate physical performance as a sophisticated gentleman, has a tendency to swallow his words, making his speeches inaudible.

The major flaw of the production is the use of the asides — direct communication with the audience. They were unclear and lacked focus on the audience.

The set, designed by Anne Abrahamson, is reminiscent of the type of scenery used during the Restoration. It not only accents the costumes and acting but also creates a rake stage effect with greater depth.

The costumes by Mark Immens were excellently coordinated with the historical style.

"Country Wife" will be at the Lyceum Theatre tonight through Sunday. Curtain time is 8 p.m. Tickets are priced from \$1 to \$1.50 for students.

Cello society presents benefit

The Arizona Cello Society and the ASU Symphony orchestra will perform at 8 p.m. Monday at Gammage Auditorium. Proceeds will go to a scholarship fund and the University's Pablo Casals International Cello Library.

Last year the Cello Society brought Casals to Gammage and raised about \$11,000 according to the program coordinator Sally Atsumi.

This year's concert will feature an 85-cello orchestra, and Laszlo Varga, the famed Hungarian cellist and conductor.

The first half of the program will include "Bachianas Brasileira" by

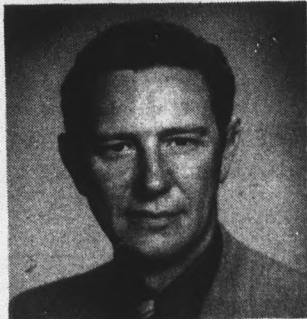
Villalobos and Casal's traditional "Song of the Birds."

After intermission Eugene Lombardi will conduct the ASU Symphony Orchestra and Varga at the cello in Dvorak's "Concerto in B Minor."

Other performers will be the Flagstaff Cello Ensemble and the ASU cello quartet.

Tickets are priced from \$2 to \$5 and are available at Gammage box office or by calling 967-8167. Students and faculty receive a 50 per cent discount.

Bert Crockett joins New England Life, of course.



Bert Crockett, well known local insurance man, is now associated with the Jones Agency of New England Life.

...If you're interested in the details of a life insurance plan that will protect you now and let you defer premium payment until after graduation, talk with Bert.

Bert Crockett
1000 E. Apache Blvd.
Tempe - 968-8711

**New
England
Life**
Suite 114

IN TEMPE . . .



ICE CREAM -
SOFT DRINKS

Call Us For
Party Refreshments
Discount To Churches,
Schools And Civic
Organizations

APRIL SPECIAL

For both men and women. Students get in shape on a Students Budget.

For The First 25 To Enroll

1/2-OFF ONE YEAR MEMBERSHIP

\$55⁰⁰ TOTAL COST

MEMBERSHIP INCLUDES

PERSONALIZED
PROGRAMS
for gaining and reducing
Nutritional Consultation
Finnish Sauna
Ultra-Violet Sun Treatment
Open 7 Days a Week

CALL OR COME IN TODAY

University Health Clubs

Tempe

Hayden Plaza East
1018 Scottsdale Rd.
967-7461

Phoenix

Hayden Plaza West
3147 W. Indian Sch.
266-6798



A Sun Devil earth-mover (baserunner) ASU runs in Tuesday's romp over La Verne. plows into home to score one of the 13

Homers win for ASU, 6-4

Dick Harris' fifth home run of the year gave ASU a 6-4 win over LaVerne College yesterday at Sun Devil Field, lifting its record to 40-5.

ASU was down 4-2 going into the seventh inning when a walk to Mike Kenneth got things rolling for the Sun Devils. John Sain got aboard on an error which was followed by Gary Atwell's single. An error on Atwell's hit scored Kenneth and Sain. Harris followed with his

homer putting the Devils in front for good.

Jeff Oscarson knocked in the other ASU runs with a two-run homer in the fourth inning.

Dale Hrovat got the win in relief for ASU, pitching the last four innings and giving up one run. He's now 2-2 on the year.

Jim Beal pounded out four hits in five at bats for LaVerne to lead the Leopards 11-hit attack.

WAC Baseball Statistics

Name, School	AB	R	H	RBI	2B	3B	HR	SB	BB	SO	TB	AVG.
Joe Wald, NM	15	5	9	1	1	0	0	1	2	1	10	.600
Bill Berger, ASU	22	4	12	5	2	1	0	1	3	3	16	.545
Tom Sain, ASU	14	4	7	8	0	3	0	1	1	1	13	.500
Clint Myers, ASU	23	9	11	7	1	0	0	0	6	1	14	.478
Clay Westlake, ASU	25	9	11	4	3	1	0	1	3	2	16	.440
Bob Szczecinski, UA	16	2	7	0	2	0	0	0	2	1	9	.437
Gary Stewart, NM	24	2	10	7	2	0	0	0	4	1	12	.416
Barry Alburris, UTEP	12	4	5	6	1	0	2	0	0	0	12	.416
Mike Kenneth, ASU	12	4	5	2	0	1	0	0	6	0	7	.416
Dennis Kendrick, ASU	25	8	10	6	0	1	1	2	5	3	13	.400

Name, School	G	IP	PITCHING			ER	SO	W-L	ERA
			H	R	B				
Bob Knox, UTEP	2	10	4	0	0	6	5	1-0	0.00
Jim Offen, ASU	3	15	8	4	3	5	12	2-0	1.80
Eddie Bane, ASU	2	18	11	4	4	7	23	2-0	1.99
Rick Koch, NM	2	8	6	2	2	6	7	0-1	2.25
Ed Anderson, UA	3	9-1.3	11	4	4	6	7	0-0	3.87
Jeff Hogan, UTEP	2	9-1.3	6	5	4	2	1	1-1	3.87
Dave Brueker, UA	2	13-2.3	12	6	6	9	4	1-0	3.95
Ron Adair, NM	2	11-1.3	14	9	5	2	2	0-1	3.98
Jim Umbarger, ASU	2	11	15	8	5	2	13	1-0	4.09

Wills might leave team

Player bucks suspension

By LEE PELEKODAS

ASU starting shortstop Bump Wills, currently under suspension, is considering quitting the team for the remainder of the season.

Wills and freshman Clay Westlake were suspended Monday by head coach Jim Brock and the ASU team council, which consists of six team members, when Brock discovered they had slept only two hours the night before a 1 p.m. game with Texas-El Paso Saturday.

Brock and the council suspended Wills and Westlake for one week, beginning Monday.

On Tuesday and Wednesday, the two were to suit up and run for about an hour before ASU's

games with LaVerne.

Wills didn't show up for the Tuesday game. "Brock wanted to talk to me about it (the suspension) but I didn't want to talk to him about it. As far as I was concerned, I had quit the team."

Westlake has accepted the council's decision.

Yesterday, Brock met with the team council again and then with Wills. Brock and Wills agreed Wills would appear before the council after yesterday's game with LaVerne.

"I'll tell them my side of the story and then I'll hear its decision," Wills said.

He said he would think about the situation over night and let Brock know today whether he'll play the rest of the season.

"I don't want to quit," Wills said, "but I feel justified in my stand that the punishment was too harsh and I feel the council was not justified in that they didn't have all the facts."

"If the council doesn't slack up on its decision, I probably won't play."

Brock was not available for comment following his meeting with Wills yesterday.

MIDDLE EARTH



Goldcraft
Handcrafted
Gold Wire
Jewelry

Open Mon.
thru Sat.

21 E. 7th St., No. 7, Tempe

If you plan to attend Summer School—

Ask about our special rates

Call or write:
Terry Cattell,
your Howard Johnson's host

**TEMPE HOWARD JOHNSON'S
MOTOR LODGE AND RESTAURANT**

Across from Arizona State University at 225 E. Apache Blvd.
Tempe, Arizona 85281, or Telephone (602) 967-9431

FOR SPECIAL DISCOUNT - PRESENT THIS AD UPON REGISTRATION

Lewis B. Windham,
television announcer,
ex-marine, lover of the
great out-of-doors,
hunter, fisherman,
bon vivant and a
connoisseur of fine
jellies and jams adds
High Tide Swimwear to his
long list of endorsements.



Swimsuits \$14.00 - \$17.00
also D - Kinis

BONNIE SUE FASHIONS

913 Mill Ave.
Tempe Center

Open 9:30 - 5:30
Phone 967-4094

IF YOUR ROOMMATES are leaving

and you're staying,

where are you going to live . . . ? In a tent . . . ??

Don't chance it if you're not an Eagle Scout. Fill in the coupon below for the Summer of '73 Roommate Selection Service.

Name: _____ Age: _____

Present Address: _____

Type of Furnished Apt. Desired: Studio One-Bedroom Two-Bedroom

Number of Roommates Desired: One Two Three

Location Desired: Tempe Mesa Scottsdale

Length of Time Required: 1 Month 2 Months 3 Months
4 Months

Date of Needed Occupancy: _____

Your Phone Number and Time When You Can Be Reached: Number: _____
Time: _____

CALL: Apartment Information at 956-6531 or send to:

**THE SUMMER OF '73 ROOMMATE
SELECTION SERVICE**
C/O W. R. Schulz Apartment Information
2627 E. Thomas Rd., Phoenix 85016

Legislature slices budget

By BILL ROSS
Staff Writer

ASU's budget appropriation for the coming fiscal year is more than \$2 million less than what the University requested. But appropriations for all three Arizona universities increased over last year's budget.

ASU will receive about \$4 million more than it did last year, because of inflation and increased enrollment, said an aide to Rep. Tom Goodwin (R-Tucson). Goodwin is the chairman of

the House Appropriations Committee.

While ASU asked for \$37,735,600 for its operating budget, the Arizona Senate and House Appropriations Committee recommended the school receive only \$35,321,000.

The Committee believed the slicing of 2.4 million dollars would not seriously affect any University programs, the aide said.

Cuts in budget requests were made across the board, and no ASU department or activity should be seriously affected,

said the aide, who asked to remain unidentified.

Areas affected by fund curtailment are instruction, administration and supporting services, organized research and public service programs, he said.

While ASU requested funds for 85 additional instructors, it received only enough for 60. Requests for additional clerical help in the offices of the administration were in some cases denied. Although the University

asked for and received allotments for seven more researchers, staff members, funds for research-related travels and equipment expenses were cut. Public service extensions such as courses offered to the public were also curtailed.

"Members of House and Senate subcommittees explored the budgetary requests in great depth, studying the subject for four months," Goodwin's aide said.

"The final appropriation is based upon what the legislators believe will best satisfy both the University community and the taxpayers."

While the House and Senate have yet to vote on the recommendation, the aide said the Legislature almost never questions the Committee's request.

While enrollment at the University of Arizona is about the same as at ASU, the budget at the UofA for the coming fiscal year will be \$63,042,400, he said.

The difference is largely due to the UofA's medical school, which accounts for

\$8.451 million, and the related hospital's which will claim \$9.530 million, Goodwin's aide explained.

The main part of the university will receive only 45.862 million, he said.

This is still about \$10 million more than the sum ASU will receive, and the difference is due to the costs of the UofA's observatory, its extensive organized research program, and its schools of earth and space science.

About \$3 million is due to the cost of the UofA's agricultural extension services throughout the state.

The UofA will get \$5.5 million due to the construction of a new chemistry building, biology building wing, and athletic facility.

The recommendation for the UofA was \$2.7 million less than it requested.

Northern Arizona University will receive an appropriation of \$13,364,500. That amount is an increase of \$1.5 million over last year's budget and about \$300,000 less than NAU requested.

friday
Arizona State University

Vol. 55, No. 101 April 20, 1973

state
press
Tempe, Arizona

Petitions for invalidation

Student protests elections

By PATTY NOLAN
Staff Writer

A letter seeking to invalidate recent ASASU elections has been received by Norman Ross, chief justice of the ASASU Supreme Court.

The letter was filed within the five school day limit required by the Constitution, but Ross said the court had to determine if it was a legitimate complaint.

John Gordon, political science major, wrote to Ross petitioning for the invalidation because a significant number of graduate students were not allowed to vote in the primary election. He said some undergraduates also were not allowed to vote in the general election.

Ross said Gordon did not provide enough facts in his letter and suggested he talk with Manuel Figueroa, election coordinator.

Richard Katz and John Morgan, former TROG members said Figueroa turned many teaching assistants away from the polls for carrying only six hours of course work. He amended this ruling late in the afternoon of the second day of the

primary, Katz and Morgan said.

Figueroa could not be reached for comment at press time.

Ruth Smith of the Graduate College said teaching assistants working 20 hours must be enrolled for a minimum of six hours course work to be considered full time students. Assistants teaching 10 hours must be enrolled for at least 9 hours of course work, she said, for full-time status.

Problems with undergraduate voting apparently resulted from Figueroa's requirement that students show some form of picture identification or a notarized statement.

Gordon did not elaborate in his letter to Ross, however, and could not be reached for comment.

Ross said the margins of victory in the primary presidential race and the general election activities vice presidential race were so narrow that preventing only a small number of students from voting could have changed the outcome of the election.

Inside:

Weekend — Helen Reddy page 13

Sports — ASU's baseball brothers
page 11

Majority of minorities receive financial aid

By JOHN BANASZEWSKI

(Editor's Note: This is the third in a series of articles dealing with the status of the American Indian and other minorities on campus.)

More than 60 per cent of all

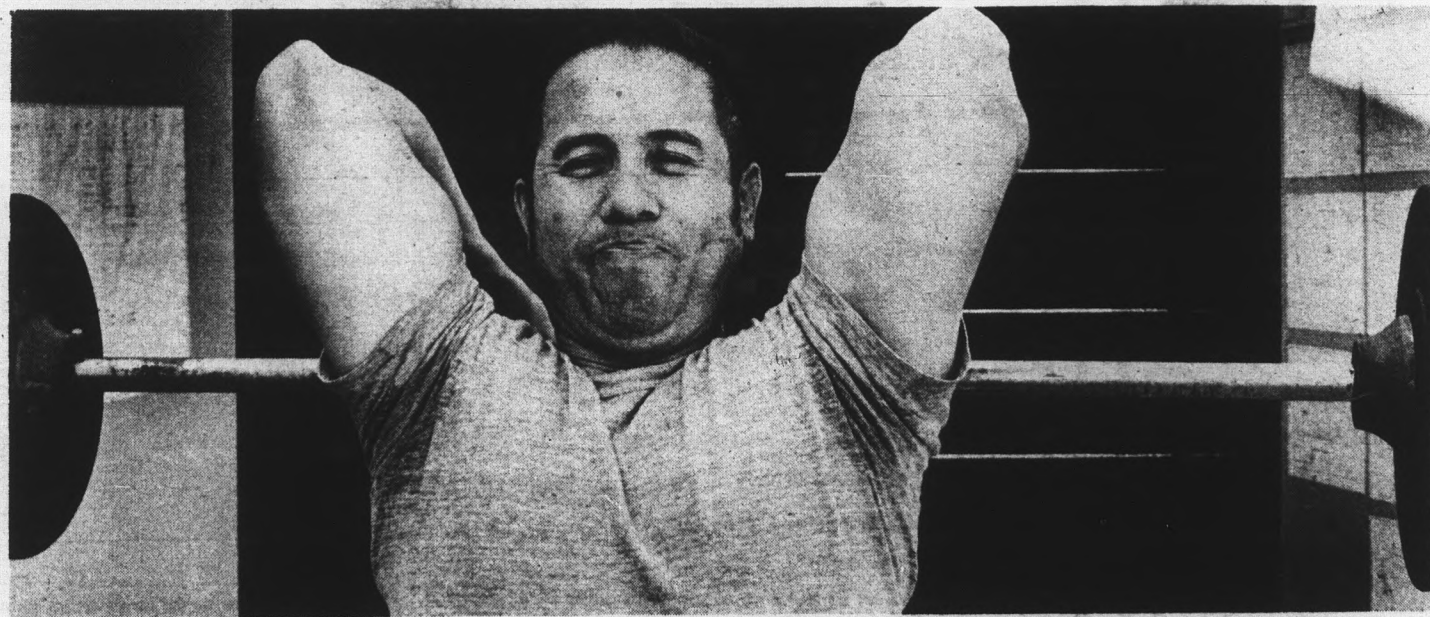
minority students on campus are receiving some sort of financial assistance from the University, state or federal governments compared to about 12 per cent for white, according to official records in the Office of Financial Aids.

The State Press has investigated every available means of financial assistance for minorities and whites, recorded how many students received aid and how much was being received by each group in each category, then tallied up the percentage and dollar totals.

Aaron James, ASU assistant director of financial aids, said the following are the means for financial assistance: academic scholarships; tuition waivers under the Equal Opportunity Program, Upward Bound and Dean's Reserve programs.

Also: Reservation Indian scholarships; national direct student loans; Educational Opportunity Grants; work-study jobs; Bureau of Indian Affairs (BIA) grants; nursing loans and scholarships and law enforcement loans and grants.

Guaranteed Bank Loans and personal family assistance figures were not available.



'It's all in the face muscles ya see'

Alfred Esquivel, working out at the weight area behind Sun Devil Gym, strains to pull those pounds back over his head.

Photo by Ann Herold

Continued on page 2

Over half ASU minorities get aid

Continued from page 1

Because this year's figures have not been compiled, the figures used are from the 1971-'72 academic year.

The Department of Institutional Studies reports that there were 27,322 students at ASU, according to an on-campus head-count from last fall after the drop-add period. That includes all but extension students.

Of that total there are 265 Indians (.97 per cent of the total student population), 579 Blacks (2.1 per cent), 383 Orientals (1.4 percent) and 1,148 Chicanos (4.19 per cent).

That brings to 2,375 the total number of minority students on campus, which represents 8.7 per cent of the total student population.

There are 24,947 white students on campus.

Each minority group has grown according to University 1970-71 enrollment figures. That year, minorities represented 5.8 percent of the total student body. There were 73 Indians, 455 Blacks, 326 Orientals and 689 Chicanos.

This year's figures for the total number of minority students and aid being given them constitute "an effort by the system to help minority students," said Eugene Marin, director of financial aids.

"There is never enough money, though, to meet all the needs or requirements of the students. But, certainly, what is available has made and is making a lasting impression on the number of students enrolled who otherwise could not afford to do so."

Marin said the figure for minorities receiving aid is understandable because minorities usually have lower family incomes than whites.

Consequently, they must seek financial assistance more so than whites whose children are probably being adequately aided by their families.

Of course, he said, there are some minority students who don't need assistance either.

"I, for one, am personally

very keen in wanting to operate the Office of Financial Aids on a policy where the main criterion shall be on fairness and equity for all in distributions," he said.

Rick St. Germaine, a member of the Special Services Advisory Board on minorities and former chairman of the Indian Student Association, agreed that the system for distributing student aid is fair and equitable.

"I can't knock the financial aids department at all," he said.

However, St. Germaine said he was surprised at the financial aid figures for Indians because "there are still 64 students who aren't getting aid."

Analysis

"Those figures can be deceiving in a way. You can have all the statistics in the world but that still doesn't negate the fact that there are still some Indians who can't make it into this University because of a lack of money," he said.

"And I'm sure that holds true for the other minorities also."

Indian students seem to be caught in a two-way bind, he said. They want to go to college but don't want to take out a loan.

When entering college Indians do not like to take out loans because of the pressure of having to repay the University. So they seek total funding through BIA grants which are supposed to serve only as supplemental funds, he said.

However, St. Germaine said, "that places fantastic economic

pressure on the BIA funds which can then become easily depleted. And when those monies are gone that's it; no more Indian students will get in," he said.

BIA grants are unique to the Indians. There are no counterpart funding organizations for the other minorities.

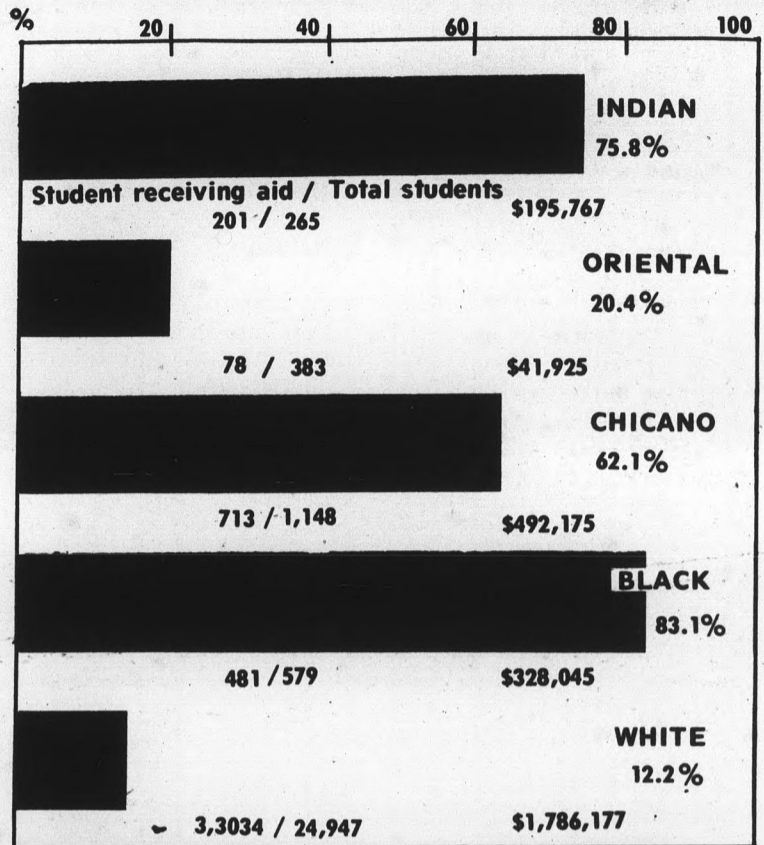
The National Direct Student Loans, formerly called the National Defense Loans, awarded more loans and more total money to each group than any other program.

Of 876 tuition-waiving scholarships awarded, 760 went to whites with the remaining 116 awarded as follows: eight to Indians; 20 to Blacks; 21 to Orientals and 67 to Chicanos.

Computing the total number of whites receiving aid (3,934) and the total number for minorities (1,473) shows that 16 per cent of the total student body is receiving some financial assistance.

The average amount per student of those receiving aid breaks down as follows: Indians — \$973; Blacks — \$682; Orientals — \$537; Chicanos — \$690 and whites — \$588.

Financial assistance



ERICKSON
HANDCRAFTS
ARTIST & DRAFTING SUPPLIES
Crafts - Picture Frames
Decorating Material
Open Mon. & Thurs. Nites
10% Discount to Students
111 E. University — 967-4482

Eat to Your Heart's Content!

Pancho's

MEXICAN BUFFET

Cooked FRESH Continually!
Homemade Tamales • Chiles Rellenos • Guacamole Salad • Chile Con Queso • Red Chile Stew • Green Chile Stew • Sour Cream Enchiladas • Green Enchiladas • Red Enchiladas • Crispy Beef Tacos • Spanish Rice • Fried Beans • Spanish Sauce • Sopesillas & Honey

All You Can Eat \$1.69 PLUS DRINK & TAX
Child's Plate - 75c

LUNCHEON SPECIALS
LARGE Selection of Lunch Specials Served Mon. thru Fri. 11 a.m. to 5 p.m. **99c**

LOS ARCOS MALL
at Scottsdale & McDowell Road

Locations in Houston, Dallas, Richardson, Fort Worth, Arlington, San Antonio, Austin, El Paso, Corpus Christi, Longview, Albuquerque, Phoenix, Oklahoma City, Bossier City, Baton Rouge & New Orleans

Bert Crockett joins New England Life, of course.



Bert Crockett, well known local insurance man, is now associated with the Jones Agency of New England Life.

.. If you're interested in the details of a life insurance plan that will protect you now and let you defer premium payment until after graduation, talk with Bert.

Bert Crockett
1000 E. Apache Blvd.
Tempe - 968-8711

New England Life
Suite 114

IF YOUR ROOMMATES are leaving

and you're staying,

where are you going to live . . . ? In a tent . . . ??

Don't chance it if you're not an Eagle Scout. Fill in the coupon below for the Summer of '73 Roommate Selection Service.

Name: _____ Age: _____

Present Address: _____

Type of Furnished Apt. Desired: Studio One-Bedroom Two-Bedroom

Number of Roommates Desired: One Two Three

Location Desired: Tempe Mesa Scottsdale

Length of Time Required: 1 Month 2 Months 3 Months
4 Months

Date of Needed Occupancy: _____

Your Phone Number and Time When You Can Be Reached: Number: _____
Time: _____

CALL: Apartment Information at 956-6531 or send to:

THE SUMMER OF '73 ROOMMATE SELECTION SERVICE
C/O W. R. Schulz Apartment Information
2627 E. Thomas Rd., Phoenix 85016

Closed criminal trials

New rules spark debate

By CLIF GLASGOW

Adoption of new procedure rules for criminal trials in Arizona has sparked additional controversy in the fair trial-free press question facing today's courts and media.

The Arizona Supreme Court approved by a 4 to 1 vote Tuesday new rules for criminal trials. These include a provision allowing a judge to exclude spectators and members of the press from the courtroom if they would present "a clear and present danger to the defendant's right to a fair trial."

Dissenting Justice William Holohan said this particular regulation

"invites disaster" by allowing a closed trial.

The new regulation, scheduled to go into effect Sept. 1, was blasted by Earl Zarbin, assistant city editor for the Arizona Republic and part-time instructor at ASU.

Zarbin said he thought the rule is wrong. "There is no reason for it. It's subject to the widest interpretation by a judge and creates a potential for detracting from a defendant's right to a fair trial," he said.

Zarbin said a judge already has complete control of his court and can expel disorderly persons

under existing regulations. He said the public has a right to view the proceedings in a trial including the tone of voice and conduct of officers of the court. A written record of the proceedings is not enough, he said.

Gerald Caplan, professor of law at ASU, disagreed, calling the new rule no more than a restatement of existing judicial authority to run a court in a manner best for a fair trial.

Caplan said the rule should only be applied in the most extreme cases. "It is a practice to be abhorred. A public court should be abandoned only in extreme

circumstances," he said.

Caplan pointed out the rule was designed to be used by a defendant and the exclusion of spectators would occur at the request of the defense. "I don't think you can ever close it if the defendant desires an open trial," he said.

Jack La Sota, visiting professor of law who helped formulate suggestions for the new rules, supported the closed trial provision.

"The purpose of a public trial is to insulate the accused from high-handed treatment by a court," he said.

When a defendant does not fear such treatment he

should have the right to request a closed trial, La Sota said.

La Sota said the state often desires an open court to protect its interests from a too lenient judge.

Both La Sota and Caplan admitted a transcript of trial proceedings could not provide insight into the actual inflection of voice or conduct of court officers but did not consider this a real fear.

The exclusion of spectators may encourage reluctant witnesses to testify, La Sota said.

Caplan called the controversy over the new rule a press-generated issue.

Save On Diamonds . . .

VISIT THE DIAMOND MAN



Joe Berning, a diamond cutter for 27 years, is now associated with JEWELS INTERNATIONAL in their new Tempe location, we are celebrating our new store with a "Festival of Diamonds".

We are offering up to 20 percent savings on all diamonds, loose or mounted, and on all diamond jewelry.

Come in and LET THE DIAMOND MAN SHOW YOU WHY OUR DIAMONDS ARE SO BRILLIANT



JEWELS INTERNATIONAL
BY G. DARRELL OLSON

130 East University

"In the Arches"

Also Phoenix — Scottsdale — Sun City
967-8917 — CREDIT AVAILABLE
Member American Gem society



TIJUANA TACO

Presents

Year-End Specials

REDEEM COUPONS at 112 E. University - Open 11 am Daily

FREE LARGE PEPSI
with any combination
plate purchase

Expires June 1, 1973

Tostada
Bean Burro
Small Pepsi

59¢

Plus Tax

regularly 74c plus tax

Expires June 1, 1973

\$1.00 WEDNESDAY \$1.00
Is Dollar Day

One buck off total purchase price of
one dozen food items

—mix or match—

Expires June 1, 1973

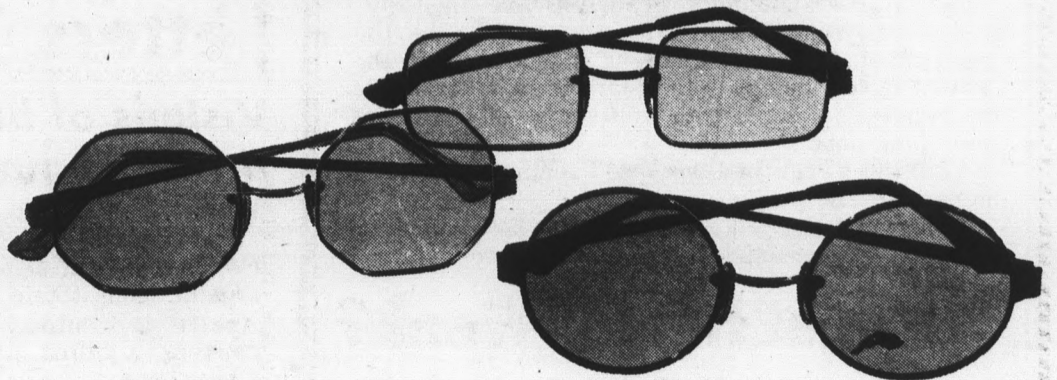
Tostada 10¢ each

with food purchase between 11 pm
till Close

—One per customer—

Expires June 1, 1973

LET US WIRE YOU FOR SIGHT.



Our contemporary "wires" come in all shapes and sizes. And there's a rainbow of precision, colored lenses to go with them.

Whatever your taste in fashion, you'll find we have hundreds of the very latest frame designs from around the world.

With the expert help of our staff, you'll find fashion eyewear just right for you. Come in — for a new outlook.

Convenient credit terms, or use your Master Charge or BankAmericard.

Single vision glasses as low as \$16

All Lee Optical Lenses Meet FDA Impact Resistant Specifications.

TEMPE 13 CONVENIENT VISION CENTERS THROUGHOUT ARIZONA
Open Monday through Saturday.
Tempe Center/2032 S. Industrial Park Ave.
967-7864 967-7333

LEE Optical



Opinion | state press

Lesley Ronson

Delinquent professors

This is the time of year when students need their professors the most. They need advice about term papers, projects and theses. They need last minute advice about graduation.

They need advice and they need it now. There are only two more weeks of school, not counting finals week.

But where are the professors? They don't seem to be in their offices. Are office hours just a figment of students' imaginations?

They're not supposed to be, according to page 22 of the 1970 Faculty Guide.

"Every faculty member is expected to maintain and post regular office hours. At least one to two hours each day should be scheduled Monday through Friday each week and the schedule should be arranged to include both morning and afternoon hours. Office hours should be posted outside the faculty member's office door."

Schedules are posted. The few that you see are often not adhered to. How many times have you gone to see a prof during his office hours to find him not there?

I'm not referring to the occasional offender, but to the prof who's out playing golf or tennis on student's time.

The problem is not the same in every department. Smaller departments usually have a better student-teacher relationship. It is the larger departments, like political science or history, where the problem is acute.

I realize there are many conscientious professors who sincerely wish to help students, who sincerely wish to teach. (The two do go together.)

And there are many students who stand the professor up when an appointment has been made, or many who don't care about school.

But there is a difference. The professors get paid. Teaching is their job, and their primary concern should be the students. A student who feels her prof has a sincere interest in her can't help but be more interested in the course, and therefore more receptive to learning.

But there is a better remedy than bitching with other students.

Dr. Karl Dannenfeldt, academic vice president, said a student should bring the matter up the department chairman. If nothing is done about it, the student should then go to the dean, he said. Those are the people to complain to who supposedly will get something done.

But there isn't time this year to complain to those higher up. The pressure is on.

The least the professors could do is be in their offices at definite times. It is part of their job.

Why not Human Week?

Next week is Women's Week, sponsored by AWS.

It's commendable a group is organizing speakers and events but it's too bad we need a Women's Week at all.

I find it a bit strange that a majority of the population is treated as if they are a minority, and feel they must show their culture through a week of special events.

There seems to be no need for a Man's Week. Could it be that every week is man's week, especially white man's week? If so, everyone should fight against it, including men. The tension, decisions and POWER of the white man's world should be shared with women and persons of every race.

Then, maybe we could have a Human Week.



'OH, A POOR, OLD HANDICAPPED PERSON — LET ME HELP YOU CROSS THE STREET . . . OOPSI!'

Rick Mahrle

Playing the game

In dealing with the administration one encounters a world far removed from reality.

Moving about in their own world, high above the students in a metaphysical plane few can comprehend, the administrators have found it necessary to create simple phrases with which to communicate to us lower beings.

As these phrases are often hard to understand, I have decided to compile the Annotated Dictionary of the Administrative Language.

The following are a few of the more common entries.

Under the heading of phrases with hidden meanings:

I don't wish to comment on that at this time. A common phrase meaning either the administrator knows nothing about a subject he should be informed on, or he knows a hell of a lot.

We'll sit on it. Means hopefully if we ignore the situation, you will forget about it.

I think we will conclude the matter very shortly. Shortly can be anywhere from next month to 1989.

The administration is interested in helping us to the extent to which they can. This is commonly used by a lower administrator who has been told by his superior that they'll sit on it. (See We'll sit on it.)

Many factors have to be taken into consideration. Means forget it, kid!

Another problem frequently encountered is the secretary ploy. In her overzealous attempt to shield her boss, the good secretary uses phrases like:

He is not in his office. Administrators spend very little time in their offices. What are they doing when they are supposed to be in the office working?

He's at lunch. This is usually used at 9 a.m. or 3 p.m. Probably the most famous of all administrative jargon is the put-down.

I really don't like to discuss it over the phone. What is he worried about? Is he afraid the phone is tapped?

I'm not the person you should be talking to. Usually buck passing to an administrator who is out to lunch. (See He's at lunch).

would you hold please? The ultimate. (One State Press reporter has been on hold for three years now.)

Letters

Visions of being a real human

Editor:

In regards to Carter Frey's excellent defense of organic foods (State Press, April) I would like to present another defense altogether.

"Is not life more than food and the body more than clothes." Matt 6:25. Truthfully I should present this to all who write articles giving the pro's and con's of subjects. "Judge not and you will not be judged." The fact of the matter is, I am presenting this to all who will take the time to read it. Yes, that's you!

When you are "turned off" by someone or someone's actions, instead of dashing off and telling

everyone how this or that is so terrible, stand firm and try very hard to place yourself in the position of the other person. Then ask yourself why he may be doing what he is.

If you are strong enough to do the first two steps, you're home free. Once you know the problem, you've won. All there is to do is to find the solution that would be most satisfying to yourself if you were in the other's position. "Love your neighbor as you love yourself."

It's quite difficult to do on your own, but if you have visions of being a real human, I challenge you to do that. Another result will be that you'll find you make friends much easier and you'll lead a happier life.

I'm not saying you should sit back and let those who don't follow that edict walk all over you. Of course stand

up and confront those people with your beliefs, but do it following the formula previously stated. It has to be an effort of many but it spreads. Something good moves fast.

Back to Carter Frey. It is not that which goes into the body which is evil, but those things which come from the body.

I have tried to offer a solution. I have not given the full solution. For those of you who have read this far I offer the full solution. Finish reading Matthew 7. It points out those things which, if followed, would end strife among mankind. Then the Book of John, for there it is written: "Truly, truly I say to you, the hour is coming when the dead will hear the voice of the Son of God, and those who hear will live."

Kim E. Hoepfner
Junior
Chemical Engineering

ASU starts bike paths

By BARRY HOCHFELDER
Staff Writer

ASU will begin installing bike paths this summer and several will be ready for use by the time school begins in September, Gilbert Cady, vice president for business affairs, said yesterday at the transportation forum.

"This University has a commitment to the bike path issue," Cady said.

Bicycle paths are being installed as a partial solution to the severe parking problems on campus. Hopefully more people will use will use bi

"This University has a commitment to the bike path issue," Cady said.

Bicycle paths are being installed as a partial solution to the severe parking problems on campus. Hopefully more people will use bikes instead of driving cars when the paths become available, he said.

Cady said the University eventually hopes to tie in the campus paths with those to be constructed in Tempe, Scottsdale and other neighboring communities.

One proposed path is down Orange Street to the area between the Memorial Union and Hayden Library. Cars will not be allowed on the street, he said.

A bike path is also planned for the Forest Avenue mall when the mall is completed but

bike riding will be prohibited on the main mall.

The ASU bike path program is being funded by \$25,000 and it is hoped that more money will be forthcoming, Cady said.

He said another path will be from Manzanita Hall to the College of Law, but did not yet know which paths will be completed by September.

A major concern of the program is that of bike security. The University is currently investigating the possibility of a central bike parking station in the area where North and South Halls used to be, said Steve Kirby, assistant to the ASASU president.

Kirby said student interest and concern for the creation of the paths was strong. It was because of this support that ASASU decided to become involved in the program, he said.

Tempe's planned bike paths await only City Council approval, said Betty Drake of the Tempe planning department.

There will be \$250,000 invested in the paths if the council approves, she said.

The city spent two years working on the program and has proposed paths where needs are the greatest. Drake said she hopes some of the paths can be tied into those at ASU.

Advisors' signatures: help or hassle?

The University has survived another semi-annual wave of student gripes over having to obtain their advisors' signatures on course request cards. Is it just another formality or a useful tool?

"It's a pain in the neck for everyone—students and faculty alike," said one advisor, "but it is a necessary measure."

George Peek, dean of the College of Liberal Arts said, "By requiring these signatures we can be assured that the advisor will see the student at least once a year. This also means the advisors are committed to the responsibility of making sure students are made aware of changes in the curriculum which might affect their program."

Some of the students disagree. One engineering student said, "The handbook tells you what classes you need. Even a real dummy can figure that out."

David Courey, a business student said, "They're really strict about it over at business administration. I've known some instructors who wouldn't give you your class cards unless you've got that blue slip, so I usually just go ahead and get it over with."

Another student said, "The one and only time I saw my advisor, he didn't even bother to read my card. All he did was give me a big lecture about 'what was a girl like me doing in the political science field and wouldn't I rather stay home and clean the house.' I don't need any more of that bull, so I just fake his initials and turn in the card."

Herbert Bohlman, director of student advisement for the College of Business Administration said, "I must have 50 or 60 requests on my desk for submission to the Standards Committee. Many of these are due to deficiencies that should have been taken care of well before graduation time."

"When a student regularly sees his advisor these situations are all but eliminated," said Bohlman. "Actually, when you think of it, that ten or fifteen minutes a year spent with your advisor isn't really much to ask, and it can really be of value to the student."

AWS accepts applications

Applications for committee chairwomen positions for Associated Women Students (AWS) are now available in the AWS office in the MU and the MU information desk.

Cindy Settergren, AWS president-elect, said persons chosen for these positions will be in charge of selected AWS committees for next year.

AWS is also seeking persons to serve on the various committees.

The only qualification for these positions is being an ASU student, Settergren said.

She couldn't be happier if she'd designed them herself.



String halter by Catalina

CELIA'S fashions

"Try Celia's First"

TEMPE CENTER

IF YOU ARE PLANNING ON

EUROPE THIS SUMMER

A **PASSPORT** IS REQUIRED.

THE PASSPORT OFFICE HAS INDICATED THAT THIS IS THE

LAST WEEK To Apply

For a passport if you are going to Europe on our charter

(made possible through the courtesy of UofA travel office)

LEAVING **MAY 22** RETURNING **AUG 17**
from ASU from Amsterdam

THE LOW, LOW COST OF **\$299⁰⁰**

- includes:
- Round trip air fare on transinternational air line
 - All meals in flight
 - Reserved seats, choice selection
 - Charter bus from ASU to Tucson airport and return
 - All fees, charges and taxes
 - Your on your own in Europe — come and go as your please
 - Liberal 44 LB baggage allowance

FOR A CHOICE SEAT RESERVATION SEND CHECK FOR \$50 MAKE PAYABLE TO UNIVERSITY OF ARIZONA, and send to: Dr. L. Tenney, 2727 E. University No. 103

TEMPE, Arizona 85281

If more information is desired call Dr. Tenney

at **834-0134**

open to all Students, Faculty, staff and families associated with ASU.

Collage

Today

Home-cooked meal, noon to 1:30 p.m., Baker Center.

Sponsored by the American Baptist Campus Ministry.

CAB Film, "The Sorrow and the Pity," 6:30 p.m., Neeb Hall.

A documentary by Max Ophuls. Free.

College Life, 7:61 p.m., Tempe Women's Club across Gammage.

Spring Film Festival, "Gimme Shelter," 7 and 9:30 p.m., MU

Movie House. Stars The Rolling Stones. Admission \$1.

Student Recital Series, 6 p.m., Recital Hall. Chamber Music

Evening.

"The Magic Flute," 8 p.m., Music Theatre. By the Lyric

Opera Theatre. Also on Saturday.

Saturday, April 21

Primal Scream group session, 7:30 p.m., call 244-1896 for

place. Attendance by appointment only due to limited

space. \$4.

"Bonnie and Clyde," 7:30 and 9:30 p.m., MU Movie House.

Admission 75 cents. Tickets at the door. Sponsored by

Alpha Epsilon Rho.

CAB film, "Thief of Paris," 6:30 p.m., Neeb Hall. Also, four

Emile Kole films. Free.

Sunday, April 22

Delta Sigma Pi professional meeting, 7 p.m., MU Mohave

Room.

Monday, April 23

Inter-Varsity Christian Fellowship, 7:30 p.m., MU Navajo

Room. Weekly study of Jesus Christ.

ASU Symphony and Arizona Cello Society, 8 p.m.,

Gammage. Conducted by Eugene Lombardi.

Nursing school adopts more flexible program

Nursing education is changing to a more flexible format by adopting open curriculum programs, said Dr. Lucy Kelly, representative of the National League for Nursing.

Kelly, visiting the ASU campus said, "An open curriculum increases educational options by allowing student mobility between different programs. This concept recognizes that students may alter goals, abilities or aspirations during their course of study," she said.

The league plans to direct 20 pilot projects at schools with open curricula, so Dr. Kelly is touring nursing facilities around the country, and assessing their curriculum programs.

"With the pilot programs, the league hopes to study common curriculum problems and to examine the feasibility of the open curriculum concept," she said.

While she's been in Arizona, Kelly examined nursing curricula at ASU and Mesa Community College.

"I've been in some states where nurses didn't even know about the programs in the next county," she said.

Get The Best Medical Assistant Training



SOUTHWESTERN
Preparatory School for
Medical Assistants
2025 N. Central Ave. 85004

Rented books stolen; library picks up tab

The fine art of misplacing things permanently is not confined to roommates and friends. Hayden library has the same problem.

The McNaughton leisure reading collection of popular books and current best sellers is plagued with pilferage. About 70 of the 770 McNaughton books are missing and presumed stolen, Linda Thanukos, librarian, said.

The loss was discovered when the collection was taken off the shelves for return to the company.

The McNaughton books don't belong to the University and can't be stamped with any identification as other library books are.

The library pays a rental fee of about \$300 per month for the books, and will have to pay for the missing books,

said Dr. H. William Axford, head librarian.

The high incidence of theft is a problem of policy, Thanukos said.

The book-checkers at the exit door have a difficult time determining the difference between students' personal property and books such as the McNaughton books from the leisure reading collection.

"We do lose a lot (of books), especially the ones on sex. I think it embarrasses people to check them to check them out so they just steal them," Thanukos said.

The McNaughton books are being returned to the company because of a budget bind.

"We ran into price increases and the budget didn't stretch as far this year. We're not happy about

having to chop the service off for a couple of months," Axford said.

The library will have to pay 25 per cent of each missing book's list price to help compensate for the loss, Axford said.

"It won't be a horrendous amount but it is still bothersome," he said.

Axford said the McNaughton books will be back after July 1, the beginning of a new fiscal year and new money. Until then, if you want to read "The Exorcist" or "Intimate Behavior," you'll have to buy a copy.

LILIES OF THE FIELD WE ARE NOT.



Remember the lilies of the bible? They toiled not. Neither did they spin. As Dominican Sisters of the Sick Poor we toil for the young as well as the old, for the acute as well as the chronically ill and we care not for their race or religion for all are of the kingdom of God. Our feet carry us along busy streets, up and down tenement stairs, in and out of homes where illness, ignorance, discouragement and despair are sometimes permanent guests. Nursing, counseling, helping to keep families together in their homes as one loving unit. The Dominican Sisters of the Sick Poor achieving the impossible every day of the year.

To learn how you can serve as a Dominican Sister of the Sick Poor write to:
Sister Marguerite Mitchell,
Vocation Director
Room 103
Mariandale, Ossining,
New York 10562

DOMINICAN SISTERS OF THE SICK POOR.



COOL POOLS

for

summer school

Quiet & Nice 1, 2, & 3
Bedroom, Furn. & Unfurn.
By yourself or roommates

•CASA LOS ARGOS

7110 E. Continental Dr.
Scottsdale — 945-4026

•BROADWAY PLAZA

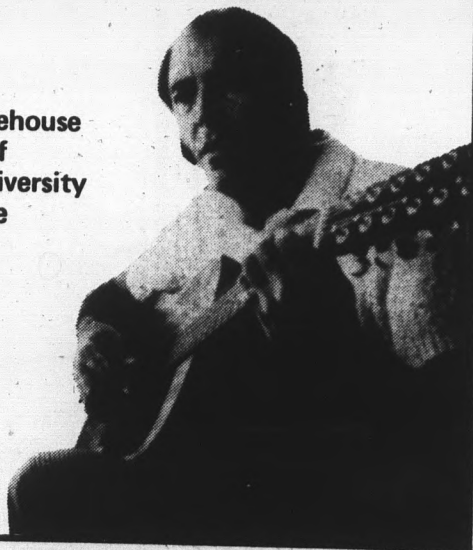
121 E. Broadway
Tempe — 967-5144

MOVE IN TODAY

THERE'S MORE ON TAP at PANINI'S WAREHOUSE

with Norm Heard
Friday & Saturday Evenings

Panini's Warehouse
corner of
Forest & University
in Tempe



DOMINICAN SISTERS OF THE SICK POOR.



Board insures wide variety of speakers

Jerry Rubin's appearance at ASU in the spring of 1970 changed the policy of bringing speakers to campus, Dr. Joel Dauten, president of the Public Lectures Board, said yesterday.

After Rubin's speech, the University decided there should be an organized board to see that top speakers of differing views are brought to campus, he said.

Each year about \$10,000 is allocated to the Board. Next year's allocation should be the same Dauten said.

For the three years the board has been in existence it has been funded by \$5,000 from the student body and \$5,000 from the board of faculty.

This funding is strictly voluntary. If the students or faculty should decide the money could be put to better use in another area, they could withhold it, Dauten said.

There are six faculty and four student members on the board. "Primarily it is the students that decide who is to speak," Dauten said.

"I would say, although maybe I shouldn't, that the students are more diligent in attendance. They seem to have been more interested in the board than the faculty," he said.

As of now the Public Lectures Board has spent \$8,930 of its original \$10,000.

The largest amount spent on one speaker including travel expenses, was \$3,143.50 for Lillian Gish in March. The largest personal fee was \$2,844 paid to Art Buchwald.

Chemist speaks at conference

A Nobel Prize-winning chemist will be the keynote speaker at the 10th Rare Earth Research Conference, partly sponsored by ASU April 30-May 3 in Carefree.

Dr. Glenn Seaborg, professor of chemistry at the University of California at Berkeley, will speak on transuranium and lanthanide elements at 8:45 a.m. on April 30.

The four-day international convention will feature the presentation of 125 technical papers. These papers represent nine scientific areas, including chemistry, industrial technology, and bioinorganic chemistry.

"More than 200 scientists from the U.S., Europe, South America and the Orient are expected to attend the conference," said Dr. Therald Moeller, chairman of the ASU chemistry department.

The convention is also sponsored by the U.S. Army Research Office and the Rare Earth Research Conference Committee.

state press

STATE PRESS is published by Arizona State University Tuesday through Friday during the academic year, except holidays and examination periods. Entered as second class matter at Tempe, AZ, 85281.

Your first tampon should be a Kotex tampon.



Because only Kotex tampons have soft, rounded ends... gentle insertion guides instead of two bulky tubes... and more protection than the leading brand. But the only way to be convinced is to let a Kotex tampon be your first one.

If it wasn't, here's a second chance.

For a trial size package of Kotex® tampons (5 tampons), a pretty purse container, and a very explanatory book entitled "Tell It Like It Is", mail this order form with 25¢ in coin to cover mailing and handling to:

Kotex tampons
Box 551 CN1
Neenah, Wisconsin 54956

Name _____

Address _____

City _____

State _____ Zip _____

Allow 4 weeks for delivery. Offer expires December 31, 1973. Limit one per customer.



*Femininity today from Kimberly-Clark

Advertisers: 8 more issues of the State Press

FREE TICKETS FOR STUDENTS GAMMAGE AUDITORIUM

presents

THE CHICAGO SYMPHONY ORCHESTRA

Georg Solti—conductor

Students with Campus Service Cards validated for the Fine Arts Series may pick up a FREE reserved seat ticket the week of April 23-28, at the Gammage Box Office. For further information call 965-3434.

Rip off Europe.

STUDENT-RAILPASS

The way to see Europe without feeling like a tourist.

Student-Railpass is valid in Austria, Belgium, Denmark, France, Germany, Holland, Italy, Luxembourg, Norway, Portugal, Spain, Sweden, Switzerland.

Eurailpass, Box 90, Bohemia, New York 11716

Please send me your free Student-Railpass folder order form.

Or your free Eurailpass folder with railroad map.

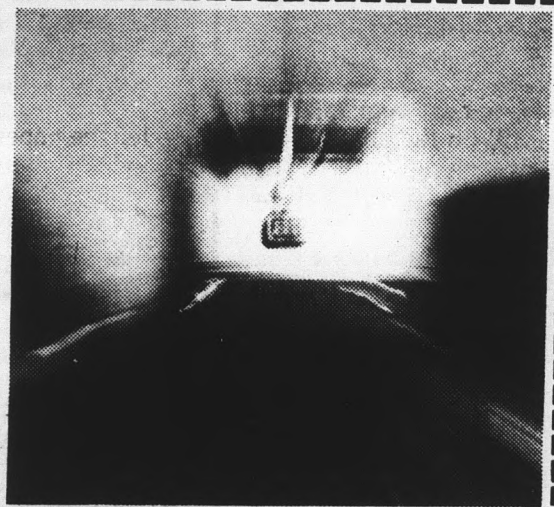
Name _____

Street _____

City _____

State _____ Zip _____

192b



So you plan to spend the Summer in Europe this year. Great. Two things are mandatory. A ticket to Europe. And a Student-Railpass. The first gets you over there, the second gives you unlimited Second Class rail travel for two months for a modest \$150 in Austria, Belgium, Denmark, France, Germany, Holland, Italy, Luxembourg, Norway, Portugal, Spain, Sweden, and Switzerland! All you need to qualify is to be a full-time student up to 25 years of age, registered at a North American school, college or university.

And the trains of Europe are a sensational way to travel. Over 100,000 miles of track links cities, towns and ports all over Europe. The trains are fast (some over 100 mph), frequent, modern, clean, convenient

and very comfortable. They have to be. So you'll meet us on our trains. It really is the way to get to know Europeans in Europe.

But there's one catch. You must buy your Student-Railpass in North America before you go. They're not on sale in Europe because they are meant strictly for visitors to Europe—hence the incredibly low price. Of course if you're loaded you can buy a regular Eurailpass meant for visitors of all ages. It gives you First Class travel if that's what you want.

Either way if you're going to zip off to Europe, see a Travel Agent before you go, and in the meantime, rip off the coupon. It can't hurt and it'll get you a better time in Europe than you ever thought possible.

ASU's farm:

Ag students work it . . .

By PHIL ALVIDREZ

Tucked away on 320 acres south of Baseline road, the ASU agriculture department farm serves as a huge physics and chemistry lab for students.

"It's an outdoor laboratory that's used primarily for education," said Joe Byrd, field lab superintendent. "Many labs are held out here."

Students from fifteen different classes work at least part time on the farm, said Dr. Richard Chalquest, agriculture department chairman. He said nearly half of the department's 2000 students use the farm.

The most popular classes are those in equitation — the art of horseback riding. Classes are held in both Western and English riding, Byrd said, and students also learn how to care for horses.

Another class studies methods of organic farming, involving fertilizing crops with animal wastes.

In Beginning Animal Science, students are assigned farm animals which they raise, care for and eventually show in competition with other classes, Byrd said.

The farm has a dairy where students learn the dairy process and do all the milking, he said. There are about 200 dairy cows on the farm.

The farm also has about 100 beef cattle, 40 horses, 50 sheep, 18 goats and 1,000 chickens.

Nearly all the chores around the farm are done by students, Byrd said, but there are 10 full-time employees.

The employees, including Byrd, live on the farm in five University furnished houses.

"We live here at the farm because really we're on 24-hour duty," Byrd said.

He said he and the other full-time personnel are paid a straight salary.

Alfalfa, corn and wheat are grown on the farm. Several classes grow cotton. Byrd said it is sold to bidders around the valley, but the farm doesn't try to compete with commercial cotton growers.

"We'd rather utilize our land for feed production for our livestock, and we do this on any land that's not being used for experimental or classroom work," said Byrd.

"The farm is not set up to be a profitable organization. In fact, there's no way an educational experimental facility can be a paying proposition. You're going to spend more than you bring in."

But the farm is not just for ASU.

Mesa Community College and Glendale

Community College use the farm for laboratory work. High school FFA groups (Future Farmers of America) frequent the farm in the afternoon, and the Girl Scouts hold a week-long day camp there each June, he said.

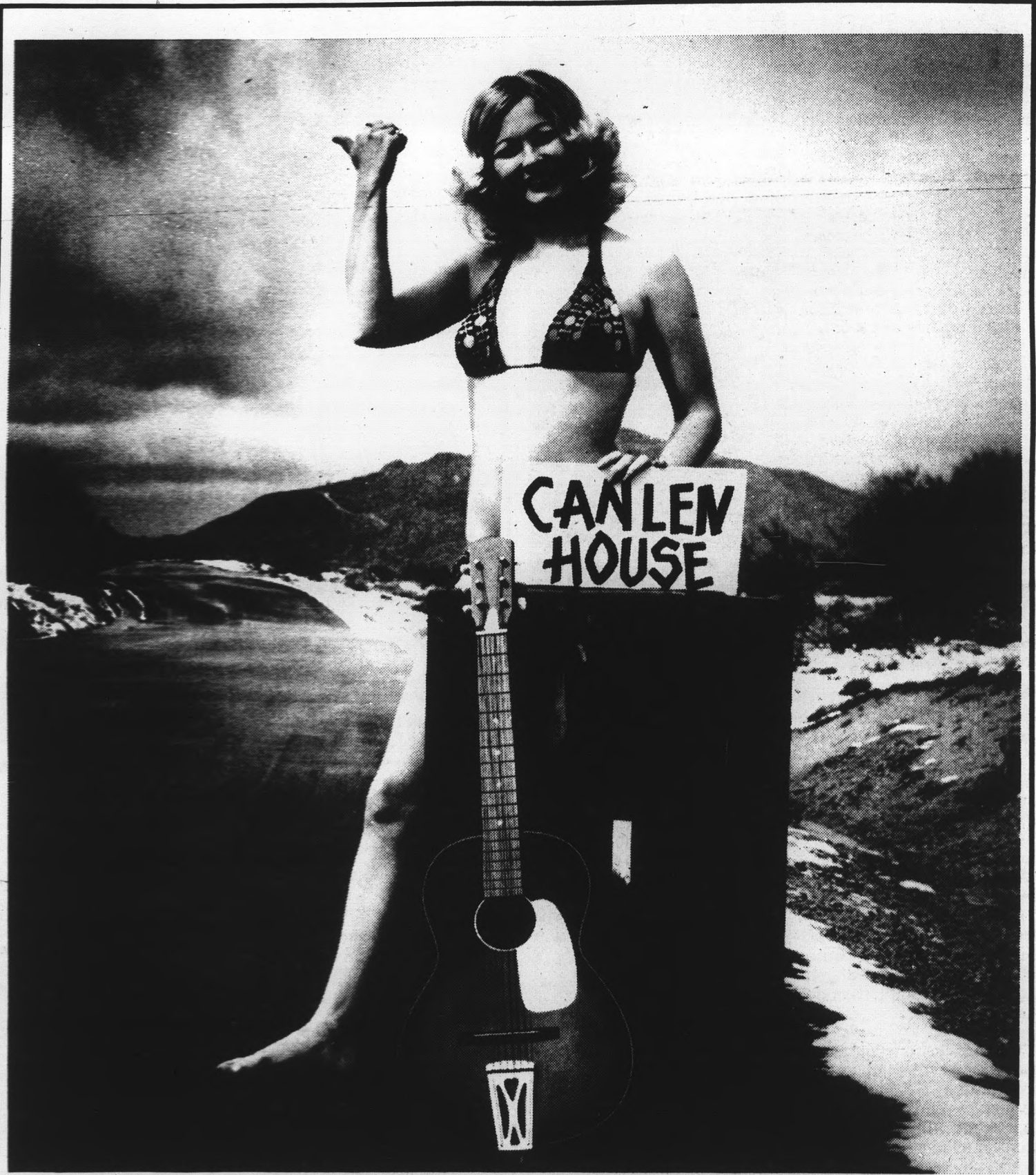
Tours are conducted twice a day for elementary school students. He said about 20,000 visit the farm each year.

ASU students have a "Fun Day" at the farm once a year, Chalquest said. It is

open to all students, and events are held in riding and livestock judging. About 200 students participated this spring he said.

Chalquest said the farm is being used as a model to see if farms and residential areas can exist side by side.

"I think most people like the idea of living next to green pastures," said Chalquest. But he said problems such as manure disposal must be solved before communities are likely to accept farms as neighbors.



CANLEN HOUSE

APARTMENTS · TEMPE

HERMOSA AND MILL AVENUE,
ONE BLOCK NORTH OF THE FREEWAY . . .
FOLLOW THE FLAGS — PHONE 968-8656

FROM \$145

Grade schoolers enjoy it



Photo by John Gherardi

Keep those eyes front

These elementary school students seem all but prepared to view the horse show at the ASU Experimental Farm in Mesa, yesterday. The farm, used by nearly half of the agriculture department's 2,000 students has tours twice a day for elementary school students. About 20,000 youngsters visit the farm each year.

"O.K., everybody keep seated now," said the voice over the speaker. The bailed hay stacked in rows in the two long wagons felt like pin cushions under us, but we obeyed. The old red tractor hitched to the wagons lurched into gear.

The scene was the ASU farm laboratory where Ron Forrest has been conducting 10 tours a week for the past three years.

"Most of the groups are first to fourth graders," Forrest said. "I don't like to have them older than that because the elder kids aren't as interested in the farm."

The passengers on this tour were children from Tavon School in Scottsdale. There were 50 first graders and 10 special education students. I felt rather conspicuous among them, but thankfully they were too fascinated with the farm to notice me. Except for Jerry.

"Where are we goin'?" he asked, tugging at my sleeve. I looked at the little person sitting beside me — his curly, sand-colored hair cut short, his face plump. I was about to explain when Forrest's voice cut in over the speaker at the front of the hay wagon.

"ASU's dairy cows are Holsteins," Forrest said. He proceeded to fill their minds with facts and figures about the black and white cows lying in the shade of their pens. The average cow weighs about 1,500 pounds, eats 36 pounds of hay a day, and is milked at noon and midnight, he said.

But the kids were way ahead of him. "Look at the billy goats!" screamed a voice behind me as we passed the dairy and stopped in front of the goat pens. I turned to find the source of that ear-splitting yell, and there sat Laura, face full of freckles and her rooster-red hair tied into pigtails with bright blue yarn.

"Do they give milk, too?" she asked. Forrest said goats furnish three quarts daily.

The old red tractor chugged ahead. "Is that green stuff lettuce?" Jerry asked me, wrinkling his pug nose as he squinted into the morning sunshine and pointing to an open field on our right. Once again Forrest saved me.

"We grow silage, wheat, barley, alfalfa hay and some cotton here at the farm," his voice cracked over the speaker.

"Uh, then that must be alfalfa," I muttered, trying to sound convincing.

We continued to circle the farm buildings, with Forrest stopping to explain points of interest along the way.

"Ooh! Pigs! That's what we smelled!" Kevin shouted as we approached the shaded pig sties. His name tag was cut in the shape of a rooster and he wore an Oakland A's sweatshirt and cap.

"Oink! Oink!" the other kids agreed as we moved ahead to the stables where a mare watched her chestnut-colored foal struggle to its feet.

"Do horses have names?" Jerry wanted to know. His question was answered as we passed the riding horses. There on each stall were hand-painted signs bearing such names as Babe, Buttercup, Daisy, Paul and Blaze.

But we weren't finished yet. We looped behind the riding stables to where beef cattle munched their feed, and then drove past the sheep and horses once more before our ride ended. It had taken half-an-hour.

As we climbed off the hay wagons, I turned to Jerry. "Well, did you like it?" I asked.

He paused and then grinned. "Yeah," he said, and raced off to catch the school bus.



APRIL SPECIAL

For both men and women. Students get in shape on a Students Budget.

For The First 25 To Enroll

1/2-OFF ONE YEAR MEMBERSHIP

\$55⁰⁰ TOTAL COST

MEMBERSHIP INCLUDES

- PERSONALIZED PROGRAMS
- for gaining and reducing
- Nutritional Consultation
- Finnish Sauna
- Ultra-Violet Sun Treatment
- Open 7 Days a Week

CALL OR COME IN TODAY

University Health Clubs


Tempe

Hayden Plaza East
1018 Scottsdale Rd.
967-7461

Phoenix

Hayden Plaza West
3147 W. Indian Sch.
266-6798

... the bull loves mixers...




Super Bull. Vodka and Schlitz Malt Liquor on-the-rocks with a lemon twist.

Bull Cooler. Schlitz Malt Liquor and any dry, white wine.

Spanish Bull. Shake up some Schlitz Malt Liquor, tomato juice, a dash of Worcestershire sauce and two drops of Tabasco sauce.

Look out for the Bull!

Nobody makes malt liquor like Schlitz. Nobody.



© 1973 Jos. Schlitz Brewing Co., Milwaukee and other great cities.

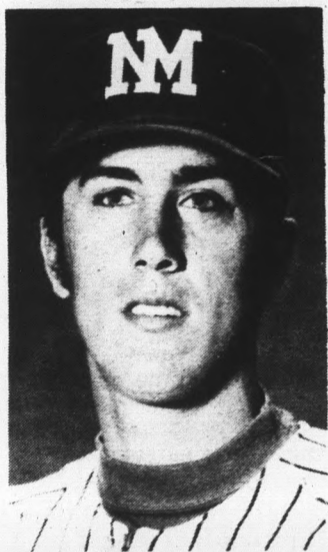
Devils wax wary of WAC ambush by desperate NM

By JIM FINN

Coach Jim Brock's Sun Devils, leading the WAC Southern Division with a 6-0 mark, will test their defensive rebounding skills this weekend as they host a New Mexico team desperately trying to bounce back into the conference race.

New Mexico, the major preseason hope to give the Devils a race for the WAC playoffs, is 1-5 in league play after losing three straight to Arizona in Albuquerque last week.

The Lobos were 22-3 and ninth



Arnie Marzullo . . . UNM's top pitcher

ranked nationally before bumping into their disastrous conference season.

Brock said he knows the Lobos are a better ball club than their WAC record indicates. "They're going to win quite a few games before this season is over," he said. "Whether they're so emotionally down now that they can't get back in it I don't know. They've just about hit bottom now, but we know they're a better ball club

and have the players who can prove it."

Brock said much of New Mexico's trouble can be traced to the loss of pitcher Arnie Marzullo, who was 4-0 and second in the nation in strikeouts before pulling a groin muscle. Prior to this week's games he had 51 strikeouts in 37 innings.

Marzullo has pitched only three innings in the last four weeks. Lobo coach Bob Leigh tried to use him against Arizona but the New Mexico ace walked the first six batters he faced.

Brock said the loss of Marzullo forces the Lobos into pitching their No. 2 man against the opponent's No. 1 man. The No. 3 New Mexico hurler then would have to go against the opposition's No. 2 man. The resultant disruption was apparent in New Mexico's first two WAC series.

Brock said he will start Eddie Bane (8-1) in the series opener at 8 p.m. tonight at Phoenix Municipal Stadium. Jim Otten is scheduled to throw in the afternoon game tomorrow (1 p.m.) with either Doug Slocum or Jim Umbarger working the night game (8 p.m.) Tomorrow's games also will be played in Phoenix.

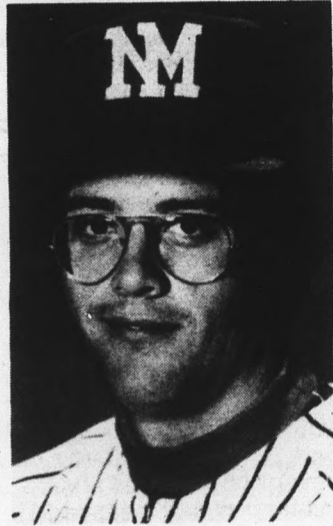
Marzullo or Ron Adair (2-1) probably will pitch against Bane with Rick Koch (3-2) and Don Miller (4-2) likely to throw for the visitors Saturday.

New Mexico, one of the top hitting teams this season nationally, has two regulars batting over the .400 mark in center fielder Dan Fitzgerald and catcher Gary Stewart. Fitzgerald also has stolen 22 bases and has 40 RBI's.

Brock's lineup for the series will be shaken up with Bump

Wills and Clay Westlake on suspension until next week. Jeff Oscarson will start at shortstop and Paul Moskau will take Westlake's first base spot.

Tommy Sain will be at third and Bill Berger, leading the WAC in hits, will be at second base. Dick Harris and Gary Atwell are solid at two outfield spots with leftfielder Dennis Kendrick still doubtful with a hand injury.



Joe Waid . . . leading WAC hitter

Clint Myers will catch and Brock can take his pick of Mike Kenneth, Mike Rawlings and several others for designated hitter.

The Sun Devils are in excellent shape for another division title with Arizona, at 3-3, the nearest rival. Brock said a sweep of New Mexico could finish the race since Arizona then must play catch-up. Even if the Wildcats have a chance at season's end they will have to deal with the Devils here at home.

state press sports

Wills, team council reach compromise

ASU shortstop Bump Wills and the team council came to a compromise yesterday concerning the terms of his suspension.

Wills, who was suspended Monday for disciplinary reasons, said Wednesday he was thinking about leaving the team if the council did not "slack up on its decision."

"I felt it was a matter of finding a compromise," Wills said yesterday.

The original punishment by the council and head coach Jim Brock involved a certain amount of running and missing games for a week.

The compromise reached was to have Wills remain suspended through Monday and run five miles yesterday and an hour before the games with New Mexico tonight and tomorrow.

Wills said the original punish-

ment by Brock and the council involved more running than the compromise does.

"I thought it was unfair that the council made the original punishment so harsh," Wills said. Wills added that Brock did everything he could to keep him on the team.

Brock could not be reached for comment.

College baseball rankings

ASSOCIATED PRESS

1. Southern California	489
2. Arizona State	487
3. South Alabama	483
4. Texas	482
5. Georgia Southern	479
6. (tie) Miami (Fla.)	475
Florida State	475
8. Vanderbilt	474
9. Southern Illinois	469
10. Tulsa	465

HORSES FOR RENT
PAPAGO STABLES
 ✓ HAY RIDES ✓ GROUP RIDES
 ✓ RIDING LESSONS ✓ GUIDES AVAILABLE
 ✓ GENTLE HORSES FOR BEGINNERS
 ✓ BOARDING

10 Percent Off to ASU Students Mon. thru Fri.
 966-9793
 626 E. Pima, Tempe
 North of Sun Devil Stadium

IN TEMPE . . .

Dairy Queen
 ICE CREAM - SOFT DRINKS

Call Us For Party Refreshments Discount To Churches, Schools And Civic Organizations

HORSES FOR RENT

RENT A PINTO!
 \$5 A DAY,
 5¢ A MILE!

FOR MORE INFO, CALL:

Allen Gaede
 Berge Ford
 Mesa, Arizona
 964-2921

For students and faculty 21 and over.

RENT-A-CAR

MR. HICKS
 OF EL PASO

"If you call us Hicks...you better say Mr."

LeSueur's
 MEN'S & BOY'S STORE
 18 West Main, in Downtown Mesa
 MON. TUE. WED. & FRI. 9 A.M. to 5:30
 THUR: 9 A.M. to 9 P.M.
 SAT. 9 to 5:30

Sains' family fosters athletes

Sun Devils boast brothers

By LEE PELEKODAS

Although he's not playing much this year, John Sain knows what's going on when it comes to baseball at ASU.

And thanks to John, younger brother Tommy Sain is learning very fast.

"I'll tell you one thing," Tom said, "it's great to have an older brother, especially on the baseball team. You can ask him questions and you know you'll get the right answers."

John, a 21-year-old outfielder, is a senior and in his third year of varsity baseball at ASU. He's nicknamed "The Stump" because of his husky upper body and "stumpy" legs. He's 5-7, 155 pounds.

Tommy, 20 next month, is a

sophomore infielder-outfielder and is a rookie to the varsity team.

Tom is team starter

Tommy has played more frequently than John this season which is an awkward position for any older brother, especially after starting for the two previous seasons. But John harbors no bad feelings about the situation.

"I'm glad he's playing," John said of Tommy. "I don't have anything against him. He made the ball club and he's a starter. I'm glad one of us is in there."

Tommy is currently the third leading hitter in the Western Athletic Conference with a .500 average.

But things haven't always

been as good for Tommy as they are now. Last year as a freshman he went through the ordeal of being John's little brother. John has always been noted as a hustler on the field and Tommy experienced some pressure to follow in his footsteps.

"Most of the pressure came from Jeff Osborn, the freshman coach last year" said Tommy. "We had a lot of conflicts. He expected me to be like John. He also wanted me to be loud, a rah-rah-type player. But I said no, not as a freshman. I'm really not that way anyway."

Big brother mediates

Big brother John tried to help straighten the situation out. "Ozzie's mistake was that he tried to compare us as players. I thought he was overdoing it a little. He got upset because I wasn't explaining to Tom how things should be done here."

John didn't want to have control over his brother. "I didn't take him by the hand last year. I just gave him suggestions and he followed up on them if he thought they'd be beneficial."

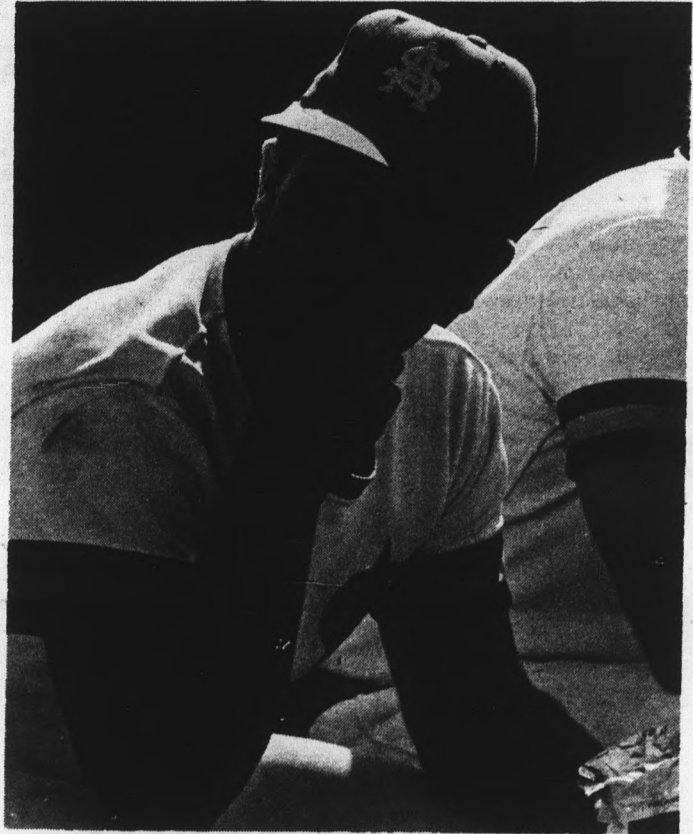
Hustles for big leagues

John's hard work and hustle may be the determining factor as to whether he gets drafted into the pro ranks after this year. He admits his size is a great disadvantage.

Tommy also stands under six feet at 5-10. But the Sains' lack of size does not affect their desire to play pro ball.

"It's always been a lifetime ambition to play major league baseball," said John. "And as a freshman in college, you still have that dream. But as you get older it's different."

"Last year I saw baseball isn't what it's really built up to be. When you have a semi-pro program that is run better than some pro teams, you know pro ball is hurting."



'If I didn't have a chew today, it would be the first time in four months.'

John was speaking of the Anchorage Glacier Pilots' semi-pro baseball program. He, as well as other members of the ASU team, has spent previous summers in Alaska playing ball.

Hopes for contract

"I really hope to sign after my junior year," Tom said. "When you look at Jim Crawford (a former Sun Devil) who didn't get a lot of money to sign and Al Bannister (another former Devil) who got a lot to sign, and Craw is in the bigs and Bannister isn't, it makes you a little more ambitious."

What brought Tom to ASU was a few words from John. "John told me I'd never find a better coach to help me step into

pro ball than (Bobby) Winkles. John influenced me more than anything. He wanted me to have the best in Winkles."

The regular baseball fan will more often than not see The Stump with a wad of chewing tobacco in his mouth during a game.

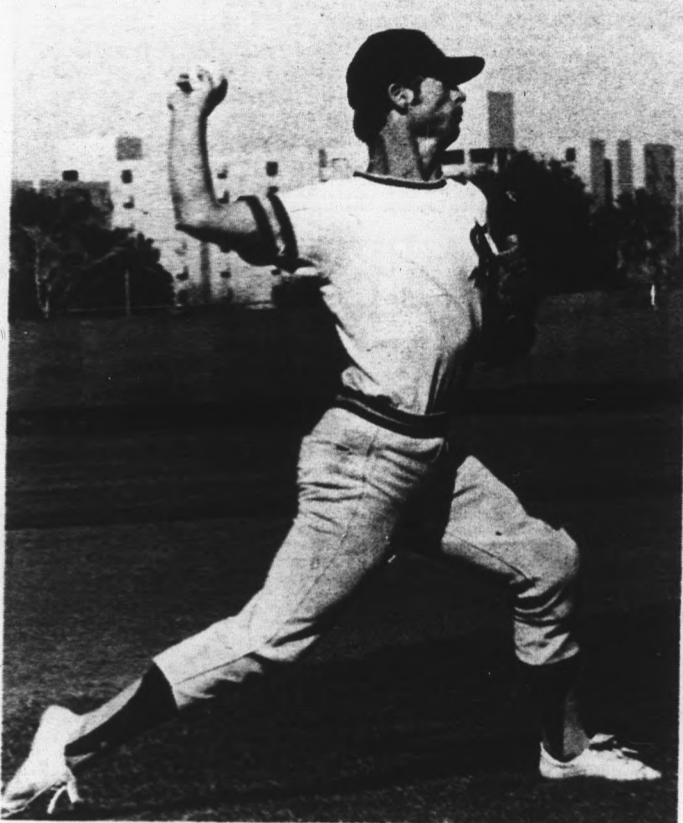
Many people wonder why he does it.

"It's compared to chewing bubble gum," John said. "It just helps pass the time away."

"Just like a habit, huh John?" Tommy asked.

"Oh ya, it's a habit," John said. "If I didn't have a chew today it would be the first time in four months."

The Sains don't hold too many records at ASU, but The Stump's perpetual chewing has to be one of some kind.



'It's great to have an older brother, especially on the baseball team.'

Golfers fifth in Cal

The ASU golf team had an opening round of 301 in the Western Intercollegiate Golf Championships Wednesday, good for fifth place, five strokes off the pace set by USC.

Two strokes behind USC is Long Beach State. Brigham Young and Fresno State are third and fourth in front of ASU. Arizona is at 302.

**PLAY WEE-TEE
MINATURE GOLF**

Your Choice of Two 18-Hole Courses



University Drive at Rural—Tempe
HOURS — 1 p.m.—12 midnight Daily Phone 966-8027
Sat., Sun. and holidays 10 a.m.—11 p.m.

PACIFIC MUTUAL

announces

A Career Opportunity . . . while you're in school

A chance to earn a substantial income and begin a meaningful and exciting career . . .

Leading to a position with Pacific Consulting Corp.

Call
MIKE SEARCY
967-8837 or 266-4435

**HERTZ
RENT A CAR**

ASU Students . . .

If you're over 18 you can rent

a Ford or other fine car at at

SPECIAL LOW WEEK-END RATE of

\$8.00 A DAY
AND 13c PER MILE

UNLIMITED FREE Mileage Rates

7 Days for \$119.00

or
Rent a Pinto for only \$79.00 a week

For Your Car, Call Your A.S.U. Representative

STEVE BLAGEN

967-9362 or 963-5786

Final home meet

Track team faces UTEP

The final home meet of the season for the Sun Devil track team is on tap this Saturday night when ASU hosts defending Western Athletic Conference champion Texas-El Paso at Joe Selleh Track.

The annual "Spring Fling" night at ASU will start with the field events at 7:30 and the running events at 8. All children, high school age and under, will get in free when accompanied by a paying adult.

The Devils, as a team, were idle last week, but selected athletes turned in seasonal bests on the West Coast.

The 440-relay team of Phil Chewing, Carl McCullough, Charlie Wells and Maurice Peoples lowered its mark to 40 seconds flat at the Trojan Relays in Los Angeles Saturday. In the same meet, Larry Lawson and Mark Rafferty lowered seasonal bests by posting identical non-winning times of 4:09.5.

Netters meet teams in match

The ASU tennis team hosts the ASU Invitational Tournament Friday and Saturday in Tempe.

The Sun Devils meet New Mexico State at 3 p.m. today. The Devils meet Mesa Community College and the University of Nevada tomorrow.

for the four-lap event.

Maurice Peoples demonstrated his Olympic form in winning the open 440 with a 45.9 clocking.

While the others were running in Los Angeles, Ed Zuck was at the San Diego Relays running his best time in the mile, 4:09.5.

The 440-relay is billed as the top race of the meet as the Miners of El Paso will provide a strong challenge. Their relay team has a time of 40.5 while ASU's best is 40.0.

Challenging Peoples in the 440 will be Jesse Kemp who has run 47.7.

In the 880, the Miners have Hollie Walton, who will be opposed by Bob Franeck or Ed Zuck.

state press sports

Citron's Surplus

Jefferson at 2nd St. in Phoenix for

- Navy denim searfer
- bellbottoms
- Tankers
- Back Packs
- Camping Supplies
- White & .13 Button Bells
- Parachute canopies

Other Miner standouts include Paul Pearson in the mile (4:08.7), Larry Brown in the three-mile (13:53.8), Neville Holness in the high hurdles (14.3), Hans Høglund in the shot put (65-1/2), Dennis Sledge in the pole vault (15-6) and Eddie Loughridge in the triple jump (50-8).

Høglund will battle ASU's freshman Ron Semkiw. Semkiw has a lifetime best of 61-4 3/4 in the shot and 168-2 3/4 in the discus.



Ron Semkiw

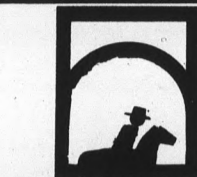
CARPET SPECIALS

9 x 12 used rugs-\$5.00

All Sizes In Stock

CARPET HOUSE

1516 E. Van Buren, Phx.



the baca grande

CORPORATION

A SUBSIDIARY OF ARIZONA-COLORADO LAND & CATTLE COMPANY

GIRLS & GUYS

EXCITING POSITION FOR YOUNG MEN OR WOMEN IN ONE OF ARIZONA'S LEADING LAND DEVELOPMENT ORGANIZATIONS — THE BACA GRANDE — LISTED ON THE AMERICAN AND PACIFIC STOCK EXCHANGES. WORK IN ATTRACTIVE DOWNTOWN SCOTTSDALE OFFICE.

\$2.50 PER HOUR
ASK FOR MISS ANN HOGAN
Call 947-7604 Mon. thru Fri.

CLASSIFIED ADS

Classified advertising must be paid for in advance either in person or by mail to the State Press, ASB 302, two days in advance of publication. No ads will be accepted over the telephone. Office hours are 8 a.m. to 4 p.m. Monday through Thursday and 8 a.m. to noon Friday. Phone 945-3457. Rate: \$1 for three lines and 30c for each additional line. 50 per cent discount for consecutive additional days. There will be no refunds for advertisements placed with the State Press.

● MOTORCYCLES

Hondas SL 175 and TR90. Low mileage, excellent condition, reasonable price. 967-2763. (4-20)

Bultaco 350. Desert Power. Many extras. \$550 or best offer single bike trailer extra. 966-4252. (4-20)

Honda 450cb custom seat. Only \$650. Inc two helmets face shields and extra tools 937-3218. (4-20)

68 Honda 65 cheap must sell call 966-0905 evenings.

● FOR SALE

Ovation classical guitar 3 mos. old \$340 new sell for \$250 or \$300 with case 1224 E. Lemon #156. (4-20)

Ampex 1455A open reel tape deck w/sos & echo, see it at my apt. 1224 William, by Woolco Pl. (4-20)

Good used books. Out-of-print search service. Dollar Sign Books. Alma School Rd. at University, Mesa-962-6257.

Stereo cassette tape recorder priced to sell quickly contact Rich Plynter after 5:30 p.m. 254-1705. (4-20)

SPOOLS all sizes now available finished or unfinished. Largest stock in area at the lowest prices call now—838-3762 or 834-1084 open Sunday also 9-5. (5-4)

Sale: couch, girls bike, reel-to-reel tape deck, am-fm receiver, tent, small desk, large mirror, appliances, kitchen wares, adding machines, and lots more. April 20-23 1717 Jen Tilly, apt. 228 Tempe 966-5767. (4-20)

● RENT

Duplex apartment in Mesa 1 bedroom unfurnished, front & back yard, livingroom carpeted, front and rear yard \$90 a month, pay your own utilities 833-1887. (4-24)

3br. townhouse completely furnished: contemporary decor \$320 month includes water available June 1 close to ASU 946-8009. (4-24)

1 bedroom home 6 blocks from ASU with large lot & many fruit trees. Available May 3 966-8071. (4-20)

One bedroom furnished all utilities included Pool, gas, BBQ laundry + storage facilities close to ASU, shopping centers, Coco's + University 1+2 lease terms Landmark Apartments. 929 E. Vista del Cerro, Tempe 966-8091. (5-4)

Need an apartment? Try La Paz. 1011 E. Lemon. Pool, laundry summer rates (run)

Mobile home 3 bed room completely furnished inc tv & stereo 5 min from ASU move in today \$150 total 966-5231 don.

Roommate needed pronto 2 bdrm 2 bath lots of trees furn \$91+ elec mo. before 8 am after 10 pm greg 966-2797.

3 bed rm 2 baths all elec kitchen pool enclosed patios carports carpeting Lotus Flower Apts south of Broadway on McClintock Tempe see Mng'r Apt. 16 or call 966-0147 \$215 per month. (4-20)

● WANTED

Roommates 3 bdr furnished house air cond by main post office on Southern Tempe \$65 month plus utility split 968-0055. (4-25)

2 female roommates—May 18-Aug \$57 monthly + food. Palm Villa Call 966-8357. (4-27)

Need fem rmmate for 2 bdrm unfurn at Windbell \$86 apiece after 3 967-0222/966-0505 Karen. (4-20)

Roommate—your half \$64/mo Bel Air Apts. — Move in now — pay rent starting Apr. 1 Rosie 968-5868.

Immediately female roommate will have own room \$47 pool utilities paid 1224 E. Lemon. Call 968-1409 after 3 p.m.

● SERVICES

Bicycles repaired at low rates flats fixed \$1 house calls any where Tempe south or the Salt \$1. Tuneups & minor repairs on motorcycles Frank 966-7395. (4-27)

Auto-tuneups reasonable prices work guaranteed! Call 965-2512 Scott or Jack. (4-24)

Professional typing IBM pica call 275-9165 Mrs. Dee. (4-20)

2 senior girls willing to 'house-sit' this summer. Contact 968-2388 between 6:30-10:30 p.m. (4-20)

Experienced editing, form and style. IBM Gothic or standard type. Near ASU 966-1684. (run)

● TYPING

Quality typing—reports, term papers, theses. Resumes composed Lora at 946-9157 or 947-8101. (run)

Professional typing, all kinds, near ASU 968-1544. (4-25)

Typing: former exec sec. Exp. student papers, statistics, eng. Karen 968-0488. (run)

Typing, 967-3675 Tempe. (run)

Typing—experienced, neat accurate, call Anne 946-4105. (run)

Professional typing. Term papers, Research, Reports, etc. Reasonable rates. 955-6047. (run)

PROFESSIONAL TYPING. IBM Selectric. Minor editing & corrections. Reasonable. NE Phoenix. 956-7983. (5-4)

TYPING—IBM SELECTRIC PICA TYPE, ROSEMARY VANCE. TEMPE 967-9143. (5-4)

TERM PAPERS, RESUMES, THESES DISSERTATIONS, PROFESSIONAL, GUARANTEED WORK, IBM. MAXINE MULLEN 955-0763. (run)

● LOST

Lost black billfold lost in library Monday April 9 Reward 965-2565. (4-20)

Lost girl's gold I.D. bracelet Saturday April 14 reward call 965-2798. (-24)

● INSTRUCTION

Want to learn piano (any style)? Want to compose? Experienced music grad teaches Classic, Jazz, Contemporary Improv. All levels, call John 964-6293 after 5.

Sport parachuting instruction. Licensed. 15 yr. experience US Parachute Service Mesa 965-3980. (run)

Ballet—beginners thru professional. Recommended for children, teens, adults and ASU dance majors. Qualified instructor: Mary Adams, LRAD, AISTD. Arizona Academy of Dancing. Tempe: Valley Fair, 95 E. Southern. Phx: 3802 E. Ind. Sch. (Run)

TUTORING—French & Spanish translation service. Call 968-2913 before 7:30 a.m. or nights.

● AUTOMOBILES

73 CJ5 Jeep 3000 miles V8 roll bar power steering 2 mos. old \$3500 1224 E. Lemon #124. (4-20)

65 Sprite. One owner car. \$300 965-2158 after 5. (4-20)

1969 Pontiac Firebird excell. condition \$1600 or best offer call 968-1845 evenings/weekends. (4-20)

1970 VW bus am-fm sunroof removable bed, stove, etc. \$1950/offer 959-8903. (4-20)

69 GTO exc cond 4 spd loaded low mileage best offer 945-8060. (4-20)

57 T-Bird very sharp new inter. 4 speed 70 eng all new or rebuilt must go by May 968-1990. (4-20)

1959 Rambler station wagon. Cheap, dependable. Make offer 803 W 1st St. #D Tempe, evenings.

● ANNOUNCEMENTS

April 28 is the single graduates first anniversary come and help us celebrate with dancing and refreshments live music by the Open Road Desert Hills Banquet room 8-1 donation \$1.50. (4-27)

Shabat dinner and program "What Crucified Jesus" April 20 dinner 6:30, program 8:00 call 966-5371, Hillel, for reservations. (4-20)

PRIMAL SCREAM! group sessions. By appointment only. Donation \$4. Tues.-Sat. 7:30 p.m. 244-1896. (4-20)

● HELP WANTED

You can operate your own business exciting way to spend summer or start a career phone 992-2674 for appt. (4-20)

Part time, full time summer jobs, opportunity for good earnings plus education scholarships. Call Bob Ross, 964-5633. (run)

Photographer needed for next semester. Beautiful new facilities call 965-3656, 965-3657. (run)

Waitresses full or part time nite work only apply now for summer job at Fridays & Saturdays 825 N. Scottsdale Rd. Weekdays between 10 am and 2 pm. (run)

Don't Drop Out

DROP IN

Coin Operated — Self Service

Highest Quality

Gasoline



915 EAST 8th STREET

WEEKEND

state
press

Friday, April 13



Story and photo by Steve Carr

Reddy wants youth dialogue

Ask her anything, but keep it light

FLASH — Helen Reddy smokes cigarettes!! (will wonders never cease?) A rather inane statement, but when considered in context of the press conference she held Wednesday, the information is both fitting and educational.

Reddy, who appeared at the Civic Plaza the same evening scheduled a conference that afternoon for local high school newspapers. Also present were a KOY representative and one from the STATE PRESS.

According to a spokesman from Capital Records, Reddy has become bored with the typical interviews handled by publications in the big-wonderful world. She wanted to speak with the young people, those who "knew about her."

Also in the interest of her young admirers, she refused to have her picture taken with a cigarette in hand.

So there I sat, primed and ready to shoot questions at her pertaining to her interest in parapsychology and her belief that in another life she was a Catholic priest (information gleaned from reviews, interviews and biographical sketches)

"Ask her anything you want," the capital spokesman repeated to each and every reporter to appear.

O.K., so I asked.

And O.K., she refused to answer the questions about parapsychology.

And as we sat in a semi-circle surrounding the Australian singer, who has spent seven years in the U.S., she answered questions relating to tips for those who want to enter show business, among others.

The conference was handled in a democratic manner allowing each reporter to ask one question until the circle was completed. This continued four times around until we were all queasy from dizziness.

As the questions spewed forth like lava from a sluggish volcano, my mind whizzed and whirred in anxious anticipation for the next big chance to pose a question.

I was ready, greased and oiled gears in my brain had prepared me for the big test. My time approached and when two people stood between me and my

question, I, through some unexplainable devilish influence blurted out, "Will you be going back to Australia soon?"

Out went the words, and oh how I wanted to reinhaled them again. For as she answered "Yes in November," she added, "and you just blew your turn for your next question."

Oh, dejection.

Like a thousand anchovies grumbling from my innards came the overwhelming feeling of total sickness.

I blew it.

Somewhere amid the confusion of the varied questions, I managed to glean information pertaining to Reddy, the individual.

Referring to her acceptance speech at the Grammy awards, ("I would like to thank God because she made all this possible, she said "I wanted to say something very brief that would thank you (the listeners) and get in some licks for my sisters."

She further qualified the brief thank you by admitting "God is a spiritual being, without form and therefore sexless."

The petite shag haired blond said the male chauvinism problem in Australia far exceeds the complaints of women in America.

"There is more polarization between the sexes and more male chauvinism," she said. But later admitted that "Men are discriminated against in our society," as her three month old son groaned in agreement from his infant seat resting on a nearby desk.

Reddy is also the mother of a little girl.

"I would love for my daughter to be a feminist," she said, "But she is only 10 years old."

Reddy also sympathizes with the gay liberation movement. She compared homosexuality to the outcasting of lefthanded individuals years ago, a truism necessitating disproving.

"In time we will come to see homosexuality as nature's way of population control," she said.

Following that statement she left, amid the young high school girls admiring comments and visions of future stardom.

A fairy tale

Opera represents Masonic symbolism



Papageno the Birdcatcher, right, played by Paul Yoder, has just found Pamina, played by Cathy Grosberg, in a scene from the ASU Lyric Opera Theatre production of "The Magic Flute."

Mozart's romantic fairy tale opera "The Magic Flute" will be presented by the Lyric Opera Theatre at 8 p.m. today, tomorrow, Wednesday, Friday and Saturday, at the ASU Music Theatre with a few adaptations.

Aside from its romantic nature, the opera has a religious and political significance. Composer Mozart was a Mason and he has incorporated Masonic symbolism into the opera.

Mary Robert, director of the programs, said, "We are not following Masonic rituals in our version. Instead, we have substituted such symbols as the scales of justice, a book of wisdom and various sun symbols, in an attempt to universalize the philosophical impact of the story."

Robert has also taken the liberty of changing some of the dialogue which she said contained anti-feminist implications.

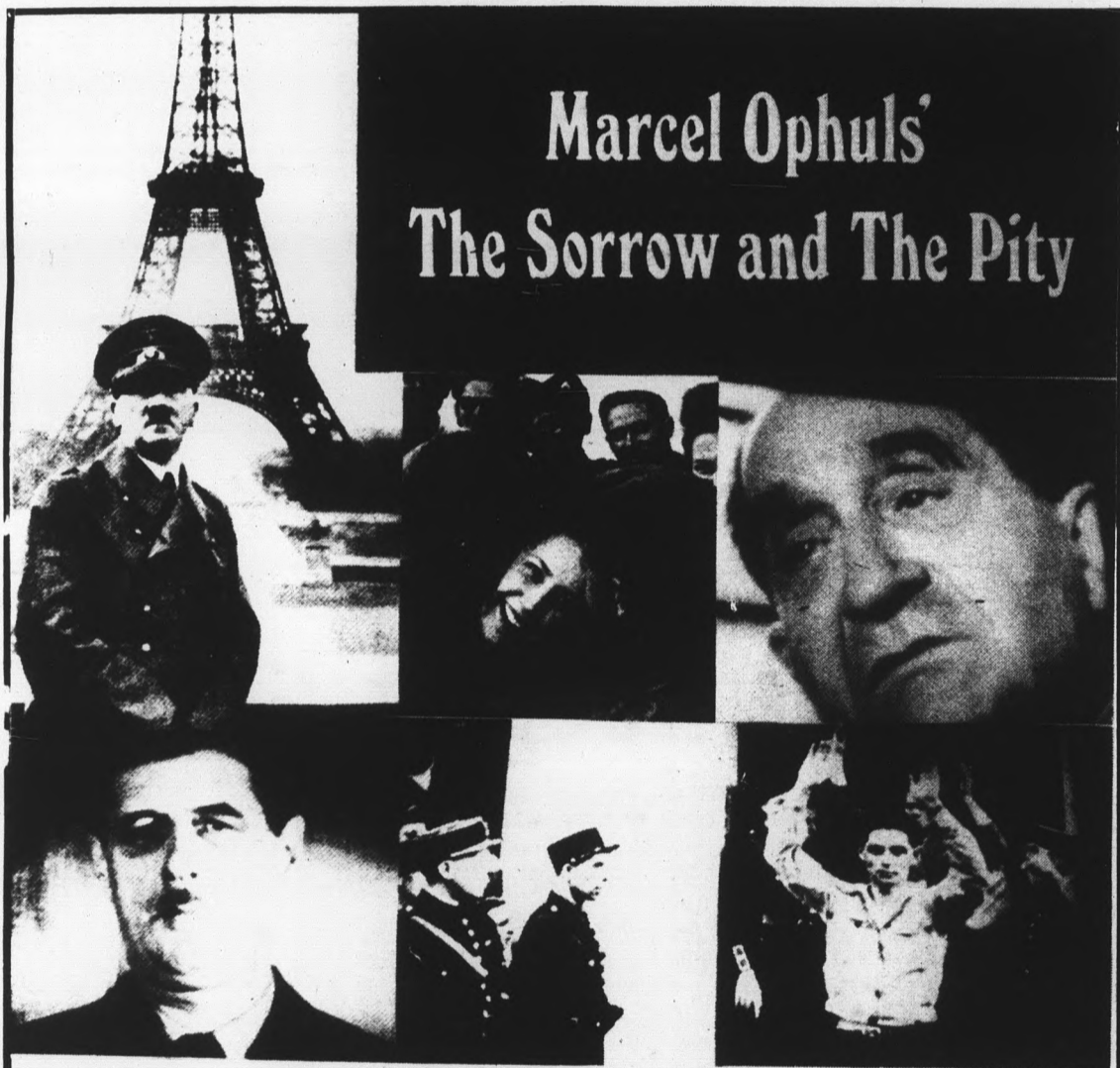
She said several other Mozart works reflect a similar attitude. The women are either shallow and silly, gullible, or gossipy, she said.

In "The Magic Flute," the character of the Queen of the Night is first portrayed as being good. She becomes abruptly evil as she attempts to rule without a man to support her.

"It seems to me that such portrayals of women are out of place today," said Robert. "Since 'Magic Flute' is a songplay with a lot of dialogue, it was possible to alter some of the spoken lines without changing the musical portion."

The 40-piece orchestra featured in the opera will be directed by Dr. Kenneth Seipp ASU music professor.

Tickets for the show are \$1 and \$2 with student ID, or \$3 and \$4 without.



Marcel Ophüls' *The Sorrow and The Pity*

The Arizona Premier

Presented by

ASASU Cultural Affairs Board

ACADEMY AWARD NOMINATION

Best Documentary

With English Voice Translations

Neub Hall — 6:30pm

Friday April 20

'Dead at Forty' depicts life of Lenny Bruce

"Dead at Forty," a one-man play of episodes from the life of comedian Lenny Bruce, will be presented by the Do It Now Foundation at 8 p.m. April 29 at the Odyssey.

Profits from the play will go toward financing the foundation's "Weekly Dope Report" which is a recorded telephone message giving callers information on bad dope circulating in the Valley area. The non-profit organization promotes street drug education.

Michael Burkett will play Lenny Bruce in the presentation adapted from Bruce's night club acts of the 50s and early 60s. The script describes his career through his drug experiences, personal problems and death from an alleged overdose.

Tickets at the door are \$2.

ASASU CULTURAL AFFAIRS BOARD
Art. Camp & Classic Film Series

Louis Malle's
THE THIEF OF PARIS
with: Jean-Paul Belmondo
Genevieve Bujold
Saturday — 6:30pm

CANCELLED
King of Kings

ALL FILMS SHOWN IN NEUB HALL
SHOWTIME IS 6:30 P.M.
OPEN TO STUDENTS, FACULTY, AND STAFF

Block fair features DeGrazia collection



Ted DeGrazia

Phoenix sneaks a view

By RUSTY FOLEY

Most likely, those nervous girls milling around the University Theatre lobby, clutching pens and paper were waiting for ex-Beatle Ringo Starr.

But the autograph of singer-songwriter Harry Nilsson would suffice, if Ringo, more widely known in the junior high school circle, didn't show.

He didn't, but Nilsson was there along with several business associates to check out a film previewing at the University I Theatre. Both he and Ringo had worked on the film.

Theatre management was being careful. This interviewer was ushered into the manager's office, a tiny, stuffy room cluttered with file cabinets, desk and film schedules taped to the very dull white walls.

Inside the office, Nilsson was finishing a concession stand hot dog.

Standing in the box office he looked a little like the 'Midnight Cowboy'. He's tall, and his blond hair, falling over his ears, was crunched lower around his neck by his beat-up black felt

cowboy hat.

Hillary Gerrard took Ringo's place. He said Ringo was in the middle of a recording session with George Harrison and therefore couldn't be in the Valley.

The same rumor predicting Nilsson and Ringo might show at the sneak preview suggested they were looking at the audience reaction to the movie—a movie that was supposed to be a little bit different.

What kind of reaction were they looking for?

"Positive," he said.

"We wanted to get away from the Hollywood predetermination."

The film has yet to find a distributor and, Nilsson said, in Hollywood there is a tendency to judge a film by who is involved rather than on the merits of the film.

"The movie, he said, "is a horror, musical-comedy."

"On the other hand, it's not a musical, it's not a comedy; it's not horror. It is a total of what it's not.

Continued on page 16 ●

Artists in various mediums, musicians and theatrical presentations will be featured at the second annual Valley Block Fair scheduled from 12 noon to 9 p.m. today and from 10 a.m. to 10 p.m. tomorrow at the Phoenix Civic Plaza.

The fair is sponsored by the Block, a community service group of high school and college students.

Outstanding among the fair events is the first showing of Southwestern artist Ted DeGrazia's de Vaca collection.

The 53-piece collection has been "in the works" for 15 years. It depicts the travels of Cabeza de Vaca, who is credited with being the first white man to set foot in Arizona in the early 1530s. He was a member of an expedition which set out from Florida in 1526 to explore the land between the North American boundary of Spain's land holdings and their colonies in Mexico.

Students from Prescott College will demonstrate mountain climbing techniques as they rappel from the top of Symphony Hall to the ground at various times during both days.

Rappelling is a means of descending steep mountain faces with the aid of a rope.

The team is part of a group which is involved in white water kayaking, mountaineering, navigation and mountain rescue.

Connie Warner, one of the founders of the Block and a senior at Camelback High School, said, "The goal of the Block is to make some contribution to the community. We feel we are old enough and capable enough to make a real contribution."

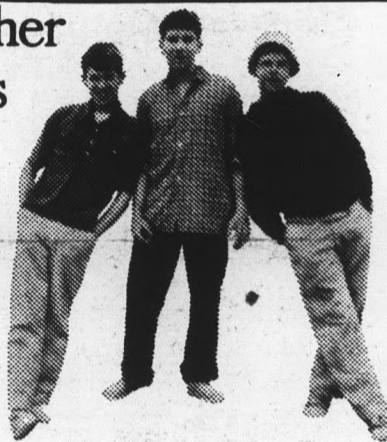
The fair is one of many activities of the Block.

The group has distributed bins to the high schools for tin can refuse as part of its ecology program. The school receives money from the sale of the recyclable cans with a percentage of the money going to the Block.

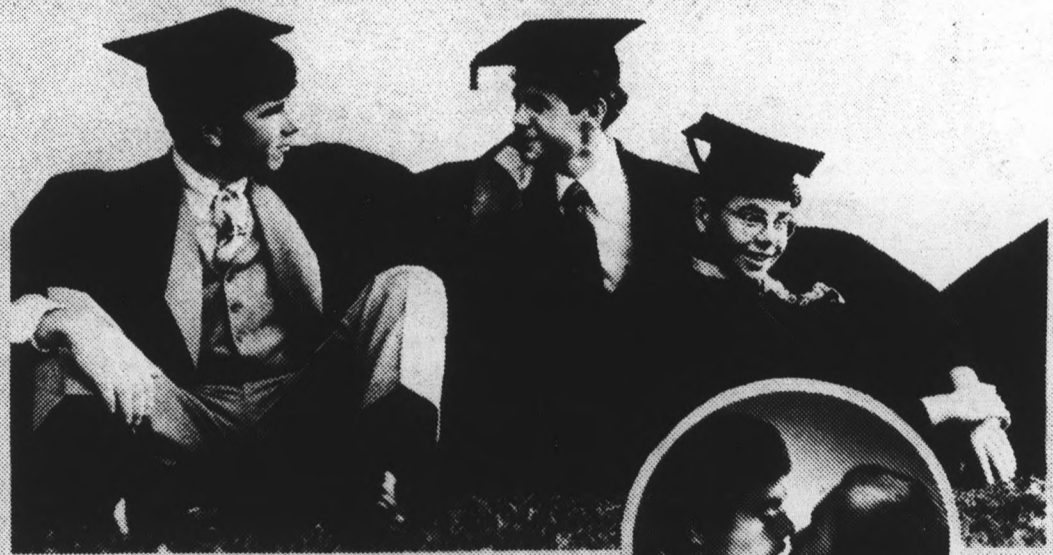
Block members are also involved with the Phoenix Art Museum, the County V.D. clinic and in establishing college scholarships for Valley students.

Admission is free to the fair, which has been coordinated through the efforts of the Block, the Valley National Bank, the City of Phoenix, and various high school students and organizations.

The further adventures of Hermie, Oscy and Benjy.



They've come a long way since that summer of '42!



Class of '44

Starring GARY GRIMES · JERRY HOUSER · OLIVER CONANT and DEBORAH WINTERS

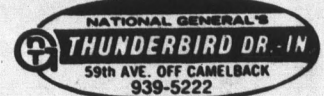
Executive Producer HARRY KELLER · Written by HERMAN RAUCHER

Produced and Directed by PAUL BOGART · Music by DAVID SHIFF · Celebrating Warner Bros. 50th Anniversary · A Warner Communications Company

TONIGHT TODAY

KACHINA

AT TWO THEATRES!



Co-Hit — T-Bird Only

"LAST SUMMER"

UNIV. NO. 2

Broadway East of Rural Tempe 967-7957

"That 'Hamilton Bitch'? Well, perhaps I am. But I'm the woman he wants!"



Admiral Nelson and his Lady Hamilton... and the love that defied the world!

A HAL WALLIS Production
Glenda Jackson · Peter Finch
in "The Nelson Affair"

Anthony Quayle · Margaret Leighton · Dominic Guard · Nigel Stock

Michael Jayston as "Captain Hardy"

Screenplay by Terence Rattigan · Based upon his play "A Descent into the Maelstrom" · Directed by James Cellan Jones
Produced by Hal B. Wallis · A Universal Release · Technicolor

SHOE TIMES WEDNESDAY
Nelson Affair — 6:30-8:40

This Weekend

FRIDAY: Peter Sellers and Ringo Starr in the "Magic Christian" will be at the Valley Theatre, 509 Mill Ave., at midnight.

Sponsored by KICKS Unlimited, Peace and Love Festival '73, starring the O'Jays, Main Ingredient, The Chi-Lites, the Detroit Emeralds, the Moments and Milly Jackson, begins at 6 and 10 p.m. at the Phoenix Civic Plaza. Tickets are \$5 and \$6.

"The Magic Flute," presented by the ASU Lyric Opera Theatre begins at 8 p.m. tonight and tomorrow in the ASU Music Theatre. Tickets, with student ID, are \$2 and \$1.

The Block Fair, featuring artists and their mediums, begins at 12 noon and runs to 9 p.m. at the Phoenix Civic Plaza.

ASU University Players will present "The Country Wife" at 8 p.m. in the Lyceum Theatre. More info at 965-3437.

SATURDAY: "Bonnie and Clyde" will show at the MU Movie House at 7:30 and 9:30 p.m. Admission is 75 cents and tickets will be sold at the door.

The Block Fair continues today beginning at 10 a.m. and continuing until 10 p.m. "The Sorrow and the Pity" will show at Neeb Hall. Admission is free for this documentary on the days of the German occupation of Paris. Persons

who lived through this era relate their experiences for the film. The movie is in French and German with English voice translation. The movie is four hours and 20 minutes long. It has been acclaimed one of the best documentaries produced.

And at the MU Movie House "Gimme Shelter" shows at 7 and 9 p.m. This flick documents the infamous 1970 U. S. Rolling Stones' tour. It includes the Altamont killing at the concert, where security was supposed to be enforced by Hell's Angels, oddly enough. This is supposed to have signaled the end of the Woodstock spell over the counter-culture.

Composer-performer Curtis Mayfield will be in concert at 7 and 11 p.m. at the Celebrity Theatre 32nd Street North of Van Buren. Tickets are \$3.50, \$4.50 and \$5.50. Special guest is Freddie King.

SUNDAY: The ASU Women's Center will have an open forum meeting at 7:30 p.m. in the MU Pinal Room.

Newman Center sponsors car rally

An endurance open class car rally is being sponsored by All Saints Newman Center at 10 a.m. April 28.

A prize of \$20 will be offered to the winner.

Participants can bring a picnic lunch and soft drinks will be provided.

The rally will originate at the Center at 230 E. University Drive and end up at a Tempe park. The park has not yet been decided. For more information call 967-7824.

Movie previews in Valley

Continued from page 15

The name of the film is "Son of Dracula."

Nilsson has the title role. He wrote the music, too.

Ringo Starr produced the film and makes the most of his role as the immortal wizard, Merlin. He spends his time pouring over astrological books, toying with his scientific machinery and spouting platitudes.

They chose Phoenix for the sneak preview because of its proximity to Los Angeles.

But, asked this interviewer, Phoenix has so different an atmosphere, is Phoenix representative of the rest of the country?

"We worried about that, but then it might do better in places other than L. A. So maybe Phoenix is a bad place."

Someone piped in, "I don't think L. A. is typical."

"Jaded," said someone else.

By this time, it was close to 8:30, time for the picture to begin. Those in the crowded

office were getting ready to go outside.

Gerrard, Ringo's associate, had eagerly shoved clippings into my hands from the London papers concerning Ringo's movie, "That'll Be The Day."

"They're raves," he said delightedly.

"Ringo does films because he enjoys them," he said describing Ringo's periodic movie roles.

Outside, clusters of those nervous girls clad in high-rise baggies and potholder vests, or hip huggers and Army jackets, huddled together, struggling, with the moral support of their bored boyfriends, to get up enough courage to approach Nilsson for an autograph.

He stood in the middle of the lobby with his thumbs hooked in his pants pocket.

"Should I . . . should I?" asked one girl with long straight hair, looking like all the rest of the girls with her.

"Oh, go ahead," said her

boyfriend with shoulder-length hair and dressed in jeans.

The movie was just as Nilsson said it was. "The son of Dracula meets a girl, falls in love, agrees to give up biting people and they go off into the sunset together—to the accompaniment of seven of my tunes."

The movie is high camp, a very refined version of the Beatles' "Help."

As actors, Nilsson accurately described himself and Ringo as not good, but not bad.

As might be expected, as soon as the film was over those girls found courage and slowly, but surely, a crowd gathered around Nilsson, right in the theatre aisle.

My job was through, but as I walked out of the theatre, Gerrard came rushing after me and demanded an "objective opinion."

I told him: just a lot of fun. "Well that's what we were trying to do—just make something that was fun."

"**** BOLD AND BRASSY,
BRUTAL AND BRILLIANT!"
—New York Daily News

**WARREN
BEATTY
FAVE
DUNAWAY**



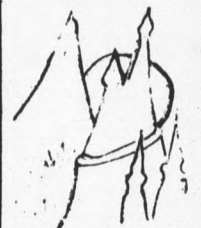
BONNIE AND CLYDE

"FROM START TO FINISH THE FILM WAS
ENGROSSING, FASCINATING AND MAGNIFICENTLY MADE!"
—Newsday

MOVIE Place: MU Moviehouse
Time: 7:30 & 9:30 p.m.
Date: Saturday, April 21
Admission: **75¢**

TICKETS SOLD AT DOOR

MIDDLE EARTH

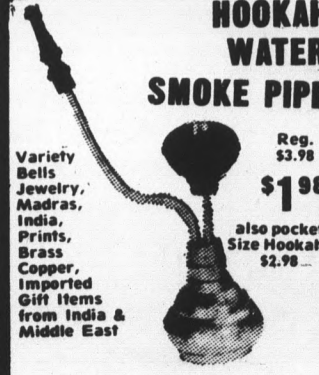


Goldcraft
Handcrafted
Gold Wire
Jewelry

Open Mon.
thru Sat.

21 E. 7th St., No. 7, Tempe

HOOKAH WATER SMOKE PIPE



Reg. \$3.98
\$1.98

also pocket
Size Hookahs \$2.98

Variety
Bells
Jewelry,
Madras,
India,
Prints,
Brass
Copper,
Imported
Gift Items
from India &
Middle East

**ARABIAN
BAZAAR CO.**
3957 North Brown Ave.
Scottsdale — 945-7713

Free incense with each purchase!

Open up



Make the most of it!

ANHEUSER-BUSCH, INC. • ST. LOUIS