

### Liberal Arts' funds cut

By BILL ROSS  
Staff Writer

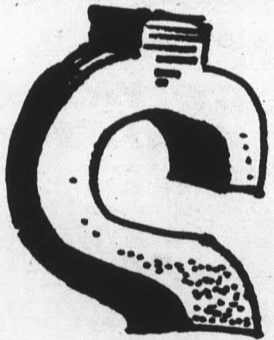
Decreases in federally funded grants to education may force cutbacks in some ASU programs, said George Peek, dean of the College of Liberal Arts.

"This will lessen the possibility of research accomplishment in many fields, including microbiology, social service and psychology, Peek said. "Humanity will be the loser."

Peek said agencies reducing grants to universities include the Department of Health, Education and Welfare (HEW) and the National Science Foundation (NSF).

The cutbacks are partly the result of slices in the Nixon Administration's budget and impounding of funds appropriated by Congress.

"Hopefully, Congress and the public will demand that certain programs be reopened," Peek said.



"While it is good that the country is taking a hard look at its appropriations to education and trying to economize whenever possible, the nation mustn't be too severe."

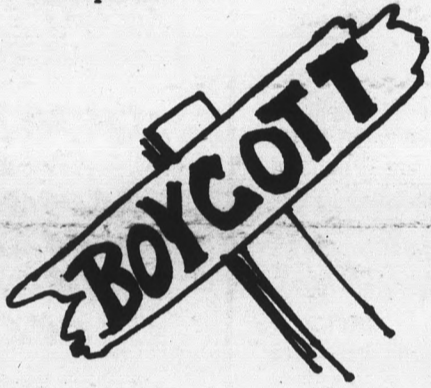
Peek said cutbacks may harm numerous ASU programs. Federal support for the purchase of research equipment in zoology has been eliminated, he said.

Continued on page 2

### Boycott hurts grocers

By RUSTY FOLEY

Tempe grocers are feeling the effects of the three-day-old meat boycott, but they say the boycott will backfire and raise rather than lower meat prices.



The boycott, which began Sunday, is being spearheaded by housewives who are feeling a pinch in their budget due to the highest meat prices in history.

"Over the past several weeks we've had a 10 per cent drop in meat sales. Since Sunday, there's been a 25 per cent drop," says William Stobaugh, manager of the Safeway store at 926 E. Broadway.

As a result, his store is supplying meat as needed rather than ordering a week's supply, he said.

John Kanter, manager of the El Rancho store at 929 Mill Ave., said there has been a considerable drop in meat sales at his store since the boycott began.

However, he said, "Last week our sales were double what they usually are. People just stocked up. I don't know who they're kidding by boycotting."

Prices will go down if the boycott lasts, said Chuck Sharpe, employe public relations manager for Safeway Stores Inc.

Continued on page 2

### Heavy traffic slows Mill Ave. businesses

By JOHN LEHOCKEY  
Staff Writer

The parking ban on Mill Avenue has cost merchants a lot of money. And it will continue to do so.

Jack Alves of the Inner Sanctum said he has never seen business so bad. "I can understand the city's problem, but my business is really hurting. We've had a considerable loss already," he said.

Alves said he received little warning from the Tempe Police Department before they placed the ban on parking. "An officer came in 20 minutes before they put up their signs. He was very polite, but we could have used a little advanced notice," he said.

Harvey Friedson, Tempe traffic engineer, made the decision to limit the parking along Mill Avenue. He said the important thing was to move traffic.

volume is way down. We have to sit here and watch an empty store."

Schwarze said the traffic was the main problem rather than the parking ban. "Traffic, not the ban, is hurting us. No amount of drawing power is going to make people come in and fight the traffic," he said.

Alves said the problem was the lack of municipal parking in the area.

"The Mill Avenue Merchants Association has been dealing with the city for some time in an effort to establish municipal parking.

"The parking is not just needed for us, it's needed by the city employes as well," he said.

A spokesman for the Tempe Chamber of Commerce said all the merchants in the area are suffering from traffic problems.



"It's not a question of whether it will hurt their business, it obviously does. The question is, do we move the traffic or don't we?" he said.

Other merchants complained about business slowing. Steve Schwarze of Jean's West said "it's shown us that most of our customers come into the area by car. Our

"Tempe Center and even Los Arcos are losing business. We had a call from one owner in Hayden East Plaza. He was more than a little disgruntled."

"When the business that usually comes from Mesa is cut off from the shopping centers, it really hurts them," he said.

# Last day for primary vote

Page 2

# Last chance to vote

Today is the final day to vote in the ASASU primary elections.

Yesterday, voter turnout was light, but constant, said Manuel Figueroa, elections coordinator.

All voting will be in the library moat on the south side of the building. Students must have a validated campus service card to vote. Photo identification is required if no picture ap-

pears on the service card, Figueroa said.

Poll hours are from 8 a.m. to 8 p.m., he said.

Figueroa said the voting procedure takes about seven minutes.

## • federal funds cut Continued from page 1

The Latin American studies program may be curtailed because of lack of funds to pay visiting lecturers. Researchers in the psychology department will not be able to continue to hire teaching assistants, Peek said.

Federal support for graduate programs has been cut, but won't seriously affect ASU, said William Burke, vice president of the School of Graduate Studies.

In 1968, there were 138 ASU graduate students receiving aid from federal fellowships, Burke said. This year there were only 37. Next year only 16 students will receive funds from these programs, and by the 1974-5 academic year, the program will have been phased out completely, Burke said.

Cutbacks will affect graduate research in urban transportation, air and water pollution, cancer and health care, Burke said.

"But we are optimistic," Burke said. "We hope to maintain our programs without federal support."

"We at ASU were not badly hurt because we never received more than 15 per cent of our funds from federal programs," Burke said. "Many major universities were harder hit, and in a real sense this has benefited ASU because we have been able to attract outstanding talent from some of those schools."

ASU will be able to make up the lack of funds by receiving extra money from the state and from private grants, Burke said. "Nevertheless, we are still searching for money to compensate from the loss of federal support."

Other cutbacks in aid may force stipends for faculty and students involved in research to be stopped, said Horace Lundberg, dean of the Graduate School of Social Services Administration.

## • meat boycott Continued from page 1

"We submit our needs to bid and buy from the lowest bidder. The prices of the people we buy from will be affected," he said.

Dr. R.G. Lytle, ASU associate professor of agriculture, explained the effect of the boycott, "Buying less meat tends to push prices down, but in the long run it will limit production."

Retailers won't need as much meat and neither will wholesalers. Eventually the farmer will not need to produce as many animals for sale, he said.

The boycott and reduced meat buying in general has

affected the butchers, Kanter said.

"Our company has laid off about eight employees. The boycott has not only hurt prices, it's affecting employment."

"I'm concerned about prices, but the boycott is not going to help. It's the price of grain that's going up too. I mean even the birdseed we sell has gone up from 45 cents to 65 cents in just two weeks," he said.

Kanter and the boycott organizers are in agreement on one issue — Nixon has not handled the problem the way they think he should.

Kanter said, "The president could have

stopped rising prices a long time ago. It's not right to be selling grain to the Russians and then charging your people higher prices for meat."

Nixon's price ceiling on meat for packers, wholesalers and retailers serves no useful purpose said Lauri Risch, an organizer of a boycotting group called Beef Against Meat (BAM).

In spite of the ceiling, BAM is going ahead with its plans for picketing and boycotting. They are also circulating petitions supporting the boycott, said Risch.

# Red White & Blue Grass

### Holiday Dinner

SUN DEVIL LOUNGE PROUDLY PRESENTS THE RETURN ENGAGEMENT OF RED WHITE & BLUE GRASS, LAST SEASON'S TOP GROUP.

FOUR SHOWS NITELY 9 P.M.-1 A.M.



RURAL ROAD AT APACHE TEMPE • PHONE 968-3451



THE SUPERMARKET'S

# Spring Sale

THE CLOTHING STORE ON MILL AVENUE HAS 40% OFF MOST EVERYTHING!

## JEANS: 1/2 PRICE

OVER 2500 PAIRS... FAMOUS MAKER... FIRST QUALITY... INC: LOW WAIST... BAGGIES

## SWEETS: 40% OFF

SPORT & DRESS FAMOUS MAKER LARGE SELECTION



## LEATHER COATS: SAVE 40%



SEUDES SPLIT COWHIDE DRESS LEATHERS

## PLUS:

ALL KNIT SHIRTS... PULLOVER KNITS... SWEATER KNITS... TURTLE NECKS... & SKINNY RIB KNITS

## 40% OFF



# Supermarket

514 MILL AVE. TEMPE

3/17 - J. H. H. H.

**No canoes, rafts**

# Sheriff restricts boating

By TOM LAWSON

The Maricopa County Sheriff's Department said they are discouraging any canoeing or rafting on the Salt and Verde Rivers.

It said the three persons rescued Sunday never should have been on the river. The department took five hours to rescue the stranded persons.

"We didn't want to risk other people's lives. Our efforts were based on logic; you don't want to kill the rescuers, too," explained Lt. Osborn Morris, commander of the Mesa area. "Quite frankly, they shouldn't have been on the river. We are discouraging anyone from going into that water on any kind of craft because it's so treacherous.

"It's extremely dangerous just because it's

so high right now. The current is very swift, creates whirlpools, not to mention the health hazard. The water is very dirty, from going through sewage systems and things like that," he said.

Morris said the sheriff's department is also going to strictly enforce state boating laws, which state anything that floats is required to be registered.

In Sunday's accident the department sent for a boat, but they do not have boats made for rescues on the river.

"We have seven boats that we keep on the lakes. We really need some smaller boats for the river. But we never needed them before because the river was dry," he said.

The Salt and Verde Rivers are unsafe at all points right now, he said. Even expert swimmers and canoeists should stay off the rivers.

"I wouldn't recommend anyone going out there, I don't care how expert they are. I don't think an expert would go out there, he'd be too smart to do that," he said.

"We've had three people drown trying to swim the (Salt) river. The water is so swift, it usually brings down tree trunks. The water tumbles you so you run the risk of striking rocks and logs. Usually a person doesn't last more than a few seconds before he becomes unconscious."

"I could show you pictures of people who have drowned in the river. All their clothes are torn off, and there's hardly a piece of skin that wasn't torn or bruised."

The rivers are normally safe for rafting and canoeing, but the runoff from the mountains is causing the water to flow at up to 18,000 cubic feet per second.

He said it is impossible for them to predict when the rivers will return to normal, because it depends on the weather.

# Beer rally at UofA may force suspensions

By JIM BALL

Three former candidates for the Associated Students of the University of Arizona may be suspended or placed on probation for their involvement in beer rallies on the UA Mall last week.

UofA Dean of Students Robert Svob recommended that Mike Jones and Kathi Mayer be placed on probation, and Richard Lewis be suspended for serving a keg of beer on the UofA Mall in defiance of the Code of Conduct's rule against liquor on campus.

Mayer has been fired from her job as a dorm resident assistant, as a result of the incident.

According to an article in Monday's "Arizona Daily Wildcat" Code of Conduct when they brought the keg to campus, but did so to protest "arbitrary enforcement of campus drinking rules."

Mayer said students must hide their drinking in dormitories while in fraternities students are very open about it.

"They have every right to appeal the recommendations through the student judiciary system, but we're obligated to uphold the University's rules and regulations," Svob said.

## Seat Reservations

The only charter to Europe offering this service.

Leave from ASU - Return to ASU

No hassle getting to & from the Airport

**\$299** TOTAL COST

Arrive London — May 22  
Depart Amsterdam — August 17

### Assurance—

This charter under the direct control of the UofA Travel Office — not an outside firm.

For seat reservations and further information regarding European Travel attend the first meeting . . .

**TONIGHT—April 4 - 7:30 pm**

at the home of Dr. L. Tenney  
Call 834-0134 for reservations

# MU Events

TODAY

Classic Film Festival, "The Twelve Chairs," 7:30 p.m., Movie House. Admission 25 cents.

MU Duplicate Bridge Club, 7:15 p.m., Alumni Lounge.

Music Moods, 11 a.m., Rendezvous Lounge. Excerpts from Proficiency Pageant.

Film Committee meeting, 3:30 p.m., Navajo Room.

THURSDAY, APRIL 5

Ideas and Issues Committee meeting, 3 p.m., Activities Center. Music Moods, 11 a.m., Rendezvous Lounge. Steve Baum on cello, Susan Stone on clarinet and Margaret McAlpine on piano.

FRIDAY, APRIL 6

Pop-Up, 11 a.m. to 1 p.m., Rendezvous Lounge. Mike Collins, folksinger.

Spring Film Festival, "THX-1138," 5, 7:30 and 9:30 p.m., Movie House. Admission \$1.

## Radio seminar today at MU

Several radio personalities representing a variety of stations in the Valley will speak at a seminar at 11:30 a.m. today in the MU Cochise Room.

The seminar is entitled "Radio Personalities — What does it Take?"

Featured speakers include Bill Heywood of KTAR-AM, Pat McMahon formerly of KRIZ, Toad Hall of KDKB and Mike Gillespie, program director of KMCR-FM.

TROG presents . . .

## "The Fabulous Bullets"

TODAY — 12 to 2

Arizona Room of M.U.



## LET US BE YOUR WHEELS.

ASU STUDENT SPECIAL  
COMMENCING MARCH 30, 1973  
SCHEDULE

Lv. ASU (Orange Street across from Men's Gym) 3:00 P.M.  
+ Fridays 3:55 P.M.  
Ar. Casa Grande 5:10 P.M.  
Ar. Tucson

RETURN

Lv. Tucson Terminal 8:30 P.M.  
Ar. Casa Grande 9:40 P.M.  
Ar. ASU 10:40 P.M.

FARES:  
ASU (Tempe) To Tucson  
ASU (Tempe) to Casa Grande

R.T. O.W.  
\$11.90 \$6.25  
\$ 5.70 3.00

TICKET MUST BE PURCHASED IN ADVANCE AT:  
Tempe Greyhound Dept  
13 E. 5th Street—Tempe, Arizona

Tucson Greyhound Terminal  
2 S. 4th Avenue—Tucson, Arizona

**GO GREYHOUND**  
...and leave the driving to us.

+ When Holiday involved service will be adjusted.

# Opinion | state press

## Hands off

The politicians made their move last week at the regular meeting of the State Press Advisory Board. The Board acts as the publisher of this newspaper. The politicians in question were Norm Keyt, former ASASU President and a member of the board, and Steve Yarbrough, ASASU Executive Manager. Presidential candidate Rick Weiss, also a board member, put in his two cents, too.

The complaints were centered around State Press coverage of TROG, the group attempting to win control of student government.

Yarbrough complained the paper ran an editorial supporting TROG's presidential candidate John Morgan. Several board members pointed out the piece was aimed at the attitudes and practices of current student officers, and did not directly support Morgan.

The State Press has not supported a candidate in this semester's elections, although it could do so. Nor will the paper support any candidates in the coming general election.

But Yarbrough's complaint is understandable when one realizes that should TROG succeed, it will attempt to abolish his salary.

Yarbrough's cheap political move is not what upsets us, however. What is upsetting is that politicians such as Keyt and Weiss are members of the State Press Advisory Board.

Their pressure damages State Press credibility as a paper which is attempting to remain impartial in its coverage of the news.

Keyt complained the paper had devoted more coverage to TROG candidates than others.

It was explained to him TROG got the coverage because its members were involved in more newsworthy events such as supreme courts suits, deals with outside politicians, unusual candidates and so forth.

To devote equal coverage to other candidates running quiet, conventional campaigns would mean distorting the news. It would have also indicated bias.

Weiss also charged that certain State Press reporters were biased, but admitted practically in the same breath that presidential candidates can easily become paranoid.

Certainly newspaper reporters and editors are human, which means that they have their own beliefs and biases. Members of the State Press staff try to keep them out of news columns, however, despite paranoid politicians' beliefs to the contrary.

But our being human is not so great a crime as to justify mastery by the politicians.

We have nothing against students sitting on the State Press Advisory Board, but politicians have their own personal axes to grind and, in the future, should be kept well clear of this wheel.



Rick Mahrle

## The louder the voice . . .

Truth has been one of man's most elusive absolutes. What is the truth? All too often the truth is that which is spoken by the loudest voice.

A fine example of the truth was shown Thursday night. President Nixon spoke on television of how the United States has achieved "peace with honor" in Vietnam.

The public will accept the presidential pronouncement as the truth because he is the president. His voice speaks louder than the truth.

The president has completely ignored the true situation in Southeast Asia. There the fighting still goes on. The cease-fire we have so grandly negotiated has gotten our troops out, but has done nothing for the South Vietnamese.

We entered the war to keep out the North Vietnamese, yet the North Vietnamese control large areas in the South.

We entered the war to keep the influence of China out of the area. But all we have done is make the North Vietnamese government

more dependent on China and have increased Chinese control.

Do we call this peace with honor? Is this what we fought so long for?

If the U.S. had pulled out of South Vietnam five or more years ago, would it have made any difference? I say no.

If there would have been a difference, I wish the president would tell me the truth so we could all know.

Truth can also fall victim at the local level.

Take the Arizona Republic's version of the Paul Fannin drunk driving case.

People in Phoenix believe what the Republic prints because it has the loudest voice. If the Republic ignores an event or whitewashes it, few will find out the truth.

Even if other papers report the truth, they are not believed because their voices are weaker.

Beware of what you call the truth. The truth is not always found in what those with the loudest voices say.

## Letters TROG program reflects paucity

Editor:

Student governments in Arizona, and presumably throughout the country, are in a crisis. Their programs have little relevance to the needs or interests of most students.

This is clearly reflected in the prevalent campus antipathy toward student government. The relative paucity of intelligent solutions to this crisis is evident in the TROG lody program.

For the ego-tripping and incompetence of executive officers, they propose to substitute the ego-tripping and incompetence of the majority of student senators.

The TROG candidates for executive offices have promised that, upon election, they will remove themselves from any position of responsibility and become the unpaid lackeys of a senatorial cabinet.

Such selflessness is so rare that voters will be overcome with joy, knowing that the of-

ficers they mandated to achieve a specified program will have abdicated the authority to do so.

Voter joy will undoubtedly be doubled when they realize that they have, at best, only an indirect influence over the selection of a cabinet, and of course, no assurance that anything at all will be accomplished. The TROG officers themselves might envision a future of behind-the-scenes manipulation, secure from public exposure. Or perhaps they frankly have no intentions of accomplishing anything at all, thus gaining the celebrity of holding office, without the danger of being revealed as incompetent as their predecessors.

As for the details of the TROG program, one wonders how long day-care, a legal aid service, housing assistance, concerts, movies, etc., will continue to exist if student activity fees are made voluntary. This is the heart of their program: a series of programs, none of them

original in conception, incapable of realization because TROG also proposes the virtual elimination of funds. However, in the current ASASU Information Bulletin, TROG makes no mention of its intentions regarding tuition in its electoral platform.

If one considers the \$4.75 currently allotted ASASU per semester, per full-time student, one realizes that no onerous sum is involved.

The question then is how to use this money in ways that will benefit the majority of students.

There is no point in offering glib solutions to this problem. I merely suggest that TROG is deceptive about its intentions and foolish in its proposals, another in the endless string of vaunted heroes who characteristically make their entrance just prior to an election, occupy the stage for a brief moment, and then, as in all tragedies, plummet from the height of grandeur when their flaw is revealed.

THOMAS LAUERMAN

state press

STATE PRESS is published by Arizona State University Tuesday through Friday during the academic year, except holidays and examination periods. Entered as second class matter at Tempe, AZ, 85281

# 'A white elephant'

# Chapel faces uncertainties

By BOB SCHNEIDER

St. Mary's Church, a long-time Tempe landmark, is 70 years old this year, but no special ceremony is planned.

Apparently, few persons are even concerned.

The building, on the northwest corner of College and University, is nostalgic. Its past is historic; its future uncertain.

Rev. Albert Buckley, director of the ASU All Saints' Newman Center considers the old church's fate a dilemma.

"The structure is a huge white elephant, it's too small for our current needs, and, in its present state, is unusable anyway," he said.

Rev. Buckley favors restoration efforts to

preserve church as a historical site, yet allow its use as a chapel for ASU Catholic, Protestant and Jewish services.

St. Mary's history begins in 1877 when Rev. Edward Gerard, the first Catholic priest ordained in Arizona, convinced interested citizens to build a chapel in Tempe. An adobe structure was built at the foot of the small butte looking south.

The new chapel was blessed on March 10, 1881, and was dedicated to Our Lady of Mt. Carmel. In 1891 a priest from St. Mary's parish in Phoenix took over the responsibility of the small chapel.

"In those days, the Tempe church was essentially a mission of the Phoenix parish," Rev. Buckley said. "As a result, it was called St. Mary's Church of Tempe, although it had been dedicated to Our Lady of Mt. Carmel."

"In 1962, the church was sold to ASU's Newman Catholic Student Center for \$60,000," Rev. Buckley said. "It was used exclusively as a church facility for the

campus until the end of 1968."

The structure, one of the city's few surviving historic buildings, typifies the Valley's frontier heritage.

Architect Chris Doran, an ASU graduate, believes the church could be remodeled to reflect this heritage.

Ironically, the abandoned church's obsolescence is the key to its renewal. "Recent liturgical changes could be integrated within the traditional architectural form," Doran said.

"This could be done by modifying the existing structure to meet the needs of the renewed church," he said. Removing interior plaster and exposing the brick walls would bring out the true interior character of the old church, Doran said.

Doran said much of the restoration work could be done by student volunteers.

"Such a comprehensive renovation supported by generous donors and a dedicated student community, could bring new forms to a historic building without harming the

existing exterior structure," Doran said.

Because of a large debt remaining on the Newman Center, Rev. Buckley sees little hope of financial aid from the Phoenix Diocese. As a result, restoration must be publicly financed.

"I'd like to see a strong community effort centered in Tempe and reaching throughout the entire diocese," Rev. Buckley said. "If lodges, local groups, students and individuals put forth the effort, the old church can be saved."

Rev. Buckley estimated rehabilitation of the old church as an ecumenical chapel would be around \$100,000.

"Tempe has few such buildings marking its history, and the architecture has influenced the University itself," he said. "Bricks used in the College of Nursing were selected to compliment the church."

St. Mary's has been closed since 1968 when it was last used as an auxiliary to the ASU's Newman Center. Since then, it has become a useless, crumbling monument to the past.

The old church's days seem numbered.



**CLASSIFIED**  
965-3249

Baskets and boxes  
and stuff galore  
now ready for Easter  
at  
**THE GALLERY STORE**  
Where? Matthews Center  
on the second floor  
from 12:00 to 4:00  
(Need we say more?)

a new land...a new hope...a new dream

**Nominated  
for Four  
Academy  
Awards  
including  
Best  
Picture**

Max von Sydow · Liv Ullmann

**The Emigrants**  
UNIV. NO. 2  
Broadway East of Rural 967-7857  
SHOWTIMES MON-FRI.—9:00 SAT. & SUN.—2:15-5:00-7:50  
Technicolor® from Warner Bros, A Warner Communications Company PG

**HE'S THE GREATEST!**

**WALT DISNEY  
Productions**  
**The World's  
GREATEST  
ATHLETE**

TECHNICOLOR®  
Released by BUENA VISTA DISTRIBUTION CO., INC.  
© 1972 Walt Disney Productions

**PLUS**

**WALT DISNEY PRODUCTIONS**  
**NOW YOU SEE HIM,  
NOW YOU DON'T**

TECHNICOLOR®

© 1972 Walt Disney Productions

**SHOW TIMES  
NOW YOU DON'T**  
Weekdays 7:00  
**ATHLETE**  
Weekdays 8:30  
**NOW YOU DON'T**  
Sat. & Sun. 12:30-3:50-7:20  
**ATHLETE**  
Sat. & Sun. 2:00-5:30-9:00

**UNIV. NO. 2**  
Broadway East of Rural  
Tempe 967-7857

**QUESTION: Are you going home after . . .**

**FINALS?**

If you're flying to Chicago or N.Y.C. . . . Call us!! Our price is cheaper than standby, and we'll both be celebrating the same thing . . . the end of another semester — and the beginning of a GREAT summer.

**SIGNED'**  
**ASASU and UNIVERSAL TRAVEL — 967-1673**

## Near Tempe

# Class plans atomic plant site

Fourteen ASU graduate students have figured out where Arizona's first nuclear power plant could be built.

Members of the "Nuplex Environmental Management" class completed a study which says the plant could be built six miles east of Tempe at the Granite Reef Diversion Dam.

Total construction costs would be about \$200 million, the study says.

The class is taught by Dr. Grant Richardson, professor of environmental agriculture.

Richardson is preparing the final paper for publication, and it should be available within a few weeks.

### Generating capacity

The report recommends a 500 megawatt capacity plant for generating electricity. It says this would help meet Central Arizona's future power needs and should be adequate for the first nuclear power plant.

The plant's reactor, which creates energy, would use uranium oxide clad with zirconium alloy as its fuel.

The study says a continuous flow-through cooling system for the reactor could be achieved by diverting the Southern Canal. It proposes sending the entire flow through the condenser and then recycling the water back into the canal.

The study says this would produce a 15 degree temperature rise in the water, but this would be reduced long before the water's first use at a point three miles downstream. It also says the flow-through system would consume very little water.

### Environmental effects

The study includes the economic, biological and social impact of the power plant: effects on air, soil, and water environment, noise pollution and potential recreation benefits.

"Plant and animal habitats

would be destroyed only in the four-acre construction site. The half-mile radius exclusion area would limit some recreational activities, but would promote others," Richardson said.

The only significant changes would be banning hunting in the exclusion area and requiring citizens to obtain a recreational

use pass for the area.

The study said no harmful social environment effects would result.

"With the flow-through cooling system, no visibility reduction would occur, and no toxic or undesirable substances would be emitted into the atmosphere," Richardson

said. Noise problems would be insignificant, he said.

The power plant proposed by the students would stimulate growth in many economic categories, such as job opportunities, Richardson said.


## Traffic forecast appears gloomy

There is no immediate relief in sight for valley commuters. The roads could be closed four to six more weeks, said Ted Wilson, supervisor of hydrologic records and analysis division of the Salt River Project.

Hillel presents . . .

## THE NEW THEATER

A TWO PERFORMER GROUP



**FREE!**

**DIMA ROOM APRIL 8, 8pm**

PAUL RICHARDS AND GERALD HIKEN  
PRESENT ORIGINAL PLAYS OF JEWISH  
LIFE OF THE 1920's IN AMERICA  
AND EUROPE

## "Does Anybody Care"

### Become a Volunteer now!



Contact: Conrad Martinez

### COMMUNITY SERVICES PROGRAM

Academic Services Bldg., Room 111  
ARIZONA STATE UNIVERSITY  
965-6305

## CLASSIFIED ADS

Classified advertising must be paid for in advance either in person or by mail to the State Press, ASB 302, two days in advance of publication. No ads will be accepted over the telephone. Office hours are 8 a.m. to 4 p.m. Monday through Thursday and 9 a.m. to noon Friday. Phone 965-3457. Rate: \$1 for three lines and 30c for each additional line. 50 per cent discount for consecutive additional days. There will be no refunds for advertisements placed with the State Press.

### ● AUTOMOBILES

1970 Triumph Spitfire convertible under 20,000 miles excellent condition \$1150 955-2984. (4-6)

1962 Chevy exc. condition. Air. Radio must sell \$350. 949-1639. two new tires. (4-6)

69 Triumph 6T6+ only 19000 miles Michelin tires \$1200 966-5767. (4-6)

1959 Rambler station wagon. Cheap, dependable. Make offer 803 W 1st St. #D Tempe, evenings. (4-6)

1971 VW convertible excellent condition 1475.00 964-4170 964-9986. (4-4)

1968 Camaro 327V8 automatic air good condition \$1400 966-5203. (4-10)

70 Fiat 124 spt cpe. Yellow w blk int. Air, am/fm, cover—more. Clean, mech. perf. 254-0855 eves. (4-6)

66 Dodge Monaco wagon PS fact. air, new tires, must be seen to believe. \$750 968-1559. (4-4-6)

1970 Plymouth sport Satellite immaculate air disc brakes low mileage many extras 945-8944. (4-11)

63 VW Slightly damaged but runs funky \$125 call 967-3587 before 4 pm. (4-6)

### ● MOTORCYCLES

Beat the traffic! Honda 350, '69, low mileage, super clean \$380. Call Dave 966-5740. (4-4)

1972 Honda 100c1 A-1 shape helmet luggage rack tools cheap transportation \$320 965-2561. (4-4)

68 Honda 65 cheap must sell call 966-0905 evenings. (4-4)

### ● SERVICES

CANNIBUS - hard rock band - call 968-2833.

Experienced editing, form and style. IBM Gothic or standard type. Near ASU 966-1684. (run)

### ● FOR SALE

Manuel s/c typewriter excellent \$45 after 7 lowell 967-6004 heavy duty case inc. (4-6)

Marlin 30/30 carbine \$75.00 Rugger .22 carbine/cust. stock \$75. Browning 12ga autoshotgun w/2 bbls \$175 prices firm 968-3359. (4-6)

Beautiful 3 bedroom home with maid quarters or apt, 2 fireplaces, double garage, fenced backyard. Corner lot next to ASU. Call 964-8729 evenings 985-0537 (4-6)

2 bedroom coop apt rent 129/mo 60% deductible from taxes call 947-6765. (4-4)

Good used books. Out-of-print search service. Dollar Sign Books. Alma School Rd. at University, Mesa 962-6257.

30# target bow, \$40. Olympic size javelin, \$30 SF books for trade. Call 965-4283 or 992-5191. (4-4)

Ampex 1455A open reel tape deck w/sos & echo, see it at my apt. 1224 William, by Woolco Pl. (4-4)

New Magnet Sprint. Type 10 speed bicycle 25" frame, Holland made, assembled. \$85.00 963-8791. (4-4)

Bicycle Schwinn Varsity 10 spd 19" frame 27" wheels green good cond. \$55 947-0482. (4-10)

12X60 mobile home 1970 2 bdr fully carpeted, awnings, storage shed Apache at McClintock \$5900 966-7400. (4-10)

### ● WANTED

1 or 2 roommates. 1 bedroom of lrg. apt. \$100/mo. incs utilities & phone 966-2640. (4-4)

WANTED — YOUR WRITE-IN VOTE FOR JEFF KILGORE FOR FIRST VP ON APR 3-4 HE HAS HELPED THE STUDENTS. (4-4)

Roommate—your half \$64/mo Bel Air Apts. — Move in now — pay rent starting Apr. 1 Rosie 968-3868.

Immediately female roommate will have own room \$67 pool utilities paid 1224 E. Lemon. Call 968-1409 after 3 p.m.

Home needed for ugly but lovable dog will furnish food if could keep for 2 months call 266-7065 after 6:00 evening.

### ● TYPING

Typing—experienced, neat accurate, call Anne 946-4105. (run)

Professional typing. Term papers, Research, Reports, etc. Reasonable rates. 955-6047. (4-18)

PROFESSIONAL TYPING. IBM Selectric. Minor editing & corrections. Reasonable. NE Phoenix. 956-7983. (5-4)

TYPING—IBM SELECTRIC PICA TYPE, ROSEMARY VANCE. TEMPE 967-9143. (5-4)

TERM PAPERS, RESUMES, THESES DISSERTATIONS, PROFESSIONAL, GUARANTEED WORK, IBM, MAXINE MULLEN 955-0763. (run)

### ● RENT

3 bed rm 2 baths all elec kitchen pool enclosed patios carpools carpeting Lotus Flower Apts south of Broadway on McClintock Tempe see Mngnr Apt. 16 or call 966-0147 \$215 per month. (4-20)

Need an apartment? Try Lapaz 1011 E. Lemon. Pool, laundry no lease. (4-6)

### ● ANNOUNCEMENTS

Join Hillel at the symphony! April 3, Civic Plaza, \$1.50—with Berl Senofsky. Call 966-5371 for information. (4-2)

PHI SIGMA KAPPA Centennial Founders Day banquet awards and dance. 8:00 March 15, Arizona Country Club \$6.50 per person.

PRIMAL SCREAM; group sessions. By appointment only. Donation \$4. Tues.-Sat. 7:30 p.m. 244-1896. (4-20)

Free! The new theater! Original plays performed by professional actors—depicting Jewish life of the 1920's in America and Europe—April 8, 8:00 pm Pima room, MU. (4-6)

TROG presents "The Fabulous Bullets" in a free mini-concert 12-2 pm Arizona room in the MU. (4-4)

World Campus Afloat film showing Friday, April 6th Memorial Union, Yuma room at 2:30 and 3:00 pm representative will be present to answer questions regarding the film as well as those bearing on admissions and financial aid.

### ● HELP WANTED

Auditions—singers, dancers, musicians & specialty acts. LEGEND CITY, Red Garter Saloon, April 14, 1:00 P.M. An equal opportunity employer.

Baby-sitter 3 or 4 nights a week for 5 year old girl phone 967-3205 Sun thru Wed Ev. (4-4)

STUDENT EMPLOYMENT in Yellowstone and all U.S. National Parks. Booklet tells where and how to apply. Send \$2.00, Arnold Agency, A-206 East Main, Rexburg, Idaho 83440. Moneyback guarantee. (4-5)

Help wanted to work one or two days a week. 1.75 per hour. 968-9347. (4-4)

good paying part-time jobs reliable people wanted to work in Phoenix in connection with the Phoenix JC's 4hrs per day at \$2.63 p/hr plus incentive pay. Depending on capabilities evening work only 5-9 for intv. 263-5958 mon-fri 1-5 pm. (4-6)

Waitresses full or part time nite work only apply now for summer job at Fridays & Saturdays 825 N. Scottsdale Rd. Weekdays between 10 am and 2 pm. (run)

### ● INSTRUCTION

Wanted tutor in anglo-saxon grammar and pronunciation. Call Marc 968-3505. (4-4)

Want to learn piano (any style)? Want to compose? Experienced music grad teaches Classic, Jazz, Contemporary Improv. All levels, call John 964-6293 after 5.

Sport parachuting instruction. Licensed. 15 yr. experience US Parachute Service Mesa 985-3980. (run)

Ballet—beginners thru professional. Recommended for children, teens, adults and ASU dance majors. Qualified instructor: Mary Adams, LRAD, AISTD. Arizona Academy of Dancing. Tempe: Valley Fair, 95 E. Southern. Phx: 3802 E. Ind. Sch. (Run)

TUTORING—French & Spanish translation service. Call, 968-2913 before 7:30 a.m. or nights.

### ● LOST

Wallet at handball cts. Sat. Please call Gary Alpert 967-1525 Reward urgent that I find it. (4-6)

White male samoyed-white shepard mixed 75 lbs. 1 yr. old any information contact 966-8071. (4-6)

Reward lost hand calculator in P.U. West lot. Call 965-4707 or 965-2158. (4-6)

## CARPET SPECIALS

9 x 12 used rugs-\$5.00

All Sizes In Stock

## CARPET HOUSE

1516 E. Van Buren, Phx.

## COLLEGE SENIORS AND GRADUATES!

A Challenge for the Bold as a PILOT

or NAVIGATOR STARTING SALARY over \$9,000

30 Days Paid Vacation annually.

See your local AIR FORCE Representative or Phone 261-3344

# UCLA—a recruiter's theme song

By JIM FINN

"Somebody has to challenge UCLA."

That familiar phrase in college basketball is probably a national slogan by now as coaches move out on their annual recruiting prowls.

For ASU coaches-recruiters, the UCLA challenge is top priority since the Bruins reign as the biggest hurdle to Sun Devil chances to win an NCAA championship.

Bruce Haroldson, assistant coach and recruiter for the Sun Devils in the West, says the idea of challenging John Wooden's UCLA dynasty is one of the first things brought up when he talks to a recruit.

"I tell 'em we're a logical team to challenge for the number one spot in the nation," says Haroldson. "Arizona State's gotta be considered one of the truly great universities in the West at this point athletically, with the facilities we've got coming up, the city in general, and the proximity to Los Angeles, your large urban center for producing the great high school athletes."

We've got a dynamic approach to athletics and we're pushing for the number one spot."

Haroldson, who covers the West in his recruiting forays for the Sun Devils, brought in two top prospects for visits last weekend in Richard Washington of Portland Oregon and Melvin Baker of Gallup, New Mexico.

These two players, described by Haroldson as "All-World" (Washington) and "the best forward I've seen in six years" (Baker) represent a significant development in ASU recruiting, Washington especially because UCLA is doing its best to put the young seven-footer in a Bruin uniform.

The development is the fact that these "super players" are now showing an interest in ASU. "When I came here six years

ago we couldn't even talk or begin to get our foot in the door with the very top players in the United States. They wouldn't pay any attention to us. We weren't even in the picture. Each year it's been getting progressively better," said Haroldson.

"Last year I was talking to the best players and they were available and interested, but we didn't get 'em. Last year we didn't get any of the best ones, but they came for the first time. This year we're talking to more of the great players, and more are coming, and we feel we're going to get some of them."

"This year we're talking to more of the great players and more are coming and we feel we're going to get some of them."

Haroldson says the difference between now and six years ago is based on the record of the past few years and the new arena. Winning records the past three seasons, after six losing years, has brought back the momentum of the 1962-64 NCAA playoff years, he said.

"The mistake was not building the new facility after the success of the early 60's," said Haroldson. "These super players are going to places where they have real nice facilities."

Six years ago it was the record, but you can't live on what you've done in the past. You have to build on what you're doing in the future."

If there's any one key in the recruiting game it's the role played by the athletes currently in the program, according to Haroldson.

"This is the most important

thing we can possibly have," he said referring to the recruiting by varsity players.

"I was looking through some old questionnaires I had sent out to players we lost and one of the biggest detriments was the attitude of the varsity players. That to me is the key as to whether or not you get a player to come here. It's their attitude as they project it to the recruit as they host him on campus. If our guys don't do a good job recruiting the kid we have very little chance of getting him."

Some coaches feel that this player-to-player idea is too dangerous, but the ASU staff professes faith in its players.

"We're risking our chances with a great player by putting him with another player because he could say one wrong word and turn him away. But, then again, he could sell the player better than a coach. The players are going to believe the players already here more than the coaches. We have faith enough in our players that they will do a good job for us."

"If they display the unselfishness in recruiting that they did on the playing floor we should have a super year of recruiting."

What does a high school player want to know before he considers the ASU program?

"Where you can live — can

you live in an apartment? Can a freshman have a car? How far are you from the Phoenix Suns games? What style of ball do you play?"

"The black kids will ask 'How many black students are on campus, is there a black community?' — that's the standard question from a black kid," says Haroldson.

"If they display the unselfishness in recruiting that they did on the playing floor we should have a super year of recruiting."

The ASU style of ball got some excellent exposure in the NCAA playoffs in Los Angeles this year, said Haroldson, helping him with recruiting in his area.

"I was talking to Clifton Pondexter's coach (Pondexter is one of the top prospects in California and his brother Roscoe was named to the all-tournament team in the western regionals playing for Long Beach State) and he said it was real refreshing to see our style of ball being played after watching the PAC-8 week after week."

"We go in there and show 'em some real runnin.' Some shoot 'em up basketball."

The main thing the ASU recruiters try to accomplish is making the players happy, says Haroldson.

"We want a kid to come here because he's going to be happy. Money's not a valid reason for going to a school. You might be getting money under the table, but what good is it if you're not happy? Kids today are getting smarter about that sort of thing. They realize that money isn't everything. Just like Bill Walton has been talking about how money can't buy happiness."

"It's like a marriage between the player and the program. If the marriage is based on anything other than the player's happiness then it's not a good arrangement."

## Golfers finish third

ASU finished third out of 18 teams in the Pacific Coast Invitational Golf Tournament last week in Goleta, Calif.

The Devils finished seven strokes behind Stanford and five behind USC. Top finisher for ASU was Tom Purtzer who was fourth at 226.

The Devils will compete in the Goldwater Cup matches in Scottsdale this week.

## Wulk heads West

ASU coach Ned Wulk has been named to coach the West team in the East-West basketball game April 7 in Honolulu, Hawaii.

Wulk, who was named WAC coach of the year, will coach such standouts as Ed Ratliff of Long Beach State, Kresimir Cosic of BYU, Gary Rhoades of Colorado State and Darryl Minniefield of New Mexico.

## Backcourt men take honors at hoop dinner

Senior guard Mike Contreras was named Most Valuable Player for the WAC champion Sun Devils at the ASU basketball banquet Friday night.

Contreras averaged 16.7 points per game this year to lead the Sun Devils to a 19-9 season.

Contreras' backcourt mate, Jim Owens, was honored with the Sun Devils' defensive award. Owens, also a senior, made a comeback this season after sitting out last year with an injury to earn All-WAC honorable mention.

Junior forward Mark Wasley was named most improved player and James Brown, junior swingman, won the Sparkplug award.

The Sun Devils also announced their all-opponent team. Heading the list was UCLA's Bill Walton who was joined on the team by BYU's Kresimir Cosic, Robert Parish of Centenary, Eric Money of Arizona and Mike Robinson of Michigan State.



**Every THURSDAY at**

**PIZZA HUT**

**\$1<sup>00</sup> OFF**

**ANY LARGE PIZZA**

**PLUS**

**PITCHERS-99¢\***

\*With the purchase of any food order

**LIVE ENTERTAINMENT**

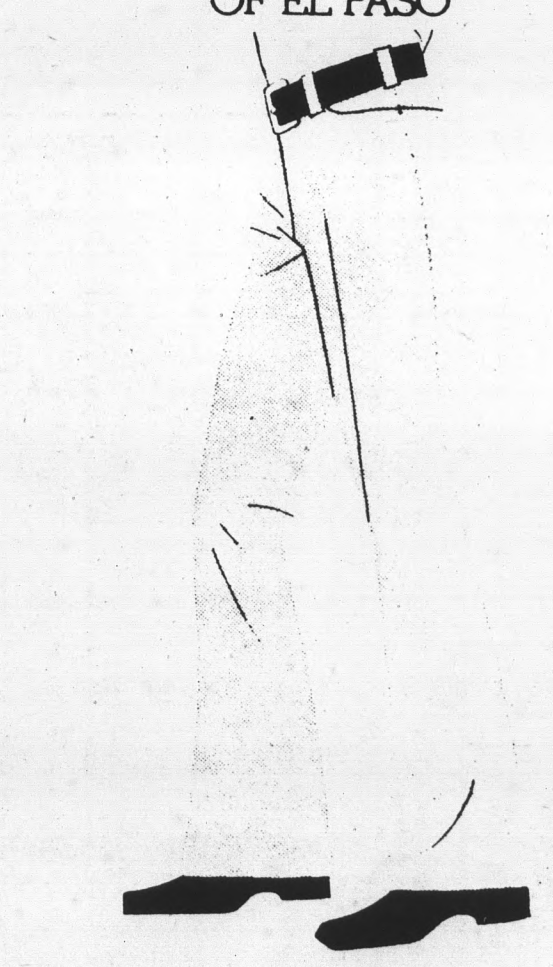
featuring Jim Graham

**955 E. UNIVERSITY — TEMPE**

**5:30 to Close**

**MR. HICKS**

OF EL PASO



"If you call us Hicks...you better say Mr."

**LeSueur's**

**MEN'S & BOY'S STORE**

18 West Main, in Downtown Mesa

MON. TUE. WED. & FRI. 9 A.M. to 5:30

THUR. 9 A.M. to 9 P.M.

SAT. 9 to 5:30

# ASU pool expert shoots for national contest

By GREG HAGAN  
Staff Writer

We got trouble, right here in River City. It starts with T and rhymes with P and that stands for pool.

The people in Boise, Idaho are going to have trouble too, when Jeff Wierbiki, an ASU Junior, arrives tomorrow to play in the Association of College Unions International Pocket Billiards Tournament.

Wierbiki, ranked fourth in the nation in pocket

billiards, has a good opportunity to come away the winner.

He has been shooting pool for 10 years, starting as a teenager in Ashland, Ohio.

He is a self-taught player who says he first started playing on a small table his parents bought.

Now, at 25, he is competing for the position of top collegiate pool player in the nation.

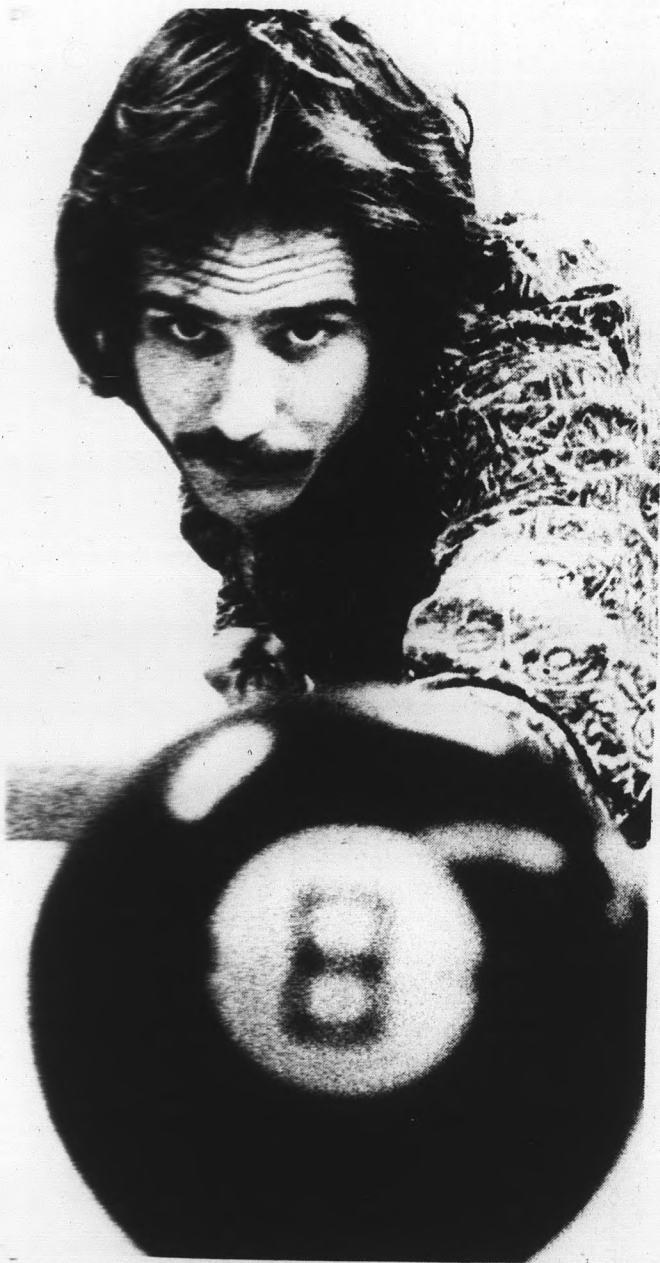
The top collegiate player is invited to the U.S. Open

Pocket Billiards Championship. This is the equivalent of the Professional Golf Association (PGA) tournament in golf.

Wierbiki played all-time pool great, Willie Mosconi, in an exhibition match at the MU last November. He said the pressure was fantastic.

There were about 300 people watching, television cameras going, and he was playing the seven-time world champion. "I've never felt pressure like that before in my whole life," he said.

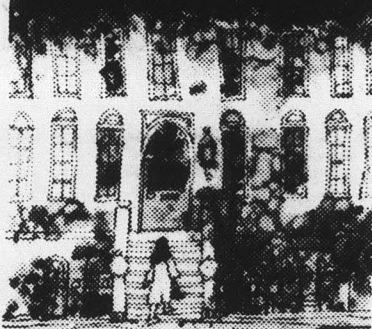
He said his high run (consecutive shots without a miss), is 120 balls.



Jeff Wierbiki

Photo by Ann Herold

## SOMETIMES THE SMALLEST MOUSE HAS THE MIGHTIEST ROAR.



Last year, in New York City alone, 7 nursing nuns made 6,322 patient visits. Not in hospitals, but in the patients' own homes. Fantastic? Not at all.

Not for the Dominican Sisters of the Sick Poor. Ever since they were founded in 1876, the Sisters have been doing the impossible daily.

Long before there were relief agencies or visiting nurses, the Dominican Sisters were dedicated to nursing the poor in their own homes thus keeping the families together.

Today, the Dominican Sisters of the Sick Poor are still on the job. Although their primary work is still in nursing, it has been expanded to include social work, physiotherapy, dietetics, and almost all health related professions. Each woman has her own skill, her own special ability to offer. In this Order, which is small in size, there is both freedom and flexibility.

Yet the Sisters are not merely visiting nurses but religious nurses who think of their patients, not as cases, but suffering members of the Mystical Body of Christ who need, even beyond material and physical help, the healing unction of Christ's love.

To learn how you can serve as a Dominican Sister of the Sick Poor write to:

Sister Marguerite Mitchell,  
Vocation Director  
Room 104  
Mariandale, Ossining, N. Y. 10562

**DOMINICAN SISTERS OF THE SICK POOR.**



# Free speed reading lesson.

You'll increase your reading speed on the spot!

**HERE'S A GREAT OPPORTUNITY:** Evelyn Wood Reading Dynamics offers you a free glimpse of what it is like to be able to read and study much faster. At our free introductory lesson you will actually participate in techniques that will improve your reading and study speed on-the-spot. See what is holding back your reading rate and see how you can easily read much faster.

**WHAT YOU'LL LEARN:** At our introductory lesson you will see that Reading Dynamics is a comprehensive reading improvement program. You'll learn that our students not only read faster but also comprehend more, and remember better. You'll learn how our study method can cut study time in half. In short you will have an opportunity to see what we teach and how we teach it.

**OTHERS HAVE DONE IT— SO CAN YOU:** Seeing the instant results of your progress at the introductory lesson will help you understand why our average graduate increases his reading speed 4.7 times with improved comprehension. You'll see why over 500,000 people have improved their reading skills through the Reading Dynamics techniques. You'll understand why Reading Dynamics has been taught at the White House to staff members of Presidents Kennedy and Nixon.

**COME SEE FOR YOURSELF:** We want you to decide for yourself the value of becoming a rapid reader through the use of the Evelyn Wood Reading Dynamics techniques. Plan now to attend a free introductory lesson; they are informal and last about an hour. Come as you are, even bring a friend.

**Come to your free lesson.**  
5:30 and 8:00 Today thru Thursday  
April 3rd thru 5th

—TEMPE  
Howard Johnson's Motor Lodge  
225 East Apache Blvd.

PHOENIX  
Central Plaza Inn  
4321 N. Central Avenue

—SCOTTSDALE  
Ramada Scottsdale Inn  
6833 Main

 Evelyn Wood  
Reading Dynamics Institute

**Howard Johnson's motor lodges**

If you plan to attend Summer School—

Ask about our special rates

Call or write:  
Terry Cattell,  
your Howard Johnson's host

**TEMPE HOWARD JOHNSON'S MOTOR LODGE AND RESTAURANT**

Across from Arizona State University at 225 E. Apache Blvd.  
Tempe, Arizona 85281, or Telephone (602) 967-9431

FOR SPECIAL DISCOUNT - PRESENT THIS AD UPON REGISTRATION