

friday

Arizona State University

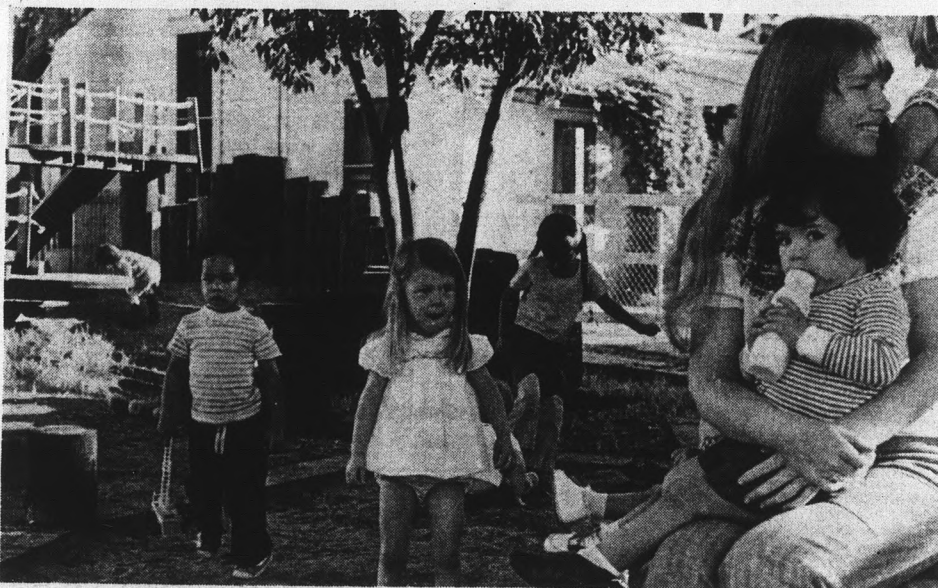
Vol. 55, No. 50 December 1, 1972

state  
press

Tempe, Arizona

## Faces financial crisis

# Preschool seeks more support



## Preschool in Jeopardy?

## ASASU attempts to establish blood program for University

ASASU is working with the local Blood Services to establish a University blood bank for members of the University community and their immediate families.

"It (ASU blood services program) is an ASASU initiated project for the entire University," said Mark Wilson, ASASU president.

Currently the program is only limited to those who donate blood, Wilson said.

He said any donor will be able to draw an unlimited amount of blood up to one year after the blood was donated.

A University blood bank, he said, strives to reach a point when all members of the University community will be able to benefit from the blood services.

Student response will determine if the blood services program will be extended to non-donors, Wilson said.

"It has to be a grass root and widely supported program," Wilson said, "It takes people to come in and give blood. We (ASASU) can only go so far."

Before an open credit system to all University members and their immediate family can be established, the donors' response must be measured, Wilson said.

He said the amount of blood donated must be weighed against the amount donors will draw for their own needs.

When maximum University blood needs are covered by a minimum amount of donations, a general credit system for an ASU blood bank can be maintained, he said.

"Arizona State is unique in that it doesn't have it (a blood bank) available to all in the University community," Wilson said.

Blood donations by ASU donors would be credited to the campus bank.

A committee at the Student Health Center would be formed to administer the University accounts. If a particular member of the University is in need of the blood, the health center will inform Blood Services of the name of the person and the hospital in which the person is located.

Blood services will see that the person gets the blood.

Pat Whelan, ASASU blood drive chairman, said various organizations on campus have been asked to conduct blood drives for the University bank.

It is hoped that some kind of schedule be set up with each group or organization on campus to take a turn conducting a drive. This would insure a steady flow of donations coming into the ASU credited bank, he said.

The first blood drive will take place on Dec. 7 and 8 in the Memorial Union. Only donors will receive credits for the blood donated, said Wilson.

Further information on the blood drive can be obtained at 965-3162.

By LESLEY RONSON

The ASASU preschool, which cares for ASU students' children, has been operating with no group fully responsible for it, according to comptroller Dean Mousser, and as a result it now faces a financial crisis.

ASASU came up with the idea for the preschool and initial funding, he said, but they cannot fully support it.

Mousser said he has contacted the College of Education and home economics department, but has received no definite answer from them.

### Look for third source

"If Education or home economics does not want to take on the present preschool as it is, or they do not want to absorb it under their present operations, then we would have to look to a third source. And right now I don't know of a third source that would take it," he said.

Mousser said if no support is found for the preschool soon, it will have to be closed.

### Several would be nice

Sharon Kulhavy, director of the preschool, said, "It would be nice if we had several departments to support us, but we can wait for that if they can't."

"Education and home economics are natural for this kind of program so those were the two departments who were approached by the comptroller.

### Maybe multiple funding

"But Education is not in any position at this point to fund a program like ours." She said she doesn't think home economics could do it either. But she thinks both departments could partially fund the school.

Kulhavy and Mousser have different opinions about the preschool's financial situation. Kulhavy said the budget they prepared for the comptroller's office, which says the preschool will be \$5,000 in the hole by the end of the year, is not the budget they operate under.

### Paying off the debt

The budget which Kulhavy says the school operates under puts the school only about \$400 in debt. She said they are paying it off.

"I was asked to prepare a budget which would show what we need to operate," she said, "but that is not what we have."

She said they would operate under the comptroller's budget if they had the money allocated in that budget.

Warning: The American Vegetarians have determined that meat eating is hazardous to your health. See page 11.



Warning: Motorcycle jumping may be hazardous to your health, too. See page 9.



# Draft counselor explains call

The University's draft counselor said yesterday that the Defense Department's latest draft call announcement is misleading to students eligible for induction.

Ron Romine, University Selective Service counselor, warned that the chances for a student to be drafted are greatly reduced, but not completely eliminated.

He said the critical age for induction is between 19 and 21, and the critical time period for induction is in the spring.

The draft announcement made Wednesday by Defense Secretary Melvin Laird calls for fewer than 10,000 men to be drafted next year before military induction is halted June 30.

Laird said no one will be drafted in January and the final inductions are to be spread between February and June.

According to Selective Service officials, men with numbers up to 95 in this year's lottery, whose deferments ran out late this year, will be the first called in February.

Since the law states that those without deferments cannot be drafted after March 31, only men with lottery numbers picked this year under 40 will be taken after that date.

Following the June 30 deadline, the nation will switch to an all-volunteer force, relying heavily on the Reserves and National Guard, according to Laird.

Laird said the Guard and Reserves are short about 55,000 men, with an increased shortage expected next year as a result of the draft cutback.

He added that if the enlistment situation in the Guard and Reserve forces does not improve, Congress will be forced to pass a special law to draft men after the regular induction period ends June 30.

Romine said students should be sure to fill out the white Selective Service cards in their registration packets.

All eligible students who fail to do so will lose their student classification with the draft board, thus increasing chances of being inducted.

Romine added that the critical periods for induction of students are between semesters and during the summer.



The Christmas Gift That  
Only YOU Can Give . . .

A PORTRAIT BY

# ERIC

1020 MILL AVENUE

PHONE FOR  
APPOINTMENT

966-8491

# Teacher explains survival course

The ASU survival course is for students having motivational and communication problems created by adjustment to college life, said Carolyn Kaluzniacki, teacher of the controversial course.

The course is designed for those apprehensive about coming to college, she said.

"The freshman drop-out rate is 40 per cent and even higher for minority groups. This course provides clues for succeeding, before they fail," she said.

Controversy arose when Rick St. Germaine, chairman of the Indian Student Association, appeared before a United States Civil Rights Commission concerning conditions for Indians at ASU. Germaine said the University secretly instituted a survival skills class comprised of 33 athletes out of the 36 total enrollment, ignoring his recommendations for an Indian survival class.

"The course was not designed specifically for athletes; it just turned out that way by chance. They need help in developing skills too," Kaluzniacki said.

Indian students maintain the highest dropout rate of any student group. College presents a totally different social environment from that of the reservation as well as academic adjustment problems, she said.

Segregating Indian students into individual survival courses only continues the situation of segregation begun on the reservation, according to Kaluzniacki.

Combining students with similar problems into the same class necessitates sharing problems. "In this case the students are well on their way to attack their problems both academically and socially," she said.

Students are referred to the class through a federally funded program, comprised of Upward Bound, Talent Search and the Education Opportunity Program (EOP), she said. Upward Bound deals with high school students possessing the potential but not achieving. It directs the students interests toward college, she said.

Talent Search facilitates enrollment and attempts to reach those who might not consider college. EOP sponsors tuition and book scholarships based on financial need, she said.

Advisers in the different colleges also refer students to the program.

She said that any student who enrolls will be accepted into the class.

The survival course attempts to enhance the students study skills, increase reading speed and vocabulary, aid in effective speaking and create interest in other classes. The class also attempts to help the student get through the bureaucratic red tape inherent in any university, she said.

"The students felt after first enrolling that it was a gut course. They are now sadly mistaken. Many of them claim to work harder in this than any other subject," she said.

"Through the use of video tape machines, the students see themselves and their mistakes. It is a self-learning tool instrumental as a key to picking up problems," she said.

Numerous individuals have evaluated the class and all the reports are favorable. At present there are only two sections, but hopefully there will be four next semester.

The fall semester schedule did not list the course as funds were received too late. It is included in the spring schedule, she said.

STATE PRESS is published by Arizona State University Tuesday through Friday during the academic school year, except holidays and examination periods. Entered as second class matter at Tempe, AZ 85281.

## EUROPE

Israel & Orient

from L.A.

\$150-300 Student flights

Contact:

Mitch Peles, 278-5253  
4248 W. Osborn  
Phoenix, Az. 85019

## Ardee's WELCOMES ASU

with 10% discount on

Macrame Supplies, Lute, Beads & Flowers  
Decoupage Boards & Needlework.

PAINTINGS & UNUSUAL GIFTS

featured along with candles

Hand Tooled Leather Belts, Handbags and Billfolds

IN TEMPE CENTER

968-3532

Young  
Innocent  
By  
Arpeja  
Polayno Pant, Blouse and Jacket  
\$44<sup>00</sup>

Bonnie Sue Fashions  
913  
Mill Ave

# Study shows communists avoid guerilla connections

By MARK FITZWATER

Communist parties in several Latin American countries are apparently exploiting the workability of political co-existence by publicly avoiding direct association with guerilla movements, according to Marvin Alisky, political science professor.

Alisky recently finished a study entitled "Tupamaros and the Communist Parties of Latin America." A chapter on Uruguay will be published in the 1973 International Yearbook on Communist Parties by the Hoover Institution of Stanford University.

The study compares Latin American Communists to the Communist party in Italy.

In Italy, since 1946, the Marxists have been able to retain some political power by taking advantage of the divisions in non-Marxist political groups.

"Parallel coalitions are now showing strong influence in Latin America," Alisky said. "A coalition of Chilean Communist and Socialist parties elected Marxist President Salvador Allende. Since then, other political groups, have adopted the popular front approach."

His study, based mainly on researching copies of two Communist Party papers, "Popular" of Uruguay and "Siglo" of Chile, revealed a double-level quest for power.

"On one level the parties are trying to work within coalitions for power. On the other level, the urban guerillas are trying to attain power through terrorism," Alisky said.

"The parties working through the system don't criticize the terrorists' methods; instead they deny responsibility for anything the terrorists have done.

The political parties don't want to be blamed. For propaganda purposes they are denying a direct link with any of the terrorists."

Alisky said the Communists and Socialists were able to win about 19 per cent of the total vote in the 1971 national elections in Uruguay by presenting a broad front.

This was a 13 per cent increase over the 1966 election in which the broad front approach of Allende was adopted.

"Problems resulted," Alisky said. "The party, although a minority, has enough strength to cause delay and disruption. One

legislator out of five, acting in coalition with the left, can hamper congressional action and delay such programs as the government's anti-inflation effort."

Alisky said the Communists are encouraging strikes and trying to weaken price controls to weaken the governments' fight against inflation.

The radical groups compound the threat to existing governments in Latin America, Alisky said.

"Some are so radical that even the Communists and the Socialists have difficulty in achieving progress with them," he said.



Alisky

from

Vanity Fair



CELIA'S fashions

TEMPE CENTER

## SHOP at TEMPE CENTER for all your Holiday needs



Free Santa Ring for All Children.  
Stop at any Tempe Center Store.

Open Evenings 'til 9:00

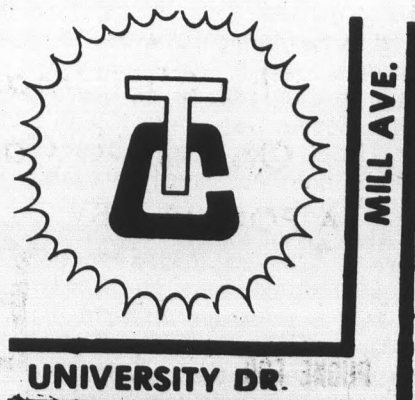
- Americana Shop
- Ardee's Decor
- Artistic Trophies
- Bonnie Sue Fashions
- Brickie's Furniture
- Brown's Card & Party Center
- Celia's Fashions
- El Rancho Market
- Fiesta Laundry & Cleaners
- First National Bank
- Flair Sportswear
- Hill's Books & Records
- Jam's Restaurant
- Lee Optical
- Livia Wigs
- Pioneer Camera Shop

- Ray's ASU Barber Shop
- Revco Drug Store
- Rosamond's Beauty Shop
- Sewing Basket
- Sherwin-Williams
- Shoes Unlimited
- Stag Tobacconists
- State Farm Insurance
- Teepee of Toys
- T.G.&Y. Family Center
- 31 Flavors Ice Cream
- Tops Liquor Store
- University Sporting Goods
- Viking Sewing Center

TEMPE CENTER

University & Mill

"In the Heart of Sun Devil Country"



# Opinion | state press

## ASU impedes press freedom

The State Press recently received a letter of inquiry which read in part:

"We at the Iowa State Daily are considering the possibility of obtaining funds from our student senate on a formal contractual basis. Currently we receive \$70,000 of our \$200,000 budget on a lump sum basis from student fees as approved by the student senate. This student money involves "playing politics" each spring

when the allocation comes up for review. The senate has also on occasion tried to legislate policy, viewing the Daily as simply another student organization. Our goal is freedom from such political strings, possibly through financial independence."

The letter, which asked about our own situation, pointed out the similarities in the operations of two newspapers —

one on a campus of 45,000 and the other on one of 30,000.

The main characteristic we hold in common is the fact that one-third of our budget is controlled by people usually hopelessly ignorant of journalistic practices.

When students or faculty complain to these people of something the newspaper has done, the power-group generally evaluates the complaint on a persona-impact

basis, rather than a journalistic one.

The following axioms are customarily used when passing judgment on newspaper content:

(1) Bad news is just as important as good news, except when the subject is oneself or one's friends;

(2) The newspaper cannot print everything available for publication, but what it does print should be acceptable to the budget group, whatever its actual merit;

(3) Freedom of the press applies to all newspapers at all times, but the college press should be censored from time to time;

(4) Editorial writing and newswriting are much the same thing, to be placed under the same restrictions;

(5) Editorial attacks upon an individual's competence are to be regarded as attacks upon integrity or morals, with the description of such attacks both slander and libel;

(6) Cutting a newspaper's budget improves the quality of its product.

It is resort to these tools by power-wielding ignoramuses that modifies journalism at Arizona State and most universities in the United States today.

College journalists by no means produce perfect work with every attempt, as is true of students in any other field, but it is surprising they don't make more mistakes.

How many other disciplines train students in a specific field under the iron hands of idiots, at the administration's demand?

Today sees the last State Press produced by members of the fall semester staff. There were plenty of rough times along with the fun this year, but in retrospect it was more than worthwhile.

We hope, for the sake of journalists on the way up, and for our readers, that the State Press may continue publication. But we hope, for the benefit of all concerned, that future efforts may be independent of the biased and unschooled group now in control.



## Letters

### Indian reams out Indian

Editor:

In regard to the article of Nov. 22 with reference to the discussion of the merits of a survival course.

Let me say this to Rick St. Germaine: "Shut-up!" "Cool it!" and any other four-letter terminology that he might be familiar with.

First of all, Mr. St. Germaine, let me clarify that I am an Indian, that I have lived on a reservation, and that since leaving the reservation I have for the past five years served my Indian people.

I am concerned that so many uninformed, self-imposed spokesmen for the Indian people keep blowing their mouths off at exactly the wrong times.

It is embarrassing to me to read such stupid accusations as you have put forward about Dr. George Hamm and the survival program. Let me tell you about a survival program for the Indian Education Department in a well-known University to the North.

Those students which are put on academic probation are required to take this course. It has not only been successful, but it has been the turning point of many college drop-outs.

The students under this Indian Education Department not only feel good about the program but many, after having been required to take the course because of academic probation, find themselves doing well academically and by choice repeating the course.

You also might like to know that a number of the Indian students in this program are now taking groups on survival programs for the student body as a whole.

I suggest, Mr. St. Germaine, that instead of blowing off at the mouth uninformed that it would be worthwhile for you to ask Dr. Roger Swanson and Dr. George Hamm about these survival courses at other Universities, especially with respect to Indian education.

Please do not destroy the chances of upgrading Indian Education. You are overly defensive and as such place many other Indian students in a poor light.

A leader can cause his group to feel attacked or abused very easily by such emotional accusations; however, do not give yourself an "A" for that. A true leader is one who can look at things objectively, go the second mile to be informed and then make his decisions factually, not emotionally.

I have never met, nor do I know, Dr. Hamm nor Dr. Swanson; I only know of the program and after all, isn't that a good basis to judge a program on — the merits of the program — not personalities?

By the way, in case you notice my last name is not an Indian name, it is German. However, I assure you that my surname was Indian and that my interest is with the education of my people, not the condoning of them.

## Vietnam arms buildup obstructs final peace

By RICK MAHRLE

It is now 'Peace at hand' plus a month, yet we seem as far away from peace as we were during the summer.

Some of the heaviest bombing attacks of the war are now being directed against North Vietnam, and Uncle Sam is hurriedly building up South Vietnamese arms.

While the peace talks have been delayed until Dec. 4 and the President has announced he will end the war by the end of the year, the South Vietnamese air force has become the fourth largest in the world.

On Nov. 20, according to the New York Times, the Pentagon announced it had essentially completed an urgent program to arm South Vietnam.

The Pentagon proudly announced it had compressed into three weeks a supply schedule planned to take until late in 1973.

More than 600 planes and helicopters have been given to the South Vietnamese during the last three weeks to a month.

Of those planes, 100 were F-5 jet fighter bombers, which because of the urgent build-up call, had to be borrowed from South Korea, Nationalist China and Iran, the Times said. It seems only 20 of the fighter bombers were available in the United States.

Also given to the Saigon government were 90 A-37 light attack bombers, 30 A-1 prop-driven bombers, 30 C-130 transports, 20 AC-119 gunships and 270 helicopters.

More than 2,000 craft now in the South Vietnamese air force make it the fourth largest in the world — not just Asia, but in the world. The majority of those planes are U. S. made and in most cases gifts

from Uncle Sam.

Now the question is, with peace so 'at hand,' why is the U. S. so hurriedly arming the Saigon government? Is it because the ceasefire agreement would end the arms build-up?

Perhaps peace talk delays can be directly related to this arms build-up. If so, this delay is a crime against both the Vietnamese people and those American soldiers still dying in the United State's most embarrassing foreign involvement.

Could Henry Kissinger and Nixon have sat down together, the President saying, "Well, Henry, we've got a problem. Do you think you can delay this agreement until we can build up the South Vietnamese army?"

Kissinger could have answered, "Sure, Dick. Why not? We'll just tell the people it'll take one more session of the peace talks."

I hope such a conversation would never take place, but such quick build-ups point out a need for a settlement delay.

After all, the Pentagon said the build-up was to be completed by late 1973. Did the Pentagon expect us to be in Vietnam that long? It must have if its plans looked that far into the future.

It should be noted that the North Vietnamese are also building up their forces, but the longer we delay on a final decision, the more explosive post-war Vietnam will be.

Arms do not create war, but without them, it is difficult to wage full-scale conflict. So, by delaying a settlement and building up the South Vietnamese forces, we have created an even more explosive situation in Vietnam.

# Letters

## Anti-prof piece elicits grumble

Editor:

Regarding an editorial of Nov. 28, concerning faculty activism in the Williams recall movement: I'm surprised that the rest of the State Press staff didn't insist that its author have his by-line accompany the story for fear of themselves being suspected of writing such tripe.

Whoever you are, I of course respect your right to voice your opinion, but I can't respect your reasoning. You began by referring to the "outright and massive student rebellion against authority" of the past few years as "ill-reasoned."

Rebellion against which authority? Was it always ill-reasoned, regardless of the cause or persons involved?

The tone of your editorial suggests that such activism was repugnant mainly because, deep down, you revere authority as a thing in itself, regardless of whom exercises it.

There are plenty of petty bureaucrats around who would be cheered by your apparent reverence, but it's no blueprint for remaining a free person.

It is ironic that you should castigate Professor Fullinwider of the History Department and of the faculty recall-support group, by implying that he would have us accept his word as the "voice of authority."

From my knowledge of Dr. Fullinwider, I believe he is a man who would like nothing better than for people to think for themselves.

As to your statement that Dr. Fullinwider "thrusts himself before the news media much these days," implying that he is a publicity-hound, may I say that makes for pretty ludicrous reading in a paper that features none other than S. P. Fullinwider on page one of that same issue.

Would you, phantom reporter, have us believe that the State Press runs non-newsworthy copy — on the front page, yet? Absurd!

Lee Bealmear  
Senior  
Sociology

## President praises Saga

Editor:

On Nov. 15, 1972 there were nationwide benefit dinners for the people of Bangladesh. Saga Foods made it possible for ASU to participate in this assistance program.

Oftentimes students on campus at any college are quick to criticize institutional feeding as below-standard. Saga Foods at ASU has been subject to this criticism in the past.

They deserve our commendation for their efforts of last Wednesday. It is too bad that all students did not extend themselves to helping their fellow man.

Saga not only prepared the Bangladesh meal at ASU, but also at all campuses they serve. I bid those in the decision positions of Saga Foods to continue and expand such worthwhile programs.

Mark Wilson  
President  
ASASU

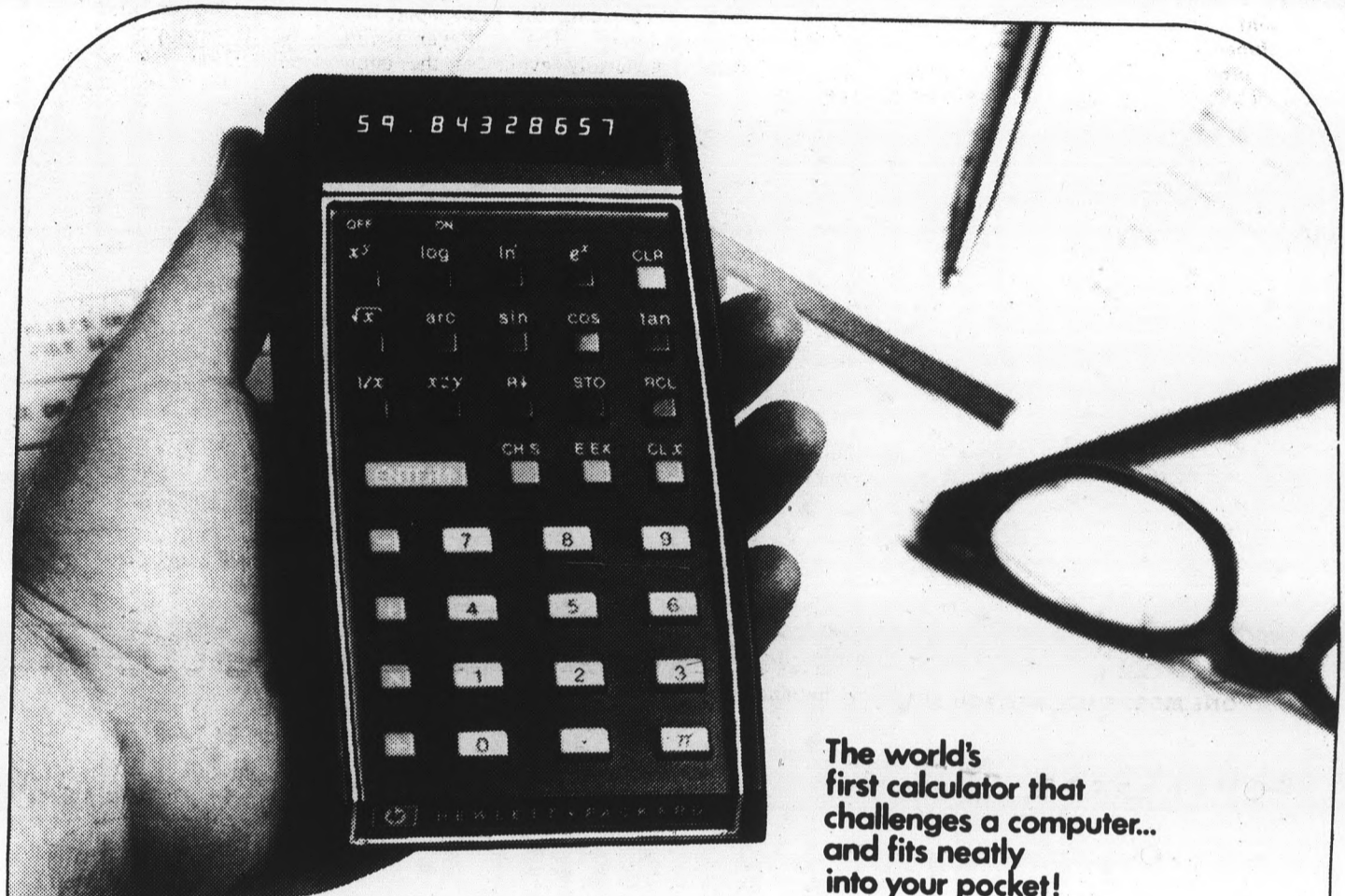
**state  
press**

## Letters Policy

The State Press welcomes comments from the University community on any material published in the newspaper, or any topic determined to be of interest to the majority of its readers.

Letters — typewritten, double-spaced and no longer than 300 words — to be submitted to the Editor, State Press, must be edited for libel, space requirements and compliance with the newspaper's regulations.

The Editor, with whom responsibility for publication rests, may at his discretion refuse publication of any item.



The world's first calculator that challenges a computer... and fits neatly into your pocket!

## The HP-35 by Hewlett-Packard Students call it the "Super Slide Rule!"

Can your slide rule compute transcendental functions with 10-digit accuracy in less than half-a-second? *The HP-35 can!*

And that's just for openers. The new Hewlett-Packard HP-35 can free you from countless hours of tedious calculations with tables, slide rule, pencil and paper. Yes, this 9-ounce cordless wonder fits right in your pocket. Yet it challenges a computer in handling complex problems, including log, trig and exponential functions—each with a single keystroke. And it does it anywhere, from the classroom to your dorm.

Engineering and math students, as well as faculty, will especially appreciate its many practical benefits. The HP-35 without question . . .

- SAVES TIME in solving problems
- GUARANTEES ACCURACY which means fewer mistakes—better grades
- REPLACES LOG AND TRIG TABLES—the calculator does it all
- OPERATES SILENTLY in classroom, library or wherever used
- OFFERS COMPUTER-LIKE POWER—no waiting for school machine
- GOES ANYWHERE—it's as portable as your favorite slide rule

**Come in today for a FREE DEMONSTRATION**

Student Book Center  
704 College Ave.

University Bookstore

### A Challenge for THE BOLD



in the  
UNITED  
STATES  
AIR  
FORCE

Become a Pilot or Navigator.

- Starting salary—over \$8,400
- 30 days paid leave annually
- Free medical and dental care
- Opportunity to advance your career
- Opportunity for world-wide travel

OBTAIN COMPLETE DETAILS FROM AN  
AIR FORCE RECRUITER

321 N. Central Ave.  
Phoenix, Arizona  
261-3344

# TROG meets with Schwada

By LESLEY RONSON

TROG (Tuition Reduction Originative Group) members met yesterday with University President John Schwada to discuss the organization's goals and objectives.

John Morgan and Richard Katz said they presented 11 ideas to the president. His only immediate response, they said, was to say he would pass the written proposals to the proper channels.

"He said he feels that the University administration should not be involved in a student government whatsoever," Katz said.

In a telephone interview Schwada said the processes of election and removal of officers should be left to the students, but that once elected, student government officials should have close contact with the administration. The 11 proposals TROG presented were:

—To make incidental student fees optional. Arizona is a right to work state, and no one can be forced to join a union. TROG says forced membership in ASASU is similar to forced union membership.

—To recall all illegally elected ASASU officials. TROG says the ASASU constitution was violated in the 1972 elections, so the election was illegal. TROG also says the current officials are incompetent and unresponsive to the needs of the students.

—To have a broad-based, student, constitutional convention. TROG says the present constitution does not meet the needs of the student community and that current ASASU officials do not uphold it. They say ASASU President Mark

Wilson violated the election code by not listing all company expenditures, and the legal adviser who should prosecute, and the court who judges this violation are appointed by the president.

—To make non-vital organs of ASASU separate entities. TROG says the Cultural Affairs Board could be self-supporting by using profits from concerts in the new field house.

—To increase the budgets of student organizations by reallocating \$21,000 in ASASU funds now being given to the administration-

appointed executive manager and intramural director.

—To redistribute to student organizations the \$50,000 in ASASU funds now controlled by the executive manager. TROG says the organizations will not lose ASASU funds if TROG is successful, as an ASASU official told members of the Business Administration council.

—To build new student organizations aimed at meeting the real needs of the student community. They suggest a strong, ef-

fective tenants' union to work with the Tempe City Council and mayor to end the price-fixed rents, contracts and deposit rip-offs.

—To expand and fund the day care center.

—To make the ASASU Foundation different from the administration controlled short-term loan fund. And to make the loan available on the day it is requested instead of making students wait a week or more for an "emergency loan."

● Continued on page 12

## GO GREYHOUND AMERIPASS

See America  
\$2.50 A Day

- Escorted Tours
- Rose Bowl
- Xmas in Mexico

Ship  
Greyhound  
express

- Fast
- Economical

for more information  
contact—

LIBBY  
BIGGERSTAFF

Greyhound Bus Station  
13 E. 5th St.  
Tempe  
Phone:  
967-4030 967-0924

GO GREYHOUND

and leave the driving to us

# TANG'S

## VERY SPECIAL CHRISTMAS STUFF

from the boutique

**"SANTA SPECIAL"**

**MADRAS BEDSPREADS**  
Double Reg. \$6.99  
Single Reg. \$5.99

**"STOCKING STUFFERS"**

**CANDLES** —  
69c-99c-\$1.99

**ALL TYPES — Plaques from \$1.99**

**TEN BOTTLE WINE RACK**  
from \$3.88

**HANGING ASHTRAY**  
\$1.77

**"GIFTY THINGS"**

**DRY'D FLOWERS IN A DOME**  
from \$1.49

**Jewelry Boxes from \$2.77**  
**BRASS-SHEESHAM WOOD-ITALIAN**

**BANGLE BRACELETS**  
All colors \$1.99 Doz.

DENVER • BOULDER • PHOENIX • TUCSON • HOUSTON • LOS ANGELES

### IMPORTS OF THE WORLD

MESA-TEMPE HIGHWAY  
1525 East Apache Boulevard  
TOWN AND COUNTRY SHOPPING CENTER  
4821 North 20th Street  
BETHANY HOME ROAD & 27th AVENUE  
6025 North 27th Avenue



## Kicking the traces of timid existence with Evel Knievel

Page 9

## Unsuspecting bass get tube treatment with Mutt around

Page 8



## Supremes' Diana revives the spirit of Billie Holiday

Page 10

# This Weekend

**FRIDAY:** "The Beguiled" shows at the MU movie house at 7:30 and 9:30 p.m. Stars Clint Eastwood and Geraldine Page. A wounded Union soldier takes refuge in the house of some southerners. For Clint Eastwood groupies only. 50 cents.

Patti Page and Roger Williams at Celebrity Theatre. Times and prices at 267-7501. **SATURDAY:** "Throne of Blood," a Japanese version of MacBeth, shows at Neeb Hall at 6:30 p.m. This is not a cheap Japanese science fiction flick like you can see on the tube. Admission is free.

"Between Time and Timbuktu," a Kurt Vonnegut movie, will be on Channel 8 at 10:30 p.m. Watch it yourself if you want to know more about it.

"Catch-22" will be shown again in the MU movie house. This time it's a benefit for the United Fund. 6 and 8 p.m.

Roger Williams and Patti Page will be at Celebrity Theatre again.

**SUNDAY:** Tickets are still available for the bus trip to Nogales with the Latin American Forum. \$9.75 for a two-way ticket. 965-5058 for tickets.

Neeb Hall shows two freebies, "Sunrise" and "The Wind." The first is a suspense movie. The second is about a woman who murders a man, buries him, and a windstorm uncovers him. Fun and laughs for all.

"Catch-22" shows at the MU again, same times.



Contemporary Christian musician Larry Norman will perform at Neeb Hall tonight at 7:30 and 9:30 p.m. Norman is one of the top names in the Jesus Rock movement, famous for such songs as "I Wish We'd All Been Ready." He is a dedicated Jesus follower, who says he would rather be called a Christian than a musician, and once turned down the lead role in "Hair" for what he termed "obvious reasons."

## Ross in 'Lady Day' draws fan avalanche

By DEBBIE ELLISON

"Lady Sings The Blues," now appearing at the Cine Capri, was a smash success, as proved by the seemingly infinite lines of patrons waiting to enter.

Diana Ross plays the superb part of "Lady Day." Having sung many years with the Supremes, Ross made her decision to leave the group, which appears to have been the right move.

Ross listened for nine months to recordings of Billie Holiday to absorb the spirit of her legendary voice.

The film marks the first venture into movie production for the Motown Record Corp. which recently expanded to the West Coast from its native Detroit.

The film took two years of preparation before production began.

Five months went into examining more than 200 songs performed by Holiday with such musicians as trumpeter, Harry "Sweets" Edison; bassist, Red Holloway; and guitarist, John Collins.

The screenplay succeeded in conveying many of the situations in Holiday's life that, without making the film too tragic, revealed in her an inner beauty.

Billie Holiday went through childhood with an aunt who replaced a mother. After being raped she fled to New York where she



Diana "Billie Holiday" Ross

cleaned a house of "ill repute," later becoming a prostitute and eventually a drug addict.

Before her death in 1959, she was to serve a prison sentence for drug abuse.

In an effort to re-establish her career, Holiday did one-nighters throughout the country trying to build up her name. As a result, she was booked into Carnegie Hall, but to no avail. Her career never was the same.

Other noted characters in the film are Billy Dee Williams (Brian's Song), as Louis McKay, a numbers king and Billie's boyfriend. Comedian Richard Pryor plays "piano man," Holiday's accompanist who was later killed trying to obtain dope for Billie's habit.

**HELD OVER**  
2nd Week

THURSDAY WELD ANTHONY PERKINS  
**'PLAY IT AS IT LAYS'**

TAMMY GRIMES ADAM ROARKE GAY JOON DEE OWEN CLEGGY BOWNE JOAN DIDION  
FROM PERCY BYRONNE GARDNER TOMMY PERCY A MANUSCRIPT BY ROBERTSON JAMES WELLS

**SHOW TIMES**  
PLAY Mon.-Tues.-Wed 7:15-9:00  
PLAY Thurs.-Fri-Sat.-Sun 3:30-5:25-7:35-9:20

**UNIV. NO. 1**

Broadway East of Rural  
Tempe 967-7857

**MICHAEL SACKS**  
**RON LEIBMAN**  
**SHARON GANS**  
**VALERIE PERRINE**

BILLY PILGRIM LIVES FROM TIME TO TIME TO TIME...

A UNIVERSAL RELEASE

**"SLAUGHTERHOUSE-FIVE"**

TECHNICOLOR®

**SHOW TIMES**  
Weekdays 7:00-9:00  
Sat. & Sun. 3:13-5:15-7:15-9:15

Broadway East of Rural  
Tempe 967-7857

**PLAY WEE-TEE**  
**MINIATURE GOLF**

Your Choice of Two 18-Hole Courses

University Drive at Rural — Tempe  
HOURS — 1 p.m.-12 midnight Daily Phone 966-8027  
Sat., Sun. and holidays 10 a.m.-11 p.m.

ASASU CULTURAL AFFAIRS BOARD  
*Art. Camp & Classic Film Series*

**KUROSAWA'S**  
**THRONE OF BLOOD**  
SATURDAY

Victor Sjostrom's  
**THE WIND**  
6:30

F.W. Murnau's  
**SUNRISE**  
8:30  
SUNDAY

ALL SHOWS WILL BE IN NEEB HALL  
OPEN TO STUDENTS, FACULTY,  
& STAFF  
- NO CHARGE -

**ALL SAINTS CATHOLIC**  
**STUDENT CENTER**

230 East University Drive  
**ADVENT VIGIL MASS**  
**DRAMA — MUSIC**  
**AUDIO-VISUALS**  
SATURDAY EVENING  
10:30, 2 DECEMBER  
COME JOIN US AS WE WAIT . . .

**"CATCH-22"**  
IS, QUITE SIMPLY,  
THE BEST AMERICAN FILM  
I'VE SEEN THIS YEAR! — Vincent Canby, N. Y. TIMES

A MIKE NICHOLS FILM  
ALAN ARKIN

**CATCH-22**  
BASED ON THE NOVEL BY JOSEPH HELLER

STARRING MARTIN BALSAM, RICHARD BEN JAMIN, ARTHUR GARFUNKEL, JACK GILFORD, BUCK HENRY, BOB NEWHART, ANTHONY PERKINS, PAULA PRENTISS, MARTIN SHEEN, JON VOICHT & ORSON WELLES AS DREDDLE. SCREENPLAY BY BUCK HENRY. PRODUCED BY JOHN CALLEY & MARTIN RANSCHOFF. DIRECTED BY MIKE NICHOLS. PRODUCTION DESIGNER RICHARD STYBEN. TECHNICAL \* PARAVISION \* A PARAVISION PICTURE \* UNDER 17 REQUIRES PARENT OR ADULT COMPANY

December 2 & 3 — 7 & 9:30 P.M.  
M.U. Movie House — Adm. \$1.00  
Tickets on the Mall & ASASU Office

# Kniewel goes airborne

By PRISCILLA ATWOOD BOTTIMER

Less than four hours after the burial of his father-in-law, who drowned in a boating accident, and five days before an unspectacular jump of 16 diesel trucks at Beeline Dragway, Evel Kniewel — king of the motorcycle stuntmen — sat in the Phoenix Playboy club fielding newsmen's questions with the defensive style characteristic of his breed.

"When am I gonna jump the Snake River Canyon? I'm gonna jump it when I get damn good and ready. That canyon is three-quarters of a mile across and 700 feet deep, and I'm not interested in going before I'm ready, and getting killed."

That statement could be readily debated. Those speaking pro-Kniewel could say there are easier ways of death — bullets, pills, asphyxiation — than going airborne on a motorcycle.

Others, the con-Kniewel, could say that such a masochist enjoys the constant fear of uncertain survival. The sexual thrill of potential death.

But hold on here. What does Kniewel, the subject of all this psychological speculation, say about his alleged death wish?

"It's all bullshit. People who don't do anything but live and breathe, they try and analyze people who do other things.

"The best explanation of what I do is 'Far better it is to take a chance and risk life, even tho cheated by failure, than to live like poor souls in the gray twilight

who know no victory, no defeat, because they have tried neither."

Kniewel has had his quota of both victory and defeat, sometimes achieving both at the same time. He has broken nearly every bone in his body at least twice. He has suffered a central protrusional fracture of his hips and pelvis in a crash at Caesar's Palace, which left him with one short leg.

He has pins, screws, suture scars and surgical steel plates in, on and through his body and has made "two to three million" in the last six years as a result.

"People don't pay all those millions to see a sane person," said Kniewel. "And without me, they wouldn't have anything to do."

The first time Kniewel gave people something to do was with the Jacy Christmand's auto daredevil show in Colorado. He jumped two mountain lions and a coffin full of rattlesnakes as the grand finale to a stock car race.

"I went up the ramp and down on a corner of the coffin," said Kniewel. "Snakes went everywhere and the crowd moved as quick as they could out of the stadium."

The last jump in which Kniewel gives people something to do may be the one planned for Snake River Canyon. It is there that he plans to jump the Canyon with a steam powered XR-I Sky Cycle made specially by Harley-Davidson.

"I meet John Glenn at the Houston manned space center and he introduced me to Bob Truax, the only man listed in Who's Who for rocketry," Kniewel said. "He told me the only reliable method of propulsion is steam, and I decided to take his word for

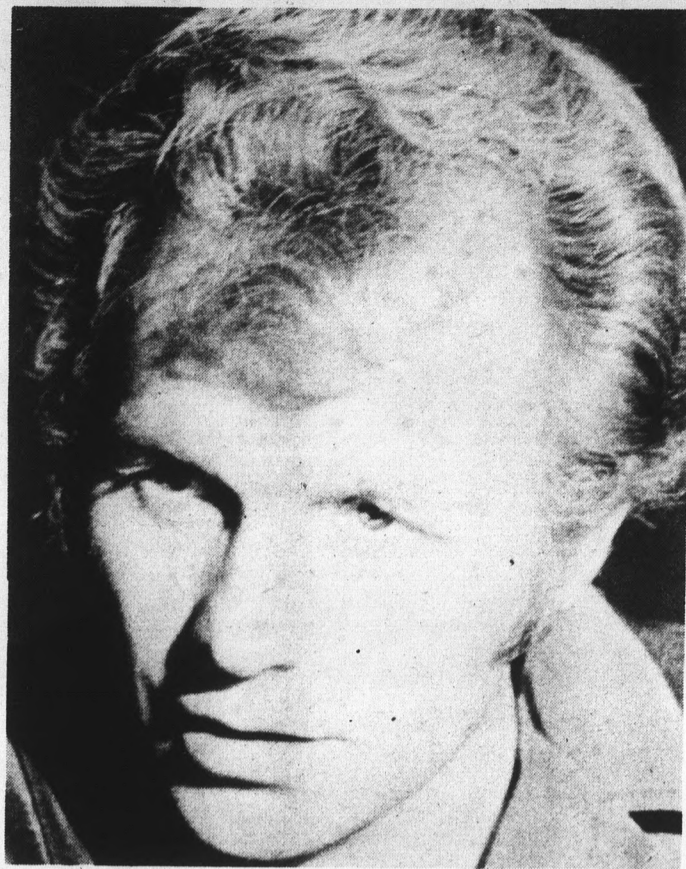
it." The sky cycle will be propelled with water from the artesian well at the Olympia Brewery in Tumwater, Washington.

"That's not for promotional purposes," said Kniewel. "It's just that the Olympia beer water is the purest water I could find."

Kniewel plans his canyon jump for July 4th of 1973. Before then he plans a destruction derby in the Los Angeles Coliseum in which A.J. Foyt, Mario Andretti, and Al and Bobby Unser will drive such blue-blood cars as a Silver Dart Rolls Royce and a Lincoln Continental.

Kniewel, of course, will headline that show by riding down a 130-foot ski ramp and hopefully over 50 cars piled in a pyramid.

"We plan on at least 60,000 people at that event," said Kniewel. "After that I'd like to fly a plane into a 150 foot replica of the Empire State Building to duplicate the crash that took place there in 1945."



## In Time For Christmas Giving

Annual Book Sale  
Beginning December 4th

at the  
**UNIVERSITY BOOKSTORE**

**ERICKSON**  
HANDCRAFTS  
ARTIST & DRAFTING  
SUPPLIES  
Crafts - Picture Frames  
Decorating Material  
Open Mon. & Thurs. Nites  
10% Discount to Students  
111 E. University — 967-4482



The  
**Christmas**  
gift that will  
be opened...and opened  
and opened.

52 pages in gorgeous color. 60¢ wherever magazines are sold. (Holiday mailing envelope in each newsstand copy)

Gift subscriptions:  
\$5.00 per year in U.S. and possessions.  
\$6.00 elsewhere. Arizona Highways will

send an attractive Christmas card to announce your gift.

Write:  
Arizona Highways, 2039 West Lewis, Phoenix,  
Arizona 85009, or Phone: 258-6641

Now on sale at your local newsstand.

## Why wait for tomorrow?

If you think the Seminary is a place of study and meditation, you're right. But there is so much more.

As a Paulist you become involved from the start.

We were founded with the belief that each man has a place. Each man has a job. Sometimes, many jobs. And each contributes his own unique talents and is given the freedom and the support he needs to achieve his goals.

The Paulist is a man on the move. His mission is to people, particularly the people of North America. The issues and problems we face today—injustice, poverty, peace, war—must be the concern of the Church.

Wherever the Paulist student serves the Christian Community—in a parish or an inner city school, a youth center or a campus, or in communications, he is concerned. Involved. Right now.

When you commit yourself to the Paulists, it isn't a someday thing. It's today.

For more information write:  
Father Donald C. Campbell,  
Room 102.

**Paulist Fathers.**

415 West 59th Street  
New York, N.Y. 10019





"Mutt" Webb

# Mutt's better bass trap: tube, paddle, skunk hair

By RICK CLARK

"Mutt" Webb does his fishing from an inner tube, uses skunk hair for bait and seldom makes a cast farther than 12 feet.

A devout Arizona fisherman for 35 years, Webb began experimenting with a unique concept in bass fishing two years ago and has steadily refined the technique.

He calls his method "tube fishing."

Unlike conventional fishing gear, Webb's equipment is rather simple.

His "boat" consists of a large truck tube encased in camouflaged canvas with two holes for his legs. Webb sits in the middle and paddles backwards with the use of swim fins. This enables him to maneuver easily through brushy areas.

"Shad (a minnow inhabitant of most Arizona warm water lakes) and other small fish go into the brushy areas to hide from larger fish," Webb explained. "The bass will be in there after them."

Webb said the unique thing about the tube and fins is that they do not frighten bass the way metal boats often do.

"The tube and fins don't disturb fish any more than a

duck would, since they don't make any noise," he said. "Fish are very susceptible to noise."

The 53-year-old cigar-chewing angler makes his own lures for tube fishing. His jig consists of an offset hook, (number three or four ought) skunk hair and the lower portion of a yellow or orange artificial worm. He forms the "head" of the jig by melting lead and pouring it into a small mold.

Paddling right into thick brushy areas where boats could never venture, Webb simply flips the jig a few feet ahead of him and "works" the area by retrieving the line in short, jerky motions.

Since the bass is only a few feet away when he strikes, the impact is usually much greater than it is in conventional bass fishing, Webb said.

"In the brush, they think it's (jig) something like a young bird or grasshopper that just fell into the water from the brush and they (bass) really run with it," he said.

Webb said it is important to make the jig "drop in naturally," appearing to have fallen into the water from the brush or trees.

Webb said bass are "vicious gluttons" that "grab anything that moves."

Webb said the biggest bass he has caught while tube fishing was six pounds.

"The biggest thrill in hooking one is that each time you feel the line tighten, you think '... this may be the biggest granddaddy of them all,'" he said.

According to Webb, tube fishing is more effective than other methods of catching big bass because it is slower.

"A big bass (five pounds and heavier) doesn't have to chase anything," he explained. "He simply stakes out his area and waits until the bait comes to him. A smaller bass doesn't establish residency as easily, so consequently he's a roamer and sometimes a schooler—and he will chase a plug."

Webb prefers jigs made with skunk hair instead of horse hair or feathers.

"Skunk hair is more water resistant, more pliable and it doesn't get wet enough to expose the hook," he said.

Gathering skunk hair can create problems. On one occasion, the Webbs were returning from a family outing and noticed a dead skunk along the road. Webb stopped his truck and cut off the skunk's tail. He was not very popular with the family when he tried to get back into the truck.

Consistent with his philosophy on life, Webb is attempting to perfect tube fishing.

"I'm not satisfied in doing something unless I do it well," he said.

A custodian at Glendale Community College, Webb's job is agreeable with his interests in the outdoors. He works from 3 p.m. to 11 p.m. on week days.

"My mornings and weekends are free for, well, fishing," he said.

Wearing chest-high waders over his clothes, Webb ventured into Lake Pleasant's cold waters Thanksgiving Day for some tube fishing.

His wife and most avid fan, Verna, stayed on shore to keep the coffee warm.

Isn't it a little cold paddling around out there in the middle of November?

"I don't think it ever gets too cold for Mutt to fish," Verna said.

After 10 minutes in the brush, Webb connected with a three-and-a-half pound bass that leaped out of the water, "walked" on his tail and viciously thrashed the water before yielding. Webb "lipped" (grabbed the fish by the lower lip) the fish and hoisted him out of the water.

Although this was nothing new to Mutt Webb, he had the same gleam in his eye and smile on his face as the eight-year-old who has just caught his first perch.

## Hit Record by ASU Grad. Student



### "San Francisco With Serita"

Roaming S.F. with words, music & poetry with selections from Rod McKuen

A UNIQUE XMAS GIFT  
A limited Holiday Special

**\$2.98** ... while they last

Available at the University Bookstore — M.U. Bldg.



Serving  
11 A.M.—9 P.M.



**Bradford House**  
ALL YOU CAN EAT  
SPECIALS!

**SATURDAY, SUNDAY, MONDAY**

**GOLDEN FRIED SHRIMP—ALL YOU CAN EAT!**

Served With  
Golden French Fries, Creamy cole  
slaw, hot roll and butter. **\$1.99**

**SUNDAY**

**GOLDEN FRIED CHICKEN—ALL YOU CAN EAT!**

Served with  
Golden French Fries, tossed green  
salad, roll and butter. **99c**

**'COMPLETE'**  
**TURKEY DINNER**

Served with—Mashed  
potatoes, stuffing,  
green beans, cran-  
berry sauce, roll &  
butter . . . Pumpkin  
pie, coke or coffee.

**\$1.76**  
COMPLETE

GRANTS RESTAURANTS COAST TO COAST

GRANT PLAZA TEMPE—RURAL & SOUTHERN

## "ALOHA, KAMAAINA SENIORS!"

For free information on job opportunities in Hawaii after graduation write to:  
Kamaaina Career Opportunity Day, Box  
9668, Honolulu, Hawaii 96820."

# HERTZ

## RENT A CAR

**ASU Students . . .**

If you're over 18 you can rent  
a Ford or other fine car at at

**SPECIAL LOW WEEK-END RATE of**

**\$6.50** A DAY  
AND 12c PER MILE

**UNLIMITED FREE Mileage Rates**

4 Days — \$ 75.00

5 Days — \$ 93.00

6 Days — \$108.00

7 Days — \$119.00

For Your Car, Call Your A.S.U. Representative

# STEVE BLAGEN

967-9362 or 963-5786

# Vegetarians ask FTC to rate meat 'hazardous'

By JOHN PHILLIPS

If American Vegetarians gets its way, meat — that red-blooded staple of the red-blooded American's diet — may soon be considered as "hazardous to your health" as cigarettes are.

American Vegetarians has asked the Federal Trade Commission to level all meat hazardous to health, and its reasons range from the nutritional to the philosophical.

American Vegetarians is a national lobby group. It claims heart disease ratios are highest in the three largest meat-consuming countries: the United States, Australia and Canada, and the American Medical Association declared meat the No. 1 cause of coronary occlusions and thromboembolic, a blood clotting disease.

It also claims uric acid, a by-product of meat, becomes deposited in the body and can cause arthritic pain in the joints and damage kidney cells.

Conditions under which animals are raised for butchering lead to diseases and too many chemicals in meat it said.

The Vegetarians contend, for example, that when a frightened animal is but-

chered, adrenalin is secreted into the tissues which can not be completely broken down when the meat is cooked.

Ingestion of this meat, they claim, creates biochemical equivalents to hostility, fright, and fear.

American Vegetarians also pointed to a study done at Yale that has shown reduced endurance with a meat diet. In tests for deep knee-bends, while holding arms perpendicular to the body, non-meat eaters recorded time lengths four to nine times those of meat eaters.

According to the American Vegetarians, British life insurance companies give 20 per cent discounts to non-meat eaters because of surveys correlating meat consumption and a lowered life span.

Kathleen Webb, assistant manager of the Plantree dome, Tempe vegetarian restaurant, raises the philosophical objections to eating meat.

"I just think natural foods are what we were intended to live by," she said. She feels that "the foods God gave us" are fruits, nuts, green, leafy vegetables and grains.

"When you're a vegetarian there's so much available . . . it's so vast compared to animals", she said. "Animals are so diseased today you don't know what you're getting."

Webb also said she objects to eating meat "because of the death vibration that comes into your body when you ingest meat."

She indicated that when someone is a vegetarian, "you don't have a death vibe in your body. The more live things you can eat the better", she said.

Webb said she can recognize meat eaters because they act differently than non-meat-eaters. "After you've been a vegetarian for two or three months . . . you have a lot more calmness about you," she said.

Webb said she thinks vegetarianism "is a science," but added that the most important point is "treating yourself right."

It is now for the Federal Trade Commission to decide what exactly is "right." If they side with the vegetarians, Saga Foods may be serving carrot stew and celery balls and spaghetti.

## ASU exposition displays 5,000 new paperbacks

ASU and the Phoenix-area college faculty will be able to examine more than 5,000 books, and the film, "Future Shock," in a paperback exposition from 9 a.m. to 9 p.m., Dec. 5 and 6 in the MU Cochise room.

The exposition is co-sponsored by several Arizona college stores and the college division of the Association of American Publishers, Inc. More than 20 publishers will show their books.

Books will be displayed at company booths and in a special section where they will be grouped by academic discipline. Publishers' representatives will answer questions and distribute catalogs concerning the books.

The R. R. Bowker Company will furnish reference works providing information about books not on display.

The film "Future Shock," based on Alvin Toffler's bestseller, will be shown hourly.

Invitations to the exposition were sent to 3,000 faculty throughout the area. Bookstore managers also are invited to attend.

## GIVE YOURSELF A CHRISTMAS PRESENT

—A charter flight to EUROPE next summer—

We will fly from Phoenix to Amsterdam, Holland, May 27, return June 27, 1973. Round trip only approx. \$255. less than round trip to New York.

For information, call 967-1673 or write

Arizona Academic Associates  
Prof. G. Kleinfeld and Prof. L. Tambs  
P.O. Box 26480  
Tempe, Arizona 85282

weisfield's JEWELERS love is our business



WEISFIELD'S Jewelers  
LOS ARCOS MALL  
947-5429

Rings enlarged to show detail.



© 1972 Jos. Schlitz Brewing Co., Milwaukee and other great cities.

# Six bulls are better than one.



Nobody makes malt liquor like Schlitz. Nobody.

# Collage

COLLAGE is a biweekly calendar of campus events, excluding athletics and activities sponsored by the Memorial Union. Members of the University community are welcome to bring information about activities to the State Press office, ASB 302. Forms are provided. Only those events listed on State Press forms will be published.

## Today

**Aware** — Women's Active Return to Education meeting, 11:30 a.m. to 1:30 p.m., MU 284.  
**College Life** — 7:41 p.m. at Tempe Womens Club across from Gammage. Mesa's basketball coach plus special music and refreshments.  
**Auto Rally** — 7 p.m., Thomas Mall. First Friday Niter, \$1 per car, open to beginners and newcomers.  
**"Hansel & Gretel"** — Lyric Opera Theatre, 8 p.m., Music Theatre. The classic opera by Engelbert Humperdinck of the famous Grimm fairy tale. A perfect holiday treat for the family. Also presented Dec. 2, 8 and 9.  
**Lunch** — American Baptist Campus Ministry, noon to 1:30 p.m., Baker center. A great home-cooked meal for only 50 cents.

## Saturday, Dec. 2

**CAB film** — "Throne of Blood," 7:30 p.m., Neeb Hall.  
**Society for Creative Anacronism** — Tournament, 11 a.m., El Dorado Park, Scottsdale. Public invited. Tournament will continue through Sunday.  
**"Catch 22"** — 7 and 9:30 p.m., MU moviehouse. Admission \$1, tickets available on the Mall and MU 252. Benefit for the United Fund.  
**Car wash** — Burger King, 9 a.m. to 6 p.m., \$1 (includes free Whopper). Benefit for the United Fund sponsored by Blue Key and Motor Board. Through Sunday.

## Sunday, Dec. 3

**CAB film** — "The Wind" and "Sunrise" — two silent films accompanied by Roberta Bragdon on piano.  
**Aesthetic Band** — 8 p.m., MU Pima Room. Provides a safe, receptive space for those who wish to share their communication through music and other art forms. Free. Performers are asked to come at 7:45 p.m.  
**Bus tour** — to Nogales, sponsored by the Latin American Forum. For more information call 965-5058 or drop by SS 213.  
**Women's Liberation meeting**, 7:30 p.m., MU Alumni Lounge.

## Monday, Dec. 4

**Recital** — Janis Williams and Karen Ekblaw, harpists, will be accompanied by flutist Becky Lasher, 8 p.m., Recital Hall at the Music Building. Free.

## Tuesday, Dec. 5

**CAB foreign film** — "Mehizeiten," a German film with English subtitles, 6:30 p.m., Neeb Hall.  
**Israeli folk dancing** — 8:30 p.m., MU Cochise Room. Everyone welcome.  
**Lunch** sponsored by Hillel, 11:30 a.m. to 1 p.m., Baker Center. 50 cents.  
**CAB meeting**, 3:30 p.m., MU 244. All students encouraged to attend.

## Burglar alarm rings untrue

If the burglar alarm on the self-service postal center (SSPC) near the MU is functioning correctly, the SSPC was being robbed at noon Wednesday.

University Police notified the US Postal Service's main Tempe office shortly after noon that the alarm was sounding on the Mall.

SSPC technician W. L. Shumway was dispatched from the post office and quieted the alarm at approximately 1:45 p.m.

Shumway said there was no evidence of any tampering with the SSPC. "It's something in the system," he said. "We can't seem to find out why it goes off all the time."

The SSPC was actually robbed once, about a year ago. Shumway recalled.

"About \$140 was taken, but they (the guilty parties) were caught," Shumway said.

## Get The Best Medical Assistant Training



### SOUTHWESTERN

Preparatory School for Medical Assistants

Established & Operated by Maricopa County Medical Society

REGISTRATION NOW BEING ACCEPTED FOR CLASS STARTING JAN. 22

Information 252-5496

2025 N. Central Ave. 85004

# ASU accepts tunnel bids

Construction bids for a tunnel to provide utilities and communication facilities for the new fieldhouse on Stadium Drive will be accepted until Dec. 8, according to John Ellingson, director of planning and construction.

Work on the tunnel will begin after the Fiesta Bowl on Dec. 23, continue through semester break and be completed by June 1973, Ellingson said.

The parking lot directly west of Manzanita Hall will be closed for the construction, but there will be parking for residents in a lot located north of the Palo Verde Complex.

"Some of the commuting students who now use that lot will be moved to another one," Ellingson said. "The women residents from Manzanita and Palo Verdes

Main and East will receive first preference."

The new tunnel will begin by the greenhouse near the Forest Hydrology building, run north along McAllister across University Drive, through the visitor and resident parking lots of Manzanita Hall and under Stadium Drive before connecting to the fieldhouse, he said.

"There is a complete network of tunnels around campus, serving all the buildings. At the present," he said, "there is in excess of 16,000 feet or more than three miles, of tunnel work throughout campus."

According to Ellingson, each tunnel houses large pipes for carrying chilled water and smaller pipes for system about 14 years ago and has encountered no problems as yet.

utility and telephone lines. He said that ASU first began to use the present piping

## ● TROG

Continued from page 6

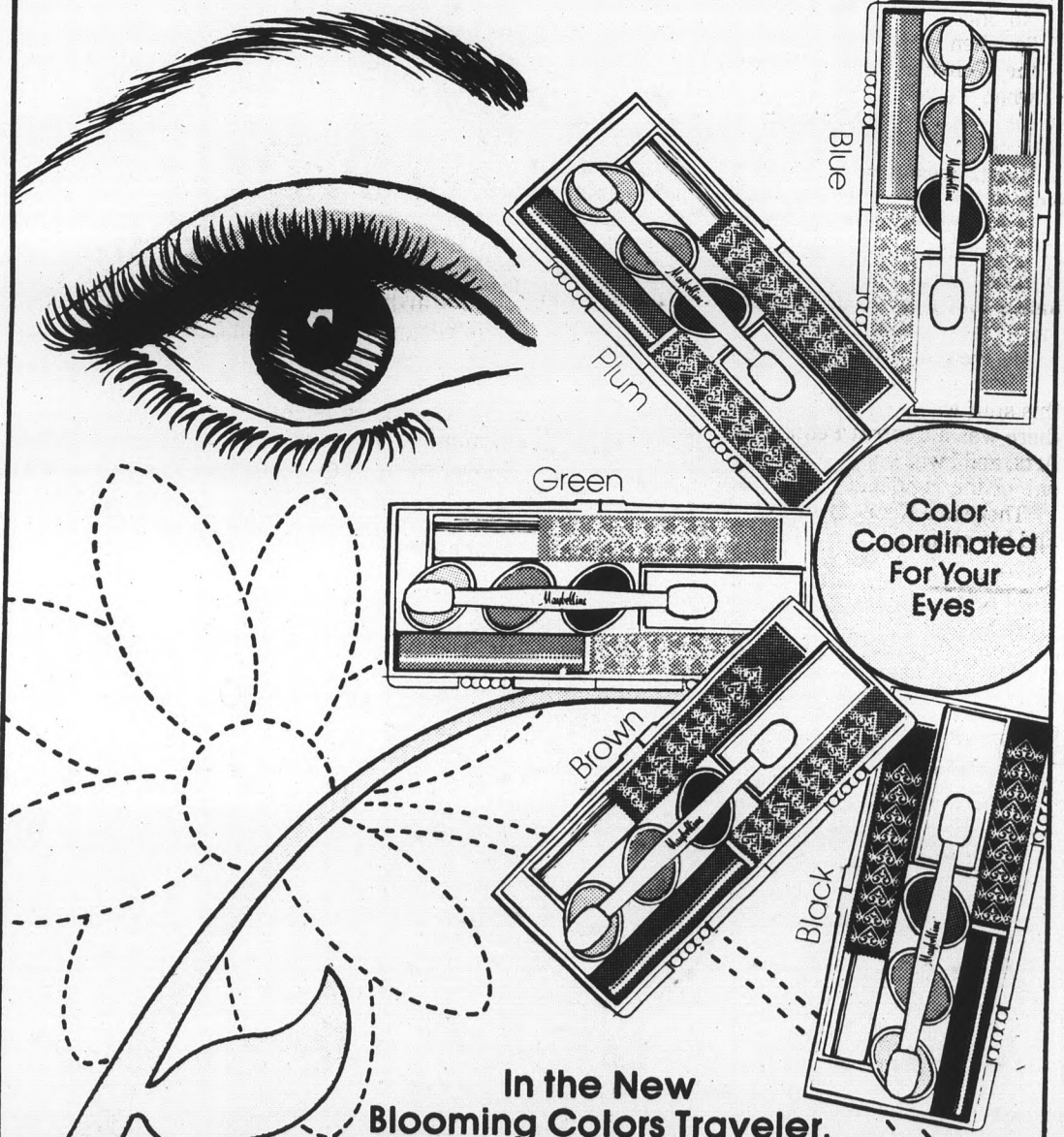
—To show that students are responsible citizens and will not stand for corruption and insensitivity in government at any level.

—To have the ASASU officials direct themselves to the issues raised.

Katz emphasized that TROG is not trying to replace the current ASASU officials with its own members "We are not trying to grab power. We probably won't even be here next year."

"We are trying to be a valuable vehicle for expressing student concern," he said.

## Color-Really Together!



Here's the case for coordinating your eyes—the all new Maybelline Traveler Kit in five fantastic color schemes!

Each kit has everything you need for colorful eyes—three super-soft Blooming Colors Shadows, plus Automatic Overliner and Blooming Colors Mascara—all tucked away in one tiny case.

Choose from Blue, Plum, Green, Brown, or Black.

*Maybelline*  
The finest in eye make-up, yet sensibly priced.

'Where's it at?'

# Prof's poetry relates

Clickety-clack! Lord, has anybody got the message?  
Walkie-talkie self-destruction whirring,  
spinning, computing  
Punched-out symbols of meaning, zig-zag.  
Snic-snac! Next, please. Where's it at?

By GERRI FIEDLER

Dr. Richard Wentz, coordinator of religious studies at ASU, writes poetry in an attempt to break through the hum-drum character of most kinds of communication.

The lines above are from the poem, "Sounds On Out," from his collection, "Birds of our Knowing." The purpose of the poem was to "focus in and out of what I sense to be the student's situation."

Dr. Wentz, an associate humanities professor, said he could not say which of his poems represented his best effort to get under the surface of things and to meet students where they are.

Dr. Wentz left Pennsylvania State University to take the newly created position of coordinator of religious studies in the Center of the Humanities at ASU. Although he has not written any poetry since he arrived in 118-degree temperature in mid-summer, the first verse of his poem "Running Bird," (except for the "winter slush") could be about the Southwest's roadrunner:

"Like a lonely jogger in the winter slush,  
we drive on through cold rain.  
No one else can make it for us.  
So when we're "up" and  
the Weltschmerz is overcome —  
when we've got it all together —  
the whole course is a challenge to our courage."

Wentz doesn't know whether he would call his pieces "poetry." "It's probably not as disciplined as poetry," he said. "It's certainly not poetry in a most technical sense, because most poetry really needs to be read and studied, whereas the kind of things that I try to do are meant to make some immediate contact."

He thought a moment and then chuckled. "Somebody apparently thought that some of this stuff was poetry, because a couple years ago there was a Central Pennsylvania Festival of the Arts, and I was invited to be one of the readers and one of the contributors to a poetry anthology."

There is a Kennedy-like quality to Wentz' voice and his pronunciation. "Dick Wentz here," is the

way he answers the phone.

He was dressed in a wallpaper-print sport shirt. His brown hair, mixing with gray, is styled in a relaxed cut. It frames his round face, blue eyes, dark-rimmed glasses and a pipe. He occasionally fiddled with a brass letter opener and he laughed readily.

"I've dabbled in almost every kind of writing," he said. He has published in scholarly journals; he wrote and delivered a poem, "Raven on the Horizon" in memory of Martin Luther King, Jr.

He also wrote a series that was modeled after "Winnie the Pooh," using the Milne characters parabolically.

He is currently working on an article to be called, "Radical Religion and Country and Western Music."

"I feel as though I have to write, even though I have a lot of other things that I could or should be doing," Wentz said. "But by the same token, I think that the university in some sense exists to foster a certain kind of creativity — the generation of ideas that become part of the things that people study and consider."

"I sort of feel that some kind of thing should be done as part of one's work, as part of the role that he plays in the university."

Wentz' other special interests have included lead roles in little theater musicals, public readings, and hosting talk shows on educational television. For relaxation he likes to refinish old farm furniture and putter around the house and yard.

"I used to play some squash," he said. Has anybody at ASU seen a squash court lately?

## ASU gallery presents utilitarian ceramic art

Matthews Center Gallery will present a selection of utilitarian decorative ceramics by artist Erik Gronborg Nov. 30 through Jan. 7.

Gronborg is chairman of the art department at the University of Nevada at Las Vegas.

Matthews Center director Rudy Turk also presented Gronborg's first one-man show at the Richmond Art Center in 1961.

NIRVANA



By Richard Wentz

Lord, I've got no eight-fold path that reaches to you. In fact, there's too much going on to walk that path even if I could see it. There's an exam to study for; there's a date to hear "Chicago;" there's a lousy polluted valley to do something about; there's a child who has to take my hand in order to run and play. I've tried shorter paths, too. Diagrammed my soul with techniques. Somehow I felt like a projector, the film rolling out from the craters of my brain, from the hollows of my viscera, What's more, Lord, there's too much noise for me to find a silent path. You find it, Lord; You run it — hurry up! Maybe I'll meet You on the way.

'Planning a Christmas Trip?'

# Southwest German

Volkswagen — Porsche

German and Dutch Mechanics

for your German made car

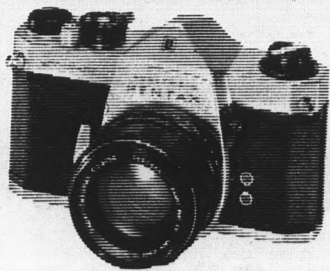
2315 E. Apache, Tempe — 968-0702

WE ARE YOUR CAMERA/LENS HEADQUARTERS.



Viv. Auto 85-205 149.00

Save BUCKS \$\$ on Pentax, Vivitar, Olympus, Konica, Minolta etc. . . . at:

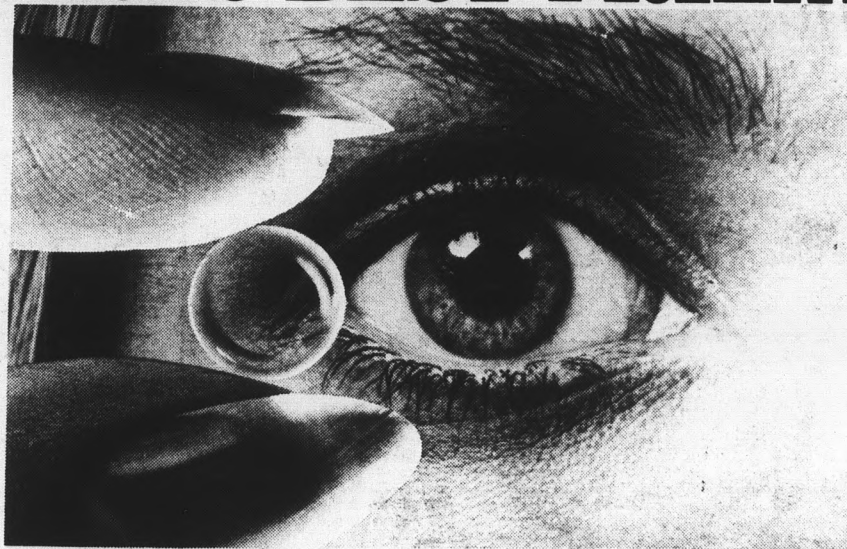


CHRISTOWN CAMERA  
Chris-Town, So. Arcade  
19th Ave. and Bethany • 279-8888  
OPEN 7 DAYS

ARIZONA'S No. 1 HONEYWELL PENTAX DEALER  
Prices start under 150.00

BEST PHOTO BUYS IN TOWN

# CONTACTS ARE A GIRL'S BEST FRIEND.



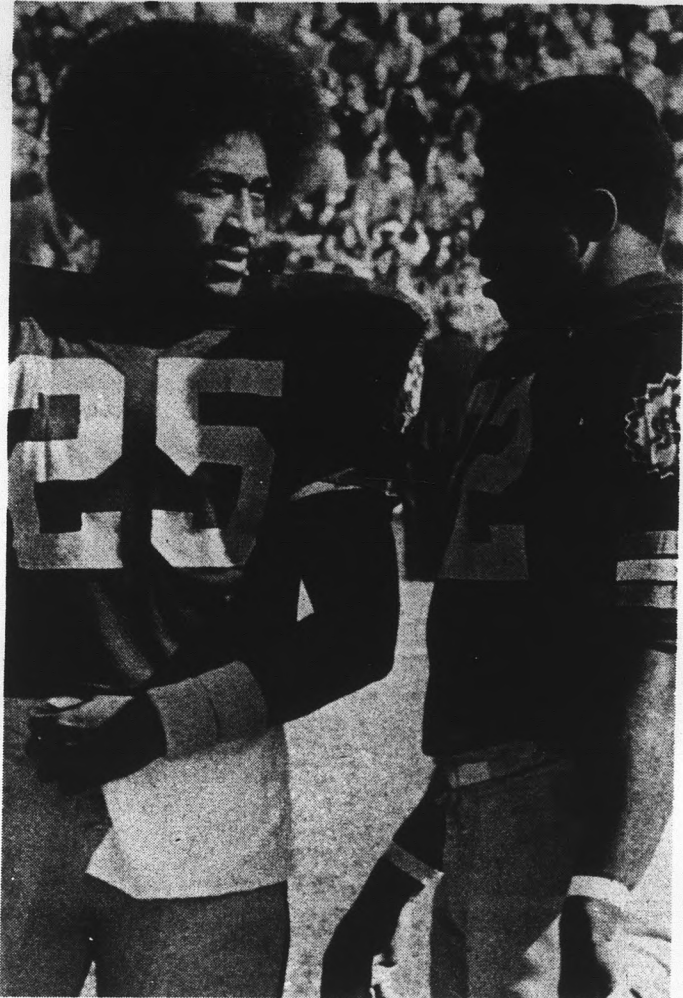
Contact lenses can help you look better, feel better. Our contacts are flawlessly ground to exact specifications. They're fitted with care by professionals. Let us show you the new comfort and convenience of our contact lenses.

\$80

Single-vision contact lenses:

TEMPE 13 CONVENIENT VISION CENTERS THROUGHOUT ARIZONA  
Open Monday through Saturday.  
Tempe Center/2032 S. Industrial Park Ave.  
967-7864 967-7333

LEE Optical  
BANKAMERICARD  
master charge



Unanimous All-WAC selections Steve Holden and Woody Green.

Photo by Gary Ulik

## Holden wins two spots

# 6 Devils make All-WAC

Six Sun Devils have been named to seven 1972 All-Western Athletic Conference first team positions.

The Devils' Steve Holden earned two positions by being selected as the return specialist on the defensive unit. Holden, along with halfback Woody Green, was a unanimous selection for the first team offensive unit.

Other Devils named to the All-Wac team were center Ron Lou, fullback Brent McClanahan, tight end Joe Petty and sophomore linebacker Bob Breunig.

Green, Holden and Petty were all repeaters from last year's team. Holden was the only senior to be named to the WAC team all three years of his varsity competition.

Four Sun Devils gained honorable mention. WAC total offense champ Danny White was selected along with guard John Houser, linebacker James Baker and kicker Juan Cruz.

Holden's selection to both offense and defense marked the first time in WAC history that a player has accomplished the feat. He caught 38 passes for 848 yards this year for 12 touchdowns, ranking him fifth in

WAC receiving. His best game statistically was against Air Force, catching seven passes for 170 yards and three TD's.

Green was second in the WAC in rushing behind national leader Pete VanValkenburg. The junior halfback from Portland, Ore., rushed for 1,363 yards, just 23 yards less than VanValkenburg, despite missing nine quarters of action due to knee injuries.

In final WAC statistics, ASU led in team offense, 516.5 yards per game; team defense, 341.3 yards per game; rushing offense, 334.6 yard average; rushing defense, 126 yards allowed per game; scoring offense, 46.6 points per game. White edged UTEP's Gary

Keithley for total offense honors averaging 195.6 yards a game, about four yards better than the UTEP quarterback. Keithley was tops in passing offense.

UTEP's Greg Taylor and Lon Crittendon dominated the receiving stats, finishing first and second respectively.

Holden was the leader in punt returns with a 12.7 average and Juan Cruz led in kick scoring with 71 points.

In the scoring race, three Devils were among the top five and five were in the top 10. Green was first with a nine point per game average, while Holden and McClanahan were third and fifth respectively. Cruz was sixth and White ranked tenth.

### CARPET SPECIALS

9X12 used rugs-\$5.00

All Sizes In Stock

### CARPET HOUSE

1516 E. Van Buren, Phx.

### BROADWAY CAR WASH

Car Wash **79¢** With 15 Gal. Fillup

FREE SPRAY WAX WITH THIS COUPON

Broadway Road, just East of Rural

**NEW!** MEN! WHEN YOU'RE IN GOOD SHAPE **NEW!**  
YOU FEEL GREAT. LET US BUILD A NEW YOU AT THE NEW

### OLYMPIA HEALTH CLUB

520 N. Scottsdale Rd. 966-5692

OPEN 6 DAYS A WEEK. FOR MEN ONLY

10 to 10 Mon. thru Fri.  
10 to 6 Sat.

#### Completely Equipped

—Pool Table - & TV Room  
—Showers - Sauna  
—Fireplace  
—Health Bar & Foods  
—Dressing Rooms  
—Exercising Room

#### Complete Physical Program

—Lose Weight - Gain Weight  
—Conditioning  
—Relaxation  
—Weight Lifting  
—Individual Instruction

Owned by  
Jerry Irvine  
and Bob Foster

#### SPECIAL INTRODUCTORY OFFER

**\$50<sup>00</sup>** Per Year

## CLASSIFIED ADS

Classified advertising must be paid for in advance either in person or by mail to the State Press, ASB 302, two days in advance of publication. No ads will be accepted over the telephone. Office hours are 8 a.m. to 4 p.m. Monday through Thursday and 8 a.m. to noon Friday. Phone 965-3457. Rate: \$1 for three lines and 30c for each additional line. 50 per cent discount for consecutive additional days. There will be no refunds for advertisements placed with the State Press.

### ● HELP WANTED

Business opportunity, big money part-time or full, male or female training provided. Earn your independence. Call 834-9559. (12-8)

\$50-100 per week, demonstrate scientific skin care product in your free time. 265-2611. (12-1)

Earn \$90 weekly, work 3 evenings and Saturday, car necessary. Phone 834-0879. (12-8)

We need 9 Vivianne Woodard cosmetic consultants, training free, 966-0571. (12-8)

Business opportunity, female or male, part or full-time, very good pay. Call 2635. (12-8)

Coeds—Excellent opportunity to pick-up extra Xmas money and still maintain academic and social obligation. We train cocktail waitresses full or part-time. Night work only. Apply in person at Friday's and Saturday's, 825 N. Scottsdale Rd weekdays. (12-8)

Assistant head waitress with management experience must have waitress experience and references. Contact Karen Weekdays, Friday's & Saturday's, 825 N. Scottsdale Road. (12-8)

### ● MOTORCYCLES

250cc Honda Scrambler. Excel cond. Only 3,500 miles Ph. 969-3010. (12-1)

1971 CL 175 Honda, excellent condition & accessories, make offer, 968-0258. (12-1)

1969 Honda 160cc, good condition, \$240 or best offer, call 965-5456. (12-1)

### ● SERVICES

Student weddings, freelance photographer, student rate \$50, evenings 966-1059. (12-4)

ASTROLOGY. I will calculate, analyze and interpret your horoscope for \$15. Larry, 966-4350. (12-8)

### ● WANTED

Need female to share rm in 2 bdrm apt, \$61. 967-0095, Charon or Leslie, 1700 College, #21. (12-6)

Roommate to share apt., one minute to campus. \$60 total. Contact Chris at 705 Krueger #8, Tempe. (12-6)

Roommate with own room in three bedroom house, \$60 a month plus utilities, 1045 W. 9th St. after 6 p.m. (12-1)

Male roommate to share house with 2 other males, 5 minutes from ASU, \$75.00, Ray, Jce 962-0131. (12-1)

Female to share 2 bedroom with 2 bath, \$58.50, includes utilities, 1 block from ASU, 966-9403. (12-1)

### ● TYPING

Typing very reasonable, fast & accurate, exp. in thesis diss. electric, pkup ASU, Lyn, 963-8428 (12-1)

Typing—experienced, neat, accurate. Call Anne, 946-4105. (12-8)

Professional typing, call 275-9165, Mrs. Dee. (12-8)

TYPING—IBM Executive, 50 cents a page. Theses, dissertations, reports. East Phoenix. 955-3206, 267-9812. (run)

Term papers, resumes, theses, dissertations. Professional, guaranteed work. IBM. Maxine Mullen. 955-0763. (run)

Typing—fast accurate pica style, reasonable rates, reports, research plus term papers, etc. call 955-6047. (12-8)

IBM Prestige or Gothic type. Experienced editing, format. Convenient to ASU. 966-1684. (12-8)

Typing - exp., thesis, dissertations, statistics, former exec. sec. Karen 968-0488. (run)

Fast, accurate typing. 10 years ASU experience. Pica or elite. 838-1642 or 838-1649, 8 a.m. to 10 p.m. (run)

Typing, call Sherry Buttermore, 242-4375. (12-8)

### ● TYPING

Typing, resumes, transcription, theses, mailings. Call Lora at 946-9157. (12-1)

Typing in my home, IBM Selectric, Rosemary Vance, 967-9143. (12-8)

Professional typing, IBM selectric, minor editing, reasonable 956-7983. (run)

Typing (legal exp.) call 253-8586 evenings. (11-29, 12-1, 12-4)

Typing—Tempe—967-3675. (run)

Typing Jean Buttermore 277-3602 expert diss. thesis, term paper research papers. (run)

Typing, term papers, transcription, theses, mailings. Resumes composed. Call Lora at 946-9517. (12-8)

### ● AUTOMOBILES

63 VW bus, engine rebuilt Aug. 1972, 495, call 833-3798 after 5 p.m. (12-6)

69 Pontiac Lemans convertible, new top, \$1000 firm, ask for Bill, 967-1040 or 947-7793. (12-1)

70 VW camper with pop top, air, radio, stereo. Low mileage, new engine, exc. condition, make offer. 264-0030, after 5 p.m. (12-1)

1966 Olds 88 Green convertible, new tires, god condition, \$700, phone 964-8413. (12-6)

Fiat 124 Spyder '70 in top shape, has every extra, radial tires to AM-FM radio. 967-1740. (12-6)

### ● FOR SALE

Part-ownership in airplane Aeronca Champ. Good, cheap time builder. Contact Dan, 967-0871. (12-1)

Shoe Sale! Womens loafers, discontinued, brass laces, \$7, \$10, 1/2 price, Backdoor Shop 707-S. Forest, 966-1772. (12-1)

18" Philco color TV. like new, 2 months old, 222.00, call 966-2749, Pete. (12-8)

### ● FOR SALE

10x55 Fleetwood trailer, 1 bedroom, good cond. \$2600, pool, 701 S. Dobson space 279, Mesa, 964-5585. (12-1)

2 naug. black chairs, queen box spring & mat, small office desk, Marimba eve. 839-0046. (12-1)

Craig stereo cassette player, recorder, home unit, excellent condition, \$50, 968-3054. (12-4)

Lady's Hamilton watch, 14kg with diamonds on cover, \$300 (cost \$575), call Sylvia be 5 pm, 276-5442. (12-5)

Ludwig drums, full set (4), Zildjian cymbals, stands, cases, extras, white pearl. \$350. 956-4316. (12-1)

1000 return address labels \$1, 100 gummed gold-strip labels beautifully printed in Black with any name and address up to 4 lines, two inches long. Gold trim. Set of 100 in hand box, \$1, postpaid, Labco, PO Box 7041, Phx. Ariz. 85011. (12-8)

New Wilson staff golf clubs. 9 irons and 4 woods. Save \$150 on this set. Call 967-2663. (12-6)

Blizzard Snow skis. 206 cm with poles, \$55. Nordica boots size 10 1/2 fit 9 1/2 foot \$15. 967-4986. (12-8)

Girl's suede coat. Size 9/10, excellent condition. 966-8554. (12-6)

### ● INSTRUCTION

Sport parachuting instruction. Licensed jumpmasters, FAA examiner and master rigger on staff. 14 years experience. U. S. Parachute Service, Mesa, 985-3980. (run)

Free introductory class in self-hypnosis, Nov. 2, 7:30 p.m. at 6522 N. 23rd Ave; stop smoking, lose weight, calm nerves, speed learning, self confidence, abundant success, 242-3442. (12-2)

### ● ANNOUNCEMENTS

First fri. niter car rally. NE corner Thomas Mall, 7:00 pm \$1 per carload, Phx Rally Org, ph 947-1654 fri. Dec. 1, C U there!

Graduate students, chanukah party, Wed., Dec. 6, 8 p.m. 4540 S. Rural Rd. Apt. F4 By Hillel. (12-6)

Hasidic Shabbat weekend at Baker Center, Dec. 1-2. For reservations call Hillel, 966-5371. (12-1)

Purchase your Chanukah menorah and candles from Hillel, at Baker Center, 213 E. University Dr. (12-1)

Las Vegas party Sat. Dec. 2, Tempe Garden apts., 3340 S. Butte 8:00 p.m. sponsored by Hillel. Call 966-5371 for rides and information. Cost \$1.00. (12-1)

Sunrise ski package available: Nine Pines Motel, Pinetop, Ariz. Reasonable rates, 833-4633. (12-6)

### ● RENT

San Miguel apts. 2 bd. 2 bath available Nov. 1, no lease 966-4713, 910 E. Lemon. (12-8)

New 2 bdrm. townhouse shag/drapes, children, pets welcome \$185, Dobson/Broadway, 959-1612. (12-6)

### ● LOST

Lost black lab pup, female, 9 wk old, white spot on chest, please call 967-0549, we love her. (12-6)

Small gold German Shepherd, big feet and big ears, answers to Joshua, we love him. 968-5006. (12-6)

CLASSIFIED

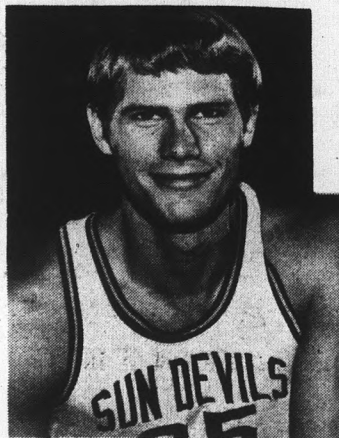
965-3249

## 1972-73 Sun Devil starters

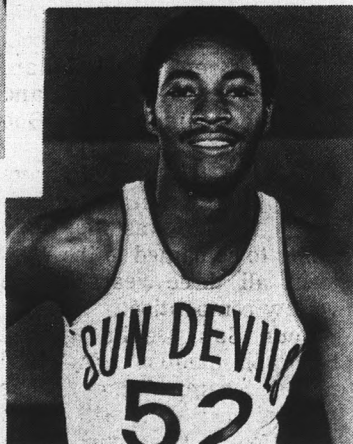
Ron Kennedy



Mark Wasley



James Brown



Ned Wulk



Mike Contreras



Jim Owens

# Mean Green try out maroon, gold

North Texas State's Mean Green Eagles visit Sun Devil Gym tomorrow night for a 7:30 match with Ned Wulk's '72-'73 Sun Devils in the ASU season opener.

The Eagles are playing their third game of the year against nationally-ranked Long Beach State tonight. Nebraska whipped North Texas 64-46 in the Eagle opener and the Mean Green bounced back to beat Cal State - Fullerton 63-54 earlier this week.

Wulk's starting lineup is expected to include James Brown, Mike Contreras and Jim Owens at outside positions with Mark Wasley and Ron Kennedy stationed inside.

Junior-college transfers Jack Schraeder (6-8) and Ken Gray (6-5) probably will see considerable action in relief at the inside spots.

Leading the North Texas squad will be 6-6 sophomore forward Bobby Iverson, described by second-year Eagle coach Gene Robbins as a threat anytime he's in the game.

The Eagles are coming off an 8-18 season of competition in the Missouri Valley Conference.

Last season the Devils opened with an upset of then top-ranked Southern California and went on to post an 18-8 record.

The Devils will run Ned Wulk's characteristic fast break offense again this season with some pressure defense employed to compensate for the uncertain depth inside.

Wulk said the Sun Devil strength this year will be concentrated in the guard position as 6-10 sophomore Scott Lloyd's lost with a broken ankle.

6-11 junior center Ron Kennedy will be counted on to handle much of the rebounding responsibility for the Sun Devils, an area which Wulk feels is the team's major weak spot since the fast break depends on the rebounding phase.

The Sun Devil junior varsity will play a preliminary game against Arizona Western JC at 5:15.

### BATTERY WAREHOUSE

1233 E. OLD 8th ST. TEMPE  
(CORNER DORSEY LN. & E. 8th ST.)

**BATTERIES FOR ALL CARS**

**\$8.50**

From

EXCH.  
Plus Tax.

Open 6 Days 8 a.m.—6 p.m. 10 a.m.—2 p.m. Sun.

**sports | state press**

## The College Inn

### LIVE AT THE COLLEGE INN

Where people care about you and your needs.

Where the entire staff works tirelessly to provide a clean, pleasant and satisfying student home.

Where you can discuss your problems with the management, and get full effort and cooperation in determining a solution.

Where the price is right and the location is perfect.

Call: 967-7828 or stop at 401 East Apache for Second Semester Reservations



## PROBLEMATICAL RECREATIONS - 33



A castle and a bishop are placed at random on different squares of a chessboard. What is the probability that one piece threatens the other?  
— Contributed

For the answer to this problem, write:



**DATA SYSTEMS DIVISION  
LITTON INDUSTRIES**

Employment Office  
15800 Strathern Street  
Van Nuys, California 91409

An Equal Opportunity Employer M/F

**OUR PROFESSIONAL  
RECRUITMENT  
REPRESENTATIVE  
WILL BE ON  
CAMPUS**

**December 7 and 8  
INTERVIEWING CANDIDATES  
IN E.E., M.E., MATH/  
COMPUTER SCIENCES**

# Gym team competes in Denver

ASU's gymnastics team will be "taking temperatures" as they compete in the 18-team Rocky Mountain Open in Denver tomorrow, according to Coach Don Robinson.

Robinson said the meet will give the Sun Devils a good indication of what to expect for the season since all the WAC teams will be there and the Devils' first dual opponent, Iowa State, will also be competing.

The Devil gymnasts are working on a 16-meet win streak in dual meets with a 12-0 slate in dual competition last season.

New Mexico edged the ASU gymnasts for the WAC title last year.

Robinson said the gymnastics team has more individual stars this year than in the past and he sees the

horizontal bar, floor exercises and vaults as the team's strong area.

Seniors Dick Dalton, Myron Tucker and Jim Furcini, along with outstanding sophomore Gary Alexander, lead this year's gymnastics squad.

"The WAC championship is our goal for the season," said Robinson. "New Mexico should be the strongest team to beat again this year."

Robinson also listed freshmen Herb Hansen, Craig Kirby and Mark Dedrick as performers who should give the gym effort a strong boost this season.

"The Rocky Mountain should be a good indication of our strength. We expect to do a good job and have a lot of good individual performances, but at this point in the season anything can happen," said Robinson.

## Sun Devil Notes

The ASU Women's Invitational Golf Tournament goes into its second round today with nine schools participating in the two day 36-hole event.

The tournament is at Century Country Club on Shea Blvd. in Scottsdale.

The teams are competing for individual trophies, team trophies and team best+ball trophies.

Defending champ Cal-State Fullerton is among the participants in the tourney. Other teams include San Diego St., Cal-State Long Beach, University of Arizona, University of New Mexico, New Mexico State, Odessa College, Scottsdale Community and ASU.

Mary Bea Porter entered the tournament as ASU's No. 1 player. She teamed with Donna Jones to win the Stanford Invitational three weeks ago, in addition to taking the individual championship.

ASU flanker Steve Holden has been selected to his second All-American team this year. He was named to the 24-man team selected by the Football Writers of America.

Holden was previously selected to the Football News All-America team.

Only four of the 24 players selected were from colleges west of Colorado. They were tight end Charlie Young and defensive lineman John Grant of Southern California, defensive lineman Bud Magrum of Colorado, and Holden.

The ASU soccer club will host three teams in a soccer doubleheader beginning at noon Saturday on the field behind Women's P.E.

The first game will match the University of Arizona against the Thunderbird Graduate School. The second game, at 2 p.m., has the ASU club playing Prescott College.



# VAN HEUSEN

## 417



*fashion makes a printed statement*  
*Big, bold prints are making fashion*  
*news today. This is the headliner of*  
*the season! Styled with:*


- long point Brooke collar
- newsworthy 2-button cuffs
- 65% Dacron\* polyester, 35% cotton. \$9.00

# LeSueur's

MEN'S and BOY'S WEAR  
18 W. MAIN, DOWNTOWN MESA

**DANIEL'S** JEWELERS 12-1-06-12

**SANTA CLAUS IS COMING TO TOWN**



**SANTA CLAUS PENDANT & CHAIN**

ONLY \$5

**DANIEL'S** JEWELERS

IN MESA SHOP AT DANIEL'S  
TRI-CITY MALL  
1910 W. MAIN STREET  
STORES IN PHOENIX, YUMA and TUCSON