



Keyt:  
'Cheerleaders  
are frivolous'

## ASASU pares cheering funds

By DEBBIE GRAHAM

There may be no cheerleaders or pom pon line at away games next year.

Jim Martin, ASASU first vice president, in a letter, told Dr. Fred Miller, athletic department director, that ASASU will not totally fund the two spirit groups next year.

Martin proposed that the athletic department supply travel and lodging for away games, and ASASU provide uniforms, advisers and equipment.

He also recommended that an advisory committee be formed, "Because of the controversy which sometimes accompanies the performance of our cheerleaders and pom pon lines."

Norm Keyt, ASASU president, said, "They are supposed to be very good cheerleaders, but they have a tough time getting people to cheer."

The Athletic Board has appointed a committee to study funding of the cheerleaders. Dr. Miller said if the board decides

the athletic department should fund the cheerleaders, they will.

"We need their kind of support. After a while during a game there is a void. The cheerleaders act as a catalyst, which we need. I just hope the Student Senate realizes this," Miller said.

Donald Dotts, executive director of the ASU Alumni Association, said, "I got a real curt letter from a John Back saying that the Social Board of ASASU is not requesting any funds for the pom and cheer lines for next year because they do not feel the lines are a part of ASASU."

"I think this is a false contention," he said. He added that he didn't know what other group

Continued on page 2



## Day care bill for universities faces Senators

Day care centers at the three Arizona universities will be a reality with the passage of Senate Bill 1041. The bill, sponsored by Senator Cloves Campbell (D-Maricopa), provides for their establishment by the Board of Regents but depends on the support of the Faculty, staff and students of the universities for passage.

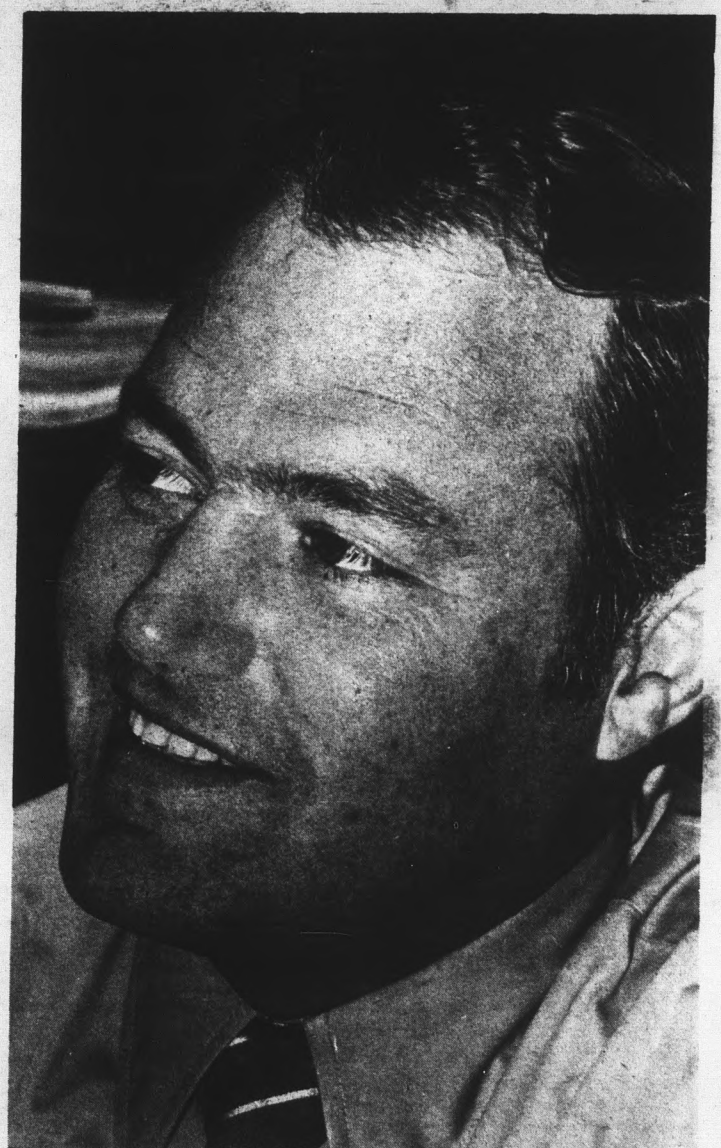
"The bill relates only to the faculty, staff and students at the three universities in the state," explained Senator Campbell.

If passed the bill will require the Board of Regents to establish the centers. "The administrative decisions lie with the Board of Regents. They will set up the program, staff and administrative functions," he continued.

Though state supported, there will be a registration fee for use of the centers. Other than that, explained Campbell, "how much the individual pays for the services depends upon salary level. If the person can afford say, four dollars a day, that is what they will pay." There will be a scale rate based on ability to pay established.

At present the bill is in the education committee. From there it will go to the rules committee and then to the floor.

Passage hopes depend on support from the universities. "For the students who are in favor of this bill I can only recommend that they push as much as possible by contacting their legislator and writing the people in the legislature responsible for the bill that's in committee, advised Lewis Monteilh, administrative assistant to Senator Campbell. Student petitions circulated on campus could be submitted to the legislature and would be a means of showing support for the bill.



Duncan Patten begins a new job  
as assistant academic vice president  
July 1. Story on page 2

# Patten fills new academic job

By JOHN BANASZEWSKI

The new administrative position of assistant vice president for academic affairs has been created at the University and Dr. Duncan Patten has been appointed to fill the post aimed at bettering administration-faculty communications.

University President John Schwada announced Patten's instatement which becomes effective July 1. Patten, present chairman of the faculty-senate and associate professor of botany and microbiology, will conclude his duties in the assembly to assume his new administrative responsibilities.

Working under Karl Danenfeldt, academic vice president, Patten told the State Press his role will be that of a "sounding board to test ideas" with the job's primary purpose being "to increase com-

munications between administration and faculty."

Of his present chairmanship of the faculty-senate, Patten said, "it may look like I'm

selling out to the administration, but really I'm just an intermediary for the administration."

Patten, a University faculty

member since 1965, emphasized that "it is absolutely necessary" he keep his faculty position in addition to his new job, in order to "help this communications breakdown between the faculty and the administration."

Patten said, "I emphasized when I accepted the position that I would still maintain a faculty position in teaching, research, et cetera."

Concerning his past work with the faculty senate, Patten said, "I built the nest, now I have to sleep in it. I've bugged the administration enough this year" through this position. He feels his new placement may have been done to alleviate that "bugging."

"This year as chairman of the faculty senate I've opened more doors than I would next year," he said. "The bureaucratic

hierarchy tends to slow things down and stifle them, but this year I've had a chance to get some suggestions across to the administration."

He added that his first year at the new post will be filled "more or less with listening to both sides, really an extension of this year, but only with the administration."

Patten said Dr. Carleton Moore, president elect of the faculty senate, will assume the chairmanship next year and emphasized that Moore is "then the faculty representative."

Patten said his new post, which deals mainly as faculty-administration liaison, "will not usurp the responsibilities of the chairmanship of the faculty-senate because I do have a little fear of them thinking the administration is trying to usurp their power."

## ASASU cuts funds

Continued from page 1

they could be more a part of.

Allen Frazier, sponsor of the cheerleaders, said the pom pon and cheer lines requested \$16,000 for their budget from the Student Senate for next year. He estimated that about \$14,000 of this was for travel expenses.

Keyt said ASASU does not have the funds to fulfill every request, so the Board of Financial Control decided to cut back the cheerleaders.

"Cheerleaders are, I think, frivolous. There is nothing in

the statutes that says ASASU must fund them. It is just a tradition," he said.

The cheerleaders' sponsor said, "Traveling to away games has always been one of the incentives to get kids to try out to be cheerleaders. There probably won't be any tryouts unless we are sure of some support."

Keyt said that if there are no funds appropriated for travel for the two groups, ASASU will still provide uniforms for them.

## state press

Barney Hutchinson — Editor

Max Jennings — Faculty Adviser

Hal Hubele — Advertising Manager

Advertising 965-3249 News, Sports 965-3656, 965-3657.

STATE PRESS is published by Arizona State University every Tuesday through Friday during the school year, except holidays and examination periods. Entered as second class matter at Tempe, Arizona 85281.



Give her one of our engagement rings. Before someone else does.

*Paul Johnson*  
JEWELERS

130 UNIVERSITY DRIVE

1 1/2 Blocks West of Student Overpass)

Also PHOENIX - SUN CITY

MEMBER AMERICAN GEM SOCIETY



# BLACK HERITAGE WEEK

## Black Heritage Week/Objectives

The sense of purpose which pervades Black Heritage Week is reflected in part, but only in part, in the listing of events contained in this leaflet.

Black Heritage Week has this as its main objective:

—To reveal, both to blacks and non-blacks, the continuing and valuable contributions which black people have made, and are making, to every meaningful aspect of American life.

There is no facet of society which is not marked, to a significant degree, by the intellect, art, skill and the humanity of black people.

And these are, too often, contributions which must surmount prejudice and antagonism, and worse, to make themselves felt—and accepted.

Even the wide range of events which are part of the official program of Black Heritage Week/1972 cannot begin to suggest the scale of achievement which has been achieved by Black Americans, past and present.

But it is our hope that this celebration, and the individual occasions which comprise it, will bring knowledge to those who do not now possess it, understanding to those willing to understand, and glory to those black men and women who have created the heritage to which these days are dedicated.

## EVENTS

### Sunday—February 13

5:30 pm "Nightfall" by Beverly Smith  
A dramatic production  
Maricopa Room/Memorial Union/ASU  
Admission: \$2

### Monday—February 14

1:30 pm "Angela—Like It Is"  
A film  
Movie House/Memorial Union/ASU  
Donation: 50¢ minimum

### "The Contemporary Black Student Movement"

7:30 pm Dr. Harry Edwards  
University of California at Berkeley  
Arizona Room / Memorial Union / ASU  
Admission: \$1.50

### Tuesday—February 15

1:00 pm "King"  
A feature-length documentary film  
Arizona Room/Memorial Union/ASU  
Admission: \$1

### Colloquium—"Toward a Psychology of Blackness"

3:30 pm Dr. Charles Thomas  
Distinguished psychologist  
Neeb Hall/Arizona State University  
No charge for admission

### "King"

6:00 pm A feature-length documentary film  
Phoenix Union High School  
Admission: \$2

### Wednesday—February 16

3:30 pm Basketball  
Final game of round robin competition  
Sun Devil Gymnasium  
No charge for admission

### Benquet

7:30 pm "The Black Athlete in Perspective"  
Arizona Room/Memorial Union/ASU  
Featured: John Wooten

### Thursday—February 17

8:30 am to 4:30 pm Program of Black Arts  
Art/Music/Poetry  
Rendezvous Room/Memorial Union  
ASU — No charge for admission

### "Uptight"

1:30 pm A film  
Movie House/Memorial Union/ASU  
Donation: 50¢ minimum

### Friday—February 18

1:30 pm "Stagolee"—Bobby Seale and  
"David Hilliard"—Two Films/Followed  
by panel discussion  
Movie House/Memorial Union/ASU  
Donation: 50¢ minimum

6:30 pm Karamu/An African Feast  
Maricopa Room/Memorial Union/ASU  
Admission: \$4

(The Karamu will be followed by a showing of the film "Right On" at 8:00, featuring the Original Last Poets)  
Dance Featuring the TNT Flashers  
(Admission to dance included in admission to Karamu. Separate admission to dance only: \$1.50)

### Saturday—February 19

1:30 pm "Cool World"  
A film  
Movie House/Memorial Union/ASU  
Donation: 50¢ minimum

7:00 and 9:30 pm Concert Featuring  
"War"  
Two Separate Performances  
Phoenix Union High School  
Auditorium  
Admission: \$3





**Tang's**  
IMPORTS  
ARE CELEBRATING



WASHINGTON'S  
BIRTHDAY



22¢

WITH A

# "REAL GEORGE" SALE

2¢

NEVER before bargains! George taught the world the technique of chopping trees, but TANG'S LEAD IN CHOPPING PRICES for a sale!

22¢

PRICES AS LOW AS

SALE STARTS FRIDAY and goes through GEORGE'S DAY, TUESDAY the 22nd

## EXTRA, EXTRA SPECIALS

### SEE WHAT 2¢ WILL BUY

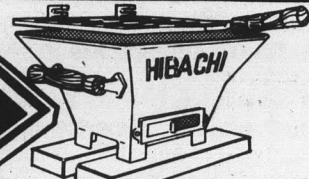
- 33c Incone 2c
- 10c plastic lizards 2c
- 66c Disposable bibs (4 per pkg) 2c
- 16c Chinese classic books 2c
- 23c Round combs 2c

### CHECK THESE BARGAINS

- to 14.88 Assorted wall plaques 2.22
- 2.99 Brentwood pillows 2.22
- Native Bow & Arrow set 2.22
- 39.99 Wrought Iron Wine caddy 2.22
- 5.44 Mexican Casserole 2.22
- 5.88 Italian Raffia Animals 2.22
- 6.88 Italian Raffia Animals 3.22
- 9.95 Teak Cutting Boards 3.22
- 12.95 Carved Owl Book ends 5.22
- 18.95 Teak Round Ice Bucket 6.22
- 14.88 Japanese Night Lights 12.22
- 14.99 Spanish decorator ships 12.22
- 19.95 Chairs Teak 15.22
- 17.88 Chairs, ladderback 15.22
- 28.95 Alabaster tables 22.22
- 24.95 Spanish ships 22.22
- 39.95 Umbrella vases 22.22

### TEMPE STORE ONLY

- 29c Coconut Cups 2c
- 49c Coke glasses 2c
- 1.69 Tape dispenser-Lady bug 2c
- Lady bug pencil containers 2c
- 88c Sunflower seed necklace 22c
- 2.88 Lady bug stapler 22c
- 2.37 African Necklace 1.22



10" x 10" HIBACHI  
reg. 5.95 **\$2.22**

RATTAN SWING CHAIR (10 ONLY) reg. 34.95 **\$22.22**



CORK SQUARES 12" x 12" x 1/2" **22¢ each**

RATTAN SHELL CHAIR reg. 7.95 **\$2.22**

### 22¢ WHILE THEY LAST

- 79c Ship-in-bottle 22c
- 99c Glass Piggy Banks 22c
- to 88c Selected place mats 22c
- 38c Frosted candle glass 22c
- 48c Frosted candle glass 22c
- 1.77 Iron think taper candle holders 22c
- 97c Brass nut-ash trays 22c
- 77c Brass nut-ash trays (3") 22c
- 1.44 Sausage roasters 22c
- 99c Butterfly & misc. paper weights 22c
- 99c Porcelain fry pan ash trays 22c
- to 2.00 Discontinued posters 22c
- 88c Italian grape bottles 22c
- 49c Selected honey stemware 22c
- 88c Double rose flower hooks 22c
- 40c silk decorator balls 22c
- 1.33 lacquered serving bowls 22c
- 99c riki candles 22c
- 37c Bamboo skewers (pkg.) 22c
- 38c Fondue forks 22c
- 75c Pate A Go-Go 22c
- 1.39 Cocktail puree 22c
- 98c Napkin holders 22c
- 69c Enamel ladles 22c

### 1.22 WHILE THEY LAST

- 1.77 Incone burners 1.22
- 1.66 Italian wine bottles 1.22
- 1.99 paper mache candle holders 1.22
- 1.99 T-Shirts 1.22
- 1.99 Coach candle lamps 1 1.22
- 2.44 Coach candle lamps 1.22
- 2.88 Coach candle lamps 1.22
- 5.97 Zodiac Wall plaques 1.22
- 2.49 Dragon tea pots 1.22
- 6.88 Selected Wall plaques 1.22
- 1.49 Book ends (pr.) 1.22
- 3.99 Coffee Tables (12"x12"x12") 1.22
- 1.49 large Pagoda wind chimes 1.22
- 1.59 Tangs Chinese tea (8 oz.) 1.22
- 2.77 Kimono Dolls 1.22
- 1.99 Skewers 1.22
- 2.69 Liver pate Alsace 1.22
- 77c Baking shells (set) 2 for 1.22
- Selected mugs 2 for 1.22
- 99c Smile glasses 2 for 1.22
- 1.99 Silk scarves 2 for 1.22
- Alabaster figures 2 for 1.22
- 99c Rattan baskets 2 for 1.22
- 1.18 Rainbo Kerosene lamps 2 for 1.22

### TEMPE STORE ONLY

- 2.59 Asst. photograph frame pictures 1.22
- 10.95 Mexican flower design plaques 1.22
- 2.99 Asst. leather belts 1.22
- 2.99 Asst. fringe waist bands 1.22
- 17.95 Teakwood bench (4 only) 12.22
- 37.95 Teakwood exp. bench (3 only) 32.22
- 74.95 30"x30" teakwood dining table 42.22

### TEMPE STORE ONLY

- 177.00 teakwood 6 drawer chest 42.22
- damaged trim 179.00 Teakwood table 82.22
- 63 x 32 (2 only) 59.00 teakwood stack table 22.2
- (3 sets of 3) 19.95 Spanish bar stools (6 only) 12.22

PLUS HUNDREDS OF OTHER THINGS "SALE TAGGED" throughout the store!  
LIMITED QUANTITIES • MANY ITEMS • ALL SALES FINAL



# IMPORTS OF THE WORLD

MESA-TEMPE HIGHWAY  
1525 East Apache Boulevard

TOWN AND COUNTRY SHOPPING CENTER  
4821 North 20th Street

BETHANY HOME ROAD & 27th AVENUE  
6025 North 27th Avenue

# Opinion | state press

## New chicano group needs solid support

By DAN HUFF

La Alianza Universitaria, the proposed over-all representative organization for students of Spanish heritage, deserves University support.

La Alianza's 16-member organization committee and chicano law student Aaron Carreon have put together a constitution which is a fine example of the positive aspects of democracy.

The proposed organization would include anyone of Spanish heritage not just militant chicanos.

As stated in its constitution, La Alianza's goals include fostering justice and respect for individual rights, and promotion of social programs to better living standards among those of Spanish heritage.

Thus, while the group would seek "to support and make positive proposals and contributions to the educational system," it also will serve as a watchdog for citizens who too often have been denied fundamental rights and freedoms within Arizona and the nation.

Because the proposed group would be open to all of Spanish heritage, the University may be only the beginning. The constitution is general enough that it might be used on campus from Berkeley to New York.

Why should that excite the more than 800 Spanish — surnamed University members?

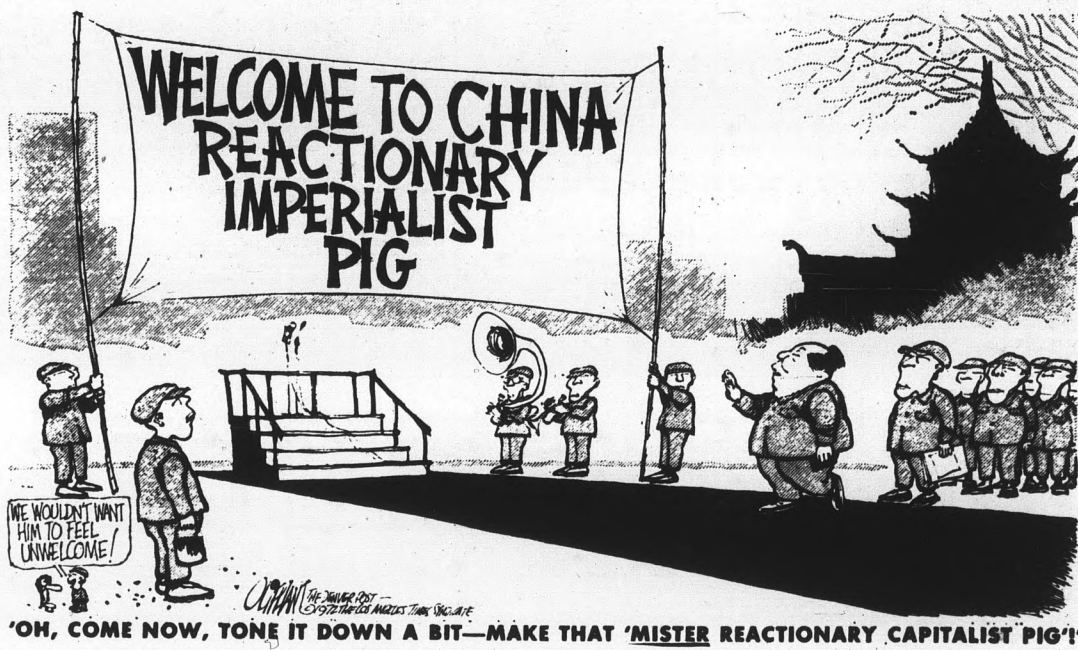
In addition to its pledge to "initiate a continuing program of activities which present all aspects of the Spanish culture," La Alianza would seek to practice tolerance. And tolerance will be vital in an organization which seeks to coordinate the many Spanish heritage factions. That quality also will come in handy when dealing with anglos.

Chicano militants — and anglos — should realize that tolerance, a welcome part of the movement, does not mean "meekness."

La Alianza would be able to flash some pretty big fangs at those who offend.

La Alianza's proposed constitution will be discussed at 7 tonight in the Great Hall of the College of Law. It is hoped La Alianza's promoters will find the support they need to launch the group.

It is also hoped their constitution will emerge unscathed. A large group which subscribes to the principles La Alianza promotes would do much to increase good will between chicanos and whites, and that's one thing all of us could use.



'OH, COME NOW, TONE IT DOWN A BIT—MAKE THAT 'MISTER REACTIONARY CAPITALIST PIG'

### Guest editorial

## Students should obtain more control of money

By ROSS KLEIN

Each semester every student enrolled in more than six hours at ASU is required to pay in excess of \$50 in student activity and service fees. Some of the beneficiaries of these funds include the student health service, the athletic department, the student affairs committee and the Associated Students. Concerning the money that reaches ASASU (less than 10 per cent), I feel the students at ASU are being ripped off. The token return of student activity fees to ASASU is the student's only opportunity to direct his money into programs, projects, and services which he needs. Or, that is what we are led to believe.

The administration and the Arizona Board of Regents tolerate ASASU only so they can say, "yes, we give the students a say in their school's programs." In reality, the only thing we can do is

be dictated to and spend our money in whatever way we are told we can.

The student senate works many long hours every year appropriating almost \$250,000 for student activities and services, but the final budget must receive the approval of the bureaucracy governing the university. In addition, once these funds have been approved, they still may be blocked by any administrator or the Board of Regents with an iron hand of coercion placed on one of the persons required to sign the requisition (as was recently done to Dean Peek). If this fails, the administration has one last opportunity to squash us. This is the ASASU executive manager, an employe of ASASU, hired by and responsible to the administration. Every requisition requires his signature of approval.

Actually, this defense system, devised by the administration and board of regents, has proven to be quite effective in the past few months. This can be illustrated by President John Schwada's veto of a proposal to establish a draft counselor on campus. He said we'd have one. When? An attempt at a student credit union on campus was quickly annihilated by the administration. Speakers with ideologies other than those prescribed to us by the regents have been denied us in this land of freedom of speech (speakers are hard to get for free).

There is a need at this point for the students of ASU to unite and let their feelings be heard. An effort must be made to liberate our money from the control of the Arizona conservative corps. If we don't stand up for our rights now we will have no opportunity in the future to provide those services or speakers or activities which the students at ASU both want and need.

The thing is that it is our money. In view of our needs and the blocks which obstruct their final implementation, I think it is imperative that the students of ASU let their feelings be heard until we can gain complete control over our money.

Only by student control of student monies can ASASU evolve into a truly student "service" oriented organization and only through those programs, suggested as examples, can ASASU become a credible organization on campus and an intricate and worthwhile organization in all students' lives.

The guest editorial forum is open to anyone connected with the University community. The opinions expressed in a guest editorial in no way directly are endorsed or supported by the State Press. The State Press edits all submissions for style corrections and legal transgressions and attempts to check errors of fact, but must direct full responsibility of inaccuracy to the author. The State Press welcomes rebuttal guest editorials on anything appearing in the paper.

## Let's examine qualifications

As the time draws fast upon us when, heavy in the hearts we must vote in the presidential election, it behooves us as the real power behind the man to eyeball the candidates carefully.

Should you during the course of the next few months, whether leaving the john or attending some regal affair, encounter one of the candidates, do not succumb immediately to his charisma.

He may not be THE man for the job.

But—READ ON—imposters will not long endure the test of truth. By diligent application of the criteria which follow, you, as a member of the anxious public, will know with certainty the one for whom to vote.

The candidate's birthplace, first of all, should be a metropolis of 10-million-plus in the Black Hills of South Dakota where the inhabitants speak with a Southern twang, are strongly pro-busing and work mainly as grape pickers.

If your would-be president flunks out, even this early in the

By  
BILL  
NORMAN

game, you can be assured he's a phony.

The leader of our country should be a china-blue-eyed mulatto with a welfare childhood who played with a silly dog named Bubbles and whose father was a New England billionaire strongly opposed to big business.

His religion primarily should be Methodist with touches of Quaker, Southern Baptist or the Papacy, depending on whether his uncle was a PT-boat skipper or a cluttered cemetery plot in Ireland.

Check out your guy's hands. They should be calloused.

This must be the result of splitting hairs for a living as a boy in Illinois. If the callouses came from hacking cherry trees you may be in the presence of a revolutionary.

Political platforms and ideological stances are naturally

areas in which to examine campaigners for the office.

Our man should be an anti-Vietnam, anti-Arab middle-grounder with "nuke 'em" as his favorite expression.

Certainly an advocate of the Monroe Doctrine, he must favor industrial expansion, cutbacks in pollution and bombing the Ukraine.

Does he have dung on his shoes? Too bad, if he does. That's from making secret raids on abandoned POW compounds in rice paddies. Our next president will have wet trousers from chasing wetbacks through damp lettuce fields.

Last of the tests to infallibly weed out pretenders to the throne is that of transportation.

The right candidate will arrive on an SST. Straddling a clapboard platform on some chuffing train won't get it and neither will a squishy entrance in a car with wet upholstery.

If he's riding an ass, instead of vice-versa, and people are throwing palm fronds in front of him, rather than at him, better whip on a few shaloms. You're at the wrong convention.

Blend of interpretations

# Henry V opens at Lyceum

By JOSE CATALAN

A production of Shakespeare's "Henry V," with an unusual blend of interpretations, opens tonight at the Lyceum Theatre.

"What I strive for is a self-contained ensemble, more interested in the play itself than the ego-preening of the actor, said director William E. Dobkin.

"When you read the play it is ambiguous like most literary works," said Dobkin. "It's very easy to take one facet of Henry's character and build one production around it."

"Somebody took the play and turned it into an anti-war plot. Others show that he was a God-fearing man; the perfect benevolent ruler who strove to unite England.

"I was fascinated by the complexity of Henry's character and all these interpretations. Rather than showing any one of them, I have taken them, through the art and craft of the theatre, to show as many of (Henry V's) characters as possible.

"I don't start the play the way the script does. I've written an opening for it using speeches from Henry V, Richard II and Henry IV.

Three French language scene between Katherine and Alice will be retained much as written, Dobkin said. "I think the sense of the scene will come through. It is a translation scene itself, in which the princess is trying to learn English.

"In that scene I have taken later speeches from Katherine and placed them in the English lesson scene to show more tender aspects of the character.

"Another interesting aspect, both frustrating and exciting to the audience, is the fact that there are over 50 roles in the play and I have only cast 13 actors.

"Even the title role will be played by more than one person, although Randy Wells will play the major portion of that role."

The cast also includes Trish Kinney, Jack Vannatter, Tim Heathman and Nick Toth.

"Sometimes a person will be playing an English lord and next a French lord," said Dobkin. "The public will be able to tell by the scene and the costumes. Miss Donna Bartz, our costume designer, has used color schemes to help clarify who is who.

"The language is the same as per the original play. I have not fiddled with the language. I think Shakespeare said it best.

"Some people would be somewhat upset with the fact that I

bothered to tamper with it at all. But I think generally that with what we have done, nothing is lost and we have gained a great deal."

"Henry V" will be staged at 8 p.m. through Sunday, and Feb. 23-27. Tickets may be purchased from noon to 3 p.m. at the Lyceum box office, 965-3437.



Leer, King Henry

King Henry, portrayed here by Randy Wells, seems displeased with this review of "Henry V." The play opens tonight at 8 p.m. in the Lyceum Theatre.

NEWS  
3656

★ THE HARRY RACE COMPANY ★

WALT DISNEY'S  
**Lady and the Tramp**  
IT'S THE HAPPIEST CANINE CARTOON OF ALL!

PLUS 2nd BIG HIT! \$1,000,000 DUCK

UNIV. DC-1 MONDAY-FRIDAY LADY & THE TRAMP 8:30 AM SUNDAY 11:30 AM SATURDAY 11:30 AM DUCK 11:30 AM, 11:35 AM DOORS OPEN 11:30 AM

Sean Connery James Bond 007  
Diamonds Are Forever

Plus 2nd BIG HIT! \$1,000,000 DUCK

UNIV. DC-2 DEBBIE & SHELLEY REYNOLDS & WINTERS "What's The Matter With Helen?"

All Saints Catholic Student Center

230 E. University Drive

"The Wondrous Bread Theatre"

Frazer & Jane MacLean

Will perform during the

Saturday Night Mass

11:15 P.M.—Feb. 19, 1972

NEW ARRIVALS

KNIT SHORTS & TOPS

BY

- GARLAND
- CATALINA
- PAM BEE
- MISS PAT



CELIAS FASHIONS

TEMPE CENTER

STYLE - BEAUTY - CRAFTSMANSHIP

MR. HICKS SLACKS



- BAN-ROLL WAIST BAND PREVENTS ROLL-OVER
- PERMANENT PRESS NO-IRONING
- FLARE LEGS
- THE LATEST IN STYLE



\$1100

LeSueur's  
MEN'S STORE

18 WEST MAIN STREET  
IN DOWNTOWN MESA

Christmas Hours: Open Daily  
9-9 . . . Saturday 9-5:30 P.M.



# Professor seeks grant to study smelter smoke

Dr. Thomas H. Nash, assistant professor of botany and microbiology, is seeking a grant from the National Science Foundation.

The grant will be in conjunction with the Arizona State Department of Health, Northern Arizona University and Arizona State University, and will enable those institutions to coordinate a study on the environmental contamination factors of smelter smoke.

Nash said there will be three basic phases to the research program.

The first will consider exactly what the pollutant concentrations are. "We are most chiefly concerned with the amounts of sulfur-dioxide and

emissions of heavy metals from the smelters," he said.

The second phase will evaluate data.

Two engineers will investigate and check evidences in smelter emissions in a helicopter and on the ground.

"There will be a coordinated phase on the ground consisting of two analytical chemists to study particulate samples in the vicinity of the smelters," Nash said.

The final phase will consider the effects the smelters have on living organisms.

Nash said he will conduct weekly studies in certain plant and insect communities and see what damage occurs. By eliminating all possibilities of

damage due to insects, disease, or soil deficiency, he can determine how much smelter emissions are responsible.

Nash said the purpose of this study is to discover facts. If a problem exists solutions would be suggested. "Perhaps the smelters can recycle the emissions or do something in the smelter operation itself to make it more efficient," he said.

**\$299 ROUND TRIP to EUROPE**

For students, faculty, employees, alumni, and immediate families

June 15	TUCSON—LONDON
Aug. 23	AMSTERDAM—TUC
July 2	TUCSON—LONDON
Aug. 14	FRANKFURT—TUC

**ARIZONA UNIVERSITY CHARTERS**  
2201 EAST BROADWAY  
TUCSON, ARIZONA — 85719  
PHONE (602) 624-5521

## United Fund gets new image

A design contest with a \$200 cash prize is being sponsored by the Industrial Arts Club of ASU for the upcoming United Fund Campaign.

Purpose of the contest is to find a new design for the campaign progress indicator.

For years the United Fund has used the familiar thermometer design, marked at intervals with various sums. As money is collected, the red line of the thermometer is painted in till, when the campaign's goal is reached, the red line is completed.

Through the contest, open to all University students, the United Fund hopes to come up with a new, more original design.

Prize money is being donated by the Industrial

Arts Club, and by local businessmen.

Deadline for submitting entries to the contest is March 15.

Applications and information concerning specifications for designs may be obtained at the division of technology office, Room 201 of the Technology Center.

**MRS. ANN PALM READER**

I will tell your past, present, & future before you utter a word. Helps in love, marriage and business. Reading \$3.00.

9 A.M. till 11 P.M.  
1123 Apache Blvd.

**"They'll be Dancing In the Streets"**

**NEXT WEDNESDAY, FEB. 23**

**8 to 11 P.M.**

**ALPHA DRIVE**

**FREE STREET DANCE**

**SPONSORED BY Interfraternity Council**

**Some Computer Operators**

**Have More Fun Than Others —**

**SOME ARE NAVY PILOTS**

The Navy Officer Information team will be on the ASU Campus Today . . . on the Mall from 10 to 3

## Super Packs

FOR  
BACKPACKING  
WALKING  
HIKING



**HIGH ADVENTURE HEADQUARTERS**  
"LIGHTWEIGHT CAMPING SPECIALISTS"  
3925 E. INDIAN SCHOOL • PHOENIX, ARIZ. 85018 • 955-3391

**SPORTS**  
**3657**

**NEWS**  
**3656**

### CLASSIFIED ADS

Classified advertising must be paid for in advance either in person or by mail to the State Press, ASB 302, two days in advance of publication. No ads will be accepted over the telephone. Office hours are 8 a.m. to 4 p.m. Monday through Thursday and 8 a.m. to noon Friday. Phone 965-3657. Rate: \$1 for three lines and 30c for each additional line. 50 per cent discount for consecutive additional days. There will be no refunds for advertisements placed with the State Press.

**● FOR SALE**

Akai 1800 SD, reel to reel with eight track cartridge, good condition, \$175.00—966-7346 after 5 p.m. (2-18)

'69 Honda 450, excellent condition, \$600, 968-1365. (2-18)

1969 Nashua Mobile home, 12x58, 2 bdrm, 1 1/2 bath, furn. carpet, drapes, cooler, window reefer, set up in park. \$4600, 268-2821. (2-18)

Carpet & pad, 12 x 18, gold - \$100: 9 x 12, red - \$10; covered cat basket, lg, w/kr, \$5. 967-4220. (2-18)

'71 Honda 350 Scrambler 3500 miles, good condition, \$550, call Tom, 966-0002. (2-23)

1960 Pont. Pwr steering, pwr brks, radio, runs exclt, call Al, 966-7940. \$175 or best. Must sell. (2-18)

Schwinn Suburban, 5 speed, 6 months old, exint condition. \$75 or best offer. 968-3753. (2-18)

2 brand new 2 man rafts, never used, foot pumps also, \$25 each or both for \$45. 994-0063. (2-18)

Honda Dream 300, windshield, book rack, excellent, \$295, 838-0674. (3-1)

2 10 speed bikes, 1 Schwinn Varsity, 1 Italian, both for \$95. Call 266-5760. (2-23)

Discontinued Bass weejun loafers and Bass tacks, 40% off, we make belts, purses & sandals. Backdoor Shop, 707 S. Forest. (2-18)

Knapsack, lafuna of France, near new. Levi jacket, blanket-lined, size 36, 965-2174. (2-17)

Gas range, 30 in. coppertone, immaculate, \$125. 267-3984. (2-17)

**● HELP WANTED**

HELP! Volunteers needed for A & C program for inner-city kids. Call 967-8747 or 965-5100. (2-18)

\$10 to finder of cheap housing for future ASU couple, late 20's, small dog, child. Need 6/1/72. Burns, 605 Maple, Prescott. (2-18)

Sales hostesses, all shifts, full and part time. No experience necessary. Dunkin Donuts, 711 E. Broadway, Tempe. Apply in person between 8 a.m. and 3 p.m. (2-18)

Want to earn \$1830 this summer? For appl., call 269-8325 or 943-5707. Leave name and no. (5-19)

Employment opportunities in the world's largest chain of health spa's are now available for men and women. For more information call 833-1251. (2-25)

\$70 per month in summer job! Call Mark at 269-8325 or 943-5707. Leave name and phone no. (5-19)

**● INSTRUCTION**

Sport parachuting instruction. Licensed jumpmasters, FAA examiner and master rigger on staff. 14 years experience. U.S. Parachute Service, Mesa, 985-3980. (all year) (5-19)

**● RENT**

2 bedroom trailer, 10 minutes from campus, quiet park, adults. No pets, call before 8 p.m. Sunday, 242-2968. (2-18)

Furnished house for rent in Phoenix, 3 bdrs. near encanto park, \$350, Tel. 277-9974. (2-18)

Male roommate wanted for 1 bedroom apt. Prefer 21 or over. 1011 E. Orange No. 63. (2-18)

Male roommate wanted: \$62.40 month, new carpet, stereo, sofa, 8 a.m.-2 p.m. 1100 E. Lemon St. No. 41. (2-18)

Grad student, female, own room \$50 plus share util., kit, priv., nice house, close by, car, 969-6609. (2-18)

A large room, refr. private bath, refrigerator available, big enough for 2, in Phoenix, call 277-6539 after 6. (2-18)

Need one or two roommates, male at Park Terrace East, near Campus, call 966-0180. (2-17)

Third roommate wanted in three bedroom house. Fireplace, enclosed garage, etc. \$75 mo. Call 945-5794. (2-18)

Rooms for Rent, Males only, room and board \$90 mo. close to campus. 968-0162 or 967-9905. (3-22)

Grad student, female, own room \$50 plus share util. kit. priv. nice house, close by, car 969-6609. (2-18)

Male roommate wanted to share house in Scottsdale, 947-2569. (2-17)

LAMANCHA HAS NEW RATES! Discounts of 30-40 per cent. Apt. and dormitory facilities, 909 Terrace Rd. 967-2011. (2-24)

Parkway Apts. 615 S. Hardy Dr. 2 bdrm. unf. \$185. Furn. \$210 3 bdrm. unf. \$215, furn. \$245. Immediate occupancy. 968-2600. (2-24)

**● MISCELLANEOUS**

SEEKING members for ARE (Edgar Cayce) Search For God) Study group, call Rod at 968-2006. (2-18)

Free street dance Wednesday, February 23 on Alpha Drive. Everyone is invited. (2-23)

**● WANTED**

Female to room with same, close to ASU, prefer upperclassman, for now and summer, \$62.20, leave message, get info, 947-2569. (2-25)

WANTED: 1 female roommate, 2 bedroom apt. close to campus, \$65 per month, 3 other girls, call 966-3189. (2-18)

Need girl to share 2 bedroom house, \$65 a month, call or come over, 966-6325, 1950 Don Carlos. (2-18)

For comparative analysis, wish to interview any male who has ever impregnated a girl to whom he was not then married, no matter how the situation was resolved. Information held in strictest confidence. Phone: Dr. E. H. Pfuhl, Department of Sociology, ASU 965-6311 or leave callback number at 965-3768.

**● SERVICES**

9th annual Jet charters LA to Europe, Orient—from \$129, one way, \$229 RT. Write Gary Prost, LTS Travel Service, Box 6670, Flagstaff, Arizona 86001. (4-18)

Lose inches in 70 minutes the European wrap way. Available in kits, for information, 949-5898. (3-30)

MESSAGE ON MORMONISM. 968-5411. (3-17)

Self Hypnosis classes beginning Soon. Lose weight, calm nerves, stop smoking, speed learning, self confidence, 242-3442. (5-19)

Having a party or dance? Need a band? C&H will do all the work. Just call Mike, 967-4333. (2-17)

**● TYPING**

Electric typing in my home. Rosemary Vance. 967-9143. (5-19)

TYPING, professional, reasonable. IBM Selectric, minor editing, and corrections. Call 279-2574. (5-19)

Typing: professionally, all ASU papers, editing and spelling. Lucille, 969-9711. (2-17)

TYPNG, 40 cents per page. Call anytime, 267-8408. (2-18)

IBM—standard or Gothic type. Editing as desired. Reliable, Convenient to ASU. 966-1684. (5-19)

TERM PAPERS, RESUMES, THESES, DISSERTATIONS, PROFESSIONAL, GUARANTEED WORK. IBM. MAXINE MULLEN. 955-0763. (5-19)

ASU experience, IBM elite, fast, accurate guaranteed 838-1642. (end of semester)

Typing—fast, accurate, themes, research papers, theses, etc. Experienced. 955-6047. (3-31)

IBM EXECUTIVE TYPE. 267-9812, 955-3206. Term Papers, Thesis, etc. Northeast Phoenix Area. (5-19)

Typing: close to ASU, 966-4713. (5-19)

**● AUTOMOBILES**

'68 VW refrig., sunroof, radio, completely rebuilt engine, new tires, like new inside and out, perfect condition. 966-5456. (2-25)

1962 Oldsmobile, must sell, new tires, \$295, evenings, 833-0532. (2-24)

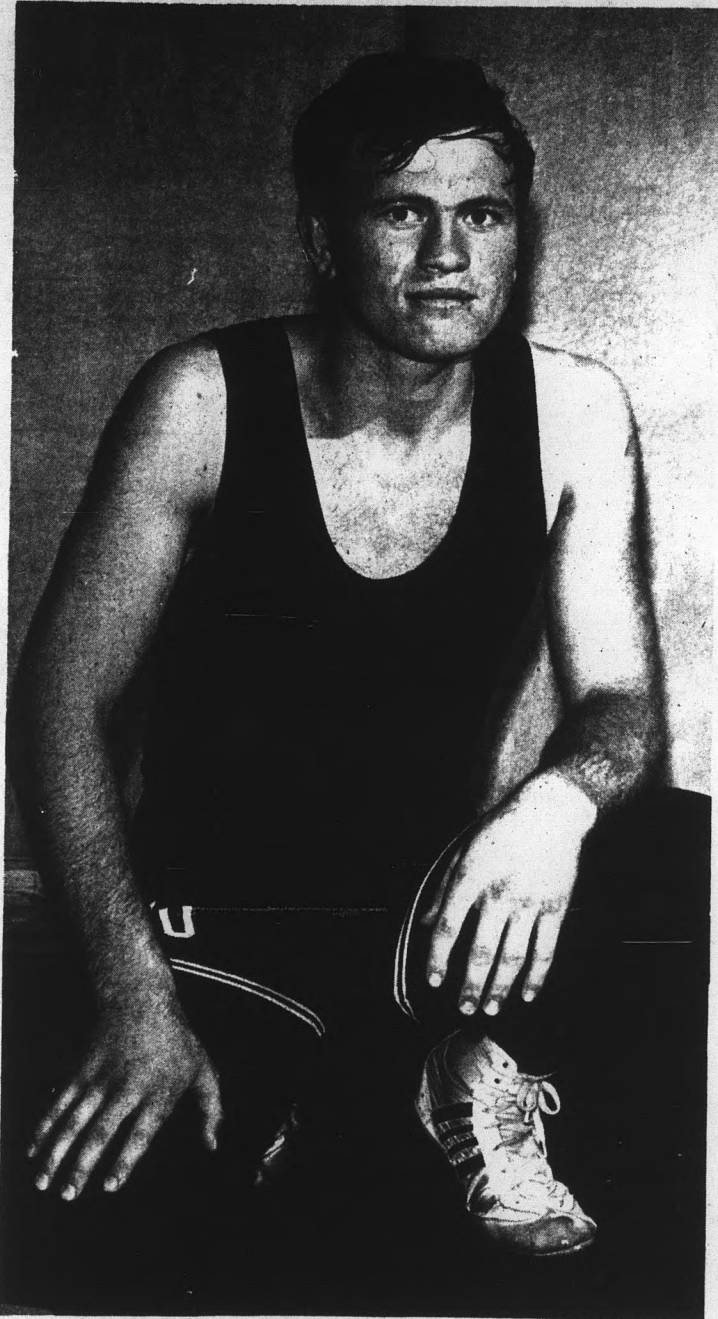
Must Sell, 1965 Black Mustang, 4-speed, 289 new tires \$600 947-2805 Cathy Cochran evenings. (2-18)

1965 Triumph Spitfire in great condition. \$600.00 Contact in person, 1019 E. Lemon, Apt. 216. (2-25)

1963 Ford Econoline van, good condition, \$750. 1966 Ford 4 dr. V-8, power, \$450. A.M.A. Auto, 3250 W. Broadway, Phoenix, 268-3122. (2-17)

**● LOST**

REWARD! Lost last semester, a slide rule in area of physical science bldg. Great sentimental value. Call 965-2226. (2-18)



**May be out for season**

Laron Hanson, Brigham Young's top wrestler and defending WAC champion at 142 pounds, is a doubtful performer this weekend. Hanson was slated for tonight's dual meet with ASU and for the Sun Devil Invitational. He suffered a dislocated elbow and may be out for the rest of the season. Which will make Kelly Trujillo, his opponent at 142 pounds and ASU's top wrestler, a disappointed man.

# It's now Wadas' turn to burn deadly BYU

By LINDA RAYMER  
As a prelude to the ASU Invitational this weekend the Devil wrestlers will take on the BYU Cougars tonight at 7:30 p.m. in their toughest dual meet of the season. Both the BYU meet and the invitational will be in Sun Devil Gym.

Coach John Wadas says the tournament will decide who will be the favorites for the WAC championships, and will tell how his team will do in conference play. "If we can beat BYU in the invitational," said Wadas, "We can win the conference."

ASU's Eddie Wells, sidelined in the last match with a dislocated shoulder, will be back in action for the BYU match and the invitational. Wells will be wrestling at 134 pounds with the University of Oregon's Brent Merrill, touted by Wadas as the man to beat. Merrill's record is 10-1-2.

Kelly Trujillo may be competing against Laron Hanson of BYU, the defending WAC champion. However, Hansen suffered a

dislocated elbow against Utah and may be sidelined for the remainder of the season.

Wadas has so much confidence in Trujillo's wrestling ability, he said he will be disappointed if Hansen can't compete in the meet.

Bob Vargas (118) will have his toughest match against Dale Brumit (UofA) while Mike Morales (126) faces a tough bout with David Luke, 8-0, from the University of Oregon.

At 150 pounds, Mike Koury should wrestle well, according to Wadas and take a top place after coming down from 158 pounds. Koury's main competition will be Rondo Fehlberg, defending WAC champion from BYU.

Anything goes for Ron Scott, a transfer from San Bernardino College.

Scott will be wrestling at 158 pounds with no strong competition from any of the schools.

Ramiro Quezada (167) will match Mark Purky from Oregon and Tilo Tuitama (177) expects to

find Mike Hansen of BYU stiff competition.

Wadas said the Devils will be a stronger tournament team this match because several of the wrestlers went down one weight position.

The first round is at 7 p.m. Friday, followed by consolation rounds at 11:30 a.m. Saturday and finals at 7 p.m.



**Brent Merrill**

## PANTS & SHOES

OPEN 10-8 MON. - THUR. 715 B S FOREST TEMPE CORNER FOREST & UNIVERSITY



### SALE

REG. 10.00 VALUE <b>T-SHIRTS BRIEFS</b> 6 for \$4.97	<b>FUNKY KNITS FASHION T-SHIRTS</b> UP TO \$10.00 VALUE WHILE THEY LAST <b>\$3.99</b> each	\$5-\$6.00 WEMBLEY <b>TIES</b> \$2.97	REG. 1.50 <b>SOX</b> 6 pr. \$5.87c ea.
<b>BELTS</b> To 10.00 VALUE \$4.47		<b>BRAND name fashion BOOTS</b> REG. \$38 <b>\$22</b>	

## PANTS GALORE

200 PAIR OF PANTS

Regular to \$12.00 while they last

Van Hueson

Wrangler

**\$4.97**

Lee

Levis

### ENGAGEMENT SPECIAL!



2 5x7 Portraits in vivid natural color

**\$24.95**

REG. PRICE \$51.00

CHOOSE FROM 8 POSES

OFFER EXPIRES MARCH 11

**BONUS!** ENGAGED COUPLES WILL RECEIVE A FREE GLOSSY FOR PUBLICATION UPON PRESENTATION OF THIS AD.



**ERIC**

1020 MILL AVENUE

PHONE FOR APPOINTMENT

**966-8491**

## ROTC officer exam set

Any sophomore with at least 60 semester hours who is interested in earning a commission with the United States Air Force is urged to take the Officers Qualifying Test Saturday at 7:30 a.m. in the Life Science Building, room 191. This test is free and non-committing. Questions regarding the test and Air Force ROTC can be answered at Old Main, second floor or by calling 965-3189 or 965-3182.

## CONCERN

Questions for CONCERN must be submitted at the Message Center of the Memorial Union on forms provided there. Name, address and phone number must be included for verification purposes. Only initials are used in CONCERN. Initials will be withheld upon request. The State Press reserves the right to edit questions. Questions of an informational nature are welcomed from any member of the University community.

**Q. Does ASU have a dean's honor roll? If so, what are the requirements? If not, why?**

**A.** "The university does not have an honor roll. Each college has its own honors system," said Dr. Robert Harrell, assistant to the academic vice president.

Some colleges do have honor rolls while others offer an honors program as a part of their course of study.

The Colleges of Architecture, Business Administration, Education, and Fine Arts recognize outstanding students through some kind of honor roll each year.

The Colleges of Liberal Arts, Business Administration, Engineering Sciences, and Nursing offer honors programs. All the colleges give recognition to outstanding students upon graduation.

Information concerning the honors programs can be obtained from the individual colleges.

## "Live with Jesus"

featuring

### "HIS PLAYERS"

from Pepperdine University

**8:30 PM FRIDAY**

**Feb. 18**

at

**13th St. & Mill — Birchett Park**

## EASTER BREAK

Round trip Phoenix-Chicago .....	\$208.00
Round trip Phoenix-Pittsburgh .....	250.00
Round trip Phoenix-Washington .....	270.00
Round trip Phoenix-Philadelphia .....	280.00
Round trip Phoenix-New York .....	286.00

(Air Fare Only)

PHOENIX to HAWAII \$275.50 (includes Hotel & other features too!) Hawaiian Getaway departing April 3 via TWA for further info call:



64 E. BROADWAY, TEMPE—967-7855

Also ask us about TWA's special Getaway Credit Card, just for students. Charge your Air Fares!

# ATTEND FREE

# MINI LESSON

## You'll Increase Your Reading Speed On The Spot!

### For The 1st Time Ever...

- World Famous Evelyn Wood Reading Dynamics offers you a free glimpse of what it's like to be able to read and study much faster.
- You'll see why Presidents Kennedy and Nixon invited Evelyn Wood to the White House to teach their advisors and the Joint Chiefs of Staff how to read faster.
- You'll actually be taught how to read and study faster during the exciting Speed-Reading Lesson.
- You'll hear what the faculty members of one of America's foremost colleges says about Evelyn Wood, and watch them read fast!

We want you to decide for yourself the value of becoming a Speed-Reader, Evelyn Wood style.

You'll find this Special Free offer of increased reading speed to be an exciting and unusual experience.

For the first time we are offering a Special Speed-Reading Lesson to provide you with a glimpse of what it's like to be able to read and study almost as fast as you can turn pages ..... and you'll actually participate in the techniques that will improve your reading and study speed on the spot!

**For Seat Reservations . . . Call—947-7586**

## LAST DAY TODAY! TODAY . . 4 P.M. & 8 P.M.

—HOLIDAY INN, Tempe — SAFARI HOTEL, Scottsdale  
—DEL WEBB TOWNEHOUSE, Phoenix



4220 N. Brown, Scottsdale

**947-7586**

*Evelyn Wood* READING DYNAMICS®