

University Law Professor Richard Dahl said the present method of selecting judges in Arizona acts as a deterrent to qualified lawyers seeking the position because of the time and money involved in getting selected.

Story on page 3

## Association catalogs tenant news

A central file containing information about the best apartments to rent, price changes over past years and criticism made by former tenants of Tempe apartments is being created by the newly-organized ASASU Tenant Association.

Headed by Mark Wilson, ASASU administrative assistant, the association, with the aid of three University law students, will hear complaints and suggestions by tenants at an open meeting at 3:30 p.m. tomorrow in the MU Cochise Room.

The association will "provide a central information and protection center for students who live off campus," Wilson said.

A group of ASU students tried to create a similar organization in 1968, but "ran into many difficulties," he said.

The ASASU association using the aid of University law students should overcome many of the former group's problems, he said.

"Our problem will be how to meet the challenge proposed by Tempe apartment owners," he said.

The association's central file will also contain detailed information about the facilities available at each of the Tempe apartments and evaluations concerning fair treatment of tenants by the managements, he added.

Wilson said the association will arbitrate hearings on complaints made by students.

"We will find out the story of the manager and the story of the tenant, then move in a positive direction to make sure fair is fair," he said.

Present conditions are "very much in favor of the landlord," he said.

Wilson said leases signed by

tenants have "loopholes that can go either way, but are usually against the tenant."

The association will research problems presented to them, then talk to legislators who will "look into the statutes" if necessary, he said.

Continued on page 2

# Homecoming given \$388 for activities

By GABIE GREEN  
Staff Writer

The ASASU Executive Council's decision not to "actively support" Homecoming this year was clarified yesterday by ASASU Activities Vice president George Hillman.

Hillman said \$388 allocated by last year's ASASU Senate for Homecoming may be used for an election for king and queen and a Homecoming dance, explaining an announcement last week that limited Homecoming activities would be ASASU sponsored.

After examining ASASU Senate appropriations, ASASU Executive Manager Steve Yarbrough said, "Last year's Homecoming was

roughly budgeted for \$2,025," which came from three different ASASU budgets.

"When the budget was being considered for this year, last year's activities vice president (Jeff Figler) requested less than \$1,000," Yarbrough said. But the senate allocated only \$388, he added.

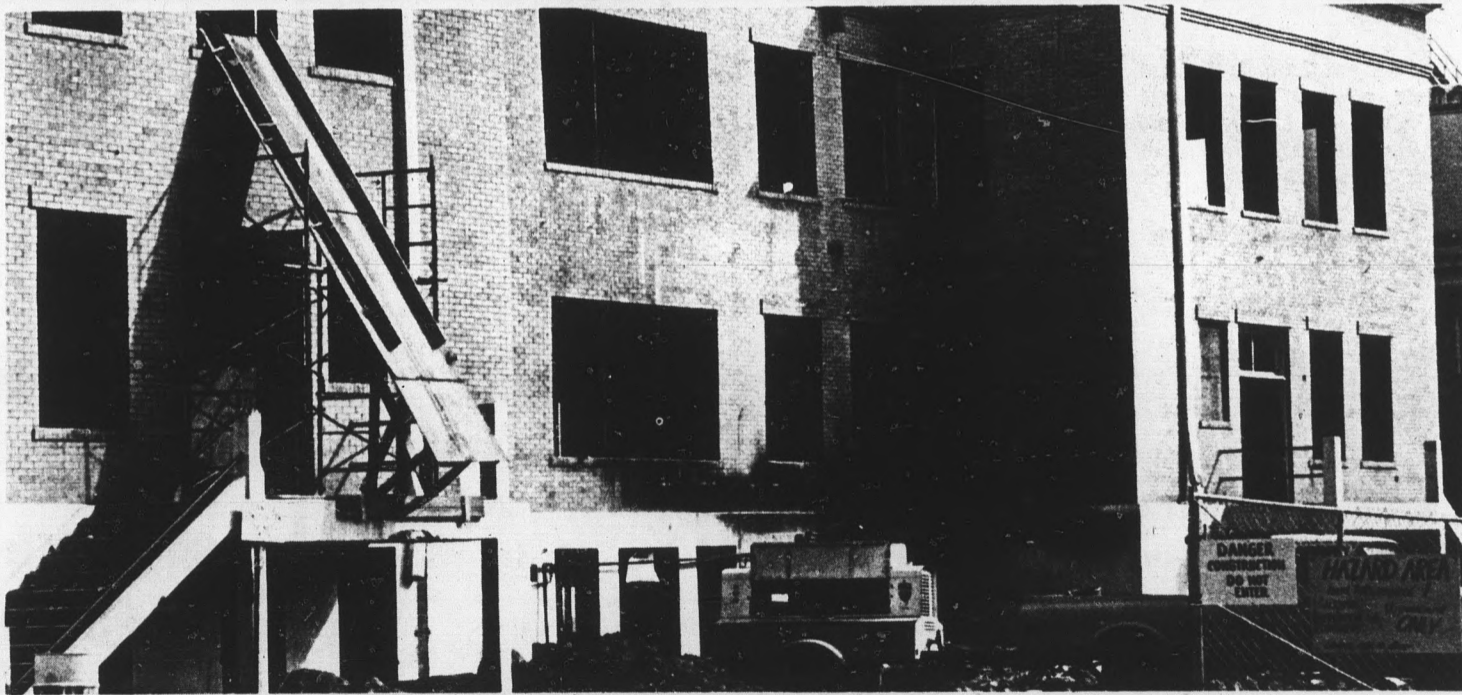
Some lack of participation in Homecoming activities must have been shown to justify Figler's cut in money requested for that Homecoming budget and the Senate's final allocation, he said.

"We will decide what to do with the money at Tuesday's Executive Council meeting," Hillman said.

"Most of the money probably will be spent for a

Continued on Page 3

The status of Homecoming at ASU this fall was further explained yesterday by George Hillman, ASASU activities vice president. With \$388 budgeted for the festivities, ASASU will sponsor elections of Homecoming royalty and a dance, compared to over \$2,000 spent last year on the event.



## It's nothing a nail and coat of paint won't fix

It was not the fury of natural forces such as fire, wind or lightning that reduced the Arts building in the center of campus to its current state of gutted devastation, but the

good intentions of man. The building, originally constructed in 1914, is being renovated at approximately 11 times the original cost. Story on page five.

## ASU-42, CSU-0

The Sun Devils, despite the conspicuous absence of top rusher Woodrow Green, dominated the Rams through their rushing game as the rest of their bevy of talented backs rushed for 502 yards. Story on page 8.

# Arena excavation on schedule

Site excavation has begun for Universities' new field house southeast of Sun Devil Stadium. Bidding for actual construction of the structure is expected to begin early in 1972.

Site excavation for the University's \$8 million field house is on schedule and should be completed within 90 days, John Ellingson, director of planning and construction, said yesterday.

He said the excavators will move more than 130,000 yards of rock and earth before the second phase of construction begins.

The second phase involves relocating the railroad tracks running south of Sun Devil Stadium and turning East 6th Street from its present southwesterly direction to a more southerly course, Ellingson said.

## Tenant

Continued from Page 1

If the budget allows, he said, the association will print a booklet outlining current tenant rights, statutes and the substance of Tempe apartment leases.

It will be "to the students' best benefit if they would contribute to the Tenant Association by way of ideas, physical help and valid complaints," Wilson said.

The association will aid "people having complaints right now," he said. "If the incentive is there on the part of the tenants, we can start right away."

**CLASSIFIED**  
965-3249

## 2 FREE BIKES

One Girl's — One Boy's 3 speed, lightweight Bicycles

will be given away Friday, October 29 at 7:00 P.M. with the Lucky Winner's names to be drawn by

**KOY's Toothfairy!**

ENTER OFTEN AS YOU LIKE AT

**KING'S FOOD HOST U.S.A.**

1123 S. Rural — 1/2 Block North of Apache

Deposit This Coupon in KING'S—1123 Rural

NAME ..... Circle One:  
ADDRESS ..... Man  
Woman

You Must Be Present To Win!

Hopefully, he added, the University will be advertising for bids for the second phase within the next few weeks.

Ellingson said it is also hoped bidding for actual building construction will begin after the first of the year.

The money for furnishing the interior of the oval structure southeast of Sun Devil Stadium has not been appropriated by the state legislature. Ellingson said he believes the appropriation will probably be made sometime in April.

Meanwhile, construction of the UofA's \$8 million sports arena is also on schedule, according to Warren Moon, vice president of Place and Place, the firm which designed it.

The UofA structure was begun late last November and will include a basketball arena, drama labs, locker rooms for faculty and students and office space, Moon said.

Both oval structures will seat about 15,000 persons in the main arena.



## Field house

Excavation at the future site of ASU's \$8 million field house is right on schedule and should be completed within 90 days.

**DISPLAY ADS**  
965-3249

**SCENE II**  
Division of Jonathan Logan, Inc.



WHAT TO DO ON A CHILLY NIGHT—

WEAR  
BRUSHED NYLON  
GOWN PAJAMAS

FROM

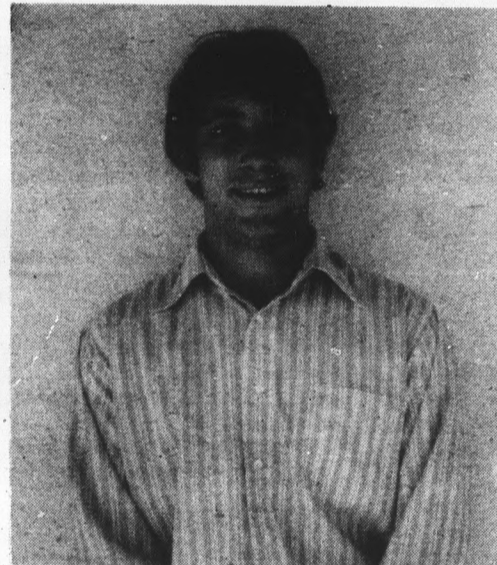
**Celias Fashions**

TEMPE CENTER

and also at

SHERWOOD CENTER  
1149 EAST MAIN  
MESA

# WANTED



**GREG ARMSTRONG**  
526-86-6571

## DESCRIPTION:

Male, White Caucasian, 5' 11", 160 Lbs., black wavy hair, green eyes, no visible scars.

## CONSIDERED ARMED AND DANGEROUS

Suspect is known to be armed with airline tariffs, schedules, tour brochures, youth discount cards, ski information and special holiday vacation programs. Approach suspect with caution as he is known to become extremely excited when he knows you are taking a trip.

## HABITS

Suspect is known to frequent fraternities, sororities, Union building, and most school activities.

## REWARD

Greater savings, and a satisfactory trip.

If you see this man call 947-7341 IMMEDIATELY.

## ASU law professor

# Dahl advocates appointed judgeships

By DENNIS CARROLL

The selection of state and county judges should be taken from the hands of the voters and placed within a system of judicial appointment, according to an ASU law professor.

Agreeing with a statement made earlier this month by Arizona Supreme Court Chief Justice Fred Struckmeyer, Dr. Richard Dahl



Dr. Richard Dahl

said, "The man on the street isn't the trial watcher he used to be. He often doesn't know each judge and what he's supposed to do."

Dahl, director of the law library, is the author of a judicial bibliography which includes a section on the selection of judges. He said

the election method for judges serves as a deterrent to qualified lawyers who might seek a judgeship if it were not for the time and money involved in getting elected.

Dahl suggested that three or four nominees for seats on the state's supreme, superior and appellate courts be put forward by the state bar association. Appointments would be made by the governor.

Such a system, Dahl said, would attract a higher caliber of men who are known by their fellow lawyers as competent candidates for judgeships.

The bar association would serve as a screening device, readily assuring the public of competent judges, he said.

"Our judicial system can only work if the people have a high degree of confidence in their judges."

Under the election process judges must spend considerable amounts of time and money campaigning, Dahl said.

He termed the campaign techniques of "baby kissing," handshaking and appealing for funds "inequitable and demeaning."

"Judges should focus on doing their jobs, not on

getting re-elected," Dahl said.

He added that judges face the dilemma of securing campaign funds and the resulting political indebtedness.

"It is extremely important that judges not be indebted to campaign

contributors nor even give the appearance they are," he said.

Any appointive method must have built into it some way of "getting rid of a judge who goes sour," Dahl said.

He also suggested that courts have an attractive

retirement policy to phase-out at a certain age.

Dahl said he does not favor having the legislature confirm court appointees.

Most state legislators, he said, have no more legal expertise than the average voter.



## Homecoming allotted \$388

Continued from page 1

dance. Any left, though none has been appropriated, will pay for an election of a Homecoming king and queen," he added.

ASASU President Norm Keyt said, "We have \$388 and we will do what we can with that."

Reacting to the Executive Council's original decision to allow no election or floats, members of the ASU Inter-fraternity Council (IFC) have printed a letter to their members saying, "Recent developments in the offices of ASASU have hinted at anti-fraternity, anti-sorority policies."

Bill Eaton, treasurer of IFC, said many Greeks believe "anti-Greek discrimination is being practiced" by student officers.

Two examples of "discrimination" are the recent attempt by the Board of Financial Control to cut off funds for travel to away games by the spirit squads, "almost all of whom are Greeks," and the previous announcement that Homecoming activities would be cancelled, he said.

The IFC probably will make plans to take their opinions to the ASASU Senate, he said.

"The ASASU Executive Council will encourage student groups to do something with the alumni," Keyt added.

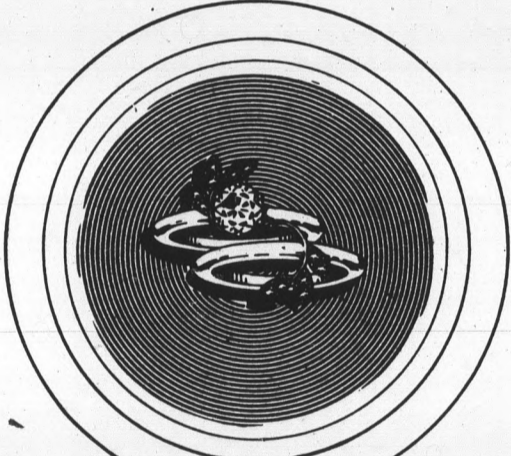
But Donald Dotts, executive director of the ASU Alumni Association, said, "I am not too acquainted with the controversy the students are having concerning Homecoming activities."

The association will still have the traditional activities planned for the alumni, he said.

"I regret that some students might not want to continue one of ASU's cherished traditions," he said.

Campus tours and four class reunions will still be held the day of Homecoming, and the traditional buffets and banquets will also be sponsored by the Alumni Association, he said.


"If the fraternities want to put up decorations or hold an election, not financed by ASASU, they should do so," he said.



emphasis on design

Looking for distinctive engagement or wedding diamonds? We have a complete array of modern mountings and diamonds of fine quality to fit every budget. Our Registered Jeweler of the American Gem Society will be happy to explain diamond characteristics for you and provide professional help to aid your selection.

MEMBER AMERICAN GEM SOCIETY



*Paul Johnson*  
JEWELERS

EXPERT WATCH & JEWELRY REPAIR IN THE ARCHES

130 EAST UNIVERSITY DRIVE • TEMPE • 967-8917  
1940 EAST CAMELBACK, PHOENIX, 277-1421  
ALSO IN SUN CITY  
CERTIFIED GEMOLOGIST, AMERICAN GEM SOCIETY

The **Holiday Inn**® of Tempe

takes pride in Congratulating

## "THE NEW AFFAIR"

upon completion of one year of  
bringing the tops in entertainment  
to Sun Devil Country

**LET US JOIN IN CELEBRATING**

One week of Gala Festivities  
Monday, Oct. 11 thru Sat., Oct. 16



- A giant Birthday Cake every nite at midnite.
- Lots of fresh, hot popcorn & other goodies to eat.
- A special concoction aptly named "THE NEW AFFAIR" — one to a customer (one's enough!) — the lighted glass is yours to keep.

... follow the **SEARCHLIGHT** to

**Apache & Rural ...**



# SUN DEVIL

## LOUNGE



# the point | state press

opinions



'WHO? THEM? GEE - ER, I'LL BE DARNED! I WONDER HOW THEY GOT THERE...'

## ASASU shuffle

The Homecoming issue is really not as confusing as the ASASU office would lead one to believe. Really.

First, the Executive Council decided to save a whole lot of money by declining to support the traditional event this fall, citing the shabby student support as part of the reason.

In the face of staid tradition, the council decided to do away with floats and royalty elections, and spend money only in connection with alumni events.

Upon discovering that there wasn't as much money in the Homecoming kitty as originally assumed (therefore not as much to save), word has come out that Homecoming will be supported financially after all, complete with king and queen, but still no floats.

This interesting tangle of events has put student leaders into the position of openly admitting the expenditure of ASASU funds on an event not supported by the majority of students.

Ignorance of the budget can be pleaded in this case, and it can be dropped there. Dropped, that is, if a constituency can accept that kind of action on the part of its representatives.

But when it comes to slashing away at University activities in hopes of finding better alternatives, they must first be sure their aim is correct. Backfires are awfully embarrassing.

## counterpoint

Editor:

I trust none of those Radical Student Union members were ASU students—the ones that demonstrated in front of the county jail (SP, Oct. 5).

"Solidarity with prisoners" implies that prisoners are all of a group. This is a crude, unthinking concept. Actually, those incarcerated in the pokey are as individual as those outside. Any other thinking is snobbish and patronizing.

For example, some are in just for drinking a little too much. They are certainly different from murderers, fire-bugs, narcotics sellers, rapists, cat burglars and embezzlers. And each of these is different from the rest.

As for insisting on amnesty for the rebelling Attica prisoners, well, how silly can you get? Do these simple toots really think the warden at Attica calls up the head of the Maricopa County Jail for advice? Some will use anything as an excuse to demonstrate and

get their picture in the paper. J. R. Wilson

Editor:

As a concerned member of the student body and as some one currently responsible for the faculty evaluation program, I have a few questions for Tim Evens, whose letter appeared in the State Press (Sept. 28).

How did you arrive at your conservative estimate of \$25 per teacher for evaluation? Why didn't you contact someone familiar with the program to answer your questions? Why have you not offered to be on the staff to see that the evaluation is completed correctly?

The only costs will be for computer time and printing. A minimal charge (possibly 25 cents) will probably be placed on the booklet to offset costs.

The staff is very closely screened in an attempt to approach professional quality and will not be paid.

The total cost should not be even one-third of his \$35,000 figure. I believe him to be an uninformed student who didn't bother to research the facts before vocalizing.

The purpose of faculty evaluation is to help increase the already high quality of teaching at ASU.

Wayne Lindquist

John Banaszewski

## Radicalism goes door-to-door

Never in a million years, or J. E. Hoover's real age, would I ever have thought radicalism could be paralleled to Hooverism.

Don't get me wrong. I speak not of Edgar's personal brand of anti-crime, anti-subversivism, anti-communism tactics called Hooverism.

Rather, I speak of the tactics used by the Hoover vacuum cleaner salesman.

Now the only possible parallel, of course, is the selling techniques used by the two organizations to sell their respective wares.

The other night I discovered that the techniques used by the sellers of The Militant are very similar to those of the Hoover vacuum cleaner salesman.

I wish it weren't so, but as the girl went from door to door with her Avon lady smile and Hooverism

rhetoric intact, it was obvious the girl with radical ends in mind was using Establishment means in mouth.

Imagine a knock on your door and upon opening you get:

"Hi, how ya' doin' guy, my name is Leona Trotsky and I'm selling The Militant. Wanna buy a subscription? It's only a dollar three-eighths for 200 jam-packed issues of the magazine that's got three people in Buffalo bullying about.

"Oh, I should tell ya' that we publish monthly so you'll be on ours and probably J. Edgar Hoover's official list of 'known activists' who are purported to be purposefully pathological perpetrators of porno perversion who are trying to cast a pinko political pigmentation on the red, white and blue."

She puts her militancy on the fake walnut Central

## Hail, Columbus?

Today this nation honors the most overrated sailor in the history of the seven seas, Christopher Columbus.

Oct. 12 marks the 479th anniversary of that man discovering he wasn't really where he thought he was, an achievement significant enough to merit the closure of many state and federal offices across the nation.

It's useless anymore to point out the conclusive proof that Vikings were the first to reach these shores, and they knew they weren't in Japan.

Fans of the Latin explorer give Columbus the race to the New World by default, enforcing their arbitrary rule that the discoverer must write down his find and send it to Rome, otherwise he's discovered nothing.

The Norsemen never had a chance under those rules.

## state press staff

ASB 302  
Arizona State University  
Tempe, Ariz. 85281  
(602) 965-3656, 965-3657  
Display and classified ads:  
(602) 965-3249

Jay Hovdey  
Ray Wong  
Diane McIntyre  
John Banaszewski  
Barney Hutchinson  
Linda Thrane  
Bruce Johnston  
Rick Snedeker  
Tim Bateman  
Julie Paterson  
Terri Hoffman  
Craig Demmon  
Fred Uhrich  
Sue Ann Bailey  
Gabe Green  
Dan Huff  
Tom Journey  
Bill Norman  
Max Jennings  
Hal Hubele

Editor  
Managing Editor  
News Editor  
City Editor  
Sports Editor  
Ass't. City Ed.  
Ass't. Sports Ed.  
Feature Editor  
Weekend Editor  
Ass't. Weekend Ed.  
Chief Photographer  
Staff Photographers

Staff Writers  
Faculty Adviser  
Display Ad Manager

STATE PRESS is published by Arizona State University as the campus newspaper every Tuesday through Friday during the school year, except holidays and examination periods, and is entered as second class matter at Tempe, Arizona, 85281.

## Costs rocket for annexes at University

More new buildings aren't the only things going up on campus these days—construction costs are skyrocketing, too.

The price of renovating the Arts building in the center of campus will be nearly 11 times the original building cost, according to a report recently released by John Ellingson, director of planning and construction.

In 1914, the Arts building was constructed for \$82,637. Renovation costs will be \$901,000, the report said.

The study, based on comparative building costs, also indicates that building additions today are being constructed at higher costs per square foot than original building cost.

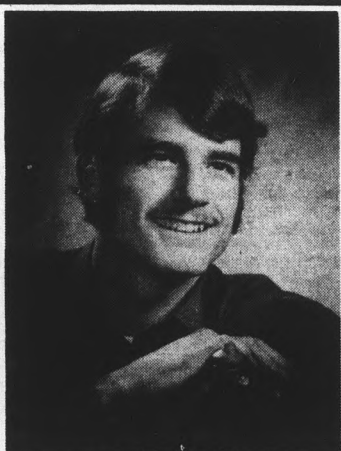
The per-square-foot price of the Language and Literature building when it was built in 1964 was \$16.59, but a new north wing is costing \$26.08 per square foot.

The Business Administration building cost \$19.37 per square foot in 1968, while the annex to the building, completed this summer, cost \$28.84 per square foot.

A delayed proposal to expand the Physical Sciences building originally was estimated in 1967 at \$2.5 million. The long-deferred project remains on the University capital outlay request, but for 1972 the estimated cost is \$6.4 million.

Ellingson said plans for new buildings include provisions for growth, but "in many cases budgetary limitations require the reduction, postponement and even elimination of these considerations."

As a result, buildings must be updated and expanded a few years later at an inflated cost-per-foot, he said.



John Busch

People in Sun Devil Country Prefer . . .

photography  
by  
**ERIC**  
1020 Mill Ave.  
966-8491

# Collage

TODAY, Oct. 12

**AWARE**, 12 p.m., MU 284. (Association for Women's Active Return to Education.) Meetings are designed to help older women returning to school adjust to problems they encounter.

**German Club**, 2:45 p.m., LL Reading Room. Elections and plans for future activities. New members invited.

**Business Administration Student Council**, 3 p.m., MU 286.

**Lambda Delta Sigma-Beta Chapter** (pledge meeting), 7:30 p.m., LDS Institute. Business and activities for Big-Little Sister Week will be discussed.

**Zero Population Growth**, 8 p.m., MU 269. Gerald Ventrella, Phoenix mayoral candidate, will discuss environmental problems facing Phoenix.

**Poetry Reading by Besmlr Brigham**, 8 p.m., MU Pima Room. Mrs. Brigham is of Choctaw Indian heritage. The program is part of a Southwest Creative Writing Project co-sponsored by the National Endowment for the Arts and the English department.

WEDNESDAY, Oct. 13

**ACLU Student Chapter**, 12 p.m., Armstrong Hall 144.

**Associated Women Students**, 2:30 p.m., MU Mohave Room. Committee meetings follow at 3 p.m.

**U of A Medical School representative**, 3:30 p.m., Murdock Hall 101. Dr. George Adams will conduct an open session with pre-med students.

**ASASU Senate**, 3:45 p.m., MU Mohave Room. Open to the public.

**"Help Bring Wildlife Back"**, 7:30 p.m., Murdock 101. An environmental colloquium sponsored by the ASU Ecology Association. Speakers Cleveland Amory and Paul Anthony, an audio-visual presentation and discussion of the organization of a new action group, the Wildlife Guard.

COLLAGE is a weekly calendar of campus events, excluding athletics and activities sponsored by the Memorial Union. Members of the University community are welcome to bring information about activities to the State Press office, ASB 302. Forms are provided.

**Radical Student Union Booksale**, 9 a.m. — 3 p.m., Hayden Library. Also Thursday.

**Bible study and creative workshop**, 5 p.m. and 6 p.m., Danforth Chapel.

**Undergraduate Social Welfare Association**, 6 p.m., SS 203.

**Wesley Foundation Luncheon**, 12 p.m. — 1 p.m., Baker Center. Home-cooked meals. 50 cents for students and 75 cents for non-students.

**University Players' production of "Jimmy Shine"**, 8 p.m., Lyceum Theatre. Through Sunday.

THURSDAY, Oct. 14

**Colloquia in Solid State Science Lecture Series**, 3:30 p.m., PSC A-203. Charles Slichter, department of physics at the University of Illinois. Refreshments at 4 p.m. in PSC A-200.

**"Woodstock"**, 5 and 8 p.m., Neeb Hall. Admission \$1. Through Sunday.

**"Celebrations"**, 7:30 p.m., Christ Chapel Methodist Church. God Unlimited, a musical group, will perform.

**Blue Key**, 7:30 p.m., MU.

FRIDAY, Oct. 15

**All Akbar Khan and John Handy**, 8:30 p.m., Gammage Auditorium.

**Lyric Opera Theatre, "Don Giovanni"**, 8 p.m., Music Theatre. Also Saturday.

**Registration for the October Organization Roster**, Office of Student Affairs, Matthews Center. Registration forms give organizations access to University facilities. Last day to apply.

SATURDAY, Oct. 16

**Kappa Sigma pledge class car wash**, 9 a.m. — 3 p.m., Bob's Union 76. \$1.25 per car.

MONDAY, Oct. 18

**Inter-Varsity Christian Fellowship**, 2-4 p.m., MU 272. IVCF is an inter-denominational study and fellowship group.

**Joan Sutherland and Richard Bonyage**, 8:30 p.m., Gammage Auditorium.

## Blacks charter club for coeds

The idea of an organization designed to conduct University and community functions relevant to Black women has lingered in the minds of such students for a long time, according to Lyndia Philpot, a junior sociology major.

Almost 75 coeds joined the new Black Women's Association within two hours yesterday, lured by resounding strains of Marvin Gaye and cries of "Are you Black? Are you a woman?"

"Black people have not been duly represented so far on campus, but there is an

apparent need for it," Miss Philpot said.

"The sisters and brothers have been falling apart—in this day and age they should be getting together. And there's now more sincerity and interest than in previous years," she said.

The association will attempt to unite all Black women on campus, both Greek and independent, encourage student inter-relationships and establish community programs, especially in Black areas, Miss Philpot said.

It will be structured similarly to the existing Panhellenic or Associated


Women Students organizations, aim at all aspects of campus activities and help form a coalition with other Black organizations, she said.

For example, Miss Philpot continued, the Black Women's Association will work with Alpha Kappa Alpha, the Black women's sorority which established a chapter at ASU last year.

Once the group is

organized and sponsored, she said, fund-raising functions such as soul dinners, volleyball tournaments, fashion shows or "whatever the Black sisters say they want," will be planned at regular meetings.

"Nobody will be just a member," she said, "and no one woman will speak for the whole group. Everybody will have their say."



### STUDENT MEDICAL INSURANCE

Enrollment  
Deadline Extended  
To Oct. 22, 1971

Graduate Assistants and Teaching Assistants  
are eligible for this Program.

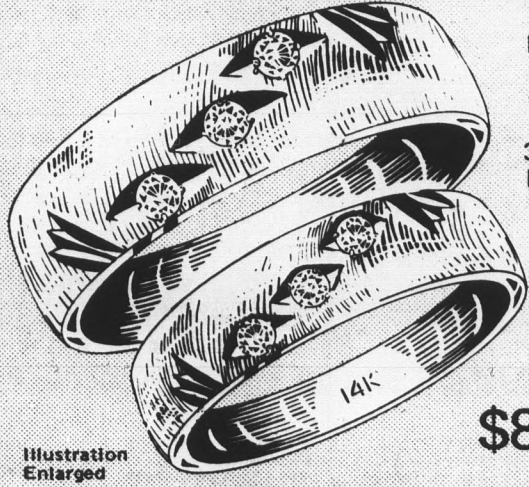
## DON'T WAIT!

SPECIAL LOW RATES FOR  
STUDENTS WITH DEPENDENTS

APPLY IN MU Room 222 OR CALL 965-3239

### DANIEL'S JEWELERS

## DIAMOND ACCOMPANIMENT TO YOUR LOVE STORY



EXQUISITE  
14-KARAT  
GOLD DUO  
SET WITH  
3 RADIANT  
DIAMONDS  
IN EACH  
BAND.

# \$87.50

Illustration Enlarged

CHARGE IT... even if you've never had credit before!

A DIVISION OF GORDON JEWELRY CORP.—STORES COAST TO COAST

## DANIEL'S

Quality Jewelers

IN MESA SHOP AT DANIEL'S  
TRI-CITY MALL  
1910 W. Main Street  
STORES IN PHOENIX, YUMA and TUCSON

6-3-06-12

# 'Pre-medical' major non-existent

Second of a two-part series  
Entering college for the first time, a student interested in pursuing a medical career learns, perhaps to his surprise, that there is no such thing as a "pre-medical" major.

This idea, according to Dr. Jack Toohey, ASU associate professor of health, physical education and recreation and chairman of the medical arts evaluation committee, is a common misconception.

Most students beginning their medical education at ASU major in zoology or chemistry, Toohey said.

The difference between pre-med programs at ASU and the UofA is in the courses, according to Dr. George Adams, an assistant dean of students at the Tucson medical school.

Adams believes the courses offered at ASU are "much more

standard" than those at the UofA, depending on the student's major.

But there are similarities at both institutions.

One is evaluation procedures. The medical arts evaluation committee at the University functions as a collection agency for pre-medical information.

Toohey explained that the committee does not make recommendations either to or about students. It functions instead as an information agency, gathering Medical College Admissions Test (MCAT) scores, letters of recommendation and comments from individual instructors for each student.

Adams said pre-med students at the UofA are evaluated in four areas—academic record, MCAT results, letters of

recommendation and personal interview.

The "largest part of consideration is from the academic record," Adams said, but evaluation is not based primarily on grade point average.

Students who are eligible for medical school usually find the going rough when it comes to being admitted to a medical training facility.

Medical schools, according to Toohey, are in a "buyer's market." Each year there are more applicants than the medical schools have room for, but many who are turned down the first time have another chance because their names are placed on alternates lists.

The UofA Medical Center has been popular since it opened in September, 1967, Toohey said, and ASU students place "high priority" on attendance there.

He said one of the reasons for the Tucson school's popularity is its "progressive" structure—pass-fail grading is an example.

There are only 64 openings at the UofA medical college each

year and Toohey estimated that "close to 200" apply. ASU, he said, "probably set a record this year" because 20 University students were admitted at the UofA.

## CONCERN

Questions for CONCERN must be submitted at the Message Center of the Memorial Union on forms provided there. Name, address and phone number must be included for verification purposes. Only initials are used in CONCERN. Initials will be withheld upon request. The State Press reserves the right to edit questions. Questions of an informational nature are welcomed from any member of the University community.

**Q. What are the traffic regulations regarding bicycle riding? If there are such regulations, why aren't they enforced by giving violators traffic fines such as are given to automobile operators?**

**A.** "According to the state statutes, bicycle riders must follow the same rules as automobile drivers do," said Lt. Irving Jaffe, University Police.

The University Police do not like to give tickets because some of the bicycle riders do not understand they are governed by these rules, Jaffe said.

"We would prefer the students follow the rules on their own," he said. "They should know these laws are not made to harass them, but for their safety."

## MU Events

**TODAY, Oct. 12**  
MU Film Committee, 2:30 p.m., Activities Center.

MU Hostesses, 3:30 p.m., MU 267.

Criadas, 3:30 p.m., MU 271.

ASU-Colorado State University game film, 11:30 a.m., Movie House.

**WEDNESDAY, Oct. 13**  
"China in the UN?," 2:30 p.m., Pima Room. Dr. Yung-Hwan Jo and Dr. Guilford Dudley.

"Raintree County," 7:30 p.m., Movie House. Free tickets at the Activities Center.

**THURSDAY, Oct. 14**  
Noon concert, 11:30 a.m.

Montgomery Lounge. Violin and piano.

**FRIDAY, Oct. 15**  
"The Reivers," 7:30 and 9:30 p.m., Movie House. Tickets 50 cents at the Activities Center.

**SATURDAY, Oct. 16**  
"Two Little Bears," 10:30 a.m. and 1 p.m., Movie House. Tickets 50 cents at the Activities Center. Children's Film Festival.

**CONTINUING**  
George Eastman House Contemporary Photographers VI, 8 a.m.—6 p.m. Monday-Friday, gallery.

## CLASSIFIED ADS

Classified advertising must be paid for in advance either in person or by mail to the State Press, ASB 302, two days in advance of publication. No ads will be accepted over the telephone. Office hours are 8 a.m. to 4 p.m. Monday through Thursday and 8 a.m. to noon Friday. Phone 965-3457. Rate: \$1 for three lines and 30c for each additional line. 50 per cent discount for consecutive additional days. There will be no refunds for advertisements placed with the State Press.

### FOR SALE

Huffy 10 speed bikes, \$75. Still boxed, Call 968-3755 after 3 p.m. Limited supply. (10-13)

Martin 00018 acoustical guitar, Olds "recording" cornet 247-2957 evenings. (10-15)

'71 Yamaha 250 Enduro. Excellent & low mileage, extras. 947-1435 after 6 p.m. Also 274-3494. (10-12)

Unique majestic AM radio, large cabinet approx. 4' by 2'. Beautiful wood and good sound. \$35, cheap for what you get. Call Steve, 967-6418.

Zenith color console—\$150, B & W TV—\$25, Offenhauser duquad manifold, paperboy bike—966-5497.

Manx Kittens 955-6548. (10-28)

9x12 used rugs \$5.00, all sizes in stock. Carpet House, 1516 E. Van Buren, Phoenix. (Semester)

Honda 1971 1/2 CB 175 excellent condition. Extras. \$525, 956-1146.

Drapery rods and ydgs for van curtains, Oscar Leverant Fabrics 4136 E. Indian School. (10-14)

### SERVICES

Looking for Reality? There's only one way says Berkley grad. Come any Sunday, 9:45 a.m., 2424 N. 71st Street, Scottsdale Baptist Church, ask for Lloyd. (10-13)

Stop thinking about it and do it now! Permanent removal of unsightly facial hair. Come in and we'll talk about it. Discount for students. Call 968-1851. (11-16)

Art lessons, reasonable. Saturdays. 966-0331, Tempe. (10-4)

**TIME IS MONEY AT CLARK DEVELOPMENT NO. III.** This is a limited partnership investment opportunity for the small investor. According to a national association this type of investment averages 15-20% in earnings. But Arizona is far above average. More information from Mr. Jerzy Zaborski, 956-5656, Res. 966-7682. LARRY CLARK REALTY, 2728 E. THOMAS RD. PHOENIX, AZ. 85016.

We are some ASU students who would like to start a no-charge dating service for ASU students. All we offer is an opportunity to meet interesting people if interested. Please call 966-2738 after 4 p.m. for details. (10-13)

Room for two passengers. Private plane to New Mexico football game. Call Glen—967-8149, Skip—946-5507. (10-12)

Good Samaritan Day School—offers you day care services with school. Ariz. Cert. teachers, 1st grade thru 4th. Kindergarten for 4 and 5 yrs. old., pre-school for 2 and 3 yrs. old. Drop-ins and infants welcome. Open 24 hrs. Hot lunches—reasonable rates. Call 966-0410 for information. Located at 440 W. 5th in Tempe. (10-14)

Dance to the Music! C & H can book any type of band for all occasions. Call Mike 967-4333. (10-28)

Tutoring, Spanish, French, 968-2913.

### SOCIAL

Single Catholics Dance by the Phoenix Single Catholics Club, Nov. 19, 1971 8:30 P.M., Ramada Inn 3801 E. Van Buren, Phx. To be informed of future activities send name, address to PSCC, P.O. Box 678 Phx., AZ. 85001.

### AUTOMOBILES

1971 VEGA CHEV. Air, auto, fastback, opt. Int. Economical 4 cyl. 264-6934. (10-14)

1968 Jaguar XKE, air, excellent condition. \$3000. 265-9077. (10-13)

'63 Chevy II, 6 cyl. Must sell. Excellent condition, no air, \$300. 965-5456, ask for Mike. (10-13)

'69 Yamaha DT-1 MX (250 cc.) Very good condition. 254-1637 or 965-3124, ask for Ron.

1970 Opel Kadett economy special. Very clean, four-speed. Call 966-3734 after 6 p.m. (10-15)

White '60 Falcon—minor repairs, otherwise perfect—\$100. Call 275-1639 after 6:30 p.m. (10-13)

'69 Chevy II 427, 4-spd. positraction, Crager wheels, 31,000 mi. Call 944-0436, will take trade in.

1966 Dodge Coronet must see must sell V8, super clean, runs perfect call M-F 9-5, 264-9873. See evenings 929 E. Vista del Cerro.

### INSTRUCTION

Certified experienced French instructor available for tutoring, call after 6, 947-6234. (10-14)

TUTORING: FRENCH & SPANISH ALSO YOGA LESSONS. 968-2913 (11-17)

English, tutoring, etc. 967-5925. (all semester)

Self hypnosis is the key to self confidence, peace, happiness, and success, stop smoking, lose weight, calm nerves, speed learning. 274-0698.

### TYPING

Expert Typing, new IBM: Theses, dissertations, term papers, books. Mrs. Petty, 959-5385. (10-22)

Typing (IBM) 945-1171. (4-21-'72)

Expert typing, dissertations, theses, term and research papers. Call Jean Buttermore, 277-3602. (all semester)

Typing, close to ASU, 966-4713. (11-30)

IBM Selectric—Choice of type, style. Editing as desired. 966-1684. (semester)

**TYPING: TERM PAPERS, RESUMES, THESES, DISSERTATIONS, PROFESSIONAL GUARANTEED WORK, IBM. MAXINE MULLEN—955-0743. (year)**

Typing IBM 253-1285 955-3206. (semester)

### WANTED

Help! Volunteers needed to work with inner-city kids in an arts & crafts recreation program Sat. mornings. Interested? Call Kay 965-5100 or 967-8747. (10-13)

Desperately need ride to Kansas on Friday, Oct. 15. Melani, 966-8114. (10-13)

We need people who care to participate in the Freedom March and Rally for Soviet Jewry this Sunday at JCC in Phx. Meet at Baker Center for ride. 966-5371. (10-12)

### RENT

Roommate wanted to share one-bedroom apt. \$50 a month and utilities. Call 967-6107 after 4:00 p.m. (10-15)

Mature girl to share apt. Walking distance to ASU. 966-0331. (10-14)

WANTED: straight roommate to share small farm located 3 mi. So. of Baseline in Tempe \$60. 967-8795 or 967-1588. (10-14)

Grenada Mesa now renting. 176 beautiful new 2 bedroom apts. Furn. or unfurn. Fully draped and carpeted. 505 S. Roosevelt, Mesa, across from Motorola. Phone 252-7501. (10-13)

Girls to share 4 bdrm. house. \$60 mo. & share util. In Mesa; no more pets; own room; 969-6609.

2 bedroom, 2 bath, no lease. San Miguel Apts. 966-4713. (10-19)

Roommate wanted to share one-bedroom apt. \$50 a month and utilities. Call 967-6107 after 4:00 p.m. (10-12)

Girl roommate wanted to share large 3 bdrm. house. 10 min. from campus. New bedr. set w/w carpet, color TV. Call Linda. 962-8427.

### HELP WANTED

Part or full time days, nights. Start \$1.40 per hr. Jack-in-the-Box. 966-7372, 942 E. Broadway, Tempe. (10-12)

Part time, your own hours. Direct sales work on commission and set your own income. Apply at 808 E. Ash, Tempe 12 to 2 p.m. (10-13)

Salesmen and women for complete line of household appliances. Commission basis. Marketing Creators, 660 E. Main St., Mesa. Good money part time. (10-19)

**GIRLS - GIRLS TELEPHONE WORK PLEASANT TELEPHONE WORK FROM OUR OFFICE PHOENIX. JC PROMOTION. NO EXPERIENCE NECESSARY. JUST A PLEASANT VOICE. \$1.75 HOUR. PLUS BONUS. WORK 9 A.M. - 2:30 P.M. OR 4 P.M. - 9 P.M. APPLY CONSUMER SAMPLER ADVERTISING, 4000 N. 7TH ST., ROOM 124. 264-8011. (10-12)**

Need 7 girls part time to become professional make-up artists 966-0571. (all semester)

### LOST

Black Lab pup 3 months. We love our dog, please help us find him. Reward, call 966-4070. (10-19)

Irish Setter, female on 10-6-71, call 966-2323, Roger. (10-12)

Siamese type male cat with white paws. Six months old lost. Please contact Kris at 1735 Cutler, Apt. B or call Doug at 945-9433. (10-12)

### PETS

Free Airdale puppy, needs a good home with big yard. Call 968-0249 or 966-4349. (10-14)

Free kittens, 1/2 Siamese—grey with blue-grey eyes. 6 wks. old, both male. 966-7925. (10-12)

## ATTENTION STUDENTS!!!

Make your holiday travel plans now before the rush. Groups will receive reduced rates for flights to major cities.

Campus Representatives:  
—Bob Bell  
—Mark Sklar



## MUNDUS TRAVEL BUREAU

44st. & Camelback Rd.  
Phoenix, Az. 85018

959-5250

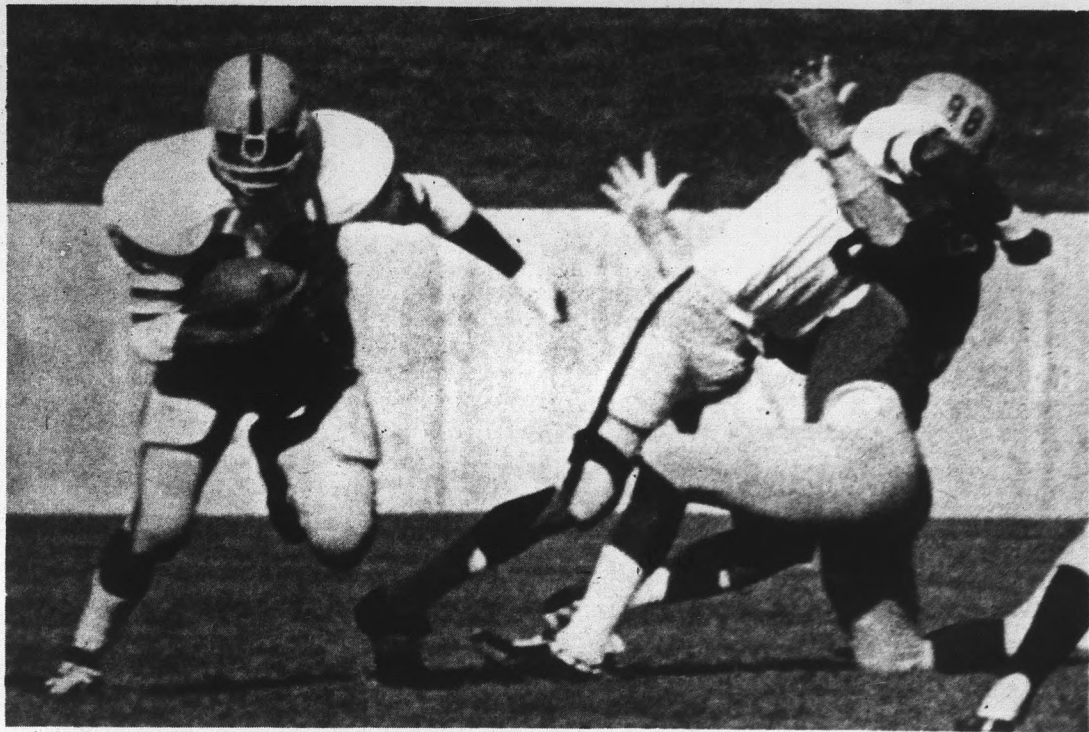
## FORMAN-NACE THEATRES

BURT LANCASTER  
ROBERT RYAN  
LEE J. COBB  
He gave the West justice right up to its neck then rammed more down its throat.  
**"LAWMAN"**  
GP COLOR United Artists

—AND—  
"ENDS TUESDAY"  
JAMES GARNER  
SUZANNE PLESSETTE  
—AND—

UNIVERSITY WALK-IN  
BRACADAWY—JUST EAST OF RURAL RD. • TEMPE 967-7857  
"SUPPORT YOUR LOCAL GUNFIGHTER." United Artists

UNIVERSITY WALK-IN  
BRACADAWY—JUST EAST OF RURAL RD. • TEMPE 967-7857  
CHARLTON HESTON  
THE OMEGA MAN  
GP PANAVISION™ TECHNICOLOUR™  
AND  
THX-1138



### Petty blocks for Eley

Monroe Eley (24) started this 43-yard run against Colorado State with a solid block by tight end Joe Petty (88). Petty, who weighs less than 180 pounds, took out linebacker Greg Harris (89), who weighs 208 pounds.



### McCutcheon wrapped up

All-American candidate Lawrence McCutcheon (30) of Colorado State got two yards on this play in the first quarter. He was stopped by linebacker Larry Delbridge (60) and cornerback Windlan Hall (31).

## Sophomore pair rejoins grid team

Halfback Woodrow Green and linebacker James Baker, both sophomore starters, have returned to the ASU football team after missing three practices and the Colorado State game Saturday.

Green cited personal problems involving his wife and newborn baby in Portland for his departure. He left Wednesday with Baker, who financed the entire round trip journey from money earned on a summer job.

Assistant coach Joe McDonald went to Portland after scouting Oregon State Saturday to contact Green's parents and family and eventually Green himself.

Green's wife and child are moving to the Valley where she hopes to find employment.

## ★ Reserve backs effective

Continued from Page 8

yards) and Bob Speicher (42 yards) gave ASU 118 yards.

Grady Hurst, the third different starting quarterback in three games, passed just enough times to be effective. The 12 to 15 mph wind limited the air game.

Three of Hurst's six completions went for touchdowns.

The defense, led by Larry Delbridge, Junior Ah You and Richard Gray, put constant pressure on the CSU offense. The first unit gave up only 18 yards rushing in three quarters. Substitutes gave up the other 41.

"The game was good in that a lot of new people got some game experience," said Head Coach Frank Kush. "The score made an evaluation of our effort difficult because of the CSU injuries on defense."

Kush added, "Our team is improving but, because Oregon State is a more competitive team, we will need at least 50 per cent improvement this

weekend in Portland for a win."

"We've reached the bottom now," Wampler said after his team suffered its fourth straight loss. "There is no direction to go but up. We'll try anything now to alter our performance."

CSU will travel to Salt Lake City next Saturday to face Utah. ASU goes to Portland to meet Oregon State Saturday night.

#### TEAM STATISTICS

	ASU	CSU
First downs	18	22
Rushing yardage	502	59
Passing yardage	72	236
Total offense	571	295
Passing	6-10-1	15-35-1
Punts	4-32-2	8-35-5
Fumbles lost	1	3
Yards penalized	64	12
Score by quarters		
Arizona State	7	7
Colorado State	0	0
Final Score: Arizona State 14-42, Colorado State 0-0		

#### HOW THEY SCORED

ASU	First Quarter	Time Left
7-0	The Devils' only sustained drive took 13 plays and covered 78	

yards. Grady Hurst completed both passes he threw, the last to Steve Holden for the touchdown from 13 yards out. Don Ekstrand kicked the extra point.

#### Second Quarter

14-0 Monroe Eley's 73-yard run up the middle brought the Devils to the CSU seven. Oscar Dragon scored from two yards out and Ekstrand made the point after. 11:00

#### Third Quarter

21-0 Eley's 43-yard run set up the Devils' third score. A 14-yard pass from Hurst to Ben Malone set up the score. Hurst hit Holden for a TD from the 14. 8:35

28-0 Ekstrand kicked the point after. Malone, taking over for Eley, ripped off a 55-yard run that brought the Devils to the CSU 15.

Two plays later Hurst hit Joe Petty all alone in the end zone with a 12-yard touchdown pass. Ekstrand made the point after. 5:22

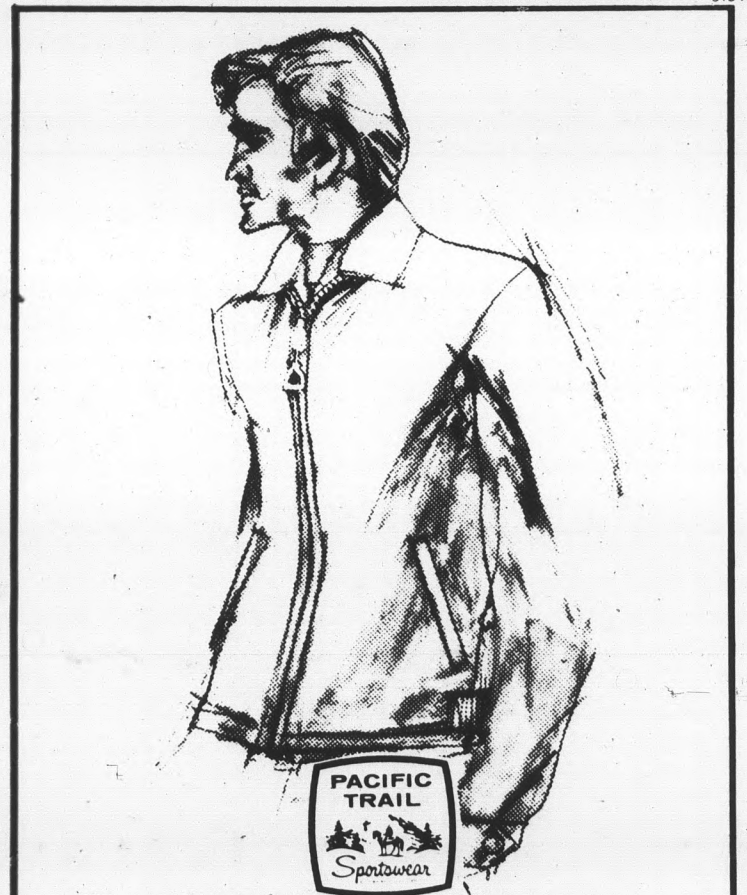
#### Fourth Quarter

35-0 Malone recovered a fumble on a CSU punt return and the Devils took over on the enemy four yard line. Bob Speicher dove over from the two. Ekstrand kicked the extra point. 13:18

42-0 With Rick Brown quarterbacking, Malone rambled 87 yards on one carry to the CSU three. Bob Speicher drove from one yard out for the touchdown. Ekstrand kicked the extra point. 8:54

Munchy's  
Coming!

606 Mill



### Great all-around jacket

Classic favorite from Pacific Trail. Famous '900' jacket of custom-finished water-repellent nylon, lined with color-coordinated Acrilan® pile. Made to wear, and wear, and wear. Tops in style and value. Black, brown, camel, navy, moss mist, loden, sage, brass, red. Sizes 36 to 46. \$18. (Long and extra sizes slightly higher.)



**LeSueur's**

18 West Main Street  
DOWNTOWN MESA

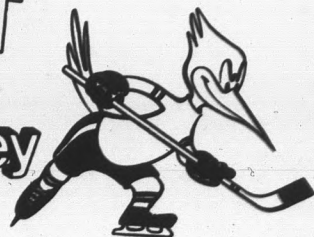
— Free Parking at Rear —

Daily 9 to 5:30, Thursday to 9 P.M.

**SUPERSPORT**  
Roadrunner Hockey

An Arizona Product

at the Coliseum



**DISCOUNT TICKETS!!! ASU NIGHT**

**2 for \$3<sup>50</sup> with ASU I.D. card**

ASU NIGHT by the Phoenix Roadrunners and ASASU

Tickets are on sale in the ASASU COMMUNITY BOX OFFICE in room 252 in the M.U. for further information call 965-5658

# A-State runners bow to hosting CSU

Arizona State's cross country team placed three men in the top five finishers but lost to Colorado State's long distance runners, 27-28, Saturday in Fort Collins, Colo.

Skyler Jones was second with a 31:06 time over the six-mile course run in the foothills of the Rocky Mountains. His effort paced the Devils.

Bill Brown (31:14) was third and Randy Yaussi (31:54) fifth. Dennis Gromark's first-place time of 30:29 led the Rams to the low score.

"I think we are basically a better team than CSU," said harrier coach Baldy Castillo. "The altitude affected our overall performance. That course is more than 4,000 feet

higher than what we are used to running."

CSU 27, ASU 28	
1. Dennis Gromark, CSU	30:29
2. Skyler Jones, ASU	31:06
3. Bill Brown, ASU	31:14
4. Randy Yaussi, CSU	31:54
5. Mike Baer, CSU	32:09
6. Dave Gathings, ASU	32:39
7. Larry Larson, ASU	32:48
8. Tom Berger, CSU	33:11
9. Jerome Roberts, CSU	33:15
10. Tim Zumbaugh, ASU	33:21
Other ASU finishes	
12. Pete Sevin	33:47
14. Mark Rafferty	35:57

# Reserve runners rally Sun Devils past Rams 42-0

By **BARNEY HUTCHINSON**  
Colorado State head football coach Jerry Wampfler probably expected a tough time Saturday. But it's likely he didn't think Arizona State, with one

strong arm tied behind its back, still would beat his team, 42-0.

With its top two running backs absent by various means, the Devils turned CSU's home opener into a study of frustration in front of 25,101 fans. The win was No. 21 in a row, second in the nation to Toledo's 28-straight victories. The Rockets beat Bowling Green 24-7 Saturday.

Fullback Brent McClanahan missed the trip for ASU because of bone chips and strained ligaments in his arm. Woodrow Green left the team Wednesday for unexplained reasons and didn't return until Saturday. Green had led the team in rushing with 440 yards in 74 carries.

So 76 per cent of the ASU rushing potency was nowhere near Fort Collins, Colo., Saturday.

But Ben Malone and Monroe Eley filled in extremely well at halfback. With Malone's game high 184 yards and Eley's 177, the halfback spot accounted for 361 yards and more than 13 yards a carry.

At fullback Oscar Dragon (76

Continued on Page 7



## Holden handles touchdown

Sun Devil Steve Holden got behind Colorado State's Perry Smith (12) to haul in a 13-yard touchdown pass from Grady Hurst in the first quarter.

## Malone sets Devil mark

The 87-yard run by Sun Devil Ben Malone in the fourth quarter of the ASU-CSU game Saturday set a record for the longest non-scoring run in the school's history.

The run broke the old mark of 80 yards set by Morrison Warren against Northern Arizona in 1947. Warren is now an associate professor of education and director of the Experimental Program in education at ASU.

The longest scoring run by a

Sun Devil is 99 yards by Max Anderson against Wyoming in 1967.

Ben Malone's older brother, Art, recorded the second longest run. The play covered 97 yards against Utah in 1968.

## Tellus Hotline

A National Hotline Affiliate

Loneliness Rap Line  
Personal Problems  
Problem Pregnancy Referral  
968-0755  
Suicide Crisis Intervention  
Information & Referral

968-2477



ARTIST & DRAFTING SUPPLIES

Crafts - Picture Frames  
Decorating Material  
Open Mon. & Thurs. Nites  
10% Discount to Students  
Tempe Center • WO 7-4482

## CARPET SPECIALS

9x12 used rugs - \$5.00

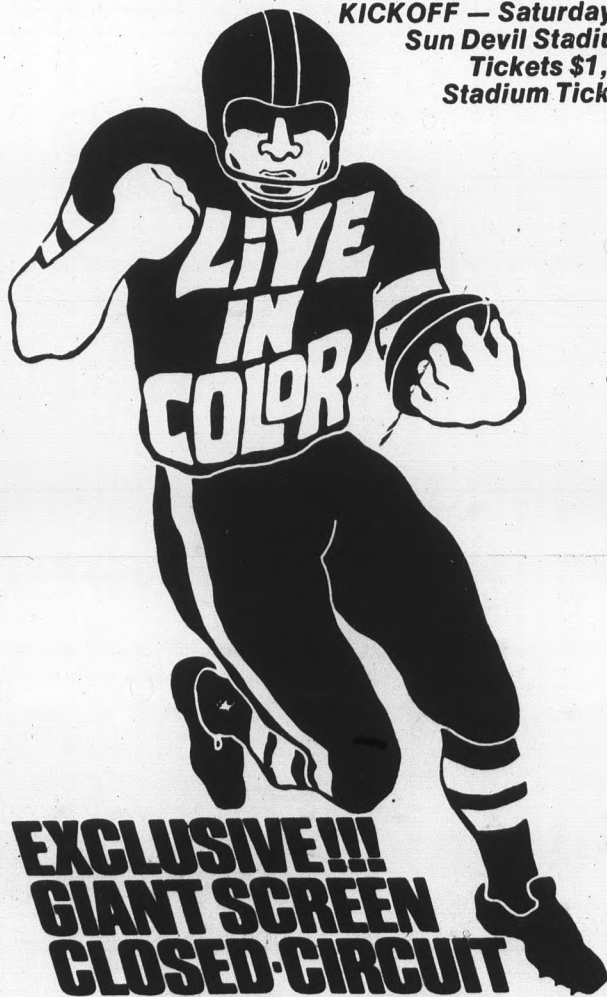
All Sizes In Stock

## CARPET HOUSE

1516 E. Van Buren, Phx.

## SUN DEVILS VS. OREGON STATE

KICKOFF — Saturday, Oct. 16  
Sun Devil Stadium, 8 PM  
Tickets \$1, \$2, \$3 at  
Stadium Ticket Office



## THIS WEEK ONLY



Reg. \$4.98

**\$2.97**

Bill's Records  
**MusiCenter**

7th & FOREST  
A. S. U. — TEMPE  
OPEN Mon. — Fri. 'TIL 9

## Tumbleweed Steak House



### OUR MENU

- NO. 1 NEW YORK CUT SIRLOIN STEAK DINNER \$189  
Includes Tossed Green Salad, Buttered Baked Potato, Garlic Bread
- NO. 2 KANSAS CITY CUT SIRLOIN STEAK DINNER \$179  
Includes Tossed Green Salad, Buttered Baked Potato, Garlic Bread
- NO. 3 RIB-EYE STEAK DINNER \$149  
Includes Tossed Green Salad, Buttered Baked Potato, Garlic Bread
- NO. 4 RIB-EYE STEAK SANDWICH \$149  
On Open Face Bun, Tossed Green Salad, French Fries
- NO. 5 CHOPPED SIRLOIN STEAK DINNER \$149  
Includes Tossed Green Salad, Buttered Baked Potato, Garlic Bread
- NO. 6 CHOPPED SIRLOIN SANDWICH \$ .69  
Served on Seed Bun with French Fries
- NO. 7 T-BONE STEAK DINNER \$299  
Includes Tossed Green Salad, Buttered Baked Potato, Garlic Bread

Hayden Plaza West  
33rd Ave. & Indian School  
Phoenix  
Next to Loew's Theatre

