

ASU may get wider radio transmit range

Proposal in senate to give radio \$8,200

————— Story on Page 3

A view of new 'Fidelio' shows different flavor

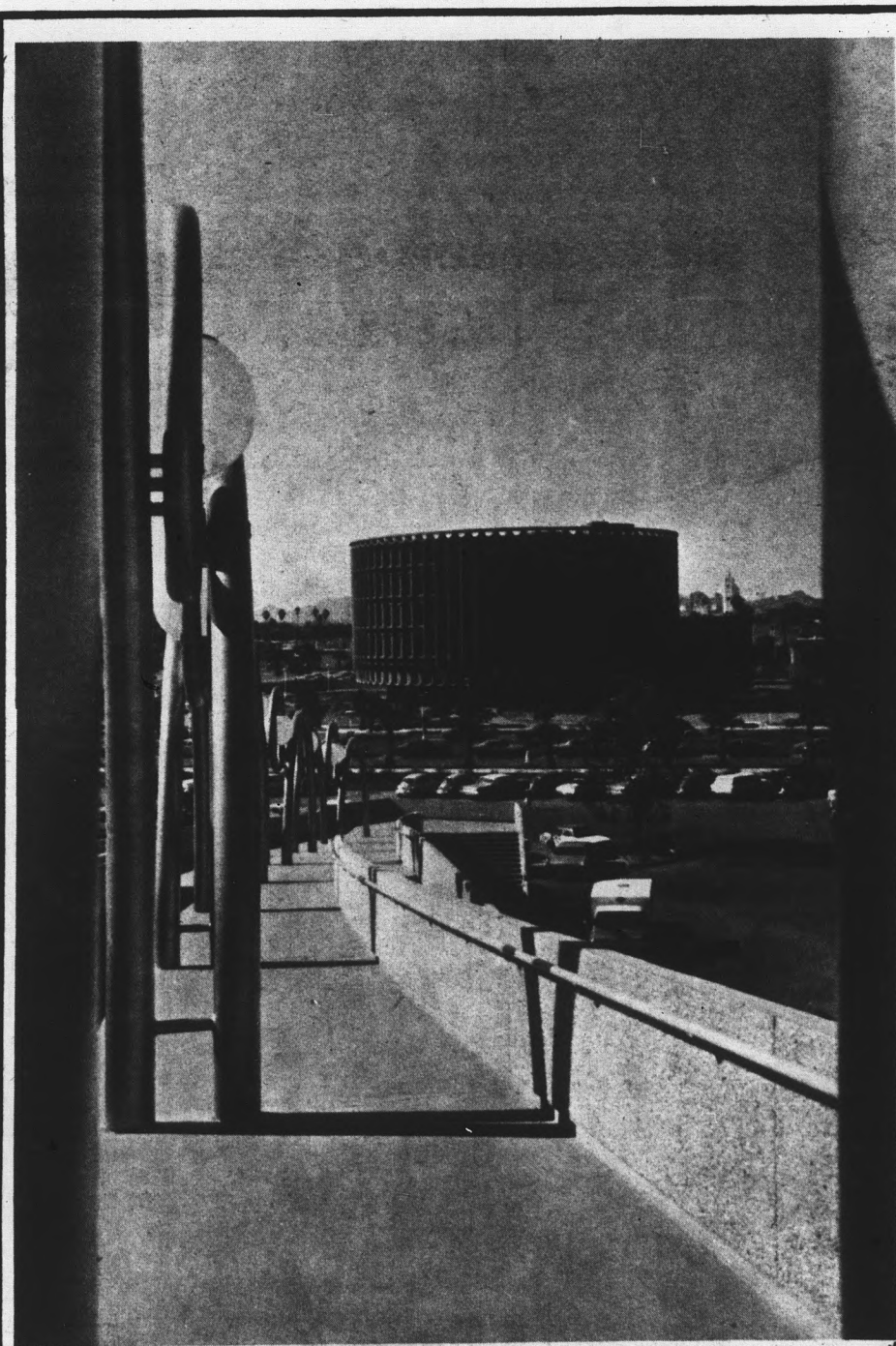
————— Story on Page 5

Depression appears most often in women

————— Story on Page 2

Lack of school funds could mean the death of lacrosse

————— Story on Page 11



*Music building opens;
First week of June is
scheduled moving date*

See story on Page 8

A cherry-frosted "cake" on campus—the new music building near Gammage Auditorium—will begin to be furnished early in June. Once moved in, the music department will finally be all under one roof.

Photo by Terri Hoffman

Women more susceptible to depression

Women are more likely than men to fall into a state of depression because of the roles women play in society, an assistant professor of psychology said yesterday.

Dr. Thomas Kennedy said a woman's depression is probably "culturally determined." Women tend to internalize their problems when things go wrong, he said.

"The husband," he continued, "keeps active by going to work and coming in contact with other people."

On campus, the ratio of women to men seeking help for depression is 60-40, said Dr. Thomas Cummings, director of the student counseling service.

Depression can be caused by general and specific

events, he said. Parents, pressures of expectation, and disillusionment with instructors are examples of causes of depression, he said.

Students, he said, don't just come in and announce they are depressed, but they do come in to talk about their problems.

Dr. Cummings said the concept that a person is more apt to be depressive if his parents are depressive is rather unfounded.

"It's like saying that if a person's parents were

schizophrenic, then the child will be, too," he said.

That is possible, he added, but not biologically determined.

A serious depressive condition is indicated when a person cannot identify the problem causing his depression, said Dr. Richard Jones, director of the Student Health Service.

There are various types of depression, he said. Most depressive conditions among students are "situational" he added—trouble with a

boyfriend or girlfriend or doing poorly in class.

More women than men are treated for depression, Dr. Jones agreed, because many women lead boring lives, due to the societal or familial roles.

Student outstanding

University senior Thomas Lane was named outstanding civil engineering student at a recent meeting of the Arizona section of the American Society of Civil Engineers. Lane was selected in cooperation with the University's engineering faculty.

"Students don't just come in and announce they are depressed."



OPENING TOMORROW

SHAD'S

featuring . . . **"THE IN CROWD"**

NO COVER CHARGE Monday thru Thursday
"After Hours"—Friday and Saturday

Between Tempe and Scottsdale
825 N. Scottsdale Road • 966-2693
 (Formerly JD's)

DETAILED CLASS DESCRIPTIONS

For Fall 1971 Classes

now available in

Liberal Arts College

Department Offices

Includes:

- Detailed Course Content
- Number & Type of Tests
- Projects
- Prior Preparation
- Grade Determination
- Texts

NOISE

IS A DRAG!

WITH THIS ADVENT DOLBY NOISE REDUCTION UNIT.

Your Tape Recorder Can Be Twice What It Is!

ONLY \$125

If you make your own tape recordings, then you're familiar with one of the most obnoxious forms of distortion: TAPE HISS.

Well, the Advent Dolby Model 101 practically eliminates tape hiss and some other unwanted noises. And it works as well with cassette recorders as reel recorders. Take away that "dusting" of noise and life is different. You can also record at slower speeds for double tape economy.

The Advent Model 101 works on the Dolby Noise Reduction principle. It's a system now in use by virtually all major recording companies. So join the experts.

When you have the Advent hooked up you still may record the old-fashioned way. And your old tapes will be as good as ever.

Just not as good as your new tapes.

Mon., Thur., & Fri. Til 9:00 P.M. — Closed Sundays

AUDIO SPECIALISTS *Sound & Video Experts Since 1950*

333 E. CAMELBACK • 264-9911

Expansion possible for KASN operation

By BILL NORMAN

The day when campus radio can broadcast to more than one residence hall may soon arrive. If an administrative go-ahead and funds are forthcoming, KASN may soon be available to listeners within a 2- to 20-mile radius.

After operating with a limited broadcast range and limited funds, the station finally got its chance when Ted Wolverson and Fred Ferron, student senators, took the first step in the Student Senate.

With the counsel of Jim Richards, KASN director, they introduced Senate Directive 1, which, if approved by President H.K. Newburn, would give the station \$8,200 for newer, more powerful and more efficient equipment.

That amount, according to the directive, is to come from the interest drawn on the principal of the University endowment fund as prescribed in ASASU statutes.

The \$8,200, Richards said, is the minimum amount required to purchase equipment and get on the air. Currently broadcasting only to Manzanita Hall, the station utilizes a cable transmission.

He said a full service budget of \$23,511.25 would not only buy equipment but also necessitate only an operating budget for the next year. He said, however, this was "out of the question" at this time.

The acquisition of better equipment may not be the only change in KASN-FM, for if the proposal is accepted, the station may also become student-managed and student-operated.

Ferron said the main difficulty with operation of the station in the past arose from the fact that management and funding is split between the Bureau of Broadcasting and the Department of Mass Communications. The studio was built, he said, for classroom use.

The station must cease operation between 10:30 p.m. and 11:30 p.m., the same time the television station does. This presents another difficulty for, as a result, broadcast time is severely limited, he said.

In the proposal Richards listed five categories of need related to the radio station:

- to quickly disseminate information to the University community.

- to renew interest in campus activities.

- to expand the radio services on the University campus and separate the campus station from the Bureau of Broadcasting and the Department of Mass Communications.

- to provide enough facilities for the growing number of students interested in radio broadcasting.

- to provide a forum for the presentation of all sides of current issues.

To meet those needs, he suggested that student managers of the station be selected by an overseeing board of directors.

Such a board would ideally be composed of the ASASU executive manager, two faculty members and four students, with two recommended by the Student Senate.

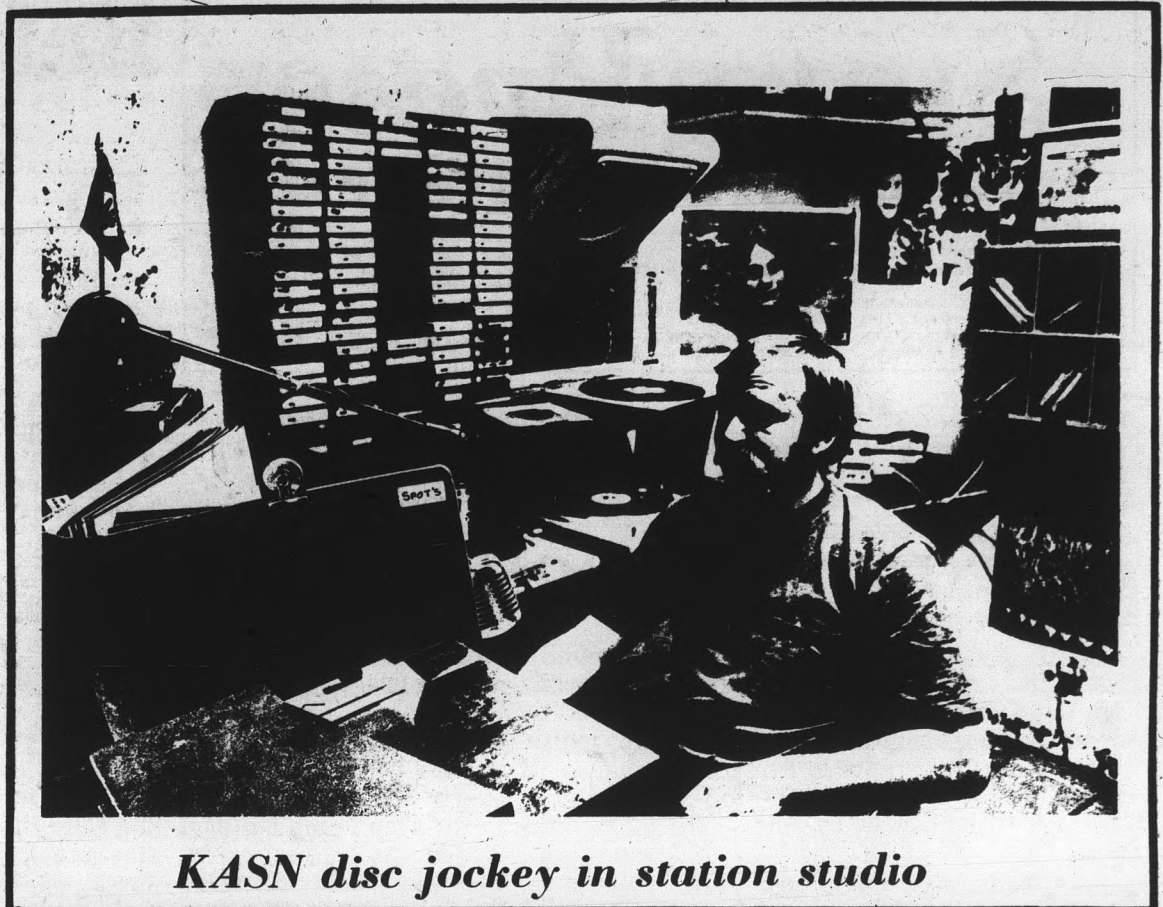
Richards said the proposed

programming would be designed to appeal to members of the University with rock and progressive rock. But, he said, there will be a strong emphasis on public affairs with short interviews and features squeezed between records.

His proposal also recommends the station's call letters be changed to KXWB "because KASN has lost its meaning."

"The University is a forum for the free exchange of ideas," he said. If the new station is put into operation, he explained, it would dedicate itself "to this goal and provide information and entertainment of interest to the University community."

"Student support for the new FM radio station would be welcome," Richards said, "and letters should be sent to KASN, Bureau of Broadcasting."



KASN disc jockey in station studio

Announcing the appointment of

Paul Johnson Jewelers

as official representatives of

*Orange Blossom
Diamond Rings*

Symbol of a Dream



Fleurette



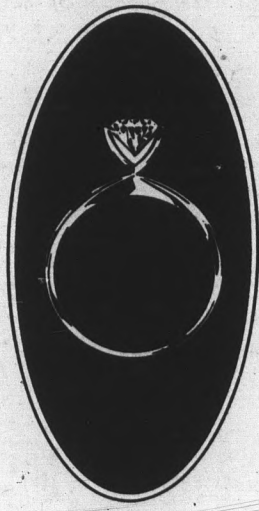
Snowflake



Sonnet



Antigua



Lyric



Starmist

The dream of love you dreamed.
Was like no other dream.
You found it could come true.
That love could be so real.
The dream could be forever.
A dream like yours deserves a ring like these.
Handcrafted in 18 carat gold.
And magnificently jeweled.
By Orange Blossom. Symbol of a dream.

Paul Johnson
JEWELERS



130 EAST UNIVERSITY DRIVE • TEMPE • 967-8917
1940 EAST CAMELBACK, PHOENIX, 277-1421
ALSO IN SUN CITY
CERTIFIED GEMOLOGIST, AMERICAN GEM SOCIETY
OPEN THURSDAY 'TIL 9

State Press

Arizona State University

Editor, Jay Hovdey; managing editor, Ray Wong; news editor, Diane McIntyre; city editor, John Banaszewski; feature editor, Rick Snedeker; sports editor, Barney Hutchinson; chief photographer, Jeannie Ledbetter; assistant city editor, Linda Thrane; weekend editor, Tim Bateman; assistant weekend editor, Julie Paterson; faculty adviser, Don Ferrell; advertising manager, Hal Hubele.

The editorial content of the State Press reflects the views of the newspaper staff, not the position of Arizona State University. All signed editorials contain the views of the author, not the publication. The State Press is published Tuesday — Friday during the school year, with the exception of holidays and examination periods. The paper is entered as second class mail matter at Tempe, Ariz., 85281.

Yale U takes a glance at campus conditions

By JAY HOVDEY

ASU has finally made the big time. Don't get too excited, but that ivy tower back east somewhere has knelt to consider this campus in its second edition of the "Insiders' Guide to the Colleges," published by the Yale News.

Admittedly subjective and sometimes biased, the University received two stimulating pages in the latest update of the popular publication.

According to the guide's look at ASU, "Arizona State is located in the land of arthritics, asthmatics and Barry Goldwater. It fits in pretty well, despite the fact that it may harbor an occasional aberrant hippy or liberal. Football, basketball and

baseball are more important to the students than war, race or poverty. Indeed, ASU's campus, a monument to white middle-class affluence, makes it easy to believe that war, race and poverty don't exist."

So much for the architectural analysis, written, as is the entire piece, by a mysteriously identified "campus representative." The political dissection of ASU continues with:

"While their East or West coast counterparts are busy forming communes or political collectives, the tradition-oriented jocks who attend ASU are busy drinking with the boys or having food fights in the frat house. There's a certain dependability in these hallowed All-American pursuits, but, inevitably a certain boredom as well. ASU, for all its play-eat-drink-go-to-bed life style, is not that exciting a place to be."

Several other stalwarts to University life got honorable — dishonorable mentions in the guide, from Big Surf to Gov. Jack Williams.

The jivey leaguers finally turned upon the academic worth of the University, concluding that, "There are some academic majors as well, and occasionally, a professor will begin to throw off some intellectual sparks. But the fact that the two best departments are sociology and education testifies to ASU's trade-school atmosphere."

The University should have no fear that readers of the "Insiders' Guide to the Colleges" will get the wrong impression of ASU and what it is trying to achieve.

As long as those straight-forward and enlightening University catalogs have been copiously scattered throughout this nation's colleges, interested students will get the "true" image of ASU.

On second thought, maybe selective book-burning isn't such a bad idea.

because this understanding atmosphere was not displayed by all segments of the ASU community.

Our main objective in this letter is the portion of the march which took place through fraternity row. The protestors were not putting on a show for the fraternities, and if those spectators didn't want to join in the march or for some reason didn't believe in what the protestors were doing, they should have remained inside.

However, a good portion chose to stand outside and "look at the freaks," as some of them referred to the protestors. This was totally uncalled for and a true reflection of the Greek lack of understanding for the protest.

We are not denouncing ASU's fraternities for not joining the march. However, we feel that the mockery of the march was an immature, unintelligent and totally frustrating gesture. This gesture was certainly frustrating to the "marchers," and it was not an example of what university fraternities should be.

Barry L. Silverstein
Harry L. Manion III

Refugee problem key to Middle East peace

The Middle East is one of the most explosive areas in the world today, yet most Americans are surprisingly misinformed on the causes, and the subsequent efforts which have led to the current situation. For the problem to be understood, events must be put into perspective and certain myths dispelled.

Among these myths is the charge that the Palestinian refugees fled of their own accord, and at the instigation of the Arab governments. Israel, it is said, asked them to remain.

There exists, in fact, ample evidence to prove that Israel forced the Palestinian Arabs to flee through the use of intimidation. Terrorist organizations, such as the Irgun Zvai Leumi and the Stern gang, were dedicated to the establishment of a Jewish state regardless of the consequences suffered by the indigenous Arab population.

A Guest Editorial
By WILLIAM H. BARKELL

Thus, atrocities, such as the massacre at Deir Yassin on April 9, 1948, where the Irgun killed 250 Arab men, women and children, led to the flight of thousands more who thought the fate of Deir Yassin would be their fate as well. Intimidation is a powerful weapon, and the emerging Israeli state used it effectively.

Another myth states that Israel wishes peace, but the hostile Arabs surrounding her are a barrier to peace. There have been three wars in the Middle East since 1948.

The first was initiated by the inception in the area of an alien, ex-

clusively Jewish state, where any Jew in the world, who so desired, could obtain citizenship, but where the indigenous Arabs who had lived there for centuries were forced to leave.

The second war, in 1956, amounted to a joint British-French-Israeli invasion of Egypt.

The last war, in 1967, was initiated via a "pre-emptive" strike against Egypt by Israel. Israel justified this strike on the grounds that Egypt had ordered the United Nations peace-keeping force from its territory. This charge ignores the fact that Israel had refused to allow the U.N. forces on its territory in the first place! Such seems to be the Israeli path to peace.

The key to a lasting peace in the Middle East lies in a just settlement of the Palestinian refugee problem. As yet, Israel has refused to either repatriate or offer reparations to the refugees, both of which have been called for by U.N. resolutions. (The very same U.N., by the way, to which Israel owes its existence!)

Israel charges that the Arab governments have not allowed the refugees in. The problem with this charge is that states such as Egypt and Jordan already have large populations relative to their economic capabilities to support them. Besides, this charge again sidesteps the primary cause of the plight of the refugees.

The only solution to the problem is the de-Zionization of Israel and the concurrent establishment of a secular state where Jews, Muslims, Christians or whatever, can live and work together in harmony and as equals. Until this comes to pass, the outlook for a lasting peace in the Middle East is dim indeed.

letters

Editor:

The sneak fire bombing of Old Main last week has been discussed to quite some length by the craftsmen and the women in Physical Plant. We feel the rest of the campus and the community should know our feelings.

Deeds like this bombing, are done by a small way-out group that more than likely do not even attend the University. They advocate peace on the one hand and cause death and destruction on the other. This in turn costs the working class of America untold millions of dollars each year.

We in the Physical Plant operate on a too small budget already. Yet, we have to clean up the mess made by a few social misfits.

It is time the decent, normal young people of our campus community start taking on the responsibility of doing something about this misguided minority, or there won't be any universities left for you to attend. This the communist world would love to see.

The Shop Representative Committee
Physical Plant

Editor's note:

The members of the Shop Representative Committee must be thanked for stating their too long silent views. However, it is improper to assume that the damage to Old Main was caused by a "small way-out group" who "advocate peace on the one hand and cause death and destruction on the other."

The reference is clearly to a leftist oriented political group, and since neither the University Police nor the FBI have reported any leads in the bombing investigation, such remarks constitute a conviction before trial, trademark of the Communist world.

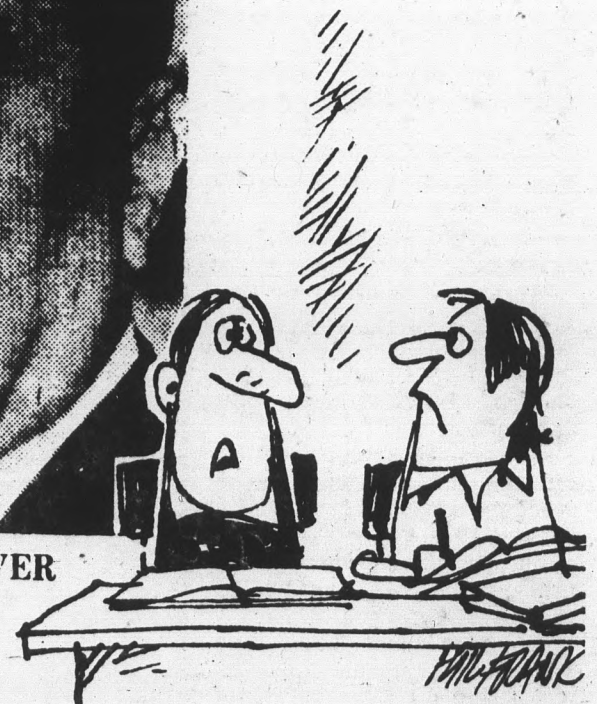
Editor:

First of all we'd like to congratulate the students at ASU on their amazing apathy. It was truly pathetic. We are referring to the moratorium march of May 5, 1971. It is truly discouraging that of 33,000 people, only 1,000 at most felt that a peaceful march could bring peace.

Having participated in the march, we appreciated the graceful way most of the non-participants acknowledged the validity of the protest. We say "most"



J. EDGAR HOOVER



'COULD WE TAKE DOWN YOUR POSTER?
I CAN'T SEEM TO STUDY!'

YAF newspaper added to campus press

The philosophical atmosphere on the ASU campus is slowly taking on the appearance of being "Neopolitan"—in the ice cream

Analysis by Wayne Kasper

sense that is. We have always had bland neutral vanilla with the State Press. Then came the "New Times" and its wild red-strawberry statements and now the campus has been graced with a new publication called Fidelio. Fidelio is more or less a rich, deep chocolate-flavored sundae sprinkled with crushed nuts and topped off with a cherry.

Calendar

Calendar announcement forms are available in the State Press office, ASB 302. Deadline for announcements is noon of the day before publication.

TODAY

Faculty Assembly, 3:30 p.m., Murdock 101.
College of Education Seminar, 7:45 p.m., Farmer building. "Humanizing Education of the Mexican-American", Searcher's Workshop, 2:30 p.m., MU 272. Sponsored by Inter-Varsity Christian Fellowship.
THURSDAY, May 13
Recital—Baritone Eddie Varnum accompanied by Carmen Nash, 8:30 p.m. in Gammage Recital Hall, 301.
International Student Relations Board, 3 p.m., MU 253
Inter-Varsity Christian Fellowship, 7 p.m., MU 272.
Student recital, 8:30 p.m., Gammage Recital Hall 301. Eddie Varnum, baritone.
Fourteenth annual architecture awards dinner, 7:30 p.m., Arizona Room of the MU.
Symphonic Wind Ensemble, 8:30 p.m., Gammage. Karel Husa, Pulitzer Prize-winning composer, conducting.
"Biography," 7:30 p.m., Lyceum Theater. Continues through Sunday.

FRIDAY, MAY 14

SOCKO Tournament, 12-1 p.m., MU Recreation Center.
College Life, 8 p.m., Tempe Women's Club. Sponsored by Campus Crusade for Christ. 25 cents admission. Crimson and the New Beginning.
Dance for Dimes, 8:30 p.m.-12:30 a.m., Arizona Room of the MU. A March of Dimes dance sponsored by Sophos. \$1 admission.

SUNDAY, MAY 16

Concert Choir and Percussion Ensemble, 3:30 p.m., Gammage.

MONDAY, MAY 17

Recital, 7 p.m., Gammage Recital Hall 301. Students of Linda Brown, graduate student.
Student recital, 8:30 p.m., Gammage Recital Hall 301. Carolyn Elfen, soprano, and Robert Diaz, tenor.

TUESDAY, MAY 18

"The Look Of Love," 8 p.m., Pima Room of the MU. Readings by the readers theater class.
Brass choir, 8:30 p.m., Arizona Room of the MU.

WEDNESDAY, MAY 19

Student recital, 8:30 p.m., Gammage Recital Hall, 301. Thomas Macher, baritone.
Searcher's Workshop, 2:30 p.m., MU 272.

THURSDAY, May 20

Stage Band, 8:30 p.m., Arizona Room of the MU. Original compositions by band members, and a piano recital by senior Carmen Nash.

FRIDAY, MAY 21

Annual "Pops" concert, 8:30 p.m., Gammage. The University Symphony Orchestra conducted by Eugene Lombardi, and the University Choral Union, directed by Douglas McEwen.

SATURDAY, MAY 22

Organization of Arab Students, 2 p.m., MU 269.

SUNDAY, MAY 23

Student performance, 3 p.m., Gammage. Trumpet, organ, trombone and percussion ensemble.

Such is the editorial appraisal of these newspapers, but what of this new upstart, Fidelio?

Since the academic community has already accustomed itself to such papers as the Times and Press, perhaps some explanation and reactions to the newest flavor chocolate Fidelio, would be in order.

According to the editors of Fidelio, the name is derived from Beethoven's (that's Ludwig Von) only opera. The title means freedom versus tyranny. Hence, as the editors feel, the title is appropriate to the purpose of Fidelio and means they support "freedom" against what such papers as the New Times support as "tyranny."

Supported by YAF

Fidelio is supported by the Young Americans For Freedom (YAF) and acts as their voice. Why have they come out with Fidelio instead of using the State Press or the New Times?

"We thought the New Times needed some opposition," said Robert Bohannon, president of YAF.

Brian Stanley, editor of "Fidelio," said "we've dissented... we're providing an alternative to the New Leftist pap. Most people are as sick as we are about the New Left ideology."

"Most people are sick of being spoon-fed this ideological pap. Fidelio shows that students are capable of thinking and are serious and capable of finding answers to the many difficulties of modern society," he continued.

"Unlike the New Times, which looks down at its readers, Fidelio treats its readers with respect for their intelligence. We use humor and satire to speak against those who are speaking down to the student or are trying to use them," he added.

Such is the purpose for Fidelio and since its first issue came out Monday, the reactions of the other two papers on campus have been those of surprise, to say the least.

Fidelio's editor feels the paper was successful in airing the YAF's conservative views, and the editors of the New Times and the State Press agree that in some articles Fidelio expressed itself very well.

Some good articles

But Michael Lacey, New Times editor and Jay Hovdey, State Press editor, are not particularly excited about this new "flavor" on campus.

"I thought there were some very good articles and they were written well—a departure from the State Press," Lacey said.

"For instance, we would have used an article like "The Hippy Industrial Complex," because it was humorous and we use humor in our paper. However, there were some major discrepancies in the piece," he added.

Another editor on the Times, Karen Lofgren, said "Their style of writing... is a high-and mighty way of speaking. They feel that they have to talk above everyone, which is just the opposite of what we have to say."

Lacey called their style of writing "A la Bill Buckley."

Stretches definition

As far as the "vanilla" State Press is concerned, the new editor, Jay Hovdey, said, "Fidelio is stretching the definition of the word 'newspaper.' It presents some interesting points, but from the first issue, I don't think it will be taken seriously."

Fred Chriss of the Times seemed to agree, saying, "We can't take them seriously yet, as a challenge, because we've seen so many papers like them disappear before."

Generally, among the editors of the Times and Press, there was an overall distaste for Fidelio. Why?

By-lines German

"I noticed that most of the by-lines were German," Hovdey said.

"One difference between the Times and Fidelio is that they first established themselves as a challenge to us. When we first came out we did not do that," said Chriss.

"Also, the YAF is more extreme right than we are left. Hence, their attack on us was unfair," he added.

Lacey added: "They write on a fairly high level... they should just write what they have to say instead of attacking us... however I'm glad to see them attacking people. I believe in the great American tradition of attacking people... I'll be glad to

meet them in an alley sometime."

The Fidelio staff is proud of its paper and feel they have accomplished a lot.

"I think that we've gotten a lot of positive response. From our first edition we expected to encounter quite a bit of shock. A conservative newspaper wasn't expected by most students," Stanley said.

Bohannon added: "I imagine they're (The New Times) reading us... not necessarily with shock but they might be a little bit worried."

As more and more students "digest" what they have read there will be even more comment concerning Fidelio and the so called "neopolitan" movement here at ASU.

Lacey gave some advice that "puts the topping on the cake," when he said, "as long as YAF has come out with the 'Sharon Statement' in Fidelio and we've come out with the 'Port Huron Statement,' why doesn't the State Press come out with the 'Hal Hubele' Statement?"

ADMINISTRATIVE DATA PROCESSING TECHNICAL—SALES

—A Professional Service to Employers and Applicants—

Management Recruiters

264-0496

First Federal Savings Bldg. 3003 NORTH CENTRAL AVE.



an engagement tradition
photography by
ERIC
1020 MILL AVENUE
966-8491

LA MANCHA

(Immediately East of Campus — 909 Terrace Rd.)

Now Taking Applications For Fall

SINGLES ★ DOUBLES ★ SUITES ★ APARTMENTS

- Reasonable Rates
- Air Conditioned Throughout
- TV & Billiard Lounges
- Swimming Pool
- Sauna
- Wall-To-Wall Carpeting

Come on over for a tour
or

Telephone us for information . . .

967-2011

The Place Is The OASIS

Eff., Studios, 1 BR Apt's Special Summer Rates

from \$114⁰⁰

Study Room—Barbecue—Pools

FREE UTILITIES

Includes membership to club Lisa Discotheque. Fun-Fun-Fun

See the "Coach" 617 E. Apache — 967-4330

Mexican-Americans make quiet changes

By RICK SNEDEKER

While some Mexican-Americans are still crying out "Chicano!" in the streets, many are never heard from but nevertheless are causing changes that can only be had with a soft nose and a grindstone.

Christine Marin, 26, has never had her picture splashed on a newspaper page in blatant defiance to a nation that has kicked her people.

Most of the time she sits quietly at her desk in a little crowded room on level four of the University library. Her desk is barely visible through the paperwork.

Miss Marin is currently attempting to compile a comprehensive bibliography of material relevant to the Mexican-American community, of which she is a part. She is bibliographer for Chicano studies at the library.

The collection of materials Miss Marin has compiled for the bibliography includes books, two types of microfilm collections, pamphlets, newspapers published by or for Mexican-Americans, newspaper clippings since 1963 pertaining to Mexican-Americans, dissertations and theses.

A collection of books on the subject are housed in the card catalog room in the southwest corner of level two of the library. Pamphlets (vertical file material) are found against the opposite wall under the heading "Chicano Studies."

Miss Marin has been working on the project since last summer with the help of Mexican-American work-study students. These students need to be proficient in English and Spanish to qualify for the job.

Early this semester, Miss Marin was joined in the project by Government Documents Librarian Nancy Sanders, who assists "when she has time" and is compiling and devising a KWOC subject-title index for the bibliography.

While still a student at ASU in 1967, Miss Marin was working on a private bibliography and saving pertinent national

Job opportunities open for graduating seniors

Job opportunities are available for Spanish-speaking graduating seniors interested in working for the Social Security Administration as a claims representative in the Southwest.

Tony Armijo from the Social Security Administration will conduct interviews on campus May 17-28.

The Federal Service Examination must be taken before the interview. It will be given Saturday at Ag 250.

For further information call Rodrigo Austin, 965-6228.

newspaper clippings associated with the Mexican-American community.

Following graduation and while employed as bibliographer

Chris Marin, bibliographer, Chicano studies project

at Hayden Library "about two years ago," she said, several MASO students approached her with complaints concerning a lack of Mexican-American material available for research in the library.

She said the idea took time to get off the ground because of "unaware" and insensitive educators."

She continued to say that the administration was a boon rather than a hindrance to the project, which needed to go through the president's office for acceptance.

Now that the project is in high gear, it appears that it might be somewhat of a novelty. Miss Marin said that letters have been received from all over the Southwest inquiring about the project.

Dr. Robert Albright, a reference librarian at present compiling a bibliography pertinent to blacks, said that a California educator he knows said that "nothing of this sort" is available at his university."

With luck, she hopes to complete the core of the project, and Miss Sanders her index, by September, when a new American Studies program will commence.

Wives will get PHT diplomas

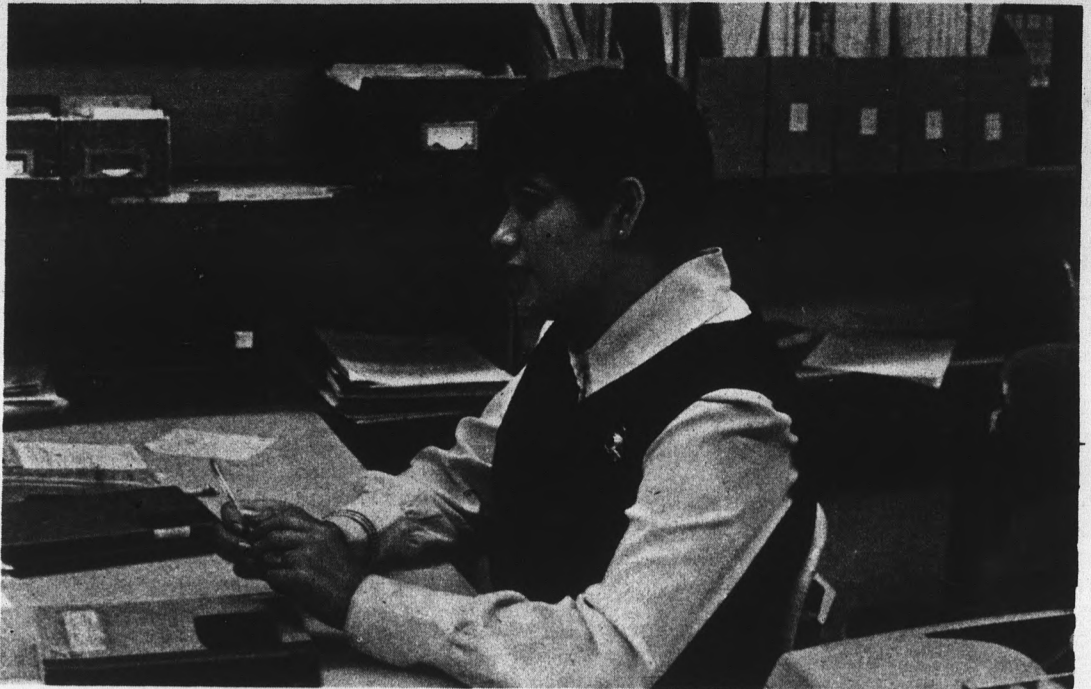
"Pushing Hubby Through" (PHT) diplomas will be presented to wives of graduating men Saturday at the 15th annual Pushing Hubby Through banquet, sponsored by the Memorial Union.

Mrs. Ruth Adams, chairman of the House Appropriations Committee of the Arizona Legislature, will be guest speaker at the 7:30 p.m. dinner in the Arizona Room of the MU.

The banquet is designed to recognize the women whose work and loyalty have contributed to the success of their husbands' University careers.

Cost of the dinner is \$10 per couple. Reservations must be made by Thursday in the MU activities center, 965-6640.

Don Dotts, alumni director, will serve as master of ceremonies.



MAX ANDERSON, BUFFALO BILLS



GENE FOSTER, SAN DIEGO CHARGERS

If you've heard of the Buffalo Bills, you've heard of Max Anderson! . . . If you've heard of the San Diego Chargers, you've heard of Gene Foster! A couple of real men on the go! . . . Gene Foster and Max Anderson announce their opening of MAJESTIC EAST. Men's Fashions Store. Located at 810 South Ash, two blocks west of Mill Ave. on University in Tempe.

Featuring Latest Fashions:

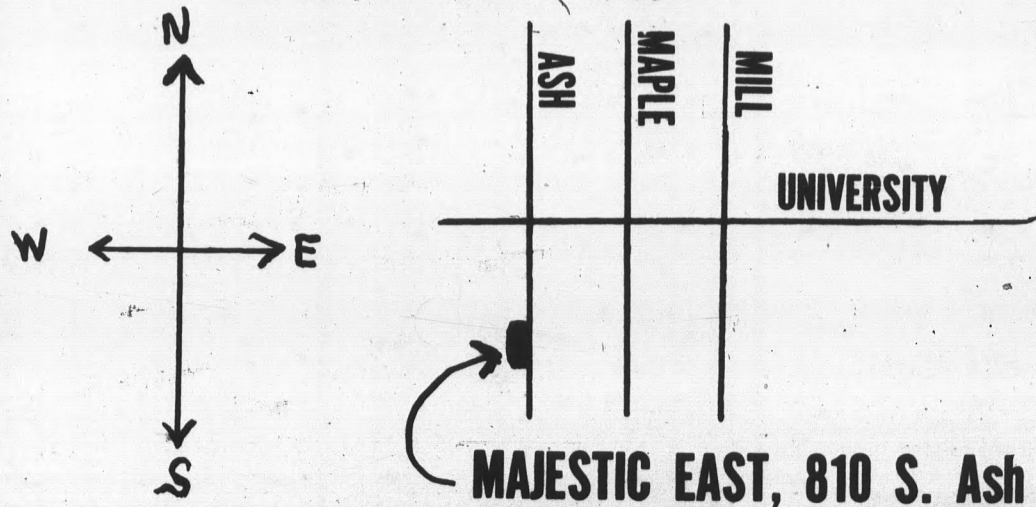
- Double Knit Slacks
- Casual Slacks
- High Fashion Shirts
- Dress Shirts
- Sport Shirts
- Knit Shirts
- Muscle Shirts
- Tank Tops

Clothes for Men on the Go!

Store hours

Mon., Tues., Wed., Sat . . . 10:00—6:00

Thurs., Fri — 10:00 — 10:00



Terrace Road Apartments

950 Terrace Road
1 & 2 Bedrooms, Summer rates. 966-8540

SAVE \$\$

BS BEER

MU 238

ASU Students Only
TOMORROW
Escape to Big Surf
for ASU's 2nd
SUN
SAND
SURF DAY



\$1.00 Admission With ASU Photo I.D. Card

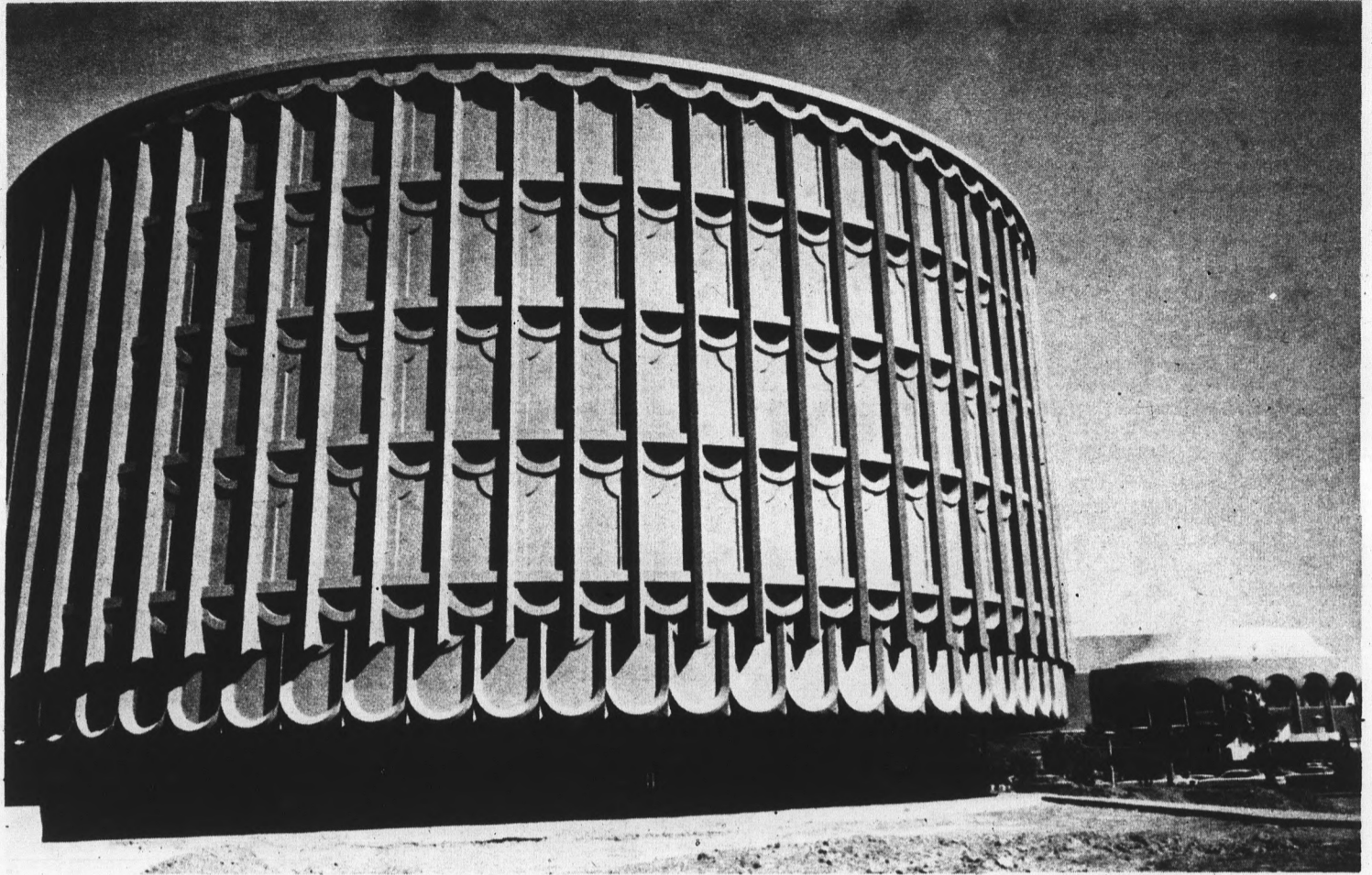
2 p.m. to 9 p.m.

"SOUL ON ICE" from 5 p.m.

SPONSORED BY ASSOCIATED STUDENTS

New music building now ready

Photos by
Terri Hoffman



Gammage appears dwarfed behind new building

**Music
department
moves
in
June
to
new
building**

The music department will begin moving pianos, desks and busts of Beethoven into the new music building—the building resembling a cake with cherry frosting west of Gammage—the first week in June.

Completion of the \$2.7 million building was hindered by strikes last year which put it behind schedule two or three months, but it is expected to be fully completed by mid-summer, John Ellingson, director of property control, said.

The building contains departmental and faculty offices, several classrooms, studios for rehearsals and private lessons and two performance halls, said Jim Seeman, facilities and program coordinator for the music department.

The Music Theater, with a 501 seating capacity, will be used for faculty chamber music, opera and ensembles, Seeman said.

The theater has an orchestra lift, counterweight scenery supports and a sky loft, he added.

Student recitals and small ensemble performances will be given on the second level in the Recital Hall, which seats 128 people.

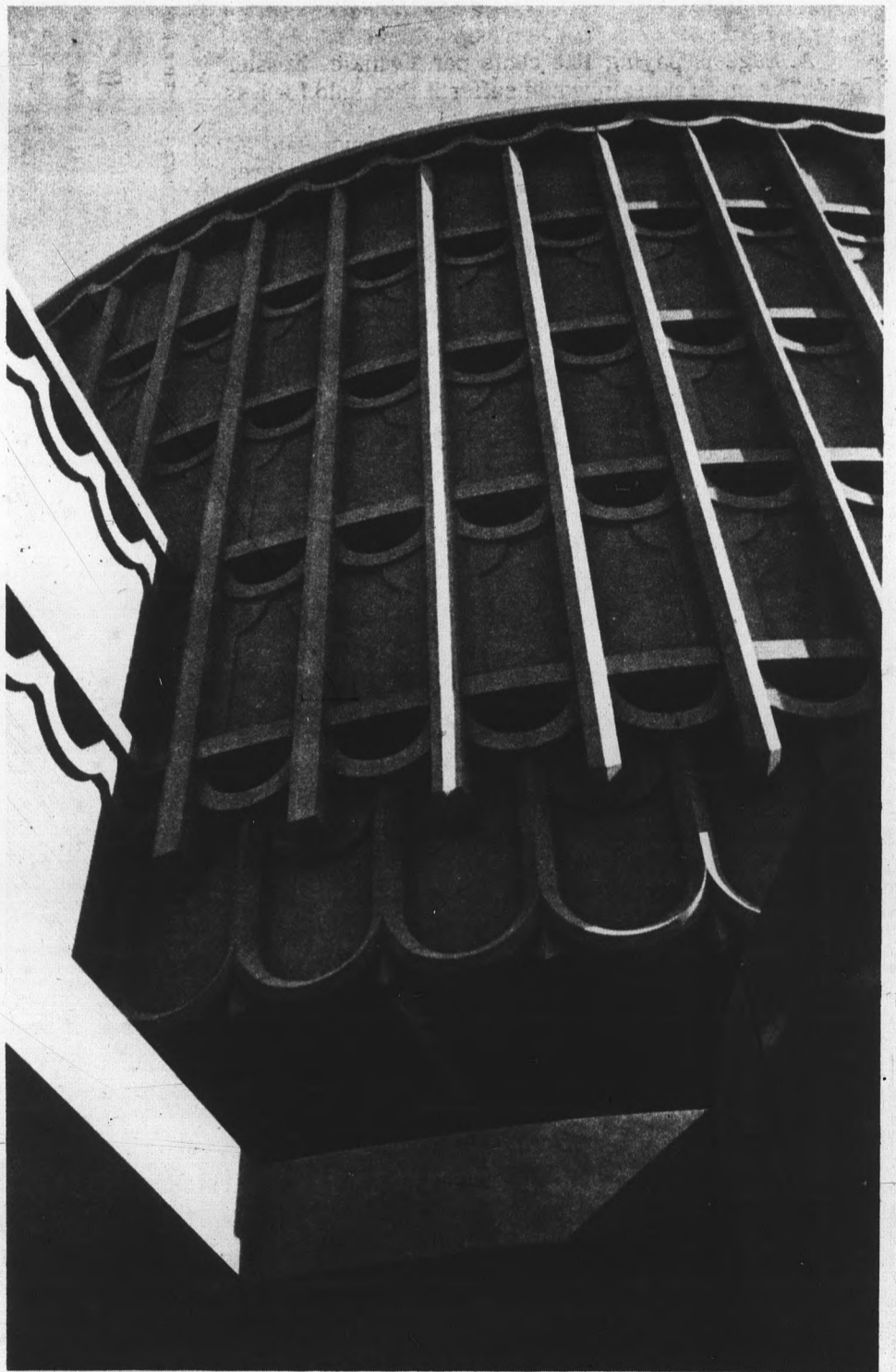
“We are anticipating acoustics as fine as those in Gammage, although we won’t know for sure until we use it for our first performance, which will be next fall,” Seeman said.

There is also a rehearsal area the exact size of the stage and a two-level music library with electronic “phones,” Ellingson said.

“A major advantage of the new building is the fact that the faculty will all be located in two areas instead of in seven places all over campus like it is now,” Seeman said.

“It is all-in-all a gorgeous building,” he added.

The building may be ready for classes during the first summer session.



“Cherry frosting” outside design striking

CONCERN

Questions for CONCERN must be submitted at the Message Center of the MU on the forms provided at the center. Questions must be written and include name, address and phone number, for verification purposes. Only initials are used in CONCERN. Initials will be withheld upon request. Questions are welcomed from any member of the University community.

Q. Why does a one-half pint of nonfat milk cost 16 cents at the Hub? How much profit do they make on each carton? P.W.

A. Frank Kessler, director of Saga Foods, said his organization is paying eight cents a carton for milk, excluding the cost of handling. He said Saga's profit margin on the milk is several percentage points lower than that of most restaurants.

Q. Why can't the Memorial Union serve pies that are larger or less expensive—25 cents is an awful price to pay for so small a piece of pie. D.H.

A. Kessler explained the the standard nine-inch pies are cut in eighths—as is done in most restaurants, he said. However, most restaurants charge anywhere from 30 to 40 cents per slice, Kessler said. He concluded that campus pie-eaters are getting a pretty good bargain.

Q. The Hub used to feature pies during evening meals. Now that it's closed, can the Sidewalk Cafe do the same? D.H.

A. Space currently does not permit display and handling of pies at the Sidewalk Cafe, Kessler said. "This is something we're working on. I'm sure that by the end of the year or the beginning of next semester we'll have something either purchased or designed to display pies," he said.

Q. Why does the cafeteria serve soup when they don't have any soup spoons? J.G.

A. "That's a good one; there'll be no problem there," Kessler said. He added that baskets containing soup spoons wrapped in napkins would be placed near where the soup is served.

Q. Why are the Hostess items such as Twinkies and cup cakes sold at the Hub for 20 cents instead of 15 cents as sold anywhere else? Why have not all the food-handlers at the University taken the basic sanitation course required by law in Maricopa County?

A. Saga is paying 10.8 cents per Twinkie, Kessler said. The profit margin would suffer if they sold for less than 20 cents, he said.

Concerning the sanitation courses, Kessler said all food-handlers under Saga jurisdiction have taken a three day training session from the county. The sessions lasted three hours a night and were conducted on campus.

He said he would like to hear any student complaints concerning Saga employes' food-handling techniques. "We're always open for suggestions," Kessler said.

Mary Bunte, secretary to four presidents, will retire

Mary Bunte, who has worked at the University for 38 years, is retiring this spring. She came here in 1933 with President Gammage from Northern Arizona University, where she had been the secretary to the registrar, the dean and the president.

"When I went to work for President Gammage (in 1927), I talked him into letting me take some classes. I worked my way through school," Miss Bunte later received her M.A. in Education.

Since Miss Bunte came to the University she has worked with four presidents: Gammage, Richardson, Durham and current President Newburn. Mrs. Katherine Gammage, the former president's wife and director of gifts and endowments, said "the reason she was so valuable is that she's very professional. She knew everyone who went through the door of the president's office."

"She was kind, friendly, sincere and could be very firm when she needed to be," Mrs. Gammage added.

Miss Bunte said she briefly taught in the business administration department. "I taught parttime and worked part time. But I decided I liked the office work better, so when they got someone to fill in, I stopped teaching."

Miss Bunte was adviser to Kappa Kappa Alpha for several years until they became Chi Mega. She was adviser to Pliades, the senior honorary sorority, for 18 years until it was changed to Mortar Board and took on the practice of rotating between three advisers each year. She advised for one year and left the organization.

She was also a member of the Newman Club which, she said, is now the Catholic Student Association. "She worked very hard collecting money, for the new building when she was on the Newman Foundation Board," said Mrs. Gammage. Miss Bunte said there have been many impressive changes on campus

since she first arrived. "The peak year of enrollment they had was 900 students the year before we got here," she said.

"I probably wouldn't have stayed when we came but we were in the first air conditioned building in the Valley-Mathews Library. The library was on the top floor and we were on the left. I used to be in charge of the mail."

Miss Bunte said she has performed a wide variety of services on campus. "For awhile I was in charge of the mimeograph office," she said.

Her plans for the future include recreation and relaxation. "I plan to play golf, swim and entertain friends. I want to travel some, too."

FORMAN-NACE THEATRES

A Report Card on the Love Generation



the Young Graduates

Patricia Wymer • Steven Stewart • Gary Rist • B. Kirby, Jr.
Jennifer Ritt • Dennis Christopher • Marly Holiday

CO-HIT MARK LESTER SUSAN GEORGE

SUDDEN TERROR

UNIVERSITY WALK-IN

One schoolday it started... and never stopped!

FAYE DUNAWAY in "PUZZLE OF DOWNFALL CHILD"

A UNIVERSAL RELEASE/TECHNICOLOR

PLUS:

Life is protest is love is rebellion is the

"Act of the Heart"

A UNIVERSAL RELEASE • TECHNICOLOR

Genevieve Bujold
Donald Sutherland

UNIVERSITY 2 WALK-IN

EVERY WEDNESDAY
ALL THE FISH YOU CAN EAT \$1.29

SPECIAL (with coupon)



If fish is your fancy, our fish plate features the fanciest flounder filet plus french fries and coleslaw for only \$1.29.

Bring this coupon to your local Howard Johnson's restaurant for this special offer! Good every Wednesday through May 26, 1971

HOWARD Johnson's
225 E. Apache Blvd.
Tempe

A Report Card on the Love Generation

NOW PLAYING!



the Young Graduates

Patricia Wymer • Steven Stewart • Gary Rist • B. Kirby, Jr.
Jennifer Ritt • Dennis Christopher • Marly Holiday

UNIVERSITY NO. 1 Walk-In

Broadway, Just East of Rural Rd. Tempe 967-7857

NORTHERN Drive-In

Black Canyon Highway at Northern. 943-9112

CO-HIT: SUDDEN TERROR

The dying person is topic for discussion

Death does not come like a thief in the night for everyone, according to Dr. Elizabeth Kubler-Ross, an expert in the care of the terminally ill.

Dr. Kubler-Ross will speak on "Understanding the Dying Person and His Family" June 7 and 8 in the MU, said Richard Herman of the graduate school of social service administration. The school is sponsoring the two-day program.

"The program is designed primarily for people in medicine, nursing, social work, psychology, religious work and all who are giving care to the dying," Herman said.

Dr. Kubler-Ross is also the author of the book "On Death and Dying" which has become a best seller, Herman said.

In the course of her research for the book, she spoke to 400 terminally-ill patients and their families about the problems of those knowingly facing death, Herman said.

"The purpose of the program is to assist those in the helping professions to improve the care of the dying

Benefit movie presented for Civil Liberties Union

"The Confession," a high-powered drama about a man's refusal to surrender his dignity, will be presented at a benefit showing for the Arizona Civil Liberties Union tonight at Loew's Hayden East Theatre.

Tickets for the 8 p.m. performance may be purchased from the Student Bar Association booth on the Mall or by calling 966-3374. Student tickets cost \$3.

The movie is directed by Costa Gavras, who also directed "Z," and stars Simone Signoret and Yves Montand, who also appeared in "Z."

person and his family," Herman said.

Similar sessions will be held at the UofA June 10 and 11. Registration deadline for both programs is May 15. Cost is \$20 and registration is by mail only, through the University Extension Office.

Women receive special awards

Nearly 200 women received special recognition for outstanding contributions to the University at the Women's Week awards banquet last week.

Top honors went to Kathy Murphy, senior in radio-television, and Nina Erra, senior in home economics.

They were each given an Outstanding Senior Woman award, the highest honor conferred by Associated Women Students, based on their service, leadership and scholarship.

Miss Murphy, AWS president, was also selected as Outstanding Panhellenic Woman. Miss Erra, president of Mortar Board, was also named outstanding senior in home economics.

New AWS officers installed at the banquet are Tina Levitt, president; Carol Dawson, executive vice-president; Jeanne Rice, activities vice-president; Susan Loohawenichit, secretary and Cindy Close, treasurer.

ATTENTION June Graduates

Must Have Retail Experience in Men's Apparel or Shoes

Send resume to: Thomas Anzures Nunn-Bush Shoe Co. P.O. Box 2047 Milwaukee, Wis. 53201

NEW!
HILL 'N DELL APTS.
BY HALLCRAFT
51st STREET & TAYLOR
3/4 MILE SOUTH OF MOTOROLA
BEDROOMS RENT

~~1 - 90.00 Gone!~~
~~2 - 107.00 Gone Too!~~
families only } **3 - 127.78 (2-3-4 children)**
... a few left

Utilities included, central air & heat, G.E. stove & refrigerator, carpets, drapes, laundry room, more . . .

Income Determines Eligibility
Come To 5116 E. McDowell or Phone
275-6782 for Info

OPEN 7 DAYS PER WEEK 8:30 A.M. TO 6 P.M.

(LATER BY APPOINTMENT)

CLASSIFIED ADS

Classified advertising must be paid for in advance either in person or by mail to the State Press, ASB 302 (Old Business Administration) two days in advance of publication. Office hours are 8:30 a.m. to 4:30 p.m. Phone 965-3457. Rate: \$1 for three lines and 30c for each additional line. 50 per cent discount for consecutive additional days. There will be no refunds for advertisements placed with the State Press.

SALE

New Garrard SL95 and Bass. Still in box — never used. I have 2 retails. \$140 and \$110. 967-8298. (5-13)

Mobile home 8x47 xcinf. cond. 2 blocks to ASU. Awning & extras \$2495 after 4:30. 966-5400. (5-19)

Wilson classic golf bag, Sunday model perfect condition. Call after 5 p.m. 965-4011. (5-12)

Guitar: Martin 12-string acoustic (D12-20), custom neck, grover tuning heads, hard case, \$350. 967-5845. (5-12)

Reward a 2 bedroom trailer furnished to anyone that closes a bill of sale to one of the finest private schools in Tempe. (5-14)

Complete Great Book Series, Synopticon, dictionary, great ideas, gateway series \$200. 268-3130. (5-13)

Air Cond. for Volkswagen 6 volt battery Fridgi King \$50 call Joyce 966-2286. (5-12)

2 Pioneer speakers Garrard turn table Sansuiz Model 3000A (5-7)

RALLYE! Poet's "Spring Sonnet" TSD Event Sun., May 9, S.E. corner Thomas Mall, 10 a.m. Entry fee 3.50. Info. call 962-2608 days or 947-1654. (5-14)

12x60 mobile home furnished, close to campus, low lot rental, 1968 model. 968-3527. (5-12)

AUTOMOBILES

1955 Mustang convert V8 lower brakes steer air automatic, good cond. \$850. 966-8227. (5-13)

71 Pinto Auto. air con., power steer. 1000 mi. \$2400 or best offer Nancy 966-7102 aft. 2 p.m. (5-19)

1965 Ford Galaxie 500 Convertible good condition \$250 phone 965-4877. (5-14)

Going into service this summer 1966 MGB like new sacrifice call Cory 966-2323. (5-14)

Amazing 65 Ford 3/4 ton pickup camper. Dual propane conversion, completely overhauled. New tires. Camper has ice box, trailer brakes 969-9763. (5-14)

63 Chev. 283, factory air, power steering & brakes, excel. cond. must sell \$450 can see at 1019 E. Lemon apt. 211. 6 to 9. (5-19)

Set of 4 Goodyear Polyester 6 x 13 tires and wheels, 2000 mi. wear, \$40.00 1019 E. Lemon Apt. 211. Between 7 and 9 p.m. (5-19)

1968 Kawasaki Scrambler 250cc like new must sell soon \$395 call 966-9912 1211 E. Lemon Apt. 3. (5-13)

1969 Corvette coupe 427-390 fully equipped including A/C immaculate \$3600 966-9545. (5-14)

Late 1965 MGB, BRG, Rollbar, driving lights, tonneau, new top, good polyglass tires, comp. clutch, brakes, and shocks, rebuilt trans. & fr. susp., cover. 967-5213. (5-14)

63 Olds. Cutlass conv. V-8 PWST \$350. 26" mans 3 spd. bke \$30. New TV \$85 #324 325 W 5 St. Mesa 273-1029. (5-9)

1969 MG Midget excellent condition, Stanley 949-8158. (5-14)

62 Ford Galaxie 500 runs good. Best offer. Call 965-5165. (5-12)

Sports car for sale or trade 215 c.i. Buick Special engine 4-speed trans. mag wheels new tires many custom features 26 E. University Dr. 967-3681 967-2868. (5-7)

1969 Roadrunner Top condition phone 964-8077. (5-14)

1968 triumph bonnville \$700 can be seen at 6623 S. 32nd st. Phx. (5-13)

Blue checker cab excellent condition air conditioning real roomy call 966-5913. (5-12)

69 Fiat spyder 850 convertible. Excel. condition. one owner. Must sell. 947-6186. (5-14)

70 VW bus, 7 passenger, 71 license, 11,000 local miles full warranty to 24,000 miles. \$2500 1846 E. Whitton, Phx. 85016. See or write. (5-14)

HELP WANTED

State Press needs news photographers. Apply at State Press contact Ray Wong or Don Ferrell 965-3657 bring portfolio. (5-14)

Need a ride to new England? Bessey Motor sales. South 1 Paris, Maine needs driver to drive 1971 Dodge Colt there leaving 3 June. Gas, food, lodging paid for. Call 965-2605 after 5 for details. (5-14)

390 weekly work evenings and Saturdays start your summer job now call 964-4222 after 4. (5-14)

We need help fighting pollution! Help out environment and make money too. Call D. Wenck 275-3320. (5-21)

FOR SALE

2 bedroom furnished mobile, large awning, walk to ASU and shopping, \$4850, call 967-6680. (5-12)

11 month membership to the University Health Club. \$87 value for \$75. Call 965-2486. (5-12)

FOR SALE. Record Store, short hours, low investment, high return Will train. Paul 949-9573. (5-14)

Waterbeds, top quality, \$25.00, king size, 20 yr. written guar. Call 967-4673. (5-22)

WANTED

1 female roommate needed for summer. \$45 a mo. Call Lucy 2687, Karen 5583, Sue 2927. Nice. (5-14)

Rider, riders to share driving, expenses to San Francisco, leaving May 15 Sat. call 943-1743. (5-14)

Need 2 female roommates for June 1 in sin City call Nancy 966-8341. (5-13)

Need female roommate to share 2 bedroom House. Close to ASU cheap rent, June 1 call Renae 968-3794. (5-14)

1 Male roommate needed for the summer or till Jan. or next June 2. Guys need 3rd to share 3 br. 2 bath furnished air pool apt. near Coco's call Bill 966-7450. (5-13)

Female roommate for May - Aug. \$60.66 a mo. 1050 Stanley Pl. 968-0057 Adrian. (5-13)

Female roommate for May-Aug. \$60.66 a mo. 1050 Stanley Pl., 1A, 968-0057. Adrian. (5-12)

Responsible people willing to care for a monkey for summer. House preferred (965-5771.) (5-14)

Wanted two roommates for large three bedroom home already furnished. Male pref. 968-0088. (5-12)

Need 3 girls to work part-time on campus. Will train. 967-8209. (5-21)

SERVICES

Romp in the woods !!! We're going on an overnight campout May 15-16 total cost \$3 for info call Hillel 966-5371 Guitars invited. (5-14)

Reliable Child Care, certified teacher, Los Arcos area. Nice home, 949-5319. \$12.50 a week or \$1.50 half-day. (5-13)

Alaska calling? Construction, oil, fishing, cannery, teaching, gov't summer jobs; cost of living; further info sources. \$3 cash or MO for second edition Jobs in Alaska, Box 1565 Anchorage 99501. (5-20)

Married couples needed to participate in psychological experiment at ASU earn \$2.50 per one interesting hour call 967-0176 or 965-6723. (5-13)

Pro FFFN Beginners' car rally; May 7 SE corner of Thomas Mall 7:00 p.m. \$1.00. (5-8)

Reliable Child Car certified teacher Los Arcos area nice home 949-5319. 50c hr. or \$1.75 1-2 day- one 1-2 \$2.75-two. (5-13)

Self Hypnosis—speed learning concentration, calm nerves, stop smoking lose weight 274-0698. (5-20)

Plan to student teach Fall 1971? Submit application to Education 115 before leaving for vacation. (5-12)

Fiat service. Cheap. 271-0904 evenings and weekends. (5-12)

Self-hypnosis the miraculous tool of success. Speed up the learning and creative abilities. Learn to concentrate. Lose weight, stop smoking and so forth. 274-0698. (5-21)

LOST

Lady's yellow gold Girard Perregaux watch lost Monday, good reward 949-1616 sentimental. (5-14)

Blue-tick puppy. Black head with white body and black spots. Lost on campus Friday. If found call John Langhout at 966-0160. (5-13)

FOUND

Puppy found. For information call 965-5482. (5-14)

MOTORCYCLES

'69 500 custom Honda mint cond. '69 350cc Honda, \$400, you must see. Call John, 967-7784. (5-11)

TYPING

Typing—IBM, reasonable, Scottsdale 945-2489 or East Phoenix 275-7970. (5-14)

Secretarial Service by J; Xerox - typing - Notary 2211 N. 24th St. Phx. Az. 275-8161. (5-20)

Typing, IBM selectric, notary, theses, etc. Marilyn, 966-8721. (5-21)

Typing—reasonable and accurate 947-1233 After 6 p.m. (5-20)

Typing—experienced, neat, accurate 946-4105. (5-19)

Typing 966-5654 after 5. (5-21)

IBM Electric—Gothic type. Class 966-1684. (run)

Typing, 967-3675, Tempe. (5-21)

Typing—Call Sherry Buttermore 279-2888. (run)

Typing IBM. Maxine Mullen, 955-0763. (run)

Typing call Jean Buttermore 277-3602. (run)

Typing (IBM) 253-1285. (5-21)

Typing. 967-2602. (run)

East Mesa junction area, 986-4314. (run)

RENT

Furnished three bedroom home for rent near Tri-City, 1704 W. Pepper Pl. Mesa. Family preferred. (5-12)

Extra large 1 & 2 br. apts. Low Mon. to Mon. or lower rates on lease, Palm Villa 966-5911. (5-21)

Wanted two female roommates to share 3-bedroom house \$50. ea. monthly. Phone 966-5764. (5-14)

3 bedroom apt. starting June 1, \$200 per month sublease until Sept. 1, 1623 Mailbu Call 966-2560. (5-14)

Clean, quiet, kitchenette Apt. furnished \$5.00 per month utilities included 966-9587. (5-19)

Three persons can share very spacious 1 bdrm. furnished apt. for summer \$6.66 ea. utilities paid. Call Maria 947-9098 or Donna 966-9305. (5-14)

Large studio apt. available June 1, \$96/mo. Buena Ventura Apt. #205 815 N. Hayden Rd. Scottsdale. Phone 947-1453. (5-12)

Studio Apts., 2054 East Apache Blvd. 967-5278. (5-12)

Summer rental 3 bedroom house, fenced yard, air conditioned, organic garden 966-1207. (5-19)

Female to share 3 br., air cond. house with one other for the summer \$75 mo. no pets, child maybe 966-2286. (5-12)

3 bedroom apt. starting June 1. \$200 mo. sub-lease. 1805 E. Concorda Dr. Call 966-6931 after 5. (5-12)

Studio Apts. 2054 East Apache Blvd. Call 967-5278. (5-12)

3 bedroom house furnished \$250 a month call Vicki 966-9303. (5-19)

Nice mobile home located near ASU. One bedroom, \$110.00 per month, 966-8573, suitable for couple. (5-14)

3 bedroom 1 1/2 bath, No. Tempe, \$200, 945-7542. (5-21)

Furnished, refrigerated, pool, studio \$110, 2 bdrm \$140 no lease. Inquire 1031 E. Lemon #1. (5-21)

TV rentals, \$12.00 a month. Ph. 969-7963. (5-21)

Need an apt. for summer? Check with San Miguel apts., 910 E. Lemon, 2 bdrm., furn., pool, no lease, summer rates. (6-1)

PETS

Australian Shepard puppies very cute \$15 all colors white to jet black. call 966-5913. (5-12)

Free Kittens neighborhood bred 6 weeks old and house broken 966-1866 809 Farmer Ave. (5-14)

Sports

Barney Hutchinson
Sports Editor

*Arizona State vs.
the Wishbone-T?*



It has become a tradition in the 1970s for sports-minded people to think about football in the spring—even though baseball, track, golf and tennis should be the subjects of interest.

So this writer, not being one to break a tradition of two years, will think about football.

It has come to the surface that a third Western Athletic Conference football team will be switching to the Wishbone-T offense for the coming fall season. Brigham Young University will go the same way of New Mexico and Arizona.

The Wishbone-T offense, for the three remaining football fans who don't know, is an offense originating in Texas where three running backs continually punish both sides of the line of scrimmage with continual plunges.

The offense receives its name because the three backs and the quarterback lineup in a "Y" formation from the defensive team's point of view. And from that point of view, the Wishbone-T looks like sheer hell to stop.

The University of Texas used it to win a national championship and nearly two in the past two years. The two toughest games Arizona State had during the last season were against New Mexico and Arizona, both employing the running-dominated offense.

There is no danger of ASU using the offense exclusively. The Wishbone-T is set up mainly for large, powerful running backs and linemen. Arizona State needs an offense to best employ blinding speed.

But BYU's shift to the Wishbone-T or Veer-T offense brings up a thorny question. Is the rest of the league going to the defense that can best stop the Sun Devils from winning a third WAC championship?

The question is pertinent. The Wishbone-T is at its best when a team wants to slow down the pace of the game. It is also death to try and play catchup if the non-Wishbone team falls behind. The new Texas offense can also destroy a set of ineffective linebackers, a position ASU will suffer from inexperience this fall.

The University of New Mexico clobbered their alumni team 35-14 in their annual spring football game two weeks ago, the Wishbone-T chewing up over 500 yards on the ground.

BYU's Veer Offense also makes use of the passing game and coach Tom Hudspeth is flatly predicting marked improvement for the Cougars over last year because of the switch.

With the success of the special offense, many more teams around the league will be installing plays run off the Wishbone-T formation. Arizona State may be seeing a lot of the offensive pattern for 1971.

From the above developments, the following conclusions can be drawn.

Along with bringing along a quarterback that can lead the team in the ASU break-away offense, coach Frank Kush and his assistants should also find the right men for the linebacking post or quite possibly suffer a defensive letdown early in the season.

The Western Athletic Conference could employ the Wishbone-T at all but one or two locations. Kush and his associates should be thinking about developing a Notre Dame-like defense especially designed to stop the triple option.

Finally, as Kush may have already done, the Wishbone-T, triple option, Veer-T offense may be nice for variety. But Arizona State should stay with an offense that can equally use the pass along with the run.

Lacrosse trying for funds from student government

The sport of lacrosse may be turning into the bastard child of Arizona State University, according to individuals trying to organize the sport here on campus.

Lacrosse, a sport popular in the east featuring the rugged turf action of football without the protective padding, may die from lack of funds. This, according to team captain John Arenare, could be the fate at ASU while sister universities in the state are fully supporting lacrosse teams.

Both Northern Arizona University and the University of Arizona have funded lacrosse teams on their campuses. Both institutions have provided at least \$1,000 from the Associated Student governmental setup.

"But we can't get a thing out of the Associated Student organization here at ASU," Arenare says. "It is a strange situation. Both NAU and the UofA are set to join a newly forming lacrosse league and the sport could die here."

According to Arenare and partner Dan Pace, ASASU told the two to apply for funds from the Athletic Department since the club was sports oriented. But the Athletic Department flatly refused any support saying lacrosse doesn't compete on a varsity level.

"We would really like to have a lacrosse team at ASU," Arenare says, "because of this league that is forming in September." Called the Southwest Collegiate Lacrosse League, membership will include the UofA, NAU, Brigham Young, Utah, Colorado, Colorado State and some other teams in California.

Arenare says the last alternative may be to petition the student Senate this fall for funds. In the meantime, Arenare would like team membership to increase from the present figure of 28. The team, which uses a long-handled racket to catch, carry and throw a ball towards an opponent's goal, practices Tuesday, Thursday and Friday on the Saguaro field at 2:30 p.m. Further information can be gained from either John Arenare, Dan Pace or club president Scott Young.

J. D. Hill All-Star game pick

J.D. Hill, Arizona State University's foremost football star of 1970, is one of three Western Athletic Conference players to be selected to this year's College All-Star team.

The announcement of Hill's selection came last weekend in Chicago. The College All-Stars will play the world champion Baltimore Colts in the annual Chicago Tribune Charity game July 30 at Soldier Field.

Named along with Hill to the 52-man squad was Wyoming's kicker Bob Jacobs and Utah defensive back Norm Thompson. Blanton Collier will assume the head coaching duties of the All-Star squad.

It was the second time Hill has been tabbed to an all-star game. The speedy wide receiver, who was the fourth collegiate drafted by the pros in January and the top choice of the Buffalo Bills, also played in the Senior Bowl.

It was also the second year in a row that Arizona State has landed an offensive player on the College All-Star team for competition against the Super Bowl championship team. Art Malone, a running back now with the Atlanta Falcons, was a member of the 1970 crew.

Hill will be joined this year by a wealth of collegiate talent that will play in the NFL this fall. Among them are Dan Pastorini, the quarterback from Santa Clara who combined with Hill in the Senior Bowl this winter.

Also on the squad are quarterbacks Jim Plunkett from Stanford and Archie Manning of Mississippi; Joe Moore, a wide receiver from Missouri; Elmo Wright, a wide receiver from Houston and Ohio State running back John Brockington.

NEWS
3656

Call
967-1604

Pizza Inn

955 E. University

Orders To
Take Out

Susan Fairall
SINGS
Fri. & Sat.
8:30 to 1 a.m.
NO COVER

Buffet
11 to 2:30 PM
Mon - thru - Fri.
All you can eat
Pizza & Salad

\$1.19

Draft Beer

— Special —

75¢ Any Large Pizza **75¢**
Off Of Your Choice Off

(Limit: 1 Pizza per coupon)
Offer Good thru May 31, 1971

Notice

UNDER NEW MANAGEMENT

Service Manager **Mike Maus**

General Manager **Richard Autz**

We Service All Makes
Specializing In Ford Product

BERGE

Service Center
967-2063
16 E. UNIVERSITY DR. TEMPE
Ford Parts Stocked

HUSTLER

the no-splice retread.

For People Who Don't Trust Retreads

From \$9.95 ... and you don't need an innertube

Cohill & Low Tire Company

4333 E. Washington—275-6228

(Less than 5 minutes from ASU)

Ask for STEVE TAIT — Campus Representative

WAC tennis

Utah, BYU, Arizona favored

By RUTH WOOTTEN

The Arizona State tennis team isn't included in the three-team battle forecast by the Western Athletic Conference for the WAC tennis championships this weekend in Tucson.

The three teams which seem to be the best bets for the title are defending champ, BYU, Utah and UofA. ASU is put in fourth place ahead of New Mexico, Wyoming and Colorado State.

Utah might have a slim edge over the other two schools since their victories over BYU 6-3 and UofA 8-1. The Sun Devils lost both meets to BYU and Utah, but soundly whipped the Wildcats last weekend 7-2.

Zdravko Mincek, BYU's top-seeded singles player, will be defending his WAC singles title. He may run into rough competition from Sun Devil John Fort who lost to Mincek by default two

weeks ago when he suffered a slight ankle sprain. It was his only WAC loss of the year.

Fort will also be going against Krulevitz who won No. 3 singles in 1970 and Hardy who was the runnerup at No. 5 singles also in 1970.

The WAC competition will start with the first round singles at 9 a.m., Friday at the Tucson Racquet and Swim Club, 4001 Country Club. Finals will be Saturday, with singles at 9 a.m. and doubles at 3 p.m.



Hans Nordstrom

TELESCOPING THE MEET
Meet: Ninth annual WAC Tennis Championships.
Site: Tucson Racquet and Swim Club, 4001 Country Club, Tucson, Arizona.
Dates: May 14-15, 1971.
Finals Schedule: Singles finals, 9:00 a.m. Saturday. Doubles finals, 3:00 p.m. Saturday.
Scoring: One team point is awarded for each individual victory.

1970 Champions (returnees)
Champion
No. 1 Singles, Zdravko Mincek, Brigham Young
No. 2 Singles, Dan Bleckinger, Utah
No. 3 Singles, Steve Krulevitz, Utah
No. 4 Singles, Marty Hennessey, Brigham Young
No. 5 Singles, Randy Trane, Brigham Young
No. 6 Singles, Dale Fritz, Utah
No. 1 Doubles, Bud Guion-Butch Palmer, Ariz.
No. 2 Doubles, Zdravko Mincek-Mark Shires, BYU
No. 3 Doubles, Randy Trané-Marty Hennessey, BYU

Top Contenders for No. 1 Singles Title
John Fort, Arizona State, transfer from BYU, lost only to Mincek on forfeit when he twisted an ankle.
Steve Krulevitz, Utah, won No. 3 singles in 1970.
Zdravko Mincek, Brigham Young, defending champion but has lost to Krulevitz.
Craig Hardy, Arizona, runnerup at No. 5 singles in 1970.

Fort-led netters destroy Wildcats

The slight ankle sprain the Devil's John Fort suffered two weeks ago at BYU wasn't a factor last weekend in Tucson as the University tennis team smashed the Wildcats, 7-2, for their second

win in the last 53 contests against UofA.

Fort bounced back from his default at BYU to defeat the Cats' Craig Hardy 6-2 and 6-1.

ASU's Dave Kanter, after losing the first set 3-6 Butch Palmer, was able to rally in the last two sets 7-5 and 6-3 to win the match.

Sun Devil Jay Harvey pushed a victory over Jim Logan 8-6 and 7-5. Geoff Grange also defeated his UofA opponent Richard Hoshaw 6-3 and 6-2.

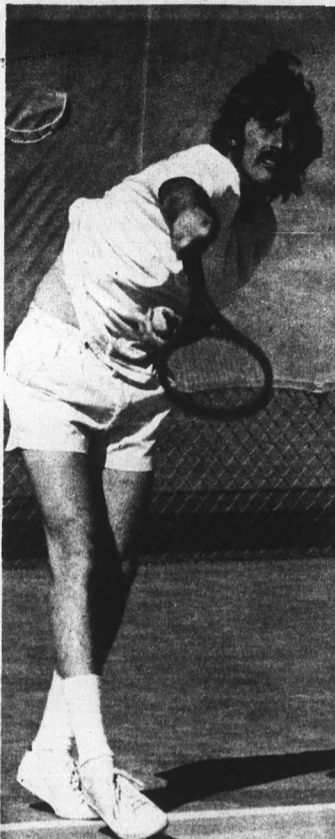
The two ASU losses were Hans Nordstrom to Bud Guion 6-3 and 15-13, and Mike Wilkinson to Bill Hoshaw 3-6, 7-5 and 8-6.

Nordstrom redeemed himself in doubles play, as he teamed up Fort to whip Guion and Palmer 7-5 and 6-3.

Harvey and Wilkinson managed a win over Logan and Bill Hoshaw 19-17 and 6-4.

Grange and Kanter rallied for a 3-6, 6-3, 7-5 win over Arizona's No. 3 team to close out the scoring.

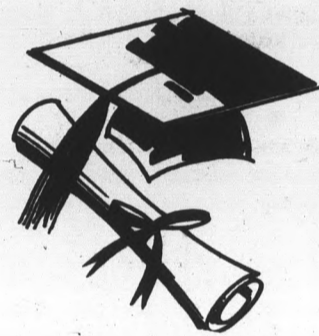
The Sun Devils host Wyoming at 2:30 p.m. this afternoon on the ASU courts.



John Fort



Best of Luck GRADS



Buy the Graduate Something Special . . .

a Gift from

TEMPE CENTER

"In The Heart Of Sun Devil Country"

Americana Shop
Bonnie Sue Fashions
Brickie's Furniture
Brown's Card & Party Center
Celia's Fashions
El Rancho Market
Erickson's Handcrafts
First National Bank
Flair Sportswear
Hills Record & Book Shop

Inland Western Loan Co.
Jam's Restaurant
King James Tobacconists
Lee Optical
Liva Wigs
Pepper Mill
Pioneer Camera Shop
Ray's A.S.U. Barber Shop
Revco
Reverie Arts
Rosamond's Beauty Shop
Sewing Basket

Sherwin-Williams Paint
State Farm Insurance
Teepee of Toys
T.G. & Y. Family Center
31 Flavors Ice Cream
Tops Liquor Store
University Sporting Goods
ZZZona Laundry & Cleaners
Viking Co.

TEMPE CENTER

UNIVERSITY & MILL

