

state press

Vol. 53, No. 73

Wednesday, March 17, 1971

Tempe, Arizona

Voting today until 8 p.m.

Voting in today's ASASU primary elections will be held in front of Hayden library, 8 a.m. to 8 p.m. Students must show University identification to receive a ballot.

The election is being held to give students an opportunity to write in candidates not on the ballot for ASASU offices. Names appearing on the ballot were nominated by petition March 4.

The primary results will reduce to not more than two candidates per office (except in the case of a tie) for the general ASASU elections, March 24.

According to the ASASU Constitution, for a write-in candidate to be placed on the general election ballot he must receive the second highest number of votes for that particular office.

If there are only one or two candidates listed for an office, a write-in must get at least 50 votes to appear on the general election ballot.

The following candidates will be listed on the primary ballot, along with blank spaces for write-in nominations:

President: Norm Keyt, junior.
First vice-president: Lin Hallickson, junior.

Activities vice-president: Sue Driver, sophomore; and George Hillman, junior.

Administrative vice-president: Manuel Figueroa, junior; and

Sharion Patterson, sophomore.
AWS president: Tina Levitt, junior.

AWS activities vice-president: Jeanne Rice, freshman.

There were no petitions turned in for the offices of AWS judicial vice-president, secretary and treasurer.

Candidates for ASASU Senate are:

College of Architecture: Paul Zavalney, freshman.

College of Education: John Foster, junior; Melvin Ing, junior; and Duane Janssen, junior.

College of Engineering Sciences: David Christian, sophomore; John Durand, freshman; and Kent Rasmussen, junior.

College of Business: Ron Alvig, junior; Joe Anderson, sophomore; Don Dalton, sophomore; Glen Funk, junior; Brad Hall, freshman; Brad Kahla, freshman; and Ted Wolverton, junior.

College of Liberal Arts: David Adams, senior; Dave Carter, sophomore; Ray Gamboa, freshman; Steven Geller, freshman; Brad Kimes, freshman; Michael Kinhan, sophomore; Leslee Kopald, sophomore; Ronald Kremer, freshman; Steven Machol, freshman; Pat Norris, freshman; Lee Schloss, sophomore; Marlene Skiba, junior; and Rick Weiss, sophomore.

For athletic fields

University plans land purchase

By TOM JOURNEY

University officials are in the process of purchasing a 76-acre land site on Rural Road near University Boulevard, Gilbert Cady, vice-president for business affairs, said yesterday.

The property being considered is adjacent to a 91.8-acre site presently owned by Arizona Public Service Co.

Cady said the 76-acre site will be used, for the present, as athletic fields but it could "perhaps" be used for parking.

The site is being purchased for "about \$7,500 per acre," Cady added.

Cady added the Legislature has not appropriated all the money for the site but it has appropriated part. "No land money was appropriated last year," he said.

Hallcraft Homes, Inc. is the potential buyer of the 91.8-acre site on the northeast corner of Rural Road and University Boulevard.

The Tempe City Planning Commission, at its Feb. 22 meeting, voted unanimously to deny a request by Hallcraft Homes to rezone the 91.8 site

to a general commercial, multi-family residence general and garden-type industrial district.

The decision was appealed to the Tempe City Council and was then remanded to the planning commission, where action is pending.

Frank Burch, of the law firm Burch, Cracchiolo, Levie and Guyer, which represents Hallcraft Homes, said the city council apparently was concerned about the densities of requested use as they relate to city facilities.

Burch said the University has no plans to purchase the 91.8-acre site. He added the

University is going along with Hallcraft on its plans to establish low-cost housing on the site.

"Part of the University's concern was to build something useful" on the site, Burch said.

Burch explained to the planning commission that "There was a need for housing of this type (low cost) and quality in Tempe."

He said the housing could serve 6,000 graduate students, 2,000 ASU employees, 500 to 1,000 City of Tempe employees and 5,000 to 10,000 other people in Tempe.

"We're aiming at the non-classified (University) personnel," he said.

Mummert calls his office 'progressive' at discussion

By DIANE McINTYRE

Maricopa County Sheriff John Mummert described his department as progressive yesterday at a lecture and

question-answer session sponsored by the Student Bar Association.

"My taking office was a drastic change in politics for

Maricopa County," Mummert said. "Change was long overdue, and had a progressive man been in office before, changes would have been made long ago."

Establishment of a narcotics detail, a lowered cost of returning extradited prisoners, a policy of promotion by competitive examination and a more exacting training program were cited by Mummert as progressive changes in the county sheriff's department since he became sheriff in January 1969.

Mummert, dressed in tones of gold, moved away from the Great Hall podium during the period and walked easily before the audience, answering questions conversationally.

He said he does not think marijuana penalties are "out of proportion to the crime."

But first convictions "need to be examined" carefully, he said. "I don't think all felons should necessarily be sent to prison. Some need another chance."

The sheriff was then asked what effect on his re-election a vote by 18 year-olds might have. "It would probably be about 75 per cent of the vote opposing me," he replied.

Mummert said he is "not opposed one way or the other" to lowering the voting age to 18 for state and local elections, but questioned if young voters could make responsible decisions about questions that affect tax dollars if they are not paying taxes.

Answering a question on gun control legislation he said it is "not enforceable." Hardcore criminals don't buy guns, generally speaking," he said, "or they buy them from someone else."

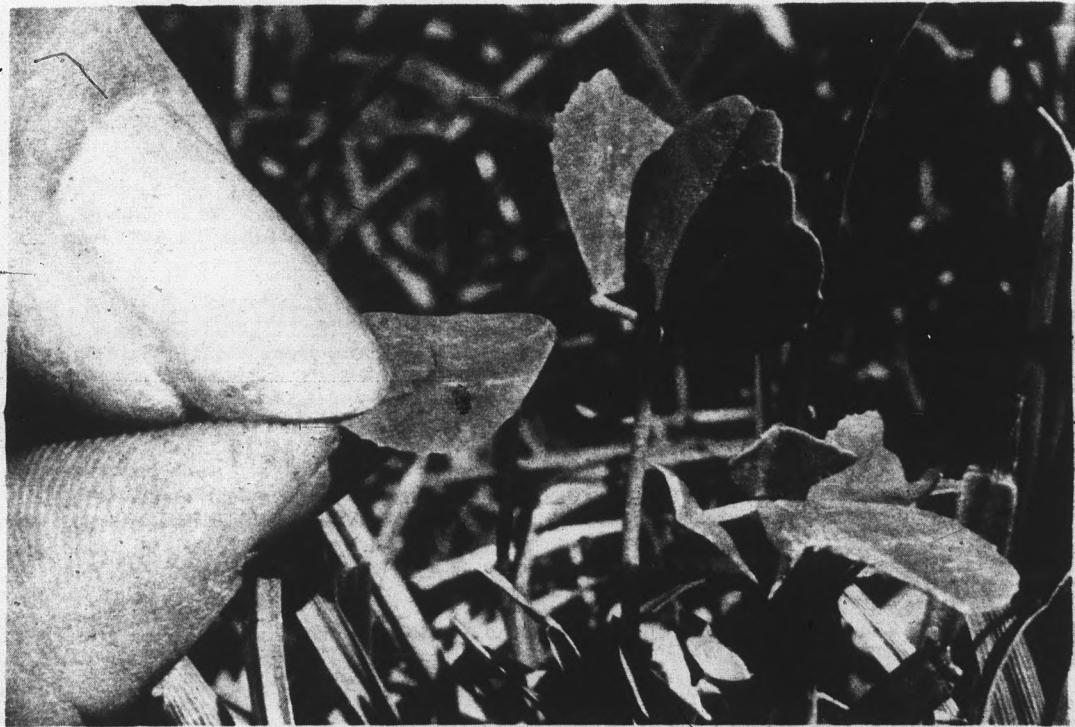
Most violent crimes are not planned much in advance, he added.

He explained that a recent news block of The Arizona Republic was intended "to bring the Republic to the bargaining table," Mummert said. "It did, and currently we're getting along fine."

The move was precipitated by repeated sensationalized, inaccurate reports of crime news in the Republic," he said.

A raid by the Sheriff's Department in late 1969 of a Phoenix theater showing "I Am Curious (Yellow)" was a "political move that was pretty damned successful," Mummert said.

(Continued on Page 5)



**IRISH
LUCK**

Happiness is stumbling upon a four-leaf clover on St. Patrick's Day, when everything else you are wearing is red. It's the luck of the Irish when you do, because to not wear green on St. Patrick's Day is still in many places worth a pinch on the posterior.

Photo by Ray Wong

CONCERN

Questions for CONCERN must be submitted at the Message Center of the MU or the forms provided at the center. Questions must be written and include name, address and phone number, for verification purposes. Only initials are used in CONCERN. Initials will be withheld upon request. Questions are welcomed from any member of the University community.

Q. Why do persons entering the Arizona Collection area have to sign a register?

A. An assistant librarian said the signing-in helps keep a closer control of the books which are non-circulating and it also gives them an idea as to what area students are interested so they know where they need expansion.

Also the collection subscribes to all Arizona newspapers for the students and this signing helps the librarians see if the project is worth the money, added the librarian.

Q. "How many times do I have to be hit by a bike before they are banned from the sidewalks?"—R.R.H.

A. Lt. Thomas Godbehere of University Police said that is up to the University. He could not recall the University Police receiving any complaints.

Dudley Melichar, executive manager of ASASU, said that as far as he knows the Student Senate is not doing anything and that no complaints have been received.

He said that if students would bring complaints to the attention of Dennis Greene, ASASU first vice-president (965-3161, MU 246), he could bring them up before the Student Senate.

Melichar said that the Student Senate could then draw up a resolution to present to the University.

Q. Why aren't more students employed on campus where non-students are employed now? e.g. the book-checkers at the library exit, drivers of the mail sweepers, and janitorial and maintenance work on campus.—J.K.

A. George Zelenski, associate director of the Physical Plant, said that "there isn't over a dozen college students working during the school-year in conjunction with the physical plant services because there are no openings and no program to hire more. However, around 60 students are hired during the summer to assist the gardeners, wash windows, etc."

Students are not hired to check books at the library exit, according to Edward Danaher, associate director of the library, because "they are prone to let their friends through and with senior citizens checking, students do not mind opening their bags or satchels as much. "There are 150 students working at the library now in other capacities," he said.

Division separation said not the solution

By DEBEGERER

The chairman of a Faculty Senate ad hoc committee told senators at Monday's meeting that the removal of the division of agriculture from the College of Engineering Sciences would not solve the division's problems.

Dr. Robert Ashe, chairman of the ad hoc committee to study grievances of the agriculture division, said "the Board of Regents was very likely to abolish agriculture on this

campus" if it transferred from the engineering college.

The committee was formed to investigate grievances advanced by Dr. Daniel Robinson, professor of agronomy, at two senate meetings last December.

Faculty Senate approved a motion Monday requesting the academic vice-president to study the developments regarding the report made by the committee.

The motion asks Dr. Karl Dannenfeldt, academic vice-

president, to prepare a report for the May Faculty Senate meeting on any action taken regarding the committee's report. It also asks for an additional report on developments by the first senate meeting next year.

The two grievances stated by agriculture faculty members were: 1) "Prof. Richard Soderberg (director, division of agriculture) is completely unqualified both academically and professionally to direct a division of agriculture, and 2) "The normal channel for expressing concern about such a situation, the Office of the Dean, had been essentially closed by the divisional meeting of March 20."

The faculty members also asked the committee to recommend Soderberg's immediate transfer from the division and to recommend the reassignment of the division outside of the College of Engineering Sciences.

Regarding penalties to agriculture faculty members, Dr. Ashe said, "It is my understanding that some of the

(Continued on Page 5)

Meeting called to hear changes

John Cochran, Faculty Senate chairman, has called for a special faculty assembly meeting to discuss amendments to the Faculty Constitution approved Monday at a senate session.

The meeting will be at 4 p.m. March 31 in Murdock 101 and is "restricted to action on constitutional amendments," Dr. Cochran said.

If the amendments are approved by the assembly, they will go to the Board of Regents for final approval before going into effect.

Several amendments, "will have the Faculty Constitution conform to the new Code of Conduct" regarding faculty committees, Dr. John Tootle, secretary, said.

Other amendments deal with election of a Faculty Senate chairman - elect; changing the

term of office of senate secretary; and electing by secret ballot, replacements for senators who fail to complete their three-year term.

In other action, the senate approved a motion by Dr. Gerald Kleinfeld, associate professor of history, asking the University president to transmit to the Legislature a senate statement on health insurance.

This statement recommends a University contribution to health insurance be provided for faculty and staff.

The statement adds that the Faculty Senate "regrets the spiralling cost in health insurance costs for the private plan available to faculty and staff." It also says that all junior college employees and more than 94 per cent of all public school employees in Arizona already have such coverage.



an engagement tradition

ERIC

1020 MILL AVENUE
966-8491

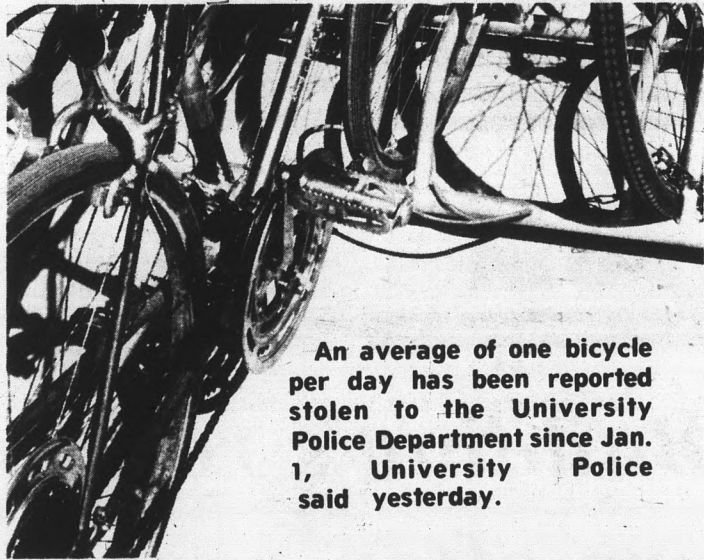
WHERE IN THE WORLD DO YOU WANT TO GO?

IF EUROPE IS YOUR CHOICE, LOOK INTO THESE 1971 ARIZONA STATE UNIVERSITY SUMMER STUDY TOURS!

- 1. Decorative Arts Study Tour of Europe—June 10-July 12, 1971**
DA 495, 4 semester hours credit. Tour Directors: Professor Hildegard Streufert and Professor Barbara Buntz. \$1778 Phoenix to Phoenix including Rome, Florence, Venice, Paris, Stockholm, Copenhagen and London. RESERVATION DEADLINE: April 14, 1971.
- 2. Management and Technology Study Tour of Europe—June 15-July 29, 1971**
MG 459 and IT 444, 6 semester hours credit. Tour Directors: Dr. Joseph C. Schabacker and Dr. Louis J. Pardini. \$1588 Round Trip from Washington, D.C. visiting industrial centers in England, Belgium, East Germany, West Germany, Austria, Italy, Switzerland, and France. RESERVATION DEADLINE: April 16, 1971.
- 3. Humanities in World Cultures Study Tour of Europe—July 6-August 19, 1971**
OHU 401 and OHU 495-1 or PDR 495-1, 9 semester hours credit. Tour Directors: Dr. James Yeater and Dr. David J. Meyer. \$110 Round trip from Boston. Two weeks on the continent and four weeks of study in England. RESERVATION DEADLINE: May 7, 1971.
- 4. English Literature Study Tour—July 19-August 23, 1971**
1 EN 491 and 1 EN 495, 6 semester hours credit. Tour Director: Dr. Nicholas A. Salerno. \$1335 Round trip from New York City touring England and Italy. RESERVATION DEADLINE: May 14, 1971.
- 5. European Studies—July 21-August 11, 1971**
2 LS Prop Seminar, 3 semester hours credit. Tour Director: Mr. David Mamalis. \$1477 Phoenix to Phoenix, with time in Paris, Rome, Florence, Athens, Frankfurt, and London. RESERVATION DEADLINE: May 21, 1971.

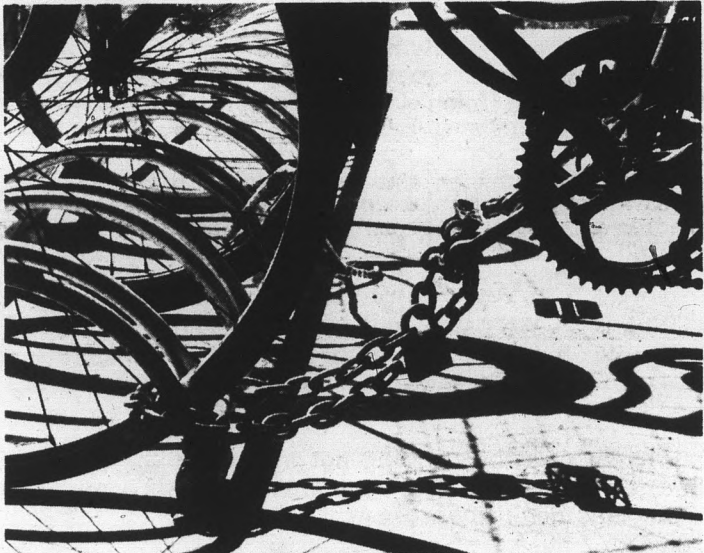
RESERVATIONS ARE LIMITED, AND ARE NOW BEING ACCEPTED.
ALL PRICES INCLUDE TUITION, AIR TRANSPORTATION ON SCHEDULED AIRLINES, LAND TRAVEL, LODGING AND MOST MEALS. DETAILED BROCHURES ARE AVAILABLE ON EACH OF THESE TOURS FROM THE RESPECTIVE TOUR DIRECTORS OR AT THE OFFICE OF SUMMER SESSIONS, ASB BUILDING ROOM 110. (Phone 965-6563)

Safety chief says bicycles clog campus with hazards



An average of one bicycle per day has been reported stolen to the University Police Department since Jan. 1, University Police said yesterday.

Photos by Jeannie Ledbetter



Bicycle pollution is infesting the University, Sylvester Anderson, University fire and safety inspector, told the State Press Monday.

In the past 10 years bicycle sales have risen by 100 per cent, according to reports of the Arizona Safety Council, Anderson said.

The report also stated that last year 820 bike riders were killed in accidents in the United States.

"We have not had any deaths on campus yet," Anderson said. Some minor injuries and many near misses have been reported though, he added.

Another problem related to bicycle safety is the chaining of bicycles to stairwells, which Anderson called a major hazard.

Those who park in dangerous places like stairwells can have their bicycles removed by University Police and will be charged \$5 to get their bikes out of the motor pool, he said.

Bicycle riders are subject to all rules which apply to motor vehicles, Anderson said. "Many students ride against traffic, thinking they are safer if they can see on-coming cars. This is not true. Students should ride with the flow of traffic," he said.

It is a bicycle rider's duty to stop for all traffic signals and signs and to signal his intentions, Anderson said.

"Parking is still our biggest problem," Anderson said. Existing parking spaces in bicycle racks total 1,700, Earl Wyatt, University landscape architect, reported.

"We are installing bicycle racks as fast as we can pour the cement," Wyatt said. Next week an additional 190 racks will be established, and approximately 250 more are being designed, he added.

In the coming weeks students will be expected to park in the bicycle racks, Wyatt said.

Who Said . . . "NEVER ON SUNDAY"? NOW 7 DAYS A WEEK Live Entertainment

Monday thru Saturday . . .

The Fabulous "NEW AFFAIR"

and on

Sunday . . .

"Flint & Company"

4 SHOWS NIGHTLY

9 — 10 — 11 — 12

NO COVER • NO MINIMUM

NOW 7 DAYS A WEEK

Happiness Hours 4-8 p.m.

Pitcher Coors (64 oz.) \$1²⁵

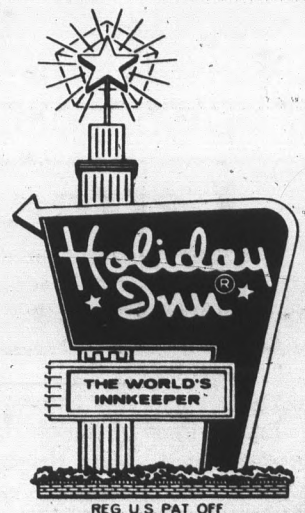
King Sized Coctails 50¢

- FRESH HOT POPCORN
- NICKEL SANDWICHES

THE SUN DEVIL LOUNGE

Corner Rural and Apache

PEN JOHNSON, Innkeeper



SPORT PARACHUTE ANNIVERSARY SPECIAL

Sport parachute jump training at our parachute loft in Mesa. First jump Sunday at our jump area near Phoenix, just a twenty minute drive from A.S.U. cost \$25.00 each in groups of four. Our cost includes your first jump! Now beginning our third year, this Anniversary Special is our way of saying Thank You.

Our Parachute Training School is the only school in Arizona with FAA parachute rigger examiner, FAA Master Parachute Rigger with over fourteen years experience sport parachute jumping and training sport parachutists. Arizona's only authorized dealer for Pioneer Parachutes and Equipment.

Our Aircraft Pilots are rated commercial flight instructors.

Our Jump Training is conducted by rules and regulations dedicated to insuring safety in parachuting through proven and reliable recommended procedures.



U. S. PARACHUTE SERVICE

6976 E. Baseline
— Mesa —
Phone: 985-3980

Guest editorial

ASASU president misusing office

By FRANK ANSEL

I have pointed out several aspects of the Associated Students as an organization:

- (1) ASASU membership is automatic with enrollment for six or more hours.
- (2) Membership fees are automatically included in the overall registration fee.
- (3) Under the present election schedule, student body representation by ASASU is partial at best.
- (4) ASASU appears, in function at least, to resemble a labor union—a bargaining agency—more than a governmental organization.

This results in a situation in which ASASU can claim to represent X,000 students. Generally speaking, ASASU is personified by its president. Thus, he may go before an audience or into publication contending that he personally represents X,000 students.

This is in accord with the theory of the republican or representative form of government. However, ASASU's governmental form is not actually based in fact upon representation of the majority of the electorate.

It would seem that, when a person campaigns for an ASASU office, he implies he will accept the responsibility to represent the electorate in a dignified manner calculated to protect its best interest.

When whoever holds the ASASU presidency — or any other elected representative

— uses his office to further his personal desires, wishes, feelings, ambitions or goals, or those of a clearly defined minority, he then takes himself and his office outside proper function and recognition and damages the respect which should be inherent in the organization and its purpose.

It would appear such is the case in the current ASASU president and his personal campaign directed toward elimination of the so-called Code of Conduct.

Perhaps the code is repressive and unfair;

perhaps it is not. That is not the consideration here. The question is whether ASASU, its president and its myriad vice presidents do in fact represent the student body and, if so, whether or not they do it properly.

If elimination or severe modification of the code is in the best interest of the student body, it would appear that the movement would have such widespread popular support that it would be unnecessary for the ASASU president to personally campaign for it. Yet, this does not seem to be the

case. It would seem, somehow, that the cart has gotten before the horse.

This points up a suggested course of action:

- (1) Recognize ASASU for what it is — government or bargaining agent.
- (2) Identify the functions and operation accordingly.
- (3) Reschedule and reorganize elections so that those elected represent the current electorate.
- (4) Individually, personally and positively support those representatives.
- (5) Keep them constantly aware of matters of popular concern.

With such a program, the apathy and unconcern reported by a recent ASASU survey can be eliminated.

state press

editorial forum

Letters to the Editor

Gammage 11

Editor:

We must really direct this letter to Sandy Schaal and the Gammage eleven (Letters Mar. 11).

These perceptive ladies are correct when they use the word absurd to describe their situation with regard to the use of parking lots.

The fact that a parking lot exists across from Gammage Hall and cannot be used by the residents most of the time is another example of normal administrative policy.

After all, who are the residents of Gammage, or any residents for that matter? Residents don't have rights, residents exist only

through the graces of Matthews Center.

Absurd only begins to describe the medieval (sic) existence we all experience.

The RHA is powerless to move in any direction to help the residents. The Student Affairs Office, instead of offering help, issues threats to the students. In fact, there is no organization functioning which can protect the residents, or any students.

Yes, absurdities do exist, and many could probably be found within the walls of Matthews Center itself.

James Bentley
Jess Gibson
Francis G. Domiano

Outdated

Dear sir:

I note from your article on the new Miss Maricopa County that she is a lass who can dig a conservative climate. Hoorah.

She is quoted, however, as passing on the judicial system as being "outdated and ineffective." Wow.

Isn't this a case of the pot calling the kettle a honky?

What is more outdated and ineffective than a beauty contest, and one for the grand championship of Maricopa County in particular?

I suggest that the beautiful young lady redirect her energies toward something more socially significant than beauty contests. . . like hog raising.

That way her opinions on our judicial system might carry substantially more weight.

Timothy H. Barnes
College of Law

Building's rooms are often vacant

By RAY WONG

Besides having the most luxurious rooms at the University, the Memorial Union also has the most rooms available for student use.

Counting rooms on the third floor and the mezzanine leading to the third floor, there are more than 25 rooms available for studying in the union.

A week's survey of third-floor rooms showed that at any one time there were only four or five rooms being used. This usage was in rooms that were the size of moderate size classrooms. Also the survey indicated there were only one or two persons using the rooms at any one time.

Why then is the building not attracting the crowds anticipated by Union officials? One answer is always available—the students don't know about it.

The most logical answer, however, is that students are using the library more. Library officials indicated that generally there is an increase in the usage of the library for studying.

I don't have an answer for the question, but surely the problem of "wasted space" may be remedied when student organizations are allowed more space at the Union.

The Union recently allowed eight organizations space at the Union. These organizations will be allowed one desk in room 264 which contains seven desks and chairs.

Added to the single desk and chair for each organization will also be \$10 rental fee.

Union officials have indicated that the use of the rooms is booked solid. However, the Union has 20 rooms available that could be used to help out some of the other 300 organizations on the University.

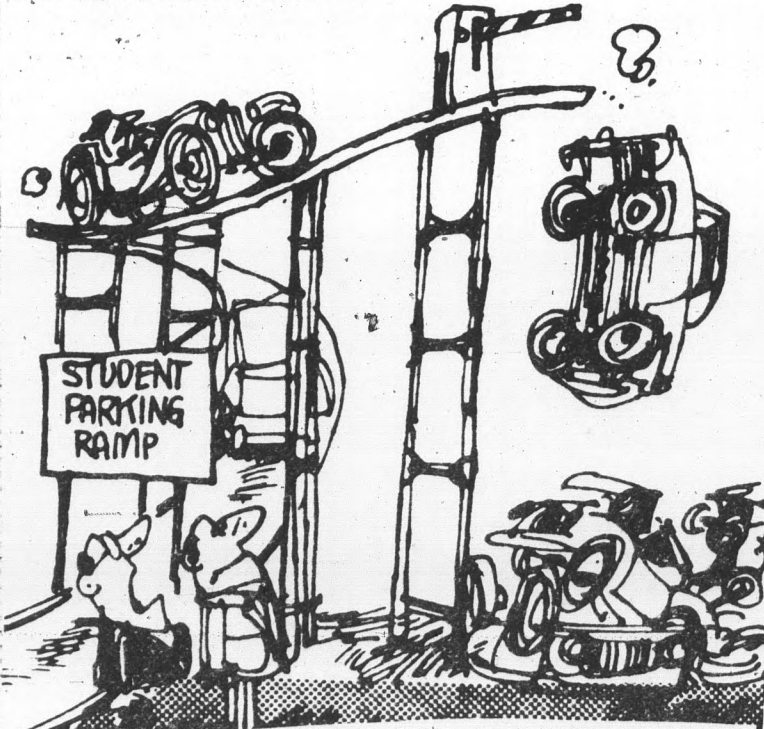
If MU officials reject the possibility of use by various organizations, it will be because there are 300 organizations. Officials feel that there needs to be a criteria for those who use the union and feel that only those groups that will be of help to the "prestige" of a union will be accepted.

The MU indicated that if there was room in the Union as things are set up now, it won't meet present needs without taking away from others. By denying organizations, the union would be taking away from others and leaving space available for no one to use.

If the Union can not figure what to do with all the room it has available, perhaps they "could" consider setting up a system where organizations can use the rooms on a permanent basis of sharing rather than restricting.

There was a one-time plan for having lockers in the building for use by off-campus students.

Since the new MU has opened, I'll wager there are rooms in that building that even dust has never stirred.



Letters Policy

The State Press will continue its policy of printing as many letters to the editor as space requirements permit. A few basic requirements must be noted, however.

Letters should be no longer than 300 words in length. They must be double — or triple — spaced, and should contain neither libelous nor obscene material.

Letters must be signed. Names will be withheld on request. Correspondents should also include their addresses and phone numbers.

State Press

Editor
David Jensen
Managing Editor
Jay Hovdey
City Editor
Nan Sexton

News Editor
Ray Wong

Chief Photographer
Jeannie Ledbetter

Weekend Editor
Rick Snedeker

Asst. City Editor
John Banaszewski

Sports Editor
Bill Butler

Copy Editors
Peggy Gregory
Cherie Taylor
Wendell Wilson
Terri Crawford

Staff Reporters
Diane McIntyre
Tom Journey
Bill Norman
Randy D. Bailey

Asst. Weekend Editor
Cricket Stilwell

Ad Manager
Hal Hubele
Faculty Advisor
Prof. Don Ferrell

STATE PRESS is published by Arizona State University as the official campus newspaper every Tuesday through Friday during the school year, except holidays and examination periods, and is entered as second class matter at Tempe, Arizona, 85281.

'Spring round-up'

Wives slate mall activity

"Spring Round-Up," a fiesta sponsored by the Faculty Wives Club, will be presented from 9:30 a.m. to 4:30 p.m. Saturday on the Mall. Benefits from the fiesta will go to the Student Loan Fund.

Mrs. Jack Armstrong, Faculty Wives Club president, said activities will revolve around the fountain.

Included will be great movies of the past, including "The Great Train Robbery;" and a puppet show produced by Alan Grier, faculty associate in speech and drama.

Souvenir footballs, autographed by Coach Frank Kush, J. D. Hill, Joe Spagnola and others, will be on sale. Artists will demonstrate batik, silk screening, acrylics, ceramics and other crafts, Mrs. Armstrong said.

There will be a Potpourri Shop, a paper flower sale, and the faculty wives art show. Mrs. Armstrong said a student favorite is the Used Book Corral in which hundreds of books will be on sale at bargain prices. Treats made by the wives will be on sale in the Ranch Kitchen, as will the Faculty Wives Cookbook.

Mrs. Armstrong said the wives are also conducting bake sales in front of Broadway Plaza and Valley Fair shopping centers. Proceeds also go to the Student Loan Fund.

The wives have been working on their crafts, collecting items for the shops and planning the fiesta the whole year, she said.

More about

Mummert talk

(Continued from page-1)
Although confiscated film reels were returned to the theater owner, the film was later ruled obscene by a Superior Court judge and banned in the state.

Mummert went on to say that four areas that concern him in relation to "getting the job done" are the U.S. Supreme Court, the home, "swift and sure justice" and rehabilitation.

"The home takes care of its obligations less than the

Supreme Court takes care of its," he said. We end up babysitting and punishing as a result."

"And swift and sure justice" means "that whether we free or convict, we should do it promptly," the sheriff said.

Rehabilitation "is a common-sense answer to our problem," he said. "Arizona is probably as sorry in this as any state. We hardly have room to sleep every prisoner, let alone train them."

More about

Agriculture rift

(Continued from Page 2)
salaries might be on an academic year" rather than a 12-month basis in next year's contracts. Only one of 17 faculty members in agriculture is currently on academic year contracts.

Other conclusions reached by the five-man committee were that the director of the division has "clearly lost the confidence of the faculty," and that the dean "has not always been tactful in his relations with the faculty."

The committee also found that the faculty of agriculture "has not been monitoring its operations" and therefore costs have mounted; student enrollment has remained static; and objectives, job descriptions and communications have not been developed "to desirable levels."

The committee recommended the director be reassigned no later than the end of this fiscal year, and a search committee be appointed to seek a new director.

The committee also recommended the dean and faculty of agriculture should resolve to work more closely in solving problems.

Next month's agenda will in-

clude a motion by Dr. Gordon Cluff, associate professor of speech and drama, to withhold approval on the committee's conclusion regarding the division of agriculture's removal from the College of Engineering.

Aluminum cans will cut price to Legend City

To promote re-cycling of aluminum cans, Legend City is cutting 50 cents off admission prices for persons bringing a dozen aluminum cans this Saturday.

The Ecology Day project is being sponsored by the Tree Museum, a University ecology club, and the discount admission will be from noon till 10 p.m.

Rick Brown, a member of the Tree Museum, said the person bringing the most cans will win a 10-speed bicycle, and the high school bringing the most cans will receive a \$100 grant from the Tree Museum for an ecological project.

**TONITE!!!!
KRUX RADIO**

PROUDLY PRESENTS

BOBBY STEVENS

AND THE

CHECKMATES

TWO BIG SHOWS

DOORS OPEN 7 P.M.

AT

MR. LUCKYS

3660 GRAND AVE.

\$3.00 ADM.

Do Your Own Thing Now!

We're seeking graduates with majors in: Business Administration / Economics / Psychology / Mathematics / Liberal Arts / Marketing / Architectural Design / Mechanical Engineering / Personnel Administration / Accounting / Computer Sciences / Food and Hotel Management / Traffic and Transportation Management / Management Engineering / and Industrial Engineering.
We want idea-people to turn us on in the following fields:

- RETAILING
- BUYING
- ACCOUNTING
- AUDITING
- ARCHITECTURE
- MECHANICAL ENGINEERING
- MERCHANDISING
- PERSONNEL
- FOOD MANAGEMENT
- VENDING
- SYSTEMS ANALYSIS
- COMPUTER PROGRAMMING
- PERSONAL SERVICES
- MANAGEMENT ENGINEERING
- WAREHOUSING & TRANSPORTATION

Ideas and people make our business. We're in the retailing, food and personal services business. And YOUR IDEAS can help us do a better job.

Here's where YOU come in. We're changing. And growing. And we're looking for bright young people who can help us make our changes work. YOU are one of the new-idea people we're looking for.

HERE'S OUR OFFER: You can start out in management right now. You make good money. You put your own ideas to work and evaluate the results. You move up fast. You work almost anywhere in the world, with opportunity to travel. You're a big part of our operation. And you accomplish whatever your talents lead you to work toward. That's it.

YOU have the opportunity. We have openings. Let's get together and see if our ideas are in the same bag.

Our representatives will be on campus soon. See your placement director and sign up for an interview NOW!

**WE'LL BE INTERVIEWING:
MARCH 24, 1971**

If you can't make our scheduled interview date, don't sweat it. Write us direct and find out if our ideas are in the same bag. Write to:

**COLLEGE RELATIONS MANAGER
DEPT. NP**

ARMY & AIR FORCE EXCHANGE SERVICE

THE PX-BX SYSTEM

3911 WALTON WALKER BLVD. DALLAS, TEXAS 75222
Equal Opportunity Employer

the hot corner
**Spagnola, Artozqui
 show hidden talents**
with Bill Butler

Though Joe Spagnola and Mike Artozqui have ended their ASU football days, they're still around, now playing softball for the Library Tavern.

Spagnola hit .600 Saturday afternoon at Clark Park to lead the boys from 8th Street to a 17-12 victory over the Hut. The future Pittsburg passer hit two home runs and a triple.

Those home runs sounded really impressive until Artozqui cleared things up for me.

"Spag just blooped two balls up in the air and the wind took them for home runs," he commented knowingly.

Decked out in his floppy Michael J. Pollard hat, Artozqui was not to be outdone by Spagnola's three for five.

Big Mike not only pitched, but went three out of four for .750. "And all that with this cast on my arm," he boasted.

"Their power won the game for them said Hut-man Steve Bay of Sigma Phi Epsilon. "They either hit home runs or they were out of it."

Former Devil footballer R. C. Carothers, here in the off season from Winnipeg of the Canadian league collected a circuit clout as did bouncers Bob Walter and Dave Keaggy.

Before I get bounced, I'd better make that two for Keaggy.

In another ballpark, I've gotten a lot of comments recently both in the mail and in person about some things I've written. Whenever possible, I've published them. In fact so far, I've printed everything sent to me.

The sports desk is always open to your letters so long as they won't get us sued or thrown in the clink. Just try to keep them short, in English, in good taste and double spaced, typewritten.

If you don't own a typewriter, I'll accept stuff neatly printed in green crayon on old grocery bags.

But remember, green crayon only.

Yesterday while thumbing through stacks of bomb threats, extortion notes, nasty letters from the federal income tax boys and ten thousand press releases that make a sports editor's day worthwhile, I came across the following note from the Concern Box:

Is Bill Butler for real?

What happened to Bob Wischnia and Barney Hutchinson?
 (signed) T.V.

Well, T.V., I hate to disappoint you, but Bill Butler is real and still typing away.

As for Barney and Bob, I'm sorry to say, T.V., that they were merely figments of your imagination. Pure protoplasm.

By the way, T.V., are you sure you're for real?

A note to baseball fans: star sportswriter Ken Cerino will be roaming around the Sun Devil stands with a tape recorder this week doing a story on "the art of watching baseball." So all you artistic fans start polishing up your Bronx cheers for today's final tilt with Colorado State and tomorrow's opener in the series with Loyola of New Orleans.

Cole sets record

When Jon Cole set out to prove something, he does it in style.

In addition to winning the AAU sanction meet last weekend at Tolleson, Cole added 50 pounds to his old power lift world record to set a new one at 2,140 pounds.

In resetting the power lift

record, Cole bettered two other world marks. He lifted 800 pounds in the squat, 815 pounds dead lift but only tied his old record of 525 on the bench press.

Cole originally had set out to surpass the bench press mark by five pounds. He did

On 13 hits

Devils bury CSU, 14-1

Arizona State rolled to an easy 14-1 victory over Colorado State yesterday at Sun Devil field.

It was only the second game of the year for CSU which has not yet matured into cohesive team.

ASU took advantage of this situation to pound out 13 safeties. It was the third consecutive game the Sun Devils scored more than ten runs and ten hits.

Kent Jacobson led the attack with three hits, one a double,

good for three RBIs.

Roger Schmuck continued his torrid hitting by going two for three and driving in two runs.

Al Bannister and Ken Reed also collected two hits for the Devils.

Tom Welton capped off the day with a pinch-hit two-run shot deep over the right field wall. He also set down the Rams in the ninth to preserve Ken Hansen's win.

Ken Hansen went 5 1-3 innings for the victory. He left after being

struck on his pitching hand by a ground ball.

John Adams came in and allowed only one hit in the 2-2-3 innings he pitched. He struck out five and walked none.

The victory raises ASU's record to 13-3 for the year.

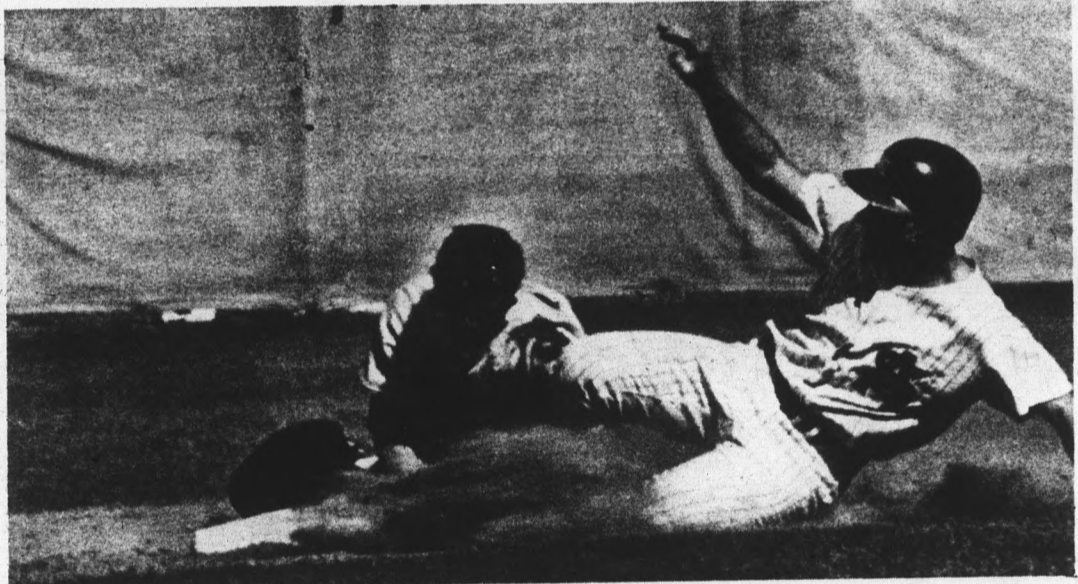
Craig Swan will be on the mound today as the Devils wind up their three game series with CSU at Sun Devil field. Game time is 3 o'clock.



**SLIDES IN,
 SLIDES OUT**

Above: Roger Schmuck slides home for run six on Jim Foster's sacrifice fly in the fifth inning of Monday's win over CSU. Below: In his second attempt to steal second, Rick Valley is thrown out in the third, also on Monday.

Photos by Ed Lallo



**OFF THE SCREEN
 THE PICTURE FLOATS OVER YOUR HEAD!**

STARRING
**MOD SQUAD'S
 MICHAEL
 COLE**

DEBORAH
 WALLEY
 JOHNNY
 DESMOND

Chris-Town Theater

OPEN
 WEEKDAYS
 6:45 P.M.
 SAT. & SUN.
 12:45 P.M.

THE NEW, SENSATIONAL
 EXTRA DIMENSION TO
 MOTION PICTURE
 ENTERTAINMENT SURPASSES
 ANYTHING EVER SEEN!

3D 3D 3D 3D

ARCH OBOLER'S
"THE BUBBLE"
 IN SPACEVISION COLOR

Call
 967-1604

Pizza inn

955 E. University

Orders To
 Take Out

Buffet

Mon - thru - Fri.
 All you can eat
 Pizza & Salad

\$1 19

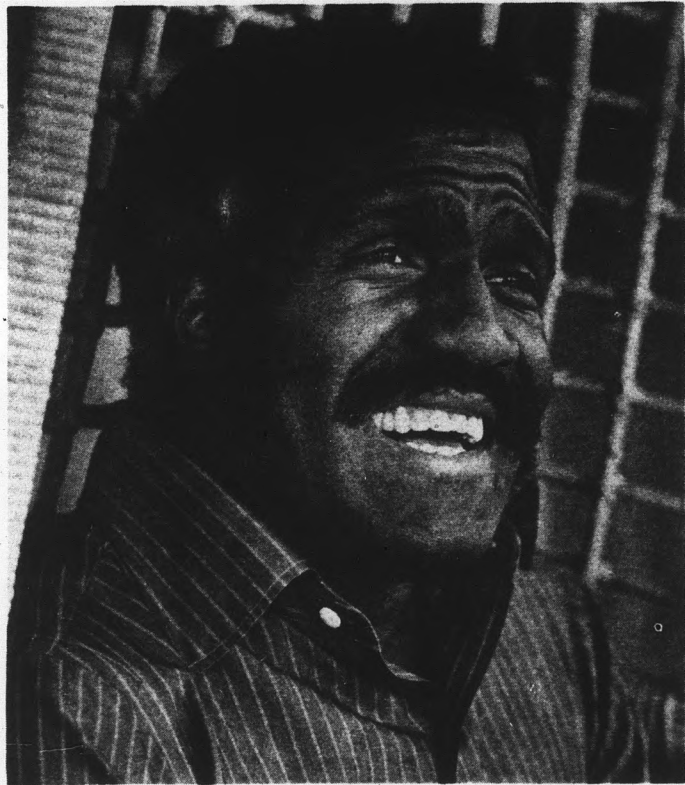
Draft
 Beer



75¢ — Special — **75¢**
 Off Any Large Pizza Of Your Choice Off

(Limit: 1 Pizza per coupon)
 Good Mon. thru Fri.

Rock music to be played at Gammage



Bobby Stevens

The Association, and Bobby Stevens and the Checkmates will be presented at 8:30 p.m. April 1 at Gammage Auditorium by the Associated Students. Besides their Las Vegas appearances, the Checkmates have made numerous television performances. They shook Gammage in 1969 with one of the most exciting and successful shows ever presented, according to a review.

Singer Bobby Stevens organized the group in 1968 while attending high school in Ft. Wayne, Ind. Last year the original Checkmates Ltd. disbanded, leaving only Stevens and drummer Marvin "Sweet Louie" Smith from the old group.

The Association, seven-member "softer-singing" group, will also appear to balance out Steven's style of hard soul.

The Association, whose newest addition joined the group in 1967, made their recording debut in 1966 with "Cherish."

The group is a mixture of many styles and talents. Members came from such groups as the New Christy Minstrels, the Comic Brotherhood and Frank Zappa's band.

Tickets are available for \$3, \$4 and \$5 at the Gammage box office, MU 252 and on the Mall.



The Association

SPORTS
Call 3656

NEWS
Call 3656

ASSOCIATED STUDENTS PRESENTS

the association



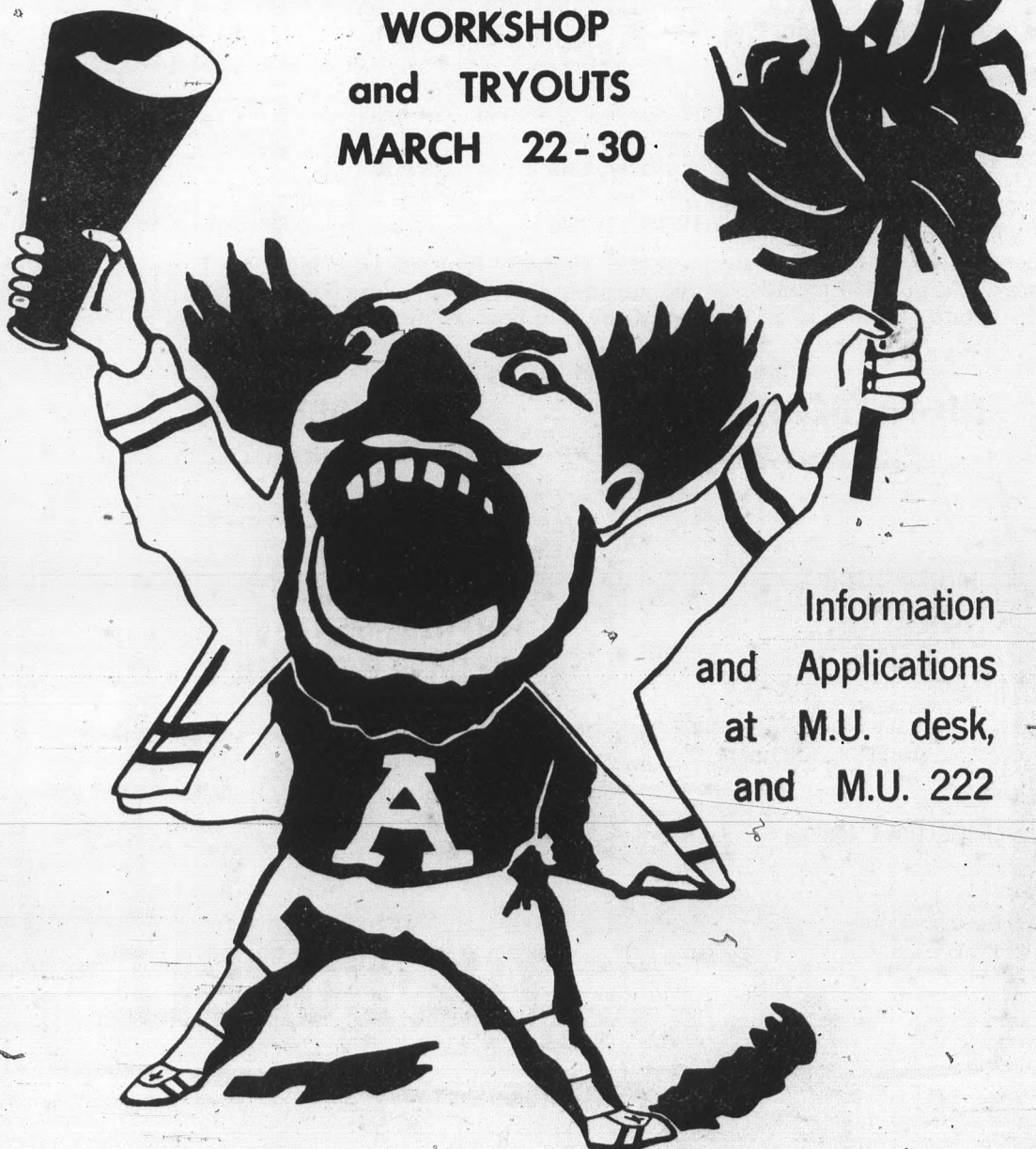
AND
Bobby Stevens and the Checkmates

TICKETS \$3, \$4, \$5
GAMMAGE

TICKETS AVAILABLE ... GAMMAGE BOX OFFICE, MU 252, AND ON THE MALL

GET IT ON FOR SPIRIT!

CHEER & POM PON
WORKSHOP
and TRYOUTS
MARCH 22-30



Information
and Applications
at M.U. desk,
and M.U. 222