

# state press



ARIZONA STATE UNIVERSITY

Vol. 53, No. 41

Thursday, December 3, 1970

Tempe, Arizona

## Union struggle

# Boycott is urged by picket teams

By BILL WILLIAMS

Picket teams from the Friends of the Farm Workers are urging shoppers at Valley supermarkets not to buy non-union picked lettuce. University student Steve Campbell, spokesman for the Friends of the Farm Workers, said a major problem in unionizing lettuce pickers in Arizona is winning the support of the consumer.

Campbell said the consumer boycott of non-union grapes was the deciding factor in the successful unionization struggle of grape pickers. It forced growers to recognize the Cesar Chavez-led United Farm Workers Organizing Committee (UFWOC) as their official bargaining agent.

Likewise, Campbell added, consumer protest is vital in forcing lettuce growers to recognize UFWOC, so lettuce pickers can "find a decent way of life."

Campbell said, "Lettuce pickers are caught in a vicious circle."

Children of lettuce pickers are often forced to go to work in the fields to supplement family incomes, he explained, and miss out on the education necessary to obtain better jobs.

The Friends of the Farm Workers are also raising funds to give to the UFWOC unit in Tolleson, which is headed by Gus Gutierrez, Campbell said.

The Friends' only expense is a small one, the cost of the paper to print the leaflets they distribute at grocery stores, he said.

All other funds go to the UFWOC strike fund and to buy food and medical supplies for the farm workers, Campbell said.

Having worked briefly in the lettuce fields, Campbell said he knows picking lettuce is back-breaking work.

There is a 50 per cent disability rate among lettuce pickers, who may expect a maximum work span of seven years, he said.

Campbell attributed those figures to lack of medical attention for lettuce pickers, who generally experience back trouble after working in the fields for a time, he said.

Campbell said there is a moral issue inherent in the farm workers' struggle to unionize. He said there exists a de facto abuse of the farm workers' right to determine their life style.

Campbell emphasized that the pickets are not urging consumers not to shop at a particular store, but to refuse to buy lettuce picked by non-union labor and to explain why to the store manager.

Consumers should ask to see the boxes in which the lettuce is shipped to the store, Campbell said. If the lettuce is union-picked, he said, the box will bear an eagle emblem with the words United Farm Workers Organizing Committee or the abbreviation UFWOC.

Campbell said the Friends of the Farm Workers welcome inquiries and help from the people in the community. He said interested people may contact Bob Morris, at 967-6888.



## ATLANTA BOUND

"Peaches'n Cream," the committee in charge of selling the 10,000 seats reserved for Arizona in the Peach Bowl, is now employing several techniques to make sure all seats are filled the day of the game. Tickets are now available at the Ticket Office.

Photo by Ray Wong

# Peach Bowl: Group sells game tickets

By GRETTA McDANIEL

"Peaches 'n Cream" is the name affectionately given to the committee which will take on "Operation Peach" to sell 10,000 tickets for the Peach Bowl game.

This committee will assure the Sun Devils of a booster section of partisan fans, Ted C. Bredehoff, assistant to the athletic director, said yesterday.

The committee is composed of businessmen, service clubs and University officials who met last Friday to organize into sub-committees.

The Phoenix Toastmasters are the Speakers Bureau for the committee. They will approach service clubs in the Phoenix and surrounding area, accompanied by Angel Flight, cheerleaders and pom-pom girls to encourage the clubs to purchase tickets, Bredehoff said.

While the toastmasters give short presentations, the coeds will distribute ticket applications.

The appeal for ticket sales "is built around the notion that by buying tickets you will uphold the reputation of the University, Arizona and the Southwest," and "if you can't be there in person, the ticket you buy will be used to send disadvantaged children and servicemen from the Atlanta area to the game," Bredehoff said.

Bredehoff added that selling all the tickets would show appreciation to the Peach Bowl Committee for selecting the Sun

Devils as the first team in the Bowl game.

Another appeal for ticket sales is that the Peach Bowl is a charity game with proceeds going to the Georgia Lighthouse Foundation, Inc., for eye research and sight preservation, he said.

Bredehoff said it is to be considered that enthusiastic support by Arizona could indirectly influence the other Bowl selection committees for future consideration of the Sun Devils.

The University Alumni Associations of the University and NAU have offered their time and energies to assist in selling the 10,000 seats.

The University association is promoting charter flights to the game, and according to Donald V. Dotts, executive director of the Alumni Association, two flights have already been filled. He said there are 15 planes available which can accommodate 2,000 passengers.

Allan Frazier, assistant dean, is in charge of promoting a program of student participation. Students will be able to go to Atlanta by bus if they can't afford to fly.

Bredehoff said the Diamond's stores are featuring "Peach Pits" — official Peach Bowl information booths.

The deadline for selling tickets is Dec. 15, and if by that time they have not all been sold, the University will be responsible for putting up the money to cover the unsold tickets, Troy F. Crowder,

assistant to the president and director of University relations, said.

Tickets may be picked up personally at the south end of the Sun Devil stadium.

## Justices speak at conference

The Arizona State Judiciary Conference, to be conducted in Armstrong Hall today and Friday, will be addressed by two of Arizona's Supreme Court Justices.

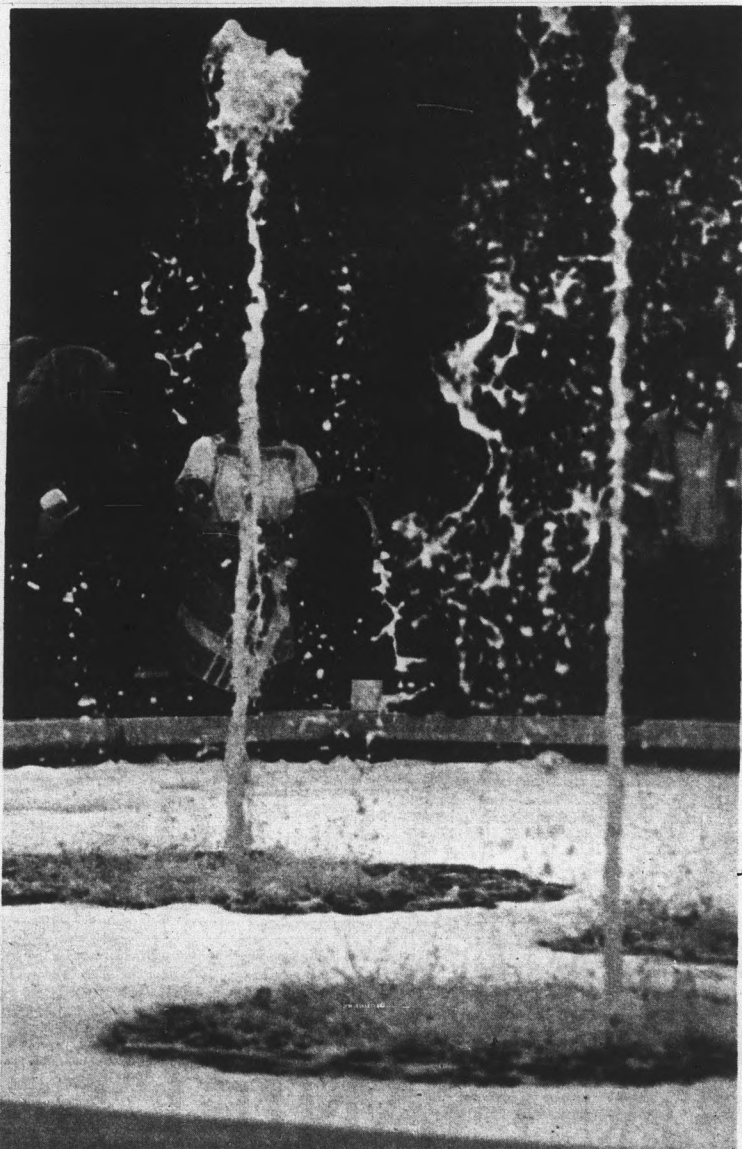
Justice Jack D. H. Hayes will discuss the topic of bail at 2 p.m. tomorrow, and Justice Lorna Lockwood will speak at 5 p.m. Friday.

Marvin Linner, administrative director of the courts, said that lack of room necessitated closing the conference to persons outside the judiciary.

"Members of the press will be able to cover the conferences, though," Linner said.

Included on today's agenda are Justice Robert Finley and Howard Cleavinger at 2 p.m.; Dr. A. LaMon Smith, director of the Arizona State Department of Corrections, at 9:40 a.m.; and a meeting of the Arizona Judges Association at 4:15 p.m.

J. Edward Murray, managing editor of the Arizona Republic, will address a banquet for conference delegates tonight, 7:30 p.m., at the Tempe Holiday Inn.



## BUBBLE BATH

Some people try just too hard for a white Christmas. Maybe the frothy white soap suds look pretty in the fountain for a while, but eventually someone has to clean up the mess.

# Learning experiment stresses participation

By BILL KLEIN

A dull, drab classroom became something conducive to learning Wednesday when education students created an environmental learning situation.

The students participated in several "sense-stimulating experiences" involving texture, hearing, perspective, color relationships, mod collages and group painting.

Under the guidance of Dr. Elizabeth Manera and Mike Wolfe, who teach the SE 311 class, students created an atmosphere to project form and design as a feeling to stimulate creativity.

The theory of this type of learning situation is to "get the student involved in the environment," said Larry Cuzzocrea, one of the students participating in the project.

"I think a person will get more out of a situation by living in it rather than just hearing about it from a professor standing in front of a class lecturing," Cuzzocrea said.

"By participating, creating and living in the environment," Cuzzocrea said, "you will learn."

"The idea was to build a curriculum in our subject area, which is art, then present it to the rest of the class in a way that will give them a flavor of what it would be like to be a student in one of our classes," he said.

"The environment was designed to teach the average student of junior or senior college level something about art in general."

One interesting aspect of this type of classroom setting is the environment can be changed every week to meet the moods and feelings of the student.

Living in a creative classroom will stimulate learning because, instead of just hearing about it,

one lives in the environment he has helped to create.

There are problems in initiating a classroom atmosphere such as this. One student commented, "There are so many forms people won't look at or react to simply because society says it is not acceptable."

"The idea of the environmental learning in the classroom is to learn to relate to things around you," Cuzzocrea said.

"For example, if you want a class on perspective, you would have to know how it works," Cuzzocrea said. One does this by drawing, building and literally living in the different perspectives found in the environment surrounding us.

Other students who participated in the creation of the environmental learning classroom were Sondra Moore, Stephanie Martori, John Skurja and Ralph Martini.

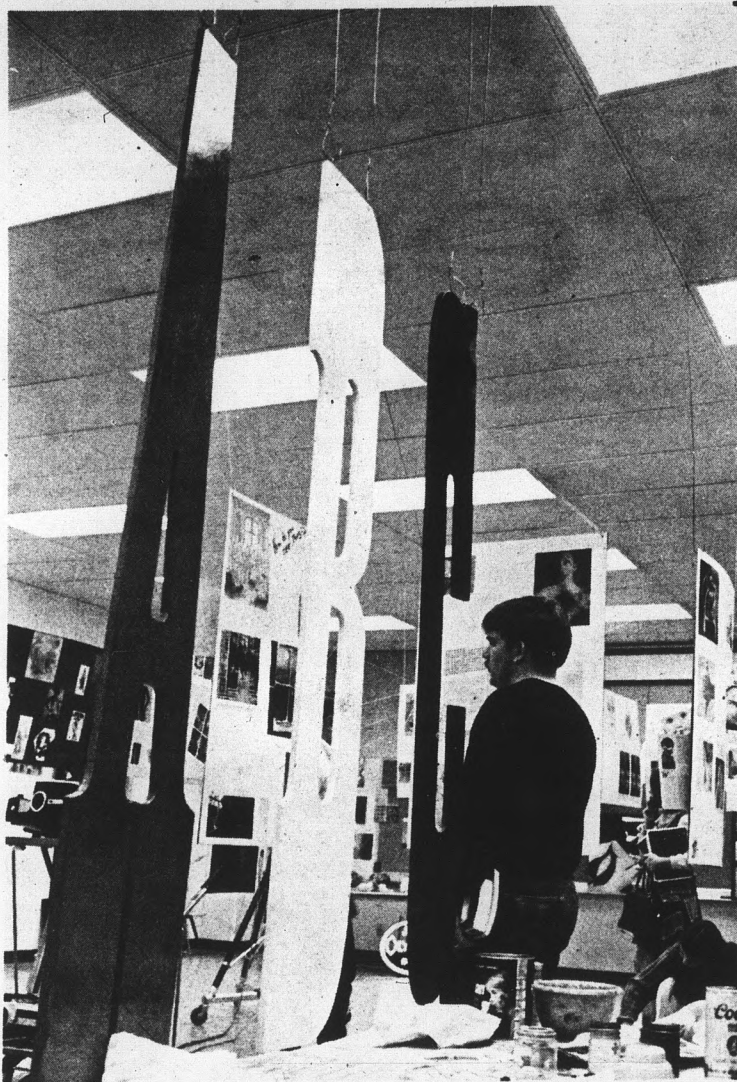
## AWS asks aid for committee

The Associated Women Students are looking for a woman student to head their newly-formed Community Relations Committee.

The committee will help in recruiting students to the University from surrounding high schools, said Liz Sundquist, AWS secretary.

The committee will also recruit scholarship candidates and solicit funds from community women's groups, as well as providing speakers for these groups concerning issues which are pertinent to the University and the community, Miss Sundquist said.

Those interested in participating or heading this committee should contact the AWS office at 965-3438.



TEXTURE, FORM

Students examine and participate in a classroom environmental learning situation.

Photo by Bill Klein

## Percussionists play unique card game in Child's 'Take 5'

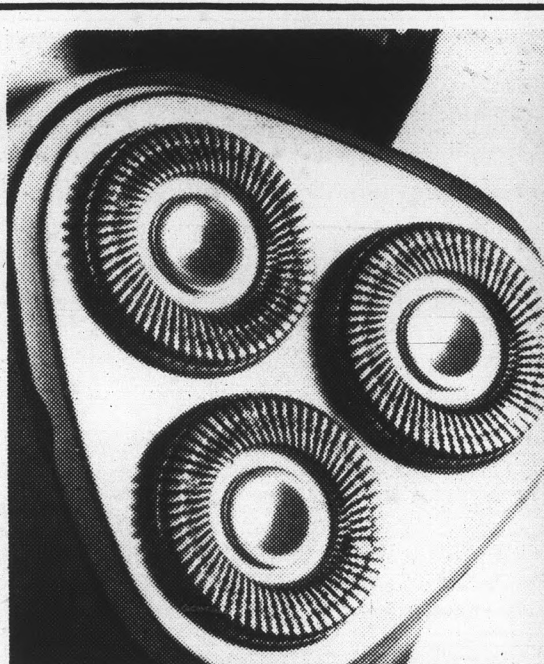
A unique card game will be played by the Percussion Ensemble, directed by Mervin Britton, associate professor of music, at 8:30 p.m. Sunday and Monday in Goodwin Stadium West-102.

A deck of cards will be used by the group in presenting Barney Child's "Take 5," an example of chance music. The cards, each with instructions and notes involving range, tempo and color, are dealt to the players. The players may follow the directions on the card or pass.

Since the performance depends upon the players' discretion, and unlimited combinations are possible, "Take 5" sounds differently at each playing.

The ensemble will also perform "Sketch for Percussion" by Ronald Lo Presti, music faculty member, "The Aztec Gods" by Gardner Read, "Percussion Music" by Michael Colgrass, and "Divertimento for Piano and Percussion" by Nicolas Flagello.

Ensemble members are John Flores, Don Giannatti, David Long, Steve Matthews, Milton Miller, Russell Battelene, Jonathon Fincher, Melanie Katich, Frederick Wagner, all percussionists and Lorelle Nelson, pianist.



### This is what we have against blades.

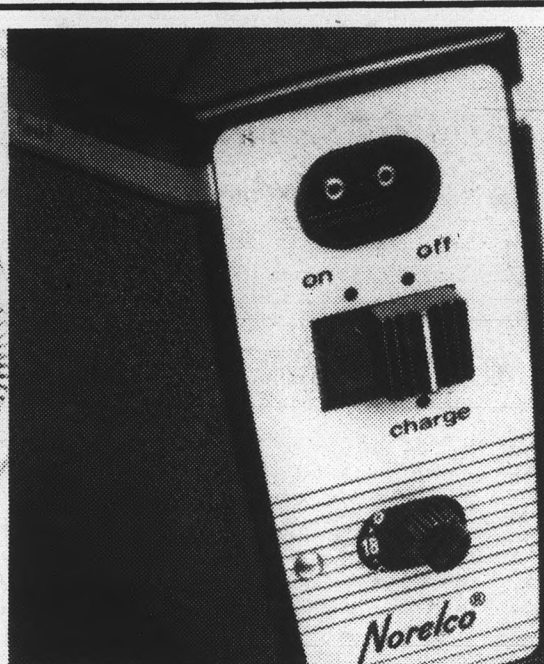
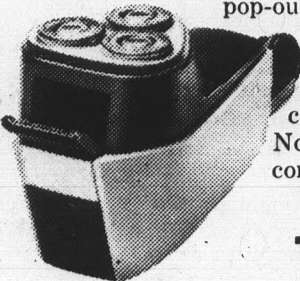
A shaver that shaves as close or closer than the new platinum and chromium blades.

99 men tested our Norelco Tripleheader 35T against these new blades. Each shaved one side of his face with a blade and the other with the Tripleheader. Our three floating heads followed the curves of their faces. And our eighteen rotary blades shaved in every direction at once (that's the way beards grow).

Blades can't do all this. They're straight. And that's why seven out of ten men said the Tripleheader shaved them as close or closer than the new blades.

What's more, the Tripleheader has a pop-out trimmer. So you can get your sideburns straight and even for a change.

Now what blade can compete with that?



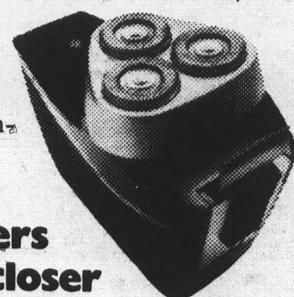
### This is what we have against other rechargeables.

A rechargeable that gives up to twice as many shaves per charge as any other rechargeable.

Our Rechargeable Tripleheader 45CT has all the features of our regular Tripleheader. It has three Microgroove™ floating heads. And eighteen rotary blades that continuously sharpen themselves to cut down on bothersome blade replacement. And a hidden pop-up trimmer for neat sideburns and mustaches.

It also has some special features all its own. A Shave Counter that automatically counts your shaves and tells you when to recharge. A Charge Indicator that lights up when it's recharging. And, of course, the Rechargeable can shave with or without a cord.

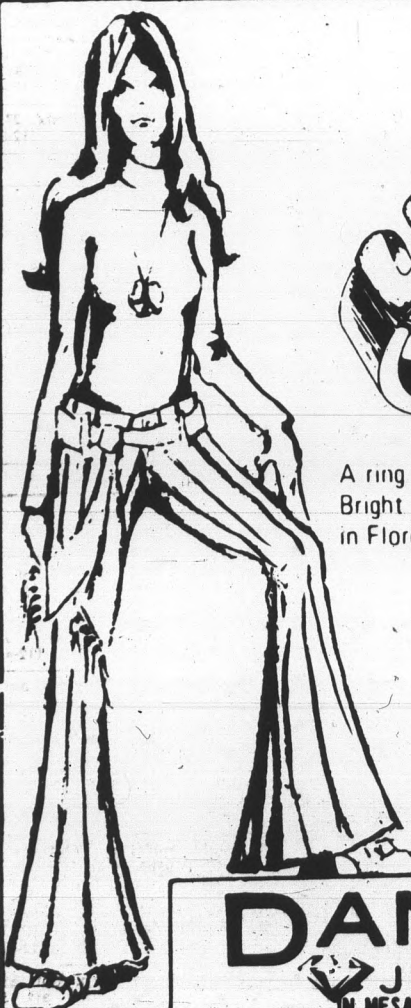
Now what rechargeable can compete with that?



### The Norelco Tripleheaders You can't get any closer

Norelco © 1970 North American Philips Corporation, 100 East 42nd Street, New York, N. Y. 10017.

**DANIEL'S**  
JEWELERS




A ring that says it for you, constantly. Bright 10-karat gold band with LOVE in Florentine finish.

**\$ 9<sup>95</sup>**

We Think Young! Ask about our YOUNG AMERICA CREDIT!

**DANIEL'S**  
JEWELERS  
IN MESA SHOP AT DANIEL'S  
TRI-CITY MALL  
130 W. MAIN STREET  
STORES IN PHOENIX, YUMA and TUCSON

## Phi Gamma Delta's Tempe-Tucson run will aid hemophiliacs

Gov. Jack Williams has declared Friday "Phi Gamma Delta of Arizona State University Day, 1970," for the group's efforts to raise \$7,000 to assist local hemophilia victims.

"This is a very worthwhile and generous effort on the part of the Phi Gamma Delta Fraternity and I do urge all citizens of Arizona to cooperate and support the good objectives of this observance," Governor Williams said.

The fraternity project is a cross-country run from Tempe to Tucson which begins Friday night and ends at half time at the ASU-Uof A football game a Ralph Morgan of Phi Gamma Delta.

Approximately 65 pledges and active members of the fraternity will run, in a relay of one-mile laps, from Sun Devil Stadium to Varsity Stadium in Tucson, Morgan said.

Fraternity pledges are now asking individuals, organizations, businesses and industrial firms to contribute \$70 for each mile lap of the jaunt, Morgan added. The money will be donated to the Greater Phoenix Chapter of the Hemophilia Foundation.



**GETTING READY**

Royce Ring, Ralph Morgan and Tim Hammontree are getting in shape for the Phi Gamma Delta relay run to Tucson. Sponsors will donate \$70 per mile to the Hemophilia Foundation.

Photo by Ray Wong.

## Program to discuss Star of Bethlehem

The University Planetarium will present "The Christmas Star" at 7 p.m. Dec. 14-18 in PSB 350.

The program deals with "the scientific and mythological belief about what the Star of Bethlehem was," Victor Stryker, assistant planetarium lecturer said.

All those interested in attending the free program are advised to call early for reservations at 965-3561.

**NEWS — 3656**

**VISTA**  
NEEDS  
LAWYERS  
TOO!

For Information and Applications...  
See Recruiter at  
LAW SCHOOL

## Sophomores initiated into Phi Eta Sigma

Phi Eta Sigma, an honorary fraternity, will initiate 23 University sophomores into its organization Sunday at the home of their faculty sponsor, Dr. John Krenkel.

Membership in the fraternity requires at least a 3.5 scholastic average during the freshman year.

The new members include Harald Arndt, Timothy Evens, Steven Fielder, Michael Grant, Thomas Gray, James Hazar, William Kivett, Robert Kraft, Steven Lambert, Howard Meyers and Harmon Sieff.

Other initiates are George Golna, Jr., Jack Van Natter, Jeffrey O'Connor, Frank Schauer, Mark Burns, John O'Steen, Donald Mar, Daniel Cornell, John Henson, Fred Lee, James Masingill and William Todsden.

**Let Us Get Your Car Ready For WINTER. . . We Service All Makes**

**BERGE SERVICE CENTER**

16 E. University Dr. TEMPE

967-2063

## CLASSIFIED ADS

Classified advertising must be paid for in advance either in person or by mail to the State Press, ASB 302 (Old Business Administration) two days in advance of publication. Office hours are 8:30 a.m. to 4:30 p.m. Phone 965-3657. Rate: \$1 for three lines and 30c for each additional line. 50 per cent discount for consecutive additional days. There will be no refunds for advertisements placed with the State Press.

### ● AUTOMOBILES

'69 Triumph 250, \$475. 906 W. University, No. 12. After 5:30 p.m. (12-4)

'64 Station wagon, white, stick shift, over-drive, refrig., heater, clean, good tires and battery. 1416 West 7th St., Tempe. (12-4)

1969 Mach 1 Mustang. Excellent condition. Special paint. AM-FM stereo, air. 29,000 miles. \$2,600. 264-5503, 949-0901, 947-3015. (12-4)

'58 Ford, 4 dr. htdp., full power, A/C orig. mfg. & owner avlbl. Exc. rbr. Call 277-1370 aft. 6 p.m. (12-8)  
VW Bus, rebuilt engine, new clutch, battery etc., interior redone, \$600 or best offer, 967-8298. (12-4)

'58 MGA Roadster, wire wheels, needs repairs, \$150. Also '59 Plymouth Wagon, good transportation, \$150. Call 934-6772. (12-4)

66 TR-4, mint cond., new tires, top, seats. Will trade for Van or VW bus. 948-6833. (12-4)

'67 Fairlane, V-8, automatic, radio, air. \$1000. 965-4060. Call evenings after 5 p.m. (12-4)

'68 Cougar, automatic, vinyl top, air, pwr. bks. & str., radio. \$2,500 or best. 276-7122 evenings. (12-8)

'67 Corvette, air, low mileage. New tires, excellent condition. 967-6290. (12-4)

Porsche '67 912 5-speed hot blue. Call after 6. 997-1269. (12-4)

Chevelle SS '69 Stick. Call after 6 p.m. 997-1269. (12-4)

Must sell '67 Austin Healy 3000. Phone 956-6963. (12-4)

'65 VW sunroof bus, fair condition, new engine, clutch. Make offer, 279-3993. (12-3)

'64 VW top condition, faculty owner, \$895. Call Dr. Bowman, 3792 between 9:30-10:30 a.m. daily, or come to my office L.L. 409. Carrier / cover available. (12-4)

### ● INSTRUCTION

Tutoring Spanish and French. Close to campus. 966-1040. (12-4)

Have you ever wondered how it feels to float gently to earth under a parachute? To soar through the air like an eagle? Try sky-diving. Safe - fun - rewarding. Call Parachuting, Ltd. Sky Diving School. 934-5900. Complete course only \$40.00. (12-8)

Individual tutoring in math, chemistry, physics and biological sciences. Phone 967-7924. (1-8)

Tutoring Spanish or French. Call 276-3994. (12-3)

Individual tutoring in math, chemistry, physics and biological sciences. Phone 967-7924. (end of sem.)

### ● HELP WANTED

Waitresses, must be 21. Neat appearance. Top salary. Apply Pizza Inn. 9552 E. University. (12-4)

Experienced salesgirl to work in Ladies-sport\_wear shop in Mesa. Call 272-7475 for interview. (12-4)

Waitress and cocktail waitress. Must be over 21. Experience required. Phone after 6 p.m. 947-6030. (12-3)

Female student with transportation to act as part-time housekeeper-babysitter. Loving family with 2 children. Furnished guest house with bathroom and board. Salary. Call 948-6112. (12-4)

Students with wheels to teach, 4 children gymnastics, tennis & trampolines at RCS 2 hrs. once weekly. Flexible hours. 959-2184. (12-3)

Waitress and short order cook, weekend work, must be 21 or over. Please call 275-8510 for an interview.

### ● SERVICES

Seeking reality—Hear Jamie Smoot, President of Arizona Bible College Freshman Class, Sunday, Dec. 6, 9:45 a.m. First Baptist Church College-career class, 105 E. University Drive. "Christ, the Answer." (12-4)

Don't forget Phoenix Rally Organization's December First Friday Nighter car rally this Friday night, December 4. First car out at 7:31 p.m. at the SE corner of Thomas Mall. Entry fee \$1. Call Dave Gordon, 265-4171, for information. (12-4)

### ● RENT

New Luxury 2-bdrm. Furnished or unfurnished \$175-up. 966-9707. (12-4)

Roommate for 2 bedroom furnished apt. \$50 per month plus utilities. Call 967-6737. 964-4341. (12-4)

Bedroom in home with private bath and kitchen privileges. Memale. 967-8908. (12-4)

Large studio apt for rent. Must leave town. Rent paid through November. Call 967-7345. (12-4)

Home near campus for lease. Ideal for group of 4 or more, fully furnished. Call 964-4341. (12-4)

Male roommates for large home near campus. \$40 per month. Contact Moe, 966-0485 anytime.

Apartments for students, adjacent to campus. La Manche. 967-2011. (12-4)

### ● LOST

Gold ring with black sapphire and two diamonds. Lost around Bus. Adm. Bldg. Reward. 945-0329. (12-4)

### ● SALE

The unique Christmas gift: ironwood carvings by the primitive Seri Indians, 969-9763. (12-16)

Sony portable tape recorder and Telex stereo. 967-1765. (12-4)

The unique Christmas Gift: Ironwood carvings by the primitive Seri Indians, 969-9763. (12-11)

Tickets to ASU vs. U of A football game. 967-8149. (12-4)

10-speed Senator. Less than 5 miles. Re-painted. 946-7493. Afternoons. (12-4)

Buick Riv. Factory chrome wheels. Chev. 4 Barrel carb set-up 327. 946-7579. After 6:00 p.m. (12-4)

Diamonds—One 1/5 carat 6 small stones, excl. for reset. Matching bands. \$125. 946-2662. (12-8)

Head vector skis with boots. Bindings, poles. \$250 new, now \$125. Also white star skis with boots bindings \$350 new, now \$200. Inquire at 967-7442. (12-4)

Pool table 3 1/2 x 7 ft. Fisher, set of Belgian balls. 4 cues, Walnut wall cue rack. 276-1497. (12-4)

Skis Hart Super Pro factory, new, would cost \$160. Will sell for \$100. Call after 6 p.m. 997-1269. (12-4)

Gretsch standard guitar—excellent cond. \$125.00. Call 966-1873. (12-3)

Home 4-track stereo unit with speakers and 40 tapes plus mono tape recorder—make offer. Call 966-1873. (12-3)

Mag & Chrome wheel locks \$5.95 set. Spark plugs, Autolite 59c ea. Valvoline H.D. motor oil 39c ea. Gabelial Shock absorbers \$6.99 ea. V. W. extractor system S&S \$29.95. Valvoline Racing Oil \$9.99 case. Rundles Auto Parts, 220 E. Apache Blvd. Tempe, Ariz. Telephone 967-5778. (12-11)

Like new Post Versalog Slide Rule — Must sell. Call 275-3459 after 4:00 p.m. (12-3)

Perfect Christmas present. Akai x-360D Tape recorder. Top recorder in its line. \$675 value, for \$500. Still under warranty. Call 967-0037. (12-3)

Set of 4 living room tables. Mahogany. All excellent condition. 946-7800 after 6 p.m. (12-4)

9 x 12 used rugs \$5.00 all sizes in stock. Carpet House, 1516 East Van Buren, Phoenix.

Attractive neighborhood—exquisite fireplace in family room — refrigerated. 3 bedrm., 1 1/2 bath, range, oven, even disposal; dishwasher, pantry, carpeting/drapes, block fence \$27,500. Clements Realty. 947-4261. (12-8)

Royal, portable typewriter. Excellent condition. 966-1866. (12-3)

### ● FOR SALE

Bean bag chairs, pillows, and tables. See at Super Snap! 122 E. Univ. Arches, 968-0331.

### ● TYPING

Typing, 966-5654 after 5 p.m. (1-8)

Best typing IBM Selectric. Pick-up and delivery at the University. 945-2376. (2-10-71)

TYPING—967-3036. (End of Semester)

K&S resume and typing service call us for rates 24 hr service. Phone 949-1902, 10 a.m. to 7 p.m. (12-4)

Typing, IBM Electric, East Phoenix, 275-7970. Scottsdale. 945-2489. (12-8)

Typing very reasonable, 266-1749.

East Mesa — Apache Junction area, 966-4314.

Typing call Jean Buttermore, 277-3602. (sem.)

Typing, Close to ASU 966-4713, Exp. (end of semester)

Typing. 967-2602 (end of semester)

Typing IBM, Maxine Mullen, 955-0763

Typing (IBM) 253-1285.

Typing 967-3675.

IBM Selectric Gothic type 966-1684.

### ● WANTED

Female roommate to share 2-bdrm. apt. \$62 per mo., call Kris or Betsy after 5. 966-5187. (12-3)

Female roommates for 2-bdrm apt. 1137 E. Orange. Call Donna, 966-9567. (12-4)

1 male roommate needed for 2 bdrm. apt. \$80 a month plus 1/2 utilities, 967-3500 after 5 p.m. (12-4)

Two riders to go to New York City on or around Dec. 15th and to share gas expense — Jim Moore. 1970 E. 1st, Tempe. Come by around 5:00 p.m. (12-4)

Female roommate wanted. Share two bedroom apt. \$63.80 util. included. Jan. 1 or Feb. 966-1040. (12-9)

Third studios male to share 2-bdrm. apt. in Scottsdale. \$62.40. plus ut. Call 946-7227. (12-4)

Female to share 2 bdrm. furn. apt. 1/2 rent \$67.00 plus util. Call Cathy aft. 5 p.m. 966-6803. No pets. (12-4)

Roommate wanted for South Bay apartment. Call Jerry for info. 964-6203. (12-3)

Male roommate wanted. 1140 E. Orange. Walking distance to school. Palm Villa Apts. 966-7429. (12-4)

state press

# editorial forum

## The other side of the class question

By DAVID JENSEN

In the last two issues this page has carried editorials on class interest that were both aimed at the role that should be played by the instructor.

In the interest of being fair to all involved, it might be a good idea to look at the other side of the coin—what the responsibility of the student is.

Admittedly, many professors use the same lecture over and over, and this is a negative factor as far as the student is concerned, but the fact remains that the student who can't tolerate this situation doesn't have to remain in the class.

In most cases, there is more than one professor for a given class. For this reason, it is the student's fault if he chooses to remain in a classroom situation that he can't tolerate.

As was stated in another editorial, the responsibility for learning is with the student, not the teacher. The column also indicated that in order to learn, a student needed to be motivated.

The above premise is an excellent one, but

all too often the student is quick to blame his instructor for a situation that is his own fault.

To be motivated one must have some interest in what he is studying. If the student isn't interested in the course he is taking, then no matter how good the teacher is he will be unable to reach that student.

Granted, many classes in college are far from the most interesting subject matter, but the student must realize that some things are required of him and make the best of a bad situation.

Until the curriculum changes to a program of totally voluntary classes, students are going to be faced with the problem of taking classes they don't care for.

Taking this unfortunate circumstance at its face value, the best conclusion that I can reach is that although teachers are partly to blame for lifeless lectures and boring class sessions, an equal amount of the blame for these circumstances must be shared by the student.

So, before you drop the blame for that rotten class you've got in the teacher's lap, stop and think. It may be just as much your fault as it is his.

## Abortion: change needed

Abortion should have been a four letter word. That's how it gets used.

The past two years have sent the abortion dilemma brought to a vote in some conservative state legislatures. In New York, it was legalized; in this state a similar bill failed.

Gov. Williams said last year that Arizona was not

bothered by a population, problem serious enough to warrant the legalization of abortion.

Abortion, he explained is against the "pioneer spirit which built this state."

Which, is quantitative analysis may be true, but quality of life must be considered and wasn't by state legislators last year.

It's usually true that the

woman who can afford an abortion, can also afford a child. But, for the impoverished woman, a child can only be a burden.

Critics shout that fooling with the machinery of life is playing a God role. The same critics usually can afford adequate medical care, contraceptives or children. And the critics are silent when science snuffs out life with vicious weapons.

Next month the legislature will begin a new session. Perhaps this will be the session to see the rule making body reconsider legislation to legalize abortion—if not to limit an exploding population, then to improve the lot in life of the poverty families of Arizona.

RDB

STATE PRESS is published by Arizona State University as the official campus newspaper every Tuesday through Friday during the school year, except holidays and examination periods, and is entered as second class matter at Tempe, Arizona, 85281.

### State Press

Editor  
David Jensen

Managing Editor  
Peggy Doyle

Campus Editors  
Nan Sexton  
Randy Bailey

Sports Editor  
Barney Hutchinson

Feature Editor  
Jim Spencer

Staff Reporters  
John Banaszewski  
Charlene Christiansen  
Rick Snedeker  
Crickett Stillwell  
Jay Hovdey

News Editor  
Diane McIntyre

Photo Editor  
Ray Wong

Asst. Sports Editor  
Bob Wischnia

Weekend Editor  
Randy Bailey

Copy Editors  
Rosaling Mosow  
Cherie Taylor

Ad Manager  
Hal Hubele

Faculty Adviser  
Prof. Don Ferrell



'HOW'D YOU EVER GET SO MANY TROPHIES FOR BROAD JUMPING?'

© YOUNG AMERICA CORP. 1804 NORTH 22ND AVENUE, LOS ANGELES, CALIF. 90001

## Letters to the Editor

### Rights deprived?

Editor:

I would like to address this letter to the article that appeared concerning the 18-year-old voter.

The article asks "how many of these 'mature' individuals will logically choose the best man for the job?"

This in my estimation assumes that logic plays a part in the voting decision process and implies that today's voters are indeed logical.

The article fails to concern itself with the real question; has the 18-year-old been deprived of the rights guaranteed to him in the U. S. Constitution? The right to those liberties corresponds to the demands made by the state of these individuals.

The 18-20 year-olds comprise 26-40 per cent of our entire active military force. As of June, 1969, there were 40,000 deaths in Vietnam. Forty-two per cent of those deaths were men under 21.

This age group is also held responsible for their actions with respect to contract, and criminal actions. In short, it is expected of this group that they meet the demands of the state as much as any citizen. It is upon these grounds that the franchise should be extended to them.

The inclusion of this group would, in my opinion, improve and increase the voter turnout in elections.

Many of the 18-21 year-olds

already possess a better education than a large portion of adults among our general electorate.

In 1920, 50 years ago, 17 per cent of Americans between the ages of 18 to 21 were high school graduates. Only 8 per cent went on to college.

Today, by contrast, 79 per cent of Americans in this age group are high school graduates, 47 per cent go on to college.

Studies of voting behavior have consistently shown that persons under 30 vote less often than those who are older.

In 1963, President Kennedy's Commission on Registration and Voting Participation found that "by the time they have turned 21, many young people are so far removed from the stimulation of the educational process that their interests in public affairs has waned. Some may be lost as voters for the rest of their lives."

The exercise of the franchise and the expectation of the franchise, in my opinion, will provide a strong incentive for greater political involvement and understanding of this group.

It is my belief, therefore, that the 18-year-old not only has the legal right to vote but also that we all will gain from their participation in the electoral process.

Michael Aguirre  
Administrative V.P.  
ASASU

## Letters Policy

The State Press will continue its policy of printing as many letters to the editor as space requirements permit. A few basic requirements must be noted, however.

Letters should be no longer than 300 words in length. They must be double — or triple — spaced, and should contain neither libelous nor obscene material.

As in the past, the editor reserves the right to edit all material published to conform to rules or style, spelling and grammar, though general content will not be altered.

Letters must be signed. Names will be withheld on request. Correspondents should also include their addresses and phone numbers.

All letters received are subject to verification by the editor.

## Santa squad clued; kids' bubble burst

By JOHN BANASZEWSKI  
A squad of Santa Clauses are standing in a room getting a briefing session on the upcoming day and their general duties. They are standing at semi-attention with about five Santa's in a row and four rows deep.

In front of the Santa stands a lady in what appears to be a military uniform, giving them strict orders on the appropriate actions to be taken by the many sidewalk Santas.

Orders pouring forth from the feminine commander's mouth are hard to accept for prospective present pusher. But considering our overly-sophisticated, self-conscious, put-up-a-good-front culture, they unfortunately fit in.

In a low-keyed, rather authoritarian voice the lady tells the Santas they will not smoke cigarettes (or anything else), chew gum, lean on the chimney, eat garlic or onions for lunch and

"above all don't promise anything definite to the kids."

The above quote is legitimate and the foregoing paragraphs are not mere fiction fabricated for folly. They are true and accurate. There IS such a briefing session for Santas and there IS such a lady.

The lady was called Miss Hunt and she ran the "Volunteers of America" which does, in fact, brief and explain the duties of an all-round good Santa to the prospective candidates.

The rather sad episode appeared on television and gave another graphic example of how overly complicated our society is becoming.

I feel kind of sorry for the children watching the six o'clock news on that day because the biggest bubble in their ice cream and jelly bean lives had just burst.

# Half-time show features highly competitive bands

By GAY LUEBKIN

Not all the competition at the ASU-UofA game Saturday night will be of the pigskin variety.

The traditional rivalry with which the sister schools meet in football is matched by their marching bands.

Taking over the football field at halftime, the ASU-UofA bands strive to outmarch and outplay each other. "We work just as hard for this as the football team does to beat the U," said band member Mike Cohn.

Although the band doesn't rehearse any longer for the UofA game than for any other, Cohn said the band puts forth special effort "to sound the best and look the sharpest we can."

Trumpet player Phillip Silberstein agreed and said "All halftimes count for personal satisfaction but the UofA half-time is special. We'll put a lot of effort into our practice this week."

Assistant Band Director Robert Miller said the growth of the band competition was spurred by the UofA's band. Miller said, "We want our players to play well for themselves and then worry about competition."

He added, "There have been episodes in the past where our band has done things like kidnapping the UofA drum major before the show and the UofA card section used to throw its cards at us when we came on the field, but we've grown up."

Miller said the two bands are radically different in style. The University band is devoted to precision drill while the UofA band uses pageantry employing animated figures on the field.

Miller said the University band style offers a better chance to maintain discipline while still achieving an exciting show.

Commenting on Saturday's competition, Miller said a factor in the University's favor is the band has gone contemporary, playing such tunes as "Eleanor Rigby" and "Aquarius."

He added the band arranger takes into consideration the style in which the pieces were written while the UofA plays everything like a march, not considering the style of the music.

Miller sees the band competition as healthy, causing the bands to play as tight-knit units. "Everyone does his job as perfectly as he can. The honors go to

the band that does the better job," Miller said.

The zealotness of each band to do an exceptional job in their competition can lead to problems, Miller said, citing the incident several years ago when both bands decided to use fireworks in their combined halftime.

The smoke was so thick at the end of the show the third quarter had to be postponed until the football teams could see.

Miller, a former Sun Devil band member, concluded, "There are no band scoreboards as there are in football. All I can say is that when we get to Tucson the ASU band is going to put on a great show."

## Calendar

Calendar announcement forms are available in the State Press office, ASB 302. Deadline for announcements is noon of the day before publication.

**Thursday, Dec. 3**  
 Electronics Club, 8 p.m., ITC 209.  
 Inter-Varsity Christian Fellowship, 7 p.m., Hayden Library 303.

**International Student Relations Board**, 2:45 p.m., MU West International Lounge.

**ASU Rodeo Club**, 8 p.m., 1219 E. Lemon.

**Mathematics Colloquium**, 3:40 p.m., PSA 103.

**Accounting Association**, 1:30 p.m., BA 258.

**Dawa-Chindi American Indian Club**, 6 p.m., Payne B47.

**Friday, Dec. 4**  
 Kundalini Yoga class, 6 p.m., MPE 105.

**Saturday, Dec. 5**  
 Organization of Arab Students, 2 p.m., MU West solarium.

**Monday, Dec. 7**  
 L'Amicale des Gaulois, 3 and 7:30 p.m., LL 18. "Cartouche," French film with Jean Paul Belmondo and Claudia Cardinale. English subtitles.

**Kundalini Yoga class**, 6 p.m., MPE 105.

**The Christian Science Organization**, 8 p.m., Danforth Chapel.

**NEWS**  
 Call 3656

## Christmas luncheon reset for Dec. 12

The Faculty Women's Club has rescheduled its Christmas luncheon for Dec. 12 at Ye Old Lantern, 7501 E. Camelback Road, Scottsdale.

The University chapter of Sigma Alpha Iota, an international musical sorority will present a vocal and instrumental program of Christmas songs at the luncheon.

Cost of the luncheon, which begins at 12:30 p.m., is \$3.50. Members are invited to bring guest. Advance reservations should be made as early as possible with Dr. Susanne Shafer, vice-president of the club, at 965-3339 or 966-4408.

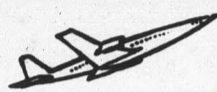
## Young Republicans elect new officers

The Young Republicans have elected officers for the next six months.

New officers are: Robert Croft, president; Keith Poletis, first vice-president; Dean Trebisch, second vice-president; James Waterstradt, third vice-president and Craig Komadino, treasurer.

Committees will be formed with the three vice-presidents as chairmen. Interested persons should contact Croft.

**CLASSIFIED**  
 Call 3657



## Flying Home for Christmas?

Let MURDOCK TRAVEL Help You Spend a Merry Christmas with your Family

ONE CALL & WE'LL DO THE REST

- Student Standby Listings
- Confirmed Reservations
- Student Discount Cards
- Free Ticket Delivery

Make Your Reservations NOW!



MURDOCK TRAVEL INC.

21 E. 7th St., Tempe 967-8738

GRUNEWALD & ADAMS



*They Were Surprised*  
 We Have Engagement Rings  
 Low As \$125.

Perhaps it's because our stores are so lovely. People think we don't have diamonds in the \$125 to \$300 range. We do, and they're all perfectly cut and of exceptional clarity. They'll fit every finger and every budget. Come in soon and surprise yourself.

Grunewald & Adams Jewelers / Biltmore Fashion Park

# The Religious Conference

## Serving Arizona State University

### Spring 1971

### Schedule of Courses

The following courses, offered by the Religious Conference School of Religion, may be accepted as transfer credit toward a Bachelor's degree, within the limits of the student's degree program. If religion courses are accepted in the area of General

Education in the student's degree program, they can count normally as General Education credit. Register for these courses at Danforth Chapel.

Course No.	Title	Sec.	Credit	Hours	Days	Room	Instructor
RE 101	Survey of the Old Testament	1	3	9:15-10:30	T-Th	check at Danforth Chapel	Lacy
RE 102	Survey of the New Testament	1	3	9:15-10:30	T-Th		Geib
RE 103	Survey of Christian Denominations	1	3	7:00-10:00pm	W		Curran
RE 201	Prophets of Israel	1	3	9:15-10:30	T-Th	check at Danforth Chapel	Curran
RE 202	Life and Teachings of Jesus	1	3	3:40-4:55pm	T-Th		Stewart
RE 203	World Religions	1	3	10:40-11:55	M-W-F	check at Danforth Chapel	Roberson
RE 203	World Religions	2	3	6:40-9:30pm	T		Beck
RE 301	Wisdom Literature of the Old Testament	1	3	10:40-11:55	T-Th	check at Danforth Chapel	Plotkin
RE 302	Life and Letters of Paul	1	3	10:40-11:30	M-W-F		Hollingsworth
RE 303	Judeo-Christian Ethics	1	3	6:40-9:30pm	W	check at Danforth Chapel	Seller
RE 402	Thought Projections of Jesus	1	3	8:40-9:30	M-W-F		Stevens
RE 402	Thought Projections of Jesus	2	3	2:40-5:30	M	check at Danforth Chapel	Belt
RE 403	Contemporary Religious Thought	1	3	9:15-10:30	T-Th		Belt
RE 403	Contemporary Religious Thought	2	3	6:40-9:30pm	T		Belt
RE 403	Contemporary Religious Thought	3	3	arr			Baroody

# Courneyeur favors Quebec-Canada split

By DAVE CURTIS

Philip Courneyeur, a Canadian newsman, teacher and political activist, spoke Tuesday evening in favor of the separation of Quebec from Canada and strongly against the Federal government in Ottawa.

He also spoke in detail about the turmoil that resulted after the recent kidnappings.

"Polls indicated that the kidnappings were inwardly pleasing to the majority of the people of Quebec," Courneyeur said.

This was interpreted as "a pre-revolutionary situation" and "troops were needed to re-assert Federal authority," he said.

He claimed the Ottawa government was under pressure from Washington to take a hard line against the kidnappers and the FLQ, a Quebec liberation party, which has been declared illegal by the Canadian government since the kidnappings.

Courneyeur accused the Canadian government of several lies which were used to "whip the populace into a state of hysteria."

He said the government falsely claimed that the FLQ had 3,000 commandos in Montreal which had been trained in Cuba, Algeria and the Middle East, that the FLQ had enough dynamite in Montreal to blow up the core of the city, and that leading figures in Quebec were in a coup against the government.

He said the charges have not been proven and questions asked of the government about them are avoided by claiming national security prevents divulging information.

"A huge credibility gap has resulted," Courneyeur said.

More than 400 people were arrested after the Canadian government invoked the War

Measures Act of 1914, which allows temporary suspension of individual rights, Courneyeur said. They included more than 50 labor leaders, more than 50 newsmen, including Canadian Broadcasting Corporation personnel, and several opposition party leaders, he said.

He called the events a plot by the Canadian government against the people of Quebec.

Courneyeur built a case of discrimination of the people of Quebec around government released statistics on income levels, employment levels and unequal appropriations to French-speaking and English-speaking schools.

He called Quebec an economic colony of Canada whose poor are used as a source of cheap labor for the rest of Canada.

He said the people of Quebec will not longer submit to this kind of oppression.

"I am convinced that there is no other solution to the problem than the separation of Quebec," he said.

He said it is implicit in any free relationship that those involved have the right to disengage. Ottawa doesn't recognize that right.

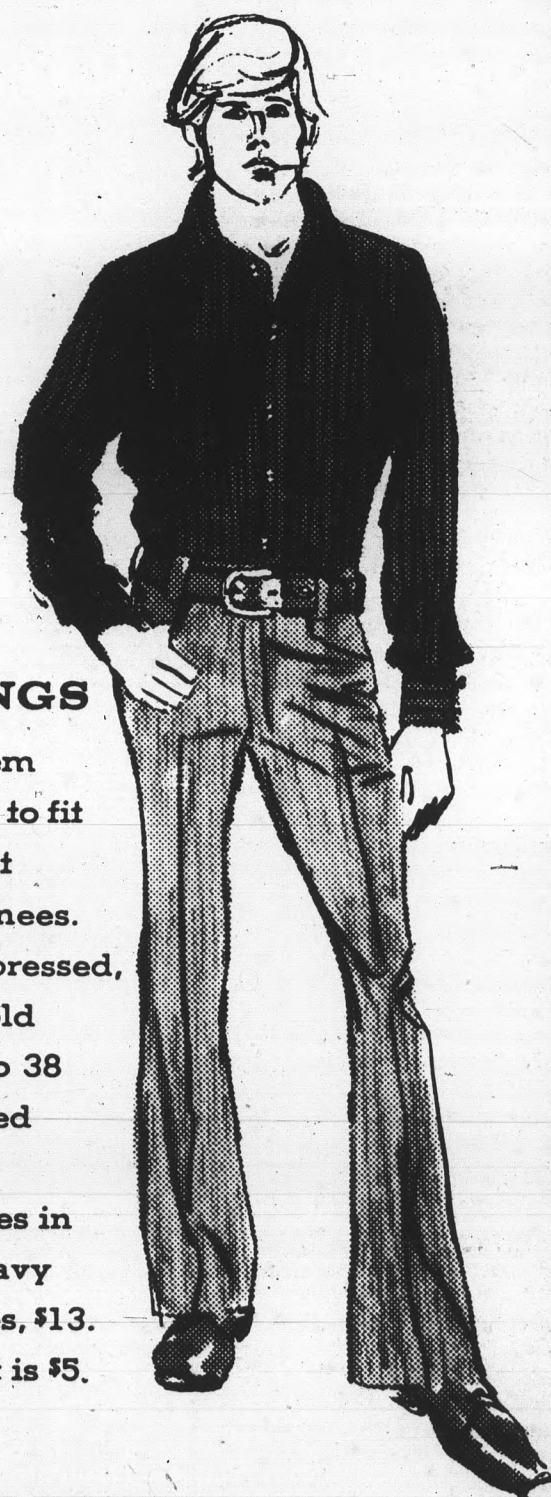
Courneyeur writes for La Lutte, Ouvriere (Worker's Struggle). He taught school at the elementary level and French at the high-school level in British Columbia. He was provincial secretary of the New Democrat Youth party in British Columbia, and is a member of the central committee of the Socialist Worker's League. He is presently on a speaking tour in the United States, sponsored by the Young Socialist Alliance.



## WATERCOLOR DAYS

Visiting watercolorist Beth Ames Swartz demonstrates her techniques on rice paper in the MU West living room before a group of enthusiastic students. Photo by Ray Wong.

Campus Reps:  
TERRY HOTHEM  
FRANK FONDRISI



## WE HAVE ALL THOSE GREAT JEANS AND THINGS

And we'll help you get them together. Our jeans are cut to fit at the hips, flare at the boot tops, stay straight at the knees. They're made of durably pressed, brushed cotton denim, in old wine, blue or tan, for 30 to 38 sizes, \$11. Our shirt of ribbed cotton knit has two-button cuffs, a tapered body, comes in burgundy, brown, tan or navy for small to extra-large sizes, \$13. And the brown leather belt is \$5.

THE UNIVERSITY SHOP  
**SAKS FIFTH AVENUE**

2500 East Camelback Road, Phoenix

Yale · Princeton · University of Michigan · New York · White Plains · Springfield · Garden City  
Bala-Cynwyd · Washington · Atlanta · Ft. Lauderdale · Chicago · Skokie · Detroit · Troy · Palo Alto · Phoenix

## Good news for students...

Now you can eliminate the expense of service charges on your checking account. Continental has 100% FREE CHECKING. No service charge regardless of your balance or the number of checks you write.

AND you can save steps! Bank by mail. We pay the postage both ways! Just call us, and we'll send your free bank-by-mail kit. Phone 277-5577.

## CONTINENTAL BANK

4000 North Central · Phoenix  
68th St. & Camelback Rd. · Scottsdale  
Open Monday thru Thursday 9 A.M. - 5 P.M.  
Fridays 9 A.M. - 6 P.M.

# 'Forget peaches or lose'—Kush

"They have everything going for them," says Frank Kush, head coach of Arizona State University.

He is talking, however, about the Arizona football team.

And the fact that the Wildcats are in the best possible position to ruin Arizona State is very much on Kush's mind.

"It can be just like the other bowl-bound teams," Kush explains. "Notre Dame Air Force, Stanford and Ole Miss all got word that they were headed for bowls and all lost the following game."

Notre Dame will head for the Cotton Bowl AFA to the Sugar, Stanford will go to the Rose Bowl and Mississippi will play in the Gator Bowl.

As for the Devils, who landed a bid to the Peach Bowl early last week, Kush has one big job in mind.

"To get the players' minds away from that bowl," Kush says.

The general feeling by Kush is that the bowl bid is nice, but if Arizona State came this far just to quit after only nine games, the bowl game is next to worthless.

Arizona State is 9-0 and could become the first undefeated ASU team since Dan Devine's 1957 team.

As for the Big Game, Arizona State has enjoyed recent success winning the last five games. But the series overall has been dominated by the Arizona team which has won 27 games against ASU's 16 victories with no ties.

The Sun Devils, who at the time were known as the Owls or the Bulldogs, had a rough time in the early part of the century. Arizona won 20 of the first 22 games including 12 of those by shutouts. It has only been since 1949 that

the outcomes have swung over to ASU's side. Arizona's 53-0 win in 1919 and ASU's 61-14 victory in 1951 have been the biggest margins.

The situation this year is very similar to 1964 when a highly touted Sun Devil squad, 8-1 at the time, traveled to Tucson for the Big Game. But the Wildcats turned back the talented Devils 30-6 in what has become the last UofA win.

What ever happens this year will happen Saturday night in the Old Pueblo at 7:30 in an ABC-TV regionally televised game.

Past Results

1899	ASU won, 11-2
1902	Arizona won, 12-0
1914	Arizona won, 34-0
1915	Arizona won, 7-0
1919	Arizona won, 53-0
1925	Arizona won, 13-3
1926	Arizona won, 35-0
1928	Arizona won, 39-0
1929	Arizona won, 36-0
1930	Arizona won, 6-0
1931	ASU won, 19-6
1932	Arizona won, 26-6
1933	Arizona won, 26-7
1934	Arizona won, 32-6
1935	Arizona won, 26-0
1936	Arizona won, 18-0
1937	Arizona won, 20-6
1941	Arizona won, 20-7
1942	Arizona won, 23-0
1946	Arizona won, 67-0
1947	Arizona won, 26-13
1948	Arizona won, 33-21
1949	ASU won, 34-7
1950	ASU won, 47-13
1951	ASU won, 61-14
1952	ASU won, 20-18
1953	Arizona won, 35-0
1954	Arizona won, 54-14
1955	Arizona won, 7-6
1956	ASU won, 20-0
1957	ASU won, 47-7
1958	ASU won, 47-0
1959	ASU won, 15-9
1960	Arizona won, 35-7
1961	Arizona won, 22-13
1962	Arizona won, 20-17
1963	ASU won, 35-6
1964	Arizona won, 30-6
1965	ASU won, 14-6
1966	ASU won, 20-17
1967	ASU won, 47-7
1968	ASU won, 30-7
1969	ASU won, 38-24

## First tilt important for ASU

By BOB WISCHNIA  
Assistant Sports Editor

It isn't often that the first basketball game of the year is the most crucial of the entire season.

But that may be the story as Arizona State's cagers open their season tonight at 8:05 hosting San Diego State.

Student and faculty tickets for tonight's basketball game with San Diego State may be picked up at 5:30 on the east side of Sun Devil Gym.

The tickets will be distributed right up until the varsity game slated for 8:05. Fee cards must be shown to obtain the tickets.

ASU head coach Ned Wulk feels the initial game of the year could set a trend for the whole season. And he has a pretty strong argument considering the past results.

Not since 1966 has ASU won an opener. Last year the Sun Devils were beaten at the buzzer by a weak Cal Poly (Pomona) team and went on from there to drop 21 more games. A-State dropped eight contests by six points or less.

"We have got to get off on the right foot," said Wulk. "A win tonight could really give us a boost. Last year we really didn't have that bad a team, but our youngsters got psyched out pretty badly."

Only four return from that team with Wulk injecting some vital and talented new blood into the basketball program.

Some of the new plasma includes sophs Mike Contreras, Brad McNamara, Dave Kundla and Dale Nickelson. Transfers Paul Stovall, Mike Bowling, Rhea

**ARIZONA STATE**  
Coach: Ned Wulk (280-222).  
Record last year: 4-22 overall, 2-12 (8th) in the WAC.  
Arena: Sun Devil Gym (4,609).  
Schedule:

date	opponent	site
Dec. 3	San Diego State	Tempe
Dec. 4	Loyola (Cal)	Tempe
Dec. 9	Seattle	Seattle
Dec. 11	Fresno State	Fresno
Dec. 12	Southern Cal	Los Angeles
Dec. 19	Loyola (Ill)	Tempe
Dec. 28-29	Motor City Classic (ASU, Delaware, Loyola (La.) and Detroit)	Detroit
Jan. 2	DePauw	Tempe
Jan. 7	*Wyoming	Laramie
Jan. 9	*Colorado State	Fort Collins
Jan. 11	Hawaii	Tempe
Jan. 16	*Arizona	Tempe
Jan. 23	Northern Arizona	Tempe
Jan. 28	*Brigham Young	Tempe
Jan. 30	*Utah (TV)	Tempe
Feb. 4	*Texas-El Paso	El Paso
Feb. 6	*Colorado State	Tempe
Feb. 6	*Wyoming	Tempe
Feb. 15	New Mexico State	Las Cruces
Feb. 20	*Arizona	Tucson
Feb. 26	*Utah	Salt Lake
Feb. 27	*Brigham Young	Provo
Mar. 5	*New Mexico	Tempe
Mar. 6	*Texas-El Paso	Tempe

\*WAC games.  
Starters back: 6-6 Mike Hopwood (6.6), 6-5 Jim Owens (4.1).  
Others back: 6-8 Dave Hullman (8.9) started nine games and led WAC in field goal percentage (.568), 6-5 Kevin English (3.3) was top reserve. 6-0 Jay Arnote injured last season.  
Transfers: 6-5 Paul Stovall (32 pts. and 25 rebs. at Pratt JC), 6-6 Rhea Taylor (16.7 pts. and 10.4 rebs. at Robert Morris JC), 6-7 Mike Bowling from Southern Cal and 6-2 Bill Kennedy from West Liberty State are red shirts.  
Top Sophomores: 6-0 Brad McNamara (23.9), 6-4 Dave Kundla (17.5), 6-2 Mike Contreras (17.7), 6-7 Dale Nickelson (15.8) and 6-9 Mark Wasley (11.6).  
**ARIZONA**  
Coach: Bruce Larson (120-112).  
Record last year: 12-14 overall, 8-6 (4th) in the WAC.

Arena: Bear Down Gym (3,600).  
Play in Tempe: Jan. 16.  
Starters back: 6-4 Bill Warner (20.3), 6-8 Tom Lee (11.9 pts. and 9.9 rebs.), 5-9 Walt McKenney (10.2), 6-8 Bruce Anderson (9.2).  
Others back: 6-10 Eddie Myers (10.2 pts. and 8.9 rebs.), was academically ineligible the second semester. 6-1 Lanny Mitchell (4.6) was a parttime starter at guard.  
Transfers: 5-11 Jim Huckstein (22.5 at Santa Ana JC) and 6-3 Youree Myers (18.8 at Eastern Arizona).  
Top Sophomores: 6-5 Phil Edwards (21.0), 6-5 John Anderson (15.7), 6-5 Tom Lawson (13.2).

**BRIGHAM YOUNG**  
Coach: Stan Watts (392-242).  
Record last year: 8-18 overall, 4-10 (7th) in the WAC.  
Arena: Smith Fieldhouse (10,200).  
Play in Tempe: Jan. 28.  
Starters back: 6-6 Phil Tollestrup (11.6), 6-3 Steve Kelly (9.2), 6-5 Jim Miller (8.0).  
Others back: 6-9 Veikko Vainio average 1.4 points.  
Transfers: 6-3 Bernie Fryer (31.0 at Peninsula JC), 6-8 Jay Bunker (Palomar JC).  
Top Sophomores: 6-8 Kalevi Sarkalahti (18.9 points and 11.2 rebs.), 6-10 Kresimir Cosic (17.4 pts. and 12.6 rebs.), 6-8 Craig Jorgensen (8.4), 6-2 John Starkins (7.1).  
Note: Sarkalahti is from Finland and Cosic was starting center on Yugoslavian Olympic team which was runner to United States in 1968.

**COLORADO STATE**  
Coach: Jim Williams (356-226).  
Record last year: 14-9 overall, 7-7 (5th) in the WAC.  
Arena: CSU Auditorium (9,520).  
Play in Tempe: Feb. 12.  
Starters back: 6-9 Mike Childress (14.2 pts. and 17.0 rebs.), 6-2 George Price (12.3) and 6-1 Bob Caton (4.9). Childress set a WAC record with 392 rebounds.  
Others back: 6-7 Travis Lackey (4.9) and 5-10 Doug Peden (2.6).  
Transfers: 6-5 Rick Fisher, who played with Spencer Haywood at Trinidad JC.  
Top Sophomores: 6-3 Gary Rhoades (29.0) and 6-0 Paul Ball (25.0).

**NEW MEXICO**  
Coach: Bob King (146-66).  
Record last year: 13-13 overall, 7-7 (tie 5th) in the WAC.

Arena: University Arena (14,831).  
Play in Tempe: March 5.  
Starters back: 6-8 Willie Long (23.8 pts. and 12.9 rebs.), and 5-8 Petie Gibson (11.9).  
Others back: 6-0 Rick Wright (1.8).  
Transfers: 6-4 Harold Little (15.9 at Compton JC), and 6-7 Mike Faulkner (25.3 pts. and 13.9 rebs. at Lamar JC).  
Top Sophomores: 6-7 John Johnson (21.5 pts. and 8.0 rebs.), 6-8 Mike Stewart (19.5 pts. and 11.1 rebs.), 6-9 John Mulligan (12.9 and 8.1 rebs.).

**TEXAS-EL PASO**  
Coach: Don Haskins (177-58).  
Record last year: 17-8 overall, 10-4 (1st) in the WAC.  
Arena: County Coliseum (8,400).  
Play in Tempe: March 6.  
Starters back: 6-3 Bob Doyle (13.6) and 6-5 Dick Gibbs (10.5 pts. and 8.5 rebs.).  
Others back: 6-5 Scott English (4.0) and 6-4 Len Stewart (5.8).  
Transfers: 6-8 Dave Borup (16.3 pts. and 15.7 rebs. at Snow JC), 6-5 Greg Davlin (17.8 at Burlington JC), 5-10 Stanley Milton (28.9 at Mesa CC), 6-1 Danny Whitlock (19.0 pts. at Hobbs JC), 6-2 Rich Warner (Centerville JC).  
Top Sophomores: 5-10 Bruno Iannone (18.6), 6-6 Robert Wright (10.4), 6-5 Jeffro Hills (9.9).

**UTAH**  
Coach: Jack Gardner (614-272).  
Record last year: 18-10 overall, 9-5 (tie 2nd) in the WAC.  
Arena: Special Events Arena (15,000).  
Play in Tempe: Jan. 30.  
Starters back: 6-2 Mike Newlin (26.0), 6-5 Ken Gardner (14.4 pts. and 11.0 rebs.), 6-10 Jim Mahler (11.9 pts. and 8.8 rebs.).  
Others back: 6-5 Early Laster (5.5), Ken Reynolds (2.4).  
Transfers: 6-1 Eddie Trail (22.1 at Flathead JC), 6-6 John Dearman (19.9 at Harbour JC), 5-9 Jimmy Wright (24.0 at Santa Monica JC), 6-4 Gary Norgan (18.0 at Ricks JC), 6-1 Eugene O'Neal (Oakland JC).  
Top Sophomores: 6-7 Larry Green (17.5), 6-7 Jim Sorenson (13.5).

**WYOMING**  
Coach: Bill Stanningan (148-141).  
Record last year: 19-7 overall, 9-5 (tie 2nd) in the WAC.  
Arena: Memorial Fieldhouse (11,000).  
Play in Tempe: Jan. 30.  
Starters back: 6-2 Willie Roberson (12.2) and 5-10 Roy Wilson (6.4).  
Others back: 6-4 Brad Smith (3.4) and 5-10 Roy Wilson (6.4).  
Transfers: 6-10 Jerry Brucks (19.1 at Fullerton JC), 6-7 Sam Ballard (19.5 at Lee JC), 6-4 Franklin Irvin (17.4 at Hartnell JC).  
Top Sophomores: 6-9 1/2 Rod Penner (17.9), 6-2 Denny Mountz (13.6), 6-7 Mike Wells (13.3).

## Sports



Sid Smith... transfer guard boosts San Diego State.

Taylor and Bill Kennedy will help out.

Familiar faces are juniors Dave Hullman, Mike Hopwood and Jim Owens. Senior Jay Arnote will be attempting a comeback after sitting out a year due to a knee injury. Two-year letterman Kevin English will be an inside reserve.

The Aztecs of San Diego State dropped their first game of the year Tuesday night at Texas Tech and bring to Tempe an experienced but small team.

Five of the top six scorers from

a 13-13 team return with 6-4 forward Von Jacobsen leading the way with a 1969-70 index of 16.4 points a game. The other forward will be 6-4 Joe Lavender, who tossed in 15 points a contest, while top boardman Jon Borchert (6-5) averaged 15 caroms last year.

Wulk's starting lineup will probably include 6-6 Hopwood, 6-5 Stovall and either 6-7 Bowling or the 6-8 Hullman, 6-2 Contreras is set at one of the outside posts, while his running mate will be either Kundla, Arnote or Owens.

If you smash 'em up—Bring 'em to us!

**BERGE SERVICE CENTER**  
16 E. University Dr., Tempe  
967-2063

Enjoy fine food in elegant surroundings at...

**Ferguson's CAFETERIAS**

Spacious dining room completely separate from serving area

From a snack to a full course meal... all at reasonable prices.

2632 West Indian School in Phoenix  
1000 East Broadway in Tempe

Banquet facilities available  
call 264-3717 in Phoenix • 967-8621 in Tempe  
Open daily from 11:30 AM to 8:30 PM

**ECONOMY MINDED? BUY CROWN**

When you get Crown from Fairway you get amazing quality, only possible by "deck to you buying." Models start at...

**\$1988**

**CLASSIC**  
Inlay mosaic, select veneers, fully adjusted and guaranteed. An \$80.00 value if domestic.

**FAIRWAY SPECIAL \$36**  
Also available in Flaming Maple or Rich Rosewood with gold machine heads.

**COUNTRY WESTERN**  
Slim neck, fast action, fine grain top, and chrome machine heads. A \$95.00 value if domestic.

**FAIRWAY SPECIAL \$4995**  
Also in Rosewood.

**Fairway** Est. 1930  
**LOAN AND MUSIC CO.**  
26 N. Central • 21 S. 1st Ave.  
Home of CROWN-GIBSON-GRETSCH LUDWIG-GOYA-ACOUSTIC

# Matmen count on experience

The 1970-71 Sun Devil wrestling team will open its campaign Thursday and Friday in Tucson when they will enter the Arizona Invitational.

The Sun Devils returning from two consecutive losing seasons return to the scene expecting some better results. The team

should be ready to rebound above the .500 mark in 1970-71.

The team looks to be solid although the losses of Gary Seymour, the Western Athletic Conference heavyweight champ; Bob Shines, a one-time WAC champ; and Jim Lambson have all graduated.

But the head man, coach Ted Bredehoft thinks his squad is stronger than the past two years. The team will rely on the returning lettermen and transfers for experience. The coach also stated that ASU will have little depth therefore all the weight will be on his key men.

The squad narrows down to this:

118 pounds—Gary Nez will return from last year's squad but with little experience. This class

is particularly important because it leads off every match and with a win here could be of tremendous help.

126 pounds—The Devils get a new man in Ed Maze, who transferred from Texas-El Paso to ASU. He will bring good experience to the squad. A title contender in the WAC, this man could be real tough for Devil foes.

134 pounds—This weight seems to be solid with Ed Wells, a transfer from Blue Mountain (Ore.) J. C. where he was an All-America. He first season at ASU was cut short by an injury but he is healthy now and should show well.

142 pounds—Another newcomer is Kelly Trujillo, a Columbia Mason J.C. transfer, who was Washington State juco

champ. He will represent the Devils at this weight.

150 pounds—Tom Benson is back from last year's squad where he compiled a record 22-11-0. This was fourth best on last year's team. Benson won the state title in the junior college ranks at Phoenix College prior to transferring.

158 pounds—Gary Coley is another returnee coming off a good season. Coley compiled some strong results pinning his opponents 14 out of 29 matches. Coley had the second best record on the team 20-9-0 last year.

167 pounds—Rich Alvarez seems to be the Devils' pick in taking over this class. He was used in the 1969-70 season and compiled a record of 4-5. Alvarez is due for improvement in the

upcoming season now that he will be full time.

177 pounds—Don Denelsbeck, a freshman from Oklahoma, joins the squad as the youngest member bringing some strong credentials with him. He was the state champ in the 167-pound class.

190 pounds—This weight will probably be filled by Dan Grieve from Highland J.C., another transfer.

Heavyweight—Bredehoft, who has been blessed with several quality heavyweight wrestlers in the past including present Kansas City Chief tackle Curley Culp, will have no one available here in the early going. The Devils may have to forfeit this weight unless a prospect comes from the varsity or freshman football teams.

## Frosh cagers open campaign

What to do for an encore?

That may be the question ASU frosh basketball coach Bruce Haroldson will try to answer as his 1970-71 rookie team commences play this week with a pair of games, hosting Central Arizona JC today, and Glendale CC tomorrow.

Tipoffs for both games are at 5:50 in Sun Devil Gym.

Haroldson's first year squads have posted 15-3 records the last two years, a tough act to follow.

However, if height and winning go hand in hand this year, the Sun Imps will be in great shape.

Heading the new rookie team is 6-11 prep All-American Ron Kennedy from Storm Lake, Iowa. Kennedy sparkled in the annual Varsity-Freshmen game last week hitting for 17 points and grabbing a game leading 15 rebounds, despite the fact the yearlings dropped a 98-76 decision.

Joining Kennedy inside will be another highly rated prospect, 6-9 Wayne Piper, who earned All-Nebraska honors while at North High in Omaha. Piper was the game's top scorer last week with 19 points.

In addition, the Imps can boast two others of 6-6 or over, Mark Gasser (6-7), and Kris Kovolik (6-6).

Outside, the rookies appear to have another quick and speedy playmaker in 6-3 James Brown, from Greenville, Miss. Brown canned 16 points against the varsity and pulled in 10 rebounds during the course of play.

ASU topped both Central and Glendale twice last year going over 100 points one time against both teams. The Imps victories over Central were by a combined total of 61 points and the difference against Glendale was 41 points.

Following this week's play, the Imps will venture to Phoenix College for a game Tuesday, Friday and Saturday, Dec. 11-12, will find the Imps in Yuma along with Yavapai JC and the Arizona frosh for the Arizona Western JC hosted tourney.

## Soccer club to meet UofA

The Arizona State soccer club will return to action after a bye last week to play the UofA soccer club this Sunday at Sahuaro field east of Sahuaro Hall.

Game time is 3 p.m.

The ASU team currently holds a 2-2 record in the Arizona Soccer League, a circuit sponsored by the Phoenix Parks and Recreation Dept.

# If General Electric can build an electric tractor, why can't they build an electric car?

General Electric is marketing a 14-horsepower rechargeable electric tractor capable of speeds up to 7 miles an hour.

We think it's a remarkable innovation. But an electric car it's not.

As a garden tractor for home use, Elec-Trak™ can take advantage of characteristics that would be distinct disadvantages in an electric car.

The availability of fuel is no problem for Elec-Trak. It's designed for limited use near electrified structures, making overnight recharging possible.

The heavy weight of the battery, which would slow down a car, means greater applied traction for Elec-Trak.

Because Elec-Trak must travel at slow speeds to do its jobs, there are no aerodynamic energy losses to take into consideration.

Still, one might expect Elec-Trak to be the forerunner of a pollution-free automobile. Perhaps it is. But there are many crucial problems left to be solved.

The most important one, of course, is the development of a substantially better electric battery. Any car built today would be severely limited in range and performance, and probably prohibitively expensive.

General Electric is making progress on new batteries, but there's a long way yet to go.

We've experimented with zinc-air batteries. Sodium-sulfur batteries. Silver-zinc batteries. Lithium-halogen batteries. And others. There are problems with all of them. Problems of life-span, cost, practicality.

Despite the problems, General Electric scientists and engineers are working for the breakthrough that will make electric cars possible.

Maybe the breakthrough is closer than we think. But we'll

continue to work and leave the predictions to someone else.

### Why are we running this ad?

We're running this ad, and others like it, to tell you the things General Electric is doing to solve the problems of man and his environment today.

The problems concern us because they concern you. We're a business and you are potential customers and employees.

But there's another, more important reason. These problems will affect the future of this country and this planet. We have a stake in that future. As businessmen. And, simply, as people.

We invite your comments. Please write to General Electric, 570 Lexington Ave., New York, N.Y. 10022.

**SPORTS**  
Call 3656

GENERAL  ELECTRIC