

A message from the president

One of our major responsibilities as a university is to make constant efforts to enhance the value of your diploma. By improving the academic reputation of the University, your personal worth to your profession is improved in the eyes of others. The fact that ASU students, received seven, Woodrow Wilson Fellowships this year, reflects, I think, our efforts to achieve this goal in your behalf.

It is not uncommon to receive telephone calls and letters from taxpayers taking us to task for "all of our unruly students" here at ASU. When television reports and newspaper articles relate incidents which interfere with our normal procedures for education, concerned citizens should react. However, we hope that such reactions include thorough investigation of all the facts.

ASU alumni can be proud of the maturity displayed by our student body. Of our 25,000 young people, only a relatively small number has become involved in activities which have created interference with our regular teaching procedures.

Although recent, nationwide campus crises have brought much destruction and cause for alarm, ASU students have maintained their respect for the law and law-enforcement officials while expressing their views on national issues. Many of our students have visited with me about their concern for and willingness to participate in efforts to assure that our campus does not experience violence to any degree.

There are a few students at ASU who are ill-mannered and vociferous. We are making it very clear to them that this University will support legitimate and orderly

expressions of dissent. But we will not tolerate disorder and violations of Regents' ordinances and University regulations. As we have in the past, we will bring disciplinary action against those students who act in violation of University regulations, leading to suspension or expulsion from ASU.

Academic anarchy at ASU will not be tolerated by the administration and faculty nor by the vast majority of our students.

Academic Freedom

During my tenure as 11th president of Arizona State University, it is my solemn promise to redouble my efforts to establish additional ties of understanding and enduring friendship between the University and the people of Arizona and the nation whom it tries to serve.

I want to make it clear that "academic freedom" in practice and in theory really means what I hope our society means it to be — freedom to be academic as befits our nature and inheritance for a thousand years — and that this freedom to be academic — to be scholarly and passionate in the search for truth and knowledge — includes the traditional ennobling acceptance of academic responsibility as men and women of wisdom and balanced judgment.

I shall call upon my associates and colleagues and the entire academic community to assist in this endeavor, not merely in words but in practice and example as well.

Campus Speakers

In today's complex and troubled society, university administrators must keep abreast of the many rapidly-changing laws involving students and campus affairs.

Recent Supreme Court decisions regarding speeches and public addresses have tended to change traditional academic approaches to campus activities.

Such changes sometimes create value conflicts which cause us all great concern.

Perhaps these rulings are wise in at least one way — our students now have a chance to prove their maturity, and to reject through their own judgment those who promulgate obscenity and insurrection.

By tradition and in accordance with Regents' policies, the University permits previously-registered student organizations to invite speakers of their choosing. The use by such organizations of certain campus facilities is permitted, therefore, provided that, under the law, such speakers do not present a clear and present danger to the peace and security of the campus.

Even now, our campus regulations governing the appearance of speakers at ASU are under close review in order to determine precisely what controls the University can exercise under the law.

It shall be made clear that the University neither invites, nor supports with State funds, nor in any way endorses the opinions expressed by speakers on campus.

Admissions Standards

Until 1959, Arizona State University maintained an "open door" policy in admitting new students.

Because of rapid enrollment of growth and the need constantly to upgrade the quality of education offered, we then instituted a policy of admitting Arizona high school graduates in the upper three-fourths of their

(Continued on Page 3)

state
press
ARIZONA STATE UNIVERSITY

Special Edition for freshmen

This is a special edition of the State Press, published by the Registrar's Office of Arizona State University for incoming freshmen. It is entered as second class matter at Tempe, Arizona Post Office under the Acts of March 3, 1897 and August 24, 1912.

ARIZONA STATE UNIVERSITY

SPECIAL STATE PRESS

SUMMER, 1970

Dr. Newburn 11th president

Dr. Harry K. Newburn, one of the nation's most experienced chief executives in the field of higher education, became the 11th president of Arizona State University on April 23.

Dr. Newburn was appointed president by the Arizona Board of Regents following the resignation of Dr. G. Homer Durham, who had served as president for nine years, to become Utah's first State Commissioner of Higher Education.

Former dean of the ASU College of Education, a position to which he was appointed on July 1, 1968, Dr. Newburn had previously served as president of the Universities of Oregon and Montana and as acting president and educational consultant to the Board of Trustees for the establishment of a new metropolitan

university, Cleveland State University.

Dr. Newburn joined the ASU faculty in 1963 as professor of education and director of the University's Center for Higher Education. Shortly after his arrival in Tempe, he was granted a leave of absence to guide the formation of the new university in Cleveland. Soon after his return to Tempe, he was designated dean of the ASU College of Education.

President Newburn's background in higher education extends back to 1933 when he was an associate professor and taught graduate courses in education at the University of Iowa. He was dean of the College of Liberal Arts there from 1941 to 1945, during which period he directed an extensive revision of the curriculum.

As president of the University of Oregon from 1945 to 1953, Dr. Newburn fulfilled the dominant role in a major expansion of enrollment, faculty, staff and the physical plant. He also developed a graduate program, a major salary review, and a program of staff evaluation.

From 1953 to 1958, Dr. Newburn was the first full-time president of the Educational Television and Radio Center, a Ford Foundation affiliate established to develop the educational network for television and to provide program service for its member stations throughout the nation.

In the next year, as consultant to the Ford Foundation, Dr. Newburn conducted a survey of faculty personnel policies in a dozen selected state universities.

(Continued on Page 2)

Summer signup scheduled

Two plans offered to ease registration

Two highly personalized programs of summer orientation and registration will be offered to new freshmen and transfer students who plan to attend Arizona State University in the fall.

Program I is available to all new (freshman and transfer) and readmitted students; Program II is available to all incoming transfer and readmitted students.

Program I is your personal and individual entrance to Arizona State University. You will register for classes and be introduced to the flavor of University

life as a part of a small group of students headed by an upperclass student assistant.

The schedule covers a two-day period, beginning with orientation and advisement on the first day and ending with registration the second day. The cost to you for the entire program is \$15; additional expenses are absorbed by the University. In return, you will receive the following:

1. Individual advisement with an academic advisor.
2. Attendance at academic college assemblies and depart-

mental meetings.

3. University orientation and assistance from an upperclass student assistant.

4. Overnight accommodations in a University residence hall.

5. Four meals in a residence hall dining room.

6. Placement testing and chest X-rays.

7. A personalized introduction to campus facilities, student services and out-of-class opportunities.

8. Selection of courses.

All new freshman, transfer and readmitted students are urged to participate in the total program outlined above. However, if for personal reasons you are unable to take advantage of the residence hall stay, you may participate in the program at a reduced cost of \$10.

This reduced fee will include the cost of the two noon meals but will not include cost of an overnight stay in a residence hall, dinner the first day, or breakfast the second day.

Program II is a one-day advisement and registration program which will be offered on three individual days. For a \$5 fee you will have the opportunity to participate in the following:

1. Individual advisement with an academic advisor.
2. Selection of courses.
3. Chest X-rays.

Registration requirements, with the exception of payment of fall semester fees which are due by mail before noon on Aug. 24,

(Continued on page 2)

Dates of Sept. 6-12 set for regular registration

Regular registration for the fall semester at ASU will be Sept. 6-12, according to Alfred Thomas, Jr., registrar and director of admissions.

New and readmitted students who have been admitted prior to Aug. 22 will obtain registration materials at the Men's P.E. Annex weekdays, Sept. 6-11, from 8 a.m. to 3 p.m., and on Saturday, Sept. 12, from 8 a.m. to noon. Evening students only will obtain materials Sept. 10 from 6 to 8 p.m.

A full schedule of advisement, testing, orientation, and social events will be available to new students during registration week.

Undergraduate students admitted after Aug. 22 will obtain

materials in the Moer Administration Building beginning Sept. 8 at the times listed above.

New freshmen and transfer students will meet with their curriculum advisers on Sept. 8-11.

REGISTRATION PROCEDURES

- a. Obtain registration packet.
- b. Seek advisement according to the procedures of your college or department.
- c. Obtain class cards according to the class card distribution schedule.

September 10 (Th)
1:00 — 3:00 p.m., Partially
Pre-registered Students
Only

(Continued on page 2)



Dr. H. K. Newburn

More about

Early registration schedule

(Continued from page 1)
may be completed during the two days.

Those who participate in the summer orientation-registration program and meet the fee payment deadline are not required to report early to attend the Fall Orientation, Sept. 6 to 12.

Information on the new program has been sent to high school counselors throughout the state. Students admitted to ASU

More about

Dr. Newburn

(Continued from page 1)

Dr. Newburn was president of the University of Montana, Missoula, from 1959 to 1963. In 1963 he left Montana to join the faculty of ASU to realize a desire to return to teaching and research.

His studies of universities and their organization and administration have not been confined to the United States. At one time, he spent six months surveying the administration of universities in Great Britain, Italy and France, a project sponsored by the Carnegie Corporation, and he has also served as an educational consultant in Hawaii, Brazil and Venezuela.

Dr. Newburn is a past-presi-

dent of the Department of Higher Education, National Education Association, and has served on the executive committees of the American Council on Education, the North Central Association of Secondary Schools and Colleges, and the National Association of State Universities.

He holds a bachelor of education degree from Western Illinois State University, Macomb; and master of arts and doctor of philosophy degrees from the State University of Iowa, Iowa City.

ASU colleges conducting early registration and orientation, and the dates for each are:

College of Liberal Arts: July 29, July 30, July 31; College of

Architecture: July 29, July 30, July 31; College of Fine Arts: July 29, July 30, July 31; College of Business Administration: July 29, July 30, July 31.

College of Education: July 29, July 30, July 31; College of Nursing: July 29, July 30; College of Engineering Sciences: July 29, July 30.

All students must be officially admitted to the University on or before July 11, 1970. Reservations to participate in the program must be received prior to July 15, 1970.

Fall plan

(Continued from page 1)

6:00 — 8:00 p.m., Evenings
Students Only.

September 11 (Fr)

8:00 — 10:00 a.m., Freshman
only

10:00 — 4:00 p.m., All students,
including Freshmen

September 12 (Sa)

8:00 — Noon, All Students
d. Complete all registration
forms fully and accurately.

e. Pay fees in Women's Physical
Education Building at the
following times:

September 10 (Th)

1:00 — 4:00 p.m., Partially
Pre-registered Students
Only

6:30 — 8:30 p.m., Evening
Students Only

September 11 (Fr)

9:00 — 4:00 p.m., All Students

September 12 (Sa)

8:00 — Noon, All Students

(No Afternoon Hours)

Check Class Cards carefully to
verify that you have the exact
cards you requested. Your registration
is complete only after
you have turned in your
materials and paid your fees!

Dates announced for Greek rush

Students interested in joining a
Greek organization at Arizona
State University may contact the
Panhellenic Office, 965-3971 or
965-6466, for sorority information;
or the Interfraternity
Council Office, 965-3806 or 965-
6466, for fraternity information.

Currently 1,800 undergraduate
students are members of the 22
national fraternities at the University.
While these groups
conduct formal fall rush activities
the week prior to the opening of
classes in September, they also
have a summer program which
students are urged to investigate.

Women students are required
to register in advance for formal
fall rush, staged by ASU's 12
national sororities. Deadline for
registration and payment of a \$5
clerical fee is August 24. Rush is
scheduled Aug. 30 to Sept. 5.

An 8 p.m. meeting Sunday,
Aug. 30, at Palo Verde East
women's residence hall is the
opening event in rush activities.
Coeds who want to live on
campus during rush period may
move into Palo Verde East from 2
to 6 p.m. that afternoon.

Rush parties will be held
throughout the week, Aug. 31 to
Sept. 4, and bids will be passed
out on Saturday morning, Sept. 5,
at Palo Verde Main. Brochures,
registration material and other
information is available at the
Panhellenic Council office.

dent of the Department of Higher
Education, National Education
Association, and has served on
the executive committees of the
American Council on Education,
the North Central Association of
Secondary Schools and Colleges,
and the National Association of
State Universities.

He holds a bachelor of
education degree from Western
Illinois State University,
Macomb; and master of arts and
doctor of philosophy degrees
from the State University of
Iowa, Iowa City.

Married to the former Wanda-
dalee Brady since 1928, Dr.
Newburn is the father of three
children, and is a member of the
Congregational Church and the
Rotary International. He was
born in Cuba, Ill., on Jan. 1, 1906.

Student affairs office offers many services

A Student Affairs Center
located in Matthews Center
(formerly Matthews Library)
houses the vice president for
student affairs and his staff.
The center provides services for
both male and female students.
Also housed in this center is
the director of financial aids
and his staff, and the coordinator
of residence hall programs and
her staff.

The vice president for student
affairs, Dr. George F. Hamm,
coordinates the work of the
student personnel staff which
includes seven assistant deans,
the director of financial aids,
the director of student counseling
service, and the director of
student health service.

In addition to his responsibility
for supervising all student
activities, he is a member of the
President's Advisory Council, the

General Studies Council, the
Athletic Board, the Student
Policy Committee, the Faculty
Senate, and he is Chairman of the
Student Affairs Committee.

Dr. Richard T. Wootton,
director of financial aids, and his
professional staff supervise the
awarding of scholarships, loans,
grants, and the work-study
program.

The coordinator of residence
hall programs, Dr. Jo F. Dorris,
together with her professional
assistants, supervises the
residence hall staff, and the
coordination of residence hall
programs (educational, cultural,
and social); she also serves as
faculty advisor to the Residence
Hall Association which includes
both men and women's halls.

Dr. L. T. Cummings, director
of student counseling service,
and his six professional
assistants, occupy quarters on
the first floor of South Hall. They
offer programs designed to
provide individual and group
counseling to students ranging
from personal problems to
getting information regarding
interests, vocations, and personal
assistance.

The director of the student
health service, Dr. Richard L.
Jones, and his professional
assistants maintain constant
supervision over the health of
ASU students from a Student
Health Center which houses a
dispensary and infirmary which
are staffed by physicians and
registered nurses.

Dispensary services are
available during regularly posted
hours, and in any hour for
emergencies, to all students
registered for more than six
semester hours.



Dean Hamm

Campus ombudsman service to maintain 'due process'

As an additional safeguard to "academic due process," including advisement, at Arizona State University, there has been revived on the campus an office first established in Sweden in 1810 as an intermediary between citizens and government officials.

The president of the student body and six faculty and staff members are now serving as general "ombudsmen" to hear any outstanding grievances and to help find solutions within the existing framework of the University.

Services of the specially designated ombudsmen are now available to faculty and staff members as well as students.

Selected members of the faculty and student body will be designated as ombudsmen for the 1970-71 academic year.

If a student cannot find a satisfactory solution to a problem after consulting his faculty adviser and departmental chairman, he is first advised to see or submit a written petition to the dean of the college in which he is enrolled. Or he may seek directly the personal help of the ombudsmen.

If an ombudsman cannot put the student in touch with a satisfactory solution, the aggrieved individual may petition the president in writing.

The president may refer the matter to the appropriate and responsible officer or organ of the University, or to a special joint panel drawn from the Faculty Grievance Committee, the Staff Personnel Committee, and the Student Supreme Court.

Most ASU students, since they elected to apply here in the first place, are enthusiastic about the large campus and its growth.

However, a few may adopt the idea, currently fashionable, that large universities are distant and unresponsive, or that faculty advisers and deans are too busy to lend assistance; or they may prefer not to come to the University Counseling Service.

For such students, the device of the ombudsman may render real and important educational service.

Those officially-designated as Ombudsmen at ASU either hold important positions to which they have been elected by the faculty, students, or staff; or, they have unusual experience and competence in university organization and administration.

Memorial Union sets a move back home

After 1½ years of temporary residence in West Hall, the Memorial Union hopes to return soon to its home, the new and greatly expanded Memorial Union building. Its enlarged facilities will include:

Lounges for casual conversation, for making new friends and renewing old ones, for receptions, teas, and programs; a quiet lounge for music listening, comfortable chairs for studying before an open fire; and many additional rooms for meetings of campus organizations, plus exciting new food and activity areas.

Innumerable services for the individual may be found in many areas — Information Desk, Lost and Found, Lending Library, Western Union, Barber Shop, Bookstore, Darkroom, and others. New programs galore include exhibits, dinner lectures with prominent speakers, newly released films, and much, much more.

Memorial Union Program involves student participation in the Union. Seven Memorial Union Activities Divisions are involved in planning a diverse program of activities for the ASU community. The Divisions are active throughout the year, and membership is open to any ASU student.

The Art and Display Division schedules a variety of education displays as well as local and touring art exhibits. An Entertainment Division presents a popular film series, "Pop-Up" concerts, and a monthly Coffee House series.

The Ideas and Issues Division plans weekly discussion programs relevant to contemporary issues. Speakers include ASU faculty members as well as prominent local and national figures.

A Hospitality Division involves freshman and sophomore women as the official Memorial Union Hostesses at many Union and

University events. The Special Events Division plans activities related to seasonal and all University events.

A Recreation Division utilizes the facilities of the MU Games Room to plan its programs. The Circulation Division takes charge of distributing all publicity material for Memorial Union activities.

Wherever its location, the Memorial Union will continue to not only be a building, but an idea, a feeling, a place of warmth and activity — a place where you will always be welcome.

Religious activity well-established

Religious activities involving all major denominations and faiths and characterized by considerable inter-faith involvement is centered in Danforth Chapel at the heart of the campus.

Such programs as Faculty-student seminars, participation in Freshman Orientation Week, and emphasis on social and environmental issues are of vital concern to the Center for Religious Affairs. New and relevant ways to meet the student's personal and spiritual needs are constantly being initiated.

The School of Religion has 15 accredited course offerings which range in subject matter from traditional to contemporary theological thought. These courses are free and registration material is available in the Chapel.

The Chapel is open to all for quiet meditation and, upon request, for weddings or other appropriate activities. Student counseling needs are supplied by the services of the religious coordinator or other campus ministers.



Students stroll to classes, or simply relax in the landscaped surroundings, on Cady Mall, main street of the campus.

More about *A message from President Newburn*

(Continued from Page 1)
graduating class and out-of-state students in the upper two-thirds.

Those not meeting the minimum standards could be accepted by achieving certain scores, indicating comparable ability, on special tests.

Enrollment has continued to grow beyond projections. There is further need to upgrade our academic quality.

Beginning this fall, Arizona high school graduates in the upper two-thirds of their class and out-of-state students in the upper one-half will be admitted.

Arizona students not meeting this requirement may be admitted by scoring a minimum 17 on the American College Test. Out-of-state students not in the upper one-half of their class may be admitted by scoring a minimum 19.

Athletics

A national reputation for scholastic excellence is important to any university. Such a reputation helps to attract outstanding faculty members and large grants from foundations and provides other benefits as well.

For many state universities, possessing a reputation for scholastic excellence goes hand-in-hand with recognition of an outstanding athletic program also.

For the past ten years, ASU football and baseball programs have been among the most successful in the nation. Our basketball program is destined to regain admiration. Many track participants have starred in the

Olympics, and our golf successes have been numerous.

The academic prowess of our athletes is becoming more impressive, also. It is no longer unusual for an athlete to continue his education and obtain a master's degree.

Included among our recently graduated athletes are a physician, several outstanding teachers, lawyers, successful businessmen, and government leaders.

In Conclusion

From the beginning, it has been my intention to act only in terms of what I consider to be the best interests of the University as a state-supported institution dedicated to the education of men and women equipped to live in and contribute to a free and responsible society.

In meeting such a commitment, one must be acutely aware of all the forces, the pressures, the demands, and the needs of the society of which the University is a part and which it attempts to serve. At the same time, he must not be diverted from his efforts to improve constantly the quality of the University environment as a place where men can come to grips with the "fragile heritage of free exchange of conflicting ideas."

In our national society and on our university campuses, we as Americans seem to be more perplexed and anxious, and more at odds with ourselves than ever before in our history. This is particularly true about the meaning and quality of our lives, and the

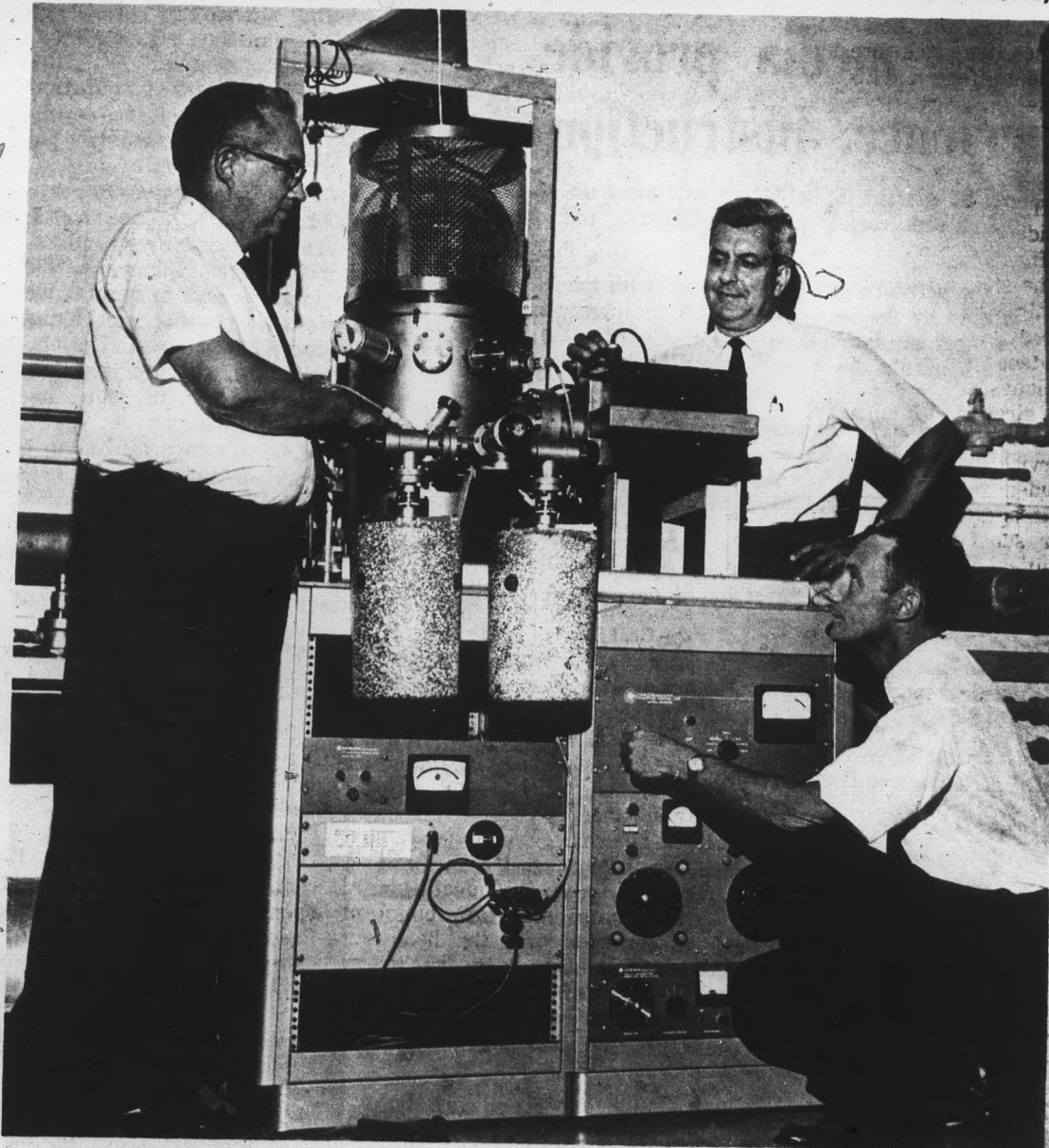
significance of the university to our personal existence and national character.

Crises, both of confidence and hope, are our constant experi-

ence; and as in all such crises, there is the apprehension and alarm that the light of former values will be extinguished. We will as a society, as a nation, and

as a University survive these crises, and we will be the stronger for them.

DR. H. K. NEWBURN
PRESIDENT, ASU



Modern laboratories bustling with research activity contrast with the relaxed atmosphere on the University's mall.

College of Liberal Arts is largest

Comprised of 20 departments, the ASU College of Liberal Arts maintains the largest faculty and offers the greatest number of courses of the university's nine colleges.

Liberal Arts offers programs of study leading to two undergraduate degrees, the bachelor of arts and bachelor of science.

Twenty majors are available to candidates for the bachelor of arts degree. They are:

Anthropology, chemistry, Chinese, economics, English, French, geography, geology, German, history, home economics, journalism, mathematics, philosophy, political science, psychology, radio-television, Russian, sociology, and Spanish.

Twenty-five majors are available to the candidates for the bachelor of science degree from the College of Liberal Arts. They are:

Anthropology, biology, botany,

boys' club administration, chemistry, economics, entomology, geography, geology, health education, home economics, journalism, mathematics, medical technology, microbiology, physical education, physics, political science, psychology, radio-television, recreation, sociology, wildlife biology, x-ray technology, and zoology.

To students majoring in these degree programs, the College of Liberal Arts offers special programs of study in the following areas:

American studies, bilingual secretarial program; Foreign Service Training program, Latin-America Area Studies, pre-dental, pre-medical, and pre-osteopathy, pre-law, pre-ministerial, pre-occupational therapy, pre-physical therapy, pre-optometry, pre-pharmacy, public service training program, Asian studies and public safety administration.

Among the research facilities used by the College of Liberal Arts are a complete atomic mineral and metal analysis laboratory, a meteorite laboratory, psychological clinic and laboratory, the Institute of Public Administration, Animal Resource Center, the Poisonous Animals Research Laboratory, center for family life studies, center for urban studies, the Center for Latin American Studies, and the Center for Asian Studies.

Dr. George A. Peek, professor of political science, who joined the ASU faculty in 1964, is Dean of the College of Liberal Arts.



Dean Peek

Campus media provide experience, instruction

Students at Arizona State University have an opportunity to participate in a wide variety of radio, television, and journalism activities.

Many of the activities are synchronized with laboratory work in courses offered by the Department of Mass Communications, but students in other academic programs also participate. The Department offers separate degree programs in journalism and radio-television.

ASU operates KAET, a non-commercial educational television station on Channel 8. KAET telecasts over 80 hours per week of local and National Educational Television (NET) programs to help meet the educational and cultural needs of the state.

KAET programs are seen throughout Maricopa County and in such outlying communities as Prescott, Globe, Flagstaff and Miami. KAET studios are modern with the latest equipment, including facilities for broadcasting full color programs.

Students prepare and broadcast "College Beat" weekly. A number of broadcasting majors appear as talent or do behind-the-scenes work on other KAET programs.

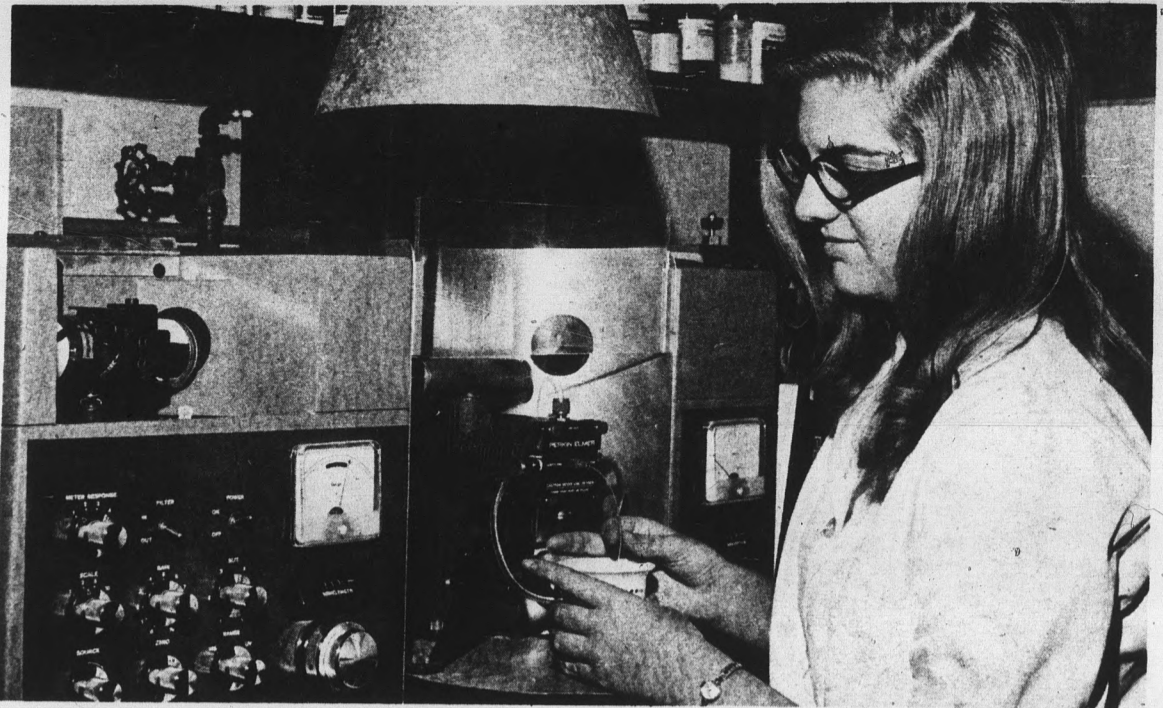
The Bureau of Broadcasting also maintains radio studios for student use. Advanced students in broadcasting classes this year prepared weekly programs for broadcast by many commercial stations around the state.

The State Press, campus newspaper, is published four times weekly. It is distributed on campus, and subscriptions are included in the student activity fee.

The award-winning newspaper has won first place in general excellence three out of the past four years in the Rocky Mountain Collegiate Press Contest. Journalism students have won a large number of individual awards in state, regional, and national competition.

Journalism majors have worked as summer interns on such daily newspapers as the Washington Post, Milwaukee Journal, Salt Lake City Tribune, and Arizona Republic.

The University yearbook, Sahuaro, is edited and published by students.



STUDYING A SHOOTING STAR — Coed conducts analysis of a meteorite. Center for Meteorite Studies at ASU is one of the world's noted facilities and has worked with NASA in analysis of moon material brought back by Apollo space missions.

Library is fast becoming one of finest in America

The Arizona State University Library is rapidly becoming one of the finest university research libraries in the western United States.

The acquisition of books and other library materials, accelerated by the University's commitment to excellence and supplemented by federal and private assistance, has propelled ASU's research library forward as one of the nation's fastest growing libraries.

Modern method techniques and computer systems in the acquisitions and circulation services make it easier to keep up with the heavy demands of growth.

With a collection of approximately 1½ million books, periodicals, newspapers, microfilm and documents, the university is able to support the pressures of the increasing number of programs of independent study and research offered early in the undergraduate years.

The library is arranged in a subject oriented plan with reference service available on the main level. Reference service is extended to the other levels by a "hot line" telephone service, which connects to the Reference

Service Librarian on the main level.

The reference staff utilize their knowledge in the various subject disciplines in giving assistance to the users of the library as well as in contributing to the development of a strong reference and resource collection. Other public services are the Arizona Collection, Rare and Special Collections, Government Documents, Special Services (newspapers, maps and microform materials), and Current Periodical Service.

The growth of the resources of the library has been enhanced this past year through the receipt of many gifts, among the more notable the Special Collections suite of rooms provided by gift funds from Dr. and Mrs. Oscar W. Thoeny.

The Arizona State University Library Associates also gave a gift of two walnut reading tables and eight walnut and leather side chairs.

Gifts of note must include the Mosher Collection of 312 volumes donated by Thomas B. Mosher Jr. The University also received a rare facsimile of an illuminated manuscript edition of Dante Alighieri's Divina Commedia published in 1921 in an edition of

350 copies, a gift from Mr. and Mrs. L. S. Rogers of Phoenix.

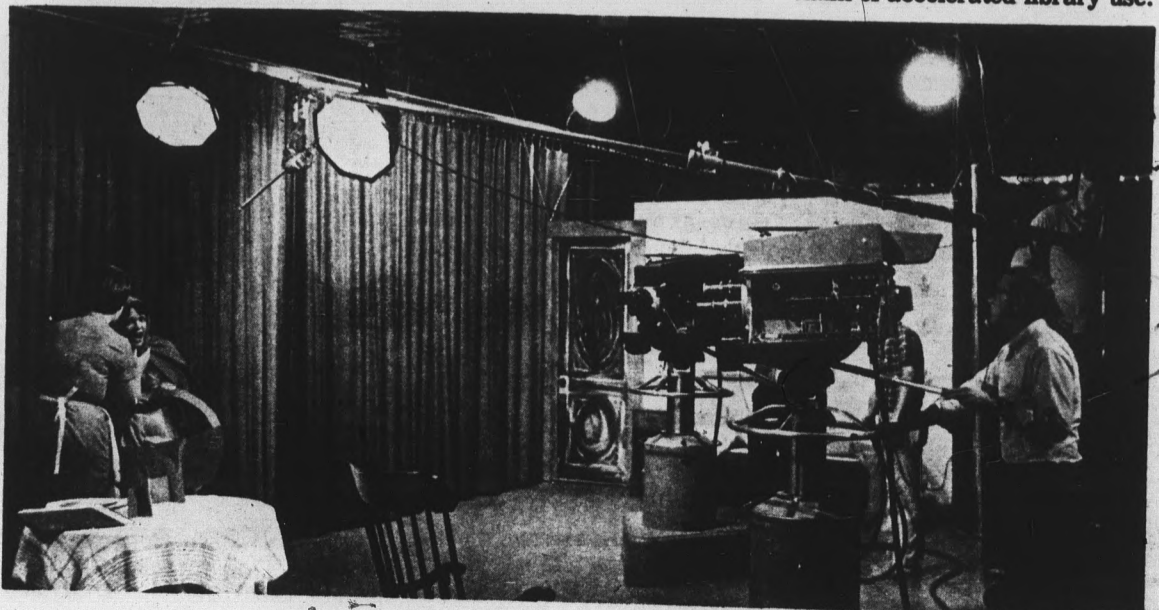
Two rare editions of the Rubaiyat were donated by the Leigh Hunt Memorial Fund. One of these is one of 25 copies and was owned by Hugh Walpole and the other is one of 500 copies bound in vellum and illustrated by Sangorski and Sutcliff.

The Alumni Association provided funds to purchase two additional Baskerville imprints (Milton's Paradise Lost and Paradise Regained), and the ASU Library Associates gave an early book on Travels in Italy in 1646 published in London in 1648.

The Charles Trumbull Hayden building has proved to be an outstanding facility. The flexible design provides the library with a number of choices necessary in determining the best use of space in a rapidly growing institution.

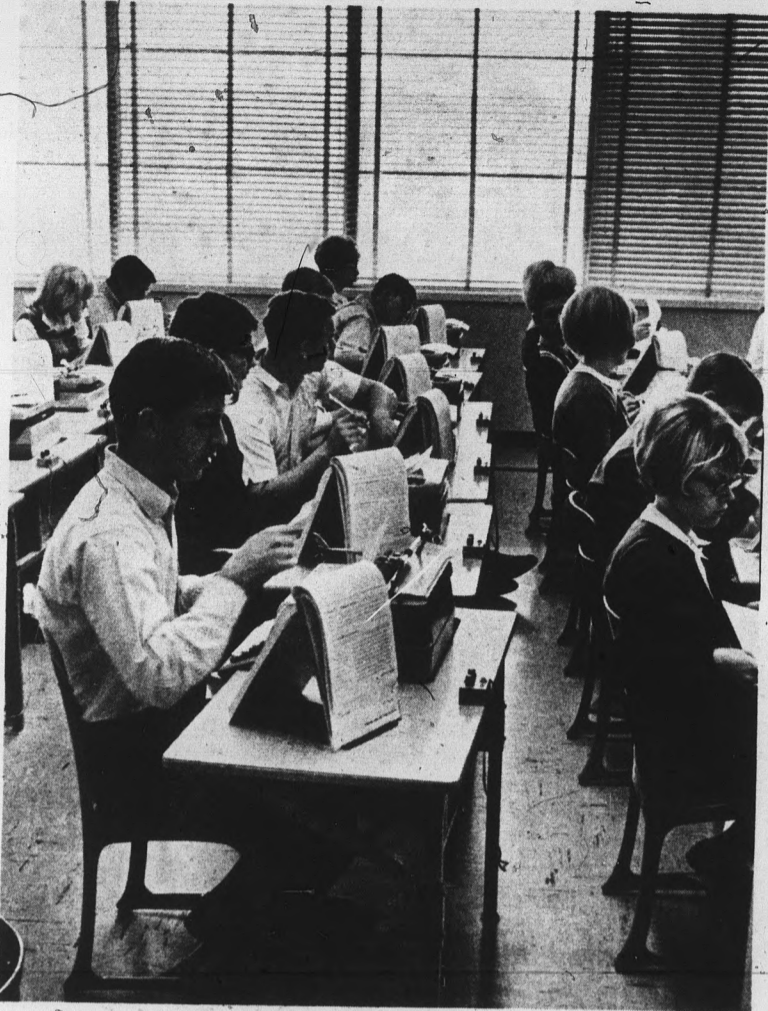
The pleasing and effective use of stone and wood throughout the entire architectural design established an elegant atmosphere that contributes to the sincere or serious efforts of the teaching and research programs of the University.

The 1,083,000 volumes circulated by the University Library during the past year supports the claim of accelerated library use.



Television cameras zoom in on players in a KAET-TV children's production.

Business now has own complex



TAP, TAP — Students in beginning typing course learn skill which they will find useful throughout college and in the days to come thereafter, no matter what their ultimate career goal may be.

The College of Business Administration has just completed its second year in its new facilities and is presently working with architects and the building committee for construction of additional space.

The colorful new building, which contains its own computer has the latest instructional equipment and facilities. Every classroom in this new building is a special-purpose room designed to encourage student participation and offer an ideal learning environment.

The College of Business Administration offers a balanced curriculum for students interested in careers in various fields of business. Each student is assigned a faculty advisor who will assist him in planning his academic program. Approximately one-half of a student's courses are taken in fields commonly described as "general education" or "liberal arts." These include such areas as communications, humanities, physical and natural sciences, behavioral and social sciences, and mathematics. The remaining one-half of the student's curriculum is taken in professional business subjects.

The professional courses include basic work in accounting,

economics, finance, marketing, management, business law, and quantitative analysis. In addition, students may specialize in one of

eleven major fields. These major fields are accounting, advertising, economics, finance, general business administration, insurance, management, marketing, office administration, real estate, and quantitative systems.

The American Association of Collegiate Schools of Business, the official accrediting agency of professional schools of business, has accredited both the undergraduate and the graduate programs of the College of Business Administration.

Graduate degrees of Master of Business Administration, Master of Science in Accounting, Master of Science in Economics, and

Doctor of Business Administration are also offered.

Over 4,000 students will be enrolled with major fields in business during the coming year. Approximately 100 business faculty members will provide a combination of practical and theoretical instruction in these various fields.

Through its Center for Executive Development, the College of Business Administration also conducts special seminars and conferences for local businessmen. These executive development programs provide management training in most of the functional fields of business and keep the faculty in touch with current business problems and practices. These programs are facilitated by Arizona State University's excellent location in Arizona's business center.

A Dean's Advisory Committee of 18 local business leaders serves as a liaison group between the College and the business community.

The Bureau of Business and Economic Research gathers and publishes business and economic data pertaining to the surrounding community. The Bureau also serves as a laboratory for students who wish to secure practical experience in business research and analysis.

Dr. Glenn D. Overman, who joined the ASU faculty in 1956, is Dean of the College of Business Administration.



Dean Overman

Oldest college is Education

ASU's College of Education, the oldest college in the state's oldest institution of higher learning, offers courses in major areas, leading to the bachelor of arts in education degree.

Master of arts in education and educational specialist, doctor of education and doctor of philosophy degrees are also conferred, as are the education specialist and doctor of philosophy degrees.

Specialization of course work is organized into 17 different groupings: elementary education, secondary education, special education, higher education, adult education, counselor, educational administration and supervision, audio-visual education, Indian education, social and philosophical foundations, educational foundations, library science, instructional

materials, safety education, reading education, educational psychology, and educational technology.

The college also provides preparation for state teaching certificates. In addition to the elementary program, students are prepared to meet certification requirements for teach-

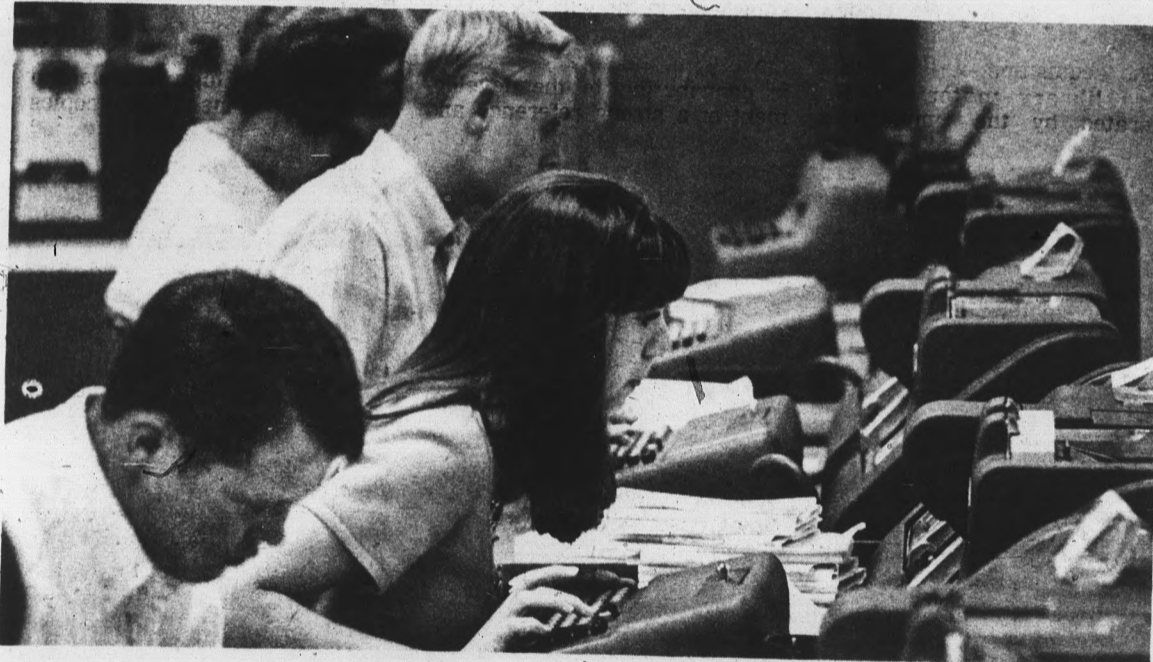
ing any one of the 26 major teaching fields and 23 additional minor fields for high school instruction.

The College of Education operates a Counseling Center, a Reading Center, a Bureau of Educational Research and Services, and the I. D. Payne Laboratory whose purpose is research and development in the education of culturally disadvantaged children.

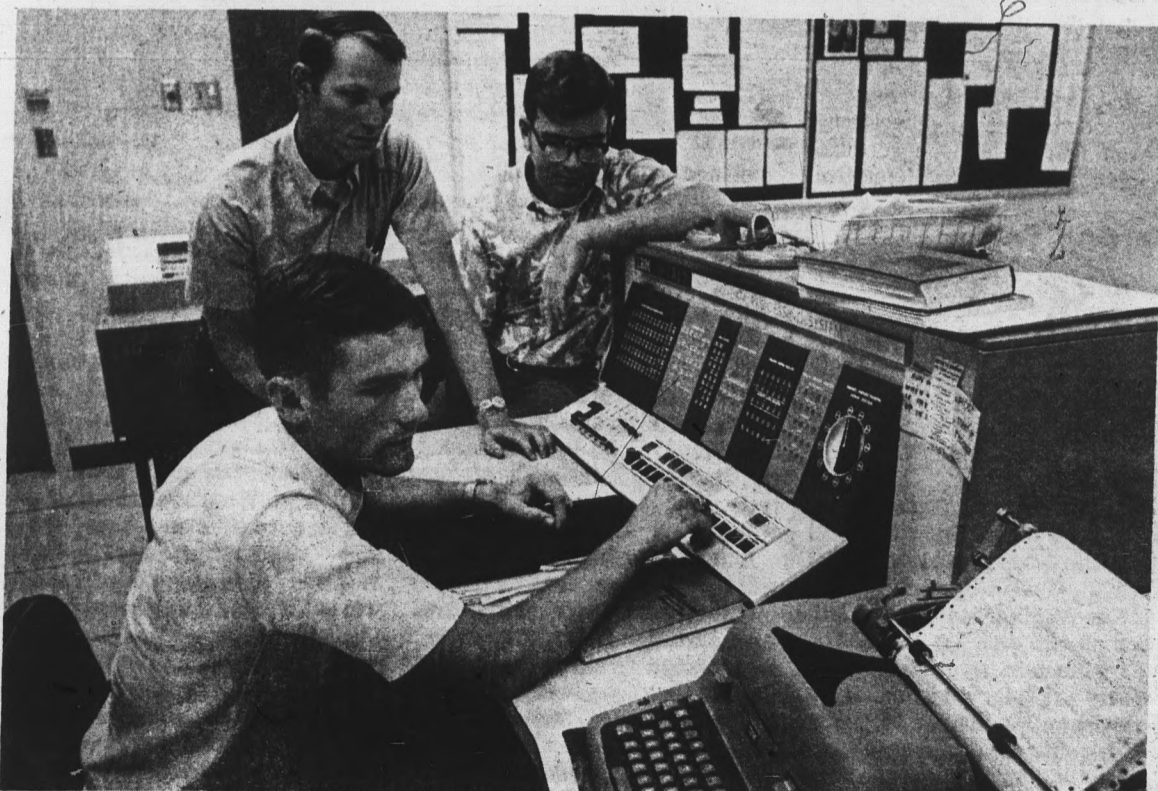
Dr. Del Weber serves as the Acting Dean of the College of Education.



Dean Weber



Tongue-between-teeth helps concentration in business machines class



Students operate a IBM 1620 computer in class exercise

Nursing College to begin fifth year

This fall will mark the fifth year of classes in the College of Nursing building, located on the north end of the campus mall at University and College Avenue.

The nursing program was initiated in April, 1957 when the School of Nursing was organized within the College of Liberal Arts. The School became a College of Nursing on July 1, 1964.

The College now offers programs leading to the Bachelor of Science and Master of Science degrees in nursing.

The Master of Science in Nursing program will be in its second year with students specializing in Community Mental Health — Psychiatric Nursing and Family and Child Nursing, with planning underway for a specialty in Medical - Surgical Nursing.

The general objective of this program is to prepare competent specialists in clinical nursing who are oriented to community programs who can participate in multidisciplinary groups and who can assume leadership or teach-

ing roles in a variety of health settings.

The curriculum is designed to include three areas; courses in general education, related non-nursing and electives, and nursing. The courses in the nursing major are organized in a four semester upper division sequence.

Excellent student clinical experiences are selected by the College of Nursing faculty who accompany the students to hospitals and health agencies located in Phoenix and Mesa.

Arrangements are made with over 30 agencies; some of them are Good Samaritan and St. Joseph's Hospitals, Maricopa County Health Department, Visiting Nurse Services, Crippled Children's Service and Veteran's Administration Hospital.

Loans are available to eligible students with clearly established financial need, through the Nurse Training Act of 1964. Scholarships are also available.

The philosophy behind the College of Nursing is that it contributes to the improvement of society through the preparation of competent professional nurses.

The purpose of the Baccalaureate Program is to graduate a person possessing general clinical competence who can perform as a professional nurse in any health care setting.

The graduate is prepared to give direct patient care to the individuals and families, using systematic observation, assessment and decision-making skills culminating in enlightened nursing action.

The graduate also is prepared to teach responsibly about health practices, to function as a leader of small health groups, to collaborate with other professionals in the health field, and to continue functioning as an inquiring person.



Dean Bardewyck

Graduate program fulfills many needs

With the increasing demands of our technical age, more and more students either remain in college after receiving bachelor's degrees to continue studies or return later for advanced degrees.

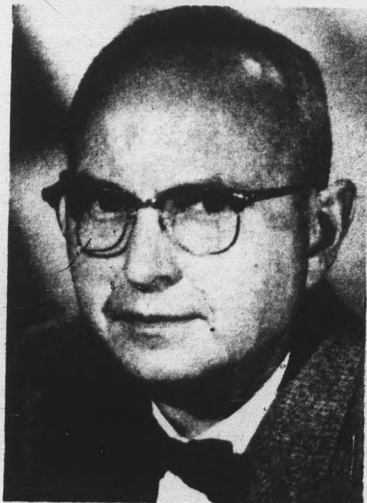
Thus it is of interest to young students starting their academic career to know that Arizona State University offers well rounded and extensive graduate programs through its Graduate College, of which Dr. William J. Burke, vice president for graduate studies and professor of chemistry, is dean.

Master's degrees are offered in accounting, agriculture, anthropology, art, biological science, botany, chemistry, drama, economics, engineering, English, French, geography, geology, German, history, home economics, humanities, mathematics, microbiology, music, nursing, philosophy, physical education, physics, political science.

Also fine arts, music, natural sciences, psychology, sociology, Spanish, speech, zoology, accounting, economics, education,

engineering, business administration, and social work.

The Graduate College also offers the Master of Counseling, Education Specialist, Doctor of Education, the Doctor of Business Administration, and the Doctor of Philosophy degrees. The Ph.D. fields include anthropology, botany, chemistry, education, English, engineering, history, mathematics, physics, psychology, political science, Spanish and zoology.



Dean Burke



Student nurse times simulated intravenous procedure



Nursing Center also houses Grad School of Social Service Administration

ASASU aids learning process

Every student registering for more than six hours, is automatically a member of the Associated Students of Arizona State University.

The Board of Regents, the President and the faculty, challenge every student to accept his individual responsibility by exerting intelligent effort for self-government and for promoting the intellectual, moral and social welfare of all students, in a democratic manner.

The Student Senate or Legislative Branch passes the laws governing the Associated Students, its boards and agen-

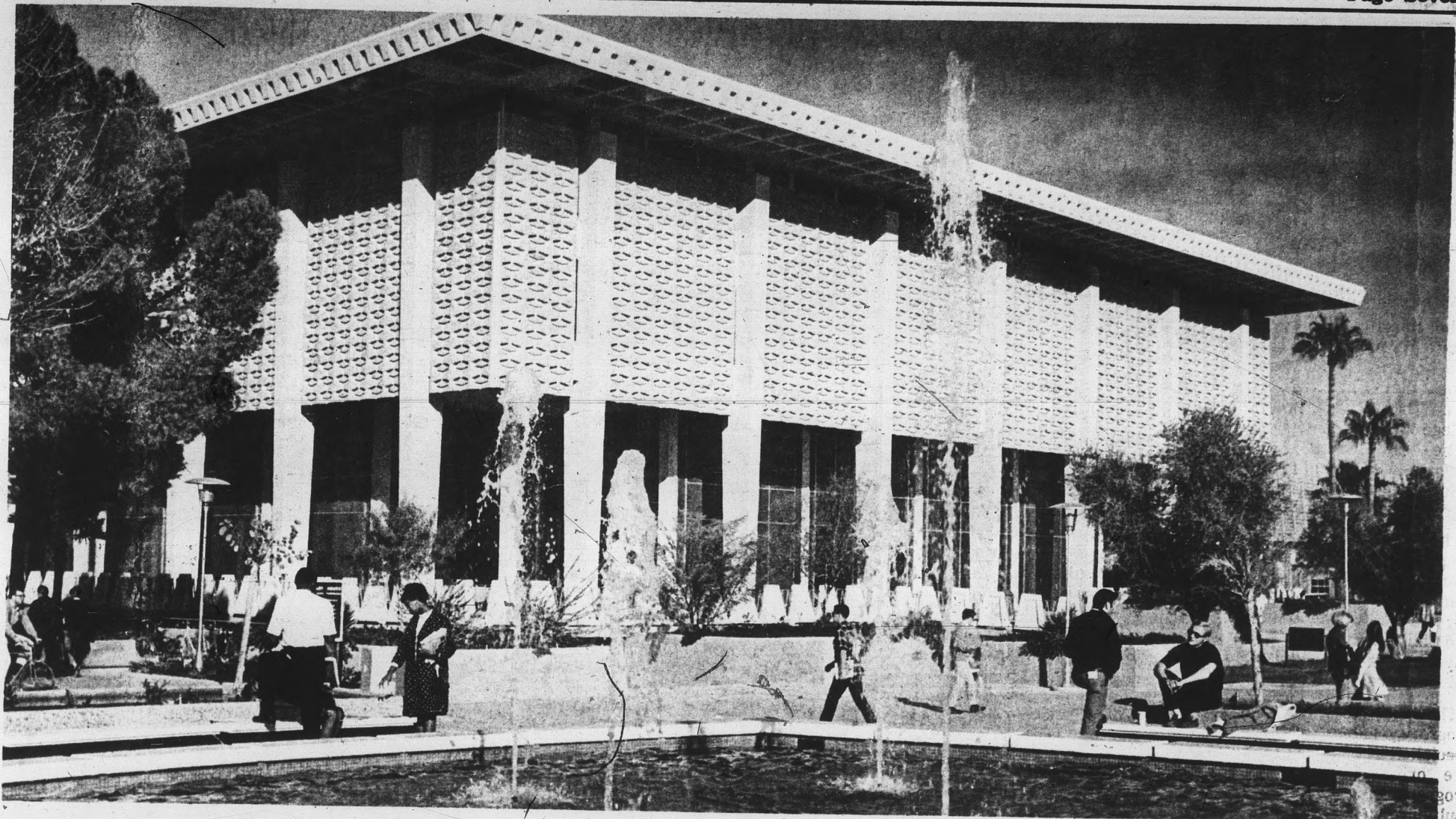
cies.

The Executive Branch carries out these laws and the Student Court or Judicial Branch passes on the constitutionality of the laws and interprets the Constitution.

Annual elections are held in which student senators are elected to represent the Associated Men Students, Associated Women Students, Sophomore Students, Junior Students, Senior Students, Off-campus Men, Off-campus Women, and students in the colleges of Liberal Arts, Education, Architecture, Busi-

ness Administration, Engineering, Fine Arts and Nursing.

Under authority delegated by the President of the University, Associated Women Students sets and enforces social standards and regulations regarding campus dress, coordinates women's student government through residence hall councils and the off-campus women's organization, establishes hours for women students, and formulates and administers policies deemed essential to promote a desirable group living experience.



Center of academic activity on campus is the Charles Trumbull Hayden Library, built to house 1.3 million volumes

Charter law class is graduated

In June, 1970, the charter class at the College of Law of Arizona State University received their J.D. degrees as the first graduates of the new College.

After successfully completing the three-year program of law study, the 76 graduates have now assumed responsibilities as members of the practicing bar, law clerks to local and federal judges, Department of Justice employees, law teachers, Judge Advocate General staff members, business managers and representatives in other law-related areas.

During the past year, the law building has housed three classes of law students for the first time. Some 320 full-time students have been enrolled, including an entering class in the Fall of 1969 numbering 130.

Each succeeding class has entered with better credentials of Law School Admission Test Scores and undergraduate academic averages. Applications for admission for the fall of 1970 have already exceeded those of any previous year by several hundred.

At the annual meeting of the Association of American Law Schools in December, the College of Law was granted full accreditation by that organization.

This action, along with the previous awarding of provisional accreditation to the law school by the American Bar Association, means that the students of the College graduate from a fully accredited institution and thereby qualify as candidates for the bar examinations in jurisdictions throughout the country.

The accreditation followed visitations by inspection teams who submitted reports emphasizing the strength of the new school and the fact that it surpassed each of the accreditation standards of the organizations.

Highlights during the year included lectures by former



Dean Pedrick

attorney general Ramsey Clark; Daniel Walker, director of the Chicago Study Team, National Commission of Causes and the Prevention of Violence; Judge Carl McGowan of the Court of Appeals, District of Columbia Circuit; Dr. Karl Menninger, noted psychiatrist, and many other speakers.

To the distinguished faculty of the College, including national authorities in the fields of evidence, torts, constitutional law, property and criminal law were added several new permanent staff members.

The additions included Prof. Michael A. Berch, graduate of Columbia University and former New York City practitioner; Arthur B. LaFrance, a consultant for O. E. O. Legal Services, associate with the New Haven Legal Assistance Association, and a Yale law graduate; Milton R. Schroeder, law clerk to Judge Carl McGowan and editor of the Law Review at the University of Chicago; and Robert E. Strong, a Harvard law graduate formerly in practice with a prominent Los Angeles law firm.

Visiting faculty for the year were H. C. L. Merillat, executive director, American Society of International Law; and Prof.

Frederick K. Beutel, formerly of the University of Illinois law school.

Further strengthening the teaching capability of the College will be three other faculty members who will join the staff for the 1970-71 year.

An internship program was implemented for third-year students during the summer of 1969 and the academic school year. Some 75 students were placed as clinical interns with such offices as the State attorney general, the Maricopa County attorney, the Maricopa County public defender, Legal Aid Society and Superior Court judges.

On a full-time or part-time basis for eight weeks, the students worked under the super-

vision of the legal staff of the co-operating offices and the law school faculty. A grant from the Council on Legal Education for Professional Responsibility, a Ford Foundation-funded enterprise, partially supported the development of the clinical instruction program.

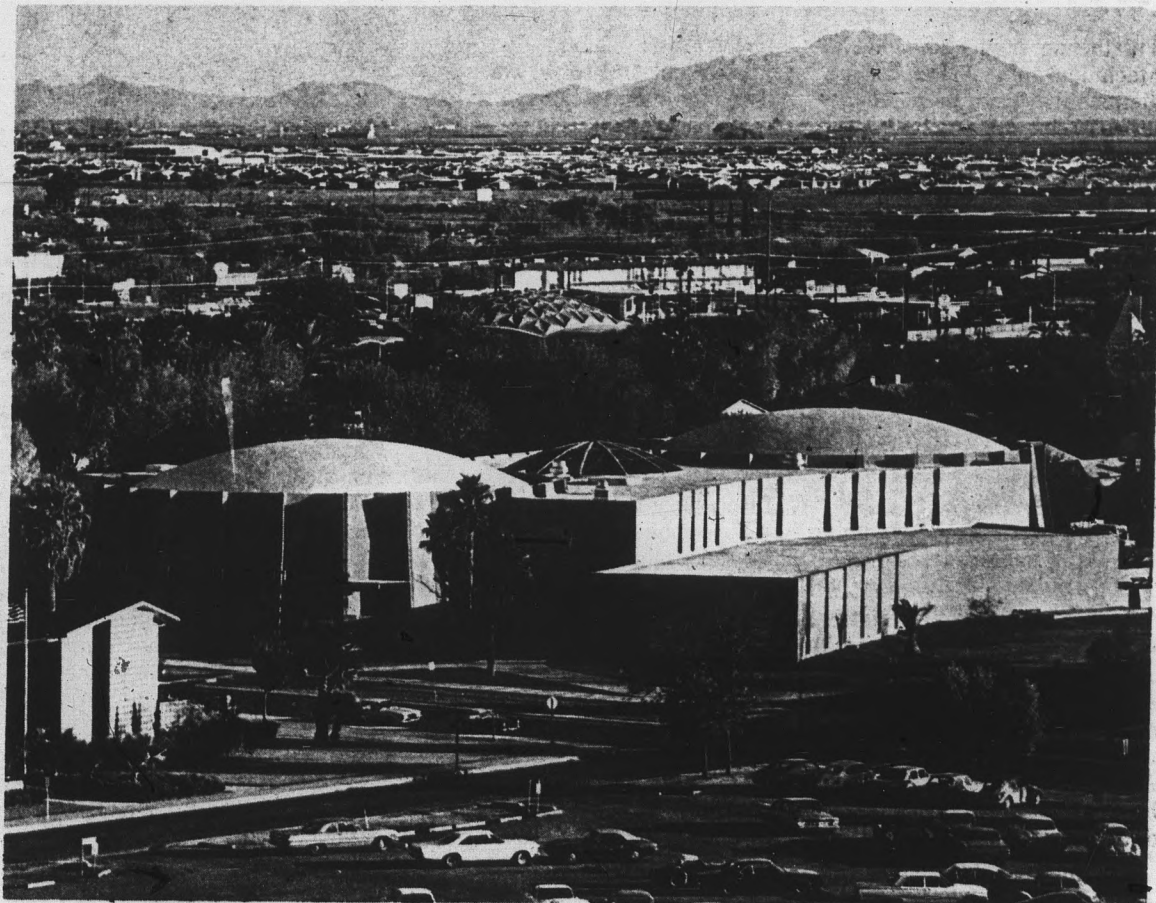
The College of Law is situated in a building of aesthetic charm and functional efficiency. A fine law library contains a working collection in excess of 80,000 volumes.

With these facilities, the unusually qualified faculty and an innovative program of legal education, the law school is in a position to meet its future obligations subject to effective support of the university administrators

and the indispensable backing of the legal profession and other elements of the larger communities of Arizona.

Admission to the College of Law is based upon an evaluation of an applicant's credentials. One must have a bachelor's degree and take the Law School Admission Test before being considered as a candidate for admission.

Since instruction in the College is at the graduate level, it is necessary that an undergraduate program be completed prior to law study. Students interested in attending the College of Law at ASU may file an application during their senior year of undergraduate study.



Armstrong Hall, home of the College of Law



SMELL OF THE GREASEPAINT — and the roar of the crowd awaits outside the dressing-room door on opening night.

The active one

Fine Arts College both teaches and serves

The College of Fine Arts, says Dean Henry Bruinsma, is in a unique position as a professional college for training teachers, artists, and clinicians, and also as a major service college to the entire University.

New students at ASU find that their advisers, regardless of their major, recommend one or more electives in art, music, speech and drama, dance, or the interdisciplinary humanities, to fulfill the general studies requirements or as free electives.

There are also many opportunities for community service and for extra-income activities for students in the Fine Arts. Students taking courses in the art department in such areas as painting, sculpture, ceramics, crafts, printmaking, jewelry, and photography, may find their works selected for public showing in the many art shows on campus and in the community each year. Many students also contribute their services to community-action programs in working with school children in underprivileged areas.

Music students, including

many who major in other fields, find stimulating activity in the many choral, orchestra, band, and opera organizations on the campus. Some are invited to participate in the Phoenix Symphony Orchestra and in other musical organizations in the

community. Many students also contribute their services to community action groups through their work in teaching and recreational programs.

Speech and Drama students, as well as students of the Dance, find a rich outlet for study and performance through the major theatre and dance groups on campus. Students in the Speech and Hearing Therapy program ultimately find themselves involved with clinical services in local hospitals and schools.

The many courses offered in the College also provide an opportunity for personal cultural enrichment in such areas as the interdisciplinary Humanities Center, and in the individual departments of the College where specially designed courses for non-majors are available.

Students interested in participating in these courses, as well as in the many activity-type courses of the College, will find a variety of challenging and creative opportunities, designed to meet their individual needs and desires.



Dean Bruinsma



THE KNACK — Student actors emote in this scene from the Ann Jellicoe play "The Knack," produced by University Players.

Fine arts groups

Student participation urged

A rich and varied schedule of cultural activities is available at Arizona State University for students who want to participate as well as for those who prefer the role of spectator.

At Gammage Auditorium, the Frank Lloyd Wright-designed center for the performing arts, many of the world's most distinguished guest artists are featured each year.

In addition to this extensive cultural attraction, many other activities are available on campus under the auspices of the ASU College of Fine Arts.

Among these latter, University Players and Lyric Opera Theatre both offer full seasons of drama and music productions, and

welcome student participation through audition.

Other groups, open to students through competitive audition, are the Symphony Orchestra; the Choral Union, Concert Choir and University Singers; the Sun Devil, Concert and Symphonic Bands; and many smaller vocal and instrumental ensembles.

Orchosis, the modern dance group, provides yet another outlet for the talented student. Also available are regularly scheduled Reader's Theatre and Forensics events.

Related to these activities is the fact that the new Music Building at ASU is tentatively scheduled to open Feb. 1, 1971.

This will provide not only classrooms, studios and offices, but also practice rooms, a 500-seat opera theatre, a 200-seat recital hall, and an electronic music laboratory.

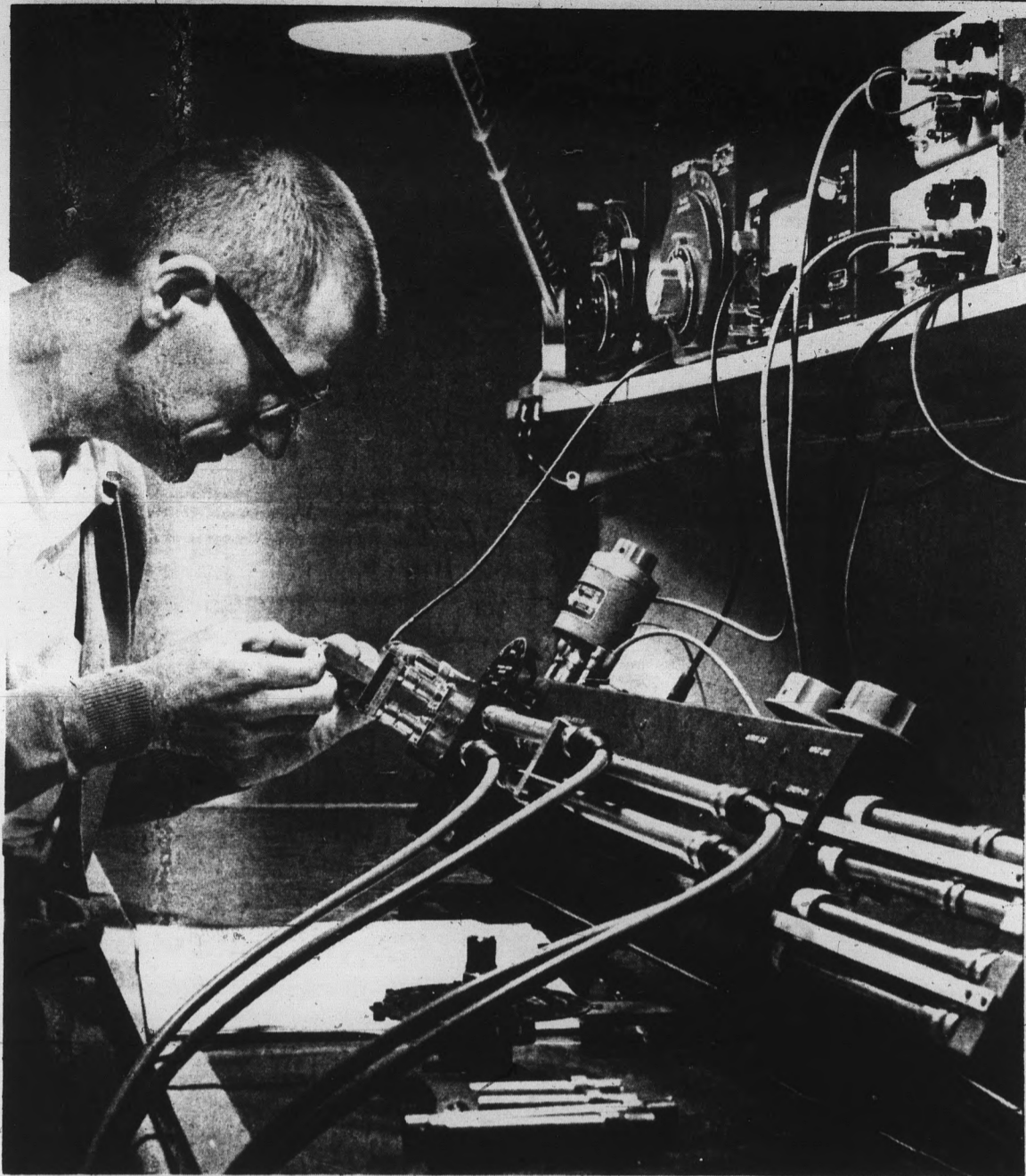
With the opening of the new Art Building this summer, greatly expanded facilities are now available for students interested in painting, ceramics, sculpture, jewelry, crafts and other art media.

In the galleries on the second floor of Matthews Center at ASU, where the University's permanent Art Collections are housed, many special exhibitions of work by world-renowned artists are presented during the year.



Orchosis modern dance group members perform

Engineering college covers many fields



Dr. Carl R. Zimmer, Professor of Electrical Engineering, using a high frequency bridge for the measurement of transistor parameters. College of Engineering students have a diversity of equipment at their disposal for experimental projects.

The College of Engineering Sciences at Arizona State University includes the Division of Agriculture, Division of Construction, Division of Technology, the School of Engineering, the Engineering Research Center and the University Computer Center.

The Bachelor of Science Degree in Agriculture is offered in the fields of Agricultural Science, Agricultural Production and Management, and Agricultural Business. Four special programs, agricultural education, foreign agricultural service, preveterinary and preforestry are also offered. Students take part in practical applications of agriculture training on the University Farm. In addition, ASU offers a Master of Science degree program in agriculture.

The basic general construction curriculum leading to the Bachelor of Science degree is arranged to develop management, leadership, and competitive qualities in the student through general education fundamentals and a broad range of theoretical and applied science subjects essential to building, heavy, and industrial contracting.

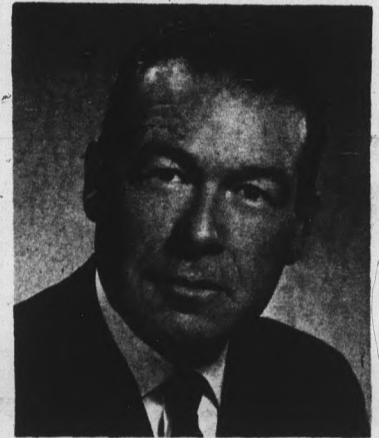
For students interested in technology, there are five fields of specialization in which the bachelor's degree can be obtained: Aeronautical technology, electronics technology, graphic arts technology, industrial technology, and technical education.

The Engineering School is housed in a block long complex of

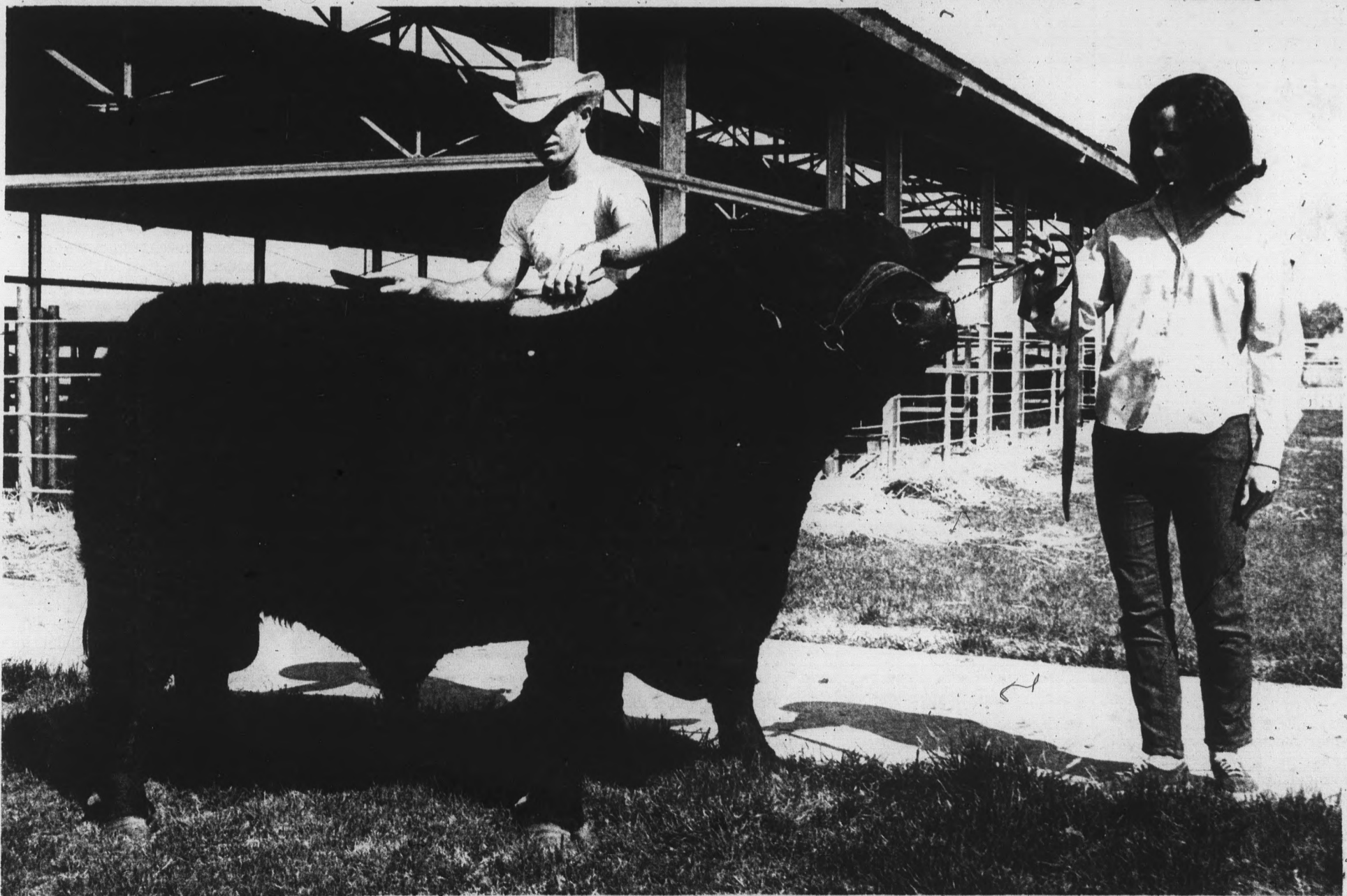
modern buildings, including a number of uniquely designed laboratories. The student may select his area of specialization from the chemical, civil, electrical, engineering mechanics, industrial, mechanical, or engineering science field which are offered. If he wishes, he may continue beyond the bachelor's degree to the Master of Science, the Master of Science in Engineering, or the Doctor of Philosophy degrees.

The Computer Center is equipped with the following computers: IBM 1130, GE 245, time sharing system, GE 425, and CDC 3400, plus numerous items of auxiliary equipment.

The Engineering School was built, accredited by the Engineers' Council for Professional Development, and authorized to award the bachelor's, master's, and the Doctor of Philosophy degrees between 1956 and 1962 under the leadership of Dr. Lee P. Thompson.



Dean Thompson



Techniques of grooming and showing prize livestock are part of training in animal husbandry available in the Division of Agriculture

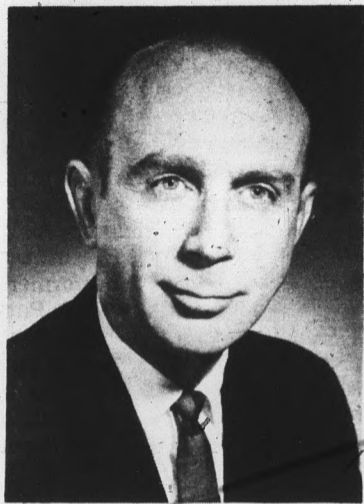
Professionalism

Key word for Architecture

The College of Architecture which was accredited in 1961 by the National Architectural Accrediting Board offers programs with the purpose of providing liberal, technical and professional preparation for careers concerned with creation of the buildings and related features of a functional and satisfying environment.

James W. Elmore is the dean of the College.

The College of Architecture offers a five-year program leading to the profession degree,



Dean Elmore

Bachelor of Architecture.

The architecture program is based on the belief that the architecture profession has the obligation of providing creative leadership in the shaping of man's environment.

The program acquaints the students with all the techniques and philosophies of design and construction, and through its varied resources, stimulates and aids the student in his quest for a personal philosophy that will sustain him in seeking the rewards of a career devoted to shaping a better environment.

It is the purpose of the College of Architecture to provide graduates with a thorough and intimate comprehension of the nature of architecture; the competence necessary to acquire professional registration; the high ideals necessary for responsible and creative functioning as an individual, and as an architect in our changing society.

The college is a member of the Association of Collegiate Schools of Architecture.

A number of scholarships are provided each year through the Architecture Foundation.



Delicate, precise work goes into construction of architectural model

PHOTO BY
ASU PHOTOGRAPHY
SERIES 1000
MANZANITA HALL
MAY 1968



Manzanita Hall women's dormitory — tallest building on the Campus

Housing available

Housing is ultra-important in the booming Valley of the Sun. Arizona State University is constantly working to provide adequate and suitable housing for its students.

The ASU residence halls are not just a place to sleep and eat. The halls are integrated with the academic aims of the institution, and living in them has been a factor contributing to the success of many a student.

The halls have succeeded in developing a climate conducive to good study habits. All have regular "quiet hours" to encourage study and the head residents are always ready to further encourage high academic standards.

Each year, both men's and women's residences compete for the highest academic average and trophies are given to the winning men's and women's halls.

The individual residences sponsor scholarships, service projects as well as dances and receptions; some have published their own mimeographed newspapers. Sahuaro, Manzanita, and the Palo Verde's have dining rooms in the residence buildings.

Each residence hall has its own governing body, made up largely of student officials elected by their fellow students in the hall.

Women's residence halls include: Palo Verde, Palo Verde East, Gammage, McClintock B (honor hall for upperclass women), the Quad units, McClintock A, Wilson and Manzanita and Sahuaro.

Men's residence halls include: Hayden, Irish, M.O. Best units, Sahuaro, Adelphi and Palo Verde West.

All students wanting residence hall quarters for the coming academic year may apply to the Housing Office, Moer Administration Building, room 124. Prospective students should apply early.

Nine Devils receive All-WAC honors

Placing nine men on the All-Western Athletic Conference football team and an American record in the javelin were the big sports stories of the past year at Arizona State.

The 1969 Sun Devil gridders became the third consecutive Frank Kush coached squad to

post an 8-2 record, and the group became the first ASU team to win a WAC football championship.

A-State put nine men on the All-Conference squad, including three in the backfield. Named were quarterback Joe Spagnola, halfback Dave Buchanan who was also named WAC Player of

the Year, fullback Art Malone who also earned All-America mention and was a starter in the East-West Shrine game, and split end Cal Demery, a unanimous choice.

In addition, tackle Mike Tomco and guard Gary Ventura were named to the offensive line, while

on defense, ASU was represented by end Junior Ah You, linebacker Mike Kennedy, and back Seth Miller who also led the nation in pass interceptions.

Included in the Sun Devils wins were a 48-26 opening game triumph over Minnesota, and a 38-24 smacking of rival Arizona, which clinched the conference title.

Mark Murro uncorked an American record toss of 300-0 in the javelin on March 27, the fourth longest toss in world track history, as he went undefeated in dual meet competition. Murro broke his own American mark of 292-8 set last year during the WAC championships.

Teamwise, the Sun Devil trackmen, led by Murro, Chuck LaBenz, and Barry Shepard, finished third in the conference meet to close out the season.

Coach Bobby Winkles baseball troops found the going a little tough as they ended their season with a 30-22 mark, and finished second in the WAC-Southern Division.

Three players were named to the All-Southern Division team, shortstop Lenny Randle, who led the team in hitting with a .335 mark, outfielder Roger Schmuck

who hit at a .321 clip, and led the club in hits (62), homeruns (10), and runs batted in (45).

ASU's basketball squad suffered through its longest season ever, going 4-22. Senior Seabern Hill set six school records—most points in a career (1,539), career average (19.2), season scoring (593), season average (22.8), season field goals (244), and single game field goals (16 twice). In addition, he was named to the UPI All-Conference first team, and played in the Aloha Classic with the nation's top players, and earned all-tourney honors.

Coach Bill Mann's golfers enjoyed a fine season, as they copped championship honors in five of 10, tournaments during the season, but could manage only second place to BYU in the conference meet. Top performers during the year included Paul Purtzer, Howard Twitty, John Jackson, Don Powers, and Dave Gurley. Twitty took top prize in the Tucson Conquistadores affair and Jackson won the Arizona Intercollegiate tourney.

Jim Lambson and Gary Coley carried the banner in wrestling during the year, Hans Hordstrom, Mike Wilkinson, and Bjorn Alven were tops in tennis, while Brian Scott and Dan Smith led the way in gymnastics.



Sun Devil Marching Bandsmen step out behind drum major

Gammage offerings exciting

Stellar attractions scheduled during the 1970-71 season at Arizona State University's Gammage Auditorium promise exciting entertainment for members of the University community and the public.

In addition to the traditional Celebrity and Fine Arts Series, there will be Dance, Theatre and Chamber Music Series, according to David B. Scouler, managing director at ASU's center for the performing arts.

"As has been the custom in the past, we also are scheduling a number of outstanding Special Events this year," Prof. Scouler said. "These include such favorites as the annual performances of 'The Nutcracker' by the Ballet West during the Christmas holiday season, and such new attractions as a marionette theatre production from Europe.

"Also listed among the Specials are current hit entertainers like B. B. King, one of today's greatest soul attractions. Many of the world's best-known and most distinguished artists are featured annually at Gammage Auditorium, providing students a unique opportunity to see and hear the finest in the performing arts field."

ASU students are entitled to free tickets for either the Celebrity of the Fine Arts Series. Events in these series soon will be announced, along with those in the Dance, Theatre and Chamber Music Series.



The party scene from Ballet West's annual Gammage production of 'The Nutcracker'

Welcome Freshmen

The University Bookstore Is At Your Service

Come In And 'Shop Around' Before The Big 'Rush'

Shop On Campus

Save More Money

The University Bookstore

" . . . Your Campus Store . . . "

. . . Owned and operated by Arizona State University; to serve the needs of the students and faculty of this institution.

. . . Stocking a complete line of books — text-books, reference, and general reading. A vast assortment of the best paperbacks.

. . . School supplies — Paper, Pencils, Pens, Notebooks, and all supplies necessary for the proper completion of your school work.

. . . Engineering Equipment — the widest assortment of the finest engineering supplies in the country — approved by the School of Engineering. The very best at the lowest prices to be found anywhere.

. . . Art Supplies and Equipment — a complete selection of the very best. All types of paints, brushes, paper, canvas, etc.

. . . A complete college line — monogrammed shirts, jackets and sweatshirts, Decals and college souvenirs . . . Penants, ceramics and college jewelry.

. . . Stationery — both social and engraved papers. Numerous types of both boxed and open stock.

Regular Hours

8-5:00 — Monday-Friday

8-7:00 — Monday thru Thursday

9-1:00 Saturday

- . . . Early purchases assure you of buying the books and supplies you need while stock is plentiful.
- . . . Shop before the "rush" and make your adjustments later.
- . . . Full 15 day refund period beginning with registration day.
- . . . No refunds are made without a cash register receipt.
- . . . Merchandise to be refunded must be in new and resalable condition.
- . . . Do not remove price tags or book covers.
- . . . The cash register receipt must accompany merchandise to be returned.

We Buy Used Books The Year Around

Visit Your

University Bookstore

6th & College

Serving The Students And The Faculty