

# Balladeer to appear

First program in summer cultural series

Balladeer Hoyt Axton, guitarist, singer and composer of such hits as "Greenback Dollar," will appear in the opening program of the Summer Sessions Concert and Lecture Series at Gammage Auditorium this coming Wednesday (June 24) at 8 p.m.

Admission to this and all other programs of the summer series is free to students, faculty and staff on presentation of ID cards. Tickets for the general public will be available at the door at \$1 each.

A prolific songwriter, Axton's powerful album, "My Griffin Is Gone," is attracting widespread

attention in the music world.

Critics describe his songs of the common man as "heartfelt and poignant with an air of earthy sophistication." And though he is a singer of poetic songs, he resembles more a swarthy Northwoodsman in appearance.

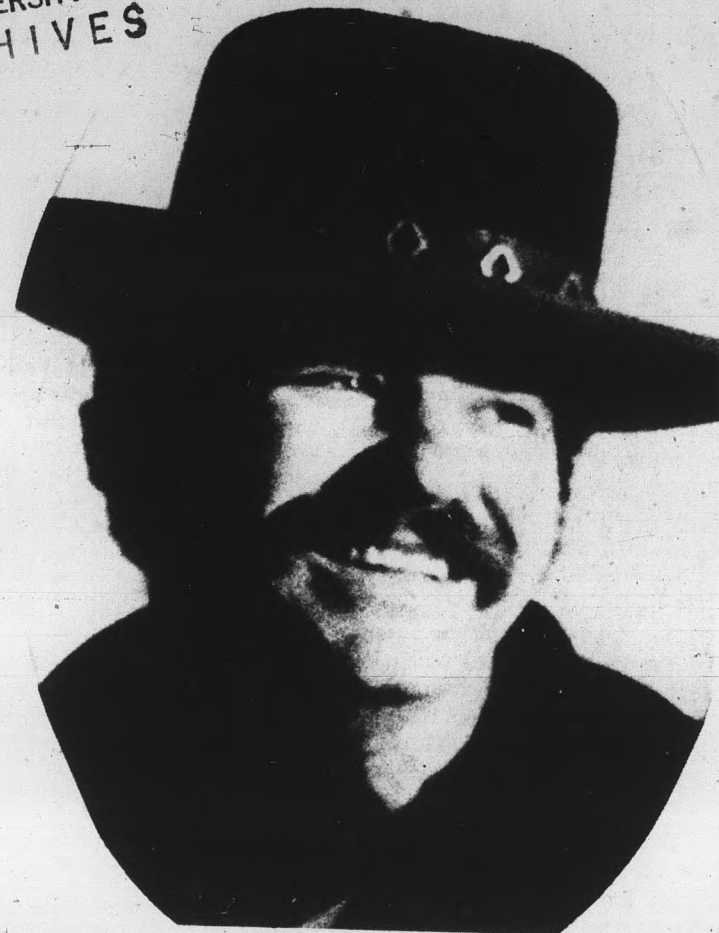
Axton's taste in music runs the gamut from classical to contemporary pop. Among his favorite composers are Bach, Mozart, The Beatles and Bob Dylan.

He has performed in clubs and on college campuses from coast to coast, and has appeared on such television shows as "Bonanza," "I Dream of

Jeannie," "Hootenanny," and "The Jimmy Rodgers Show." He also was the featured star in a TV documentary, "Story of a Folk Singer."

Bach, he says, has been the greatest influence on his personal career, and he also lists Segovia and Ravi Shankar as instrumentalists who have made a tremendous impression on him.

Unlike some angry young protest singers, whose songs are based on negativism, Axton is described as "a man with a positive message," as demonstrated in such songs as "On the Natural," "Snow Blind Friend" and "Sunshine Fields of Love."



Hoyt Axton



## Summer News

Arizona State University

Thursday, June 18, 1970

Vol. 1, No. 1



### 'Man of La Mancha' scheduled July 2, 3, 5

"Man of La Mancha," award-winning classic of the musical stage, will be presented by Arizona State University Players and Lyric Opera Theater at Gammage Auditorium on July 2, 3 and 5.

The eloquent show, voted Best Musical in 1966 by the New York Drama Critics' Circle, will be directed by Dr. James Yeater with musical direction by Dr. Kenneth Seipp.

The cast for the Arizona State University Players-Lyric Opera Theater production of "Man of La Mancha," which will be staged July 2, 3 and 5 at Gammage Auditorium, has been announced.

Starring in the coveted Cervantes - Don Quixote role will be James Selway, of Phoenix, with JoAnn Yeo, also of Phoenix, as Aldonza, and Ron Keller, Phoenix, as Sancho.

Others in the cast include Harvey Truitt, Chandler, as the Padre; Jack Van Natter, Scottsdale, as Dr. Carrasco; John Welty, Scottsdale, as the Innkeeper; Ann Milsop, Phoenix, as Antonia; Mike Lancy, Phoenix, as the Barber; Tim Sullivan, Tucson, as Pedro, the head muleteer.

Also, Tim Heathman, Phoenix, as Anselmo; Debbie Alvord, Lake Havasu City, as the Housekeeper; Anne Odenwald, Scottsdale, as Maria; Dianna Richard, Phoenix, as Fermina; Bob McFadden, Jamestown, N.

Dak., as the Captain; and Lee Stevens, Phoenix, as the Inquisitor.

Muleteers, along with Pedro and Anselmo, are Neil Beitman and Charles Pavarini, both Scottsdale; John Windsor and Tony Baca, both Phoenix; John Packard, Tempe; and John Mecham and Sterling Tinsley, both Tempe.

Portraying Knights are Tom Burns, Phoenix; Kip Miller and Scott Kennedy, both Scottsdale; and Mike Whitney, Mesa. Jack Bigus and Doug Potter, both Phoenix, are Guards.

There will be an 8 p.m. curtain all three evenings. Tickets, priced at \$3.50 and \$2.50 for the public, are on sale at the Gammage box office, 965-3434.

### Dr. Schabacker leaving deanship

Dr. Denis J. Kigin will assume the responsibilities of acting dean of the Division of Summer Session and Extension effective July 1 with the return of Vice President and Dean Joseph C. Schabacker to full-time teaching, it has been announced.

Professor of industrial education from 1958-65, Dr. Kigin has been assistant dean of the extension division and summer program director since 1968.

Dr. Schabacker's request to return to teaching came after his appointment earlier this year as national president of the university division of the Society for the Advancement of Management International, New York, and transfer of that office's headquarters to the ASU College of Business Administration.

Assumption of the new duties with the international professional society led Dr.

Schabacker to request reassignment to his former post of professor of management in the College of Business Administration.

"It is with genuine regret and mixed emotion that I will be leaving my assignment as a vice president," Dr. Schabacker said in making the request. "However, I believe this new opportunity will provide professional rewards and challenges. I look forward to the professional challenge of working with thousands of management students across the country as president of the university division of SAM."

Among activities of the national division, which represents a membership of approximately 6,000 students, is publication of a bi-monthly newsletter.

The ASU chapter received national recognition in 1969-70 for its membership and program.

### MU functions shifted

A shift in location of some functions has taken place, the Memorial Union announced this week.

The MU program department, Devil's Den and many other services, have been moved to temporary locations in Palo Verde West dormitory on the north edge of the campus.

The move was necessitated by the closing of all facilities in the Memorial Union building with the advent of the final stage of remodeling, due for completion this fall.

Included in the PVW facilities are the Devil's Den snack bar, typewriters, ditto machine, games, puzzles and cards and records and a record player. Hours are from 8 a.m. to 5 p.m. Monday through Friday.

Still located in MU West are the information desk, lost and found, the games room and lounge facilities, open from 7:30 a.m. to 4 p.m. daily except weekends. The information desk closes at 3 p.m. daily.

## Campus roundup

A series of summer tours to points of interest around Arizona has been arranged by the program department of the Memorial Union for summer students.

The series begins June 26-27 with a trip on the scenic White Mountain Railroad, Arizona's only remaining steam powered line.

The 40-mile trip through some of the most beautiful unspoiled high country in the American west begins at PV West hall at 3 p.m. Friday, June 26, with transportation to Show Low, where overnight accommodations will be arranged.

The tour leaves Show Low early the next morning for McNary, where the train begins its trip at 9:30 a.m. Returning to McNary at 3 p.m., the tourists will return to Tempe at 8:30 p.m.

Cost for the tour is \$1 transportation, \$4.68 a person for motel accommodations in Show Low and \$6.13 per fare on the scenic railroad.

Reservations must be made at the program desk in PV West no later than 12 noon this coming Tuesday, June 23.

Other tours during the summer will include a visit to Oak Creek Canyon and the Red Rock Country on July 11, the Grand Canyon on Aug. 1 and 2, and a trip over the Apache trail Aug. 8.

### Films series opens tonight

A series of feature films has been planned as part of the summer program of the Memorial Union for the 1970 sessions.

During June, the series include the film "Those Magnificent Men in Their Flying Machines," shown at the Art and Architecture Auditorium tonight (Thurs., June 18) at 6:30 and 9 p.m. A fictitious international air race in 1910 is the setting of this comedy that combines slapstick, nostalgic replicas of flying machines, slight romance and a villain.

Information on tickets and other programs of the MU is available at the MU information desk in MU West or at the program office in Palo Verde West.

### Lyric Opera auditions today

Auditions for next fall's Lyric Opera Theatre production of "Don Pasquale" at Arizona State University are scheduled today.

Mary Robert, who will direct the Donizetti comic opera, said auditions will be held from 1 to 2:30 p.m. at the Lyric Opera office, 913 Myrtle.

They are open to all students who will be registered at ASU in the fall. "Every one of the four lead roles (one soprano, one tenor, and two baritones) is a gem," Mrs. Robert said. "Performers traditionally have welcomed the opportunity to appear in this opera, which is regarded as a masterpiece in the field of opera buffa."

Only the leads will be auditioned today. The chorus and orchestra will be selected later.

The production will be staged at ASU's Cosner Auditorium Oct. 16, 17, 23 and 24, as the opener of Lyric Opera Theatre's 1970-71 season.

### Piano recital is set Wednesday

A piano recital featuring Jeanne Ornelas, a student at Arizona State University, is scheduled Wednesday, at 8:30 p.m. in Gammage Recital Hall, room 301.

The program, open free to students, faculty and the public, will include Schubert's "Sonata in A Major," Bach's "Prelude and Fugue in D Major," Mozart's "Rondo in A minor," and the Toccata from Poulenc's "Trois Pieces."

## Wisconsin professor will lecture

Among the special lecturers who will be featured during the 1970 summer session in the department of office administration and business education at Arizona State University will be Dr. Harland E. Samson, of the University of Wisconsin.

Dr. Donald Tate, chairman of the ASU department sponsoring the special programs, said Dr. Samson's lectures are open to the public.

He is scheduled to speak today in the ASU business administration building.

He will discuss a variety of problems related to cooperative work programs for the high school and post high school institutions at his 7:40 a.m. lecture in room 353. At 9:20 a.m. he will talk about current research and thinking that affect business and distributive education. That lecture will be in room 386.

A well known teacher - educator in the distributive education field at the University of Wisconsin, Dr. Samson earned his doctorate at the University of Minnesota.

Past president of the National Council for Distributive Education, he serves as consultant to the U.S. Office of Education and as consulting editor to South - Western Publishing Company.

His background consists of coordinating distributive education programs in the high school and wide business experience in merchandising and sales.

The lecture - discussion sessions are designed primarily for Valley business educators. Further information may be obtained by calling 965-3231.



**TEACHING AWARD** — Mrs. George C. Greathouse, Phoenix, receives notification from Bruce McCroskey, left, Phoenix, general sales manager, Carnation Company, and Dr. Del Weber, dean of the ASU College of

Education, that she has won \$500 Carnation Company teaching incentive award enabling Whittier school teacher to start her doctorate at ASU this summer.

## Carnation Co. incentive award starts teacher on way to Ed.D.

**TEMPE** — Mrs. George C. Greathouse, 4424 W. Flower, Phoenix, whose educational career has been characterized by a consistent record of honors and achievements, has received another award which will enable her to initiate doctoral study this summer at Arizona State University.

A teacher at the Whittier School in Phoenix, Mrs. Greathouse was recently presented a Carnation Co. teaching incentive award of \$500 during the ASU College of Education honors assembly.

The award was inaugurated by the company in 1969 "to attract creative, dedicated, understanding educators who can motivate and develop the potential of young people from our congested and depressed areas, who without this help might well become school dropouts and be lost to the needs of society."

The recipient of the award attended Phoenix Elementary School, District No. 1, and Phoenix Union High School where she was an honor student. She was also an honor student at Tempe High School where she was graduated in 1957.

After attending Phoenix College, where she was a member of the honor society and received the Gibson Award for high scholastic standing in the social sciences and the Delta Sigma Theta sorority scholarship, Mrs. Greathouse enrolled at ASU where she was elected to membership in Kappa Delta Pi. She received a bachelor of arts

### Teacher tests

The U.S. and Arizona Constitution examinations, required for teacher certification, will be given at 9 a.m. Saturday in SS 108.

The fee is \$4 for each examination, and an individual may take both tests on that date. No advance pre-registration is required for the exams.

degree, with distinction, in elementary education from ASU in 1963, and in 1966, she was awarded a master of arts degree there in the same field.

In the summer of 1967, Mrs. Greathouse received a grant to participate in an ASU workshop on "Program Instruction and the Disadvantaged," and last summer, she was a coordinator of a workshop, sponsored by the Civil Liberties Union, where the main topic was Black contributions to American history, and the major speaker was Julian Bond.

She is the past president and secretary of the Mary Bethune Parent-Teachers Association, and was for two years a member of the Valley Christian Centers board of directors.

She is a member of the Parent-

Teachers Organization and Human Relations committee at Frank Borman Junior High School, Maryvale, and was selected by the district to participate in a human awareness workshop sponsored by the Phoenix Union High School System.

Before joining the Whittier School faculty, where she is the only black teacher, Mrs. Greathouse taught six years at the Booker T. Washington Elementary School.

She is married to George C. Greathouse, a former student and athlete at ASU, and they are the parents of three sons.

In her doctoral studies at ASU this summer, Mrs. Greathouse will specialize in child development and teacher education in the inner city.

## Two notable artistic shows now on display

Two notable artistic displays are on view in Matthews Center galleries this summer, it has been announced.

Leonel Gongora, Colombian artist, is presenting his first one-man show in Arizona through July 27.

Selections from the art collection of Mrs. A. Sharpe Maremont will be featured at the galleries through September.

Gongora's paintings and drawings are widely known throughout North and South America and in Europe. He is currently a professor of painting at the University of Massachusetts in Amherst.

Gongora was born in Cartago, Colombia and studied at the Escuela de Bellas Artes in Bogota, and at Washington University in St. Louis.

His work has been exhibited in the United States, Italy, Mexico and Colombia in one-man shows, plus dozens of group shows and national and international shows.

Rudy Turk, ASU Curator of art collections, described Gongora as

"an internationalist to whom every person is a world."

Turk said Mrs. Maremont has one of America's most impressive privately formed collections of 20th century art. The long-term exhibit at ASU will feature works that are "classics of the contemporary art movement," he said.

Marsden Hartley's "Berlin Abstraction" of 1914 is the earliest work in the exhibition which primarily includes work done in the 1950's and 1960's.

Included are painting and sculpture by such renowned artists as Josef Albers, Alexander Calder, Sam Francis, Robert Motherwell, Robert Rauschenberg, Mark Rothko and Victor Vasarely.

The galleries will be open to the public from 10-5 Mondays through Fridays and from 1-5 Sundays during June and July. In August weekday hours will remain the same but the galleries will be closed on Sundays and only the loan exhibitions will be on view.

Summer News is published four times each summer session by the Division of Summer Session and Extension. News articles may be telephoned in to 965-5013 or turned in at OBA 304 from 9 a.m. - 5 p.m. Deadline for each week's edition is Monday of that week.