

OCT 31 1969

ARIZONA COLLECTION

# State Press

ARIZONA STATE UNIVERSITY-TEMPE

Thursday, October 30, 1969

Vol. 52, No. 25



First Place  
General Excellence



UP A  
TREE ...

Since every inch of Mall pavement was covered with signs, cookie fortunes, bread crumbs and the like, these Homecoming King signs escaped the crush by rising above it. They cluttered the foliage in front of Hayden Library.

Photo by Scott Adams

## City asks taxing ability on University services

By RANDY BAILEY

If the State Court of Appeals allows it, the City of Tempe will soon be charging a one per cent sales tax on what it considers non-University related services—dormitory space, food and all bookstore sales.

Proceedings were opened yesterday by Tempe to reverse a previous court decision blocking the taxation. The city contends that room and board and other campus services do not directly involve the educational process.

State Attorney General Gary Nelson, arguing the case for the Board of Regents, was quite concerned over the possible implications of the tax.

"The city (Tempe), would have the power to tax anything it considered not involved with education at the University. The tax might eventually be applied to the school's football revenue," declared Nelson.

Attorney General Nelson added,

"We won this case in the Superior Court, and I'm confident we will win in this appeal."

"The state's position is that ASU has only one function: education. To try and separate the various functions of the University into educational and profit-making is impossible," Nelson stated.

"This tax would give the city the selective power to destroy—which would increase the cost of education a great deal," summarized the attorney.

City Attorney David Merkel claimed the tax was needed to give students "equal treatment both on and off campus."

"We (Tempe) feel that if you pay the tax off campus then you should pay the tax on campus," commented Merkel.

Tempe has been receiving some tax money from campus sales to nonstudents. The city wants to charge this same tax on all sales.

(Continued on page 3)

## Housewife petitions Nixon Help asked in attempt to get prisoner release

By BONNIE BARTAK

"Hanoi Release John Nasmyth."

This slogan soon will appear on campus and in the Valley, as it already has elsewhere on bumper stickers and billboards, due to the determination and conviction of

Mrs. Pat Berger.

Mrs. Berger, a Litchfield Park housewife, is John Nasmyth's sister. And she and her family want to know: where is Capt. John H. Nasmyth Jr., who was sent to Vietnam three years ago?

Nasmyth's family began a national effort to petition President Nixon last month to find out.

The University chapter of Sigma Alpha Epsilon is helping in Mrs. Berger's campaign because Capt. Nasmyth was a member of that fraternity at the University of Idaho.

University chapter president Rocky Weaver said Mrs. Berger is sending him a letter enclosing 30 petitions.

Capt. Nasmyth, listed as missing in action in Vietnam since September, 1966, officially had his status changed to "captured" by the Department of the Air Force in August.

His name was one of 49 released as prisoners-of-war by the Pentagon after recent interviews with three prisoners-of-war who had returned to the United States.

Nasmyth's family hopes that as result of the petitioning other families may learn of their sons' status in the service. Their plea is that Americans write to government

(Continued on page 5)

## Gals need to feel free

By MARCIA SIMONS

Women won the right to vote in 1920. In 1969 women are continuing their fight for freedom under the name of The Women's Liberation Front.

A statement put out by the University chapter of the organization states: "We call upon women to demand full participation in all aspects of society. The University must recognize that campus regulations discriminate against women in particular and must take positive action to protect the inherent human rights of women."

Just what liberating women is all about is the question facing this two-month old organization. Bonnie D'Agostino feels women should be liberated from

the myths that control their behavior and other people's behavior toward women.

"It's very hard to fight the attitude that a woman's place is in the home," she said. "The idea behind women's liberation is the exploration of attitudes to see if they're valid for each woman individually."

"One myth is that you have to wear make-up to be beautiful or feminine," Bonnie continued. "The people who sell make-up depend on women to perpetrate this mystique by buying it."

Grace Frei, a Spanish-English major, feels that if the group is to be effective, it must have goals with which women can immediately identify. "Dorm rules, job opportunities are things we can relate with," she

said. "How many women are heads of departments at the University," she queried.

"I don't go along with girls who advocate no make-up, no underwear—superficial things," she continued. "What's in a name or a dress—I'm concerned with a change in woman's attitude, not her appearance."

Both girls agreed that the way a woman decides to liberate herself must have meaning to her as an individual.

An African coed who has been attending the weekly meeting of the Women's Liberation Front because she is interested in learning about the difficulties of women in today's societies. "Women have always been submissive, while men have been

(Continued on page 3)

**Candelabra sheds moody light**

**New gallery has atmosphere**

By **CHERIE GRAY**

Decorated with soft lights, candelabra and victorian chairs, the new Renaissance and Baroque Gallery is open in Matthews Center.

Exhibitions of Italian, French, Dutch, Flemish and English are selected gifts and loans from the Lewis and Lenore Ruskin collection. Simple wooden frames were replaced by heavy, elaborate frames as ancient as the paintings themselves.

"A collection of this scope is virtually impossible to come by in private collections," Rudy Turk, curator, said. Planning a permanent European gallery, Turk hopes the Ruskin collection will form the nucleus.

19th century painter Benjamin West shows spectacular artistry in lighting facial expressions, coloring and shadows. The Englishman's painting, "Pharoah's Discovery of the Baby Moses," projects the English painter's ability to depict detail.

A very typical landscape painting in restful blues and greens by Jacob Ruysdale is also notable. Painted in the mid-17th century, it has the fresh spark of modern day scenery.

The Italian paintings are primarily religious with the Madonna and Child as favorite subjects.

Included in the display is an 18th century bronze figurine and

**Ticket pickup**

General admission tickets in the end zone for the Homecoming game may be purchased today at the Men's P.E. Building from 8:30 a.m. - 8:45 p.m. today and tomorrow and 8:30-11:45 a.m. Saturday.

**SUNDAE**  
(any flavor)  
**SPECIAL**

**39c**



**ICE CREAM STORES**  
**TEMPE CENTER**  
Phone 967-9776

similar sketching of "Aeneas Carrying Anchises from Troy," by Pierre Lepautre of France in the late 17th century.

Dignified portraits dominate the exhibit. Dutch women with their starched collars, dark, full dresses, heavy jewelry and headpieces reveal the dignified style of their era. The carefully preserved paintings assure the Renaissance culture a place in art history.

**Senate okays request**

The Faculty Senate has approved requests of six of its committees to increase their representation.

A total of at least 15 student representatives have been approved as members on the academic affairs committee, committee on committees, honorary degrees, financial affairs and physical plant, student policy and university services.

Dr. Karl H. Dannenfeldt, academic vice president, announced earlier this fall that ASU students had been awarded 131 positions on 27 of the 38 major committees formulating policies

governing the University. Students have been awarded 11 committee positions on the new, experimental University Council. The council includes representatives of the faculty, staff, students and alumni, and the ASU president serves as chairman.

Last year there were 75 student positions on 19 committees.

STATE PRESS is published by Arizona State University as the official campus newspaper every Tuesday through Friday during the school year, except holidays and examination periods, and is entered as second class matter at Tempe, Arizona, 85281.

**ANNOUNCING THE OPENING OF BROWN'S CARD AND PARTY CENTER**

Come In Soon To See Our Larger Selection Of

- |                       |                            |                        |
|-----------------------|----------------------------|------------------------|
| Hallmark Cards        | Unusual Contemporary Cards | Russell Stover's Candy |
| Wedding Announcements | Candles and Accessories    | Party Supplies         |
| Party Supplies        | Remembrance Albums         | Fine Stationery        |
| Gift Wrap             |                            | Christmas Cards        |
|                       |                            | Sealing Wax & Signets  |

Consult Us About All Your Needs for Party Supplies & Decorations

**TEMPE CENTER**

923 So. Mill (Just East of El Rancho)

Tel. 966-3062

**TEMPE CENTER IS CELEBRATING**

THEIR LUCKY **13<sup>th</sup>** Anniversary

NO PURCHASE NECESSARY

**FREE**

REGISTER AT ALL STORES

**20 SWINGER CAMERAS**  
(courtesy of Pioneer Camera)

**FREE**

**TWO \$10 Savings Accounts**  
At The **FIRST NATIONAL BANK**

**FREE**

EVERYONE'S INVITED

**ANNIVERSARY CAKE AND PUNCH**  
SATURDAY 1:00 P.M.

**COME ONE - COME ALL**  
HELP US CELEBRATE OUR BIG

**13th ANNIVERSARY**

DON'T MISS THIS GREAT EVENT



**FREE ANIMAL BALLOONS**  
From "GA-GA" the CLOWN  
SATURDAY 10 to 12 & 2 to 4 p.m.

SEE "GA-GA" THE GREAT CLOWN!

**BIG, BIG SAVINGS IN ALL THE STORES**

**TEMPE CENTER**  
"In The Heart Of Sun Devil Country"  
UNIVERSITY & MILL

**NEW CAR DISPLAY**  
Courtesy of **Borge Ford**

**GREAT BARGAINS FOR EVERYONE.**  
MANY ITEMS SPECIALLY MARKED DOWN - HURRY!

# Women seek rights ATO members work to improve Phoenix homes

(Continued from page 1)  
the dominant sex," she said.

"Basic to women's liberation is the liberation of all people who are suppressed," Bonnie suggested. "The current cliché is that women are treated a lot like blacks. Both are treated passively. Blacks can sing and dance, women can sit at home and take care of children. Liberation of women is part of a total struggle of people against suppression."

"As far as I'm concerned," she said, "any group of women getting together to discuss their roles is good."

Pinny Lauerman, who is a member of a small off-campus group interested in liberating women, has definite criticism of women's present role in society.

"Women are being forced to define themselves in terms of men," she said. "They are faced with bad job opportunities, and are being capitalized on by hair-do and make-up fashions. They need to be freed from use as sexual objects, freed from having to compete with other women for men."

"For example, doing away with make-up and underwear serves a purpose," Pinny suggested. "It frees you. You're

yourself, not trying to look like anyone."

Pinny feels that some women's liberation groups go overboard in trying to act like men. "I'm not suggesting that," she said. "A good example where men and women work on equal basis, and yet women are treated as women and vice-versa, is in the kibbutz' of Israel."

Pinny feels that women's liberation groups can have different outlooks to begin with and definite views can be adopted later.

## Tax increase

(Continued from page 1)

Merkel claimed that although no direct pressure had been exerted by Tempe merchants, the tax would benefit them.

"We also want to tax performances in Grady Gammage where the performers receive a percentage of the ticket sales," added Merkel.

When asked the amount of revenue the tax would bring into the city, the city attorney would only say he had "no idea, but I imagine the amount will be substantial."

Should the case be decided in Tempe's favor, the Board of Regents plans to take the case to the State Supreme Court, Nelson said.

Alpha Tau Omega will forego traditional Homecoming activities and work with VISTA on painting and generally improving 30 poverty homes in South Phoenix.

Tim Bray, ATO member, said, "We decided that instead of decorating the house for Homecoming, we would do something more constructive. We will work with VISTA and donate our time and \$350 worth of paint and paintbrushes to the project."

ATO participated in a similar program last year, also in conjunction with VISTA. The fraternity hopes to make working with VISTA an annual Homecoming project.

ATO members will work in approximately ten groups which are organized according to the time members have free.

The fraternity hopes to paint the houses, clean up the yards and generally improve at least 30 South Phoenix homes. About 55 members will work 30 hours per day in 15 hour shifts in the two areas where the homes are located. "We hope to finish at least ten houses a day," said Bray.

On Saturday, Wayne Thompson, head of the ATO project, will travel with the VISTA people and visit the homes the group worked on.

# CLEARANCE 2 DAYS ONLY

Friday and Saturday

## "MISS PAT"



Discontinued Colors and Styles  
40% Off

# CELIA'S

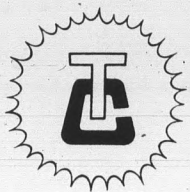
fashions



Tempe Center  
967-2245



"In the Heart of Sun Devil Country"



# AMERICANA SHOP

TEMPE CENTER

## Welcome To ASU Alumni!

### KNIT and DRESS

# SHIRTS!

YOUR CHOICE  
OF STYLES

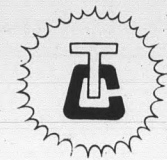
# 2 FOR \$5

OR \$3 EACH

OPEN  
THURSDAY  
TIL 9 P.M.



LARGE  
SELECTION  
STYLES



STOCK UP  
NOW!  
FRIDAY  
&  
SATURDAY  
ONLY!



LARGE  
SELECTION  
SIZES

# AMERICANA SHOP

## TEMPE CENTER

967-5457

OPEN: Daily 9 a.m. to 6 p.m.  
Thursdays 'Til 9 p.m.



# State Press Opinion

## Mobilization or compulsion?

### Question posed by draft bill, decline in Army's enlistments

Fifteen congressmen, including Rep. Morris K. Udall, D-Ariz., have introduced a bill to end the draft in favor of a voluntary army.

The bill calls for adjustment of present service standards for noncombatant duties, increased use of women and civilians, improved officer training programs, more in-service training and a pay raise of \$100 a month.

**Editorial Comment**

Rep. Allard K. Lowenstein, D-N.Y., one of the main sponsors of the House bill, says the draft must be ended because forced conscription is responsible for many of the country's ills, including student unrest, in part, and a lack of respect for law among the young.

Figures for fiscal 1969, ended in June, show the Army missed its enlistment goal of 197,000 men by 9,000, falling short every month from November to June.

Col. Donald L. Roberts, chief of staff for the recruiting command, blamed the failure mainly on President Nixon's promises to end the draft.

"Immediately when that announcement was made our recruiting went into a nose-dive," he told a wire service reporter, adding that the Paris peace talks and general dissatisfaction with the war were also factors in the recruiting lull.

It would seem that Rep. Lowenstein and Col. Roberts are miles apart, but they are close in one aspect — they both give the draft a life of its own.

To Rep. Lowenstein, the draft is an incisive destroyer of youthful stability. To Col. Roberts, the draft is an enforcer of Army enlistments.

Both fail to recognize that the draft is a creature of our society and not a controller of it — or at

least it should not be.

When first created, the function of the draft was simple: mobilize men rapidly to wage a war for the survival of America. It unfortunately spilled over into peace time.

Now we are once again at war, but the draft has changed, imperceptively to some perhaps, but significantly to the young men who face induction.

Both the introduction of the House bill to end the draft and the fall off in enlistments are indicators of this change — a change from mobilization to compulsion.

A country must be secure to be free. The original motivation for the draft was to secure our freedom.

Free people will choose to fight if they feel threatened. Our country has many times witnessed the bravery of men who fought for something in which they believed.

If enlistments are an indication, apparently many young men no longer believe in the cause for which our country fights in South Vietnam. That may be because no one has convinced them it is just or even needed.

The result: men must be brow-beaten into enlistment by the draft, instead of to defend their country. Hence the decline in enlistments when there is a possibility the draft might be ended.

So perhaps it is not the draft that is right or wrong, Rep. Lowenstein and Col. Roberts aside, but whether what we are fighting for is right.

Free men will choose to fight for a cause in which they believe; they don't have to be forced. Skeptical, unbelieving men must be forced to fight; they won't choose.



**Pam Stevenson**

## Let them eat cake

Bread is more than something to drop down toaster-tunnels for breakfast or wrap around a piece of bologna for lunch.

It is an indictment against 20th Century living. Important nutritionally and symbolically throughout history, bread has been proscribed by man during the past few years.

Bread is the most universally prepared staple in the world. It is inextricably woven into man's culture — socially and religiously. Breaking bread with a person used to be a ritual of trust and friendship. All major religions rely on bread as some type of life symbol.

Mahatma Ghandi said, "There are so many hungry people that God cannot appear to them except in the form of bread."

And that form has changed drastically. So, by tracing the decline of bread one can trace the decline of its symbolic worth and the decline of the ethereal things symbols represent.

Simple, sturdy food it once was (when big-boned women kneaded a week's supply at a time), it is particularly significant that bread has gone soft.

It used to be bread came as a whole loaf — pretty to the eye as well as tasty. Bakeries originally made bread, not pastries. (It is interesting to note that a local businessman said a bakery is no longer a feasible, profit-making busi-

ness venture, partially because people do not want wholesome foods).

Now, the bread can't even be seen for the gaudy plastic wrapper. A synthetic, sterile aroma unfolds with each loaf of precise quarter-inch slices.

Hold a bleached, blanched, aerated, anemic slice by the corner and it will bend like limp lettuce. Touch it in the center and the bread slices cave in. Bite into it and it is instantly dough again, permanently stuck to the roof of the mouth.

The taste is utterly indescribable, but anyone who ate paper as a

child should recognize the flavor.

Perhaps it should be comforting to know that, although it tastes like mattress stuffing, modern bread is "enriched." Which means, "eight ounces of this bread (approximately eight slices) supplies the following percentages of minimum daily requirements for these essential food substances: thiamine (vitamin B-1), 55 per cent; riboflavin (vitamin B-2), 30 per cent; niacin (another B-vitamin), 55 per cent; iron, 40 per cent."

Give us this day our percentages of minimum daily requirements.

(Calcium propionate added to retard spoilage).

## State Press

**Editor**  
Larry Ross

**Managing Editor**  
Terry Ross

**News Editor**  
Larry Nelson

**Copy Editors** — Mike McCloy  
Ed Taylor  
George Jeff  
**Photo Editor** — Ray Wong  
**Assistant** — Scott Adams  
**Feature Editor** — Jane Sims  
**Assistant** — John Aldape  
**Weekend Editor** — Jan Norman

**Faculty Adviser**  
Dr. Joe Milner

**Advertising Manager**  
Hal Hubele

**Campus Editor**  
Pam Stevenson

**Sports Editor**  
Bill Jackson

**Assistant Campus** — Marcia Simons  
**Assistant News** — Ray Kipp  
**Assistant Sports** — Don Podesta  
**Head Staff Reporter** — Marcie Smith  
**Staff Reporters** — Bonnie Bartak  
Glenn Hunter  
Al Shiya  
Don Podesta

**Mechanical Composer**  
Tom McCrea

## READERS' FORUM

### EDITORIAL RAPPED

**EDITOR:**

The editorial comment appearing in the State Press of Oct. 28 criticizes the decision of the Board of Regents to conduct "classes as usual" in Arizona's universities during the November moratorium. The editorial goes on to say that "The board has flung the gauntlet and there is always someone there eager to pick it up . . . Rebels like nothing better than to be told arbitrarily that they can't do something."

I fail to see how even the most enthusiastic supporters of the Moratorium Day Circus can consider the Regents decision "arbitrary." The board has been given the responsibility of providing the best education possible in the state universities. That hardly includes sponsoring or condoning street dances, Mall fiestas, or dissident "yellabstractions" during class hours. Nor does it include closing the universities each time a group of unhappy students decides to invite the local high school kids over to do their thing, whatever that may be.

Most rational people, including the Regents, must realize that if classes are dismissed in November for anti-Nixon demonstrations, the pressure for class dismissal would later be applied anytime a few hundred students decided they wanted to protest racism, slum housing, air and water pollution, medicare, discrimination against potheads and homosexuals, or the bad grades they would probably get if classes weren't dismissed for the demonstrations. The situation could easily result in campus chaos.

All the Regents have done is express their support of the university presidents and their desire to continue providing a good education to the many thousands of students who expect, and deserve, a satisfactory return on the investment of their time and money in these universities.

The University has been quite agreeable in the past if a request has been made to schedule activities on the Mall when classes are not in session. It is probable that such a request would be honored in the present situation. If the request is made and not honored, then and only then should one consider charges of "stifling campus dissent" and "suppressing free expression." These charges were made in the editorial mentioned above.

The editorial writer has been careful not to stick his neck out very far in any direction, and it is possible that he was making a feeble attempt to retain the appearance of neutrality. He comments, "It is probable that the board was more interested in maintaining orderly class attendance than in blunting the thrust of the peace-movement." He also states that "what now looks like a simple matter of 'laying down the law' can be made to look like a combination of the Stamp Act and Gestapo oppression." Yet even while admitting (Continued on page 12)

# Design students learn by doing

Soda straw bridges are a prelude to the real thing for freshman engineering students. Each student in the freshman course, Engineering Analysis and Design, is issued a kit of components from which bridges are constructed.

During the first week of the course the students engage in a competitive bridge-building contest, as depicted last month in the State Press. Values are assigned to the soda straws, two balsa wood strips, string, wire and glue in the kit. The winning design is the one that shows the smallest ratio of cost to load at failure.

Each bridge is tested by the students. It takes a value of four cents per ounce to earn an "A" grade. Two dollars per ounce

is a grade of "D".

The record thus far is nine cents per ounce. The winner gets a \$5 award. Similar "overnight designs" are assigned during the first four weeks of the semester.

The design program was initiated in the fall of 1965 in an attempt to stem the tide of students leaving engineering curricula to transfer to physics, mathematics, chemistry and liberal arts programs at the end of the freshman year. The students complained that they found the traditional coursework of the first year to be "too much like a continuation of high school."

Engineering students were not exposed to the interface of engineering with society and were

not made aware of the impact that engineering as a profession has upon our culture.

The first semester freshman course, Engineering Analysis and Design, was proposed to serve as an initial step in the desired direction. Response to the program was immediate and a 50 percent increase in the retention of freshmen engineering students occurred in the first year.

Also the first place winners of the 1968 and 1969 national design competition, sponsored by the American Society for Engineering Education, were ASU freshman engineering students.

The feature or central theme a rather complex and complete of the Engineering Analysis and

Design course is built around design project that becomes the responsibility of a team or "student engineering company."

In the freshman engineering design project each student must first generate a design problem in which he identifies some physical need which does not appear to be met satisfactorily today.

Second, he submits a proposal for authorization to organize an engineering company. Students submitting best proposals are appointed as chief engineers who assume the direction of a company effort to undertake the development of the proposed system or device.

Each student then serves as one of the five to six student engineers in a company effort to identify and analyze the problem and make decisions concerning optimum choices of available alternatives. The students design critical components and elements in the system and make economic evaluations.

They must prepare oral and written progress reports, consult with engineers from local industries and prepare a final design report. A working model must be built if possible.

Finally, each student takes an active part in a student-led faculty-guided design competition that concludes with semi-final and final competition. Engineers from local industries serve as jury members for these semi-final and final presentations.

All members of the design juries and almost all of the engineering consultants who work with the freshman students are engineers from industry, government and private practice. This brings the practicing profession into direct and immediate contact with the students. It has eliminated the traditional four-year lag before many engineering students could become immersed in the realities of an authentic design experience.

## Soldier's release requested

(Continued from page 1)

officials asking for their help in getting lists of captured men from the North Vietnamese, release of the sick and wounded, free flow of mail to the captured men and neutral inspection of the prisoners-of-war camp.

Although the chapter still must hold a meeting concerning campaign support, Weaver said, "I'm sure we could get some people to help her."

He said he plans to check into the cost of erecting a billboard and into putting signs up on campus.

Mrs. Berger also spoke to the ASU Veterans Club two weeks ago to explain the petitions she is circulating and what her fam-

ily's goals are.

Nasmyth's family wants to have at least 50,000 signatures before they fly to Washington, D. C., to give the petitions to President Nixon.

Two thousand bumper stickers have been printed and several billboards erected that demand "Hanoi Release John Nasmyth."

Mrs. Berger said two billboards are up in Los Angeles and last Friday one was built in San Diego. Another is planned to go up in Los Angeles next week. In the near future, Mrs. Berger said, she plans that some will also appear in Arizona cities.

Nasmyth's parents in Cali-

fornia are providing all funds for the campaign.

Mrs. Berger requests that interested students write to her at P.O. Box 1116, Litchfield Park, Ariz., 85340, for petitions. The petitions read: "Attention President Richard Nixon: As concerned citizens of the United States of America, we would like to enlist your help in bringing home Capt. John Nasmyth of the United States Air Force and his comrades who are at this time Prisoners of War in North Vietnam."

Mrs. Berger said she will mail petitions, envelopes and return postage to students. She also will supply addresses of hundreds of government officials.

## No TRICKS... Just TREATS

at the  
**Chez Bon Restaurant**

featuring

- CHEZ-BURGER
- MAUI-BURGER
- OCEAN-BURGER
- CHEZ-BON SPECIALTY
- COLOSSAL-BURGER
- SUBMARINE
- HAM ON A BUN

BANANA ROYALE  
SHAKES & MALTS  
PETER PAN SUNDAE

LEFT BANK SUNDAE  
SPARKLING SODA  
CREME DE MENTHE SUNDAE

OPEN TO 2 A.M. GAME NIGHTS

This Coupon

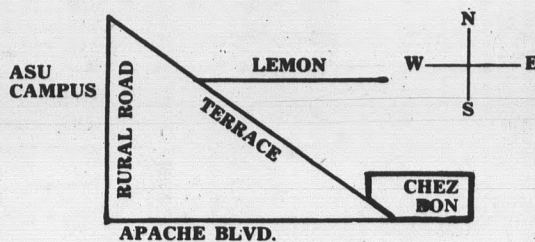
Plus **40 CENTS**

Good For One

**HOT FUDGE  
SUNDAE**

Reg.  
75c

Good Until  
Nov. 1, 1969



967-9192

1212 APACHE BLVD., TEMPE

### Pizza Inn

# 2 FOR 1

# BUY 1 GET 1

# FREE!

Good Today Only

October 30, 1969

Bring This Coupon

## PIZZA INN

955 E. University Dr. 1/2 Bk. E. of Scottsdale Rd.



### MID TERMS

Are Easy With

## WIL MAC OUTLINES

Keyed directly to your text and course in:

- Anthropology 102
- Art History 111
- Art Renaissance 212
- Business 233
- Art of the Ancient World 312
- American Art
- Chemistry 115
- Education Scientific Foundations
- History of Western Civ. 101, 102
- History of United States 103, 104
- Psychology 100
- Math 120, 121
- Writing for Journalism & Creative Writing
- World Regional Geography 121
- Sociology 101

Others in process, Only \$1.92

SOLD AT

- VARSITY BOOK EXCHANGES
- UNIVERSITY BOOKSTORE

# Court to discuss new driving law

By BILL REDEKER

The state's new implied consent law, effective Saturday, will be the topic today as the Supreme Court of Arizona convenes its annual conference for city magistrates at the College of Law.

The annual meet will begin at 9 a.m. in Armstrong Hall and continue through Friday. In addition to covering ramifications of the implied consent law, sessions on Friday will be devoted to discussing problems and operations of traffic courts.

Robert Donigan and James Economos, two of the nation's leading instructors in traffic law, will lead the conference. James Hegarty, director of the State Department of Public Safety, and Joe Collier, Phoenix city chemist, will assist in the duties.

Beginning Saturday, drivers arrested for drunk driving must take a chemical test for intoxication analysis or have their license suspended for six months.

The implied consent law will not change existing laws on drunken driving. Only the mechanism of enforcement will be affected.

A driver will be placed under arrest when an officer has reasonable grounds to believe the driver is under the influence of alcohol. During a 15-minute delay between arrest and administration of the chemical test, the officer will inform the violator that his license will be suspended if he refuses to submit to taking the test.

The machine that determines the amount of alcohol in the body is operated by a trained police officer. The machine utilizes a small vial of liquid which is broken and hooked up to a tube. The suspect blows into the tube until a light goes out. The liquid changes color with breath blown on it and is then analyzed by the machine. The result is graphed on a dial and printed on a card. The card becomes a part of the record.

If the graph indicates a reading higher than .015, the suspect will be booked for driving under the influence of alcohol.

The breath analysis test will be used in all cases, except where circumstances make it impossible. The State Health Department has approved the equipment to be used for the testing.

When the driver's license is suspended he may receive a hearing from the Highway Department if he wishes. If he is not satisfied with the hearing results, he may file a petition for review in Superior Court.

If the suspect claims he doesn't remember taking the test, his best bet is to try another defense . . . the police take a picture of the suspect and the machine.

## Law, order on lunch menu

"Law and order" will be discussed again, this time at the annual luncheon of the Arizona Council for the Social Studies in Tucson tomorrow.

Dr. Leonard Gordon, assistant professor of sociology here, will be the featured speaker at the event, which begins at 12:30 p.m. at the Tidelands restaurant.

Gordon's topic will be "Law and the Social Order."

A panel discussion on law and order's implications for American society will follow Dr. Gordon's talk.

Dr. Susanne M. Shafer, associate professor of education here, will preside over the meeting. She is also president of the council.

## KAET Channel 8

Thursday, October 30 A.M.		P.M.	
8:00 Yoga For Health "Exercise the Yoga Way"	8:30 TV High School "Grammar"	9:00 MU-107 Introduction to Music	9:30 SP-101 Elementary Spanish
10:00 Pocketful of Fun	10:30 Once Upon a Day "Children's Music Appreciation"	11:00 SP-102 Elementary Spanish	11:30 MU-107 Introduction to Music P.M.
12:00 What's New? "Bear Hunt"	12:30 Misterogers Neighborhood	1:00 The Friendly Giant "Kiki's Playhouse"	1:15 Guten Tag "Conversational German"
1:30 The French Chef "Charlotte Malakoff"	2:00 Human Relations & Motivation (C) "The Needs We All Have"	2:30 Bridge With Jean Cox "Theories of Opener & Responder"	3:00 Pocketful of Fun
3:30 Once Upon a Day "Children's Music Appreciation"	4:00 What's New?	4:30 The Friendly Giant "Kiki's Playhouse"	4:45 Guten Tag "Conversational German"
5:00 Misterogers Neighborhood	5:30 SP-101 Elementary Spanish	6:00 SP-102 Elementary Spanish	6:30 MU-107 Introduction to Music
7:00 TV High School "Grammar"	7:30 Arizona Wildlife Views (C) "Arizona Native Trout"	8:00 Speaking Freely (C) "Edmund Muskie"	9:00 Thursday at Nine "Hearing Conservation in the Public Schools"



## SANTA FE RAILWAY

will interview students at  
**ARIZONA STATE UNIVERSITY**

Wednesday and Thursday,

November 5 & 6, 1969

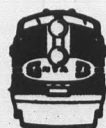
## CAREER OPPORTUNITIES

Santa Fe is a transportation company serving the southwest by rail, truck and pipeline. We have substantial interests in oil, lumber, uranium, coal, real estate and other enterprises, too.

If you would like more information about a career with Santa Fe where the only limit to your future is your desire, ability and effort, arrange for an on-campus interview. We want to talk with you.

Santa Fe offers career opportunities in these departments: Accounting, Finance, Cost Analysis, Railway Operations, Market Research, Real Estate and Industrial Development, Communications, also Civil, Electrical, Industrial and Mechanical Engineering. We are looking for individuals with Masters degrees in Accounting, Qualitative Methods, Business Administration, Transportation, and Marketing or Bachelors degrees in Transportation, Real Estate, Statistics, Engineering (Mechanical, Electrical, Civil, Industrial Engineers or Technologists).

Schedule your interview with the University Placement Office and ask for brochure featuring Santa Fe career opportunities.



The World Traveler, Philosopher and Connoisseur of Good Food presents Golden Fried Chicken stolen from Farmer Jones' back yard, sweet and sour cole slaw, French fried potatoes, sour dough bread with honey.

**FRIED CHICKEN**

**\$1.49** PER PERSON

Seconds on Chicken

**Hobo Joe sez: EVERY THURSDAY IS CHICKEN FRY DAY!**

**Hobo Joe's**

COFFEE SHOPS

- Scottsdale & First Ave.
- 20th St. & Thomas Rd.
- 43rd Ave. & Glendale
- 16th St. & Camelback
- East Apache Blvd., Tempe
- Stapley & Main, Mesa

**Young Energy, Inc.**

**Students market jobs**

Many college students have found the part-time work they need to defray school and social expenses, thanks to the efforts of five University students.

John Wallace, John Bohon, Phil Muhrey, Wally Limburg and Stan Wilson have established Young Energy, Inc., an organization designed to market economical services to the community and at the same time provide part-time employment for willing college students.

Wallace originated the idea this past summer.

Because of the ever-growing size of its work force, and the wide variety of experience which the individuals in that work force have acquired, Young Energy is able to offer a variety of services to individuals and businesses throughout the Valley.

The company originally specialized in rug shampooing, painting and other comparable areas of home care but has since gained experience ranging from landscaping to interior decorating and bartending.

Young Energy basically offers unskilled and semi-skilled labor, but most purchasers of its services have found that using a college student is a bonus for many reasons, including attitude, appearance, responsibility, intelligence level and enthusiasm.

To avoid scheduling problems, the company is placing each available student's schedule, skills and other information on computer. This one step, coupled with the size of the work force, has enabled the company to offer prompt service.

Young Energy offers its work force \$2 per hour and, most importantly, flexible hours with no requirement as to number of hours to be worked. Because it is managed by students, the company understands the social and academic requirements of students as to money and time, and attributes much of its success to the flexibility which has stemmed from this understanding.



**VOTE HERE...**

Voting concluded yesterday in the contests for Homecoming King and Queen as the "do not bend or fold" cards got put to full use.

Photo by Ray Wong

**Soprano plans opera recital**

Soprano Barbara Gwillim Dujanovic, senior, will present an operatic recital Wednesday in Gammage 301.

Accompanied by Margo Smith, she will open her program with Handel's "Bel Piacere" and arias from Mozart's "Marriage of Figaro" and "Exultate Jubilate."

Gloria Gracey, clarinetist, and

Ann Fuller, pianist, will present a movement from Brahms' "Sonata No. 1 in F Minor," which will be followed by vocal selections composed by Reynaldo Hahn and Franz Schubert, to be sung by Mrs. Dujanovic.

Miss Gracey will perform her own composition, "Two Bagatelles," accompanied by Sharman Rathkey and Mary Best.

**Two new programs by clinic aid stutterers**

If the patient can't come to the clinic, take the clinic to him — by telephone.

That's exactly what the University Speech and Hearing Clinic does when employing one of its two new techniques to aid stutterers.

Dr. Donald Mowrer, assistant professor of speech, is responsible for both.

Mowrer's telephone therapy program was designed to aid stutterers who couldn't come to the clinic for treatment.

The subject calls the clinic and reads a selection from the current edition of "Reader's Digest." He is monitored and after five dysfluencies (stutters), the clinician cuts off the conversation and hangs up.

The supposedly harsh tactic has produced results.

Mowrer's other innovation is the use of a walkie-talkie, which the patient carries on the Mall. During a half-hour period his speech is monitored, recorded and progress noted.

*The Village Shop*  
616 Myrtle, Tempe

ASU University Ave.

7th St

*Paisley at its best!*

*Rayon + Cotton Linen*

*Sleeveless Vest*

*Free Alterations*

**fm** *STEREO 94.5*

*WITH THE POPULAR, POPULAR MUSIC AND PERSONALITIES, TOO*

**Romantique**

New... from Gold Fashion Originals... romantic bridal sets with the cherished antique look for the frankly sentimental. Like love... never out of style.

Layaway or Charge No Extra Cost

**BUDD'S JEWELRY**

Oxford Square Tempe

The Christian Science College Organization at ASU Cordially Invites Students and Faculty to a lecture entitled:

**"Today's Prophet"**

to be given by Joseph G. Heard, a member of the Christian Science Board of Lectureship

**8:00 P.M. - Thursday, Oct. 30**

In the Great Hall - Law Building

# Workshop will study air pollution problems

## Recommendations to go to Secretary Robert Finch

By JOHN RUKKILA

Blue skies in Arizona are becoming a thing of the past as eye-stinging smog increases every year. What is being done about this?

An air pollution workshop presented to prepare local citizen leaders for official public hearings on air quality standards for central Arizona is being held in Phoenix today.

According to Mrs. Robert K. Corkhill, workshop general chairman, today's workshop at the Ramada Inn will inform community leaders and interested people about Arizona's air pollution problems and what may be done about them. The program will concentrate solely on air pollution and is a preparation for public hearings to be held on the subject next year.

The morning session includes a panel of experts in the fields of mining, meteorology, biology, medicine and health who will present information about pollution in each of these areas.

Dr. Duncan Patten, associate professor of botany at ASU,

will speak about air pollution from a biological point of view. He will talk about biological systems that might be influenced by air pollutants and what effects the pollutants would have on these systems.

Dr. Patten will also discuss how ecosystems respond to disturbance and what can be done

## School for farmers, cowboys

Interested in Stockmen's School? The seventh annual Stockmen's School will be held at the Ramada Inn in Phoenix, Jan. 12-15.

Dr. Dyfed Lewis and Dr. John Hodges from Great Britain, and Dr. David Hyde of Ireland will be part of a staff of 67 who will discuss 139 timely subjects.

Those interested and eligible will receive two hours credit at ASU for completing three or more days of the course.

A ten-day Farrier Science Course for horseshoers is scheduled in connection with the Stockmen's School, Jan. 12-22 at the ASU Farm.

Information concerning Stockmen's School may be obtained from co-director Dr. Elvin Taysom, professor of animal science.

about air quality from a biological and ecological point of view.

Featured speaker will be Dr. August T. Rossano Jr., noted professor of air resource engineering who will speak on "Dynamics and Control of Air Pollution."

In the afternoon other specialists will speak about industry and pollution laws and legislation. Group discussions will be held on self-help and preparation for future public hearings.

Approximately 100 representatives of industrial and community-oriented groups as well as a few interested individuals have been invited to attend.

The workshop is not open to the general public. According to Mrs. Corkhill participants

must represent a community orientated group or demonstrate a special interest in the community's air pollution problem.

The National Air Pollution Control Administration (NAPCA) is sponsoring the one-day workshop. A \$2,100 grant has been provided to the League of Women Voters Education Fund for the air pollution workshop to be held in Phoenix.

Mrs. Corkhill explains that in accordance with the federal government's 1967 air quality act, NAPCA has designated 50 air control regions throughout the United States. Local representatives in each designated region arrange control area boundaries in accordance with local air pollution conditions. An NAPCA representative recommends the local decision for ap-

proval by Robert Finch, secretary of the national office of health, education and welfare.

Phoenix is included in area 25. Local boundaries have been recommended to include Pima, Pinal, Gila and Maricopa counties. The deadline for approval by Secretary Finch is Nov. 10.

Mrs. Corkhill says that once a local pollution control area has been designated and approved, official public hearings must be held to determine air quality standards.

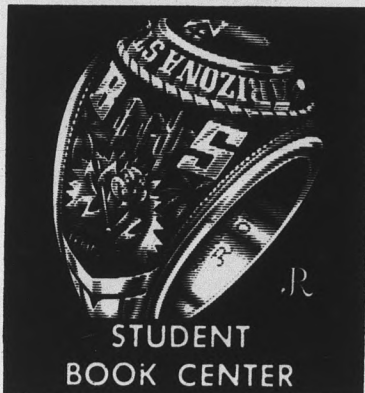
According to Mrs. Corkhill the first aim of the public air quality hearings for district 25 will be to determine safe standards for sulfur dioxide in the air. Later hearings will determine acceptable levels for hydrocarbons, carbon monoxides and nitrogen oxides.

## Football lunch at noon today

A Homecoming football luncheon for alumni and other boosters will be held at noon today in The Islands Restaurant, 4839 N. 7th St., Phoenix.

Speakers will be Chuck McBride, assistant coach for the offensive line, and Jerry Thompson, assistant coach for the defensive line.

University of Wyoming publicist Bill Young will give his views of the Cowboys' chances for victory in the Saturday night's football game.



## Pitchers FREE

at the

## Pizza Inn



with the purchase of Large Pizza Inn Special or equivalent purchase.

Good Saturday & Sunday

(Nov. 1st & 2nd)

Valid Only With This Coupon

## PIZZA INN

955 E. University Dr. 1/2 Bk. E. of Scottsdale Rd.

## Nurses want toys

The Arizona Association of Student Nurses (AASN) will go trick 'r treating for toys tonight from 7:30 to 10:30 p.m.

About 50 members of AASN will be collecting toys in Tempe for the Sacaton Indian Hospital. The toys will be cleaned and donated to the hospital in December for the children's ward.

No stuffed toys will be accepted.

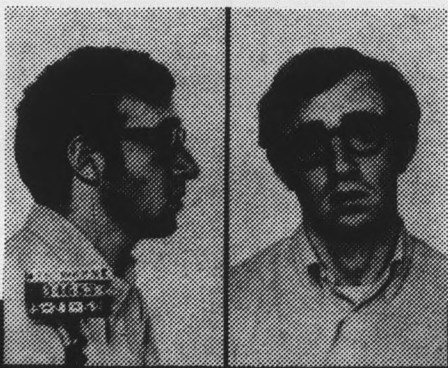
**"Take The Money And Run' is nuttiness triumphant.**

**You may be reminded of Chaplin...**

**you may think of W.C. Fields...**

**but above all you'll see Woody Allen, original."**

**—LOOK MAGAZINE**



PALOMAR PICTURES INTERNATIONAL PRESENTS  
WOODY ALLEN'S

**"TAKE THE MONEY AND RUN"**

starring **WOODY ALLEN** and **JANET MARGOLIN**

**NOW PLAYING**  
—EXCLUSIVE—

**CINE CAPRI**  
E. CAMELBACK at 24th St.

ASASU presents

"Billboard's No. 1 Rated Group"

# GARY PUCKETT and THE UNION GAP

AT GOODWIN STADIUM • APACHE & COLLEGE

FRIDAY, OCTOBER 31, 1969 • 8:30 p.m.

A.S.U. STUDENTS \$1.50

On Sale at South Hall & Gammage Aud.

GENERAL ADMISSION TICKETS \$2.50

Available at All Community Box Offices & Gammage Auditorium

# PARKING LOT SALE

## \$150,000 LIQUIDATION SALE!

Thousands To Choose From!  
LADIES DRESSES - BLOUSES  
PANTS - SUITS - SKIRTS - SETS

### 40 to 80% OFF

Sorry - Quantities are Limited!  
All Items Are Subject to Prior Sale!

## 3 BIG DAYS

THURSDAY-FRIDAY  
SATURDAY

Coat and Dress Set  
12 Left  
Reg. 30.00  
NOW **\$1200**

"Ponchos"  
16 Left  
Reg. 18.00  
NOW **\$988**

"BELL-BOTTOMS"  
"HOPSACK"  
Reg. 8.95  
Only 164 Left  
**\$495**

"Long Pant" Top  
112 Assorted Colors  
Reg. 7.95  
**\$288**

"POLYESTER"  
Only 16 Jr. and  
Jr. Petite Dresses  
Reg. 22.00  
NOW **\$795**

HOLIDAY LUREX  
DRESSES  
Only 8 Left  
Reg. 39.00  
NOW **\$1500**

POLYESTER TOPS  
33 - White Only  
Reg. 7.95  
NOW **\$188**

SANDLES  
61 Pair  
Reg. 7.00  
NOW **\$188**

LEVIS FOR GALS  
221 Left - One  
Color - All Sizes  
Reg. 9.00  
NOW **\$177**

24 Left - Holiday  
LACE DRESSES  
Reg. 19.95  
NOW **\$788**

ONLY 3  
LADIES DRESSES  
Reg. 29.00  
NOW **\$500**

FAMOUS NAME  
"Holiday" Dresses  
ONLY 10  
Reg. 29.95  
NOW **\$1295**

1 JACKET  
Reg. 24.95  
NOW **\$1000**

CAR COATS  
Only 8 - Plaid  
Reg. 19.95  
NOW **\$995**

BONDED KNIT  
62 CAPRIS  
Reg. 7.95  
NOW **\$288**

66 DRESSES  
ASSORTED  
Reg. to 12.95  
NOW **\$388**

Large Size 8 Left  
DRESSES  
Reg. 10.95  
NOW **\$488**

8 ASSORTED  
DRESSES  
Reg. to 29.00  
NOW **\$900**

8 ASSORTED  
DRESSES  
Reg. to 29.00  
NOW **\$900**

864 ONLY  
PERMANENT  
PRESSED!  
**LADIES  
CAPRIS**

SEE THEM IN YOUR  
FAVORITE DEPARTMENT  
STORE AT REGULAR 6.95.  
ALL THE COLORS YOU  
COULD EVER WANT IN  
YOUR WARDROBE  
Sizes 6 to 20  
**\$244**

54 BLOUSES  
Reg. 6.95  
NOW **\$395**

ONLY 10  
TWEED PANT SETS  
Reg. 19.95  
NOW **\$995**

LADIES PANTIES  
Reg. 79c  
NOW **22c**  
122 LEFT

26 ONLY  
Assorted Dresses  
Reg. to 19.95  
NOW **\$488**

## LADIES BLOUSES

523 Only! Hurry! Don't miss this spectacular Bargain of the year. Daisy Prints. Fall colors. Convertible collars.

Sizes 32-38  
Regular \$3.95  
**\$129**  
NOW ONLY

PIN STRIPE  
Name Brand 15 Only  
PANT SET  
Reg. 29.00  
NOW **\$1288**

STRIPE SHIFT  
Famous Maker 11 Left  
Reg. 16.95  
NOW **\$888**

SWEATERS  
White Only 41 Left  
Reg. 4.95  
NOW **\$188**

"Western" Capris  
8 Only  
Reg. 12.00  
NOW **\$495**

PLAID JUMPERS  
Fall Colors 22 Left  
Reg. 12.95  
NOW **\$695**

Blouse Special  
14 Only  
Reg. 8.95  
NOW **\$395**

Jr. Petite Dresses  
5 Left  
Reg. 19.95  
NOW **\$488**

LARGE SIZE  
HOSTESS GOWNS  
9 Only  
Reg. 20.00  
NOW **\$600**

34 PAIR LEFT  
BIB OVERHALLS  
Reg. 9.95  
NOW **\$295**

BARGAIN  
TABLE  
**\$100**

KNIT TOPS  
Reg. 16.00  
NOW 22 Left **\$395**

22 LEFT  
PANT DRESSES  
Reg. 9.95  
NOW **\$388**

Belts Assorted 25c each  
"Safari Dresses"  
Only 14 Left  
100% Arnel  
Reg. 16.95  
NOW **\$888**

SPECIAL ORLON  
PANT SET  
17 Left  
Reg. 16.95  
NOW **\$788**

3 PIECE  
SKIRT SUITS  
8 LEFT  
Reg. 30.00  
NOW **\$1000**

SKIRTS  
23 LEFT  
Reg. 6.95  
NOW **\$295**

TOTE BAGS  
5 ONLY  
Reg. 6.00  
NOW **\$200**

MINI ROBE TOP  
SPECIAL **50c**

BEST BUY  
PANT SUITS  
34 Left  
Reg. 12.95  
NOW **395**

128 DRESSES  
Reg. 12.95  
NOW **\$295**  
SAMPLE

DRESSES AND VEST  
4 Only  
Reg. 50.00  
NOW **\$1200**

54 S-T-R-E-T-C-H  
CAPRIS  
Reg. 9.95  
NOW **\$395**

MISSY DRESSES  
14 LEFT  
Reg. 22.00  
NOW **\$900**

NYLONS  
Reg. 79c  
NOW **25c**

500 PAIR  
Due to this amazing offer  
— only 2 to a customer.



THURSDAY,  
FRIDAY,  
SATURDAY

# COUNTRY CLUB SPORTSWEAR

140 NORTH COUNTRY CLUB MESA

NOW  
GOING  
ON!

# Architects show work in center

An exhibit of various student projects from the College of Architecture is on display in the entrance lobby of Matthews Center.

The exhibit is connected with Homecoming festivities "by virtue of being put up," said organizer Dr. Robert Hershberger.

On display is Lynn Pomeroy's prize winning model of an Episcopal Church.

The blueprints and sketches of an "Art and Artists Community for Downtown Phoenix" that won for Mike Revmer the Weaver-Drover travel prize are also being shown.

Other student projects are taken from first, second, and third year level classes.

Two examples of a class experiment titled "A Nocturnal Short Term Land Tax Paving Drive-In Light and Sound Hot Dog Dance Hall Youth Involvement Rapping Center" are on display.

Robert Winton's extensive sketches and blueprints of "A Music Facility for the Flagstaff Summer Festival of Arts and Music" are also being shown.

A "Visual Analysis of the Desert" by John Douglas includes photographs of desert vegetation, wildlife, soil, sunsets, washes and knolls.

A contribution by Nelson Kaita is blueprint of a "Youth Involvement Center."



Sights such as this were common this week as the University got ready for the wild weekend.

Photo by Ray Wong

## DON'T FOLD ...

# Dorm opens wide *Beasties* haunt MU

Open House at Manzanita Hall Saturday will be enhanced by the Manzanita Hostesses.

A women's honorary auxiliary, the Manzanita Hostesses will be serving refreshments, running elevators and giving guided tours from 10 a.m. to 3 p.m.

Hostesses, recognizable by their short sleeve, navy blue dresses and a gold identification pin, will be on hand to answer questions and help with check-in and check-out procedures.

Open House activities are held in conjunction with Homecoming activities.

Halloween Happenings at the MU began yesterday and will continue through tomorrow.

Student committee members provided holiday decorations, hard candy and pumpkins for MU-goers to carve.

The committee ran a gory movie in the Rumpus Room and opened a haunted house in the basement last night.

Students are welcome to stop in and soak up the Halloween atmosphere.

## CLASSIFIED ADS

For classified advertising submit ad in person to the State Press, Old BA 302, two days in advance of publication, from 8:00 a.m. to 3:30 p.m., call 965-3657. Rate: 5c per word, 75c minimum.

### FOR SALE

L'Dee's Boutique 1608 E. Thomas Rd. 274-5744. Custom clothes for free thinkers. Bells, black light, blouses, sashes, posters, jewelry, grove with the mood.

Red VW convertible, excellent, \$650. 112 W. 6th, Tempe, leave note.

In shipment. Seven new 1969 zig zag sewing machines. Nationally advertised brand with full factory guarantee. \$35 each or small monthly payments. These machines may be inspected in warehouse at Unclaimed Freight, 4522 N. 7th St., Phoenix. 9 a.m. to 6 p.m. Monday thru Saturday.

Typewriter, SCM 210 Electric, full carriage, like new, \$75. 966-0877.

ASU "Soouse" season pass to all athletics, \$10. 11 mo. membership to University Health Club, \$80. 945-0367.

We have just received a shipment of seven brand new stereo consoles. Some still in cartons. These 1969 nationally advertised models are in beautiful walnut finish with four speaker system and world famous BSR turntables and powerful solid state chassis. They will be sold on a "First come, first serve" basis for only \$88 each or small monthly payments. We have records available so you can test each set before you buy. They may be inspected at Unclaimed Freight, 4522 N. 7th St., Phoenix. 9 a.m. to 6 p.m. Monday thru Saturday.

Like new Magnovox HIFI, including speaker and approximately 100 albums. 275-1702.

Psychedelic speakers \$39, student discount on all stereos, tape decks, and guitars. Stitch and Listen 2619 W. Bethany, 265-2184.

Telex stereo headphones with leather case, \$20. 966-0350.

Four Electrolux vacuum cleaners and all attachments to be sold for \$39.95 each or monthly payments available. Unclaimed Freight, 4522 N. 7th St., Phoenix.

### TRAVEL

Save \$ Non-stop Christmas Charters. Chicago round trip \$135.00. Lv. Tucson 5 p.m. Dec. 19. Lv. Chicago 9:30 p.m. Jan. 4. New York round trip \$149.00. Lv. Tucson 7 p.m. Dec. 19. Lv. New York 1:30 p.m. Jan. 4. Arizona University Charters. 2201 E. Broadway, Tucson. Call 623-3456, 624-5521. Minimum deposit \$50 required.

### HELP WANTED

Earn Extra \$\$ Part-time, gathering information for new city directory. No selling. Mr. Moss or Mr. Gray. R. L. Polk and Company, 258-3761.

Male and female. \$200-\$500 MONTHLY SALARY to those who qualify. Full or part time work available. No experience necessary. We train at company expense. Opportunity to work in promotional department of international organization. Work involves the integrating of advertising and promotional techniques. Excellent training for students whose eventual field of endeavor would involve dealing with people. Successful students would be guaranteed full time summer employment. For interview appointment ask for Mr. Mann at 258-3319 from 9 a.m. - 3:30 p.m.

COLLEGE REPRESENTATIVES NEEDED to sell Volkswagen bus tours to Europe in Summer, 1970. \$100 commission per sale. Write VW adventures. P.O. Box 7999, Austin, Texas. 78712.

Commission sales \$70 to \$100 per week by appointment only. Part time day and evening. Call Clark 264-5573.

National Company expanding in Arizona. Sales and management with some franchise positions. Excellent fringe benefits with luxury car. Mr. Bach. 277-5947. 9-4 Mon. thru Thurs.

Men, earn \$67 three nights and Saturday. 969-6723.

College Dream Job: I'm looking for men who work well with attractive women, who wish a high potential income from commissions. Modest investment. Great potential. Call 963-5801.

Campus Rep for Arizona University charters — commission, unlimited travel benefits: Call or write Mr. Lynn Gage. 2201 E. Broadway, Tucson, 85719 (602) 623-3456.

Full or part time. Michele's Coffee Shop, 1021 W. University (con. Hardy), Tempe.

### RENT

Serious student needs male roommate to share one bedroom apt., 10 minutes walk from campus. Call 966-6878 or 914 E. Lemon, No. 134.

Rent completely new nite club set up for \$60 for any occasion. 268-2143.

One bedroom, furnished, kitchenette, \$150 monthly. Call Paul or Bill at 966-0733 after 9:30 p.m.

### SERVICES

WANTED — Coeds who like to look their feminine best from 7:40 straight thru that goodnight kiss. Make me prove I can help. Call 946-2938 for appointment, free gift. Absolutely no obligation whatsoever.

Self hypnosis classes beginning soon. Lose weight, stop smoking, calm nerves, increase learning and creative abilities. Write P.O. Box 11132, Phoenix 85017 or call 274-0698.

Delli luncheon special. Knackwurst and saurkraut, home fries, bread and butter, \$.99. College Delli, University and Rural.

Drummer needs work. 5 years experience. All types. Todd 966-3007 after 6:30 p.m.

Special 20% off to students. Reduce or gain weight fast. All new modern equipment with sauna. Golden's Health Club, 3300 S. Mill, Danelle Plaza (located at South Mill and Southern Avenue) in South Tempe, 966-8751.

### MOTORCYCLES

1968 Honda, 65 cc. \$150. Call Doug 967-7079.

'68 Honda 350 Scrambler. New Bell helmet, \$450. 272-9961.

1968 Suzuki AS-100. Two helmets incl., \$175. Call 966-3192 after 3 p.m.

'68 YAMAHA 125cc Twin scrambler \$250. Call 934-1375 after 5 p.m. weekdays.

1967 Honda, 305 Scrambler, 966-4427.

### AUTOMOBILES

1965 GTO 398, recently rebuilt for sale or trade for VW camper. 948-2195 after 5.

New MGB gear box for sale. Call 966-1076 after 2 p.m.

1966 Austin Healy, excellent running condition. Must sacrifice \$1795 or consider offer. 966-1370.

1969 Toyota Land Cruiser, still on warranty. Asking \$2450. Call 965-6285, 10 to 12, MWF.

1937 Yellowstone Park Touring Bus. Excellent running condition. Best offer. Phone 956-2121.

'63 Tempest, new engine, brakes, shocks, muffler, five new tires. 310 E. 9th Drive, Mesa. 962-9756.

'68 Toyota Corona, two door hardtop. Call 261-4945 or 962-0023. Paul.

1964 Plymouth Valiant Convertible V-8, Automatic, \$675 or best offer. Must sell, private party. 934-8946.

1964 Olds Cutlass, bucket seats. Excellent. \$850.00. Day 969-3575; night 959-0598.

DUNE BUGGY. '69 Meyers Gold Black interior. White top. 70 Horsepower 1500 cc engine. Holley carb with ram air manifold. Cyclone exhaust. 324 miles. New tires. Chrome wheels. Full instruments. Chrome roll bar. Gold carpets. Canvas cover. Two bar. 947-7122 or 945-1282.

1958 Jag XK 150, 1917 E. Fairmont, South at McClintock High School, Knoel Homes Division.

'62 Corvette, 327, 365 hp, Hurst 4-speed, American mags, Goodyear wide tread GT tires, two tops. Call Cory, 966-9171.

### TYPING

Fast, accurate typing. Low rates. 8549 E. Jackrabbit Road, Scottsdale.

Typing — 955-0763.

ASU experience. Fast, accurate, work guaranteed. IBM elite. 967-4517.

Typing. Experienced. Fast, accurate. 279-4270.

Typing — 967-3675.

Typing, IBM. Work guaranteed. Mrs. Shirley Enrico, 966-1138.

Typing 945-4685.

### INSTRUCTION

Tutoring, individual instruction in biological sciences, math, chemistry and organic. 966-6909.

Tutoring individual instruction in biological sciences, math, chemistry and organic. 966-6909.

INDIVIDUAL tutoring in math, chemistry, physics and biological sciences. Phone 967-7924.

### WANTED

Female roommate to share apartment in Phoenix. Split rent, utilities, telephone. Prefer senior or graduate in Education. 937-4237.

Female roommate. Ball Lanl, apt. 51, after 6 p.m.

Two girls to rent/share Scottsdale townhouse with girl. Call 946-9462 after 5:30 p.m.

## Calendar

### TODAY

Magistrate Conference, 9 a.m.-5 p.m., Great Hall of the College of Law.

College of Law: Third-Year Program, final examinations.

ASU Rodeo Club, 8 p.m., Ag 202.

ASU Young Democrats, speaker on Code of Conduct, 7:30 p.m., SS 101.

Peace Corps, recruiting on Mill near water fountain, 9 a.m.-4 p.m.

Circle K Club accepting applications for membership. Applications are available at the desk in each men's dormitory until Friday. Circle K Club is a men's service organization sponsored by Kiwanis; a 1:25 GPA is required.

ASU Soccer Team, meeting to form the team, 4:30 p.m., Sahuaro Hall Soccer Field.

Association for Childhood Education, 6 p.m., Ed 301.

Undergraduate Social Services Association, lecture on "Poverty in South Phoenix," by David Leuser, editor of "Voice of the City," 8 p.m., SS 234.

History Department meeting to discuss issues to be taken to the College Student Advisory Council, 3 p.m., SS 226.

Christian Science College Organization, lecture by Joseph G. Heard, "Today's Prophet," 8 p.m., Great Hall in the Law College.

### TOMORROW

Association for Women's Active Return to Education, 11:40 a.m.-1:30 p.m., Payne Hall B 212.

Homecoming Dance at L.D.S. Institute, 10 p.m.-1 a.m., 947 McAllister; music by the Robsons.

ASU Veterans' Club, 4:30 p.m., Tempe American Legion Hall, Post No. 2, 15 E. 5th St.

College Life, Halloween Evening, 7:61 p.m., 13th St. & Mill.

"The Infernal Machine," by Jean Costeau, University Players, 8:30 p.m., Lyceum.

### COME TO

## Citron's Surplus

Jefferson at 2nd St. In Phoenix for

•Navy denim bellbottoms

•Pea Coats

•White & 13 Button Belts

## STUDENT DISCOUNT PRICES

# GOODYEAR

SERVICE STORES

## FRONT-END ALIGNMENT

# \$4.88

any U.S. auto plus parts

WITH THIS AD

OPEN MON. & THURS. TIL 9 P.M.

50 N. Dobson Road Mesa 962-4205  
Across From Tri-City Mall



# Sports arena given top priority

## Facility will seat 16,000

By BOB WISCHNIA

Top priority in the ASU request to the Arizona Legislature will be a \$5.5 million proposal for the construction of a 16,000-seat multi-purpose sports arena.

The Board of Regents has approved the request, but the Legislature must appropriate funds before ground-breaking can take place.

The sports arena itself will be of a semi-snakepit design. The floor of the arena will be below ground level, along with half of the seats, while the remaining seats will be above ground.

The entire athletic department offices, the Sports Information Department and the ticket and athletic director's office will be moved there from Sun Devil Gym.

In addition, all of the Sun Devil teams will have locker room facilities located in the new arena. There will also be weight rooms, trainer's rooms and meeting rooms for the teams.

The arena will not be used only for athletic events. The arena could also be used for concerts which are too big for Gammage Auditorium, convocations, freshman orientation, large scale meetings and graduation exercises.

The arena will be located between the east side of Tempe Butte and Joe Selleh Track. It will be partially dug out of the east butte.

The new arena will allow the present Sun Devil Gym to be used for intramurals, physical education classes and recreation.

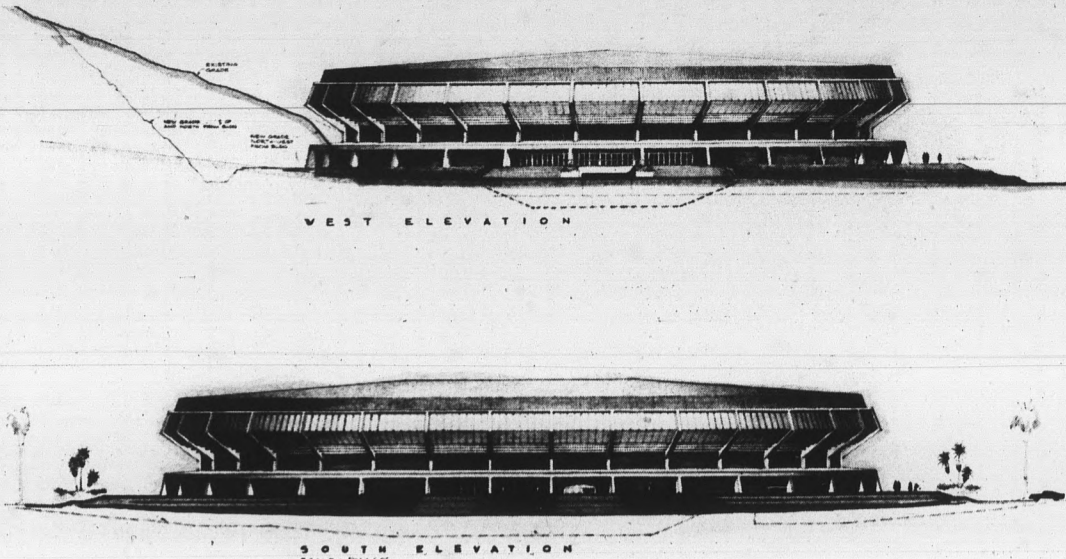
Funds for the arena were included in the capital outlay requests to the 1967, '68 and '69 Arizona Legislatures, but were not appropriated. \$160,000 was granted by the Legislature for planning purposes, however.

Head basketball coach Ned

Wulk said that the new sports arena will help in recruiting and acquiring a more attractive home schedule. Wulk is the unofficial head of a steering committee on the proposed complex.

The greatest obstacle that Wulk faces is the delay in beginning construction. The longer the delay in construction the more the facility will cost. Herein lies the basic obstacle — money.

If the Legislature approved the arena in the spring, Wulk anticipates a year's delay before construction could start. It is then expected to take 18 months before it would be completed. This would mean that the arena would be ready for the 1972-73 season.



### PROPOSED ARENA ...

Artist's conception of the proposed sports arena, hopefully ready for the 1972-73 season, shows west and south elevations as it would be, nestled next to the east butte near Sun Devil Stadium. Arena would seat 16,000 in theater-type seats.

## Sun Devil Sports

### Students to jump for scholarships

The 1969 National Collegiate Parachuting Championships will be staged Nov. 27-29 at Mel Larson's Phoenix Dragway and Race Course. More than 100 top-ranking universities and colleges throughout the nation will be

represented by some 150 jumpers competing for scholarships. Each will make six or seven jumps, more than 1,000 jumps during the three-day activity.

Figure eights, back loops and free fall will demonstrate the jumper's skill as he aims for the ground target on the race course.

The mile-long drag strip makes a near-perfect runway for the jumpers and allows full spectator visibility and safety.

University jumpers are invited to contact Parachuting Ltd. or Wayne A. Noel, 274-6005, regarding the formation of a team. Several male and female jumpers are needed to fill a team.

### Wyoming riding along on crest

Team	Conference Games				All Games			
	W	L	Pts.	Op.	W	L	Pts.	Op.
Wyoming	4	0	139	26	6	0	182	58
Utah	3	0	72	29	5	1	138	67
Arizona	2	1	85	61	2	4	148	168
Brigham Young	3	2	107	105	3	3	104	115
Arizona State	1	1	46	31	3	2	146	98
Texas-El Paso	1	4	53	123	2	4	67	133
Colorado State	0	2	23	61	3	3	144	160
New Mexico	0	4	49	138	1	5	79	176

### Picture the world through the eyes of Pat Sky.



Patrick Sky sings about the world he sees. And with a poet's touch, he writes his songs. They're here in Photographs, a sensitive new album that sheds light on Now. You'll understand.

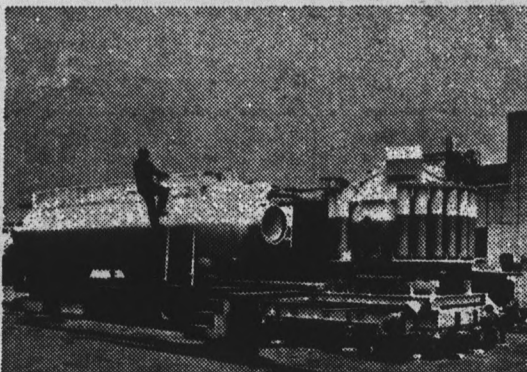
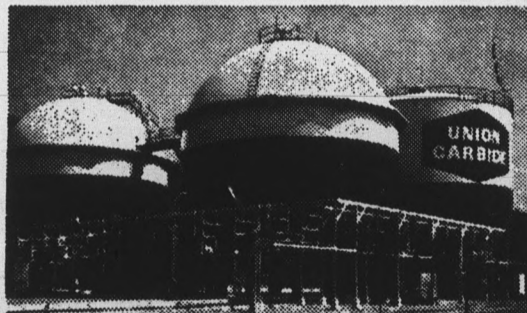
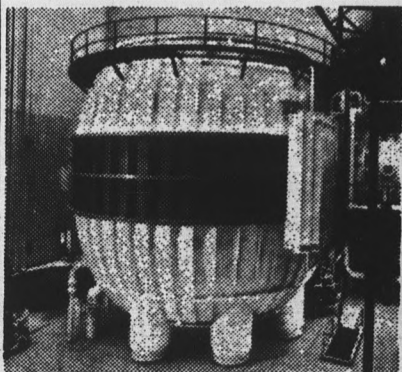


FTS-3079

Verve FORECAST

Verve/Forecast Records is a division of Metro-Goldwyn-Mayer Inc.

Pittsburgh-Des Moines Steel builds for the future with projects like these:



If you're a Civil or Mechanical Engineer and would like to build with us, sign up for an interview on Oct. 31st or send your resume to:

Mr. Robert Barrett, Pittsburgh-Des Moines Steel Company  
P.O. Box 329, Santa Clara, Calif. 95052



# Play to make use of gigantic mirror

Have you ever wished you could see yourself on stage in a big-time musical hit?

Thanks to a giant 500-pound plexiglass mirror utilized in the "Cabaret" set, you'll have that chance when the musical is presented at 8:30 p.m., Nov. 5 and 6 at Gammage Auditorium.

"Cabaret," which tells the story of the decadent night-life of Berlin before the days of the Nazis, uses the mirror on stage before and after the show, at intermission and in the opening and closing acts.

Why?

Producer - director Harold Prince explains it this way, "We feel the crazy, destructive modern world. So . . . we put the audience literally into the picture . . . at key moments."

In addition to the mirror, the musical boasts six major set-

tings, 15 songs and a sizeable cast, including an all-girl jazz band and chorus line.

Starring Tandy Cronyn as Sally, the big cast includes Jay Fox, Woody Romoff, Franklin Kiser and Bryan Hull.

Tickets for the Thursday performance are almost sold out, but there are still good seats available in all locations for the Wednesday performance.

Student tickets, which can be obtained from the Gammage box office, are \$6, \$5, \$4 and \$3.



Stage hands get the mirror ready which will be used at the "Cabaret" performances. Audience members will be able to look at themselves.

## Letter

(Continued from page 4)

that the Regent's decision was probably designed to maintain class attendance, the writer is the first to throw stones at the board for suppressing free expression and stifling campus dissent.

It is true, as the editorial states, that propaganda mills need little trust to grind out a very damaging product. It seems that State Press is quite willing to be the first to turn the crank that grinds out that product.

Carolyn W. Wilch

## MIRROR MIRROR . . .

### Schedule

Alumni Homecoming Football Luncheon, \$2 at the door, The Islands Restaurant, Phoenix.

"The Age of Woman", panel discussion and coffee, sponsored by Associated Women Students in conjunction with the Women's Faculty Club, MU West, 3:30 p.m.

## Overman to moderate discussion

Dr. Glenn Overman, dean of the College of Business Administration, will moderate an alumni-student panel on the topic, "The Age of Youth in Business," corresponding to the Homecoming activities, at 7:30 tonight in BA 129.

Principal speaker at the panel, which is open to the public, will be Gene Rice, executive vice president of First Federal Savings and Loan Association.

Other businessmen on the panel include John Holland, senior vice president of Transamerica Title and president of the ASU Alumni Association, and Harry Mehrtens, director of sales promotion and personnel of PBSW Office and School Products. Mehrtens is the recipient of the 1969 Alumni Service Award.

Student panel members include Valerie Ballschneider, a senior economics major, vice president of the Economics Club, and member of the Dean's List; John Comeau, senior, member of the Dean's List and president of the Society of Advancement of Management; and Wayne Gustafson, a senior accounting major and honor student.

## Merit, forum topic

Harold Bennett, director of the State Personnel Commission, will discuss the reorganization of the Arizona state merit system during today's Public Administration Forum at 3:30 p.m. in SS 205.

The forum is designed to express the viewpoints of practicing administrators in all levels of government. Of particular interest to faculty members, graduates and undergraduates in public administration, the program is open to everyone.

### DIAMOND VALUES...

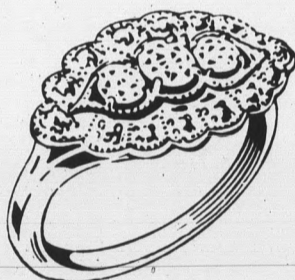
to be found only at

**YOUR DANIEL'S JEWELRY STORE**

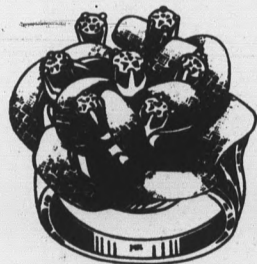
**IN TRI-CITY MALL**



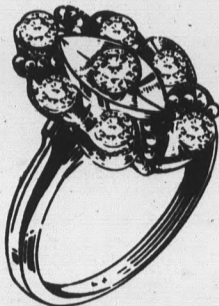
Textured dome ring has 5 diamonds set in 14-karat gold . . . . . \$79.50



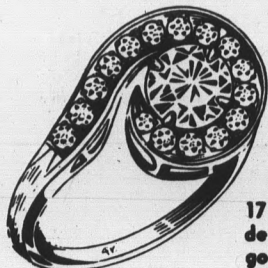
Classic 15 diamond princess design ring in 14-karat gold . . . . . \$139.00



7 diamond cluster ring in two-tone 14-karat gold . . . . . \$179.95



Popular dinner design ring with 7 diamonds, 14-karat gold. . . \$269.00



17 diamond question mark design set in 14-karat gold . . . . . \$350.00

**"CHARGE IT" - USE OUR PAYMENT PLAN**

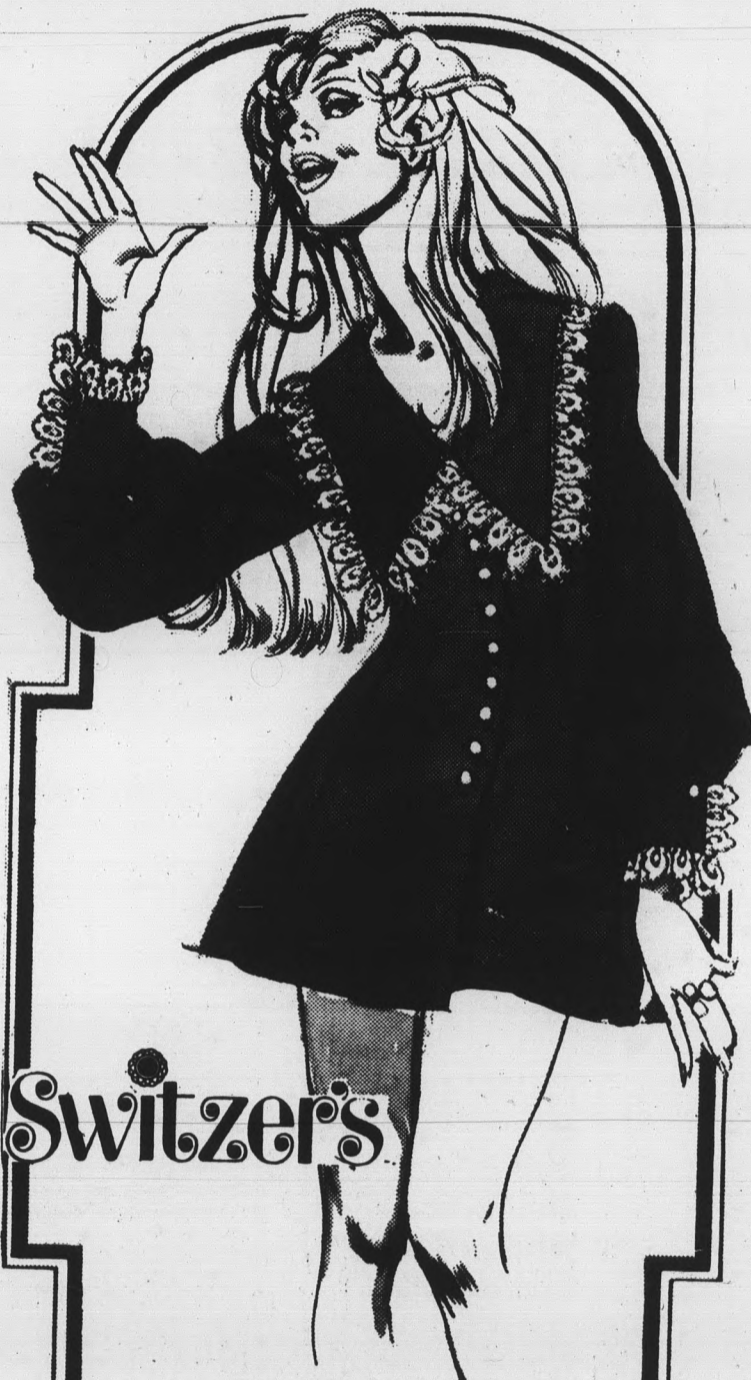
A DIVISION OF GORDON JEWELRY CORP. - STORES OPEN TO ORDER  
**DANIEL'S**  
Quality Jewelers

College Accounts Invited

**DOWNTOWN MESA**  
130 West Main Street—Mesa

**PHOENIX—Thomas Mall**  
4513 East Thomas Road

**TRI-CITY MALL**  
1910 W. Main—Mesa



# Switzer's

### Lace Trimmed Coat Dress by Mad Rags

Note the delicate white lace that accents the fashionable lines of this bonded orlon knit.

The pearlized buttons suggest a step-in but hidden buttons make it a complete coat dress.

Ready for some color?

Try one of these: wine, purple, navy, red or pink in sizes 5-15.

Just \$19.98

**SWITZER'S**

Mesa Tri-City • Thomas Mall  
Park Central • Chris-Town  
Fashion Square • Downtown Phoenix  
Las Vegas