

## Animosity denied

# Conlan defends actions

By RAY KIPP

Sen. John Conlan, R-Maricopa, says there is no personal animosity toward Dean Richard Landini in his opposition to the proposed Litchfield Park campus appropriation.

Conlan said the proposed academic concepts to be followed and the "extreme" liberal thinking of Landini were his major reasons for objecting.

He favored the building of a new campus, he said, but felt more open discussion and full examination of its needs and activities were needed.

"We've been asleep at the switch too long while a few educators have led us down the path," he said. "Someone has to put the lid on."

He remains solidly opposed to Landini as dean. He advocates a fair representation of liberal and conservative views on every campus and feels Landini would select a faculty composed entirely of liberals.

Conlan last week charged that Landini had radical views and was guilty of political agitation and poor leadership.

Commenting on the proposed course of

study for the new campus he said, "I think the idea of trying to solve the world's problems at age eighteen is absurd, and that's what they're talking about."

"You have to have background before you can solve those kinds of problems and high school does not supply it," he said.

He told a State Press reporter the first two years of college should be used to master basic fields of study and begin to supply the needed background.

Defending his comments of last week that the university should raise requirements to admit only the top 50 percent of high school graduates, Conlan said, "Not everyone belongs in a university."

He said universities should teach on an accelerated level while slower learners attend junior colleges, vocational or technical schools until able to keep up with that accelerated pace.

Limiting admission, he said, is also a way to stop the depersonalization of the large university and could upgrade the quality of education by attracting better faculties with better student body.

# SPC disavows aid for AS candidates

Representatives of the Student Power Coalition told the State Press yesterday they neither support nor endorse candidates for ASASU president and first vice president.

Ellie Finn, defeated SPC candidate for president, said the organization was speaking out in response to leaflets distributed Sunday night in girls' dorms aligning presidential candidate Stan Wilson with SPC.

## Funds bill pondered

By TED LEDINGHAM

The Arizona House and Senate Appropriations Committees will "hopefully get to the universities' appropriations by the end of the week," Rep. John Pritzlaff, R-Maricopa, told the State Press yesterday.

Pritzlaff, chairman of the House Appropriations Committee, said the issue was still under discussion in the respective committees.

The two committees will meet in joint session later this week to try to work out a compromise, he continued.

Once the committees agree, the recommended figures will be presented for consideration, hopefully early next week, he explained.

The three state universities have requested a total of \$60.7 million in operating funds from general tax monies and \$53.2 million for new buildings.

Gov. Williams has recommended trimming operating funds to \$52.7 million and slashing the building budget to \$5 million, \$2 million each for the UofA and ASU, and \$1 million for NAU.

She said the leaflets were not put out by Wilson or the Student Power Coalition and that her organization was not backing either Wilson or John Holman, "nor does SPC support or endorse Cheryl Bradshaw or Tom Edwards for first vice president."

"All reports, rumors, leaflets or other material to the contrary are false."

Wilson, who had not been notified of the SPC announcement, told an audience in Gammage Auditorium yesterday afternoon, "SPC has not informed me of their support for me."

Referring to the distribution of leaflets, he later added, "I have no idea who did it; I can only speculate."

Miss Finn also expressed surprise about the leaflets, which she didn't know about until she received a phone call questioning their validity Monday morning.

She said that the only connection SPC had with either of the presidential candidates was when "representatives of Holman offered SPC members any help they might need in acquiring votes."

Holman denied that any of his representatives had ever "gone to a Student Power Coalition meeting to acquire votes." He said he knew of no action by his representatives on behalf of SPC.

# SDS called opportunistic

## Uses others for own goals

By GLENN HUNTER

The faculty advisor to the University Civil Rights Board has accused "such groups as SDS" of using the legitimate grievances of minority groups to further their own causes.

In an informal talk to journalism students Friday, Dr. John P. Morris of the College of Law cited last November's laundry dispute as an example of how some leftist groups have attached their names to minority-groups causes and have attempted to "take over."

"I thought MASO (Mexican-American Student Organization) showed exemplary leadership in withstanding the extreme pressure put on them from some of these groups during the dispute," Morris said.

He related how MASO voted to abandon their sit-in position at 5 p.m. during the occupation of the administration building, while other participating groups

wanted to stay and provoke police action.

It is perhaps because of such exploitation that blacks no longer seek to integrate with white society, Morris said: "The trend today is toward a separatist society. We will eventually have to integrate, but that day will be a long time coming."

One of three black professors

## Voting day tomorrow

The ASASU general election will be held tomorrow directly west of the fountain.

Officers to be elected are as follows: ASASU president, first vice president, administrative vice president and activities vice president.

Election news on pages 5, 6, 7 and 8.

Following are the ASASU Student Senate vacancies to be filled according to college: Education-12, Liberal Arts-11, Law-1, Business Administration - 7, Nursing-1, Fine Arts-2, Engineering-5 and Architecture-1.

Also on the ballot will be the following AWS offices: president, executive vice president, activities vice president, treasurer and secretary.

There will be three constitutional amendments to be voted upon on the ballot. They will be listed as one, two and three with a short summary in the upper right-hand corner of the ballot.

Polls will be open from 8 a.m. to 8 p.m.

on the faculty, Morris pointed out that there is now only one black student on the UCRB, which investigates alleged discrimination in the university community.

"This is an example of the separatist trend," he said.

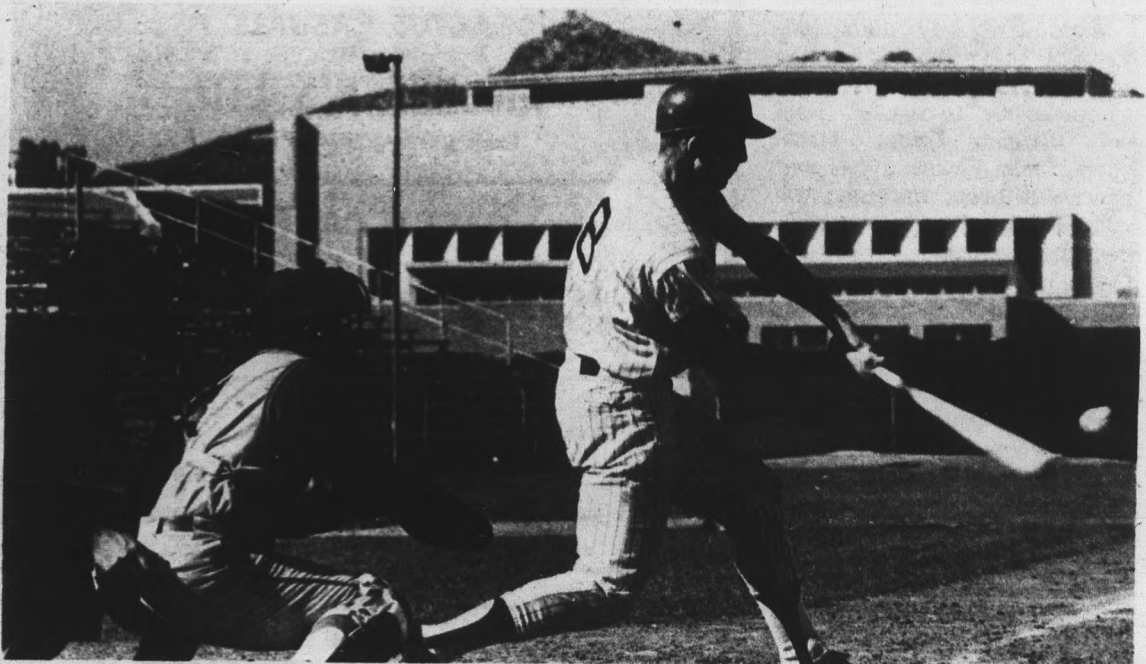
Morris indicted the American education system for its failure to teach students to identify the underlying problems of our age: "This is why students are agitating for trivial issues. They are not able to recognize the real problems our society faces."

A tall, lanky man who peppers his speech with wry witticisms, Morris bemoaned America's "loss of her sense of humor."

## SUN DEVIL BASEBALL



Ohio State 10, ASU 5  
Season Record: 10-5



DIDN'T GET THIS ONE — Catcher P. R. Powell chokes off this Ohio State run, but it wasn't enough as the Buckeyes downed A-State 10-5 yesterday. See related story and another picture page 11.

Photo by Bill Jackson

# Sociologist believes in student unrest

Sixty years of being a sociologist have taught Dr. Ben Cherington to understand student unrest.

Speaking at a meeting of the International Relations Organization Thursday, Cherington, 83, said, "The universities are not meeting world needs today."

"They need to get a perspective on the realities of the time they are operating in," he added. Although he sides with the

student, he also stresses that they maintain a certain amount of humility by realizing how much they don't know.

"After all, that's why they are on campus," he said.

But if the campus is unsatisfactory the students should do all they can to change it, he added.

Putting events in perspective for Cherington means viewing the world not as a conglomerate

of nations, but as a single unit.

This single unit theory is promoted on campuses, he said, by the interchange of foreign students. There is a great advantage in having these exchanges. Foreign visitors learn new ways and foster world consciousness among their hosts.

To promulgate internationality in university curriculum, Cherington said international and not political situations, should

be stressed. He also warned that universities are not coping with ever-advancing technological change.

In order to meet this challenge, Cherington said universities should initiate untried courses, use communities as laboratories for training, and innovate ways and means for more student participation.

These changes will be brought about by students who want

them, need them, and are willing to fight for them.

However, in their struggle for change, students would be wise to gauge public opinion of violent protest, and employ non-violent means, he said.

This places the student in a rather nebulous position when all justifiable means of protest are exhausted, he said.

Cherington's only answer to the predicament is, "try, try again and don't give up."

## Bill to broaden power of AS president is killed

By BURT KENNEDY

Student Government Writer

The Student Senate defeated a bill Friday which would have allowed the ASASU president to convene the senate on "extraordinary occasions."

Before the vote, Senate Speaker Linda Yarbrough voiced concern that the bill might be unconstitutional because it did not maintain the separation of powers between the executive and legislative branches.

The senate session Friday afternoon was a continuation of a session last Wednesday which was forced to adjourn when a quorum was lost.

In other action, the Senate unanimously passed a bill authorizing the hiring of a full-time senate secretary in anticipation of the passage of an amendment on the general election ballot which would abolish the post of ASASU secretary.

Also receiving unanimous approval was a resolution asking that the University president direct a review of current registration procedures, which the resolution describes as "complex and confusing beyond necessity."

By a vote of 25-2 the senate passed a resolution requesting the establishment of a joint

faculty student governing body to be known as the University Senate.

And, before adjourning, the senate discussed the possibility of dropping the session scheduled for Wednesday, the day of the general election.

But because of deadlines on legislation and the large amount of work yet to be done, it was decided to hold the meeting as scheduled.

## CALENDAR

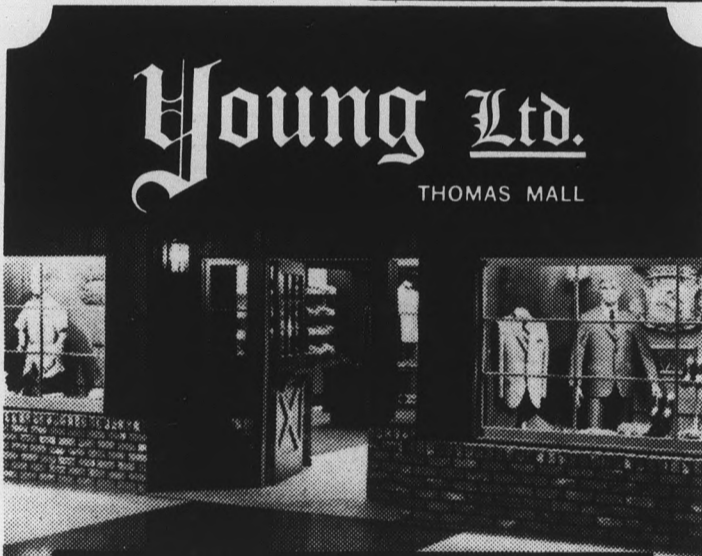
All meeting notices should be submitted three days prior to the date of publication to assure their appearance in the calendar.

### TODAY

Student Information Board meeting, 3 p.m., MU West, Room 226.  
Fifth meeting of the Marriage Lecture Series, "A Married Couple Looks at Marriage," 7:30 p.m., Newman Center.

### TOMORROW

Alpha Lambda Delta will host a tea in honor of freshmen women holding a cumulative grade index of 3.5. The tea will be held in MU Rumpus Room, 4 p.m.  
MU West film series, "A Perfect Day," and "The Music Box," with Laurel and Hardy, Rumpus Room, 11:30 a.m. and 12:30 p.m., no charge.



**Young Ltd.**  
THOMAS MALL

Campus Headquarters  
for the complete line of  
**CACTUS CASUAL**  
Slacks & Bermuda Shorts



TUXEDO RENTALS  
OPEN: MON.-THU. THOMAS MALL  
& FRI. NIGHTS 959-0620  
Master Charge Cards Welcome

CACTUS CASUALS  
are at  
**ANDERSEN'S LTD.**  
Park Central Mall, Phoenix

CACTUS CASUALS  
are at  
**JOHN HORAN'S**  
130 E. University Drive, Tempe

CACTUS CASUALS  
are at  
**JUSTER'S**  
44 WEST MAIN SCOTTSDALE

CACTUS CASUALS  
are at  
**LAVIN'S FOR MEN**  
Fashion Square, Scottsdale

## Spotlight shines on marimbas, brass, soloist

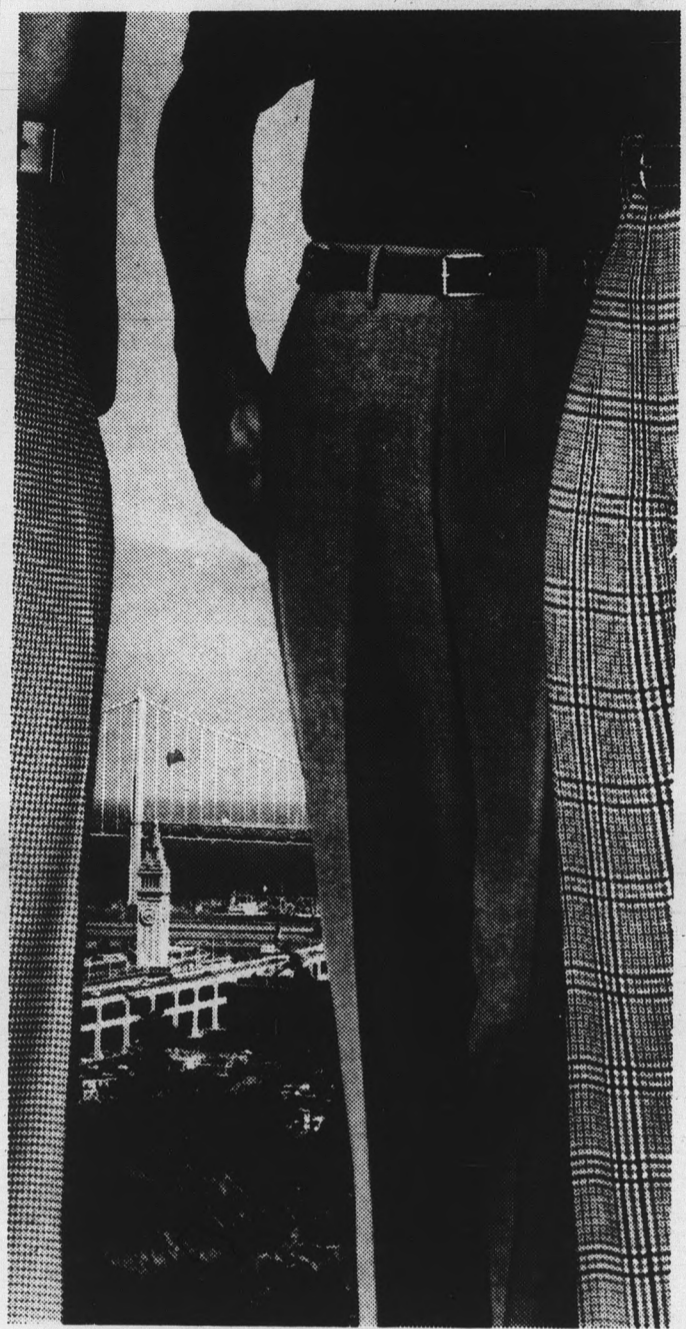
The Percussion Ensemble will perform tonight at 8:30 in Gammage Recital Hall.

Mark Moritz and Milton Miller will be spotlighted on the marimbas, performing a peice composed by George F. Handel. Virginia Ikeda, vibraphone; John Flores, xylophone; and David Long, marimba; will combine talents for a percussion arrangement.

Soprano Mary Dillon will be the guest soloist, singing "Basho Songs" by Edward J. Miller.

The five percussion majors performing tonight are under the instruction of Mervin Britton Dr. A. J. Broekema, head of the music department, noted that Britton has established the only percussion library in the nation.

The New Art String Quartet can be heard tomorrow night at 8:30 in the Great Hall, College of Law, as part of the Faculty Chamber of Music Series.



Direct from San Francisco  
in living color:

**Cambridge Classics**  
featuring Fortrel®

Cambridge Classics salutes the new season with a Variety Spectacular reflecting the elegant excitement of San Francisco's Telegraph Hill. Spirited colors. Stimulating patterns. You'll enjoy the crisp, cool blends: Fortrel® polyester and cotton. \$14.50 and under. For a list of nearby stores, write Box 2468, South San Francisco, California 94080.

cambridge classics

**CACTUS CASUALS®**

CACTUS CASUALS  
are at

**Pomeroy's**

**MEN'S STORES**

- 136 West Main, Mesa
- Tower Plaza, Phoenix

## Queen selected in Space Week

Amanda Blake, Kitty on "Gunsmoke," presented sophomore Pat Anderson the trophy as queen of Space Week.

Miss Anderson was selected by a panel of judges including Miss Blake, entertainer Vic Caesar, Ruth Harris, Miss Arizona, newscaster Jim Spear and activities vice president Tom Holmes.

Miss Anderson is a clothing and textile major from Idaho and was sponsored by her sorority, Alpha Delta Pi.

First runner-up was Barbie Swinehart, sponsored by Theta Delta Chi fraternity, and second runner-up was Valerie McMahon, sponsored by Manzanita Hall.

## Agronomist says nitrogen essential to high acre yield

"The beauty of agriculture is its efficiency," said Dr. Daniel O. Robinson, Director of the Division of Agriculture.

From 1800 through 1932 there was little progress in the corn yield per acre. An acre averaged 26 bushels. Today, he says, "we get 80 bushels from an acre."

Why? Machines are important but the real "key to agricultural efficiency is the development of chemistry and fertilizers."

Robinson pointed out that the same thing goes into making fertilizer as goes into making gunpowder: nitrogen. After the war, many nitrogen fixing plants were no longer needed, so they were used for making fertilizer.

Most people were farmers a century ago, but now most of the people live in the cities while five percent of the country works on land. "This efficiency allows the rest of the country to work in industry," said Robinson.

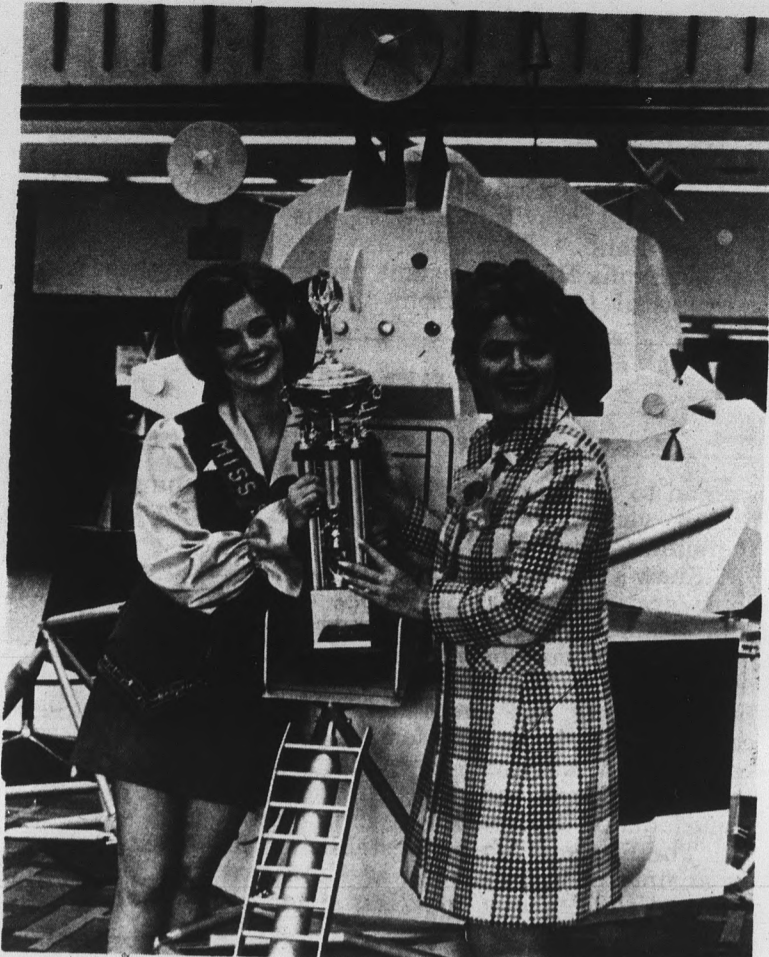
Six percent of the national income comes from farms or 15% when adding the produce and marketing agencies.

## Colonel visting AFROTC units

Col. Daniel K. Phippen, Commandant of Area 1, AFROTC is making a supervisory visit to the University's Air Force ROTC Department today through Thursday.

Purpose of his visit is to inspect the department and review latest teaching methods with the AFROTC faculty to insure that proper supervisory controls are being used for effective administration of the educational program at the University.

Col. Phippen will be hosted by Col. Noel B. Reddick, professor of Aerospace Studies.



**MISS SPACE WEEK** — Sophomore Pat Anderson receives the trophy as "Miss Space Week" from Amanda Blake, Kitty on the "Gunsmoke" television series.

## Extension course offered in family legal problems

The legal problems which might confront a family are topics to be covered in an eight-week evening course entitled "Law for Everyday Use."

The extension division course, to be held at West High School in Phoenix, is designed to give the layman an awareness of such topics as community property, car insurance and ownership responsibilities, plus liabilities and juvenile delinquency.

Also discussed in the one-credit course will be the function of the courts, banking, and wills and probate procedures in Arizona.

The fee for the March 19-May 7 course is \$25 per person and \$40 for married couples.

Registration may be made in advance by calling 961-6564.

## YAF moves to prevent heckling during speech

Young Americans for Freedom will utilize bouncers tomorrow night to insure freedom of speech when the president of the Arizona branch of the Captive Nations Committee speaks before the organization.

Members of YAF which actively urged expulsion of students responsible for heckling Gov. Jack Williams during his Young Republican-sponsored speech March 6, will hear Walter Chopiowsky at 8 p.m. in SS 108.

The Young Americans for Freedom have warned through pamphlets that heckling will not be tolerated during Chopiowsky's "Communism Today: What the World Anti-Communist League Is Doing About It."

Chopiowsky, who will give personal accounts of private talks with Nationalist Chinese Presi-

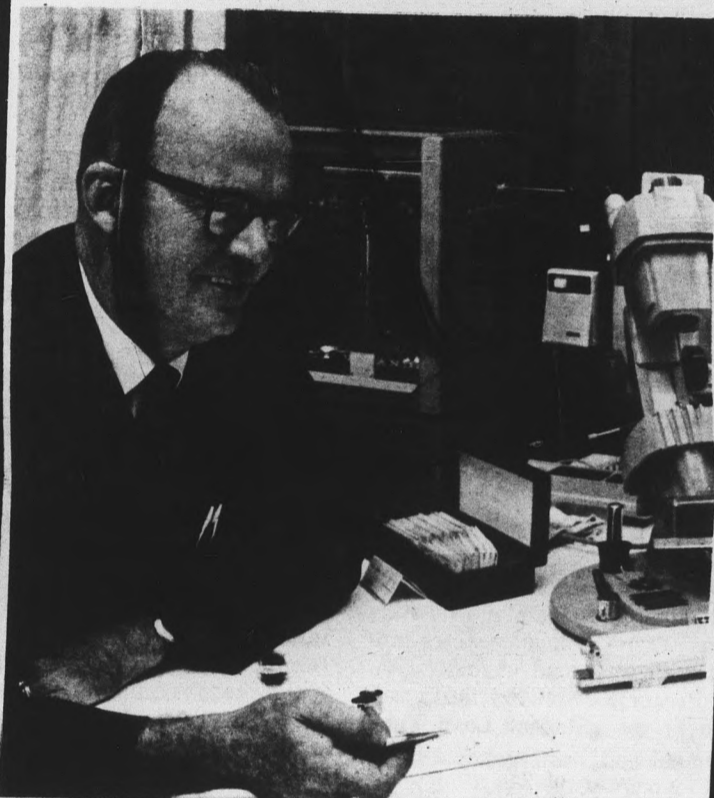
dent Chiang Kai-Shek and South Vietnamese President Nguyen Van Thieu, came to the United States in 1951 on a scholarship to the University of Chicago.

He later served with the U.S. Army in Korea for three years, and worked toward a degree in mechanical engineering at Roosevelt University and the Illinois Institute of Technology.

Chopiowsky was born in the Ukraine and lived in Poland and Czechoslovakia. He helped create the National Captive Nations Committee shortly after the Hungarian Revolution in 1956.

A Phoenix resident and founder of the Arizona Chapter of the Committee, Chopiowsky has attended Anti-Communist League conventions in Taipei and Saigon.

## The Diamond Man



Joe Berning, a Diamond Cutter for 23 yrs. and manager of Paul Johnson Jewelers of Tempe, is always available at our Tempe store to answer any question you may have concerning Diamonds.

At Paul Johnsons you receive a free diamond education, examining loose diamonds thru our gemscope and then selecting the size, color, cut & clarity Diamond, in your price range.

Mr. Berning suggests it's best to select your Diamond loose & have our master craftsman place your gem in one of our hundreds of engagement styles.

CREDIT TERMS AVAILABLE

*Paul Johnson*  
JEWELERS



IN THE ARCHES

130 EAST UNIVERSITY DRIVE • TEMPE • 967-8917,  
1940 EAST CAMELBACK, PHOENIX, 277-1421  
ALSO IN SUN CITY AND FLAGSTAFF  
CERTIFIED GEMOLOGIST, AMERICAN GEM SOCIETY

# liontree

*The Village Shop*  
616 Myrtle Temple

*Navy Dacron Voile*  
*Red Cuffs*  
*Low-Slung*  
*Sat-in Belt*

*Free Attractions*

**FIRST STUDENT TOURS to AUSTRALIA & SOUTH PACIFIC**  
3 Tours • 9 Departures • June & July  
From \$1195 • 37 Days • all inclusive

For Folders and Reservations...  
**UNIVERSE TRAVEL, INC.**  
3611 Long Beach Blvd., Long Beach,  
Calif. 90807 (213) 424-8504

# 'Don Juan' hell of a show

By BRUCE TALBOT

Drama students: keep the faith. Your faculty knows what it's doing and proved it with last weekend's reading of "Don Juan in Hell."

The University's Drama Quartet — four faculty members — read George Bernard Shaw's dream scene from "Man and Superman" at the Lyceum "to give students the valuable opportunity to watch their teachers perform," explained Rose Marie Smith, director.

And perform they did! From the moment the cast presented itself in its formal attire until the curtain call, the audience was grabbed and bound by the group's ingenious interpretations.

Dr. Daniel Witt, full-time assistant professor of speech and drama and part-time narrator and devil, used his fantastically rubber face to fascinate viewers throughout the production. He never fell out of character as a casually observing Satan — hysterically crossing his legs, leaning back and smiling, frowning, grimacing, sneering and chuckling.

Interpreting his role as commander-in-chief of hell, Witt made the devil a human and articulate figure, expanding him into a deep and thinking character.

Attempting to recreate an image for Don Juan, Dr. Norman Perrill, also assistant professor of speech and drama, portrayed the great hustler as a multi-faceted man; Don was astute but a little naive, intelligent but slow, witty but calm.

Most of all, as Shaw wrote, Don Juan was verbose. Varying his voice and expression, Perrill helped avoid the peril of long passages.

Professor of speech and drama William Stites read the part of the Commander — a statue. Perfectly suited for the role, Stites dead-panned his way through the cleverest lines of the scene.

Consoling his daughter when she tried to pray her way out of Hell, Stites told her: "No, no, no, my child: do not pray. If you do, you will throw away the main advantage of this place. Written over the gate here are the words 'Leave every hope behind, ye who enter.' Only think what a relief that is! For what is hope? A form of moral responsibility. Here there is no hope, and consequently no duty, no work, nothing to be gained by praying, nothing to be lost by doing what you like. Hell, in short, is a place where you have nothing to do but

## Fiesta set for Saturday

Two thousand geraniums, a sidewalk cafe, a potpourri shop and a used book stall will be popping up on the mall Saturday when the faculty wives present their second annual fiesta.

Proceeds from the fiesta will go to the Student Loan Fund which has emergency funds available to students needing money immediately to stay in school.

The potpourri shop will feature

items such as candle holders and sewing articles made by the faculty wives.

The used book stall, the geranium sale and the bake sale in Tempe Center will all be part of the fiesta. Campus tours will be conducted including a tour of the University Art Collection and the Ansel Adams photography exhibit in Matthews Center.

Clowns will also be present to entertain children.

amuse yourself."

The crowd loved Shaw's philosophy and loved how Stites related it. Swiveling on his black stool, the statue grunted and growled, offering his ideas to the other Hell-dwellers.

Marianna Brose, assistant professor of English, made a beautiful transition from the role of an antiquated

## REVIEW

woman to the young subject of Don Juan's pursuits. Her precise verbal and facial maneuvers strictly controlled the slide toward youthfulness.

Shaw's writings were given full attention and careful consideration by Miss Brose. She felt and reacted to each complicated phrase the script challenged her with.

And that may be just exactly why the Drama Quartet succeeded. They felt and reacted. The lighting, the set seemed to feel and react, too. Lee Ritterbush used colored lights, large styrofoam blocks and three platforms to give an intensely mystical atmosphere to Hades. Speakers' stands and stools intermingled with the "mystique" made the reading a living production.

The Reader's Theatre established itself last weekend as an interesting, talented and creative group. — "Don Juan in Hell" was a good lesson for aspiring actors.

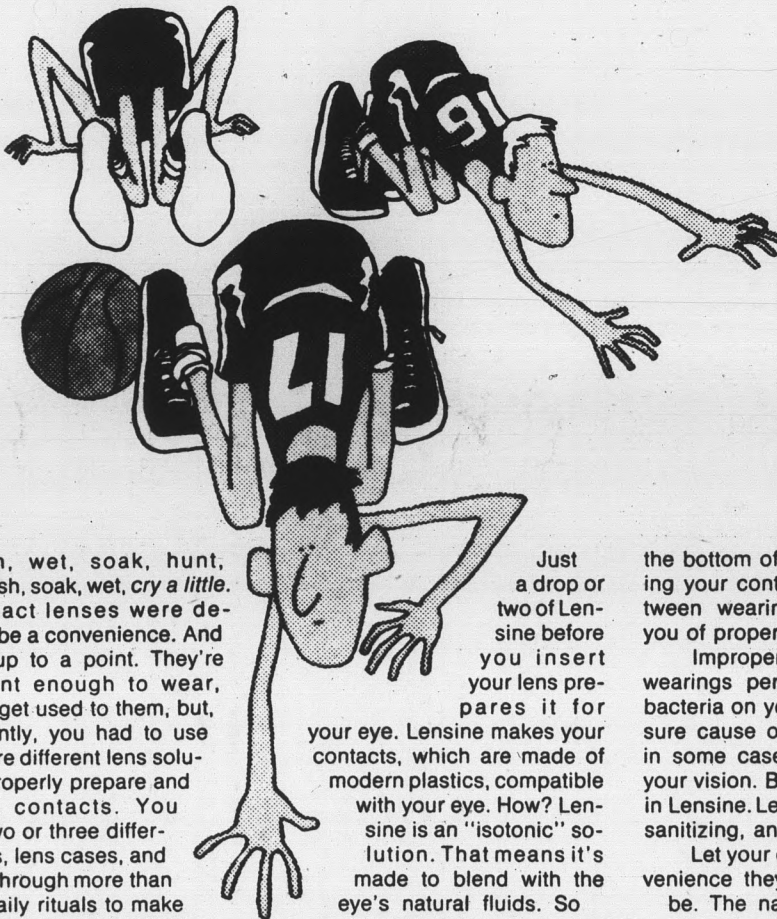
## Carnival to climax spring celebration

A carnival and dance will be held by the Blue Key National Honor fraternity on April 25 as a climax to ASASU's Spring Week.

All campus organizations are invited to participate by having their own booths, which will be set up in the park north of the Language and Literature Building. Colored lights will be strung up in the trees to give a Mardi Gras effect.

In order to encourage smaller groups to take part, Blue Key has arranged to construct and place the booths in the carnival for them. They will also provide information for money-making ideas and prizes.

STATE PRESS is published by Arizona State University as the official campus newspaper every Tuesday through Friday during the school year, except holidays and examination periods, and is entered as second class matter at Tempe, Arizona, 85281.



Wash, wet, soak, hunt, squint, wash, soak, wet, cry a little.

Contact lenses were designed to be a convenience. And they are up to a point. They're convenient enough to wear, once you get used to them, but, until recently, you had to use two or more different lens solutions to properly prepare and maintain contacts. You needed two or three different bottles, lens cases, and you went through more than enough daily rituals to make even the most steadfast individuals consider dropping out.

But now caring for your contacts can be as convenient as wearing them. Now there's Lensine, from the makers of Murine. Lensine is the one lens solution designed for complete contact lens care . . . preparing, cleansing, and soaking.

Just a drop or two of Lensine before you insert your lens prepares it for your eye. Lensine makes your contacts, which are made of modern plastics, compatible with your eye. How? Lensine is an "isotonic" solution. That means it's made to blend with the eye's natural fluids. So a simple drop or two coats the lens, forming a sort of comfort zone around it.

Cleaning your contacts with Lensine fights bacteria and foreign deposits that build up during the course of the day. And for overnight soaking, Lensine provides a handy contact canister on



the bottom of every bottle. Soaking your contacts in Lensine between wearing periods assures you of proper lens hygiene.

Improper storage between wearings permits the growth of bacteria on your lenses. This is a sure cause of eye irritation and, in some cases, it can endanger your vision. Bacteria cannot grow in Lensine. Lensine is sterile, self-sanitizing, and antiseptic.

Let your contacts be the convenience they were designed to be. The name of the game is Lensine. Lensine, made by the Murine Company, Inc.

## Your Psychology professor lives with his mother?

Think it over, over coffee.  
The Think Drink.



For your own Think Drink Mug, send 75¢ and your name and address to: Think Drink Mug, Dept. N, P.O. Box 559, New York, N.Y. 10046. The International Coffee Organization.

# Are you cut out for contact sports?

# THE RACE OF CAMPAIGNS CANDIDATES ISSUES IN ELECTION 1969



Photos by Daren Krupa  
**POLITICAL PLATFORM** — Candidates take their campaigns to the voters in Mall forums today. Polls are open for voting 8 a.m.-8 p.m. tomorrow.



state press

**emphasis**

## *Election bulging with student views*

By JANE SIMS  
Emphasis Editor

The mood of election 1969 is shaded with concern, tinged with anxiety and colored with change.

On all political fronts, radical, moderate and conservative, students anticipated this election would be a different mixture of candidates and issues than ever before. Voters expected candidates to stop talking about themselves and start talking about the University. And they did.

It's a contest of platforms, ideas, programs and solutions this year, candidates maintain, and students are the focal point for the political quick-draw. As fast as one candidate poses a problem and its solution, his contender has dug up another issue, mimeographed flyers and tacked another plank on his platform.

### Candidates Questioned

Taking a closer look at the campaigns and the candidates, Emphasis went to the nominees for their views on the election. In a series of interviews and surveys, the State Press probed into the reasons why candidates believe this election is less apathetic than those in the past, and what prompted them to seek an office.

One week ago, 2,820 voters turned out for the primary election

(only 2,425 voted in last year's final election). Candidates and election board officials had forecast heavy voter turnouts.

The reason for larger electorate voting? More than half of the 40 candidates questioned maintained the Student Power Coalition either frightened or encouraged many to vote in the primaries. Others credited the heavy voting to increased concern for better representation in ASASU, interest of students in "bringing University concerns into a closer relationship with national and local issues" and some said the added publicity spurred many to vote.

### Students Apathetic

Both presidential candidates told the State Press they believe students are generally apathetic about elections because they "haven't been able to relate or identify with leaders." Their platforms reflect concern for changing apathy to interest by expanding the ASASU's president role in the University and establishing better communication with students.

Candidates for executive branch positions generally considered running for an ASASU office for at least six to eight months, surveys indicate. Senate contenders' interest in seeking a seat in the legislative body appeared more sudden; most nominees said they decided to run for an office within the last two months.



JOHN HOLMAN

## ASSOCIATED STUDENTS PRESIDENT

"The next president must make sure student government reflects the mood and temperament of students. ASASU must not and cannot be controlled by elite conservative elements or the campus may be faced with disruption."

ASASU President  
Bill Oldham  
1968-69



STAN WILSON

# 'Awareness . . . redirection'

Concern of students for a change within the University should be evolved through the structure of ASASU and in the executive officers, declared John Holman, presidential nominee.

"I want to see a change. The inactivity of student government in the past has had to do with a lack of awareness and desire for change," Holman maintained. "ASASU has the poten-

tial and ability of creating change."

Holman, a 22-year-old senior, who has campaigned under the slogan, "Through awareness . . . redirection," noted that in the past student government has been bogged down by functional concerns and hasn't accomplished "concrete things concerning students." He said ASASU should seek and encourage students to voice their opinions and

ideas about University policy.

Student Senate speaker pro tempore Holman, is president of the business council and Pi Sigma Epsilon, chairman of the Senate student affairs committee, vice president of Lambda Chi Alpha, a member of Blue Key and Interfraternity Council 3.0 club.

Primarily, his campaign platform includes:

- working with the Student Senate to spend over \$80,000 in excess money accumulated in unappropriated funds the last three years.

- obtaining more student representation on policy making University boards and committees.

- developing a student assembly as a legislative body open to any student or organization to supplement the Student Senate.

- introducing an International Center for information concerning countries abroad.

- instituting a University Senate composed of the faculty and Student Senates

- increasing the resale value of textbooks through the University Bookstore or lower their cost to students.



CHERYL BRADSHAW

nance committee chairman, Tom Edwards, 20. "I'm running to accomplish this and to guarantee students the most effective use of activity fees."

Edwards' campaign is based on (1) implementing responsible changes in the University to assume effective spending of activity fees and to eliminate ineffective board spending (2) greater cooperation and communication among ASASU officials in an effort to implement changes in the existing government structure (3) improvement of advisement and registration procedures and (4) increasing the student membership on University boards and committees.

His previous experience includes liberal arts and Interhall Council senator, senate campus affairs committee and AS election board.



JANET FRASIER

"ASASU needs new ideas, a broader range of freedom to carry out these ideas and enthusiasm to put them through. Many alterations are required in the status quo."

# 'Concerned need a voice'

Today's college students are the involved generation, the concerned generation seeking a change in the power structure; and ASASU should be reshaped to recognize their new interests, asserted presidential candidate Stan Wilson.

"I'm in complete agreement with College of Liberal Arts Dean George Peek who said, 'quit playing games and get down to the nitty gritty issues which affect students' lives,'" Wilson said. "That's what student government should be doing — the students need a voice."

Wilson, 21, a junior, maintains that until this year students haven't been able to relate to or identify with leaders and consequently don't care about ASASU. To remedy this, he purports the next president should take a stand on national, state and local issues and "then when University concerns arise students will relate and listen to their leaders."

Previous experience that Wilson listed included participation in student leadership, twice class president and student body president in high school; chairman of the AS election board and ASU Devils' Advocates. He is a member of Phi Gamma

Delta fraternity and publicly endorsed by an independent group, the Silent Middle.

The main points of Wilson's platform reflect his concern for the "evolving role of the president." He proposes:

- reshaping the president's role to one of concern, exemplifying involvement in national and community interests in addition to University interests.

- more public speakers who reflect the issues of the day to appear on campus.

- extension of information board public relations to promote student interests.

- formation of a vestigatory committee to create complete equality on and a campus.

- creation of student factions to represent student needs at meetings.

- work to unite the independent and a student-student gaps

## Two seek 1st VP title

The Student Senate speaker's seat will be filled next year by one of the two first term senators vying for the position. Both have emphasized responsive leadership and greater representation in their campaigns.

"I decided to run for AS first vice president because of the need for constructive change; and I know I could make the necessary changes," said education senator Cheryl Bradshaw, 22. "Student government should be open to all students, not just a select few."

The main planks of her platform include (1) initiation of a school-wide leadership conference (2) more realistic group seating at football games (3) increased representation on the AS Executive Council and Board of Financial Control and (4) combination of the faculty and Student Senates.

Previously vice president of a junior college Miss Bradshaw is co-chairman of the rallies and traditions board and a member of the campus affairs board.

### TOM EDWARDS

"Student government needs to be revitalized within the existing framework," said senate fi-



TOM EDWARDS

## Holman, Wilson Both concerned about

Presidential candidates John Holman and Stan Wilson both contend communication between administrators and students is inadequate and the past ASASU officials haven't totally represented students.

The State Press confronted the candidates with questions concerning these issues—

Q. Is communication between the administrators and students inadequate in your opinion?

A. HOLMAN: "No, it isn't. There's not enough feed-back from the students—this is one of the goals in seeking the presidency. The voice of students should be consistent in importance with the faculty and administrators' in issues directly affecting the communication should be strengthened in this area."

A. WILSON: "Communication isn't good—administrators too many times aren't open and genuine receptive to students. They usually listen to students until they disagree and that's often as far as admin-

## Frasier stresses use of newsletters

Platforms of both candidates competing for administrative vice president are aimed at improving communication through weekly newsletters and updating students on the campus mood through student attitude surveys.

Janet Frasier, a 19-year-old sophomore, stressed in her campaign better communication through newsletters and surveys and by providing free publicity via the student information board for organizations, introducing "Listen-Ins" for ASASU leaders to hear student problems, starting an International Forum and beginning teacher-course evaluations.

An education senator, Miss Frasier is AWS activities chairman, a member of Alpha Lambda Delta and campus affairs committee and past president of Palo Verde West.



RICHARD MARTIN

"The SPC candidates more oriented toward a change than the present government has been. We will take the initiative of going to the students for their opinions and continually maintain a two-way communication."

CAMPAIGNS  
CANDIDATES  
ISSUES

# A year of decision

More than 60 candidates will compete for offices in ASASU, Associated Women Students and Residence Hall Association tomorrow when voters go to the polls for the general election.

Voting will take place west of the new fountain from 8 a.m. to 8 p.m. Contested offices to be decided include all executive branch seats and senatorial positions in four colleges.

Three amendments will also appear on ballots for voters to decide revisions in the constitution.

ASASU first vice president Linda Yarbrough predicted a heavy voter turnout tomorrow and forecast an es-

timated 3,000 students will vote in the election.

Today at two locations presidential and vice presidential candidates will speak on issues concerning the University and students in Mall forums. Presidential runners will speak at 10:20 in front of Danforth Chapel while first vice presidential nominees talk at the Mall intersection in front of the Engineering Building.

Again at 11:20 a.m. presidential hopefuls will talk at the Mall intersection in front of the Engineering Building and the first vice presidential candidates in front of Danforth Chapel.

## Winners campaign

Unopposed candidates for Associated Women Students President and Residence Hall President told the State Press because of the lack of competition their campaigns are focused on informing students about programs and issues concerning the organizations.

Next year's AWS President Sherry Hutt, 19, maintains she is campaigning for students to reject the constitutional amendment ousting the AWS President from AS executive council.

Her plans for AWS next year include: expanding general council representation, coordinating and supporting various women's organizations, introducing a provision for a women's grievance committee and communicating more with ASASU and RHA.

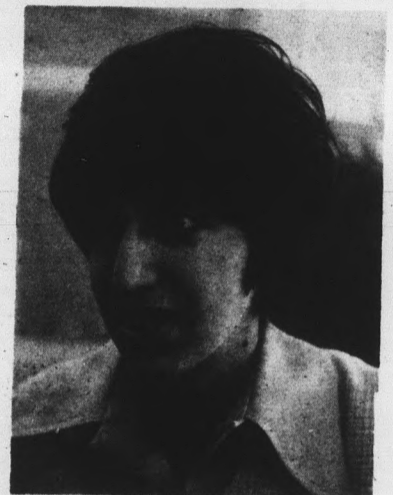
Miss Hutt's qualifications for the office include two years of experience as AWS representative, Women's Week steering committee member and work on two AWS study committees.

KATHIE CAMPISANO

"Instead of campaigning for myself, I'm trying to make the Residence Hall Association more well known on campus," asserted Kathie Campisano, RHA president for next year.

Miss Campisano said RHA will work programming residence hall functions, stressing "bottom up planning" to achieve true representation and improving communication between men and women's residence halls.

Her previous experience includes: presiding as president of Manzanita, Coed Council, Coed housing government, staffing and program committee and AWS.



KATHIE CAMPISANO



SHERRY HUTT

## AS 'change' forecast

Traces of unofficial candidate priming and politicking have been noticeable on campus for several months. As early as November, candidates were working on platforms and tickets were forming.

And so for two months candidates within and outside student government were making a play for voter support with signs like "Call senator—for better representation"

"This year's election is more competitive than in past years. Today's student is becoming concerned and involved with student government . . . the days of winning elections on "good guy" popularity are slowly ending," asserted presidential nominee Stan Wilson. John Holman, his opponent, agreed, "more competition is

apparent this year because of student demands that ASASU become more effective. Students are looking for change in student government and campaigns are aimed in this direction."

Already the Student Power Coalition claims it has seven candidates in senatorial positions. And, former presidential nominee Ellie Finn asserts, "By mathematical calculations, we expect to have at least 15 candidates in the senate. This election will surprise a lot of people."

"If I had known around December that hot-house the Senate is going to be next year, I would have run for first vice president," asserted one presidential candidate. "There's going to be a tremendous amount of pressure in the senate. . . ."

*"Students don't realize the importance of this election — their futures next year rest in the leaders they select."*

— An ASASU Candidate

## a voice'

extension of the student information board into a public relations committee promote student interests.

formation of a senate investigatory committee to evaluate complete racial equality on and around the campus.

creation of student lobby-factions to represent student needs at legislative meetings.

work to unite the campus and close the Greek-independent and administrative-student gaps.

## Wilson, Holman face facts

Concerned about administrator-student gap

Holman and Stan Wilson between administration and the past ASASU students.

the candidates with the administration opinion?

There's not nearly as much voice of students with the faculty's directly affecting them. "It isn't good—administrators aren't open and genuinely listen to students as far as adminis-

trators go. Intercommunication should be improved."

Q. How well do you think past student administrations have represented the students?

A. WILSON: "Every administration has worked to represent the student body, but none have represented the entire campus' interests. AS President Bill Oldham was the first step toward presidential involvement, but didn't always concern himself with the same areas I feel are important.

A. HOLMAN: "By past administrations I'll refer to the presidency. Oldham did a good job trying to bring up student ideas, but a poor job of working as an administrator with people (students, faculty and University officials). Both are essential for the job—the president must work with people and be innovative. I also think the president shouldn't try to do all the things himself at once; he should delegate responsibility."

## Coalition candidate realizes problems

"As a candidate of the Student Power Coalition, I'll take the initiative of going to the students for their opinions and continually maintaining a two-way communication," claims candidate Richard Martinez, a junior.

Martinez, whose previous experience includes co-chairman of the Mexican American Student Organization and several other unlisted organizations, maintains the AS administrative council should investigate student problems, needs and opinions in surveys and newsletters and regular monthly meetings should be staged among students, administrators, Regents and legislators.

"Past student administrations have been too overly occupied with running ASASU in the traditional way. They haven't employed new ways, such as the proposals offered by the SPC," he said.

## Aims agreed upon, means a toss-up



PEPE MARTINEZ

Nominees for ASASU activities vice president are running on tickets similar in the aim "of changing student government," but different concerning the means of initiating it.

Pepe Martinez, 20, Student Power Coalition, advocates change through the 22 - plank platform of the group. He maintains "the opportunity to seek an office has always been there, it's only this year it's possible to run . . . this is the year of the SPC," he said.

"Whether elected or not, I am personally involved with the 22

points in our platform."

He said, "I have been working for a more aware student body represented by legitimately concerned people, such as those in political organizations."

Martinez, a junior, listed his previous experience as co-chairman of the Mexican-American Student Organization (MASO) and junior class president in high school. He said he has been considering running for office for three years.

BILL PHILLIPS

"Through awareness . . . re-direction," is the campaign motto of 19-year old Bill Phillips, who is running on a ticket with presidential nominee John Holman and administrative vice presidential candidate Janet Frasier.

Phillips is running on the three - candidate platform and its main points are: 1) reassessments of boards, giving them more work and basing membership on attaining a diversity of interests 2) providing more outstanding speakers, MU services and activities and free entertainment with the \$80,000 now in ASASU and 3) obtaining more student representa-

tion on policy making boards and committees.

"After a year in the Senate, I can see how bad things really are and how ASASU isn't doing enough for the students and providing them with worthwhile activities and entertainment," he said. "Whoever becomes vice president must be an effective administrator, not just an effective cheerleader."

Phillips, a sophomore, is a liberal arts senator, chairman of the student grievance committee and chairman of the senate campus affairs committee.



BILL PHILLIPS



RICHARD MARTINEZ

SPC candidates are oriented toward action present government We will take the initiative going to the students opinions and continually in a two-way com-

CAMPAIGNS  
CANDIDATES  
ISSUES

# Constitutional change



Photo by Daren Krupa

**A VOTE-IN** — Students will go to the polls tomorrow from 8 a.m. to 8 p.m. to cast their ballots for ASASU officials and decide the verdict of three constitutional amendments.

## Amendments listed

Tomorrow when voters go to the polls to elect student officers they will also decide whether or not three amendments will be added to the ASASU constitution.

The amendments briefly are:

- Constitutional amendment one—makes the Associated Women Students president an ex-officio, non-voting member of the ASASU Executive Council.
- Constitutional amendment two—allows grad-uation of ASASU secretary in order to allow for the hiring of a full-time paid secretary.
- Constitutional amendment three—allows graduate students to become members of the ASASU supreme court instead of only junior and senior undergraduates.

## 40 offices already filled Many Senate races uncontested

Fourty of the candidates vying for seats in the Student Senate are already in office because of uncontested races in five colleges.

Senatorial hopefuls in the Colleges of Liberal Arts, Law, Fine Arts and Architecture are unopposed. And one seat in the College of Fine Arts will be appointed since only one candidate petitioned for the two open seats in the college.

### COLLEGE OF BUSINESS

Five candidates submitted questionnaires for senate seats in this college, but eleven are competing for the seven openings.

**BILL ALEXANDER** — A member of Delta Sigma Pi professional business fraternity, 21-year-old Alexander is seeking the office because he believes in representation "from the majority, not the minority."

**HENRI BENOIT** — An SPC candidate, Benoit said he decided to run "because I became aware of the elitist type of government we now have and accepted my responsibility to society."

**DALE DAUTEN** — A 19-year-old freshman, he is vice president of the ASU Pre-Law Club and former student body president of a 2,000 student high school. Dauten said he has the time, energy and interest to represent the college and believes in the "necessary functions" of student government.

**FREDERICK JEHRING** — A 20-year-old sophomore, he is a founder of Zeta Beta Tau fraternity. He said, "I decided to run when I learned the terrible job the Senate is doing representing the students from other senators and students in ASASU."

**TERRY MOSER** — Student Power Coalition candidate Moser, 21, supports the SPC's 22-point platform.

**TERRY ZAJAC** — A business senator this year, Zajac is past president and secretary of Phi Sigma Epsilon marketing fraternity and a representative of the business administration council.

### COLLEGE OF EDUCATION

Eighteen candidates are running for the 12 education seats in the Senate. Nine returned questionnaires for the election special edition.

**BECKY BRIGHAM** — An appointed education senator now, the 18-year-old freshman claims she wants to continue working for the education college.

**CHRISTOPHER CONLEY** — Active in residence hall activities and high school government, transfer student Conley, 26, said "It's time for the previously quiet student to have his voice heard in ASASU."

**TOM COVINGTON** — He says after his appointment to a Senate position this year he became more and more aware of the University's problems. Covington 20, a junior, is running on the SPC platform.

**MAGGI FLYNN** — a frequent attender of Senate sessions, Miss Flynn was active in student government and the newspaper at Phoenix College.

**YOLANDA GOMEZ** — A concern for the rights of students prompted the 19-year-old sophomore to seek a Senate position. Secretary of the Student National Education Association, she has participated in high school government.

**B. J. MORRIS** — He views himself as a moderate and believes "the various coalitions, societies and radical unions" don't represent him or other moderates. A 24-year-old junior, he said in a distributed four-point platform he aimed at representing students more effectively and establishing educational programs.

**DORA L. RENDON** — An SPC candidate, the 20-year-old junior is a member of the Mexican American Student Organization (MASO) and Young Republicans.

**VONI WALKER** — "I decided that becoming involved is the only way to find out if student government is the farce it's made out to be... besides, I'm a doer," she said.

By BURT KENNEDY

The last time the students voted on a constitutional amendment it abolished the office of president of Associated Men Students (AMS).

That was March 15, 1967.

Tomorrow, two years later, the student body will decide the future role of the counterpart to that office — Associated Women Students (AWS) president.

Of the three constitutional amendments to be decided in this general election, amendment one, removing the AWS president as a voting member of the ASASU executive council, has generated the most controversy.

### Contradiction of ASASU Concept

First vice president Linda Yarbrough explained that the basic concept of ASASU is that it represents all the students.

"Having a voting member of the Executive Council who represents only a portion of the students — even the large feminine portion — is in contradiction to the concept of ASASU," asserted Senate Speaker Yarbrough.

AWS President Liz Lim defended the voting privilege of her post. She maintains the amendment would penalize women students because of a lack of interest on the part of men students.

"At one time there also was an AMS president who was a member of the Executive Council," said Miss Lim. "But because of apathy on the part of the men students, the office was abolished."

Only three voting members would be left on the council without the AWS president, Miss Lim emphasized. This, she said would vest majority control in two members — "it isn't so far-fetched when you consider all the joint campaigns by ASASU office seekers," she said.

### Office Abolished?

The abolishment of the office of ASASU secretary, to which Miss Lim referred, is embodied in Amendment Two.

Opposition to this amendment is based on the belief that a further reduction in the number of members on the executive council would limit the effectiveness of internal checks and balances among council members.

ASASU Secretary Tana Hobart is in favor of abolishing the post she now holds. She claims the 30-40 hour work load and 12-hour course eligibility requirement "are more than a student as justices of the ASASU Supreme Court should carry."

### Justice Qualifications—Amendment Three

Constitutional amendment three has been the least controversial amendment.

It allows graduate students to qualify as justices of the ASASU Supreme Court. At the present time judgeships are limited to two juniors and three seniors.

This amendment would also remove the restriction that the chief justice must be a senior.

## No concrete lead on poster vandals

Vandals have struck down campaign posters and ground signs of the two presidential candidates, nominees report.

ASASU Presidential Candidate John Holman claims most of his campaign signs were stolen or destroyed during the weekend before he replaced them.

His opponent, Stan Wilson, said Sunday night over 40 of his ground signs were taken.

Election board officials claim they have no verified leads of who took the campaign signs.

Editorial —

## AWS questioned

On the ballot in Wednesday's general election will be a measure to drop the voting privilege which the AWS president now holds on the ASASU Executive Council.

Supporters of this amendment believe that since the AWS president represents only the women students, she should not be allowed the same voting privileges of the ASASU officers who "represent all the students."

It is ludicrous to think that a council composed of officers elected by a very small minority of the student body would be any less representative because of the presence of a women's representative.

From all reports, the women students approve and support the AWS organization.

Many of the ten ASASU women senators who voted against a proposal to make dorm hours completely self-regulatory stated that the reason for their vote was that AWS would be a more effective agent in this area.

Until two years ago the AWS president was balanced on the Executive Council by an Associated Men's Students president. But this office was abolished when the men became apathetic.

To punish the women for a lack of interest on the part of the men is unfair.

Thus, we believe, that while the abolishment of the office of ASASU secretary is justified, the removal of the voting privilege from the AWS president is unfair and unjustified.

# Personal design key to fashion

## 'Best dressed' coed gives hints on wardrobe

By PAT WHALEN

Kathie Campisano, the "Best Dressed Girl on campus," according to Glamour Magazine, feels that a fashion-conscious coed can keep her wardrobe current and still maintain a bank balance if she makes her own clothes.

In addition to cutting costs, sewing accentuates the individual. A coed can either utilize ready-made patterns which are very current or, as Kathie does, improvise patterns by adding personal details and combining favorite features of different patterns. She warns though, that it takes a lot of imagination, to visualize a design and the way it will look when finished.

Although pattern choice and design are important, it is a girl's method of constructing a wardrobe that is most important. Kathie's secret for creating a fashionable wardrobe is to begin with the accessories which are currently popular.

A couple of scarves, a chain or a pair of shoes can set the stage for an entire look.

Kathie based her entire fall and winter wardrobe around a pair of clunky shoes. Because they were a deep, dark color she emphasized brown, beige and grey when she made her clothes.

In order to make a sizeable wardrobe and still keep costs within reason Kathie suggests coordinating clothing choices. She advocates always making something that will go with something else in the wardrobe and selecting one or two basic colors and developing them.

Selecting which patterns to make may pose a problem to some, but by studying fashion magazines which are filled with styles for the upcoming season, it is easy to find patterns which are similar to them and to create "originals."

When making clothes, a special attention should be given to the fabric, Kathie says the first

thing she does when shopping for material is to crumble it to see if it wrinkles easily and to see if it is wash and wear. Dry cleaning school clothes can put a sizeable dent in any coed's pocketbook.

Whether buying or making clothes, some coeds do not like everything about the new fashions. "If a girl isn't comfortable in the latest fashions, she shouldn't wear them," says Kathie. "If a fashion-conscious girl is too modest for the popular nude look, line it. Go semi-nude and line volle blouses with a corresponding or even contrasting color." This may be warmer but at least the girl will be more at ease in it.

The biggest asset for girls who make their own clothes is the fact that the University campus is individual and casual in dress says Kathie. Even beginners can make simple, free fitting clothes and still remain current in the world of fashion.

## Forum on lawn will consider campus issues

An open forum on the MU West lawn Thursday from 3 to 5 p.m. will be the first AWS-sponsored discussion relating to campus issues.

Discussion on "Campus Crisis: Response or Revolt," will be directed by Richard Martinez, who is affiliated with Mexican-American Students Organization (MASO) and Student Power Coalition, and Tom Holmes, ASASU activities vice-president.

Campus Security Chief John Duffy and Gerald Hobson, a member of the Committee to End the War in Vietnam, will also participate.

According to AWS president Liz Lim, both Dr. George Peek, dean of the College of Liberal Arts, and Dean George Ham, vice-president for student affairs, declined to participate because of prior commitments.

Miss Lim said AWS has rejected the trend toward holding forums in rooms limited in capacity. Instead, it desires to use an area convenient to more students.

The discussion leaders will state their views and answer questions. Students are urged to participate in the discussion.

The next forum, scheduled for April in cooperation with the Student Bar Association, will explore the Selective Service process.

## Stahnke dispels myths about desert creatures

An ignorance of the creatures of the desert is the biggest cause for undue fear of them, said Dr. Herbert L. Stahnke, director of the poisonous animal research laboratory and world's greatest authority on scorpions.

Stahnke, who spoke on "Desert Denizens" last Thursday night, allowed scorpions and tarantulas to crawl on his arms as he explained fallacies about poison animal safety.

A particularly widespread misconception concerns the treatment of rattlesnake bites, he said. He said that the worst thing to do is slit the bite open and try to suck out the poison.

He explained the application of tourniquets and said the bitten area should be kept cold to stop circulation of the poison.

He gave tips on how to keep scorpions out of the house, or to attract them if desired.

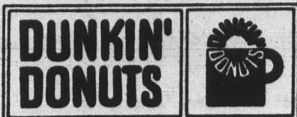
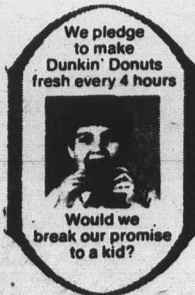
He had some good news for people who go on boondockers, saying that certain types of alcohol work against poisonous venom.

His advice to those who explore the desert: never walk or reach where you can't see.



## Need a 2 a.m. book break?

No matter how late you're up — we're up later! 2 a.m., 4 a.m., anytime you need a break from boring up . . . or want to cut out from calculus . . . swing by Dunkin' Donuts. We're close to campus. Open 24 hours a day, 7 days a week. We pledge to make our donuts fresh every 4 hours. (52 varieties from plain to fancy filled.) And we brew our coffee fresh every 18 minutes.



711 E. Broadway

## When you start knocking on doors try ours first.

You'll find the type of company and job you've been preparing for. A company in the forefront of advancing technology . . . with diversified capabilities . . . and a healthy mix of commercial and government business.

You'll be able to choose a creative career in fields such as underwater acoustics; radar; communications; space systems or computer technology.

Come and talk to us on:

### MARCH 28

Openings for:

BS, MS, and PhD Candidates in:

ELECTRICAL ENGINEERING  
MECHANICAL ENGINEERING  
INDUSTRIAL ENGINEERING  
MATHEMATICS  
PHYSICS

For work in:

RESEARCH and DEVELOPMENT  
DESIGN  
MANUFACTURING  
VALUE ENGINEERING  
FIELD ENGINEERING  
RELIABILITY ENGINEERING  
ENGINEERING WRITING

Sign up for interviews through your Placement Office, or write Manager of College Relations, Raytheon Company, 141 Spring Street, Lexington, Massachusetts 02173.



An Equal Opportunity Employer

## GINO'S PIZZA

WE DELIVER

946-8779

947-4784

Mon. thru Thurs. 5-1  
Fri. Sat. 4-2  
Sun. 3-12

## Brisk business conducted by placement interviewers

By JERRY JAMES

Many University seniors and graduate students no longer have to hunt for employers because employers are hunting for them.

The Placement Service has had approximately 450 different companies and governmental agencies interview qualified students on campus this year, said Miss Connie Landi, placement interviewer.

In order to be eligible for placement interviews the student must register with the service, said Miss Landi. He is then put on a mailing list and receives placement bulletins telling which companies will be on campus in the near future. The bulletin also tells what type of academic background a particular company is interested in, Miss Landi said.

Students interested in being interviewed by a certain company must make an appointment to see that company's representative, Miss Landi said.

"Most often the appointment time set up by the company will be filled within a week after it is announced," added Miss Landi. If more students wish to be interviewed by one company, after all appointments for that company are filled, said Miss Landi, they are put on a waiting list.

When the list contains eight or more names, the interviewing company is notified and can usually respond by extending

the interviewer's time on campus or by sending an extra recruiter, Miss Landi said.

About 14 students can be interviewed by one representative in the day he is on campus, said Miss Landi. "Some companies such as IBM, however, send as many as six or eight representatives for two days." This is usually in cases where more than one division of the company is recruiting.

If a student is unable to make an appointment with a company representative he can still be included in that company's files by writing to it. Then, when the recruiter is on campus, that student's file can be given to him, said Miss Landi.

In most cases no final decisions are made by an interviewer at the time he is on campus, Miss Landi said. "The representative is talking to many students on many university campuses in the Southwest and doesn't make a decision on his own," said Miss Landi. He will usually finish his recruitment tour and return to the company where he will make recommendations and confer with other officials of the company, she continued.

When a decision has been made the student will usually be notified by the company to thank him for being interested in the company, or to ask him to visit the plant and see if he would be interested in a certain position, said Miss Landi.

## Class learns cattle judging

'How now brown cow?'

By DOUG HARTLEY

Students in animal husbandry class are getting first-hand experience in determining the most desirable qualities in cattle.

Dr. Elvin D. Taysom, associate professor of animal science, is conducting the class on a farm south of Tempe.

Four Hereford yearlings stand tied to a corral. The question is which steer is the best?

The students learn how to evaluate masculine traits in bulls, and feminine traits in cows.

Explained Dr. Taysom, "An

expert can tell a lot by examining the animal's head."

Ron Harrison, a freshman animal husbandry major, said the line of the animal's back and the texture and color of its hair are important, as well as the shape of its head.

Head shape determines breeding qualities, said Harrison. A cow with a bullish head might not produce quality calves, he said, and this can be determined before the animal is purchased.

Harrison, from Alvin, Texas, was a rodeo stock contractor and is entered in the Phoenix rodeo.

Some students haven't had as much experience as Harrison. Susan Schmidt, a freshman drama major and one of six girls in the class, said she just wanted to find out more about animals.

Monna Sharp, an accounting major, owns her own farm south of Tempe, while Andre Lugo, freshman pre-veterinary major said he has "been around animals a lot," and likes working with them.

Last week the class toured the Cudahy meat packing plant and slaughter house in Phoenix.

The girls appeared calm as

the class witnessed the process in the slaughter house. "I was watching them (the girls) closely," grinned Harrison, "but they didn't flinch."

## AFROTC selects finalists for ball

Four Angel Flight queen finalists will represent the Air Force ROTC in the annual Military Ball.

The coeds who will compete against four finalists from the Army ROTC Kavettes are Diana Bennett, Cindy Banks, Nancy Simon and Cathy Sprawls.

Angel Flight is the women's auxiliary of Arnold Air Society, Air Force honorary. The queen will be crowned at the Military Ball Saturday at the Phoenix Ramada Inn.

## Jaunt to Taliesin

MU hostesses and men from Sahuaro Hall will tour Taliesin West, the home of the late Frank Lloyd Wright, today. The Scottsdale home is a school for architecture students and is characteristic of Wright's belief that architecture should lend itself to the landscape.

## Recruiter on Mall for Campus Afloat

A. Rankin Sneed, World Campus Afloat representative, will be on the Mall to answer questions, tomorrow through Friday 9 a.m. - 3 p.m. Students may call 967-9800 for interviews.

World Campus Afloat is sponsored by Chapman College, Orange County, California. Each semester "the ship is your classroom, the world is your laboratory" for 500 students as they tour 17 countries in South America, Africa and Europe.

Slides will be shown Wednesday at 7 p.m. in MU West.

Dr. Henry Manheim, University adviser for World Campus Afloat, said he will answer students' questions in SS 107.

## Psychologist will speak

"An Overview of Sensitivity Training" will be presented by Dr. Willard W. Blaesser, professor of education, counseling and educational psychology, at Thursday's meeting of the American Society for Training and Development.

The noon meeting at the Desert Hills Motel, 2707 E. Van Buren, Phoenix, is open to the public. Reservations are available at Valley National Bank, 141 N. Central Ave., Phoenix.

Dr. Blaesser, former dean of students at the City College of New York, is a director of the National Training League Institute for Applied Behavioral Science.

He has been consultant and trainer at Radio Corporation of America, General Foods, Standard Oil Company and the American Red Cross.

Now Open!

**SAX CLUB**

— DANCING —

1890 E. Apache

OPEN 12 NOON—1 A.M.

"Come Swing with Us"

**MUTUAL FUNDS**

**WHICH MUTUAL FUND IS BEST?**

Some Mutual Funds emphasize income — some stress appreciation, either current or long term — others seek a conservative balance somewhere in between. The "best" Mutual Fund for you is one whose management aims coincide with your objective and the degree of risk you care to assume. That is why careful selection is so important. For information, or a current prospectus on any Mutual Fund, call or write . . .

**John D. Richmann  
INVESTMENT ASSOCIATES**

2121 S. Mill, Tempe — Suite 228 — 966-9010



## Self-Hypnosis

Can Change Your Life,  
Increasing Learning and  
Creative abilities  
Lose weight, calm  
nerves, Stop smoking  
and Cure Insomnia

Call  
**274-0698**



If your accent is youth  
and leisure, you'll find our  
European accent perfect.

Tours tailored to young  
tastes and interests providing  
abundant leisure  
time for relaxation and  
personal pursuits.

42 summer departures.  
From \$767.

Also available:  
ORIENT-SOUTH AMERICA &  
TEEN PROGRAMS (AGES 15-  
18)

For complete information  
and complimentary brochure

Travel Center, Inc.

2201 E. Broadway

Tucson, Arizona 85719

## Classified

For classified advertising submit ad in person to the State Press, Old BA 302, two days in advance of publication, from 8:00 a.m. to 3:30 p.m., call 961-3457. Rate: 5c per word, 75c minimum.

### • FOR SALE

Fender Guitars! Stratocaster. 967-2648.  
Precision Bass 967-4532.

25 cal. La Fury auto pistol and 22 cal.  
Derringer. 966-2130.

Solid State stereo, \$50 or \$70, Norm.  
966-5639.

Scuba equipment, for sale, CHEAP, 966-  
0250 or 109 E. Mckeney St. No. 2.

### • SERVICES

MEN: Interested in traveling to Europe  
this summer? Call Bob, 961-4242.

Was your last date a Ding-a-Ling? Meet  
your ideal mate, matched by COMPUT-  
ER! Call for free compatibility ques-  
tionnaire. 264-9831 (24-hrs.)

WAS your last date a Ding-a-ling? Meet  
your IDEAL MATE matched by COM-  
PUTER! Call for free compatibility ques-  
tionnaire, 264-9831 — 24 hrs.

PARACHUTING LTD.  
Sky Diving School  
1827 W. Camelback, Phoenix  
274-6005

Gain or lose weight fast at Golden's  
Health Club, 107 S. Macdonald St., Mesa.  
Individual supervision plus modern sci-  
entific exercise equipment — sauna and  
heated pool. \$5.00 off membership of 3  
months or longer with this ad. 964-2351  
or 964 9080.

### • TYPING

ENGLISH GRADUATE, 8 YEARS at  
ASU. 967-3139.

Experienced typing for students, IBM  
elite. 967-4517.

TYPING 945-4685

TYPING — 967-3036.

FAST, Accurate, Guaranteed, IBM Elite.  
Sue Johnson, 211 East 14th St., 966-7848.

TYPING — 946-8965.

PROFESSIONAL Typing Service. Theres  
Thesis, Reports. Experienced, Reason-  
able, Fast Service. 946-9009 or 946-2557.

TYPING: IBM. Maxine Mullen. 245-  
3265 or 955-0763.

### • AUTOMOBILES

1966 Datsun 1600 Roadster. Hardtop,  
softop, tonneau cover. Fully synchron-  
ized 4-speed, radio and heater. Immacu-  
late condition, \$1425 or trade for larger  
car. 966-7059 after 5 p.m. 724-B West  
Brown, Tempe.

1963 VALIANT, good condition. \$400.  
Phone after six, 966-7325.

Mustang, '65 conv., R/H, air, style steel  
wheels, five Goodyear Polyglass tires,  
new brakes, shocks, tune up. Very clean,  
\$1400. 265-3230, 274-6780.

1967 Chevelle Malibu Sport Coupe. Ra-  
dio, heater, vinyl top, power steering.  
One owner, excellent condition. \$1,900.  
Office: 961-3729. Home: 946-4584.

1965 MG Midget. Best offer. 254-9580.

1968 Silver Corvette coupe. Excellent,  
must sell. Lt. Phillips at 962-1892.

### • MOTORCYCLES

1968 Suzuki 305 Raider in excellent con-  
dition. 6-speed, extremely fast. Must sell,  
going into service. \$500. 946-5245.

Showroom immaculate 1968 Bridgestone  
350 GTR. Extremely fast and smooth,  
6-speed, many extras. Ridden only 7  
months. Must sell going into service.  
\$550. 966-8929.

### • INSTRUCTION

TUTORING: Math and Chemistry. Call  
after 5 p.m. 966-6775.

INDIVIDUAL TUTORING in math, chem-  
istry, physics, and biological sciences.  
Phone 967-7924.

### • LOST

Are you paranoid? Norm. 966-5639.

### • HELP WANTED

Male or female, ON CAMPUS REPRE-  
SENTATIVES WANTED. High Compens-  
ation. Call Mr. Sparks ("Tape") 945-8419.

# Devils crumble; down Seattle

By LARRY NELSON  
Assistant Sports Editor

If Bobby Winkles had his way, he would rather go back to Thursday and start the weekend anew.

After Thursday's 5-1 victory over San Diego State, the Sun Devils proceeded to drop three in a row to San Fernando Valley State, including one on Saturday night that would have made the New York Mets drool.

Sandwiched in between the skirmishes with SFVSC was an ego-boosting, otherwise meaningless triumph over the Seattle Pilots, 5-4, Saturday afternoon.

It was ego-boosting in the sense that a college team doesn't whip a major league club (even an expansion team) every day, but it was meaningless due to the fact that it doesn't count in the won-loss record.

The main reason the Devils fell apart over the weekend was a nearly total collapse by the moundsmen. Lerrin LaGrow went the distance against San Diego State Thursday, striking out nine and walking seven, but no ASU hurler has accomplished a similar feat since.

Freshman fireballer Jim Crawford came about as close as possible Saturday night, though. He breezed through 8½ innings of no-hit, no-run ball, and it looked like the fans at Phoenix Municipal Stadium were going to witness a gem.

Then the roof fell in.

Four errors, four hits and three walks later, San Fernando Valley State owned a 9-4 lead which the Devils couldn't dent in the bottom of the ninth, dropping Arizona State's official season mark to 10-4.

Bill Leinheiser was the victim of a 5-0 rout in Friday's first game, while Kenny Hansen took the brunt of the attack in the second clash of the doubleheader, losing 5-4.

Freshman hurlers took all the glory Saturday as Craig Swan gained credit for the victory over Seattle with a five-inning mop-up job in relief of Larry Gura.

Making matters even worse is the injury incurred by catcher Billy Cotton, who separated his finger from his fingernail in Friday's second game. Cotton will be out for about two weeks, leaving Winkles with converted outfielder Paul Ray Powell as his only backstop.

Infielder Terry Brenner, whom Winkles had counted on to help out behind the plate, is out with the same injury which sidelined Cotton.

Lack of hitting punch aided the Devil's downfall, as the A-Staters stranded 27 runners in the three losses to San Fernando Valley State.

Winkles hopes to regain the old Devil magic this week as the Big Ten invades Tempe. Ohio State opened a three-game series here yesterday, to be concluded with single games this afternoon and tomorrow night.

After the Buckeyes leave, Michigan arrives for an afternoon clash Friday, a Saturday doubleheader, a Monday night game and a Tuesday afternoon contest.

## Ball games rescheduled

The Maroon and Gold game, highlight of spring football practice, has been moved to Saturday, March 29, 7:30 p.m. in Sun Devil Stadium. The game was originally scheduled for Wednesday, March 26.

The game is one of three changes prompted by a heavy spring sports load.

The baseball game against Southern Illinois, last year's NCAA runnerup, has been switched from 3 p.m. March 26 to 7:30 at Phoenix Municipal Stadium.

The day-night doubleheader against Wyoming has been changed to back to back games, March 29, at Sun Devil Field.



**BIG SWINGER** — Roger Detter, Sun Devil short stop and team captain, strides into the ball during yesterday's 10-5 loss to Ohio State. Lerrin LaGrow lost his first game of the season, to bring his record to 3-1.

Photo by Bill Jackson

## Kush sorts through players

The sorting out process goes on as ASU enters the third week of spring football practice.

Coach Frank Kush felt his Devils were "looking good until we began switching personnel around at various positions." Both new and old Sun Devils are getting a shot at all spots, as Kush is looking for the best athletes on the field.

Some of the lettermen being used at different slots include fullback Jim Shaughnessy at running back, wingback Mike Brunson at running back, running back Dave Buchanan at wingback and wingback J. D. Hill at defensive back, a position he played off and on last

season.

New players being maneuvered are sophomore defensive end Junior Ah You to tight end on offense, junior offensive tackle Roger Davis of Diablo Valley JC to defensive tackle

and split end Calvin Demery to defensive halfback.

Kush is also out to solidify the offensive line where junior letterman Gary Venturo at right guard is the only returning starter.

LOOKING FOR  
SOMETHING  
SPECIAL



IF IT'S A REALISTIC CAREER DEVELOPMENT PROGRAM WITH INITIAL RESPONSIBLE ASSIGNMENTS, YOU'VE FOUND IT!

Immediate  
**OPENINGS FOR ENGINEERS** in

SHIP STRUCTURAL DESIGN • SHIPBOARD ELECTRICAL SYSTEMS DESIGN • SHIPBOARD ELECTRONICS SYSTEMS DESIGN & EVALUATION • SHIPBOARD MISSILE SYSTEMS EVALUATION • SHIP PROPULSION & PIPING SYSTEMS DESIGN • SHIPBOARD VENTILATION & AIR CONDITIONING SYSTEMS DESIGN • PRODUCTION & FACILITIES ENGINEERING

With EXCELLENT FEDERAL SERVICE BENEFITS

Our brochures are now available in the Placement Office. Sign up for an on-campus interview with our professional employment representative today!

LONG BEACH NAVAL SHIPYARD

LONG BEACH, CALIFORNIA 90801  
(A/C 213) 832-3311, Ext. 320

Interviews on Monday, March 24, 1969

## Welcome ASU Students!

Famous Charco-Broiled Steaks

FILLETS	\$1.58
SIRLOIN	1.48
BEEFBURGERS	.65
STEAK SANDWICH	99c

## THE BEEF HOUSE

NOW 2 LOCATIONS TO SERVE YOU

69 E. BROADWAY 1264 W. UNIVERSITY  
TEMPE MESA

BANQUET FACILITIES AVAILABLE AT MESA

Why should a traditional club tie have the new full fashion shape?

Only the new more luxurious full-fashion shape (fuller under-the-knot, wider throughout) is right with today's bolder shirt collars, wider jacket lapels. It shows off to best advantage the authentic British club insignia and imported silks of Resilio's outstanding traditional clubs. Resilio Traditional Neckwear, Empire State Building, New York, N.Y. 10001.

P.S. All Resilio ties have the new full fashion shape.

Resilio  
TRADITIONAL NECKWEAR

Young Ltd.  
THOMAS MALL

# Heavyweights dominate WAC meet

Arizona State's wrestling team continued its dominance of the heavyweight division in the WAC Championships, but that was the only weight it could capture and finished in third place with 40 points behind champion Utah (59 points) and defending champ BYU (58).

This year's version of the heavyweights, Rick Cahill, won two come-from-behind victories to register A-State's fifth consecutive championship in that division. Curley Culp had captured the title the last four years.

Cahill came back from a 5-0 deficit against Utah's Frank Holtry to win a 9-5 decision, decided Arizona's Chet Proctor, 12-3 and came back from a 5-3 deficit to defeat Roger Brown of New Mexico 8-5 for

the championship.

Defending champ at 123 pounds, Bob Shines, was eliminated in the first round by Utah's Balvino Irizarry, who Shines defeated last year for the crown. Coach Ted Bredehoff pointed out this was the first time that A-State didn't have a finalist at 123 since wrestling was started here.

Sun Devil Jim Lambson took third place at 130 pounds, defeating Bill Martinez of Colorado State 10-3, losing to Bob Kawa of Utah by pin and beating Mike McAdams of BYU for the consolation title.

Art Holland also took the consolation title at 137 pounds, downing Harlan Hankins of Colorado State, losing to Efrin Escalante of BYU and decision-

ing Rudy Griego of New Mexico 6-3 for the title.

Sophomore Felix Salinas took wins from Greg Wolfley (17-2) of Wyoming, Howard Hall of BYU (3-2) and lost a 8-5 decision to Ron Lemmon of Utah to take second place at 145 pounds.

Dan Churchill (152 pounds) took third by decisioning Greg

Lewis of Arizona, losing a 2-1 decision to CSU's Mike Thurlow, the eventual champ, and came back for a 4-2 decision over Utah's Jim Sukle for the consolation slot.

After Dick Johnston (160) and Mike Koury (167) were eliminated in first round action, Cahill did his thing in the heavy-

weight division.

Finishers behind ASU were Wyoming (37 points), UofA 35, CSU 25, New Mexico 21 and UTEP with 12 points.

Next competition for a portion of the Sun Devil grapplers will be the NCAA Championships at Provo, Utah, March 27-29.

## Cindermen fall to powerful Bruins

Sun Devil cindermen won six of 18 events at Los Angeles Saturday, but UCLA won the rest and most of the second and third place slots to down the A-State team 103-51.

The Bruins had too much power and too much depth for the Devils and that spelled nothing but trouble for coach Baldy Castillo's squad.

Mark Murro continued his winning ways in the javelin with a 256-2 toss, while Manuel Quintinar won the mile in 4:05.8 in absence of Chuck La-

Benz, Barry Shepard set a meet and stadium record in the high jump with a leap of 6-10, Darby Jones won the 120-yard high hurdles with a 14.3 timing, Dick Miller toured the 440-yard hurdles in 53.9 for first place, and Jerry Bright won the 220 with a 21.2 timing.

Perhaps the biggest upset of the day came when Olympian Ron Freeman was beaten in the 440 by the Bruins' Wayne Collett. Collett hit the tape at 45.8 followed by Freeman at 46.3, just ahead of UCLA's Len Van Hofwegen who finished at 46.4.

UCLA took the first three spots in three events, the 3,000 meter steeple chase, the shot put and the discus and won the 440-yard and mile relays.

Jerry Jobski took his second straight set - back in the two-mile, losing to UCLA's Dan Preston, who covered the distance in 9:01.6, as compared to Jobski's 9:02.4.

The Sun Devils won't get any rest from the strenuous schedule this weekend, as they tangle with pre-season WAC favorites UTEP and BYU at 7:30 on Joe Selleh Field.

## Loss of teammate hinders gymnasts

The loss of Darryl Bair on the Sun Devil gymnastics team is being felt more and more as the weeks go on.

It was felt at Tucson Saturday, when the A-State crew dropped a 149.85-146.825 decision to the UofA Wildcats.

Bair, who was and still may be considered one of the best all-around men in the conference, was limited to just two events, floor exercise and long horse, because of an infected hand that has bothered him for the past month.

If the hand heals in time, Bair will be a strong contender for the all-around championship at the WAC competition at Colorado State, March 28-29. If it doesn't heal, the Devils will continue to suffer.

Bair managed third place in both events, finishing behind teammate Brian Scott, who took first and UofA's Doug Boger in floor exercise and behind the U's Boger and Corey Fox on the long horse.

Senior John Price continued his dominance on the still rings, winning at Tucson with a 9.25, .25 points better than Arizona's Doug Swarts.

The only other event the Devils managed to win was the all around competition, garnered by frosh Dan Smith with a 48.20 tally.

Smith and Scott, who have been progressing rapidly since the start of the season, are probably two of the best freshmen in the conference or in the country.

Scott, besides winning the floor exercise, took a second place on the high bar and third in all around competition.

The next outing for Don Robinson's team will be Saturday at USC. Robinson said that if Bair is healed the Devils can possibly take the Trojans, but without him there's not much of a chance for a victory.

### 'A' meeting

A meeting of the "A" Club will be held tonight in the MPE varsity room at 7 to elect officers and plan club activities. All lettermen are urged to attend.

Also being discussed will be a temporary "A" Club room that will be used by lettermen until a permanent room is established in the new fieldhouse.



**ARTIST & DRAFTING SUPPLIES**

Crafts - Picture Frames  
Decorating Material  
Tempe Center • WO 7-4482  
Open Mon. & Thurs. Nites

### Suede & Leather CLEANING

Mountain States Leading Specialists

**SWAN CLEANERS & LAUNDRY**

2529 N. 32nd St. 956-4700  
Valley Bank Credit Cards

### Young Ltd.



**TUXEDO RENTALS**

THOMAS MALL  
959-0620

### Mrs. T's PIZZA

Free Delivery

966-0664

- Spaghetti
- Raviola
- Lasagne

S a n d w i c h e s



For Jewish Students and Their Friends

### TUESDAY LUNCHEONS

11:30 to 12:30 — 50c

BAKER CENTER - 213 E. UNIVERSITY

(Behind the College of Nursing Bldg.)

# If you let nature take its course you may fail yours.

You were supposed to cram for calculus tonight, but somehow 35-24-35 looked more appealing than the derivative of  $x^2$ .

And now it's 1 a.m. And nature can play some pretty mean tricks on a guy at 1 a.m.

Relax, take a couple of NoDoz®

and stop relaxing.

NoDoz has the strongest stimulant you can buy without a prescription. And it's not habit forming.

NoDoz will help you resist nature, at least until the next time a cold hard fact loses out to a soft warm one.

