

Kush to remain as Devil coach

By BILL JACKSON
Sports Editor

There is only one difference between George Allen of the Los Angeles Rams and Frank Kush of Arizona State—Allen was fired and re-hired, Kush resigned and was re-hired.

In a written statement yesterday, Kush said he had been released, at his request, from a commitment to become head football coach at University of Pittsburgh and expressed his "deep desire to remain at Arizona State University."

The coach went on to say that he has apologized to those concerned at Pittsburgh and Arizona State for the embarrassment and complicating circumstances which have resulted because of his change of plans.

"I have requested and received assurance from President Durham and Clyde B. Smith (athletic director) that I may continue as

head football coach at Arizona State," Kush said.

At a press conference yesterday at the Phoenix Sands motel, Smith disclosed that Kush had reached a decision to stay at Arizona State Monday afternoon, but because of all the commitments to Pitt a statement to the press could not be made until yesterday morning.

"The biggest problem at Pitt was creating a vacuum, making it difficult for them to hire another coach," Smith said. Releasing the news that Kush was staying on at ASU could have created this vacuum.

Smith said that Kush's decision to go to Pitt was a very deep emotional involvement and that he had a chance to assess things at Los Angeles, where he was attending the NCAA meetings.

"Frank had visions of restoring the Pitt dynasty," Smith said. "But his greatest concern was for his

family and that played an important part in his decision to stay at Arizona State."

Kush was not present at the conference.

President Durham said he was tremendously pleas-

ed that Kush has decided to continue here as head football coach.

"We feel that Frank Kush is one of the nation's truly great football coaches and we invite all Arizonans to share our pride and pleas-

ure in his decision to remain here.

"This decision represents a significant expression of faith in the future of our entire state as well as Arizona State," the president said in a written statement.

state press

Vol. 51, No. 52

Friday, January 10, 1969

ARIZONA STATE UNIVERSITY
Tempe, Arizona

AS foundation laid

Senate debates amendments

By JANE SIMS

Senators laid the foundation Wednesday to abolish the office of ASASU secretary and remove the Associated Women Students president from the executive council through constitutional amendments.

If the amendments survive scrutinizing of a faculty-student committee and another vote of the Senate, students will vote on the issues in a special election in the spring.

Introduction of the amendment to oust the AWS president from executive council set off a 45-

minute debate in the senate ending in a 21-9 vote in favor of the amendment.

"The AWS president is the only member of the executive council not elected by all the students. To be consecutive, if she can vote, the men should be represented," asserted Tom Edwards, finance committee chairman. "Anyway, just how many women is AWS actually representing?"

Liberal arts senator Janet Frazier countered, "Instead of taking the AWS president off the council, why not make her a non-voting member. If she's taken off the council communication will be damaged between AWS and ASASU."

An amendment to the constitutional amendment was proposed by Sen. Frazier to "make the AWS president a non-voting member of the council." However, the Senate committee of the whole defeated the motion.

Several senators indicated AWS representatives were expected to contest the Senate's move to revoke the AWS president's membership from the committee.

Their appeal will probably be issued when the Senate votes again on the amendment.

Another amendment, seeking to eliminate the office of ASASU

secretary, was okayed by senators with little debate. Student leaders maintained the position of secretary should be a hired, full-time position.

A third constitutional amendment to "allow graduate students to serve on the ASASU Supreme Court" was also passed by the Senate.

Introducer Walt Ulman, liberal arts senator, indicated the amendment would permit the University to utilize law school graduates' services in court matters.

The Senate also approved a petition requesting "the reinstatement of diplomas in the commencement exercises for those students graduating upon completion of their spring semester."

The petition will now go to registrar Alfred Thomas and the faculty senate.

"The University's commencement exercises are nothing more than a presentation of candidates for graduation. Seniors don't actually receive their diplomas until six weeks after graduation exercises," said Sen. Patricia Randolph, liberal arts.

A precedent was set by the Senate when a bill requesting \$1,500 for student bar association activities was passed by the representatives unanimously.

Committeemen resign

Two members of an ASASU Senate ad hoc committee to investigate activities of AS President Bill Oldham have resigned.

Senators John Holman, student affairs chairman, and Tom Edwards, finance chairman, resigned. Holman cited "political reasons" as the cause for resigning and Edwards explained his resignation was submitted "because of lack of time for the investigation."

Senate speaker Linda Yarbrough will appoint replacements to the committee, headed by engineering senator Dennis Cole, this week.

Cole will present a brief report to the Senate on the investigation Wednesday at 3:45 p.m. in the Great Hall. Results of the probe were termed "very successful" by Cole.

The Senate committee is investigating charges against Oldham, alleging "he has failed to enforce and comply with the ASASU Constitution and Statutes and acted irresponsibly and in derogation of the best interests of Associated Students."

Publication ends

Today's State Press is the final issue of the semester. Following non-activity week, final exams and semester break, the State Press will reappear February 4.

Pop sounds to fill Gammage



The Baja Marimba Band

In the four years since the Baja Marimba Band was formed in Hollywood, it has become one of the most sought after recording acts in the country.

The group will appear at an ASASU sponsored event in Gammage Auditorium Jan. 30 at 8:30 p.m.

Tickets will be available beginning Jan. 13 at South Hall, Bill's Records, Wallich's Music City, Melody Records and Community Box Offices for \$3, \$2.50 and \$2.

The group was started by Herb Alpert, who advised group leader Julius Wechter in the spring of 1964 to record a song called "Comin' In the Back Door."

The success of the single release was soon followed by the group's first album titled "The Baja Marimba Band."

Since then the band has stepped up their television activities and personal appearances.

ASASU will also sponsor the Beatles' "Magical Mystery Tour" at 7 p.m. Feb. 4 in Gammage Auditorium.

Tickets are available on the mall until Feb. 4, except during the semester break for 50c with ID. Tickets will be \$1 at the door.

Class card distribution planned

During the period from 8 to 11 a.m., Thursday, Jan. 30, class cards will be issued only to those students who received partial schedules during early registration. No other students will be permitted to obtain class cards during these hours.

All students may pick up cards Thursday, Jan. 30 from

11 a.m. to 4 p.m., Friday, Jan. 31 from 8 a.m. to 4 p.m., Friday, Jan. 31 from 8 a.m. to 4 p.m., and Saturday Feb. 1 from 8 a.m. to 11:30 a.m.

According to Registrar officials, this schedule is planned to allow pre-registering students who did not receive their entire schedules first priority.

Free University official charges lack of support

Although Associated Students is backing the initiation of a Free University on campus, administrators have shunned the idea, asserted Mike Goodman, head of the Free University, yesterday.

"The University administration isn't sponsoring, sanctioning or supporting the Free University. Our only support has come from ASASU because I believe we are a part of Associated Students," Goodman said.

Despite criticism in the Free University's catalog describing one of its problems as "a lack of support from the administration," Dean of Students George Hamm said facilities for the experiment will be provided at the Newman Center.

"University property won't be available for the Free University this year. What will happen in the future is undetermined," said Hamm.

The Free University catalog states, "Due to certain verbal communications issued by members of the Board of Regents, the administration of the University has been unable to comply with our demands for classroom and office facilities."

(Continued on page 16)

Piginauguration

As a protest against the inauguration of Richard Nixon, the campus chapter of Students for a Democratic Society will inaugurate Pig-asus the Pig as President Jan. 20 at 12:30 p.m. on the Mall near Danforth Chapel.

Foreign film set for two night run

The Italian film "La Strada," directed by Federico Fellini, will be presented by the ASASU Cultural Affairs Board Jan. 11-12 at 7:30 p.m. in Armstrong Hall.

The film, starring Anthony Quinn, Richard Basehart and Aldo Silvani, is the winner of many awards, including the Academy Award for the "Best Foreign Film."

Indian objections close art exhibit

By DIANE KAUFFMAN

Objections from the Indian community forced the Isleta Indian exhibit of rare paintings to close in Matthews Center yesterday.

"The Indians in the Tempe area think that the collection of the Isleta Indian secret ceremonies is too sacred to them to be exhibited to the public," said Rudy Turk, art curator.

These 44 paintings, loaned by the American Philosophical Society and circulated through the Smithsonian Institute, were first obtained by anthropologist Elsie Parsons from Joe B. Lente, an Isleta Indian.

The paintings depict Isleta ceremonies, jealously guarded

until 1936 from outside observation, said Turk.

Lente, who had read a monograph by Dr. Parsons entitled, "Isleta, New Mexico," wrote her in 1936 verifying her facts and offering to supply illustrations.

"These drawings you will never see no where because no one could do this . . ." he wrote. "They are afraid to die if they do and I don't want no soul as long as I live that I have this

picture (sic)."

The paintings he sent Dr. Parsons were significant for their scientific revelations. He had also penciled comments still visible on his works. The brightly colored painted pictures featured powerful compositional arrangements and color patterns.

Lente's comments are interspersed with those of Dr. Parsons and her colleague, Esther Goldfrank, in text panels which accompanied the exhibit.



Mexico orchestra to present concert

The National Orchestra of Mexico City, conducted by Luis Herrera de La Fuente, will give a performance Jan. 23, at the University.

A special event at Gammage Auditorium, the program will be at 8:30 p.m. Tickets are on sale at Gammage box office.

The orchestra was founded in 1949 by Carlos Chavez, noted

contemporary composer. Maestro de La Fuente was named conductor in 1954 and four years later the group made its first concert appearances in the United States, Canada and Europe.

For the program, the orchestra will present "Si libet" by Manuel Enriquez, "La Mer" by Debussy and "Symphony No. 1 in C minor" by Brahms.

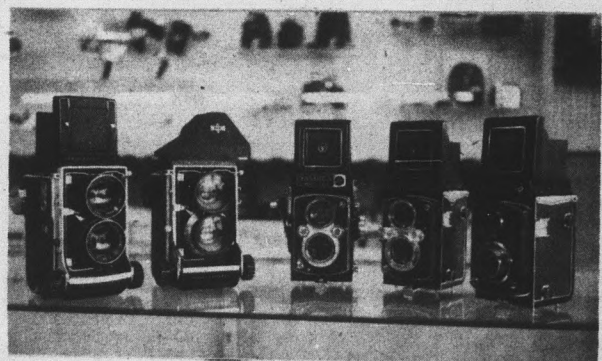
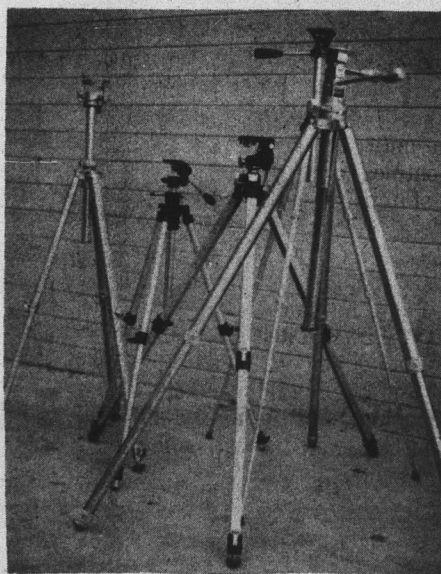
MODERN DANCE — The renowned dancer-choreographer, Jose Limon, and his large company will perform Jan. 29 at 8:30 p.m. in Gammage Auditorium. Tickets for the program, fourth event in the 1968-69 Man and the Dance Series, are available at the Gammage box office.

Assistants to meet

Terry Smith will preside over a meeting of University liberal arts graduate assistants Monday at 4 p.m. in PSB 100.

LOOK
January Clearance
PHOTO
Sale

REG.	SALE
\$22.50 GC675-L	\$14.88
\$17.50 GC673-L	\$10.88
\$23.50 P&B 1107	\$16.70
\$29.50 P&B 1108	\$21.15
\$49.95 Tiltall professional	\$37.88



TWIN LENS REFLEX CAMERAS

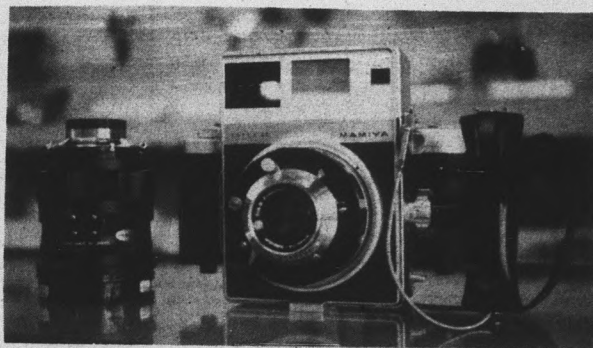
MAMIYA C33 with 80mm 2.8 Lens Reg. \$285.00 **SALE \$220.**

MAMIYA C220 with 80mm 2.8 Lens Reg. \$219.50 **SALE \$170.**

Yashica Mat 124 with case Reg. \$120.00 **SALE \$85.**

YASHICA-D with case Reg. \$77.50 **SALE \$59.**

YASHICA-A with case Reg. \$49.95 **SALE \$35.**

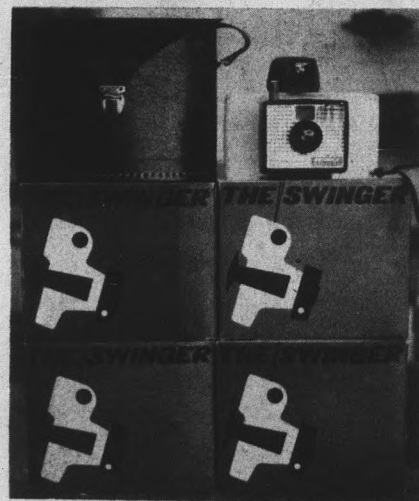


MAMIYA SUPER PRESS 23

Camera with 100mm lens, roll film back and grip. Reg. \$329.50 **SALE \$259.50**

Telephoto Lens 150mm Reg. \$169.50 **SALE \$135.00**

65mm Wide Angle Reg. \$174.50 **SALE \$139.00**



POLAROID SWINGER CAMERA

REG. \$19.95 **SALE \$14.88**



BLACK & WHITE FILM

Sizes	Reg.	SALE
127		
120	3 FOR \$1.00	3 FOR 69c
620		

PIONEER CAMERA SHOP

967-4662

TEMPE CENTER

TEMPE

Economics seminar planned

Arizona businessmen and community leaders can compare views on the 1969 economic outlook for the state during the annual Economic Forecast Luncheon-Seminar to be sponsored in Phoenix today by the economics department.

The luncheon, given in cooperation with the Center for Executive Development and four other agencies and organizations, will be from 11:30 a.m. to 2:30 p.m. at the Smokehouse Restaurant, Phoenix.

Purpose of the annual event is to bring together businessmen, community leaders and professors to compare their impressions of the current economic health and what to expect in the coming year.

Because of the growing response to the seminar, early reservations are advised by Joe F. Creed, coordinator of distributive education for the Center for Executive Development, where reservations can be made.

Dr. Glenn D. Overman, dean of the College of Business Administration, will preside over the

program, which will open with a national economic forecast by Dr. Don V. Plantz, professor of economics.

Dr. Martin T. Farris, chairman of the economics department, will moderate a panel discussion. Speakers and their topics, in relation to the 1969 Arizona economy, include:

Virgil D. Hunt, director of corporate planning and marketing for The O'Malley Companies, "Construction and the Financial Markets in Arizona"; Dr. Jerry R. Ladman, assistant professor of economics, "Federal Spending in Arizona"; Rep. Timothy A. Barow, Arizona House of Representatives, "State Tax and Legislation"; and Dr. Richard D. Kinkleman, assistant professor of economics, "Manufacturing and Mining."

Cooperating with ASU in the luncheon-seminar are the Phoenix Chamber of Commerce, American Marketing Association, American Society for Training and Development and the state's Distributive Education Services.

CALENDAR

All meeting notices should be submitted three days prior to the date of publication to assure their appearance in the calendar.

- Today** Campus Crusade for Christ's first College Life program of the year at 7:61 p.m. at 13th Avenue and Mill.
- ASU Veteran's Club at the National Guard Armory at 4:30 p.m.
- Tuesday** The World Affairs Council and Center for Asian Studies co-sponsor a speech by Salvador Lopez, permanent UN representative from the Philippines in Great Hall at 8 p.m.
- Coming** Faculty wives informal coffee during finals week, Jan. 21 2-4 p.m. in the College of Nursing Lounge.

Mall to get mechanical mail service

An automatic post office will be installed by the end of next week in front of the MU.

Tempe postmaster Gil Montinez said the post office is scheduled to be completed by Jan. 15, but may not be ready to open until a few days later.

Montinez said students could buy stamps, envelopes and post cards at the new post office.

It will accept parcel post, certified mail and insured mail up to \$15, he said.

The office will also have a dollar bill and coin changer.

George Morrell, director of purchasing, said the mail distribution center in the MU will be permanently moved to Matthews Center.

STATE PRESS is published by Arizona State University as the official campus newspaper every Tuesday through Friday during the school year, except holidays and examination periods, and is entered as second class matter at Tempe, Arizona, 85281.

ATTENTION BACHELORS . . .

Paul Johnson
JEWELERS

130 UNIVERSITY DRIVE
(1 1/2 Blocks West of Student Overpass)

Also PHOENIX - SUN CITY - FLAGSTAFF

FEATURING:

- ENGAGEMENT & WEDDING RINGS
- LAVALIERS
- WATCHES
- GIFTS
- WATCH & JEWELRY REPAIRS



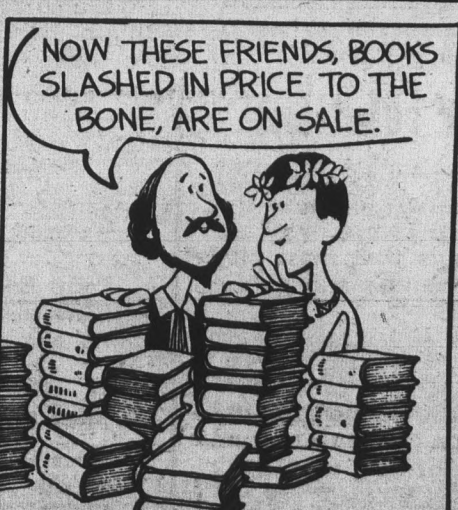
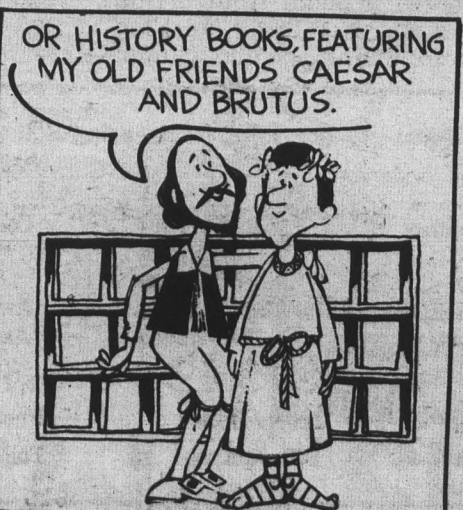
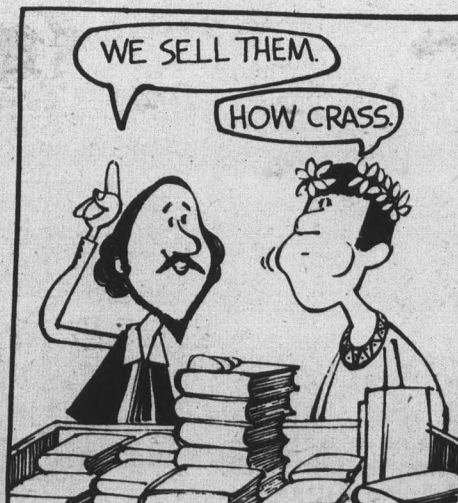
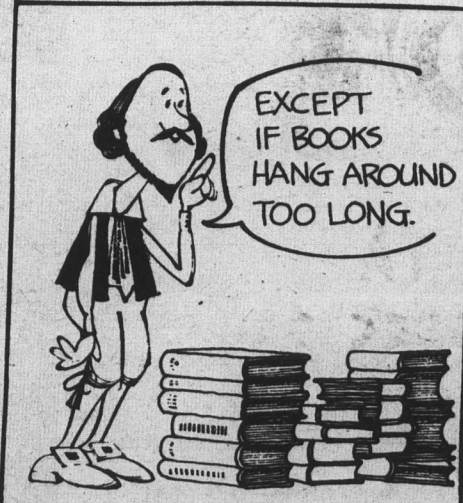
MEMBER
AMERICAN GEM SOCIETY

Your Education Isn't Complete
Until You've Taken Our
Diamond Course (No Tuition)



"Our Classroom"

Shakespeare and Co. PRESENTS A DAY IN THE LIFE OF WILL



Impeach committee

The ASASU Senate Finance Committee has proven Dean George Hamm's point about student government inaction.

In November, after extensive research including interviews with every coach in the women's P.E. department, two State Press reporters exposed a serious conflict of interest in that department.

Specifically, the activity fee funding of women's sports teams by ASASU is budgeted by Miss Anne Pittman, who coaches two of the teams.

We did not charge mishandling of the funds; we merely said that the temptation to favor her personal interests and activities was there and should be eliminated by the Senate when it prepared the 1969-70 budget.

Tom Edwards and the Finance Committee, after talking with Miss Pittman but not conducting the exhaustive research (much of it statistical) we did, decided to drop the matter.

Committee members should consider taking their responsibilities seriously before the year ends — they are dealing with student money, after all.

Considering current controversies within student government, however, perhaps the committee should just be impeached.

Students leeches?

College students were described as "almost leeches" by Kenneth Kunes, new county assessor, in a recent newspaper interview.

Lashing out at student protesters, Kunes said they "contribute nothing to society. Until they help create material goods and wealth for a profit, they will continue to be strictly takers, they won't have earned the right to protest."

He also compared students to "inmates of a prison who stand up and scream because they aren't served ice cream every night of the week."

Why so many politicians feel it necessary to complain about student protesters in a state which has avoided serious disturbances is a continual mystery. They ought to read the American Constitution more closely and learn that our freedoms, including the right to protest, are not restricted by age or material wealth.

Furthermore, the idea that students "contribute nothing to society" is ludicrous. Thousands of them have part-time or full-time jobs to pay for their education and are thus contributing more to society than the chronically unemployed, the physically handicapped and retired persons.

Perhaps, stretching Kunes' logic, the people of Sun City should have no voice in public policy because they aren't working anymore.

Good omens for progress

After assassinations, financial crisis and assorted other disasters, that memorable year 1968 passed into history with the release of the Pueblo crew and the exploits of the Apollo 8 astronauts.

These good omens hold forth hope for a year of relative peace and progress — though this may, of course, be balanced by the terror of exam week now approaching.

So far, today's college students can remember vividly only the dates of tragedy and turmoil. Our parents may remember Pearl Harbor, but they also have happier recollections of World War II's end.

We can only say, however, what we were doing when someone died and threw the nation into fear and mourning. 1969 offers hope that we may yet have a proud date to remember — when some American adventurer reaches the moon, for example.

Fickle Finger of Fate

This month's Flying Fickle Finger of Fate awards go to:

—Gov. Jack Williams, who appointed two Tucson men to the state board of regents Tuesday. They may be fine men but, considering the rivalry between ASU and the UofA, it might be nice to have a Tempe resident on the board just once to give special attention to our needs.

—Football coach Frank Kush for adding a little post-season drama to our lives with his alternating decisions to leave ASU and stay. Tune in next semester to see if his latest decision sticks—which we hope it does.

Parking meters and public relations

Why does the city of Tempe use restrictive signs and parking meters to cut down on student parking near the campus? If ASU is the largest industry in Tempe, why are students penalized or hampered in ways that most city residents are not? Sounds like bad economics and public relations, to say nothing of fairness.

Goodyear and its bad minutes

If Goodyear was willing to spend the money to build a large electric "Welcome to Tempe" sign commuters from Phoenix could see as they crossed the bridge, why don't they fix it so it tells the correct time?

Letters to the editor

To reside or not to reside

Editor:

This fall I enrolled as a fulltime non-resident paying out of state tuition. Last summer, I married a resident who had pre-registered. We received a bill for her non-resident tuition (by marrying a non-resident, she had become a non-resident).

Not understanding this classification, we went to the Mauer Building to protest. We went from clerk to clerk to supervisor to head of admissions. In each case, it was confirmed that she was now a non-resident and must pay \$407.

Feeling this was unjust, we went to the registrar to appeal our case. He informed us that in cases of this type, only one person had to pay the non-resident tuition.

In pre-registering for the spring semester, we encountered the same problem. Again the clerks informed us we have to pay for my wife's non-residency.

Brent C. Riley

Student Senate worthless

Editor:

The Student Senate is showing its true worthlessness by even considering the impeachment of student body President Bill Oldham. The Student Senate is nothing more than a bunch of reactionaries, frater-

nity men and prestige-conscious people with absolutely no concern for the students or interest in making this an academically free and effective University.

Oldham has done more to cause needed radical change than all of the other people in student government combined. This school needs more students like Oldham if student government is to become anything more than a handy tool for the administration.

James Miller

Oldham begins tradition

Editor:

Student government should be a representative institution, and we now have a student body president who has been attempting to make it so. In my 3½ years on campus, I have never seen such a sincere concern for student interests as under Bill Oldham's administration.

As stated in Wednesday's State Press editorial, no one is perfect and everything one attempts is not wholly acceptable to everyone. But on what basis can those bringing charges of irresponsibility make their case?

Oldham has begun a tradition which long ago should have been commenced, even if this means stepping on a few toes.

Carolyn Grisz

CAPTAIN FENWICK'S MAILBOX



"America was a pretty good country while she lasted," according to the Wabash Hobo.

The Hobo, also known as John L. Booth of Reno, Nevada, is a persecuted man who believes the country is being destroyed by "left wing ding professors" and assorted other evil characters.

His most recent letter to the State Press, though mailed from Reno, showed his return address as the Chamber of Commerce of Montgomery, Alabama.

As he sums up his life: "As a kid — from 1929 to 1939 — starved, beaten and bloodied on streets of American cities. 1941-45: in war, sailed to foreign field in defense of America. I despise Communists and federal bureaucrats. I always stood up for America as now. Don't go against my spirit. I warn all."

A 1934 snapshot of himself as the "Flop House Kid" in Chicago is shown nearby.

He also wrote a poem "to the editor, to Ann Landers and to all concerned for just peace in this crazy shaky world, now what ye folks gonna do about this?"

LOVE STORM

I spat in the air, kicked the old rockin' chair
Clenched me fist, pounded on and cracked the table.

I looked cross-eyed and daffed (?)
While she just stood there — laughed, laughed, laughed and laughed.

I cursed, bawled her out; neighbors knew this love storm about

All the neighbors heard me shout
They heard me shout: I'm the fool that loves you.

Truly so, Wabash Hobo
He added a P.S.: "So now what ya gonna do about that?"

We also received a poem from prison. William Bustamante, No. 26677 at Florence, sent us the following ode about inter-

racial love. It may not be terrific poetry and is somewhat earthy, but is a more worthwhile effort than crime.

BLACK AND BEWILDERED

The laws of the people said it was not right.

For you see, I am black, and she was white.
But I said to her, one summer day:
Let the people say what they may.

And being of women and a man,
We made love on the sand.

The sea and its mighty tide
Hushed her tears as she cried.

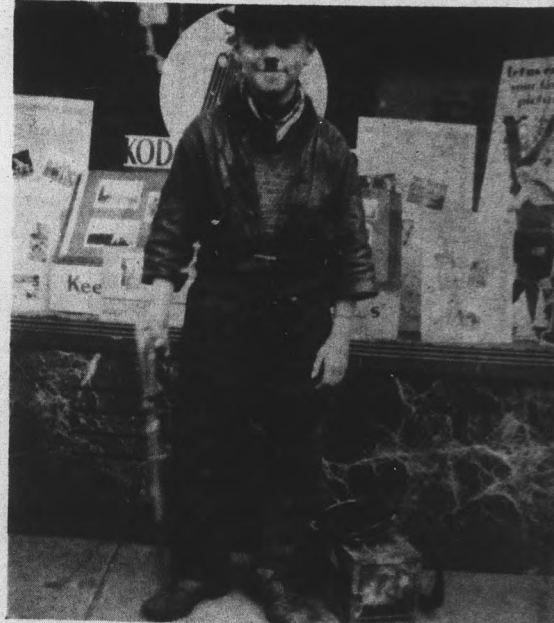
After we lied, warm and supine,
Kissing and laughing for a long, long time;

Waking up, I searched with my hand.
Empty . . . I could not understand.

Then I saw her walking, into the sea —
Walking away . . . away from me.

That day by the sand, she died.
For my color she could not hide.

Now is left on the sand
A black and bewildered man.



Editor David Anderson	Managing Editor Dave Gurzenski	Campus Editor Edythe Edgar
Weekend Editors Larry Ross Terry Ross	Copy Editors Elliott Perritt Myrna Sevey George Thorne	Asst. Campus Editor Jane Sims
Focus Editor Jerry Kemper	Asst. Sports Editor Carol Black	
Editorial Assistant Marcie Smith	Mechanical Compositor Tom McCrea	
Ad Manager Hal Hubele		
News Editor Athia Hardt	Sports Editor Bill Jackson	Photo Editor Tom Wheeler
		Faculty Adviser Prof. Robert E. Lance

Speaker studies British economy

Dr. John Cochran, professor of economics, who has just returned from several months of intensive study of the economic system in London, will present his speech, "A Critical Look At the British Economy in Early 1969," at 7:30 p.m. Thursday in SS 218.

Dr. Cochran will be sponsored by the Economics Club, an organization which discusses current social-political problems and issues.

Coeds will model Clairol hairstyles

Three University students, Sharon Davies, Jazelle Ghiz and Sue Neumeister, have been chosen to model for the Clairol Company's annual national convention now in Phoenix.

The three girls, all members of Alpha Delta Pi sorority, were selected by a panel of six of the top hair stylists in the nation to model during the convention shows over the weekend.

The Clairol Company, which makes hair products and cosmetics, is having its convention at Del Webb's Townehouse.

Cancellation told

The January meeting of the Congress of Organizations set for tomorrow has been cancelled.

Meeting plans will be announced in mailed releases from Associated Students when another date is set, explained ASASU President Bill Oldham.

Exam schedule

All Classes Regularly Scheduled on MWF or Daily at:

7:40 - 8:30	Wed.,	Jan. 22 at 10:00 - 11:50
8:40 - 9:30	Mon.,	Jan. 20 at 1:00 - 2:50
9:40 - 10:30	Mon.,	Jan. 20 at 7:40 - 9:30
10:40 - 11:30	Tues.,	Jan. 21 at 10:00 - 11:50
11:40 - 12:30	Mon.,	Jan. 20 at 10:00 - 11:50
12:40 - 1:30	Thurs.,	Jan. 23 at 10:00 - 11:50
1:40 - 2:30	Wed.,	Jan. 22 at 7:40 - 9:30
2:40 - 3:30	Tues.,	Jan. 21 at 7:40 - 9:30
3:40 - 4:30	Thurs.,	Jan. 23 at 3:40 - 5:30
4:40 - 5:30	Fri.,	Jan. 24 at 1:00 - 2:50

Examination is Scheduled on:

All Classes Regularly Scheduled on TTh or TThS at:

7:40 - 8:30	Fri.,	Jan. 24 at 7:40 - 9:30
7:40 - 8:55	Fri.,	Jan. 24 at 7:40 - 9:30
8:40 - 9:30	Wed.,	Jan. 22 at 3:40 - 5:30
9:15 - 10:30	Thurs.,	Jan. 23 at 7:40 - 9:30
9:40 - 10:30	Thurs.,	Jan. 23 at 7:40 - 9:30
10:40 - 11:30	Wed.,	Jan. 22 at 1:00 - 2:50
10:40 - 11:55	Wed.,	Jan. 22 at 1:00 - 2:50
11:40 - 12:30	Tues.,	Jan. 21 at 3:40 - 5:30
12:15 - 1:30	Tues.,	Jan. 21 at 1:00 - 2:50
12:40 - 1:30	Thurs.,	Jan. 21 at 1:00 - 2:50
1:40 - 2:30	Thurs.,	Jan. 23 at 1:00 - 2:50
1:40 - 2:55	Thurs.,	Jan. 23 at 1:00 - 2:50
2:40 - 3:30	Fri.,	Jan. 24 at 10:00 - 11:50
3:15 - 4:30	Mon.,	Jan. 20 at 3:40 - 5:30
3:40 - 4:30	Mon.,	Jan. 20 at 3:40 - 5:30
4:40 - 5:30	Fri.,	Jan. 24 at 3:40 - 5:30
4:40 - 5:55	Fri.,	Jan. 24 at 3:40 - 5:30

Examination is Scheduled on:

Examinations for classes that are scheduled with "Time Arranged" and for classes that meet at or after 5:30 p.m. will be at the time scheduled for the last regular meeting of the class during the examination period of Jan. 20-24, unless otherwise scheduled by the instructor during this final examination period.

If a conflict occurs or a student has more than three exams in one day, he should consult instructors regarding possible schedule adjustment, or if necessary the dean of the college concerned. No change should be made in this schedule, except those re-

(Continued on Page 13)

JOHN HORAN CLOTHIER



130 E. University
Tempe, Arizona 85282
966-1193

THE TRADITIONAL SHOP

5TH ANNUAL JANUARY CASH CLEARANCE SALE

STARTS WEDNESDAY AT 9:30 A.M.
BRING CASH OR VNB CARD AND ENJOY BIG SAVINGS THROUGHOUT THE STORE

SUITS

REGULAR \$38 UP STOCK

LONG SLEEVE KNITS (TURTLE NECKS INCLUDED)

1/3 OFF

SHOE GROUP

Sandals & Sneakers - 1/2 PRICE

ALL WASH SLAX 20% OFF

All Toiletries

2 for 1

SPORT COATS

2 for the price of 1
BRING A FRIEND TO BUY THE SECOND.

ALL TIES

BUY ONE - TAKE HOME TWO

WATCH

LONG SLEEVES - REGULARLY 7⁰⁰ - 12⁰⁰

BUY FIRST SHIRT AT REGULAR PRICE

BUY SECOND SHIRT FOR 5⁰⁰

BUY THIRD SHIRT FOR 3⁰⁰

BUY FOURTH SHIRT FOR 1⁰⁰

Find Friends Who Wear The Same Size!

JOHN HORAN

FINE NATURAL SHOULDER CLOTHIER

130 EAST UNIVERSITY • TEMPE, ARIZONA 85282 • (602) 966-1193

TEMPE

1121 E. Apache Blvd.

966-4622

LAFAYETTE
RADIO ELECTRONICS
WORLD'S FOREMOST SUPPLIER OF ELECTRONIC COMPONENTS

PHOENIX

3232 N. 3rd St.

279-2321

1969 Caprice Coupe



No clowns. No hoopla. No funny hats.

This is an event for the serious car buyer. The man who has X number of dollars to spend and is determined to get his money's worth and maybe more.

Come to a Chevrolet Showroom during our Value Showdown.

Ask the man to show you, on paper, how you can order most any

1969 Chevrolet with a big V8 and automatic transmission for less than you could last year.

Come in and spend some time. Dig, probe, ask questions, take notes. You owe it to yourself to be thorough. Go for a drive.

Get a free sample of Chevrolet's luxurious full-coil, cushioned ride. Shut the windows and see how fresh the interior stays, thanks to Astro

Ventilation. Feel the kick of the biggest standard V8 in our field.

Then go down the street or across town and see how we stack up against Those Other Cars.

We think you'll wind up with a Chevy.

More people do, you know.

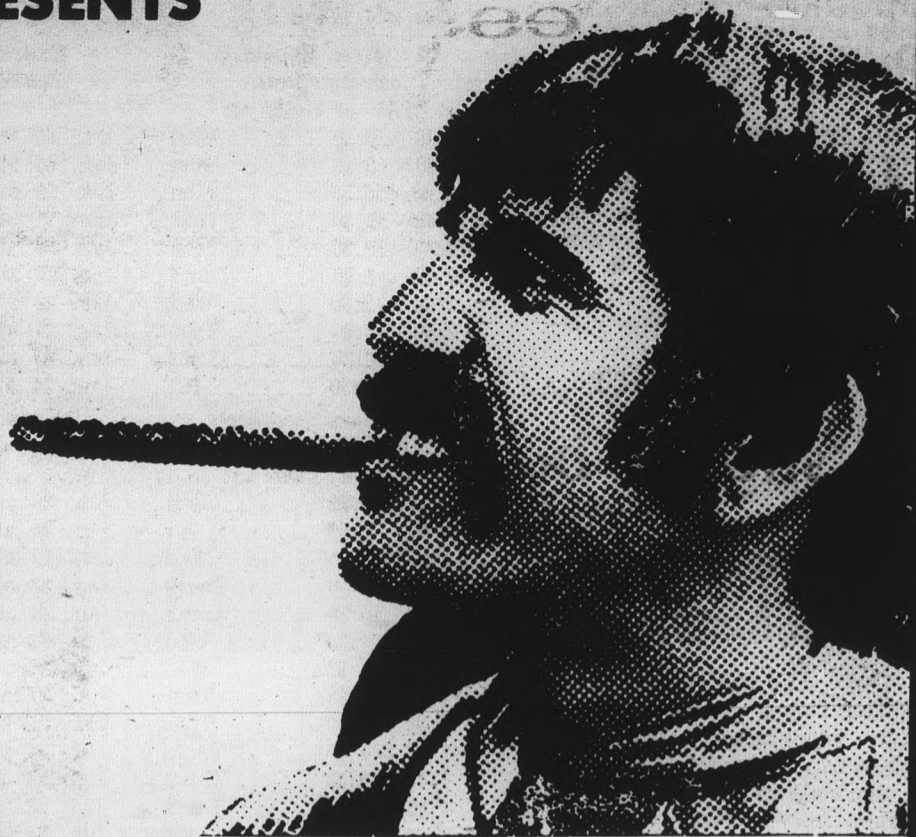
Putting you first, keeps us first.



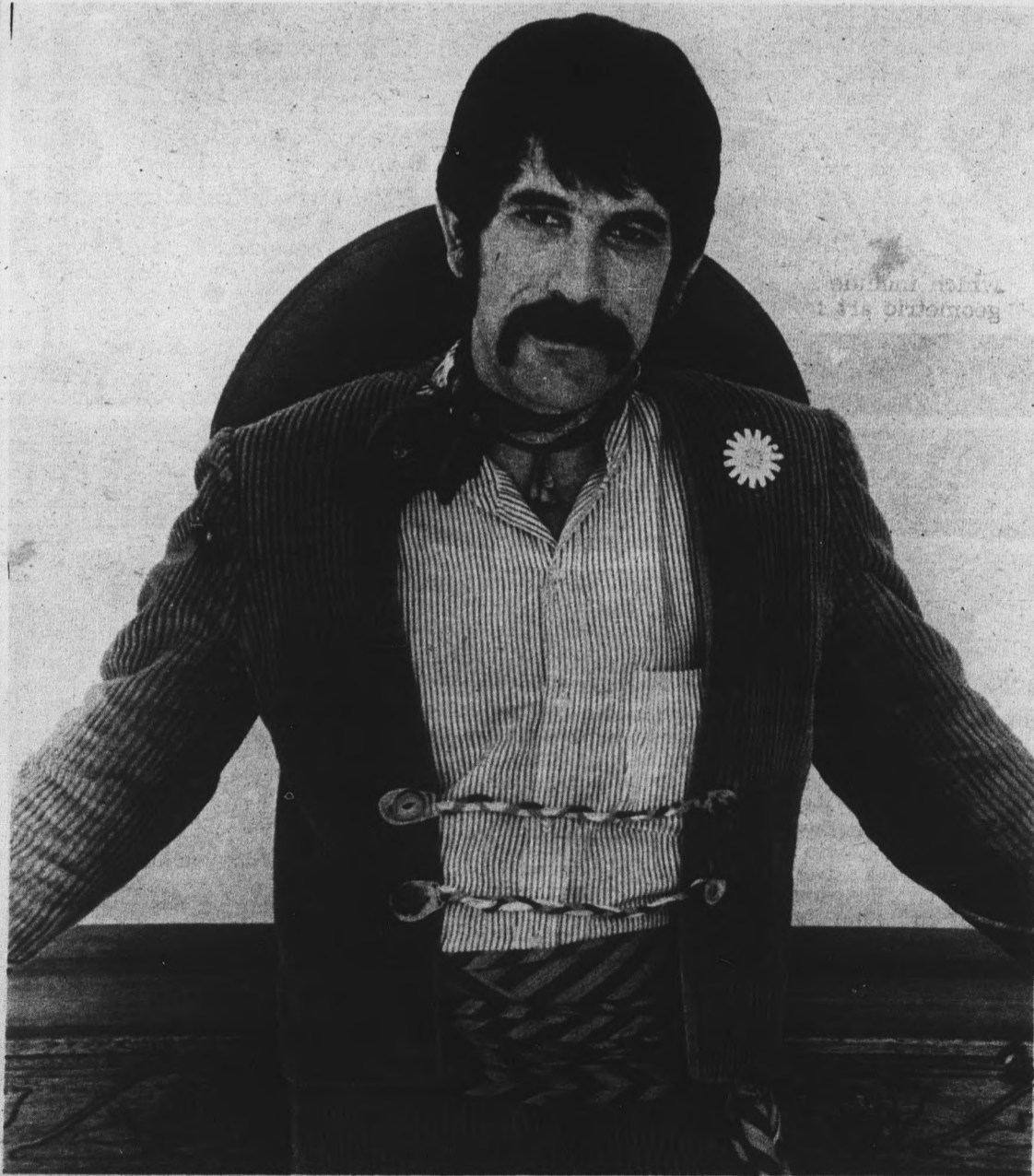
The Chevrolet Value Showdown is on.

ASASU SOCIAL BOARD PRESENTS

**BADA
MARIMBA
BAND**



**Thursday, January 30
8:30 PM
Gammage Auditorium**



Julius Wechter

**TICKETS WILL BE
AVAILABLE BEGINNING
JANUARY 13
at**

- Activity Center — South Mall
- Bills Records Shops
- Wallich's Music City
- Melody Records
- Community Box Offices

\$3.00



\$2.50



\$2.00

Exasperating -

Picasso art concepts shake, baffle world

editor's digest service

NEW YORK — A bizarre sculpture shakes the city of Chicago to its artistic foundations. A tender portrait of a child hangs side by side with a grotesque image of a woman with a misplaced nose. An anti-war mural galvanizes public opinion against Fascism. A series of revolutionary cubistic paintings — all lines, all angles — baffles a public accustomed to recognizing what they see.

Who are the artists responsible? "They" are one man — Pablo Picasso, perhaps the single most important artist of our century.

The one thing this native-born Spaniard never inspires is neutrality. People either love him or loathe him, swear by him or at him. Whatever feeling he arouses, his impact has been phenomenal both in the world of art and beyond, in the movies, advertising, fashion, literature and the theater. Never one to trod the beaten path, he was an innovator from the beginning.

At fourteen, Picasso, whose father was an art teacher, had already mastered the school of realistic painting and had started to explore new areas. During his entire professional career he was to jump constantly from one style to another — exasperating and defying critics, who vainly tried to "peg" his talents.

Picasso started off rather soberly in the "Blue Period," during which most of his paintings used that color predominantly. The subjects were very sad, very human, very poignant. By 1905 he shucked it off for a lighter, brighter "Pink Period" of circus figures; yet the harlequins were still thin, hollow-cheeked and resigned. The soft work, haunting and beautiful, gave way to the hard edges of the cubist revolution which Picasso helped lead along with his friend George Braque. Cubism probably was the first really new concept in art to develop since the Renaissance. The cubist reduced the world to elemental shapes, lines, cones, spheres, angles.

Thus, Picasso's work at this time was anti-figure, anti-human. Yet he did even more. He destroyed normal shapes and sequences as they were known. No wonder his portraits of wandering eyes and misplaced features caused such a furor of criticism. It just wasn't "natural."

When cubism no longer satisfied his artistic bent, he flirted again with more classical forms; the human figure crept back into his work — still strange but at least recognizable. What has made Picasso so invigorating and constantly interesting was that he salied back and forth all the time. He could paint pictures with feeling,

(Continued on page 8)



POOR CLOWN — Poignant, sad-faced clowns are one of the major themes of Pablo Picasso's work. In 1918, he painted this "Pierrot" using his favorite color, blue, for the background. This painting represents one of the many periods of the famous artist, which include the earliest experiments with cubism—translating human figures into geometric art forms.



AMERICAN JUMPERS — Scenes like this will be typical when the Ballet America comes to Gammage Thursday with "Big Country." It is part of the Celebrity Series.

Gammage to feature 'Big Country' ballet

Burch Mann's Ballet America, scheduled to appear Friday, will present "Big Country," dedicated to the men and women who helped build a new nation.

A Celebrity Series event, the program will be at 8:30 p.m. in Gammage auditorium. Tickets, priced at \$4, \$3, and \$2, are on sale at the box office.

Headed by choreographer Burch Mann, Ballet America has won recognition for its ability to recapture the spirit of a restless people in an unconquered land. "Big Country" has been described as a brilliant explosion of music and dance, as stimulating as an old fashioned Fourth of July picnic.

Miss Mann believes that European ballet, created in the baroque courts of kings, could never hope to express America's open society that spreads free as the tall grass over the plains.

"To try to tell the story of the plainsman, the backwoods-

man and the mountainman of pioneer America in the style of European ballet is as false and abortive as painting a portrait of Abraham Lincoln with lace as his wrists," she says. "Any art form telling the story of America must discard that which is excessive or artificial."

As a result, in trying to recapture the spirit of this land, she stresses the fact that art is not an elegant spectacle but rather the simple record of man's journey across the earth. In the case of Ballet America she believes the record involves the "men and women who journeyed across the land to hammer a nation out of a wilder-ness."

The first portion of the production is devoted to the western prairies and plains. The violence of "Storm" is followed by "Unfenced Land," dedicated to the wild horses that roamed

(Continued on page 10)

Picasso

(Continued from Page 7)

as well as those completely devoid of emotion. He could be bright; he could be somber. He could be totally amoral or he could fire the imagination with the moral tone of his work.

An example of this was his famous mural, "Guernica." Struck by the horrors of the Spanish Civil War, particularly a savage bombing raid by the Fascists on a small town, he unleashed a savage mural on the world that was charged with feeling and emotion. This painting with its vivid, wrenching images of death and destruction was so sharp and incisive a picture of agony that it aided in rallying many to the Loyalist cause. His work had struck at the conscience of the world.

Since that time, Picasso has ranged everywhere. His work has often been bizarre, full of strange distortions and many baffling nonrepresentational works. In numbers, the amount of work he has turned out has been staggering. Ever artistically restless, he has ventured into sculpture, prints, book illustrations, stage design and ceramics.

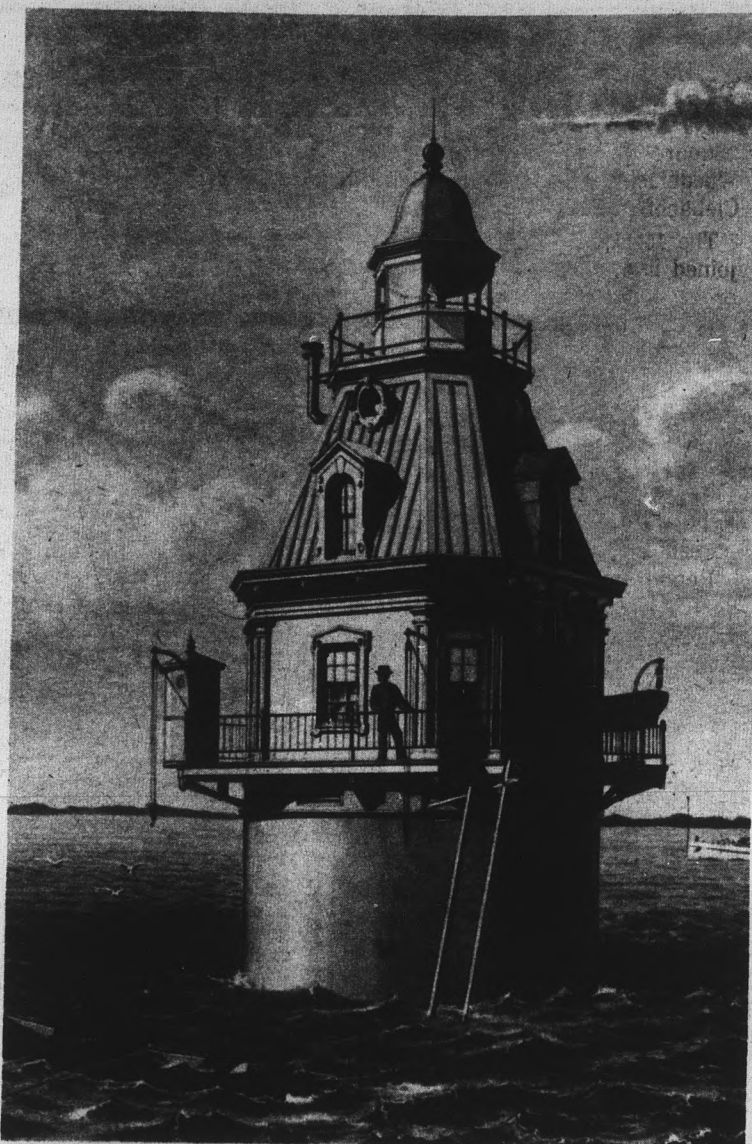
Picasso is a man of many faces, professionally as well as personally. And today, at 88, he is probably the most famous artist of our time.

Probably no other artist in history has so delighted in subterfuge. His love of disguise is legendary. Through his personal transformations into clown, gunman, torero, gorilla, owl and satyr, one can begin to sense the depth, richness and elusiveness of the man.

Throughout his long career, he has always been fascinated with the eyes, whether of the subject or the beholder. The character of a person, he feels, speaks most eloquently through the eye.

Picasso once said, "I do not develop or evolve. I am." His work is in fact a succession of different stances, but each one is the "real" Picasso. He pioneered new styles and new techniques, and restlessly surged forward to new frontiers when everyone said he had already reached the last outpost.

Whether people consider him overrated or underestimated, a hoax or a hero, he remains the most controversial and celebrated artist of his time, our time.



AHOY THERE — A watercolor rendering of the lighthouse at New Haven, Conn., is among those in a current Matthews Center art show being held through Jan. 26.

Drawings in art showing

An exhibition entitled "Bridges, Tunnels and Waterworks," featuring famous and lesser known structures, will be on display through Jan. 26 here.

Under the auspices of the Smithsonian Institution, the show includes 77 aquatints, mezzotints, etchings and lithographs which portray 18th and 19th century engineering works under construction or as they appeared in use.

The prints are grouped into nine categories: masonry arch bridges, wood and metal arch bridges, suspension bridges, masonry viaducts, wood and iron viaducts, girder bridges, the London and Birmingham railway, tunnels and hydraulic works.

Also included are portraits of such outstanding engineers as J. A. Roebling, R. Stephenson, T. Telford, J. Rennie, J. R. Peronet and M. I. Brunel.

The exhibit concentrates on British and American structures erected after 1800. Artists of the late 18th century and the 19th century celebrated the progress of technology in their paintings and prints which showed railroads, bridges and other engineering projects set in romantic landscapes.

An example of this is the interpretation of Roebling's Niagara railway suspension bridge, seen in a dramatic, classically done landscape of towering rock formations and wind-swept pine trees. The bridge carries a train over the torrent below, and the filigree of suspension wires projects against the sky, stressing the delicateness of the structure.


The exhibit will be on display at Matthews Center and may be viewed by the public 10 a.m. to 5 p.m. Monday through Saturdays, and 1 to 5 p.m. Sundays.

PLAY WEE-TEE
MINIATURE GOLF
 YOUR CHOICE — TWO 18-HOLE COURSES
 University Drive at Rural — Tempe
 Hours 1 P.M. to 11 P.M. Daily Phone 966-8027



NEED A GOOD GROUP TO LIVEN UP
 YOUR NEXT DANCE?
THE LEVITY COMPANY
 ROCK GROUPS LIGHT SHOWS
 Phone: 997-8304
 DON'T MISS THE FANTASTIC
 SWEETWATER SHOW — JANUARY 26

Need a 2 a.m. book break?



No matter how late you're up — we're up later! 2 a.m., 4 a.m., anytime you need a break from boning up . . . or want to cut out from calculus . . . swing by Dunkin' Donuts. We're close to campus. Open 24 hours a day, 7 days a week. We pledge to make our donuts fresh every 4 hours. (52 varieties from plain to fancy filled.) And we brew our coffee fresh every 18 minutes.

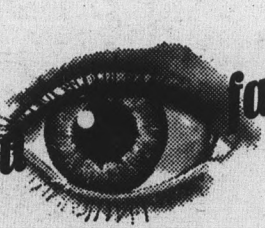
We pledge to make Dunkin' Donuts fresh every 4 hours

Would we break our promise to a kid?

DUNKIN' DONUTS


711 E. Broadway

are you **far-sighted?**



With CF&I, you can go as far as your talents take you. That's because CF&I has a planned management program geared for forward movement of promising people. The opportunity is there.

Set your sights high. We have positions for graduates in metallurgy, combustion, electrical, mechanical, civil, industrial, and chemical engineering, product design, mining, business administration and sales. For further information, write to Director—Industrial Relations, CF&I Steel Corporation, P.O. Box 1920, Denver, Colo. 80201



PINCHED FOR TIME?

— UNDERSTANDING COMES FASTER WITH CLIFF'S NOTES!


OVER 175 TITLES \$1 EACH

Cliff's Notes

HERE:

Hills Books and Records

TEMPE CENTER



Clebanoff orchestra to provide 'unique sounds' Strings to appear at Gammage

The Clebanoff Strings and Orchestra will perform at Gammage Auditorium at 8:30 p.m. next Saturday in a program featuring the unique sound which has won the instrumentalists fame throughout the country.

The two-part concert will include classic string music as an opener, followed by a "pops" program after the intermission.

For the performance, Herman Clebanoff, conductor, has selected "Sarabande, Giga e Badinerie" by the 17th century violinist-composer Arcangelo Corelli; "Concerto in G minor" by Vivaldi, featuring Clebanoff as violin soloist; Samuel Barber's "Adagio for Strings, Opus 11;" the Waltz from Tchaikowsky's "Serenade for Strings;" and

"Square Dance for Strings and Woodblock" composed in 1965 by Clebanoff.

The 15 string players will be joined in the second half of the program by an accordionist, pianist, harpist and percussionist for the "pops" portion of the concert.

Included will be Giovannini's "Stringorama;" selections from Broadway shows: "West Side Story" and "Funny Girl;" a group of "Songs of America;" "Cornish Rhapsody" by Bath; "Pepito" by Giovannini; "Golden Earrings" by Young; songs from such films as "Valley of the Dolls" and "Zorba the Greek;" "Ebbtide" by Maxwell, and a Clebanoff arrangement of "Hava Nagila."

When the group was originated in 1957 by Clebanoff, it was regarded as a daring experimental move on his part. Though popular for centuries in Europe, this type of chamber orchestra was virtually unknown in America.

In addition to concert, radio and television appearances, the Clebanoff Strings and Orchestra has made background scores for motion pictures, as well as hit record albums.

At 20 Clebanoff was the youngest member of the Chicago Symphony Orchestra. Later, he was concertmaster of both the Illinois Symphony Orchestra and the NBC Orchestra. He made his conducting debut with the New Orleans Symphony Orchestra.

Tickets for the program, priced at \$3, \$2 and \$1.50, are on sale at the Gammage box office, 961-3434.

Beckett drama readied

"Waiting for Godot," an enigmatic drama by Samuel Beckett, will be presented at the Lyceum Jan. 16 to 19.

The play will be staged at 7:30 p.m. Thursday and Sunday, and at 8:30 p.m. Friday and Saturday. Tickets, priced at \$1, may be obtained at the Lyceum box office.

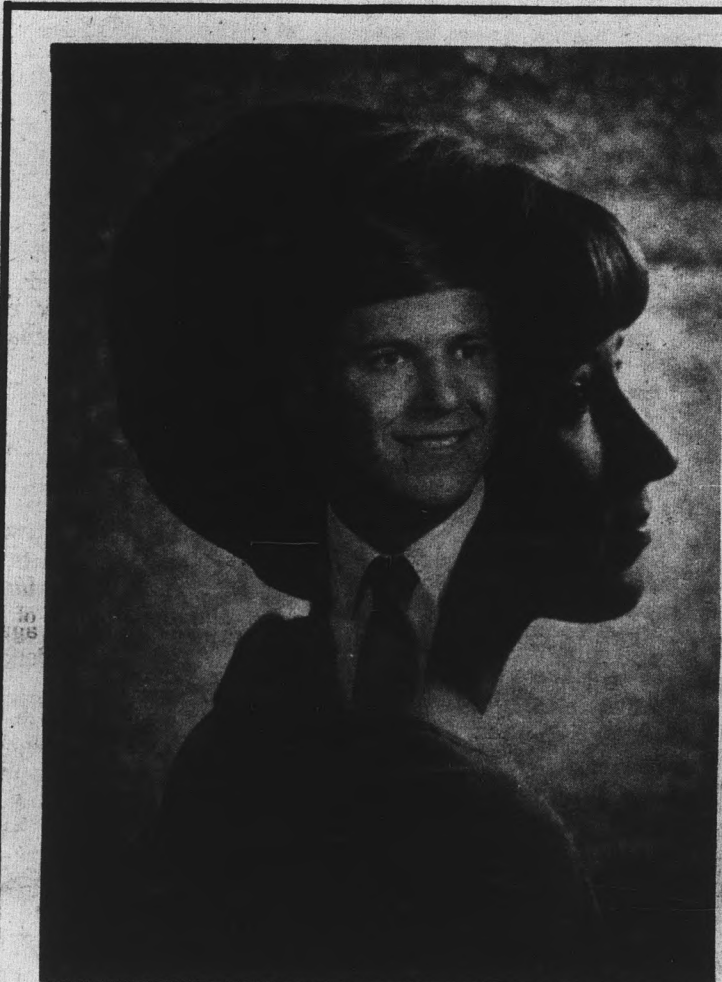
Cast members include Ralph Norton as Vladimir, Max Mills as Estragon, Mike Hood as Pozzo and Leo McCormick as Lucky.

Estragon and Vladimir, waiting disconsolately on a country road for a nebulous Godot, complain of life, toy with repentance, quarrel, make up and wonder what it is they expect of Godot when he comes.

Pozzo, a pompous taskmaster, struts down the road with Lucky, who has been reduced to near idiocy and slavery. Prodded to think, Lucky recites a frenzied jumble of theology and politics before stumbling off into the darkness with his master.

In the second act, Estragon and Vladimir pretend at slave and master, recite humorous poetry, argue over the past and the present.

Allegorical and symbolic, the play depends heavily on a strong sense of theater and comedy for its impact. The tragi-comedy opened in New York in 1956 after a successful run in Europe.



Does Your Heart Throb Know You Want His Portrait So?

One portrait is worth a thousand words, just imagine how many words ERIC'S VALENTINE IMAGE is worth. What better way is there to say you care than a portrait of you and your sweetheart finished in this excitingly different way.

THE GIFT ONLY YOU CAN GIVE ...
YOUR PORTRAIT ... BY ERIC

Call Today for an Appointment

Tell our receptionist you want a
"Valentine Image" Portrait

photography by

ERIC

966-8491

OR 966-5011

1020 S. MILL AVENUE • TEMPE

OFFER EXPIRES FEBRUARY 1

TRANSCENDENTAL MEDITATION

If you are interested in learning more about meditation as taught by the

**MAHARISHI
MAHESH YOGI**

come to a lecture being given January 21st at the Women's Club of Phoenix, 302 W. Earll Drive at 8 P.M. Adults \$1.00 —Students \$.50. Or call the I.T.M.S. Center, 2543 E. Thomas Road, Phoenix. Phone 956-0530.

COUNT BASIE

"The Most Explosive Force in Jazz"

Thursday, January 16

9:00 P.M. to 1:00 A.M.

BIG SHOW AND DANCE

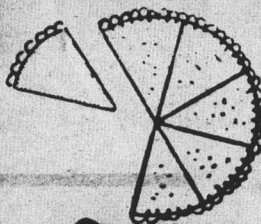
Admission \$3.00 at Door

Riverside Ballroom

1975 S. Central, Phoenix

PIZZA HUT

Where "Quality Reigns Supreme"



OPEN 7 DAYS
11:30 A.M.

**A FULL
PIZZA MENU**

DINE IN - OR CARRY OUT!

"Try Our Atmosphere and
Good Cheer for Size"

GLENDALE

4322 W. GLENDALE RD.

934-4171

PHOENIX

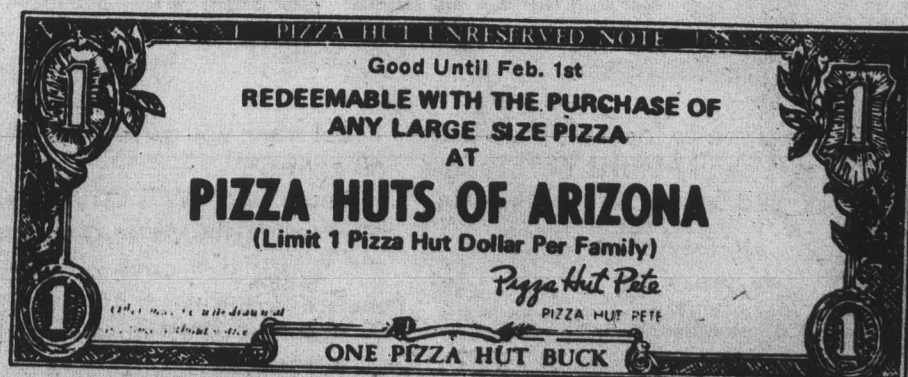
5703 N. 7th ST.

279-2028

TEMPE

946-7078

1420 N. SCOTTSDALE RD.



Hamburgers or Sicilian swordfish?

by sebastian

After hamburgers, what? The answer comes from, of all places, Berkeley.

After much study of Berkeley students' dietary habits, Ruth Horowitz and Gertrude Khuner wrote "The College Cookbook."

Their objective was to enable the student to enjoy home cooking with a minimum of time and expense. They supply model shopping lists, menus and a modest list of necessary cooking utensils.

Cooking cues abound, and the authors explain grades of meat, cooking terms and money saving tips.

While some of their hints are ingenious — "to refresh bread and rolls, dampen slightly, place in brown paper bag and warm in the oven" — others are so elementary they are ludicrous — "save wire ties and plastic bags for reuse."

Once the student is ready

for her first encounter with the skillet, the authors offer a myriad of economical tasty dishes.

Beginning with hamburger, they build up to Hungarian goulash, chicken chow mein and the ultimate delicacy, Sicilian swordfish.

Each main dish comes with suggested side dishes. Since their emphasis is on "homey cooking" the authors urge students to cook from scratch items which are normally bought, such as soup, dressings and frozen vegetables.

They offer several simple recipes for these dishes, but if one insists on using the canned varieties, the unrelenting authors suggest ways of livening up canned foods with various spices and garnishes.

According to the authors, every meal should have a finale. The simple dessert section of the book should not be ignored. Desserts are important not only for their innate value, but because

"along with candlelight and wine, desserts enhance the romantic climate of the evening," say the authors.

If the evening is going to be relaxed and romantic, the authors suggest pre-planning and pre-cooking. In fact, they strongly suggest their personal method of weekly menu planning.

Perhaps only a female mind could have originated their supposedly time saving weekly menu method, and only two female minds could carry it out.

They advocate an hour or so of planning out a week's menu, shopping up a storm and then preparing the entire week's meals in one fantastic cooking orgy.

It is doubtful whether the average apartment-sized freezer could store 7 meals for two.

But despite this one flaw of feminine logic, "The College Cookbook" authors offer supper security for the willing student.

Teachers choose students to complete questionnaire

A large number of pre-selected University students are being sought by Dr. John Hudson and Dr. Leonard Gordon of the sociology department to participate in an attitude survey.

It is requested that anyone whose name appears on the following list go to the sociology office, SS 107, any time today or Monday. There the participants will be given a short questionnaire to fill out.

John P. Aylward, Paul L. Bendlin, Thomas A. Berry, Walter J. Blasko, Robert L. Bogdanoff, William A. Bowser, W. R. Brouillette, Norman H. Burbine, Patricia G. Carr, Raymond D. Caruso, John C. Churchill, James C. Civileto, Joseph V. Colarusso, Jeffrey D. Cole, Elizabeth A. Cook, Mary J. Davis, Thomas A. Demico, Joseph D. D'Aprimo, Christine E. Doerins, Joel T. Dowling, Roger R. Dughilly, Timothy Duprey, Frank J. Dymnicki, Susan L. Feva, Ila G. Felbus, Aldo Ferrera, Nora E. Forbes, Bruce A. Fraser, Paul Garabedian, Jr., Gene M. Gault, Anne M. George, Dennis D. Goodman, James A. Gordon, Mattias M. Gould, Leonard C. Guarnera, Robert T. Guarnera, Pamela B. Guerbe, David J. Hainge, William O. Hanley, Curline L. Harper, Janis L. Harrell, Susan M. Hayes, Ernest P. Henes, Paul E. Hickman, Marc K. Hoffman, William E. Holland, Jane C. Jackson, Mark Jeziorski, Michael J. Kaddaras, Barbara A. Kascsak, Lawrence E. Kelley, Letitia P. Kitchel, Stephen T. Klock, Ivan P. Lay, Paul D. Lefebure, Gretchen W. Lofthrop, Eric C. Lundberg, Everett D. Lyons, Peter J. McCann, James D. McCarthy, John J. Mable, Lloyd W. Mann, Richard A. Maranhas, Karl F. Marazita, Charles M. Marich,

Carol L. Mattson, Gary L. Maxson, Ginger L. Merry, Rene E. Moquin, Robert E. Munz, Barbara A. Murray, Donald S. Patton, Albert W. Perreault, Raymond J. Perreault, William D. Pierce, Vincent B. Pizziconi, Ronald H. Rash, Roger Reekie, Ralston B. Regan, William S. Richards, Eleda B. Roberts, Lucy V. Ronning, Alva L. Royal, Selma S. Schweiger, Charlotte S. Sears, Michael T. Skarnulis, Myra A. Sorgen, Grey S. Staples, Mary G. Taylor, Raymond K. Taylor, Thomas J. Tierney, Richard G. Torrone, Ronald M. Tosti, Vivian A. Vidoll, Robert J. Vitkus, Madelyn S. Walker, Richard H. Wall, John M. Warren, Randall J. Webber, Louis A. Wefers, Jr., Cynthia E. Whitfield, Peter R. Williams, James W. Winslow, Masaaki Yokota, Mary L. Young.

Ballet

(Continued from page 7)

across the plains; "Night on the Prairie;" "Out of Scotia" and "Streets of Laredo," the story of a lonesome young cowboy, in dance poem form.

Following an intermission, the large company of young dancers, singers and musicians will join in "Hill Country," set in the Smokey hills of America where a unique personality — that of the mountain folk or hillbillies — developed.

The concluding section, entitled "Deep Delta," is a tribute to the pioneers of jazz who could work at hard labor for 14 hours and then play half the night for a glass of beer and a catfish sandwich, down New Orleans way and along the Mississippi.



©VOLKSWAGEN PACIFIC, INC. 1968

Squeeze play.

If you're a sports fan, you know that the contest really starts before the Star-Spangled Banner. Out in the parking lot.

But when you drive a Volkswagen, it's no contest.

Because a VW is very easy to park — even when the other guys are offside.

PHOENIX
Mark Imports
2020 E. Indian School Rd.

GLENDALE
Bob Grant Motors
4434 W. Glendale Avenue

MESA
Patterson Motors, Inc.
1127 West Main Street

PHOENIX
Morgensen Motors
1402 N. Central Avenue



Self-Hypnosis

Increase learning
and
Create abilities
Lose weight, calm
nerves, Stop Smoking
and Cure Insomnia

Call

274-0698

B & M

Typewriter
Service

RENTALS SALES

966-5031



3300 S. MILL AVE.

In Danelle Plaza

Behind the Fireside

Plenty of Free Parking

jan. 25
saturday
8:00 p.m.

an evening with

trini lopez

arizona veterans memorial coliseum

plus
the comedy duo of
skiles and
henderson

commemorating
junior achievement's
golden anniversary



seats may be reserved at any community box office.

the coliseum or junior achievement of metropolitan of phoenix, inc. \$2 - \$3 - \$4 - \$5 - \$8



PEOPLE WHO LIKE PEOPLE — Gary Krawford and Gloria Bleezarde practice togetherness in Woody Allen's "Don't Drink the Water," currently at the Palace West.

'Water' runs out Sunday at Phoenix Palace West

Woody Allen's Broadway comedy, "Don't Drink the Water," will finish a one week run at Palace West in Phoenix Sunday.

It is a story about what happens to a "typical" American family (the mother is a professional mah-jong hustler) detained in a behind-the-iron-curtain country on a charge of espionage.

The comedy takes potshots at the Foreign Service, embassy life, international espionage, re-

ligion and the American tourist.

The road show features Hans Conried and Vivian Blaine in the leading roles.

All evening performances are at 8:30 with the exception of Sunday when curtain is 7:30. There are 2:30 Wednesday and Saturday matinees and a special Sunday matinee at 2 p.m.

Student discount tickets are available through Joe O'Brien at South Hall. The tickets may be purchased for \$2.25.


California trio to present show

The California Trio will be presented in a program of chamber music Jan. 19 at 8:30 p.m. in Matthews Center.

Second in the Chamber Music Evening series for 1968-69, the program will include Beethoven's "Trio in G Major, Op. 1 No. 2," Brahms' "Trio in C Major, Op. 87," and Dvorak's "Dumky Trio, Op. 90."

For those who do not have season tickets for the chamber music series, individual tickets for this program, priced at \$2, are on sale at the Gammage box office.

SOUTHWESTERN PREPARATORY SCHOOL FOR MEDICAL ASSISTANTS



Complete training for a position in a physician's office. Five and one-half month course.

Owned and operated by the Maricopa County Medical Society. Physicians and R.N.'s on the teaching staff.

Free Placement — Tuition May Be Financed

Classes Begin January and March

ACADEMY OF MEDICINE • 2025 N. Central • Phoenix • Phone 252-9201

American Youth: Its Outlook Is Changing the World

The subject of this month's issue of Fortune magazine

Much has been said, and much has been published, about today's "alienated" youth and society. But to some extent, two important questions remain unanswered: Is this, indeed, a special kind of younger generation? If so, what will be its impact on U.S. life over the next decade?

To find the answers to these questions, Fortune has devoted most of its January issue to *Youth and Its View of America*. Here, in a single issue of Fortune, is perhaps the most thorough and searching analysis of the topic ever presented by a magazine. Some of the areas on which this special study focuses:

- Why student activists demand reforms
- The revolution on the square campus
- Youth and the pop culture cult
- Parents of the Forties
- What blue-collar youth thinks
- A new style of campus living
- How youth is reforming business

Don't miss this special, single-subject January issue of Fortune. It's on sale now!

FORTUNE

Why does a perfect size 7 look perfect only 21 days every month?

It has nothing to do with calories. It's a special female weight gain... caused by temporary water-weight build-up. Oh, you know... that uncomfortable full feeling that sneaks up on you the week before your menstrual period. This fluid retention not only plays havoc with your looks but how you feel as well. (It puts pressure on delicate nerves and tissues, which can lead to pre-menstrual cramps and headaches, leaves emotions on edge.)

That's why so many women take PAMPRIN®. It gently relieves water-weight gain to help prevent pre-menstrual puffiness, tension, and pressure-caused cramps. PAMPRIN makes sure a perfect size 7 never looks less than perfect. Nor feels less than perfect, either.



PAMPRIN products for a woman's world

Record Review

Stones extend invitation with 'Beggars Banquet'

by Larry Nelson

The original bad boys of contemporary rock, the Rolling Stones, have issued a new album which is sure to solidify their spot in the higher echelon of modern social commentators.

Entitled "Beggars Banquet," the album's cover is in the form of an invitation to a formal dinner, complete with formal print and R.S.V.P.

If the listener accepts the invitation, he is in for a rare treat because one of the Stones' sources of material this time is none other than the Bible.

By far the strongest cut on the album is the first song, "Sympathy for the Devil," which begins by bemoaning the death of Christ and follows with the statement, "I shouted out, 'Who killed the Kennedys?' when after all, it was you and me."

The song as a whole comes across as a vicious slam at the powerful and affluent, citing various events in history when that group has caused sorrow and destruction.

Taken directly from the Bible, which is a surprise coming from Mick Jagger, is "Prodigal Son," which is merely the Biblical story put to music.

While Jagger knifes the rich in "Sympathy for the Devil," he pays tribute to the hard-working lower class in "Salt of the Earth."

Two other comments on the gritty portion of life are included, neither of which would give the Stones any added esteem in society's high circles.

First of these is "Street Fighting Man," a number which was misunderstood when released as a single. It is a complaint against a society which produces conditions which make street fighting an everyday occurrence.

The second is "Stray Cat Blues," a realistic blues song about a not-too-respectable love affair, the female partner being a 15-year-old girl.

Not to be ignored in catching hell from Mick Jagger's pen is that old American standby, country and western music.

The lyrics of "Dear Doctor" bring back memories of Homer and Jethro, both in vocal quality and content.

However, it is on this cut that the Stones prove they are top-notch musicians as lead guitarist Bill Wyman catches the flavor of western music perfectly, showing he is not limited to the driving hard-rock style of pickin', which he also does better than most.

The album is not a total success, however, as two of the cuts are nearly worthless.

While "Beggars Banquet" does not achieve greatness (few albums do — the Stones' own "Flowers" and the Beatles' "Sergeant Pepper" are two that did), it says some things which should be aired, and Mick Jagger shouts them in a most convincing manner.

Franck symphony to be highlighted

The Phoenix Symphony will present the fourth in its series of concerts Sunday, Monday and Tuesday — and it will feature a uniquely chosen highlight.

Cesar Franck's Symphony in D minor will be featured as a result of a poll taken of December audiences by Guy Taylor, symphony conductor.

Opening the three identical concerts will be Handel's Overture to "Theodora." Following intermission, the orchestra will perform Paul Creston's "Corin-

thians: XIII, Op. 82," premiered here as a Phoenix Symphony commission in March, 1964. Three colorful dances from "The Three-Cornered Hat" by Manuel de Falla will close the program.

Seats are available at the symphony office, 264-4754, for the 3 p.m. Sunday and 8:30 p.m. Monday concerts at Gammage Auditorium, and the 8:30 p.m. performance Tuesday in Phoenix Union Auditorium. Tickets are also on sale at the Community Box Office, 277-6205.

Students may purchase seats for \$1.50 by showing proper ID cards at the door.

STATE PRESS

Weekend

Editors

TERRY ROSS
LARRY ROSS

Staff Writers: Sebastian Marcla Simons
WEEKEND is published every Friday as a supplement to the daily State Press.



Only LEE Optical gives you a spare pair of lenses FREE!

FOR YOUR SAFETY

- LEE gives you an extra pair of clear single-vision lenses FREE with your first complete pair of glasses.
- Also at LEE, buy contact lenses for as low as \$95 and get a clear spare pair FREE.
- For children under 12, no extra cost for heat-treated safety lens glasses. Plus, your child receives an extra set of clear safety lenses FREE.

QUALITY all LEE glasses are precision ground from perfect American-made lenses

STYLE over 500 modern frame styles and colors

SERVICE satisfaction guaranteed

CREDIT liberal credit terms or use your VNB credit card

Single-vision glasses as low as

\$13⁸⁵

10 CONVENIENT EYEWEAR CENTERS

TEMPE • 805 Mill Avenue, Tempe Center

PHOENIX 16 W. Adams St.	PARK CENTRAL 3100 N. Central	CHRIS-TOWN 19th Ave. and Bethany Home Rd.	THOMAS MALL 4527 E. Thomas Rd.
SCOTTSDALE 719 N. Old Scottsdale Rd.	MESA 129 West Main	TUCSON El Con Center, Amphi Plaza	YUMA 2816 4th Ave.

Where it's always SAFE to save money on glasses and contact lenses.



1/3 OFF Clearance

★ Dresses

★ Sweaters

★ Pant Suits

★ Skirts

★ Famous Maker Wool Knits

CELIA'S fashions

TEMPE CENTER



In the Heart of Sun Devil Country

Sikorsky Aircraft

REPRESENTATIVES WILL BE ON CAMPUS TO GIVE SENIORS AND GRADUATES COMPLETE DETAILS ON

ENGINEERING OPPORTUNITIES

WITH THE PIONEER AND LEADING MANUFACTURER OF VTOL AIRCRAFT

See your College Placement Office now for an appointment on:

MONDAY, FEBRUARY 3

SIKORSKY AIRCRAFT, Stratford, Conn. • Division of United Aircraft Corp. • An Equal Opportunity Employer

Cadet control in Army ROTC

For the first time at ASU, the students are running many of the activities of the Army ROTC department. This year cadets are responsible for all activities except those in the classroom. Regular Army instructors are present only to advise cadets on their actions.

Those who have been given the responsibility for these ROTC activities are the cadet Brigade Commander and his assistants. The commander, William Wheeler, is in charge of the entire unit.

The brigade staff is made up of four divisions of cadets with various duties. The divisions consist of personnel, publicity, operations, and supply.

This year the cadets can truly say, "Students are running the show."

Fraternities begin rush, set rushee goal

Fraternity rush for spring semester begins today with the distribution of 2,000 issues of

Silver Wing plans event

Silver Wing, basic Air Force ROTC fraternity, will have a Dining-In ceremony today at Williams Air Force Base.

The Dining-In will be the final step for cadet pledges to become active members in Silver Wing.

Maj. Clarence Lee, assistant professor of aerospace studies, said the speaker for the event will be Marine aviator Maj. David L. Althoff.

Lee said that Althoff is the most highly decorated Marine aviator of the Vietnam war.

the Greek Times, the Interfraternity Council newsletter.

The newsletter, which will include rush registration cards, may also be picked up at the desk of MU West.

Tables will be set up on the Mall next week as IFC will try to maintain the acceptance with which last semester's rush was met by the campus community.

Representatives of each house will meet with IFC officers for a rush clinic Monday. Rush letters will also be distributed at the 3 p.m. meeting in NBA 137.

Actual rush week will begin Feb. 15 with open houses and will last until the following Friday, Feb. 21. Informal pledging will begin the next day.

This semester's goal set by IFC is 250 rushees, which would

be an increase of 100 men over last spring. Last semester's rush involved about 600 men, a rush record. Academic qualifications for rushees have been set by IFC at 2.5 for freshmen, who must have the high school

equivalent or have graduated in the upper one-half of their class. Incoming students from other colleges and rushees having completed at least one semester here must have a 2.00 to be eligible.

Exam schedule

(Continued from page 5)

quired in individual cases, without the approval of the dean of the college concerned.

A final examination schedule revision has been announced by Karl Dannenfeldt, academic vice president.

Exams for all sections of MA 116 and MA 118 are scheduled for Saturday, Jan. 18 8-9:50 a.m.

Exams for all sections of MA 117 are scheduled for Saturday, Jan. 18 10:10 a.m.-noon.

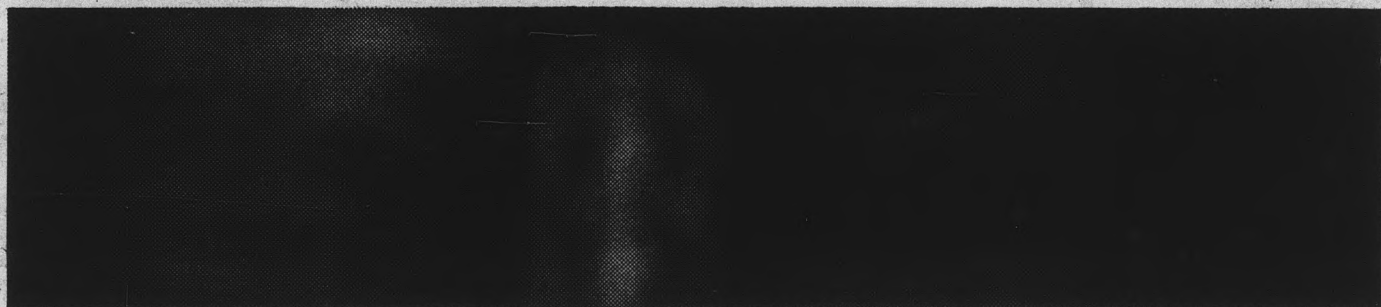
Room numbers for the exams are posted in the Math wing.

Exams for classes that are scheduled with "time arranged" and for classes that meet at or after 5:30 p.m. will be at their regular scheduled meeting times.

Newsmaker

An ASU engineering professor has been invited to speak at the 48th annual meeting of the Highway Research Board of the National Research Council in Washington, D.C., Jan. 13-17.

Dr. Mathew J. Betz, professor of civil engineering, will present a technical report on applying statistical techniques to highway maintenance cost calculations. An internationally recognized expert on transportation engineering, Dr. Betz will speak before researchers, administrators and engineers from all over the world.



I've got my interview set between computer lab and econ hurry up bus I'll be late for class wonder if Alcoa's doing anything about traffic jams

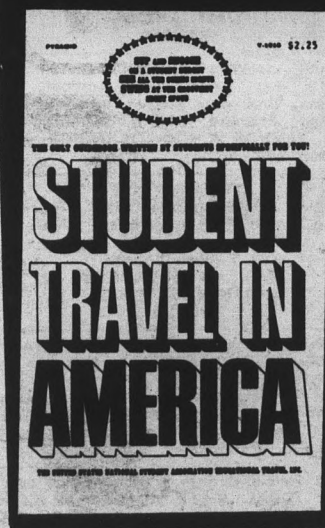
I read somewhere they're solving rapid transit problems and helping explore the seas and outer space and working with packaging and automotive applications So when I go in I'll tell it like it is—for me and they'll tell it like it is—for them

Straight questions—straight answers and they won't care if the bus is a little late Get together with Alcoa:

February 11

An Equal Opportunity Employer
A Plans for Progress Company

LIKE IT IS—



WHERE IT'S AT!



Discover the discounts in USA, Mexico, Hawaii, Canada & the Caribbean.

A Pyramid Book, only \$2.25 at your campus bookstore or wherever paperbacks are sold.

Change for the better with Alcoa

ALCOA



Devils, 'Cats to open WAC play

By LARRY NELSON

There could be no better way to open conference play than to meet an arch-rival, which is exactly what the schedule holds for Arizona State.

The Sun Devil basketball team opens its Western Athletic Conference season against the UofA Wildcats on ASU's home court Saturday night.

And Ned Wulk's crew is going to have their hands full — Bruce Larson's 'Cats come into town riding a five-game winning streak, including a 75-66 triumph over Seattle, a team that whipped Arizona State, 86-81.

On the other hand, the Devils are currently sporting a 4-8 record and are in the throes of a four-game losing streak — but you can toss out all the records and start from scratch when these two schools tangle.

A pair of ex-Phoenix College cagers are liable to give the Devils the most headaches Saturday night. Sophomore forward William Warner has been the Wildcats' top scorer and in the 'Cats' last game, reserve guard Walter McKinney came off the bench to score 20 points.

The Devils will also encounter a 6-10 center, Eddie Myers, and a guard, Mickey Foster, who can look like Jerry West when he has a hot hand.

To counteract the big guns of the UofA, Ned Wulk has some potent ammunition of his own — if he can get them all to produce at the same time.

Flashy guard Seabern Hill leads the team in scoring with

a 19.2 average. He was above 20 per game before turning cold in the last two games.

The brightest spots in the line-up recently have been the two forward posts held by Ron Johnson and Gerhard Schreur.

Johnson has put on a spurt that started in the Far West Classic in Portland, Ore., which has boosted his scoring average to 12.5, second on the team. His board work has also been commendable. He pulled down 18 caroms against New Mexico State Monday night.

After a miserably slow start this year, Schreur has come on to be the team's leading rebounder and third leading scorer, averaging 7.7 rebounds and 9.5 points.

Now all Wulk has to do is find two other players who can hold their ground with these three and he just might come up with a winning combination.

If the Devils fail to find that combination Saturday night, they will get four more chances on their home court before the beginning of second semester.

Utah State, with exciting Marvin Roberts (28 points per game, 13.5 rebounds), invades Sun Devil territory Jan. 18, followed by the Utah Redskins Jan. 23, Brigham Young Jan. 25 and Loyola of Los Angeles Feb. 1.

The Utah and BYU games are both WAC contests.

It does not appear that matters will be any easier after

the UofA game, as one of Utah's victories was an 80-72 win over Southern California, a team that demolished the Devils, 92-75.

BYU has four inside men who

tower over 6-7, most notable being 6-8 Karl Liimo.

Wulk hopes his team does not wait until the last few weeks of the season to get untracked this year.

When in need of Tow Service, request
TEMPE BODY SHOP
11 E. 4th St. Day Ph. 967-1601
24 HOUR TOW SERVICE
● Auto Body & Fender Repairing
● Auto Painting
● Wheel Aligning & Balancing

Classified

For classified advertising submit ad in person to the State Press, Old BA 302, two days in advance of publication, from 8:00 a.m. to 3:30 p.m., call 961-3657. Rate: 5c per word, 75c minimum.

● FOR SALE

MUST SELL: Del Rav two pickup electric guitar with volume and tone control. Only two months of use. Original price \$90.00. MUST SACRIFICE FOR \$20. Phone 961-4933 and ask for Wes.

G. E. washing machine and dryer. Excellent condition. \$195 964-6664.

SKI SWEATER—SWIM SUIT SALE. Imported salesman's samples at cost. Men's & Women's ski sweaters. Women's one piece, hip huggers, bikinis. 948-6186

BEAUTIFUL 4-bedroom home with adobe patio, 1 mile south of campus 1 year old. 967-5647

LOSE WEIGHT safely with Dex-A-Diet Tablets. ONLY 98c at Campus Drug.

Like-new cycle helmet with clear bubble. 967-8232.

● HELP WANTED

GIRLS 18-30: singers, pianists, instrumentalists, dancers. Interested in USO European tour. Contact Sara Winter 946-1516, if no answer 946-8220.

STUDENTS PART-TIME \$700 MONTHLY
Guarantee if you meet our requirements
*Evening work, no canvassing
*Dignified work appointments only
*Excellent career potential after college
No experience necessary — we train at our expense.
For interview — 966-5734 or 956-6680

OPENINGS — 6 men \$64.50 per week — car required. Call between 6-8 p.m. 967-5070.

● AUTOMOBILES

\$25 cash rest financed - buys sexy 1963 GRAND PRIX, 4-speed, air, radio and heater. 959-6274 after 5 p.m.

1962 Sorite. Good condition — best offer. 944-3076.

'65 Corvette roadster, completely stock. Disc brakes, new tires, positrack, 350hp 327 & 4-speed. Best offer, 966-0690.

● MOTORCYCLES

1967 Yamaha 100 c.c., red & chrome. \$225. Excellent condition 964-6664.

1966 Buellco 200 c.c.'s. Excellent condition — must sell. Call 966-8746.

1966 Honda 150. Excellent condition. Just tuned up. Call 961-4774 or 945-5803.

● TYPING

TYPING 946-4105
FORMER executive secretary desires typing. IBM. 967-3546.

EXPERIENCED with research papers, theses, manuscripts. Minor editing free. Fast, accurate. IBM electric. Ethel Helfernan, 959-5838.

8 YEARS ASU experience, English graduate, 967-3129.

TYPING: IBM's. MAXINE MULLEN, 265-3265 or 955-0763.

TYPING 946-1149.

TYPING — 967-3036.

FAST, Accurate, Guaranteed. IBM Elite. Sue Johnson, 211 East 14th St., 966-7848.

TYPING. 946-8965.

PROFESSIONAL TYPING: Fast, reasonable, accurate. 967-4517.

● LOST

solid state stereo amplifier. Lost in the instrument room of the ASU Symphonic Band. A \$20 reward is offered for information leading to the return of the amplifier to its owner. Phone 961-4933 and ask for wes.

● WANTED

GREZELDA: I hear there is a black-light at the Ear.
MAX: No! It's a dark-white light.

WANT Jeep towed or driven to San Antonio or El Paso area. See John Fish at 615 Apache, Apt. 18A or call Braubach Equipment, 512-736-1659.

Female housemate over 21. Private bedroom in 3-bedroom house, kitchen privileges. Call Lora Lee, 945-6467.

TWO female roommates to share 2-bedroom apartment. Ball Lanai. 966-5197 after 5 p.m.

LOOKING for a roommate. College girl looking for an apartment to share. Call Brenda at 943-7488 after 6:30 p.m.

● SERVICES

JOB INTERVIEWS need an airline ticket? Students going on job interviews may arrange to pay for tickets when reimbursed by company. THE TRAVEL MART. Call 967-3366.

MANZANITA SNACK BAR—open now!
Hours: Coffee & Donuts 8:45-10:00 a.m.
Monday thru Friday 2:00-3:00 p.m.
Monday thru Friday 2:00-3:30 p.m.
Sunday & Thursday 7-10 p.m.

Gavle E. Williams
Registered Electrologist
Permanent Hair Removal
1663 W. University Dr.
Mesa, Arizona
969-6954

DANCE INSTRUCTION: Ages 3 thru Adults. Tap, Ballet, Jazz, Acrobats, Exercises, Ballroom. Studios in Mesa and Tempe. Phones: 964-6956, 945-6782, 966-1902. GAYNOR SCHOOL OF DANCE. Free Lesson with ad.

TRIM PEOPLE
FEEL CONFIDENT
Tempe Physical Fitness Club
Passive & resistive exercise
Finnish Sauna
MILL & SOUTHERN
DANIELLE PLAZA
966-8751

Wash & Wear Hair Cuts. FERRARA HAIR FASHIONS. Mill & Southern — Danielle Plaza.

LOSE WEIGHT, increase learning ability, calm nerves and stop smoking with hypnosis. 274-0698.

WAS your last date a Ding-a-Ling? Meet your IDEAL MATE matched by COMPUTER! Call for free compatibility questionnaire, 264-9831 — 24 hrs.

SUN Electronic Automotive Tuning — \$4.95 (4) cylinder, \$6.95 (6) cylinder, and \$8.95 (8) cylinder. 4 Parts. VNB card accepted. KELLER'S TUNE SHOP, 1951 E. Apache Blvd. 967-0759.

XEROX COPIES — 7/8c each
DIVERSIFIED SERVICES, INC.
1016 South 23rd Street
Phoenix, Arizona

● INSTRUCTION

ATTENTION FLY FISHERMEN: Fly tying classes will be offered for eight weeks starting Jan. 24, 1969. If interested please contact Dannie Hall for details. 969-2990 after 6 p.m.

INDIVIDUAL TUTORING in math, chemistry, physics, and biological sciences. Phone 967-7924.

MATH tutor: 966-0485.

TUTORING: math & chemistry, 966-6775. Freshman & sophomore level.

● TRANSLATION

Translations from Russian to English, German to English. Also lessons in Russian by native. Phone 252-1590 from 6-9 p.m. weekdays, 9-11 a.m. Saturday and Sunday.

Welcome ASU Students!

Famous Charco-Broiled Steaks

FILLETS	\$1.58
SIRLOIN	1.48
BEEFBURGERS	.65
STEAK SANDWICH	99c

THE BEEF HOUSE

NOW 2 LOCATIONS TO SERVE YOU

69 E. BROADWAY 1264 W. UNIVERSITY
TEMPE MESA

BANQUET FACILITIES AVAILABLE AT MESA

YOU'RE "IN"
AT PHILCO-FORD
IF YOU ARE

INTUITIVE
INTROSPECTIVE
INQUISITIVE
INNOVATIVE
INDEFATIGABLE
INDESTRUCTIBLE
INGENUOUS
INDIVIDUAL
INVENTIVE
INVINCIBLE
AND
INVOLVED

Tomorrow can be yours at Philco-Ford. If you have "a better idea," we have the desire and the resources to make it work. No matter what your area of interest, one of our 11 Divisions has a spot for you. Come and talk to us about your future... or write to College Relations, Philco-Ford Corporation, C & Tioga Streets, Philadelphia, Pa. 19134.



PHILCO-FORD WILL BE HERE ON THURSDAY, FEB. 6
DIVISIONS: Aeronautic • Appliance • Communications • Electronics • Consumer Electronics • Education and Technical Services • International • Lansdale • Microelectronics • Sales & Distribution • Space & Re-entry • Western Development Laboratories.

'Suicide' trip begins for wrestlers, coach

Coach Ted Bredehoff and the Sun Devil wrestlers begin a "suicide road trip" today that includes five meets in a three week period.

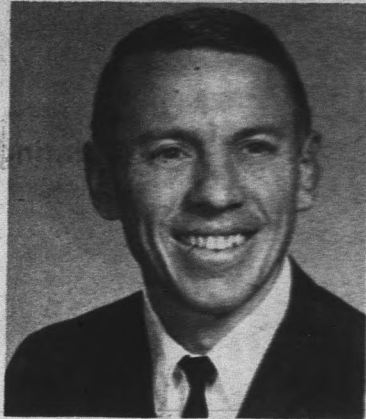
Tonight's foe is New Mexico, a team which has never been very tough on the mats. But, the Devils have only worked out three days since the Christmas holidays. Bredehoff hopes the same is true for the Lobos.

Arizona State will travel to Tucson Jan. 17 to tangle with the UofA Wildcats, a team they haven't lost a dual meet to in four years.

After finals Bredehoff will take his team east to meet Michigan State Jan. 29, Iowa State Jan. 30 and to compete in a double meet Feb. 1 at Minneapolis against Minnesota, Nebraska and Northern Iowa.

Bredehoff has labeled the trip "suicidal."

Returning home, the Devils have to face Oklahoma State Feb. 5. The Oklags have always placed high in the NCAA Championships and should give the ASU grapplers all they can handle.



Ted Bredehoff

Bow meet set

The Sun Devil Archers' Club will host their second annual Arizona Indoor Archery Meet Jan. 25 and 26.

The meet will begin each day at 8 in the WPE gym.

Kirstie Kaiser will defend her title in the women's amateur division.

The tournament will be limited to 72 entrants because of limited indoor facilities and time.

Trophy presented

The "B" league trophy won by Sigma Phi Epsilon in intramural football will be donated to the parents of Paul Hanson. Hanson, a member of the football team and a pledge in the fraternity died in an automobile accident Dec. 15 while returning from the Sig Ep Christmas formal.

Gymnasts host meets

Coach Don Robinson's gymnastics team will have three home meets during the semester break, beginning with Colorado University tomorrow at 2 p.m.

The following Saturday the Sun Devils host Ft. Lewis College at 7:30 p.m.

After finals the Wildcats come north from Tucson for a meet Jan. 31 at 7:30 p.m.

All meets will be in Sun Devil Gym.

Robinson said that he thinks that his team can win all three meets since they have improved with every meet they have had to date.

The Devils are 0-1 in dual meets, losing a close match to Denver last week. The ASU gymnasts have also competed in tournaments at UofA and Colorado, plus the East-West All Star meet during the Christmas holidays.

Pickup Schedule

The ticket office has announced the following ticket pickup dates for the semester's remaining home basketball games.

Jan. 15, 16—Utah State;
Jan. 20, 21—Utah and BYU;
Jan. 29 and 30—Loyola of Los Angeles.

ATO wins football crown

Quarterback Tim Bray led ATO to a perfect 10-0 season and the "A" league championship in intramural football.

The ATO's defeated the Fijis in the championship game, as Bray threw two passes for TD's. The ATO's struck first on a pass from Bray to Barry Soltenberger. The score of 7-0 held up as the first half came to a close.

The ATO's struck again early in the second half on a pass from Bray to Craig Fletcher.

Late in the second half the Fijis tried desperately to fight

back, but fell to the way-side losing, 14-6.

Outstanding play on defense was turned in by Don Bogener and Phil Graeff.

The first semester intramurals have ended with the Fijis leading by a considerable margin. Rounding out the top five teams are ATO, Phi Deltis, Sigma Chi and Phi Sigs.

Expansion OK'd

Final plans for an addition of 8,500 seats to Sun Devil Stadium before the next football season were approved by the Board of Regents during Christmas vacation.

The addition will be built on top of the west section of the stadium and boost seating to 50,500.

The press box, increased in size from one to two decks, will be located atop the addition.

Badminton meet on tap tomorrow

The Arizona Open Badminton Tournament will be played in the WPE gym tomorrow morning.

Seventy entries have been received from Texas, California and Arizona, including one from Bill Berry, a former Thomas Cup player. (The Thomas Cup is one of the world championships, both team and individual, for men.)

Two divisions are scheduled for both the men's and women's singles with one division each in mixed doubles, men's doubles and ladies' doubles.

Top University players competing will be Sue Annis, Linda Whitney, Marian Esquivel, Tom Hazard and Darrell Holt.



ARTIST & DRAFTING SUPPLIES

Crafts - Picture Frames
Decorating Material
Tempe Center • WO 7-4482
Open Mon. & Thurs. Nites

The College Inn

Personalized Food and Lodging for University Men

The Atmosphere, Convenience and Privacy of a business man's club.

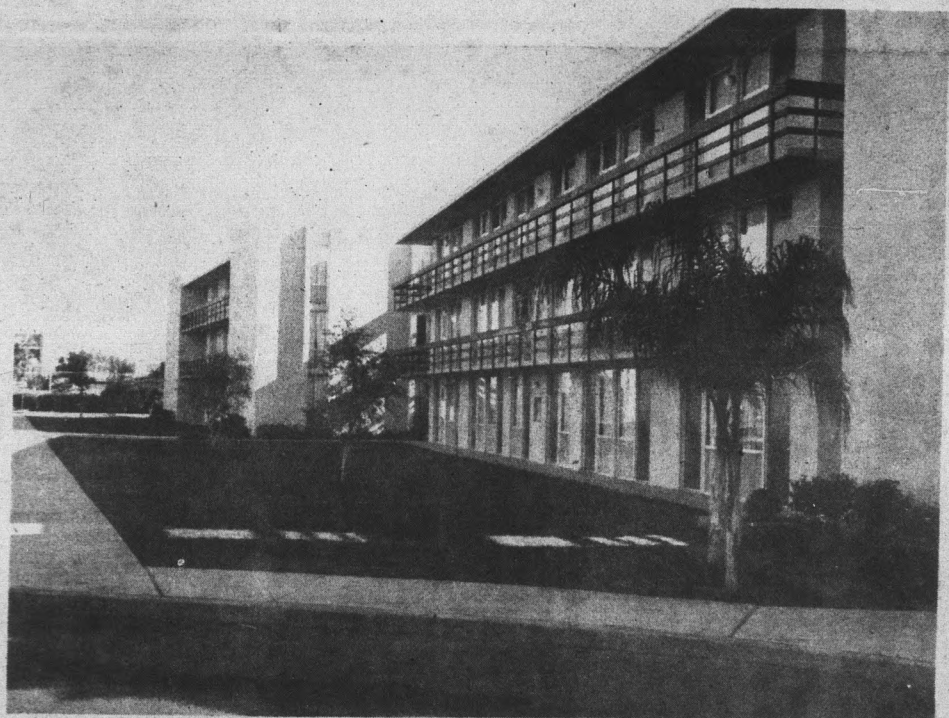
Swimming Pool • Color TV Lounges • Pool Tables • Maid Service

Our kitchen is operated by Professional Food Service and staffed by housewives and mothers who take pride in the meals they prepare.

Payments by the semester or by the month
\$495 per semester and up.



401 E. Apache Blvd. — Tempe — Phone 967-7828



Free University official

(Continued from page 1)

"Since the Free University is an educational experiment to try to involve the University in the community, it deserves the support of the administration," said Goodman.

Goodman explained the decision not to allow the Free University the use of classrooms was a result of a rule that prohibits non-students from utilizing university facilities.

He continued, "Some administrators are scared by the name 'Free University.' They don't understand our purposes. Free universities at Colorado State

University and the University of Texas have enjoyed the support of their administrations and have been successful."

"We don't want to dictate courses that the University should teach, rather we want to offer courses that the University isn't offering. We want to be thought of as an 'Experimental College' and in the future we will refer to ourselves as the 'Experimental College' rather than the Free University," said Center in South Hall.

Goodman. "In a meeting on Wednesday with University officials, it was

suggested that our activities be confined to facilities such as the Newman Center and Baker Center," said Goodman. "But this is not involving the University with the community and that is our goal."

Free University catalogs, listing course offerings for the spring semester, are available through the Student Activities

Goodman urged those students who are interested in the Free University to voice their support. He pledged that the Free University would function even if it was allowed to exist only in off-campus facilities.

Course offered

A refresher course for engineers planning to take the coming examinations for engineering-in-training or professional engineering will be offered beginning Feb. 3.

Consisting of ten sessions covering engineering fundamentals, the course will be heard Monday evenings from 6:30 to 9 in the Engineering Center.

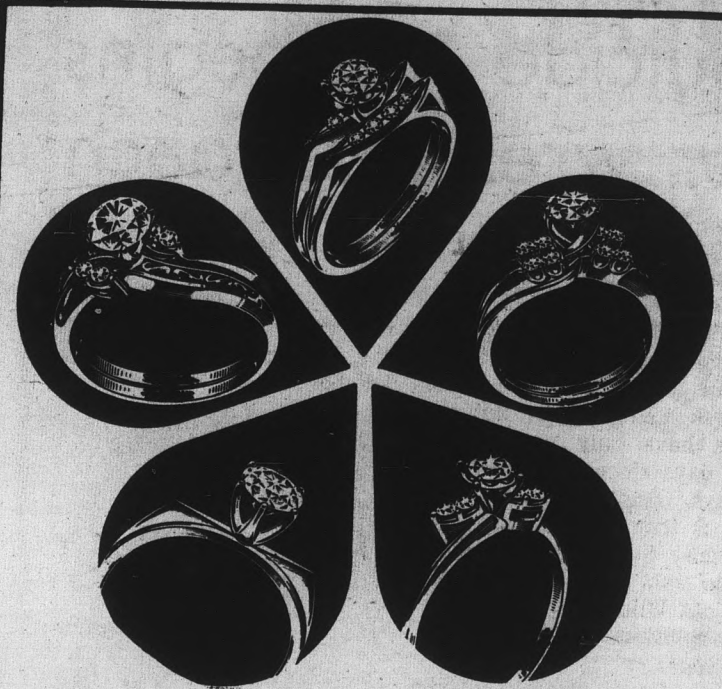
Registration for the course will be held during the first session, and a \$25 fee covers all or part of the lectures.

Concert will eulogize victims of air crash

The University's 82-piece Symphonic Band and the 64-piece Concert Band will unite in concert Jan. 14.

Included in the 8 p.m. program at Gammage Auditorium will be a selection played in memory of two student band members, Eva Lynn Despain and Paul Pixler, who were killed over the holidays when their plane crashed near Globe.

The composition, "Trauersinfonie," was written by Wagner for the interment of Weber. The Symphonic Band, under the direction of William H. Hill, will present Leidzen's arrangement of this work, prepared in the 1930's for the Goldman Band in New York.



For a **RING-ING**
New Year...

BUDD'S JEWELERS

708 S. Forest
966-6031

Oxford Square
Tempe

Open Thursdays Till 8:30 P.M.

SAVE

30%

SALE

- Sportcoats
- Dress Slacks
- Jackets & Coats
- Knit Shirts
- Suits
- Shoes
(dress and casual)
- Sweaters
- Dress Shirts

Mens Furnishings - Socks, Ties, Gifts, etc.



VNB Credit
Card Welcome



Open Till 9 P.M.
Monday-Thursday
and Friday

THOMAS MALL

PHOENIX