

# Education curriculum may see extensive change

A proposed change in the College of Education curriculum will eliminate all professional education courses in the student's freshman and sophomore years.

The new program was approved last Monday by the faculty senate, but the catalog describing the program must still be approved by the Board of Regents, according to Dr. Harry K. Newburn, dean of the college.

The proposed catalog copy states that, beginning on Sept. 1, 1969, undergraduate students will not be admitted to the Education College until the end of their sophomore year.

As of now students enter the college as freshmen.

To qualify for admittance into the college under the new program, the student must have a minimum of 56 semester hours and at least a 2.0 grade average.

During freshman and sophomore years, students interested in studying elementary education will register in the College of Liberal Arts, but will list their major as "Pre-Elementary Education." They will be assigned to an adviser for the College of Education.

The same situation applies for students wanting to

study special education. They will register for a major in "Pre-Special Education."

Students wishing to study secondary education will list their major as "Pre-Secondary Education" but will enroll during their first two years in the college of the subject they wish to eventually teach.

For example, if the student wants to teach English, he will register in the College of Liberal Arts. If he wants to teach music, he will enroll in the College of Fine Arts. The student will be assigned an adviser from the college in which he is enrolled.

Dean Newburn said most students under the new program will take general education courses and other prerequisites determined by the adviser during the first two years.

During the last two years of the secondary education program, the student will concentrate on education courses and courses in the student's teaching field, Dean Newburn said.

Under the elementary and special education programs, the student will just concentrate on professional

education courses during the last two years, he said.

Dean Newburn explained that the new curriculum would give the student more time to determine if he is interested in education.

"When students first enter college they often do not know what they want to study. By delaying the decision until the junior year, students will be better able to decide how much interest they have in education," he added.

He said it would be easier for junior college transfer students to enter the Education College without being behind or losing credits.

Admission into the college would be based on work the student had done at the University level, the dean said.

Under the present system, decisions to admit students when they are freshmen are based on high school and college entrance exam grades.

Dean Newburn also said the change was following a trend in colleges throughout the nation of making education an upper division school.

# state press

ARIZONA STATE UNIVERSITY

Vol. 51, No. 49

Friday, December 20, 1968

Tempe, Arizona



Photo by Clara Cassevant

**FELIZ NAVIDAD** — Fourth and fifth graders at Lowell School, 1210 S. First Ave., Phoenix, join in Christmas fun provided by the ASU Mexican-American Student Organization. About 90 per cent of the enrollment at Lowell School is Mexican-American.

## Assistants disappointed by negotiations

Disgruntled graduate assistants, disappointed with the administration's response to their requests for privileges to match their responsibilities, will renew negotiations after the holidays.

Chairman Terry Smith lamented, "We've ended up with

what we had a year ago — faculty identification cards, a book store discount and representation on college committees."

The only advance made was a raise in the minimum budget salary request for grad assistants from \$2,800 to \$3,000 in five of the Liberal Arts College departments.

Smith explained this means a \$200 salary increase for about 30 teaching aides.

"The negotiating committee will meet in January to decide our next move," Smith said.

"From what I've been able to determine by talking with individual students, the grad assistants are disappointed and unhappy with the administration's presentation at Monday's general meeting," Smith continued. "But they want to continue discussions."

## Legislation floods chambers

The largest amount of legislation to be introduced in the Student Senate chambers this year — three constitutional amendments, four bills and one petition — was proposed Wednesday in a special Senate session.

The deluge of legislation was the product of an all-day Senate workshop last weekend, which included an afternoon brainstorming session on possible legislation. All Senate bills will go into committee until the next session.

Among the legislation introduced were a bill restricting student representation on University boards and committees to ASASU Executive Council members and senators, and a bill establishing women's dorm hours in the statutes. Funds for "The Experiment in International Living" were also requested in Senate bill 6, and another bill proposed that dean of students George Hamm's office handle all organization registration.

Constitutional amendments brought before the Senate for a first reading called for removing the Associated Women Students president from the ASASU Executive Council, changing the office of ASASU secretary to a hired position rather than an elected office and opening the ASASU Supreme Court Justice's office to graduate students.

## Senate picks committee to investigate Oldham

By JANE SIMS

An ad hoc committee to investigate the activities of ASASU President Bill Oldham was appointed Wednesday in the Student Senate.

Charges against Oldham alleging "he has failed to enforce and comply with the ASASU Constitution and Statutes and acted irresponsibly and in derogation of the best interests of Associated Students" were tagged by Linda Yarbrough, Senate speaker, for investigation.

"In accordance with the recommendations of Student Senate, I hereby appoint an ad hoc committee to investigate charges against Oldham," said Speaker Yarbrough. "The committee of seven senators will report to the Senate Jan. 15."

Speaker Yarbrough maintained that the committee isn't sentencing Oldham, it is "seeking documentation to see if the charges are true."

In addition, several allegations that Oldham isn't upholding his duties as President of Associated Students were made at an all-day Senate workshop.

When the State Press attempted to contact Oldham Thursday, Tana Hobart, ASASU secretary, informed a reporter he left for his home in Twin Falls, Idaho, yesterday for vacation and was not available for comment.

Several senators reportedly went to Oldham Monday expressing their discontent with his conduct before the committee was appointed in the Senate.

"I'll stand behind any action I've taken while in office this year," Oldham told the State Press Monday, when he was questioned about rumored impeachment proceedings. "I've followed through with all the campaign promises I made to the students last spring. If my conduct is questionable, everyone's is!"

The ad hoc committee will hold a closed meeting Jan. 6 to review allegations against Oldham and results of the investigation. Names of the committee members were not available for publication.

## Car, dorm thefts increase this week

Thefts from cars and dormitories have increased 100 per cent this week, reported John Duffy, director of Campus Security.

Mostly clothing and currency have been reported stolen, Duffy said.

Duffy warned students Tuesday about the seasonal increase in petty theft and no thefts were listed for Wednesday night or Thursday morning.

Crimes should decrease this weekend, Duffy said, because there will be so few students on campus.

# Nelson clarifies facts about discrimination

Information indicating discrimination by state university contractors should be referred to the Arizona Civil Rights Commission for proceedings under the Civil Rights Act, according to state attorney general Gary Nelson.

It is up to the commission to investigate the charges, and if discrimination is found and cannot be eliminated through conciliation, the Board of Regents should declare the offender's contract breached.

Nelson made the statement in a legal opinion requested by Thomas L. Hall, adviser to the board. The request apparently was prompted by University students' protests concerning alleged discrimination by a Phoenix laundry under contract with the University.

The attorney general said Arizona law requires that public contracts contain an agreement by the contractor not to discriminate in employment. Nelson added the Civil Rights Commission should receive "reliable information" concerning alleged discrimination by University contractors in employment—or voting rights or public accommodations.

According to Nelson, the commission has power under the state Civil Rights Act to investigate and find if the alleged discrimination exists.

When the procedural requirements of this act have been exhausted, and the commission upon a finding of discrimination issues an order to halt it, the regents should declare their contract with the offender breached, Nelson said.

Procedural requirements of the Civil Rights Act call on the commission to attempt through private conciliation to eliminate any discrimination if it finds reasonable cause to suspect before resorting to a full scale hearing for the alleged offender and a formal finding and order against him.

If no finding of discrimination is made, the regents may consider the issue closed.

# Atmosphere to influence transfer of services MU to be 'at home' in West Hall

The MU will be "at home" in the West Hall of the Quad when classes resume Jan. 6, due to remodeling and expansion of the present MU, Mrs. Cecelia Scoular, MU director, told the State Press yesterday.

"We are going to take advantage of the homey atmosphere of West Hall with its verandah, large colonades and green lawns," she explained. "Services and facilities in the present MU will be transferred to rooms in the hall, which will be named appropriately after rooms of a house."

Mrs. Gertrude Thomas, assistant director of the MU, drew a picture of how the converted West Hall will look.

"As students walk through the main door they will be welcomed into the living room. The living room will welcome the individual students, and at times when they wouldn't be inconvenienced, may be reserved by various groups. The living room will also be the setting for MU coffees," she said.

On the right as you come through the main door will be the check-out desk turned information desk, Mrs. Thomas said, where all the services taken care of by the present information desk will be performed.

To the left of the entrance will be the lost and found office with bulletin boards and "riding board," she continued.

"Across from lost and found will be the barber shop," and with a smile, she added, "wonder what the men are going to think of the pink walls?"

The south wing of the first floor will substitute for the program loft. "The 'front porch' as we have designated it, will be the loft, with the

stereo, lounge and services such as the ditto machine and paper cutter. The dark room for photography buffs will be just off the front porch.

"In the same area is the 'rumpus room,' which will be the informal fun room and gathering place, comparable to the MU lower lounge. Plans are being made to show the Impact series of MU pop-up movies in the rumpus room," she continued.

The north wing of the first floor will house the "club room," where the pool tables and billiard table will be located along with the other games, Mrs. Thomas said as she wrapped up a tour of the first floor.

The second floor of West Hall will mainly consist of meeting rooms for University organizations, now accommodated by rooms on the second floor of the MU, Mrs. Thomas said. They will have names such as solarium, trophy room, sun porch and study.

"The rooms in the north and south wings will be reserved for individuals, just as MU 208, 209, 210, 211, 213, and 214 are now," she said.

Food service is the only facility which will not be transferred to West Hall, Mrs. Scoular said. The present MU cafeteria will remain open for snacks only, she explained.

Plans to handle catered meals for organization banquet and dinner meetings of University groups are being made at Palo Verde and Manzanita halls, according to Mrs. Thomas.

"Meal ticket students will have a choice between residential halls and Payne Training School kitchen. Plans are underway to convert the kitchen to a cafeteria to provide an eating spot right on campus."

**Now In Scottsdale, Too!**  
750 No. Old Scottsdale Rd. • 947-3751

**MUNTZ CAR STEREOS**  
Priced From **\$29.95** with 2 speaker kits

**MUNTZ STEREO**

ALL 4 STORES OPEN MON., THURS. & FRI. NIGHTS

<b>EAST</b> 2800 THOMAS 966-2800 • DAILY 9-9	<b>N. CENTRAL</b> CENTRAL & THOMAS 219-2206 • Open 7 Nights	<b>WEST</b> 2400 BETHANY 219-2207 • DAILY 11-7
--	---	--

**750 N. OLD SCOTTSDALE RD.**  
(Just South of Camelback Road)  
**PHONE 947-3751 • OPEN DAILY 10-7**

For A Christmas Engagement Expect to find that unusual style you're looking for at **Paul Johnson Jewelers**

Specializing in Diamonds, Engagement Settings and Matched Band Sets

LAYAWAY AND TERMS FOR STUDENTS

**Paul Johnson JEWELERS**

IN THE ARCHES

130 EAST UNIVERSITY DRIVE • TEMPE • 967-8917  
1940 EAST CAMELBACK, PHOENIX, 277-1421  
ALSO IN SUN CITY AND FLAGSTAFF  
CERTIFIED GEMOLOGIST, AMERICAN GEM SOCIETY  
**Open Till 9 Till Xmas**

# Foundation grants ASU \$273,855

The National Science Foundation has awarded the University four grants totaling \$273,855 to support programs designed to increase the knowledge and teaching proficiency of high school and college instructors.

The NSF institutes are regarded among the nation's most successful efforts to improve the quality of high school and college instruction of scientific subjects, and are credited for having motivated increasingly large numbers of students to select various fields of science and engineering for prospective careers.

The foundation offers stipends and dependency allowances for

## Division will offer photographic tour

A three-week photographic tour of Europe will be offered this summer by the University Extension Division in cooperation with the National Education Association.

Beginning July 21 and ending Aug. 11, the tour will visit Ireland, England, Norway, Sweden, Finland and Holland, concentrating on landmarks, scenery and people ideally suited for the photographer's lens.

From the rolling hills of Ireland to the austere but romantic Baltic, the rural and urban sites on the itinerary have been selected for their appeal and challenge to the photographer.

Among major stops on the tour are Killarney, Dublin, London, Oslo, Copenhagen, Stockholm, Helsinki and Amsterdam.

The tour, which offers three semester hours of graduate credit, will be conducted by Dr. Joel A. Benedict, director of the ASU Audiovisual Center.

Cost of the tour is \$980 per person, including the registration fee for the course; air travel to and from Europe; and meals, hotel accommodations and travel on the continent.

Additional information about the tour may be obtained from the ASU Extension Division.

high school and college teachers who are qualified to participate in the programs.

Dr. Gordon L. Bender, professor of zoology, has been designated director of a six-week summer institute for 30 college teachers in desert biology, beginning June 3 and continuing through Aug. 2, which is supported by a grant of \$42,060.

A seven-week institute in geology for secondary school teachers will be conducted by Dr. Paul T. Miller, professor of geology, from June 23 to Aug. 8. A grant of \$47,670 will enable 40 teachers to participate in the program.

With the support of a \$57,094 grant, a summer institute in biochemistry and cellular biology for 40 secondary school teachers will be conducted by Dr. Chester R. Leathers, associate professor of botany, from June 23 to Aug. 15.

A grant of \$127,031 will support an academic institute for secondary school teachers, of general science and mathematics under the direction of Dr. Lehi T. Smith, associate professor of mathematics.

The institute will begin in September, 1969, and continue until July, 1970, with provisions for 20 participants from September to June and for 10 during the summer of 1970.

Additional details about the programs and the eligibility requirements to participate in them may be obtained from the institute directors at ASU.

## University to offer credit in construction estimating

A college - credit course in building construction estimating will be offered by the University extension division.

Covering the essentials necessary for making estimates for commercial and residential building constructions, the course will be conducted at Phoenix West High School, 2910 N. 19th Ave., 7-9:40 p.m. Mondays.

The course, which will be comprised of 16 sessions, may be taken for three semester hours of credit, or it may be "audited" for no credit by paying a \$48 registration fee.

Harry L. Thompson, assistant professor of construction, will conduct the course, and registration will be held during the first class meeting Jan 27.

## Business senators seek student help

Business administration senators will have office hours to allow students from the college to consult them.

The hours will be 1-4 p.m. on Monday, Tuesday and Thursday in the small conference room in the northeast corner of the business library.

The senators need the students' ideas and suggestions in order to develop legislation.

## Coffee scheduled

All faculty women are invited to the College of Nursing lounge for coffee during finals week.

The service is offered from 2 p.m. - 4 p.m. beginning Tuesday, Jan. 21.

STATE PRESS is published by Arizona State University as the official campus newspaper every Tuesday through Friday during the school year, except holidays and examination periods, and is entered as second class matter at Tempe, Arizona, 85281.

## SUNNYSLOPE HONDA

Don't lay your Honda up for lack of Parts and Service. Our Parts Stock is one of the largest in the Southwest.

ONE DAY SERVICE ON MOST REPAIRS

7th St. and Dunlap

Open Thurs. Even. & Sun. PM.

943-5342

# BRAD'S COFFEE SHOP



1717 S. Rural Road - Tempe

LUXURIOUS DINNER HOUSE ATMOSPHERE...  
AT PRICES YOU CAN AFFORD

A New Place Your Date Will Appreciate!

### GO YOU DEVILS! AFTER GAME SPECIAL

Try This For Size . . .

"It's-A-Happening" Sundae  
(serves four)

Open Late . . . Till 1:00 A.M.

On Game Nites

### BIG BRAD'S BREAKFAST

Bacon, Sausage or Hamburger  
Patty, Three Eggs, Hash,  
Browns, Toast or Hot Roll  
Coffee or Milk

\$1.15

### LITTLE BRAD'S STEAK

5-OZ. USDA CHOICE  
TOP SIRLOIN

Served with Tossed Iceberg  
Green Salad - Choice of  
Dressing - French Fries

\$1.39

### NEW HOURS

MONDAY-THURSDAY 8 A.M. - 12 P.M. • FRIDAY 8 A.M. - 1 A.M.  
SATURDAY 8 A.M. - 1 A.M. • SUNDAY 11 A.M. - 12 P.M.

### NEW HOURS

TEMPE

1121 E. Apache Blvd.

966-4622

**LAFAYETTE**  
RADIO ELECTRONICS  
WORLD'S FOREMOST SUPPLIER OF ELECTRONIC COMPONENTS

PHOENIX

3232 N. 3rd St.

279-2321

Christmas  
on campus

# 'Deck the halls' and they did



Photo by Athia Hardt  
One of McClintock's residents' windows



Photo by Steve Leathers  
Outdoors comes indoors at Hayden Hall



Photo by Edythe Edger  
Traditional evergreens brighten up PV Main lobby

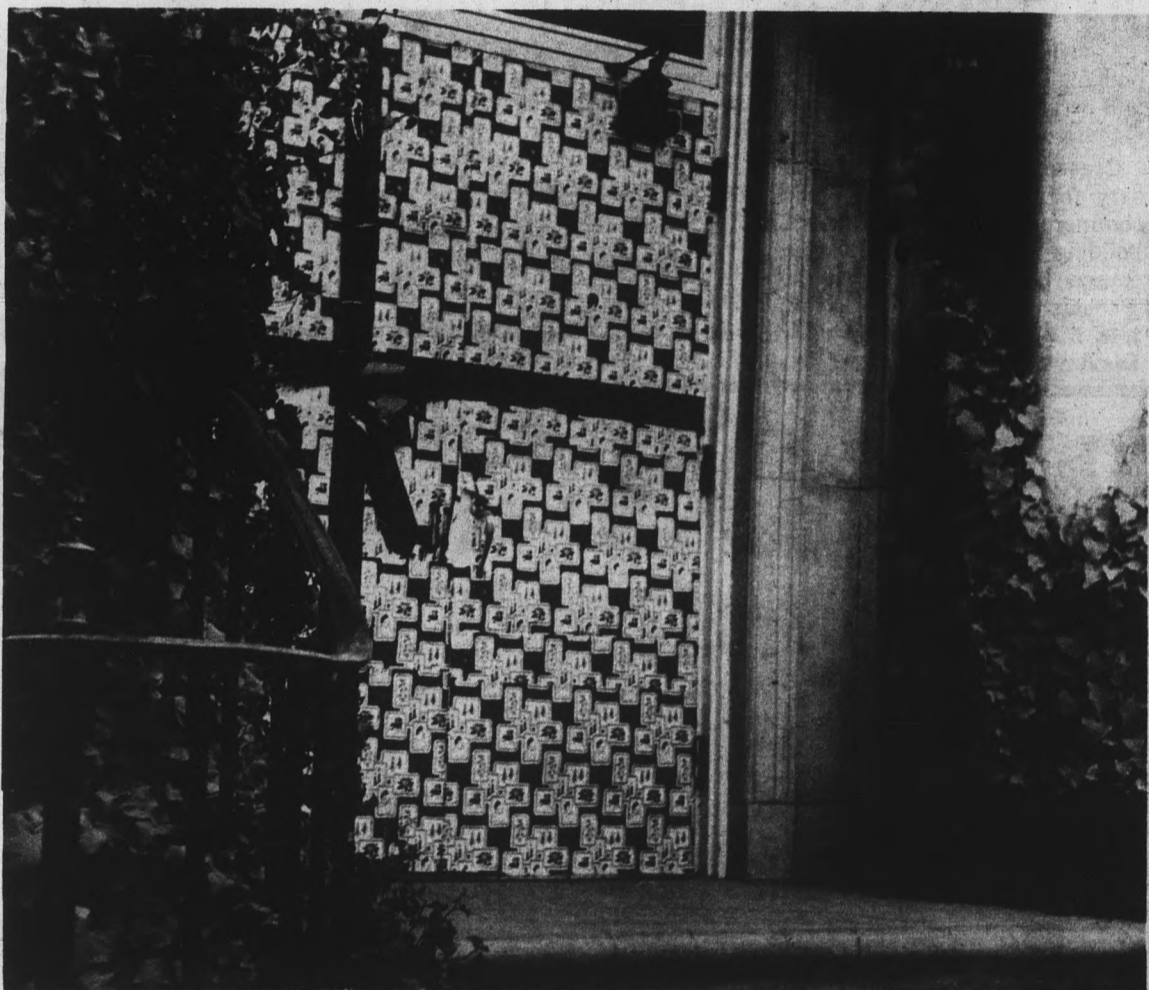


Photo by Athia Hardt  
Gammage Hall sports colorfully wrapped door



Photo by Athia Hardt  
A windowful of Peanuts greets Santa at McClintock Hall



Photo by Edythe Edger  
Partridge in PV Main

# Exam schedule

All Classes Regularly Scheduled on	MWF or Daily at:	Examination is Scheduled on:
7:40 - 8:30	Wed.,	Jan. 22 at 10:00 - 11:50
8:40 - 9:30	Mon.,	Jan. 20 at 1:00 - 2:50
9:40 - 10:30	Mon.,	Jan. 20 at 7:40 - 9:30
10:40 - 11:30	Tues.,	Jan. 21 at 10:00 - 11:50
11:40 - 12:30	Mon.,	Jan. 20 at 10:00 - 11:50
12:40 - 1:30	Thurs.,	Jan. 23 at 10:00 - 11:50
1:40 - 2:30	Wed.,	Jan. 22 at 7:40 - 9:30
2:40 - 3:30	Tues.,	Jan. 21 at 7:40 - 9:30
3:40 - 4:30	Thurs.,	Jan. 23 at 3:40 - 5:30
4:40 - 5:30	Fri.,	Jan. 24 at 1:00 - 2:50
All Classes Regularly Scheduled on	TTH or TThS at:	Examination is Scheduled on:
7:40 - 8:30	Fri.,	Jan. 24 at 7:40 - 9:30
7:40 - 8:55	Fri.,	Jan. 24 at 7:40 - 9:30
8:40 - 9:30	Wed.,	Jan. 22 at 3:40 - 5:30
9:15 - 10:30	Thurs.,	Jan. 23 at 7:40 - 9:30
9:40 - 10:30	Thurs.,	Jan. 23 at 7:40 - 9:30
10:40 - 11:30	Wed.,	Jan. 22 at 1:00 - 2:50
10:40 - 11:55	Wed.,	Jan. 22 at 1:00 - 2:50
11:40 - 12:30	Tues.,	Jan. 21 at 3:40 - 5:30
12:15 - 1:30	Tues.,	Jan. 21 at 1:00 - 2:50
12:40 - 1:30	Thurs.,	Jan. 21 at 1:00 - 2:50
1:40 - 2:30	Thurs.,	Jan. 23 at 1:00 - 2:50
1:40 - 2:55	Thurs.,	Jan. 23 at 1:00 - 2:50
2:40 - 3:30	Fri.,	Jan. 24 at 10:00 - 11:50
3:15 - 4:30	Mon.,	Jan. 20 at 3:40 - 5:30
3:40 - 4:30	Mon.,	Jan. 20 at 3:40 - 5:30
4:40 - 5:30	Fri.,	Jan. 24 at 3:40 - 5:30
4:40 - 5:55	Fri.,	Jan. 24 at 3:40 - 5:30

Examinations for classes that are scheduled with "Time Arranged" and for classes that meet at or after 5:30 p.m. will be at the time scheduled for the last regular meeting of the class during the examination period of Jan. 20-24, unless otherwise scheduled by the instructor during this final examination period.

If a conflict occurs or a student has more than three exams in one day, he should consult instructors regarding possible schedule adjustment, or if necessary the dean of the college concerned.

No change should be made in this schedule, except those required in individual cases, without the approval of the dean of the college concerned.

## College Inn-mates try year-old news

Residents of the College Inn received an unexpected Christmas present yesterday when an anonymous benefactor exchanged the CI's State Presses with those of Dec. 15, 1967.

"The State Press has some really avid readers," remarked one student after observing that most residents read their morning State Press without noticing the year's delay.

Among the unsuspecting was CI manager Ken Slemmons who passed out copies of the 1967 Christmas issue to residents unaware of the early morning switch. Finally noticing the date it was some time before he realized that not only was the date a misprint, but—as a resident remarked—the entire issue was a misprint.

## Faculty women plan activities

An informal coffee, a dinner and a series of ten lectures are scheduled for the Faculty Women's Club after Christmas.

The informal coffee will be in the College of Nursing lounge on Tuesday, Jan. 21, at 2-4 p.m.

On Tuesday, Feb. 4, Justice Lorna Lockwood will speak to

the faculty women at a dinner at Hobo Joe's.


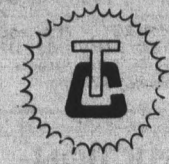
A series of lectures will be on Thursdays at 4:30-6:30 p.m. in the College of Nursing auditorium.

The first in a series of ten lectures will be given by representatives of Merrill Lynch on investments Thursday, Feb. 6.

**Paperbacks for Vacation Reading**  
Ideal Companion for the Long Trip Home

*Merry Christmas*  
and a  
*Happy New Year*

Open Monday  
and Thurs. Till 9 p.m.

**TEMPE CENTER — 967-5243**

## FREE ADMISSION

### Bruce's WORLD OF SOUND PRESENTS



## THE GRINGOS AT MR. LUCKY'S

INTRODUCING THE FABULOUS NEW

### SHURE VOCAL MASTER

VOCAL ARRANGEMENT AND PROJECTION SYSTEM


- NEVER BEFORE—SUCH CONTROL OF VOCAL EFFECTS
- SUCH VOCAL CLARITY AND PRESENCE

Now you can project your live vocals with complete recording studio control and effects. It's the first portable sound system with six channels and built-in adjustable reverb intensity, bass and treble. A Shure microphone free with each "VM" purchased during this showing.




**MON.  
DEC. 30  
3-9 P.M.**


*Bruce's* World of Sound, Inc.  
2711 EAST INDIAN SCHOOL ROAD PHONE 277-7494



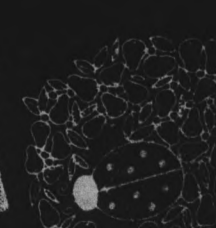
On the fourth day of  
Christmas my true love gave  
to me four super sweaters,  
and a ladybug in a pear tree...



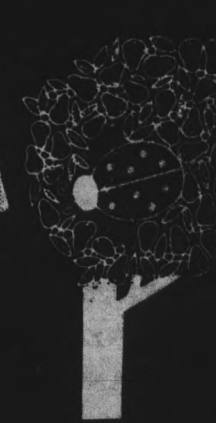
\$15<sup>00</sup>




\$14<sup>00</sup> \$11<sup>00</sup>



\$17<sup>00</sup>





village brownstone

2462 EAST CAMELBACK RD. BILTMORE FASHION PARK

# School service goal of Angels in uniform

Angels are lurking in the ROTC Building.

These "angels" are members of Angel Flight, auxiliary of the Air Force ROTC honorary fraternity, Arnold Air Society.

Diana Bennett, Angel Flight information officer, said the objectives of Angel Flight are to perform service projects for the

community and school and to inform the community of the military's mission, philosophy and way of life.

Miss Bennett said the 36-member University squadron recently completed several community service projects, such as Christmas parties with gifts for underprivileged children and for patients in the geriatric ward of Arizona State Hospital.

During Thanksgiving several Angels traveled to Mexico with the Arnold Air Society to assist in working on a school for children.

Last week the squadron attended the "out-of-the-foxhole" banquet for Vietnam veterans.

In promoting school activities, Miss Bennett said the squadron serves as hostesses for AFOTC functions ushers at athletic events and aids in campus elections by assisting at the election booths.

To become a member of Angel Flight a girl must be enthusiastic toward the program and display knowledge of current events, poise, personality and appearance.

"After she is accepted, she will remain an Angel until she is graduated," she added.

## Show to spotlight holidays in Valley

"Christmas in Phoenix" will be featured on "Thursday at Nine" on Channel 8 Dec. 26 at 9 p.m.

The program, taped by a KAET crew at the Phoenix City Council chambers, Tuesday, features Valley high school choirs and Christmas messages from the mayors of Phoenix and Tempe.

The music portion of the show, featuring the choruses from Maryvale and Carl Hayden High Schools, was taped during one of a series of performances of the sixth annual Christmas Festival of Choruses. Choirs from 20 Valley schools took part in the festival, whose last performance is tonight at 7.

## Cosner Cafeteria will be meal site

Students who have purchased this semester's meal ticket will eat at Cosner Cafeteria when they return from Christmas vacation Jan. 6.

Students may buy monthly meal tickets on the second floor at the food service office in the MU. These meal tickets are good at any cafeteria on campus.

Students who have worked for meals must re-apply for jobs.

# Student jogs, beats smoking

## Middle-aged teacher runs 260 miles monthly

By MARCIA SIMONS

Elmer A. Bailey averages 260 miles a month, 2,200-3,000 miles a year. What makes him unique is that he is 49 years old and does it on foot.

Bailey, an elementary school teacher studying for his M.A. degree in Indian education here, began jogging in 1966.

"I quit smoking and started putting on weight. I started running with the idea of losing weight and found I enjoyed running long distances. Within six months I ran my first 26 miles," Bailey said.

Now weighing 148 pounds, Bailey remembers getting teased into running his first marathon race, an 18-miler, in Mesa.

"Endurance is the main requirement for a marathon. Technically, you beat anyone who drops out before running the set number of miles. I start out dead last and begin picking up people along the way," he explained.

## Sig Ep memorial

The annual trophy Sigma Phi Epsilon presents to the outstanding pledge of the year has been changed to the Paul Hansen Memorial award. Hansen, a pledge of the fraternity, was killed Sunday while returning from the Sig Ep formal in Payson.

Marathons vary from 10 to 15 to 26 miles. To qualify, the contestant usually must run 26 miles in four hours, Bailey said. His best time is three hours and 48 minutes.

Besides benefiting weight watchers, Bailey said jogging also helps people with high blood pressure — it brings down the pulse rate.

In a San Diego marathon race in which Bailey ran, 14 out of a field of 40 joggers were medical doctors. While competing in this meet, he met a 70-year-old jogger from Los Angeles.

"He had the appearance of a

50-year-old and the body of a 20-year-old," Bailey said.

He went on to say long distance runners compete much more frequently on the coast. "There is no official group of marathon runners in Arizona. The first recognized marathon race in Arizona will be on Founder's Day in Tucson, Feb. 15." Professors at ASU sometimes get Elmer Bailey mixed up with another Bailey on campus — Bill Bailey.

"People think my son, Bill, is me. But Bill's a sprinter and doesn't care to run long distances like his dad," Bailey said with a smile.

## Classified

For classified advertising submit ad in person to the State Press, Old SA 302, two days in advance of publication, from 8:00 a.m. to 3:30 p.m., call 961-3457. Rate: 5c per word, 75c minimum.

### FOR SALE

For Sale: Basset Pups. AKC Registered. 943-5175.

If you're in the market for a diamond ring, I can save you 50%. Call Richard, 959-6946.

CHRISTMAS GIFT SPECIAL — 4 or 8 track car stereo, \$39.95 w/2 speakers, A-45 w/speakers \$49.95, C-100 w/speakers \$59.95, A-60 w/speakers \$69.95. 8 track factory Christmas tape \$4.50. Our 4 track tapes \$3.50, 8 track \$4.00. CAR STEREO, 831 S. Rural Rd., 966-8213.

### WANTED

Male to share large double-decker trailer. Privacy. One block from campus. \$50 per month — utilities included. Space 2. Desert Sunset Trailer Court, 735 Apache Blvd. 277-2545.

Senorita Rita to have a very, very, Merry Xmas!!! Y Larry too.

SP. 201 Reader (Alegria: Novelistas). New or used. Call 947-6388.

One or more students wanting to drive to Detroit, share gas, '68 Mustang, call 955-7344, ask for Cathy.

OSCILLOSCOPE Wanted Call 964-6443.

### SERVICES

Gayle E. Williams Registered Electrologist Permanent Hair Removal 1663 W. University Dr. Mesa, Arizona 969-6954

Wedding photography is my speciality TOM JONES — PHOTOGRAPHER 967-0821 After 5 p.m.

TRIM PEOPLE FEEL CONFIDENT Tempe Physical Fitness Club Passive & resistive exercise Finnish Sauna MILL & SOUTHERN DANELLE PLAZA 966-8751

Wash & Wear Hair Cuts. FERRARA HAIR FASHIONS. Mill & Southern — Danelle Plaza.

DANCE INSTRUCTION: Ages 3 thru Adults. Tap, Ballet, Jazz, Acrobat, Exercises, Ballroom. Studios in Mesa and Tempe. Phones: 964-6956, 945-6782, 966-1902. GAYNOR SCHOOL OF DANCE. Free Lesson with ad.

HYPNOSIS can help you to increase learning and creative abilities, lose weight, calm nerves, stop smoking. 274-0698.

SUN Electronic Automotive Tuning — \$4.95 (4) cylinder, \$6.95 (6) cylinder, and \$8.95 (8) cylinder + Parts. VNB card accepted. KELLER'S TUNE SHOP, 1951 E. Apache Blvd. 967-0799.

Tempe Peace Council. Draft Counseling Available. Baker Center Rm. W7. Mon-Fri. 7-9 p.m.

A NEW YEARS EVE PARTY without music? Bands for rent 266-2254.

MADAM RAY PALMISTRY READERS & ADVISOR. She'll tell you your past, present & future & love affairs. Open 8:00 a.m. to 10:00 p.m. Holiday special \$1.00. 719 S. Hayden Rd. Corner of University. Look for the Palm sign. 967-9801.

XEROX COPIES — 7½c each DIVERSIFIED SERVICES, INC. 1016 South 23rd Street Phoenix, Arizona

### INSTRUCTION

INDIVIDUAL TUTORING in math, chemistry, physics, and biological sciences. Phone 967-7924.

### FOUND

A WATCH near the Newman Center Dec. 10. For further information call 961-4501.

HELP — lost cat. Yellow, female, 1-yr-old. Call 966-6805 or Mr. A., Apt. 6. Thank you.

### FREE

2, 3-month old kittens, both fully housebroken, good with kids, very warm, clean, cuddly, affectionate, they don't bite or claw furniture. I'm moving and must give away. 966-0332.

### HELP WANTED

STUDENTS PART-TIME \$700 MONTHLY Guarantee if you meet our requirements \*Evening work, no canvassing \*Diversified work appointments only \*Excellent career potential after college No experience necessary — we train at our expense. For interview — 966-5734

Female Help Wanted: Food Service. See Ron or Ed at the College Deli, Rural & University.

COEDS: With \$20 capital. You can earn \$400 to \$1000 a month part-time. Call 966-5918.

OPENINGS — 6 men \$64.50 per week — car required. Call between 6-8 p.m. 967-5070.

Counter help wanted. Male or female. Apply at Taco Bell, 601 N. Arizona Ave., Chandler.

### AUTOMOBILES

1953 MGTD — Excellent condition. Best offer. 966-1036.

1964 Corvette, air, AM-FM, 4-speed. \$2,095. Call 967-8456 after 5:00 p.m.

CORVETTE, 1965 Roadster. New tires, white paint & tune up. Completely stock — \$2,400 or best offer. 966-0690.

67 SPRITE Private 277-7634, 946-1598.

1965 Pontiac GTO, reposs. new tires, 4-speed, good condition. Will consider taking cycle or sports car in trade. 966-5166.

1963 FORD GALAXIE 500 2 dr. hardtop, V8 rebuilt engine (new short block) with 5,000 miles, Cruiseomatic, radio, heater, excellent interior, seat belts, tinted windshield. Excellent buy, \$650. 966-4154.

### MOTORCYCLES

Beautiful 1968 BSA Thunderbolt. 650 c.c., 200 miles, \$1,200. Contact Phyllis 313D Arts. (Friday)

### TYPING

TYPING — reports, term papers, theses and manuscripts according to Cambell, Turabian, etc. Lucille Bryan, 969-9711, Mesa.

I will type your paper as if it were mine. 967-6913.

TYPING: IBM's, MAXINE MULLENS, 955-0763.

TYPING 946-7149.

TYPING — 967-3036.

FAST, Accurate, Guaranteed. IBM Elite. Sue Johnson, 211 East 14th St., 966-7848.

TYPING. 946-8965.

PROFESSIONAL TYPING: Fast, reasonable, accurate. 967-4517.

### REWARD

REWARD and fervent thanks offered to anyone finding my 12-year-old daughter's white fur-fabric coat. Lost at Tempe Center Dec. 11. Call 967-5151 after 4 p.m.

TURN ON YOUR FRIENDS THIS XMAS WITH GIFTS FROM EARTH AT 415 MILL PHONE 966-9878 SHOP EARLY BEFORE OUR SELECTION IS DEPLETED

IMPORTS - BEADS MUSIC BOXES FINE HAND CRAFTS CLOTHES GREAT JEWELRY RUGS - INDIAN PRINTS SMOKING SUPPLIES A NICE SELECTION of Exotic GIFTS

Attention: FACULTY, STAFF & STUDENTS

## NEED A CAR?

Save \$100's LESS Than Retail

We Sell Quality With A Written Guarantee

### 1968 Models

- Torino
- Montego
- Galaxie
- Bonneville
- Delta 88
- Thunderbird
- Cougar
- Impala
- Continental
- Mustang
- Premium AMX
- Station Wagons

OVER 200 UNITS TO CHOOSE FROM — CHOICE OF COLORS

ONE OWNER, MOST HAVE AROUND 15,000 MILES

BALANCE OF FACTORY GUARANTEE GOES WITH CAR

Financing Available

## JOHN HULL & ASSOCIATES

Wholesale Auto Brokerage — Agency ● 966-8573

# Busy vacation for Devil teams

The Sun Devil Classic tonight and tomorrow night is the start of a busy holiday schedule for Arizona State athletic teams.

After the cagers finish the Classic, they travel to Portland, Ore., for the Far West Classic that will feature California, BYU, Yale, Oregon, Syracuse, Washington State and Oregon State, as well as the Sun Devils. The Devils will face the Bea-



**NEBRASKA GUARD** — Tom Scantlebury, Nebraska guard, is expected to give the Devils fits tonight in the opening game of the Sun Devil Classic. Scantlebury averages 12.8 points per game.

## Ski condition called good

Reports from Colorado indicate that skiing will be good to excellent for the holidays.

All major Colorado highways and passes, except Trail Ridge Road and Independence Pass, are open and maintained 24 hours a day. Snow tires are recommended.

The five-day weather forecast calls for snow throughout this week and part of next. It was snowing at most areas at report time.

The most populated areas, such as Aspen, Arapahoe Basin, Loveland Basin and Vail, report snow depths of 25 to 39 inches and from one to six inches of new snow.

## Sports Short

Four former Sun Devil cagers, coached by Ned Wulk, have gone on from ASU to further their playing careers in the ranks of the professional teams.

Joe Caldwell, Devil all-time scoring leader, is a starter on the Atlanta Hawks. Freddie Lewis, MVP in 1965-66 is captain and leading scorer of the Indiana Pacers. Art Becker plays for the Houston Mavericks and Dennis Hamilton is on the roster of the Atlanta Hawks.

vers of Oregon State in the first round of the tourney Dec. 26.

After celebrating New Year's Ned Wulk's crew returns home to meet Seattle University in Sun Devil Gym Jan. 2. There will be no student ticket pick-up for that game.

Arizona State's quintet then takes to the road for a regional television game against UTEP Jan. 4 and then on to Las Cruces, N.M., to tangle with the powerful Aggies of New Mexico State Jan. 6.

Coach Don Robinson's gymnastics team will travel to Tucson for a clinic Dec. 26-30.

Highlight of the clinic will be the annual East-West meet, in which the top gymnasts of the nation are picked to compete, the night of Dec. 27.

Robinson plans to take nearly all his team for the clinic and thinks that four or five of the Devils, led by seniors Darryl Bair and John Price, will be chosen to compete in the meet.

Arizona State's wrestling team returns today from Los Angeles, where they competed in the UCLA Invitational Wed-

nesday and Thursday.

The Devils will compete in the Phoenix Holiday Tournament,

"on a voluntary basis," according to coach Ted Bredehoff, tomorrow and will then be idle

until Jan. 10 when they travel to New Mexico for a dual meet with the Lobos.

Center George Hummer and All-American linebacker Ron Pritchard will play in at least two post-season bowl games on television.

Both will compete in the East-West Shrine game Dec. 28 in San Francisco, Calif. That game will be on national television at the same time as the Sun Bowl game — Arizona vs. Auburn.

Pritchard has been picked to play in the Hula Bowl in Honolulu, Hawaii, Jan. 4.

## Coed team places

The women's field hockey team captured second place in a tournament last Saturday at Mesa Community College.

The UofA won by beating ASU 4-0. NAU finished third after losing to the University, 2-1.

Six teams participated in the day-long event divided into two divisions — one for junior colleges and one for universities.

The next field hockey tournament will be on campus Jan. 11.



**TOP CORNHUSKER** — Marvin Stewart leads Nebraska with a 15.5 per game scoring average.

## TEMPE BODY SHOP

11 E. 4th St. Day Ph. 967-1601

24 HOUR TOW SERVICE

- WHEEL ALIGNING & BALANCE
- Auto Glass Work — 1 Day Service
- Auto Body & Fender Work

## BERGE SERVICE CENTER

16 E. University Dr. — 967-2063

- COMPLETE CAR SERVICE
- TIRES FOR ALL MAKES

Get ready for Christmas Vacation Now!

# HERTZ RENT A CAR

## SPECIAL WEEKEND RATES

FOR ALL A.S.U. STUDENTS 18 OR OLDER

### THE RATES

- WEEKEND DAYS "24 Hrs." \$6.50 a day plus 12c a mile
- ENTIRE WEEKEND, \$19.50 plus 12c a mile
- 1 FULL WEEK "7 DAYS" \$60.00 plus 12c a mile
- "XMAS RATE" SPECIAL \$79 for 7 Days 1,000 Free Miles



- 1969
- FORD MUSTANG
  - FORD GALAXIE
  - CHEVROLET IMPALA
  - MERCURY
  - COUGAR

Going Home For  
The Holidays?  
Drive A HERTZ Car  
To Any Major City  
In The United States

For Reservations  
and Information

Call  
967-9362 966-0155  
STEVE BLAGEN  
Campus Representative

1969  
Honda 90cc  
\$19800  
SUNNYSLOPE  
HONDA  
7th St. at Dunlap  
943-5342

# Research reveals coed housing facts

By BRUCE TALBOT

The construction of Hayden Library in 1966 ended coeducational housing at the University for three years, although few people realize it ever began.

When built, the Quad, presently a women's dormitory, had an east wing for male students which was torn down to make room to build the library. A square lawn separated the units, but residents shared many facilities, including lounges and a dining room.

Wilson Hall, also a women's dorm, housed men several years ago and also could technically have been classified as a coeducational facility, asserted housing director Gayle Shuman.

"Wilson men lived near Gamage, McClintock and the Quad and shared the dining facilities of the MU. This, I feel, is a type of coed arrangement," he said.

When Manzanita was being planned for both female and male residents, however, the public outcry was loud and harsh.

"People just didn't know the facts about coed housing and, consequently, acted with some reservations regarding the plan," commented Dr. Leon Shell, assistant dean of students.

Two University graduate students know the facts. Libby Friedman, administrative assistant at Manzanita, and Sandy Albano, unit director at Sahuaro Hall, have made detailed studies of coed housing at other universities in an attempt to evaluate the project's probable success here.

Miss Friedman and Albano described coeducational housing, with approval of the University's coed housing steering committee, as adjacent male and female dormitories where maxi-

mum sharing of public areas such as dining rooms, recreation rooms and lounges occurs.

Forty universities in the 18-state North Central Accreditation Region of which ASU is a member returned Albano's questionnaire, and 95 per cent (38) indicated they had some form of coeducational housing. In addition, 68 per cent of the housing directors polled had plans to construct additional coed units within five years.

Eighty-three per cent of comments made about coeducational dorms, noted advantages to the system. Improved dress standards and dining hall behavior, the development of a more natural setting for interaction between the sexes, the attainment of a better understanding and thinking of the opposite sex and the sophistication gained by student hall leaders as they plan activities for both sexes were apparent coed housing advantages in 50 to 75 per cent of the schools questioned.

One-fourth of the schools listed economic advantages to the system of coed halls; nearly half felt they were using space more effectively.

"There seems to be a general endorsement of coed housing," Albano said.

"Although most responses were checked as advantages because of their intangible nature,

my study may suggest that the benefits of coed units are mainly derived from the changes in the 'surface behavior' of students," he added.

Eight universities checked a need for more personnel under a coeducational housing program and six felt the system was harder on the less mature and socially shy students than the traditionally segregated dormitories.

Two universities found coed living units "encourage unwholesome relationships between sexes."

In her position paper on coeducational housing, Miss Friedman wrote: "By and large, most students who attend a four-year university select one not in close proximity to their homes, so it is necessary to have some type of living quarters. The most usual type of living arrangement selected is the college-sponsored living unit."

Campus housing is taking on new significance and meaning; students identify and use their living facilities, she said. Michigan State University in 1961 transformed living centers into "living-learning centers," offer-

ing classes within residence halls.

"In short," emphasized Miss Friedman, "universities should plan for people, not for buildings."

Good housing appears to be an increasingly popular solution to the problems encountered while housing young adults.

"Properly built units, however, could take away this problem," she emphasized.

Miss Friedman, examining a study of coeducational residence halls by Bessie B. Collins, dean of women at the University of Delaware, discovered "coed dorms provide a more natural climate — similar to that which students have experienced before coming to and after leaving college."

Of the 392 member institutions of the Association of College and University Housing Officers, 190 of the 372 schools returning a recent survey had coed housing units.

In all but eight states in the United States there is a college or university which offers coeducational housing for on-campus students.

Arizona is one of the eight abstaining states.

"No study indicates that any college or university having already utilized coeducational housing plans on discontinuing it," Miss Friedman added.

Additional findings Miss Friedman encountered in her research were a stimulated intellectual and cultural growth, a lack of influence on grades, an improved food service, a better understanding of women's closing hours by men and a greater desire for students to "stay home."

One disadvantage not reported in Albano's study was discovered; if buildings aren't located properly, the problem of controlling hours would become major.

## B & M Typewriter Service

RENTALS SALES  
966-5031



3300 S. MILL AVE.  
In Danella Plaza  
Behind the Fireside  
Plenty of Free Parking



### ARTIST & DRAFTING SUPPLIES

Crafts - Picture Frames  
Decorating Material  
Tempe Center • WO 7-4482  
Open Mon. & Thurs. Nites  
10% Discount to Students

## PLAY WEE-TEE

## MINIATURE GOLF

YOUR CHOICE — TWO 18-HOLE COURSES

University Drive at Rural — Tempe

Hours 1 P.M. to 11 P.M. Daily

Phone 966-8027

## Vaudeville

PRESENTS  
JOE BETHANCOURT  
AND  
PONTALONE  
PLUS

A VERY Unique  
Presentation of the  
Christmas Story

Fri. & Sat. 9-1—Sun. 4-9

602 N. Miller Rd. Scottsdale

## DANIEL'S brings Diamond Elegance to TRI-CITY MALL!



DIAMOND BRIDAL SETS

CRAFTED IN MAGNIFICENT

18 KARAT GOLD

3 diamonds set amid a contemporary latticework design..... \$150.00

6 diamonds set in a traditionally romantic design..... \$250.00

6 diamonds set in a very modern brushed bark design..... \$350.00

OPEN A CONVENIENT CHARGE ACCOUNT... USE OUR PAYMENT PLAN

A DIVISION OF GORDON JEWELRY CORP.—STORES COAST TO COAST

# DANIEL'S

Quality Jewelers

- DOWNTOWN MESA  
130 West Main Street—Mesa
- PHOENIX—Thomas Mall  
4515 East Thomas Road
- TRI-CITY MALL  
1010 W. Main—Mesa

**GLORY**  
to God  
in the Highest,  
and on earth  
Peace,  
Good Will  
toward men. Luke 2:14

The  
**Americana**  
Shop  
TEMPE CENTER