

**HIGHER EDUCATION** — Typifying the growth of higher education at Arizona State University — academically as well as physically — is imposing, 15-story Manzanita Hall, a modern dormitory for 1,000 coeds.

## Early Registration Set For Summer

Early advisement and registration for new Arizona State University students will be held on campus July 29, 30, 31 and August 1, according to Alfred Thomas, ASU registrar and director of admissions.

A complete listing of appointments for newly admitted students and former students who have been readmitted will be distributed on those days.

Aptitude and placement tests will be given at ASU on July 29, 30 and 31. These tests also will be given during regular fall orientation week, Sept. 9-14, but it is to the student's advantage to take them early.

The tests include:

**AMERICAN COLLEGE TESTS (ACT)**, July 29, 1 p.m., Life Sciences Center, room 191. This test is required of all new freshmen and a \$6 fee must be paid at the cashier's office in the administration building. The receipt is required for admission to the testing area.

**MUSIC THEORY PLACEMENT TEST**, July 30, 1 p.m., Gammage Auditorium, room 212, required of all entering music majors and minors.

**FOREIGN LANGUAGE PLACEMENT TEST**, July 30, 3 p.m., Language and Literature Building, room 18, required of all new students who plan to continue work in a language begun in high school.

**ENGLISH EXEMPTION TEST**, July 31, 8 a.m., Language and Literature Building, room 18. Students whose English scores on the American College Tests were at or above the 82nd percentile are eligible to take this test. Students who

pass the test are exempted from English 101 and 102 and will take English 104. Students whose English scores on the ACT were above the 91st percentile are automatically eligible for English 104 without taking the English Exemption Test.

**ARCHITECTURE APTITUDE TEST**, July 31, 1 p.m., Physical Science Building, room 100, mandatory for freshmen entering the College of Architecture.

Registration materials will be issued July 30 from 8:30 a.m. to 10 a.m. at the Moer Administration Building. Also on July 30 at 10 a.m. will be a University orientation assembly in Grady Gammage Memorial Auditorium. Following this general assembly, orientation assemblies in the various ASU colleges will begin at 11 o'clock.

Academic advisement with major department chairmen will be July 30 at 1 p.m., followed by advisement with departmental academic advisers from 2 to 4 p.m. Academic advisement by appointment with departmental academic advisers also is scheduled for July 31 and Aug. 1, from 9 a.m. to noon and from 1 to 4 p.m.

Advisers will help new students prepare course schedules. Students who took part in early registration will be mailed a printed schedule of courses and a bill for fees from the office of the registrar and director of admission, Thomas says. These materials and a check for the fees must be returned to Thomas' office by noon on Aug. 26 to complete the early registration process.

### Special Edition For Freshmen

This is a special edition of the State Press, published by the Registrar's Office of Arizona State University for incoming freshmen. The regular State Press is the official campus newspaper and will be published four times a week in the fall. It is entered as second class matter at Tempe, Arizona Post Office under the Acts of March 3, 1897 and August 24, 1912. Subscription price is \$3 per year.

**state press**  
ARIZONA STATE UNIVERSITY

ARIZONA STATE UNIVERSITY

## ASU Welcomes New Freshmen

September 9.

That's the day Freshman Orientation Week opens at Arizona State University.

During that week, new students will be tested, advised, and registered for classes beginning Sept. 16.

A record number of students are expected at ASU this year, topping last year's 22,000 enrollees in the state's fastest growing institution of higher learning.

Many freshmen will have taken advantage of early registration during the summer, but those who were unable to will attend a general orientation assembly Sept. 9 in Grady Gammage Memori-

al Auditorium. There they will be welcomed and receive registration instructions from President G. Homer Durham and other administration and student officials.

From Sept. 9-11, a series of tests will be given to help guide the university careers of new students. These include the American College Test, English Exemption Test, Foreign Language Placement Test, Architecture Aptitude Test and Music Theory Placement Test.

After hours of exams, X-rays, and advisement, students can relax at dances, mixers, assemblies and receptions sponsored by various campus groups. See the general schedule for details Page 3.



**AMBASSADOR HONORED** — Dr. G. Homer Durham, left, president of Arizona State University, congratulates Harlan Cleveland, U. S. ambassador to the North Atlantic Treaty Organization, after awarding him an honorary doctor of laws degree during the University's 82nd annual Commencement last June when more than 4,000 graduate and undergraduate students applied for diplomas.

## Higher Education At ASU

BY DR. G. HOMER DURHAM  
President, Arizona State University

Arizona State University is located in the heart of the Phoenix Metropolitan area in the city of Tempe.

Serving the growing needs of the state and the nation are the Colleges of Architecture, Business Administration, Education, Engineering Sciences, Fine Arts, Law, Liberal Arts, Nursing, the Graduate College, an Extension Division, the Summer Session, together with the Schools of Engineering and Social Service Administration, and Divisions of Agriculture, and Industrial Design and Technology.

This new College of Law will accept its second entering class in September.

The fine arts as well as the

liberal arts and sciences find a prominent place in the ASU curricula. Work leading to the Ph.D. is offered in many fields in addition to baccalaureate and master's degrees in all of the colleges.

The prominence which any institution of higher learning

### Frosh Beanies ASU Tradition

One of the ASU traditions involves the freshman beanie.

All new students wear the beanie from the start of Orientation Week until the first football victory.

In order to gain admittance to mixers, picnic and pep rally, you will need a beanie. They will be on sale on campus during Orientation Week.

achieves is predicated largely on the interest of its students and the quality of its faculty.

The ultimate test of a student's success comes from the interaction of his own effort and the inspiration, based on sound preparation and experience, his professors are able to impart.

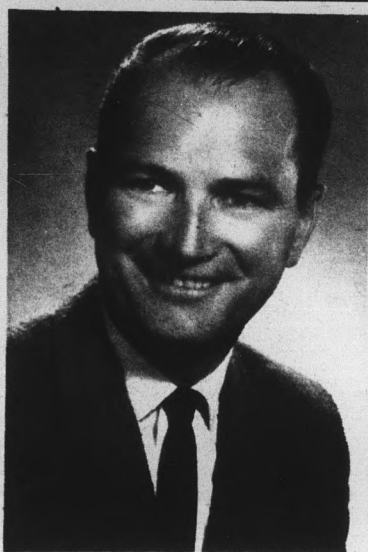
High school students contemplating a choice of university will find at Arizona State University a highly trained, distinguished and cosmopolitan faculty secured through continuous and vigorous recruiting.

ASU is distinctive for educational vigor.

We welcome the fresh and vigorous ideas brought to us each year by so many new and returning students, and by our new faculty members.



Dr. Karl H. Dannenfeldt



Dr. Joseph Schabacker

# New Appointments Listed

Appointments of an academic vice president and new deans of the Colleges of Education and Liberal Arts are among recent administrative changes at Arizona State University.

Dr. Karl H. Dannenfeldt, professor of history and dean of the College of Liberal Arts since 1963, has been appointed Academic Vice President, succeeding Dr. Gordon B. Castle who requested a return to teaching.

The offices of the deans of the Colleges of Liberal Arts, Architecture, Business Administration, Education, Engineering Sciences, Fine Arts, Law, Nursing the Graduate School of Social Service Administration and of the Registrar and

Director of Admissions will be responsible to the President through Vice President Dannenfeldt.

Succeeding Dr. Dannenfeldt as dean of the College of Liberal Arts is Dr. George A. Peek, professor of political science at ASU since 1964.

One of the nation's leading educators, Dr. Harry K. Newburn, professor of education and director of the Center for Higher Education at ASU since 1963, has been appointed dean of the College of Education.

Dr. Newburn, former president of Montana State University and the University of Oregon, succeeds Dr. G. D. McGrath, dean since 1953, who had requested a return to full-time duties as professor of education.

In other administrative appointments, Dr. Richard G. Landini, professor of English and former assistant dean of the Graduate College, has been named first dean of Litchfield College, ASU's branch college due to open in 1970.

Assuming a newly designated position as Vice President for Special Services, Dr. Joseph A. Schabacker will be responsible to the President for various student personnel services, through the Dean of Students; the office of the Dean of Summer Sessions and Extension including the Bureau of Broadcasting, KAET and the Audiovisual Service; the University Librarian; the Placement Service; the Date Processing Service, and the Memorial Union.

## Take Advantage Of Opportunities

By DR. JOSEPH C. SCHABACKER  
Vice President For Special Services

Whether you are embarking upon a university program for the first time, or whether you are continuing your college experience, it is well for you to think about some of the opportunities which are available at this significant phase of your life. Here are some OPPORTUNITIES you will want to consider: (1) The opportunity of the university environment; (2) the opportunity of using the university's unique resources; (3) The opportunity to learn the basic transferable skills; (4) The opportunity to develop personal values; (5) The opportunity to use time wisely. Let me take each of these in turn to help you to develop sound guidelines as you pursue your collegiate education.

**THE UNIVERSITY ENVIRONMENT:** The university environment provides an opportunity which will not be available in any other time of your life. Basically it is an opportunity which will allow you to seek out and to benefit from a very wide intellectual horizon. Take advantage of a varied selection of courses and experiences no matter what your primary career goal may be. It is mainly during this period of your life (before you enter into the "university of adversity") that you will have an opportunity to whet your appetite with many educational, technical, professional and social experiences.

**THE UNIVERSITY'S UNIQUE RESOURCES:** Arizona State University is made up of a professionally-prepared faculty, dedicated administrative staff, buildings, social activities and extracurricular functions of many kinds. One of the obvious first opportunities which exist for the student is his university professor. The professor is here to help, to guide, to motivate and to influence a student as he pursues the activities in various courses throughout his college career. In addition to the academic staff, however, there are also the great opportunities available through the library and its staff. No course or no semester should go by without continuous use of the library by every student. An additional resource of the university, which is not used as well as it should be by most students, is the curriculum advisor to whom a student is assigned when he enters the university. The advisor should be used. His ideas, his counsel, and his help should be sought by each student throughout his university career.

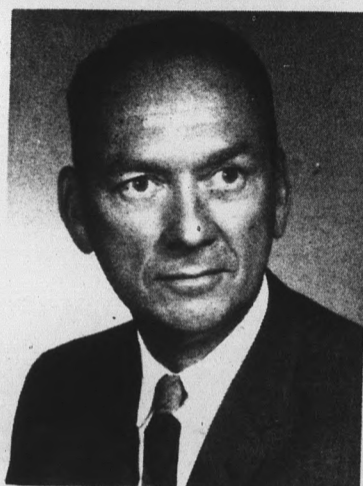
**THE BASIC TRANSFERABLE SKILLS:** In no matter what facet of life you will make your mark, you will find certain skills to be highly transferable. These can be developed best while you are a university student. (1) Mastery of the scientific method of investigation; (2) Understanding people, and working with them effectively; (3) The ability to be able to communicate ideas so that understanding develops; (4) Organizing and marshaling scarce resources toward given ends; (5) Wholehearted and persistent application to any task at hand; (6) The development of memory for facts, ideas, and people. If you can see and solve problems, if you understand people and know how to work with them, if you are good at communication, if you know how to organize the resources at your command, if you can throw yourself into the task at hand, and if you have a good memory, you can do almost anything. You can be a first-rate student (or a first-rate teacher).

**DEVELOP PERSONAL VALUES:** The personal values which you develop while you are completing your university degree requirements will endure through life. In order for these personal values to have a better focus, it is important for each student to begin to establish personal goals and objectives. At no time during your later life, and generally speaking, at no time during the previous years of your life can this opportunity be so well developed as during your collegiate days.

**USE TIME WISELY:** Among the assets which are available to each of us, the one which is most limited as a resource is the matter of time. You will find this to be certainly true as you proceed with your courses in the university. A key question for you to answer (consistent with the set of values upon which you have decided) is how you will use the limited minutes and hours that are equally dealt out to all. From a practical point of view, this is perhaps one of the most significant parts of the planning of your work and your experience at the university. How do you use your time?

Spend a maximum amount of your time on the campus, in the library, in discussion groups with fellow students, attending various lectures, exploring other related disciplines and in getting ideas

(Continued on page 4)



Dean George Peek



Dean Harry Newburn



Dr. Richard Landini

## Regular Registration Scheduled

For those students who do not take advantage of early registration (See story, Pg. 1), regular advisement and registration at ASU will be Sept. 9-14.

Registration materials for continuing and newly admitted students who have been admitted or readmitted prior to Aug. 24, will be issued from the Men's PE Annex Sept. 9-13 from 8 a.m. to 3 p.m. and on Sept. 14 from 8 a.m. to noon.

Undergraduate students admitted after Aug. 23 will obtain

registration materials in the Moeur Administration Building beginning Sept. 9 and graduate students admitted after Aug. 23 will start receiving materials the same day at Room 101 in the Old Business Administration Building.

Each student must have an approved program of study form signed by his adviser before obtaining class cards. Continuing students not previously advised should consult their advisers before registration while

new and transfer students will meet with their advisers Sept. 10-12 (See Orientation Week Schedule, Pg. 3, for details).

Unclassified students are required to obtain an approved program of study signed by the Dean, or his representative, of the College in which the student wishes to enroll.

ASU registration procedures require students to obtain a registration packet as outlined above and then report to a curriculum advisor to obtain an approved program of study.

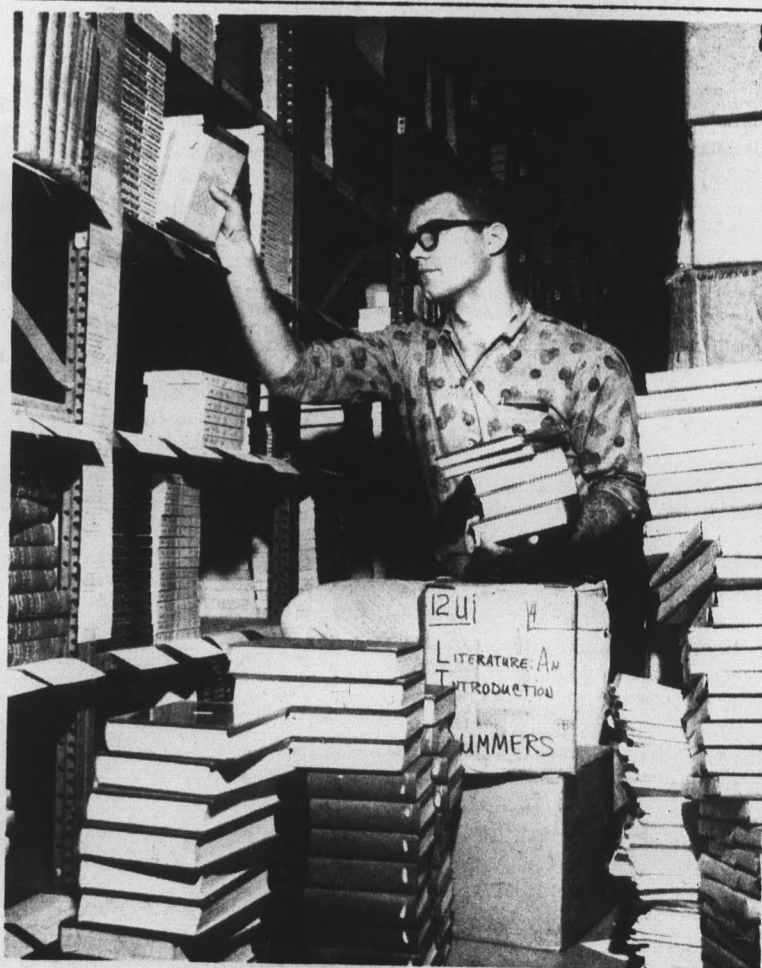
Freshmen will obtain class cards on Sept. 12 from 8 a.m. to 4 p.m. All other students will obtain class cards on Sept. 13 from 8 a.m. to 4 p.m. and on Sept. 14 from 9 to 11:30 a.m.

Fees may be paid in the Men's Gym on Sept. 12 and 13 from 9 a.m. to noon and from 1-4 p.m. and on Sept. 14 from 9 a.m. to noon.

Registration is complete after materials have been turned in and fees have been paid.

ASU classes begin Sept. 16. Late registration period will be from Sept. 16 to 21 with a fee of \$10 charged all day students.

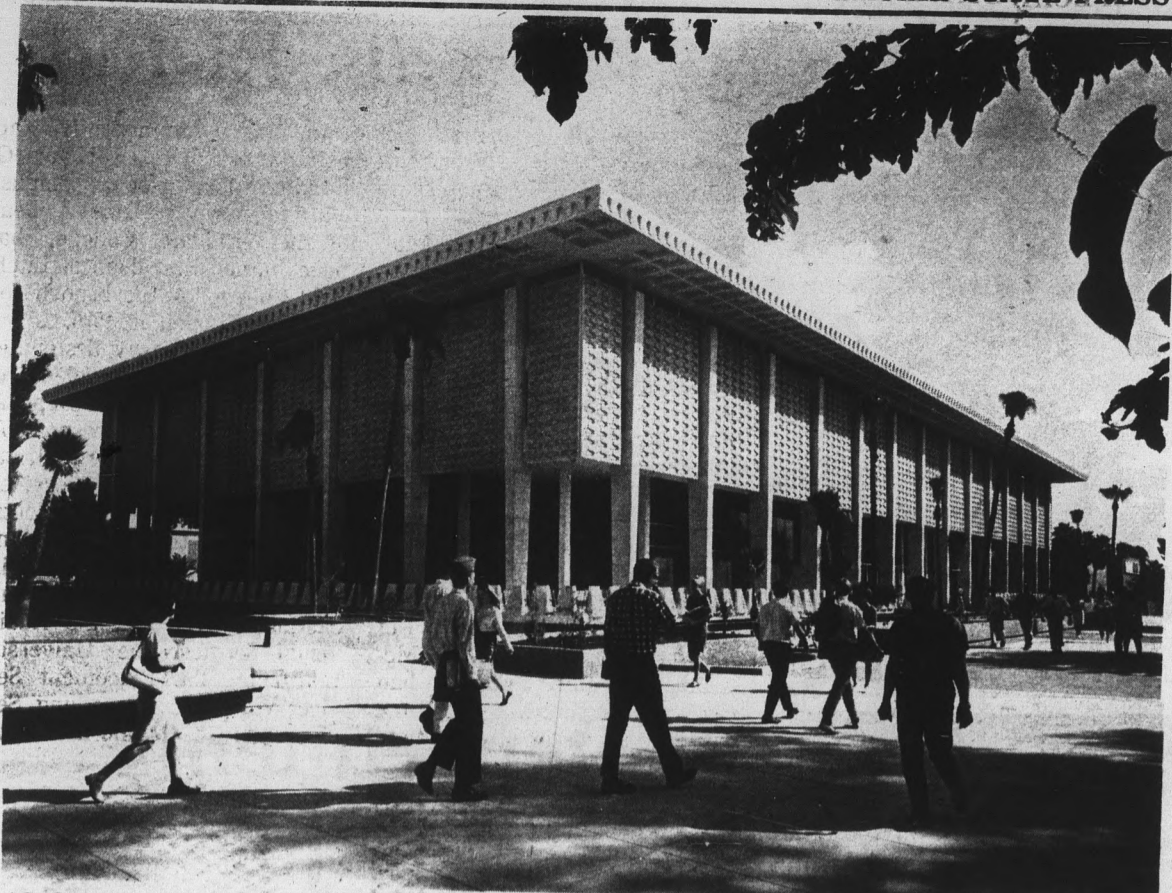
Drop-Add period begins Sept. 18 and ends at noon on Sept. 21.



READY FOR YOU — Hefting loads of heavy books, this employee of University Book Store prepares for onrush of new students who will purchase thousands of books for 1968-69 academic year.

### Index

ASU Opportunities	2
General Schedule	3
Colleges of:	
Law	3
Liberal Arts	4
Fine Arts	5
Engineering	6
Business	7
Architecture	8
Education	9
Nursing	9
Graduate	9
Sports	11



**ACADEMIC HEART** — Five stories of modern study and resource facilities are available for ASU students at spacious Charles Trumbull Hayden Library located in the heart of the campus.

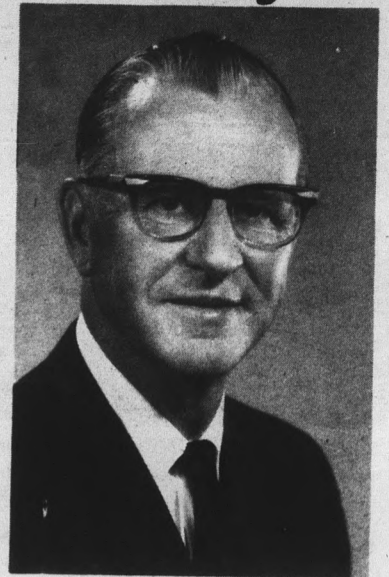
## Campus Can Boast Of Finest Library

The Arizona State University Library is rapidly becoming one of the finest university research libraries in the western United States.

The acquisition of books and other library materials, accelerated by the University's commitment to excellence and supplemented by federal and private assistance, has propelled ASU's research library forward as one of the nation's fastest growing libraries.

Modern method techniques and computer systems in the acquisitions and circulation services make it easier to keep up with the heavy demands of growth.

With a collection of approximately 870,000 books, periodicals, newspapers, microfilm and documents, the university is able to support the pressures of the increasing number of programs of independent study and research offered early in the



**Dr. Alan D. Covey**

undergraduate years.

The library is arranged in a subject oriented plan which decentralizes reference service in order to provide more individual assistance and service to the library user. Education, Science, Social Science and Business Administration, and Humanities are the Reference Services designed to help students and faculty with special information related to their respective subjects.

The Reference Staff has contributed considerable professional knowledge and experience towards building strong definitive reference collections in each of the subject disciplines. Additional public services are the Arizona Collection, Rare Books and Special Collections and the Government Documents Service.

The Charles Trumbull Hayden building has proved to be an outstanding facility. The flexible design provides the library with a number of choices necessary in determining the best use of space in a rapidly growing institution. The pleasing and effective use of stone and wood throughout the entire architectural design established an elegant atmosphere that we believe contributes to the sincere or serious efforts of the teaching and research programs of the University.

The 861,000 volumes circulated by the University Library this year supports the claim of accelerated library use.

## Consult This Schedule During Orientation Week

### MONDAY, SEPTEMBER 9

8:00 A.M.—University Orientation Assembly, Grady Gammage Auditorium  
 9:00-10:30 A.M.—College Assemblies:  
 Architecture — Physical Sciences Building, Room 100  
 Business Administration — Business Administration Building, Room 203  
 Education — Memorial Union Ballroom  
 Engineering, Agriculture, Industrial Design and Technology — Life Sciences Center, Room 191  
 Fine Arts — Gammage Auditorium, Room 301 (Only those majoring in Music, Art, Speech and Drama, Interdisciplinary Humanities)  
 Liberal Arts — Gammage Auditorium  
 Nursing — Nursing Auditorium  
 10:30 A.M.—Meeting of new students who are uncertain of their choice of college — Gammage Auditorium  
 Chest X-rays at Student Health Service for Liberal Arts students not attending the above meeting  
 1:00-4:00 P.M. — Testing  
 Entrance Aptitude Tests. American College Test (ACT): Required of all freshmen students who have no record of their scores on file at ASU. 1.00 p.m., Physical Sciences Building, Room 100, \$6.00 fee is to be paid at the Cashier's Office in the Administration Building. The receipt must be presented for admission to the testing room.  
 English Exemption Test. 1:00 p.m., Business Administration Building, Room 203. Students who have not taken the ACT prior to Orientation Week are not eligible to take the English Exemption Test.  
 1:00-5:00 P.M.—Chest X-rays, Student Health Service, College of Liberal Arts students. (This applies only to students not taking placement tests at this hour.)  
 7:30 P.M.—President's Reception for all new students, Hayden Library.  
**TUESDAY, SEPTEMBER 10**  
 8:30 A.M.—Noon—Departmental Meetings: Students enrolling in the colleges of their choice will meet with their advisers in the various departments of the colleges.  
 9:00-11:00 A.M.—Music Theory Placement Test: Required of all entering music majors and minors. New Freshmen, 9:00 a.m., Gammage Auditorium, Room 212; Transfer Students, 9:00 a.m., Gammage Auditorium, Room 213.  
 9:00 A.M.—Noon—Chest X-rays, Student Health Service, College of Engineering Sciences.  
 1:00-3:00 P.M.—Foreign Language Placement Test: Required of all new students who plan to continue work in a language previously studied in high school. French, 1:00 p.m., Language and Literature, Room 3; German, 1:00 p.m., Language and Literature, Room 5; Spanish, 1:00 p.m., Language and Literature, Room 18; Other Languages, 1:00 p.m., Language and Literature, Room 403.  
 1:00-5:00 P.M.—Chest X-rays, Student Health Service, College of Fine Arts, Architecture and Nursing.  
 6:30-7:30 P.M.—Phrateres reception for women living off campus, Memorial Union Arts Lounge.  
 7:30-9:00 P.M.—Associated Women Students' Assembly, Memorial Union Ballroom.  
**WEDNESDAY, SEPTEMBER 11**  
 8:00-noon—Academic advisement in faculty members' offices.  
 Chest X-rays at Student Health Service for students in the College of Business Administration and balance of Liberal Arts.  
 1:00-2:00 P.M.—Meeting of new students uncertain of their choice of college, Business Administration Building, Room 105.  
 1:00-5:00 P.M.—Architecture Aptitude Test: Mandatory for all freshmen and transfer students entering the College of Architecture. Construction Students, 1:00 p.m., Physical Sciences, Room D202; Architecture Students, 1:00 p.m., Physical Sciences, Room 100.

Academic advisement with faculty advisers as previously announced.  
 Chest X-rays, Student Health Service, for students in the College of Education and balance of Engineering.  
 8:00 P.M.—"A Night at Gammage Auditorium," entertainment.

### THURSDAY, SEPTEMBER 12

8:00 A.M.—3:00 P.M.—Registration for All New Students — Check Off as Completed  
 Steps in Registration for All New Students — Check Off as Completed  
 ( ) 1. New students who have been admitted: Obtain Registration materials at the Men's Physical Education Annex from 10:30 a.m. to 3:00 p.m., Monday, and from 8:00 a.m. to 3:00 p.m. on other days. New students who have not been admitted will report to the Admissions Office in the Moer Administration Building.  
 ( ) 2. See your Curriculum Adviser and obtain an Approved Program of Studies form properly completed.  
 ( ) 3. Obtain a class card for each class listed on your Approved Program of Studies. Class cards will be distributed at the offices listed on Pages 3 and 4 of the Schedule of Classes, and will begin distribution on Thursday, September 12. Check each card carefully to make certain it is the correct card.  
 ( ) 4. Fill out your registration materials carefully.  
 ( ) 5. Arrange class cards in the same order you have listed your classes on your registration card and insert them behind your Master Name Card in the manila envelope provided.  
 ( ) 6. Check to be sure you have your Health Service X-ray card.  
 ( ) 7. Go to the Men's Gymnasium to have your materials checked. Please enter the north door. After your materials have been checked and you have paid your registration fees, your registration is complete.  
 8:00 A.M.—Noon—Academic advisement in faculty members' offices.  
 Chest X-rays at Student Health Service for any remaining freshmen and transfer students.  
 1:00-4:00 p.m.—Academic advisement in faculty members' offices.  
 Chest X-rays at Student Health Service for those entering the Graduate College, and those undergraduates re-admitted after an absence of two or more years.  
 7:00 P.M.—Folksinging and fellowship sponsored by Student Interfaith Council and Orientation Committee, Quadrangle lawn.  
**FRIDAY, SEPTEMBER 13**  
 8:00 a.m.—Noon and 1:00-5:00 p.m.—Registration for upperclass and transfer students.  
 8:00 A.M.—Noon—Chest X-rays.  
 Testing: Final make-up tests for students who had conflicts with regularly scheduled testing dates. No freshman student is allowed to register without a record on file with ASU of having taken the American College Test (ACT). 8:00 a.m., Life Sciences Center, Room 191, \$6.00.  
 1:00-4:00 P.M.—Class Card Pickup (continued)  
 1:00-5:00 P.M.—Registration (Upper Class and Transfer Students)  
 7:00 P.M.—Various living groups will feature activities to acquaint students with many aspects of campus living, at individual living units.  
**SATURDAY, SEPTEMBER 14**  
 9:00 A.M.—Noon—Registration (continued).  
 Chest X-rays (continued).  
 10:00 A.M.—Noon—Mortar Board Reception, Memorial Union Ballroom. Mortar Board is the honorary for senior women based on scholarship, leadership, and service. The reception is for all new women students who have signed up for a Big Sister. Those whose last names begin with A-H, 10:00; I-Q, 10:30; R-Z, 11:00.  
 7:30 P.M.—12:00 Midnight—"A Night at the Memorial Union" — entertainment, dancing, movies, stage show, artists-in-residence, etc.

## Law College Marks End Of First Year

Dedication of a striking new building, additions to the faculty, and completion of the first year of study by the charter class were listed by Dean Willard H. Pedrick as the highlights of the 1967-68 academic year of the College of Law of Arizona State University.

On February 26, 1968, the College of Law Building was officially dedicated. Participating in the dedicatory events were Chief Justice Earl Warren of the United States Supreme Court and Secretary of Labor W. Willard Wirtz. In attendance for the dedication and for a conference on "Needed Innovations in Legal Education" held contemporaneously were representatives of other law schools throughout the country, members of the judiciary of Arizona and other states, and members of the legal profession.

The teaching faculty for the College of Law, which Dean Pedrick emphasized is the critical factor in any educational program, includes some of the country's most distinguished law teachers: Harold C. Havighurst, the former Dean of the Northwestern University School of Law; Edward W. Cleary, nationally-known authority on procedure and evidence and formerly at the University of Illinois; and Richard W. Effland, a recognized expert on property and probate law formerly on the faculty of the University of Wisconsin; and some distinguished young law professors: Richard C. Dahl, the former Law Librarian for the State of Washington; William C. Canby, formerly a Director of the Peace Corps Mission to Uganda, with an exceptional academic record and considerable experience in

practice; John P. Morris, for several years a partner in a Chicago law firm specializing in labor relations and antitrust law; and Alan A. Matheson, formerly in University Administration. Three additional faculty



**Dean Willard H. Pedrick**

members will join the College next fall.

The instruction for the College's first year has provided an enriched program of tested materials and teaching techniques, and this format will continue for the second year as well. In the third year, emphasis will shift to clinical experiences, seminars, and individual graduate studies in law-related fields designed to enlarge the capabilities of the law graduate.

"We believe," said Dean Pedrick, "that we have a program of legal education designed to challenge the law student and better fit him for service in a profession that has as its object helping people in all walks of life to cope with their legal problems."

The Law Library in the new building presently contains some 65,000 volumes, representing a

nearly complete set of federal and state materials, most of the latest textbooks and treatises, and a growing collection of legal periodicals. Both purchased and donated materials are adding to the quality and value of the collection. In the building, there is space for a collection of 200,000 volumes.

A charter class of 113 has received instruction during the first academic year of the College. Ages of the law students range from 19 to 50 years with a preponderance under 30. To date, applications for the 1968 freshman class have far exceeded in number those of the previous year. Applicants must have taken the national Law School Admission Test and must have secured an undergraduate degree from an accredited four-year college or university (B.S., B.A., or their equivalent).



**CULTURE CENTER** — One of the nation's finest cultural centers is spectacular Grady Gammage Memorial Auditorium designed by the late Frank Lloyd Wright.

Auditorium also is headquarters for College of Fine Arts and contains four floors of classroom, workshop, office and rehearsal space.

## Student Affairs Center Provided

The Student Affairs Center located in Matthews Center (formerly Matthews Library) houses the Dean of Students and his staff, including services for male and female students; the Financial Aids Office, including services for scholarships, loans, grants, and the work-study program; and the Student Counseling Service, which is served by seven full-time counseling psychologists. This is a new home for the Counseling Service which has been located in the College of Education Building.

The Dean of Students, Dr. George F. Hamm, coordinates the work of the student activities staff which also includes the Associate Dean of Students, Dr. Catherine G. Nichols, and her staff. He serves as director of student activities; is a member of the President's Advisory Council, the Curriculum and Advisement Council, the General Education Council, the Academic Affairs Committee, the

Athletic Board, and the Faculty Senate; he is Chairman of the Student Affairs Committee; and is also advisor to the Associated Students Executive Council and the Student Senate.

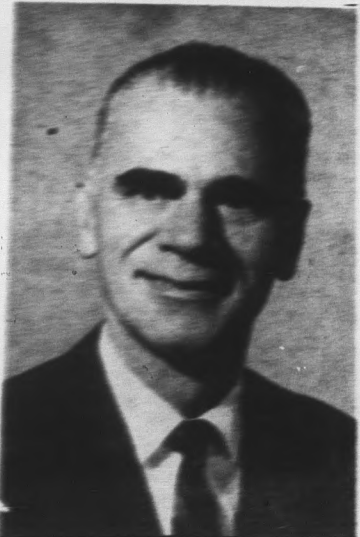
The Associate Dean is responsible for the orientation of new students, the coordination of the religious program, and the Student Health Service. Her staff oversees women's government, organizations, and personnel records.

A new position this year, Coordinator of Residence Hall Programs (both men and women), will be filled by Mrs. Jo F. Dorris, who for the past seven years has served as Assistant Dean in the Associate Dean of Students' Office. Her new duties will entail, primarily, the supervision of residence hall staffs, the coordination of residence hall programs, and serving as faculty advisor to the Interhall Council.

Dr. Stephen J. Kimler, Director of Student Counseling Service, and his six professional assistants occupied their new quarters in July and will offer programs designed to provide individual counseling to students ranging from personal problems to gaining information regarding interests, vocations, and personal assistance.



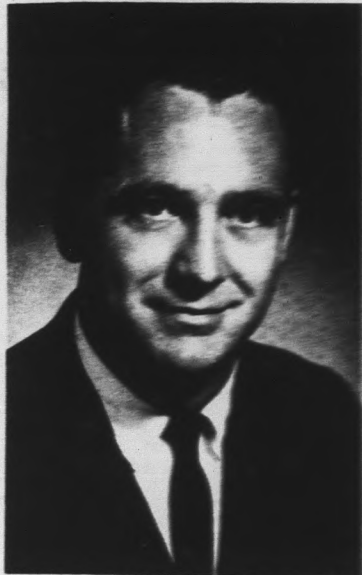
Dean Catherine G. Nichols



Stephen J. Kimler



Mrs. Jo Dorris



Dean George F. Hamm

## 20 Departments List 44 Majors

Comprised of 20 departments, the ASU College of Liberal Arts maintains the largest faculty and offers the greatest number of courses of the university's nine colleges.

Liberal Arts offers programs of study leading to two undergraduate degrees, the bachelor of arts and bachelor of science.

Nineteen majors are available to candidates for the bachelor of arts degree. They are:

Anthropology, chemistry, economics, English, French, geography, geology, German, history, home economics, journalism, mathematics, philosophy, political science, psychology, radio-television, Russian, sociology, and Spanish.

Twenty-five majors are available to the candidates for the bachelor of science degree from the College of Liberal Arts. They are:

Anthropology, biology, botany, boys-club administration, chemistry, economics, entomology, geography, geology, health education, home economics, journalism, mathematics, medical technology, microbiology, physical education, physics, political science, psychology, radio-television, recreation, sociology, wildlife biology, x-ray technology, and zoology.

To students majoring in these degree programs, the College of Liberal Arts offers special programs of study in the following areas:

American studies, bilingual

secretarial program; Foreign secretarial program, Foreign Service Training program, Latin-America Area Studies, pre-dental, pre-medical, and pre-osteopathy, pre-law, pre-ministerial, preoccupational-therapy, pre-physical therapy, pre-optometry, pre-pharmacy, public service training program, Asian studies and law enforcement administration.

Among the research facilities used by the College of Liberal Arts are a complete atomic mineral and metal analysis laboratory, a meteorite laboratory, physiological clinic and laboratory, the Institute of Public Administration, Animal Resource Center, the Poisonous Animals Research Laboratory, the Center for Latin American Studies, and the Center for Asian Studies.

Dr. George A. Peek, professor of political science, who joined the ASU faculty in 1964, is Dean of the College of Liberal Arts.

## Fraternity, Sorority Rush Scheduled

Fraternity rush is already underway, according to Jerry Whitted, Interfraternity Council President. Rush information and rush booklets explaining the rushing system and the fraternities at ASU are being mailed and distributed by the Inter-Fraternity Council. Each potential rushee should stop and consider the advantages of fraternity membership.

This year the IFC is initiating a new program under the guidance of Gene Fazio, Scholarship chairman. This program provides individual tutoring for specific courses as well as speed reading courses, study skills courses, and professional career counseling all available to fraternity men at no cost.

Any student interested in viewing the fraternities first hand are urged to sign up now for fraternity rush. Registration may be completed by filling out and returning the information blank included in the rush booklet or by stopping by the Interfraternity Council office, M.U.

225 between 9:00 and noon, Monday through Friday. Any questions concerning IFC rush should be directed to Bob Wacker, IFC Rush Chairman at 961-3806.

Sorority rush begins September 1st with registration and a brief orientation in the Palo Verde Complex at 8:00 p.m. All rushees will be assigned living quarters in the Palo Verde West

dormitory with room and board available during rush week. Rushees will be allowed to move into the dormitory on Sunday, September 1st from 2:00 until 6:00 p.m.

Rush applications are in the Panhellenic Handbook which is being mailed from the Panhellenic Council office this summer. The applications are due after that date. Handbooks can also be picked up in the Panhellenic Office in the MU, Room 205, from noon to 5:00 Monday through Friday.

This year the annual Panhellenic Fashion Show will be held on August 13th with Goldwaters furnishing the fashions and their fashion consultant acting as the emcee. Modeling will be done by ASU's sorority women. The event will take place in the MU Ballroom with an informal information session on rushing at ASU following the fashion show. The event will begin promptly at 7:30 p.m.

## MORE ABOUT — Opportunities

(Continued from page 2)

from faculty, from students, and from others with whom you will be in contact.

Don't be afraid to ask for appointments or to ask for the open doors of your professors. They will be and should be ready to share ideas with you by discussing problems. If you have a driving intellectual curiosity, you will find your professors ready to enter into discussions with you. Become acquainted with your fellow students, not only in the field of your choice but also in the other departments around the university.

Attend with enthusiasm the functions of the university in addition to the classroom and athletic events. Whet your appetite with the many offerings in the performing arts, political science, the educational process, business, industry, science and technical fields.

Above all, develop a positive attitude about the entire work that you do at your university. A strong favorable attitude will result in better physical and mental health, and will develop the capacity for you to learn and to increase knowledge through time. As a matter of fact the tone which you set for yourself in college life will more than likely set the values and the tone of all that follows in your "career in life."

# Fine Arts College Unique

The College of Fine Arts, says Dean Henry A. Bruinsma, is in a unique position as a professional college for training teacher-artists, and also as a major service college to the entire university.

New students at ASU find that their advisers, regardless of major, recommend one or more electives such as art or music appreciation to fulfill humanities requirements, or in speech and drama to meet communications area requirements.

A special two-year sequence in interdisciplinary humanities also is offered by a team of professors from five colleges.

In addition, courses to meet graduation requirements offer a variety of activities, allowing students to develop skills begun in high school. These include four choirs, three bands, two orchestras, opera and musical theater, the University Players, and a wide variety of forensic activities.

Students may receive a bach-

elor of arts degree in art, drama, humanities, music or speech; a bachelor of science degree in art, speech pathology and audiology; a bachelor of music degree in applied music, choral music, church music, in-



Dean Henry A. Bruinsma

strumental music or theory and composition or a bachelor of fine arts degree in commercial art, design, ceramics-crafts, environmental design, painting, photography, print-making or sculpture.

In cooperation with the College of Education, each department of the College of Fine Arts offers major and minor programs designed to provide teachers of art, music, speech, drama and humanities for the public schools.

Masters degrees are offered in the same general areas, and doctorates are available in music and art education in cooperation with the College of Education.

Although the departments composing the College of Fine Arts originally were in the College of Liberal Arts, they were combined to form the new college in 1965, and during its first year of existence, the College of Fine Arts became one of the largest such units in the west.



HELLO, DOLLY! — Typical of top-level entertainment appearing in ASU's Grady Gammage Memorial Auditorium is Dorothy LaMour who starred in Broadway hit, "Hello, Dolly!"

## Opera, Theatre Set Major Productions

University Players and Lyric Opera Theatre will join to present two major productions at Gammage Auditorium during the 1968-69 season. The first, a Broadway musical hit, "Bye Bye Birdie," will be staged Dec. 6 to 8.

Richard Strauss' highly melodious comedy, "Der Rosenkavalier," has been selected as the opera production for the coming year. It will be presented May 2 and 3.

In addition, University Players' season will include four productions at the Lyceum Theatre.

"Oh What A Lovely War," satirical review based on World War I songs and diaries which was enthusiastically received in London and New York, will run Oct. 3-6, 11-13, and 18-20.

"The Time of Your Life," a comedy-drama by the American playwright William Saroyan which won the Pulitzer Prize and the Drama Critics' Circle Award, is scheduled Nov. 7-10, 15-17, and 22-24.

Contrasts, an evening featuring the sublime tragedy of

Greece and the slapstick comedy of Rome, will include two short plays: Euripides' "Iphigenia in Aulis" (Greek tragedy) and Plautus' "The Twin Menachmi" (Roman comedy). This will be presented Feb. 20-23, Feb. 28 to March 2, and March 7 to 9.

"The School for Scandal," merry 18th century comedy of manners by Richard Brinsley Sheridan, is slated April 3-6, 11-13 and 18-20.

Readers Theatre Productions, also at the Lyceum Theatre, will include Christopher Fry's "The Firstborn," Dec. 12 to 15, and George Bernard Shaw's "Don Juan in Hell," March 13 to 16.

Lyric Opera Theatre, in addition to co-producing the musical and the opera with University Players, will also stage productions at Cosner Auditorium, including one in October, "Cos', fan tutte" (Women Are Like That)", and Donizetti's comic opera, "Don Pasquale," in February. Also planned during the year is a children's opera, presented by Lyric Opera Theatre.



NOTE WORTHY — Name musicians, such as Blues singer Lou Rawls, frequently perform on ASU campus.

## Celebrity And Fine Arts Series To Offer Diversified Programs

Among the diversified programs that will be available to students during the 1968-69 season at Arizona State University's Grady Gammage Memorial Auditorium are five outstanding events in the Celebrity Series and five in the Fine Arts Series.

Prof. David B. Scouler, managing director of the auditorium, has announced that the Celebrity Series will feature the Ray Charles Show; the Indianapolis Symphony Orchestra and the Romeros, four classical guitarists; the Ballet America, fine young New York dance company; "You Know I Can't Hear You When the Water's Running," smash Broadway comedy; and a final evening of Jazz, featuring Wes Montgomery and his band.

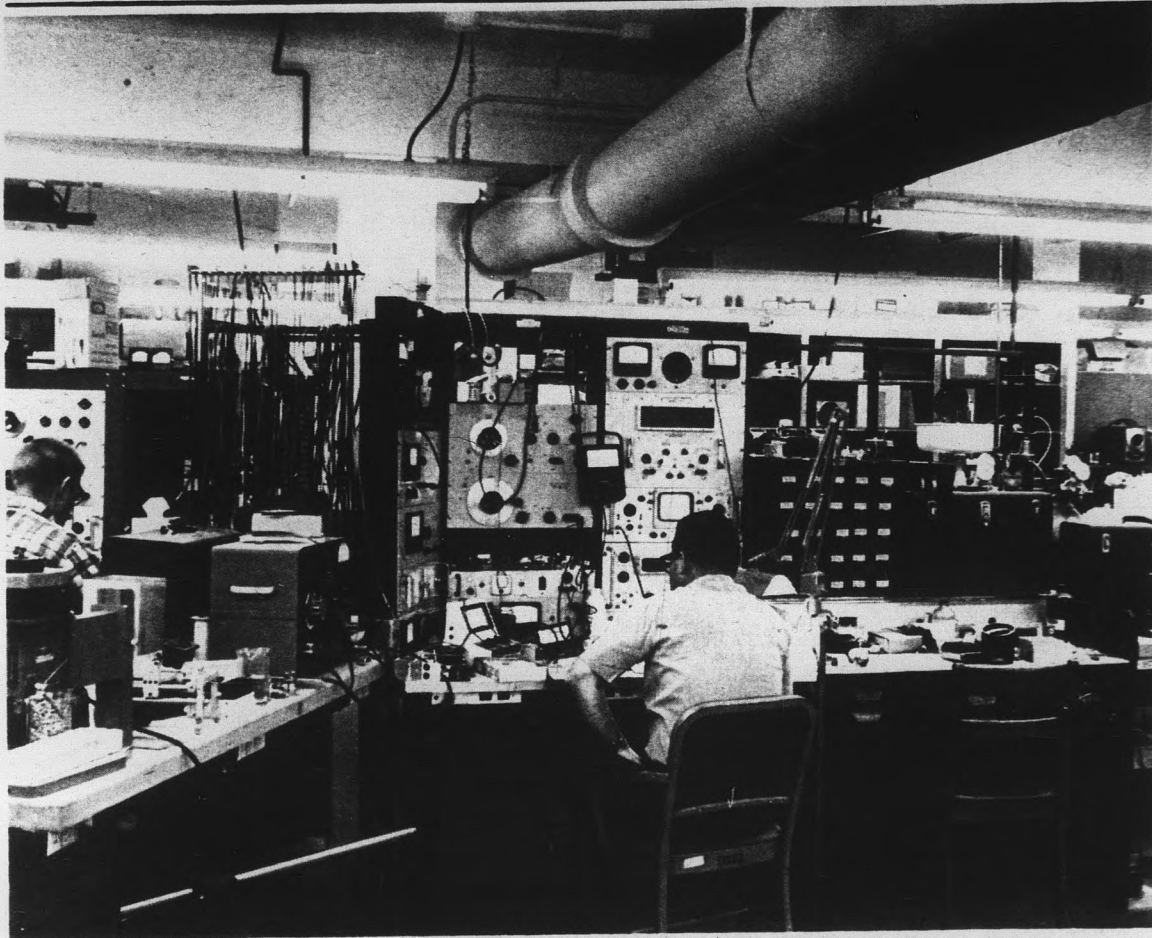
Fine Arts Series programs will

include performances by the Stuttgart Bach Kantori; Christa Ludwig, mezzo-soprano, and Walter Berry, baritone, both world-renowned stars of the Metropolitan; Violinist Yehudi Menuhin in his first tour in five years; the Pittsburgh Symphony in a return concert; and Andre Watts, spectacular young American pianist.

A number of Special events are planned for the year. Highlights will include appearances by Louis Armstrong and his band; the National Symphony Orchestra of Mexico; the San Diego Ballet in a Christmas season performance of the Nutcracker Ballet; and Cannonball Adderley and his band in an after-the-game show on the evening of the Homecoming football game.



MUSICAL DEVILS — High-stepping Sun Devil Marching Band is one of several musical and dramatic groups offered at ASU. A Symphony Orchestra has achieved professional caliber and regularly tours the western states. National recognition has been accorded the Concert Choir which appears at regional and national music festivals. The acclaimed Symphonic Band augments standard band literature with fine transcriptions. The Lyric Opera Theatre performs grand opera, chamber opera, children's opera and musicals and twice yearly joins with University Players, a polished theatrical group which has full schedule of its own productions.



MODERN LAB — Sophisticated laboratories, such as this well-equipped engineering facility, help prepare students to cope with rapid advances in science and technology.

# Engineering Fills Space Age Bill

The College of Engineering Sciences at Arizona State University includes the Division of Agriculture, the Division of Industrial Design and Technology, the School of Engineering, the Engineering Research Center and the University Computer Center.

The Bachelor of Science Degree in Agriculture is offered in the fields of Agricultural Science, Agricultural Production and Management and Agricultural Business. Four special programs, agricultural education, foreign agricultural service, pre-veterinary and pre-forestry are also offered. Students take part in practical applications of agriculture training on the University Farm.

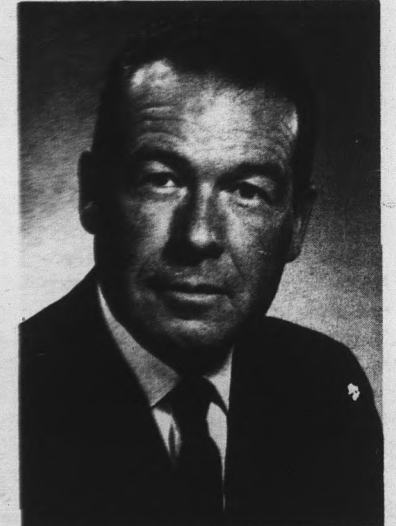
For students interested in Industrial Design and Technology, there are six fields of specialization in which the Bachelor's degree can be obtained: aeronautical technology, communications technology, design technology, electronic technology, graphic arts technology, tool and manufacturing technology, and welding technology.

The Engineering School is housed in a block long complex of modern buildings including a number of uniquely designed laboratories. The student may select his area of specialization from the chemical, civil, electrical, engineering mechanics, industrial, mechanical or engineering science fields which are offered. If he wishes he may continue beyond the Bachelor's

degree to the Master of Science, the Master of Science in Engineering or the Doctor of Philosophy degrees.

The Computer Center, equipped with the following computers, IBM 1620, IBM 1130, GE 225, and CD 3400, plus numerous items of auxiliary equipment, provides students an opportunity to study and use modern computer equipment and techniques. In the Engineering Research Center students participate with faculty members in applied research projects.

The Engineering School was built, accredited by the Engineers' Council for Professional Development, and authorized to award the Bachelor's, Master's, and the Doctor of Philosophy degrees between 1956 and 1962 under the leadership of Dr. Lee P. Thompson.



Dean Lee P. Thompson

## Cady Is Vice President

On March 29, 1965, more than 200 close friends — including high-ranking officials of government and education — honored Gilbert L. Cady, vice-president for business affairs, for 30 years of distinguished service to Arizona State University.

Vice President Cady, who has been on the ASU staff since his graduation from the University in 1934, delivered the keys of

the campus buildings to the late Grady Gammage when he came to Tempe in the summer of 1933 to assume a presidency which would continue for more than a quarter of a century.

Starting at ASU as a freshman among 836 students, Mr. Cady worked his way through college as a part-time employee in the business office which led to successive posts as business secretary, college comptroller, administrative assistant to the president and, in 1957, the vice-presidency.

One of the significant links between the University's colorful past, its dynamic present and promising future, Mr. Cady's career at ASU has extended through four presidential terms. His outstanding leadership during the last three decades has been an important factor in the University's development from an enrollment of 836 to one of more than 20,000.

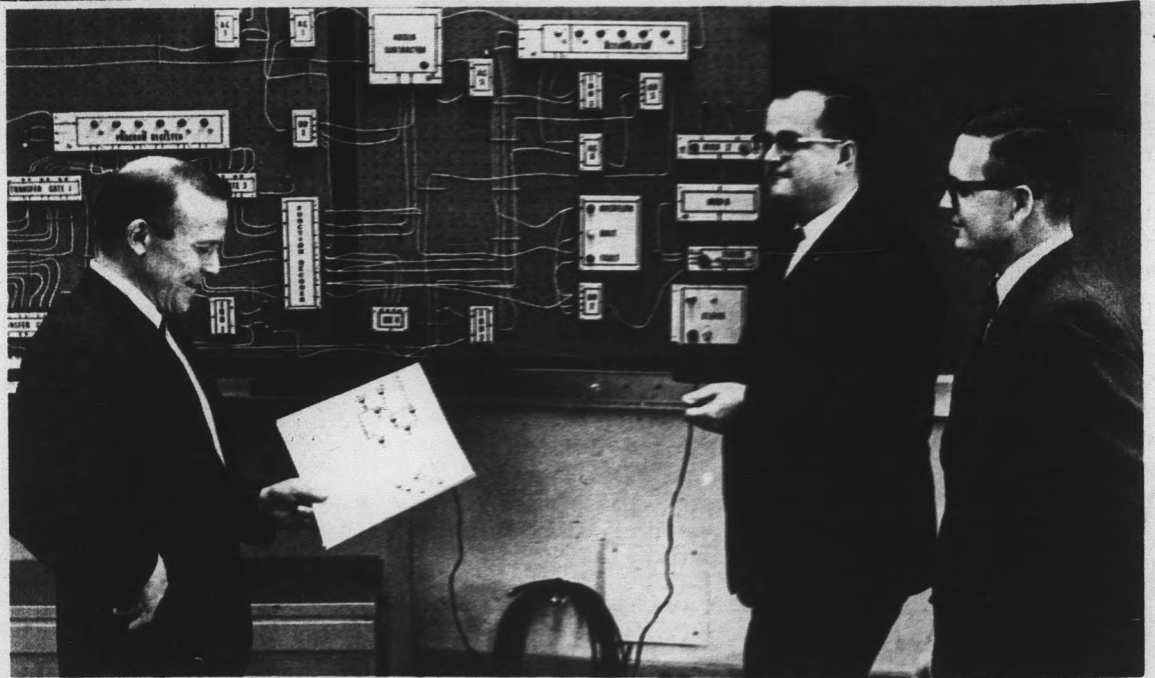
The only interruption in his long term of dedicated service to the University during the period of its greatest growth came in 1941 when he left the campus to become an Army of-

ficer. He served overseas 37 months as a member of the Inspector General Corps, achieving the rank of lieutenant colonel, before returning to the University to resume his educational mission.

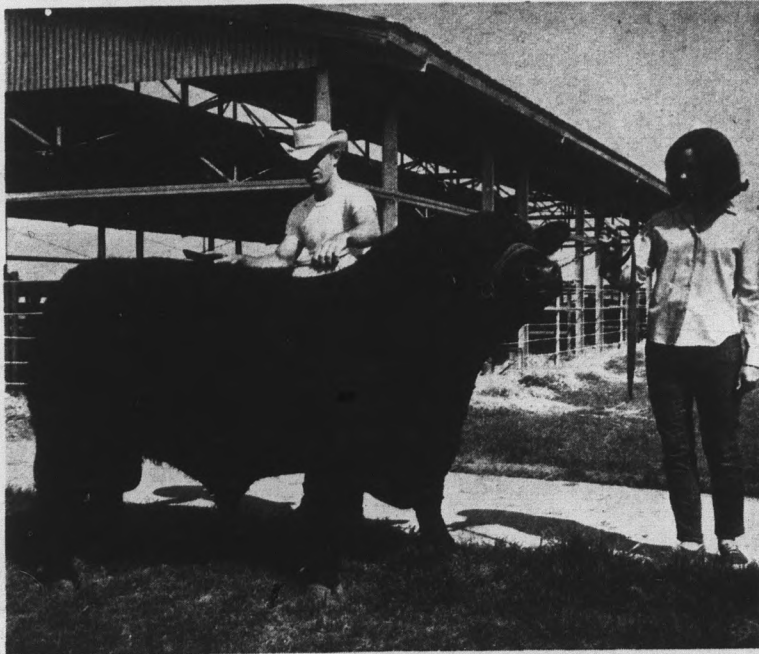
"As I see it," says Vice President Cady, "mine is a service function — to provide facilities so that our academic people can do their jobs."



Gilbert L. Cady



COMPUTER TRAINER — An Arizona State University instructional aid demonstrates the basic operations in computers. Marlowe Sperstad, center, chairman of the Electronic Technology Department, traces a circuit for two ASU graduate students.



DON'T MOVE — College of Engineering Science Division of Agriculture makes modern 230-acre farm available for university agriculture students.

## ASU Student Government Democratic

Every student registering for more than six hours, is automatically a member of the Associated Students of Arizona State University.

The Board of Regents, the President and the faculty, challenge every student to accept his individual responsibility by exerting intelligent effort for self-government and for promoting the intellectual, moral and social welfare of all students, in a democratic manner.

The Student Senate or Legislative Branch passes the laws governing the Associated Students, its boards and agencies.

The Executive Branch carries out these laws and the Student Court or Judicial Branch passes on the constitutionality of the laws and interprets the Constitution.

Annual elections are held in which student senators are elected to represent the Associated Men Students, Associated Women Students, Sophomore Students, Junior Students, Senior Students, Off-campus Men, Off-campus Women, and students in the colleges of Liberal Arts, Education, Architecture, Business Administration, Engineering, Fine Arts and Nursing.

President of the AS for the coming year, Bill Oldham, was elected at the general election held last March.

Under authority delegated by the President of the University, Associated Women Students sets and enforces social standards and regulations regarding campus dress, coordinates women's student government through residence hall councils and the off-campus women's organization, establishes hours for women students, and formulates and administers policies deemed essential to promote a desirable group living experience.

# College Offers Business Skills

New students registering for the first time in the College of Business Administration will be pleasantly surprised when they arrive on campus. A new modern home has just been completed for the College and is located east of the former building on the new mall. The colorful new building, which is built around a computer, contains the latest instructional equipment and facilities. Every classroom in this new building is a special-purpose room designed to encourage student participation and offer an ideal learning environment.

The College of Business Administration offers a balanced curriculum for students interested in careers in various fields



Dean Glenn D. Overman

of business. Each student is assigned a faculty advisor who will assist him in planning his academic program. Approximately one-half of a student's courses are taken in fields commonly described as "general education" or "liberal arts." These include such areas as communications, humanities, physical and biological sciences, behavioral and social sciences, and mathematics. The remaining one-half of the student's curriculum is taken in professional business subjects.

The professional courses include basic work in accounting, economics, finance, marketing, management, business law, and quantitative analysis. In addition, students may specialize in one of eleven major fields. These major fields are accounting, advertising, economics, finance, general business administration, insurance, management, marketing, office administration, real estate, and statistics and data processing.

The American Association of Collegiate Schools of Business, the official accrediting agency of professional schools of business, has accredited both the undergraduate and the graduate programs of the College of Business Administration.

Graduate degrees of Master of Business Administration, Master of Science in Accounting, Master of Science in Economics, and Doctor of Business Administration are also offered.

Over 3,500 students will be



**BUSINESS TYPES** — Despite the rapid and far-reaching changes taking place in the modern business world, basic tools and skills are still indispensable. Typing drill occupies these students in College of Business Administration.

enrolled with major fields in business during the coming year. Over ninety faculty members will provide a combination of practical and theoretical instruction in these various fields.

Through its Center for Executive Development, the College of Business Administration also conducts special seminars and conferences for local businessmen. These executive development programs provide man-

agement training in most of the functional fields of business and keep the faculty in touch with current business problems and practices. These programs are facilitated through Arizona State University's excellent location in Arizona's business center.

A Dean's Advisory Committee of 18 local business leaders serves as a liaison group between the College and the business community.

The Bureau of Business and Economic Research gathers and publishes business and economic data pertaining to the surrounding community. The Bureau also serves as a laboratory for students who wish to secure practical experience in business research and analysis.

Dr. Glenn D. Overman, who joined the ASU faculty in 1956, is Dean of the College of Business Administration.

## Student-Operated Mass Media Featured

Students wishing to study mass communications at Arizona State University have an opportunity to participate in television, radio, or journalism operations.

ASU operates campus radio station KASN a carrier current station, and KAET, a non-commercial educational television station on Channel 8. Both are maintained by the Bureau of Broadcasting for training students in radio and television operation.

Students participate in the

writing, programming, continuity and radio traffic for KASN which programs music, news, college sports and special events.

KAET telecasts over 50 hours per week including local and National Educational Television (NET) programs to help meet educational needs of the community.

KAET recently expanded operations and now is seen throughout Maricopa County and in such outlying communi-

ties as Prescott, Globe, Flagstaff and Miami.

BOTH KAET and KASN provide students enrolled in mass communications with working laboratories equipped with the finest facilities and supervised by professional broadcasters. Facilities for both stations are located in the engineering center.

Students seeking journalism training and experience may work on the State Press, campus newspaper published four times weekly with headquarters

in the Memorial Union.

The university - owned, student-operated paper is published under auspices of the department of mass communications and the board of Student Publications. Distributed on campus, subscriptions are included in the student activity fee.

Staff work on the State Press serves as professional training for students enrolled in journalism.

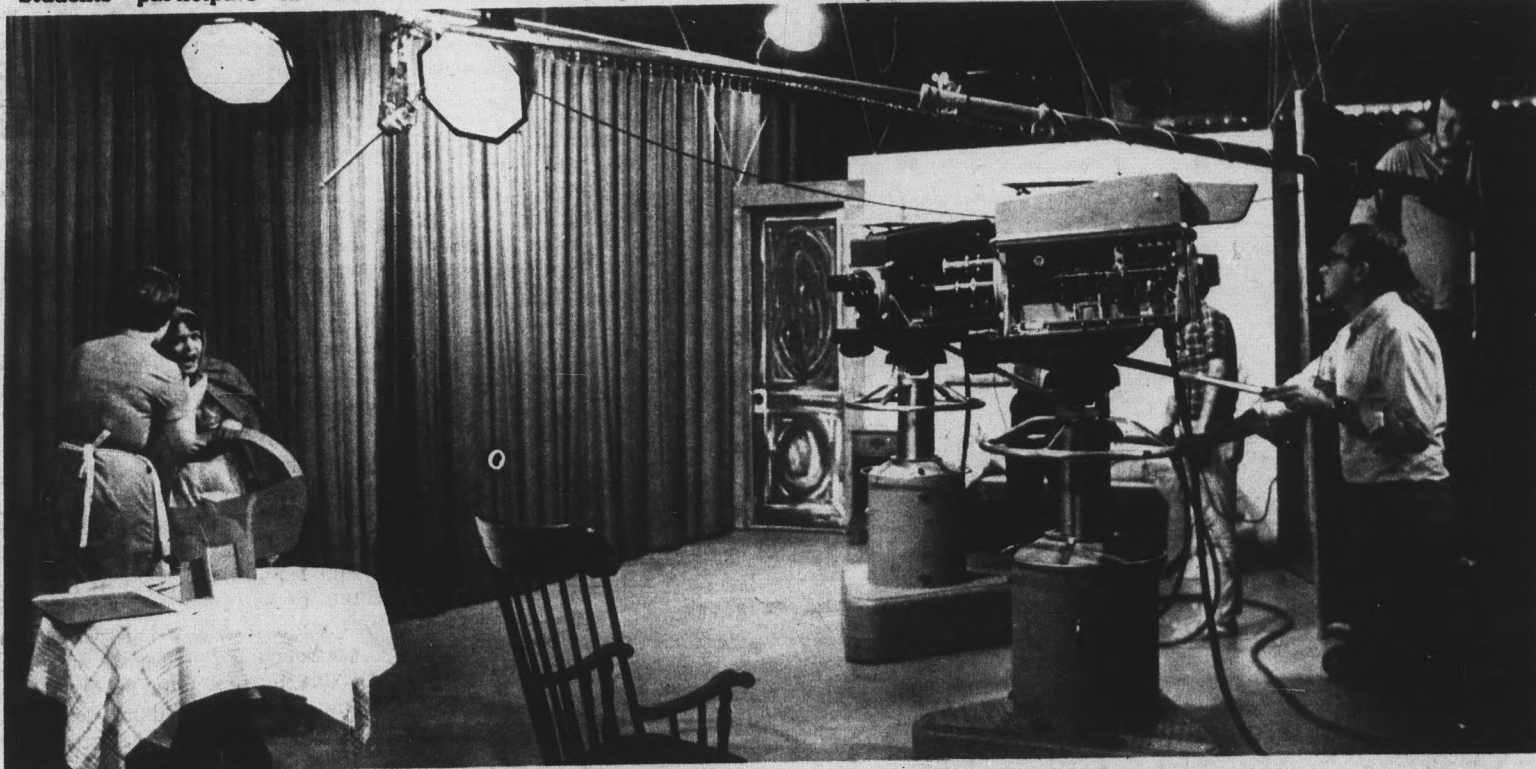
The university yearbook, *Sahuaro*, is student-edited and published.

## Religious Activities On Campus

An active and well-organized religious life, involving all major denominations and faiths and characterized by considerable inter-faith activity centered in Danforth Chapel at the heart of the campus, is among the oldest and strongest traditions at Arizona State University.

Such programs as "The Frontiers of Knowledge" colloquys, the "Issues and Trends" panels, "The Panel of Americans" the Freshmen Week Folk Sing, the Lectureship series, and the many special events arranged by the student religious organizations with all students as their guests; plus 15 courses in Bible and Religion, attest to the naturalness, healthfulness and vigor of the campus spiritual life.

The religious coordinator, Rev. Charles Crouch, is available in the Chapel for counseling or for information relative to the religious needs of the students, and coordinates the activities of all the denominations and faiths serving campus students.



**ON STAGE** — Students in ASU's Bureau of Broadcasting work and learn in a truly professional environment. Here, staff of

KAET, university's education TV station, tapes a production of University Players for viewing over Channel 8.



Architects and artists will share this striking complex to be constructed this academic year.

# Architects Stress Creative Abilities

The College of Architecture which was accredited in 1961 by the National Architectural Accrediting Board offers degree programs and special courses with the purpose of providing liberal, technical and professional preparation for careers concerned with creation of the buildings and related features of a functional and satisfying environment.

James W. Elmore is the dean of the College.

The College of Architecture offers a five-year program leading to the bachelor of architecture degree.

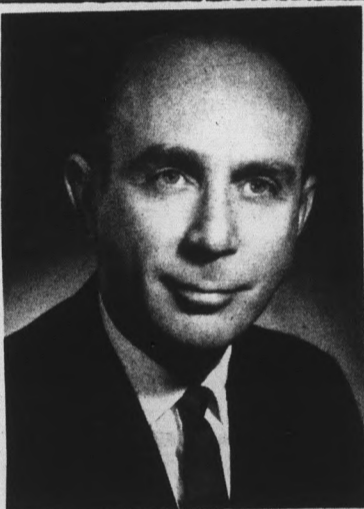
The college also offers a four-year curriculum leading to a bachelor of science degree in construction.

The architecture program is based on the belief that the ar-

chitecture profession has the obligation of providing creative leadership in the shaping of man's physical environment.

The program acquaints the students with all the techniques and philosophies of design and construction, and through its varied resources, stimulates and aids the student in his quest for a personal philosophy that will sustain him in seeking the rewards of a career devoted to shaping a better environment.

It is the purpose of the College of Architecture to provide graduates with a thorough and intimate comprehension of the nature of architecture: the competence necessary to acquire professional registration; the high ideals necessary for responsible and creative functioning as an individual, and as an



Dean James W. Elmore

architect in our society.

The college is a member of the Association of Collegiate Schools of Architecture.

A number of scholarships are provided each year through the Architecture Foundation, which administers the supporting contributions of the Central Arizona Chapter, American Institute of Architects, and others.

# Program Educates Tomorrow's Builders

Educating tomorrow's builders of the world is the long range goal of Arizona State University's Construction Degree Program. Meeting the heavy demand by the industry for its graduates is its most immediate problem.

The curriculum is a direct answer to the serious shortage of professional management talent in a 100 billion dollar industry which in the next thirty years expects to double the nation's housing, factories, office buildings, roads, dams, harbors, and other works so essential to the welfare of mankind.

But with all the drama and opportunity, too few students entering college consider the rewards and action of construction careers. Intense satisfaction, ra-

pid advancement, high earnings, and the challenge of great responsibility await the young constructor who has learned to lead others and direct the technical dimensions of contract construction.

Students enrolled in the College of Architecture's Bachelor of Science Degree in Construction Program go through a dynamic four-year plan of study broadly designed to develop the all-around organizational and leadership abilities needed to compete in the fast moving, rapidly changing business of construction. A feature of the program is its interesting variety of courses, drawn equally from the colleges of business administration, engineering, architecture and liberal arts.

# Campus Housing Factor In Success Of Students

Housing is ultra-important in the booming Valley of the Sun. Arizona State University is constantly working to provide adequate and suitable housing for its students.

The ASU residence halls are not just a place to sleep and eat. The halls are integrated with the academic aims of the institution, and living in them has been a factor contributing to the success of many a student.

The halls have succeeded in developing a climate conducive to good study habits. All have regular "quiet hours" to encourage study and the head residents are always ready to further encourage high academic standards.

Each year, both men's and women's residences compete for the highest academic average and trophies are given to the winning men's and women's halls.

In addition to offering many services, the residence halls encourage the development of tra-

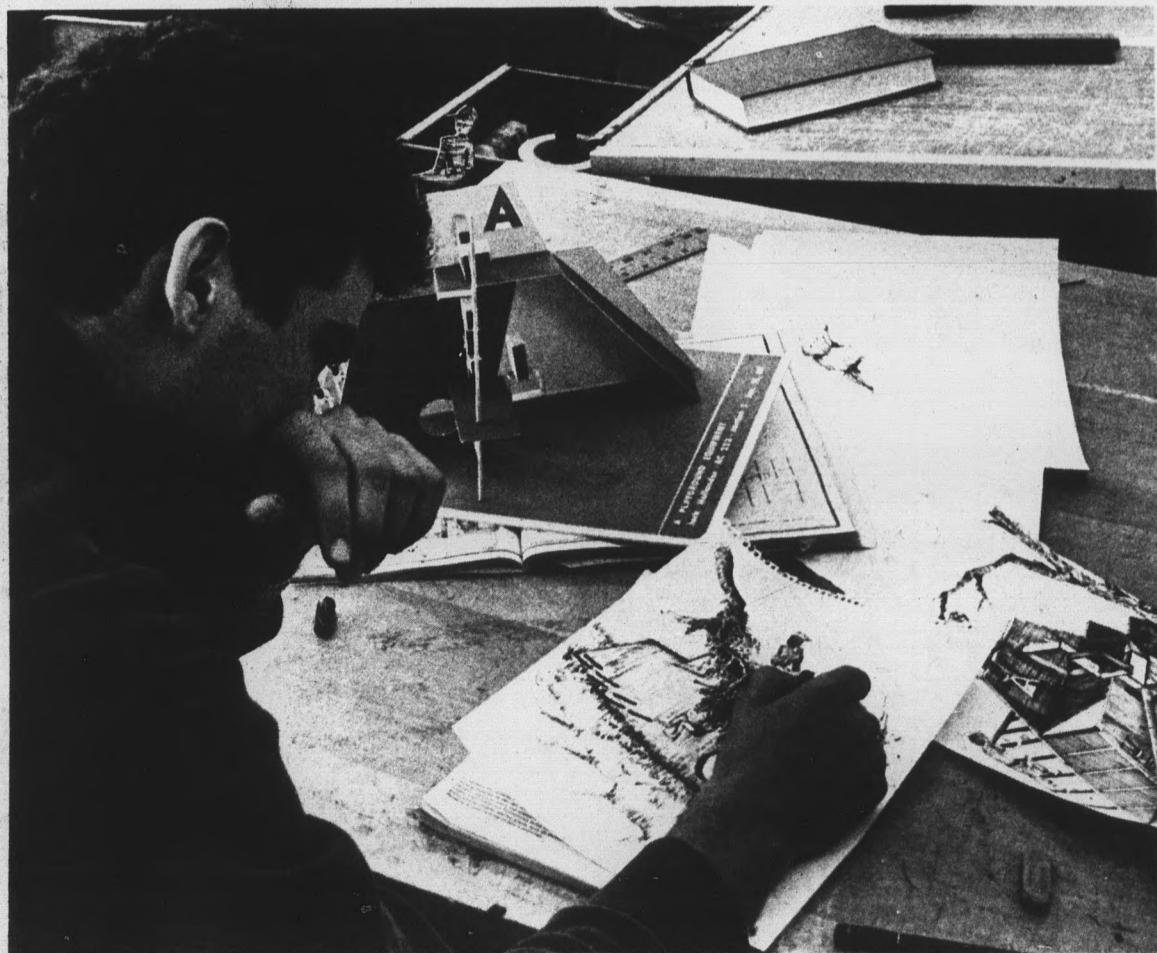
ditions and cultural programs. The individual residences sponsor scholarships, service projects as well as dances and receptions; some have published their own mimeographed newspapers. Sahuaro, Manzanita, and the Palo Verde's have dining rooms in the residence buildings.

Each residence hall has its own governing body, made up largely of student officials elected by their fellow students in the hall.

Women's residence halls include: Palo Verde, Palo Verde East and West units, Gammage, McClintock B (honor hall for upperclass women), the Quad units, McClintock A, Wilson and Manzanita.

Men's residence halls include: Hayden, Irish, M.O. Best units, Sahuaro and Adelphi.

All students wanting residence hall quarters for the coming academic year may apply to the Housing Office, Moeur Administration Building, room 124. Prospective students should apply early.



CONCENTRATION — Sketches and scale model are products of this architecture student's labor and creativity.



**PATIENT PATIENT** — Dummy substitutes for live patient but student nurses at ASU have plenty of opportunity for practical training in Phoenix hospitals and other agencies.

## College Develops Professionalism

This fall, Arizona State University's College of Nursing will continue to hold classes in its newly constructed building on campus.

The nursing program was initiated in April 1957 when the School of Nursing was organized within the College of Liberal Arts. The School became a College of Nursing, July 1, 1964.

The curriculum is designed to include three areas; courses in general education, related non-nursing and electives, and nursing.

The courses in the nursing major are organized in a four semester upper division sequence.

Excellent student clinical experiences are selected by the College of Nursing faculty who accompany the students to hos-

pitals and health agencies located in Phoenix and Mesa. Arrangements are made with over 30 agencies; some of them are Good Samaritan and St. Joseph's Hospitals, Maricopa County Health Department, Visiting Nurse Services, Crippled Children's Service and Veterans Administration Hospital.

Loans are available to eligible students with clearly established financial need, through the Nurse Training Act of 1964. Scholarships are also available.

The philosophy behind the College of Nursing is that it contributes to the improvement of society through the preparation of competent professional nurses.

The purpose of the nursing program is to prepare students for beginning professional nurs-



Dean Loretta A. Hamner

ing positions under supervision in psychiatric, maternal and child, medical and surgical, and Public Health nursing; and to provide a foundation for further specialization in clinical nursing, supervision, administration and teaching.

## Better Teachers Is Constant Goal

ASU's College of Education, the oldest college in the state's oldest institution of higher learning, offers courses in major areas, leading to the bachelor of arts in education degree.

Master of arts in education and doctor of education degrees are also conferred, as are the education specialist and doctor of philosophy degrees.

Specialization of course work is organized into 17 different groupings: elementary education, secondary education, special education, higher education, adult education, counselor education, educational administration and supervision, audio-visual education, Indian education, social and philosophical foundations, educational foundations, library science, instructional materials, safety education, reading education, educational psychology, and educational technology.

The college also provides preparation for state teaching certificates. In addition to the elementary program, students are prepared to meet certification requirements for teaching any one of the 26 major teaching fields and 23 additional minor fields for high school instruction.

The College of Education operates a Counseling Center, a

Reading Center, and the Bureau of Educational Research and Services.

Dr. H. K. Newburn, who joined the university faculty in 1963, is the new Dean of the College of Education.

## School Produces Social Workers

The Graduate School of Social Service Administration, directed by Dean Horace Lundberg, offers a two-year generic program in professional social work education leading to the Master of Social Work degree.

The school was inaugurated in 1961 and course work began in 1963 to help meet the nation's critical need for trained, competent personnel for the social work profession. It was awarded accreditation by the Council on Social Work Education at the end of its second year of operation.

Social work offers many opportunities to serve mankind and to contribute toward a more effective society. Social workers are employed in a variety of fields including child welfare, medical and psychiatric services, rehabilitation, corrections, education, and recreation.

## Vice President Burke Dean Of Graduate College

Dr. William J. Burke, who joined the Arizona State University staff in 1962 as vice president, combines the roles of administrator, professor and dean. In addition to his duties as vice president for research, he is dean of the Graduate College and holds the rank of professor of chemistry.

Head of the University of Utah chemistry department from 1949 until he accepted the ASU position, Dr. Burke also taught at Ohio University and was for several years a research chemist with E. I. du Pont de Nemours and Co.

Dr. Burke served on the committee on faculty fellowships of



Dean William J. Burke

the Fund for the Advancement of Education, Ford Foundation from 1952-56, and spent two months in Ethiopia studying its system of higher education as a member of a State Department International Cooperation Administration survey team.

The ASU vice president received a bachelor of arts degree from Ohio University, Athens, and a doctor of philosophy degree in chemistry at Ohio State University, Columbus. He is a native of Lowellville, Ohio.

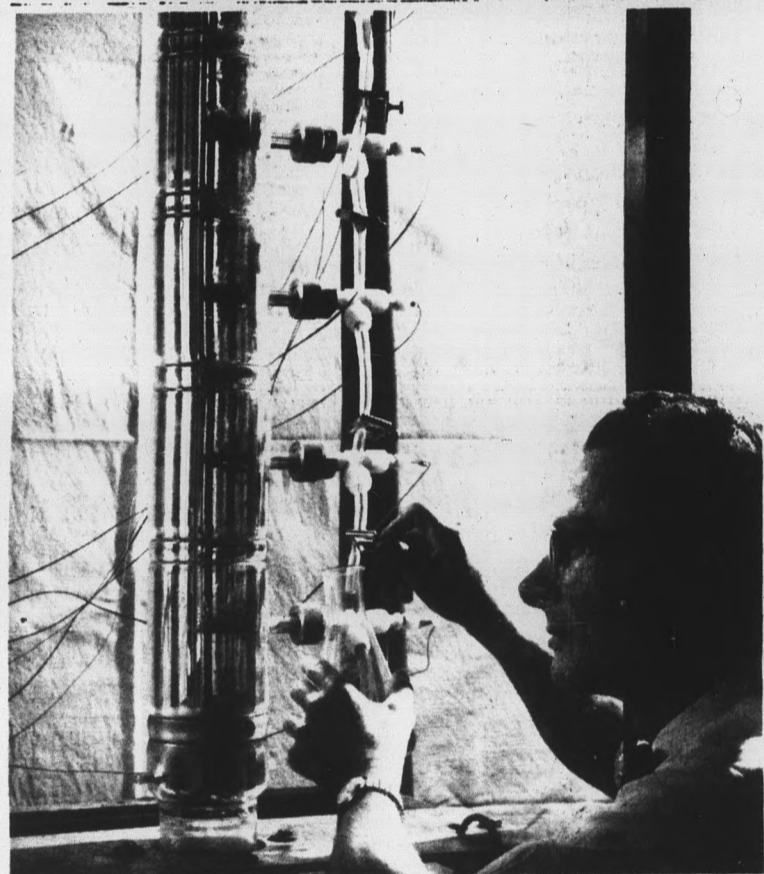
A visiting associate for the Committee on Professional Training of the American Chemical Society, he has also served as secretary and counselor for the Salt Lake section of the ACS. He is a consultant on chemical problems for the Monsanto Chemical Co., and has been active for several years in the Visiting Scientist program sponsored by the American Chemical Society.



**STYLISH CAMPUS** — Landscaped mall fronts recently completed Social Service Administration. Recently-completed mall graces the building which houses College of Nursing and Graduate School of heart of the ASU campus.



**CHEERS**—Active Arizona State University student body, over 22,000 strong, is given the opportunity to participate in an interesting and diversified schedule of activities outside the classroom. Cheerleaders, left, exemplify spirit shown by ASU students in campus leisure-time activities.



**RESEARCH** — Challenging variety of research grants and fellowships awarded to ASU faculty offer students invaluable opportunity for practical application of their knowledge and training.

## Memorial Union Activity Hub

The Memorial Union is a gathering place for the University students and faculty to seek friendships, new appreciations of the fine arts, relaxation and active participation in many social and cultural events held there.

The facilities of the Union include lounges on each floor. The first floor lounge is a social lounge. It has a piano for everyone's use. Here, too, are found magazines and newspapers. A fireplace for winter warmth and popcorn popping enhances the atmosphere.

A fine arts lounge is located on the second floor; recorded music concerts are played. Art exhibits and gallery talks are presented by the Cultural Affairs Committee, and informal receptions are held by many groups. The lounge also is used

as a quiet place for reflection and reading.

If your free time pleasure requires more activity, bowling, billiards, table tennis, and other games are available in the union games room. A card room is also located there.

At the information desk are many personal services, ranging from band-aids to campus and student directories.

The first floor includes a cafeteria and the Devil's Den snack bar. The Corral, located on the second floor, is another spot for informal eating.

If students are interested in participating in the activities of the Union program, there are many committees and subcommittees which are responsible for programs in the Union. Working with the Union staff, three major committees of the

Associated Students plan and direct activities: the Social Committee, the Cultural Affairs Committee, and the Faculty-Student Relations Committee. There are many weekend social events as well as the cultural programs in the building.

All freshmen women are invited to join the Memorial Union Hostess Committee. Members of the group serve as official hostesses to many University events held in the Memorial Union, such as concerts, lectures, conferences and receptions.

The Memorial Union Board consists of students representing various areas of the University. It makes recommendations regarding the Union.

The Union is available for group meetings, banquets and other activities.

## More Students Remain For Advanced Degrees

With the increasing demands of our technical age, more and more students either remain in college after receiving bachelor's degrees to continue studies or return later for advanced degrees.

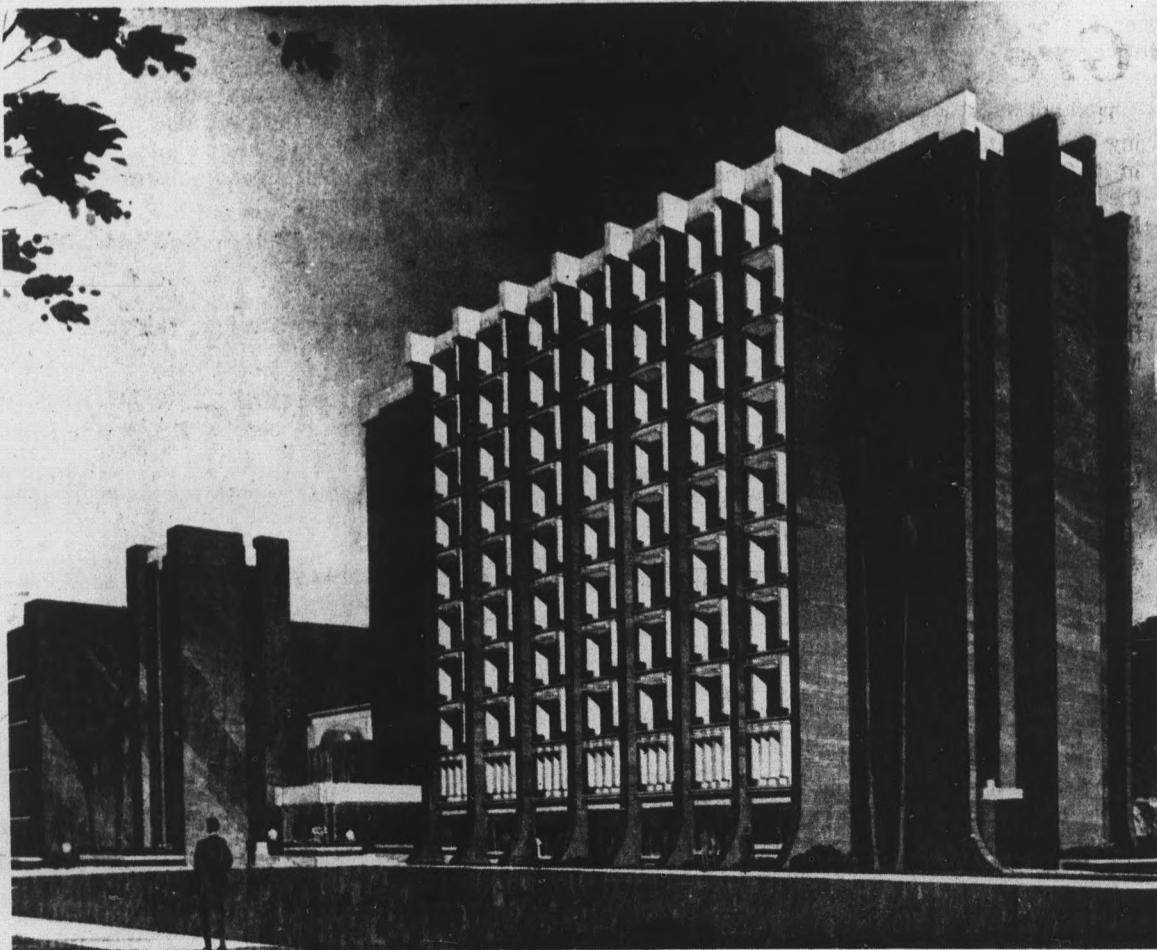
Thus it is of interest to young students starting their academic career to know that Arizona State University offers well rounded and extensive graduate programs through its Graduate College, of which Dr. William J. Burke, vice president for research and professor of chemistry, is Dean.

The graduate program at ASU is growing rapidly. During the first semester of 1967-68, 5,296 students were enrolled in the various graduate programs. Master's degrees are offered in accounting, anthropology, art, biological science, botany,

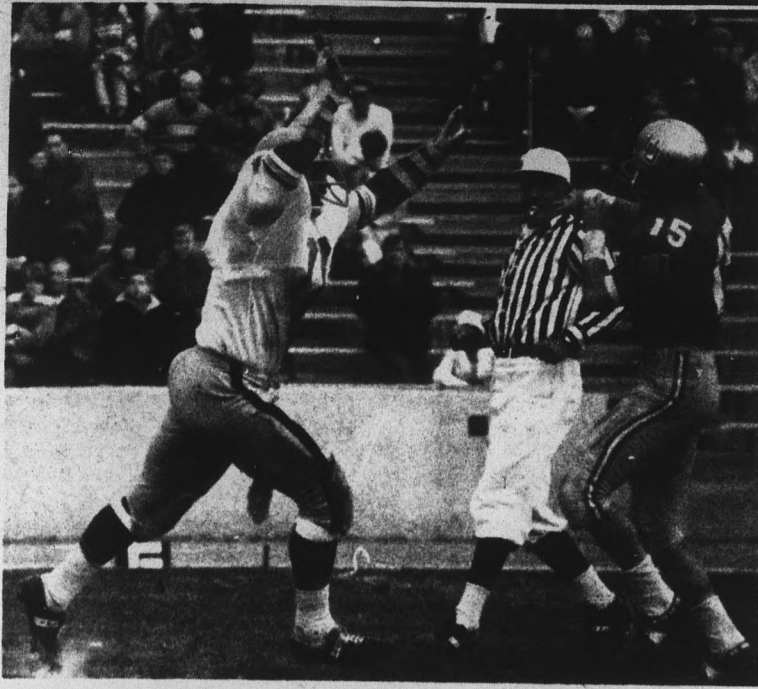
chemistry, drama, economics, engineering, English, French, geography, geology, German, history, home economics, humanities, mathematics, music, philosophy, physical education, physics, political science.

Also fine arts, music, natural sciences, psychology, sociology, Spanish, speech, zoology, accounting, economics, education, engineering, business administration, and social work.

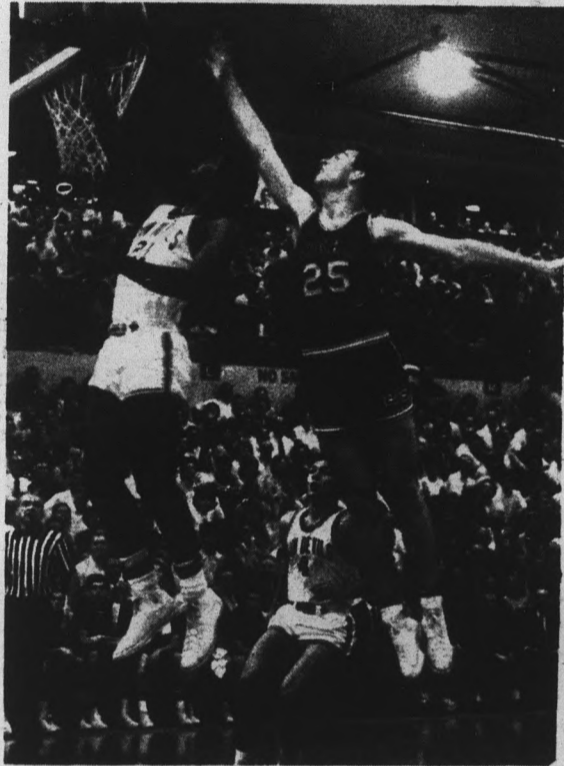
The Graduate College also offers the Education Specialist, Doctor of Education the Doctor of Business Administration, and the Doctor of Philosophy degrees. The Ph.D. fields include botany, chemistry, education, English, engineering, mathematics, physics, psychology, and zoology.



**HIGHER MATH** — Modern, towering mathematics wing is now being added to ASU's Physical Sciences Center.



**CULP BEARS DOWN** — That University of Utah quarterback may have gotten the pass away but pity the after-effects when jarring Sun Devil middle guard Curley Culp got through with him. This was routine for the All-American gridders who earned first team honors on both the Sporting News and Time Magazine squads.



**TOP GUN** — Leading the Arizona State University basketball squad in scoring in his first varsity season was Seabern Hill, flashy guard from Pittsburg, Calif. He canned 14.9 points a game including last-second game-winning tosses against Wyoming and Brigham Young.



**LEADING HITTER** — Freddie Nelson, ASU second sacker, led the Sun Devils in hitting at .351 and earned All-Western Athletic Conference honors for his efforts. The Devils rolled up a 39-14 record in 1968.

# ASU Attracts Top Athletes

In Intercollegiate Athletics, 1967-68 was the year of Curley Culp and the year for developing the classiest group of young athletes ever assembled at Arizona State University.

Culp won the majority of the honors and the youngsters received a solid year of seasoning as the Sun Devils turned in sparkling performances in football, golf and track.

Culp was the stalwart of an ASU football team that went 8-2 on the year, just missing an unbeaten year and a WAC title by a Wyoming field goal and an Oregon State touchdown.

Big Curley, middle guard on defense, tore through all opposition and ended by earning both Sporting News and Time Magazine first team All-America honors, being voted Homecoming King and outstanding senior scholar-athlete plus a first

round draft by the Denver Broncos.

If this wasn't enough, he had four post-season bowl game appearances and then found time to roll over ASU wrestling opposition for his second straight unbeaten season and fourth straight WAC title. He was not able to defend his NCAA heavy-weight title due to varsity competition as a freshman.

But, back on the gridiron where the explosive combinations of Max Anderson, Larry Walton, Ken Dyer, Ed Roseborough, Art Malone and J. D. Hill rolled through such teams as Wisconsin, 42-16; Arizona 47-7; New Mexico, 56-23, and Utah, 49-32.

But all was not that easy, it took ASU the entire evening to finally eak out a 33-32 decision over Texas of El Paso and both Washington State and Brigham Young were stubborn victims.

And what makes coach Frank Kush happy for 1968 is that most of the wrecking crew of '67 returns (including three All-WAC first teamers — Wes Plummer, Ron Pritchard and George Hummer) to provide experienced firepower to attack another back-breaking schedule.

ASU's golfing forces, under Billy Mann's direction, rolled to an outstanding year, winning 11 of 13 dual matches, both the Fresno and BYU Invitationals plus two second places (Sun Devil and WAC) and a third place (All-America) in tourneys.

Track coach Baldy Castillo borrowed some of Kush's gridiron speed and combined it with his own sprinters to compile an outstanding record against much deeper opposition.

Hurdler and footballer Fair Hooker broke a school record with a 13.9 effort in the highs while Dick Rambo tied the school mark of 16-0 in the pole vault.

Quartermiler Ron Freeman also bettered the school standard with a 45.9 showing in the

San Diego Meet of Champions 440 but it was good only for a second place finish in the race.

Sprinters Jerry Bright and J. D. Hill took the WAC 220 and 100 then teamed with Larry Walton and John Holbrook for a 440 relay title.

Sophomore Jesus Ortiz of Douglas set a WAC discus mark of 183-9, some 19 feet further than he had ever thrown, in the WAC championships at windy, cold University of Wyoming.

Shot putter Isiah Oakes also took home a WAC title and is one of the two lone seniors on Castillo's squad which spells victory in 1969.

Baseball failed to defend its 1967 NCAA title but coach Bobby Winkles' troops stormed through the year in 19-14 fashion and drew the highest average diamond attendance in school history.

Little Freddie Nelson, junior second baseman, led the Devils in hitting at .351 while junior hurler Joe Arnold and freshman Kenny Hansen finished one-two in the WAC pitching tabulations. Winkles, baring professional signings, loses only three men to graduation.

The entire starting lineup in basketball returns making ASU's outlook a bright one considering the fashion Seabern Hill, Roger Detter, Jay Arnote, Gerhard Schreur, Ron Johnson and Bob Edwards closed out 1967-68.

Ned Wulk's troops were 11-17 and 4-6 in the WAC including wins over BYU and Utah late in the year.

Wrestling was third in the WAC with Culp and Bob Shines winning individual crowns and gymnastics held down the same spot led by all-around man Rich Impson.

Diver Keith Russell and freestyler Jimmy Rang were the best on the ASU swim team with Russell winning the WAC one-meter board competition.

Tennis was fifth in the WAC and Cross Country last.

## Campus Undergoes Greatest Changes

The ASU campus is undergoing the greatest transformation in its 82-year history. Change in the physical appearance of ASU has become a tradition in recent decades but when the present projects are completed even this year's graduates will have difficulty recognizing their Alma Mater.

One of ASU's most successful projects has been the conversion of College Avenue between University Drive and Orange Street in the heart of the campus into a broad, landscaped esplanade known as the University Mall. Dotted with multi-shaped planters of shrubs, trees and flowers, kiosks and circular seating wells, the avenue is the setting for student activities as well as providing a thoroughfare for students and faculty.

The Mall is being extended south, east and west in the central campus accompanied by realignment and expansion of some university streets.

Other major construction projects now underway or proposed include:

\*An 82,000-square-foot mathe-

matics wing for the Physical Sciences building. One portion includes three levels, now 85 percent completed, while the other portion will have eight levels of classrooms and offices.

\*An 84,000-square-foot Business Administration directly east of the existing Business building. Now ready for occupancy, the building will serve 1,230 business students.

\*Two buildings which will double the present facilities of the College of Education. Covered walkways will link the two new structures to the present Hiram Bradford Farmer Education Hall.

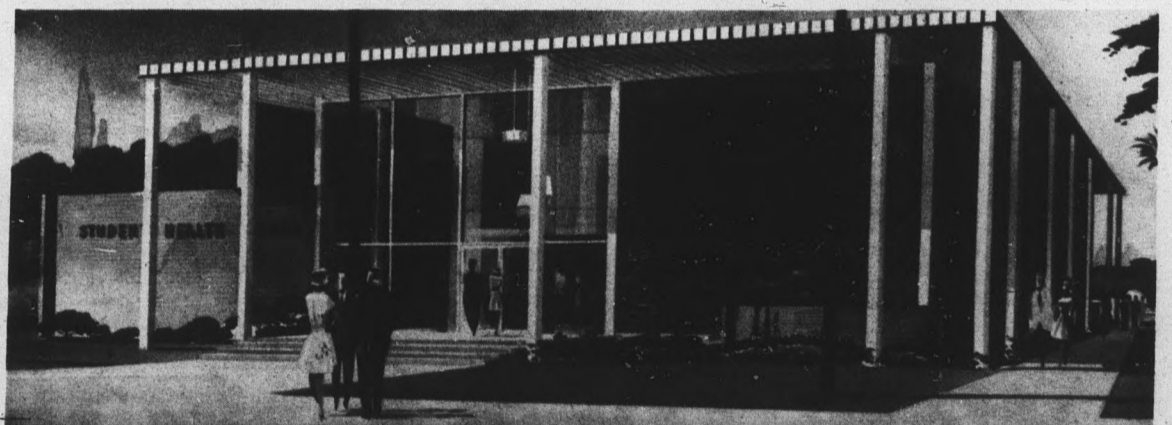
\*A 14,000 square-foot-addition to the Home Economics building.

\*A 2,500 square-foot-addition to the radio and television studios of KAET in the Engineering Sciences Center.

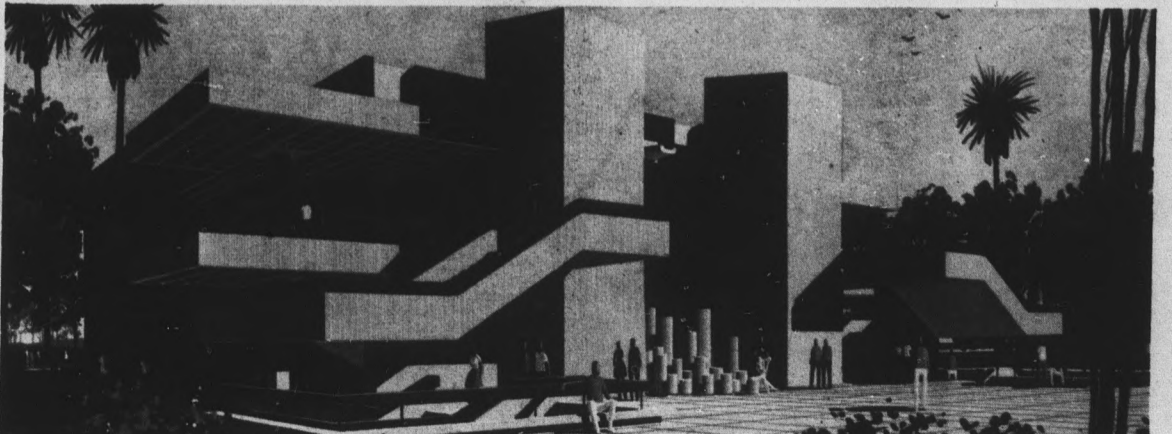
\*A 15,650 square-foot addition to the Student Health Service.

\*A block-long Art and Architecture complex of two buildings totaling 113,000 square feet.

\*A 20,598 square-foot lecture hall building including a 500-seat hall on each of its two



**TO YOUR HEALTH** — This 15,650 square-foot structure will be added to the Student Health Service, west of Physical Sciences Center.



**PLANS APPROVED** — Construction of this 20,598-square-foot lecture hall building at Arizona State University, at an estimated cost of \$450,000, is expected to begin late this summer. Designed by Donald B. Schwenn, Phoenix architect, the building will include two 500-seat lecture halls, one on each floor. Structure will be located in tennis courts-area north of the Men's Physical Education building and west of the Engineering Sciences Center.

# Welcome Freshmen

*The University Bookstore Is At Your Service*

**Come In And 'Shop Around' Before The Big 'Rush'**

*Shop On Campus*

*Save More Money*

## The University Bookstore

" . . . Your Campus Store . . . "

. . . Owned and operated by Arizona State University; to serve the needs of the students and faculty of this institution.

. . . Stocking a complete line of books — text-books, reference, and general reading. A vast assortment of the best paperbacks.

. . . School supplies — Paper, Pencils, Pens, Notebooks, and all supplies necessary for the proper completion of your school work.

. . . Engineering Equipment — the widest assortment of the finest engineering supplies in the country — approved by the School of Engineering. The very best at the lowest prices to be found anywhere.

. . . Art Supplies and Equipment — a complete selection of the very best All types of paints, brushes, paper, canvas, etc.

. . . A complete college line — monogrammed shirts, jackets and sweatshirts. Decals and college souvenirs . . . Pennants, ceramics and college jewelry.

. . . Stationery — both social and engraved papers. Numerous types of both boxed and open stock.

## Regular Hours

**8 - 7:00 Monday thru Thursday**

**8 - 4:30 Friday**

**9 - 1:00 Saturday**

- . . . Early purchases assure you of buying the books and supplies you need while stock is plentiful.
- . . . Shop before the "rush" and make your adjustments later.
- . . . Full 15 day refund period beginning with registration day.
- . . . No refunds are made without a cash register receipt.
- . . . Merchandise to be refunded must be in new and resalable condition.
- . . . Do not remove price tags or book covers.
- . . . The cash register receipt must accompany merchandise to be returned.

**We Buy Used Books The Year Around**

*Visit Your*

# University Bookstore

*Located In Memorial Union Building*

*Serving The Students And The Faculty*