

## Deadline Controversy Erupts

### Bulletin

The AS Supreme Court yesterday afternoon issued an injunction to hold up the primary election originally scheduled for Wednesday until the election code violation cases are decided.

The court will meet at 4 this afternoon to consider two suits. One is against the Election Board brought by John Hertz, candidate for activities vice president; James Henny, Liberal Arts Sophomore; and Bud Scribner, AMS senator.

Scribner also brought a separate suit against the Student Senate by bringing suit against Steve Yarbrough, speaker of the Senate. Scribner contends that a section of the new election code which prevents write-in candidates in the general election is unconstitutional.

The injunction was issued after an attempt to resolve the dispute through talks with AS President Bill Perkins.

### AS Candidates Accused Of Filing Petitions Late

By LARRY ROSS

Rumors, charges, denials, no comments and general confusion erupted into a full-blown controversy yesterday as the shadow of election code violation was cast on Wednesday's primary election.

The charges came first from two former student government members, who protested to the State Press that the 4 p.m. deadline on Monday for filing qualifying petitions for the primary had been extended by the Election Board to allow two candidates for high AS positions to be placed on the ballot.

THEY ALLEGE, additionally, that another candidate who filed on Tuesday morning, was ousted from the election unjustly.

Their contention is that if one candidate is disqualified for lateness, then all late candidates should be disqualified.

The crux of the controversy is the 4 p.m. deadline for filing petitions. The election code provides that late petitioners be excluded from the election ballot, though they may still run as write-in candidates.

The two men who complained of the alleged violation to the State Press, one a veteran of the administrative branch of student government and the other of the legislative branch, maintain that the late filers would gain an advantage they were not entitled to by having their petitions accepted.

The positions and candidates involved in the allegations are AS president (Skip Swerdlow), AS activities vice president (Mary Lamberts), AS secretary (Tana Basham) and business senator (Tom Edwards).

WHEN THE STATE Press first contacted Ilene Lashinsky, Election Board chairman, she denied knowledge of any late petitions and refused to comment any further than to say the deadline was 4 Monday afternoon and to quote the new election code about the procedure for filing complaints.

She later called and changed her position, explaining that an appointment had forced her to be abrupt in the previous conversation.

She confirmed that there had been a meeting on Tuesday to determine which of four late petitions would be accepted and which wouldn't. She said that there were two groups involved — one composed of late petitioners from Monday afternoon and the other from early Tuesday morning.

OTHER SOURCES indicated that the late filers on Monday were Skip Swerdlow, Mary Lamberts and Tana Basham and that the single petition filed on Tuesday morning was that of Tom Edwards, a business senator seeking reelection.

Miss Lashinsky said that the late Monday petitions were accepted because a rumor had spread that the deadline had been extended to 6 (when the activities center closes) and because that was "an awful lot" of people to exclude from the election ballot.

The board, she explained, rejected the petition of Tom Edwards because it came in much later and he had been "negligent" in not calling or notifying anyone that the petition would be late.

SHE FURTHER stated that the late petitions on Monday had been filed between 4 and 6 p.m., but that she did not know the exact time they had been turned in.

A State Press reporter learned that the petitions were actually turned in to the executive manager's office, MU 207, the place officially designated by student government officers.

A source in the office said that no petitions had been turned in there before the office closed at 4:30, but that the petitions were turned in to the office the next morning.

THE SOURCE added that any late petitions had apparently been turned in at the student government office and later sent to the Executive Manager's office.

(Continued on page 3)

### Students Form New Party

Six candidates told the State Press yesterday that they had formed the Student Power Party to present a united front in the student government elections March 13.

John Hertz, running for activities vice president, outlined an elaborate party platform which the candidates plan to use in their campaigns.

The other members of the group are Bill Fortner, running for president; Dave Bernhard, seeking the fine arts senator position, and three liberal arts senator candidates — Gary Eschbacher, John Clark and Walt Ulman.

The platform contained the following goals: (1) liberalize girls' dorm hours, (2) raise faculty salaries, (3) lower tuition, (4) remove the administrative veto power over student legislation, (5) end compulsory ROTC, (6) make the State Press completely independent of University control, (7) apply student funds to student problems and (8) define procedural channels for student discipline cases.

"We also want to start a joint student lobby of students from the three state universities to lobby for student interests before the Board of Regents and the state legislature," Hertz told the State Press.

### Partial Candidate List Released

State Press obtained a partial list of candidates qualified by the Election Board for Wednesday's primary polling late yesterday after a merry-go-round of official uncertainty.

Steve Yarbrough, AS first vice president, released the following names at 3:30 p.m. yesterday after a round of "list, list, who's got the list?" had ended with no final tabulation being discovered:

AS President: Bill Oldham, Skip Swerdlow, Bob Carlin, Bill Fortner, Dennis Dodds.

First Vice President: Linda Vogel

Activities Vice President: Tom Holmes, Mary Lamberts, John Hertz.

AS Secretary: Tana Basham. Administrative Vice President: Sue Korinek, Jonas Miller, Stan Wilson.

AWS President: Liz Lim, Lynn Martin; Executive Vice President: Luise Monseur; Activities Vice President: Cecelia Doran; Secretary: Claudia Clark; Treasurer, Barb Davis.

Missing are candidates who have qualified in the races for AS senator's seats. Yarbrough said he had no way of obtaining these names.

It was impossible for State Press to obtain background information on candidates prior to press time.

Earlier this month, State Press agreed with Swerdlow, AS administrative vice president, and Election Board President Ilene Lashinsky that the responsibility of officially announcing to the State Press that one was a candidate for an office would be left to the indi-

vidual candidates.

However, the State Press attempted to obtain a list of qualified candidates today after complaints that insufficient coverage had been given election matters to date.

Miss Basham, now acting AS secretary, told the State Press about 4:10 p.m. that she would obtain a final list of candidates from Miss Lashinsky, but called back at 4:15 p.m. to report she could not reach Miss Lashinsky and that no one else had the list.

Earlier, Kathy Hurlebaus, Election Board publicity chairman, told the State Press "I don't think we (the Election Board) know who has a list."

"We don't accept the petitions," she said. "All we do is run the elections. We don't have anything to do with getting a list."

The Election Code requires that the petitions be turned in to the ASASU Executive Manager's office, MU 207, along with the \$20 filing fee, before 4 p.m. Feb. 26.

### Conlan to Speak On Vietnam Issues

Senator John B. Conlan, R-Maricopa, will speak at 4 p.m. today in the MU ballroom about "The Real Issues in Vietnam." The speech is sponsored by the Baptist Student Union at no charge.

# America Must Fill Vacuum Britain Created—Durham

If the United States hopes to fulfill its global responsibilities, the nation must develop "selective partnerships" throughout the world to replace the power vacuum created by the decline of the United Kingdom, said President G. Homer Durham during his annual Foreign Policy address before the cadets of the Air Force ROTC units.

Speaking at Gammage Auditorium Thursday morning, President Durham said, "This would involve development of special relationships in the Mediterranean and the Middle East with Italy and Turkey; in the Far East with Malaysia, Thailand, Taiwan and Japan."

"IN ADDITION," he continued, "we must not overlook such relationships afforded by Libya in North Africa; Kenya and Ethiopia in East Africa; and Saudi Arabia, Iran, Pakistan and India on the great Asian 'world island'."

President Durham proposed this course of diplomatic action as an alternative to attempting to "go it alone" in meeting our global responsibilities.

The withdrawal of British

forces from the Far and Middle East "leaves a gap from Hong Kong, through Malaya and Singapore, across the Indian Ocean, across Africa, across the Middle East, across the Mediterranean, directly back to the island of Great Britain," said President Durham.

**HOW THE UNITED STATES** handles the situation occasioned by the withdrawal of British forces from two-thirds of the world will determine the future of American domestic politics and foreign policy, stated the ASU president.

President Durham recommended optimum use of the United Nations in the development of the "selective partnership" throughout the world. He also discussed limitations of the physical and political resources of the United States.

# Tamayo Exhibition Opens Tomorrow

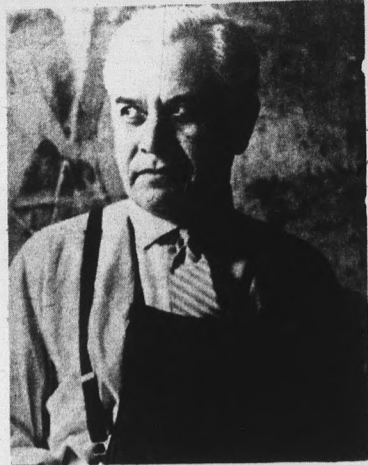
By DEBORA KELMAN

An exhibit of paintings by Rufino Tamayo, internationally acclaimed as Mexico's greatest artist, will open at the Phoenix Art Museum tomorrow afternoon at 1.

The Friends of Mexican Art and the Phoenix Art Museum will co-sponsor the comprehensive exhibition. It will be the largest display of his works ever presented in the United States. Major museums and private collectors throughout the country are loaning approximately 125 works.

Jack Breckenridge and Dr. John Hale, associate professors of fine arts, will be among the art authorities giving tours of the show tomorrow afternoon between 1 and 5. Admission is free and refreshments will be served. Dr. Hale is on the board of directors and is technical adviser for the Friends of Mexican Art.

Tamayo, a Zapotec Indian, is basically an easel painter and



Rufino Tamayo

muralist. He is well known among Mexican painters because he rebelled against the traditional style of the "Big Three" representational propagandists: Riviera, Orozco and Siqueros. Tamayo's large oils are generally abstract and vivid in color.

There have been other exhibits of Tamayo's paintings throughout the world. He was chosen by his government to paint a mural for the Mexican Pavilion at Expo '67 and will have a presentation at the Olympics.

The exhibit will run through March. Museum hours are 10 a.m. to 5 p.m. daily, 1 to 5 p.m. Sunday and also 7 to 9 Wednesday evenings.

**WHITE SHIELD - HEALTH & BEAUTY AIDS**  
**TEMPE CENTER**

OVER 6000 ITEMS  
 SUBSTANTIALLY DISCOUNTED

Far Below Retail on a Day to Day Basis  
 See How Much You Can Save by Developing  
 The White Shield Habit. Save 25% to 50%

**WHITE SHIELD**

**RED TAG SALE**

Special Group of **POSTERS**  
 1/2 Price

... while they last

**HILL'S BOOKS & RECORDS**

Tempe Center 967-5243



socko stripe two-piecer slung low on the hips. Acrilan acrylic knit in powerful pastels.

**Celia's FASHIONS**  
 Tempe Center &  
 1149 E. Main, Mesa



The "Second" Best Man At Your Wedding is ERIC

Perhaps the most important single detail in your wedding preparation is the selection of the right photographer.

**ERIC'S SPECIAL WEDDING OFFER**

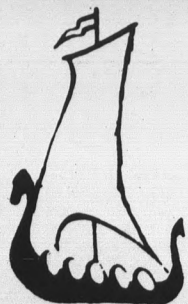
Check These Features . . .

- ★ Complete wedding coverage
- ★ Complete reception coverage
- ★ 6-pose publicity bridal sitting in our studio
- ★ 1 8x10 glossy portrait for publication
- ★ 1 Deluxe Rosewood Wedding Album
- ★ Deluxe Guest Book (holds 240 names)
- ★ 12 5x7 NATURAL COLOR wedding candid
- ★ 20 3x5 preselected NATURAL COLOR previews from which to choose your candid.

All This and Quality Too!

**\$6800 COMPLETE**

Call today for a private Wedding Consultation in our studio . . .



photography by **ERIC**

1020 MILL AVENUE • SUITE 3 • TEMPE 966-8491

**MORE ABOUT —**

# Petition Controversy

(Continued from page 1)

**STEVE YARBROUGH**, first vice president, reported late yesterday afternoon that some of the candidates had apparently been told at the time petitions were picked up that they could turn their completed petitions in until 6 Monday afternoon.

He said he assumed some of the candidates who had been told this might not have checked the election code to find out that the deadline was 4 p.m.

Skip Swerdlow, administrative vice president, told several State Press staff members that he had turned his petition in at 4:15 Monday afternoon. He refused to comment further.

A reporter was later told that he had gone home. He could not be reached there for comment.

**JOHN HERTZ**, activities vice presidential candidate from the new Student Power Party, has filed a petition of complaint with the AS Supreme Court on the basis of an alleged election violation.

He told a reporter early yesterday that the acceptance of the late filer in the contest for the activities position had put additional burden and expense on him as a candidate.

He maintains, however, that the main point in the dispute is whether the letter of the law in regard to the election code is being followed by allowing the late petitioners on the primary ballot.

**IN ADDITION**, a protest regarding violation of the election code had been filed by James Henry and sent to the administrative vice president, the Election Board chairman and the Election Board adviser.

"I just happened to hear about it and it burned me up," he said. "I think it stinks."

# Serbian Buffet Will Be Offered

A buffet will be held at 7 p.m. Saturday in the MU Pagoda Room preceding the 8:30 performance of the Branko Krsmonovich Chorus of Yugoslavia in Gammage auditorium.

Featuring Serbian food, the buffet will be served in the style of the Serbian Republic of Yugoslavia, with music being provided by a tamburitza orchestra.

The dinner is open to ticket holders who plan to attend the performance of the Yugoslavian choral group at Gammage Auditorium. Cost of the buffet is \$1.50, and advanced reservations may be made by calling the MU Information Desk, 961-3406.

During the first portion of the program, devoted to the classics of past ages, the chorus will appear in


formal attire. For the second half, they will change into the colorful costumes of Yugoslavia's six republics and present the Slavic folk music of their native land.

The chorus has won several concert awards including the World Festival Award in Vienna in 1959 and the World Festival Award in Moscow in 1957. The singers also won three first prizes at the International Polyphonic Contest in Arezzo, Italy, in 1955.

Ticket prices are \$4, \$3 and \$2. For further information call 961-3434.

STATE PRESS is published by Arizona State University as the official campus newspaper every Tuesday through Friday during the school year, except holidays and examination periods, and is entered as second class matter at Tempe, Arizona, 85281.


*Roman Holiday*  
**RESTAURANT**  
 16 E. 4th St.  
 "House of Sauces"  
**PIZZAS**  
 &  
 Complete Italian  
**DINNERS**  
 Eat In or Take Out  
**967-9723**  
**OPEN**  
 5 p.m. to 1 a.m.  
 Mon. - Thur. - Sat.  
 3 p.m. to 11 p.m.  
 Sundays  
 Location of Old "Capri"



**GETTING MARRIED?**  
 All Invitations are Engraved  
 Low Prices From 11.95 the First 100  
 Quick Service — One Week —  
 Napkins Monogrammed Overnight  
 Low - Low Prices

**HAPPY HOUSE**      **Tempe Center**

**DIAMOND CUTTER**




Joe Berning, manager of Paul Johnson Jewelers in Tempe, and a diamond cutter for twenty-two years, checks the angle on a diamond he is cutting.

Did you know that the finest diamond material will lack brilliance, if not cut to exacting proportions? The cutting, color, and clarity of each diamond must be graded independently to establish its value.

Take our Diamond Presentation and learn why so many A.S.U. students purchase their diamonds here.

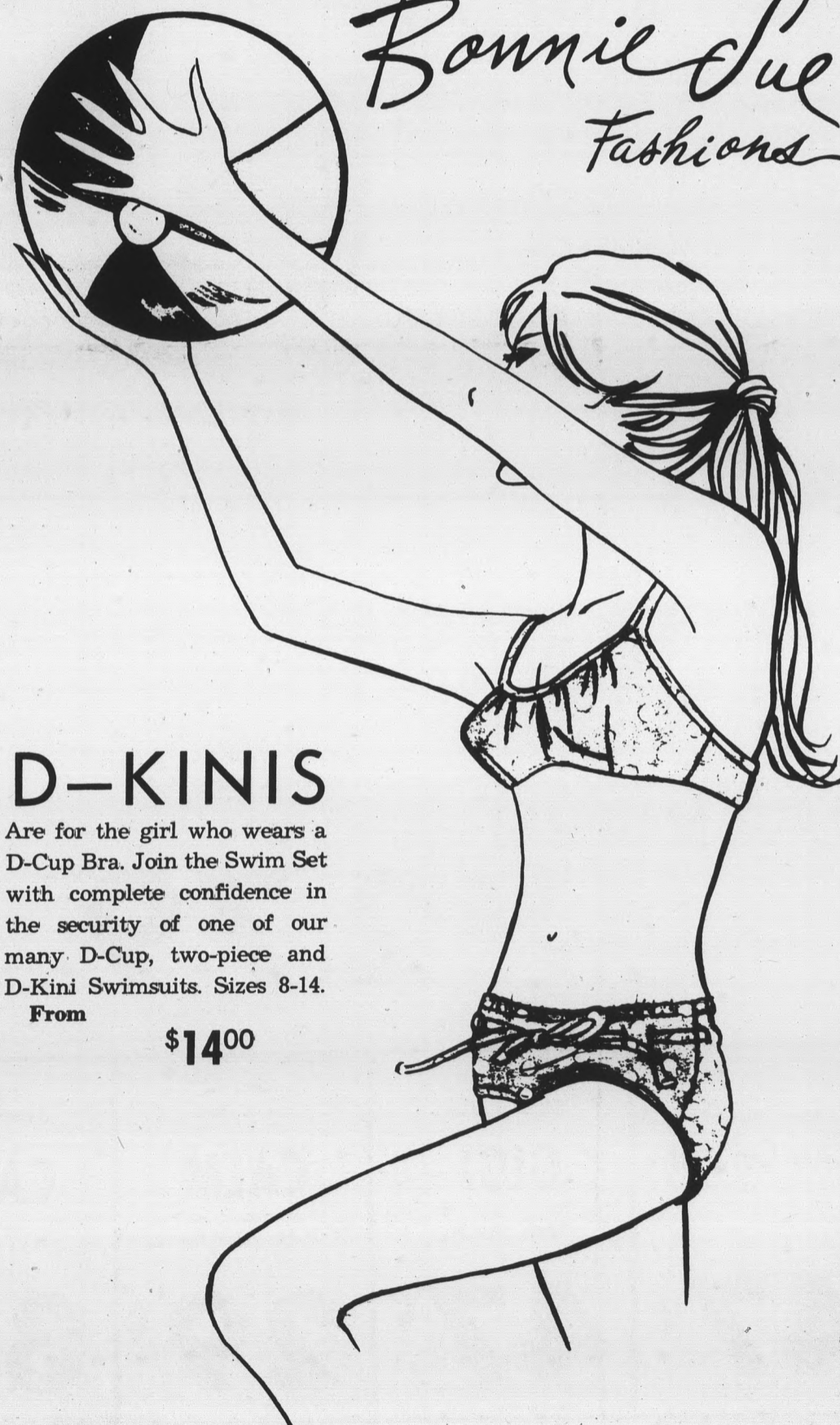
*Paul Johnson*  
**JEWELERS**



**IN THE ARCHES**

130 EAST UNIVERSITY DRIVE • TEMPE • 967-8917  
 1940 EAST CAMELBACK, PHOENIX 277-1421  
 CERTIFIED GEMOLOGIST, AMERICAN GEM SOCIETY

*Bonnie Sue*  
*Fashions*



**D-KINIS**  
 Are for the girl who wears a D-Cup Bra. Join the Swim Set with complete confidence in the security of one of our many D-Cup, two-piece and D-Kini Swimsuits. Sizes 8-14.  
 From **\$14<sup>00</sup>**

**913 Mill Ave.**  
**Tempe Center**

**Open Thurs.**  
**Til 9 P.M.**

**Telephone 967-4094**



# WHITE SHIELD TAPE-A-THON CONTEST

March 1st to May 11th



A.S.U. Affiliated  
Fraternities, Sororities,  
And Authorized University Clubs

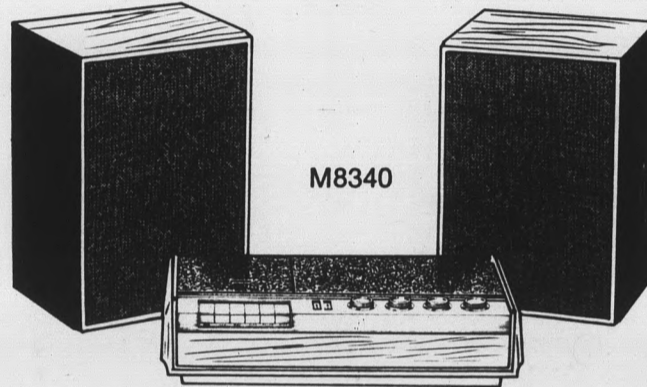


COME IN AND  
REGISTER YOUR  
GROUP TO JOIN

## WIN A GE

Cassette Stereo Play/Record System

CASSETTE  
play/record system  
with 4 Cassette tapes  
Valued at **\$225<sup>00</sup>**  
For Your Organization



## THE TAPE-A-THON RACE

SIMPLE TO PLAY

ASK ALL YOUR MEMBERS TO  
SAVE THEIR REGISTER RECEIPTS  
FROM ALL THEIR PURCHASES  
AT WHITE SHIELD  
FROM MARCH 1st To MAY 11th

SAVE REGISTER TAPES  
AT  
WHITE SHIELD  
MARCH 1st TO MAY 11th

STOP and see the GE Cassette  
Stereo play/record System  
For full contest information contact  
our Campus Representative Robert  
Morris, 966-7050, 966-6023

Winner will be announced  
on or before May 20th, 1968

## EXTRA SPECIAL STEREO RECORD BUY

BLOOMING HITS

\$4.79  
Value

FEATURING

PAUL MAURIAT

AND HIS ORCHESTRA

**\$ 2.79**

"LOVE IS BLUE"

25's 69c Value <b>Alka-Seltzer</b>	17-oz. \$1.39 Value <b>GIGI</b> Hair Spray	1-oz. 75c Value <b>CALM</b> Roll-On Deodorant	1½-oz. \$1.00 Value <b>CALM</b> Roll-On Deodorant	Family Size 95c Value <b>GLEEM</b> Tooth Paste	Family Tube \$1.65 Value <b>HEAD &amp; SHOULDERS</b> Shampoo
<b>47¢</b>	<b>47¢</b>	<b>29¢</b>	<b>37¢</b>	<b>53¢</b>	<b>87¢</b>

PRICES EFFECTIVE THUR.-FRI, SAT. FEB. 29, MAR. 1, 2

WE RESERVE RIGHTS TO LIMIT QUANTITIES

# what's happening

## TV in Education a Topic On Channel 8 Sunday

Television in continuing education will be discussed on "The President's Forum" at 6 p.m. Sunday on KAET-TV, Channel 8.

President G. Homer Durham will participate in the discussion. Joining him will be Dr. Joseph C. Schabacker, vice president for special services; Dr. Roy C. Rice, dean of summer sessions and extension; and Dr. Dennis J. Kigin, assistant dean of extension and professor of industrial technology.

The program, entitled "Off-Campus Educational Service," will cover such matters as eco-

nomics of off-campus classes, the extent of ASU's extension program and the reasons for universities engaging in off-campus educational services.

## Zoology Student Wins Fellowship

Larry F. Lemanski, a post-graduate zoology student, has been awarded a \$2,500 research fellowship by the National Institute of General Medical Sciences.

Lemanski, who won the fellowship through national competition and review by two groups of consultants, will use the funds to study the regeneration of limbs in vertebrates.

## Last Chance At \$7 Sahuaro

This is the final day to buy a Sahuaro yearbook for \$7.

Books may be purchased today on the Mall or in MU 207. Hereafter, books sold will cost \$9.

This year's book is planned to feature the individual rather than the masses of students and faculty.

## Futuristic Drama On KAET Tonight

"Home," a drama by Megan Terry, will be presented on NET Playhouse at 9 p.m. tonight on Channel 8.

The play is the story of the lives of nine people after the world has been destroyed. Their "Home" is an elevator-sized room with wall dispensers for food pills and an air vent which is their only contact with the outside world.

The play will be presented again at 10 p.m. Sunday.

## Tri Sigs Pick, Install Officers

Sigma Sigma Sigma sorority this month installed Laura McCammon, a sophomore speech and drama major, as 1968 president.

Other new officers are: Vice president Mary Ann Harkness, junior commercial arts major; Recording Secretary Linda Bartlett, junior English major; and Corresponding Secretary Karen Gompf, junior anthropology major.

Kathy Hulett, a junior in home economics, was installed as treasurer. Win Barse, a zoology junior, is the new scholarship chairman.

Elections were held before Christmas vacation.

## Jan Soderstrom In Contest Finals

Miss Jan Soderstrom, one of this year's five finalists in the national Pillsbury Award Program, travels to Minneapolis on Sunday to compete for a \$500 prize and a job.

Selection as a finalist insures an honor award of \$150.

The finalists were chosen on the basis of high scholastic achievement, interests and outstanding personality.

Miss Soderstrom has a grade average of 3.97 and has compiled a long list of awards and responsibilities. She is currently president of Mortar Board, senior women's honoree.

## Delta Sigma Pi Smoker Sunday

Business administration students are invited to the first rush function of Delta Sigma Pi professional business fraternity, at 7:30 p.m. Sunday in the Arts Lounge of the MU. The smoker is free and refreshments will be served.



**ARTIST & DRAFTING SUPPLIES**

Crafts - Picture Frames  
Decorating Material

Tempe Center • WO 7-4482  
Open Mon. & Thurs. Nites

**LRL Develops Fiber Optic Oscilloscope with 20 Picosecond Resolution**

**Underground nuclear explosion heralds new era in recovery of natural resources**

**LRL - Livermore discovers "mendelevium 258" The heaviest isotope known to man!**

**NEW! electron-positron accelerator being built at Livermore Laboratory**

**Engineers build a graphite engine to operate continuously at 2700°F for more than 270 hours**

These are a few of the accomplishments of scientists and engineers at Livermore. These pioneers of research work on the technology of tomorrow in virtually all phases of nuclear energy.

If the following information is of interest, contact your placement office and arrange an interview with our representatives when they visit your campus.

**What are we?** — One of the largest scientific research laboratories in the world with a staff of over 5,600 scientists, engineers and support personnel engaged in virtually all phases of nuclear energy research.

**Where are we?** — Our Livermore facility is located in a pleasant suburban area within easy driving distance of the San Francisco Bay Area.

**What do we offer?** — A tremendous variety of unusual stimulating research problems; a large number of outstanding technical associates; a vast array of equipment including some of the most advanced computers in existence; hard work.

**What kind of people are we seeking?** — Scientists, Engineers, Mathematicians at all degree levels who have the ability and desire to contribute to our research effort.

Current openings at all degree levels include:

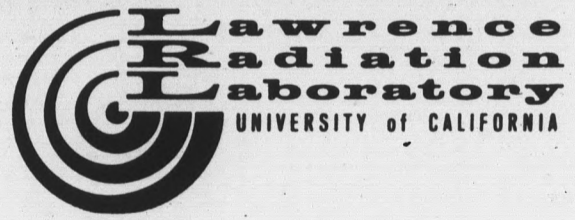
**Theoretical and Experimental Physicists** • Hydrodynamics • Nuclear physics • Fission and fusion reactions • Astrophysics • Geophysics • Solid state physics • transport theory

**Electronics Engineers** • Systems design and development • Instrumentation • Computer technology • Field systems engineering

**Mechanical Engineers** • Advanced machine design • Analytical and experimental stress analysis • Applied mechanics • Environmental testing

For further information about these and other openings arrange to talk with our representatives during their

**CAMPUS INTERVIEW  
Tuesday, March 5**



or write:

Lawrence Radiation Laboratory  
University of California  
P.O. Box 808 XX-78  
Livermore, California 94550

An Equal Opportunity Employer  
U.S. Citizenship Required

# Bright Shines for Devil Cinderemen

Sun Devil cinderemen take to the track and field in earnest tomorrow in Los Angeles against Occidental College and the UofA following an outstanding showing in the Arizona Relays in Tucson last week.

Leader of the pack has to be Jerry Bright, who brings back memories of other great Sun Devil sprinters such as Henry Carr and Ullis Williams.

**BRIGHT BEGINS** his second season as a Sun Devil after a demanding summer season as a member of the United States Track Team.

At the U.S. and British Commonwealth meet in Los Angeles last year, Bright was a member of the 400 meter relay team which tied the 1964 Olympic record of 39.0 seconds.

In the Pan Am Games in Montreal, Canada, he finished fourth in the 100 meters with a time of 10.4, was second in the 200 meters with a time of 20.7 and ran on the 400 meter relay team that finished first with another 39.0 timing.

**HIS TIME OF 20.7** seconds earned him first place in the 200 meters at a triangular meet with Spain and Italy at Viaggerio, Italy. The 40 meter relay team picked up another first place, "slowing down" to 39.5.

Other meets Bright participated in included the California Relays at Modesto, Calif.; the NCAA Track and Field Cham-

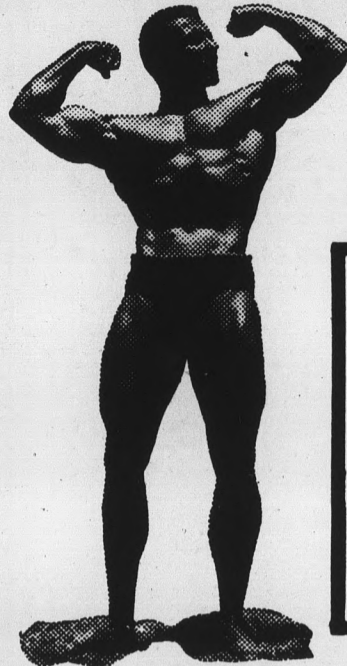
(Continued on page 7)



**OLYMPIC HOPEFUL** — Jerry Bright, 1967 All-American in the 220-yard dash, leads Sun Devil hopes for a WAC Track Title.

## Get In Shape Now!

WE OFFER INDIVIDUAL COURSES & PERSONAL INSTRUCTION FOR:



- Body Building
- Reducing
- Conditioning
- Sauna

February

**CHARTER MEMBERSHIPS**

For Only **55c** PER VISIT IN SERIES

Call Today For Free Information  
No Obligation Of Course! Hours 10 A.M. to 10 P.M.

### University Health Clubs

IN TEMPE

1018 N. Scottsdale Rd.  
Ph. 967-7461



## Classified

For classified advertising submit ad in person to the State Press, MU 3, two days in advance of publication, from 12:40-3:30 p.m., call 961-3657. Rate: 5c per word, 75c minimum.

### ● FOR SALE

TRUMPET King Silver Sonic. Used only one year. Call 959-2949.

FENDER Jazzmaster guitar & case. Sunburst finish, excellent condition. Cost \$407, asking, \$170. Call Chris, 967-9069.

CANNON Flex Rm. 1.8 camera with acc. \$140. Excellent condition. Phone 966-8138.

MEN'S brown leather English riding boots 7 1/2-8. Wardrobe trunk, good condition with lock. Remington portable typewriter. Call 275-1883.

### ● AUTOMOBILES

1965 PONTIAC Tempest, V-8, automatic, power steering, air, white-torquoise, 33,000 miles. Must sell. Call 946-6927 after 5 p.m. Make offer.

'59 ENGLISH Ford. Excellent economy, 35 mpg. Good shape. \$200. Call 967-2640.

AIR conditioned stationwagon, engine just overhauled. 1957 Plymouth. Good buy, only \$295. Call 967-0311.

66 MUSTANG Fastback. Hi-performance 4-speed, 17,000 miles. Must sell. Any reasonable offer. 945-2841.

1960 FORD. Recent overhaul, radio, heater, 4-door. \$250 or nearest offer. Must sell, moving. Call 967-6651.

MUST sacrifice 1966 SS396 convertible. 4-speed, air, radio, heater, plus many extras. \$100.00 plus payments or \$2100.00. Call 274-3746 or 961-5854.

1957 CHEVY stationwagon (Nomad). Excellent motor. Good condition. 114 S. 5th Street.

'64 RAMBLER, gold and white, 770 Classic. Radio, heater, factory air. Just had valve job and trans. O/H. Dick Shine, 967-5386.

1959 FORD — 4-door sedan, 6-cylinder — good gas mileage. Excellent condition. \$400. Call Bob, 961-5373, Best C, Room 405.

### ● MOTORCYCLES

1958 LAMBRETTA Scooter — runs & licensed. \$50 or trade for tape recorder or outboard motor or ??? Call 966-9683.

1968, 125cc SUZUKI, 1400 miles, can transfer warranty, \$250 or best offer. 945-3903.

### ● PERSONAL

GRADUATE STUDENTS & SENIORS: Organize against new draft laws. MU 209., Wed., March 6, 8:00 p.m. Committee to End aWR.

MRS. Eve Palm Reader and Advisor. Tells past present and future. Advise on all affairs of life such as love, marriage, business. 6407 E. Baseline Rd. 966-9648.

### ● SERVICES

BABYSITTING done in my home. Tempe-Scottsdale line. Call 945-2364.

VOLKSWAGEN NEED WORK? Specialist in VW Repair and Maintenance. Tempe Safety Clinic. 915 Apache Boulevard.

HONDA tune-up special. Complete tune-up, 35.95. Parts 10 percent off to college students. Arizona Cycle. 2404 Scottsdale Rd., 947-3481.

FAST PRINTING. SHORT RUN. Can reduce, enlarge. Revolutionary ltr method. 100 copies 4c each; 50-6c; 25-8c. Xerox. MINUTE PRINT 7 E. 5th St.

### ● TYPING

TYPING — 946-1149.

TYPING — Accurate — Experienced — Reasonable. Northeast. 945-9680.

TYPING — 967-3036.

TYPING, 946-1228.

TYPING, 945-5803.

TYPING, fast, guaranteed, IBM. 211 East 14th Street. Sue Johnson. 966-7848.

### ● HELP WANTED

MALE OR FEMALE. Good jazz piano player for Fri. & Sat. nights. Contact Tom Randolph, Shalimar Country Club, 967-3122 for appointment.

### ● INSTRUCTION

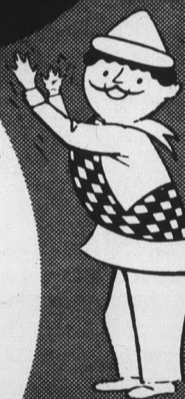
INDIVIDUAL tutoring in math, physics, chemistry, and biological sciences. Phone 967-7924.

### ● WANTED

FEMALE roommate for two working girls, call after 5 p.m., Mary or Peggy, 966-7024.

# GRAND

# OPENING



### ANOTHER NEW Pizza Inn OPENING

Yes, now your area can enjoy the same delicious pizza that is delighting all America... excitingly-flavorful pizza... at its best... at Pizza Inn!

Pizza Inn's exclusive recipe: Specially milled flour combination for flakey-tender crust... plump, select tomatoes, blended with a zesty puree plus 26 of the world's most exquisite spices and herbs... a crown of golden, aged Mozzarella cheese... garnished with your choice of olives, mushrooms, pepperoni, hamburger, sausage or anchovies. From the very first bite to the very last bit... delicious! All this fresh-baked goodness is yours at the new Pizza Inn or the Pizza Inn near you!

## GRAND OPENING SPECIAL

# 98¢

Mar. 1st & 2nd

Regular \$1.45 Pizza  
Limit 2 per coupon

Bring This Coupon

# Pizza Inn

Dine with us or take a pizza home. Phone and we'll have it ready for you in twenty minutes.

Your Favorite Beverage Only 10c with Each Pizza

955 East University

Ph. 967-1604

**MORE ABOUT —**

# Jerry Bright Leads Devil Sprinters

(Continued from Page 6)  
 pionships at Provo, Utah; the AAU Track and Field Championships at Bakersfield, Calif.; and dual meets against Germany at Dusseldorf, Germany; against Great Britain at London and the Americas vs. Europe meet in Montreal.

Bright said the trip to Europe was interesting, but exhausting. During a two-week jaunt he was in 16 races.

WHILE participating in these meets, Bright became acquainted with such track stars as Jim Ryun, the Kansas world record-holder of the mile run; Ralph

Boston, America's great broad jumper; Willie Turner, a sprinter from Oregon State; Bob Seagrán, the outstanding USC pole vaulter and many others.

Says Bright of Ryun: "He is just a great guy. Besides being a great track star, he is a dedicated and humble individual."

Bright's most embarrassing moment took place at a London banquet. Everyone had finished eating and a member of the British track team was speaking. Once the talk had begun, Bright felt a cramp in his right thigh. He started to massage it to relieve the pain but his ef-

forts were in vain.

IN ORDER TO relax his throbbing muscle, Bright jumped to his feet. He was in an unenviable position, standing at his table while everyone else was sitting down listening to the speaking. Needless to say, his teammates had a few choice comments while he was standing.

"Although I was embarrassed," Bright said, "I was surprised when the speaker kept talking as if nothing had happened."

According to Bright, the Europeans love track and field. He says this because of the numerous letters he has received from European track fans since his return home.

Just after his return Bright received a letter from a Norwegian youngster requesting his autograph and a few tips on how to run fast. Bright had never met the young lad.

BRIGHT IS the second of three children. He has an older brother who was on the Olympic

swimming team and a younger sister. His father, who is a sales representative for American Tourister Luggage, was a little perturbed when U.S. track officials gave his son a suitcase for his trip to Europe that was made by a company other than ATL.

Bright's big ambition at the present time is to qualify for the summer Olympics. He will attend the qualifying trials in July at the Los Angeles Coliseum.

## Athletics Calendar

**BASKETBALL:**

Friday, ASU vs. BYU, Sun Devil Gym, 8 p.m.  
 Saturday, ASU vs. Utah, Sun Devil Gym, 8 p.m.

**FRESHMAN BASKETBALL:**

Friday, ASU vs. Glenarm Land Co., Sun Devil Gym, 6 p.m.  
 Saturday, ASU vs. Jameson Sporting Goods of Tucson, Sun Devil Gym, 6 p.m.

**BASEBALL:**

Friday, ASU vs. Los Angeles St., Sun Devil Field, 3 p.m.  
 Saturday, ASU vs. Los Angeles St., Sun Devil Field, 1 p.m.  
 Doubleheader

**TRACK:**

Saturday, Occidental College, UofA, ASU at Los Angeles

**TENNIS:**

Friday, ASU vs. Cal Poly, Sun Devil Courts, 2:30 p.m.  
 Saturday, ASU vs. Cal Poly, Sun Devil Courts, 9 a.m.

**WOMEN'S BASKETBALL:**

Saturday, ASU Intercollegiate Women's Basketball Tournament  
 WPE Gym, ASU, NAU, Glendale Community College, Arizona Western, Eastern Arizona

### If you like the feel of money—lots of it...why not work for a big, strong bank?

©1967, Security First National Bank



Lots of money isn't all we have at Security Bank: A career with us would mean working in an atmosphere where youth is accented, with people who are progressive as well as financially astute. Southern California is an exciting

place to be—as a banker and as an individual. And Security Bank is the largest bank based there. The opportunity is great. If you have an interest in money and want to work for a big bank that isn't stuffy, we'd like to talk to you.

Make your financial partner  
**SECURITY FIRST NATIONAL BANK**  
AN EQUAL OPPORTUNITY EMPLOYER MEMBER FEDERAL DEPOSIT INSURANCE CORPORATION

Undergraduate students contact the Placement Office for further information. We'll have a representative on campus Tuesday, March 5 and Wednesday, March 6.

# LOVE that CHICO'S

**RESTAURANT\***  
**FINE MEXICAN FOOD**

1120 East Apache Blvd. — Tempe  
 \*Air Conditioned of course



**Heard around Campus!**

...it is more interesting to work for

## AEROJET

See your placement office today for interview arrangements

**Aerojet Interviews March 7 & 8**  
**AEROJET-GENERAL CORPORATION**  
 A subsidiary of The General Tire & Rubber Co.  
 an equal opportunity employer

## Looking For Something Special?

If it's a realistic career development program with initial responsible assignment, you've found it!

Immediate openings for Engineers in . . .

- Ship structural design
- Shipboard electrical systems design
- Shipboard electronics systems design & evaluation
- Shipboard missile systems evaluation
- Ship propulsion & piping systems design
- Shipboard ventilation & air-conditioning systems design
- Production and facilities engineering

WITH EXCELLENT FEDERAL SERVICE BENEFITS

Our brochures are now available in the Placement office  
 Sign up today for an on campus interview with our professional employment representative on

**TUESDAY, MARCH 5**

**Long Beach Naval Shipyard**

Long Beach, California 90801

Area Code 213 — 832-3311 - Ext. 320

AN EQUAL OPPORTUNITY EMPLOYER  
 U.S. CITIZENSHIP REQUIRED

PLEASE ALLOW APPROXIMATELY 20 MINUTES

# PIZZA HUT®

"Quality Reigns Supreme"

**1420 N. SCOTTDALE RD**

**946-7078**

just North of "JD"  
eat in or carry out

Also  
**PHOENIX GLENDALE**

AQUA NET  
Hair Spray

**39¢**

Reg. 89c

*Ryan-Evans*  
**DRUG STORES**

Tempe Center Store Only

Prices Good Thru Sunday, March 3

SCORE  
Hair Dressing

4.5-oz.

**58¢**

Reg. 1.09

SOFSKIN LOTION  
Hand & Body

**36¢**

Reg. 1.50

GLEEM  
Tooth Paste

Family Size

**56¢**

Reg. 95c

SCHICK  
Band Razor

**\$1.29**

Reg. 2.95

LISTERINE  
Antiseptic

20-oz.

**77¢**

Reg. 1.45

5-DAY AEROSOL  
Deodorant

4-oz.

**44¢**

Reg. 1.00

Panti Hose

**\$1.29**

Reg. 1.79

state

press

FRIDAY,

March 1, 1968

# W e e k e n d



By CAROL BLACK

"Spring is the time to catch a man's fancy," so the old saying goes.

It is also the time to put away heavy winter clothes and to start searching for the newest look in fashion.

SPRING 1968 helps solve both of these problems by providing a look that says, "I'm strictly a female female," to those sought-after men around campus.

The look of spring is concentrated on the neck, waist and legs. What is worn at these three fashion areas is almost more important than the clothes themselves.

The "romantic neck," as it is termed by Vogue, is emphasized by ruffles and more ruffles. However, the ruffles don't stop there — many dresses are covered with them. Big collars, bright colored scarves and wide ties are other methods of accentuating the neck.

SPRING FASHION emphasizes the waist; the dominance of the A-line is over. The dirndl skirt is the reason: short, bouncy, pert, softer, it has more personality than the classic A-skirt and is worn with a body-fitting shirt, tailored or romantic to fit the mood. The kilt that became popular this winter is now seen in cotton, worn with short sleeve turtleneck pullovers.

Wide and narrow belts of patent, smooth and suede leathers, of striped or solid elastic and of ribbon sashed or bowed are a must with the look of '68. There are also jeweled versions for night wear.

Legs are also in focus with great looks this spring. Opaque and textured knee socks are being worn with everything.

BRIGHTLY colored, lacy white or muted panty hose and stockings in black, navy, gray or brown are matched with dark or light shoes in plain or plaid patent, calf or kid leather.

Heels are stocky and many shoes have metal trim or perforations.

The colors of Spring '68 are navy, gray, natural and warm

brown with an occasional touch of the traditional red, white and blue. With the return of the "thirties" look, black and white remains popular, and bright pinks, oranges, greens and yellows remain a must in every girl's wardrobe.

THE SUIT and vest are "in." Gently flared or pleated skirts, usually in a big plaid or small print, are topped with jackets that have wide lapels and large pockets. These jackets are often square-shouldered and square-necked, but never bulky.

Dresses are romantic with much emphasis on the waist and lots of ruffles in cool, muted colors. Other popular Spring dresses are the light-weight knits and light sweater dresses.

With the return of the "thirties" and "Bonnie and Clyde," the mid-length skirts come to the middle of the calf and are usually worn with white blouses that have large collars and big cuffed sleeves. Most often seen in a black and white pattern, this outfit features a wide red belt. Some coats and other dresses are also taking on the mid-length.

TO HELP get into the swim of things, the new bathing suits are taking on new look. The bikini and two-piece suits are still around, but variations such as a detachable apron skirt have been added to give two separate looks to the same suit. Matching "his and hers" suits are shown in plaids with matching stay-press shirts.

Beach coverups vary from the ever-popular "shifts" to brightly colored sweatshirts and playsuits.

With Spring '68 offering such a variety of looks, there should be no problem choosing a style just right for you as you set up your program to "win him over."

(Continued on page 2-B)

## COVER

Cross sections of new Spring fashions are worn on the cover by Kaki Bonsall, Darlene Finkel, Sue Barer and Sue Naylor. Photo by Wendell Peacock. Fashions by Jennifers.

It's



Look

MORE ABOUT —

# It's the Look

(Continued from page 1-B)

Though '68 trends follow hemline examples set in '67, length limitations for '69 promise a drastic change.

According to New York fashion experts, the unflattering "midi" (mid-calf) length will attempt to draw male attention to the modest ankle.

The only consolation for those who prefer the more attractive immodesty of bare knees is that '69 will offer more latitude to the fashion individualist. The mini-skirted, though not to be labeled "high fashioned," will neither be snubbed by department store buyers or young fashion followers.

This trend toward lower extremities will not take place in a single year, or even a single season, as it is more feasible to shorten than it is to lengthen a dress. For this reason, along with young women's natural adversity to needless Puritanism, next season's fashions will be a potpourri of hemline variations that will befuddle store buyers and fashion followers.

Tuesday: A look at spring make-up.

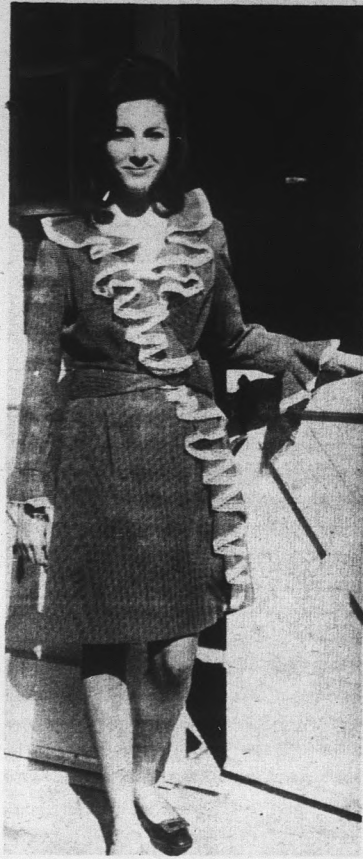



Photo by Wendell Peacock  
**FEMININITY RETURNS**—The romantic look of the "Thirties" is worn here by Darlene Finkel. The color emphasis is on black and white with lots of ruffles.



**IN THE SWIM** — Kaki Bonsall models two variations of the same bathing suit. The suit features a detachable apron-skirt.

**NOW SHOWING** **HAYDEN EAST** **WINNER 4 Academy Award Nominations**


1348 NO. SCOTTSDALE RD. 966-0071



Truman Capote's **IN COLD BLOOD** is "A KING-SIZED AMBITIOUS, BRILLIANTLY-MADE FILM! FASCINATING, WELL-DONE, IMPORTANT! A VOLATILE MOSAIC!" —William Wolf, Cue Magazine

STUDENT DISCOUNT CARDS AVAILABLE AT THEATRE

Written for the screen and directed by **Richard Brooks**  
Positively no one under 16 admitted unless accompanied by a parent or guardian. S.M.A. 68




ART THEATRE GUILD **VALLEY** 967-6684 509 Mill Ave. TEMPE

"A SUPERB FILM!" —Life Magazine **FINAL WEEK**

"BRILLIANT, FORCEFUL CINEMA ART." —Bosley Crowther, New York Times

"★★★★... A RARE EXPERIENCE." —Wanda Hale, New York Daily News



**JAMES JOYCE'S Ulysses**

Nightly at 7:15 & 9:40 Sunday Matinee

Admittance will be denied to all under 18 years of age

Starring MILO O'SHEA • BARBARA JEFFORD MAURICE ROEVES • T. P. MCKENNA • ANNA MANAHAN  
Produced and Directed by JOSEPH STRICK • Screenplay by JOSEPH STRICK and FRED HAINES



**GINO'S PIZZA**

WE DELIVER



**946-8779**

**2 WORLD TITLE FIGHTS**  
ONE ADMISSION PRICE

**HEAVY-WEIGHT CHAMPIONSHIP**

 vs   
**JOE FRAZIER** vs **BUSTER MATHIS**


**MIDDLE-WEIGHT CHAMPIONSHIP**

 vs   
**EMILE GRIFFITH** vs **NINO BENVENUTI**

—CLOSED CIRCUIT—  
Exclusively at Madison Square Garden  
118 N. 7th Ave.  
Monday, March 4, 7 p.m.

Tickets on Sale at Booth on Campus  
Call 967-9881 or 967-9973 also at  
Whitey's TV, 1908 E. McDowell AL 3-2103 — Camelback & Central 266-6873 — or at the Garden all Day Monday, March 4.

**Top Less Club**



Take a trip to the TOP for LESS!

**"Top of The Mark" Student Club**

20% discount on all hair services (cuts, sets, frostings, etc.) Membership \$2.00 (ASU Students only) FREE membership to first 20 girls to join.

Mr. Mark, Mr. Derek, Miss Carol at 611 N. Old Scottsdale Rd., 945-7008

Stars Make 'Dinner' Successful —

# Emotions Fill Tracy's Last Film

By JOHN KEETER

Some things are just impossible.

Like traveling faster than light or running a three-minute mile or making a bad movie with Katharine Hepburn and Spencer Tracy.

THEY PLAY the liberal-minded parents of an exuberant, beautiful young girl who has fallen in love with a Negro doctor in the MGM color release, "Guess Who's Coming to Dinner?"

In the last film before his death, Tracy plays a progressive newspaper publisher who has been a great promoter of equality among races. He has strong vocabulary for those who disagree with him and contempt for the majority of the world's population. He is a liberal who refuses to entrench himself in any traditional beliefs.

TRACY is best when he is not encumbered by too much dialogue or restricted by exact stage directions, which William Rose's script allows him. Tracy brings to the role a wonderful

weathered philosophy of a man who has seen more of life than he really wanted to.

Katharine Hepburn is the sympathetic mother who is more concerned with her daughter's happiness than with "this problem of pigmentation." There is no one who can show emotion quite like Katharine Hepburn when the script gives her enough latitude. It is a superb performance, one that makes up

## MOVIE REVIEW

a good part of the picture's charm.

Katherine Houghton is fine in the role of the lively, headstrong daughter. She plays the part of a happy person with characteristic youthful indifference to traditions. Stanley Kramer, director - producer of the film, wisely chose an inexperienced talented actress to do the part as a more experienced actress might have brought less energy and spontaneity to the role.

SIDNEY POITIER balances Miss Houghton's youthful ener-

gy with more mature reticence as he is a 36-year old doctor who loves her. Poitier's role is not a demanding one. It is a good part but lacks the necessary meaty dialogue to really give him an opportunity to work on the screen.

There is a fair share of cliches and wisecracks uttered by the Negro maid that don't detract from the picture. In fact, the Negro maid, played by Isabel Sanford, gets some of the biggest laughs in the picture, as when at one point she exclaims, "Civil rights is one thing but this is something else."

Despite the fact that there are many good performances in the film, the reason for its success remains with Hepburn and Tracy. You find yourself deeply involved, not simply because a Negro man and a white girl have fallen in love, but because it is Katharine Hepburn and Spencer Tracy who must reckon with the problem.

Tracy says, "Nothing else is important except what you feel and how much you feel."

With Spencer Tracy and Katharine Hepburn you feel a great deal.

## "ONE OF THE YEAR'S 10 BEST!"

—Bosley Crowther, New York Times • Joseph Morgenstern, Newsweek  
—Judith Crist, NBC-TV Today Show • Hollis Alpert & Arthur Knight, Saturday Review • William Wolf, Cue Magazine  
—National Board of Review



## "ANNE BANCROFT IS CLOSE TO MIRACULOUS!"

— Hollis Alpert, Saturday Review

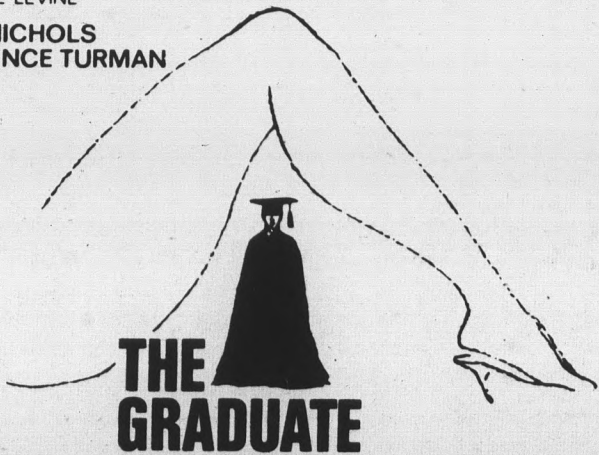
## "DUSTIN HOFFMAN IS NOTHING SHORT OF SUPERB!"

— Bosley Crowther, N. Y. Times

## "KATHARINE ROSS IS BEAUTIFUL, TALENTED, SURELY THIS YEAR'S JULIE CHRISTIE!"

— Liz Smith, Cosmopolitan

JOSEPH LEVINE  
PRESENTS  
MIKE NICHOLS  
LAWRENCE TURMAN  
PRODUCTION



STARRING ANNE BANCROFT AND DUSTIN HOFFMAN • KATHARINE ROSS  
SCREENPLAY BY CALDER WILLINGHAM AND BUCK HENRY PAUL SIMON  
PRODUCED BY SIMON AND GARFUNKEL LAWRENCE TURMAN  
DIRECTED BY MIKE NICHOLS AN EMBASSY PICTURES RELEASE TECHNICOLOUR® PANAVISION®

EXCLUSIVE SHOWING

NOW FOX CHRIS-TOWN THEATRE  
5700 N. 19th Ave. • 264-6161  
Open 6:45 p.m.

## THE MEWS

(Oldest Coffee House in Arizona)  
presents

JOE BETHANCOURT

Fri. & Sat. 9 - 1  
602 N. Miller Rd.

Scottsdale

We are Also Available for  
Private Parties  
For Information  
See Manager at the Door

## PUT YOURSELF IN THIS PICTURE!



But Do It In

## NATURAL COLOR

Imagine! Only \$3.00

for a 5x7!

Quality like you've always expected from Studio M  
Now in the richness of true natural color at a  
price you can afford



Tempe Center

967-4662

# HERTZ RENT A CAR

SPECIAL LOW WEEK-END RATE of

**\$6.50** A DAY "24 Hrs."  
AND 12c PER MILE

"RATE INCLUDES GAS"

FOR ALL ASU STUDENTS 18 OR OLDER

- FORD
- COUGAR
- MUSTANG
- CHEVROLET
- PLYMOUTH
- LeMANS

For Reservations and Information

Call Your A.S.U. Representative

## STEVE BLAGEN

966-0155 or 967-9362

# Predicting Grays the Hair

Predicting next year's top entertainers can turn a person's hair gray. Yet that's exactly what Prof. David Scoular, director of Gammage Auditorium whose hair is completely white, must do.

Contacting and contracting talent must be done a year and a half in advance to plan a varied series of programs and to facilitate ticket reservations and advance publicity. This forces Prof. Scoular and an advisory board of faculty and students to forecast tomorrow's stars.

"We try to pick the comers not the goers," says Prof. Scou-

lar. "Variety is our Bible," he adds.

Prof. Scoular says they don't shy away from presenting controversial talent. "If an artist has something to say, we'll bring him on and let the people make up their minds."

This has been done in the past

## CAMPUS FOCUS

concerning Kalheinz Stockhausen's electronic music, and Andy Warhol's silent lecture. "Nobody can be 100 per cent right," reflects Prof. Scoular.

The rest of the Gammage season is solid, time-tested entertainment.

For students with Celebrity Series tickets the Branko Krsmanovich Chorus of Yugoslavia will perform on Saturday and the world's greatest mime, Marcel Marceau will debut on Mar. 23.

Holders of Fine Arts Series tickets may hear Anna Moffo, Prima Donna of the Metropolitan Opera on March 12, and Cologne's famed Barque Orchestra conducted by Ferdinand Leitner on May 6. Reserved seat tickets must be picked up at the Gammage box office during the time specified on the series ticket.

The plays "Phaedre" and "Lion in Winter" may be seen on March 11 and 15. Special events coming up are the Helsinki Philharmonic Orchestra, March 17, lecturer-comedian Dick Gregory on March 27, the Chamber Symphony of Philadelphia on April 20, and a debate on United States foreign policy between Sen. Albert Gore and Rep. Gerald Ford on April 28.

Summing up the range of Gammage fare, Prof. Scoular says, "You'd have to be a real square to like everything."

# Datebook

## FILM

"The King and I" — An MU Friday film feature. Critics have called this the perfect musical. Starring Deborah Kerr, Yul Brynner, Rita Moreno and Martin Benson, it's the story of a woman who becomes a teacher for the children of the king of Siam. To be shown in the Arts Lounge at 3:30, 6, and 8:30 p.m. Free tickets are available at the MU desk.

## ART

"Persistence in Vision" — This photographic exhibit will be featured in both the Arts and Lower lounges of the MU from March 1 through March 31.

## MUSIC

Branko Krsmanovich Chorus of Yugoslavia— On the Celebrity Series program, this Gammage Auditorium feature will be held at 8:30 p.m. Saturday. A 7 p.m. pre-concert buffet with chorus members in the MU Ballroom is open to interested faculty and students. Buffet reservations are available at the MU desk and performance tickets can be purchased at the Gammage box office.

## PLAYS

"The Master Builder," starring Michael Rapinchuk, has its final performances tonight and tomorrow evening at 8:30 at the Lyceum Theater. Tickets for this Emlyn Williams' adaptation of Henrik Ibsen's play are on sale at the Lyceum box office, 961-3437.

## Plan Your Summer Trip NOW with Student-Teacher Overseas Travel Service

A special department just for you at THE VALLEY TRAVEL MART Oxford Square, Tempe

Student Tours to Europe in 1968

via the all jet services of  and Luxury Steamships

13 spectacular itineraries, 21 to 75 days of superior grade travel from as little as \$840.30 all inclusive, June and July departures. Prepared by the nation's foremost student tour operators, S.T.O.P. TOURS\* of Berkeley, California. Itineraries tailored for the college and university student, geared to the tastes and interests of the young adult. Travel Europe with fellow students from throughout the United States and Canada on comprehensive programs that provide lots of leisure time for relaxation and personal pursuits.

Also available: Student Charter tours, 12 inexpensive programs to Europe based on dollar saving charter fares. No club membership needed to join. \*STUDENT TRAVEL OVERSEAS PROGRAMS.

For additional information and descriptive brochures:

CALL 967-3366

A.S.U. BREAKFAST SPECIAL \$1.00

3 EGGS AND HAM Hash Brown Potatoes Toast, Jelly and Coffee Served Daily 6:30-11:30

HARMAN'S Mesa-Tempe Hi-Way TEMPE

THE INNER EAR FRIDAYS 8PM-1AM FOLK MUSIC JAZZ FOOD FUN! 1414 S. 25th McAllister



Only LEE Optical gives you a spare pair of lenses FREE!

### FOR YOUR SAFETY

- LEE gives you an extra pair of clear single-vision lenses FREE with your first complete pair of glasses.
- Also at LEE, buy contact lenses for as low as \$95 and get a clear spare pair FREE.
- For children under 12, no extra cost for heat-treated safety lens glasses. Plus, your child receives an extra set of clear safety lenses FREE.

QUALITY all LEE glasses are precision ground from perfect American-made lenses  
STYLE over 500 modern frame styles and colors  
SERVICE satisfaction guaranteed  
CREDIT liberal credit terms or use your VNB credit card

Single-vision glasses as low as \$13<sup>85</sup>

10 CONVENIENT EYEWEAR CENTERS Open Monday, Tuesday, Wednesday, Thursday, Friday, Saturday

TEMPE • 805 Mill Avenue, Tempe Center

PHOENIX 16 W. Adams St. PARK CENTRAL 3100 N. Central CHRIS-TOWN 19th Ave. and Bethany Home Rd. THOMAS MALL 4527 E. Thomas Rd.

SCOTTSDALE 719 N. Old Scottsdale Rd. MESA 129 West Main TUCSON El Con Center, Amphi Plaza YUMA 2816 4th Ave.

Where it's always SAFE to save money on glasses and contact lenses.



EXCLUSIVE!

THE INDISPENSABLES

interview DEAN RUSK Saturday, 5 pm, Channel 12

We are proud to present the only exclusive interview given by Dean Rusk during his recent Phoenix visit. Be sure to see it Saturday, and watch our award-winning show every week, 5 p.m. on Channel 12.

Sponsored by

