

## Pakistan Feels Growing Pains

By BERTHA REYNOLDS

Tomorrow and yesterday mean the same thing in Pakistan for the people put off today what they can do tomorrow, said Dr. John E. Owen, associate professor of sociology, in a lecture yesterday in the MU Ballroom.

The new and undeveloped country faces three overriding problems: (1) A built-in conflict with the division of the country into wings in which shared values and norms are lacking; (2) The relationships with India and (3) affairs with Red China, one of Pakistan's friendliest allies, Dr. Owen said.

DR. OWEN spoke on "Pakistan: Problems and Progress" as part of a series of lectures presented by the Center for Asian Studies.

University students have always had the strongest political power in Pakistan, especially when the move for independence from Great Britain began, said Dr. Owen, who spent from 1958 to 1963 as a sociology lecturer and U.N. adviser at Dacca University in East Pakistan.

Progress is so slow in Pak-

istan that sometimes Dr. Owen taught only one class in 60 days because of the rioting students.

THERE IS segregation of sexes in classrooms with a resulting psychological tension. There is no dating as such, in fact, most young men complain that they're almost old men before they can have a conversation with a coed. "You can see the eyeballs of the boys moving in unison when a coed comes into the classroom," said Dr. Owen.

The Student Union is a muddy, rusty iron shed where Dr. Owen once invited some of his students for tea and wound up having 30 or 40 students, half of whom he didn't know.

Students memorize textbooks from cover to cover because of a great fear of tests. Tests have amazing importance in occupational status as well as marriage prospects, said Dr. Owen.

"It is the plain will of the people of Pakistan to survive with entire families living in cardboard boxes with open drains and cows, pigs and goats living with the people with no sanitary facilities for either," said Dr. Owen.

## Voluntary ROTC Bill Hits Senate Floor

By TERRY ROSS

The resolution to make ROTC voluntary finally made it before the Senate Wednesday after a week's delay because of technical difficulties.

The resolution requests that President G. Homer Durham ask the Board of Regents on behalf of the students to make ROTC voluntary.

FAULTS IN the title of the original resolution forced the introducers, Tim Smith and Bill Oldham, both liberal arts senators, to withdraw the resolution last week.

Several reasons for ending compulsory ROTC were given in the resolution.

—The legitimate demands of the students must be represented.

—VOLUNTARY association supports the traditional American belief that freedom of choice generates efficiency and effectiveness.

—Voluntary ROTC complies with "United States Statutes at Large," Public Law 88-647.

—The "Report of the Committee on Institutional Goals of the University for 1974-75," instituted by President G. Hom-

er Durham, recommends ROTC be made voluntary.

—SUBSTANTIAL financial savings would result for the government by ending compulsory ROTC.

Special procedures have been enacted for the resolution. Instead of receiving three readings, the measure will be read only once more, discussed and voted on at the Nov. 15 Senate meeting.

A public Senate hearing on the ROTC resolution will also be held Thursday from 2:30 p.m. to about 5:30 p.m. in MU 211.

SHARP CRITICISM was heaped on the State Press by Bud Scribner, AMS senator, for the headline on last week's story concerning the withdrawal of the resolution. The headline said the Senate had rejected the resolution when actually it had only been withdrawn.

In other business Senate Bills 4 and 5 received second reading. They will get the final reading and vote at the next Senate meeting.

SB 4 increases the salary of the president of Associated Women Students (AWS) from \$60 to \$100.

Her responsibilities are equal to those of the other executive officers and she should receive equal compensation, according to Carolyn Kimura, AWS senator, who introduced the bill.

THE FINANCE Committee recommended passage and, when asked how deeply the measure had been studied, said the bill's introducer and AWS President Karen Keesling had been questioned.

The other bill, SB 5, would appropriate \$613.86 to pay Saga Food Service for last May's AWS Women's Day Banquet. The money appropriated last year reverted to the general fund when it went unused because of late billing.

"I have no objection to the bill, because Saga has to be paid, but I think it was the result of poor planning and would hope for better in the future," said John Bare, off-campus men's senator.



Photo by Tom Wheeler

**STACKED** — No pile-up in a football game was ever like this, and the guy on the bottom wasn't even running anywhere. He was only trying to demonstrate that his slacks don't get wrinkled even under the most agonizing (?) abuse. He and five other men, all chosen by the girls in an advertising class for the demonstration, occupied chairs on the Mall at 11:30 yesterday and tried to see who could hold the most girls on his lap. Jim Lehman, senior, came out from under as the winner. Total girls: Nine.

## State Press Awarded Hippie Love Symbol

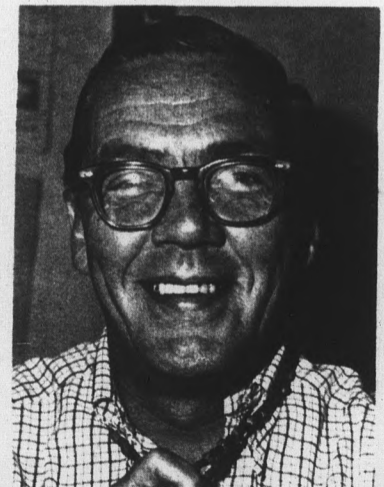
Dicky (not Dickie) Harris visited the State Press yesterday. He would have us correct four errors in our account of his speech on the Mall Wednesday.

Dicky says there were 20 people who gained entrance to the Pentagon during the peace demonstrations recently, not 50 as we reported.

Dicky also insists he is an Afro-American, not a Negro, and that he is in favor of resistance and revolution, and certainly not a pacifist as our headline described him.

Dicky departed in apparent good spirits after our chat. He presented us with his personal necklace. We will wear it in

good faith as a token of our new friendship with Dicky.



Editor Hippie

## NCAA Statistics —

### Devils Rank High

The Sun Devils lead the nation in point production with 223 points, according to the latest NCAA football statistics.

The Devils also rank fifth in total offense (232.3).

Fullback Max Anderson climbed to second place in the nation in the rushing statistics. Anderson has 812 yards on 131 carries, compared with No. 1

rusher O.J. Simpson of Southern California's 105 yards on 203 carries. Anderson may be able to pass him since Simpson is sidelined with an injury.

Devil Wes Plummer ranks second in interceptions with seven. Leader in this statistic is Steve Haterius of West Texas State with eight.

## State Fair to Highlight ASU

ASU Day at the Arizona State Fair will be held this Saturday. Events will open at 10 a.m. with the 150-piece Sun Devil Marching Band, under the direction of Professor William H. Hill, playing the National Anthem. Later, the band will parade down the Avenue of Flags,

and present a noon concert on the grandstand stage. Linda Hochstetter, Arizona Maid of Cotton, and a junior here, will be introduced during the performance.

At 12:30 p.m., the 23-member ROTC drill team will give a precision marching drill on the Avenue of Flags and Angel Flight, the women's auxiliary for the Air Force ROTC unit will perform at 2:15 p.m.

## National Society Honors Initiates

The Epsilon Beta chapter of Eta Kappa Nu, the national electrical engineering honor society, will honor 32 new initiates at its fall initiation banquet in MU 218 at 6:30 p.m. tomorrow.

The featured speaker will be Richard C. Dahl, the law librarian for the new University College of Law. The topic will be "The Trials And Tribulations of a Law Librarian."

## Henry and Igor Duo Offer Variety Show

Local variety singers Henry and Igor will present an informal hour concert sponsored by Cultural Affairs Board on the Nursing building patio Monday at 6:30 p.m.

Singers of everything from jazz to pop and bossa nova to ballads, the duo is currently appearing at the Village Inn Pizza Parlor at 36th Street and Indian School Road every Fri-

day and Saturday night at 9 and Sunday at 7:30 p.m.

Igor, whose real name is Don Glenn, writes much of the pair's music and has the distinction of being the only senior at the University majoring in country and western music.

Henry Thome, who uses his real name, has made his mark with a hit recording of "Scotch and Soda."

## Cultural Award Presented -

# France Honors Professor

One of the highest honors a foreigner may receive from the Republic of France will be awarded Dr. Robert W. Lowe, associate professor of French.

In recognition of his continued interest and appreciation in the fields of French literature, civilization and music, Dr. Lowe will be presented the

Chevalier de l'Ordre des Art et des Lettres by the French cultural attache at Los Angeles, Pierre Gilbert.

THE CONSUL of France to Phoenix, Paul Coze, will open the ceremony which will be held Nov. 6 in the sixth floor lounge of LL, 10:40 a.m.

An accomplished musician as

well as linguist, and historian, Dr. Lowe is also author of a current book on the French opera, "David et Jonathas" by Marc-Antoine Charpentier.

Lowe holds an MA from Columbia University, and a doctorate from the Sorbonne at the University of Paris.

## Sahuaro Set Girls Aid Sales

Shooting for a contagious enthusiasm to pull the yearbook from financial troubles, Sahuaro Set girls employ a 14-hour public relations technique never before used by the annual publication.

Fifteen mini-skirted, vested females wear out their knee-

high boot leather as yearbook salesmen and spirit generators in dorms, cafeterias and on the Mall.

"IN A LARGE school such as this one," said Sahuaro Set girl Pauline Urbano, "we need to generate enthusiasm."

She also noted that the situation of a large percentage of commuting students causes a communications gap that can't be bridged by merely a part-time promotional campaign.

"To reach the commuters, we need a full time campaign," said Miss Urbano.

Beginning as strictly a promotional group, the Sahuaro Set has added a social and fund-raising purpose to its goals.

"WE ENJOY a few informal get-togethers, and the fund-raising projects will help us buy the

boots we need without using yearbook budget money," explained Miss Urbano.

Selected from 90 applicants, the girls include Barbara Blair, Becky Doeller, Diana Ellson, Judy Fife, Ann Flaskamp, Carla Flipper and Joyce Freestone. Also, Carol Hornbrook, Dij Jones, Nan Messersmith, Deb-

bie O'Brien, Stephanie Saunders, Jeannie Tenhagen and Ann Webber.

"We need you as an individual to make the school great," the Set tells students, connecting the yearbook theme of an individual facing mass society with the catchy "group movement" idea of the campaign.

MIDTERM TROUBLES? SEE

## COLLEGE COURSE OUTLINES

Keyed to your text—Chem. 113, 114—Psych. 100—Soc. 101, Sect. I—Education III—other outlines in U. S. Hist., Hist. of Civ., English handbook, statistics.

Sold only at THE INK POT

407 Mill Ave. - Tempe

12-6 Daily except Sunday

# OFFICIAL RING DAY

Date: November 7

Time 9 a.m. to 8 p.m.

in the

UNION LOBBY

Jim Taylor

a Trained College Specialist from JOHN ROBERTS wants to meet you



He will assist you in selecting the ring that is right for you . . . with the proper stone, weight and style, for the most lasting and beautiful symbol of your educational achievement.

FOUR WEEK SHIPMENT

## THE SAHUARO SET WANTS YOU



THE SAHUARO SET'S BOOTS COURTESY OF THE BROADWAY

. . . to join forces with a new movement called the Sahuaro Revolution. The militia will be on campus from November 6-10 to enlist your support for the 1968 Sahuaro.

The Sahuaro Revolution will overthrow the ideas that individuals are numbers, faces are IBM cards and that you are lost in the masses. It will feature personal interviews with various individuals of the ASU community. More color will be used throughout the book in order to emphasize the concept of the individual and his place in society.

For only \$7 you can join the Sahuaro Revolution and become a yearbook patriot which entitles you to a free 1968 Sahuaro and all the memories you'll want. Sign up next week on the mall or at MU 207.

The Sahuaro is a revolution; color it red, white and blue.

# SAHUARO

# Devil Doll



Photo by Doug Ahlert

**PATTI FELKER**, 19-year-old sophomore French major is this week's Devil Doll. Patti is from Texas, is in Chi Omega, and likes sports.

**HEVENU  
SHALOM  
ALEYCHEM**  
24 Hour  
Inspirational Message  
**DIAL 277-9272**

## Only Deadpans Wanted -

# Interviews Cause Problems

People who agree with public opinion pollsters are a headache to research, said Bruce Merrill, director of the new survey research center.

The center, which tries to keep its poll taking as scientifically sound as possible, usually questions a minimum of 1,000 people to get an accurate random sample of the entire population. This is accomplished by using the mathematical probability theory to find out the political, social and economic views of society as a whole.

Merrill said, however, the great difficulty of these random samples arises when people deliberately agree with the pollsters rather than express their own views. Merrill stated, "Some people are so nice they'll say anything you want them to. They'll go out of their way to agree with our interviewer. Of course, this ruins the entire purpose of the poll."

To encourage the subjects' honest expression of opinion each interviewer undergoes several rigid training courses at the University before going to work in a particular area. "We're very careful to train our inter-

viewers to conceal whatever opinions they may hold," Merrill said. "A smile or frown at the wrong time could give away their personal feelings and we'd probably get a very agreeable but untruthful answer from our subject."

Merrill also said that the center, which began operation last month, has 20 interviewers on its staff, most of whom are graduate students or college-educated women. The center is also a unit of the institute of public administration in the Department of Political Science and

is supported by research grants from several foundations. It receives no state funds and does not compete with private research business. Its three objectives are to generate research opportunity for graduate students, to provide data for scholarly publications and to offer a service to the community.

STATE PRESS is published by Arizona State University as the official campus newspaper every Tuesday through Friday during the school year, except holidays and examination periods, and is entered as second class matter at Tempe, Arizona, 85281.

**LOOK WHAT WE'VE GOT!!**

POSTERS

POSTERS

**POSTERS**

**HILLS**

BOOKS  
&  
RECORDS

Tempe Center

Open Mon. and Thurs. 'Til 9:00

## 177-Help Wanted

**SALT RIVER PROJECT**

Offers You  
**PLUS ADVANTAGES**

For a Challenging Career!

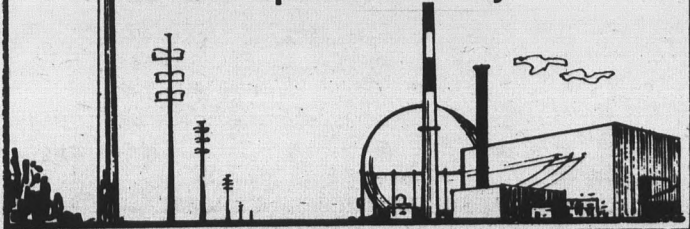
- + Growth potential in growing Arizona
- + Individual recognition in an engineering atmosphere
- + Challenging, top-level, prestige projects
- + Climate — you can't beat Phoenix!
- + Recreation, housing, cultural advantages

Contact your Placement Office  
for Interview Dates or Write:

PERSONNEL DEPT.  
SALT RIVER PROJECT  
P. O. BOX 1980  
PHOENIX, ARIZONA  
85001



Supplying Power  
to the Space Industry



**WHY BLACK and WHITE ?**  
Natural Color Portraits

Are: 5 x 7 — \$ 3.00  
8 x 10 — \$ 5.00

ONLY AT

**STUDIO**

TEMPE CENTER

967-4662

# Interviews Slated

The following organizations will conduct interviews on campus next week. Interested and qualified students should make appointments in the Placement Office, Admin. 101.

- MONDAY**  
 Control Data Corp. — EE, ME, Math, Phys.  
 Mountain States Telephone Co. — All Engr., all Bus. Admin., all Lib. Arts, all Indus. Design & Tech.  
 Univac-Div. of Sperry Rand Corp.—EE, Math, Phys.  
 Salt River Project — EE
- TUESDAY**  
 Control Data Corp. — EE, ME, Math, Phys.  
 Mountain States Telephone Co. — All Engr., all Bus. Admin., all Lib. Arts, all Indus. Design & Tech.  
 American Potash & Chemical Corp.—KE, EE, ME, Inorgan. Phy. Chem, Geol.  
 General Motors Corp. — KE, EE, ME, Math, Phys, EM, ES, IE, Phy.-Chem. Acctg., Gen. Bus., Stat. & D.P., Elec. Tech.  
 W. T. Grant Co. — All Bus. Admin., all Lib. Arts  
 McGraw-Edison Power Systems Div. — KE, Phys., EE, ME, Organ-Chem. Phy. Chem.  
 Union Carbide Corp. Consumer Products Div. — All Bus. Admin., all Lib. Arts
- WEDNESDAY**  
 General Motors Corp. — KE, EE, ME, Math, Phys, EM, ES, IE, Phy.-Chem. Acctg., Gen. Bus., Stat. & D.P., Elec. Tech.  
 Union Carbide Corp. Consumer Products Div. — All Bus. Admin., all Lib. Arts  
 Factory Mutual Engineering Div. — All Engr.  
 Pittsburgh Plate Glass Co. Chem. Div.—KE, EE, ME  
 Procter & Gamble Dist. Co. Case Food & Sales Dept. — All Bus. Admin, all Lib. Arts.

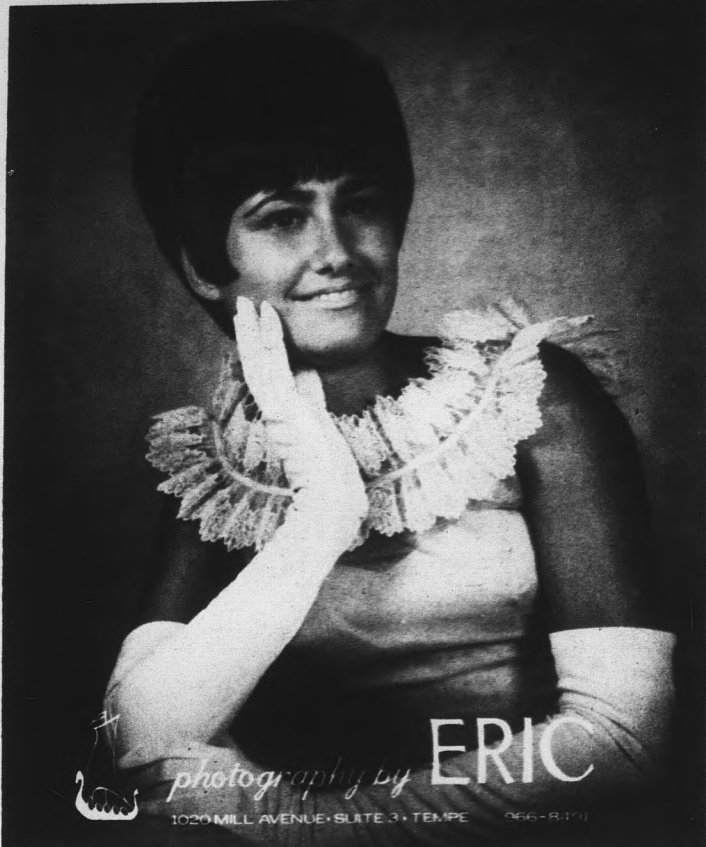
- United Fruit Co. — CE, EE, ME, Acctg., Ag. Bus., Ag. Sc., Math, MBA tech u/g degree, MBA non-tech u/g degree
- THURSDAY**  
 Procter & Gamble Dist. Co. — All Bus. Admin., all Lib. Arts  
 Hewlett-Packard Co. — EE, ME  
 Kaweah Construction Co. — CE, Const't  
 Levitt & Sons, Inc. — CE, Arch., Const't  
 Pan American Petroleum Corp. — KE, CE, EE, ES, IE, ME  
 The Upjohn Co. — Biol. Sc., all Chem., all Ag., and any Bus. Admin. student who has 12 hours of Sc.  
 U.S. Navy — Interviewing on the MU Patio  
 Humble Oil & Refining Co. Esso Production & Research Co. Esso Research & Engineering Co. Enjoy Chemical Co. —KE, CE, EE, ES, IE, ME
- FRIDAY**  
 Pan American Petroleum Corp. — KE, CE, EE, ES, IE, ME  
 U.S. Navy — Interviewing on the MU Patio  
 Humble Oil & Refining Co. Esso Production & Research Co. Esso Research & Engineering Co. Enjoy Chemical Co. —KE, CE, EE, ES, IE, ME  
 Anaconda Wire and Cable Co. — KE, CE, EE, EM, IE, ME, Acctg., Elec. Tech.  
 Douglas Aircraft Co.-Aircraft Div. & Missile Space Systems Div.—CE, EE, EM, ES, IE, ME, Phys., KE, Math  
 Motorola Inc. Semiconductor Products Div.—KE, EE, ME, Phys., Anal.-Inorgan.-Phy. Chem.  
 The Powers Regulator Co.—All Engr., Mgmt.  
 The Shell Co.—KE, EE, EM, ME, all Chem., CE, ES, IE, Phys.

# Hook to Head Business Panel

Dr. Ralph C. Hook Jr., professor of marketing, will moderate a panel analyzing the opportunities in smaller businesses, financing, marketing and the importance of good communication on the University sponsored "Western Business Roundup" radio program Sunday.

Other panel members include Allen H. Center, vice president in charge of public relations for Motorola, Inc.; Dr. Murray Hilibrand, former vice president of Ryan-Evans drugstores in Tucson; William Smith, vice president of the Valley National Bank, Tucson; and Dr. William Voris, UofA business dean.

The program, recorded at the U of A, will be broadcast on KTUF at 8:45 a.m., KALF at 9 a.m., KASA at 6 p.m., KPHO at 6:05 p.m., KRDS at 6:30 p.m., KOOL at 7:30 p.m. and KOY and KTAR at 10:30 p.m.



**ILENE LASHINSKY**  
 Alpha Epsilon Phi  
 STUDENT PRICES

## Correction

Two statements in yesterday's State Press article on KASN were incorrect. The campus radio station has been given permission by the Federal Communications Commission to "radiate" a signal within Palo Verde Main dormitory.

In the past, the signal could occasionally be picked up outside the dorm—this was the only situation which could be considered illegal. When this condition happened, the transmitter was shut down. KASN can only be heard in PV Main.

## Bands to Battle

A band audition and judging sponsored by Social Activities Board will be held tomorrow from 11 a.m. to 5 p.m. on the McClintock patio.

Two groups will be chosen from the participating bands to play at a battle of the bands on the Mall Nov. 11 from 9 to 12 p.m.

Any band interested in auditioning should contact Linda Scheuneman, chairman of Social Activities Board, between 2:30 and 4 p.m. at 961-3263.

## Gay Gibson

# CELIA'S fashions

Tempe Center  
 and  
 1149 E. Main, Mesa  
 Open Thurs. Till 9 p.m.

WELCOME HERE

Be yourself  
 with a  
 smooth  
 trim-line look  
 no buckles  
 no binding  
 no bulges

## PANTY HOSE

— SHEERS  
 — OPAQUES  
 — FISHNET

*Bonnie Sue Fashions*

913 MILL AVE  
 Temp Center Telephone 967-4094

Open Thurs.  
 'Til 9:00

## SELECTION

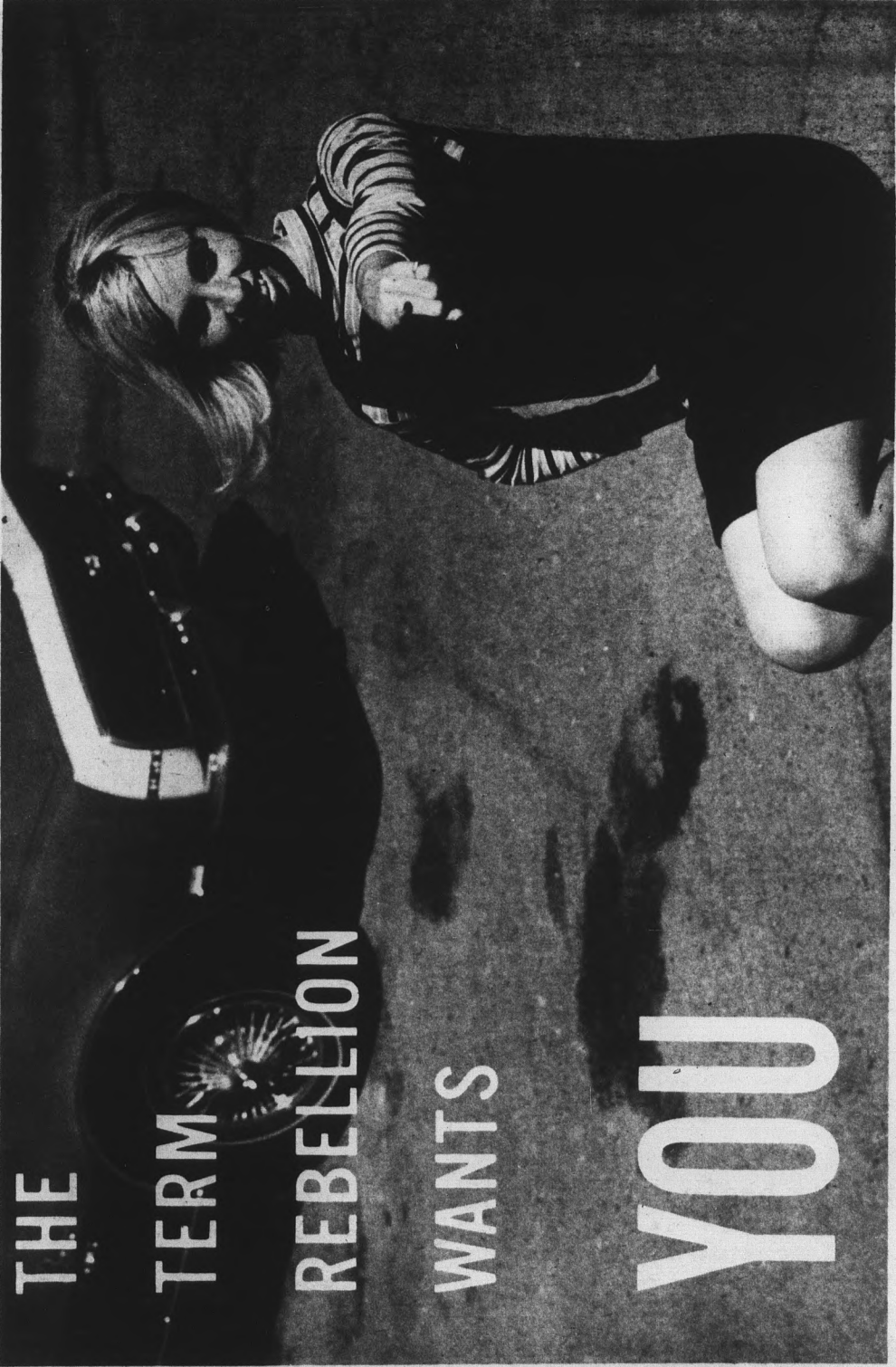
TRIUMPHANT SET  
 His \$29.50 Hers \$27.50

We have one of the  
 Largest Wedding Band  
 Selections in the  
 Valley—Come and See

# Scott Jewelers

Tempe Shopping Center  
 911 Mill Ave.  
 966-6101

# SPONSORED BY ASSOCIATED STUDENTS — ARIZONA STATE UNIVERSITY



**THE  
TERM  
REBELLION  
WANTS**

**YOU**

## JOIN THE LEADERS OF THE SEVENTIES

### START RIGHT

Each year of college is worth \$60,000 in increased lifetime earning power.

### REACH HIGH

A Bachelor's degree will add a quarter million dollars to your lifetime earnings.

Today's M.B.A. will have an income increase of 15% per year during his first 20 years out of school.

More Ph.D.'s will be awarded in the seventies than A.B.'s in the forties.

### IT'S PRACTICAL

The lowest cost — anywhere — may be exchanged to any level premium plan or to 2+ Equity.

## JOIN THE TERM REBELLION

## ENROLL AS A LEADER

**\$10,000 "TERM REBELLION"**  
For \$25.00 Per Year — Under Age 23

Age (Nearest Birthday)	\$10,000	\$5,000
Under 23	\$25.00	\$14.00
23 to 29	27.00	15.00
30 to 34	31.00	17.00
35 to 39	45.00	24.00

PREMIUM RATES INCREASE AUTOMATICALLY WHEN INSURED REACHES A HIGHER AGE GROUP

GUARANTEED RENEWABLE TO AGE 40 AT THESE LOW RATES — IN OR OUT OF SCHOOL

WAIVER OF PREMIUM BENEFIT INCLUDED

NO MEDICAL EXAMINATION

NO FLYING OR WAR EXCLUSION

GUARANTEES INSURABILITY THRU EXCHANGE

## WHO MAY APPLY

Students in a college or university who are in good health and under age 40. Students who are members of the armed forces are not eligible to apply.  
Faculty and Staff — If you are in good health and under age 40, you may also apply during the limited enrollment period.

**TO: Carefree Life Insurance Corporation of America**

3800 NORTH CENTRAL AVENUE, SUITE 912  
PHOENIX, ARIZONA 85012

## HOW TO APPLY

- Parent or student should complete the application. Answer each question fully to the best of your knowledge.
- Parent or student should sign their name on the line marked "Applicant." No one else need sign.
- Mail the application form. Please send your check or money order payable to CAREFREE LIFE for the first premium with your application. Be sure all questions are answered fully and that you sign the application.

**THIS PLAN IS AVAILABLE DURING A LIMITED ENROLLMENT PERIOD.**

Application to CAREFREE LIFE for a policy of Life Insurance in the amount of  \$10,000.00 with an annual premium in the amount of \$\_\_\_\_\_ on the life of \_\_\_\_\_

Name LAST FIRST MIDDLE INITIAL SEX	STREET CITY STATE ZIP CODE	Height Weight
Date of Birth	Name of College or University State	Present Student Classification <input type="checkbox"/> Freshman <input type="checkbox"/> Junior <input type="checkbox"/> Sophomore <input type="checkbox"/> Senior <input type="checkbox"/> Graduate <input type="checkbox"/> Other

### BENEFICIARY

If a Beneficiary is not designated in this space, the Beneficiary will be as shown to the right of this space.

Insured's spouse, if living, otherwise to the insured's children equally or to the survivors or survivor, or if there be none, then to the insured's natural parents, equally or to the survivor, or if neither of them is living, then to the estate of the insured.

NAME RELATIONSHIP

Answer "YES" or "NO"

- Will the policy applied for replace any insurance in force on the life of proposed insured?
- Has proposed insured been under observation or treated by a physician or confined in a hospital during the past five years?
- To the best of your knowledge and belief does the proposed insured have any impairment to health or any disease?
- Is the proposed insured now a member of the armed forces?  
If the answer to Question 2 is "YES" or the answer to Question 3 is "YES" give details below.

Ailment	Treatment, Approximate Date and Results	Name and address of Physician and Hospital
---------	---	--

The Applicant will be the Owner of any policy issued on this application. The undersigned declares that all statements and answers are made a part of this application and that they are complete and true to the best of the undersigned's knowledge and belief. It is agreed that if this application is accepted by the Company, the policy applied for, together with this application, will constitute the entire contract between the parties concerning the insurance provided.

Date \_\_\_\_\_ MONTH \_\_\_\_\_ DAY \_\_\_\_\_ YEAR \_\_\_\_\_

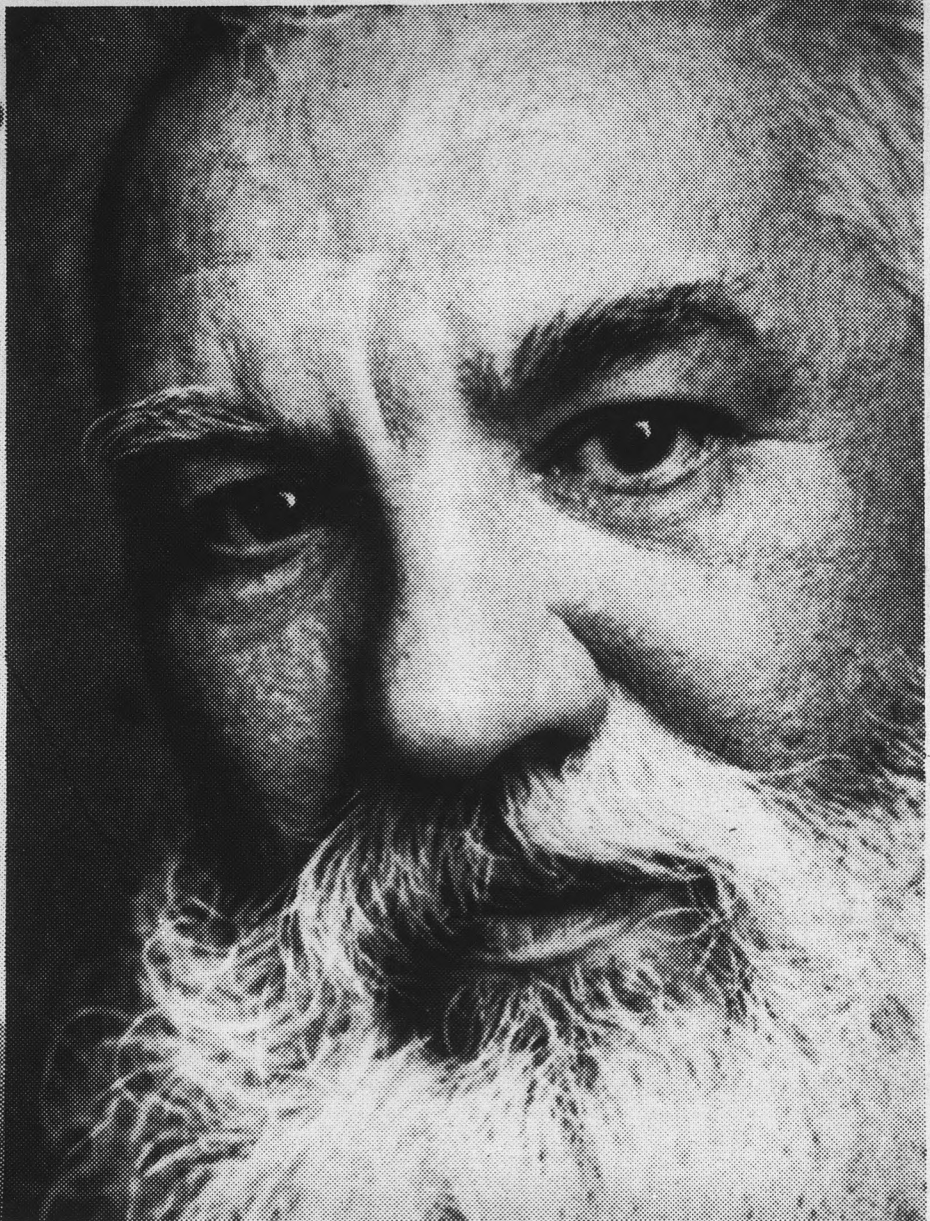
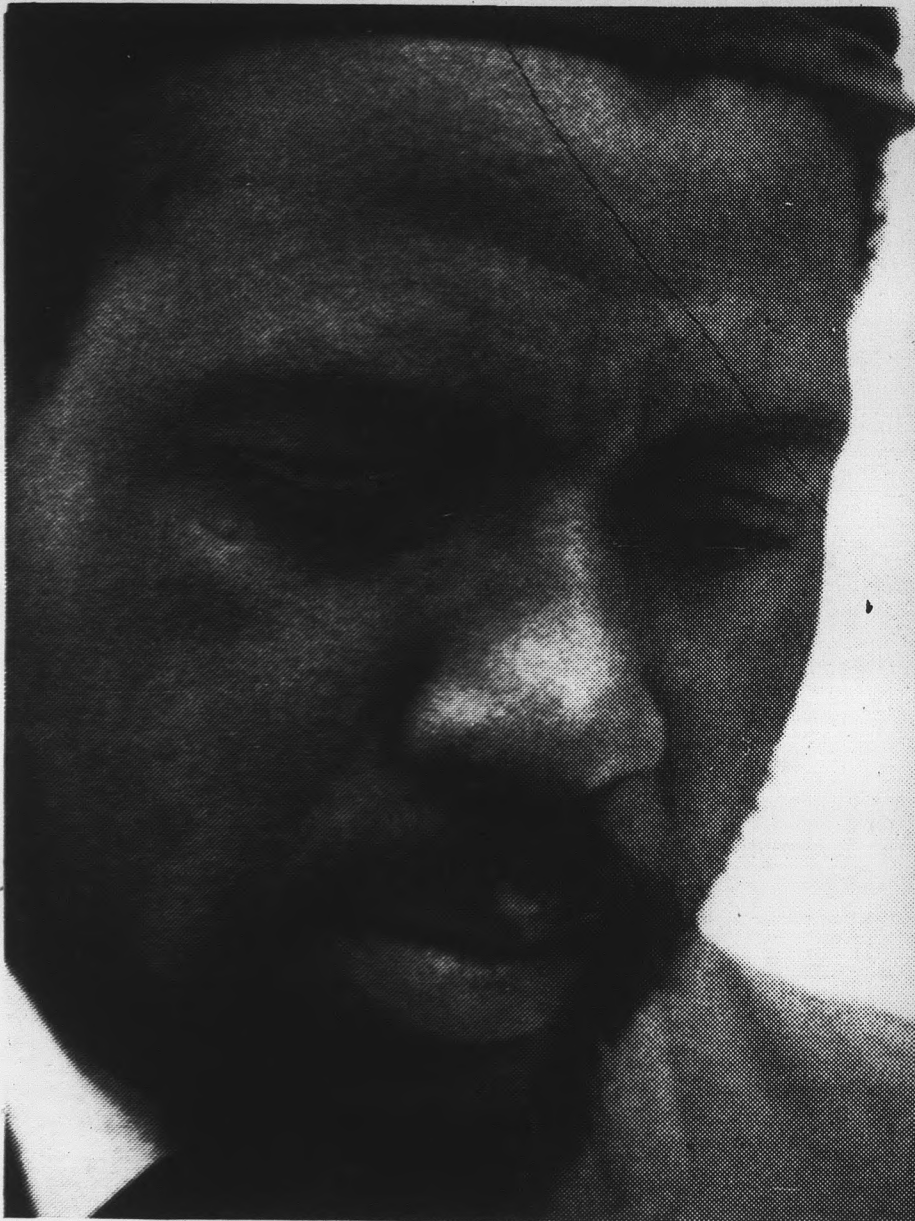
Witness \_\_\_\_\_ (Not Applicable) \_\_\_\_\_

Signed \_\_\_\_\_ APPLICANT

Dated at \_\_\_\_\_ CITY \_\_\_\_\_ STATE \_\_\_\_\_

TEAR OFF & MAIL TO CAREFREE LIFE

TEAR OFF & MAIL TO CAREFREE LIFE



"The only cats worth anything are the cats who take chances. Sometimes I play things I never heard myself."

--Thelonious Monk

"Don't keep forever on the public road, going only where others have gone. Leave the beaten track occasionally and dive into the woods. You'll be certain to find something you have never seen before."

--Alexander Graham Bell

To communicate is the beginning of understanding



## Associated Women Plan Overnighter

Planners for this weekend's AWS Retreat have rescheduled the site from the Payson Natural Bridge to the Wrangler's Roost at New River.

According to Assistant Dean Flarie den boer, 120 girls signed up for the retreat, too many for the Payson Lodge to accommodate.

Buses will leave today at 3 p.m. to carry the girls the 50 miles to Lake Pleasant Lodge.

Tonight at dinner Mrs. Laura Henze, instructor of sociology, will speak on the topic "Cultivation of Womanhood."

Later, the girls will gather around a campfire for singing and conversation.

Saturday morning the girls will split into groups to discuss the role of women on the ASU campus, how AWS can improve its program, and the complete year's program for AWS.

Saturday afternoon will see the end of the retreat as the buses return the girls to Tempe.

## Weekend Happenings

### TODAY

A.W.A.R.E. will meet in Matthews Center 150G at 12 noon.

HILLEL will meet at 8 p.m. in Baker Center for services and a following social hour.

### SATURDAY

INSTITUTE OF ELECTRICAL AND ELECTRONICS ENGINEERS will meet at 8:15 a.m. at the Tempe Salt River Project office to tour its Agua Fria Steam Plant.

### SUNDAY

SAHUARO GLEE CLUB will meet at 2 p.m. at Hayden Hall. All male and female students are invited to join the group which will present a Christmas concert Dec. 17.

HILLEL will have a social mixer at 7:30 p.m. in Baker Center.

CHAMBER MUSIC will be presented in the MU Ballroom by the Warsaw Quintet at 8:30 p.m.



Photo by Bill Dempsey

**ISLANDS' EFFORT** — In a "Herculean" effort, Sahuaro B's Islands restored ASU's Victory Bell, which had been tattered and torn through the years. Islands' president Paul Odom and Kathy Storey, both sophomores, proudly display the bell.

## Stan's Fireside

3300 S. Mill Ave.

Under New Management

SPECIAL BUFFET LUNCHEON

1.10 Plus Beverage

Dancing  
Niteley  
Live Music  
Fri. and Sat.



Buffet  
Dinner  
**1.50**  
Plus Beverage

Wonderful Food and Cocktails

Complete Banquet Facilities

Your Hosts: **STAN and JEANNIE STANFORD**

966-6416

Closed on Sunday

# How to interview 130 companies in half an hour.

Talk to the man from General Electric. He represents 130 separate GE "companies" that deal in everything from space research to electric toothbrushes. We call them product departments. Each one is autonomous with its own management and business objectives. That's why a job at General Electric offers the kind of immediate responsibility you might expect to find only in a small business. Right from the start you get a chance to demonstrate your initiative and individual capabilities. And the more you show us, the faster you will move ahead. As you do, you'll find that you

don't necessarily have to spend a lifetime working on the same job in the same place. We have operations all over the world. Chances are you'll get to try your hand at more than one of them. Our interviewer will be on campus soon. If you're wondering whether it's possible to find challenging work in big business, please arrange to see him. He speaks for 130 "companies."

**GENERAL ELECTRIC**  
An equal opportunity employer

### A.S.U. BREAKFAST SPECIAL

**\$1.00**

3 EGGS AND HAM

Hash Brown Potatoes  
Toast, Jelly and Coffee

Served Daily 6:30-11:30

**HARMAN'S**

Mesa-Tempe Hi-Way  
TEMPE

# Devils to Set Sights On Scalping Redskins

Sun Devil football coach Frank Kush and Ute coach Mike Giddings are faced with the same problem tomorrow — how do you get a team fired-up after losing the "big" game?

For the Sun Devils it was a heartbreaking loss to seventh-ranked Wyoming, 15-13. For the Utah Redskins it was losing a close one to rival Brigham Young, 17-14.

**KUSH SAID**, "It's going to be tough . . . really tough getting our athletes 'up' for the Utah game. Our athletes played their hearts out, and we could have won. Wyoming's a great team. We made a couple of key mistakes and that was that."

Two top rating sheets did their best to help Sun Devil morale by giving Kush's team the game. Kickoff magazine predicted a Sun Devil victory by 8.3 points while the Monday Morning Quarterback favored the Devils by 3.4 points.

"WE'RE STILL a young foot-

start eight kids who had never played college ball before this year, but they're improving game by game."

"I don't think we have the talent of Wyoming, BYU or Airball team," said Giddings. "We zona State, but when we put things together, we're capable of playing pretty good ball."

**Bob Vache and Ray Cox** will broadcast the Sun Devil-Utah contest on KTAR radio beginning at 1:30 p.m. MST Saturday.

said Giddings.

The Utes, 3-3 for the season, will throw some monstrous linemen against the Devils. Ute starters include tackles Joel Trachtenberg (241) and Armin Blaufuss (246) and guard Norman Chow (235). Ute defensive giants are tackles Joe Honson (265) and Manny Fernandez (246) and end Norm McBride (231).

"JUST LOOKING at some of their (Utah) films," said Kush, "I'd say they were about the same as they were last year. They have, in Jack Fehrke, the type of quarterback who has always given us trouble, and they have good quickness."

Last year the Utes crushed the Sun Devils 21-6 in Sun Devil Stadium.

"That was a good example of us putting things together," said the Utah coach. "We haven't really played back to that level since. I'd certainly like to duplicate it Saturday."

**KUSH FEELS** that his troops will be able to make a full recovery from last Saturday's setback.

"We have some maturity we've never had before," he said, "I think these kids have too much character and pride to fold. Physically we have some bumps and bruises, but

(Continued on page 11)

**MEDICO**  
Alma Mater  
FILTER PIPES

your college letters here →

IMPORTED BRIAR

NOW AT YOUR LOCAL STORE \$4<sup>95</sup> AND \$5<sup>95</sup>

Find them on our racks . . .

**CAMPUS DRUG**  
Corner University & College

*Classified*

For classified advertising submit ad in person to the State Press, MU 3, two days in advance of publication, from 12:40-3:30 p.m., call 961-3657. Rate: 5c per word, 75c minimum.

● INSTRUCTION

LEARNING to drive needn't cost you a fortune. All American School. 265-2500.

Rental FLY Lease Charter Instruction Call Jim Bostrom or Chuck King at 967-7325 or North Phoenix Aviation at 942-1011.

TUTORING: Biology, chemistry for university and secondary students. 277-6303.

INDIVIDUAL tutoring in math, physics, chemistry, and biological sciences. Phone 967-7924.

● MISCELLANEOUS

CLASSIC Guitar Interests. Aspiring players and listeners. Arizona Classic Guitar Society. 946-2860.

● WANTED

WILL trade: portable Sylvania stereo, full set of golf clubs and Mexican guitar for a good steel string guitar. Dick Schinke. 967-1882 or see me at the Mews Coffee House 602 N. Miller Rd. Scottsdale.

● FOR SALE

POSTERS Hill's Books and Records — Tempe Center.

JENNIES SAMPLE DRESS FASHIONS LADIES READY-TO-WEAR nationally advertised brands at wholesale prices. Open evenings. Lay aways. VNB credit cards accepted. Tempe: 1016 McClintock Drive (Hayden Rd.) North of Apache Blvd. 966-7871.

BOBBI'S SAMPLES New Wardrobe Time! All occasion clothing. All sized. Junior, Misses, Petite, Half-sizes. Sportswear, formals, lingerie, jewelry, hose. Many at wholesale prices. Open 9:30-9:00 Mon thru Sat. Layaway and VNB. Two stores to serve you. Mesa: 1456 E. Main, 962-0941. Scottsdale: Frontier Shopping Center, Scottsdale and Thomas Rd., 945-9272.

SKI SWEATER AND SWIM SUIT SALE Men's and girl's imported ski sweaters all sizes. Girl's imported swim suits. Sizes 10 and 12. Salesman's samples at cost. Shown by appointment. Call 948-6186.

CLASSICAL guitars. A super buy \$39.88. Fairway Loan and Music Company. 21 and 45 South First Ave.

NERVOUS? Can't sleep? Try "Sleepers." Guaranteed results or money back. Only 98c. Campus Drugs.

● AUTOMOBILES

1963 MGB one owner. Must see and drive to appreciate. \$1400 963-6901 963-6234.

● TYPING

TYPING — 967-3036.

TYPING, fast, guaranteed, IBM, 211 E. 14th St. Sue Johnson. 966-7848.

TYPING — 945-4685.

● HELP WANTED

GIRL student—mother's helper, and companion for two school age children. Own room-bathroom-salary. 948-3342.

PART TIME, FULL TIME Part-time. Home improvement canvassing. Call Dave, 272-0091 or after 5 p.m. 272-6028. \$100 per week.

"FULL or Part Time." Married man with car to call on Students for 58 year old mid-west company. Training program if you qualify. Can earn over \$200 per week. Call 264-3327. Evenings and Sunday AM 59830.

EARN \$61.00 per week. Work evenings and Saturdays. Car necessary. Call Jerry 1 to 5 p.m. 966 0104.

● SERVICES

BABYSITTING; our home. Fenced yard, swings, lunches. Near Mill and Southern, buses to Broadmoor and McKerny schools. 967-5523.

PILOT with Aircraft will fly anywhere and share expense. Prefer Mexico or California. Call Jim Bostrom or Chuck King. 967-7325.

MRS. Day. Palm reader and advisor. Love, marriage and business. \$1.00 reading. 964-9987.

AUTO TAPES UNLIMITED special of the week: 4 tops—"Reach Out"; Peter, Paul and Mary—"Album 1700"; and Supremes—"Greatest Hits" ONLY 03.75 (4 & 8 track) Phone 967-8989 for all your "custom" auto-tape needs.

● RENT

FEMALE roommate wanted. Share spacious 2-bedroom with 2 others. Ample closets. University Village Apts. 966-6881.

TAKE YOUR DATE FLYING We have day and night flights. Call Jim Bostrom or Chuck King. 967-7325.

● PHYSICAL FITNESS

BEST equipped gyms in the West. Lowest membership rates. Golden's Health Club, 107 S. McDonald St., Mesa, 964-2351.

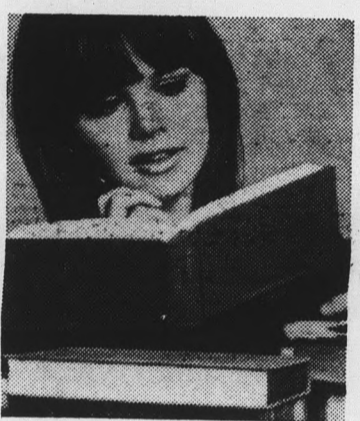
● MOTORCYCLES

'66 YAMAHA 305. Excellent condition. Bike cover included. \$450. 966-9980.

TRIUMPH Confessa — 250cc, 4 speed foot shift, electric starter, like new — 967-4290, after 4 p.m.

REBUILT, repainted, like new 1962 Honda Dream, \$325. 969-9945.

As a college girl, you'll learn psychology, sociology, philosophy, economics and more.



## As a United Stewardess, you'll put them all to use.

(And fly to the places you've read about.)



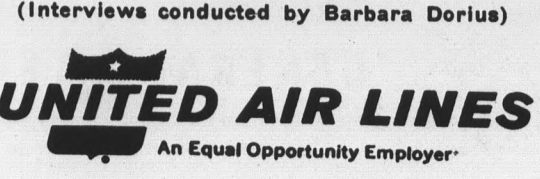
Learning "by the book" is the first step. Learning by doing is the next. As a United Air Lines stewardess, you'll meet people from all walks of life. You'll become a master of tact and diplomacy. It's the kind of experience that will be useful to you the rest of your life.

After a 5½-week course at our Stewardess Training Center in Chicago, you'll be assigned to one of 10 United stewardess domiciles—Seattle, San Francisco, Los Angeles, Denver, Chicago, Detroit, New York, Newark, Washington, D.C., or Miami.

During your first year, you'll earn as much as \$451 a month. And you'll be given a generous travel allowance. Other benefits include a two-week paid vacation and four free trip passes after one year. As a United stewardess, you'll be eligible for reduced fares—up to 75%—on international airlines.

If you're single, between 20 and 26, between 5'2" and 5'9", weight 140 pounds or less (in proportion to height), and your vision is correctible to 20/30 in each eye, you may qualify.

**INTERVIEWS**  
Wed., Nov. 8 — 4 p.m. to 8 p.m.  
Arizona State Employment Service  
207 E. McDowell Rd., Phoenix  
Call 254-5631



# Wrestling Championship Grapplers Compete

Gene Parrish and Larry Wagner head the list of Sun Devil grapplers entered in the fifth annual Arizona Greco-Roman Wrestling Championships tomorrow at Glendale Community College.

Parrish, Western Athletic Conference champion in his weight class, and Wagner each won his weight division in last year's meet.

Added to the Sun Devil power are Robert Shines and Gary Seymour, two national junior college champions.

A CLINIC begins at 9:30 a.m. to explain Greco-Roman rules. Greco-Roman differs from Intercollegiate Wrestling in that wrestlers can not use holds below the hips of the opponent.

Semifinals are slated at 2 p.m., with finals at 7 p.m.

Vern Braasch, Glendale CC mat coach and tournament director said that he expects over 100 entries in the eight international weight classes.

The Phoenix Wristlock Club looms as the favorite in the meet with three nationally ranked defending champions, Buz Hayes (154), Glenn McMinn (125) and Russ Winer (213).

HAYES AND McMinn attend Arizona State, though neither is eligible for Sun Devil competition.

A pair of Olympic team prospects, Phoenix College's Gayle Tolifson (138) and Bruce Crile (191) will be going for their fourth straight state titles.

Date	Opponent or Tourney	Site
Nov. 30	UCLA	Here
Dec. 1-2	UofA Invitational	Tucson
Dec. 8-9	Okla.St. Invitational	Stillwater
Dec. 23	State AAU	Phoenix
Jan. 9	New Mexico	Here
Jan. 13	Michigan State	Here
Jan. 15	Arizona	Tucson
Jan. 18	Minnesota	Here
Feb. 2-3	Naval Training Center	San Diego
Feb. 9	Brigham Young	Here
Feb. 15	Western State	Gunnison
Feb. 16	Utah	Laramie
Feb. 17	Wyoming	Laramie
Feb. 17	Brigham Young	Laramie
Feb. 19	Colorado	Boulder
Feb. 22-24	Invitational (Wyo., UA, Colo. State)	Utah, Here
Feb. 29	Arizona	Here
Mar. 1-2	State AAU	Phoenix
Mar. 8-9	Western AC	Provo
Mar. 21-22-23	NCAA Championships	Penn.

**FLYING IS FUN**

**-Be A Pilot-**

FINN AVIATION AERO CLUBS presents:

The goingest clubs in Arizona!

**Welcome ★ Beginners ★ Welcome**

low hourly rates	low membership cost
no dues	no assessments
ground school	family aircraft
aerobatics	FAA safety films
social events	all ratings welcome

**SPECIAL STUDENT RATES**

**This is for you!**

Call **937-4669** or **934-5978**  
**265-7438** or **934-5325**

or write **P.O. Box 11236 Phoenix, Arizona 85017**

## Coaches Vote Devils Sixth In Basketball

Basketball coach Ned Wulk and five other Western Athletic Conference coaches met recently in Tucson and voted Wyoming as the most likely winner of the 1967-68 conference title.

The Sun Devils and the Lobos of New Mexico were voted in a tie for last place.

Brigham Young was predicted to take second, Arizona, third and Utah, fourth.

The coaches were; Jack Gardner, Utah; Stan Watts, BYU; Bruce Larson, Arizona; Bob King, New Mexico; Wulk, ASU and Wyoming's assistant coach, Bill Purden.

## Military Teams Play Tomorrow

The Semper Fidelis Society of the Marine Corps will play Air Force ROTC's Arnold Air Society in a pre-intramural football game Saturday. The clash will be at 3 p.m. at the Payne Training School field, west of campus.

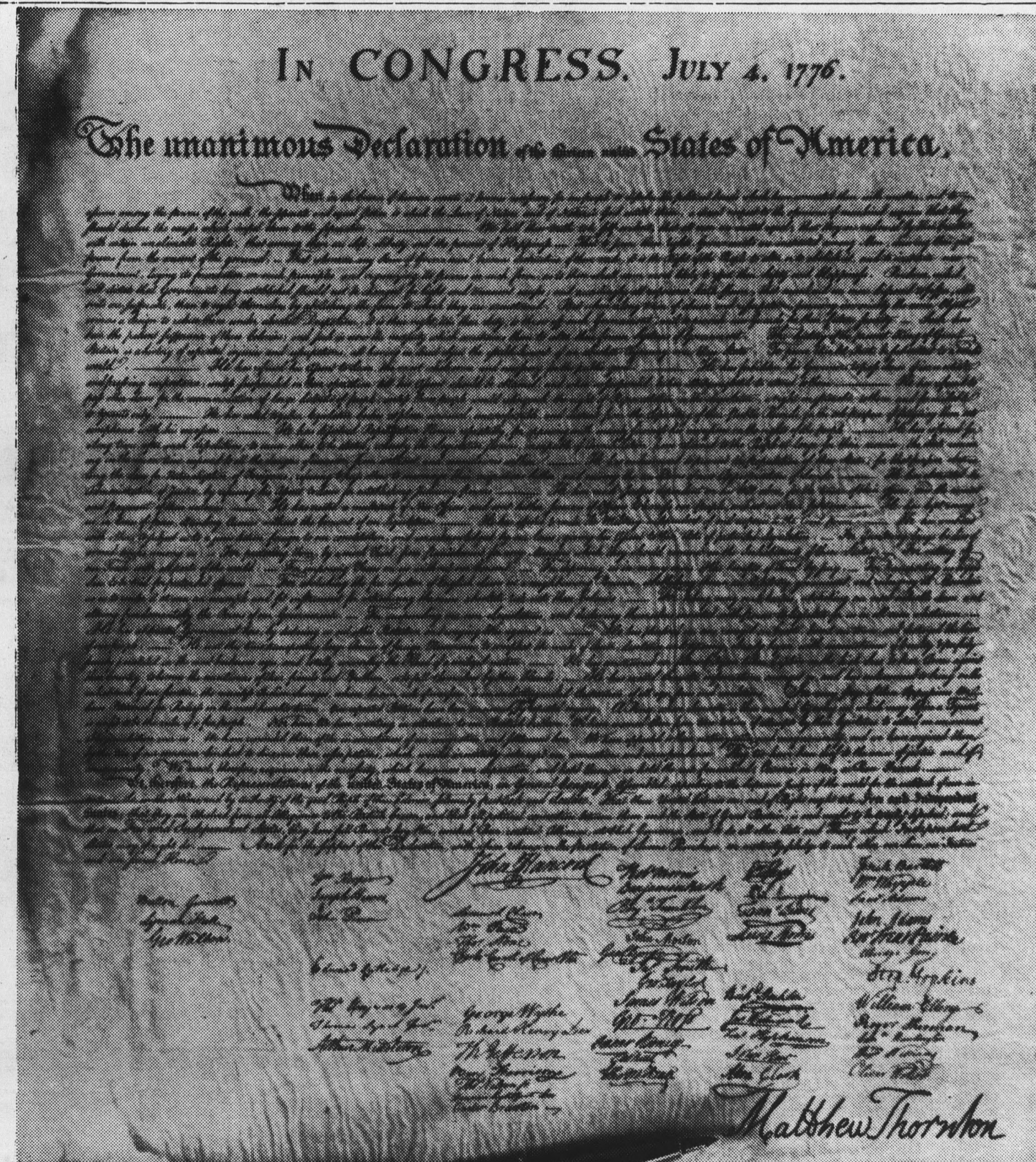
The game is one of a series set up by Semper Fidelis in preparation for the intramural league. The Marines will play a Federal Bureau of Investigation team next Sunday.

## Sign-Up Deadline Set for Gymnasts

A 4:30 p.m. Monday deadline has been set for women's intramural gymnastics entries.

Scheduled for Nov. 7-9, competition will cover six different events with trophies awarded to winners.

The mixed-doubles tennis intramurals tournament, co-sponsored by the Women's Racket Club, has a Nov. 7 entry deadline for the Nov. 10-12 tournament dates.



**If Matthew Thornton had signed his name with the Scripto Reading Pen, he'd be remembered today.**

Scripto's new Reading Pen makes what you write easier to read. That's why Scripto calls it the Reading Pen. It's a new Fiber-Tip pen that writes clear and bold. Not a fountain pen, not a ball-point, this is an entirely new kind of pen with a durable Fiber-Tip. Get the refillable Reading Pen for \$1. Refills come in 12 colors. Available in a non-refillable model for 39¢. Write with Scripto's new Reading Pen. You'll be remembered.

New fiber tip from **Scripto**

Two Games Scheduled -

# Kickers to Begin Season

Both Sun Devil Soccer teams kick off the first game in the Arizona Soccer League for the fall season this weekend with two away games.

The senior - graduate team will travel to Tucson Sunday afternoon to oppose the newest team in the 12 team league, Tucson City, in what could be a battle between the league's two top teams.

The freshman - sophomore-junior team will go to Phoenix to face the Latinos in Maryview Park at 3 p.m. tomorrow at Osborn and 57th Avenue.

THE LATINOS finished in the middle of the league last year.

The two soccer squads finished their exhibition season last weekend with a combined won - lost record of 1-3-1.

Starting for the undergrads will be basically the same squad that battled the graduate team in last weekend's inter - squad game, holding them to seven points. Forwards will be Fox Braden, George Montclair, Jorge Ibarra, Carlos Adams and Larry White.

HALFBACKS will be Frank Brough and Jesus Espinoza. In fullback position will be Luis Rojo, Pat Kirsch and Jim Franzmeier. Tom Risley will man the goal for the Devils.

Most of the grads starting line - up will be the same team that took the Knock - Out Cup playoffs last season. The forward line will be Bill Allen, Pepe Gomez, Pete Versteegen, Harry Versteegen and Manuel

Avendano. Halfbacks consist of George Butchko and Cosimo Tripodi. The goalie position on the grad team is still unsettled since all-star Risley will be playing for the undergrads.




Photo by Wendell Peacock  
**FLYING HIGH** — Nick Spann, Sigma Phi Epsilon, doing a front somersault in pike position during Men's and Women's Intra-mural Swimming and Diving finals.

4 LOCATIONS FOR YOUR CONVENIENCE

- ★ **Ray's ASU Barber Shop**  
TEMPE CENTER
- ★ **Boles Barber Shop**  
905 E. LEMON ST.
- ★ **M. U. Barber Shop**  
MEMORIAL UNION BUILDING
- ★ **Ray's Hayden Plaza**  
HAYDEN PLAZA EAST

PROFESSIONAL  
QUALITY BARBERING



Arizona Region  
**SCCA**  
Championship  
Slalom Finals  
& Time Trials

**Phoenix International  
Raceway**

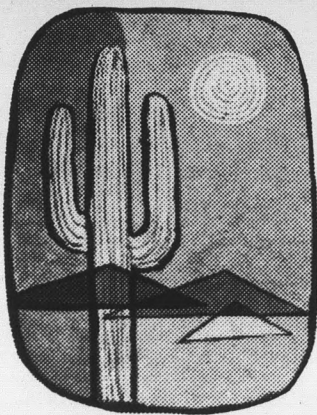
115 AVE. & BASELINE RD.  
SUNDAY, NOV. 5, 1967

Registration Opens—8:30 A.M.    Entry Fee—\$3.50

**SPECTATOR EVENT**

GRAND STAND SEATING PROVIDED  
CONCESSIONS AVAILABLE

## EARN YOUR MASTER'S DEGREE OR PhD WHILE YOU WORK



### AT **MOTOROLA** IN COLORFUL PHOENIX

Motorola offers the student at the BS or MS level an opportunity to advance his career and education concurrently. Work and achieve a Master's or PhD Degree in an environment of constant challenge and tremendous growth.

**THE ENGINEERING TRAINING PROGRAM**  
Open to BS or MS graduates in Electrical Engineering, Chemical Engineering or Physics with a B average or better. While pursuing an MS or PhD degree at Arizona State University each trainee is placed in a rotational program covering four engineering activities at Motorola.

**THE MARKETING TRAINING PROGRAM**  
Open to BS graduates in Electrical Engineering or Physics with a B-average or better. Marketing trainees may work toward an MBA or an MS or PhD degree. Rotational assignments are in the marketing area.

MR. FRANK MYERS will conduct interviews on campus  
NOVEMBER 10

- Direct Placement at all Degree Levels for . . .
- Electrical Engineers    ■ Organic & Physical Chemists
  - Physicists    ■ Chemical Engineers    ■ Metallurgists
- In Research and Development, Quality Control, Marketing, and Production.*

If you are unavailable for an interview at this time write directly to: Director of College Relations, Motorola Inc., Semiconductor Products Division, 5005 East McDowell, Phoenix, Arizona 85008.




**ARTIST & DRAFTING SUPPLIES**  
Crafts - Picture Frames  
Decorating Material  
Tempe Center • WO 7-4482  
Open Mon. & Thurs. Nites



## Only LEE Optical gives you a spare pair of lenses FREE!

### FOR YOUR SAFETY

- LEE gives you an extra pair of clear single-vision lenses FREE with your first complete pair of glasses.
- Also at LEE, buy contact lenses for as low as \$95 and get a clear spare pair FREE.
- For children under 12, no extra cost for heat-treated safety lens glasses. Plus, your child receives an extra set of clear safety lenses FREE.

QUALITY all LEE glasses are precision ground from perfect American-made lenses

STYLE over 500 modern frame styles and colors

SERVICE satisfaction guaranteed

CREDIT liberal credit terms or use your VNB credit card

Single-vision glasses as low as

# \$13<sup>85</sup>

9 CONVENIENT EYEWEAR CENTERS *Open Thursday evening and on Saturdays*

TEMPE • 805 Mill Avenue, Tempe Center

- |                            |  |                                      |   |
|----------------------------|--|--------------------------------------|---|
| PHOENIX<br>16 W. Adams St. | CHRIS-TOWN<br>19th Ave. and Bethany Home Rd. | THOMAS MALL<br>4527 E. Thomas Rd.    | SCOTTSDALE<br>719 N. Old Scottsdale Rd. |
| MESA<br>129 West Main      | YUMA<br>2816 4th Ave.                        | TUCSON<br>El Com Center, Amphi Plaza |   |

Where it's always SAFE to save money on glasses and contact lenses.



## Coeds Win California Golf Meet

Sun Devil women golfers took Stanford Intercollegiate Golf Tournament victories when they beat UCLA by two strokes Oct. 26 and 27.

The team of Jan Crow and Marie Strand returned with team honors, ten strokes better than second-place UCLA.

JAN CROW also won second low gross (165) and scored a hole-in-one and an eagle on the second day of play. Joy Hirota returned with low net honors.

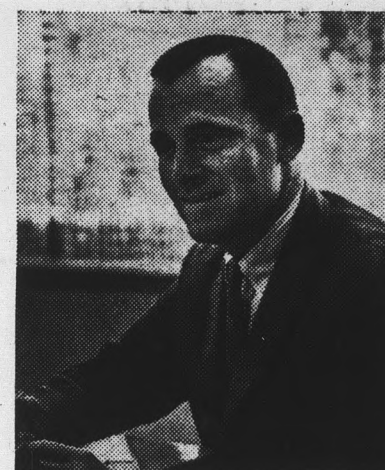
The golfers included Jan Crow, Marie Strand, Joy Hirota and Nancy Regier.

Dropping their first tournament to Texas, the team practices for the Sun Devil Intercollegiate to be held at Thunderbird Country Club Nov. 16 and 17.

## Devil Marks Bow To Sun Archers

Both women's and men's Sun Devil archery records were broken in last week's Sun Devil Classic.

Kiratie Kaiser broke the women's school record of 685 with a 692 and Paul Center's 716 smashed the men's record by 26 points.



**SHEL ARNOT**  
BA, Liberal Arts, U. of California, became an assistant district sales manager less than ten years after graduation, and is now assistant manager of our Chicago sales district. After Bethlehem Loop Course training, Shel sold steel products in Los Angeles, handling a number of multi-million-dollar accounts. Now he has an even bigger job.

**MANAGEMENT MINDED?**  
Career prospects are better than ever at Bethlehem Steel. We need on-the-ball engineering, technical, and liberal arts graduates for the 1968 Loop Course. Pick up a copy of our booklet at your placement office.

An Equal Opportunity Employer in the Plans for Progress Program



## Sun Imps to Play Only Home Game

Sun Devil football fans by showing their activity card will get their first and only chance to see Coach Bill Kajikawa's Sun Imps in action this year when they face the New Mexico Wolfpups tomorrow at 8 p.m. in Sun Devil Stadium.

The Frosh record is 0-1 for the season after dropping their only game three weeks ago against the Arizona Wildkittens, 21-6.

"WE WEREN'T as sharp as we had hoped to be," said Kajikawa. "We made a lot of mental mistakes, and gave the ball over to them too many times."

Fullback Max Anderson holds two Western Athletic Conference records for this season. He holds the best one-game rushing record of 220 yards against Wisconsin and the best one-play rushing record with a 99-yard run gainst Wyoming.

The Imps gave the Wildkittens six fumbles, one pass interception, had one punt blocked, lost 61 yards rushing and had 95 yards in penalties called on them.

Sun Imps Auzie Houchins and Bob Davenport led the rushing statistics with 44 and 38 yards, respectively. Joe Spagnola is the leading passer with five completions in eight attempts for 74 yards and one touchdown.

HALFBACK Lenny Randle is the leading receiver with four receptions good for 61 yards and a TD.

Sun Imp Bill Novak holds the edge on punting statistics, kicking 11 times for a 39.6 average.

No.	Name	Pos.	Ht.	Wt.
84	Vince Ortwein	RE	6-2	195
75	Mike Schmeding	RT	6-1	195
64	Ted Olivo	RG	5-11	212
63	Mike Shimkus	C	6-2	235
61	Gary Ventura	LG	6-0	215
65	Jim Kelley	LT	6-0	215
80	Galen Lawrence	LE	6-4	185
11	Joe Spagnola	QB	6-1	170
28	Dick Rusinko	RH	6-0	175
21	Auzie Houchins	LH	6-1	195
24	Bob Davenport	FB	6-0	215

### Sports Short

## Pigskin Prophecy

FROM THE SPORTS DESK (Winners in bold face)  
Record 37-12-1

ARIZONA STATE at Utah	ARMY at Air Force
New Mexico at ARIZONA	COLORADO at Oklahoma
BRIGHAM YOUNG at Utah State	Louisiana State at MISSISSIPPI
WYOMING at San Jose State	Stanford at WASHINGTON
	Georgia at HOUSTON
	Florida at AUBURN

## MORE ABOUT — Football

(Continued from page 8) they are mostly minor."

The Devils will throw a powerful team against the Utes with Max Anderson, now the number two man in the nation in NCAA rushing statistics with 812 yards gained on 131 carries, compared to number one O. J. Simpson of Southern California with 1,050

yards on 203 carries. Wes Plummer ranks second in interceptions with a total of seven.

The team, as a whole, continues to lead NCAA statistics in point production (223), ranks fifth in total offense (407.3 yards per game) and eleventh in rushing offense (232.3).

## TEMPE BODY SHOP

11 E. 4th St. Day Ph. 967-1601 - Nite 967-1279

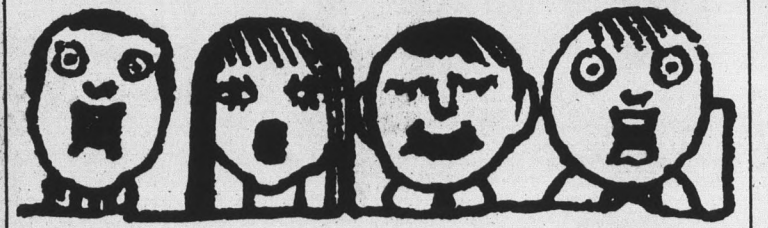
24 HOUR TOW SERVICE

- WHEEL ALIGNING & BALANCE
- Auto Glass Work — 1 Day Service
- Auto Body & Fender Work

## Treat Your Favorite Muchacha To The Very Best at At CHICO'S RESTAURANT\* FINE MEXICAN FOOD

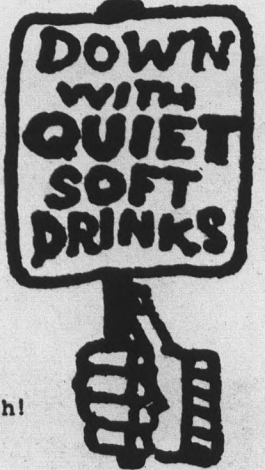
1120 East Apache Blvd. — Tempe  
\*Air Conditioned of course

Presenting The Drinking Song for Sprite:  
"ROAR, SOFT-DRINK, ROAR!"  
(To the tune of "Barbara Fritchie")



Traditionally, a lusty, rousing fight song is de rigeur for every worthy cause and institution. But we wrote a song for Sprite anyway. We'd like you to sing it while drinking Sprite, though this may cause some choking and coughing. So what? It's all in good, clean fun. And speaking of good, clean things, what about the taste of Sprite? It's good. It's clean. However, good clean things may not exactly be your idea of jollies. In that case, remember that Sprite is also very refreshing. "Tart and tingling," in fact. And very collegiate. And maybe we'd better quit while we're ahead. So here it is. The Drinking Song For Sprite. And if you can get a group together to sing it--we'd be very surprised.

Roar, soft drink, roar!  
You're the loudest soft drink we ever saw!  
So tart and tingling, they couldn't keep you quiet:  
The perfect drink, guy,  
To sit and think by,  
Or to bring instant refreshment  
To any campus riot! Ooooooh--  
Roar, soft drink, roar!  
Flip your cap, hiss and bubble,  
Fizz and gush!  
Oh we can't think  
Of any drink  
That we would rather sit with!  
Or (if we feel like loitering)  
to hang out in the strit with!  
Or sleep through English lit' with!  
Roar! Soft drink! Roar!  
Yeahhhhhhhhhhhhhhhhhhh, SPRITE!



SPRITE. SO TART AND TINGLING. WE JUST COULDN'T KEEP IT QUIET.

AT

You Get THE WORLD'S BEST SERVICE Your Own! Coin Operated Self Service

HIGHEST QUALITY GASOLINE

Tempe 915 East 8th Street and Creamery Road

Bring your next prescription to a Ryan-Evans pharmacy and judge for yourself . . . our prices are low . . . low . . . low . . . Be sure . . . you can put your trust in a Ryan-Evans state registered pharmacist. S & H Green Stamps, too.

# RYAN-

# E V A N S

## DRUG STORES

# CHRISTMAS LAY-A-WAY SALE

Our cosmetic departments are stocked with a complete assortment of the finest in cosmetic gift sets. Revlon, Max Factor, English Leather, and British Sterling are but a few of the fine lines in stock.

**BUY NOW . . . 10% WILL HOLD ANYTHING UNTIL CHRISTMAS**

**HELBROS  
WATCHES**

**\$19<sup>88</sup>**  
VALUES TO 49.95  
(LIMIT 2)

**PANASONIC  
RADIO**

**\$12<sup>95</sup>**  
14.95 VALUE MODEL 1157

**DOMINION**

**Corn Popper**  
**\$5<sup>99</sup>**  
MODEL 1710

**PROCTOR  
2-SLICE TOASTER**

**\$8<sup>88</sup>**

**BEAUTY BUG**

**HAIR DRYER**  
**\$23<sup>88</sup>**  
VALUE 29.95

**POLAROID  
MODEL 104**

**\$29<sup>95</sup>**  
VALUE 59.95 (LIMIT 2)

**G.E.**

**9-CUP PERCOLATOR**

**\$14<sup>95</sup>**

**REMINGTON 500**

**Electric Shaver**  
**\$29<sup>88</sup>**

**Prices good through Saturday at our Tempe Center store only.**

state  
press

# Weekend

FRIDAY, November 3, 1967



**PSYCHEDELIC!**

synchronized sight and sounds

Photo by Bill Vaughn

# campy scamp Warhol here

Andy Warhol, the man responsible for the Pop-Op Art Movement in America, will lecture Monday at 8:30 p.m. in Gammage Auditorium.

Prior to the lecture he will show two films at once on one screen to produce Pop-Op Art effect. The rest of the show will consist of lecture and questions and answers.

Warhol studied art at the Carnegie Institute of Technology in Pittsburgh. He has had shows in such places as Paris, Toronto, Buenos Aires, Stockholm and the Leo Castelli Gallery in New York.  
Tickets priced at \$1 can be picked up at the door.

Famous for his paintings of Campbell Soup Cans, the 37-year-old Warhol also won the Art Directors Club Medal in 1957 for a giant shoe ad.

He recently wrote a book titled "Andy Warhol's Book" which will be published in November. According to reports, the limited, signed, boxed edition will sell for \$50 while the mass-market paperbound edition will sell for \$3.95.



Andy Warhol

20th CENTURY-FOX PRESENTS  
**THE F.L.M.-F.A.M.M.A.N.**  
A LAWRENCE TURMAN PRODUCTION  
STARRING **GEORGE C. SCOTT**  
INTRODUCING **SUE LYON** - **MICHAEL SARRAZIN**  
CO-STARRING **HARRY MORGAN** - **ALICE GHOSTLEY**  
**ALBERT SALMI** - **JACK ALBERTSON** - **SLIM PICKENS**  
PRODUCED BY LAWRENCE TURMAN - DIRECTED BY IRVIN KERSHNER  
SCREENPLAY BY WILLIAM ROSE - MUSIC BY ERYK GROSZMITH  
PANAVISION® COLOR BY DELUXE  
NOW SHOWING  
**Fox Chris-Town Theatre**  
5707 N. 19TH AVE., 264-6161  
Co-Feature: "Quiller Memorandum"

# go blow your mind psychedelic scene

Psychedelic! Only a year old? Yes.

But it's a term with the width, the breadth, the universality of a million years of life and meaning. And, baby, it's only beginning.

From the Greek: psyche — life as perceived through the mind and soul; the key part; all mental activity. Delic — an ecstatic delight (in something).

In short, psychedelic is all things to all people, Plato to Nietzsche, Mick Jagge to Timothy Leary. It just depends on what blows your mind or scoops your cool.

Psychedelic rock, then, would be a musical sound that stimulates the mind and/or the soul's perception of life. In all sincerity now, how does that mean?

The drug cult first applied the term psychedelic to hallucinatory effects of the "mind-bending" drugs. It implies a world of total perception, of the distortion and fusion of the shapes, sizes, images of the world, a new awareness and spiritual perception.

But whether these visionary drugs are tickets to Nirvana or cargo tags to the Wasteland, doctors agree that for most the trip ends in the hospital.

That is, unless it's a hippie pilgrimage to Haight-Ashbury, a crusade to the Pentagon or a human be-in in the Grand Canyon. But in their attempts to spread peace and love, the hippies have not always been the best goodwill ambassadors. Too often, their attack on "middle-class hypocrisy" and insincerity has been looked upon as not only unjustified, but a pure sham.

Nobody wants to be left out, and currently, the arts are struggling with attempts to recreate the "Trip" with living color and stereophonic sound, through loudspeakers, on walls, in sculpture and flat on paper.

Psychedelic music manifests itself in all directions . . . blues, folk rock, hard rock and electronic tone moods. What they all have in

common is a desire to create an enveloping environment of music and perception.

To this end, light shows are the current bag. Different musical backgrounds are semi-coordinated with flashing lights on actual photographs, paintings and your Grandma's bathroom sink. The total effect? Breaking down old ways of seeing things with the hope of creating new ways of perceiving things.

The real goal of this psychedelic movement is to force a new way of looking at life on that non-existent entity, "the public."

The feel is that the world has changed so greatly through the last generation that the old interpretations simply do not fit the actualities of life. The hippies are out to convince people of all natures that there's a new means of coping with reality, and that it's a necessity. The psychedelic movement is the essence of their efforts.

Does the movement have any new answers? The age-old values of love, kindness and human dignity are simply reaffirmed by this hippie movement, but the psychedelic has no new answers to the oldest problems of mankind.

And, ironically, the psychedelic, in all its art forms, its images and perceptions, its unscarred and "uncivilized" perfection, is and continues to be, a commercial property of the highest value.

The significance of the psychedelic movement lies in its mass appeal. Its influence has invaded every level of life and civilization, from the academic drop-out to the businessman who swears on his grave that he can "feel" the spirit of it all.

But the hippies have yet to prove that the psychedelic has stirred the idealism of the nation, what with its poverty wars, its VISTA, its Peace Corps . . . all older, all more time-tested, and maybe all more enduring than the virgin spirit of the psychedelic.

**THE WINTER CAR**  
NOW! UPON: 50¢  
111 S. McAllister  
8pm to 1am  
FOLK MUSIC COFFEE JAZZ  
CRIBBAGE  
STUDENT ART  
CONFUSION  
BOB WILSON  
SHERI SHELDON  
THE BEGGARMEN  
KEVIN THROOP  
RABBIT RABBIT

COVER: Dance bands swing and strobe lights flash at Valley night clubs as Bill Vaughn captures the mood of the psychedelic scene.

ART THEATRE CHILD  
**VALLEY**  
967-6664 509 Mill Ave.

### "Defense D'Afficher"

by Hy Hirsh

### "Psychomontage"

by Drs. Phyllis and Eberhard Kronhausen

### "The Little Island"

by Richard Williams  
—Animated—

### "Amazing Grace"

by Ian Joel

### "Relativity"

by Ed Emshwiller

The Ford Foundation winner's shocking view of an uninhibited battle between a Man and a Woman—definitely not for the timid!

What's this all about? It's tomorrow's program for the Midnight Movie Club. The Club is for Members Only. You must be 18 or older to be a member. So join?

# HERTZ RENT A CAR

FOR ALL COLLEGE STUDENTS 18 OR OLDER

## THE RATES

- WEEKEND DAYS "24 Hrs." \$6.50 a day plus 12c a mile
- ENTIRE WEEKEND, \$19.50 plus 12c a mile
- 1 FULL WEEK "7 DAYS" \$60.00 plus 12c a mile
- 1 FULL WEEK "7 DAYS" \$88.00 plus 500 Free Miles

Call 967-9362



STEVE BLAGEN  
Campus Representative

## THE CARS

1968

- FORD MUSTANG
- FORD GALAXIE
- CHEVROLET
- AND OTHER
- FINE CARS

Call 966-0155

To Be Assured of the Car You Want Make Reservations 24 Hours In Advance



## Polish quintet plans concert in ballroom

The Warsaw Quintet will appear in the MU ballroom, 8:30 p.m. Sunday in one of the Polish group's first American performances.

The Quintet was started by five musicians in 1960 for their personal enjoyment. They made their first public appearance in 1963 and have since gained popularity on tours in Europe, Japan, Hong Kong and India.

Tickets are priced at \$2 and can be picked up at Gamma Auditorium Box Office.

### Tempe Riding Stable

Introducing a Fall Special To You. —the purchase of a discount card for \$5 entitles the holder to \$1.00 per hour rates. SAVE 50c on our usual \$1.50 hourly rate. Card good for 3 months.

Call or come by and buy your card now.

730 Hardy Drive - Tempe  
966-9251

### HOW TO BE ON TOP OF WHAT'S HAPPENING.

Shake off the conventional bit and come fly with us. In a semester's time we can train you so you'll be flying to Malibu for surfing, Mexico for bullfights, or Los Angeles for action.

When you fly, you're on top of what's happening.

Learn to fly for the fun of it. It's easy to rent planes. You can even own your own plane for something like a thousand. Look in the want-ads; you'll see.

Or learn to fly to qualify for one of those sweet \$25,000-a-year airline captain jobs. And see the world.

Come on out and con us into a bargain rate for your first lesson. And, by the way, we don't sign you up for any package, either. You fly only when you want to. With the instructor of your choice.

We have ten new Cessnas and a bunch of sharp, patient instructors, and no salesmen.

Try us.



DEER VALLEY AIRPORT • 942-1333

## 'king kong,' 'rib' to be featured

The original version of "King Kong" filmed in 1932 will be shown Saturday and Sunday at 7:30 p.m. in Cosner Auditorium.

Sponsored by the cultural affairs committee, "King Kong" is the only American film it will show this year. In an aesthetic sense the film portrays the movie style of its era. The "beauty and the beast" plot was considered spectacular at the time it was made, but is being shown now for its "camp" or pop value.

A "battle of the sexes" will be fought in the MU Friday Film Festival's presentation of "Adam's Rib" Friday at 6 and 9 p.m.

Directed by George Cukor, the cast includes Spencer Tracy, Katharine Hepburn, Judy Holliday and Tom Ewell.

The movie portrays the courtroom combat of a female lawyer and her husband, the assistant district attorney. He prosecutes and she defends a woman who has shot her two-timing husband.



A major growth and diversification program is underway at United Fruit.

Last year, people spent close to \$300 million dollars to purchase over 3 billion pounds of Chiquita bananas.

This success is due to a vast amount of research, planning, cultivation, quality control and advanced management techniques; our bananas today are a great improvement over what they were 5 years ago.

These improvements that United Fruit has brought to Chiquita bananas are only a part of the story. We have grown in many other diversified and exciting fields as well.

United Fruit has in its corner the Great White Fleet consisting of more than 40 refrigerated vessels; Compania Numar, processor of edible oils, in Costa Rica; Revere Sugar Refinery; J. Hungerford Smith Co., Inc., manufacturers of syrups, ice cream flavorings and toppings; and Baskin-Robbins, a leading distributor and producer of ice cream. We also own: A&W Root Beer Company and A&W Drive-Ins of Canada, Ltd.; Tropical Radio Telegraph which operates a public communica-

tions system between the United States and Latin American countries; and a 40% interest in MacMillan, Bloedel, United, Inc., suppliers of kraft linerboard for our banana boxing operations.

If you would like to be part of this excitement at United Fruit, we would like to meet with you.

You can start things happening by scheduling an interview with us, through the placement office on campus.

We will be interviewing on

"November 8, 1967"

For people in the following areas:

**"Accounting  
Engineering  
For positions in Central America"**

If an interview is inconvenient at this time, please contact our Personnel Administration Office.



**United Fruit Company**

Prudential Center  
Boston, Massachusetts 02199

All candidates evaluated on a merit basis



# Albee's 'Dream' to be presented

Two plays by Edward Albee, America's most discussed playwright, will begin a three-week-end engagement tonight at 7:30 in the Lyceum.

"The American Dream" and "The Death of Bessie Smith," presenting sharply contrasting satire and realism, will be per-

formed by the University Players.

BASED ON an actual incident, "The Death of Bessie Smith" portrays the auto accident death of blues singer Bessie Smith in Memphis, where racial bias delayed her entry into a white hospital that might



A GREAT NEGRO BLUES SINGER dies because she is refused admission to a white hospital in Albee's "The Death of Bessie Smith." Billie Pearlstein as the first nurse and Joseph Edwards as the father star in the University Players' production at the Lyceum Theatre Thursday and Friday.

"BUT YOU CAN'T LET HER DIE," Howard Kirk as Jack pleads to Valerie Meshew, the second nurse in a scene from "The Death of Bessie Smith." Directed by Dr. James Yeater, the play of social criticism is based on a true incident involving the death of a great Negro blues singer refused admission to a white hospital. Curtain time will be at 7:30 p.m. Thursdays and at 8:30 Fridays and Saturdays, Nov. 2-4, 9-11 and 16-18. Tickets may be obtained at the Lyceum box office.

Photos by Bertha Reynolds

## Henry and Igor are back!



Fri. & Sat. - 9 till 1 Sundays 7:30 to 11:30

Sunday Night  
**HOOTENANNY!**

3626 E. Indian School Road, Phoenix  
Phone 955-2150

### The 1967 ARIZONA STATE FAIR presents at the Coliseum:

**FRI. Nov. 3** THE BOB HOPE SHOW  
STARRING BOB HOPE featuring THE CLINGER FAMILY VIC CEASAR

**SAT. Nov. 4** NASHVILLE NIGHT AT THE FAIR COUNTRY MUSIC SPECTACULAR!  
STARRING RAY PRICE HANK SNOW GLEN CAMPBELL WANDA JACKSON ROY CLARK

**FRI. Nov. 10** THE ANDY WILLIAMS SHOW ANDY WILLIAMS HENRY MANCINI Plus 40 PIECE ORCHESTRA

**SAT. Nov. 11** POP AT THE FAIR FEATURING THE RIGHTEOUS BROS. SHOW STARRING THE RIGHTEOUS BROS. plus APRIL STEVENS & NINO TEMPO THE BLOSSOMS

#### PRICE SCHEDULE

THE BOB HOPE SHOW, \$6, \$5, \$4  
NASHVILLE NIGHT, \$4.50, \$3.50, \$2.50  
THE ANDY WILLIAMS SHOW, \$7.50, \$6.00, \$4.50  
THE RIGHTEOUS BROS. SHOW, \$5, \$4, \$3  
GET YOUR TICKETS AT THE HAPPY HOUSE  
Also available at Main Coliseum Box Office, All Community Box Offices and Associated Students Office (U of A, Tucson)

## We Practice What We Preach!

Our instructors follow the same exercise program we will design for you!

Through University Health Club's personalized conditioning you can attain the figure you desire.

Charter Memberships For Only  
**65c**

Per VISIT IN SERIES

DAILY 10 to 10

SUNDAY 10 to 6

Call today for a consultation with our Figure Experts... No obligation, of course.



## University Health Clubs

IN TEMPE  
1018 N. Scottsdale Rd.  
Ph. 967-7461



have saved her life.

The play will feature Howard Kirk, Billie Pearlstein and Mike Rapinchuk.

In delightful contrast to the serious, realistic "Bessie Smith" will be the hilariously absurd "American Dream," a comment on American life and ideals.

BOB GRAYBILL and Jonie Anderson portray Albee's satirical Daddy and Mommy, and Caryl White, Linda Leppa and O.B. Lewis play Grandma, Mrs. Barker and the American Dream, respectively.

Performances of both plays will continue Saturday and Sunday at 8:30 p.m., and for the next two weekends, Nov. 9, 10, 11, 16, 17 and 18. Tickets may be reserved at the Lyceum box office for \$1.

STATE PRESS

## Weekend

Editor DAN MURPHY

WEEKEND is published every Friday as a supplement to the daily State Press.

It's SMART To Be EARLY!

Any Christmas Cards in our stock

can be Imprinted with YOUR name

Quick Service

(ASU 24, Utah 22)

HAPPY HOUSE SHOP  
Tempe Center