



Photo by Clifton Furedy

**GREAT EQUALIZER** — The security men who issue tickets apparently follow the letter of the law—bikes are under the same rules as automobiles.

## Campus Responds To Liquor Survey

By ROBERT SHAW

A recent government-sponsored study recommending lowering the legal age to 18 for buying and drinking of alcoholic beverages in public, has brought varied response from campus drinkers and thinkers.

A commission working out of Stanford University on a \$1 million federal grant recommended a national policy to promote drinking in a family setting and to lower the legal age for drinking to 18.

THE STANFORD University study noted that the 21-year-old age limit is "largely unenforceable and creates a basically hypocritical situation." It continued that with an 18-year-old minimum, liquor could be avail-

able on college campuses "in a more reasonable, healthier context," reducing the tendencies of students to flock to outside bars.

Freshman Steffi Renken is opposed to lowering the legal age as a solution to the increased national rate of alcoholism. She said, "Countries like Italy which encourage youngsters to drink have just as high an alcoholism rate as we do." This fact, according to Miss Renken, seems to prove that earlier drinking doesn't necessarily discourage alcoholism.

## Tax Hearing Rescheduled

The City of Tempe sales tax suit against the University has been postponed until Nov. 22.

The hearing before Superior Court Judge Kenneth Chatwin had been scheduled for yesterday, but was postponed on the request of Gary Nelson, assistant attorney general, representing the State Board of Regents.

Tempe City Attorney David Merkel said he was skeptical about the value of such a delay, since previous efforts at compromise between the city and the University had been unsuccessful.

Three studies published by two members of the political science department and a research consultant to the State Tax Commission propose an overhaul of the state government, including abolishment of the State Tax Commission.

The reports released Wednesday are written by Dr. Heinz C. Hink, professor of political science, Dr. John P. White, professor of political science, and Dr. David A. Bingham.

The reports will be presented to the Council on Organization of Arizona State Government (COASG) at 9:30 this morning in the State Capitol.

ACCORDING TO the report proposals, the activities of the State Tax Commission could be

# Court Turns Down Ballot Injunction

By LARRY ROSS

The AS Supreme Court refused to issue an injunction yesterday that would have stopped the distribution of the Homecoming election ballots for today's election.

The hurriedly-called first session of the student court met to consider an action brought by Terry Forsberg and several candidates in the election against Bob Wacker, chairman of the Election Board.

FORSBERG, representing the plaintiffs, maintained that Wacker had violated the statutes of ASASU by having the ballots for the Homecoming election printed in a fixed order instead of a rotated order.

Forsberg, who sponsored the

bill which put the rotation clause in the statutes, told the court that this had been done because people who have no firm decision on a candidate tend to vote for the first candidate on the list.

The plaintiff also alleged that Bob Wacker had "willfully and wantonly and with complete disregard for his sworn duties of office conspired to deprive the membership of the Associated Students of Arizona State University of their right to be offered and presented a fair and impartial election."

"THIS IS a clear case of statutory interpretation," Wacker told the court.

The defendant did not deny that the rotated order stipulation

existed in the statutes, but he maintained that another clause takes precedence over it.

This clause says, "If voting machines and/or IBM cards are used, appropriate procedures shall be approved."

WACKER informed the court that during a visit to the DATA Processing Center on campus two weeks ago he was told that they were so far behind they could not process the election at all. After further consultation, he got a commitment to process the polling if only a fixed-order listing was used on the ballot.

He explained that rotation would require 12 to 35 combinations of ballots, depending on whether the ballots for king and queen were separate.

A decision was then made, Wacker said, that the accuracy of computer counting would far outweigh the accuracy of hand counting and that this would offset the lack of rotation on the ballots.

THE CANDIDATES were informed of the possibility of a fixed order ballot last week, according to Wacker, and they then drew for a place on the ballot.

Apparently some dissatisfaction developed, however, as the names of six candidates were listed as plaintiffs. These names have been withheld at the request of Wacker who felt their publication might prejudice today's election.

Wacker's main contention was that the section on machine counting was put in the statutes to meet practical problems such as they had encountered, and that he had therefore acted correctly in having fixed order ballots printed.

THE COURT decided in favor of the defendant, Wacker.

The decision was unanimous that Wacker had not been negligent in his duties as Election Board chairman and split in regard to the decision on an injunction to stop distribution of the ballots.

★ ★ ★

A fire in a waste paper basket added to the heat of discussion at the first session of the AS Supreme Court yesterday. The fire poured smoke into the corridor outside the meeting room.

A quick-thinking spectator waiting in the hall for the court to reconvene spotted the fire and put it out in short order with water from the mens restroom down the hall.

The fire was apparently started when someone tossed a lighted cigarette into the basket.

## Student Cyclist Robbed; 3 Jailed

A 21-year-old geography major is grateful for the efficiency of the Phoenix police department.

James P. Beck, a junior, said he was riding his bicycle on Camelback Rd. near Alhambra High School Wednesday at 3 a.m. when three men driving a 1960 Cadillac forced him off the road and then took his wallet containing \$24, his watch and his shoes.

"They grabbed me, beat me up a bit, then threw me into the irrigation canal," Beck said.

Beck was treated for head cuts at Maryvale Community Hospital. Beck told a State Press reporter he plans to attend classes today.

"We're both grateful for the efficiency and courage displayed by the Phoenix police. Everyone was very helpful. It's a great tribute to the human family," Gordon Beck added enthusiastically.

## Pick Up Game Stubs Tuesday

Students may pick up ticket stubs for the Oct. 28 Wyoming game between 8:30 a.m. and 4:45 p.m. starting Tuesday at the front ticket windows of the gym upon presentation of a current activity card or two cards if a date's stub is also being picked up.

## State Offices Examined

# Studies Propose Changes

transferred to the State Board of Property Tax Appeals or to a newly created board.

Dr. Bingham said the only function of the Tax Commission in the field of property tax now is setting of the state property tax rate, with further jurisdiction in revenue fields of income, luxury, transaction privilege, excise and use taxes.

Because the commission is elected, Dr. Bingham said that it faces the problem of allowing political consideration to influence administrative decisions.

Another of the reports noted that a joint legislative budget committee is preparing to draft proposals to amend the Arizona Constitution to eliminate the of-

ficers of state auditor and state examiner. An auditor general would assume the duties of both offices.

HINK SAID the functions of the two offices are similar, so that the transfer of duties seems "logical." He said the preaudit and general accounting function of a state may be better performed by an administrative official within the executive branch.

The third report concerns the reorganization of the executive branch of the state government, concluding that consolidation of the governor's administrative authority must be decided by the people and their representatives rather than by experts on administrative theory.

## Campus Expanding -

# Students, Faculty See Plans

Interest at the annual student-faculty reception in the College of Education yesterday centered around blueprints and drawings of the proposed education complex.

The reception, sponsored by the Academic Council of the

## Old Main Setting For Southwinds

An outdoor jazz concert will be given by the Southwinds Monday at 7:45 and 8:15 p.m. in Old Main Park.

The activity is sponsored by the Cultural Affairs Board.

The combo consists of Rick Hodge, piano; Jimmy Golini, drums; Tony Morrell, reeds; and Don Stewart, bass.

## Friday's Flicker Stars Alan Ladd In 'Shane' Role

"Shane," directed by George Stevens will be shown in the MU Friday Film Festival series tonight at 6 and 9 in the MU Arts Lounge.

Stars include Alan Ladd, Jean Arthur, Van Heflin and Brandon deWilde.

Rancher Joe Starrett hires a buckskin clad, mysterious-appearing drifter hoping that together they will have the courage to stand off Ryker, the cruel, dishonest cattle baron who is trying to steal the town.

At first, Heflin, his wife and 9-year-old son are wary of the stranger, but they accept him as one of the family when he puts on his gunbelt and joins Starrett in working the ranch.

Seating in the MU Arts Lounge is available for only the first 200 persons.

College of Education, was "an attempt to build a college atmosphere," said Marc Weidinger, president of the Academic Council.

Faculty, students and student advisers in the college visited the Education Building patio yesterday from 1 to 4 p.m. to talk with advisers, professors and deans of the college. Information concerning the nine organizations comprising the Academic Council were available at booths surrounding the patio and manned by representatives from the organizations.

Free refreshments were served and a display of artwork

done by third-grade children, enrolled in the Payne Laboratory School for the college, surrounding the activities.

The display of the plans for the second unit of the education complex were the center of attention. The unit, scheduled for completion by December of 1968, includes two major buildings — the Tower with the Learning and Resources Center as an extension, and the Divisible Auditorium.

These units, plus an additional building presently in the idea stage, will complete the education complex for the university.

# Debaters To Wrangle Income Controversy

The first Earlybird Invitational Debate Tournament will be held on campus tomorrow. Debate teams from 15 colleges and universities will discuss the proposition: "Resolved: The federal government should guarantee a minimum annual income for all citizens."

C. Richard Keil, new director of forensics here and former assistant director of the debate team at University of Southern California, said five preliminary rounds will be conducted throughout the day at the Language and Literature Building with the final round taking place at 6:30 p.m. The first and sec-

ond place teams will be awarded trophies.

Going into this tournament, the Sun Devil team posts a 16-28 record in three matches.

## Honorary Picks New Swimmers

Naiads, women's synchronized swimming honorary, has chosen 10 new members. They are: Elsie Absher, Polly Broussard, Carole Carpenter, Ann Clarke, Barbara Gabel, Terrie Gregory, Patty Heiple, Marge Sanford, Connie Tolo, and Barb Zauft.

**If your major is listed here, IBM wants to see you October 25<sup>th</sup>/26<sup>th</sup>**

Your major, whatever it is, makes you a prime candidate for a career with IBM. Sign up for an interview at your placement office right away—even if you're headed for graduate school or military service.

Why is IBM interested in so many different people?

The basic reason is growth. Information processing is the fastest growing, fastest changing major industry in the world. IBM computers and other products are being used to solve problems in widely diverse areas, such as government, law, education, medicine, science, the humanities. We need people with almost every kind of background. That's why we want to talk with you.

Whatever your major, you could do a lot

of good things at IBM. Change the world (maybe). Make money (certainly). Continue your education (through our Tuition Refund Program, for example). And have a wide choice of places to work (over 300 locations throughout the United States).

We'll be on campus to interview for careers in Marketing, Computer Applications, Programming, Research and Development, Manufacturing, Customer Engineering, and Finance and Administration. Come see us.

P. S. If you can't see us on campus, write to Mr. E. C. Purtell, Jr., IBM Corporation, 3424 Wilshire Blvd., Los Angeles, California 90005.

Accounting  
Aerospace Engineering  
Art  
Banking  
Business Administration  
Ceramic Engineering  
Chemical Engineering  
Chemistry  
Civil Engineering  
Communication Sciences  
Computer Sciences  
Economics  
Electrical Engineering  
Engineering Mechanics  
English  
Finance  
Forestry  
General Engineering  
History  
Humanities and Social Sciences  
Industrial Engineering  
Industrial Management  
Languages  
Management Engineering  
Marketing and Distribution  
Mathematics  
Mechanical Engineering  
Metallurgical Engineering  
Metallurgy  
Music  
Oceanography  
Operations Research  
Ornithology  
Philosophy  
Physics  
Political Science  
Power Engineering  
Psychology  
Purchasing  
Religion  
Sociology  
Speech and Dramatic Arts  
Statistics  
Transportation and Traffic

STATE PRESS is published by Arizona State University as the official campus newspaper every Tuesday through Friday during the school year, except holidays and examination periods, and is entered as second class matter at Tempe, Arizona, 85281.

**Sedley's at**  
THE VALLEY  
TRAVEL MART

SELECTION



TRIUMPHANT SET  
His \$29.50 Hers \$27.50

We have one of the Largest Wedding Band Selections in the Valley—Come and See

**Scott Jewelers**

Tempe Shopping Center  
911 Mill Ave.  
966-6101

**IBM**  
An Equal Opportunity Employer

# Handicapped Optimistic - Mexican-Americans Studied

Findings of a campus sociological study of handicapped Mexican Americans are shattering many of the stereotyped images said Mrs. Naomi Harward, associate professor of sociology.

The three-year study, financed by the U.S. Department of Health, Education, and Welfare for \$143,000, has thus far indicated an optimistic attitude among Mexican-American families whose providers are physically or mentally handicapped.

"WE ARE studying 150 subjects who were successful applicants for vocational rehabilitation in Arizona, and are comparing them with a similar number of Caucasians suffering from the same handicaps," said Mrs. Harward.

One hundred persons from each group were interviewed between July, 1966 and April, 1967. The results were tabulated and will soon be sent to Washington.

The interviewers concentrated

on job interests during the period, periodically visiting Mexican-Americans who were accepted for job retraining at state rehabilitation centers in Phoenix, Tucson and Yuma.

THE INTERVIEWS revealed that the families involved hoped to improve their socio-economic status.

"A high percentage of the Mexican-Americans interviewed expressed an earnest desire for employment, and an interest in

education and training," said Mrs. Harward.

Financial need, larger than average families, and language differences are barriers to advancement.

Mrs. Harward said, "Whether he lives in Phoenix or Cottonwood, Yuma or Miami, Tucson or Nogales the Mexican-American's work attitude is high, his desire for education and training strong. He is sincerely striving to improve his economic status.

# VISTA Looks To Volunteers

Mary Ellen Larsen, member of the San Francisco Volunteers in Service to America (VISTA), will be on campus Nov. 29 through Dec. 1 to recruit new volunteers.

After speaking before several selected classes, she will meet with the officials of the Leap program in Phoenix and brief Arizona's VISTA workers.

Naomi M. Harward, associate professor of sociology working in conjunction with Mrs. Larsen, said that the VISTA program stresses a person-to-person contact in order to accomplish meaningful duties.



See exciting professional  
**ICE HOCKEY** at the  
COLISEUM

**SPECIAL STUDENT RATE!**

75¢ off on any ticket in any section upon presentation of student activity card.

For information on home schedule . . . or to order tickets, phone . . .

**254-6693**

## Wire Frames

ROUND — OVAL  
RECTANGULAR

SPECIAL DISCOUNT  
TO STUDENTS  
(Fast Service)

- Prescriptions Filled
- Prescription Sun Glasses
- Contact Lenses

**GATESH OPTICIANS**

947-2171

30 W. Main • Scottsdale



Paper backs  
make A  
Better Grade

Bring In Your List . . .

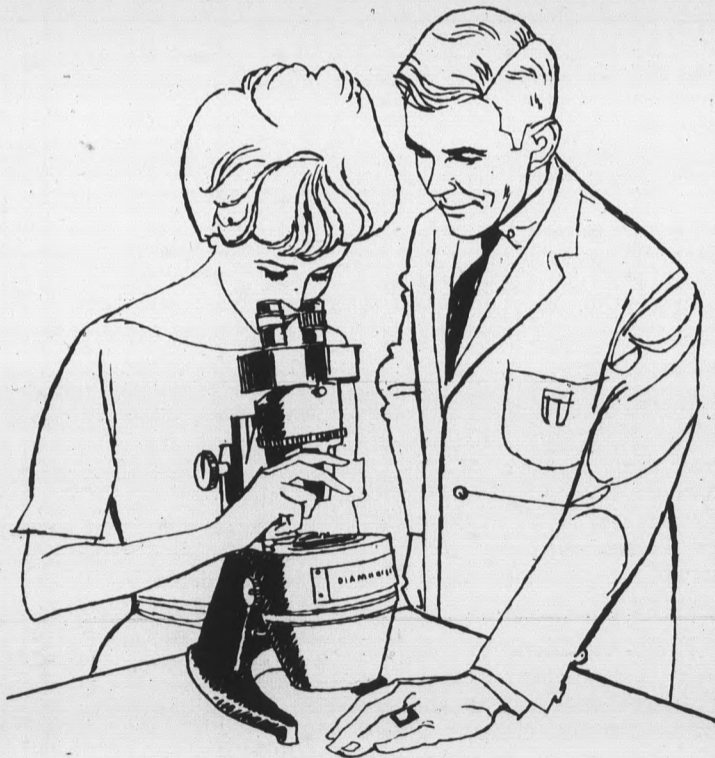
. . . We Have 'Em

**HILLS** BOOKS  
&  
RECORDS

Tempe Center

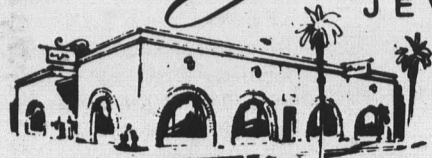
Open Mon. and Thurs. 'Til 9:00

What can you know about a diamond?



Find out at...

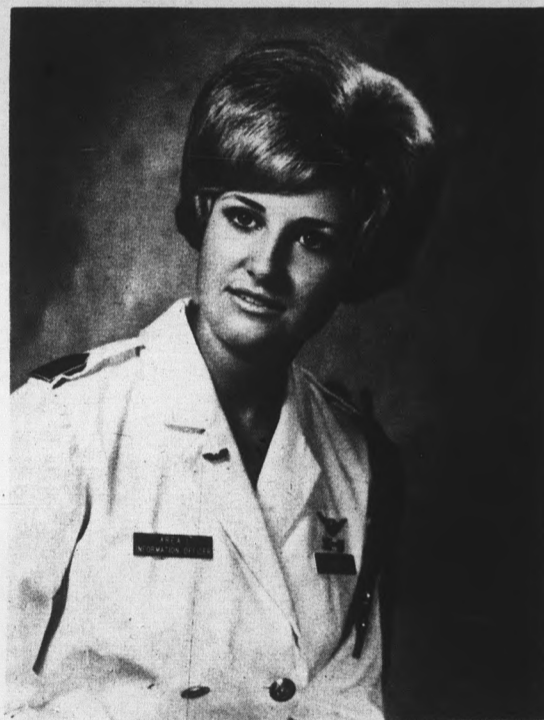
*Paul Johnson*  
JEWELERS



IN THE  
ARCHES

130 EAST UNIVERSITY DRIVE • TEMPE • 967-8917  
1940 EAST CAMELBACK, PHOENIX 277-1421  
CERTIFIED GEMOLOGIST, AMERICAN GEM SOCIETY

**BLACK and WHITE ?**



**NOT**

When You Can Have A  
**NATURAL COLOR PORTRAIT**

For: 5 x 7 — \$ 3.00  
8 x 10 — \$ 5.00  
11 x 14 — \$10.00

ONLY AT

**STUDIO**

TEMPE CENTER

967-4662

# forum

## Specific Kudos, General Clouts

Last spring, the Sahuaro was wallowing in a deficit approaching \$1,500. The cause was the apathy of students who felt untouched by the yearbook and who perhaps considered it a lackluster production from the start.

Though it may be rather early to forecast trends, this certainly looks like a banner year for the Sahuaro by contrast.

**THE MAIN** reason is the well-planned, professional advertising buildup the yearbook has had this fall under Sahuaro Editor Wayne Brewster. He has kept his promise of last April to "commercialize a popular movement among the students . . . in order to get our message across."

However, a slick ad campaign full of girls and gimmicks is no substitute for quality in the finished product.

Thankfully, Brewster has evidently remembered this and plans a number of major and minor improvements for the volume. He intends to have much more copy, including feature articles and interviews, and a more even distribution of color photos throughout the 1967-68 Sahuaro.

**THIS EDITORIAL** was not written merely to encourage this year's Sahuaro staff in its efforts. We also wish to wonder out loud about the future of yearbooks at ASU and other universities.

To sum it up succinctly, college yearbooks across the nation have faced serious financial difficulty the last few years. Perhaps this is with good reason.

Often, they have been too similar in content to high school yearbooks with their tiresome collection of individual snapshots and photos of myriad clubs with their members standing stiffly and grimacing at the camera.

**WE THINK** students are a pretty sophisticated, albeit blase, group of people who just don't care for that kind of Mickey Mouse presentation, no matter how professionally produced, mechanically speaking.

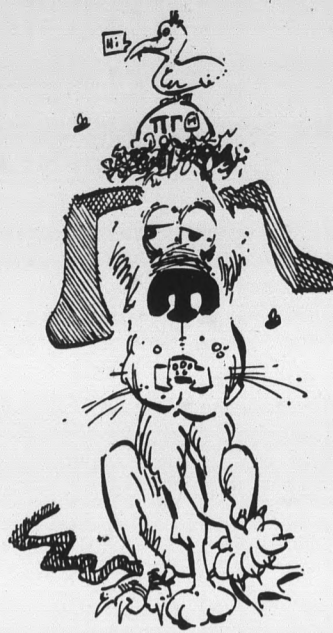
If Brewster succeeds in making the Sahuaro more adult in its outlook with the addition of interviews and meaty feature stories, we shall applaud him heartily. At any rate, he seems to be moving in the right direction.

But what this growing campus really needs in the future is a yearbook which is a NEWS book, not a social register or a handy index of graduates.

This might necessitate a change to a magazine format, but it would provide students with a permanent record of the entire year's activities, summarizing and supplementing the day-to-day coverage of the State Press. We think the student body is mature enough to desire solid news coverage in its yearbook.



The first rule of the biology department—make extensive tests to see if it's alive.



We fraternity mascots spread joy all over campus.

## Letters to the Editor

Editor:

Correction, please: my letter, printed Tuesday, originally stated that "The State Press operates with a minimum of intellect and maximum of bias," not "minimum of bias" as you misprinted.

I would now add "minimum of efficiency" to the above charges.

Paul D. Schaefer

**Editor's Note:** A letter of maximum efficiency, typed double- or triple-spaced on a 50-space line, is most likely to see print with a minimum of errors.

Editor:

Dr. Daniel Witt, director of Brendan Behan's play "The Hostage," told me Saturday night why we should end the war in Vietnam.

If you haven't seen the play at the Lyceum, you are missing the loudest anti-war protest on campus all year, under the guise of a bawdy Irish play.

Behan, the Dublin-born playwright, died in 1963 of a chronic case of alcoholism. But as in his play, it is only the drunks that tell the truth. Brendan tells the truth about the inhumanity of war so well that the audience goes away muttering, "Let's get the hell out of Vietnam."

He tells the truth: that is, stop fighting whether you are right or wrong. I suggest, as I am sure Brendan would, that we get LBJ and Ho together, give them a few strong drinks, and whisper this into their ears. And if they don't come to an agreement then, let them play Russian roulette with each other for a little while, instead of letting innocent Americans and Viet Cong tear each other's guts out. No one loves you like yourself.

Mike J. Jordan

**THE LIBERATION** News Service, which reminds us that "Freedom is not a gift from Captain Fink," also sent us a poem. Too bad it wasn't censored. How it escaped we don't know, but its asininity says thing about people who produce such tripe.

### IT REALLY BLOWS YOUR MIND

i was one of those who came one of the few who came we actually entered into the brain of the great death machine and tried to give it time to reconsider.

Editor:

Strategically located between University Drive and the Social Studies Building towers the greatest obstacle between ASU students and language and literature.

Six floors of steel, cement and bricks guard the pathway to learning in these fields, and a hardy Jason or El Cid is required to gain entrance. The labors of Hercules were mere trifles compared to entering the Language-Literature Building at 10:40 in the morning.

This man-made barrier to education utilizes all of its facilities (few and tiny doorways, narrow and steep staircases and eerie wind - elevator - produced sound effects) to ward off would-be learners. It leers as students trample one another in its doorways and stand packed on its stairways like so many crated oranges while the minutes tick away. Chuckles quiver its multi-million dollar sides as its wailing sound effects drown out professors' voices in 200 level rooms.

However, this steel-girded opposer to the teaching of language and literature is not satisfied. It plans to expand. It would like to stretch all the way to University Drive with perhaps one more five foot wide entrance.

Its subversive mission seems to be to confine and destroy, and it certainly is capable of encouraging students to drop French and enroll in Underwater Basket Weaving if it is taught in a more accessible building.

These conditions are deplorable. Let's unite against this Frankenstein of ASU and demand that its creator satisfy the purpose of this towering structure and render it useful.

Patti Mowery

Editor:

Apropos of the sign on the Mall, "Make Love, Not War," that seemed to arouse both amusement and defensive comment: surely this is not an age of such specialization that one has to choose. From my observations I should say that most Marines, etc. are quite capable in both fields.

C. G. Swanson

it did not reconsider rather it tried to trap our bodies (knowing full well it could not imprison our minds & love) and failing in this it thrust us back, echoing lies and breaking trusts—as is the way with death machines.

concrete, growing up into a great heartless complex of corridors and rooms that one might chose (sic) to call

a pentagon or the pentagon . . . called this on account of its geometrical shape

and because it sounds nicer than murder incorporated. my back is against a pillar near the river entrance and some of the guards know my name.

norman morrison burned himself to death a few yards from this place. it is a lovely day. the last 2 days have been awkward —

but I came to realize my love for people. i almost left them. almost, but my place was set among them.

walking up here the last day i was near tears, for dedicated and sincere as they were

i did not want to see my friends go to prison. there must be another way i thought (and think) another method that doesn't put people in cages. these people were not meant for cages.

no people are. . . and yet they did as they must, and walked into the brain of the death machine. they entered in to occupy for peace.

and halt the apparatus of war. of course they were blocked. but they stood still and waited—trying again and again to enter again and again being blocked. the brain police pushed them back somewhat

but staying was done. and the night came uncertainly, the second day— it really blows your mind that's washington out there, washington, d.c.

capitol of the entire united states. across the river you can see the washington monument and capitol dome.

it really blows your mind. this is the pentagon. you are throwing your soul against it. it really blows your mind sometimes.

what a groovy thing to be doing. what a vitally important, groovy thing to be doing. Frank Kowalsky is the blown mind responsible for that travesty on the English language.

\* \* \*

**FINALLY**, Fidel Castro's newspaper, Granma, sent us a poem against the war in Vietnam. The following lines are of special interest: At a Texas ranch a steer lassoed in the morning is barbecued. It reeks of the burning flesh of Da Nang mothers.

state press

Editor  
Bill Dempsey

Managing Editor—Susan Black  
News Editor—John Wallace  
Society Editor—Diane Blied  
Copy Editor—Sandy Smolen  
Ad Manager—Hal Hubele  
Printer—Tom McCrea

Campus Editor—Linda Cottam  
Assistant—Athia Hardt  
Sports Editor—Jerry Kemper  
Assistant—Edythe Edgar  
Photo Editor—Wendell Peacock  
Proofreader—David Anderson

Faculty Adviser  
Prof. Robert E. Lance

# Interviews Slated

The following organizations will conduct interviews on campus next week. Interested and qualified students should make appointments in the Placement Office, Admin. 101.

**MONDAY**

California State Government—CE  
 County of Los Angeles—CE  
 Dupont—KE, EE, ME, all Chem.  
 Factory Insurance Association—KE, CE, EE, Engr. Mech., Engr. Sc., IE, ME  
 Naval Weapons Center—CE, KE, EE, Mech., Engr. Sc., ME, Math, Phys., Analytical and Physical Chem.  
 New Mexico Univ. Physical Science Lab—EE, ME, Math, Phys., Elec. Tech.  
 U.S. Army Engineer District, L.A.—CE, EE, ME  
 U.S. Geological Survey—CE, Math, all Chem., Geol.  
 Wash. State Highway Comm.—CE, also summer employment  
 U.S. Army—Interviewing on Mall  
 Pittsburgh-Des Moines Steel—CE, EE, IE, ME, Const'l., Design tech., Welding tech.

**TUESDAY**

Naval Weapons Center—as above  
 Carnation Company—All Bus. Admin., All Lib. Arts  
 Freeport Sulfer Co.—KE, ME  
 Morrison-Knudsen Co., Inc.—CE, Const'l., Acctg.  
 Owens-Corning Fiberglass Corp.—KE, CE, IE, ME, Mktg. & Sales  
 Pacific Mutual Life Insurance Co.—All Bus. Admin., all Lib-Arts  
 Simmons Co.—Acctg., Adv., Econ., Gen. Bus., Mgmt., Mktg. & Sales  
 Westinghouse Electric Corp.—CE, IE, KE, EE, ME, Engr. Mech., Engr. Sc., Math, Phys., Aero. Tech., Comm. Tech., Elec. Tech., Design Tech., Tool & Mfg. Tech., Welding Tech., MBA Tech. u-g degree for R & D, design engr. application, mfg., tech. mktg.  
 U.S. Atomic Energy Commission—KE, EE, Engr. Sc., IE, ME, Phys., Acctg.  
 MBA-Tech. non-Tech, Econ, Fin., Gen. Bus., Mngmt.

**WEDNESDAY**

Morrison-Knudsen Co., Inc.—as above  
 Chrysler Corp.—KE, Engr. Mech., Engr. Sc., CE, EE, IE, ME  
 U.S. Navy—Interviewing on M.U. Patio  
 Del Monte Corp.—Acctg., Econ., Fin., Gen. Bus., Mgmt., Off. Admin., Stat. & D.P., assorted Lib. Arts  
 IBM—All Engineering, All Bus. Admin., All Indus. design & Tech., All Chem., Math, Phys. Spch & Drama  
 Pacific Missile Range—EE, ME, Phys. for R & D, design  
 IBM San Jose  
 United Airlines—All women candidates interested in airline stewardess

**THURSDAY**

IBM—as above  
 U.S. Navy—Interviewing on the M.U. Patio  
 The Boeing Co.—KE, CE, EE, Engr. Mech., Engr. Sc., GE, ME, Math, Phys., Acctg., Econ., Fin., Gen. Bus., Mgmt., State & D P, Mba tech u-g degree, MBA non-tech u-g degree, Aero Tech, design tech, Tool & Mfg Tech, Welding Tech  
 R J Reynolds Tobacco Co—All Bus Admin, all Lib Arts

**FRIDAY**

Del Monte Corp—as above  
 U.S. Navy—Interviewing on M.U. Patio  
 E. G. & G.—EE, ME, Phys., Acctg.  
 Motorola, Inc. Gov't. Electronics Division—EE, ME, Acctg.  
 Ryan Aeronautical Co.—EE, IE, ME, Phys., Acctg.  
 Schlumberger Well Service — EE, ME, Phys.  
 Sperry Flight Systems Division — EE, Engr. Mech., IE  
 Charles Pfizer & Co.—Econ., Gen. Bus., Mgmt., Mktg. & Sales, MBA tech u-g degree, MBA non-tech u-g degree, Biol. Sc., all Chem., Health, P.E. & Rec., Lang. & Lit., Mass Comm., So. Sc., Hum, Spch. & Drama

## Frosh Golfers Take 2nd Place

Freshmen men and women's golf teams each finished second in their divisions at the William H. Tucker Intercollegiate golf tournament last week.

Sun Devil Dave Sheff was individual winner in the freshman-junior college division, topping the second place winner by two strokes.

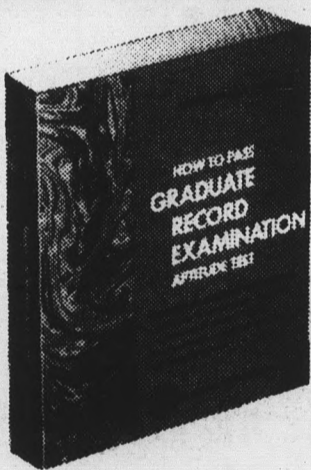
In the women's division, Odessa Texas Junior College won the women's division title with a team total of 455 over ASU's 481 in the 54-hole competition.

The men's senior golfers placed fourth over New Mexico, with Mike Morley finishing fifth in individual play with a 290.

# Can you meet the test?

Here's everything you need to help you get a top score in the tests you have to pass.

- Up-to-date test material
- Best organized study guides
- Do's and don'ts of test-taking
- Step-by-step programming
- Accurate practice tests
- Correct answers and solutions
- Self-evaluation profiles



### COWLES SCORE-HIGH EXAM BOOKS

**How to Pass GRADUATE RECORD EXAMINATION APTITUDE TEST** with special Test-Yourself Examination bonus. 444 pages

- How to Pass LAW SCHOOL ADMISSION TEST**
- MEDICAL COLLEGE ADMISSION TEST**
- DENTAL APTITUDE TEST**
- MILLER ANALOGIES TEST**
- FEDERAL SERVICE ENTRANCE EXAMINATIONS**
- GRADUATE BUSINESS SCHOOL ADMISSION TEST**
- NATIONAL TEACHER EXAMINATIONS**

Each \$3.95 Paper • Over 300 pages  
 24 GRE Advanced Tests also available

... plus  
**COMPUTER PROGRAMMER APTITUDE TESTS \$4.95 Paper**  
**SHORT-CUT SHORTHAND**  
 Learn Shorthand in 40 Easy Lessons by S. M. Wesley, Ph.D.  
 \$3.95 Paper

Available at your campus bookstore

**COWLES EDUCATION CORPORATION**  
 LOOK Building / 488 Madison Avenue, New York, New York 10022



## GLENEAGLES makes a strapping

**raincoat!** Actually, the leg straps on this bold raincoat are useless unless you ride a horse, drive a sports car, straddle a motorcycle, or just want to look as if you do. The "Paddock" model has a wool plaid lining that zips in or out to suit the weather. Scooter straps and a handy "book pocket" inside. Lots of flare for traveling room. Deep center vent. 65% Dacron® polyester, 35% cotton in traditional British tan shade. Entirely wash & wear. And the buttons will never fall off. Protected against rain and stain with DuPont ZePel® fabric fluoridizer. See it today.

**\$46.50**



DOWNTOWN • CHRISTOWN • THOMAS MALL • SCOTTSDALE

# Improved Teacher Concept Disclosed at Conference

Improved instruction techniques and better teacher-student relationships may result from a recent conference on interaction analysis here.

Dr. James W. Bell, associate professor of secondary education, said 134 educators from Arizona, Utah, Nevada, and California unanimously agreed that the interaction analysis theory presented by Dr. Edmund Amidon will improve the role of the teacher in the classroom.

DR. AMIDON is a professor of educational psychology at Temple University in Philadelphia.

Speaking before an audience of 300 in the MU ballroom, he demonstrated his theory with a tape recording of an actual classroom lecture. With a planned volunteer he showed proper and improper criticism techniques.

Co-author of two texts on the subject, Dr. Amidon said the interaction analysis system assumes that classroom behavior can be stated objectively, data collected, analyzed, and evaluated to show that teachers can be helped to change their behavior.

DISCUSSIONS were headed by Dr. Terry Cornell and

Dr. Wayne Roberson of the University of Arizona; Elbert Brooks, assistant superintendent of the Tucson Public School System; George Jeff, representing the Las Vegas, Nev., public schools; and Wayne H. Parrish, assistant professor of education.

The one day session included a talk by Dr. Richard G. Landini, dean of the planned Litchfield College. He discussed the cluster college concept, and said the new college should be operating by 1970 with a class of 1,000 students and a staff of 65 instructors.



**Bobbies Flowers**

20 E. 5th St.  
967-2972 — 967-4274  
Home Phone WO 7-6319

Large Artificial Plants For Rent For Parties . . .

★ White Stag      ★ Catalina  
★ Koret of California

- Jonathan Logan
- Howard Wolf
- Gay Gibson
- Sacony

Lingerie by VANITY FAIR  
PETER PAN — PLAYTEX

Lay-Away — Valley Bank Charging

**CELIA'S** fashions

TEMPE CENTER

OPEN THURSDAYS TILL 9 P.M.

## Noted Conductor Will Open Series

The internationally famed Vienna Symphony will perform at Gammage Auditorium Oct. 25, opening the Fine Arts Series.

The Vienna Symphony will be directed by Wolfgang Sawalisch who Time magazine called one of the most gifted German conductors to emerge since Herbert von Karajan.

Selections that will be performed are Mozart's Symphony in C Major, known as the "Linz" and "Symphony No. 1 in D major" by Mahler.

For ticket information call the Gammage Box Office, 961-3434.

**Sedley's at**  
THE VALLEY  
TRAVEL MART

**A.S.U.**  
**BREAKFAST**  
**SPECIAL**  
**\$1.00**

3 EGGS AND HAM  
Hash Brown Potatoes  
Toast, Jelly and Coffee

Served Daily 6:30-11:30

**HARMAN'S**  
Mesa-Tempe Hi-Way  
TEMPE

## CAREER EMPLOYMENT INTERVIEWS

FOR SENIORS AND GRADUATE STUDENTS —  
DECEMBER 27th and 28th, 1967

As a free service to you, the Dallas Chamber of Commerce has arranged for more than 100 employers to be available . . . under one roof . . . for career interviews during two of your Christmas holidays. These aggressive firms need top calibre men and women from all fields. Because many do not interview on your campus, this is a unique opportunity for you. You will be able to discuss with these many firms the career opportunities available to you in Dallas after graduation.

Join in and make your Christmas vacation count. Clip the coupon below and mail it today.

### MAIL THIS COUPON TODAY . . .

Register by November 10th to be able to select schedule of interviews  
**Job Interviews will be held Dec. 27th and 28th**  
**at The Apparel Mart in Dallas, 2300 Stemmons Freeway**

#### Because Dallas

- ... has had the fastest growth rate of any major metropolitan area during the '60s,
  - ... leads the Southwest in wholesale sales, volume of banking business, number of headquartered companies worth \$1 million or more,
  - ... is the nation's third largest insurance center and convention center,
  - ... provides cultural stimulation in a cosmopolitan and inviting environment . . .
  - ... because of these factors and others, Dallas' businesses offer you the opportunities to grow . . . and go. Here's why: Dallas Metro Area had a net increase of 29,470 new employees in its work force during the past 12 months. Objective forecasts say there will be at least 25,000 new jobs to be filled in metro Dallas every year through 1970.
- You can become an integral part of Dynamic Dallas, a city on the move. Sign up for the Operation Native Sons and Daughters career employment interviews, NOW.

### DALLAS IS REALLY ON THE GO!

EMPLOYMENT INCREASED 29,470  
DURING THE PAST 12 MONTHS  
YOUR FUTURE IS IN DALLAS!

#### OPERATION NATIVE SONS AND DAUGHTERS

Dallas Chamber of Commerce  
Fidelity Union Tower Bldg.  
Dallas, Texas 75201

Please mail information to:

Name \_\_\_\_\_

Address \_\_\_\_\_

City \_\_\_\_\_

Register by November 10 to be able to select your schedule of interviews.

# Weekend Events

**TODAY**

A.W.A.R.E will meet at noon in Matthews Center 150G.

VETERANS CLUB will meet at the Mesa VFW at 4 p.m.

AMERICAN SOCIETY OF CIVIL ENGINEERS will hear a speech on professional registration at a noon luncheon in the P.V. East Cafeteria.

INTERNATIONAL AFFAIRS CLUB will meet at 2:30 p.m. in SS 332.

COLLEGE BEAT on KAET-TV, Channel 8, will find host Jack Frazier interviewing ASASU President Bill Perkins. Tonight's broadcast will be at 7 p.m. with another showing on Channel 5 at 10:45 a.m. Saturday.

"THE HOSTAGE" will be presented by the University Players at 8 p.m. in the Lyceum. Saturday night also.

"SHANE" will be shown in the MU Arts Lounge at 6 and 9 p.m.

"THE TELEPHONE" and "Old Maid and the Thief" will

be presented by the Lyric Opera Theatre in Cosner at 8:30 p.m.

PLEDGE PRESENTS will be held in the MU Ballroom at 7:30 p.m.

CHAD AND JEREMY will perform at 8:30 p.m. in Gammage Auditorium.

**SATURDAY**

FINAL JUDGING of the freshmen cheerleader candidates will take place at 9 a.m.

DEVILS 'N' DAMES will hold a car wash from 9 a.m. to 5 p.m. at the Shell station at the corner of Rural and University.

HALLOWEEN FUN NIGHT will be held in the MU Arts Lounge, Pagoda Room and Lower Lounge from 7:30 to 11:30 p.m.

**SUNDAY**

HILLEL will present a corn-beef lunch at noon in Baker Center.

**MONDAY**

AN ORGAN RECITAL by Herb Halvorson will be presented at 4 p.m. in Gammage Auditorium.

*If more of you ate at Paul Shank's Gracious Dining we could run a BIGGER ad*  
Safari HOTEL SCOTTSDALE

*Thank You!*

Starting Soon ... At The  
**UNIVERSITY BOOKSTORE**  
CLASSICAL JAZZ POPULAR

**RECORD SALE**

Your favorite artists on these labels

CAPITOL	MERCURY	MGM	DOT	RCA
	UNITED ARTISTS	VERVE		
Kingston Trio	Chas. Byrd	Frank Sinatra		
Ferrante & Teicher	Thelonius Monk	Billy Vaughn		
Cannonball Adderly	George Shearing	James Brown		
Al Hirt	Stan Getz	Pete Fountain		

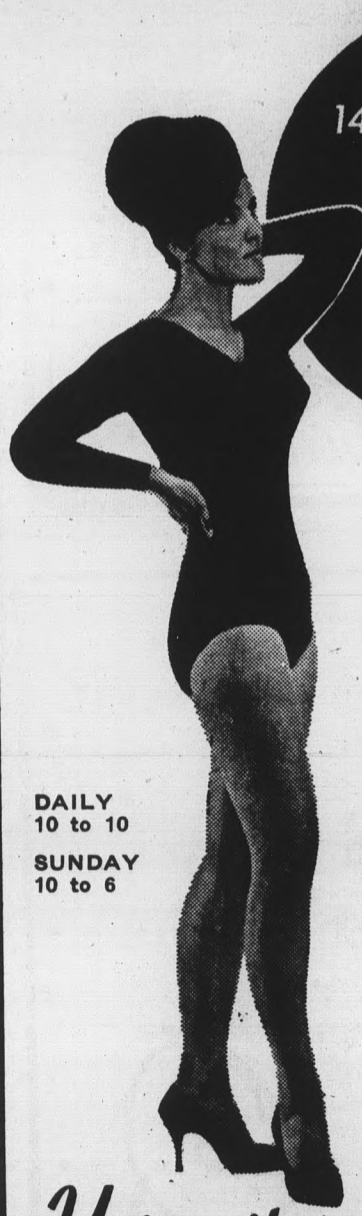
Save \$2 or \$3 ON EVERY ALBUM

FORMER LIST.....3.98 and 4.98 REDUCED TO.....1.98  
FORMER LIST.....4.98 and 5.98 REDUCED TO.....2.98

HUNDREDS TO CHOOSE FROM  
COME EARLY FOR BEST SELECTIONS  
**UNIVERSITY BOOKSTORE**  
Open Mon.-Thurs. 8-7 Fri. 8-4:30 Sat. 9-1

**GET READY NOW FOR FALL FASHIONS!**

Slip into fall fashions with a slim, firm, youthful figure by following the University Health Clubs' specialized slimming program!



I LOST 14 INCHES OFF MY HIPS AND WAIST AND 44 POUNDS

This Health Club member achieved these results by following University Health Clubs' fabulous slimming program. You too can achieve remarkable results by commencing your program now!

BACK TO SCHOOL SPECIAL!

Charter Memberships For Only **65¢** PER VISIT IN SERIES

DAILY 10 to 10  
SUNDAY 10 to 6

Call today for a consultation with our Figure Experts . . . No obligation, of course.

*University Health Clubs*



IN TEMPE  
1018 N. Scottsdale Rd.  
Ph. 967-7461

# Classified

For classified advertising submit ad in person to the State Press, MU 3, two days in advance of publication, between 1-4:00 p.m., call 961-3657. Rate: 5c per word, 75c minimum.

### FOR SALE

1960 TERRY Mobile Home. See to appreciate. Sell to best offer. 2067 E. Apache Blvd.

NERVOUS? Can't sleep? Try "Sleepers." Guaranteed results or money back. Only 99c Campus Drugs.

FOR SALE: Lear-Jet 8 track Car Stereo, 4 speakers and two tapes — \$150 list price; \$95. 966-9829.

JENNIES SAMPLE DRESS FASHIONS LADIES READY-to-wear nationally advertised brands at whole-sale prices. Open evenings. Lay aways. VNB credit cards accepted. Tempe: 1016 McClintock Drive (Hayden Rd.) North of Apache Blvd. 966-7871.

### BOBBI'S SAMPLES

New Wardrobe Time! All occasion clothing. All sizes. Junior, Misses, Petite. Half-sizes. Sportswear, formals, lingerie, jewelry, hose. Many at wholesale prices. Open 9:30-9:00 Mon thru Sat. Layaway and VNB. Two stores to serve you. Mesa: 1456 E. Main, 962-0941. Scottsdale: Frontier Shopping Center, Scottsdale and Thomas Rd., 945-9272.

SKI SWEATER AND SWIM SUIT SALE Men's and girl's imported ski sweaters all sizes. Girl's imported swim suits. Sizes 10 and 12. Salesman's samples at cost. Shown by appointment. Call 948-6186.

CLASSICAL guitars. A super buy \$39.88. Fairway Loan and Music Company. 21 and 45 South First Ave.

### INSTRUCTION

LEARNING to drive needn't cost you a fortune. All American School. 265-2500.

Rental FLY Lease Charter Call Jim Bostrom or Chuck King at 967-7325 or North Phoenix Aviation at 942-1011.

TUTORING: Biology, chemistry for university and secondary students. 277-6303.

INDIVIDUAL tutoring in math, physics, chemistry, and biological sciences. Phone 967-7924.

### TYPING

TYPING — 967-3036. TYPING, fast, guaranteed, IBM, 211 E. 14th St. Sue Johnson. 966-7848. TYPING — 945-4685.

### HELP WANTED

PERFORMERS MALE or female. Need experienced singers and instrumentalists interested in new Folk-Jazz group with unlimited possibilities. Contact Bill Zorn 937-3649 or Butch Milling CR7-1661.

EARN \$61.00 per week. Work evenings and Saturdays. Car necessary. Call Jerry 1 to 5 p.m. 966-0104.

### MOTORCYCLES

'66 YAMAHA 305. Excellent condition. Bike cover included. \$450. 966-9980.

TRIUMPH Contessa — 250cc. 4 speed foot shift, electric starter, like new — 967-4290, after 4 p.m.

REBUILT, repainted, like new 1962 Honda Dream, \$325. 969-9945.

1966 B.S.A. 650cc, 8,000 miles, \$600. Overhauled engine. 966-8138.

### AUTOMOBILES

1964 LANDAU Thunderbird. See to appreciate. Sell to best offer. 2067 E. Apache Blvd.

'58 OPEL very lonely. Interested in meeting a weary walker or footsore commuter. 0225. 276-1816.

1963 M.G.B.—white, red interior, wire wheels, one owner. 963-6234, 963-6901.

### PERSONAL

QUESTION: What's the difference between gator and O'Gara?

ARISE Irish. Unite and vote. Free our Homecoming election from the bonds of British Control.

ACTORS-Writers workshop meet 8 p.m. biweekly. Students welcome. 276-5180.

### WANTED

GRATE to hold logs in fireplace and andiron set. 964-2033.

WANTED: Passengers for private plane flight to Kansas City-St. Louis vicinity. \$50 round trip. Leaving Nov. 20 for return Nov. 26. Call evenings. 947-9218.

### RENT

TAKE YOUR DATE FLYING We have day and night flights. Call Jim Bostrom or Chuck King. 967-7325.

NICELY furnished 2-bedroom house with garage, covered patio, one block from law college. Adults only (graduate students, staff or faculty.) Phone 967-4192 days or 966-6711 evenings.

FEMALE grad-roommate wanted. Share expenses. Large, modern 2-bedroom. University Village Apts. 966-6881.

1/2 BLOCK to ASU. 1 bedroom, furn. All util. pd. \$90 mo. Avail. Oct. 28. 705 Krueger. 967-5430.

### SERVICES

CALORY GALLERY — where cooking is the art that pleases the palate. Homelike atmosphere. Jim and Juanita welcome you. Open weekdays 7 a.m. to 8 p.m. Closed Sunday. Corner 6th St. and Mill Avenue.

PILOT with Aircraft will fly anywhere and share expense. Prefer Mexico or California. Call Jim Bostrom or Chuck King. 967-7325.

MRS. Day. Palm reader and advisor. Love, marriage and business. \$1.00 reading. 964-9987.

AUTO TAPES UNLIMITED special of the week: 4 tops—"Reach Out"; Peter, Paul and Mary—"Album 1700"; and Supremes—"Greatest Hits" ONLY 03.75 (4 & 8 track) Phone 967-8989 for all your "custom" auto-tape needs.

### PHYSICAL FITNESS

BEST equipped gyms in the West. Lowest membership rates. Golden's Health Club, 107 S. McDonald St., Mesa, 964-2351.

# Sororities to Inaugurate

Twelve sororities will introduce a total of 240 pledges at the annual Pledge Presents ceremonies, tonight at 8 in the MU Ballroom. The event will feature the theme, "My Fair Lady."

Nine members of Archons, honorary for outstanding fratern-

nity men, who will be tapping new members that evening, will escort the sorority pledges. Arkesis, Greek honorary for sorority women will also tap new members, according to Betsy Kalish, chairman of the event.

Scholarship trophies will be given to the active group, the

pledge class and the sorority chapter with the highest grade during second semester last year.

A dance held afterwards from 9:30 to midnight on the patio will feature music by Ray Andrade's Orchestra and will be chaperoned by sorority alumni.

## Sorority News

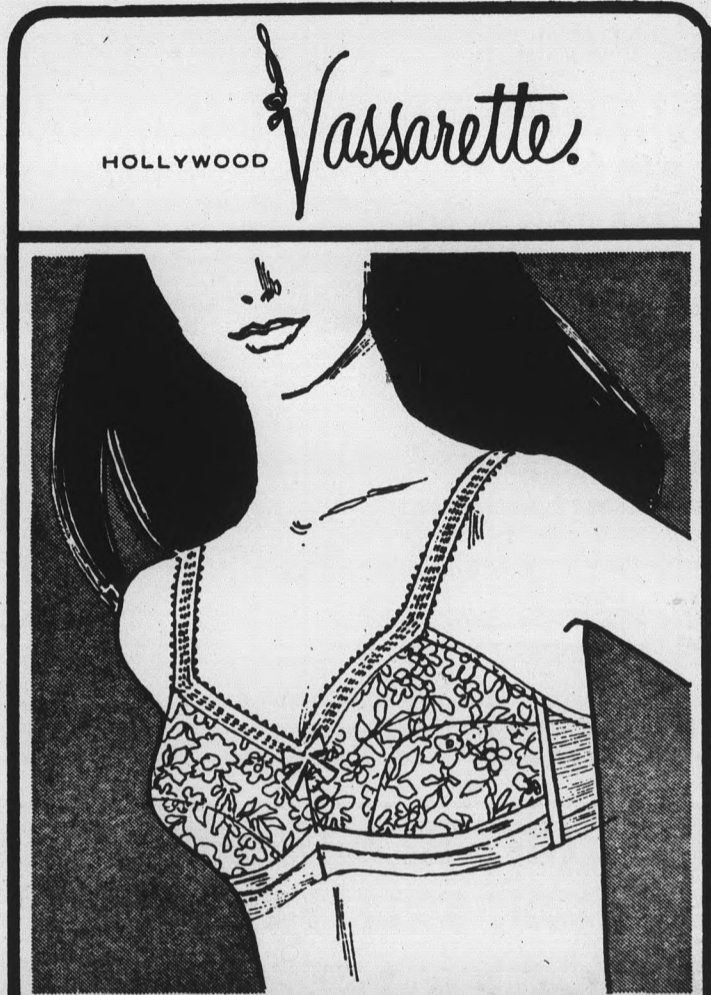
Next Monday is Founder's Day for Kappa Delta. A dinner will be held at the Executive House with sorority members and Phoenix alumni invited.

Kappa Delta was founded at Longwood College, Farmville, Va., on Oct. 23, 1897, and has been on campus since 1952.

Pledge class officers have been elected for Chi Omega. They are: Sue Crocker, president; Ja Montgomery, vice president; Jenny Buck, secretary; Jennifer Smith, treasurer; Margaret Lassen and Carol Hornbrook, Junior Panhellenic.

New actives are Mary Tibshraney and Bertie Rabish.

A retreat was held last weekend in Prescott.



Even the colors are soft, in this stretch-strap bra with contoured lace cups!

"Mais Oui" nylon lace cups are contoured with a lining of softest Dacron® polyester fiberfill to enhance personal curves. Adjustable stretch straps won't cut or curl. Its Lycra® spandex back is a beautifully low, rounded line... stays securely in place with your every move. Vassarette Matchmaker fashion colors! A. B. C. 32-36 — \$500

Bonnie Sue  
Tempe Center Fashions



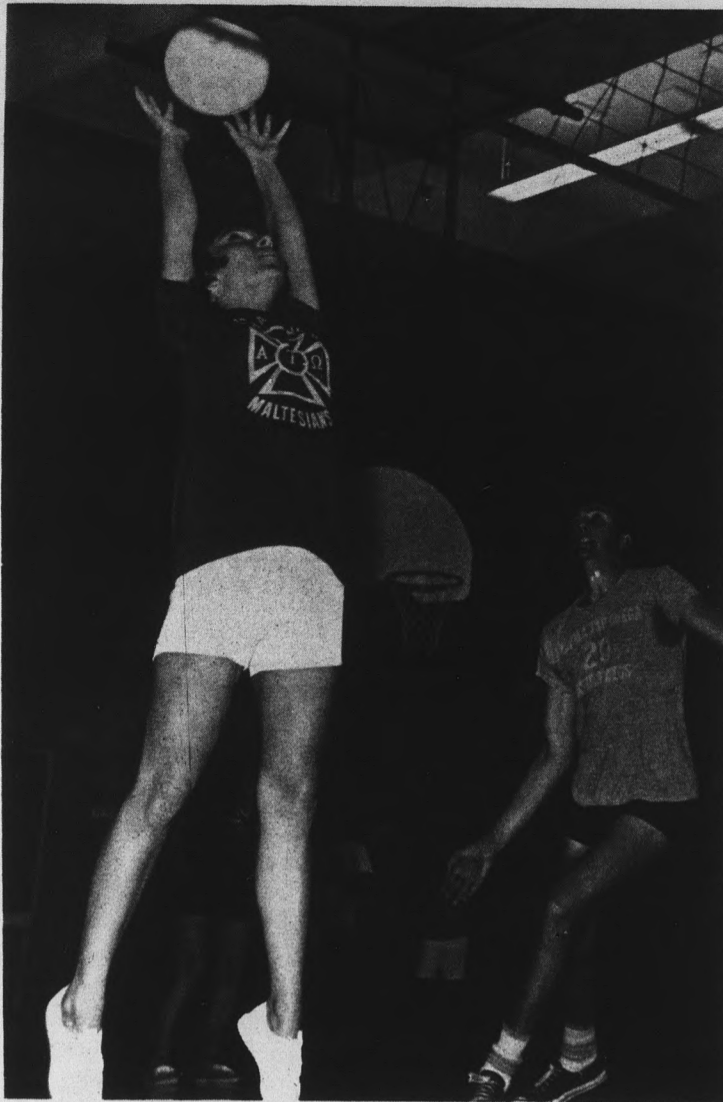
Flight 609 to Chicago has been cancelled. No Pilot. How would you like to fly Flight 609... and make about \$25,000 a year to boot. If you'd like to pilot 609, or any other commercial airline, call Sawyer School of Aviation; it's up to you if you fly or ride. AT SAWYER, THERE'S NO LIMIT TO WHAT HE CAN DO.



**Sale!**  
 Oct 21 to 28 only  
 Surprise Sale  
 also 10% off  
 Regular Stock  
 only upon presenting this card.

The Village Shop  
 616 Myrtle Ave, Tempe

ASU.



**TWO WAY STRETCH** — Steve Larson, Alpha Tau Omega, helps an unidentified Maltesian as they joined forces to defeat the Tumbleweed Islands "A" team in Co-Rec Volleyball, 15-3, 15-6.

Photo by Ron Schizik

## Rodeo Team In Regional

The Sun Devil Rodeo Team will vie for titles this weekend in the Salinas, Calif., National Intercollegiate Rodeo Association rodeo.

The first West Coast region competition for the '67-68 academic year, the N.I.R.A. rodeo will feature students from California, Nevada and Arizona who will try for team and individual points, accumulated throughout the year for national standings.

**COMPETING** for the Sun Devils are Sherrick Grantham, Stan Harter, John Fowler, Nial Robinson, Mark Thomas and Johnny Haggard. Alternates are Pete Beers and Tony Lewis.

Grantham, current holder of the N.I.R.A. championship calf roping and ribbon roping titles, is entered in the bull-dogging, calf roping, ribbon roping and team roping divisions.

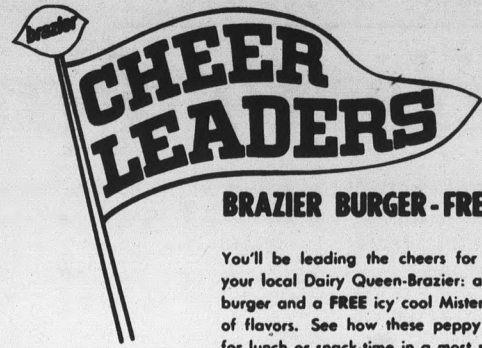
Harter is the 1966 N.I.R.A. roping and ribbon roping champ and this year's West Coast region student director.

He will enter the ribbon roping, calf roping and team roping.

**JOHN FOWLER**, Rodeo Club president, will compete in calf roping and ribbon roping.

Nial Robinson will be spurring for points in the saddle-bronc, bareback and bull riding events.

Riding for the Sun Devil women's team are Ruth Cowan, Peggy Rogers and Mary Noble. The girls vie for team points in barrel racing and goat tying.



### BRAZIER BURGER-FREE MR. MISTY

You'll be leading the cheers for this real bargain at your local Dairy Queen-Brazier: a tender, juicy Brazier burger and a FREE icy cool Mister Misty in your choice of flavors. See how these peppy favorites satisfy you for lunch or snack-time in a most refreshing way. Come to Dairy Queen-Brazier where a Mister Misty is yours FREE when you buy a Brazier burger for only 45c

**FRI., SAT., SUN.**  
Oct. 20, 21, 22



### SPECIAL TREAT!

Exciting Sounds from South of the Border

## "The Brass Factory"

Saturday Night 9-11 P.M.

**POLYNESIAN DAIRY QUEEN BRAZIER**

6701 East McDowell Road  
Just West of Scottsdale Road

# CORN BEEF

**HILLEL LUNCH SUNDAY**  
OCT. 22nd  
12 - 2 p.m.  
**BAKER CENTER**  
50c  
**MEMBERS FREE!**

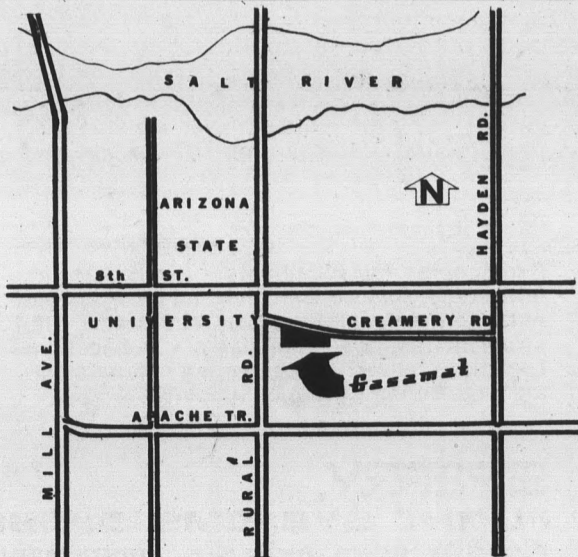


Coin Operated

**SAVE TIME! SAVE MONEY!**

When you serve yourself  
to

**HIGHEST QUALITY GASOLINE**



Tempe 915 East 8th Street and Creamery Road

## The United man is looking for qualified new stewardesses!

See him, talk to him,  
listen to him, complete  
an application form.

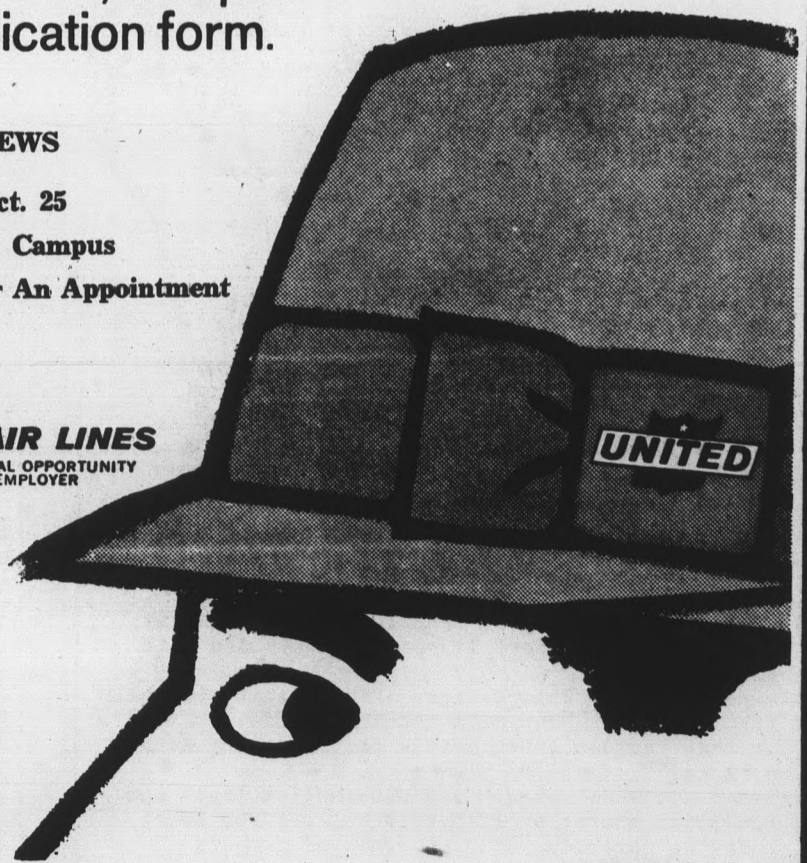
**INTERVIEWS**

Wed., Oct. 25

Contact the Campus

Placement Office For An Appointment

**UNITED AIR LINES**  
AN EQUAL OPPORTUNITY  
EMPLOYER



# Team Balance Called Key - Devils to Face WSU

A balanced Sun Devil football team will go against a strong rushing Washington State team this weekend in Spokane.

Washington State assistant football coach Red Smith described the Devils as "the best balanced team we will face all year." This is surprising since Washington has played Southern

KTAR radio will broadcast the game from Spokane with Bob Vache and Ray Cox handling the play-by-play. Game time will be 2:30 MDT.

California, the nation's No. 1 team, and UCLA, No. 3.

COACH Kush agrees. "Balance and the long pass... our running and passing have both been established and people can not use gimmick defenses or concentrate on stopping one part of our game."

But Kush's biggest criticism

of his team going into this Cougar match is speed.

"Washington State has three backs as fast or faster than anybody on our squad," Kush said. "I'd say the only back we have with exceptional speed is J. D. Hill, who can really fly. Max Anderson and Art Malone have great balance but are not particularly fast. Karry Walton has great moves but not great straightaway speed. Ken Dyer gets the job done more by great effort than anything else."

WASHINGTON State has an 0-5 record for 1967 but this does not tell the whole story. The Cougars losses were to tough teams like Southern California, UCLA, Oklahoma, Baylor and Stanford.

The Cougars will be strengthened with the return of No. 1 tight end Bob Simpson and 240-pound defensive tackle Ty Hansell. Simpson has been on the bench for three weeks, and Han-

sell was injured in pre-season drills.

Veteran Cougar Doug Flansburg, 6'2", 195 pound end could be the biggest single Washington State threat. He led the Pacific Eight in receptions with 54 for 613 yards last year and caught 12 passes against Hous-

(Continued from page 10)

## Pigskin Prophecy

FROM THE SPORTS DESK  
(Winners in bold face)

SOUTHERN CALIFORNIA at Washington

Record 21-8-1

Brigham Young at TEXAS — EL PASO

ARIZONA STATE UNIVERSITY at Washington State

Wichita State at WYOMING

Utah at ARIZONA

TEXAS at Arkansas

COLORADO at Nebraska

NOTRE DAME at Illinois

Tennessee at ALABAMA

Oregon State at PURDUE



### automatic landings are here!



At 9:45 P.M. EST on February 27, a Pan-American Boeing 727 jetliner with 98 passengers on board made a fully automatic landing at John F. Kennedy Airport in New York — the first operational automatic landing in the history of aviation in the United States.

Sperry Flight Systems Division participated as a member of the Boeing-Sperry engineering team which made this event possible. Our SP-50 Automatic Flight Control System played a key role. It put the Boeing 727 down "smooth as a feather," less than four feet to the right of the runway's center line under conditions of snow and fog — with a crosswind of twelve knots.

This is just another reason why Sperry Flight Systems Division is recognized as the leader in the development of Flight Control Systems and Flight Instruments and Displays. Our engineering team is second to none.

Join Sperry Flight Systems Division upon receiving your degree in Engineering and take that big first step toward fulfilling your professional and academic goals. We are looking for engineers with B.S., M.S. or Ph.D. degrees in E.E. or M.E., to work in the areas listed below.

Sperry Flight Systems Division, located in Phoenix, Arizona, leads in flight systems for airline and business aviation, and also provides such systems for vital military aviation and space programs. Since opening our plant in Arizona 10 years ago, we have grown from 50 to over 3,000 employees, with four plant expansions to accommodate our growth.

About Phoenix: It's a great place to live, with a dry, sunny climate, that lets you enjoy year-around outdoor sports and hobbies. Nearby Arizona State University — with present enrollment of approximately 23,000 — offers programs leading to advanced degrees in all engineering fields. To assist you in pursuing your further educational goals, Sperry Flight Systems Division will pay your full tuition and book costs.

**ON CAMPUS  
INTERVIEWS  
FRI., OCT. 27**

It takes only a half hour of your time to get the complete story. To sign up for an appointment with a Sperry Flight Systems Division Professional Representative, see your Student Placement Office.

Gyroscopics • Mechanisms • Circuit Design  
Advanced Avionics • Research and Development  
Autopilots • Magnetics • Control Systems • Instrument Displays • Standards • Publications  
Logistics • Industrial Engineering • Manufacturing Engineering • Product Support

**SPERRY  
FLIGHT SYSTEMS DIVISION**  
P.O. BOX 2529, PHOENIX, ARIZONA 85002

An equal opportunity employer M/F

## TEMPE BODY SHOP

11 E. 4th St. Day Ph. 967-1601 - Nite 967-1279

24 HOUR TOW SERVICE

- WHEEL ALIGNING & BALANCE
- Auto Glass Work — 1 Day Service
- Auto Body & Fender Work

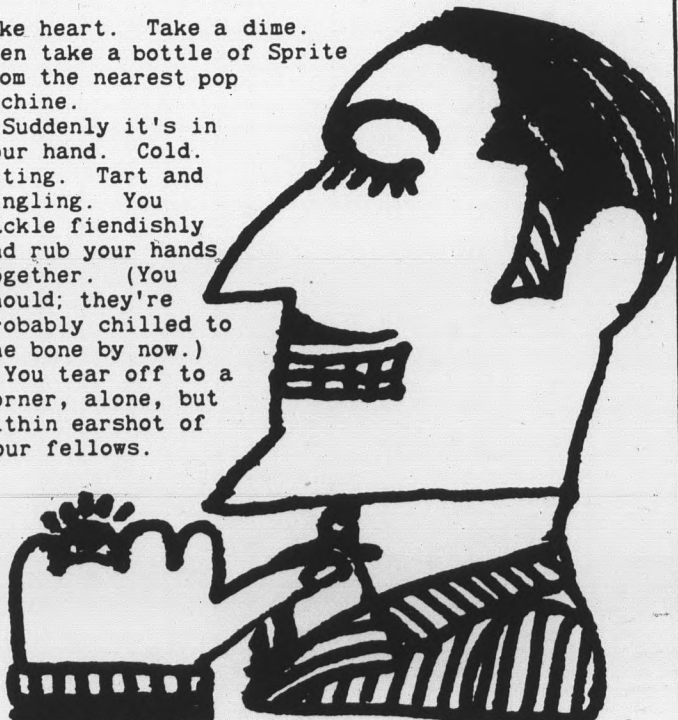
This is your chance,  
Student #7026941.  
Drink Sprite and be  
somebody.

MR. BIG

Take heart. Take a dime.  
Then take a bottle of Sprite  
from the nearest pop  
machine.

Suddenly it's in  
your hand. Cold.  
Biting. Tart and  
tingling. You  
cackle fiendishly  
and rub your hands  
together. (You  
should; they're  
probably chilled to  
the bone by now.)

You tear off to a  
corner, alone, but  
within earshot of  
your fellows.



And then? And then? And then you unleash it.  
SPRITE! It fizzes! It roars! It bubbles with  
good cheer!

Heads turn. Whisperings. "Who's that strangely  
fascinating student with the arch smile. And what's  
in that curious green bottle that's making such  
a racket?"

And you've arrived! The distinctive taste and  
ebullient character of Sprite has set you apart.  
You're somebody, uh...uh, whoever-you-are.



SPRITE. SO TART AND  
TINGLING. WE JUST COULDN'T  
KEEP IT QUIET.

SPRITE IS A REGISTERED TRADE MARK

# Volleyball Tourney Returns

Nineteen teams representing nine junior colleges and universities will participate in the third annual ASU Intercollegiate Volleyball Tournament tomorrow in the Women's Physical Education Building. Matches begin at 9 a.m. and will continue all day with the finals scheduled for 1:45 and 2:30 p.m.

## Athletic Fraternity Pledges To Contest for Membership

The mens intramural tennis finals for singles were completed Wednesday, and competition for membership in Sigma Delta Psi, national honorary athletic fraternity, takes place Saturday. Jerry Gordon of Sigma Nu clinched the A league championship in mens intramural tennis by beating Buddy Backery of Sahuaro D while Ken Spence, Phi Delta Theta, took

the top position in B league by outplaying Les Smith of Sigma Chi.

Competition was based on single elimination play. Each player had to compete in preliminary matches, consisting of winning five out of eight games per match, to reach the finals.

A CONTINUING program of physical testing for membership in Sigma Delta Psi will utilize the University swimming pool Saturday for competition.

The event will be a 100-yard swim which must be completed within 1 minute 45 seconds. Testing will begin promptly at 8:30 a.m. and candidates must be on time.

A female sextet from the University of Arizona is defending champion in the "A" Division, and the "B" Division champ is Northern Arizona University.

Sun Devils, expecting to be a strong contender in this year's tournament, according to Coach Mary Littlewood, will enter teams in both divisions.

Members of the team are Dale Petty, Pat Behr, Kathy Handel, Betty Williams, Mary Lou Petitjean, Carol Newman, Joan Dewar, Sue Annis, Jan Rouwenhorst, Eva Mercado, Roni McGill, Tyna Barinaga, Kris Farmer, Kathy Mattice, Elaine Hunt, Stephanie Hopkins, Judy Browning, Diane Wolta, Judi Driggs, Nancy Ellis, Catherine Arviso, Cherry Robertds and Marion Esquivel.

During a recent practice, Cherry Robertds was elected "A" team captain and Judy Browning captain of the "B" team.

## Undergraduate Soccermen To Face Rough Maryvale

Both University soccer squads will see exhibition action this weekend against future Arizona Soccer League foes.

The University Soccer Clubs undergraduate team will face Maryvale's Cougars Sunday morning. The opposition is a new team in Arizona soccer competition but promises to be tough this year.

The undergraduates will sport the same starting lineup which last Sunday tied state champion Judson High School 3-3.

The senior-graduate squad

will battle Hollandia, long-time powerhouse in this state, the same morning at 10 in Montersame morning at 10 in Monterey Park at 7th Street and Sheridan, Phoenix.

In an earlier outing against Hollandia, the combined Devil teams were shot down 7-2.

The older Devils will be together for the first time all year against Maryvale. The graduates and seniors can rarely make it to practice and have yet to play together as a team.

## MORE ABOUT — Sun Devils

(Continued on page 11)

ton in the Astrodome. He was a first team PAC selection and a second team Academic All-American.

THE COUGAR No. 1 ground gainer is Mark Williams, a 5'8" 170-pound halfback who has netted 249 yards in 69 tries.

Devil-Cougar relations have been on the stormy side in the past. In 1960 the Sun Devils won, 24-21, there was a 24-24 tie in 1962 and in 1965 the Sun Devils edged out Coach Bert Clark's "Rose Bowl" team 7-6.

Last year the Cougars pulled an upset victory over Devils, 24-15.

"I think it's going to be a tough game," said Kush, "which is just what we need right now. I think our boys realize they can't afford to look ahead to Wyoming."

### Intramurals

Men's Tennis Doubles

#### A LEAGUE

Best B over Delta Chi  
Pi Kappa Alpha over Best A  
Sahuaro D over Irish Hall  
Sigma Chi over Sahuaro C  
Sigma Alpha Epsilon over Vet's Club  
College Inn over Sahuaro A  
Phi Kappa Psi over Theta Chi  
Sigma Nu over Kappa Sigma  
Theta Delta Chi over Lambda Chi Alpha  
Phi Sigma Kappa over Hayden Hall  
L.D.S. over Best C  
Fijis over Bye  
Alpha Tau Omega over Sahuaro B  
Wee Ones over Sigma Phi Epsilon

#### B LEAGUE

Kappa Sigma over L.D.S.  
Best A over Delta Chi  
Alpha Tau Omega over College Inn  
Theta Delta Chi over AROTC  
Sigma Nu over Fijis  
Sahuaro C over Best C  
Phi Delta Theta over Delta Sigma Phi  
Phi Sigma Kappa over Hayden Hall

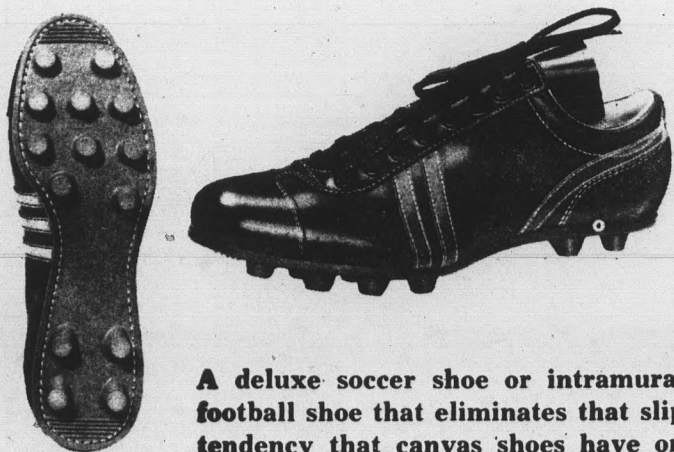
ORDER OUR TAKE OUT  
DINNERS AND REALLY ENJOY  
TOMORROW NIGHT'S GAME  
ON RADIO

Call WO 7-3049  
for

**CHICO'S**  
RESTAURANT\*  
FINE MEXICAN FOOD

1120 East Apache Blvd. -- Tempe  
\*Air Conditioned of course

NOW IN STOCK BY  
POPULAR DEMAND!



A deluxe soccer shoe or intramural football shoe that eliminates that slip tendency that canvas shoes have on grass playing fields. Converse style low cut with fine moulded rubber sole and moulded cleats. Blue trim on top grain leather uppers. Rubber padded top for maximum protection. Approved for intramural football.

LIST PRICE  
**12<sup>30</sup>**  
TEAM PRICED AT  
**8<sup>95</sup>**

UNIVERSITY  
SPORTING  
GOODS

TEMPE CENTER

Burnished Scotch Grains  
by  
**MANSFIELDS**



black or brown

Mansfield's new long-wing brogue in Burnished Scotch Grain—the beautifully textured leather that blends so well with this season's bold-patterned, tweedy look in sports and casual wear. Add full leather linings, full storm welts, and blucher comfort—all at a realistic price. Come see what we mean! 25.00

**Hanny's**  
Racquet Shops

Downtown • Christown • Thomas Mall  
Scottsdale

**Sedley's at**  
THE VALLEY  
TRAVEL MART

"Top 40"  
Singles **77<sup>c</sup>**  
SPECIAL  
HILL'S RECORDS  
AND BOOKS  
Tempe Center

BRING YOUR NEXT PRESCRIPTION TO A RYAN-EVANS PHARMACY AND JUDGE FOR YOURSELF . . . OUR PRICES ARE LOW . . . LOW . . . LOW . . . BE SURE . . . YOU CAN PUT YOUR TRUST IN A RYAN-EVANS REGISTERED PHARMACIST. SAVE WITH SAFETY.

# RYAN-

# E V A N S

## DRUG STORES

\$ \$ \$ \$ \$ \$ \$ \$ \$ \$ \$ \$ \$ \$ \$ \$

# DOLLARAMA

\$ \$ \$ \$ \$ \$ \$ \$ \$ \$ \$ \$ \$ \$ \$ \$

FOR THE FIRST 70 CUSTOMERS

## FREE

2.50 VALUE BAIN NOUVEAU SOAP  
WITH ANY 3.00 COSMETIC PURCHASE  
BRING THIS COUPON AND SHOP OUR ALL  
NEW COSMETIC DEPARTMENT. LIMIT 1  
FREE — COUPON — FREE

# SALE

\$ \$ \$ \$ \$ \$ \$ \$ \$ \$

VISIT OUR ALL NEW COSMETIC DEPARTMENT . . . AND SAVE MONEY ON OUR EVERYDAY LOW . . . LOW . . . PRICES.

CLAIROL  
NICE 'n' EASY

## \$ 1.00

2.00 VALUE      LIMIT 2

GET SET  
HAIR SPRAY

## \$ 1.00

4 CANS

4.76 VALUE      LIMIT 4

DRISTAN  
TABLETS

## \$ 1.00

1.98 VALUE      LIMIT 2

GILLETTE  
SUPER STAINLESS STEEL

## \$ 1.00

Pkg. of 15

1.98 VALUE      LIMIT 2

BAN  
ROLL-ON OR SPRAY

## \$ 1.00

2.00 VALUE      LIMIT 4

MAGNETIC  
HAIR ROLLERS

## \$ 1.00

4 FOR

2.36 VALUE      LIMIT 4

KLEENEX  
FACIAL TISSUE

## \$ 1.00

5 FOR

200s, REG. 35c      LIMIT 4

\$ 1.00

## \$ 1.00

2 FOR

2.00 VALUE      LIMIT 4

FILLER PAPER  
300 COUNT

## \$ 1.00

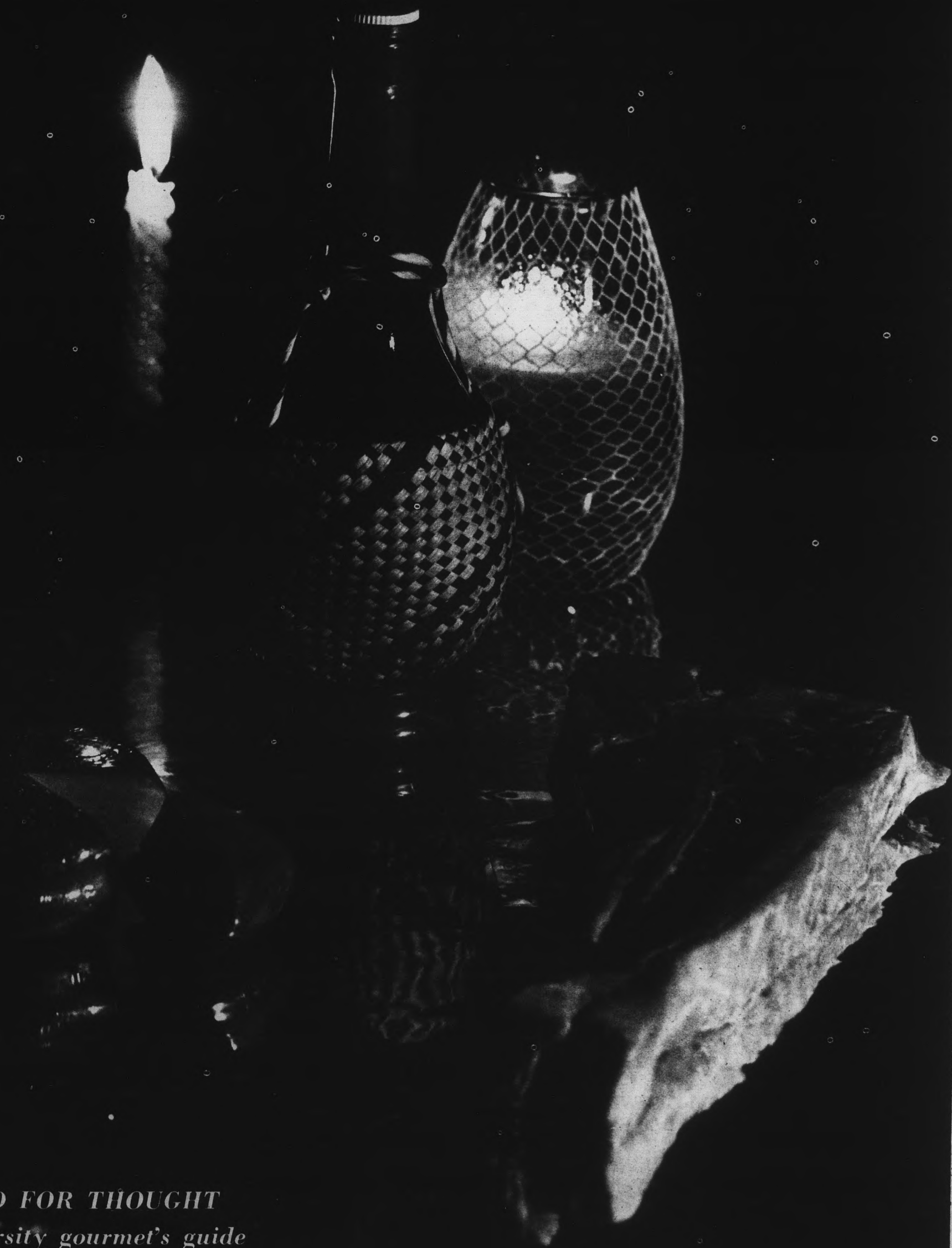
2 FOR

PRICES GOOD THROUGH SATURDAY AT OUR TEMPE CENTER STORE ONLY

state  
press

# Weekend

FRIDAY, October 20, 1967



*FOOD FOR THOUGHT*  
*a university gourmet's guide*

Photo by Tom Gorrel

# Tired tasters? Inns 'stuff your gullet'

Weekend dining is a pleasure rare; to be savored far more than the few extra hours sleep Sunday afternoons or the break in daily clash bash of classes.

Weekend eating is cheater eating because it is necessary to go some distance, pay a little more for the privilege of Bearnaise, sour cream, champagne, steak, lobster or your choice.

It is cheater eating because a loosening of the belt one notch

or a tug at the skirt waist denotes only a pleasant hunger satisfaction that is accompanied by slower, more prolonged conversation.

Bavarian buffs will find that the Alpine Village Inn blends a clever but not pretentious Germanic atmosphere to accompany an excellent bevy of German and American favorites that are truly delectable.

From the relish tray and caldron kettle soups that begin the

feast to the sauerbraten, steak and lobster or whatever entree follows, the attractively costumed waitresses keep a steady but not-too-rapid barrage of morsels coming.

Chez Louis, behind the frontier-hewn facade of Scottsdale West is the Frenchman's delight. A relatively small menu is perhaps misleading because the succulent dishes available reflect the expertly blended flavors of Louis Germain, formerly

with Perino's in Los Angeles.

The Coq au Vin; chicken, bacon and mushrooms cooked in onions and cognac, or the beef bourguignonne, beef casserole with vegetables and bacon in red Burgundy sauce and served with buttered noodles, are two of Germain's best.

Steak is at its best in Phoenix, as attested by the myriad of excellent dining rooms with beef as their specialty, and perhaps nowhere can well-prepared steak and side dishes be found with such a unique atmosphere as at Monti's La Casa Vieja.

Neptune's Table necessarily

gets the nod as seafoods' best friend. The elegant Phoenix restaurant caters well to those who want the best in ocean-fresh shark, swordfish, lobster or shrimp — even in this desert metropolis.

From the "Big Four" restaurants, the knife, fork, napkin and hunger crew moves out to a great number of eateries with menus as big as their reputations.

So, take a suggestion and stuff your gullet with an all-out, no-holds-barred meal at any one of over 100 Valley inns. Your digestive tract — and your disposition — will thank you.

## Saga keeps the hordes healthy

By JOHN WALLACE

When one eliminates the apartment-dwelling home economist, the Burger Chef - Chenny Dog devotee, and the Executive House gourmet, what's left is an enormous aggregation of University students who daily adhere to the law of self-preservation by permitting Saga Food Service to soothe their minds, still their hearts and fill their stomachs.

Saga — 36 states, three countries (how'd they escape out of the United States and how'd they get into Canada and Lebanon?); 220 colleges and universities, 23 hospital accounts, \$75 million gross last year and this school's favorite Big Brother (save for my mother the administration).

Five tons of meat, 3,000 gallons of milk, 700 gallons of ice cream a week at this university alone — "I don't believe it," snarled one strikingly slender coed.

But despite the relentless efforts of these community-minded, humanitarian do-gooders at the top of the Saga pedestal, you college kids still aren't eating the way your mother would like.

What would the mothers of America think if it were made known to the world that Mrs. Elaine McFarland, director of the Student Health Center, says the occurrence of fainting among coeds is "fairly frequent."

Reasons given for these unfortunate experiences include skipping breakfast, a low sugar content in the blood, and iron deficiencies from a lack of meat and vegetables.

But don't blame Saga. "We

serve Saga food to patients here at the center," said Mrs. McFarland. "They have an excellent balanced diet."

"I think that boys, on the whole, eat very well," she added.

It seems that most of the diet trouble occurs in the weaker sex.

"Food's food for the most part," said a healthy specimen the other day. "When you're hungry and broke, Saga really comes on strong."

**Sedley's at**  
TRAVEL MART  
THE VALLEY



ONLY  
\$99.50

THE  
"ANYTIME-ANYWHERE"  
TAPE RECORDER

Tape the easy way with Sony's solid-state, Easymatic CassetteCorder! Here's the "anytime-anywhere" recording way to go. Simply press the button, snap in the Sony tape Cassette and tape up to 90 minutes...press the button again...out pops the cassette ready to reload. What could be easier?

SONY SUPER SCOPE

Hi Fi Sales

764 W. Main, Mesa  
969-3191

**Stan's Fireside**  
3300 S. Mill Ave.  
Under New Management

SPECIAL BUFFET LUNCH  
\$1.00 Plus Drink

Dancing  
Nightly  
Live Music  
Fri. and Sat.



Fish Fry  
Every Wed.  
\$1.25  
Children .75

Wonderful Food and Cocktails

Closed On Sundays

Your Hosts: STAN and JEANNIE STANFORD  
966-6416

Complete Banquet Facilities  
Small or Large Groups

The Stationery You Are Looking For  
GREETING CARDS THAT GREET  
- FULL POST OFFICE SERVICE -  
(A.S.U. 24 Wash. St. 17)

Happy House Tempe Center

ART THEATRE GUILD  
**RIVA**  
945-0982 15 E. Main  
SCOTTSDALE

"BUNUEL stages this play with explosive ferocities. He is showing us the played-out privileged classes in all their stubborn sterility. It is fitfully fascinating, well-staged and well-played."

- Bosley Crowther, N.Y. Times

"The strongest of Bunuel's many strong films, a harrowing parable of salvation and damnation in which the grand old anarchist pours all the vials of his wrath upon the idle rich and the mother church."

- Time



LUIS BUNUEL'S  
**the exterminating  
angel** NOW SHOWING  
FOR ONE WEEK ONLY!

# HERTZ RENT A CAR

FOR ALL COLLEGE STUDENTS 18 OR OLDER

## THE RATES

- WEEKEND DAYS "24 Hrs." \$6.50 a day plus 12c a mile
- ENTIRE WEEKEND, \$19.50 plus 12c a mile
- 1 FULL WEEK "7 DAYS" \$60.00 plus 12c a mile
- 1 FULL WEEK "7 DAYS" \$88.00 plus 500 Free Miles



STEVE BLAGEN  
Campus Representative

## THE CARS 1968

- FORD MUSTANG
- FORD GALAXIE
- CHEVROLET
- AND OTHER
- FINE CARS

Call 966-0155

To Be Assured of the Car You Want Make Reservations 24 Hours In Advance

## Jennings stays for jd encore

"Anything that's original knocks me out" said Waylon Jennings, who considers himself the originator of his own brand of music, Country-folk.

Between performances at JD's, Jennings said, "I like the Lovin' Spoonful because their mixture of psychedelic and country is original." He add-



Photos by Ron Schizik wailing Waylon

ed, "I sing country music because that's the only music I know. I can sing it and I can feel it."

Prior to coming to Phoenix Jennings worked as disc jockey in Texas. Jennings said, "I came here because I was hungry. My claim to fame is being the world's worst newscaster."

Jennings said, "I've been all over the world and I think Phoenix is the greatest town there is. This may sound corny, but that's the way I feel."

Waylon Jennings, glittering country singing success will be at JD's tomorrow night for a special hold-over performance.

## Chad & Jeremy



College special, folk-rock by Chad & Jeremy, English turned American vocalists  
Tonight: 8:30 in Gammage.

**APARTMENT**  
1/2 BLOCK TO ASU  
1 Bedroom furn. All util. paid. \$90 a mo. 705 Krueger. Phone 967-5430 for info.

**NEW LOCATION**  
Dr. Robert G. Skok  
Optometrist  
17 E. 7th St. 967-4221

**On Campus** with Max Shulman  
(By the author of "Rally Round the Flag, Boys!", "Dobie Gillis," etc.)

### THERE ARE NO BAD TEACHERS; THERE ARE ONLY BAD STUDENTS

The academic year has only just begun and already one thing is clear: you're not ready for college.

What, then, should you do? Should you throw up your hands and quit? I say no! I say you must attack, grapple, cope! I say America did not become the world's leader in motel construction and kidney transplants by running away from a fight!

To the question then: You say you're not ready for college. You're too green, too naive. You lack maturity.

Okay, the answer is simple: get mature. How? Well sir, to achieve maturity you need two things:

- a) a probing mind;
- b) a vest.

A probing mind will be quickly yours if you'll remember that education consists not of answers but of questions. Blindly accepting information and dumbly memorizing data is high school stuff. In college you don't just accept. You dispute, you push, you pry, you challenge. If, for instance, your physics prof says, "E equals mc squared," don't just write it down. Say to the prof, "Why?"

- This will show him two things:
  - a) Your mind is a keen, thrusting instrument.
  - b) You are in the wrong major.

Ask questions, questions, and more questions. That is the essence of maturity, the heart and liver of education. Nothing will more quickly convince the teachers that you are of college calibre. And the tougher your questions, the better. Come to class with queries that dart and flash, that make unexpected sallies into uncharted territory. Ask things which have never been asked before, like "How tall was Nietzsche?" and "Did the Minotaur have ticks? If so, were they immortal?" and "How often did Pitt the Elder shave?"



(Incidentally, you may never know the complete answer to Pitt the Elder's shaving habits, but of one thing you can be positive: no matter how often he shaved and no matter what blades he used, he never enjoyed the shaving comfort that you do. I am assuming, of course, that you use Personna Super Stainless Steel Blades, a logical assumption to make when one is addressing college men—which is to say men of perspicacity, discrimination, wit, taste, cognizance, and shrewdness—for Personna is a blade to please the perspicacious, delight the discriminating, win the witty, tickle the tasteful, coddle the cognizer, and shave the shrewd.)

(I bring up Personna Super Stainless Steel Blades because the makers of Personna Super Stainless Steel Blades pay me to write this column, and they are inclined to sulk if I omit to mention their product. I would not like to see them unhappy, the makers of Personna, for they are fine ruddy men, fond of morris dancing and home brewed root beer, and they make a blade that shaves closely and cleanly, nicklessly and hacklessly, and is sharp and gleaming and durable and available both in double-edge style and Injector style.)

(And from these same bounteous blademakers comes Burma-Shave, regular or menthol, a lather that out-lathers other lathers, brother. So if you'd rather lather better, and soak your whiskers wetter, Burma-Shave's your answer.)

But I digress. We have now solved the problem of maturity. In subsequent columns we'll take up other issues, equally burning. Since 1953 when this column first started running in your campus paper, we've tackled such thorny questions as "Can a student of 19 find happiness with an economics professor of 90?" and "Should capital punishment for pledges be abolished?" and "Are room-mates sanitary?" Be assured that in this, our 14th year, we will not be less bold.

\* \* \* © 1967, Max Shulman

The makers of Personna Super Stainless Steel Blades (double-edge or Injector) and Burma-Shave (regular or menthol) are pleased (or apprehensive) to bring you another year of Max Shulman's uninhibited, uncensored column.

our gift to you!  
**save 10%**  
on Xmas photo-greeting cards  
made by Kodak

Just bring your favorite snapshot, negative or color slide to us. Choose from a variety of contemporary and modern designs. But act NOW to take advantage of our early-season 10% saving to you—order by October 27.

**PIONEER CAMERA SHOP**  
967-4662 Tempe Center

**9 x 12**  
Used Rugs - 7.50  
All Sizes in Stock  
**CARPET HOUSE**  
1516 E. Van Buren, Phoenix

**THE CO-ED**  
presents a  
Pre-Formal Opening Special  
**PANT DRESSES**  
Regular Price \$10.00  
This Weekend  
Only . . . . . Just \$6.00  
**THE CO-ED**  
715 S. FOREST  
TEMPE - ARIZONA  
Just Received Shipment — Coat Dresses

# Pair by menotti to open lyric opera

By BERTHA REYNOLDS

Tom Burns officially becomes a "thief" and Tomm Fox competes with Steve Hood, who portrays a telephone, for the love of a girl tonight as the Lyric Opera Theater opens its season in Cosner with a pair of productions.

The two operas by Gian-Carlo Menotti are "The Old Maid and the Thief" and "The Telephone."

"The Old Maid and the Thief," is a grotesque comedy, directed by Dr. Kenneth Seipp. Performing in it will be Mary Margaret Dillon as Miss Toddy; Mary Reynolds as Miss Pinkerton, Julie Gibson Grier as Laetitia and Tom Burns as the thief.

"The Telephone," directed by Alan Grier of Tempe will feature Susan Mecham as Lucy; Tomm Fox as Ben and Steve Hood at the telephone, Ben's only rival for Lucy's love.

Set designer Douglas-Scott Goheen has created a complex series of steps and levels upon which the action will take place. Goheen even obtained authentic pot-bellied stoves for the set.

Burns, a 19-year-old sophomore majoring in vocal performance, is playing opposite Mrs. Grier for the second time. He portrays the thief who is literally kidnapped by pining, panting spinsters.

Mrs. Grier, who usually plays a glamour girl, will display her versatility as a lower-type character. The 20-year-old sophomore major in vocal performance changed from a piano major last year when her voice developed sooner than she expected.

Fox, a graduate assistant in Spanish, is a master of six to eight languages and considers music a hobby even if he has spent 15 years of his life performing.

A sophomore drama major, Hood, pantomimes most of his part as a baritone singer in "The Telephone." He will play Mr. Doolittle in the coming production of "My Fair Lady."

Ruth Yandell, a graduate in education, is pianist for both productions. Grier, director of "The Telephone," uses a real character as the telephone which is usually not done.

The plot of "The Telephone," which is set in an ultra-modern futuristic time is the desperate attempt of Ben to win the hand of Lucy who spends her time on the telephone day and night.

Finally as a last resort, Ben leaves to call her on the telephone to ask her to marry him.

"The Telephone" is a short, light, delightful comedy written to precede "The Medium."

The English librettos and the music for "Telephone" and "Thief" were written by Menotti who is a winner of two Pulitzer Prizes as an internationally popular chamber opera composer.

Menotti, who was born in Italy, came to this country in the twenties where he attended the Curtis Institute in Philadelphia. He directed the film of his opera, "The Medium," wrote "Amahl and the Night Visitors" especially for television, and won Pulitzer Prizes for "The Consul" and "The Saint of Bleecker Street."

"Because of the enthusiastic

response to our performances last year of Menotti's "The Medium," Dr. Seipp said, "we have scheduled two more operas this year by the same composer."

"The Telephone" and "Thief" will be performed in Cosner Auditorium tonight, tomorrow night and next weekend, at 8:30. Students, faculty and staff may see this production free

by buying a season ticket for three musical theatre presentations for as low as \$2.

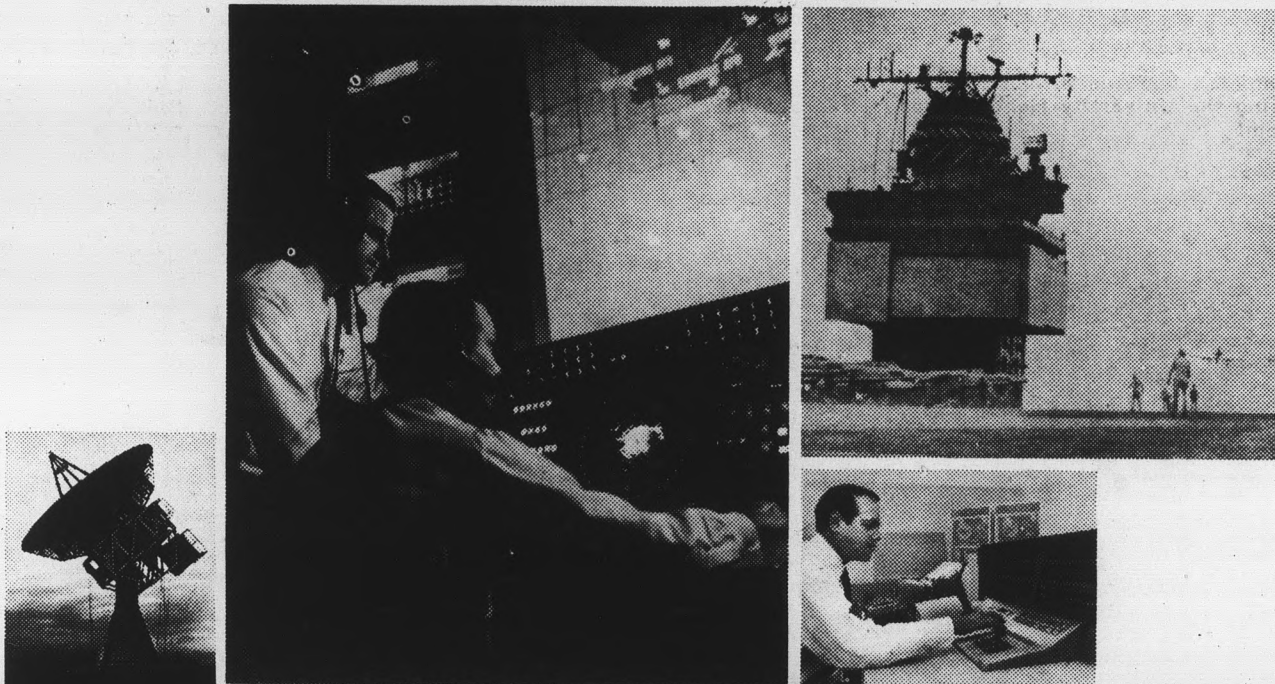
The regular price for tickets is \$1 per show, but by taking advantage of this offer three productions can be seen for the cost of two.

Tickets may be obtained in advance at the Lyceum box office, 961-3437, or at Cosner on evenings of performances.

**THE INK POT**  
 Mrs. McAllister #259  
 South of the Sands 8pm-1am  
 Folk music: Jazz: Cribbage: Chess: Con fusion  
 Tonight: Dick Charland: Bob Wilson  
 Gene Wilburn: the Beqqarmen  
 Steve Sinohi  
 A NON-PROPHET ORGANISATION

**SOMETHING NEW**  
**COLLEGE COURSE OUTLINES**  
 Keyed to your Text and/or Course  
 Nearly all Freshmen and many Sophomore Courses available now. Others are on order  
**Sold only at THE INK POT**  
 407 Mill Ave. - Tempe  
 10-6 Daily except Sunday

## Hughes announces new openings on the TECHNICAL STAFF.



Assignments exist for Engineers graduating in 1967 with B.S., M.S. and Ph.D degrees in ELECTRICAL ENGINEERING.

HUGHES-FULLERTON Engineering Laboratories assignments range from research to hardware development and operational support of products and systems in the field. Our current activities involve the advanced technologies of phased-array frequency-scanning radar systems, real-time general purpose computers, displays, data processing, satellite and surface communications systems, surface-to-air missile systems, and tactical air weapons command/control systems.

For additional information on the opportunities offered at HUGHES-FULLERTON in Southern California—and to arrange for a personal interview with our Staff representatives, please contact your College Placement Office or write: Mr. D. K. Horton, Supervisor, Professional Staffing, HUGHES-FULLERTON, P. O. Box 3310, Fullerton, California 92634.

On-campus interviews  
**November 3**



HUGHES AIRCRAFT COMPANY

**HEVENU**  
**SHALOM**  
**ALEYCHEM**  
 24 Hour  
 Inspirational Message  
**DIAL 277-9272**

**FRANKSON**  
**ARTIST & DRAFTING**  
**SUPPLIES**  
 Crafts - Picture Frames  
 Decorating Material  
 Tempe Center • WO 7-4482  
 Open Mon. & Thurs. Nites