

# Schmidt Trial Restrictions Imperil Free Press

By LARRY ROSS

Limitations on the press coverage of the Schmidt murder trial in Tucson may have dangerous implications for a free press, maintained the editor of the Arizona Republic during a campus panel discussion Thursday.

"Judge Royston, in his determination to not have his decision reversed, has gone way beyond what a limit to a free press should be," said Frederic Marquardt, referring to the controversial Schmidt trial judge.

MARQUARDT defended the rights of a free press in a sometimes lively debate with two attorneys and a Superior Court judge on the subject of free press vs. fair trial.

Sandor Shuch, Phoenix attorney, countered Marquardt's charge with the reply that "Judge Royston had no other choice than to do what he has done, because he saw an atmosphere of hysteria arising."

He maintains the Tucson judge imposed limitations on the Schmidt trial to keep control of

what might turn out to be another Shepard case.

DR. SAM SHEPARD'S murder conviction was reversed by the Supreme Court on grounds that irresponsible press coverage of the trial had prejudiced the jury.

"The Sixth Amendment to the Constitution says that the defendant is entitled to an impartial jury — not a jury of idiots who don't read the paper," Marquardt fired back.

Shuch replied that the prosecution has historically made

use of the press to gain favorable decisions.

"THE RIGHT TO publish implies the right not to publish and to have certain responsibilities," Shuch said. "It is the joint responsibility of the bar and press."

Lawyer Mark Harrison said that he thought there must be controls on the press.

"THE THING that concerns me most is what should be reported, and who should be responsible for what is reported," the Phoenix attorney said.

"The problem of a Roman carnival atmosphere must be solved," emphasized Judge William Gooding of the Maricopa County Superior Court.

"The problem of juries with prior knowledge of cases is the main problem of the courts," he said. There are cases where it is simply not possible to find a fair jury."

Gooding maintained that the problem with getting fair juries is finding jurors without pre-existent knowledge of the case.

## state press

ARIZONA STATE UNIVERSITY

Tempe, Arizona

Tuesday, May 9, 1967

Vol. 49—No. 51

# Legal Advising Rights May Free Mumbaugh

The appeals of David R. Mumbaugh may be vitally affected by the United States Supreme Court decision in the Ernest Miranda murder case of 1966 which excludes the use of confessions before a suspect has been advised of his constitutional rights.

Attorneys for Mumbaugh, who was convicted last week of the September slaying of coed Laura Bernstein, are hoping to appeal the conviction on grounds that Tempe police did not fully counsel Mumbaugh before having him sign a confession statement. If this portion of the state's evidence against him is ruled inadmissible, the 19-year-old Tempe boy may be entirely cleared of his conviction.

Sgt. Dale Douglas of the Tempe police said that Mumbaugh was questioned for almost an hour after coming to the police station only eight days after Miss Bernstein was found stabbed to death in a Tempe alley. Douglas said, "We advised him

of his constitutional rights and then, with his permission, commenced a more serious interrogation."

Mumbaugh, however, gave a more detailed account of the questioning at a hearing held by Superior Court Judge George Sterling for Mumbaugh's defense attorneys in their first effort to have the confession ruled out as evidence.

He said, "I told them that I killed Laura Bernstein. Then I told them how I did it." He went on by telling the judge that an investigating officer told him, "We want to do this proper." The officer then, in Mumbaugh's words, "picked up this sheet of paper which showed me my constitutional rights . . . and I signed the waiver."

According to the laws of double jeopardy, if his confession is thrown out and Mumbaugh is fully acquitted, he will be free. The murder weapon, a switchblade knife, has been ruled inadmissible as evidence. Mumbaugh admitted throwing the knife into a canal after he murdered the girl.

## Park Love-Ins Out, Says City Director

By ATHIA HARDT

Love-ins will not be held in Tempe parks in the future, said Tempe Parks Director Joe Salvato last Friday.

The decision to bar love-inners from city parks came, according to Salvato, after an estimated 600 people crammed Tempe Beach for a love-in on April 30. Added to 900 other visitors, the park was over-filled, he said.

"WE HAD about \$200 damage, which included filthy words written on walls, torn-up trees and damage to the windows and roof of the concession stand," Salvato added.

But Sgt. Dale Douglas of the Tempe police said there were no police incidents.

"I wasn't aware of any damage. The only enforcement we were involved in was giving parking tickets," he declared.

THE UNIVERSITY student who reserved Tempe Beach facilities for the love-in said there was no trouble from love-inners.

"Originally I got the park for a get-together for the staff of the Morning Sun (local hippy newspaper)," said sophomore Carolyn Walsh.

"As manager for the Holy Grail, I got that band to play. But when others said they wanted to call a love-in, I told them to go ahead."

Miss Walsh said that in the future love-inners would look for bigger Phoenix parks, such as Papago, that are better-prepared to handle large crowds.



Photo by Tom Wing

OH NO YOU DON'T — Kaydette's halfback co-captain Karen Kent eyes the chances of getting around the Angel Flight's Nancy Bell in an end sweep of Friday's Powder Puff football game in Sun Devil Stadium. In spite of Miss Kent's many ball-carrying efforts, the Angels prevailed 6-0.

## Senate Group Approves Draft Extension, Change

The Senate Armed Services Committee approved a four-year extension of the draft yesterday and recommended drafting younger men first and denying deferments to graduate students.

The committee, which took no stand on a draft lottery, unanimously approved extending the draft to June 30, 1971. Since President Johnson has the authority to adopt most of the proposals which have figured in recent draft studies, the committee chose to direct its recommendations to him rather than spell them out in legislation.

THE COMMITTEE recommended that Johnson use his executive powers to:

Draft younger men first, starting with 19-year-olds instead of 26-year-olds.

Defer students until they receive a bachelor's degree or until they reach the age of 24, then expose them "to the same vulnerability to the draft as

those who are between the ages of 19 and 20."

MEANWHILE, speaking to state selective service directors Wednesday, President Johnson said a lottery system was expected to be fully operational by January, 1969.

The committee rejected plans of the President's Selective Service Commission for a new civil service organization to operate the draft system, relegating local draft boards to appeal agencies.

The committee also rejected a Defense Department request for authority to draft men into the National Guard and reserve units at the discretion of the President. Instead, it recommended a provision which would let young men enlist in the reserve or National Guard any time up to the day they were scheduled for induction.

No change was recommended in the draft law's provisions for deferring conscientious objectors.

# news

'OPERATION NOSECONE' BEGINS —

## Airmen Study Engineering

Operation Nosecone, an 18-week program of intensive study in the College of Engineering, began yesterday for some 50 Air Force personnel who are being sent back to school.

They join about 200 other Air Force men who are presently enrolled in the Air Force Institute of Technology (AFIT), a cooperative venture between the Air Force and universities around the country.

ASU IS THE only one of these universities to present a proposal for a "nosecone" program that was acceptable to the Air Force, however.

All AFIT students have had some previous college experience, said Dr. George Beakley, assistant dean of the College of Engineering Science.

The nosecone program is designed to help them review their past studies and prime them for the regular course work that follows, he said.

THE PROGRAM gives them a non-credit review of earlier studies, plus twelve semester hours of calculus, two hours of computer programming and

two hours of engineering analysis.

This is more work than a student would receive in one semester, Dr. Beakley pointed out. "The Air Force personnel literally go to school day and night," he said.

During a normal semester, the work load for these men is often anything but normal with the airmen carrying as many as 22 semester hours.

WHAT IS MORE, Beakley said, "they have produced in a phenomenal manner in the past. Roughly 95 percent of the men entering the program over the last six years have graduated."

Normal attrition of students

in engineering is 50 percent by the end of their first year, according to national statistics.

To qualify for the AFIT program an enlisted man must be considered good officer potential to get a college degree in engineering.

CANDIDATES generally have completed one year of college work, mainly in general education, and are proficient in math.

It is important to have the general education requirements out of the way, Dr. Beakley said, as the AFIT men "have to function at an accelerated pace in what even normally is a reasonably difficult situation."

## You Can Sleep Tonight; Security Will Be Awake

By ROBERT SHAW

As dusk falls over the University community, two of the three Campus Security shifts prepare for their nightly vigil of guarding the students. Campus Security, which is on duty 24 hours a day and seven days a week with telephones and radios always open, has two nighttime shifts, one beginning at 2 p.m. and another at 10 p.m.

Captain Norman Peck, officer in charge of nighttime operations, said that his nighttime forces perform almost half of that department's total function. He explained, "We have a minimum of two men on vehicular and crime patrol at all times." He said there are usually at least two to three additional men on duty every night.

CAMPUS SECURITY has at least five patrolmen working in its busiest hours between 6 p.m. and 10 p.m. It also maintains a reserve force of 10 officers who help with special events such as

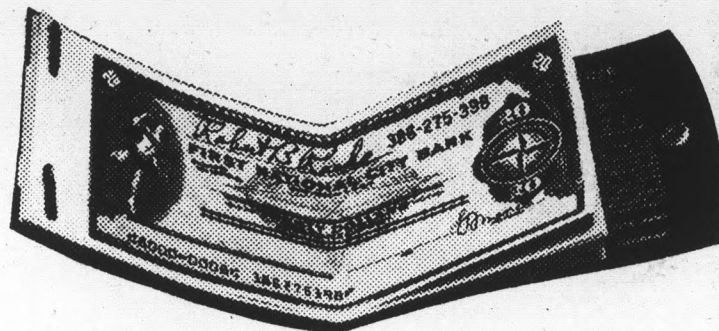
football games and concerts.

"Our primary functions at night are checking building security, providing transportation to the infirmary, maintaining a parking patrol, and answering routine calls," Peck said. He continued, "We probably have more night calls for transportation to the infirmary than anything else. Infirmary officials will not admit students after 10 p.m. if they are not escorted or met by an officer."

Peck cited reports of peeping toms and drunken students as the two calls most unique to the nighttime hours. Referring to the problem of unruly drunken students, Peck said, "We try to keep these incidents within the

(Continued on page 5)

# Pre-vacation offer.



All the travelers checks you want—up to \$5,000 worth—for a fee of just \$2<sup>00</sup>. At banks everywhere, during May only.

You can save real money by buying First National City Travelers Checks now for your summer vacation trip. Read how.

Normally travelers checks carry a fee of a penny a dollar. It costs \$1 for \$100 worth of checks, \$2 for \$200, \$10 for \$1,000, and so forth.

Now, during May only, you can buy any amount you need—up to \$5,000 worth—for only \$2, plus the face value of the checks. You could save up to \$48. (For less than \$200 worth, of course, the fee is less than \$2.)

If you're planning a trip to Europe, what you save from this offer could pay for an extra day on the Rhine. Or dinner and Shakespeare at Stratford.

Or a patch of grass at the Newport Jazz Festival, if you're staying closer to home.

### Welcomed everywhere

First National City Bank has been in the travelers check business for 63 years. Our checks are known and accepted in more than a million places throughout the

world—airlines, car rental agencies, steamship lines, hotels, motels, restaurants, stores, etc.

You can spend them as easily at Le Drugstore as at the drugstore. And they're just as convenient on a weekend trip as on a world tour.

### Fast refund in case of loss

The greatest advantage of First National City Travelers Checks is that you get your money back promptly if they're lost or stolen. We've built a security network of 25,000 banking offices around the world where you can get lost checks refunded fast. On the spot.

How do you find the nearest refund offices? In the Continental U.S., call Western Union Operator 25. Abroad, we've supplied every principal hotel with a list of the nearest offices.

No wonder we're called the Maximum Security travelers check.

### Buy now, travel later

Buy your travelers checks now—at a saving—and use them later. Many people, in fact, keep some travelers checks on hand as insurance against the day when they may need cash in an emergency.

### Offer good only in U.S. and Puerto Rico, May 1-31, 1967

Never before has such complete protection for your cash been so inexpensive. So act fast. Get your summer supply of First National City Travelers Checks now. They can be bought at most banks and savings institutions.

If your vacation money is in your local bank and you won't be home until after May 31, you can still take advantage of this offer. Just mail this ad to your parents and ask them to send your money to you.

### Note to all banks and savings institutions

During the month of May, we're making this unusual introductory offer to your customers at no cost to you. Your customer gets the saving, but you earn your normal commission.

## First National City Travelers Checks

Member Federal Deposit Insurance Corporation.  
© 1967 First National City Bank, New York.

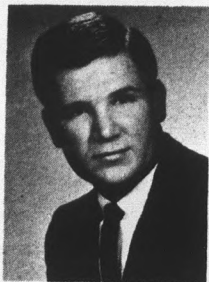
STATE PRESS is published by Arizona State University as the official campus newspaper every Tuesday through Friday during the school year, except holidays and examination periods, and is entered as second class matter at Tempe, Arizona, 85281.

## professional

We get pretty concerned about the way life insurance is often sold.

We're not in favor of a client just buying a policy and getting it over with. We want him to understand what it's all about, how his policy can be made to serve a variety of future needs, how it will fit into an overall financial program tailored to his own requirements.

It's this approach that separates the professional from the ordinary salesman. And if you feel you'd be more satisfied dealing with a professional, we're at your service.



Call  
Jim Pullaro  
264-4334

or stop by  
2727 N. Central  
Suite 103

PROVIDENT  
MUTUAL LIFE  
INSURANCE COMPANY OF PHILADELPHIA

# Professor of Education, Ex-Student To Accept Honorary Law Degrees

Honorary doctor of law degrees will be awarded to a professor of education and a former student at Commencement exercises May 26.

The degrees will be presented to Dr. Harold D. Richardson, professor of education, and Dr. K. C. Leebrick, president of Maunaolu College in Hawaii.

Dr. Richardson joined the faculty in 1940 and served as director of graduate study until 1949. He also served as registrar from

1941 to 1948 and concurrently held the position of dean of instruction until 1949 when he was appointed dean of Arizona State College at Tempe.

In 1953, Dr. Richardson was appointed academic vice-president and was named acting president in 1959 following the death of President Grady Gamage. He continued in this capacity until Sept. 1, 1963, when he continued as professor of education.

Richardson holds a masters degree in philosophy from the University of Wisconsin and a Ph.D. from Northwestern University. He is a member of Phi Beta Kappa and is listed in "Who's Who in America," "Who's Who in American Education" and "Who's Who in the West."

The 81st Commencement exercises will be at 8 p.m. in Sun Devil Stadium May 26.

Dr. K. C. Leebrick, president

of the only junior college in Hawaii, returns to the landmark he knew during the Normal School days of 1902-1906. During the pioneer years of the Arizona institution, Dr. Leebrick served as class president and commuted to the Tempe school by horseback.

After graduation he became superintendent of public schools in the Clifton district. The Alumni Association honored Dr. Leebrick in 1964 by awarding him the Alumni Achievement Award.

In 1938 Dr. Leebrick was president of Kent State University in Ohio but had to relinquish the position to accept a major's commission during World War II. He later worked for the State Department overseas and was vice president of the University of Hawaii before accepting his present position at Maunaolu College.

## Religion Classes Schedules Made

The curriculum committee of the religious conference at a recent meeting approved the class offerings for fall 1967-68. Day classes will be offered in the following areas: RE 101 Survey of the Old Testament, RE 102 Survey of the New Testament, RE 103 Survey Study of the Christian Denominations, RE 203 World Religions, RE 301 Wisdom Literature of the Old Testament and RE 302 Life and Letters of Paul.

Evening classes include: RE 202 Life and Teachings of Jesus, RE 303 Judeo-Christian Ethics, RE 402 Thought Projections of Jesus, and RE 403 Contemporary Theology.

All classes will carry 3 hours of credit.

Registration will be made in Danforth Chapel. Those interested in registering for one of the classes are asked to check the statement at the top of the class schedule regarding the receiving of credit for such classes.

This summer, the religious conference will conduct two classes each summer session. The classes will meet five days a week. Schedules of such classes are available at Danforth Chapel. These classes will also carry 3 hours of credit.

### GO FLY A CESSNA

Your own brand new 150  
\$903.83 down  
\$176.25 a month

**SPECIAL FOR BEGINNERS:** No cost for flight training, up to first solo.

**MERCURY AVIATION**  
Tucson Int'l. — 294-3474  
Sky Harbor, Phoenix — 273-1201

### Kentucky

### Fried Chicken

**\$3.75**

BUCKET

Serves  
5 to 7  
People



**HARMAN'S**  
Mesa-Tempe Hi-Way

### BURGES DAY SCHOOL

- NURSERY
- PRE-SCHOOL
- KINDERGARTEN

School: 966-7512  
Res: 966-0370 & 966-7002

(4 Minutes from ASU)  
2144 E. Apache, Tempe

### a New Xesya COSMETIC STUDIO

Individual and Group  
Instruction in Complexion  
Care and Make-up  
FREE SAMPLES

THOMAS MALL  
S. COURT  
Phone 959-6130

### A Paul Johnson Original\*



\*Leg bracelet, that is, as modeled by Alpha Delta Pi's Karlene Arnold. Detachable pendants, watches, charms and Greek letters give variety to leg jewelry.

*Paul Johnson*  
JEWELERS



IN THE  
ARCHES

130 EAST UNIVERSITY DRIVE • TEMPE • 967-8917  
1940 EAST CAMELBACK, PHOENIX 277-1421  
CERTIFIED GEMOLOGIST, AMERICAN GEM SOCIETY



## Graduation Special

- 2** 8x10 PORTRAITS  
IN SILK
- 8** WALLET SIZE

All For  
only

**1850**

No Sitting Fee  
Selection of  
6 Poses

**STUDIO**

TEMPE CENTER • PHONE 967-4662

# Lost Wax Method Found by Goo

by DAREN KRUPA

The ancient, complicated art of cast-bronze sculpture is currently being taught to University students by Ben Goo, associate professor of art.

The technique, called the Lost Wax Method, involves immersing a wax model in a cylindrical container of liquid plaster-like material. After the plaster dries, it is removed from the container and placed in a kiln, where excess water is evaporated from the mold and the wax model is burned out from the center through vents in the top of the mold.

A HOLLOW in the shape of the wax cast remains, into which molten bronze is poured. After the metal solidifies the mold is broken away from the cast.

Small passages called sprues and vents, which draw the molten bronze into the mold and allow expanding gases to escape, are also filled with bronze and are connected to the cast.

When the mold is removed,

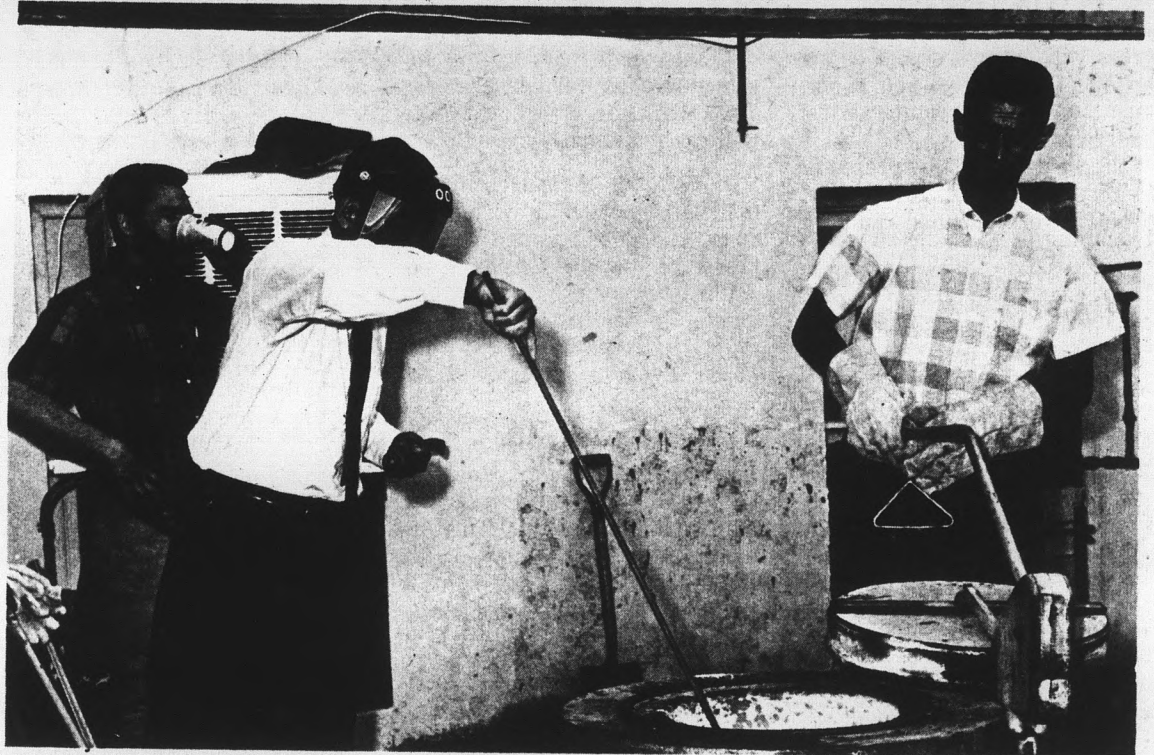
the cast has metal stems protruding from it in all directions. These stems are cut off and the piece is then finished and polished.

"It is not known who first used the technique," said Prof. Goo. "However, it was being used as far back as 3,000 B.C. in China."

**THIS TECHNIQUE** of cast-bronze sculpture made its debut only recently on university campuses because of its complicated procedures. Since then the method has been simplified so that a six-year-old could work it.

Prof. Goo came here in 1955, but didn't introduce the technique until a year ago because of lack of facilities and money.

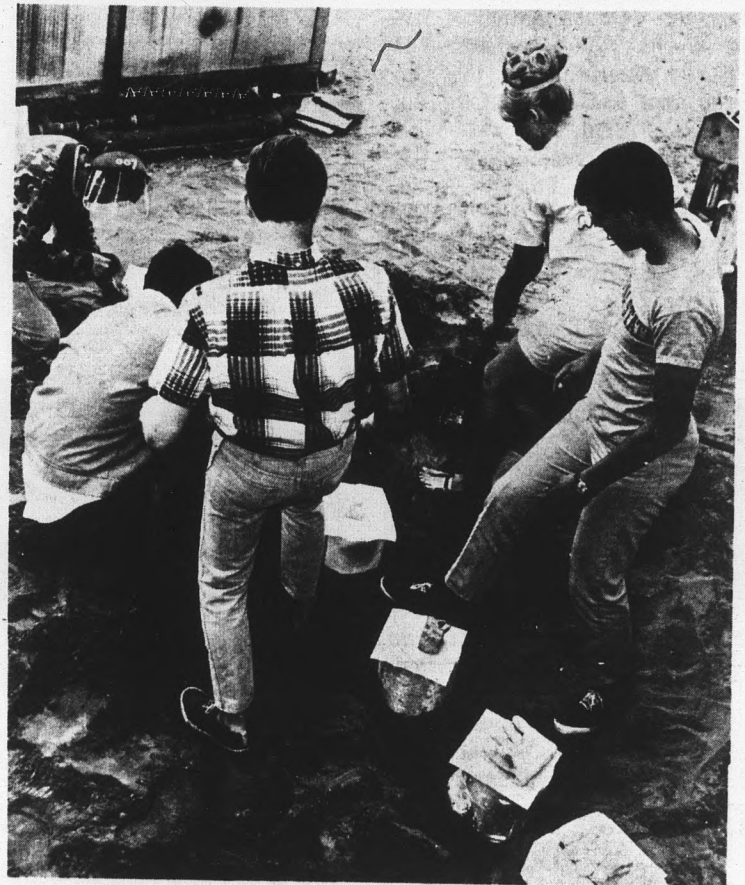
Prof. Goo acquired much experience with metal melting and foundry procedures and processes while working at a Pearl Harbor shipyard in World War II. He learned the Lost Wax Method of cast-bronze sculpture in 1954 in Milan, Italy, where he was working under a Fulbright Fellowship.



**PREPARING THE METAL** — Robert Tobias (left) and Tipton Cummins help Prof. Goo check the molten bronze prior to pouring.



**POURING THE METAL** — Molten bronze is poured into the silt-packed molds. Smaller holes appearing on top of the mold are vents which allow rapidly expanding gases to escape. The vents, connected to the cast itself, are also filled with molten bronze. After the metal solidifies and the mold is removed, the vents and sprues, also filled with bronze, protrude from the cast in all directions. They will be cut off before the cast is finished and polished.



**READYING MOLDS FOR CASTING** — Students pack silt around the molds before pouring the metal. If the mold cracks or leaks before the metal solidifies, the silt will hold it in place.



**FINALLY** — After the metal has solidified, the mold is chipped away, leaving a rough, unfinished cast.

State Press

Photos by

Ron Schizik

## Engineering Prof. Set for Teaching Leave in Sudan

Dr. Charles D. Hoyt, Jr., associate professor of engineering since 1962, has been granted a one-year leave of absence to teach in the Sudan for Northwestern University's branch of the Agency for International Development.

Hoyt said, "They have been angling for me for a couple of years." He went on to explain that he had teaching obligations here and had to remain to teach graduate courses. He further commented that he was satisfied with his job here, but that he was eager to join the foreign faculty at Khartoum, capital of the Sudan.

Hoyt, a Purdue graduate with an M.A. in industrial engineering, expects to handle courses in production management and operations research.

### MORE ABOUT —

## Campus Security

(Continued from page 2)

University. We don't like to book drunken students. We usually just try to get their buddies to put them in bed and let them sleep it off. If the student gets too mean, we report him to the dean because we feel disciplinary action is easier on the student than \$ 100 fine, and it is usually more effective."

PECK REPORTED that in the event of a major upheaval on campus, Campus Security is re-enforced by the Tempe police. He added, "We like to handle these ourselves if at all possible." He also observed, "The other police forces sometimes get a little rough if we have to call them in. We usually call out the dean to talk to the students before we call in another force."

Peck recalled that the last time they had to use other forces was about a year ago in an attempted pantie raid. Chuckling about the incident, he said, "A group of men had started from the Hayden-Best-Irish complex headed toward the women's dormitories. Our men covered the immediate area at College and Orange where the men were. The Tempe police guarded the Palo Verde complex. Luckily, the dean was able to discourage the boys before anything happened."

## Placement

The following employers will interview qualified candidates tomorrow, Thursday and Friday in MU 8. Appointments for educational interviews should be made in Admin 102 and commercial interview appointments should be made in Admin 101.

**EDUCATIONAL**  
 May 10 — Agua Fria Union HS, Avondale, Ariz., Sec.  
 May 11 — Patagonia School, Patagonia, Ariz., Elem., Sec.  
 May 12 — San Juan SD, Monticello, Utah, Elem., Sec.

**COMMERCIAL**  
 May 11 — U.S. Navy: Interviewing on MU patio.  
 May 12 — U.S. Navy: Interviewing on MU patio. Kirt Construction Co., Construction (B) for heavy construction work in California.

## Final Exam Schedule

Second Semester, 1966-67

All Classes Regularly Scheduled on MWF or Daily at:	Examination is Scheduled on:
7:40- 8:30	Mon. May 22 at 7:40- 9:30
8:40- 9:30	Mon. May 22 at 1:00- 2:50
9:40-10:30	Wed. May 24 at 10:00-11:50
10:40-11:30	Tues. May 23 at 10:00-11:50
11:40-12:30	Mon. May 22 at 10:00-11:50
12:40- 1:30	Thur. May 25 at 10:00-11:50
1:40- 2:30	Wed. May 24 at 7:40- 9:30
2:40- 3:30	Tues. May 23 at 7:40- 9:30
3:40- 4:30	Thur. May 25 at 3:40- 5:30
4:30- 5:30	Fri. May 26 at 3:40- 5:30

All Classes Regularly Scheduled on TTh or TThS at:	Examination is Scheduled on:
7:40- 8:30	Fri. May 26 at 1:00- 2:50
7:40- 8:55	Fri. May 26 at 1:00- 2:50
8:40- 9:30	Wed. May 24 at 3:40- 5:30
9:15-10:30	Thur. May 25 at 7:40- 9:30
9:40-10:30	Thur. May 25 at 7:40- 9:30
10:40-11:30	Wed. May 24 at 1:00- 2:50
10:40-11:55	Wed. May 24 at 1:00- 2:50
11:40-12:30	Tues. May 23 at 3:40- 5:30
12:15- 1:30	Tues. May 23 at 1:00- 2:50
12:40- 1:30	Tues. May 23 at 1:00- 2:50
1:40- 2:30	Thur. May 25 at 1:00- 2:50
1:40- 2:55	Thur. May 25 at 1:00- 2:50
2:40- 3:30	Fri. May 26 at 7:40- 9:30
3:15- 4:30	Mon. May 22 at 3:40- 5:30
3:40- 4:30	Mon. May 22 at 3:40- 5:30
4:30- 5:30	Fri. May 26 at 10:00-11:50
4:40- 5:55	Fri. May 26 at 10:00-11:50

## Director of LDS Institute Named to New Position

After 19 years as director of the Latter-day Saint Institute of Religion, E. LV Richardson has been named director of the curriculum for the Church's 230 Institutes located throughout the nation.

Known to thousands of students through the years as "Brother R," Richardson will be succeeded by Arch O. Egbert, who was an instructor at the Institute from 1959 to 1964, when he moved to Provo, Utah to complete requirements for his Ph.D. degree.

Richardson began his career

with the church Department of Education as a teacher in the Logan, Utah Seminary in 1938.

In his new position, Richardson will move to the central office of the Institute program on the BYU campus in Provo.

### CLASSIFIED ADS DEADLINE

Classified ads will not be accepted after 5 p.m. tomorrow since the State Press will publish its last edition for the spring semester Friday, May 12, 1967.

and now... **JADE EAST CORAL**  
 A NEW AFTER SHAVE & COLOGNE



AFTER SHAVE from \$2.50  
 COLOGNE from \$3.00  
 SWANK Inc.—Sole Distributor

## THE BEEF HOUSE

Charco Broiled Steaks

- ★Filet Mignon \$1.48
- ★T-Bone 16-oz. \$2.50
- ★Sirloin \$1.38
- ★King Size
- ★Chopped Filet \$1.08
- Hamburger 60c

Dinners Include Baked Potato, Tossed Green Salad, Choice of Dressing and Garlic Bread

Open Daily 11 a.m. to 9 p.m. Except Monday  
 Also Above Orders To Go — 967-6248

Broadway Plaza—Corner Mill & Broadway, Tempe

AFTER THEIR LITERATURE CLASS, EILEEN RACED BACK TO THE DORM TO CONFRONT HER ROOMMATE...



TCV STANDS FOR TWENTIETH CENTURY VIEWS, A SERIES OF OVER 60 VOLUMES OF CRITICAL ESSAYS ON THE GREAT WRITERS OF THE WORLD... FROM AUDEN TO HEMINGWAY TO SHAKESPEARE OR SWIFT! YOU, TOO, CAN LEARN FROM THE FAMOUS CRITICS. BUY A TCV AT YOUR BOOKSTORE TODAY! PAPERBOUND — ONLY \$1.25!  
 A SPECTRUM BOOK SERIES FROM PRENTICE-HALL, ENGLEWOOD CLIFFS, NEW JERSEY

Student Book Center  
 CORNER COLLEGE & SEVENTH STREET

photography by **ERIC**  
 1020 MILL AVENUE, SUITE 3 • TEMPE 966-8431  
 TRACI ANDERSON — Chi Omega  
**STUDENT PRICES**

# calendar

## Today

### LEATHERNECKS TO RECRUIT

The U.S. Marine Corps officer selection team from Phoenix will be available on the MU patio today to discuss the Marine Corps officer training programs.

Capt. Miles Crafton, the Officer Selection Officer, and Gunnery Sergeant Bob Berger will be at the Marine display to answer questions concerning students earning a commission as a Marine lieutenant through summer training.

A few vacancies still exist for seniors and graduates to earn a commission by participation in a 10-week training session this fall, according to Capt. Crafton.

### Lectures

8 p.m. Brasilia, capital city of Brazil, will be discussed by the College of Architecture in the MU ballroom. A reception will follow.

### Clubs

8:30 p.m. The Rodeo Club will hold an emergency meeting to finalize the horse show prepara-

tions in MU 209. The Awards Banquet has been postponed.

### Fine Arts

8:15 p.m. A Vocal Recital will be given by Linda Ray in Gammage 301.

### Tomorrow

#### Lectures

1:40 p.m. "Engineering Anthropology, Its Military, Industrial and Scientific Potentials" will be presented by Mr. H. T. E. Hertzberg in EC G 145.

3:40 p.m. "Asteroidal Origin of Meteorites" will be discussed by Larry Beck in AG 150.

4:30 p.m. The Botany Seminar will present William Weisrock to speak on "DNA Base Ration Studies on the Genus Hyphomicrobium" in LSC 255. Refreshments will first be served at 4 p.m. in LSC 257.

### Clubs

3:40 p.m. YAF, Young Americans for Freedom, will meet in BA 206 to hear Rev. James Patterson discuss the political activities and the history of the National Council of Churches.

6 p.m. The Circle K Club will hold a swim party-business meeting at the home of Dr. Bullock, 151 Bonita Way, Tempe. Next year's officers will be elected. Contributions for the cost of the meal are requested. Pictures of the Playboy dance are available in Bes' B, room 4.

7 p.m. Alpha Epsilon Delta, pre-dental and pre-medical honorary, will meet to elect officers in LSC 255. All interested pre-med students are invited to attend.

7:30 p.m. Devils and Dames will not meet this week.

7:30 p.m. La Liga Panamerica will meet in MU 213.

### Fine Arts

6:30 p.m. The ASU Symphonic Band concert will be held on Gammage Auditorium mall.

8:15 p.m. The Brass Ensemble will play in the MU ballroom.

### Thursday

#### Fine Arts

6 p.m. The ASU Band will present a concert on the Quad lawn.

8:30 p.m. The Los Angeles Philharmonic Orchestra, conducted by Zubin Mehta, will perform in Gammage Auditorium today and tomorrow.

### NAVY INFORMATION TEAM HERE

Navy officers from the Los

Angeles Recruiting Station and the Los Alamitos Air Station will be available for counseling today and tomorrow near the Devils Den. Information will also be given to women interested in the WAVES. The officer qualification test will be administered on campus.

Keyed-up students unwind at Sheraton and...



### save money

Save with weekend discounts! Get your free ID card from the Sheraton rep on campus. It entitles you to room discounts at nearly all Sheraton Hotels and Motor Inns. Good over Thanksgiving and Christmas holidays, summer vacation, weekends all year round. Airline youth fare ID cards also honored at Sheraton.

Ernest Anthony Lofurno  
Phone: 966-7359

Sheraton Hotels & Motor Inns

## Classified

For classified advertising submit ad in person to the State Press, MU 3, two days in advance of publication, between 1-4:00 p.m., call 966-3657. Rate: 5c per word, 75c minimum.

NO CLASSIFIED ADS WILL BE TAKEN AFTER 5 P.M. WEDNESDAY, MAY 10.

### FOR SALE

Victor 10 key elec. adding machine. Used very little. \$75. Call 967-0652 or 946-3637.

Impala skin handbags, African gameskin rugs, lion and ebza skin belts, call 966-2016.

Umbrella frame Tent — 3 room with zippered floor, 9x18, easy to assemble. Call 966-3656 Tues. or Thurs., 3-4 p.m. only

WEDDING dress size 6; silk organza, chapel train. Like new—cost \$180. Sacrifice. 867-7343 after 5:00.

CONRAD bass guitar. Must sell. 966-4191.

ATTENTION! Auto Insurance for the single student; as well as, the married student.

Good Student and Drivers Education Discounts.  
A Top Standard Company  
SAFECO INSURANCE GROUP  
For Ages 16-Up  
Call: Carroll Insurance Agency  
1024 McClintock Drive  
Tempe, Arizona  
Phone 967-8709

BOBBI'S  
Open till 9:00 p.m. Monday thru Saturday  
Samples at wholesale prices  
One-of-a-kind dresses, all sizes  
Formals, After Fives  
Misses, Juniors  
Sportswear, Lingerie  
VNB cards and layaway plan  
Frontier Town Shopping Center  
Scottsdale and Thomas Roads  
945-9272

Jennie's Sample Dress Fashions  
Nationally Advertised Brands  
at Wholesale Prices  
Open Evenings 966-7871  
Layaway and VNB Credit Cards Welcome  
1016 McClintock Drive  
North of Apache Boulevard

GOLDEN Retriever pups. 947-6998 or Rm. 215, Forest Hydrology.

MAJOR AUTOSTEREO  
Units and Custom Cartridges  
SAVE 15% 966-8800

### WANTED

RIDERS wanted to Yellowstone National Park. Arriving June 2. Call 966-4525.

ROOMATE — mature male, share new 3-br. air-cond. house. Mile from ASU 966-7985.

MALE roommate to share large, comfortable apartment over the summer and/or next fall. Serious student desired. Call Ron 967-9367.

COMMERCIAL pilot wants two expense sharing passengers in four place to mid-west June 9th. 922-1597 evenings.

### INSTRUCTION

INDIVIDUAL tutoring in math, physics, chemistry, and biological sciences. Phone 967-7924.

### RENT

JULY-August, San Diego, Mission Beach surfside, 1-Br. duplex. 946-9006.

### TYPING

QUALITY typing, stencils and Notary work. Electric SC. Mrs. Way, 947-5366.

GUARANTEED, reasonable, IBM elite. 211 E. 14th St. Tempe. 966-7848.

TYPING — neat and accurate. 946-1149.

TERM papers, manuscripts, etc. Quality work, reasonable. Ph. 967-7250.

STAFF, Faculty, Students. Two gals, 27 years combined secretarial experience. Term papers, resumes, theses, manuscripts. Highest quality — lowest prices. 272-2440, 937-1048.

### PERSONAL

TO S. QUAD: Thanks for the word. Coming from you it's a compliment. —Rick S.

Always Remember: "KING KONG DIED FOR OUR SINS!"

LOSE WEIGHT safely with Dex-A-Diet Tablets. Only 98c at Campus Drug.

ACID Indigestion? Painful gas? Get new Ph5 Tablets. Only 98c Campus Drug.

### HELP WANTED

SUMMER JOB—Students train now. \$74 weekly, (10 openings left). Full time, \$148. Call 966-0104. 5:30-7:30 p.m. only.

FASHION & Cosmetic consultant. Sales position available. Call 275-8782, 274-2284.

GIRLS age 18 or over to work as waitresses at Mackinac Is., Mich. June 10 thru Sept. 5. Good salary. Mr. Brocato, 946-9742, 8-11 a.m. or 5-8 p.m.

### AUTOMOBILES

1964 CHEVY 2/dr.; automatic, power windows, brakes, steering; retrim., new tires. Contact 274-2586.

1955 CHEVROLET NOMAD station wagon. Call Dave 967-2622 after 6 p.m.

1956 T-BIRD. Good condition. Contact 966-2709.

1955 Chevy NOMAD station wagon. Call Dave, 967-2622 after 6 p.m.

### MOTORCYCLES

1964 Honda 250 Scrambler. \$300. 967-5158.

HONDA 305cc. Super Hawk. 967-7942.

HONDA-50, 1966, excellent. 900 miles. 967-4402, 966-4096, Sunday.

1966 HONDA 305 Scrambler. 5700 miles. Exc. cond. Must sell. Call 946-2136 after 5 p.m.

### SERVICES

PROFESSIONAL aid in statistical analysis of data, preparation of proposals and research design. Write Mr. Whitney, P.O. Box 3063, Scottsdale, Arizona; or Phone 275-1462.

"Always Pay Less for Portraits at UpDikes" . . . "Finest Quality"

## NOW IN TEMPE

1100 EAST BROADWAY

working in Temporary Quarters while new building goes up

### University-Special

REMEMBER GRADUATION

SWEETHEARTS

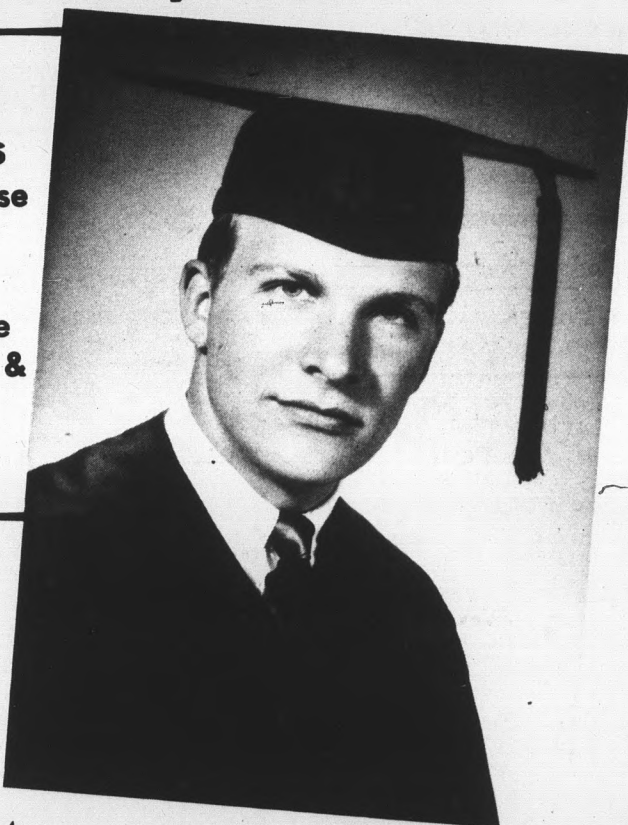
FRIENDS

LOVED ONES

one 8" x 10" Only

3 95 No Sitting charge \$10.00 Value

10 Poses To choose from Free use of Cap & Gown or Drapes



If ordered with above special

50 WALLET PORTRAITS

2 1/2 x 3 1/2 on finest heavy portrait paper 4 95 Only \$15.00 Value

Open Tues. & Thurs. nights Noon to 8:30 P.M.

Mon., Wed., Fri., Sats. 9 A.M. to 5:30 P.M.

Lots of Free Parking

Very useful for job applications

Celebrating the opening of our newest location. UpDike offers a beautifully retouched 8"x10" portrait as well as 50 beautiful Wallet Portraits for this fabulous price. Satisfaction guaranteed or money back. Proofs 1 day — finished portraits 4 days.

UpDike Studios "Home owned In Arizona Since 1906"

Three locations Arizona's oldest and largest Portrait Studios

Next to Skaggs — Safeway — Just East

1100 East Broadway, Tempe Ph. 967-2088

# sports

## Horsehidiers Lift Chances Of Capturing WAC Title

The Devil horsehidiers, with an assist from New Mexico, upped their chances last weekend to capture the southern division crown of the WAC.

Coach Bobby Winkles' boys took two games from San Diego University to up their record to 37-8 and New Mexico split a double header with Arizona to up the Devils' chances for the crown.

**TOM BURGESS** hurled a five-hit 1-0 triumph in the first game, and Jeff Pentland followed up with an 11-1 victory in the second half of the twin bill.

**PENTLAND GAVE** up four walks and picked up 11 more strikeouts as he collected his 12th victory of the season against 3 losses.

By winning both contests, Winkles' club made it a series sweep over the Tororos. Gary Gentry picked up a 10-0 victory on three-hit pitching over the visitors in Friday's game.

(First Game)

SAN DIEGO		U.		ASU	
ab	r	h	bi	ab	r
Rutledge, cf	2	0	0	Nelson, 2b	3
Younans, rf	2	0	0	Reid, rf	3
Baker, lb	3	0	0	Carpenter, lf	3
Thomp'n, ss	3	0	0	Bobb, lb	3
Ahern, if	1	0	0	Davini, c	3
Ghirni, pr	0	0	0	Gran'd, cf	2
Carpenter, p	3	0	0	Linville, cf	2
Diana, 2b	3	0	0	Perry, ss	2
Forster, c	3	0	0	Burgess, p	2
Tou'en, 3b	2	0	0		
Totals	22	0	0	Totals	22

SAN DIEGO		U.		ASU	
000	000	0-0	1-1	5-0	5-0
5	ASU	5	PO-A	San Diego	38-7
21-11	2B-Carpenter	S-Younans			

DP-Davini and Nelson LOB-San Diego  
 5, ASU 5 PO-A-San Diego 38-7, ASU  
 21-11, 2B-Carpenter, S-Younans.

(Second Game)

SAN DIEGO		U.		ASU	
ab	r	h	bi	ab	r
Rutledge, cf	4	0	1	Nelson, 2b	5
Younans, rf	2	0	0	Reid, rf	5
Baker, lb	3	1	1	Carpenter, lf	5
Ghirni, if	2	0	0	Bobb, lb	5
Thomp'n, ss	3	1	1	Davini, c	4
Ahern, if	4	0	0	Gran'd, cf	4
Diana, 2b	3	0	2	Linville, cf	4
Forster, c	2	0	0	Perry, ss	4
Tobias, c	1	0	0		
Tou'n, 3b	1	0	0		
Duolap, p	1	0	0		
Brown, p	1	0	0		
Bel'che, ph	1	0	0		
Saffert, p	0	0	0		
Totals	31	1	5	Totals	41

SAN DIEGO		U.		ASU	
000	000	001-	1-5	3-3	17-0
105	ASU	030	02x-11	17	0

-E-Foster 2, Diana, DP-Toumalen, Diana, Baker, Forster; Grangaard, Nelson, Bobb, LOB-San Diego 7, ASU 7, PO-A-San Diego 24-10, ASU 27-8, 2B-Diana, Davini, Bobb 2, Pentland, Carpenter, 3B-Pentland, SB-Carpenter, Nelson, Lind 2, Grangaard, Davini.

## COACH BALDY CASTILLO SAYS —

# Track Season Ends Well

By JOHN SAR

"It's been a good season and I'm happy with the way the boys have performed this spring." These were Coach Baldy Castillo's comments looking back on one of the toughest schedules Devil trackmen have faced in recent years.

With competition which included USC, Southern Cal, Oklahoma, Nebraska, and WAC, any coach could be proud of his team's ability to hold its own and raise a few eyebrows doing it.

IF YOU WERE to give an award for the biggest eyebrow raiser of the season, it would have to go to Senior Larry Berryhill who came up from the position of "also ran" to the premier half miler on the Devil squad and one of the best in the WAC.

Of course, the athlete with the most potential is Sophomore Jerry Bright, who Coach Castillo rates in the top five sprinters around, has consistently run 9.7 hundreds and dips below 21.0 in the 220 when the pressure's on.

Everyone expected Louis Scott to dominate the distance events and he has, turning in the best two-mile time in the nation this year and usually bringing ten points to the Devil's side of the scoreboard with victories in the mile and two-mile, a mighty rough double.

A FINE ARRAY of understudies like Jerry Jobski and Ken Robinson have kept Scott on his toes.

Paul Longstreth, although he was overtaken by Berryhill, has added necessary depth in the 880 and filled a big hole in the mile relay squad.

Ron Freeman got a slow start with a sore leg but has come back to run a 46.4 quarter mile, .5 better than his conference championship performance of last year. There won't be any surprise from anyone if he re-

peats this year as conference champ.

Of course, any pole vaulter who goes over 16 feet can consider his season a success, and Mike Markhan might repeat as a WAC champ if he's near his season best effort of 16.2.

In the jumping events, Barry Shepard, Ken Dyer, Jeff Schlesinger, John O'Green and Ken Nash didn't exactly topple the walls of Jericho, but those second and third place points all help when you're adding up the winning score.

The tracksters may have dropped their last dual encounter of the year to the Wildcats, which is something no Devil supporter likes to see, but it doesn't take much away from what has to be considered a very successful season.

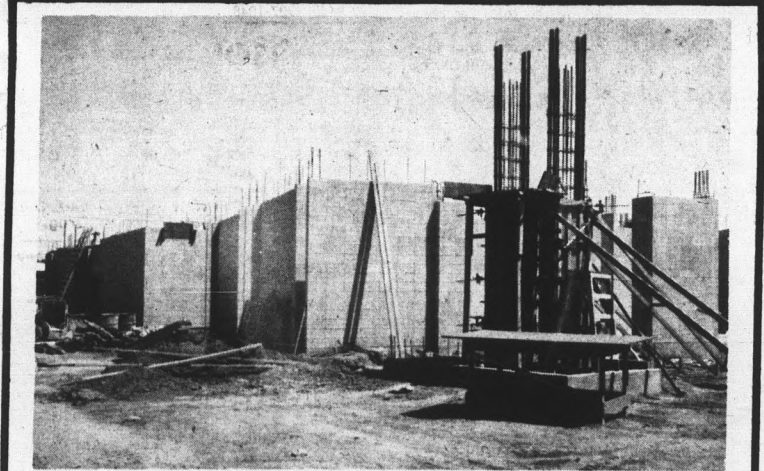
## BERGE SERVICE CENTER

16 EAST UNIVERSITY DRIVE — 967-2063

10 Years of Serving Tempe Auto Owners from the Same Location

SEE US FOR

- COMPLETE SERVICE OF ALL MAKES
- FULL LINE OF PARTS AND ACCESSORIES
- REFRIGERATION INSTALLATION AND SERVICE
- BODY REPAIRS



## The College Inn

A new approach to University living for the Arizona State man is rising out of the ground at 401 East Apache Blvd. Many of Arizona's finest building mechanics are assembled at this beehive of construction to insure the completion of a 5 building complex, designed to satisfy the living needs of the most discriminating University men, and have it ready for occupancy Sept. 10, 1967.

Please call at our temporary office at the corner of Apache Blvd. and Normal Ave. Mr. and Mrs. Kenneth Slemmons, resident managers, will show you a sample room, give you pertinent information, and take your reservation for Fall. Call 967-7828 for further information

## THESES

Professional Typing  
265-3630

## Frixson

ARTIST & DRAFTING SUPPLIES

Crafts - Picture Frames  
Decorating Material

Tempe Center • WO 7-4482  
Open Mon. & Thurs. Nites

## Fred Elquest & Son

Everything for the Art Student

- Art Supplies
- Picture Framing

703 N. 2nd St.  
Phoenix  
PHONE AL 8-2628

## COPPER Quickies

A WHOLE FLEET OF AUTOMOBILES

YES, 80 AUTOMOBILES COULD BE HUNG SAFELY FROM THIS WIRE ROPE. IT'S USED TO LIFT THE BUCKET ON ONE OF THE ELECTRIC SHOVELS IN AN ARIZONA COPPER MINE.

WOULD YOU BELIEVE 80??

## KNOW YOUR ARIZONA COPPER MINES...

**MAGMA** IS THE ONLY ARIZONA COMPANY WHICH MINES ALL OF ITS COPPER IN UNDERGROUND OPERATIONS. IT HAS TWO LOCATIONS-- AT SUPERIOR AND SAN MANUEL, BOTH EQUIPPED WITH MILLS AND SMELTERS.

THE FAMED OLD SUPERIOR MINE INVOLVES A HONEYCOMB OF 100 MILES OF TUNNELS, SHAFTS AND CROSSCUTS. IT IS THE STATE'S DEEPEST MINE, WITH OPERATIONS AS MUCH AS A MILE BELOW THE GROUND.

**San Manuel** WAS DEVELOPED IN THE LATE 1940'S AND EMPLOYS THE "BLOCK CAVING" METHOD OF MINING. THIS "UPSIDE DOWN" PROCESS MEANS DRIVING TUNNELS AND THEN CREATING HUGE CHAMBERS BY CAVING IN THE ORE FROM ABOVE AND HAULING IT TO HOISTING SHAFTS. MAGMA LIFTS OVER 40,000 TONS OF ORE PER DAY FROM A SINGLE LEVEL AT THIS MINE.

240 MILLION LBS.!

MAGMA'S TOTAL PRODUCTION IS ABOUT 14 MILLION TONS OF ORE PER YEAR, YIELDING APPROXIMATELY 240,000,000 POUNDS OF COPPER.

TO HOUSE THE COMPANY'S WORKERS, THE BEAUTIFUL TOWN OF SAN MANUEL WAS BUILT; IT IS ONE OF ARIZONA'S MOST MODERN COMMUNITIES.

Representing Arizona's Number One Basic Industry  
**ARIZONA MINING ASSOCIATION**  
Arizona Title Building • Phoenix, Arizona 85003

From The Merchant of

HAPPINESS

ORIGINAL DESIGNS

HAND CRAFTED  
IN OUR STUDIO IN  
GOLD AND PLATINUM



14K white gold  
Engagement and  
Wedding Set  
2 diamonds  
61/100 ct. TW  
\$300.00



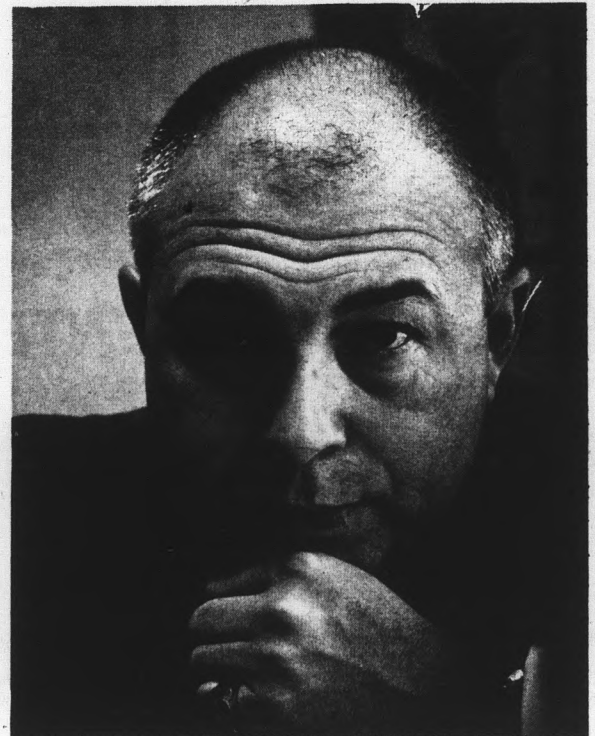
18K yellow gold  
Wedding Ring \$85.00



14K yellow gold  
Engagement and  
Wedding Set  
2 diamonds  
41/100 ct. TW  
\$275.00



14K oxidized yellow  
gold Wedding Ring  
\$55.00



ALEXANDER KOWER  
OF VIENNA  
DESIGNER-JEWELLER BY BIRTH



14K white gold  
Engagement and  
Wedding set  
3 diamonds  
1 1/3 ct. TW  
\$850.00



18K yellow gold  
and palladium  
Wedding Ring  
13 diamonds  
\$250.00

Alexander's

DESIGNERS & MANUFACTURING JEWELLERS SINCE 1868

Studio 6

75 WEST FIFTH AVE.  
SCOTTSDALE  
945-2563

DAILY 10-6 • THURSDAY TIL 9

