

Photo by Con Keyes

PRE-REGISTRATION — Sandi Olson studies the second semester schedule of classes and wonders whether or not the professor she gets is the one she really wants. Students have to pick up IBM cards before they see their advisers in order to complete pre-registration.

Pre-register—Avoid Waiting in Lines?

Early advisement and registration for second semester began yesterday at Moeur Administration Building. Students should report first to Moeur Administration Building to obtain their class request cards and schedule before meeting with their advisers. They should then list the approved course on the course request card and leave it with the adviser who will sign it and forward it to the Registrar's Office.

Advisement and registration will be conducted until Dec. 5 from 8 a.m. to 4 p.m. and from 8 a.m. to 12 noon on Dec. 3. Advisement for students registering only for late afternoon or night classes will be held Dec. 1 between 6 and 8 p.m.

Student Signatures Needed For Viet Nam-Bound Scroll

All students are encouraged to sign their names on the Viet Nam Scroll today from 9:30 a.m. to 1:30 p.m. at the booth set up in front of the library on the Mall.

The six foot by three foot scroll, sponsored by the activities co-ordination council in conjunction with the social board, will be a Christmas greeting from the University to the men in Viet Nam.

Col. Curtis will send the scroll to Gen. Westmoreland who will pass it from division to division. The scroll itself will have a Christmas greeting on the top

and the signatures of all the students below it.

Last year a telegram with students' names was sent to Viet Nam. However, this year, the activities co-ordination council felt that the scroll idea would be more personal.

Inside Today

The area of faculty-student relations is explored on today's editorial page.

Norville Nexus expresses his views on a favorite college pastime — drinking.

(See page 4.)

Basketball: No Cents

The fifty cents admission fee to basketball games was recently abolished by a majority decision of the Athletic Board, according to Dr. J. J. Dauten, member.

The change is a result of a public relations effort to avoid conflicts with students and faculty over the charge. Abolishment of the fee will create a loss of approximately \$9,000 in athletic funds, but it is not felt that the loss will adversely affect the program this year, Dauten said.

THE SUN DEVIL basketball squad opens this 1966-67 season Thursday night at 8 against Whittier College Poets. Dopesters are rating Whittier a slight favorite.

state press

ARIZONA STATE UNIVERSITY

Tempe, Arizona

Wednesday, November 30, 1966

Vol. 48—No. 40

'Roar of the Greasepaint' Presented This Weekend

Leslie Bricusse and Anthony Newley's musical comedy, "The Roar of the Greasepaint — The Smell of the Crowd," opens Friday at 8:30 p.m. for the first time in the Valley at Gammage Auditorium.

The musical, referred to as "a whirligig of fun and fantasy" by the New York Daily News when it first opened on Broadway last year, will run through Sunday.

The Daily News described the story as stringing a "series of brilliantly imagined songs, and sketches and dances on a single thread — the plight of the underdog." There is the assurance that "the underdog will one day have his way."

Dr. James Yeater and the University Players join Dr. Kenneth Seipp and the Lyric Opera Theatre in producing the modern morality play.

John Williamson plays the role of Cocky, the little man, the underdog who always loses "the game of life," while Barry Fried portrays the pungently decad-

ent Sir.

Other principal characters include Carol Carpenter as the Girl, JoAnn Yeo as the Kid, John Dixon as the Bully and Virgil Gibson as the Negro.

Curtain time is 8:30 p.m. Friday and Saturday and 7:30 p.m. Sunday. Tickets are available at the Lyceum box office, 966-3437, or at the door on the evening of performances.

3 Bills Receive Second Reading

A bill which would appropriate \$1,000 each for library materials to the Best-Hayden-Irish and Saguaro complexes from the Student Senate's unappropriated balance will receive second reading today at 3:45 p.m.

The measure was introduced by Interhall Sen. Pat O'Neil.

The Student Senate will also resume discussion of a bill establishing a Western Week and one revising the Department of Traffic Appeals. The two bills were left in the Committee of the Whole Nov. 16.

The proposal establishing a University Western Week was introduced by Panhellenic Sen. Mary Thompson and would repeal an earlier bill.

Off-Campus Women's Sen. Maryann McGovern proposed the bill which would establish a Department of Traffic Appeals. It also repeals an earlier bill.



Photo by Con Keyes

LINE-UP — College students waited in long lines outside the Moeur Administration Building yesterday in order to pick up their pre-registration cards. Pre-registration cards can be obtained until Dec. 5.

Carillon Bells to Chime Soon

Carillon bells will strike the Christmas spirit on campus this year as the \$23,000 system, passed by the student senate last year after much controversy, will be installed by Dec. 10.

Amplifiers will be placed above Matthews Library with

the organ-like player located within the building. The Maas-Roe Co. of California will install the electronic system that operates automatically or manually playing rolls of music.

Christmas carols will be played by the carillon system

throughout the holiday vacation and afterwards will chime at class breaks, athletic events and other campus affairs of merit.

Dedication of the bells is tentatively scheduled for Jan. 4, with a brief ceremony in the morning and a formal dedication

Arabian Education Lags, Colonial Powers Blamed

Yousif Ghulam, University student and former professor of 25 years at the University of Bagdad, blamed former colonial powers for the Middle East education lag in a lecture last Friday night at the MU Ballroom.

Ghulam cited the French in Morocco and Algeria and other colonial powers who have stifled educational development in these countries through their own "self-interest."

According to Ghulam, only three percent of the Arabs were being educated because classes were taught in French by French teachers. "The Arabic language was considered a foreign language by the colonial powers," he said.

A further stifling of education was brought about when colonial

powers tried to force Christianity onto Arabic people, who are predominately Moslem.

Lack of capital and mismanagement of leaders were also cited by Ghulam as reasons for the Arabic countries' lag in education.

Approximately 31,000 students are attending school in foreign countries outside of Iraq, with

only 15 universities in the Arabic countries, he noted.

Ghulam said that Arabic nations use the same system of education as the United States with primary, secondary and schools of higher education. "American understanding of the Arabic countries is needed in order to improve relations," he said.

Speech Clinic on Program

The Pop-up today will be a demonstration from the University Speech and Hearing clinic from 11:45 a.m. to 1:15 p.m. in the MU lower lounge.

Student clinicians will demonstrate equipment used in hearing tests and also answer questions about the speech correction program.

A portable audiometer will be on display along with tapes and slides to illustrate the different methods of correction.

Students Play, Sing Medieval Music

By BERTHA REYNOLDS

Early medieval music is here to stay if 18 members of Collegium Musicum have anything to say about it.

Collegium Musicum, a one-unit music course composed of singers and instrumentalists, is taught by Dr. Frederick Gable, assistant professor of music.

SINGERS and musicians are Karen Alford, harpsichord and alto; John Barnes, bass; David Boor, bass and recorder; Fraser Brown, tenor; Daniel Glenn, bass and bass viol; Barre Grif-

fith, bass bassoon and recorder; Kenneth Hansen, baritone; Robert Lindell, baritone; Anne Payne to Richard Rathkev, bass, flute and recorder; Lynda Ray, soprano; Sheryl Robb, alto and keyboard; William Robb, baritone; Dennis Royall, bass, recorder and trombone; Kinga Szakats, alto; Jeannette Wagner, soprano; Verne Bullock, tenor and Raymond Dirodis, tenor.

The course, which is offered to non-music majors as well as majors, is devoted to the study

and performance of medieval renaissance and baroque music.

The Collegium owns some interesting early instruments—namely, recorders, popular wind instruments in the 16th, 17th and 18th centuries; a treble and tenor viol, an early bowed string instrument; a

harpsichord, a keyboard instrument of the 17th and 18th century and a krummhorn, a double-reed instrument.

MUSICIANS enroll in the class as amateurs and learn to play these early instruments during the course of the semester, said Dr. Gable.

1,571 More Attend ASU

A total of 23,595 students are enrolled in classes, according to a final first-semester report released last week by the office of the registrar and director of admissions.

The report reveals that 20,669 students are enrolled in residence courses; 2,336 are registered for extension classes and 590 for correspondence work.

The 1966-67 first-semester total exceeds last year's first-semester figure by 1,571.

Comprised of 15,972 undergraduate students and 4,697 graduate students, the 1966-67 residence enrollment of 20,669 exceeds last year's total of 19,198 by 1,471.

Enrollment in the summer sessions of study, which ended Aug. 20, reached a record-breaking total of 17,832, it was reported by President Durham.

Of the total, 11,526 students were enrolled in undergraduate classes 6,306, graduate. A total of 5,542 students were enrolled in more than one summer session program, reducing the total number of different students served to 12,290.

DAY NURSERY

MOTHER GOOSE TOWNHOUSE
46 EAST FIRST STREET
CENTRAL SCOTTSDALE
947-0801 — 948-2353

A.S.U. BREAKFAST SPECIAL

\$1.00

3 EGGS AND HAM

Hash Brown Potatoes
Toast, Jelly and Coffee

Served Daily 6:30-11:30

HARMAN'S

Mesa-Tempe Hi-Way
TEMPE

A LITTLE BIT OF THE OLD WEST
20 ACRES of
Peace and Quiet . . . Rugged . . . Beautiful
1 1/2 Hour's Drive
"GET RICH QUICK?" NO!
"GOOD INVESTMENT?" YES!
\$299 PER ACRE, \$75 DOWN, \$75 MONTHLY
WESTERN LAND & CATTLE CO., INC
967-7871

EXCEPTIONAL OPPORTUNITY With Ready Made Market

One of the nation's largest life insurance companies desires a representative to contact seniors and graduate students. Premium financing available. Special life insurance plan is extremely competitive. Liberal commissions and complete fringe benefit program. Qualified senior or graduate student considered.

For interview, apply Suite 923, Guaranty Bank Tower, 3550 North Central, or call 264-1358.



**DON'T
MAKE A MOVE!**
'til you check the
BIG SAVINGS

at our

**Pre-Holiday
SALE**

STARTS TOMORROW

*Bonnie Sue
Fashions*

913 Mill Ave
Tempe Center

Telephone 967-4094

Open Thurs.
Til 9:00



Spotlight

Senior Debbie Noller and Prof. J. J. Lamberts are this week's choices for the student-teacher spotlight.

Miss Noller, a secondary education major in English, is a

member of Alpha Lamda Delta which she was secretary of during her freshman year. She is also a member of Kappa Delta Pi, education honorary and was a member of Sun Devil Archers her freshman year.

As a member of the Student Inter-faith Council she represented ASU in Albuquerque, New Mexico at the Southwest Inter-faith Conference. Miss Noller is presently chaplain of McClintock "B" an honor dorm.

Prof. Lamberts, who teaches English and linguistics, received his Ph.D. in linguistics from the University of Michigan. He has taught at Michigan, Northwestern, Minnesota and, since 1960, at ASU.

In addition, Prof. Lamberts has been on the summer session faculties of Minnesota, New York University and St. Louis University.

Concert Band Positions Open

Interested in playing instruments?

Non-music majors can try out for a Concert Band position Nov. 30 from 4 to 5:15 p.m. in Music Annex III.

Musicians for the band will perform without University credit, said Ronald Fuller, assistant director of the Sun Devil Marching Band.

The concert will play several twilight concerts and other programs during the spring semester.

PAPERBACK BOXED SETS

The Perfect Xmas Gift

"Lord of the Rings"
"Second World War"
5 Vol. of "Peanuts"

LET US HELP YOU
SELECT YOUR GIFTS

HILL'S

Books & Records

Tempe Center

OPEN MONDAY AND THURSDAY TILL 9 P.M.

Politics Shift Westward, But Parties Weak -- Rice

As the population has "tilted" westward, so apparently has the axis of political force in the country, reported Dr. Ross R. Rice, professor of political science, in a recent address sponsored by the Center for American Studies.

Aside from recent increases in political force — such national figures as Earl Warren, Richard Nixon, Lyndon Johnson, Barry Goldwater and Stewart Udall call this region

their home — the Southwest defies labels and absolutes.

IF IT is an area which places emphasis on youth, it is also one which has a swiftly growing population of retirees. If the region is optimistic, looking toward the future in this land of economic opportunity, it is also pessimistic, fearful of change and threatened by a break from tradition.

IF THERE is a high charge of conservatism in the Goldwa-

ter style, and even rightist extremism, there is also the California Democratic Council, and also leftist extremism.

Rice noted that political party organizations in this region tend to be weak. For example, voter registration by parties "means little." In Arizona and California Democrats may out-register Republicans by 3 to 2, yet Goldwater can take the presidential electorate in Arizona in '64.



Munsingwear.

presents the

Lambs Wool Look

These masculine sweaters in a blend of lambs wool and Dacron® polyester. Fashion-right and comfort-perfect in a wide range of the season's best colors. Ribbed cuffs and bottom for smooth, neat fit. Sizes Sm-Md-Lg-XLg.

Cardigan \$10⁹⁵ V-neck \$9⁹⁵
Pull-Over



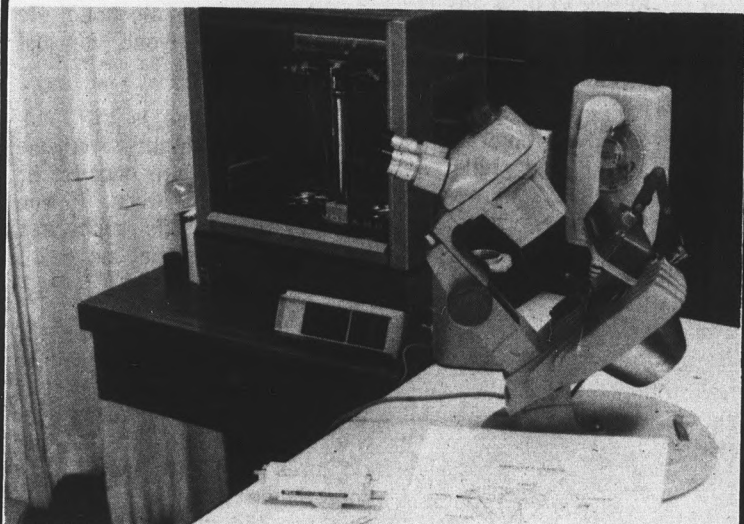
THE
Americana
SHOP

QUALITY MEN'S APPAREL

TEMPE SHOPPING CENTER

OPEN 9:00 A.M. TO 6:00 P.M.
THURSDAY 'TIL 9 P.M.

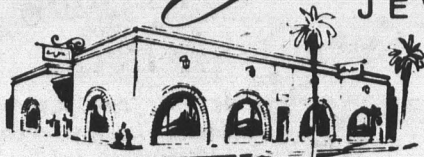
WO 7-5457



IF YOU CAN'T USE THESE TOOLS, you aren't ready to buy a diamond. They are absolutely necessary to properly grade the quality of a diamond. Unfortunately, no one is required to use these, so often diamonds are mis-graded.

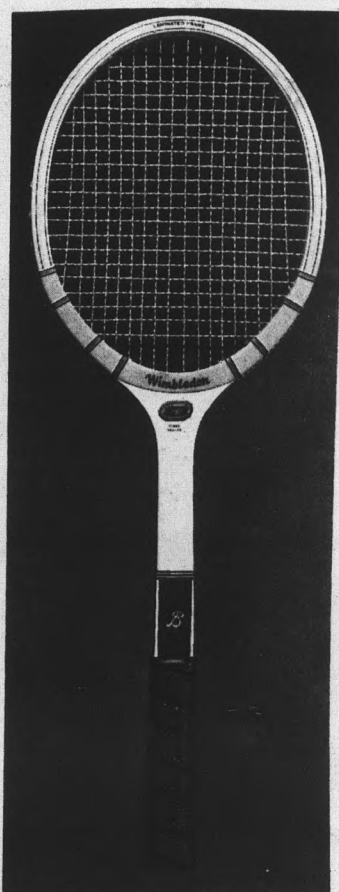
This is why it is essential for you to take our 1/2 hour diamond presentation, and learn how to use these yourself—so you will have more confidence when you buy your diamond. This diamond presentation is given by Joe Berning, a diamond cutter, only at . . .

Paul Johnson
JEWELERS



IN THE
ARCHES

130 EAST UNIVERSITY DRIVE • TEMPE • 967-8917
1940 EAST CAMELBACK, PHOENIX 277-1421
CERTIFIED GEMOLOGIST, AMERICAN GEM SOCIETY



WIMBLEDON

Fully worthy of its famous name, WIMBLEDON has the built-in strength and liveliness for fast, rugged play. An eight-ply maple and double fibre bow construction, unusually responsive flat shaft, vulcanized fibre reinforced throat and shaft, full horseshoe overlay, and tan perforated genuine leather grip are some of the features found in more expensive rackets. A long-life racket with fine styling and impressive playing qualities.

Bancroft



ASU TENNIS

Equipment Headquarters

Complete Restringing Service and Repair

- WILSON, DAVIS, SPALDING, BANCROFT FRAMES AND TENNIS BALLS
- Your Choice of Seven Different Tennis Strings from Multit-Ply Nylon to Imperial Blue Streak Gut Custom strung to fit your particular game.
- Racquet Covers and Tennis Presses
- Wilson Jack Cramer Tennis Shorts and Jackets
- Munsingwear Shirts
- Converse Shoes

BANCROFT WIMBLEDON
STRUNG MULTI-PLY NYLON

Retail at 15.00

SALE PRICE NOW

9⁹⁵

UNIVERSITY
SPORTING GOODS

TEMPE CENTER

Open 9 to 6 Daily — Thursday Till 9 p.m.

Student-Faculty Spirit of Cooperation

During the past two months three major changes have taken place that indicate greater student influence in determining University policy.

The three changes include: a reorganization of the University Disciplinary Committee, reduction of the coed on-campus residence age limit from 23 to 21 and a cancellation of the additional 50 cent charge for basketball tickets approved by the Athletic Board last year.

TWO OF these changes were proposed by students several years ago, but final action was not taken until recently. These actions took place only after students and faculty members formed a highly cooperative spirit. This spirit was made possible because a few students saw the value in establishing greater student-faculty relationships.

The University Disciplinary Committee reorganization was initiated by the members themselves acting upon the advice of George Hamm, dean of students. Dean Hamm, hearing of the students' animosity towards this committee, actively sought student suggestions for its improvement.

Now the Student Affairs Committee with student representatives serves as an appellate body for disciplined students. The reorganization of this committee allows for due process. The major change is the absence of the dean of students on the committee, both as prosecutor and judge. (Prior to reorganization the dean was the chairman of the committee who pronounced the final action.)

THE BOARD OF REGENTS Saturday approved the lowering of coed age limits for off-campus residence. This change was also initiated by students, but crystallized only when faculty members sided with AWS in recommending the change to President Durham, who passed it on to the regents. Now, even Dean Nichols will admit this was long in coming and long needed, due to the growing housing difficulties.

Friday the cancellation of the extra 50 cents per basketball ticket for faculty and students was another indication of the new student-faculty cooperation.

Last year the extra 50 cents for tickets was approved by the Athletic Board because the Athletic program directors were concerned about gate receipt losses caused by students and faculty members who picked up reserved seat tickets but never used them.

THIS YEAR someone failed to give proper notification of the ticket fee increase before tickets were sold. So this left either notifying the ticket holders they would have to pay an additional 50 cents or cancelling the previous decision for the sake of "good will." The measure was very nearly reinstated when the chairman started to break a 6-6 tie by changing his vote. But, one student asked for a committee voting roster which revealed one athletic director was not a member and therefore not entitled to vote. The faculty and students were spared an extra 50 cents per ticket.

Tickets are paid for by faculty and student activity fees collected at the beginning of each semester. Had not the faculty and students worked together, another fee would have been added to the increasing "little extras."

These are a few of the areas in which faculty-student cooperation and understanding has been highly beneficial and progressive in aiding the growth of ASU.

THE ADMINISTRATION cannot be overlooked as a part of the human triangle we call the University. They have the authority, by law, to run the University as they see fit, but they have in no way interfered with the new student-faculty cooperative spirit, in fact, they have encouraged it.

Now that things seem to be improving on all fronts, continued cooperation is most important because once any number of people lose sight of the "University" concept the whole will be affected and progress and growth will cease. It's not all taking — it's more giving than anything else.

From the back row

By NORVILLE NEXUS

Did you ever wonder why people do what they do? Why they smoke, drink or study? Take drinking for instance. Now why would anyone in their right mind tip the bottle? All it leaves you is a depleted wallet, a bad name and a hairy feeling tongue the next morning.

Do you realize what kind of junk is used to manufacture alcoholic beverages? Vodka is made from potatoes, rice hops and malt are the main ingredients in beer and even I don't know what is used to make certain brands of whiskey.

BESIDES the uncomfarts that alcohol brings, there are the surroundings that must be contended with by one who imbibes. Those bar stools are undoubtedly the most uncomfortable seats ever invented. They have no back supports on them which probably lend to the high rate of injuries received while drinking.

Then, of course, there is always the man behind the bar. Some of them are really very nice and some of them are so bad they wouldn't even give you a cold.

The worst bartender type is the woman. You can't tell her dirty jokes and if she gets rude with you, you've got to either leave or shut up — you just can't punch a woman in the chops in our country.

THE TYPES of people in a bar are something else again. There are several types that seem to make their home in bars. First, we have the obvious choice — the alcoholic. He doesn't bother anyone, he just drinks.

The second type is the loud-mouth. He thinks everyone should listen to him because he is a truly cool person. If you don't listen to his gibbering, he'll soon find some one else's ear to assail.

THE THIRD TYPE is the mover. This guy thinks himself so slick that he can get any girl in the place. He comes over and with a mouth full of white dentures innocently asks if he can dance with your date. If you are big enough and he is small enough, the best way to get rid of this pest is to firmly insert your doubled-up fist into his finely polished dentures.

There are sundry other types that regularly invade taverns, but they are too numerous and too noxious to mention.

I really haven't figured out why people put up with all these inconveniences just to spend money. In fact, I often ask myself why I do it.

Letters to the Editor

Editor:

I am a typical Freshman "dormie." Specifically I reside in Sahuaro Hall. I am also an "out-of-stater" and couldn't go home for the Thanksgiving Holidays.

When I took residence in Sahuaro Hall, I knew that meals would not be served over the Christmas Holidays. This did not bother me because I was going home at Christmas anyway and would not have to worry about meals. However, the news that meals would not be served over the Thanksgiving Holidays came as quite a shock.

I was faced with the problem of obtaining meals for the four days with a very low supply of funds. If proper warning had been given in the catalog or in the form that had to be filled out, myself and many other fellow "dormies" would not have been in this predicament.

I consider myself very liberal in my taste of food. I can eat almost anything Saga Food has to offer. Although my taste-buds are slow, my sense of honesty and fairplay are not. I feel that I have been cheated by Saga Food.

David Wood

Editor:

Former Sen. John Florez is quick to criticize the Senate and the State Press for considering the need for reapportionment. I feel, however, that he lacks a knowledge of the situation.

As the State Press so aptly showed in its Nov. 16 editorial, there are great inequalities in the present system of representation.

Mr. Florez disputes these inequalities on the basis that we are called the Senate and therefore should not be apportioned because the national Senate is not.

The fact is, we are the only representative body here, and whether we are called the Senate, the House of Representatives or Parliament is inconsequential. We should still represent the student body as equally as possible.

THE SENATE is further criticized for spending too much time and debate on reapportionment by Mr. Florez. However, since committee meetings on this subject are closed and no bill or amendment has yet been proposed, I would appreciate knowing how he knows what amount of time has been spent on the subject. The fact remains that any time given to bettering our representation of the students is time well spent.

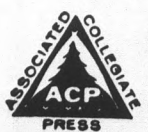
FINALLY, the Senate is criticized for failing to pass any effective legislation due to the study of reapportionment. In truth, only one committee is at present working on reapportionment. The other committees are working on other bills. At present, most legislative work is in these various committees. We are working on quality, rather than the quantity Mr. Florez seems to favor.

I would, finally, like to thank the State Press for its fine editorial on the subject and its coverage of the Senate affairs in general.

Bud Scribner,
AMS Senator

statepress

THE STATE PRESS is the official campus newspaper of Arizona State University. It is published Tuesday through Friday throughout the academic year by the Board of Student Publications in cooperation with the Department of Mass Communications and entered as second class matter at Tempe, Arizona 85281.



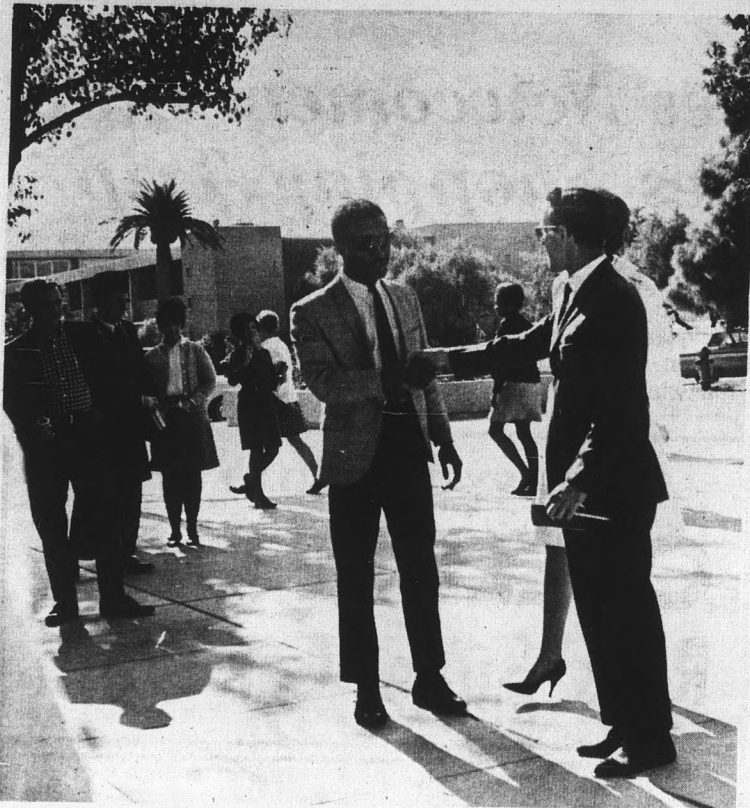
THE STATE PRESS is a member of the Arizona Newspapers Association, Associated College Press and National Advertising Service, Inc. Subscription price is \$5 per school year.

| | |
|---------------------|-----------------|
| Editor-in-Chief | Tony Ault |
| Managing Editor | Jerry Hofferber |
| News Editor | Valerie Jones |
| Assistant | Bill Cushing |
| Campus Editor | Bob Johnson |
| Assistant | Dick Gazl |
| Sports Editor | John Wallace |
| Society Editor | Susie Black |
| Assistant | Linda Coffam |
| Copy Editor | Bill Dempsey |
| Photo Editor | Con Keyes |
| Assistant | Bill Grey |
| Faculty Supervisor | Robert E. Lance |
| Advertising Manager | Hal Hubele |



Concerning Letters

This is your newspaper and any student, faculty member or administration opinion or viewpoint, in good taste, on any subject concerning University life, will be welcomed.



DOWN WITH THE BIBLE — The University Players presented one act dialogue plays on the mall yesterday dealing with their favorite subject — the Bible.

Reading Class Given

The College Reading Class, geared to improve reading efficiency, vocabulary and, to some extent, study skills, will be offered during the spring semester for no University credit.

Six sections of the reading program will commence the second week of classes and involve 30 hours of classroom instruction. Classes end during the twelfth week of the semester.

Interested students may register in the Reading Center, during pre- and regular registration.

A fee of \$15 will be charged. Sections will be limited to 25 students on a first come basis.

FOR AN EVENING TO REMEMBER... START WITH



Paul Shank's
Gracious Dining
IMPRESSIVE ELEGANCE AT POPULAR PRICES!

Safari HOTEL • SCOTTSDALE

Sale of Paintings Donated by Celebrities To Be Highlight of Newman Art Festival

The Newman Center Art Festival, scheduled for Dec. 4 from 11 a.m. to 11 p.m. at the Newman Center, will feature paintings donated by celebrities from all over the nation.

Art collectors including Bing Crosby, Dean Martin, Mr. and Mrs. Robert Kennedy, Walt Disney and Bill Keane donated works for the Art Festival.

Cash prizes for the best amateur work are to be awarded at the show.

All art works that will be on display will be auctioned off beginning at 8 p.m.



FAMILY CIRCUS — Charles Farrell and Mrs. Jack Schouten, president of Notre Dame Auxiliary, look over art work by Bill Keane which he donated for Newman Center Art Festival Dec. 4 at 11 a.m.

Bowling Clinic Open to Novices

A weekly series of both men's and women's free bowling instruction begins this afternoon in the MU games room at 2 P.M.

A certified bowling instructor will start with a one hour women's instruction period this afternoon and will conduct a similar men's clinic tomorrow at the same time.

JOB APPLICATION PHOTOS

8 for \$6.88

4 poses to choose from



BILL LAURIE, Sigma Chi

"Portraits of Excellence"

by

STUDIO

Located in the Pioneer Camera Shop
TEMPE CENTER • PHONE 967-4662

*We're Only A Dealer . . . But We Try Our Darndest To Please Everyone.**



Madisons
Chevrolet
CAMPUS REPRESENTATIVES

- George Tischer 967-6484
- Randy Byers 967-6484
- Hank Homes 967-0991

* STUDENT, FACULTY AND STAFF DISCOUNTS AVAILABLE ON NEW AND USED CARS AND PARTS

Club Calendar

EDITOR'S NOTE: Clubs interested in publishing meeting or activity dates of their organizations in this column may bring the information into MU3 or call 966-3654 at least two days before desired date of publication.

TODAY

CIRCLE K CLUB will meet in the PV East cafeteria at 5:15 for a dinner meeting. This is also an important business meeting.

LA LIGA PAN AMERICANA will meet in MU 213 at 7:30 p.m. to discuss the Christmas Mexican Dinner scheduled for Dec. 11.

Dr. A. J. Bachrach, head of the department of psychology, will speak on graduate school in psychology at the **PSI CHI** meeting in SS 332 at 3:30 p.m. All interested persons are invited to attend.

TOMORROW

"Is Prayer Obsolete?" will be the subject of a talk given by Lenora D. Hanks in Danforth Chapel at 8 p.m. This is the **CHRISTIAN SCIENCE COLLEGE ORGANIZATION'S** annual college lecture, which is open to all University students.

"Turbine Rail Car Propulsion Systems" will be the title of a speech to include slides given by Charles Sperr, engineer from AiResearch. The talk is sponsored by the **INSTITUTE OF ELECTRICAL AND ELECTRONIC ENGINEERS (IEEE)** and will be held in ECG 150 from 11:30 to 12:30. A discussion period will follow the lecture, refreshments will be served and visitors are welcome.

INTERNATIONAL RELATIONS CLUB will meet in SS 101 at 2:30 p.m. for a discussion of upcoming programs.

RODEO CLUB will meet in AG 202 at 8 p.m. This is the last meeting before the Rodeo, Dec. 10 and 11. A work party will be needed Saturday morning to clear the rodeo area at the corner of Rural Road and University Drive. Work will start at 8 a.m. The club's next social event will be a dance held at the ABC Ranch.

FRIDAY

SAILING ASSOCIATION will meet in MU 209 at 3 p.m. The meeting is open to all students interested in learning to sail for pleasure or racing. Also, funds for a club boat will be discussed at this time.

SUNDAY

ALPHA BETA ALPHA will hold its annual Christmas reception from 3 to 6 p.m. at the Harold Batchelor residence, 111

W. 7th St., Tempe. Club members' families and friends are welcome.

MONDAY

ARIZONA ASSOCIATION OF STUDENT NURSES will hold a joint meeting with the Pre-Medical Students in NC 4 at 8 p.m. A lecture on burns will be included.

Who's Whose

Editor's Note: Students wishing to announce a pinning, engagement or marriage may pick-up the necessary form in MU 3. Please try to have the form completed at least three days prior to date of publication desired.

PINNED

Bob Golden, Alpha Epsilon Pi, Sigma Delta Chia, to Teri Stein.

Bonnie Jean Goldman to Kent Frauenberger, Theta Chi.

Michele Goodman, Kappa Kappa Gamma, to Phil Skramstad, Theta Chi.

ENGAGED

Pam Johnson, Alpha Phi, to Tim Powell.

Jory Crane, Pi Beta Phi, to Paul Jensen, Sigma Nu.

Jeanette Young, Beta Chi Epsilon, to Ronald D. Standage.

Leslie Garrity to Steve Sawyer, Alpha Rho Chi.

Kathy Bron, Kappa Alpha Theta, to Ted Alexander.

MARRIED

Linda Bron to Rex Martin, Sigma Nu

TO MEXICO —

Faculty Wives Newcomers Club Plans Nogales Shopping Trip

A sightseeing and shopping trip in Old Mexico is scheduled by the Newcomers Group for all University faculty wives.

The annual trip to Nogales will be made this year on Saturday, Dec. 10, with departure time set for 8 a.m. from the MU by bus.

All those planning to make the trip are asked to have their reservations in no later than Saturday, Dec. 3, so that arrangements for chartering a bus may be made in ample time. Mrs. Duncan Patten, of 333 East Geneva, Tempe, is chairman. Her telephone number is 966-6529. She is accepting reservations on a first-come first-served basis.

The trip provides an opportunity to see Nogales and to shop there for Christmas gifts, and for items to display at a January party which will center on the theme: Mexican Holiday.

Also scheduled in December by the Newcomers Group of Faculty Wives Club is an event entitled "Christmas — Arizona Style," to be held Tuesday, Dec. 6, at 7:30 p.m. at the Alumni House on campus.

The theme will be carried out by demonstrating the uses of desert flora, including cactus and various shrubs, and how these plants may be incorpor-

ated into Christmas decorations.

The displays will include both indoor and outdoor decorating techniques found particularly in the West.

Participants will see unique

and colorful Western ways to express the Yuletide theme, according to the co-chairmen, Mrs. Eugene F. Chasey and Mrs. John E. Bell, both of Tempe.

EVERY THURSDAY IS COLLEGE DAY Russ' Super Car Wash

CAR WASH ONLY \$1.25 No Purchase Necessary

\$1.00 with purchase of 7 gallons of Gas or Spray Wax application.

Russ' Super Car Wash

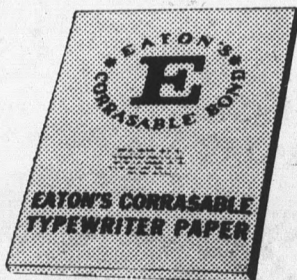
7569 E. McDOWELL RD. SCOTTSDALE, ARIZONA

DON'T

fight it.

Get Eaton's Corrasable Bond Typewriter Paper.

Mistakes don't show. A mis-key completely disappears from the special surface. An ordinary pencil eraser lets you erase without a trace. So why use ordinary paper? Eaton's Corrasable is available in light, medium, heavy weights and Onion Skin. In 100-sheet packets and 500-sheet ream boxes. At Stationery Departments.



Only Eaton makes Corrasable.®

EATON PAPER CORPORATION, PITTSFIELD, MASSACHUSETTS

Now on our shelves at the

UNIVERSITY BOOKSTORE

Sun Devils Barber Shop
Razor Cuts
OPEN MONDAYS
Through Friday
8:30 - 5:30
in the **ARCHES**
Corner 8th St. & Forest

statepress

Classified

For classified advertising submit ad in person to the State Press, MU 3. Two days in advance of publication, between 8:30 a.m. 13:30 p.m., or call 966-3657. Rate: 5c per word. 75c minimum per issue.

FOR SALE

Shop **AFTER CLASS** at **AFTER CLASS**. Open 1 to 9 p.m. 1021 S. McClintock Dr., Tempe. Ask about our ASU discount.

MOTORCYCLES

BOYS — GIRLS
Learn to ride a motorcycle **FREE**. For information call Cycle Rental Corp. 946-9742.

TYPING

PAPERS and thesis. Experienced typist. 1342 E. Culver.—Phx. 253-6452.

LETTERS, term papers, manuscripts, quality work, reasonable. Call 967-7250 after 6 p.m.

AIRCRAFT

PRIVATE pilot's course, free financing. Scottsdale Flying Service 946-5907 or 943-2885.

MESA FLIGHT SERVICE — 964-9281.

ATTENTION student and private pilots!!! SAVE \$6/hr. in Cessna 150 and 172. 265-1329.

REAL ESTATE

HOME with beautiful pool near A.S.U. Days 966-3242, eves. 967-7948.

LOST

SAT. afternoon, "Wierd Harold", tri-color Basset Hound, scars on front legs, 967-9877.

SERVICES

LOW MOTORCYCLE, AUTO RATES FOR STUDENTS
Carroll Insurance 967-8709
Res. 967-4587
Representing Aetna - Safeco - INA Progressive

LIFE INSURANCE
\$10,000 — \$40,000
(Students under 25)
NO WAR EXCLUSION
Call: CARROLL INS.
967-8709 — Res. 967-4587

HELP WANTED

PART-time help needed. Evenings and weekends. Service station experience preferred. 966-1358.

EARN \$50 per week. 3 evenings and weekends. Apply 1000 Apache Blvd., Suite 221, 10 a.m. any morning.
NEED TUITION OR SPENDING MONEY?

If you can work 3 hours per day, we'll help pay for your college education! We have openings for students in the Phoenix area for a limited time only. You must have use of a car and be willing to contact business owners. Earnings will depend upon how many hours you work. Write: Art Dickerson, President, Southwestern Petroleum Corporation, 534 N. Main, Fort Worth, Texas.

AUTOMOBILES

'62 CHEVY II snow-white Nova conv. with red interior, auto. trans., low mileage, one owner. \$800. 969-9585.

'64 Volks, many extras. \$1,200. 1040 E. Spence, No. 2.

PERSONAL

Martha B. Enjoyed outing, however the water was a little cold. No pneumonia, just double pleurisy. See you Wednesday. John E.

ABOVE AVERAGE STUDENTS — Interested in seeing the world and getting college credit at the same time? Inquire about Chapman College's Seven Seas Program. Call campus representative Mike at 966-4975. Academic scholarships available. Special \$1200 scholarships for Juniors. Spring semester sails Feb. 7 for South America, West Africa, and Northern Europe.

INSTRUCTION

INDIVIDUAL tutoring in math, physics, chemistry and biological sciences. Phone 967-7924.



Devils Hit Bull's Eye In Southwest Tourney

Sun Devil and Devilette archers swept the top spots here last weekend in the 1966 Southwest Intercollegiate Archery Meet.

WINS in the women's division were most impressive as Devilettes took eight of the top ten spots, including the first four places.

Point leader was Judy Severance with a total of 1906 markers, a new meet record. Next were Lynn Swanlund, 1898; Sue Donnelly, 1841; and Merry Sheppard, 1729.

ENROUTE to her winning score, Miss Severance set three new meet records. She shot a perfect 216 score in the Columbia 30-yard distance round at a 48 inch target. Her total of 742 in the Chicago round eclipsed the old mark of 720, and in the 50-yard Columbia round, her 192 bettered by eight the old meet mark.

In the men's division, Devil Jim Fay nosed out fellow-Devil Bob Taliaferro by 2072-2040. The

duo took the first two places with Dick Watson of Los Angeles State College scoring third. Next Sun Devil finisher was Bob Hall in fifth place.

IN HIS WIN, Fay set five new meet records in separate firing categories. Taliaferro also starred by setting three new meet records. The two competed in a

field of 13 men.

In addition to host ASU, four schools sent representatives to the meet: Los Angeles State College, San Fernando Valley State College, California State College at Long Beach and the UofA. Pierce College of California also entered the women's division.

WHITTIER 'CHICKENS OUT' —

New Rule Foul

By JOHN WALLACE

There's a new foul rule in the Western Athletic Conference, you know. It's the one where no free throws are awarded for the first six common fouls, the offended team taking the ball out of bounds instead.

That rule is all well and good for the WAC, but teams outside the conference have their choice of either playing under the new rule or going back to foul shots.

THE SUN DEVILS have approached all of their non-WAC opponents in connection with this monumental decision of which rule to watch, and every team has agreed to play out-of-bounds ball . . . all except Whittier the Devils' opponent tomorrow night in Sun Devil Gym.

The word is out that Whittier is "chicken."

No, not because of the Devils (who couldn't scare their own junior varsity), but probably because what they're confused about, they're afraid of.

A "COMMON" FOUL is something that isn't. It isn't a foul against a player who is shooting. It isn't a flagrant or intentional foul committed against any player. What a "common" foul IS is everything else (maybe).

Anyway, after the first six common fouls, a seventh will draw a foul shot and a second if the first shot is successful. As for those flagrant and intentional babies, that's a free throw anytime.

THE PURPOSE of the foul experiment is to curtail foul shooting and the resulting time consumption. It sounds like a good idea, as fans may be wanting to get of the gym as quickly as possible tomorrow if the Devils look against Whittier like they did against the freshmen.

Gretta Signs Cub Contract

Jim Gretta, outfielder with the Sun Devil 1965 NCAA championship baseball team, has signed a professional baseball contract with the Chicago Cubs of the National League.

The 6-1, 175-pounder had a varsity batting average of .287 on the '65 team. He also played on the '63 and '64 squads.

Gretta is expected to be assigned to either Lodi, Cal. of the Cal-State League, or Quincy, Ill. of the Midwest League.

HOME IN ON . . .

the best Flight School in Arizona. New Aircraft, superb maintenance, licensed mechanics, FFA-approved

MERCURY AVIATION
Tucson Int'l — 294-3474
Sky Harbor, Phoenix
273-1201

that new men's shop in Scottsdale

TUXEDO RENTALS

Open Thurs. Night

JUSTER'S

44 W. MAIN SCOTTSDALE



FARAH

Master Ply

with FaraPress

You can't help sweeping a gal off her feet in masterfully tailored slacks like these. The secret is in the weave of vat-dyed fibers that are double-plied for double strength. Permanently pressed to "Never Need Ironing."

Waists 28"-38" \$800



CAMPUS men's shop

603 Mill Avenue • Tempe

1967 ENGINEERING AND MATH GRADUATES

FOR

- | | |
|-----------------|------------------------|
| SYSTEMS | INDUSTRIAL ENGINEERING |
| PRODUCTION | TEST ENGINEERING |
| RESEARCH | FIELD ENGINEERING |
| QUALITY CONTROL | DESIGN |

The Inland Steel Company, East Chicago, Indiana, invites you to investigate our many career opportunities. Consult the specific job descriptions in the pocket of our brochure. Our representatives will be on your campus on Thursday, December 8th. For an appointment, Contact Mr. Rodney M. Armstrong, Jr.



INLAND STEEL COMPANY

INDIANA HARBOR WORKS
EAST CHICAGO, INDIANA



An Equal Opportunity Employer
In the Plans for Progress Program

Our Annual Storewide Book Sale Now Underway — Check These Gift Item Buys — In Time For Christmas

AS MUCH AS
50% OFF

★
WIDE VARIETY
OF GAMES

★
MEN'S WALLETS

★
LADIES
BILLFOLDS

★
PHOTO
ALBUMS

★
BRIEF
CASES

★
POCKET
SECRETARIES

★
MUGS &
CERAMIC WARE

★
BOOKS-BOOKS
BOOKS

★



TR-35

EBERHARD FABER

Writing/Marking PENS



a distinctive new feel in writing!

4 COLORS

BLUE • BLACK • RED • GREEN

- ULTRA FINE NIB
- DISTINCTIVE STYLING

AS MUCH AS
50% OFF

★
PICTURE
FRAMES

★
CLOCKS

★
WATCHES

★
SCRIPTO
LIGHTERS

★
WIDE VARIETY
of
JEWELRY

★
POSTERS

★
RONSON
LIGHTERS

★
PEN SETS

★
BOOKS-BOOKS
BOOKS

★

Student Book Center

corner college & seventh street

★ HOURS: MON. - FRI., 7 To 9; SAT. 8 - 5; SUN. 1 - 5 Phone — 966-6226 ★