

# state press

ARIZONA STATE UNIVERSITY

Tempe, Arizona

Wednesday, November 16, 1966

Vol. 48—No. 34

## Escalation in Viet Nam: An Unpopular Viewpoint

What was billed as an "academic" discussion of solutions to the Viet Nam conflict included a non-academic plea to withdraw as well as an academic argument supporting current policy. Three educators were to have offered their solutions in the MU ballroom Monday night.

Dr. Yung-Hwan Jo, assistant professor of political science, Dr. Donald Gieschen, assistant professor of philosophy, and Dr. George Peek, professor of political science, were to have represented the present administration policy, escalation, and withdrawal.

**BUT, THE DISCUSSION** was grounded before it started when the three academicians could not agree on who would represent the escalation viewpoint.

As it turned out, Dr. Jo generally supported the Administration policy, Dr. Gieschen made an impassioned non-academic plea for withdrawal, while Dr. Peek answered a question or two, but did not participate.

The escalation viewpoint went unrepresented.

**AT THE OUTSET** Dr. Jo made it clear he agreed in substance with the idea of escalation, but disagreed on the basis of "attainability."

He suggested "a horrible end might be better than a horror without end."

His blueprint for the end of the war: Create a large core area in South Viet Nam, strengthen it, then reduce actions in the South and bombing in the North.

**HE HOPES** a possible change in attitudes on both sides coupled with possible changes in government, might bring about negotiations. If Hanoi fails to respond, then bombing attacks might be resumed later, he said.

Such a course of action might be appropriate at present because "neither party can afford to come to the conference table at the present time," he said.

"**WE SHOULD NOT** destroy North Viet Nam,"

he said. To do so would be to strengthen the dissident factions in the Hanoi government and play into the hands of Communist China.

Some the advantages of America's present policy, he said, are:

—Present policy exasperates the dispute between China and Russia, while escalation tends to force the Communists to stick together.

—**RUSSIA** in the present situation is not in a position to participate in the war directly.

—"It's the cheapest policy and the least evil policy," he said. Escalation is very expensive in both manpower and money.

Dr. Gieschen, claiming to speak more from the non-academic viewpoint of the Vietnamese peasant, condemned American action in Vietnam.

"**WHY VIET NAM?**" he asked. Because China is upsetting the balance of power in the Cold War, and because of American reluctance to support revolutions.

"America is a big force against revolution," he said.

Gieschen reeled off a long list of statistics pegging South Viet Nam as a United States creation and a dangling puppet.

**AND AS FOR** the claim the United States makes concerning supply of men and arms draining from the North, it "simply is not true," he said.

The war is an insurrection in the South against the puppet government in Saigon, he insisted.

**THE UNITED STATES**, he said, cannot resolve the war if it relies on the humanity of Hanoi.

Future negotiations have no hope if the United States continues to hold the supposition Hanoi must make the first move.

"How can we expect such virtues of Hanoi that we obviously don't possess, ourselves," he asked.

The discussion was sponsored by the International Relations Club.

## Mesa Suspect Called 'Loner'

A campus criminologist said that if Robert Benjamin Smith, accused of murdering five people in Mesa Saturday, had more social bonds and recognition from friends, he might not have acted the way he did.

**DR. P. G. GARABEDIAN**, associate professor of sociology, said that Smith "is obviously an isolate."

In other words, he didn't have many friends, didn't participate in sports and was alone a great deal of the time.

"I think it's apparent that a lot of the people associating with Smith knew he was this way but nothing was done about it," said Garabedian. "This shows that informal social control is very weak in our society."

Police charged that Smith, an 18-year-old Mesa High School student, walked into a Mesa beauty school Saturday morning and shot six people, killing four women and a 3-year-old girl and wounding another woman and a 3-month-old baby.

**THE BOY SAID** he committed the mass slaying because he wanted recognition, police said, citing recent mass slayings in Austin, Tex. and Chicago as giving him the idea. Smith reportedly told police he had been planning the act for more than three months.

"The value system of our society puts a great deal of importance on human life and the individual," said Garabedian.

He said this is probably why Smith chose to kill more than one person. This way the boy would get a great deal more publicity.

"He must have recognized he wasn't the typical kid," said the criminologist. "He must have been keenly aware of social pressures."

**THE CRIME** represents an attempt to fit what the boy conceives as a masculine role, Garabedian continued. He said this may have been the result of his military family background.

## Senate to Ponder \$225 for Delegate

A proposal which would provide \$225 from Student Senate's unappropriated balance to cover the travelling expenses of a University delegate to a student conference on U. S. Affairs at West Point will be decided this afternoon at the 3:45 p.m. Senate meeting.

The measure, introduced by IFC Sen. Don Harris, was defeated in a preliminary vote Nov. 2.

A bill to establish the unappropriated balance as a formal foundation will receive second reading. The bill, proposed by Architecture Sen. Thomas Papandrew, would use the interest from this Foundation to bring a noted speaker to campus each year.

A bill establishing a University Western Week will also receive second hearing. The measure, introduced by Panhellenic Sen. Mary Thompson, would repeal Senate Bill 174.

## Nursing Building Dedicated; 200 Attracted to Ceremonies

A crowd of about 200 students and faculty members turned out last week to watch the formal dedication of the School of Nursing building.

Lulu Wolfe Hassenplug, dean of the School of Nursing, UCLA, and Jo Eleanor Elliott, president of the American Nurses' Association, were the guest speakers at the dedication.

Speaking on the subject, "Professional Education for Nursing," Dean Hassenplug said, "Learning is a lifelong process, and student nurses go through a life where nothing is remote and everything is possible."

"Leadership is not academically endowed by a degree, but it is achieved by having courage and a lot of pushing and pulling," said Miss Elliott, speaking on "Leadership in Nursing."

Miss Elliott also said, "We must be careful not to prepare our students for so far in the future that they will not be able

to work today."

Other speakers included Rev. Thomas A. Walsh, director of the Newman Center, Loretta Hanner, dean of the College of Nursing here, and President Durham.

An open house conducted by the nursing students followed the ceremony.

## Opera Tryouts Scheduled Soon

Six University coeds will audition for the annual Metropolitan Opera Nov. 26 at the University of Arizona Auditorium, said Christina Carroll, associate professor of music.

Betty Burton, Glenda Finley, Susan Mecham, Betsy Taylor, Mary Dillon and Helen Ralls will present a practice recital Nov. 15, at 2:40 p.m. in the MU Ballroom.

## Campus Leaders Hear Durham

By **CHUCK PIERSON**

Introducing himself as "G. Homer Durham, professor of political science and friend of the University," President Durham led off a discussion with 50 student campus leaders last

Thursday in which he pointed out the distinctiveness of a university:

"It should discover new knowledge in addition to teaching the existing."

**HE FELT** this should be es-

pecially true at the graduate level.

Dr. Durham went on to show that the University's standards are higher than those of many similar schools. "Ohio State accepts all their high school graduates that apply. ASU does not admit out-of-state applicants in the lower third of their class or residents in the lower fourth."

Residents who do not qualify have two more chances, according to Dr. Durham. They may appeal or they can go to one of the two-year junior colleges and attempt to bring up their grades.

Several problems were raised by some of the student leaders. A former justice of the ASU Supreme Court complained that last year "almost no one brought anything to us."

**CAROL** Tessitore, captain of the pom-pom girls, felt that "too much status is given to belonging to many organizations instead of doing a good job with one."



Photo by Chuck Pierson  
**PRESIDENT G. HOMER DURHAM**

### Grants Sought To Aid Teachers Of Slow Pupils

Fellowship applications for a teaching program for mentally retarded children has been made by the Department of Educational Services in the College of Education according to Dr. Willard Abraham, department chairman.

The fellowships, if granted, by the U. S. Office of Education, will be for the summer of 1967 and the 1967-68 school year. They will be available to seniors and graduates interested in teaching mentally retarded children. The fellowships should pay tuition and a stipend for each student.

The department applied for the fellowships because of the recent shortage in teachers of mentally retarded children. More information concerning the fellowships will be announced after January

#### ASU FORUM

Edwin McDowell of the Arizona Republic will speak today at 2 p.m. in SS234. Mr. McDowell's topic is "Far Eastern Report," a discussion of his observations while in Japan.

#### PI OMEGA MEET

Pi Omega Pi, National Business Education Honorary, will hold its November meeting tomorrow, in Room 206 of the Business Administration Building. The business meeting will begin at 3 p.m. for the general membership; at 3:30, there will be three guest speakers: Mrs. Joanne Harrington, Miss Donna Christian, both graduate assistants here and Miss Janet Campbell, teacher at the American Institute of Technology.

#### CAR WASHES

Phrateres' pledge class plans

## Bits and Pieces

two Nov. 17 car washes.

One, to feature clowns and candy for the children, will be held at the Tempe Shell station on the corner of Priest and Broadway.

The other is to be at the Phoenix station on the corner of 16th Street and Thomas.

#### MOORE

Dr. Carleton B. Moore, director of the Laboratory for Meteoritic Research, has been elected president of The Meteoritical Society, an international organization of professional workers in meteoritics, astronomy, or geology.

Dr. Moore, who joined the faculty in 1961, succeeds Peter Millman, of the National Research Council of Canada, Ottawa, for a two-year term.

#### HOOK

Dr. Ralph C. Hook, director of the bureau of business research and services, will give a presentation and slide selection of his recently-completed sabbatical in Sweden. The talk, to be held today at 12:30 in MU 211, will feature Dr. Hook's impressions and experiences in modern Sweden.

The event is sponsored by the Marketing Club and refreshments will be served.

#### ENGLISH EXAM

The Junior English Proficiency Examination will be given Nov. 17 beginning at 2:30 p.m. in LSC 191.

All Liberal Arts second-semester sophomores, with the exception of those who received an A or a B in EN 102, are required to take the test.

We've got the best facilities, the finest benefits, and blah, blah,

# blah!

Sure, you've heard it before—probably from so many companies it's lost its meaning for you.

So we'll skip the story about our having the best, or the most, or the finest of anything. Even if we think privately that it's true, it still remains for you to be convinced.

We do have a booklet about our facilities, the work we do, the places where we work, the cities and towns we live in.

And if you've got the maturity to know that a man gets ahead on his own demonstrated ability

to handle a job, you're the kind of man Collins would like to talk with.

We suggest you see your college placement officer for details. If he happens to be out of Collins Career books, write to Manager of Professional Employment, Collins Radio Company, in Cedar Rapids, Iowa; Dallas, Texas, or Newport Beach, California.

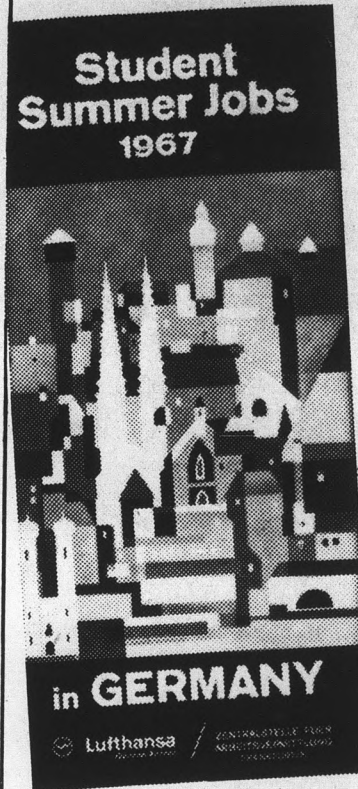
Then, contact the Collins representative when he visits the campus. You'll get straight talk about careers at Collins.

COMMUNICATION / COMPUTATION / CONTROL



An equal opportunity employer

COLLINS RADIO COMPANY / DALLAS, TEXAS • CEDAR RAPIDS, IOWA • NEWPORT BEACH, CALIFORNIA • TORONTO, ONTARIO  
Bangkok • Beirut • Frankfurt • Hong Kong • Kuala Lumpur • Los Angeles • London • Melbourne • Mexico City • New York • Paris • Rome • Washington • Wellington



Wenn Sie 18 Jahre oder älter sind und einigermaßen mit Ihrem Deutsch zurechtkommen, dann senden Sie diesen Gutschein ein. Er könnte Ihnen Vergnügen und vielleicht sogar Nutzen bringen!

Lufthansa German Airlines, Dept. UX122  
410 Park Avenue  
New York, N.Y. 10022

Please send me an application form and brochure about Student Summer Jobs in Germany for 1967.

NAME \_\_\_\_\_

UNIVERSITY \_\_\_\_\_

SEMESTER \_\_\_\_\_

ADDRESS \_\_\_\_\_

CITY \_\_\_\_\_

STATE \_\_\_\_\_

ZIP \_\_\_\_\_



# Gandhi's Ideas Naive, Says History Expert

India's Mahatma Gandhi, the advocator of non-violence, often brought violence with his policies, an Asian and British history expert claimed Monday.

Speaking to a group in the MU Ballroom, Dr. Mark Naidis from California State College in Dominguez Hills, stated that India's history was "studded with violence" although her holy men preached against it.

In his talk entitled "The Riddle of Mahatma Gandhi," he described Gandhi as "something of a saint, and up to a point, a successful revolutionary."

He was unquestionably a revolutionary in the sense that he wanted to eliminate British rule in India, Dr. Naidis said. He also wanted to maintain the Indian culture, and "it is sometimes difficult to separate Gandhi the revolutionary from Gandhi the reformer."

GANDHI'S FIGURE, like John

F. Kennedy's, has grown throughout the world, Dr. Naidis said. Although today's India is not Gandhian, the man is revered universally.

He was an innovator, a man who brought nationalism into

the villages and made it a mass movement and a man who became an avid enemy of the British rule in India. Yet "consciously or unconsciously, he frustrated the hopes of minority groups for a share of the politi-

cal power," Naidis stated. "His social reform ideas were vague and impractical. His economic ideas were incredibly naive. Gandhi became great because, illiterate and half-starved, millions of Indian villagers could identify with him and hope for a better future."

AGAINST URBANIZATION, Gandhi rejected machinery. He saw factories and industry as unnecessary evils, and concluded India should eliminate them and return to her former way of life.

He also wanted children to be taught handicraft skills and all subjects such as mathematics,

geography, etc., were to be incorporated into them. The outcome of this was the teaching of vocational skills in schools.

His solution to poverty was "get used to it."

DR. NAIDIS, who became interested in Asian affairs serving in the China - India - Burma command in the Air Force, is the author of "India: A Short Introductory History." He is presently working on "The Wheel and the Crescent," a cultural history of India.

The talk was sponsored by the University's Center for Asian affairs.



POP-UP — "The Roar of the Greasepaint, the Smell of the Crowd" will be presented by University Players as part of the MU Pop-Up series. Today's free preview of the Broadway musical by Leslie Bricusse and Anthony Newly will be held in the MU ballroom at 11:45 a.m. and 12:45 p.m.

## Music Lecture Given in French

Dr. Robert Lowe, associate professor of French, lectured on the music of the court of Louis XIV of France to members of the newly organized French club last week.

The lecture, delivered entirely in French, was accompanied by records.

Any student or faculty member with even a small understanding of the language is invited to join L'Amicale Du Gaulois. The club members are planning a Christmas party for Dec. 11.

## WANTED COLLEGE STUDENT

Attractive, sparking personality interested in women's fashions for evening sales work in well known Scottsdale shop.

Some modeling and sales experience preferred.

APPLY AT FASHIONS WEST

One 5th Avenue  
Scottsdale



BILL LAURIE, Sigma Chi

"Portraits of Excellence"

by

STUDIO

Located in the Pioneer Camera Shop  
TEMPE CENTER • PHONE 967-4662

## JOB APPLICATION PHOTOS

8 for \$6.88

4 poses to choose from

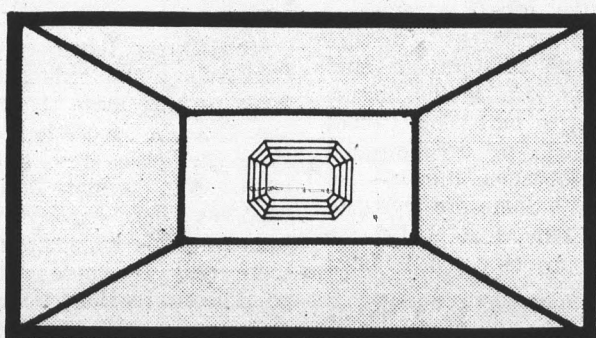
## Taking your M.R.S.?



## Do your cramming with MODERN BRIDE

From previews of the newest bridal and trousseau fashions to exciting plans for an off-season European honeymoon, Modern Bride is the modern guide to large and small weddings, first-home furnishings, post-nuptial entertaining, and the planning that makes perfect — before, during and after. See for yourself in the current issue of Modern Bride.

JUST 75¢—ASK ABOUT THE SPECIAL HALF-PRICE STUDENT SUBSCRIPTION RATE AVAILABLE THROUGH COLLEGE BOOKSTORES!



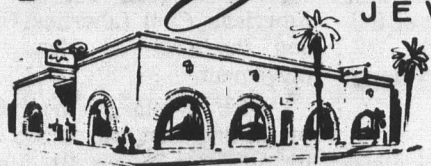
## GIRLS, SEE...

One of the world's largest DIAMONDS, weighing over 30 carats. This week only, on display in our Tempe store. Also, browse around and look at hundreds of pierced earrings (some on sale) just for the fun of it.

1 Block from PV, in the Arches, at . . .

OPEN TONIGHT 'TIL 9

Paul Johnson  
JEWELERS



IN THE ARCHES

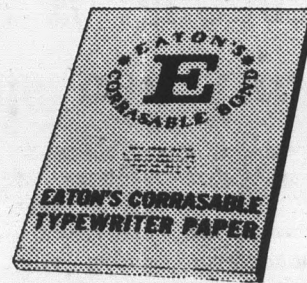
130 EAST UNIVERSITY DRIVE • TEMPE • 967-8917  
1940 EAST CAMELBACK, PHOENIX 277-1421  
CERTIFIED GEMOLOGIST, AMERICAN GEM SOCIETY

Anyone can

# GOOF.

With Eaton's Corrasable Bond Typewriter Paper, you can erase that goof without a trace.

Not a telltale smudge remains. A special surface permits quick and easy erasing with an ordinary pencil eraser. For perfect papers every time, get Corrasable. In light, medium, heavy weights and Onion Skin. In handy 100-sheet packets and 500-sheet ream boxes. At Stationery Departments.



Only Eaton makes Corrasable.®

EATON PAPER CORPORATION, PITTSFIELD, MASSACHUSETTS

Now on our shelves at the

# UNIVERSITY BOOKSTORE

# Reapportionment: Is it really needed?

statepress

The Senate Operations Committee is currently engaged in a long needed study that undoubtedly will lead to some controversy in the legislative body.

The study: current apportionment and the possibilities of reapportionment.

To the average student who hasn't taken advantage of being represented by one or more of his elected senators, reapportionment may mean very little, but it may spell big changes in the entire structure of ASASU. Every student activity will be affected in some way if reapportionment takes place.

It is needed because the senate, as it is now constituted, has proven cumbersome and much too slow for the past five years. Very little legislation has passed through the senate than can really be considered as affecting "every student," not that this is always necessary or even desirable.

Nevertheless, a rapidly expanding student population needs a representative body that can foresee future problems and act quickly to overcome them, without arguing over the omission or addition of the whereases and herefores of bills.

In short the present senate has become a victim of bureaucracy.

If students were to consider representation on a strictly population basis, the current apportionment is grossly inadequate. (See chart)

Consider the fact that the Liberal Arts College, with 4,287 students in 1965-66, was represented by only two senators, while the College of Nursing, with 33 students, was also represented by two senators. This is equal representation?

If we were to look at representation from the standpoint of geographical location, we would find that off campus students number nearly 16,000 (65-66) and are

SENATE REAPPORTIONMENT 1965-66		
Constituencies	Enrollment	Senators Representing
Liberal Arts	4,287	(2)
Education	4,020	(2)
Business Administration	2,335	(2)
Engineering	1,833	(2)
Architecture	599	(2)
Fine Arts	583	(2)
Nursing	339	(2)
Graduate	4,130	(2)
Freshman	5,089	(2)
Sophomore	3,201	(2)
Junior	2,993	(2)
Senior	2,976	(2)
Men (AMS)	11,919	(2)
Women (AWS)	7,279	(2)
Fraternities (IFC)	1,100*	(2)
Sororities (Panhellenic)	650*	(2)
Interfaith Council	?	(2)
Interhall	?	(2)

\*approximate figure

Most enrollment figures taken from the Board of Regents Report Dec. 20, 1965 for the 1965-66 year.

represented by two senators, while on campus students, numbering approximately 3,200, are also (equally?) represented by two senators.

On the other side of the coin, every student is now represented by at least six senators, which is excellent, but just how many students know even one of them? It might be easier to remember one or two, rather than six, especially during elections. A student senator would be much more important if he were the only one elected from a field of six.

There used to be a certain status attached to the different classes. If a young man wore a beanie, answered "yes sir" to every question, and wore an ASU sweat-shirt and tennis shoes, you could once say "there's a freshman." Today there are freshmen ranging from 17 to 60, and beanie sales have dropped considerably. Yet,

## Homecoming: A sense Of unity and spirit

For one day last week this campus actually had spirit and a sense of unity.

For one day last week, the Greeks and independents actually worked together to bring off a magnificent Homecoming parade.

And for one day last week, the Sun Devils kept their 12-year record of winning homecoming football games intact by upsetting Oregon.

But that was last week. This week, Greeks and dormies are holing up in their rooms attempting to catch up on their studying that was laid aside in favor of producing some fantastic Homecoming floats and hard campaigning for king and queen.

This week students on campus have forgotten about the homecoming king and queen and view the chickenwire by the dorms and fraternity houses with disinterested stares.

This week men students are scrimping on meals because they blew \$50 or \$60 last weekend.

This week the sense of unity and the spirit that was on campus last week, is silently dissolving.

This week some people are saying, "It was a great weekend." And then, others are saying, "What weekend?"

Well, the campus can always look forward to another year and another Homecoming.

there is a distinction in being a class representative in the senate.

Then, the word is out that the National Education Association plans to run a candidate on the next presidential ballot. Sound ridiculous? Why not? Doesn't the senate boast of an Inter-Faith Council senator and a Panhellenic senator in ASASU? Everyone is interested in politics these days.

We can be sure there are many who, because of their own interests, would object to reapportionment, and would insist that "rocking the boat in midstream" might be dangerous.

Since we are in a democracy, (in a sea of red tape), the Operations Committee, headed by Linda Vogel, has elected to ask the students at large, what they think of the present senate apportionment and if they think reapportionment is needed, and why.

Written opinions and suggestions on reapportionment may be turned in at the MU Information Desk, in care of the Senate Operations Committee.

THE STATE PRESS is the official campus newspaper of Arizona State University. It is published Tuesday through Friday throughout the academic year by the Board of Student Publications in cooperation with the Department of Mass Communications and entered as second class matter at Tempe, Arizona 85281.

THE STATE PRESS is a member of the Arizona Newspapers Association, Associated College Press and National Advertising Service, Inc. Subscription price is \$5 per school year.

Editor-in-Chief: Tony Ault  
 Managing Editor: Jerry Hofferber  
 News Editor: Valerie Jones  
 Assistant: Bill Cushing  
 Campus Editor: Bob Johnson  
 Assistant: Dick Gazi  
 Sports Editor: John Wallace  
 Society Editor: Susie Black  
 Assistant: Linda Coffam  
 Copy Editor: Bill Demosey  
 Photo Editor: Con Keyes  
 Assistant: Bill Gray  
 Faculty Supervisor: Robert E. Lance  
 Advertising Manager: Hal Hubele

## Letters to the Editor

Editor:

One enters the library resigned to the thought that he will surely not get any studying done. After one or two trips thereto, one comes to the realization that the steady drone and the flow of curves make such endeavors seem ridiculous objectives.

One soon becomes accustomed to sharing the noise and scenery as part of a routine which takes occasional breaks to allow students to locate pages which they were supposed to be studying. Common tools of this social organ are the low-buzz voice and the alert eye.

Here is where I am registering my complaint. The library employees are the worst violators of the scheme. Library employees (I should qualify this to include only level two) are entirely too noisy!

It is not uncommon — rather toward the other extreme — for library employees to discuss any and all matters out loud while other folks in the library are trying to buzz. One cannot buzz through or around solid noise — let alone think — let alone study. Some are trying to do that, study, that is. Let the buzz and gaze stay, but the blast has to go.

M. A. Thiele

Editor:

I have in front of me a copy of the yellow flyer, which you made reference to in the Nov. 3 issue of the State Press. It suggests that the ASU flag bear a "chicken's foot" since students have not stood up to deny statements made by Frank Empsak the previous week, who said all students would "lie, cheat, and do anything" to avoid the draft.

Now either students agree with him, in which case they are cowards, or they disagree with him, in which case they are afraid (i.e. cowardly) to speak up about it. Anyone who refuses to deny that he is a coward is likely to be one.

And the worst coward of all is the one who refuses to think. And in that respect, you can hardly accuse the author of this flyer of being a coward.

Gayle Lynn Berry

Editor:

I am rather concerned about Guthrie Packard's letter of Nov. 3. That he blew his intellectual cool is sadly apparent. I sus-

pect that campus political ambitions motivated him to get his name in print. He would, however, have been wise to employ a ghost writer, for the dull triteness of his declarations is disappointing.

Specifically, Packard's concept of business-labor relations is remarkably primitive; his lack of compassion for the worker is childishly dogmatic in that it denounces all strikes without considering the relative aspects of any one strike; and, most noteworthy, his concept of what should concern today's college student is narrow and unrealistic. It is narrow because he feels that students have no business exerting a social influence outside the campus and it is unrealistic because he seems to see the college set as an isolated and detached group of hippies who charmed existence need not include such sordid concerns as workers' rights.

Although a letter such as Packard's would ordinarily deserve nothing more than a casual sneer, it occurs to me that since the letter was, after all published in the State Press and has, thus, been exposed to our impressionable collegiate minds, there may be some value in pointing out its shortcomings.

T. Clark Miller

Editor:

In reference to Joan Winter's article, headlined "Greeks Defended by Area Official" which appeared on page two of the Nov. 2 State Press, and officially in reference to Mrs. Henley's statement, "The public looks on the sorority system with mixed emotions. It's up to us to show them what we really are."

But, you do, Mrs. Henley, you really do!

Christopher Pollack  
Curtis M. Page

Editor:

The November 10 edition of the State Press contained a letter to the editor written by Miss Janice Rose which alluded to some connection between the American Civil Liberties Union and the anti-Viet Nam War movement.

I wish to clarify the record by stating that the ACLU and its affiliates across the United States take absolutely no position on the war itself. The only concern ACLU has with the is-

sue is that people exploring both sides of the war issue be allowed to express their opinions.

ACLU is composed of Americans who take both sides on Viet Nam. For example, United States Secretary of Defense Robert S. McNamara (Hawk) and Socialist Norman Thomas (Dove) are both members of ACLU.

Robert W. Fernie

Editor:

One wonders if our State Press is missing a bet by not providing a comic section to allow humor as that submitted by a reader on Nov. 3, concerning the activities of students in sympathy with the Tempe city employees.

Either this person lives in a vacuum or is unaware of conditions forced on these strikers by a group of so-called businessmen, laughingly called a City Council.

Man has always overcome indignities and inequities when he and others joined forces to provide a united effort, and this incident was a case of realistic, thinking students agreeing with a protest.

Should our 17th century reader of Thursday do a little research, he would be enlightened as to how hard these employees work and how inadequately they are paid.

When this person is allowed to enter the world to make his way in life, he will look back and realize how foolish he was to fall for the type of erroneous propaganda he reads in our local newspapers, excluding the State Press.

D. Ripley

Editor:

Would it be possible to persuade our parking lot department to notify us one day in advance when it is necessary to close the Grady Gammage lots? These officials already have easels which they put up in the driveways when they wish us to remove our cars by six o'clock. All that would be required is signs to be tacked to these easels saying, "This lot will be closed tomorrow."

I am sure it would not unduly inconvenience the parking lot department to put up these signs, and it would certainly save those of us who park there a great deal of inconvenience.

Mrs. Evelyn Plummer

# The Music, or Unmusic, of Stockhausen: Time Will Tell

There was a hi-fi show in Gammage Auditorium Monday evening and its instigator may some day be looked upon as in a class with Beethoven.

The show was really a lecture-recital by a 38-year-old German composer named Karlheinz Stockhausen, who was brought to campus by the management of the auditorium from the University of California at Davis.

WHAT HE showed to the audience was a type of music consisting of composed noise. The tap of a finger on a drum head, the scrape of an ordinary kitchen utensil on a gong or a syllable shouted by an anonymous voice are some of Stockhausen's instruments.

And he uses them masterfully.

Through the medium of magnetic tape and electronic apparatus of immense complexity, the composer controls and molds noise into music. Music of Keystone Kop playfulness, of lunatic hideousness, of almost Frankian sensuality.

OF COURSE an enormous generalization has been made, i.e., these "sounds" are — through the composer's art — transformed into "music." The few who walked out during the performance may disagree, but there is a good case for calling

these literal twitterings and scratchings music:

Berlioz' morbid (but fun) "Symphonie Fantastique," the orgies of sound in Respighi's "Roman Festivals," the stream that grows into a great river in Smetana's "Moldau," or the donkey ride in Grofe's "Grand Canyon Suite." These and others all attest to the validity of Stockhausen's electronic suggestiveness.

His music rips through the air. Caressees it. Irritates it. Charges it with tension. And life.

THE MUSIC screeches like a parrot, meows like a cat, twangs like plucked rubber bands. It suggests a bloodcurdling human scream of terror, a doll crying "mama," a human laugh, soap bubbles popping in air, basket-

balls bouncing on a gym floor. The insides of a monkey house at a zoo, a dog fight, a human belch, a distant lawnmower, the washing of a window with sand, the escape of air from a balloon. These and more are the fascinating sounds of Karlheinz Stockhausen. They are the sounds of the present and the sounds of the future.

And they may be the sounds of genius.

There is beauty in Stockhausen's work. There is melody. There is rhythm, and there is emotion. Just because a composer eschews tonality and conventional instrumentation to create sounds people are not (now) used to hearing does not mean the composer — or the art form — are without credence.

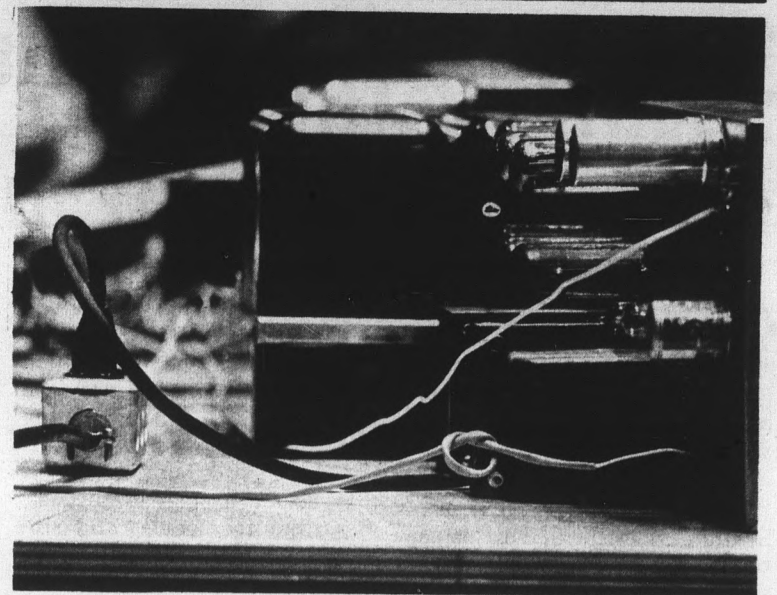


Photo by Richard Cantor

Some of the 'Instruments' of the 'Orchestra'

STOCKHAUSEN is not the first in this field — that honor probably belongs to Edgar Varese — but he probably is its foremost practicing apostle. Whether or not the apostle — and his cause — are worth the

effort cannot be determined now.

The sage of The Arizona Republic called it unmusic. This is unfair. But it may be a century before we find out whether it is untrue.

R.C.

**FLY, MAN, FLY**  
 Become  
 airline pilot qualified  
 in our flight school  
 (Must be 20 to 35 years  
 of age)  
 Accelerated Courses  
 Financing Available  
**MERCURY AVIATION**  
 Tucson Int'l. — 294-3474  
 Sky Harbor, Phoenix —  
 273-1201

**OPPORTUNITIES  
 IN SELLING**

**Free to  
 College  
 Students  
 25¢ to others**

A new booklet, published by a non-profit educational foundation, tells which career fields let you make the best use of all your college training, including liberal-arts courses — which career field offers 100,000 new jobs every year — which career field produces more corporation presidents than any other — what starting salary you can expect. Just send this ad with your name and address. This 24-page, career-guide booklet, "Opportunities in Selling," will be mailed to you. No cost or obligation. Address: Council on Opportunities, 550 Fifth Ave., New York 36, N. Y., AZ-11-14

## ASU Students, Faculty, and Staff . . .

**"Be Our Guest"**

**OVER \$91.00** IN ADMISSION TICKETS **for only \$5.00**

The "Be Our Guest" booklet contains COMPLETE ADMISSION TICKETS to recreational, cultural and sporting events in the Phoenix area. THE SMALL AMOUNT YOU PAY COVERS THE COST OF CONSTRUCTION, PRINTING AND DISTRIBUTION OF THE BOOKLETS. THERE IS NO FURTHER COST TO YOU. The activities below wish to make effective use of their "empty space." Since "space" is useless unless occupied, they invite you to occupy it as a guest, in the hope that you will return as a regular cash customer and/or provide them with word-of-mouth advertising among your friends. This is NOT a discount booklet.

ACTIVITIES	TICKETS	VALUE
<b>SWIM</b>		
Bowling . . . . . Choice of 18 houses . . . . .	6	\$ 3.30
Motorcycle Racing . . . . .	2	2.00
Drag Racing - Sportsland . . . . .	2	4.00
Football - A.S.U. . . . . Choice of three 1967 games . . . . .	1	4.00
Go Karting . . . . .	2	1.00
Model Car Racing . . . . . Choice of 5 locations . . . . .	2	3.00
Phoenix Giants Baseball . . . . . Choice of 4 games . . . . .	2	3.00
Ice Skating - Iceland . . . . .	2	2.00
Aid To Zoo Horse Show . . . . .	2	2.00
Golf . . . . . Choice of 4 locations . . . . .	2	3.00
Golf Practice . . . . . Choice of 4 locations . . . . .	2	1.30
Manzanita Speedway . . . . .	2	4.00
Skiing - Williams Ski Area . . . . .	1	3.75
Kiddielands . . . . . Choice of 2 locations . . . . .	2	1.80
American Heritage Wax Museum . . . . .	1	1.25
Miniature Golf . . . . . Choice of 4 locations . . . . .	2	1.50
Boat, Sports & Travel Show . . . . .	1	1.00
Polo . . . . .	2	2.00
Phoenix Symphony Orchestra . . . . .	1	3.00
Travel Films - World Adventure Series . . . . .	1	1.85
Gymnastics - A.S.U. . . . .	2	2.00
Wrestling - A.S.U. . . . .	2	3.00
Basketball - Grand Canyon College . . . . .	2	2.00
Basketball - Mesa Community College . . . . .	2	2.50
Horseback Riding . . . . . Choice of 4 locations . . . . .	2	4.00
Putt'ng Courses . . . . . Choice of 2 locations . . . . .	2	1.20
Indian Drive In Theatre . . . . .	2	2.50
Karate & Judo . . . . .	1	6.00
Football - Glendale Community College . . . . .	2	3.00
Basketball - Glendale Community College . . . . .	2	2.50
Roller Skating . . . . . Choice of 3 locations . . . . .	3	2.25
Mystery Castle . . . . .	1	1.00
Boating . . . . .	2	2.00
Football - Phoenix College . . . . .	2	3.00
Swim & Gym - Y.M.C.A. . . . .	2	2.00
Billiards . . . . . Choice of 7 locations . . . . .	2	4.20
	69	\$ 91.90

**PURCHASE PRICE REFUNDED IF NOT SATISFIED!**  
 \*Horseback riding is the only ticket requiring an accompanying paid admission.

**SUPPLY IS LIMITED - FIRST COME, FIRST SERVED!**  
**WHY ARE WE SELLING THESE BOOKLETS?**

We actually are not selling these booklets, but are handling the program in accordance with our practice of trying to bring you opportunities for special rates on recreational activities whenever possible.

**ON SALE NOW AT UNIVERSITY BOOKSTORE— OFFER ENDS DEC. 13**

CREATIVE OUTLET FOR STUDENTS' —

# Printers' Ink Runs in Veins Of Kalliope Staff at Sahuaro

An interview with Barry Goldwater, an expose about a feminine invader in one of Sahuaro's halls, poetry and an editorial denouncing the character assassination of unpopular speakers were among the items included in the first "Kalliope."

"KALLIOPE" IS A NEW publication, neither a newspaper nor a literary magazine, which will be put out approximately once a month by several residents of the Sahuaro Complex.

Mike Corson, editor-in-chief, prefers to call it a "magazine-newspaper." He says the content depends on contributions, varying from nonfiction news stories to editorials and short fiction stories.

The "Kalliope" was begun to enable the average student to "express his views and/or talent," Corson said. He admits that "life can go on without it," but he feels it offers a needed

outlet for the creative talents of students.

CORSON EMPHASIZED that the content of the publication depends on contributions. The editors select the material and have the final word on what is to be published, but Corson said that they are open to suggestions from the faculty and students.

He said that the last issue of "Kalliope" had been supported by a small appropriation from one hall council in the Sahuaro complex and that the next issue would probably be financed in a similar manner.

The paper would like to get some aid from advertising, he said, so that it could improve the appearance of the publication. He said that they want a "more classy print" instead of the present "ditto" method.

THE EDITORS OF "Kalliope" and a member of IHC,

said that the IHC "was very impressed" with "Kalliope" and had bought a full page advertisement in the next issue.

They have hope for recognition in the future, but until then, they are essentially "just a group of students endeavoring to put out a literary magazine" and have no official connection with the dormitory system, Iannella said.

EFFORTS ARE being made to get staff members and contributions from other dormitories, he added. He said Best complex had planned to start its own newspaper, but he thinks they are now going to support "Kalliope" instead.

Participation from faculty and students outside of Sahuaro complex will be welcomed. They are interested in quality writing of any kind. Material may be given to Mike Corson, or to any of the other editors.

## MANAGEMENT TRAINING PROGRAMS MONTGOMERY WARD & CO.

### EXPANSION

More than 50 new large stores during the next five years in the Western Region

### TRAINING

Structured job experience combined with formalized training. Programs vary from six months to two years

### CHALLENGE

Rapid assignment of measurable responsibility

### MAJORS

We prefer Business Administration Majors, Accounting Majors, and Liberal Arts Majors

### OPPORTUNITY

An increase of 70% in the number of Management positions

### SALARIES

Starting salary is \$6,500 to \$7,200. Regular appraisals and salary progression

SEE YOUR PLACEMENT OFFICE FOR On-Campus Interviews November 23, 1966

### NEW MENU

## THE INNER EAR

"South of The Sands" Friday Night

### A LITTLE BIT OF THE OLD WEST

## 20 ACRES of

Peace and Quiet . . . Rugged . . . Beautiful  
1 1/2 Hour's Drive

"GET RICH QUICK?" NO!

"GOOD INVESTMENT?" YES!

\$299 PER ACRE, \$75 DOWN, \$75 MONTHLY  
WESTERN LAND & CATTLE CO., INC  
967-7871

## opportunities with

## Pan American PETROLEUM CORPORATION

One of the largest exploration and producing companies in North America

A Subsidiary of Standard Oil Company (Indiana)

### ENGINEERS

NOVEMBER 17 AND 18

Senior and Graduate MECHANICAL, ELECTRICAL, CHEMICAL, INDUSTRIAL and CIVIL for permanent engineering positions responsible for drilling, producing, and gasoline plant operations. The Company offers outstanding engineering and management careers. Arrange now for an interview at the Placement Service Office.

### GEOPHYSICISTS

NOVEMBER 17 AND 18

Senior and Graduate students with majors in GEOLOGY, PHYSICS, ELECTRICAL ENGINEERING, ENGINEERING SCIENCE, and MATHEMATICS for petroleum exploration geophysicist positions. The Geophysicist plays a vital role in Pan American's expanding exploration program. Arrange now for an interview at the Placement Service Office.

### GEOLOGISTS

NOVEMBER 17

Graduate students with majors in GEOLOGY for permanent positions in exploration geology. Also temporary summer employment opportunities for Seniors who plan to complete advanced degrees. Arrange now for an interview at the office of Professor Mont M. Warner.

## PAN AMERICAN PETROLEUM CORPORATION

An Equal Opportunity Employer

state press

## Classified

For classified advertising submit ad in person to the State Press, MU 3, two days in advance of publication, between 8:30 a.m. 13:30 p.m., or call 966-3657. Rate: 5c per word. 75c minimum per issue.

### FOR SALE

SONY portable, battery operated stereo, 4-speed record player. Call 966-2715.

KITTENS—Siamese-marked Persians. \$5. 254-4396 N. Mitchell St.

SKIS and bindings, 6'3". Like new — beginners. \$35. 946-7736.

DIAMONDS JEWELRY GIFTWARE — at wholesale prices — by appointment only MAYHAN ENTERPRISES LTD. 967-3233

WILL sell contract for private lessons at Astair Studio, all or part at reduced rates. 277-3602. 1640 W. Mulberry Drive.

### MOTORCYCLES

1964 TRIUMPH Cub, \$350. Joe. 966-0742.

### TYPING

PAPERS and thesis. Experienced typist. 1342 E. Culver.—Phx. 253-6452.

LETTERS, term papers, manuscripts, quality work, reasonable. Call 967-7250 after 6 p.m.

### RENT

ONE br. bungalow, 10 min. from campus. Private, lovely grounds. 278-7069.

### AIRCRAFT

PRIVATE pilot's course, free financing. Scottsdale Flying Service 946-5907 or 943-2885.

MESA FLIGHT SERVICE — 964-9281.

FLY THE BEST; FLY FOR LESS Cessna 150, \$6.50 hr wet; Cessna 170, \$9 hr. wet. 955-1992.

### REAL ESTATE

HOME with beautiful pool near ASU. Days 966-3242, Evenings 967-7948.

### HELP WANTED

MEN and Women 20 and older. Part-time sales work. Your hours. Car essential. Call 258-1447 for appointment.

NEED ten people to work Sunday, November 20 at Sun Devil Stadium at 9 a.m. Call 3381.

EARN \$50 per week. 3 evenings and weekends. Apply 1000 Apache Blvd., Suite 221, 10 a.m. any morning.

TRIO needed for engagement. Accordion, sax and drums. Call Russell Hanzl, 253-7368.

### AUTOMOBILES

1963 MG 1100, must sell. Asking \$650. 966-4261.

BRITISH racing green Austin-Healey Sprite. A classic '59, 948cc; excellent condition. Phone 936-6298 after 6 p.m.

1962 DODGE Lancer driven 18,000 miles. Excellent cond. \$700. cash. Phone 966-3366 between 9:30-10:30 a.m.

'66 TRIUMPH Bonneville TT Special. \$1,000 or \$350. and T.O.P. 966-6856.

### LOST

LOST: White German Shepherd pup. Lost near University Dr. and Forest Ave. Call 966-1332.

BLACK leather wallet with red lining. Lost near library, Reward !!! 947-0253.

### INSTRUCTION

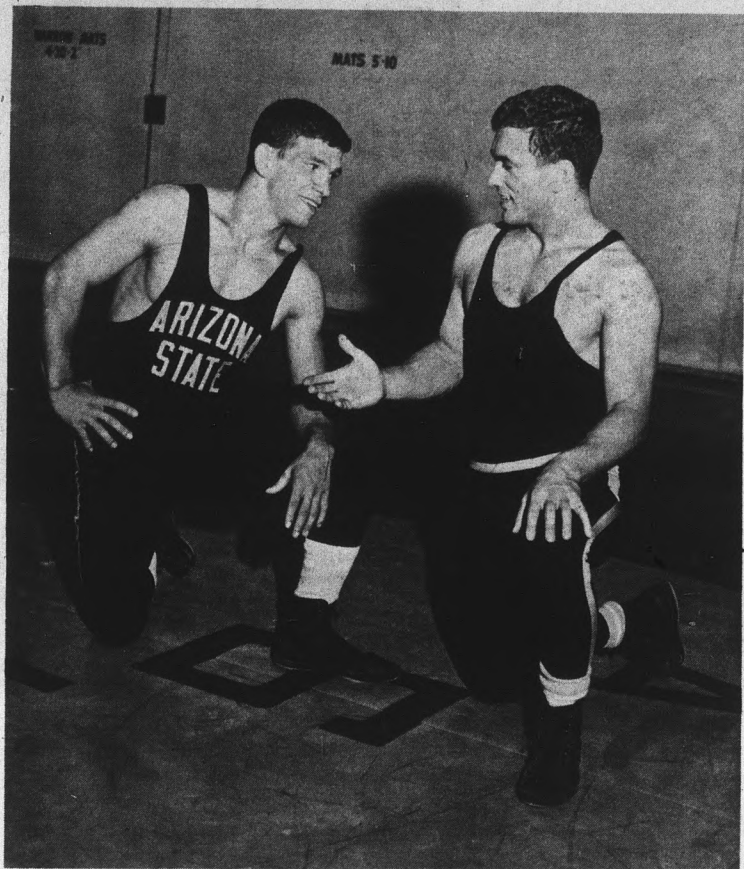
INDIVIDUAL tutoring in math, physics, chemistry and biological sciences. Phone 967-7924.

### WANTED

TWO roommates to move in 2/br. poolside apt. at La Crescenta Park. Take over lease. Only \$52/mo. Utilities pd. Call 966-6169.

### PERSONAL

JOHN E.: Dropped Chemistry because I didn't mix with the halogens too well. Will be glad to see you again. How 'bout by the Old Main fountain tomorrow at 2 p.m.? Martha B.



**FAMILY FEUD** — Pete (left) and Tony Russo were both members of the '64-'65 WAC champion Sun Devil wrestling team, but they'll be on opposing squads tomorrow night at 7:30 in Sun Devil Gym. It'll be an intersquad meet with Pete going for the Gold and Tony re-activated from ineligibility retirement to grapple for the Maroon. It will also be a Fans' Clinic night for students.

## Basketballers Start Slate Vs. Frosh

There are easier ways to kick off a basketball season, but I can't think of any right now.

Anyway, the Sun Devil basketballers will, in a sense, open their '66-67 season tonight at 7 in Mesa at the Westwood High School Gym.

But the varsity will have an easy job of it (we hope) as they'll be going against their own freshmen counterparts.

In their annual appearance in Mesa, the Devils will start off with an hour of drills, then move into the varsity-JV game. The gym will be open to everyone and no admission will be charged.

If, at the end of that little fiasco, the frosh aren't too discouraged, they'll be called upon again Saturday evening at 4 to play the same bunch of boys for the Eighth Annual ASU Basketball Clinic, a gathering of coaches from all parts of the valley. This game will be in Sun Devil Gym.

## No Tube Views Of Cat-Devil Tilt

By JOHN WALLACE

It's officially official. When the Devils sneak down to Tucson to play the Wildcats a week from Saturday, there won't be any TV cameras around.

The bad guy was Dick Clausen, UofA athletic director who first made the rather unpopular statement last week.

It's the same old excuse . . . the game's not a sellout. It's an old rule from the Board of Regents of 1964 vintage. They decided that the annual game COULD be televised if it were sold out by Nov. 1.

Well, two years running now, that stipulation has not been met and the game has been on the blackout.

Of course, if the Board itself went to a Cat-Devil game, they probably wouldn't get a seat.

The ticket manager down at Nogo Tech says more than 5000 tickets to the game are yet unsold. They're on sale both up here and down there. But 24 hours before gametime, there could be 50,000 tickets yet unsold, and chances would still be good that if you got to the game as little as one hour ahead of time, you STILL wouldn't find a seat.

Tempe has a way of relocating when the Devils go to Tucson for things like Thanksgiving football games. Home football games in Tempe drew an average of 29,817 fans last year, 50 per cent of whom will be in Tucson Nov. 26. It will be more than enough to fill the stadium.

## 'Holy' Defense Plagues Devils

There are a lot of statistical categories in the reams of records kept on WAC football teams, and in all these different listings, the Sun Devils lead the field in only one item.

The Devils have given up an average of 135.7 passing yards per game in eight contests, tops in the Western Athletic Conference.

This may or may not be a fluke.

The A-Staters have compiled this statistic against, among others, West Texas State's Hank Washington, the nation's No. 3 passer. The Devils have faced BYU's Virgil Carter, currently second in the WAC in passing offense with a 208-yard per game average.

And so, this Saturday, Kush and Co. face New Mexico, a team whose lowly air totals top only Utah in the WAC. But then again, the Utes BEAT the Devils.

### DAY NURSERY

MOTHER GOOSE TOWNHOUSE  
46 EAST FIRST STREET  
CENTRAL SCOTTSDALE  
947-0801 — 948-2353

## Sun Devils Barber Shop

Razor Cuts

OPEN MONDAYS

Through Friday  
8:30 - 5:30  
in the  
ARCHES  
Corner 8th St. & Forest

FOR AN EVENING TO REMEMBER . . . START WITH

**Paul Shank's**  
*Gracious Dining*  
IMPRESSIVE ELEGANCE AT POPULAR PRICES!

Safari HOTEL • SCOTTSDALE

## U. S. TREASURY DEPARTMENT INTERNAL REVENUE SERVICE

Has Positions Nationwide For

## JANUARY GRADUATE ACCOUNTING MAJORS AS INTERNAL REVENUE AGENTS

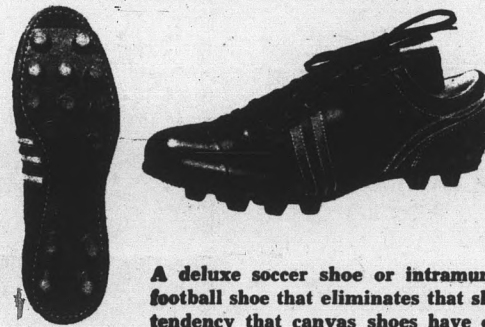
Recruiters on Campus Wednesday, November 16th. Immediate job opportunities for California.

See your Placement Office to sign up for on-campus interview, or call collect

Phoenix 261-3500

All qualified applicants will receive consideration without regard to sex, race, creed, color, or national origin.

NOW IN STOCK BY  
POPULAR DEMAND!



A deluxe soccer shoe or intramural football shoe that eliminates that slip tendency that canvas shoes have on grass playing fields. Converse style low cut with fine moulded rubber sole and moulded cleats. Blue trim on top grain leather uppers. Rubber padded top for maximum protection. Approved for intramural football.

LIST PRICE  
**12<sup>30</sup>**  
TEAM PRICED AT  
**9<sup>95</sup>**

UNIVERSITY  
SPORTING  
GOODS

TEMPE CENTER

## EVERY THURSDAY IS COLLEGE DAY Russ' Super Car Wash

CAR  
WASH  
ONLY

**\$125**

No  
Purchase  
Necessary

**\$100**

with purchase of 7 gallons  
of Gas or Spray Wax appli-  
cation.

## Russ' Super Car Wash

7569 E. McDOWELL RD.  
SCOTTSDALE, ARIZONA

# Constructors Shortage Not Filled by College Graduates

By DAVE SNOWDEN

Have you ever wondered what the smallest curriculum department at ASU is? The answer can easily be found on the first floor of the Architecture building. Walk slowly or else you'll miss it.

The Construction Department can proudly boast a full time enrollment of 176 students. Strangely enough there are no women, though some have given it the old college try.

"It is surprising," remarked Prof. Edward F. Shaifer, department chairman, "that the construction industry contributes to over 15 per cent of the GNP and goes unnoticed on the educational level."

MOST surprising is that the "handful" of colleges awarding construction degrees can turn out only enough people to satisfy 10 per cent of industry's demand. It is for this reason that Shaifer classifies his department as the "orphan" in comparison with other fields of study.

A contributing factor to the massive shortage of college educated constructors, is that too many institutions, Shaifer feels, teach construction as a part of their engineering or architecture curriculums. The construction industry wants a man who is construction oriented.

IN ORDER to meet this demand, the construction department

has created a course of study that captures all the related fields, but concentrates on construction. "The normal four-year curriculum of this kind has become a cram course," Shaifer said. "The program is by no means a cinch."

The student finds himself facing studies in business administration, architecture, engineering, construction and the liberal arts. The student needs 132 hours, compared to the normal 126 hours required of others.

The diversity in education al-

lows the graduate to compete with others in the business world. Many companies face problems on the managerial level. Shaifer feels that this would be solved by a man educated in construction.

SHAIFER is very pleased that students in the department know what they are getting into. The career can be very fascinating and rewarding, both personally and monetarily. Graduates can find themselves on a foreign assignment helping other people or a stateside job.

6 LOCATIONS FOR YOUR CONVENIENCE

★ Ray's ASU Barber Shop  
TEMPE CENTER

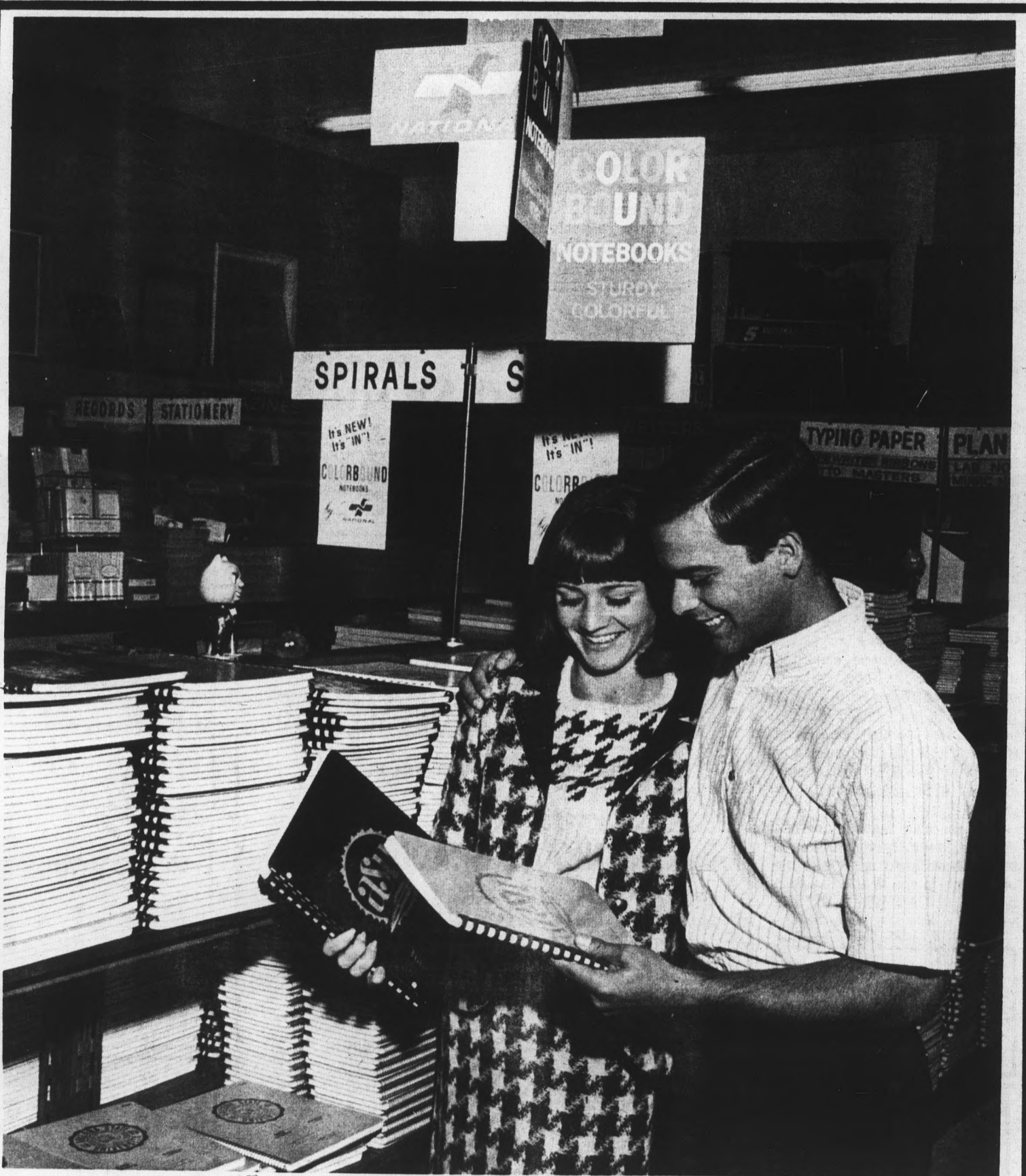
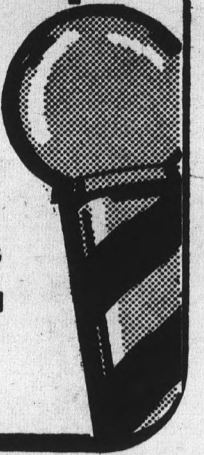
★ Boles Barber Shop  
905 E. LEMON ST.

★ Sands Barber Shop  
SANDS HOTEL

★ M. U. Barber Shop  
MEMORIAL UNION BUILDING

★ Ray's Hayden Plaza  
HAYDEN PLAZA EAST

★ East High  
48th ST. & VAN BUREN



You Don't have to Have a Date to Buy NATIONAL SPIRALS  
... But You Might Find One at the

Photo  
by  
Ray Moran

# Student Book Center

corner college & seventh street

★ HOURS: MON. - FRI., 7 To 9; SAT. 8 - 5; SUN. 1 - 5 Phone - 966-6226 ★

## Friday Deadline For Who's Who

The deadline for nominations to Who's Who in American Colleges and Universities has been extended to 4 p.m. Friday.

Nominations by faculty, students and organizations must be turned in to the dean of students office, Admin 103.



### A.S.U. BREAKFAST SPECIAL \$1.00

3 EGGS AND HAM  
Hash Brown Potatoes  
Toast, Jelly and Coffee  
Served Daily 6:30-11:30

**HARMAN'S**  
Mesa-Tempe Hi-Way  
TEMPE