



Photo by Con Keyes

**TIMBER** — Large scale moving on campus got underway Tuesday with the transfer of some 30-foot tall palm trees from the areas between the new library and SS building and between the swimming pool and gymnasium. No one seemed to know where the trees were going, however.

## Battle for Costumes Baffles Both Sides

By RICK SWITZER

As we left the Homecoming action last week, the costume and anti-costume factions were in the heat of battle, with little certainty as to whether good or evil would triumph. A new aggressor has appeared on the scene, and hope for the other side has dimmed considerably.

A recap of the week's excitement reads like a Clay-Liston fight, except the ring is getting a bit crowded.

**ROUND 1:** Homecoming Committee (in maroon and gold) threw the first big punch, which landed right in the surprise zone. When the dust cleared, it looked as if election day was going to be pretty plain as far as dress was concerned. NO costumes — for anybody.

**Round 2:** Executive Council (in white) made a dynamic comeback with a spectacular right cross to the Homecoming Committee's ego. Along with a few remarks about lack of cooperation, it was decided that there would be costumes after all.

**Round 3:** The Costume Dodgers sent up a pinch-hitter who

### Well-Traveled Students Sought

Students who have visited foreign countries and would like to talk or show slides to interested students, contact Bill Sage, Chairman of International Student Relations Board at ext. 3237.

caught the Executive Council just a little below the belt, and the referee didn't even see it coming. Panhellenic Council (in off-color pastels) informed State Press that "The sororities will definitely NOT wear costumes on election day, and that's final!"

### Paper Seeks Ugliest Man

This year's Ugly Man Contest, with a permanent trophy for the winning organization and the profits for charity, will begin Monday, Oct. 24.

The annual event, sponsored by Pi Delta Epsilon, national journalism honorary, in cooperation with State Press, gives student organizations a chance to discover the ugliest person in their ranks.

The ugly entrant will be photographed, and one picture of each candidate displayed on the MU patio. The largest total amount of money collected through penny or larger votes will determine the winner.

**DEADLINE** for entering the contest is Friday, Oct. 21. Entry blanks are available in Main 302 and the State Press office, MU 3.

Voting will be from 9 a.m. until 4 p.m. Monday, Oct. 24, through the following Thursday; and from 9 a.m. until noon on Friday, Oct. 28.

Information on the contest is available in Main 302, MU 3 or by phoning 966-3656.

# Hitch-hiking Now?

Can the University parking problem be solved?

The AS Executive Council will discuss the crowded parking situation and a possible solution during its meeting Monday.

The new proposal, suggested by electrical engineering student Doug Maake, would aim to ease crowded parking facilities by decreasing the number of vehicles needed to transport students to and from the campus.

**MAAKE** recommends that giant car pools, for all commuting students, be formed on Grand Avenue, Jefferson, Washington, and Van Buren in Phoenix.

Students needing transportation to the campus would stand on the approach side of signal lights to enable students driving to school to see them and offer a ride. Drivers in turn, would travel in the right lane, honking at students to indicate they are seeking passengers.

Suggested streets for the initiation of the plan are 56th, 16th St., Central, 19th, 35th,

52st, 67th, and Grand Avenues, and Washington, Van Buren, and Jefferson.

**FOR THE** return trip, Maake advises using the present parking spaces on the north lane of 11th Street running along the north side of Gammage Auditorium, as a meeting place for those desiring rides and those offering rides.

Signs would be placed and marked with the various Phoe-

nix destinations. Riders would stand near the sign designating the street nearest to his home.

Each prospective passenger would give the driver a dime for each ride, reducing the driver's gasoline expenses.

Parking spaces available near campus would be easier to find as the plan is expanded throughout the Valley and the number of autos taken to campus diminishes, Maake explained.

## Clubs Must Meet Sahuaro Deadline

It was announced last week that all organizations desiring space in the 1967 Sahuaro yearbook should pick-up page contracts from Organizations Editor Shirly Simpson in MU 2.

Yesterday, Miss Simpson said that only about half of the campus organizations have picked up contracts, which must be

returned by Oct. 28 deadline.

Pam Sisk, editor-in-chief of the Sahuaro, said, "We are doing our best to let the students have the book by the second week in May — but we can only do that if the organizations meet their deadlines."

This year's book will have 497 pages with a 27-page color section.

# state press

ARIZONA STATE UNIVERSITY

Tempe, Arizona

Thursday, October 13, 1966

Vol. 48—No. 17

## Mitchell, Ferguson Win Freshman Senate Seats

Judy Mitchell and Jerry Ferguson were elected freshmen senators yesterday as 509 ballots were cast in the general election.

Miss Mitchell received 235 votes while Ferguson got 230. They defeated Terry Edwards and Bill Flanders for the two Student Senate seats.

Edwards polled 221 votes while Flanders received 186.

A total of 872 votes were cast in the general election.

The two new senators outlasted 14 other candidates for the

posts. Ten senate hopefuls were eliminated in the primary elec-

### Indian Students: Report Promptly

All Indian students who have not yet reported to George Gill, Indian student adviser, are requested to do so at their earliest convenience.

Gill is located at the Indian Education Center, College of Education, Annex 4.

tion last Wednesday.

Other primary candidates were Janis Blumkin, Daryl Brown, Ron Collett, Steve Elmore, Ralph Galvez, Gene Hechler, Buzz Keller, Greg Layman, Richard Lee and Ronald Wheat.

Joyce Warmkessel and John Moore were elected as the two graduate senators.

Election Board members staffed the polling booths at the Saguaro Complex, the Palo Verde Complex and in front of the Administration Building.



Photo by Con Keyes

**TOO SHORT** — Obviously unaware that the couch is a good foot too short for him, this unidentified sleeping beauty was caught reclining in the MU basement games room during a class break.

See Our Cosmetic Bar ...

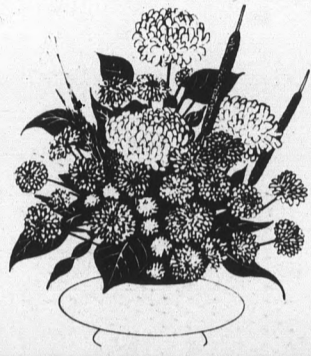
REVLON **\$1.10**  
Aquamarine Lotion — 2.20 Value

BONNIE BELL  
1006 Cleanser. Extra Savings on Quart Size

DOROTHY GRAY **\$1.25**  
2-Minute Magic Cleanser — 2.00 Value

ASTRINGENT **\$2.00**  
Dorothy Gray — 3.50 Value

Artificial  
Potted  
Flower  
Arrangements



Dress Up  
A  
Drab Room  
In A  
Hurry ...

Stop By for a Refreshing Break at  
"The Fountain"  
A Menu to Suit All Tastes ...

University Drive

**campus drug**  
YOUR Drugstore  
on Campus

& College Ave.

CAMPUS CRUSADE MEETS —

# Students Camp in Prescott, Hear Diversified Speakers



More than 240 college students, over half from ASU, were challenged to live for Christ at the fall Campus Crusade for Christ retreat in Prescott last Friday and Saturday.

"Intellectual Honesty" was the topic of the keynote message Friday evening by Dave Allen, youth director of Bethany Bible Church in Phoenix. He encouraged students to honestly investigate the Bible.

VOLLEYBALL, football and ping pong were included in the recreation program.

A campfire Saturday night concluded activities on a personal note as students shared their personal religious experiences.

A sophomore psychology major commented, "The Christian life is dynamic. Serving Jesus Christ is something worth giving your life to."

ONE COED shared her view that "Christianity shouldn't be some sort of mountain top emotional experience. It should apply to everything you do in life."

Another student said, "Now I can see that a good marriage is one where both partners are following Christ."

Seminar leaders came from many walks of life and included Wayne Stuart, Phoenix architect and builder; Bill Johnson, director of Campus World; Elmer Lappen, Arizona director of Campus Crusade; Herb Selby, employe of Salt River Project; and Kenneth Kempton of Desert Haven Community Church in Tempe.

Two more retreats are planned for the spring.



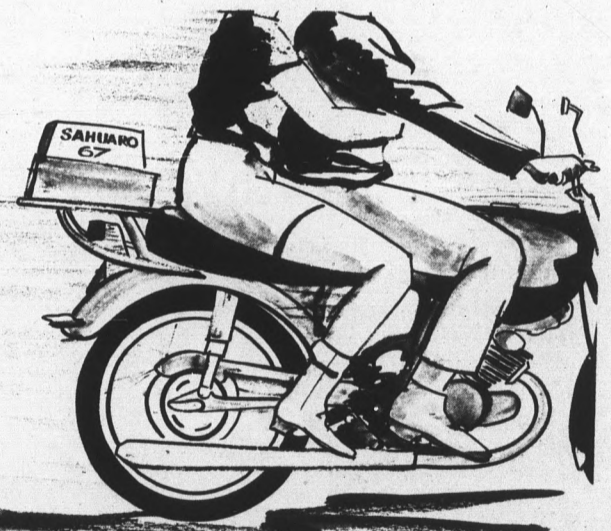
SUNDAY,  
OCTOBER 15 - 8 P.M.  
VETERANS MEMORIAL COLISEUM  
TICKETS: \$1, \$2, \$3, \$4 & \$5  
At All Community Box Office and Coliseum Box Office Locations  
IN TEMPE:  
HAPPY HOUSE,  
905 Mill Ave.

## Home Ec Group Will Host Coeds

The home economics professional honorary, Phi Upsilon Omicron, will host a dessert for perspective members in the upper lounge of the Home Economics building at 7 tonight.

The event, held each semester, honors coeds who are majoring in home economics, carrying a full load and keeping a 2.8 grade average.

From the girls invited to the dessert, those who are most qualified and who show the important leadership qualities needed are chosen.



# A SMOC

hits the trail  
for fun and games

That Is Why He And His Gal Are In  
On The Action — Including A  
1967 SAHUARO,  
497 Pages Big.  
Only \$7.00/MU 207

SMOC — SWINGING MAN ON CAMPUS-TYPE  
(INCLUDES WOMEN TOO)

# MAN-POWER

THE ANTI-BACTERIAL

DEODORANT



## Nothing stops odor better for a man!

ANTI-BACTERIAL. That's why it works! Man-Power stops odor because it stops the bacteria that cause odor. And keeps them stopped, 24 man-hours a day! It's a fact! Nothing stops odor better for a man!

BY THE MAKERS OF OLD SPICE

# Business, Labor Are S&H Topics

The Sperry & Hutchinson Lectureship Program beginning Monday is described by Dr. Robert Gryder, assistant dean, College of Business Administration, as one of the College's most important events of the year.

The changing role of labor unions will be discussed Monday at 8 p.m. in the MU Ballroom by Jack Barbash, author and economist at the University of Wisconsin and former government economist.

"The Changing American Business System" series will also feature lecturers at later dates on the subjects of the changing business environment, changing roles of management and changing roles of financial institutions.

The S & H program was

formulated to bring students, faculty and the public into contact with recognized experts of public affairs and social sciences, and to strengthen the community - university relationship.

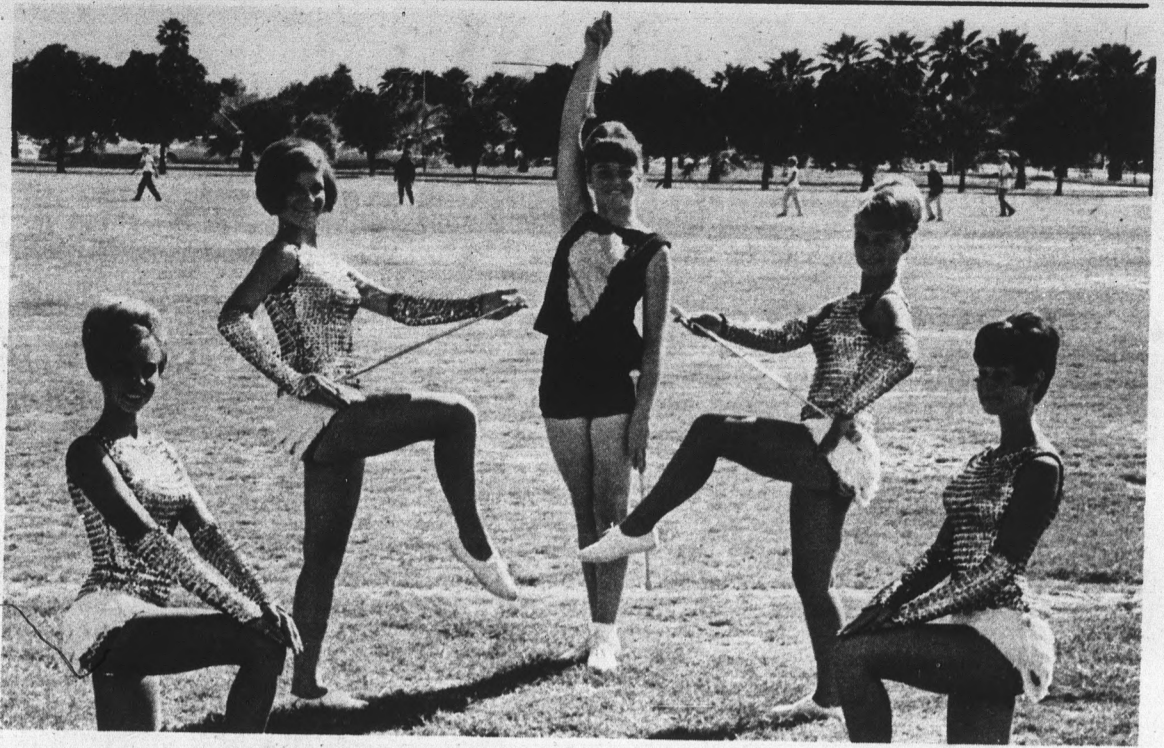
To qualify for one of the 150 annual grant awards, institutions must clearly define the public character of the lectures.

## Correction

The story "Personnel Office To Add Staff" which appeared in yesterday's State Press was completely erroneous.

Personnel Director G. Albin Matson Jr. said yesterday there are no plans to increase the office staff at the present time.

Construction work being done in the office is creating a small amount of new storage space.



HERE IS A closer look at the University majorettes usually seen from a distance at football games and wherever the Sun Devil Band plays. Pictured from left to right are Robyn Warner, Vicky Love, Cheryl Collins, Janice Reeb, and Judy Harris.

## Engineering Life Will Be Subject Of Confab Here

The second annual "Conference on Careers in Engineering" will be held here Oct. 29, from 9:15 a.m. until 3:15 p.m.

An estimated 500 mathematics and science teachers and counselors for grades 7 through twelve, engineering faculty members, and representatives from industry will meet in small discussion groups.

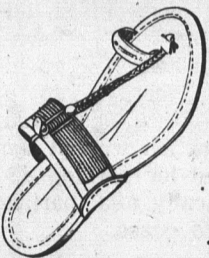
THEY WILL explore the rapidly changing technological developments and their implications for those advising and preparing students for careers in engineering.

There will also be guided tours of selected research and laboratory areas of the University Engineering Center, a luncheon, and nationally known speakers.

Dr. Bernard M. Oliver, vice-president for research and development at the Hewlett-Packard Co., will speak on "Cultural Lag and Overshoot in Education" at the general meeting.

RETURNING for the second year as luncheon speaker will be Dr. E. J. Piel. He will explain an experimental high school course in Engineering Concepts which he helped pioneer in New Jersey.

**Water Buffalo SANDALS 3.95 to 6.95**



RUGGED!  
HANDSOME!  
FOR MEN &  
WOMEN  
Sizes 4 TO 14  
Soak in water  
Wear until  
dry.  
They mold to  
your feet.

**Maharani Creations**

4 VALLEY LOCATIONS

Order by Phone—946-5224

- 89 W. 5th Ave., Scottsdale
- Thomas Mall
- Chris-Town
- Town & Country

## V I SPECIAL

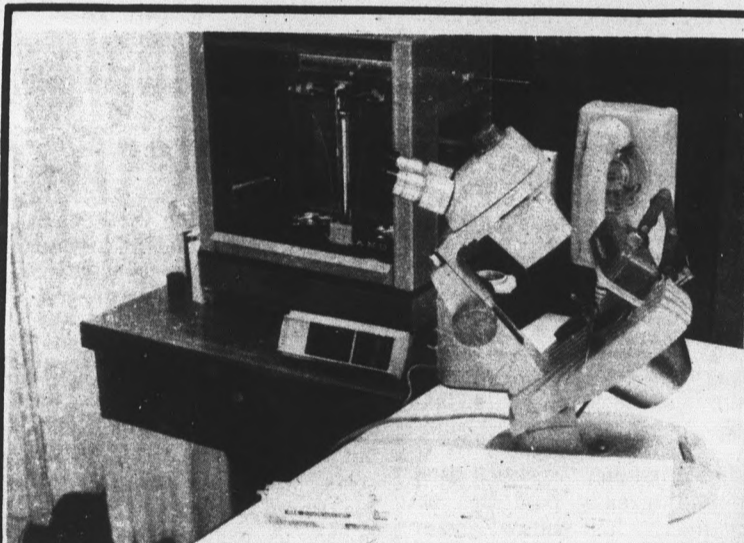
INDIVIDUAL PIZZA 99c  
Salad, Soft Drink

SANDWICHES  
Hot Ham Bun 65c  
Italian Salami 65c  
Hogie 75c

SERVED DAILY  
TILL 5



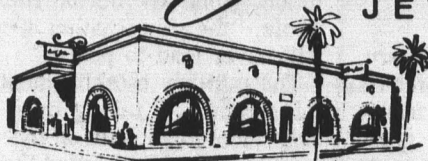
801 E. Apache Blvd. 967-3355



IF YOU CAN'T USE THESE TOOLS, you aren't ready to buy a diamond. They are absolutely necessary to properly grade the quality of a diamond. Unfortunately, no one is required to use these, so often diamonds are mis-graded.

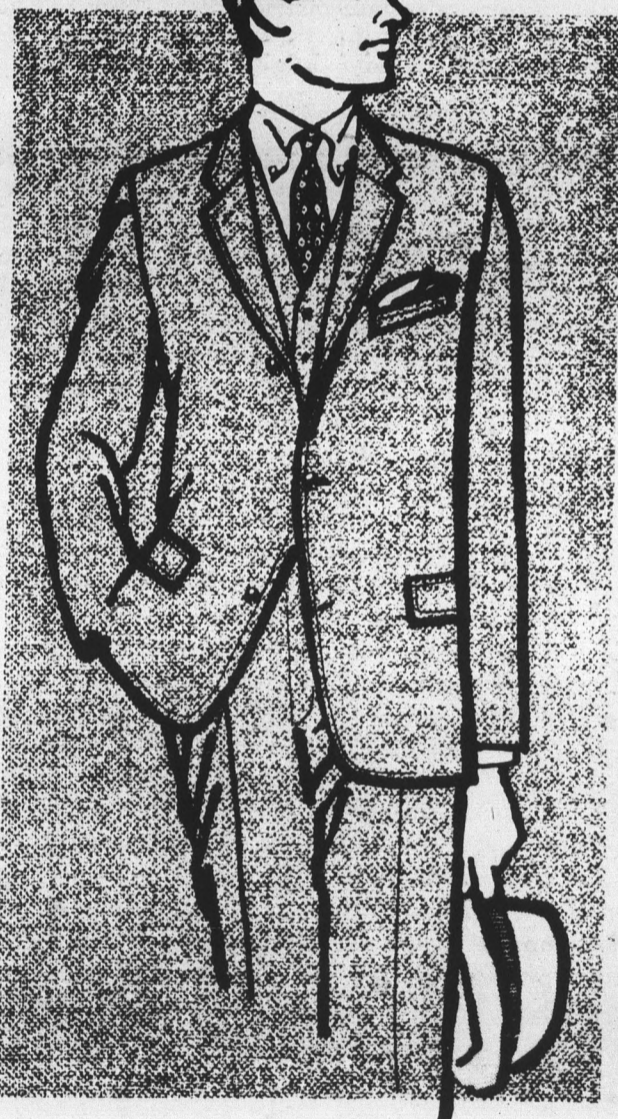
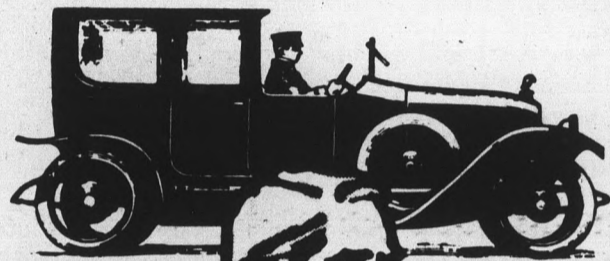
This is why it is essential for you to take our ½ hour diamond presentation, and learn how to use these yourself—so you will have more confidence when you buy your diamond. This diamond presentation is given by Joe Berning, a diamond cutter, only at . . .

**Paul Johnson**  
JEWELERS



IN THE  
ARCHES

130 EAST UNIVERSITY DRIVE • TEMPE • 967-8917  
1940 EAST CAMELBACK, PHOENIX 277-1421  
CERTIFIED GEMOLOGIST, AMERICAN GEM SOCIETY



## WIDE TRACK HOPSACK

Hopsacking is at present cutting a wide track among traditionalists who wish both good appearance and extra mileage from a suit. Of excellent woollens, the Proprietor's selection will be difficult to match, for workmanship and good fit.

**The Oxford Shop**  
Outfitters For Gentlemen



## GUEST EDITORIAL —

# Motorcycle safety

According to a recent survey by a national magazine, ASU ranks third in the nation in the number of motorcycles and motorbikes registered on its campus.

This is easy to understand; the small motorcycle provides an ideal form of transportation for today's college student, especially in the dry Southwest. They are cheap, fun to ride, park almost anywhere, and they are economical to operate.

For these and many other reasons, motorcycles are becoming more and more popular on college campuses. And because they are becoming more popular, a lot of drivers, both of motorcycles and automobiles, are going to have to seriously revise some of their habits.

Motorcycles are not toys. Even the smallest of them can hit sixty and most of the medium-sized ones have top speeds of 100 mph or better. They are powerful, carefully engineered pieces of machinery, yet far too many motorists insist on treating them like overgrown bicycles and an appalling number of riders insist on riding them as if they are.

Most of the riders on campus either don't know what constitutes safe dress for motorcycling or they don't care. Only a few ASU motorcyclists wear safety helmets, although head injuries are responsible for nearly 80 percent of all cycle fatalities. A great many of them wear open-toed sandals or ride barefoot, an open invitation to serious foot damage in the event of a skid.

The problem is compounded by some of the stores and gas stations in Tempe which rent motorbikes without giving the renters adequate instruction on how to handle the machines. In some cases the renter is simply shown where the controls are and how to shift gears and then turned loose on the city streets.

A third very serious problem comes from other drivers. Many of them are simply not watching for motorcyclists, or insist on treating them as if they were bicycles. They will cut in front of a rider, pass him in his lane, run him off the road and sometimes turn into him. Statistics show that nearly three-fourths of the motorcycle fatalities are caused by collisions with automobiles. As the number of motorcycles on the road increases, the number of motorcycle-car accidents is going to continue to soar until motorists learn to look out for cycles and give them the respect they deserve.

Motorcycles are no more dangerous than automobiles, but both are extremely dangerous unless treated with proper respect. Cyclists everywhere can do their part to reduce accidents by wearing safety helmets and proper footgear and by driving defensively.

As the motorcycle accident rate goes up, more people are asking for new and tougher legislation to "control" them. Motorcycles are particularly vulnerable to this sort of action because over the last ten years motorcycling as a sport has enjoyed the worst "press" of any sport in the United States. Already many state legislatures have bills before them to regulate motorcycling. Some of these measures are timely and fill a definite need. All too many of them are ill-considered and unduly restrictive.

RICK COOK

## state press

THE STATE PRESS is the official campus newspaper of Arizona State University. It is published Tuesday through Friday throughout the academic year by the Board of Student Publications in cooperation with the Department of Mass Communications and entered as second class matter at Tempe, Arizona 85281.



THE STATE PRESS is a member of the Arizona Newspapers Association, Associated Collegiate Press and National Advertising Service, Inc. Subscription price is \$5 per school year.

EDITOR-IN-CHIEF  
MANAGING EDITOR  
NEWS EDITOR  
ASSISTANT  
CAMPUS EDITOR  
ASSISTANT  
SPORTS EDITOR  
SOCIETY EDITOR  
ASSISTANT  
COPY EDITOR  
PHOTO EDITOR  
ASSISTANT  
FACULTY SUPERVISOR  
ADVERTISING MANAGER

TONY AULT  
JERRY HOFFERBER  
VALERIE JONES  
BILL CUSHING  
BOB JOHNSON  
DICK GAZI  
JOHN WALLACE  
SUSIE BLACK  
LINDA COTTAM  
BILL DEMPSEY  
CON KEYES  
BILL GRAY  
ROBERT E. LANCE  
HAL HUBELE

# Sports fans

The ire of a sports fan is easily aroused.

One day he hates Willie Davis because he drops two fly balls that most center fielders wouldn't even dare look up into the glare for. Davis is a goat and they're all over him.

A few days later Willie Davis has them shaking their heads again. There are no heroes on the losing team, but Davis has just made one of the most sensational catches of all time. He's no longer a goat; they like him again.

Closer to home, about a year ago right now, the fan was down on Frank Kush. How could he be the fourth ranked coach in the nation in winning percentages and still field a team that squeaked to one victory and had been plumed into four defeats.

The fan pointed out that, after all, Kush even had All-American material (Benny Hawkins) to work with. So it must be Kush's fault.

Then came the great reversal of 1965 and the Devils closed out the season playing football like football was made to be played. Suddenly the team stopped making mistakes. Suddenly it started scoring points. Suddenly the defense became air-tight. Kush was a hero again.

Same pattern so far this year. Kush is becoming a bum again says the fan. His charges stand 1-3 on the season and have been unimpressive. The fan and his gravelly voice is starting to get more raspy.

Last year head basketball coach Ned Wulk had to take even more lumps than Kush.

The press wanted him fired. People couldn't understand how the once proud cagers could have back-to-back losing seasons. (In both seasons they were one game under the .500 mark.)

Then out came a survey that showed, on a rating basis, just who played the hardest schedules in NCAA basketball last year. Duke faced the toughest grind. Arizona State was a close second. So now Wulk wasn't such a bad guy, after all, in the eyes of the fan. Anyway, his record is something like 162-79, so he's really okay.

They almost built a statue of track coach Baldy Castillo in 1964 after a couple of his boys romped over everybody in this country and then went over to Tokyo and won a medal or two.

Then last year, things didn't really go too well for Baldy's new boys, and the fan was saying "Bet he's lost his touch."

And would you believe that there was even a fan who had a bitter taste in his mouth last spring because Bobby Winkles and his diamond darlings didn't make the trip back to Omaha like they did twelve months earlier.

But the immortal fan, the guy who gets red in the face and spills his beer as he shrieks at the coach, wouldn't be the immortal fan if he couldn't have his ups and downs.

So now you're saying to yourself, "They sure as heck aren't talking about me. I'm loyal!" No, maybe we're not talking about you, but you know who we mean.

BRIAN TRACY

# Letters to the Editor

Editor:

In Tuesday's Oct. 11 State Press, Kathy Chandler questioned the "extra" one dollar sitting fee being charged graduating seniors to have their senior yearbook portraits taken.

Miss Chandler assumed that she had already paid the sitting fee in her tuition and/or when she purchased a copy of the Sahuaro Yearbook.

Both the ASU Photo Service and the Sahuaro Yearbook are expected to only spend the money they collect through sales and subscriptions.

Therefore, in order for the Photo Service to recoup the money they spend on film, forms, and photographers, they are now charging a \$1 sitting fee. Incidentally, it is not uncommon on other university campuses for the student to pay as much as \$4 to \$5 for the same service. Hopefully, the Photo Service relies on students making reorders to pay for all of the expenses.

In the case of the Sahuaro, the subscription price for a student of having his photo in that edition. The per copy cost of the 1966 Sahuaro was approximately \$10, yet subscribers were only required to

pay \$6, or \$7 after October 15. The rest of the budget to meet expenses was raised by charging individual organizations for space in the yearbook.

This fee was not arbitrarily tacked on to harass the students or to make a quick buck, but to face the reality of rising costs, which are being felt by the Photo Service and the Sahuaro, as well as the student.

Miss Chandler, I sympathize with your concern.

Allan Frazier  
Supervisor, Sahuaro Yearbook

Editor:

It was recently brought to my attention that a college student is not deferred from the draft unless he is currently enrolled in or has completed the requirements of ROTC. I feel that this is an affront to my (or any other student's) philosophy of pacifism.

This glorification of war should not be a required subject in this or any other institution. For, as Aldous Huxley wrote, "the perpetuation of war will never lead to peace."

The military establishment of this country is taking over not only more than half of the annual budget of the United States, but is now taking over the minds of the masses.

Scott M. Douglas

# From the back row

By NORVILLE NEXUS

Douglas Maake, an electrical engineering major (natch), has arrived at a solution to alleviate the chronic parking problem on campus.

Maake suggests, sans tongue in cheek, that a gigantic car pool be formed to eliminate the number of cars on campus. He recommends that all students who commute to and from campus form the car pools on Grand Ave., Jefferson, Washington and Van Buren streets.

The master plan continues: all students who need rides to campus should stand on the right hand side of the street and the commuters who have cars would drive past them honking their horns indicating they are seeking passengers.

He suggests the same system for returning home after classes. All students are to stand in front of Gammage Auditorium beside signs designating destinations in Phoenix. Students with cars who are going to the vicinities marked by the signs would give a lift to the waiting students.

The plan isn't bad at all in theory. In fact, it could very well be developed into fun and games on the trip to school — and especially on the return trips.

However, I have one question concerning the plan. What is going to happen to the men and women students who are, to phrase it bluntly, losers?

Assume you, as a male student, are wheeling down Van Buren tooting your horn every few blocks and suddenly come upon two girls. One is wearing a mini-skirt and she is a blond with features that would cause a 76-year-old man to do an about face in his wheel chair and the other girl the "studious type" with a face that makes a Sun Devil Linebacker look like a Devil Doll, which one would you pick up?

Then there would always be the male students who would get a bit thirsty on the long drive to campus and would have to stop at an A&W root beer stand to quaff their thirst. Campus security would probably have to hire a new, special force to police all the roadside stands to pull the stragglers out and get them to classes.

The biggest problem of all that would arise with the adoption of the plan is that it would throw the University into a state of bankruptcy. How could the school function without the \$5 fee charged for parking decals? The faculty tea parties would have to cease.

What would happen to the parking lots on campus? Perhaps they could be made into local "Forest Lawns" for students who succumb to Saga's cuisin. The small white blocks strewn haphazardly about the lots would make a good skateboard obstacle course.

Even with all these drawbacks, more power to your plan Doug Maake.

## Bits and Pieces

**CAR WASHES**  
Sigma Nu pledges will wash cars for \$.99 Saturday, beginning 9 a.m. at the Arcadia Enco service station, 56th and

E. Indian School Rd., and Hayden Plaza "66" station, northeast corner of the Woolco lot. For \$1.00, Tau Beta Sigma will also wash cars Saturday

at the Enco station, Rural Rd. and University Drive.

**ISRB**

The International Student Relations Board brother-sister picnic will be held Sunday at Daley Park.

Students will meet in front of the MU at 2 p.m. Transportation will be provided to the park.

It's called the brother-sister picnic because male foreign students will be paired with female American students or vice versa. Meals will be provided for foreign students.

**CORE**

The campus chapter of the Congress of Racial Equality will meet in SS 229 at 3:15 p.m. today.

**DR. PORTNOFF**

Dr. Collice Portnoff, professor of English, will attend the 20th annual meeting of the Rocky Mountain Modern Language Association today and Friday at the University of Utah, Salt Lake City.

A former president of the RMMLA, Dr. Portnoff will preside at the meetings as a member of the association's executive committee.

## Girls' Dorms Elect Officers; Now Ready for New Duties

Officers for the current school year have been elected in the women's dorms. Most of the officers were elected last spring semester.

New officers in Palo Verde are: Alice Exum, president; Carol McGrew, vice president; Sharon Mentzer, secretary; Jeanine Linsenmeyer, treasurer.

**PALO VERDE** West officers are: Kathy Lyding, president; Peggy Ann Lew, vice president; Carol Sorenson, secretary; Marnee Vuko, treasurer. Palo Verde East officers are: Jan Young, president; Eva Willis, vice president; Cathy Layton, secretary; and Michaelene Hayduke, treasurer.

Elected in Wilson were: Sandra McChesney, president; Ginger Baldwin, vice president; Sandy Bowen, secretary; and Carol Fogel, treasurer. McClintock A selected Pat Bailey, president; Pat Gorman, vice president; Claudia Lane, corresponding secretary; Sharon Maurin, recording secretary; and Bonnie Seeley, treasurer.

McClintock B chose Linda Sprague, president; Cynthia Radcliffe, vice president; Kay Alexander, recording secretary; Brenda Ross, corresponding secretary; and Ginger Blount, treasurer.

**THE QUADRANGLE** will have Pam Mates as president; Karen Petersen, vice president; Anna Vasquez, secretary; and Kathy Storey, treasurer.

In Gammage, Bonnie Hollaway will be president; Liz Lin, vice president; Judy Huber, secretary; and Sandy Almodova, treasurer.

## Home Ec Confab To Be 'Up-to-Date'

The Home Economics department is sponsoring a "Keeping-Up-to-Date-Day," next Thursday.

Registration will begin at 9 a.m. in the H.E. Luncheon, costing, \$2, will be served at 12:15 p.m. in the MU.

Reservations can be made by calling 966-3270 before tomorrow.

The program will be as follows:

- 9:15 Welcome — Dr. Bertha Bresina, chairman of the Home Economics department
- 9:30 New Developments on Decision-Making — Janice Hogan
- 10:00 Experimental Foods in Action — Mrs. Mary Carolyn Woolridge
- 10:15 Using the Electronic Range — Kathleen Bates
- 10:30 Coffee time
- 10:45 New Trends in Family Relationships — Mrs. Helene Hoover
- 11:15 Watching Johnny Grow Through

- Good Nutrition — Mrs. Miriam Jackobs
- 12:15 Luncheon in MU Pagoda Room
- 1:30 Home Economics at the Secondary Level — Marjorie Grant and Dr. Margaret Barkley
- 2:00 New Developments in Textiles — Martha McInnis
- 2:30 Child Development in Present Day — Society — Mrs. Judith Creighton

## Organist to Play Baroque Music

University organist Charles Brown will give a free noon concert today at Gammage Auditorium.

The program, beginning at 12:40, will present baroque music of composers from Austria, Germany and Italy.



### JOB APPLICATION PHOTOS

8 for \$6.88

4 poses to choose from

"Portraits of Excellence"

by

**STUDIO**

Located in the Pioneer Camera Shop  
TEMPE CENTER • PHONE 967-4662

**APARTMENT**  
**1/2 BLOCK TO ASU**  
1 Bedroom furn. All util. paid. \$85 a mo. 802 1/2 Tyler. Phone 967-5430 for info.

**GAY GIBSON'S**

Double Knit Wool in Socks Blue Cherry

at The Village Shop 616 Myrtle Tempe

Open 10-6 Thurs. til 9.

**SUPER - CALI - FRAGIL - ISTIC - EXPI - ALI - DOCIOUS !!**

**Lady Bostonians**

Indoors or out, warm weather or cold, Lady B's bring you a chic fashion look in classic, fun footwear. They're sleek in look... trim in fit... wonderfully light and comfortable. Leisurely fashioned for dorm, travelling, shopping or just lounging around. Come slip into YOUR pair of Lady Bostonians—today!

**14.00**

**Hanny's**  
ADAMS AT FIRST STREET

DOWNTOWN • CHRISTOWN • SCOTTSDALE • THOMAS MALL

## Club Calendar

**EDITOR'S NOTE:** Clubs interested in publishing meeting or activity dates of their organizations in this column may bring the information into MU3 or call 966-3656 at least two days before desired date of publication.

### TODAY

**AMERICAN CHEMICAL SOCIETY**, student affiliate, will meet in PSC 202 at 7 p.m. There will be a demonstration and lecture on liquid nitrogen and liquid helium. Membership forms will be available for prospective members. Students interested in chemistry are invited. Refreshments will be served.

**ARCHONS**, fraternity honorary, will meet in MU 218 for a noon luncheon. Special guest will be Donald Dotts, acting alumni secretary.

**SAILING ASSOCIATION** will meet in MU 7 at 7 p.m. to discuss the association's constitution, review plans for coming

race series and to admit new members. Interested students are invited to attend.

### TOMORROW

**INSTITUTE OF ELECTRICAL AND ELECTRONIC ENGINEERS** will meet in MU 218 at 6:30 p.m. for a dinner meeting. Dr. W. J. Pedrick, dean of the new Law College, will speak on "How To Tune It With You." Tickets are \$1.25.

**INTERNATIONAL STUDENTS RELATIONS BOARD** will hold open house from 4 to 6 p.m. at the Baker Center, 213 E. University Drive. Students are welcome to attend.

**ASSOCIATION FOR WOMEN'S ACTIVE RETURN TO EDUCATION (AWARE)** will hold an organizational meeting in the MU from 12 to 1 p.m. Check board for room number.

## Army Cadets To Sponsor Tea-hop Party

Army ROTC will sponsor a Cadet Tea Hop Sunday afternoon from 5 to 5:30 in the MU ballroom.

The dance will be semi-formal and will include a band and punch and cookies. It will be the first such dance here. The band is the Gordon Wallace Orchestra.

A tea hop is a combined Sunday afternoon tea party and dance, just as it says. Such events were started in the 1800's by cadets at West Point and Annapolis to break Sunday monotony.

The cadets would bring their girls over and have a tea party-dance.

Cost is \$1 per couple and open to all students.

## Phrateres Hits Hills For Weekend Retreat

Over 40 members of Phrateres took to the hills last weekend for the off-campus women organization's annual retreat.

The event was held at Camp Tontozona, near Payson, and began Friday afternoon and ended Sunday morning.

Agenda included discussions Saturday morning of plans for the homecoming float, social activities, service projects and

pledging.

Dean Jo Dorris, of the Office of the Dean of Women, and Karen Darr, AWS president, spoke Saturday afternoon.

Phrateres' future events include a pizza party exchange with Sahuaro D, a Halloween party and a hayride exchange with Alpha Gama Rho fraternity.

## Cheerleader Forms Due

Tryouts for freshmen cheerleaders will begin Oct. 24 with a three-day clinic conducted by the varsity cheerleaders.

Interested freshmen (men and women) will learn three cheers

for first cuts. Finalists will present an original cheer.

Applications are available at the MU Information Desk. These must be returned by Oct. 21 at 4 p.m.

Nobody has a smoother line!

Than  
**Mr. Wrangler**<sup>®</sup>  
in PERMANENT PRESS  
Shirts and Slacks  
with **FORTREL**<sup>®</sup>

Say no more... Mr. Wrangler has the last word in that stay-neat, wrinkle-free look. Naturally, they're Permanently Pressed 50% Fortrel polyester, 50% cotton. Completely guaranteed for one year's normal wear.



•BRITT'S DEPT. STORE  
Phoenix

•COWBOY & INDIAN  
TRADING POST  
Phoenix

or write

**Mr. Wrangler**  
Suite 929, 350 Fifth Avenue,  
New York, N.Y. 10001

CELANESE® FORTREL® IS A T.M. OF FIBER INDUSTRIES, INC.

## The Sandwich Shop

featuring

★ HAM BUN      ★ CORNED BEEF  
★ HAM HOCK & BEANS      ★ CHILI BEANS

— Hot Apple Pie With Sauce —

"Your Favorite Beverages"

6 East 7th Street — Tempe

state press

## Classified

For classified advertising submit ad in person to the State Press, MU 3, two days in advance of publication, between 8:30 a.m. 13:30 p.m., or call 966-3657. Rate: 5c per word, 75c minimum per issue.

### ● FOR SALE

LOSE WEIGHT safely with Dex-A-Diet Tablets. Only 98c at Campus Drugs.

**BOBBIE'S**  
Samples of nationally-advertised ladies wearing apparel at WHOLESALE PRICES! Just arrived! Huge selection of beautiful holiday fashions especially in sizes 9 and 10. Many one-of-a-kind dresses, 1/2 sizes, after-five dresses, knit suits, skirts, blouses, robes, lingerie, capris, shorts. VNB credit cards welcome. Convenient lay-away plan. Scottsdale and Thomas Rd. 945-9172. Open 9:30 a.m.-9 p.m., Mon. through Sat.

1964 Honda — 305cc. Dream, excellent condition, \$400, 279-4003. After 5 p.m.

Solve parking problems — 1964 All-state 250 cc motorcycle with saddlebags, excellent condition, 275-7349 — evenings. \$325.

**MEN**  
Shop after class at  
**AFTER CLASS**  
(Open 1-9 p.m.) 1020 S. McClintock-Tempe

'65 Honda Scrambler—250cc. Excell. cond. Must sell, \$475. Phone 967-1283.

### ● RENT

Yamaha 50cc, fun cycles, 2.00 per hr. at Jim's Union Service. Corner Van Ness and Apache.

### ● SERVICES

IRONING: Shirts 15c. 967-2797.

### ● REAL ESTATE

Tempe home with pool, citrus, built-ins. Days 966-3242; Evenings 967-7948.

### ● HELP WANTED

Soloist needed for Sunday Services in local church. For information, call 967-0664.

**\$75 PER WEEK !!!**  
Dance your way around the world with Arthur Murray's !!! You will be trained in this city to teach anywhere in the Arthur Murray organization. Guaranteed salary after training. Must be single 18-25. Apply in person, 7124 E. Thomas Rd. — Scsdl.

**DOORMEN**, bouncers, and bar tenders. Apply at King and I, 21 W. Osborn or phone 274-8890.

### ● AUTOMOBILES

Mercedes Benz, 1957, 190 SL, black, roadster (conv.), Judson super-charger, best offer. 966-1229.

1965 TEMPEST custom, V-8, 2 dr. hdtop, mag wheels, like new, Call 265-9650.

1960 White Ford, std. transmission, in excellent condition. Reasonably priced. Call 966-2070. Must sell immediately.

1958 Pontiac, 4 dr. HT Automatic V8. Excellent condition. 274-1095.

1961 MG Roadster, red. Brand new interior, rebuilt engine. Excellent condition. 253-4977.

### ● INSTRUCTION

**FLY!**  
What everyone wants to do but couldn't afford. Only \$6.50-hr. License only \$380. 955-1992.

**INDIVIDUAL** tutoring in math, physics, chemistry and biological sciences. Phone 967-7924.

### ● TYPING

Letters, term papers, manuscripts, quality work, reasonable. Call 967-7250 after 6 p.m.

# Fair Weather Fans?

The turning point came against the UofA in the final game of the season last year.

The Sun Devils beat the Wildcats 14-6, and outscored them 7-6 in the first half.

The Devils haven't outscored anybody in first-half action since.

It's all down in the record books, especially the first half of the record books.

In four games this year, 240 playing minutes have passed. Of that figure, one-half of those minutes have been of the first-two-quarters type.

**THE QUESTION** is, "Where have the Sun Devils been in the first halves of their games?" Fans will bet they weren't in the stadium, much less down on the field. And if they were on the field, the opposition didn't notice.

Game No. 1: Texas Western racks up 40 first-half scores. The Devils are on the rampage with 7.

Game No. 2: Wyoming laughs its way to 23 points in a slap-happy first two periods. Devils are out to lunch and score not at all.

**GAME NO. 3:** Devils take sick and tie West Texas at half-time 14-14. Halftime show was converted to a celebration.

Game No. 4: Washington State watches as ASU falls back into form. Cougars roll up 21 points in the half. Devils make up for showing in previous game; score zero points.

"**THE OFFENSE** has been given the ball in bad field position," says Coach Frank Kush. "They're down there at their own 20 with three downs to move the ball. With the opposition penetrating so deep, they get four downs to move."

Whatever the reason, oppon-

ents have been scoring and the Devils have not. Totals: opposition 77-ASU 21.

There's been lots of first half action, but it's all happened at the wrong end of the field.

"Down 21-0 at the half," says Kush, "you change your entire concept of play. Your opponent can be cautious and play ball control. He plays the kind of game where there are few mistakes. The opponent's defense can get reckless and take chances. It can almost dictate what our offense can do."

**THE DEVILS DO** change their play. "In the second half, down by so much, you have to gamble on offense. We also try to adjust to the particular situation with things like changing blocking assignments. But playing catch-up football is tough. You've got to take chances."

Gambling or taking chances, the Devils have done the job in the second half. But only once in four games has it been enough to overcome their disastrous first half performance.

**THAT ONE** time was when they came back with 23 scores in the last two quarters to up-end Texas Western by 30-26.

Against Wyoming, the Tempe boys won the last two quarters by 6-0, but finished on the short end of 23-6.

In an ill-fated second half against West Texas (the goal post got in the way), the defense held the Buffs to 7 points while the offense scored 6 of its

# Left Out Forever The Benchwarmer's Big Chance

By HUGH BOYLE

The big game has started.

Thousands are here to see their team win, naturally.

Led by the pom pon girls, the crowd tries valiantly to cheer the team to victory.

**BOTH SQUADS** start off sluggishly. Neither is able to generate the big break that could turn the tide in their favor.

Meanwhile, on the bench sits the pom pon alternates, cheering along with the crowd. But somehow, they have that left-out feeling.

One of the alternates sits off by herself, silently hoping that she'll get a chance to go in and

wake up the fans.

**SUDDENLY**, one of the starters sprains an ankle doing a tough half-spin-going-right. The proverbial benchwarmer gets a chance to break into the lineup.

The starter with the sprain is carried off the field on a stretcher as the sub goes in. This is her big chance. She's nervous. The team needs a big cheer to get rolling.

The formations and tricky maneuvers of the pom pon team become a jumble as the scared rookie huddles with the varsity poms for the big shout that will get the crowd moving.

**LEGS START** kicking, the crowd goes wild, the team is

urged on by the thunderous roar of the fans.

But wait!

The little sub has fumbled her paper fluff-ball. The crowd groans. The team bogs down. All is lost. The rookie has blown her chance and now falls into oblivion.

**IF ONLY** she'd practiced instead of studying for PE, the team might have had a chance.

Later that night, the starting pom pon lineup is announced for the next game. The sub is left out. She is demoted to number six position on the team.

Dejected, she quits.

A pom pon girl who tried to make good, but just didn't have the stuff.

## Sahuaro Photo Schedule

<b>SENIORS</b> Today, October 13 M	<b>GREEKS</b> Alpha Tau Omega, Gamma Phi Beta
Tomorrow, October 14 M	Alpha Tau Omega Gamma Phi Beta
Monday, October 17 N-O-P	Sigma Nu, Delta Delta Delta
<b>ASU Photographic Service, Matthews Hall</b> 8 to 11:30 a.m. and 1 to 4 p.m. 9 to 11:30 a.m. Saturday	<b>C. R. Conley, Photographer, 106 W. University</b> 1 to 8 p.m., Monday thru Thursday 10 a.m. to 5 p.m. Friday

own. But the one point was enough as the Devils dropped their second straight, 21-20.

**AND LAST** Saturday against Washington State, Ksuh's crew almost made it all the way back, taking the second half by 15-3. But it fell short and the loss column grew. Final score: 24-15.

Second half scores indicate ASU has a pretty good ball team; a potent offense and an outstanding defense. Totals: ASU 50-opposition 17.

But games are won in both halves, and it looks as though first impressions are lasting ones on the Sun Devils.

NEED PRINTING??

SEE

**SUN DEVIL PRESS**  
Student owned & staffed  
**SPECIAL STUDENT DISCOUNT**

- Wedding Invitations
- Business Cards
- Xmas Cards

Stationery starting at \$3.50

CALL 966-5141

NOW OPEN

# El Frijole Pot

FINE MEXICAN FOOD

at the

University Arches

OPEN 8 A.M. - 9 P.M. DAILY

## KENNINGTON SPORT SHIRTS

The new button down look.

New, higher, full fashioned roll collar with removable flex-itize stays that allows you to shape the collar as desired.



SHADOW PLAIDS - CHECKS - SOLIDS

OPEN THURS. TILL 9:00 P.M.  
VALLEY CARDS WELCOME

Herman Marx Ltd.

1466 E. MAIN STREET  
MESA

Just East of Skaggs and El Rancho

business  
admin-  
istration  
majors

Hughes, one of Southern California's leading electronics firms, is currently selecting candidates for its Finance and Administrative Development-Graduate Program.

We would like to discuss the Program with you if you will receive your MBA degree during the next year and your undergraduate training is in one or more of the following areas:

Engineering General Business Economics  
Business Statistics Accounting Finance  
Industrial Relations

The Program is completely oriented and operational. It has been developed to fill the ever increasing financial and administrative requirements of our company. The two-year Program provides valuable experience in many areas through responsible assignments tailored to individual need.

CAMPUS INTERVIEWS

October 25, 1966

by Mr. Carey W. Baker  
MBA Program Administrator

For further information and to arrange a campus interview appointment, please contact your Placement Director or write: Mr. Carey W. Baker, Hughes Aircraft Company, Culver City, Calif. 90230

Creating a new world with electronics

**HUGHES**

HUGHES AIRCRAFT COMPANY

An equal opportunity employer.

# German Spirituals Traced in Book



Buffington

University Professor of German, Dr. Albert F. Buffington, is the author of a book entitled "Dutchified German Spirituals" which was recently published by the Pennsylvania German Society.

Buffington was professor and head of the Department of German at Pennsylvania State University before coming here in August, 1965.

The book is a study and collection of the religious folk-songs developed and sung in the German revivalistic churches in Pennsylvania during the last 165 years.

In the introduction Buffington traces the sources of texts and tunes and discusses their

peculiar language which resembles the German used in the churches and schools of the Pennsylvania immigrants.

Buffington first called attention to the German spirituals in a paper he presented at the annual meeting of the Modern Language Association of America in 1945.

This is the second work Buffington has published since his arrival here.

The first book, a revised edition of "A Pennsylvania German Grammar" published by the Pennsylvania German Folklore Society, is a reference tome for the scholar or layman interested in the relationship of Pennsylvania German to other German dialects and to standard German.

He is also the author or co-author of several other books and numerous articles, including "Songs Along the Mahantongo," published by Folklore Associates, Inc., in 1962; "Early Pennsylvania German Dialogues and Plays," published in 1963 by the Pennsylvania German Society; and "The Pennsylvania Germans," published by the Princeton University Press in 1942.

## One-Act Opera Buffa

# Lyric Opera Theatre's 'The Boor' Opens 3-Day Cosner Auditorium Stand Tonight

First Lyric Opera Theatre production of the season will be "The Boor," opera buffa in one act, adapted from Chekhov's play.

It will be presented at Cosner Auditorium at 7:30 p.m. tonight and at 8:30 p.m. tomorrow and Saturday.

Tickets may be reserved in advance at the Lyceum box office, 966-3437, or may be purchased at Cosner on evenings of performances.

"The Boor," directed by Dr. Kenneth Seipp,

stars David Rasmussen in the title role, Susan Mecham as the young widow, and Bill English as the servant.

Scenes from Mozart's "Don Giovanni," directed by Mary Parkey, will be presented as a prologue to "The Boor," since the Don resembles the widow's dead husband and casts light on the story which follows.

The orchestra will be conducted by Edwin Putnik.

Get Your Tickets For \$85 Worth of FREE Cues!

at Chase's "Q" Palace

GRAND OPENING

OCT. 14 & 15 6 P.M. - 1 P.M.

1328 E. Apache Blvd.

Next door to Harmans

10 A.M. - 1 P.M. 967-4633

## THE BEEF HOUSE

Charco Broiled Steaks

- ★Filet Mignon \$1.48
- ★T-Bone 16-oz. \$2.50
- ★Sirloin ..... \$1.38
- ★King Size
- ★Chopped Filet \$1.08
- Hamburger .... 60c

Dinners Include Baked Potato, Tossed Green Salad, Choice of Dressing and Garlic Bread

Open Daily 11 a.m. to 9 p.m. Except Monday Also Above Orders To Go — 967-6248

Broadway Plaza—Corner Mill & Broadway, Tempe

## IS THE WIGGLY SCENE FOR YOU ?

It's the latest hang-up. The psychadelic Go-Go scene. Soon it will be the big noise on campus. The current issue of The Saturday Evening Post takes you on the rounds of New York's "total-environment" night-clubs. Experience the frantic kaleidoscope of flashing lights, movies, slides, colored smoke and deafening rock 'n' roll that give you an LSD trip with no side effects. Get with New York's "Take-Over Generation" as they Jelly Belly their cares away. Find out what to wear when making the new scene: bust shields, fluorescent mini-skirts, silver motorcycle jackets, aluminum wigs. Is this really a new are media as its inventor believes? Is it for your school? Find out in the October 22 issue of the Saturday Evening Post. Pick up on it today, baby.



## Visit The Most Modern Two-Level Book & Supply Center in the Southwest



Make This Your ONE-STOP Shopping Headquarters

# Student Book Center

corner college & seventh street

HOURS: MON. - FRI., 7 To 9; SAT. 8 - 5; SUN. 1 - 5 Phone — 966-6226