

A Record Budget: Still Not Enough

The Board of Regents approved a budget totaling \$59,094,817 for the 1967-1968 school year for the three state universities at its monthly meeting here Saturday.

The budget is \$9 million higher than the last fiscal year.

Of the \$59 million total, \$41,598,417 will come from state funds and \$17,496,200 will come from student tuitions.

The University's share is \$21,678,946; \$15,491,946 from state funds and \$6,187,000 from student tuitions. The University of Arizona's budget totaled \$30,622,696, and Northern Arizona University is to receive \$6,793,175.

ALL THE FIGURES are record totals. However,

Regent Leon Levy of Tucson stated that another \$6 million would be needed to do a sufficient job.

"We have arrived at a budget which we can operate on, if the legislature were to ask us to pare off half a million dollars, we wouldn't know where the hell to start," said Levy. "The budget is the 'minimum' we can hope to operate on."

Levy arrived at the \$6 million figure after he and Myron Holbert, budget officer for the board, had studied a report by Dr. M. M. Chambers, dean of higher education at the University of Indiana. The report stated that the average state tax cost per student in the State of Arizona was \$592, 30 per cent below the national average of \$764.

SOME STATE universities had an average state tax cost per student which were as much as three times that of Arizona schools of higher education. At the University of California, for example, the state tax cost per student is \$1,705.

The regents also revealed student on-campus enrollment figures for the present fall semester. Arizona State has 20,641 students attending classes. The UofA has 21,407, and NAU 5,900.

THE TOTAL ENROLLMENT at the three state universities now stands at 47,948. "We potentially have to be prepared to handle double that number of students in ten years," Levy said.

He states that the three universities are currently servicing over 100,000 students a year.

state press

ARIZONA STATE UNIVERSITY

Tempe, Arizona

Tuesday, October 11, 1966

Vol. 48—No. 15

Freshmen Vie For Senate Posts

Four candidates will compete in tomorrow's general election for two freshmen Student Senate posts.

Terence Edwards, Jerry Ferguson, Bill Flanders and Judy Mitchell survived the primary from which ten other hopefuls were ousted. Miss Mitchell topped the vote-getting in the primary election.

Edwards, a physical education major, was student body president and is a Sigma Phi Epsilon pledge.

A business administration major, Ferguson was secretary and treasurer of his student

body. He is a cadet squadron leader in the AFROTC.

Flanders, a Phi Sigma Kappa pledge, has an academic scholarship and majors in political science.

Miss Mitchell was secretary of her student government and majors in secondary education. She served as a Girls' State mayor and was an American Field Service summer student to Turkey.

Election Board members will run voting booths at the Saguaro Complex, the Palo Verde Complex and in front of the Administration Building.



Photo by Con Keyes

SEASON'S END — Andrew Wyeth's painting is one of 24 on display in the upper and lower lounges of the MU. The exhibition runs until Oct. 30.

IFC Refutes CORE, 'No Basis for Charges'

There is "no basis whatsoever" for CORE's charges of discrimination by Sigma Nu fraternity, said Interfraternity Council (IFC) adviser Robert Chamberlain Thursday.

"I don't think we have to answer charges of discrimination because we don't have any," he said.

CHAMBERLAIN, who is assistant dean of men, made the remarks at IFC's bi-monthly meeting in the Senate chambers.

He told fraternity representatives their organizations are allowed to pledge anyone they select, and are free to set up their own standards provided they do not discriminate on the basis of race, religion or national origin.

ONE FRATERNITY, Alpha Epsilon Pi, has added one Negro to its rolls.

Chamberlain pointed out, however, that there is "lots of voluntary segregation on campus" which he admits points up ASU's lack of cosmopolitan atmosphere.

This lack, he explained, is attributable to the fact most ASU students are Arizonans and

commuters, who have no sense of closeness to the campus community.

IFC PRESIDENT Ted Marsella also denied there is any discrimination in the fraternity system.

"There is no de facto segregation," said Marsella. For while there may be no Negroes in white fraternities, he indicated, the fraternities select their members on bases other than skin color.

"We drop whites, too," he

said.

RETURNING to the charges by CORE, Marsella said the missing Sigma Nu waiver, representing a statement of non-discriminatory policy by that fraternity, still has not been found.

But he is sure the waiver is on file nationally, he said.

According to Marsella, CORE's charge that Sigma Nu's constitution was discriminatory was based on the absence of that waiver in IFC files.

'Half a Sixpence' At Gammage Show

The current Broadway hit, "Half a Sixpence," will be presented at Gammage Auditorium at 8:15 p.m. Oct. 20 and 21.

The musical, presented by American Theater Productions, will star Kenneth Nelson, and is based on H. G. Wells' celebrated novel, "Kipps."

Nelson, understudy to Tommy Steele in the original Broadway production is no stranger to the stage. He starred as Willie Baxter, in the production of, "Sev-

enteen," and won wide acclaim for the starring role in "The Fantastics."

"Half a Sixpence," revolves around a cockney clerk (Nelson) in Shalford's Drapery Emporium and Fabric Bazaar.

The play's music, written by David Heneker, has drawn many favorable reviews.

Tickets are available at the Gammage Box Office. Prices are \$3, \$4 and \$5.



Photo by Bill Gray

AUTUMN SUN — A coed takes a few minutes respite between drudge of classes to soak up a few rays of autumn's sun.

Debating Squad Scrambles For Forensic Enthusiasts

Limited applications for the Debate Team will be accepted in LL611 on Wednesday, Oct. 12 from 1 to 4 p.m. Freshmen and sophomore students are invited to apply, experienced or not.

The debate team travels throughout the year challenging other college and university squads. It proves to be rewarding and educational for a debater says Dr. William Stites, debate coach.

After the applications have been accepted, most of the students will begin a six-week training period. Having completed the training, the student will be eligible to join one of the debate squads.

Bill Walker, senior debate member, said the team is divided into novice squad, generally those in first year debate; junior squad, those just off varsity; and senior varsity squad which debates the best teams in the country.

Those students interested should see Jim Pierce, forensic assistant of debate, tomorrow.

Free Press-Fair Trial Debate Is Subject of Panel Discussion

A panel discussion and question and answer period on the current "Free Press - Fair Trial" controversy will be sponsored from 11:40 a.m. to 1:30 p.m. Thursday by Sigma Delta Chi and Pi Delta Epsilon.

The two journalism honoraries will present three panelists familiar with each side of the dispute following a luncheon in

MU7. Tickets are available in Main 302 for \$1, or may be credited from a meal ticket.

The program was prompted by the national controversy that followed the Supreme Court's Sheppard decision, and by the police blackout of information on the recent murder of coed Laura Bernstein.

Author to Discuss Pre-Raphaelite Era

English biographer and lecturer, Lady Rosalie Mander of Wightwick Manor, Wolverhampton, whose books appear under the more familiar name of Rosalie Glynn Grylls, will be guest speaker Thursday at 8 p.m. in the MU ballroom.

Sponsored by the English department, she will lecture on "Rossetti and the Pre-Raphaelite Brotherhood," late 19th century poet-painters, illustrating her talks with slides. Free to students, faculty and the public, the lecture will be followed by a reception in the arts lounge.

Author of the recently published "Portrait of Rossetti,"

Lady Mander also wrote "Trelawny" and "William Godwin and His World." Her biography of "Mary Shelley," written more than 20 years ago, still is regarded as the standard work. She comes here after lecture engagements at Yale and Princeton.

Of Cornish ancestry, Lady Mander attended Queens College and Oxford. During the 1930's she married Sir Geoffrey Mander who died in 1962. Her Wolverhampton home, Wightwick Manor, is included in the National Trust by reason of the collection of pre-Raphaelite art contained there.

Professors Will Pilgrimage to Mountains

Students aren't the only ones who need to retreat from the busy activities of campus life!

Teachers and instructors also find it relaxing to get out of the Valley of the Sun, especially those teaching in the Department of Educational Administration and Supervision.

Each year this department, headed by Dr. Raymond Wochner, has a retreat in the fall when the leaves are starting to change color.

This autumn department members and their families will travel to Alpine Lodge in the White Mountains on Oct. 15-16.

During the weekend, professors "forget about shop and enjoy their families" said Dr.

Wochner. There are plenty of activities to keep everyone busy including hiking, fishing and horseback riding. Side trips are also planned and in the past the group has visited Bear Lake and gone down the Coronado Trail.

ASU Soloist to Play Prescott Inaugural

Frank Spinoso, assistant professor of music, violinist and conductor, will appear as solo musician at Prescott College President's inauguration Sunday, October 23.

Spinoso, who will appear with the Phoenix Symphony Orchestra as a soloist, will play a violin concert composed of Viv-

aldi's "Sonata in A Major," J. S. Bach's "Sarabande," and Tartini's "Variations on a Theme of Corelli."

He has taught at Hastings College, the University of Alabama and the University of Illinois before assuming his present job here. In January he will serve as guest conductor of the Illinois Summer Youth Camp.

LIKE
MAKE HOLIDAY
AIR RESERVATIONS
NOW...
YOU PAY NO EXTRA SCRATCH
FOR OUR SERVICE
Don't Sweat Going To Phoenix
We Represent All Airlines
"SWING BY TODAY"
UNIVERSAL TRAVEL
WO 7-1673
18 E. 5th St.

Fred Elquest & Son
Everything for the Art Student
• Art Supplies
• Picture Framing
703 N. 2nd St.
Phoenix
PHONE AL 8-2628

WHAT'S THIS?

Answer: Who Cares!

- How many College Life Insurance Companies of America are there?
Answer: ONE!
- Who Represents College Life?
Answer: COLLEGE GRADUATES ONLY.
- Who Benefits from this Specialization?
Answer: COLLEGE MEN ONLY.
- Where is the Home Office Located?
Answer: INDIANAPOLIS, INDIANA.

When your "College Life" Representative calls on you make sure he represents "the Original and Only Company Specializing in Insurance for College men... represented Only by College men Selling Exclusively to College men."

THE COLLEGE LIFE
INSURANCE COMPANY OF AMERICA
INDIANAPOLIS, INDIANA

For the Best "College Plan" Go to Your ABC's of Insurance!

Your "COLLEGE LIFE" Representatives at
Arizona State University

A GUILAR, Jerry — 967-1001
B ECKER, Harry — 966-1643
C HAMBERLIN, Jim — 279-0339

Smocs are Mocked

It's No Secret Who The Pacesetters in Fashion Are — And It's No Secret Who Digs The

1967 SAHUARO
— Set The Pace And Reserve Yours Now,
Only \$7.00 / MU 207

SMOCS — SWINGING MEN ON CAMPUS

Wilson Hall Banners in R&T Contest Series

Winners of the first in a series of football banner contests are Wilson Hall, first place; Phi Sigma Kappa, second place; and McClintock Hall, third place.

There will be a banner contest to coincide with each home football game, said James Nichols, chairman of the banner committee of the Rallies and Traditions Board. It is also possible the contests will continue through the basketball season as well.

Nichols said the purposes of the contests are to build student interest in athletics, to encourage school spirit and to boost attendance at home games.

Solon Candidate To Cite Record Of Incumbent

L. Alton "Pat" Riggs, U. S. Congress Democratic nominee from District 1, will speak about the record of his opponent, John J. Rhodes, Oct 21 at 7 p.m. in the MU Ballroom. The general public is invited.

WINNERS OF each contest are awarded points; seven for first place, five for second place and three for third place.

At the end of the season the organization with the most points will receive a trophy which will keep for one year. Second - and third-place winners will each receive a plaque.

All student organizations on campus are encouraged to enter, Nichols stated. They may do so by picking up an entry blank at the information desk in Memorial Union. The completed blank should be returned by 5 p.m. Wednesday, the week of the game.

BANNERS ARE to be displayed on campus and must be in place by 8 a.m. the Friday before the game. They will be judged that afternoon by three local ASU alumni, who will base their decisions on artwork, originality and general appeal.

The three winning banners will be on display at the game. It will be the responsibility of the organizations whose banners are on display to remove them after the game, Nichols said.



V I SPECIAL

INDIVIDUAL PIZZA 99c
Salad, Soft Drink

SANDWICHES
Hot Ham Bun 65c
Italian Salami 65c
Hogleg 75c

SERVED DAILY
TILL 5

801 E. Apache Blvd. 967-3355

AL HIRT
AMERICA'S GREATEST TRUMPET SHOWMAN

IN PERSON
AND HIS EXCITING ALL STAR SHOW

SUNDAY, OCTOBER 15 - 8 P.M.
VETERANS MEMORIAL COLISEUM

TICKETS: \$1, \$2, \$3, \$4 & \$5
At All Community Box Office and Coliseum Box Office Locations

IN TEMPE:
HAPPY HOUSE,
905 Mill Ave.

Take Along A
"PAPERBACK"

Try Us First . . .

HILLS BOOKS & RECORDS

Tempe Center
Open Monday and Thursday 'Till 9 p.m.

DIAMOND BANDS, from \$75. Custom made, or choose from a wide selection.

channel-set diamonds

Paul Johnson
JEWELERS

IN THE ARCHES
130 EAST UNIVERSITY DRIVE • TEMPE • 967-8917
1940 EAST CAMELBACK, PHOENIX 277-1421
CERTIFIED GEMOLOGIST, AMERICAN GEM SOCIETY

THIS WEEK'S SPECIAL

ABBY SACK, Alpha Epsilon Phi

"Portraits of Excellence" by **STUDIO M**

Three Desk Size Portraits In Deluxe Silvertone Finish

THIS WEEK ONLY . . . **\$1188**

NO SITTING FEE
6 Poses to Choose From

Located in the Pioneer Camera Shop
Phone 967-4662
TEMPE SHOPPING CENTER

Evidence

The circumstances surrounding the arrest of David R. Mumbaugh, a draftsman with the traffic engineering section of the Arizona Highway Department, for allegedly stabbing ASU coed Laura Bernstein to death Sept. 21, still remain unclear.

The press has been given only the bare details surrounding Mumbaugh's arrest by the defense and prosecution attorneys and Tempe police. Tempe police were asked by John D. Lewis, a deputy county attorney, to make no comment about the case.

Lewis told newsmen Sept. 30 that "certain information" led to Mumbaugh's arrest and made no further comment.

A preliminary hearing scheduled for Oct. 4 was changed to Nov. 9 by Justice of the Peace Ralph W. Fowler on the request of defense attorney Robert Corcoran of Phoenix. Both the deputy county attorney and the defense attorney may have made these requests for fear of adverse pre-trial publicity in accordance with the America Bar Association's recent, over-zealous concern for the rights of defendants?

Friday, two ASU students told police they knew Miss Bernstein, and a week before her tragic death she told them someone, whom she described as an "older man," had tried to run her down in an automobile. Whether she only "thought" someone had tried to kill her, or it was just a coincidental mishap, no one can really say.

But, in the light of the recent happenings and the lack of information about Mumbaugh's arrest, mainly the evidence that police supposedly have, makes the case even more mysterious.

Many people, since they don't know what evidence they have, and the chance that someone else, an "older man" perhaps, may have killed Miss Bernstein, want to know why police suspect Mumbaugh. This leads to another question. Are the police still pursuing their investigation, or are they certain Mumbaugh is their man?

It might be asked by others, "why didn't the police, after questioning almost 200 people in the course of their investigation, run across the two students who related Miss Bernstein's past fear only last Friday?"

The students and others want to know, and do "have a right to know." So many questions, and so few answers, lead to conjecture and doubt. Not as it would seem, about the suspect, but about the efficiency of law enforcement agencies.

The press, in attempting to fulfill its responsibility, without receiving complete factual information about crimes, may try to put two and two together and come up with headlines in stories like "Coed Molesting; Murder Linked?" The public needs to know and the press tries to give them what they want, if it's in their best interest. The press can either "put up, or shut up," and the ABA would prefer they "shut up" in certain crime stories.

The people, who make the laws and expect them to be enforced, demand the press to "put up." This is our function.

When lawyers and law enforcement agencies refuse to furnish information to the press, they are turning their backs to some of the laws they are pledged to defend, in this case the first and fifth amendments to the Constitution.

The American Society of Newspaper Editors, in a recent report to The Associated Press, seeing the importance of too much publicity in criminal cases causing the defendant in some case to be condemned by society before trial, agreed that lawyers and law enforcement officials should not release to the press:

- 1) The prior criminal record or statements as to character or reputation of a defendant.
- 2) The existence or contents of any confession, admission or statement given by the defendant or his refusal or failure to make a statement.
- 3) The identity or credibility or prospective witnesses.

They said, on the other hand, "Lawyers and police officers should be permitted to give the identity of an arrested person, the circumstances of arrest, the substance of the charge and to describe evidence seized."

The State Press must agree in part with ASNE's outlook, particularly in the Bernstein case now pending. Only a token amount of information has thus far been given. We hope that more information will be released in a very short time.

Discrimination?

Kappa Alpha Psi, a mostly Negro fraternity now being reorganized after a three year "lack of interest" problem, has been given a "lot of advice and leeway" from the Interfraternity Council, according to a Kappa Alpha Psi spokesman.

The fraternity, which now has seven active members and 18 pledges, started reorganizing April 2. They boast Henry Carr, New York Giants football player, as an alumnus.

Kappa Alpha Psi stated it "likes" the fraternity system, and didn't think there was any discrimination shown. The fraternity itself has been trying to obtain several white pledges.

The Negro fraternity's spokesman also pointed out that Phi

Sigma Kappa sent a Negro several rush invitations last year.

On the other hand, Alpha Epsilon Pi, a "predominately Jewish" fraternity, said there is "some discrimination each year." On CORE's claim of discrimination, Bill Daniels, spokesman for Alpha Epsilon Pi, said "we have no views."

It seems all fraternities do discriminate, but it is not strictly because of race, color, creed or national origin; it is on an individual basis. Alpha Epsilon Pi, who says it does discriminate, has a Negro brother who is a Catholic. They also have a Protestant brother.

Everyone has a right to choose his own friends; this is what the fraternities at ASU have done.

From the back row

By NORVILLE NEXUS

Water closets have broken into the pages of Newsweek.

The current issue of the news magazine carries a feature story on men's rooms. More specifically, the article deals with handwriting inscribed on wash-room walls.

Newsweek reporters, being the searching, intrepid type they are, researched their subject carefully. Judging from the thoroughness of the article, they undoubtedly have the cleanest hands in New York.

The news magazine's editors culled only the best examples of the dubious literary talent that abounds in lavatories throughout the U.S.

The examples of washroom poetry range from the familiar little four line poems to "Marianne —\$25" to "Ronald Reagan eats peanut butter."

The story related the fact that it has often been said. "The best way to reach someone is to leave an inscription on a lavatory wall." This may explain the fact that one note read, "Judge Crater, call your office immediately."

One of the more imaginative inscriptions was found in a Greenwich Village washroom. It read, "God isn't really dead, He just doesn't want to get involved."

Not one to be outdone at such trivia, I decided to conduct a local research experiment of my own. With high heart and even higher hopes, I embarked early one evening to begin my study.

The first washroom inspected was that of a well-known local motel. The only worthwhile message on the walls read, "Bob McConnell wears elevator shoes."

The next men's room was a bit more fruitful, the walls were solid lead and ink. One conspicuous inscription seemed to stand out, "Charlie Brown is a junkie." One person with a warped sense of humor had written, "Mickey Mouse wears falsies (ears)."

After several Dad's root beers, I found that I ran into trouble deciphering the writings if they were any higher on the wall than three feet. But the inscriptions closer to the floor seemed to be more interesting anyway.

One peculiar message read, "Saga food's peanut butter isn't."

I had to give up on my research study because I suddenly found myself surrounded by other people who were on all-fours. Someone was asking, "What's the trouble? What's everyone looking for, anyway?" Another voice answered, "I don't really know, I think someone dropped a contact, though."

Silently heading for the door and banging my head on several pipes while trying to make an exit, I spied one last message, "The buffalo herds are planning a comeback. (signed) Obediah Plumflump."

Letters to the Editor

Editor:

In support of many others who feel the same way I do, I would like to know why we have to pay all of these little "extras." As was mentioned in this section before, we do pay for all sports activities when we pay the registration fee. Now we are charged 50 cents to attend basketball games.

Another new "extra" is the sitting fee for all graduating seniors that "must be paid before pictures are taken" and put into the annual. Not only is this service paid for by us when we register, but we also pay for these services when we purchase an annual.

Isn't having our pictures put into the annual a privilege for graduating seniors (after all the time and money we have spent at the University for four years or more) instead of an "extra" charge for this honor?

Even another "extra" that is popped on the seniors is having to pay \$5 in order to have a few forms filled out and signed showing that we have satisfactorily passed the school requirements for graduation. If a person does not meet all these requirements, he is told that he must wait and pay another registration fee and go through this same procedure next semester, paying another \$5.

What are we paying our registration fee for in the first place?

Kathy Chandler

Editor:

I find it hard to believe that such a large, respected organization as CORE could be so

far off base in its judgment and criticism of the fraternities on the University campus. It would seem to me that if CORE was so earnest in its criticism, they would have at least made the effort to investigate all the facts of the situation by getting information from the Interfraternity Council office, visiting some of the fraternities or even questioning a few fraternity men — none of which did they do (or seem to do as is evident by their remarks.)

CORE seems to condemn the fraternities for not pledging Negroes when they should, in fact, be blaming the Negro students for not rushing the fraternities. In the past very few, if any at all, Negro students have gone through formal fraternity rush on our campus. This year, for example, only one did go through the rush; and although receiving numerous bids, did not accept any.

If the individual Negro student does not take the initiative to even go through the preliminary action of merely visiting the fraternities, as many of the Caucasian students do, how does CORE expect him to become a member?

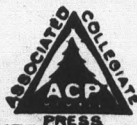
There is one paradox I cannot understand, though. If CORE is so strongly against the evils of discrimination, as we all are, what will happen when they do get their "Negro fraternity" started on this campus and a white boy wishes to join?

It gives one something to think about, anyway.

Geoffrey E. Gonsler

state press

THE STATE PRESS is the official campus newspaper of Arizona State University. It is published Tuesday through Friday throughout the academic year by the Board of Student Publications in cooperation with the Department of Mass Communications and entered as second class matter at Tempe, Arizona 85281.



THE STATE PRESS is a member of the Arizona Newspapers Association, Associated Collegiate Press and National Advertising Service, Inc. Subscription price is \$5 per school year.

EDITOR-IN-CHIEF	TONY AULT
MANAGING EDITOR	JERRY HOFFERBER
NEWS EDITOR	VALERIE JONES
ASSISTANT	BILL CUSHING
CAMPUS EDITOR	BOB JOHNSON
ASSISTANT	DICK GAZI
SPORTS EDITOR	JOHN WALLACE
SOCIETY EDITOR	SUSIE BLACK
ASSISTANT	LINDA COTTAM
COPY EDITOR	BILL DEMPSEY
PHOTO EDITOR	CON KEYES
Assistant	BILL GRAY
FACULTY SUPERVISOR	ROBERT E. LANCE
ADVERTISING MANAGER	HAL HUBELE

Bits and Pieces

COLLEGE NOW

"Get ready for college now" is the title of an article published in the September and October issues of Today's Health Magazine by Dr. Willard Abraham, chairman of the Department of Educational Services of the College of Education.

The two part article stresses the importance of long-range planning by high schoolers on their future careers in college.

NEW IDEAS

Academic Vice President Joseph C. Schabacker will conduct a conference session entitled "Developing New Ideas and Areas of Community Service for Institutions of Higher Learning" at a conference of deans, directors and other university and college leaders at the University of Richmond, Va., on Oct. 18.

U.S. FILM

The United Nations Assn. of Phoenix will present the Oscar winning documentary, "The Eleanor Roosevelt Story" on United Nations Day, Monday, Oct. 24. Showing time at Phoenix' Fox Theater is 8 p.m.

The film was written by Broadway playwright and poet Archibald MacLeish and narrated by CBS newsman Eric Sevareid.

Admission to the show will

Marriage To Be Newman Center Discussion Topic

"Christian Marriage" is the topic for a series of eight Tuesday night lectures and discussions that begin tonight at 7:30 in the Newman Catholic Student Center.

Father Walsh will offer an introduction to the series.

Other programs include "A Physician Looks at Marriage" (Oct. 18); "Marriage and its Subconscious Motivations" (Oct. 25); "A Married Couple Looks at Christian Marriage" (Nov. 1); "Budget and Finance in Married Life" (Nov. 8); "An Educator . . ." (Nov. 15); "A Psychiatrist Looks at Christian Marriage" (Nov. 22) and "Recent Theology on Family Planning" (Nov. 29).

Lecturers will include Dr. George Hamm, dean of students; Dr. Thomas Kruchek, Phoenix psychiatrist and neurologist; Dr. Gerald Cryns, executive secretary of Catholic Social Services in Phoenix.

be 75 cents for students, \$1.50 for non-students.

FOREIGN SERVICE

Applications for the U. S. Foreign Service examination and sample copies of the exam are

now available from Dr. Al-Marayati in SS 416.

According to Al - Marayati, people from all fields and interests are being sought by the federal government for diplomatic work.

Work in Alaska Inspires Topic

Tomorrow's geology colloquium will be open to the public, says Dr. Troy L. Pewe, chairman of ASU's geology department.

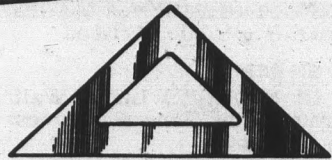
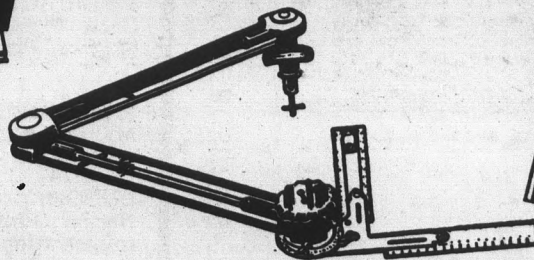
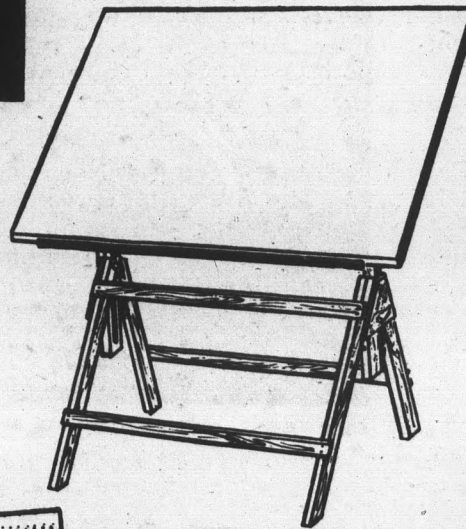
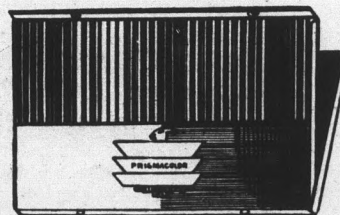
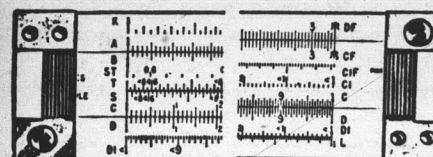
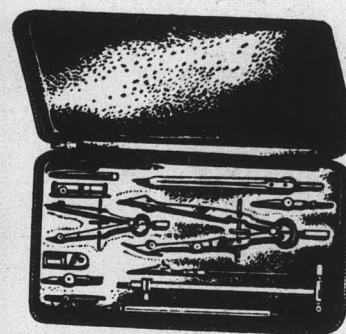
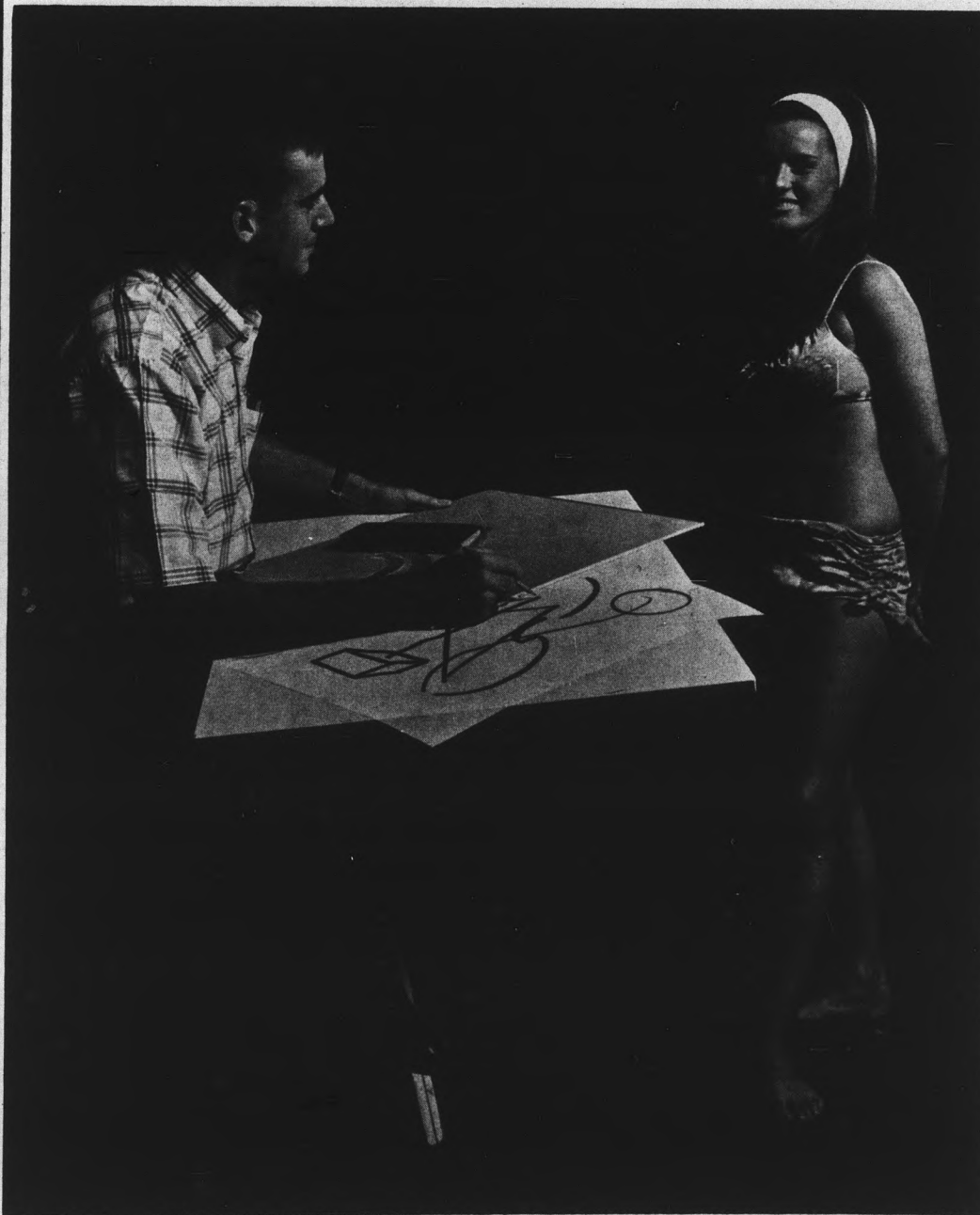
Speaker for the 3:40 p.m. talk will be James A. Rowe, ASU senior in geology who spent

the past summer working in the Puget Bay area southeast of Seward, Alaska.

Rowe's talk is entitled "Dendrochronology and lichenometry applied to a reconnaissance of the Puget Glacier area, Alaska."

Imagine What You Could Do . . .

WITH OUR COMPLETE LINE OF **LIETZ** ART & ENGINEERING SUPPLIES



Student Book Center

corner college & seventh street

HOURS: MON. - FRI., 7 To 9; SAT. 8 - 5; SUN. 1 - 5 Phone - 966-6226

Get Your Tickets
For \$85 Worth
of FREE Cues!

at
Chase's "Q" Palace

GRAND
OPENING

OCT. 14 & 15 6 P.M. - 1 P.M.

1328 E. Apache Blvd.

Next door to Harmans

10 A.M. - 1 P.M. 967-4633



Nursing Managers To Train

A personnel management course for administrative personnel in the nursing home management field is scheduled Tuesday and Wednesday, Oct. 18 and 19 in BA 111.

The two-day program is sponsored by the Arizona Nursing Home Association, ASU's Bureau of Business Research and Services, and the State Vocational Education Department's distributive education services.

Topics covered at the seminar will include New Services Required by Medicare, Job of the Manager, Written Job Descriptions and Personnel Practices, Human Relations and Communications, Basic Salary Determinations, Training of Personnel, Personnel Problems and Labor Management Relations.

Among the faculty from the department of management who will participate are Harold C. White, Robert E. Boynton, Sherman Tingey, and Leonard Kazmier. Joe F. Creed of the Bureau of Business research and Services, will also participate and should be contacted for further information or to make advance reservations. Cost of the seminar, including two luncheons, is \$20.

Registration will be at 8:30 a.m. Oct. 18. Lectures and discussions both days will run from 9 a.m. to 4:30 p.m.

RECEIVED — Assistant to the President Tilman Crance and wife greet Mr. and Mrs. Arthur W. Ricks and Dr. Eleanor Jaqua at a weekend reception by President G. Homer Durham for new faculty members.

Sahuaro Photo Schedule

SENIORS	GREEKS
Today, Oct. 11	L Sigma Phi Epsilon
Tomorrow, Oct. 12	M Alpha Tau Omega, Gamma Phi Beta
Thursday, Oct. 13	M Alpha Tau Omega, Gamma Phi Beta
ASU Photographic Service, Matthews Hall	C. R. Conley, Photographer, 106 W. University
8 to 11:30 a.m. and 1 to 4 p.m.	1 to 8 p.m., Monday thru Thursday
9 to 11:30 a.m. Saturday	10 a.m. to 5 p.m. Friday

Hickory Style Bar-B-Que



1828 N. Scottsdale Rd., Tempe
Phone 946-8892 For Take-Out Orders

CHRISTIAN MARRIAGE SERIES Newman Catholic Student Center

University Drive at College Avenue

A series of eight lectures and discussion for all students who are contemplating Marriage in the near future, for engaged couples and all interested students. Tuesday evenings at 7:30 p.m. beginning October 11.

OCTOBER 11

Introduction. Father Leon Bourke, Ph.D. Associate Director of Newman Catholic Student Center, Arizona State University.

OCTOBER 18

A PHYSICIAN LOOKS AT MARRIAGE. T. J. Hughes, M.D. General Practice and Surgery, Tempe, Arizona

OCTOBER 25

MARRIAGE AND ITS SUBCONSCIOUS MOTIVATIONS. Gerd Cryns, Ph.D., Executive Secretary, Catholic Social Service, Phoenix, Arizona

NOVEMBER 1

A MARRIED COUPLE LOOKS AT CHRISTIAN MARRIAGE. Mr. and Mrs. John Gallagher, Scottsdale, Arizona

NOVEMBER 8

BUDGET AND FINANCE IN MARRIED LIFE. Walter G. Becker, Ph.D., Associate Professor of General Business Administration, Arizona State University

NOVEMBER 15

AN EDUCATOR LOOKS AT CHRISTIAN MARRIAGE. George Hamm, Ph.D., Dean of Students, Arizona State University

NOVEMBER 22

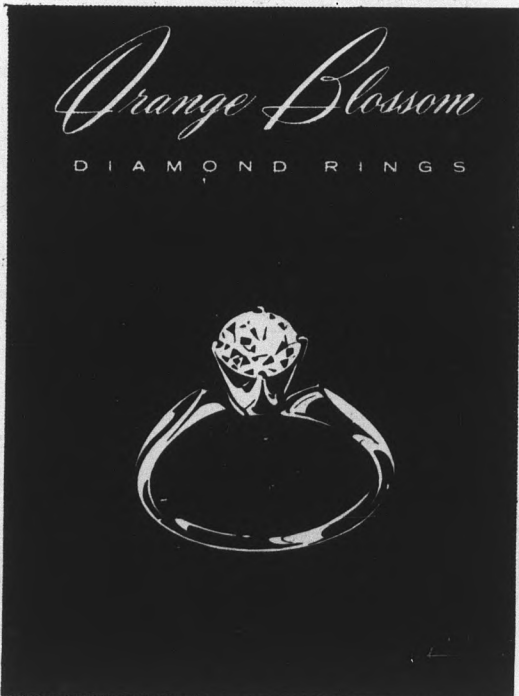
A PSYCHIATRIST LOOKS AT CHRISTIAN MARRIAGE. Thomas Kruchek, M.D., Psychiatry and Neurology. Phoenix, Arizona

NOVEMBER 29

RECENT THEOLOGY ON FAMILY PLANNING. Father Thomas A. Walsh, Director, Newman Catholic Student Center, Arizona State University

For Information, please call: 967-3483

SEE DENNIS FOR DIAMONDS



EMPRESS • PRICES FROM \$125 TO \$1500

*Fine
Dennis D. Naughton
Jewelry*

132 N. Central — Park Central Mall
9 A.M.-5:30 Daily — Till 9 Mon., Thurs. & Fri.
AL 2-3774

As Usual, The Creators Of The Unusual

Registered Jewelers  American Gem Society

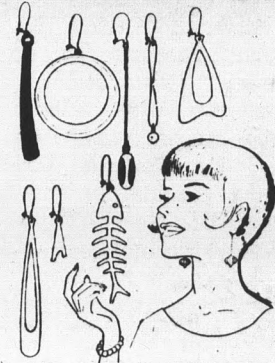
SEE DENNIS FOR DIAMONDS



ARTIST & DRAFTING SUPPLIES

Crafts - Picture Frames
Decorating Material
Tempe Center • WO 7-4482
Open Mon. & Thurs. Nites

EARRINGS



Pierced, Chicken, Pierced Look **\$1.95**

Gay! Mod! Unusual! Long - short - Hoops - Swingers!
Build your earring wardrobe from the best selection in the Valley.

*Maharani
Creations*

4 VALLEY LOCATIONS

- Order by Phone—946-5224
- 89 W. 5th Ave., Scottsdale
- Thomas Mall
- Chris-Town
- Town & Country

'The Four of Us' Sing At MU Pop Up Concert

"The Four of Us," a folk-jazz group of students, will perform in two half-hour concerts tomorrow at 11:45 a.m. and 12:45 p.m. in the MU ballroom.

The group, consisting of Carol McKenzie, freshman, and sophomores Verne Bullock, David Dir and George Jett, can be heard tomorrow with no charge to students, faculty and staff.

The concert is the second in the new Pop Up Series following last week's concert by Dolan Ellis.

Entertaining in the Orient on a USO tour over the summer, "The Four of Us" had a chance to spend 12 days in Viet Nam singing to soldiers.

They played in Japan, Korea, Okinawa, Thailand, the Philippines and Guam. They were accepted for the tour upon recommendation of three U.S. senators.



"THE FOUR OF US" will present two concerts in the MU ballroom tomorrow. Members are Verne Bullock, Carol McKenzie, David Dir and George Jett.

Advances in Home Economics Topic for Many Speakers

All those interested in new developments in the home economics field are invited to a "Keeping-Up-To-Date Day," sponsored by the Department of Home Economics.

Dr. Margaret Barkley, associate professor of home economics and event chairman, said all home economists are welcome to the Oct. 20 event whether actively engaged in the profession or not.

OPENING with a 9 a.m. registration in the Home Economics Building, and a welcome at 9:15 a.m. from Dr. Bertha Bresina, department chairman, the day will feature talks by ASU faculty members.

Topics to be covered and those speaking include:

New Developments in Deci-

sion-Making, Miss Janice Hogan; Experimental Foods in Action, Mrs. Mary Carolyn Wooldrige; Using the Electronic Range, Miss Kathleen Bates, and New Trends in Family Relationships, Dr. Helene Hoover.

ALSO, Watching Johnny Grow Through Good Nutrition, Mrs. Miriam Jackobs; Home Economics at the Secondary Level, Miss Marjorie Grant and Dr. Barkley; New Developments in Textiles, Miss Martha McInnis and Child Development in Present Day Society, Mrs. Judith Creighton.

Those planning to attend the 12:15 p.m. luncheon in the Pagoda Room of the MU priced at \$2, are asked to make reservations in advance by calling 966-3270 by Friday.

Town Planning Is Talk Topic

A distinguished English architect has selected a timely subject for his lecture Oct. 14, at 3 p.m. in the MU ballroom.

Sponsored by the College of Architecture, the lecture is open free to students, faculty and the public.

Hughes announces new openings on the TECHNICAL STAFF.

Is this man a double agent?



No...but he knows a lot about security.

He's Provident Mutual's Big Man on Campus. In 15 minutes he can show you why it's important to plan now for future security—and how to go about it.

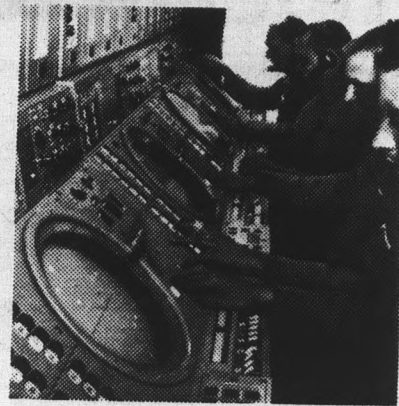
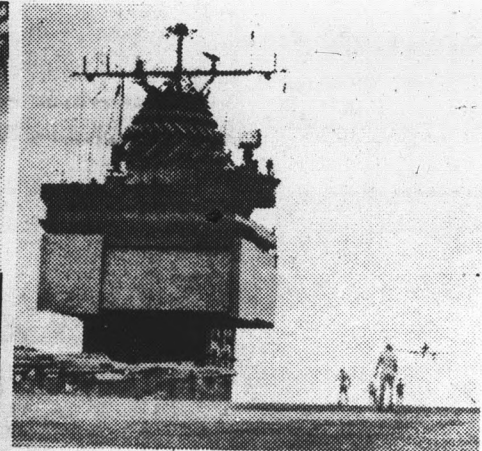
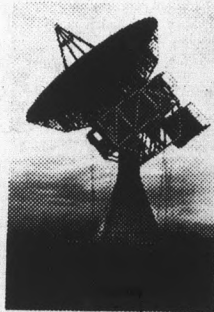
The right kind of life insurance is a very important part of your financial future. This fellow student will show you a plan specifically designed for college men and women.

For complete information on the advantages of getting a head start—and our special program—stop by or telephone today.

Call
WILBUR BULLOCK
264-4334

or stop by
2727 N. Central
Suite 103

PROVIDENT MUTUAL LIFE
INSURANCE COMPANY OF PHILADELPHIA



Assignments exist for Engineers graduating in 1967 with B.S., M.S. and Ph.D degrees in ELECTRICAL ENGINEERING.

At HUGHES-FULLERTON, newly awarded contracts have created assignments ranging from research to hardware development and operational support of products and systems in the field. Our current activities involve the advanced technologies of phased-array frequency-scanning radar systems, real-time general purpose computers, displays, data processing, satellite and surface communications systems, surface-to-air missile systems, and tactical air weapons command/control systems.

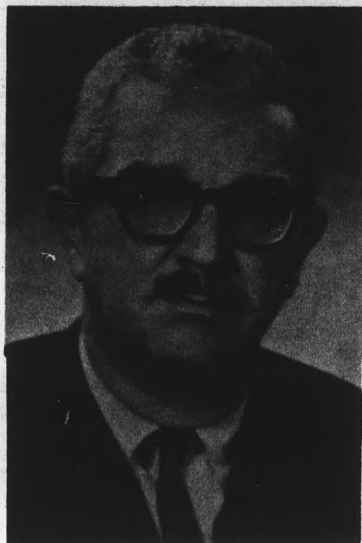
For additional information on the opportunities offered at HUGHES-FULLERTON in Southern California—and to arrange for a personal interview with our Staff representatives, please contact your College Placement Office or write: Mr. J. E. Tenney, Member of the Technical Staff, HUGHES-FULLERTON, P. O. Box 3310, Fullerton, California 92634.

On-campus interviews

October 24 and 25

HUGHES
HUGHES AIRCRAFT COMPANY

Changing Role of Union Topic of Economist's Talk



Barbash

"The Changing American Business System" will be the topic of the first of four programs on American business to be presented in the MU ballroom on Monday at 8 p.m.

Guest speaker is Jack Barbash, a University of Wisconsin economist. His topic is "The Changing Role of Labor Unions."

Barbash, on the Wisconsin faculty since 1957, is a specialist on labor unions and industrial relations research. He is also the author of several books on unions — "The Practice of Unionism," and "Unions and Union Leadership."

The program will be presented by the Sperry and Hutchinson Co. Foundation to present to the student a better understanding of public affairs in business. All students are invited to attend.

History of German Farmers Published by Professor

Dr. Terry G. Jordan, assistant professor of geography, will publish this month his book, "German Seed in Texas Soil: Immigrant Farmers in Nineteenth-Century Texas."

The study is a scholarly work concerned with how German immigrants influenced the agricultural life and economy in Texas where they settled, and how they were affected by the state's cultural and physical environment.

THE BOOK studies the agricultural assimilation of a fairly large, loosely knit immigrant group during the first 50 years in its adopted homeland.

Dr. Jordan notes that farmers of German descent in the U.S. have long enjoyed the reputation of being superior agriculturists. In Texas, German distinctiveness in farming was encountered as early as the 1840's.

In order to evaluate the Germans, Dr. Jordan compared their farming practices with those of Anglo-American and Negro farmers who lived in adjacent areas of Texas.

MORE THAN 50 statistical tables are included in the book, containing comparative figures for German and non-German groups.

The study reveals many similarities and differences between the farming systems established in Texas by the Germans and those of the Southerners.

The Germans put more labor and capital into their land and their production was superior to that of the native-born farmers.

HOWEVER, virtually no differences were detected in crop

and livestock selection, indicating a rapid and complete assimilation in these fundamental aspects of the agricultural system.

Professor Jordan, a descendant of the German immigrants of whom he writes, joined the ASU faculty in 1965, and is a specialist in the historical geography of the U.S.

After receiving a B.A. from Southern Methodist University, Jordan was awarded an M.A. by the University of Texas and a Ph.D. by the University of Wisconsin.

A member of Phi Beta Kappa, Dr. Jordan held a Woodrow Wilson Fellowship as a graduate student.

Exhibition of American Art Shown in Gammage Lobby

An exhibition of portraits entitled "Fourteen Faces" went on display in the Lobby Gallery of Gammage Auditorium yesterday.

All 14 of these paintings, selected from the ASU Collection of American Art, are gifts to the University from Oliver B. James. They illustrate the flowering of American portraiture, spanning a period of more than two centuries, said Dr. Hugh T. Broadley, curator of university art collections.

Ranging from the sensuously appealing "Portrait of a Young Woman" by an unknown painter who followed baroque traditions of European aristocratic

portraiture, Dr. Broadley added, the exhibit includes neo-classic, romantic and realistic portraits plus examples of Walt Kuhn's stark primitivism and Karl Knath's angular cubism.

"The 14 faces mirror changing taste and reflect social, economic and environmental conditions which prevailed at different times in America's history," said the curator. "They are revealed as documents of historic significance as well as of artistic importance."

The public may view the portraits every afternoon from 1:30 to 3:30 or when the building is open for evening functions.

Kentucky
Fried Chicken

\$3.75



BUCKET
Serves
5 to 7
People

HARMAN'S
Mesa-Tempe Hi-Way

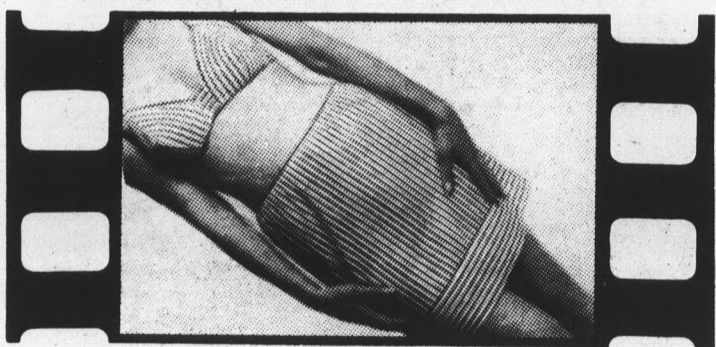
Good Gas — Lowest Price — Lousy Service



STUDENT DISCOUNT

Across from J.D.'s 2315 Apache 6602 E. Main
Tempe Tempe Mesa

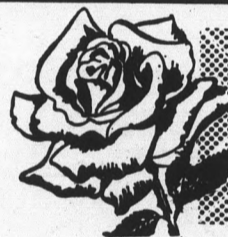
Plaza 8. What the underground girls are wearing underneath.



INTRODUCING PLAZA 8 COORDINATED LINGERIE BY PERMA-LIFT.
YIPES STRIPES. BLACK AND WHITE TRICOT BRA; \$4.00.
COORDINATED PETTI-SLIP; \$5.00.

Diamond's Dept. Store

PHOENIX



Bobbies Flowers

20 E. 5th St.
WO 7-2972 — WO 7-4274
Home Phone WO 7-6319

Plants For Rent
For Parties . . .
Large Artificial

The Chateau of Beauty

709 S. Forest Ave.

Welcomes
To Our Staff . . .

Mr. Karl

International Hair Stylist
Paris - London - Rome

By appointment — phone 967-9141

Mr. Karl - Mr. Robert
Miss Carma - Miss Bente
Miss Karon - Mr. Fred



WE HONOR STUDENT DISCOUNT CARDS

Activities VP Once Chased At 'Iron Curtain' by Reds

Remembering a frightening visit to the Russian border, three years in Europe and moving from city to city in the United States, Chuck Walrad, Activities Vice President, mentions "ASU is 'home' to me—the first I've really known."

The Russian border impressed her not only as being without an actual "iron curtain," but because she and her family were chased from the site by an armed group of hostile-looking Russian officials!

AT HER ASU "home," Chuck has been a member of Natani, the International Student Relations Board, Cultural Affairs Board Chairman, and an active participant in dorm activities. While a resident of the Quad, she tried to establish a dorm library, though lack of support stifled its success.

During her spare moments, Chuck enjoys reading "odd things," especially those concerning history or Eastern philosophy, and listening to music. "I like everything from the Rolling Stones to Rachmaninoff," she smiles.

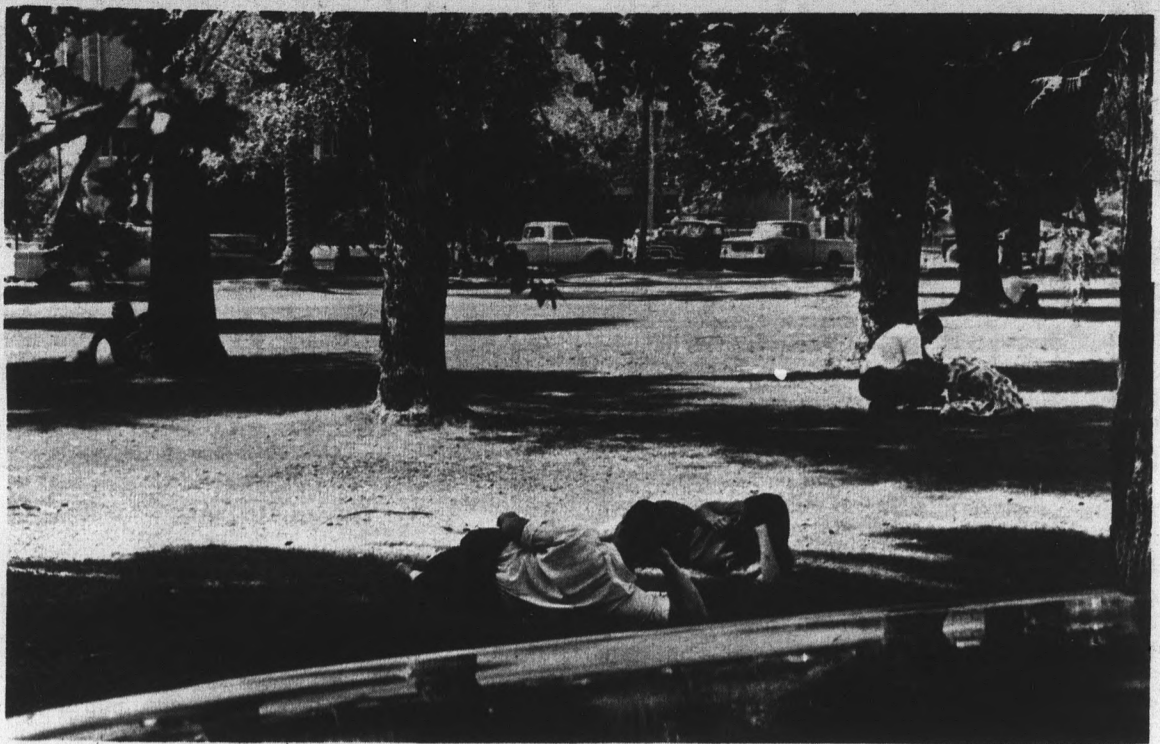
CHUCK MAJORS in English and plans to earn her master and later her Ph.D. degree in the field.

"I'd like to teach linguistics and modern grammar at ASU," she adds.

She also maintains a 3.56 average, but comments, "I'd like to bring it up."

Though Chuck holds such an average and has been awarded two to three scholarships annually, she sets aside Saturdays for housecleaning and shopping.

"Sunday is the only day I study."



LAZY DAYS — Couples, friends and birds gather in the shade to relax, talk and chirp during all hours of the day. Above is the lawn north of the LL building, just below University Dr.



**TEMPE
Center**

Count 'em - - - -

*33 Fine Shops
and Stores*

*Catering To ASU's
Every Need*

Americana Shop
Ray's ASU
Barber Shop
Bonnie Sue Fashions
Brickie's Furniture
Buddy's Coffee Shop
Celia's Fashions
El Rancho Market
Erickson's Handcrafts
1st Federal Savings & Loan
1st National Bank
GallenKamp's
W. T. Grant
Happy House Shop
Hill's Record & Book Shop
The Hogan
Inland-Western Loan & Finance
Jam's Restaurant
King's Fashions
Lee Optical
Pioneer Camera Shop & Studio M
Rosamond's Beauty Shop
Ryan-Evans Drug Store
Scott Jewelers
Sewing Basket
Sherwin-Williams Company
S & H Green Stamp Center
Standard Service Station
State Farm Insurance
TeePee of Toys
31 Flavors Ice Cream
Tops Liquor Store
University Sporting Goods
Zzzona Laundry

Bonnie Sue Fashions

POOR BOYS

Cottons, Orions, Velours

From

\$4.00

Telephone 967-4094 Open Thurs. Till 9 p.m.

Games Galore

Chess - Cribbage - Skittles - Go

Paper Goods and Notes

Christmas Cards — Monogramming

IMPORTED CANDIES

Happy House

TEMPE CENTER



Permanent Press Stifles Sloppy Look

By JOAN FISHER

Throw away that iron, permanent press is here to stay! —to paraphrase a quote from the "Wall Street Journal."

Introduced in men's slacks two years ago, permanent press has invaded almost every segment of the textile market. Shirts, dresses, lingerie and sheets in fibers from 100 per cent synthetic to pure cotton never need ironing if cared for properly.

"Time" magazine reports that major shirt manufacturers have converted most of their line. At Koret of California, permanent press outsells traditional women's clothing two to one.

UNLIKE WASH 'n wear, which relies on a synthetic-natural fiber blend for wrinkle resistance, the permanent press process involves high temperature baking which activates a chemical on the textile or garment to form a permanent bond. Presto — permanent pleats, creases and flat seams.

Are those pants too tight? Don't buy them! The seams and creases left after altering won't come out with laundering. Unwanted wrinkles in new garments, too, may be there to stay.

First, wash in hot water, rinse in warm, then tumble dry with hot air (relaxes fibers and removes wrinkles formed during water extraction). Cool while tumbling and before handling. Remove immediately.

THE LAST point is critical for permanent press success. Dryer heat or premature handling may set wrinkles permanently. A wash 'n wear cycle automatically shuts off heat and cools clothes as they tumble.

The slightly higher cost of articles — those curing ovens do cost — is more than offset by

their advantages. As one Midwest college administrator puts it, "There are fewer beatniks now than several years ago. You just can't look sloppy in permanent press — no matter how hard you try."

Who's Whose

Editor's Note: Students wishing to announce a pinning, engagement or marriage may pick-up the necessary form in MU 3. Please try to have the form completed at least three days prior to date of publication desired.

PINNED

Sue Norman, Kappa Alpha Theta, to Bill Walker, Alpha Tau Omega.

Carolyn Charest, Alpha Delta Pi, to Garry Jestadt, Sigma Phi Epsilon.

ENGAGED

Karen Loraine Unruh to David B. Smith.

Club Calendar

EDITOR'S NOTE: Clubs interested in publishing meeting or activity dates of their organizations in this column may bring the information into MU3 or call 964-3454 at least two days before desired date of publication.

TODAY

PRE-LAW CLUB will meet in MU 7 at 3 p.m. The meeting will include election of officers and Dean Pedrick will speak on plans for the new law college which will begin classes in the fall of '67. Also, information about the law school admission test will be given. Dues are \$2 for the year.

TOMORROW

JUDO CLUB will meet in the gym annex 6:30 to 8:30 p.m. for a practice session. Practice will be from 6:30 to 8:30 Mondays and Wednesdays for the rest of the semester. There are four black-belt instructors, and coeds are invited to attend.

ORIENTAL STUDENTS CLUB will meet in MU 211 at

3:30 p.m. Meeting will include election of vice president and final plans for the South Mountain picnic will be discussed. All interested persons are invited to attend.

STUDENT INTER - FAITH COUNCIL will meet in MU 211 at 6 p.m. for election of officers.

YOUNG DEMOCRATS will meet in SS 101 at 3:30 p.m. to discuss plans for coordination with the Maricopa County candidates and the Pat Riggs meeting on Oct. 21.

THURSDAY

ARCHONS, fraternity honorary, will meet in MU 218 for a noon luncheon. Special guest will be Don Dotts, acting ASU alumni secretary.

SAILING ASSOCIATION will meet in MU 7 at 7 p.m. to discuss the club constitution, review plans for the coming race series and to admit new members. Interested persons are invited to attend.

Sorority Names New Members

Newly-initiated Gamma Phi Beta actives are Pattye Collin, Audrey Dalessandio, Tomi Jo French, Jo-Carroll Glassen, Helen Hodges, Debbie Lee, Karen Remmer, Cheryl Shaffer, Peggy Taylor, Patty Winchesll, Linda Davis, Sue Thompson, Kris Reiserer and Ann Pearson.



CHRISTMAS HOLIDAYS

Unless you're booked on Santa's sleigh —

Make Your Reservations Now - 967-3366

The VALLEY TRAVEL MART

Representing All Major Airlines

NO SERVICE CHARGE

707B S. Forest—Oxford Square 1 Blk. from ASU

GOOD FOR ONE FREE WORKOUT

Golden's Studio of Physical Culture

45 E. 1st Avenue
128 S. Country Club Dr.
Mesa, Arizona

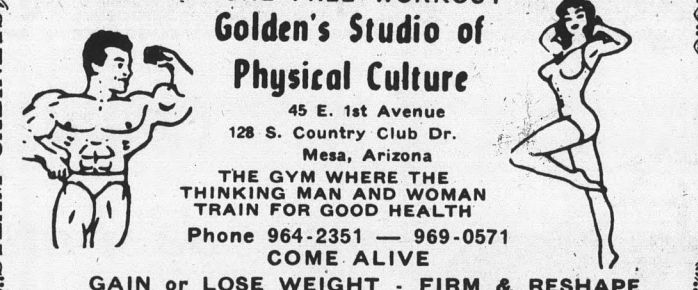
THE GYM WHERE THE THINKING MAN AND WOMAN TRAIN FOR GOOD HEALTH

Phone 964-2351 — 969-0571

COME ALIVE

GAIN or LOSE WEIGHT - FIRM & RESHAPE

STEAM CABINETS SAUNA ROOMS



GO FLY A CESSNA

Your own brand new 150 \$903.83 down \$176.25 a month

SPECIAL FOR BEGINNERS: No cost for flight training, up to first solo.

MERCURY AVIATION

Tucson Int'l. — 294-3474

Sky Harbor, Phoenix — 273-1201

state press

Classified

For classified advertising submit ad in person to the State Press, MU 3, two days in advance of publication, between 8:30 a.m. 13:30 p.m., or call 964-3457. Rate: 5c per word, 75c minimum per issue.

- FOR SALE**
 - NEARLY new 1966 Masterwork stereo, port. phono. \$195, save \$15. 945-8343
 - LOSE WEIGHT safely with Dex-A-Diet Tablets. Only 98c at Campus Drugs.
 - Mercedes Benz, 1957, 190 SL, black, roadster (conv.), Judson super-charger, best offer. 966-1229.
 - MEN Shop after class at AFTER CLASS (Open 1-9 p.m.) 1020 S. McClintock-Tempe
 - STUDENT discount cards save you money! Call 967-1230 or 959-3386, 277-9006.
 - USED portable typewriters w/carrying cases, up to \$35. UNIVERSITY BOOK-STORE.
 - BOBBIE'S WHOLESALE SAMPLES many one-of-a-kind dresses, capris, blouses, suits, robes, beautiful after-five dresses, lingerie. Convenient lay-a-way plan, VNB cards accepted. Scottsdale and Thomas Rds. Open 9:30-9 Monday through Saturday.
- HELP WANTED**
 - REPRESENTATIVES to sell student discount cards. Call 959-3386, 277-9006, 967-1230.
 - \$75 PER WEEK!!! Dance your way around the world with Arthur Murray's!!! You will be trained in this city to teach anywhere in the Arthur Murray organization. Guaranteed salary after training. Must be single 18-25. Apply in person, 7124 E. Thomas Rd. — Scisd.
 - DOORMEN, bouncers, and bar tenders. Apply at King and I, 21 W. Osborn or phone 274-8890.
 - Male or female students for part-time sales work. Set your own hours. Also need distributor. 947-5283 days; 946-7298 evenings.
- AUTOMOBILES**
 - 1962 WHITE F-85 convert., power top, automatic shift on floor, radio, heater, air cond. good tires, \$1000. Call 963-5608. (Chandler). Ask for Bob Mitchell.
 - '63 FALCON 2 dr., stick shift, price \$950, Call after 5 p.m. 253-6892.
 - 1961 FORD 2 dr., 390 engine, 4 speed, radio and heater, tach, FM radio, excellent condition, 967-5872.
 - 1965 TEMPEST custom, V-8, 2 dr. htdop, mag wheels, like new, Call 265-9650.
 - 1964 VOLKSWAGEN, sun roof, new tires, like new, extras, \$1200, 966-611.
 - 1956 CHEVY, six, stick, very clean, \$225, 3945 E. Earl Dr. No. 7, 955-4134 between 1 and 5 p.m.
- RENT**
 - Yamaha 50cc. fun cycles, 2.00 per hr. at Jim's Union Service. Corner Van Ness and Apache.
- SERVICES**
 - IRONING: Shirts 15c. 967-2797.
- LOST**
 - HUGE REWARD—Lost small black and brown dog. Similar to Chihuahua. 967-7411.
- MISCELLANEOUS**
 - BULLETIN: Tempe, Arizona. Arizona Arizona Roadrunners with devastating attack, bone-crushing defense and record shattering offense, clobbered Michigan Beaverhunters 240-(62) and 220-(58).
- TYPING**
 - NEAT, accurate typing, by mature, experienced secretary, reasonable, 959-6905.
 - Letters, term papers, manuscripts, quality work & reasonable. Call 967-7250 after 6 p.m.
- INSTRUCTION**
 - INDIVIDUAL tutoring in math, physics, chemistry and biological sciences. Phone 967-7924.

COPPER Quickies

DO NOT BUG US!



COPPER SCIENTISTS ARE AVIDLY STUDYING THE WAYS CERTAIN BACTERIA CAN CAUSE SEPARATION OF METALS FROM ORE, WHILE OTHERS CAN BOOT OUT SULPHUR FROM METAL-BEARING ROCK.

"10,000 GALLONS PLEASE!"

FLYING TON!

A TYPICAL MODERN JET AIRLINER USES ABOUT 2,000 POUNDS OF COPPER, MOSTLY IN ITS COMPLEX AND VITAL ELECTRICAL SYSTEM.

"Copper Cuties"

HIGHLY COLORED COPPER CARBONATE ORES FROM THE BISBEE MINES HAVE LONG BEEN SOUGHT FOR THEIR BEAUTY BY MUSEUMS ROUND THE WORLD.

Representing Arizona's Number One Basic Industry

ARIZONA MINING ASSOCIATION

Arizona Title Building • Phoenix, Arizona 85003

THAT'S THE DAILY DIESEL FUEL CONSUMPTION BY TRUCKS AND OTHER EQUIPMENT IN AN AVERAGE ARIZONA COPPER MINE. NUMEROUS LOCAL OIL DEALERS COUNT THE MINES AS THEIR NO. 1 CUSTOMERS.

Same Song, 3rd Verse . . . 24-15

The maestro was changed, but the song was the same . . . pretty much.

The Devils dropped their third straight, Saturday afternoon, bowing to the Washington State Cougars and their own mistakes, not necessarily in that order.

Sophomore quarterback Rick Shaw played the entire game in place of regular quarterback John Goodman, but the Sun Devils still came out on the short end of a 24-15 score.

The Devils were in a quick hole when Max Anderson fumbled the first Washington punt and the Cougars recovered on the ASU 22.

Five plays later the Cougars had their first touchdown, the big gainer on a nine-yard pass from quarterback Jerry Henderson to the nation's leading receiver, end Doug Flansburg. The catch was one of six for the sprinter.

Early in the second period, in a gallant effort at self-submersion, quarterback Shaw threw the Devils' ninth interception of the campaign.

The tall sophomore's pass was meant for Fair Hooker in the flat, but defensive back Bud Norris thought his name was on it and he returned it 42 yards for the Cougars' second TD.

Battling the Washington line and a 25-mile-an-hour wind, the Tempe boys got nowhere the rest of the half.

But the Cougars kept pouring it on, this time with a 48-yard scoring drive that rounded out the first half action.

So after 30 playing minutes, the Devils were true to form, down 21-0. Thank goodness for half-time.

The "New Devils" took the field for the third quarter and scored in three plays. Travis Williams, rounding into form with 139 yards rushing, jumped off the right side of the line and traveled 74 yards to the

team's first marker.

Midway in the quarter, the Devils were knocking again at the Cougar 14 yard line thanks to a Shaw-to-Ken Dyer aerial, good for 34 yards.

Shaw fumbled the ball and the scoring opportunity on the next play, but the Devils got it back when middle guard Curley Culp blocked a punt and John Pitts recovered at the Cougar 9.

Shaw took it over in two plays and ran for the two-point conversion. With 3:09 left in the third quarter it was 21-15.

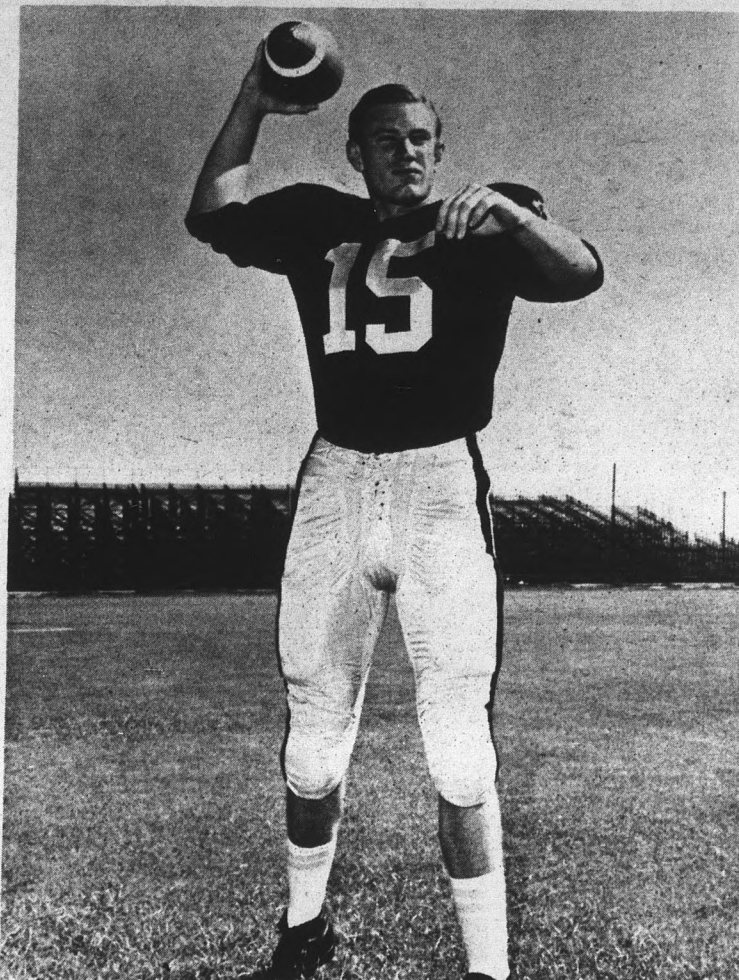
Another interception stopped the Devils in the final quarter.

The Cougars put the Devils out of contention with a final field goal rounding the score to 24-15 the way it ended.

The Devil rushing game continued to improve, this time with 195 yards, thanks mostly to Travis Williams and quarterback Shaw.

But in the age of the passing attack, Shaw threw only 11 times, had three intercepted and completed three. He threw only three times to Dyer, Devils' leading receiver. Kenny caught two for 44 yards. Hooker had the last reception for 13 yards.

Fullback Jim Bramlet, top Devil rusher, carried the ball exactly once, as the offense stalled on several third-down and short yardage situations.



IN THE DRIVER'S SEAT — Sophomore quarterback Rick Shaw got the nod Saturday from Coach Frank Kush over regular quarterback John Goodman. Shaw directed the strongest Devil ground game to date, racking up a total of 195 rushing yards in a losing cause to Washington State, 24-15.

Kicking into the wind much of the game, Ken Hornbeck booted eight times for a fine 41-yard average, keeping the Cougars at a safe distance much of the time.

It was the first victory for the Cougars, making their record equal with that of the Devils, 1-3.

The Devils meet powerhouse BYU next Saturday in Provo, Utah. These Cougars are 3-0 and share the WAC lead with Wyoming.

Short Draggers To Compete Here

A new type of professional drag racing will come to the greater Phoenix area, beginning Saturday, Oct. 15.

Sports-long Drag-way will begin a weekly program of eighth-mile drag races, an innovation in this area, in which, as one organizer put it, "The spectator gets twice the action — he can see it all."

Plans are underway to pave the road connecting the Drag-way with Grand Avenue (Highway 60-70).

Mixed Bowling League Forming

A men's and women's mixed bowling league is forming in the MU.

The league will meet Mondays at 7 p.m. at the MU bowling lanes. Interested persons are asked to attend the first organization meeting at the above place and time next Monday, Oct. 17.

Registration and signing-up can be done in the MU game room.

For further information, call Joe Meeks at 963-5689.

The Sandwich Shop

featuring

- ★ HAM BUN ★ CORNED BEEF
 - ★ HAM HOCK & BEANS ★ CHILI BEANS
- Hot Apple Pie With Sauce —

"Your Favorite Beverages"

6 East 7th Street — Tempe

The Popular

ASU Maroon Blazer

Sports Coats

Regularly \$39.95

This Week Only . . . **\$24⁹⁵**

Neb's Freight Depot

4021 E. Thomas Rd.
Phoenix



- . . . Guaranteed by a top Company
- . . . No War Clause
- . . . Exclusive Benefits at Special Rates
- . . . Full Aviation Coverage
- . . . Deposits Deferred Until You Are Out of School

THE COLLEGE PLAN
for
THE COLLEGE MAN

- Our Campus Representatives
- Randy Griggs, Mgr.
 - Ray Bingham
 - Bob Jacobsen
 - Eddie Mauck

824 Mill—967-8625

JOB APPLICATION PHOTOS

8 for \$6⁸⁸

4 poses to choose from

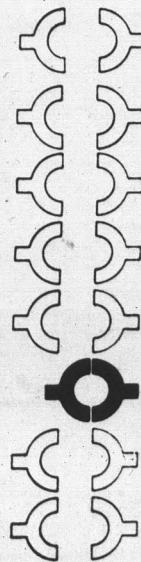


"Portraits of Excellence"

by

STUDIO

Located in the Pioneer Camera Shop
TEMPE CENTER • PHONE 967-4662



All your ideal dates
from your own area . . . and
your one best date
from the entire country
for only 3 dollars!

CONTACT
COMPUTER
DATING

I'm convinced! Please rush my free
Contact Questionnaire to:

NAME _____

COLLEGE _____

ADDRESS _____

CITY _____ STATE _____ ZIP _____

SEND TO: CONTACT COMPUTER DATING
755 BOYLSTON ST., BOSTON, MASS. 02116

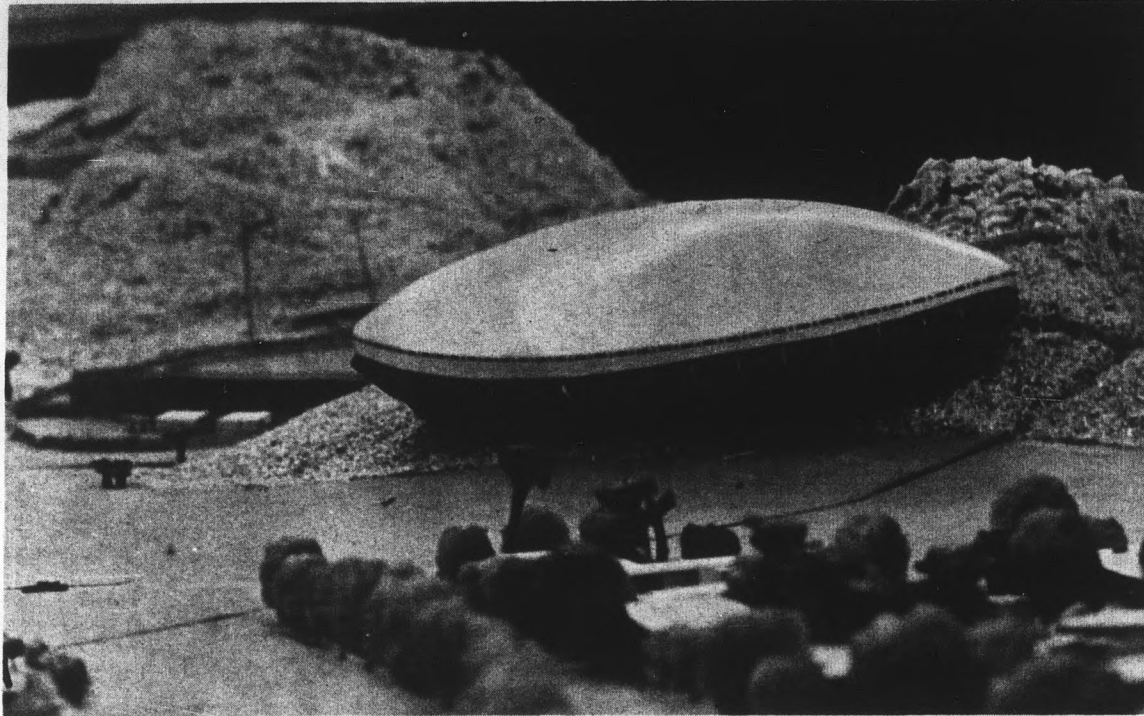


Photo by Con Keyes

NEW DEVIL GYM — This is the scale model of the new gym, proposed to replace the Sun Devils' small and antiquated gymnasium in the center of campus. The model is on display in the Physical Plant along with scale models of the rest of the campus. The gym will be located in back of the new women's dorm, Manzanita Hall, now under construction.

Regents Say Gym Important

The Arizona Board of Regents was told Saturday that both the UofA and ASU need new gymnasiums.

Regent Leon Levy of Tucson said that the Sun Devil gym is too small and that new facilities are needed.

"I don't want to under-emphasize athletics," Levy said. "They're an important segment of any university."

The problem of the outdated gyms was discussed in relation to the general physical condition of youth in America today. Dr. Richard Harvill, president of the UofA said proper facilities in which to exercise can help correct this problem.



Free to College Students 25¢ to others

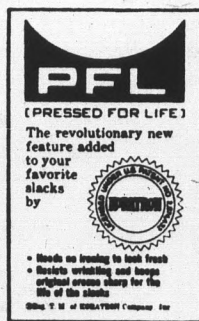
A new booklet, published by a non-profit educational foundation, tells which career fields lets you make the best use of all your college training, including liberal-arts courses—which career field offers 100,000 new jobs every year—which career field produces more corporation presidents than any other—what starting salary you can expect. Just send this ad with your name and address. This 24-page, career-guide booklet, "Opportunities in Selling," will be mailed to you. No cost or obligation. Address: Council on Opportunities, 550 Fifth Ave., New York 36, N. Y., AZ-10-10

HARRIS TRADITIONAL IVY Keeps Its Promise

... to the American male who looks to the lean, trim fitting slack of easy care fabric for comfort and performance. They're tapered-to-the-narrow cuff with belt loops and separate waistband.

Sizes 28 to 40.

from ... \$6.98



THE *Americana* SHOP
QUALITY MEN'S APPAREL

TEMPE SHOPPING CENTER

OPEN 9:00 A.M. TO 6:00 P.M.
THURSDAY 'TIL 9 P.M.

Statistics Don't Lie... Unfortunately

The Devils are at the bottom of the WAC pack, 0-1 in the conference and 1-3 overall.

The reasons are obvious. ASU ranks dead last in total offense with 253.3 yards per game. The team ranks next to

last in defense, giving up 290 yards per game.

The passing department is a tossup. John Goodman has carried the Devils to the WAC lead in passing offense, but the Devil secondary ranks last in passing defense.



New Modified Slim-Cut for the man moving up

Slimmer than regular dress slacks, but not as slim as teenage slacks, Hagggar's new Imperial "2030" model hits a happy medium that's especially designed for young men moving up. Luxurious too, in handsome pure worsted wool with exclusive Shape-O-Matic waistband for a comfortable fit. We have your size in favorite fall colors.

from \$15.00

THE *Americana* SHOP
QUALITY MEN'S APPAREL

TEMPE SHOPPING CENTER

WO 7-5457

OPEN 9:00 A.M. TO 6:00 P.M.
THURSDAY 'TIL 9 P.M.