

Students Still Draft Exempt

Despite the increase in the national draft quota, college men are still safe in their deferred status providing they meet qualifications, according to reports from the Selective Service System.

These qualifications consist of being a fulltime student (carrying a minimum 15-hour load), adequate grades, or a score of 70 per cent or better on the college deferment test.

THE DEFERRED status of male students continues until October, when colleges provide Selective Service with information on fulltime male students. This information is being sent from information provided on student registration forms.

Presently, college men are allowed four years to finish undergraduate work, and any senior

planning to enter graduate school should rank in the upper quarter of his class or have a score of 80 per cent or better on the college deferment test.

These tests were given on various dates during the summer. Others are scheduled for Nov. 18 and 19, although no information on the location is available.

Although general information is supplied to the draft boards by the colleges, all confidential information is up to the individual student.

AT THE present time, heavier drawings are being made by the draft boards on the 19 and 20-year-old men. If a student is re-classified I-A, he has ten days to appeal a change of draft status. He must then show why he qualifies for the change.

Parking Problems Lessening... Slowly

"Students will find sufficient parking spaces if they are not too concerned with proximity to the center of campus," said John R. Ellingson, director of the Physical Plant. "Parking lots for off-campus students have been located on the fringe of the campus because of the new building program."

DURING THE summer improvements were made on the parking lot behind the engineering building with an all-weather road covering and the lot behind Palo Verde Hall was paved with asphalt, Ellingson said.

At present ASU has 6,850 parking places for faculty, staff, resident and off-campus students, Ellingson explained.

At the peak of traffic on Mon-

day and Wednesday between 8 a.m. and noon, Ellingson estimated that a maximum number of cars on campus is 8,000.

HOWEVER, there should be no parking problems because Tempe city streets offer 2,500 parking spaces within a 15-minute walk of the center of the campus, Ellingson said.

See Diagram, page 12

In 30 days a new parking lot for off-campus students will be in use at Myrtle and 9th Sts. with 220 spaces available, he continued.

A new staff parking lot will be ready for use in 60 days at the former Goodwin Stadium football field.

Ellingson expressed surprise over half-filled Palo Verde parking lot during the heaviest days of the week.

Off-campus sophomore, junior and senior commuters will find ten parking lots on campus, but likely will concentrate in three major areas on the north east side of the campus, according to John B. Duffy, director of campus security.

Freshmen will park in three lots on the campus perimeter. One is on Apache Boulevard east of College Avenue. The second is adjacent to Sahuaro Hall on Rural Road south of Apache Boulevard.

The third and largest lot for freshmen is located on the southeast side of Sun Devil Stadium, off Sixth Street.

Ellingson says that students should pick up their parking permits as soon as possible to avoid parking fines.



WHITEWASHED — Two freshmen coeds look each other over and agree that they have more whitewash on themselves than Tempe Butte's "A." A highlight of Freshman orientation week, the annual painting of the "A" attracted a crowd of over 350 freshmen who trooped up the hill to cascade garbage pails full of whitewash over the stone "A."

Photo by Jerry Hofferber

Late Registration Ends on Saturday

Late registration will end Saturday noon.

Gary Richardson, a registration worker, said there is a limited selection of classes at present. "One-hundred students were turned away during the lunch break Tuesday alone."

A \$10 fee is charged for late registration.

Drop-Add Period To End Saturday

Drop-add period will end Saturday at noon. October 17 is the last day students may drop individual classes.

The Calendar of Events, a newsletter published by the Bureau of Publications erred in saying the last day to register for credit was Monday.

Students must go to the indi-

vidual departments to pick up drop or add forms. Directions are on the front of these cards.

To drop a course the student must also obtain a white registration class card from the department. Then he must turn in the completed drop form and card to the registration office.

To add a course the student must pick up a class card and turn this in to the registration office with the add form.

Gale (N. H.) Cassity, assistant registrar, emphasized that students should be sure to get the card with the right course and section number. Otherwise students' names will appear on the wrong class lists.

Plans for 4 New Buildings Receive Regents' Approval

Plans for four major buildings at the University were approved Sept. 1 by the Board of Regents meeting in Tucson.

President G. Homer Durham said authorization to call for bids and award construction contracts was granted for:

— Business Administration Building, 79,600 square feet, \$1,320,000;

— Physical Plant Building, 38,000 square feet, \$540,000;

— Physical Science mathematics wing, 82,000 square feet, \$1,330,000;

— Law building, 82,000 square feet, \$1,640,000.

THE REGENTS approved naming the law building Armstrong Hall in memory of John Samuel Armstrong, member of the Arizona Territorial Legislature.

In March, 1885, Armstrong in-

troduced and secured passage of the bill establishing the Territorial Normal School at Tempe, now ASU.

The new College of Law will admit its first class in September 1967.

Contracts were also awarded to three companies for:

REMOVAL of the cinder track from Goodwin Stadium and relocating it east of Sun Devil Stadium, Robert Ewing, General Contractor, Phoenix, \$133,546;

Construction of a third floor addition to the Industrial Design and Technology Building, T.G.K. Construction Co., Inc. Phoenix, \$301,500;

In addition, Walsh and Obert, Architects, Phoenix, were appointed to design a proposed education building of 100,000 square feet and costing an estimated \$1,800,000.

Sahuaro Photos: A New System Will Be Initiated

A new system for scheduling senior pictures has been instituted this year, Sahuaro adviser Alan Frazier said.

Seniors will be assigned a date to have pictures taken alphabetically.

Service is open from 8 to 11:30 a.m. and 1 to 4 p.m.

Men should wear a dark coat with tie and white shirt. Women students will be furnished dark sweater shells.

A sitting fee of \$1 will be charged.

Frazier said the fee will be

(Continued on page 12)

Office Petitions Available Now

Freshmen students and graduates who wish to run for Senate offices in their respective classes may pick up petitions today in the office of the ASASU Secretary.

In order that their names may appear on the ballot, prospective candidates must fill out a candidate information sheet and meet the designated requirements.

Properly completed petitions must be returned to the secretary's office no later than 4 p.m. Sept. 28.



DEEP MUD — A story of mud frustration unfolded on the parking lot behind Industrial Design and Technology buildings as the automobile of an ASU student is resigned to the inevitable.

Photo by Con Keyes

Bids Asked on New College of Law

By GEORGIE STILLMAN

The University College of Law enters an important stage this week as bids are accepted on its buildings, to be located at the southeast corner of McAllister and Orange, across from the new women's gym.

The bids are estimated at approximately 1.5 million dollars, according to John R. Ellingson, Director of the Physical Plant.

THE BUILDINGS have been completely financed, and contracts will be awarded soon, Dean Willard H. Pedrich said. "Plans seem to be moving along in good order," said Dean Pedrich. Scheduled completion date is September, 1967.

The faculty, headed by Dean Pedrich, now includes three other leading members of the legal education profession: Edward W. Cleary, Professor of Law, formerly of the University of Illinois; Richard C. Dahl, Law Librarian, and Associate Professor of Law, formerly Law Librarian at the University of Nebraska and editor of the Law Journal; and Harold C. Havinghurst, Professor of Law, formerly of Northwestern University. All have had extensive general practice experience and governmental work.

The buildings, designed by the Phoenix firm of Cartmell and Rossman, are considered by experts on law college design to set a new standard of excellence. Interiors are especially arranged to facilitate discussion and close student-faculty relations. Every classroom may also serve as a practice court room.

APPROXIMATELY the top one hundred applicants will be admitted as first year students. Applicants must have graduat-

ed from an accredited four-year college; and score well on the Law School-Admission Test.

The deadline for completed applications, with college transcripts and LSAT scores on file at the College of Law is May 1st. Applications and information may be obtained from the office of the dean, College of Law.

ID and Activity Cards Available

Activity cards for continuing, pre-registered and new students can be obtained in MU 200 through next week from 8:30 a.m. to 4:30 p.m., according to Dick Finley, executive manager of Associated Students.

Activity cards for late-registration students are being distributed in MU 207.

Distribution of permanent identification cards for new students will begin Monday in MU 200. Students who have not had their ID photo taken should go to MU 207.

The ID card will be used for identification purposes only. The activity card, presented with the ID card, will admit the authorized bearer to all student events such as ball games, the Fine Arts and Celebrity series in Grady Gammage, and the two campus libraries.

Classified Ads Start Monday

State Press classified ads will be taken in MU3 starting Sept. 23, Monday through Friday. Cost is five cents per word per insertion with a 75-cent minimum charge.

WELCOME STUDENTS

YOU REALLY "STRIKE-IT RICH" WHENEVER YOU LET

UNIVERSAL TRAVEL

ARRANGE YOUR TRAVEL PLANS

CALL WO 7-1673 FOR INFORMATION

- ALL MAJOR AIRLINES
- TOURS

UNIVERSAL TRAVEL 18 E. 5th STREET

TEACHER'S PET for '67

\$1666 SEDAN

drive a '67 **DATSUN** then decide!

Confident, aren't we? You bet! Because Datsun is the economy import that delivers more. Smooth. Quiet. Big car ride. With plenty of power for the highway and nimble performance in traffic. Datsun is practical as they come, too. Economical, naturally. But also easier to maintain. Fittings are standard; no special tools needed. And parts and service are available from coast coast.

Best of all, the Datsun Sedan delivers fully-equipped with over 50 quality features and no-cost extras... including: Powerful hi-torque engine Solid unitized body and frame 7-step paint process Battery-saving alternator 4-speed, all-synchromesh stick Road-hugging, 2,000 lb. weight Four headlights Heater and defrosters Padded dash; Seat belts Enclosed glove compartment Extra package shelf Contoured bucket seats Deluxe chrome wheel covers 4-ply whitewall tires Rich carpeting Locking gas cap Factory undercoating... and more! Drive Safely

SPORTS COUPE \$2546 WAGON \$1866 PICKUP \$1666

Test it at your Datsun Dealer. **DATSUN**

BRIT SMITH ♦ **TEMPE**

University Drive & Mill Ave. 967-3381 Open Evenings

Join The In Crowd with

RCA

8 Track Car Tapes

- ★ Mancini
- ★ Astronauts
- ★ John Gary
- ★ Yarborough
- ★ Al Hirt
- ★ Eddie Arnold

HILLS BOOKS & RECORDS

Tempe Center

OPEN EVERY NITE 'TIL 9:00 P.M.

During Study on Border- Researcher Discovers 'Lost' U.S. Territory

Dr. James E. Hill, assistant professor of geography, is stirring State Department officials and the El Paso Boundary Commission to action over the status of El Horcon on the Texas-Mexico border.

Dr. Hill discovered this summer, to the surprise of the American public, that the United States owns the 413-acre peninsula of land called El Horcon near the Mexican state of Tamaulipas on the Gulf of Mexico.

WHILE collecting material for his doctoral dissertation, "Agriculture in the Lower Rio Grande of Texas" in the summer of 1962, his curiosity became aroused when a series of maps provided by the U. S. Geographical Society produced visual evidence that El Horcon is American territory.

Dr. Hill carried on his research on the El Horcon question through an ASU research grant made in December 1964, the year he joined the University faculty. He had graduated from the University of Tennessee in 1963.

The boundary confusion occurred after a private Texas irrigation company severed the lower meander (riverbed) of the Rio Grande in 1966 in an attempt to keep the river from changing its channel away from the company pumping station.

THE UNITED STATES and Mexico agreed in the Treaty of 1884 that the Rio Grande would

remain a flexible international boundary which could shift only by natural causes.

The river formed a backward S at the turn of the century with the upper portion sweeping into Hidalgo County and the lower area into Tamaulipas.

Since the company damaged Mexican farmers in violating the treaty by constructing the man-made meander, it had to pay costs of surveying and marking the correct international boundary line.

DR. HILL contacted the El Paso Boundary Commission, the main depository for his information, and found the only item on the El Horcon boundary in their records was the court acimony of midwife's, since there pany.

However, natural river shifts throughout time had deposited 63 acres of property on the south half of Rio Rico in U. S. territory.

Work by the Western Division of the Aerial Photography Laboratory of the Agricultural Stabilization and Conservation Service in Salt Lake City gave definite proof by pictures that the United States owned El Horcon.

MEANWHILE, Dr. Hill tramped over the face of Hidalgo County, interviewing Rio Rico residents, many of whom he believes still are unaware that they may be U. S. citizens.

Citizenship of the residents must be determined by the test-

imony of midwives, since there are few doctors' reports and baptismal certificates are non-existent.

Residents born in El Horcon can go to Nuevo Progreso, the legal port-of-entry, and request the Immigration Service to determine their citizenship.

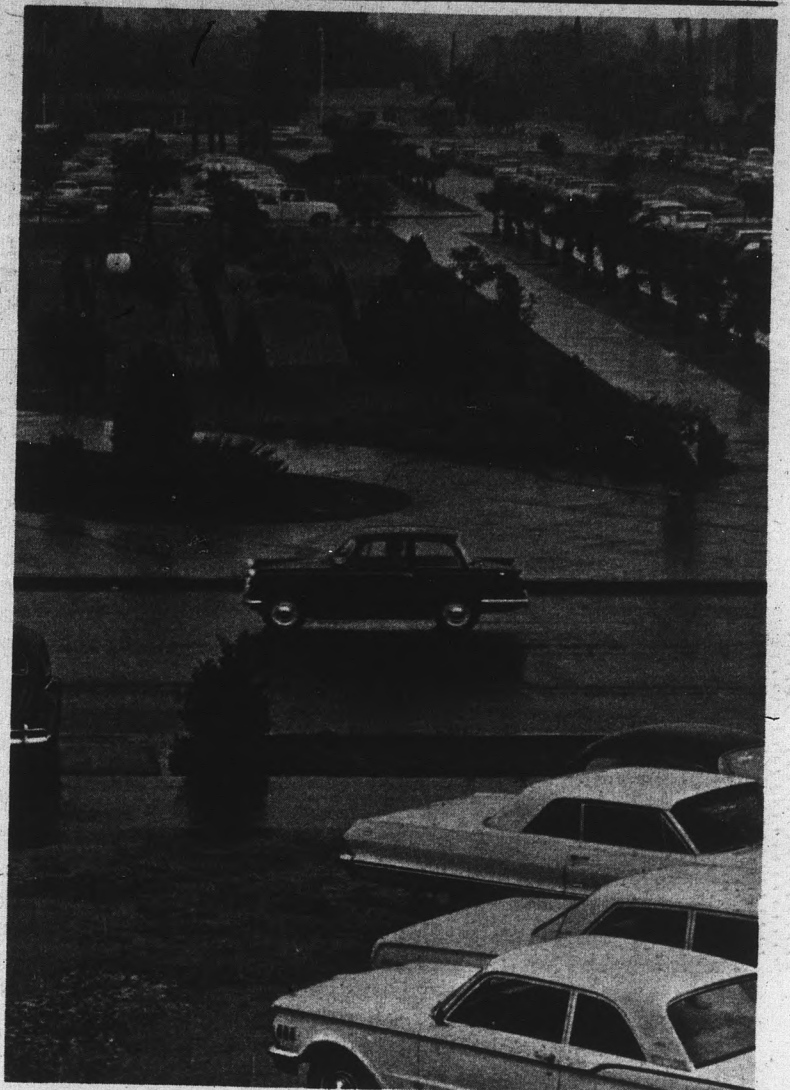
More than half of the 289 residents are illiterate and Spanish is spoken in the local school.

EL HORCON'S value to the United States involves heretofore lost Texas property taxes and Federal income taxes and its potential for growing cotton.

The State Department is presently in the process of settling the disputed national boundary near Presidio, Texas between Mexico and the United States, which involves the El Horcon area. The citizenship of El Horcon's residents will not be affected by the settlement, says Dr. Hill.

HOWEVER, the situation regarding the boundary can be repaired only by an act of

(Continued on page 8)



RAIN, RAIN — Rain greeted students the first two days of classes. The week's rain was the heaviest buildup of moisture in over a decade.



UNUSUAL ENGAGEMENT RINGS - hundreds of them, from \$75.00 to \$15,000. See styles available nowhere else ... only at

Paul Johnson
JEWELERS



130 EAST UNIVERSITY DR., TEMPE
PHONE 967-8917 • ALSO IN PHOENIX
MEMBER AMERICAN GEM SOCIETY





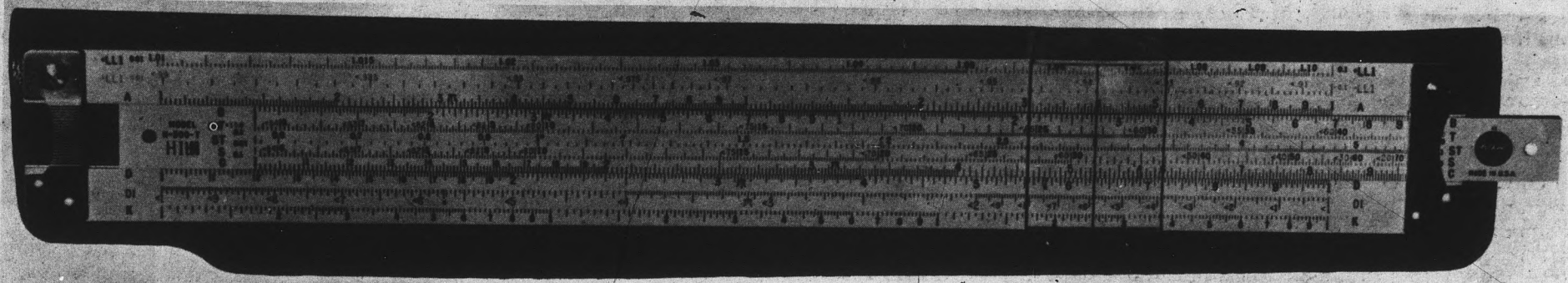
**BONE
OF HERRING
A SPECIALITY**

The Establishment's chef d'oeuvre, for those of a tweedy persuasion, is herringbone, served in strictest purity. The ingredients are wools of haute quality, workmanship worthy of a gourmet, and cuts of the best. A tasty item, served daily.

The Oxford Shop
Outfitters For Gentlemen



SLIDE RULE SPECIALS



LIMITED TIME ONLY!

PICKETT N500 HI LOG
SLIDE RULES

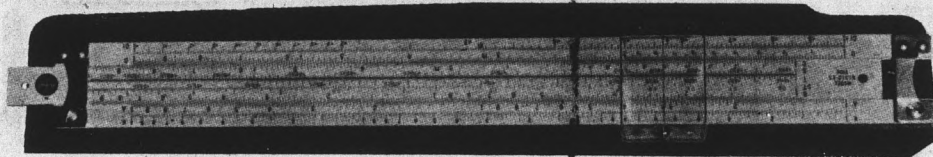
REGULAR \$14.85 VALUE
NOW ONLY **\$12.49**

NEW! Mustang leather carrying case.

LIFETIME GUARANTEE

All-metal accuracy in an educator approved slide rule. Your choice of Eye-Saver Yellow or White. Functional grouping of scales for easier operation. Complete with case and instruction manual.

While They Last!



LIMITED TIME ONLY!

PICKETT N1010 STANDARD TRIG
SLIDE RULES

REGULAR \$12.00 VALUE
NOW ONLY **\$9.95**

NEW! Mustang leather carrying case.

LIFETIME GUARANTEE

All-metal accuracy in an educator approved slide rule. Your choice of Eye-Saver Yellow or White. Functional grouping of scales for easier operation. Complete with case and instruction manual.

POCKET PLASTIC RULES

Pocket Size Trainer
5" Scale Sections, 1" Body



Front

For beginning students. 7 basic scales engraved on the face of the rule. A durable rule with smooth operation. May be traded in on a Pickett All-Metal Rule.

Model N61 white with Pocket Case and Instruction Manual

\$1.50

SEE OUR COMPLETE SELECTION OF PICKET SLIDE RULES

★ Stop By for FREE Book Covers ★

and sign up for

the many

★ FREE DOOR PRIZES ★

Student Book Center

corner college & seventh street

HOURS: MON. - FRI., 7 To 9; SAT. 8 - 5; SUN. 1 - 5 Phone - 967-9332

Jazz Programs Added To Fine Arts Series

A new series of offerings, the Festival of Jazz Series, has been added to the Fine Arts, Lecture and Celebrity series offerings of last year, according to the Concert and Lecture Series Committee's 1966-67 plans.

The Jazz series will include stars of the Monterey Jazz Festival, the John Handy Quintet, the Bola Sete Trio and the Jean Hoffman Trio, Sept. 24; Paris Rive Gauche, a French cabaret revue, Nov. 9; Dionne Warwick, Dec. 8 and Odette and the Shelly Manne Quintet, March 1.

Tickets for the jazz series are \$5 for the run of four, and \$2 for single show attendance.

The Celebrity Series contains: Fiesta Mexicana, Sept. 28; Ferrante and Teicher, Oct. 27; Fred Waring and his Pennsylvanians, Feb. 2; "Luv," Broadway play,

Feb. 17; the Houston Symphony, March 7.

The Fine Arts Series includes: Manitas DePlata, guitarist, Oct. 25; "The Odd Couple," a Broadway play, Jan. 10; The Houston Symphony, March 6; The American Ballet Theatre, April 7 and the Los Angeles Philharmonic, May 11.

Students are entitled to membership in either the Fine Arts or Celebrity Series on a first come, first served basis by presenting their current identification card or fees receipt at the Grady Gammage Auditorium box office.

A temporary listing for the Lecture Series: John Ciardi, poetry editor of the Saturday Review, Oct. 17 and General Maxwell Taylor, Feb. 10.

New Schedule, Shows Announced by KAET

Channel 8 (KAET), has expanded its programming to include Saturdays, making it one of the few educational TV stations in the country operating on a six-day schedule.

In addition to National Educational Television network programming Channel 8 receives, special arrangements

have been made with NBC to air the "Richard Boone Show" and "Profiles in Courage."

Saturday at 6:30 p.m. "Statement of Fact" will be presented on the Boon series.

"An Interview with General Eisenhower" will be aired Monday at 9 p.m.

This exclusive hour-long interview with former President

Dwight D. Eisenhower is the introductory program to a 13-part series entitled the "Struggle for Peace" to be shown Mondays at 9 p.m.

The "Profiles in Courage" series will begin with the story of Mary S. McDowell, fired from her position as a school teacher in 1918 for refusing to sign a loyalty oath.

Durham Seeks Budget Increase To Up Salaries

President G. H. Durham requested a special supplementary item of \$880,000 in the 1967-68 budget for the improvement of faculty salaries at ASU.

Speaking to the Board of Regents, Dr. Durham said, "average full-time faculty salaries, for all departments at ASU, will lag \$6,358 behind the national average for 1965-66, unless steps are taken to correct the situation."

"If we are to maintain academic excellence," the president must compete for top quality faculty with national leadership."

"The \$880,000 requested would generally permit a 10 per cent improvement in the 1967-68 faculty salary budget over 1966-67, including provision for deferred income paid after retirement and other "fringe benefits," said Dr. Durham.



INTERVIEW WITH IKE — The introductory program to a 13-part series entitled the "Struggle for Peace," will be broadcast by Channel 8 Monday at 9 p.m. The program is an exclusive hour-long interview with former President Dwight D. Eisenhower filmed at his home at Gettysburg, Pa.

WELCOME BACK!

Happy to Have You at

CHENNY'S

Good Luck to the Sun Devils

Our Specialty

The World's Best 15c Hot Dog

PLUS

Hamburgers Polish Sausage
Cheeseburgers French Fries
Coke—Sprite—Root Beer—Shakes

Open til 1 A.M. Sun. thru Thur.
3 A.M. Fri. and Sat.

Rural Road at Lemon St.



**TO ALL A.S.U. STUDENTS
GREETINGS**

MAY YOU LOOK FORWARD TO
THIS SEMESTER WITH ANTICIPATION
AND BACKWARD WITHOUT REGRET.

Let



Supply Your Needs

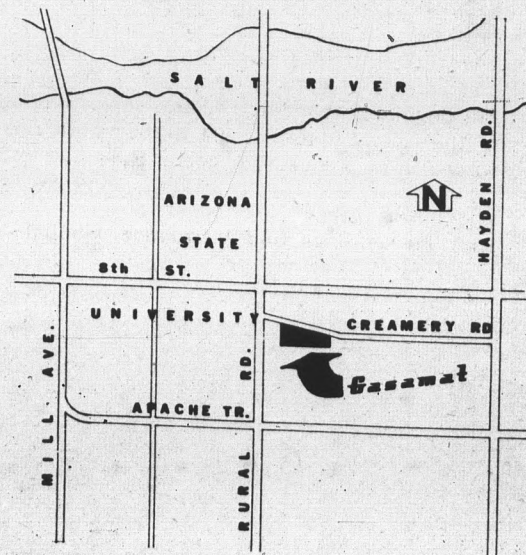
FOR ARTIST, ARCHITECTURAL and
DRAFTING SUPPLIES — Balsa Wood
CRAFTS — PICTURE FRAMES — PRINTS
SIGN and DECORATING MATERIALS
PORTFOLIOS — TRANSFER TYPE — ETC.

10% DISCOUNT TO STUDENTS and FACULTY
COME IN AND PICK UP YOUR DISCOUNT CARD
CONVENIENTLY LOCATED IN TEMPE CENTER

967-4482

Gasamat

Throughout Rocky Mt. Region
**HIGHEST QUALITY GASOLINE
LOW, LOW PRICE**



Tempe
915 E. 8th St. — Creamery Rd.

Welcome Freshmen

The University Bookstore Is At Your Service

Come In And 'Shop Around' Before The Big 'Rush'

Shop On Campus

Save More Money

The University Bookstore

" . . . Your Campus Store . . . "

. . . Owned and operated by Arizona State University; to serve the needs of the students and faculty of this institution.

. . . Stocking a complete line of books — text-books, reference, and general reading. A vast assortment of the best paperbounds.

. . . School supplies — Paper, Pencils, Pens, Notebooks, and all supplies necessary for the proper completion of your school work.

. . . Engineering Equipment — the widest assortment of the finest engineering supplies in the country — approved by the School of Engineering. The very best at the lowest prices to be found anywhere.

. . . Art Supplies and Equipment — a complete selection of the very best All types of paints, brushes, paper, canvas, etc.

. . . A complete college line — monogrammed shirts, jackets and sweatshirts. Decals and college souvenirs . . . Pennants, ceramics and college jewelry.

. . . Stationery — both social and engraved papers. Numerous types of both boxed and open stock.

Regular Hours

8 - 7:00 Monday thru Thursday

8 - 4:30 Friday

9 - 1:00 Saturday

. . . Early purchases assure you of buying the books and supplies you need while stock is plentiful.

. . . Shop before the "rush" and make your adjustments later.

. . . Full 15 day refund period beginning with registration day.

. . . No refunds are made without a cash register receipt.

. . . Merchandise to be refunded must be in new and resalable condition.

. . . Do not remove price tags or book covers.

. . . The cash register receipt must accompany merchandise to be returned.

We Buy Used Books The Year Around

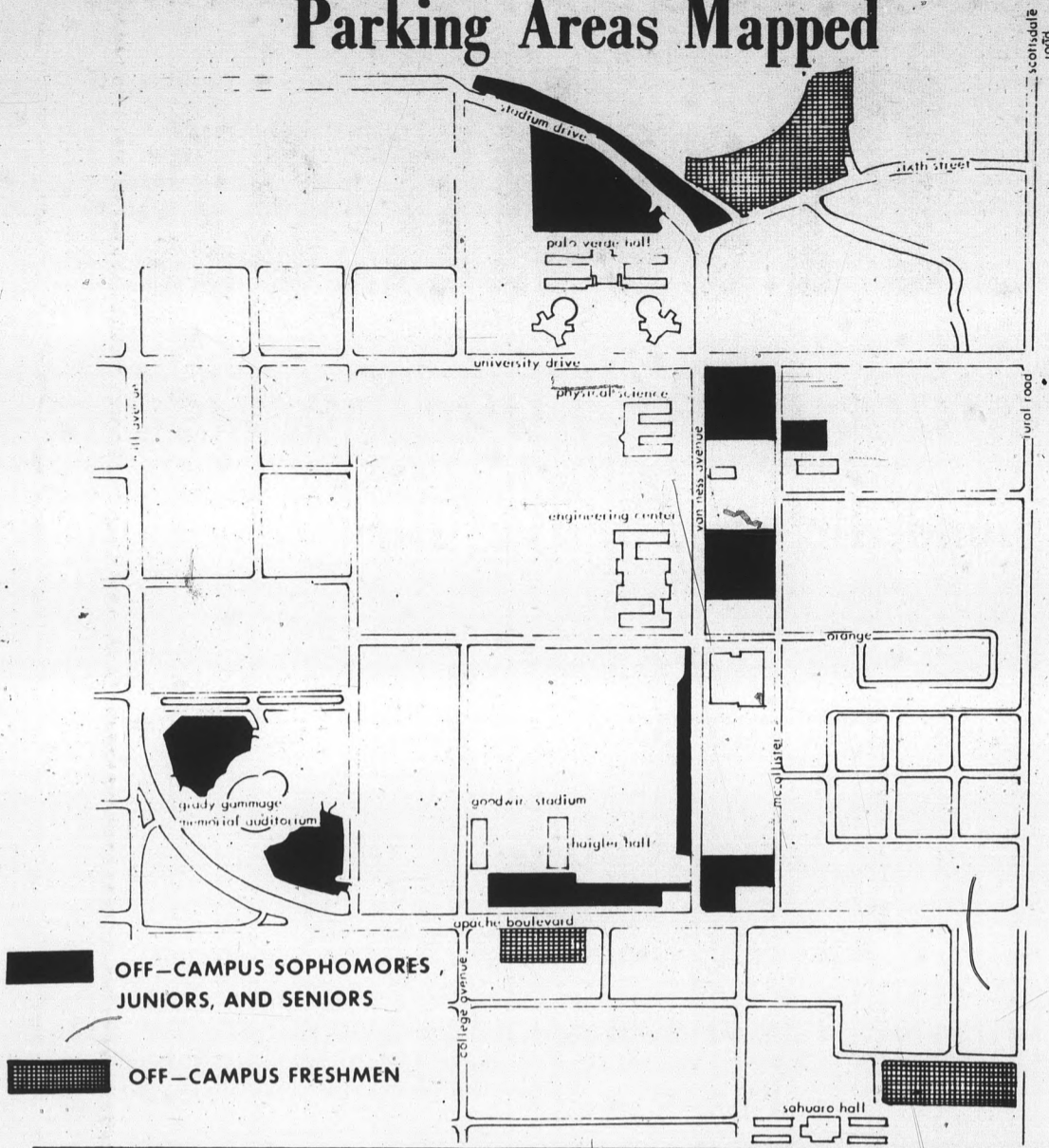
Visit Your

University Bookstore

Located In Memorial Union Building

Serving The Students And The Faculty

Parking Areas Mapped



MORE ABOUT —

Researcher Discovers

(Continued from page 3)

Congress which will recognize the proper international boundary, he says.

The biggest sore point to the United States is the fact that U. S. citizens are illegally under jurisdiction of Mexico, said Dr. Hill.

It is even possible that the local police inspector in El Horcon, a Mexican official, is a U.S. citizen, he said.

Dr. Hill feels county, state and federal jurisdiction over El Horcon should be enforced since the territory is a part of Hidalgo County, Texas.

PREVIOUS studies aided Dr. Hill in his research in El Horcon.

He published a descriptive interpretation of maps in the October, 1965 edition of Geographical Review in "El Chamizal—A Century-Old Boundary Dispute," and his collection of copies of treaties from the Chamizal project speeded up his work in the El Horcon boundary problem.

However, further research in-

to the El Horcon situation has been halted by the closure of public files to him in a recent letter from the El Paso Commissioner's office, Dr. Hill said.

Williams To Face Goddard at Polls

Gov. Sam Goddard rode a 8,035 vote margin to victory Tuesday night over challenger Norman Green in the Democratic gubernatorial primary election. Jack Williams with 34,640 votes, easily walked away with the Republican nomination.

Gov. Goddard gathered 55,290 votes to Green's 47,255.

A very poor 40 per cent statewide voter turnout was blamed on heavy rains and flooding in Phoenix and Tucson. Analysts believe the low voter turnout had a decided effect on the three-way race in the Democratic contest.


Williams, a former Phoenix mayor, led 2 to 1 from the start of the contest and never was in trouble. His two opponents conceded two hours after the polls closed.

In the contest for District 3 congressman, Rep. George F. Senner Jr. barely won the nomination from Ralph Watkins Jr. The see-saw battle lasted through Tuesday night with Watkins and Senner changing leads all night. Senner finished with 17,528 to Watkins' 13,726.

Senner will now face Sam Steiger, Republican candidate who ran unopposed.

PARK HERE—Off-campus students will find these parking lots for their use at ASU this fall. Checkered lots are for freshmen only. Other off-campus students should park in black lots.

Bonnie Sue Fashions

- Hanes
 - Jantzen
 - Phil Rose
 - Jezebel
 - Berkshire
 - Ship 'N Shore
 - Playtex
 - Bobbie Brooks
- Charm of Hollywood
- 
- Fritzi
 - Jane Colby
 - Goddess
 - Shapely
 - Munsingwear
 - Donn Kenny
 - Russ-Togs
 - Exquisite Form
- Hollywood Vassarette.

WELCOME BACK!

YOU'RE JUST IN TIME TO BROWSE THROUGH OUR CLOCK-STOPPING FASHIONS.

913 Mill Ave.
Tempe Center

Telephone 967-4094

Open Thurs.
Til 9:00

It's Here...

A NEW STUDENT DISCOUNT PROGRAM for ASU Students Only

Check These Savings —

- ✓ Student Book Center . . . 10%
- ✓ John Horan's Men's Wear . 10%
- ✓ McKenna's Country Set . . 10%
- ✓ Neptune's Table 10%
- ✓ Avis Rent-A-Car 20%
- ✓ Coronado Golf Course . . . 33%

AND AT 29 OTHER FINE STORES

These savings during the school year will enable you to save far more than the \$2.00 purchase price of the card. Interested? Call 967-1230 or see your dormitory or fraternity representative.

Campus & Career Fashions Ltd.

THE BACK DOOR SHOP

● Capezios ● Bernardo ●
Old Maine Trotters

130 E. UNIVERSITY DR., TEMPE

Club Calendar

EDITOR'S NOTE: Clubs interested in publishing meeting or activity dates of their organizations in this column may bring the information into MU3 or call 966-3656 at least two days before desired date of publication.

BLUE KEY will meet in the Senate Chambers Tuesday at 6:30 p.m.

RALLY AND TRADITIONS BOARD will meet in MU 211 today at 3 p.m. This is an organization meeting to coordinate future events. All new members and cheerleaders are to attend. Next scheduled meeting will be Monday in MU 210 at 3 p.m., and all students interested in working on the board are invited to attend.

Sororities Pledge 220

"Sorority rush went very well this fall, and I'm quite pleased with the results," claimed Dean Kay Hoover, assistant dean in the office of the Associate Dean of Students.

The sororities pledged over 60 per cent of the 366 coeds who participated in rush, for a total of more than 220 pledges for the 12 sororities.

New 1966 pledges are:

ALPHA DELTA PI

Virginia Baldwin, Carol Barford, Cathy Basset, Elizabeth Boyer, Sharon Jo Davies, Marion Davis, Cynthia Farris, Janet Marie Golman, Lyndy Goshia, Rebecca Holley.

ALPHA EPSILON PHI

Also Emille Hunsaker, Jeanne Huvelle, Brenda Jones, Nancy Keeling, Marsha Lindsay, Bonnie Mowinski, Elaine Nigeman, Marguerite Palmer, Kethy Ragan, Teresa Schwegler, Salli Slaughter. Susan Abrahams, Linda Bloom, Linda Fishman, Dale Gordon, Judith Knell, Denise Landy, Harriet Judy Meyer, Georgann Teeman, Deborah Vener.

ALPHI PHI

Lindsey Jane Alexander, Janice Baker, Lynn Brandys, Chandler Burud, Joyce Claridge, Diane Dauten, Marilyn Dunham, Phoebe Eitheim, Cheryl Ewy, Patricia Farry, Marybeth Flower, Penny Griffin, Gwilyn Haglr, Vicki Halbert, Mary Jo Holtz, Pamela Johnson, Susan Montgomery, Barbara Riggs, Molly Roff, Sarah Seidell, Mary Gay Sliver, Deborah Smith, Marjorie Sutherland, Teri Voelker, Karla Von Wald and Jo Ann Wallace.

CHI OMEGA

Barbara Allen, Traci Anderson, Stephanie Austen, Jane Baity, Janice Bender, Katie Boyle, Joy Burd, Michele Doyle, Patti Felker, Patricia Flynn, Patricia Haskell, Melody Hawkins, Tarina Hayes, Sharon Holder, Jacque Jordahl, Jane Kinzig.

Also Charlene Lewis, Margaret Marietti, Deborah O'Brien, Carolyn Owen, Frankie Pomeroy, Susan Jo Schmitt, Patty Souvalli, Jeanne Tenhagen, Mary Tibshraeny, Beverly Ward, Constance Williams, Barbara Woehrel.

GAMMA PHI BETA

Nancy Anderson, Jacque Armstrong, Karen Cappellucci, Luanne Dickson, Maureen Gibson, Mary Kay Harrington, Judy Harris, Jerrye Munro, Linda Olson, Sandee Powers, Julie Ann Redding, Penny Trump, Virginia Vandling, Ann Vogler, Ann Weier, Bea Willis, Glenann Wood, Suzanne Woolgar.

DELTA DELTA DELTA

Lynne Boccigone, Marcia Carlin, Joan Chance, Gerolyn Flaig, Kathleen Gall, Karen Grotflich, Johanne Guelich, Diane Head, Lynn Hopkins, Karen Hughes, Shirley Isley, Carol Klemme, Leeann Mason, Patricia Meyer, Alix Miller, Gail Miller, Catherine Streech, Judy Wasson.

DELTA GAMMA

Anne Armstrong, Suzanne Bonnet, Linda Carnal, Debbie Condon, Sue Finder, Patti Goodman, Robin Healy, Joy Hubbard, Kathy Jablonski, Kathy Merrett,

Janaleev Meyhaus, Toni Murtaugh, Dawn Naar, Sally Perry, Susan Price, Bari Redding, Ellen Rose, Sarah Sheward, Pamela Ward, Patti Weatherston, Nancy Widstrand, Rae Wyles, Mary Lou Younger.

KAPPA ALPHA THETA

Elena Bass, Catherine Bonsall, Carol Cavagnol, Cynthia Crabtree, Susan Dick, Patricia Edstrom, Jill Endicott, Christie Felt, Virginia Harries, Marlene Hoffman, Kathy Kostka, Kathleen Lyding, Leslie Mathias, Janet Norman, Patricia Phillips, Jo Pamela Putnam, Kathleen Schweitzer, Gayle Stevenson, Iani Voorhies, Susan Van Slyke, Debbie Weidav, Karen Wilt.

KAPPA DELTA

Susan Boals, Elizabeth Bohannon, Linda Cordalis, Jan Eisner, Sheryl King, Barbara Mack, Ruth Malene, Wanda Rippstein, Karen Vuyovich.

KAPPA KAPPA GAMMA

Virginia Akin, Sue Blazok, Mary Brown, Joyce Drolet, Judy Fierro, Ann Flask-

kamp, Suzanne Godber, Nancy Fry, Barbara Haislip, Corrine Hancock, Melinda Hopkins, Dil Jones, Susan Lang, Mimi Maffeo, Nan Messersmith, Susan Miller, Judy Mitchell, Elen Oxentenko, Judy Porter, Janine Robison, Karen Seidner, Linda Sladish, Pauline Urbano, Susan Jane Williams, Ann Wyckoff.

PI BETA PHI

Elizabeth Bacon, Queta Baker, Ann Barbara, Nancy Bell, Lydia Bennett, Kathy Delozier, Gloria Don, Barbara Eggleston, Jenny Esparza, Kathy Fumusa, Sheryl Hamlin.

Also Martha Higgins, Barbara Johnson, Karen Iofgren, Monique Mendel, Suzanne Moore, Nancy Olsen, Patricia Randolph, Janis Roelofson, Kathleen Russell, Chelly Seeds, Lynn Theikas, Patricia Touhey, Lynda Winston.

SIGMA SIGMA SIGMA

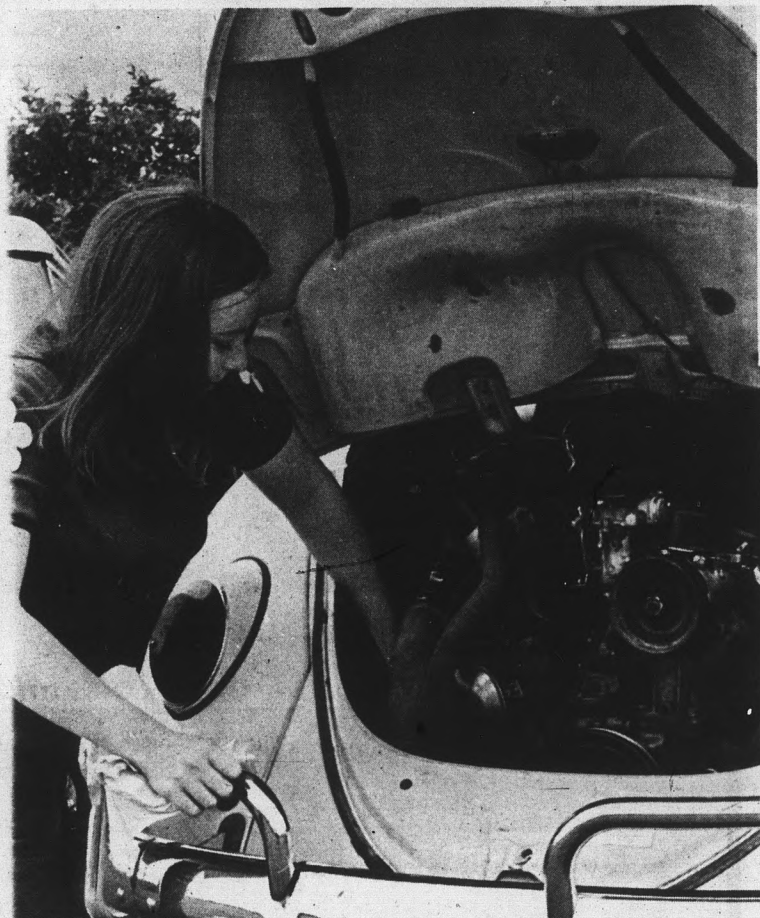
Alaine Austin, Chris Carless, Janet Dombek, Mary Anne Harkness, Margaret Hull, Susan Kadin, Vivian Painter, Lynn Smith, Dorothy Jean Middleton, Karen Gompf.

Jennifer's COLLEGE SHOP
703 S. Forest Tempe

The Villager
Sweater & Skirt Story

Landmark on campus . . . sweaters and skirts by THE VILLAGER, identically matched or creatively paired, purely classic or spiced by inspiration. Choose yourself a trunkfull for school from our comprehensive collection. They're an American tradition.

Use your convenient Jennifers or VNB Charge Account



VERSATILE COED — This unidentified one-girl pit crew was caught in the act of tuning up her touring car between laps during a recent meet near campus.

Photo by Con Keyes

WISE GUYS ARISE
...MARCH ON

HILLS
BOOKS & RECORDS

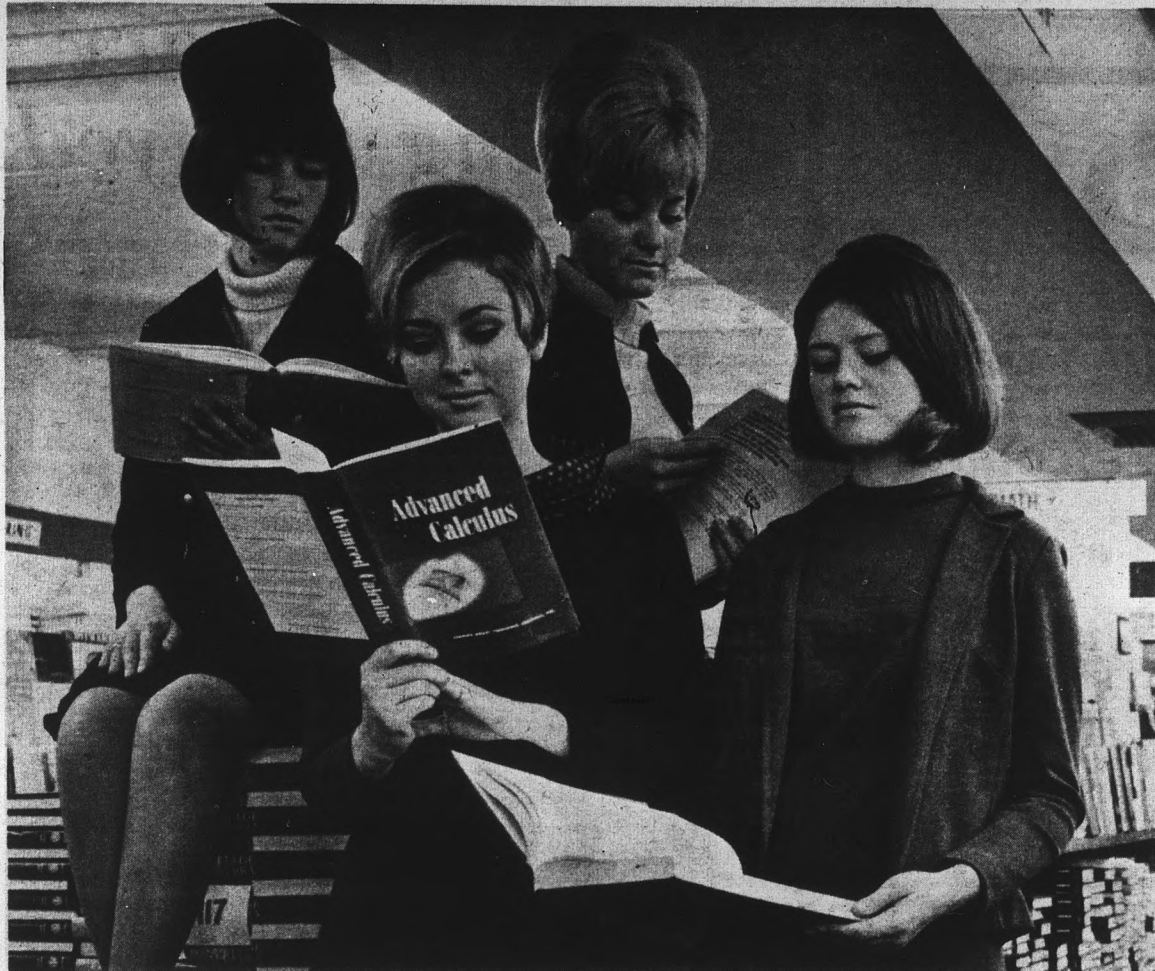
JOIN THE BIG DEMONSTRATION OF THE
PAPERBACK
BOOM

BROWSERS WELCOMED
BUYERS ADORED

9:00 A.M. TO 9:00 P.M. MONDAY THRU FRIDAY
SEPTEMBER 12 TO 23

REGULAR HOURS MONDAY & THURSDAY TIL 9 P.M.

HILLS BOOKS & TEMPE
RECORDS CENTER



FASHIONS — Displaying a few of the styles in vogue this year from the Kaydette-Angel Flight fashion show are Bunny Olmstead, Angel Flight, and Linda Lippla, Karlen Donovan and Nancy Steven, Kaydette.

Fall Fashions Feature Fake Furs

By **LINDA COTTAM**
Assistant Society Editor

Fashions for fall went on display Sunday evening in the MU ballroom as members of Angel Flight and Kaydettes and other models displayed clothes which ranged from casual to formal, from the pant suit to the cocktail dress.

Individual styling, men's wear fabrics and English tailoring appeared frequently, along with real and fake furs. The 1930's long torsos and flared hemlines are back again.

THE FALL sportswear story begins at Carnaby Street. The coats are longer (the new seven-eighths length) and narrower, with matching hip pants. The pantsuit ranges in fabric

from suede to gabardine.

Ski sweaters, poorboy shirts, body skirts and belted coats are bold in color and flashy in style. Mix-and-match sets have gone berserk this fall.

The sets on display included A-line and hip skirts, bermuda shorts and stovepipe pants, topped with poorboys, blouses and cardigans, pull-overs and jackets.

DROPPED belts and raised hemlines, turtle necks and paisley prints mark this fall's campus-bound casuals. A new creation for convenience and versatility is the slirt, a combined shirt and slip.

Looking toward rainy weather, storm coats in bright plastic or cotton hopsacking with matching umbrellas will be seen all around campus. Shiny boots look chic while keeping the feet dry.

Wool double-knits go comfortably to classes, while crepe,

black velvet and white lace stay out late at night. The "in" colors for this fall are olive green, chocolate brown butterscotch, and of course, plum.

THE
DOME
RING
FLORENTINED YELLOW
GOLD



\$1875

Scott
Jewelers
911 Mill Ave.
Tempe Shopping
Center

**SPECIAL
TOP 40
SINGLES
77^c**

HILLS Records
& Books
TEMPE CENTER

Open Even 'Til 9 p.m.



THE VILLAGER: traditional in the Autumn world

The Village Shop
616 Myrtle Ave.
Tempe

Open 10-6 Thurs. til 9.

In Limited Supply...

High Intensity
Desk Lamp... **5.95**

Also Replacement Bulbs

Desk Calendars... **49^c**

Over-The-Door
Garment Hangars... **49^c**

1/2 Price Sale

Shulton's Desert Flower
Hand & Body Lotion

Wide Assortment
Of
Surfer Shirts

Stop By for a Refreshing Break at
"The Fountain"
A Menu to Suit All Tastes . . .

University Drive
campus
YOUR Drugstore
on Campus **drug** & College Ave.

BO-JO

Welcomes Back All Our Old Friends
 And Extends A Hearty Welcome
 To All The New
STUDENTS and FACULTY

THE B-O-J-O SUBMARINE SANDWICH

An experience to see it made . . . more
 than that . . . a pleasure to eat!

"Across From New Fraternity Row"
OPEN 7 DAYS A WEEK

★ Discount Cards Available Again in Limited Quantity ★
DINE IN & TAKEOUT SERVICE

Phone 967-7023

829 S. Rural Rd., Tempe

Hayden Library Opening Delayed

The new Charles Trumbull Hayden Library, under construction since December of 1964, originally scheduled to be opened Monday, will be available to faculty and students next week, according to the Library office.

Students will not have access to the Humanities Department on the 5th floor, but books in this subject area may be obtained by request.

Matthews Library will be open 8 a.m. to 10 p.m. week days and 8 a.m. to 5 p.m. on Saturdays, until the Hayden Library is opened.

SINCE THE card catalogue still is located in Matthews, requests for books should be filled out there, then taken to the reserve book room at Hayden Library. This room may be entered through the sunken garden terrace. There, the requested book will be paged.

The \$4 million library offers twice the stack area as the old building. The study facilities have been enlarged from less than 600 to a capacity of 300

students.
 AND THERE is still room for expansion. The building was constructed so that another two stories may be added later.

MORE ABOUT —

Seniors

(Continued from page 1)

applied toward purchase of proofs.

Make-up shooting sessions for seniors unable to make assigned days will be scheduled throughout the semester.

SENIORS	
Monday, September 19	A
Tuesday, September 20	A-B
Wednesday, September 21	B
Thursday, September 22	B-C
Friday, September 23	C
Saturday, September 24 (makeup)	A-C

For the Greeks, the Greek editor of the *Sahuaros* will contact them concerning their time to be photographed.

Photographer will be C. R. Conley, 106 W. University Drive. The hours are from 1 to 8 p.m. Monday through Thursday and 10 a.m. to 5 p.m. Friday.

COPPER Quickies

SCOTCHMAN?

NOT ONLY IS EVERY POSSIBLE BIT OF METAL SQUEEZED FROM OLD MINES AND WASTE DUMPS BY "LEACHING" WITH LIQUIDS, BUT COMPLICATED EQUIPMENT IN SMELTER STACKS EVEN RECOVERS (FOR RE-SMELTING) MINERAL DUSTS WHICH OTHERWISE WOULD ENTER THE ATMOSPHERE.



"Which hand do you take?"

ROCK CONTAINING SMALL QUANTITIES OF METAL IS WORTHLESS--IT'S FOUND EVERYWHERE. ROCK BECOMES ORE ONLY WHEN SCIENTIFIC INGENUITY AND HUGE INVESTMENTS FIND ECONOMIC MEANS TO EXTRACT THE METAL.



AJO?

BECAUSE EARLY PROSPECTORS FOUND BOTH ORE AND WILD ONIONS IN THE AREA, "AJO", SPANISH FOR "GARLIC", BECAME AJO, SITE OF A MAJOR ARIZONA COPPER MINE.

NOT IN ARIZONA-- OF COURSE



BUT NATIONWIDE, THE ROOF OF THE AVERAGE HOME IS HIT EACH YEAR BY SOME 50 TONS OF RAIN, SNOW AND SLEET. NO WONDER RUGGED COPPER GUTTERS, DOWNSPOUTS AND WEATHERSTRIPPING ARE SO POPULAR.

Representing Arizona's Number One Basic Industry
ARIZONA MINING ASSOCIATION
 Arizona Title Building • Phoenix, Arizona 85003

EARRINGS



Pierced,
 Chicken,
 Pierced Look

\$1.95

Gay! Mod! Unusual! Long - short - Hoops - Swingers!
 Build your earring wardrobe from the best selection in the Valley.

Maharani Creations

4 VALLEY LOCATIONS

Order by Phone
 — 946-5224

THOMAS MALL CHRISTOWN TOWN & COUNTRY
 AND
 89 W. 5th Ave., Scottsdale

Get yours now!

VNB STUDENT CREDIT CARDS!

Applications available at campus
and college-town merchants ...
or at any Valley Bank office.



Student cards are green-and-yellow for identity. Initial credit limits are necessarily lower than the familiar blue-and-yellow cards. Other than credit limits, there is no difference. You are a full-fledged (and valued!) VNB Credit Card customer.

- **GOOD FOR 'MOST ANYTHING, ANYWHERE, ANY TIME**
- **WELCOMED AT MORE THAN 6,000 MERCHANT-OUTLETS**

The Valley Bank is convinced that college-age men and women can handle credit wisely. A good credit reputation will be one of your most valued assets all the rest of your life!

Charge the things you need and want!

Each month, we send you a statement of all your purchases. Pay with just one check.

If you pay in full within 25 days of statement date, there is **NO** extra cost involved (except on cash advances which do carry a small service charge).

Any month you wish, however, you can pay as little as 10% of your statement (\$10 minimum) for a small fee which will appear on your subsequent statements.

GET YOUR STUDENT CREDIT CARD APPLICATION

"Instant Loans" too! Present your card at any VNB office for a cash advance up to \$25.



YOUR CREDIT CARD BANK

100 OFFICES • DEPOSITS OVER \$1 BILLION

MEMBER FEDERAL DEPOSIT INSURANCE CORPORATION

BACK - TO - SCHOOL GYM SUPPLY HEADQUARTERS



Popular
**CONVERSE
ALL STARS**
Black or White
At
8.50



**MEN'S
P. E. SHORTS**
Maroon only
1.25


Master Brands Combination Locks
Ideal For Lockers \$1.59



Men's
Tennis
Shorts
White
All Sizes
3.99



"Floppy"
TENNIS
HAT
Reg. 2.50 Now **\$1.66**



WILSON
Extra Duty
Championship
Tennis Balls
\$1.99

Large Selection of Wilson, Davis
& Bancroft Tennis Rackets
WE DO CUSTOM RE-STRINGING



UNIVERSITY SPORTING GOODS

Conveniently located in the TEMPE SHOPPING CENTER
OPEN DAILY 9:00 TO 6:00 - THURSDAY TILL 9:00 P.M.

We're Welcoming FRESHMEN This Week with a
Complimentary Ball Point Pen - Offer Limited to
First 500 Students.

PANTS GALORE

at the

University Pants House

216 E. UNIVERSITY DRIVE, TEMPE

featuring

Slacks That Never Need Pressing

- PERMANENT PRESS
- HOPSACKING
- DACRONS
- IVY
- CORDUROYS
- NYLONS
- CONTINENTAL
- MOD STYLING
- FORTREL MATERIALS

2 pr. for \$10

Others at \$6.00 - \$10.00 - \$12.00

KORATRON Finish - Keeps crease for life of the pants - Wash
'em, Dry 'em, Crease stays in - Wrinkles Stay Out.

PIGSKIN CHAFINGS

Think Positive

By BRIAN TRACY
Sports Editor

Twice in the last three years the Devil gridders of Frank Kush have started their season on a losing note. Let's end the negativism right there.

Think positive! The 17 returning lettermen again don the maroon and gold. Among them will be the fearsome front defensive five of Larry Hendershot, Curley Culp, Jesse Fleming, Steve Timarac and Bob Rokita. That's 1,151 pounds of human hustle that could spell disaster for more than a few backfields.

ATHLETIC Promotion Manager Al Stephan has dubbed the big five as the "Bruising Beelzebubs." For those of you who are not English majors or read Human Sexual Response instead of Shakespeare, "Beelzebub" is synonymous with "Devil." So it's not really dirty.

If you want to be nasty you can still yell "Give 'Em Hell Devils!" at the games, but calling somebody a "rotten beelzebub" won't really get the job done.

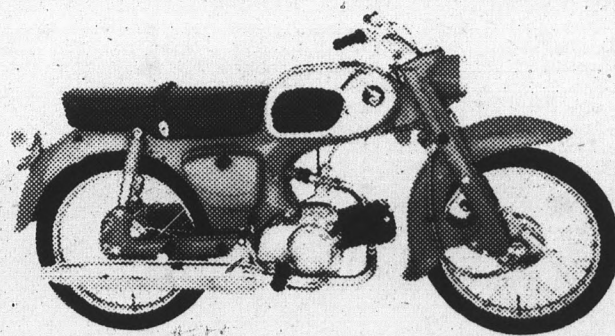
Back to the gridiron. Continuing with the bright spots letterman-wise, both John Pitts and Dewey Forrister will be returning. Pitts will be seeing most action as a defensive back this year, and Forrister, an excellent blocker, will return to his tight end spot.

IN THE backfield directing the Devils again this year will be John Goodman, backed up by impressive sophomore Rick Shaw. The speed is definitely there with turf burners Travis Williams and Max Anderson back to lug the pigskin. Ditto for up-the-middle power as Jim Bramlet returns as fullback.

But you can stop right there as far as depth goes for the backfield. And here we go again getting negative. A couple of JC transfers, Bob Conley and Jim Williams, brighten the picture somewhat, but Coach Kush shudders at the thought of any injuries.

THE TENTATIVE starting units for the Devils are:

- | OFFENSE | DEFENSE |
|--------------------|---------------------|
| LE Dewey Forrister | LE Jesse Fleming |
| LT Ray Shirey | LT Bob Rokita |
| LG Mike Chowanic | MG Curley Culp |
| C George Hummer | RT Larry Hendershot |
| RG Obia Lowe | RE Steve Timarac |
| RT Larry Langford | LLB Tim Buchanan |
| RE Fair Hooker | RLB Ron Pritchard |
| QB John Goodman | MLB Dick Egloff |
| LH Travis Williams | LH John Pitts |
| RH Max Anderson | RH Ken Dyer |
| FB Jim Bramlet | SAF Phil Booker |



PARKING TICKET

That's Honda. Just the ticket for parking on crowded campus lots and, in fact, anywhere at all. Ride your Honda right up to class, if you like. If the teacher gives you a funny look, it's probably because he'd like to have one, too.

See all the Honda models at



WESTERN HONDA

6907 E. McDOWELL RD., SCOTTSDALE, ARIZONA 85257

Honda Dealer for A.S.U.



"THE BRUISING BEELZEBUS" — The big front defensive five of (l to r) Larry Hendershot, Curley Culp, Jesse Fleming, Steve Timarac and Bob Rokita prepare to blast off the 1966 campaign Saturday against Texas Western. Game time of 8 p.m. in Sun Devil Stadium will provide the answer as to just how bruising a Beelzebub can be.

For Coach Kush — Three Vital Questions

If Coach Frank Kush had access to a crystal ball, he would undoubtedly look for the answers to three vital questions before you could say "beelzebubs."

1. Is ASU's defensive line really that good?
2. HOW WILL THE Devil secondary hold up against the expected Texas Western aerial blitz?
3. Will the offensive line crumble under the Miners' seasoned defensive unit?

Nine offensive starters from the Texas Western 1965 team will square off against the De-

vils Saturday night. TOPS ON THE list will be Billy (The Kid) Stevens, the leading sophomore quarterback in the nation last year. Stevens led the Miners to an 8-3 record by completing 196 passes for a staggering 3,032 yards and 21 touchdowns.

Stevens' three primary receivers from last year will also be back. Chuck Hughes, Bob Wallace and Chuck Anderson caught a total of 166 passes for 21 touchdowns in the 1965 campaign.

If the already legendary ASU defense can stop the fear-

some foursome, the Miners' scoring punch will be nil.

THE SUN Devil offensive wall will also get the supreme test. The TWC defensive boasts six starters from last year's line-up.

The ASU line, however, is a patchwork of sophomores and transfers, with only one seasoned veteran on hand.

Becker Is Back; Will Aid Bill Mann

Art Becker, former Sun Devil championship team, who recently signed a letter of intent to play for the Devils.

Becker, working toward his master's degree in education, will assist frosh coach Bill Mann. Becker played for the AAU Akron Goodyear Wingfoots for the last two seasons.

During his career at Arizona State, Becker compiled 1,284 points, fourth on the Sun Devils' all-time scoring list. He twice won first team academic All-America honors and holds the school record for the most consecutive free throws without a miss — 35.

One of Becker's first understudies will be Bill Leinheiser, a member of Camelback High School's Class AA state cham-

signed a letter of intent to play for the Devils. Leinheiser, a 6-4 forward, starred in the North - South High School All-Star game held at Flagstaff last month.

Karate Starting

Workouts for the Karate Club will resume Tuesdays and Thursdays at Cosner Hall from 3 to 5 p.m., and on Saturdays at the men's gym annex from 9 to 11 a.m.

All students wishing information are welcome at any workout or call Rand Ardoin, 967-1770.

Information will also be posted Sept. 12 to Sept. 16, from 1 to 4 p.m. in front of the MU building.



SUN DEVILS BARBER SHOP

OPEN

MONDAY

THROUGH FRIDAY
130 UNIVERSITY DR.

IN THE ARCHES

the smart new traditional shop is open in Scottsdale with—

CRICKETEER
SUITS • SPORTCOATS • SLACKS •

- SERO OF NEW HAVEN
- VAN HEUSEN 417
- BRIAR TIES & JEWELRY
- CANTERBURY BELTS
- ADLER HOSE
- WINDBREAKER OUTERWEAR
- TOWNE & KING SWEATERS
- Permanent Press Slacks by H. I. S. — LEE — A-1

COME IN AND REGISTER FOR YOUR DOOR PRIZE

JUSTER'S
44 W. Main Street Scottsdale

THIS YEAR, UNIVERSITY MEN FIND OUR VESTED SUITS MOST OUTSTANDING IN THREE UNUSUAL FABRICS—HOPSACK, WHIPCORD AND HERRINGBONE-CHEVIOT

Our shops at Harvard, Yale, Princeton, University of Michigan and Stanford University unanimously agree that our famous natural-shoulder model suit is a favorite on campus in wool hopsack, wool cheviot, and wool whipcord. In preparing our new fall collections, we have included brown, blue, and olive hopsack, \$85; wheat, olive and oxford herringbone cheviot, 79.50; and natural, olive and blue whipcord, 79.50—all impeccably tailored with 5/16-inch stitched lapels and matching vests, on our exclusive University Model. They are available in a full size range. University Shop.

THE UNIVERSITY SHOP
SAKS FIFTH AVENUE
2500 East Camelback Road, Phoenix

Yale - Princeton - Harvard - University of Michigan - Stanford - New York - White Plains - Springfield - Garden City - Washington - Ft. Lauderdale - Chicago - Skokie - Detroit - Beverly Hills - Phoenix

1966 Gridiron: The Coaches and the Coached



READY TO ROLL — After weeks of coaching by the gentlemen pictured in the top photo, the athletes below will be ready to ramble against the Texas Western Miners Saturday night. Coaches pictured are (l-r) Paul Kemp, Dick Tamburo, Larry Kentera, Bill Kajikawa, Don Baker and kneeling Head Coach Frank Kush. The starting backfield as shown below includes (l-r) Quarterback John Goodman, Halfback Travis Williams, Fullback Jim Bramlet and Halfback Max Anderson.



Ben Hur
Water Buffalo Sandals

395 to 695



RUGGED! HANDSOME!
FOR MEN & WOMEN
SIZES 4 TO 14
NATURAL LEATHER

Soak in water.
Wear until dry.
They mold to your feet.

4 VALLEY LOCATIONS Order by Phone — 946-5224

Maharani Creations

THOMAS MALL CHRISTOWN TOWN & COUNTRY
AND
89 W. 5th Ave., Scottsdale



The Americana Shop



The Students Report

Americana Shop apparel is modest
in price . . . traditional in styling

Selections of clothing, furnishings and
sportswear . . . guaranteed to fit.

U should stop . . . and shop
for fashion correct apparel

WO 7-5457

WO 7-5457



QUALITY MEN'S APPAREL
TEMPE SHOPPING CENTER

OPEN 9:00 A.M. TO 6:00 P.M.
THURSDAY 'TIL 9 P.M.