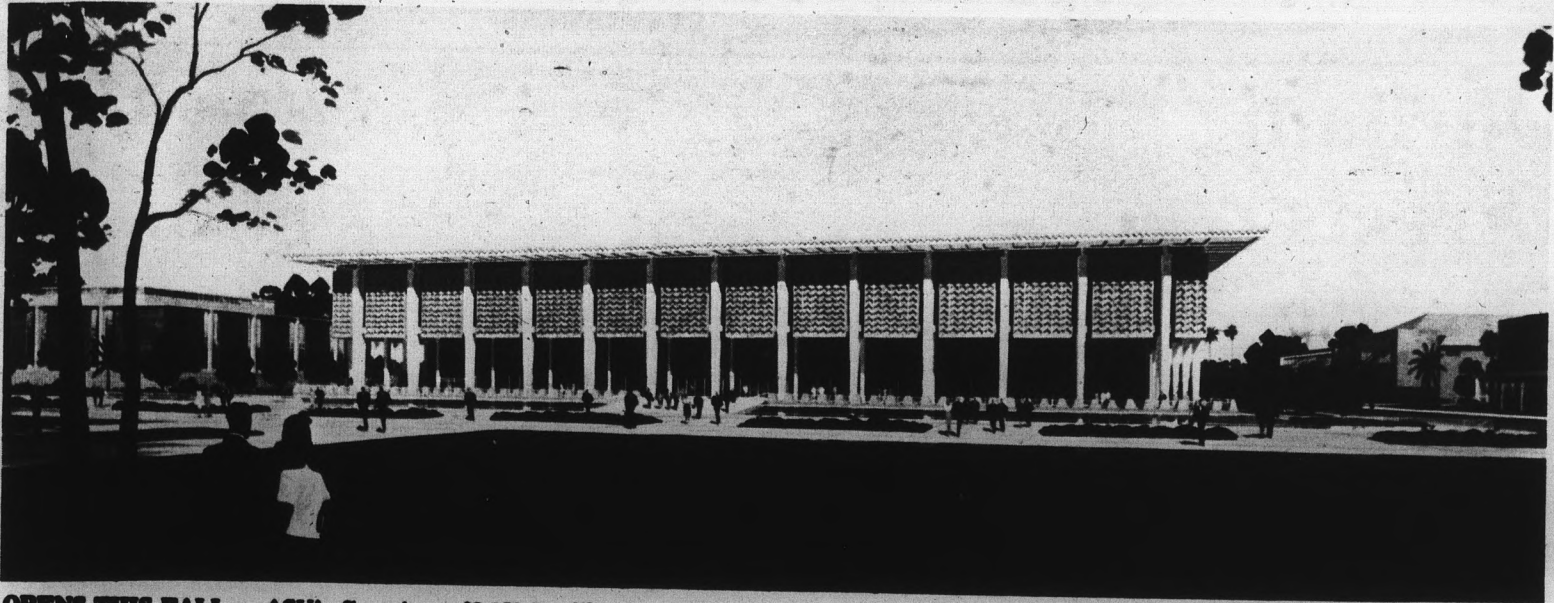


## Index

ASU Opportunities .....	2
General Schedule .....	3
Colleges of:	
Law .....	3
Liberal Arts .....	4
Fine Arts .....	5
Engineering .....	6
Business .....	7
Architecture .....	8
Education .....	9
Nursing .....	9
Graduate .....	10
Sports .....	11



**OPENS THIS FALL** — ASU's five-story, \$3,250,500 library will open this September with room for a million volumes and about 20,000 students. Structure, modernly designed for study and research, is heart of university education programs.

# state press

ARIZONA STATE UNIVERSITY

## Special Edition For Freshmen

This is a special edition of the State Press, published by the Registrar's Office of Arizona State University for incoming freshmen. The regular State Press is the official campus newspaper and will be published four times a week in the fall. It is entered as second class matter at Tempe, Arizona Post Office under the Acts of March 3, 1879 and August 24, 1912. Subscription price is \$3 per year.

Special Issue

Tempe, Arizona

July 1966

# WELCOME FRESHMEN

## Important Steps Enable Freshmen To Begin College

Follow these eight steps to enroll at Arizona State University.

1. If you have not done so, send your application for admission to the Office of the Registrar and Director of Admissions at ASU.

2. Have your high school send a transcript of your record showing grades and credits earned, rank in graduating class, and date of graduation to the ASU Registrar and Director of Admissions.

3. Have your family physician mail a complete health certificate examination, including certificate of smallpox vaccination within the past four years, to the Student Health Service in the addressed envelope provided.

4. Forward results of chest X-ray if done during past six months, or obtain X-ray during registration time. See general schedule; chest X-rays are scheduled at certain times depending on which college you plan to enter.

5. The American College Test (ACT) is required. If you did not take it in high school plan to do so on July 5 or July 19 in Life Sciences 191 at 1 p.m. There is a \$5 fee.

6. Students ranking in the top 10 per cent of their high school class will receive a certificate of honors at entrance.

7. Arizona high school graduates who rank in the top three-fourths of their class will be granted regular admission to ASU. Those in the lower one-fourth may be granted provisional admission only after testing and counseling.

8. During Freshman Orientation Week Assembly Sept. 7 at 8:15 a.m., you will meet your curriculum advisor who will help you plan your first semester schedule.

Remember, early orientation,

(Continued on page 2)



**TWO PRESIDENTS** — A member of several federal educational boards, Dr. G. Homer Durham, president of Arizona State University, left, receives greetings from Lyndon B. Johnson, President of the United States.

## Academic Role Prominent

BY DR. G. HOMER DURHAM  
President, Arizona State University

Heart of higher education in Central Arizona is Arizona State University at Tempe, nine miles east of downtown Phoenix, one of the Southwest's leading institutions of advanced learning. Established in 1885, the University is the hub of Central Arizona's cultural and intellectual life.

Serving the growing needs of the state and the nation are the Colleges of Architecture, Business Administration, Education, Engineering Sciences, Fine Arts, Liberal Arts, Nursing, the Graduate College, an Extension Division, the Summer Session, together with the Schools of Engineering and Social Service Administration, and Divisions of Agriculture, and Industrial Design and Technology.

A new College of Law is planned to accept the first entering class in September, 1967.

The fine arts as well as the liberal arts and sciences find a prominent place in the ASU curricula. Work leading to the Ph.D. is offered in physics, chemistry, engineering, psychology, mathematics, botany, zoology, English and education, in addition to baccalaureate and master's degrees in all of the colleges.

The prominence which any institution of higher learning achieves is predicated largely on the interest of its students and the quality of its faculty.

Physical facilities are needed, but the ultimate test of a student's success comes from the interaction of his own effort and the inspiration, based on sound preparation and experience, his professors are able to impart.

High school students contemplating a choice of university can be assured that they will find at Arizona State University a highly trained, distinguished and cosmopolitan faculty secured through continuous and vigorous recruiting.

ed through continuous and vigorous recruiting.

One of the outstanding characteristics of ASU is the rapidity of its growth. Accordingly, traditional patterns of educational development do not apply, equally, in all of the University's departments.

The evolution of our program of teacher education, for example, has followed a steady pattern of development since 1885 to a position of national prominence.

Engineering and Business Administration, on the other hand, have achieved a similar position in only a few years. In these cases, as in many others on the campus, the newness of the program is a strength, rather than a weakness.

ASU is distinctive for educational vigor.

We welcome the fresh and vigorous ideas brought to us each year by so many new and returning students, and by our new faculty members.

## ASU Orientation Week Activities September 6-10

September 6!

That's the day Freshman Orientation Week opens at Arizona State University.

During that week, new students will be tested, advised, and registered for classes beginning Sept. 12.

A record number of students are expected at ASU this year, topping last year's 22,000 enrollees in the state's fastest growing institution of higher learning.

Many freshmen will have taken advantage of early registration during the summer, but those who were unable to will attend a general orientation assembly Sept. 7 in Grady Gammage Memorial Auditorium. There they will be welcomed and receive registration instructions from President G. Homer Durham and other administration and student officials.

On Tuesday, Sept. 6, a series of tests will be given to help guide the university careers of new students. These include the American College Test, English Exemption Test, Foreign Language Placement Test and Architecture Aptitude Test.

After hours of exams, X-rays, and advisement, students can relax at dances, mixers, assemblies and receptions sponsored by various campus groups. See the general schedule for details, Page 3.

To explain all the details of university life takes 400 pages of the catalog, but one thing the catalog does not contain is the new system of fees.

The general university fee now is \$143. In addition, non-residents will pay \$34 per semester hour up to 12 hours and \$407.50 for 12 hours or more. Part-time registration fee, six hours and under, is \$16 per hour.

## Durham Directs Growth

Beginning his seventh full year as president of Arizona State University, Dr. G. Homer Durham will greet the freshman class in the annual Freshman Convocation in Grady Gammage Memorial Auditorium.

"ASU presents all the advantages of the small college through our various curricula, chapters of academic societies, residence halls, and student organizations," Dr. Durham said. "At the same time, we combine these characteristics with the advantages of strength and size—faculty strength, diversified, highly selected and talented and sufficient size—to provide growing library, laboratory and other educational facilities uncommon to the small college."

Since assuming the presidency of Arizona State University in September, 1960, Dr. Durham has directed the building of the Grady Gammage Memorial Auditorium, designed by the late Frank Lloyd Wright, and has launched the construction of a new \$3 million library as fundamental elements in the University's development.

During his administration, three colleges (Fine Arts, Architecture, Nursing) and a Graduate School of Social Service Administration were developed; authorization for the establishment of a new College of Law to open in 1967 has been achieved; five professional programs of study were accredited; and the University was granted authority to award the Doctor of Philosophy and Doctor of Business Administration degrees.

## Counseling New Student Service

Establishment of a new counseling service for Arizona State University students has been announced by ASU President G. Homer Durham.

Dr. Robert Heimann, professor of education, has been named acting director of the service.

Expected to begin operation by the autumn semester, the Counseling Service will temporarily be housed in the College of Education building.

The basis and program for the service have been developed over a number of years by a faculty committee.

Negotiations are underway for five counseling psychologists to staff the service. The counselors, all with professional training, will be selected from the best candidates throughout the nation, says Dr. Heimann.

The service will be responsible to the Dean of Students, and will be coordinated with the student health center, deans' offices, and other student services.

Helping students develop educational and vocational goals is generally the most frequent demand of a university counseling service. But, the staff also will give general advice and consultation on study problems and personal adjustment.



**READY FOR YOU** — Hefting loads of heavy books, these employees of University Bookstore prepare for onrush of new students who will purchase thousands of textbooks for 1966-67 academic year.

## Take Advantage Of Opportunities

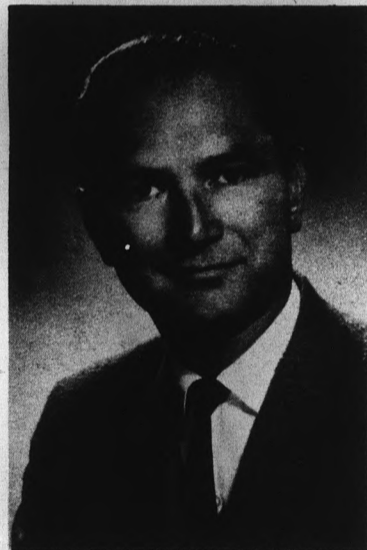
By Dr. Joseph C. Schabacker  
Academic Vice President

Whether you are embarking upon a university course program for the first time, or whether you are continuing your college experience, it is well for each of you to think about some of the opportunities which are available at this significant phase of your life. Here are some opportunities you will want to consider:

**THE UNIVERSITY ENVIRONMENT:** The university environment provides an opportunity which will not be available in any other time of your life. Basically it is an opportunity which will allow you to seek out and to benefit from a very wide intellectual horizon. Take advantage of a varied selection of courses and experiences no matter what your primary career goal may be. It is mainly during this period of your life (before you enter into the "university of adversity") that you will have an opportunity to whet your appetite with many educational, technical, professional and social experiences.

**THE UNIVERSITY'S UNIQUE RESOURCES:** A university is made up of a professionally-prepared faculty, buildings, and administrative staff, social activities and extra-curricular functions of many kinds. One of the obvious first opportunities which exist for the student is his university professor. The professor is here to help, to guide, to motivate and to influence a student as he pursues the activities in various courses throughout his college career. In addition to the academic staff, however, there are also the great opportunities available through the library and its staff. No course or no semester should go by without continuous use of the library by every student. An additional resource of the university, which is not used as well as it should be by most students, is the curriculum advisor to whom a student is assigned when he enters the university. The advisor should be used! His ideas, his counsel, and his help should be sought by each student throughout his university career.

**THE BASIC TRANSFERABLE SKILLS:** In no matter what



Dr. Joseph C. Schabacker

facet of life you will make your mark, you will find certain skills to be highly transferable. These can be developed best while you are a university student. (1) Mastery of the scientific method of investigation; (2) Understanding people, and working with them effectively; (3) The ability to be able to communicate ideas so that understanding develops; (4) Organizing and marshalling scarce resources toward given ends; (5) Wholehearted and persistent application to any task at hand; (6) The development of memory for facts, ideas, and people. If you can see and solve problems, if you understand people and know how to work with them, if you are good at communication, if you know how to organize the resources at your command, if you can throw yourself into the task at hand, and if you have a good memory, you can do almost anything. You can be a first-rate student (or a first-rate teacher).

**DEVELOP PERSONAL VALUES:** The personal values which you develop while you are

(Continued on page 4)

## Students Consider University Privilege

By Dr. Gordon B. Castle  
Vice President

Attendance at a University is an opportunity and a privilege. Although attendance at Arizona State University is available to any resident of the State who meets the qualifications for admission, many students, for one reason or another, cannot enroll.

Those who do attend the University, however, have an opportunity to broaden their horizons in the general areas of human knowledge and to study in depth, particular areas. In order for the University experience to be successful, there must be an extraction from the University's total offerings that which best serves the student's individual capabilities and needs and fulfills the University's requirements.

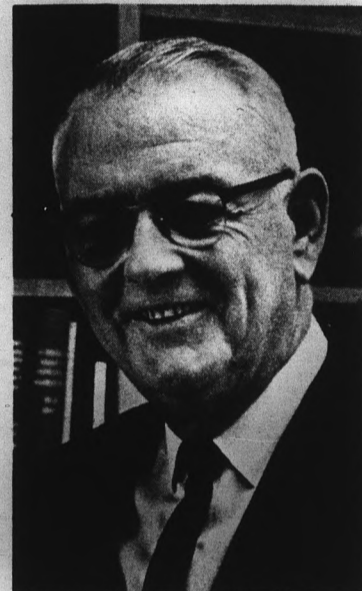
The University provides many services: a climate for learning, good teaching, well-equipped laboratories, and the counsel and inspiration of able men and women.

The University faculty is organized into departments of instruction, each of which has as its main objective teaching and research in a specific field. A student in a given department finds the opportunity of associating with students of like interests and of belonging to clubs or societies which are representative of the areas of his interest.

In these more informal situations the student becomes acquainted with fellow students and faculty members and is offered the opportunity to engage in discussions which probe the areas of his maturing concerns. Access to the Library, well-stocked with books and periodicals in many fields of knowledge, aids and assists him in his studies.

In addition, a host of extra-curricular activities, sports, and social events provides a well-rounded program of college life.

A student must bring to the University intellectual curiosity, motivation, and dedication. In addition he will enrich the campus with his individual per-



Dr. Gordon B. Castle

sonality with all its interests, humor, and depth. From the rich and varied fare offered him and with the inspiration and guidance of teachers skilled in presenting, without indoctrinating, he will learn to extract not only facts, but the judgment to assess them; not only information but insight into how to use it; and he will acquire an increased awareness of the rewards of intellectual exploration.

The student who is receptive to the University's offerings and who utilizes fully his intelligent curiosity and eagerness to know will enrich himself and the institution.

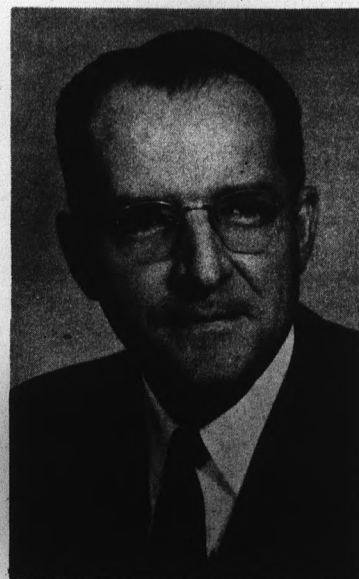
## Continued From Page 1

## Important Steps To Follow

advisement and registration will be conducted at ASU on July 14 and July 26, but it is necessary to make a reservation by returning the early registration post card mailed to you. Early registration is optional. Regular registration will be held Sept. 8-10.

The schedule for early registration days, July 14 and 19, is as follows: 8-9 a.m., obtain registration course request card and schedule of classes at Moeur Administration building. 9-9:30, attend general orientation at Grady Gammage Memorial Auditorium. 9:45-noon, orientation and advisement for the following colleges:

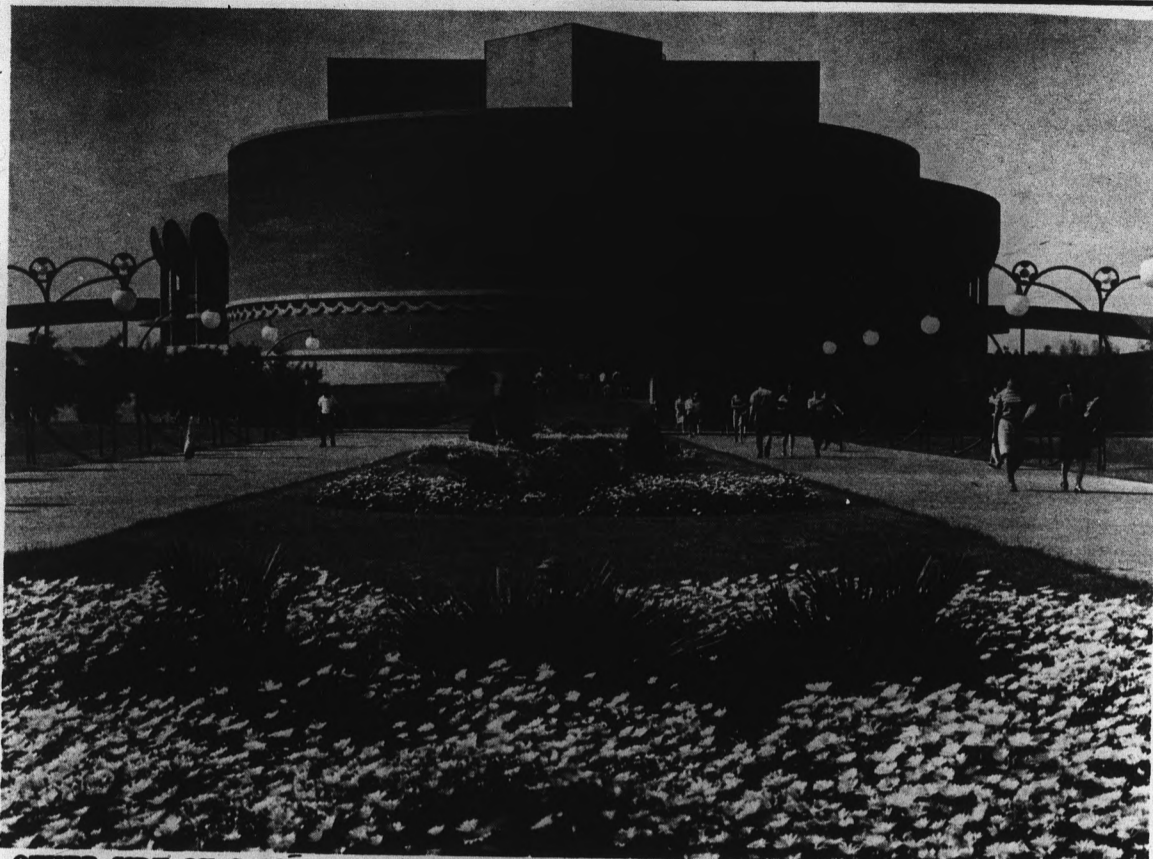
Liberal Arts, Life Science Center 191; Education, Physical Sciences 100; Business Administration, Business 203; Engineering Sciences, Engineering Center Building G, Room 145; Architecture, Engineering Center Building A, Room 312; Nursing, Language and Literature 18,



Alfred Thomas, Jr.  
Registrar

and Fine Arts, Gammage Auditorium 301.

Lunch will be from noon to 1 p.m., followed by curriculum advisement at assigned locations.



**OTHER SIDE OF GAMMAGE** — Most students are familiar with Grady Gammage Memorial Auditorium, one of country's finest cultural centers, but this view shows academic side of building which includes five floors of classrooms, rehearsal rooms, and offices for departments of music and drama.

## Job Opportunities Many

The continuing influx of industry into Arizona is increasing the opportunities for ASU graduates.

Dr. Robert F. Menke, director of Arizona State University Placement Service, says "Many excellent job opportunities are available to our graduates on the international, national, and state levels. In addition, the number of potential employers that are coming to our campus have been significantly increasing during the last few years."

This past spring, representatives of 500 business firms and government agencies visited the ASU campus to recruit employees for their concerns. This was

more than the number that recruited employees at ASU in the year before.

The strongest demand was for engineers, technicians and physical scientists.

Accountants and other business administration graduates are in strong demand. Many ASU graduates in the teaching field go to work in Arizona.

"The greatest demand in educational placement is for elementary school teachers and for those with elementary certificates who can teach in special fields, such as music, library work or girl's physical education. Teacher shortages in Arizona are also continuing at the

high school level," notes Dr. Menke.

### PART-TIME WORK

For the student who must work to supplement his income, Arizona State University, thanks to its location, is an ideal place to enroll. Located in the industrial and population center of the state, ASU offers many employment opportunities in Phoenix, Tempe, Mesa and Scottsdale businesses. Many on-campus parttime jobs are also available.

To help the student, ASU has the Placement Service on the ground floor of the Administration building. All students interested in jobs will find it helpful to register there.

## General Schedule

All freshmen who have not registered during the summer are expected to attend Orientation Week, Sept. 6-10. Freshman who registered during the summer need be present only for Wednesday events, but are invited to participate in the evening programs. Others should be on campus Tuesday to secure X-rays and registration materials before the Wednesday assemblies.

### Tuesday, Sept. 6

- 9 a.m.-noon and 1-4 p.m. Liberal Arts students pick up advisement dockets, Social Sciences 412.
- 9 a.m.-noon and 1-4 p.m. Pick up registration materials, Men's P.E. Annex. Chest X-rays for College of Liberal Arts.
- 1-5:30 p.m. Testing: American College Test (ACT), required of all new students who have not taken it in high school or during the summer. Life Sciences Center 191.
- English Exemption Test, Business Administration 203.
- Foreign Language Placement Test, Business Administration 103.
- Architecture Aptitude Test, mandatory for freshmen entering College of Architecture, Physical Sciences 100.
- 1-5 p.m. Chest X-rays for College of Engineering. Chest X-rays for College of Business Administration.
- 7 p.m. Interhall Council dance, Apache Blvd. tennis courts.

### Wednesday, Sept. 7

- 8:15-9 a.m. University Orientation Assembly, Grady Gammage Memorial Auditorium.
- 9 a.m.-noon College orientation assemblies and/or departmental advisement.
- 1-4 p.m. Individual advisement.
- 1-5 p.m. Chest X-rays for College of Education. Chest X-rays for College of Fine Arts.
- 7 p.m. Phrateres reception for new off-campus women, Memorial Union Arts Lounge.
- 8 p.m. Associated Women Students assembly, Memorial Union ballroom.
- Men's residence hall assemblies, in each hall.

### Thursday, Sept. 8

- 8 a.m.-noon Chest X-rays for College of Architecture. Chest X-rays for College of Nursing.
- 9 a.m.-noon Individual advisement, pick up class cards, and registration.
- 1-4 p.m. Individual advisement, registration.
- 5:30 p.m. Student Interfaith Council picnic, Alumni House lawn.

### Friday, Sept. 9

- 8 a.m.-noon Chest X-rays.
- 8 a.m.-noon Make-up ACT test administration, Life Science Center 191.
- 9 a.m.-noon and 1-4 p.m. Registration.
- 10 a.m.-noon Reading of skin tests for College of Nursing, Student Health Center.
- 1-4 p.m. Pick up class cards.
- 1-5 p.m. Chest X-rays.
- 7 p.m. Painting of the "A" and pep rally. Foreign Student Reception.

### Saturday, Sept. 10

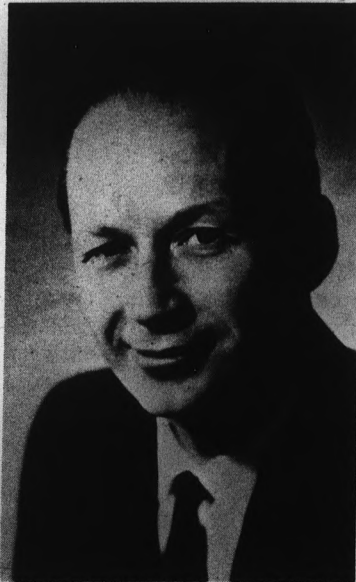
- 8 a.m.-noon Chest X-rays.
- 9 a.m.-noon Registration.
- 10 a.m. Mortar Board reception, Memorial Union Arts Lounge.
- 9 p.m. Freshmen mixers at Palo Verde West and on the Memorial Union Corral Terrace.

NOTE: All new students registering for over six hours must have an identification picture taken from Sept. 8 through Sept. 10 in the Men's Gymnasium, Room 103.

## Law

Expansion of legal services to more people in our society will have a profound impact on the education of law students, says Dr. Willard H. Pedrick, dean of the Arizona State University College of Law which will admit its first class in September, 1967.

Dr. Pedrick, a professor of



Dean Willard H. Pedrick

law at Northwestern University since 1948, said that wider distribution of legal services will necessitate changes in the basic law courses.

He adds the bulk of future legal service income will continue to be generated by work related to property, corporations, probate and negligence law, though the latter may decline as accident insurance makes further headway.

Criminal law in all its branches will become a larger segment of the basic program, he noted. Problems involving the poor as well as the affluent will be introduced into conventional courses on a modest level. Contracts, torts, family law and creditors rights will lend themselves to this approach.

Therefore, the staples of the

**1967 OPENING** — Expected to be ready for occupancy in September, 1967, this College of Law structure features circular law library and moot court and central rotunda. Library will hold 200,000 volumes.

## New College Accepts First Class In '67

law students' diet will not undergo great change, but to make room in the curriculum for new emphasis on the breadth of the law's responsibilities to society will require utilization of new scientific methods for educating students.

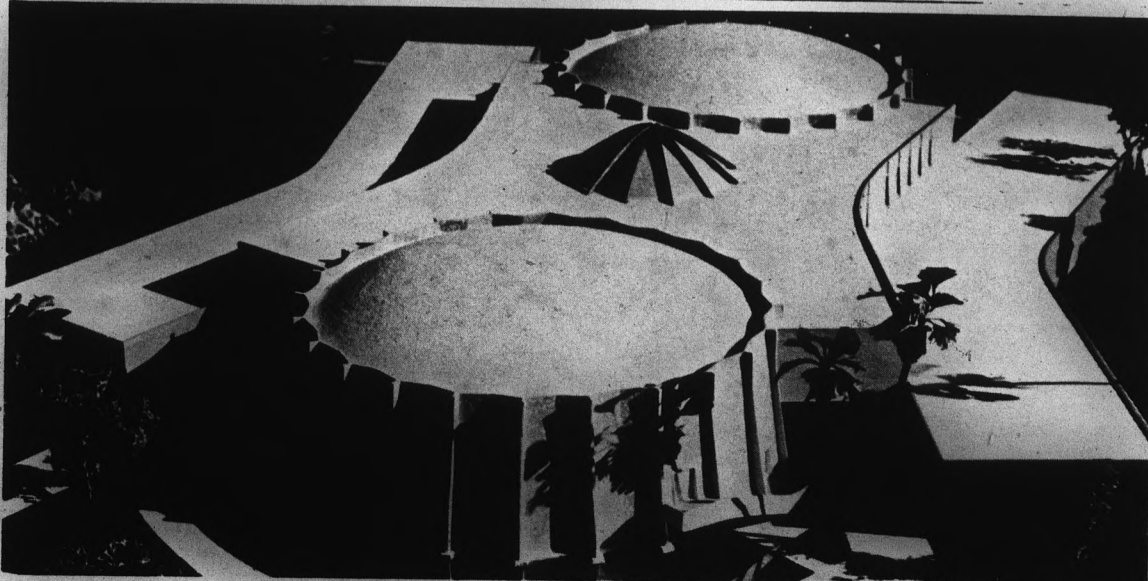
Continuing education involving

both the law school and organized bar will play an increasingly essential role in skillful distribution of legal services, says Dr. Pedrick.

ASU will build a law course better geared, particularly in the third year of the program, to engage fully the interest and

energy of the student as he is involved in clinical participation.

Student participation in legal aid, in neighborhood law offices, and in the processes of criminal law will be increasingly viewed not as a diversion but as a clinical part of the learning processes.



# Liberal Arts

## 20 Departments Set 24 Majors

Comprised of 20 departments, the ASU College of Liberal Arts maintains the largest faculty and offers the greatest number of courses of the university's nine colleges.

Liberal Arts offers programs of study leading to two undergraduate degrees, the bachelor of arts and bachelor of science.

Twenty-four majors are available to candidates for the bachelor of arts degree. They are:

Anthropology, art chemistry, drama, economics, English, French, geography, geology, German, history, home economics, humanities, journalism, mathematics, music, philosophy, political science, psychology, radio-television, Russian, sociology, Spanish, and speech.

Twenty-three majors are available to the candidates for the bachelor of science degree from the College of Liberal Arts. They are:

Biology, botany, boys' club administration, chemistry, economics, entomology, geography, geology, health education, home economics, journalism, mathematics, medical technology, microbiology, physical education, physics, psychology, radio-television, recreation, sociology, wildlife biology, x-ray technology, and zoology.

In addition to these areas of specialization leading to undergraduate degrees, the College of Liberal Arts offers special pro-

grams of study in the following areas:

American studies, bilingual secretarial program; Foreign secretarial program, Foreign Service Training program, Latin-America Area Studies, pre-dental, pre-medical, and pre-osteopathy, pre-law, pre-ministerial, pre-occupational, pre-physical therapy, pre-optometry, pre-pharmacy, public service training program and non-western studies.

Among the research facilities used by the College of Liberal Arts are a complete atomic mineral and metal analysis laboratory, a meteorite laboratory, psychological clinic and laboratory, the Bureau of Government Research, Animal Resource Center, and the Poisonous Animals Research Laboratory.

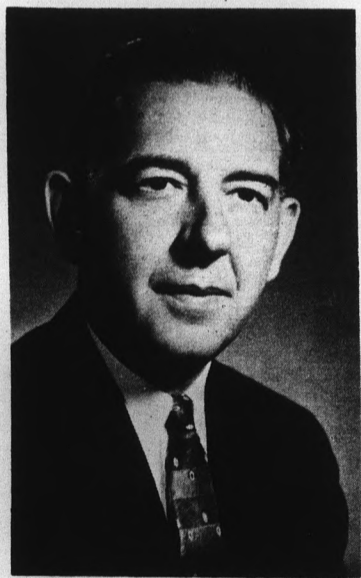
Dr. Karl H. Dannenfeldt, professor of history, who joined the ASU faculty in 1956, is Dean of the College of Liberal Arts.

### Bookstore Selection Extensive

Located in the Memorial Union building at College Ave. and Orange St., is the campus bookstore, owned and operated by the university to serve the needs of students and faculty.

The Bookstore stocks a complete line of books, textbooks, reference books, paperbacks, and books for general reading. School supplies, art supplies and stationery are also in stock.

The Bookstore is open from 8 a.m. to 7 p.m. Monday through Thursday; from 8 a.m. to 4:30 p.m. on Friday; and from 9 a.m. to 1 p.m. on Saturday.



Dean Karl H. Dannenfeldt



Nigerian Air Force ROTC Cadet Gets Flying Tips From ASU Professor



Dean George F. Hamm



Dean Catherine G. Nichols



Dean Russell O. Bloyer

## ASU Names New Deans

A new dean of students and dean of men have been appointed at Arizona State University by President G. Homer Durham.

Dr. George F. Hamm, professor of education and former dean of men, is the new dean of students. He succeeds Dr. Weldon P. Shofstall, who, after 15 years of service as dean of students, has requested a leave of absence and full time service as professor of education.

Dr. Russell O. Bloyer, assistant dean of men since 1964, succeeds Dr. Hamm as dean of men. A former graduate assistant in the ASU Counseling Center in 1963 and 1964, he received his doctor of education degree in counseling and guidance at ASU last May.

President Durham described Dr. Hamm as "an excellent dean of men," citing his "unusually effective contributions to the programs of the men's residence halls, the fraternities and other student organizations."

During Dr. Hamm's administration as dean of men, academic requirements of fraternities were increased from 2.00 (C) to 2.20. Last year's fraternity system was selected as the second best system in the nation by the National Interfraternity Council, and professional requirements for residence hall staff members were elevated.

As dean of students, Dr. Hamm will coordinate the work of the student personnel staff which includes the dean of men and the Associate Dean of Students, Dr. Catherine Nichols.

The student personnel program provides opportunities and services to enhance college living, studying and recreation. The program encompasses several major areas of college life outside the classroom.

Individual counseling ranges from personal problems to assisting students gain information regarding loans, study habits and scholarships. Counseling also provides a channel to the university administration of information about student needs and interests.

The student government program supplements academic life by furthering belief in our nation's constitutional government. It provides students an opportunity to become participating individuals.

A well-balanced intramural

program keeps students physically fit as well as mentally active. Fraternities, halls and other groups participate fully in this phase of the personnel program.

The dean of students serves as director of student activities, and is a member of the President's Advisory Council, Coordinating Council, Faculty Senate, academic affairs committee, and is advisor to Associated Students. He also is chairman of the university discipline, scholarship and student affairs committees.

The dean of men is responsible for counseling, educational programs in men's residence halls, men's student organizations, conduct of men, and coordination of advisers of men's organizations. He also is a member of the student affairs and university discipline committees.

The associate dean is responsible for orientation, counseling, coordination of the religious program, the Health Service, and the activities calendar. Her staff oversees women's government, organizations, residence halls, personnel records and needs.

Offices of the dean of students and dean of men are located in the Administration building. Associate Dean Nichols' office is in the Memorial Union.

### Continued From Page 2

## Take Advantage Of Opportunities

completing your university degree requirements will endure through life. In order for these

### Sororities Begin Rush On Sept. 2

Arizona State University has twelve active sororities on campus and all conduct formal rush period during the fall.

Coeds who want to join a sorority at ASU this fall should plan to be on campus before Freshman week, for an orientation assembly, Friday, September 2.

Registration will be in Palo Verde Hall lobby from 7 to 9 p.m. Thursday, September 1.

Sorority rush begins September 2. "Open Houses" are scheduled from 10 to 11:50 a.m.; 3 to 4:50 p.m. and 8 to 9:50 p.m.

The first series of parties is set for Saturday, September 3 from 2 to 8:20 p.m.; the second, from 2 to 8 p.m., Sunday, September 4; the third, from 6 to 8:50 p.m., Monday, September 5. Two preference parties will be held Friday, September 9 from 4:30 to 6:20 p.m. Preference cards must be signed at 6:30 p.m. in the Palo Verde cafeteria.

Those who have not signed up by August 19 will be ineligible for Fall Formal Rush. Coeds coming directly from high school must have a 2.5 cumulative grade index to go through sorority fall rush.

personal values to have a better focus, it is important for each student to think clearly through the goals and objectives upon which he has decided. At no time during your later life, and generally speaking, at no time during the previous years of your life can this opportunity be so well developed as during your collegiate days.

**USE TIME WISELY.** Among the assets which are available to each of us, the one which is most limited as a resource is the matter of time. You will find this to be certainly true as you proceed with your courses in the university. A key question for you to answer (consistent with the set of values upon which you have decided) is how you will use the limited minutes and hours that are equally dealt out to all. From a practical point of view, this is perhaps one of the most significant parts of the planning of your work and your experience at the university. How do you use your time?

First of all you should recognize that your study at the university is not a mere prolongation of your high school and grammar school learning. This should be for you a completely new and thrilling intellectual as well as social experience. You should decide that during your college career you will sample various fields of knowledge in certain fields while at the same time range over a different set of disciplines and discover the many new and interesting relationships that exist.

# Art, Music, Drama Emphasized

The College of Fine Arts, says Dean Henry A. Bruinsma, is in a unique position as a professional college for training teacher-artists, and also as the major service college to the entire university.

New students at ASU find their advisers, regardless of major, recommend one or more electives such as art or music appreciation to fulfill humanities requirements, or in speech and drama to meet communica-

tions area requirements.

A special, two-year sequence in interdisciplinary humanities also is offered by a team of professors from five ASU colleges.

In addition, courses to meet graduation requirements offer a variety of activities, allowing students to develop skills begun in high school. These include four ASU choirs, three bands, two orchestras, opera and musical theater, and the University Players.

Professional students seeking a major in the College of Fine Arts can work for a bachelor of arts or a bachelor of science degree in speech, drama, and speech correction.

The bachelor of arts and bachelor of music degrees are offered in music performance, theory, composition, and music education. Also, the B.A., B.S., and bachelor of fine arts degrees are given in painting, sculpture, ceramics, crafts, gra-

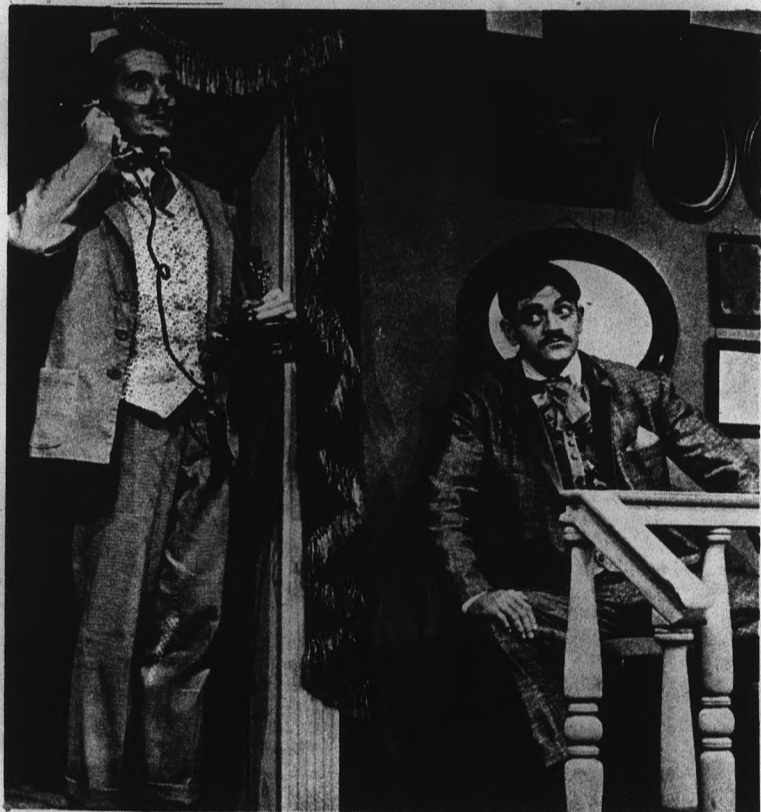
phics, photography, and commercial art.

Masters degrees are offered in the same general areas, and doctorates are available in music and art in cooperation with the College of Education.

Although the departments composing the College of Fine Arts originally were in the College of Liberal Arts, they were combined to form the new college in July, 1965, and during

its first year of existence, the College of Fine Arts became one of the largest such units in the west.

Among distinctions received by the college in the past year were a major grant from the U. S. Office of Education for 18 graduate fellowships in the fields of art and art education, and a Ford Foundation grant to support experimentation in theoretical training for music majors.



**RIGHT YOU ARE!** — Listening-in on telephone conversation merely heightens plot during University Players' presentation of "Right You Are If You Think So," one of many excellent offerings each year by university thespians.

## ASU Players Seek Actors

Auditions will be held in August for the first of a full schedule of dramatic productions to be offered during the 1966-67 season at Arizona State University.

Any ASU student interested in the theatre is invited to attend auditions August 29 and 30 for two one-act plays by the British playwright N. F. Simpson which will be presented at the Lyceum Sept. 22-24, Sept. 29-Oct. 1, and Oct. 6-8 by the University Players.

The University Players also will present Euripide's great tragedy, "Electra," on Nov. 3-5, 10-12, and 17-19; "The Mad Woman of Chaillot," by Jean Giraudoux, March 2-4, 9-11, and 16-18; and Tennessee Williams' "Summer and Smoke," March 30-April 1, April 6-8, and 13-15.

In addition, the University Players will stage a Children's Theatre production Dec. 9-11 and 16-18, and a Readers' Theatre production on Feb. 17-18, 24-25.

These include: "The Roar of the Greasepaint—The Smell of the Crowd," Broadway hit by Anthony Newley and Leslie Brisson, Dec. 2, 3, 4, and "Susannah," an opera by Carlisle Ford, April 28-29.

The ASU Players will join the Lyric Opera Theatre to give two major productions in the Grady

Gammage Memorial Auditorium.

The Lyric Opera Theatre season will include "The Boor," from the play by Anton Chekhov, Oct. 13-15; "The Medium," by Gian-Carlo Menotti, Feb. 9-11, and "Salad Days," an English musical comedy, March 17-18 and March 30-April 1. All presentations will be in Cosner auditorium.

## Auditorium Entertainment Varied

An extensive and varied program of events featuring leading symphonies, Broadway plays, opera, ballet, popular stars and noted lecturers, will be offered this season at Arizona State University.

In addition to the Fine Arts and Celebrity Series, there will be a series of nine special attractions, a new Festival of Jazz series, and a chamber music series at Grady Gammage Memorial Auditorium.

Included in the 1966-67 Fine Arts Series will be: Mancinas DePlata, Spanish flamenco guitarist, Oct. 25; "The Odd Couple," Broadway comedy, Jan. 10; The Houston Symphony, March 6; The American Ballet,

April 4, and The Los Angeles Philharmonic, May 11.

The Houston Symphony, directed by Sir John Barbirolli, will also appear in the Celebrity Series on March 7, and The Los Angeles Philharmonic, directed by Zubin Mehta, will be included as a special event on May 12. The American Ballet Theatre also is scheduled as a special event on April 3.

Included in the Celebrity Series at Gammage Auditorium are Fiesta Mexicana, Sept. 29; pianists Ferrante and Teicher, Oct. 27; Fred Waring and his Pennsylvanians, Feb. 2; "Luv," a Broadway comedy hit, Feb. 17.

Other special events are the

## Fine Arts

### New Band Leader

William Hill, formerly associated with the UCLA band program for four years and one-time director of bands at Adams State College in Colorado, is the new director of bands at ASU.

"I'm quite excited about joining the ASU faculty, and I see an exciting future for the university bands," he said. "We anticipate fielding a 140-piece marching band in the fall with a large high school band festival group joining us for a mass presentation at the ASU home football game on Oct. 1."

"I'm impressed with the student officers of the band. Strong leadership will be provided by faculty members Harold Hines and Ronald Fuller, and I see no reason why ASU should not have one of the great college band programs in the country."

First meeting of new and former band members will be Sept. 5 at 7 p.m. in the band room at Grady Gammage Memorial Auditorium.

#### SYMPHONY BUSY

The ASU Symphony Orchestra, directed by Eugene Lombardi, also has an exciting year planned with a major tour and series of campus concerts featuring guest artists.

Auditions for the 80-piece orchestra will be during registration week in Grady Gammage Memorial Auditorium.

#### CHORAL OFFERINGS VARIED

The choral program at ASU will be strengthened by the addition of Professor Louis R. Dales, who comes to ASU from Drake University where he was choral director and professor of voice.

In addition to his studio teach-



Houston Symphony, Directed By Sir John Barbirolli, Will Be At ASU This Year

ing at ASU, he will direct the 400-voice University Chorus, which, with the university symphony, annually presents Handel's "Messiah" in December.

David Scouler will continue as director of the University Con-



Dean Henry A. Bruinsma

cert Choir, and Lawrence Hogerhyde will direct the Women's Chorus, which just completed a successful first year. Kenneth Seipp directs University Singers and ASU musical productions.

lor, Feb. 10.

Three evenings of chamber music have been scheduled, including The Dolmetsch Ensemble, Oct. 2; Trio Italiano d'Archi, March 2, and Karlheinz Stockhausen, in a lecture-recital of his music, on Nov. 14-15.

The new Festival of Jazz Series will open on Sept. 24 with a concert by the principal participants in the Monterey Jazz Festival which will have concluded a week before. This will be a large and notable group of jazz musicians.

Other jazz productions include "Paris Rive Gauche," Nov. 9; singer Dionne Warwick, Dec. 8, and "Cannonball" Adderley with Miriam Makeba, March 1.

# Engineering Grows With Space Age

The College of Engineering Sciences at Arizona State University includes the Division of Agriculture, the Division of Industrial Design and Technology, the School of Engineering, the Engineering Research Center

and the Computer Center.

The Bachelor of Science Degree in Agriculture is offered in the fields of Agricultural Science, Agricultural Production and Management and Agricultural Business. Four special

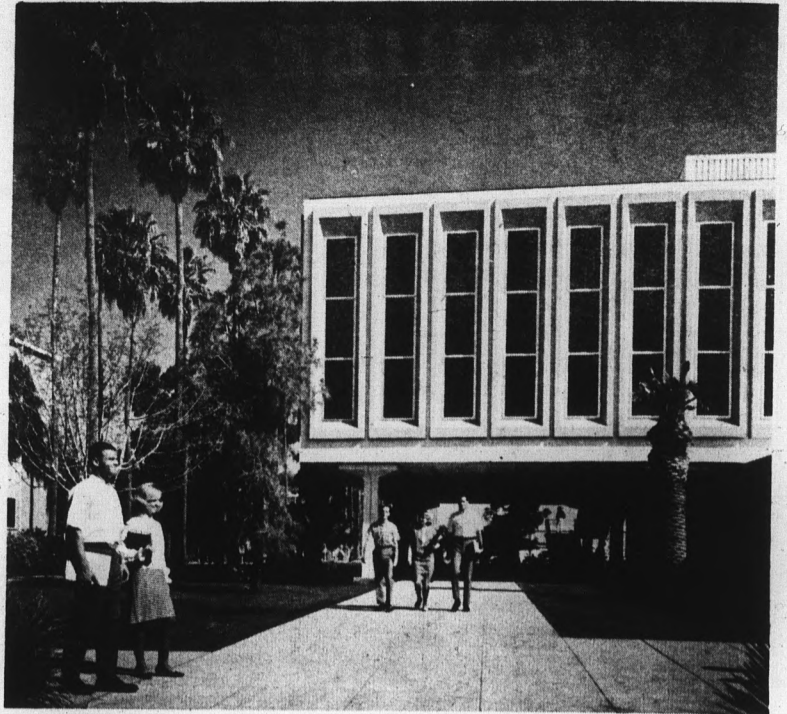
programs, agricultural education, foreign agricultural service, pre-veterinary and pre-forestry are also offered. Students take part in practical applications of agriculture training on the University Farm.

For students interested in Industrial Design and Technology, there are six fields of specialization in which the Bachelor's degree can be obtained: aeronautical technology, electronic technology, graphic arts technology, technical design, tool and manufacturing technology, and welding technology. This Division is housed in a new building, completed in October 1964 and incorporating the latest concepts in laboratory and classroom design.

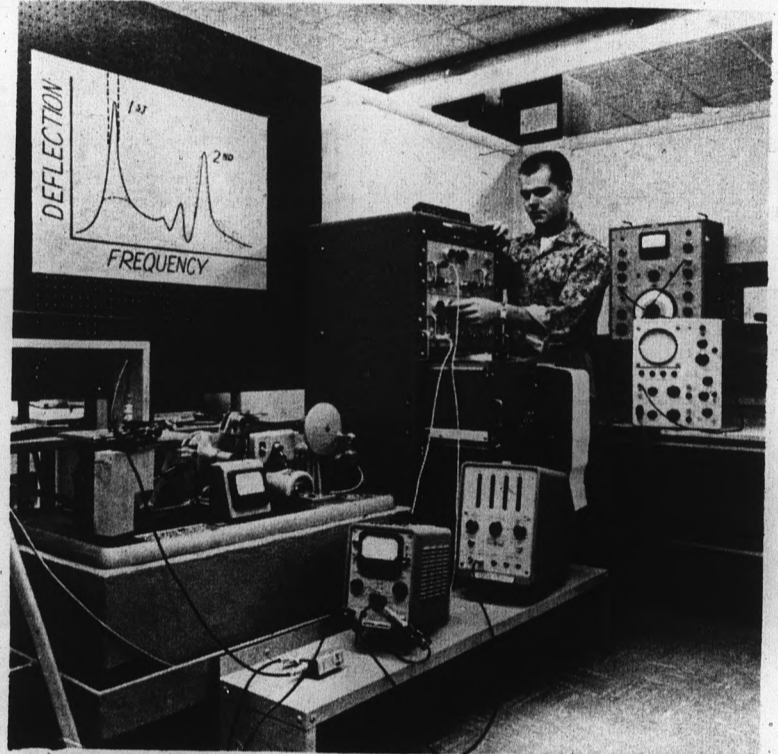
The Engineering School is housed in a block long complex of modern buildings including a number of uniquely designed laboratories. The student may select his area of specialization from the chemical, civil, electrical, industrial, mechanical or engineering science fields which are offered. If he wishes he may continue beyond the Bachelor's degree to the Master of Science, the Master of Science in Engineering or the Doctor of Philosophy degrees.

The computer center, equipped with the following computers, LGP 30, IBM 1620, GE 225, and CD3400, plus numerous items of auxiliary equipment, provides students an opportunity to study and use modern computer equipment and techniques. In the Engineering Research Center selected students participate with faculty members in applied research projects.

The Engineering School was built, accredited by the Engineers' Council for Professional Development, and authorized to



**ENGINEERING CENTER** — Stretching one block long, this modern building is headquarters for ASU's Engineering Center. Engineering has undergone rapid growth at urging of local industries.



**COMPLICATED** — Roomful of technical instruments helps student obtain accurate engineering measurements, one of many areas of emphasis in ASU engineering.



**Division of Agriculture Makes 320-Acre Farm Available For Ag Students**

## Cady Business Vice President

On March 29, 1965, more than 200 close friends — including high-ranking officials of government and education — honored Gilbert L. Cady, vice-president for business affairs, for 30 years of distinguished service to Arizona State University.



**Gilbert L. Cady**

Vice President Cady, who has been on the ASU staff since his graduation from the University in 1934, delivered the keys of the campus buildings to the late Grady Gammage when he came to Tempe in the summer of 1933 to assume a presidency which would continue for more than a quarter of a century.

Starting at ASU as a freshman among 836 students, Mr. Cady worked his way through college as a part-time employee in the business office which led to successive posts as business secretary, college comptroller, administrative assistant to the president and, in 1957, the vice-presidency.

One of the significant links between the University's colorful past, its dynamic present and promising future, Mr. Cady's career at ASU has extended through four presidential terms. His outstanding leadership during the last three decades has been an important factor in the University's development from an enrollment of 836 to one of more than 20,000.

The only interruption in his long term of dedicated service to the University during the period of its greatest growth came in 1941 when he left the campus to become an Army officer. He served overseas 37 months as a member of the Inspector General Corps, achieving the rank of lieutenant colonel, before returning to the University to resume his educational mission.

"As I see it," says Vice President Cady, "mine is a service function—to provide facilities so that our academic people can do their jobs.

## Associated Students Govern Self

Every student registering for more than six hours, is automatically a member of the Associated Students of Arizona State University.

The Board of Regents, the President and the faculty, challenge every student to accept his individual responsibility by exerting intelligent effort for self-government and for promoting the intellectual, moral and social welfare of all students, in a democratic manner.

The Student Senate or Legislative Branch passes the laws governing the Associated Students, its boards and agencies. The Executive Branch carries out these laws and the Student Court or Judicial Branch passes on the constitutionality of the laws and interprets the Constitution.

Annual elections are held in which student senators are elected to represent, the Associated Men Students, Associated Women Students, Sophomore Students, Junior Students, Senior Students, Off-campus Men, Off-campus Women, and students in the colleges of Liberal

award the Bachelor's, Master's, and the Doctor of Philosophy degrees between 1956 and 1962

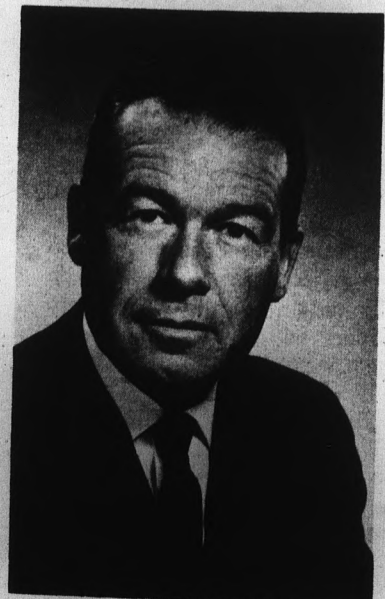
Arts, Education, Architecture, Business Administration, Engineering, Fine Arts and Nursing.

President of the AS for the coming year, Robert McConnell, Long Beach, Calif., was elected at the general election held last March.

Under authority delegated by the President of the University, Associated Women Students sets and enforces social standards and regulations regarding campus dress, coordinates women's student government through residence hall councils and the off-campus women's organization, establishes hours for women students, and formulates and administers policies deemed essential to promote a desirable group living experience.

In addition to the numerous honorary groups on campus there are the following councils: Interfraternity Council, Men's Interhall Council, Junior Panhellenic Council, Panhellenic Council, Business Administration Students Council, College of Education Academic Council, Joint Council of Engineering Societies and the Student Religious Council.

under the leadership of Dr. Lee P. Thompson who came to A.S.U. in 1965 as Dean of the center. The latest addition to the College of Engineering Science Engineering Center, a three story classroom, laboratory, and office building, was completed in January, 1965 and older laboratories and shops are now being remodeled to assure students of the most modern study and research facilities.



**Dean Lee P. Thompson**

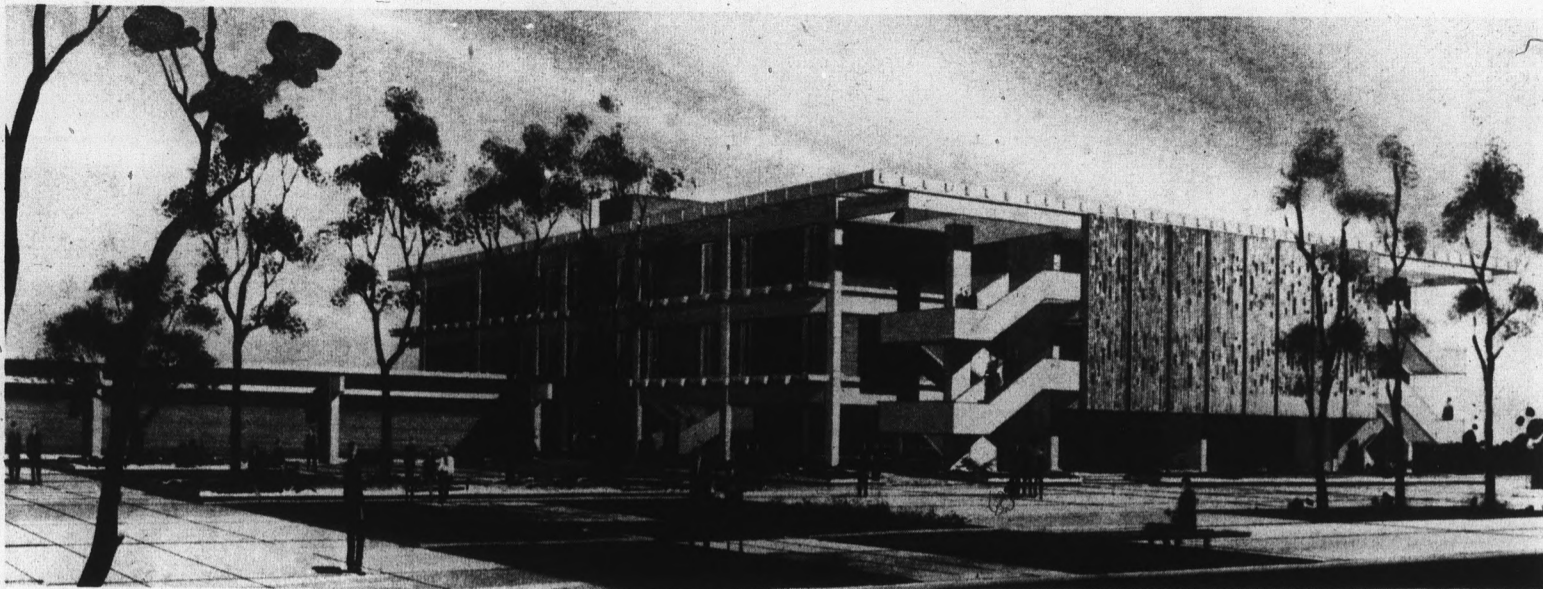
# Business Offers Specialization

Arizona State University's College of Business Administration offers a program of study leading to a bachelor of science degree in 10 fields of specialization.

Candidates for the bachelor of science degree in business administration may major in accounting, advertising, economics, finance, general business administration, insurance management, marketing and selling, office administration, or real estate. Students majoring in general business administration may also take special courses in preparation for careers in transportation, traffic management, data processing and computer programming, business statistics, and business communications.

In addition to four-year degree programs, special three- and two-year programs of study in pre-law and secretarial sciences are offered. Graduate degrees of Master of Business Administration, Master of Science in Accounting, Master of Science in Economics, and Doctor of Business Administration are also offered.

The College of Business Ad-



**BUSINESS GROWS** — Construction will begin late this summer on \$1,320,000 building for College of Business Administration which has outgrown old structure erected in 1951. New headquarters is expected for completion in 1967.

**COMPUTERS HELP** — Electronic data processing equipment located in several ASU buildings help students and faculty arrive at business and research answers quickly and accurately.



## Business Administration



Dean Glenn D. Overman

ministration, located in Arizona's business center, also conducts special seminars and conferences for local businessmen. These executive development programs provide management training in most of the functional fields of business and acquaints the faculty with current business problems and practices.

A Dean's Advisory Council of 15 business leaders serves as a liaison group between the college and the business community.

The Bureau of Business Research and Services gathers and publishes business and economic data pertaining to the surrounding community. The Bureau also serves as a laboratory for students who wish to secure practical experience in business research and analysis.

The American Association of Collegiate Schools of Business, the official accrediting agency of professional schools of business, has accredited both the undergraduate and graduate programs of the College of Business Administration.

Dr. Glenn D. Overman, who joined the ASU faculty in 1956, is dean of the College of Business Administration.

## Buildings Sprout On Campus

Three new buildings will greet students attending Arizona State University this September, and three more projects will be underway—constant reminders of ASU's multi-million-dollar expansion explosion.

Last academic year, over 22,000 students used facilities of over 80 major buildings.

This will be another year of transformation with projects being commenced or completed on all sides of the campus and more modern structures taking shape on the drawing board.

The new heart of ASU's educational programs, the \$3,259,500 Charles Trumbull Hayden Library, will open in September with room for a million volumes and about 20,000 students.

Two other structures, new in September, are a \$1,085,478 women's physical education building, and a \$742,650 headquarters for the College of Nursing.

Projects started will include a 15-story dormitory for 1,000 women, Manzanita Hall, and buildings for the College of Law, which will open in 1967, and the College of Business Administration.

In the planning stage are an Art and Architecture building, a 10-story mathematics wing to the Physical Sciences building, and extensive expansion of the Memorial Union.

One of the most striking buildings in the southwest, the Grady Gammage Memorial Auditorium, designed by the late Frank Lloyd Wright, was com-

pleted in 1964, taking its place as one of the nation's finest cultural showplaces. It also houses five floors of classrooms, offices, and rehearsal space for the music and drama departments.

Other major construction recently completed include: in 1965, additions to MO. Best and

Sahuaro men's dormitories, aeronautical technology building, an addition to the industrial design and technology building, and an addition to the physical sciences building.

Finished at the start of the 1964 fall semester were the seven-story Palo Verde West

women's dormitory, a hydrology laboratory for the U. S. Forestry Service, industrial design and technology structure, additions to the engineering center, and a six story language and literature building.

Construction completed at the start of 1963 semester included the seven-story Palo Verde East women's dorm, a twin to Palo Verde West; and an addition to the Life Sciences Center.

Five other major academic centers have been completed since 1955: Life Sciences Center, Physical Sciences Center, Engineering Center, Social Sciences Building, and College of Education.

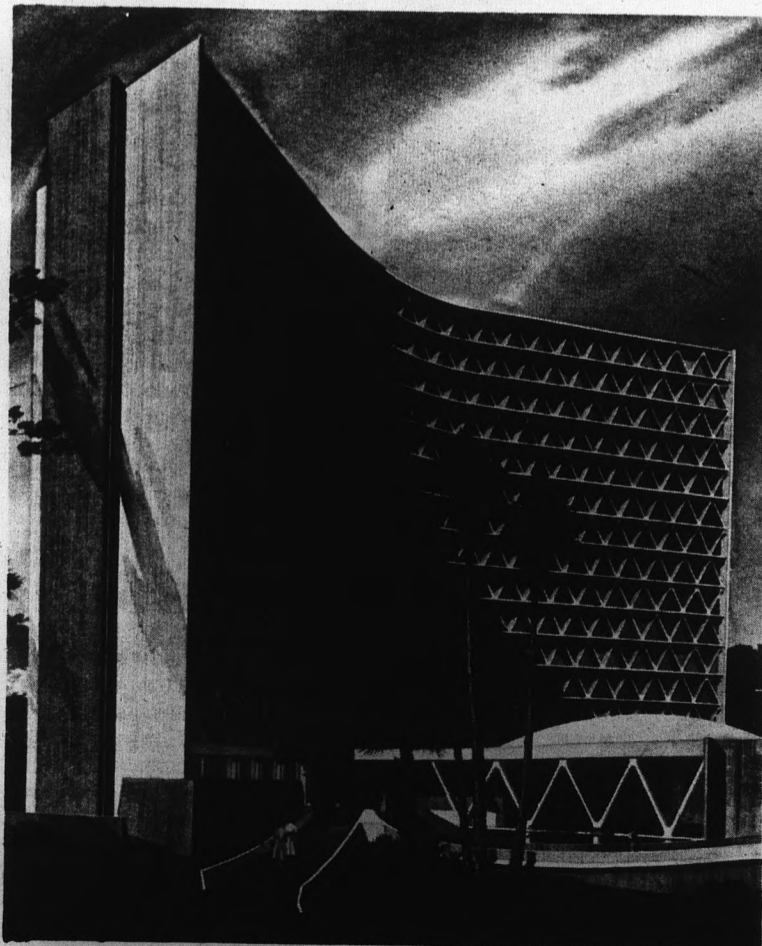
## 20 Fraternities Schedule Rush

Fraternity rush — 20 houses in all — is set to begin Sept. 10 with an orientation assembly from 11 a.m. to noon at Grady Gammage Auditorium.

Open Houses will be held Saturday and Sunday, Sept. 10 and 11, from 1 to 6 p.m.

Smokers bid pickup by rushees, Monday, Sept. 12 from 1 to 4 p.m. in the MU Ballroom. Smokers will be held Monday and Tuesday, Sept. 12 and 13 from 6:30 to 8 p.m. and 8:30 to 10 p.m. Preference bid pickup by rushees will be held Wednesday, Sept. 14 from 1 to 4 p.m. in the MU Ballroom.

Preference parties will be held Wednesday and Thursday, Sept. 14 and 15, from 7:30 to 10 p.m. Final bid pickup by rushees will be held Friday, Sept. 16 from 1 to 5 p.m. in the MU Ballroom.

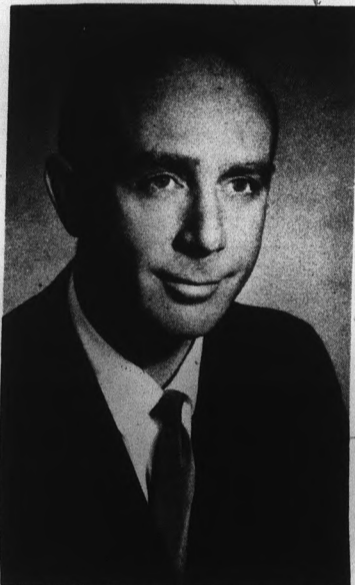


**GOING UP** — This 15-story dormitory for 1,000 coeds now is being built at corner of University and Stadium Drives. Named Manzanita Hall, the sweeping structure, tallest on ASU's campus, will be completed in September, 1967.



**TWIN DORMS** — About 1,500 women are housed in Palo Verde complex which contains main three-story building and twin seven-story dorms, East and West. Overpass connects complex to main campus.

## Architects Stress Creativity



**Dean James W. Elmore**

The College of Architecture which was accredited in 1961 by the National Architectural Accrediting Board offers degree programs and special courses with the purpose of providing liberal, technical and professional preparation for careers concerned with creation of the buildings and related features of a functional and satisfying environment.

James W. Elmore is the dean of the College.

The College of Architecture offers a five-year program leading to the bachelor of architecture degree.

The college also offers a four-year curriculum leading to a bachelor of science degree in construction.

The college program is based on the belief that the architecture profession has the obligation of providing creative leadership in the shaping of man's physical environment.

The program acquaints the students with all the techniques and philosophies of design and

construction, and through its varied resources, stimulates and aids the student in his quest for a philosophy that will sustain him in seeking the rewards of a career devoted to shaping a better environment.

The four-year bachelor of science degree in construction became an operational program in 1957.

It has evolved from fundamental architectural, business, construction, and engineering curricula with the counsel of an advisory committee composed of 12 representatives of various segments of the construction industry who assist in shaping the program and policies so as to provide realistic instruction in the techniques of philosophies of the contracting profession.

It is the purpose of the College of Architecture to provide graduates with a thorough and intimate comprehension of the nature of architecture: the competence necessary to acquire professional registration; the high ideals necessary for responsible and creative functioning as an individual, and as an architect in our society.

The college is a member of the Association of Collegiate Schools of Architecture.

A number of scholarships are provided each year through the Architecture Foundation, which administers the supporting contributions of the Central Arizona Chapter, American Institute of architects, and others.



**Spacious, Cool Patio of Social Science Building Is Popular Haven**

## Residence Halls Success Factor

Housing is ultra-important in the booming Valley of the Sun. Arizona State University is constantly working to provide adequate and suitable housing for its students.

The ASU residence halls are not just a place to sleep and eat. The halls are integrated with the academic aims of the institution, and living in them has been a factor contributing to the success of many a student.

The halls have succeeded in developing a climate conducive

to good study habits. All have regular "quiet hours" to encourage study and the head residents are always ready to further encourage high academic standards.

Each year, both men's and women's residences compete for the highest academic average and trophies are given to the winning men's and women's halls.

In addition to offering many services, the residence halls encourage the development of traditions and cultural pro-

grams. The individual residences sponsor their own dances, receptions; some have published their own mimeographed newspapers. Sahuaro and Palo Verde have their own dining rooms right in the residence buildings.

Each residence hall has its own governing body, made up largely of student officials elected by their fellow students in the hall.

Women's residence halls include: Palo Verde, Palo Verde East and West units, Gammage,

McClintock B (honor hall for upperclass women, the Quad units, McClintock A, and Wilson. A 15-story dormitory, Manzanita Hall, now is being constructed for 1,000 coeds.

Men's residence halls include: Hayden, Irish, M. O., Best units, Haigler, Sahuaro and Adelphi.

All students wanting residence hall quarters for the coming academic year may apply to the Housing Office, Moeur Administration Building, room 124. Prospective students should apply early.

subject matter fundamental to the construction field, yet dramatic enough to encourage participation in an area which might otherwise be considered dull and uninteresting.

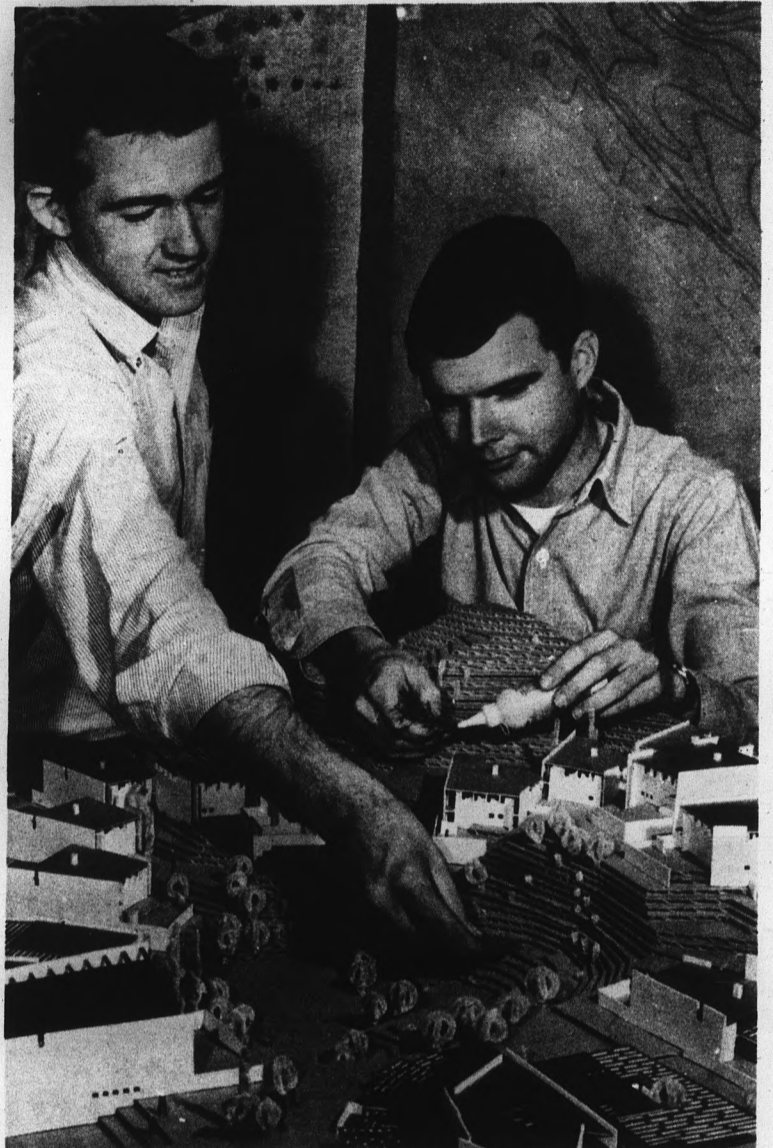
In many respects, the course is an industry-university venture. The courses are keyed directly to industry. Equipment manufacturers, material suppliers and others closely related to the industry are invited to participate in the program.

A graduate with a bachelor of science degree in construction is professionally equipped with a background of courses in four primary areas: general education, construction education, technical education and business administration.

Too, the construction courses are taught by men with actual experience in the industry. ASU's construction department has five faculty members with long and varied industrial experience. Four of them are licensed professional engineers. Every effort is made to keep the courses current with the times.

Graduates find ready acceptance in the construction industry with local building concerns and with large national firms in building, material suppliers and equipment distributors.

# Architecture



**IN MINIATURE** — Scale models and elevations are laboriously detailed by these students in ASU College of Architecture. Works range from zoo displays to whole towns and modern residences.

## Construction Curriculum Keyed Directly To Industry

The construction industry is constantly looking for a new approach and bigger and better ways to not only protect us from the elements, but to add to our everyday living enjoyment. This is an ever present challenge to the construction industry.

At Arizona State University, this challenge is accepted by those enrolled in the College of Architecture's department of construction leading to a degree in construction.

"Constructioners," as they call themselves, go through a four-year plan of study with

# Education

## Better Teachers Constant Goal

ASU's College of Education, the oldest college in the state's oldest institution of higher learning, offers courses in major areas, leading to the bachelor of arts in education degree.

Master of arts in education, and doctor of education degrees are also conferred, as are the education specialist and doctor of philosophy degrees.

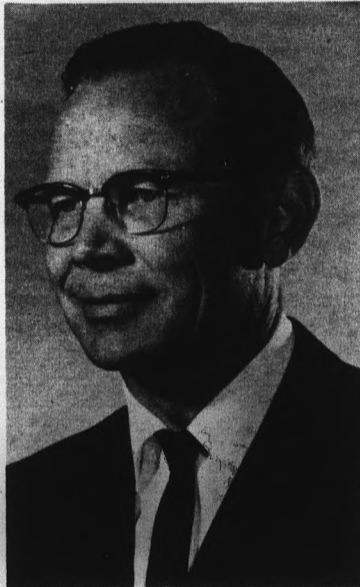
Specialization of course work is organized into 13 different groupings: elementary, secondary, special education, higher education, adult education, counseling, school administration and supervision, audio-visual education, Indian education, social foundations, educational psychology, educational foundations, and library sciences.

The college also provides preparation for all state teaching certificates. In addition to the elementary program, students are prepared to meet certification requirements for teaching any one of the 24 major teaching fields and 13 additional minor fields for high school instruction.

The College of Education operates the Campus Laboratory School, an elementary school which serves as a laboratory for those in teacher education, a Counseling Center, a Reading Center, and the Bureau of Educational Research and Services. The Bureau conducts a variety of surveys and studies for educational groups and institutions around the state.

During the year the college sponsors a series of workshops or conferences or an extensive range of topics: Indian education, human relations, migrant children, guidance and counseling, reading, curriculum development and library science.

Dr. G. D. McGrath, who joined the university faculty in 1950, is Dean of the College of Education.



Dean G. D. McGrath

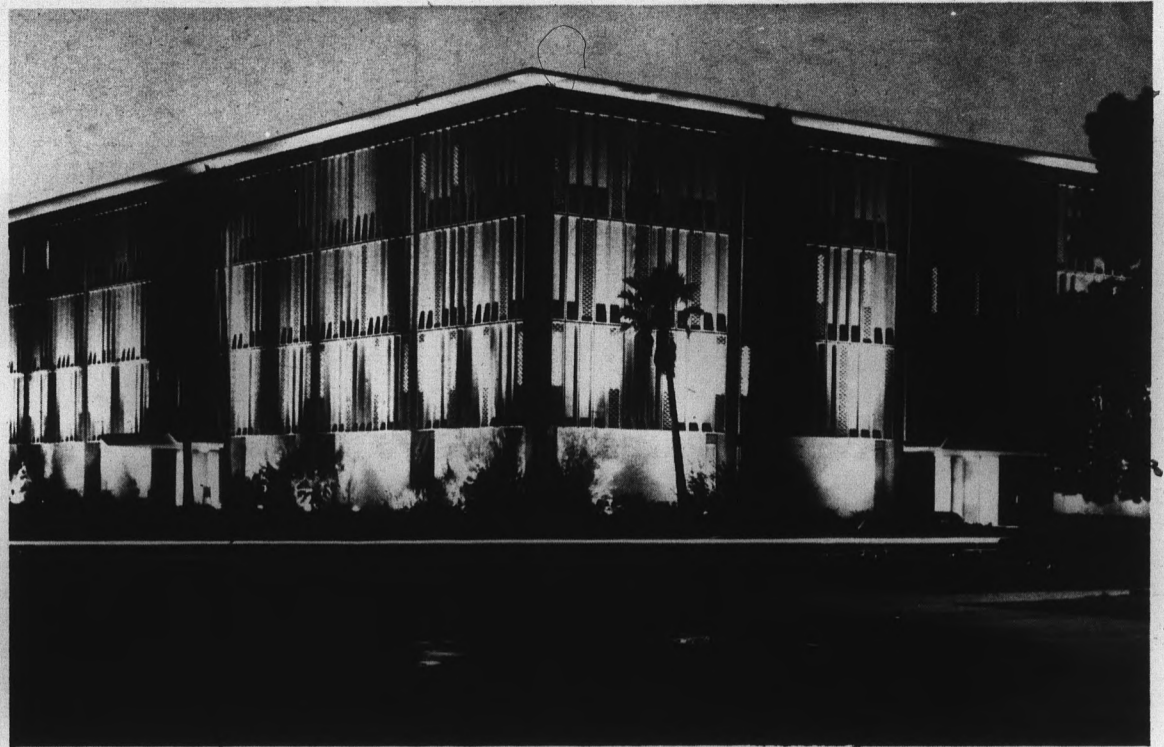
### Early Test Dates Set

Entering freshman who have not taken the American College Test (ACT), required for admission to Arizona State University, may take advantage of early testing dates this summer.

The ACT will be given on July 14 and 26, beginning at 1 p.m. in Room 191 of the Life Sciences Center. It is only for those students who did not take the test in high school. A \$5 fee must be paid at the cashier's window in the Administration building.



Problems Like Heart Disease, Cancer Are Fought  
By Faculty Researchers



# Nursing

## College Develops Professionalism

This fall, Arizona State University's College of Nursing will hold classes in its newly constructed building for the first time.

The College of Nursing came into being on July 1, 1964. Mrs. Loretta Hanner is dean of this fully accredited college.

### Religious Life Is Organized

An active and well-organized religious life, involving all major denominations and faiths and characterized by considerable inter-faith activity centered in Danforth Chapel at the heart of the campus, is among the oldest and strongest traditions at Arizona State University.

Such annual observances as Spiritual Exploration Week, in which virtually the entire campus participates; lecture series; the Freshman Week picnic; the many special events arranged for Christmas and Easter by the student religious organizations, with all students as their guests; plus a steady round of religious events, including 15 courses in Bible and Religion, attest to the naturalness, healthfulness and vigor of the campus spiritual life.

The religious coordinator, Rev. Charles Crouch, is available in the Chapel for counseling or for information relative to the religious needs of the students, and coordinates the activities of all the denominations and faiths serving campus students.

Twenty-five such organizations are active and officially recognized by ASU at present.

The College of Nursing offers to qualified high school graduates a basic four year collegiate program leading to a bachelor of science degree in nursing.

The student nurse is given a base or general education to provide a rich academic background. Students start nursing courses in the sophomore year, freshman students have group meetings with the College of Nursing faculty every month.

To provide the best clinical experience in all fields of nursing, the college utilizes the Maricopa County Health Department, Visiting Nurse Service, Inc., Nursing homes and the following hospitals: Good Samaritan, Crippled Children's, Maricopa County, Veteran's Administration, Mesa Lutheran, White Angel, St. Luke's, Doctor's, Arizona State, and St. Joseph's.

Loans are available to eligible students with clearly established financial need, through the Nurse Training Act of 1964. Scholarships are also available.

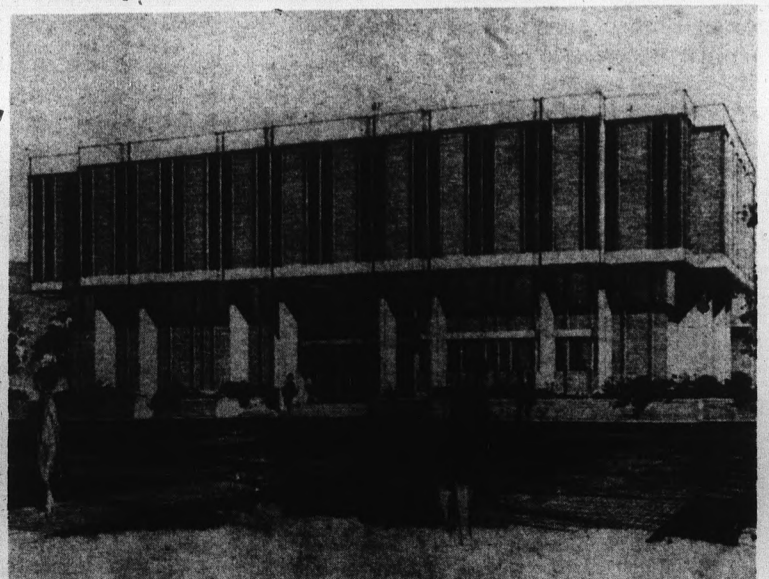
EDUCATION — ASU began operation in 1886 with one room in which to train teachers. This attractive headquarters for the College of Education, ASU's oldest college, was opened in 1961. In addition to classrooms and offices, building contains facilities for counseling, testing and educational research and services.



Dean Loretta A. Hanner

The philosophy behind the College of Nursing is that it contributes to the improvement of society through the preparation of competent professional nurses.

The purpose of the nursing program is to prepare students for beginning professional nursing positions under supervision in psychiatric, maternal and child, medical and surgical, and Public Health nursing; and to provide a foundation for further specialization in clinical nursing, supervision, administration and teaching.



NEW FOR NURSING — ASU nursing students will make this modern building their headquarters when they return to campus in September.

# Graduate

## Advanced Study Popular Pursuit

With the increasing demands of our technical age, more and more students either remain in college after receiving bachelor's degrees to continue studies or return later for advance degrees.

Thus it is of interest to young students starting their academic career to know that Arizona State University offers well rounded and extensive graduate programs through its Graduate College, of which Dr. William J. Burke, vice president for research and professor of chemistry, is Dean.

The graduate program at ASU is growing rapidly. During the second semester of 1965-66, 4,357 students were enrolled in the various graduate programs.

Master's degrees are offered in: anthropology, art, biological

science, botany, chemistry, English, French, geography, geology, German, history, home economics, humanities, mathematics, music, philosophy, physical education, physics, political science.

Also fine arts, music, natural sciences, psychology, sociology, Spanish, speech, zoology, accounting, economics, education, engineering, business administration, and social work.

The Graduate College also offers the Education Specialist, Doctor of Education, the Doctor of Business Administration, and the Doctor of Philosophy degrees. The Ph.D. fields include botany, chemistry, education, English, engineering, mathematics, physics, psychology, and zoology.

city staff in 1962 as vice president, combines the roles of administrator, professor and dean. In addition to his duties as vice president for research, he is dean of the Graduate College and holds the rank of professor of chemistry.

Head of the University of Utah chemistry department from 1949 until he accepted the ASU position, Dr. Burke also taught at Ohio University and was for several years a research chemist with E. I. du Pont de Nemours and Co.

Dr. Burke served on the committee on faculty fellowships of the Fund for the Advancement of Education, Ford Foundation from 1952-56, and spent two months in Ethiopia studying its system of higher education as a member of a State Department International Cooperation Administration survey team.

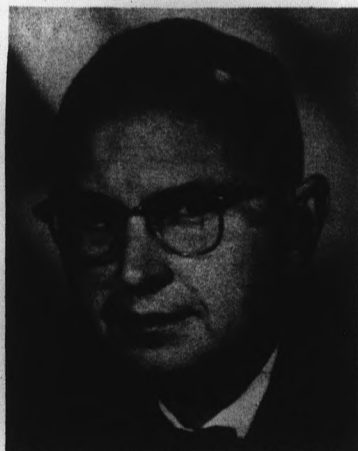
The ASU vice president received a bachelor of arts degree from Ohio University, Athens, and a doctor of philosophy degree in chemistry at Ohio State University, Columbus. He is a native of Lowellville, Ohio.

A visiting associate for the Committee on Professional Training or the American Chemical Society, he has also served as secretary and councilor for the Salt Lake section of the ACS. He is a consultant on chemical problems for the Monsanto Chemical Co., and has been active for several years in the Visiting Scientist program sponsored by the American Chemical Society.

The author of more than 75 scientific articles and patents, Dr. Burke is a member of Phi Beta Kappa, Sigma XI, Phi Lambda Upsilon, Gamma Alpha, Phi Kappa Phi, the American Chemical Society, and the American Association for the Advancement of Science.

## Burke Has Many Roles

Dr. William J. Burke, who joined the Arizona State Univer-



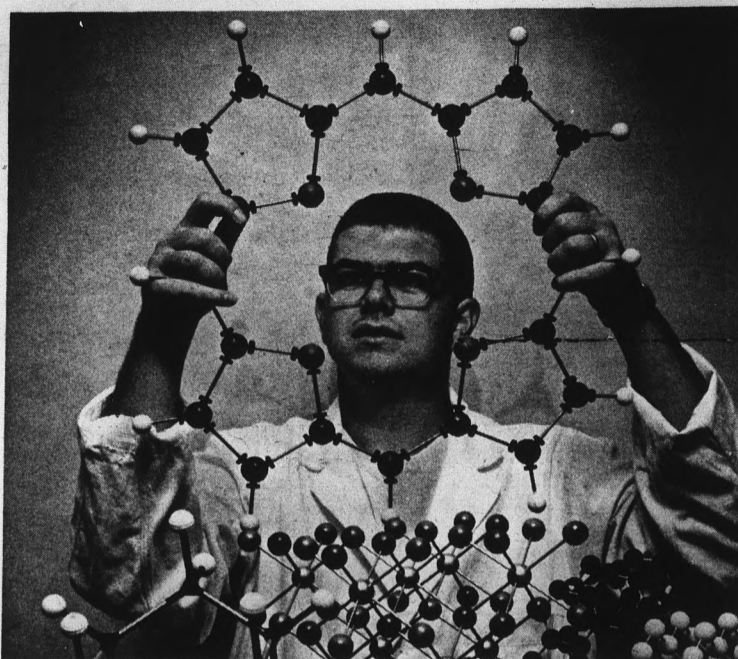
Dean William J. Burke

## School Produces Social Workers

The Graduate School of Social Service Administration, directed by Dean Horace Lundberg, offers a two-year generic program in professional social work education leading to the Master of Social Work degree.

The school was inaugurated in 1961 and course work began in 1963 to help meet the nation's critical need for trained, competent personnel for the social work profession. It was awarded accreditation by the Council on Social Work Education at the end of its second year of operation.

Social work offers many opportunities to serve mankind and to contribute toward a more effective society. Social workers are employed in a variety of fields including child welfare, medical and psychiatric services, rehabilitation, corrections, education, and recreation.



**UP AND ATOM** — Molecular models are only one device used by ASU chemistry faculty to help make the complexities of the physical sciences more digestible to undergraduates. A wide range of graduate research enables advanced students to work for higher degrees while helping advance man's knowledge of matter.

## Memorial Union Activity Center

The Memorial Union is a gathering place for the University students and faculty to seek friendships, new appreciations of the fine arts, relaxation and active participation in many social and cultural events held there.

The facilities of the Union include lounges on each floor. The first floor lounge is a social lounge. It has a piano for everyone's use. Here, too, are found magazines and newspapers. A fireplace for winter warmth and popcorn popping enhances the atmosphere.

A fine arts lounge is located on the second floor; recorded music concerts are played. Art exhibits and gallery talks are presented by the Cultural Affairs Committee, and informal receptions are held by many groups. The lounge also is used as a quiet place for reflection and reading.

If your free time pleasure requires more activity, bowling, billiards, table tennis, and other games are available in the union games room. A card room is also located there.

At the information desk are many personal services, ranging from band-aids to campus and student directories.

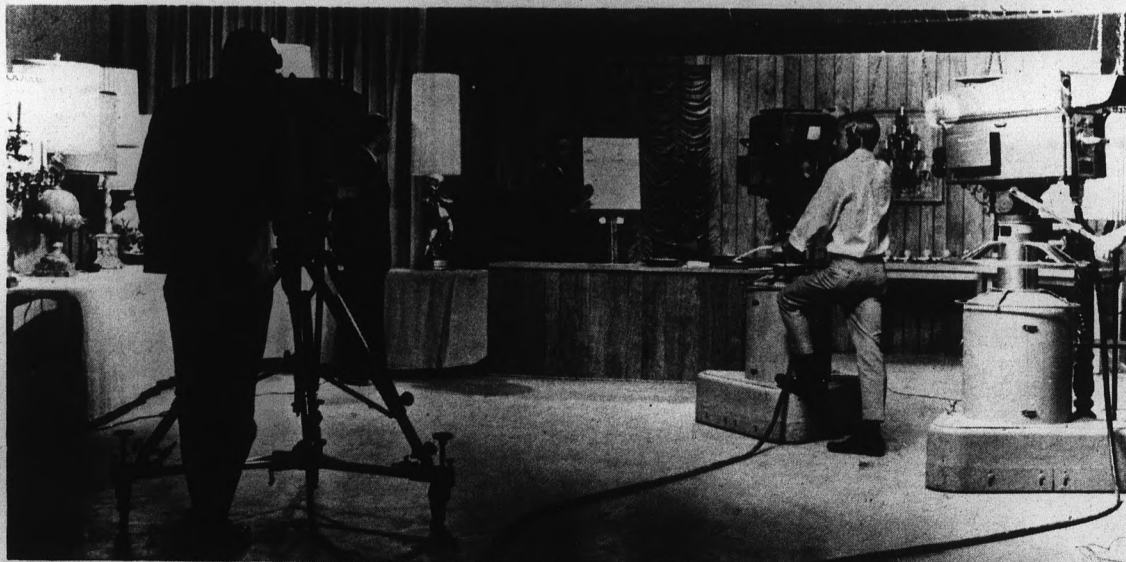
The first floor includes a cafeteria and the Devil's Den snack bar. The Corral, located on the second floor, is another spot for informal eating.

If students are interested in participating in the activities of the Union program, there are many committees and subcommittees which are responsible for programs in the Union. Working with the Union staff, three major committees of the Associated Students plan and direct activities. The Social Committee, the Cultural Affairs Committee, and the Faculty-Student Relations Committee. There are many weekend social events as well as the cultural programs in the building.

All freshmen women are invited to join the Memorial Union Hostess Committee. Members of the group serve as official hostesses to many University events held in the Memorial Union, such as concerts, lectures, conferences and receptions.

The Memorial Union Board consists of students representing various areas of the University. It makes recommendations regarding the use of the building and seeks and receives student opinion regarding the Union.

The Union is available for group meetings, banquets and other activities.



**ON THE AIR** — In studios of ASU's KAET-TV, Channel 8, student cameramen learn television production in modern laboratory. Located in Engineering Center, KAET broadcasts over 50 hours per week.

## Mass Media Explored

Students wishing to study mass communications at Arizona State University have an opportunity to participate in television, radio, or journalism operations.

ASU operates campus radio station KASN, a carrier current station, and KAET, a non-commercial educational television station on Channel 8. Both are maintained by the Bureau of Broadcasting for training students in radio and television operation.

Students participate in the writing, programming, continuity and radio traffic for KASN which operates about 12 hours a day, is commercial, and programs music, news, college sports and special events.

KAET telecasts over 50 hours per week including local and National Educational Television (NET) programs to help meet educational needs of the community.

KAET recently expanded operations and now is seen throughout Maricopa County and in such outlying communities as Prescott, Globe, Flagstaff and Miami.

Both KAET and KASN provide students enrolled in mass communications with working laboratories equipped with the finest facilities and supervised by professional broadcasters. Facilities for both stations are located in the engineering center.

Students seeking journalism training and experience may work on the State Press, campus newspaper published four times weekly with headquarters in the Memorial Union.

The university-owned, student-operated paper is published under auspices of the administration, department of mass communications and associated students. Distributed on campus, subscriptions are included in the student activity fee.

Staff work on the State Press serves as professional training for students enrolled in journalism.

The university yearbook, *Saharo*, is student-edited and published.

# Action-Packed Year At University

For the first time since Arizona State joined the Western Athletic Conference four years ago the Sun Devils failed to win a team title. Yet it was a banner year for individual performances.

A breakdown of the year 1965-66, by sports:

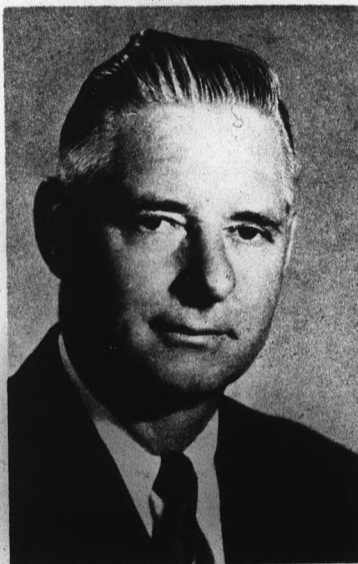
**BASEBALL:** The Sun Devils of Coach Bobby Winkles posted a highly creditable 41-11 record,

year prior ASU won the national NCAA title.

Winning first team all-conference honors were Dyer, Kleinman, Jackson and Pentland.

**FOOTBALL:** Last season ASU had its worst football record in Frank Kush's eight years as head coach. The record was 6-4, and, yet, it could very well have been Kush and staff's finest job of coaching.

## Sports



**Clyde B. Smith**  
Athletic Director

yet placed second in the southern division race of the conference with a 7-5 mark.

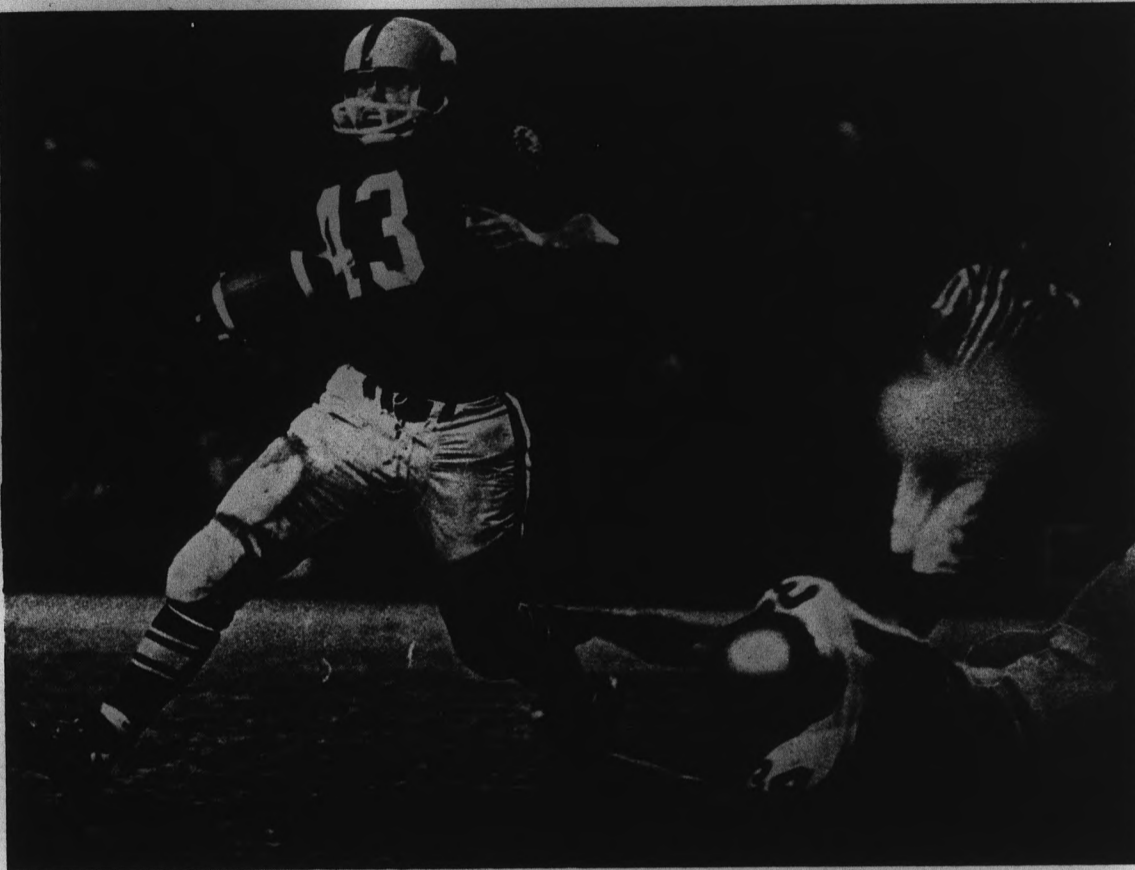
It should be recalled that a

The Devils started poorly, losing their first three and four of the first five. Then came the revolution. ASU won its last five in a row and finished second in the Western Athletic Conference race with a 3-1 mark.

Probably the top win of the year came in the Homecoming game against Washington State University. The Cougars had downed three Big Ten opponents prior to meeting the Devils. ASU won the contest, 7-6, in one of the finest games ever played in Sun Devil Stadium.

**BASKETBALL:** It was a frustrating season for Arizona State's basketball squad; but it was not without its rewards.

The high points included winning the third annual Sun Devil classic (for the third time), a 89-87 win over Big Ten Champion Michigan (in the Far West Classic), a 79-78 overtime triumph over Southern Illinois Uni-



**Full Back Jim Bramlet Eludes Washington State Defender**

versity (ranked first nationally among small colleges most of the season) and a 101-94 win over NIT Champion Brigham Young. The Devils also came within two points of NCAA Champion Texas Western at El Paso, losing 69-67.

A research conducted by Gordon Wise of the Marketing and Research Division of Miami University of Ohio proclaimed the Sun Devil schedule second toughest in the nation (behind Lake Forest).

The basketball story was all Freddie Lewis. The diminutive

guard, named to the All-District team by the U. S. Basketball Writers Association, broke seven individual records and tied one.

The final record showed ASU with 12 wins and 14 defeats. The Western Athletic Conference mark was 3-7.

**TRACK:** Coach Baldy Castillo's athletes showed well by finishing third in the conference meet behind New Mexico and Brigham Young, two of the best in the nation.

Outstanding individual performances accounted for four

school records set by Jon Cole in the discus (199-5) and shot put (61-3/4), Dick Miller in the intermediate hurdles (51.4) and Willie Hearnton in the triple jump (49-5/4).

**WINTER SPORTS:** Coach Ted Bredehoff's wrestlers gave it a good try, but couldn't repeat as conference champions, placing second behind Brigham Young. Individual WAC champions for ASU were Glenn McMinn at 115-pounds and heavyweight Curley Culp. Second place finishes were recorded by Pete Russo at 130 and Jim Forler at 145.

In gymnastics Coach Morris Stevenson's athletes placed third in the league championships behind Arizona and Brigham Young. On the season the squad compiled an impressive 10-2 dual match record against the toughest schedule yet attempted.

The swimming picture was all Bernie Wrightson. The ASU senior, for the third straight year, won the conference diving championship, although the squad finished fifth. Wrightson went on to also win the NCAA 10-meter championship and placed second in one meter diving.

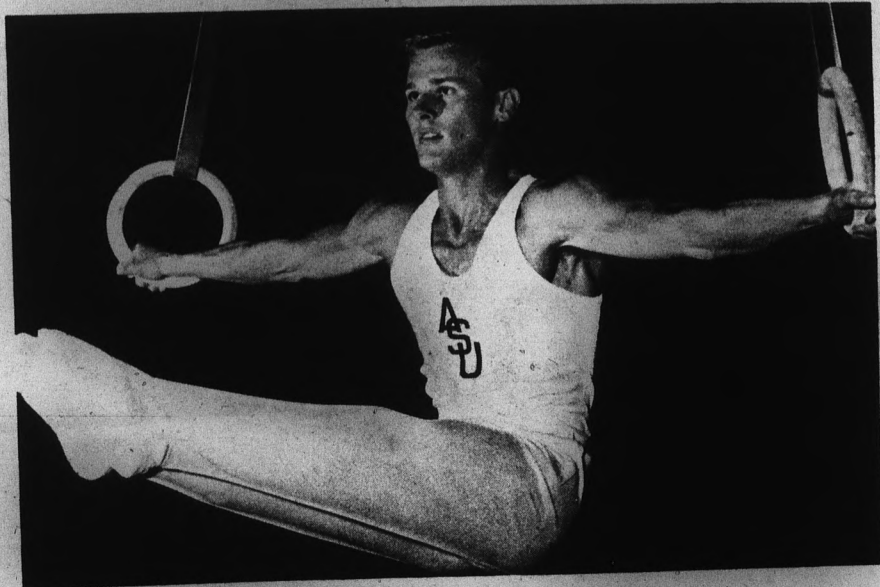
**SPRING SPORTS:** It was a frustrating year for Coach Billy Mann's golfers who posted an excellent 12-0-1 dual match record, yet placed third in the Western Athletic Conference championships. The squad was led by George Boutell, proclaimed Amateur Golfer of the Year for 1965 by *Golf Magazine*.

The Devils fared worse in tennis, finishing sixth in conference play after compiling a 14-12 dual match record on the season.

**UPCOMING:** Football is now the order of the day at ASU, and the Sun Devils, along with Brigham Young and Wyoming, are being picked as contenders. The reason is that ASU won its last five games of 1965 in-a-row, and have 17 lettermen returning from that squad, including men who accounted for 2,317 of the Devil's 2,467 total offensive yardage last go-round.



**Dick Miller Set School Record In Intermediate Hurdles**



**Gymnast Les Christianson Holds Muscular Control On Still Rings**



**Mike Lange Lines Up Shot**

# Welcome Freshmen

*The University Bookstore Is At Your Service*

*Come In And 'Shop Around' Before The Big 'Rush'*

*Shop On Campus*

*Save More Money*

## The University Bookstore

" . . . Your Campus Store . . . "

. . . Owned and operated by Arizona State University; to serve the needs of the students and faculty of this institution.

. . . Stocking a complete line of books — textbooks, reference, and general reading. A vast assortment of the best paperbacks.

. . . School supplies — Paper, Pencils, Pens, Notebooks, and all supplies necessary for the proper completion of your school work.

. . . Engineering Equipment — the widest assortment of the finest engineering supplies in the country — approved by the School of Engineering. The very best at the lowest prices to be found anywhere.

. . . Art Supplies and Equipment — a complete selection of the very best All types of paints, brushes, paper, canvas, etc.

. . . A complete college line — monogrammed shirts, jackets and sweatshirts. Decals and college souvenirs . . . Pennants, ceramics and college jewelry.

. . . Stationery — both social and engraved papers. Numerous types of both boxed and open stock.

## Regular Hours

8 - 7:00 Monday thru Thursday

8 - 4:30 Friday

9 - 1:00 Saturday

- . . . Early purchases assure you of buying the books and supplies you need while stock is plentiful.
- . . . Shop before the "rush" and make your adjustments later.
- . . . Full 15 day refund period beginning with registration day.
- . . . No refunds are made without a cash register receipt.
- . . . Merchandise to be refunded must be in new and resalable condition.
- . . . Do not remove price tags or book covers.
- . . . The cash register receipt must accompany merchandise to be returned.

**We Buy Used Books The Year Around**

*Visit Your*

# University Bookstore

*Located In Memorial Union Building*

*Serving The Students And The Faculty*