

## English Proficiency Test Is Tomorrow

The Junior English Proficiency Examination, required of all Liberal Arts second-semester sophomores, except those who received an A or a B in EN 102, will be given this semester tomorrow, April 14, beginning at 2:30 p.m. in LSC 191. Students may come to take the test anytime between 2:30 and 3:30 p.m. and should allow two hours for writing the test. ID cards will be required and students are permitted to bring dictionaries.

Transfers who made A's or B's in comparable courses should so inform the office of the Dean of the College of Liberal Arts, SS 412, and be excused.

If for some reasons a student cannot take the test at the scheduled time, make-up arrangements should be made with the office of the Dean of the College of Liberal Arts before April 14. Students who fail to make suitable make-up arrangements prior to the test will be presumed to have failed the test. Students who fail the test or who neglect to take it will not be permitted to take junior level courses next semester.

## Law College Dean Speaks Tomorrow

Dr. Willard H. Pedrick, dean of the new College of Law, will deliver the major address during the 8th annual foundation dinner tomorrow in the Hotel Westward Ho in Phoenix, according to J. C. Wetzler, foundation president.

Details about the college which will admit its first class of students in September, 1967, will be revealed during the dinner, which has become an occasion for the announcement of major developments at the University.

Pedrick, chairman of Chicago's planning and zoning commission, has been a professor at Northwestern University since 1948.

The dinner will also include a talk by President Durham and the presentation of "Campus in the Sun," the new 15-minute color film about the University.

Reservations for the dinner

may be made with Mrs. Kathryn Gammage, associate secretary of the foundation, at the Development Office, 966-3501.



DR. WILLARD PEDRICK

## Constructions, Grants Accepted by Regents

Durham Lists Contracts OK \$5 Million for Jobs

The University has been awarded \$286,893.93 in research contracts and grants, gifts, fellowships, scholarships and student aid since Feb. 26, President Durham reported Saturday to the Board of Regents.

The total includes \$218,440 in contracts and grants for research and educational services, \$31,100 in fellowships, \$22,272.53 in scholarships and student aid, and \$15,081.40 in gifts.

CONTRACTS include a \$26,363 agreement with the Arizona Game and Fish Commission for an "Investigation of Commercial Fishery Potentials in Reservoirs," conducted by Dr. W. L. Minckley, assistant professor of biology, and agreements totaling \$11,420 between the bureau of educational research and services, Dr. R. Merwin Deever, director, and the following school districts:

Madison Elementary District 38, Cartwright District 83, Isaac School District 5, Brophy College Preparatory, Scottsdale Elementary District, Tempe Elementary District 3, all Maricopa County; Casa Grande Elementary District 4, Apache Junction Elementary District 43, and Superior Elementary District and Superior High School District, Pinal County; and Window Rock District 8, Apache County.

Among the grants is a study of "Socio-Economic and other Variations Related to Rehabilitation of Mexican-Americans," supported by the and directed by Mrs. Naomi Harward, associate Vocational Rehabilitation Administration, \$54,385, professor of sociology.

AN AMERICAN Chemical Society grant of \$10,260 supports an investigation of "The Siluro-Devonian Geology of Western Tennessee" by Dr. Robert F. Lundin, assistant professor of geology, and a \$23,400 grant from the National Science Foundation (NSF) continues a 2½-year-old ASU program of research for undergraduate chemistry students directed by Dr. Tom R. Thomson, associate professor of chemistry.

Topology, an area in mathematics, is the focus of a \$21,200 NSF grant directed by Dr. Edward E. Grace and Dr. Robert W. Heath, professors of mathematics. Dr. John Staudhammer, professor of

Continued on Page 5

Plans for more than \$5 million worth of new construction on campus were moved ahead by the state Board of Regents Saturday in a meeting in which contract for construction of a 15-story dormitory for women was awarded to Del E. Webb corporation.

The dormitory job went to the Webb firm on a bid of \$3,665,000 after the apparent low bid of Mardian Construction company of Phoenix was withdrawn by the bidder. Mardian company asserted it had made a "technical" error in its bid of \$3,498,000, according to Gilbert Cady, vice president for business affairs.

Five completed construction projects at the University totaling approximately \$2.5 million, were accepted by the Board of Regents.

The board authorized the University to make final payments for the projects upon certification by the contractors and engineers or architects associated with them and by John R. Ellingson, director of the physical plant.

PROJECTS, contractors and engineers or architects, final construction costs, are:

Remodeling of research and instructional laboratories in the Engineering Center; Busby Associates, Phoenix, architect; Robert G. Hickman, Phoenix, contractor, \$350,607.23.

Aeronautical Technology building; Horlbeck-Hickman and Associates, Mesa; Armstrong Construction Co., Phoenix, \$145,918.18.

ADDITION to Sahuaro Hall dormitory, accommodating 150 students; Horlbeck-Hickman and Associates; William S. Porter Construction Co., Inc., Mesa, \$411,114.13, provided by self-liquidating revenue bonds retired by students' payment of dormitory fees, at no cost to state taxpayer.

Utility tunnel and piping to southeast area of campus and M.O. Best Hall; Lowry and Sorensen Engineering Co., Inc., Phoenix; Manhattan-Dickmann Construction Co., Phoenix, \$282,078.45.

M.O. Best dormitory for men addition; Kitchell Contractors, Inc., Phoenix; Weaver and Drover, Phoenix, \$613,152.35.

THE REGENTS also approved plans for the construction of a mathematics building of the

Continued on Page 5

## Wernher von Braun Talk Friday

Space scientist Wernher von Braun will lecture Friday at 8:15 p.m. in Gammage Auditorium.

Director of the George C. Marshall Space Flight Center of the National Aeronautics and Space Administration in Huntsville, Ala., Dr. von Braun will discuss interplanetary exploration and what may be expected of rocketry in the future.

THE GERMAN-BORN space expert earned his doctor of philosophy degree in physics at the University of Berlin. Later he served as technical director of Germany's Peenemuende Rocket Center where the V2 was developed. During the closing months of World War II, he led more than 100 of his fellow scientists to the West and surrendered to the Allies.

Under contract to the U. S. Army, he came to the U. S. in 1945. At White Sands N.M., he directed high altitude firings of captured V2 rockets, then became project director of a guided missile development at Ft. Bliss, Tex., where

many of his Peenemuende colleagues were.

The entire group, headed by Von Braun, was transferred to Huntsville, in 1950 where the Army centered its rocketry activity. In 1960 the Von Braun-headed army ballistic missile agency development team was transferred to NASA at the President's direction and was made responsible for launching NASA's large space vehicles.

THERE DR. VON BRAUN directed development of the Redstone rocket, America's first large ballistic rocket, and the Jupiter IRBM.

Special versions of the Redstone were used by the team to launch some of America's first satellites, Explorer I and Pioneer IV, and in the first successful space flight recovery of animal life, as well as in placing astronauts Shepard and Grissom in suborbital flight.

The Marshall Center, employing about 7,000, is in charge of developing NASA's large launch vehicles and conducting re-



DR. WERNHER von BRAUN

lated research. The Saturn space vehicles are being developed to carry out the goal of placing men on the moon and returning them safely to earth.

THE LECTURE, open to students, faculty and public, is the final program in this year's lecture series. General admission tickets will be on sale at the door.

Students, faculty and the public are also invited to see the NASA display on campus, sponsored by AFROTC and featuring scale models of the Gemini capsule, and the Apollo and Lunar Excursion modules.

The display will be in the MU upper lounge through Friday morning. AFROTC cadets will be on hand to conduct tours of the exhibit, answer questions, and give out printed explanatory material concerning the display. At noon on Friday, the NASA exhibit will be moved to Gammage Auditorium, where it may be viewed before and after Dr. von Braun's lecture.

WORLD BRIEFS

# War Must Go to Reds—Ky

By United Press International

**VIET NAM** — At least two Americans were killed and 34 wounded in a Viet Cong attack on an airbase near Saigon yesterday. The attack on the airbase came a few hours after an assault on a company of the 1st Infantry Division which caused heavy casualties. On the political front, South Vietnamese Premier Ky told the Saigon Student Council that he believes the war must be pushed to the Red Chinese mainland.

**HATTIESBURG, Miss.** — Thirteen Mississippi Ku Klux Klansmen were bound over to a grand jury here yesterday on civil rights charges connected with the fire-bomb death of Negro leader Vernon Dahmer, January 10.

**MOZAMBIQUE** — Two tankers were preparing yesterday to unload 34,000 tons of oil believed destined for rebel Rhodesia in defiance of a British Naval blockade and a U. N. imposed ban. One docked at Beira, Mozambique, and the other at Durban, South Africa, after being diverted from Beira Sunday by the British Navy.

**WASHINGTON** — Chrysler Corporation is calling in about 17,500 Dodge Monacos and Polaras cars for safety modification, said Sen. Walter Mondale, D-Minn. Mondale criticized Chrysler because neither the owners nor dealers are being informed that a safety factor is involved.

# Orientation Discussion Today For European Humanities Tour

Dr. Robert C. Lamm, professor of music, will discuss the humanities tour of Europe, which he will direct this summer, at an orientation meeting at 7:30 p.m. in room 301 of Gammage Auditorium.

A detailed outline of the itinerary and a description of tour arrangements will be presented at the meeting and an opportunity for questions and answers will be provided. Assisting Dr.

Lamm at the meeting, which is open not only to prospective tour participants but to their friends as well, will be Graham Turner of the Continental Bank.

Registration deadline is April 15. Offering six hours of undergraduate or graduate credit, the tour-course is entitled "The Humanities in European Civilization." It may be taken also on a non-credit basis by persons other than regularly enrolled students.

Transatlantic flights via jet and a motor coach tour through nine European countries will be featured in the summer tour program scheduled July 17 to Aug. 28.

Highlighting the trip will be visits to world famed music festivals including Aix-en-Provence, Salzburg, Lucerne, Munich, Bayreuth and Edinburgh. Ample

time will be provided for sight seeing and shopping in other cities such as Paris, Brussels, Amsterdam, Monaco, Nice, Rome, Florence, Venice, Vienna, Cologne, Bonn and London.

The six weeks of educational travel and adventure will also include a Rhineland tour by river steamer; visits to museums, churches, castles and art galleries; and attendance at the outdoor opera in Rome.

## Fraternity Index Tops All-men's

Scholarship averages of fraternity members has been averaged at 2.4 as compared with the all-men's dormitory average of 2.16 for the past academic semester, according to an analysis released by the Inter-Fraternity Council.

## China Topic Of TV News Show Tonight

"News In Perspective" on KAET, Channel 8, tonight at 9 p.m. will examine the "China Problem."

Taking part in the discussion are New York Times newsmen Tom Wicker, Lester Markel and Max Frankel who will appraise the Red China question in terms of what the U. S. knows and still needs to learn about the inscrutable Asian power.

They will also consider the Sinó-Soviet split, complicated recently by the Chinese boycott of the 23rd Congress of the Soviet Communist Party, which was attended by representatives of North Vietnam and North Korea, erstwhile allies of Communist China.

The journalists will devote particular attention to the United States attitudes on containment on Red China without isolation, the prospects of diplomatic recognition and the future military involvements with the Chinese Communists.

Markel, Wicker and Frankel will also evaluate domestic issues; President Johnson's "Great Society" program to date and the government's attempts to curb inflation.

Nezaret Cherkexian is executive producer of the 1966 National Educational Television production, "News In Perspective."



## Every mother wants to raise her family in a safe and friendly atmosphere

When the little hummingbird set up housekeeping in a Standard Oil refinery, she paid us a high compliment.

She didn't know that our Company had invested millions to remove smoke and vapors from the refinery atmosphere, but she found it highly compatible—and she's an expert judge of air. The refinery's human neighbors also benefit.

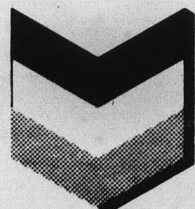
Clearing smoke and smog from the atmosphere of whole cities will be a more complex problem, but

Standard Oil works for this, too—through research, joint efforts with public authorities, the loan of top scientists to pollution control projects in your community's interest.

Whether it's protecting natural resources, scenic areas and wild life... guarding water resources against pollution... or preventing contamination of the air in our busy cities... Standard Oil is dedicated to conservation—an important part of our responsibility to you.

1 P.S. The baby hummingbirds, born at our El Segundo, California, refinery, were as pretty as their mother.

The Chevron—  
Sign of excellence



STANDARD OIL COMPANY OF CALIFORNIA

## BAHÁ'U'LLÁH

**A.S.U.  
BREAKFAST  
SPECIAL  
\$1.00**

**3 EGGS AND HAM**  
Hash Brown Potatoes  
Toast, Jelly and Coffee

Served Daily 6:30-11:30

**HARMAN'S**  
Mesa-Tempe Hi-Way  
TEMPE

# Controversial 'Intolleranza' Highlights KAET Programs

KAET's programming for the coming week is highlighted by the controversial contemporary opera that caused riots in Italy and Germany.

The television premiere of Luigi Nono's "Intolleranza" will be presented at 10 Tuesday evening, April 19, and repeated Friday evening, April 22, at 9:30.

"Intolleranza" is a two-act symbolic musical drama that protests war, intolerance, oppression, colonialism, and fascism. Its central character is a refugee who searches for reality and truth in a fast-moving sequence of scenes that include a mining disaster and episodes in a concentration camp.

Police had to be called out when the opera was done for the first time in Venice in May, 1961. Youthful demonstrators filled the auditorium with cat-calls and whistles, threw stink bombs, and then showered the house with fascist leaflets at the end.

The first American performance was given by the Opera Company of Boston in February 1965. Mr. Nono, who once ran for public office on the Com-

munist ticket in Italy, was at first denied a visa when he applied for permission to go to Boston, but protest by the press and members of the Massachusetts congressional delegation finally gained him admittance. The cast includes soprano

Beverly Sills, mezzo-soprano Margaret Roggero, tenor Lawrence White, baritone Ercole Bertolino, and bass Guus Hoekman. Bruno Maderna conducted, Sarah Caldwell staged it and Josef Svobda did the scenery and lighting.

## Gammage Wind Five Performs With Isaak

The Gammage Wind Quintet will be featured at a concert given by the Faculty Chamber Music Society tonight.

Joining with the quintet in the 8:15 p.m. program in the MU ballroom will be Dr. Donald Isaak, assistant professor of music.

Performing artists in the quintet are Edwin Putnik, flute; Frank Stalzer, oboe; Jack Ratterree, clarinet; Jack Rausch, bassoon, and Eugene Chausow, French horn.

Works to be presented are the Telemann "Trio Sonata in C" performed by Putnik, Stalzer and Isaak; the Poulenc "Sonata

for Flute and Piano" with Putnik and Isaak; Ibert's "Three Short Pieces for Woodwind Quintet" and Hindemith's "Quintet, Opus 24, No. 2" both featuring the Gammage Wind Quintet.

Tickets will be on sale at the door.

Also scheduled in April are concerts by the Symphonic Band on April 22, and by the Symphony Orchestra on April 25. Both will be at 8:15 p.m. in Gammage Auditorium.

## Lunch Reservations Deadline Is Today

Reservation deadline for the annual spring luncheon given by Faculty Wives Club is 5 p.m. today.

The event, arranged by Mrs. Robert F. Lundin, chairman, and Mrs. Herbert A. VanScoy, co-chairman, will be held Saturday at Mountain Shadows, start-

ing at 12:30 p.m. Fashions from the shop of Muriel Ross on Lincoln Drive will be featured and installation of new officers conducted.

Not limited to club members, the luncheon is open to the wives of all faculty members and their guests. Cost is \$3 each.

Ranging from sports wear, swimming suits and casuals through afternoon and evening wear, the fashions will include "everything a busy faculty wife needs to carry her through an entire day into evening," said Mrs. Lundin.

## Blood Asked For Student

Blood is needed for Alan Hunt, a sophomore history major, who is in Good Samaritan Hospital with a serious kidney infection.

A large amount of blood is necessary for treatment and replacement and is a serious problem, according to Hunt's employer, Joe Sims, manager of General Stores. Volunteer donors should report to the Southwest Blood Bank at 1211 W. Washington.

**IF you can DRIVE... you can FLY an AIRPLANE!**



**MERCURY AVIATION**  
SKY HARBOR AIRPORT  
Phone 275-7586

**THE MUSIC SPOT**  
53 E. Broadway  
Broadway Plaza — 967-7161

**STUDENTS EUROPE**  
TWA CUNARD

See Europe this summer with a small group of students your own age. 32 different American Youth Abroad trips to choose from — 35 to 69 days — 9 to 17 countries. Complete land prices from \$338.

WRITE OR CALL

**UNIVERSAL TRAVEL**  
Call 967-1673  
18 E. 5th St. • Tempe

**THE BEEF HOUSE**

**Charco Broiled Steaks**

- ★Filet Mignon \$1.38
- ★1/2 Chicken 98c
- ★Sirloin \$1.28
- ★T-Bone 16-oz \$2.50
- ★Chopped Filet 98c
- ★King Size Hamburger 55c

Dinners Include Baked Potato, Tossed Green Salad, Choice of Dressing and Garlic Bread

Open Daily 11 a.m. to 9 p.m.  
Also Above Orders To Go — 967-6248  
Broadway Plaza—Corner Mill & Broadway, Tempe

SEE DENNIS FOR DIAMONDS

*Orange Blossom*  
DIAMOND RINGS

CELESTIA • PRICES FROM \$100 TO \$1500

*Fine Dennis D. Naughton Jewelry*

132 N. Central — Park Central Mall  
9 A.M.-5:30 Daily — Till 9 Mon., Thurs. & Fri.  
AL 2-3774

As Usual, The Creators Of The Unusual.

Registered Jewelers American Gem Society

SEE DENNIS FOR DIAMONDS

**WHAT'S THIS?**

Answer: Who Cares!

- How many College Life Insurance Companies of America are there?  
Answer: ONE!
- Who Represents College Life?  
Answer: COLLEGE GRADUATES ONLY.
- Who Benefits from this Specialization?  
Answer: COLLEGE MEN ONLY.
- Where is the Home Office Located?  
Answer: INDIANAPOLIS, INDIANA.

When your "College Life" Representative calls on you make sure he represents "the Original and Only Company Specializing in Insurance for College men... represented Only by College men Selling Exclusively to College men."

**TOM Kerr & JERRY Aguilar**  
: 967-9257  
: 967-1001

Buy Where You Benefit Most!  
**THE COLLEGE LIFE**  
INSURANCE COMPANY OF AMERICA

Your "COLLEGE LIFE" Representatives at  
**Arizona State University**

# I A W S :

About 300 women student leaders from 13 western states met on campus last week for the Intercollegiate Associated Women Students Region I Convention. Theme of the convention was "Values — Chained or Changed?"

Jo F. Dorris, acting associate dean of students, delivered the opening address Wednesday afternoon entitled "Value: Definition, Implication, Obligation."

Man lives by what he believes, and what he believes is determined by what he values, said Mrs. Dorris at the opening session of the convention.



DEAN JO DORRIS

conference delegates that achievement of such self-actualization is "something for which we might all strive."

Recognizable by the fact that they have decided what they will value and why, such people have a superior conception of reality and an increased acceptance of self and of their fellow men, said Mrs. Dorris. They can identify with others, can achieve improved interpersonal relationships, and yet value privacy. They are more spontaneous, democratic and creative and are better able to resist inculturation.

"Many students are involved in a search to find themselves during college years," she said. "Will values be chained to old concepts or changed to fit a new world and new ideas? Only by examination can we determine what values should be retained and why — and what values should be discarded."

"Your obligation as young intellectuals preparing to take your place as leaders in the world of tomorrow is to examine your values and your lives. Our effort during this convention will be to stimulate thinking in terms of values, but such examination should not terminate with the convention."

"May you go forth determined to question and to seek solutions, perceptively, honestly, and with self respect and respect and consideration for others," she concluded.

Dr. Glenn M. Chronister, associate professor of education, spoke at the convention Thursday morning on "Self-Actualization."

A person's self-image is of utmost importance since it serves as a screen through which life experiences are filtered, said Dr. Chronister.

The person who feels unwanted, lonely, inferior, incompetent; who anticipates failure, who has inflexible behavior and sees life as a threat is one who has an inadequate self-concept, the professor said.

Similarly, people with faulty self-concepts are inhibited in their growth. The person who believes he is special and that the world owes him a living has serious problems. No matter how much is done for such a person, it is never enough.

Unfortunately, though, no matter how distorted an individual's views may be, he reacts to them as they were a creed. But distorted views make it hard to relate to others because each distortion raises barriers to successful communication, Dr. Chronister added.

People protect such distorted views in a number of ways. They may give several good, logical reasons — but not the real one. Or they may protect themselves by accusing others, or by adopting another's qualities and passing them off as their own, or by denying that they have distorted views.

The individual who has an adequate self-concept is characterized by certain unmistakable qualities, the professor continued. He is the person who assesses himself honestly, trusts himself, is able to make choices and decisions, sets realistic and accurate goals, is spontaneous with others, and makes the utmost of his experience.

In conclusion Dr. Chronister said. "Your productivity is heavily influenced by your self-conception. I urge you therefore to enter wholeheartedly into the discussions for which you are gathered. Your theme for the convention is 'Values — Chained or Changed?' Consider, evaluate, digest and ingest, sift and sort to determine what has value for you."

"Moral Values" was the subject of a discussion Thursday featuring a panel of experts including a psychologist, a physician, a minister, and a former dean of women.

"It is easy to recognize what is valuable to another man by how he acts and treats his fellow man, and by the ambitions and goals he sets himself," she said. "Therefore, I suggest that you use caution in setting your values because you may be committed to a life determined by them."

Discussing what Abraham Maslow calls the self-actualized individual, in his book "Toward a Psychology of Being," the dean commented on the scarcity of such people and told the 300

conference delegates that achievement of such self-actualization is "something for which we might all strive."

Recognizable by the fact that they have decided what they will value and why, such people have a superior conception of reality and an increased acceptance of self and of their fellow men, said Mrs. Dorris. They can identify with others, can achieve improved interpersonal relationships, and yet value privacy. They are more spontaneous, democratic and creative and are better able to resist inculturation.

"Many students are involved in a search to find themselves during college years," she said. "Will values be chained to old concepts or changed to fit a new world and new ideas? Only by examination can we determine what values should be retained and why — and what values should be discarded."

"Your obligation as young intellectuals preparing to take your place as leaders in the world of tomorrow is to examine your values and your lives. Our effort during this convention will be to stimulate thinking in terms of values, but such examination should not terminate with the convention."

"May you go forth determined to question and to seek solutions, perceptively, honestly, and with self respect and respect and consideration for others," she concluded.

Dr. Glenn M. Chronister, associate professor of education, spoke at the convention Thursday morning on "Self-Actualization."

A person's self-image is of utmost importance since it serves as a screen through which life experiences are filtered, said Dr. Chronister.

The person who feels unwanted, lonely, inferior, incompetent; who anticipates failure, who has inflexible behavior and sees life as a threat is one who has an inadequate self-concept, the professor said.

Similarly, people with faulty self-concepts are inhibited in their growth. The person who believes he is special and that the world owes him a living has serious problems. No matter how much is done for such a person, it is never enough.

Unfortunately, though, no matter how distorted an individual's views may be, he reacts to them as they were a creed. But distorted views make it hard to relate to others because each distortion raises barriers to successful communication, Dr. Chronister added.

People protect such distorted views in a number of ways. They may give several good, logical reasons — but not the real one. Or they may protect themselves by accusing others, or by adopting another's qualities and passing them off as their own, or by denying that they have distorted views.

The individual who has an adequate self-concept is characterized by certain unmistakable qualities, the professor continued. He is the person who assesses himself honestly, trusts himself, is able to make choices and decisions, sets realistic and accurate goals, is spontaneous with others, and makes the utmost of his experience.

In conclusion Dr. Chronister said. "Your productivity is heavily influenced by your self-conception. I urge you therefore to enter wholeheartedly into the discussions for which you are gathered. Your theme for the convention is 'Values — Chained or Changed?' Consider, evaluate, digest and ingest, sift and sort to determine what has value for you."

"Moral Values" was the subject of a discussion Thursday featuring a panel of experts including a psychologist, a physician, a minister, and a former dean of women.

## 'VALUES — CHAINED OR CHANGED'



CONVENTIONEERS and KACHINA DOLL DECORATION at PALO VERDE COMPLEX — Publicity Chairman Carole McGrew and Entertainment Chairman Jeri Anne Meikle.

Moderator was Kay Hoover, assistant dean in the office of the associate dean of students. Miss Hoover received a bachelor's degree in business education and master's degree in guidance and counseling at the University of Oklahoma and was administrative assistant at a women's residence hall before assuming her current post.

Panelists included:

Dr. Charles Combs, associate professor of education, who spent 10 years in private practice in psychology and psychotherapy and has served as a school psychologist, a counseling and psychotherapeutic consultant, and a research psychologist.

Dr. Edward Sattenspiel, specialist in gynecology and obstetrics, who has been in private practice 12 years in Phoenix and directs the Good Samaritan Hospital training program in the area of his specialty and represented the medical field on the panel.

The Rev. Thomas Walsh, head of the Newman Catholic Student Center at ASU, who served 17 years in the San Francisco Bay area, specializing in youth work, and has had parishes in Tucson, Nogales and Phoenix.

Jinnett Kirk, now dean of students at Mesa Community College and formerly dean of women at Phoenix College, who has taught high school for five years and also served as counselor at Phoenix Technical School, and represented the area of student personnel and guidance.

Amy Freeman Lee, artist, poet and art critic, discussed the ABCs of American life — anti-conformity, brutality, and concern — in her keynote address Friday morning.

Brutality, she said, is the most detrimental force in our time. She expressed concern about brutality toward animals, particularly emphasizing her opposition to bull fighting, which has been legalized in her home state, Texas.

"We conform from gab to garb," she commented, illustrating the need for anti-conformity in the American culture. "Whoever would be a man would be a non-conformist," she said.

About concern, she said the first step in gaining concern to make a commitment.

Education is also important because it helps us to learn about all kinds of people and through education we can eliminate prejudice. Through education we will become what we were meant to be, "children of God."

The Convention Steering Committee was headed by Betty Davis. It included Priscilla Overman, treasurer; Patricia Bufford, secretary; Laura Chittenden, decorations and programs; Lynda Decker and Jo Burton, housing and registration; Susanne Robbins, arrangements; Cathryn Goddard, speakers and workshops; Carole McGrew, publicity; Celina Somoza, packets; Jeri Anne Meikle, entertainment. Planning for this convention started two years ago.



DR. GLENN CHRONISTER



AMY FREEMAN LEE

## MORE ABOUT *Research Grants*

Continued from page 1  
electrical engineering, will direct a \$9,485 grant to determine what happens when micro-circuit devices are interconnected.

Dr. Jack A. Collins, associate professor of mechanical engineering, will study the combined phenomenon of fretting and fatigue encountered in aerospace, automotive and other areas of engineering, with the support of a \$19,200 grant from the NSF.

A \$4,000 NSF grant supports a "Conference on Theoretical Issues in the Experimental Analysis of Behavior" directed by Dr. Arthur J. Bachrach, chairman of the psychology department, and a \$21,278 grant from the National Institutes of Health supports an investigation of "Conditional Cardiovascular Responses" by Dr. Eugene M. Taylor, assistant professor of psychology.

Dr. Horace W. Lundberg, dean of the Graduate School of Social Service Administration, is directing a study of "The Neurologically Impaired Child and Community Services" with the support of the U. S. Public Health Service grant of \$4,944.

A \$2,000 grant from Anderson, Clayton and Company,

Phoenix, supports the animal nutrition research of Dr. E. Grant Moody, professor animal science, and \$4,614 in additional funds from the NIH continues the investigation of "Chemistry of Antibiotic Actinobolin" by Dr. Morton E. Munk, associate professor of chemistry.

An additional grant of \$5,890 from the Office of Education supports an "Institute in Educational and Cultural Desegregation for School District Teams," conducted by Dr. Howard J. Demme, associate professor of education.

## MORE ABOUT —

### *Construction*

Continued from page 1  
Physical Sciences Center at an estimated cost of \$1,330,000, with funds provided by the 1965 legislative appropriation and grants of \$267,428 and \$178,285 from the U. S. Office of Education.

Also approved were three contracts totaling \$147,372.26. They include:

Irrigation relocation at the site of the proposed women's residence hall, east of the Palo Verde dormitories, \$8,767.76, to

## Readers' Theatre in Lyceum Presents 2 One-act Plays

Two one-act plays by August Strindberg, Swedish dramatist, novelist and short story writer, will be presented tomorrow, Friday and Saturday at the Lyceum by the Readers' Theatre of the department of speech and drama.

"Miss Julie," a naturalistic psychological drama, is one of Strindberg's best known plays, while "The Stronger" is a dramatic monologue in which the speaker interacts with another character who does not respond vocally.

Mrs. Susanne Holmes, instructor in speech and drama will direct "Miss Julie," which will feature also a dance, choreographed by Kathleen Erickson, dance instructor in the department of

health, physical education and recreation.

The cast includes Judie Flatt, of Phoenix, in the title role; Mike Flatt, of Phoenix, portraying Jean; and Jan Golman, of Scottsdale, as Kristin.

A graduate assistant, Lynda Salisbury, of Tempe, will direct "The Stronger."

In response to the enthusiastic reception according last semester's production of "Ethan Frome," which played two nights to a standing-room-only audience, Readers' Theatre will present the Strindberg plays on three nights. No admission will be charged and the public is invited.

Curtain time will be 7:30 p.m. Thursday, and 8:30 p.m. Friday and Saturday.

the Concrete Ditch Lining Service, Inc., Phoenix, a project for which the board granted an easement to the City of Tempe.

**Ben Franklin Press**  
SEE US FOR ALL YOUR PRINTING NEEDS

- W. Invitations
- Business Cards
- Bind Thesis
- Fliers
- Bus. Forms
- NCR Sets

104 W. University Drive  
Ph 967-3995, Tempe

**6 Job Application Photos \$5.88 Complete**

**INCLUDES RETOUCHING**

**Pioneer Camera Shop**

"STUDIO M" PORTRAITS OF EXCELLENCE

TEMPE CENTER • 967-4662

**Sun Devils Barber Shop**

**OPEN MONDAYS**

Through Friday  
8:30 - 5:30

in the **ARCHES**  
Corner 8th St. & Forest

**GENTLEMEN:**

Interested in a sales career? Full or part-time, make out your own working schedule. No limit to earnings. Training provided, with large national life company — in business since 1886.

Call 264-9183 for interview or stop by 301 W. Indian School Road, Suite 118 and ask for Mr. Andy Eaton.

**Say it in 中國, по-русски, اعطيني (or 27 other languages)**

It's easy—even fun. You listen to the record, then talk along with it. You set your own learning pace, but chances are you'll be able to speak a surprising number of words and phrases in a few hours.

For only \$2.45 you can see if a particular language appeals to your interest and aptitude. Or learn enough to make foreign travel more pleasant. At the very least, you'll be able to say "No" (or "Yes") in another language!

Each album has 5 or more\* 7½" flexible packable 33⅓ records plus a handy "How to Use the Language" Study Guide.

Amharic	Kurdish*
Arabic	Lao
Bengali	Norwegian
Cambodian	Persian
Danish	Portuguese (Brazilian)*
Dutch	Russian
French	Serbo-Croatian
Greek	Swahili (East Africa)*
Hausa*	Tagalog
Hebrew (Modern)	Thai
Hindi*	Turkish
Indonesian	Vietnamese
Korean*	

\*6 records

**\$2.45 each**  
At your bookstore  
**WORLD FOREIGN LANGUAGE RECORD SERIES**

THE WORLD PUBLISHING COMPANY Cleveland, Ohio 44102

**COPPER Quickies**

**DOWN TO THE SEA IN SHIPS**

OVER A CENTURY AGO, ARIZONA COPPER ORE WAS HAULED BY BURRO TO THE COLORADO RIVER, LOADED ONTO SMALL SHIPS, TRANSFERRED IN THE GULF OF CALIFORNIA TO SEA-GOING VESSELS, THEN CARRIED "ROUND THE HORN" TO SWANSEA, WALES, FOR SMELTING...

A TRIP EQUAL TO NEARLY 3/4 OF THE WAY AROUND THE WORLD !!

**ONE OUT OF EVERY SEVEN!**

ABOUT ONE OF EVERY SEVEN ARIZONANS DEPENDS DIRECTLY OR INDIRECTLY ON THE STATE'S COPPER INDUSTRY FOR ALL OR MOST OF HIS INCOME... MINERS, SUPPLIERS, FARMERS, MERCHANTS.

**"Mr. Versatility" COPPER SULPHATE**

COPPER SULPHATE, ONE OF INDUSTRY'S MOST VERSATILE CHEMICALS, IS USED IN ELECTROPLATING, DYEING, PAINT MAKING, MANUFACTURING RAYON YARNS, EVEN THE TANNING OF LEATHER.

**SORRY, MONTANA!**

THAT STATE WAS ONCE THE NATION'S BIGGEST COPPER PRODUCER. ARIZONA TOOK THE LEAD OVER 55 YEARS AGO, AND HAS HELD IT EVER SINCE. WE AREN'T ABOUT TO GIVE IT UP!

Representing Arizona's Number One Basic Industry  
**ARIZONA MINING ASSOCIATION**  
P.O. Box 989 Phoenix, Arizona 85001

# Cole Paces Cindermen

Paced by the record shattering performance of discus thrower Jon Cole, the Devils romped to an easy 103-42 victory over Colorado in a dual track meet last week.

Cole wiped out the previous school record and erased his own personal best mark with a mighty heave of 199-2. The 6-0, 220-pound senior also took top honors in the shot put with a toss of 59-5¾ to be the only double winner of the meet.

**THE DISCUS** mark was a stadium, school and meet record while the shot put win gave Cole another meet record.

Larry Hendershot piled up points with second place finishes behind Cole in both events.

High jumper Mike Lange set a meet record with a leap of 6-6. His best for the season, however, is a lofty 6-9¾.

**IN YET ANOTHER** meet record, javelin tosser Glenn Wittingham placed the stick out 245-11.

This was just shy of his 248-11 best on the season.

Dick Miller blazed the 440-yard intermediate hurdles in 52.8 for another meet mark.

Ron Freeman set the pace to capture the 440 in a time of 47.2. Tom Dhiem followed Freeman to the wire for second place points.

**WITH LOU SCOTT** out of action due to illness, Art Reade turned in his best performance of the year, winning the mile in 4:13.5. Ken Robinson garnered third spot for the Devils.

Jerry Jobski placed second in the two mile with a time of 9:24.2, just a scant two seconds behind the winning time of Colorado's Ralph Bervin.

In the sixth meet record set by the Devils, pole vaulter Mike Markham soared 15-6, just one inch shy of his season best. John Perkins copped second with a vault of 13-6.

BYU and Utah visit Goodwin Stadium tomorrow night in a triangular affair.

## SPORTS-WHYS

# Baseball Blitz

By ORV FREEBISH

At this stage of the season last year, the Devil horse-hiders were sailing along with a record of 31-3.

Now there's no way a team gets tired of winning, but last year's team suffered a mid-season let down that was almost disastrous. They lost three of their next four games and five out of ten. Seeing how they dropped only eight tilts all season long, it was a pretty serious letdown.

**THIS YEAR**, everybody is hoping that the three-game losing streak to Michigan a few weeks ago was the annual mid-season slump. Everybody, except the opposition, that is.

And if the opposition has been checking the batting figures of the Devils and some of the run-producing results of recent games, there's no doubt that there's moisture accumulating in their sweat socks.

In the current 11-game winning streak the Devils have scored 10 runs in a game three times, 15 runs once, and 16 runs twice.

It would take an IBM machine to add up all the total runs of the 11 games. Opposing pitchers have created a status symbol of visiting the psychiatric clinic after being bombarded by the big bats of the locals.

**YOU'VE HEARD** of baseball players retiring by "hanging up their cleats!" Well, one distraught chucker the other day went so far as to hang up his whole arm after being belted for 10 runs in a few innings.

Jack Simtheran is still atop the batting stats, hitting at a .367 clip with Duffy Dyer at .364 hotly in pursuit.

All totaled, there are six regulars hitting at better than .300. Jan Kleinman is rapping out hits at a .345 rate, followed by Ralph Carpenter at .329, Reggie Jackson at .320 and Jim Armstrong at .303.

**EVEN THE BENCH** is belting the ball. Larry Cooper was hitting .429 before Monday's game when he went three-for-five.

Continued on page 7

UNITED  
AIR LINES  
STEWARDESSES

Enjoy Travel and Freedom  
From Routine



- Free 5½ week training
- Excellent salary and liberal expense allowance
- Assignment now being made to spring and summer classes

Interviews Will Be Held Wednesday, April 20 & Thursday, April 21

Basic Requirements: Single, 5'2" to 5'9", at least 20 years old (girls 19½ may apply for future classes). Glasses or contacts ok.

Contact State Department of Employment,  
207 E. McDowell Rd., Phoenix. Telephone 258-1621



An Equal Opportunity Employer

**GOT A  
MAN'S JOB  
TO DO?**



Get it done right. Get MAN-POWER... the new power-packed aerosol deodorant! MAN-POWER'S got the stepped-up penetration power, the 24-hour staying power a man needs. Goes on fast... never sticky... dries in seconds. Try it! 1.00

BY THE MAKERS OF OLD SPICE | SHULTON



**THE RECORD BREAKER** — Field event star Jon Cole gets off a practice discus heave. The 6-foot, 200-pounder set a school and stadium record last week against Colorado when he sailed the discus out 199-5. He also set a meet mark in the shot put with a toss of 59-5¾. Cole hails from Glendale.

**BODY CONDITIONING & REDUCING**  
Private Instruction  
**Eichenauer Gym**  
Papago Plaza 946-5111

**NEED TYPING?**  
Swift — Professional  
Theses, Term Papers,  
Manuscripts, etc.  
Call 265-3630

# Reggie Wrecks Record Book

Rippin' Reggie Jackson re-wrote the record books yesterday, belting his twelfth and thirteenth homeruns of the season as the Devils rolled over Wisconsin, 11-3.

Jackson first tied then broke the homerun record of twelve set last year by slugger Rick Monday.

Reggie's first round tripper was a 470-foot shot over the right center field wall in the fourth inning, breaking up a 1-1 tie.

The second, and record-setter, was a sky-high drive to deepest center field. The ball was hit as far as one could be hit and still stay within Sun Devil Field, and Jackson stormed around the bases to the record and mob congratulations from his teammates and a standing ovation from the fans.

The slugging center fielder also ripped a triple and made a fine over-the-shoulder catch in the game.

Winning pitcher for the Devils was John Pavlik, who also helped his own cause by hammering a homer in the third inning.

Pavlik hurled seven strong innings giving up only one run, with Dale Spier picking up the slack in the eighth stanza.

"Huck" Armstrong had himself quite a day at the plate with two singles and a triple, while captain Jan Kleinman and Duffy Dyer also ripped triples.

Wisconsin 001 000 020 - 3 6 2  
ASU 001 203 32x - 11 13 2  
Poser (L), Reich, Premis and Beise; Pavlik (W), Spier and Dyer.

Coach Bobby Winkles has indicated that sophomore right hander Sam Chipps will receive his first starting assignment tonight as the Devils host the Badgers at Phoenix Municipal Stadium at 7:30 in the series finale.

Chipps, a 6-1 190-pound JC transfer from Glenrock, Wyoming, has appeared in relief in three games and in four innings pitched has not yielded a run.

After Thursday off, the horse-hiders will swing back into action Friday in the "big series."

The Wildcats of the UofA visit Mesa's Rendezvous Park for a single game Friday at 3 p.m. and the two arch rivals then shift over to Phoenix Municipal for a day-night twin bill on Saturday.

Winkles is still undecided about his pitching rotation for the Arizona series saying, "We'll give all of the staff some work against Wisconsin and play it by ear from there on in."

MONDAY'S GAME  
WISCONSIN 001 000 020 - 3 7 7  
ASU 100 230 63x - 15 15 5  
Reich (L, 0-1), Fenn and Huset; Pentland (W, 6-1), Robison and Dyer, Popovec.



**LOOKING TO THE WILDCATS** — This array of hitters for the Sun Devils will be opposing the UofA when the two state rivals square-off in the three-game series this weekend. They are, from left, outfielder Glenn Smith, outfielder Jim Gretta, catcher Duffy Dyer and team captain first sacker Jan Kleinman. As a group this quartet is averaging .313 at the plate, and has combined for a total of 14 doubles, 13 triples and 13 homeruns.

## BYU, SFS Are Next A-State Tennis Foes

A 10-4 dual match record will be on the line when the Ted Bredehoft coached Arizona State University tennis team hosts Brigham Young and San Fernando State late this week in a series of matches between Thursday and Saturday.

On Thursday afternoon at 2 the Sun Devils will host BYU while Friday night and Saturday morning the opposition will be furnished by SFS. The first night match of the year is set for 7:30 while the Saturday affair begins at 10.

All matches in the series will be staged at Sun Devils courts on the north side of Apache boulevard adjacent to Sun Devil diamond.

Last week ASU dropped a 9-0 decision on the West Coast to perennially powerful University of Southern California.

Main bright spot in that defeat was the play of Dave Farmer, topped ranked Sun Devil, who forced the U. S. Lawn Tennis Association's 10th ranked

player, Tom Edlefson of USC, to go three sets before falling 6-3, 3-6, 6-3.

Bredehoft's first through sixth singles lineup this week, seasonal records in parenthesis, includes:

- 1 — Farmer (12-2); 2 — Briggs Bosworth (9-5); 3 — Larry Stanley (10-4); 4 — Roger Wright (8-6); 5 — Team captain Lee Sullivan (7-5); and 6 — Paul Pedersen (6-5).

Ray Young, a veteran regular with the ASU team, has been sidelined the past three weeks with a broken foot.

### Sports Short

Of the 25 members on the Sun Devil baseball squad, 17 are from out of state. Including Arizona, 11 states in all have representatives on the team.



**ARTIST & DRAFTING SUPPLIES**  
Crafts - Picture Frames  
Decorating Material  
Tempe Center • WO 7-4482  
Open Mon. & Thurs. Nites

### TYPING

Neat, accurate, reasonable, "1700 Apartments"  
1700 E. Don Carlos,  
Apt. 2E, Tempe.  
Phone 966-0885

It makes c's when you save \$'s at GASAMAT—near you at 915 E. 8th St., Creamery Road in Tempe.

### MORE ABOUT —

## Sports-Whys

Continued from page 6

Pitchers aren't supposed to be hitters, but nobody told Jeff Pentland. He's Bobby Winkles' number-one pinch hitter and is hitting at a .368 clip. He's so good with the bat that Winkles even started him in left field against Wyoming one game, and the stocky lefthander responded by belting a home run and going two-for-four.

**JACKSON** ripped his ninth and 10th homeruns of the season Monday against Wisconsin. One shot over the right field wall bounced on the far side of Van Ness Street. He's one shy of Rick Monday's record of 11 round trippers and there are still 15 games to play.

Glen Smith hit one of the highest home runs I've ever seen in the same game with the Badgers Monday. He hit it to right center **OVER** the palm trees. I understand the ASPCA is after Smith for scaring the hell out of a lot of birds that call those trees home.

YOU DON'T NEED TO BE A MILLIONAIRE TO LIVE LIKE A KING. YOU CAN START OUT BY EATING AT . . .

## BIGBURGER

1737 S. Mill  
Tempe • 966-1661

1324 N. Scottsdale Rd.  
Scottsdale • 945-7341

EVERY THURSDAY IS  
**COLLEGE DAY**  
Russ' Super Car Wash

CAR WASH ONLY \$1.25 No Purchase Necessary

\$1.00 with purchase of 7 gallons of Gas or Spray Wax application.

**Russ' Super Car Wash**

7569 E. McDOWELL RD.  
SCOTTSDALE, ARIZONA

**CARD**  
**CONTEMPORARY DISPLAY TODAY**  
8:30 - 3:00  
SS Building  
**PRIZES**  
Sponsored by GAX



**NEW CHEERLEADERS** for next year include (kneeling), Mac Felix, Jack Breese, (middle row) Jeanne Besser, Carolyn Charest, Lynn Smith, Cheryl Moss, Claudia Sellers, and (standing, back row) Lou Winters, Tom Giles and Dennis Cameron. The ten students were chosen on the basis of ability, grades and responsibility. Three workshops were held in conjunction with the judging.

## IAWS Meets Here, Adopts Resolutions, Elects Officers

At the Intercollegiate Associated Women Students Region I Convention last week on campus, 21 resolutions were adopted, two regional officers elected and a host school selected for the next meeting.

Gina Morrone, University of Denver, was elected regional vice-president and Jean McEvoy, University of California at Berkeley, was elected regional co-ordinator. The University of California at Davis won the race for host school.

One of the more controversial questions of the convention was settled by the adoption of a resolution permitting accredited junior colleges to participate as voting members in IAWS for a period of two years. At the end of that time the four year college members will vote on retention of the junior colleges' membership. To be effective,

this resolution must be passed by the national convention.

A revision of state convention areas put the Arizona member schools in the same area with New Mexico schools.

The ASU delegation's resolution to consider adopting a national pin was passed, but the pin proposed by ASU was not selected. Instead each interested member school was asked to submit designs at the National IAWS meeting in West Virginia next year.

The resolution proposing support of President Johnson's Viet Nam policy was tabled.

### Club Calendar

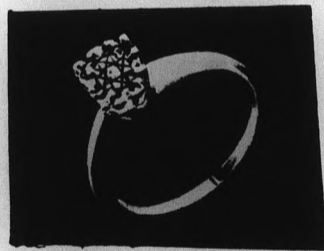
All club notices should be submitted to the State Press, MU 3 by noon two days prior to desired publication date.  
**FINANCE AND REAL ESTATE CLUB** — George Steinhilber, vice president of the Real Estate Loan Department of the Valley National Bank, will speak this afternoon at 3 in MU 211.

**TEMPE**  
Center

**32 FINE SHOPS  
AND STORES  
TO SERVE YOU**

**MILL AVENUE 8th to 10th Streets**

**SALE PRICED FOR  
THIS WEEK**



Enlarged To Show Detail

**Diamond Engagement Ring**

White or Yellow Gold

**\$4995**

**Scott Jewelers**

911 Mill Avenue — Tempe Center  
966-6101

Open Thursday Night Until 9:00 P.M.

**PAINT COLORS**

**WE'LL MIX ANY COLOR YOU WANT**

No matter what you're planning to paint we have the right Sherwin-Williams' paint you need... in the loveliest colors you've ever seen! We'll mix your color choice accurately on our Colormeter while you wait.



**Sherwin-Williams Co.**

967-1711

Americana Shop

Ray's ASU

Barber Shop

Bonnie Sue Fashions

Brickie's Furniture

Buddy's Coffee Shop

Celia's Fashions

El Rancho Market

Erickson's Handcrafts

1st Federal Savings

& Loan

1st National Bank

GallenKamp's

W. T. Grant

Happy House Shop

Hill's Record & Book Shop

Inland-Western Loan & Finance

Jam's Restaurant

King's Fashions

Lee Optical

Pioneer Camera

Shop

Rosamond's Beauty Shop

Standard Service Station

State Farm Insurance

TeePee of Toys

31 Flavors Ice Cream

Tops Liquor Store

University Sporting Goods

Zzzona Laundry

Ryan-Evans Drug Store

Scott Jewelers

Sewing Basket

Sherwin-Williams

Company

S & H Green Stamp Center

The Hogan