

Photo by Richard Cantor

SELMA STORY — Sheriff Jim Clark of Dallas County, Ala., (left) spoke to a large gathering of students in Cosner Auditorium (right) yesterday on civil rights demonstrations in Selma last winter, while members of CORE and other students picketed the auditorium. Clark blamed "revolutionaries and beatniks" for the disturbances (See story this page).

22 Offices Filled For AS Primary

Barring a huge write-in vote, 22 offices have already been filled in the ASASU primary election five days before the actual balloting begins Wednesday morning.

Those 22 students are running unopposed for their respective offices. Thirteen more races will be decided in the primary election, leaving only six offices to be determined in the general election March 23.

THOSE RACES already decided and their respective candidates are: ASASU secretary, Heather McFalls; AMS president, Steve Klock; AMS vice president, Jerry Whitted; AMS secretary, Phil O'Neil; AMS treasurer, Larry Huwaldt, and AWS president, Karen Darr.

Also AWS secretary, Susan Charest; AWS senators (two seats), Jo Ann Foreman and Carole McGrew; business administration senators (2), Skip Swerdlow and Richard Zimmerman, and fine arts senators (2), Baktawer Irani and Linda Vogel;

Others decided are: nursing senators (2), Pat Horn and Cheryl Mugridge; sophomore senators (2) Bob Carlin; junior senators (2), Norman Killip and Bunny Olmsted; senior senators (2), Judy Henderson and Don Thomas, and off-campus women senators (2), Maryann McGovern and Jan Plowman.

THE ELIMINATION of two candidates for the office of sophomore senators has left one seat to Bob Carlin and one seat without a candidate, forcing it to be decided in the fall elections.

Offices which will be decided in the primary are: ASASU first vice president, Bill Harris and John Herrick; ASASU administrative vice president, Alan Warne and Charles Wise; AMS senators (2), Terry Forsberg, Jim Robson, Bud Scribner and Mike White; AWS executive vice president, Jane Williams and Lynn Lifgren.

Also liberal arts senators, Barbara Hughes, Bob Johnson and James Rasner; education senators (2), Diana Van Duerm, Morleen Haskes and Karen Lynsky; engineering senators (2), George Hogelin, Don Howard and Arand Rughani; and off-campus men senators (2), Roger Patton, Richard Psolka, Steve Yarbrough and John Zaborac.

OFFICES THAT GO into the general election after elimination of some candidates in the primary are: ASASU president, Bob McConnell, Laurie Robos and Bob Schaefer; ASASU activities vice president, Ronald Harmon, Nanci Valleskey and Duane Veld; AWS activities vice president, Karen Blair, Linda Gallagher and Carolyn Kimura.

Also, AWS treasurer, Betty Ethell, Sara Fryd, Karen Keesling and Sandra McChesney; architecture senators (2), Don Bogner, William Brown, Don Harris, Joe Jensen and Thomas Papandrew.

Students will have an opportunity to meet the candidates and hear the presidential aspirants speak Monday at 3 p.m. in the Quad. Campaigning begins at 6 p.m. Sunday.

NEWS ANALYSIS — New Groups Sprouting Up

By JANEY LEFTWICH
"Divide and conquer" seems to be the new strategy of left-wing or "liberal" groups on campus.

Students for a Democratic Society (SDS) was deemed inadmissible to the ranks of on-campus organizations, but members of SDS recently have formed such groups as The Committee To End the War in Viet Nam and the Congress of Racial Equality (CORE), both of which have been sanctioned by the Organizations Board.

IN ADDITION, the newly formed campus unit of the American Civil Liberties Union, (ACLU), which was approved this week by the board, plans to use SDS campus non-recognition as an issue to stimulate discussion on the right of a university to "control the liberties of its students."

The board has not suddenly been forced to give approval to any group now that it is election time. Instead, after careful study, the groups were given sanction because their constitutions either implicitly state or imply that they disapprove of

civil disobedience and would not engage in such activities on campus.

By stating this in their charters, the clubs are placed under obligation not to participate, as a group, in any illegal demonstrations. Should they go against their constitutions, the Executive Council has cause to revoke their charters immediately.

THERE WAS no such statement or implication on disapproval of illegal activities in the material presented to the boards by SDS.

Granting the clubs on-campus status will show that neither the administration nor the student government wants to censor the opinions expressed by on-campus groups or directly limit free speech of students and faculty.

President Durham has often stated that suppression was not the goal of the decisions made by the councils.

According to one board member, "our quarrel with SDS had nothing to do with any disagreement we might have had with its political philosophy. It lay (Continued on page 8)

Dr. Tilden Speaks Today In Charter Day Program

Approximately 3,500 freshmen will get their first view of a formal academic procession at 10:30 a.m. today in Gammage Auditorium.

All departmental chairmen and the deans have been requested to file on the Gammage stage in full academic regalia, including caps, gowns and hoods, for the Charter Day program, as arranged by the Academic Affairs Committee of the Faculty Senate.

Dr. Arnold Tilden, professor of history, will deliver the major address during the 10:40 a.m. convocation commemorating the 81st anniversary of the enactment by the Territorial Legislature of the measure establishing the University.

The program will include an invocation by Albert L. Plotkin, spiritual leader, Temple Beth Israel, and greetings from President G. Homer Durham and Fred Reish, Associated Students president.

Selections on the Hugh W. Long Memorial Organ, played by Mrs. Nadine Dresskell, asso-

ciate professor of music, will include "Now Thank We All Our God" and the Alma Mater.

The University Concert Choir, conducted by David Scoular,

professor of music, will be featured in Mendelssohn's "Kyrie."

All students, faculty and staff are invited to attend the annual convocation.

Selma Trouble Inspired by Reds, Says Clark While CORE Pickets

Sheriff Jim Clark of Dallas County, Ala., yesterday told students at Cosner Auditorium that the civil rights demonstrations in Selma during the winter of 1965 were communist inspired.

"Whites and coloreds lived as friendly neighbors prior to the demonstration," Clark said. "No literate person was denied voting privilege."

"THEN A horde of revolutionaries and beatniks, led by Martin Luther King descended on Selma," he said, many of whom were known communists.

Trouble in the South is stirred up by outside agitators, Clark said. During the march to Montgomery, he said, there were only nine local Negroes out of a crowd of 8,500.

He admitted that many mistakes were made by law enforcement officers during the

demonstrations, and if he had it to do over, he would make changes.

CLARK'S comments came as he conducted a question and answer period instead of a talk due to lack of time.

Though he admits to being a segregationist, Clark says he is not a racist. He defined a racist as someone who hates other races. He said that he does not.

Members of CORE, joined by other students picketed the auditorium.

WORLD BRIEFS

Decline Hits Stock Market

By United Press International

NEW YORK — A sharp decline on the New York Stock Exchange was touched off when Morgan Guaranty Trust Company of New York yesterday increased its minimum interest rate on prime loans from 5 per cent to 5.5 per cent. Irving Trust and Bankers Trust in New York and Mellon National Bank of Pittsburgh quickly raised their minimum interest rate to 5.5 per cent also.

AMSTERDAM — Police battled with about 2,000 demonstrators who tried to disrupt the wedding of the Dutch Crown Princess and German Army veteran Claus Von Amsberg here yesterday. Smoke bombs were thrown into the crowd by police.

VIET NAM — Regular troops of the North Vietnamese army yesterday seized a U. S. Special Forces Camp after a two day battle. Only five Americans and 21 Vietnamese are known to have survived.

WASHINGTON — Congress yesterday gave final approval to a bill supplying about \$5 billion for the Viet Nam War.

Greeks Challenged

Panel Discusses Pros, Cons of Sorority Life

By JOAN WINTER

Greek life was challenged by a panel of University administrators last week at a Pi Beta Phi sorority-sponsored meeting which frustrated and stimulated more than 250 attending Greek women into analyzing their sorority, its purpose and function.

The board's observations provoked considerable discussion and audience reaction in the two-hour evaluation.

Dr. George F. Hamm, dean of men; Dr. Nicholas A. Salerno, assistant professor of English; Robert Chamberlain, adviser to the dean of students; Mrs. Jo F. Dorris, associate dean of students, and moderator Dean Nancy K. Hoover, Panhellenic adviser, discussed Greek life and possible solutions to problems in the Greek system.

Impressions of ASU's sorority system, Greek scholarship womanliness and its achievement were the topics of discussion.

Each panel member gave an initial statement of his impression of sororities, their problems and possible solutions.

Salerno, admitting that he was "anti-Greek," reduced the sorority woman to a well-dressed girl with a high grade index but no indication of intelligence or earned knowledge.

Racial Bigotry

"A sorority contains a bunch of racial bigots with no idea of scholarship," Salerno said.

"The organization discriminates against race and color, only selecting the girl who can benefit the group. A person's individual qualities are not taken into account."

Salerno also said that in spite of its problems a sorority has unlimited potential. He feels it offers a valuable type of training program that is not available anywhere else.

In order to raise the level of ASU's sorority system Salerno suggested that Homecoming King and Queen elections be abolished.

"Whenever I think of a queen I think of a banana peel. Just ask yourself what animal eats bananas and then you will know on what plane these elections are."

Eliminate Greek Week

A second suggestion for a better Greek system would be the elimination of Greek Week which, in Salerno's opinion, is analogous to "National Pickle Week."

Chamberlain reported on five major flaws in the sorority system as voiced in a poll of fraternity men and independent women.

The main problems include:
 —Consideration of nationality and race in group selection.
 —Dominant alumni control.
 —Subordination of members.
 —Emotional and social immaturity.
 —Conformity.

Primarily Sophomoric

An objective evaluation of these criticisms, Chamberlain said, would help sororities realize their potential. He feels ASU's sororities are not fulfilling their function. Upperclassmen are, in his words, "... lacking in our Greek system; our approach is primarily sophomoric and social."

He further commented that this panel discussion was a sign of improvement within the sororities. "Greeks are looking within themselves to discover their goals and directions. This is a first at ASU."

He feels that if this self inspection of values continues, Greek standards will be raised.

Dean Hamm felt Greek groups should evaluate themselves in terms of improvement — not by past honors and achievements.

He proposed a four-point system aimed to improve ASU sororities. They would include:

- Sorority houses.
- Established sense of priorities.
- High scholarship.
- The realization of what a sister really is.

An objective critic committee would be helpful in projecting the sorority's direction. One main problem, he said, is the lack of communication between faculty and Greek groups. To correct this he suggested closer interaction with faculty advisers and sororities.

Emphasize Culture

Hamm feels that the Greeks should emphasize cultural programs, receptions for visiting dignitaries, scholarships and moral standards rather than tri-cycle races and derby chases.

"Why does a sorority exist and couldn't their function be filled by another organization?" asked Dean Dorris, the only woman panelist.

She defined the national sorority constitutions and their purpose. "A sorority woman is refined, is a leader without being authoritarian, is cooperative, and is devoted to high moral standards."

Junior Judy Lay, coordinator of the panel, stated "criticisms were made only to get each girl to seriously look at her sorority, its directions and goals."

THE VALLEY TRAVEL MART

Your ONE-STOP Service For —

- Airlines
- Steamship
- Cruises
- Tours
- Hotels
- Surface Transportation

CALL NOW FOR YOUR EASTER RESERVATIONS!

967-3366 ● 707 S. Forest Ave., Tempe
 In the Oxford Square Shops

THIS WEEK'S



Bob Knight—Theta Delta Chi

SPECIAL

1 — 8 x 10 Black & White Portrait
 18 — Wallet Sized Prints Portraits

1188

Everything Included
 Offer Expires March 22, 1966

"Portraits of Excellence" by

STUDIO "M"

Located in the

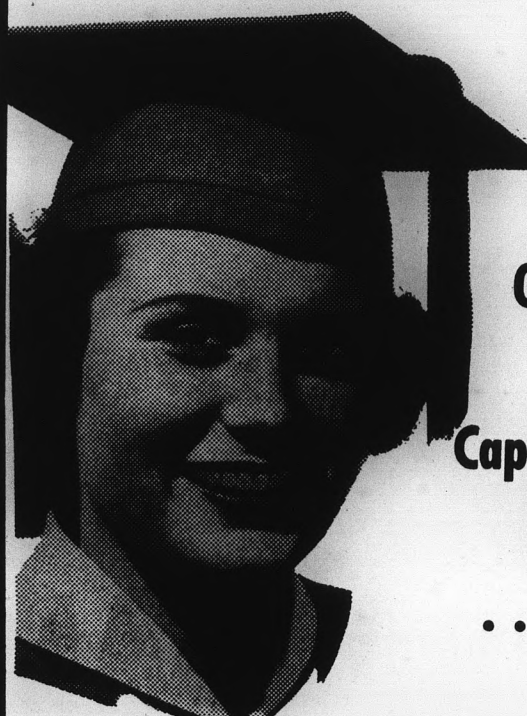
PIONEER

Camera Shop

Phone 967-4662

TEMPE SHOPPING CENTER

SENIORS...



It's Time To ORDER Your Cap & Gown Ring ... NOW

At The

UNIVERSITY BOOKSTORE

Open Mon. — Thurs. 8-7 Fri. 8-4:30 Sat. 9-1

GENTLEMEN:

Interested in a sales career? Full or part-time, make out your own working schedule. No limit to earnings. Training provided, with large national life company — in business since 1886.

Call 264-9183 for interview or stop by 301 W. Indian School Road, Suite 118 and ask for Mr. Andy Eaton.

SIX SWEDES TO TALK —

Swedish Socialism, Education, Trade, Topics of 'Sweden Day'

Swedish guest lecturers, headed by Consul General Per Anger from San Francisco, will give addresses about Swedish foreign policy, the Swedish Welfare State, Swedish trade, education, research and films at Sweden Day beginning 9:40 a.m. Tuesday in Cosner Auditorium. A film "The Riddle of Sweden," will be shown at the Engineering Center at 7:30 p.m. Monday preceding Tuesday's program.

Music Ensemble, Trio di Trieste, To Play Monday

Internationally-known chamber music ensemble Trio di Trieste will perform Monday night at 8:15 in the MU ballroom.

The program, which is the final program in the Chamber Music Series, will include Mozart's "Trio in B-flat major," Ravel's "Sonata for Violin and Cello," and Brahms' "Trio in C minor, Op. 101."

Members of the trio include Dario de Rosa, pianist, Renato Zanetovich, violinist, and cellist Amadeo Baldovino.

Those students holding season tickets for the chamber music series will be admitted to the concert. Other tickets may be obtained at the Gammage box office. Price for the tickets is \$1.50.

Placement Interviews

Placement interviews scheduled on campus next week are as follows:

COMMERCIAL PLACEMENT
MONDAY — Douglas United Nuclear, Inc.; Kaiser Steel Corp.; California Packing; Chevron Chemical Co.; Internal Revenue Service; General Electric Computer Equipment Department.
TUESDAY — California Packing; The Fluor Corp.; AMECO; Peter Kiewit Sons' Co.; Marion Laboratories, Inc.; Federal Power Commission; Southern California Gas; General Foods Corp.
WEDNESDAY — Chicago Bridge & Iron Co.; Humble Oil & Refining Co.; Edgerton, Germeshausen & Grier, Inc.; Lincoln National Life Insurance Co.; Montgomery Ward & Co.; R. T. French Co.
THURSDAY — Hallmark Cards, Inc.; Pacific Missile Range Naval Missile Center; Peat, Marwick & Mitchell; First Western Bank.
FRIDAY — First Western Bank; Kaiser Steel Corp.; Woolworth Co.; Good-year Aerospace Corp.; Tektronix, Inc.; U. S. Forest Service.
EDUCATIONAL PLACEMENT
MONDAY — Fountain Valley School District, Huntington Beach, Calif.; Holbrook Public Schools; Nordhoff Union High School, Ojai, Calif.
TUESDAY — Milpitas (Calif.) Elementary School District; Monrovia (Calif.) Unified School District; Orange (Calif.) Unified School District; Buckeye High School.
WEDNESDAY — Alhambra (Calif.) City Schools; Inglewood (Calif.) Unified School District; Riverside (Calif.) Unified School District; University of California at Los Angeles.
THURSDAY — Phoenix Union High School District.
FRIDAY — Garvey School District, South San Gabriel, Calif.; Simi (Calif.) Valley Unified School District.

FLY Falconaire

- INSTRUCTION
- CHARTER
- RENTAL

Good Deal on "Block Rates"

West Hangar
 Falcon Field, Mesa
 Phone 969-1712

Sweden Day will begin with a discussion by Consul General Anger on "Basic Foreign Policy Objectives of Sweden."

Speakers in addition to Anger, will be Dr. Torsten Husen, professor of educational psychology and director, Institute of Educational Research, University of Stockholm; Dr. Gunnar Johansson, professor of psychology, University of Uppsala; Dr. Bo Sodersten, lecturer, department of economics, University of California, Berkeley; Consul Lars Schonander, Consul of Sweden at San Francisco; Dr. Torsten Henriksson, information officer at the Swedish Consulate General in San Francisco.

At 10:30 a.m. Dr. Husen will speak on "Educational Research and Educational Change in Sweden" in Ed 424 before a faculty group, and at 1:40 p.m., he will repeat the address in Cosner Auditorium before both faculty and students.

"Research on Event Perception" will be the topic of Dr. Johansson at 10:40 a.m. in the seminar room of the Business Administration building where Dr. Sodersten will discuss "The Political Economy of the Swedish Welfare State" at 2 p.m.

At noon in MU 7, Dr. Henriksson will speak on "Sweden in Film History," and at 2:30 p.m. in the MU upper lounge, a panel of the visiting lecturers will discuss "The Swedish Welfare State: Progress and Problems."

Swedish displays, including Swedish glass and ceramics, tourist, theatre and art posters and a screen exhibit about the raising of the 17th Century warship "Wasa" in Stockholm, will be on display at the MU, starting Saturday (March 12), where Swedish films will also be shown.



Per Anger

DO YOU WORK FOR A SLAVEDRIVER?

See if you can talk him into driving by

BIGBURGER

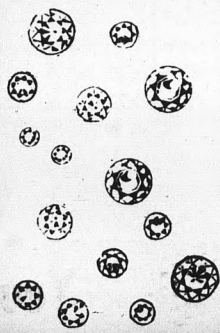
For the FINEST HAMBURGER served anywhere!

1737 S. Mill

1324 N. Scottsdale Rd.

Tempe • 966-1661

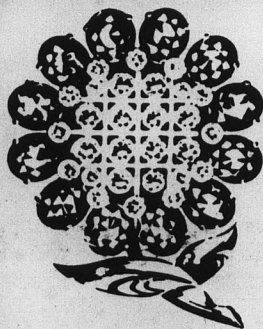
— Scottsdale • 945-7341



FOR DIAMONDS!

LET US TEACH YOU HOW TO GRADE DIAMONDS

MEMBER AGS
Paul Johnson
 JEWELERS
 130 E. UNIVERSITY DRIVE • TEMPE. (Also Phoenix)



FOR JEWELRY!

250 PAIR OF PIERCED EARRINGS

Turbine Car in Infant Stage Says Car's Chief Designer

By JIM McGOVERN

Chrysler Corporation's turbine car is still in its infant stage, according to George J. Huebner Jr., chief designer of the car.

Huebner, who is director of research for Chrysler Corp., gave an hour-long talk on the car on campus Wednesday night. A half-hour question and answer period followed.

THE DISCUSSION and a film were sponsored by the student section of American Society of Mechanical Engineers (ASME).

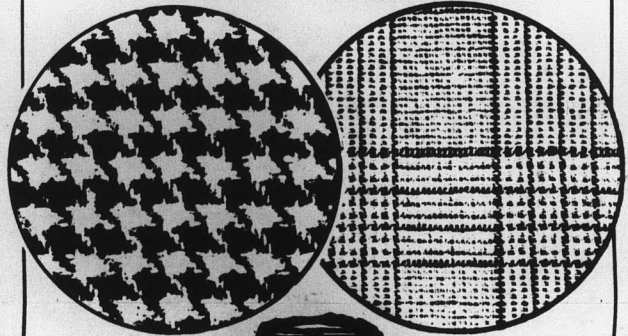
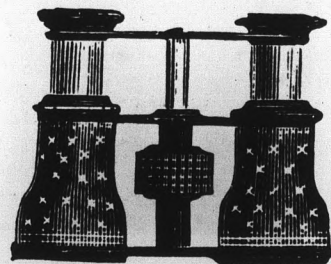
Huebner is touring college campuses to find public reaction to the car. Two of the cars are

displayed at each campus.

"ANYONE WHO drives it, likes it," he said. Everywhere he and his companions travel the car draws onlookers, he added.

The cars were burning kerosene during their stay here, but the researchers plan to use whatever fuel is "closest to their motel" during their coast to coast trip, Stecher said.

At the conclusion of the corporation's tours the two turbine cars which were here will be scrapped, Huebner said, because of a three-year customs law requiring extra duty to be paid on the handmade Italian car bodies.



SHARP FOCUS

To even the untutored eye, 'tis clear the major sports jackets of the season are bright of colour, clear of plaided or chequed pattern. For a view of greater sharpness, the Proprietary recommends a visit.

The Oxford Shop



OUTFITTERS FOR GENTLEMEN

CORNER OF SEVENTH & FOREST

PRESSMAN AND FLASH

The Caped Crusader Applies the Decision Matrix To Page 83 of the University Catalog

PRESSCAVE, Ariz. — (SPNS) — Pressman and Flash, new-born personifications of State Press, were detained briefly by InSecurity officers last night after they

DO	A	DON'T
Coed Dorm	D	
	M	
Individual	I	University
Responsibility	N	Catalog
	I	
	S	
	T	
Dean of	R	AWS
Students	A	Dean of
	T	Women
National	I	
Constitutional	O	
Prescriptions	N	

were arrested while surveying coeds entering and leaving Pressdorms.

The Dynamic Duo was set free moments after identifying them-

selves to the officers who had not recognized them.

The Caped Crusader and Boy Wonder later revealed their true pressmission. They were preparing to apply the decision matrix Press-trap to University regulations covering coed housing.

After studying the following In-Conclusions, Pressman and Flash gave up the idea, Pressed into their Pressmobile and disappeared into the night:

Under increasing Pressure from coeds, various elements of AWS and AS have for many semesters Flashed the possibility of petitioning someone for permission for all women 21 and over to Presside off campus if they like.

For as many semesters, elements of AWS and AS have told the coeds that they'd really like to do something about the problem, but the only source of the regulation seemed to be page 83 of the University catalog, and no one would tell student government who wrote the catalog.

Official sources didn't Press forward with the identity of the authors.

Meanwhile, a student government committee at the University

of Arizona is all but ready to Present to the authors, the Board of Regents, for their consideration a formal request that the age limit be revised (at the UofA) to 21.

Pressman said the final decision would, of course, rest with the Regents. But he exPRESSED disappointment that the "test case" had not been Pressed by ASU students who, he said, seemed to complain most about the policy.

Next week Pressman and Flash will reveal the identity of their first special guest villain . . .

Will it be Dr. Nicholas Salerno, assistant professor of English?

Will it be Dr. John P. White, professor of political science and Christmastime fan of the infamous Batman?

Would you believe the Election Board?

* * *

Read in again next week, same Presstime, same Pressplace, as Pressman and Flash work for the forces of good on the ASU campus.



Prepare for the Flood

There's going to be another flood in April. This one's not going to be a flood of water, though. It's going to be a flood of cars. April is the month when construction of the new, high rising women's dormitory will begin on the northeastern corner of the campus.

The site is precisely where hundreds of cars are parking today. The lot on the corner of University Drive and Van Ness has long been a last resort for students who couldn't find anyplace nearer the campus than Scottsdale . . . and now it's giving way to the bulldozers. Where next?

THERE ARE still lots that normally have vacancies behind Palo Verde East and around Sun Devil Stadium. Cars displaced from the new dorm site will probably fill these.

Authorities have been making Promethian efforts over the last year to clear new lots east of campus, but an active

building program and an increasingly large student body are outdating their efforts before completion. At the present rate it is not difficult to see the encroachment of the University on land bordering Rural Road.

AS THE problem of space grows increasingly pressing, we hail Chief of Campus Security Duffy when he urges students to accept long car-to-campus walks as a necessity.

Full utilization of present space is a necessity. ASU, however, is coming very close to that full utilization, particularly with the loss of the huge lot representing the new dorm site. The problem has the potential of growing from merely irritating to serious.

We realize that parking is continually being worked on, but it seems that if the problem is to be solved, more resources must be employed in its solution.

Open Letter To SDS

To all SDS members and interested students and faculty:

We are writing this letter to clarify a few of the misconceptions left by the recent article in the State Press concerning our challenge to debate the Students for a Democratic Society. Let it be known by all who read this letter that we, David Stamat and Larry Stephan, speaking individually and not in the name of the ASU Debate Team, do hereby officially challenge any undergraduate member or supporter of the SDS or any other group advocating U. S. withdrawal from Viet Nam to an ASASU Executive Council sponsored debate.

We charge that those arguments presented by the Students for a Democratic Society and its supporters are both inaccurate and misleading to the student body of Arizona State University. We urge all students and faculty members of our school to encourage and support this debate and to attend it, if scheduled, in Grady Gammage auditorium.

WE FIRMLY believe that U.S. participation in the Viet Nameese war is both necessary and beneficial to this country. We say this not out of sheer emotion, but based upon an examination of the facts. The arguments for U.S. withdrawal put forth at SDS tables around this campus, whether they be the opinion of the individual reciting or the policy of the organization, have been grossly exaggerated and distorted.

The debate we are demanding would answer SDS's request for an opportunity to deliver its philosophy and would, at the same time, give the student body an opportunity to examine the issues in light of pure fact instead of personal opinion.

We stand firm in our belief that this debate is a giant step in the logical examination of this issue. We are, as we have already stated, formally challenging SDS at this time, and we will expect a reply in the State Press within seven days.

THERE ARE, no doubt, many students on this campus who would like to stand up for our government in this type of discussion. Many have already volunteered to do so, but we believe that once the true facts and full definition of all terms are brought before our fellow students, the need for defending either our country or our university administration will cease to exist. In the meantime, we respectfully request the boycott of SDS tables and "discussion" booths by all ASU students and faculty members.

**DAVID M. STAMAT
LARRY STEPHAN
Members ASU Debate Team**

Letters to the Editor

Long-Time Lean Toward UofA

EDITOR: Brian Tracy's column was well written and completely justified. It's certainly true that Jerry Eaton's comments were biased, non-objective and uninformed.

A year ago, after ASU's first loss to the UofA in 8 years, Eaton condemned Wulk's talent in a similar fashion. These columns, like bomb shells to ASU followers, merely followed a pattern set over 20 years ago.

It's been our observation that since WW II days, 3 different Republic Sports Editors have consistently written anti-ASU, pro-UofA columns. This is too long and too consistent to be a coincidence.

The Republic is the state's "leading" paper with the Tucson Daily Star the only other contender. With a large body of UofA fans in the valley it appears the Republic's sports policy is oriented for these readers who might otherwise go for

the Abe Chanin-dominated Star.

Undoubtedly many ulcerated ASU readers also take the Gazette just to get partial relief with "Dr. Allison's" evening medication. This, too is fine for R & G circulation.

The situation isn't apt to change until more of the local

dailies can provide national news in an AM edition. Meanwhile we continue to bleed over our morning coffee.

HAL HUBELE

P.S. Sure its all theory. . . but no other explanation makes much sense either.



THE STATE PRESS is the official campus newspaper of Arizona State University. It is published Tuesday through Friday throughout the school year. It is entered as second class, postage paid at Tempe, Arizona, 85281.



THE STATE PRESS is a member of the Arizona Newspapers Association, Associated Collegiate Press and National Advertising Service, Inc. Subscription price is \$5 per school year.

Editor-in-chief	MARTHA THAYER
Managing editor	John E. Polich
Night Managing editor	Jerry Hofferber
Campus editor	Paul Schaff
Assistant	Maret Viksjo
Assistant News editors	Toni Altmore, Valerie Jones
Copy editors	Diana Rosen, Kenny Neundorf
Sports editor	Brian Tracy
Assistant	Bill Thomas
Weekend Editor	Bruce M. Spence
Assistant	Bob Golden
Chief Photographer	Chuck Fridenmaker
Chief Proofreader	Bob Johnson

Peace Corps Volunteers Learn Much While Teaching South American Illiterates

By PAM STRANEY

Returned Peace Corps Volunteers Ynez Aguilar and Richard Hannigan found that "those ignorant people" could teach them.

Aguilar, 23, junior technology major, spent two years in Brazil working first as a mechanic and then a surveyor with a jelly factory co-operative. Hannigan, 28, also a junior technology major, spent his two years in the Colombian Andes in co-operation with a federation of coffee growers.

FORMER PEACE Corps Volunteers manned booths this week to publicize the corps and placement tests. There are about 15 former volunteers attending classes on campus and about 30 in the valley.

Hannigan recalled the time his roommate arranged for one of the workers who had lost the lower part of his leg to get an artificial leg at no cost. But the man couldn't wear the leg when he worked, so he said he didn't want it if it was just going to be a "cosmetic."

"We had been planning the gift without consulting the man and we were stunned."

"That man taught me a great deal about humility," Hannigan said.

ONLY TWO boys in Aguilar's surveying group could write, but they had no trouble setting up his surveying equipment and using it. When payday comes workers sign receipts with a thumbprint.

Exasperation was a feeling common to both Aguilar and Hannigan. "Every other day's a saint's day and nobody works on Saint's days," said Aguilar. He said it's a major breakthrough when people do show up to work on the specified work days.

Once Hannigan and his group filled a town's reservoir with fish. The next day the mayor of the town had the reservoir emptied because he thought it was too muddy.

HANNIGAN felt like an outsider most of the time. When President Kennedy died, however, the people lined up to express their grief. They thought he was Kennedy's personal representative and were afraid the

Peace Corps would be withdrawn.

Finally he had to leave town to escape the crowds. "It was

like a funeral procession," he said.

Both Aguilar and Hannigan contracted parasites. Aguilar

sent a stool specimen to his doctor, but didn't suspect anything until he got a letter from the doctor a month later.

HANNIGAN said that a South American might get a parasite if he came here since change in diet, not the quality of food, causes parasites.

Transportation is poor in Brazil, Aguilar said. It took him five days to travel by train a distance equal to from Phoenix to Albuquerque.

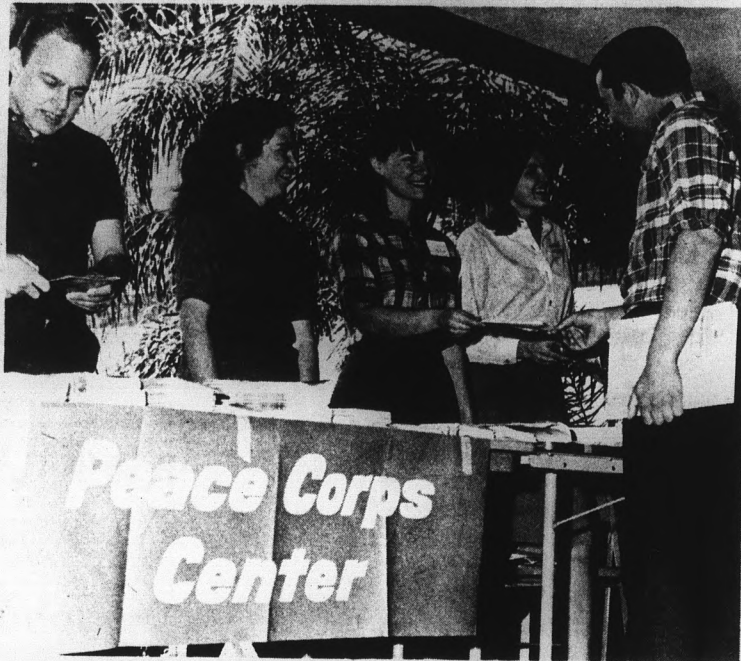
The trains, mostly old, frequently went off the track. "The crew was quite good at getting them back on the tracks," he said.

Reservations Due For Festival Tour of Europe

The "Humanities in European Civilization" tour of European music festivals will visit a total of nine countries from July 17 to Aug. 28.

Conducted by Prof. Robert Lamm, professor of music and chairman of the humanities committee, the course will offer students six semester hours of credit in either graduate or undergraduate levels. Registration, however, is not limited to students. Tour reservations will be accepted until April 15.

Additional tour information is available from Dr. Lamm or the summer sessions division.



RECRUITING — Returned Peace Corps volunteers Pat Smith and Lida Fester and advanced trainee Cathryn Goddard discuss the opportunities in the Peace Corps with prospective volunteers.

KORET
OF
CALIFORNIA

CELIA'S fashions
TEMPE CENTER

TEMPE CENTER
OPEN THURSDAY TILL 9 P.M.

Pi Phis Elect New Officers

Joan Winter was elected president of Pi Beta Phi sorority recently.

Other new officers are Judy Lay, vice president; Ellen Arnold, recording secretary; Karen Keesling, treasurer, Bunny Olmsted, scholarship chairman; Cindy Jones, pledge trainer, and Becky Akin, song leader.

Pi Phis also initiated 24 new members. They are Pam Ake, Joan Bauer, Marcia Boone, Arlinda Brown, Suzanne Butterfield, Janet Clarke, Sandy Creighton, Sandy Farnum, Carol Gay, Sally Grayson and Janet Jeewek.

Also Christine Kajikawa, Judy Lay, Paula McNeill, Carol Maedor, Peggy Phillips, Jill Putnam, Lynne Reese, Susan Roehl, Susie Sekulich, Pat Shannon, Lucki Smith, Ellen Toeniskeeter and Judy Waid.

PRECIOUS

Revlon

'INTIMATE' IN A SPRAY MIST!

If beauty is her way of life, this is the gift to delight her completely! Revlon's cherished 'Intimate' Spray Mist to spray on from this elegantly fluted Crystalline Decanter. It has the look of prized heirloom crystal. Beautifully gift-wrapped, 3.00.

University Drive
campus drug
YOUR Drugstore on Campus
& College Ave.

Tennis Team Welcomes New Mexico State Today

The Sun Devil tennis team will start a new season today when they host New Mexico State in a dual match at 2 p.m. on the A-State courts.

Five lettermen will be returning from last year's squad which posted a 21-2 dual match record, the best in ASU's history.

The lettermen are Dave Far-

mer, Briggs Bosworth, Lee Sullivan (captain), Ray Young and Paul Pederson.

Newcomers are Larry Stanley, transfer from Phoenix College, and Roger Wright, transfer from Santa Monica Junior College in California.

The two teams will meet again Saturday at 9 a.m. on the Sun Devil courts.



The ENGAGE-ABLES go for **Keepsake®**

And, for good reasons... like smart styling to enhance the center diamond... guaranteed perfect (or replacement assured)... a brilliant gem of fine color and precise modern cut. The name, Keepsake, in your ring assures lifetime satisfaction. Select your very personal Keepsake at your Keepsake Jeweler's store. Find him in the yellow pages under "Jewelers."



PRICES FROM \$100. TO \$5000. RINGS ENLARGED TO SHOW BEAUTY OF DETAIL. © TRADE-MARK REG. A. N. POND COMPANY, INC., ESTABLISHED 1892

HOW TO PLAN YOUR ENGAGEMENT AND WEDDING

Please send new 20-page booklet, "How To Plan Your Engagement and Wedding" and new 12-page full color folder, both for only 25c. Also, send special offer of beautiful 44-page Bride's Book.

Name _____
 Address _____
 City _____ State _____ Zip _____

KEEPSAKE DIAMOND RINGS, BOX 90, SYRACUSE, NEW YORK

Your **KEEPSAKE** Jeweler In Mesa

George Dickson

JEWELER

"THE WATCH SPECIALIST"

Phone 964-5822

3 Doors East of Valley Bank

54 West Main

Mesa

Pentland Gets Mound Chore

Sophomore Jeff Pentland will go to the mound at Sun Devil diamond this afternoon as the Devil baseballers open a three-game stand with Cal State of Long Beach at 3 p.m.

Pentland, a southpaw, was effective in relief against Cal State of Los Angeles last weekend, allowing only three hits in four innings while striking out six and walking none. His ERA is 3.38.

The Devils' hitting attack, termed "anemic" by Coach Bobby Winkles, finally came around against LA State last Saturday when the horsehiders laced 13 hits including five for extra bases.

Shortstop Jim Armstrong is pacing the statistics, hitting at a .412 clip. Third baseman Jack Lind and outfielder Glen Smith follow with .286 each.

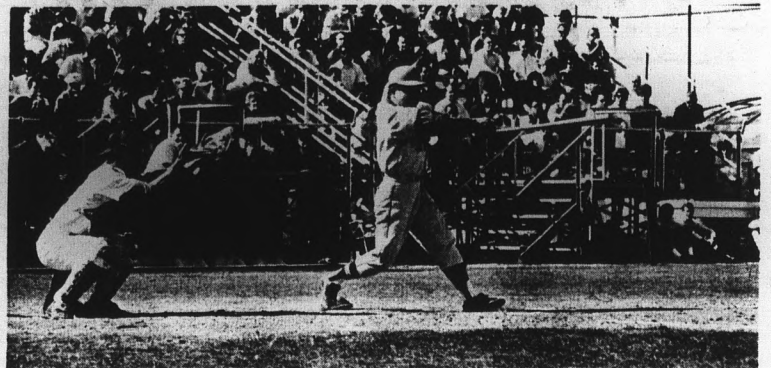
The Devils and the 49ers will team up again tomorrow for a double header with the first game scheduled for 1 p.m.

Today's starting line up is as follows:

Jack Lind.....3b
 Duffy Dyer.....c
 Glen Smith.....rf

Ralph Carpenter.....lf
 Reggie Jackson.....cf
 Jan Kleinman.....1b

Jim Armstrong.....ss
 Jack Smitheran.....2b
 Jeff Pentland.....p



ST-E-E-E-RIKE THREE — Catcher Duffy Dyer gloves the third strike as an opponent swings and misses in a recent game. The horsehiders return to action this afternoon at 3 against Cal State Long Beach.

THE UNIVERSITY TRUST

DESIGNED EXCLUSIVELY FOR AND OFFERED ONLY TO COLLEGE MEN — Premiums DEFERRED

● John J. Brooking

● Jim Sarti

967-8843

GIRARD LIFE
 INSURANCE COMPANY OF AMERICA

P. O. Box 5297 • Exchange Park • Dallas, Texas 75222
 Operating in 42 States, District of Columbia, Puerto Rico and Western Europe

statepress

Classified

For classified advertising submit ad in person to the State Press, MU 3, between 8:30 a.m. and 4 p.m., or call 966-3657. Rate: 5c per word, 75c minimum per issue.

● FOR SALE

1963 Triumph Tiger Cub, 5,000 miles, good condition will take reasonable offer. Call 959-1281.

1958 Mercedes-Benz, 190-SL soft top roadster, good shape. Price \$1900, Phone: 279-4873.

PORSCHE Speedsters, '54 Nationally acclaimed concours winner, '56 excellent condition. Fresh 100 h.p. plus engine. Serious inquiries call 946-6408.

1958 MGA. Recent engine work, new clutch, good tires. Clean, must sell, fast. Phone 955-4194.

64 Corvette Convertible, 4 speed, 300 horsepower, positraction, radio, excellent condition, make offer, 966-4506.

SALE: Nationally advertised brands of dresses, sportswear, bathing suits, after-five dresses... At below wholesale prices. New large supply of spring stock — especially in sizes 7-9. Jennies' Sample Fashions, 1024 McClintock Dr. (Hayden Rd.) North of Apache Blvd., Tempe.

A.K.C. REGISTERED BASSIT hound — male. One year old. Phone: 275-8065 after 5 or Saturday.

WEDDING GOWN, size 10, silk linen. Contact Mrs. Kurtzhaltz, 2216 6W. Cherry Lane, Tempe.

1958 BUICK CENTURY, 4 dr. htdp. Full power. Factory air and new paint, brake drums and lining. Automatic transmission. In excellent condition. \$595. Call 944-6100 — will demonstrate.

1960 PONTIAC convertible. 50,000 miles and new tires. Very good condition, \$600. Phone: 945-7883.

1965 HONDA C110. Only 1700 miles. In good condition. Must sell immediately. Phone John at 966-2717 or 967-9142.

SHARP 1964 YAMAHA, 250 cc, 5 speed. 7475 or 967-3005.

● LOST

LOST — Woman's white gold watch. REWARD. Call 966-2782.

TRI DELTA RING — Gold and black with sorority crest. Lost on campus. Call 966-4428.

LOST: Chi Omega active's pin. Reward. Call 966-2821.

● TYPING

SENIORS! SECURE YOUR FUTURE. Professional job resume. Phone: 265-3630.

● INSTRUCTION

INDIVIDUAL tutoring in math, chemistry, physics and biological sciences. Phone 967-7924.

● HELP WANTED

WORKERS ARE NEEDED in the MU Cafeteria, to work two hours per day, five days a week. For this you will receive your meals Monday thru Friday. You may work for cash if you are free from 8:30 to 10:30 a.m. Monday-Friday. Contact the Student Manager between 4:30 and 6:30 p.m. in the MU Cafeteria.

Part time work at Camelback Inn, waiters and waitresses, Weekdays to suit your schedule, breakfast, lunch, or dinner, Sat. or Sun., also good salary and tips, call 945-8441.

● WANTED

RIDE NEEDED from ASU to northeast Phoenix, MWF at 2:30. Call AM 5-1926.

Typing — Have had experience in all fields. Phone: 966-6429.

SEWING AND ALTERING. Mrs. James Koffen, 1311 West 10th Place. Phone: 967-6173.

● RENT - Furnished

Nice one bedroom, large, quiet, private apartment. Heated pool, carport, \$80. 325 Hardy Dr. Tempe. Phone: 967-6317.

● RENT

JIM'S Union Service, 422 Apache Blvd., rents 50 cc Hondas, \$1.50 per hour.

● PERSONAL

PERSONAL: MEN OF THE AMERICA INSTITUTE OF FOREIGN TRADE, Phoenix's international executive training school, cordially invites ASU upper class students to a party given by the "Out Crowd" TONIGHT (Friday) at Mountain Shadows (5461 Lincoln Dr., Scottsdale). This gathering is a continuation of many functions given last year and many more to come this semester. Those interested in a good time and "soul music" featured by "The Terrorors" be on hand at 8:30 p.m. — casually dressed.

FRANKSON
ARTIST & DRAFTING SUPPLIES
 Crafts - Picture Frames
 Decorating Material
 Tempe Center • WO 7-4482
 Open Mon. & Thurs. Nites

Extra Diamond Assurance by Keepsake

ANTICUA \$400
 ALSO \$250 TO 1975 WEDDING RING 42 50

CAPRI \$250
 ALSO TO \$1800

The Keepsake Guarantee provides protection against loss of diamonds for one year, guarantees a perfect center diamond (or replacement assured), lifetime trade-in value and permanent registration.

★ GOOD HOUSEKEEPING GUARANTEE

BUDD'S JEWELERS

708 So. Forest
 Oxford Square — Tempe

New Facilities Point to Dream

By BRIAN TRACY
Sports Editor

The days of Goodwin Stadium are numbered. The glorious scene of the world-record days of Ullis Williams, Henry Carr and the boys will be reduced to rubble after this season to make way for expansions of the business and MU buildings.

But the relocation of the track at a yet unconfirmed site, may be the first step in a massive move by the Athletic Department.

According to Athletic Director Clyde Smith, "It's not definite yet, but the chances are great that the Intercollegiate Athletics department and the entire sports program will be moved from its present home in Sun Devil Gym to new facilities."

THE FEASIBILITY of this major shift, undoubtedly to the area near Sun Devil Stadium, is presently under study by the University.

Smith pointed out that each completion of a new academic structure, such as the library, law school, new dorms, etc., brings the dream of an athletic complex one step closer to reality.

But definitely, the first step into this reality will have to come next year when Baldy Castillo and his thinclads open the 1967 track season.

Original speculations had it that the track would be relocated in Sun Devil Stadium. But this not only would necessitate the removal of the first several rows of seats in the stadium, it was also felt that a top-caliber track could not be constructed under the conditions.

THE TURNS could not be sufficiently banked, ade-

Gymnasts, Grapplers In Finals

Arizona State wrestling and gymnastics coaches will take their teams into competition for Western Athletic Conference championships this weekend with mixed feelings of apprehension and confidence.

"We beat the University of Arizona in a dual meet," Gymnastics Coach Norris Stevenson said. "This should be indicative of our performance in the WAC championships."

However, Stevenson expressed concern over the readiness of some team members down with the flu. Les Christianson, favored to win on the still rings, hasn't been able to practice all week due to illness, the coach said.

Ted Bredehoff, ASU wrestling mentor, said chances for a successful defense of the Devils' conference crown would depend on depth and "a continued maximum performance by our 'big four'."

Wins by Glenn McMinn, Pete and Tony Russo and Curley Culp were cited as musts for a team title.

Bruins Hosted by Thinclads

By BILL THOMAS

Goodwin Stadium will take on some characteristics of the Roman Colosseum tomorrow night, with the Sun Devil track team cast in the role of a Christian.

It's expected to be a thumbs-down night for Coach Baldy Castillo's thinclads as they face powerful UCLA, everybody's favorite to win the NCAA title this year.

The Bruins squad is loaded with veteran performers. Co-captain Bob Day, NCAA record holder in the mile at 3:56.4, posted an excellent early-season 4:02.7 in the Long Beach Relays last week.

ARIZONA STATE'S Louis Scott, with best times of 4:10.2 in the mile and 9:02.7 in the two mile, should provide Day's closest competition in the distance races.

The Uclans also boast the best 1-2-3 javelin combination in the collegiate ranks. Dick Selby, Egil Sundbye and Jack Bonkrude each have a

220-foot toss this season, with Selby's 237-½ being the best. Devil Glenn Winningham has a 222-11 throw to his credit.

The only A-Stater with a better-than-poor chance to win is Jim Cole, whose 192-6½ toss in the discus should be more than UCLA can handle.

BASKETBALLERS Mike Lange and Frank Bailey will be on hand for the first time to strengthen the high jump ranks. Lange leaped 7-feet last year and Bailey has a 6'-6" career best. The Bruins, however, have two men who have cleared 6'-6" this season.

Other Bruins to watch include Bob Frey in the 440 (47.5), Norm Jackson in the 220 (20.8), Roger Johnson in the intermediate hurdles (50.9), Traueott Gloeckler in the shot put (60-1¼), Marc Savage in the pole vault (16-2) and Alan Bergman (23-1½) in the broad jump.

ASU'S PAUL Longstreth (1:53.7) should pick up points in the half-mile but UCLA's Co-captain, Dennis Breckow (1:50.4) is favored.

Utah-Pacific In Title Opener

Western Athletic Conference basketball champs, the Utah Redskins, open their bid for the NCAA title tonight against the University of Pacific at UCLA's Pauley Pavillion in Westwood, Calif.

The Redskins downed the Devils in WAC play both in Tempe and Salt Lake, while the Devils defeated the UofP Tigers 87-75 early in the season.

quate straightaways would require yet further destruction before construction, and field event sites would be more temporary than permanent.

The new track, as tentatively planned, will have 10 lanes, suitable for any triangular or NCAA meet. Field event sites will be in the infield.

Surprisingly, seating accommodations for the public will be better than presently found at Goodwin.

The University recently purchased several "mobile grandstands" with an estimated seating capacity of 7,500.

GOODWIN at present seats approximately 5,500.

The "mobile grandstands" can be put on wheels by a crew of four men and moved to any place on campus.

Pete Null's
TEMPE BODY SHOP
11 E. 4th St. Day Ph. 967-1601 - Nite 967-4067
24 HOUR TOW SERVICE

- Auto Body & Fender Repairing
- Auto Painting
- Wheel Aligning & Balancing

Get In Shape Now!

WE OFFER INDIVIDUAL COURSES
& PERSONAL INSTRUCTION FOR:



- Body Building
- Reducing
- Conditioning
- Sauna
- Steam Bath

Hours: 10 to 10 Daily

Charter Memberships
\$6.00
Per Month

University Health Clubs

IN TEMPE
1018 N. Scottsdale Rd.
Ph. 967-7461

IN PHOENIX
3147 W. Ind. Sch. Rd.
Ph. 266-6798

Tennis Equipment HEADQUARTERS

Wilson Extra
Duty Championship
Tennis Balls
Reg. \$2.50
NOW \$1.98
Can of 3

- WILSON
- DAVIS
- BANCROFT
- SPALDING

TENNIS RACKETS



CUSTOM TENNIS RACKET RE-STRINGING

UNIVERSITY SPORTING GOODS


Open Thurs. Till 9 P.M.
TEMPE CENTER
Phone 966-1633

Kennecott's Corner

How many people depend on you?

If you work in the mines or smelter, some 13½ persons, including yourself, depend on your wages, says the Arizona Department of Mineral Resources. (Kennecott employees support enough people to populate Nogales and Holbrook). All 13½ aren't under one roof (we hope) but the grocer, doctor, shoe store, service station and a string of others eagerly awaiting a chunk of your check, easy to see how important a fair profit for the mines can be. That's the carrot that keeps us going!

We will welcome job inquiries from Senior Engineering Students. For information on rewarding careers in mining, write to us at Hayden, Arizona.



Copper Corporation
Ray Mines Division

An Equal Opportunity Employer

Coed Named Finalist In National Contest



Kathy Allison

Kathy Allison, Phi Sigma Kappa fraternity's "moonlight girl" for 1966, has been selected as one of the eight finalists for the 1966 national Phi Sigma Kappa moonlight girl contest.

Treasurer of Alpha Delta Pi sorority, Miss Allison was chosen from a field of more than 40 candidates by a panel of three judges. They were Frank Gifford, professional football player; Robert C. Heyda, New York advertising executive; and Ann Tumavicus, the 1962 national moonlight girl.

The winner of the national competition will receive a diamond Phi Sigma Kappa pin, an all-expense-paid, one-week trip to Washington, D. C., and a new wardrobe of her choice.

MORE ABOUT — New Organizations

(Continued from page 1)
chiefly in its statement that, at times, civil disobedience, was justifiable.

WHEN DOUG Cory, president of the Committee To End the War in Viet Nam, openly states that, "a majority of the group's members are in SDS," it becomes clear that SDS realizes it was not discriminated against because of its views but because of the obvious possibility of its disregard of any University control.

A POINT brought up in the board's discussion of The Committee To End the War in Viet Nam was that by allowing one group with a transient and narrow interest to come on campus, a precedent would be made and a multitude of tiny "fly-by-night" groups could form for each public issue.

In the discussion about the American Civil Liberties Union, the Board noted that in national by-laws, membership was open to everyone but those with "radical, left-wing, Communist, or Nazi leanings."

The group further claims to have no SDS members. According to its president, Robert W. Fernie, the interest of ACLU in SDS is as a "purely academic problem involving the freedoms and rights of ASU students." The campus chapter hopes not to become involved in legal or lobbying activities, but to keep its activities limited to those of education.

ALL GROUPS have been holding meetings off-campus since November or December. Yet, none have requested on-campus status until very recently. Their timing correlates perfectly

with the upcoming AS elections.

The Committee To End the War in Viet Nam application was passed quickly by both the board and the Executive Council.

But members of CORE (which applied a week later) have held that a "slow-down" has been put into effect by the student government groups. Although CORE was approved by the board last week, its request and constitution were not brought up at the Executive Council meeting (the next stop in the process) with those of other clubs approved by the board at the same time.

The issue at stake in all of the controversy has been where to draw the line on control of student activity.

What A Selection of Shorts and Surfers . . .

HARRIS — LEVI — JANTZEN — DICKIE

Sta-Prest

Tailored and Tapered

SOLIDS • PLAIDS • PRINTS

5.00 — 5.95



SPORTSWEAR FOR SPORTSMEN
Jantzen

HOURS:
OPEN 9 A.M. to 6 P.M.
THURSDAY NIGHT
'TIL 9 P.M.

THE
Americana
SHOP
QUALITY MEN'S APPAREL

GO
DEVIL MATMEN
Win the WAC
Again!

state
press

FRIDAY,
March 11, 1966

Weekend



Dedication

The Tenth Annual Memorial Union Birthday Celebration is dedicated to the ideal of peace and understanding of students and peoples of the world. "Festivals of the World," planned by students of Arizona State University from the United States and other countries, is presented with the hope that some new understanding may be achieved through the mutual-sharing of ideas and traditions.

Photo by Chuck Fridenmaker

LIBERTY CAKE — Symbolizing the MU Birthday's dedication to peace and understanding is this three-foot model of the Statue of Liberty. The cake, largest ever for an MU birthday party, will serve 2,000. (See Page 8-B for MU Birthday Time-table)

Blue Key Carnival Profits Result in Four Scholarships

Blue Key Carnival, traditionally held with the MU Birthday Party, will be tomorrow night from 7 until midnight on College Avenue west of the MU.

Booth themes cover everything from Sigma Chi's car smash to Delta Chi's "Guillotine and Bastille Day." Alpha Rho Chi fraternity will run a Paris paint shop and La Liga Panamericana a miniature Chilean market.

Other entries include Kappa Sigma and Gamma Phi Beta, an egg drop; Alpha Tau Om-

ega, a pie throw, and Alpha Epsilon Pi and Alpha Phi, a dunking booth.

Trophies for best men's booth, best women's booth, best mixed booth, most lucrative and sweepstakes will be presented at 11 p.m. Judging is on the basis of originality, theme and most lucrative.

All profits from the carnival go to the Dr. B. Ira Judd Scholarship Fund. Blue Key awards four \$100 scholarships from this fund each semester.

Hopeful MU Expansion Will Bring 'Togetherness'

According to Bob Schaefer, MU board chairman, a \$2½ million expansion of the Memorial Union is currently under consideration.

If these plans are adopted, the Union will be able to accommodate more stu-

dents then at present and offers more services than the MU presently has. This, according to Schaefer, is very important for the students, and hopefully will bring them together.

The expansion would include enlarging lounges, making dining areas larger and more attractive, making a large open court with trees and chairs and a bigger conference room. These are just a few of the things that will be included.

Fun, Food, Excitement . . . Offered at MU Birthday Party

MARGARET VAN ALLSBURG

should be no exception.

A birthday party usually means fun, food and excitement. This year's MU birthday party, tomorrow from 7 p.m. to midnight,

Representatives of six countries will serve food. Students representing China will serve a dinner for \$1.25 consisting of chicken

chow mein, rice, sweet and sour pork, relishes, Chinese salad, tea and milk.

A Parisian night club will serve grape juice in wine bottles and popcorn. Cost will be 10 cents a glass with the popcorn free.

Germany's drink, called the "secret beverage," will be drawn from a large keg by the chief burgermeister. Pretzels will be served with the mystery drink. Cost will be 10 cents a glass with the pretzels free.

A Dutch restaurant will serve coffee and two types of sandwiches. One sandwich will be made of pumpernickel and Dutch cheese and the other will be made of pumpernickel and liverwort. Coffee and two sandwiches will cost 25 cents.

Representatives of Sweden will serve cocoa, a Swedish bun and a Swedish cookie for a quarter.

JAPANESE tea and four types of rice crackers will be served at no cost by the delegates of Japan.

The MU birthday cake will be cut in the International Room at 9:30. The cake, in the shape of the Statue of Liberty, will be larger than ever before and will be able to serve 2,000 guests.



Photo by Joe Bolender

CHINESE HOSTESSES — These girls will serve as hostesses tomorrow night in the Pagoda Room as they help recreate the Chinese New Year. In front are Jo Ong (left) and Helen Lee. In back are (from left) Judy Chow, Nancy Lee and Elaine Ong.

IF you can DRIVE... you can FLY an AIRPLANE!



MERCURY AVIATION
SKY HARBOR AIRPORT
Phone 275-7586

something's happening

EUTHANASIA

COFFEE HOUSE
FRI.-SAT. 50c 8 P.M.
401 MILL AVE., TEMPE

VILLAGE INN
PIZZA PARLOR
61 W. Thomas

Presents . . .

"The Brandy Wine Trio"
★ Bob Diaz ★ Mike Thiele ★
★ Bill Morrison

Fri. - Sat. 8 P.M. - 12 P.M.

"THE VILLAGERS"
On Every Sunday - 6:30 - 10:30
Phone 264-5511

DELTA GAMMA
PRESENTS

RAMSEY LEWIS TRIO

for the
Foundation For The Blind

WEDNESDAY, MAR. 23
A.S.U. Gymnasium
8:15 P.M.

\$1.50 — \$2.50 — \$3.50

Non-Refundable

WAY OUT!

Reading Out Of This World

- Bradbury
- HEINLEIN
- E. E. Smith
- Norton
- Tolkein
- Burroughs

HILLS Books & Records
OPEN MON. & THURS. NITE TILL 9 P.M.

Tempe Center Phone 967-5243

STUDENTS EUROPE
TWA CUNARD

See Europe this summer with a small group of students your own age. 32 different American Youth Abroad trips to choose from — 35 to 69 days — 9 to 17 countries. Complete land prices from \$338.

WRITE OR CALL

UNIVERSAL TRAVEL
Call 967-1673
18 E. 5th St. • Tempe

JOE BLAN - COURT
JUSTE CLARK
MARLYN MENDELSON
"CENTRAL SOME"
BY MICHAEL P. . .

ALL AT THE
INNER EAR FRI 8:30 TO 1:00
111 S. MAINS. TEMPE
25¢ DONATION

MU to Celebrate Tenth Birthday With 'Peace and Understanding'

By JERRY KOSOWSKY

Festivals of 13 different countries will be represented in celebration of the Memorial Union's 10th birthday tomorrow night from 7 to midnight. The MU, for this one evening, will become a world tour within itself.

According to Chuck Walrad, assistant party chairman, the entrance of the MU will be decorated like the skyline of New York, complete with a 40-foot Statue of Liberty. The inside of the building will be divided into different countries and an Embassy will be created in the main ballroom.

THE EMBASSY, where representatives from each country will gather, will have the flags of the countries on display.

For entertainment there will be a Hindu dancer, magician, Persian dancer, American dance band, singer and at 9:30, the birthday cake will be cut by Nancy Valleskey, party chairman; Christine Kajikawa, acting activities vice president, and Linda Oakley, activities vice president.

Exhibits representing different countries will be open for students to attend and view the many different customs and styles of clothing.

For France a phase of Bastille Day will be celebrated. The atmosphere starts in the first floor corridor, which will be decorated like a Paris street and comes to a climax in room 7, where a small French night club, "Le Mistrel," has been created.

FRENCH waitresses, an accordion player, a French singer, a pianist and a bar, with the finest in French wines (really grape juice) will also add to the decor. The music will be entirely French and the night club workers will speak with French accents.

In another part of the Union the soft sound of oriental music will fill the air. The Pagoda Room will be an evening in China. Here the Chinese New Year will be celebrated right down to the dragon. Chinese opera, poetry, dancing, singing and costumed serving girls will complement the authentic Chinese food served for \$1.25 per plate.

In the lower lounge the "Republic Day" of India is celebrated. Here bazaars of rich exotic fabrics, rare teas, flowers and a cute baby elephant will be displayed. Girls in costumes of the Far East will show the displayed items.

OUTSIDE in the courtyard Scottish bands, complete with bagpipes and Scottish dancers will play. Both the bands and the dancers will wear authentic kilts. Highland games will also be held in the courtyard throughout the evening for the brave to participate.

In the Embassy the American sound of Joe Vaccaro and his band will be great, said Mike Byron, MU program chairman.

During the course of the evening, students will be able to see these and other countries and what facilities the Union has to offer them now. The word "now" is used, according to Bob Schaefer, MU board chairman, for a \$2½ million ex-

pansion is under consideration at this time.

If the birthday party this

year is as great as rumor has it, and if it's comparable to those of the past,

the parties of the future in a new larger building should be tremendous.



Photo by Joe Bolender

PARDON MY TRUNK! — Getting the nameless elephant ready for tomorrow night's party are (from left) Susan Dermer, Susie Hisey, Sarry Lien and Shirley Schrade, representing India.

Slip into
CITY CLUB



shake up the
weekend with
a great big
handsewn*



Here's the penny loafer with loaf to spare: the inside is leather lined and in-soled with a cushion of foam. The outside with handsewn front* is yours in a Scotch grained leather of black cherry, black forest or golden harvest. Smooth leather in black, black cherry or palamino. City Club Trujuns \$13.00 to \$18.00.

Wouldn't you like to be in our shoes? Most of America is. International Shoe Co., St. Louis, Mo.

Available at these fine stores:

B & P Shoe Dept., c/o Britts Dept. Store
Camelback Shopping Center
Phoenix, Arizona

Berts Shoe Store
6011 N. 35th Ave.
Phoenix, Arizona

SAVE 10%

For Your Entire Party at

- ★ Amsterdam House Restaurant
- ★ Dino's Capri
- ★ Neptune's Table
- ★ Smokehouse Restaurant

ONLY with B & M

Student Discount Coupons

(Also save from 10% to 33%
at 32 other stores and businesses)

For further information or to get the name of the campus representative in your dorm or fraternity contact Bruce Meyerson — 277-9006 or Rodger Buffman — 959-3386.

Concert of Soloists To Perform Tonight

A Concert of Soloists, presented by the Arizona State University Symphony Orchestra, will perform tonight in Gammage Auditorium at 8:15.

The annual concert will include one student from six categories: string, woodwind, brass, percussion, keyboard and voice. The representatives have been selected through competition.

Performing will be Richard Rathkey, flutist; Robert Strava, violinist; Howard Pink, brass section; Jeffrey Morse, marimbist; Janet Keim, soprano; and Douglas Palmer, pianist.

Strava, Pink and Morse are members of the Phoenix Symphony Orchestra.

The entire ASU orchestra will play "Swedish Rhapsody" by Hugo Alfvén and accompany the soloists.

RAY ICELY

TV Lost to Intelligensia, Mundane Items Favored

Nothing succeeds like success, and we have become so successfully mediocre that we will encounter great difficulty in pulling ourselves out.

Not necessarily in the fields of science and engineering . . . but in the arts of relaxation and entertainment, we are so far behind, the future looks appalling. New-found leisure time — even for students — has opened so many doors and new ideas while new-found technological advances lull us into a lack of creativity.

TAKE, FOR example, television. Past chairman of the Federal Communications Commission, Newton Minow called television a "vast wasteland" in 1961. Having a cross between the flu and a cold last weekend, I spent eight straight hours watching the boob-tube. All I got out of it was a headache. I not only can't remember the plots and stars I saw (and some I even enjoyed), but I can't even remember the names of the programs!

Many reasons have been advanced for the "downfall" of television, but basically, it is a monster that cannot satiate the never-ending appetite of its audience, which wants to be enter-

tained superficially. In short, a case of too much, too soon.

WE, AS a nation, are no longer able to think and entertain ourselves at the same time. We lazily sit in front of a 21-inch screen and wait to be transported to other places, to vicariously live dangerously, or to while away time watching late movie stars live in a world of fantasy. All this, with 10- or 15-minute intervals for trips to the kitchen or bathroom. Not a word is spoken between trips; only during them to find out if anyone wants beer, a soft drink or milk. Who plays Scrabble anymore? Who talks over ideas and philosophies?

The time for conversation is the next day at work or school, as the case may be.

"Did you see 'Batman' last night?" "Wasn't 'Bonanza' great?" "Yeah, I saw 'Secret Agent'." The part I liked best was . . .

HAVE WE dropped to such a mundane and superficial level that we can't discuss more of intellectual or cultural heritage? How many talk about "CBS Reports" or other documentaries? How many watch them? This is where television really distinguishes itself. The medium it-

self has unlimited potential . . . it is the audience that needs to improve.

Has anyone commented on CBS News' "Our Friends, the French," shown Tuesday night? Who has commented on the St. Louis Symphony performance in Gammage that same night? Or, also in Gammage, the Rumanian Folk Dances on Wednesday night? Who watches KAET's offerings?

WHEN IT comes to talking about our movie stars in their roles, we are all the finest and most discerning of critics — on any level except cultural or esoteric — while on more thought-provoking subjects we are almost deaf and dumb.

It isn't that we don't want to learn . . . schools have never been so busy and so much money has never been spent on education. We don't take advantage of the opportunities that do arise, and we just aren't selective enough.

Military Ball Honors Queen

The annual Military Ball, will be held this year at Del Webb's TowneHouse, 100 W. Clarendon, Phoenix, March 18.

"Moments to Remember" is the theme, says Cadet Col. William Daley, chairman of the ball committee and master of ceremonies for the dinner.

THE AFFAIR is hosted alternately by the Army ROTC and the Air Force ROTC. The Air Force is in charge this year.

Dinner for the advanced cadets and their guests will start at 7:15 p.m. At 9 will be a grand march by senior cadets and their guests followed by dancing to Ray Andrade's orchestra.

The highlight of the evening will take place at 10:30 when one of eight coets, four members each from the Angel Flight and the Kayettes, will be named Military Ball Queen.

THE QUEEN has already been chosen but her name will be kept secret until the coronation.

The girls considered for the honor were Julie Ash, Sally Swank, Julie Loper, Jo Yuknis, Nancy Stevens, Marguerite Palmer, Sherri Galbreath and Susan Phillips.

BEGINNER'S PACKAGE

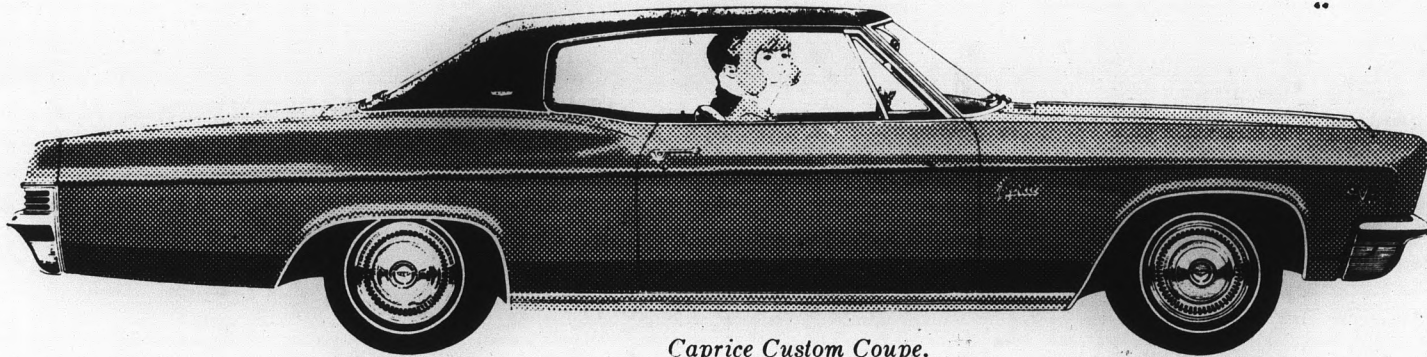
- ✓ Skis
- ✓ Boots
- ✓ Bindings
- ✓ Poles
- ✓ Stretch Pants
- ✓ Parka

only . . . **\$99.⁵⁰**

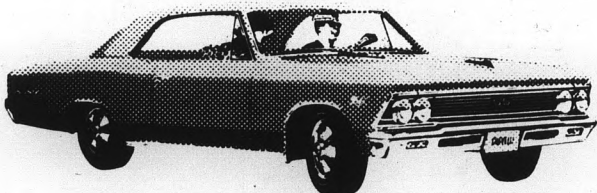
The Valley's only winter ski specialty shop

THE PURPLE SKI

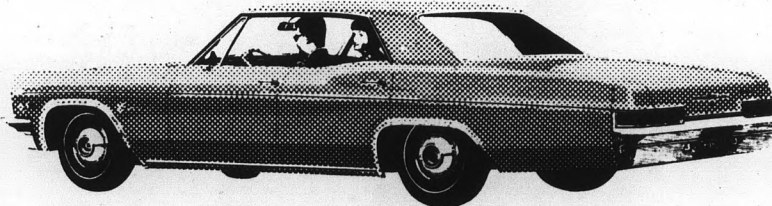
5110 N. Central Avenue
Open Daily 10 a.m.



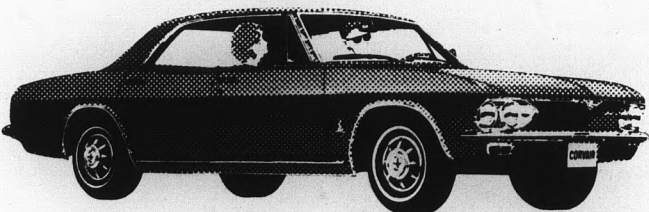
Caprice Custom Coupe.



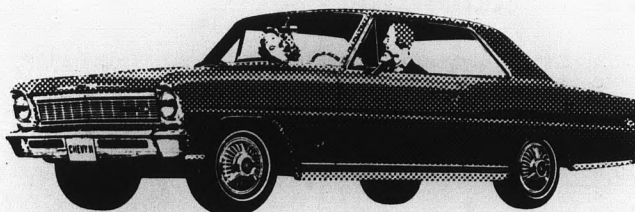
Chevelle SS 396.



Impala Sport Sedan.



Corvair Monza Sport Sedan.



Chevy II Nova SS Coupe.

Starting now—Double Dividend Days at your Chevrolet dealer's! (Just the car you want—just the buy you want.)

**CHEVROLET
DOUBLE
DIVIDEND DAYS!**

NO. 1 BUYS • NO. 1 CARS
Now at your Chevrolet dealer's

Right now you'll get a mighty handsome buy at your Chevrolet dealer's during Double Dividend Days. Pick from 45 great models of Caprice, Chevrolet, Chevelle, Chevy II or Corvair with a huge selection of colors, custom touches, engines, interiors. Availability, variety and buys have never been better. Hurry in to your Chevrolet dealer's now!

Eight features now standard for your safety include seat belts front and rear. Always fasten them before starting.



All kinds of good buys all in one place . . . at your Chevrolet dealer's—Chevrolet • Chevelle • Chevy II • Corvair • Corvette

**HARMAN'S
Dining Room**

Mesa-Tempe Hi-Way
TEMPE

REGULAR \$1.95
Chicken Dinner
Only **\$1.25**

MONDAY ONLY
Served 4 to 10 P.M.
"It's Finger Lickin' Good"

KAET-TV Offers 'Don Giovanni,' Nakobou

This week Channel 8 offers everything from classic opera to the study of an author whose book "Lolita" added a new dimension to fiction.

Tonight at 9 the Arts at ASU presents Jack Ratterree on the clarinet and Dr. Don Isaak at the piano playing selected movements from Hindersmith's sonata for clarinet and piano and Poulenc's Sonata for clarinet. Dr. Henry A. Bruinsma is host for the series.

KAET proudly presents Mozart's "Don Giovanni" at 10 Tuesday evening. The opera will be repeated at 9 next Friday evening.

This outstanding three-hour program features the world-renowned operatic basso, Cesare Siepi, soprano Lisa della Casa and the Vienna Philharmonic Orchestra, and the Chorus of the Vienna State Opera conducted by the late Wilhelm Furtwaengler.

Cesare Siepi, who plays the title role, is one of the most active figures in the field of opera.

LISA DELLA CASA, appearing as Donna Elvira, is widely

acclaimed for her interpretations of many operatic heroines, especially those of Mozart and Richard Strauss.

Also appearing in this critically acclaimed performance are sopranos Elizabeth Gruemmer, considered to be one of the most accomplished Donna Annas in the world, and Erna Berger, the celebrated coloratura who plays Zerlina.

"Don Giovanni" was produced by Harmony Films Ltd. of London. Paul Czinner was the producer-director.

ON WEDNESDAY evening at 10 Valdimir Nabokov appears in National Educational Television's (NET) series "U.S.A.: The Novel." This is the first off-the-cuff, for-the-record television film to which Nabokov has consented.

An intimate camera follows Nabokov about his surroundings . . . the beautiful town of Montreux, and the elegant hotel where he lives with his wife. It is the capturing of his words that makes this film of great television and literary importance.



TENSE MOMENT — Flora, right, played by Joan Weinzapfel, looks aghast as Baron Douphol, center, portrayed by Ed Humphrey, slaps Alfredo, portrayed by Don Morgan, challenging him to a duel in "La Traviata," Verdi opera that will be presented at 8:30 p.m. in Gammage Auditorium March 18 and 19, by ASU players and Lyric Opera Theatre. Tickets are on sale at the ASU Lyceum, 966-3437, or may be obtained at Gammage on evenings of performances.

BE SAFE WITH A SPARE PAIR OF LEE OPTICAL LENSES!

Only
LEE
gives
you
all this



FREE

A spare pair of lenses when you buy your first complete pair of glasses. Pay the regular low Lee price for frame and lenses. Get a pair of clear single-vision lenses absolutely FREE.

FREE

A spare pair of clear single-vision contact lenses when you buy your first pair at the \$85 regular Lee price. As low as

FREE

The extra protection of heat-treated safety lenses (that usually cost an additional \$4 to \$6 elsewhere) is free at Lee in glasses for children under 12. Plus, a spare pair of clear single-vision, heat-treated safety lenses FREE with your child's first complete pair of glasses.

HOW

Lee can give you so much more for less!

Thousands of Arizonans go to Lee Optical for all their eyewear needs. This large volume of business, combined with Lee's guaranteed customer satisfaction, makes it possible for you to get highest quality eyewear at lowest cost. ONLY LEE OPTICAL GIVES YOU ALL THIS!

PLUS!

CREDIT — Your credit is good at Lee Optical . . . budget terms available.

Or use your Valley Bank Credit Card.

STYLE — Choose from over 500 (nationally-known) frame styles and colors.

QUALITY — All Lee Optical glasses are precision ground from the finest American-made lenses. Satisfaction guaranteed or your money back.

SERVICE — Lee's prompt service means no waiting.

PRICE — A pleasant surprise! Lee Optical's quality, single-vision glasses . . . as low as

\$13⁸⁵

9 CONVENIENT EYEWEAR CENTERS / open Thursday nights and all day Saturday

TEMPE
805 Mill Avenue
Tempe Center

CHRIS-TOWN
19th Ave. and
Bethany Home Rd.

PHOENIX
16 W. Adams St.

MESA
129 West Main

THOMAS MALL
4527 E. Thomas Rd.

SCOTTSDALE
719 N. Old
Scottsdale Rd.

TUCSON
El Con Center
Amphi Plaza

YUMA
2816 4th Ave.



Where it's always safe to save money on glasses — and contact lenses, too!

we proudly present . . .

the SWING-RAYS

(THURS. THRU SUN.)

at the LIBRARY

1001 E. 8th ST., TEMPE — OPEN NOON DAILY

Five ideal dates. Three dollars (\$3)

Join in the most adventurous experiment of our time. Operation Match. Let the IBM 7090 Computer (the world's most perfect matchmaker) stamp out blind dates for you.

Two Harvard juniors started it. 100,000 students have done it. Now you and 3,400,000 college students in 1500 colleges in 50 cities can sign up and join in!

Just send us the coupon. We'll send you the Operation Match Quantitative Personality Projection Test pronto!

Then return the questionnaire with \$3.00. What you're like and what you like will be translated into our 7090's memory file. It will scan the qualifications of every member of the opposite sex from this geographic area. Then it will select the five or more matches best for you.

You'll receive your names, addresses and telephone numbers within three weeks. You'll be what your date is looking for. Your date will be what you are looking for. In other words: the matches will be mutual.

Dear IBM 7090,
I am 17 or over (and 27 or under) and I want to help stamp out blind dates. So mail me my questionnaire. Quick!

Name _____ School _____

Address _____ City _____ State _____ Zip Code _____

Operation Match

Compatibility Research, Inc.
559 Pacific Avenue, Suite 37, San Francisco, California 94133

Weekend Roundup

TODAY

Concert of Soloists, ASU Symphony Orchestra, Gammage, 8:15 p.m.

"Music Man" with Norwood Smith and Eileen Christy, Phoenix Star Theatre, 8:30 p.m.

Brothers Four, Phoenix College, 8 p.m.

"Who's Afraid of Virginia Wolf?," Arizona Repertory Theatre, 8:30 p.m.

Baseball — ASU vs. Cal State Long Beach, Sun Devil Field, 3 p.m.

Tennis — ASU vs. New Mexico State, Tennis Courts, 2 p.m.

SATURDAY

Movie, "The Awakening," Cosner, 7:30 p.m.

"Music Man," Phoenix Star Theatre, 8:30 p.m.

"Who's Afraid of Virginia Wolf?" (last night), Arizona Repertory Theatre, 8:30 p.m.

Baseball — ASU vs. Cal State Long Beach, Sun Devil Field, double header, 1 p.m.

Track — ASU vs. UCLA, Goodwin Stadium, 7:30 p.m.

Soccer — ASU vs. Hollandia, Monterey Park, Phoenix, 3 p.m.

Tennis — ASU vs. New Mexico State, Tennis Courts, 9 a.m.

SUNDAY

"Music Man," Phoenix Star Theatre, 8:30 p.m.

MONDAY

Movie — "Under The Yum Yum Tree" with Jack Lemmon, Cosner, 7:30 p.m. Admission, 35 cents.

You Can Count on Us...

Fashion Costs No More at Sears

Sears

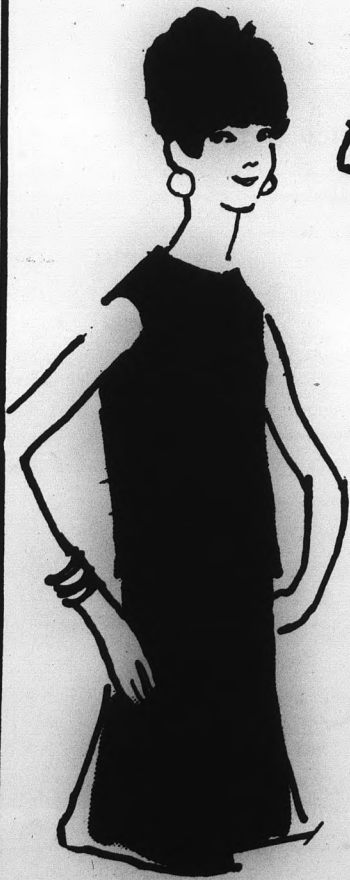
Announcing The Opening of Our New

Junior Bazaar

where fashion happens

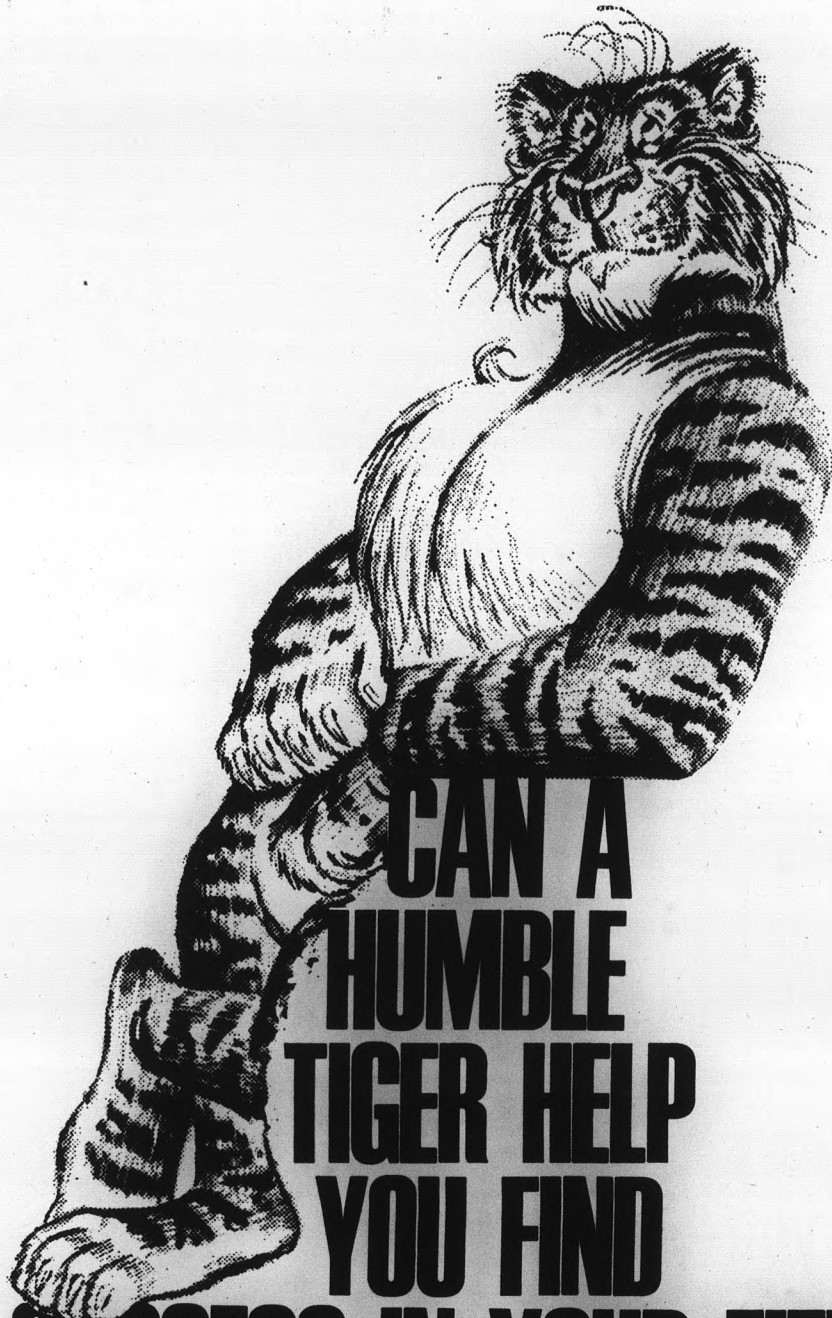
For The Co-Ed Who Wears Size 3 to 15

Featuring a full line of Dresses, Play and Swimwear for the Junior and Junior Petite Fashion Figure



Come in Soon and See Our Collection of Smart New Shapes for Spring '66

Sears, Roebuck & Co.
1949 E. Camelback Road
Phoenix 264-7300



CAN A HUMBLE TIGER HELP YOU FIND SUCCESS IN YOUR FIELD?

We don't mean to jest about the most serious decision you'll ever make ... it's just that Humble Oil & Refining Company actually offers opportunities and responsibilities that might be a little awesome if we took ourselves too seriously.

You see, Humble is America's leading supplier of energy. We're not only the principal domestic operating affiliate of the Standard Oil Company (New Jersey), but also affiliated with Esso Production Research Company, the Enjay Chemical Company and Esso Research and Engineering Company.

That automatically makes us a leader in U.S. petroleum exploration, producing, manufacturing, transportation, research and marketing. Our employees also find opportunities with other Standard Oil Company (New Jersey) affiliates throughout the world.

And that is why we need people at all degree levels, from Bachelor to Ph.D. — and in almost every discipline.

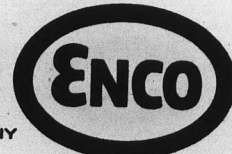
If you're seeking the rewards that derive from significant contributions in your field, we'd like to talk to you — seriously.

SEE

YOUR PLACEMENT OFFICE
Our Engineering Recruiting Team
will visit the campus March 16, 1966.

HUMBLE

OIL & REFINING COMPANY
AMERICA'S LEADING ENERGY COMPANY



A PLANS FOR PROGRESS COMPANY AND AN EQUAL OPPORTUNITY EMPLOYER.

'Repulsion' Shows Agony Of Mentally Ill Woman

By TONI ATMORE

"Macabre," "monstrous" and "blood chilling" are some of the words used to describe the movie, "Repulsion," starring French actress Catherine Deneuve at the Kiva theater.

The movie is about a young French manicurist, Carol, who is progressively driven to insanity by her sexual fantasies and repressions.

CAROL LIVES with her sister Helen, in an apartment. Helen has a lover, Michael, and the apartment is the main place for their nightly love-making. Helen and Michael decide to take a vacation and despite Carol's extreme sulking that is a result of her sister's holiday plans, Helen leaves anyway. Thus, the young manicurist is left alone with one destructive element in the story, her twisted mind, and is driven to complete madness.

After the departure of her sister the men who attempt to enter into Carol's world only represent a threat to the virgin who shuns any kind of male affection. These men become the murder victims of the girl.

Keeping the story at a consistent nerve shattering level is director Roman Polanski and photography director Gilbert Taylor.

THE SUPERB photography gives the movie the air of morbidity and lets the viewer enter into the distorted world of Carol's mind. The young manicurist's total attention on cracks and their sudden splitting and all the visual fantasies that actually go on in some sick minds are masterly done by photography.

The actors all played their parts skillfully and Catherine Deneuve in the role of Carol had only a small speaking part but a difficult acting one.

The habits and gestures of some mentally ill people were expertly done. The focused at-

tention for long time periods on various things as the cracks and the deranged looks on Carol's face were also well handled by Miss Deneuve.

A GROUP of psychiatrists reviewed the screenplay, also done by Polanski and they decided he must have done intensive clinical research on this form of mental illness. They couldn't believe Polanski's statement that he wrote it through personal observation and intuition.

Many critics have compared the terrifying elements of "Repulsion" to "Psycho". No matter how opinions may vary, it is true that another master of suspense has entered moviedom, director Polanski.

"REPULSION" has more to it that just a journey into the world of the macabre. The audience not only sees the horrible results of a girl's very sick mind but is given an insight into the terrors it inflicts upon Carol.

This is why "Repulsion" surpasses the common chiller. It shows with perception one of the worst agonies ever given to mankind — mental illness.

Brothers Four Perform Tonight

The Brothers Four, nationally known folksingers, will perform tonight at the Phoenix College Auditorium at 8.

The group will sing many popular songs including their own million-seller, "Greenfields." Tickets are \$1.



CHAMBER MUSIC — The Trio di Trieste will give the final concert in the Chamber Music Series on March 14 at 8:15 p.m. in the MU ballroom. The trio members are Dario de Rosa, pianist; Renato Zanettovich, violinist, and Amadeo Baldovino, cellist. Rosa and Zanettovich who founded the trio graduated from the Trieste Conservatory of Music in Italy. Baldovino formerly played with the Trio Italiano d'Archi. Trio di Trieste will perform compositions by Mozart, Ravel, and Brahms. Students will be admitted with an ID card, and tickets can be obtained for \$1.50 at Grady Gammage box office.

STATE PRESS

Weekend

EDITOR

Bruce M. Spence

Assistant Editor

Bob Golden

WEEKEND is published every Friday as the WEEKEND magazine of the daily State Press.

"Spring Fever"

Won't Affect Your Appetite

at

CHICO'S

RESTAURANT*
FINE MEXICAN FOOD

1120 East Apache Blvd. — Tempe
*Air Conditioned of course

A new book by
Miss America 1965—

Wonda Kay Van Dyke

invites you to
look at

THAT GIRL IN
YOUR MIRROR

Cloth, \$2.95 Paper, \$1.00.

UNIVERSITY BOOKSTORE

Who is she? Where is she going? What of her dreams and hopes? How important is her faith? How strong her sense of right?

C - I N - C - H

All University Students are welcome to Sunday night Christian Fellowship at the Home of Jim Rogers, 4112 Grandview Drive.

From 9 to 10 P.M.
Every Sunday

1c SALE

Thompson's
ACEROLA - C

FIGHT
Colds & Fatigue

Limited Time Offer

100 tabs 100 mg C + Bioblavonoids
Reg. \$1.35, extra bottle for 1c
250 tabs. Reg. \$3; 2nd bot. 1c
Call 946-5111 for free delivery

Special gift for ASU students

EIK'S JUICE BAR

Papago Plaza—40 N. 1st Ave., Phx.
Mail Orders Promptly Filled

HERTZ RENT A CAR

FOR ALL COLLEGE STUDENTS 18 OR OLDER

THE RATES

- WEEKEND DAYS
\$6.00 a day plus 11c a mile
- ENTIRE WEEKEND,
\$15.00 plus 11c a mile
- 1 FULL WEEK
\$55.00 plus 11c a mile
- 1 FULL WEEK
\$99.00, No mileage charge



LOU OSMAN

Campus Representative

THE CARS

- FORD MUSTANG
- FORD GALAXIE
- CHEVROLET IMPALA
- DODGE
- PLYMOUTH

Call 967-8161

To Be Assured of the Car You Want Make Reservations 24 Hours In Advance

Saturday Time-table for MU Birthday Party

"FESTIVALS OF THE WORLD"

Arab World "FEAST OF SACRIFICE" Arts Lounge Feast to celebrate the end of the Pilgrimage Continuous shows	India "REPUBLIC DAY" Lower Lounge Exotic Bazaar Baby Elephant
Chile "INDEPENDENCE DAY" Senate Chambers Chilean Ramada Shows 7:15-7:45, 8:15-8:45-9:15-10:15-10:45-11:15-11:40.	Iran "NOUROUZ" AMS Office New Year's Celebration
China "CHINESE NEW YEAR" Pagoda Rooms Dinner served - \$1.25 per person Dragon Dance Shows at 7:15-8:15-9:15-10:00-10:45	Japan "CHERRY BLOSSOM FESTIVAL" Faculty Dining Room Japanese Delicacies Shows at 7:30-8:30-9:30-11:00
Embassy Room "EMBASSY PARTY" Ballroom Dance Band Floor Shows Dancing at 7:30-9:00 10:00-11:00 Floor shows at 8:30-10:30 Cake cutting at 9:30	Netherlands "QUEEN'S BIRTHDAY" Corral Dampplaats-Dutch Restaurant
France "BASTILLE DAY" Lower Floor Street scene on Bastille Day French boite, "Le Mistral" Shows at 7:25-8:10-8:55-9:40-10:25-11:10	Nigeria "INDEPENDENCE DAY" Student Body Office A native scene
Germany "OKTOBERFEST" Den and Patio German Band and Polka Shows at 7:05-8:20-9:20-10:50	Pakistan "FESTIVAL OF EID" AWS Office "Christmas"
	Scotland "HIGHLAND GAMES" Courtyard Scottish Pipe Band Dancers Shows at 8:00-9:00-10:30
	Sweden "MIDSUMMER'S MAEPOLE FESTIVAL" Terrace Swedish Delicacies Shows at 7:45-9:00-10:00-11:00

Foreign Consuls Arrive at 6:30 For MU Party

Student ambassadors of countries represented at the MU Birthday Party Saturday night will arrive at Gammage at 6:30 dressed in the traditional clothing of their countries.

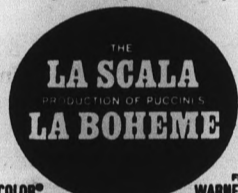
Accompanying the students will be the Consul and his wife from Belgium, Ecuador, El Salvador, Finland, France, Germany, Italy, Luxembourg, Mexico, Nicaragua, Norway and Sweden.

These people will be driven in limousines under police escort to the MU between 6:45 and 7 p.m. They will pass through an honor guard of Arnold Air Society cadets. They will be received inside by Nance Valleskey, President and Mrs. Durham, Fred Reish, and Mrs. Cecilia Scoular.

Hayden East Theatre
Scottsdale & Curry Roads
Tempe — 966-1283

An Entertainment Event of Major Importance!

AN ACTUAL PERFORMANCE!
Through breathtaking new techniques in film making and highest fidelity sound.



TECHNICOLOR® FROM WARNER BROS.
Premiere Performances 4 Times
MARCH 16 - 17, 1966

SPECIAL STUDENT DISCOUNT MATINEE
THURSDAY, MARCH 17th
4:00 P.M.

TICKETS FOR GUARANTEED SEATS at Boxoffice or by Mail
(NO RESERVED SEATS)

For Student and Party Discounts Contact Theatre Manager
TO AVOID DISAPPOINTMENT WE URGE YOU TO OBTAIN YOUR TICKETS WITHOUT DELAY FOR MATINEE ON EVENING, WED. March 16, Thurs. March 17

TICKETS AVAILABLE AT ALL STATEWIDE THEATRES

HONDA---

Number One In Transportation

Service - Sales - Rentals - Parts

APACHE HONDA

2311 West Main — Mesa — 969-7375
2 1/2 Miles East of the Campus on Tempe-Mesa Highway

Lucky Cue Family Billiards

1612 EAST McDOWELL ROAD • PHOENIX
Next To — "Brookshire Restaurant"

WIN "Social Security" JACKPOT!

Every day a new number is chosen. Your Social Security number may win you up to \$200.00

HOURLY RATES

1 Player\$.70
2 Players1.25
3 Players1.50
4 Players1.50
5 Players1.50

SPECIAL DEAL

Monday, Tues., & Wed.	
Male Escort\$.70
Girl Friend	NO CHG.
.....\$.70 Hr. For Both	



Golf, Pizza and Meatballs

CLAUDIA LANE
Biology Major — Jr.

"Bo-Jo's is the best place in Tempe for college kids. The pizza is the greatest this side of Italy."

DISCOUNT CARDS
STILL AVAILABLE



NICKI NORDSTROM
P.E. Major — Junior

about Bo-Jo's
Meatball
Sandwiches . . .

"Great way to relax after a tough game of golf."

PHOTO COURTESY
ROY MOLEN
STUDIO

Phone
967-7023

For Takeout
Service

BO-JO

SUBMARINE SANDWICHES & PIZZA

Corner University Drive & Rural — North of "Freddies"
— COMPARE OUR PRICES —