

state



ARIZONA STATE UNIVERSITY

press

Tempe, Arizona

Wednesday, October 6, 1965

Vol. 47—No. 12

Saturday is Grubby Day at the ASU-Wichita game. The word is wear anything that's old and ugly and then go to the dance in the MU. The whole thing is being co-sponsored by the Rally and Traditions Board and the Social Board.

'65 High Exceeds Estimate

The University's total student enrollment for the first semester is 19,137 students, according to A. B. Schellenberg, chairman of the Board of Regent's budget committee. This figure is an increase of 2,216 students over last fall's enrollment.

Schellenberg said that the UofA has a total enrollment of 20,245 for the first semester, with enrollment at ASC totalling 4,950. This is an increase of 4,673 students enrolled in the three schools.

The budgets for Arizona's two universities will now be submitted to the legislature. Schellenberg stated that the budgets are based on enrollment figures.

Because this year's enrollment figures exceeded previous estimates, and almost equalled the original 1966-67 projections, actual registration figures have been obtained before making up the budgets, said Schellenberg.

The budget chairman said Saturday that ASU requested \$12,398,589 in state funds, with a total budget of \$18,301,895. The UofA asked for \$17,149,218 in state funds, with their total budget coming to \$26,336,141, he added.

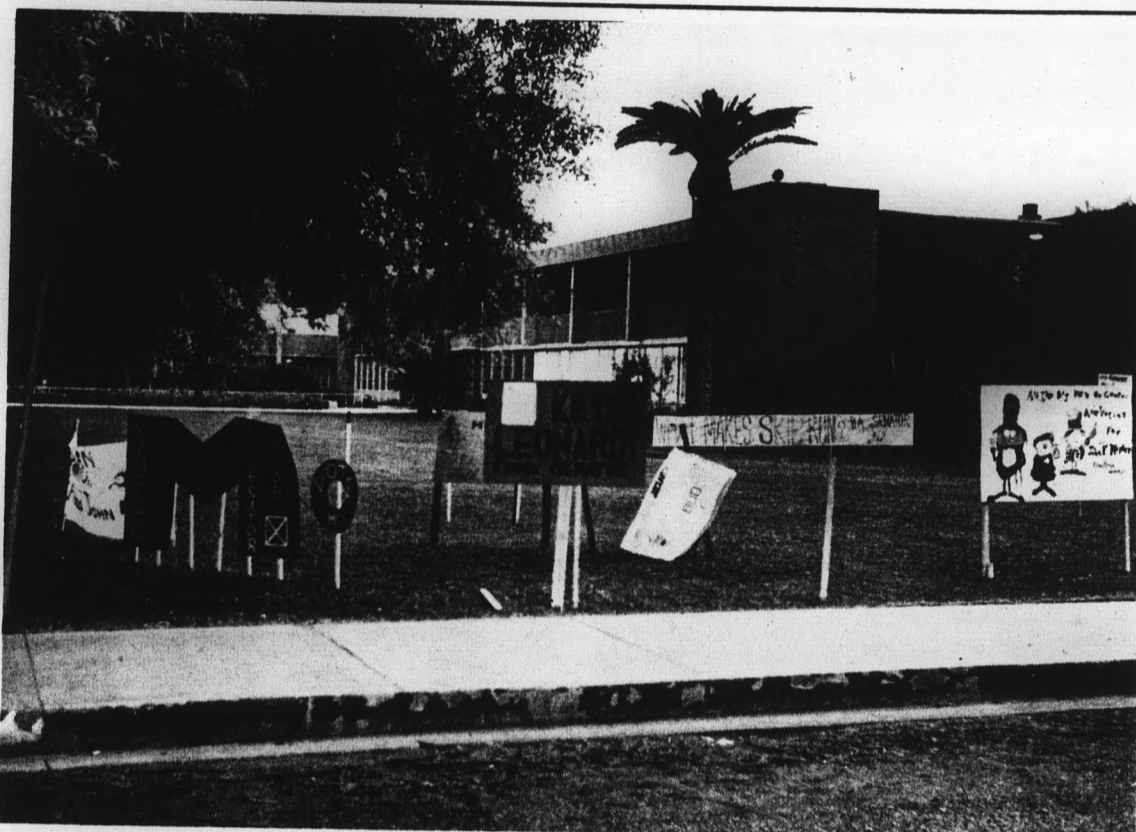


Photo by Larry Mishler

SIGNS OF THE TIMES — Electioneering for Senate seats began with vengeance Monday as signs bloomed on strategic campus locations. The elections will fill openings for freshmen and Business Administration seats vacated recently. Polls are located all over campus.

Polling Starts Today

Primary elections are today for the positions of freshman, business administration, fine arts and graduate senators.

Voting booths are located in front of the library, at the Palo Verde complex, and on the corner of College and Orange. Booths will be open from 7:40

a.m. to 5 p.m. Students must present their activity cards and student ID to gain admission to the polls.

A field of 14 candidates will be cut to four in the race for freshman senator. Two of the eight names on the BA senator primary will survive.

Two vacant seats for both fine arts and graduate senators will be filled. Only two candidates are running from each college.

In this situation, the candidate polling more votes will be considered the winner, and the other, runner-up, since two seats must be filled.

In the case of write-ins, the write-in candidate must poll at least as many votes as the runner-up to have his name placed on the general election ballot.

If number of write-ins increases the candidates by five or more, then the four candidates polling the most votes would be placed on the general election ballot.

Lettermen Ducats On Sale At MU

The Lettermen, a contemporary singing group, will come to Gammage Auditorium Thursday, Oct. 14. Show time for the Interhall Council-sponsored event is 8:15 p.m.

Tickets are now on sale in front of the MU for \$1.50, \$2.00, and \$2.50. The ticket table is open from 10:30 a.m.-1:30 p.m. and 4:30-6 p.m.

The Lettermen, who are featured as "the freshest, most magnificent vocal blend on today's entertainment scene," will perform for one night only.

Tickets are on a first-come first serve basis.

World Briefs

VANDENBERG AIR FORCE BASE, Calif. — A satellite designed to test U. S. plans for an orbital platform in space was launched yesterday the Air Force reported.

The device was lifted to its orbital position by an Atlas D intercontinental ballistic missile.

SAIGON — U. S. paratroopers and soldiers suffered heavy losses yesterday in two separate clashes with the Viet Cong north of Saigon. The paratroopers were lured into an area heavily-infested with Viet Cong emplacements. Nearly all soldiers of an Army unit were killed or wounded in an ambush.

The South Vietnamese government reported that over 100 guerillas were killed in two operations early Tuesday.

WASHINGTON — The anticipated filibuster against a pending bill in Congress to repeal the article of the Taft-Hartley Act that bans union shops was turned over to Southern Democrats yesterday by Republican opponents of the bill.

Chief administration opponent is Sena-

tor Everett Dirksen who is directing the filibuster. The Illinois legislator has planned to alternate filibustering speakers between Republicans and Dixicrats.

JAKARTA, Indonesia — Unofficial reports from Jakarta report that Communist-led rebel pockets are now scattered and weakened enough to pose only a minor threat to the government.

Radio Malaysia reported that army forces have begun a crackdown on Communists in the capital city, arresting some 200 yesterday.

MOSCOW — The Kremlin issued an appeal to Red China for a settlement of differences and a consolidated effort against American activities in Viet Nam yesterday. The statement called for "concrete efforts" but did not elaborate.

DURBAN, South Africa — Nearly 100 South Africans are dead and 130 injured in that country's worst train accident. Angry negroes beat a rail worker to death after the commuter train derailed and overturned.

Week's Theme Is Decided

"Symphony Americana," a composition portraying songs and styles of American music, is this year's Homecoming theme.

Deadline for decorative entries is 4 p.m. today in Memorial Union Room 212.

Headed by Christine Kajikawa and Ross Fish, the Homecoming Committee already has started plans for Homecoming Week which begins Nov. 8. Homecoming is Nov. 13.

A brochure has been sent to all campus organizations, containing information on Homecoming, application for king and queen, deadlines and other Homecoming events.

The co-chairmen say the theme was chosen so that ASU could "prove its maturity" with a "composition designed to portray the variety of songs and styles that make up American music."

Fish said this year's judging sheet has been completely revamped from last year's. "This year's sheet has lots more detail and more categories for judging entries," Fish said.

Various Homecoming committees meet each Thursday at 4 p.m. in Memorial Union Room 209.

Musicians Have Day

Sun Devil stadium not only will be filled with the usual groans and growls of football players and the yeas and boos of football fans, at the ASU-Wichita game, Saturday, but with the sound of music as well.

Eleven central Arizona high school bands will gather for Band Day and will join the Sun Devil Band during pre-game and half-time ceremonies for a mass concert, according to Ronald Fuller of the music department.

The bands will enter individually at pre-game and join together for the "Star Spangled Banner." At half-time, the bands will return to the field for the mass concert.

The bands are from Dysart, Peoria, Coronado, Scottsdale, St. Mary's, Phoenix Christian, Apache Junction, Miami, Globe, Maricopa, Tempe, McClintock, Casa Grande and Buckeye high schools.

Foreign Service Interviews Slated

A United States Foreign Service Officer, Albert N. Williams, will be on campus today to discuss foreign service work with interested students.

The meeting will be from 3 to 5 p.m. in SS 101.

After a film depicting the duties of a Foreign Service Officer, Williams will answer questions on careers in the service.

Next written examination for the Foreign Service will be given Dec. 4 at sites throughout the country. Applications for the examinations must be filed before Oct. 18.

Applicants for both the Foreign Service and United States Information Agency take the same examination. Candidates must specify at the time of application which agency they seek to enter.

Successful candidates on the written examination will be invited to undergo an oral exam before a panel of senior officers during the spring.

Meeting Planned For Tonight

Over 100 prospective members have been invited to attend the first meeting of Pi Sigma Epsilon, professional fraternity for marketing, sales management and selling, to be held this evening in MU 211 at 7:30.

Guest speaker, Tom Churchill, general manager of Arizona F.M. Corp., will speak on "College Graduates in the Sales Field." Any student, regardless of major may attend.



CHAMBER MUSIC SERIES — Appearing tonight again is London's Amadeus String Quartet. Concert time in Gammage is 8:15 p.m. Tickets may be obtained at the Auditorium box office. The quartet will next appear on the 10th and 17th of this month.

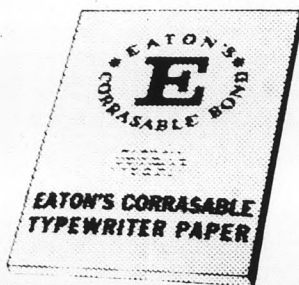
DOG 'N SUDS Drive-In
 UNDER NEW MANAGEMENT
 Open Mon. thru Sat. 9 A.M. - 12 P.M.
 Sunday 11 A.M. till 12 P.M.
Mexican and American Foods
 FAMILY PACK: \$1.50
 5 Hamburgers & Gallon Root Beer —
 966-6137 FOR CARRY-OUT SERVICE
 921 East Transmission Road., Tempe

DON'T

fight it.

Get Eaton's Corrasable Bond Typewriter Paper.

Mistakes don't show. A mis-key completely disappears from the special surface. An ordinary pencil eraser lets you erase without a trace. So why use ordinary paper? Eaton's Corrasable is available in light, medium, heavy weights and Onion Skin. In 100-sheet packets and 500-sheet ream boxes. At Stationery Departments.



Only Eaton makes Corrasable.®

EATON PAPER CORPORATION, PITTSFIELD, MASSACHUSETTS

Now on our shelves at the

UNIVERSITY BOOKSTORE

Now Underway... At The UNIVERSITY BOOKSTORE

CLASSICAL JAZZ POPULAR

RECORD SALE

Your favorite artists on these labels

CAPITOL	MERCURY	MGM	DOT	RCA
	UNITED ARTISTS	VERVE		
Kingston Trio	Chas. Byrd	Frank Sinatra		
Ferrante & Teicher	Thelonius Monk	Billy Vaughn		
Cannonball Adderly	George Shearing	James Brown		
Al Hirt	Stan Getz	Pete Fountain		

Save \$2 or \$3 ON EVERY ALBUM

FORMER LIST.....	3.98 and 4.98	REDUCED TO.....	1.98
FORMER LIST.....	4.98 and 5.98	REDUCED TO.....	2.98

HUNDREDS TO CHOOSE FROM
COME EARLY FOR BEST SELECTIONS

UNIVERSITY BOOKSTORE

Open Mon.-Thurs. 8-7 Fri. 8-4:30 Sat. 9-1



Photo by George Wood

SOMETHING NEW — Students look at one of the new film drop-boxes recently placed around campus for the convenience of students wanting Black and White or Color film processed. The Service is sponsored by the Audio-Visual Center.

Film Drop-Boxes At ASU Newly Established This Fall

A new service sponsored by the Audio Musical Center for campus residents this fall, the film drop boxes placed around campus for having black and white or color films processed.

Students may leave film in envelopes at the drop boxes and pick up the finished prints at the Photography Service Office in Matthews Hall directly behind the Library.

Jack L. Dunham, administrative assistant at the Center, said "We chose this type of service because it offered the best benefit for the students."

Film drop boxes are now located in the MU, Sahuaro Hall lobby, Best "A" and at the Audio-Visual Center.

Yearbook Extends Deadline

The deadline for taking 1966 Sahuaro yearbook senior portraits has been extended to Saturday at the request of many senior students.

The deadline had been set originally for yesterday afternoon.

Many seniors who are off campus student teaching as well as others were unable to meet the schedule, according to Pam Sisk, Sahuaro photo editor. Photo Service will be open Saturday from 8:30 to 11:30 a.m., she said.

On campus students who did not meet the earlier schedule may have their portrait taken today, tomorrow, and Friday from 8:30 to 11:30 a.m. and 1:30 to 3:30 p.m., she added.

No appointment is necessary at Photo Service which is located in Matthews Hall directly behind the library.

Men should wear a white shirt, tie and coat, and women should wear a plain or simple-patterned blouse or dress.

President Appoints Member To Board

President Durham has appointed Max Goodrich, AS administrative vice president, to membership on the Student Affairs Committee for 1965-66.

The University-wide committee is concerned with student affairs and their coordination with the University under the direction of Dr. Joseph C. Schabacker, academic vice president.

Other members include the deans and associate deans of students, the chairman and past chairman of the Faculty As-

sembly, other administrative officers and faculty members, together with AS, AWS and AMS presidents and the AS first vice president.

President Durham has also appointed Dr. Wallace Adams, associate professor of history, to the Board of Student Publications, to serve this fall for Dr. George Paulsen, assistant professor of history, who is on leave.

Dr. Marvin H. Alisky, chairman of the department of mass communication, is chairman of the board.



Welcome To Our Friendly Barber Shop

SUN DEVILS BARBER SHOP

Open Mon. thru Fri.
8:30 - 5:30

THE ARCHES
In The Mall
Corner 8th St. & Forest

Chart with
20 Individual
Hair Styles

FURNISHED APARTMENT

\$60⁰⁰

915 Kenwood Circle
Tempe
966-0862 after 4:30 P.M.

For The Best Meals In Town

TEMPE CAFE

427 Mill Avenue

BREAKFAST SERVED ANYTIME

Bacon or Sausage & Eggs — 85c

Ham and Eggs — 95c

OPEN 6:30 A.M. TO 7:30 P.M. — 7 DAYS A WEEK

Grand Opening

TODAY

of

Conniejean's

(formerly RAE'S MADEMOISELLE)

The Store of
Famous Labels

YOUR COLLEGE STORE

Sizes 3 to 17, includes Petite

POPULAR PRICES FOR POPULAR CLOTHES

154 WEST MAIN — MESA

Phone 964-3308

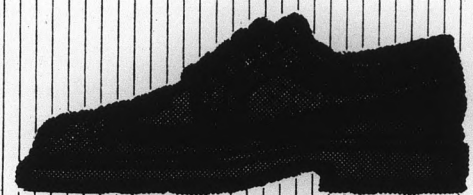


ARTIST & DRAFTING
SUPPLIES

Crafts - Picture Frames
Decorating Material

Open Mon. & Thurs. Nites
Tempe Center • WO 7-4482

THE
INNER
EAR
OPENS
FRIDAY!



IMPORTANT

FOOTNOTE

Don't fail to study the newest developments in footwear at the Establishment. Classics are stressed, but some of the more advanced offerings are also well-favored.

TOP:
SHELL CORDOVAN 29.95

BELOW:
BURNT IVORY WING 24.95

The Oxford Shop

CORNER FOREST & SEVENTH

How Rumors Do Multiply

This straight news account reports the small-time theft of a sign from the VISTA Training Center.

Special to the American Phoenician

More than 2,000 Federal Bureau of Investigation agents swarmed over the Arizona State University campus yesterday in a dramatic maneuver to wrest from the hands of a ruthless gang of student robbers irreplaceable United States government property, the American Phoenician learned today.

Unusually reliable sources told the American Phoenician the force was backed up by the 37th Airborne Division of the Arizona National Guard and large elements of the Scottsdale Police's crack riot squad.

Campus Security spokesmen said they had reported the incident to the FBI, but hadn't heard from them. Legislators and newsmen were speculating on the possibility this most certainly means the FBI action constituted a federal invasion of our great sovereign state.

One state senator who refused to be identified said the legislature will make an immediate probe into this latest Communist infiltration of our state universities.

A prominent ASU and fraternity officer requested the American Phoenician not to print his comments when he said, "The federal invasion was undoubtedly the worst threat to honorable student government since Saga Food banned apple pie and the Young Democrats took down their American flag."

The irreplaceable federal property is half of a sign reading "Arizona State University VISTA Training Center." It disappeared from the VISTA trailer near the Agriculture building over the weekend.

JOHN POLICH

Engineers Mass Own Energy

Engineers are normally a mild lot.

ASU engineers have been, in the past, famous for their social life like Carl Hayden is famous for his home made ice cream. Their idea of a swinging time was a racy afternoon spent standing on the stairs of the engineering center ogling Palo Verde girls enroute to class.

The only time they ventured west of the tall palms was for registration and then they traveled in groups to avoid attack by political science majors. This composure has been ended now.

Now, under the remarkable leadership of Dr. John Decker, the neat world of the engineer is crumbling right before his calculating little eyes. Dr. Decker, in a State Press article, has gone out to discredit that most sacred of formulae $E=mc^2$. Not only that, but Dr. Decker claims that E , being energy, doesn't equal anything at all!

Posh, says he, energy is just a bunch of pzazz, so how do you like that? The poor engineers have accepted the good Dr.'s announcement like Pres. Johnson accepts a defeat in Congress.

Several times over the weekend, local police were called out to quash riots by protesting engineers on the lawn or Dr. Decker's house. His wife received an anonymous phone call saying that he was going to be thrown, bound and gagged, into an IBM card punching machine. He narrowly avoided assassination by a fanatic with an electron gun.

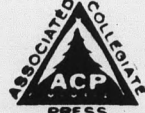
Although engineers are necessarily a part of campus life (they support the bookstore), it is obvious that they are getting wholly out of hand. In their present mood, one little spark, such as the development of a perfectly efficient engine, could throw them into a frenzy.

The only solution is to import responsible and nationally respected scientific leaders such as Mr. Wizard to try to restore order. In the meantime, it is the responsibility of every non-engineering student to maintain an attitude of calm non-violence and patience. Forebearance is the order of the day. Remember, public, without engineers man wouldn't even have the electric toothbrush.

TED JARVI

state
press

THE STATE PRESS is the official campus newspaper of Arizona State University. It is published Tuesday through Friday throughout the school year, excepting holidays, and is entered as second class matter at Tempe, Arizona 85282.



THE STATE PRESS is a member of the Arizona Newspapers Association, Associated Collegiate Press and National Advertising Service, Inc. Subscription price is \$5 per school year.

EDITOR-IN-CHIEF
MANAGING EDITOR
NEWS EDITORS
COPY EDITORS
CAMPUS EDITOR
SPORTS EDITORS
SOCIETY EDITOR

SHIRLEY DeMARKE
ROBERT M. DORN
IRV JACOBSON, ZANDRA ELLIS
KATHY MEYER, JANET BERGMAN
MARTHA THAYER
BILL MAAS, LARRY WARD
PAT HUNTER

"I Feel Like A Sitting Dove"



I Cover College Avenue

By BOB DORN
Managing Editor

And now here's the honest guide to campus fashions. It is by no means complete but should serve as general instruction to freshmen or transfer students who are interested in isolating, identifying and, eventually, joining a Group.

Instructions are: look down the list and find the Group you would most like to join, then take down information under that group's heading. Buy the necessary items and wear them for a week, after which period of time the Group should accept you. If they don't, try changing your clothes, they probably smell.

ANTHROPOLOGY-SOCIOLOGY GROUP — Basic item here is the colored pair of levis. Under no circumstances should you wear a button-down shirt. Shoes range from a basic leather boot for budding anthropologists who kick around dirt clods in the parking lots to sandals for the sociologists who just seem to like sandals. Ride a very old bike and grow a full mustache and/or beard. Do not be disappointed if Anthropologists and Sociologists do not immediately accept you, for they basically dislike people.

FINE ARTS GROUP — Very similar to Anthropology-Sociology. The Blue work shirt is very popular and levis may be of the old blue denim variety in addition to the colored type. Old cords are big and army fatigue pants are actually enviable. Sandals are nearly requisites, try and get a pair no one else has. Wear hair long. Wash your face but not your hands. It is not essential that you be enrolled in the Fine Arts College. Your record collection should have large elements of Mose Allison, Bob Dylan (pre-1965) and Miles Davis.

GREEK-BUSINESS AD. GROUP — You must look Californian. Shoes are paramount here. Wear penny loafers, saddle shoes or cordovan wing-tips, and blue or red deck shoes. Buy a California license plate. All clothing must be immaculate and new. Date nothing but sorority girls. Say witty things like, "Are you kidding me," and "Out of sight." You must look Californian.

ENGLISH - HISTORY - POLITICAL SCIENCE GROUP — This one is difficult to define. English majors tend to look quite a bit like the first and second groups and Political Science people often resemble the **GREEK-BUSINESS AD.** category. In general,

try to have the university look without looking like you give too much of a damn about it. Use language that includes terms like, "mutual dichotomy," and "value judgment." Have a Greek background but you must have disaffiliated, or, at least, don't live in the house. If you are an undergraduate, hang around with graduate students. If you're a graduate student, hang around with professors.

ARCHITECTURE STUDENTS GROUP—No one's too sure what these people wear because no one's ever seen one. However, a good bet would be to wear something functional, or maybe organic.

INTRAMURAL ATHLETICS GROUP—Wear white T-shirts and black tennis shoes or track warm-up shoes. Something that will put you high on the status ladder is the grey athletic undershirt. Do not sweat.

There are other off-shoot or minor groups like **PHILOSOPHERS** (wear anything) and **HIGH SCHOOL TEACHERS** (look like Clark Kent) but I have tried to list the major groupings for men. Do not despair if not all the members of Groups on campus adhere to these basic principles — there are always those who refuse to conform.

Fall Fashion Eye Makeup Adds Beauty

With fall fashion centering on the eyes, many coeds are uncertain as to how to apply eye makeup for the new wide-eyed look. *Ladie's Home Journal* offers hints for perfect eye make-up.

APPLICATION of eyeliner is one of the hardest arts to master. With patience and practice, you should be able to perfect it in time. Put your finger above the eye, raising the lid slightly and holding it taut. With an eyeliner pencil, liquid eyeliner or the increasingly popular cake eyeliner (with a separate brush that you wet), draw a very narrow line close to the base of your lashes and extend slightly up and out to the corner of your eye.

To make your lashes look longer and thicker apply mascara to your upper lashes. Be careful not to apply too much as your lashes will stick together and look unnatural. One way to avoid this is to brush the lashes with a small brush after applying the mascara.

If you happen to have dark circles under the eyes they can be disguised by applying a lighter foundation than you normally use.



GOT YOUR GOAT — The latest addition to the Sigma Nu Fraternity is the mascot, Rosey. Rosey is boarded out at a farm for the week but returns to the house to take part in the fraternity weekend.

Pledge Presents Changes Format

New sorority pledges will be presented to the Student Body at Pledge Presents in their own sorority chapter rooms at Palo Verde Hall for the first time this Sunday from 1:30-4 p.m.

In the past, pledges have been presented on the stage of the MU Ballroom at the Pledge Presents Ball.

"We felt that Pledge Presents was about due for a change and

that the girls will feel more comfortable in their own chapter rooms," said Pam Del Ducca, vice president of Panhellenic Council.

Each individual sorority will plan how they want to present their own pledges. "This will add variation to Pledge Presents and make it more interesting for the public," said Mary Lou Dains, Panhellenic representative.

1966 SAHUARO Yearbook Now Is \$6 before
But Will Cost \$7 after . . .
Reserve Yours

OCT

15 Buy Now at MU 207

Help us Celebrate Our Birthday



the MUSIC SPOT

Broadway & Mill — — 967-7161

NOW Thursdays TOO...!



JEFF GLAZE COMBO



for the 2nd Straight Year . . . **STILL ROCKIN' AT THE**

SANDS HOTEL

Thurs., Fri., Sat.

9 till 1

Just Off Campus

Introducing the "Least" bra by goddess

It's the most!



Here's a little bit of nothing from the wonderful world of GODDESS . . . the only nude look bra with real support. You'll feel *au natural* in this uniquely different hint of a bra. As light as air yet designed to mold and support. In alluring skintone nylon marquisette, power net back. 32-36 B, C. Only \$4.00

Bonnie Sue fashions

913 Mill Avenue Tempe Center

Ph. 967-4094

Open 9 to 6 Daily Thurs. 9 to 9

UNA PERMANENTE A LA ULTIMA MODA



PARA USTED

Ole! Waves are IN this season. And this swinging style is the newest of them all. The foundation, of course, is a really good cold wave to give your hair body and bounce . . . then an expert cut which is carefully set to achieve a smooth high crown and flaring ends. Sheer flattery!

For Coeds Only

Ondulade permanente (Completa) Reg. 12.50	8.15
Champoo y peinado Reg. 3.00	2.45
Corte de pelo Reg. 2.00	1.60

We specialize in frosting and tipping

Coeds present this coupon for these values

Stop for Style

Beauty Salon

AT

THOMAS MALL

44th & East Thomas Rd.

959-0790

ASU Coed Given \$1,500

By ZANDRA ELLIS

Marilyn Hawkinson, former University sophomore, has received a \$1500 scholarship to attend the University of the Seven Seas, an accredited floating ship that will sail her over the waters of the world for one semester. She plans to return here second semester.

The scholarship has been granted by a large U. S. food company.

Miss Hawkinson will begin a four-day orientation program in New York Oct. 16 and the ship will sail Oct. 20, docking first in Portugal and sailing on to Spain, the Mediterranean, down the Suez Canal on to Egypt and visiting many other major ports in the world.

A real floating university was the dream of William T. Hughes, an industrialist and rotarian in Whittier, California. His dream became a reality with the maiden voyage of The University of the Seven Seas in 1962. It is a co-educational institution with an enrollment of 450 students.

Affiliated with Chapman College in Orange California, the school offers a wide variety of studies including english, foreign languages and several literature courses. A minimum of

12 hours or a maximum of 15 hours is the required study schedule for undergraduates.

A six-hour required course in area study involves the study of the different countries and their peoples which the students will visit. The purpose of the school is expressed in the words "The world becomes your classroom and the world's peoples your teachers."

The ship will usually dock three days in a country at the most five or six. All classes excluding area study, which is larger, will have less than 25 students.

Most of the major university activities are represented on the ship as on a regular university campus. Each semester new

student government officers are elected.

Approximate total cost of attending the school is \$3,000 a semester. Information concerning scholarships can be obtained from Chapman College. A 3.0 grade average is desired from students applying for scholarships.

She is a member of Kappa Alpha Theta sorority and Spurs, the sophomore girl's honorary, Leadership Board and Student Relations Club. She is on the cheerleading advisory board for Rally and Traditions and has served on the Palo Verde Hall Council. She has been working on the AWS Regional Convention, until withdrawal from ASU last Friday.

Fellowships Are Available For Prospective Teachers

Students interested in college teaching should apply now for the "most prestigious" fellowship in the United States — the Woodrow Wilson Fellowship — says Dr. Nicholas Salerno, professor of English.

This fellowship is granted by the foundation which offers 1,000 fellowships to both men and women, pays \$2,000 per year plus tuition and fees.

Students must be nominated by faculty members, said Dr. Salerno. Any student interested should talk to his adviser or any faculty member to let them know that the student is interested in applying, according to Dr. Salerno.

The deadline for nominating candidates is Oct. 31. Any student nominated should see immediately one of the two campus representatives, Dr. Salerno or Dr. Ronald Smith, professor of history.

This should be done before the application forms arrive, reports Dr. Salerno.

To be eligible, a student must be a senior or graduate and not registered in a graduate school.

Faculty members should send their nominations to:

Professor John N. Hough, Department of Classics, University of Colorado, Boulder, Colorado 80304.

Kick the dull driving habit. Step out in a lively Dodge Coronet.



Isn't it time you joined the Dodge Rebellion?

Forget all you've seen and heard about '66 cars. Because Coronet is here . . . sharp, smart and sassy, the greatest thing from Dodge since Year One. Loaded with luxury the higher-priced cars haven't caught onto yet. With a choice of five engines, each one designed to make the walls of Dullsville come tumbling down. And with a whole slew of standard equipment that used to cost extra. Like an outside rear view mirror. A padded

dash for extra safety. Variable-speed electric windshield wipers and washers. Backup lights. Turn signals. Seat belts, two front and two rear. And, as some extra frosting on the Coronet cake a 5-year or 50,000-mile warranty.*

Enough said to get you really tempted? Now let's get away from the look-alike, drive-alike, first-cousin cars with Coronet, a car with a lively personality all its own.

DODGE DIVISION  CHRYSLER MOTORS CORPORATION '66 Dodge Coronet

***HERE'S HOW DODGE'S 5-YEAR, 50,000-MILE ENGINE AND DRIVE TRAIN WARRANTY PROTECTS YOU:** Chrysler Corporation confidently warrants all of the following vital parts of its 1966 cars for 5 years or 50,000 miles, whichever comes first, during which time any such parts that prove defective in material and workmanship will be replaced or repaired at a Chrysler Motors Corporation Authorized Dealer's place of business without charge for such parts or labor: engine block, head and internal parts, intake manifold, water pump, transmission case and internal parts (excepting manual clutch), torque converter, drive shaft, universal joints, rear axle and differential, and rear wheel bearings.

REQUIRED MAINTENANCE: The following maintenance services are required under the warranty—change engine oil every 3 months or 4,000 miles, whichever comes first; replace oil filter every second oil change; clean carburetor air filter every 6 months and replace it every 2 years; and every 6 months furnish evidence of this required service to a Chrysler Motors Corporation Authorized Dealer and request him to certify receipt of such evidence and your car's mileage. Simple enough for such important protection.



Join the Dodge Rebellion at your Dodge Dealer's.



WATCH 'THE BOB HOPE CHRYSLER THEATRE' WEDNESDAY NIGHTS ON NBC-TV. CHECK YOUR LOCAL LISTINGS.

TYPING

Neat, accurate, reasonable. VeElla Gardens, 1700 E. Don Carlos, Apt. 2E, Tempe. Phone 966-0885.

The Unusual in Greek Jewelry



Scott Jewelers

911 MILL AVE. Tempe Shopping Center

Classified

Regulations: For ASU students, faculty and staff only. To place classifieds, submit to the State Press office in person. Deadline is Monday noon for Wednesday issue and Wednesday noon for Friday issue. Rates: Three cents per word per insertion with a 50-cent minimum.

FOR SALE

FLAMINGO House Trailer - 8'x40', 2 bedroom, 2 evaporative coolers, completely furnished. Good condition. Call 265-9905. May be seen at 2062 E. 10th St., Tempe.

CLEAN 1955 Mercury, two-door Monterey. Newly overhauled Engine, transmission, brakes, etc. 947-4752.

CONN trumpet, with case. Excellent condition. Valued at \$300.00, will sell for \$200.00. Phone: 277-1224.

PRINTING

CAMPAIGN handbills, etc. Fast service, very reasonable. Call George's Printing for appointment. Phone 966-6646 or 946-1375.

INSTRUCTION

INDIVIDUAL tutoring in math, chemistry, physics and biological sciences. Phone 967-7924.

HELP WANTED

EARN YOUR MEALS. Male students needed in the MU cafeteria. Jobs open 6 a.m. to 7:30 p.m. You work two hours a day, Monday through Friday, for a five day meal ticket or six days a week for a seven day ticket. Contact Tom Hearne.

MISCELLANEOUS

NEED A BABY SITTER? Call graduate student's wife with small baby. Hourly or weekly. 966-7767.

Winless Devils vs. Winless Shockers

Arizona State's football record to date: 0-3. First three opponents' record to date: 8-1.

To put it another way . . . you might have debts, dehydration or dandruff, but you're going to have a hard time receiving sympathy from Frank Kush.

Kush's Sun Devils have dropped three straight — to Brigham Young, Utah State and West Texas State. And while preseason forecasts did not rate these teams among the best in the West, their performances to date have indicated the soothsayers goofed.

Saturday night prospects are good for a winless team to notch a victory. Supplying the opposition will be the Wichita State Wheatshockers, losers of games to Montana State (17-6) and Cincinnati (14-6) both on the road.

The teams have more in common than their records. The Shockers are averaging less than one yard per rushing try. The Devils' figure is hardly better at 1.6. Both teams have been living and dying, by the pass.

Wichita features a scrambling veteran quarterback—Lou Confessori, just what ASU needs. Hank Washington of West Texas State last week passed for close to 300 yards, and there are still painful memories of BYU's Virgil Carter and Utah State's Ron Edwards.

But while the Devils are worrying about containing the 6-0, 185-pound Confessori, Wichita's George Karras is probably working overtime planning a defense to stop ASU's All-Amer-

ica candidate — Ben Hawkins, the one bright light in the Devils otherwise dismal offensive picture.

Last season against Wichita The Hawk caught touchdown passes of 8 and 43 yards. And he's ASU's leading receiver to date with 18 grabs good for 238 yards. He also has accounted for 12 of the Devils' 20 points to date.

The 6-0, 176-pound senior is closing in on several ASU career pass receiving marks. In two-plus varsity seasons Ben has caught 69 passes good for 1,084 yards and eight touchdowns.

The career record for most passes caught is 87 and the yardage total is 1,389, both set by John Allen who had the advantage of four varsity seasons (1951-53, 1956).

Hawkins is also maintaining a reception pace that would see him break the ASU record for most passes caught in one season. The current mark is 42, set last year by two men — Jerry Smith and, yep, Hawkins.

Other game items:

Pass defense has been a Wichita strong point to date. The Shockers in two games have allowed but four completions in 14 attempts for 42 yards, and in the process picked off two interceptions.

—ASU's ground game has left something to be desired, but the figure of 187 net yards in three games is misleading. Devil quarterbacks have been thrown for 106 yards in losses, that amount coming off the gross yards gained figure.

—Chuck Kolb, ASU's punter, should improve his national ranking in punting. Against West Texas he averaged 50.3 yards on six kicks, and increased his average per punt to 45.0 yards. Last week he ranked 20th nationally.

—Kush was highly disappointed at the WTS loss, especially after coming from 13-0 down to lead at halftime 14-13. He termed it "one of the worst games we've played in my eight years here." He said many of the problems concerned missed

assignments or mental mistakes, and credited this, in part, to a shuffling of personnel last week in order to plug holes created by injuries. The mentor also felt the platooning of athletes was hindering ASU. "It's a vicious circle," he said. "We're not deep or experienced enough to play complete separ-

ate platoons, and yet we're hindering our better players by forcing them to go both ways."

—Missing from the ASU lineup again this week will be end John Pitts (shoulder dislocation) and tackle John Hanson (knee). Returning to fulltime duty will be tackle Ray Shirey (knee).

ON CAMPUS
M.U. BARBER SHOP
 IN THE GAMES ROOM
2 BARBERS
MONDAY THRU FRIDAY 8:30 — 5:30

YOUNG MEN UNDER 25!

Do you think your car insurance rates are too high? Sentry Insurance may save you up to \$50 or more. All you do is fill out a simple questionnaire to see if you qualify. You have nothing to lose and a lot to gain. Just call the Sentry man nearest you for details.

Bud Bailey 959-2747 Gordon Nickolie 947-0496 Pat Barber 946-5141

Or Write SENTRY INSURANCE
 P.O. BOX 1954 — PHOENIX, ARIZONA

Look out for you
SENTRY INSURANCE
 The Hardware Mutuals Organization

APARTMENT

1/2 Block from ASU

Furnished — All Util. Paid.
 Quiet, Ideal for ASU People

\$85 Mo.

Phone 967-5430

To the readers and admirers of Atlas Shrugged & The Fountainhead
Nathaniel Branden
 will deliver the opening lecture of his series on
Objectivism
 the philosophy of

Ayn Rand

and its application to psychology
 Saturday, Oct. 9, 8 p.m.
 HIWAY HOUSE
 3148 East Van Buren St., Phoenix
 Admission opening night — \$3.50
 Student admission — \$2.75
 Nathaniel Branden Institute, Inc.

For descriptive brochure, contact
 NBI's Local Representative
 Mr. Dennis Lee Wilson
 3122 North 27th Street
 Phoenix, Arizona 85016
 Phone: 279-2652 (evenings)

COFFEE SHOP

Newman Catholic Student Center

Serving Breakfast Lunch Excellent Food at Reasonable Prices

"Best Coffee on Campus" (Cassandra, May 1965)

Open Classdays from 7 a.m. till 4 p.m.
 Sundays — from 8:30 till 12 noon

8th Street and College Avenue
 "At the Gates of the Campus"

OPEN TO THE PUBLIC

COLLEGE DAY

EVERY THURSDAY IS

"COLLEGE DAY" AT

Russ' Super Car Wash

CAR WASH ONLY

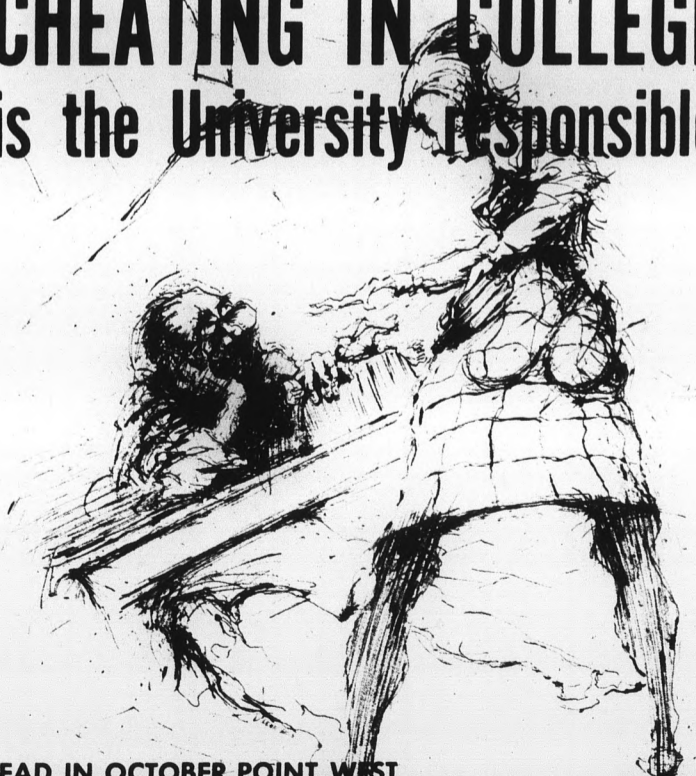
\$1.00 NO PURCHASE NECESSARY

TO ALL ASU STUDENTS
 UPON I.D. PRESENTATION

Russ' Super Car Wash

7569 E. McDOWELL RD.
 SCOTTSDALE, ARIZONA

CHEATING IN COLLEGE!
 is the University responsible?



READ IN OCTOBER POINT WEST

"INTERVIEW WITH A COLLEGE GHOST"

AVAILABLE: A.S.U. CAMPUS DRUGS
 UNIVERSITY SPORTING GOODS STORE
 RYAN-EVANS DRUGS (TEMPE CENTER)

PHOENIX
 Point West Magazine

Spectators Drawn By YAF Display

By BOB GOLDEN

"Does politics pay? Ask LBJ.

"Participate in the Welfare State: Go Poverty Stricken."

"Santa is Dead — Long Live Lyndon Claus."

Anybody for a bumper sticker? The Young Americans for Freedom have these and many more like them, as they were displayed at their booth on campus last week.

Spectators came and went. And some stayed to argue. "What's the YAF's position on Vietnam?" queried one bystander. Mark Nobel, YAF treasurer, pointed to the button on his shirt which read "Win in Vietnam."

Another pedestrian walked by and read a bumper sticker that said, "Down With Defense: Like It Gets in the Way of Surrender." He asked the YAF behind the table what they meant by "Down with Defense."

"It's just kind of a joke," he was told.

"So are you," the bystander replied and walked away.

But not everyone was a wise guy. Dozens of stickers were sold (like "Let's Phase Out McNamara," "Bomb the Ban" and "Don't Worry: A Disarmed U. S. Will Protest You" and several YAFers were signed up.

And so went another typical day of recruiting for all red-blooded Young Americans for Freedom.

Then there was the super-ultra-leftist who climbed up the street sign pole and changed Orange Street to Red Street while singing Red River Valley.

COSNER MOVIE

Best "A", men's residence hall, will sponsor the showing of "Who's Been Sleeping In My Bed" at 7:30 p.m. Thursday and Friday in Cosner Auditorium. Admission will be 35 cents.

Corps Captain To Give Talk At University

U. S. Marine Corps Captain Roy C. Peterson will be here Monday through Friday to talk about a new Marine organization on campus. The organization, called the "Semper Fidelus Society," is designed for officer candidates of the U. S. Marine Corps who are currently enrolled in a Marine Corps pre-commissioning program. The Semper Fidelus's work in cooperation with the Marine Headquarters Officer Selection Office.

Anyone interested in the Marine Officer procurement programs can talk with Capt. Peterson in the MU Patio next week, or contact Semper Fi president George Crane at 967-9770.

Production Tryouts 'Guys And Dolls' Set

University Players and Lyric Opera Theater tryout rehearsals for this year's musical production "Guys and Dolls" will be Sunday at 2 p.m., Monday at 7:30 p.m., and Tuesday at 7:30 p.m., in Gammage Auditorium.

Any student can audition for the various parts. A cast of 40 including actors, singers, and dancers will be selected.

The two groups will present the play Dec. 16-18 at Gammage Auditorium. Three full houses at Gammage Auditorium viewed last year's joint production of "West Side Story."

Don Doyle will direct the production while Dr. Kenneth Seipp will handle the music. Miss Kathleen Erickson will serve as choreographer.

Students interested in work-

ing on the technical crew can contact the following: Douglas Goheen, scenery, props, painting, David Hale, lighting, and Miss Joanne Griggs, costumes.

For traditional apparel and modest prices

Americana Shop

offers the following outstanding clothing, furnishings and sportswear lines

styled by *Enro*

Cricketeer

London Fog

Haggar

Sagner

Byford

Canterbury

Munsingwear

Greif

Jaymar YMM

Harris

Brentwood

Beau Brummell

Adler

Wren

White Stag

Levis

Jantzen

New York Knit

Hickok

Jade East

THE *Americana* SHOP

Quality Men's Apparel
Tempe Shopping Center

NOW OPEN 2 NIGHTS

Till 9 P.M.

MONDAY & THURSDAY

HILLS BOOKS & RECORDS

TEMPE CENTER

Get In Shape Now!

WE OFFER INDIVIDUAL COURSES & PERSONAL INSTRUCTION FOR:



- Body Building
- Reducing
- Conditioning
- Sauna
- Steam Bath

Hours: 10 to 10 Daily

Charter Memberships

\$6.00 Per Month

University Health Clubs

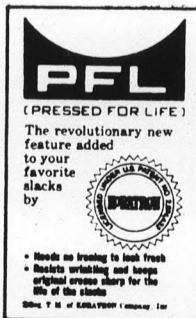
IN TEMPE
1018 N. Scottsdale Rd.
Ph. 967-7461

IN PHOENIX
3147 W. Ind. Sch. Rd.
Ph. 266-6798

HARRIS TRADITIONAL IVY Keeps Its Promise

... to the American male who looks to the lean, trim fitting slack of easy care fabric for comfort and performance. They're tapered-to-the-narrow cuff with belt loops and separate waistband. Sizes 28 to 40

\$6.98



THE *Americana* SHOP
QUALITY MEN'S APPAREL

TEMPE SHOPPING CENTER

OPEN 9:00 A.M. TO 6:00 P.M.
THURSDAY 'TIL 9 P.M.