



All students must have an activity card for admission to Saturday nights football game. Distribution is being conducted on the second floor of the Memorial Union. ID cards may also be claimed by new or transfer students.

Ballet Troupe Makes Debut

The Harkness Ballet, first new major ballet in the United States in 20 years, will have its American debut at Gammage Auditorium, Oct. 4 and 5.

The five-week tour of some 30 cities, launched here, will introduce significant American-style choreography to audiences throughout the country.

Responsible for the birth of the exciting new company of 30 dancers, led by Prima Ballerina Marjorie Tallchief, is Rebekah Harkness, widow of philanthropist William Hale Harkness, known for his generous donations to science and medical research.

Mrs. Harkness established the Rebekah Harkness Foundation in 1961, with dance as its major beneficiary. The foundation finances the Harkness Ballet.

A year ago, on Oct. 5, the company appeared in a private performance at the White House before President and Mrs. Johnson and a glittering international audience.

Following that, the company undertook an extensive tour of Europe, where critics and audiences alike acclaimed the exciting young dancers, world-renowned guest stars, and the original works presented.

Born in a unique environment, a dance workshop at Watch Hill, R.I., where leading choreographers, composers, teachers and designers worked together to create new works, the ballet now has its headquarters in New York at Harkness House, a Fifth Avenue mansion.

Soloists include Lone Isaksen, Brunilda Ruiz, Lawrence Rhodes and Helgi Tomasson. George Skibine, former director of the Paris Opera Ballet, is artistic director.

Highlight of the American tour is the world renowned premiere of Skibine's "Sara-bande" to the music of Couperin, an expanded version of the ballet originally created to honor President Kennedy's state visit to Versailles in 1961.

Student tickets, available at the auditorium box office, are priced at \$3, \$2 and \$1.50.

One of the Gammage Auditorium Special Events, the Harkness Ballet will perform at 8:15 p.m. on both evenings, with a different program each night.



Marjorie Tallchief

Deadline Nears

So far, 13 freshman senator petitions, four business administration senator petitions, and one graduate senator petition has been received from students by Judy Meyer, AS Secretary. No petitions have been taken out for fine arts senator.

Deadline for taking out petitions is Sept. 29 at 4 p.m.

An election orientation assembly will be held Thursday Sept. 30 at 4:30 p.m. The primary election will be Oct. 6 and the general election Oct. 13.

Social Services Now Accredited

The Graduate School of Social Service Administration, which offers the state's only two-year professional program of graduate education leading to the master of social work degree, has been awarded accredited status by the Council on Social Work Education in New York.

Mark Hale, chairman of the council's commission on ac-

creditation, has informed President Durham that "the accredited status is retroactive to the beginning of the program now in effect."

The commission cited "the school's interest in making a contribution to the solution of special problems of the Southwest."

In response to a critical shortage of social workers in Arizona and throughout the nation, the Board of Regents authorized establishment of the professional graduate school at the University on Oct. 4, 1961.

Before he joined the staff of the U. S. Office of Education, Dean Lundberg had been an associate professor for seven years at the University of Utah's Graduate School of Social Work.

During ASU's 79th annual Commencement June 1, the first master of social work diplomas were awarded to 15 candidates who had successfully completed the requirements for the graduate degree.

Located in Old Main, the school now has a faculty of nine, a staff of 15 field instructors, and a group of 13 physicians, psychiatrists and psychologists who serve as special lecturers.

Auto Influx Grows

By BRIAN TRACY

That four-wheeled monster, the automobile, is the main cause of any grey hair growing on the heads of campus security officials during home football games at Sun Devil Stadium.

The influx of cars of some 35,000-plus fans clog intersections for miles and fill parking lots to capacity in short order. To combat a situation which would result in absolute congestion, three departments—Campus Security, Tempe Police Department, and the Sheriff's Department, join to combine their resources and manpower.

Campus Security, under the direction of John B. Duffy, provides 31 men for traffic control and crime prevention, most of the latter concerned with car theft. Of the 31 men, only five are on regular duty with the remaining 26 called in on overtime.

The Sheriff's Department supplies 30 deputy sheriffs for duty within Sun Devil Stadium. Tempe Police Department also increases the size of their force during game time and control traffic away from the general vicinity of the stadium.

Traffic in the stadium area proper is controlled by means of an observer atop the Palo Verde East building. The observer, when noting extreme congestion, radios officers who divert traffic away from that particular area.

This system has worked quite effectively, as witnessed by last Saturday's BYU game, according to Duffy. Within 40 minutes of the end of the game all parking lots were empty and traffic was moving normally on all access roads.

Problems during game time in the stadium are usually limited to a few faintings or to sprained ankles and skinned knees, the latter resulting from tumbles down stairways.

According to Duffy, post-game incidents are relatively few and far between. He attributes this to the generally "mature type of student found on campus."

One night of the football season that does cause concern and extra precautions is the UofA game. Due to the intense rivalry, the game is almost always a sellout, and this invariably results in a group of peo-

(Continued on Page 2)

World Briefs

NEW DELHI, India — India and Pakistan ordered their troops to cease firing yesterday after Indian Prime Minister Lal Bahadur Shastri announced that his nation would withdraw from the war if Pakistan would do the same.

Troops of both nations were ordered yesterday to end hostilities before another sunrise.

Shastri told his parliament that previous threats by Communist China of direct intervention against India have eased but that that nation will remain a challenge to India.

* * *

VATICAN CITY — Bishops of the progressive and conservative factions of the Roman Catholic Church have divided on issues to appear in the Church's forthcoming statement on world problems.

Chief trouble-spot is that dealing with birth control with progressives pressing for a distinct and clear statement and conservatives arguing for little or no treatment of the issue.

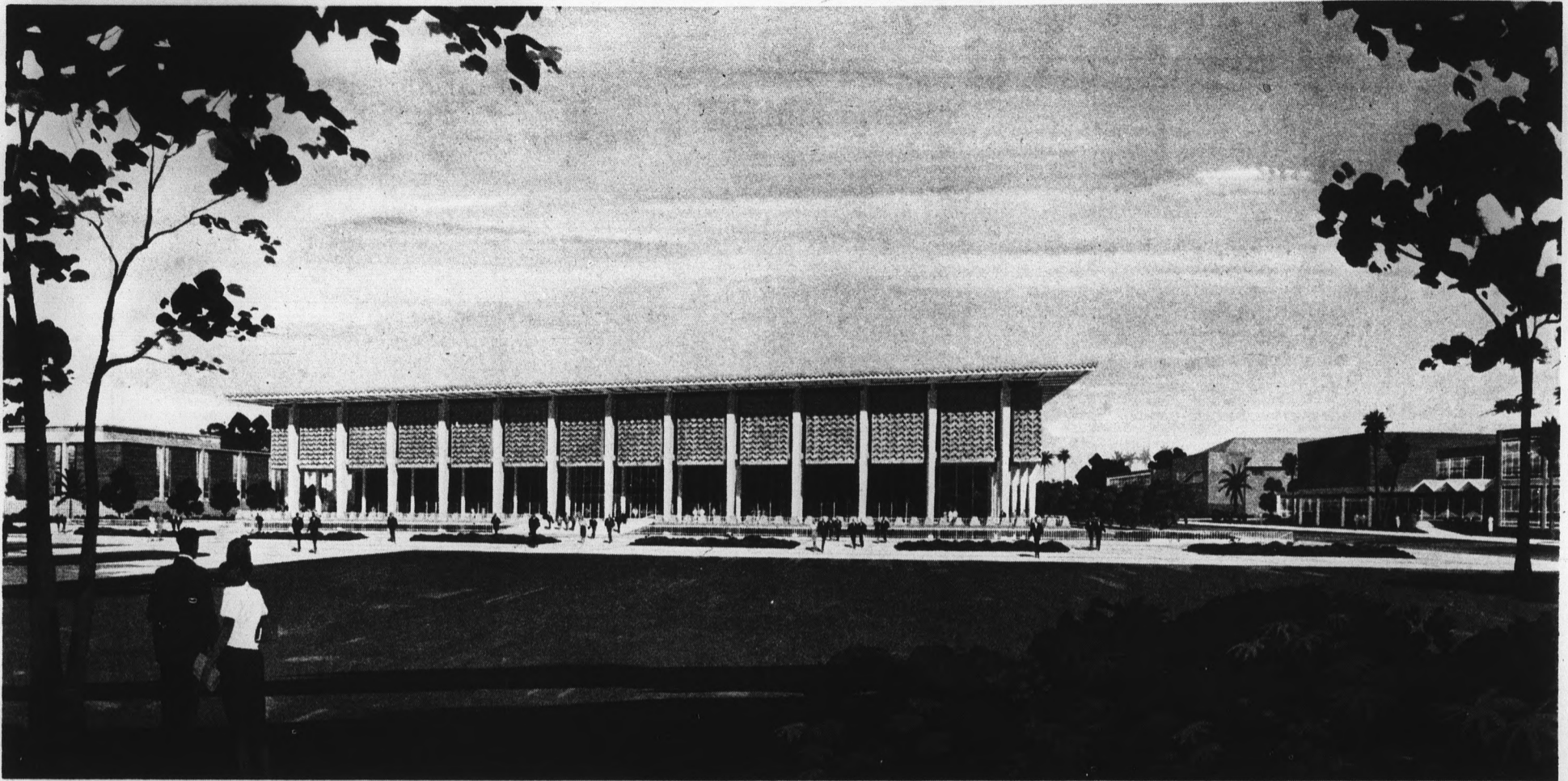
* * *

WASHINGTON — Nearly 2,000 doctors, dentists and veterinarians will be drafted soon as part of the Defense Department's build-up of U.S. armed forces. Drafting will start next January.

* * *

SAIGON, Viet Nam — A request for re-examination by Washington of U.S. policy on the use of non-lethal gas has been asked by the U.S. military command in Viet Nam.

Artist Envisions Completed Library



BUILDING RISES — Construction won't last forever. The new library is shown in the artist's conception as it will appear after its completion in early 1967. When the new library is completed, Matthew's library will become the home of the new law school.

MORE ABOUT —

Auto Influx Grows

(Continued from Page 1) ple that are turned away at the gates. The dispersal of this milling throng sometimes presents a problem for the officers.

As in all highly co-ordinated operations such as this, the unexpected is always prepared

for, Duffy says. In order to cope with any unforeseen emergencies, the three departments have a master plan of mobilization. In case of a major incident of any sort, each officer knows just exactly where to go and what to do.

state
press

THE STATE PRESS is the official campus newspaper of Arizona State University. It is published Tuesday through Friday throughout the school year, excepting holidays, and is entered as second class matter at Tempe, Arizona 85282.



THE STATE PRESS is a member of the Arizona Newspapers Association, Associated Collegiate Press and National Advertising Service, Inc. Subscription price is \$5 per school year.

**Refund Period
ENDS
Saturday, Sept. 25**

After This Date We Are Buying

Used Books On A Limited Basis

**UNIVERSITY
BOOKSTORE**

GRAND OPENING Campus Coffee Shop

130 E. 8th STREET — IN THE ARCHES BUILDING

Serving the Finest Food at Very Reasonable Prices

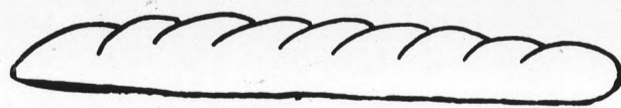
**BREAKFAST - LUNCH - SNACKS
- DINNER -**

Beefburger35 Cheeseburger40
Jumbo Burger50 Hot Dogs25

★ 21 DIFFERENT SANDWICHES ★ HOT PLATTERS
CORNED BEEF — ROAST BEEF — TURKEY — MEAT LOAF
SALADS — SOUP — FRIES — POTATO SALADS

THE ORIGINAL 2 FOOT HERO

The Sandwich you Buy By the Inch or Foot . . .
Combination of (Yes, you get all of them) Ham, Cheese,
Bologna, Swiss Cheese, Salami, Ital. Dressing, Lettuce, Tomato
on our own Freshly Baked 2-Foot French Bread



13c
Per Inch

It's a Meal . . . It's a Creation . . . It's a Hero . . .

PIES — PASTRIES — ICE CREAM SODAS — SUNDAES — SHAKES

OPEN: DAILY 7 AM — 10 PM
SATURDAY 9 AM — 10 PM
SUNDAY 11 AM — 6 PM

Campus Coffee Shop

130 E. 8th STREET — IN THE ARCHES BUILDING



CHOIR MEMBERS FETED — Two members of the National University in Mexico City Choir discuss ASU with Vice-President Gordon Castle, left, during a buffet held last Monday in their honor by the International Student Relations Board in the faculty dining room. The 30-member choir, composed of faculty members and students, included this university in its tour of the Southwest under the Mexican government's cultural exchange program with the U. S.

Geography Graduates Placed

Arizona State University's geography department has placed seven of its graduates with master's degree or in process of obtaining Ph.D. degrees in various positions.

Two of the seven recent masters graduates in geography are now at other universities working toward Ph.D.'s, three are teaching at the university level, while two are teaching at the high school level.

Scott Williams, who received a National Science Foundation award for four years of graduate study, is currently enrolled at the University of California at Riverside.

Robert Norris has been ap-

pointed to the geography faculty at North Texas State University Ph.D.

Barbara Howard is currently teaching in a public high school in Reno, Nevada, and Betty Haas is teaching in a Phoenix area high school.

The placing of the seven in various "employment" categories gives ASU's geography de-

partment a 100 per cent employment rate for those earning master's degrees at ASU this summer.

versity; Ronald Garst has received an appointment to the faculty at Kansas State College, in Pittsburg, Kansas, and Robert Earickson is currently enrolled at the University of Washington, working toward

Engineering Grant Awarded

The American Iron and Steel Institute, New York, N.Y., has awarded a \$20,000 grant to the University to conduct research on light gage steel folded plates.

Dr. Richard Pian, professor of engineering in the College of Engineering Sciences, is chief investigator for the project.

In order to develop criteria for design of light steel folded plates as long-span roofs, an attempt will be made to ana-

lyze both single and multiple-folded plates of several shapes.

Dr. Pian, a graduate of Cornell University, has been on the faculty since 1959 after teaching 11 years on the Michigan State University engineering faculty.



Dr. Pian

Foreign Students Open House Set

International Student Relations Board will host its first open house at 4 p.m. Friday in the Baptist Student Union, 112 E. 8th St.

This year the board has members from Iraq, Turkey, Guam, Pakistan, Persia, Nigeria, Scotland, Thailand and Greece.

Members have planned a number of open houses this semester to enable foreign and American students to get to know each other better.

He was a visiting professor of structural engineering at the SEATO Graduate School of Engineering, Bangkok, Thailand, in 1961-63.



Welcome To Our Friendly Barber Shop

SUN DEVILS BARBER SHOP

Open Mondays

THE ARCHES
In The Mall
Corner 8th St. & Forest

Chart with
20 Individual
Hair Styles

Ovation Cosmetics

"Moisture is the Secret"

financial opp. available for individuals and Sororities.

G. M. Buzard
distributor
537 E. Osborn
279-8840 945-1433



... See you at the **LIBRARY**

T.G.I.F. EVERY DAY

NOON — 7:00 P.M.

BIG ONES 75c

DANCE PARTIES

THURS., FRI., SAT.

JAM SUNDAYS


The STARLINERS starring
The RAY BROTHERS

LIBRARY

1001 E. 8th St. — Tempe

OPEN NOON DAILY

Campus Favorites



12.95 11.95

Cordovan color or Burnished Brown

ALSO BASS "WEEJUNS" FOR MEN & WOMEN

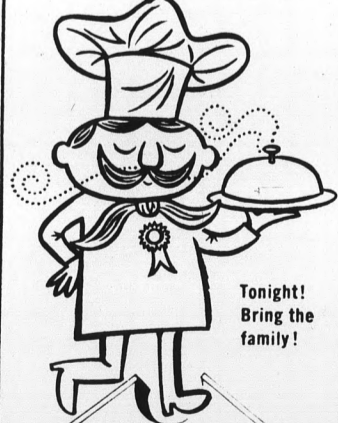
* OPEN THURSDAY 'TIL 9

VISIT THE NEW **WIGWAM** FOOTWEAR • SPORTSWEAR

"LANDMARK AT THE CROSSROADS"
Scottsdale Road
Main Street

GOURMETS GO FOR VILLAGE INN PIZZA

Custom-baked gourmet pizza, bubbly-hot and delicious, plus imported and domestic beers. Dinnertime, snacktime, anytime! go for Village Inn pizza —



Tonight! Bring the family!

VILLAGE INN PIZZA PARLOR

PHOENIX: 3626 E. INDIAN SCHOOL
61 W. THOMAS / 2334 W. BETHANY HOME
MESA: 1156 W. MAIN
TEMPE: 801 E. APACHE BLVD.



photo by Bill Schueman

SELECTION BEGINS — As woman students crowded into the MU upper lounge for the annual Kaydette tea. Each candidate was given an opportunity to speak to the selection committee. New Kaydettes will be announced next week.

Orchesis Selects New Members

Orchesis, dance honorary and performing group, selected twenty-four new members Tuesday night on the basis of the ability to dance on an advanced level and on a feeling for dance, said Kathleen Erickson, acting sponsor.

Orchesis will give its first public performance Nov. 4 with an informal fall workshop. It will include a presentation of dance technique and composition.

New members are: Janet de-

Berge, Marilyn Moyer, Linda Brown, Gale Chatham, Ann Clarke, Anna Fricchione, Michele B. oGodman, Phyllis Lea Harper, Betsy Kalish, Pat Knapp, Lynn Litton, Gloria Manez, Bunny Olmsted, Charlotte Parker, Cheis Parr, Dorothy Price, Pamela Price, Oma Sandoval, Corl Somuels, Laura Stapely, Saundra Statham, Betty Scott, Kay Swisher and Sherry Youman.

In addition eight alternate members selected were: Lisbeth Applefield, Linda Biery, Sharyn Owens, Herb Gregg, Stevie Kenyon, Penny Pellack, Sande Surger and Don Knight.

The new members were selected from 49 applicants by the Orchesis council of officers with the assistance of Hope Heiman, dance instructor, and Peggy DesJardin, the group's musical accompanist. Officers are: Elva Hlava, president; Denita Doering, vice president, Patty Gorman, secretary; Judy Jerome, corresponding secre-

tary; Denise Doering, treasurer; Neela Perry, Rose Margaret Killen and Ann Graves, publicity.

Miss Erickson is acting sponsor in the absence of Margaret Gisolo who is on sabbatical leave.

Classified

Regulations: For ASU students, faculty and staff only. To place classifieds, submit to the State Press office in person. Deadline is Monday noon for Wednesday issue and Wednesday noon for Friday issue. Rates: Three cents per word per insertion with a 50-cent minimum.

INSTRUCTION

INDIVIDUAL tutoring in math, chemistry, physics and biological sciences. Phone 967-7924.

TRANSPORTATION

NEED ride from 36th St. and Indian School Road Monday through Friday. Phone 955-3365.

WANTED

TWO male students, senior or graduate, rent a room in Scottsdale home. 946-8417.

quality

[there's no substitute]

We represent a century old life insurance company with a solid reputation. Not stodgy, though. The Company's growth pattern in the last ten years is a reflection of keeping up-to-date with the newest coverages and features—with competitive rates.

The sales force speaks quality, too. They're well-informed in the professional approach to life insurance programming. Many of them began their sales careers on college and university campuses in the Company's internship program for students.

If you like the idea of a quality company, a quality training program, and quality products—and if you think you'd be interested in looking into a career before graduation—get in touch.

CURTIS PAGE
JOHN HERRICK
WILBUR BULLOCK
264-4334

PROVIDENT
MUTUAL LIFE
INSURANCE COMPANY OF PHILADELPHIA
a century of dedicated service

NOW OPEN

6 A. M.
'Til
12:00 P. M.

...the friendly

Yankee Doodle Dandy
CAFE / 606 Mill Ave.
Tempe

HOT PLATE — SANDWICHES
BREAKFAST ALL DAY LONG
... the Country Cookin' way!

COFFEE **5c** Cup

Come In and See Us, Ye Hear!

Tempe Adopts Sales Tax

Student and faculty members shopping in Tempe stores will soon find over-the-counter items one per cent more expensive. The tax is currently three cents on the dollar.

Voters Tuesday adopted the one per cent sales tax by a vote of 1,314-1,031. The tax, which will be effective Nov. 1, is the first of its kind in Tempe, according to Miss Laretta Mutkey, city clerk.

Mayor John C. Mocer said that the Tempe City Council initiated the sales tax as the "most equitable approach to answering Tempe's needs for revenue both now and in the future."

The mayor further stated

that the sales tax prevented the necessity of an increase in the property tax rate.

"A sales tax enables the city to maintain a stable property tax and has the further effect of causing the entire using public including transient, visitors, tourists and students to share in the cost of providing city services," said Mayor Mocer.

Money derived from the tax will be used for water, sewer, fire and police services.

The tax is estimated to produce about \$350,000 annually for Tempe. Supporters have advocated that the tax will net \$150,000 from local residents, \$100,000 from students and \$100,000 from visitors and tourists.



*Wool Jersey Dress
in
Dusty Olive
Cornflower Blue
Burgundy*
*If you have a
Village you
have Everything!
get one at*
The Village Shop
*616 Myrtle Ave.,
Tempe.*
Open Thurs. Eve.

New Fraternity Pledges Named

Fraternity rush ended last Friday when bids were given. New fraternity pledges are:

Alpha Epsilon Pi

Mike Maisel, Harry Salzman, Steven Levy, Frank Swerdlow, Lawrence Callahan, William Glazer, Michael Bleifer, Barry Nadill, Geoffrey Weiskopf, Michael Barker, Elliott Blonde, Thomas Rubin, Barry Hirsch, Richard Meer, Richard Goldfeder, Stanley Solodky, Lewis Rubinstein, Gary Dorman, Jerome Cagen, Joel Marcus, Richard Rogers, Fred Steiniger, John Newman, Craig Gorson.

Coeds Pledge Organization

The first project of the year for Phrateres, off-campus women's organization, will be to decorate cars Friday in campus parking lots with maroon and gold streamers, to boost spirit for the Saturday night game with Utah.

New pledges are Linda Carol Brown, Beverly Clymer, Diana Crickmore, Renee Felmann, Barbara Gossett, Glinda Hancock, Alice Hightower, Jan Lazzari, Meryl Lee Mills, Ginnie Ann Reilly, Jo Robinson, Cindy Schell, Sherrie Sidener, Patty Spieth, Pat Valentine, Jean Weber, and Sherry Yearicks.

Also, Nedra Jean Anderson, Ruth Blum and Gail Drake, all of Mesa; Carol Batten Diane Blied, Betty Bocchini, Julia Campo, Joey Fetter, Sherry Grace, Linda Montoya, Genanne Olson, Sheryl Phipps, Linda Reed, Pam Ross, Sharon Sawyer, Lynette Stainbrook, Ann Stephens and Paula Strumpfer.

Also, Diane Barnum, Kathy Bennid, Nancy Burke, Candy Burud, Linda Soglan, Carol Ann Gill, Nancy Gilzinger, Dessa Hallickson, Janice Hallis, Pamela Huber, Jean Howard, Kristi Koonce Margaret Monroe, Anna Mortensen, Saunu Nechville, Kerry Owens, Shirley Packer, Janet Plowman, Shirley Schracl, Sylvia Scothorn, Oralita Terrell and Kathleen Timmer.

Alpha Rho Chi

Charles Ranes, Cliff Mills, Tony Schmitz.

Alpha Tau Omega

Lloyd Robson, Robert Phillips, James C. Butler, Thomas Peper, Dennis Sutton, Louis DeRoos III, Bill Fischer, James Garvey, John Dykema, Teddy Sudderth, LeRoy Brenoman, Phil O'Neil, Leslie Judd, James Sollenberger, Steven Lampert, Frank Bowman, Steve Rold, Doug Kalen, Kempton Edmondson, Gerald Moore, Lawrence Jaskulski, Clarke Congdon, Bert Warden, David Gardner, Alan Schlosser, Bruce Hammer, John Kirkpatrick.

Delta Chi

Daniel Powell, Dan Whipple, Charles Voss, Jay Frerichs, John Dutton, Jon Nelson, David Overgard, Richard V. Gazi, Maurice Deise, Allan Chasey.

Delta Sigma Phi

Stephen Bryant, Greg Grabe, Jack Sneathen, Rick Barnett, Robert Sine, Dave Weib, Terry Beckhelm, Richard Blair, Jim Spellman, Richard Edick, Chris Raleigh, Michael Iannotti, Gary DeSpain, Dan Robertson, Stephen Know, Steve Anderson, Richard Johnson, George Kaddaras, Henry Stevens, Dale Gillam, Bill Holmes, John Frank, Raymond Bolleau, Tom Matthew, Ronald Dawson, John Miller, Loren R. Owen, Jr.

Kappa Sigma

Edward Sharkey, Frank Betz, Richard Morris, Charles Lewis, Gerald Scott, Jim Pehta, David Enmundson, Malcolm Arnot, Jacob Puzio, Richard Nye, Jr., Greg Janos, Warren Lind-sley, Jr., James DaCosta, Richard Claver, Bill Dickson.

Lambda Chi Alpha

Edward Cooner, Lawrence Orr, John Busdicker, John Higgins, Joe Jensen, Bill Bergquist, Roger Cochran, Gerald Evenson, Richard Levering, Jeff Paulson, Tom Holt, Gary Clark, Thomas La Bouff, Jeww Warner.

Phi Delta Theta

David T. Smith, James W. Pullard, Robert McDonald, Bruce Balcom, Bill Baker, Frank Cataldo, Jr., Frank Farrell, Eric Stiefel, Kenneth Spence, John Miller, III, Larry Jarnagin, Gary A. Clendenin, Ken Cook, Barry MacBan, R. J. Smith, Steve Riddle, Phil Davis, John McLeod, Bart Feber, Gerry Gardner, Mike O'Brien, Mike Jutson, Robert Galusha, Jay Delich, Mike Bell, Jeff Armstrong, Thomas Allen, Clark Griffin, Bob Greene, Roger Whitney, Steve Dolby, Dan Hill.

Phi Gamma Delta

Ken Vanosky, Bob Wilson, Charles Mysliwicz, Neil Febus, Richard McNeill, James Holt, Jock Sewall, Bill Stern, Ted Mullen, Robert Wagner, Louis Matta, Steve Ryan, Ken McCullough, Jim Breitfuss, John Gaston, David Thomas, Chuck Wagner, George Baker, Jr.

Phi Kappa Psi

Thomas Hazard, James Bell, Ken Prue, Kit Obrock, Peter J. Mortimer, Ronnie Treiber, William B. Baker, Jim Brown.

THE PITCHER HOUSE

B.I.T.O.A.

406 MILL AVE. TEMPE

Pi Kappa Alpha

John McClure, Chris Solomon, Phillip Sproul, John Earley, Kevin Leonard, Craig Myers, Spencer Covington, Paul Hummell, Lynn Byron, William Steiner, Gregg Hansen, Doug Elden, Charles Cimino, John Bare, James Thielke, Donald Haroz, Mike Polachek, Doyle Brown, Paul Trapnell, George Bird, Raymond Quigley, Barry Connoley, Charles Creighton, Nelson S. Nelson, Mark Zimmerman, Mike Brower.

Phi Sigma Kappa

Floyd Herdrick, Carl Meyer, Jeff Blue, Tyler Borman, John Kissane, John Jacobson, Mike Strickland, Michael Krouse, Fred Basgal, Ed Strubbe, William Quinn, John Paris, Jed Billings, Roger Bazeley, Lee Ladwig, Joseph McNeill, John Rogers, Lawrence Forsythe, Larry Juniper, Harry ohnson, Jr., John Rhodes, Bill Jean, Mike Pickard, Stephen Solomon, Paul Bjorklund, John Herren.

Sigma Alpha Epsilon

Richard Bevington, David Ferrara, Gary Hart, Robert K. Searcy, Bruce Mabb, Brian Earley, James Murr, Thomas Young, Ken Robinson, Eddie Diercks, Danny Thome, Terry Burt, Michael Tubbs, Randy Wilson, Dennis Dilg, Peter Kellen, James Gadd, Jay Smith, John H. Ramirez, John Seaman, Richard Kwasny, Robert Blaska, Donald Arnett, Larry Fosholt, Gage Caughois, Larry Levinger, Stephen Kies, Jack Lindahl.

Sigma Chi

Lawrence Cuzzocrea, Tom Burke, George Campanis, Michael Huff, Thaddeus Taylor, Michael J. Nighols, Bernard Vitek, Fred Nelson, Dave Grangaard, Joseph Barlow, Steve Smith, Mike G. White, James Sasser, Tom Deal, Mike Pond, Lawrence D. Cooper, David T. Leahy, Bob Carlin, Lawrence P. Cooper, Steve Suggs, James Harvey, Rod Kahn, Ronald Lohr, Eugene Panis, Tom Cochran, Tom Tribou, Chuck Sankey, Dave McGuire, Rich O'Brien, Jordan Nordhagen, Don Pollard, Rich O'Brien.

Sigma Nu

Mike Bartlett, Michael Sepiol, Stephen Girard, Don Golder, Allen Orso, Jeffrey Jennes, David Beresic, Tim Short, Mike Adams, Max Joyce, John

T. Acklen, Howard Thompson, Steve McAdams, Jon Abel, Paul Hermanson, Michael Tiano, Charles Kahrhoff, Timothy Day.

Sigma Phi Epsilon

John Zenor, Bill Worthen, Al Zalecki, Michael Simmons, John Bebbing, Phillip Hertzog, Rick Callahan, Randy Woods, Lock Ledford, Farrell Holmes, Thomas Risley, Ernest Peluso, Tony Veto, James Leithliter, William Greenleaf, George King, Tom Hoag, Paul Hapip, Tim VanLeer, Wayne Krok, Greg Eaton, Lawrence Dunkel, Mike McNeff.

Tau Kappa Epsilon

Charles Manty, Stephen Cooke, Thomas Heideman, Dennis McGaffick, Charles Accello, Clark Donato, James White, Kevin McSheffrey.

Theta Chi

Robert Elwell, George Mate, Dave Laubie, Elliott Simons, Jerry Boucher, Walter Frauenberger, David Fedel, Richard Milot, Dennis Mitchell, Mike Markiewicz, Dennis Le Febre, Martin Goldfarb, Peter Till, Barry J. Anderson, Gregory Duncon, Lynn Kantor, George B. Gerber, Stanley, Hughes, Phil Skramstad, Bud Scvribner, Douglas Hayhurst, Robert Paulsen, George Freih, Karl Anderson.

Theta Delta Chi

Mike Mazza, William Solley, Les Cox, Steven Barfield, Stephen Bernard, David Basham, Frank Thomason, William Rabe, John Delisa, Mark Goldrich, Steve Sharpe, Barney Rouse, Allan Matthews, Jim DeVaney, Richard Beckley, Chris Pollack, Thomas Prager, Bruce Kaufman, William DeHaro, Charles Abair.

State Press

SOCIETY

Hostess Tea Slated

The Memorial Union Hostesses, a service organization for freshman women, will hold their membership tea at 3:30 this afternoon in the MU Upper Lounge. All freshman women are invited to attend.

The organization provides hostesses for all MU functions in addition to performing other service functions both on and off campus.

"The Memorial Union Hostesses has been called the springboard to other activities because it's a good way for freshmen women to enter into activities at A.S.U.," says Kar-

en Lane, this year's president of the organization.

Among the other functions the club will hostess the afternoon sessions of recorded music in the Upper Lounge, the MU birthday party, Parents Day and Senior Day.

Fred Elquest & Son

Everything for the Art Student

• Art Supplies
• Picture Framing
703 N. 2nd St.

Phoenix

PHONE AL 8-2628

COFFEE SHOP

Newman Catholic Student Center

Serving Breakfast
Lunch

Excellent Food at
Reasonable Prices

"Best Coffee on Campus" (Cassandra, May 1965)

Open Classdays from 7 a.m. till 4 p.m.
Sundays — from 8:30 till 12 noon

8th Street and College Avenue

"At the Gates of the Campus"

OPEN TO THE PUBLIC



CAMPUS & CAREER FASHIONS LTD • SPORTABLES WITH YOU IN MIND • 130 E 8TH ST • TEMPE • 966-1162 • OPEN EVENINGS
FEATURING CAPEZIO • BERNARDO • LADY GANT • VERA • BERNARD ALTMAN • MR THOMPSON • ROGER VAN ESS & OTHERS

A change made
with you in mind —

More convenient
shopping hours:

Monday thru Friday 12—8
Saturday 10—5

130 EAST EIGHTH STREET
IN THE ARCHES — TEMPE
PHONE 967-8917

Dean Kay Hoover Added To Staff -

New Dean Shows Concern For ASU Women

Dean Kay Hoover, the new assistant dean in the Office of the Associate Dean of Students, sees the office as a place that many students are reluctant to visit. They change their minds, however, after they meet the staff and see that this is a part of procedure.

"The staff office is terribly concerned about the role of women students, their progress and their growth. Sometimes we are a little pushed for time, especially during the drop-add period, but we try to give each student ample time to talk about what is concerning her," she said.

Dean Hoover's duties include counseling women students, writing recommendations for reinstatement, transfer students and the Peace Corp, representing the office at both campus and outside functions, and serving as one of the two advisers to Panhellenic and Junior Panhellenic councils.

"So far, I find my work with Panhellenic to be the most challenging. The girls are intelligent, active young women who keep you involved with not only what they are doing on campus, but, also, with their national officers and activities and current events."

Dean Hoover's Panhellenic duties include attending the Junior Panhellenic, executive and Panhellenic meetings.

She worked closely with sorority rush this year. "We changed a few things for rush that made the mechanics go easier. This made the girls feel less pressure and tension."

Dean Hoover said that girls who went through rush and didn't pledge were "very understanding and they took it very well. We try to point out that there are many houses that haven't met their quota yet and these houses will be participating in informal rush."

Dean Hoover also works with the individual sororities and their officers. "We go over how they are progressing with their functions, scholarship and scholarship problems, and talk to their alumnae. We try to have a monthly meeting with the president and chapter adviser."

"I thoroughly enjoy counseling," Dean Hoover continued. We counsel all women students who wish to withdraw from school or drop a course.

"We really question them to

see if they have thought through their reasoning to see if it is an actual situation which can be rectified by withdrawal or dropping.

"Some women change their minds, but some have their minds made up and see withdrawal as the only alternative. They don't see other openings

that are available for them."

Dean Hoover mentioned such alternatives as part-time work, student loans, Health Center care and religious counseling through Danforth Chapel as some of the available solutions to women's problems.

Last year, Dean Hoover served as administrative assist-

ant at Palo Verde East. "Without the experience of last year I would be reluctant to take this job, as I know it now."

"The experience of working with women and having a chance to see University policies and philosophies, and, yet, being able to work under Mrs. Charlotte Lewis, head resident,

who could give me direct assistance and advisement, was tremendous."

Dean Hoover is replacing Dean Sandra Leyda, who left to join her husband at Washington University. She completed her bachelor and masters' degrees at Oklahoma University.

Here's the shortest line between graduation and a "go-places" career.

Your name: _____

It's the one you sign on at your placement office for an interview with IBM October 18-19

Want growth—with a difference? Career excitement—with stability? New frontiers in all technologies—with the leader in the nation's fastest-growing major industry?

IBM can offer you extraordinary growth opportunities in Research, Development, Manufacturing, Programing and Administration—throughout its network of labs, plants and technical centers.

If you want the facts about these careers, you'll want to talk to the IBM interviewer.

Certainly, he wants to talk to you about these key jobs. They're jobs with technical responsibility. Where you can

put your ideas to work and earn superior rewards.

In a growth company like IBM, responsibility and advancement come rapidly. In fact, during the next five years IBM expects to appoint approximately 6,000 new managers. A wide range of training and education programs will help you meet the challenge of growth.

So visit your placement office now for a line on IBM. Sign on it for your interview. If for any reason you can't arrange an interview, visit your nearest IBM branch office. Or write: Manager of College Relations, IBM Corporate Headquarters, Armonk, New York 10504.

IBM is going places. Why not come along?

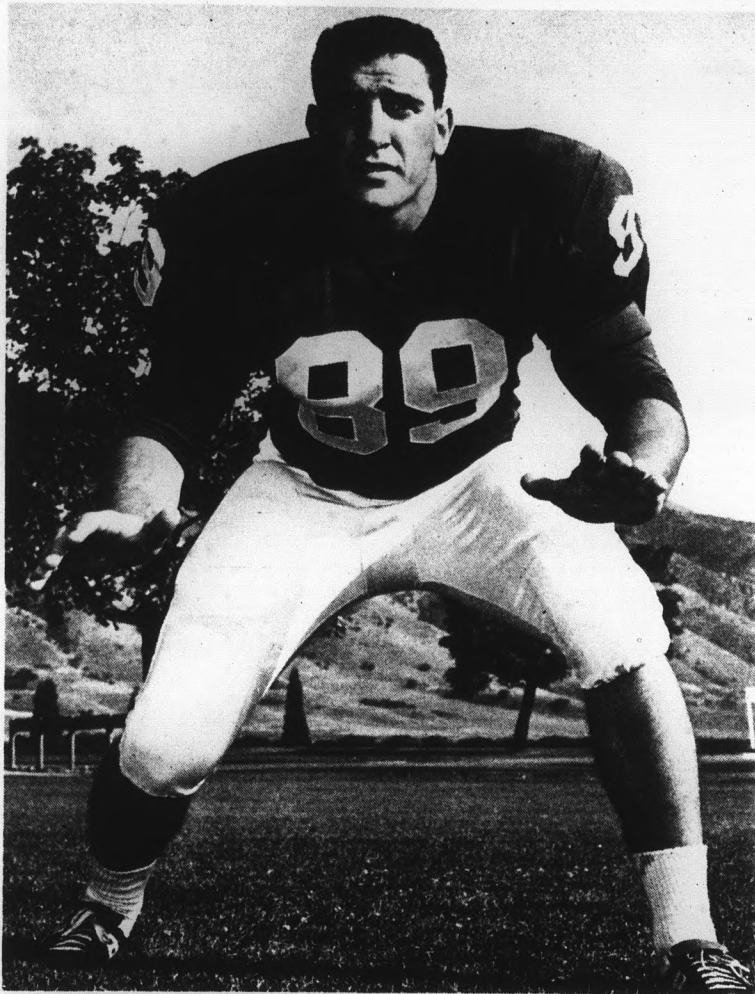
Whatever your area of study, ask us how you might use your particular talents at IBM. Job opportunities at IBM lie in eight major career fields: (1) Research and Development, (2) Engineering, (3) Manufacturing, (4) Finance and Administration, (5) Marketing, (6) Field Engineering, (7) Systems Engineering, (8) Programing. IBM is an Equal Opportunity Employer.

IBM

THE PITCHER HOUSE
B.I.T.O.A.
406 MILL AVE. TEMPE

All Types Sorority
and Fraternity
Jewelry
Scott
Jewelers
911 MILL AVE.
Tempe Shopping Center

STATE PRESS SPORTS



AGGIE CO-CAPTAIN — Ron Sbranti, 6-2, 229-pound senior, from Antioch, California, will hold down the left defensive end position for the Utah State Aggies Saturday night. Sbranti is co-captain of the Aggie team and is one of three seniors making the trip for the youthful team. Ron is part of the four-man defensive line which held the University of Hawaii runners to a minus four yards rushing in 24 attempts.

Aggies After Second Win

by JOHN SAR

Utah State University, fresh from a week's rest following a victory over the University of Hawaii two weeks ago, will invade ASU in hopes of producing their second victim of the season. The Utags have defeated the Devils once in seven tries and that was 1948 at the onset of the series.

Led by All-American candidate Roy Shivers, USU will be out to revenge last year's 24-8 clobbering by the Devils. Shivers, an explosive runner, spearheads a multiple Utah State attack from his tailback position.

Quarterback Ron Edwards will attempt to puncture the Devils' defense with a combination running and passing attack. Edwards, who led USU in total offense in 1964, and Shivers are expected to be the main threat to the Devils.

The Utah State roster is plagued by several of the same problems as the Devils. With 28 sophomores and 28 juniors, Coach Tony Knap admits that his team is young but feels that he has the makings of a fine team.

The Utag's defensive forward wall, averaging 235, held Hawaii to a minus four yards rushing in 24 attempts. With four returning lettermen in the defensive backfield the Utag defense should prove a pretty tough nut for the Devils to crack.

All is not bright for the Utags as they gave the ball away ten times in their game against Hawaii. USU was guilty of eight fumbles and two pass interceptions.

Three Utags injured in the Hawaii game and four others slowed by pre-season mishaps should be back in action Saturday to put USU near full strength for the Sun Devils.

WRA To Hold Swim Tourney

The University's women's intramural swimming meet sponsored by the WRA and Naiads will be Tuesday, Sept. 28, at 3:30 p.m. at the University pool.

There will be two divisions: an open division open to any woman student enrolled at ASU and a sorority division open to any sorority member. There will be 18 events ranging from sprints to relays.

Tennis Team Opens Practice

The tennis team, which posted a 21-2 dual meet record last season, started practice for the 1965-66 season last week.

The netters are engaged in an intra-squad double elimination tournament to decide holders of top squad positions.

The Devils are preparing for their first competition Oct. 7 at Tucson in the 54th annual Southwestern Sectional Tennis Open.

Returning lettermen are number one seeded Dave Farmer; Lee Sullivan, most valuable player last season; Ray Young and Paul Pederson.

Others competing for the top six positions are Terry McIver, Hank Julicker, Larry Stanley and Roger Wright.

All Stars

ASU was represented in the annual College All Star game in Chicago this year by halfback Larry Todd. Other Sun Devil participants in the game were halfback Whizzer White in 1951 and halfbacks Charley Taylor and Tony Lorick in 1964.

Badminton Team Starts Practice

Girls interested in playing on the University women's badminton team should meet at 7:00 p.m. Wednesday night in the men's gym. The team will compete in several intercollegiate tournaments during the year. Answers concerning the badminton team, are available in the WRA office, room W109 in the physical education building.

THE PITCHER HOUSE
B.I.T.O.A.
406 MILL AVE. TEMPE

THE FAMOUS
HAM BUN
is now served IN TEMPE
Plus the Wonderful
HOT APPLE PIE
6 E. 7th ST. Behind Arizona Bank Building
NOW OPEN 'TILL 10 P.M.
★ SANDWICHES TO GO ★
Call Us At 967-9956 And
We'll Have 'Em Ready For Pick-up
Corned Beef on Rye, Chili & Beans, Ham Hock & Beans
Coffee Milk Tea Soft Drinks Draft Beer
Open 9 a.m. - 10 p.m. Daily — Closed Sun.
(Plus — Open to Midnite Friday and Saturday)

Featuring The VERY BEST In
Professional Barber Service
MEN'S HAIRSTYLING
THE ROFFLER SCULPTUR KUT
HAIR COLORING
HAIR-PIECES — FITTING & SERVICE
REGULAR BARBER SERVICE
ROFFLER INTERNATIONAL
Men's Hairstyling Salon
3333 East Van Buren — 10 Minutes from ASU
● Neil Fisher ● Dave Orman
● Dale Ayen ● Hugh Davis

- NEW MANAGEMENT -
TONIGHT IS MOTHER-IN-LAW NITE AT SHAKEY'S. BRING ALL YOU HAVE!

featuring
ROY GREEN & WARREN
SHAKEY'S PIZZA PARLOR
1420 Apache Blvd. — Tempe
Ph. 967-8803

Break The "Hamburger Habit"
Try A Delicious
ITALIAN BEEF SANDWICH
AT
Mister BEEFY
624 APACHE BLVD. — 966-6430
(ACROSS FROM THE SANDS)
FREE Root Beer With Any Sandwich And This Ad!

SEASON STARTS TONIGHT —

University Players' Series Opener Set

With the opening of the University Players' season Thursday, cultural activities on campus gets underway.

Curtain time in the Lyceum for "Of Mice and Men" is 7:30 p.m. Thursday, and on Friday and Saturday it is 8:30 p.m.

The play will run Sept. 23 to 25, Sept. 20 to Oct. 2, and Oct. 7-9. Tickets may be obtained at the Lyceum box office.

The Amadeus Quartet of London will open the Gammage Auditorium Chamber Music Series with a concert at 8:15 p.m. on Sunday. The ensemble

will perform the Beethoven string quartets in a cycle of six concerts, scheduled Sept. 26 and 29, and Oct. 3, 6, 10 and 17.

Other auditorium series slated to open next month include Fine Arts, Celebrity, and Special Events, while the Lecture Series opens in November.

The Lyric Opera Theatre season begins in October with Donizetti's "Nightbell." In November the first programs of the year by the ASU Symphony, the Faculty Chamber Music Society, and the Center for American Studies will be presented.

New Directories Being Compiled For November

The task of obtaining the names, addresses, colleges and phone numbers of every student enrolled in classes seems to be almost impossible at times. Never-the-less, it is being done as quickly and as accurately as possible.

Mrs. Lorraine Knilans, of the Bureau of Publications, said that she expects the directory to be as good or better than last year's.

Data was not available until final registration was completed. The directory will include the faculty office numbers and phones, and home addresses. The information is now being compiled and will be sent to the printer, Plains Publications.

Students will be able to pick up their directories about the first of November. The publication is paid for by advertisers and is free to students.

Black Widow Spiders Neede For Serum

Dr. H. L. Stahnke, director of poisonous animal research, has mad an urgent plea for 10,000 black widow spiders for development of an antivenom for

immunization of horses and for a serum to reduce human deaths from black widow spider bites.

"We would like the people who find the spiders to place them in a container," Dr. Stahnke said. "They can readily be captured by taking a small stick or other object, and brushing the spider out into the open so that it cannot crawl into a creice or under anv object.

"Then place a small jar over the spider. Slip a piece of cadr-board between the jar and the surface so that the jar can be turned right side up."

College Costs Top \$9 Million

A 28 per cent rise in the annual cost of running American colleges and universities was recorded for the 1963-64 school year.

According to figures releas-ed by the U. S. Office of Education, the cost for the year reached a record \$9.2 billion.

Operation expenses increased 35 per cent to \$241 million, the greatest increase in this field being library construction.

Faculty salaries and other teaching expenses totaled \$2.8 billion, a 25 per cent increase over 1961-62.

THE PITCHER HOUSE
B.I.T.O.A.
 406 MILL AVE. TEMPE



32 FINE SHOPS AND STORES TO SERVE YOU

MILL AVENUE 8th to 10th Streets

SPECIAL! BARGAINS OF THE WEEK

★ **FREE** ★
 — WITH THIS AD ONLY —

A Watch crystal will be given free with every watch cleaning. This week only.

Scott Jewelers
 911 Mill Avenue — Tempe Center
 966-6101

BACK TO SCHOOL with PAPER BACK BOOKS	NEW LOW PRICES ON ALL RECORDS
--------------------------------------	-------------------------------

HILLS BOOKS & RECORDS

- Americana Shop
- Ray's ASU Barber Shop
- Bonnie Sue Fashions
- Brickie's Furniture
- Buddy's Coffee Shop
- Celia's Fashions
- El Rancho Market
- Erickson's Handcrafts

- 1st Federal Savings & Loan
- 1st National Bank
- GallenKamp's
- W. T. Grant
- Happy House Shop
- Hill's Record & Book Shop

- The Hogan Inland-Western Loan & Finance
- Jam's Restaurant
- King's Fashions
- Lee Optical
- Pioneer Camera Shop
- Rosamond's Beauty

- Standard Service Station
- State Farm Insurance
- TeePee of Toys
- 31 Flavors Ice Cream
- Tops Liquor Store
- University Sporting Goods
- Zzzona Laundry

- Ryan-Evans Drug Store
- Scott Jewelers
- Sewing Basket
- Sherwin-Williams Company
- S & H Green Stamp Center