

## Open House Is 'In'

The Memorial Union will host an Open House on Friday, Sept. 24. Program Director Michael Byron stated that the Open House will feature something for faculty, staff and students, ranging from a Shakespeare collection to folk singing.

Byron and staff said they are trying to present the MU in a more contemporary vein for students. Byron added that these programs would be continued throughout the year, as opposed to last year's one-time affairs, to make the MU a vital part of the campus.

Open House will begin at 10:30 a.m. in the faculty dining room where coffee will be served by the MU. Outstanding prints from the MU Shakespeare Collection will also be on view.

Students, faculty and staff are invited to come up and

"table talk" in the Pagoda Room between 9 and 10.30 a.m. Coffee, juice and pastries will be sold for 5 cents apiece.

The upper lounge will host a noonday concert by Mrs. Esther McLaughlin, harpist.

The remodeled games room will open up its doors between 1 and 5 p.m. — four hours of free games, bowling and billiards.

Mariaches will invade the Devils Den between 2:30 and 4:30 p.m. The den will be selling five cent beverages during the festive affair. Two caricature artists also will entertain.

The MU Activity Center will be open between 3:30 and 4:30 p.m. Visitors are invited to attend and meet the center's officers and staff.

Folk singing will be presented in the Pagoda Room from 8:30 to 11:30 p.m. Entertainers from a Scottsdale

club will headline the program. They include Norm Heard, Ellen Baskett and the Front Porch Singers. Soft drinks, crackers and cheese will be served.

The lower lounge will host entertainment between 8:30 and 11:30 p.m. Free punch will be served.

Nine artists, each working in a different media, will display their talent. Free-form sculpting and abstract portraiture will be featured. Everyone is invited to visit the "loft" (upper lounge) between 8:30 and 11:30 p.m.

Contemporary music with a rock-and-roll beat will be featured in the MU ballroom between 8:30 p.m. and 12 midnight. The Galahads and the University Singers, both folk singing groups, will headline two stage shows during the program.

## Law College Dean Named

The first step toward the reality of the new College of Law on campus is the recent appointment of Willard H. Pedrick as dean.

Pedrick, presently professor of law at Northwestern University, Chicago, will come to ASU next July. However, the school is not expected to admit students until September, 1967.

Professor Pedrick will spend his first year at ASU establishing the law library and selecting faculty.

According to Dr. John P. White, political science professor at ASU, the biggest asset to the future law school is the appointment of Pedrick as dean and the commitment of the school to be "first class"

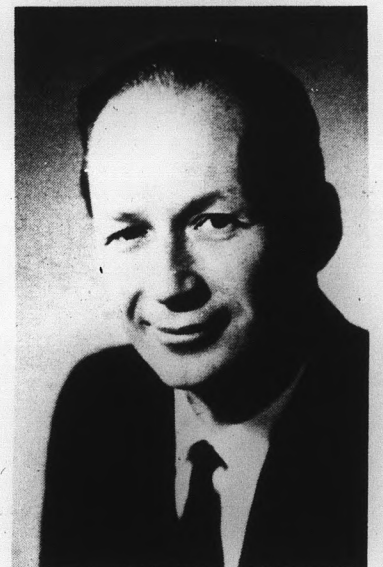
"The need for another law school in Arizona has grown out of the increased population," said White. He feels that a school on the ASU campus opens up the opportunity for students who want to attend law school but who do not have sufficient funds to go away to school.

Although academic policy and grade requirements have not been established yet, Dr. White feels that a college degree and good grades are essential for the student who plans to attend ASU's law school. Admittance will probably be on a very selective basis," he said.

Plans are under consideration for the housing of the

school, although nothing is definite yet, said Gilbert Cady, vice president of ASU business affairs.

Professor Pedrick will remain on the Northwestern faculty during the academic year, 1965-66. President Durham said that Pedrick's work in law



Pedrick

and with legal problems qualifies him for the position he will assume at ASU.

He was graduated with a bachelor of arts degree, magna cum laude, from Parsons College in 1936 where he was student body president. In 1939 he earned his doctor of jurisprudence degree at Northwestern.

Serving first as a law clerk to Justice Fred M. Vinson, U.S. Court of Appeals, he then became special assistant to the attorney general; Tax Division; U.S. Department of Justice; 1942-43 and was attorney-consultant to the U.S. Economic stabilizer, 1943-44.

He began his law teaching career at Cincinnati University, and the University of Texas. After joining the Northwestern faculty in 1946 he advanced to professor of law in 1949.

His professional fields include taxation, torts, estate planning and legal aspects of international business investment. He has written casebooks and articles in legal periodicals.

## Distribution Lines Forming For Identification Cards

Permanent identification cards for all new students who have had their picture taken and a punch-type activity card for all full time students are now being distributed in Room 200 of the Memorial Union Building.

Distribution will continue until tomorrow at noon.

The permanent ID card, which is to be used for identification purposes only, includes the student's photo, name, social security number, birth date, and signature. Used alone, it will not admit any student to athletic or Gammage events.

The activity card which is new this year, along with the permanent ID card will entitle the authorized bearer to attend all student events such as the ball games, the Fine Arts or Celebrity series at Gammage, and the use of Matthews Library.

The new card includes the student's name, social security number, college and year in school. Along the bottom side it has a series of numbers from

one to thirty which will be punched for corresponding events as the student participates in that event.

Dick Finley, executive manager of Associated Students, said both the permanent ID and the activity card must be used together. Persons using the cards

other than the designated bearer are subject to disciplinary action, he added.

Part time students should stop by the distribution point to pick up a library card. And students who have not had their ID photo taken should go to Room 207 in the MU.



THROUGH THE WINDOW Clancy's has taken on a brighter look with the addition of a picture window provided by removing a portion of the wall which faces the inside hall. New furniture, paneling and curtains were also part of the remodeling which took place this summer.

## Angel Flight Is Slated Monday

Angel Flight, honorary auxiliary unit of Arnold Air Society, will have a tea at 2:30 p.m. Monday in the MU upper lounge to choose new members.

Six regular members and 10 alternates will be chosen at the tea, according to Capt. John L. Downs, USAF advisor.

### First Deadline

Seniors may have their pictures taken beginning today for the 1966 Sahuaro. The photographic service in Matthews Hall will take the photos. No appointment is necessary.



AS OFFICERS RELAX — Members of student government take a break after a hectic first week of school activities. Officers have been busy issuing informative material to new students. General planning got underway this week as orientation came to a close.

## Campus Provides Lab For Volunteers

For twelve weeks, fifty-one Peace Corps volunteers will be studying diligently here at ASU for their training in Project Brazil Cubes Agricolas.

These representatives of almost all 50 states have a schedule of 60 hours a week, including Saturdays and Sundays, a total of 720 contact hours for the 12 weeks.

Volunteers are staying at the Sands hotel in Tempe. Much of the studying is done in the conference room of the hotel, while lectures are attended on campus.

### Reish To Appoint Court Justices

A member of the Board of Publications and four justices on the AS Supreme Court are currently the only vacancies in President Fred Reish's administration.

Reish said yesterday that the five appointments will be announced next week.

The ASU Experimental Farms serves as a lab for learning to plant and irrigate both American and Brazilian gardens.

Studies include 320 contact hours of Portuguese by the audio-lingual process. In the early morning hours, they attend Physical Education Classes, of which there are 75 total hours. Thirty hours are spent in Health and Medical Training and 35 hours in Area Studies of the country's history, politics and culture. For women, there are 210 hours of study in Home Economics and for men the same number of hours in Agriculture. Finally, there are 30 hours of ASWAC, American Studies, World Affairs and Communism.

The average age of these men and women is 21. The training will be concluded November 20th.

### HAPPY HOUSE SHOP TEMPE CENTER

Wishes to thank all Greeks for the opportunity to serve you with our Monogramming for your Rushes.

GOOD LUCK

## MEWS

CAMELBACK ROAD

**THE MEWS**

Presents

**Norm Heard**

**Ellen Baskett**

**The Front Porch Singers**

FRIDAY, SATURDAY, SUNDAY (HOOT)

SHOW TIME: 9:00-10:30-12:00

CALL 947-1282 FOR RESERVATIONS

## Kennecott's Corner

### It's a Good Game, And Everybody Wins

A company and its workers do not compete against each other; rather, they move forward or fall back as members of the same big team. When an industry makes a profit, its employees gain, too. On the average, for example, the more profitable industries pay 35% higher wages than the less profitable ones. Kennecott strives unceasingly for the efficient methods and expanding markets which lead the way to profitable operation. The result is a better life for Kennecott's own employees, a continuing stimulus to Arizona's general economy, and progress for everybody.

We will welcome job inquiries from Senior Engineering Students. For information on rewarding careers in mining, write to us at Hayden, Arizona.



An Equal Opportunity Employer

# WELCOME

To All Students and Faculty  
Enjoy "Just Good Food" at

## Jam's

**Try JAM'S special all beef  
Hamburger Steak cooked to  
your order**

- Dinner Salad - choice of dressing
- Whipped or French Fried potatoes
- Sliced Tomatos - bread and butter

Coffee - Tea - Milk

## \$1.00

Hot Kosher Corned Beef or  
Pastrami, on Rye ..... 65c

**TEMPE SHOPPING CENTER**

Hours: 8 to 7 Daily — Closed Sundays

CBI

where  
we teach  
you how  
to grade  
diamonds

130 EAST EIGHTH STREET  
IN THE ARCHES — TEMPE  
PHONE 967-8917



**PAINTING THE "A"** — Barbi Rosenthal's got the brush that goes with Stevie Kenyon's paint can that goes with the freshman class up Tempe Butte for the annual painting of the "A" tonight. After the painting, a pep rally will be held in Sun Devil Stadium to teach new students the Alma Mater and school cheers, followed by a street dance.

**NEW IBM SYSTEM —**

# Computer Simplifies Payroll

A new simplified procedure for students working on the payroll system will go into effect this semester.

According to Robert S. Burnes, assistant controller of payroll, the objective is to "simplify processing and at the same time initiate better controls over the previous system."

This increased control will insure the student his proper time and amount of pay.

Under the new system one IBM card will replace the old 101 form. The 101 card was previously filled in by the student at the Placement Center and then sent to payroll. Next it was required to be filled in

by the state auditor. The entire procedure required 20 forms to be filled out before an employe could be put on the system.

If the employe was making over \$1.10 per hour he was also required to obtain a 103 form. The department which he worked for filled out and submitted it to payroll before it could be processed.

The new system combines 101 and 103 forms into one IBM card. The card must have the signature of the appropriate dean and department head for approval. This will give the dean more information about the University's business transactions.

The student brings this card to the personnel office and signs the necessary papers to insure there are no forms left out. This also promotes better contact between student and office personnel.

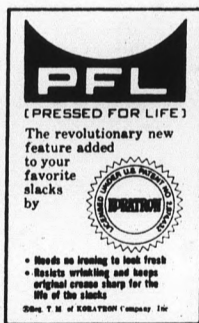
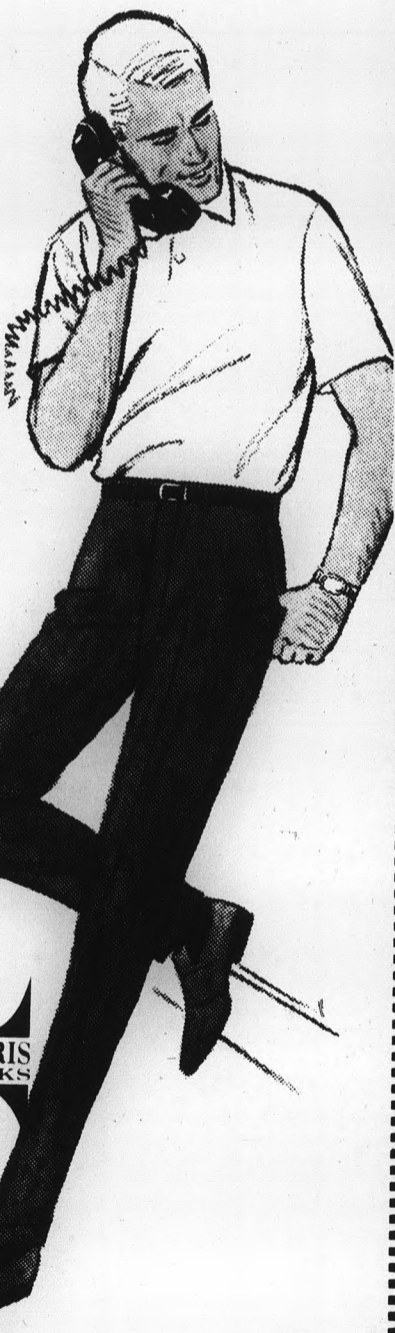
In order to get the IBM card the 101 form must be presented at the Placement Center. For each job, even if it is in the same department, a separate card is needed.

Each new time card is punched out, sorted and returned to the department head for the new pay period. The cards are then submitted to the state auditor and checks are prepared at the state capitol.

**HARRIS TRADITIONAL IVY Keeps Its Promise**

... to the American male who looks to the lean, trim fitting slack of easy care fabric for comfort and performance. They're tapered-to-the-narrow cuff with belt loops and separate waistband. Sizes 28 to 40

**\$6.98**



THE *Americana* SHOP  
QUALITY MEN'S APPAREL

TEMPE SHOPPING CENTER

OPEN 9:00 A.M. TO 6:00 P.M.  
THURSDAY 'TIL 9 P.M.

## GRAND OPENING Campus Coffee Shop

130 E. 8th STREET — IN THE ARCHES BUILDING

Serving the Finest Food at Very Reasonable Prices

**BREAKFAST - LUNCH - SNACKS  
- DINNER -**

Beefburger .....	.35	Cheeseburger .....	.40
Jumbo Burger .....	.50	Hot Dogs .....	.25

★ 21 DIFFERENT SANDWICHES  
★ HOT PLATTERS

Served with Potatoes,  
Gravy, Lettuce, Tomatoes

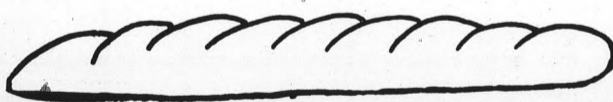
Corned Beef ●  
Roast Beef ●  
Turkey ●  
Meat Loaf ●

Salads - Soup - Fries - Potato Salad

★ FULL COURSE DINNERS

### THE ORIGINAL 2 FOOT HERO

The Sandwich you Buy By the Inch or Foot . . .  
Combination of (Yes, you get all of them) Ham, Cheese,  
Bologna, Swiss Cheese, Salami, Ital. Dressing, Lettuce, Tomato  
on our own Freshly Baked 2-Foot French Bread



**13c**  
Per Inch

It's a Meal . . . It's a Creation . . . It's a Hero . . .

★ Delicious Pies and Pastries  
★ Large Selection of Ice Cream, Sodas, Sundaes,  
Shakes, Malts, Freezes, Floats, Cones

**NOW OPEN**

DAILY  
7 A.M. — 10 P.M.

ORDERS TO GO — CALL 967-9016

## Campus Coffee Shop

130 E. 8th STREET — IN THE ARCHES BUILDING

## Teachers' Seminar Slated For October

"Montessori: Promise, Panacea, or What?" is the theme of an invitational conference scheduled next month by the department of elementary education.

Featuring addresses and panel discussions by noted specialists in the field, the conference will start at 9:15 a.m. in the Life Science auditorium Saturday, Oct. 16.

Deadline for registration is Oct. 8. Registration forms accompanied by \$1 should be sent to Nell B. Byers, conference chairman, at the College of Education.

Since seating at the auditorium is limited, Mrs. Byers urged that reservations be made well in advance. All kindergar-

ten and first grade teachers in public and private schools throughout the state are invited, as are nursery school and private day care center people.

Assisting Mrs. Byers with conference arrangements are Leona M. Dudek, Josephine H. Johnson, Idelle B. Lee and Cameron B. Olmsted.

Among the keynote speakers at the day long event will be Miss Lena Wikramaratne, of Tempe, director of the teacher training program and a member of the International Pedagogical Committee of the Association Montessori International; and Mrs. Ruth French, elementary curriculum consultant, Mt. Diablo Unified Schools, Concord, Calif.

## University Extensions Offer Many Courses Throughout Arizona

An air force base, a hospital and an industrial firm are among the 25 locations throughout the state at which Arizona State University's extension division will be offering approximately 80 college credit courses this fall.

The locations extend as far north as the Ganado School on the Navaho Indian Reservation and as far south as Kofa High School in Yuma, according to Dr. Roy C. Rice, dean of ASU extension program.

Designed for those who are unable to register for on-campus work, the courses meet undergraduate and graduate degree requirements and, said Dr. Rice, "provide formal educational experiences for personal pleasure, general cultural advancement, refresher training, upgrading of present vocational skills or the acquisition of new interests and abilities."

Registration for about 45 courses ends today at Elementary School 1, Avondale; Junior High School, Chandler; Arizona Children's Colony, Coolidge; Washington High School, Glendale; Westwood High School, Mesa; on the ASU campus; and at Camelback High School, Cartwright District School, Central High School, Harris School and West High School, all in Phoenix.

Twenty-three classes, the

greatest concentration of the courses, will be conducted at West High School.

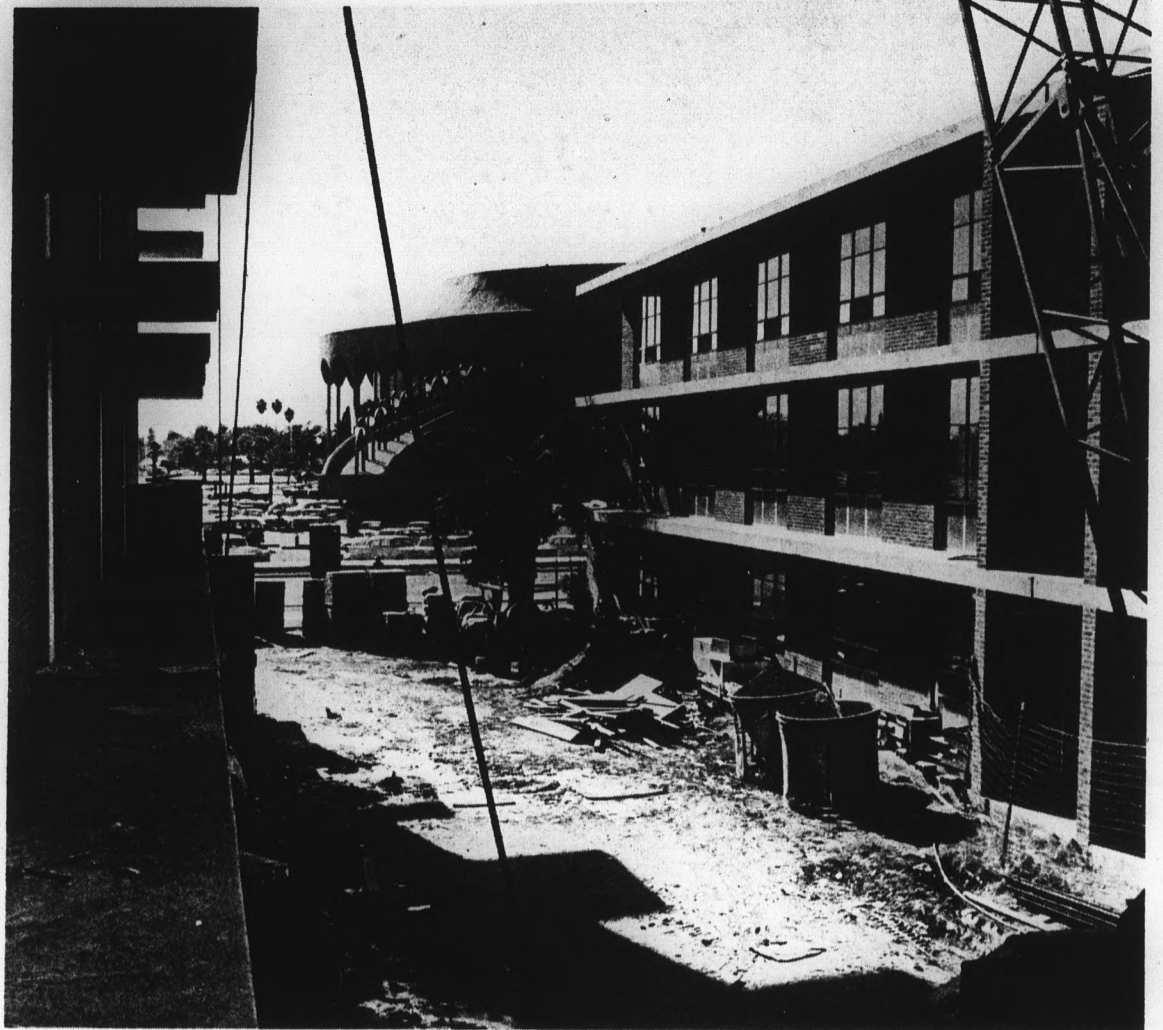
Although most of the courses are in the field of education, classes in industrial arts, speech, political science, sociology and anthropology are also available.

Included in the schedule are courses in federal and state constitutions, subjects required for teacher certification.

Two hour courses are generally held from 7 to 9 p.m.; three hour courses, from 7 to 9:40 p.m., and four hour courses, 6 to 9:40 p.m.

Registration has been closed for about 30 additional courses which will be at Ganado, Kearney, Luke Air Force Base, Peoria, Good Samaritan Hospital, three Madison District schools, Motorola, Wilson Elementary School, Tonalea and Tonto Elementary Schools in Scottsdale, Gililand and McKemy Junior High Schools in Tempe, Meyer, and Kofa High School.

Additional information about the program and a complete listing of the courses may be obtained from the extension office on the ASU campus.



**BEST HALL CONSTRUCTION** — Building activity is booming again on the addition to M. O. Best Hall. Coupled with similar expansion of Sahuaro Hall, a total of 330 beds will be available for students living on campus. A construction strike-lockout this summer halted progress for two and one-half months.

## National Health Institute Awards Additional Microbiologist Grant

The National Institute of Health has awarded an additional grant to ASU for training graduate microbiologists.

Directing the grant are Dr. William T. Northey, associate professor of microbiology, and Dr. Roy M. Johnson, professor of microbiology.

Under the grant, ASU received \$19,338 for the first year for the research and training project, \$21,500 this year and an additional amount for a third year.

### Smoker Slated

The Circle K Club will host a smoker for prospective members at 7:30 p.m. tonight in the MU upper lounge. All interested men students are invited.

Sponsored by the Tempe Kiwanis Club, the Circle K Club is one of 625 international service clubs.

Presently six graduate students work with Dr. Northey and Johnson. The money provides for stipends and tuition for graduate students in microbiology, with particular emphasis on immunology, virology and bacterial genetics.

**OF  
MICE**

**Thank You**  
*We Appreciate Your Understanding During The Rush Days*

**BOOKS AND SUPPLIES WILL BE REPLENISHED IMMEDIATELY TO FILL YOUR NEEDS**

### Bookstore Hours:

Monday - Thursday — 8 a.m. to 7 p.m.

Friday Only — 8 a.m. to 4:30 p.m.

Saturday Only — 8 a.m. to Noon

**UNIVERSITY  
BOOKSTORE**

## THE FAMOUS HAM BUN

is now served IN TEMPE  
Plus the Wonderful

## HOT APPLE PIE

6 E. 7th ST. Behind Arizona Bank Building

NOW OPEN 'TILL 10 P.M.

★ SANDWICHES TO GO ★

Call Us At 967-9956 And

We'll Have 'Em Ready For Pick-up

Corned Beef on Rye, Chili & Beans, Ham Hock & Beans  
Coffee Milk Tea Soft Drinks Draft Beer

Open 9 a.m. - 10 p.m. Daily — Closed Sun.

(Plus — Open to Midnite Friday and Saturday)

## HARMAN'S Dining Room

Mesa-Tempe Hi-Way  
TEMPE

REGULAR \$1.95

## Chicken Dinner

Only \$1.25

MONDAY ONLY

Served 4 to 10 P.M.

"It's Finger Lickin' Good"

# Four Participate In Design Course

Four ASU graduate engineering students were among 25 participants in an experimental engineering design course at Dartmouth College this summer.

The course, Introduction to Engineering, was developed at Dartmouth to give students a practical engineering assignment at an early stage in their curriculum.

This summer the students were dedicated to "improve the mobility of the paralyzed." The projects were centered around the Crotched Mountain Rehabilitation Center near Greenfield, N.H., a diagnostic, educational and research facility for the handicapped.

The students, organized into "companies," visited the center and selected and carried out their own design projects, working closely with the crippled children and therapists.

The ASU students, each working with a different company, helped develop two curb-climbing devices, an overhead rail transport system and a universal portable hoist for wheel chairs.

Participating were Paul D. Carter, Chester L. Henry, Dale E. Jepson, and Stephen Snyder, all sophomores.

The summer course was taught by seven visiting faculty members under the supervision of Thayer School personnel, in a Design Education Workshop

## YAF Sponsors Essay Contest

A student essay contest on the book "None Dare Call It Treason" is being sponsored by Young Americans for Freedom, an independent campus political group. The purpose of the contest and Y.A.F. is to offer the conservative point of view that is not brought out in the classroom. To promote interest in the contest, the Americanism Educational League is offering \$5,000 in prizes and Y.A.F. is giving free copies of the book to interested students at their bookstand on campus.

# AND MEN

... IS COMING

— We Write All —  
**INSURANCE**

Students Under 25  
S-R 22's

• Auto • Motorcycle •  
Trailer • Fire • Theft

**RALPH PACKER**

26 E. 8th St. Tempe  
967-3189 967-1182

## Two Year Men Get Opportunity For Promotion

The USAF special two year commissioning program, inaugurated here this year, will enable any interested male student of junior, senior or graduate standing to receive a commission in the Air Force after two years of training even if no prior ROTC has been completed.

Interested students with two remaining years of college should enroll before the drop-add period ends or contact Maj. John K. Prong in the English Building.

If enrolled in the course, the students are required to attend a six week field training camp which will be considered as the first two years of ROTC. During this period, students will be classified as pursuing students.

During the six weeks the students will receive all classroom credit for which they are registered in addition to books and uniforms. At the end of the camp students will receive compensation for the time spent in camp and \$40 per month for the remaining year.

After graduation or completion of graduate work, the student will receive a commission as a 2nd lieutenant.

sponsored by the National Science Foundation.

Thornton W. Price, professor of mechanical engineering at Arizona State University, was among the visiting professors.

He coached one of the companies.

Other projects developed during the course include a third type of curb-climbing device and an adjustable wheelchair arm that also serves as a transfer board.

At the end of the term the projects were demonstrated before a panel of evaluators composed of national leaders in the fields of medicine, engineering, business and government.

## 'Light the A's' Form Available

Application forms are available today for groups interested in lighting the A's on the west butte of Sun Devil Stadium during football games.

Forms may be picked up beginning at 2:30 p.m. on a first-come-first-served basis in the AMS office, MU 204.

Welcome To Our Friendly Barber Shop



**SUN DEVILS BARBER SHOP**  
3 Barbers  
Open Mondays

**THE ARCHES**  
In The Mall  
Corner 8th St. & Forest

"Razor Cut" Hair Styling by Gene Ragsdale

## Professors Earn Honors

An "outstanding teacher" evaluation has been earned by three ASU agriculture professors in a poll of their students taken by the National Association of Colleges and Teachers of Agriculture.

Drs. Grant L. Richardson, professor of agronomy; E. Grant Moody, professor of animal science and Joseph H. Galloway, associate professor of animal science and the university veterinarian, were rated by their students, who were issued teacher evaluation cards by the NACTA last spring.

Evaluation of the professors was voluntary. The NACTA hopes all teachers in their programs will participate in such

rating to improve the teaching of agriculture.

The professors were judged in seven categories: interest, knowledge and presentation of subject, attitude toward students, intellectual stimulation, fairness in grading, and level at which the course is taught.

A proficiency scale from zero to nine was used in each category. Each professor had to meet a minimum total score to qualify as an outstanding teacher.

The cards were processed by the office of Dr. Henry S. Brunner, specialist for agricultural colleges, Office of Education and Welfare in Washington, D.C.

## COFFEE SHOP

Newman Catholic Student Center

Serving Breakfast  
Lunch

Excellent Food at  
Reasonable Prices

"Best Coffee on Campus" (Cassandra, May 1965)

Open Classdays from 7 a.m. till 4 p.m.  
Sundays — from 8:30 till 12 noon

8th Street and College Avenue  
"At the Gates of the Campus"

OPEN TO THE PUBLIC

## THE BEEF HOUSE

Charco Broiled Steaks

★Filet Mignon \$1.38	★½ Chicken ..... 98c
★Sirloin ..... \$1.28	★T-Bone 16-oz \$2.50
★Chopped Filet .. 98c	★King Size Hamburger .... 55c

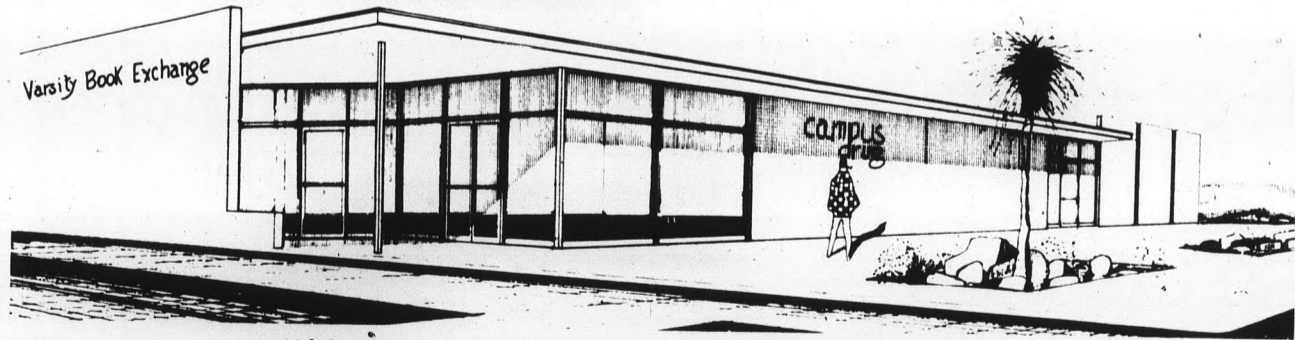
Dinners Include Baked Potato, Tossed Green Salad, Choice of Dressing and Garlic Bread

Open Daily 11 a.m. to 9 p.m.

Also Above Orders To Go — 967-6248

Broadway Plaza—Corner Mill & Broadway, Tempe

## We're A Buildin' ...



(Sketch of our New Building now underway)

# MEANWHILE . . . WE'RE STILL DOING BUSINESS AT THE SAME OLD STAND . . .

- Fountain
- Toiletries
- Incidentals

Corner of University & College Ave.

# campus drug

YOUR Drugstore on Campus

- Cosmetics
- Prescriptions
- Stationery

# Driver Education Conference Slated

The University, in cooperation with the National Education Council, scheduled a two-day conference on driver and safety education for Sept. 31, and Oct. 1.

Representatives from Arizona, California, Hawaii, Nevada and New Mexico will attend the conference.

The opening general session will be presided by Mrs. Sarah Folsom, state superintendent of public instruction.

The opening address will be delivered by Saxson C. Elliot, professor of safety education at Los Angeles State College.

The conference begins at 1 p.m. on Friday, Sept. 31, with registration in the MU.

Panel leaders are John R. Eales, consultant for the California State Department of Education and William Lemon,

director of school bus safety for the New Mexico State Department of Education.

Panel members include Melvin T. Schroeder, of San Jose State College; R. Craig Rover, coordinator of safety education at ASU, and James Warren, consultant of safety education for the New Mexico department of education.

State delegations will meet individually from 7 to 9 p.m. on Friday (Sept. 31) to formulate "follow-up state plans.

The state reports will be delivered at the general session on Saturday morning (Oct. 1). A luncheon for 11:30 a.m. in the MU with New Mexico State University Vice President W. B. O'Donnell as the principle speaker.

Adjournment will follow the luncheon.

# Sigma Xi Meets Thursday

A. Brian Thomson, manager of the Computer Center, will be the guest speaker at a meeting of the ASU Chapter of the Society of Sigma Xi on Thursday from 11:45 a.m. to 11:30 p.m. in MU 218C. He will discuss operations of the Computer Center.

Sigma Xi is a national honorary organization for scientific research.

Using computers in geophysical analysis, Thomson programmed the IBM 607, one of the earliest computers to be used in routine engineering calculations.

In 1958, he was transferred to the United States and in 1961 left Shell to become a senior

## ASU A-go-go In MU Saturday

ASU-a-Go-Go, will feature the ASU Dancers and the music of Charlie Johnson and his band tomorrow night at the after game dance. The festivities, sponsored by the Social Activities Board, will be held in the Memorial Union Ballroom from 10 p.m. until 12:30 a.m.

Chairman of the board, Diana Powell, said that there will be no admission and that free popcorn will be served.

systems analyst with the Process Computers Section of the General Electric Company in Phoenix.

In 1963, Thomson assumed management of the Computer Center which serves instructional and research computing requirements of the university and undertakes selected outside projects of academic interest.

Interested in the application of computers to language translation, one of his projects involves Chinese to English translation by computer. Thomson also is an industrial consultant.



**Bobbies Flowers**

20 E. 5th St.  
WO 7-2972 — WO 7-4274  
Home Phone WO 7-6319

For Parties . . .  
Large Artificial  
Plants For Rent

NOW IN TEMPE

# Mister BEEFY

HOT DOGS . . . ITALIAN BEEF SANDWICHES  
With all the trimmings

624 APACHE BLVD. — 966-6430  
(ACROSS FROM THE SANDS)

# Apache HARDWARE & VARIETY STORE

Your "BEN FRANKLIN" Store



Woven Stripe  
Bedspreads

Twin or Full Size

## \$4.88



Foam Filled  
SLEEPING PILLOWS

Floral print, stripe covers. Blue or pink in poly bag. 18x24 in. **88c**

**FINE QUALITY CANNON MUSLIN SHEETS, CASES**

You'll love the smooth feel of these fine muslin sheets! 130 threads to the square inch guarantees long wear! Choose from 4 sizes: 72x108 in. twin; 81x108 full; twin or twin fitted, 39x76 and 54x76 in. with Flex-O-Matic corners. In white only.

Single — \$2.29  
Double — \$2.49

**COSMETICS • SCHOOL SUPPLIES**

Pans - Coffee Makers - Utensils  
MASTER PADLOCKS & BICYCLE LOCKS

Keys Made . . . . . 40c • Brasso . . . . . 49c

500-Count Filler Paper, regularly 1.49

# 74c

Leave your Film with us for Developing. FREE Film Black & White or Color with every Roll Developed

# Ben Franklin

1332 APACHE BLVD. • TEMPE

*Works Anyway -*

# 'Mood' Artist Lacks Shaggy Beard

A long shaggy beard and mane, sandals, baggy slacks and residence in North Beach seem to be the requirements for the young, impressionistic mood artists of today.

Not so, says 22-year-old senior Pete Kersten, Scottsdale, who looks as though he could just as well be a Green Bay



**Pete Kersten**

Packers quarterback. And that thought also has appealed to him as he is a native of Green Bay, Wis., and a former Arcadia High School football player.

Pete contended, "Waiting for the proper mood is silly because if you really love your work, you'll keep at it all the time." He feels he works better under pressure with deadlines to meet and in the company of other people — namely his brother

Rick, 24, who is presently serving with the Navy Reserve in San Diego, Calif.

The Kersten brothers began their artistic careers, just like any other second grader drawing stick figures in school. Walt Disney and his fantasyland characters became their heroes and tracing Mickey and Donald became their favorite pasttime.

After that there were experiments, lucky breaks and a lot of talent. During their early teens, the Kerstens had the opportunity to design and paint backdrops for a local television program. "We were so thrilled with the offer that we didn't worry about the money and it really interested us.

"It's great to have a brother in the same type of work because we work well together, the competition is healthy and we put out more finished products. We found this especially true when Del Webb contracted us to make 80 paintings to be used in a Florida hotel. We lined up the canvases and combined our efforts in an assembly line fashion," said Pete.

Now that they have expanded, the work with charcoal, pastels, oil, casein water colors, and plastic and latex paints. They even opened a statue shop in Scottsdale where they learned to antique statues by rubbing one color over another, giving

the effect of old wood or brass.

The brothers have plans for a commercial art service in which they will have the opportunity to experiment and test their creativity and versatility.

Never satisfied, the brothers are continually redoing paintings and trying new techniques.

They got a special kick of surprising their mother when they antiqued the household cupboards, created a giant clay Tiki god, which they antiqued on the front door, and constructed a Polynesian pool paradise of volcanic rock with a carved statue and a trickling water fall in the back patio.

ASU  
MEMORIAL UNION  
BARBER SHOP  
IN THE GAME ROOM

TO SERVE YOU

RAY'S ASU  
TEMPE SHOPPING  
CENTER

SANDS MOTOR  
HOTEL  
BARBER SHOP  
SANDS HOTEL, TEMPE

RAY'S  
HAYDEN PLAZA  
EAST

**BEST WISHES**  
TO THE  
**SUN DEVILS**  
DURING THE 1965 SEASON

---

**CHICO'S**  
RESTAURANT\*  
FINE MEXICAN FOOD

1120 East Apache Blvd. — Tempe  
\*Air Conditioned of course



CAMPUS & CAREER FASHIONS LTD • SPORTABLES WITH YOU IN MIND • 130 E 8TH ST • TEMPE • 966-1162 • OPEN EVENINGS  
FEATURING CAPEZIO • BERNARDO • LADY GANT • VERA • BERNARD ALTMAN • MR THOMPSON • ROGER VAN ESS & OTHERS



**Sew Your Own**

Back to school fashions will be easy to make with the "simple-to-sew" patterns from the How to Sew line by Simplicity. Featured above are two jumpers in tweed wool and corduroy made from one pattern. Both feature the dropped waistline effect — one with hip-pocket emphasis, the other with a dropped belt. The square and V-line necks are perfect for sweaters, jerseys or blouses to be worn underneath. The pattern is Simplicity 6134 available in junior sizes.

**The Villager**

THE VILLAGER:  
THE INTELLIGENT LOOK

*Wild Cherry  
Dacron  
Shift*

*20.00*

*The Village Shop  
616 Myrtle Ave.  
Tempe.*

*967-1981*

TEAR OUT THIS AD

## NOW IN PHOENIX

### She Can Teach You To Read 2,500 Words a Minute

Mrs. Sookie Winters is shown teaching one of her classes now in session at the Reading Dynamics Institute in Phoenix. Several hundred students are currently enrolled in her classes in Phoenix and Tucson, Arizona. A preview movie introduction on Dynamic Reading will be given at Tempe on the times and dates indicated below. These classes are filling rapidly and it is important to attend early demonstrations if you have an interest. Reading Dynamics has spread all over the United States in the last 6 years. They have institutes in most key cities and have over 100,00 successful graduates in all walks of life.

**IS IT SIMPLY A PROMOTION STUNT?**

Claims for achievements by Reading Dynamics students are oftentimes so unbelievable that they invoke ridicule by other reading systems. But look at this evidence:

Results have been reported in Time, Newsweek, Business Week, Esquire, NEA Journal and other professional publications. Graduates have appeared on television with Jack Paar, Garry Moore, and Art Linkletter.

Describing Reading Dynamics' impact on some of our nation's legislators Time said, "Washington has seen nothing like it since the days when Teddy Roosevelt read three books a day and ran the country at the same time."

**SENATOR PROXMIRE, WISCONSIN:**  
"I must say that this is one of the most useful education experiences I have ever had. It certainly compares favorably with the experiences I've had at Yale and Harvard."

**SENATOR TALMADGE, GEORGIA:**  
"It is my opinion that if these techniques were instituted in the public and private schools of our country, it would be the greatest single step which we could take in educational progress. I think the public schools of Georgia should consider putting in the technique. It would be worth a \$100 million per year appropriation."

**MICHAEL LEVY, President of Standard Security Life Insurance Co.:**  
"My normal relaxed reading is now at a rate approximating 4,000 words per minute. Even with the most difficult and technical reading material, I find that my speed exceeds 2,500 words per minute."

A Reading Dynamics class at St. Louis University had an average beginning speed of 357 words per minute, an ending speed of 1,810 words per minute. Average comprehension rose from 73% to 83%.

**HOW IS READING DYNAMICS DIFFERENT FROM OTHER READING COURSES?**

1. No machines are used. You learn, instead, to use your hand as a pacer — a tool you always have with you.
2. Conventional rapid reading courses aspire to 450-600 words per minute. Most Reading Dynamics graduates can read between 1,500 and 3,000 words per minute and many go even higher.

**\* GUARANTEE \***

We will guarantee to increase the reading efficiency of each student by AT LEAST 3 times with equal or better comprehension. We will refund the entire tuition of any student who does not obtain at least the tripling of his reading efficiency as measured by the beginning and ending tests. This refund is conditioned upon the student's having attended all of the required classes or having made up missed sessions with the teacher. He also must have practiced the required number of hours, following the assignments as outlined by the teacher. The average student may expect a 7 times increase in reading speed, and an improvement in comprehension and recall.

We will teach the student to handle study material and technical reading faster and more efficiently.

The teacher will make himself available for counseling and extra help whenever possible and will encourage the students to avail themselves of this help.

Any student who must withdraw from the course for any reason may re-enter, any subsequent courses at any future time, at no additional cost.

If you take home a full briefcase . . . if you are a student behind in your reading . . . if you have a stack of unread books . . . if you're striving for greater business success . . . if you want to enjoy reading more . . . THEN THIS COURSE IS DESIGNED FOR YOU!

**FREE DEMONSTRATION**

We Invite You To Attend A Free Demonstration

- You will see an amazing documented film about Reading Dynamics
- You will learn how Reading Dynamics can help you to faster reading, improved comprehension, greater retention.
- You may win a full 8-week course, absolutely free. (Scholarship)

Five Separate Showings Tomorrow, Sat. 18th  
12 noon — 1:30 p.m. — 3 p.m. — 4:30 p.m. — 6 p.m.  
Tempe Sands Hotel — 601 E. Apache Blvd.

For Further Information Call EVELYN WOOD

## READING DYNAMICS INSTITUTE

Suite 200 — 4647 North 16th Street — Phoenix, Arizona  
Phone 279-9746 — Phone 959-1080

TEAR OUT THIS AD

# STATE PRESS SPORTS

## Devils Debut Against BYU

Summer will still have three days to go, the leaves won't be brown, but ready or not, football arrives at Arizona State University Saturday.

Pitted are Frank Kush's Sun Devils against Tom Hudspeth's Brigham Young Cougars in a Western Athletic Conference contest. Game time will be 8 p.m. at Sun Devil Stadium.

The game rates a toss-up on paper. ASU returns 13 lettermen, BYU 20. New faces will play a prominent role in the fortunes of each club. The Cougars lead with quarterback Virgil Carter, second in the conference last season in total offense, and fullback John Ogden, the loop's leading rusher. ASU's Ben Hawkins was the Western AC's top receiver in '64.

The squads come into the fray with almost equal size. ASU's offensive unit averages 207 or 209 pounds per man (depending upon whether Travis Williams, 201, or Max Anderson, 175, starts at left half), while BYU's corresponding eleven averages 207. On defense the Sun Devils hold a two pound edge — 206 to 204.

Both teams have suffered key injuries of late, most deemed not serious, but nonetheless hampering. BYU's second and third team quarterbacks — Stu Simpson and Barney Williams — are ailing along with defensive end Lonnie Williams and tackle Max Newberry.

ASU last week saw two of its key performers — tackle John Hanson and Guard-linebacker John Folmer — go to the sidelines with shoulder injuries. Others below par physically include guard George Corneal, quarterback Chuck Kolb, fullback Jim Bramlet, tackle Curley Culp, defensive halfback Ken Dyer and end Ed Hopkins.

The relative inexperience of the competing squads is shown in a breakdown by class of the tentative offensive and defensive starters. Each club has one senior listed in either the offensive or defensive backfields — Darrell Hoover at roving linebacker for ASU and end Lou Andrus at safety for BYU.

On offense the Devils will start four seniors, six or five juniors and two or one sophomores (depending upon the left

half situation) while the Cougars will show with three seniors, seven juniors and one sophomore. On defense the Devils will start two seniors, four juniors and five sophomores while BYU will have two seniors, five juniors and four sophomores.

The '65 season marks the first ASU is eligible for the conference football title. League play also gets underway Saturday in Salt Lake City with Utah hosting Arizona.

Kush hopes that football is somewhat akin to the theater, because he termed a game-type scrimmage last Saturday night "very ineffective."

## Ducats Available For Single Games

Individual game tickets for the 1965 Arizona State University seven-game home schedule will be available through six major outlets starting Monday, September 13th.

Bill Gorman, ticket manager, disclosed the following locations: Kerr's Sporting Goods, Christown and Thomas Mall; Hanney's downtown; Marston's, 3209 N. Central; Morris Sporting Goods, Scottsdale; Happy House, Tempe Center.

In addition, Coolidge Drugs and Ryan-Evans Drugs, Casa Grande, will serve outlying areas.

Close to 13,000 tickets are available for the opener against BYU. Reserved seats are priced at \$4.00 and \$2.00 with the latter available only at the ticket office on campus. Six thousand general admission tickets will go on sale at Sun Devil Stadium at 6:30 p.m. on game nights for all contests except the finale with the University of Arizona.

Student guest tickets and spouse cards are on sale at the ticket office.

## Sun Devil Schedule

Football scheduling this fall includes three opponents Sun Devils failed to get a look at last year.

Washington State University returns to Tempe after losing to the Devils once and tying once since the series began in 1960.

The University of Wyoming, another recent addition to the schedule follows Washington State late in November. Since 1951 the Devils have a 1-1 record with the Pullman team.

The Devils' first opposition, Brigham Young University, will return to Tempe after losing seven to ASU and winning two

since the series opened in 1935. The Devils have not faced the Cougars since 1960 when ASU won in Provo, 31-0.

Sun Devil stadium will be the site of the annual ASU-UofA battle on Thanksgiving weekend. The Wildcats lead the series 27-11 over the Devils. This season's schedule:

9/18 Brigham Young (H)  
9/25 Utah State U. (H)  
10/ 2 West Texas St. (A)  
10/ 9 Wichita State (H)  
10/16 San Jose State (A)  
10/23 U. New Mex. (H)  
10/30 Texas West. Col. (A)  
11/13 Washington St. U. (H)  
11/20 U. of Wyoming (H)  
11/27 U. of Arizona (H)

For Those Who Want The Very Best  
**FLAT TOP**  
We can create any style to fit the individual's personality  
**BARBER SHOP**  
Chart With 20 Modern Hair Styles  
THREE REGULAR BARBERS  
Danelle Plaza — Across From Valley Fair



## FREE KODAK FILM

KODACOLOR OR BLACK & WHITE

With Every Roll Left Here For Developing and Prints

Molen University Studio

8th and Rural — Tempe



Elastikord Reeds - - \$10.00 & up  
Blouson Knitmate

# CELIA'S

fashions

Tempe Center

&

Sherwood Center, Mesa

LARGEST SELECTION OF PIERCED EARRINGS IN TOWN  
*Scott Jewelers*  
911 MILL AVE.  
Tempe Shopping Center

BE SAFE WITH A SPARE PAIR OF LEE OPTICAL LENSES!

Only LEE gives you all this



FREE

A spare pair of lenses when you buy your first complete pair of glasses. Pay the regular low Lee price for frame and lenses. Get a pair of clear single-vision lenses absolutely FREE.

FREE

A spare pair of single-vision contact lenses when you buy your first pair at the regular low Lee price of \$85

FREE

The extra protection of heat-treated safety lenses (that usually cost an additional \$4 to \$6 elsewhere) is free at Lee in glasses for children under 12. Plus, a spare pair of clear single-vision, heat-treated safety lenses FREE with your child's first complete pair of glasses.

HOW Lee can give you so much more for less!

Thousands of Arizonans go to Lee Optical for all their eyewear needs. This large volume of business, combined with Lee's guaranteed customer satisfaction, makes it possible for you to get highest quality eyewear at lowest cost. ONLY LEE OPTICAL GIVES YOU ALL THIS!

PLUS! CREDIT — Your credit is good at Lee Optical... budget terms available. Or use your Valley Bank Credit Card.

STYLE — Choose from over 500 (nationally-known) frame styles and colors.

QUALITY — All Lee Optical glasses are precision ground from the finest American-made lenses. Satisfaction guaranteed or your money back.

SERVICE — Lee's prompt service means no waiting.

PRICE — A pleasant surprise! Lee Optical's quality, single-vision glasses... as low as

\$11.85

This does not apply in Yuma office

8 CONVENIENT EYEWEAR CENTERS/ open Thursday nights and all day Saturday

TEMPE  
805 Mill Avenue  
Tempe Center

THOMAS MALL  
4527 E. Thomas Rd.

MESA  
129 West Main

SCOTTSDALE  
719 N. Old  
Scottsdale Rd.

PHOENIX  
16 W. Adams St.

TUCSON  
El Con  
Shopping Center

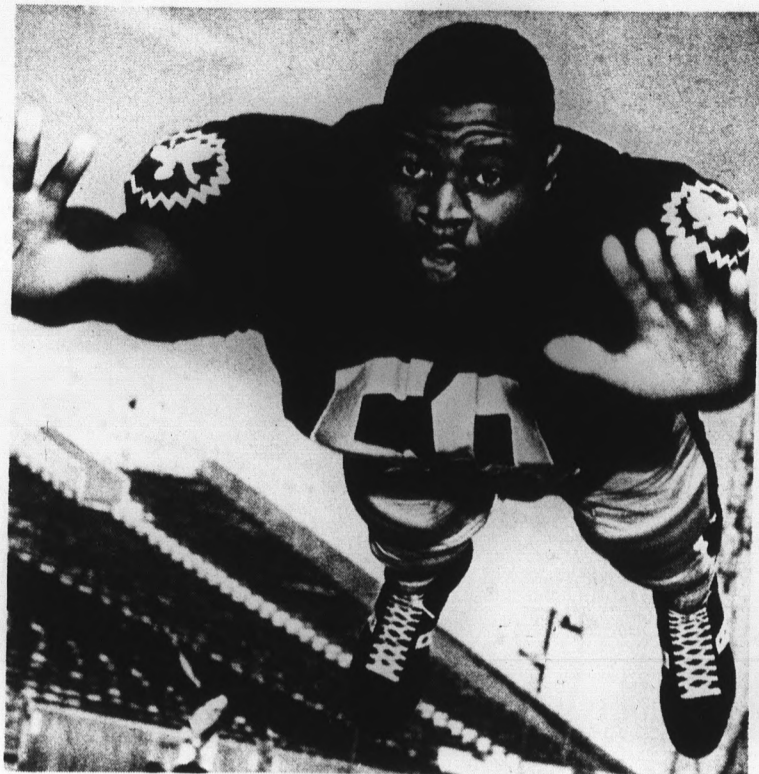
CHRIS-TOWN  
19th Ave. and  
Bethany Home Rd.

YUMA  
2816 4th Ave.



Dispensing Opticians

Where it's always safe to save money on glasses — and contact lenses, too!



### Two-Way Man

Bobby Johnson, a two year veteran on the Sun Devil line, will be called upon for offensive and defensive duty tomorrow when the Devils open their 1965 season against BYU. Johnson is scheduled to start at right tackle on offense and to replace the injured John Hansen in the defensive line.

### Castillo Starts Recruiting In Climb To Regain Crown

Coach Senon (Baldy) Castillo, cross country coach, feels that this year's team has a fair

chance to climb out of the WAC cellar, and possibly capture a third place in the conference meet at Provo, Utah.

### Prep For Opener Frosh Gridders

Freshmen coach Bill Kajikawa greeted 51 frosh prospects, as the Sun Imps started grinding for their opener against Arizona Western of Yuma, on Oct. 2.

The freshmen squad is working out once a day, with practice starting at 6:30 p.m. The squad represents a total of 13 states. They include Pennsylvania leading with 16 athletes, California with 10, Arizona and Illinois with 5 each, four from New Jersey, two from Wisconsin, Michigan and Ohio, and one each from Alaska, Nevada, Connecticut, New York, and Indiana.

The remainder of the frosh schedule finds the Sun Imps meeting the U. of New Mexico freshmen, Oct. 16, at Tempe; the U. of Arizona freshmen, Oct. 30, at Tucson, and Eastern Arizona Junior College, Nov. 20.

The team will be led by returning lettermen Louis Scott, Bob Stifler, and Larry Berryhill. Four-year veteran Eric Owers, last year's temporary coach, is working out with the team although his eligibility has run out.

Paul Longstreth, a half miler on last year's team, will also be working with the team. Three freshmen, Doug Bittle, Ken Robinson, and Pete Till are also expected to bolster the squad's strength.

Castillo says that anyone interested in participating in cross country should contact him immediately in the Gym, Room 211.

#### "OLD PRO"

The "Old Pro" on the ASU football staff is Bill Kajikawa. He has been coaching football for the Sun Devils since 1937, and has served under nine head coaches.

# the PITCHER HOUSE

## PRESENTS

JAY BENTLY AND

# THE JET SET

RECORDING STARS OF WATUSI "64"

## FRI., SEPT. 17th

1:00 P.M. TO 5:00 P.M.

Every Friday and Saturday — 9 p.m to 1 a.m.

### B.I.T.O.A.

MEMBER PRICES IN EFFECT

406 MILL AVE.

TEMPE

967-9974



### Just call him "Smooth Sam"

HE'S WEARING "DACRON"®-"ORLON"® Ultramatic Prest Hagggar dress slacks. Even when the humidity hangs hot and heavy, or he's soaked in a sudden shower, 70% "DACRON" polyester-30% "ORLON" acrylic keeps these fine dress slacks smooth and sharply creased. They even take repeated washings without a wrinkle. And Hagggar styling gives him the trim fit he wants in fine dress slacks. No wonder the gals go for "Smooth Sam". **10.95**

®Du Pont's Reg. T.M.

WIN A FORD MUSTANG or one of 50 other big prizes. See your Hagggar dealer for details.



GET HAGGAR SLACKS AT:

The Cromwell Shop of Arizona  
Hayden Plaza East Shopping Center  
1130 South Scottsdale Road, Tempe

### TENNIS BALL HEADQUARTERS



- Wilson
- Dunlop
- Spalding
- Pennsylvania

Championship Grade

## \$1.91

For Can of Three

## UNIVERSITY SPORTING GOODS

Tempe Center

# Cougar Offensive Power Sparks Opening Lineup

Coaches at Brigham Young University said this week that the power that helped the Cougars pick up the second best offensive rating in the Western Athletic Conference last season will be back in the starting lineup. The Cougars open the season against ASU in Sun Devil Stadium tomorrow night.

WAC scheduling has separated the two teams since 1960 when the Devils stopped BYU 31-0 in Tempe. The Cougars have beat the Devils twice in nine tries over the past 30 years.

While the fullback and quarterback spots lack seniors, both positions will be manned by experienced players, BYU Head Coach Tom Hudspeth said.

Virgil Carter, a former teammate of Devil quarterback John Goodman, had secured the field general spot earlier this week. Last season he piled up 1,542 yards running and passing.

The Cougars also plan on giving the Devil's a match for its running game in junior fullback John Ogden who ran for 770 yards at BYU last season.

Cougar coaches have been disappointed with the early season drill, and Coach Hudspeth said more aggressiveness will have to be shown before BYU flies to Tempe Saturday.

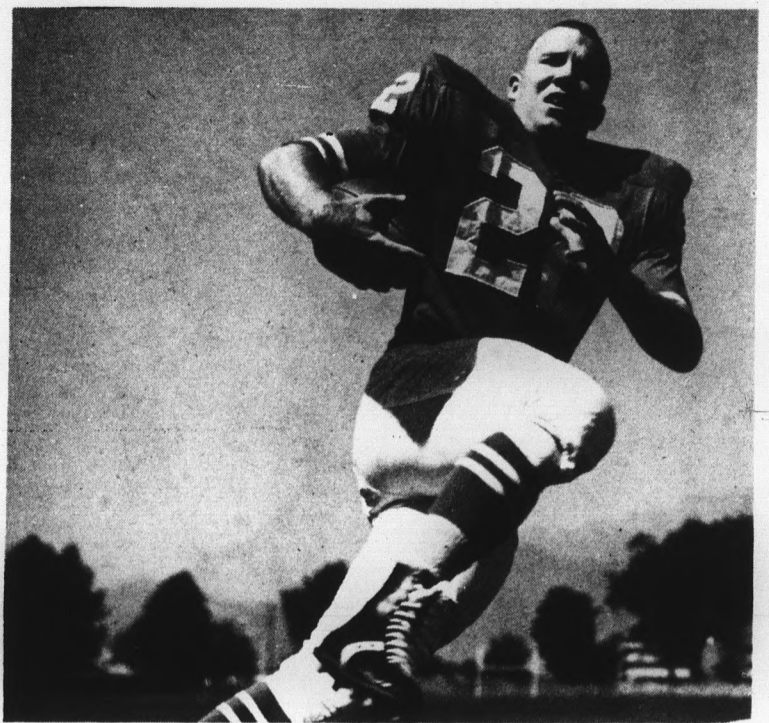
The offensive backfield power of BYU was softened by injuries last week. Former San Diego Marine Barney Williams, a 200 pound reserve quarterback and the top defensive safety, was carried off the field

with a shoulder separation. He will be out at least six weeks, doctors said.

The Cougars will be sending three inexperienced defensive linemen against the Devils Saturday night. Ironically, Coach Hudspeth said this will probably be the strongest spot in the BYU lineup.

Also expected in the opening lineup Saturday night for the Cougars is Steve Peterson, another defensive end from Mesa. Peterson, a 6-2,197 pounder, won all-state honors while playing with the Mesa High School state champions in 1963.

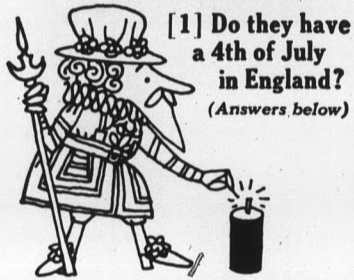
Coach Hudspeth said the Cougar workouts will be at a minimum throughout the week, hoping to cut down on injuries before the inexperienced club meets the Devils.



**Cougar Charger**

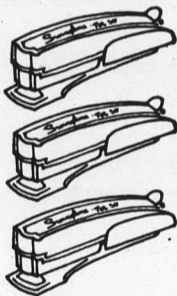
Kent Oborn, 5-11, 177-pound Junior from Payson, Utah, will be the starting tailback for the Cougars tomorrow when they open their 1965 season in Sun Devil Stadium. Kent led the conference last year in Punt and Kickoff returns.

## Swingline PUZZLEMENTS



[1] Do they have a 4th of July in England?  
(Answers below)

[2] Take two TOT Staplers from three TOT Staplers, and what do you have?



This is the **Swingline Tot Stapler**



**98¢**

(Including 1000 staples)  
Larger size CUB Desk Stapler only \$1.49

No bigger than a pack of gum—but packs the punch of a big deal! Refills available everywhere. Unconditionally guaranteed. Made in U.S.A. Get it at any stationery, variety, book store!

**Swingline INC.**  
Long Island City, N.Y. 11101

ANSWERS 1. Sure, but they don't celebrate Independence Day! 2. The two TOT Staplers you took—which is not a bad idea, because if there is one thing better than having one TOT Stapler, it's having two of them! They're so handy and useful!

Find Your **Swingline Staplers** at **Campus Drug**  
Corner College & 8th



\$15.95

**Jarman**  
SHOES FOR MEN



\$19.95

Others

\$15.95



keeps you comfortable . . . walking, standing or seated!



**FREE STADIUM CUSHION**

with each purchase of Jarman shoes

The Penny genuine moccasin saddle slip-on with hand-sewn mocSeam.

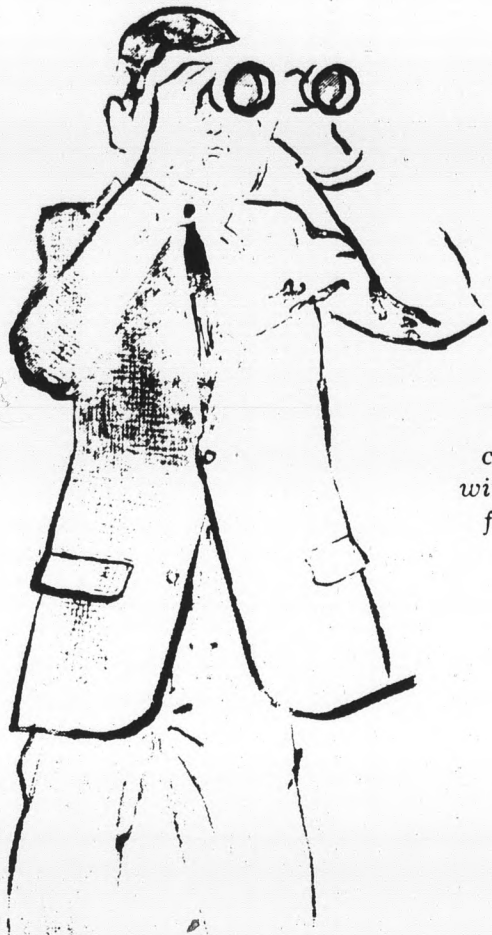
Black or Deep Burgundy Cordoshell. Pinked and perforated Wingback.

**Campus men's shop**

603 Mill Avenue — Tempe

# Welcome back!

The Americana Shop



To the Game  
and After  
in

### **Cricketeer**

The object: studied casualness at the stadium, without the need to change for post-game celebrating.

How to succeed: in this Cricketeer Back Bay Tweed Sportcoat . . .

**in sport coats**

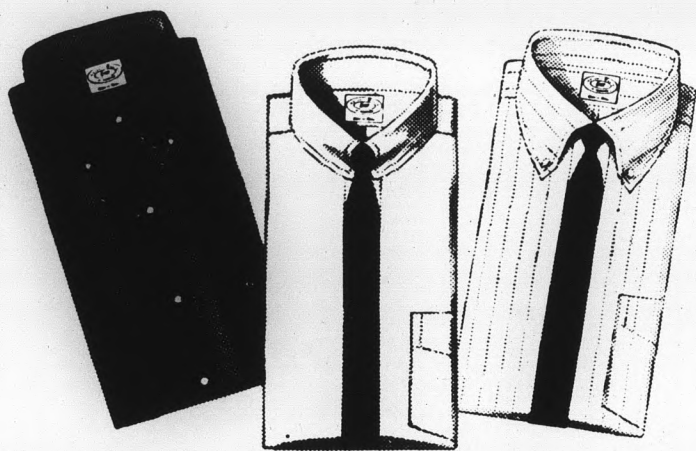
from **\$39.95**

**in suits**

from **\$59.95**

## **the new campus look was never more natural**

We are ready to show you a complete new selection of clothes including suits, sport coats, slacks and refreshing accessories naturally — traditional styling, modest in price.



**in sport or dress shirts**

details include tapered body, box pleat, locker loop in back . . . and many colors.

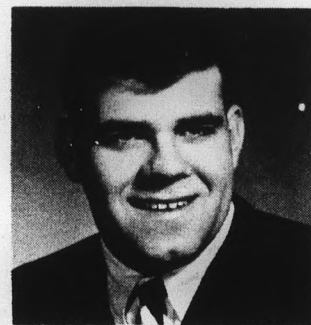
from **\$5.00**



**in sweaters**

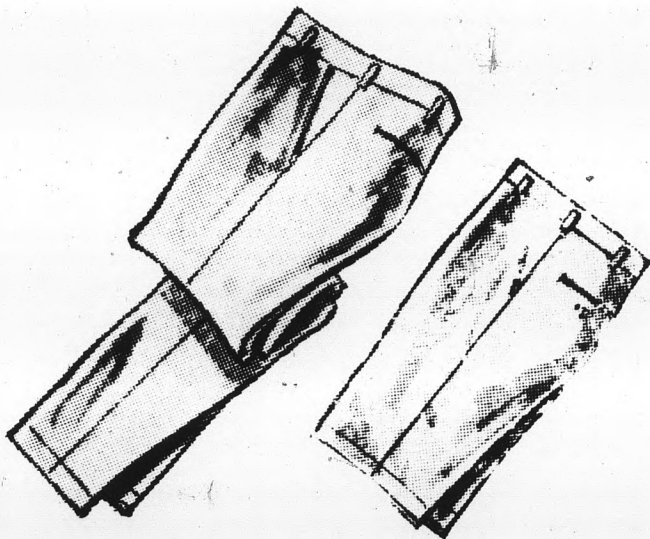
imaginatively designed classics are yours in colors and patterns to reflect the look of men-in-the-know.

from **\$10.95**



Craig "Stubby" Ankeney  
Our  
Campus Representative

**GO DEVILS!  
BEAT  
THE COUGARS**



**in slacks**

casuals from **\$5.98**

dress from **\$12.95**

**in bermudas**

from **\$4.98**

**Levi Cords \$5.98**

**Levi Sta-Prest \$6.98**



OPEN 9:00 A.M. to 6:00 P.M.  
THURSDAY NITE 'TIL 9 P.M.

**TEMPE SHOPPING CENTER**

